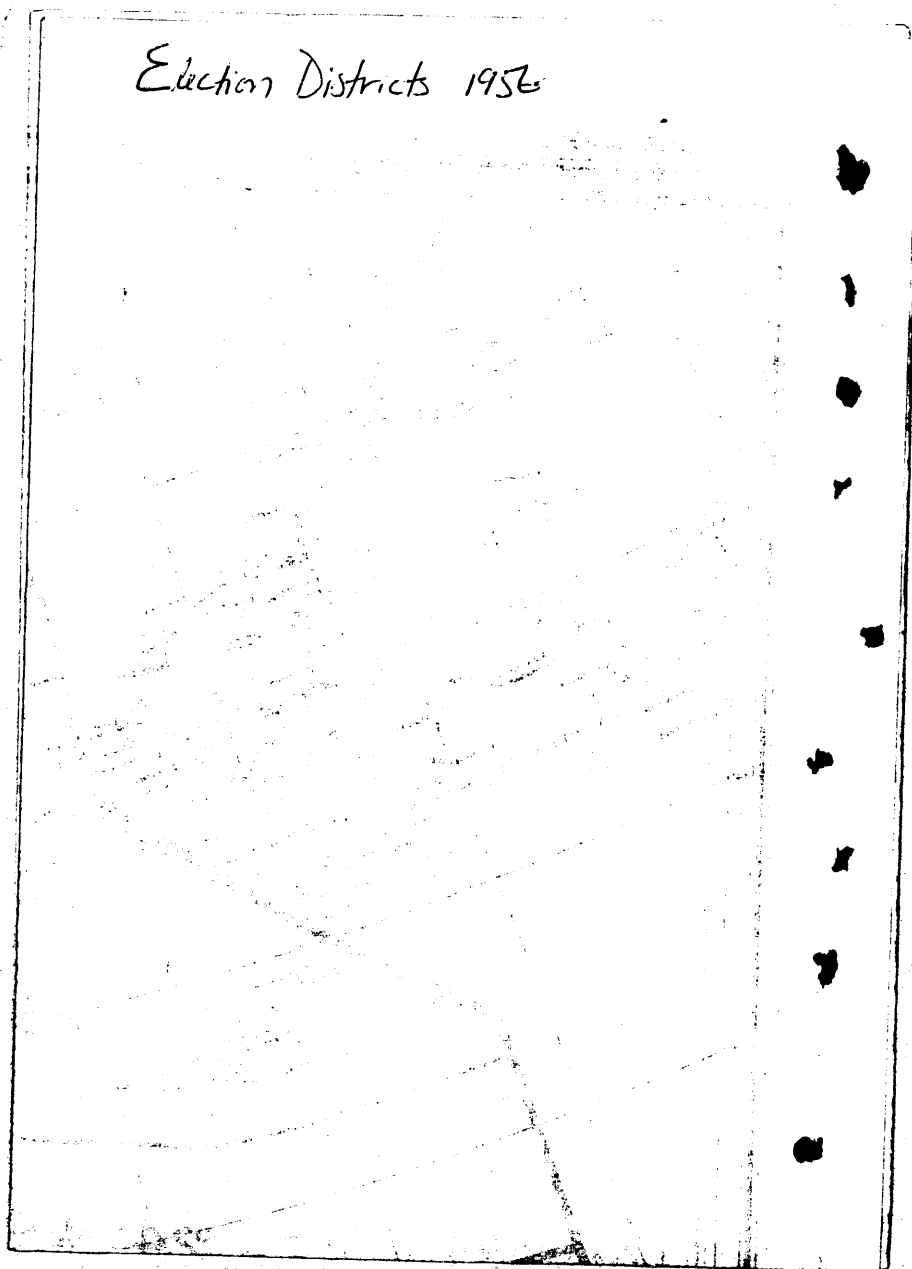


LDIR#159

APPORTIONMENT

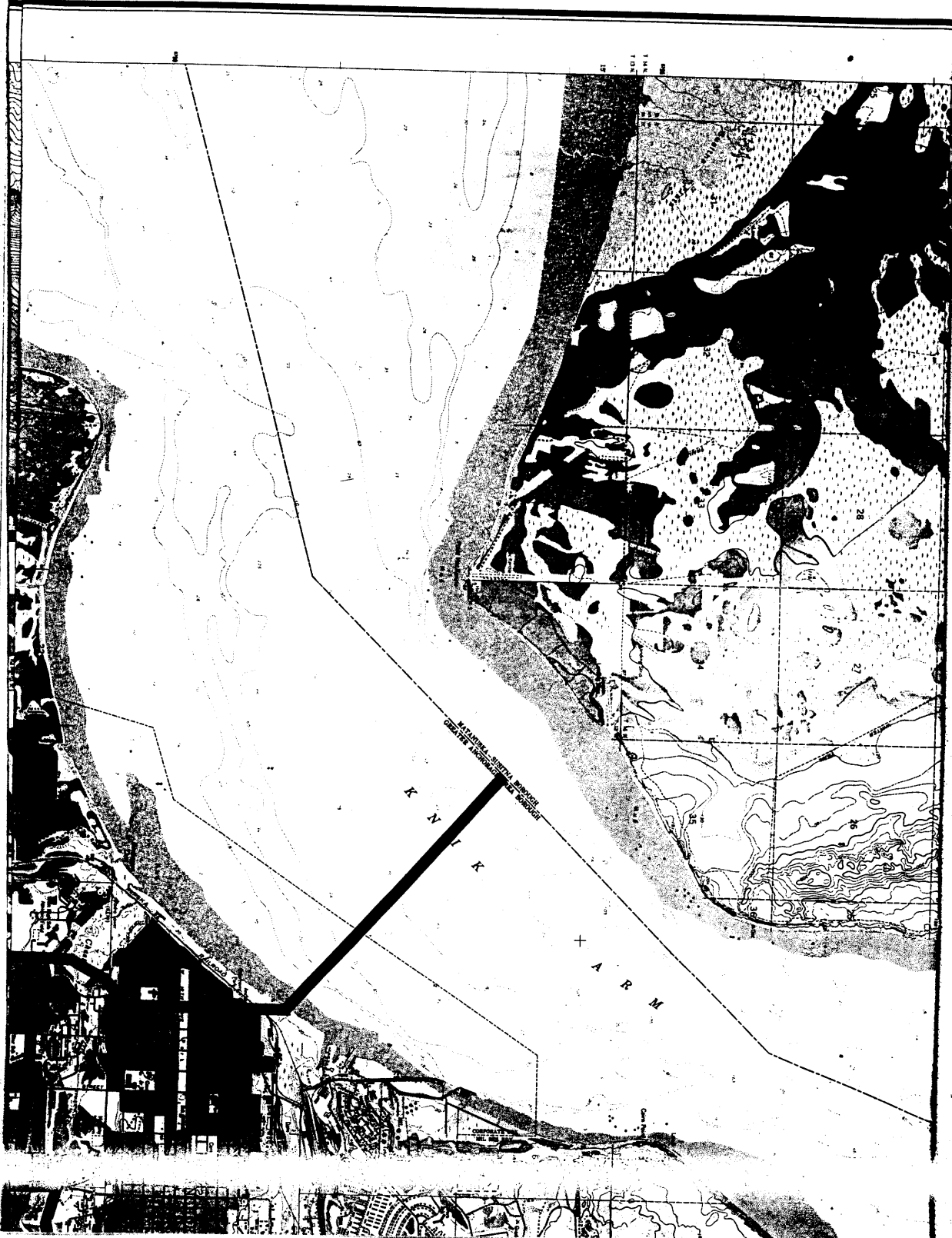
1956-1973

Election Districts 1956

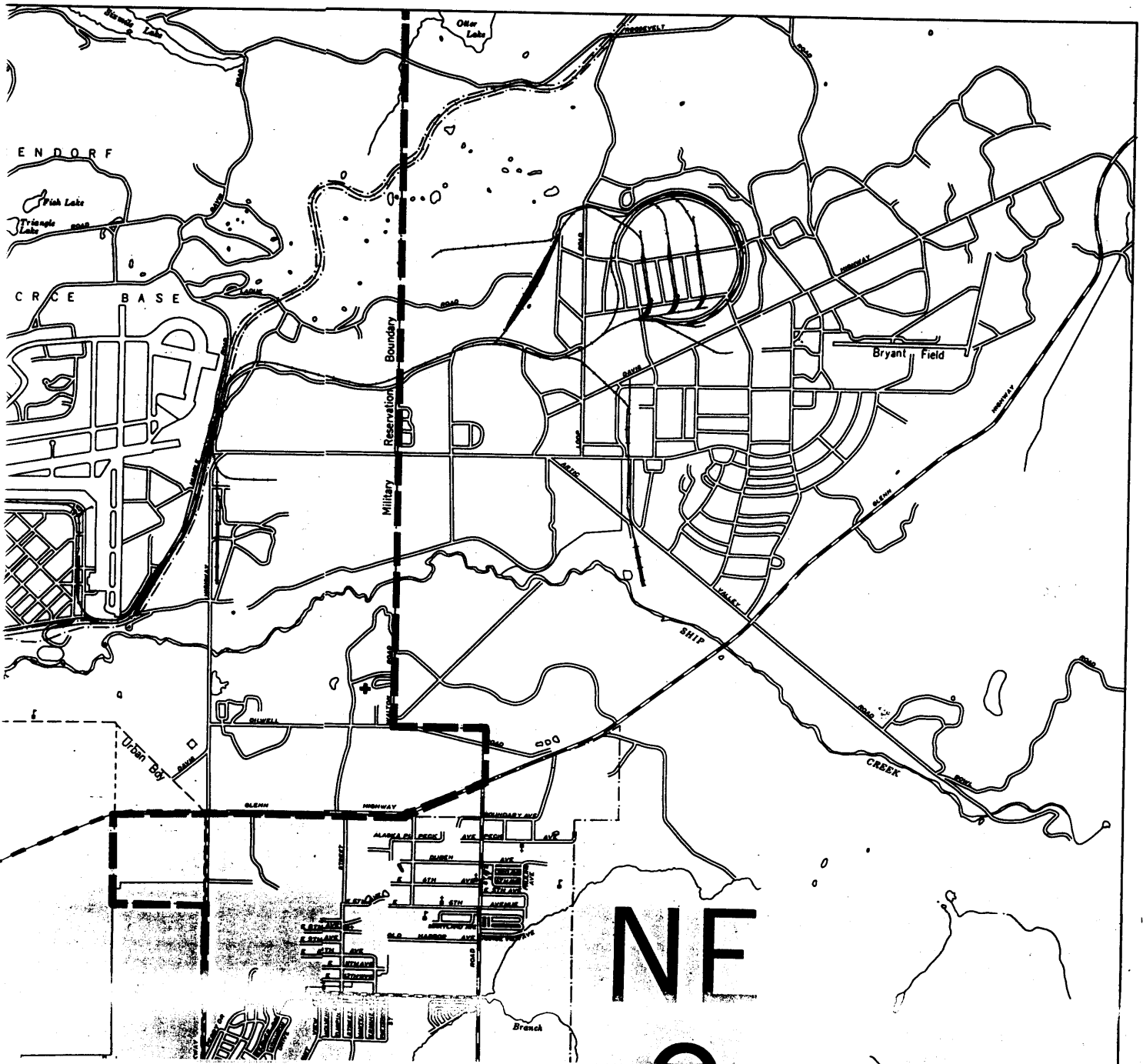


Election districts 1965

Election districts 1973



Election Districts 1972



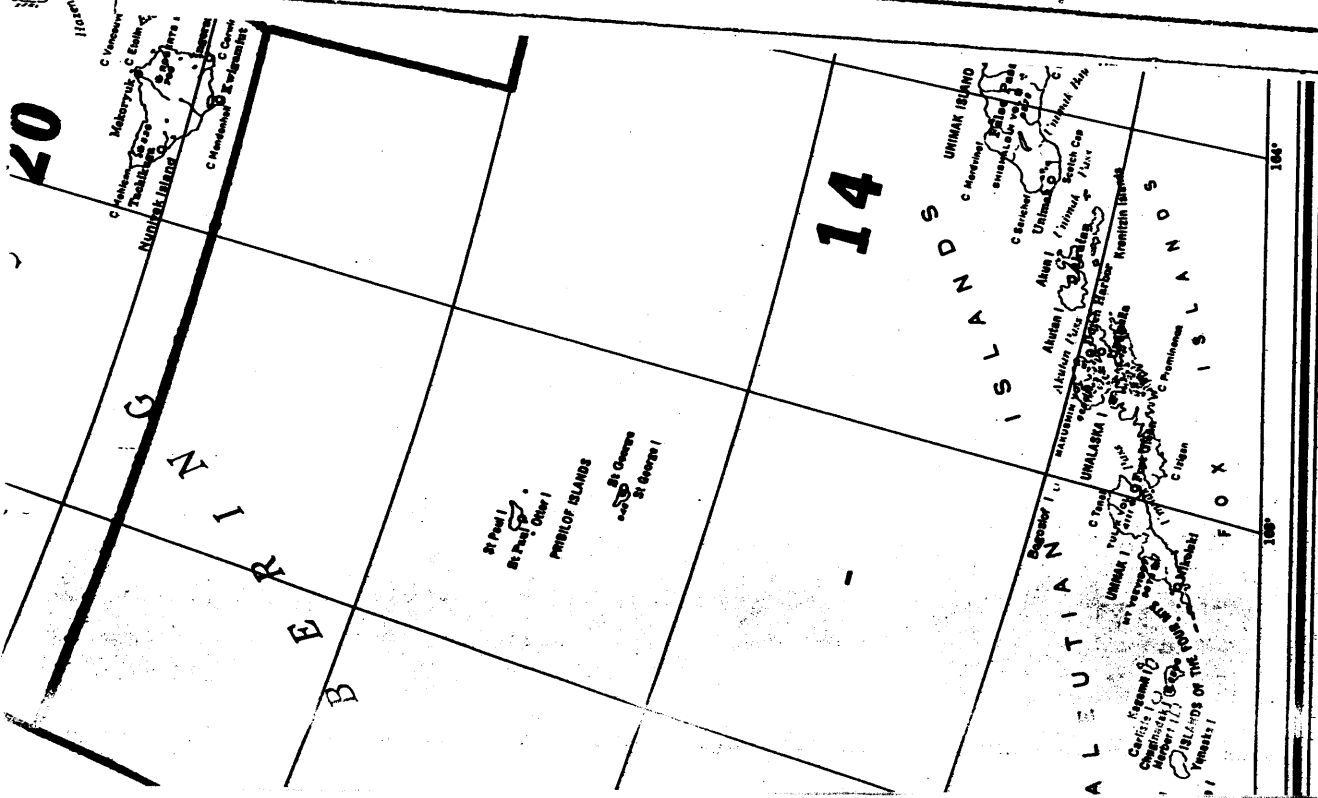
* OFFICIAL MAP *

ALASKA ELECTION DISTRICTS

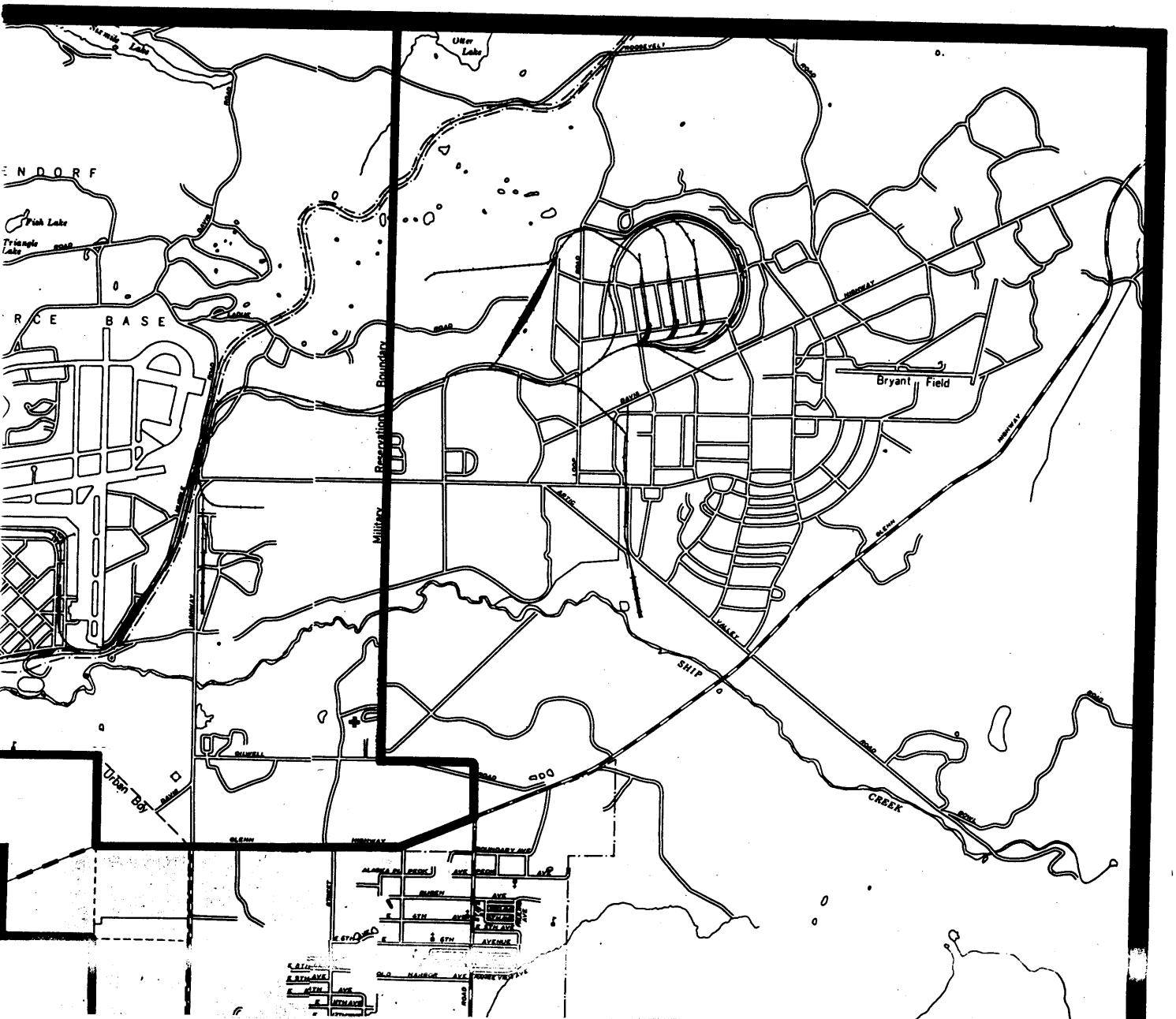
AS DETERMINED IN ACCORDANCE WITH THE PROVISIONS
OF THE
CONSTITUTION OF THE STATE OF ALASKA
FOLLOWING THE OFFICIAL 1971 REAPPORTIONMENT BY
GOVERNOR WILLIAM A. EGAN

SENATE SEATS	HOUSE SEATS
District E: 2 Seats District F: 2 Seats District G: 2 Seats District H: 2 Seats District L: 3 Seats All other districts 1 seat each.	Districts 1, 4 & 12: 2 Seats Districts 8, 9, 10 & 11: 4 Seats District 17: 5 Seats All other districts 1 seat each.

————— SOLID LINES INDICATE SENATORIAL DISTRICTS (LETTERS)
 - - - - - BROKEN LINES INDICATE HOUSE DISTRICTS WITHIN SENATORIAL DISTRICTS (NUMBERS)



Election districts 1973



Election districts 1974

ANCHORAGE



ALASKA

OFFICIAL ALASKA SUPREME COURT REAPPORTIONMENT PLAN JUNE 14, 1972

— — — — — SOLID LINES INDICATE SENATORIAL DISTRICTS (LETTERS)
- - - - - BROKEN LINES INDICATE HOUSE DISTRICTS WITHIN SENATORIAL
DISTRICTS (NUMBERS)

50 0 50 100 150
SCALE IN MILES

THE SUPREME COURT OF THE STATE OF ALASKA

CERTIFICATE

I, Josephine M. McPhetres, Clerk of the Supreme Court of the State of Alaska, do hereby certify that this copy of the Alaska Department of Highways map of Alaska depicts the HOUSE and SENATE DISTRICTS as established in the court's interim reapportionment plan dated June 14, 1972 as amended June 30, 1972.

WITNESS my hand and the seal of the Supreme Court of the State of Alaska, at Juneau, this 7th day of July, 1972.


JOSEPHINE M. McPHETRES
CLERK

