

ALASKA LEGISLATURE COMMITTEE FILES, 2003-2004 8672

11093 HOUSE TRANSPORTATION

Need ID	Project Description/Funding Source	Score	Phse	Apprn	FFY04	FFY05	FFY06	FFY07	FFY08	FFY09	Req'd Funding >6 years
6626	Cordova: Covered Pedestrian Walkways Construct covered pedestrian walkways at 4 locations in Cordova.	76.5	2 4							75.0	
	Federal			TE	0.0	0.0	0.0	0.0	0.0	68.2	
	State				0.0	0.0	0.0	0.0	0.0	6.8	
	Other										
	Project Total				0.0	0.0	0.0	0.0	0.0	75.0	200.0
6175	Cordova: Interpretive Boardwalk Construct boardwalk along the Cordova breakwater. Includes a kiosk and interpretative signs.	80.0	2 4							100.0	
	Federal			TE	0.0	0.0	0.0	0.0	91.0	0.0	
	State				0.0	0.0	0.0	0.0	9.0	0.0	
	Other										
	Project Total				0.0	0.0	0.0	0.0	100.0	0.0	400.0
6619	Cordova: Whitshed Road Bike Path & Wayside Construct a pedestrian/bicycle facility along the first mile of Whitshed Road, develop the Orca Inlet Recreational Wayside at MP 0.5 mile and improve the access trail to the Meals Lake Recreational area.	89.2	2 3 4					120.0		300.0	
	Federal			TE	0.0	0.0	0.0	109.2	272.9	1,050.0	
	State				0.0	0.0	0.0	10.8	27.1	0.0	
	Other										
	2/50.0; 4/450.0									450.0	
	Project Total				0.0	0.0	0.0	120.0	300.0	1,500.0	0.0
16141	Craig: East Hamilton Drive Path Paving Remove brush and overgrowth, install root barrier and pave the existing gravel path along East Hamilton Drive.	97.2	2 4				30.0	10.0			
	Federal			STP	0.0	27.3	0.0	9.1	222.9	0.0	
	State				0.0	2.7	0.0	0.9	22.1	0.0	
	Other										
	Project Total				0.0	30.0	0.0	10.0	245.0	0.0	0.0
6839	Dalton Hwy: MP 0.0 - Livengood Pullout/MP 20 - Hess Creek Wayside At MP 0 the Livengood Pullout on south side, install two interpretive panels and sanitary facilities. At MP 20 the Hess Creek Wayside on the west side, install two interpretive panels, a parking and access road.	78.7	2 4							50.0	
	Federal			TE	0.0	0.0	0.0	0.0	0.0	45.5	
	State				0.0	0.0	0.0	0.0	0.0	4.5	
	Other										
	Project Total				0.0	0.0	0.0	0.0	0.0	50.0	250.0

Need ID	Project Description/Funding Source	Score	Phse	Apprn	FFY04	FFY05	FFY06	FFY07	FFY08	FFY09	Req'd Funding >6 years	
3976	Dalton Hwy: MP 115 - Arctic Circle Campground Access Includes development of RV and tent camping sites, sanitary facilities, picnic tables, and information/interpretation kiosk.	83.5	2					75.0				
			3									
			4								750.0	
					TE	0.0	0.0	0.0	68.2	0.0	682.3	
	Federal				0.0	0.0	0.0	6.8	0.0	57.7		
	State											
	Other											
	Project Total				0.0	0.0	0.0	75.0	0.0	750.0	0.0	
3964	Dalton Hwy: MP 188.6 Middle Fork Koyukuk River Access Improve access road, upgrade and enlarge parking area.	88.3	2					25.0				
			4						125.0			
					STP	0.0	0.0	0.0	22.7	113.7	0.0	
						0.0	0.0	0.0	2.3	11.3	0.0	
	Federal											
	State											
	Other		ROW + Materials									
	Project Total				0.0	0.0	0.0	25.0	125.0	0.0	0.0	
3965	Dalton Hwy: MP 207 - Bettles River Access Provide parking spaces and improve access to the Dietrich-Bettles Rivers. Improve access to a back country trail.	88.3	2					25.0				
			4						125.0			
					STP	0.0	0.0	0.0	22.7	113.7	0.0	
						0.0	0.0	0.0	2.3	11.3	0.0	
	Federal											
	State											
	Other		ROW + Materials									
	Project Total				0.0	0.0	0.0	25.0	125.0	0.0	0.0	
3966	Dalton Hwy: MP 215 - Arctic Loon Ponds Overlook Create a parking area to provide watchable wildlife and fishing opportunities.	81.0	2					25.0				
			4						115.0			
					TE	0.0	0.0	0.0	0.0	22.7	104.6	
						0.0	0.0	0.0	0.0	2.3	10.4	
	Federal											
	State											
	Other											
	Project Total				0.0	0.0	0.0	0.0	25.0	115.0	0.0	
3967	Dalton Hwy: MP 235 - Upper Dietrich River Wayside Provide a parking area, interpretation, restrooms, and trash cans for visitors and commercial vehicles.	85.0	2					50.0				
			4						150.0			
					STP	0.0	0.0	0.0	45.5	106.5	0.0	
						0.0	0.0	0.0	4.5	13.5	0.0	
	Federal											
	State											
	Other		ROW + Materials									
	Project Total				0.0	0.0	0.0	50.0	150.0	0.0	0.0	

Need ID	Project Description/Funding Source	Score	Phse	Apprn	FFY04	FFY05	FFY06	FFY07	FFY08	FFY09	Req'd Funding >6 years
3968	Dalton Hwy: MP 252 - Spike Creek Camp Wayside Provide safe, adequate parking and toilet facilities.	81.0	2 4						30.0		
	Federal			TE	0.0	0.0	0.0	0.0	27.3	159.2	
	State				0.0	0.0	0.0	0.0	2.7	15.8	
	Other										
	Project Total				0.0	0.0	0.0	0.0	30.0	175.0	0.0
3949	Dalton Hwy: MP 261 to 265 - Allgun Valley Wayside Construct parking sites and interpretive panels between MP 261 and 265.	85.0	2 4					25.0			
	Federal			STP	0.0	0.0	0.0	22.7	159.2	0.0	
	State				0.0	0.0	0.0	2.3	15.8	0.0	
	Other										
	Project Total				0.0	0.0	0.0	25.0	175.0	0.0	0.0
3950	Dalton Hwy: MP 275 Galbraith Lake Campground & Access Includes recreational vehicle and tent camp sites, parking area, sanitary facilities, kiosk, well and upgrade the 1.75 mile long access road. Located on the west side of road.	91.5	2 3 4				170.0	110.0	50.0		
	Federal			TE	0.0	0.0	154.6	100.1	25.0	864.2	
	State				0.0	0.0	15.4	9.9	0.0	10.8	
	Other	3/25.0; 4/75.0							25.0	75.0	
	Project Total				0.0	0.0	170.0	110.0	50.0	950.0	0.0
3972	Dalton Hwy: MP 57 Yukon Crossing Intermodal Facilities Construct intermodal facilities at the Yukon River boat/barge landing site. Includes access, storage area and parking, information and traveler facilities.	80.7	2 3 4								
	Federal			TE	0.0	0.0	0.0	0.0	0.0	390.0	
	State				0.0	0.0	0.0	0.0	0.0	0.0	
	Other	2/140.0; 3/10.0; 4/110.0								110.0	
	Project Total				0.0	0.0	0.0	0.0	0.0	500.0	0.0

Need ID	Project Description/Funding Source	Score	Phse	Apprn	FFY04	FFY05	FFY06	FFY07	FFY08	FFY09	Req'd Funding >6 years
3974	Dalton Hwy: MP 60 Campground Access Includes recreational vehicle camping area, a tent camping area, parking area and picnic area on the West side of the road.	86.5	2					100.0			
			3						25.0		
			4								
	Federal			TE	0.0	0.0	0.0	91.0	0.0	0.0	
	State				0.0	0.0	0.0	9.0	0.0	0.0	
	Other	3/25.0; 4/25.0									
	Project Total				0.0	0.0	0.0	100.0	25.0	0.0	525.0
3975	Dalton Hwy: MP 86 - Yukon Flats Overlook Includes parking spaces, viewing deck and three interpretive signs.	94.8	2				25.0				
			4					75.0			
	Federal			STP	0.0	0.0	22.7	68.2	0.0	0.0	
	State				0.0	0.0	2.3	6.8	0.0	0.0	
	Other	ROW + Materials									
	Project Total				0.0	0.0	25.0	75.0	0.0	0.0	0.0
3944	Delta Junction: AK Road Commission Interpretive Center Provide an interpretive center and highway traveler welcome station at Big Delta State Historical Park (Rika's Landing), located at MP 274.5 Richardson Hwy.	91.2	2				171.0				
			4					284.0			
	Federal			TE	0.0	0.0	155.6	258.4	0.0	0.0	
	State				0.0	0.0	15.4	25.6	0.0	0.0	
	Other										
	Project Total				0.0	0.0	171.0	284.0	0.0	0.0	0.0
3945	Delta Junction: State Historic Park Resource Protection Erosion protection, and pave access road, parking area, RV sanitary dump station loop and pedestrian trails at Rika's Roadhouse.	81.2	2						300.0		
			4								
	Federal			TE	0.0	0.0	0.0	0.0	272.9	0.0	
	State				0.0	0.0	0.0	0.0	27.1	0.0	
	Other										
	Project Total				0.0	0.0	0.0	0.0	300.0	0.0	1,200.0
6602	Denali Hwy: MP 15 to 45 Revegetation & Restoration Improve Swede Lake and McLaren River Road Trailheads. Revegetate and restore trampled areas near the Delta River Wayside, Tangle Lakes and other locations.	91.0	2				100.0				
			4					250.0			
	Federal			STP	0.0	0.0	91.0	227.4	0.0	0.0	
	State				0.0	0.0	9.0	22.6	0.0	0.0	
	Other	BLM Labor									
	Project Total				0.0	0.0	100.0	250.0	0.0	0.0	0.0

Need ID	Project Description/Funding Source	Score	Phse	Apprn	FFY04	FFY05	FFY06	FFY07	FFY08	FFY09	Req'd Funding >6 years
9549	Dillingham: Coastal Trail Construction Upgrade and hard surface 6.5 miles of pathways. This will include approximately 2.9 miles of existing pathway on the Kakanak Road from Dillingham to the intersection of Kakanak and Aleknagik Lake Roads, and 3.6 miles of new separated hard surfaced bike/pedestrian trails which continue from the newly constructed pathway at Shannon's and Aleknagik Lake Roads. Project termini will be at the intersection of Waskey and Aleknagik Lake Roads.	83.2	2							5.0	
			7							1,586.0	
			4								
	Federal			TE	0.0	0.0	0.0	0.0	0.0	1,447.3	
	State				0.0	0.0	0.0	0.0	0.0	143.7	
	Other										
	Project Total				0.0	0.0	0.0	0.0	0.0	1,591.0	0.0
6267	Eagle: Restore Customs House Restore historic U.S. Customs House in Eagle.	128.7	2								
			4		60.0						
	Federal			TE	54.6	0.0	0.0	0.0	0.0	0.0	
	State				5.4	0.0	0.0	0.0	0.0	0.0	
	Other										
	Project Total				60.0	0.0	0.0	0.0	0.0	0.0	0.0
9920	Eilm: Walla Walla Iditarod Trail Repair a six mile section of the Iditarod trail located between Eilm and Walla Walla. Repairs include smoothing and widening the trail and moving it away from the cliff.	128.0	2		70.0						
			4			175.0					
	Federal			TE	63.7	159.2	0.0	0.0	0.0	0.0	
	State				6.3	15.8	0.0	0.0	0.0	0.0	
	Other										
	Project Total				70.0	175.0	0.0	0.0	0.0	0.0	0.0
3678	Fairbanks NSB: Harding Lake/Salcha Drive Bike Trail Construct a bike/recreational path around Harding Lake along Salcha Drive (Richardson Hwy approx. MP 320).	74.0	2							750.0	
			3								
			4								
	Federal			TE	0.0	0.0	0.0	0.0	0.0	682.3	
	State				0.0	0.0	0.0	0.0	0.0	67.7	
	Other										
	Project Total				0.0	0.0	0.0	0.0	0.0	750.0	5,000.0
3853	Fairbanks: Farmers Loop/Dogmushers Sanitary Wayside Outhouse to serve bike path and dog mushing trailhead.	102.3	2			30.0					
			3				40.0				
			4				75.0				
	Federal			TE	0.0	27.3	104.6	0.0	0.0	0.0	
	State				0.0	2.7	10.4	0.0	0.0	0.0	
	Other										
	Project Total				0.0	30.0	115.0	0.0	0.0	0.0	0.0

Need ID	Project Description/Funding Source	Score	Phse	Apprn	FFY04	FFY05	FFY06	FFY07	FFY08	FFY09	Req'd Funding >6 years	
6598	Fairbanks: Farmers Loop-Chena Hot Springs Road Trail Connection All-season trail connection.	106.0	2			100.0						
			3				100.0					
			4						500.0			
					TE	0.0	91.0	91.0	454.9	0.0	0.0	
	Federal				0.0	9.0	9.0	45.2	0.0	0.0		
	State											
	Other											
	Project Total				0.0	100.0	100.0	500.0	0.0	0.0	0.0	
3831	Fairbanks: Steamship Nenana Renovation Additional restoration work on sternwheeler Nenana.	101.8	2			150.0						
			4					450.0				
					STP	0.0	90.0	0.0	409.4	0.0	0.0	
						0.0	0.0	0.0	40.6	0.0	0.0	
	Federal											
	State											
	Other	2.60				60.0						
	Project Total				0.0	150.0	0.0	450.0	0.0	0.0	0.0	
6609	Fairbanks: Steese Hwy - Chatanika Multi-use Trails Easements for multi-use recreation trail.	83.0	2						100.0			
			3							200.0		
					TE	0.0	0.0	0.0	0.0	91.0	181.9	
						0.0	0.0	0.0	0.0	9.0	18.1	
	Federal											
	State											
	Other											
	Project Total				0.0	0.0	0.0	0.0	100.0	200.0	0.0	
12800	Fairbanks: Tanana Valley Railroad Trainhouse/Museum Construct a 3,000 SF structure at Alaskaland to house and support operations of the restored Tanana Valley Engine #1. The proposed two part building will also include a museum with a focus on the history of the Tanana Valley Railroad and railroad transportation in Alaska.	114.7	2									
			3				20.0					
			4				650.0					
					TE	0.0	609.5	0.0	0.0	0.0	0.0	
	Federal											
	State					40.5	0.0	0.0	0.0			
	Other	2/60, 3/20										
	Project Total				0.0	670.0	0.0	0.0	0.0	0.0	0.0	
S939	Fairbanks: Yankovich/Miller Hill Multi-Use Path Construct a separated bicycle/pedestrian trail along Yankovich and Miller Hill Roads in the Farmers Loop/University of Alaska area.	83.7	2					125.0				
			3							800.0		
			4									
					TE	0.0	0.0	0.0	113.7	0.0	727.8	
	Federal											
	State					0.0	0.0	11.3	0.0	72.2		
	Other											
	Project Total				0.0	0.0	0.0	125.0	0.0	800.0	800.0	

Need ID	Project Description/Funding Source	Score	Phse	Apprn	FFY04	FFY05	FFY06	FFY07	FFY08	FFY09	Req'd Funding >6 years
6613	Galena: Separated Path	103.0	2			45.0					
	Extend the existing bike/ped. facility 1/2 mile to the housing up river.		4				200.0				
	Federal			TE	0.0	40.9	181.9	0.0	0.0	0.0	
	State Other				0.0	4.1	18.1	0.0	0.0	0.0	
	Project Total				0.0	45.0	200.0	0.0	0.0	0.0	0.0
16160	Glenn Hwy MP 76: King Mountain Scenic Overlook	104.3	2			146.0					
	Project will reconstruct the King Mountain State Recreation Site, located 30 miles east of Palmer, to serve as a highway wayside. Project includes reconfiguring and paving existing gravel looped drive, constructing parking for 20 autos and 7 large pull through vehicles, 17 picnic sites, 3 interpretive kiosks, 2 sets of vaulted toilets, 1,000 feet of paved trail and an unpaved area for overflow parking. Caretaker and other miscellaneous park facilities will be installed.		7					50.0			
			4					1,047.0			
	Federal			STP	0.0	132.8	0.0	997.9	0.0	0.0	
	State			0.0	13.2	0.0	99.1	0.0	0.0		
	Other										
	Project Total				0.0	146.0	0.0	1,097.0	0.0	0.0	0.0
3814	Glennallen: Glenn Hwy Bike Path	189.0	2								
	Construct a 2.7 mile bike pedestrian path from the visitors center at the Glenn/Rich Hwy Junction to the Library/Moose Creek.		3								
			7			150.0					
			4			1,300.0					
	Federal		STP	1,319.1	0.0	0.0	0.0	0.0	0.0		
	State			130.9	0.0	0.0	0.0	0.0	0.0		
	Other										
	Project Total				1,450.0	0.0	0.0	0.0	0.0	0.0	0.0
16241	Haines: Mud Bay Road Beach Access	113.3	2		30.0	10.0					
	Construct a wayside at One Mile Creek, including a parking area, interpretation and an accessible route to the tidal flats. The route would be a combination of path and boardwalk crossing the creek and grassy riparian areas to a small deck with views of the Chilkat River delta.		3				5.0				
			4				200.0				
	Federal			STP	27.3	195.6	0.0	0.0	0.0	0.0	
	State			2.7	19.4	0.0	0.0	0.0	0.0		
	Other										
	Project Total				30.0	215.0	0.0	0.0	0.0	0.0	0.0

Need ID	Project Description/Funding Source	Score	Phse	Apprn	FFY04	FFY05	FFY06	FFY07	FFY08	FFY09	Req'd Funding >6 years
16038	Haines: Old Haines Highway Sidewalk Construction Construct curb, gutter and sidewalk along both sides of the Old Haines Highway from the base of the hill to Third Avenue. Width of the paved roadway would be narrowed as part of sidewalk installation. Include a connection north along the right-of-way for First Avenue.	95.2	2				25.0	20.0			
			7						20.0		
			4						510.0		
	Federal			STP	0.0	0.0	22.7	18.2	482.1	0.0	
	State				0.0	0.0	2.3	1.8	47.9	0.0	
	Other										
	Project Total				0.0	0.0	25.0	20.0	530.0	0.0	0.0
16181	Healy School Klds Safety Trail Construct trail from Tri-Valley School to the Healy Spur Road.	124.7	2								
			3		20.0						
			7		10.0						
			4				105.0				
	Federal			STP	10.0	95.5	0.0	0.0	0.0	0.0	
	State				0.0	9.5	0.0	0.0	0.0	0.0	
	Other	3	20		20.0						
	Project Total				30.0	105.0	0.0	0.0	0.0	0.0	0.0
12742	Homer Split Separated Pathway Ph II Construct a separated pathway from the Homer Fishin' Hole to the End of the Road Wayside to include interpretive sites.	128.3	2								
			7			50.0					
			4			635.0					
	Federal			TE	0.0	623.1	0.0	0.0	0.0	0.0	
	State				0.0	61.9	0.0	0.0	0.0	0.0	
	Other										
	Project Total				0.0	685.0	0.0	0.0	0.0	0.0	0.0
12499	Homer: Veterans Memorial Wayside Construct a wayside at MP 6 on the Sterling Highway. Wayside will include parking area, viewing scopes, benches, flag poles and interpretive center to display historical and cultural information.	95.8	2				45.0				
			3						260.0		
			4								
	Federal			TE	0.0	0.0	40.9	236.5	0.0	0.0	
	State				0.0	0.0	4.1	23.5	0.0	0.0	
	Other										
	Project Total				0.0	0.0	45.0	260.0	0.0	0.0	0.0
12741	Homer: Baycrest/Homestead Skl/Trailhead Rehabilitation Construct a year round trailhead that provides off-street parking on Rogers Loop Road.	109.2	2			35.0					
			3				50.0				
			4						235.0		
	Federal			TE	0.0	31.8	45.5	213.8	0.0	0.0	
	State				0.0	3.2	4.5	21.2	0.0	0.0	
	Other										
	Project Total				0.0	35.0	50.0	235.0	0.0	0.0	0.0

Need ID	Project Description/Funding Source	Score	Phse	Apprn	FFY04	FFY05	FFY06	FFY07	FFY08	FFY09	Req'd Funding >6 years
12741	Homer: Baycrest/Homestead Ski/Trailhead Rehabilitation	109.2	2			100.0					
	Construct a year round trailhead/pullout that provides access to Homer area Ski/wilderness trails off the Sterling Highway, adjacent to the DOT&PF Maintenance facility. Project will include a year round restroom, parking area and interpretive facilities.		3					100.0			
			7						25.0		
			4						306.0		
	Federal			STP	0.0	91.0	91.0	301.1	0.0	0.0	
	State				0.0	9.0	9.0	29.9	0.0	0.0	
	Other										
	Project Total				0.0	100.0	100.0	331.0	0.0	0.0	0.0
16060	Homer: Diamond Creek Scenic Overlook Construction	105.8	2			175.0					
	Construct a two lane paved access road, parking area, picnic areas, viewpoints, restroom facilities, caretaker cabin and trailhead and trails.		7						25.0		
			4						1,300.0		
	Federal			STP	0.0	159.2	0.0	1,205.4	0.0	0.0	
	State				0.0	15.8	0.0	119.6	0.0	0.0	
	Other										
	Project Total				0.0	175.0	0.0	1,325.0	0.0	0.0	0.0
9879	Homer: End of the Road Wayside Park Construction	114.5	2								
	Construct a highway wayside at the beginning of the Sterling Hwy and adjacent to the AMHS terminal and dock which consists of a rest and viewing area, toilet facilities, parking, pathway and interpretive signs.		7				50.0				
			4				200.0				
	Federal			TE	0.0	227.4	0.0	0.0	0.0	0.0	
	State				0.0	22.6	0.0	0.0	0.0	0.0	
	Other	3/50.0									
	Project Total				0.0	250.0	0.0	0.0	0.0	0.0	0.0
16003	Homer: Pathway Realignment, Beluga Slough to Homer Spit	88.5	2					100.0			
	Realign the bike path from the Spit to Lake Street to the other side of the road. Project will include constructing a parking area at the intersection of the Sterling Highway and FAA Road. Include interpretive signing in the parking area.		3						50.0		
			7							50.0	
			4								560.0
	Federal			STP	0.0	0.0	0.0	91.0	45.5	554.9	
	State				0.0	0.0	0.0	9.0	4.5	55.1	
	Other										
	Project Total				0.0	0.0	0.0	100.0	50.0	610.0	0.0

Need ID	Project Description/Funding Source	Score	Phse	Apprn	FFY04	FFY05	FFY06	FFY07	FFY08	FFY09	Req'd Funding >6 years	
6485	Homer: Soundview Avenue Trail Construction Construct approximately 2000 feet of pedestrian pathway between two disconnected segments of Soundview Avenue.	110.2	2		50.0							
			3									
			7			15.0						
			4			200.0						
			Federal		TE	45.5	195.6	0.0	0.0	0.0	0.0	
	State			4.5	19.4	0.0	0.0	0.0	0.0			
	Other											
	Project Total				50.0	215.0	0.0	0.0	0.0	0.0	0.0	
6489	Houston: Houston-Willow Creek Historic Trail Improvements Construction of a gravel-surfaced pedestrian/equestrian trail connecting from a day use area to the historic Willow Sled Trail. Construction of an open air picnic pavilion with picnic tables and bench seating.	95.2	2				70.0					
			3									
			7						5.0			
			4						350.0			
			Federal		TE	0.0	0.0	63.7	322.9	0.0	0.0	
	State			0.0	0.0	6.3	32.1	0.0	0.0			
	Other											
	Labor + Material											
	Project Total				0.0	0.0	70.0	355.0	0.0	0.0	0.0	
2039	Juneau: Auke Bay Ferry Terminal Enhancements Transportation enhancements at the Auke Bay ferry terminal. Design, fabricate and install interpretive exhibit in terminal and improve facilities for pedestrians and bicyclists.	90.2	2				165.0					
			4					1,000.0				
			Federal		STP	0.0	0.0	150.1	909.7	0.0	0.0	
				State			0.0	0.0	14.9	90.3	0.0	0.0
				Other								
	Project Total				0.0	0.0	165.0	1,000.0	0.0	0.0	0.0	
3100	Juneau: North Douglas - Fish Creek to False Outer Point Bike Path Const Construct bike path from Fish Creek to False Outer Point.	80.7	2						300.0			
			4									
			Federal		TE	0.0	0.0	0.0	0.0	272.9	0.0	
				State			0.0	0.0	0.0	0.0	27.1	0.0
				Other								
	Project Total				0.0	0.0	0.0	0.0	300.0	0.0	1,700.0	

Need ID	Project Description/Funding Source	Score	Phse	Apprn	FFY04	FFY05	FFY06	FFY07	FFY08	FFY09	Req'd Funding >6 years
16151	Juneau: Path Grade Reduction Next to Egan Drive Next to the outbound travel lanes on Egan, place existing drainage in a culvert and construct embankment fill that reduces grades by elevating the multi-use path between the end of Channel Vista Drive and Power House Road.	116.7	2		30.0	20.0					
			4				198.0				
	Federal			STP	27.3	18.2	180.1	0.0	0.0	0.0	
	State				2.7	1.8	17.9	0.0	0.0	0.0	
	Other										
	Project Total				30.0	20.0	198.0	0.0	0.0	0.0	0.0
159	Juneau: Under Thunder Path Construction Establish a path for pedestrians and bicyclists along the eastern edge of the Mendenhall Valley between Egan Drive and the Mendenhall Glacier Visitors Center. Includes connections to neighborhoods and schools.	109.2	2			200.0	125.0				
			3				50.0				
			4					3,425.0			
	Federal			STP	0.0	181.9	159.2	3,115.7	0.0	0.0	
	State				0.0	18.1	15.8	309.3	0.0	0.0	
	Other										
	Project Total				0.0	200.0	175.0	3,425.0	0.0	0.0	0.0
9599	Kenai Peninsula Borough: Deep Creek Beach Access Improvements Construct a separated paved access pathway along Deep Creek Beach Road from the highway to the beach. Realign and widen lower portion of Deep Creek Beach Road to facilitate staging for tractor launching by concessionaire and private business.	127.2	2								
			4			650.0					
	Federal			TE	0.0	591.3	0.0	0.0	0.0	0.0	
	State				0.0	58.7	0.0	0.0	0.0	0.0	
	Other										
	Project Total				0.0	650.0	0.0	0.0	0.0	0.0	0.0
9760	Kenai Peninsula Borough: 12 Mile Wayside Trail System Rehabilitation Construct trailhead facilities including restrooms and make trail improvements at the 12 Mile Wayside along the Seward Highway. Trail work would include adding gravel material to the existing trail, constructing water bars, lighting for winter cross-country skiing, and interpretive signage for summer use.	76.0	2							50.0	
			4								
	Federal			TE	0.0	0.0	0.0	0.0	0.0	45.5	
	State				0.0	0.0	0.0	0.0	0.0	4.5	
	Other										
	Project Total				0.0	0.0	0.0	0.0	0.0	50.0	250.0
2609	Kenai Peninsula Borough: Seward Hwy: Scenic Byway Interpretive Sites Planning, design, and construction of six interpretive sites between MP 18-91 of the Seward Highway Scenic Byway, along with a series of route and site identifier signs along the entire length.	107.0	2								
			4			185.0					
	Federal			TE	0.0	168.3	0.0	0.0	0.0	0.0	
	State				0.0	16.7	0.0	0.0	0.0	0.0	
	Other										
	Project Total				0.0	185.0	0.0	0.0	0.0	0.0	0.0

Need ID	Project Description/Funding Source	Score	Phse	Apprr.	FFY04	FFY05	FFY06	FFY07	FFY08	FFY09	Req'd Funding >6 years	
6662	Kenai: Kenai River Bridge Access Road Pathway Construct a pedestrian/bike path parallel to the Kenai River Bridge Access Road between Kalifornsky Beach Road and the Kenai Spur Road, 3.3 miles.	189.0	2									
		99.5	3		100.0							
			7					90.0				
			4					3,800.0				
					STP	91.0	0.0	3,538.7	0.0	0.0	0.0	
	Federal							0.0	0.0	0.0		
	State				9.0	0.0	351.3	0.0	0.0	0.0		
	Other											
	Project Total				100.0	0.0	3,890.0	0.0	0.0	0.0	0.0	
16004	Kenai: Kenai Coastal Trail Construct a multi-purpose trail along the base of the Kenai bluffs from the Kenai Dunes Park to a new trailhead and parking area located just off Bridge Access Road. Total length of trail is approximately 1 mile and includes interpretive signing.	89.7	2				715.0	475.0				
			3							1,500.0		
			7									
			4									
					STP	0.0	0.0	115.0	432.1	0.0	1,364.6	
	Federal							42.9	0.0	135.5		
	State				0.0	0.0	0.0					
	Other	2,600					600.0					
	Project Total				0.0	0.0	715.0	475.0	0.0	1,500.0	9,220.0	
2409	Kenai: Kenai River Flats Interpretive Site Improvements Improve the existing highway rest stop near Warren Ames Memorial Bridge. Viewing platforms, viewing scopes, walkways, paving, sanitary facilities and landscaping.	130.7	2		452.0							
			7					10.0				
			4					1,910.0				
					TE	411.2	0.0	1,746.6	0.0	0.0	0.0	
			Federal							0.0	0.0	0.0
	State				40.8	0.0	173.4	0.0	0.0	0.0		
	Other											
	Project Total				452.0	0.0	1,920.0	0.0	0.0	0.0	0.0	
9606	Kenai: Overland Avenue Pedestrian Walkway Construct a concrete sidewalk along Overland Avenue from Mission Street to Main Street. Project includes pedestrian improvements, historic lighting, and visitor amenities.	97.2	2				50.0					
			3					60.0				
			7							50.0		
			4							200.0		
					TE	0.0	45.5	0.0	54.6	227.4	0.0	
	Federal							5.4	22.6	0.0		
	State				0.0	4.5	0.0					
	Other											
	Project Total				0.0	50.0	0.0	60.0	250.0	0.0	0.0	

Need ID	Project Description/Funding Source	Score	Phse	Apprn	FFY04	FFY05	FFY06	FFY07	FFY08	FFY09	Req'd Funding >6 years
9608	Kenai: Russian River/Kenai River Sportsman's Boardwalk Construct 330 feet of elevated boardwalk along the banks of the Kenai River at the Sportsman's Access boat launch site. construct multiple points of access to the boardwalk via ADA accessible ramps. Install park benches at designated locations on the boardwalk to allow for sight seeing and rest stops.	103.5	2			75.0		10.0			
			3								
			4					450.0			
	Federal			TE	0.0	68.2	0.0	375.0	0.0	0.0	
	State				0.0	6.8	0.0	0.0	0.0	0.0	
	Other							85.0			
	Project Total				0.0	75.0	0.0	460.0	0.0	0.0	0.0
15699	Kennicott Trestle Repair historic railroad trestle at the Kennicott Mill site, including stabilization of structural supports, reducing bridge rail and interpretation.	142.8	2								
			3								
			4			400.0					
	Federal			TE	0.0	363.9	0.0	0.0	0.0	0.0	
	State				0.0	36.1	0.0	0.0	0.0	0.0	
	Other										
	Project Total				0.0	400.0	0.0	0.0	0.0	0.0	0.0
9999	Ketchikan: Waterfront Promenade, Phase II Construct a promenade along the waterfront in downtown Ketchikan between the Federal Building and the Thomas Basin breakwater. Includes resting and viewing areas at the mouth of Ketchikan Creek.	104.0	2			80.0	20.0	50.0			
			3								
			4						814.5		
	Federal			TE	0.0	72.8	18.2	45.5	500.0	0.0	
	State				0.0	7.2	1.8	4.5	0.0	0.0	
	Other										
	4/314.5								314.5		
	Project Total				0.0	80.0	20.0	50.0	814.5	0.0	0.0
13680	Klawock: Causeway Path Completion Add base and pave a shared-use path along the Craig-Hollis state highway through the City of Klawock between the Klawock River bridge and the Big Salt junction.	106.7	2			20.0					
			3			10.0					
			7				20.0				
			4				400.0				
	Federal			TE	0.0	27.3	382.1	0.0	0.0	0.0	
	State				0.0	2.7	37.9	0.0	0.0	0.0	
	Other										
	Project Total				0.0	30.0	420.0	0.0	0.0	0.0	0.0

Need ID	Project Description/Funding Source	Score	Phse	Apprn	FFY04	FFY05	FFY06	FFY07	FFY08	FFY09	Req'd Funding >6 years	
16163	Kluti-Kaah Bike Path Construct a bike path along the Old Richardson Highway through the communities of Kluti-Kaah and Copper Center, including a bridge across the Klutina River.	88.7	2					200.0	140.0			
			3							100.0		
			4									
					STP	0.0	0.0	0.0	181.9	127.4	91.0	
	Federal				0.0	0.0	0.0	181.9	127.4	91.0		
	State				0.0	0.0	0.0	18.1	12.6	9.0		
	Other											
	Project Total				0.0	0.0	0.0	200.0	140.0	100.0	1,700.0	
2443	Kodiak: Fort Abercrombie Historic Trail Rehabilitation Develop an interpretive pathway following the historic roads at Ft. Abercrombie. The entrance road, parking areas and trailheads will be upgraded and paved and ADA access provided to the visitor center. An interpretive nature trail will be constructed, toilets replaced, and trailhead kiosks constructed. An ADA ramp, steps and viewing deck will be constructed at Lake Gertrude and a picnic area access road and parking areas will be upgraded and paved.	80.3	2						425.0			
			3							250.0		
			7									
			4									
	Federal			TE	0.0	0.0	0.0	0.0	386.6	0.0		
	State				0.0	0.0	0.0	0.0	38.4	0.0		
	Other											
	Project Total	3/250.0			0.0	0.0	0.0	0.0	425.0	250.0	1,472.4	
7282	Kodiak: Lakeview Drive Separated Pathway Construct approximately 1.25 miles of trail along Von Scheele Way and Lake View Drive to Olmeloi Way.	83.5	2					50.0				
			3						10.0			
			7								15.0	
			4									300.0
	Federal			TE	0.0	0.0	0.0	45.5	9.1	286.6		
	State				0.0	0.0	0.0	4.5	0.9	28.4		
	Other											
	Project Total				0.0	0.0	0.0	50.0	10.0	315.0	0.0	
16016	Kodiak: Sellef Lane Bicycle/Ped Trail Construction Construct approximate 0.5 miles of separated asphalt pathway and/or sidewalk, as determined in design phase, from Beaver Lake (City/Borough boundary) to Von Schlee Way. Project will include illumination along pathway.	115.5	2		75.0	75.0						
			7									
			4						100.0			
									582.0			
	Federal			STP	68.2	68.2	620.4	0.0	0.0	0.0		
	State				8.8	6.8	61.6	0.0	0.0	0.0		
	Other											
	Project Total				75.0	75.0	682.0	0.0	0.0	0.0	0.0	

Need ID	Project Description/Funding Source	Score	Phse	Apprn	FFY04	FFY05	FFY06	FFY07	FFY08	FFY09	Req'd Funding >6 years
16092	Manley Wayside and Boat Launch Access Rehabilitation Rehabilitate the park on the west side of Manley Slough.	92.3	2 4				100.0	50.0	750.0		
	Federal			STP	0.0	0.0	91.0	45.5	682.3	0.0	
	State				0.0	0.0	9.0	4.5	67.7	0.0	
	Other										
	Project Total				0.0	0.0	100.0	50.0	750.0	0.0	0.0
13619	Mat Su: Bogard Road Wasilla Schools Grade Separated Crossing Provide corrugated steel plate undercrossing of Bogard Road in Wasilla to provide a direct connection between Wasilla High School and Wasilla Middle School including necessary demolition and realignment of trail.	106.7	2 3 7 4			250.0					
	Federal			TE	0.0	227.4	632.2	0.0	0.0	0.0	
	State				0.0	22.6	62.8	0.0	0.0	0.0	
	Other										
	Project Total				0.0	250.0	695.0	0.0	0.0	0.0	0.0
6182	MatSu Borough: Byers Lake Scenic Overlook & Access Improvements to Byer's Lake Recreational Area to include two parking areas, interpretive kiosks, trail connections to Curry Ridge, Troublesome and Coal Creek Trails, and other visitor amenities. Most of new trail will be ADA accessible.	93.2	2 3 7 4				150.0				
	Federal			TE	0.0	0.0	20.0	118.3	918.8	0.0	
	State				0.0	0.0	0.0	11.7	91.2	0.0	
	Other										
	Project Total				0.0	0.0	150.0	130.0	1,010.0	0.0	0.0
9761	MatSu Borough: Historic Signs Install at least 28 interpretive historic signs at various locations within the Mat/Su Borough along the George Parks, Glenn, and Denali Highways.	91.0	2 4				25.0				
	Federal			TE	0.0	0.0	19.0	154.6	0.0	0.0	
	State				0.0	0.0	0.0	15.4	0.0	0.0	
	Other				2/6.0		6.0				
	Project Total				0.0	0.0	25.0	170.0	0.0	0.0	0.0

Need ID	Project Description/Funding Source	Score	Phse	Apprn	FFY04	FFY05	FFY06	FFY07	FFY08	FFY09	Req'd Funding >6 years
7319	MatSu Borough: Fairview Loop Road Trail MP 5.1 to 9.27 Construct a separated non-motorized trail along Fairview Loop Road between the Hanson Farm State Historic Park at MP 5.1 and Hayfield Road at MP 9.27, approximately 4.2 miles in length.	83.0	2						150.0		
			3							200.0	
			7								
			4								
	Federal			TE	0.0	0.0	0.0	0.0	136.5	181.9	
	State				0.0	0.0	0.0	0.0	13.5	18.1	
	Other										
	Project Total				0.0	0.0	0.0	0.0	150.0	200.0	960.0
9602	MatSu Borough: Nancy Lake SRA Trailhead & Trails Improvements Phase I construction of 5 pull-offs and trailheads along Nancy Lake Parkway with developments for parking, hiking, viewing, interpretation and picnicking. Construct a 10' wide paved pathway along Nancy Lake Parkway from MP 67.2 Parks Highway to South Rolly Lake, approximately 6.5 miles.	96.7	2				525.0				
			3					380.0			
			7						100.0		
			4						3,400.0		
	Federal			TE	0.0	0.0	477.6	0.0	3,184.0	0.0	
	State				0.0	0.0	47.4	0.0	316.1	0.0	
	Other										
	Project Total				0.0	0.0	525.0	380.0	3,500.0	0.0	0.0
9604	MatSu Borough: Valley Winter Trailheads & Trail Marking Improve the winter trailhead at Kroto Creek on Petersville Rd to a 200 vehicle trailhead; construct a parking area at Nancy Lake Pkwy at MP 2.2; provide snowmachine trail marking on the Big Susitna, Deshka and Yentna River systems. Install toilets at two trailheads and construct kiosks, pave parking areas and loading ramp.	86.7	2					200.0			
			3						100.0		
			4								
	Federal			TE	0.0	0.0	0.0	181.9	91.0	0.0	
	State				0.0	0.0	0.0	18.1	9.0	0.0	
	Other										
	Project Total				0.0	0.0	0.0	200.0	100.0	0.0	750.0

Need ID	Project Description/Funding Source	Score	Phse	Apprn	FFY04	FFY05	FFY06	FFY07	FFY08	FFY09	Req'd Funding >6 years
9601	MatSu Borough: Willow Creek Trailhead & Trails Improvements Construct 140 unit trailhead parking area on Willow Creek Parkway near the Susitna River. Pave parking area, install 3 toilets and 5 kiosks. Realign 700 feet of road and landscape. Construct 3,500 feet ADA accessible interpretive trail and 5,000 feet of ADA accessible internal trail. Construct a paved pathway through Willow Creek SRA with improvements.	101.7	2			400.0		256.0			
			3								
			4								
	Federal			TE	0.0	363.9	0.0	0.0	2,774.6	0.0	
	State				0.0	36.1	0.0	0.0	42.4	0.0	
	Other										
		3/256.0; 4/233									
	Project Total				0.0	400.0	0.0	256.0	3,050.0	0.0	0.0
12403	Mat-Su: Point MacKenzie Winter Recreation Trailhead Construct a multi-purpose trailhead in the vicinity of the new Port at Point Mackenzie. The trailhead, restrooms and parking area will accommodate winter recreationists using the proposed ferry between Anchorage and Point Mackenzie to access literally thousands of miles of winter trails. The trailhead will provide summer access to a variety of fishing and hunting opportunities. Access to the trailhead will also be via the Point Mackenzie Road.	74.7	2								120.0
			3								
			7								
			4								
	Federal			STP	0.0	0.0	0.0	0.0	0.0	109.2	
	State				0.0	0.0	0.0	0.0	0.0	10.8	
	Other										
	Project Total				0.0	0.0	0.0	0.0	0.0	120.0	0.0
6216	Mat-Su: Big Lake - Fish Creek Park Wayside Construct a pedestrian bridge and 10 vehicle parking area adjacent South Big Lake Road at Fish Creek and construct a separated pedestrian path from Fish Creek to S. Big Lake wayside. Project will bring the trail into the wayside, and will pave the 1/4 mile of South Big Lake Wayside Access Road that circles the wayside.	189.0	2								
		98.8	3								
			7			10.0					
			4			530.0					
	Federal			TE	0.0	491.2	0.0	0.0	0.0	0.0	
	State				0.0	48.8	0.0	0.0	0.0	0.0	
	Other										
	Project Total				0.0	540.0	0.0	0.0	0.0	0.0	0.0

Need ID	Project Description/Funding Source	Score	Phse	Apprn	FFY04	FFY05	FFY06	FFY07	FFY08	FFY09	Req'd Funding >6 years
2492	Mat-Su: Old Glenn Hwy Pathway Improvements Construct a separated pathway along the Old Glenn Highway from Palmer to the Knick River Bridge.	77.3	2							300.0	
			3								
			4								
	Federal			TE	0.0	0.0	0.0	0.0	0.0	272.9	
	State				0.0	0.0	0.0	0.0	0.0	27.1	
	Other										
	Project Total				0.0	0.0	0.0	0.0	0.0	300.0	1,550.0
12740	MatSu: Palmer Hayflats Waysides Improvements Improvements to the Rabbit Slough Wayside and Cottonwood Creek Wayside accesses to the Palmer Hayflats State Game Refuge.	82.3	2						165.0		
			3							50.0	
			7								
			4								
	Federal			TE	0.0	0.0	0.0	0.0	125.0	40.0	
	State				0.0	0.0	0.0	0.0	0.0	0.0	
	Other										
		2/10, 3/10, 4/25							40.0	10.0	
	Project Total				0.0	0.0	0.0	0.0	165.0	50.0	1,610.0
3776	McCarthy Road/Richardson Highway Interpretive Waysides Install interpretive signs along McCarthy Road, Edgerton Highway and Richardson Highway, and in McCarthy and Kennicott.	77.3	2							200.0	
			4								
	Federal			TE	0.0	0.0	0.0	0.0	0.0	181.9	
	State				0.0	0.0	0.0	0.0	0.0	18.1	
	Other										
	Project Total				0.0	0.0	0.0	0.0	0.0	200.0	1,000.0
6859	McCarthy Road: Kennicott River East/West Wayside On East Wayside construct sanitary facilities and provide trash cans. On West Wayside construct parking area with sanitary facilities at the terminus of the McCarthy Road.	189.0	2								
		97.7	3								
			4			550.0					
	Federal			STP	0.0	500.3	0.0	0.0	0.0	0.0	
	State				0.0	49.7	0.0	0.0	0.0	0.0	
	Other										
	Project Total				0.0	550.0	0.0	0.0	0.0	0.0	0.0
3767	Nenana: Bike Trail Construction Construct two miles of bike path to follow city streets and 9th Street.	97.8	2			75.0					
			4					100.0			
	Federal			TE	0.0	68.2	0.0	91.0	0.0	0.0	
	State				0.0	6.8	0.0	9.0	0.0	0.0	
	Other										
	Project Total				0.0	75.0	0.0	100.0	0.0	0.0	0.0

Need ID	Project Description/Funding Source	Score	Phse	Apprn	FFY04	FFY05	FFY06	FFY07	FFY08	FFY09	Req'd Funding >6 years
8988	Nome: Front Street Safety & Enhancements	108.3	2								
	Construct enhancements along Front Street such as sidewalk widening, lighting, bench, and four intersection bump outs located at Front St. with Hunter St. and Federal Way. Also includes scenic overlook with historical and interpretive signs.		3			10.0					
			7			200.0					
			4					1,500.0			
	Federal			TE	0.0	191.0	1,364.6	0.0	0.0	0.0	
	State				0.0	19.0	135.5	0.0	0.0	0.0	
	Other	2/20.0; 3/10.0									
	Project Total				0.0	210.0	1,500.0	0.0	0.0	0.0	0.0
3746	Nome: Nome-Council Road Waysides	78.8	2								50.0
	Construct parking lot, picnic areas, sanitary facilities and interpretive exhibits at MP 4, 15, 17, and 20.		4								
					TE	0.0	0.0	0.0	0.0	0.0	45.5
						0.0	0.0	0.0	0.0	0.0	4.5
	Project Total				0.0	0.0	0.0	0.0	0.0	50.0	250.0
3728	Nome-Taylor Road: MP 17 Wayside	104.3	2			50.0					
	Construct parking area and interpretive signs.		4				175.0				
					STP	0.0	45.5	159.2	0.0	0.0	0.0
						0.0	4.5	15.8	0.0	0.0	0.0
	Project Total				0.0	50.0	175.0	0.0	0.0	0.0	0.0
3721	North Pole: Hurst-Dawson Bike Trail	79.8	2						150.0		
	Construct a bike path east of Badger Rd.		3							50.0	
			4								
					TE	0.0	0.0	0.0	0.0	136.5	45.5
						0.0	0.0	0.0	0.0	13.5	4.5
	Project Total				0.0	0.0	0.0	0.0	150.0	50.0	0.0

Need ID	Project Description/Funding Source	Score	Phse	Apprn	FFY04	FFY05	FFY06	FFY07	FFY08	FFY09	Req'd Funding >6 years		
3869	Northern Region: ADA Pedestrian Facilities Pedestrian facility improvements to meet Americans with Disabilities Act standards.	999.0	2		150.0								
			3		650.0								
			7		300.0	5.0	5.0	5.0	5.0	5.0	5.0		
			4		2,900.0	1,000.0	1,000.0	1,000.0	1,000.0	1,000.0	1,000.0		
				Federal		STP	3,638.8	914.2	914.2	914.2	914.2	914.2	
				State			361.2	90.8	90.8	90.8	90.8	90.8	
	Other												
	Project Total				4,300.0	1,005.0	1,005.0	1,005.0	1,005.0	1,005.0	0.0		
16556	Northern Region: Winter Trail Marking Mark overland winter trails in Northern Region with permanent trail markers. Trail markers will ensure winter travelers can safely journey between communities in the area.	199.0	2		50.0	50.0	50.0	50.0	50.0	50.0			
			4		200.0	200.0	200.0	200.0	200.0	200.0			
				Federal		STP	227.4	227.4	227.4	227.4	227.4	227.4	
				State			22.6	22.6	22.6	22.6	22.6	22.6	
				Other									
				Project Total				250.0	250.0	250.0	250.0	250.0	250.0
3707	Richardson Highway: MP 127 - Gulkana River Wayside Construction and landscaping of wayside facilities and trailhead improvements.	199.0	2										
			3										
			4		2,000.0								
				Federal		STP	1,819.4	0.0	0.0	0.0	0.0	0.0	
				State			180.6	0.0	0.0	0.0	0.0	0.0	
				Other									
	Project Total				2,000.0	0.0	0.0	0.0	0.0	0.0	0.0		
2549	Palmer: Independence Mine Trailhead & Interpretive Trail Upgrade the trailhead facilities at Independence Mine State Historical Park. Construct a trailhead kiosk at the park entrance and separated pathway from trailhead to the Independence Mine complex. Construct connecting trails to historic Boom Town and Gold Chord Lake area. Construct Mill Trail and preserve Mill Building Trestle from Mine Portal to lower area of complex to provide barrier free trail with interpretive displays. Construct service access road to Mine Portal with ADA accessible drop off and pick up at Mine Portal.	132.2	2		247.0								
			4			888.0							
				Federal		STP	224.7	807.8	0.0	0.0	0.0	0.0	
				State			22.3	80.2	0.0	0.0	0.0	0.0	
				Other									
				Project Total				247.0	888.0	0.0	0.0	0.0	0.0

Need ID	Project Description/Funding Source	Score	Phse	Apprn	FFY04	FFY05	FFY06	FFY07	FFY08	FFY09	Req'd Funding >6 years
3859	Fairbanks NSB: Chena Pump/Tanana River Scenic Wayside Upgrade the existing wayside and construct a new boat launch parking area downstream. Construct a new outhouse and limited day-use picnic area.	131.3	2								
			4			400.0					
		Federal		TE	0.0	363.9	0.0	0.0	0.0	0.0	
		State			0.0	36.1	0.0	0.0	0.0	0.0	
	Other	4/80.0									
	Project Total				0.0	400.0	0.0	0.0	0.0	0.0	0.0
3700	Parks Hwy MP 305-351: Fairbanks - Nenana Scenic Waysides Improve existing waysides/overlooks within the Tanana Valley State Forest along the Parks/Nenana Ridge.	83.2	2					80.0			
			4							375.0	
		Federal		TE	0.0	0.0	0.0	72.8	0.0	341.1	
		State			0.0	0.0	0.0	7.2	0.0	33.9	
	Other										
	Project Total				0.0	0.0	0.0	80.0	0.0	375.0	0.0
9904	Parks Hwy: Nenana Canyon to McKinley Village Bike Trail Construct a bicycle trail along the Parks Highway from the Nenana Canyon Trail to the McKinley Village area, approximately 6 miles.	75.0	2							250.0	
			4								
		Federal		TE	0.0	0.0	0.0	0.0	0.0	227.4	
		State			0.0	0.0	0.0	0.0	0.0	22.6	
	Other										
	Project Total				0.0	0.0	0.0	0.0	0.0	250.0	1,500.0
3716	Parks Hwy: Nenana River Access Construct 4 parking/river access facilities along the Nenana River.	81.3	2						75.0		
			4								
		Federal		TE	0.0	0.0	0.0	0.0	68.2	0.0	
		State			0.0	0.0	0.0	0.0	6.8	0.0	
	Other										
	Project Total				0.0	0.0	0.0	0.0	75.0	0.0	300.0
10070	Point Retreat Lighthouse Access Improvements Improve pedestrian access to Point Retreat Lighthouse and it's maritime museum, system of trails and natural history interpretive center by rehabilitating the pier and constructing an accessible deck and gangway. All travel routes will be ADA accessible.	145.3	2		35.0						
			4			1,645.0					
		Federal		TE	31.8	803.7	0.0	0.0	0.0	0.0	
		State			3.2	0.0	0.0	0.0	0.0	0.0	
	Other	2/25.0;									
	Project Total	4/841.3			35.0	1,645.0	0.0	0.0	0.0	0.0	0.0

Need ID	Project Description/Funding Source	Score	Phse	Apprn	FFY04	FFY05	FFY06	FFY07	FFY08	FFY09	Req'd Funding >6 years
10000	Prince of Wales: Craig to Klawock Separated Path Construction	119.5	2		150.0	80.0					
	Construct a multi-use path for 4.7 miles along the uphill side of the highway between the two communities.		3				5.0				
			4					1,840.0			
	Federal			TE	136.5	77.3	1,673.8	0.0	0.0	0.0	
	State				13.5	7.7	6.2	0.0	0.0	0.0	
	Other					160.0					
	Project Total				150.0	85.0	1,840.0	0.0	0.0	0.0	0.0
12259	Recreational Trails Program	999.0	all		700.0	700.0	700.0	700.0	700.0	700.0	
	This program provides funding for various small recreational trail projects statewide. The program is administered by the Alaska Department of Natural Resources.										
	Federal			RTP	560.0	560.0	560.0	560.0	560.0	560.0	
	State				140.0	140.0	140.0	140.0	140.0	140.0	
	Other										
	Project Total				700.0	700.0	700.0	700.0	700.0	700.0	0.0
16116	Richardson Highway MP 238: Donnelly Creek Wayside	107.3	2				100.0	50.0			
	Construct a separated highway turnout with restrooms, picnic tables, picnic shelter, viewing area and interpretation of the natural and historic features at this DNR managed State Recreation Area.		3					15.0			
			4						700.0		
	Federal			STP	0.0	91.0	50.0	636.8	0.0	0.0	
	State				0.0	9.0	0.0	63.2	0.0	0.0	
	Other	3 15				15.0					
	Project Total				0.0	100.0	65.0	700.0	0.0	0.0	0.0
6606	Richardson Hwy: Fairbanks-Salcha Pedestrian/Bike Trail Completion	80.5	2						250.0		
	Multi-phased bike trail construction.		3							250.0	
			4								
	Federal			STP	0.0	0.0	0.0	0.0	227.4	227.4	
	State				0.0	0.0	0.0	0.0	22.6	22.6	
	Other										
	Project Total				0.0	0.0	0.0	0.0	250.0	250.0	1,000.0
3997	Richardson Hwy: Klutina River Wayside	14.2	2							75.0	
	Construct new wayside with sanitary facilities.		4								
	Federal			STP	0.0	0.0	0.0	0.0	0.0	68.2	
	State				0.0	0.0	0.0	0.0	0.0	6.8	
	Other										
	Project Total				0.0	0.0	0.0	0.0	0.0	75.0	175.0

Need ID	Project Description/Funding Source	Score	Phse	Apprn	FFY04	FFY05	FFY06	FFY07	FFY08	FFY09	Req'd Funding >6 years
6277	Richardson Hwy: MP 190 Fish Creek Viewing Platform	81.7	2						50.0		
	Construct a fish viewing platform along the Richardson Highway between Paxson and Summit Lake.		4							125.0	
	Federal			TE	0.0	0.0	0.0	0.0	45.5	113.7	
	State				0.0	0.0	0.0	0.0	4.5	11.3	
	Other										
	Project Total				0.0	0.0	0.0	0.0	50.0	125.0	0.0
3692	Richardson Hwy: MP 275 Big Delta/Tanana River Bridge Wayside	78.5	2						150.0		
	Improve river access, add sanitary facilities, trash receptacle, telephone, bank reinforcement, improve highway entrance/exit.		4								
	Federal			TE	0.0	0.0	0.0	0.0	0.0	136.5	
	State				0.0	0.0	0.0	0.0	0.0	13.5	
	Other										
	Project Total				0.0	0.0	0.0	0.0	0.0	150.0	300.0
9901	Richardson Hwy: Valdez Bike Path Repave	85.0	2					60.0			
	Repave the bike path along the Richardson Highway from Egan Drive to Rube River Subdivision (7 miles).		4						310.0		
	Federal			TE	0.0	0.0	0.0	54.6	282.0	0.0	
	State				0.0	0.0	0.0	5.4	28.0	0.0	
	Other										
	Project Total				0.0	0.0	0.0	60.0	310.0	0.0	0.0
6612	Salcha: MP 344 - Piledriver Slough Access/ Eielson Farm Rd	100.8	2				25.0		220.0		
	Pave Eielson Farm Road (Rich Hwy-Piledriver Slough).		4								
	Federal			TE	0.0	22.7	0.0	200.1	0.0	0.0	
	State				0.0	2.3	0.0	19.9	0.0	0.0	
	Other										
	Project Total				0.0	25.0	0.0	220.0	0.0	0.0	0.0
2597	Seldovia: Waterfront Boardwalk Construction	89.7	2				330.0				
	Construct a waterfront boardwalk from Peninsula Street to Dock Street, length appx. 1/2 mile. Boardwalk includes boardwalk, railing, bench seating, signage interpretation of the history of Seldovia.		3						2,640.0		
			4								
	Federal			TE	0.0	0.0	300.2	2,401.6	0.0	0.0	
	State			0.0	0.0	29.8	238.4	0.0	0.0		
	Other										
	Project Total				0.0	0.0	330.0	2,640.0	0.0	0.0	0.0

Need ID	Project Description/Funding Source	Score	Phse	Apprn	FFY04	FFY05	FFY06	FFY07	FFY08	FFY09	Req'd Funding >6 years
16221	Sentinel Island Lighthouse Access Improvements Construct a concrete ramp from the low tide level up the beach, connecting via switchback to a landing on more level ground. Construct a path from the landing to the existing tramway that provides access to the light tower.	110.0	2		30.0	10.0					
			4			350.0					
	Federal			STP	27.3	327.5	0.0	0.0	0.0	0.0	
	State				2.7	32.5	0.0	0.0	0.0	0.0	
	Other										
	Project Total				30.0	360.0	0.0	0.0	0.0	0.0	0.0
2629	Seward: Exit Glacier Road Pathway Construct a pathway along Exit Glacier Road from the Seward Highway to the National Park Service Exit Glacier Recreation Area (7.3 miles). Project will include 2 parking/trailhead areas with ADA accessible rest rooms and interpretive kiosks.	99.0	2			405.0					
			3					100.0			
			7						50.0		
			4						6,218.0		
	Federal			TE	0.0	368.4	0.0	91.0	5,702.0	0.0	
	State				0.0	36.6	0.0	9.0	566.0	0.0	
	Other										
	Project Total				0.0	405.0	0.0	100.0	6,268.0	0.0	0.0
16006	Sitka: Cross Trail Pedestrian Access Construct a multi-use path up the hill from Charteris Street to a small viewpoint at the beginning of the Cross Trail.	114.0	2		30.0	10.0					
			3			5.0					
			4			155.0					
	Federal			STP	27.3	154.6	0.0	0.0	0.0	0.0	
	State				2.7	15.4	0.0	0.0	0.0	0.0	
	Other										
	Project Total				30.0	170.0	0.0	0.0	0.0	0.0	0.0
10071	Sitka: Harbor Drive Seawalk Construction Construct a waterfront walkway between the lightering facility and the existing sidewalk on Harbor Drive. Project includes construction of interpretive displays.	82.3	2						50.0	20.0	
			3								
			4								
	Federal			TE	0.0	0.0	0.0	0.0	45.5	18.2	
	State				0.0	0.0	0.0	0.0	4.5	1.8	
	Other										
	Project Total				0.0	0.0	0.0	0.0	50.0	20.0	530.0
11046	Sitka: Moller Field to Lake Street Pedestrian Connection Provide a multi-use path connecting Moller Field and Lake Street. Pile-supported boardwalk will likely be required for the portion nearest Swan Lake.	112.0	2		35.0	25.0					
			3			5.0					
			4				380.0				
	Federal			STP	31.8	27.3	345.7	0.0	0.0	0.0	
	State				3.2	2.7	34.3	0.0	0.0	0.0	
	Other										
	Project Total				35.0	30.0	380.0	0.0	0.0	0.0	0.0

Need ID	Project Description/Funding Source	Score	Phse	Apprn	FFY04	FFY05	FFY06	FFY07	FFY08	FFY09	Req'd Funding >6 years
16005	Sitka: Path Connection to Indian River Trail Construct a multi-use path that connects the parking area with the start of the non-road portion of the Indian River Trail. Construct river viewpoint on a spur that connects to the new path. Pave the driveway and trailhead parking area.	114.3	2		30.0	20.0					
			4			355.0					
	Federal			STP	27.3	341.1	0.0	0.0	0.0	0.0	
	State				2.7	33.9	0.0	0.0	0.0	0.0	
	Other										
	Project Total				30.0	375.0	0.0	0.0	0.0	0.0	0.0
10072	Sitka: UAS Pedestrian Connection Construction Construct a sidewalk connecting Harbor Drive and the University of Alaska Southeast (UAS) site in Sitka.	135.0	2								
			3		60.0						
			4			130.0					
	Federal			TE	54.6	118.3	0.0	0.0	0.0	0.0	
	State				5.4	11.7	0.0	0.0	0.0	0.0	
	Other										
	Project Total				60.0	130.0	0.0	0.0	0.0	0.0	0.0
10073	Skagway: Gateway Pedestrian Improvements Construct a sidewalk on the east side of the Klondike Highway between the ferry terminal and Second Street, and add interpretation that introduces Gold Rush history.	112.5	2		10.0						
			4			250.0					
	Federal			TE	9.1	219.0	0.0	0.0	0.0	0.0	
	State				0.9	0.0	0.0	0.0	0.0	0.0	
	Other	NPS				31.0					
	Project Total				10.0	250.0	0.0	0.0	0.0	0.0	0.0
2649	Soldotna: Kenal River Walkway Construction Construct a riverside pathway system along the Kenal River approx. 2900 feet downstream from Soldotna Creek Park.	78.2	2							200.0	
			3								
			7								
	Federal			TE	0.0	0.0	0.0	0.0	0.0	181.9	
	State				0.0	0.0	0.0	0.0	0.0	18.1	
	Other										
	Project Total				0.0	0.0	0.0	0.0	0.0	200.0	890.0
12539	Southeast Region Historical Signs Prepare and install interpretive signs at turnouts and other points of interest in conjunction with local governments and other interested parties.	79.0	2						50.0		
			3								
			4								
	Federal			TE	0.0	0.0	0.0	0.0	45.5	0.0	
	State				0.0	0.0	0.0	0.0	4.5	0.0	
	Other										
	Project Total				0.0	0.0	0.0	0.0	50.0	0.0	250.0

Need ID	Project Description/Funding Source	Score	Phse	Apprn	FFY04	FFY05	FFY06	FFY07	FFY08	FFY09	Req'd Funding >6 years
7219	Statewide: Bike Path Rehabilitation and Improvements Rehabilitate bike-ped facilities.	999.0	2		200.0	200.0	200.0	200.0	200.0	200.0	
			4		1,000.0	1,000.0	1,000.0	1,000.0	1,000.0	1,000.0	
				STP	1,091.6	1,091.6	1,091.6	1,091.6	1,091.6	1,091.6	
				State	108.4	108.4	108.4	108.4	108.4	108.4	
				Other							
	Project Total				1,200.0	1,200.0	1,200.0	1,200.0	1,200.0	1,200.0	0.0
6465	Statewide: Scenic Byways Grants This program identifies and designates segments of the road corridors that are outstanding for their scenic, recreational, historic, cultural, natural and/or archaeological qualities. Projects are then developed to display these qualities.	999.0	all		300.0	300.0	300.0	300.0	300.0	300.0	
				Scenic Byways	240.0	240.0	240.0	240.0	240.0	240.0	
				State	60.0	60.0	60.0	60.0	60.0	60.0	
				Other							
	Project Total				300.0	300.0	300.0	300.0	300.0	300.0	0.0
14020	Statewide: Scenic Viewshed Enhancement Various scenic viewshed enhancements throughout Alaska.	199.0	2		25.0	25.0	25.0	25.0	25.0	25.0	
			4		725.0	725.0	725.0	725.0	725.0	725.0	
				STP	682.3	682.3	682.3	682.3	682.3	682.3	
				State	67.7	67.7	67.7	67.7	67.7	67.7	
				Other							
	Project Total				750.0	750.0	750.0	750.0	750.0	750.0	0.0
6879	Naknek / King Salmon: Pathway Construction In Naknek construct approx 3.5 mi. of bike/pod trails from downtown to Donna G. Subdivision (mile 4 on the AK Penin. Hwy). In King Salmon construct approx 2.5 mi. of trail from downtown to Flat Nose Henry Rd.	199.0	2								
		114.5	3								
			7								
			4		2,400.0						
				STP	2,183.3	0.0	0.0	0.0	0.0	0.0	
				State	216.7	0.0	0.0	0.0	0.0	0.0	
				Other							
	Project Total				2,400.0	0.0	0.0	0.0	0.0	0.0	0.0
2334	Mat-Su: Hatcher Pass: Scenic Overlook & Trailhead Const - Phase 2 Construct scenic overlooks, reststops, and trailheads along the Hatcher Pass road corridor. Most of the sites will be paved viewing areas with covered kiosks and interpretive panels. Sanitary facilities will be installed. In addition, construct 1/2 mi access road, parking area and public trailhead at MP 11 of the Hatcher Pass road.	189.0	2								
		112.7	4		2,340.0						
				STP	2,128.7	0.0	0.0	0.0	0.0	0.0	
				State	211.3	0.0	0.0	0.0	0.0	0.0	
				Other							
	Project Total				2,340.0	0.0	0.0	0.0	0.0	0.0	0.0

Need ID	Project Description/Funding Source	Score	Phse	Apprn	FFY04	FFY05	FFY06	FFY07	FFY08	FFY09	Req'd Funding >6 years
3988	Cordova: Copper River Hwy. MP 5.5 - Bridge/Ped Walkway	189.0	2								
	Attach pedestrian walkway to Eyak River bridge, MP 5.5 Copper River Highway. Includes the environmental assessment for the Copper River Highway MP 0 to 10 Pedestrian/Bike Path.	110.0	4		1,000.0						
	Federal			STP	909.7	0.0	0.0	0.0	0.0	0.0	
	State				90.3	0.0	0.0	0.0	0.0	0.0	
	Other										
	Project Total				1,000.0	0.0	0.0	0.0	0.0	0.0	0.0
9910	Steese Highway: Birch Creek Wayside	125.0	2								
	Construct a wayside/parking area. Includes boat launch and sanitary facilities.		4			300.0					
	Federal			TE	0.0	250.0	0.0	0.0	0.0	0.0	
	State				0.0	0.0	0.0	0.0	0.0	0.0	
	Other	2/20.0; 4/50.0				50.0					
	Project Total				0.0	300.0	0.0	0.0	0.0	0.0	0.0
2408	Sterling: Isaak Walton Campground Archaeological Invest.	77.8	4							250.0	
	Excavation and interpretation of prehistoric houses (house pits) in the Isaak Walton Campground. Interpretive panels will be developed/constructed following interpretation of the site. (DNR)										
	Federal			TE	0.0	0.0	0.0	0.0	0.0	227.4	
	State				0.0	0.0	0.0	0.0	0.0	22.6	
	Other										
	Project Total				0.0	0.0	0.0	0.0	0.0	250.0	0.0
6635	Taylor Hwy: MP 35 to 64 Enhancements	77.3	2							75.0	
	Construct/renovate recreational facilities.		4								
	Federal			STP	0.0	0.0	0.0	0.0	0.0	68.2	
	State				0.0	0.0	0.0	0.0	0.0	6.8	
	Other	BLM Labor									
	Project Total				0.0	0.0	0.0	0.0	0.0	75.0	150.0
3642	Taylor Hwy: MP 82 Walker Fork Wayside	81.2	2						50.0		
	Construct a wayside at Walker Fork Bridge with parking for RVs and buses. Includes interpretation, picnic area, sanitary facilities and trails.		4							150.0	
	Federal			TE	0.0	0.0	0.0	0.0	45.5	136.5	
	State				0.0	0.0	0.0	0.0	4.5	13.5	
	Other										
	Project Total				0.0	0.0	0.0	0.0	50.0	150.0	0.0
3644	Taylor Hwy: MP 84 & 85 Wade Creek Waysides	77.0	2							50.0	
	Construct two waysides adjacent to Wade Creek public gold panning area.		4								
	Federal			TE	0.0	0.0	0.0	0.0	0.0	45.5	
	State				0.0	0.0	0.0	0.0	0.0	4.5	
	Other										
	Project Total				0.0	0.0	0.0	0.0	0.0	50.0	150.0

Need ID	Project Description/Funding Source	Score	Phse	Apprn	FFY04	FFY05	FFY06	FFY07	FFY08	FFY09	Req'd Funding >6 years
3629	Taylor Hwy: MP 86 Wade Creek Dredge Wayside	99.8	2			75.0					
	Construct a wayside overlooking Mulvane (Wade Creek) Dredge.		4					150.0			
	Federal			STP	0.0	68.2	0.0	125.0	0.0	0.0	
	State				0.0	6.8	0.0	0.0	0.0	0.0	
	Other										
	Match		BLM Design & Labor					25.0			
	Project Total				0.0	75.0	0.0	150.0	0.0	0.0	0.0
3636	Tok Cutoff MP 64: Porcupine Creek Wayside	109.7	2		75.0	25.0					
	Construct new trailhead, improve access road, add informational kiosk and provide landscaping.		4				175.0				
	Federal			STP	68.2	22.7	159.2	0.0	0.0	0.0	
	State				6.8	2.3	15.8	0.0	0.0	0.0	
	Other										
	Project Total				75.0	25.0	175.0	0.0	0.0	0.0	0.0
3615	Valdez Glacier Overlook	110.0	2		300.0	100.0					
	Improve road from the Rifle Range to Valdez Glacier and construct a scenic overlook at the end of the road.		4				1,750.0				
	Federal			STP	260.0	91.0	1,575.0	0.0	0.0	0.0	
	State				0.0	9.0	0.0	0.0	0.0	0.0	
	Other	2 40									
	4 175				40.0		175.0				
	Project Total				300.0	100.0	1,750.0	0.0	0.0	0.0	0.0
9909	Valdez: City Dock information and Interpretive Center	80.2	2						75.0		
	Provide an information and interpretative center for newly arriving ferry and cruise ship passengers.		4								
	Federal			TE	0.0	0.0	0.0	0.0	68.2	0.0	
	State				0.0	0.0	0.0	0.0	6.8	0.0	
	Other										
	Project Total				0.0	0.0	0.0	0.0	75.0	0.0	225.0
9905	Valdez: City Parks Bike Path Rebuild	90.0	2				60.0				
	Rebuild and widen bike paths in Meyring Park and Black Gold Park. This project will pave approximately 9,000 linear feet of path, 8 feet wide.		4					175.0			
	Federal			TE	0.0	0.0	54.6	159.2	0.0	0.0	
	State				0.0	0.0	5.4	15.8	0.0	0.0	
	Other										
	Project Total				0.0	0.0	60.0	175.0	0.0	0.0	0.0

Need ID	Project Description/Funding Source	Score	Phse	Apprn	FFY04	FFY05	FFY06	FFY07	FFY08	FFY09	Req'd Funding >6 years	
3625	Valdez: Crooked Creek Fish Viewing Reconstruct fish viewing area.	102.5	2				50.0					
			4					150.0				
					TE	0.0	45.0	0.0	135.0	0.0	0.0	
						0.0	0.0	0.0	0.0	0.0	0.0	
			Match			5.0		15.0				
	Project Total				0.0	50.0	0.0	150.0	0.0	0.0	0.0	
3624	Valdez: Richardson Hwy - Bike Path From Robe Rd thru Keystone Canyon Construct bike path along the Richardson Highway from Robe River subdivision to Keystone Canyon.	85.0	2					370.0				
			3						220.0			
			4								4,800.0	
					STP	0.0	0.0	0.0	320.0	200.1	4,366.6	
				0.0	0.0	0.0	0.0	19.9	433.4			
			Local Match					50.0				
	Project Total				0.0	0.0	0.0	370.0	220.0	4,800.0	0.0	
12479	Wasilla: Trailhead & Rest Area Construct a rest area and trailhead north of Wasilla approximately 1/4 mile south of the Parks Highway and South Church Road Intersection to provide year round rest area amenities for travelers and construct a trailhead to accommodate winter recreation activities including snowmachining, dog sledding, cross country skiing. The trailhead and rest area is approximately 5 acres with paved parking for vehicles and RVs, lighting, picnic and day use facilities, restrooms and water.	98.3	2				100.0					
			3				30.0					
			7						25.0			
			4						1,085.0			
				TE	0.0	100.0	0.0	1,009.8	0.0	0.0		
					0.0	0.0	0.0	10.2	0.0	0.0		
			3/30, 4/90			30.0		90.0				
	Project Total				0.0	130.0	0.0	1,110.0	0.0	0.0	0.0	
12459	Wiseman Wayside Construct parking and turnaround area, sanitation facility, pathway and interpretative signs.	79.0	2						50.0	25.0		
			3									
			4									
					TE	0.0	0.0	0.0	0.0	45.5	22.7	
				0.0	0.0	0.0	0.0	4.5	2.3			
					0.0	0.0	0.0	0.0	50.0	25.0	200.0	

Need ID	Project Description/Funding Source	Score	Phse	Apprn	FFY04	FFY05	FFY06	FFY07	FFY08	FFY09	Req'd Funding >6 years	
3071	Wrangell: Airport Loop Rd Path PH 1 -Petroglyph Beach Bike/Ped Path	102.7	2			60.0						
	Pedestrian/bike path - Airport Loop Road from ferry terminal to Petroglyph Beach Access.		3			40.0						
			7									
			4						700.0			
	Federal			STP	0.0	91.0	0.0	636.8	0.0	0.0		
	State				0.0	9.0	0.0	63.2	0.0	0.0		
	Other											
	Project Total				0.0	100.0	0.0	700.0	0.0	0.0	0.0	
10074	Wrangell: Pedestrian Access Improvements	98.0	2			60.0					30.0	
	Improve pedestrian access between downtown and Petroglyph Beach by constructing sidewalks along Slikine and Evergreen Avenues.		3								90.0	
			4									885.0
					TE	0.0	54.6	0.0	109.2	805.1	0.0	
	State				0.0	5.4	0.0	10.8	79.9	0.0		
	Other											
	Project Total				0.0	60.0	0.0	120.0	885.0	0.0	0.0	
	Program Total				30,864.0	33,384.0	32,723.0	34,791.0	36,612.5	38,156.0	48,177.4	

1/2 funding → 15.4
 state and federal

Alaska  Program
Trails & Recreational Access for Alaska

How much is just right?

Alaska DOT&PF

April 1, 2003

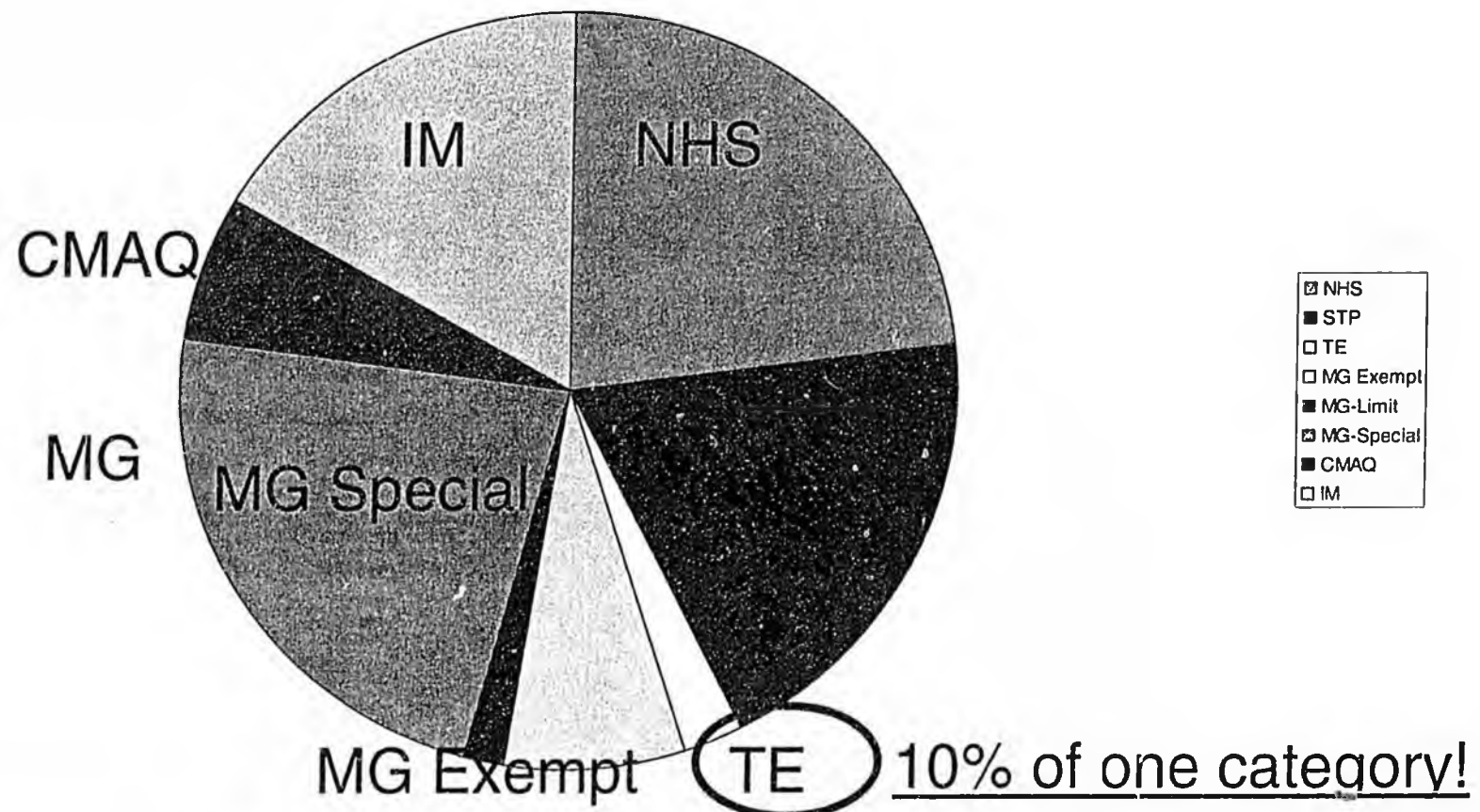
Background on TRAAK

- Established as policy in 1995
- Established as regulation in 2002
- Approximates the TE (transportation enhancement) requirement in federal law
- TRAAK generally includes:
 - Trails
 - Waysides and rest stops
 - Interpretative facilities
 - Landscaping and amenities

Transportation enhancements

- Required minimum spending level (10%) in FHWA rules
- 10% TE rule applies to one funding category, STP, not the entire FHWA funding program
- TE sub-category created in 1991
- The STP category was reduced in 1997, thus reducing TE funding also.

Federal apportionments FFY '02



In FFY 2002 TE = 2.5% of total \$302 Million or \$7.59 M
FFY 2003 and 2004 apportionment levels not yet know.

Public Interest in TRAAK

- Very strong interest in communities.
- Often more popular than road projects.
- Other benefits:
 - Safety (example Kasilof River wayside)
 - Tourism (waysides, reststops)
 - Air Quality (urban trails)
 - Public health, recreation (trails and waysides)

TRAAK can address access and safety problems



Narrow lanes and shoulders limit safe parking options.

Sterling Hwy. @ Kasilof River:
High speed, turning and parking
create safety issue.



TE Required vs. Actual TRAAK

• TE Minimum		• TRAAK Program	
• '98	\$5.3	• '98	\$17.3
• '99	\$6.6	• '99	\$25.9
• '00	\$7.5	• '00	\$28.4
• '01	\$8.2	• '01	\$28.0
• '02	\$8.4	• '02	\$28.4
• '03	\$7.2	• '03	\$30.2 Original
		• '03	\$22.0 Amended
		• '04	\$ 14.2 New target

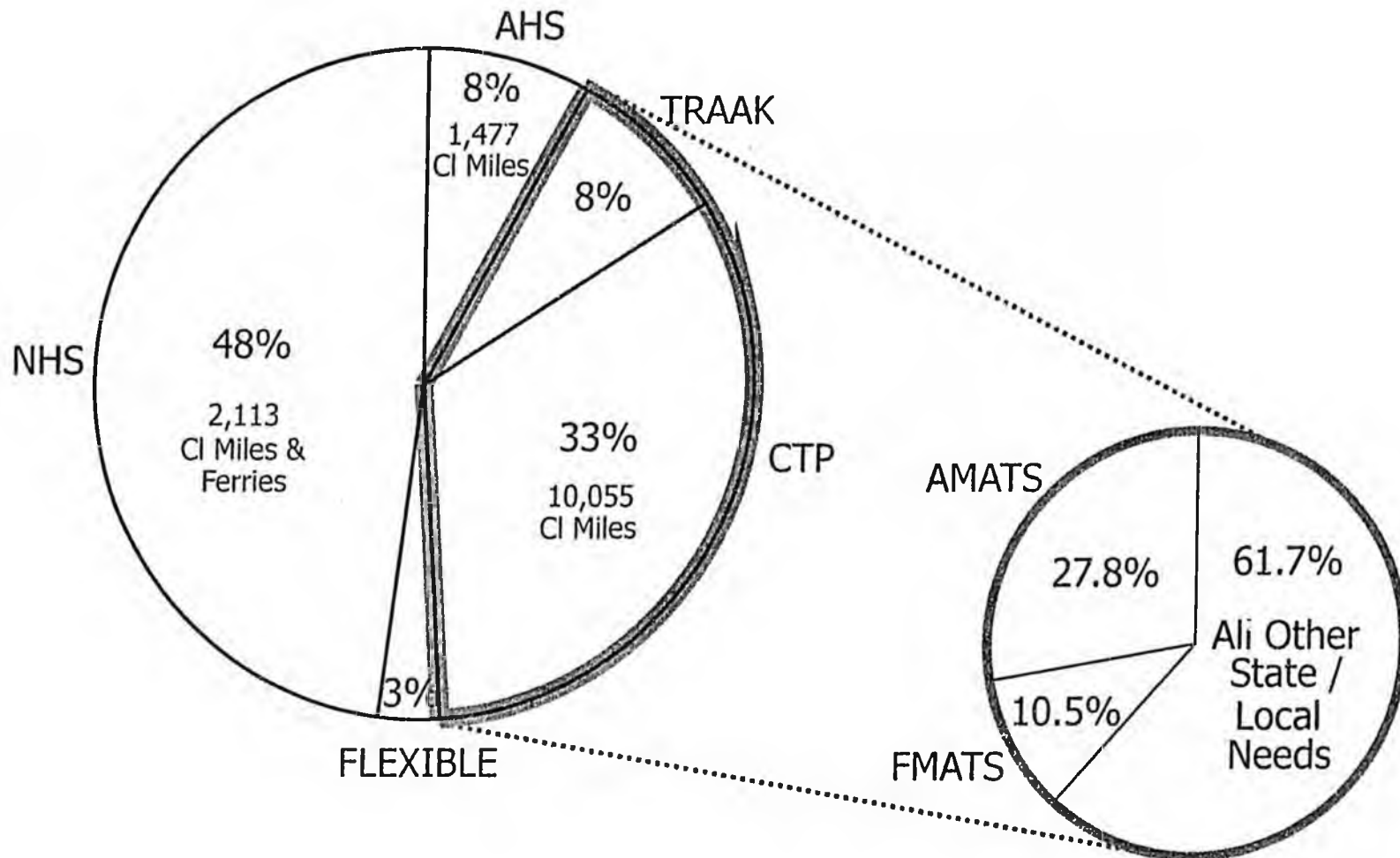
Dollars in millions.

TRAAK Nominations 2004 and Beyond

- Central Region*: 52 projects, \$65.9 M
- Northern Region: 75 projects, \$56.7 M
- Southeast Region: 21 projects, \$15.0 M
- Total backlog = \$330 Million

* Excludes AMATS as they do not nominate to the state list.

Distribution of Federal-Aid Transportation Formula Funds Per 17 AAC 05.155-200



Comparison to Other Needs

- Community Transportation backlog = \$3.12 Billion
- Ratio of CTP to TRAAK (need vs. funds)
- Need ~ 9:1
- Current funding ratio ~ 4:1
- SB 71 would adjust ratio to match respective needs ~ 9:1

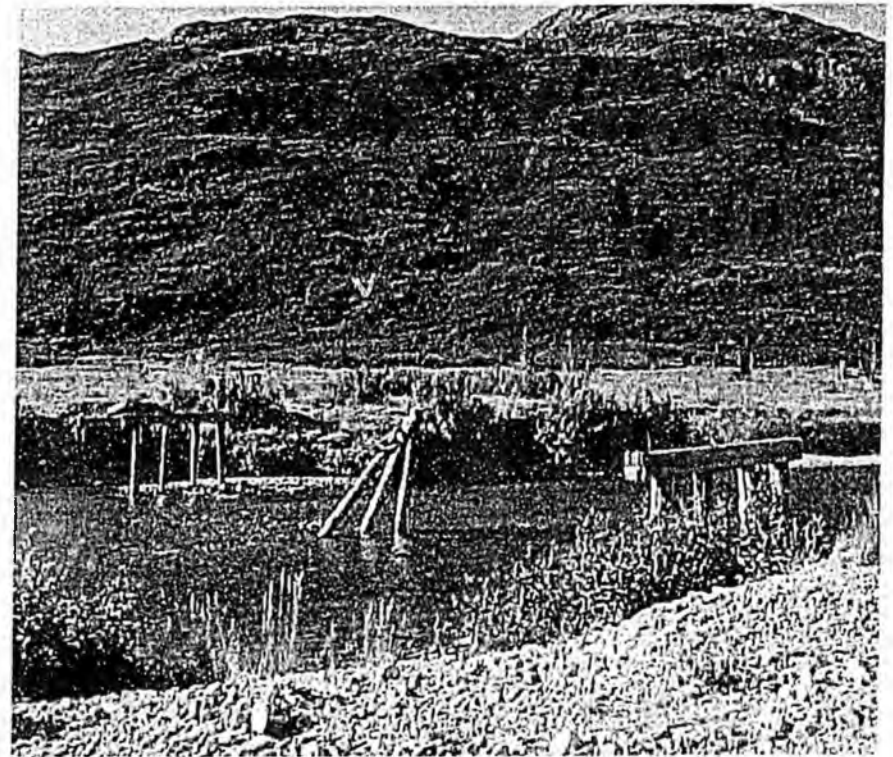
Alaska DOT&PF Mission

- AS 19.05.125: “...to establish a highway department capable of ...planning, construction and maintenance...a network of highways linking together cities and communities throughout the state thereby contributing to the development of commerce and industry ...and aiding the extraction and utilization of its resources...improve the economic and general welfare of the people...”

Example of pressing highway need elsewhere

Only road to Lake and Peninsula Borough, including 6 villages.

Identified freight savings of >\$3 million annually!



**Neglected bridge, Chinkelyes Creek
Williamsport-Pile Bay Road
(Replaced by Bailey Bridge in 2002)**

Potential Impact to MPOs

- Reducing TRAAK funds will not impact MPOs funding levels if:
 - Funding is reallocated to CTP program
- Allocation to NHS or AHS would result in reduction to MPOs
- Department proposes to reallocate TRAAK funds to CTP

Conclusion

- Funds applied to TRAAK program are not in balance with other allocations:
 - Tremendous reservoir of unmet roads needs
 - New resource and community access roads program needs funding
 - Several mega-projects now being advanced
- Department intends to reduce TRAAK program in 2004-2006 STIP, ~ 4% same as SB 71.

2004-2006 Draft State Transportation Improvement Program (STIP) --- TRAAK Projects

Under Senate Bill 71, funding for the TRAAK Program projects will be cut in half.

FY '04 \$15.4 from \$30.8 million

FY '05 \$16.7 from \$33.4 million

FY '06 \$16.3 from \$32.7 million

TRAAK nominated projects go through a similar scoring process as other transportation projects.

Projects with higher scores are first in line for funding. Projects with lower scores will be eligible for ranking against new projects next year.

Under SB 71, projects funded in the draft STIP with lower scores (perhaps under 120) will not be funded. Many currently funded projects will be delayed or cancelled.

The department is already revising the STIP based upon Administration instruction.

Need ID	Project Description/Funding Source	Score	Phse	Apprn	FFY04	FFY05	FFY06	FFY07	FFY08	FFY09	Req'd Funding >6 years
16155	Alaska Highway MP 1332: Moon Lake Wayside	95.8	2				120.0	65.0			
	Pave access road, construct new loop road, install new ADA vaulted toilets, improve parking area and picnic sites.		4						1,200.0		
	Federal			STP	0.0	0.0	109.2	59.1	1,091.6	0.0	
	State				0.0	0.0	10.8	5.9	108.4	0.0	
	Other										
	Project Total				0.0	0.0	120.0	65.0	1,200.0	0.0	0.0
16041	Alyeska Highway Pathway Improvements	91.7	2				162.0				
	Rehabilitation of the 1.9 mile long Alyeska Highway Pathway . Sponsors propose improving the pathway to meet current pathway standards, weight requirements for snow removal equipment, interpretive signs, and construction of a new pedestrian and bike underpass from the New Girdwood Townsite traversing under the Alyeska Highway to Forest Fair Park.		3					50.0			
			7							50.0	
			4							1,248.0	
	Federal			STP	0.0	0.0	147.4	45.5	0.0	1,180.8	
	State				0.0	0.0	14.5	4.5	0.0	117.2	
	Other										
	Project Total				0.0	0.0	162.0	50.0	0.0	1,298.0	0.0
6461	AMATS Allocation	999.0	all		7,620.0	7,870.0	8,130.0	8,400.0	8,680.0	8,960.0	
	AMATS Program Allocation										
	Federal			CMAQ	2,772.8	2,863.7	2,958.3	3,056.6	3,158.5	3,260.4	
	Federal			STP	4,159.1	4,295.6	4,437.5	4,584.9	4,737.7	4,890.5	
	State				688.1	710.7	734.1	758.5	783.8	809.1	
	Other										
	Project Total				7,620.0	7,870.0	8,130.0	8,400.0	8,680.0	8,960.0	0.0
5789	AMHS: Shipboard Visitor Information Kiosk	86.5	4					220.0			
	Design, fabricate and install electronic information systems to be used onboard four Southeast Mainline Alaska Marine Highway vessels.										
	Federal			STP	0.0	0.0	0.0	200.1	0.0	0.0	
	State				0.0	0.0	0.0	19.9	0.0	0.0	
	Other										
	Project Total				0.0	0.0	0.0	220.0	0.0	0.0	0.0

Need ID	Project Description/Funding Source	Score	Phse	Apprn	FFY04	FFY05	FFY06	FFY07	FFY08	FFY09	Req'd Funding >6 years
2665	Anchor Point: Anchor Road Pod. Beach Access Imp. Construct pedestrian facilities along the Old Sterling Highway and Anchor Point Beach Road from the community of Anchor Point to the beaches at the Anchor River State Recreation area. Trailhead parking area to be constructed with connecting pathways to the nearby school, baseball field, and the visitors center. Also included is a pedestrian bridge across the Anchor River and trail from the Silver King campground to the Halibut campground and parking area. Included will be viewing decks, interpretive kiosks, landscaping and visitor amenities.	123.7	2								
			3								
			4			2,600.0					
	Federal			TE	0.0	2,365.2	0.0	0.0	0.0	0.0	
	State				0.0	234.8	0.0	0.0	0.0	0.0	
	Other										
	Project Total				0.0	2,600.0	0.0	0.0	0.0	0.0	0.0
2311	Anchorage: Girdwood - Winner Creek Trail & Trailhead Impr. This will provide a pathway connection in Girdwood along Winner Creek.	81.8	2						50.0		
			4								
	Federal			TE	0.0	0.0	0.0	0.0	45.5	0.0	
	State				0.0	0.0	0.0	0.0	4.5	0.0	
	Other										
	Project Total				0.0	0.0	0.0	0.0	50.0	0.0	350.0
6129	Anchorage: Girdwood Valley - Iditarod Trail Provide a trail connection along the historic Iditarod Trail up Crow Creek Mine Road to Crow Pass.	100.7	2			300.0					
			3					200.0			
			7							10.0	
			4							2,200.0	
	Federal			TE	0.0	272.9	0.0	181.9	0.0	2,010.4	
	State				0.0	27.1	0.0	18.1	0.0	199.6	
	Other		NPS Labor								
	Project Total				0.0	300.0	0.0	200.0	0.0	2,210.0	0.0
16040	Arctic Valley Parking & Trailhead Improvements Improve the parking lot and trailhead at Alpenglou Ski Area at Arctic Valley. Sponsor proposes that improvements be similar in nature to McHugh Creek State Wayside. Proposed improvements include trail signage, grading, reshaping, slope stabilization, erosion control, drainage, toilets, parking lot improvements and interpretive kiosk.	94.7	2				200.0				
			3					10.0			
			7							10.0	
			4							1,545.0	
	Federal			STP	0.0	0.0	181.9	9.1	0.0	1,414.6	
	State				0.0	0.0	18.1	0.9	0.0	140.4	
	Other										
	Project Total				0.0	0.0	200.0	10.0	0.0	1,555.0	0.0

Need ID	Project Description/Funding Source	Score	Phse	Apprn	FFY04	FFY05	FFY06	FFY07	FFY08	FFY09	Rec'd Funding >6 years
4012	Barrow: Isatquak Lagoon Boardwalk and Trill	115.7	2		100.0						
	Construct approximately one mile of boardwalk in vicinity of school, hospital, park, softball field and lagoon.		3			160.0					
			4				1,110.0				
	Federal			TE	91.0	80.0	850.0	0.0	0.0	0.0	
	State				9.0	0.0	0.0	0.0	0.0	0.0	
	Other	3/80.0; 4/260.0				80.0	260.0				
	Project Total				100.0	160.0	1,110.0	0.0	0.0	0.0	0.0
7279	Bethel: Chief Eddie Hoffman Highway Separated Pathway	189.0	2								
	Construct a 4.2 mile, separated pathway from the airport to the high school along the north side of the Chief Eddie Hoffman Highway.	106.3	3		150.0						
			4			1,955.0					
	Federal			STP	136.5	1,778.5	0.0	0.0	0.0	0.0	
	State				13.5	176.5	0.0	0.0	0.0	0.0	
	Other										
	Project Total				150.0	1,955.0	0.0	0.0	0.0	0.0	0.0
12541	Cape Decision Lighthouse Dock and Access Improvements	112.0	2		40.0	20.0					
	Remove large submerged boulders blocking access to the beach loading point and construct a skid with winch for removing watercraft from the water. Improve pedestrian safety on the large dock extending from the lighthouse by installing pedestrian rail and reconstructing the burned portion of the dock.		3								
			4				400.0				
	Federal			TE	30.0	18.2	360.0	0.0	0.0	0.0	
	State				0.0	1.8	0.0	0.0	0.0	0.0	
	Other	2/10.0; 4/40.0			10.0	40.0					
	Project Total				40.0	20.0	400.0	0.0	0.0	0.0	0.0
6118	Central Region: ADA Pedestrian Facilities	999.0	2								
	Construct ramp and curb cuts in compliance with ADA at various locations to be determined.		4		200.0	200.0	200.0	200.0	200.0	200.0	
	Federal			TE	181.9	181.9	181.9	181.9	181.9	181.9	
	State				18.1	18.1	18.1	18.1	18.1	18.1	
	Other										
	Project Total				200.0	200.0	200.0	200.0	200.0	200.0	0.0

Need ID	Project Description/Funding Source	Score	Phase	Apprn	FFY04	FFY05	FFY06	FFY07	FFY08	FFY09	Req'd Funding >6 years
2251	Central Region: Winter Trail Marking	999.0	2		50.0	50.0	50.0	50.0	50.0	50.0	
	Mark overland winter trails in the western area of Central Region with permanent trail markers. Trail markers will ensure winter travelers can safely journey between communities in the area.		4		200.0	200.0	200.0	200.0	200.0	200.0	
	Federal			STP	227.4	227.4	227.4	227.4	227.4	227.4	
	State				22.6	22.6	22.6	22.6	22.6	22.6	
	Other										
	Project Total				250.0	250.0	250.0	250.0	250.0	250.0	0.0
7719	Chena Hot Springs Rd: Fairbanks to Chena Hot Springs Trail	87.0	2					200.0			
	Acquire easements for and plat the historic winter trail between Fairbanks and Chena Hot Springs.		3							500.0	
	Federal			STP	0.0	0.0	0.0	181.9	0.0	454.9	
	State				0.0	0.0	0.0	18.1	0.0	45.2	
	Other										
	Project Total				0.0	0.0	0.0	200.0	0.0	500.0	0.0
8619	Chenega Bay: Iktua Bay Trail Construction	83.7	2					50.0			
	Construct a trail from the Chenega Bay Airport to Iktua Bay, approximately 1.3 miles.		3						50.0		
			4								350.0
	Federal			TE	0.0	0.0	0.0	0.0	0.0	318.4	
	State				0.0	0.0	0.0	0.0	0.0	31.6	
	Other	2/50.0; 3/50.0									
	Project Total				0.0	0.0	0.0	50.0	50.0	350.0	0.0
12428	CHSR Chena State Rec Area Ph II	136.5	2		100.0	75.0					
	Construct two waysides in the Chena River State Recreation Area along Chena Hot Springs Road MP 27 and MP 39.5.		4					820.0			
	Federal			STP	90.0	68.2	746.0	0.0	0.0	0.0	
	State				0.0	6.8	74.0	0.0	0.0	0.0	
	Other		2 10 3 60			10.0					
	Project Total				100.0	75.0	820.0	0.0	0.0	0.0	0.0
9600	Clam Gulch: Caribou Hills Winter Trailhead	86.8	2					68.0			
	Construct winter trailhead parking area and information kiosk at Mile 117 Sterling Highway for 75 vehicles and trailers. The trailhead would be located within Clam Gulch State Recreation Area and the adjacent highway right of way.		3						200.0		
			7								5.0
			4								227.0
	Federal			STP	0.0	0.0	0.0	61.9	181.9	211.1	
State			0.0	0.0	0.0	6.1	18.1	20.9			
	Other										
	Project Total				0.0	0.0	0.0	68.0	200.0	232.0	0.0

Need ID	Project Description/Funding Source	Score	Phse	Apprn	FFY04	FFY05	FFY06	FFY07	FFY08	FFY09	Req'd Funding >6 years
2666	Clam Gulch: Clam Gulch Beach Access Improvements	91.8	2								
	Construct improved vehicular and pedestrian access from the Sterling Highway to the beach area for commercial fishing, beach combing and clam digging. Construction of the pedestrian access will require relocating the existing road to one side of the narrow gulch and channelizing the stream flow.		3								
			4						1,270.0		
	Federal			TE	0.0	0.0	0.0	1,155.3	0.0	0.0	
	State				0.0	0.0	0.0	114.7	0.0	0.0	
	Other										
	Project Total				0.0	0.0	0.0	1,270.0	0.0	0.0	0.0
15819	Copper River Trail: Uranitna River to Cleave Creek with Richardson Hwy. Connector	199.0	2								
	Construct a rail to trail project between the Uranitna River and Cleave Creek with a connector to the Richardson Highway via the Tioke River.		3								
			4		3,540.0						
	Federal			TE	3,220.3	0	0.0	0.0	0.0	0.0	
	State				319.7	0	0.0	0.0	0.0	0.0	
	Other										
	Project Total				3,540.0	0.0	0.0	0.0	0.0	0.0	0.0
3991	Cordova: Bering River Railroad Park	89.3	2					75.0			
	Create railroad park by rehabilitating railroad engine and installing at old railroad; site will be landscaped.		4						150.0		
	Federal			TE	0.0	0.0	0.0	68.2	136.5	0.0	
	State				0.0	0.0	0.0	6.8	13.5	0.0	
	Other		ROW								
	Project Total				0.0	0.0	0.0	75.0	150.0	0.0	0.0
6618	Cordova: Copper River Hwy - MP 0.0 - 5.5 Pedestrian/Bike Path	189.0	2		275.0						
	Construct a Pedestrian/Bicycle facility along the Copper River Highway from downtown Cordova to the Eyak River.		3		300.0						
			7			280.0					
			4			2,800.0					
	Federal			STP	523.1	2,801.9	0.0	0.0	0.0	0.0	
State			51.9	278.1	0.0	0.0	0.0	0.0			
	Other										
	Project Total				575.0	3,080.0	0.0	0.0	0.0	0.0	0.0
6620	Cordova: Copper River Hwy - MP 5.5 - 10 Pedestrian/Bike Path	83.0	2					150.0	350.0		
	Construct a Pedestrian/Bicycle facility along the Copper River Highway from the Eyak River to 10 mile.		3								
			7								
			4								
	Federal			STP	0.0	0.0	0.0	0.0	136.5	318.4	
State			0.0	0.0	0.0	0.0	13.5	31.6			
	Other										
	Project Total				0.0	0.0	0.0	0.0	150.0	350.0	400.0

Need ID	Project Description/Funding Source	Score	Phse	Apprn	FFY04	FFY05	FFY06	FFY07	FFY08	FFY09	Req'd Funding >6 years
6626	Cordova: Covered Pedestrian Walkways	76.5	2								75.0
	Construct covered pedestrian walkways at 4 locations in Cordova.		4								
	Federal			TE	0.0	0.0	0.0	0.0	0.0	68.2	
	State				0.0	0.0	0.0	0.0	0.0	6.8	
	Other										
	Project Total				0.0	0.0	0.0	0.0	0.0	75.0	260.0
6175	Cordova: Interpretive Boardwalk	80.0	2								100.0
	Construct boardwalk along the Cordova breakwater. Includes a kiosk and Interpretative signs.		4								
	Federal			TE	0.0	0.0	0.0	0.0	91.0	0.0	
	State				0.0	0.0	0.0	0.0	9.0	0.0	
	Other										
	Project Total				0.0	0.0	0.0	0.0	100.0	0.0	400.0
6619	Cordova: Whitshed Road Bike Path & Wayside	89.2	2					120.0			
	Construct a pedestrian/bicycle facility along the first mile of Whitshed Road, develop the Orca Inlet Recreational Wayside at MP 0.5 mile and improve the access trail to the Meals Lake Recreational area.		3						300.0		
			4							1,500.0	
	Federal			TE	0.0	0.0	0.0	109.2	272.9	1,050.0	
	State				0.0	0.0	0.0	10.8	27.1	0.0	
	Other										
	2/50.0; 4/450.0									450.0	
	Project Total				0.0	0.0	0.0	120.0	300.0	1,500.0	0.0
16141	Craig: East Hamilton Drive Path Paving	97.2	2			30.0		10.0			
	Remove brush and overgrowth, install root barrier and pave the existing gravel path along East Hamilton Drive.		4						245.0		
	Federal			STP	0.0	27.3	0.0	9.1	222.9	0.0	
	State				0.0	2.7	0.0	0.9	22.1	0.0	
	Other										
	Project Total				0.0	30.0	0.0	10.0	245.0	0.0	0.0
6839	Dalton Hwy: MP 0.0 - Livengood Pullout/MP 20 - Hess Creek Wayside	78.7	2								50.0
	At MP 0 the Livengood Pullout on south side, install two interpretive panels and sanitary facilities. At MP 20 the Hess Creek Wayside on the west side, install two interpretive panels, a parking and access road.		4								
	Federal			TE	0.0	0.0	0.0	0.0	0.0	45.5	
	State				0.0	0.0	0.0	0.0	0.0	4.5	
	Other										
	Project Total				0.0	0.0	0.0	0.0	0.0	50.0	250.0

Need ID	Project Description/Funding Source	Score	Phse	Apprn	FFY04	FFY05	FFY06	FFY07	FFY08	FFY09	Req'd Funding >6 years
3976	Dalton Hwy: MP 115 - Arctic Circle Campground Access	83.5	2					75.0			
	Includes development of RV and tent camping sites, sanitary facilities, picnic tables, and information/interpretation kiosk.		3								
			4							750.0	
	Federal			TE	0.0	0.0	0.0	68.2	0.0	682.3	
	State				0.0	0.0	0.0	6.8	0.0	67.7	
	Other										
	Project Total				0.0	0.0	0.0	75.0	0.0	750.0	0.0
3964	Dalton Hwy: MP 188.6 Middle Fork Koyukuk River Access	88.3	2					25.0			
	Improve access road, upgrade and enlarge parking area.		4						125.0		
	Federal			STP	0.0	0.0	0.0	22.7	113.7	0.0	
	State				0.0	0.0	0.0	2.3	11.3	0.0	
	Other										
	ROW + Materials										
	Project Total				0.0	0.0	0.0	25.0	125.0	0.0	0.0
3965	Dalton Hwy: MP 207 - Bottles River Access	88.3	2					25.0			
	Provide parking spaces and improve access to the Dietrich-Bottles Rivers. Improve access to a back country trail.		4						125.0		
	Federal			STP	0.0	0.0	0.0	22.7	113.7	0.0	
	State				0.0	0.0	0.0	2.3	11.3	0.0	
	Other										
	ROW + Materials										
	Project Total				0.0	0.0	0.0	25.0	125.0	0.0	0.0
3966	Dalton Hwy: MP 215 - Arctic Loon Ponds Overlook	81.0	2					25.0			
	Create a parking area to provide watchable wildlife and fishing opportunities.		4							115.0	
	Federal			TE	0.0	0.0	0.0	0.0	22.7	104.6	
	State				0.0	0.0	0.0	0.0	2.3	10.4	
	Other										
	Project Total				0.0	0.0	0.0	0.0	25.0	115.0	0.0
3967	Dalton Hwy: MP 235 - Upper Dietrich River Wayside	85.0	2					50.0			
	Provide a parking area, interpretation, restrooms, and trash cans for visitors and commercial vehicles.		4						150.0		
	Federal			STP	0.0	0.0	0.0	45.5	136.5	0.0	
	State				0.0	0.0	0.0	4.5	13.5	0.0	
	Other										
	ROW + Materials										
	Project Total				0.0	0.0	0.0	50.0	150.0	0.0	0.0

Need ID	Project Description/Funding Source	Score	Phse	Apprn	FFY04	FFY05	FFY06	FFY07	FFY08	FFY09	Req'd Funding >6 years
3968	Dalton Hwy: MP 252 - Spike Creek Camp Wayside	81.0	2						30.0		
	Provide safe, adequate parking and toilet facilities.		4								175.0
	Federal			TE	0.0	0.0	0.0	0.0	27.3	159.2	
	State				0.0	0.0	0.0	0.0	2.7	15.8	
	Other										
	Project Total				0.0	0.0	0.0	0.0	30.0	175.0	0.0
3949	Dalton Hwy: MP 261 to 265 - Atgun Valley Wayside	85.0	2					25.0			
	Construct parking sites and interpretive panels between MP 261 and 265.		4							175.0	
	Federal			STP	0.0	0.0	0.0	22.7	159.2	0.0	
	State				0.0	0.0	0.0	2.3	15.8	0.0	
	Other		ROW + Materials								
	Project Total				0.0	0.0	0.0	25.0	175.0	0.0	0.0
3950	Dalton Hwy: MP 275 Galbrath Lake Campground & Access	91.5	2				170.0	110.0			
	Includes recreational vehicle and tent camp sites, parking area, sanitary facilities, kiosk, well and upgrade the 1.75 mile long access road. Located on the west side of road.		3						50.0		
			4								950.0
	Federal			TE	0.0	0.0	154.6	100.1	25.0	864.2	
	State				0.0	0.0	15.4	9.9	0.0	10.8	
	Other	3/25.0; 4/75.0						25.0	75.0		
	Project Total				0.0	0.0	170.0	110.0	50.0	950.0	0.0
3972	Dalton Hwy: MP 57 Yukon Crossing Intermodal Facilities	80.7	2								
	Construct intermodal facilities at the Yukon River boat/barge landing site. Includes access, storage area and parking, information and traveler facilities.		3								500.0
			4								
	Federal			TE	0.0	0.0	0.0	0.0	0.0	390.0	
	State				0.0	0.0	0.0	0.0	0.0	0.0	
	Other	2/140.0; 3/10.0; 4/110.0								110.0	
	Project Total				0.0	0.0	0.0	0.0	0.0	500.0	0.0

Need ID	Project Description/Funding Source	Score	Phse	Apprn	FFY04	FFY05	FFY06	FFY07	FFY08	FFY09	Req'd Funding >6 years
3974	Dalton Hwy: MP 60 Campground Access	86.5	2					100.0			
	Includes recreational vehicle camping area, a tent camping area, parking area and picnic area on the West side of the road.		3						25.0		
			4								
	Federal			TE	0.0	0.0	0.0	91.0	0.0	0.0	
	State				0.0	0.0	0.0	9.0	0.0	0.0	
	Other	3/25.0; 4/25.0							25.0		
	Project Total				0.0	0.0	0.0	100.0	25.0	0.0	525.0
3975	Dalton Hwy: MP 86 - Yukon Flats Overlook	94.8	2					25.0			
	Includes parking spaces, viewing deck and three interpretive signs.		3					75.0			
			4								
	Federal			STP	0.0	0.0	22.7	68.2	0.0	0.0	
	State				0.0	0.0	2.3	6.8	0.0	0.0	
	Other	ROW + Material s									
	Project Total				0.0	0.0	25.0	75.0	0.0	0.0	0.0
3944	Delta Junction: AK Road Commission Interpretive Center	91.2	2					171.0			
	Provide an interpretive center and highway traveler welcome station at Big Delta State Historical Park (Rika's Landing), located at MP 274.5 Richardson Hwy.		4					284.0			
	Federal			TE	0.0	0.0	155.6	258.4	0.0	0.0	
	State				0.0	0.0	15.4	25.6	0.0	0.0	
	Other										
	Project Total				0.0	0.0	171.0	284.0	0.0	0.0	0.0
3945	Delta Junction: State Historic Park Resource Protection	81.2	2						300.0		
	Erosion protection, and pave access road, parking area, RV sanitary dump station loop and pedestrian trails at Rika's Roadhouse.		4								
	Federal			TE	0.0	0.0	0.0	0.0	272.9	0.0	
	State				0.0	0.0	0.0	0.0	27.1	0.0	
	Other										
	Project Total				0.0	0.0	0.0	0.0	300.0	0.0	1,200.0
6602	Denali Hwy: MP 15 to 45 Revegetation & Restoration	91.0	2					100.0			
	Improve Swede Lake and MacLaren River Road Trailheads. Revegetate and restore trampled areas near the Delta River Wayside, Tangle Lakes and other locations.		4					250.0			
	Federal			STP	0.0	0.0	91.0	227.4	0.0	0.0	
	State				0.0	0.0	9.0	22.6	0.0	0.0	
	Other	BLM Labor									
	Project Total				0.0	0.0	100.0	250.0	0.0	0.0	0.0

Need ID	Project Description/Funding Source	Score	Phso	Apprn	FFY04	FFY05	FFY06	FFY07	FFY08	FFY09	Req'd Funding >6 years
9549	Dillingham: Coastal Trail Construction Upgrade and hard surface 6.5 miles of pathways. This will include approximately 2.9 miles of existing pathway on the Kanakanak Road from Dillingham to the intersection of Kanakanak and Aleknagik Lake Roads, and 3.6 miles of new separated hard surfaced bike/pedestrian trails which continue from the newly constructed pathway at Shannon's and Aleknagik Lake Roads. Project terminl will be at the intersection of Waskey and Aleknagik Lake Roads.	83.2	2							5.0	
			7								
			4							1,586.0	
	Federal			TE	0.0	0.0	0.0	0.0	0.0	1,447.3	
	State				0.0	0.0	0.0	0.0	0.0	143.7	
	Other										
	Project Total				0.0	0.0	0.0	0.0	0.0	1,591.0	0.0
6267	Eagle: Restore Customs House Restore historic U.S. Customs House in Eagle.	128.7	2								
			4		60.0						
	Federal			TE	54.6	0.0	0.0	0.0	0.0	0.0	
	State				5.4	0.0	0.0	0.0	0.0	0.0	
	Other										
	Project Total				60.0	0.0	0.0	0.0	0.0	0.0	0.0
9920	Elm: Walla Walla Iditarod Trail Repair a six mile section of the Iditarod trail located between Elm and Walla Walla. Repairs include smoothing and widening the trail and moving it away from the cliff.	128.0	2		70.0						
			4			175.0					
	Federal			TE	63.7	159.2	0.0	0.0	0.0	0.0	
	State				6.3	15.8	0.0	0.0	0.0	0.0	
	Other										
	Project Total				70.0	175.0	0.0	0.0	0.0	0.0	0.0
3678	Fairbanks NSB: Harding Lake/Salcha Drive Bike Trail Construct a bike/recreational path around Harding Lake along Salcha Drive (Richardson Hwy approx. MP 320).	74.0	2							750.0	
			3								
			4								
	Federal			TE	0.0	0.0	0.0	0.0	0.0	682.3	
	State				0.0	0.0	0.0	0.0	0.0	67.7	
	Other										
	Project Total				0.0	0.0	0.0	0.0	0.0	750.0	5,000.0
3853	Fairbanks: Farmers Loop/Dogmushers Sanitary Wayside Outhouse to serve bike path and dog mushing trailhead.	102.3	2			30.0					
			3				40.0				
			4				75.0				
	Federal			TE	0.0	27.3	104.6	0.0	0.0	0.0	
	State				0.0	2.7	10.4	0.0	0.0	0.0	
	Other										
	Project Total				0.0	30.0	115.0	0.0	0.0	0.0	0.0

Need ID	Project Description/Funding Source	Score	Phse	Apprn	FFY04	FFY05	FFY06	FFY07	FFY08	FFY09	Req'd Funding >6 years
6598	Fairbanks: Farmers Loop-Chena Hot Springs Road Trail Connection	106.0	2			100.0					
	All-season trail connection.		3				100.0				
			4						500.0		
	Federal			TE	0.0	91.0	91.0	454.9	0.0	0.0	
	State				0.0	9.0	9.0	45.2	0.0	0.0	
	Other										
	Project Total				0.0	100.0	100.0	500.0	0.0	0.0	0.0
3831	Fairbanks: Steamship Nenana Renovation	101.8	2			150.0					
	Additional restoration work on sternwheeler Nenana.		4					450.0			
	Federal			STP	0.0	90.0	0.0	409.4	0.0	0.0	
	State				0.0	0.0	0.0	40.6	0.0	0.0	
	Other		2/60				60.0				
	Project Total				0.0	150.0	0.0	450.0	0.0	0.0	0.0
6609	Fairbanks: Steese Hwy - Chatanika Multi-use Trails	83.0	2					100.0			
	Easements for multi-use recreation trail.		3							200.0	
	Federal			TE	0.0	0.0	0.0	0.0	91.0	181.9	
	State				0.0	0.0	0.0	0.0	9.0	18.1	
	Other										
	Project Total				0.0	0.0	0.0	100.0	200.0	0.0	
12800	Fairbanks: Tanana Valley Railroad Trainhouse/Museum	114.7	2								
	Construct a 3,000 SF structure at Alaskaland to house and support operations of the restored Tanana Valley Engine #1. The proposed two part building will also include a museum with a focus on the history of the Tanana Valley Railroad and railroad transportation in Alaska.		3				20.0				
			4				650.0				
	Federal			TE	0.0	609.5	0.0	0.0	0.0	0.0	
	State				0.0	40.5	0.0	0.0	0.0	0.0	
	Other	2/60, 3/20				20.0					
	Project Total				0.0	670.0	0.0	0.0	0.0	0.0	0.0
9939	Fairbanks: Yankovich/Miller Hill Multi-Use Path	83.7	2					125.0			
	Construct a separated bicycle/pedestrian trail along Yankovich and Miller Hill Roads in the Farmers Loop/University of Alaska area.		3							800.0	
			4								
	Federal			TE	0.0	0.0	0.0	113.7	0.0	727.8	
	State				0.0	0.0	0.0	11.3	0.0	72.2	
	Other										
	Project Total	3/300.0			0.0	0.0	0.0	125.0	0.0	800.0	800.0

Need ID	Project Description/Funding Source	Score	Phase	Apprn	FFY04	FFY05	FFY06	FFY07	FFY08	FFY09	Req'd Funding >6 years
6613	Galena: Separated Path	103.0	2			45.0					
	Extend the existing bike/ped. facility 1/2 mile to the housing up river.		4				200.0				
	Federal			TE	0.0	40.9	181.9	0.0	0.0	0.0	
	State				0.0	4.1	18.1	0.0	0.0	0.0	
	Other										
	Project Total				0.0	45.0	200.0	0.0	0.0	0.0	0.0
16160	Glenn Hwy MP 76: King Mountain Scenic Overlook	104.3	2			146.0					
	Project will reconstruct the King Mountain State Recreation Site, located 30 miles east of Palmer, to serve as a highway wayside. Project includes reconfiguring and paving existing gravel looped drive, constructing parking for 20 autos and 7 large pull through vehicles, 17 picnic sites, 3 interpretive kiosks, 2 sets of vaulted toilets, 1,000 feet of paved trail and an unpaved area for overflow parking. Caretaker and other miscellaneous park facilities will be installed.		7					50.0			
			4					1,047.0			
	Federal			STP	0.0	132.8	0.0	997.9	0.0	0.0	
	State				0.0	13.2	0.0	99.1	0.0	0.0	
	Other										
	Project Total				0.0	146.0	0.0	1,097.0	0.0	0.0	0.0
3814	Glennallen: Glenn Hwy Bike Path	189.0	2								
	Construct a 2.7 mile bike pedestrian path from the visitors center at the Glenn/Rich Hwy Junction to the Library/Moose Creek.	102.3	3								
			7		150.0						
			4		1,300.0						
	Federal			STP	1,319.1	0.0	0.0	0.0	0.0	0.0	
	State				130.9	0.0	0.0	0.0	0.0	0.0	
	Other										
	Project Total				1,450.0	0.0	0.0	0.0	0.0	0.0	0.0
16241	Haines: Mud Bay Road Beach Access	113.3	2		30.0	10.0					
	Construct a wayside at One Mile Creek, including a parking area, interpretation and an accessible route to the tidal flats. The route would be a combination of path and boardwalk crossing the creek and grassy riparian areas to a small deck with views of the Chilkat River delta.		3			5.0					
			4			200.0					
	Federal			STP	27.3	195.6	0.0	0.0	0.0	0.0	
	State				2.7	19.4	0.0	0.0	0.0	0.0	
	Other										
	Project Total				30.0	215.0	0.0	0.0	0.0	0.0	0.0

Need ID	Project Description/Funding Source	Score	Phse	Apprn	FFY04	FFY05	FFY06	FFY07	FFY08	FFY09	Req'd Funding >6 years	
16038	Haines: Old Haines Highway Sidewalk Construction	95.2	2				25.0	20.0				
	Construct curb, gutter and sidewalk along both sides of the Old Haines Highway from the base of the hill to Third Avenue. Width of the paved roadway would be narrowed as part of sidewalk installation. Include a connection north along the right-of-way for First Avenue.		7							20.0		
			4								510.0	
	Federal			STP	0.0	0.0	22.7		18.2	482.1	0.0	
	State				0.0	0.0	2.3		1.8	47.9	0.0	
	Other											
	Project Total				0.0	0.0	25.0	20.0	530.0	0.0	0.0	
16181	Healy School Kids Safety Trail	124.7	2									
	Construct trail from Tri-Valley School to the Healy Spur Road.		3			20.0						
			7			10.0						
			4				105.0					
	Federal			STP	10.0	95.5	0.0		0.0	0.0	0.0	
	State			0.0	9.5	0.0		0.0	0.0	0.0		
	Other	3.20			20.0							
	Project Total				30.0	105.0	0.0	0.0	0.0	0.0	0.0	
12742	Homer Split Separated Pathway Ph II	128.3	2									
	Construct a separated pathway from the Homer Fishin' Hole to the End of the Road Wayside to include interpretive sites.		7				50.0					
			4				635.0					
	Federal			TE	0.0	623.1	0.0		0.0	0.0	0.0	
	State				0.0	61.9	0.0		0.0	0.0	0.0	
	Other											
	Project Total				0.0	685.0	0.0	0.0	0.0	0.0	0.0	
12499	Homer: Veterans Memorial Wayside	95.8	2				45.0					
	Construct a wayside at MP 6 on the Sterling Highway. Wayside will include parking area, viewing scopes, benches, flag poles and interpretive center to display historical and cultural information.		3						260.0			
			4									
	Federal			TE	0.0	0.0	40.9		236.5	0.0	0.0	
	State				0.0	0.0	4.1		23.5	0.0	0.0	
	Other											
	Project Total				0.0	0.0	45.0	260.0	0.0	0.0	0.0	
12741	Homer: Baycres/Homestead Ski/Trailhead Rehabilitation	109.2	2			35.0						
	Construct a year round trailhead that provides off-street parking on Rogers Loop Road.		3				50.0					
			4						235.0			
	Federal			TE	0.0	31.8	45.5		213.8	0.0	0.0	
	State				0.0	3.2	4.5		21.2	0.0	0.0	
	Other											
	Project Total				0.0	35.0	50.0	235.0	0.0	0.0	0.0	

Need ID	Project Description/Funding Source	Score	Phse	Apprn	FFY04	FFY05	FFY06	FFY07	FFY08	FFY09	Req'd Funding >6 years
12741	Homer: Baycrest/Homestead Ski/Trailhead Rehabilitation	109.2	2			100.0					
	Construct a year round trailhead/pullout that provides access to Homer area Ski/Wilderness trails off the Sterling Highway, adjacent to the DOT&PF Maintenance facility. Project will include a year round restroom, parking area and interpretive facilities.		3					100.0			
			7						25.0		
			4						306.0		
	Federal			STP	0.0	91.0	91.0	301.1	0.0	0.0	
	State			0.0	9.0	9.0	29.9	0.0	0.0		
	Other										
	Project Total				0.0	100.0	100.0	331.0	0.0	0.0	0.0
16060	Homer: Diamond Creek Scenic Overlook Construction	105.8	2			175.0					
	Construct a two lane paved access road, parking area, picnic areas, viewpoints, restroom facilities, caretaker cabin and trailhead and trails.		7						25.0		
			4						1,300.0		
	Federal			STP	0.0	159.2	0.0	1,205.4	0.0	0.0	
	State				0.0	15.8	0.0	119.6	0.0	0.0	
	Other										
	Project Total				0.0	175.0	0.0	1,325.0	0.0	0.0	0.0
9879	Homer: End of the Road Wayside Park Construction	114.5	2								
	Construct a highway wayside at the beginning of the Sterling Hwy and adjacent to the AMHS terminal and dock which consists of a rest and viewing area, toilet facilities, parking, pathway and interpretive signs.		7				50.0				
			4				200.0				
	Federal			TE	0.0	227.4	0.0	0.0	0.0	0.0	
	State				0.0	22.6	0.0	0.0	0.0	0.0	
	Other	3/50.0									
	Project Total				0.0	250.0	0.0	0.0	0.0	0.0	0.0
16003	Homer: Pathway Realignment, Beluga Slough to Homer Spit	88.5	2					100.0			
	Realign the bike path from the Spit to Lake Street to the other side of the road. Project will include constructing a parking area at the intersection of the Sterling Highway and FAA Road. Include interpretive signing in the parking area.		3						50.0		
			7							50.0	
			4								560.0
	Federal			STP	0.0	0.0	0.0	91.0	45.5	554.9	
	State			0.0	0.0	0.0	9.0	4.5	55.1		
	Other										
	Project Total				0.0	0.0	0.0	100.0	50.0	610.0	0.0

Need ID	Project Description/Funding Source	Score	Phase	Apprn	FFY04	FFY05	FFY06	FFY07	FFY08	FFY09	Req'd Funding >6 years
6485	Homer: Soundview Avenue Trail Construction	110.2	2		50.0						
	Construct approximately 2000 feet of pedestrian pathway between two disconnected segments of Soundview Avenue.		3								
			7			15.0					
			4			200.0					
	Federal			TE	45.5	195.6	0.0	0.0	0.0	0.0	
	State				4.5	19.4	0.0	0.0	0.0	0.0	
	Other										
	Project Total				50.0	215.0	0.0	0.0	0.0	0.0	0.0
6489	Houston: Houston-Willow Creek Historic Trail Improvements	95.2	2				70.0				
	Construction of a gravel-surfaced pedestrian/equestrian trail connecting from a day use area to the historic Willow Sled Trail. Construction of an open air picnic pavilion with picnic tables and bench seating.		3								
			7					5.0			
			4					350.0			
	Federal			TE	0.0	0.0	63.7	322.9	0.0	0.0	
	State				0.0	0.0	6.3	32.1	0.0	0.0	
	Other										
	Labor + Material										
	Project Total				0.0	0.0	70.0	355.0	0.0	0.0	0.0
2039	Juneau: Auke Bay Ferry Terminal Enhancements	90.2	2				165				
	Transportation enhancements at the Auke Bay ferry terminal. Design, fabricate and install interpretive exhibit in terminal and improve facilities for pedestrians and bicyclists.		4					1,000.0			
	Federal			STP	0.0	0.0	150.1	909.7	0.0	0.0	
	State				0.0	0.0	14.9	90.3	0.0	0.0	
	Other										
	Project Total				0.0	0.0	165.0	1,000.0	0.0	0.0	0.0
3100	Juneau: North Douglas - Fish Creek to False Outer Point Bike Path Const	80.7	2						300.0		
	Construct bike path from Fish Creek to False Outer Point.		4								
	Federal			TE	0.0	0.0	0.0	0.0	272.9	0.0	
	State				0.0	0.0	0.0	0.0	27.1	0.0	
	Other										
	Project Total				0.0	0.0	0.0	0.0	300.0	0.0	1,700.0

Need ID	Project Description/Funding Source	Score	Phase	Apprn	FFY04	FFY05	FFY06	FFY07	FFY08	FFY09	Req'd Funding >6 years
16151	Juneau: Path Grade Reduction Next to Egan Drive	116.7	2		30.0	20.0					
	Next to the outbound travel lanes on Egan, place existing drainage in a culvert and construct embankment fill that reduces grades by elevating the multi-use path between the end of Channel Vista Drive and Power House Road.		4				198.0				
	Federal			STP	27.3	18.2	180.1	0.0	0.0	0.0	
	State				2.7	1.8	17.9	0.0	0.0	0.0	
	Other										
	Project Total				30.0	20.0	198.0	0.0	0.0	0.0	0.0
8659	Juneau: Under Thunder Path Construction	109.2	2			200.0	125.0				
	Establish a path for pedestrians and bicyclists along the eastern edge of the Mendenhall Valley between Egan Drive and the Mendenhall Glacier Visitors Center. Includes connections to neighborhoods and schools.		3				50.0				
			4					3,425.0			
	Federal			STP	0.0	181.9	159.2	3,115.7	0.0	0.0	
	State				0.0	18.1	15.8	309.3	0.0	0.0	
	Other										
	Project Total				0.0	200.0	175.0	3,425.0	0.0	0.0	0.0
9599	Kenai Peninsula Borough: Deep Creek Beach Access Improvements	127.2	2								
	Construct a separated paved access pathway along Deep Creek Beach Road from the highway to the beach. Realign and widen lower portion of Deep Creek Beach Road to facilitate staging for tractor launching by concessionaire and private business.		4				650.0				
	Federal			TE	0.0	591.3	0.0	0.0	0.0	0.0	
	State				0.0	58.7	0.0	0.0	0.0	0.0	
	Other										
	Project Total				0.0	650.0	0.0	0.0	0.0	0.0	0.0
9760	Kenai Peninsula Borough: 12 Mile Wayside Trail System Rehabilitation	76.0	2								50.0
	Construct trail facilities including restrooms and make trail improvements at the 12 Mile Wayside along the Seward Highway. Trail work would include adding gravel material to the existing trail, constructing water bars, lighting for winter cross-country skiing, and interpretive signage for summer use.		4								
	Federal			TE	0.0	0.0	0.0	0.0	0.0	45.5	
	State				0.0	0.0	0.0	0.0	0.0	4.5	
	Other										
	Project Total				0.0	0.0	0.0	0.0	0.0	50.0	250.0
2609	Kenai Peninsula Borough: Seward Hwy: Scenic Byway Interpretive Sites	107.0	2								
	Planning, design, and construction of six interpretive sites between MP 18-91 of the Seward Highway Scenic Byway, along with a series of route and site identifier signs along the entire length.		4				185.0				
	Federal			TE	0.0	168.3	0.0	0.0	0.0	0.0	
	State				0.0	16.7	0.0	0.0	0.0	0.0	
	Other										
	Project Total				0.0	185.0	0.0	0.0	0.0	0.0	0.0

Need ID	Project Description/Funding Source	Score	Phse	Apprn	FFY04	FFY05	FFY06	FFY07	FFY08	FFY09	Req'd Funding >6 years	
6662	Kenai: Kenai River Bridge Access Road Pathway	189.0	2									
	Construct a pedestrian/bike path parallel to the Kenai River Bridge Access Road between Kalifornsky Beach Road and the Kenai Spur Road, 3.3 miles.	99.5	3		100.0							
			7				90.0					
			4				3,800.0					
		Federal			STP	91.0	0.0	3,538.7	0.0	0.0	0.0	
		State				9.0	0.0	351.3	0.0	0.0	0.0	
	Other											
	Project Total				100.0	0.0	3,890.0	0.0	0.0	0.0	0.0	
16004	Kenai: Kenai Coastal Trail	89.7	2				715.0	475.0				
	Construct a multi-purpose trail along the base of the Kenai bluffs from the Kenai Dunes Park to a new trailhead and parking area located just off Bridge Access Road. Total length of trail is approximately 1 mile and includes interpretive signing.		3							1,500.0		
			7									
			4									
		Federal			STP	0.0	0.0	115.0	432.1	0.0	1,364.6	
		State				0.0	0.0	0.0	42.9	0.0	135.5	
	Other	2,600					600.0					
	Project Total				0.0	0.0	715.0	475.0	0.0	1,500.0	9,220.0	
2409	Kenai: Kenai River Flats Interpretive Site Improvements	130.7	2		452.0							
	Improve the existing highway rest stop near Warren Ames Memorial Bridge. Viewing platforms, viewing scopes, walkways, paving, sanitary facilities and landscaping.		7				10.0					
			4				1,910.0					
		Federal			TE	411.2	0.0	1,746.6	0.0	0.0	0.0	
		State				40.8	0.0	173.4	0.0	0.0	0.0	
		Other										
	Project Total				452.0	0.0	1,920.0	0.0	0.0	0.0	0.0	
9606	Kenai: Overland Avenue Pedestrian Walkway	97.2	2				50.0					
	Construct a concrete sidewalk along Overland Avenue from Mission Street to Main Street. Project includes pedestrian improvements, historic lighting, and visitor amenities.		3					60.0				
			7						50.0			
			4						200.0			
		Federal			TE	0.0	45.5	0.0	54.6	227.4	0.0	
		State				0.0	4.5	0.0	5.4	22.6	0.0	
	Other											
	Project Total				0.0	50.0	0.0	60.0	250.0	0.0	0.0	

Need ID	Project Description/Funding Source	Score	Phase	Apprn	FFY04	FFY05	FFY06	FFY07	FFY08	FFY09	Req'd Funding >6 years
9608	Kenai: Russian River/Kenai River Sportsman's Boardwalk	103.5	2			75.0					
	Construct 330 feet of elevated boardwalk along the banks of the Kenai River at the Sportsman's Access boat launch site. construct multiple points of access to the boardwalk via ADA accessible ramps. Install park benches at designated locations on the boardwalk to allow for sight seeing and rest stops.		3					10.0			
			4					450.0			
	Federal			TE	0.0	68.2	0.0	375.0	0.0	0.0	
	State				0.0	6.8	0.0	0.0	0.0	0.0	
	Other							85.0			
	Project Total				0.0	75.0	0.0	460.0	0.0	0.0	0.0
15699	Kennicott Trestle	142.8	2								
	Repair historic railroad trestle at the Kennicott Mill site, including stabilization of structural supports, reducing bridge rail and interpretation.		3								
			4			400.0					
	Federal			TE	0.0	363.9	0.0	0.0	0.0	0.0	
	State				0.0	36.1	0.0	0.0	0.0	0.0	
	Other										
	Project Total				0.0	400.0	0.0	0.0	0.0	0.0	0.0
9999	Ketchikan: Waterfront Promenade, Phase II	104.0	2			80.0	20.0				
	Construct a promenade along the waterfront in downtown Ketchikan between the Federal Building and the Thomas Basin breakwater. Includes resting and viewing areas at the mouth of Ketchikan Creek.		3					50.0			
			4						814.5		
	Federal			TE	0.0	72.8	18.2	45.5	500.0	0.0	
	State				0.0	7.2	1.8	4.5	0.0	0.0	
	Other										
	Project Total	4/314.5			0.0	80.0	20.0	50.0	814.5	0.0	0.0
13680	Klawock: Causeway Path Completion	106.7	2			20.0					
	Add base and pave a shared-use path along the Craig-Hollis state highway through the City of Klawock between the Klawock River bridge and the Big Salt junction.		3			10.0					
			7				20.0				
			4				400.0				
	Federal			TE	0.0	27.3	382.1	0.0	0.0	0.0	
	State				0.0	2.7	37.9	0.0	0.0	0.0	
	Other										
	Project Total				0.0	30.0	420.0	0.0	0.0	0.0	0.0

Need ID	Project Description/Funding Source	Score	Phse	Apprn	FFY04	FFY05	FFY06	FFY07	FFY08	FFY09	Req'd Funding >\$ years	
16163	Klutli-Kaah Bike Path Construct a bike path along the Old Richardson Highway through the communities of Kluti-Kaah and Copper Center, including a bridge across the Klutina River.	88.7	2					200.0	140.0			
			3							100.0		
			4									
					STP	0.0	0.0	0.0	181.9	127.4	91.0	
					0.0	0.0	0.0	18.1	12.6	9.0		
	Project Total				0.0	0.0	0.0	200.0	140.0	100.0	1,700.0	
2443	Kodiak: Fort Abercromble Historic Trail Rehabilitation Develop an interpretive pathway following the historic roads at Ft. Abercromble. The entrance road, parking areas and trailheads will be upgraded and paved and ADA access provided to the visitor center. An interpretive nature trail will be constructed, toilets replaced, and trailhead kiosks constructed. An ADA ramp, steps and viewing deck will be constructed at Lake Gertrude and a picnic area access road and parking areas will be upgraded and paved.	80.3	2							425.0		
			3							250.0		
			7									
			4									
				TE	0.0	0.0	0.0	0.0	386.6	0.0		
					0.0	0.0	0.0	0.0	38.4	0.0		
	Project Total				0.0	0.0	0.0	0.0	425.0	250.0	1,472.4	
7282	Kodiak: Lakeview Drive Separated Pathway Construct approximately 1.25 miles of trail along Von Scheele Way and Lake View Drive to Oimeloi Way.	83.5	2					50.0				
			3						10.0			
			7								15.0	
			4									300.0
				TE	0.0	0.0	0.0	45.5	9.1	286.6		
					0.0	0.0	0.0	4.5	0.9	28.4		
	Project Total				0.0	0.0	0.0	50.0	10.0	315.0	0.0	
16016	Kodiak: Sella Lane Bicycle/Ped Trail Construction Construct approximate 0.5 miles of separated asphalt pathway and/or sidewalk, as determined in design phase, from Beaver Lake (City/Borough boundary) to Von Schlee Way. Project will include illumination along pathway.	115.5	2		75.0	75.0						
			7								100.0	
			4								582.0	
					STP	68.2	68.2	620.4	0.0	0.0	0.0	
					6.8	6.8	61.6	0.0	0.0	0.0		
	Project Total				75.0	75.0	682.0	0.0	0.0	0.0	0.0	

Need ID	Project Description/Funding Source	Score	Phse	Apprn	FFY04	FFY05	FFY06	FFY07	FFY08	FFY09	Req'd Funding >6 years
16092	Manley Wayside and Boat Launch Access Rehabilitation	92.3	2				100.0	50.0			
	Rehabilitate the park on the west side of Manley Slough.		4						750.0		
	Federal			STP	0.0	0.0	91.0	45.5	682.3	0.0	
	State				0.0	0.0	9.0	4.5	67.7	0.0	
	Other										
	Project Total				0.0	0.0	100.0	50.0	750.0	0.0	0.0
13619	Mat Su: Bogard Road Wasilla Schools Grade Separated Crossing	106.7	2								
	Provide corrugated steel plate undercrossing of Bogard Road in Wasilla to provide a direct connection between Wasilla High School and Wasilla Middle School including necessary demolition and realignment of trail.		3			250.0					
			7				200.0				
			4				495.0				
	Federal			TE	0.0	227.4	632.2	0.0	0.0	0.0	
	State			0.0	22.6	62.8	0.0	0.0	0.0		
	Other										
	Project Total				0.0	250.0	695.0	0.0	0.0	0.0	0.0
6182	MatSu Borough: Byers Lake Scenic Overlook & Access	93.2	2				150.0				
	Improvements to Byer's Lake Recreational Area to include two parking areas, interpretive kiosks, trail connections to Curry Ridge, Troublesome and Coal Creek Trails, and other visitor amenities. Most of new trail will be ADA accessible.		3					130.0			
			7						10.0		
			4						1,000.0		
	Federal			TE	0.0	0.0	20.0	118.3	918.8	0.0	
	State			0.0	0.0	0.0	11.7	91.2	0.0		
	Other										
	Project Total	3/130.0			0.0	0.0	150.0	130.0	1,010.0	0.0	0.0
9761	MatSu Borough: Historic Signs	91.0	2				25.0				
	Install at least 28 interpretive historic signs at various locations within the Mat/Su Borough along the George Parks, Glenn, and Denali Highways.		4					170.0			
	Federal			TE	0.0	0.0	19.0	154.6	0.0	0.0	
	State				0.0	0.0	0.0	15.4	0.0	0.0	
	Other		2/6.0					6.0			
	Project Total				0.0	0.0	25.0	170.0	0.0	0.0	0.0

Need ID	Project Description/Funding Source	Score	Phse	Apprn	FFY04	FFY05	FFY06	FFY07	FFY08	FFY09	Req'd Funding >6 years
7319	MatSu Borough: Fairview Loop Road Trail MP 5.1 to 9.27 Construct a separated non-motorized trail along Fairview Loop Road between the Hanson Farm State Historic Park at MP 5.1 and Hayfield Road at MP 9.27, approximately 4.2 miles in length.	83.0	2						150.0		
			3							200.0	
			7								
			4								
	Federal			TE	0.0	0.0	0.0	0.0	136.5	181.9	
	State				0.0	0.0	0.0	0.0	13.5	18.1	
	Other										
	Project Total				0.0	0.0	0.0	0.0	150.0	200.0	960.0
9602	MatSu Borough: Nancy Lake SRA Trailhead & Trails Improvements Phase I construction of 5 pull-offs and trailheads along Nancy Lake Parkway with developments for parking, hiking, viewing, interpretation and picnicking. Construct a 10' wide paved pathway along Nancy Lake Parkway from MP 67.2 Parks Highway to South Rolly Lake, approximately 6.5 miles.	96.7	2				525.0				
			3					380.0			
			7						100.0		
			4						3,400.0		
	Federal			TE	0.0	0.0	477.6	0.0	3,184.0	0.0	
	State				0.0	0.0	47.4	0.0	316.1	0.0	
	Other										
	Project Total	3/380.0			0.0	0.0	525.0	380.0	3,500.0	0.0	0.0
9604	MatSu Borough: Valley Winter Trailheads & Trail Marking Improve the winter trailhead at Kroto Creek on Petersville Rd to a 200 vehicle trailhead; construct a parking area at Nancy Lake Pkwy at MP 2.2; provide snowmachine trail marking on the Big Susitna, Deshka and Yentna River systems. Install toilets at two trailheads and construct kiosks, pave parking areas and loading ramp.	86.7	2					200.0			
			3						100.0		
			4								
	Federal			TE	0.0	0.0	0.0	181.9	91.0	0.0	
	State				0.0	0.0	0.0	18.1	9.0	0.0	
	Other										
	Project Total	3/100.0			0.0	0.0	0.0	200.0	100.0	0.0	750.0

Need ID	Project Description/Funding Source	Score	Phse	Apprn	FFY04	FFY05	FFY06	FFY07	FFY08	FFY09	Req'd Funding >6 years
9601	MatSu Borough: Willow Creek Trailhead & Trails Improvements Construct 140 unit trailhead parking area on Willow Creek Parkway near the Susitna River. Pave parking area, install 3 toilets and 5 kiosks. Realign 700 feet of road and landscape. Construct 3,500 feet ADA accessible interpretive trail and 5,000 feet of ADA accessible internal trail. Construct a paved pathway through Willow Creek SRA with improvements.	101.7	2			400.0		256.0			
			3								
			4						3,050.0		
	Federal			TE	0.0	363.9	0.0	0.0	2,774.6	0.0	
	State				0.0	36.1	0.0	0.0	42.4	0.0	
	Other										
		3/256.0; 4/233						256.0	233.0		
	Project Total				0.0	400.0	0.0	256.0	3,050.0	0.0	0.0
12403	Mat-Su: Point MacKenzie Winter Recreation Trailhead Construct a multi-purpose trailhead in the vicinity of the new Port at Point Mackenzie. The trailhead, restrooms and parking area will accommodate winter recreationists using the proposed ferry between Anchorage and Point Mackenzie to access literally thousands of miles of winter trails. The trailhead will provide summer access to a variety of fishing and hunting opportunities. Access to the trailhead will also be via the Point Mackenzie Road.	74.7	2								120.0
			3								
			7								
			4								
	Federal			STP	0.0	0.0	0.0	0.0	0.0	109.2	
	State				0.0	0.0	0.0	0.0	0.0	10.8	
	Other										
	Project Total				0.0	0.0	0.0	0.0	0.0	120.0	0.0
6216	Mat-Su: Big Lake - Fish Creek Park Wayside Construct a pedestrian bridge and 10 vehicle parking area adjacent South Big Lake Road at Fish Creek and construct a separated pedestrian path from Fish Creek to S. Big Lake wayside. Project will bring the trail into the wayside, and will pave the 1/4 mile of South Big Lake Wayside Access Road that circles the wayside.	189.0	2								
		98.8	3								
			7			10.0					
			4			530.0					
	Federal			TE	0.0	491.2	0.0	0.0	0.0	0.0	
	State				0.0	48.8	0.0	0.0	0.0	0.0	
	Other										
	Project Total				0.0	540.0	0.0	0.0	0.0	0.0	0.0

Need ID	Project Description/Funding Source	Score	Phse	Apprn	FFY04	FFY05	FFY06	FFY07	FFY08	FFY09	Req'd Funding >6 years
2492	Mat-Su: Old Glenn Hwy Pathway Improvements	77.3	2							300.0	
	Construct a separated pathway along the Old Glenn Highway from Palmer to the Knick River Bridge.		3								
			4								
	Federal			TE	0.0	0.0	0.0	0.0	0.0	272.9	
	State				0.0	0.0	0.0	0.0	0.0	27.1	
	Other										
	Project Total				0.0	0.0	0.0	0.0	0.0	300.0	1,550.0
12740	MatSu: Palmer Hayflats Waysides Improvements	82.3	2						165.0		
	Improvements to the Rabbit Slough Wayside and Cottonwood Creek Wayside accesses to the Palmer Hayflats State Game Refuge.		3							50.0	
			7								
			4								
	Federal			TE	0.0	0.0	0.0	0.0	125.0	40.0	
	State				0.0	0.0	0.0	0.0	0.0	0.0	
	Other	2/40, 3/10, 4/25									
	Project Total				0.0	0.0	0.0	0.0	165.0	50.0	1,610.0
3776	McCarthy Road/Richardson Highway Interpretive Waysides	77.3	2							200.0	
	Install interpretive signs along McCarthy Road, Edgerton Highway and Richardson Highway, and in McCarthy and Kennicott.		4								
	Federal			TE	0.0	0.0	0.0	0.0	0.0	181.9	
	State				0.0	0.0	0.0	0.0	0.0	18.1	
	Other										
	Project Total				0.0	0.0	0.0	0.0	0.0	200.0	1,000.0
6859	McCarthy Road: Kennicott River East/West Wayside	189.0	2								
	On East Wayside construct sanitary facilities and provide trash cans. On West Wayside construct parking area with sanitary facilities at the terminus of the McCarthy Road.	97.7	3								
			4			550.0					
	Federal			STP	0.0	500.3	0.0	0.0	0.0	0.0	
	State				0.0	49.7	0.0	0.0	0.0	0.0	
	Other										
	Project Total				0.0	550.0	0.0	0.0	0.0	0.0	0.0
3767	Nenana: Bike Trail Construction	97.8	2			75.0					
	Construct two miles of bike path to follow city streets and 9th Street.		4					100.0			
	Federal			TE	0.0	68.2	0.0	91.0	0.0	0.0	
	State				0.0	6.8	0.0	9.0	0.0	0.0	
	Other										
	Project Total				0.0	75.0	0.0	100.0	0.0	0.0	0.0

Need ID	Project Description/Funding Source	Score	Phse	Apprn	FFY04	FFY05	FFY06	FFY07	FFY08	FFY09	Req'd Funding >6 years
8988	Nome: Front Street Safety & Enhancements	108.3	2								
	Construct enhancements along Front Street such as sidewalk widening, lighting, bench, and four intersection bump outs located at Front St. with Hunter St. and Federal Way. Also includes scenic overlook with historical and interpretive signs.		3			10.0					
			7			200.0					
			4				1,500.0				
	Federal			TE	0.0	191.0	1,364.6	0.0	0.0	0.0	
	State				0.0	19.0	135.5	0.0	0.0	0.0	
	Other	2/20.0; 3/10.0									
	Project Total				0.0	210.0	1,500.0	0.0	0.0	0.0	0.0
3746	Nome: Nome-Council Road Waysides	78.8	2								50.0
	Construct parking lot, picnic areas, sanitary facilities and interpretive exhibits at MP 4, 15, 17, and 20.		4								
	Federal			TE	0.0	0.0	0.0	0.0	0.0	45.5	
	State				0.0	0.0	0.0	0.0	0.0	4.5	
	Other										
	Project Total				0.0	0.0	0.0	0.0	0.0	50.0	250.0
3728	Nome-Taylor Road: MP 17 Wayside	104.3	2			50.0					
	Construct parking area and interpretive signs.		4				175.0				
	Federal			STP	0.0	45.5	159.2	0.0	0.0	0.0	
	State				0.0	4.5	15.8	0.0	0.0	0.0	
	Other										
	Project Total				0.0	50.0	175.0	0.0	0.0	0.0	0.0
3721	North Pole: Hurst-Dawson Bike Trail	79.8	2						150.0		
	Construct a bike path east of Badger Rd.		3							50.0	
			4								
	Federal			TE	0.0	0.0	0.0	0.0	136.5	45.5	
	State				0.0	0.0	0.0	0.0	13.5	4.5	
	Other										
	Project Total				0.0	0.0	0.0	0.0	150.0	50.0	0.0

Need ID	Project Description/Funding Source	Score	Phse	Apprn	FFY04	FFY05	FFY06	FFY07	FFY08	FFY09	Req'd Funding - 6 years
3869	Northern Region: ADA Pedestrian Facilities	999.0	2		150.0						
	Pedestrian facility improvements to meet Americans with Disabilities Act standards.		3		650.0						
			7		300.0	5.0	5.0	5.0	5.0	5.0	
			4		2,900.0	1,000.0	1,000.0	1,000.0	1,000.0	1,000.0	
		Federal			STP	3,638.8	914.2	914.2	914.2	914.2	914.2
	State				361.2	90.8	90.8	90.8	90.8	90.8	
	Other										
	Project Total				4,000.0	1,005.0	1,005.0	1,005.0	1,005.0	1,005.0	0.0
1656	Northern Region: Winter Trail Marking	199.0	2		50.0	50.0	50.0	50.0	50.0	50.0	
	Mark overland winter trails in Northern Region with permanent trail markers. Trail markers will ensure winter travelers can safely journey between communities in the area.		4		200.0	200.0	200.0	200.0	200.0	200.0	
		Federal			STP	227.4	227.4	227.4	227.4	227.4	227.4
		State				22.6	22.6	22.6	22.6	22.6	22.6
		Other									
	Project Total				250.0	250.0	250.0	250.0	250.0	250.0	0.0
3707	Richardson Highway: MP 127 - Gulkana River Wayside	199.0	2								
	Construction and landscaping of wayside facilities and trailhead improvements.		3								
			4		2,000.0						
		Federal			STP	1,819.4	0.0	0.0	0.0	0.0	0.0
		State				180.6	0.0	0.0	0.0	0.0	0.0
	Other										
	Project Total				2,000.0	0.0	0.0	0.0	0.0	0.0	0.0
2549	Palmer: Independence Mine Trailhead & Interpretive Trail	132.2	2		247.0						
	Upgrade the trailhead facilities at Independence Mine State Historical Park. Construct a trailhead kiosk at the park entrance and separated pathway from trailhead to the Independence Mine complex. Construct connecting trails to historic Boom Town and Gold Chord Lake area. Construct Mill Trail and preserve Mill Building Trestle from Mine Portal to lower area of complex to provide barrier free trail with Interpretive displays. Construct service access road to Mine Portal with ADA accessible drop off and pick up at Mine Portal.		4			888.0					
		Federal			STP	224.7	807.8	0.0	0.0	0.0	0.0
		State				22.3	80.2	0.0	0.0	0.0	0.0
		Other									
	Project Total				247.0	888.0	0.0	0.0	0.0	0.0	0.0