

ALASKA LEGISLATURE COMMITTEE FILES 1999-2000 8672

10044 SENATE HEALTH EDUCATION & SOCIAL SERVICES



RECORDS CERTIFICATION



I, the undersigned, an employee of the State of Alaska, do hereby certify that the microfilm images on this microform are accurate reproductions of the original records of the State of Alaska as accumulated during the regular course of business, and that it is the established policy and practice of this State to microfilm its records and to dispose of the original documents after microfilm reproductions have been made.

A handwritten signature in cursive script, appearing to read "John O. B.", written over a horizontal line.

Signature of Camera Operator

A handwritten date "12/5/2001" written in cursive script over a horizontal line.

Date

1999-2000

SENATE HEALTH, EDUCATION & SOCIAL SERVICES COMMITTEE

LIST OF FILES (PAGE 1)

MICROFICHE #

BRIEFING: ALASKA FOOD COALITION

BRIEFING: MENTAL HEALTH TRUST AUTHORITY

CONFIRMATIONS, 1999

CONFIRMATIONS, 2000

MENTAL HEALTH BOARD PRESENTATION ON U.S.
SURGEON GENERAL'S REPORT ON MENTAL HEALTH

OVERVIEW: DEPARTMENT OF HEALTH AND SOCIAL
SERVICES, 3/17/99

PRESENTATION: HEALTH CARE COMMISSION

PRESENTATION: STATE INDEPENDENT LIVING
COUNCIL

SB 9

SB 21

SB 27

SB 31

SB 48

SB 56/SB 57/SB 58/SB 59

SB 61

SB 80

SB 82

SB 84

SB 94

1999-2000

SENATE HEALTH, EDUCATION & SOCIAL SERVICES COMMITTEE

LIST OF FILES (PAGE 2)

MICROFICHE #

SB 95

SB 97

SB 98

SB 103

SB 112

SB 117

SB 125

SB 127

SB 167

SB 170

SB 186

SB 191

SB 198

SB 204

SB 205

SB 207

SB 224

SB 228

SB 233

SB 244

SB 254

1999-2000

SENATE HEALTH, EDUCATION & SOCIAL SERVICES COMMITTEE

LIST OF FILES (PAGE 3)

MICROFICHE #

SB 256
SB 261
SCR 8
SCR 12
SCR 15
SJR 7
SJR 22
HB 27
HB 37
HB 70
HB 85
HB 191
HB 218
HB 226
HB 236
HB 270
HB 277
HB 346
HB 392
HB 445
HCR 15

1999-2000

SENATE HEALTH, EDUCATION & SOCIAL SERVICES COMMITTEE

LIST OF FILES (PAGE 4)

MICROFICHE #

HJR 12

HJR 36

Briefing:

AK

Food

...

The Alaska Food Coalition

Mission

The purpose of the Alaska Food Coalition is to strengthen and coordinate public and private food and nutrition assistance programs, and to educate policymakers about Alaskan food needs.

Membership

The Coalition is comprised of state agencies, municipalities, members of the private food assistance community, citizens, and organizations determined to make a difference in the food and nutritional issues facing our state.

Structure

The leadership of the AFC is the executive committee comprised of the Past Chair, Chair, Chair Elect, Secretary and Treasurer of the organization. The Chair-elect Secretary and Treasurer are elected annually at the face-to-face meeting of the AFC. All office terms are one year in duration. AFC funds are held on deposit with designated member organization 501 C3's.

Statement of Purpose A Food and Nutrition Policy for Alaska

Purpose and Members of Alaska Food Coalition

The purpose of the Alaska Food Coalition is to strengthen and coordinate public and private food and nutrition assistance programs, and to educate policy-makers about Alaskan food needs. The coalition is comprised of state agencies, municipalities, members of the private food assistance community, and citizens determined to make a difference in the food and nutritional issues facing our state.

Alaska lacks a comprehensive picture of the demographics of food needs, whether there's duplication in use of services, patterns of use, or gaps in food assistance programs. The Alaska Food Coalition feels it is vital to more clearly define the problem, the successes, and the challenges of our food distribution and assistance programs in a comprehensive way.

Hunger

Hunger can be defined "as a recurrent, involuntary lack of access to food." We know there are hungry people in Alaska communities, because Alaskans come to the food pantries, shelters, and informal food distribution sites. We also know that hunger in our state is not limited to the homeless and helpless. Finally, we recognize that a bright future for Alaska depends upon creating an environment in which children can learn and develop in a healthy way because they have proper nutrition, whether at home or in school.

Vision

The Alaska Food Coalition's vision for Alaska concerning food and nutrition means that there would be few if any families or individuals needing medium to long term assistance from food pantries, shelters, and/or informal food distribution sites. Short term requirements for food and nutrition by needing persons will be met in two ways. First of all, there will be plentiful statewide food products available to private sector distribution sites. This plentiful availability of food products will become possible by improving the distribution networks already in existence, by bettering the transportation routes already in existence and by enhancing public and private sector efforts to procure nutritional food products. Secondly, and most importantly, there will be processes that enable needing persons to become self-sufficient. These processes will require needing persons to actively participate, to their ability, in order to continue to receive food and nutritional assistance.

We see Alaska becoming a "world class" example of private/public partnership in the elimination of hunger because "everyone deserves a place at the table."

George Hieronymus, Jr.
Bean's Café PO Box 100940
Anchorage, Alaska 99501
274-9595 Fax 277-5251
Bean's @

Katrina Grundahl
SA-McKinnell Family Shelter
546 E. 15th Fireweed Lane
Anchorage, Alaska 99501
276-1609 Fax 2728546

Sara Jackson
CSS-St. Francis House
3710 E. 20th Ave
Anchorage, Alaska 99503
276-5590 Fax 258-1091
E-Mail SJJ-CSS@ Juno.Com

Jim Sanders
DCRA
333 W 4th Ave.
Anchorage, Alaska 99501
269-4591 Fax 269-4539
E-Mail J Sanders @ Com regaf. State. AK.US

Spencer Zeiger, PhD.
UAA Dept of Social Work
Bldg. K, Social Work Dept K 218-F
3211 Providence Dr
Anchorage, AK 99508
786-6906 Fax 786-6912

Samantha Castle Kirstein
Fairbanks Community Food
Bank Service
517 Gaffney Road
Fairbanks, AK 99701

Bill Coddington
CSS-St. Francis House
3710 E. 20th Ave
Anchorage, AK 99508
276-559 Fax 258-1091

Fred Jenkins
United Way of Anchorage
1057 W Fireweed Lane, Ste.
101
Anchorage, AK 99503
263-2000 Fax 263-6912

David Steelman
Lutheran Social Services
2606 C. St., Ste. 2E
Anchorage, AK 99503
272-0643 fax 272-5728

Pat Tolliver
4119 Laurel Street
Anchorage, AK 99508
563-7233 Fax 563-7234

Timothy Anderson
Wasilla Senior Services
1301 Century Circle
Wasilla, AK 99654
376-3164 Fax 373-5170

Juan San Miguel
SA Older Alaskan Program
1300 E 68th
Anchorage, AK 99518
349-0613 Fax 522-7894

Janet Athanas
Bethel Lions Club
P.O. Box 646
Bethel, Alaska 99559
543-2088 Fax 543-2083

Lynn Tomkins, Director
Food & Nutrition Services
Fairbanks-North Star Borough School Dist.
520 5th Ave Bethel, AK 99559
Fairbanks, AK 9970
452-2000 ext 32 Fax 451-6160

Scotty Benett
Fairbanks Rescue Mission
P.O. Box 73250
Fairbanks, AK 99707
452-5343 Fax 451-7058

Ellen Ganley
Fairbanks-North Star Borough
Health Commission
4454 Chena Hot Springs Rd
Fairbanks, AK 99712
488-2370 Fax 488-2542

James Hunter
St Judes Jubilee Ctr
P.O. Box 55458
North Pole, AK 99705

Peggy Moore
Kenai Peninsula Food Bank
33955 Community College Dr
Soldotna, AK 99669
262-3111 Fax 262-6428

Dixie Armstrong
Homer Comm Food Bank
P.O. Box 1487
Homer, AK 99603
235-2524 (H) 235-1968 Sep-May Evenings M-F
Fax 235-0140

Marlene Adams
CITC Elders Program
9131 Centennial Rd
Anchorage, Alaska 99504
337-7997 Fax 333-8517

Allen Joseph
Yukon-Kuskowim Health
Corp.
P.O. Box 528
Bethel, AK 99559
543-6031 Fax 543-6006

Roy Hiratsuka
Bristol Bay Native
Association
P.O. Box 310
Dillingham, AK 99576
842-3663 Fax 842-3663

Lynnete Dickenson
AVCP Inc.
P.O. Box 219
Bethel, AK 99559
543-3521 Fax 543-3596

Betty Kaplor
Helping Hands
P.O. Box 35041
Juneau, AK 99803

Diane Haines
Helping Hands
P.O. Box 35041
Juneau, AK 99803

Nancy Merriman
WIC Program, MOA
Anchorage, AK 99519
343-4773 Fax 343-4672

Fran Butzke
MoA- DHHS-SSD
P.O. Box 196650
Anchorage, Alaska 99519
343-4694 Fax 343-4805

ALASKA FOOD COALITION 3/8,99

Jack Doyle
Food Bank of Alaska
2121 Spar Ave
Anchorage, Alaska 99501
272-3663 Fax 277-7368

Randy Black
Food Bank of Alaska
2531 Legacy Dr
Anchorage, Alaska 99516
659-7210 N Slope 348-0112
269-3100 Fax 269-3465

Karen Perdue, Commissioner
Dept of Health & Social Services
PO Box 110601
Juneau, Alaska 99811-060
465-3030 Fax 465-3068

Diane DiSanto
Dept of Health & Social Services
PO Box 240249
Anchorage, Alaska 99524-0249
269-7800 Fax 561-1308

Jim Dahlman
Food Stamps Claim Unit
Div of Public Assistance, DHSS
PO Box 110640
Juneau, Alaska 99811-0640
465-3360 Fax 465-3651

Jay Livcy, Dep Commissioner
Dept Health & Social Services
PO Box 110601
Juneau, Alaska 99811-0640
465-3030 Fax 465-3068

Jim Nordlund
Div of Public Assistance, DHSS
PO Box 110640
Juneau, Alaska 99811-0640
465-2680 Fax 465-3651

Kathleen Wayne
Child Nutrition Ctr, Dept of
810 W 10th St., Ste. 200
Juneau, Alaska 99801-1894
465-8709 Fax 465-2713

Diane Peck
Maternal child Family
Health, DHSS
1231 Gambell
Anchorage, AK 99501-4267
269-3100 Fax 269-3465

Molly Wheeler, Project
Coordinator USDA Food
Dept of Education
801 W 10th St., Ste., 200
Juneau, Alaska 99801-1894
465-8710 Fax 463-5279

Marilyn Webb
Head Start Program, DCRA
PO Box 112100
Anchorage, Alaska 99811
465-4891 Fax 465-3212

Tran Roh n
Head Start Program, DCRA
PO Box 112100
Juneau, Alaska 99811-2100
465-4861 Fax 465-3212

Gail Raust
Dept of Administration
AK Commission on Aging
PO Box 110209
Juneau, Alaska 99811-0209
465-4798 Fax 465-4716

Liz Roberts
Office of the Governor
3601 C St., Ste 758
Anchorage, Alaska 99503
269-7450 Fax 269-7461

Briefing:

Mental

Health

Trust

•••

ALASKA MENTAL HEALTH TRUST AUTHORITY

MEMBERS

<u>Trustees</u>	<u>Mailing Address</u>	<u>Phone/Fax</u>	<u>E-Mail</u>
Nelson G. Page	810 N Street (Business) PO Box 91977 Anchorage, AK 99509	276-6100 (w) 345-8788 (h) 258-2530 (w fax) 345-2188 (h fax)	ngp@bpk.com
Tom Hawkins	1820 E 24 th Ave Anchorage, AK 99508	278-3602 (w) 274-4987 (h) 276-3924 (fax)	tomyhawk@alaska.net
Susan LaBelle	4830 Shelikof Anchorage, AK 99508	278-5437 (w) 561-0556 (h) 561-0557 (fax)	labelle@alaska.net
John Malone	171 Mission Lake Dr. PO Box 1032 Bethel, AK 99559	543-5301 ext 236 (w) 543-2902 (h) 543-4186 (fax)	jfmalone@unicom- alaska.com
John Pugh	1011 D Street Juneau, AK 99801	465-6531 (w) 586-1598 (h) 465-6406 (fax) 465-5159 (alternate fax)	jnrp@acad1.alaska. edu
Caren Robinson	211 4th Street, Suite 108 Juneau, AK 99801	586-1107 (w) 789-4305 (h) 586-1097 (fax)	dcc@alaska.net
Phil Younker	121 Spruce Avenue Fairbanks, AK 99709	452-6393 (w) 479-4302 (h) 452-1600 (fax)	pay@polarnet.com
Staff	Bank of America Center 550 West 7th Avenue, Suite 1820 Anchorage, AK 99501	269-7960 (phone) 269-7966 (fax)	mhta@mhta.revenue. state.ak.us
Jeff Jessee	Executive Director	269-7963 (w) 269-7958 (fax)	jeff_jessee@ mhta.revenue. state.ak.us
Bill Herman	Planner	269-7962 (w) 269-7956 (fax)	bill_herman@ mhta.revenue. state.ak.us
Mary Elizabeth Rider	Planner	269-7961 (w) 269-7957 (fax)	me_rider@ mhta.revenue. state.ak.us
Betty J Sorensen	Trust Financial Officer	269-7964 (w) 269-7959 (fax)	betty_sorensen@ mhta.revenue. state.ak.us
Stacy Moon	Administrative Clerk III	269-7960 (w) 269-7966 (fax)	smoon@mhta. revenue.state. ak.us

Alaska Mental Health Board

Statutory Duties

- Planning
- Advocacy
- Program Review
- Budget Recommendations to the Trust

Alaska Mental Health Board

Who We Serve

- Mentally ill and seriously emotionally disturbed children and adults
- Prevalence Estimates
 - 14,700 Children and Youth
 - 25,600 Adults
 - 4,200 Institutional/Homeless
- Those Receiving Public Mental Health Services
 - One-half of adults
 - One-third of children and youth

Alaska Mental Health Board

Priority Areas of Concern

- Community Services to Support a Smaller API
- Outcomes/Quality Assurance
- Criminalization of Mental Illness
- Rural Services
- Children and Youth Services

Alaska Mental Health Board

Outcomes/Quality Assurance

- Outcomes and Indicators contract
- Consumer Affairs Position (90.0 MHTAAR)
- Integrated Community QA (225.0 MHTAAR)
- API Quality Assurance (20.0 MHTAAR)
- CIMHIP (50.0 MHTAAR)

Alaska Mental Health Board

Criminalization of Mental Illness

- Women's Psychiatric Unit (200.0 MHTAAR, 200.0 GF/MH)
- Jail Alternative Services (130.0 MHTAAR)
- DOC Planner (30.0 MHTAAR, 30.0 GF/MH)

Alaska Mental Health Board

Rural Services

- Rural Human Services (150.0 MHTAAR)
- Rural Deaf/Hearing Impaired (189.8 MHTAAR)
- Enhanced DET Services

Alaska Mental Health Board

Children and Youth Services

- Community Residential Alternatives (150.0 MHTAAR)
- FAS and Related Disorders Prevention (300.0 MHTAAR)
- Children's Care Coordination Model (390.0 MHTAAR)
- Healthy Families Control Group (100.0)

The COMMUNITY MENTAL HEALTH / API 2000 PROJECT

Executive Board:

- Karl Brimner, Division of Mental Health & Developmental Disabilities
- Jeff Jessee, Alaska Mental Health Trust Authority
- Walter Majoros, Alaska Mental Health Board

API Director: Randall Burns

Project Manager: Kathy Carsow

API 2000

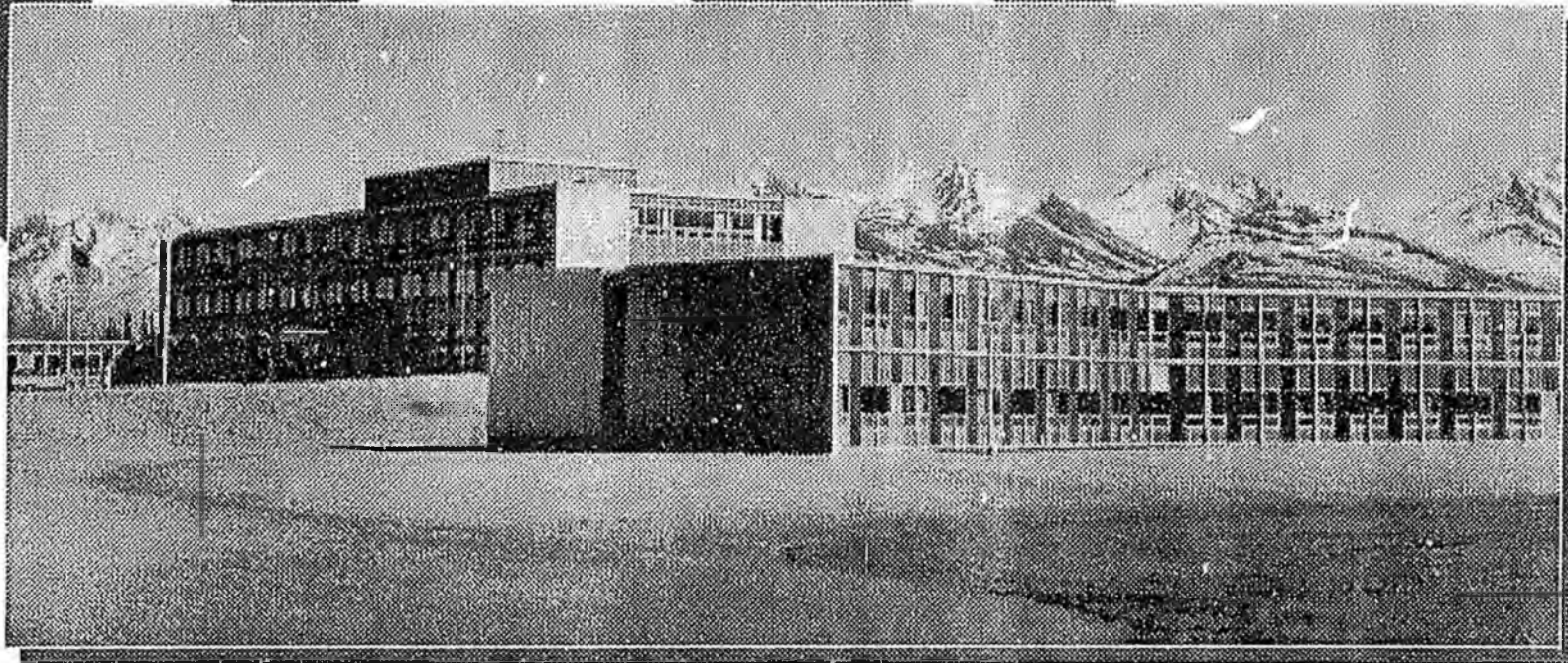
~ Replace the aging 79-bed Alaska Psychiatric Institute with a 54-bed facility to serve patients statewide

~ Develop community-based emergency mental health system in the Anchorage area to provide private treatment alternatives to hospitalization

~ Make statutory changes to the state's DET program to allow funds to follow the consumer to expand the capacity of private hospital care

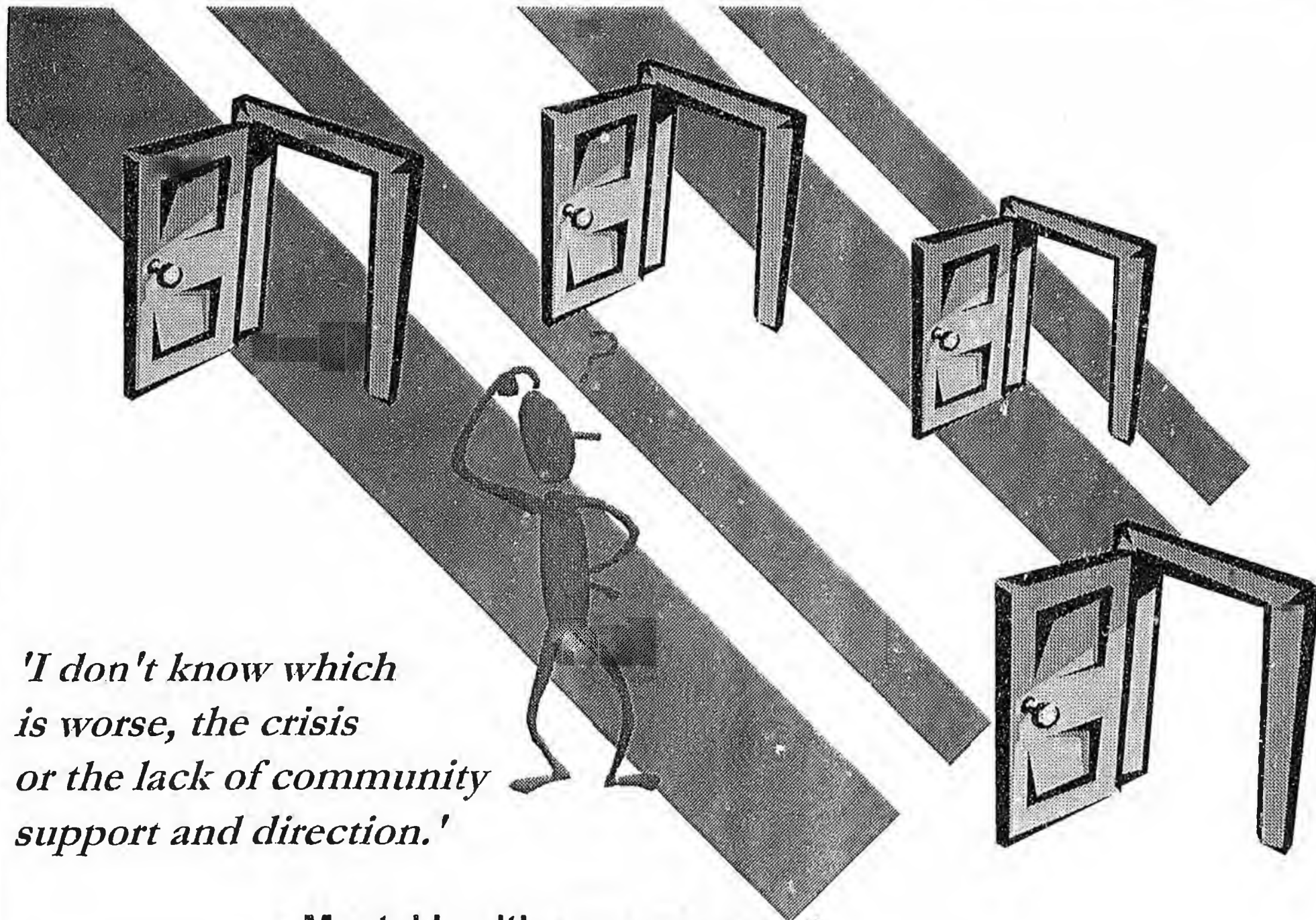


***Building a better
emergency mental health system ~
Improving response to substance
abuse and mental health crisis***



Alaska Psychiatric Institute

- ❑ Functionally obsolete for more than a decade
- ❑ Fewer than 5 years of service life left
- ❑ Major asbestos problems
- ❑ Not economical to renovate



*'I don't know which
is worse, the crisis
or the lack of community
support and direction.'*

--Mental health care consumer

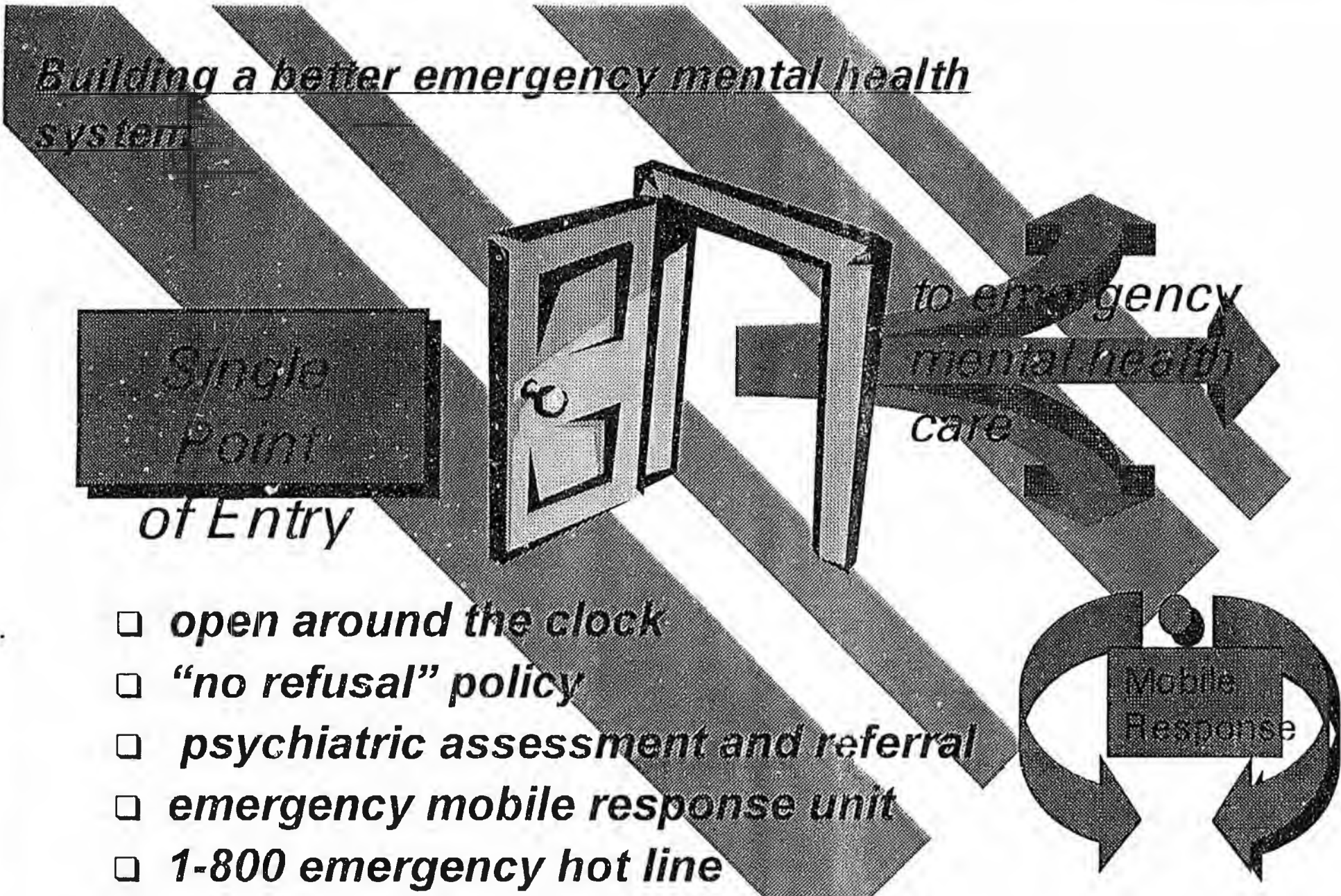
Building a better emergency mental health system

Single Point of Entry

to emergency mental health care

- open around the clock*
- “no refusal” policy*
- psychiatric assessment and referral*
- emergency mobile response unit*
- 1-800 emergency hot line*
- 23-hour stabilization & observation*
- transport to respite, detox, and hospital care*

Mobile Response



Building a better emergency mental health system

Crisis Respite

For stabilization, evaluation & assessment outside a hospital setting.

Enhanced Detox

Providing psychiatric-backed care without hospitalization for stabilizing intoxicated individuals with mental illness.



Dual Diagnosis Treatment

Dual diagnosis psychiatric program for individuals entering post-crisis treatment.

Building a better emergency mental health system

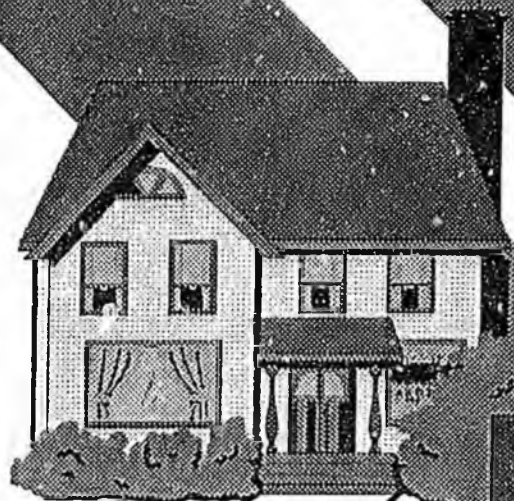


*Designated
Evaluation &
Treatment*

Secured DET hospital care for individuals in crisis and in danger of harming themselves or others.

*Alaska
Psychiatric
Institute*

A state psychiatric hospital providing patients quality treatment, safety and privacy in a therapeutic environment.



'It is much cheaper and more humane for individuals to be out of the hospital.'

--Extended care committee member

Enhanced
Extended Care

Enhance existing and create new residential treatment programs with psychiatric and medical back-up as alternatives to long-term hospitalization



Target start-up dates

<i>Enhanced Extended Care:</i>	<i>June 1, 1999</i>
<i>Enhanced Detox & Dual Diagnosis Treatment:</i>	<i>Nov. 1, 1999</i>
<i>Enhanced Crisis Respite:</i>	<i>Dec. 1, 1999</i>
<i>Single Point of Entry:</i>	<i>April 1, 2000</i>
<i>Designated Evaluation & Treatment:</i>	<i>April 1, 2000</i>
<i>Utilization Review:</i>	<i>April 1, 2000</i>

API
2000

Replace the Alaska Psychiatric Institute building

Develop private treatment alternatives to hospitalization

Statutory changes to the state DET program to expand the capacity of private hospital care

SB31

Separate Appropriation Bill for Mental Health

Overview for Senate HESS Committee

February 17, 1999 1:30-3:00

I. Introduction

II. Governor's Council on Disabilities & Special Education

- A. *Employment*
- B. *Institutionalization Prevention*
- C. *Substance Abuse Treatment for People with Multiple Diagnoses*

III. Alaska Commission on Aging

- A. *Assisted Living*
- B. *Guardianship*
- C. *Mental Health Needs of the Elderly*

Kay Burwood

IV. Alaska Psychiatric Institute

- A. *Replace the API Building*
- B. *Develop Private Treatment Alternatives to Hospitalization*
- C. *Legislate Changes to the state DET program to expand capacity of private hospital care*

Carl / Kathy

V. Alaska Mental Health Board

- A. *Outcomes/Quality Assurance*
- B. *Criminalization of Mental Illness*
- C. *Rural Services*
- D. *Children and Youth Services*

VI. Advisory Board on Alcoholism and Drug Abuse

- A. *Continuum of care for Beneficiaries (Strategy 12)*
- B. *Improved Services to Clients with Both Substance Abuse and Mental Health Issues (Strategy 14)*
- C. *Appropriate Services for Underserved Alaskans, including Alaska Natives, Youth, Women with Children, Seniors and Clients with Disabilities (Strategy 16)*

VII. Summary

Confirm;

19999



Alaska State Legislature

Official Business

State Capitol
Juneau, Alaska 99801-1182

February 23, 1999

MEMORANDUM

TO: Senator Miller, Chair
Health, Education & Social Services Committee

FROM: Nancy Quinto
Secretary of the Senate

SUBJECT: Governor's Confirmation

Pursuant to AS 39.05.080, President Pearce has referred the following name for legislative confirmation to your committee for a hearing, recommendation and report:

University of Alaska Board of Regents

- ✓ Robert A. Malone - Anchorage
Appointed: 2/18/99 Expires: 2/01/07
- ✓ Frances H. Rose - Anchorage
Appointed: 2/18/99 Expires: 2/01/07
- ✓ Joseph E. Usibelli, Jr. - Healy
Appointed: 2/18/99 Expires: 2/01/07
- ✓ Brian Rogers - Fairbanks
Appointed: 2/18/99 Expires: 2/01/07

Board of Education

- ✓ Roy Nageak Sr. - Barrow
Appointed: 01/02/97 Reappointed: 02/19/99 Expires: 01/31/04
- ✓ Susan Stitham - Fairbanks
Appointed: 07/20/95 Reappointed: 02/19/99 Expires: 01/31/04

Board of Psychologist and Psychological Associate Examiners

- ✓ Paul Craig - Anchorage
Appointed: 02/19/99 Expires: 07/01/02

NQ:kw

Resumes attached



OFFICIAL BUSINESS

Alaska State Legislature

Senate

Office of the Secretary

STATE CAPITOL
JUNEAU, ALASKA 99901-1182
(907) 465-3701
FAX: 465-2832

February 8, 1999

MEMORANDUM

TO: Senator Miller, Chair
Health, Education & Social Services Committee

FROM: Nancy Quinto^{na}
Secretary of the Senate

SUBJECT: Governor's Confirmation

Pursuant to AS 39.05.080, President Pearce has referred the following name for legislative confirmation to your committee for a hearing, recommendation and report:

✓ Board of Education

✓ Paula R. Pawlowski - Anchorage
Appointed: 08/27/98 Expires: 01/31/00

Board of Marital and Family Therapy

✓ Sandra M. Samaniego - Fairbanks
Appointed: 10/12/95 Reappointed: 11/16/98 Expires: 12/14/02

State Medical Board

✓ Keith M. Brownsberger, M.D. - Anchorage
Appointed: 08/11/95 Reappointed: 07/31/98 Expires: 04/21/02

✓ Sheila Means - Juneau
Appointed: 06/02/98 Expires: 01/09/01

Alaska Mental Health Trust Authority Board of Trustees

✓ Nelson G. Page, Esq. - Anchorage
Appointed: 03/03/95 Reappointed: 06/02/98 Expires: 03/03/03

Board of Certified Direct-Entry Midwives

✓ Marilyn Holmes - Juneau
Appointed: 07/20/95 Reappointed: 07/31/98 Expires: 07/20/02

Health Education & Social Services Committee

Page 2

February 8, 1999

✓ **Board of Nursing**

✓ Barbara Berner, ANP, EdD - Anchorage
Appointed: 06/02/98 Expires: 03/31/02

✓ **Board of Examiners in Optometry**

✓ Thomas N. Carter - Fairbanks
Appointed: 12/11/98 Expires: 06/15/02

✓ Erik D. Christianson, O.D. - Ketchikan
Appointed: 06/01/98 Expires: 06/15/01

✓ John C. Cobbett, O.D. - North Pole
Appointed: 09/11/98 Expires: 06/15/02

✓ **Board of Pharmacy**

✓ Margaret D. Soden, R.Ph. - Fairbanks
Appointed: 12/11/98 Expires: 04/01/02

State Physical Therapy and Occupational Therapy Board

✓ JoAnne Bell-Graves - Juneau
Appointed: 12/11/98 Expires: 09/01/00

✓ Leslie F. Schwartz - Petersburg
Appointed: 10/06/95 Reappointed: 12/11/98 Expires: 09/01/02

Board of Professional Counselors

✓ Toni Chrestman - Nome
Appointed: 11/16/98 Expires: 11/01/02

✓ Anne L. Henry - Juneau
Appointed: 11/16/98 Expires: 11/01/02

✓ David F. Leonard, Esq. - Fairbanks
Appointed: 11/16/98 Expires: 11/01/00

✓ Allan A. Morotti, Ph.D. - Fairbanks
Appointed: 11/16/98 Expires: 11/01/01

✓ Robert L. Pound - Anchorage
Appointed: 11/16/98 Expires: 11/01/01

Professional Teaching Practices Commission

✓ Steven Beardsley - Anchorage
Appointed: 12/11/98 Expires: 07/01/01

✓ Bruce F. Johnson - Sitka
Appointed: 08/30/95 Reappointed: 12/11/98 Expires: 07/01/01

✓ Vickie L. McCubbin - Anchorage
Appointed: 12/11/98 Expires: 07/01/01

Health Education & Social Services Committee

Page 3

February 8, 1999

✓ **Board of Social Work Examiners**

- Denny Patella - Anchorage

Appointed: 09/11/98 Expires: 07/01/01

NQ:hv

Resumes attached



OFFICIAL BUSINESS

Alaska State Legislature
Senate
Office of the Secretary

STATE CAPITOL
JUNEAU, ALASKA 99801-1182
(907) 465-3701
FAX: 465-2832

April 21, 1999

MEMORANDUM

TO: Senator Miller, Chair
Health, Education & Social Services Committee

FROM: Nancy Quinton *NQ*
Secretary of the Senate

SUBJECT: Governor's Confirmation

Pursuant to AS 39.05.080, President Pearce has referred the following name for legislative confirmation to your committee for a hearing, recommendation and report:

Board of Dental Examiners

Kenneth L. Crooks, D.D.S. - Dillingham

Appointed: 04/07/95 Reappointed: 04/14/99 Expires: 02/01/03

NQ:kw
Resumes attached

Alaska State Legislature



Senator Mike Miller, Chairman
Senator Pete Kelly, Vice Chairman
Senator Drue Pearce
Senator Gary Wilken
Senator Kim Elton

State Capitol, Rm 119
Juneau, Alaska 99801-1182
(907) 465-3762

**Senate Committee on
Health, Education and Social Services**



OFFICIAL BUSINESS

Alaska State Legislature

Senate

Office of the Secretary

STATE CAPITOL
JUNEAU, ALASKA 99801-1182
(907) 465-3701
FAX: 465-2832

February 8, 1999

MEMORANDUM

TO: Senator Miller, Chair
Health, Education & Social Services Committee

FROM: Nancy Quinto^{na}
Secretary of the Senate

SUBJECT: Governor's Confirmation

Pursuant to AS 39.05.080, President Pearce has referred the following name for legislative confirmation to your committee for a hearing, recommendation and report:

Board of Education

Paula R. Pawlowski - Anchorage
Appointed: 08/27/98 Expires: 01/31/00

Board of Marital and Family Therapy

Sandra M. Samaniego - Fairbanks
Appointed: 10/12/95 Reappointed: 11/16/98 Expires: 12/14/02

State Medical Board

Keith M. Brownsberger, M.D. - Anchorage
Appointed: 08/11/95 Reappointed: 07/31/98 Expires: 04/21/02
Sheila Means - Juneau
Appointed: 06/02/98 Expires: 01/09/01

Alaska Mental Health Trust Authority Board of Trustees

Nelson G. Page, Esq. - Anchorage
Appointed: 03/03/95 Reappointed: 06/02/98 Expires: 03/03/03

Board of Certified Direct-Entry Midwives

Marilyn Holmes - Juneau
Appointed: 07/20/95 Reappointed: 07/31/98 Expires: 07/20/02

Health Education & Social Services Committee

Page 2

February 8, 1999

✓ **Board of Nursing**

Barbara Berner, ANP, EdD - Anchorage
Appointed: 06/02/98 Expires: 03/31/02

✓ **Board of Examiners in Optometry**

Thomas N. Carter - Fairbanks
Appointed: 12/11/98 Expires: 06/15/02
Erik D. Christianson, O.D. - Ketchikan
Appointed: 06/01/98 Expires: 06/15/01
John C. Cobbett, O.D. - North Pole
Appointed: 09/11/98 Expires: 06/15/02

✓ **Board of Pharmacy**

Margaret D. Soden, R.Ph. - Fairbanks
Appointed: 12/11/98 Expires: 04/01/02

State Physical Therapy and Occupational Therapy Board

JoAnne Bell-Graves - Juneau
Appointed: 12/11/98 Expires: 09/01/00
Leslie F. Schwartz - Petersburg
Appointed: 10/06/95 Reappointed: 12/11/98 Expires: 09/01/02

Board of Professional Counselors

✓ Toni Chrestman - Nome
Appointed: 11/16/98 Expires: 11/01/02
Anne L. Henry - Juneau
Appointed: 11/16/98 Expires: 11/01/02
David F. Leonard, Esq. - Fairbanks
Appointed: 11/16/98 Expires: 11/01/00
Allan A. Morotti, Ph.D. - Fairbanks
Appointed: 11/16/98 Expires: 11/01/01
✓ Robert L. Pound - Anchorage
Appointed: 11/16/98 Expires: 11/01/01

Professional Teaching Practices Commission

Steven Beardsley - Anchorage
Appointed: 12/11/98 Expires: 07/01/01
Bruce F. Johnson - Sitka
Appointed: 08/30/95 Reappointed: 12/11/98 Expires: 07/01/01
Vickie L. McCubbin - Anchorage
Appointed: 12/11/98 Expires: 07/01/01

Health Education & Social Services Committee

Page 3

February 8, 1999

✓ **Board of Social Work Examiners**

• Denny Patella - Anchorage

Appointed: 09/11/98 Expires: 07/01/01

NQ:hv

Resumes attached

Paula Rac Pawlowski
3300 Balchen Drive
Anchorage, Alaska 99517

Experience:

Elected President of the Alaska PTA, April 1997-99
National PTA Parent Involvement Commission 1997- current

Office Manager, *Mystrom For Anchorage* re-election campaign, 1996-1997
24 years diverse volunteer activities in schools, museums, and community associations
with numerous boards, workshops, and presentations including:

Docent, Anchorage Museum of History and Fine Arts
Docent, Heritage Plantation, Sandwich, MA
Docent, Plimoth Plantation, Plymouth MA
Docent, Alaska Zoo, Anchorage, AK

11 years self-employed as home daycare provider
5 years art gallery experience

Department of Defense Education Activity:

Invited Presenter: Parent Involvement & Site Based Management
Panama City, Panama - 1996
Monterey, California - 1996

Appointments/Volunteer Activities:

National Military Family Representative for Alaska, 1996-current
Parent Involvement Chair, Alaska PTA Board of Managers
Chair, Family School Partnerships, Alaska PTA Board of Managers
4th Vice President, Anchorage Council of PTA
President, West Anchorage High School PTSA
President, Turnagain PTA
Parent Representative, Coalition of Essential Schools, Falmouth, MA
Alaska Goals 2000, Geography
Education representative, Women League of Voters, Falmouth, MA
Host parent, American Field Service, 1979, 1986, 1992, 1997

Awards:

Volunteer of the Month, April, Anchorage School District- 1997
Volunteer of the Year, Secondary Level, Anchorage School District - 1992
Outstanding Program for the Town of Falmouth, Falmouth School Board - 1991
Volunteer of the Year, Anchorage Community Schools - 1989

References:

Dr. Bill Mell, Anchorage School District
Dr. Lance Bowie, West High School
Abbe Hensley, Anchorage
Denise Burger, Office of the Mayor, Anchorage

Sandra M. Samanlego
1290 Jones Road
Fairbanks, AK 99709
Phone: 452-2293 (w)

CAREER OBJECTIVE To employ my skills, knowledge and experience to promote public welfare as well as my own personal and professional growth.

EDUCATION Interdisciplinary baccalaureate in Social Science and Management, Marylhurst College, Marylhurst, Oregon (1982). Have accomplished about half the courses required toward Public and Business Administration Master's degrees, UAS.

EMPLOYMENT HISTORY

Executive Director Responsible for the overall operation of a 24-hour shelter, and support services for victims of domestic violence, and sexual assault. Responsibilities include development and evaluation of programs, preparation and oversight of budget, proposal-writing to various funding sources, grant searches, personnel management (30 staff members), public relations, community education (public speaking), and coordination of services with outside agencies.
WOMEN IN CRISIS - COUNSELING & ASSISTANCE 5/95 - Present

Grants Specialist/Public Relations Coordinator Responsible for searching for program funding and developing proposals to federal, State, and private sources. Coordinate the organization's public relations efforts. Contact legislators and their aides to discuss issues of concern to the organization. Draft position papers. Participate in determining organizational and program strategies. Participate in the hiring process for Administration personnel. Assist in the writing and editing of the organization's newsletter and annual report.
FAIRBANKS NATIVE ASSOCIATION 8/93 - 4/95

Law Specialist (Special Assistant to the Commission) Work closely with the Commission Chairman and two Commissioners. Draft regulations, assure their legal compliance and oversee the process to final adoption; hold public hearings; relate with the public (mostly fishermen) through personal, telephone and written communication; manage the Commission's enforcement actions (authorize investigations, approve Show Cause notices, assign hearing officers, approve settlements); synopsize Commission decisions and coordinate efforts for publication of the digest; research (mostly legal); act as liaison between Commission and Attorney General's Office (court cases, regulations, AG opinions); edit and do artwork for annual report.
ALASKA COMMERCIAL FISHERIES ENTRY COMMISSION 2/86- 8/93

Statistical Technician Perform data entry; work with reporting agencies to instruct on proper completion of reports; maintain files; special projects as assigned.
ALASKA COUNCIL ON DOMESTIC VIOLENCE & SEXUAL ASSAULT 2/85 - 2/86

Executive Director Administered three State grant programs, supervised four employees; was responsible for financial management, budget and contract revisions, program evaluations, and reports, public relations, networking with other agencies; the physical move of the agency to another location and finally the closing of the agency, including disposal of assets.
JUNEAU WOMEN'S RESOURCE CENTER 2/84 - 2/85

Executive Director Responsible for the overall operation of two federally funded programs (counseling/tutorial program throughout the school district and preschool program for Native American children), including grant application; preparation and oversight of budgets; financial and program evaluation and reports; needs assessments; employee management; public relations; and coordination of services with outside agencies.
JUNEAU JOHNSON O'MALLEY PROGRAM 9/79-7/83

Other employment included: Personnel clerk; fish cannery worker, clerk, secretary, tele-marketer

Keith M. Brownsberger, M.D., F.A.C.P.
3260 Providence Drive, Suite 523
Anchorage, Alaska 99508-4683
Phone: (907) 561-1363 FAX: (907) 563-4564

Personal Information

Date of Birth: 1 April 1933
Spouse: Sally B. Brownsberger

Place of Birth: La Verne, California

Education & Training

Stanford University, AB in Biological Science	1951 - 1955
Stanford Medical School, M.D.	1955 - 1959
Santa Clara Community Hospital, Internship	1959 - 1960
Santa Clara Community Hospital, Chest Medicine Residency	1960 - 1961
Santa Clara Community Hospital, Pathology Residency	1961 - 1962
Stanford Hospitals, Internal Medicine Residency	1962 - 1964
Stanford University, Infectious Disease Fellowship	1964 - 1966

Alaska Native Health Service, Chief of Medicine	1966 - 1968
Private Practice, Internal Medicine and Infectious Disease	1968 - Present

Certifications

Diplomate of the American Board of Internal Medicine	Dec. 13, 1971
Fellow of the American College of Physicians	Nov. 10, 1978

Present Positions

Affiliate Professor of Medical Education, University of Alaska - Anchorage	1978 - Present
Member of WAMI Admissions Committee, University of Washington School of Medicine	1988 - Present
Preceptor for Medical Students at the University of Alaska WAMI Biomedical Program	1989 - Present
Chairman of the Alaska - WAMI Admissions Committee	1991 - Present
Clinical Assistant Professor of Medicine, University of Washington School of Medicine	1991 - Present
Member of the American Medical Association	1960 - Present
Member of the American College of Physicians	1963 - Present
Member of the Alaska State Medical Association	1968 - Present
Member of the Anchorage Medical Society	1968 - Present
Regional Physician for the U.S. Nordic Ski Team	1978 - Present

Previous Positions

Alaska Statewide Health Coordinating Council Member	1976 - 1978
President of Providence Hospital Staff	1976 - 1977
Regional Delegate to the American Hospital Association	1978 - 1980
Chairman of the Bush Medicine Committee, Alaska State Medical Association	1979 - 1984
President of Alaska State Medical Association	1984 - 1985
Chairman of the Pharmacy Committee, Providence and Humana Hospitals	1985 - 1990
Governor for Alaska, American College of Physicians	1989 - 1993
Credentials Committee, American College of Physicians	1989 - 1993
Chairman, Governors Workshop on Credentialing, American College of Physicians	1993

RESUME

Sheila Means

Date of Birth: 6/4/44

Born Great Britain Naturalized American Citizen

Married 2 Children

Education:

B.Sc (Bachelor of Science) University of Birmingham England 1964

MB. ChB (Bachelor of Medicine, Bachelor of Surgery)

University of Birmingham England 1968

Work Experience

1968-69 United Birmingham Hospitals - Houseman Year

1969-72 Stoke on Trent Hospitals - Medical Registrar

1972-73 United Birmingham Hospitals - Medical Registrar

1974-76 Oxford Regional Hospital Board - Anaesthetist

1976-77 University of Iowa Hospitals - Assistant Professor of
Anaesthesiology

In 1978 I married and emigrated to the United States and have lived in Juneau ever since raising my family and working for the Juneau School District

1985-1988 Capital School - Instructional Aide

1988-1989 Harborview School - Instructional Aide

1989-1997 Harborview-Capital School - Administrative
Assistant

1997 - present Juneau Douglas High School



RESUME

NELSON G. PAGE
810 "N" Street
Anchorage, Alaska 99501

345-8788
(907) ~~345-8788~~
(907) 276-6100
(907) 345-2188 FAX

Mailing Address:
P. O. Box 91977
Anchorage, Alaska 99509

Employment

Managing Shareholder, law firm of Burr, Pease & Kurtz, Anchorage, Alaska,
1990 - present
Shareholder, law firm of Burr, Pease & Kurtz, Anchorage, Alaska, 1983 - present
Associate, law firm of Burr, Pease & Kurtz, Anchorage, Alaska, 1979 - 1983
Law Clerk to the Honorable Warren W. Matthews, Justice, Alaska State Supreme Court,
.1978 - 1979

Professional Affiliations

Oregon Bar, member, 1978 - present
Alaska Bar, member, 1979 - present
Admitted to practice before all courts in the states of Oregon and Alaska, the U.S. District
Court for the District of Alaska, the 9th Circuit Court of Appeals and the U. S. `
Supreme Court
American Bar Association, member, 1978 - present
Association of Trial Lawyers of America, 1989 - present
Alaska Academy of Trial Lawyers, 1990 - present
American Arbitration Association 1993 - present

Professional Activities

Alaska Supreme Court Standing Committee on Civil Rules, 1987 - present
Alaska Bar Association Disciplinary Committee, 1987 - 1990
Alaska Bar Association Board of Bar Examiners, 1982 - 1986
Committee on Civil Justice Reform, Federal District of Alaska, 1991 - present
Alaska Bar Association Standing Committee on Ethics, 1992 - present
U.S. District Court for the District of Alaska, Civil Justice Reform Advisory Group, 1992 -
- present, Chair - 1994 - present

Civic Activities

Alaska State Chamber of Commerce, 1990 - present
Alaska Mental Health Board, member, 1989 - 1993, Chair - Legislative Lands Committee
Alaska Regional Hospital, Board of Trustees, member, 1990 - 1993, Moderator, 1992 -
1993
Imaginarium, Board of Directors, member, 1987 - 1989, President, 1989 - 1990
Anchorage Transportation Commission, member, 1983 - 1988, President, 1988 - 1989
Suicide Prevention Center, Board of Directors, Vice-President, 1981 - 1983
KSKA "Consumers First", legal affairs educational radio program co-host, 1992 - present

Education

Georgetown University Law Center, Washington, D. C.
Georgetown Law Journal, Board of Editors, 1977 - 1978
J. D. cum laude 1978
Portland State University, Portland Oregon
Oregon Student Public Interest Research Group (OSPIRG), Board of Directors,
1973 - 1974. State Treasurer, 1974 - 1975
B.S. cum laude 1975
University of Oregon, Eugene, Oregon, 1971 - 1973

Marilyn Holmes
969 Goldbelt Ave
Juneau, AK 99801

Resume

Position sought: Public Member of the Alaska State Board of Certified Direct-Entry Midwives

Relevant experience:

1995 to present Served as the Public Member and secretary for the Alaska State Board of Direct-Entry Midwives: creating annual reports for 1996 and 1997, writing letters and information sheets, collaborating with the *Midwives Association of Alaska* to produce an illustrated public information brochure and creating a Procedures Manual to guide prospective CDMs through the governmental process. As a member of the national *Citizens for Midwifery* I helped finish procure Medicaid reimbursement for CDMs in Alaska.

1992 & 1993 Lobbied the Alaska State legislature on behalf of the Direct-Entry Midwives: researched and analyzed data re: the safety and economics of midwifery for the edification of lawmakers, testified at committee hearings, wrote letters, rallied supporters, negotiated with legislators and aids, hosted conferences and generally contributed my energy to facilitating the process of creating a licensing board for Alaska's midwives and procuring Medicaid reimbursement for CDM services.

1987 Gave birth to another healthy daughter at home in Juneau, under the care of a Direct-Entry Midwife.

1983 Gave birth to my first daughter in the Jordan Creek Birth Center, Juneau, under the care of two Certified Nurse Midwives. Prior to this, I had researched natural birth extensively.

1977-1979 Photographed home and hospital birth center births in the San Francisco Bay Area, which were attended by nurse midwives. Created a children's book on sibling attended childbirth.

1955-1961 As a child, while visiting my grandmother who was a public health nurse in Champaign-Urbana, Illinois, I accompanied her on pre- and post-natal visits to home birth families.

Related volunteer activities:

1993-1994 Served on the board of directors of the Discovery Foundation during a time of upheaval, financial crisis and reorganization: coordinated publicity for the annual fundraiser, organized and tracked operations and personnel during executive vacancy, recorded, processed and distributed minutes of the meetings, interviewed and maintained liaison with key donors, researched and implemented a successful executive search process for the board, coordinated and hosted a reception for the new executive and assisted in her orientation and adjustment.

Other volunteer activities:

1998 Taught dinghy sailing to ages 13-18 with the Juneau Youth Sailing Foundation.

1997-1998 Served on the Juneau School District's Gender Equity Committee as an advocate for girls mathematics.

1996 Helped develop a foreign language curriculum at Dzantik'i Heeni Middle school and taught a photography unit for three months at Capitol Elementary School in Juneau.

1995 Community mentor for students at Dzantik'i Heeni Middle School, Juneau.

1993-1994 Developed and coordinated the Harborview Earth Club, Juneau. Produced a video with students on a trip to the landfill and the implications for our lifestyles.

1992-1993 Created and performed "Creta Garbage", a character who helps students reduce the solid waste in their lunch rooms.

1992-1998 Member of the League of Women Voters and an annual volunteer for community polling.

1976-1979 Member of San Francisco Women Entrepreneurs: coordinated workshops and seminars on areas of general business interest such as Time Management and Financial Planning.

Education and employment:

1965 Graduated with honors from Saratoga High School, Saratoga, California. Excelled in language arts and science.

1965-66 Northwestern University, Evanston, Illinois.

1966-67 Independent living and employment as a chairside dental assistant/receptionist.

1967-70 BA in Humanities from University of California at Berkeley: course work included history, literature, the arts, philosophy, psychology, science and statistics. Extra curricular activities included a serious study of documentary and art photography.

1970-73 Post-graduate studies in photography, advertising and advertising production. Worked as a free-lance photographer and created three studios with darkrooms.

1973-74 Instructor, Academy of Art College, San Francisco.

1975-77 Staff photographer for Macy's California, San Francisco.

1977-81 Owner of a 4,000 sq. ft. studio advertising photography business specializing in large format table-top still life of food, wine, computers, jewelry and banking. My day rate was \$1250.00/day. All work was project

based and required the management and coordination of a full time and contract staff of assistants and stylists. My tasks ranged from being an art director and interpreting a client's needs, to a technician who followed an exacting and detailed layout designed by an ad agency. My work involved negotiation, a cooperative team approach, management skills, problem solving and communications.

1981-present Owner of a photography business in Juneau specializing in interactive portraiture, advertising illustration, political advertising and photo asset management.

Personal information:

My interests include: issues related to education, health and nutrition, gardening, cooking, sailing, hiking, and natural history. I have taken the hospice training and am conversant with issues related to death and dying.

RESUME

BARBARA BERNER 14350 Golden View Drive
Anchorage, Alaska 99516

WK ~~279-3500~~
786-4503

LICENSURE Registered Nurse, Advanced Nurse Practitioner
Alaska License No. 06654-0153-01

CERTIFICATIONS: Adult Nurse Practitioner
Certified Health Education Specialist

EDUCATION:

1963-1967 B.S. Degree
St. Anselm College School of Nursing
Manchester, NH

1981-1983 MSN Degree
Oregon Health Sciences University
Portland, Oregon
Specialty in Nurse Practitioner Track of Adult Health and
Illness

1990-1994 Ed.D. Program Planning, Administration and Adult Education
Boston University
Boston, Mass.

PROFESSIONAL EXPERIENCE:

1997-Present Nurse practitioner in private practice; Alaska Health Care Clinic, Anchorage,
Alaska

1994-1997 Coordinator, Breast and Cervical Cancer Early Detection Program,
Section of Epidemiology, Division of Public Health, State of Alaska

1983-1994 Nurse Practitioner, U.S. Indian Health Service Anchorage, Alaska
Instructor, Training Coordinator and University of Alaska, Associate faculty in
the Community Health Aide Program of the Indian Health Service.

1979-1981 Nurse Epidemiologist
U.S. Indian Health Service Hospital
Mt. Edgecumbe, Alaska

1968-1970 Head Nurse
Medical-Surgical Intermediate Care Ward
Marion County General Hospital
Indianapolis, Indiana

1967-1968 Charge Nurse
Premature and Newborn Nursery
Oklahoma City, Oklahoma

PROFESSIONAL MEMBERSHIPS:

1979-1981 Association of Practitioners for Infection Control
1981-1983 Graduate Student Organization
Oregon Health Sciences University
President 1982-1983
1983-Present Sigma Theta Tau Honorary Nursing Organization
1983-Present American Nurses Association
1983-Present Alaska State Nurses Association
1983-Present Alaska Nurse Practitioners Association
President 1984-1987; President 1997-1998
1985-Present American Academy of Nurse Practitioners
Board of Directors 1988- 1992
President 1990-1991
1994-Present Alaska Women's Health Advocates
1995-Present Phi Delta Cappa Honorary Teachers Organization
1996-Present Medical Advisory Board, Mountain View Clinic
1998-Present Board of Directors, Alaska Youth and Parent Foundation

PUBLICATIONS:

Efficiency of information processing as a function of language dominance and learning style.

Unpublished Doctoral Dissertation, Boston University, Dept. of Education, 1994

The use of mixed venous blood to assess acid-base status in states of decreased output when respiration is controlled. Unpublished Master's Thesis, University of Oregon Health Sciences Center, 1983.

Contributor, The Community Health Aide Program Manual. Robert Burgess, Editor. Government Printing Office, Washington, DC. 1986.

Provision of health care in a frontier setting: an Alaskan perspective. Journal of the American Academy of Nurse Practitioners. 4(3). 1992.

Mammography screening in women between ages 40-49 Years. State of Alaska Epidemiology Bulletin. No. 39, December 29, 1994.

Risks for the development of breast cancer and implications for screening. State of Alaska Epidemiology Bulletin. No.24, October 6, 1995.

A breast and cervical cancer screening program in Alaska. Journal of Circumpolar Health, 1996.

Breast and cervical cancer screening practices in Alaska, 1995. Alaska Dept. of Health and Social Services, State of Alaska, 1996.

LECTURES

"Performing a Competent Clinical Breast Examination"

Lecture given to Graduate Nurse Practitioner students at the University of Alaska School of Nursing, 1995, 1996, Community Health Aide Students at the Alaska Native Medical Center, 1995, 1996, presented at the Alaska Health Summit, 1995, Southcentral PHN conference, 1995, Organization of Lactation Specialists, 1996, Bethel PHN training, 1996, North Slope Borough Health Care Providers Breast and Cervical Cancer Update Seminar, 1996.

"Performing A Competent Breast Self Examination"

Lecture and demonstration offered at the American Association of Retired Persons, 1995, 1996, YWCA Evening Forum, 1996.

"Cervical Cancer in Alaska"

Lecture offered at the Community Health Aide Forum, 1995.

"Cardiovascular Disease and Women"

Lecture offered at the Alaska Health Summit, 1995, and the Community Health Aide Forum, 1995.

"Learning Styles of Alaska Native People"

Lecture given to Emergency Medical Technician Trainers, 1992, 1993, 1994, 1995, 1996, 1997.

AWARDS:

- | | |
|------|--|
| 1983 | Oregon Health Sciences University Dean's Award for Leadership |
| 1992 | St. Anselm College Alumni Association Award of Merit for "demonstrated unusual competence and standing in her profession, distinguished service to her community, and a genuine regard for the betterment of mankind". |



STATE OF ALASKA

OFFICE OF THE GOVERNOR
P.O. Box 110001, Juneau, AK 99811-0001
Phone: (907) 485-3500 Fax: (907) 483-3484

BOARDS AND COMMISSIONS RESUME

INSTRUCTIONS

A separate application is required for each position for which you apply. Complete and specific answers will aid in rapid and accurate processing of your resume. The initial determination of whether you qualify for the position specified will be based on this application.

Please type or print legibly in ink. Forward to the above address. Be sure your answers are true. A willfully false answer may result in your disqualification or removal from office if you are appointed.

Position for which I am applying: Optometry, Chiropractic Examiners

Please list any other Board or Commission on which you serve: None

Name: Thomas N. Carlson Previous Name Applied Under: N/A

Mailing Address: Box 42509

Residence Address: 4359 Bishop Cir

City, State and Zip Code: Fairbanks AK 99708

Business or Message Telephone: 452-26985

AS 38.05.100 requires that a person appointed to a board or commission be a registered voter before the last general election:

Are you a registered voter? YES [checked] NO

Voter Registration Number (Optional): Social Security Number (Optional):

Have you ever been convicted of a misdemeanor within the past five years or a felony within the past ten years? YES NO [checked]

If "YES", explain the circumstances on a separate sheet of paper and attach it to this application. A conviction is not necessarily grounds for disqualification. The number of convictions, nature, recency and relationship to the board position applied for will be evaluated and a determination will be made after a review of all relevant facts.

CONFLICTS OF INTEREST: Certain boards and commissions require full disclosure of personal financial data under AS 39.50.010. If required for the board or commission for which you are applying, are you willing to do so? YES [checked] NO

Could you or any member of your family be affected financially by decisions to be made by the board or commission for which you have applied? YES NO [checked]

If "YES", explain:

BOARDS & COMMISSIONS

APR 24 1998

TRAINING AND EXPERIENCE: (If resumé attached, it is not necessary to complete items A-D)

A. List any professional licenses, certifications, or registrations and dates obtained that may be used as qualifying criteria:

B. List both formal and informal education and training experiences: (Use additional paper if necessary)

H.S. Grad. - 1972
3 yrs college, U of A, U of Minn, D.S.U.
2 yr assoc degree - mechanics - Hennipin Jo Tech, Eden Prairie, MN
1980

C. List any community service, municipal government, and state positions held, and any awards received. Include both compensated and uncompensated positions (ex: president of a service organization or a mayor). Include length of time served.

D. Employment work history - paid, unpaid or voluntary: (Use additional paper if necessary)

Owner and president of MSE Auto Parts for the past 13 years.

The Office of the Governor and the State of Alaska have an Affirmative Action Equal Employment Opportunity Program. To assist in the program, you are asked to voluntarily answer the following questions to provide the information necessary for reporting purposes. Under State and Federal law, the information you provide will not be used to illegally discriminate against you.

SEX: Male _____ Female _____

ETHNIC BACKGROUND: White _____ Black _____ Hispanic _____ Alaska Native _____
Asian or Pacific Islander _____ American Indian _____

DATE OF BIRTH _____ MILITARY SERVICE (if applicable, give dates) _____

CERTIFICATION: I swear that the information I have entered on this form is true to the best of my knowledge. I understand that if I deliberately conceal or enter false information on the form my application may be rejected, I may be removed from the list of eligible candidates or I may be removed from the position. I agree that the Office of the Governor may contact present or former employers or other persons who know me to obtain additional information about my skills and abilities. I understand that the information on this application is public information and may be released through a legal request for such information.

Signature in Ink John [Signature] Date 4/23/98

RESUME

Erik D. Christianson, O.D.

Ketchikan Eye Care Center
351 Carlanna Lake Rd.
Ketchikan, AK 99901
907-225-2020 (W)

Education

Montana State University
Bozeman, Montana
1978-79, pursued pre-medical curriculum.

Concordia College
Moorhead, Minnesota
1980-82, continued pre-medical studies.

Pacific University
Forest Grove, Oregon
1983, Bachelor of Science Degree in Visual Science, Cum Laude

Pacific University College of Optometry
Forest Grove, Oregon
1982-1986 Doctor of Optometry Program
1986, Doctor of Optometry Degree, 3.48 gpa

Professional experience

Eagle River Vision Clinic/Eagle River, Alaska

August 1986-August 1987

Associate Optometrist

Practiced as an associate at Eagle River Vision Clinic in Eagle River, Alaska. Practice owner was Jeff Keene, O.D. I was hired to help with a growing practice and offer an optometric specialty. Specifically I was initially hired to investigate and develop a Vision Therapy program at the practice. Due to growth of the primary care portion of the practice and the demands of a large itinerant portion of the clinic duties I took over most of the itinerant duties. I held itinerant clinics in Kotzebue, Nome, King Salmon, Dutch Harbor, Barrow, and in the 7 villages on the North Slope (Atkasuk, Kaktovik, Nuiqsut, Wainwright, Pt. Lay, Pt. Hope, and Anaktuvuk Pass). I developed my primary care and intraprofessional team skills through this experience. I also got to see and meet people from all over Alaska.

North Slope Borough Health Department/Barrow, Alaska

August 1987-January 1990

Staff Optometrist/Clinical Eye Care Coordinator

I was hired to develop the Eye Care program for the North Slope. Administrative duties included designing and remodeling office space in Greist Family Services Center to perform as an Eye Clinic. Hiring, training, and maintaining a staff of 3 persons. Clinical duties included general primary eye care in Barrow and travel a minimum of 2 times per year to the other villages in the North Slope Borough. I developed a good working relationship with hospital staff, Public Health Service ophthalmology/optometry, and Alaska private sector ophthalmology/optometry. I was a consulting staff member of the Barrow Hospital. Due to the remote nature of Barrow and the North Slope I utilized the full-scope of my eye training. This was very valuable training.

Alpine Vision Center/Ketchikan, Alaska

January 1990-April 1997

Private Practice

I purchased a 25+ year-old practice from the estate of the late Ed. L. Craig, O.D. I practiced full-scope optometry with an emphasis on specialty contact lenses, primary care, ocular disease management and surgical co-management. I have kept my skills up in Vision therapy and Low vision. I employed 3 staff members besides myself. I developed itinerant practices in Craig, Alaska and Metlakatla, Alaska. The services provided in Metlakatla are on a contract basis with Annette Island Service Unit. Due to the geographic location of Ketchikan and lack of a permanent ophthalmologist I have developed a good reputation as a diagnostician and consultation source for Southern Southeast Alaska physicians. I feel kept my working relationship with Public Health Ophthalmology /Optometry intact. I developed excellent relationships with ophthalmologic specialists in Seattle and Washington state.

Ketchikan Eye Care Center/Ketchikan, Alaska

April 1997-Present

Practice in a Partnership

Eye Care and Health Care in general are changing at a rapid pace. One of the obvious changes is the loss of Solo private practitioners. Although we both had healthy practices in Ketchikan, Dr. Rick Swearingen and myself, saw that we needed to change some things. One of those things was to change our location and the other was to become more efficient. A partnership offered these things. In the fall of 1996 we built a 4000 square foot office building near Ketchikan General Hospital and in the medical area of town. The combination of two practices devoted to keeping pace with developments in eye care has given Ketchikan an eye clinic to be proud of. We can grow with and more effectively meet the challenges change brings to our community and the profession. Our goal in the future is to continue to develop our practice and eventually expand to offer specialty ophthalmologic services.

Professional memberships

Member American Optometric Association from 1984 to the present.

Member Alaska Optometric Association from 1987 to the present./Secretary of Alaska Optometric Association 1994-96.

Community activities

Member of Ketchikan Rotary 2000 from 1990-present

Board member of Ketchikan Rotary 2000 in 1993.

Active member of St. John's Episcopal Church.

Served on the Vestry from 1991-93, Senior Warden 1993/currently serve as Lay minister.

Appointed to Ketchikan Gateway Borough School District Strategic Improvement Team 1996-present.

References

1. Father Gary Herbst/St. John's Episcopal Church/Ketchikan, AK/225-3680
2. Roy Box, O.D./Optometrist/Juneau, AK/789-3175.
3. David Albertson, DDS/Dentist/Ketchikan, AK/225-9631
4. Greg Kolean/Director/Ketchikan Gateway Borough Parks and Rec/Ketchikan, AK/225-9579
5. Stacey Schultz, M.D./Internal Medicine/Ketchikan, AK/225-4104
6. Jamie McCallister, M.D./Family Practice/Clinical Director/Metlakatla, AK/886-4741

JOHN COBBETT, O.D.

*145 South Santa Claus Lane, Suite 204
Post Office Box 55777
North Pole, Alaska 99705
(907) 488-9496 (w)
FAX (907) 488-5900*

Education

- | | |
|--------------|---|
| 1964 to 1968 | Biola University
<i>La Mirada, California</i> |
| 1968 to 1969 | California State College, Fullerton
<i>Fullerton, California</i>
<i>Bachelor of Arts, History</i> |
| 1972 | Long Beach City College
<i>Long Beach, California</i> |
| 1972 to 1976 | Pacific University
<i>Forest Grove, Oregon</i>
<i>Doctorate of Optometry</i> |
| 1992 | Pennsylvania College of Optometry
<i>Philadelphia, Pennsylvania</i>
<i>(Ocular Therapy for the Optometric Practitioner, Course 750B), offered in Anchorage, Alaska</i> |

Licenses

Alaska Board of Optometry License # 76 with pharmaceutical agent prescription and use endorsement

Alaska Business License # 76196

Professional Experience

- | | |
|-----------------|--|
| 1978 to Present | John Cobbett, O.D., North Pole Vision Clinic
<i>North Pole, Alaska</i>
<i>Doctor of Optometry, Owner of Professional Office</i> |
|-----------------|--|

Professional Memberships

- American Optometric Association**
- Alaska Optometric Association**
- North Pole Community Chamber of Commerce**

CURRICULUM VITAE

MARGARET DAVIS SODEN

Home Address:

3222 Anella Ave.
Fairbanks, Alaska 99709

Mailing Address:

P. O. Box 61328
Fairbanks, Alaska 99706

EDUCATION

Graduate, James Madison High School, Portland, Oregon, 1960

Graduate, Oregon State University, Corvallis, Oregon. Bachelor of Science Degree in Pharmacy, 1965 (5 year degree program).

Honors, Awards and Activities:

Dean's List: 1964, 1965.

Lambda Kappa Sigma: Professional sorority for women in pharmacy

Mortar board: Senior Women's Honorary for both scholarship and campus activities, 1964.

Talons: Sophomore Women's Honorary for both scholarship and campus activities, 1962.

Residence Hall President, Margaret Snell Hall, 1962-1963.

Inter-Hall council, 1962-1964.

Residence Hall Advisor, Margaret Snell Hall, 1961-1962.

Student American Pharmaceutical Association, 1960-1965.

Continuing Education courses with emphasis on therapeutics, communications skills and methods to improve patient compliance through:

University of Wisconsin-Extension

University of the Pacific

Oregon State University

Numerous symposiums and seminars held in Alaska sponsored by the Alaska Pharmaceutical Association.

LICENSES TO PRACTICE PHARMACY

Oregon Board of Pharmacy, #5004, by examination, 1965.

California Board of Pharmacy, #24030, by examination, 1965.

Alaska Board of Pharmacy, #414, by reciprocity, 1970.

WORK EXPERIENCE AS A PHARMACIST

- 1990- Prescription Center Pharmacy
1919 Lathrop Street, Suite 109
Fairbanks, Alaska 99701
- 1970-1990 Medical Center Pharmacy
1867 Airport Road
Fairbanks, Alaska 99701
- 1967-1970 Sav-On Drugs #87-Huntington Beach, California
Corporate Head Office, Marina Del Rey, California
- 1965-1967 Skidmore's Prescription Pharmacy
810 S. W. Washington
Portland, Oregon
(This pharmacy closed about 1972 after 100+ years)
- 1964-1965 Intern Pharmacist, summers and vacations
Skidmore's Prescription Pharmacy
- 1964-1965 Intern Pharmacist, summers and vacations
Meek's Powell Pharmacy
39th and Powell Blvd.
Portland Oregon
- 1970-1986 Part-time relief work on an intermittent basis at:
Alaska Native Health Service Clinic, Fairbanks, Alaska
Co-Op Drugs, Fairbanks, Alaska
Teamster's Pharmacy, Fairbanks, Alaska

PROFESSIONAL ORGANIZATIONS

Alaska Pharmaceutical Association, member since 1970.

Chairman: Poison Prevention Week, 1975, 1976.

Member: Board of Directors, 1977-1979, 1996-1999

President-Elect: 1978-1979, 1996-1997

President: 1979-1980, 1997-1998

Committee Member: Continuing Education, Membership,
Professional Affairs, Legislative and Awards.

Continuing Education Coordinator, Fairbanks Area.

American Pharmaceutical Association, 1975-1990

Alaska Delegate to 1979 National Convention, Anaheim, Calif.

Alaska Board of Pharmacy, 1981-1989

Secretary: 1982-1983, 1984-1989.

National Association of Boards of Pharmacy, 1981-1989

Alaska Delegate to Regional Meeting, Portland, Oregon, 1983.

OTHER ORGANIZATIONS AND ACTIVITIES

American Association of University Women (AAUW), member since 1972.

Fairbanks Branch offices held:

Treasurer: 1973-1976, 1988-1992.

President: 1976-1979.

Vice President, Membership: 1980-1982, 1992-1994.

Vice President, Programs: 1985-1987, 1994-1996

Legislative Chair: 1982-1984.

Issues Chair (Promoting Individual Liberties): 1987-1988.

By-Laws Chair: 1984-1988.

Delegate to National Convention: 1977, 1979.

Scholarship Committee Chair: 1990-

President-Elect: 1998-1999

Alaska State offices held:

Treasurer: 1974-1978.

Vice President, Membership: 1978-1980.

By-Laws Chair: 1984-1988.

Secretary: 1988-1990.

Issues Chair (Promoting Individual Liberties): 1990-1992.

Golden Heart Homemakers Club, Fairbanks, 1973-1979.
President: 1974-1978.

Golden Heart Club, Fairbanks, 1979-1986 (successor to above group)
Treasurer: 1983-1986.

Alaska Extension Homemakers Council, 1973-1979.
State Health Chairman: 1974-1978.

Boy Scouts of America, Fairbanks-Midnight Sun Council
Assistant Cub Scout Den Leader, 1980-1981.
Assistant Editor, Pack Newsletter, 1980-1981.
Cub Scout Den Leader, 1982-1984.
Pack Committee, Pack 78 Advancement Chairman, 1981-1984.
Organizing all awards for 50 boys in the Cub Scout Pack.

The Greater Fairbanks Community Hospital Foundation, Inc.
Board of Directors, 1994-

Farthest North Girl Scout Council
Board of Directors, 1995-

AWARDS

Alaska Extension Homemaker of the Year, June 1978.
Tanana Valley Extension Homemaker of the Year, May, 1978.
Finalist for Business and Professional Women "Fairbanks' Woman of the Year", November 1978.
Bowl of Hygeia Award for outstanding community and professional service in pharmacy for state of Alaska, 1983. Presented by the Alaska Pharmaceutical Association.

PERSONAL DATA

Date of Birth: October 28, 1942
Place of Birth: Portland, Oregon
Married to Laurence L. Soden, Civil Engineer, self-employed with Cardinal Associates.
Children: Matthew Laurence Soden Born: March 17, 1971
 Derek John Soden Born: February, 21, 1974

REFERENCES

James L. Murphy, R.Ph.
1114 Galena
Fairbanks, Alaska 99701
452-2328

Ellen Witcher
1015 8th Avenue
Fairbanks, Alaska 99701
456-4518

Barbara Matthews
P O Box 10553
Fairbanks, Alaska 99710
457-3537

Kendal Kaihoi R.Ph
4737 Villanova
Fairbanks, Alaska 99709
452-1514

JoAnne Bell-Graves

Objective: To offer support to the Alaska through service.

**Business
Experience:**

1973-1978 "Joanne's Style - Sitka, AK
1976-1978 "Hair Unlimited - Wrangell, AK
1978-1991 "JoAnne's at the Baranof - Juneau, AK
1987-1994 "The Bell House Bed & Breakfast" -
Juneau, AK
1997-Present "COL Salon"- Juneau, AK

**Business &
Community
Organizations**

Board member:
1975-1978 Sitka Chamber of Commerce
1976-1978 BPW
1976-1978 Soroptimists
1976-1978 Beta Sigma
Current- Alaska Women in Travel
Current- Harborview Elementary School Site Council
Current- Member of the JCVB

1988-1991 Appointed by Gov. Cowper to the
Employment Security Board.

Personal Born in Sitka, Alaska and raised in a commercial fishing family. Moved to Juneau in 1978.

114 Franklin - Juneau, AK 99801 - (907) 586-8333
Suite 106

Resume of Leslie Fujishin Schwartz

Registered/Licensed Physical Therapist

Educational Background:

High School: Graduated from Adrian High School, Adrian, Oregon, 97901 in May of 1969 as class Valedictorian with a 3.97 G. P. A. (3.0 is a "B" average.)

Undergraduate School: Graduated Cum Laude from Lewis and Clark College, Portland, Oregon, with a Bachelor of Arts Degree in Biology in June of 1973.

Post Graduate Education: Graduated from Mayo Clinic School of Physical Therapy, Rochester, Minnesota, in July of 1975 with a Certificate in Physical Therapy. Affiliations included Respiratory Therapy, State Hospital for the mentally handicapped, Horace Mann School for the developmentally disabled, Mayo Clinic Outpatient Physical Therapy Clinic, Rehabilitation Section of St. Mary's Hospital, and Orthopedics.

Employment history:

8/75 to 8/78, Staff P. T. at Mercy Medical Center in Nampa, Idaho. Evaluation and treatment of post-surgical orthopedic patients; rehabilitation, mental health, neurological, outpatient, and cardiac patients. Also consultation and treatment of nursing home residents and Home Health Care patients.

8/78 to 3/80 (full-time) and 11/80 to 8/81 (part-time), Staff P. T. at the Elk's Rehabilitation Hospital in Boise, Idaho. Treatment and evaluation of patients for rehabilitation including neurological, spinal cord injured, post-trauma and post-surgical orthopedic patients on an inpatient and outpatient basis. In this facility therapists participated in the teaching of a pool program for arthritic/rehabilitating patients and industrial back program. Therapists also worked in hydrotherapy and wound care.

2/82 to 3/88, Self-employed P. T. working part-time for the Petersburg School District and Petersburg General Hospital, Petersburg, Alaska, in addition to Home Health and seeing some children through the Infant Learning Program. In the school setting, the P. T. evaluated and treated children with developmental/motor delays and participated in the planning and implementation of their I. E. P. (Individual Education Plan). The Hospital setting included acute, long term care, and a variety of outpatients.

3/88-7/90, Part-time Staff P. T. and Department Head of Petersburg General Hospital and part-time P. T. contracted to the Petersburg School District.

7/90 to 6/91, Teaching part-time in an English Language School, New Day School, Yamagata, Japan.

6/91 to present, Part-time Staff P. T. and Department Head of Petersburg General Hospital, Petersburg, Alaska. With Evaluation and treatment of Long Term Care, acute, and outpatients. Also from 6/91 to present, contract physical therapist to the Petersburg School District and Infant Learning Program serving Petersburg and Wrangell, Alaska.

9/91 to 3/94, Contract P. T. to Wrangell General Hospital, Wrangell, Alaska. This included Long Term Care, Acute, and outpatients, with visits to Wrangell on a monthly basis.

3/94 to present, Contract P. T. to Wrangell General Hospital, Wrangell, Alaska. Intermittent visits while regular physical therapist is on vacation.

References:

Arlee Kawakami, R. P. T.
Elk's Rehabilitation Hospital
Boise, Idaho

Sandy Tackett, Director of Nurses
Petersburg General Hospital
P. O. Box 589
Petersburg, Alaska 99833

Gary Grandy
Past Administrator
C/o Petersburg General Hospital
and Long Term Care Facility
P. O. Box 589
Petersburg, AK 99833

Barbara (Toni) Chrestman, MS, LPC, NCC
P. O. Box 1802
Nome, Alaska 99762

EDUCATION

University of North Texas, Denton, Texas. Bachelor's Degree in Education (English and Biology).

East Texas State University, Commerce, Texas. Master's Degree in Counseling and Guidance. (CACREP accredited program).

Chi Sigma Iota, Academic Excellence in Counseling; ETSU, 1991.

EXPERIENCE

Norton Sound Health Corporation; Nome, Alaska, 1994 to present.

Mental Health Clinician III, 1994 to present. Currently providing clinical and community services to Inupiat and Yupik populations in Bush Alaska. Program planning and development; intake and assessments; brief and long-term therapy; crisis intervention; emergency psychiatric on-call; community crisis response; training and community education in outpatient, inpatient, and remote village settings. Individual, family, and group therapy. Prevalent issues include suicidality; child, adolescent, and adult physical and sexual trauma; substance abuse; parenting; eating disorders; grief/loss; community violence; and the effects of inter/intracultural stress and trauma upon individuals and families.

Coordinator, Developmental Disabilities, 1994. Program development, coordination, and cooperation with other agencies to provide wrap-around services to the developmentally disabled population of the Norton Sound Region.

Delos Centers for Marriage and Family Therapy; Dallas, Texas, 1991 to 1994.

Student Intern, then, Master's-level Therapist. Assessments, testing, evaluations, treatment recommendations, and therapy for Dallas Adult Probation clients. Group, family, and individual therapy for sexual abuse survivors, perpetrators, and nonperpetrating family members; substance abuse and other addictive disorders; impulse control; anger and stress management; relationship building and maintaining; gender issues; and child, adolescent, and family therapy in an inpatient setting.

Cedars (Psychiatric) Hospital; DeSoto, Texas, 1986-1991.

Director of Intervention and Admissions. Program task analysis, development, implementation, and supervision. Crisis intervention; psychiatric and substance abuse emergencies; preliminary diagnosis and triage; staff recruitment and training; heavy marketing; Speaker's Bureau; and supervision of intake, admissions, crisis line, and reception and telephone staff.

Dallas Diagnostic Association; Dallas, Texas. 1983-1986.

Clinic Manager of the Biofeedback/Stress Management Clinic. Serving in a medical-surgical hospital setting, within a group of twenty-five medical doctors.

PRESENTATIONS, WORKSHOPS, AND TRAINING

Mental Health Introduction, Emergencies, and Grief/Loss, NSHC, Nome, Alaska, to Village Health Aides.

Domestic Violence, Trauma, and Grief, Bering Sea Women's Group, Nome, Alaska, to Village Safe-Home Representatives.

Working with Survivors of Domestic Violence, Bering Sea Women's Group, Nome, Alaska, to BSWG staff members.

Mental Health and Stress Management and Suicide Prevention, Nome, Alaska, to Nome Beltz High School students and teachers.

Toni Chrestman

Obsessive Compulsive Disorder, Developmental Disabilities, and Substance Abuse and Mental Health, NHSC, Nome, Alaska, Behavioral Health Services Department.

Ethics and Confidentiality in Keeping Mental Health Records, Richland College, Dallas, Texas, to Medical Records students.

Stress Management for Pilots, Modern Aero Aviation, Dallas, Texas, to private and commercial pilots.

Stress Management for Police, Duncanville (Texas) Police Department, deep-night shift police officers.

Suicide Prevention in Communities, Grand Prairie and Irving, Texas, in the public schools, to parents, teachers, administrators, and students.

COMMUNITY VOLUNTEER ACTIVITIES

Nome, Alaska: *City of Nome, Alaska:* Welfare Reform Planning and Implementation Committee; *Bering Sea Women's Group:* Member, Board of Directors.

Dallas, Texas: *Nelson Tebedo Clinic:* Therapeutic support groups for staff who work with HIV/AIDS patients. *Suicide and Crisis Center of Dallas:* Telephone crisis worker; trainer of volunteers; Survivors of Suicide group facilitator; Member, Board of Directors; and volunteer support group facilitator. *Dallas Public Schools:* Ten-year award for voluntary service; PTA boards; and Girl and Cub Scout leader.

PROFESSIONAL LICENSURE AND CERTIFICATION

Licensed Professional Counselor (Texas), 1994. (Will be licensed in Alaska, per Senate Bill 331, effective 1/1/99)

National Certified Counselor, 1993.

Certified Crisis Intervention Counselor, 1987.

State of Texas Secondary Teaching Certification.

RELATED TRAINING

Treating the Effects of Severe Trauma in Adults and Children, Dr. Donald Meichenbaum, Seattle, Washington, 1998.

Red Cross Mental Health Disaster Training, Dr. William J. Taylor, Anchorage, Alaska, 1997.

Critical Incident Stress Debriefing, Dr. Jeffrey Mitchell, Anchorage, Alaska, 1997.

Domestic Violence Prevention in Rural Areas, National Women's Resource Center, Washington, DC, 1996.

Suicide and Crisis Prevention—Survivors of Suicide Groups, Dr. Doug Puryear, Suicide and Crisis Center, Dallas, Texas. 1986.

PROFESSIONAL ORGANIZATION MEMBERSHIPS:

American Counseling Association

Alaska Counseling Association

International Association of Marriage and Family Therapists

Dallas Group Psychotherapy Society

Association for Multicultural Counseling and Development

REFERENCES

Furnished upon request.

ANNE L. HENRY
3347 Park Place
Juneau, AK 99801

EDUCATION:

Completed graduate training for a Master of Arts in Applied Behavioral Sciences, counseling emphasis, from the Leadership Institute of Seattle, in 1992. My internship was at the Seattle Mental Health Institute.

Completed course work for a Master of Arts degree in the study of Film History and Criticism from the University of Southern California in 1981.

Graduated in 1979 with a Bachelor of General Studies degree from the University of Michigan, with a double emphasis on Film and Media Communications.

WORK

EXPERIENCE:

Since 1992, I have been a counselor in private practice in Juneau, Alaska. I do individual, couple, family, and group work. I am certified in substance abuse counseling and hypnotherapy. I am a member of the Critical Incident Stress Debriefing Team. I contract with several EAP organizations for counseling. I am a member of the American Counseling Association, NBCCH (National Board Certified Clinical Hypnotherapists), NAADAC (substance abuse counselors), and the ACA of Alaska where we are working toward state licensure of counselors. I have recently joined NBCCH.

Prior to going into Private practice, I held a variety of jobs which had broadened my abilities to communicate with clients.

OTHER
EXPERIENCE:

In my early twenties I pursued political activism. It was my training ground for leadership, public speaking, organizing, peer-counseling, crisis line work and consciousness raising. Since then, I have continued to use these skills. I have complimented this growth with work in individual and group therapy, family of origin and spiritual study. I have done 12 step work, critical incident stress debriefing, regression therapy training, and have participated in and facilitated many workshops.

**RESUME OF
DAVID F. LEONARD
ATTORNEY AT LAW**

ADMITTED TO PRACTICE: State of Alaska, November 14, 1989
United States District Court, November 14, 1989
United States Court of Appeals, Ninth Circuit, July 1, 1994

PRACTICE EXPERIENCE:

Civil Litigation & Appellate Practice	Environmental
Employment Law	Insurance
Personal Injury	Municipal Law
Probate/Wills	Landlord/Tenant
Professional Malpractice	Products Liability
Domestic Relations	Real Estate

LEGAL EMPLOYMENT: Self-employed, January 1997 to present and
June 1995-January 1996
Law Office of David F. Leonard
100 Cushman, Suite 501
Fairbanks, Alaska 99701

Associate, December 1995-November 1996
Aschenbrenner Law Offices, Inc.
Box 73998
Fairbanks, Alaska 99707

Associate, June 1994-June 1995
Law Offices of Marcus R. Clapp
P.O. Box 80965
Fairbanks, Alaska 99708-0965

Associate, 1989-94
Hughes Thorsness Gantz Powell & Brundin
590 University Avenue
Fairbanks, Alaska 99709

Summer Associate, 1988
Case & Lynch
4334 Rice Street
Lihue, Hawaii 96766

Academic Support Program Tutor
Fall Semester 1987
University of Oregon School of Law

Research Assistant, Summer 1987
Professor Caroline Forrell
University of Oregon School of Law

**PROFESSIONAL
EMPLOYMENT:**

Public School Teacher:
Aleutian Region School District, Alaska 1984-86
Lower Yukon School District, Alaska 1979-84

White River School District, Washington 1979
Tacoma Public Schools, Washington 1979 (substitute)

EDUCATION:

J.D. May 1989
University of Oregon School of Law, Eugene, Oregon
Cumulative GPA 3.64
Order of the Coif
Am Jur Prize Awards: Federal Income Tax,
Partnerships and Corporations, Legislative
and Administrative Process
Certificate of Completion: Business Law Program

B.A. English, June 1977
University of Northern Colorado, Greeley, Colorado
GPA 3.33
Editor: Colorado North Review
Representative: Associated Students Government
Chess Club

CERTIFICATES:

Alaska and Colorado Type A Teacher Certificate
Alaska Notary Public

BAR ASSOCIATIONS:

Tanana Valley Bar Association, Alaska Bar Association,
American Bar Association

ACTIVITIES:

Lower Yukon School District Education Association, Site
Representative, 1981-84
Aleutian Region School District Education Association,
Officer, 1985-86
Board of Trustees, Fairbanks Crisis Line 1990-92
Midnight Sun Swim Team, Officer Board of Directors
1993-97
Yak Service Area Commissioner 1993-97
Masters Swim Team, Fairbanks Cycle Club, Fairbanks Nordic
Ski Club, Fairbanks Trap Club, Single-Engine Aircraft
Private Pilot

**LECTURES AND
PUBLICATIONS:**

Labor and Employment Update Seminar, Attorney
Panelist, October 7, 1993
Interior Alaska Chapter Northwest Region Human Resource
Management Association, Speaker, January 1994
Alaska Dental Society Newsletter "Attorney's Corner,"
Contributor
Aschenbrenner Law Offices Employment Law Manual,
Contributor
Aschenbrenner Law Offices Employment Law Seminars,
Attorney Speaker, May 1996, June 1996

APPLICANT

District Court Judge, Fourth Judicial District, Fairbanks,
Alaska, 1997

ALLAN A. MOROTTI

Vita

Office Address

713-B Gruening Building
School of Education
University of Alaska Fairbanks
P.O. Box 756480
Fairbanks, AK 99775-6480
907-474-6440

Home Address

791 Goldstreak Road
Fairbanks, AK 99712

EDUCATION

- A.A. San Joaquin Delta College, Stockton, CA. 9/66-6/68. Major: History.
- B.A. California State University at Hayward, Hayward, CA. 9/68-6/70. Major: Social Science.
- St. Mary's College, Moraga, CA. 9/73-8/74. Graduate level course work in elementary school education leading to teacher certification by the State of California.
- M.S. University of Oregon, Eugene, OR. 6/81-8/84. Major: Counseling (Community & School).
- Internship University of California at Berkeley, The Counseling Center, Berkeley, CA. 8/89-8/90. APA pre-doctoral internship program
- Ph.D. University of Oregon, Eugene, OR. 9/87-9/92. Major: Counseling Psychology. APA accredited program.

CERTIFICATION

School Counseling: Preprimary through Twelfth Grade. State: Alaska.

Elementary Education: Preprimary through Ninth Grade. State(s): Alaska, California, and Oregon

PROFESSIONAL TEACHING EXPERIENCE

Assistant Professor, 8/95-Present. University of Alaska Fairbanks, Guidance and Counseling Program, School of Education, Fairbanks, AK. Coordinator of school counseling field placements, clinical supervision of school counseling practicum/internship students, direct graduate research projects, course instructor of the following:

Career Counseling
Child and Adolescent Psychology
Cross-Cultural Counseling
Group Counseling
Lifespan Developmental Psychology
Practicum/Internship Supervision: School Counseling
School Counseling
Theories of Counseling

Lecturer (Visiting Summer Faculty), 1995 Summer Session, University of Alaska Fairbanks. Course: School Counseling.

Assistant Professor, 7/93-8/94. Mankato State University, School Counseling Program, Division of Counseling & Student Personnel, College of Education, Mankato, MN. Coordinator of Elementary School Counseling Program, directed graduate research projects, clinical supervision of internship students, course instructor of the following:

Counseling Skills & Procedures I & II (included lab)
Research Seminar
Internship Supervision: School Counseling
Chemical Dependency and The Family
Counseling in a Multicultural Society

Classroom Teacher, Weller Elementary School, Fairbanks North Star Borough School District, Fairbanks, AK. 8/90-6/91. Taught language arts, reading, and mathematics to 3rd grade students. .5 FTE.

Graduate Teaching Fellow, DeBusk Memorial Center, University of Oregon, 6/88-6/89. Facilitator for small group exercises which were part of introductory class on counseling skills and procedures. .2 FTE.

Group Leader, University of Oregon, Winter Quarter 1988 & 1989. Facilitator of small group experience which was part of Group Counseling course. Non-salaried position.