

ALASKA LEGISLATURE COMMITTEE FILES 1991-1992 8672

6790 HOUSE HEALTH EDUCATION & SOCIAL SERVICES

Currently the department has 1,166 jail beds for a jail population of approximately 750 and 1,390 prison beds for a prison population of approximately 1,700. Construction will add only 46 minimum security prison beds to the system by the fall of 1991. Taking into consideration the addition of new beds that are on the drawing board at this time, the shortfall in beds is projected as follows:

	1991	1992	1993	1994	1995
Shortfall in Bedspace	0	-69	-172	-179	-162

If the peaking effect is taken into consideration, the shortfall of beds would be adjusted as follows:

	1991	1992	1993	1994	1995
Shortfall in Bedspace	-149	-186	-258	-233	-184

Unfortunately, there are several factors that may affect growth pattern:

1. Implementation of House Bill 366¹³ could cause 264 or more prisoners currently incarcerated to serve an additional two years for refusing to participate in court ordered programs. The current refusal rate is 34%.
2. The continuation of presumptive sentencing.¹⁴

¹³ House Bill 366 requires prisoners to participate in court-ordered counseling that had been previously voluntary and could only be recommended by judges. Failure to participate in court ordered programs will now result in the prisoner's loss of mandatory parole (good time credit wherein one third of the sentence is served outside of prison) as well as revocation of probation prior to release from incarceration, meaning significantly longer sentences. Programs commonly recommended by judges have been substance abuse, sex offender, and anger management. Approximately 80% of the prisoners fall into one or more of these categories. Although the incentive to participate should reduce the refusal rate, it is notable that 10% of those now refusing are parole eligible.

Class A sex offenders average 2½ years mandatory parole while Class B sex offenders commonly receive five years probation. This time could be served in an institution for each prisoner who falls under HB 366.

Of the approximately 259 prisoners that are to be involved in substance abuse treatment, 30% refuse to participate. Under HB 366, perhaps 77 prisoners would have to serve their mandatory release time or probation time in jail.

¹⁴ A 1987 Judicial Council study concluded that presumptive sentencing generally appeared to increase the length of the sentence for both first felony offenders and repeat offenders subject to presumptive sentencing. This accounted for an estimated 41.6% of the 100% increase between 1980 and 1984 in total prison time sentenced.

3. Re-evaluation of sentencing policies and practices.¹⁵

These factors make precise projections difficult, but there is one certainty, the prisoner population will grow.

Staffing of Institutions

It is logical that an increase in prison population triggers a corresponding growth in department personnel. Since 72% of the Department of Correction budget is personal service, its budget cannot be discussed without considering staffing patterns and ratios. If there is to be any significant reduction in the budget, department staffing patterns and practices must be analyzed.

The complexity of correctional staffing patterns generally escape those outside of corrections. The citizen or legislator not yet exposed to corrections management may view an institution as if it were operated for one or two shifts, like a bank or a store. There are several critical differences between correctional facility operation and free-world institutions.

First, a correctional facility is self contained like a ship or small city. There are systems for food service, utilities, medical care, law enforcement, employment and most other elements of life in the free world.

Second, institutions must operate on a continuous basis. Many positions must be staffed around the clock. In most industries an employee is hired to perform a particular job, but when a day of work is missed, the work can wait until the employee returns. If a correctional officer becomes ill, the task of supervising prisoners can't be deferred and another officer must be pulled in to cover, frequently on overtime.

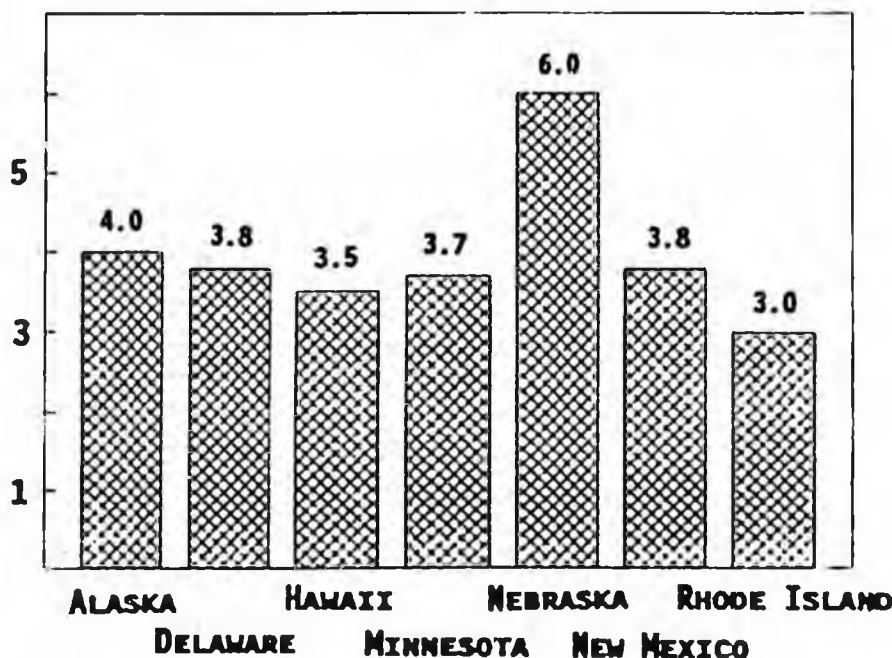
Third, the inmate population of a correctional facility presents a unique challenge. While the staff of a facility are providing supervision and basic services, the inmate population plan activities like escapes, assaults, covert organizations and smuggling of contraband.

Regardless of technology, people are the most important resource in correctional administration. Their knowledge, skill and abilities are the fuel that drives a safe system.

¹⁵ Alaska Sentencing Commission, 1990 Annual Report to the Governor and the Alaska Legislature, December 1990.

With the assistance of the American Correctional Association, the Department of Corrections has adopted a policy for classifying the security levels of institutions and staff to inmate ratios. When compared with similar systems, Alaska supervises four prisoners for each officer. As can be seen from the graph,¹⁶ most of the comparable systems have a smaller prisoner to officer ratio.

PRISONER SUPERVISION RATIO FOR COMPARABLE SYSTEMS

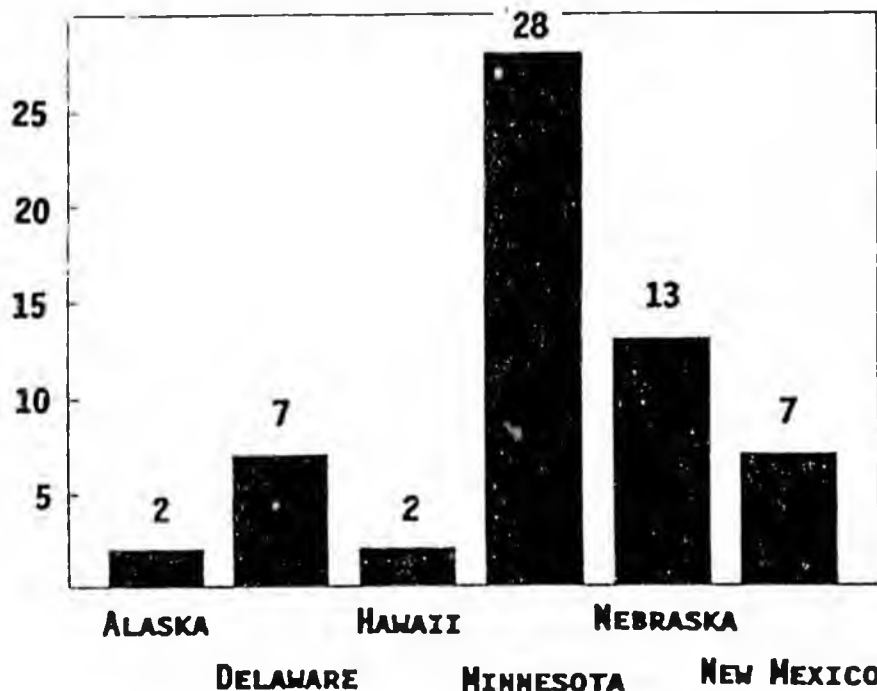


When compared with the similar systems, Alaska supervises four prisoners for each officer. As can be seen from the graph above, most of the comparable systems have a smaller prisoner to staff ratio. When comparing the ratio of prisoners to total staff, Alaska is slightly below the national average of 2.7 prisoners per employee¹⁷ (Alaska's ratio is 2.42). The average ratio for similar size systems is 2.55. Again the factor of Alaska's demographics and geography must be considered in evaluating prisoner to staff ratio's. As stated previously, the Department of Correction's has a higher custody of prisoners that requires increased supervision which in turn creates a more labor intensive system.

¹⁶ Information generated from data in The Corrections™ Yearbook, Adult Prisons and Jails - 1990 Criminal Justice Institute, South Salem, New York. The number of institutional prisoners was divided by the number of correctional officers to ascertain a ratio.

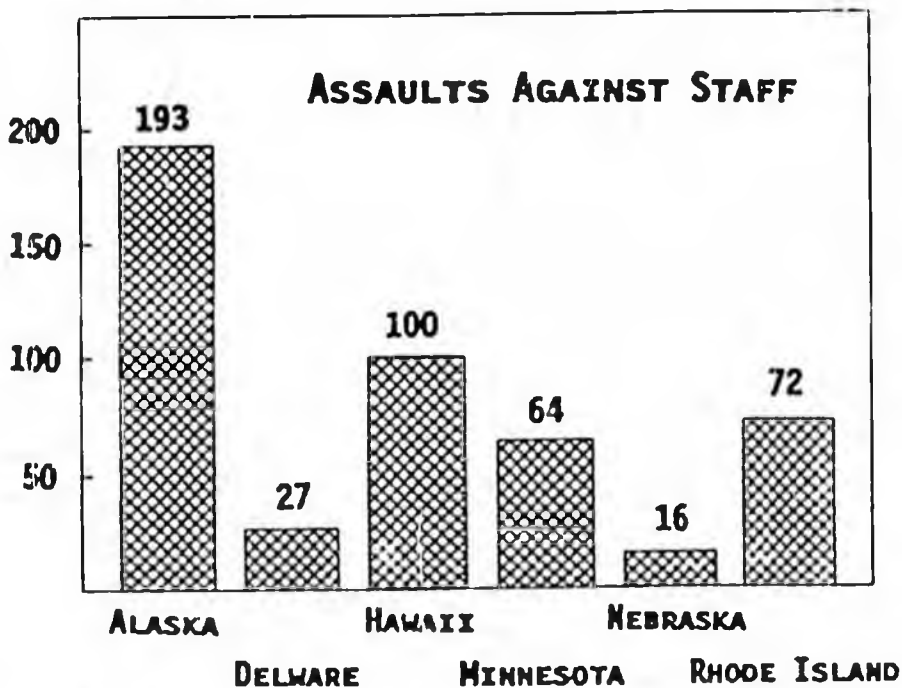
¹⁷ The Corrections™ Yearbook, Adult Prisons and Jails - 1990, Criminal Justice Institute, South Salem, New York

ESCAPE RATES OF COMPARABLE SYSTEMS PER 1,000 INMATES



Using the same comparisons, Alaska has a remarkably low escape rate considering the higher prisoner to officer ratio. In fact, only Ohio and Texas had a lower escape rate in the nation.¹⁸

Unfortunately, Alaska also has the highest ratio of assaults on staff by inmates.¹⁹



¹⁸ The Corrections™ Yearbook, Adult Prisons and Jails - 1990. Criminal Justice Institute, South Salem, New York. Rhode Island was not reflected in the chart but had 83 escapes for the same time period.

¹⁹ New Mexico was not listed as one of the comparable systems as data regarding assaults was not available.

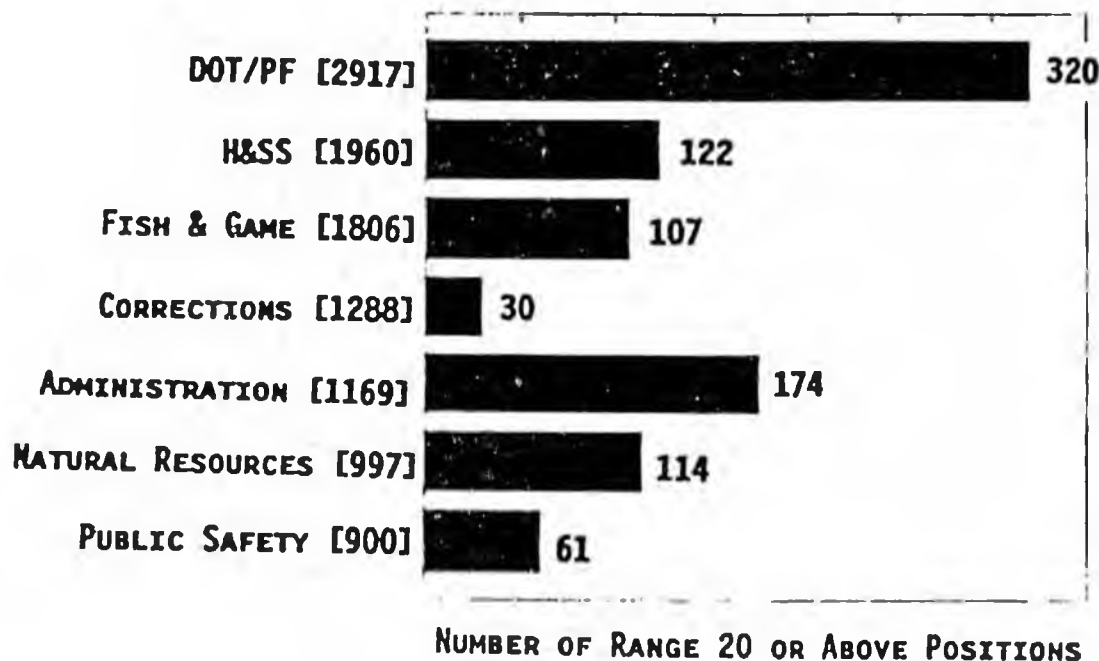
Among the statistics that have been provided, two are of particular note: Alaska has the lowest escape ratio; but because of the disproportionate number of violent, high custody inmates Alaska also has the highest ratio of assaults on staff. This figure means that our security staff have a high chance of being assaulted every day they go to work.

Middle and Upper Management

While the heart of corrections rests with the expertise of its line staff, every organization which employs over one thousand three hundred people requires a sophisticated management structure. The question is whether management resources exceed the need of the organization.

As can be seen by the next chart, in 1989 the Department of Corrections is the fourth largest department in State government.²⁰ Yet the Department of Corrections had the smallest percentage of employees working above range 20 (This is the case in 1991). Range 20 and above positions in State service are the functional equivalent of private sector mid - upper management.

**COMPARISON OF THE SEVEN
LARGEST DEPARTMENTS
RANGE 20 AND OVER POSITIONS**



²⁰ 1989 data from the Governor's Office

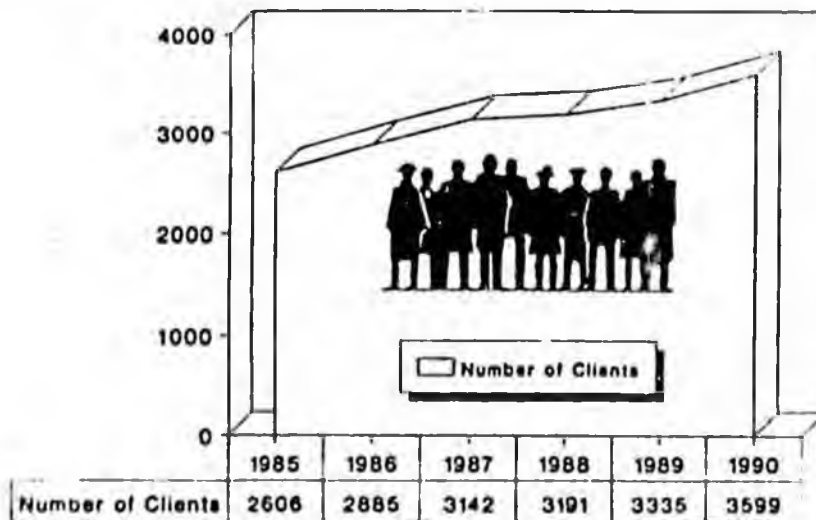
These lean management resources of the Department of Corrections is both a blessing and a curse. Because there are so few management level positions in the Alaska Department of Corrections, our managers must be directly involved and knowledgeable about day-to-day operations. On the other hand, many vital management services such as research, projections, planning and quality control go begging. But one thing is imminently clear: While the management of the Department of Corrections may require redirection and visionary leadership, there is simply no "management fat" in the Alaska Department of Corrections.

On the contrary, it could be argued that maximum efficiency and creative problem solving cannot be achieved without additional managerial support.

Probation/Parole

The most widely utilized form of non-incarcerating supervision is the probation/parole system, administered for adults by the Department of Corrections. Probation officers are responsible for the supervision of felony offenders sentenced by the Alaska Court System (3,599 cases in 1990) and for enforcing applicable conditions upon their release from custody. In addition, probation officers provide court ordered presentence investigations of offenders awaiting sentencing.

**Probation/Parole Client Trend
1985 through 1990**



As can be seen above, this part of corrections also continues to grow at a rapid rate.

Neakok Decision

Supervising offenders in the community is, without doubt, the State's greatest point of vulnerability. In 1986 a probationer who had been doing well with supervision out of the Bethel office returned to his home village of Point Lay.

He became drunk, raped a woman and then shot two members of his family. During the trial, one of the points raised was that Department of Corrections budget was insufficient to adequately fund supervision of probationers and parolees.

The State of Alaska eventually resolved the case with a settlement of approximately five million dollars (more than the total budget of probation/parole supervision).²¹ At this writing there are two similar cases filed and pending. Because of the Neakok decision, the department has had to increase supervision and warning mechanisms to protect foreseeable victims from harm at the hands of probationers and parolees.



²¹ Division of Corrections v. Warren Neakok, 721 P.2d 1121 (Alaska 1986)

Probation/Parole Offices

Currently, the department has thirteen probation offices which are staffed to supervise a statewide distribution of offenders. This is no small undertaking when one considers the size of Alaska. An example of this challenge is the Bethel probation office. The four probation officers in this office service an area slightly larger than the State of Washington. The Neakok experience now demands that officers be placed close to the clientele they supervise. Yet the impossible burden placed on the state by case law is readily seen by the two officers who supervises the Barrow district (100,000 square mile district).



When Alaska is compared to other states with similar caseload levels, the total number of offenders per probation officer in Alaska is in the median range. A reduction in probation personnel could result in a situation similar or worse than Neakok if the level of supervision drops below court imposed standards. Again, one "Neakok" can cost the State of Alaska as much as funding statewide probation services for an entire fiscal year.

SUMMARY

Over the past three fiscal years, the Alaska inmate population has grown at a rate of 78 prisoners per year. The secure housing of these prisoners requires staff, facilities, and services. It has been said that at the projected rate of growth, the Department of Corrections will need to construct a 200 bed facility every two years. The department's budget, however, has not kept up with this demand. Because of past legislative and executive policies, patterns, and practices, the Department of Corrections finds itself on the lean edge of funding.

With reorganization and a new approach to fiscal accountability, purchasing practices, contract management, etc., this department can arrive at peak efficiency. This may even result in maintaining and, hopefully, rolling back the budget. Shrewd analysis, planning, and realistic time frames are needed to test this hypothesis.

But one thing is certain: Whether we like it or not, corrections is a growth industry. Until the criminal justice system and lawmakers explore new approaches to criminal justice, corrections must be funded to ensure public protection and offender reformation.

This document is not an appeal to perpetuate the status quo -- our presuppositions must be reexamined at every level -- this is a call to maintain a high level of traditional service until alternatives are tried and proven.

Institutional Comparison Sheets

The following criteria was utilized to compile information relative to institutional staffing levels of analogous facilities located in other states:

- Type of facility [pretrial, jail, correctional center, prison]
- Rated capacity of facility [number of prisoner beds]
- Staffing level
- Security level
- Detention type [sentenced, unsentenced, male/female, misdemeanor/felon]
- Custody level [maximum, close, medium, minimum, multi-level]
- Level of admissions [workload]
- Design [due to time restraints, this criteria was not used on all units]

Efforts were made to identify at least four analogous facilities for each correctional facility within the department. In some cases, due to the detention of multiple custody levels of prisoners, number of admissions, security level of facility, etc., analogous institutions were not available.

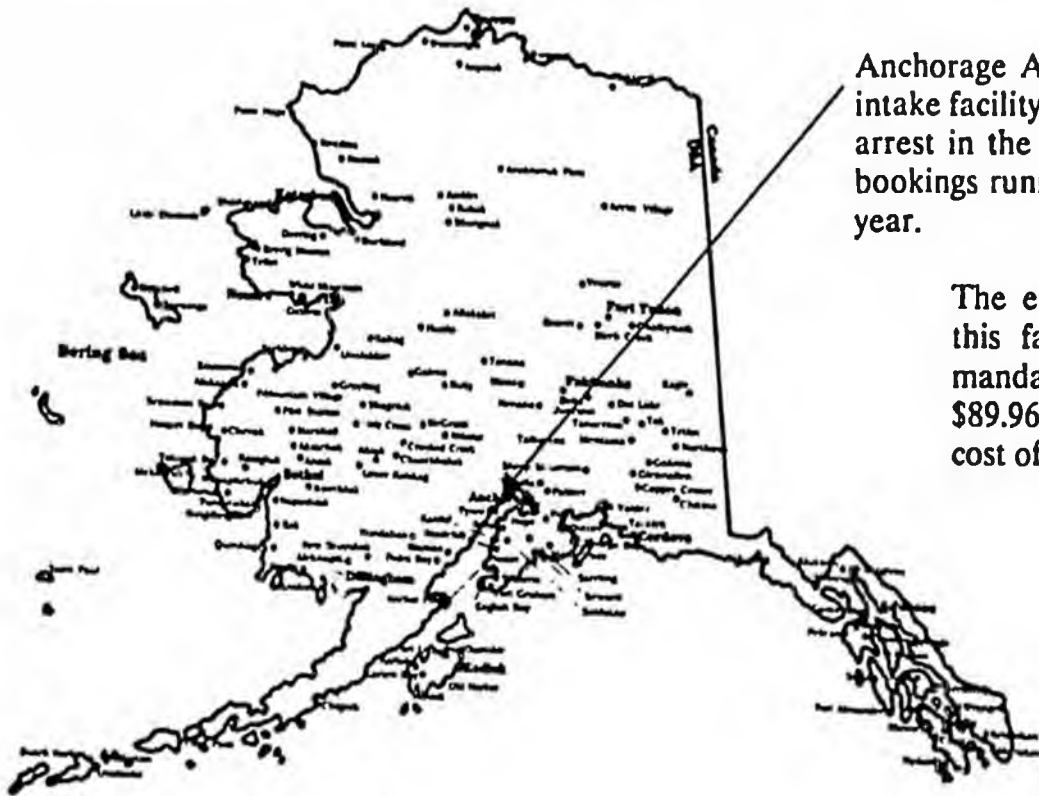
Sources used:

- The Corrections Yearbook - Adult Prisons and Jails, 1990, published by Criminal Justice Institute, Inc., South Salem, New York
- National Jail & Adult Detention Directory, 1990, published by the American Correctional Association, Laurel, Maryland
- ACA Directory - Juvenile & Adult Correctional Departments, Institutions, Agencies & Paroling Authorities, 1990, published by the American Correctional Association, Laurel, Maryland

Correctional Facility	Maxium Capacity	Emergency Capacity	1990 High Count	Total Staff Complement	Prisoner Ratio To Staff	Manday Costs	FY'92 Proposed Budget
Anchorage Annex	104	108	121(Oct)	55	1.89	89.96	3,327.8
Anvil Mountain	102	104	99(Oct)	44	2.32	106.67	3,756.8
Cook Inlet Pretrial	397	403	417(Oct)	135	2.94	56.25	8,973.1
Fairbanks	183	194 ¹	254(Aug)	98	1.87	90.86	7,398.7
Hiland Mountain	225	230	232(Sep)	79	2.85	65.45 ²	7,122.7
Ketchikan	53	59	76(Feb)	43	1.23	111.99	2,787.2
Lemon Creek	164	170 ³	194(Jan)	96	1.71	90.64	6,406.2
Mat-Su Pretrial	76	79	100(Jan)	40	1.90	94.95	2,666.8
Meadow Creek	62	66	62(Feb)	22	2.82	65.45 ⁴	
Palmer Medium	165	170	176(Jun)	77	2.21	68.29 ⁵	7,802.8
Palmer Minimum	130	130	132(Oct)	30	4.33	68.29 ⁵	
Spring Creek	412	428	424(Dec)	207	1.99	83.61	13,210.0
Wildwood	204	210	205(Feb)	75	2.72	70.81 ⁶	7,469.2
Wildwood Pretrial	112	113	111(Mar)	33	3.39	70.81 ⁶	
Yukon-Kuskokwim	88	92	118(Feb)	45	1.96	94.87	3,893.0

- ¹ Emergency capacity for Fairbanks is 202 through 1991 then drops to 194 1/01/92
² Manday costs for Hiland Mountain includes operation of Meadow Creek
³ Emergency capacity for Lemon Creek is 175 through 1991 then drops to 170 1/01/92
⁴ Manday costs for Meadow Creek includes operation of Hiland Mountain
⁵ Manday costs includes operation of both Medium and Minimum facilities
⁶ Manday costs for both Wildwood and Wildwood Pretrial combined

Anchorage Annex Correctional Center



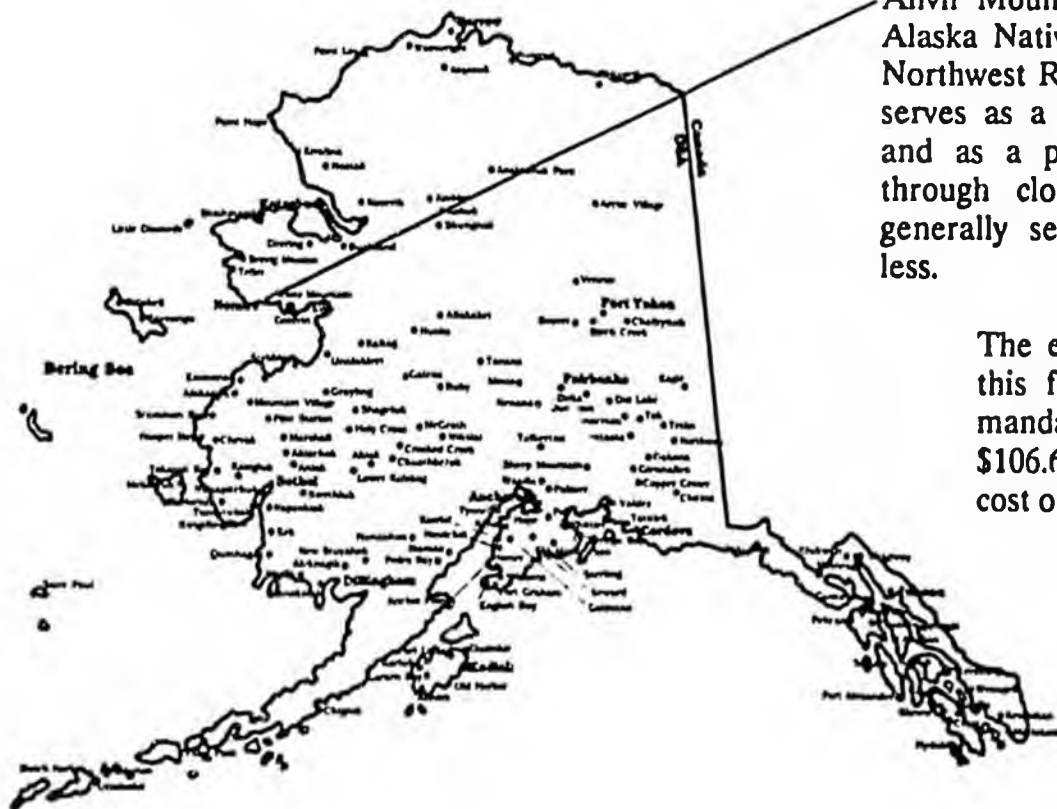
Anchorage Annex operates as the intake facility for all misdemeanor arrest in the Anchorage area with bookings running about 11,000 per year.

The emergency capacity of this facility is 108 with a manday cost during FY90 of \$89.96 (Does not include cost of statewide programs).

This facility houses misdemeanor adult males and females, pretrial and sentenced prisoners in all custody levels. Anchorage Annex Correctional Center has a staff ratio (using total staff and emergency capacity) of 1.89. A comparison with other systems as to size and purpose reflects the following:

<u>Facility</u>	<u>Maximum Capacity</u>	<u>Total Staff</u>	<u>Prisoner Ratio To Staff</u>
Anchorage Annex	104	55	1.89:1
Rutland C.C./Vermont	99	59	1.68:1
Cumberland County Jail/MA	112	66	1.70:1
Burlington County Jail/N.J.	100	70	1.43:1
Calvert Detention Center/MD	92	50	1.84:1

Anvil Mountain Correctional Center



Anvil Mountain primarily houses Alaska Native prisoners from the Northwest Region of the state. It serves as a jail for all custodies, and as a prison for community through close custody prisoners generally serving three years or less.

The emergency capacity of this facility is 104 with a manday cost during FY90 of \$106.67 (Does not include cost of statewide programs).

This facility houses adult males and females, felons and misdemeanants, pretrial and sentenced prisoners in various custody levels. Anvil Mountain has a staff ratio (using total staff and emergency capacity) of 2.32. A comparison with other systems as to size and purpose reflects the following:

<u>Facility</u>	<u>Maximum Capacity</u>	<u>Total Staff</u>	<u>Prisoner Ratio To Staff</u>
Anvil Mountain	102	44	2.32:1
Hawaii Correctional Center	95	49	1.94:1
Barnstable Jail/Mass	102	41	2.49:1
Rutland Correctional Center/VT	99	59	1.68:1
St. Johnsbury C.C./Vermont	99	63	1.57:1

Cook Inlet Pretrial Facility



Cook Inlet Pretrial operates as the intake facility for all felony arrest in the Anchorage area as well as temporary housing for mental health case reviews.

The emergency capacity of this facility is 403 with a manday cost during FY90 of \$56.25 (Does not include cost of statewide programs).

This facility houses felony adult males, pretrial and sentenced prisoners in all custody levels. Cook Inlet Pretrial has a staff ratio (using total staff and emergency capacity) of 2.94. A comparison with other systems as to size and purpose reflects the following:

<u>Facility</u>	<u>Maximum Capacity</u>	<u>Total Staff</u>	<u>Prisoner Ratio To Staff</u>
Cook Inlet Pretrial	397	135	2.94:1
Sussex C.C./Delaware	372	155	2.40:1
Kettle Moraine C.C./Wisc.	375	226	1.66:1
Baltimore Detention/Maryland	380	147	2.59:1
Contra Costa County/California	386	135	2.86:1

Fairbanks Correctional Center



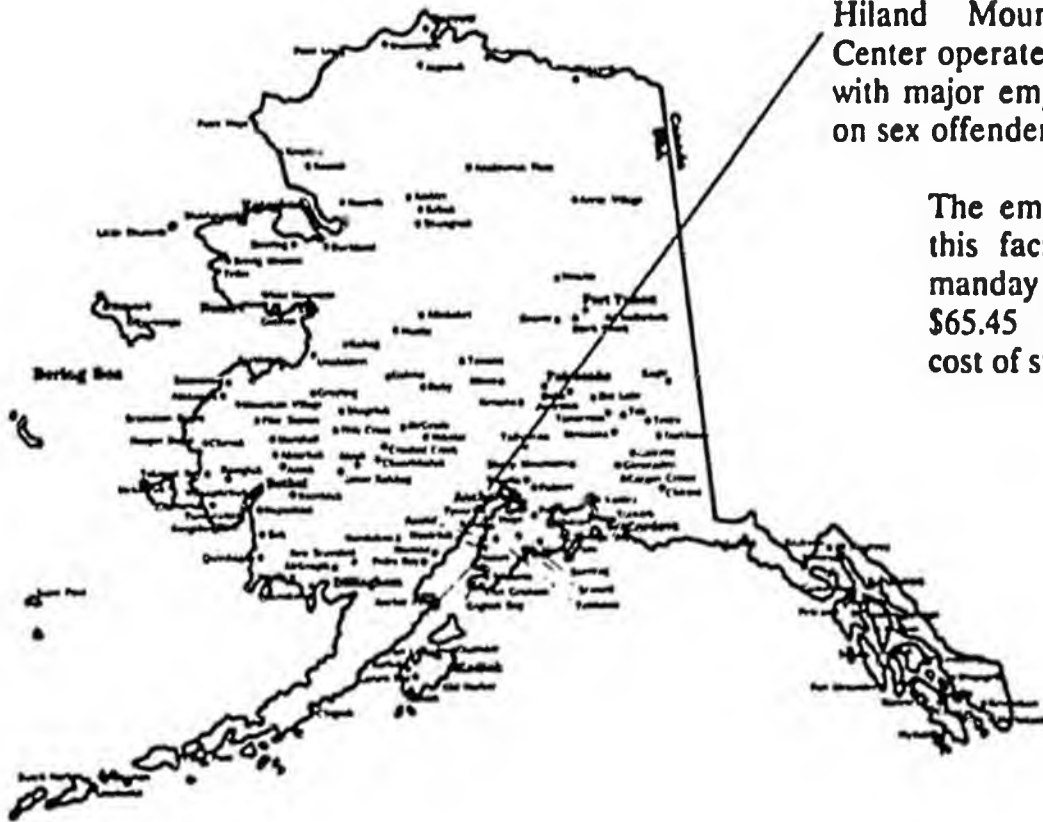
Fairbanks Correctional Center operates as an intake facility for the Fairbanks area as well as a unit to house sentenced prisoners on a statewide basis.

The emergency capacity of this facility is 194 with a manday cost during FY90 of \$90.86 (Does not include cost of statewide programs).

This facility houses males and females, pretrial and sentenced prisoners in all custody levels. Fairbanks Correctional Center has a staff ratio (using total staff and emergency capacity) of 1.87:1. A comparison with other systems as to size and purpose reflects the following:

<u>Facility</u>	<u>Maximum Capacity</u>	<u>Total Staff</u>	<u>Prisoner Ratio To Staff</u>
Fairbanks	183	98	1.87:1
Kuloni C.C./Hawaii	160	85	1.88:1
Middle Sex County Jail/Mass	165	75	2.20:1

Hiland Mountain Correctional Center



Hiland Mountain Correctional Center operates as a program unit with major emphasis being placed on sex offenders.

The emergency capacity of this facility is 230 with a manday cost during FY90 of \$65.45 (Does not include cost of statewide programs).

This facility houses male adult sentenced felon prisoners who are medium custody. Hiland Mountain Correctional Center has a staff ratio (using total staff and emergency capacity) of 2.85:1. A comparison with other systems as to size and purpose reflects the following:

<u>Facility</u>	<u>Maximum Capacity</u>	<u>Total Staff</u>	<u>Prisoner Ratio To Staff</u>
Highland Mountain	225	79	2.85:1
Jackie Brannon C.C./OK	230	108	2.13:1
Omaha C.C./Neb	240	113	2.12:1

Ketchikan Correctional Center



Ketchikan Correctional Center operates as an intake facility for the lower half of Southeast Panhandle and handles sentenced prisoners on a statewide basis.

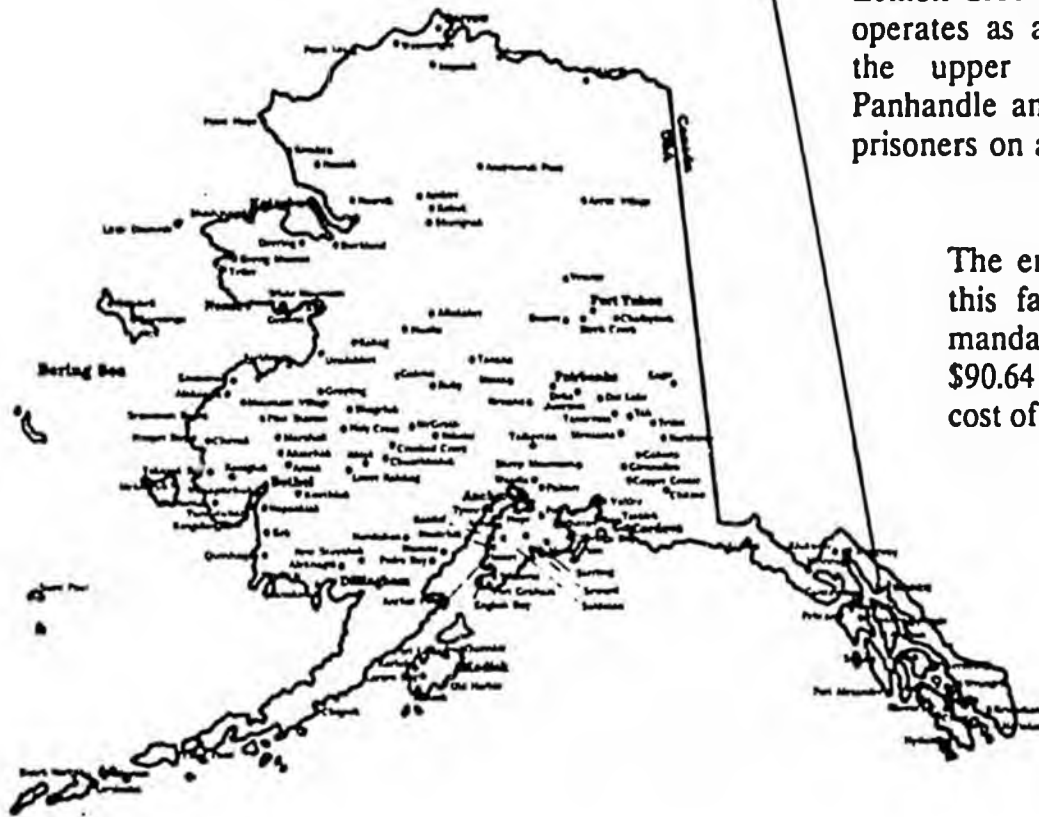
The emergency capacity of this facility is 59 with a manday cost during FY90 of \$111.99 (Does not include cost of statewide programs).

This facility houses male and female adult, pretrial and sentenced, felon and misdemeanor prisoners at all custody levels. Ketchikan Correctional Center has a staff ratio (using total staff and emergency capacity) of 1.23:1. A comparison with other systems as to size and purpose reflects the following:

<u>Facility</u>	<u>Maximum Capacity</u>	<u>Total Staff</u>	<u>Prisoner Ratio To Staff</u>
Ketchikan Correctional Center	53	43	1.23:1

Note: No other comparable facilities found.

Lemon Creek Correctional Center



Lemon Creek Correctional Center operates as an intake facility for the upper half of Southeast Panhandle and handles sentenced prisoners on a statewide basis.

The emergency capacity of this facility is 170 with a manday cost during FY90 of \$90.64 (Does not include cost of statewide programs).

This facility houses male and female adult, pretrial and sentenced, felon and misdemeanor prisoners at all custody levels. Lemon Creek Correctional Center has a staff ratio (using total staff and emergency capacity) of 1.71:1. A comparison with other systems as to size and purpose reflects the following:

<u>Facility</u>	<u>Maximum Capacity</u>	<u>Total Staff</u>	<u>Prisoner Ratio To Staff</u>
Lemon Creek	164	96	1.71:1
Kulani C.C./Hawaii	160	85	1.88:1
Middle Sex County Jail/Mass	165	95	1.74:1

Mat-Su Pretrial Facility



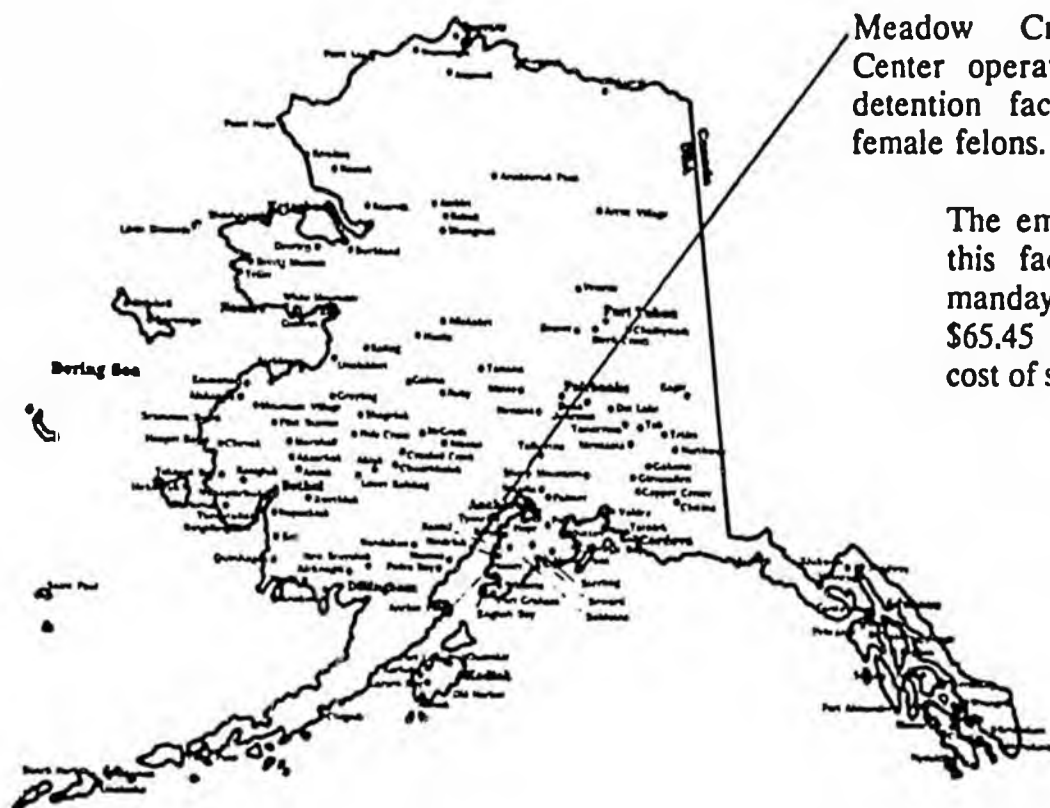
Mat-Su Pretrial was designed to provide prisoners from the Matanuska and Susitna Valleys to be in close proximity during pretrial status. This facility also functions as an overflow unit for Anchorage and temporary placement for the Palmer Correctional Center.

The emergency capacity of this facility is 79 with a manday cost during FY90 of \$94.95 (Does not include cost of statewide programs).

This facility houses adult males and females, pretrial and sentenced prisoners in all custody levels. Mat-Su Pretrial has a staff ratio (using total staff and emergency capacity) of 1.90. A comparison with other systems as to size and purpose reflects the following:

<u>Facility</u>	<u>Maximum Capacity</u>	<u>Total Staff</u>	<u>Prisoner Ratio To Staff</u>
Mat-Su Pretrial	76	40	1.90:1
Union Ave. Det Center/Conn.	70	44	1.59:1
Scott County Jail/Iowa	89	45	1.98:1
Ontario County Jail/N.Y.	88	45	1.96:1
Kauai Correction Center/HA	79	43	1.84:1

Meadow Creek Correctional Center



Meadow Creek Correctional Center operates as the primary detention facility for sentenced female felons.

The emergency capacity of this facility is 66 with a manday cost during FY90 of \$65.45 (Does not include cost of statewide programs).

This facility houses female adult sentenced felon prisoners at all custody levels. Meadow Creek Correctional Center has a staff ratio (using total staff and emergency capacity) of 2.82:1. A comparison with other systems as to size and purpose reflects the following:

<u>Facility</u>	<u>Maximum Capacity</u>	<u>Total Staff</u>	<u>Prisoner Ratio To Staff</u>
Meadow Creek	62	22	2.82:1
Wyoming Womens Center/WY	52	38	1.37:1
Nebraska Center for Women	84	58	1.45:1
Parkside C.C./NY	60	30	2.00:1
New Hampshire C.C. for Women	70	30	2.33:1

Palmer Medium Facility



Palmer Medium Facility operates as program unit for sentenced male prisoners.

The emergency capacity of this facility is 170 with a manday cost during FY90 of \$68.29 (Does not include cost of statewide programs).

This facility houses male adult sentenced prisoners from minimum to medium custody. The Palmer Medium facility has a staff ratio (using total staff and emergency capacity) of 2.21:1. A comparison with other systems as to size and purpose reflects the following:

<u>Facility</u>	<u>Maximum Capacity</u>	<u>Total Staff</u>	<u>Prisoner Ratio To Staff</u>
Palmer Medium	170	77	2.21:1
Columbus C.C./NC	156	61	2.56:1
Wayne C.C./NC	175	70	2.50:1
Minnesota C.C./MN	170	130	1.31:1
Carter County C.C./TN	180	86	2.09:1

Palmer Minimum Facility



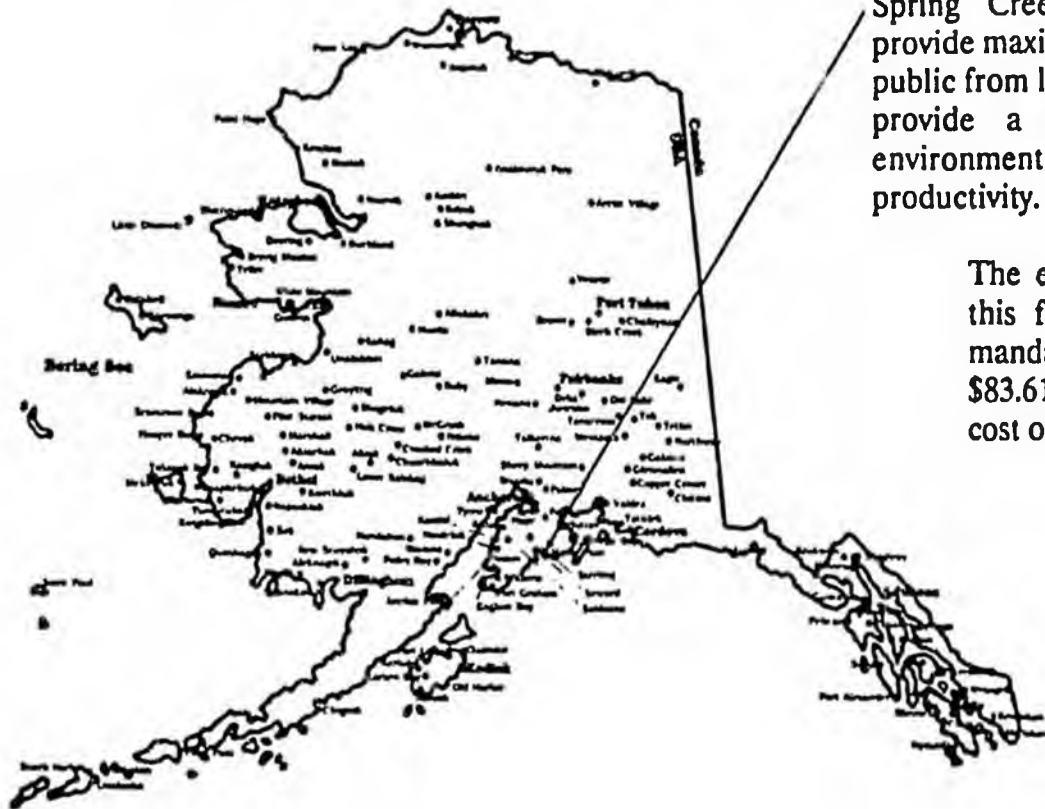
Palmer Minimum Facility operates as program unit for sentenced male prisoners.

The emergency capacity of this facility is 130 with a manday cost during FY90 of \$68.29 (Does not include cost of statewide programs).

This facility houses male adult sentenced prisoners who are minimum custody. The Palmer Minimum facility has a staff ratio (using total staff and emergency capacity) of 4.33:1. A comparison with other systems as to size and purpose reflects the following:

<u>Facility</u>	<u>Maximum Capacity</u>	<u>Total Staff</u>	<u>Prisoner Ratio To Staff</u>
Palmer Minimum	130	30	4.33:1
Powder River C.C./OR	150	51	2.94:1
Watauga C.C./NC	128	32	4.00:1
Rutherford C.C./NC	142	44	3.23:1
Mecklenburg C.C./NC	138	49	2.82:1

Spring Creek Correctional Center



Spring Creek was designed to provide maximum protection to the public from long-term prisoners; to provide a living and working environment that will permit productivity.

The emergency capacity of this facility is 428 with a manday cost during FY90 of \$83.61 (Does not include cost of statewide programs).

This facility houses adult male sentenced prisoners in close or maximum custody levels. Spring Creek has a staff ratio (using total staff and emergency capacity) of 1.99. A comparison with other systems as to size and purpose reflects the following:

<u>Facility</u>	<u>Maximum Capacity</u>	<u>Total Staff</u>	<u>Prisoner Ratio To Staff</u>
Spring Creek	412	207	1.99:1
Oak Park Heights/Minn	400	303	1.32:1
Oklahoma State Penitentiary	494	501	0.99:1
Mecklenburg C.C./Virginia	335	346	0.96:1
Kirkland C.C./S.C.	448	285	1.57:1

Wildwood Correctional Center



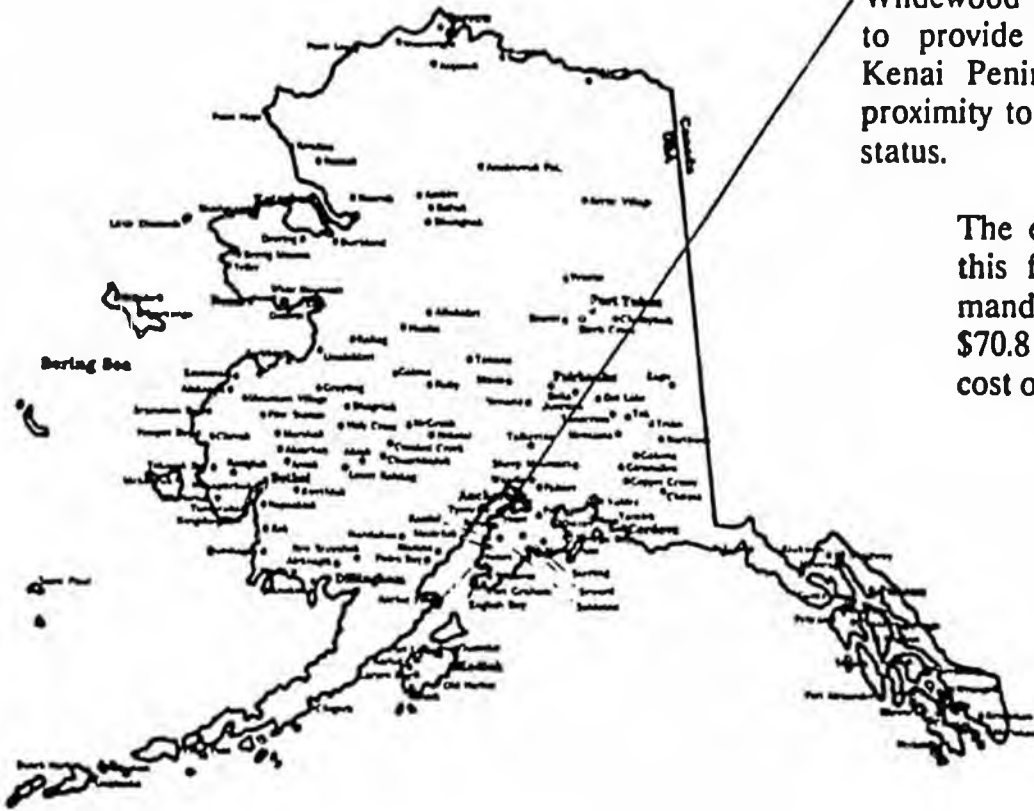
The Wildwood Correctional Center operates as a program unit for sentenced male prisoners.

The emergency capacity of this facility is 210 with a manday cost during FY90 of \$70.81 (Does not include cost of statewide programs).

This facility houses male adult sentenced prisoners who are minimum to close custody. The Wildwood Correctional Center has a staff ratio (using total staff and emergency capacity) of 2.72:1. A comparison with other systems as to size and purpose reflects the following:

<u>Facility</u>	<u>Maximum Capacity</u>	<u>Total Staff</u>	<u>Prisoner Ratio To Staff</u>
Wildwood	204	75	2.72:1
Arizona State Prison-Yuma	205	104	1.97:1
Halifax C.C./Virginia	207	67	3.09:1
Putnam C.C./Florida	208	153	1.36:1

Wildwood Pretrial Facility



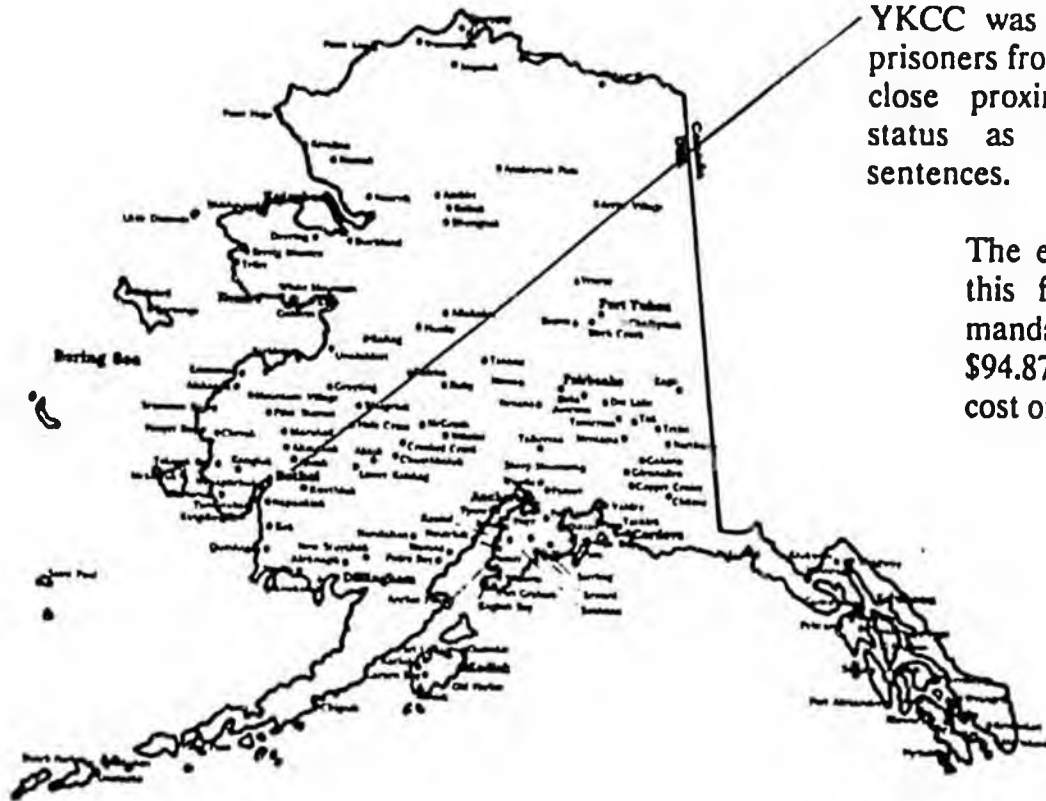
Wildwood Pretrial was designed to provide prisoners from the Kenai Peninsula to be in close proximity to family during pretrial status.

The emergency capacity of this facility is 113 with a manday cost during FY90 of \$70.81 (Does not include cost of statewide programs).

This facility houses adult males and females, pretrial and sentenced prisoners in all custody levels. Wildwood Pretrial has a staff ratio (using total staff and emergency capacity) of 3.39:1. A comparison with other systems as to size and purpose reflects the following:

<u>Facility</u>	<u>Maximum Capacity</u>	<u>Total Staff</u>	<u>Prisoner Ratio To Staff</u>
Wildwood Pretrial	112	33	3.39:1
Barnstable Jail/Mass.	102	41	2.49:1
Cumberland County Jail/Maine	112	66	1.70:1
Merrimack County Jail/N.H.	108	46	2.35:1
Roanoke County Jail/Virginia	104	60	1.73:1

Yukon-Koskokwim Correctional Center



YKCC was designed to provide prisoners from the interior to be in close proximity during pretrial status as well as for short sentences.

The emergency capacity of this facility is 92 with a manday cost during FY90 of \$94.87 (Does not include cost of statewide programs).

This facility houses adult males and females, pretrial and sentenced prisoners in all custody levels. Yukon-Kuskokwim Correctional Center has a staff ratio (using total staff and emergency capacity) of 1.96. A comparison with other systems as to size and purpose reflects the following:

<u>Facility</u>	<u>Maximum Capacity</u>	<u>Total Staff</u>	<u>Prisoner Ratio To Staff</u>
Yukon-Kuskokwim	88	45	1.96:1
Rutland C.C./Vermont	99	59	1.68:1
Hunterdon County Jail/Conn.	82	42	1.95:1
Scott County Jail/Iowa	89	45	1.98:1
Sussex C.C./New Jersey	88	71	1.24:1

Confirmation

Dept. of Health

&

Social Services

T. Mala



Alaska State Legislature
House of Representatives
COMMITTEE ON HEALTH, EDUCATION
AND SOCIAL SERVICES

OFFICIAL BUSINESS

POUCH V
JUNEAU, AK 99811
465-3759

M E M O R A N D U M

TO: REP. GEORGIANNA LINCOLN, CO-CHAIR
REP. PATRICK CARNEY, CO-CHAIR
REP. BETTYE DAVIS, VICE-CHAIR
REP. CHERI DAVIS
REP. JOHN GONZALES
REP. MARK HANLEY
REP. MARY MILLER
PAT JACKSON
CAROLINE LOMBARD
HOUSE HEALTH, EDUCATION AND SOCIAL SERVICES COMMITTEE

FR: PATTI, HESS COMMITTEE SECRETARY, EXT. 4923 *Patti*

DT: APRIL 5, 1991

RE: CONFIRMATION HEARING--COMMISSIONER TED MALA--4/8/91

ATTACHED ARE DOCUMENTS FOR YOUR CONSIDERATION BEFORE THE CONFIRMATION HEARING FOR COMMISSIONER TED MALA SCHEDULED ON MONDAY, APRIL 8TH, AT 8:00 A.M.

INCLUDES: 1. CURRENT RESUME
 2. DHSS ORGANIZATIONAL INFORMATION

SEE YOU ON MONDAY MORNING!

unanimous do pass

file copy

THEODORE A. MALA

Post Office Box 20029
Juneau, Alaska 99802
W: (907) 465-3030 H: 463-4951

EDUCATION:

1979-1980 HARVARD SCHOOL OF PUBLIC HEALTH Boston, Ma.

Master of Public Health degree conferred June, 1980. Core curriculum with electives in public health planning and administration. Elected Class Marshal at graduation.

1972-1977 SCHOOL OF MEDICINE, AUTONOMOUS UNIVERSITY Guadalajara, Mx.

Received Diploma of Physician and Surgeon, December, 1976
Internship requirements completed in 1977.
National Boards, Social Service and Licensing requirements completed in Mexico, 1981.

1969-1972 DE PAUL UNIVERSITY Chicago, Il.

Bachelor of Arts Degree conferred in 1972.
Major in Philosophy and Minor in Foreign Language.

PROFESSIONAL LICENSES

Physician and Surgeon, Mexico, 1985
Professions Registry No. XX-106
UNAM Degree Registry 1985-270

PROFESSIONAL EXPERIENCE:

1990-Present

Commissioner Designee, Alaska Department of Health and Social Services
Appointed by Governor Hickel to this cabinet level position subject to legislative confirmation.

1986-1990

Secretary General, International Union for Circumpolar Health.
Re-elected to three year term in Umea, Sweden in 1987.

1982-1990

UNIVERSITY OF ALASKA Anchorage, Alaska

Associate Professor of Health Sciences.
Institute Director: Institute for Circumpolar Health Studies.

Founder and Director, International Institute for Circumpolar Health Studies.

The Institute for Circumpolar Health Studies was incorporated into Alaska State Law in June of 1988 under authority of the Legislature and signed into law by the Governor (Chapter 136) and appropriated \$550,000. to start up (Chapter 137).

Founder and Director, Siberian Medical Research Program. 1982.

Author of the University of Alaska-Siberian Branch of the Academy of Medical Sciences of the USSR Medical Research Agreement. The Agreement has worldwide recognition as to its uniqueness in being the first agreement Siberia has ever made in medicine with any western institution or country.

Founder and Director, Magadan (Soviet Far East) Medical Research Program. October, 1989.

This historic agreement signed before Governor V. Kobets of Magadan Region, by the Director of the Institute for Biological Problems of the North and the Minister of Health of the Magadan Region, The Commissioner of Health and Social Services of Alaska and myself for the Institute for Circumpolar Health Studies of the University of Alaska, Anchorage, represents the first Agreement that region has entered into with the West. The signing was featured on the front page of Magadanskaya Pravda, October 13, 1989 and has resulted in the first exchanges of health professionals between Alaska and the USSR.

Courses taught:

Human Anatomy and Physiology (2 levels)
Introduction to Health Sciences
Personal Health in Alaska
Multiple seminars on Siberia and Circumpolar Health

Research:

Principal US Medical Scientific Coordinator. "Bering Bridge Expedition" (National Geographic and DuPont Company) February, 1989. Involved coordinating and following dog sled expedition from Soviet Magadan Territory to Kotzebue, Alaska.

"Drug Use and Abuse in Alaska." I was the Field Coordinator for two years on this baseline statewide study. University of Alaska Anchorage, 1982.

Chaired committee on "Minorities in Higher Education: The Changing North" for The College Board, published 1988.

1978-1979 ALASKA STATE DIVISION OF CORRECTIONS Anchorage, Alaska

Chief of Health Services. I wrote and set up the medical care system for Corrections in Alaska. This included supervising health services and medical personnel as well as writing standards and federal grants to support those services.

1977-1978 ALASKA FEDERATION OF NATIVES Anchorage, Alaska

Special Assistant for Health Affairs. I was responsible for addressing the special needs of Alaska Natives through drafting public policies, organizing a statewide health needs assessment conference, and liaised with state and federal officials as well as the public.

HONOR ACTIVITIES

Co-chairman and founder, Bering Emergency Medical Services Committee, 1990-present.
Outstanding Services Award, Alaska Commissioner of Health, 1979.
Member, American Public Health Association, 1980
Member, Alaska Public Health Association, 1983
Member, Association of American Indian Physicians, 1981
Elected Council Member: Harvard School of Public Health Alumni Council 1981-1984
Trustee, United Way of Anchorage, 1978-1979.
Member, American Society for Circumpolar Health, 1981.
Elected to Board: Alaska Native Education Association, 1984. Re-elected, 1986.
Member, American Orthopsychiatric Association, 1984.
Elected to Board: Native American Science Education Association (NASEA), Washington, DC. 1984-1987.
Chairman, 1987 NASEA Alaska Conference
Advisor, World Health Organization, Nordic Council Meeting in Greenland, 1985.
Appointed Member, Research and Publications Committee, Alaska Area US Public Health Service, 1985-present. (I represent the Alaska Native Health Board)
Appointed (by Secretary of Health and Human Services) to the National Advisory Board, National Institutes of Health, Fogarty International Center 1985 to 1987.
Elected: Secretary General, International Union for Circumpolar Health (in Sweden, March, 1986) Re-elected Permanent Secretary General, International Union for Circumpolar Health for term 1987-1990 at Umea, Sweden General Union Assembly
Elected Member: New York Academy of Sciences, 1986.
Member, American Association of University Professors, 1987.
Elected Member: Harvard Club of Boston, 1988.
Directed first USSR (Magadan) to US (Alaska-Texas) Medevac, September, 1990.

HONORS:

1990. Commendation from State of Alaska for coordinating first medical evacuation from Soviet Far East to Alaska in September, 1990. Special recognition by State of Alaska Emergency Medical Services Council.
1990. Commendation from Office of Alaska Governor Cowper for participation in the Third Northern Regions Conference in Anchorage in May, 1990.
1990. Federal Aviation Administration: Citation for coordinating first Medivac Flight from Alaska to USSR in September of 1990.
1990. Alaska State Legislature Citation for contributions to being the first in recent times to initiate relations between Alaska and the Russian Arctic Scientific Community.
1990. State of Alaska Commendation Award signed by Governor and Lt. Governor for contributions for opening the doors between Alaska and the Soviet Far East.
1990. Named to "Who's Who in the Nation's Emerging Leaders". Marquis Publications. 1990 Edition.
1990. Named to "Who's Who in the World". Marquis Publications. 1990 edition.
1989. Named to "Who's Who in the West". Marquis Publications. 1989-1990 edition.
1989. Elected to and participated in Joint Civilian Orientation Conference, Class of 1954, Department of Defense, the Pentagon, Washington, DC.
1989. Alaska State Legislature Joint Senate and House Commendation recognizing contributions resulting in the awarding of the Honor Kempton Humanitarian Award.
1989. Named 7th recipient of the "Honor Kempton Service to Humanity Award" to be conferred April 8, 1989 by the National Spiritual Assembly of the Baha'i Faith of Alaska.
1988. College Board, Western Region, Special Recognition Award for outstanding contributions to education.
1988. Governor's Award for "Program of the Year" (UAA-Siberian Medical Research Program)
1986. National Institutes of Health, John E. Fogarty International Center Recognition and Appreciation Certificate

Theodore A. Mala, MD, MPH
Page Five. April 4, 1991

LANGUAGES:

Spanish (fluent); Russian (comprehension)

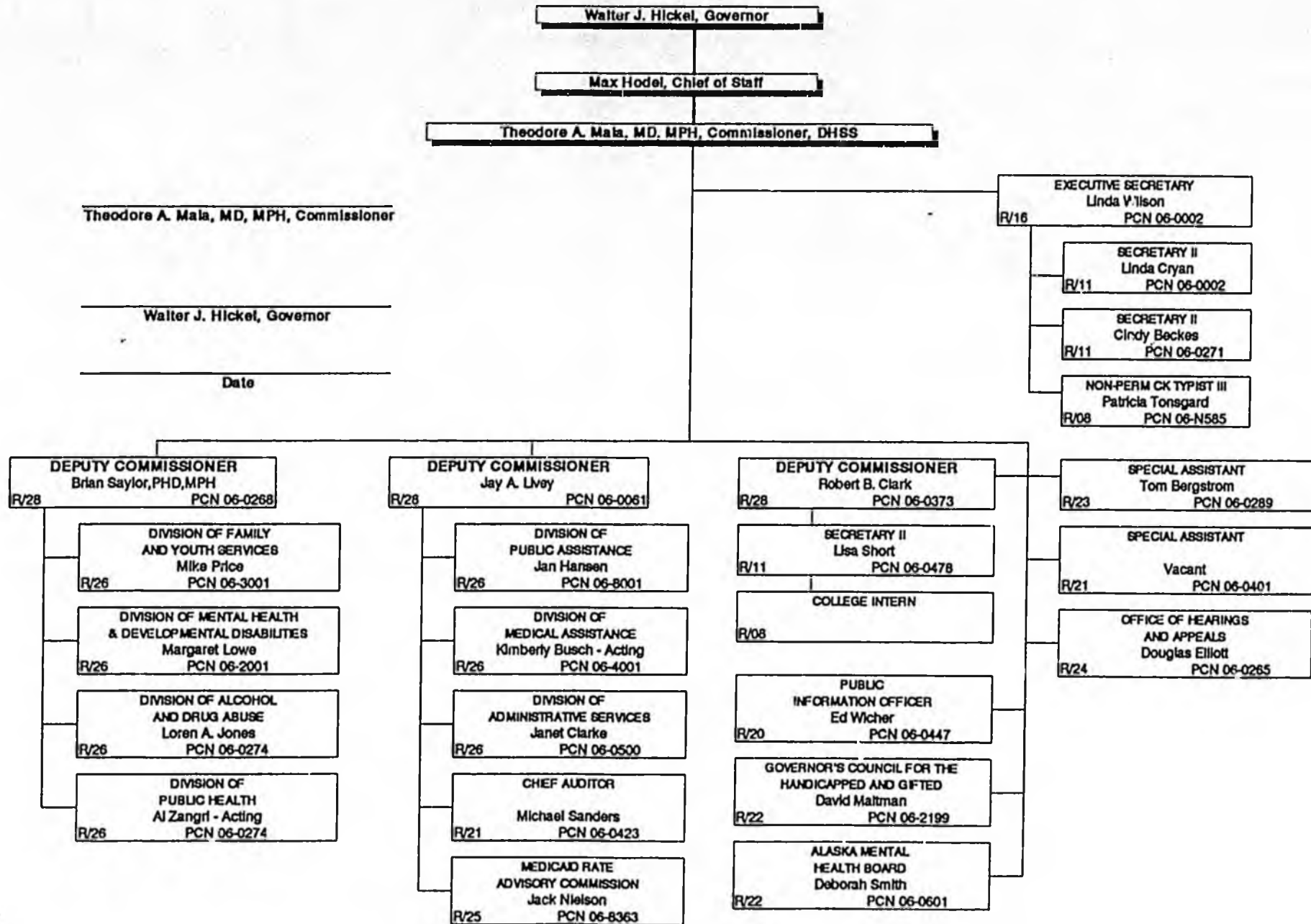
PERSONAL:

Married to Nancy Marie Edtl. Two children. Excellent health. Have traveled extensively lecturing and residing throughout US cities, Canada, Europe, Mexico, Guatemala, Soviet Russia especially Siberia and the Soviet Far East.

Special emphasis on circumpolar countries: Canada, USSR (Siberia and Soviet Far East), Greenland, Finland, Sweden, Denmark and Alaska where I have traveled and worked for years on common Northern circumpolar health problems.

REFERENCES AND PUBLICATIONS: Available on request.

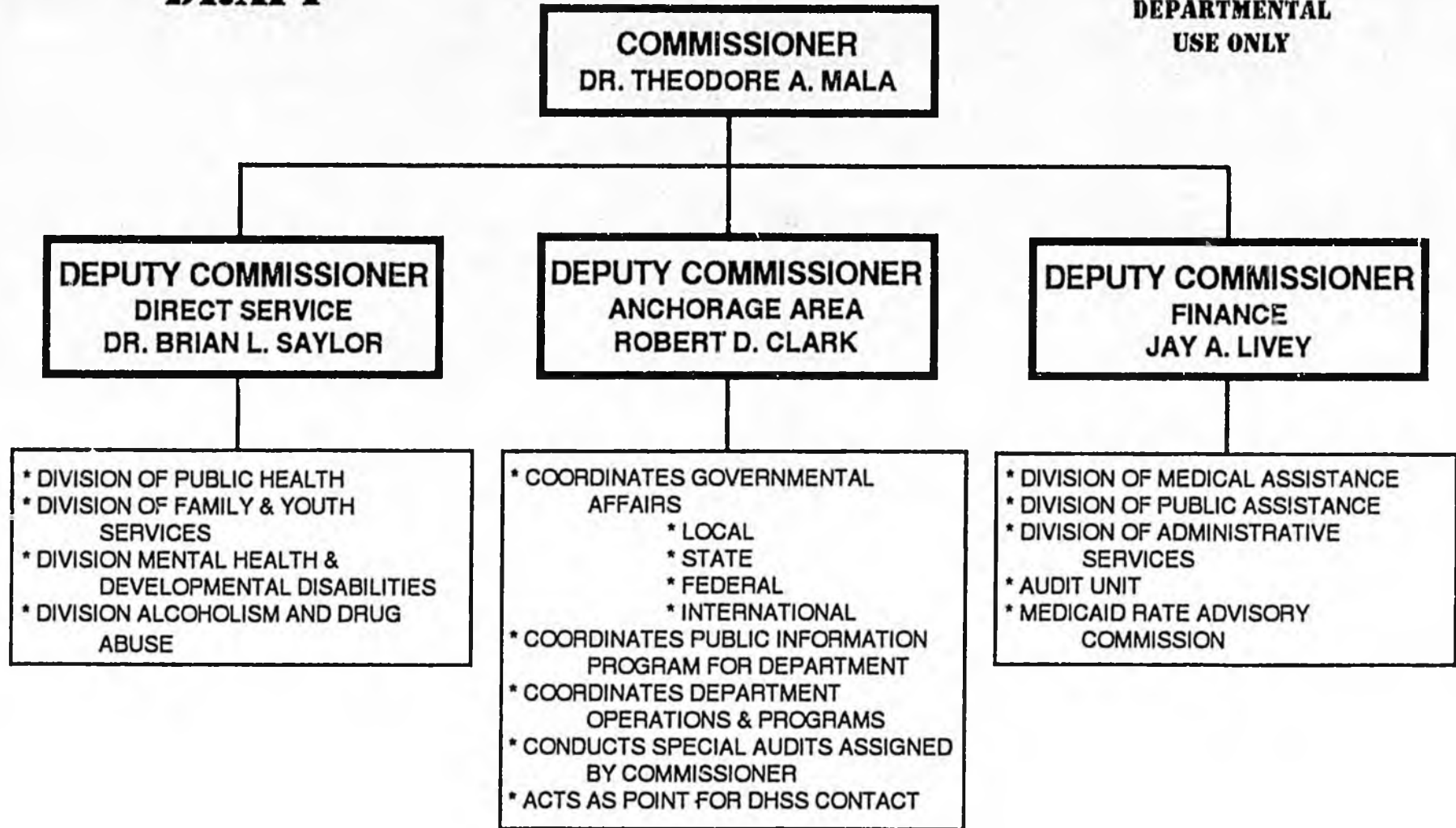
ORGANIZATION CHART
STATE OF ALASKA
DEPARTMENT OF HEALTH AND SOCIAL SERVICES
OFFICE OF THE COMMISSIONER



STATE OF ALASKA
DEPARTMENT OF HEALTH AND SOCIAL SERVICES

DRAFT

**FOR INTERNAL
DEPARTMENTAL
USE ONLY**



2-7-91 v.6

* PLEASE REFER TO ATTACHED DOCUMENT FOR "EXPLANATORY NOTES TO DRAFT ORGANIZATIONAL CHART"

EXPLANATORY NOTES TO DRAFT ORGANIZATIONAL CHART

Purpose: The purpose of these explanatory notes is to provide information and guidance to Departmental personnel as to administrative relationships and responsibilities of the Commissioner, two Juneau based Deputies (Direct Service and Finance) and Deputy Commissioner for the Anchorage area.

Notes:

1. Each of the three Deputy Commissioners report directly to the Commissioner.
2. The two Juneau based Deputy Commissioners are responsible to the Commissioner for administration of programs listed under Direct Services and Finance on the Chart.

These two Deputy Commissioners, from time to time may request assistance from the Anchorage based Deputy regarding any of the programs under their administrative structures on the chart.

The Deputy Commissioner in Anchorage may bring to the attention of the Juneau Deputy Commissioners or, in their absence, to the Commissioner's attention, any emergency or other unusual matter related to any DHSS program.

3. Private organizations and state institutions normally will contact the respective program Deputy Commissioner in Juneau for routine contractual or administrative issues. Such groups, in an urgent or emergency situation, may request assistance of the Anchorage Deputy in facilitating departmental responses for those matters.
4. Departmental Regional Managers in Anchorage will continue to report to the respective Division. Supervisors who report to Regional Managers will continue to report through those Regional Managers. The Regional Managers will continue to receive performance evaluations by those respective Division Supervisors.

5. The Deputy Commissioner for Anchorage area will have basic responsibilities as set forth on the organizational chart.

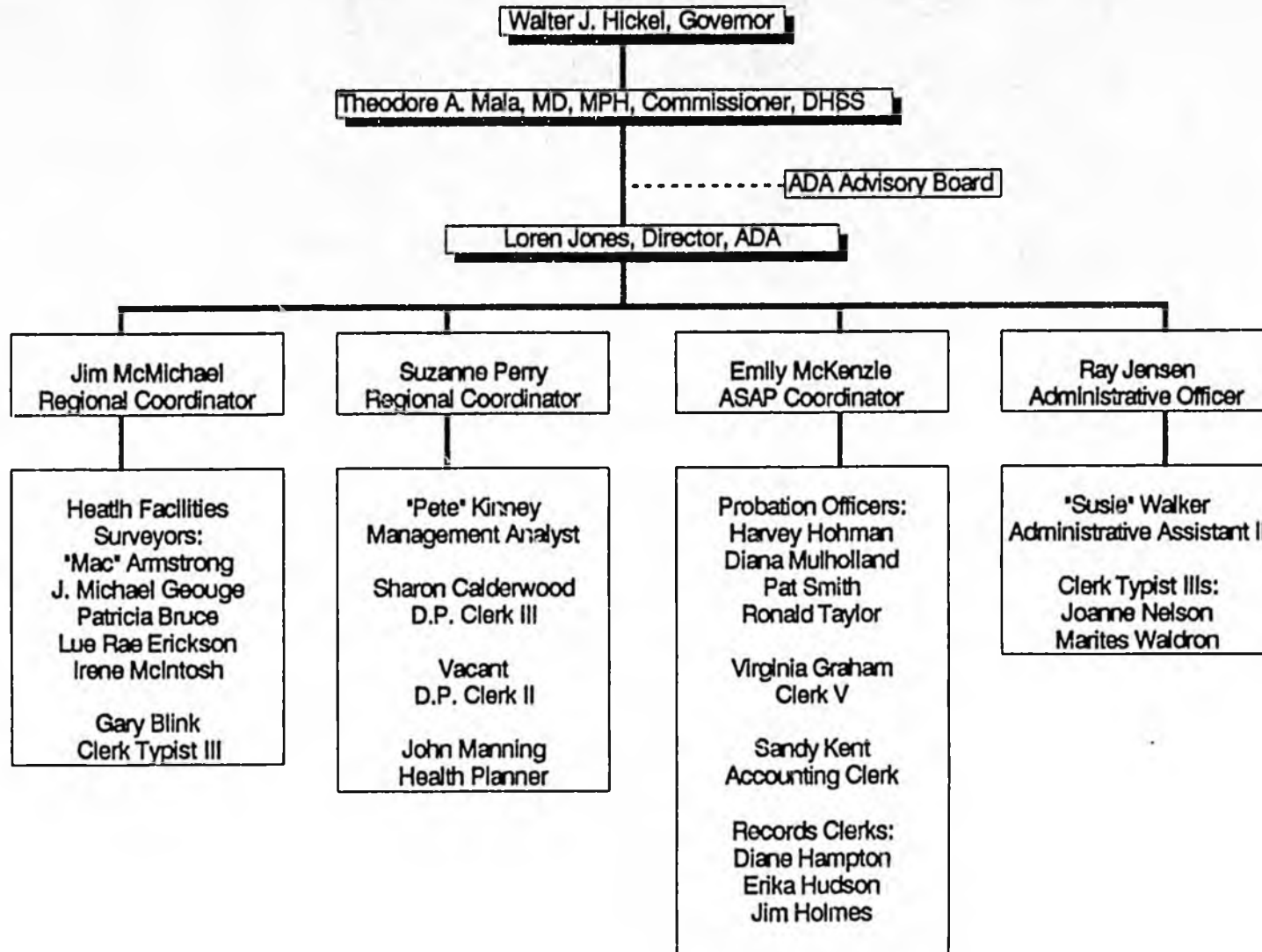
Each of the five functions are related to those program areas as implemented in and for "the Anchorage geographic area" as defined from time to time by the Commissioner.

Since the five functions listed are inter-related to the same types of activities and functions for the balance of the state, frequent formal and informal consultations between the Anchorage area Deputy and either the Deputy for Direct Service or Deputy for Finance will be needed. This will be especially important for the first three to six months of operations.

These consultations will assure consistent administration of the programs across the state.

ORGANIZATIONAL CHART

STATE OF ALASKA
DEPARTMENT OF HEALTH AND SOCIAL SERVICES
DIVISION OF ALCOHOLISM AND DRUG ABUSE



Approved _____

DEPARTMENT OF HEALTH & SOCIAL SERVICES
 Division of Administrative Services
 Organizational Chart

Approved: *J. Clarke 2/8/91*
 Janet Clarke, Director

OFFICE OF THE DIRECTOR
 0500 Director R/26 AWA
 0044 Sec. I R/10 AWA

WORD PROCESSING POOL
 0052 Admn. Asst. II R/14 AWA
 0422 Clerk Typist III R/08 AWA
 0118 Clerk Typist III R/08 AWA
 0081 Clerk Typist III R/08 AWA

INFORMATION SYSTEMS
 0355 DP Manager I R/21 AWA
 0327 Anlst/Prog IV R/19 AWA
 0454 Anlst/Prog IV R/19 EBA
 0343 DP Tech III R/16 AWA
 0439 Data Com Spec I R/18 AWA
DATA ENTRY
 0328 DP Clerk III R/11 AWA
 0354 DP Clerk II R/09 AWA
 0411 DP Clerk II R/09 AWA

FACILITIES SECTION
 0502 H&SS Plnr III R/21 AWA
 0314 Pblc Fac Plnr I R/20 AWA
 0385 Pblc Fac Plnr I R/20 EBA
 0384 Acct Tech I R/12 AWA
 0053 Archltecl R/21 AWA

PLANNING SECTION
 0114 Health Plnr III R/21 AWA
 0070 Health Plnr II R/19 AWA
 0320 Rsich Anlst III R/18 AWA

SUPPLY SECTION - JUNEAU
 0023 Supply Officer IV R/19 AWA
 0025 Supply Tech II R/12 AWA
 0455 Clerk IV R/09 AWA
 0090 DP Clerk II R/09 AWA
 0029 Mail Clerk Cr III R/09 AWA
SUPPLY SECTION - ANCHORAGE
 0066 Supply Officer III R/18 EBA
 0059 Supply Tech II R/12 EBA
 0063 Mail Clerk Cr III R/09 EBA
 0092 Clerk Typist II R/07 EBA

BUDGET SECTION
 0093 Budget Analyst IV R/21 AWA
 0011 Budget Anlyst III R/19 AWA
 0085 Budget Anlyst III R/19 AWA
 0117 Budget Anlyst III R/19 AWA
 0341 Rsich Anlyst II R/16 AWA
 0444 Acct Clerk III R/10 AWA

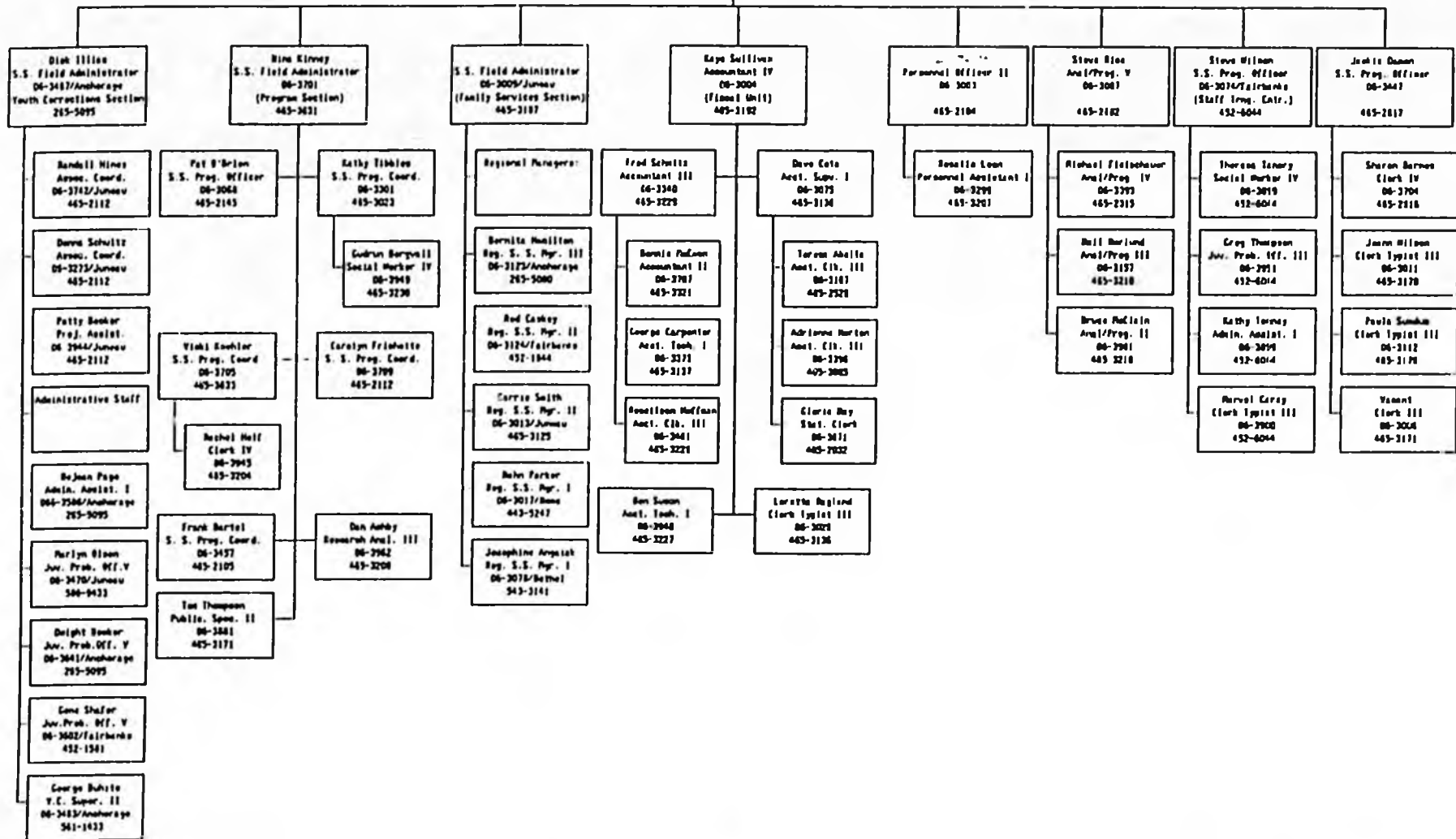
FINANCE SECTION
 0057 Acct Supervisor V R/22 AWA
 0013 Admn Asst III R/16 AWA
 0260 Admn Asst I R/12 AWA
JUNEAU FISCAL
 0012 Acct Supervisor II R/18 AWA
 0453 Acct Tech II R/14 AWA
 0104 Acct Tech I R/12 AWA
 0106 Acct Tech I R/12 AWA
 0014 Acct Clerk III R/10 AWA
 0068 Acct Clerk III R/10 AWA
 0105 Acct Clerk III R/10 AWA
 0021 Acct Clerk II R/09 AWA
 0017 Acct Clerk II R/09 AWA
 0018 Acct Clerk II R/09 AWA
 0048 Clerk I R/06 AWA
ANCHORAGE FISCAL
 0221 Acct Supervisor I R/16 EBA
 0094 Acct Clerk II R/09 EBA
 0270 Clerk Typist III R/08 EBA
JUNEAU REVENUE UNIT
 0028 Accountant IV R/20 AWA
 0245 Accountant III R/18 AWA
 0098 Acct Tech III R/16 AWA
 0096 Acct Tech II R/14 AWA

PERSONNEL & PAYROLL
 0007 Personnel Officer III R/22 AWA
CLASS/SPEC PROJECT
 0041 Personnel Spec II R/18 AWA
SOUTHEAST REGIONAL OFFICE
 0087 Personnel Officer I R/18 AWA
 0107 Personnel Asst II R/14 AWA
 0015 Personnel Asst I R/12 AWA
 0451 Acct Clerk III R/10 AWA
 0082 Acct Clerk II R/09 AWA
 0009 Clerk Typist III R/08 AWA
 0003 Clerk Typist II R/07 AWA
SOUTHCENTRAL REGIONAL OFFICE
 0064 Personnel Officer II R/20 EBA
 0008 Personnel Asst II R/14 EBA
 0072 Personnel Asst I R/12 EBA
 0065 Personnel Asst I R/12 EBA
 0452 Acct Clerk III R/10 EBA
 0046 Acct Clerk II R/09 EBA
 0050 Clerk Typist III R/08 EBA
 0108 Clerk II R/07 EBA

Department of Health & Social Services
 Division of Family & Youth Services
 Control Office

MICHAEL J. PRICE
 Division Director
 06-3001
 485-2191

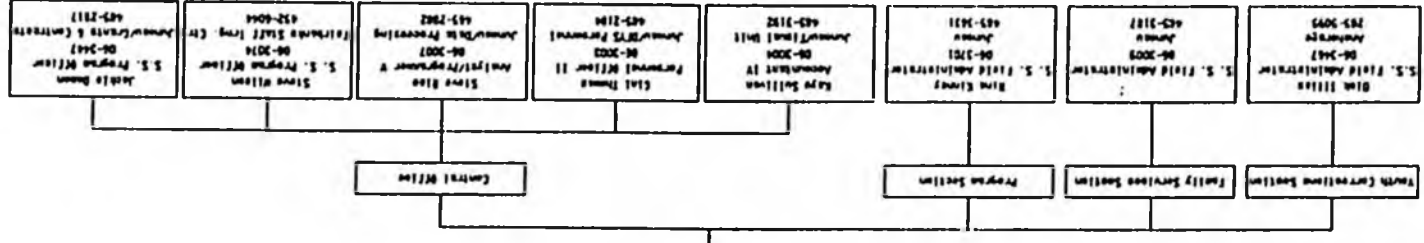
Phyllis Norman
 Secretary
 06-3782
 485-2191



Effective 12/15/80

Division of Family and Youth Services
 Bureau
 Effective 12/15/90

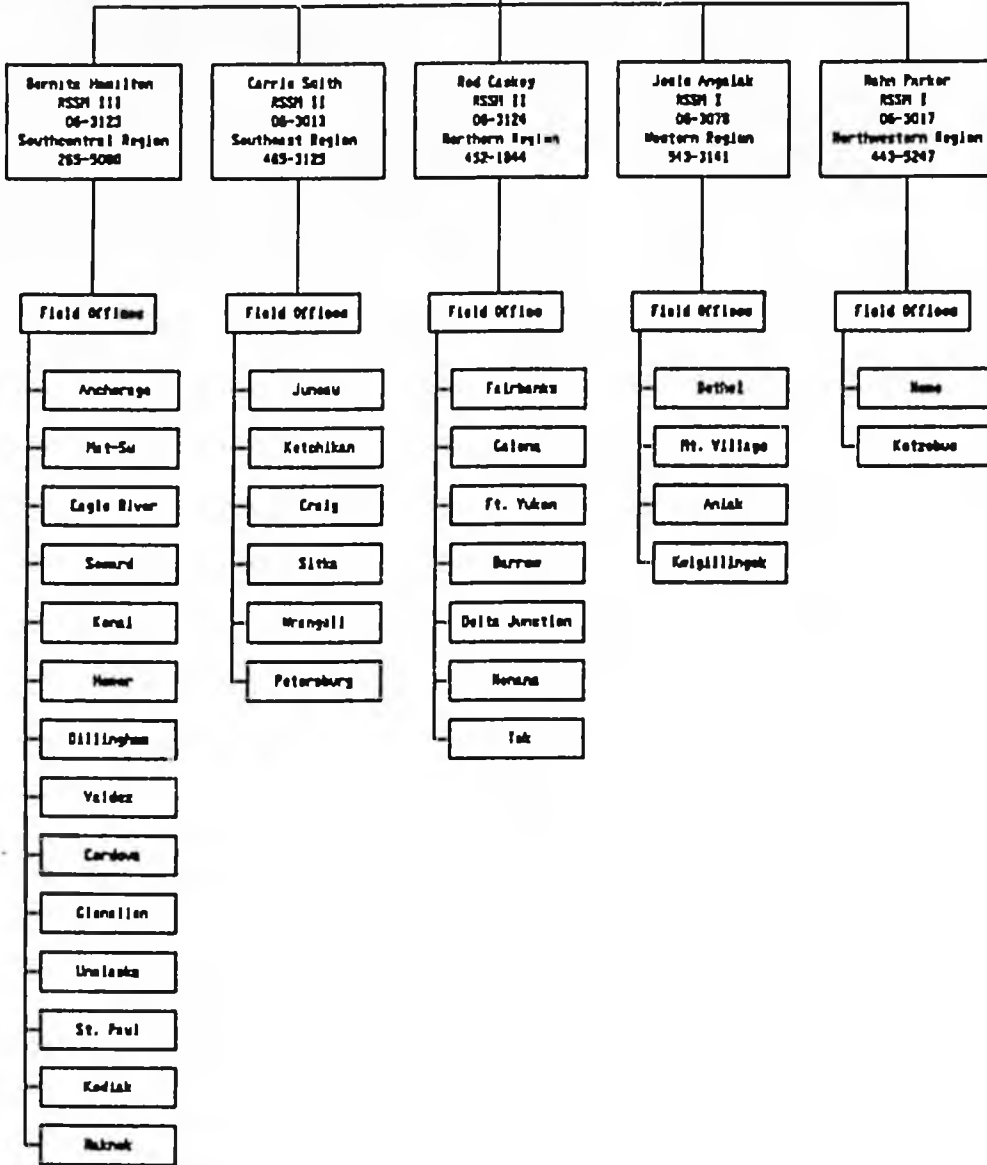
MICHAEL L. PRICE
 (Acting) Division Director
 06-2001
 James Central Office
 485-2181



Division of Family & Youth Services
 Family Services
 Field Office Locations

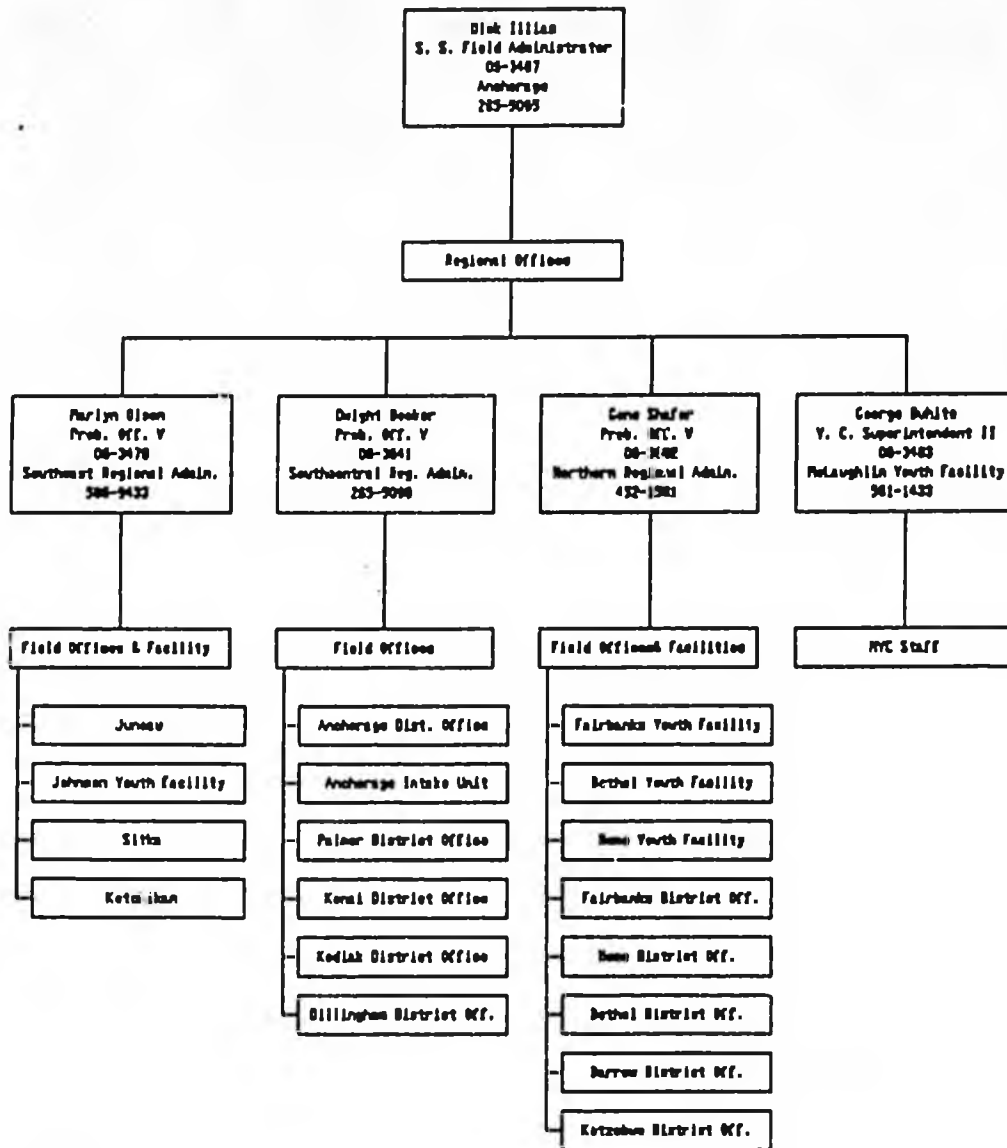
MICHAEL LAKE
 S. S. Field Admin.
 06-3008
 465-1187

Regional Offices

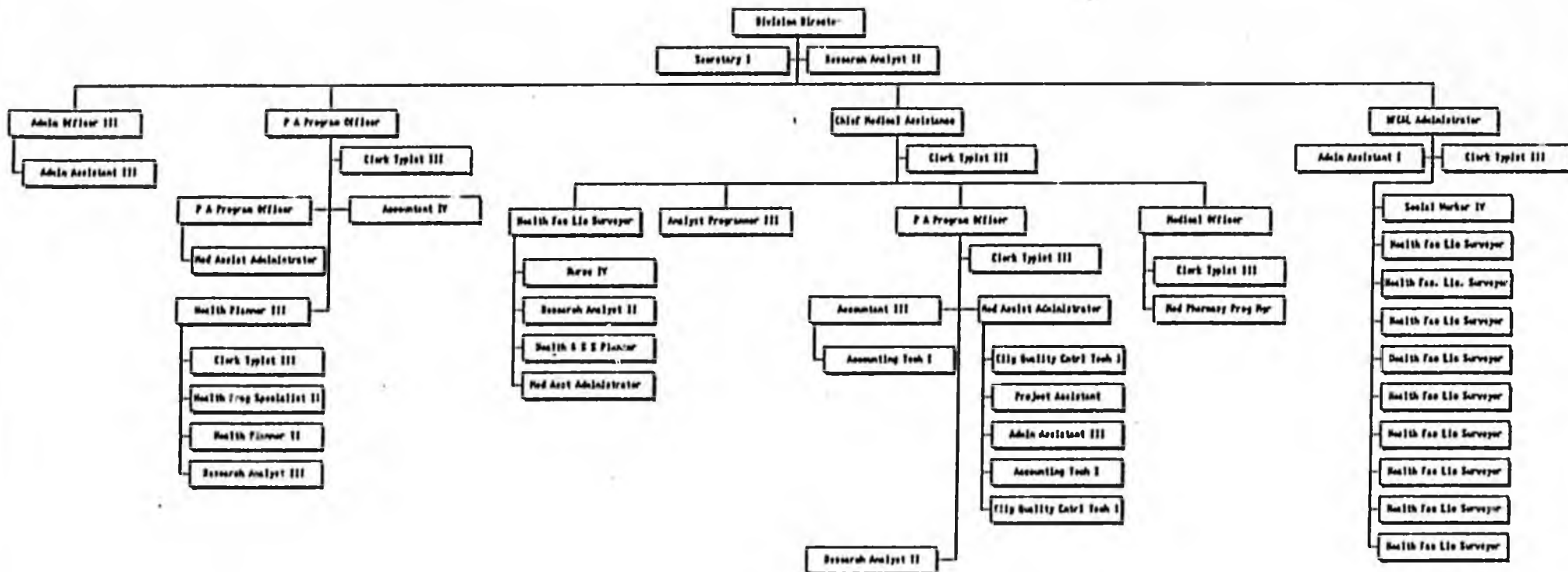


Effective 12/15/98

Division of Family and Youth Services
 Youth Corrections
 Field Office Locations

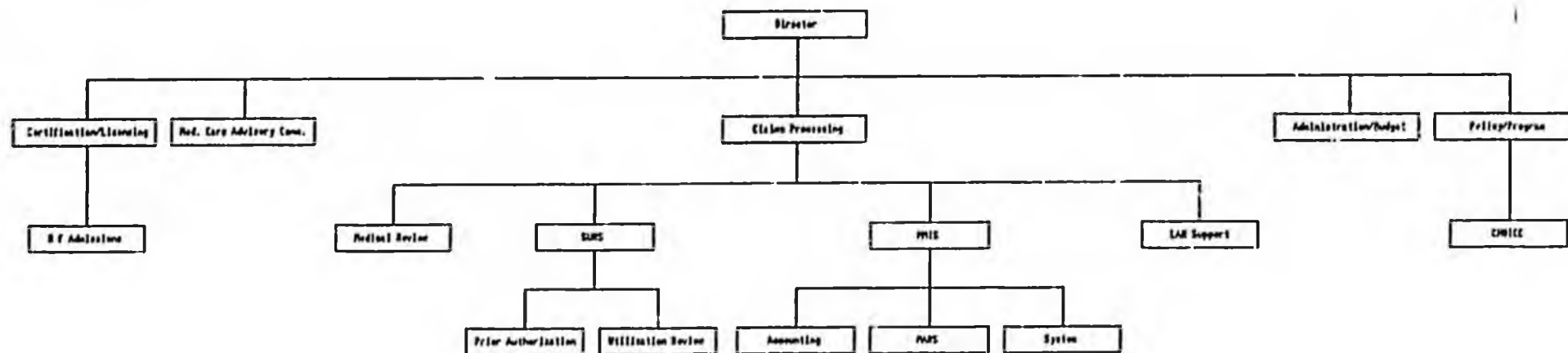


Effective 12/15/90



Director Kimball B. Busch

Date 11-28-90

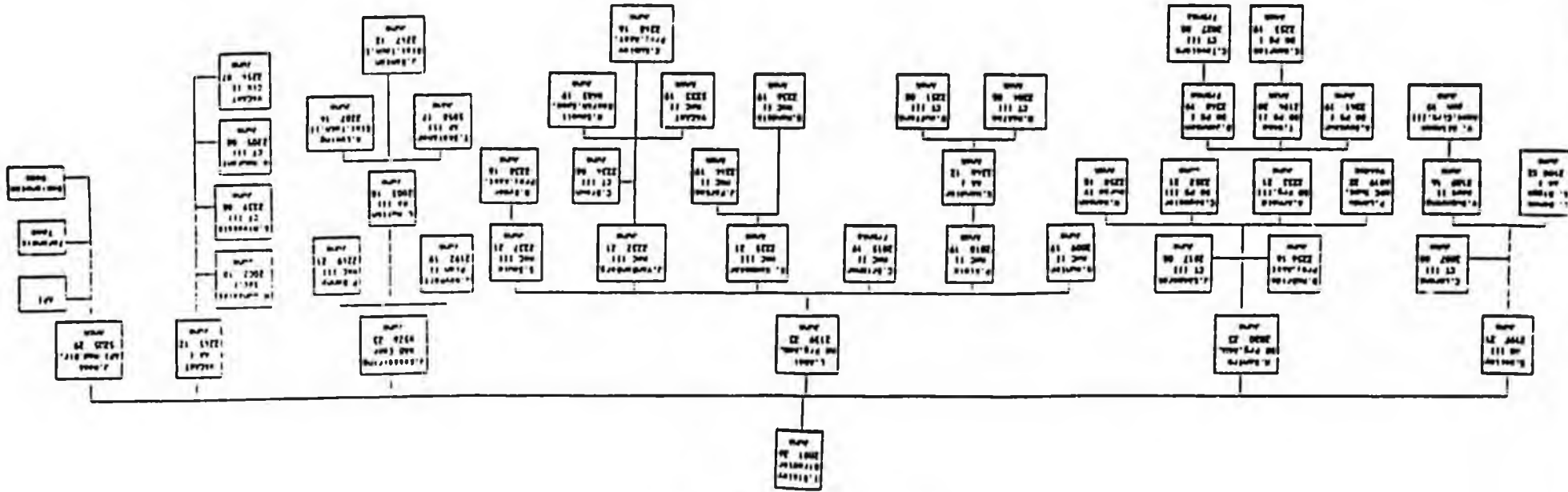


Director Kimberly B. Busch

Date 11-28-90

THE NAME OF THE COMPANY

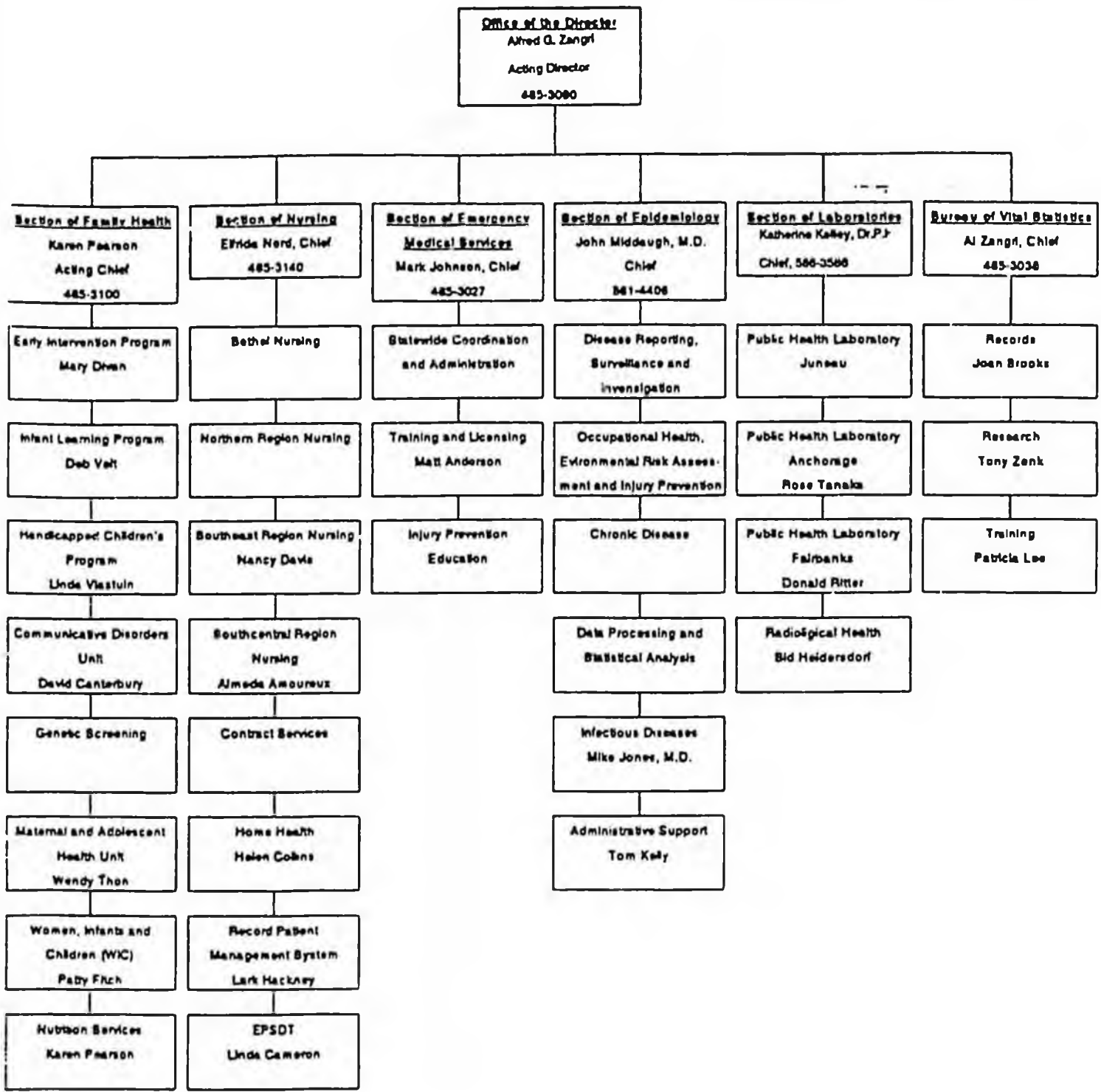
THE NAME OF THE COMPANY

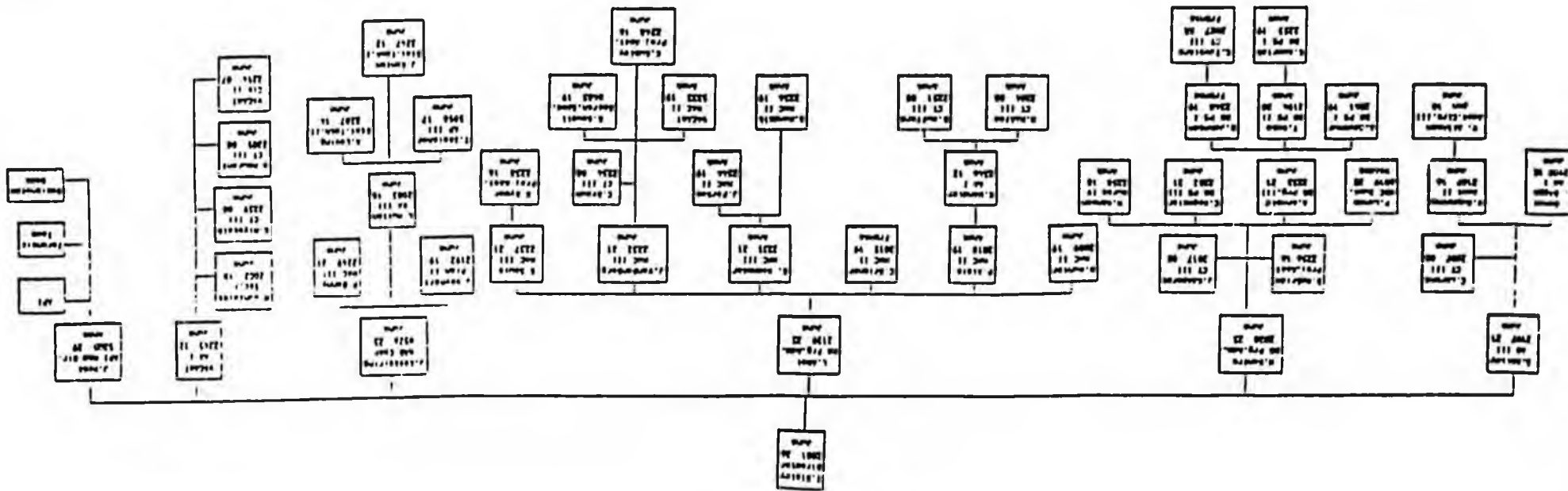


ORGANIZATION OF THE COMPANY
 PREPARED BY THE HUMAN RESOURCES DEPARTMENT
 DATE: 10/15/2023

Organization Chart

rev. 10-88

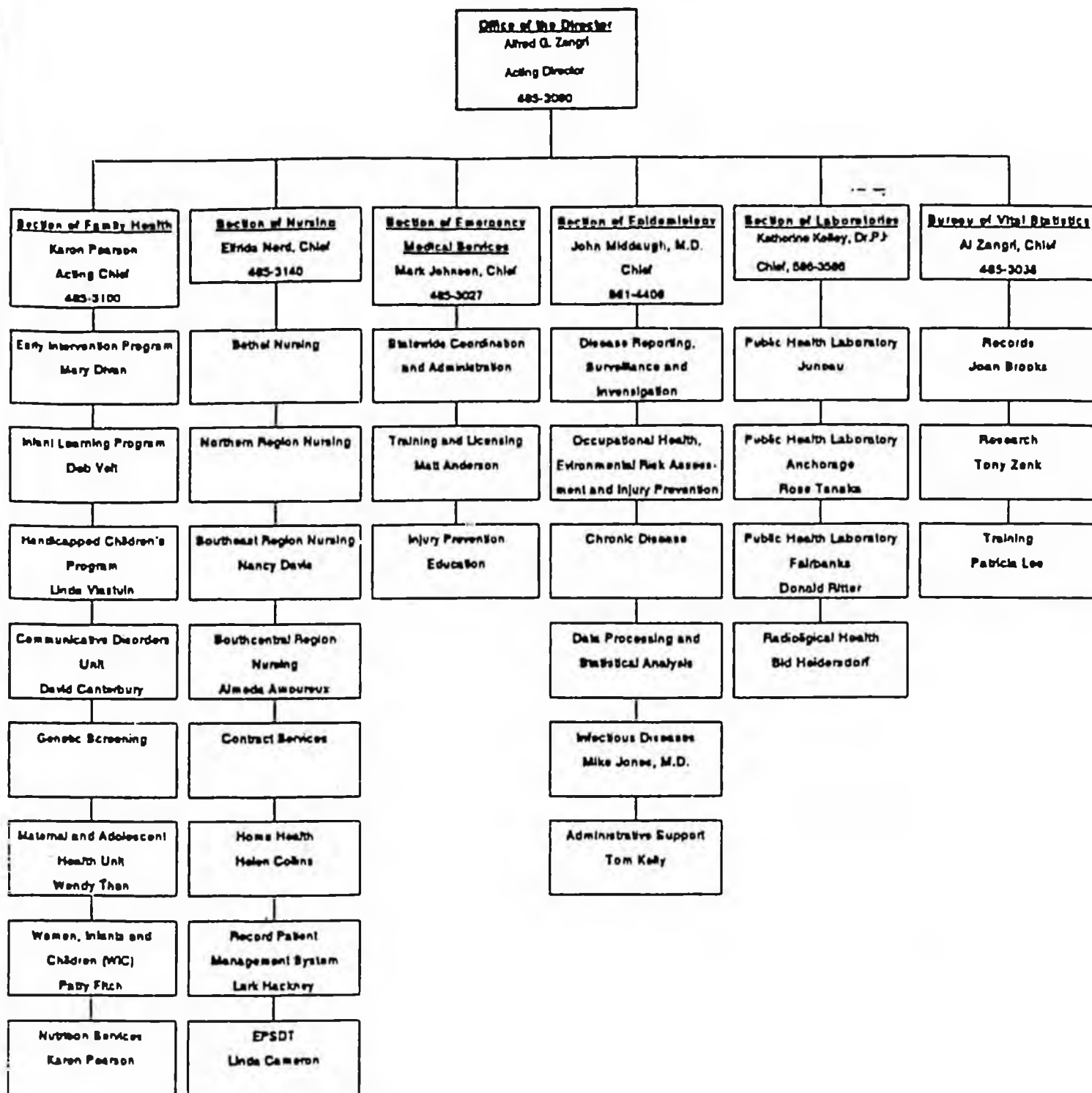




REVISION OF THE CHART AND THE ORGANIZATION OF THE BUREAU OF THE ARMY AND THE AIR FORCE
REVISION OF THE CHART AND THE ORGANIZATION OF THE BUREAU OF THE ARMY AND THE AIR FORCE

Division of Public Health
Organization Chart

1988



FIELD OPERATIONS

Location Codes EDA

CHIEF OF FIELD OPERATIONS 563-0394

Eames, Rebecca Chief 8121
 Hutch, Sharie CT III 8272

Corrective Action Unit 563-0394

Maxwell, Gregory PAA II 8314
 Ruuttila, Shane PAA I 8064
 Nolan, Michelle PAA I 8329

Early Fraud Detection Unit 277-3338

Price, Anita EQCT II 8397
 Luddington, Calvin INY II 8398
 Rogovin, Michelle EQCT I 8400
 Vacant EQCT I 8401
 Wakefield, Jackie ET II 8402

Fair Hearing 562-0631

Patterson, Garth PAPH 8344
 McEdward, Judy CT III 8345

Training 272-9342

Leonard, James PAIS 8165
 Foglia, Patricia PAA I 8422
 Snola, Thomas PAA I 8308
 Taft, Gerald PAA I 8048
 Schmidkofer, Mary PAA I 8309
 Waggoner, Rosemary CT III 8108

Anchorage Region

Reed, Ron PAPH 8081

Northern Region

Thomson, Judith PAPH 8042

SouthCentral/NorthWest

Eames, Rebecca PAPH 8068

Southeast Region

Hugh, Hargo PAPH 8095

Southwest Region

Flood, Jack PAPH 8157

MICROTAGE REGION

Location Code: EBA

Anchorage Regional Office 274-6324

Reed, Ronald D. PAPH I 8081
 Monaghan-Price, Eileen ET III/PI 8062
 Lidbergh-Jasper, Arlene C IV 8113
 Miller, Laura CT III 8024

<u>Corrective Action/Intern Unit</u>			<u>Intake Unit #1</u>			<u>Intake Unit #2</u>			<u>Intake Clerical Unit</u>			<u>VACANT POSITIONS</u>	
Kalelnikoff, Ronda	ET IV	8043	Hoyt, Stephanie	ET IV	8431	Venhaut, Robert	ET IV	8172	Gize, Dawn	C IV	8265		
Ervin, Char	ET III	8000	Jones-Birch, Jamie	ET III	8181	Dehler, Kim	ET III	8173	Schunk, Vickie	C III	8273	ET I/II	8423
Pull, Brad	ET II/IV-E	8405	Abram, Marlek	ET II	8409	Byrd, James	ET II	8348	Fiegler, Bruce	C III	8271	ET I/II	8435
Giovannelli, Mike	ET II/IV-C	8419	Hitchell, Robin	ET II	8434	Franches, Mary Lou	ET II	8312	Mason, Billy	C III	8270	ET I/II	8083
Holtanbach, Patty	ET I	8437	Thomas, Judith	ET II	8245	Foster, Lois	ET I	8116	Salth, Mary K	C III	8283	ET I/II	8174
Langerman, Linda	ET I	8439	Kelso, David	ET II	8033	Alexander, Cynthia	ET I	8140	Tollfeldt, Carolyn	C III	8264	ET I/II HP	5300
Huot, Rachel	ET I	8410	Rescamper, James	ET I	8170	Marshall, Katherine	ET I	8141	Simpson, Sandra	C III	8429	C II	8219
Doughty, Robert	ET I HP	5301	Rivers, Oswald	ET I	8438	Harding, Gene	ET I HP	5343				C III	8107
Dehler, Joanna	ET I HP	5356	Dredle, Margaret	ET I	8177	Horris, Jane	C IV	HP 8118				C II	8248
			Clifford, Linda	ET I HP	5354							ET I/II HP	8149
			Stano, Susan	ET I HP	5299								

<u>Adult Public Assistance Unit</u>			<u>Maintenance Unit I</u>			<u>Maintenance Unit II</u>			<u>Maintenance Unit III</u>			<u>Maintenance Clerical Unit</u>		
Conrad, Dave	ET IV	8071	Matthews, Joan	ET IV	8041	Melsker, Lisa	ET IV	8169	Laurin, Russ	ET IV	8298	Lindos, Patricia	C IV	8117
Leck, Suzanne	ET III	8106	Rupert, John	ET III	8084	Skoog-Moera, Cecily	ET III	8073	Shookmurtuk, Lydia	ET III	8433	Murray, Craig	C III	8368
Hilop, Marlon	ET II	8176	Featherly, Suzanne	ET II	8311	Kahana, Mary Alice	ET II	8301	Bergel, Bruce	ET III	8432	Welch, Theresa	C III	8066
Jackson, Joe	ET II	8061	James, Charles	ET II	8310	Farbail, Art	ET II	8333	Streeter, Gil	ET II	8244	Tessel, Donald	C III	8263
Holsten, Robert	ET II	8242	Stemol, Angela	ET II	8200	Black, Anthony	ET II	8328	Jacobs, Rita	ET II	8102	Hemacher, Craig	C II	8246
Lindis, Barbara	ET II	8259	Hornath, Dennis	ET II	8180	Ross, Becky	ET II	8299	Wells, David	ET II	8104	Reed, Linda	C II	8347
Woodard, Lennier	ET II	8302	Humphries, George	ET II	8425	Hagby, Gwen	ET II	8326	O'Mear, Donna	ET II	8160			
Davis, Mary	ET I	8436	Risch, Kelli	ET II	8417	Roeding, Kirk	ET II	8418	Bruce, Thomas	ET I	8257			
Priest, Stolly	ET I	8424	Lom (Gibson), Debra	ET II	8103	Jones, Lexlie	ET I	8231	Ramos, Ingrid	ET I	8173			
Morris, Michael	ET I	8175	Fleahng, Anita	C III	8336	Ropars, Judy	C III HP	5344	Ward, Larry	ET I HP	5315			
Hoff, Donald	C III	8342	Monson, Larry (IV)	ET III/IV	8305	Ramos, Frank (III)	ET III/IV	8307	Harp, Jolynn	C III	8430			
Alston, W. Craig	C III	8109												
Pusch, Vickie	C III	8107												

NORTHERN REGION

Location Code: JDA

Northern Regional Office 451-2054

Thomson, Judith RAPH 8042
 Vacant CT III 8275

Ft. Yukon 662-2327

Kalkins, Linda ET II 8058
 Potter, Mae CT II 8160

Intake Unit 451-2850

Compton, Diane ET IV 8315
 Jorissen, Mary Lou ET III 8118
 Hondrie, Greg ET II 8055
 Nicholson, Tim C III 8277
 Northley, Annette C III 8067
 Holcomb, Becky C III 8335
 Hutchinson, Dwyto C III 8279

Maintenance Unit 451-2050

Karnes, Sylvia ET IV 8040
 Wilson, Andrea ET III 8057
 Harrington, Marie Celine ET II 8075
 Dutton, Frank ET I 8182
 McGee, Barbara ET I 8202
 Andrews, David ET I 8420

Field Unit 451-2050

Wagner, Mary ET IV 8065
 Denson, Sandy ET III 8316
 Roddon, Estrellita ET II 8078
 Kelle, Bonnie ET I 8089

Clerical Unit 451-2050

Smith, Jesse C IV 8208
 Norclor, Rosa C III 8278
 Davis, Rosalie C III 8281
 Day, Lelan C III 8276
 Watts, Thorn C III 8025
 Stoll, Bruce C III 8447
 Ednisson, Myra C II 8237
 Doggett, Diana CT III 8274

Training Unit

Holyfield, Nilda ET IV 8442
 Carter, Jaime ET III 8179
 Wasser, Sharron ET I 8444
 Morrison, George ET I PPT 8406
 Vatter, Robert (IV-E) ET I PPT 8150
 Dahl, Carol ET I 8408
 Stuhr, Jacqueline ET I 8261
 Reed, Patricia ET I 8310
 Easaw, Gloria ET I 8203
 Hall, Sholla ET I NP 8346
 Wright, Dabra ET I NP 8347
 Dykas, Theresa ET I NP 8348
 Vacant ET I 8446

Specialty Unit sup'd by S. Karnes

Smith, Sandy ET III 8443
 Koo, Sandi ET II 8260
 Skinner, Sue ET II 8045
 Albin, Joy ET II 8236
 Holder, Susan ET II 8162

Review/Home Visits

Kitchinmaster, Carol ET III 8235
 Oseth, Linda ET III 8000

Energy Assistance

Millimason, Glen C IV 8219

Quality Control

Flenaugh, Mary
 Wheat, Mary

SOUTHCENTRAL NORTHWESTERN REGION

Location Code: EDA

SC/NW Regional Office 561-4370

Vacant	PAPH I	8068
McBratney, Charleen	ET III/FH	8117
Goldsmith, Carol	ET III IV	8319
Flowers, Brenda	C IV	8128
Bryan, Shirley	CT III	8159

FIELD UNIT I 561-4373 (EDA)

Biggs, Yarnetto	ET IV	8269
Gillette, Elmo	ET III	8099
Alles, Joan	ET II	0091
Bowman, Rhonda	ET II	8239
Pierre-Muriddin, Marquita	ET I	8460
Driscoll, Diantha	ET I	8141
Salazar, Terri	ET I	8258
Early, Johnie	C III	8110
Harris, Maureen	C III	K353
Vacant	ET I/IIIP	S302

Field Unit II 561-4364 (EDA)

Holce, Rudder	ET IV	
Fitch, Judith	ET III	
Payton, Georgia	ET II	
Sheldon, Joanne	ET II	
Britton, Jack	ET II	
Liljokvist, Ken	ET II	
Field, William	ET II	
Bjorgon, Randy	ET I IV-E	
Bandy, Katherine	ET I IP	
Huller, Ruth	C III	

DILLINGHAM 842-5961

Webb, Torry	ET I PPT	8145
-------------	----------	------

Kotzebue 442-3451

Thompson, Loretta	ET I	
Vacant	C III	

KODIAK 486-3783

Cornish, Helonaa	ET I	8063
McCormick, Owen	C III	8403

Home District Office 443-2237 (HHA)

Downey, Carol	ET IV	8044
Johnson, Frank	ET II	8391
Korenak, Rebecca	ET II	8448
Bronner, Susan (scas)	ET II	8230
Prather, Patricia	ET I	8051
Lyons, Michelle	ET I	8449
Horbert, Diane	CT III	8280
Hartso, June	C III PPT	8341
Vacant	ET I/II	8034

Masilla Dist Ofc 376-3903 (ECE)

Howard, Barbara	EOM	8201
Wolfe, Kathie	ET III IV	8097
Thisby, Joan	EAP C IV PPT	8216

Kenai Dist Ofc 262-9032 (DOA)

Feldman, Herlin	EOM I	8050
Krogh, Marilyn	EAP C IV PPT	8215

UNIT I

Frisson, Laurel	ET III	8378
Wood, Teryl	ET II	8251
Sparks, Sheila	ET II	8228
Travis, Michael	ET II	8377
Horgan, Robert	ET II	8457
Hiller, Walter	ET I	8322
Dale, Linda	ET I	8375
Hicks, Theresa	ET I PPT	8139
Bernstein, Stacy	ET I IP	K349
Sandvik, Eldon	ET I NP	K352

Intake Unit

Brooks, Katherine	ET III	8181
Rowley, Mary	ET II	8286
Richmond, Mary	ET II	8321
Segura, Esthor	ET II	8285

UNIT II

Campbell, Lee	ET IV	8098
Matura, Leslie	ET III	8171
Stegner, Sharon	ET II	8284
Stratton, Gloria	ET II	8253
Levan, Meeno	ET II	8458

Maintenance Unit

Hull, Sussonne	ET IV	8306
Skinner, Jeonette	ET II	8227
Gage, Deborah	ET II	8054
Grothe, Debbie	ET I PPT	8287
Brown, Barbara	ET I IP	S303
Floyd, Patricia	ET I IP	K350

Clerical Unit

Prahl, Nancy	C IV	8143
Johnson, Sharon	C III	8376
Hasson, Jane	C III	8366
Willis, Nancy	C III	8282
Pollard, Shannon	C III	8459
Hilliard, Teri	CT III	8238

Clerical Unit

Gerhard, Sharon	C IV	8331
Vacant	CT III	8207
Evanoff, Kari	C III	8289
Kopecky, Jillana	C III	8288
Snell, Judith	CT III	8467

Honor 235-6132 (superv'd by Feldman)

Johnson, Ilona	ET I	8320
Knapton, Anna E	C III	8334

SOUTHEAST REGION

Location Code: AMASoutheastern Regional Office 465-3537

Nash, Hargo		PAPM I	8095
Jennings, Evelyn		CT III	8330
Knight, David	QA/IV	ET III	8085
Pickett, Charlene		ET III	8324
Stanbury, Charlotte	IV-E	ET II	8404
Lenis, Leo		ET II	8030
Ashe, Donald		ET I	8455
Vacant (pos to be reclas'd to CT III)		ET I	8049

Location Code: ACALocation Code: ARALocation Code: AKAKetchikan District Office 225-2135

Dawson, Linda	ET IV	8037
Woodard, Rae Ann	ET III	0114
Thompson, William	ET II	8326
Peters, Janet	ET II	8347
McDowell, Petra	ET II	8325
Hollywood, Barbara	ET I	8168
Krobel, Katharine	ET I	8087
Ripley, Kathleen	CT III	8337
Scott, Hada	CT III	8032

Sitka District Office 747-8234

Monard, Cheryl	ET III	8206
Hefner, Kathleen	ET I	8115
Peel, Elizabeth	C III	8082
(Lolly)		

Juneau District Office 465-3551

O'Connell, Joni	ET IV	8039
Hamby, Rick	ET III	7119
Hoskito, Lolita	ET II	8046
Heinzon, Rick	ET II	8243
Burt, C. Rocky	ET I	8140
Paul, Rhonda	ET I	8183
Andersen, Brenda	ET I	8456
Edge, Claudollen (Scooter)	C IV	8332
Hansen, Darlene	C III	8086
Bowers, Izabelle	CT III	8338

Krangall 874-3935

Anderson, Jo	ET I PPT	8252
--------------	----------	------

Petersburg 772-3393

Hinderman, Terry (shared clerk w/dyfs)		
--	--	--

SOUTHWESTERN REGION

Location Code: DKA

Southwestern Regional Office 543-2686

Flood, Jack PAPH I 8157

<u>UNIT I</u>		<u>UNIT II</u>		<u>UNIT III</u>		<u>CLERICAL UNIT</u>					
Lester, Michele	ET IV	8069	Christiansen, Jeanette	ET IV	8303	Parsons, Michele	ET IV	8360	Tynes, Robin	C IV	8161
Mossile, Annie	ET III	8059	Stiegemeier, Franz	ET III	8120	Gholson, Carolyn	ET III	8317	Hillson, Ruth	C III	8369
Freeman, Joyce	ET II	8070	Angellan, Senka	ET II	8071	Coleman, Kathleen	ET II	8453	Evans, Matilda	G III	8035
Hanes, Michael	ET I	8452	Stiegemeier, Martha	ET II PPT	8323	Getty, Patricia	ET II	8367	Francisco, Marsha	C III	8454
Collins-Miller, Marie	ET I	8451	Raskin, Kristie	ET I	8450	Rovet, Bud	ET II	8038	LePore, Corino	C III	8355
Tschannen, Anellisa	ET I	8421	Sallifeo, Sino	ET I	8074	Angalak, William	ET II	8349	Romer, Horton	C II	8250
Rapoza, Cocolla	ET I PPT	8090	White, Faith	ET I PPT	8094	Choney, Lucy	ET II	8327	Velch, Yvos	C II	8056
Elliott, Evelyn	ET I RP	5342	Vacant	ET I/II	8079	Yager, Frances/Joanna	ET I	8031			

SYSTEMS OPERATIONS 562-3725

Location Code: EBA

Aaltonen, Karen PM/O
Spees, Robert C III
Hayo, Laura Act C III
Vacant PM ' Jno

O'Brien, Jack PM II
Stuart, Tom PM I
Vacant PM I
Spees, Jeff PM I
Wallace, Evelyn PM I
Boquist, Connie ET III
Kim, Seong DataProcessing Ass't
Hunloy, Rob DataProcessing Ass't

Vacant A/P V
Green, Mark A/P IV
Langston, Harv A/P IV
O'Keefe, Monica A/P III
Tooley, Doug A/P III
Eustice, Allan A/P II
Greene, Brady A/P I
Winn, Diane A/P I
Lentfer, Susan A/P I
Vacant A/P I
Vacant A/P I

FIELD OPERATIONS

Location Codes EUA

CHIEF OF FIELD OPERATIONS 563-0394

Emmes, Rebecca Chief 8121
 Nutch, Sharie CT III 8272

Corrective Action Unit 563-0394

Maxwell, Gregory PAA II 8314
 Ruottila, Shana PAA I 8064
 Nolan, Michelle PAA I 8329

Fair Hearing 562-0631

Patterson, Garth PAPO 8344
 McEdward, Judy CT III 8345

Early Fraud Detection Unit 277-3330

Price, Anita EQCT II 8397
 Luddington, Calvin INV II 8398
 Rogovin, Michelle EQCT I 8400
 Vacant EQCT I 8401
 Wakefield, Jackie ET II 8402

Training 272-9342

Leonard, James PAIS 8165
 Foglia, Patricia PAA I 8422
 Snola, Thomas PAA I 8308
 Taft, Gerald PAA I 8048
 Schmidkofer, Mary PAA I 8309
 Waggoner, Rosemary CT III 8108

Anchorage Region

Read, Ron PAPH 8081

Northern Region

Thomson, Judith PAPH 8042

SouthCentral/NorthWest

Emmes, Rebecca PAPH 8068

Southeast Region

Hosh, Margo PAPH 8095

Southwest Region

Flood, Jack PAPH 8157

ANCHORAGE REGION

Location Code: EBA

Anchorage Regional Office 274-6524

Reed, Ronald D. PAFM I 0081
 Monaghan-Price, Eileen ET III/FH 0062
 Lidbergh-Jasper, Arlene C IV 8113
 Miller, Laura CT III 8024

Corrective Action/Intern Unit

Intake Unit #1

Intake Unit #2

Intake Clerical Unit

VACANT POSITIONS

Kateinikoff, Ronda ET IV 8041	Koyt, Stephanie ET IV 8431	Vorhove, Robert ET IV 8172	Gize, Dawn C IV 8165		
Ervin, Char ET III 8060	Jones-Birch, Jamie ET III 8181	Dehler, Kim ET III 8173	Schunk, Vickie C III 8273	ET I/II 8423	
Puff, Brad ET I/IV-E 8405	Abram, Warwick ET II 8405	Byrd, James ET II 8348	Flegler, Bruce C III 8271	ET I/II 8415	
Clovenelli, Mike ET I/IV-E 8119	Hitchell, Robin ET II 8434	Frankos, Mary Lou ET II 8312	Keen, Billy C III 8270	ET I/II 8083	
Hollenbach, Patty ET I 8437	Thomas, Judith ET II 8245	Foster, Lois ET I 8116	Salth, Mary K C III 8283	ET I/II 8174	
Lengerman, Linda ET I 8439	Masuo, David ET II 8033	Alexander, Cynthia ET I 8240	Tellfeldt, Carolyn C III 8264	ET I/II HP 5300	
Huolz, Rachel ET I 8410	Reemper, James ET I 8170	Marshall, Katherine ET I 8441	Simpson, Sandra C III 8429	C II 8219	
Doughty, Robert ET I HP 5301	Rivers, Oswald ET I 8438	Harding, Gene ET I HP 5343		C III 8107	
Dehler, Joanne ET I HP 5356	Brodie, Margaret ET I 8177	Herris, June C IV HP 8218		C II 8248	
	Clifford, Linda ET I HP 5354			ET I/II TPI 8149	
	Stone, Susan ET I HP 5299				

Adult Public Assistance Unit

Maintenance Unit I

Maintenance Unit II

Maintenance Unit III

Maintenance Clerical Unit

Conrad, Dave ET IV 8073	Matthews, Joan ET IV 8041	Melaker, Lisa ET IV 8169	Laurin, Russ ET IV 8298	Lin-Boe, Patricia C IV 8112	
Lack, Suzanne ET III 8106	Rupert, John ET III 8044	Shoog-Moore, Cally ET III 8073	Shoog-Moore, Lydie ET III 8133	Murray, Craig C III 8268	
Hiclop, Marlon ET II 8176	Featherly, Suzanne ET II 8311	Kahana, Mary Alice ET II 8301	Emgat, Bruce ET III 8132	Welch, Theresa C III 8066	
Jackson, Joe ET II 8061	James, Charles ET II 8310	Iarball, Art ET II 8333	Streeter, Gil ET II 8244	Yessal, Donald C III 8263	
Nielsen, Robert ET II 8213	Stemel, Angela ET II 8100	Black, Anthony ET II 8128	Jacobs, Rita ET II 8102	Konacher, Craig C II 8246	
Lindie, Barbara ET II 8259	Horvath, Dennis ET II 8180	Ross, Decky ET II 8299	Wells, David ET II 8104	Road, Linda C II 8247	
Roodard, Lennier ET II 8302	Humphries, George ET II 8425	Mogby, Dawn ET II 8226	O'Neal, Donna ET II 8160		
Davis, Mary ET I 8436	Risch, Kelli ET II 8117	Roesling, Kirk ET II 8418	Druce, Thomas ET I 8257		
Priest, Sholly ET I 8424	Low (Gibson), Debra ET II 8103	James, Leslie ET I 8231	Ramos, Ingrid ET I 8173		
Morris, Michael ET I 8175	Fleming, Anita C III 8316	Ravera, Judy C III HP 5344	Ward, Larry ET I HP 5345		
Hoff, Donald C III 8382	Monson, Larry (HW) ET III/IV 8305	Ramos, Frank (HW) ET III/IV 8307	Harp, Jolynn C III 8150		
Alston, W. Craig C III 8107					
Fusich, Vickie C III 8107					

NORTHERN REGION

Location Code: JUA

Northern Regional Office 451-2854

Thomson, Judith RAPH 8042
 Vacant CT III 8275

Ft. Yukon 662-2327

Katkins, Linda ET II 8058
 Potter, Mae CT II 8160

Intake Unit 451-2850

Compton, Diane ET IV 8315
 Jorissen, Mary Lou ET III 8118
 Hondric, Greg ET II 8055
 Nicholson, Tim C III 8277
 Northey, Annetta C III 8057
 Halcomb, Becky C III 8335
 Hutchinson, Dwyta C III 8279

Maintenance Unit 451-2850

Karnes, Sylvia ET IV 8040
 Wilson, Andrea ET III 8057
 Harrington, Marie Colina ET II 8075
 Dutton, Frank ET I 8182
 HoGeo, Barbara ET I 8202
 Andrews, David ET I 8420

Field Unit 451-2850

Wagner, Mary ET IV 8065
 Benson, Sandy ET III 8316
 Redden, Estrellita ET II 8078
 Wells, Bonnie ET I 8089

Clerical Unit 451-2850

Smith, Jesse C IV 8208
 Horcier, Rosa C III 8278
 Davis, Rosalie C III 8281
 Day, Lelon C III 8276
 Matts, Thora C III 8025
 Stoll, Bruce C III 8447
 Edmisson, Myra C II 8237
 Daggott, Diana CT III 8274

Training Unit

Holyfield, Nilda ET IV 8442
 Carter, Jalma ET III 8179
 Wasser, Sharron ET I 8444
 Morrison, George ET I PPT 8406
 Vatter, Robert (IV-E) ET I PPT 8150
 Dahl, Carol ET I 8408
 Stuhr, Jacqueline ET I 8261
 Reed, Patricia ET I 8318
 Easaw, Gloria ET I 8203
 Hall, Sholla ET I MP 8346
 Wright, Dobra ET I MP 8347
 Dykes, Mercedes ET I MP 8348
 Vacant ET I 8446

Speciality Unit sup'd by S. Karnes

Smith, Sandy ET III 8443
 Koo, Sandi ET II 8260
 Skinner, Sue ET II 8045
 Albin, Joy ET II 8236
 Holder, Susan ET II 8102

Review/Home Visits

Kitchenmaster, Carol ET III 8235
 Oseth, Linda ET III 8008

Energy Assistance

Williamson, Grien C IV 8219

Quality Control

Flenough, Mary
 Wheat, Mary

SOUTHCENTRAL NORTHWESTERN REGION

Location Code: EBA

SC/NW Regional Office 561-4370

Vacant	PAPH I	8068
McBratney, Charleen	ET III/III	8117
Goldsmith, Carol	ET III IV	8319
Flowers, Brenda	C IV	8128
Bryan, Shirley	CT III	8159

FIELD UNIT I 561-4373 (EOA)

Bliggs, Vernetto	ET IV	8269
Gillette, Elma	ET III	8099
Alles, Joan	ET II	8091
Bowman, Rhonda	ET II	8239
Pierre-Muriddin, Marquita	ET I	8460
Driscoll, Blanco	ET I	8141
Salazar, Terri	ET I	8258
Early, Johnie	C III	8110
Harris, Maurcen	C III	K353
Vacant	ET I/II/III	S302

Field Unit II 561-4364 (EOA)

Holce, Rudder	ET IV	8304
Fitch, Judith	ET III	8111
Payton, Georgia	ET II	8300
Sheldon, Joanne	ET II	8229
Britton, Jack	ET II	8225
Liljokvist, Ken	ET II	8461
Field, William	ET II	8101
Bjorgon, Randy	ET I IV-E	8416
Bandy, Katharine	ET I NP	K351
Huller, Ruth	C III	8266

DILLINGHAM 842-5961

Webb, Torry	ET I PPT	8145
-------------	----------	------

Kotzebue 442-3451

Thompson, Loretta	ET I	8205
Vacant	C III	8052

KODIAK 486-3783

Cornish, Holanad	ET I	8063
McCormick, Gwen	C III	8403

Hume District Office 443-2237 (IITA)

Downey, Carol	ET IV	8044
Johnson, Frank	ET II	8391
Korenek, Rebecca	ET II	8448
Brenner, Susan (seas)	ET II	0230
Prather, Patricia	ET I	0051
Lyons, Michelle	ET I	0449
Herbert, Diane	CT III	8280
Martin, June	C III PPT	0341
Vacant	ET I/II	0034

Wasilla Dist Ofc 376-3903 (ECE)

Howard, Barbara	EOH	8201
Wolf, Kathie	ET III IV	8097
Thisby, Joan	EAP C IV PPT	8216

UNIT I

Frisson, Laurel	ET III	0370
Wood, Teryl	ET II	8251
Sparks, Shella	ET II	8228
Travis, Michael	ET II	0377
Horgan, Robert	ET II	0457
Miller, Walter	ET I	8322
Dale, Linda	ET I	8375
Hicks, Theresa	ET I PPT	8139
Bernstein, Stacy	ET I NP	K349
Sandvik, Eldon	ET I NP	K352

UNIT II

Campbell, Lee	ET IV	8098
Matura, Leslie	ET III	8171
Stegner, Sharon	ET II	8284
Stratton, Gloria	ET II	8253
Levon, Heeno	ET II	0458

Clerical Unit

Prahl, Nancy	C IV	8143
Johnson, Sharon	C III	8376
Hanson, Jane	C III	8366
Millis, Nancy	C III	8282
Pollard, Shannon	C III	8459
Millard, Teri	CT III	0238

Kenai Dist Ofc 262-9032 (DQA)

Feldman, Herlo	EOH I	8050
Krogh, Marilyn	EAP C IV PPT	8215

Intake Unit

Drooks, Katherine	ET III	8181
Rowley, Mary	ET II	0286
Richmond, Mary	ET II	8321
Segura, Esther	ET II	8285

Maintenance Unit

Hull, Susanne	ET IV	8306
Skinner, Jeanette	ET II	0227
Gage, Deborah	ET II	8054
Grothe, Debbie	ET I PPT	8207
Brown, Barbara	ET I NP	S303
Floyd, Patricia	ET I NP	K350

Clerical Unit

Gerliard, Sharon	C IV	8331
Vacant	CT III	8207
Evanoff, Kari	C III	0209
Kopecky, Jilliana	C III	8208
Snell, Judith	CT III	8467
<u>Homer 235-6132 (superv'd by Feldman)</u>		
Johnson, Ilona	ET I	8320
Knapton, Anne E	C III	8334

SOUTHEAST REGION

Location Code: AYASoutheastern Regional Office 465-3537

Hashi, Margo		PAPM I	8095
Jennings, Evelyn		CT III	8330
Knight, David	QA/IV	ET III	8085
Pickett, Charlene		ET III	8324
Stanbory, Charlotte	IV-E	ET II	8404
Lewis, Lea		ET II	8030
Ashe, Donald		ET I	8455
Vacant (pos to be reclass'd to CT III)		ET I	8049

Location Code: ACAKetchikan District Office 225-2135

Dawson, Linda	ET IV	8037
Woodard, Roe Ann	ET III	8114
Thompson, William	ET II	8326
Peters, Janet	ET II	8347
McDowell, Petra	ET II	8325
Hollywood, Barbara	ET I	8168
Krobel, Katharine	ET I	8087
Ripley, Kathleen	CT III	8337
Scott, Hada	CT III	8032

Krangel 874-3935

Anderson, Jo ET I PPT 8252

Location Code: ARASitka District Office 747-8234

Howard, Cheryl	ET III	8206
Hefner, Kathleen	ET I	8115
Peel, Elizabeth	C III	8082
(Lolly)		

Petersburg 772-3393

Hinderman, Terry (shared clerk n/dyfs)

Location Code: AXAJuneau District Office 465-3551

O'Connell, Joni	ET IV	8039
Hamby, Rick	ET III	8119
Hoskito, Lolita	ET II	8046
Hainzon, Rick	ET II	8243
Burt, C. Rocky	ET I	8140
Paul, Rhonda	ET I	8183
Andersen, Brenda	ET I	8456
Edge, Claudellen (Scooter)	C IV	8332
Hansen, Darlene	C III	8086
Bowers, Izabelle	CT III	8338

SOUTHWESTERN REGION

Location Code: DKASouthwestern Regional Office 543-2686

Flood, Jack PAPH I 8157

UNIT I

Lestar, Michele	ET IV	8069
Wassilje, Annie	ET III	8059
Freeman, Joyce	ET II	8070
Hanos, Michael	ET I	8452
Calli-Miller, Marie	ET I	8451
Tschannen, Anellise	ET I	8421
Repoza, Cecelia	ET I PPT	8090
Elliott, Evelyn	ET I HP	5342

UNIT II

Christiansen, Jeanette
Stiegemeier, Franz
Angellian, Senka
Stiegemeier, Martha
Raskin, Kristie
Sallifao, Sino
White, Faith
Vacant

UNIT III

ET IV	8303	Parsons, Michele
ET III	8120	Cholson, Carolyn
ET II	8071	Coleman, Kathleen
ET II PPT	8323	Cetty, Patricia
ET I	8450	Revet, Bud
ET I	8074	Angalak, William
ET I PPT	8094	Chaney, Lucy
ET 1/II	8079	Yager, Frances/Joanne

CLERICAL UNIT

ET IV	8368	Tynes, Robin	C IV	8161
ET III	8317	Hillson, Ruth	C III	8369
ET II	8453	Evans, Matilda	C III	8035
ET II	8367	Francisco, Harsha	C III	8454
ET II	8038	LePore, Corina	C III HP	5355
ET II	8349	Romer, Harlon	C II	8250
ET II	8327	Welch, Yves	C II	8056
ET I	8031			

SYSTEMS OPERATIONS 562-3725

Location Code: EBA

Aaltonen, Karen
Speas, Robert
Hayo, Laura
Vacant

PAFO
C III
Act C III
PAA I Jno

O'Brien, Jack PAA II
Stuart, Tom PAA I
Vacant PAA I
Speas, Jeff PAA I
Wallace, Evelyn PAA I
Boquist, Connie ET III
Kim, Seong DataProcessing Ass't
Hunloy, Rob DataProcessing Ass't

Vacant A/P V
Green, Hark A/P IV
Langston, Harv A/P IV
O'Keefe, Monica A/P III
Tooley, Doug A/P III
Eustice, Allen A/P II
Greene, Brady A/P I
Winn, Diane A/P I
Lentfer, Susan A/P I
Vacant A/P I
Vacant A/P I

MEDICAID RATE ADVISORY COMMISSION

3601 C Street, Suite 250
Anchorage

Phone: 562-1996

JACK NIELSON
EXECUTIVE DIRECTOR

MARY ANDERSON
PROG. BUDGET ANAL. III

MONA SHIPMAN
INTERNAL AUDITOR I

LAURA YOUNG
INTERNAL AUDITOR II

TERRY KLEMENSON
ACCOUNTING TECH I

KENT HARTZBERG
INTERNAL AUDITOR III

RANDALL SCHLAPIA
INTERNAL AUDITOR IV

SUE BROWN
SECRETARY I

**DEPARTMENT OF HEALTH AND
SOCIAL SERVICES**

IN BRIEF

DRAFT



**THEODORE A. MALA, MD, MPH
COMMISSIONER**

January 28, 1991

January 11, 1989

Dear Legislator:

The attached document provides an introduction to the programs offered to the residents of Alaska by the Department of Health and Social Services. As you can see, the department is engaged in a variety of critical services to needy Alaskans.

In addition to this document, the department also publishes a briefing book which contains a summary of the department's budget, as well as a booklet which identifies all grants awarded by the department. These publications should be available in the near future.

If you have questions regarding any activities of the Department of Health and Social Services or if I can be of help to you, please do not hesitate to contact me or my staff.

Sincerely,

Theodore A. Mala, MD MPH
Commissioner

DIVISION OF PUBLIC ASSISTANCE

GENERAL INFORMATION

The Division of Public Assistance (DPA) is responsible for the administration of 11 programs:

1. Aid to Families with Dependent Children (AFDC)
2. Old Age Assistance (OAA)
3. Aid to the Disabled (APD)
4. Aid to the Blind (ABL)
5. Food Stamps
6. General Relief
7. General Relief Medical (Determines client eligibility)
8. Medicaid (Determines client eligibility)
9. Energy Assistance
10. PFD and ALB Hold Harmless
11. Post Mortem Examination

Several of these programs are funded wholly or in part with federal funds. These programs include AFDC (50 percent federal), Food Stamps (100 percent federal), Medicaid (50 percent federal), and Energy Assistance (100 percent federal). Food Stamp program benefit funding is not contained in the state budget. The remaining programs are funded entirely from state general funds. Along with the presence of federal money in these four programs, comes a complete set of federal rules and procedures governing conditions of eligibility for benefits as well as rules for overall program operation.

The division conducts business through a mix of private vendor contracts and state staffed facilities. Most of the activities administered by state staff are prohibited by federal law from transfer to the private sector. At present, the division has state staffed client service offices in 16 locations:

<u>SOUTHEAST</u>	<u>SOUTHCENTRAL</u>	<u>NORTHERN</u>	<u>SOUTHWEST</u>
Juneau	Anchorage	Fairbanks	Bethel
Sitka	Dillingham	Ft. Yukon	
Ketchikan	Kodiak	Kotzebue	
Wrangell	Kenai	Nome	
Petersburg	Wasilla		
	Homer		

The division also contracts for application-taking assistance in Barrow with the North Slope Borough and in Kotzebue through a similar arrangement with the Maniilaq Association. In addition to

these state and contractor operated client service offices, the division has paid agents in approximately 165 additional communities around the state, bringing the total number of communities having division representation to approximately 185.

The division will service approximately 25,500 families monthly during FY 91. Since many families are served only seasonally or for a short period of crisis, the above numbers do not represent an unduplicated count of families to be served over the course of a full year. A conservative estimate would place the unduplicated count of families who will receive aid during FY 91 at 34,000 families, consisting of approximately 70,000 persons, or roughly 13 percent of the state's population. One out of every eight Alaskans will seek some type of cash, food, medical, or energy assistance from the division in FY 91.

PROGRAM SUMMARIES

Aid to Families with Dependent Children (AFDC) - AFDC is a nationwide state/federal financial aid program that helps needy children who are deprived because at least one parent is absent, disabled, or deceased. Effective October 1990, the AFDC was expanded to provide assistance to two-parent families with an unemployed parent by federal mandate. The amount of assistance is intended to be adequate to provide the basic necessities for the children, thereby enabling them to remain within the family unit. In FY 91, approximately 8,481 families will receive benefits each month.

General Relief (GRA) - General Relief is a state funded program designed to meet the emergency subsistence needs of employable Alaskans. Strict income requirements and a demonstrated need (such as an eviction notice) must be met. If eligible, a maximum monthly payment of \$120.00 per person is allowed by state statute. On behalf of clients, payments are made directly to landlords and vendors to ensure only critical subsistence needs are met.

Adult Public Assistance (APA) - Adult Public Assistance provides a state legislated level of supplemental cash assistance to aged, blind, and disabled persons who meet certain income and resource requirements and are categorically eligible to receive

federal Supplemental Security Income (SSI). APA component funding is dependent on the number of eligible cases and the cash assistance amount issued monthly. The program currently provides a \$274.00 average supplemental payment to 6,820 APA clients each month.

Old Age Assistance - Alaska Longevity Bonus Hold Harmless -

A change in federal rules made by Congress in 1984 would have cost a large number of elderly Alaskans millions of dollars in state and federal assistance from programs based on need, were it not for this program. Federal law now requires the state to count the Alaska Longevity Bonus received by recipients when determining eligibility and payment level for Old Age Assistance. This program replaces the federal funds that this costs our seniors with an equal amount of state funds.

Energy Assistance Program (EAP) -

The Energy Assistance Program is a 100 percent federally funded program to provide cash assistance in the form of payments to home energy suppliers of low-income households. The benefits are in the form of a once-per-year payment, which varies annually. The EAP serves approximately 10,500 households depending on the household's income, fuel costs, and geographic location. It is not a monthly maintenance program. Payments cover oil, natural gas, electricity, propane, wood, and other products related to home energy needs.

Permanent Fund Dividend Hold Harmless -

The Permanent Fund Dividend (PFD) legislation provides that the department may not consider the dividend as income or a resource in determining eligibility for public assistance programs unless required to do so by federal law or regulation. Individuals found ineligible or getting reduced public assistance solely because of receiving the dividend are eligible to receive cash assistance under the PFD Hold Harmless program for a period not to exceed four months.

The PFD Hold Harmless component request assumes a PFD distribution of \$900.00 per person, resulting in most all AFDC, Food Stamp, and SSI recipients losing federal benefits for at least one month. The amount of hold harmless assistance issued is equal to the benefit a household would have received had it not gotten the dividend. After the four-month period, the recipient must once again meet all eligibility requirements for public assistance programs, or benefits are discontinued.

Food Stamps - Food Stamps provide 100 percent federally-funded assistance to low-income households to purchase food. The objective is to improve nutrition of low-income recipients. Eligibility for food stamps and the benefits which participants receive are determined by each household's size and financial situation. The amount of benefits is also adjusted for local food costs in Alaska.

Alaska Work Programs - The component provides an array of employment-related case management and support services for adult applicants and recipients of Aid to Families with Dependent Children and Food Stamps. Case workers arrange for, or provide job training, child care, transportation, counseling, and other social services as necessary, to assist clients to achieve self-support through employment. The major program in this component is the Job Opportunity and Basic Skills Training Program (JOBS); a primary aspect of welfare reform initiatives passed by Congress with the Family Support Act.

JAN HANSEN, DIRECTOR
DIVISION OF PUBLIC ASSISTANCE
464-3347