

ALASKA LEGISLATURE COMMITTEE FILES, 1989-1990 8672
6454 SENATE RESOURCES

TERRANCE J. QUINN II

Associate Professor, Population Dynamics
Juneau Center for Fisheries and Ocean Sciences
B.A., 1973, University of Colorado
M.S., 1977, University of Washington
Ph.D., 1980, University of Washington



Main interest is the application of mathematics, statistics, and computer techniques to solve broad-based fisheries problems. Recent teaching activities have included graduate-level fisheries population dynamics and estimation of animal abundance, statistical time series analysis, undergraduate-level population dynamics, differential equations, and renewable resource management systems. Public service activities include membership on the Scientific and Statistics Committee of the North Pacific Fishery Management Council, assisting the International Pacific Halibut Commission with collection of biological data, a university faculty evaluation committee, and various curriculum committees.

Research activities include research grants from Alaska Sea Grant, Alaska Fish and Game, and National Marine Fisheries Service. These grants support graduate students to work on projects such as time series analysis of salmon catch in Alaska, length-based analysis of Gulf of Alaska sablefish, population studies of Kenai River rainbow trout, population and distribution of Cook Inlet razor clams, and otolith microstructure investigations of Pacific halibut.

SELECTED PUBLICATIONS

- Are age-structured data and analysis necessary for fisheries management? T. J. Quinn II, Proc. XIIIth Int. Biometrics Conf., The Biometrics Society, Seattle, Washington, 12 pp. (1986).
Population parameters for rougheye rockfish (*Sebastes aleutianus*). B. Nelson and T. J. Quinn II, Proc. Int. Rockfish Symp., Oct. 1986, Anchorage, Alaska. Alaska Sea Grant Rept. 87-2:209-228 (1987).
Standardization of catch-per-unit-effort for trends in catchability. *Nat. Resour. Model.* 1(2):279-296 (1987).

JAMES A. RAYMOND

Fishery Biologist, Alaska Department
of Fish & Game
Affiliate Assistant Professor,
Marine Science
Institute of Marine Science
B.A., 1968, University of Pennsylvania
M.S., 1971, University of California,
San Diego
Ph.D., 1976, Scripps Institution of
Oceanography



My work has been concerned primarily with biological investigations in support of fish hatcheries in interior and western Alaska. Much of this work has involved studies of the early life history of wild salmon in this region. These studies have included timing of outmigrations, early marine migration patterns, growth rate and food preference of smolts and evaluation of adult returns to hatcheries.

In general, my interests lie in the fields of physiological and behavioral adaptations in fishes to their environment and fish culture technology. Current research involves the mechanism and ecological importance of freezing resistance in polar fishes and the distribution and migratory patterns of juvenile fishes in the Chukchi Sea.

SELECTED PUBLICATIONS

- Adsorption inhibition as a mechanism of freezing resistance in polar fishes.** J. A. Raymond and A. L. DeVries, *Proc. Nat. Acad. Sci.* 74:2589-2593 (1977).
- Using waste heat for salmon culture in Interior Alaska.** J. A. Raymond, *Northern Engineer* 9:4-8 (1977).
- Circular dichroism of protein and glycoprotein fish antifreezes.** J. A. Raymond, W. Radding and A. L. DeVries, *Biopolymers* 16:2575-2578 (1978).
- Glycopeptide antifreezes in the Labrador cod, *Gadus ogac*.** W. V. Van Voorhies, J. A. Raymond and A. L. DeVries, *Physiol. Zool.* 51:347-353 (1978).
- Fish, crustaceans and the sea floor under the Ross Ice Shelf.** P. M. Bruchhausen, J. A. Raymond, S. S. Jacobs, A. L. DeVries, E. M. Thorndike and N. N. DeWitt, *Science* 203:449-451 (1979).
- Growth of wild and hatchery coho salmon in a stream in interior Alaska.** J. A. Raymond, FRED Rept. No. 62, 52 pp. (1986).
- Inhibition of growth of non-basal planes of ice by fish antifreezes.** J. A. Raymond, P. Wilson and A. L. DeVries, *Proc. Natl. Acad. Sci.* 86:8812-8885 (1989).
- Freezing resistance in some northern populations of Pacific herring *Clupea harengus pallasii*.** J. A. Raymond, *Can. J. Fish. Aquat. Sci.* (In press).

WILLIAM S. REEBURGH

Head, Graduate Program in Marine Sciences
and Limnology
Professor, Marine Science
Institute of Marine Science
B.S., 1961, University of Oklahoma
M.A., 1964, Johns Hopkins University
Ph.D., 1967, Johns Hopkins University



Previous research has involved high-precision measurements of the electrical conductivity of seawater, studies of diagenesis and the processes controlling gas distributions in anoxic sediments, radiocarbon dating of Alaskan materials, major ion composition and flushing rates in sea ice, circulation studies in Alaskan fjords and the rates and role of benthic nutrient regeneration on the southeastern Bering Sea shelf.

Current research involves studies of microbially-mediated aerobic and anaerobic methane oxidation. An increase in atmospheric methane concentration has been demonstrated recently and, since methane is a radiatively active gas like carbon dioxide, this increase could be important in climate change. Little is known about the global importance of biological methane sinks, so this work is aimed at quantifying the amount of methane intercepted by biological processes in tundra, anoxic marine sediments, and the ocean mixed layer.

SELECTED PUBLICATIONS

- Anaerobic methane oxidation: Rates and rate depth distributions in Skan Bay sediments.** W. S. Reeburgh, *Earth Planet. Sci. Lett.* 47:345-352 (1980).
- Rates of biogeochemical processes in anoxic sediments.** W. S. Reeburgh, *Ann. Rev. Earth Planet. Sci.* 11:269-298 (1983).
- Geochemical observations supporting anaerobic methane oxidation.** M. J. Alperin and W. S. Reeburgh, pp. 282-289, *In Microbial Growth on C-1 Compounds*, R. Crawford and R. Hanson (eds.), American Society for Microbiology, Washington, D.C. (1984).
- Inhibition experiments on anaerobic methane oxidation.** M. J. Alperin and W. S. Reeburgh, *Appl. Environ. Microbiol.* 50:940-945 (1985).
- Seasonal inorganic nitrogen distributions and dynamics in the southeastern Bering Sea.** T. E. Whittedge, W. S. Reeburgh and J. J. Walsh, *Cont. Shelf Res.* (PROBES issue) 5:109-132 (1986).
- Chemical distributions and signals in the Gulf of Alaska, its coastal margins and estuaries.** W. S. Reeburgh and G. W. Kipphut, *In The Gulf of Alaska, Physical Environment and Biological Resources*, J. W. Hood and S. T. Zimmerman (eds.), NOAA, Dept. Commerce, Washinton, D.C., pp. 77-91 (1986).
- Radon-222 and radium-226 in southeastern Bering Sea shelf waters and sediments.** D. M. Glover and W. S. Reeburgh, *Cont. Shelf Res.* 7 (5):433-456 (1987).
- Anaerobic mineralization of marine sediment organic matter: Rates and the role of anaerobic processes in the oceanic carbon economy.** S. M. Henrichs and W. S. Reeburgh, *Geomicrobiol. J.* 5 (3/4):191-237 (1987).

JAMES B. REYNOLDS

Leader, Alaska Cooperative Fishery Research
Unit, Institute of Arctic Biology
Fisheries Program
Associate Professor, Fisheries
B.S., 1961, Utah State University
M.S., 1963, Iowa State University
Ph.D., 1966, Iowa State University



As leader of the Alaska Cooperative Fishery Research Unit, I administer a research program comprising, on the average, three professional and support staff, five cooperating faculty and agency professionals, and 12 graduate students. Research by Unit personnel is aimed at the form and function of Alaskan freshwater ecosystems with three categories: biology and ecology of freshwater organisms; alteration and contamination of freshwater habitats; evaluation and development of fisheries research techniques.

My personal research is directed at the ecology, dynamics and assessment of freshwater fish populations. As development and tourism grow in Alaska, impacts on freshwater fish and the lakes and streams in which they reside are increasing. Freshwater habitat is critical not only to resident fish species, but also anadromous forms, such as salmon, which migrate from the ocean to spawn. Knowledge of the habitat requirements of these fish is critical to their conservation. Also, recreational fishing has increased significantly in recent years and is causing overharvest because of the low productivity and growth inherent in northern freshwater populations. Understanding the dynamics of these populations is crucial to the development of rational fishing regulations.

I am currently conducting or supervising research on the behavior of Arctic grayling in subarctic streams, a yield model for trophy Arctic grayling in Ugashik Lake, overwintering of northern pike in the Minto Flats wetland, biology of lake trout in Gates of the Arctic National Park and the use of electricity for sampling stream salmonids.

SELECTED PUBLICATIONS

- Electrofishing.** J. B. Reynolds, *In Fisheries Techniques*, L. A. Nielsen and D. I. Johnson (eds.), pp. 147-163 (1983).
- Observations of movements and habitat preferences of burbot in an Alaskan glacial river system.** S. Breeser, F. D. Stearns, R. L. West, M. W. Smith and J. B. Reynolds, *Trans. Am. Fish. Soc.* 117:506-509 (1988).
- Effects of placer mining discharge on health and food of Arctic grayling.** J. B. Reynolds, R. C. Simmons and A. R. Burkholder, *Water Resources Bulletin* (In press).

THOMAS C. ROYER

Professor, Marine Science
Institute of Marine Science
A.B., 1963, Albion College
M.S., 1966, Texas A&M University
Ph.D., 1969, Texas A&M University

In the early 1970s oceanographic field work began in the northern Gulf of Alaska for the purpose of describing the seasonal variations in physical parameters over the continental shelf and adjacent ocean. The intricate coupling of the ocean-atmosphere system here requires both oceanographic and meteorological approaches. These studies show that winds and freshwater discharge are important to circulation. The applications of analytical and numerical models to these conditions are being used to extend our understanding of the forcing mechanisms.



Studies of the circulation of the deep Gulf of Alaska have been conducted including hydrography, current meter measurements, winds, drifting buoys and remote sensing. We are learning more about why the position and intensity of the circulation varies from year to year. These studies are continuing as a part of the World Ocean Circulation Experiment (WOCE).

Observations of water temperatures at Seward since 1970 show long period variations throughout the water column. Some of these fluctuations are associated with El Niño-Southern Oscillation events in the tropical Pacific and there are longer period changes of ten or more years. This time series demonstrates the interaction between the ocean and atmosphere. These temperature fluctuations have been shown to be important to some Alaskan fisheries.

SELECTED PUBLICATIONS

- Seasonal variations of waters in the northern Gulf of Alaska. T. C. Royer, *Deep-Sea Res.* 22:403-416 (1975).
- Ocean eddies generated by seamounts in the North Pacific. T. C. Royer, *Science* 199:1063-1064 (1978).
- Baroclinic transport in the Gulf of Alaska. Parts I and II. T. C. Royer, *J. Mar. Res.* 39:239-266 (1981).
- Coastal fresh water discharge in the Northeast Pacific. T. C. Royer, *J. Geophys. Res.* 87:2017-2021 (1982).
- Coastal temperature and salinity observations in the northern Gulf of Alaska, 1970-1982. Q. Xiong and T. C. Royer, *J. Geophys. Res.* 89:8061-8068 (1984).
- Circulation in the Bering Sea, 1982-1983, based on satellite tracked drifter observations. T. C. Royer and W. J. Emery, *J. Phys. Oceanogr.* 14:1914-1920 (1984).
- On the circulation in the Gulf of Alaska, 1981. T. C. Royer and W. J. Emery, *Deep-Sea Res.* 34:1361-1377 (1987).
- Multiple dipole eddies in the Alaska Coastal Current detected with Landsat thematic mapper data. K. Ahlnäs, T. C. Royer and T. H. George, *J. Geophys. Res.* 92(C12):13,041-13,047 (1987).
- On the seasonal variability of the Alaska Coastal Current. W. R. Johnson, T. C. Royer and J. L. Luick, *J. Geophys. Res.* 93(C10):12,423-12,437 (1988).
- Upper ocean temperature variability in the Northeast Pacific Ocean: Is it an indicator of global warming? T. C. Royer, *J. Geophys. Res.* (In press).

DONALD M. SCHELL

Professor, Marine Science
Institute of Marine Science
B.S., 1962, Southeastern Massachusetts
University
M.S., 1964, University of Alaska
Ph.D., 1971, University of Alaska



Current studies have focused on the use of stable and radioisotope abundances as natural tracers in marine and terrestrial ecosystems. These techniques have been applied to natural history questions about the growth and feeding of marine mammals and caribou as well as more fundamental studies on the geographic and trophic processes governing isotope abundances in nature.

Other studies center on the interaction between the terrestrial and nearshore biomes of the Arctic and Subarctic. Nutrient and energy exchanges are measured using natural carbon and nitrogen isotope ratios in components of each environment. From these data, it is possible to trace foodweb pathways that serve to transfer various energy sources such as peat, terrestrial primary production and marine primary production up to apex organisms in marine waters.

SELECTED PUBLICATIONS

- Ammonium excretion rates in Kaneohe Bay, Hawaii, measured by a ^{15}N isotope dilution technique. J. Caperon, D. M. Schell, J. Hirota and E. Laws, *Mar. Biol.* 54:33-40 (1979).
- Carbon-13 and carbon-14 abundances in Alaskan aquatic organisms: Delayed production from peat in arctic foodwebs. D. M. Schell, *Science* 219:1068-1071 (1983).
- Natural carbon isotope tracers in arctic aquatic foodwebs. D. M. Schell and P. J. Ziemann, *In Stable Isotopes in Ecological Research*, P. Rundel *et al.* (eds.), Springer-Verlag, New York, pp. 230-251 (1989).
- Natural isotope abundances in bowhead whale (*Balaena mysticetus*) baleen: Markers of aging and habitat usage. D. M. Schell, S. M. Saupe and N. Haubenstock, *In Stable Isotopes in Ecological Research*, P. Rundel *et al.* (eds.), Springer-Verlag, New York, pp. 260-269 (1989).
- Bowhead whale (*Balaena mysticetus*) growth and feeding as estimated by $\delta^{13}\text{C}$ techniques. D. M. Schell, S. M. Saupe and N. Haubenstock, *Marine Biology* (In press, 1989).
- Carbon isotope gradients in western arctic zooplankton. S. M. Saupe, D. M. Schell and W. Griffiths. *Marine Biology* (In press, 1989).

DAVID G. SHAW

Professor, Marine Science and
Chemistry
Institute of Marine Science
B.S., 1967, University of California,
Los Angeles
M.A., 1969, Harvard University
Ph.D., 1971, Harvard University



Research in the general area of marine organic chemistry has focused on understanding factors which control the distribution and abundance of a few organic compounds in marine environments. This has included investigation of the kinds and amounts of hydrocarbons at several Alaskan locations in an attempt to understand the biological, geological and anthropogenic processes which give rise to the observed distributions. Another focus of this research has been on understanding the role of acetate as an intermediate in the breakdown of organic matter in anoxic marine sediments. In both of these research areas, emphasis is placed on understanding the interplay between environmental forces and the reactivities of individual organic compounds which give rise to observed distributions.

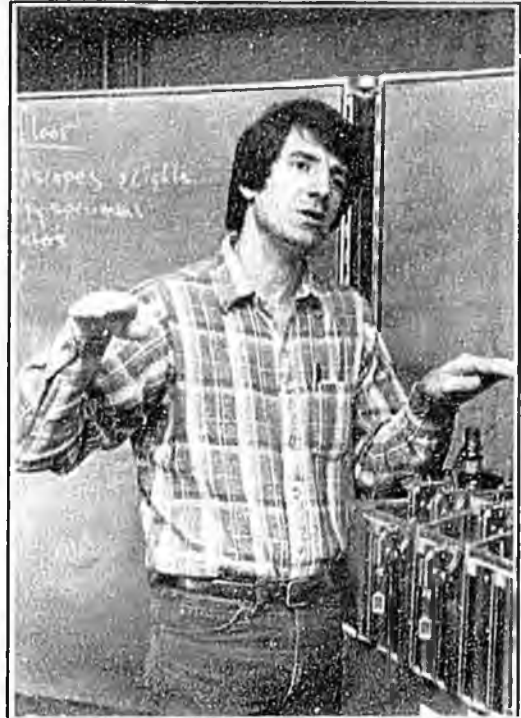
A secondary area of professional interest is the role of environmental research in the formulation of environmental policy.

SELECTED PUBLICATIONS

- Pollutant distribution: Hydrocarbons in marine sediments.** D. G. Shaw, *Environ. Conser.* 8:235-239 (1981).
- Biogeochemistry of acetate in anoxic sediments of Skan Bay, Alaska.** D. G. Shaw, M. J. Alperin, W. S. Reeburgh and D. J. McIntosh, *Geochim. Cosmochim. Acta* 48:1819-1825 (1984).
- Hydrocarbons in the sediments of Port Valdez, Alaska: Consequences of five years' permitted discharge.** D. G. Shaw, T. E. Hogan and D. J. McIntosh, *Estuarine Coastal Shelf Sci.* 21:131-144 (1985).
- Hydrocarbons in bivalve mollusks of Port Valdez, Alaska: Consequences of five years' permitted discharge.** D. G. Shaw, T. E. Hogan and D. J. McIntosh, *Estuarine Coastal Shelf Sci.* 23:863-872 (1986).
- Patterns in the abundance of plastic and tar in the North Pacific Ocean, 1976-1985.** R. H. Day and D. G. Shaw, *Mar. Pollut. Bull.* 18:311-316 (1987).
- Environmental Studies in Port Valdez: A Basis for Management.** D. G. Shaw and M. J. Hameedi (eds.), Springer, New York, 423 pp. (1988).
- The Solubility Data Series, Volume 35, Hydrocarbons C₅-C₇ with Water and Seawater.** D. G. Shaw (ed.), Pergamon, New York, 528 pp. (1989).
- The Solubility Data Series, Volume 36, Hydrocarbons C₈-C₃₆ with Water and Seawater.** D. G. Shaw (ed.), Pergamon, New York, 561 pp. (1989).

THOMAS C. SHIRLEY

Associate Professor, Invertebrate Biology
Juneau Center for Fisheries and Ocean Sciences
B.S., 1969, Texas A&I University
M.S., 1974, Texas A&I University
Ph.D., 1982, Louisiana State University



Principal research interests concern ecology of the marine benthos. Recent research has concentrated on early life history of commercially important invertebrates, particularly red king crab and Dungeness crab, but also weathervane scallops, pinto abalone and several species of sea urchins. A combination of lab and field experiments has been used to explain larval survival and distributions with respect to phototaxis, rheotaxis, geotaxis and temperature and salinity preferences and tolerances. The effects of temperature on larval morphology, development rates, and survival during incubation have been examined for Dungeness and red king crabs. Interannual variations in phasing and densities of crab larval stages have also been the subject of recent studies.

Another research direction has been ecology of intertidal and subtidal meiofauna. The relationship between sedimentation of the spring phytoplankton bloom and interannual variations in density and composition of the meiofaunal community has been the subject of continual investigation since 1985. The importance of meiofauna, particularly harpacticoid copepods, in the diets of posimetamorphic flatfish and king crabs has also been examined.

SELECTED PUBLICATIONS

- Latitudinal variation in the Dungeness crab, *Cancer magister*: Zoeal morphology explained by incubation temperature. S. Shirley, T. C. Shirley and S. Rice, *Mar. Biol.* 95(3):371-376 (1987).
- Appendage injury in Dungeness crabs, *Cancer magister*, in southeastern Alaska. S. Shirley and T. Shirley. *Fish. Bull.* 86(1):156-160 (1988).
- Behavior of red king crab larvae: Phototaxis, geotaxis and rheotaxis. S. M. Shirley and T. C. Shirley, *Mar. Behav. Physiol.* 13:369-388 (1988).
- Molting and growth of eyestalk-ablated juvenile red king crabs, *Paralithodes camtschatica* (Crustacea:Lithodidae). D. Molyneaux and T. C. Shirley, *Comp. Biochem. Physiol.* 91A(2):245-251 (1988).
- Interannual variability in density, timing and survival of Alaskan red king crab (*Paralithodes camtschatica*) larvae. S. M. Shirley and T. C. Shirley, *Mar. Ecol. Prog. Series* 54:51-59 (1989).
- Ecology of *Priapulius caudatus* Lamarck 1816 (Priapulida) in an Alaskan subarctic ecosystem. T. C. Shirley, *Mar. Biol.* (In press).

RONALD L. SMITH

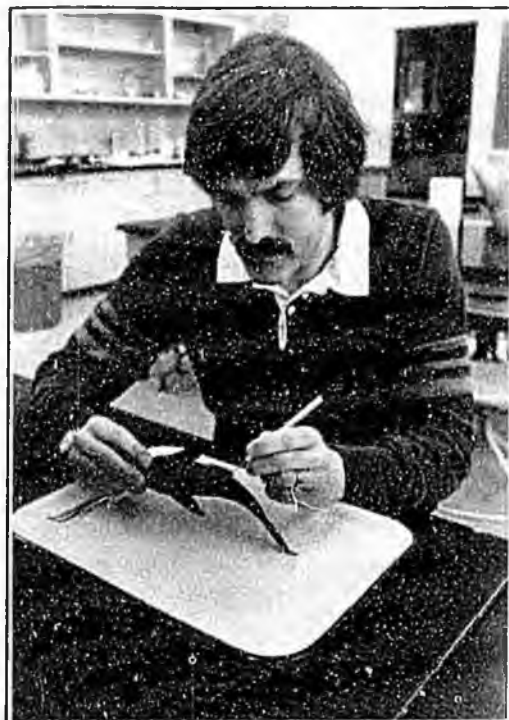
Professor, Biology and Marine Science
Institute of Marine Science
B.A., 1964, Occidental College
M.S., 1967, University of Miami
Ph.D., 1968, University of Miami

Primary research deals with the biology and physiology of marine fishes.

Feeding habits of a variety of Alaskan marine fishes, including walleye pollock and flatfishes, were studied. Importance of non-fish prey and cannibalism in pollock diets may depend largely on seasonal patterns of movement and how those patterns are affected by water temperature in the Bering Sea.

Recent work included Sea Grant projects studying feeding, growth and bioenergetics of two important Alaskan marine fish species, the walleye pollock and the Pacific cod. Laboratory experiments at Seward demonstrated the effects of temperature and body size on feeding, metabolism and growth in pollock and cod. These results are being used to refine simulations of pollock equilibrium yields and to assess the trophic impact of these species on their prey stocks. The commercially valuable cod is an important predator on other commercially important species such as pandalid shrimps, Tanner crab and king crabs.

Currently, the bioenergetic relationships of three Alaskan flatfishes are being studied in a project funded by the Alaska Sea Grant Program. The species are Pacific halibut, yellowfin sole and flathead sole. The results of this project will help clarify the potential yield of these commercial fish resources and assess their impact on prey species.



SELECTED PUBLICATIONS

- Effect of water soluble fraction of Prudhoe Bay crude oil on embryonic development of Pacific herring. R. L. Smith and J. A. Cameron, *Trans. Am. Fish. Soc.* 108:70-75 (1979).
- Effect of food intake and temperature on growth and conversion efficiency in juvenile walleye pollock, *Theragra chalcogramma*, a laboratory study. R. L. Smith, A. J. Paul and J. M. Paul, *J. du Conseil* 42:241-253 (1986).
- A theoretical energy budget for juvenile walleye pollock in Alaskan waters. R. L. Smith and A. J. Paul, *INPFC Bull.* 47:79-85 (1986).
- Aspects of energetics of adult walleye pollock *Theragra chalcogramma* (Pallas) from Alaska. R. L. Smith, A. J. Paul and J. M. Paul, *J. Fish Biol.* Vol. 33 (1988).
- Notes on the biology of the Bering poacher *Ocella dodecaedron* (Tilesius) and the sturgeon poacher *Agonus acipenserinus* Tilesius in the southeast Bering Sea. R. L. Smith and J. G. Gillispie, *Copeia* 1988(2):454-460 (1988).
- Respiratory energy requirements of the cod, *Gadus macrocephalus*, relative to body size, food intake and temperature. A. J. Paul, J. M. Paul and R. L. Smith, *J. exp. Mar. Biol. Ecol.* (1988).
- Gastric evacuation in walleye pollock, *Theragra chalcogramma*. R. L. Smith, J. M. Paul and A. J. Paul, *Can. J. Fish. Aquat. Sci.* 46:489-493 (1989).

WILLIAM W. SMOKER

Associate Professor, Fisheries
Juneau Center for Fisheries and Ocean Sciences
B.A., 1967, Carleton College
M.S., 1970, Oregon State University
Ph.D., 1982, Oregon State University



Culture of Pacific salmon may impose artificial selection on stocks. This selection would be inadvertent under the present practice of broodstock management, but could be purposeful. Genetically mediated response to selection is predictable from results of breeding experiments; the prediction forms the basis of a rational breeding program, one that imposes desirable selection and avoids undesirable selection.

Experiments on hatchery-cultured salmon, in which groups of siblings or offspring of known parents can be observed, have become possible with the development of microwire tag technology. My work has shown that genetic variability explains part of the variability of such things as size and timing of anadromous migration in some stocks of salmon. These traits, therefore, are both vulnerable and susceptible to artificial selection. The research is being extended to broodstocks of large production-scale hatcheries and to captive broodstocks.

SELECTED PUBLICATIONS

- Genetic effects on the dynamics of a model of pink (*Oncorhynchus gorbuscha*) and chum (*O. keta*) salmon. W. W. Smoker, *Can. J. Fish. Aquat. Sci.* 41:1446-1453 (1984).
- First adult return of pink salmon tagged as emergents with binary-coded wires. F. P. Thrower and W. W. Smoker, *Trans. Am. Fish. Soc.* 113:803-804 (1984).
- Variability of embryo development rate, fry growth, and disease susceptibility in hatchery stocks of chum salmon. W. W. Smoker, *Aquaculture* 57:219-226 (1986).
- Phenotypic variation in development rate in pink salmon. J. E. Joyce and W. W. Smoker, *In Proc. 1987 Northeast Pacific Pink and Chum Salmon Workshop*, P. Rigby (ed.), Alaska Department of Fish & Game, Juneau, pp. 122-123 (1987).
- Production of native, transplant, and hybrid chum salmon at a southeastern Alaska hatchery. W. W. Smoker and F. P. Thrower, *In Proc. 1987 Northeast Pacific Pink and Chum Salmon Workshop*. P. Rigby (ed.), Alaska Department of Fish & Game, Juneau, pp. 140-141 (1987).

RICHARD G. STEINER

Associate Professor, Fisheries
Marine Advisory Program, Cordova
B.A., 1974, University of Tennessee
M.S., 1979, Oregon State University



Involved primarily in informal education for the commercial fishing industry and other maritime clientele. Information on a broad range of topics such as gear technology, safety, stock biology and distribution, management issues, marine mammals, mariculture, and seafood marketing is conveyed through workshops, newspapers/trade journal articles, television/radio, and by daily office visits. Current focus is resource conflict resolution, science education for the public, and fisheries development.

Workshops and lectures delivered include: *Ocean Issues in Alaska; Underutilized Fishery Resources in Alaska; Blackcod Longlining; Halibut Longlining; Alaska's Marine Resources; Ocean Edibles; Marine Environment of Prince William Sound; Sea Survival; Marine Mammals in Alaska; Sleep Deprivation; Salmon Handling; and Offshore Oil in Alaska.*

Conceived and continues to produce a television program entitled "Alaska Resource Issues Forum," a one-hour talk show on controversial resource issues in Alaska. Programs that have aired statewide are: *Foreign Interception of Alaska's Salmon; Americanization of Alaska's Fisheries; Mining and the Environment; The Arctic National Wildlife Refuge; Logging in Alaska; Marine Mammal Management; and Salmon Farming, Boom or Bust.*

Research on killer whale-longline conflict in the Bering Sea and Prince William Sound has resulted in a general understanding of the problem. Currently working to establish a formalized Environmental Dispute Resolution Capability within Alaska.

SELECTED PUBLICATIONS

- How to survive the loss of sleep. R. G. Steiner, *Pac. Fish.*, November, pp. 99-105 (1985).
Alaska's non-traditional developing fisheries. R. G. Steiner, *Alaska Marine Resource Quarterly*, First Quarter, (1986).
Killer whales and longline fisheries in Prince William Sound, Alaska, 1986. C. J. Matkin, G. Ellis, O. von Ziegesar and R. G. Steiner, Research Rept. for NWAFC/NMFS National Marine Mammal Laboratory (1986).
Killer whale photoidentification and deterrent experiments in Prince William Sound, 1986. C. O. Matkin, R. G. Steiner and G. Ellis, Research Rept., unpublished (1986).
Results of dockside interviews at Dutch Harbor, Alaska, on killer whale-longline interactions in the Bering Sea during 1987. R. G. Steiner (1987).
Tendonitis and related afflictions in fishermen and processing workers. R. G. Steiner and A. Embick, *Alaska Sea-Grains* No. 26. Reprinted in *Alaska Fisherman's J.*, May (1987).
Storms and Storm Hunters. R. G. Steiner, *Alaska Fisherman's J.*, March (1988).

CRAIG S. WIESE

Assistant Chairman, Marine Advisory
Program, Anchorage
Associate Professor, Fisheries
B.S., 1966, Oregon State University
M.S., 1974, Oregon State University
M.B.A., 1976, Oregon State University



Primary interests are financial analysis of commercial fishing and processing operations, and analysis of the impact of commercial fishing on the economies of coastal communities. Recent research centers on the economic impact of commercial fishing in Sitka, Petersburg, Cordova, Kodiak, and the Kenai Peninsula. Income to fishermen and purchases by fishermen and processors for operations are determined. The ripple effect of these expenditures through the local economy is then estimated using economic models.

Another interest is port and harbor management. A special concern is rate and management structures. In Alaska, harbor upkeep, improvements, and management are subsidized by state and municipal governments. As oil revenues decline, harbors are losing government support and must become more self-supporting. Research is underway to compare service and fee structures in Alaska with those at private and self-supporting public marinas in the northwest. Strategies for managing Alaska harbors will be suggested.

SELECTED PUBLICATIONS

- Financial statements and business calculations for commercial fishermen: A do it yourself guide.** C. S. Wiese, Marine Advisory Bulletin No. 14, Alaska Sea Grant College Program, Univ. Alaska Fairbanks, 97 pp. (1982).
- Fisherman's record-keeping system for income taxes.** C. S. Wiese, Marine Advisory Bulletin No. 15, Alaska Sea Grant College Program, Univ. Alaska Fairbanks, 13 pp. (1984).
- Erupting insurance rates.** C. S. Wiese, *Pacific Fishing*, pp. 23-28 (July 1986).
- Vessel insurance pools: A look at the basics.** C. S. Wiese, *Alaska Marine Resource Quarterly*, Vol. II, No. 2 (1987).
- Borrowing: A guide for Alaska commercial fishermen.** C. S. Wiese, Marine Advisory Bulletin No. 30, Alaska Sea Grant College Program, Univ. Alaska Fairbanks, 76 pp. (1987).
- The intelligent investor's guide to Alaska's groundfish fishery.** C. S. Wiese, *Pacific Fishing*, pp. 46-57 (September 1988).
- Just for the halibut.** C. S. Wiese, *Alaska Marine Resource Quarterly*, Vol. IV, No. 2, Univ. Alaska Fairbanks (1989).

T. MARK WILLETTE

Instructor, Fisheries
Marine Advisory Program, Kotzebue
B.S., 1983, University of Alaska Fairbanks
M.S., 1985, University of Alaska Fairbanks



The economic success of the fishing industry has been largely dictated by changes in the abundance of fish populations. Many of these fluctuations have been linked to physical changes in the marine environment. Current interest centers on defining the modes of variability of several physical variables in the North Pacific that may impact the survival of pink salmon. The physical variables are sea surface temperature, wind stress curl, coastal freshwater discharge, air temperature, and a time series of ocean temperatures from a station near Seward, Alaska. Abundance indices of pink salmon from all geographic regions around the Gulf of Alaska will be related to the physical modes of variability. The results of this type of study are most useful for the development of hypotheses regarding the processes affecting the survival of fish.

Another aspect of fish abundance variations is changes in migration routes and migratory timing. Anecdotal information from fishermen indicates that wind velocity has a considerable effect on the migratory timing and migration routes of salmon into the Kotzebue fishing district. The catch per unit of effort is the only inseason management tool used in this fishery. Therefore, to enable more precise inseason forecasts of population size, the relationship between wind velocity and catch per unit of effort is being quantified. If applied in management, this model could result in a more efficient use of the resource.

The herring resources north of the Bering Strait have as yet been largely unexploited. Work is currently underway to assess the feasibility of a herring spawn-on-kelp fishery in the Kotzebue Sound region using imported kelp. The results in 1987 indicated that low salinity and siltation will be significant problems at many of the known herring spawning sites in this region. This project is being continued to document additional herring spawning sites and attempt alternative methods.

SELECTED PUBLICATIONS

- Characterization of a biennial oscillation in ocean temperatures and wind stress curl in the North Pacific. T. M. Willette (In preparation).
- Relationships between the abundance of southcoast Alaska pink salmon (*Oncorhynchus gorbuscha*) populations and a biennial oscillation in ocean temperatures and wind stress curl in the North Pacific. T. M. Willette (In preparation).

UNIVERSITY OF ALASKA FAIRBANKS
SCHOOL OF FISHERIES AND OCEAN SCIENCES
Fairbanks, Alaska 99775-1090

FACULTY

- Vera Alexander, Ph.D., Dean, School of Fisheries and Ocean Sciences, Professor and Director, Institute of Marine Science. Arctic limnology, biological oceanography, primary productivity
- Willard E. Barber, Ph.D., Associate Professor. Fisheries, ecology of fish, fish habitat.
- Edward J. Brown, Ph.D., Professor. Microbial ecology, biogeochemistry, biotechnology.
- Don K. Button, Ph.D., Professor. Kinetics of microbially catalyzed chemical transformations in marine environments, marine biochemistry, molecular biology.
- Michael A. Castellini, Ph.D., Assistant Professor. Biology of diving, comparative biochemistry, physiology and behavior of diving vertebrates, especially marine mammals.
- Jeremy S. Collie, Ph.D., Assistant Professor. Population dynamics, management of marine fishes.
- Robert T. Cooney, Ph.D., Associate Professor. Marine ecology, biological and fisheries oceanography, marine acoustics.
- D. Douglas Coughenower, M.S., Associate Professor. Commercial and recreational fisheries development, marine safety, fisheries oceanography.
- Charles A. Crapo, M.S., Assistant Professor. Seafood quality, quality assurance, seafood processing and preservation.
- Paula J. Cullenberg, M.S., Assistant Professor. Commercial fisheries development, marine safety.
- John P. Doyle, B.S., Professor. Interpretation and dissemination of basic research results, maritime affairs information.
- Sven O. E. Ebbesson, Ph.D., Professor. Changes in brain circuitry and neurotransmitters with aging, with current emphasis on alterations during salmon smoltification and final migration.
- Robert Elsner, Ph.D., Professor Emeritus. Diving physiology, bioenergetics of marine mammals.
- Robert M. Fagen, Ph.D., Associate Professor. Animal behavior, population dynamics, fisheries biometry.
- Francis H. Fay, Ph.D., Professor. Ecology, pathology and taxonomy of marine mammals.
- Howard M. Feder, Ph.D., Professor. Biology of marine invertebrates, marine biology of benthic systems.
- John S. French, Ph.D., Associate Professor. Protein and lipid chemistry, postmortem biochemical changes in fish and shellfish, environmental effects on seafood quality.
- Richard Gard, Ph.D., Professor. Biology of salmonid fishes, population estimation, behavior and aging of marine mammals.
- Dolores A. Garza, M.S., Assistant Professor. Seafood marketing, fishery business development, sea and shore survival, marine mammal management, aquaculture development.
- Anthony J. Gharrett, Ph.D., Professor. Biochemical and population genetics of fishes.
- John J. Goering, Ph.D., Professor and Deputy Director, Institute of Marine Science. Marine nitrogen cycle, silicon cycle, silicon and nitrogen assimilation by phytoplankton.
- Lewis J. Haldorson, Ph.D., Associate Professor. Biology of marine fishes.

- M. Jawed Hameedi, Ph.D.,** Affiliate Associate Professor. Biological oceanography, environmental assessment of waste disposal and pollution in the sea.
- Susan M. Henrichs, Ph.D.,** Associate Professor. Organic matter decomposition, carbon and nutrient cycles in the marine environment, organism-sediment interactions.
- Raymond C. Highsmith, Ph.D.,** Associate Professor. Community ecology, population biology, reproduction and behavior of marine invertebrates.
- Brian H. Himelbloom, Ph.D.,** Assistant Professor. Microbiology of fish and fish products, microbial physiology, applied enzymology.
- David M. Hopkins, Ph.D.,** Professor. Tectonic, paleogeographic, paleoclimatic and paleobiologic history of arctic and subarctic marine basins and land areas.
- John J. Kelley, Ph.D.,** Associate Professor. Sea ice, air-sea-gas transfer, marine acoustics, atmospheric chemistry.
- Zygmunt Kowalik, Ph.D.,** Professor. Physical oceanography, numerical modeling, tides, storm surges, tsunamis, currents.
- Donald E. Kramer, Ph.D.,** Professor and Chairman, Marine Advisory Program. Food biochemistry, protein chemistry, post-mortem changes in fish and shellfish, low temperature preservation of seafoods.
- Jong S. Lee, Ph.D.,** Professor and Director, Fishery Industrial Technology Center. Food microbiology, food safety and quality control, modern food processing and preservation methods.
- Ole A. Mathisen, Ph.D.,** Professor. Fisheries, ecosystem analysis of salmon-producing watersheds, acoustic stock estimation, aquaculture.
- C. Peter McRoy, Ph.D.,** Professor. Ecology of benthic marine plants, ecology of lagoon systems in arctic environments.
- David L. Musgrave, Ph.D.,** Assistant Professor. Physical and chemical oceanography, numerical modeling, general circulation.
- A. Sathy Naidu, Ph.D.,** Professor. Marine sedimentation processes in arctic waters, high-latitude deltas, marine stratigraphy.
- Henry J. Niebauer, Ph.D.,** Professor. Physical oceanography, numerical modeling, air-sea interaction and physical-biological interaction in ice-covered seas, shelf and shelf-fjord estuary systems.
- Brenda L. Norcross, Ph.D.,** Assistant Professor. Fisheries oceanography, effects of physical environment on recruitment of finfish, specifically larval transport.
- Augustus J. Paul, Ph.D.,** Associate Professor. Biological oceanography and physiology, bioenergetics of fish and invertebrate species.
- Brian C. Faust, Ph.D.,** Associate Professor. Practical application of fisheries oceanography, commercial fisheries development, shellfish aquaculture, seafood marketing.
- Henry Pennington, M.S.,** Assistant Professor. Fisheries development, marine safety, multiple use, marine science education, coastal resource management.
- F. Gerald Plumley, Ph.D.,** Associate Professor. Cellular and molecular biological mechanisms underlying plant/algal responses to the environment, chloroplast biogenesis.
- Terrance J. Quinn II, Ph.D.,** Associate Professor. Fish population dynamics, estimation of animal and fish abundance, modeling and forecasting.
- James A. Raymond, Ph.D.,** Affiliate Assistant Professor. Fish physiology, aquaculture, biology of salmon.

William S. Reeburgh, Ph.D., Head, Graduate Program in Marine Sciences and Limnology, Professor, Institute of Marine Science. Biogeochemistry of recent sediments, trace reduced gases, chemical cycles of continental shelves and fjords, sea ice geochemistry.

James B. Reynolds, Ph.D., Associate Professor and Leader, Alaska Cooperative Fishery Research Unit. Fisheries, ecology, dynamics and assessment of freshwater fish populations and their habitat.

Thomas C. Royer, Ph.D., Professor. Physical oceanography, shelf dynamics, circulation in the Gulf of Alaska.

Donald M. Schell, Ph.D., Professor. Isotopic studies of ecosystem nutrient and energy flow.

David G. Shaw, Ph.D., Professor. Cycles of petroleum and natural organic compounds in the ocean, fate of oil in the sea.

Thomas C. Shirley, Ph.D., Associate Professor. Marine benthic ecology, crab biology.

Ronald L. Smith, Ph.D., Professor. Biology and physiology of marine fishes.

William W. Smoker, Ph.D., Associate Professor. Biology of salmon, aquaculture genetics.

Richard G. Steiner, M.S., Associate Professor. Commercial fisheries, natural resource education.

Craig S. Wiese, M.S., M.B.A., Associate Professor and Assistant Chairman, Marine Advisory Program. Fisheries financial and business management, commercial fishing industry, financial analysis techniques.

T. Mark Willette, M.S., Instructor. Fisheries oceanography, salmon biology.

Calgary

**(Briefing
on
Oil Sands)**

January 3, 1990

Honorable James D. Horsman
Deputy Premier
320 Legislative Building
Edmonton, Alberta, Canada T5J 1S6

Dear Premier Horsman:

As members of the Executive Committee of the South/West Energy Council and of the Alaska State Legislature, we have been exposed to the Alberta approach to oil and gas development and marketing by visits to your province and other meetings of the Council.

We have on these occasions been interested by Canadian oil and gas producers' approach to marketing natural gas to U.S. markets and how their interests and the interests of the Alberta and Canadian national government affect development of our natural gas on the Alaskan North Slope. We have also been intrigued by the experimental work being done in your Athabasca ~~Tar Sands~~ and potential technology applications in our own heavy oil and tar sands region. Finally, we are interested in knowing ~~more~~ about Alberta's public/private sector partnership to develop your oil and gas resources and particularly the Alberta Oil Sands Technology and Research Authority.

Over the last several months we have had several discussions with Ms. Susan Cribbs, Associate Director, Alberta Federal and Intergovernmental Affairs, regarding the possibility of having hearings before several of our legislative committees to ~~expose~~ *allow* Alaskan policy and law makers to your province and ~~your~~ overall ~~approach to~~ *approach* resource development. *develop a sense of how*

Through this letter, we would like to formally invite a delegation knowledgeable in these areas to address a joint meeting of Senate Resources Committee and the Senate Oil and Gas Committee. We have tentatively identified three dates ~~in~~ *later this month* ~~late January~~ as potential dates; January 29, 31, or February 2.

the

We look forward to hearing from you at your earliest convenience and know that our colleagues will be as interested in Alberta's development scheme as have we.

Thank you.



Sincerely,

Senator Bettye Fahrenkamp, Chair
Senate Resources Committee

Senator Drew Pearce, Chair
Senate Oil & Gas Committee

Representative Mark Boyer

SCHEDULE FOR FEBRUARY 2, 1990
MR. NORM MACMURCHY AND MR. BILL YORKO

9:00AM SENATOR FAHRENKAMPS OFFICE (#3835)
SEN. PEARCE, SEN.FAHRENKAMP, REP. BOYER

12:00PM SENATE PRESIDENT KELLYS OFFICE (#3822)
SEN. KELLY, SEN.FAHRENKAMP, REP. BOYER

1:00PM REPRESENTATIVE COTTENS OFFICE (#3711)
TO MEET REP. COTTEN

1:15PM REPRESENTATIVE MENARDS OFFICE (#2679)
TO MEET REP. MENARD

1:30- *Senate Resources* JOINT^A OIL/GAS MEETING TO BE HELD ... *Buttrick* ~~SENATE FINANCE???~~
3:30PM

3:30PM COMMISSIONER GORSUCHS OFFICE (5TH FLOOR ST. OFFICE BUILD)
(#2400)

***** REPRESENTATIVE DAVIDSON IS OUT OF TOWN 2FEB *****

CIRI Settlement

TESTIMONY BEFORE THE ALASKA SENATE RESOURCES
COMMITTEE: STATE-CIRI SETTLEMENT

presented by Tom Hawkins, Assistant Commissioner
Alaska Department of Natural Resources
May 5, 1989

Thank you for the opportunity to brief the committee on the litigation settlement we reached with Cook Inlet Region on April 22. The settlement came after several months of difficult negotiations. The financial stakes were significant and the effort extended by the state to analyze and understand the issues involved was extensive. The settlement followed years of dispute over some of the issues and represents an important milestone in the evolution of Alaska's land ownership patterns. I am pleased to be here today to support it and receive your comments.

Background

This committee is particularly familiar with the dramatic Alaska land ownership changes that began with the 1959 Statehood Act and doubled with the passage of the Native Claims Settlement Act in 1971. A particularly difficult area of Alaska in which to satisfy all of the competing entitlements was the region bordering Cook Inlet. By the time ANCSA passed much of the developable land in the region had been homesteaded, deeded to the state, withdrawn for military bases, or reserved by Congress as national forests and refuges.

The inability of Cook Inlet Region to satisfy its land entitlement resulted in litigation against the federal government and eventually in a complex 3 way land exchange between Alaska, CIRI, and the U.S. The T&C (Terms and Conditions) was the 1976 agreement which allowed Alaska and CIRI to receive land otherwise unavailable to them and preserved an earlier U.S.- Alaska settlement which allowed state selection of 44 million acres. Alaska agreed to trade 21.4 townships in 6 land pools and received in exchange 52 townships from the U.S. including land at Willow, Pt Woronzof, Pt. Campbell, Goose Lake, the Campbell Tract, Lake Illiamna, Talkeetna Mts., and Bristol Bay. The T&C increased Alaska's overall land entitlement by 30 townships.

Although the agreement was quickly ratified in Congress it came under closer scrutiny in Alaska and the trade received considerable criticism. A lawsuit was filed to prevent state participation and implementation of the agreement stalled as the case wound its way through the court system. Finally the Alaska Supreme Court ruled in favor of Alaska's position and the U.S. Supreme Court refused to review the matter further.

It was 1978 before the implementation of the agreement began in earnest and context of land management activity had changed considerably. Alaskans were chafing at the bit which had kept land offices closed since the late 1960's. The Beirne initiative sparked interest. A Beaufort sea oil lease sale was prepared.

Municipal land requirements demanded attention. The d-2 debate occupied the resource agencies. At the same time substantial state revenues allowed acquisition of private land interests with important public values.

The 1979 Kachemak MOU followed the repurchase of oil and gas leases previously sold in Kachemak Bay. The MOU was designed to set in motion a program to acquire private lands in the Kachemak Bay State Park. A key concern of state officials was the potential strip mining of the scenic China Poot Bay uplands for their gravel resources. The MOU protected the park by swapping state owned land on the Kenai peninsula for CIRI subsurface gravel rights in the Park.

Historians have advantage of hindsight. The 1976 T&C, the 1979 MOU, and the resulting land ownership pattern could possibly be different if reenacted today. A lot has changed. The legislature has improved the exchange statutes to require better appreciation of value and detailed public and agency review. Land management techniques are more sophisticated, a wider range of state interests are calculated, and land title records have been improved. Most important though is the recognition by state and native land owners that Alaskans should not be set against each other by the federal government. It's a difficult dilemma to avoid. The land entitlements created by ANCSA and the Statehood Act involve an unprecedented volume of acreage. Native corporations and the state naturally seek the best acres and compete with each other in the process. As the final conveyances are completed we must insure that the last best acre is owned by Alaskans.

That recognition was fundamental to the settlement before you. Out lined briefly here are the disputes which are solved by this agreement.

Section 14(g) of ANCSA

Suit by Alaska against the U.S. (CIRI intervened). Alaska sued to recover revenue from 37 federal oil and gas leases in the Kenai, Swanson River/Soldotna Creek, Beaver Creek, Sterling, and Cannery Loop units. The U.S. has interpreted S14(g) to require lease royalties to be divided on the basis of percent of lease owned without regard to unit or participating area boundaries. This interpretation has cost Alaska \$28 million (31 m - 3 m).

Section 6(h) of the Statehood Act

Suit by the U.S. against Alaska seeking reconveyance of 5500 acres of land conveyed to Alaska in 6 patents in 1982. The lands include portions of 9 oil and gas leases in the Kenai and Cannery

Loop units. If the U.S. recovers the land, it plans to convey it to CIRI. CIRI will seek retroactive revenues of \$24 to \$37 million (1976 vs. 1971 date).

Kachemak Litigation

CIRI sued to compel Alaska to convey 4400 acres as identified in the 1979 MOU. Lands are in and adjacent to Cannery Loop and Kenai Units (cover some of same leases as 6(h)). Purpose of MOU was to trade CIRI and Seldovia Native Association out of Kachemak Bay State Park.

Settlement Summary

14(g) Litigation

- * CIRI pays \$3.0 MM to State in full satisfaction of all State claims to retroactive revenues.
- * Section 14(g) continues to be applied through December 31, 1991 on all fields.
- * On January 1, 1992, the method for allocating revenues from the Kenai, Cannery Loop, Beaver Creek and Swanson River oil and gas units will permanently change to reflect the State's position.
- * State dismisses litigation for all leases listed on the State's amended complaint.

Section 6(h) Litigation

- * State retains 3,845 of 5,500 total contested Section 6(h) acres located on Kenai peninsula.
- * CIRI receives 1,655 Section 6(h) acres in partial fulfillment of remaining Kenai Pool entitlement.
- * All monies in the Section 6(h) escrow account on March 31, 1989 are divided equally between CIRI and the State. Thereafter, revenues follow acres.
- * CIRI forgoes claims to Section 6(h) retroactive revenues and relinquishes claims to Section 6(h) land retained by State.
- * U.S. dismisses litigation.

Kachemak Litigation

- * CIRI conveys to State 4,400 acres within Kachemak Bay State Park.

- * CIRI receives 2,135 acres in leases or lands on Kenai peninsula in fulfillment of remaining Kenai State Pool entitlement. State retains standard 12.5% royalty for any unitized oil and gas lands leased to CIRI.
- * CIRI dismisses litigation.

1976 Cook Inlet Land Exchange

- * CIRI relinquishes selections in Interior Alaska and Talkeetna Mountains area.
- * CIRI and State agree all remaining State obligations to convey land to CIRI are fulfilled.

Summary of Benefits to the State

Releases Monies for State and Private Use

- * Disputed oil and gas royalty revenues from lands previously conveyed to the State under Section 6(h) of the Alaska Statehood Act on the Kenai peninsula have been held in escrow pending litigation by the United States challenging the State's title. Escrowed funds are divided equally between the State and CIRI and released immediately.
- * State receives \$3 million payment for past Section 14(g) claims.
- * Under Section 7(i) of the Alaska Native Claims Settlement Act, the majority of revenues received by CIRI under the agreement will be distributed to all other Alaska Native corporations and distributed throughout Alaska's private economy. Section 7(i) distributions by CIRI have been held in escrow pending the outcome of Section 14(g) litigation.

Protects Future State Royalty Interests

- * Under the Kachemak settlement, CIRI receives a lease interest -- not title -- to any lands which are located within oil and gas units. The State retains a standard 12.5% royalty. Even though CIRI receives only a lease, the leased acreage is charged fully against CIRI's land entitlement.
- * Starting January 1, 1992, the long term allocation of revenues from certain oil and gas units on the Kenai peninsula reflects the State's position on Section 14(g).
- * The state retains title to 3,845 of 5,500 acres of Section 6(h) lands subject to the ownership dispute. Many of these acres have production and revenues from the Kenai field.

Assists State Land Management Objectives

- * All the remaining State obligations to convey land to CIRI under the 1976 Cook Inlet Land Exchange are completed and the State land pool accounts are closed.
- * A significant step is taken to further protect Kachemak Bay State Park by completing acquisition of key CIRI lands identified in 1979.
- * CIRI's relinquishment of several hundred thousand acres in interior Alaska and the Talkeetna Mountains area frees these lands for conveyance to the State from the federal government. State selections are presently complicated by approximately 10 million acres of conflicting overselections by various Native corporations. CIRI's relinquishments set the stage for other native corporations to relinquish overselections which conflict with similar State selection interests.

Permanently Settles Multiple "High Risk" Litigation

- * The integrity of federal conveyances of Section 6(h) lands to the State is protected from further challenge, and the State is protected from the financial exposure resulting from the receipt of past Section 6(h) revenues.
- * Four major issues are resolved in one comprehensive settlement. Further years of extremely costly litigation between CIRI, the State and the United States is avoided.
- * Financial risks were so great that neither party could afford to lose. The settlement represents a reasonable compromise regarding very complex issues in which the outcome of litigation was highly uncertain for both parties.



OFFICIAL BUSINESS

Alaska State Legislature

Senate

Office of the Secretary

PO BOX V
CAPITOL BUILDING
JUNEAU, ALASKA 99811

April 24, 1989

TO: Senator Fahrenkamp, Chair
Resources Committee

FROM: Nancy Quinto *NQ*
Secretary of the Senate

SUBJECT: Settlement of disputes with Cook Inlet Region,
Inc. (CIRI)

The President has referred the attached letter from Lennie Gorsuch, Commissioner, Department of Natural Resources regarding negotiations with the State of Alaska and Cook Inlet Region, Inc. (CIRI) for your review.

NQ/hc

w/attachment

CIRI Settlement

STATE OF ALASKA

DEPARTMENT OF NATURAL RESOURCES

OFFICE OF THE COMMISSIONER

STEVE COWPER, GOVERNOR

400 WILLOUGHBY AVE.
JUNEAU, ALASKA 99801-1798
PHONE: (907) 485-2400

April 22, 1989

Honorable Tim Kelly
President
Alaska State Senate
P.O. Box V
Juneau, AK 99811

Re: Settlement of disputes with CIRI

Dear Senator Kelly:

After several months of intense and serious negotiations, the State of Alaska and Cook Inlet Region, Inc. (CIRI) have agreed to a settlement of four major legal disputes between them. The purpose of this letter is to inform you of the significant elements of that agreement and offer such additional information regarding it as you or legislative committees might consider helpful in reviewing it.

The settlement agreement resolves the so-called "14(g)" oil royalty litigation, litigation challenging the state's title to certain oil and gas producing lands conveyed to it under section 6(h) of the Alaska Statehood Act, and a dispute over conveyances of title to properties in Kachemak Bay, and brings to conclusion remaining issues arising out of the 1976 land exchange agreement between CIRI, the state, and the federal government, generally referred to as the "Terms and Conditions":

(1) 14(g) Litigation. This is a lawsuit filed by the State of Alaska against the federal government about two years ago, in which the state challenged the manner in which the United States applied the provisions of section 14(g) of the Alaska Native Claims Settlement Act (ANCSA) to the distribution of oil and gas revenues from producing units on the Kenai Peninsula. The state asserted that the United States improperly paid royalty revenues to CIRI which should have been paid to the state. We requested that the court award the state retroactive royalty entitlements under its interpretation of applicable law and direct the United States to allocate future royalty receipts in accordance with that interpretation. CIRI later intervened as a party defendant in that litigation.

Under the settlement agreement, CIRI will pay \$3.0 million to the state as compensation for the state's retroactive "14(g)" claims. In addition, CIRI has agreed that the method applied to allocate federal royalty receipts will be changed beginning January 1, 1992 to that advocated by the state in its lawsuit. In exchange, the state has agreed to dismiss its lawsuit with prejudice with respect to the four producing units on the Kenai Peninsula to which the federal "14(g)" interpretation has been applied. However, the state reserves its right to challenge that interpretation in the future should it later be applied to any other oil or gas production in the state.

(2) The 6(h) Litigation. In 1982, the United States conveyed title to approximately 5,500 acres of producing lands in the Kenai and Cannery Loop units on the Kenai Peninsula to the state pursuant to the provisions of section 6(h) of the Alaska Statehood Act. In 1986, CIRI sought to select those same lands from the United States as part of its ANCSA entitlements and asserted that the 1982 conveyances to the state were invalid as being inconsistent with section 6(h). In response to CIRI's selection, the United States established an escrow into which it deposited all oil and gas revenues from the disputed lands. At the end of March 1989, that escrow amounted to approximately \$4.4 million. In 1988, the United States filed suit against the state to void the 1982 conveyances. If the U.S. were successful in that suit, those 5,500 acres would be conveyed to CIRI and the escrowed funds would be paid to it, as well. CIRI has also asserted that it was entitled to additional retroactive revenues from those 6(h) lands back as far as 1976, and perhaps 1971. Most of those revenues had been paid by the U.S. to the state over the years under the regular 90/10 mineral revenue sharing formula.

Under the settlement, CIRI receives the right to select 1,655 of the 5,500 6(h) acres and the state retains title to the rest. The \$4.4 million escrow account is divided equally between CIRI and the state. Revenues generated by the respective accounts after March 31, 1989 belong to CIRI and the state accordingly. The U.S. would dismiss its suit challenging the state's title to the 6(h) lands and CIRI would relinquish its retroactive claim to any pre-escrow revenues.

(3) Kachemak Litigation. Last year, CIRI filed suit against the state in an attempt to force it to convey certain lands in the Kachemak Bay area to CIRI under the provisions of a 1979 Memorandum of Understanding (MOU) between CIRI and the state. The state disputed CIRI's right to select the particular lands sought by CIRI and also demanded that CIRI convey to it

lands within Kachemak Bay State Park to which the state was entitled under the MOU.

The settlement brings this dispute to a close by specifying that CIRI will convey to the state 4,400 acres within Kachemak Bay State Park to which it is entitled under the MOU. The state will also fulfill its obligations to CIRI by either leasing or conveying 2,135 acres of land to CIRI. CIRI will be permitted to lease from among specified lands within the Kenai and Cannery Loop units. Such leases will be subject to a retained 12.5 percent state royalty interest. To the extent CIRI does not elect to lease from among the designated lands, it will be able to select, from certain specified tracts, the difference between 2,135 acres and the number of acres leased for conveyance to it from the state. CIRI's suit against the state would be dismissed.

(4) Resolution of Outstanding Terms and Conditions Issues. Despite the fact that the Cook Inlet area land exchange agreement was entered in 1976, it has yet to be fully implemented. The settlement will essentially bring outstanding areas of dispute to a close. Significantly, CIRI and the state both agree that the conveyances made pursuant to this settlement fully satisfy all claims that either party may have regarding the state's obligations to CIRI under the Terms and Conditions. As part of this agreement, CIRI also agrees to relinquish certain significant out-of-region selections (Red Line Pool and Talkeetna Mountains Area), involving several hundreds of thousands of acres, thereby making those lands available for selection by the state.

I believe this settlement is a fair one and is in the best interest of the state. It puts certain substantial and longstanding disputes behind us in a manner which will benefit state government, private economies, and state residents. As a result, all of us -- the state and federal governments and the Native corporations -- will be able to get on with more productive business.

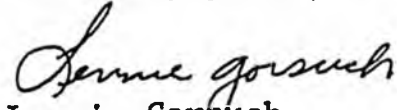
My department is prepared to provide such additional information or briefings as you or various legislative committees may desire. Because of the longstanding interest within the legislature in the state's dealings with CIRI, we have built into the settlement the opportunity for the legislature to review it. If, as a result of that review, the legislature concludes, through the adoption of a concurrent resolution this session, that the settlement is not a satisfactory one, I have retained the authority to withdraw from the settlement within the following five days.

Honorable Tim Kelly, President
Alaska State Senate

April 22, 1989
Page #4

I look forward to discussing this very important settlement with you further.

Sincerely yours,


Lennie Gorsuch
Commissioner

LG/pjg

cc: Honorable Sam Cotton
Speaker of the House

Confirmation Hearings



Alaska State Legislature

Senate

Office of the Secretary

OFFICIAL BUSINESS

PO BOX V
CAPITOL BUILDING
JUNEAU, ALASKA 99811

February 8, 1989

MEMORANDUM

TO: Senator Bettye Fahrenkamp, Chair
Resources Committee

FROM: Nancy Quinto *na*
Secretary of the Senate

RE: Confirmation of Governor's Appointees

Pursuant to AS 39.05.080, President Kelly has referred the positions noted to your committee for a hearing, recommendation and report:

DEPARTMENT OF NATURAL RESOURCES
Lennie Gorsuch

BOARDS AND COMMISSIONS

Alaska Commercial Fisheries Entry Commission

Twomley, Bruce C. - Juneau

Original term began 10/6/82 reappointed 8/18/88
expires 7/1/92

Board of Fisheries

Chihuly, Mike - Ninilchik

Term began 9/19/88 expires 1/31/91

Guide Board

Ballenger, Ben G. - Kodiak

Original term began 3/2/87 reappointed 8/19/88
expires 6/15/92

Frost, Stanley - Anchorage

Original term began 3/2/87 reappointed 8/19/88
expires 6/15/92

McClintock, Sharon E. - Chugiak

Term began 2/6/89 expires 6/15/92

Page 2
Governor's Confirmations

Alaska Oil and Gas Conservation Commission

Chatterton, Clarence "Chat" V. - Anchorage

Original term began 12/18/81 reappointed 1/19/89

expires 12/31/94

Johnston, David W. - Anchorage

Term began 1/19/89 expires 12/31/92

w/attached resumes

Resume

Lennie Boston Gorsuch

Business:
326 Main Street
Juneau, Alaska 99801
(907)364-3310

Residence:
Box 504
Douglas, Alaska 99824
(907) 386-1290

Birthplace: Los Angeles, California
Birthdate: March 20, 1944

Alaska Resident since 1970. Resided in the following communities in Alaska:
Anchorage, Ketchikan, Skagway, Tok, Soldotna and Douglas.

Graduated Juneau-Douglas High School
1962, Juneau, Alaska.

Sacramento State College 1962 - 1963
Sacramento, California

ALASKA WORK HISTORY

February 1986 to Present. Deputy Commissioner, Department of Natural Resources.

December, 1985 to Feb '85. A founder and partner of Capital Information Group, a firm established to report to clients on activities in the State Administration and in the Alaska Legislature. Set up books of the new firm as the first managing partner and established procedures for client contact and agreements. During the Legislative session covered tort reform, telecommunications issues, resources issues and cable television issues. Monitored hearings and provided indepth reports or newsletters as required by the client. During the interim, continued reporting services on State agency activities.

June, 1985 to December, 1985 Policy Analyst, Division of Governmental Coordination, Office of the Governor. Functioned as Special Projects Analyst for issues such as Exclusive Economic Zone, the Outer Continental Shelf, and the ANILCA related issues. Staffed for the Land Use Advisors Committee and the Land Use Council. Also spent some time working for the Southeast Regional Office doing specific project analysis for permitting purposes, coordinating the State agency positions on projects and issuing coastal consistency determinations.

2

December, 1982 to June, 1985. Special Assistant to the Governor of Alaska for resource issues. Coordinated positions of resource agencies and facilitated correspondence for the Governor's Office with resource agencies. Acted as liaison for resource constituent groups and Governor's Office contact for citizens with concerns regarding resource issues. Established and chaired mini-cabinet on Resources. This forum was used for interagency discussion and decision making on resource issues, major projects, and state responses to federal initiatives. Issues not decided in this forum were prepared for gubernatorial decision. Staffed for the Governor at the National Governors' Association and Western Governor's Association as well as trips to Washington, D.C. for purposes of meeting with Federal Cabinet members on Alaskan issues.

4

July, 1978 to December, 1982 Special Assistant to the Commissioner of Natural Resources for oil and gas issues. Acted as liaison between the Commissioner's Office and industry and the public. Staffed for the Commissioner in negotiations for royalty oil contracts, development of oil and gas lease sales and schedules, development of royalty oil policy and regulations. Coordinated the first competitive royalty oil sale ever held in Alaska. Represented the Department of Natural Resources in interagency meetings for the formulation of state positions on resources issues.

Developed a Village Contact Program and rural offices program for the Department of Natural Resources to provide information to the rural areas regarding the State's five-year oil and gas lease program and other departmental programs affecting rural and coastal areas. In cooperation with other resources departments, established the first North Slope Office for monitoring state permitted activities. Conducted public hearings in coastal communities regarding departmental activities including seismic permits, oil and gas lease sales, and seasonal drilling.

7

August, 1975 to July, 1978. Secretary to the Commissioner of Natural Resources. In a department with all divisions located outside of the capital city, was responsible for the smooth flow of communications between the Commissioner's Office and departmental divisions. Division Directors and the Commissioner relied heavily upon me for transfer of information. Involved in the EEO program for the Department and worked extensively with the divisions on the department EEO plan. Provided clerical training and supervision for participants in youth employment program. Supervised Commissioner's office secretarial staff.

1974. Alaska Lieutenant Governor's Office, Administrative Assistant III, Division of Elections. Responsible for budget preparation as well as all other fiscal and personnel work for the Division of Elections. Responsible for mock-up and printing of ballots and details surround first use of data vote equipment in Alaska. This included securing computers, state office buildings, ballots, and polls, and security across the State.

1970 - 1974. Office of the Governor of Alaska, Secretary to the Administrative Assistant to the Governor. Served as backup for the Governor's secretary and as final proofreader for all correspondence sent from the Governor's Office. Worked closely with the Administrative Assistant on correspondence and Governor's Office procedures, including Executive and Administrative Orders.

1970. Office of the Governor of Alaska, Secretary to the Director of the Neighborhood Youth Corps. Head secretary for the Division responsible for youth and adult employment programs across the State. Worked on verification of time sheets and payroll processing. In addition to secretarial duties.

August, 1965 to August, 1966. Alaska Department of Health and Social Services, Anchorage. Responsible for all administrative and clerical duties for two public health advisors. Worked with principals in establishing a control system for immunizations, and with Kodiak public health officials on post-earth quake health concerns.

August, 1961 to August, 1963. Alaska Department of Public Works, Secretary in the Office of Marine Superintendent, Alaska Marine Highways System, Juneau. Responsible for all secretarial work for the Marine Superintendent, Port Captain, and Port Engineer for the Ferry System at a time when vessels were being overhauled and new vessels being built. Also responsible for parts and materials orders and time sheets coming from the vessels through the Marine Superintendent's Office.

1961 through 1962. Alaska Department of Public Safety, Clerical Aide, Drivers' License and Safety Responsibility Sections. Worked after school and summers doing filing and typing. During the last summer served as backup to the clerk for safety responsibility issues.

Other Appointments

1978 to 1986. Alaska Representative on the National OCS Policy Committee. This committee consisted of representatives from each coastal state, industry, small businesses, fisheries and several federal agencies. The Committee advised the Secretary of the Interior on oil and gas lease sale schedules, impacts, revenue sharing, bidding methods, safety, oil spill clean up, and a variety of other OCS related issues. Held this position as Special Assistant to the Commissioner of Natural Resources, as Special Assistant to the Governor and as policy analyst at the Division of Governmental Coordination.

January 1986 to present. Serves as state appointed member of the Land Use Advisors' Committee. This committee made up of twenty Alaskans is appointed jointly by the Governor of Alaska and the Secretary of Interior and advises the Land Use Council on issues surrounding the implementation of ANILCA. Issues dealt with by the Committee include wilderness designations, park and preserve plans, access and national forest issues.

1980 to 1982. Southeast Alaska representative at-large for the Democratic State Central Committee. This Committee serves as the governing body of the Democratic Party of Alaska.

1970 to present. Member, Greater Juneau Democratic Precinct. Served as chairperson of several fundraising events.

RESUME

of

Bruce Twomley
P.O. Box 020972
Juneau, Alaska 99802-0972

Work Phone: 586-9577
Home Phone: 586-3251

Height: 5'11"
Weight: 158
Marital Status: Married to Sara Minton

WORK EXPERIENCE: Chairman, Alaska Commercial Fisheries Entry Commission (CFEC). 1983 to present.
Commissioner, CFEC. 1982 to present.
Member, Governor's Fisheries Cabinet. 1983 to present.
Attorney, Alaska Legal Services. 1973 - 1982.
VISTA Volunteer. 1972 - 1973.
Legal Research for San Francisco Neighborhood Legal Assistance Foundation (as a law student).
Indigent Adult Criminal Appeals (as a law student).
Legal research for Professor Roscoe T. Steffen and private attorneys (as a law student).

LAW SCHOOL: National Judicial College, University of Nevada, Administrative Law: Fair Hearing. 1983.
Hastings College of Law, San Francisco, California. 1967 - 1970. Graduated with J.D. in upper 15% of the class.

EDUCATION: Northwestern University, Evanston, Illinois. 1963-1967. Graduated with A.B. in upper quarter of the class.
Elgin High School, Elgin, Illinois. 1960-1963

BAR MEMBERSHIPS: Alaska State Bar
California State Bar
United States District Court for the District of Alaska
United States Court of Appeals for the Ninth Circuit

HONORS: Alaska Legal Services Distinguished Service Award.
1983
Martindale-Hubbell highest (a v) lawyer rating.
1983
Subject of Notice in Vol. XX of the Dictionary of
International Biography. 1986
Elected to Senior Men's Honorary, Northwestern
(Deru)
Elected to Junior Men's Honorary, Northwestern
(Norleggama)
Illinois State Scholarship Winner
Elected Most Outstanding Male Graduate (Marie K.
Ekvall Award); Elgin High School (student body:
2000)

MAJOR LITIGATION
AND PRESENTATIONS:

Co-Counsel for plaintiff class of 2667 Alaska
Native secondary school age children in Tobeluk v.
Lind (known as the Molly Hootch case), 589 P.2d 873
(Ak. Sup. Ct. 1979), which by consent decree
established the entitlement of Alaska Native
children in 126 villages throughout the state to
attend secondary school in their home villages and
further required the state to expend more than
\$158-million for the construction of local secondary
facilities. (Worked directly with more than 40
Alaska Native villages.)

Wilson v. Watt, 703 F.2d 395 (9th Cir. 1983).

Fairbanks Correctional Center Inmates v. Williamson,
600 P.2d 743 (Ak. Sup. Ct. 1979).

Ferdinand v. City of Fairbanks, 599 P.2d 122 (Ak
Sup. Ct. 1979)

Horton v. Horton, 519 P.2d 1131 (Ak. Sup. Ct. 1974)

Attorney for plaintiff class of Alaska Native women
and minor children in Finnesand v. Kleppe, No.
A75-42 Civ. (U.S. District Court Alaska), which by
consent decree abolished a discriminatory
eligibility standard for Bureau of Indian Affairs
General Assistance.

Represented more than 100 Alaska Native Allotment applicants before the Department of Interior.

Amicus Curiae in cooperation with the Office for Civil Rights in The Matter of Alaska State Department of Education and Twenty-One Regional Educational Attendance Area School Districts S-134, a proceeding before the Department of Health, Education and Welfare, to enforce Title VI of the 1964 Civil Rights Act on behalf of Alaska Native school children against the State of Alaska and the regional school districts of the unorganized borough.

Attorney for the Akiak Indian Reorganization Act Council and parents of school children in Akiak v. Lind, No. 4BR 8-39 Civ., a suit against state officials seeking a declaratory judgment as to the status of an Indian Self-Determination Act Contract School.

"Local Control and Quality Education Under the Hootch Consent Decree," Alaska Native Education Association. Juneau, April 1978.

"Legal and Policy Bases for the Hootch Consent Decree," Statewide Meeting of Alaska Corrections Officials. Anchorage, November 1978.

"Alaska Native Control of Local Village Secondary School Programs," Lawyers Clinic on Parental Liberty in Education, Washington, D.C. December 1978.

"Parental Involvement, Local Control, and Quality of Education," Alaska Native Education Association. Anchorage, 1981.

"The IRS and Alaska Limited Entry Permits," University of Alaska Commercial Fishing Business Seminar, Federal Tax Impact on Commercial Fishermen. Anchorage, 1987.

"Current Issues Affecting Limited Entry," United Fishermen of Alaska. Juneau, 1988.

Bruce Twomley
Resume
Page 4

ACTIVITIES: Reading, Skiing, Hiking, Camping, Kayaking,
 Traveling
 International Law Club, Hastings
 Kappa Sigma Fraternity, Northwestern
 President, Interfraternity Council, Northwestern
 President, Student Council, E.H.S.

References will be furnished upon request.

RESUME

MICHAEL B. CHIHULY "MIKE"

Born Tacoma Washington
Age 36

Current Residence: 16170 North Star Circle
Ninilchik, Alaska 99639

Mailing Address: P.O. Box 39294
Ninilchik, Alaska 99639

FAMILY

Wife Shirley Ann
Age 35
Born Afognak Island, Alaska

Daughter Michelle Coe
Age 8
Born Fairbanks, Alaska

Daughter Theresa Catherine
Age 6
Born Fairbanks, Alaska

Son John Michael
Age 5 months
Born Soldotna, Alaska

RESIDENCY

Anchorage Resident	12 years
Fairbanks Resident	12 years
Ninilchik Resident	7 years
Bush Resident	1 year
Wood/Tikchiks	

EDUCATION

East Anchorage High School Graduate

EDUCATION continued...

1975 Graduate University of Alaska Fairbanks
B.S. Fisheries Biology

1979 Graduate University of Alaska Fairbanks
M.S. Fisheries Biology

COMMUNITY INVOLVEMENT/PERSONAL INTERESTS

Active EMT-I Ninilchik

Active Volunteer Fireman Ninilchik

Board of Directors Ninilchik Volunteer Fire Department

Central Peninsula Fish and Game Advisory Board Member

Board of Directors Ninilchik Chamber of Commerce

Member Parish Council St. Peter's Catholic Church

Active Supporter Kenai Peninsula State Fair and 4-H Livestock Program

Water Safety Instructor (WSI) Community Swim Program

Hunting, Trapping, and Fishing since age 10

University of Alaska Fairbanks X-Country Ski Team 1971-1975

Competitive Hockey Enthusiast; played High School, College and
currently involved in Senior Men's Program, Soldotna

Youth Hockey Coach Fairbanks

Hunter Safety Instructor

EMPLOYMENT

1984-1988 Self-employed owner/operator Chihuly's Charters

1984-1988 Self-employed partner Porcupine Gift Shop

1983-1988 Substitute teacher Kenai Peninsula Borough
School District

EMPLOYMENT continued...

1984-1987 Water Safety Instructor Community Swim Program
1982/1983 Winter Caretaker/Trapper Wood River Lodge
1980-1982 Habitat Biologist, ADF&G Pipeline Surveillance
1979-1980 Fisheries Biologist, LGL Alaska Limited, Northwest
Alaskan Gas Pipeline Fisheries Studies
1977-1979 Resident Advisor, Student Affairs, Uof Ak. Fbks.
1975-1977 Research Assistantship, Northern Pike Research
Universtiy of Alaska Graduate Studies
1975 Assistant Athletic Coach, University of Alaska
1974 Fisheries Technician IV, ADF&G
1973 Fisheries Technician III, ADF&G
1972 Fisheries Technician III, ADF&G
1971 Fisheries Technician II, ADF&G
1970 Fisheries Technician I, ADF&G and FRI, University
of Washington
1967-1969 Commercial Fisherman, Bristol Bay Setnet

PUBLICATIONS

Include:

Master's Thesis on Northern Pike

Primary Author for six major fisheries studies reports prepared
for Northwest Alaskan Pipeline Company

Numerous Outdoor Articles written for ALASKA magazine and
ALASKA OUTDOORS magazine

REFERENCES

William Bailey, owner Will's Copper King Charters, Ninilchik
Doug Blossom, Chairman Central Peninsula Advisory Board, Ninilchik
Sam Bushon, Principal, Ninilchik High School
Darrel Kellum, former Principal Ninilchik High School
Elain Thomas, Teacher Ninilchik High School
Frank Miller, Teacher Ninilchik High School
Robert Jones, Teacher Ninilchik High School
Penny Brett-Vadla, Teacher Ninilchik High School
John Lindeman, Commercial Fisherman/Teacher Ninilchik High School
Pat Oskolkoff, EMT Instructor Ninilchik Emergency Services
Joseph Meier, Commercial Fisherman Ninilchik
Darwin Waldsmith, Commercial Fisherman Ninilchik
Larry Van Ray, State Coordinator Duck's Unlimited
Gerry Byrne, Commercial Fisherman/President Ninilchik Vol. Fire Dept.
James Greiner, Author and former Editor Alaska Trapper's Magazine
Al Ott, Supervisor Habitat Division, ADF&G, Fairbanks
Richard Shideler, Supervisor Habitat Division, ADF&G, Fairbanks
Carl Yanagawa, Supervisor Habitat Division, ADF&G, Fairbanks
Dr. Stephen Johnson, President Alaska Office, LGL Alaska
Dr. Richard Stenard, Student Affairs, University of Ak., Fbks.
Dr. Harris Sheldon, Student Affairs, University of Ak., Fbks.
Dr. Sam Harbo, former member Board of Game
Russel Redick, former Supervisor ADF&G Sport Fish Division

Resume

dup. l.

NAME: Ben G. Ballenger
SS# 560-28-1913

DOB: May 12, 1924
Greeley, Colorado

EDUCATIONAL BACKGROUND:

San Diego High School
Graduation 1941 - General Courses

U. of A. Wildlife Class - One week course, 1957

Military Justice School June 1959-August 1959

Deep Sea Diving School July 1943 - January 1944 Master Diver
U.S. Navy
Dept. of Supervised Study

Alaska Troopers Academy - one week 1979
Orientation on Enforcement Sitka, Alaska

EMPLOYMENT HISTORY:

March 1962 to December 30, 1985 STATE OF ALASKA
ALASKA DEPARTMENT OF FISH & GAME
GAME DIVISION

At the beginning of employment with the State my position was that of Fish and Game Aide. This consisted of performing the following duties:

Under general direction, conduct ground and aerial game surveys of deer, elk, bear, goat, caribou and moose. Collect and preserve specimens used for reproduction and aging studies from elk, deer, bear and caribou. Conduct hunter surveys, analyze and compute harvest data including sex and age composition of deer and elk from analysis of the lower mandibles. Participate in the bear-cattle program, including predator control, determination of the extent of predation, public relations and capturing and tagging brown bears. Conduct range surveys to determine the trend and utilization of key plants used by elk. Conduct winter mortality surveys to determine its effect on elk and deer populations. Assist in transplant of elk and moose including capturing and caring for the young animals until their release. Recommend regulation changes pertaining to Unit 8 to my immediate supervisor.

As the Department grew in management techniques and responsibilities and the hunt pressure increased so did the responsibilities of my position resulting in a new job classification.

July 1970-December 30, 1985 FISH AND GAME TECHNICIAN V

The main purpose of this position was to assist the Area Game Biologist in all phases of game management duties in the Kodiak area. In his absence assume all the responsibilities of the Area Game Biologist.

Primarily, duties consisted of setting up and accomplishing the mammal inventories and aerial and ground surveys. Issue permits and harvest tickets for hunts in Alaska; inform hunters as to where, when and how to hunt on Kodiak. Continual elk and deer range evaluations to determine the condition of the winter food supply. Collecting data and specimens from various animals. Answer correspondence from the public on securing permits, licenses, and other information on hunting, viewing, photographing wildlife on Kodiak and adjacent islands in GMU 8. Also during the open hunt seasons went on enforcement patrols which required checking hunters for licenses and permits. Conducted winter mortality transects for deer and elk. This work consisted of in the field inspections of key winter areas; searching the area for deer/elk carcasses; determine sex and age, physical conditions and cause of death. When time permitted I also gave talks to civic groups, school classes, sportsmans groups on hunting and wildlife management programs. Attend all meetings held by the public and speak on game regulations and policies in an effort to secure public support for our programs; inform people on regulations and laws. There was also the need for capturing of live animals, use of drugs in the captures and utilizing other marking equipment.

Because of the close work with the public and the Kodiak/Afognak/Shuyak area guides it was extremely important to have a knowledge of the State and Federal laws and Alaska State Game Regulations. In this way it was easier to to make recommendations to the staff regarding changes in the hunting and trapping regulations that the public and guides were most concerned about. Then these regulation changes would be recommend to the Board of Game.

December 1941 - November 1961 Chief Boatswain's Mate

U.S. NAVY, deck supervisor, various responsibilities in connection with maintaining, seamanship, gunnery, navigation, boat handling, marlin spike seamanship and training junior officers of the deck-duties.

March 1956 - July 1958

U.S. Deputy Game Warden, Game and fish patrol on road system of Kodiak.

During my employment with the State of Alaska I also assisted in various wildlife projects throughout the State. These projects are listed below:

Southeastern Alaska - elk transplant in the summers of 1962 and 1963.

Alaska Peninsula - moose and bear hunt monitoring in winter 1967.

Kenai Peninsula - collect biological specimens from moose kills early 70's.

Point Hope/Kotzebue - monitoring polar bear hunts, data and specimen collection for polar bear research teams. Also collected wolf specimens for research teams in Fairbanks.
Winters of 1969 and 1970.

Amchitka - live capturing of sea otters for reintroduction into Washington Oregon and other parts of Alaska. Late 60's.

Administered the Guide Test to individuals in Kodiak in 1962 and 1963 then mailed to Anchorage for correction and evaluation.



FROST GUIDE SERVICE, INC.

P.O. BOX 112449 ANCHORAGE, ALASKA 99511

January 3, 1983

Resume of: Stanley (Stan) Frost

Personal: Master Alaskan Guide
Born in Toronto, Canada Nov.1, 1924
U.S.Citizen April 4,1944
Alaska resident since March 1954
Wife Marta plus four children- Konstanze, Karen,
Cathy & Candace
Pilot since 1962
World War II served in E.T.O. Combat Engr. 1943-46

Business:

1965-present Pres.: Frost Guide Service, Inc.
1970-present Owner operator: Farewell Lake Lodge
1966-1969 Owner operator: Frost Refrigeration, Anchorage (sold)
1960-1966 Owner operator: Domestic Appliance Service Anch. (sold)
1954-1960 Owner operator: Alaskan T.V. Service, Palmer AK (moved to Anchorage 1960)
1954 Service manager: American T.V. Anchorage
Serviceman: Tom's Radio, 4th Ave., Anchorage

Organizations:

Served three terms as president, Alaska Professional Hunters Assn., 1975,76,77. Ten years on board of directors, also as secy, treasurer, and vice pres.

Board of Directors, 76-77, Citizens for Mgmt. Alaskan Lands.

Board of Directors, 1980, Safari Club International

Member: Alaska Professional Hunters Assn, National Rifle Assn.
International Professional Hunters Assn., Safari
Club International, Game Conservation International,

Also Editor of THE ALASKA PROFESSIONAL HUNTER magazine 1978-79

RESUME'

SHARON E. MCCLINTOCK

Box 671089

Chugiak, Alaska 99567

(907) 688-4143 Home - \$ - 4499

561-7452 Work -

Summary of Qualifications

Sixteen years of professional experience in ANCSA and ANCSA land implementation. Directly involved with incorporation of ANCSA village corporations, organized land selection seminars, completed and submitted land selection applications, completed resource evaluations, and easement and navigability studies, identified third party interests, participated in planning and development of private land, and development of land use policies and lands records system.

Familiar with public land laws, Alaska State land laws, thorough knowledge of ANCSA, ANILCA and 1991 bill provisions, and general knowledge of Canadian land settlement issues. Studying international aboriginal claims.

Extensive familiarity with statewide village corporation land issues gained from employment with a regional corporation, a village corporation, and a statewide nonprofit organization responsible for statewide technical assistance in ANCSA 14(c) implementation.

Established, designed and implemented ANF's successful statewide ANCSA 14(c) technical assistance program. Developed numerous training sessions on 14(c) issues.

Writing skills include principal authorship of ANF's Village Land Reconveyance Planning, A Handbook on ANCSA § 14(c), now in its fourth edition. Editor of ANF's Land Newsletter. Many land articles published in regional and statewide newspapers.

Extensive travel to numerous villages in all regions of the state. Familiar with traditional land use patterns and customs, particularly of Inupiat people of Northern Alaska.

Extensive public speaking experience gained from facilitating workshops, seminars and lectures on land selection, 14(c), 1991, public land laws, land management, board member responsibilities, trespass, easements, townsites, and ANCSA and ANILCA implementation to groups ranging from several to over 200 people. Frequent guest lecturer on ANCSA to high schools and universities, at regional seminars and through statewide audio teleconference. Keynote speaker at two village corporation annual shareholders meetings and commencement speaker at one village high school graduation.

Certified instructor on ANCSA through the University of Alaska in Anchorage, Northwest Community College in Nome, and the Kuskokwim Community College in Bethel.

Responsible for initiating the establishment of a statewide Native Allotment Advocacy Group.

Responsible for initiating working relationship between ANF and the Alaska Bar Association Alaska Native Law Section. In process of developing a comprehensive board member training manual.

Leadership and management capabilities include presidency of a nonprofit organization, supervision for four member staff, chairmanship of a major subcommittee of the Alaska Native Land Managers Association and owner of own business. Involved also with day to day operations of the ANF.

Professional Experience:

10/83-Present ALASKA NATIVE FOUNDATION

Director of ANF's 14(c) Technical Assistance Program which provides technical assistance and training to ANCSA village corporations in meeting the reconveyance obligation of ANCSA Section 14(c). Supervisor of four member land staff. Responsible for development of program, coordination of services, funding, budgeting, reporting, and overall program management. Editor of bi-monthly ANF Land Newsletter. Principal author of ANF's 14(c) Handbook, Village Land Reconveyance Planning, which is now in its fourth edition. Project includes identification of statewide 14(c) legal issues and overseeing actual legal research. Chairperson of Alaska Native Land Managers Association Federal Townsite Committee. Involved in project to develop model land lease for village corporations. Personally provided workshops to in every resion, and provided direct assistance to over 150 village corporations. Extensive travel.

4/83-10/83 QUEENE ALICE GOLD MINING COMPANY

Self-employed in family placer gold mining operation in interior Alaska.

3/81-4/83 ALASKA NATIVE FOUNDATION

ANCSA Land Specialist for the Village Management Assistance Program. Resource person for village corporation board member/land staff on land issues. Development and design of assistance program for ANCSA 14(c) reconveyance to village corporations. Principal author, Village Land Reconveyance Planning. Conducted 14(c) workshops and technical assistance to village corporations. ANF representative on AFN Land Managers Association and member of its DOT/PF 14(c)(4), Land Planning and Access/Easement Committee. Researched Native land issues. Extensive statewide travel. Provided 14(c) assistance to 112 village corporations.

3/78-2/81

COHO TECHNICAL SUPPORT

Majority partner and manager of consulting firm. Performed land status research, mining claim validity checks, mining claim staking as well as consultant in ANCSA land matters. Worked in support of survey crew and general office management.

10/76-11/77

LARSON, TIMBERS AND VANWINKLE

Paralegal Investigator and Juvenile Youth Advocate for Nome law firm. Investigation of criminal and juvenile cases. Research into background and social histories of clients. Conducted interviews, took witness statements and affidavits. Legal research, agency contact, court appearances and preparation of defenses in cases. Technical report writing. Extensive travel in Northwest Alaska and contact with numerous villages. Upkeep of law books.

8/74-10/76

SITNASUAK NATIVE CORPORATION

Land Planner. Responsible for setting up land department. Primary responsibility for implementation of ANCSA for large Native corporation. Established land management and selection criteria after extensive public and land committee meetings and data gathering. Responsible for village land selection and application. Organized permanent land committee, land records system, and initiated resource study and inventory. Developed criteria in 14(c)(1) which has been used by other Native corporations. Extensive study into 14(c)(3) municipal reconveyance and alternatives for community expansion. Extensive mapwork and identification of third party interest using aerial photos and status plats. Title searches. Performed on-site inspections of various leases, campsites, and alternative village sites. Coordinated efforts with BIA in identification of Native Allotments on village lands. Compiled and updated existing information for village profile. Represented corporation in easement hearings. Navigability study and mining claim validity checks. Coordinated with regional corporation in land matters.

7/73-8/74

BERING STRAITS NATIVE CORPORATION

Land Clerk and Research Specialist for BSNC land department. Organization of village training seminars in 12(a) and 12(b) land selections. Responsible for coordination of meetings with various land committees and board of directors regarding land selections priorities. Extensive travel. Map work and identification of third party interest on village

lands. Conducted regional resource studies and evaluation. Coordinated with the FSLUPC in village meetings in land selection and resource evaluations. Participated in land intern training program sponsored by the Alaska Native Foundation in Anchorage Conducted evaluation of the training project which enabled ANF to continue program. Emphasis of training in land matters, including selection, planning, and development of land, legalities of land transference, ownership, and recordation of land under state and federal recording systems. Easement and navigability study. Agency familiarization for land information.

6/72-9/72

CITY OF NOME

Employment Officer. Job placements, interviews and aiding in filling applications for jobs.

6/70-9/70

FEDERAL AVIATION ADMINISTRATION

Clerk Typist. Typing, correspondence, filing and general office work.

6/69-9/69

FEDERAL AVIATION ADMINISTRATION

Clerk Typist. Typing, correspondence, filing and general office work.

Education:

1970

NOME HIGH SCHOOL
Nome, Alaska

1970-73

UNIVERSITY OF ALASKA - Major: Political Science
Fairbanks, Alaska

1975-77

NORTHWEST COMMUNITY COLLEGE - Major: Criminal Justice
Nome, Alaska

1979

UNIVERSITY OF ALASKA - Major: Justice
Anchorage, Alaska

1981

UNIVERSITY OF ALASKA - Major: Planning
Anchorage, Alaska

1973

ALASKA NATIVE FOUNDATION
Anchorage, Alaska
Completed Land Intern Training Program
BLM Ratings as Supervisor Field Investigator and Realty Specialist

Professional Affiliations:

1985- Interagency Cadastral Coordinating Council Member
1984- International Right-of-Way Association member
1981 ANF Representative, Alaska Natives Land Managers Association
1984 Chairperson of ANLMA Townsite Committee
1982 Nonlawyer Member, Alaska Bar Association, Paralegal Committee
1981 Alaska Native Women's Statewide Organization, Anchorage, Alaska
1983 Alaska Association of Legal Assistants Member
1975-77 President, Board of Directors, Nome Community Center, Nome, Alaska
1974-77 Sitnasuak Native Corporation Land Committee, Nome, Alaska
1976 Chairman, BiCentennial Committee, City of Nome
1974-75 Secretary, Arctic Native Brotherhood, Nome, Alaska
1972-73 President, Native Student Organization, U.A. Fairbanks

Special Recognition

ANF Board of Directors citation for service, 1985.
Recognition Plaque from the Unalakleet Board of Directors and Shareholders,
November, 1985
AFN Citizen of the Year Nomination, 1986

References: Emil Notti, President
Alaska Native Foundation
561-7452

Jane Angvik, former President
Alaska Native Foundation
277-6903

Robert Fagerstrom, President
Sitnasuak Native Corporation
443-5296

Bryan Timbers, Attorney
Larson, Timbers and Van Winkle
Box 80
Nome, Alaska 99762

BOARDS & COMMISSIONS

RESUME
CLARENCE VAIL CHATTERTON

FEB 1 1989

2308 Boniface Parkway
Anchorage, Alaska 99504Office: 907-279-1433
Home: 907-333-8161

CHAIRMAN - Alaska Oil and Gas Conservation Commission

OBJECTIVE:

SUMMARY: Forty-five years of experience in oil and gas drilling, construction, exploration and production operations. Twenty-eight years in Alaska, which includes eleven plus years, guiding and being held accountable for Standard Oil Company of California - Drilling & Production activities in Alaska including engineering, production, drilling and construction, nine years with Rowan Drilling - U. S. as Vice-President-Alaska and seven as Commissioner/Chair of Alaska Oil and Gas Conservation Commission. Concurrent with Rowan assignment served four years 1977-1981 in the Alaska State Legislature as a member of the House of Representatives.

EXPERIENCE:

1/18/82 to Present . Commissioner/Chair - Alaska Oil and Gas Conservation Commission.

Jan. 1973 to Jan. 18, 1982 Rowan Drilling - U. S., 601 West 5th Avenue, Suite 531, Anchorage, Alaska 99501. Vice-President, an oil and gas well drilling contractor with five drill rigs in Alaska.

April 1961 to January 1973 Standard Oil Company of California, P. O. Box 7-839, Anchorage, Alaska, 99510. District Superintendent, Producing Department, Alaska. Responsible and accountable for the guidance and direction of 61 employees, including professional engineers, foremen, operating, drilling and construction personnel. This period covered the drilling-campaign at Swanson River, the installation of production facilities, the installation of a complete gas cycling-pressure maintenance plant as well as company's exploratory drilling activities in remote areas of Alaska, such as the Arctic North Slope. Assignment also includes negotiating all labor contracts for the Producing Department, Alaska. Also included an 8 month assignment in 1965 to an Organization and Cost Control Survey team for Standard of California to review their producing operations in the seven Western states for the purpose of developing a streamlined organization, work force, and cost saving methods.

CLARENCE VAIL CHATTERTON

2

2308 Boniface Parkway
Anchorage, AK 99504

November 1957
April 1961 Standard Oil Company of California, P. O. Box 455, to Vernal, Utah 84078. District Superintendent, Producing Department, Utah. Responsible and accountable for the guidance and direction of 54 employees, including professional engineers, foremen, operating, drilling and construction personnel. This period covered an active development drilling campaign in the Redwash Oilfield, initiation of pressure maintenance by water flooding and gas injection, initiation of gas sales to El Paso Natural Gas as well as responsibility for exploratory drilling operations in other parts of Utah and producing operations in the Aneth Oilfield.

November 1952
November 1957 Standard Oil Company of California, 225 Bush Street, San Francisco, California 94120. Staff Formation Evaluation Engineer, San Francisco. Responsible for establishing well bore formation evaluation procedures for the Producing Department, Western Operations, Incorporated. Assignment included holding formation evaluation seminars for the purpose of training Producing Department Engineers in formation evaluation techniques. Also functioned as the Department's expert on difficult well completion practices based on formation evaluation interpretations.

December 1944
November 1952 Standard Oil Company of California, P. O. Box 397, La Habra, California, 90631. Subsurface Petroleum Engineer, La Habra, California. Assignment carried responsibility of developing drilling and completion programs for oil and gas wells, sub-surface structural interpretation, the assurance that operations fulfilled engineering requirements and supervision of two or more Professional Engineers.

May 1942
November 1944 Lockheed Aircraft Corporation, Victory Boulevard, Burbank, California. Stress Analyst. Assignment covered the analytical stress analyses of designed component parts of aircraft such as the P-38 and the Lockheed Constellation, and the writing of reports to prove airworthiness of air frame for Civil Aeronautics Board.

EDUCATION: Professional Engineer in Petroleum Engineering, Colorado School of Mines, 1942. Major: Petroleum Engineering and Geology. Minor: Mining Engineering.

PERSONAL: Married, no children at home. Height: 5'11", Weight 190 lbs. Excellent health.

LICENSE: Registered Professional Engineer in Petroleum Engineering, State of California. Alaska extends reciprocity to California.

CLARENCE VAIL CHATTERTON

3

2308 Boniface Parkway
Anchorage, AK 99504

COMMUNITY
ACTIVITIES:

- 1964: President, Petroleum Club of Anchorage.
- 1966: General Campaign Chairman, Greater Anchorage Community Chest.
- 1967: President, Board Trustees, Greater Anchorage Community Chest.
- 1968: President, Rotary Club of Anchorage.
- 1969: President, Greater Anchorage Chamber of Commerce.
- 1976: Member of Governor's Management & Efficiency Review Group.
- 1977-
- 1980: Served as an elected member of the Alaska State Legislature, House of Representatives.

RESUME

DAVID W. JOHNSTON
940 Alyonk Drive
Anchorage, Alaska 99501

Phone: (907) 277-7868 (Home)
762-2592 (Work)

EXPERIENCE:

Natural Resource Manager II (March 1, 1988 to present)

Alaska Department of Natural Resources, Division of Oil and Gas (DO&G) 3601 C. Street, Anchorage, Alaska

In addition to duties described below, I am now providing staff support for Governor Cowper and Commissioner of Natural Resources Judith Brady in matters related to the Interstate Oil Compact Commission (IOCC). The IOCC is an organization of 29 producing states dedicated to the conservation of oil and gas; Governor Cowper is the current chairman of the IOCC. My principal functions include planning, coordinating and implementing the governor's IOCC goals and objectives, scheduling the governor's IOCC activities, planning meetings and preparing meeting agenda, writing letters for the governor's signature, preparing remarks for the governor, and interacting with other states' official representatives to IOCC and individuals doing business with IOCC, including Congressional staff and industry representatives.

Natural Resource Manager II (November 15, 1984 to present)

Natural Resource Manager I (September 15, 1984 to November 15, 1984)

Geologist III (January 1, 1984 to September 15, 1984)

Alaska Department of Natural Resources, Division of Oil and Gas (DO&G)

I currently manage DO&G's environmental analysis unit. My principal responsibilities include directing the division's environmental research effort in support of each state oil and gas lease sale; developing lease sale stipulations and permit terms; negotiating with other state and local agencies which offer comments and recommendations to modify proposed stipulations and permit terms to achieve concurrence; supervising the publication of the state's best interest finding and decision, and ACMP consistency determination for each state oil and gas lease sale; coordinating the acquisition of social, economic and environmental information for each lease sale; directing the division's public outreach program to educate local residents about oil and gas development; supervising the publication of the annual Five-Year Oil and Gas Leasing Program; and administering the state's seismic exploration permit and data acquisition program (MLUP Administration Project). I supervise four employees.

Duties of position required progressive upgrades from Geologist III to Natural Resource Manager II.

Geologist III (January 20, 1981 to January 1, 1984)

Alaska Department of Natural Resources, Division of Oil and Gas (DO&G)

Managed Alaska's MLUP Administration Project. This project coordinates all geophysical seismic exploration for oil and gas resources on state land. Principal responsibilities included review and approval of exploration plans, addressing environmental and legal issues and insuring compliance with state regulations governing oil and gas exploration, including submittal of geophysical data. Also, assisted in the review of lease operations and unit plans, and helped evaluate state land for oil and gas potential prior to a lease sale. Supervised one employee.

Managed own business (January 1, 1979 to January 20, 1981)

Provided expertise in the area of Arctic construction. Evaluated soils for proper foundation design and provided recommendations for appropriate construction methods. Prepared bid estimates and proposals for construction and assisted clients in obtaining necessary financing for their projects. Concurrently worked on Masters degree at University of Alaska.

Geologist (October 25, 1975 to January 1, 1979)
R&M Consultants, Inc., Box 2630, Fairbanks, Alaska

Drill rig geologist primarily devoted to soils and permafrost investigations, material site evaluations, and geotechnical studies. Responsible for the geologic logging of drill borings, and collecting of core samples. Results compiled in geotechnical reports, which company engineers used for facility design. Worked on projects throughout the state, including the Trans-Alaska Pipeline. Became head of field operations for R&M on its subsurface investigation of the Northwest Gas Line right-of-way. Additional experience in hard rock geology, mineral prospecting and aerial reconnaissance.

Geologist (September 1, 1975 to October 25, 1975)
U.S. Forest Service, Fort Missoula, Missoula, Montana

Researched geology and mining history of federal forest service lands in Montana to determine mineral potential. Concluding papers were published in Environmental Impact Statements, which outlined management alternatives for these lands.

EDUCATION: University of Alaska, Fairbanks, Alaska.
Master of Science in Engineering Management - 1985

Montana State University, Bozeman, Montana
Bachelor of Science in Geology - 1974

TECHNICAL: Oxford University, College of Petroleum Studies - Crude Oil Supply,
Transportation, Refining and Trading
American Association of Petroleum Geologist - Petroleum Exploration
Schlumberger - Production Well Log Analysis
University of Alaska - Well Log Analysis
IED - Seismic Exploration
EROS - Remote Sensing School

OTHER: Mediation Institute - Dispute Resolution
Batten Seminar - Negotiation

REFERENCES: Available on request.



Alaska State Legislature

Senate

Office of the Secretary

OFFICIAL BUSINESS

PO BOX V
CAPITOL BUILDING
JUNEAU, ALASKA 99811

February 13, 1989

M E M O R A N D U M

TO: Senator Bettye Fahrenkamp, Chair
Resources Committee

FROM: Nancy Quinto ^{NQ}
Secretary of the Senate

RE: Confirmation of Governor's Appointees

Pursuant to AS 39.05.080, President Kelly has referred the positions noted to your committee for a hearing, recommendation and report:

Board of Fisheries

Hanson, John - Alakanuk

Term began 2/8/89 expires 1/31/92

Hodson, Bud - Anchorage

Original term began 11/20/87 reappointed 2/8/89

expires 1/31/92

Samuelson, H. "Robin" - Dillingham

Term began 2/8/89 expires 1/31/92

NQ/hc

w/attached resumes

RESUME

John Hanson

January, 1989

Address: BOX 1, Alakanuk, AK 99554,

Work: 907-238-3117
Home: 907-238-3016

Personal: Date of Birth: July 16, 1931
Marital Status: Married to Alice Joseph for 38 years
Father to six children
Numerous grandchildren

Education: Akulurak Mission, 1939-1946

Employment and Experience

Present: Fisheries Manager, Yupik Star Fisheries
Box 168, Alakanuk, AK 99554

President and Chairman, Alakanuk Native Corporation, Box 89, Alakanuk, AK 99554

Board Member, Lower Yukon School District

Alaskan Advisor, United States-Canadian Trans-boundary Salmon Negotiation, 1982 to present

Member, Alaskan Governor's High Seas Salmon Task Force, 1987-present

Past: Heavy Duty Equipment Operator, 1957-present

Commercial Fisherman, 1947 to present

First Sergeant (Ret.), Alaskan National Guard, 1953-1973

Private, Territorial Guard, 1942-1945

Other: Member, Alaskan Board of Game, 1978-1982

Advisor, International North Pacific Fisheries Commission, 1975-1987

Advisor, United States Department of State, Bilateral Re-negotiations of INPFC/MFCMA, 1977-1978

Advisory Panel, North Pacific Fisheries Management Council, 1979

JUN 21 1983 SENIOR PEOPLE
Lower Yukon Fish and Game Advisory Committee, 1974
through 1978

Nunam Kitlutsisti Board of Directors, 1972
through 1984

Board Member, Cenaliurliit, Yukon-Kuskokwim
Coastal Resource Service Board, 1985-86

Member, Waterfowl Conservation Committee, in
cooperation with Association of Village Council
President, Nunam Kitlutsisti, and Federal Fish and
Wildlife Service, 1983 through 1987

Board Member, Alakanuk Native Corporation, 1974-
1978

Board Member, Lower Yukon School Board, 1983

Alakanuk City Council member, 1948 through 1958

Frederick (Bud) D. Hodson

Summer Address:

P.O. Box 265
Dillingham Alaska 99576
(907) 842-5464

Winter Address:

6661 Lawlor Circle
AnchorAge, Ak 99502
(907) 243-8450

OCCUPATION:

Owner / Operator, Tikchik Narrows Lodge, located in the Wood-Tikchik State Park, Bristol Bay Alaska.

Tikchik Narrows Lodge operates from June 1st through October 10th, accommodating and guiding sportfishermen. Tikchik is a daily fly out lodge fishing the entire western half of Bristol Bay and rivers in the Kuskokwim drainage.

EXPERIENCE:

1974-75 - employed as a sportfishing guide for Royal Coachman Lodge, Bristol Bay Alaska. Summers.

1976-78 - employed as a sportfishing guide/pilot for Tikchik Narrows Lodge under the ownership of Bob Curtis.

1979-85 - managing/partner of Golden Horn Lodge, located in Bristol Bay Alaska.

1986-present - owner/operator Tikchik Narrows Lodge.

EDUCATION:

Rio Hondo Junior College, Wittier CA., AS. 1974; Fullerton State, Fullerton, CA., 75 Education.

AFFILIATIONS

1979 to present - Alaska Professional Sportfishing Association, founding board member currently V.P., Board of Directors. Worked on several sportfishing issues and participated with past board of fisheries proposals. Participated in the Bristol Bay Management Plan, C.R.S.A., Bristol Bay Rainbow Trout management plan, Togiak Wildlife Refuge plan, Wood-Tikchik State Park plan.

1984 to present - Wildlife Federation of Alaska, Board of Directors, chairman wildlife committee.

1980 to present - Alaska Sportfishing Ass., business member, one of the original founding members.

1984 to present - Alaska Outdoor Council, trustee member.

Member - Trout Unlimited, Federation of Flyfishermen, National Wildlife Federation.

PERSONAL: Age 32, married two children



STATE OF ALASKA
 OFFICE OF THE GOVERNOR
 Pouch A
 Juneau, Alaska 99811

BOARDS AND COMMISSIONS RESUMÉ

INSTRUCTIONS

A separate application is required for each position for which you apply. Complete and specific answers will aid in rapid and accurate processing of your resumé. The initial determination of whether you qualify for the position specified will be based on this application.

Please type or print legibly in ink. Forward to the above address. Be sure your answers are true. A willfully false answer may result in your disqualification or removal from office if you are appointed.

Position for which I am applying:

Board of Fish

Please list any other Board or Commission on which you serve:

Name Harold "Robin" Samuelson		Previous Name applied under
Mailing Address Box 412	Residence Address	
City, State and Zip Code Dillingham, AK 99576		
Home Telephone Home - 842-5335	Business or Message Telephone	

REPORT ADDRESS AND TELEPHONE CHANGES PROMPTLY

AS 39.05.100 requires that a person appointed to a board or commission be a registered voter before the last general election:

Are you a registered voter? YES NO

Voter Registration Number (Optional)

Social Security Number (Optional)

574-20-4991

Have you ever been convicted of a misdemeanor within the past five years or a felony within the past ten years? YES NO

If "YES", explain the circumstances on a separate sheet of paper and attach it to this application. A conviction is not necessarily grounds for disqualification. The number of convictions, nature, recency and relationship to the board position applied for will be evaluated and a determination will be made after a review of all relevant facts.

A policy in the Governor's Office pertaining to boards and commissions is that a member attend at least 75% of the meetings. Are there any circumstances in either your professional or personal life which would prevent you from participating at the required authorized meetings? YES NO

If "YES", explain on a separate sheet of paper and attach to this application.

This position may require that the member travel to either urban or rural (or both) areas. Are there any circumstances which would prevent you from participating?

CONFLICTS OF INTEREST: Certain Boards and Commissions require full disclosure of personal financial data under AS 39.50.010. If required for the Board or Commission for which you are applying, are you willing to do so? YES NO

Could you or any member of your family be affected financially by decisions to be made by the Board or Commission for which you have applied?

YES NO If "YES", explain. As a fisherman -- could be affected as is the case with other fisherman on the Board of Fish.

The Office of the Governor will not discriminate against an applicant for a Board or Commission based on Sex, Age, National Origin, Marital Status, Pregnancy, Handicap, Religion or Parenthood.

TRAINING & EXPERIENCE: (If résumé attached, it is not necessary to complete items A-D)

A. List any professional licenses, certifications, or registrations and dates obtained that may be used as qualifying criteria:

B. List both formal and informal education and training experiences: (Use additional paper if necessary)

Twelve years H. S. Dillingham
Six months Welding School

C. List any community service positions, municipal government positions, state positions held, and list any awards received. These include both compensated and uncompensated positions (for example, president of a service organization or a mayor). Also include length of time served in the positions.

Choggiung Native Corp. - Villiage Corp. / Village Rep. to AFN - Bristol Bay
Wood-Tikchik State Park Board - Rep. for Dillingham
Fish and Game Advisors Board to F. (1987 Fish Board hearing)
Appointed to various studies by City council.

D. Employment work history: paid, unpaid or voluntary: (Use additional paper if necessary)

Assistant Manager Chervron Fuel Plant - Dillingham 1970
City Police-Dillingham Patrolman, 1971-72.
1973-79 Owner-Operator Grocery Store N and N: Construction jobs and
Commercial fished since - Salmon and herring gillnet, also seined
for herring

The Office of the Governor and the State of Alaska have an Affirmative Action Equal Employment Opportunity Program. To assist in the program, you are asked to voluntarily answer the following questions to provide the information necessary for reporting purposes. Under State and Federal law, the information you provide will not be used to illegally discriminate against you.

SEX ETHNIC BACKGROUND
 Male White Black Hispanic Alaska Native Asian or Pacific Islander American Indian
 Female

Date of Birth

Military Service (If applicable, give dates)

CERTIFICATION: I swear that the information I have entered on this form is true to the best of my knowledge. I understand that if I deliberately conceal or enter false information on the form my application may be rejected, I may be removed from the list of eligible candidates or I may be removed from the position. I agree that the Office of the Governor may contact present or former employers or other persons who know me to obtain additional information about my skills and abilities. I understand that the information on this application is public information and may be released through a legal request for such information.

Signature In Ink

Date



OFFICIAL BUSINESS

Alaska State Legislature
Senate
Office of the Secretary

PO BOX V
CAPITOL BUILDING
JUNEAU, ALASKA 99811

February 23, 1989

MEMORANDUM

TO: Senator Bettye Fahrenkamp, Chair
Resources Committee

FROM: Nancy Quinto *NQ*
Secretary of the Senate

RE: Confirmation of Governor's Appointees

Pursuant to AS 39.05.080, President Kelly has referred the positions noted to your committee for a hearing, recommendation and report:

Board of Game

Lentfer, Jack W. - Homer
Term began 2/17/89 expires 1/31/92

Nageak, Benjamin - Barrow
Term began 2/17/89 expires 1/31/92

Springer, Heinrich - Anchorage
Term began 2/17/89 expires 1/31/92

NQ/hc

Enc: Resumes

CURRICULUM VITAE

JACK W. LENTFER

Box 2617
Homer, Alaska 99603
907-235-5945

Personal

Born 13 May 1931; S.S. No. 516-24-9260.

Education

M.S., Wildlife Management, Montana State University,
Bozeman, 1955.

B.S., Fish and Wildlife Management, Montana State
University, Bozeman, 1952.

Employment:

1982 to present--Self employed wildlife consultant.
1981-82--Visiting Lecturer, Institute of Arctic Biology,
University of Tromso, Norway.
1977-81--Regional Supervisor, Southeast Alaska Game
Division, Alaska Department of Fish and Game.
1972-77--Polar Bear Project Leader, U.S. Fish and
Wildlife Service.
1969-72--Polar Bear Project Leader and Area Game Biologist,
Alaska Department of Fish and Game, Barrow.
1964-69--Brown Bear and Polar Bear Project Leader, Alaska
Department of Fish and Game.
1963-64--Caribou Project Leader, Alaska Department of Fish
and Game.
1957-63--Biologist, Office of River Basins Studies, U.S.
Fish and Wildlife Service, Alaska.
1956-57--Big Game Biologist, Montana Fish and Game
Department.

Other Experience

Steering Committee, International Association for Bear
Research and Management, 1965-85.
Member, International Polar Bear Specialist Group, 1968-85.
U.S. delegate to international polar bear meetings, 1965,
1968, 1970, 1972, 1973, 1974, 1976, 1979, 1981, 1983.
Fellow, Arctic Institute of North America, 1978.
President, Alaska Chapter, The Wildlife Society, 1972-74 and
1977-79.
Member, Scientific Advisory Committee to U.S. Marine Mammal
Commission, 1973-75 and 1985 to present.
Participant, Canadian Hudson Bay polar bear research
program, 1969.
Field consultant to Norwegian Polar Institute for polar bear

research in Spitsbergen, 1967.

Professional Societies

Arctic Institute of North America.
International Association for Bear Research and Management.
Society for Marine Mammalogy.
Wildlife Society.

Publications

- Lentfer, J.W. 1955. A two-year study of the Rocky Mountain goat in the Crazy Mountains, Montana. J. Wildl. Manage. 19:417-429.
- Lentfer, J.W. 1965. Brown bear harvest statistics in Alaska. Trans. West. Assoc. Game and Fish Comm. 45:134-139.
- Brooks, J.W., and J.W. Lentfer. 1965. The polar bear in Alaska. Pp. 44-55 in First International Polar Bear Meeting. U.S. Interior Dept. and Univ. of Alaska.
- Lewis, R.W., and J.W. Lentfer. 1967. The vitamin A content of polar bear liver: range and variability. Comp. Biochem. Phys. 22:923-926.
- Lentfer, J.W. 1968. A technique for immobilizing and marking polar bears. J. Wildl. Manage. 32:317-321.
- Lentfer, J.W. 1969. Polar bear tagging in Alaska, 1968. Polar Record 14:459-462.
- Cook, H.W., J.W. Lentfer, A.M. Pearson, and B.E. Baker. 1970. Polar bear milk. IV, gross composition, fatty acid, and mineral composition. Can. J. Zool. 48:217-219.
- Lentfer, J.W., and J.W. Brooks. 1970. Polar bear research in Alaska. Pp. 143-149 in Proc. Conf. on Productivity and Conservation in Northern Circumpolar Lands. IUCN Publ. New Series 16.
- Lentfer, J.W. 1972. Polar bear-sea ice relationships. Pp. 165-171 in S. Herrero, ed. Bears--Their Biology and Management. IUCN Publ. New Series 23.
- Lentfer, J.W., R.J. Hensel, L.H. Miller, L.P. Glenn, and V.D. Berns. 1972. Remarks on denning habits of Alaska brown bears. Pp. 125-132 in S. Herrero, ed. Bears--Their Biology and Management. IUCN Publ. New Series 23.
- Lentfer, J.W. 1973. Occurrence of a northern fur seal near Wainwright, Alaska. Can. Field Nat. 87:60.
- Lentfer, J.W., and D.K. Sanders. 1973. Notes on the captive wolf (*Canis lupis*) colony, Barrow, Alaska. Can. J. Zool. 51:623-627.
- Lentfer, J.W. 1974. Agreement on conservation of polar bears. Polar Record 17:327-330.
- Oritsland, N.A., J.W. Lentfer, and K. Ronald. 1974. Radiative surface temperatures of the polar bear. J. Mamm. 55:459-561.
- Lentfer, J.W. 1975. Discreteness of Alaskan polar bear populations. Pp. 323-329 in Proc. 11th International Congress of Game Biologists, Stockholm.

- Jonkel, C., J. Lentfer, S. Uspenski, and C. Vibe. 1976. Problems in the circumpolar study of polar bears. Proc. Conf. on Northern Ecology, Ottawa.
- Glenn, L.P., J.W. Lentfer, J.B. Faro, and L.H. Miller. 1976. Reproductive biology of female brown bears (Ursos arctos), McNeil River, Alaska. Pp. 381-390 in M.R. Pelton, J.W. Lentfer, and G.E. Folk, Jr., eds. Bears--Their Biology and Management. IUCN Publ. New Series 40.
- Lentfer, J.W. 1976. Polar bear management in Alaska. Pp. 209-213 in M.R. Pelton, J.W. Lentfer, and G.E. Folk, Jr., eds. Bears--Their Biology and Management. IUCN Publ. New Series 40.
- Pelton, M.R., J.W. Lentfer, and G.E. Folk, Jr. 1976. Editors for Bears--Their Biology and Management. IUCN Publ. New Series 40.
- Kolz, A.L., J.W. Lentfer, and H.G. Fallek. 1978. Polar bear tracking via satellite. Pp. 137-144 in Proc. 15th Rocky Mountain Bioengineering Symposium and 15th International ISA Biomedical Sciences Instrumentation Symposium.
- Lentfer, J.W. 1978. Polar bears. Pp. 218-225 in D. Haley, ed. Marine Mammals. Pacific Search Press, Seattle.
- Blix, A.S., and J.W. Lentfer. 1979. Modes of thermal protection in polar bear cubs--at birth and upon emergence from the den. Am. J. Physiol. 236:R67-R74.
- Lentfer, J.W., and R.J. Hensel. 1979. Alaskan polar bear denning. Pp. 101-108 in C.J. Martinka and K.L. McArthur, eds. Bears--Their Biology and Management. Government Printing Office, Washington, D.C.
- Lentfer, J.W., R.J. Hensel, J.R. Gilbert, and F.E. Sorensen. 1979. Population characteristics of Alaskan polar bears. Pp. 109-115 in C.J. Martinka and K.L. McArthur, eds. Bears--Their Biology and Management. Government Printing Office, Washington, D.C.
- Lentfer, J.W. 1982. Polar bear, Ursus maritimus. Pp. 557-566 in Wild Mammals of North America. John Hopkins University Press, Baltimore.
- Lentfer, J.W. 1983. Alaskan polar bear movements from mark and recovery. Arctic 36:282-288.
- Amstrup, S.C., I. Stirling, and J.W. Lentfer. 1986. Past and present status of polar bears in Alaska. Wildlife Society Bull. 14:241-254.
- Lentfer, J.W. 1987. Mercury in polar bears from Alaska. J. Wildl. Diseases 23:338-331.
- Schoen, J.W., J.W. Lentfer, and L. Beier. 1987. Differential distribution of brown bears on Admiralty Island, Southeast Alaska: a preliminary assessment. Proceedings, Sixth International Conference on Bear Research and Management.
- Schoen, J.W., L. Beier, and J.W. Lentfer. 1987. Denning ecology of brown bears on Admiralty and Chichagof islands, southeast Alaska and implications for management. Proceedings Seventh International Conference on Bear Research and Management.

Lentfer, J.W. 1988. Editor for Selected marine mammals of Alaska--species accounts with research and management recommendations. Marine Mammal Commission, Washington, D.C.

1981 - Feb. 1984

Qiruktaqvik and Co.
Box
Barrow, Alaska 99723

Position

Manager
Qiruktaqvik was a joint venture operation of Ukpeagvik Inupiat Corp. which sold building materials and supplies. I managed the company from it's inception till 1984.

1975 - 1980

University of Alaska, Arctic Research
Laboratory

Position

Expeditor

Did field work in various parts of the north and in the Beaufort Sea Ice Islands for University of Alaska, Fairbanks. Assisted scientists in projects.

ADDITIONAL EXPERIENCE

1988 - Present

Chairman, Eskimo Walrus Commission

1988 - Present

Member of The Executive Board of Rural Alaska Community Action Program (Rural CAP)

1987 - Present

Chairman of the Board, Umealik Insurance Company. A wholly owned subsidiary of Ukpeagvik Inupiat Corporation (UIC).

1987 - Present

Chairman, Rural Alaska Resource Assoc.

1987 - Present

Commissioner, Local Boundary Commission. Appointed by Governor Cowper, 1987 fill vacant seat second Judicial District (Northwest Alaska).

1986 - Present

Chairman, Gates of the Arctic Park & Preserve Subsistence Resource Committee.

1986 - Present

Alaska delegate to Indigenous Survival International - An international coalition of indigenous people working to develop a friendly cooperation with International environmental organizations.

1986 - 1988

Secretary, Eskimo Walrus Commission

Resume
Benjamin P. Nageak
Page 3

- 1985 - Present Member of National Park Service, Gates of the Arctic Subsistence Resource Commission. Appointed by Governor Bill Sheffield in Oct. 1985.
- 1984 - Present Rural Alaska Community Action Program (RurAL CAP) - board member.
Rural Alaska Resource Association (RARA) board member
- 1986 - 1987 Vice Chairman, Rural Alaska Resource Association
- 1984 - 1987 Porcupine Caribou Herd Commission - worked with commission for treaty between Canada and U.S. Regarding Porcupine Caribou Herd.
- 1983 - 1986 Vice President - Silakvuaqvik Communication Inc.
- 1983 - 1986 Board member - Silakvuaqvik Communication Inc. (KBRW)
- Jan. 1984 -1986 Regional Panel Chairman - University of Alaska Cross Cultural Education Program.
- 1982 - 1985 Director - Ukpeaqvik Inupiat Corp.
- July 1985 - Nov. 1985 President - Bowhead Transportation Inc. wholly owned subsidiary of UIC.
- 1983 - 1984 Sergeant at Arms - Ukpeaqvik Inupiat Corp.

RESUME

HEINRICH K. SPRINGER

General Information : Tel. home : 344-3821 work : 279-2511 x 231
Soc. Sec. No. 180-34-0316
Mailing address : 3730 Perenosa Circle, Anchorage, Ak. 99515
Residence : - dto -
plus 3 1/2 Mile Teller hgw. Nome, Ak. 99762
Birth : 13. July 1936; Lindau, W-Germany
Immigration to U.S.A. Nov. 1959
U.S. Citizen : naturalized 27/May/63 @ Lock Haven, Penna.
Married : wife ok SUN
Veteran : U.S. Army Jan. 1960 - Jan 1963; honorable discharge
Alaskan Resident since 1960.

Employment History:

present: Rural CAP; Director Weatherization/Housing Program.
1986-88: State Legislature; Representative E.D. 23 (Nome etc).
Chm. HCRA Committee; Vice Chm. Transportation; Resources.
1986-88: Consultant (Environmental & Engr.)
1963-86: State of Alaska, Dept. Highways & Dept. Transp/P.F.
in Interior & Western Alaska; last 11 years @ Regional
Director level; retired May 1986.
1960-63: U.S. Army; Stationed in Alaska Ladd AFB/ Fort
Wainwright w/ Post Engineers.
1959 Immigration from W-Germany.

Resume; Heinrich Springer p. 2.

Education:

Highschool; graduate 5/53 Donauwoerth, W-Germany
-"- graduate 5/54 Loganton, Penna. (exchange student).
College: Staatsbanschule Muenchen, W. Germany
graduate 2/20/59. Engineering
Courses: Federal & State surveying, welding, OSHA & Safety,
Environmental Laws. Labor relations, management,
Contracts, English, wildlife mgmt, biology.

Other, related to biological sciences:

Lifelong interest in biological sciences and wildlife management and hunting.

In Germany courses in biology Univ. of Munich; one year study on the population dynamics of reed warblers (*Acrocephalus*); worked with Max Planck Institute Migratory Bird Research Center on bird migration; raptor-prey relationships. Several scientific publications. Coop w/ Dr. Kalchauer on book "Die Sache mit der Jagd" (on hunting & mgmt of big game). Licensed hunter in Germany; passed exam, 1955 (similar to our guide exam.).

Hunted worldwide in Europe, Asia (China, Mongolia, Siberia), Africa and N. America; well acquainted with the different systems.

In Alaska hunted statewide for 28 years; trapped in the Tok, Fairbanks, Healy and Nome areas. Worked with the Univ. of Alaska F&S Dept. Renewable Resources and Museum scientific collections for several years; studies on birds (*Acanthis-redpolls* for 20+ years; bristlethighed curlew, Aleutian Tern, snowy owl @ Nome - Seward Peninsula)

Cont'd.

Resume: Heinrich Springer p.3

worked w/ Arctic Aero Med Lab. @ Ft. Wainwright ;
w/ U.S.F.W.S. on migratory bird studies ; w/ NOAA
on the biological assessment Norton Sound ; w/ DoT-PF
in preparation and review of EIS statements ; w/ Pipeline
Coordinator during Pipeline Construction and Coastal Zone
Management Plans of Western Alaska.

In the 15th Legislature as a member of the House Resources
Committee active in legislation on ANWR, Sea Mammals,
renewable resource issues, Guiding & outfitting.

Affiliation: Life member: Deutsche Ornithologen Gesellschaft since 1957

Scient. organiz.	Bayerische	"	"	"	"
	British Ornithologist's Union			"	1960
	American	"	"	"	1960
	Cooper Society			"	1960
	Wilson Society			"	1960

Member: N.W. Vertebrate Biology Society
American Birding Assoc.
Arctic Institute of N. America.
International Crane Foundation
Safari Club International
National Rifle Assoc.
Ducks Unlimited.
National Sporting Fraternity
Audubon Society

At the present Chm. of the TASKFORCE on Guiding & outfitting created by SB191.
I believe I have sufficient qualification to serve on the Game Board based
on following points: Scientific knowledge about modern Game management;
International Situation, Historic perspective of Alaska, economic aspects,
politics, Seammammal issues; functions of Federal, - State -, Local Govern-
mental agencies and advisory boards. Need for cooperative efforts of all
users - sports -, Recreation, Subsistence, None consumptive.

Springer- Game board.

References:

Senator Wille Hensley

" Bettye Fahrenkamp

Rep. Sam Cotten

" Adelheid Hermann

" Al Adams

" Lyman Hoffmann

Sam Stoker, Fbks. ^{Tel.} 479-5744

Lew Pamplin, Dir Game. ADFG Auch.

David Rosenzau, LGL. Fbks.

Dr. Brina Kessel UAF - Museum

Dr. Fred Dean UAF

Dr. Gerald Swartz UAF

Dr. Doug Murphy UAF

Dr. Bill Drury 10 High St. Bar Harbor Maine 04609

Dr. Clayton White, Dept. Zool. Univ. Utah, Provo 84602

John Weske USFWS Laurel. Md

Dr. Heinz Remold, Biology Dept. Harvard Univ.

Walt Parker, Auch. ^{Tel.} 333 5189

Ron Somerville, Juno. ^{Tel.} 789-3450 outd. Council

Gail Gatto, Environm. Lobby ^{Tel.} 272-9317

Mathew Jya, Walnut Comm. ^{Tel.} 443-5231

Brent Jones, APHA. Auch. ^{Tel.} 522-3221

STATE OF ALASKA
THE LEGISLATURE

LEGISLATIVE AFFAIRS AGENCY

POUCH Y STATE CAPITOL
JUNEAU ALASKA 99811
907 465 3800

*f - Confirmations
Governor Appointments*

MEMORANDUM

March 28, 1989

SUBJECT: Appointment of David W. Johnston to Oil and
Gas Conservation Commission
(Work order 6-0999A)

TO: Senator Jan Faiks
Attn: Mark Riehle

FROM: Jack Chenoweth
Legislative Counsel

The three member Oil and Gas Conservation Commission is a regulatory or quasi-judicial state commission that sets state policy with reference to a range of oil and gas development and conservation practices. Under article III, section 26 of the state constitution, appointees to the commission must be confirmed by the Legislature. The commission must include one member who, under AS 31.05.009,

shall be a geologist with educational and professional background in the field of petroleum geology;

Governor Cowper has submitted the name of David W. Johnston to fill the "geologist" position, replacing Bill Barnwell who resigned from the Commission. If confirmed, Mr. Johnston will serve for the remainder of his predecessor's unexpired term, ending December 31, 1992.

It is my opinion that Mr. Johnston meets the above-quoted statutory requirements. By way of formal education, according to the resume provided, his undergraduate degree is a Bachelor of Science Degree in Geology from Montana State University. The resume cites additional technical training generally relating to petroleum studies, petroleum exploration, well log analysis, and seismic studies. By way of professional background and employment experience, Mr. Johnston's work has emphasized petroleum-related activities, initially when employed in the private sector by

Senator Jan Faiks
Page 2
March 28, 1989

R & M Consultants and more recently as an employee of the state's Department of Natural Resources employed as a "Geologist III" and as a "Natural Resource Manager II" with emphasis on oil and gas lease sale related work.

You did not indicate the basis for objection or concern that the nominee's qualifications did not meet the statutory requirements. Trying to anticipate the basis for possible objection to the nominee's qualifications, I considered whether the concern might be due to an apparent lack of petroleum geology-related education, and followed up with questions in that area. Typically, I learned, the undergraduate program that leads to the award of a geology degree is a general program that, according to one source, "sets [the graduate] up to practice geology" without reference to a specific field. An oil and gas specialty in geology generally follows from additional formal education--master's degree work or specialized training not within a degree program--or, more commonly, from actual employment experience. This is roughly the direction Mr. Johnston's career has developed.

Some support for this analysis appears in the class specification definition for the "Geologist" class specification series prepared and implemented by the Division of Personnel. The class specification document recently in use notes that "The Geologist series covers a range of professional geologist positions involved in the identification, evaluation, and management of known and yet to be discovered geologic resources in the state." It notes, also, that "Geology has many speciality subdivisions," and that the state's Geologist class series "is designed for general use, replacing . . . such specialty classes as mining geologists, petroleum geologists, and geological engineers." The Geologist III position, Mr. Johnston's first appointment in state service, required that "[i]ncumbents must have developed professional competence and knowledge and skills associated with an advanced geologic concentration, such as would typically be attained through completion of a master's degree program or comparable professional accomplishment." The record suggests that, in 1981, following five years private sector assignments with a concentration in petroleum geology-related work and Arctic construction, the Department of Natural Resources considered Mr. Johnston's experience sufficient (in the absence of a master's degree) to appoint him a Geologist III and assign him responsibility for the state's Miscellaneous Land Use Permit (MLUP) Administration

Senator Jan Faiks
Page 3
March 28, 1989

Project, coordinating geophysical seismic exploration for
oil and gas resources on state lands.

If this memorandum prompts questions, please contact me.

JBC:gc
WKG8/079

Alaska State Legislature

Senate Resources Committee

Senator Bettye Fahrenkamp, Chairman

Senator Jay Kerttula, Vice Chairman
Senator Dick Eliason
Senator Steve Frank
Senator Rick Halford
Senator Arliss Sturgulewski
Senator Fied Zharoff



P.O. Box V
Juneau, Alaska 99811
(907) 465-4907

M E M O R A N D U M

TO: Committee Members, Senate Resources Committee
FROM: Senator Bettye Fahrenkamp, Chairman
RE: Confirmation of Governor's appointments
DATE: March 30, 1989

The following individuals on the attached list of Governor's appointees have been referred to the Senate Resources Committee for consideration.

Resumes for these individuals are available at your request.

Please review this list and contact my office if you would like additional information.

BOARDS AND COMMISSIONS

3/29/89

RESOURCES COMMITTEE:

DEPARTMENT OF NATURAL RESOURCES

Commissioner Lennie Gorsuch

Alaska Commercial Fisheries Entry Commission

Twomley, Bruce C. - Juneau

Original term began 10/6/82 reappointed 8/18/88
expires 7/1/92

Board of Fisheries

Chihuly, Mike - Ninilchik

Term began 9/19/88 expires 1/31/91

Hanson, John - Alakanuk

Term began 2/8/89 expires 1/31/92

Hodson, Bud - Anchorage

Original term began 11/20/87 reappointed 2/8/89
expires 1/31/92

Samuelson, H. "Robin" - Dillingham

Term began 2/8/89 expires 1/31/92

Board of Game

Lentfer, Jack W. - Homer

Term began 2/17/89 expires 1/31/92

Nageak, Benjamin - Barrow

Term began 2/17/89 expires 1/31/92

Springer, Heinrich - Anchorage

Term began 2/17/89 expires 1/31/92

Guide Board

Ballenger, Ben G. - Kodiak

Original term began 3/2/87 reappointed 8/19/88
expires 6/15/92

Frost, Stanley - Anchorage

Original term began 3/2/87 reappointed 8/19/88
expires 6/15/92

McClintock, Sharon E. - Chugiak

Term began 2/6/89 expires 6/15/92

Alaska Oil and Gas Conservation Commission

Chatterton, Clarence "Chat" V. - Anchorage

Original term began 12/18/81 reappointed 1/19/89
expires 12/31/94

Johnston, David W. - Anchorage

Term began 1/19/89 expires 12/31/92

Alaska State Legislature

SENATOR BETTYE FAHRENKAMP
CHAIRMAN, RESOURCES COMMITTEE
119 N. CUSHMAN STREET, SUITE 201
FAIRBANKS, ALASKA 99701
OFFICE (907) 452-4882
HOME (907) 456-2899



Senate

WHILE IN JUNEAU
P.O. BOX V
JUNEAU, ALASKA 99811
CAPITOL, ROOM 125
OFFICE (907) 465-3834
HOME (907) 780-6027

April 24, 1989

The Honorable Tim Kelly
President of the Senate
Alaska State Legislature
P.O. Box V
Juneau, AK 99811

Dear Senator Kelly:

In accordance with AS 39.05.080, the Senate Resources Committee reviewed the following with regard to confirmation of the Governor's appointments:

Department of Natural Resources
Commissioner Lennie Gorsuch

Alaska Commercial Fisheries Entry Commission

Twomley, Bruce C. - Juneau
Original term began 10/6/82 reappointed 8/8/88
expires 7/1/92

Board of Fisheries

Chihuly, Mike - Ninilchik
Term began 9/19/88 expires 1/31/91
Hanson, John - Alakanuk
Term began 2/8/89 expires 1/31/92
Hodson, Bud - Anchorage
Original term began 11/20/87 reappointed 2/8/89
expires 1/31/92
Samuelson, H. "Robin" - Dillingham
Term began 2/8/89 expires 1/31/92

Board of Game

Lentfer, Jack W. - Homer
Term began 2/17/89 expires 1/31/92
Nageak, Benjamin - Barrow
Term began 2/17/89 expires 1/31/92
Springer, Heinrich - Anchorage
Term began 2/17/89 expires 1/31/92

Guide Board

Ballenger, Ben G. - Kodiak
Original term began 3/2/87 reappointed 8/18/88
Frost, Stanley - Anchorage
Original term began 3/2/87 reappointed 8/19/88
expires 6/15/92
McClintock, Sharon E. - Chugiak
Term began 2/6/89 expires 6/15/92

Letter to Senator Kelly

-2-

April 24, 1989

Alaska Oil and Gas Conservation Commission

Chatterton, Clarence "Chat" V. - Anchorage

Original term began 12/18/81 reappointed 1/19/89
expires 12/31/94

Johnston, David W. - Anchorage

Term began 1/19/89 expires 12/31/92

There were no stated objections to the confirmation of any of the named individuals by committee members. This does not reflect an intent by any of the members to vote for or against the individuals during any further sessions for the purpose of consideration.

/s/ Rich Hallock
Senator

/s/ Clarence V. Chatterton
Senator

/s/ Steve Frank
Senator

/s/ William Sturgis
Senator

Respectfully,

/s/ _____
Senator

/s/ _____
Senator

/s/ William J. Fabroni
Senator

Board of Game

REVISION DATE: 3/10/89

BOARD: GAME, BOARD OF

BOARD NUMBER: 40

TITLE: Board of Game

DEPT: Department of Fish and Game

AUTHORITY: AS 16.05.221

STATUS: ACTIVE

REQUIREMENTS: LEGISLATIVE CONFIRMATION AND FINANCIAL DISCLOSURE

PROHIBITIONS:

TERM: 3 years

DESCRIPTION: 7 members appointed by Governor: residents of the state, appointed without regard to political affiliation or geographical location of residence; Commissioner of the Dept. of Fish and Game is not a member, but serves as ex-officio secretary.

SPECIAL FACTS: Regulatory; quorum - majority; may be removed for inefficiency, neglect of duty, or misconduct in office. Serve at pleasure of Governor.

FUNCTION: Conservation and development of game resources.

COMPENSATION: \$150/day and travel for regular board meetings (\$100/day for other meetings/conferences).

MEETINGS: At least once a year (board selects time/place); others as necessary; normally 2 times per year.

*FOR FURTHER INFORMATION CONTACT: Executive Director, Division of Boards, Dept. of Fish and Game, P.O. Box 3-2000, Juneau, AK 99811 PHONE: 465-4110

GAME

MEMBER	APPT	REAPT	REAPT	TERM
Joel F Bennett 114 West Sixth Street Juneau 99801 Public	80/07/18	87/02/24	0/00/00	90/01/31
Samantha C Castle 1170 Sunnyslope Road Fairbanks 99709 Public	88/02/26	0/00/00	0/00/00	91/01/31
Don Collinsworth Comm., F & G, Box 3-2000 Juneau 99802 Comm./Mandated	83/02/28	0/00/00	0/00/00	0/00/00
Sidney Huntington P.O. Box 27 Galena 99741 Public	81/02/02	87/02/24	0/00/00	90/01/31
Nicholas Jackson P.O. Box 123 Gakona 99586 Public	84/02/23	87/02/24	0/00/00	90/01/31
Jack W Lentfer Box 2617 Homer 99603 Public	89/02/17	0/00/00	0/00/00	92/01/31
Benjamin Nageak P.O. Box 914 Barrow 99723 Public	89/02/17	0/00/00	0/00/00	92/01/31
Heinrich Springer 3730 Perenosa Circle Anchorage 99515 Public	89/02/17	0/00/00	0/00/00	92/01/31