

ALASKA LEGISLATURE COMMITTEE FILES 1985-1986 86/2

3542 HRES HB 86 - HB 93

418

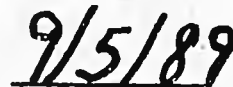


RECORDS CERTIFICATION

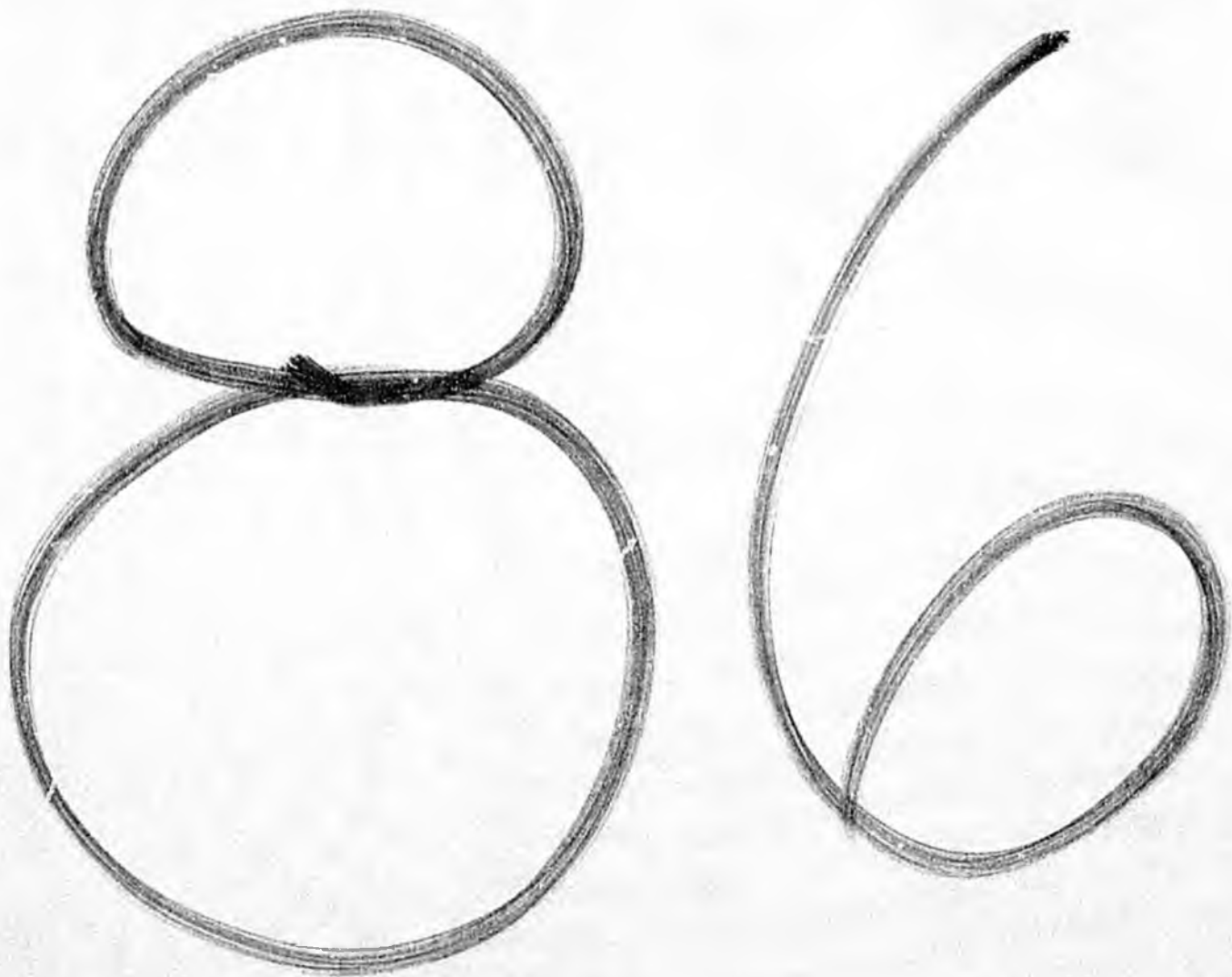


I, the undersigned, an employee of the State of Alaska, do hereby certify that the microfilm images on this microform are accurate reproductions of the original records of the State of Alaska as accumulated during the regular course of business, and that it is the established policy and practice of this State to microfilm its records and to dispose of the original records after microfilm reproductions have been made.


Signature of Camera Operator


Date

H B





STATE OF ALASKA
OFFICE OF THE GOVERNOR
JUNEAU

January 18, 1985

The Honorable Ben Grussendorf
Speaker of the House
Alaska State Legislature
Pouch V
Juneau, AK 99811

Dear Representative Grussendorf:

Under the authority of art. III, sec. 18, of the Alaska Constitution, I am transmitting a bill to establish the Willow Creek State Recreation Area.

This bill would place approximately 4,000 acres of land along Willow Creek near the Parks Highway in state recreation area classification. About 60 percent of the land is owned by the Matanuska-Susitna Borough and the borough supports the designation and management of the area as a state recreation area.

The area would be managed in accordance with a comprehensive plan developed in consultation with the borough. Primary emphasis would be on recreational uses and associated development. The state and borough have begun work on a joint plan that includes a road to the mouth of Willow Creek. This road will alleviate conflict between use of the creek by motorized and non-motorized boats. Designation as a state recreation area will allow increased compatibility among the various recreational uses of the creek while minimizing any harm to fish and wildlife resources and habitat.

I urge your favorable action on this measure.

Sincerely,

A handwritten signature in cursive script that reads "Bill Sheffield".

Bill Sheffield
Governor

**STATE OF ALASKA 1985 LEGISLATIVE SESSION
FISCAL NOTE**

HB 86

Revision Date: _____

REQUEST

Bill/Resolution No.: HB 86
 Title: Willow Creek State Recreation
 Area: _____
 Sponsor: _____
 Requestor: _____
 Date of Request: _____

FISCAL DETAIL

Agency Affected: Natural Resources
 Program Category Affected: NOMEK
 BRU, Program or Subprogram(s) Affected: _____
Parks and Recreation

EXPENDITURES/REVENUES: (Thousands of Dollars)

	FY 85	FY 86	FY 87	FY 88	FY 89	FY 90
OPERATING						
100 PERSONAL SERVICES		28.3	48.7	77.0	77.0	77.0
200 TRAVEL		7.0	1.0	1.0	1.0	1.0
300 CONTRACTUAL		5.0	23.0	23.0	23.0	23.0
400 SUPPLIES		1.5	3.0	2.0	2.0	2.0
500 EQUIPMENT		16.2	11.2	11.2	2.0	2.0
600 LAND & STRUCTURES						
700 GRANTS, CLAIMS						
800 MISCELLANEOUS						
TOTAL OPERATING		53.0	86.9	114.2	105.2	105.2

CAPITAL		143.0	4,237.0	3,598.0		
----------------	--	-------	---------	---------	--	--

REVENUE						
----------------	--	--	--	--	--	--

FUNDING: (Thousands of Dollars)

GENERAL FUND		196.0	4,323.9	3,712.2	105.2	105.2
FEDERAL FUNDS						
OTHER						
TOTAL		196.0	4,323.9	3,712.2	105.2	105.2

POSITIONS:

FULL-TIME						
PART-TIME		1	2	3	3	
TEMPORARY						

ANALYSIS: Attach a separate page if necessary

ATTACHED

Prepared By: Peter Panarese Phone: 265-4517
 Division: Division of Parks & Outdoor Recreation Date: 1-16-85

Approved by Commissioner: Wm. J. Zimnik Date: 1-16-85
 Agency: Natural Resources

Distribution (by Agency preparing fiscal note):
 Legislative Finance
 Legislative Sponsor
 Requestor
 Office of Management and Budget

Willow Creek State Recreation Area - Fiscal Analysis

FY 86

100	-	Park Ranger I / 8 months
200	-	Travel for training, regional coordination
300	-	Vehicle mileage, janitorial maintenance
400	-	Hand tools, commodities
500	-	Pick-up truck, mobile radio, law enforcement equipment
Capital	-	Design and engineering for road/campground/parking

FY 87

100	-	Add Natural Resource Technician I/3 mos.
300	-	Add maintenance/services contract
500	-	Additional truck radio
Capital	-	Construction of boat launch, road and parking

FY 88

100	-	Add Park Ranger I/8 mos.
500	-	Additional truck, radio
Capital	-	Continue FY 87 construction; includes car and walk-in, camping and trails and trail heads.

NOTE TO READERS, JANUARY 1985:

The appendices, which are now outdated, are not attached to this copy for distribution. The recommendations in this version of the plan embody recommendations only and actions taken in response to the plan will reflect changes made during policy discussions in December and January.

SOUTHCENTRAL RECREATION ACTION PLAN

Presented to Governor Bill Sheffield

December 1, 1984

By

Esther C. Wunnicke, Commissioner
Alaska Department of Natural Resources

Don W. Collinsworth, Commissioner
Alaska Department of Fish and Game

Contents:

I. Executive Summary	1
II. Introduction.	3
III. Background.	4
IV. Issues.	5
V. Recommended Actions	7
Legislative Designations.	8
Funding for Recreation-related Purposes	11
Land Management and Planning.	12
VI. Summary	13
VII. Appendices	

I. EXECUTIVE SUMMARY

Recognizing the intense, and growing, recreational demands of southcentral Alaskans, this action plan makes a variety of recommendations for legislative designations, land acquisitions and exchanges, facilities development, habitat and fisheries enhancement, land management priorities, and future planning. Implementation could take several years.

If implemented, legislative designations (Table One) would include:

- State Recreation Rivers, 6 units, 250,000 acres
- State Forest, 1 unit, 450,000 acres
- Public Use Areas - 2 units, 1 million acres
- State Recreation Areas - 2 units, 10,000 acres
- Wildlife Refuge Addition - 1 area, 1,200 acres

The plan also presents funding proposals for recreation-related projects, many of which are already proposed within departmental budget requests for FY 86. Tables Two, Three, and Four provide more budget information on these proposals. Each category of proposals is ranked by priority as decided by the interagency group and members of the public who worked on the plan, but because the lists focus only on regional recreation needs late in the budget process, they cannot displace departmental or community budget priorities already submitted to the Governor's Office. Possible land acquisitions include:

- Ninilchik River, 300.0
- Cottonwood Creek, 40.0
- Crooked Creek-Kasilof River, 200.0
- Kashwitna Landing, 500.0
- Wasilla Creek, 180.0
- Anchorage Urban - Belm Lake, 600.0
- Funny River - Kenai Confluence, 1,300.0
- Little Willow Creek, 180.0
- Clam Gulch, 65.0
- Whiskey Gulch, 200.0
- Neil Lake (Deshka River), 300.0
- Moose Creek (Deshka River), 300.0
- Bishop Creek, 200.0
- Bird Creek, 100.0
- Deep Creek, 500.0
- Nancy Lakes inholdings, 250.0

Facilities development could include the following:

1. River-related facilities:

- Willow Creek State Recreation Area (proposed): 7,735.0
- Little Susitna River, 400.0
- Kenai Peninsula Recreation Units, 1,155.0
- Ninilchik/Deep Creek Marine Launch Feasibility Study, 20.0
- Talkeetna Boat Launch and Campground, 173.0
- Kepler-Bradley Lakes, 500.0
- Anchorage Fishing Pier Facilities, 1,500.0
- Kenai River Development, 1,000.0
- Anchor River Development, 400.0
- Whiskey Gulch Development, 200.0
- Sheep Creek Access Development, 200.0

2. Park and recreation facilities (non-riverine):
- Chugach State Park Access, 1,420.0
 - Safe Water Supplies, 150.0
 - Independence Mine State Historic Park, 600.0
 - Thunderbird Falls Recreation Site, 420.0
 - Public Use Rental Cabins, 225.0
 - Park Location Signing, 155.0

Wildlife, fisheries, and enhancement could include:

- Wildlife Enhancement
 - Moose Habitat Enhancement - Anchorage Bowl, 12.0 cont
 - Kenai Refuge Habitat Enhancement, 85.0 cont
 - Moose Creek Range Habitat Enhancement, 35.0 cont
- Fish Enhancement
 - Susitna King Salmon Rehabilitation, 116.7 cont
 - Big Lake Hatchery, 85.4 cont
 - Elmendorf Hatchery, 475.5 cont
 - Fort Richardson Hatchery, 825.9 cont
 - Kenai River Juvenile King Studies, 137.3 cont
 - Kasilof Hatchery, 78.3 cont
 - Trail Lakes Hatchery, 197.8 cont
 - Fort Richardson Fish Transport, 500.0 cont
 - Elmendorf Completion, 1,520.0 cont
- Wildlife Observation - Potter Marsh, 525.0
- Wildlife Observation - Anchorage Bowl, 250.0
- Anchorage Trap and Skeet Range, 500.0

The proposed trade-out of Seldovia Native Association lands in Kachemak Bay State Park remains the state's highest land exchange priority.

This action plan represents the recommendations of the group that prepared it for possible short-term steps to improve recreation opportunities in southcentral Alaska. Other proposals were also studied and documented and could be implemented in the future. To maximize continuity in southcentral recreation management and to continue coordinated planning and management, it is recommended that you establish a steering group on southcentral recreation, composed of the agencies that developed this action plan and representatives of affected governments. No funding would be necessary for this action.

Development at South Denali should proceed within several years but hinges largely on federal appropriations. Next year (FY 87) the state should begin to budget special planning and development funds in accord with the federal schedule.

II. INTRODUCTION

In 1983, responding to the growing recreational demands of residents of southcentral Alaska, Governor Sheffield recommended the immediate legislative protection of one of the state's finest recreational resources, the Kenai River. As a result, the Legislature established the Kenai River Special Management Area, and planning and management for the Kenai River have already begun.

Protection of the Kenai River was clearly merited. Visitor use of the river grew from 122,000 recreation days in 1977 to 230,000 recreation days in 1983 -- almost doubling in five years. Today, it is estimated that 14% of all sport fishing in Alaska occurs on the Kenai River. The use is attributable to the river's accessibility by road from major population centers, including Anchorage and Kenai/Soldotna, and the availability of healthy fish resources.

In the course of managing the Kenai River and conducting area planning for the Matanuska-Susitna region, state agencies have found that the problems of recreation management on the Kenai River are not unique. Instead they are symptomatic of the burgeoning recreation demand throughout southcentral Alaska -- a demand that creates pressures on recreation users, local governments, and the state and federal governments. Careful recreation management is necessary both to meet this demand and to protect Alaska's land and natural resources.

Governor Sheffield, recognizing the need for a recreation management strategy in southcentral Alaska, asked the Departments of Natural Resources and Fish and Game to cooperate in the development of an "action plan" for southcentral Alaska. The Governor directed that the plan include recommendations for:

- 1) legislative proposals for designating state recreational rivers, recreation areas, habitat/recreation areas, and other multiple use areas;
- 2) land acquisitions and exchanges that will increase public access to recreational resources in southcentral Alaska, including the Kenai Peninsula;
- 3) capital budget requests for facilities development, especially those with local or federal participation or support;
- 4) operating budget requests for land management and planning to support the recreational program;
- 5) future priorities for recreation planning and development; and, in addition,
- 6) analysis of the costs and benefits of the proposed actions in the plan.

III. BACKGROUND

Rapidly intensifying recreational use is creating a new, major demand for opportunities for sport fishing, hunting, hiking, river running, and camping in southcentral Alaska. This growing use has been concentrated in accessible areas, so that patterns of use are uneven and damage to some resources is a possibility. There are new pressures on local services, and on the state and federal governments to provide recreation opportunities and recreation management.

The growth in southcentral recreation demand has been identified in several major planning and management efforts recently undertaken by government agencies in close consultation with the public. Planning efforts have included "Alaska State Park System: Southcentral Region Plan" (1982); the Susitna Area Plan, released in draft in July 1984 and expected to be finalized in January 1985; and sport fisheries and game studies produced by the Alaska Department of Fish and Game. Additionally, the Governor's study group on the Kenai River, headed by the Office of Management and Budget in 1983, identified the need for dispersal of recreation uses from heavily used areas on the Kenai Peninsula and better management of these areas.

The Susitna and Kenai areas feature a wide variety of recreational resources that provide exceptional opportunities for public use. The recreational potential is large and diverse: many recreational experiences are available (fishing, hunting, camping, hiking) and there are numerous accessible recreational areas, mostly along the Seward, Glenn, Parks, and Denali highways. Large population centers, with unusually high recreation use patterns, are within the southcentral area. Additionally, a number of federal conservation units within the region provide excellent opportunities for recreational use by Alaska residents and visitors to the state. Increased access and transportation development within the region will lead to new recreation demands in some areas in future years.

Meeting recreational demands is, of course, very important to potential users. But recreation also contributes significantly to Alaska's economic vitality. Recent studies in support of planning for state parks and other recreation sites have indicated that recreation use in southcentral Alaska contributes tens of millions of dollars annually to local economies. Tourism and recreation play an increasing role in economic development planning throughout Alaska.

Major recreational uses that need special consideration by the state are sport fishing, recreational vehicle camping, tent camping and hiking, picnicking, boating, kayaking/canoeing, cross-country skiing, hunting, and snowmobiling. Recreational uses can be combined with habitat protection, forest management, mineral development, and other uses in a multiple use context, but planning for recreational pressures is needed throughout the state's public lands to assure compatibility of recreation and other land management activities.

IV. ISSUES

Recreation issues include the following concerns, some of which were identified in the recreation element of the draft Susitna Area Plan and by the state Division of Parks and Outdoor Recreation and Department of Fish and Game.

Recreational Land Base

Because of southcentral Alaska's accessibility to major population centers and transportation routes, demands on recreational resources are higher and present more competition with other land uses such as urban growth, resource development, and habitat protection than they do in most other parts of Alaska. Specific problem areas include popular river corridors and lakeshores.

Although accessible sites receive more use than remote areas, they often have a lower proportion of land in public ownership. In addition, there is relatively little federal land in accessible recreation areas in southcentral Alaska: most prime recreation areas are in private, borough, or state ownership. The different landowners and managers can and should cooperate in providing recreational opportunities -- for example, in some areas the state will have to assist local communities in providing local recreation opportunities and meeting growing demands on local resources from outside the communities. The need for cooperative management is accentuated by the likelihood that state revenues will decline in the future, and funding for development and maintenance of recreation sites will tighten. However, cooperative management will require coordination of planning, management, and budget priorities.

Growth in Recreational Use

The demand for recreational use of our state land, fish, and game resources will continue to grow with the upper Cook Inlet area. Recognition of current demands and projected future growth requires that the state begin immediately to provide dispersed recreation opportunities for recreational use in the southcentral area.

The growth in recreation use new areas will necessitate intensive management for resource conservation. Remote areas, newly opened for recreational and multiple use, will be affected by large numbers of new resource users. A major concern in the public comment on the Susitna Area Plan and in other forums has been the need for more intensive state land and resource management, and the action plan is intended to address these current and future management needs.

In the course of public comment on the Susitna Area Plan, recently completed after three years and over 40 public meetings, there was evident concern that recreational use of public land has intensified without commensurate land and resource management by the state. New uses, including all-season off-road vehicle use, are giving greater accessibility into the public lands but are not being managed.

Sport Fishing

The southcentral region bears by far the greatest amount of sport fishing in the State of Alaska. Approximately 55% of Alaska sport fishing occurs in the Cook Inlet watershed, amounting to 950,000 angler days a year and about 150,000 persons sport fishing. Use has been increasing about 7.8% per year.

Today about two-thirds of this southcentral sport fishing effort is concentrated on the Kenai Peninsula. The Matanuska-Susitna and Anchorage areas support the remainder.

Two areas could accommodate substantial additional growth in recreational use: the Matanuska-Susitna Valley and marine waters along the Kenai Peninsula.

Access to waters in northern Cook Inlet is primarily limited by the lack of developed surface transportation and facilities. Even though there is acknowledged to be an adequate fishery resource to support increased sport fishing use, access is in most cases restricted to river boats and aircraft. For instance, there are no public launch facilities on the Susitna River below Talkeetna. Even rivers crossing the Parks Highway from Willow to Talkeetna, draining into the Susitna River, have limited access. Most of these rivers are bordered by private lands with little or no access. Most use occurs in the highway corridors, and results in congestion and uneven resource use.

Sport Hunting

Most of the recreational hunting by Alaskans occurs in southcentral Alaska and the greater part of projected increases in demand for hunting opportunities will occur in this region. Because the habitat base is finite and potentials for manipulating increases in productivity are limited, future demands for recreational hunting can best be met by retaining productive wildlife lands in public ownership and by assuring public access to wildlife resources. Habitat enhancement measures included in this plan can be an important tool in providing sport hunting opportunities on public lands.

Other Recreational Uses

There is a large demand in southcentral Alaska for accessible land and facilities that accommodate other types of recreation such as hiking, picnicking, snowmobiling, skiing, and camping. Often these types of uses can be accommodated with other multiple use activities and the recreation activities listed above. These uses are likely to be enhanced by protection of lands for the recreation activities listed above.

Multiple Use Management

Proposals to provide for recreation and habitat protection generally recommend retention or acquisition of public land and management that

permits recreation, forest management, mineral development, access, and other multiple uses in balance together. In some cases, it will be the joint decision of the Departments of Fish and Game and Natural Resources in the planning process to restrict multiple use in critical areas within a legislatively designated unit. However, the action plan's premise is that coordinated multiple use management of state lands and resources can provide adequately for recreation and habitat protection together with other uses.

V. RECOMMENDED ACTIONS

To provide the foundation for a permanent system of lands and waters that offer diverse opportunities for public recreation in southcentral Alaska, this action plan makes recommendations for legislative designations, land acquisitions and exchanges, facility development, land planning and management, and priorities for future recreation development and planning. These actions will help relieve the recreational pressures faced by the public, local governments, and land and resource managers in southcentral both today and in the future.

These recommendations are designed to accommodate rapid growth in sport fishing, hunting, boating, and other recreational activities in the Matanuska and Susitna basins and on the Kenai Peninsula, and to allow for orderly development of the region's fisheries and recreational facilities.

State agency staff have met to discuss the recreation action plan proposal with representatives of affected local governments. A summary of these discussions is included in the appendix (APPENDIX ONE). The government representatives believed that the recreation action plan has significant potential for relieving recreational pressures and meeting future needs.

Local government representatives have indicated support for our integrated recreation planning and management to meet the variety of recreation demands. They regard this proposed action plan as a package to address "average" recreation demands, not a package likely to provide for wealthy recreationists. They also see the potential economic benefits of the action plan, with little or no adverse impact on other resource development. The local government representatives agreed on three commendable criteria for selecting alternatives from the action plan: a) emphasize projects that provide more benefits for fewer dollars; b) emphasize projects that the public will be aware of; and c) emphasize protection and retention of critical areas, with a later focus on development and maintenance.

Development of the Willow Creek State Recreation Area, as proposed in this plan, will have the largest single impact on recreational use of any proposed project in the Matanuska-Susitna Valley. The Willow Creek project will greatly improve boat access to the west side of the Susitna River and

road access adjacent to Willow Creek. The project is expected to accommodate an additional 40,000-60,000 recreation days annually.

Legislative Designations

The action plan proposes seven legislative designations of lands with outstanding values including public recreation. All of these proposals are high priorities in state area plans that have had thorough public review and comment. APPENDIX TWO contains drafts of legislation and fiscal notes for each proposed action. Table One summarizes each action and fiscal impact.

1. State Recreation Rivers.

Six rivers have been proposed for designation as state recreation rivers, including a total of approximately 250,000 acres of public lands:

Alexander Creek
Kroto Creek/Moose Creek (Deshka River)
Lake Creek
Little Susitna River
Talachulitna River
Talkeetna River

Common factors militating in favor of these designations include:

- Very high priority for designation as state recreation rivers in the Susitna Area Plan; Little Susitna identified for protection in Willow Subbasin Plan; closure to new mineral entry per these plans and public comment
- High multiple use and recreation values, particularly sport fishing, hunting, moose winter range, spawning grounds for Cook Inlet fishery
- Fiscal impact: \$130,000 first year, dropping to \$79,000 after two years

2. Susitna State Forest.

Five areas in the vicinities of Kashwitna, Kroto-Creek-Kahiltna River, Lake Creek, Mt. Susitna, and Peters Creeks are proposed for designation as the Susitna State Forest (450,000 acres).

These areas share:

- High priority for legislative designation in the Susitna Area Plan
- Prime multiple use potential for recreation, forestry, and habitat management
- Fiscal impact: \$81,000 in operating costs for two years, dropping to \$66,000 afterwards

3. Yentna-Susitna Public Use Area.

Approximately 54,000 acres of public domain lands along the lower Yentna and Susitna Rivers and Kroto Slough are proposed as the Yentna-Susitna Public Use Area.

Table One - Proposed Legislation and Fiscal Impacts

NOTE: The symbol * indicates a Fish and Game budget request
 The symbol ‡ indicates a Natural Resources budget request

PROPOSAL	1986		1987		1988		1989	
	CIP	OPER	CIP	OPER	CIP	OPER	CIP	OPER
1. State Recreation Rivers	...	277.4‡	...	229.8‡	...	252.7‡	...	277.9‡
2. Susitna State Forest	...	81.0‡	...	81.0‡	...	66.0‡	...	65.0‡
3. Yentna-Susitna Public Use Area	Fiscal impact included with Nelchina proposal, below No. 5							
4. Willow Creek State Recreation Area	7,735.0‡	212.5‡	...	145.0‡	...	158.7‡	...	174.5‡
5. Nelchina Public Use Area	...	129.8‡ 40.0*	...	129.8‡ 40.0*	...	78.5‡ 29.0*	...	78.5‡ 20.0*
6. Jim-Swan Lakes State Recreation Area	500.0‡	122.1‡	...	93.6‡	...	102.7‡	...	112.9‡
7. Palmer Hay Flats Refuge Additions

Draft legislation is included in Appendix Two, except for Palmer Hay Flats Additions, No. 7.

This area has:

- High priority for legislative designation in the Susitna Area Plan
- Moose winter range, large concentration of trumpeter swan nesting sites, and 25,000 acres of land with potential for commercial forestry
- Fiscal impact: included with Nelchina designation, below

4. Willow Creek State Recreation Area.

This area includes 3,440 acres of accessible, high-quality recreation lands. It was identified for protection and recreation management in the Willow Subbasin Plan and planning for the site has been conducted jointly with the Matanuska-Susitna Borough, with very strong public and agency support. A detailed master plan is available. Designation and funding will:

- contribute significantly to dispersal of sportfishing efforts in southcentral away from areas where use is now too heavy
- provide important public recreation infrastructure near areas of intense urban growth
- Fiscal impact: \$7,735,000 CIP, \$212,500 oper'g dropping to \$145,000 after one year

5. Nelchina Public Use Area.

A core area of 1,000,000 acres of public land is proposed for designation as a multiple use area with special habitat management and planning. The designation of this area has strong public support and proposed legislation has been carefully prepared over several years by the Departments of Natural Resources and Fish and Game. Senator Kerttula has previously introduced similar legislation and has recently expressed interest in the Administration's plans for the Nelchina.

This area features:

- High priority for legislative designation in the Susitna Area Plan
- Critical calving grounds for the Nelchina caribou herd
- Significant opportunity for hunting, hiking, and other recreational activities, mining, and possibly transportation
- Proposed legislation provides for DNR management with ADF&G concurrence on the management plan
- Fiscal impact: \$169,000 for two years, dropping to \$98,500

NOTE: A larger area, including another 1.5 million acres, has been proposed for special designation and management in addition to the core acreage. If this is added to the proposed Nelchina Public Use Area by the Legislature we recommend acceding to the addition if management is for multiple use. Stricter habitat protections are necessary in the core area.

6. Jim-Swan Lakes State Recreation Area.

This area of public land has critical importance for habitat and already attracts intensive recreational use from Anchorage and Palmer residents (7,600 acres). It has:

- High priority for legislative designation in the Susitna Area Plan
- Valuable waterfowl and moose habitat and hunting area, with a scenic buffer along the Glenn Highway
- Fiscal impact: \$122,100 first year, dropping to \$93,600; 500.0 CIP

7. Palmer Hay Flats State Game Refuge Addition (bill not drafted).

The proposal is to add 1,200 acres on the Glenn Highway to the existing state game refuge. This was a high priority in the Susitna Area Plan, protecting valuable waterfowl and moose habitat and hunting area, with a scenic buffer on the Glenn Highway. There would be no fiscal impact.

Additionally, per public comment in the Susitna Area Plan, Bird Island at Lake Louise will be provided protection by Interagency Land Management Assignment from the Department of Natural Resources to the Department of Fish and Game.

This concludes our recommended package of legislative designations.

Funding for Recreation-Related Purposes

The Departments and many local governments have already presented the Governor's Office with proposed Capital Improvement Project priority lists which include statewide priorities for a variety of purposes including recreation. The following categories of recreation-related spending are proposed as the consensus of the two Departments after some discussion with local governments. Neither the Departments nor the local governments would expect this list, providing recreation funding priorities for southcentral Alaska, to displace their lists of capital spending priorities (though many of the items are the same).

1. Land Acquisitions (Table Two).

To reduce crowding conditions and accommodate increases in the number of anglers on intensively used waterways, the action plan recommends state acquisition of the lands listed in Table Two. This list is in order of priority. Detailed information on parcel identification, use, and benefits is provided in APPENDIX THREE. The list has been agreed upon by the two departments, reviewed by local governments, and discussed with interested members of the public.

2. Facilities Development (Table Three).

To provide adequate public facilities to support existing recreational use in heavily used recreation areas, the action plan proposes investment in development of the facilities listed in Table Three. Each category of proposals is ranked by priority, but no priority is assigned among the categories. These lists have been agreed upon by the departments and reviewed with local governments. Further information on the proposals is provided in APPENDIX FOUR.

3. Wildlife, Fisheries, and Enhancement (Table Four).

A list of possible wildlife and fisheries projects is provided in Table Four, with description of the proposed projects in APPENDIX FIVE. These projects would enhance the resource base for observation and sport hunting and fishing.

Land Management and Planning.

There should be no additional costs for planning and management beyond those presented in the fiscal notes for proposed legislation. However, this funding is important to allow land management agencies to conduct planning for these highly used areas and to prevent degradation of lands and resources and threats to public safety. A major concern in public comment on the Susitna Area Plan has been that planning should result in more intensive land management. This land management should be funded appropriately. Other recommended actions and activities include the following proposals.

Land Exchanges. The Administration has placed special emphasis on the acquisition by land exchange of Seldovia Native Association inholdings in the Kachemak Bay State Park. In fact, last year the first phase of the exchange was completed after years of deliberation. About 25,000 acres of private land remain in the Park, and the Department of Natural Resources has continued negotiating with Seldovia Native Association with the target of completing the trade-out. The state is pursuing the possibility of exchange in good faith as a high priority, and the administration hopes that the inherent difficulties of negotiating and implementing large land exchanges will not prevent the near-term trade-out of Seldovia's lands.

Although purchase of the inholdings has been proposed and considered, the state is not in a position to buy out private lands in Kachemak Bay State Park. It is estimated that such an action would cost over \$20 million, which would amount to a very large portion of the shrinking capital budget.

Smaller land exchanges are being pursued by the state to increase the size and integrity of significant state park and refuge areas. The land exchange option should be pursued where landowners are willing to trade and where land acquisition needs allow time for the land exchange process. The state intends to continue using land exchanges where appropriate to protect recreational opportunities in southcentral Alaska.

South Denali Development. The state is cooperating closely with federal agencies to develop a major visitor facility on the south slope of the Alaska Range in Denali State Park. Planning funds should be made available next year to begin implementing facility development plans for the area. The state expects the development to result in a variety of recreational opportunities for Alaska residents and visitors. See APPENDIX SIX.

Future Planning. The agencies involved in preparing the action plan have also brought together proposals for future legislative designations, funding, and recreation enhancement. We recommend the establishment of a southcentral recreation steering group, composed of the agencies that have contributed to this effort, to assure that the initial coordination of recreation management embodied in this action plan is continued in future years.

SUMMARY

The proposed southcentral recreation action plan contains a variety of possible legislative and executive actions to help relieve the pressures for recreational opportunities in the region. Most of the proposals have been advanced from prior planning studies and agency budget proposals, with special attention to those action items that have had public review and comment.

Implementation of parts of this plan is sure to benefit Alaskans today and protect our lands and resources for future use. We recognize that it is an ambitious project, and one that needs considerable analysis prior to wholesale adoption. But we are relatively convinced that the priorities for legislative designation and the higher ranking capital projects deserve attention during the coming legislative session.

Table Two - Proposed Land Acquisitions

NOTE: The symbol * indicates Fish and Game budget request
 The symbol # indicates Natural Resources budget request

CURRENTLY
 REQUESTED

NEW
 REQUEST

PROJECT	FEATURES/BENEFITS	CIP	OPER	YEAR	CIP	OPER	YEAR
1. Ninilchik River	King, coho, pink, steelhead 12,000 fishing days/year	300.0	...	FY 86*
2. Cottonwood Creek	Fishing/hunting near Wasilla 9,000 fishing days/year, significant hunting	40.0	...	FY 86*
3. Crooked Creek/Kasilof R.	Major king salmon fishery 25,000 fishing days, 5,000 kings	200.0	...	FY 85
4. Kashwitna Landing	Boat launch on lower Susitna R.	135.0	...	FY 86#	65.0#
5. Wasilla Creek	Coho fishery access, hunting	500.0+
6. Anchorage Urban - Behm Lk.	Potential rainbow fishery	180.0	...	FY 86*
7. Funny River/Kenai R.	Bank fishery, public access	600.0*
8. Little Willow Creek	Access from Parks Hwy to fishery	1,300.0*
9. Clam Gulch	Parking area near clamming flats	180.0*
10. Whiskey Gulch	Near four major sport fisheries	65.0	...	FY 86#
11. Neil Lake	Floatplane access to Deshka River	200.0	...	FY 86*
12. Moose Creek	Road access for river use	600.0*
13. Bishop Beach	Tidal spit, fishing, marine access	200.0*
14. Bird Creek	Sport fishing, access to Chugach	200.0	...	FY 86#
15. Deep Creek	Overcrowded beach fishery	100.0*
16. Nancy Lakes	Inholdings acquisition for trails	300.0*
		250.0+

Descriptive narrative for each proposed expenditure is included in Appendix Three.

Table Three - Proposed Facilities Development

NOTE: The symbol * indicates a Fish and Game budget request
 The symbol † indicates a Natural Resources budget request

CURRENTLY
REQUESTED

NEW
REQUEST

PROJECT	FEATURES/BENEFITS	CIP	OPER	YEAR	CIP	OPER	YEAR
<u>Category One: River-related facilities</u>							
1.	Willow Creek S.R.A.				7,735.0#	212.5#	86
2.	Little Susitna River	400.0		FY 86#
3.	Kenai Peninsula Recreation	1,115.0		FY 86#	...	10.0#	...
4.	Ninilchik/Deep Creek				20.0*
5.	Talkeetna Boat Launch				173.0*
6.	Kepler-Bradley Lakes				500.0#	10.0#	...
7.	Anchorage Pier				1,500.0*
8.	Kenai River Development				1,000.0#	10.0#	...
9.	Anchor River				400.0*
10.	Whiskey Gulch				250.0#	50.0#	...
11.	Sheep Creek				200.0*
<u>Category Two: Park and recreation facilities (non-riverine)</u>							
1.	Chugach State Park Access	1,420.0		FY 86#	...	60.0#	...
2.	Safe Water	150.0		FY 86#	5.0#
3.	Independence Mine Devel.	600.0		FY 86#
4.	Thunderbird Falls	420.0		FY 86#
5.	Park Public Cabins	225.0		FY 86#
6.	Park Signs	135.0		FY 86#

Descriptive narrative for each proposed expenditure is included in Appendix Four.

Table Four - Wildlife, Fisheries, and Enhancement

NOTE: The symbol * indicates a Fish and Game budget request
 The symbol † indicates a Natural Resources budget request

CURRENTLY
REQUESTED

NEW
REQUEST

PROJECT	CIP	OPER	YEAR	CIP	OPER	YEAR
1. Fisheries Enhancement Proposals:						
- Susitna King Salmon Rehabilitation	...	116.0	Cont*
- Big Lake Hatchery	...	85.4	Cont*
- Elmendorf Hatchery	...	475.5	Cont*
- Fort Richardson Hatchery	...	825.9	Cont*
- Kenai River Juvenile King Salmon Studies	...	137.3	Cont*
- Kasilof Hatchery	...	78.3	Cont*
- Trail Lakes Hatchery	...	197.8	Cont*
- Fort Richardson Fish Transport	500.0	...	FY 86*
- Fort Richardson Backup Water	300.0	...	FY 86*
- Elmendorf Completion	1,520.0	...	FY 86*
2. Wildlife Enhancement Proposals:						
- Moose Habitat - Anchorage Bowl	...	12.0	Cont*
- Kenai Refuge Habitat - Moose	...	85.0	Cont*
- Moose Creek Range Improvement	...	35.0	Cont*
3. Wildlife Observation - Potter Marsh	520.0*	5.0*	86
4. Wildlife Observation - Anchorage Bowl	250.0*	10.0*	...
5. Anchorage Trap and Skeet Range	300.0*	100.0*	86

Descriptive narrative of most proposed expenditures is included in Appendix Five.

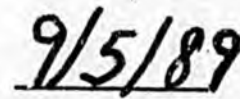


RECORDS CERTIFICATION



I, the undersigned, an employee of the State of Alaska, do hereby certify that the microfilm images on this microform are accurate reproductions of the original records of the State of Alaska as accumulated during the regular course of business, and that it is the established policy and practice of this State to microfilm its records and to dispose of the original records after microfilm reproductions have been made.


Signature of Camera Operator


Date

H B

9 3

SUMMARY OF CSHB 93

The broad based goal of this legislation is to protect certain rivers.

The need for this legislation is based on the premise that all types of uses of rivers and surrounding lands can not continue to increase without damage to the river's ecosystem which in turn threatens traditional recreational activities.

In limiting uses, an effort was made to preserve and protect as many traditional uses as possible with the caveat that certain multiple uses would have to be compatible with the general recreational goals and objectives set out in this legislation.

Sec. 41.23.010

(a) Establishes management structure.

(b)(1) Sets out protection of fish and wildlife populations and habitat so as to enhance sport and subsistence fishing, hunting, and trapping activities.

(b)(2) Scenic and natural integrity of the river and the continuation of traditional recreational uses of the river by the public are established.

(b)(3) Rivers are closed to future mineral entry and land disposals.

(c) Multiple uses that may be allowed for each river listed with the provision that they are found to be compatible with (b)(1) and (b)(2).

Sec. 41.23.220

(a) Rivers are designated into the special purposes section of the constitution by the legislature only.

(b) Rivers are closed to mineral entry and mining leasing.

(c) Description of the designated rivers.

Sec. 41.23.030

(a) DNR receives multiple use management authority.

(b) Instream flow must be reserved within two years of a river being designated by DNR.

(c)(1) Fish and Game management stays with the proper Agencies and Boards.

(c)(2) Water quality authority is maintained by DEC.

(c)(3) Municipalities retain their respective authorities under AS 44.19.145 (a) (11) and AS 46.40.100.

(d) The use of weapons is expressly permitted except in areas of high public use when the safety of the public is threatened. The exercise of sport and subsistence hunting, fishing or trapping is protected except as it should endanger the public's safety.

(e) Access is granted for specific activities unless a determination of incompatibility with (b)(1) or (b)(2) is found to exist.

(f) Competitive leasing for the construction and operation of public use facilities is allowed.

(g) Existing commercial activities are protected unless they threaten water quality or habitat.

Sec. 41.23.040

(a) A management plan must be adopted. ADF&G must be consulted in the management plan process as well as local communities located in or near a recreational river.

(b) Management plans are submitted to the legislature.

(c) ADF&G must consult with DNR before adopting regulations involving recreational rivers.

(d) DNR must adopt a management plan within 2 years of the legislature designating a recreational river.

(e) The commissioner must state in each management plan incompatible uses within a recreational river along with location and the time frame associated with each incompatibility.

Sec. 41.23.050

Municipalities which involve their lands in a recreational river management system must concur with that portion of the management plan that affects their land.

Sec. 41.23.060

(a) Additional land may be acquired by DNR by purchase, gift, lease, or exchange. If the exchange involves state land with a fair market value of over \$100,000.00 the legislature must give its approval.

(b) No additional land may be obtained by eminent domain.

Sec. 41.23.070

Public land laws found in AS 38.04, 38.05, and 38.95 apply to recreational rivers except if such provisions are inconsistent with provisions of this chapter.

Sec. 41.23.080

(a) Cooperative management agreements are allowed with federal, state, or municipal governments or private land owners.

(b) The commissioner may transfer management to another agency to assist in the development of a facility or to carry out a program authorized by law.

(c) The management of a recreational river under AS 41.23.020 shall not be as a unit of a park.

Sec. 41.23.090

(a) Before recommending a recreational river the commissioner must adopt an area plan, and involve local communities.

(b) The commissioner shall:

(1) Take testimony at local communities.

(2) Prepare a summary of the testimony.

(3) Consult local fish and game advisory committees.

Sec. 41.23.900

Definitions

Sec. 2. Effective date clause.

Bradley
3/27/85 ✓

Original sponsor: Rules/Governor

1 IN THE HOUSE

BY THE RESOURCES COMMITTEE

2 CS FOR HOUSE BILL NO. 93 (Resources)

3 IN THE LEGISLATURE OF THE STATE OF ALASKA

4 FOURTEENTH LEGISLATURE - FIRST SESSION

5 A BILL

6 For an Act entitled: "An Act establishing a system of special use rivers;
7 and providing for an effective date."

8 BE IT ENACTED BY THE LEGISLATURE OF THE STATE OF ALASKA:

9 * Section 1. AS 41 is amended by adding a new chapter to read:

10 CHAPTER 23. MULTIPLE USE MANAGEMENT OF PUBLIC RESOURCES.

11 ARTICLE 1. STATE RECREATIONAL RIVERS.

12 Sec. 41.23.010. PURPOSES. (a) The purpose of AS 41.23.010 -
13 41.23.090 is to establish management guidelines for those rivers
14 designated for recreation under AS 41.23.010 - 41.23.090 while permit-
15 ting each river to be individually managed under a multiple use man-
16 agement plan providing for traditional uses that have occurred on the
17 river.

18 (b) The goals and objectives by which a recreational river shall
19 be managed include

20 (1) the protection and maintenance of the fish and wildlife
21 populations and habitat on a sustained yield basis so as to preserve
22 and enhance sport and subsistence fishing, hunting, and trapping
23 activities;

24 (2) protection of the scenic and natural integrity of the
25 river and continuation of the traditional recreational uses of the
26 river by the public;

27 (3) the closure to future mineral entry under AS 38.05.-
28 185 - 38.05.275 and land disposals within a recreational river.

29 (c) The commissioner shall permit the following activities when

1 compatible with (b)(1) and (2) of this section:

2 (1) use of aircraft, powerboats, snowmachines, all terrain
3 vehicles, and other motorized transportation;

4 (2) timber harvesting for personal use including firewood
5 and house logs;

6 (3) commercial timber harvesting;

7 (4) sand and gravel extraction for public use;

8 (5) grazing;

9 (6) public use facilities; and

10 (7) other uses determined compatible with (b)(1) and (2) of
11 this section by the commissioner.

12 Sec. 41.23.020. DESIGNATED RIVERS. (a) Subject to valid exist-
13 ing rights, the state-owned land and water designated as a recreation-
14 al river under (c) of this section constitute a special purpose area
15 under art. VIII, sec. 7 of the Alaska Constitution. State-owned land
16 and water may be designated as a recreational river only by the legis-
17 lature.

18 (b) The state-owned land and water described in this section are
19 closed to mineral entry and mining leasing under AS 38.05.185 -
20 38.05.275.

21 (c) The land and water presently owned by the state and all land
22 and water acquired by the state in the future, including shore and
23 submerged land, that lies within the following described parcels are
24 designated recreational rivers:

25 (1) Talachulitna State Recreational River

26 (A) Township 16 North, Range 10 West, S

27 Section 6: W1/2

28 Section 7: NW1/4

29 (B) Township 16 North, Range 11 West, Seward Meridian

Section 1: E1/2, SW1/4

Section 2: S1/2, NW1/4

Section 3

Section 11: N1/2

Section 12: N1/2

(C) Township 17 North, Range 10 West, Seward Meridian

Section 6: W1/2, W1/2SE1/4

Section 7

Sections 18 - 19

Sections 30 - 31

(D) Township 17 North, Range 11 West, Seward Meridian

Section 1: E1/2E1/2

Section 3: W1/2

Sections 4 - 5

Section 6: S1/2

Sections 7 - 8

Section 9: N1/2, SE1/4

Section 10

Section 14: W1/2

Section 15

Section 17: NW1/4

Section 18: N1/2, SW1/4

Section 19: NW1/4NW1/4

Section 22

Section 23: W1/2

Section 25: E1/2E1/2

Section 26: W1/2

Section 27

Section 34

1
2
3
4
5
6
7
8
9
10
11
12
13
14
15
16
17
18
19
20
21
22
23
24
25
26
27
28
29

- Section 35: W1/2
- (E) Township 17 North, Range 12 West, Seward Meridian
 - Section 7: S1/2
 - Section 12: S1/2
 - Section 13
 - Section 14: S1/2
 - Section 15: S1/2
 - Section 16: S1/2
 - Sections 17 - 18
 - Section 20: E1/2
 - Sections 21 - 23
 - Section 24: N1/2, N1/2S1/2
- (F) Township 17 North, Range 13 West, Seward Meridian
 - Section 9: S1/2
 - Section 10: S1/2
 - Section 11: S1/2
 - Section 12: S1/2
 - Sections 13 - 16
 - Section 24: N1/2
- (G) Township 18 North, Range 10 West, Seward Meridian
 - Section 18: SW1/4SW1/4
 - Section 19: NW1/4, S1/2NE1/4, E1/2SW1/4, SE1/4
 - Section 20: S1/2, NE1/4
 - Section 21
 - Section 22: W1/2W1/2
 - Section 26: W1/2SW1/4, SW1/4NW1/4
 - Section 27: S1/2, S1/2N1/2
 - Sections 28 - 29
 - Section 30: E1/2, E1/2W1/2

1 Section 31: NE1/4, S1/2NW1/4, NE1/4NW1/4,
2 SW1/4, W1/2SE1/4

3 Section 33: NE1/4NE1/4

4 Section 34: N1/2NW1/4

5 (H) Township 18 North, Range 11 West, Seward Meridian

6 Section 6: W1/2, W1/2E1/2, E1/2SE1/4

7 Section 7

8 Section 11: E1/2SE1/4

9 Section 12: SW1/4SW1/4

10 Section 13: NW1/4, E1/2SW1/4, SE1/4

11 Section 16: SW1/4

12 Sections 17 - 18

13 Section 19: NE1/4

14 Section 20: N1/2, SE1/4

15 Section 21: W1/2

16 Section 24: E1/2NE1/4

17 Section 28

18 Section 29: E1/2

19 Section 32: E1/2

20 Section 33

21 (I) Township 18 North, Range 12 West, Seward Meridian

22 Sections 1 - 2

23 Section 12: N1/2, SE1/4

24 (J) Township 19 North, Range 12 West, Seward Meridian

25 Section 3: N1/2, SW1/4

26 Section 4: E1/2E1/2, W1/2SE1/4, SE1/4SW1/4

27 Section 9: E1/2, SW1/4, E1/2NW1/4, SW1/4NW1/4

28 Section 10: NW1/4

29 Section 15: W1/2SW1/4, SW1/4NW1/4

1
2
3
4
5
6
7
8
9
10
11
12
13
14
15
16
17
18
19
20
21
22
23
24
25
26
27
28
29

Section 16

Section 21

Section 22: W1/2W1/2, E1/2SW1/4, SW1/4SE1/4

Sections 27 - 28

Section 34

Section 35: S1/2, NW1/4

(K) Township 20 North, Range 11 West, Seward Meridian

Section 18: W1/2

Section 19: W1/2

(L) Township 20 North, Range 12 West, Seward Meridian

Section 1

Section 2: N1/2

Section 11: E1/2

Sections 12 - 13

Section 14: E1/2

Sections 23 - 24

Section 25: N1/2

Section 26

Section 27: E1/2

Section 34: S1/2, NE1/4, SE1/4NW1/4

Section 35: NW1/4

(M) Township 21 North, Range 11 West, Seward Meridian

Section 31: SW1/4

(N) Township 21 North, Range 12 West, Seward Meridian

Section 25: that portion south of the Skwentna River

Section 26: that portion south of the Skwentna River

Section 35: that portion south of the Skwentna

River

Section 30: that portion south of the Skwentna River

(2) Alexander Creek State Recreational River

(A) Township 16 North, Range 7 West, Seward Meridian

Sections 6 - 7

Sections 18 - 19

(B) Township 17 North, Range 7 West, Seward Meridian

Section 18: S1/2, W1/2NW1/4

Section 19

Sections 30 - 31

Section 32: W1/2

(C) Township 17 North, Range 8 West, Seward Meridian

Section 1

Section 2: E1/2, N1/2NW1/4

Section 3: N1/2N1/2

Section 4: N1/2, N1/2SE1/4

Section 11: NE1/4

Section 12

Section 13: E1/2, E1/2NW1/4

Section 24: NE1/4, E1/2SE1/4

(D) Township 18 North, Range 8 West, Seward Meridian

Section 4: W1/2

Section 5

Section 6: NE1/4

Section 7: N1/2, SE1/4

Section 9

Section 10: SW1/4

Section 14: W1/2SW1/4, SE1/4SW1/4

1
2
3
4
5
6
7
8
9
10
11
12
13
14
15
16
17
18
19
20
21
22
23
24
25
26
27
28
29

1
2
3
4
5
6
7
8
9
10
11
12
13
14
15
16
17
18
19
20
21
22
23
24
25
26
27
28
29

Section 15: W1/2, SE1/4, S1/2NE1/4

Section 16: N1/2, SE1/4

Section 22: N1/2, N1/2S1/2, S1/2SE1/4

Section 23: W1/2, W1/2SE1/4

Section 26: W1/2, W1/2E1/2, E1/2SE1/4

Section 27: E1/2NE1/4

Section 33: SW1/4, S1/2SE1/4

Section 34: S1/2S1/2

Section 35

Section 36: W1/2

(E) Township 19 North, Range 8 West, Seward Meridian

Section 19: W1/2, W1/2E1/2

Section 29: W1/2W1/2

Section 30

Section 31: E1/2, E1/2W1/2

Section 32

(F) Township 19 North, Range 9 West, Seward Meridian

Sections 3 - 4

Sections 9 - 10

Section 13: S1/2

Section 14: S1/2

Sections 15 - 16

Section 22: N1/2

Section 23: N1/2

Section 24

(3) Lake Creek State Recreational River

(A) Township 21 North, Range 9 West, Seward Meridian

Section 3

Section 4: Excluding Tracts A, B, C and D

1
2
3
4
5
6
7
8
9
10
11
12
13
14
15
16
17
18
19
20
21
22
23
24
25
26
27
28
29

Section 9: N1/2 Excluding Tracts A and B

Section 10

Section 15

(B) Township 22 North, Range 9 West, Seward Meridian

Section 4: NW1/4, S1/2

Section 5: N1/2, E1/2SE1/4

Section 9: N1/2, SE1/4, E1/2SW1/4

Section 10: W1/2SW1/4, SW1/4NW1/4

Section 15: W1/2

Section 16: E1/2, E1/2W1/2

Section 21: E1/2

Section 22: W1/2

Section 27: W1/2

Section 28: E1/2

Section 34

(C) Township 23 North, Range 9 West, Seward Meridian

Section 3: W1/2W1/2

Section 4

Section 5: E1/2, E1/2SW1/4

Section 7: SE1/4, SE1/4NE1/4, E1/2SW1/4

Section 8: S1/2, NE1/4, S1/2NW1/2, NE1/4NW1/4

Section 9: N1/2NW1/4, SW1/4NW1/4, NW1/4SW1/4

Section 17: W1/2, W1/2E1/2

Section 18: E1/2

Section 19: N1/2, SE1/4, E1/2SW1/4

Section 20: W1/2, SE1/4, S1/2NE1/4, NW1/4NE1/4

Section 29

Section 30: NE1/4, E1/2NW1/4, NE1/4SW1/4, SE1/4

Section 32

Section 33: S1/2SW1/4, NW1/4SW1/4

(D) Township 24 North, Range 9 West, Seward Meridian

Section 28: S1/2SW1/4, SW1/4SE1/4

Section 29: NW1/4, S1/2

Section 30

Section 31: N1/2

Section 32: NW1/4, E1/2

Section 33

Section 34: SW1/4SW1/4

(E) Township 24 North, Range 10 West, Seward Meridian

Section 3

Section 4: E1/2

Section 10

Section 11: W1/2, W1/2SE1/4, SW1/4NE1/4

Section 13: W1/2W1/2

Section 14

Section 15: NE1/4

Section 23: N1/2, SE1/4

Section 24: W1/2, S1/2SE1/4, NW1/4SE1/4

Section 25

Section 36: NE1/4, E1/2NW1/4

(F) Township 25 North, Range 10 West, Seward Meridian

Sections 6 - 7

Section 8: S1/2, NW1/4

Section 16: W1/2

Section 17

Section 18: E1/2

Section 20: SE1/4, N1/2

Section 21

1
2
3
4
5
6
7
8
9
10
11
12
13
14
15
16
17
18
19
20
21
22
23
24
25
26
27
28
29

Section 22: W1/2

Section 25: SW1/4

Section 26: S1/2

Section 27

Section 28: E1/2, NW1/4

Sections 34 - 35

Section 36: W1/2

(G) Township 25 North, Range 11 West, Seward Meridian

Section 1: E1/2

(H) Township 26 North, Range 10 West, Seward Meridian

Section 31

(I) Township 26 North, Range 11 West, Seward Meridian

Sections 3 - 4

Section 9: E1/2

Section 10

Section 14: W1/2

Section 15

Section 22: E1/2, E1/2NW1/4

Section 23

Section 25: S1/2, NW1/4

Section 26

Section 27: NE1/4

Section 35: NE1/4

Section 36

(J) Township 27 North, Range 11 West, Seward Meridian

Section 6: SW1/4

Section 7

Section 8: SW1/4

Sections 17 - 18

1
2
3
4
5
6
7
8
9
10
11
12
13
14
15
16
17
18
19
20
21
22
23
24
25
26
27
28
29

Section 19: N1/2, SE1/4

Section 20

Section 21: SW1/4

Sections 28 - 29

Section 30: NE1/4

Section 32: E1/2

Section 33

Section 34: W1/2

(4) Krotz Creek and Moose Creek State Recreational River

(A) Township 19 North, Range 6 West, Seward Meridian

Section 2: SW1/4

Section 3

Section 10: E1/2

Section 11

Section 14

Section 15: E1/2E1/2

Section 22: E1/2E1/2

Section 23

Section 25: that portion west of the eastern-
most bank of the Susitna River

Section 26

Section 27: E1/2E1/2

Section 34: NE1/4NE1/4

Section 35

Section 36: that portion west of the eastern-
most bank of the Susitna River

(B) Township 20 North, Range 6 West, Seward Meridian

Section 4

Section 5: E1/2

1
2
3
4
5
6
7
8
9
10
11
12
13
14
15
16
17
18
19
20
21
22
23
24
25
26
27
28
29

Section 8: NE1/4, E1/2SE1/4

Section 9

Section 15: W1/2

Section 16

Section 21: E1/2, N1/2NW1/4, SE1/4NW1/4

Section 22: NW1/4, S1/2

Section 27

Section 34

(C) Township 21 North, Range 6 West, Seward Meridian

Section 3

Section 9: E1/2SE1/4, SE1/4NE1/4

Section 10

Section 15: W1/2, W1/2NE1/4

Section 16

Section 20: E1/2

Section 21

Section 28

Section 29: E1/2

Section 32: E1/2E1/2, NW1/4NE1/4

Section 33

Section 34: SW1/4

(D) Township 22 North, Range 6 West, Seward Meridian

Sections 4 - 5

Section 6: E1/2, E1/2W1/2

Sections 7 - 9

Sections 16 - 18

Sections 20 - 21

Section 27

Section 28: N1/2, SE1/4, E1/2SW1/4

1 Section 29: E1/2NE1/4

2 Section 33: N1/2NE1/4, SE1/4NE1/4

3 Section 34

4 (E) Township 23 North, Range 6 West, Seward Meridian

5 Section 4

6 Section 7: W1/2

7 Section 9

8 Section 16

9 Section 17: SW1/4SW1/4

10 Sections 18 - 19

11 Section 20: W1/2NW1/4

12 Section 21

13 Section 28

14 Sections 30 - 31

15 Section 32: S1/2

16 Section 33

17 (F) Township 23 North, Range 7 West, Seward Meridian

18 Section 1

19 Section 2: E1/2

20 Sections 12 - 13

21 Section 24

22 Section 25: N1/2, SE1/4

23 Section 36: N1/2NE1/4

24 (G) Township 24 North, Range 6 West, Seward Meridian

25 Section 4: W1/2

26 Section 5

27 Section 6: NE1/4, E1/2SE1/4

28 Section 8: N1/2, SE1/4, E1/2SW1/4

29 Section 9

1
2
3
4
5
6
7
8
9
10
11
12
13
14
15
16
17
18
19
20
21
22
23
24
25
26
27
28
29

Section 15: SW1/4, SW1/4NW1/4

Section 16

Section 17: NE1/4, N1/2SE1/4

Section 21: E1/2, SE1/4SW1/4

Section 22: NW1/4, N1/2SW1/4, SW1/4SW1/4

Section 28: E1/2W1/2, E1/2

Section 33

(H) Township 24 North, Range 7 West, Seward Meridian

Section 6: S1/2, NW1/4

Section 7

Section 8: S1/2SW1/4

Section 16: W1/2, W1/2E1/2

Section 17

Section 18: N1/2N1/2, SE1/4NW1/4, S1/2NE1/4,
N1/2SE1/4, SE1/4SE1/4

Section 19: NE1/4NE1/4

Section 20: N1/2

Section 21: W1/2, SE1/4, W1/2NE1/4

Section 27

Section 28: E1/2

Section 33: NE1/4NE1/4

Section 34: E1/2, E1/2W1/2, NW1/4NW1/4

Section 35: W1/2, SE1/4, S1/2NE1/4

Section 36: SW1/4

(I) Township 24 North, Range 8 West, Seward Meridian

Section 1: E1/2

Section 12: NE1/4, E1/2SE1/4

Section 13: NE1/4NE1/4

(J) Township 25 North, Range 6 west, Seward Meridian

- 1 Section 5
- 2 Section 8
- 3 Section 17
- 4 Section 18: SE1/4
- 5 Section 19: E1/2, E1/2W1/2
- 6 Section 20: W1/2W1/2
- 7 Section 29: W1/2W1/2
- 8 Section 30: E1/2, E1/2W1/2
- 9 Section 31: E1/2
- 10 Section 32: W1/2W1/2, SE1/4SW1/4
- 11 (K) Township 25 North, Range 7 West, Seward Meridian
- 12 Section 5
- 13 Section 6: SE1/4, S1/2NE1/4
- 14 Section 7: E1/2, SW1/4, E1/2NW1/4
- 15 Section 8: NW1/4, W1/2SW1/4
- 16 Sections 18 - 19
- 17 Sections 30 - 31
- 18 (L) Township 25 North, Range 8 West, Seward Meridian
- 19 Section 13: E1/2 SE1/4
- 20 Section 24: E1/2NE1/4
- 21 (M) Township 26 North, Range 6 West, Seward Meridian
- 22 Section 5
- 23 Section 8
- 24 Section 17: N1/2, SE1/4, N1/2SW1/4, SE1/4SW1/4
- 25 Section 19: SE1/4
- 26 Section 20: E1/2, SW1/4, S1/2NW1/4, NE1/4NW1/4
- 27 Section 29: E1/2, NW1/4
- 28 Section 30: S1/2, NE1/4, SE1/4NW1/4
- 29 Section 31: E1/2NE1/4, that portion of NW1/4-

NE1/4 within retained easement (50' each side of MHW1)

Section 32: lands within 150' of MHW1

(N) Township 26 North, Range 7 West, Seward Meridian

Section 4: W1/2

Section 5: E1/2, S1/2SW1/4

Section 7: SE1/4

Section 8

Section 9: NW1/4, N1/2SW1/4

Section 17

Section 18: E1/2

Section 19

Section 20: W1/2

Section 29: S1/2, NW1/4

Section 30

Section 31: NE1/4

Section 32

(O) Township 27 North, Range 6 West, Seward Meridian

Section 4

Section 5: E1/2

Section 8: E1/2

Section 9

Section 16

Section 17: E1/2

Section 20: E1/2

Section 21

Section 28: W1/2

Section 29: E1/2

Section 32: E1/2

- 1 Section 33: W1/2
- 2 (P) Township 27 North, Range 7 West, Seward Meridian
- 3 Section 7
- 4 Section 8: S1/2, NW1/4
- 5 Section 9: W1/2
- 6 Section 16
- 7 Section 17: N1/2, SE1/4
- 8 Section 20: E1/2
- 9 Section 21
- 10 Section 28: N1/2, SW1/4
- 11 Section 29: E1/2
- 12 Section 32: E1/2
- 13 Section 33: W1/2
- 14 (Q) Township 27 North, Range 8 West, Seward Meridian
- 15 Section 12: NE1/4
- 16 (R) Township 28 North, Range 6 West, Seward Meridian
- 17 Section 32: S1/2SE1/4
- 18 Section 33: S1/2S1/2
- 19 (5) Talkeetna State Recreational River
- 20 (A) Township 26 North, Range 3 West, Seward Meridian
- 21 Section 1
- 22 Section 2
- 23 Sections 3 - 6: excluding ASLS 81-196, ASLS
- 24 80-94, ASLS 80-84
- 25 (B) Township 26 North, Range 4 West, Seward Meridian
- 26 Section 1: exclusive of ASLS 79-149
- 27 Section 2: exclusive of ASLS 79-149
- 28 Section 3: exclusive of ASLS 79-149
- 29 Section 4: E1/2, SW1/4 exclusive of ASLS 79-149

1 Section 7: S1/2

2 Section 8: S1/2 exclusive of ASLS 79-149

3 Section 9: E1/2, E1/2W1/2

4 Section 10: W1/2W1/2, NE1/4NE1/4

5 Section 11: N1/2N1/2

6 Section 15: W1/2NW1/4, NW1/4SW1/4

7 Section 16: N1/2, N1/2S1/2

8 Section 17: that portion north of the south
9 bank of the Talkeetna River

10 Section 18: exclusive of DOT 200642

11 (C) Township 26 North, Range 5 West, Seward Meridian

12 Section 12: E1/2SE1/4

13 Section 13: E1/2, E1/2SW1/4, SW1/4SW1/4

14 Section 23: that portion northeast of the south
15 bank of the Susitna River

16 Section 24: that portion east of the left bank
17 of the Susitna River and west of the right
18 bank of the main channel of the Talkeetna
19 River (that channel of the river that runs
20 diagonally through the NE1/4 and SW1/4 of
21 Sec. 24)

22 (D) Township 27 North, Range 2 West, Seward Meridian

23 Section 4: S1/2

24 Section 5: SE1/4, E1/2SW1/4

25 Section 7: SE1/4

26 Sections 8 - 9

27 Section 13: N1/2

28 Section 14: N1/2NE1/4

29 Section 17

1
2
3
4
5
6
7
8
9
10
11
12
13
14
15
16
17
18
19
20
21
22
23
24
25
26
27
28
29

Section 18: E1/2, SW1/4

Section 19

Section 20: N1/2, SW1/4

Section 30: W1/2

(E) Township 27 North, Range 3 West, Seward Meridian

Section 24: E1/2

Section 25

Section 26: SE1/4

Section 31: S1/2

Section 32: S1/2 exclusive of ASLS 79-149

Section 33: S1/2S1/2 exclusive of ASLS 79-149

Section 34: S1/2S1/2 exclusive of ASLS 79-149
and ASLS 76-138

Sections 35 - 36

(F) Township 27 North, Range 4 West, Seward Meridian

Section 36: S1/2SE1/4 exclusive of ASLS 74-78
and ASLS 74-77

(6) Little Susitna River: the water column of the main stream of the Little Susitna River from mean high water mark to mean high water mark, from the point at which the river crosses the section line dividing Sections 23 and 26 in Township 19 North, Range 1 East, Seward Meridian downstream to the point at which the river crosses the section line between Sections 15 and 22 in Township 16 North, Range 5 West, Seward Meridian; the water column of Lake Creek from mean high water mark to mean high water mark, from the point at which the creek crosses the section line dividing Sections 10 and 11, Township 18 North, Range 4 West, Seward Meridian downstream to the confluence with the Little Susitna River; and

(A) Township 16 North, Range 5 West, Seward Meridian

1 Section 3

2 Section 4: NE1/4NE1/4

3 Section 10: E1/2, E1/2W1/2

4 Section 15: E1/2, E1/2W1/2

5 (B) Township 17 North, Range 4 West, Seward Meridian

6 Section 4

7 Section 6: SW1/4

8 Section 7: W1/2, S1/2SE1/4

9 Section 8: E1/2, S1/2SW1/4

10 Section 17: NW1/4

11 Section 18: N1/2, N1/2SW1/4

12 (C) Township 17 North, Range 5 West, Seward Meridian

13 Section 12

14 Section 13

15 Section 14

16 Section 15

17 Section 21: NW1/4NE1/4, N1/2NW1/4

18 Section 22

19 Section 23: N1/2N1/2, SW1/4NW1/4, W1/2SW1/4

20 Section 26: W1/2W1/2

21 Section 27

22 Section 34

23 (D) Township 18 North, Range 1 East, Seward Meridian

24 Section 8: NW1/4, SW1/4NE1/4, S1/2NW1/4NE1/4

25 (E) Township 18 North, Range 1 West, Seward Meridian

26 Section 15: N1/2NW1/4

27 Section 16: NW1/4, N1/2NE1/4, SE1/4NE1/4

28 (F) Township 18 North, Range 2 West, Seward Meridian

29 Section 15: NW1/4, N1/2NE1/4, NW1/4SW1/4

Section 16: S1/2

Section 17: S1/2

Section 19: NW1/4, W1/2NE1/4, E1/2SW1/4.

(G) Township 18 North, Range 3 West, Seward Meridian

Section 19

Section 20: SW1/4, W1/2SE1/4, SE1/4NW1/4,
W1/2NW1/4

Section 28: W1/2NW1/4, NE1/4NW1/4

Section 29: NE1/4

Section 30

(H) Township 18 North, Range 4 West, Seward Meridian

Section 11: SW1/4, SW1/4SE1/4, SW1/4NW1/4

Section 13: S1/2, SW1/4NW1/4

Section 14

Section 24

Section 25: N1/2

Section 26

Section 27: S1/2

Section 33: S1/2, S1/2NE1/4

Section 34

Section 35: NW1/4, W1/2NE1/4

Sec. 41.23.030. GENERAL MANAGEMENT OF RECREATIONAL RIVER. (a)

The land and water within the area designated as a recreational river under AS 41.23.020(c) is assigned to the Department of Natural Resources for multiple use management.

(b) Within two years from the effective date of the designation of a river as a recreational river under AS 41.23.020(c), the commissioner shall, after consultation with appropriate state agencies, reserve to the state under AS 46.15.145 an instream flow or level for

1 the water in the river described in AS 41.23.020(c) that is adequate
2 to achieve the purposes of AS 41.23.010 - 41.23.090.

3 (c) The provisions of AS 41.23.010 - 41.23.090 do not affect the
4 responsibility of

5 (1) the Department of Fish and Game, the Board of Fisher-
6 ies, the Board of Game, or the Guide Licensing and Control Board under
7 AS 08.54, AS 16, or AS 41.99.010;

8 (2) the Department of Environmental Conservation under
9 AS 46.03; or

10 (3) state agencies and municipalities under AS 44.19.145-
11 (a)(11) and AS 46.40.100.

12 (d) The commissioner shall permit the use of weapons within a
13 recreational river except in sites of high public use such as picnic
14 areas, boat ramps, camping grounds, and parking areas when the commis-
15 sioner determines that the use of weapons constitutes a threat to
16 public safety. Except as provided in this subsection, the commis-
17 sioner may not restrict the exercise of sport or subsistence fishing,
18 hunting, or trapping within a recreational river.

19 (e) The commissioner shall permit access for a use described in
20 this subsection within a recreational river unless the commissioner
21 determines that access is incompatible with AS 41.23.010(b)(1) and
22 (2):

23 (1) access to mining, timber harvest and other resource use
24 areas;

25 (2) access to private property;

26 (3) access for oil and gas and geothermal exploration and
27 development;

28 (4) access for energy related development systems;

29 (5) access for state or municipal land settlement.

1 (f) The commissioner may lease land competitively within a
2 recreational river to a person for the construction and operation of a
3 public use facility within the recreational river.

4 (g) The commissioner may not restrict commercial activities
5 existing within the boundaries of an area designated as a recreational
6 river under AS 41.23.020(c) at the time of the designation unless the
7 commissioner determines that the commercial activity threatens the
8 quality of the water or an essential habitat within the recreational
9 river.

10 Sec. 41.23.040. MANAGEMENT PLAN. (a) The commissioner shall
11 adopt and may revise a comprehensive multiple use management plan for
12 a river designated as a recreational river under AS 41.23.020(c). The
13 commissioner shall consult with the Department of Fish and Game before
14 the adoption or revision of a management plan governing the use of an
15 area within a recreational river. The commissioner shall comply with
16 the notice requirements of AS 38.05.945 and shall hold at least one
17 public hearing in the municipalities and communities that are proximi-
18 tely located to the recreational river and with the local fish and
19 game advisory board in the area in the adoption or revision of a
20 management plan.

21 (b) A comprehensive management plan adopted or revised by the
22 commissioner under (a) of this section shall be submitted to the
23 legislature for review within the first 10 days of the first regular
24 session of the legislature to convene after its adoption or revision
25 by the commissioner.

26 (c) The Department of Fish and Game shall consult with the
27 commissioner before it adopts or revises regulations governing fish
28 and game management in an area designated as a recreational river.

29 (d) A comprehensive multiple-use management plan adopted for a

1 recreational river under (a) of this section shall be adopted within
2 two years from the effective date of the designation of a river as a
3 recreational river under AS 41.23.020(c).

4 (e) The commissioner shall designate in the management plan uses
5 determined incompatible within a recreational river designated under
6 AS 41.23.020(c). If the commissioner determines that a use is incom-
7 patible with one or more other uses in a portion of a river designated
8 as a recreational river, the commissioner shall state in the manage-
9 ment plan adopted or revised under (b) of this section

10 (1) each determination of incompatibility;

11 (2) the specific area where the incompatibility is de-
12 termined to exist;

13 (3) the time within which the incompatibility is determined
14 to exist; and

15 (4) the reasons for each determination of incompatibility.

16 Sec. 41.23.050. MANAGEMENT OF MUNICIPAL LAND. If a municipality
17 commits land for inclusion in a recreational river designated under
18 AS 41.23.020(c), the commissioner shall obtain the concurrence of the
19 municipality to the management plan proposed under AS 41.23.030 as it
20 applies to municipal land.

21 Sec. 41.23.060. ACQUISITION OF ADDITIONAL LAND. (a) The com-
22 missioner may acquire in the name of the state land that is adjacent
23 to or located within the land described in AS 41.23.020(c) by pur-
24 chase, lease, gift, or exchange. Notwithstanding AS 38.50, the ex-
25 change may not be completed without the approval of the legislature if
26 the appraised fair market value of the state land proposed for the
27 particular exchange is in excess of \$100,000.

28 (b) The commissioner may not acquire land for inclusion in a
29 recreational river by eminent domain.

1 Sec. 41.23.070. APPLICATION OF PUBLIC LAND LAWS. Except to the
2 extent that a provision is inconsistent with a provision of this
3 chapter, the provisions of AS 38.04, AS 38.05, AS 38.35, and AS 38.95
4 apply to land described in AS 41.23.020(c).

5 Sec. 41.23.080. COOPERATIVE MANAGEMENT AGREEMENTS. (a) The
6 commissioner may enter into a cooperative management agreement for the
7 management of land and water described in AS 41.23.020(c) or of other
8 adjacent land and water with a federal agency, a municipality of the
9 state, another agency of the state, or a private landowner.

10 (b) The commissioner may transfer the management of a specific
11 site within a recreational river described in AS 41.23.020(c) to
12 another state agency to assist in the development of a facility or to
13 carry out a program authorized by law.

14 (c) The commissioner may not manage a recreational river de-
15 scribed in AS 41.23.020 as a unit of the state park system.

16 Sec. 41.23.090. RECOMMENDATIONS BY COMMISSIONER. (a) Before
17 recommending the establishment of a recreational river to the legisla-
18 ture, the commissioner shall adopt an area plan for the area within
19 which the proposed recreational river will be located that complies
20 with the requirements of (b) of this section.

21 (b) In the adoption of an area plan preparatory to a recommenda-
22 tion for the establishment of a recreational river, the commissioner
23 shall

24 (1) after notice under AS 38.05.945, hold a public hearing
25 in each community that is located proximately to or within the bound-
26 aries of an area proposed for inclusion within a recreational river;

27 (2) prepare a summary of the testimony offered at each
28 public hearing held under (b)(1) of this section with regard to the
29 establishment of the proposed recreational river for inclusion in the

1 area plan;

2 (3) consult with each fish and game advisory committee with
3 responsibilities for an area within the boundaries of an area proposed
4 for inclusion within a recreational river and include the recommenda-
5 tions of the local fish and game advisory committee in the area plan;
6 and

7 (4) provide a copy of the area plan to each community in
8 which a hearing was held under (b)(1) of this section.

9 ARTICLE 2. GENERAL PROVISIONS.

10 Sec. 41.23.900. DEFINITION. In this chapter, "commissioner"
11 means the commissioner of natural resources.

12 * Sec. 2. This Act takes effect immediately in accordance with AS 01.-
13 10.070(c).

**STATE OF ALASKA 1985 LEGISLATIVE SESSION
FISCAL NOTE**

Revision Date: March 27, 1985

REQUEST

Bill/Resolution No.: CSHB 93
Title: Recreational Rivers

Sponsor: Rules/Governor
Requestor: _____
Date of Request: _____

FISCAL DETAIL

Agency Affected: Natural Resources
Program Category Affected: NRMEC

BRU, Program or Subprogram(s) Affected: Land and Water Management

EXPENDITURES/REVENUES: (Thousands of Dollars)

	FY 85	FY 86	FY 87	FY 88	FY 89	FY 90
OPERATING						
100 PERSONAL SERVICES		94.0	94.0	94.0	94.0	94.0
200 TRAVEL		3.0	3.0	3.0	3.0	3.0
300 CONTRACTUAL		10.0	15.0	30.0	30.0	30.0
400 SUPPLIES		.5	.5	.5	.5	.5
500 EQUIPMENT		16.2	12.5	2.0	2.0	2.0
600 LAND & STRUCTURES						
700 GRANTS, CLAIMS						
800 MISCELLANEOUS						
TOTAL OPERATING		123.7	125.0	129.5	129.5	129.5
CAPITAL		400.0				
REVENUE						

FUNDING: (Thousands of Dollars)

GENERAL FUND		523.7	125.0	129.5	129.5	129.5
FEDERAL FUNDS						
OTHER						
TOTAL		523.7	125.0	129.5	129.5	129.5

POSITIONS:

FULL-TIME		2	2	2	2	2
PART-TIME						
TEMPORARY						

ANALYSIS: Attach a separate page if necessary

Fiscal note revised to reflect 1) removal from state parks system; 2) addition of five southcentral rivers; 3) reduced revenue forecasts.

See attachment

Prepared By: Ned Farguhar
Division: Commissioner's Office

Phone: 465-2400
Date: March 27, 1985

Approved by Commissioner: Alvin D. Arnold, Deputy
Agency: Natural Resources

Date: March 27, 1985

Distribution (by Agency preparing fiscal note):

- Legislative Finance
- Legislative Sponsor
- Requestor
- Office of Management and Budget
- Impacted Agency(ies)

7/1/84

CSHB 93 - Attachment

- 100 - 2 Natural Resource Technicians (to conduct planning through FY 87 and then to focus on management of the recreation rivers)
 - 200 - Regional travel
 - 300 - Printing costs for comprehensive plan through FY 87, then janitorial and maintenance costs for Little Susitna facility
 - 400 - Hand tools and commodities
 - 500 - Pickup truck in FY 86 and boat/trailer in FY 87
- Capital - Boat launch, parking at Little Susitna River

Alaska State Legislature

POUCH V
JUNEAU, ALASKA 99811
(907) 465-4453/4530

2201 ROOSEVELT DRIVE
ANCHORAGE, ALASKA 99503
(907) 248-4234



MEMBER
HOUSE RESOURCES COMMITTEE
MEMBER
HOUSE STATE AFFAIRS COMMITTEE

Representative Roger Jenkins

DISTRICT 11

MEMORANDUM

TO: Representative Richard Shultz
Representative Adelhied Hermann
Representative F. Kay Wallis
Representative Bette Cato
Representative Mike W. Miller
Representative Drue Pearce
Representative John Sund
Representative David Thompson
Representative Sam Cotton
Representative Pat Pourchot

FROM: Representative Roger L. Jenkins

DATE: April 1, 1985

SUBJECT: Statement of Intent of Amendment #1 to CSHB #93

Attached are copies of a proposed amendment to Resource CSHB #93 and appropriate portions of the Susitna Area Plan. In my review the amendment satisfies the Susitna Area Plan screening corridor objectives, while providing for adequate protection of the river without precluding other activities.

Your favorable consideration of this change is appreciated.

JUSTIFICATION

CS for House Bill No. 93 (Resources)

Amendment #1

by Jenkins

The intended purpose for CSHB 93 is to establish management guidelines for recreational rivers, while permitting each river to be individually managed under a multiple use management plan. Since statehood the legislatures have designated more land as parks, critical habitats, etc. than for land disposal. At a time of declining oil and gas revenue, the legislature should not be closing additional area to coal and mineral exploration and mining. However, on the other hand the legislature must continue to protect traditional uses of fishing, hunting, and trapping activities. All these goals can be accomplished by creating a 200 foot buffer along these recreational streams. This concept as laid out in the "Susitna Area Plan-PUBLIC REVIEW DRAFT-Summary" has gone through approximately 40 public hearings and over 1000 public comments. The Susitna Area Plan last week also received the Mat-Su Borough Assembly approval.

A M E N D M E N T # 1

Offered in Resources Committee

by Jenkins

TO: HOUSE BILL 93

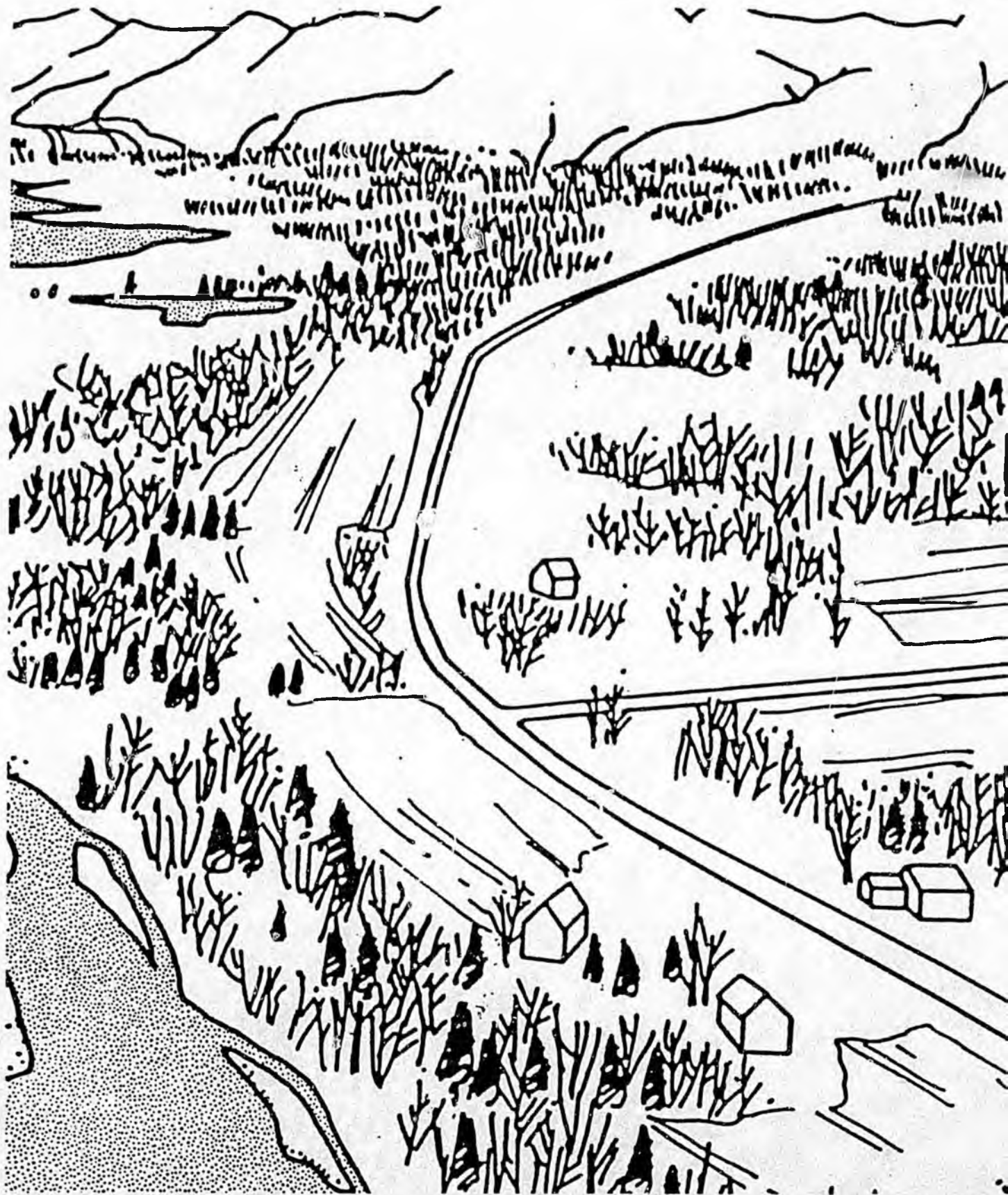
Page 1, line 28 amend to read:

"185 - 38.05.275 and land disposals within 200 feet upland from the meander of ordinary high water mark of a recreational river."

Page 2, line 20, amend to read:

38.05.275 within 200 feet upland from the meander of ordinary high water mark of a recreational river.

PUBLIC REVIEW DRAFT-Summary



PREPARED BY:
ALASKA DEPARTMENT OF NATURAL RESOURCES
ALASKA DEPARTMENT OF FISH AND GAME
AND THE MATANUSKA-SUSITNA BOROUGH
IN COOPERATION WITH:
ALASKA DEPARTMENT OF TRANSPORTATION AND PUBLIC FACILITIES
KENAI PENINSULA BOROUGH
U.S. DEPARTMENT OF AGRICULTURE
AND THE BUREAU OF LAND MANAGEMENT

JUNE 1984

STREAM CORRIDORS

I. STATEWIDE GOALS

- A. Recreation. Provide opportunities for a variety of recreational activities within stream corridors, including both wilderness and developed recreational activities.
- B. Habitat. Protect fish and wildlife riparian habitats.
- C. Private Ownership of Land. Provide opportunities for private ownership of land near streams.
- D. Water Quality. Protect water quality to support domestic uses, fish and wildlife production and recreational activities.
- E. Forest Products. Where consistent with the management objectives of a stream corridor, provide for the harvest of timber from riparian forests.

II. MANAGEMENT GUIDELINES

- A. Priority of Public Uses in Stream Corridors. "Stream Corridor" as used in these management guidelines refers to the stream itself and adjacent lands with stream-related recreational, residential, habitat, timber and hydrologic values. As a general rule, ADNR will set a higher priority on protecting public use values in stream corridors than providing opportunities for private ownership of land. However, the Department recognizes the strong demand for property along streams and will provide land for private purchase in some stream corridors. Prior to the disposal of stream corridor lands, DNR, in consultation with other affected agencies and the public, will assess existing and projected public use needs associated with the stream corridor. Disposals near streams with important recreation value will be designed to protect access to and along the stream for fishing, hiking, camping and other recreational activities.
- B. Retention of Publicly Owned Buffers as a Management Tool in Stream Corridors.
 - 1. When the management intent for land adjacent to a stream is to permit uses such as fishing, picnicking, hunting, timber harvest, building fires, camping or other similar active uses, public ownership of stream buffers should be used rather than easements to provide for these uses.
 - 2. In state subdivisions stream buffers should, in all cases, be either retained in public ownership or conveyed to a home owners' association. If streams in subdivisions have recreation or habitat values of regional or statewide importance, or are identified as public waters, buffers should be retained in public ownership.
 - 3. Publicly owned buffers adjacent to a stream may be retained along the full length of the stream or on the portions determined to have high current or future public use and habitat values.
- C. Retention of Access Easements as a Management Tool in Stream Corridors.
 - 1. When the primary management intent is to protect the public's right to travel along a stream bank rather than to establish a public use area, an easement should be used to protect this right. Easements along streams should also protect the right to pause briefly to observe wildlife, take photographs or rest, but

2. Easements along streams should establish, at minimum, the right to travel by foot, dogsled, horseback, snowmobile and two and three-wheeled vehicles. On a case-by-case basis the right to travel by all terrain vehicles and four wheeled vehicles may be reserved. Easements should be reserved for roads or railroads only if they are planned for construction.
3. Easements and publicly owned buffers may be used in combination on a stream to provide opportunities for private ownership near the stream while protecting public use or habitat values on other portions of the stream. Therefore, although easements should not be used where significant public use is to be encouraged, they may be used on portions of a stream with important public recreation and habitat values when most portions of the stream are retained for public use.

D. Establishing Widths of Publicly Owned Buffers, Easements and Building Setbacks in Stream Corridors.

1. Widths of publicly owned buffers along streams will vary according to management intent. In addition, the buffer width for any given stream may vary along the stream course depending on topography, vegetation and land ownership. Establishing buffer widths for particular streams should be based, at a minimum, on objectives for the following: recreational activities to be supported, habitat protection and management, noise abatement, visual quality, water quality, likelihood of erosion of the riverbank (in which case the buffer should be widened to compensate), and land disposal.
2. Although buffer and easement widths may vary among streams, a basic level of consistency is needed to avoid confusion about the width of public use and access areas along the state's many streams and because it would be prohibitively expensive to establish separately by fieldwork and site analysis buffer widths for each stream corridor. The following guidelines are intended to establish a reasonable degree of consistency in buffer and easement widths:
 - a. When it is determined that a publicly owned buffer is appropriate, a standard minimum buffer width of 200 feet landward from the ordinary high water mark on each bank generally should be established. This width may be reduced to a minimum of 100 feet on each bank in individual cases consistent with the management objectives of the stream corridor.
 - b. As a general standard publicly owned buffers of at least one-fourth mile landward from the ordinary high water mark on each bank should be retained on streams recommended for legislative designation as State Recreation Rivers to be managed as part of the State Park System. Exceptions to this policy may be made where land ownership, topography, or the nature of anticipated public uses in a stream corridor warrant.
 - c. When it is determined that a public access easement will be reserved on land adjacent to a stream, a minimum easement of 50 feet landward from the ordinary high water mark on each bank will be reserved.
 - d. In all cases where land is sold near a stream a minimum building setback of 100 feet landward from the ordinary high water mark on each bank should be established.

*The Alaska Department of Fish and Game does not endorse excluding fishing from the rights reserved for the public in stream corridor easements.

uses, transportation facilities, and pipelines will, where feasible, require setbacks between these facilities and adjacent water bodies to maintain streambank access and protect adjacent fish habitat, public water supplies, and public recreation. The width of this setback may vary depending upon the type and size of non-water dependent use, but will be adequate to maintain access and protect adjacent waters from degradation below the water quality standard established by DEC. Adjacent to designated anadromous fish spawning habitat this setback will, to the extent feasible, never be less than 100 feet landward of ordinary high water.

Where it is not feasible and prudent to maintain a setback adjacent to fish habitat, public water supplies or recreational waters, other measures will be implemented to meet the intent of this guideline.

- F. Activities in Important Waterfowl Habitat. Activities requiring a permit, lease, or development plan with high levels of acoustical and visual disturbance, such as boat traffic, blasting, dredging, and seismic operations, in important waterfowl habitat will, to the extent feasible and prudent, be avoided during sensitive periods. Where it is not feasible and prudent to avoid such activities, other mitigative measures will be considered to meet the intent of this guideline.
- G. Dredge and Fill in Important Waterfowl Habitat. Permits for dredging and filling in important waterfowl habitat, including permits for gravel extraction and the construction of roads and pads, will not be granted unless it is determined that the proposed activity will not cause significant adverse impacts to essential waterfowl habitat or that no feasible and prudent alternative exists.
- H. Structures in Fish Habitat. To maintain migration of juvenile fish DNR will, to the extent feasible, require that structures in fish habitat be built to minimize impacts on fish migration.
- I. Water Intake Structure. When issuing water appropriations in fish habitat, DNR will require that practical water intake structures be installed that do not entrain or impinge upon fish. The most simple and cost-effective technology may be used to implement this guideline.

Water intake structures will be screened, and intake velocities will be limited to prevent entrapment, entrainment, or injury to the species of fish found in the water. The structures supporting intakes should be designed to prevent fish from being lead into the intake. Other effective techniques may also be used to achieve the intent of this guideline. Screen size, water velocity, and intake design will be determined in consultation with the ADF&G.
- J. Alteration of the Hydrologic System. To the extent feasible channelization, diversion, or damming that will alter the natural hydrological conditions and have a significant adverse impact on important riverine habitat will be avoided.
- K. Soil Erosion. In addition to the use of publicly owned buffers and building setbacks, soil erosion will be minimized by restricting the removal of vegetation adjacent to streams and by stabilizing disturbed soil as soon as possible.
- L. Forest Management Practices. Personal use of timber or commercial harvest within 200 feet of a stream will be consistent with management objectives of the stream corridor.
- M. Subsurface Development. See section on Subsurface Resources and Materials, this chapter.
- N. Instream Flow. See section on Instream Flow, this chapter.

STATE OF ALASKA
THE LEGISLATURE

POUCH Y STATE CAPITOL
JUNEAU, ALASKA 99811
907 465 3800


LEGISLATIVE AFFAIRS AGENCY

MEMORANDUM

March 26, 1985

SUBJECT: Recreational rivers and lakes
(CSHB 93(Resources))

TO: Representative John Sund

FROM: Richard A. Bradley 
Legislative Counsel

Howard Wayne has asked that I identify for you the areas that would need to be changed in the latest version of CSHB 93 (Res) if the bill moved from "recreational rivers" to "recreational rivers and lakes". The latest draft that I have is dated 3/22 though I expect to start a new one this afternoon.

A copy of that draft is enclosed.

The changes necessary are:

Page 1. Lines 6, 11, 13 - 14, 15, 17, 18, 25, 26, 28.
Page 2. Lines 12, 14, 16, 24.
Page 22. Lines 27, 28.
Page 23. Lines 3(?), 18, 23, 25.
Page 24. Lines 7, 8, 11, 13 - 14, 17, 20, 23.
Page 25. Lines 4, 6, 7, 8, 10, 12, 13, 22.
Page 26. Lines 5, 16, 19, 22, 24, 27.
Page 27. Lines 2, 5, 9.

If I may be of further assistance, please advise.

RAB:lmb
L4/063

Enclosure

DNR AMENDMENT ONE

CSHB 93

March 27, 1985

See also

Add at p. 1, line 27 and renumber section 3 as section 4:

(3) protection and maintenance of water quality and stream
flow; and

DNR AMENDMENT TWO

CSHB 93

March 27, 1985

To include Chelatna Lake (22, 500 acres), and at p. 12, line 17:

T27N R12W S.M.
Sections 1-3
Section 10 N1/2 SE1/4
Sections 11-14
Section 15 NE1/4
Section 23 NE1/4
Section 24 N 1/2

T28N R12W 8.M.
Sections 1-5
Sections 8-12
Sections 13-17
Sections 21-24
Sections 25-28
Sections 33-36

If the Committee wishes to include a smaller area of critical concern (9,800 acres), insert this description instead:

T27N R12W S.M.
Sections 1-2
Sections 3 E1/2 E1/2
Sections 11-13
Section 14 N1/2, SE1/4

T28N R12W S.M.
Section 4 SW1/4
Section 9
Section 10 W1/2, SE1/4
Section 14 SW1/4
Section 15
Section 16 N1/2, SE1/4
Section 21 NE1/4
Section 22
Section 23 W1/2
Section 26
Section 27 N1/2, SE1/4, E1/2, SW1/4
Section 34 E1/2
Section 35
Section 36 SW1/4

DNR AMENDMENT THREE

CSHB 93

March 27, 1985

To include upper portion of the Talkeetna River, add at p. 20,
line 23:

T28N R1E S.M.

Section 2
Section 3 SE1/4
Section 9 SE1/4
Section 10
Section 11 NW1/4, W1/2 NE1/4, W1/2 SW1/4
Section 15 N1/2, SW1/4
Section 16 E1/2 SW1/4
Section 20 SE1/4
Section 21
Section 22 NW1/4
Section 28 N1/2, SW1/4
Section 29 E1/2, SW1/4, SE1/4 NW1/4
Section 31 SW1/4, E1/2
Section 32
Section 33 NW1/4

T28N R1W S.M.

Section 36 SE1/4 SE1/4

T27N R1E S.M.

Section 5 NW1/4
Section 6

T27N R1W S.M.

Section 1
Section 2 S1/2, NE1/4, S1/2 NW1/4
Section 3 S1/2, S1/2 N1/2
Section 4 SE1/4
Sections 7-10
Section 11 N1/2
Section 12 NW1/4
Section 15 NW1/4
Section 16 N1/2
Section 17 N1/2
Section 18 N1/2

T27N R2W S.M.

Section 2 SW1/4
Section 3 S1/2
Sections 10-12



Resource Development Council

for Alaska, Inc.

807 "G" Street, Suite 200, Anchorage, Alaska 99501-3440
 Box 100510, Anchorage, Alaska 99510-0510 - 047276-0700

EXECUTIVE DIRECTOR
 Paula P. Easley

EXECUTIVE COMMITTEE
 Charles R. Webber, President
 K. Doniel Hinde, Vice Pres.
 E. Thomas Pargeter, Vice Pres.
 Dale P. TUEBS, Secretary
 J. Shelby Gishny, Treasurer
 Boyd J. Brownfield
 Don L. Finney
 Robert W. Fleming*
 John Forbeskie
 Mano Frey
 O.K. "Easy" GIBRATH
 John L. Hall
 Sara S. Hemphill
 Joseph R. Hentl
 Phil R. Holdreem
 John T. Kelsey
 Ethel H. "Pete" Nelson
 John Rense
 R. G. Rodriguez
 R. D. Stock
 Robert I. Swannam
 Jack Werner

DIRECTORS/FOUNDERS*

John Abshire
 Hameed Ahmad
 Earl H. Belsline
 Rex I. Bishopp
 Tappen T. Blaney
 Robert A. Breaze
 Glen E. Briggs
 Milton Byrd
 Larry Dinneen
 James V. Drew
 James G. "Dud" Dye*
 Fred O. Eostaugh*
 Tom Fink*
 Lee E. Fisher*
 Don R. Fondell
 Kelly Gay
 Robert Gilford
 Howard Gray
 Dave Harbour
 Arthur R. Hauver
 Roger R. Harby
 Hazel Heath
 Dave Hedwore
 Carl W. Helmiller
 Charles F. Herbert
 M. A. Higgins
 Joe Jackovich
 Jerry E. Jean
 John Choon Kim
 Frank Kelt
 May H. Laster
 Kay Linton*
 Phillip L. Looker
 Charles E. Logsdon
 Dennis W. Limes
 Jeffrey B. Lowentals
 Paul J. Martin
 G. R. Meeks
 Michael Millhollin
 Pat Mulligan
 Max D. Nalley
 Richard A. Pohuo
 William Purrington
 Irene Ryan
 Lin S. Soane
 Mary J. Sulliff
 Dale Teel
 Joe J. Thomas
 Richard W. Tindall
 Rudy J. Tracclair
 Joe Uzbelle
 Lyle Von Bergen
 James Wakefield
 Cyril R. Wandmaker
 Anita Williams
 Lew M. Williams
 Jed Holley, Staff Consultant

EX-OFFICIO MEMBERS

Senator Ted Stevens
 Senator Frank Murkowski
 Congressman Don Young
 Governor Bill Sheffield

March 29, 1985

Representative Dick Shultz
 Co-Chairman House Resource Committee
 Pouch V
 Juneau, AK 99811

Dear Dick:

The Resource Development Council has reviewed the March 22 draft Resources Committee substitute for HB 93. We appreciate this opportunity to comment on the proposed legislation.

RDC believes this version of the recreational river is a far better proposal than that originally introduced. As far as we can see the management priorities for recreational use are protected in the draft substitute and other uses are addressed more effectively.

Our remaining problems with the draft substitute involve the following:

- 1) RDC still doubts the need for this legislation given the existing statutory and administrative mandates for management of these areas. Our letter of March 22 addresses this concern more completely.
- 2) Because we have been unable to look at a revised map addressing the draft substitute we are unable to properly comment on appropriateness of the lands proposed for inclusion. We do, however, hope that the boundaries outlined for the Little Susitna River in the original proposal are not indicative of the entire system proposed in the draft. A recreational river system does not need lands located more than a few hundred yards from the riverbank.
- 3) The management plan should be mandated to address acreage included in the recreational river system which is determined to be inappropriate for recreational enhancement. This will give the legislature the input necessary to remove unnecessarily withdrawn lands from the system and place them back into the public domain.
- 4) RDC also believes that the closure of these streams to mineral entry may not be necessary given the water quality standards in place today. Properly enforced water quality standards can alleviate the conflicts between miners and other river users.

Representative Shultz
HB 93
page 2

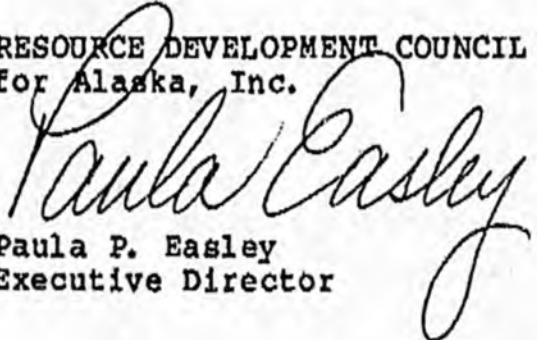
5) The legislation should also address utility and transportation corridors through these areas. Population growth in and around these rivers may necessitate the development of utility and transportation access through these areas. We suggest that these considerations be included as a subsection of the proposed language for Sec. 41.23.010. The management plans should also address these concerns and plan for their potential development.

These issues address the primary concerns the Resource Development Council has with the draft substitute. We would, however, stress the positive nature of the changes made to this bill since its referral to your committee. We commend all who took part in the development of this substitute.

Thank you for the opportunity to review and comment on the proposed substitute to the recreational river legislation.

Sincerely,

RESOURCE DEVELOPMENT COUNCIL
for Alaska, Inc.


Paula P. Easley
Executive Director

BILL SHEFFIELD
GOVERNOR



STATE OF ALASKA
OFFICE OF THE GOVERNOR
JUNEAU

The Honorable Ben Grussendorf
Speaker of the House
Alaska State Legislature
Pouch V
Juneau, AK 99811

Dear Representative Grussendorf:

Under the authority of art. III, sec. 18, of the Alaska Constitution, I am transmitting a bill relating to the creation of a system of recreation rivers.

The bill is based in part on legislation enacted last session creating the Kenai River Special Management Area. The establishment of the Kenai River Special Management Area was a significant beginning in our program to improve the quality of recreation for Alaskans and to reduce the resource damage that results from overuse.

This year I will be introducing several pieces of legislation directed at expanding and diversifying recreational opportunities in southcentral Alaska. To provide for the growing recreation demands of Alaskans, who are among the most active anglers, hikers, boaters, hunters and campers in the United States, we must take action now to designate appropriate state lands and waters for special use.

Today I am introducing two recreation bills: to establish a state recreation rivers system, including the Little Susitna River, and to designate the Willow Creek State Recreation Area. Both of these areas were recommended for special designation on the Willow Subbasin Plan adopted two years ago. On March 1, after the Susitna Area Plan is adopted, I will introduce legislation to create several more special areas as recommended in the final plan.

Section 1 of this bill amends AS 41.21.022 to allow the discharge of firearms for lawful hunting in recreation river corridors except when public safety requires otherwise.

Section 2 contains the body of the bill. New AS 41.21.308 states the purposes of the new sections in AS 41.21, which

include dedication of a recreation river and adjacent state land as a unit of the state park system. New AS 41.21.310 designates the Little Susitna River corridor and adjacent state lands as a recreation river. New AS 41.21.312 delegates to the Department of Natural Resources the regulatory responsibilities for the river corridor subject to the existing powers of the Department of Fish and Game, Board of Fisheries, Board of Game, Guide Licensing and Control Board, and Department of Environmental Conservation.

Under new AS 41.21.314, the commissioner of natural resources is directed to develop and adopt a comprehensive management plan for the river corridor through a public hearing process and consultation with affected local municipalities and other interested state and local agencies. Once the plan is adopted, the commissioner is directed to adopt regulations under the Administrative Procedure Act (AS 44.62) to implement the plan. These regulations, as a minimum, must designate appropriate transportation and utility corridors for the area in cooperation with the Department of Transportation and Public Facilities; establish guidelines for the extraction of sand and gravel for public purposes and the harvest of forest products; and establish appropriate land use controls where necessary to maintain the river in its natural and free flowing state. The commissioner is also directed in new AS 41.21.314(c) to reserve an in-stream flow or level for the river adequate to insure that there is sufficient water so that the purposes of the Act can be fulfilled.

Under new AS 41.21.316, the commissioner is given authority to acquire in the name of the state an interest in other land where acquisition would effectuate the purposes of the Act. The use of the power of eminent domain, however, is expressly prohibited. The commissioner is also given authority in new AS 41.21.318 to enter into cooperative agreements with other public and private parties.

Finally, new AS 41.21.320 gives the commissioner express authority to seek an injunction to enforce regulations adopted under AS 41.21.308 -- 41.21.320. The last three new sections all parallel sections adopted in the Kenai River legislation passed last session.

In light of the increasingly intensive recreational use of the Little Susitna River and other rivers throughout the state, and their importance both to the recreational needs of Alaskans and to the tourist industry, I urge your prompt action on this measure.

Sincerely,

A handwritten signature in cursive script, appearing to read "Bill Sheffield". The signature is written in dark ink and is positioned above the typed name and title.

Bill Sheffield
Governor



Alaska State Legislature

HOUSE OF REPRESENTATIVES
COMMITTEE ON RESOURCES

POUCH V
JUNEAU, ALASKA 99811
(907) 465-3715

MEMORANDUM

March 21, 1985

TO: RESOURCES COMMITTEE MEMBERS

FROM: Representative Dick Shultz *DS*
Co-Chair, House Resources

SUBJ: HB 93: Recreation Rivers

Please find a copy of the committee substitute for HB 93.

Committee staff has spent numerous hours over the last four weeks working with the Governor's office, the Mat-Su Borough, Representatives: Larson, Cotten, and Pourchot's office to accommodate their concerns.

This bill represents many compromises. The governor's bill in the original form was designed as a limited use park approach to managing certain rivers. This CS sets out a multiple use approach to management with recreation and habitat uses to be considered first and foremost. All other uses must be compatible with these uses if they are to be allowed.

There may remain some areas of minor disagreement surrounding this CS, however, I feel the major concerns of all parties have been addressed on a well balanced basis. I have spoken with Representatives: Larson, Cotten and Pourchot and they are satisfied that we are at a point where we can move ahead with this CS.

It is time to move this legislative on and I would appreciate your taking the time to review this draft as soon as possible in preparation for our upcoming meeting.

FISCAL NOTE

Revision Date: _____

REQUEST

Bill/Resolution No.: HB 43
 Title: Recreation Rivers

Sponsor: _____
 Requestor: _____
 Date of Request: _____

FISCAL DETAIL

Agency Affected: Natural Resources
 Program Category Affected: NRMEC

BRU, Program or Subprogram(s) Affected:
Parks and Outdoor Recreation; Land and
Water Management

EXPENDITURES/REVENUES: (Thousands of Dollars)

	FY 85	FY 86	FY 87	FY 88	FY 89	FY 90
OPERATING						
100 PERSONAL SERVICES		56.6	60.0	60.0	60.0	60.0
200 TRAVEL		4.0	1.0	1.0	1.0	1.0
300 CONTRACTUAL		24.0	26.0	26.0	26.0	26.0
400 SUPPLIES		5.0	5.0	5.0	5.0	5.0
500 EQUIPMENT		41.0	4.0	4.0	4.0	4.0
600 LAND & STRUCTURES						
700 GRANTS, CLAIMS						
800 MISCELLANEOUS						
TOTAL OPERATING		130.6	96.0	96.0	96.0	96.0
CAPITAL		400.0				
REVENUE						

FUNDING: (Thousands of Dollars)

GENERAL FUND		530.6	96.0	96.0	96.0	96.0
FEDERAL FUNDS						
OTHER						
TOTAL		530.6	96.0	96.0	96.0	96.0

POSITIONS:

FULL-TIME						
PART-TIME		2	2	2	2	2
TEMPORARY						

ANALYSIS: Attach a separate page if necessary

Attached.

Prepared By: Peter Paharese
 Division: Parks and Outdoor Recreation

Phone: 265-4517
 Date: January 16, 1985

Approved by Commissioner: [Signature]
 Agency: Natural Resources

Date: January 16, 1985

Distribution (by Agency preparing fiscal note):

- Legislative Finance
- Legislative Sponsor
- Requestor
- Office of Management and Budget
- Impacted Agency(ies)

7/1/84

State Recreation Rivers - Fiscal Analysis

FY 86

- 100 - Two permanent part-time Park Ranger 1/8 mos.
- 200 - Training and regional coordination
- 300 - Vehicle mileage, refuse collection, janitorial contract
- 400 - Hand tools, maintenance commodities
- 500 - Pickup trucks (2), radios, boat with trailer, zodiac raft, law enforcement equipment such as lights, siren, PA system, handguns

FY 87

Same costs except that equipment purchases would be unnecessary except for additional radio equipment.

Capital expenditures are for road/boat launch/parking at the Little Susitna River.

PROPOSED AMENDMENT TO HB 93
DEPARTMENT OF NATURAL RESOURCES

Delete subsection (b) at p.2, lines 13-14 and replace with the following wording:

(b) Other resource management activities, such as timber harvest, extraction of gravel for public purposes, and provision of access, shall be allowed to occur when designed to be compatible with the purposes set out in (a) of this section.



Alaska Environmental Lobby, Inc.

~~419 6th Street, Suite 328~~ Juneau, Alaska 99801
204 N. Franklin St. Suite 3

907-586-2345

AMENDMENTS TO HB 93 " An Act establishing a system of recreation rivers"

Sec. 41.21.314 (b) (3) delete

Rationale

Since (b) (1) gives the commissioner the ability to "designate incompatible uses and prohibit or restrict them (b) (3) is redundant. At some point and in some areas "extraction of sand and gravel for public purposes and the harvest of forest products" could be determined incompatible use.

ALASKA CENTER FOR THE ENVIRONMENT • ALASKA CHAPTER, SIERRA CLUB
ALASKA WILDERNESS GUIDES ASSOCIATION • ANCHORAGE AUDUBON SOCIETY,
ARCTIC AUDUBON SOCIETY • DENALI CITIZENS' COUNCIL • FRIENDS OF THE EARTH
JUNEAU AUDUBON SOCIETY • KACHEMAK BAY CONSERVATION SOCIETY • KENAI AUDUBON SOCIETY
KODIAK AUDUBON SOCIETY • LYNN CANAL CONSERVATION • NORTHERN ALASKA ENVIRONMENTAL CENTER
SITKA CONSERVATION SOCIETY • SOUTHEAST ALASKA CONSERVATION COUNCIL

STATEMENT OF ROBERT D. ARNOLD
DEPUTY COMMISSIONER, DEPARTMENT OF NATURAL RESOURCES
IN SUPPORT OF HB 86
(Willow Creek State Recreation Area)
AND HB 93
(State Recreation Rivers)

HOUSE COMMITTEE OF RESOURCES
February 1, 1985

Representative Herrmann, Representative Shultz, and members of the Committee, I am Robert Arnold, Deputy Commissioner of the Department of Natural Resources. I am pleased to appear before you today to testify in support of HB 86 and HB 93, both introduced at the request of Governor Sheffield. These bills, which would establish the Willow Creek State Recreation Area and create a new state recreation rivers system with the Little Susitna River as its first component, are very important pieces of legislation that will help meet recreation demands in southcentral Alaska and reduce the potential for resource damage that could result from an absence of recreation management.

As the Governor noted when he transmitted HB 93 to the Speaker of the House, Alaskans are among the most active hunters, anglers, campers, boaters, and hikers in the United States. To meet their growing needs, the Governor last year sponsored legislation to protect the Kenai River -- legislation that was enacted and has already resulted in the inauguration of planning and management for one of Alaska's finest rivers. Recreation use of the Kenai River has doubled in the past four years, and this increased use has diminished the recreation experience for many Alaskans and has resulted in some damage along the river itself.

Both of the bills that you are considering today will help meet current recreation needs, protect valuable resources for the future, and provide for the growing recreation demands of southcentral Alaskans. And both of the legislative proposals have resulted from a public planning process for state and borough lands in southcentral Alaska.

Let me now address each of the bills in turn.

HB 93 - Recreation Rivers

In October of 1982, the Department of Natural Resources adopted the Willow Subbasin Plan with the support of the Matanuska-Susitna Borough (Resolution 82-17). The Plan affected about a million acres of high-value resource lands in the Little Susitna and Willow basins. Among its findings were the recommendations that the Little Susitna be closed to mineral entry and that the corridor be managed "to maintain and enhance the recreation/habitat resources along the Little Susitna River." This primary designation for recreation and habitat uses was paired with a secondary designation for forestry.

Since the adoption of the Willow Subbasin Plan, we have also conducted a planning process for state and borough lands in the Susitna basin. This plan should be finished a month from today, after three years of public participation -- including over 40 public meetings and incorporation of comments and suggestions from hundreds of citizens and from agency and borough staff. The Susitna Area Plan, like the Willow Subbasin Plan, will identify some rivers that should be managed primarily for their recreation and habitat values.

With this groundwork done by the public, state agencies, and the Matanuska-Susitna Borough, we have prepared legislation to establish a recreational rivers system that will first include the Little Susitna River, and later can be amended to include rivers in other areas of the state.