

ALASKA LEGISLATURE COMMITTEE FILES 1983-1984 8672

2308 SHESS CMHC HEARING

C. Michael Hough

ATTORNEY AT LAW
P O BOX 291
HOMER ALASKA 99603
19071 235-8184

January 26, 1983

Community Mental
Health Center
Box 2274
Homer, AK 99603

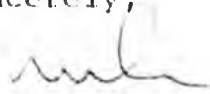
Gentlemen:

This letter is to indicate my support for continuing funding of the Community Mental Health Center which serves the residence of the South Kenai Peninsula. I would also note a significant improvement in the Mental Health Center after Dr. Paul Craig became the director.

My office has been involved in emergency placement of disturbed individuals, evaluation of persons suspected of being suicidal and in counseling on family disputes.

The local Mental Health Center is well respected by the local community including the court system. Dr. Craig and his staff have shown their involvement in the community by discussing their services with the Chamber of Commerce and other interested groups in the Homer area.

Sincerely,



C. MICHAEL HOUGH
Attorney at Law

CMB:lb

February 19, 1983

Community Mental Health Center
P.O. 2274
Homer, Alaska 99603

Dear Paul:

This letter is in support of continued funding for the Community Mental Health Program in Homer. We appreciate the working relationship between community mental health and the The North Pacific Rim and the support services provided by your agency.

Sincerely,

A. J. T.
Agnis Mogenack Community Health Representative
Fort Graham, Alaska 99603

Susan B. English School

A part of KENAI PENINSULA BOROUGH SCHOOL DISTRICT
SELDOVIA, ALASKA 99663


February 2, 1989

Paul L. Craig, Director
Community Mental Health Center
Box 2274
Homer, AK 99603

Dear Dr. Craig:

Seldovia Community Schools wishes to express support of the Homer Community Mental Health Center. Your counseling and educational services plus Eileen Littrell's counseling and parenting classes have proven beneficial. Since the size of Seldovia prohibits a counseling center of its own, we are appreciative of the cooperation between your agency and agencies here. We appreciate your compliance and concern and look forward to continued services by your agency.

Sincerely,



Ms. Annie McKenzie
Coordinator
Seldovia Community Schools



PAUL BANKS ELEMENTARY SCHOOL

BOX 1889 • HOMER, ALASKA 99603 • (907) 235-8161

February 4, 1983

Community Mental Health Center
Box 2274
Homer, Alaska 99603

To Whom It May Concern:

I have been asked to write a letter in support of the Community Mental Health Center and Paul Craig here in Homer, Alaska.

Paul has been able to provide excellent counselling and psychological help to students in severe need here at Paul Banks Elementary School. Without Paul's assistance the students here would not be able to receive any direct counselling or psychological benefits due to the logistical distances involved between our school and Central Office and the other support teams that work with the school.

In the last year and half the Community Mental Health Center has not just become a small office somewhere down in town, but has become an arm that is extending out into the community and helping not only the school, the children, the parents, but all members of the society in which we live here in Homer.

I greatly support Paul's efforts and solicit your support in funding the Mental Health Center and the programs in which Paul Craig has initiated in the community.

Sincerely yours,

Lewis McLin, Principal
Paul Banks Elementary

LM/lg

Cook Inlet Council On Alcohol And Drug Abuse

February 15, 1983

Dear Paul,

I would like to lend my support of the Community Mental Health programs and services offered to the residents of the South Kenai Peninsula.

I was especially pleased when you added the Parent-Child Education and Training program and the Infant Learning Program. There has been a need to address the issue of parenting being one of the most difficult jobs for which there is the least amount of training. You are addressing this need through your educational programs that prepare and support parents.

I am also very pleased with the "team" approach that has been developing in which Mental Health, Homer Junior and Senior High School, and Cook Inlet Council are working closely to establish appropriate programs and services for "high risk" students and their families. This agency and school "team" approach with the students and their families will increase the chances of teens receiving appropriate services which I believe will increase the chances of the students receiving an education. I believe it will also help provide support and services to the family.

I'm looking forward to our continued work together.

Sincerely,

Mildred J. ...
YOUTH OPTIONS Coordinator

John D. Kosch
Box 1163
Homer, Alaska 99603

January 21, 1983

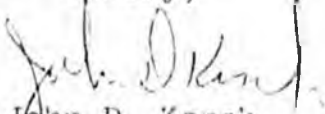
Paul L. Craig, Ph.D.
Psychologist, Director
Community Mental Health Center
Box 2274
Homer, Alaska 99603

Dear Paul;

As a councilperson and citizen of the city of Homer, I feel that you and your staff have been doing an excellent job in administering the services of the community mental health center.

I feel the whole concept and the different services the community health center offers are needed and certainly I back them. I further would hope that any grants that are available for community mental health should come your way.

Sincerely,



John D. Kosch
Homer City Councilperson

Private
JAN 20 1983
CICADA

Cook Inlet Council On Alcohol And Drug Abuse

January 20, 1983

Dr. Paul Craig
COMMUNITY MENTAL HEALTH CENTER
P. O. Box 2274
Homer, AK 99603

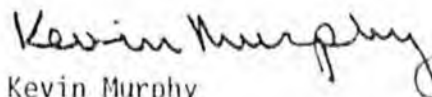
Dear Paul:

This is my letter of support for the Community Mental Health Center. It is my professional opinion that your office provides a much needed, high quality service to your community.

In working with recovering persons, the Parent-Child Education and Training Program can serve as an important adjunct to a healthy, sober family. In working with individuals and families, mental health needs must be addressed in many cases for a person to return to or begin a quality sobriety. It is important we work together. I know through your efforts with the Human Service Provider's Network working together is an important goal to your agency. This is also the goal of CICADA and will benefit the community.

If I can be of further assistance, please feel free to call me at 283-3658.

Sincerely,



Kevin Murphy
Executive Director

KH/pp

W J MARLEY, D.D.S.

BOX 155

HOMER ALASKA 99603

235-8909

February 24, 1983

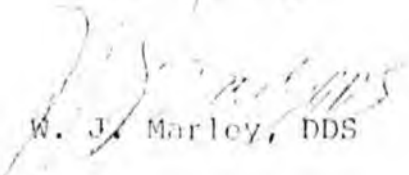
Paul L. Craig
Community Mental Health Center
Box 2274
Homer, AK 99603

Dear Sir,

I would like to express my support for our Community Mental Health Center. The services provided to our community are most important. In my opinion, there would be a terrible deficit in the health care of our community were the service not available.

While I do support the Community Mental Health Center, it is also my hope that my support would not preclude any efforts by the private practice community to provide a like service.

Sincerely,


W. J. Marley, DDS

LAURANCE A. MARSHBURN, MD

P O BOX 277

HOMER, ALASKA 99603

January 26, 1983

Re: Letter of Recommendation - Homer Community Mental Health Center

To Whom It May Concern:

It is my feeling that the Homer Community Mental Health Center continues to provide an extremely valuable resource in this community. The support that they have given to me and to my patients in the last year has been consistently of extremely high quality and entirely professional. My only area of contact with this program, however, has been in the realm of people who required counselling over a period of time, usually for a transient situational problem. As stated, the support in this area has been excellent. I have had no real contact with other areas of the program, such as the parent/child education and training program or the infant learning program.

I would certainly endorse the need for continuing support of the Community Mental Health program in Homer and recommend a favorable response on the current grant proposals.

Very truly yours,


Laurance A. Marshburn, M. D.

January 28, 1983

Community Mental Health Center
Box 2274
Homer, Alaska 99603-2274

To Whom It May Concern:

It is with great pleasure that I submit this letter of support for the services rendered by our local Community Mental Health Center. When funding for this valuable local service was threatened last year, I viewed that trend with alarm. The good to the community at large so far outweighs the dollars spent, every dollar spent represents a valuable investment.


I would like to cite my own personal experience with the Mental Health Center first. That concerns the services rendered to my mother, who through no fault of her own, has been a patient of mental institutions and clinics for the better part of her 75 years. If it were not for the existence of this clinic and the excellent service she receives here (and I rate it the best she has ever received), she would now be a ward of an institution. It is my hope that she may remain in the comfortable surroundings of her own home for as long as possible. Due to her financial situation, that can only be accomplished through this clinic.

As a school board member and parent I am also very much concerned with and about the services rendered to our schools by the Community Mental Health Center. Here in Homer Dr. Craig works with identified emotionally handicapped children, at the present serving ten such children in our Homer schools. The service area for Dr. Craig extends from Ninilchik south and includes Anchor Point, Homer, English Bay, Port Graham, and Seldovia (as well as Ninilchik). It is a very large area that obviously requires a lot of energy and time. Population wise, it is also a very fast growing area, increasing at the rate of 15 to 20 percent per year. The services that Dr. Craig provides to our schools are those that are beyond that what we, the school, can provide. We are therefore very dependent upon him.

I am particularly pleased with the Parent-Child Education and Training Program, a parent effectiveness program and one that I consider vital. Any time we can reach out to parents and assist them in their every day dealings with children, we are helping to create a healthy environment for those children. These communications skills provide a foundation and among the many benefits enable a child to perform better at school. The Parent-Child Education and Training program has been well received in the community.

Overall I find the services rendered by the Community Mental Health Center to be invaluable to the Lower Kenai Peninsula. The continuation and expansion of these services is of utmost importance. I strongly urge your financial support of the Community Mental Health Center.

Sincerely,


Mildred M. Martin, member
Kenai Peninsula Borough School Board
P.O. Box 2652
Homer, Alaska 99603

JOHN RATE
LAWYER
BOX 216R
HOMER ALASKA 99603

(907) 235-11740

To Whom It May Concern:

Re: Community Mental Health Center, Homer, Alaska

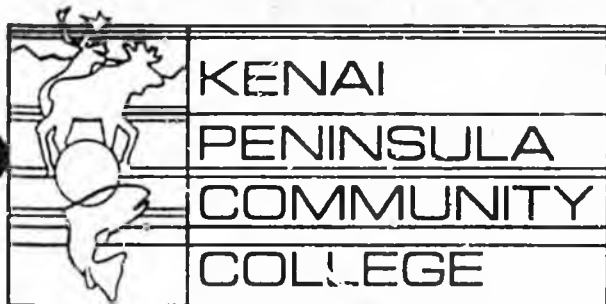
I am writing in support of the Community Mental Health Center, which I believe has served this community well. As a lawyer, I can assure you that the judicial system is definitely inadequate to deal with problems of mental health. The Center has provided a source of local counseling, which the court system has used to provide sensible dispositions directed at long-term rehabilitation of criminal offenders. It has also served to identify and resolve mental problems before they become a burden on the court system. The Center also provides an invaluable service in counseling young people who are having problems with the school administration or with their families.

I believe that the entire Homer community will appreciate your attention to the needs of the Community Mental Health Center.

Sincerely,


John Rate

JR:lag



HOMER BRANCH

P.O. BOX 2779 HOMER, ALASKA 99603 (907) 235-7743

February 14, 1983

TO Whom it May Concern:

The Community Mental Health Center in Homer, Alaska provides many necessary and unduplicated services to the Lower Kenai Peninsula.

The Center has been successful in helping people to become productive and successful citizens. I have found the staff at the Community Mental Health Center to be professional in every sense of the word and I am looking forward to continuing our work with them in the future.

Kenai Peninsula Community College Homer Campus pledges its support to Community Mental Health Center of Homer and I urge you to also support the efforts of this important and vital organization. Our community needs their services.

Sincerely yours,


Jim Riggs
Homer Campus Administrator

VALDEZ

TATITLEK

EVAK

LIENEGA

SEWARD

ENGLISH BAY

PORT GRAHAM

north pacific rim

February 22, 1983

Paul Craig, Director
Community Mental Health Center
P. P. Box 2274
Homer, AK 99503

Dear Paul:

This letter is in regards to your request for support from the North Pacific Rim Native Corporation for further funding of Community Mental Health Center programs which impact the Native villages in the South Katchemak area.

During the past 2 years, the North Pacific Rim and the community MHC have operated with a cooperative agreement to provide services to English Bay and Port Graham on a consistent basis.

We believe that timing and sensitivity to community needs are paramount to providing useful services to Alaska Native villages and we have appreciated the fact that the Community Mental Health Center has been ready and willing to provide services on an "as needed" basis as opposed to forcing programs on a community that is not ready for them.

Our Family Services Worker reports that the Community Mental Health Center has followed his lead and provided services in a timely and highly professional manner. He further states that the Infant Learning Program and the Parent Education classes are valuable components to the services provides and good mental health program serves as an excellent back-up and resource for him as a professional.

We would like to offer our continued support for your program.

Sincerely,

Richard A. Rolland
Director
Health & Social Services

403 W Northern Lights Blvd., Suite 203 / Anchorage / Alaska 99503 / Ph. (907) 276-2121

The North Pacific Rim Corporation Serves The People Of The Chugach Native Region



HOMER MIDDLE SCHOOL

Kenai Peninsula Borough School District

Lee Wiman, Principal
Larry Sauta, Vice-Principal

SRA Box 20
Homer, AK 99603
Phone: (907) 234-5100

January 26, 1983

TO: Whom It May Concern

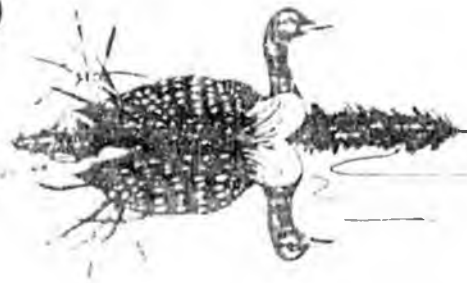
FROM: Larry Sauta, Vice Principal

SUBJECT: Letter of Support

The Community Mental Health Center under the direction of Dr. Paul Craig has, over the last two years, become an integral part of the public education in this community. Dr. Craig and his staff have been able to successfully fill a void that had existed in the area of community mental health.

We have found Dr. Craig and his staff to be extremely professional, effective, and supportive at all times.

LR:nd



Nikolaevsk

Николаевск



POST OFFICE BOX 100
ANCHOR POINT, ALASKA 99550

January 20, 1983

Dr. Paul L. Craig, Director
Community Mental Health Center
Box 2274
Homer, Alaska 99603

Dear Dr. Craig;

I would like to take this opportunity to commend you and the staff of the Community Mental Health Center for the positive influence you have been on the surrounding community specifically during the past year. The consistency of your excellent service as director has established the center as constantly available, highly competent, and completely professional.

Although new, the Parent/Child Education and Training Program and the Infant Learning Program show tremendous potential for far reaching service and influence for the South Peninsula. The combination of the abilities and talents of Chris Laine and Judith Rothstein into the one DVR position was innovative and by all appearances very successful. The organization and efforts of Mary Barnett are also to be complimented. Your efforts as administrator are reflected in the winning combination you have in your staff and the professionalism demonstrated there.

Personally, I want to thank you for your efforts in meeting needs identified here at Nikolaevsk School and your availability for advice when needed. I see our service opportunities increasing here as the two new programs gain greater visibility and as we continue to work with established programs such as Donna Fenske, PHN, and Ingrid Avril, Alaska Department of Health and Social Services.

If I can be of help anytime, please contact me.

Respectfully,

Bob Moore,
Head Teacher

BM/k js

KENAI PENINSULA BOROUGH SCHOOL DISTRICT

PUPIL PERSONNEL SERVICES

501 DOTNA ALASKA 99569

Special Services

Nursing Services

Counseling

Media

February 17, 1983

Paul L. Craig, Ph.D.
Psychologist, Director
Community Mental Health Center
P.O. Box 2274
Homer, Alaska 99503

Dear Dr. Craig,

Thank you for the opportunity to express my appreciation and continuing support for the efforts of the Community Mental Health Program. For those it may concern, I might explain that through the contract between our agencies, counseling and consultative services are provided to emotionally handicapped school children, their teachers and parents. Without your activities in the south peninsula area, services to these residents would be significantly reduced, if not eliminated altogether in many cases.

Personally, I am absolutely delighted with both the responsiveness and flexibility you and your staff have displayed in meeting difficult and at times, protracted situations. That your agency functions in a responsible fashion is obvious from the measurable improvements seen in the students you have worked with.

I expect to make heavy demands on your time in the coming year with similarly positive results.

Sincerely,

Arlo Morgenweck
Arlo Morgenweck, Ph.D.
School Psychologist



South Peninsula Women's Services, Inc.

P.O. Box 2328
Homer, Alaska 99603

Phone 243-7712

February 3, 1983

Paul Craig, Ph.D.
Community Mental Health Center
P.O. Box 2274
Homer, Alaska 99603

Dear Paul:

Please accept this letter in support of the continuing services of the Community Mental Health Center, Parent Education, and Infant Learning programs provided by the Community Mental Health Center to residents of the South Kenai Peninsula.

South Peninsula Women's Services and Community Mental Health Center has a most viable, cooperative relationship that positively benefits both individual and mutual clients. S.P.W.S. has made a multitude of referrals to the Center's various program components. These referrals have been received and acted upon in a most professional manner. Moreover, we have received appropriate referrals from the Community Mental Health Center. Mutual program planning has also been very effective.

We feel the Community Mental Health Center is an integral part of the community. The services that the three program components provide are of an utmost importance. We at South Peninsula Women's Services are in full support of the effective and needed programs offered by the Community Mental Health Center and recommend their continued funding.

Sincerely,

Carol Swartz, M.S.W., A.C.S.W.
Director

CS/ja

T. H. TAYLOR, D.M.D.

BOX 3288

HOMER, ALASKA 99603

TELEPHONE (907) 235-8000 4-442

OFFICE HOURS BY APPOINTMENT

ASH WEDNESDAY
February 16, 1983

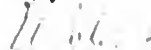
To Whom It May Concern:

As a local clergyman at St. Augustines' Episcopal Church, and a local dentist, I meet many people in the Homer and surrounding areas; some of them with problems which the Community Mental Health Center has been able to greatly assist with.

I utilize the expertise of the counselors at The Community Mental Health Center, by referring people to them from time to time. I would be disappointed, to say the least, without their valuable contribution to the well being of our community.

Please give them every consideration in their grant proposals.

Sincerely,



(The Rev.) Thomas H. Taylor D.M.D.

STATE OF ALASKA

BILL SHEFFIELD, GOVERNOR

DEPARTMENT OF EDUCATION

DIVISION OF VOCATIONAL REHABILITATION

MICHAEL C. MORGAN, DIRECTOR

Kenai Branch Office
P.O. Box 3533
Kenai, Alaska 99611
(907) 283-3113

January 19, 1983

Community Mental Health Center
Box 2274
Homer, Alaska 99603

Dear Paul:

This is in support of the Community Mental Health Center in Homer.

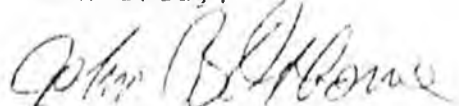
The mental health center in Homer greatly meets the needs of the local community from my perspective as well as the residents of the Homer area. They provide this office with psychological assessments on my clients, excellent guidance to my clients as well as assisting me in my contacts with employers and educational personnel. They have a broad based mental health program that works with walk ins, referrals from other agencies as well as other physicians and hospitals.

From my viewpoint they are doing an excellent job. The staff of the Community Mental Health Center appear to be highly competent, well trained, knowledgeable of problems in a rural area and very insightful of the needs of the community. Their parent/child educational program seems to be functioning quite well and appears to be meeting an obvious need. The same can be said for the Infant Learning Program which is relatively new.

I am very impressed by all of the programs that fall under this office and am highly pleased with the helpfulness of the staff.

Thank you for this opportunity to voice my opinion. I highly recommend continuation of the funding support for their current programs or any other programs they deem appropriate in the future.

Sincerely,


John B. Osborne, VRC I

JBO/PM

Ninilchik Community Clinic
February 2, 1983

Paul Craig, PhD.
Director
Community Mental Health Center
Homer, Alaska

I am happy to write this letter in support of the
Community Mental Health Center of Homer, Alaska.

Individuals in the Ninilchik area contacted the
Ninilchik Community Clinic asking for some type of help in
handling stressors. September 29 th. Paul Craig and Eileen
Littrell from the Mental Health Center met with me to discuss
some of the needs of Ninilchik's peoples.

In October Eileen Littrell, M.A., Counselor began
conducting a stress workshop three times a month open to the
general public at a \$2.00 registration fee. The times alternate
on Wednesdays and Fridays in the here and there for community
clinic usually over 100.

Private counseling is provided to individuals up
on intakes prior to the workshops. This service because of
its availability has been sought out by a young couple with
problems.

A communications skill class is held in the afternoon
with high school students. Just having Eileen in the school is
valuable. Students see her and can seek her out.

Numbers are hard to count in the mental health area.
The people actually seen are just the visible tip of the iceberg
that is receiving the benefits.

We have a need in Ninilchik for the services of the
Mental Health Center of Homer. If these services are denied our
needs go unanswered. If the program remains and is a steady
source of aid more and more people will use it.

I personally value the increased knowledge and skills
that workshops have given me. Others have voiced the same opinion.
and you Community Mental Health Center of Homer.

Pat Oskolkoff CHR

Sincerely,
Pat Oskolkoff CHR.
Ninilchik Community Clinic
Box 39348
Ninilchik, Ak. 99559
7576-3976

February 15, 1983

Dr. Paul L. Craig
Director
Homer Community Mental Health Center
P.O. Box 2274
Homer, Alaska 99603

Dear Dr. Craig:

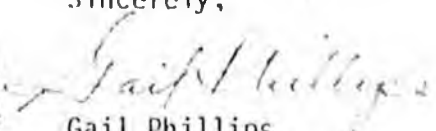
It is with a great deal of pleasure that I have been requested to submit a letter of support for the Community Mental Health Center, and am able, in good faith, to offer this support.

I feel that you and your staff are providing a vital service to the overall good health of the Homer community and surrounding area, and I will do all possible to help in your efforts to secure funding for the continuation of the Mental Health program for our area.

As a Councilperson, we are often called upon to lend support for various projects in our community, and many times I find that I have a personal conflict in giving support. Not so, however, in your case. I personally feel that your organization is not only above board, ethically and financially, but that you also are providing a desperately needed service in the community.

Please let me know if I can be of further assistance.

Sincerely,


Gail Phillips
Owner



STATE OF ALASKA

DEPARTMENT OF LAW

DISTRICT ATTORNEY OFFICE

MR. & MRS. HAMMOND, GOVERNOR
BILL SHEFFIELD
GOVERNOR

P.O. DRAWER 1180
KENAI 99611

February 22, 1983

Paul L. Craig, Ph.D.
Psychologist, Director
Community Mental Health Center
P. O. Box 2274
Homer, Alaska 99603

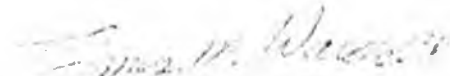
Dear Dr. Craig:

Please consider this letter as support for your continuing efforts in rendering much needed evaluation and counseling service for the people in your area.

It is clear to me from having handled a number of criminal cases on the southern end of the peninsula, that there is a definite need being met by your Center. I consider a continuation of your services as important to the treatment of a number of individuals who are involved in the criminal justice system, whose problems can best be addressed through counseling in their own community.

Please let me know if I can be of assistance in your efforts and I sincerely hope that your program will be adequately funded and supported; you certainly have my support.

Very truly yours,


Thomas H. Wardell
District Attorney
Kenai

TAW:md



KENAI PENINSULA BOROUGH

BOX 850 • SOLDOTNA ALASKA 99669
PHONE 262-4441

STATE OF ALASKA
1983

February 22, 1983

Paul L. Craig
Community Mental Health Center
Box 7774
Homer, AK 99603

Dear Dr. Craig:

While I do not at this moment have any specifics to mention regarding the mental health programs for South Kenai Peninsula, I do realize the great need for the programs in this area.

It is an absolute necessity that the Community Mental Health program, the Parent-Child Education & Training program, and the Infant Learning program continue in the community as these programs seem to be effective in filling the needs in this area.

We appreciate your work; keep it up.

Sincerely,

Stan Thompson
Kenai Peninsula Borough Mayor

State

January 26, 1983

Paul L. Craig, Ph. D.
Director
Community Mental Health Center
Box 2274
Homer, Alaska 99603

Dear Dr. Craig:

Thank you for contacting the PreSchool Program for our input regarding South Kenai Peninsula community health and child-parent related services.

Since I have only resided in Homer since September, quite frankly, I don't feel competent to assess the quality and quantity of services offered; but since I am extremely interested in pre-school parent and child education I would like to pass a few observations along to you, especially if some money might be funded in this area.

The Community School's Preschool is the only preschool of its type in Homer. There are a few other organizations that offer "preschool" education; however these fall mainly under the category of daycare and do not foster positive parent-child inter-relationships as the parent is usually working and not present.

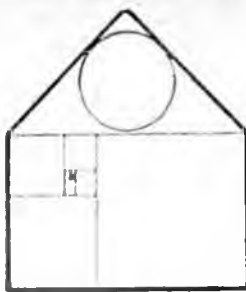
I see a great need in this community for a type of program that involves parent and child. Many children in this area live in isolated areas, missing much early socialization, and many of the mothers, in particular are spouseless for a length of time and need contact and communication with a skilled teacher and other parents just to see that Johnny really isn't as awful as she thinks and he can cooperate without that whack on the bottom she needs to give him all the time!

Our preschool program last year served as many as 110 children. Our equipment is sub-substandard or non-existent. We only have \$20.00 per month for supplies. Community Schools picks up all the bills and many people can't or don't pay and we won't exclude any child for financial reasons.

If there would be any way PreSchool could be included in any grant requests we would be overjoyed. Please feel free to visit us as we welcome your interest and support and I will be contact you or your staff to make myself acquainted with your services especially in the area of early child education.

Thank you,

Fat Springer
Fat Springer



The Children's House

A Montessori Center

January 19, 1983

Paul Craig, Ph.D.
Director, Psychologist
Community Mental Health Center
Box 2274
Homer, Alaska 99603

Dear Paul:

Thank you for informing me of your intention to submit a grant proposal again for funding of your programs. Your center has done a remarkable job this past year with the Infant Learning Program, the Parent-Child Education and Training Program, and all aspects of the Community Mental Health Program. I certainly hope funding will be available to continue the good work in these areas.

Through my work with children and their families I see a definite need of resources for parents and children alike who have special needs, problems coping with stress, or simply wish to improve their parenting skills. Your center is helping to fill this need with your various programs. I have referred parents to you for counselling and training, feeling comfortable that you could provide the needed help. The parents I hear back from have been both grateful and enthusiastic about your programs. I in turn am very grateful for your help.

I wish you continued success for another year of strong community involvement. Thanks for providing such quality programs for the people of Homer.

Sincerely,

Jane Wingquist
Jane Wingquist
Director

Homer High School

Homer Peninsula Borough School District

LEE WINN, PRINCIPAL
HOMER PENINSULA BOROUGH SCHOOL DISTRICT

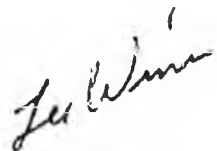
HOMER, ALASKA
HOMER, ALASKA
HOMER, ALASKA

January 20, 1983

Community Mental Health Center
P.O. Box 2274
Homer, AK 99603

TO WHOM IT MAY CONCERN:

FROM: Lee Winn, Principal



RE: LETTER OF SUPPORT

As Principal of Homer High School, I totally support the Community Mental Health Center under the direction of Paul L. Craig, Ph.D. Through his guidance, our community and school continue to be provided a very valuable resource as to their needs. At no time has Dr. Craig and his staff been unwilling to work with our problems or our schedule.

It has been my personal observation that Dr. Craig has spent additional time providing input and direction to help improve our school "effectiveness" for the student. His expertise and guidance continue to provide our teachers with new options and techniques.

The community of Homer would be drastically affected without the services of Community Mental Health Center. As a school administrator and community member, I whole heartily solicit your support.

If I can provide any additional information, please feel free to contact me.

LW:gs

● panoply

family health care

February 17, 1983

Paul Craig, Ph.D.
Psychologist, Director
Community Mental Health Center
P.O. Box 2274
Homer, AK 99603

Dear Paul:

This letter is in continued support of your program at the Community Mental Health Center. Over the past year many of my clients have received assistance and care from the Community Mental Health Center in a variety of ways by taking advantage of the well-established programs and, especially, since the introduction of the Infant Learning Program. I continue to be impressed with the service provided, with the attention to follow-up, and feel more strongly than ever that the Community Mental Health Center serves a vital function in our community. To consider referring my clients to Kenai or Anchorage for counseling and evaluation would be as limiting as not having a hospital available in which to practice.

I look forward to another year of excellent service.

Warmly,



Dan White, M.D.

DW/jlw



box ~~916~~ 331 homer alaska 99603 (907)235-7725

PROGRAM BROCHURES

Community Mental Health Center
Infant Learning Program
Vocational Counseling
Parent-Child Education & Training

Looking for professional assistance in any of the following areas?

- * Relationships
- * Behaviors that you would like to change
- * Emotions
- * Employment or educational planning
- * Stress
- * Your child's development or behavior
- * Family relations
- * Developing positive parenting skills
- * Or even Cabin Fever!



WE CAN HELP!!!
***Our professional staff
is available to
serve you.***

The Community Mental Health Center sponsors the following services:

Mental Health

Counseling, evaluation, consultation and crisis mental health services for adults and children.

Vocational Counseling

Career exploration, guidance and training services coordinated with Alaska Division of Vocational Rehabilitation.

Parenting Skills Educational Program

Workshops, classes and counseling for families and individuals regarding effective positive parenting.

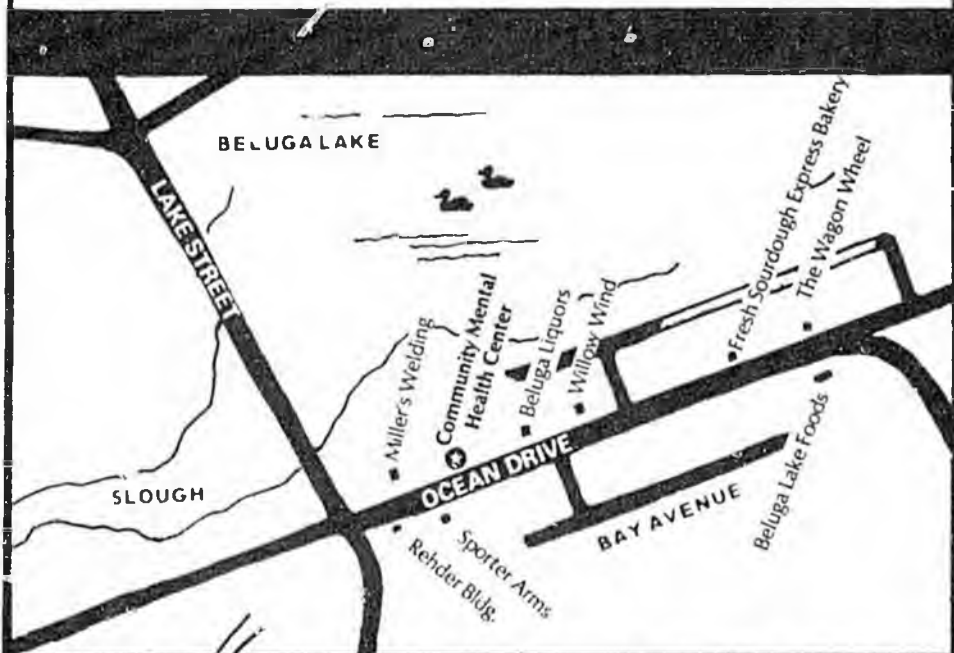
Infant Learning Program

Home-based program assisting parents of developmentally delayed infants (0-3 years) providing activities to enhance development.

Some services are free and others are on a sliding fee scale.

The center is located in the lower level of the office building on Ocean Drive between Miller's Welding and the Willow Wind. Outreach services are provided to Homer and outlying communities.

The Community Mental Health Center is sponsored by the South Peninsula Mental Health Association, a private non-profit corporation. If you are interested in becoming a member of the Association, give us a call.



Community Mental Health Center

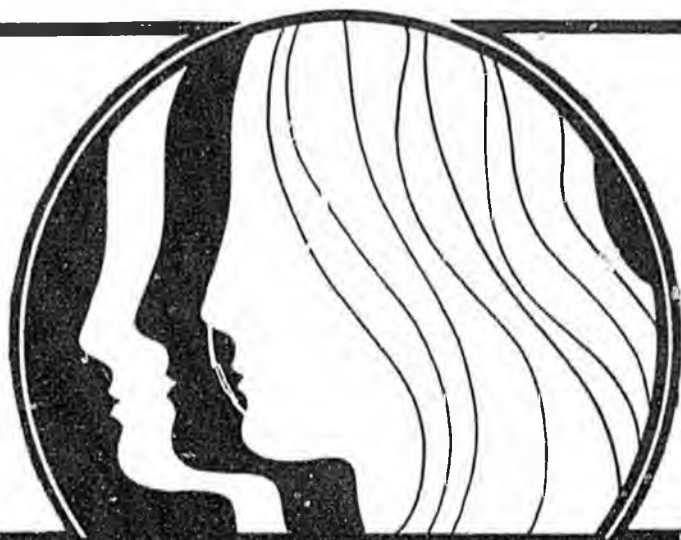
P.O. Box 2274

Homer, Alaska 99603

(907) 235-7701

Community Mental Health Center

235-7701



Serving:

**Homer-Anchor Point-Halibut Cove
Kachemak City-Seldovia-English Bay
Port Graham-Ninilchik-Nikolaevsk**



SOUTH PENINSULA INFANT LEARNING PROGRAM

**COMMUNITY MENTAL HEALTH CENTER
P.O. Box 2274
Homer, Alaska 99603
(907) 235-7701**

THE PROGRAM

The Infant Learning Program (ILP) is an early intervention program for infants and toddlers from birth to three years who are developmentally delayed, have a physical handicap or are at risk of developing a problem.

The Infant Learning Instructor will visit the parents and child in the home to do a formal assessment of all developmental areas. Where developmental delays are found, an Individualized Education Plan (IEP) will be established with the parents. The Instructor will visit the home on a weekly basis or as needed, for about an hour each visit, to share with parents some activities and techniques they can use daily to stimulate their child's development.

For more information, contact the INFANT LEARNING INSTRUCTOR through the Community Mental Health Center in Homer, 235-7701.

SERVICE AREAS

The Infant Learning Instructor will provide home services in the communities of Homer, Anchor Point, Ninilchik, Nikolaevsk, Seldovia, Port Graham, English Bay and outlying areas.

ELIGIBILITY

Any child under age three who has a handicap (such as Cerebral Palsy, Down's Syndrome, Mental Retardation, Blindness, Deafness) or who is suspected of having a developmental delay is eligible for the program.

COST

There is no cost to the parents. The program is funded by the Department of Health and Social Services, Family Services Section.

VOCATIONAL
COUNSELING



For information and
appointments, call:

235-7701

Office located in
Community Mental Health Center
P.O. Box 2274
Homer, Alaska 99603

INTRODUCTIONS

CHRIS LAING VOCATIONAL COUNSELOR

Jointly sponsored by

STATE OF ALASKA
DIVISION OF VOCATION
REHABILITATION

COMMUNITY MENTAL
HEALTH CENTER
P.O. BOX 2274
HOMER, ALASKA 99603
235-7701

V O C A T I O N A L C O U N S E L I N G



Most of us spend considerable time and energy at different points in our lives wondering which jobs would fit our needs and desires. Exploring the range of choices of employment is a difficult task. Often, the beginning step of knowing who to ask for specific information about a field of work is a bogging-down place. The Vocational Counseling Program in Homer is designed to assist people in clarifying career goals, barriers to successful employment, and strategies for seeking new employment.

FOR WHOM ARE THESE SERVICES DESIGNED?

- Any person in the process of rethinking his/her career, or how s/he is utilizing time;
- * The average American worker changes careers 4 times in his/her lifetime;
- Any disabled Alaskan who seeks assistance through Division of Vocational Rehabilitation and resides in the Southern Kenai Peninsula.
- * We serve people in the following communities:

COMMUNITY MENTAL HEALTH CENTER

Serving:

235-7701

Judith Rothstein, M.S.
Vocational Counselor

P.O. Box 2274
Homer, Alaska 99603



For information and
appointments, call:

235-7701

Office located in
Community Mental Health Center
P.O. Box 2274
Homer, Alaska 99603

Ninilehik
Nikolaevsk
Anchor Point
Homer
Kachemak City
Seldovia
Port Graham
English Bay



JOHN B. OSBORNE VOCATIONAL REHABILITATION COUNSELOR

STATE OF ALASKA
DEPT. OF EDUCATION
P.O. BOX 3833
KENAI, ALASKA 99611

VOCATIONAL REHABILITATION
PHONE (907) 283-3133

SERVICES AVAILABLE...

Career exploration and guidance: (in groups or individually), utilizing the Alaska Career Information System and interest inventories.

Information and referral services: from type of training required for a job to where such is offered, including employment forecasts for various job fields.

Special needs planning: such as in the case of physical, mental or emotional disabling conditions.

Assistance with sharpening job-readiness skills: resume writing, interviewing tips, etc .

Coordination with other agencies: state, federal, and private agency contacts.

Job development: working with area employers in developing on-the-job training opportunities.

Job supervision: assisting employers in monitoring employee progress and upgrading skills.

Individual counseling: available to clients wishing to work on issues of self esteem, assertiveness, and other issues affecting job production.

Community education: periodic classes and workshops are offered to the public covering various aspects of the job search.

Employee Assistance Program: a confidential information and referral service available to employees and their family members. Available as a benefit to employees whose employers have contracted for services.

...AND NOW FOR A WORD ABOUT VOCATIONAL REHABILITATION

The Homer Vocational Counseling program is an extension of the Alaska Division of Vocational Rehabilitation (DVR), whose nearest office is in Kenai.

In an effort to provide the most comprehensive outreach services possible to the Southern Kenai Peninsula, we serve as liason with the Kenai office, and work closely with the DVR counselor who visits Homer once each month. In order to be eligible for DVR services, an individual must:

- 1) Have a disability (emotional, mental, physical, or learning) that can be verified by a licensed physician and/or psychologist.
- 2) This disability must be a substantial handicap to employment.
- 3) DVR services will enable the individual to get and hold a job.

Applications for DVR services are available through the Homer Vocational Counselor.

Services are available through the Community Mental Health Center sliding fee scale until such time as the person may become a DVR client, at which time no fee would be charged. The sliding fee scale is based upon ability to pay; however, no one will be refused services due to a lack of funds.



Give Your Family a Boost!

Consult with the
Parenting Specialist
for Stimulating
Ideas!

Service Areas:

The Parent-Child Educator/Family Counselor will provide educational counseling services in a variety of settings, including but not limited to: Your home, the Community Mental Health Center, the school, or other common facilities. We serve parents in the following communities: Ninilchik, Anchor Point, Sel-dovia, Port Graham, English Bay, Nikol-avesk and Homer.

ELIGIBILITY:

All parents of children ages 0-18 in the service area are eligible for one or more of the services offered.

COST:

Fees are established based on ability to pay by using a sliding fee scale. As a result, services are available to one and all without regard to financial resources. Some of the groups and classes are provided without charge.



FOR MORE INFORMATION,
PLEASE CALL:

235-7701

Sponsored by South Peninsula
Mental Health Association, Inc.
Funded by a grant from the
State of Alaska, Division of Family
& Youth Services
P.O. Box 2274
Homer, Alaska 99603

PARENTING IS A TOUGH JOB!



“Parenting is a Tough Job, yet we can make it the choicest time in human life! Let us become inspired with brilliant motives so we can more effectively enrich and enhance the quality of our daily family living.”

—Eileen Littrell, M.A.
Parent Educator

THIS PROGRAM PROVIDES:

- ★ Parenting Skills Classes
- ★ Support Groups for Parents
- ★ Individual & Family Counseling

Common Child Problems Addressed:

- Short attention span
- Non-compliant behavior
- Temper tantrums
- Hitting others
- Verbal abuse
- Eating problems
- Disobedience
- Toilet training
- Whining



Parenting Skills

are

discussed within small group settings with a practical “How To” approach

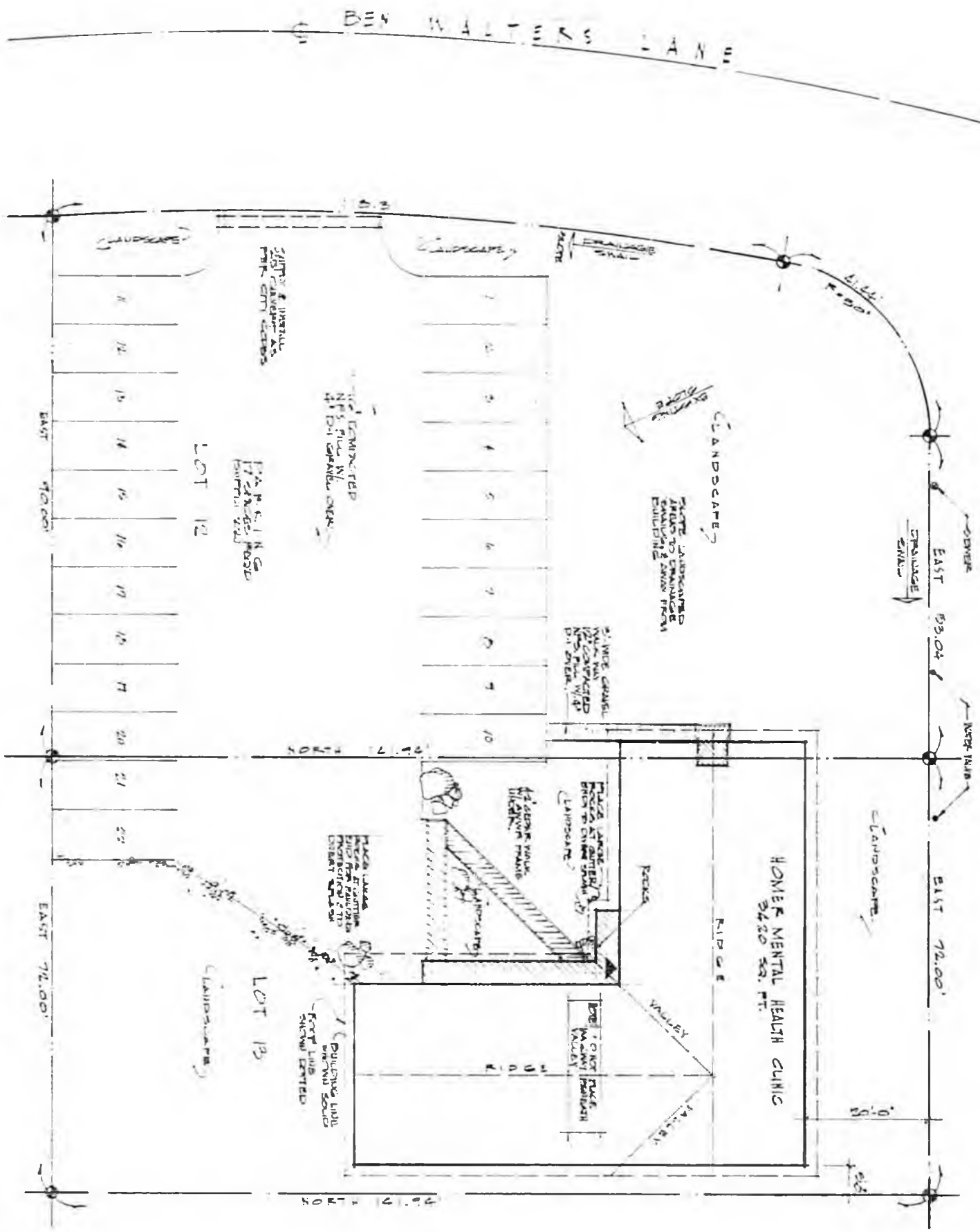
How to:

- Defuse anger
- Reduce stress
- Agree to disagree
- Be cordial yet frank in sending “I” messages
- Set training priorities
- Generate unconditional positive regard
- Detect and prevent double messages, i.e., teach honesty
- Prevent power plays & manipulating behaviors
- Speak with moderation
- Be firm but kind
- Calm tempers
- Effectively ignore to reduce undesirable behaviors
- Extinguish undesirable behaviors -
- Set appropriate limits on your child’s behavior
- Appreciate normal stages of child development
- Enjoy your children
- Effectively encourage to shape desirable behavior
- Win your child’s respect and cooperation



ARCHITECTURAL DRAWINGS
SOILS TESTS
FACILITY SPECIFICATIONS

HILLFAIR COURT



PLOT PLAN 1:100

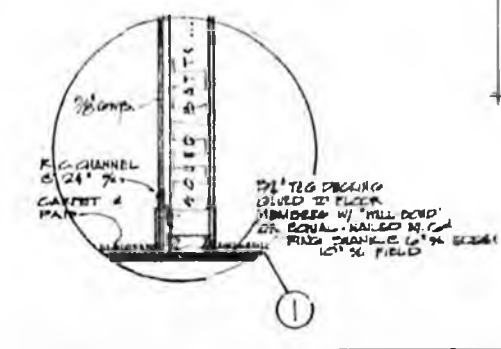
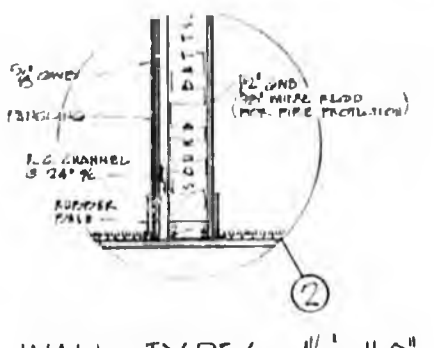
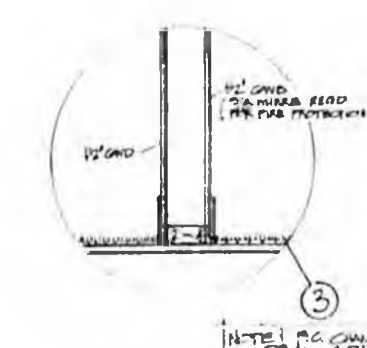
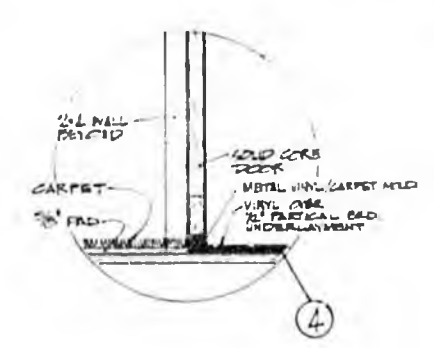
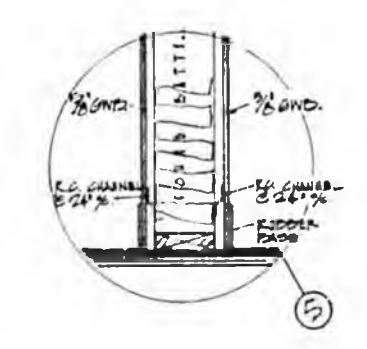
LOTS 12 & 13
BLOCK 3
LAKE SIDE VILLAGE SUBD
ZONED UPGRADE RESIDENTIAL

HOMER MENTAL HEALTH CLINIC

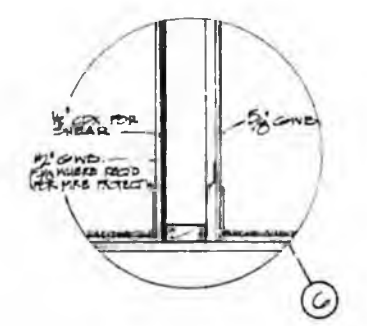
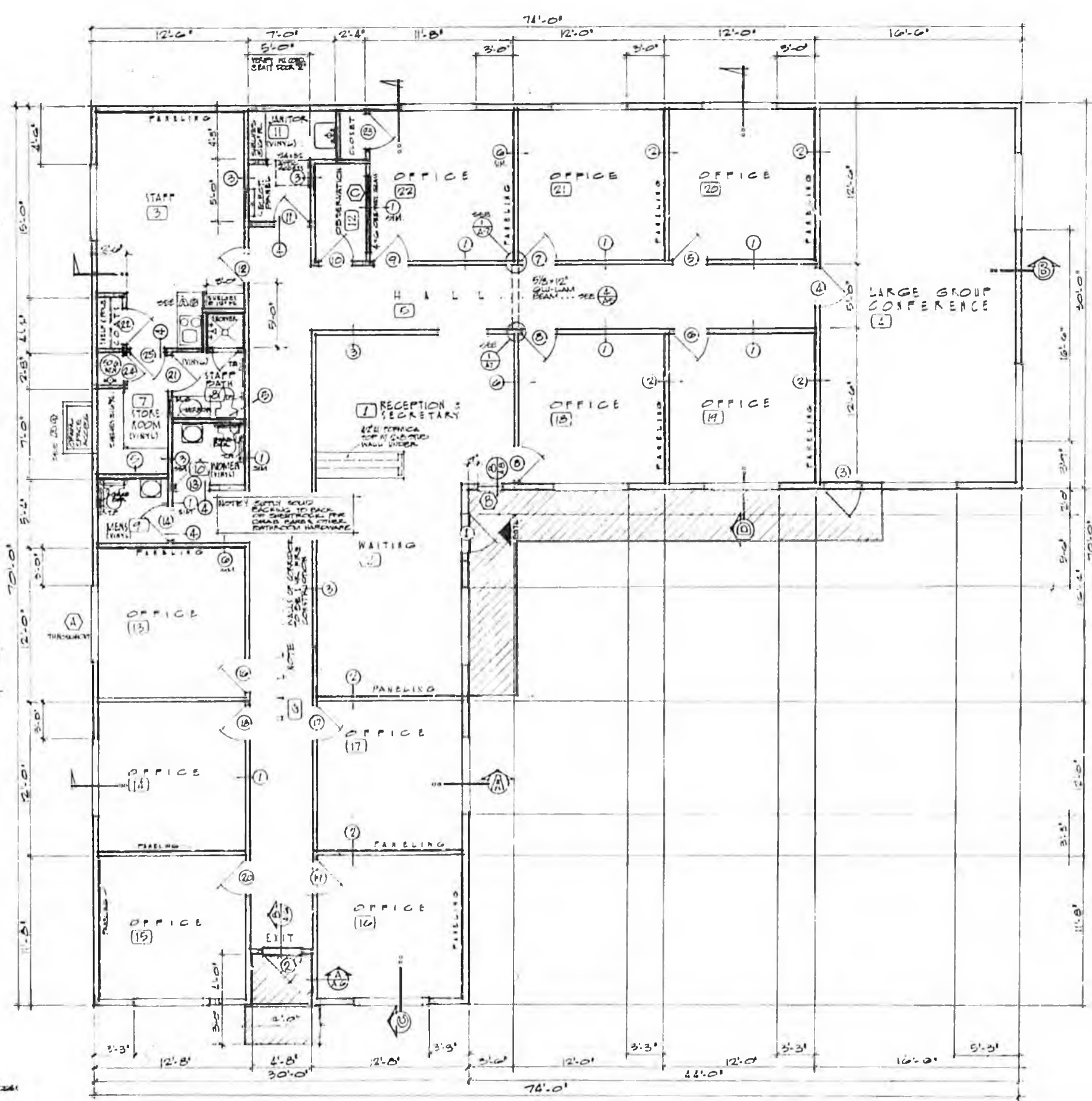
SCHEDULE OF DRAWINGS

- A-1 PLOT PLAN
- A-2 EXTERIOR ELEVATIONS
- A-3 EXTERIOR ELEVATIONS
- A-4 FOUNDATION & ROOF FRAMING & DETAILS
- A-5 SECTIONS A & B, FINISH DETAILS
- A-6 SECTIONS C, D, FINISH DETAILS
- A-7 ROOF FRAMING PLAN, FINISH DETAILS
- A-8 INTERIOR ELEVATIONS, SECT & WINDOW SCHEDULE, INTERIOR FINISH SCHEDULE
- A-9 ELECTRICAL PLAN
- B-1

HOMER MENTAL HEALTH CLINIC	
DESIGNED BY: DAVID GARCIA	DATE: 4/22/45
FOR: HENRY HOMER, A/E	
A-1	



WALL TYPES 1/2'-1'-0"

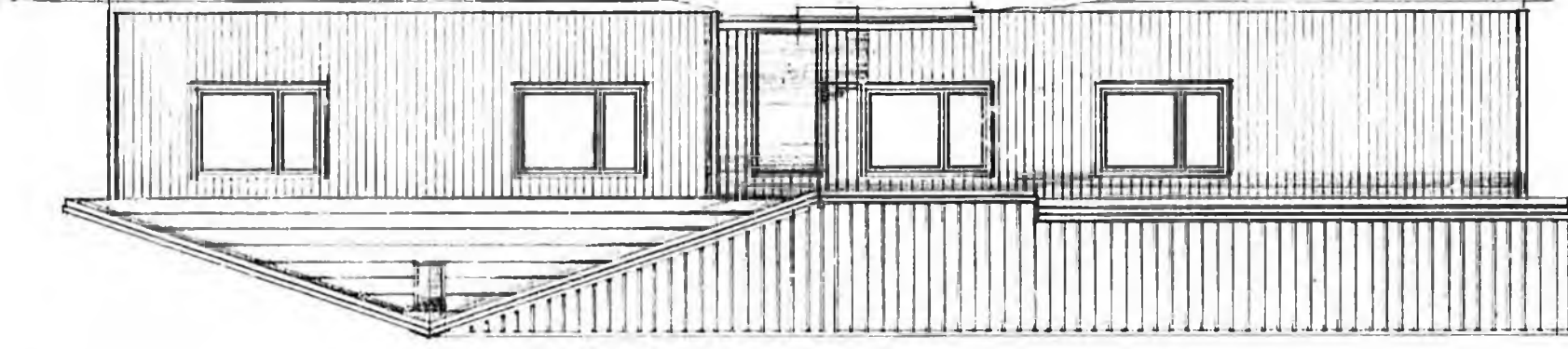


3420 SQ. FT.

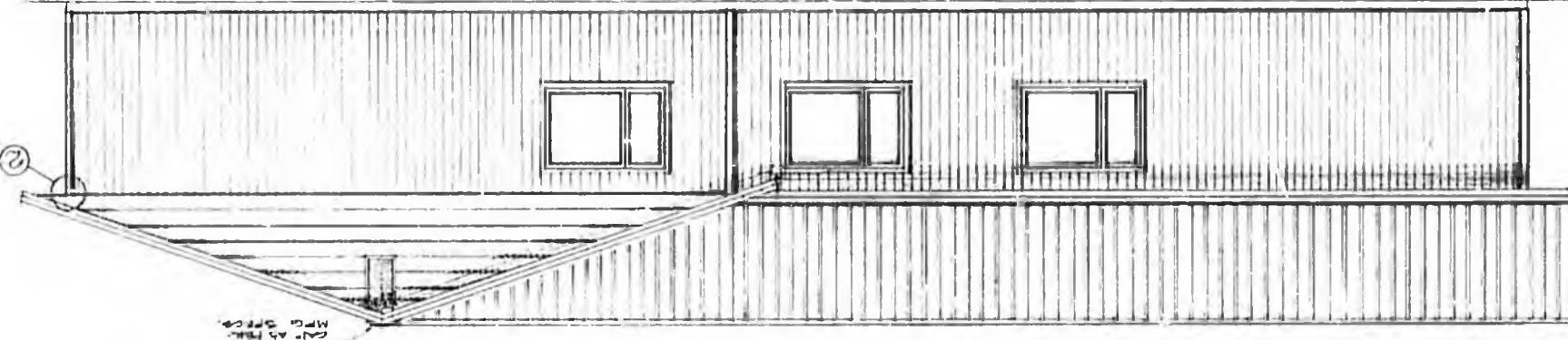
FLOOR PLAN 1/4" = 1'-0"

HOMER MENTAL HEALTH CENTER	
DRAWN BY - DAVID GARCHA	DATE MAY 29 1969
A2	

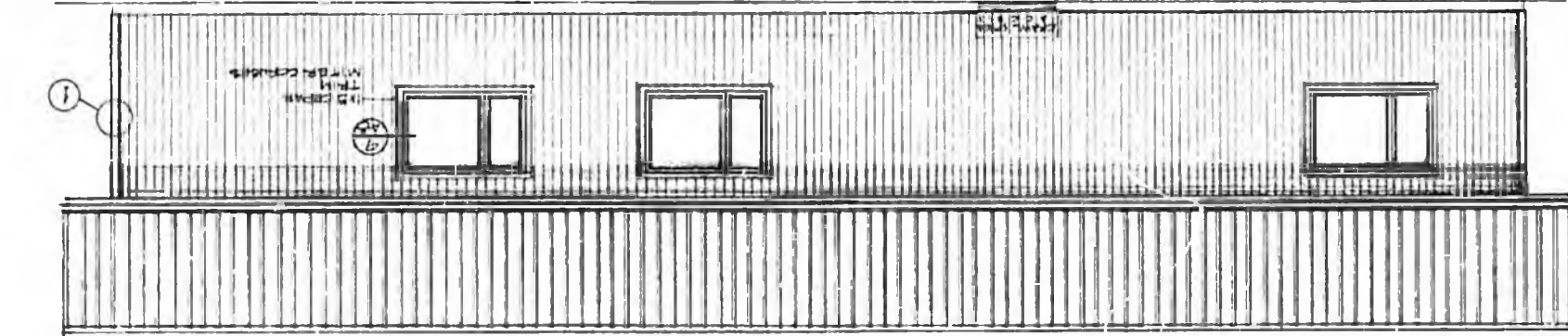
NORTH ELEVATION



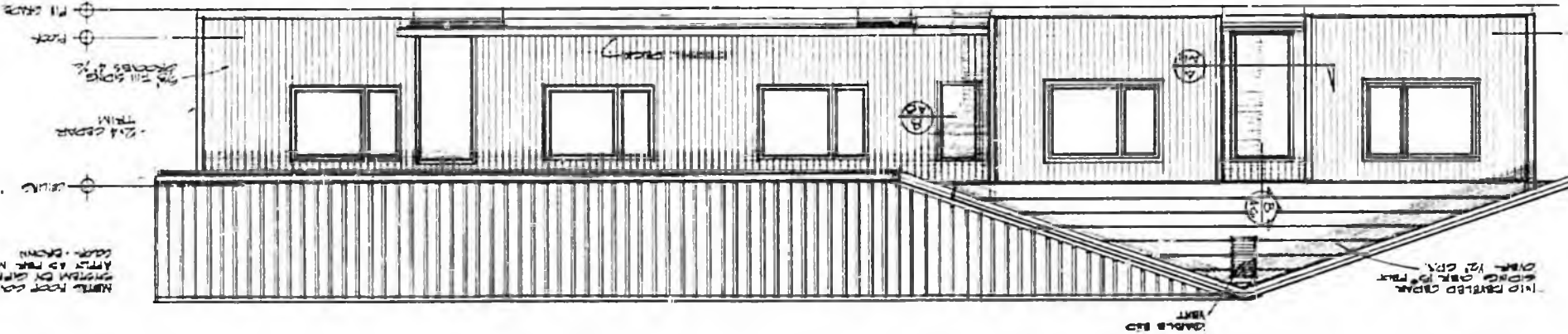
EAST ELEVATION



SOUTH ELEVATION



WEST ELEVATION



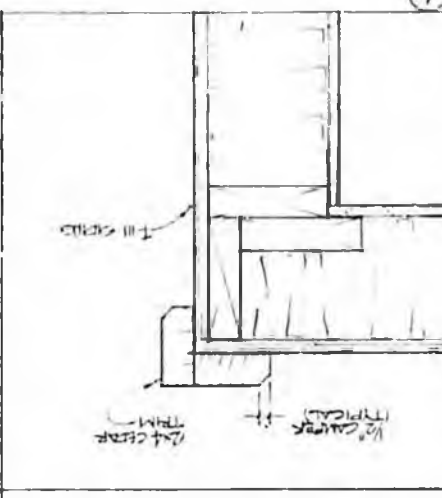
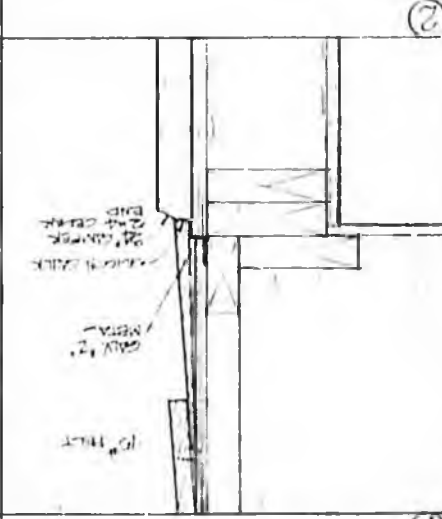
NOTE: ALL EXTERIOR PAINTING TO BE IN OLYMPIC FINISH.

T-111 SIDING TO RECEIVE 2 COATS OF OLYMPIC STAIN NO. 1 ON APPLICABLE AREAS NOT ALLOWED IN WEST SECTION OF FLOOR PLAN. STAIN MAY BE APPLIED TO PAINTED SURFACES WITH BRUSH OR ROLLER. STAINING SHALL BE DONE IN ACCORDANCE WITH MANUFACTURER'S INSTRUCTIONS.

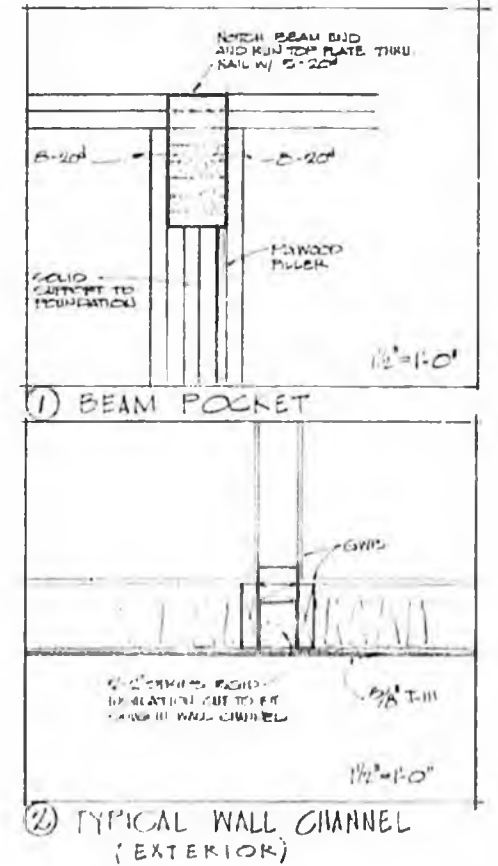
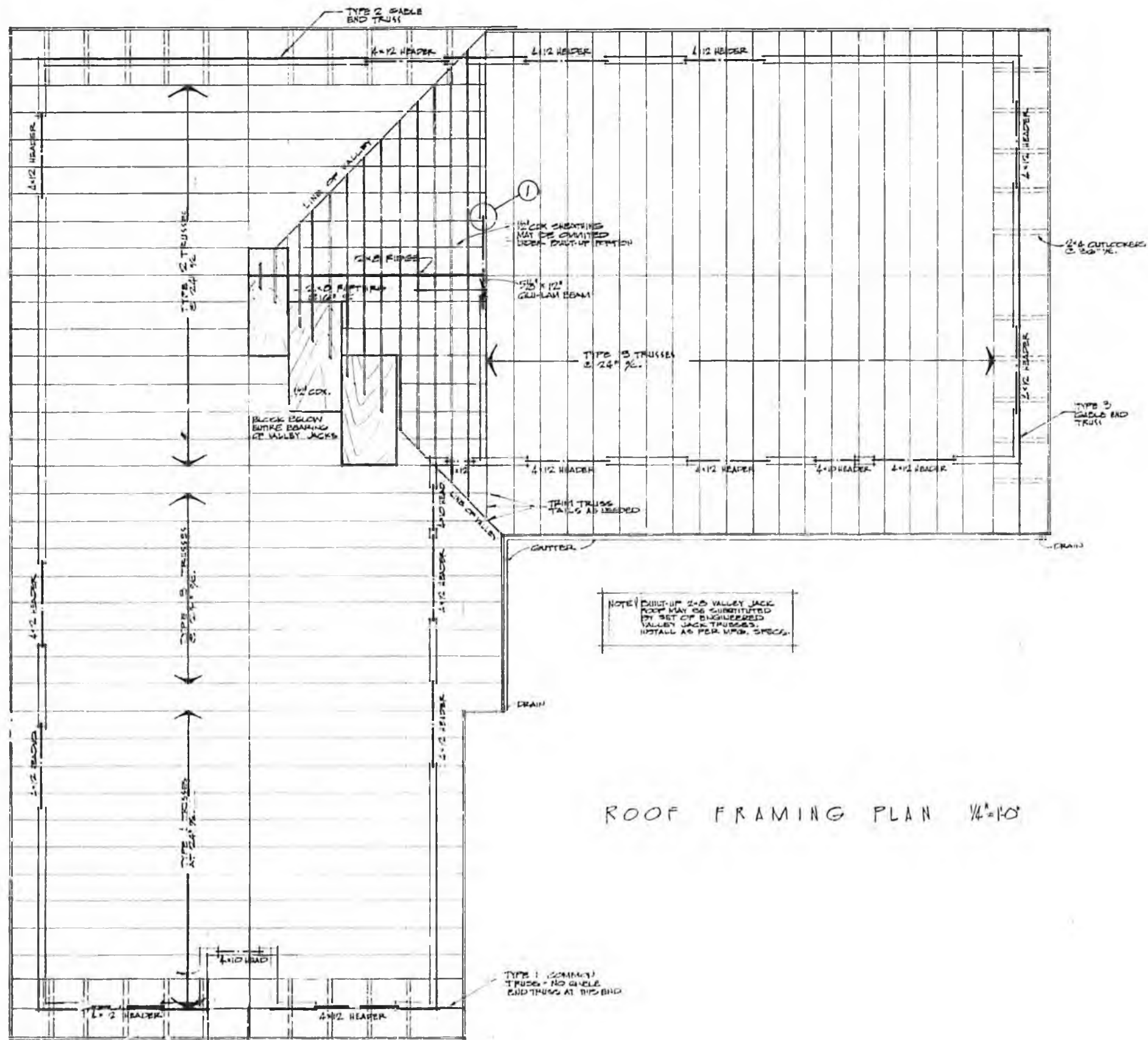
PAINT UNDERLAYER OF GABLE END AND GABLE END SHALL BE RECEIVED WITH 2 COATS OF OLYMPIC STAIN NO. 1.

RECEIVE ONE COAT OF 'OLYMPIC FINISH' PAINT. GABLE END SHALL RECEIVE ONE COAT OF 'OLYMPIC FINISH' PAINT.

EXTERIOR FINISH



NOTE: NORTH SIDE OF GABLE END SHALL BE PAINTED WITH OLYMPIC STAIN NO. 1.



D. M. GIER & COMPANY

P. O. BOX 3670
HOMER, ALASKA 99603
(907) 235-7284

October 24, 1983

Ms. Jeanne Calkins, President
Board of Directors
Homer Mental Health Center
P.O. Box 2274
Homer, Alaska 99603

Subject: Homer Mental Health Center - New Building Construction

Dear Ms. Calkins and Board Members:

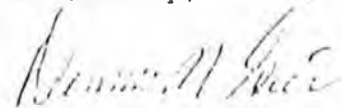
Our estimate of the additional cost involved for a deep foundation (i.e. piles under the footers) would be approximately \$25,000.00.

We submit this information to you so that provisions can be made in the budget for this type of foundation. A deep foundation may be required for this site to keep the settlement within tolerable limits.

Please call us if you have any further questions.

Thank you.

Sincerely,



Dennis M. Gier, P.E.
D.M. Gier & Company

DMG/jd

D. M. GIER & COMPANY

P. O. BOX 3670
HOMER, ALASKA 99603
(907) 235-7284

October 17, 1983

Ms. Jeanne Calkins, President
Board of Directors
Homer Mental Health Center
P.O. Box 2274
Homer, Alaska 99603

Dear Ms. Calkins and Board Members:

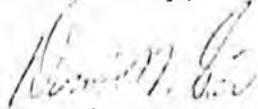
Enclosed is the Revised Soils Reconnaissance Report for the new Homer Mental Health Center.

This revision is a result of further discussion with Soils Engineers from Woodward-Clyde concerning the soft silt and peat layers found on the proposed building site. We want to emphasize that the foundation design for this site may require the use of deep foundations (i.e. piles under the footers) to keep settlement within tolerable limits.

We submit this additional information to you so that provisions can be made in the foundation design to accommodate the on-site soil conditions.

Please call us if you have any further questions. Thank you.

Sincerely,



Dennis M. Gier, P.E.
D.M. Gier & Company

DMG/jd

Encl:as

October 12, 1983

D. M. Gier Company
P. O. Box 3670
Homer, AK 99603

SUBJECT: Revised soils reconnaissance report for the proposed Homer
Mental Health Clinic located on Lot 12 & 13, Lakeside
Subdivision, Homer Recording District.

Dear Mr. Gier:

In accordance with your request, we have performed a limited soils reconnaissance on the subject property. In general we have found the site may be suitable for the proposed development provided the recommendations presented herein are incorporated into the project.

General Site Description

The site consists of two undeveloped residential lots bounded on the northerly and westerly sides by gravel surfaced roads. Vegetation consists of medium density spruce to 15-inch diameter. Undergrowth consists of tall grasses, some devils club and some alders. To the east of the properties is a small semi-defined drainage system. A utility corridor exists on the southerly boundary, where free standing water was noted during the site visit.

It is our understanding the proposed development will consist of a one story wood frame structure founded on concrete footing and block stem wall. Parking is to be provided on a gravel surface.



General Soils Conditions

Four backhoe trenches were excavated on the site on September 14, 1983 to a maximum depth of 11½ ft. Approximate locations of the trenches are shown on Figure 1. Soils encountered consisted primarily of soft clayey silts, fine sands and peat. A distinct layer of un-decomposed trees and branches was encountered in trenches 2, 3 and 4 at depths ranging from 3½ to 6 ft. Logs of the trenches are shown on Figures 2 - 5.

Water flowed into all four trenches during excavation. Flow rates were low enough to allow continued excavation and inspection of the trench walls. The highest observed flowing water is indicated for each trench on the logs. Water levels may vary considerably, depending on several factors including rainfall. Water levels on site can be expected to rise to near or on the current ground surface.

Two in-place density tests were performed on the site in representative soils near the foundation bearing level. In addition, two samples were obtained for moisture contents. Results of all the tests performed are presented in Table 1. The soils were saturated and loose.

Recommendations

Three conditions warrant special attention during the development of the site 1) high water, 2) the buried un-decomposed organic layer, and 3) the lower soft silt and peat layers. Each condition will be discussed and alternatives presented.

High water table conditions on the building site can lead to foundation troubles. Problems include water seepage into the crawl space and hydrostatic pressure on the footing stem wall. Design of

waterproofing and a perimeter drain for the foundation to eliminate water seepage should be incorporated into the plans. The stem walls for the foundation should also be designed to resist hydrostatic pressure. Because of the high water conditions footings should also be designed for buoyant conditions.

The buried un-decomposed organic layer could cause excessive settlements if footings are founded just above the layer. It appears that the organic layer extends over most of the site, but not at uniform depth. The footings should extend below the upper organic layers and the footings should be designed to accommodate the differential settlement that may result from the compression of the lower organics and soft silt layers. It may be necessary to use deep foundations, i.e. piles to keep settlements within tolerable limits.

Due to the limited nature of the reconnaissance predictions of water conditions and settlement cannot be estimated. Residential development on neighboring property was observed and noted that no special considerations were taken beyond waterproofing and the possibility that a drain system was going to be installed. This observation does not mean those residences 1) have identical soils conditions especially with the un-decomposed organic layer or 2) that they will provide trouble free conditions over the life of the structure. Free standing water was observed at about 1 foot below the ground surface.

Also due to the limited nature of our study no considerations were given to a seismic response of the site. In general wood frame structures behave well, however, loose saturated sands, of which pockets were observed may experience extreme loss of strength and large settlements. If seismic design is desired, additional site work and laboratory testing will be required. We will be glad to assist you in putting together an additional program to meet your needs, if desired or required.

If large settlements are a concern, additional work should include consolidation testing of selected samples and analyses to determine an appropriate foundation system to limit settlements.

We understand your current budget limitations and hope you understand the limitations that has placed on us. If there are any questions regarding this report, please do not hesitate to contact us at your convenience.

Sincerely,

A handwritten signature in cursive script, appearing to read "Keith Mobley".

Keith Mobley

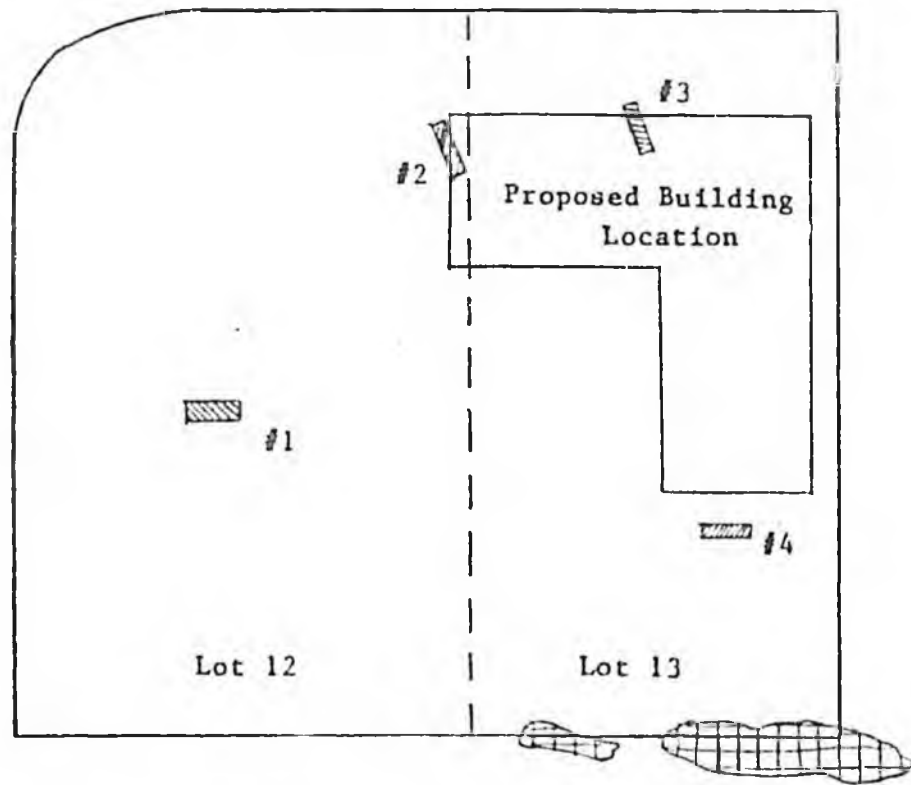
Sr. Staff Engineer


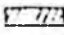
Table 1

Density Test	Dry Density	Moisture Content (%)
Hole 1 at 6 ft.	75 pcf	44
Hole 2 at 4 ft.	65 pcf	65

Moisture Contents (%)

Hole 2 at 9½ ft.	145
Hole 3 at 9 ft.	43



-  Approximate Area of Free Standing Water
 -  Approx. Location of Trenches
- Approx. Scale 1"=40'

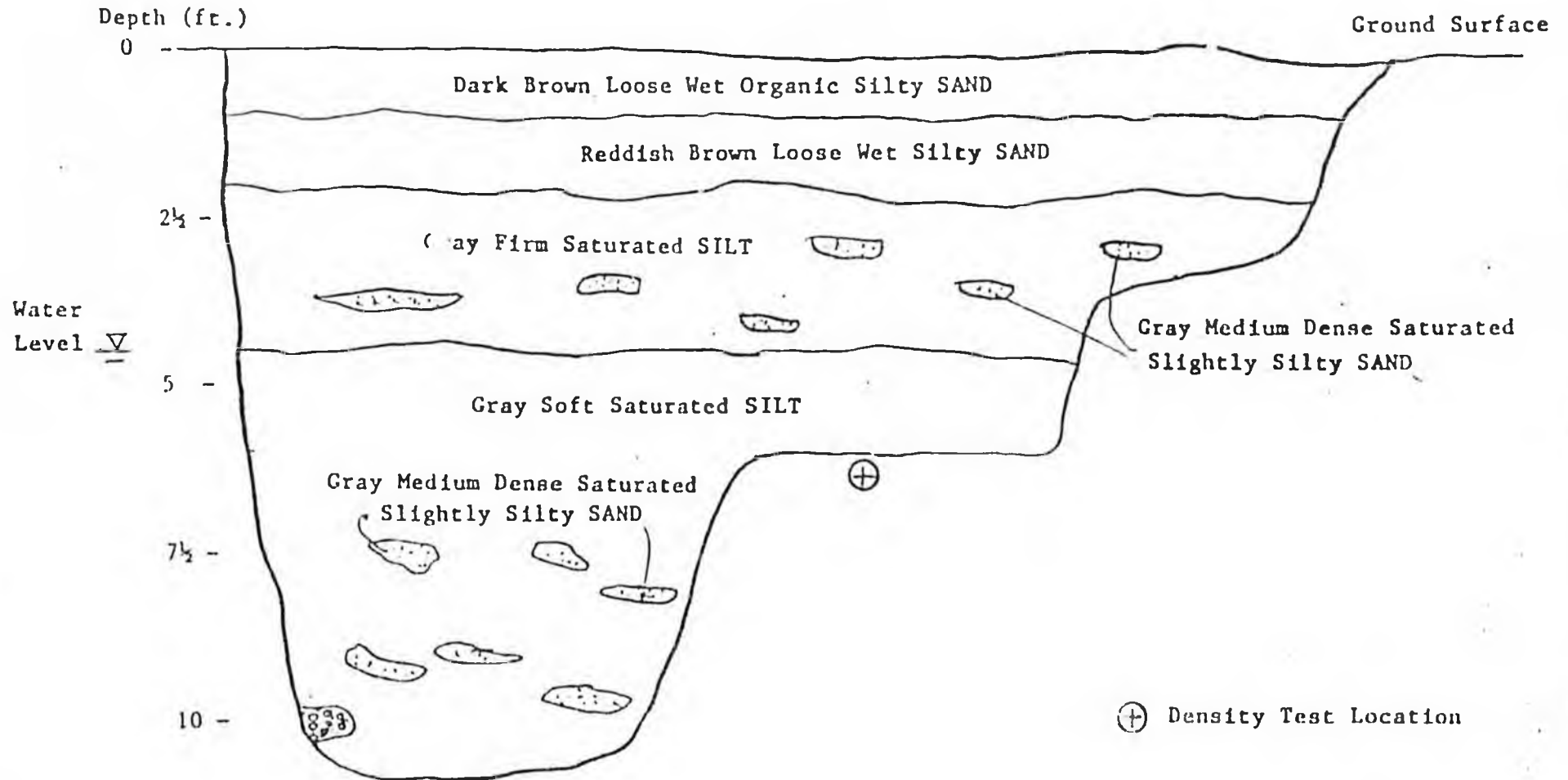
Homer Mental Health Clinic

Site Plan

Woodward-Clyde Consultants

Figure 1

South Wall

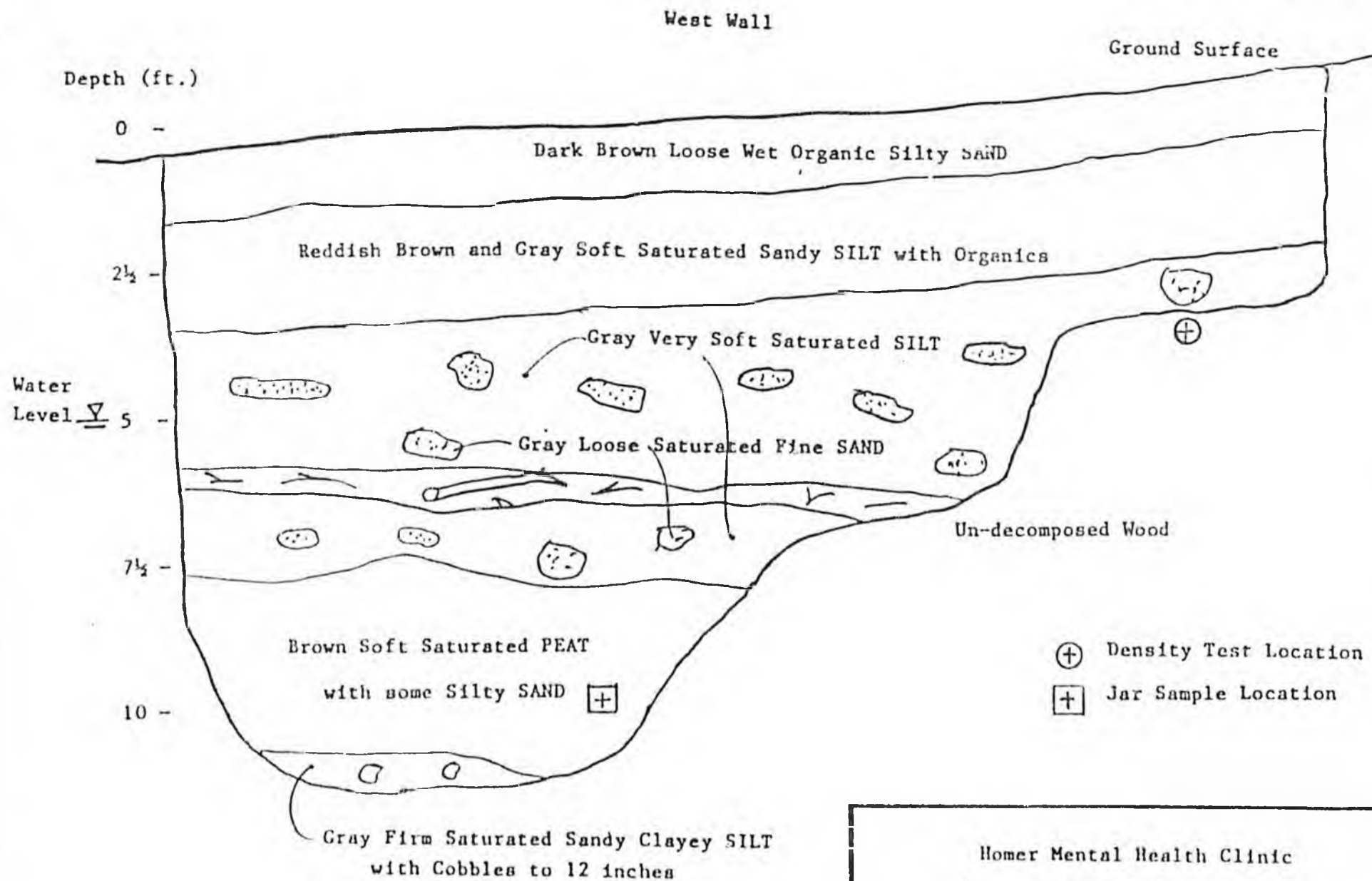


Homer Mental Health Clinic

Test Hole 1

Woodward-Clyde Consultants

Figure 2



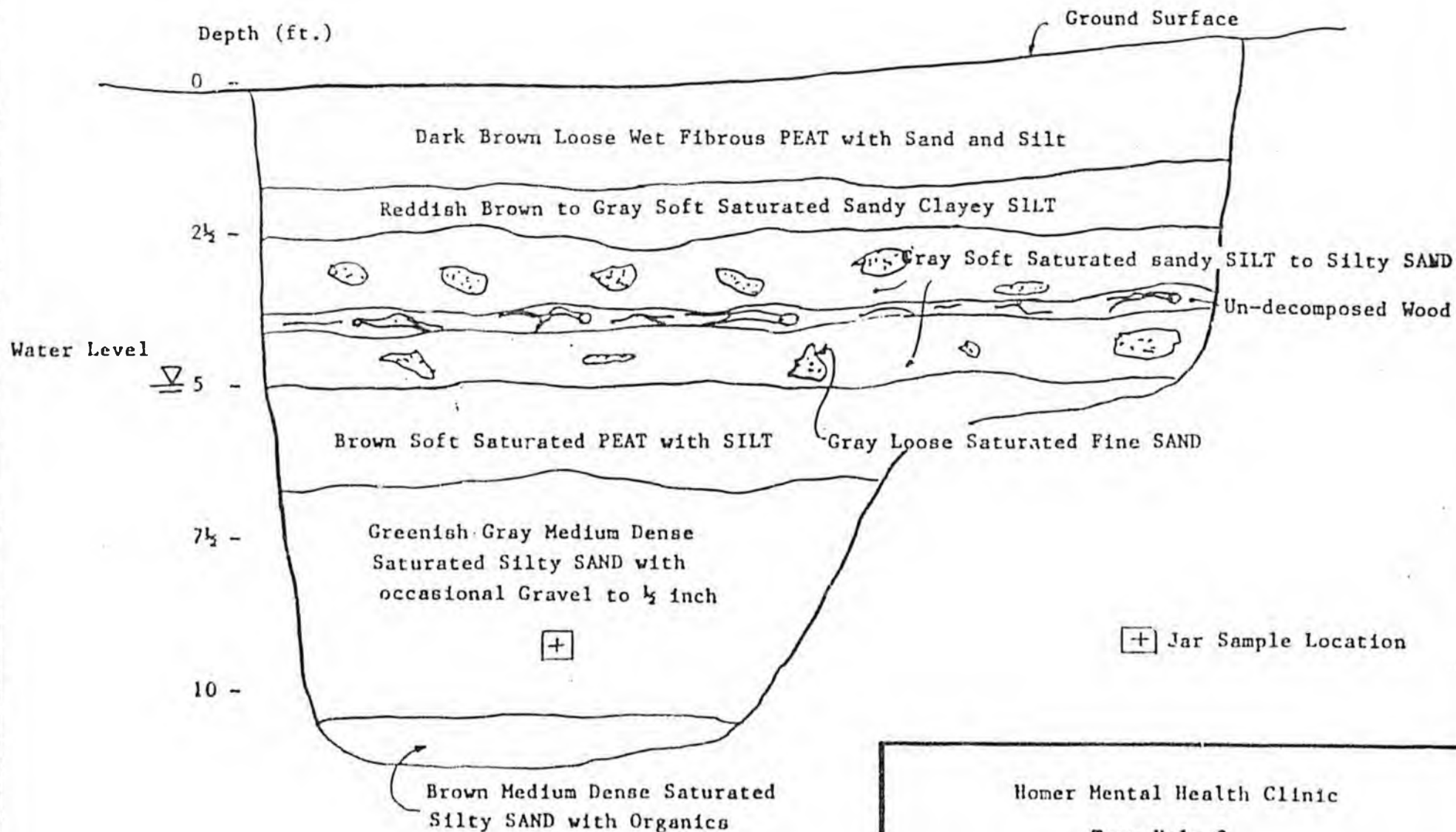
Homer Mental Health Clinic

Test Hole 2

Woodward-Clyde Consultants

Figure 3

West Wall



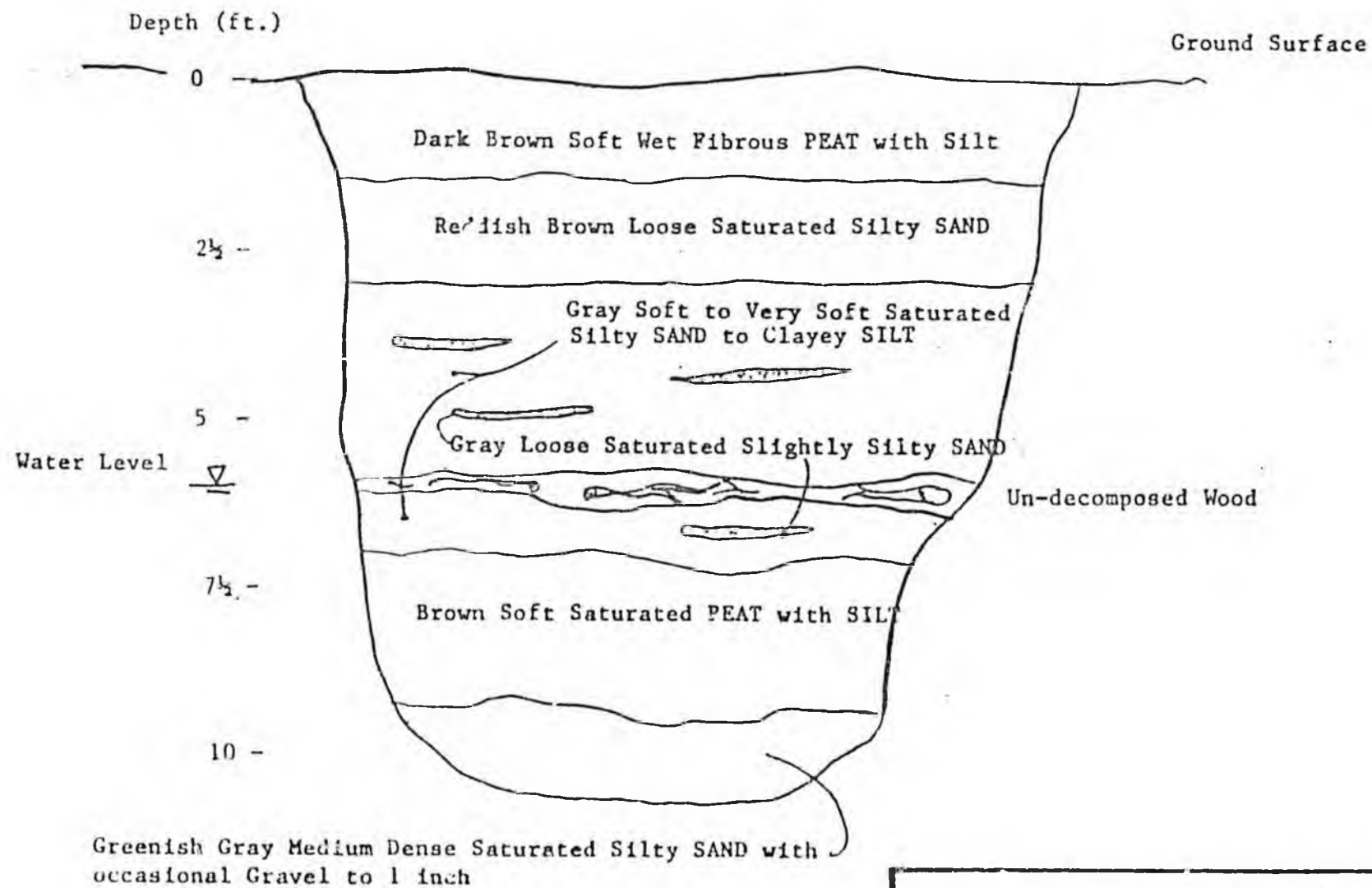
Homer Mental Health Clinic

Test Hole 3

Woodward-Clyde Consultants

Figure 4

North Wall



Homer Mental Health Clinic
Test Hole 4

Woodward-Clyde Consultants

Figure 5

HOMER MENTAL HEALTH CLINIC

SPECIFICATIONS

by: David Garcia

TABLE OF CONTENTS

	Page Number
I. EXCAVATION	3
II. FOUNDATION	4
III. ROUGH CARPENTRY	5
IV. WOOD TRUSSES	6
V. FINISH CARPENTRY	7
VI. DOORS AND WINDOWS.	8
VII. HARDWARE	8
VIII. GYPSUM WALLBOARD10
IX. CERAMIC TILE11
X. FLOOR COVERING12
XI. PAINTING AND FINISHING12
XII. TOILET AND BATH ACCESSORIES.14
XIII. CABINETS14
XIV. PLUMBING15
XV. INSULATION16
XVI. FLASHING AND SHEETMETAL.17
XVII. APPLIANCES17
XVIII. BLINDS17
XIX. ELECTRICAL18
XX. HEATING22

I. EXCAVATION

A. GENERAL

1. The contractor is to familiarize himself with the existing site conditions and information from the soils survey.
2. The owner will provide soil inspection service during earthwork operation.

B. TYPES OF FILL

1. Well-graded, non-frost susceptible material consisting of sand, gravel, or broken stone containing less than four percent of grains less than 0.02 mm. Materials shall not exceed four inches on any dimensions - except in the top six inches under footings, no size greater than one and one-half inch. All materials to be free of frozen lumps, rubbish, and organic matter.
2. Material noted as D-1 to meet the gradation and fraction specifications for Alaska Highways D-1 base course.

C. EXCAVATION.

1. Finish floor elevation to be determined in the field upon examination of existing site conditions and drainage considerations. Provide drainage for footers and run drain tile to daylight.
2. All footings shall bear on compacted backfill or in-place material at minimum depths called for on drawings.
3. Keep foundation bearing areas dry and free from frost. In the event bearing surfaces are softened by water or frost, re-excavate to approved bearing material and backfill to correct elevation with compacted backfill as specified.
4. Where excavations are carried below required depths, backfill to designated elevations with compacted backfill as specified at no charge to the contract sum.
5. Shore banks of excavations sufficiently to prevent caving. Remove all shoring before backfilling. All excavation shall be done in a manner which will create a minimum hazard and in accordance with applicable safety rules.

D. DEWATERING

1. Prevent surface and subsurface water from flowing into excavations. Do not allow water to accumulate in excavations. Remove water using methods which will prevent softening of foundation bottoms.
2. Provide and maintain pumps, sumps, discharge lines, and other components to carry water away from the excavations.

E. COLD WEATHER PROTECTION

1. Protect excavation and fill material against freezing. Do not place frozen fill material.

F. BACKFILL

1. Backfilling may be done with existing material if available and in accordance with plans.
2. Place backfill in accordance with soils report.
3. Place backfill so as not to damage structure, drain tile or utilities.
4. Provide foundation drainage system as shown on drawings.

G. COMPACTION

1. Compact all backfill with an approved vibratory compactor, and as recommended in soils report.

H. GRADING

1. Uniformly grade, form to smooth transition lines.
2. Grade areas adjacent to building lines to drain away from structure.
3. Protect newly graded areas from traffic and erosion. Keep free of trash and debris.

II. FOUNDATION

A. GENERAL

1. The contractor must examine the substrata and the conditions under which the concrete reinforcement is to be placed. Do not proceed with work until unsatisfactory conditions have been corrected.
2. Comply with requirements of the Uniform Building Code and Concrete Reinforcing Steel Institute's "Manual of Standard Practice."
3. Store concrete reinforcement materials at the site to prevent damage and accumulation of dirt or excessive rust.
4. All reinforcing for concrete to be in any one day must be placed, tied, inspected and approved by owner before any concrete is cast. Notify at least 24 hours prior to concrete placement.
5. Cast no concrete when temperature is below 40 degrees F. or can be expected to fall below 40 degrees F. in the next 24 hours, unless approved special provisions have been made for maintaining heat around pour.

B. FOOTINGS

1. Place two #5 rebar as shown on drawings.

C. CEMENT

1. 3,050 psi compressive strength.
2. Five and one-half sacks cement per cubic yard, minimum.
3. Six gallons of water per sack, maximum.
4. Three inch slump, maximum.
5. Three-quarter inch maximum aggregate.

D. Place anchor bolts as indicated on drawings and as required to secure each end of plate at corners. Place vertical bond steel.

E. Use mechanical vibrating equipment for consolidating concrete.

F. CONCRETE MASONRY UNITS

1. Use 8"x8"x16" concrete block.
2. Cement - Standard brand of Portland cement.
3. Sand - Clean, sharp, fresh water.
4. Water - clean, potable.
5. Lime - "Slick" or "Miracle" brand, or equal.
6. Reinforcement, as shown on drawings.
7. Place anchor bolts as shown on drawings and as required by codes, and to catch both ends of plate at corners and within 12 inches of each end of plates at end joints.

G. MORTAR MIXING

1. Measure each batch accurately and mix with machine:
One cubic foot of Portland cement,
One-quarter to one-half cubic foot of lime,
Two and one-half cubic feet of sand.

H. LAYING UNITS

1. Lay all units with full bed of mortar, common running bond. Shove into place. All horizontal joints to be level on each course. Bond all right angle connections. Internal angles bonded.

I. Foundation wall to be smooth and free of mortar on exterior surfaces to accept moisture seal treatment.

J. Seal block with Gonklin "Wall-up" as recommended by manufacturer.

K. Protect masonry work and moisture barrier treatment from freezing during curing period.

III. ROUGH CARPENTRY

A. QUALITY CONTROL

1. Grading rules: Standard grading and dressing rules of the West Coast Lumberman's Associations latest edition. Each piece of yard and structural lumber shall bear official grade mark of appropriate bureau or association.
2. Protect lumber and plywood from damage by weather.
3. Do not allow splash from eaves to stain unfinished siding.
4. Workmanship: Plumb, level, and true to lines, close-fits with nailing as shown or minimum as specified in sections 2517 and 2518 of 1979 Uniform Building Code.

B. MATERIALS

1. Framing lumber: Douglas Fir, Coast region or Hem-Fir, Standard grade or better.
2. Plywood: Plywood sheathing shall be APA Exterior Grade "D-D" Douglas Fir Plywood of thickness and type indicated on the drawings.
3. Plates: Plates and studs anchored to masonry with one-half inch galvanized anchor bolts 48 inches on-center maximum or four power driven stud fasteners at three inch on-center maximum. Single plate at floor, double at ceiling. Plates adjoining masonry must be AWWF.
4. Joists and rafters: set crown side up. Double headers and trimmers.
5. Bridging: Solid blocking on 1"x4" cross bridging (or pre-fab metal) no more than eight feet on center.
6. Fasteners: Bolts, washers, lags, nails or other fasteners shall be hot-dip galvanized when exposed to weather or moisture. All fasteners into concrete or masonry to be galvanized. Use only galvanized nails on exterior siding. All fasteners used in preserving treated wood to be stainless steel.

C. INSTALLATION

1. Execute rough carpentry using best industry practices. All lines to be straight and true.
2. Install framing at spacing shown on drawings or as required. Block or back for plumbing fixtures and other equipment secured at walls and ceilings. Double studs at all openings, triple at corners. Provide solid backing for all door stops.
3. Headers shall bear on at least one cripple stud for space up to six feet, not less than two cripple studs for space greater than six feet. Place one full height stud adjacent to each end of header next to cripple studs.
4. Joists and beams to be laid crown up.
5. Do not notch or drill in the middle one-third of span on joists or bearing studs.
6. Tolerances:
Top of bearing plates - \pm one-quarter inch in ten feet.
Wall divisions and openings: \pm one-quarter inch.
Wall bowing or warping: \pm one-quarter inch in ten feet.
Stud alignment: $\frac{1}{8}$ th inch from two adjacent studs.

IV. WOOD TRUSSES

- A. All trusses shall be Gang Nail wood trusses, factory built using stress graded lumber bearing the proper grade mark stamp of a recognized grading association. Connectors shall be galvanized Gang Nail connectors, and shall be stamped "Gang Nails." The trusses shall be inspected by the contractor during installation to see that all connector plates are pressed fully into the wood. Trusses to be designed by manufacturer to support minimum fifteen pounds dead load plus thirty pounds live load per square foot.

B. INSTALLATION

1. Truss shall be handled and stored in a manner which they are not subject to damage. Sufficient bearing points and/or bracing shall be provided to prevent excessive lateral bending or tipping over.
2. Framing anchors shall be provided by the contractor in accordance with the plans.
3. The truss system shall be braced during erection to prevent toppling or dominoing of trusses, and permanently braced to form complete structural truss system.
4. During the entire construction period, all contractors shall adequately distribute loads so that the carrying capacity of any one truss or member is not exceeded.
5. All erections and permanent bracing shall be installed and all components permanently fastened before the application of any loads.

V. FINISH CARPENTRY

A. MATERIALS

1. Doors: Pre-hung, tan oak, solid or hollow core as indicated on drawings. Oak veneer jambs.
2. Door casing: Solid oak.
3. Window trim: Oak veneer.
4. Paneling: one-quarter inch real wood - Champion "Woodland Ash."
5. Storage shelving: three-quarter inch AC plywood, 1"x3" pine face and supports.
6. Book shelves: Solid oak frame, 1"x12" fir shelves, three-quarter inch oak veneer sides.
7. Exterior trim: Cedar.

B. INSTALLATION

1. All work to be true, plumb, level unless otherwise shown. Scribe fits, hairline joints, scarfed and mitered running joints, neat and accurate.
2. Nailing: finish nails for mill work; blind nail work if possible; set surfaces nails; paneling nails to match.
3. Glue joints with permanent synthetic glue. Moldings mitered at corners, coped at angles.
4. Exposed surfaces to be sanded to smooth, even surfaces, ready to finish. All nails set one-sixteenth inch deep. Ease all edges one-sixteenth inch radius. Fill all nail holes.
5. Set exterior trim in waterproof caulking as necessary for waterproof installation. Use silicon caulk.

VII. DOORS AND WINDOWS

A. EXTERIOR METAL DOORS

1. To be equal to Pease Ever Straight door system. Size and type as scheduled on drawings. Provide complete door system, including frame, threshold, and all hardware. Weatherstripping to be magnetic type. Provide exit sign. Front entrance: Pease crossbuck with glass. Other entrances: Pease E-1.

B. INTERIOR DOORS

1. See door schedule. See painting and wood finish schedule.
2. All interior hollow core and solid core doors shall be Tan Oak with oak veneer jambs and solid oak casing. All doors adjacent to hallway and reception area shall have smoke seal and twenty minimum U.L. label.

C. DOOR INSTALLATION

1. Install all doors and hardware as specified, provide level and free swinging operation. Doors to fit tightly without binding or excessive play.

D. WINDOWS

1. All windows to be "Hurd" aluminum clad wood windows with "Heat Mirror" film. Casement type and as shown on drawings. Provide fiberglass screens.
2. Exterior fixed glass to be seven-eighths inch double pane, three-sixteenths inch glass.
3. Interior fixed glass to be one-way type one-quarter inch plate.

E. WINDOW INSTALLATION

1. Install in rough openings, shim for alignment and tight fit, level and straight. Use standard factory nailing flanges where required. Caulk all around for weather tight installation. Stuff spaces with fiberglass insulation before application of vapor seal and sheetrock. Set exterior trim in bed of silicon caulk to insure weathertight installation.

VIII. HARDWARE

A. MATERIALS

1. Lawrence, Stanley, or McKinney butts.
Sizes: 1-3/4" exterior for 5"x4-1/2".
1-3/4" interior doors 4-1/2"x4-1/2".
To obtain maximum degree on openings, butts shall be as required to clear projecting trim or structural conditions.
2. Quantity: One and one-half pair butts each exterior door, each solid core interior door, and each hollow core door.
3. Locksets: Sargent six line. Bronze finish. Provide keyed locks at each exterior door and janitorial. Passage locks elsewhere. Provide dead bolt at rear and front doors.

4. Door Closures: Provide door closers as indicated on door schedule. Closure to be Sargent 1250 Series. Verify for type of installation. Furnish cold weather fluid.
5. Mop and kick plates to be Sargent eight inches high stainless steel. All plates shall be furnished with width as required to provide one-quarter inch of clearance at sides of door on stops or weatherstripping.
6. Door stops: provide door stops at all doors. Sargent, Johnson, Quality, Builders Brass, or Ives. Where wall stops are not applicable, furnish floor stops. Install proper backing at all stop locations.
7. Keying: System by owner. All locks to be master keyed. Furnish two keys per lock or cylinder, and four construction master keys. Return all master keys.

B. INSTALLATION

1. Provide solid blocking for all stops.
2. Fasteners: Check all conditions and use fastening devices as needed to securely anchor all hardware as per manufacturers published templates. Self tapping sheet metal screws are not acceptable. All closures on wood doors shall be through-bolted.
3. Mounting heights: Mount units at height recommended in "Recommended Locations for Builders' Hardware" by NBHA, except as otherwise indicated.
4. Install each hardware item in compliance with the manufacturers instructions. Wherever cutting and fitting are required to install hardware surfaces which will be painted or finished at a later time, install each item completely and then remove and store in a secure place. After completion of the finish, reinstall each item. Do not install surface mounted items until finishes have been completed on the substrate.
5. Adjust and check each operating item of hardware and each door to insure proper operation or function of every unit. Replace units which cannot be adjusted to operate freely and smoothly or which are warped or damaged.
6. Coordinate all boring, backset, tapping information with door suppliers or others applicable.
7. Wherever hardware installation is made more than one month prior to acceptance or occupancy, make a final check and adjustment of all hardware items during the week prior to acceptance or occupancy. Clean and lubricate operating items as necessary to restore proper function and finish of hardware and doors. Adjust door control devices to compensate for final operation of heating and ventilating equipment.
8. All hardware to be installed by experienced tradesmen using top quality techniques. All finish hardware shall be guaranteed against defects in workmanship and materials and operation for a period of one year, backed by a factory guarantee of the hardware manufacturer, except the door closures shall be so guaranteed for five years. No liability shall be assumed by the hardware supplier where faulty operation is due to improper installation or failure to exercise normal maintenance.

VIII. GYPSUM WALLBOARD

A. MATERIALS

1. Wallboard: See details and floor plan for thickness. Apply behind panelling locations. In all wet areas such as toilet, custodial, and kitchen, use moisture resistant type board throughout. All exposed gypsum wallboard to have paper face suitable for painting.
2. Trim: Provide metal beads and trim as required for finish corners and edges as shown on drawings and as follows: finish edges and edges abutting other materials, USG #200A; at outside corners, USG "Dur-A-Bead."
3. Joint system: "Dur-A-Tape" System by U.S. Gypsum Company, or equal.

B. INSTALLATION

1. When outdoor temperature requires, heat shall be maintained in the building continuously and uniformly at not less than 55 degrees F. from one week prior to installation until wallboard application and joint treatment is completed. Installation shall not be started until windows are glazed and exterior doors installed, unless openings are temporarily closed. Provide ventilation, either natural or forced to remove excess moisture during joint treatment.
2. Review work prior to sheetrocking to insure that all framing, blocking, insulating, plumbing, electrical, and plumbing & electrical protective plates have been finished and installed properly.
3. Comply with manufacturers requirements for fire resistance ratings.
4. Use wallboard of maximum practical lengths horizontally or vertically. Bring boards into contact, but do not force into place. Where ends or edges abutt, fit neatly. Ends of all wallboard shall meet over nailing members. Joints on opposite sides of wall shall meet on different studs. Attach wallboard with one inch Hi-Lo screws, USG Type S and/or one and one-quarter inch USG brand screw type W, or one and three-eighths inch annular ring nails, spaced not more than 12 inches on center for framing 24 inch on center, and 16 inches on center for framing spaced 16 inches on center.
5. Space fasteners at least three-eighths inches from edges and ends of wallboard. Fasteners on all framing members shall be spaced and driven as recommended for specified fastening method. While driving fasteners, hold wallboard in firm contact with underlying support. Attachment shall proceed from central portion of wallboard towards ends and edges.
6. Install corner beads on all exterior corners, attach with suitable fasteners at nine inches on center, on both sides. Use single lengths.
7. Install metal trim over wallboard, at all locations where board terminates with exposed edge or abutts other materials. Attach with suitable fasteners nine inches on center, in single lengths.
8. Fasten all metal using drywall screws, or nails as recommended by manufacturer.

9. Upon review, installed drywall should look clean, neat, with close cuts around boxes and windows, etc., small gaps at corners. All broken edges etc. should be peeled back and ready for repair by taper. In general, it should have a professionally applied appearance.
10. Scrap out building and clean for taping contractor.

C. JOINT TREATMENT

1. Mix joint treatment compounds according to manufacturer's directions.
2. Apply thin, uniform layer of taping compound to all joints and angles to be reinforced. Apply reinforcing tape immediately, centered over joint, seated into compound. Follow with skim coat immediately, but not as a fill or second coat. Fold tape properly and embed in all angles.
3. After taping compound has hardened, apply taping compound, filling board taper flush with surface. Fill coat shall cover tape and feather out slightly beyond taper. On joints with no taper, fill coat shall cover tape and feather out at least four inches on either side of tape. No fill coat is necessary at interior angles.
4. After taping compound is dry, spread finishing coat of taping compound evenly over and extending slightly beyond fill coat on all joints and feathered to a smooth, uniform finish. All taped angles shall receive a finish coat to cover tape and taping compound, and provide a true angle. Sand between coats and after final application of compound to provide a smooth surface ready for decoration.
5. Apply taping compound to all fastener depressions followed, when hardened, by at least two coats of taping compound leaving all depressions level with plane of surface.
6. Apply taping compound to all bead and trim feathered out from ground to plane of surface. When hardened, follow by two coats of taping compound applied separately and allowed to dry between coats. Feather finish coat from ground to plane of surface and sand to provide a flat smooth surface ready for decoration.
7. All gypsum wallboard to be taped and finished unless concealed. Concealed gypsum board to be fire taped.
8. All gypsum board to receive light orange peel knock down type texture, except restrooms, janitorial and storage which will receive smooth surface.

IX. CERAMIC TILE

- A. Provide and install ceramic tile as shown on drawings.
 1. Comply with applicable requirements of American National Standard Institute (ANSI) A108.1, A108.4 and A108.5, and recommendations of the Tile Council of America, Inc (TCA) "Handbook for Ceramic Tile Installation." Comply with the manufacturer's instructions for the installation of each material.
 2. Two inch square ceramic mosaic porcelain tile at shower.
 3. Build up shower floor with mortar bed to provide slope, include shrinkage mesh, allow for final setting bed.
 4. Provide for soap dish.
 5. Ceramic tile shower walls, ceiling, floor, returns, etc. as shown on drawings. Use trim pieces as necessary for "finished installation."

X. FLOOR COVERING

A. RESILIENT FLOORING AND CARPET

1. Vinyl: Mannington Aristocoon - color by owner.
2. Carpet: Columbia Innovation and Classic Stripe - 100 percent Oliphin.
3. Pad: Five-eighths inch FHA pad.
4. Adhesives: As per manufacturer's recommendations.
5. Rubber base: Use premolded corners and end stop units; smooth finish; four inch high, set on cove type; light brown color.

B. INSTALLATION

1. Provide reducing strips at exposed edges of resilient flooring and at change from resilient to other floor finish. Anchor strips solidly as per manufacturer's recommendations.
2. Extend resilient flooring into closets and offsets and under movable equipment scheduled to receive resilient flooring. Extend unexposed edges of flooring under set-on bases and similar trim work.
3. Thoroughly clean all floor covering not more than four days before acceptance or occupancy by the owner.
4. Protect floor coverings from damage and from normal wear and tear throughout construction period so that it will be without indications of use or damage at the time of acceptance by the owner.
5. Carpet and resilient flooring to be installed by a professional installer. Invisible, sealed, tight, hairline seams. Carpet to be stretched with power stretcher where applicable.

XI PAINTING AND FINISHING

A. GENERAL

1. It is the intent of this section to provide finish for all materials factory primed or unfinished unless specifically stated as not requiring finish. Omission of specific surfaces from "Room finish" schedule is not to be interpreted to mean that finish is not required.
2. Contractor is responsible for finished appearance and satisfactory completion of this work. Do not commence any painting until surface to be painted is in proper condition in every respect. If for any reason surface cannot be properly prepared by customary cleaning, sanding, or puttying operations, report condition to the owner. Proceeding with the work constitutes acceptance of the surface by the subcontractor.
3. Do not paint when the air is dust laden nor when weather and temperature conditions are unsuitable. Maintain temperatures within the building at a minimum of 60 degrees F. during the painting and drying periods. Do not paint exterior surfaces in damp or rainy weather, nor when the temperature is below 50 degrees F. Comply with the manufacturer's recommendations when they are more stringent with respect to application temperatures.

B. PROTECTION

1. Place paint or solvent soaked rags, waste, or other materials which might constitute a fire hazard in metal containers and remove from premises at the close of each day's work. Take every precaution to avoid damage by fire.
2. Provide suitable coverings to protect work, the work or others, and adjacent surfaces and objects.
3. Remove or protect items such as hardware, hardware accessories, lighting fixtures and similar items placed prior to painting. Reposition or remove protection upon completion of each space. Disconnect equipment adjacent to walls by workmen skilled in these trades to permit painting of wall surfaces, replace and reconnect after completion of painting.

C. MATERIALS AND APPLICATION - EXTERIOR

1. Exterior body: Olympic Transparent Stain #718 to be roller or brush applied. Stain may be spray applied if followed with wet roller or brush to work stain into wood surface. Application by airless sprayer alone will not be allowed. Apply two coats.
2. Exterior trim and cedar: Behl "Liquid Rawhide". Apply with brush. One coat tinted, two coats clear.
3. Metal doors: Two coats Fuller O'Brien Enamel - color by owner (Coco Brown).
4. Wood deck: oil preservative.

D. MATERIALS AND APPLICATION - INTERIOR

1. Gypsum wallboard surfaces: one coat acrylic latex sealer, two coats Fuller O'Brien semigloss enamel. Apply sealer after taping, before texture is applied. Let dry, apply texture, let dry, finish with paint: (P-2) one coat acrylic latex sealer, two coats Fuller O'Brien gloss enamel.
2. Transparent stain on wood surfaces:
Oak and other hardwoods - sand smooth and stain with "Daly's" penetrating stain. Brush on and wet sand with #400 wet or dry paper. Let soak at least five minutes, or as required for desired effect. Let dry, then apply two coats Daly's Den-Matt clear Danish oil. Apply each coat in liberal amounts, let soak and wipe off excess.

Fir and other softwoods - sand smooth, then apply "Daly's" clear Penelac Sealer. Let dry. Apply stain as above (no sanding). Wipe after stain has soaked for color. Apply two coats oil as above.

Storage shelving - one coat primer, two coats Fuller O'Brien high gloss enamel.

XII TOILET AND BATH ACCESSORIES

A. DESCRIPTION - ACCESSORIES

1. Cabinets and mirrors:

Men's and women's - one-quarter inch plate mirror, 24 inch x 36 inch.

Staff bath - one-quarter inch plate mirror, 24 inch x 36 inch.
Medicine cabinet - 14 inch x 24 inch recesses with mirror; model #P1510-OA-P, as manufactured by Perma Bilt.

2. Towel bar: all towel bars to meet standards of grab bar. Conform to DBC, Section 1711b. One and one-quarter inch outside diameter pipe, stainless steel type 304, #4 satin finish. Location shown on drawings. Supply solid backing.
3. Toilet paper holders: all baths, recess mounted double roll holder as manufactured by Bobrick.
4. Towel dispensers: all baths, as manufactured by Bobrick.
5. Grab bar: see floor plan and interior elevations. Two each, men's and women's, #352-24inch straight grab bars as manufactured by Bobrick.
6. Shower door: 24 inch wide aluminum =/obscure glass shower door.

B. GENERAL

1. Assumes that all required backing and/or concealed anchors are in place, that all surfaces to receive accessories are suitable for quality installation.
2. Install all accessories in exact compliance with manufacturer's printed directions, where shown on drawings and securely fastened to solid backing.

XIII CABINETS

A. KITCHEN cabinets and bath cabinets by Pacific Cabinet Corporation. Solid oak doors and rails, raised panel doors. No pulls. Nutmeg color.

B. LAMINATED plastic countertops. Preformed with factory end caps and splash as required. Formica or Wilson Art, color by owner.

C. INSTALLATION

1. Verify that interface surfaces are plumb, straight, and true; solid, rigid, and in all ways acceptable to install as a base for quality cabinet work installation. Verify field dimensions.
2. Assemble cabinets according to printed directions.
3. Secure cabinets in place, plumb, level, square and true without distortion. Level with concealed shims if required.
4. Scribe face plates, backsplash, filler strips and trim strips to adjacent walls.
5. Secure top in place.
6. Insure that doors, drawers, and other moving parts operate freely and correctly.

A. GENERAL

1. Install all plumbing in conformance with the Uniform Plumbing Code, Uniform Mechanical Code and all amendments by local authority.

B. DOMESTIC HOT WATER AND COLD WATER PIPING

1. Rigid copper tubing type "L" with copper or bronze sweat fittings, and copper to IPS adapters.
2. Provide unions adjacent to each valve, where connected to equipment. Use isolation unions between dissimilar materials.
3. Use soft drawn type "K" copper with compression fittings or silver soldered joints below grade.
4. Grade all plumbing towards a low spot in the system if possible, and provide with one-half inch hose and drain valve, with removable key.
5. Test all water piping hydrostatically at one and one-half times the pressure found at the site or 80 psi minimum, for four hours. It is the responsibility of the plumbing contractor to see that the system is tight. Any damage to the building caused by a faulty plumbing system shall be the responsibility of the plumbing contractor. Do not cover piping until test requirements are satisfied. Install metal plumbing protectors where plumbing comes within 3/4" of framing surfaces where sheetrock is to be installed.

C. SANITARY DRAIN, WASTE AND VENT PIPING

1. All underground pipe and fittings shall be cast iron "No Hub" service weight with "No Hub" fittings and joints.
2. Inside building - Pipes 2" and less shall be ABS. Over 2" shall be "No Hub" cast iron with "No Hub" fittings and joints.
3. Support all stacks at base.
4. Cleanouts - Where shown, required by code or necessary for maintenance.
5. Test in accordance to Uniform Plumbing Code. Do not cover until requirements are satisfied.
6. Horizontal Drain lines shall have a uniform slope of 1/4" per foot toward point of disposal.
7. Provide vents for all traps. Vents may be joined 6" above flood rim of fixtures they serve, and collected for the run up to the roof. Observe vent signing per UPC when collected. Vents above heated spaces must be insulated with 1" fiberglass.
8. Extend vents 24" above roof. Increase vent two pipe sizes, 24" below roof penetration. Support vent with clamp to structural member within 6" of roof penetration.
9. Cleaning of domestic water supply: All fixtures and piping using potable water shall be flushed with clean water. Fill entire system with liquid chlorine solution so that the resulting solution in the piping, etc. is at least 50 PPM chlorine. All valves in the system shall be operated three times. Leave solution in contact with systems for 24 hours. Flush thoroughly with clean water, operating valves until no more than one PPM chlorine is obtained.

10. Install all fixtures per Manufacturer's written instructions. Observe clearances required by Code and for Maintenance.
11. All fixtures with water service shall have an 18" air cushion in line and near stop or valve.

D. FIXTURES TO BE KOHLER OR AMERICAN STANDARD

1. Toilets - Flush tank, white, Kohler-Wellworth Waterguard. Seatcover - Olsanite 30 TM. 50°F tempering valve.
2. Men's and Women's wall-hung lavatory - K-2731-B Tuanton - 16 X 14" with K8040-T faucet.
3. Staff Bath - Round, countertop white lavatory - Kohler K2910. Faucet - K-8040-T.
4. Stops - Speedflex at all fixtures.
5. Drinking fountain - Kohler K5293A
6. Water heater - Electric 50 gallon.
7. Service sink - Swan-MFS 1-W - Single wall mount fiberglass laundry tub - Faucet - Bradley H6621

XV

INSULATION AND MOISTURE BARRIERS

I. MATERIALS

- A. Foundation walls - 2" thick blue styrofoam S.H. Board, installed outside.
- B. Walls - 3½", 2lb. urethane foam for R25 - Foam to be sprayed in place.
- C. Floors - Owens Corning 9" Batts - support with wire insulation supports.
- D. Ceiling to be cellulose insulation blown in 12" thick - R-38.
- E. Sound insulation to be 3½" Owens Corning Fiberglass. "Noise Barrier Batts". Install in corridors, toilet rooms, and as scheduled on drawings for sound rated walls.
- F. Vapor barriers to be "Visqueen," six mill polyethylene sheet.

II. INSTALLATION

- A. Install thermal insulation at locations shown on drawings and as required. Fluff insulation as necessary, leave no voids or pockets. Chink small areas full. Provide complete thermal envelope. Support as required.
- B. Install vapor barriers on warm side of framing. Staple to studs, overlap joints 4" minimum. Cut neatly around penetrations, tape with duct-tape to maintain tight seal. Provide complete envelope of vapor barriers.