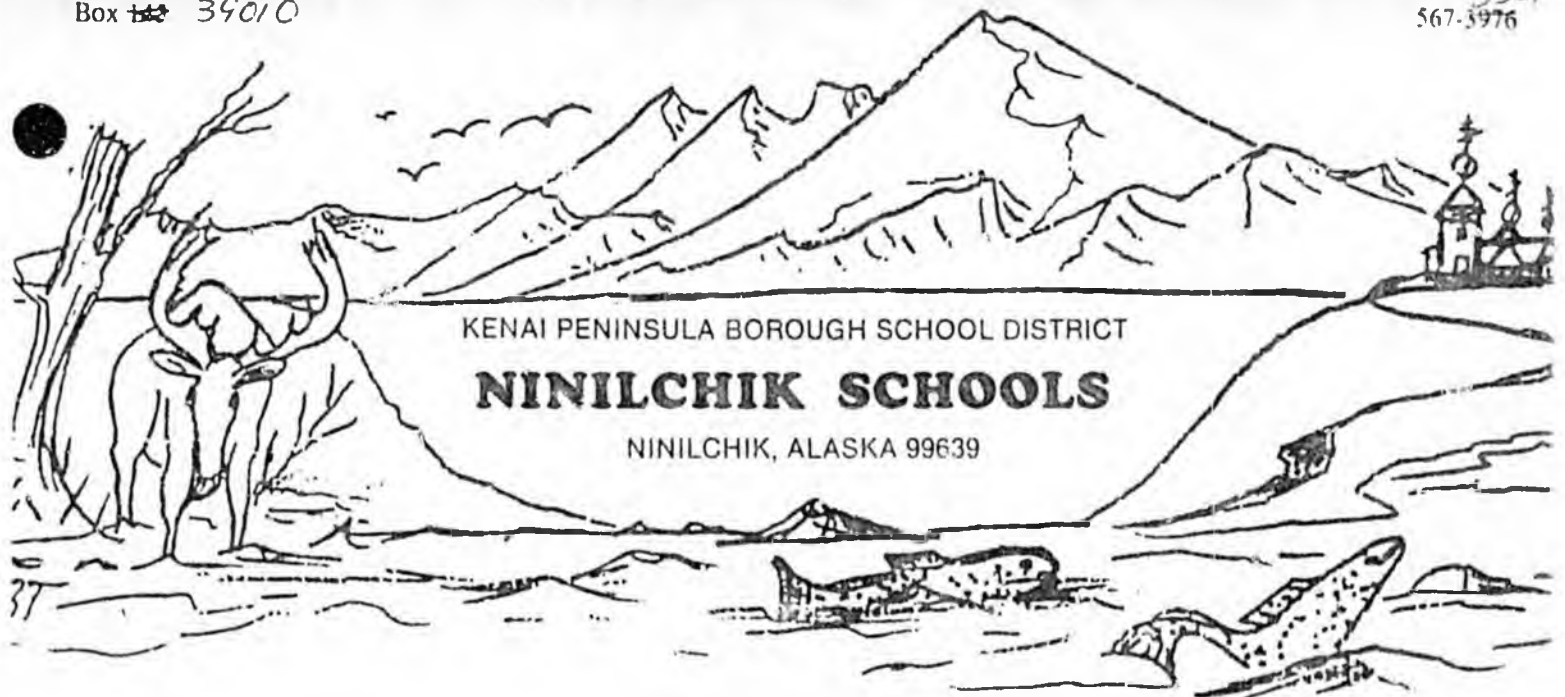


ALASKA LEGISLATURE COMMITTEE FILES 1983-1984 86/2

2267 HHESS HB 482 - HB 492 2267



January 27, 1983

Community Mental Health Center
Box 2274
Homer, Ak. 99603

Dear Staff,

I am personally involved with junior high (7-9) guidance and students with serious personal problems. There are many cases I cannot deal with because of my lack of expertise. For these special problems, I am both relieved and grateful to be able to turn to the Community Mental Health Service in Homer.

Mrs. Irene Littrell, from the Homer Office, has been traveling to Ninilchik to provide communication workshops for students and adults. She has also been dealing with some of these very serious cases. It is a real relief to have someone with her experience and background to provide counseling to these students and their parents.

One eighth grade boy was falling in all his classes. Mrs. Littrell began counseling with the entire family. The young man's attitude is greatly improved and he passed several of his courses for the quarter.

This kind of achievement is very important and worthwhile in an area that has so many problems. We need this service and appreciate it immensely. Please keep us on your agenda.

Sincerely,

Shawnie Holdermann
Ninilchik Guidance Counselor



LITTLE PEOPLE PUBLICATIONS
560 W. Soundview Ave.
Box 2181, Homer Alaska 99603
Ph.# 907/235-7515

January 27, 1983

Dr. Paul Craig, Director
Community Mental Health Center
P. O. Box 2274
Homer, Alaska 99603

Dear Dr. Craig:

We are pleased to offer our support of the services that are being provided by the Community Mental Health Center to the residents of the South Kenai Peninsula.

Those of us who have been involved with the Little People Can Read Research Project are acutely aware of the importance of high quality stimulation in the earliest years of a child's life in promoting good social, emotional, and intellectual development. We are, therefore, particularly enthusiastic about the Parent-Child Education and Training Program and the Infant Learning Program now being offered at the Mental Health Center.

Because we have observed the dedication shown by the clinic's staff and the need within the local community for these services, we urge that these programs be continued.

Cordially,

Mary + Mike

Mary & Michael Hopson

HAZEL HEATH

REAL ESTATE

Glacier View Subdivisions

BOX 676

HOMER, ALASKA 99603

March 1, 1983

Paul L. Craig, Ph.D.
Psychologist, Director
Community Mental Health Center
Box 2274
Homer, Alaska 99603

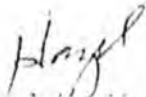
Dear Paul:

This letter is evidence of my support and belief in the work you are doing in the lower Kenai Peninsula. You have such a large area to cover. I marvel at the work you have accomplished.

Until your organization came to Homer I was not aware of the tremendous need people in our community have for your services. I didn't realize that a small city such as Homer could harbor so many different kinds of mental disturbances and psychological needs.

I hope that my support will help you in your effort to find adequate funding.

Sincerely,



Hazel Heath
Chairman
OLDER ALASKANS COMMISSION

MARK O. GULDSETH
P. O. BOX 1086
HOMER, ALASKA 99603

February 24, 1983

TO WHOM IT MAY CONCERN:

I would like to state my support for the Community Mental Health Center in Homer. It seems to be filling a definite need in the community in helping people to cope with life and with each other.

I recommend continued funding for this service.

Yours truly,

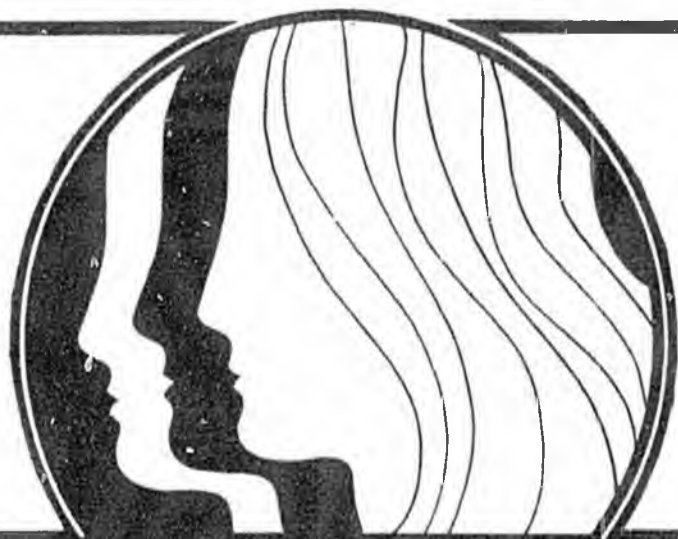


Mark Guldseth
City Councilman, Homer

PROGRAM BROCHURES

Community Mental Health Center
Infant Learning Program
Vocational Counseling
Parent-Child Education & Training

**Community
Mental Health
Center
235-7701**



Serving:

**Homer-Anchor Point-Halibut Cove
Kachemak City-Seldovia-English Bay
Port Graham-Ninilchik-Nikolaevsk**

Looking for professional assistance in any of the following areas?

- Relationships
- Behaviors that you would like to change
- Emotions
- Employment or educational planning
- Stress
- Your child's development or behavior
- Family relations
- Developing positive parenting skills
- Or even Cabin Fever!



WE CAN HELP!!!
***Our professional staff
is available to
serve you.***

The Community Mental Health Center sponsors the following services:

Mental Health

Counseling, evaluation, consultation and crisis mental health services for adults and children.

Vocational Counseling

Career exploration, guidance and training services coordinated with Alaska Division of Vocational Rehabilitation.

Parenting Skills Educational Program

Workshops, classes and counseling for families and individuals regarding effective positive parenting.

Infant Learning Program

Home-based program assisting parents of developmentally delayed infants (0-3 years) providing activities to enhance development.

Some services are free and others are on a sliding fee scale.

The center is located in the lower level of the office building on Ocean Drive between Miller's Welding and the Willow Wind. Outreach services are provided to Homer and outlying communities.

The Community Mental Health Center is sponsored by the South Peninsula Mental Health Association, a private non-profit corporation. If you are interested in becoming a member of the Association, give us a call.



Community Mental Health Center

**P.O. Box 2274
Homer, Alaska 99603
(907) 235-7701**



SOUTH PENINSULA INFANT LEARNING PROGRAM

**COMMUNITY MENTAL HEALTH CENTER
P.O. Box 2274
Homer, Alaska 99603
(907) 235-7701**

THE PROGRAM

The Infant Learning Program (ILP) is an early intervention program for infants and toddlers from birth to three years who are developmentally delayed, have a physical handicap or are at risk of developing a problem.

The Infant Learning Instructor will visit the parents and child in the home to do a formal assessment of all developmental areas. Where developmental delays are found, an Individualized Education Plan (IEP) will be established with the parents. The Instructor will visit the home on a weekly basis or as needed, for about an hour each visit, to share with parents some activities and techniques they can use daily to stimulate their child's development.

For more information, contact the INFANT LEARNING INSTRUCTOR through the Community Mental Health Center in Homer, 235-7701.

SERVICE AREAS

The Infant Learning Instructor will provide home services in the communities of Homer, Anchor Point, Ninilchik, Nikolaevsk, Seldovia, Port Graham, English Bay and outlying areas.

ELIGIBILITY

Any child under age three who has a handicap (such as Cerebral Palsy, Down's Syndrome, Mental Retardation, Blindness, Deafness) or who is suspected of having a developmental delay is eligible for the program.

COST

There is no cost to the parents. The program is funded by the Department of Health and Social Services, Family Services Section.

INTRODUCTIONS

CHRIS LAING VOCATIONAL COUNSELOR

jointly sponsored by

STATE OF ALASKA
DIVISION OF VOCATION
REHABILITATION

COMMUNITY MENTAL
HEALTH CENTER
P.O. BOX 2274
HOMER, ALASKA 99603
235-7701

COMMUNITY MENTAL HEALTH CENTER

Serving:

235-7701

Judith Rothstein, M.S.
Vocational Counselor

P.O. Box 2274
Homer, Alaska 99603



JOHN B. OSBORNE
VOCATIONAL REHABILITATION COUNSELOR

STATE OF ALASKA
DEPT. OF EDUCATION
P.O. BOX 3833
KENAI, ALASKA 99611

VOCATIONAL REHABILITATION
PHONE (907) 283-3133

VOCATIONAL COUNSELING



For information and
appointments, call:

235-7701

Office located in
Community Mental Health Center
P.O. Box 2274
Homer, Alaska 99603

Most of us spend considerable time and energy at different points in our lives wondering which jobs would fit our needs and desires. Exploring the range of choices of employment is a difficult task. Often, the beginning step of knowing who to ask for specific information about a field of work is a bogging-down place. The Vocational Counseling Program in Homer is designed to assist people in clarifying career goals, barriers to successful employment, and strategies for seeking new employment.

FOR WHOM ARE THESE SERVICES DESIGNED?

- Any person in the process of rethinking his/her career, or how s/he is utilizing time;
- * The average American worker changes careers 4 times in his/her lifetime;
- Any disabled Alaskan who seeks assistance through Division of Vocational Rehabilitation and resides in the Southern Kenai Peninsula.
- * We serve people in the following communities:

Ninilchik
Nikolaevsk
Anchor Point
Homer
Kachemak City
Seldovia
Port Graham
English Bay

SERVICES AVAILABLE...

Career exploration and guidance: (in groups or individually), utilizing the Alaska Career Information System and interest inventories.

Information and referral services: from type of training required for a job to where such is offered, including employment forecasts for various job fields.

Special needs planning: such as in the case of physical, mental or emotional disabling conditions.

Assistance with sharpening job-readiness skills: resume writing, interviewing tips, etc .

Coordination with other agencies: state, federal, and private agency contacts.

Job development: working with area employers in developing on-the-job training opportunities.

Job supervision: assisting employers in monitoring employee progress and upgrading skills.

Individual counseling: available to clients wishing to work on issues of self esteem, assertiveness, and other issues affecting job production.

Community education: periodic classes and workshops are offered to the public covering various aspects of the job search.

Employee Assistance Program: a confidential information and referral service available to employees and their family members. Available as a benefit to employees whose employers have contracted for services.

...AND NOW FOR A WORD ABOUT VOCATIONAL REHABILITATION

The Homer Vocational Counseling program is an extension of the Alaska Division of Vocational Rehabilitation (DVR), whose nearest office is in Kenai.

In an effort to provide the most comprehensive outreach services possible to the Southern Kenai Peninsula, we serve as liaison with the Kenai office, and work closely with the DVR counselor who visits Homer once each month. In order to be eligible for DVR services, an individual must:

- 1) Have a disability (emotional, mental, physical, or learning) that can be verified by a licensed physician and/or psychologist.
- 2) This disability must be a substantial handicap to employment.
- 3) DVR services will enable the individual to get and hold a job.

Applications for DVR services are available through the Homer Vocational Counselor.

Services are available through the Community Mental Health Center sliding fee scale until such time as the person may become a DVR client, at which time no fee would be charged. The sliding fee scale is based upon ability to pay; however, no one will be refused services due to a lack of funds.



Service Areas:

The Parent-Child Educator/Family Counselor will provide educational counseling services in a variety of settings, including but not limited to: Your home, the Community Mental Health Center, the school, or other common facilities. We serve parents in the following communities: Ninilchik, Anchor Point, Seldovia, Port Graham, English Bay, Nikolavsk and Homer.

ELIGIBILITY:

All parents of children ages 0-18 in the service area are eligible for one or more of the services offered.

COST:

Fees are established based on ability to pay by using a sliding fee scale. As a result, services are available to one and all without regard to financial resources. Some of the groups and classes are provided without charge.

Give Your Family a Boost!

Consult with the
Parenting Specialist
for Stimulating
Ideas!



FOR MORE INFORMATION,
PLEASE CALL:
235-7701

Sponsored by South Peninsula
Mental Health Association, Inc.
Funded by a grant from the
State of Alaska, Division of Family
& Youth Services
P.O. Box 2274
Homer, Alaska 99603

PARENTING IS A TOUGH JOB!



"Parenting is a Tough Job, yet we can make it the choicest time in human life! Let us become inspired with brilliant motives so we can more effectively enrich and enhance the quality of our daily family living."

—Eileen Littrell, M.A.
Parent Educator

THIS PROGRAM PROVIDES:

- ★ Parenting Skills Classes
- ★ Support Groups for Parents
- ★ Individual & Family Counseling

Common Child Problems Addressed:

- Short attention span
- Non-compliant behavior
- Temper tantrums
- Hitting others
- Verbal abuse
- Eating problems
- Disobedience
- Toilet training
- Whining



Parenting Skills

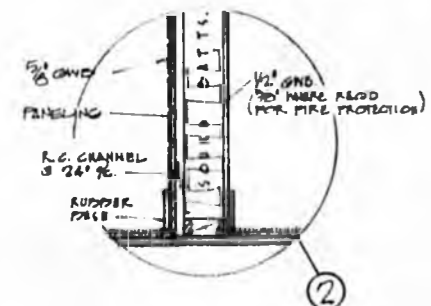
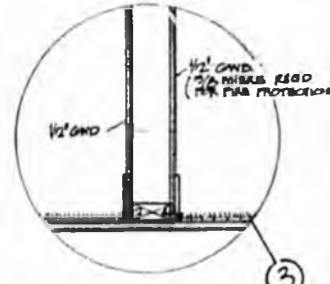
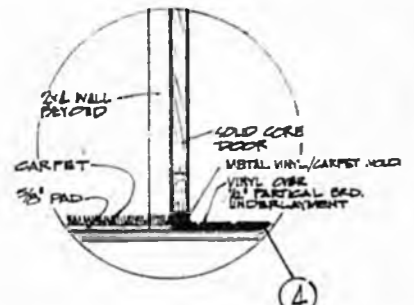
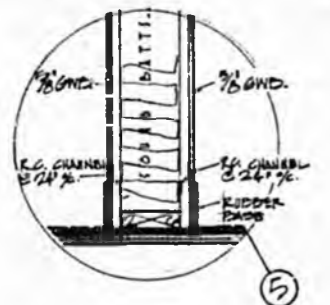
are

discussed within small group settings with a practical "How To" approach

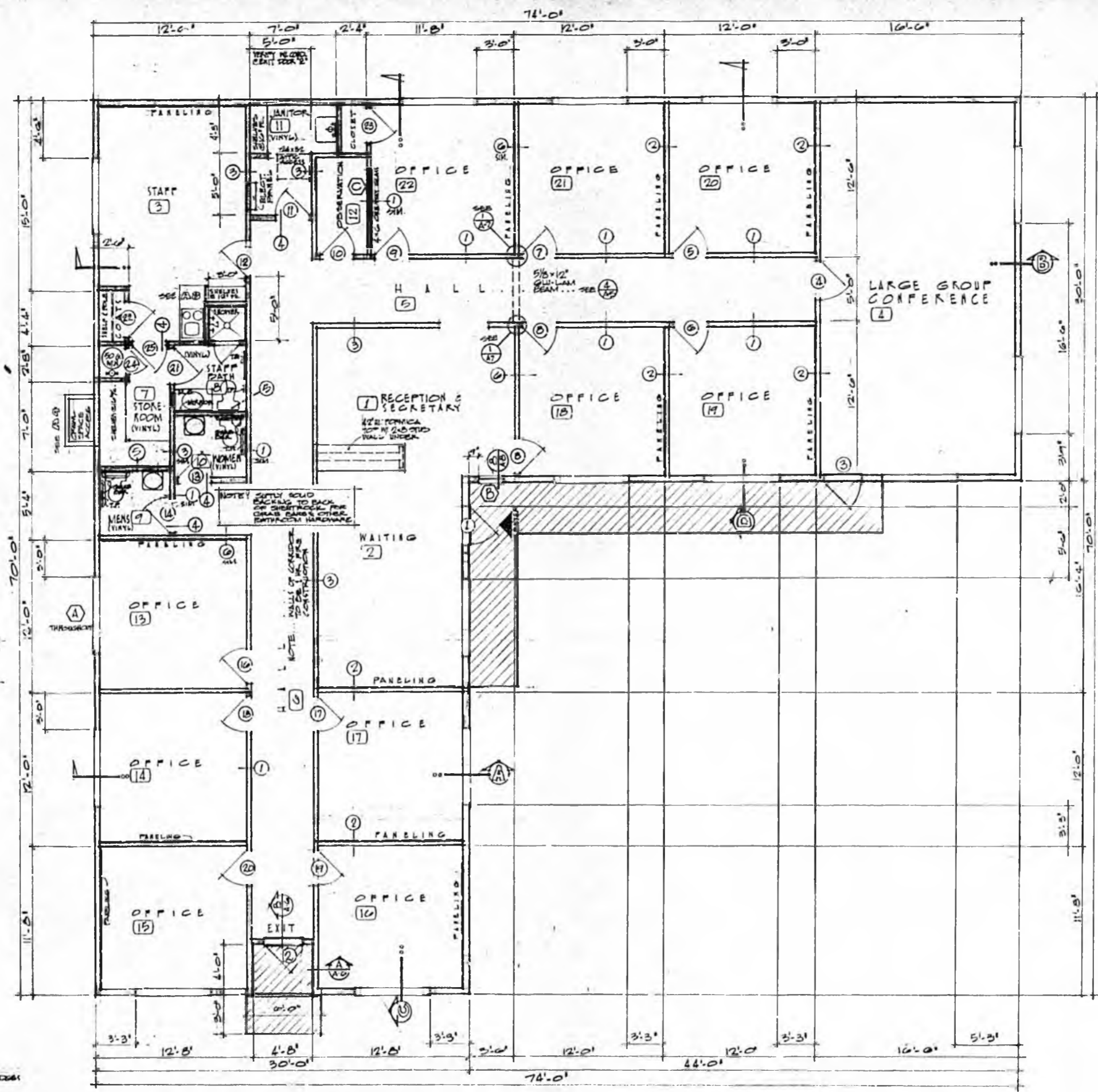
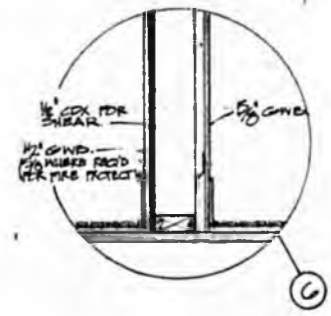
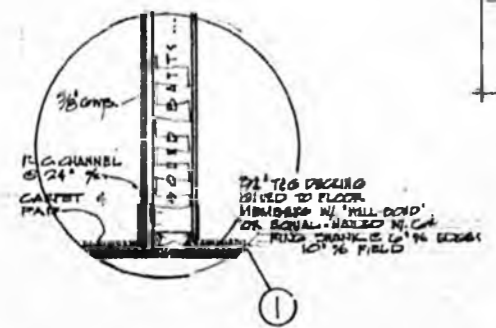
How to:

- Defuse anger
- Reduce stress
- Agree to disagree
- Be cordial yet frank in sending "I" messages
- Set training priorities
- Generate unconditional positive regard
- Detect and prevent double messages,
i.e., teach honesty
- Prevent power plays & manipulating behaviors
- Speak with moderation
- Be firm but kind
- Calm tempers
- Effectively ignore to reduce undesirable behaviors
- Extinguish undesirable behaviors -
- Set appropriate limits on your child's behavior
- Appreciate normal stages of child development
- Enjoy your children
- Effectively encourage to shape desirable behavior
- Win your child's respect and cooperation





WALL TYPES 1/2" - 1'-0"



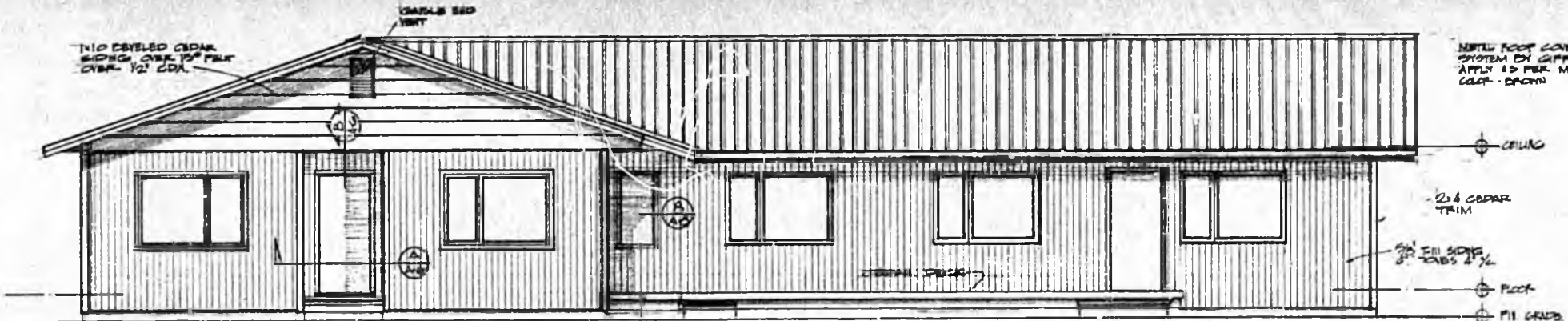
EXTERIOR FINISH

BEVELED CEDAR SIDING & CEDAR TRIM TO RECEIVE ONE COAT OF "SEAR FINISH" PUT & ONE COAT OF "SEAR FINISH" CLEAR PROTECTIVE COAT

PAINT UNDERSIDE OF GABLE END AND GABLE END VENT TO RECEIVE 2 COATS FULLER COVER EXTERIOR GLOSS FINISH MATCH ROOF COLOR

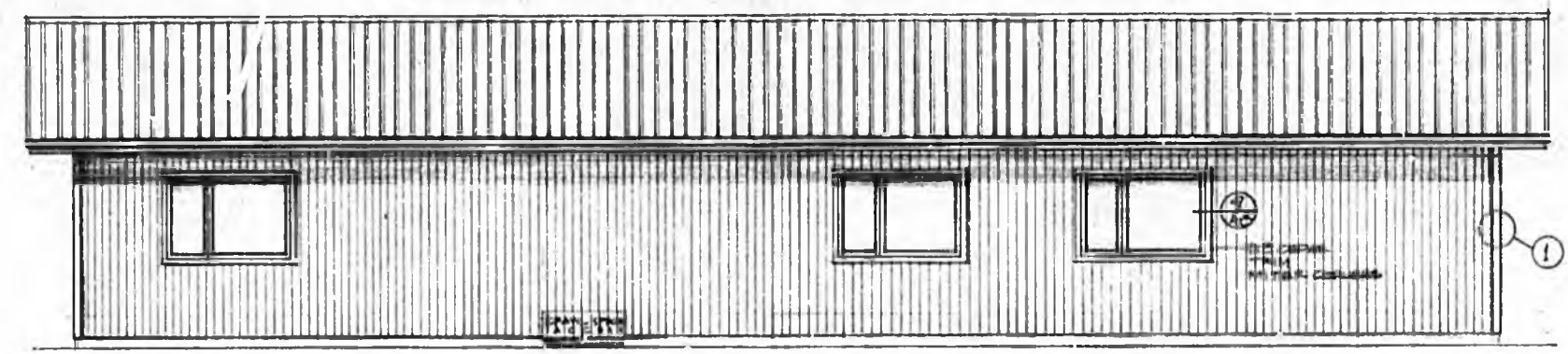
T-11 SIDING TO RECEIVE 2 COATS OLYMPIC SEMI-TRANSPARENT STAIN TO BE APPLIED W/ BRUSH OR ROLLER STAIN MAY BE SPRAY APPLIED IF FOLLOWED W/ WET BRUSH OR ROLLER. APPLICATION BY SPRAYER ALONE NOT ALLOWED OLYMPIC STAIN NO. -

NOTE: ALL EXTERIOR NAILING TO BE W/ GALV. PASTENERS ONLY.



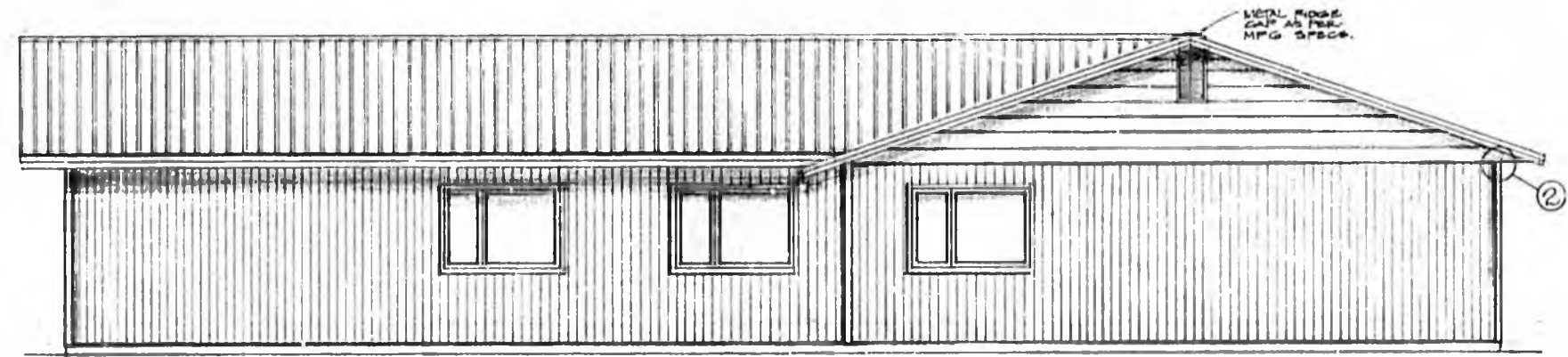
WEST ELEVATION

1/4" = 1'-0"



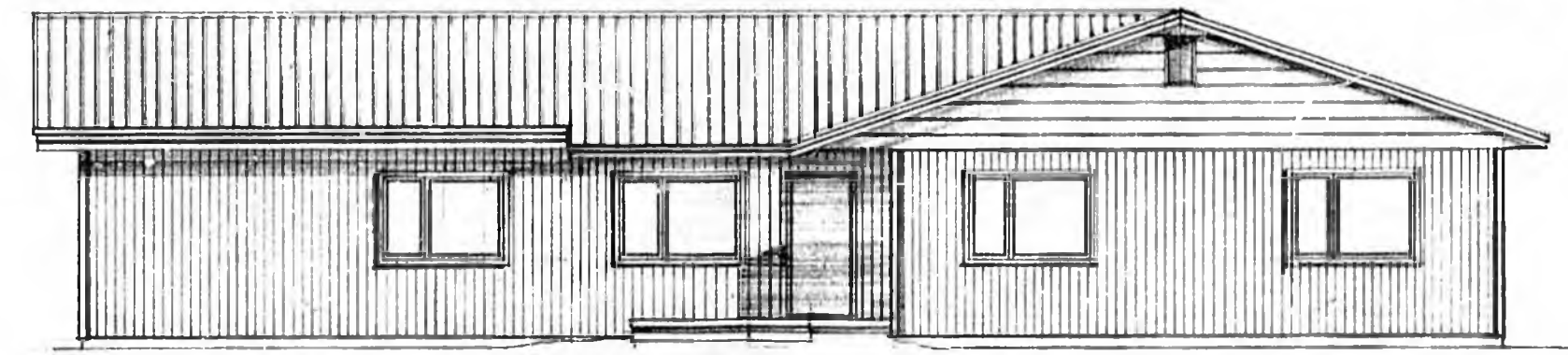
SOUTH ELEVATION

1/4" = 1'-0"



EAST ELEVATION

1/4" = 1'-0"

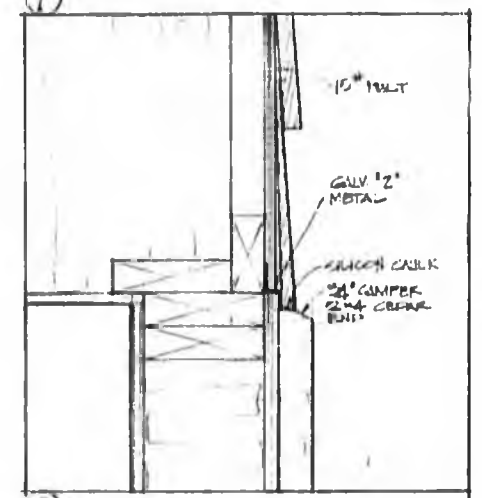
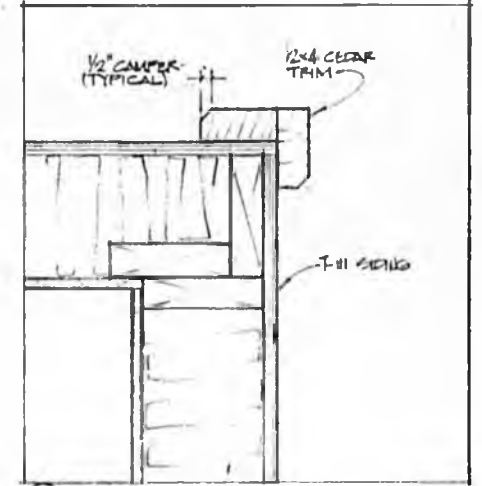


NORTH ELEVATION

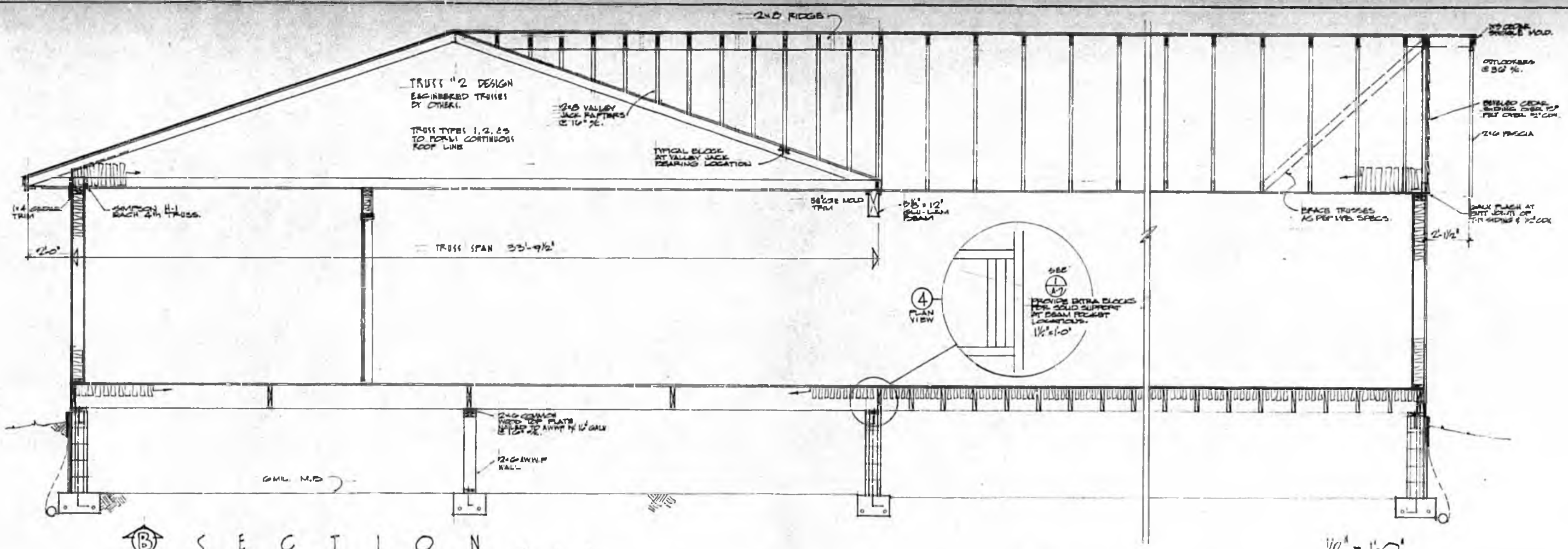
1/4" = 1'-0"

METAL ROOF COVER SYSTEM ON GIFFORD-HILL APPLY AS PER MFG. SPEC. COLOR - BROWN

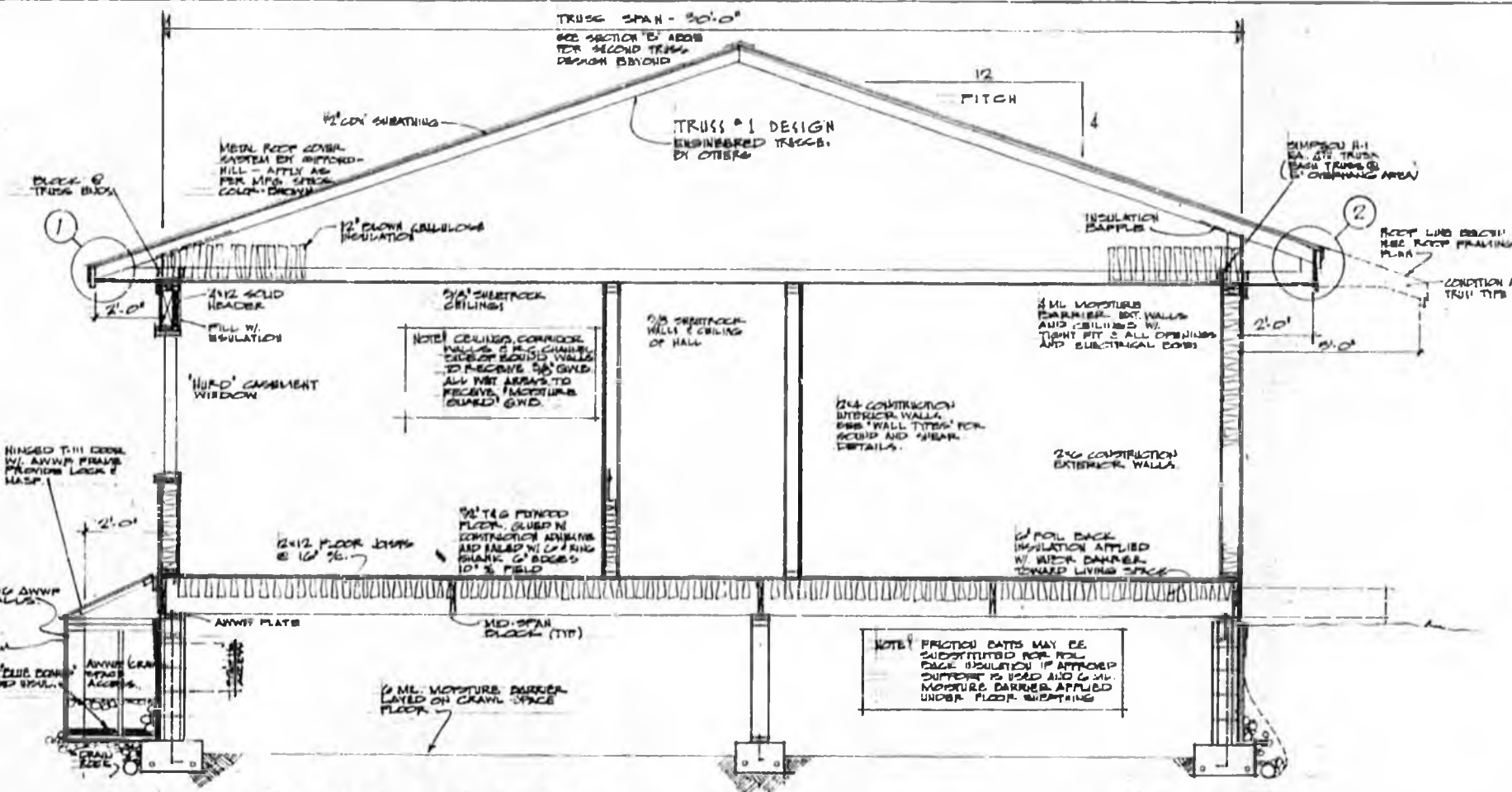
CEILING
2x4 CEDAR TRIM
T-11 SIDING 3/8" GAPS 1/2"
ROOF
PII GRADE



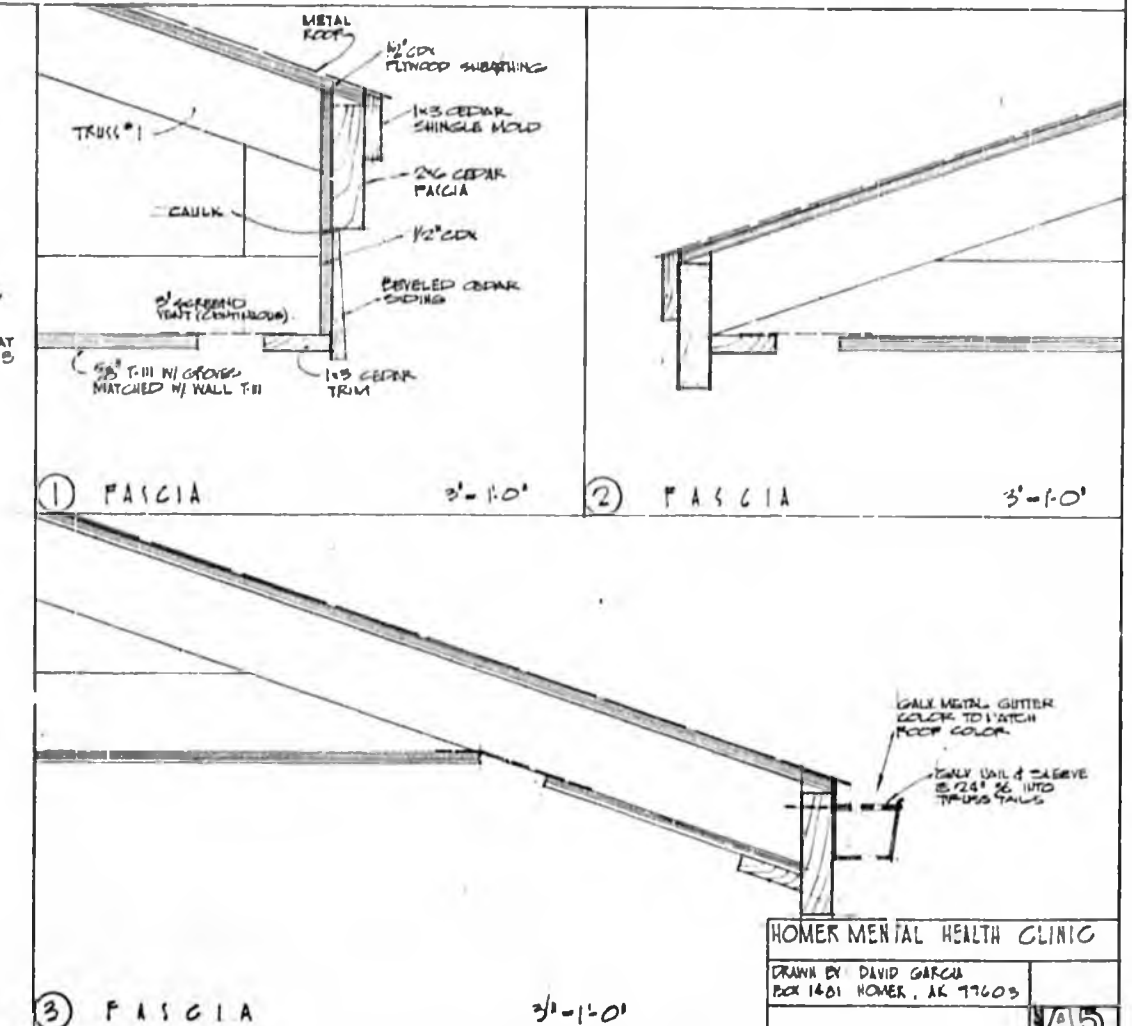
HOMER MENTAL HEALTH CLINIC
DRAWN BY: DAVID GARCIA DATE: 4/17/00
POX 1481 HOMER, AK
3



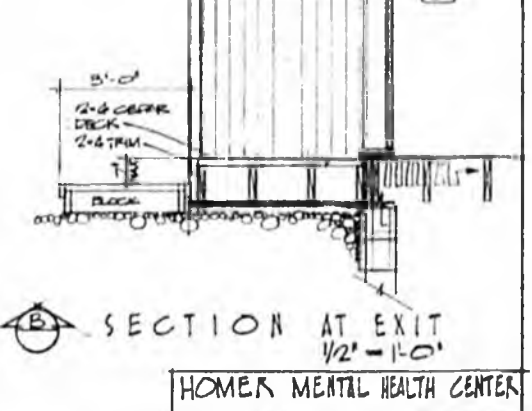
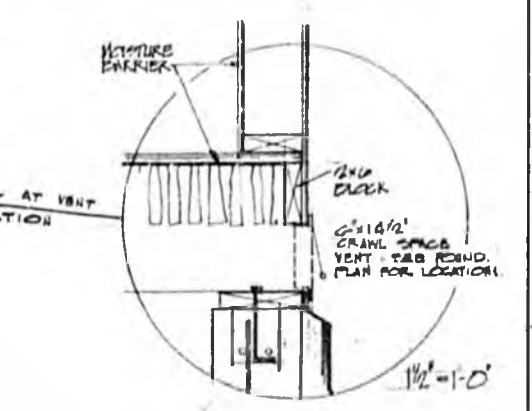
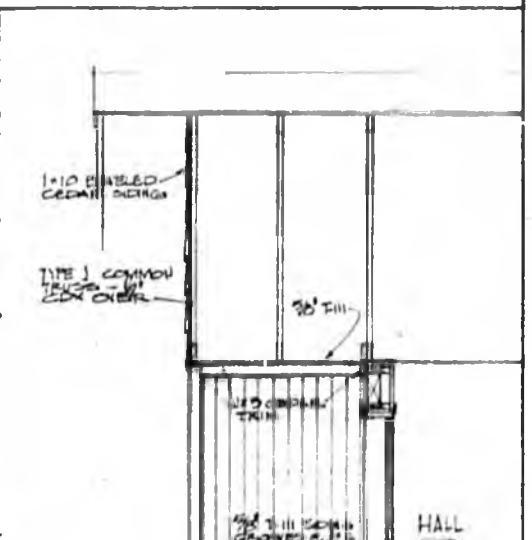
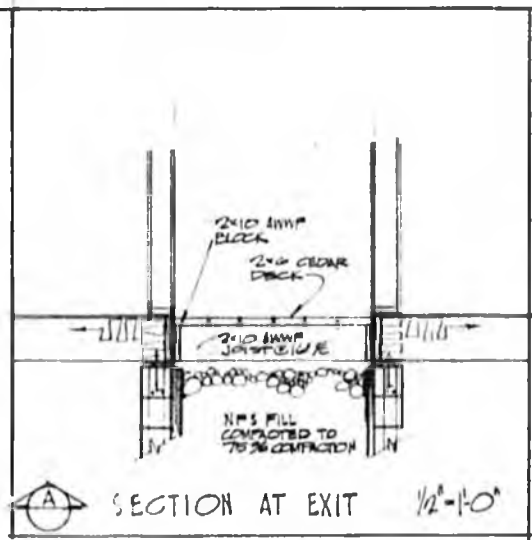
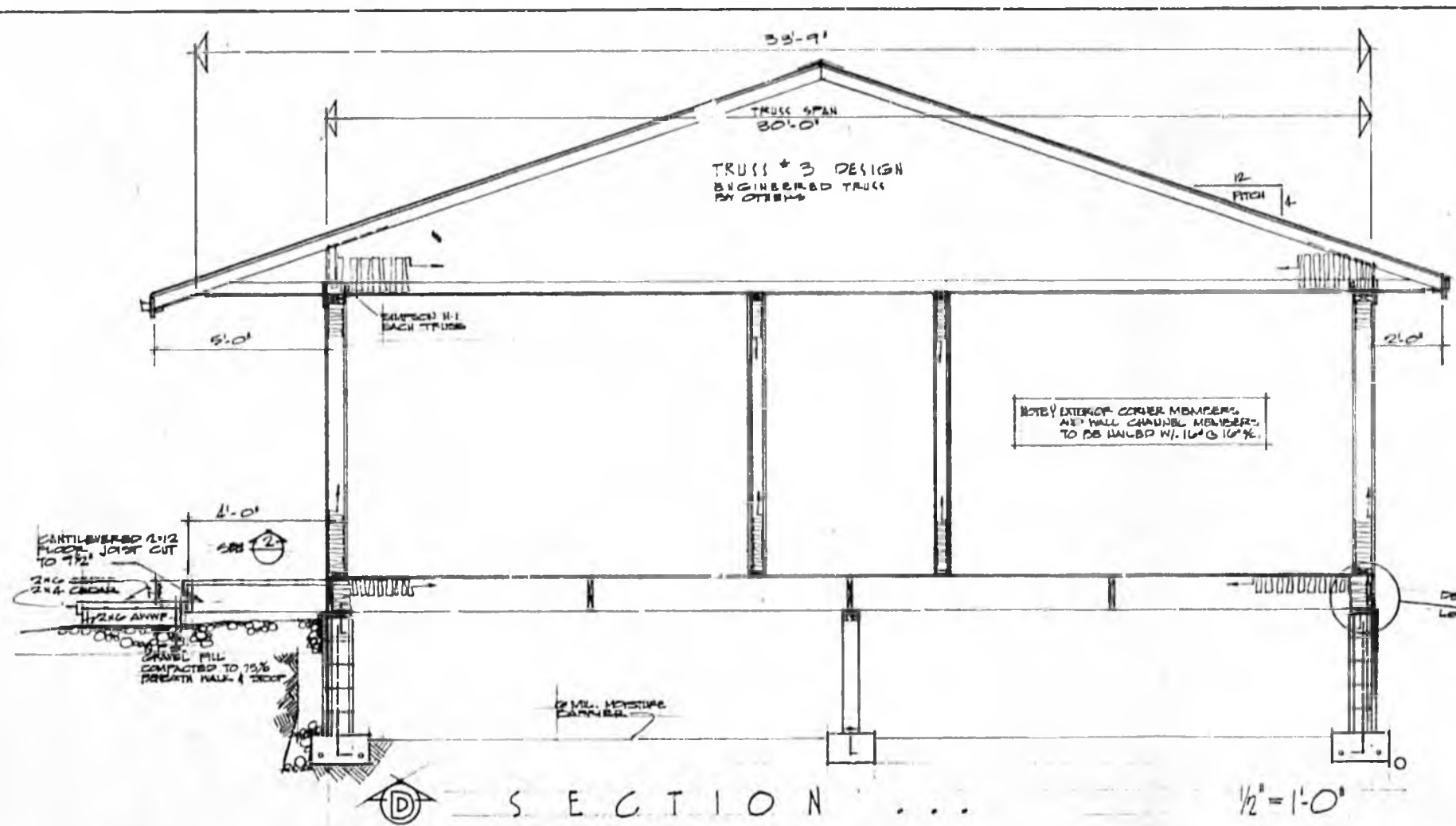
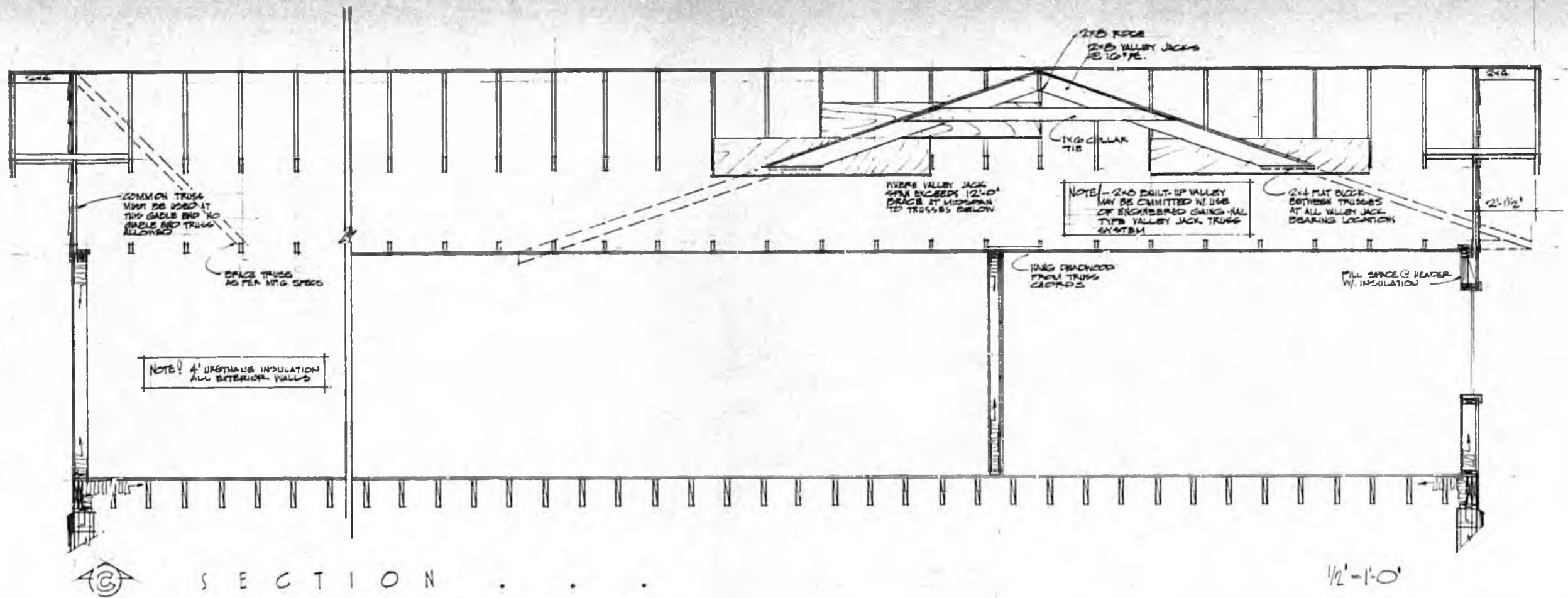
SECTION B



SECTION A



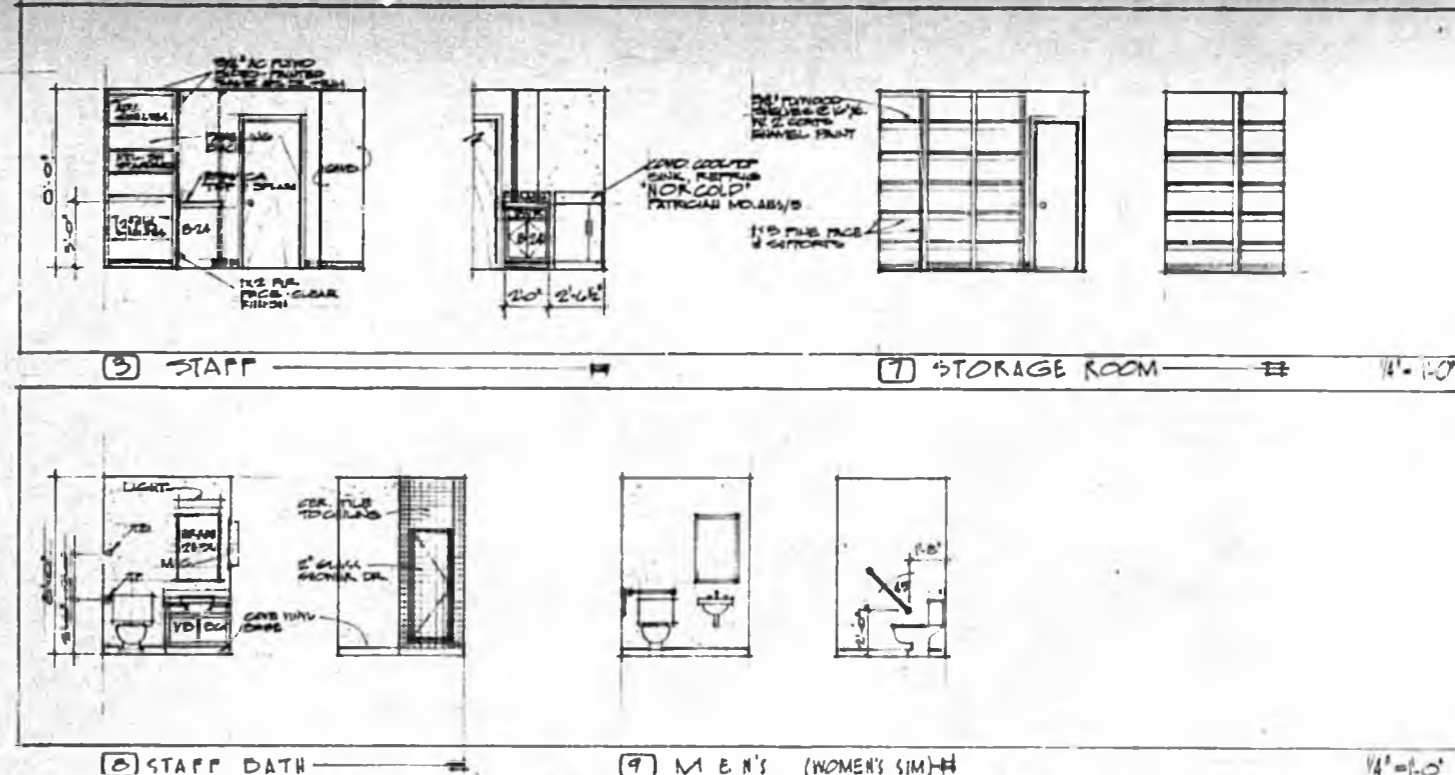
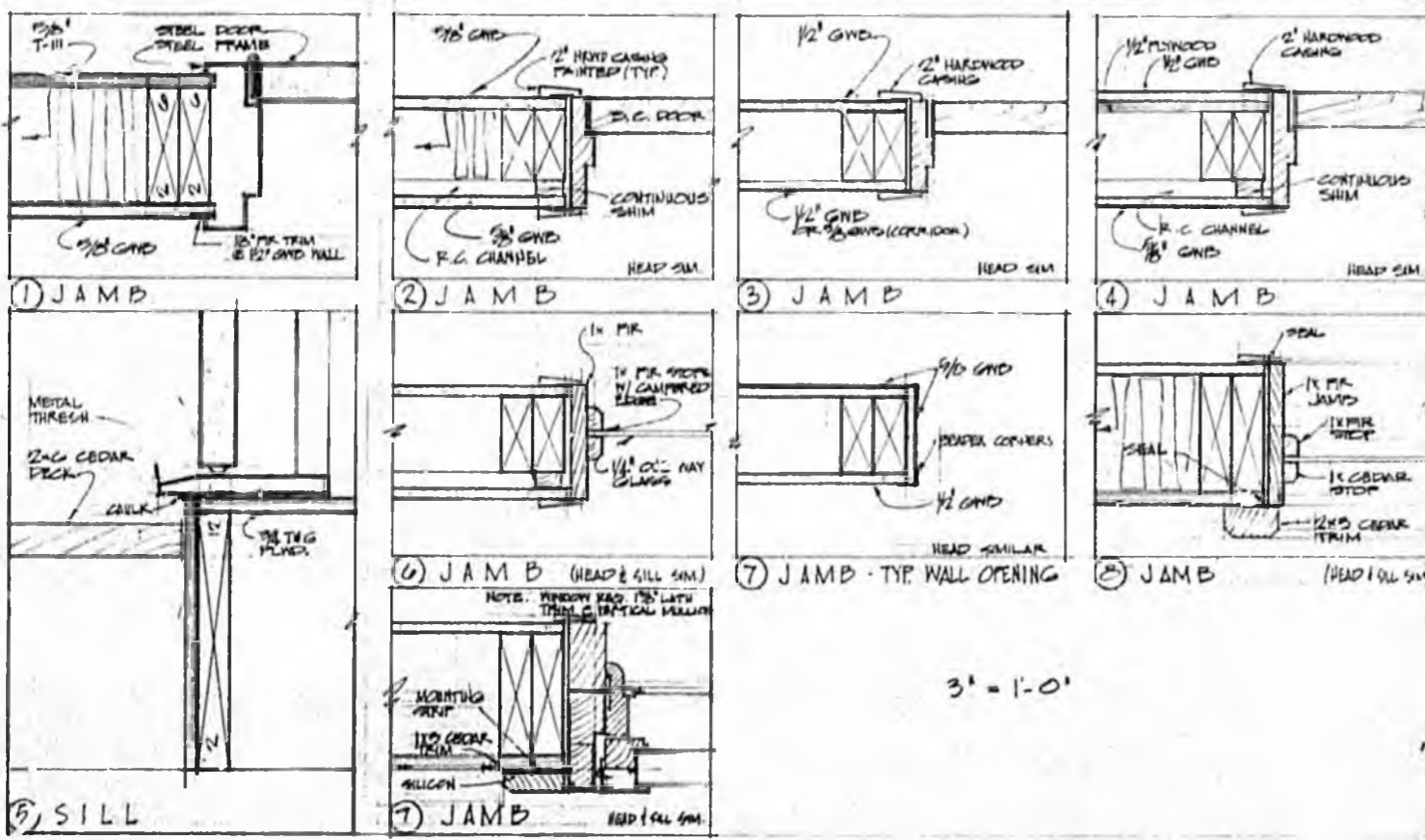
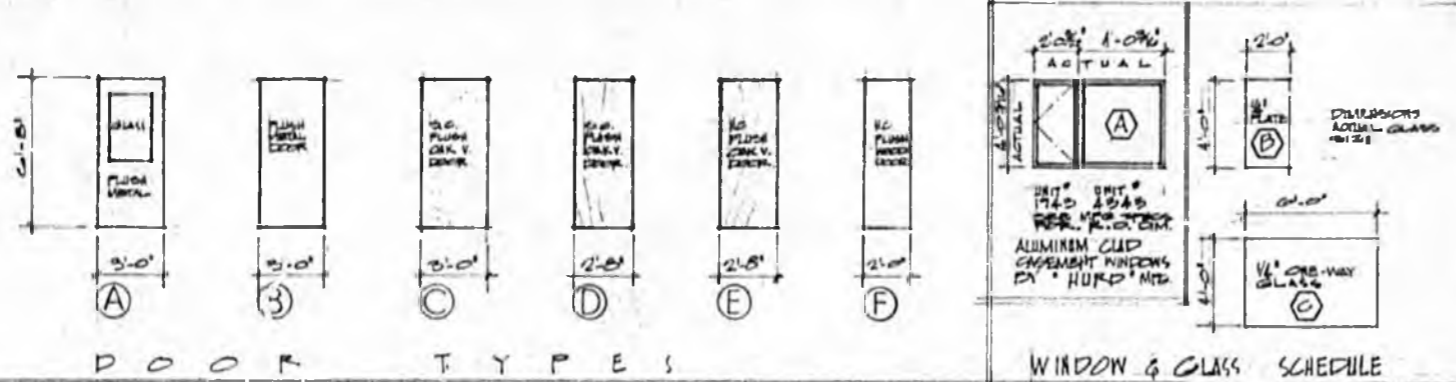
HOMER MENTAL HEALTH CLINIC
 DRAWN BY DAVID GARCIA
 BOX 1461 HOMER, AK 99603
 1/5



HOMER MENTAL HEALTH CENTER
 DRAWN BY: DAVID GARCIA DATE: 4/23/03
 POC 14-B1, HOMER, AK
 AC

DOOR & HARDWARE SCHEDULE

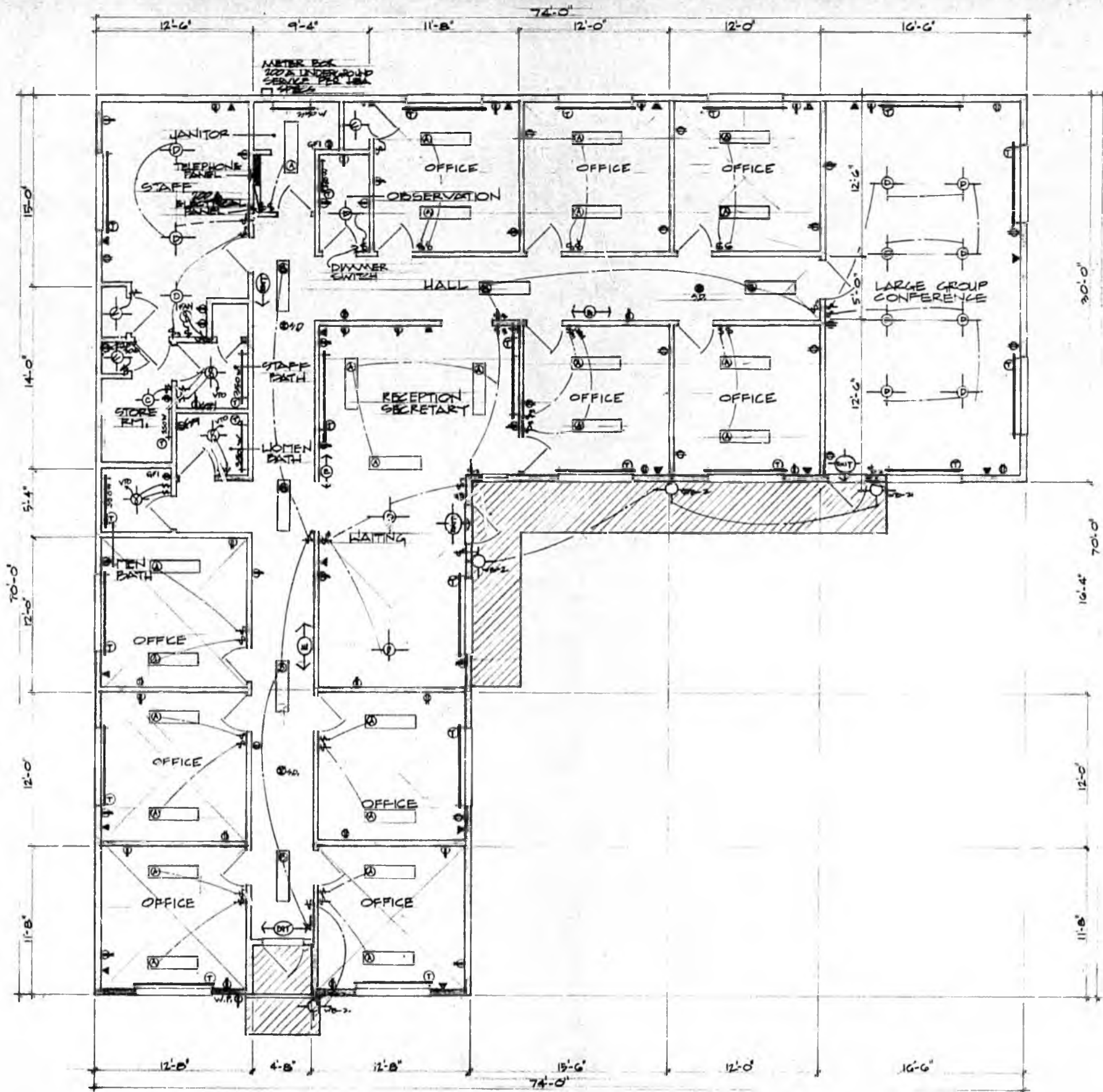
NO.	DOORS				FRAMES			HINGES			LOCKS LATCHES	GLAZING	HANGING	OTHER	LEAF PLATES	REMARKS	NO.
	WIDE	HIGH	THICK	MAT'L	FINISH	TYPE	MAT'L	FINISH	DETAILS	QT. TO							
1	3'-0"	6'-8"	1 1/2"	STEEL	PAINT	A	STEEL	PAINT	1, 2	1	48" x 48"	1/2"					
2	3'-0"	6'-8"	1 1/2"	STEEL	PAINT	D	STEEL	PAINT	1, 2	1	48" x 48"	1/2"					
3	3'-0"	6'-8"	1 1/2"	STEEL	PAINT	B	STEEL	PAINT	1, 2	1	48" x 48"	1/2"					
4	3'-0"	6'-8"	1 1/2"	STEEL	PAINT	D	STEEL	PAINT	1, 2	1	48" x 48"	1/2"					
5	3'-0"	6'-8"	1 1/2"	STEEL	PAINT	D	STEEL	PAINT	1, 2	1	48" x 48"	1/2"					
6	3'-0"	6'-8"	1 1/2"	STEEL	PAINT	D	STEEL	PAINT	1, 2	1	48" x 48"	1/2"					
7	3'-0"	6'-8"	1 1/2"	STEEL	PAINT	D	STEEL	PAINT	1, 2	1	48" x 48"	1/2"					
8	3'-0"	6'-8"	1 1/2"	STEEL	PAINT	D	STEEL	PAINT	1, 2	1	48" x 48"	1/2"					
9	3'-0"	6'-8"	1 1/2"	STEEL	PAINT	D	STEEL	PAINT	1, 2	1	48" x 48"	1/2"					
10	3'-0"	6'-8"	1 1/2"	STEEL	PAINT	D	STEEL	PAINT	1, 2	1	48" x 48"	1/2"					
11	3'-0"	6'-8"	1 1/2"	STEEL	PAINT	D	STEEL	PAINT	1, 2	1	48" x 48"	1/2"					
12	3'-0"	6'-8"	1 1/2"	STEEL	PAINT	D	STEEL	PAINT	1, 2	1	48" x 48"	1/2"					
13	3'-0"	6'-8"	1 1/2"	STEEL	PAINT	D	STEEL	PAINT	1, 2	1	48" x 48"	1/2"					
14	3'-0"	6'-8"	1 1/2"	STEEL	PAINT	D	STEEL	PAINT	1, 2	1	48" x 48"	1/2"					
15	3'-0"	6'-8"	1 1/2"	STEEL	PAINT	D	STEEL	PAINT	1, 2	1	48" x 48"	1/2"					
16	3'-0"	6'-8"	1 1/2"	STEEL	PAINT	D	STEEL	PAINT	1, 2	1	48" x 48"	1/2"					
17	3'-0"	6'-8"	1 1/2"	STEEL	PAINT	D	STEEL	PAINT	1, 2	1	48" x 48"	1/2"					
18	3'-0"	6'-8"	1 1/2"	STEEL	PAINT	D	STEEL	PAINT	1, 2	1	48" x 48"	1/2"					
19	3'-0"	6'-8"	1 1/2"	STEEL	PAINT	D	STEEL	PAINT	1, 2	1	48" x 48"	1/2"					
20	3'-0"	6'-8"	1 1/2"	STEEL	PAINT	D	STEEL	PAINT	1, 2	1	48" x 48"	1/2"					
21	3'-0"	6'-8"	1 1/2"	STEEL	PAINT	D	STEEL	PAINT	1, 2	1	48" x 48"	1/2"					
22	3'-0"	6'-8"	1 1/2"	STEEL	PAINT	D	STEEL	PAINT	1, 2	1	48" x 48"	1/2"					
23	3'-0"	6'-8"	1 1/2"	STEEL	PAINT	D	STEEL	PAINT	1, 2	1	48" x 48"	1/2"					
24	3'-0"	6'-8"	1 1/2"	STEEL	PAINT	D	STEEL	PAINT	1, 2	1	48" x 48"	1/2"					
25	3'-0"	6'-8"	1 1/2"	STEEL	PAINT	D	STEEL	PAINT	1, 2	1	48" x 48"	1/2"					



ROOM FINISH SCHEDULE

NO.	NAME	FLOOR	BASE	NORTH WALL		SOUTH WALL		EAST WALL		WEST WALL		CEILING			REMARKS
				MAT'L	FINISH	MAT'L	FINISH	MAT'L	FINISH	MAT'L	FINISH	MAT'L	FINISH	HT.	
1	RECEPTION & SECRETARY	CARPET	RUBBER	GND	F-1	GND	F-1	GND	F-1	PANEL		GWB	F-1	8'-0"	
2	WAITING	CARPET	RUBBER	GND	F-1	GND	F-1	GND	F-1	PANEL		GWB	F-1	8'-0"	
3	STAFF	CARPET	RUBBER	GND	F-1	GND	F-1	GND	F-1	PANEL		GWB	F-1	8'-0"	
4	LARGE GROUP CONFERENCE	CARPET	RUBBER	GND	F-1	GND	F-1	GND	F-1	PANEL		GWB	F-1	8'-0"	
5	HALL	CARPET	RUBBER	GND	F-1	GND	F-1	GND	F-1	PANEL		GWB	F-1	8'-0"	
6	HALL	CARPET	RUBBER	GND	F-1	GND	F-1	GND	F-1	PANEL		GWB	F-1	8'-0"	
7	STAFF ROOM	VINYL	RUBBER	GND	F-2	GND	F-2	GND	F-2	GWB	F-2	GWB	F-2	8'-0"	VENTURE GUARD GND ALL WALLS
8	STAFF BATH	VINYL	CON. VINYL	GND	F-2	GND	F-2	GND	F-2	GWB	F-2	GWB	F-2	8'-0"	VENTURE GUARD GND ALL WALLS
9	MEN'S	VINYL	CON. VINYL	GND	F-2	GND	F-2	GND	F-2	GWB	F-2	GWB	F-2	8'-0"	VENTURE GUARD GND ALL WALLS
10	WOMEN'S	VINYL	CON. VINYL	GND	F-2	GND	F-2	GND	F-2	GWB	F-2	GWB	F-2	8'-0"	VENTURE GUARD GND ALL WALLS
11	JANITOR	VINYL	CON. VINYL	GND	F-2	GND	F-2	GND	F-2	GWB	F-2	GWB	F-2	8'-0"	
12	OBSERVATION	CARPET	RUBBER	GND	F-1	GND	F-1	GND	F-1	PANEL		GWB	F-1	8'-0"	
13	OFFICE	CARPET	RUBBER	GND	F-1	GND	F-1	GND	F-1	PANEL		GWB	F-1	8'-0"	
14	OFFICE	CARPET	RUBBER	GND	F-1	GND	F-1	GND	F-1	PANEL		GWB	F-1	8'-0"	
15	OFFICE	CARPET	RUBBER	GND	F-1	GND	F-1	GND	F-1	PANEL		GWB	F-1	8'-0"	
16	OFFICE	CARPET	RUBBER	GND	F-1	GND	F-1	GND	F-1	PANEL		GWB	F-1	8'-0"	
17	OFFICE	CARPET	RUBBER	GND	F-1	GND	F-1	GND	F-1	PANEL		GWB	F-1	8'-0"	
18	OFFICE	CARPET	RUBBER	GND	F-1	GND	F-1	GND	F-1	PANEL		GWB	F-1	8'-0"	
19	OFFICE	CARPET	RUBBER	GND	F-1	GND	F-1	GND	F-1	PANEL		GWB	F-1	8'-0"	
20	OFFICE	CARPET	RUBBER	GND	F-1	GND	F-1	GND	F-1	PANEL		GWB	F-1	8'-0"	
21	OFFICE	CARPET	RUBBER	GND	F-1	GND	F-1	GND	F-1	PANEL		GWB	F-1	8'-0"	
22	OFFICE	CARPET	RUBBER	GND	F-1	GND	F-1	GND	F-1	PANEL		GWB	F-1	8'-0"	

HOMER MENTAL HEALTH CLINIC
 DRAWN BY: DAVID GARCIA
 6/20/85
 1421 HOMER AK



ELECTRICAL LEGEND

- DUPLEX CONVENIENCE OUTLET
- ⊕ GFI GROUND FAULT CIRCUIT INTERRUPTER
- ⊕ WP WEATHER PROOF OUTLET
- ⊕ 220V 220V OUTLET
- ⊕ FAN (VENTED TO OUTSIDE AIR)/LIGHT
- ⊕ S.D. 110V SMOKE DETECTOR
- ⊕ TELEPHONE OUTLET
- ▭ 200A ELECTRICAL PANEL
- ▭ 200A UNDERGROUND SERVICE AS PER UGA SPECIFICATIONS
- ▭ TELEPHONE PANEL
- ⊕ SINGLE POLE SWITCH
- ⊕ THREE WAY SWITCH
- ⊕ OFFICE FLUORESCENT FIXTURE
- ⊕ CORRIDOR FLUORESCENT
- ⊕ FIXTURE
- ⊕ RECESSED CEILING
- ⊕ EMERGENCY LIGHTING
- ⊕ EXIT LIGHT
- ⊕ BASEBOARD HEATER (THERMOSTAT TYPICAL)
- ⊕ PRESOLITE MODEL WASH TYPE 100W THRU PHOTOCELL

NOTES:
 1. FURNISH & INSTALL SIX (6) BRYANT S22B PORCELAIN LAMP HOLDERS EQUALLY SPACED THROUGHOUT CRAWL SPACE. PLACE SWITCH NEAR ACCESS WAY.

LIGHTING FIXTURE SCHEDULE

KEY	LAMPS NO	TYPE	DESCRIPTION	FINISH	HTA HT	MANUF. NO.
A	2	FSCW WM	SURFACE WRAP-AROUND FLUOR.	STD.	5'0"	LITHONIA LB-240A
B	2	FSCW WM	SURFACE WRAP-AROUND FLUOR.	STD.	5'0"	LITHONIA CB-240A
C	1	100W	RECESSD PORCELAIN LAMP HOLDER	STD.	6'0"	BRYANT S22B
D	1	100W	RECESSED CEILING W/FRESNEL LENS	STD.	R.C.	PRESOLITE 105HF-7
E	2	120V	BATTERY POWERED EMERGENCY LIGHT	STD.	5'0"	DUALITE ICL
EXIT	2	ST6	EMERGENCY EXIT LIGHT	ALUM.	6'0"	DUALITE MAF-58WW
RB1	1	100W	DIMMED ALUM. THRU PHOTOCELL	ALUM.	6'0"	PRESOLITE WB-2



ELECTRICAL PLAN

1/4" = 1'-0"

3470 SQ. FT.

HOMER MENTAL HEALTH CENTER
 DRAWN BY: KK
 O.M. GIER & COMPANY
 HOMER, ALASKA
 307-235-7284
 DATE: 9.9.83
 9 E 1

D. M. GIER & COMPANY

P. O. BOX 3670
HOMER, ALASKA 99603
(907) 235-7284

October 24, 1983

Ms. Jeanne Calkins, President
Board of Directors
Homer Mental Health Center
P.O. Box 2274
Homer, Alaska 99603

Subject: Homer Mental Health Center - New Building Construction

Dear Ms. Calkins and Board Members:

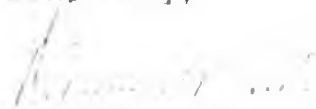
Our estimate of the additional cost involved for a deep foundation (i.e. piles under the footers) would be approximately \$25,000.00.

We submit this information to you so that provisions can be made in the budget for this type of foundation. A deep foundation may be required for this site to keep the settlement within tolerable limits.

Please call us if you have any further questions.

Thank you.

Sincerely,


Dennis M. Gier, P.E.
D.M. Gier & Company

DMG/jd

D. M. GIER & COMPANY

P. O. BOX 3670
HOMER, ALASKA 99603
(907) 235-7284

October 17, 1983

Ms. Jeanne Calkins, President
Board of Directors
Homer Mental Health Center
P.O. Box 2274
Homer, Alaska 99603

Dear Ms. Calkins and Board Members:


Enclosed is the Revised Soils Reconnaissance Report for the new Homer Mental Health Center.

This revision is a result of further discussion with Soils Engineers from Woodward-Clyde concerning the soft silt and peat layers found on the proposed building site. We want to emphasize that the foundation design for this site may require the use of deep foundations (i.e. piles under the footers) to keep settlement within tolerable limits.

We submit this additional information to you so that provisions can be made in the foundation design to accommodate the on-site soil conditions.

Please call us if you have any further questions. Thank you.

Sincerely,


Dennis M. Gier, P.E.
D.M. Gier & Company

DMG/jd

Encl:as

October 12, 1983

D. M. Gier Company
P. O. Box 3670
Homer, AK 99603

SUBJECT: Revised soils reconnaissance report for the proposed Homer
Mental Health Clinic located on Lot 12 & 13, Lakeside
Subdivision, Homer Recording District.

Dear Mr. Gier:

In accordance with your request, we have performed a limited soils reconnaissance on the subject property. In general we have found the site may be suitable for the proposed development provided the recommendations presented herein are incorporated into the project.

General Site Description

The site consists of two undeveloped residential lots bounded on the northerly and westerly sides by gravel surfaced roads. Vegetation consists of medium density spruce to 15-inch diameter. Undergrowth consists of tall grasses, some devils club and some alders. To the east of the properties is a small semi-defined drainage system. A utility corridor exists on the southerly boundary, where free standing water was noted during the site visit.

It is our understanding the proposed development will consist of a one story wood frame structure founded on concrete footing and block stem wall. Parking is to be provided on a gravel surfaced pad.



General Soils Conditions

Four backhoe trenches were excavated on the site on September 14, 1983 to a maximum depth of 11½ ft. Approximate locations of the trenches are shown on Figure 1. Soils encountered consisted primarily of soft clayey silts, fine sands and peat. A distinct layer of un-decomposed trees and branches was encountered in trenches 2, 3 and 4 at depths ranging from 3½ to 6 ft. Logs of the trenches are shown on Figures 2 - 5.

Water flowed into all four trenches during excavation. Flow rates were low enough to allow continued excavation and inspection of the trench walls. The highest observed flowing water is indicated for each trench on the logs. Water levels may vary considerably, depending on several factors including rainfall. Water levels on site can be expected to rise to near or on the current ground surface.

Two in-place density tests were performed on the site in representative soils near the foundation bearing level. In addition, two samples were obtained for moisture contents. Results of all the tests performed are presented in Table 1. The soils were saturated and loose.

Recommendations

Three conditions warrant special attention during the development of the site 1) high water, 2) the buried un-decomposed organic layer, and 3) the lower soft silt and peat layers. Each condition will be discussed and alternatives presented.

High water table conditions on the building site can lead to foundation troubles. Problems include water seepage into the crawl space and hydrostatic pressure on the footing stem wall. Design of

waterproofing and a perimeter drain for the foundation to eliminate water seepage should be incorporated into the plans. The stem walls for the foundation should also be designed to resist hydrostatic pressure. Because of the high water conditions footings should also be designed for buoyant conditions.

The buried un-decomposed organic layer could cause excessive settlements if footings are founded just above the layer. It appears that the organic layer extends over most of the site, but not at uniform depth. The footings should extend below the upper organic layers and the footings should be designed to accommodate the differential settlement that may result from the compression of the lower organics and soft silt layers. It may be necessary to use deep foundations, i.e. piles to keep settlements within tolerable limits.

Due to the limited nature of the reconnaissance predictions of water conditions and settlement cannot be estimated. Residential development on neighboring property was observed and noted that no special considerations were taken beyond waterproofing and the possibility that a drain system was going to be installed. This observation does not mean those residences 1) have identical soils conditions especially with the un-decomposed organic layer or 2) that they will provide trouble free conditions over the life of the structure. Free standing water was observed at about 1 foot below the ground surface.

Also due to the limited nature of our study no considerations were given to a seismic response of the site. In general wood frame structures behave well, however, loose saturated sands, of which pockets were observed may experience extreme loss of strength and large settlements. If seismic design is desired, additional site work and laboratory testing will be required. We will be glad to assist you in putting together an additional program to meet your needs, if desired or required.

If large settlements are a concern, additional work should include consolidation testing of selected samples and analyses to determine an appropriate foundation system to limit settlements.

We understand your current budget limitations and hope you understand the limitations that has placed on us. If there are any questions regarding this report, please do not hesitate to contact us at your convenience.

Sincerely,

A handwritten signature in cursive script, appearing to read "Keith Mobley".

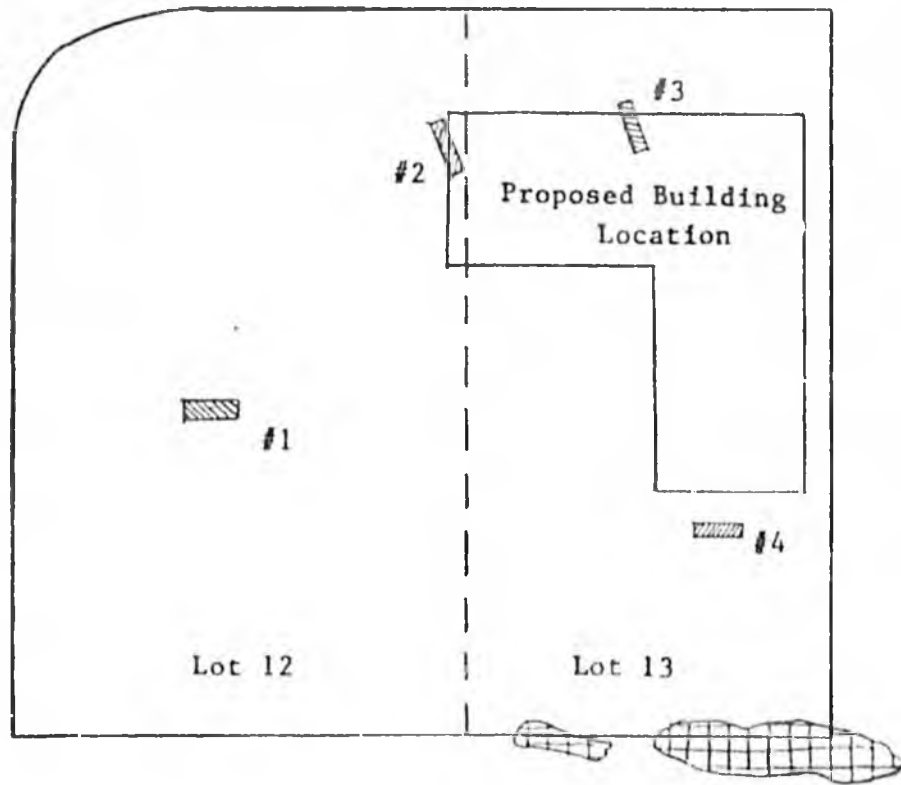
Keith Mobley
Sr. Staff Engineer



Table 1

Density Test	Dry Density	Moisture Content (%)
Hole 1 at 6 ft.	75 pcf	44
Hole 2 at 4 ft.	65 pcf	65

Moisture Contents (%)

Hole 2 at 9½ ft.	145
Hole 3 at 9 ft.	43



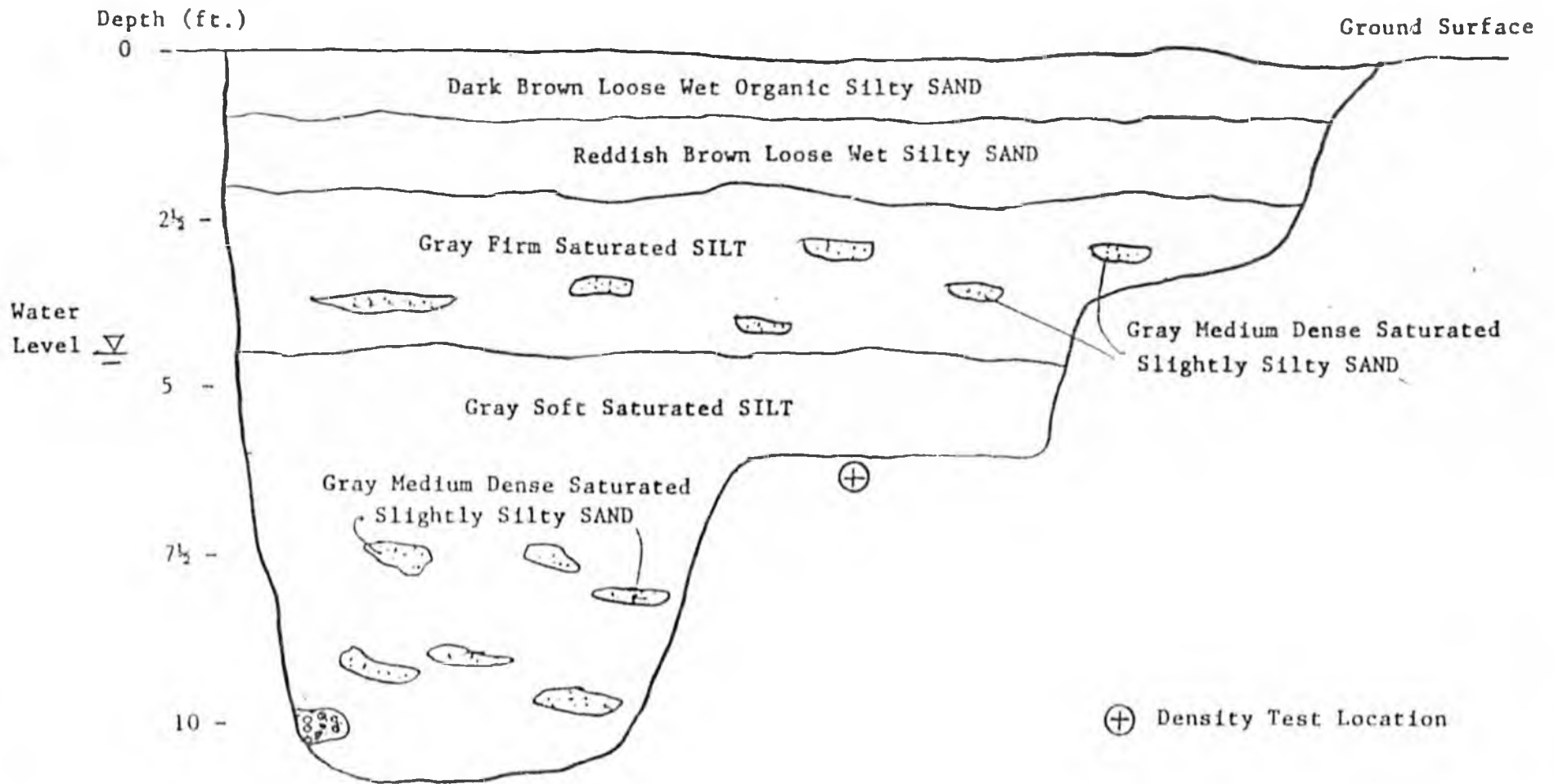
-  Approximate Area of Free Standing Water
 -  Approx. Location of Trenches
- Approx. Scale 1"=40'

Homer Mental Health Clinic
Site Plan

Woodward-Clyde Consultants

Figure 1

South Wall



Homer Mental Health Clinic

Test Hole 1

Woodward-Clyde Consultants

Figure 2

West Wall

Ground Surface

Depth (ft.)

0 -

Dark Brown Loose Wet Organic Silty SAND

2½ -

Reddish Brown and Gray Soft Saturated Sandy SILT with Organics

Water Level ∇ 5 -

Gray Very Soft Saturated SILT

Gray Loose Saturated Fine SAND

Un-decomposed Wood

7½ -

Brown Soft Saturated PEAT

with some Silty SAND

10 -

Gray Firm Saturated Sandy Clayey SILT
with Cobbles to 12 inches

⊕ Density Test Location

⊕ Jar Sample Location

Homer Mental Health Clinic

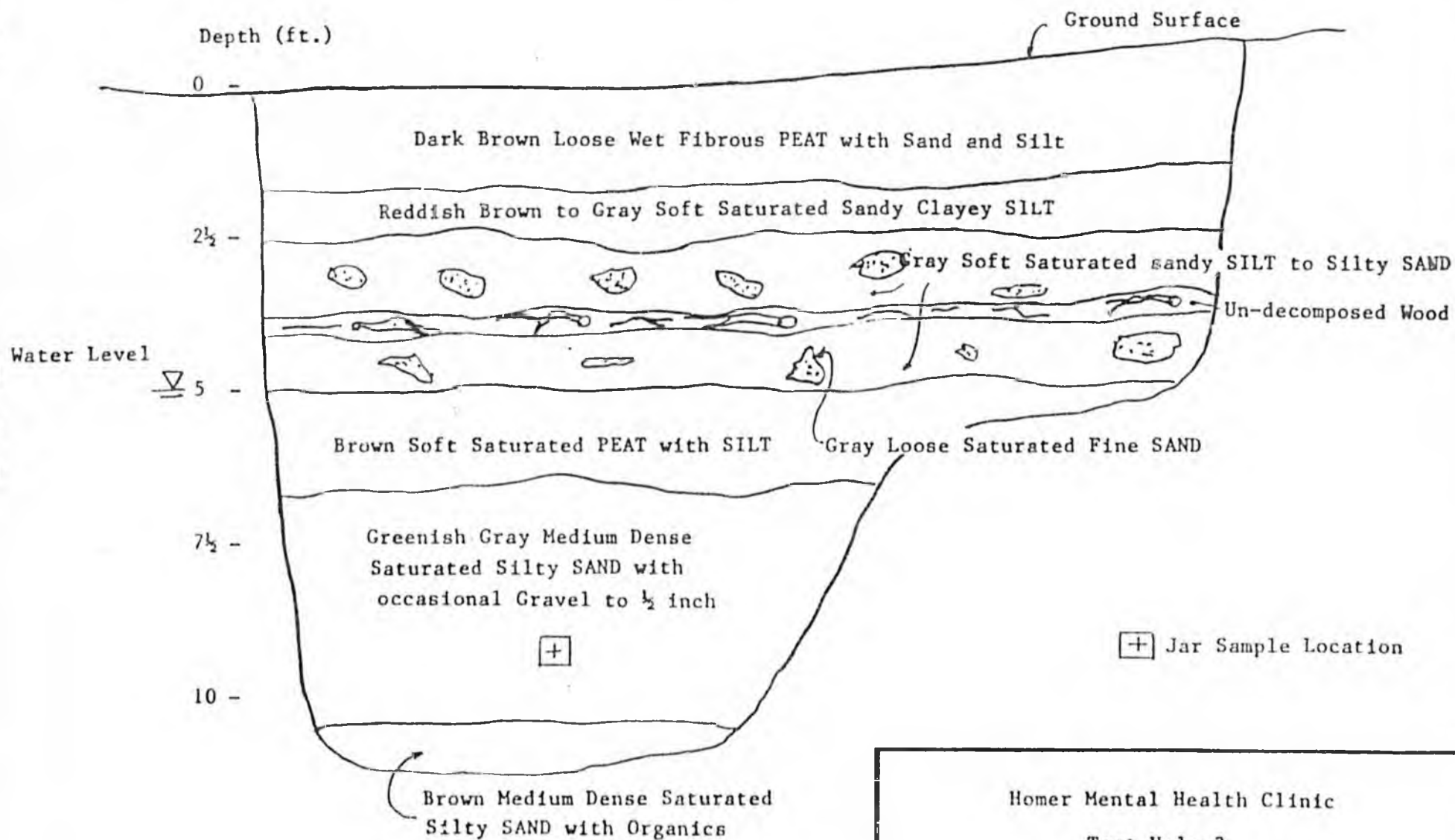
Test Hole 2

Woodward-Clyde Consultants

Figure 3



West Wall



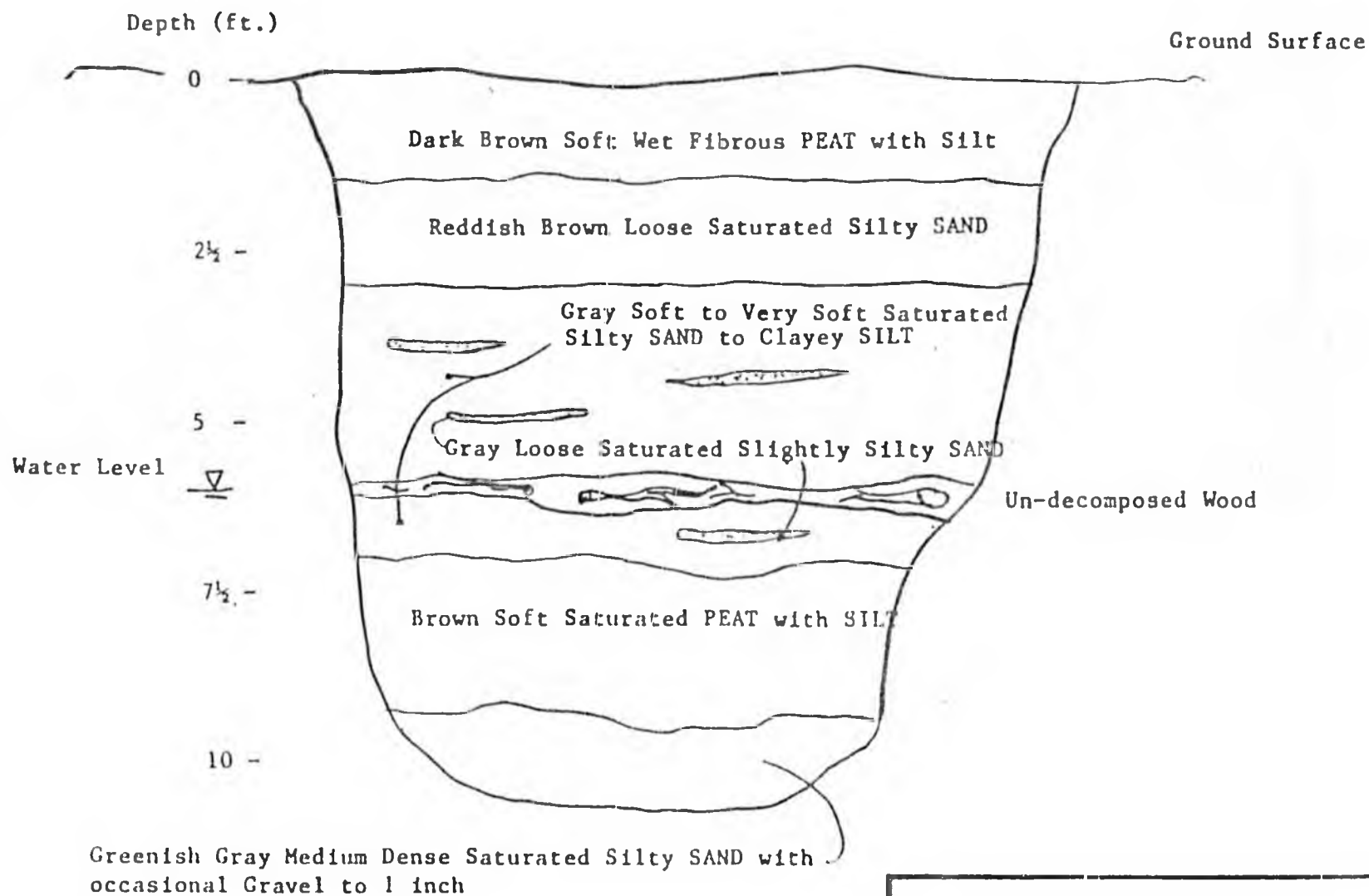
Homer Mental Health Clinic

Test Hole 3

Woodward-Clyde Consultants

Figure 4

North Wall



Homer Mental Health Clinic
Test Hole 4

Woodward-Clyde Consultants

Figure 5

HOMER MENTAL HEALTH CLINIC

SPECIFICATIONS

by: David Garcia

TABLE OF CONTENTS

	Page Number
I. EXCAVATION	3
II. FOUNDATION	4
III. ROUGH CARPENTRY	5
IV. WOOD TRUSSES	6
V. FINISH CARPENTRY	7
VI. DOORS AND WINDOWS.	8
VII. HARDWARE	8
VIII. GYPSUM WALLBOARD10
IX. CERAMIC TILE11
X. FLOOR COVERING12
XI. PAINTING AND FINISHING12
XII. TOILET AND BATH ACCESSORIES.14
XIII. CABINETS14
XIV. PLUMBING15
XV. INSULATION16
XVI. FLASHING AND SHEETMETAL.17
XVII. APPLIANCES17
XVIII. BLINDS17
XIX. ELECTRICAL18
XX. HEATING19

1. EXCAVATION

A. GENERAL

1. The contractor is to familiarize himself with the existing site conditions and information from the soils survey.
2. The owner will provide soil inspection service during earthwork operation.

B. TYPES OF FILL

1. Well-graded, non-frost susceptible material consisting of sand, gravel, or broken stone containing less than four percent of grains less than 0.02 mm. Materials shall not exceed four inches on any dimensions - except in the top six inches under footings, no size greater than one and one-half inch. All materials to be free of frozen lumps, rubbish, and organic matter.
2. Material noted as D-1 to meet the gradation and fraction specifications for Alaska Highways D-1 base course.

C. EXCAVATION.

1. Finish floor elevation to be determined in the field upon examination of existing site conditions and drainage considerations. Provide drainage for footers and run drain tile to daylight.
2. All footings shall bear on compacted backfill or in-place material at minimum depths called for on drawings.
3. Keep foundation bearing areas dry and free from frost. In the event bearing surfaces are softened by water or frost, re-excavate to approved bearing material and backfill to correct elevation with compacted backfill as specified.
4. Where excavations are carried below required depths, backfill to designated elevations with compacted backfill as specified at no charge to the contract sum.
5. Shore banks of excavations sufficiently to prevent caving. Remove all shoring before backfilling. All excavation shall be done in a manner which will create a minimum hazard and in accordance with applicable safety rules.

D. DEWATERING

1. Prevent surface and subsurface water from flowing into excavations. Do not allow water to accumulate in excavations. Remove water using methods which will prevent softening of foundation bottoms.
2. Provide and maintain pumps, sumps, discharge lines, and other components to carry water away from the excavations.

E. COLD WEATHER PROTECTION

1. Protect excavation and fill material against freezing. Do not place frozen fill material.

F. BACKFILL

1. Backfilling may be done with existing material if available and in accordance with plans.
2. Place backfill in accordance with soils report.
3. Place backfill so as not to damage structure, drain tile or utilities.
4. Provide foundation drainage system as shown on drawings.

G. COMPACTION

1. Compact all backfill with an approved vibratory compactor, and as recommended in soils report.

H. GRADING

1. Uniformly grade, form to smooth transition lines.
2. Grade areas adjacent to building lines to drain away from structure.
3. Protect newly graded areas from traffic and erosion. Keep free of trash and debris.

11. FOUNDATION

A. GENERAL

1. The contractor must examine the substrata and the conditions under which the concrete reinforcement is to be placed. Do not proceed with work until unsatisfactory conditions have been corrected.
2. Comply with requirements of the Uniform Building Code and Concrete Reinforcing Steel Institute's "Manual of Standard Practice."
3. Store concrete reinforcement materials at the site to prevent damage and accumulation of dirt or excessive rust.
4. All reinforcing for concrete to be in any one day must be placed, tied, inspected and approved by owner before any concrete is cast. Notify at least 24 hours prior to concrete placement.
5. Cast no concrete when temperature is below 40 degrees F. or can be expected to fall below 40 degrees F. in the next 24 hours, unless approved special provisions have been made for maintaining heat around pour.

B. FOOTINGS

1. Place two #5 rebar as shown on drawings.

C. CEMENT

1. 3,000 psi compressive strength.
2. Five and one-half sacks cement per cubic yard, minimum.
3. Six gallons of water per sack, maximum.
4. Three inch slump, maximum.
5. Three-quarter inch maximum aggregate.

- D. Place anchor bolts as indicated on drawings and as required to secure each end of plate at corners. Place vertical bond steel.
- E. Use mechanical vibrating equipment for consolidating concrete.
- F. CONCRETE MASONRY UNITS
 - 1. Use 8"x8"x16" concrete block.
 - 2. Cement - Standard brand of Portland cement.
 - 3. Sand - Clean, sharp, fresh water.
 - 4. Water - clean, potable.
 - 5. Lime - "Slick" or "Miracle" brand, or equal.
 - 6. Reinforcement, as shown on drawings.
 - 7. Place anchor bolts as shown on drawings and as required by codes, and to catch both ends of plate at corners and within 12 inches of each end of plates at end joints.
- G. MORTER MIXING
 - 1. Measure each batch accurately and mix with machine:
 - One cubic foot of Portland cement,
 - One-quarter to one-half cubic foot of lime,
 - Two and one-half cubic feet of sand.
- H. LAYING UNITS
 - 1. Lay all units with full bed of mortar, common running bond. Shove into place. All horizontal joints to be level on each course. Bond all right angle connections. Internal angles bonded.
 - 1. Foundation wall to be smooth and free of mortar on exterior surfaces to accept moisture seal treatment.
- J. Seal block with Conklin "Wall-up" as recommended by manufacturer.
- K. Protect masonry work and moisture barrier treatment from freezing during curing period.

III. ROUGH CARPENTRY

- A. QUALITY CONTROL
 - 1. Grading rules: Standard grading and dressing rules of the West Coast Lumberman's Associations latest edition. Each piece of yard and structural lumber shall bear official grade mark of appropriate bureau or association.
 - 2. Protect lumber and plywood from damage by weather.
 - 3. Do not allow splash from eaves to stain unfinished siding.
 - 4. Workmanship: Plumb, level, and true to lines, close-fits with nailing as shown or minimum as specified in sections 2517 and 2518 of 1979 Uniform Building Code.

B. MATERIALS

1. Framing lumber: Douglas Fir, Coast region or Hem-Fir, Standard grade or better.
2. Plywood: Plywood sheathing shall be APA Exterior Grade "D-D" Douglas Fir Plywood of thickness and type indicated on the drawings.
3. Plates: Plates and studs anchored to masonry with one-half inch galvanized anchor bolts 48 inches on-center maximum or four power driven stud fasteners at three inch on-center maximum. Single plate at floor; double at ceiling. Plates adjoining masonry must be AWWF.
4. Joists and rafters: set crown side up. Double headers and trimmers.
5. Bridging: Solid blocking on 1"x4" cross bridging (or pre-fab metal) no more than eight feet on center.
6. Fasteners: Bolts, washers, lags, nails or other fasteners shall be hot-dip galvanized when exposed to weather or moisture. All fasteners into concrete or masonry to be galvanized. Use only galvanized nails on exterior siding. All fasteners used in preserving treated wood to be stainless steel.

C. INSTALLATION

1. Execute rough carpentry using best industry practices. All lines to be straight and true.
2. Install framing at spacing shown on drawings or as required. Block or back for plumbing fixtures and other equipment secured at walls and ceilings. Double studs at all openings, triple at corners. Provide solid backing for all door stops.
3. Headers shall bear on at least one cripple stud for space up to six feet, not less than two cripple studs for space greater than six feet. Place one full height stud adjacent to each end of header next to cripple studs.
4. Joists and beams to be laid crown up.
5. Do not notch or drill in the middle one-third of span on joists or bearing studs.
6. Tolerances:
 - Top of bearing plates - \pm one-quarter inch in ten feet.
 - Wall divisions and openings: \pm one-quarter inch.
 - Wall bowing or warping: \pm one-quarter inch in ten feet.
 - Stud alignment: $\frac{1}{8}$ th inch from two adjacent studs.

IV. WOOD TRUSSES

- A. All trusses shall be Gang Nail wood trusses, factory built using stress graded lumber bearing the proper grade mark stamp of a recognized grading association. Connectors shall be galvanized Gang Nail connectors, and shall be stamped "Gang Nails." The trusses shall be inspected by the contractor during installation to see that all connector plates are pressed fully into the wood. Trusses to be designed by manufacturer to support minimum fifteen pounds dead load plus thirty pounds live load per square foot.

B. INSTALLATION

1. Truss shall be handled and stored in a manner which they are not subject to damage. Sufficient bearing points and/or bracing shall be provided to prevent excessive lateral bending or tipping over.
2. Framing anchors shall be provided by the contractor in accordance with the plans.
3. The truss system shall be braced during erection to prevent toppling or dominoing of trusses, and permanently braced to form complete structural truss system.
4. During the entire construction period, all contractors shall adequately distribute loads so that the carrying capacity of any one truss or member is not exceeded.
5. All erections and permanent bracing shall be installed and all components permanently fastened before the application of any loads.

V. FINISH CARPENTRY

A. MATERIALS

1. Doors: Pre-hung, tan oak, solid or hollow core as indicated on drawings. Oak veneer jambs.
2. Door casing: Solid oak.
3. Window trim: Oak veneer.
4. Paneling: one-quarter inch real wood - Champion "Woodland Ash."
5. Storage shelving: three-quarter inch AC plywood, 1"x3" pine face and supports.
6. Book shelves: Solid oak frame, 1"x12" fir shelves, three-quarter inch oak veneer sides.
7. Exterior trim: Cedar.

B. INSTALLATION

1. All work to be true, plumb, level unless otherwise shown. Scribe fits, hairline joints, scarfed and mitered running joints, neat and accurate.
2. Nailing: finish nails for mill work; blind nail work if possible; set surfaces nails; paneling nails to match.
3. Glue joints with permanent synthetic glue. Mollings mitered at corners, coped at angles.
4. Exposed surfaces to be sanded to smooth, even surfaces, ready to finish. All nails set one-sixteenth inch deep. Ease all edges one-sixteenth inch radius. Fill all nail holes.
5. Set exterior trim in waterproof caulking as necessary for waterproof installation. Use silicon caulk.

VI. DOORS AND WINDOWS

A. EXTERIOR METAL DOORS

1. To be equal to Pease Ever Straight door system. Size and type as scheduled on drawings. Provide complete door system, including frame, threshold, and all hardware. Weatherstripping to be magnetic type. Provide exit sign. Front entrance: Pease crossbuck with glass. Other entrances: Pease E-1.

B. INTERIOR DOORS

1. See door schedule. See painting and wood finish schedule.
2. All interior hollow core and solid core doors shall be Tan Oak with oak veneer jambs and solid oak casing. All doors adjacent to hallway and reception area shall have smoke seal and twenty minimum U.L. label.

C. DOOR INSTALLATION

1. Install all doors and hardware as specified, provide level and free swinging operation. Doors to fit tightly without binding or excessive play.

D. WINDOWS

1. All windows to be "Hurd" aluminum clad wood windows with "Heat Mirror" film. Casement type and as shown on drawings. Provide fiberglass screens.
2. Exterior fixed glass to be seven-eighths inch double pane, three-sixteenths inch glass.
3. Interior fixed glass to be one-way type one-quarter inch plate.

E. WINDOW INSTALLATION

1. Install in rough openings, shim for alignment and tight fit, level and straight. Use standard factory nailing flanges where required. Caulk all around for weather tight installation. Stuff spaces with fiberglass insulation before application of vapor seal and sheetrock. Set exterior trim in bed of silicon caulk to insure weathertight installation.

VIII. HARDWARE

A. MATERIALS

1. Lawrence, Stanley, or McKinney butts.
Sizes: 1-3/4" exterior for 5"x4-1/2".
1-3/4" interior doors 4-1/2"x4-1/2".
To obtain maximum degree on openings, butts shall be as required to clear projecting trim or structural conditions.
2. Quantity: One and one-half pair butts each exterior door, each solid core interior door, and each hollow core door.
3. Locksets: Sargent six line. Bronze finish. Provide keyed locks at each exterior door and janitorial. Passage locks elsewhere. Provide dead bolt at rear and front doors.

4. Door Closures: Provide door closers as indicated on door schedule. Closure to be Sargent 1250 Series. Verify for type of installation. Furnish cold weather fluid.
5. Mop and kick plates to be Sargent eight inches high stainless steel. All plates shall be furnished with width as required to provide one-quarter inch of clearance at sides of door on stops or weatherstripping.
6. Door stops: provide door stops at all doors. Sargent, Johnson, Quality, Builders Brass, or Ives. Where wall stops are not applicable, furnish floor stops. Install proper backing at all stop locations.
7. Keying: System by owner. All locks to be master keyed. Furnish two keys per lock or cylinder, and four construction master keys. Return all master keys.

B. INSTALLATION

1. Provide solid blocking for all stops.
2. Fasteners: Check all conditions and use fastening devices as needed to securely anchor all hardware as per manufacturers published templates. Self tapping sheet metal screws are not acceptable. All closures on wood doors shall be through-bolted.
3. Mounting heights: Mount units at height recommended in "Recommended Locations for Builders' Hardware" by NBHA, except as otherwise indicated.
4. Install each hardware item in compliance with the manufacturers instructions. Wherever cutting and fitting are required to install hardware surfaces which will be painted or finished at a later time, install each item completely and then remove and store in a secure place. After completion of the finish, reinstall each item. Do not install surface mounted items until finishes have been completed on the substrate.
5. Adjust and check each operating item of hardware and each door to insure proper operation or function of every unit. Replace units which cannot be adjusted to operate freely and smoothly or which are warped or damaged.
6. Coordinate all boring, backset, tapping information with door suppliers or others applicable.
7. Wherever hardware installation is made more than one month prior to acceptance or occupancy, make a final check and adjustment of all hardware items during the week prior to acceptance or occupancy. Clean and lubricate operating items as necessary to restore proper function and finish of hardware and doors. Adjust door control devices to compensate for final operation of heating and ventilating equipment.
8. All hardware to be installed by experienced tradesmen using top quality techniques. All finish hardware shall be guaranteed against defects in workmanship and materials and operation for a period of one year, backed by a factory guarantee of the hardware manufacturer, except the door closures shall be so guaranteed for five years. No liability shall be assumed by the hardware supplier where faulty operation is due to improper installation or failure to exercise normal maintenance.

VIII. GYPSUM WALLBOARD

A. MATERIALS

1. Wallboard: See details and floor plan for thickness. Apply behind panelling locations. In all wet areas such as toilets, custodial, and kitchen, use moisture resistant type board throughout. All exposed gypsum wallboard to have paper face suitable for painting.
2. Trim: Provide metal beads and trim as required for finish corners and edges as shown on drawings and as follows: finish edges and edges abutting other materials, USG #200A; at outside corners, USG "Dur-A-Bead."
3. Joint system: "Pref-A-Tape" System by U.S. Gypsum Company, or equal.

B. INSTALLATION

1. When outdoor temperature requires, heat shall be maintained in the building continuously and uniformly at not less than 55 degrees F. from one week prior to installation until wallboard application and joint treatment is completed. Installation shall not be started until windows are glazed and exterior doors installed, unless openings are temporarily closed. Provide ventilation, either natural or forced to remove excess moisture during joint treatment.
2. Review work prior to sheetrocking to insure that all framing, blocking, insulating, plumbing, electrical, and plumbing & electrical protective plates have been finished and installed properly.
3. Comply with manufacturers requirements for fire resistance ratings.
4. Use wallboard of maximum practical lengths horizontally or vertically. Bring boards into contact, but do not force into place. Where ends or edges abutt, fit neatly. Ends of all wallboard shall meet over nailing members. Joints on opposite sides of wall shall meet on different studs. Attach wallboard with one inch Hi-Lo screws, USG Type S and/or one and one-quarter inch USG brand screw type W, or one and three-eighths inch annular ring nails, spaced not more than 12 inches on center for framing 24 inch on center, and 16 inches on center for framing spaced 16 inches on center.
5. Space fasteners at least three-eighths inches from edges and ends of wallboard. Fasteners on all framing members shall be spaced and driven as recommended for specified fastening method. While driving fasteners, hold wallboard in firm contact with underlying support. Attachment shall proceed from central portion of wallboard towards ends and edges.
6. Install corner beads on all exterior corners, attach with suitable fasteners at nine inches on center, on both sides. Use single lengths.
7. Install metal trim over wallboard, at all locations where board terminates with exposed edge or abutts other materials. Attach with suitable fasteners nine inches on center, in single lengths.
8. Fasten all metal using drywall screws, or nails as recommended by manufacturer.

9. Upon review, installed drywall should look clean, neat, with close cuts around boxes and windows, etc., small gaps at corners. All broken edges etc. should be peeled back and ready for repair by taper. In general, it should have a professionally applied appearance.
10. Scrap out building and clean for taping contractor.

C. JOINT TREATMENT

1. Mix joint treatment compounds according to manufacturer's directions.
2. Apply thin, uniform layer of taping compound to all joints and angles to be reinforced. Apply reinforcing tape immediately, centered over joint, seated into compound. Follow with skim coat immediately, but not as a fill or second coat. Fold tape properly and embed in all angles.
3. After taping compound has hardened, apply taping compound, filling board taper flush with surface. Fill coat shall cover tape and feather out slightly beyond taper. On joints with no taper, fill coat shall cover tape and feather out at least four inches on either side of tape. No fill coat is necessary at interior angles.
4. After taping compound is dry, spread finishing coat of taping compound evenly over and extending slightly beyond fill coat on all joints and feathered to a smooth, uniform finish. All taped angles shall receive a finish coat to cover tape and taping compound, and provide a true angle. Sand between coats and after final application of compound to provide a smooth surface ready for decoration.
5. Apply taping compound to all fastener depressions followed, when hardened, by at least two coats of taping compound leaving all depressions level with plane of surface.
6. Apply taping compound to all bead and trim feathered out from ground to plane of surface. When hardened, follow by two coats of taping compound applied separately and allowed to dry between coats. Feather finish coat from ground to plane of surface and sand to provide a flat smooth surface ready for decoration.
7. All gypsum wallboard to be taped and finished unless concealed. Concealed gypsum board to be fire taped.
8. All gypsum board to receive light orange peel knock down type texture, except restrooms, janitorial and storage which will receive smooth surface.

IX. CERAMIC TILE

- A. Provide and install ceramic tile as shown on drawings.
 1. Comply with applicable requirements of American National Standard Institute (ANSI) A108.1, A108.4 and A108.5, and recommendations of the Tile Council of America, Inc. (TCA) "Handbook for Ceramic Tile Installation." Comply with the manufacturer's instructions for the installation of each material.
 2. Two inch square ceramic mosaic porcelain tile at shower.
 3. Build up shower floor with mortar bed to provide slope, include shrinkage mesh, allow for final setting bed.
 4. Provide for soap dish.
 5. Ceramic tile shower walls, ceiling, floor, returns, etc. as shown on drawings. Use trim pieces as necessary for finished installation."

X. FLOOR COVERING

A. RESILIENT FLOORING AND CARPET

1. Vinyl: Mannington Aristocon - color by owner.
2. Carpet: Columbia Innovation and Classic Stripe - 100 percent Oliphin.
3. Pad: Five-eighths inch FHA pad.
4. Adhesives: As per manufacturer's recommendations.
5. Rubber base: Use premolded corners and end stop units; smooth finish; four inch high, set on cove type; light brown color.

B. INSTALLATION

1. Provide reducing strips at exposed edges of resilient flooring and at change from resilient to other floor finish. Anchor strips solidly as per manufacturer's recommendations.
2. Extend resilient flooring into closets and offsets and under movable equipment scheduled to receive resilient flooring. Extend unexposed edges of flooring under set-on bases and similar trim work.
3. Thoroughly clean all floor covering not more than four days before acceptance or occupancy by the owner.
4. Protect floor coverings from damage and from normal wear and tear throughout construction period so that it will be without indications of use or damage at the time of acceptance by the owner.
5. Carpet and resilient flooring to be installed by a professional installer. Invisible, sealed, tight, hairline seams. Carpet to be stretched with power stretcher where applicable.

XI PAINTING AND FINISHING

A. GENERAL

1. It is the intent of this section to provide finish for all materials factory primed or unfinished unless specifically stated as not requiring finish. Omission of specific surfaces from "Room finish" schedule is not to be interpreted to mean that finish is not required.
2. Contractor is responsible for finished appearance and satisfactory completion of this work. Do not commence any painting until surface to be painted is in proper condition in every respect. If for any reason surface cannot be properly prepared by customary cleaning, sanding, or puttying operations, report condition to the owner. Proceeding with the work constitutes acceptance of the surface by the subcontractor.
3. Do not paint when the air is dust laden nor when weather and temperature conditions are unsuitable. Maintain temperatures within the building at a minimum of 60 degrees F. during the painting and drying periods. Do not paint exterior surfaces in damp or rainy weather, nor when the temperature is below 50 degrees F. Comply with the manufacturer's recommendations when they are more stringent with respect to application temperatures.

B. PROTECTION

1. Place paint or solvent soaked rags, waste, or other materials which might constitute a fire hazard in metal containers and remove from premises at the close of each day's work. Take every precaution to avoid damage by fire.
2. Provide suitable coverings to protect work, the work or others, and adjacent surfaces and objects.
3. Remove or protect items such as hardware, hardware accessories, lighting fixtures and similar items placed prior to painting. Reposition or remove protection upon completion of each space. Disconnect equipment adjacent to walls by workmen skilled in these trades to permit painting of wall surfaces, replace and reconnect after completion of painting.

C. MATERIALS AND APPLICATION - EXTERIOR

1. Exterior body: Olympic Transparent Stain #718 to be roller or brush applied. Stain may be spray applied if followed with wet roller or brush to work stain into wood surface. Application by airless sprayer alone will not be allowed. Apply two coats.
2. Exterior trim and cedar: Behi "Liquid Rawhide". Apply with brush. One coat tinted, two coats clear.
3. Metal doors: Two coats Fuller O'Brien Enamel - color by owner (Coco Brown).
4. Wood deck: oil preservative.

D. MATERIALS AND APPLICATION - INTERIOR

1. Gypsum wallboard surfaces: one coat acrylic latex sealer, two coats Fuller O'Brien semigloss enamel. Apply sealer after taping, before texture is applied. Let dry, apply texture, let dry, finish with paint: (P-2) one coat acrylic latex sealer, two coats Fuller O'Brien gloss enamel.
2. Transparent stain on wood surfaces:
Oak and other hardwoods - sand smooth and stain with "Daly's" penetrating stain. Brush on and wet sand with #400 wet or dry paper. Let soak at least five minutes, or as required for desired effect. Let dry, then apply two coats Daly's Den-Matt clear Danish oil. Apply each coat in liberal amounts, let soak and wipe off excess.

Fir and other softwoods - sand smooth, then apply "Daly's" clear Penelac Sealer. Let dry. Apply stain as above (no sanding). Wipe after stain has soaked for color. Apply two coats oil as above.

Storage shelving - one coat primer, two coats Fuller O'Brien high gloss enamel.

XII TOILET AND BATH ACCESSORIES

A. DESCRIPTION - ACCESSORIES

1. Cabinets and mirrors:

Men's and women's - one-quarter inch plate mirror, 24 inch x 36 inch.

Staff bath - one-quarter inch plate mirror, 24 inch x 36 inch.
Medicine cabinet - 14 inch x 24 inch recesses with mirror; model #P1510-OA-P, as manufactured by Perma Bilt.

2. Towel bar: all towel bars to meet standards of grab bar. Conform to DBC, Section 1711b. One and one-quarter inch outside diameter pipe, stainless steel type 304, #4 satin finish. Location shown on drawings. Supply solid backing.
3. Toilet paper holders: all baths, recess mounted double roll holder as manufactured by Bobrick.
4. Towel dispensers: all baths, as manufactured by Bobrick.
5. Grab bar: see floor plan and interior elevations. Two each, men's and women's, #352-24inch straight grab bars as manufactured by Bobrick.
6. Shower door: 24 inch wide aluminum =/obscure glass shower door.

B. GENERAL

1. Assumes that all required backing and/or concealed anchors are in place, that all surfaces to receive accessories are suitable for quality installation.
2. Install all accessories in exact compliance with manufacturer's printed directions, where shown on drawings and securely fastened to solid backing.

XIII CABINETS

A. KITCHEN cabinets and bath cabinets by Pacific Cabinet Corporation. Solid oak doors and rails, raised panel doors. No pulls. Nutmeg color.

B. LAMINATED plastic countertops. Preferred with factory end caps and splash as required. Formica or Wilson Art, color by owner.

C. INSTALLATION

1. Verify that interface surfaces are plumb, straight, and true; solid, rigid, and in all ways acceptable to install as a base for quality cabinet work installation. Verify field dimensions.
2. Assemble cabinets according to printed directions.
3. Secure cabinets in place, plumb, level, square and true without distortion. Level with concealed shims if required.
4. Scribe face plates, backsplash, filler strips and trim strips to adjacent walls.
5. Secure top in place.
6. Insure that doors, drawers, and other moving parts operate freely and correctly.

A. GENERAL

1. Install all plumbing in conformance with the Uniform Plumbing Code, Uniform Mechanical Code and all amendments by local authority.

B. DOMESTIC HOT WATER AND COLD WATER PIPING

1. Rigid copper tubing type "L" with copper or bronze sweat fittings, and copper to IPS adapters.
2. Provide unions adjacent to each valve, where connected to equipment. Use isolation unions between dissimilar materials.
3. Use soft drawn type "K" copper with compression fittings or silver soldered joints below grade.
4. Grade all plumbing towards a low spot in the system, if possible, and provide with one-half inch hose and drain valve, with removable key.
5. Test all water piping hydrostatically at one and one-half times the pressure found at the site or 80 psi minimum, for four hours. It is the responsibility of the plumbing contractor to see that the system is tight. Any damage to the building caused by a faulty plumbing system shall be the responsibility of the plumbing contractor. Do not cover piping until test requirements are satisfied. Install metal plumbing protectors where plumbing comes within 3/4" of framing surfaces where sheetrock is to be installed.

C. SANITARY DRAIN, WASTE AND VENT PIPING

1. All underground pipe and fittings shall be cast iron "No Hub" service weight with "No Hub" fittings and joints.
2. Inside building - Pipes 2" and less shall be ABS. Over 2" shall be "No Hub" cast iron with "No Hub" fittings and joints.
3. Support all stacks at base.
4. Cleanouts - Where shown, required by code or necessary for maintenance.
5. Test in accordance to Uniform Plumbing Code. Do not cover until requirements are satisfied.
6. Horizontal Drain lines shall have a uniform slope of 1/4" per foot toward point of disposal.
7. Provide vents for all traps. Vents maybe joined 6" above flood rim of fixtures they serve, and collected for the run up to the roof. Observe vent signing per UPC when collected. Vents above heated spaces must be insulated with 1" fiberglass.
8. Extend vents 24" above roof. Increase vent two pipe sizes, 24" below roof penetration. Support vent with clamp to structural member within 6" of roof penetration.
9. Cleaning of domestic water supply: All fixtures and piping using potable water shall be flushed with clean water. Fill entire system with liquid chlorine solution so that the resulting solution in the piping, etc. is at least 50 PPM chlorine. All valves in the system shall be operated three times. Leave solution in contact with systems for 24 hours. Flush thoroughly with clean water, operating valves until no more than one PPM chlorine is obtained.

10. Install all fixtures per Manufacturer's written instructions. Observe clearances required by Code and for Maintenance.
11. All fixtures with water service shall have an 18" air cushion in line and near stop or valve.

D. FIXTURES TO BE KOHLER OR AMERICAN STANDARD

1. Toilets - Flush tank, white, Kohler-Wellworth Waterguard. Seatcover - Olsanite 30 TM. 50°F tempering valve.
2. Men's and Women's wall-hung lavatory - K-2731-B Tuanton - 16 X 14" with K8040-T faucet.
3. Staff bath - Round, countertop white lavatory - Kohler K2910. Faucet - K-8040-T.
4. Stops - Speedflex at all fixtures.
5. Drinking fountain - Kohler K5293A
6. Water heater - Electric 50 gallon.
7. Service sink - Swan-MFS 1-W - Single wall mount fiberglass laundry tub - Faucet - Bradley H6621

XV INSULATION AND MOISTURE BARRIERS

I. MATERIALS

- A. Foundation walls - 2" thick blue styrofoam S.H. Board, installed outside.
- B. Walls - 3½", 2lb. urethane foam for R25 - Foam to be sprayed in place.
- C. Floors - Owens Corning 9" Batts - support with wire insulation supports.
- D. Ceiling to be cellulose insulation blown in 12" thick - R-38.
- E. Sound insulation to be 3½" Owens Corning Fiberglass. "Noise Barrier Batts". Install in corridors, toilet rooms, and as scheduled on drawings for sound rated walls.
- F. Vapor barriers to be "Visqueen" six mill polyethylene sheet.

II. INSTALLATION

- A. Install thermal insulation at locations shown on drawings and as required. Fluff insulation as necessary, leave no voids or pockets. Chink small areas full. Provide complete thermal envelope. Support as required.
- B. Install vapor barriers on warm side of framing. Staple to studs, overlap joints 4" minimum. Cut neatly around penetrations, tape with duct-tape to maintain tight seal. Provide complete envelope of vapor barriers.

XVI. FLASHING AND SHEET METAL ROOF

- A. THE EXTENT OF FLASHING ON OTHER METAL WORK IS SHOWN ON DRAWINGS
- B. Metal Roof by Gifford Hill - Pro Pand II 29GA - brown color.
 - 1. Install as per Manufacturer's specifications, providing all necessary trim. Including - formed ridge and bottom and top closure strips.
- C. Flashing @ sill - Special order from Gifford Hill - 20 quage galvanized steel, color - brown to match roof.
- D. Gutters - Northwest Metal Products Co. Stylek Galvanized Gutters 26 gallon - brown color.
 - 1. Install as per Manufacturer's specifications.
 - 2. Ferrells and nails @ 2¢ O/C.
 - 3. Supply all connections, ferrells, nails, straps, caulk, etc. necessary to assure tight, durable, no leak gutter system with straight lines and quality appearance.
 - 4. Supply downspouts and splash blocks or rocks as shown drawings.

XVII. APPLIANCES

- A. KITCHENETTE - Norcold 30" wide "Patrician" MOAES/5 - Almond color.
 - 1. Install as per Manufacturer's specifications.

XVIII. BLINDS

- A. LEVELOR - Inside mounted - dimensions in field. Color by owner.

Specifications: Homer Mental Health Clinic

XIX Electrical

A. GENERAL REQUIREMENTS

Applicable provisions of the Agreement and General Requirements of the specifications govern the work of this section.

B. WORK INCLUDED

Furnish and install a complete electrical system including all labor materials, equipment, lighting fixtures with lamps, switches, dimmers, receptacles, outlet boxes, motor wiring, wiring, and everything else necessary and/or required to produce a complete, safe, legal, and properly operating electrical system as herein specified.

C. MATERIALS

1. Provide a 200A, 120/240V, single-phase, 3-wire service with main breaker in accordance with utility company's requirements.
2. Load center: Shall be 200 amp MLO with snap-in circuit-breaker-type, breaker sizes as required.
3. Single pole, three-way switches; silent action type. Color to be ivory.
4. Receptacles: duplex 15A, 125V, grounded type. Provide GFI protection where required by code. To be ivory.
5. All devices and plates to be ivory Approved manufacturers: AM&H, Hubbell, P&S or equal.

D. WIRING

Branch circuit wiring shall be type NM with ground. Min. size wiring to be #12. Lighting: A maximum of 1,600 watts per 20A circuit is permitted for lighting. Receptacles: Install on separate circuit (20A) with maximum of eight devices.

E. LIGHTING FIXTURES

Install fixtures where indicated on drawings. Generally fixtures are either ceiling mounted two tube 40W fluorescent fixtures or recessed incandescent fixtures.

SEE FIXTURE SCHEDULE on working drawings for type and model No.

Specifications - Homer Mental Health Clinic

XX Heating

A. GENERAL REQUIREMENTS

Applicable provisions of the Agreement and General Requirements of the specifications govern the work of this section.

B. WORK INCLUDED

Furnish and install electric baseboard heating system for all spaces shown on working drawings. Each heater to be individually controlled by thermostat as shown on drawings. Equipment to be of sufficient capacity to insure 65 degree farenheit inside temperature. Provide mechanical exhaust of no more than 2 air changes per hour for toilets, showers, and kitchenette unit.

C. MATERIALS

Heating elements shall be standard 240V 1500 Watt wall mounted baseboard heaters unless smaller size is shown on working drawings. Units shall be as manufactured by Cadet Manufacturing Company, Trim Ray Models with thermostats, or equivalent.

FIRE MARSHALL REPORT

STATE OF ALASKA

DEPARTMENT OF PUBLIC SAFETY DIVISION OF FIRE PREVENTION

BILL SHEFFIELD, GOVERNOR

REPLY TO:

- POUCH N
JUNEAU, ALASKA 99811
(907) 465-4331
- POUCH 6313
ANCHORAGE, ALASKA 99502
(907) 272-2404/6
- 1979 PEGER ROAD
FAIRBANKS, ALASKA 99701
(907) 456-4002

December 6, 1983

Paul L. Craig, Ph.D.
P.O. Box 2274
Homer, Alaska 99603

Subject: Community Health Center,
Homer
Plan Review: 83A-560
Type Construction: V-N
Occupancy: B-2

Dear Doctor Craig:

Plans for the subject project have been reviewed by this office for conformity with the state fire safety regulations, however, prior to approval, the following items require clarification and/or implementation into the final documents. Following, please find our comments:

* SEE COMMENTS SHEET

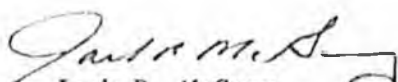
A letter certifying the above listed items will be incorporated in the plans shall constitute final approval.

Approval of submitted plans is not approval of omissions or oversights by this office; nor is it approval of noncompliance with any applicable regulations of municipal government.

If we can be of any further assistance, please feel free to contact us at the above address or call 272-2404.

Sincerely,

Sylvester (Sam) Neal
State Fire Marshal


By: Jack R. McGary
Fire Protection Engineer

JR McG/lmc

cc: Homer Vol. Fire Dept.

enclosures

(1)

① Per our phone conversation on 12-1-83 dealing with the location of your building. IF you move the building 15 FT to the west, then there will be not one hour requirement for the east wall. IF the building isn't moved, you will need to make the east wall one hour construction and remove all windows from that wall. Also, that one hour wall will need a one hour parapet as per Sec. 1709, Uniform Building Code, 1979.

② Every door opening into the corridor shall be protected by a tight-fitting smoke and draft control assembly having a fire-protection rating of 20 minutes. Doors shall be self-closing or shall be automatic closing. Per UBC Sec 3304 (b).

③ Per our phone conversation on 12-1-83 dealing with the corridor and conference. a exit corridor can not pass through the conference room. Recommend you change your floor plan to allow the corridor to exit directly to the outside. IF you are not clear on what is required please call us to help you.

④ A draft stop for the attic area is required, per U.B.C. Sec 3205.(b).

(2)

⑤ Rooms 1 & 2, Reception & waiting area will be required to be the one hour construction as required for corridors. Since they are considered as part of the corridor and not as intervening rooms.

COMMUNITY MENTAL HEALTH CENTER

Box 2274
Homer, Alaska 99603-2274
(907) 235-7701



December 15, 1983

Jack R. McGary
Fire Protection Engineer
Division of Fire Prevention
Pouch 6313
Anchorage AK 99502

Dear Mr. McGary:

Thank you for your letter of December 6, 1983 regarding plan review: 83A-560.

Relative to each of the Division's recommendations, we would like to submit the following changes which are being integrated into our architectural drawings:

- 1- The plot plan will be altered to move the building 15 feet to the west in order to provide a 20 foot clearance from the property line;
- 2- All corridor doors shall have smoke and draft control assemblies with fire protection rating of 20 minutes and shall be constructed to meet UBC Section 3304(h);
- 3- The conference room will be rotated 90 degrees and placed on one side of the corridor with offices occupying the other side of the corridor so that the exit at the end of the corridor will open to the outside rather than into the conference room;
- 4- An attic draft stop will be integrated into the plans; and,
- 5- Rooms 1 and 2, the reception and waiting areas will be built to meet the one hour construction requirement for corridors.

Thank you for your review of our plans. Your comments were most helpful as we plan for the safety of the building and its occupants.

Sincerely,

Paul L. Craig, Ph.D.
Psychologist, Director
PLC:mw

RESOLUTIONS

Cook Inlet Council on Alcoholism and Drug Abuse
City of Homer

CITY OF HOMER

HOMER, ALASKA

RESOLUTION 83 - 12 A

A RESOLUTION OF THE CITY OF HOMER ENDORSING THE EFFORTS OF THE SOUTH PENINSULA MENTAL HEALTH ASSOCIATION, INC., TO SECURE MATCHING FUNDS FROM THE STATE OF ALASKA FOR A BUILDING.

WHEREAS, the City of Homer recognizes the value of the various services provided through the Community Mental Health Center including the Infant Learning Program, the Parent Training Program, Vocational Counseling, and Outpatient Mental Health Services;

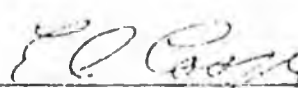
WHEREAS, the City of Homer is aware of the gross inadequacies in the current facility rented by the Community Mental Health Center including inadequate office size, lack of ventilation, and inadequate provisions for confidentiality;

WHEREAS, adequate office space to house the programs offered through the Community Mental Health Center is not currently available in Homer; and

WHEREAS, the City of Homer expressed support for a building program by allocating \$35,000 during November 1982 to the Community Mental Health Center as seed money to initiate land acquisition and building planning;

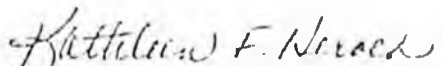
NOW BE IT THEREFORE RESOLVED that the City of Homer endorses the efforts of the South Peninsula Mental Health Association, Inc., (a private, non-profit organization) to secure matching funds from the State of Alaska to complete the proposed building project.

DATED at Homer, Alaska, this 28th day of February, 1983.



Erle Cooper, Mayor

ATTEST:



Kathleen Herold, City Clerk

ADDITIONAL SUPPORTING DOCUMENTS



Box 335
Homer, Alaska 99603

May 24, 1983

Jean Calkins
Box 2020
Homer, AK 99603

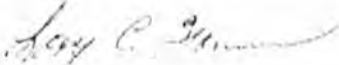
Dear Ms. Calkins:

Professional offices are a permitted use in the Urban Residential district, of which Lots 12 and 13, Lakeside Village are so zoned (HMC Title 21, Section 21.45.020).

Professional office is defined as "An office which is maintained and operated for the conduct of professional business, including but not limited to medicine, dentistry, law, architecture, engineering, accounting, veterinary medicine and investment", HMC Title 21, Section 21.32.020.

If we can be of any further assistance, please call 235-8121.

Sincerely,


Larry C. Farnen
City Manager

LCF/MH/sn

REPLY TO:

- City Hall
Ph. (907) 235-8121
- Port of Homer
Ph. (907) 235-8597
- Harbor Master
Ph. (907) 235-8959
- Public Works Dept.
Ph. (907) 235-8120
- City Engineer
Ph. (907) 235-6368

COMMUNITY MENTAL HEALTH CENTER

Box 2274
Homer, Alaska 99603-2274
(907) 235-7701



February 8, 1984

Representative Mae Tischer, Chairman
Health, Education, and Social Services Committee
Pouch V
Juneau AK 99811

Dear Chairman Tischer:

It has come to my attention that House Bill 482 concerning funding for the construction of a mental health facility in Homer is currently under consideration by the House of Representatives Health, Education and Social Services Committee.

An information packet describing the proposed facility, utilization, and cost-effectiveness is enclosed for your review. As you will note, the facility is being constructed for utilization by a variety of programs managed under the Community Mental Health Center including COMMUNITY MENTAL HEALTH services, CHILD ABUSE/CHILD NEGLECT PREVENTION services, INFANT LEARNING services, and VOCATIONAL COUNSELING. The building also will be utilized by the Cook Inlet Council on Alcohol and Drug Abuse for their Homer satellite office. The local need for such a facility is well demonstrated as documented in the enclosed facility proposal. The City of Homer has already allocated \$35,000.00 toward this project, recognizing the need for an adequate facility to house these essential services. This \$35,000.00 grant provided the financing for the purchase of the building site as well as the architectural drawings.

As President of the Board of Directors for the South Peninsula Mental Health Association, Inc., I urge you to consider House Bill 482 as soon as possible and to refer same to the House Finance Committee. Thank you for your consideration. Please keep me posted. If you have any questions, or if I can be of any help, please call me any time at 235-7248.

Respectfully,

Jeanne K. Calkins
Jeanne K. Calkins, President
South Peninsula Mental Health Association, Inc.

JKC:mw
Encl.

cc: Representative Milo Fritz
Representative Hugh Malone
Senator Paul Fischer
Senator Don Gilman

COMMUNITY MENTAL HEALTH CENTER

Box 2274
Homer, Alaska 99603-2274
(907) 235- 7701



January 9, 1984

Rep. Mae Tischer, Co-Chairperson
House HESS Committee
Alaska State Legislature
Pouch V
Juneau AK 99811

Dear Representative Tischer:

I am writing this letter in my capacity as Chairperson of the Alaska Mental Health Program Director's Association, Inc. As an Association, we are concerned with the provision of community-based mental health services available to all residents of Alaska.

Several members of the Association as well as other concerned citizens in our state have approached me as Chairperson of the Alaska Mental Health Program Director's Association regarding the possibility of providing informational testimony to appropriate Committees of the Alaska Legislature regarding community mental health services. Hence, I would like to ask whether such an informational hearing could be scheduled for the House HESS Committee during the current Legislative session. The intent of the hearing would be informational with input from the Association as well as concerned citizens who may wish to testify. It is our hope that this testimony would prove useful to the Committee as it endeavors to make critical decisions regarding health and social services programs for the coming year.

The Governor's Mental Health Advisory Council will be meeting in Juneau on Sunday and Monday, March 4 & 5, 1984. Several members of the Alaska Mental Health Program Director's Association as well as concerned citizens will be attending this Council meeting. If an informational hearing could be held concurrent with the Council meeting, this would be ideal. Specifically, Monday, March 5, 1984 would be most suitable. It would be possible to consider alternative dates. Teleconference testimony could be arranged if the beginning of March proves to be an untenable time to arrange an informational hearing.

In any case, your consideration is appreciated. As an Association, we wish you the best as you enter another Legislative session.

Respectfully,

Paul L. Craig
Paul L. Craig, Ph.D., Chairperson
Alaska Mental Health Program Director's Association
PLC:cjs



KENAI PENINSULA BOROUGH SCHOOL DISTRICT
NINILCHIK ELEM/HIGH SCHOOL
NINILCHIK, ALASKA 99639

February 28, 1984

Representative Mae Tischer, Chairman
House HESS Committee
Alaska State Legislature
Pouch V
Juneau, Alaska 99811

Dear Representative Tischer:

This is a letter of support for House Bill 482, which provides funding for construction of a mental health facility in Homer. This is an urgently needed facility that serves the southern portion of the Kenai Peninsula.

Please give it your attention as soon as possible so that it may move to the floor and Senate.

Our school has been the recipient of many services from the Mental Health Center in Homer and we do appreciate having the professional assistance for our students and the community.

Thank you for any attention this letter receives.

Very sincerely yours,



Wade C. Jackinsky
Counselor

wj
cc: Dr. Fritz
Mental Health Center

H

B

4

8

9

Alaska State Legislature

HESS

REPRESENTATIVE
JACK MCBRIDE



BOX 7563
KETCHIKAN, ALASKA 99901

COMMITTEES
COMMUNITY & REGIONAL AFFAIRS
TRANSPORTATION
SPECIAL COMMITTEE ON FISHERIES

WHILE IN JUNEAU
POUCH V
JUNEAU, ALASKA 99811
(907) 465-4919

House of Representatives

MEMORANDUM

SERVING:
KETCHIKAN
SAXMAN
WRANGELL
PETERSBURG
METLAKATLA
HYDER
MEYERS CHUCK
KUPREANOF

To: Representative Mae Tischer, Chairman
House HESS Committee

Date: February 14, 1984

Subject: HB489

From: Representative Jack McBride *Jack*

Attached please find a copy of a letter I received from Mary Beth Faikas and Joanne Therp, both from Anchorage, regarding HB 489, "An Act relating to Child Abuse".

Although HB 489 has not been scheduled for review in the HESS committee as of this date, I would appreciate it if you could include these letters in your file and also let them know when the bill will be up in committee. I would be happy to answer any questions you may have or to assist you in gathering any additional information you may need.

2-7-84

To:

REP. JACK McBRIDE
POUCH V
JUNEAU, AK 99811

RE: HOUSE BILL 489

MR. McBRIDE,

I OPPOSE THE PASSAGE OF HOUSE BILL
489 AS IT IS WRITTEN. WHILE I FULLY SUPPORT
LEGISLATION OF THIS TYPE, I FEEL THAT HOUSE
BILL 489 WILL ① DELAY TREATMENT OF BOTH
VICTIM AND OFFENDER ② REDUCE REPORTING OF
THESE CRIMES ③ AND BE MISINTERPRETED AS IT
IS QUITE VAGUE.

THANK YOU FOR YOUR TIME,

Mary Beth Fautas!
1606 ATKINSON
ANCH AK 99504

Jack-

I read in today's Daily News about the Child - Abuse Bill (HB 989) you filed in the House. I am strongly in favor of this and am very happy to hear of this bill -

As a registered nurse and as a former victim of child abuse I know how much damage can result in child abuse/neglect and have seen the mental anguish that lasts for years from such acts on children -

Any support I can give to aid you in this endeavor please call/write.

Please keep me updated.

Joanne

Joanne Therp

438 Mumford #4

Anchorage, Alaska 99508

H

B

4

92

COMMITTEE REPORT

HOUSE

(7)

FURTHER: FINANCE

1/9/84

Date: 2-27-84

Mr. Speaker:

The Committee on HEALTH, EDUCATION AND SOCIAL SERVICES has had HB 492

"An Act relating to state aid for school construction; and providing for an effective date."

under consideration and reports it back as follows:

- do pass do not pass
- do pass with attached amendments(s)
- replace with CS for HB 492 (HHS) same title
- new title
- and recommends THAT IT DO PASS
- AND attaches a "Letter of Intent" New Fiscal Note
- reports it back without recommendation
- referred to the _____ Committee

MEMBERS SIGNING
DO PASS

MEMBERS HAVING
OTHER RECOMMENDATIONS:

Rich Blalock

Lam Postinger

CHAIRMAN

Alaska State Legislature

REP. MAE TISCHER
CHAIRMAN



POUCH V
STATE CAPITAL
JUNEAU, ALASKA 99811
(907) 465-3777

House of Representatives
HEALTH, EDUCATION AND SOCIAL SERVICES COMMITTEE

MEMORANDUM

April 18, 1984

TO: Representative Mae Tischer
FROM: Bill Lovell, Staff, House HESS Committee *Bill*
RE: Sectional Analysis of CSHB 492 (HESS)

I have prepared the following sectional analysis of the House HESS Committee Substitute for House Bill 492, "An Act relating to state aid for school construction; and providing for an effective date."

Sections 1, 3, and 4 simply amend existing sections of law that refer to the existing aid program so that they now refer to the new program.

Section 2 establishes the new program of state grants for school construction (AS 14.11.200). Under the new program, the Department of Education is authorized to grant municipal school districts 90 percent of the cost of school construction projects approved by the department (AS 14.11.200(a)). The school construction grant account is established consisting of funds appropriated to the account and interest earned on those funds; any portion of a grant that is not used to carry out the purposes of this section is also credited back into the account (AS 14.11.200(b)). The bill sets out a list of priorities to be used by the department in determining which projects are eligible for the grants (AS 14.11.200(c)). To be eligible for a grant a municipality must agree to pay at least 10 percent of the construction costs with cash or bonds issued through the municipal bond bank authority. The project must also be approved by the voters of the municipality (AS 14.11.200(d)).

"Cost" is defined as the cost of acquiring, constructing, enlarging, repairing, remodeling, equipping, or furnishing of public, elementary and secondary school buildings, including the costs of all necessary studies, surveys, plans and specifications, architectural, engineering or other special services, acquisition of real property, site preparation and development, purchase, construction,

reconstruction and improvement of real property and the acquisition of machinery and equipment as may be necessary in connection with the project; an allocable portion of the administrative and operating expenses of the grantee; and the cost of financing the project, including premiums on insurance and legal fees (AS 14.11.200(e)).

Allocations under this program for school construction projects begun after July 1, 1984, are reduced by the amount of money used for the construction of residential space, hockey rinks, planetariums, saunas, and other facilities for single-purpose sporting or recreational uses that are not suitable for other activities. Allocations under this section may not be reduced by the amount of money used for construction of a small swimming pool, tank, or water storage facility used for water sports. However, allocations under this section of the law are to be reduced by the difference between the amount of money used to construct a swimming pool that is competition size or larger and the amount of money that would have been used to construct a small swimming pool, tank, or water storage facility, as determined by the Commissioner of Education (AS 14.11.200 (f)).

The Commissioner of Education is required to provide an annual report to the Legislature to include information about the balance remaining in the school construction account at the end of each fiscal year, and the use of the funds in the account for the fiscal year (AS 14.11.210). The Commissioner is required to prescribe by regulation the necessary requirements, forms, and procedures to be used in applying for construction grants under this program (AS 14.11.220(a)). Applications from municipalities seeking a construction grant are due by October 15 of the previous fiscal year (AS 14.11.220(b)). The Commissioner of Education must review all applications for construction grants and make a recommendation to the governor as to the amount of funds to be appropriated to the construction grant account (AS 14.11.220(c)).

The way the program is set up, the department would not distribute available funds to all potentially eligible school construction projects so that some projects would receive less than 90 percent funding. Rather, eligibility will be determined in part by the amount of funds available each year. Consequently, eligible projects will receive 90

Sectional Analysis of CSHB 492 (HESS)
April 18, 1984
Page 3

percent funding and other projects will receive nothing.

Sections 5 and 6 repeal the existing school construction debt retirement program except that the program remains in effect with respect to a project if construction on the project began before July 1, 1984, or if the the bonds for the project are authorized after June 30, 1983, and before July 1, 1984.

Section 7 provides that the Act takes effect July 1, 1984.

WTL:kjb