

ALABAMA LEGISLATIVE COMMISSION ON THE 1980s

1819 HRES AQUACULTURE III - COMM. CORRES 1982 A-M.

Regional Planning

In March 1980, the publication of Phase I of the "Comprehensive Salmon Plan for Southeast Alaska" marked the end of several years of meetings, draft sessions and discussions involving SSRAA, the Northern Southeast Regional Aquaculture Association (NSRAA) and Alaska Department of Fish and Game officials. This planning effort, mostly the result of legislative appropriations and volunteer time from SSRAA and NSRAA directors, culminated in a 250-page report which looks toward the year 2000.

The goal of the plan is: "To promote through sound biological practice, activities to increase salmon production in Southeast Alaska for the maximum social and economic benefit of the users consistent with the public interest." More specifically, the plan sets out to create a fully representative planning forum that addresses the region-specific fisheries development needs.

Objectives include increasing the average annual harvests of chinook, sockeye and pink salmon to harvest levels equal to the consecutive 30-year, highest average catch. The coho objective is 1,000,000 fish greater than the 30-year highest average and the chum objective is nearly twice the highest 30-year average.

Regional planning teams of aquaculture organizations and the ADF&G balance biological and technical knowledge with the needs and concerns of commercial, sport and subsistence fishermen and other user groups in order to reach a consensus on how resource development should occur. Representing SSRAA for Phase I were Jim

Bray, Bruce Eagle (1979), Jake Jacobsen (1980), and Frank Jaynes; representing NSRAA were Jev Shelton, Fred File, Gary Erb and alternate Dexter Kyle; representing ADF&G were Stan Moberly (FRED), Dave Cantillon. (Commercial Fisheries), Don Stewart and Bob Armstrong (Sport Fish). SSRAA board members Roger Ingman, Bob Rooney and John Emde reviewed initial drafts of the report.

At the outset of this planning process, it was assumed the Comprehensive Plan would be developed in two phases, each having public review. Phase I is the strategic planning for the entire region and it establishes goals and long-range (20-year) objectives. Phase I becomes the foundation for Phase II which will encompass operational planning, or the dividing of long-range objectives into quantifiable, definable short-range objectives.

Grants of \$100,000 were given by the 1979 Alaska legislature to qualified regional associations to develop regional salmon plans in cooperation with ADF&G. There are currently five Alaskan regional associations participating in their respective planning efforts.



Indian Creek flowing into the Chickamin River is a coho egg-take site.



Planning Team members discuss the Comprehensive Salmon Plan.



Financial Report

10

For The Six Months Ended June 30, 1980
and For The Year Ended December 31, 1979

Introduction:

Each year you will receive a copy of the annual report of the Corporation. This is your opportunity to see a financial and operational report for the past year. This is to inform you of progress, plans and problems addressed by the Board of Directors and management. Others are interested in the Company so copies also are furnished to employees, banks, insurance companies, government officials and any others deemed necessary.

Accountants' Report:

An independent firm of certified public accountants examines the financial statements to insure that they are presented in a fair and consistent manner. The accountants audit the Corporation's records and other sources in order that they might form an opinion which is included in a letter in the annual report. This independent review is done for the protection of your interests.

Change in Accounting Period:

SSRAA has changed its accounting year from January 1 - December 31 to the period July 1 - June 30. This is more consistent with the State of Alaska and with SSRAA's flow of operations. In the financial summary you will notice two columns, one reflecting the former accounting period and one reflecting the newer method. Because we are in a financial transition, these two columns cannot be categorically compared, as one reflects figures for 12 months and one for six months. However, the two combined account for the total income and expenses over the 18-month period January 1, 1979, to June 30, 1980.

Balance Sheet:

This is a financial photograph of the Company snapped at a particular moment - normally the close of business on the last day of the fiscal period being reported. It shows assets (what the Corporation owns), liabilities (what the Corporation owes), and equity (what is available for future obligations). Assets minus liabilities equals equity; which is the balance sheet equation.

Notes to Financial Statements:

Those notes follow the financial statements and explain items that cannot be shown clearly in the statements. This would include such items as something that happened after the date of the financial statements (subsequent events) or a breakdown of long-term debt.

Statement of Changes in Financial Position:

This statement reflects where the Corporation obtained its funds - such as earnings, borrowings, additional equity investment. Also, it shows where the Corporation used those funds (buying equipment and land, constructing buildings, paying debts). The difference between the amounts received and used shows up as an increase or decrease in cash.

Statement of Operations and Deficit:

Sometimes called a profit and loss or income statement. Here income and expenses for the year are summarized to show if there was a surplus or deficit from the activities of the Corporation during the year.

HOGAN, MECHAM, PALMER AND COMPANY
CERTIFIED PUBLIC ACCOUNTANTS
P.O. BOX 5975
KETCHIKAN, ALASKA 99901
(907) 225-9688

Board of Directors
Southern Southeast Regional Aquaculture
Association, Inc.
P.O. Box 6916
Ketchikan, Alaska 99901

We have examined the balance sheet of Southern Southeast Regional Aquaculture Association, Inc. (a non-profit corporation) at June 30, 1980 and December 31, 1979, and the related statements of revenues and expenses and changes in financial position for the six months and for the year then ended. Our examination was made in accordance with generally accepted auditing standards and accordingly included such tests of the accounting records and such other auditing procedures as we considered necessary in the circumstances.

We were not able to audit assessment proceeds as the proceeds are collected from fish processors and transferred to a trust account. Thus we were not able to satisfy ourselves with respect to assessment proceeds beyond the amount recorded.

As discussed in Note 5, the Association is presently a defendant in a lawsuit which challenges the constitutionality of its involuntary assessment program.

In our opinion, except for the amount of unrecorded assessment proceeds referred to in the second preceding paragraph, and subject to the final outcome of the lawsuit referred to in the preceding paragraph, the financial statements referred to above present fairly the financial position of Southern Southeast Regional Aquaculture Association, Inc. at June 30, 1980 and December 31, 1979 and the results of its operation and changes in financial position for the six months and for the year then ended in conformity with generally accepted accounting principles applied on a basis consistent with that of preceding years.

Hogan Mecham Palmer & Company

Ketchikan, Alaska
July 25, 1980

BALANCE SHEET

June 30, 1980 and December 31, 1979

<u>ASSETS</u>	<u>June 30, 1980</u>	<u>December 31, 1979</u>
Unrestricted Assets		
Cash	41,083	56,502
Prepaid expenses	21,803	10,532
Grant receivable	15,000	
WIN receivable		3,109
Dividend receivable		2,335
Loan proceeds receivable	9,204	95,476
Assessment receivable		1,124
Investment in ready asset fund	970	
Property and equipment, net of accumulated depreciation of 218,932 for June 30, 1980 and 130,065 for December 31, 1979	<u>2,911,331</u>	<u>2,983,331</u>
	<u>2,999,391</u>	<u>3,162,409</u>
Restricted Assets		
Investment in ready asset fund	433,037	166,092
Investment in a Spokane bank for cooperatives	17,240	17,240
	<u>450,277</u>	<u>183,332</u>
Total assets	<u>\$3,449,668</u>	<u>\$3,345,741</u>
 <u>LIABILITIES AND FUND BALANCE</u>		
Liabilities		
Accounts payable	32,355	114,769
Assessments payable	433,037	166,092
Payroll taxes payable	3,566	983
Accrued interest	22,373	3,608
Notes payable	<u>3,521,689</u>	<u>3,132,000</u>
	<u>4,013,020</u>	<u>3,417,452</u>
Fund Balance		
To begin	(71,711)	459,338
Excess of expenses over revenues for the period	<u>(491,641)</u>	<u>(531,049)</u>
To end	<u>(563,352)</u>	<u>(71,711)</u>
Total liabilities and fund balance	<u>\$3,449,668</u>	<u>\$3,345,741</u>

See Accompanying Notes to Financial Statements

STATEMENT OF REVENUES AND EXPENSES

For The Six Months Ended June 30, 1980
and For the Year Ended December 31, 1979

<u>Revenues</u>	<u>June 30, 1980</u>	<u>December 31, 1979</u>
Assessments	1,229	49,273
State grants	39,000	110,000
Dividend Income		3,373
Interest Income	7,708	525
Other	15,220	4,414
	<u>63,157</u>	<u>567,585</u>
<u>Expenses</u>		
General Board	5,407	7,541
Executive Committee	74	6,759
Special Ways and Means Committee		10,619
Personnel Committee		3,504
Board development		1,076
Board election		1,300
Regional planning	66,078	156,792
Legal services	18,381	72,058
Rehabilitation operations		4,266
Lake fertilization	45,743	39,213
Estuary study	2,242	7,391
Remote egg lakes	143,980	137,378
Logistics field support	19,935	22,658
Whitman Lake Hatchery	154,133	279,885
Administration	80,060	205,856
Interest	18,765	142,005
Loss on sale of assets		333
	<u>652,798</u>	<u>1,098,634</u>
Excess of expenses over revenue	<u>\$ (491,641)</u>	<u>\$ (531,049)</u>

See Accompanying Notes to Financial Statements

STATEMENT OF CHANGES IN FINANCIAL POSITION

For The Six Months Ended June 30, 1980
and For The Year Ended December 31, 1979

	<u>June 30,</u> <u>1980</u>	<u>December 31,</u> <u>1979</u>
<u>Sources of Cash</u>		
Excess of expenses over revenues	(491,641)	(531,049)
Add charges not requiring cash		
Loss on sale of asset		333
Depreciation	88,867	94,615
	<u>(402,774)</u>	<u>(436,101)</u>
Decrease in assessments receivable	11,124	
Increase in accrued expenses	21,348	
Decrease in receivables	91,716	
Decrease in refundable assets		1,200
Increase in accounts payable		5,730
Cash provided from operations	(278,586)	(429,171)
Proceeds from notes payable	389,689	4,265,103
Proceeds from sale of equipment	2,271	4,198
Proceeds from forgiveness of payable	41,106	
Proceeds from overpayment of equipment	3,448	
Increase in assessments payable	266,945	166,092
Total sources of cash	<u>424,873</u>	<u>4,006,222</u>
<u>Uses of Cash</u>		
Increase in prepaid expenses	11,271	7,332
Increase in receivables	15,000	109,584
Increase in investments	267,915	179,564
Decrease in accrued expenses		47,880
Redemption of note payable		2,700,000
Purchase of equipment	63,692	1,100,492
Decrease in accounts payable	82,414	
Total uses of cash:	<u>440,292</u>	<u>4,144,852</u>
Decrease in cash	(15,419)	(138,630)
<u>Cash to begin</u>	<u>56,502</u>	<u>195,132</u>
<u>Cash to end</u>	<u>41,083</u>	<u>56,502</u>

See Accompanying Notes to Financial Statements

Note 1 - Summary of Significant Accounting Policies

Property and Equipment

All items of property and equipment are stated at cost. Depreciation is calculated on a straight-line basis over estimated useful economic lives.

Note 2 - Notes Payable

Note payable to the Alaska Renewable Resource Corporation at 12% interest due and payable on December 31, 1980. Secured by property and equipment and voluntary assessment monies. Security is subordinate to claims by the State of Alaska in conjunction with \$2,700,000 and \$300,000 loans.

June 30, 1980	Dec. 31, 1980
\$382,000	\$132,000

Note payable to the Department of Commerce, State of Alaska at 9.5% interest. Repayment of the loan will be as follows: an interest only payment due on the 1st of January 1986 and thereafter equal annual payments of \$35,415 including principal and interest beginning January 1, 1987. The final payment is due on the first day of January 2004. Interest will not begin to accrue until August 24, 1985. The loan is secured by Whitman Lake Hatchery, assignment of sale of surplus fish, and assignment of Southern Southeast Regional Aquaculture Association, Inc. mandatory assessment.

June 30, 1980	Dec. 31, 1980
\$300,000	\$300,000

Note Payable to First Bank of Ketchikan at 13% interest. Principal and interest are due on August 27, 1980. Unsecured.

June 30, 1980
\$90,000

Note payable to the Department of Commerce, State of Alaska at 8% interest. Repayment of the loan will be as follows: an interest only payment due the first of January 1986 and thereafter equal annual payments of \$288,117 including principal and interest beginning January 1, 1987 and with final payment due January 1, 2004. Interest will not begin to accrue until August 24, 1985. The loan is secured by Whitman Lake Hatchery, assignment of sale of surplus fish, and assignment of Southern Southeast Regional Aquaculture Association, Inc. mandatory assessments.

June 30, 1980	Dec. 31, 1980
\$2,700,000	\$2,700,000

Note payable to CH2MHILL at 12% interest due and payable on May 6, 1981. Secured by a lien on hatchery property.

June 30, 1980
\$49,689

Totals:

June 30, 1980	Dec. 31, 1980
\$3,521,689	\$3,132,000

Note 3 - Lease

Southern Southeast Regional Aquaculture Association, Inc. has entered into a lease for land with the State of Alaska. The lease is for a period of 25 years commencing February 20, 1979 with quarterly payments of \$1,323.

Lease payments, 1979	5,490
Future minimum lease payments	
1980	5,490
1981	5,490
1982	5,490
1983	5,490
1984	5,490
Additional years	104,310
Total future minimum lease payments	\$ 131,760

Note 4 - Non-Profit Status

The Internal Revenue Service has determined that the Association is exempt from Federal Income Tax under section 501 (c) (3) of the Internal Revenue Code.

Note 5 - Involuntary Assessment Program

The Association is a defendant in a lawsuit which challenges the constitutionality of its involuntary assessment program.

The First Judicial District at Juneau has determined that the involuntary assessment program is unconstitutional. The finding of the court has been appealed to the Supreme Court of the State of Alaska. It is the opinion of counsel of the Southern Southeast Regional Aquaculture Association, Inc. that the involuntary assessment program will be found to be constitutional by the Supreme Court. However, this decision is not expected until mid-1981. Until the appeal of the case is decided, the Southern Southeast Regional Aquaculture Association, Inc. shall be and are enjoined from transferring, committing or expending any proceeds from involuntary assessments collected in southeast Alaska for fish delivered to processors after July 13, 1979; such funds shall be deposited in an account established at a bank in Anchorage, Alaska. The Association holds in escrow \$166,092 at December 31, 1979 and \$433,037 at June 30, 1980. Involuntary assessment collected after the date set by the court; management believes that the amount held in escrow will be sufficient to meet its obligation.

The State of Alaska has agreed to indemnify Southern Southeast Regional Aquaculture Association, Inc. for any loss resulting from the lawsuit.

Note 6 - Restricted Assets

(1) Investment in Ready Asset Fund is an amount of monies set aside to represent funds restricted by the ruling on involuntary assessment collection discussed in Note 5.

(2) Investment in a Spokane bank for cooperatives is stock purchased as a part of \$2,700,000 interim financing. The investment is stated at cost. Stock dividends in the amount of an additional \$13,492 have been allocated to date to bring the total investment value to \$30,732 (\$17,240 plus \$13,492). The fixed amount of \$30,732 will be disbursed 8.5 years from dates of acquisition of the stock.

Note 7 - Accounts Payable

\$90,795 of the total accounts payable represents an amount owed to CH2MHILL INC. at December 31, 1979. Per a settlement agreement dated May 6, 1980 Southern Southeast Regional Aquaculture Association, Inc., in consideration of a reduction in the payable of \$41,106, agreed to release CH2MHILL from a grievance claim for failure to perform agreed services.

Note 8 - Sale of Assets

The Board of Directors has authorized the Executive Director to pursue the sale of the temporary hatchery facilities at Beaver Falls.

Note 9 - Change in Accounting Period

The Association, by Board of Director action, has changed its accounting period from a year ended December 31 to a year ended June 30. The change was adopted to facilitate the reporting of its activity on a consistent basis with the State of Alaska, and to better accommodate flow of operations.

Hatchery Stats	Brood Year & Species	Race	Number Fish Released	Number Eggs Taken	% Survival Egg Take To Release
	1978 Coho	Indian Creek	549,000	776,000	70.7
	1979 Chum	Carroll River	1,342,000	4,374,000	30.7*
	1979 Chum	Disapp. Creek	1,330,000	1,519,000	87.5

*See related story page 18

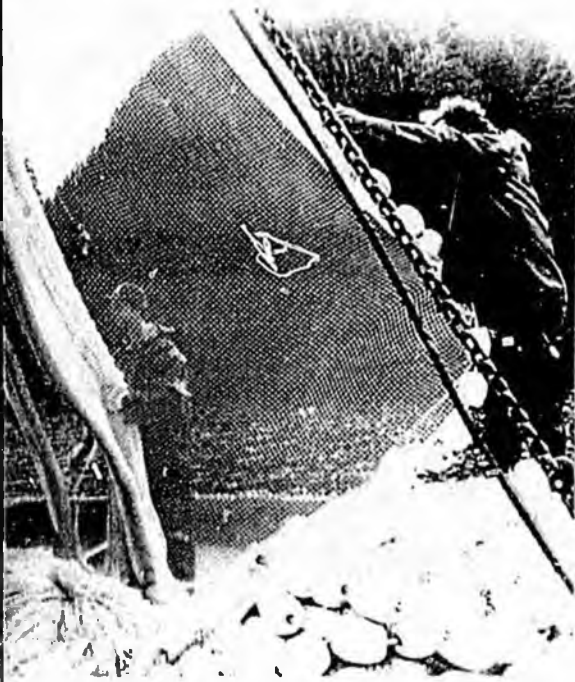
Carroll River

Although egg mortality from Carroll River summer chum stocks proved disappointing in 1979, the 1980 crew was determined to reverse the situation by establishing a camp and weir early in July and working from a land-based camp, as opposed to last year's totally floating camp.

About 32 percent of the 1979 summer chum eggs survived to fry stage. This compares with fall chum and coho egg-to-fry survival rates in 1979 of 89 and 94 percent. The loss and infertility of the summer chum eggs may have resulted from extremely high (over 15 degrees C) temperatures at the net pens where the adults were ripening until eggs and milt were removed.

Other factors causing the loss may be the long duration fish were held and the capture of adults prior to their entry into fresh water.

This year SSRAA biologists will monitor the motility of the fish milt (sperm) and carry out other tests and procedures to ensure better quality eggs. Since 1979, SSRAA members have traveled to conferences and talked with other aquaculture personnel about saltwater net pens and the holding of fish. Other groups also have experienced losses related to saltwater ripening. The SSRAA staff is working closely with consultants in an effort to bring the egg-to-fry survival rate to 70-80 percent.



Crews seine for hatchery broodstock on Prince of Wales Is.



Just prior to release chum fry averaged about 2.8 inches in length.



Field crews sort coho salmon at Indian Creek while a wolf forages in the background.

Board of Directors

Seine representatives

Fred Dobszinsky, Seattle
Roger Ingman, Ketchikan
Frank Jaynes, Ketchikan
Brian Wartman, Seattle

Power Troll representatives

Jim Bray, Ketchikan
Ed Linkous, Ketchikan
Robert Rooney, Wrangell
George Smith, Kirkland, Wash.

Gillnet representatives

John Emde, Wrangell
Jake Jacobsen, Ketchikan
Otto Johansen, Ketchikan
Carl Thynes, Petersburg

Hand Troll representative

Jim Jones, Ketchikan

Sportfish representative

Lee Burger, Ketchikan

Processor representative

Rick Lauber, Juneau

Subsistence representative

Pat Gardner, Craig

Municipalities representative

Art Demmert, Craig

Native Corporations representative

Pat Williams, Saxman

Public-At-Large representatives

Pat Roppel, Ketchikan
Lyle Simpson, Ketchikan

Staff

Ron Wendte
Executive Director

Walt Larrick
Director of Operations

Jim Voelker
Hatchery Manager

George Carnes
Field Foreman

Bob Campbell
Lake Fertilization Project

Linda Robb
Office Coordinator

Jill Blanchette
Hatchery Technician

Mark Tollfeldt
Hatchery Technician

Seasonal employees
Mike Blanchard, Dave Berg,
Gretchen Mettner, John Joyner



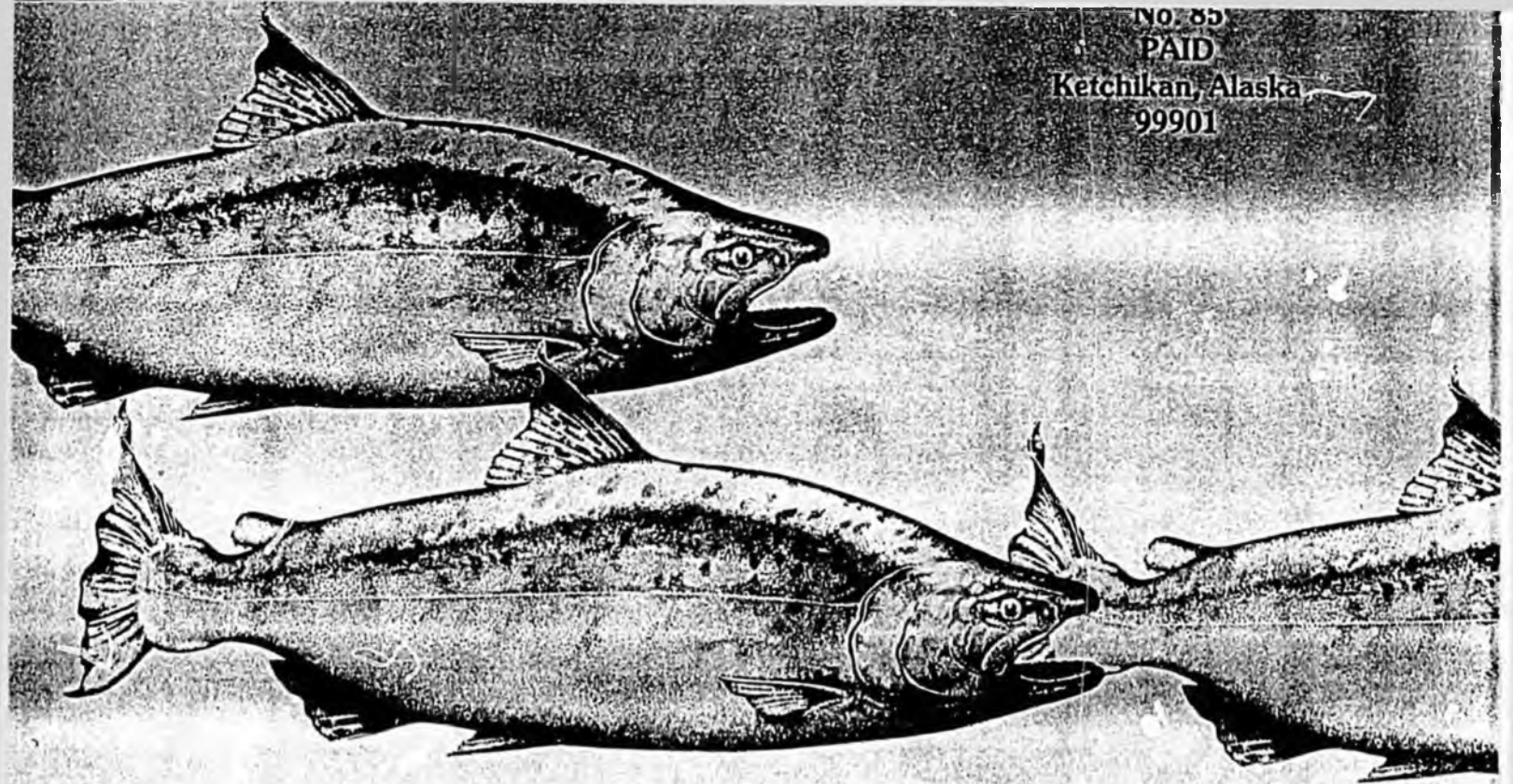
Walt Larrick, Ron Wendte and Linda Robb discuss finances.

No. 85

PAID

Ketchikan, Alaska

99901



IMPROVEMENT AND REHABILITATION IS PLANNED

RIES—The basic tool of aquaculture hatchery. Cook Inlet Aquaculture has plans for a large facility at the Lower Plant. Preliminary studies indicate hatchery could produce 1,000,000 runs of chum or pink salmon, 250,000 90,000 kings. There are other local feasibility study stages but Eklutna final permit stage with construction as early as 1981. The plans are ready!

IMPROVEMENT— A program to improve a number of Cook Inlet streams to support full salmon production can be well under way. Removal of stream obstructions and the construction of fish passages is one of the many habitat improvement projects currently under way and planned for the future. Packer Creek, Big River Lakes and other streams and lakes in the Cook Inlet.

FERTILIZATION—This technique holds promise for sockeye and coho enhancement in Cook Inlet. Basic nutrients such as nitrogen and phosphorous are added to lake areas. Big River Lakes, Packers Lake and Lent Lake are currently being analyzed for their specific fertilization needs. An increase in the return is a conservative estimate of this technique. Hence, a run of sockeye could be increased to 100,000. Canada has documented a 50-fold increase in certain runs when fertilization techniques are used.

WHAT CAN YOU DO TO HELP?

- You can conserve the resource by not wasting it.
- You can encourage others not to be wasteful or damaging in any way.
- You can volunteer to help where efforts are needed.
- You can obey the harvest regulations whether you are a commercial or recreational harvester.
- You can learn more about the needs of this vital resource so you will know what is helpful and what is harmful.
- You can teach others about the fragile nature of salmon during their spawning and fresh-water rearing stages of life.
- You can attend the Cook Inlet Aquaculture Association meetings and become involved—after all, it's your resource.



COOK INLET AQUACULTURE ASSOCIATION MEMBER ORGANIZATIONS INCLUDE:

- City of Seward
- Commercial Fishermen of Cook Inlet
- Cook Inlet Fishermen's Association
- Cook Inlet Fishermen's Fund
- Cook Inlet Region, Inc.
- Izaak Walton League
- Kachemak City
- Kenai Peninsula Borough
- Kenai Peninsula Conservation Society
- Kenai Peninsula Fishermen's Cooperative Association
- Mat-Su Borough
- Ninilchik Village Council
- North Pacific Fisheries Association
- University of Alaska

COOK INLET AQUACULTURE ASSOCIATION'S ONLY GOAL IS THE PRODUCTION OF MORE SALMON FOR COOK INLET.

Cook Inlet Aquaculture Association meets on the third Saturday of each month at 10:00 am in the Kenai Peninsula Borough Building, Soldotna, Alaska 99669 (907) 262-4441 extension 257.

Floyd E. Heimbuch, Executive Director

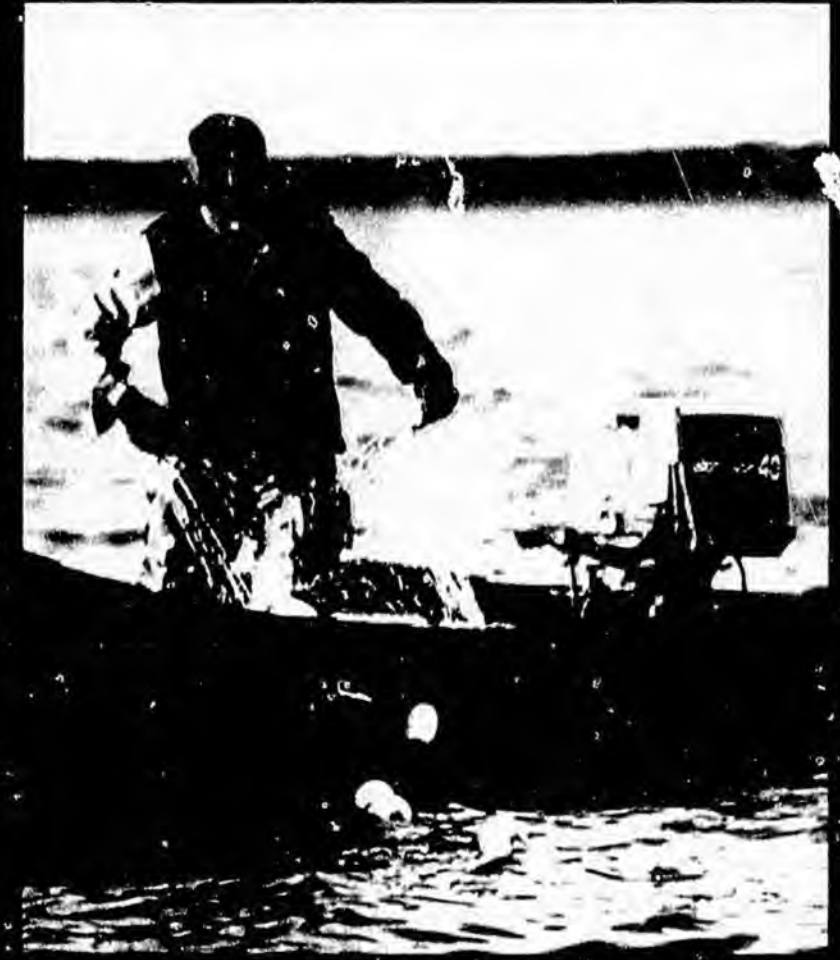
cover illustration by N. B. Curry

COOK INLET AQUACULTURE ASSOCIATION

WHAT SALMON FISHING MEANS TO THE COOK INLET REGION

Basic economy industries such as commercial fishing produce goods for export. These exports bring money into the local region. While commercial fishing in Cook Inlet is of a seasonal nature, its economic impact on the region is substantial. If full-time employment equivalents are used, an average of 15 percent of the work force in Cook Inlet is employed in the fishing industry. These workers include the commercial fishermen and crews as well as the workers in the processing plants. This means that nearly one out of every six jobs in Cook In-

let is related to commercial fishing. Many local residents consider Cook Inlet salmon essential to their subsistence lifestyle. However, with ever increasing demands upon the resource, this option may no longer be available. It is difficult to assess the monetary value of the recreational sport fishing enjoyed by tourists and Cook Inlet residents. That these opportunities **SHOULD** be continued is obvious. That they **WILL** be continued at the same level of quality, in the face of growing population pressures, will require the production of more salmon; and that is what Cook Inlet Aquaculture Association is all about.



AGRICULTURE

III

REGIONAL ASSOCIATION ISSUES

The following issues were jointly identified by all five Associations. They are in two categories: A and B. Category A should be addressed immediately during this session. Category B requires more attention than time now permits, and will require thorough evaluation prior to actions. We recommend that a study group similar to last year's policy study group be created to examine category B issues.

<u>ISSUE</u>	<u>PROPOSED ACTIONS</u>	<u>COMMITTEE ACTIONS NEEDED</u>
<u>CATEGORY A:</u>		
1) Salmon enhancement loan fund program	a) Maintain program b) Appropriate fund c) Increase loan limit	a) Resolution b) Letter to Finance c) Bill
2) State-wide mark/tag evaluation program	a) Create program b) Appropriate fund	a) Resolution b) Letter to Finance
3) Private for profit hatcheries	a) Prohibit option	a) Bill
4) Tax revenue pass through to Associations	a) Specify timely and simplified procedures for 100% receipt pass through	a) Bill or Resolution
5) Regional planning team	a) Clarify role b) Appropriate fund	a) Bill or resolution b) Letter to Finance
6) Alaska Salmon Resource Development Program	a) Renew financial commitment to fund expanded public and private program	a) Resolution
7) Policy study group for category B issues	a) Create group b) Appropriate fund	a) Resolution b) Letter to Finance

CATEGORY B:

1) Relative role of public and private aquaculture	a) Clarify for maximum cooperation and minimum duplication and competition
2) FRED facility operation	a) Contract out to Regional Associations
3) Adult returns to FRED facilities	a) Sale of fish to offset operational costs
4) PNP Loan forgiveness period	a) Extend based on species life history
5) Matching reserve fund for region with depressed and declining stocks	a) Create fund and matching formula

**ALASKA
SALMON**

Fishermen help to rebuild the stocks

HUMAN INSTITUTIONS often respond to challenges like other organisms — by adjusting their behavioural patterns. With institutions, such changes almost always produce some discomfort when familiar modes of operation are laid aside in order to adapt to new ones. The challenges of expanding frontiers have been among the most significant agents of change for human institutions.

As one of the last continental frontiers in North America, Alaska is proving to be no exception. The beleaguered salmon fisheries there are the focus of a striking experiment with a new concept in salmon management. A unique system is being developed that encourages fishermen and others who depend directly on salmon resources to become involved with their management.

Fishing was the first European enterprise transplanted to North America. Long before the first American colonies were established, Western European fishermen were routinely crossing the Atlantic to fish on the Newfoundland Banks and were drying their catches on the rocky islets along

the nearby coast. Since the challenge of developing profitable fisheries in North American waters had already been met by European fishermen by the

time the first colonists arrived, there was little stimulus for changing fishing customs brought over from Europe. As the frontier advanced across the

continent, the focus of fishing activity remained behind in the North-west Atlantic. Systems for fishery management were derived from European institutions that concentrated authority in a few selected government officials.

New Ocean

It was not until the 19th century, when the full impact of European civilisation reached the Pacific Coast, that European-American fishermen were confronted by a whole new ocean.

While they learned to admire many of the skills of native Americans,

Right — Small boat at work off the United States North-west coast. Court decisions in favour of Indian tribal fishing rights have cut heavily into salmon catching by White Americans.

fishermen and others whose livelihoods depend on fishing do not share directly in the making of fishery management decisions, although indirect their influence may be considerable. The extent of such influence depends on the political pressure that they can bring to bear on elected officials to whom agency staffs are ultimately responsible.

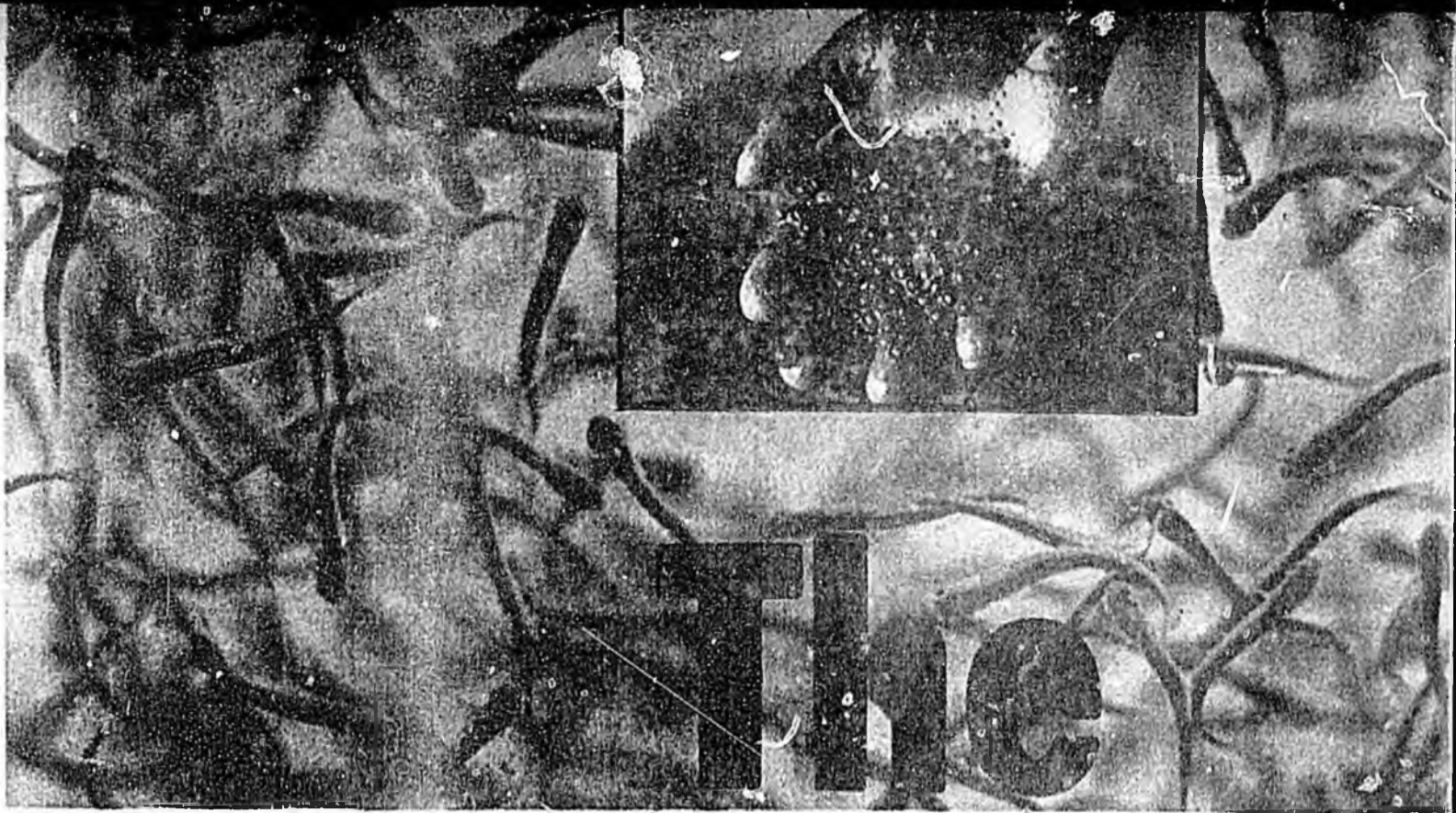
For independently-minded fishermen who spend much of their lives at sea, it is not always easy to find the time for political activity, nor for developing skills for it. The system has tended to produce an "us versus them" relationship between

ARENCO CIS/CIF

Fish processing machine for herring, pilchard, sardines, mackerel, blue whiting and similar fishes.



Butterfly fillet



Regional aquaculture associations for salmon stock enhancement have been organized in Alaska for Prince William Sound Cook Inlet and for both Northern and Southern Southeast Alaska. Efforts are being made to organize one for the lower Yukon-Kuskokwim area. Comprehensive salmon plans are being prepared by the regional planning teams. Public (ADF&G), association and private (Mom and Pop) enhancement projects are being developed within the framework of the new laws.

The hatchery project

An association, having qualified as a regional, non-profit corporation, may request the Commissioner of Commerce to establish areas in which a royalty assessment shall be levied on the sale of one or more species of salmon caught

by persons holding limited entry permits in the area in which the assessment is to be levied.

The assessment is for providing revenue for the

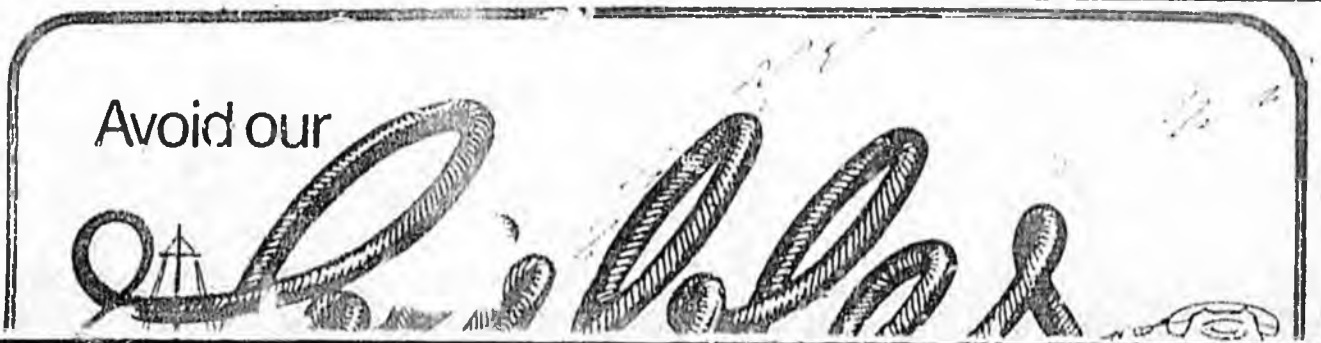
association and may be equal to two or three per cent of the fair market value of the fish, but may not exceed three per cent.

Such a royalty assessment may be terminated:

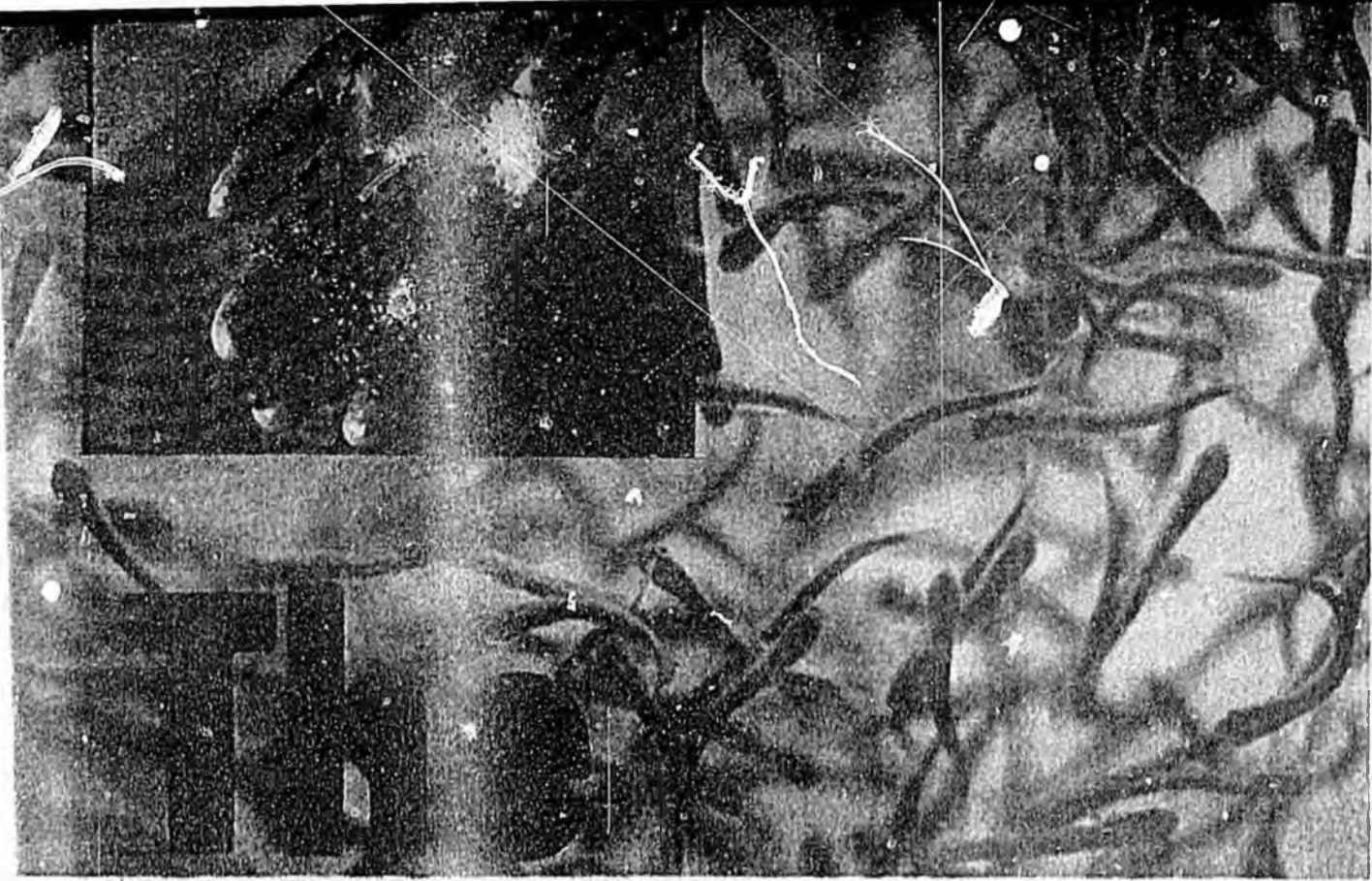
(1) on request by the regional association when all financial obligations relating to the assessment have been met; or (2) on a majority vote among qualified members in the

area, either before said obligations relating to the assessment have been met, or after they have been met.

In place of, or in addition to, the royalty assessment an association of holding limited entry permits and consisting of at least 51 per cent holders of such permits who actively participate in the fishery to be assessed may voluntarily levy an assessment among its members for the purpose of securing enhancement funds authorized by state law. Seed money for



Avoid our



atchchery roject

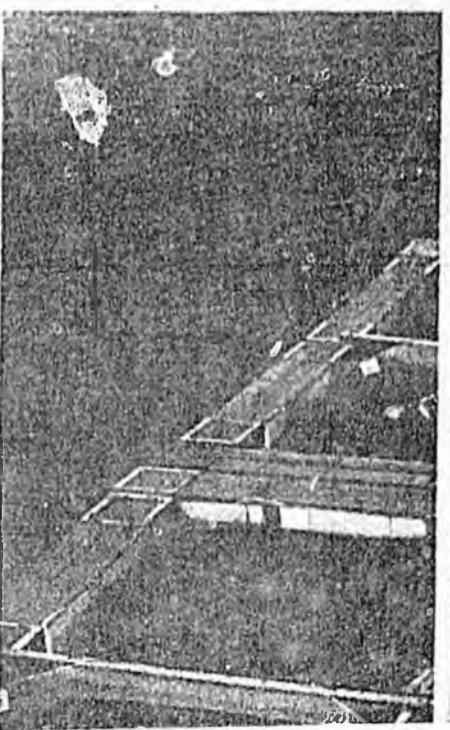
ing in the project equal to ten per cent of the loan within six years, either through a royalty assessment or other means approved by the Commissioner.

The way the system has been set up, an initial 100,000 dollars put up by the membership of a qualified regional association can produce, over a six-year period, six million dollars in matching state grants and loans. When other sources of matching funds (Sea Grant, EDA, etc.) are factored in, the overall annual yield on such an investment approaches 20 to 4!

Stimulated

Stimulated by these generous financial incentives, user-operated, non-profit salmon enhancement projects are proliferating in Alaska.

As with any rapidly growing organism, there are growing pains. In Cook Inlet, for example, disgruntled fishermen, unhappy with mandatory royalty assessments, have challenged them in court.



association and may be equal to two or three per cent of the fair market value of the fish, but may not exceed three per cent. Such a royalty assessment may be terminated: (1) on request by the regional association when all financial obligations relating to the assessment have been met; or (2) on a majority vote among qualified members in the

area, either before financial obligations relating to the assessment have been incurred, or after they have been met.

In place of, or in addition to, the royalty assessment, an association of persons holding limited entry permits and consisting of at least 51 per cent of the holders such permits who actively participate in the fishery to be benefited, may voluntarily levy and collect an assessment from among its members for the purpose of securing fishery enhancement loans authorized by state law.

Seed money for organizational and planning purposes can be granted by the state to qualified regional associations in amounts up to 100,000 dollars per region plus an additional 100,000 dollars (on a 50-50 matching basis) for those regional associations having authorized royalty assessments.

Loans, at rates not to exceed 9½ per cent, are available from the state to cover total costs for hatchery projects, providing that the Commissioner of Commerce determines that the applicant has sufficient resources for a three-year

I help you do it

To the Secretary
International Cable Protection Committee
Central Marine Depot, Berth 203
Western Docks, Southampton SO1 0HH

Name _____
Address _____

International Cable Protection Committee

SALMON:

In Homer, a group of fishermen have threatened to pull out of the association.

And sportsmen have been critical of the flow of state grants to the association.

The opposition is highly vocal. It comes mainly from sincere people with legitimate reasons for their concerns. The new system still has a long way to go before it becomes sufficiently functional to fulfill the management objectives for which it is designed. Yet, in view of this observer, the broadened base for decision making and for innovation provides it with that most valuable of all attributes for survival in a competitive environment: the flexibility to adapt to local differences and to changing environmental and economic conditions.

This flexibility should provide room for adjusting to duties such as those being experienced by the Cook Inlet Regional Aquaculture Association. The associations do provide a forum for airing differences and machinery for resolving them.

Although still in its infancy, the new system is already making notable progress. The Prince William Sound Aquaculture Corporation's successful hatchery project at Port San Juan is being expanded to make it the largest pink salmon rearing facility in the United States. It will have a capacity for rearing 69 million pinks and chums.

In March 1980, a review draft for the Comprehensive Salmon Plan for Southeast Alaska was completed by a joint planning team representing the two associations in that region.

The draft reflects solid groundwork, logical thinking and realistic goals. For example, a survey conducted by the Northern Southeast Regional Aquaculture Association (NSRAA) revealed that 71 per cent of the fishermen in the region favoured

small facilities and that 79 per cent considered risk a major concern. Their greatest fear was the development of an unbalanced salmon restoration programme with heavy emphasis on production hatcheries and relatively little emphasis on improvements in management technology and enhancement of natural productivity.

To meet these concerns, the joint planning team formulated the following project development guidelines for the NSRAA:

- 1 Over the long-term, the Association should have a primary purpose of developing self-perpetuating, rather than artificially-sustained salmon stocks.
- 2 Projects should be cost effective (pay their own way).
- 3 Association investments should focus on projects that can be stopped without incurring major financial losses if they should fail.
- 4 In broodstock development, native stocks should receive first priority; stocks transplanted to incubation or rearing stations should be released back to the native streams, and release of stocks in non-natal streams generally should be discouraged.

Using these guidelines, the joint Southeast Alaska planning teams developed a set of goals and objectives that, by the year 2000, are calculated to restore and maintain chinook, sockeye and pink salmon catches at the level of the highest 30-year average catch, the coho catch at a level 150,000 lb. greater and the chum catch at twice the level of the highest 30-year average.

Another indication of progress is that bright, highly-trained, competent, young people are being attracted to management positions in the regional aquaculture associations.

NORTH 77

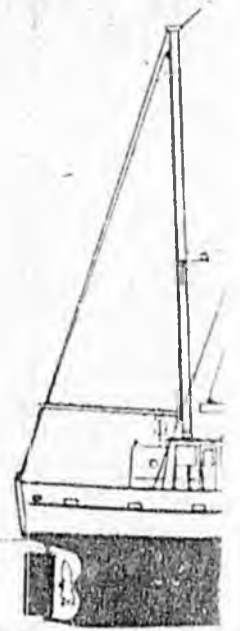
A modern sail assisted fishing vessel designed to meet today's critical demands.

Length overall.....77'
 Length DWL.....70'
 Beam.....21'
 Draft.....10'6"
 Fish hold volume.....3,000 cu. ft.
 Designer: Woodin and Marean, Inc.

Custom deck arrangements available including full shelter deck. Available as motorsailer or energy efficient motor powered vessel.

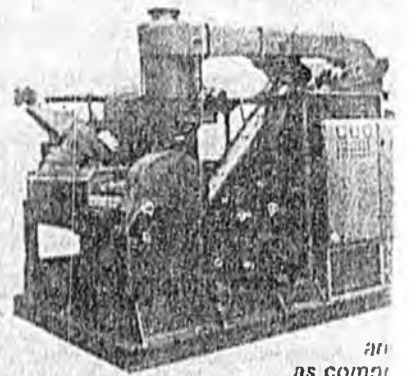
NORTHEAST BOAT COMPANY INC.

Oceanville Road
 Stonington, Maine 04681 USA
 Telephone 207/367-5541
Builders of heavy displacement GRP fishing vessels



FISH WASTED?

There



an
 as complete
 assembly

MYRE
 MEMBER OF THE KVAERN



ALASKA'S RANCHERS

Fishermen join fish farmers to boost Pacific salmon runs

WHEN SALMON ranching projects have been proposed in the countries fringing the North Pacific, some of the most bitter opponents have been commercial fishermen who fear that the enhancement schemes will eventually eliminate traditional methods of hunting the natural runs.

But in Alaska, fishermen, farmers, researchers and administrators have been working together to set up unique non-profit companies whose aim is to restore the state's depleted salmon resources with government help.

Under an Act passed by the Alaska legislature in the 1970s, salmon hatcheries may be owned by qualified non-profit companies "for the purpose of contributing, by artificial means, to the rehabilitation of the state's depleted and depressed salmon fishery."

The Act further stipulates that the programme has to be carried out without adversely affecting natural stocks of fish in the state, under a management policy which allows reasonable segregation of hatchery-reared salmon from natural stocks.

Regional associations were to be created to develop comprehensive salmon plans and rules were set out for the formation of an association.

Thus in one stroke long overdue in North America the Alaska Legislature opened the door to the state government for sharing the responsibility for managing the salmon resource with users directly concerned with it.

Keeping a management system functional while diffusing the responsibility across a broad base presents a challenge of great complexity. In their development of a system of shared salmon management, Alaskans are coping to that challenge.

Regional aquaculture associations for salmon enhancement have been organised for Prince William Sound, Cook Inlet and for both Northern and Southern Southeast Alaska. And efforts are being made to set up an organisation for the lower Yukon-Kuskokwim area.

Seed money for organisational and planning purposes can be granted by the state to qualified regional associa-

tions in amounts up to 100,000 dollars per region, plus an additional 100,000 dollars (on a 50-50 matching basis) for associations having authorised royalty assessments on the sale of one or more species of salmon caught by persons holding limited entry permits in the area.

Loans at rates not to exceed 9.5 per cent are available from the state to cover total costs of hatchery projects.

The way the system has been set up, an initial 100,000 dollars put up by the membership of a regional association can produce, over a six-year period, six million dollars in matching state grants and loans.

Stimulated by these generous financial incentives, non-profit salmon enhancement projects are proliferating in Alaska. And, although still in its infancy, the system is already making notable progress.

For example, the Prince William Sound Aquaculture Corporation's hatchery project at Port San Juan is being expanded to make it the largest pink salmon rearing facility in the United States.

A survey conducted by the Northern Southeast Aquaculture Association among fishermen in its region helped it to prepare project development guidelines. From these, both the Southeast associations are working to a set of goals and objectives that, by the year 2000, are calculated to restore and maintain chinook, sockeye and pink salmon catches at the level of the highest 30-year average catch, the coho catch at a level 150,000 fish greater, and the chum catch at the level of the highest 30-year average.

Another indication of progress is that bright, highly-trained young people are being attracted to management positions in the regional associations.

These pictures illustrate activities connected with the Northern Southeast Association's hatchery which was opened north of Juneau in the summer of 1980.

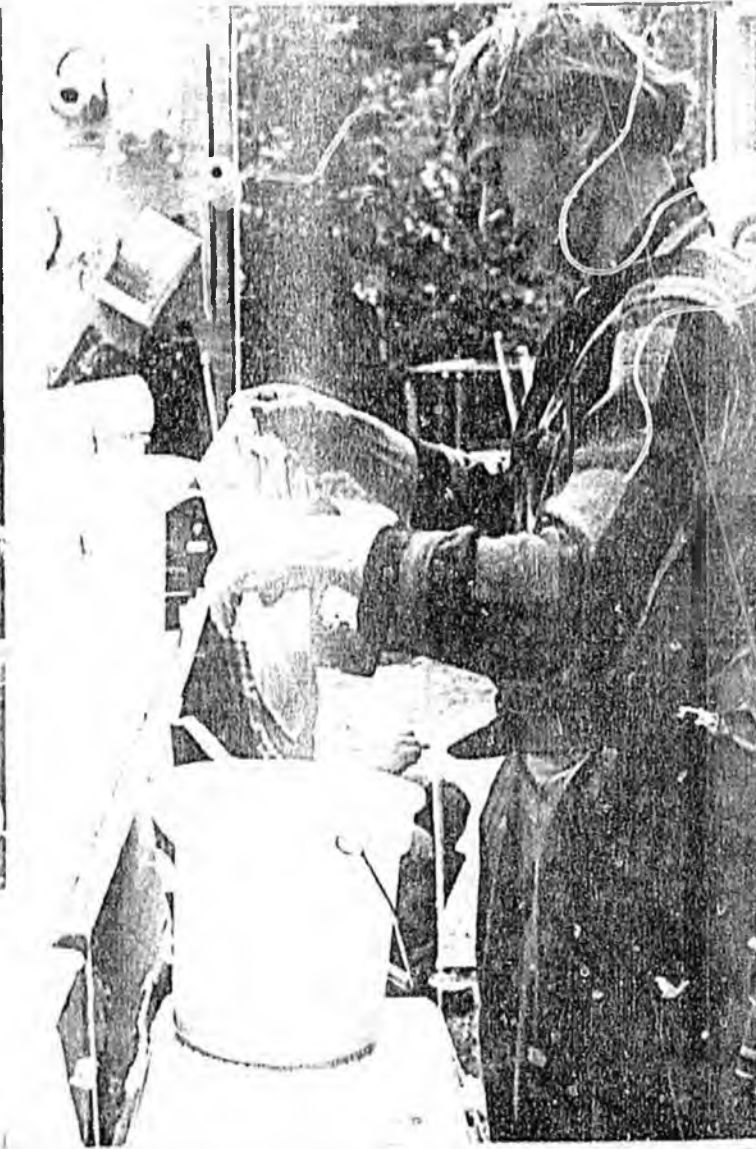
The hatchery is incubating three million pink and chum eggs with plans to add coho in a year. □



Above: Biologist Roger Boydon (left) uses an electro-shocker to stun spawning pink salmon so that Greg Young (centre) and an assistant can net the fish for hatchery broodstock. Picture by Mark Kelly.

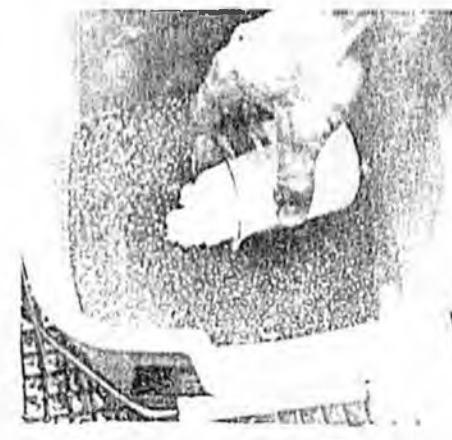


Far left: Rick Focht activates mill in the fertilised chum eggs by adding fresh water. The sperm become active in fresh water but remain so for only about 10 seconds while they enter the egg.



Left: Greg Young removes chum eggs from a "zip loc" bag prior to fertilisation. The eggs were taken at a remote site on Montana Creek, transported to the hatchery in the bags and placed in the ice chests.

Below: Eggs are fertilised with milk from the male salmon. This and other pictures by Dinna Kalm.



7900430

NOTE TO FILE :

For complete copy of this report
see Legislative Reference Library
document no. 7900430

FILE COPY

**An Analysis of Selected Elements
of the
Alaskan Salmon Resource Development
Program**

**A Report to the
Aquaculture Policy Study Group
of the Alaska Legislature**

By the Firms of:

**MILLER AND ASSOCIATES, INC.,
LEONARD LANE AND ASSOCIATES AND,
MR. WILLIAM R. WILKERSON, ATTORNEY, LAW FIRM OF
EISENHOWER, CARLSON, NEWLANDS,
REHA, HENRIOT & QUINN**

**Legislative Reference Library
Legislative Affairs Agency
Pouch Y, State Capital
Juneau, Alaska 99811**

December 1, 1979

AGRICULTURE

LAKE

FERTILIZATION

MEMORANDUM

TO: Co-chairmen

Gardiner

Zharoff

FROM: John Sund Counsel House Resources Committee

DATE: March 19, 1981

RE: Lake Fertilization oversite hearings

The testimony before the committee on lake fertilization as a salmon enhancement technique will be given by Dr. John Stockner Director of the Canadian Lake Fertilization Program in British Columbia, Dr. Jeff Koenings for the Department of Fish and Game and Walt Lerrick for the Southern Southeast Regional Aquaculture Association.

THE TESTIMONY

Dr. Stockner will describe the Canadian experience with the lake fertilization technique: what they have done; why; the results of some of the projects; what they are planning to do; and some of the considerations that they have taken into account. Dr. Stockner is an employee of the Canadian Federal Department of Fisheries and is not authorized to comment on any Alaska state projects or U.S. federal projects. He is here only to tell the Canadian story. His presentation should take about one hour and he is available for questions regarding the Canadian program.

Dr. Koenings will describe what is being done in Alaska and what the state is planning to do. He is a recognized expert in the area of lake fertilization as an enhancement technique and is available for

indepth questions regarding comparison of the States plans to the Canadian program.

Walt Lerrick of SSRAA is available to the committee as a resource person in the lake fertilization technique. The only lake fertilization project being done in the state at this time is a cooperative venture between the Department of Fish and Game and SSRAA at Hugh Smith Lake near Ketchikan. Walt has done a great deal of the work on the Hugh Smith project and the planning for other projects in Southeast Alaska.

COMMITTEE ACTION

The decision for the committee regarding the lake fertilization issue is to recommend a policy direction for the state to follow. There are no statutory changes or additions necessary. It is a budgetary matter. The committee could introduce and pass a resolution regarding the recommended course of action or adopt a letter of recommendation to the finance committee regarding the funding levels it finds necessary.

ISSUES

The Governor's budget does contain a request for funding of a lake fertilization program. The policy decision is whether to follow the recommended program; increase or decrease the scope; or adopt a different policy.

MEMORANDUM

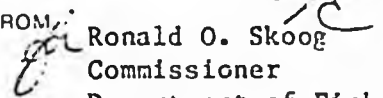
State of Alaska

TO Ronald Lehr
 Director
 Budget & Management Division
 Office of the Governor

DATE: March 20, 1981

FILE NO:

TELEPHONE NO: 465-4160

FROM:  Ronald O. Skoog
 Commissioner
 Department of Fish and Game

SUBJECT: Budget Amendment

The Fisheries Rehabilitation, Enhancement and Development (FRED) Division requests an amendment to its FY 82 budget to include an additional \$1,208,800 for mark, tag, and recovery efforts Statewide. This hatchery evaluation effort will be a joint project of the three Fisheries Divisions and private nonprofit hatchery operators.

To put this request into perspective, a brief description of where we are now and where we are going follows:

Voters of Alaska have approved salmon enhancement bonds approximating 80 million dollars. FRED Division operates 17 hatcheries throughout the State and will operate three more before the end of FY 82. The total operational egg capacities for these 20 facilities will be 624.5 million. Additionally, the Legislature established the Private Nonprofit (PNP) Hatchery Program. Since the inception of the PNP Program, 12 PNP salmon hatchery permits have been issued. Permitted egg capacities of these is about 185 million eggs.

Enhancement programs are now demonstrating large scale salmon production resulting in millions of supplementally produced adult salmon. Supplemental returns now make up a significant portion of localized runs and will soon constitute a substantial part of the State's total salmon production.

1980 Salmon Fry-Smolt Production	Releases	Returns (Prelim.)
Southeastern - State	6,196,764	38,276
PNP	13,802,224	11,554
Southcentral - State	46,551,080	841,206
PNP	22,221,000	1,494,930
Total	88,771,068	2,385,966

Projected Adult Returns in 1981 -

Southeastern - State	76,700
Southcentral - State	60,600

Problem Statement

Rehabilitated salmon runs and new salmon runs produced by State and PNP facilities, while desirable, may present new problems that must be dealt with. These include commercial, sport, and subsistence harvest allocations, seasons, and location of openings. To perpetuate the strengths of the wild stocks and the effectiveness of the enhancement facilities, natural escapements and hatchery brood stocks must be maintained. We can only guarantee the most effective overall salmon fisheries program by gaining a more intimate knowledge of the stocks and runs involved. This can best be accomplished by a coordinated mark recovery program.

Problem Solution

Through a cooperative effort of the three Fisheries Divisions and the PNP groups, we have prepared a Statewide proposal that will allow the evaluation of each facility's adult salmon production, in addition to providing information concerning stock migration, timing, separation, and harvest rates. Fishery professionals and members of the PNP groups all agree that to do anything less would cause chaos in future program management. In addition, detailed marking provides knowledge regarding methods on improving production.

In order to obtain this information in 1982, 1,482,000 (PNP & State) fish in Southeast and 2,841,000 fish in Southcentral regions of the State must be marked. Numbers of fish that must be marked will increase as each facility reaches full design capacity.

Commercial, sport, and subsistence fisheries and the hatcheries' rack returns must be sampled to provide the data necessary to most efficiently manage the fisheries and the hatcheries and still protect wild stocks and ensure hatchery brood stock requirements. To be most useful to in-season management of fisheries and hatcheries, mark recovery and sampling information must be made available to managers in a timely manner.

In 1980, 19% of the coho catch and 33% of the chinook catch in the Southeast Troll Fisheries were sampled for coded wire tags (CWT). 6,441 heads were processed, and 5,275 CWT's were recovered. Of these tags, 29% were from Alaskan projects. As the number of marked releases increases, the number of fish actually sampled will increase, as will the number of tags that will be recovered and processed. In 1982, it is expected that in this same troll fishery, 2,704 tags will be recovered just from FRED Division's releases. In 1986, this number will be 5,804. These numbers reflect only projections for the Southeast troll sampling program. Seine and gillnet sampling effort throughout the State, as well as troll sampling programs in other areas of the State, will also be expanding rapidly. Considering the large number of facilities and stocks that must be monitored, a highly coordinated effort through a tightly structured team is necessary. The Department, in cooperation with the PNP sector, is determined to ensure that this effort is successful.

The Tag Recovery Lab will be located in Juneau in Regional office space. The lab will contain a large freezer for storing fish heads shipped from all over Southeast. The Lab will also house coded wire tag detectors, dissecting microscopes, and a micro computer. A Fishery Biologist III will serve as project leader and be responsible for the coordination of mark/recovery information. Technicians will actually remove tags from fish heads and read data. Included in the staff will be a Systems Analyst to design a system to efficiently store, edit, integrate, and retrieve the diverse mark, recovery, and sampling data for various analytical, management, and reporting purposes. This information will be used by all three Fisheries Divisions. An inter-Divisional team in Southeast Alaska is drafting a comprehensive proposal to establish the functional organization to ensure that a coordinated comprehensive mark/recovery program is instituted. The schematics of this proposed organization is outlined in Table 5 and Figures 1 and 2.

The following tables summarize budget information and marking locations and numbers. Recovery budget estimates are based on sampling 30% of the fishery.

Enclosures

cc: Janet Green

Table 1

MARK, TAG, AND RECOVERY
FY 82 BUDGET REQUEST

FY 82 BUDGET CONTAINED IN GOVERNOR'S REQUEST

Recovery

FRED	85.8
Comm. Fish	261.1
Sport Fish	250.0

Tagging

FRED (129.3 FRED; 84.9 PNP)	214.2
-----------------------------	-------

Equipment (CWT Taggers)

FRED	285.0
------	-------

TOTAL PRESENT FY 82 REQUEST \$1,096.1

ADDITIONAL FY 82 BUDGET REQUEST - FRED DIVISION

For Budget Amendment

Southeast Recovery Lab	309.5
------------------------	-------

Marking (FRED)	310.9
----------------	-------

Equipment (Price increase since initial request)	35.0
---	------

Recovery

FRED	361.4
PNP	192.0

TOTAL ADDITIONAL REQUEST \$1,208.8

TOTAL BUDGET \$2,304.9

Table 2. Mark and recovery budget for FY 82 SE Alaska hatchery and fisheries evaluation.

	<u>100</u>	<u>200</u>	<u>300</u>	<u>400</u>	<u>500</u>	<u>Total</u>
FRED Marking	55.6	3.4	0.5	15.1		74.6
PNP Marking	31.9	5.0	2.6	11.8		51.3
CWT Machines (8)					160.0	160.0
Recovery						
FRED	68.1	4.1	5.5	2.7	7.1	87.5
CF	233.1	5.0	15.0	3.0	5.0	261.1
SF	57.9	2.9	839.7	.5	3.8	74.0
					Subtotal	708.5

Table 3. Mark and recovery budget for FY 82 SC Alaska hatchery and fisheries evaluation.

FRED Marking	252.1	21.6	31.0	50.4	10.5	365.6
PNP Marking	24.5	2.0	.0	7.1	.0	33.6
CWT Machines (8)					160.0	160.0
Recovery						
FRED	250.0	10.3	30.3	62.9	6.2	359.7
SF	146.7	2.2	9.5	15.1	2.5	176.0
PNP	40.0	4.0	-0-	8.0	140.0	192.0
					Subtotal	1,286.9

Table 4. Recovery Lab in Southeast

Lab	206.7	10.0	23.5	4.0	65.3	309.5
					Total	2,304.9
					*Already Requested	1,096.1
					TOTAL ADDITIONAL REQUEST	1,208.8

* Governor's Budget - FRED 585.0
 CF 261.1
 SF 250.0

Table 5

Recovery Lab

Personal Services		206.7
FB III - Lab Director/Coordinator--Existing FRED budget		
FB III - CF Project Leader--Existing CF Budget		
FB I - Quality control		33.3
FT III - May to Dec (8 months)		18.7
FT III - Jun to Nov (6 months)		14.0
2 FT II's - Jun to Nov (12 months)		25.1
EDP Programmer IV		43.3
Data Entry Clerk III		26.1
Systems Analyst II		46.2
TRAVEL		10.0
CONTRACTUAL		23.5
Rent	11.9	
Computer	3.6	
Telephones	3.0	
Remodeling	3.5	
Misc.	1.5	
COMMODITIES		4.0
Remodeling	1.5	
Supplies	2.5	
EQUIPMENT		65.3
Freezer	30.0	
4 CWT detectors	28.0	
5 CWT holding jigs	.5	
2 calculators	.5	
5 dissecting microscopes	3.5	
Large magnet	.3	
Furniture	2.5	
TOTAL		309.5

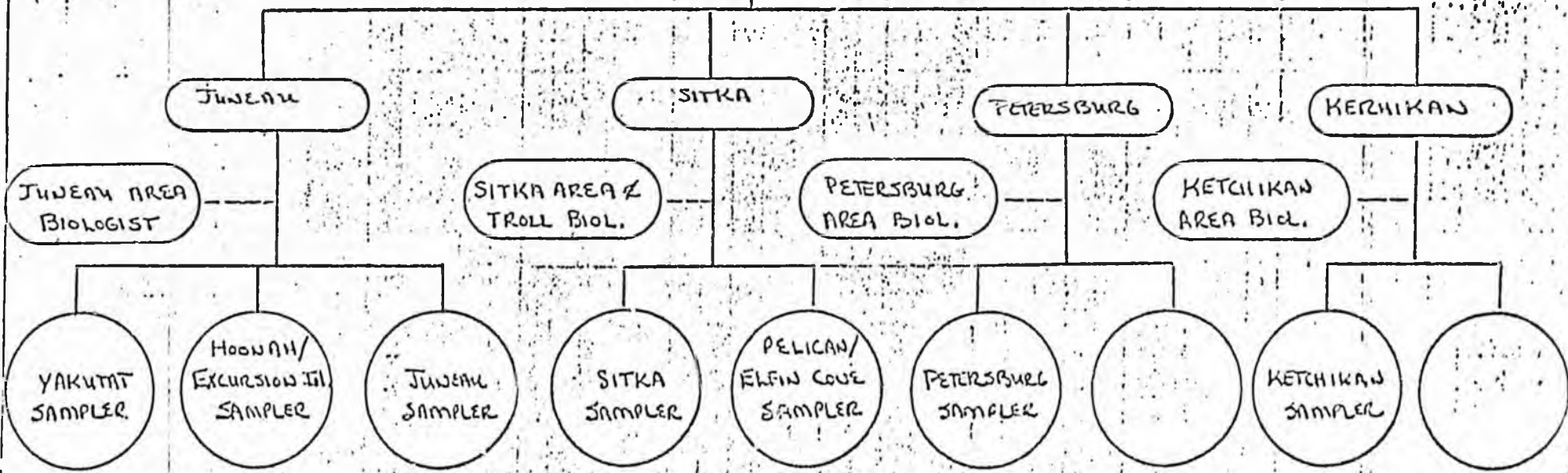
FIGURE 1

ORGANIZATIONAL SCHEMATIC FOR SOUTHEAST ALASKA COMMERCIAL HARVEST CODED WIRE TAG AND MARK RECOVERY SAMPLING PROGRAM

NEW FALL

PROJECT LEADER
FOR
CWT AND MARK RECOVERY
SAMPLING PROGRAM

———— TECHNICAL
----- ADMINISTRATIVE



FISHERIES SAMPLED

TROLL	X	X	X	X	X	X	X
SINE		X	X	X	X	X	X
NET	X	X	X		X		X

NOTE: THE ABOVE SAMPLERS WILL BE USED ON A TIME AVAILABLE BASIS FOR OTHER COMMERCIAL HARVEST SAMPLING DUTIES.

FIGURE 2 - FUNCTIONAL ORGANIZATION OF ADF/G SOUTHEAST ALASKA REGION FISHERIES MARK/RECOVERY PROGRAM (ADF/G-3/81)

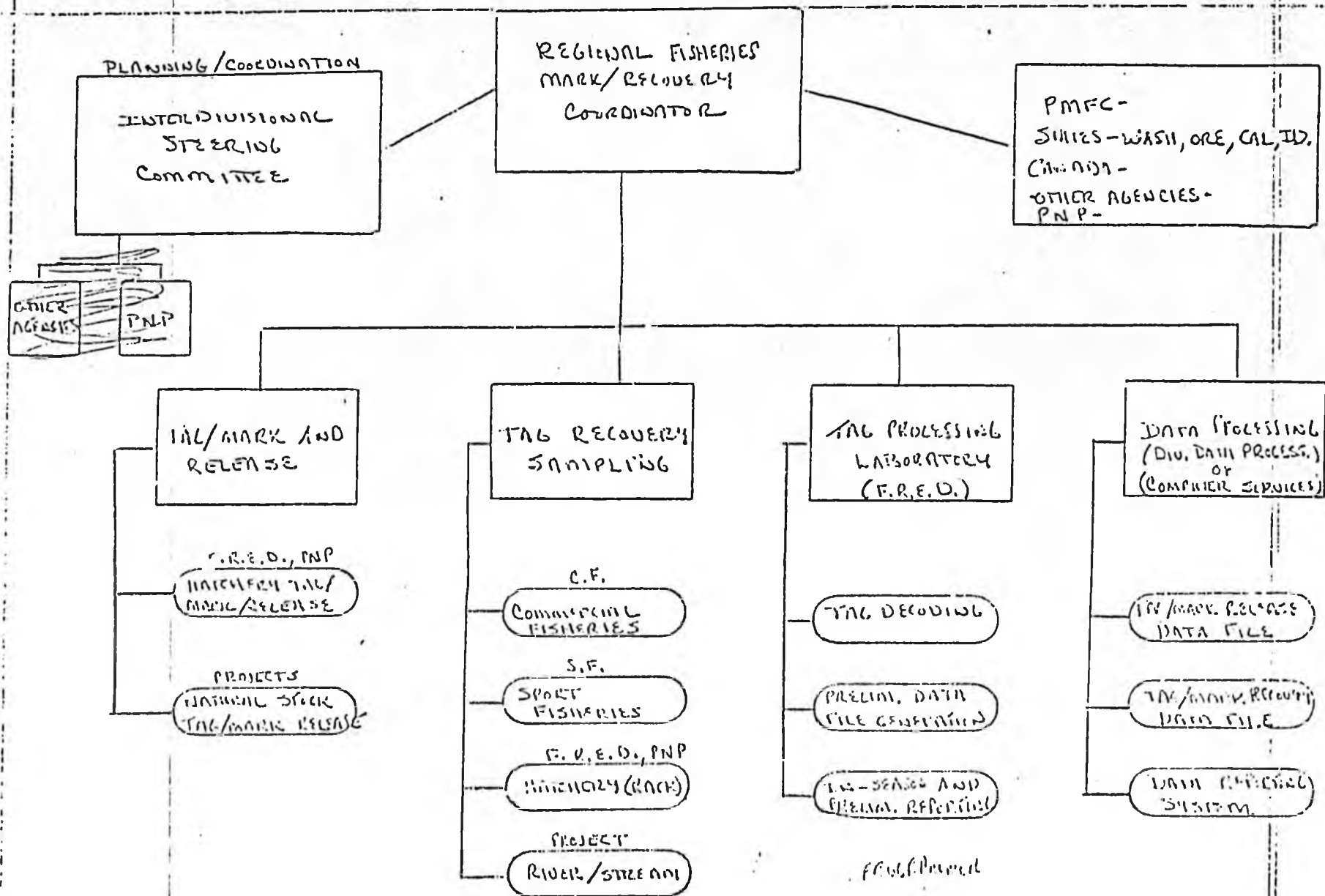


Table 6

Proposed Marking Plan and Budget Summary for FY 82

<u>Facility/Species</u>	(\$ in thousands)				
	<u>100</u>	<u>200</u>	<u>300</u>	<u>400</u>	<u>Total</u>
Beaver Falls 100,000 chum	9.2		0.5	1.0	10.7
Crystal Lake 100,000 king	7.4			1.2	8.6
25,000 coho	1.6			0.3	1.9
47,000 chum	4.4			0.7	5.1
	13.4			2.2	15.6
Deer Mountain 100,000 king	7.4			1.1	8.5
25,000 coho	1.6			0.3	1.9
	9.0			1.4	10.4
Hidden Falls No king 100,000 chum	8.6	2.8		4.8	16.2
Klawock 25,000 coho	1.6			0.3	1.9
50,000 chum	4.8			1.7	6.5
	6.4			2.0	8.4
Snettisham 50,000 chum	4.6	0.6		2.4	7.6
12,000 coho	0.8			0.2	1.0
50,000 king	3.6			1.1	4.7
	9.0	0.6		3.7	13.3
GRAND TOTAL	55.6	3.4	0.5	15.1	74.6
684,000 CWT's					
				+ 5 EA. CWT machines @ 20,000 ea.	100.0
				TOTAL	\$174.6

Table 7

PROPOSED MARKING PLAN AND BUDGET SUMMARY FOR FY 82 PRIVATE NONPROFIT

Facilities in Southeast Alaska

Facility	\$ in 1,000's				
	N/P 100	200	300	400	Total
<u>SSRAA</u>					
Chum-Diss. Cr. CWT 59,000	5.4	0.6	0.3	1.5	7.8
Carroll R. CWT 59,000	5.4	0.6	0.3	1.5	7.8
King-Unuk CWT 80,000	6.7	0.6	0.2	0.9	8.4
Coho-Indian R. CWT 25,000	(costs included w/kings)				
<u>NSRAA</u>					
Chum-mixed Single clip 50,000	1.1		0.2	0.7	2.0
Pink-mixed Single clip 50,000	1.1		0.2	0.7	2.0
<u>DIPAC</u>					
Chum-mixed Single clip 50,000	1.1		0.2	0.7	2.0
Pink-mixed Single clip 50,000	1.1		0.2	0.7	2.0
<u>Sheldon Jackson</u>					
Pink-Indian R. Double clip 50,000	1.4			0.3	1.7
Chum-mixed Double clip 50,000	1.4	0.3		0.5	2.2
Coho-mixed CWI 25,000 smolt	1.6	0.3		0.1	2.0
<u>Burro Creek</u>					
Chum-Single clip 50,000	1.1	0.5	0.2	0.8	2.6
Pink-Single clip 50,000	1.1	0.5	0.2	0.8	2.6
<u>AK Aquaculture</u>					
Pink-Single clip 50,000	1.1	0.5	0.2	0.8	2.6
Chum-Single clip 50,000	1.1	0.5	0.2	0.8	2.6
<u>Meyers Chuck</u>					
Pink-Single clip 50,000	1.2	0.6	0.2	0.0	3.0
<hr/>					
Subtotal: Marking Activities	31.9	5.0	2.6	11.8	51.3
Equipment Purchases to Accomplish Above:					
3 ea. CWT machines (complete) @ \$20.00 each					60.0
<hr/>					
TOTAL:					111.3

Table 10

SOUTHEAST RECOVERY

	<u>100</u>	<u>200</u>	<u>300</u>	<u>400</u>	<u>500</u>	<u>Total</u>
<u>FRED RECOVERY</u>						
Coastwide	68.1	4.1	5.5	2.7	7.1	87.5
<u>SPORT FISH RECOVERY</u>						
Ketchikan	9.5	2.3	2.5	.5	.2	15.0
Juneau/Yakutat	14.2	-0-	-0-	-0-	1.8	16.0
SE King	34.2	.6	6.4	--0-	1.8	43.0
	<u>57.9</u>	<u>2.9</u>	<u>8.9</u>	<u>.5</u>	<u>3.8</u>	<u>74.0</u>
<u>COMM FISH RECOVERY</u>						
Troll Fishery	233.1	5.0	15.0	3.0	5.0	261.1
					TOTAL	422.6

Table 9

SOUTHCENTRAL RECOVERY

	<u>100</u>	<u>200</u>	<u>300</u>	<u>400</u>	<u>500</u>	<u>Total</u>
<u>FRED Recovery</u>						
Big Lake	60.2	4.4	2.8	27.4	-0-	94.8
Halibut Cove -						
Sport Fish	22.7	0.5	3.3	5.7	1.9	34.1
Comm. Fish	22.7	0.5	3.3	5.7	1.9	34.1
Beluga -						
Fritz Creek	16.0	-0-	1.0	4.6	1.4	23.0
Leisure	13.0	-0-	1.5	1.5	1.0	17.0
Cannery	6.7	0.6	5.0	1.2	-0-	13.5
Sikusuilag - 0						
Kitoi	21.2	2.2	1.7	3.0	-0-	28.1
Tutka	35.7	0.9	2.9	5.4	-0-	44.9
Kasilof -						
Smolts	30.5	0.2	2.9	3.9	-0-	37.5
Big Lake and						
Crocked Creek	8.4	0.0	0.9	1.0	-0-	10.3
Karluk	12.9	1.0	5.0	3.5	-0-	22.4
	<hr/>	<hr/>	<hr/>	<hr/>	<hr/>	<hr/>
Subtotals	250.0	10.3	30.3	62.9	6.2	359.7
PWSAC						
Equipment -						
Traps, Sonar						
PNP Recovery	40.0	4.0	-0-	8.0	140.0	192.0
<hr/>						
<u>Sport Fish Recovery</u>						
Deshka	74.4	2.2	5.5	6.9	-0-	89.0
Kenai	72.3	-0-	4.0	8.2	2.5	87.0
	<hr/>	<hr/>	<hr/>	<hr/>	<hr/>	<hr/>
	146.7	2.2	9.5	15.1	2.5	176.0

Table 8

Proposed Marking Plan and budget Summary for FY 82

	SOUTHCENTRAL					Total
	100	200	300	400	500	
(\$ in thousands)						
<u>FRED Marking</u>						
Big Lake CWT & Clips 260,000	11.0	-0-	1.0	3.0	-0-	15.0
Jewel Lake) Quartz Lake)> CWT & Clips 150,000	5.4	-0-	0.2	1.9	-0-	7.5
Halibut Cove CWT & Clips 50,000	4.0	-0-	0.0	1.4	0.1	5.5
Beluga Lake) Fritz Creek)> CWT & Clips 25,000	2.0	-0-	-0-	0.7	0.1	2.8
Whittier CWT & Clips 90,000	2.4	-0-	-0-	0.8	0.1	3.3
Seward CWT & Clips 25,000	7.8	-0-	0.9	1.8	0.2	10.7
Cannery Creek CWT & Clips 224,000	14.9	1.6	2.5	3.0	0.5	22.5
Main Bay CWT & Clips 126,000	23.8	1.4	2.0	4.0	0.5	31.7
Sikusuilag CWT & Clips 160,000	14.6	0.8	-0-	1.2	-0-	16.6
Russell Creek CWT & Clips 136,000	19.5	14.4	-0-	0.2	-0-	34.1
Kitol CWT & Clips 240,000	23.1	1.0	1.2	5.9	-0-	31.2
Tutka CWT & Clips 105,000	32.8	0.3	2.7	5.1	-0-	40.9
Kasilof CWT & Clips 480,000	35.0	0.5	4.0	3.2	-0-	42.7
East Creek CWT & Clips 280,000	23.0	0.6	4.9	8.2	8.0	44.7

Table 11

New Permanent Full Time Positions Requested
for Mark, Tag, and Recovery

FRED

Fish Biologist I - Lab
EDP Programmer IV - Lab
Data Entry Clerk III - Lab
Systems Analyst II - Lab

COMM FISH

*Fish Biologist II - Troll Recovery
*Fish Biologist I - Troll Recovery

New Seasonal or Non Permanent Positions Requested
for Mark, Tag, and Recovery

*Comm Fish - 22 seasonal or non perm positions for 62 months
*Sport Fish - 25 seasonal or non perm positions for 89 months
**FRED - 125 seasonal or non perm positions for 370 months

* Included in Governor's FY 82 Budget Request

** 47 seasonal and non perm positions included in Governor's FY 82 Budget
Request

COMMITTEE
CORRESPOND-
ENCE
1982 A-M



Alaska State Legislature

HOUSE OF REPRESENTATIVES
COMMITTEE ON RESOURCES

*File Resource
Corresp Accounting*

KEN FANNING, CO-CHAIRMAN
ERIC BUTCLIFFE, CO-CHAIRMAN
POUCH V
JUNEAU, ALASKA 99911
(907) 465-3718

M E M O R A N D U M

TO: Accounting Department
Legislative Affairs Agency

FROM: Gail Thibodeau *gnt*
Resource Committee Staff

DATE: April 5, 1982

RE: Resource Committee Budget

In trying to reconcile our records with the information provided by Legislative Affairs, it appears as though there are numerous discrepancies. In order to straighten out this problem, it would be helpful if you could provide me with copies of the following vouchers and any related back-up information. Thank you for your help.

V3102598	Professional Travel	\$ 177.00
FW274364	John Manly	11.25
FW249056	Ken Fanning	89.50
FW249022	Beth Robinson	19.30
FW249098	John Manly	10.00
FW274365	Patrick Lawler	18.00
V3102817	Alaska Airlines	257.00
V3102817	Alaska Airlines	73.00
V3102817	Alaska Airlines	181.00
V3102857	Alaska Airlines	146.00
V3102854	Alaska Airlines	146.00
FW274365	Patrick Lawler	121.50
V3102774	Alaska Airlines	101.00
V3102817	Alaska Airlines	257.00
V3102817	Alaska Airlines	73.00
V3102817	Alaska Airlines	181.00
V3102854	Alaska Airlines	146.00
TA002146		9.12
FW305523		172.80
TR006390	LD REIM	53.04
AV011542	FW9305162 & 274316	430.00
AV011542	FW274315	335.00
AV011542	FW274324	268.00
AV011542	FW274365	121.50
AV011542	FW274364	11.25
AV011542	STR315388	350.00
AV011542	329668	219.00

~~Business~~ Accounting



Alaska State Legislature

REPRESENTATIVE
ERIC SUTCLIFFE

REPRESENTING
THE SOUTHERN ALASKA PENINSULA
THE ALEUTIAN CHAIN
KODIAK ISLAND
AND THE Pribilof Islands

HOME
P.O. BOX 3
UNALASKA, ALASKA 99685
(907) 581-1455

WHILE IN JUNEAU
POUCH V
JUNEAU, ALASKA 99811
(907) 465-4940

MEMORANDUM

TO: Legislative Affairs Accounting Office

FROM: Representative Sutcliffe *ES*

RE: Reimbursement for Resources Committee incurred expenses

DATE: September 21, 1981

On July 23 - 26, I stayed in Anchorage to discuss resources related issues with the following people:

Kay Poland, Department of Commerce
Eric Yould, Alaska Power Authority
Knud Gattling, Danish Consulate
Wayne Lewis, Aleut Corporation
Janie Leash, Alaska Federation of Natives
Lloyd M. Pernela, Division of Energy and Power Development
Janice Brewer, Division of Energy and Power Development

I've been paid two days per diem for that trip but would like reimbursement for two days more and for car rental expenses. Enclosed is a copy of the car rental receipt (\$142.21).

While in Unalaska, I have used my personal phone for Resources Committee business. I would like to be reimbursed for these calls which so far total \$135.62. Enclosed is a copy of my

Accounting Office

Page 2

phone bill with the resources related calls highlighted.

In all, I would like reimbursement from the Resources Committee budget for:

two days per diem (Anchorage, July 25 & 26)

\$142.21 car rental

\$135.62 phone calls

Thank you.



INTERIOR TELEPHONE COMPANY

508 W. 6TH AVENUE, SUITE 200
ANCHORAGE, ALASKA 99501
272-2575

BILLING DATE 9/01/81
PHONE NUMBER 581-1455
SERVICE DATE 6/05/78

SUTCLIFFE, KATHLEEN
BOX 3
UNALASKA, AK

99685

AMOUNT ENCLOSED _____

PLEASE DETACH AND RETURN THIS
PORTION WITH YOUR PAYMENT

PAYMENT IS DUE WITHIN 20 DAYS FROM THE
DATE OF BILLING. ACCOUNTS UNPAID FOR
30 DAYS OR MORE WILL RECEIVE A PENALTY
CHARGE OF 1% PER MONTH.

PLEASE WRITE YOUR PHONE
NUMBER ON YOUR CHECK

DATE	DESCRIPTION	QUANTITY	AMOUNT	BALANCE
	BALANCE FORWARD			148.7
05/81	PAYMENT - THANK YOU		76.13-	72.6
05/81	ADJUSTMENT- NEW JACK 8/5AK-RECORDAC ALL		10.00	82.6
05/81	ADJUSTMENT- SUBSEQUENT VISIT		10.00	92.6

PAST DUE

* BILLING NUMBER 581-1455 LONG DISTANCE CALLS **

DATE	FROM-NO	FROM-PLACE	TO-NO	TO-PLACE	T	C	MIN	HR	CHARGE	SERIAL
07/27	5811455	UNALASKA	AK 9075869402	JUNEAU AK	1	K	4	03P	E. 3.85	81211034806
07/27	5811455	UNALASKA	AK 2068422490	BAINBDG ISWA	1	*K	1	04P	ST. .71	81211034806
07/27	5811455	UNALASKA	AK 2062437626	SEATTLE WA	1	*S	1	06P	E .49	81211034806
07/27	5811455	UNALASKA	AK 2068422490	BAINBDG ISWA	1	*S	4	06P	ST. 1.63	81211034806
07/28	5811455	UNALASKA	AK 9074652320	JUNEAU AK	1	K	16	07A	AK 14.65	81211034806
07/28	5811534	UNALASKA	AK 9075869402	JUNEAU AK	2	B	12	08P	E 5.45	81211034806
07/29	5811455	UNALASKA	AK 9075861736	JUNEAU AK	1	B	10	06A	AK 4.55	81211034805
07/29	5811455	UNALASKA	AK 9074653991	JUNEAU AK	1	K	7	07A	AK 6.55	81211034805
07/29	4653715	JUNEAU	AK 9075811534	UNALASKA AK	2	K	5	12P	AK 4.75	81215025294
07/30	5811455	UNALASKA	AK 9072783537	ANCHORAGE AK	1	K	31	03P	ST 26.35	81215025294
07/31	5811455	UNALASKA	AK 9074653250	JUNEAU AK	1	K	1	07A	E 2.95	81215025294
07/31	5811455	UNALASKA	AK 9075869402	JUNEAU AK	1	K	38	04P	E 34.45	81215025294
08/01	5811455	UNALASKA	AK 6029418305	SCOTTS DALE AK	7	*B	10	07A	ST 2.86	81217030899
08/03	5811455	UNALASKA	AK 9072799417	ANCHORAGE AK	1	K	7	10A	AK 5.95	81217030900
08/03	5811455	UNALASKA	AK 9072775601	ANCHORAGE AK	1	K	3	03P	AK 2.55	81217030900
08/03	5811455	UNALASKA	AK 9072778501	ANCHORAGE AK	1	K	3	03P	AK 2.55	81217030900
08/04	5811455	UNALASKA	AK 9072749681	ANCHORAGE AK	1	K	14	08A	AK 11.90	81217030899
08/04	5811455	UNALASKA	AK 9072777641	ANCHORAGE AK	1	K	1	08A	AK 2.55	81217030899
08/04	5811455	UNALASKA	AK 9072777641	ANCHORAGE AK	1	K	12	08A	AK 10.20	81217030899
08/04	5811455	UNALASKA	AK 9074864433	KODIAK AK	1	K	14	09A	AK 11.90	81217030900
08/04	5811455	UNALASKA	AK 9072775661	ANCHORAGE AK	1	K	4	09A	AK 3.40	81217030900
08/04	5811455	UNALASKA	AK 9072481098	ANCHORAGE AK	1	S	23	05P	ST 14.95	81217030900
08/04	5811455	UNALASKA	AK 9075869402	JUNEAU AK	1	S	19	06P	E 14.20	81217030900

STANDARD RENTAL AGREEMENT PAGE 2

No. 258975

Budget
rent a car

LESSOR - AN INDEPENDENT BUDGET SYSTEM LICENSEE
Anchorage International Airport • Phone: 243-0150
Fairbanks International Airport • Phone: 452-2179
Kenai Airport • Juneau Airport
Kodiak Airport • Valdez Airport
Ketchikan Airport

AIR HAWAII

LOWEST AIR FARES IN HAWAII

SPECIAL CAR RENTAL RATES ON ALL ISLANDS WHEN YOU FLY AIR HAWAII.

\$3.00 SERVICE CHARGE PLUS COST OF REFILL IF GAS TANK IS NOT COMPLETELY FULL ON RETURN.

LICENSE NO.	VEHICLE NO.			
MAKE	RENTING STATION			
ALTERNATE VEHICLE NO.	CHECK-IN STATION			
LICENSE NO.	VEHICLE DUE BACK BY			
MAKE	RENTER WILL BE PROSECUTED IF VEHICLE NOT RETURNED WHEN DUE BACK.			
DATE	TIME	GAS OUT	GAS IN	DATE AND TIME
CUSTOMER RESPONSIBLE FOR PARKING & TRAFFIC VIOLATIONS.				IN JUL 27 8
MILEAGE IN				MINIMUM RENTAL ONE DAY PLUS MILEAGE
MILEAGE OUT				DATE AND TIME
MILES DRIVEN				HRS.
MILEAGE IN	16	178	4	DAYS
MILEAGE OUT				WKS
MILES DRIVEN		150		AIR HAWAII SPECIAL
MILES ALLOWED				
MILES CHARGED		150		PER MILE
VEHICLE CONDITION				SUB TOTAL
SPARE & JACK OK				135.80
				13.39
				122.21
				TOTAL TIME AND MILEAGE
				INTERCITY DROP FEE
				FCP
				TAXABLE GAS
				SUBTOTAL
				NON TAXABLE GAS
				MISC. ADJ.
				NET REVENUE
				DEPOSIT
				VOUCHER
				BALANCE DUE BY (CUSTOMER)
				R.A. OUT BY

CUSTOMER _____ PHONE _____

CURRENT RESIDENCE _____

CITY _____ STATE _____ ZIP _____

DRIVER LIC. NO. _____ STATE _____ EXPIRES _____ DATE OF BIRTH _____

LOCAL ADDRESS _____ PHONE _____

COMPANY _____

ADDITIONAL CONDITIONS:
DRIVING ON UNPAVED ROADS, OR LENDING TO UNAUTHORIZED DRIVER IS A VIOLATION OF THIS CONTRACT.
IF VEHICLE CHECKED IN AT ANY POINT OTHER THAN ORIGINAL RENTING CITY, AN INTERCITY CHARGE MAY BE ADDED.

TO BE PAID BY _____ TYPE _____

AX
MC
BA
DC
CB

4844 910 345 435

ERIC G SUTCLIFFE 02/82 VTS A

LOCAL ACCT.
OTHER

I HAVE READ THE TERMS AND CONDITIONS ON PAGE 1 (OTHER SIDE) AND PAGE 2 OF THIS AGREEMENT AND AGREE THERETO. I AUTHORIZE LESSOR TO PROCESS A CREDIT CARD VOUCHER, IF ANY, FOR CHARGES INCURRED HEREUNDER.

Eric G. Sutcliffe

BY HIS INITIALS IN THE BOX BELOW, CUSTOMER ACKNOWLEDGES THE COLLISION RESPONSIBILITY AS SPECIFIED IN PARAGRAPH 5, PAGE 1, (OTHER SIDE.)

\$250 COLLISION RESPONSIBILITY
\$100 COLLISION RESPONSIBILITY
FULL COLLISION PROTECTION

RATE DOES NOT INCLUDE GAS
GAS IN E 1/4 1/2 3/4
GAS OUT E 1/4 1/2 3/4

NO COLLISION PROTECTION PROVIDED.
By his initials this negates all other collision references within this contract. Customer is totally responsible for all collision damages.

ADVANCE DEPOSIT
INITIAL DEPOSIT

AT
ADD'L DEPOSIT

SOURCE CODE
DATE REC'D. BY

CASH REFUND
PAID BY (CIRCLE)
AMT. RECD. CASH CHECK CREDIT CARD CHARGE

NET REVENUE 142.21

DEPOSIT

VOUCHER

BALANCE DUE BY (CUSTOMER) 142.21

R.A. OUT BY

FINAL INVOICE SUBJECT TO AUDIT.

CUSTOMER MEMO COPY


ADAMS, Al
ALASKA

STATE LEGISLATURE

MEMORANDUM

New file
House Resource Committee
Pouch V
Juneau, Alaska 99811
Phone # 465-3715

TO: Representative Al Adams
Chairman, House Finance Committee

FROM: Representative Ken Fanning 
Co-Chairman, House Resource Committee

DATE: January 11, 1982

As per our conversation earlier today, I would like to respectfully request that the Guide Board Bill, HB 199, be referred back to the Resource Committee.

HB 199 should not have been referred to the Finance Committee in the first place. And now, due to the Marine Mammals Act recently passed in Washington D.C., which mandates certain things relative to guiding which are inconsistent with the current guide bill, we need to put the bill back into subcommittee for further work.

Thank you for your cooperation in this matter.

Accounting



Alaska State Legislature

HOUSE OF REPRESENTATIVES
COMMITTEE ON RESOURCES

KEN FANNING, CO-CHAIRMAN
ERIC SUTCLIFFE, CO-CHAIRMAN
POUCH V
JUNEAU, ALASKA 99811
(907) 465-3715

TO: Hank Sofoulis
Budget and Accounting Officer
Division of Administrative Services

FROM: Gail Thibodeau *gnt*
Resource Committee Staff

DATE: April 29, 1982

RE: Final Accounting Report for
the Resource Committee

I have attached a copy of the final accounting report for the Resource Committee as submitted to Representative Randy Phillips, Majority Coalition Liaison to Legislative Council.

These figures, with the exception of the travel and per diem categories, match the figures I received from your office. To the best of our knowledge any discrepancies related to travel and per diem are due to erroneous billings, as previously noted in my memo of December 8 to Rep. Phillips (also attached).

As directed by Rep. Phillips office, I would ask that you correct your records so that they reflect the figures noted in our final report. Thank you for your help in dealing with this problem.



Alaska State Legislature

HOUSE OF REPRESENTATIVES
COMMITTEE ON RESOURCES

John's copy

KEN FANNING, CO-CHAIRMAN
ERIC SUTCLIFFE, CO-CHAIRMAN
POUCH V
JUNEAU, ALASKA 99811
(907) 485-3715

M E M O R A N D U M

TO: Representative Joe Hayes
Speaker of the House

FROM: John Manly *JM*
AA to the Resource Committee

DATE: September 16, 1981

This memorandum has two purposes, united only by the common bond of asking for money.

First, through lack of communication or a budgeting error, Gail (Nordling) Thibodeau was not included in the House Resources Budget, as she should have been. She was approved by the leadership to be hired as Resources Committee staff, but no money has been allocated to cover that expense. On the enclosed budget print-out you will note that the committee has \$4,249 in the unallocated category. According to Sharon Sturrock in legislative accounting it will take an allocation of \$13,600 to cover Gail.

However, in phone conversation with Representative Phillips today, he expressed the concern that the committee budget not exceed the \$74,000 cap, and that perhaps Gail could be funded through another source. He suggested as a personal secretary to Rep. Fanning. Rep. Phillips also said he had thought Gail was included in the original House Resources budget, although that was not the case.

At any rate, Gail's employment has been approved by Reps. Fanning, Fuller and yourself, but the funding still needs to be settled. There are a couple of reasons the problem is just now coming to light. Gail was off the month of August (therefore funding would only be five months), and the staff has just received its first print-outs from Accounting.

The second money problem involves the subsistence summit meetings that the Resource Committee staff is arranging. These meetings, the first one of which will take place on Saturday, September 26, are leadership meetings and are to be funded from the leadership budget, which is why we are addressing the question to you.

Our problem is that there is concern that if we expend state money (on communication, travel, per diem, etc.) then the meeting is a public one. It is the intention of Reps. Fanning, Sutcliffe, Barnes and Adams that the meetings be informal gatherings of specific

invited participants, a phenomenon which occurs daily in all branches and aspects of state government. We have gotten an informal, oral opinion from Billy Berrier to the effect that the meetings have to be public. One of his assistant attorneys has expressed a contrary view, says the statute is really not very clear, and has not been definitively contested. He also surmised that if we spent the money, a supposedly aggrieved party could bring suit to have the funds refunded.

So our question is, do we spend the money, hold the meeting, and take our chances, or would you prefer some other approach? Please let us know as soon as you can on this particular question.

Enclosure

Account: House Resources (054)
Account Chair: Sutcliffe, Fanning
Account Authorization: Hayes

Funding Source/Amount: Ch 82, SLA 1981

<u>Item</u>	<u>Budget</u>	<u>Expenditures</u>	<u>Encumbered Adjusted</u>
PERSONAL SERVICES	45,542	8,980	4,000
TRAVEL & PER DIEM	15,709		
CONTRACTUAL	5,000		
COMMODITIES	3,500		
UNALLOCATED	<u>4,249</u>		
TOTAL	74,000	8,980	4,000

13,600

Adams, Al



Alaska State Legislature

House of Representatives

JUNE-DECEMBER
Box 80929
College, AK 99708
Ph. 907-479-4234

WHILE IN SESSION:
Pouch V
State Capitol
Juneau, Alaska 99811
Ph. 907-465-4833

Official Business

Representative Ken Fanning

September 17, 1981

MEMORANDUM

To: Rep. Al Adams
From: John Manly, AA *JM*
Re: Subsistence Summit Meetings

This memorandum is to confirm our conversation of earlier this afternoon, as you requested.

It is now Rep. Fanning's opinion, as he expressed it to me just prior to our conversation, that it will be in everybody's best interest to hold the September 26 summit meeting open to the public and the press. At that meeting, which will be concerned only with policy for the subsequent meetings, a number of issues should be discussed. These include, but may not be limited to, the following agenda items:

- Selection of a chairman
- Discussion of requests to expand meeting participants
- Selection of time, date and location of subsequent meetings
- Discussion of agenda items for subsequent meetings.
- Guidelines for the meetings
- Short, basic statements from each participant regarding his or her views of the potential effectiveness of the series of meetings

It is also Rep. Fanning's concern that a press statement regarding the public nature of the meeting should come from the House Resources Committee office, to ensure that the fact is known by the public prior to the meeting taking place.

ADAMS, AL



Alaska State Legislature

HOUSE OF REPRESENTATIVES
COMMITTEE ON RESOURCES

KEN FANNING, CO-CHAIRMAN
ERIC SUTCLIFFE, CO-CHAIRMAN
POUCH V
JUNEAU, ALASKA 99811
(907) 465-3715

October 7, 1981

Representative Al Adams
P.O. Box 333
Kotzebue, AK 99752

Dear Al:

This is just a short reminder regarding the upcoming subsistence summit meeting.

The meeting will begin at 9:00 AM, Saturday, October 24 at the Legislative Information Office in Anchorage. The morning session will be devoted to a discussion of the peripheral issues of wanton waste, predator control and habitat modification. The afternoon session will entail a thorough examination of the positive and negative aspects participants see in the current law. It is our intention to adjourn at approximately 3:00 PM.

If you have material pertaining to the agenda items that you would like to have included in the packet of information we are preparing, please submit them to the Resource Committee staff as soon as possible.

Finally, we have requested of the six non-legislative participants the names of their alternates. We expect to compile a list of all participants and alternates and distribute it prior to the meeting on the 24th.

See you there.

Best Regards,

A handwritten signature in cursive script, appearing to read "Eric".

Eric Sutcliffe
Chairman

ES/gnt

Akins, Glenn

SEP 8 1981

STATE OF ALASKA

DEPT. OF ENVIRONMENTAL CONSERVATION

JAY S. HAMMOND, GOVERNOR

POUCH 0 - JUNEAU 99811

July 28, 1981

The Honorable Kenneth J. Fanning
State House of Representatives
P. O. Box 80929
College, AK 99708

Dear Representative Fanning:

Thank you for the invitation to meet with you regarding our Department's programs. Since DEC is responsible for many regulatory programs, we consider legislative interest in these programs essential.

Your staff suggested, and we agree, to proceed in the following manner:

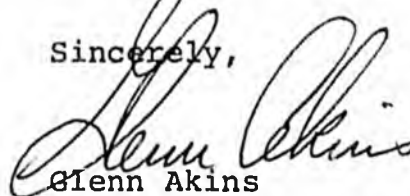
(1) Commissioner Mueller and I will meet with your staff on July 30 to give them an overview of the Department's programs. They can identify those programs and efforts which may be of special interest to you (such as placer mining, regulatory reform, seafood inspections, etc.).

(2) After you return to Juneau, we can arrange an overview briefing, emphasizing those programs of interest to you.

(3) We can then follow up, at your request, with additional details in writing or in subsequent meetings with our program managers or regional staff.

Again, thank you for your interest.

Sincerely,



Glenn Akins
Deputy Commissioner



Alaska State Legislature

HOUSE OF REPRESENTATIVES
COMMITTEE ON RESOURCES

KEN FANNING, CO-CHAIRMAN
ERIC SUTCLIFFE, CO-CHAIRMAN
POUCH V
JUNEAU, ALASKA 99811
(907) 465-3715

RECEIVED MAR 11 1982

M E M O R A N D U M

To: Joe Hayes, Speaker of the House

From: Representatives Eric Sutcliffe and Ken Fanning, Co-Chairmen
Resources Committee

Date: March 8, 1982

Subject: Sunset Review of the Alaska Renewable Resources Corporation

After a public hearing on oversight review of ARRC, the House Resources Committee determines that ARRC has not satisfactorily served the "public need", in order to justify its continued existence. Although the Committee concurs that there are few sources of high risk equity financing available to Alaskan entrepreneurs, both the concept and structure of ARCC are flawed.

The House Resources Committee will not introduce new legislation at this time, and the Committee declines to specify what, if any, alternative to ARRC should be pursued. Legislation to amend the ARRC statutes is presently before the Senate. When, and if, this legislation appears before the House Resources Committee, it will be given the appropriate scrutiny.

The House Resources Committee concurs with and submits the Division of Legislative Audit Review of the Department of Revenue Alaska Renewable Resources Corporation, dated November 13, 1981, as its findings and recommendations in accordance with A.C. 44.66.050.

Voting:

In concurrence with this letter: Reps. Fanning, Sutcliffe, Halford and Barnes.

Against this letter: Reps. Grussendorf, Vaska and Carney

STATE OF ALASKA

THE LEGISLATURE

BUDGET AND AUDIT COMMITTEE

AUDIT DIVISION
POUCH W—ALASKA OFFICE BUILDING

JUNEAU, ALASKA 99811

February 19, 1982

FEB 22 1982

TO: Representative Ken Fanning
Co-Chairman
House Resources Committee

FROM: *M. L. Wilkerson*
Gerald L. Wilkerson, CPA
Legislative Auditor
Division of Legislative Audit

SUBJECT: Discussion of Legislative
Oversight Responsibilities
as Related to Sunset Audits

As required by "sunset" legislation, your Committee has been assigned the oversight review of the Guide Licensing and Control Board and the Alaska Renewable Resources Corporation. In addition to the audit reports released earlier by this Division, the following information may be helpful.

According to AS 44.66.050, the standing committee of legislative jurisdiction as provided in Rule 20 of the Uniform Rules of the Legislature shall hold one or more hearings to receive testimony from the public and other parties that have associated responsibilities or interests. In addition, the Committee shall consider Legislative Audit's report, the agency's proposed budget, the agency's program performance report, and any other tools that might assist it in evaluating the conduct and activities of the agency being terminated.

It is important to note that the terminating agency shall have the burden of demonstrating a public need for its continued existence during the public hearings.

The determination of "public need" for continued existence shall take into consideration the following factors set out in AS 44.66.050(c):

1. The extent to which the board, commission or program has operated in the public interest.

2. The extent to which the operation of the board, commission, or agency program has been impeded or enhanced by existing statutes, procedures, and practices which it has adopted, and any other matter, including budgetary, resource, and personnel matters.
3. The extent to which the board, commission or agency has recommended statutory changes which are generally of benefit to the public interest.
4. The extent to which the board, commission or agency has encouraged interested persons to report to it concerning the effect of its regulations and decisions on the effectiveness of service, economy of service, and availability of service which it has provided.
5. The extent to which the board, commission or agency has encouraged public participation in the making of its regulations and decisions.
6. The efficiency with which public inquiries or complaints regarding the activities of the board, commission or agency filed with it, with the department to which a board or commission is administratively assigned, or with the office of the ombudsman have been processed and resolved.
7. The extent to which a board or commission which regulates entry into an occupation or profession has presented qualified applicants to serve the public.
8. The extent to which state personnel practices, including affirmative action requirements, have been complied with by the board, commission or agency to its own activities and the area of activity or interest.
9. The extent to which statutory, regulatory, budgeting or other changes are necessary to enable the agency, board or commission to better serve the interests of the public and to comply with the factors enumerated in this subsection.

The Legislative Audit reports have addressed these issues individually but only to the extent allowed by restricted audit scopes detailed within the reports.

The Law further states that the committee of reference shall, not later than the 60th day of the legislative session, submit a report to the presiding officer of each

Representative Ken Fanning
February 19, 1982
Page 3

house. The report is to include a summary of findings as to compliance with the "public need" factors enumerated above together with recommendations as to each of the following:

1. An identification of the problems or the needs that the programs and activities of the board, commission or agency are intended to address.
2. A statement, to the extent practicable, of the objectives of the program of the board, commission, or agency program, and its anticipated accomplishments.
3. An identification of any other programs having similar, conflicting or duplicate objectives.
4. An assessment of alternative methods of achieving the purposes of the program.
5. An assessment of the consequences of eliminating the board, commission or program and consolidating its activities with another program, or of funding it at a lower level.
6. A justification for the recommended continuation or extension of the board, commission or program, and an explanation of the manner in which it avoids duplication of or conflict with other efforts.
7. Any other information which, in the opinion of the committee, would improve the performance of the board, commission or agency with respect to its representation of and responsiveness to the public interest.

The committee of reference may introduce a bill providing for the reorganization or continuation of the agency being terminated as stipulated in AS 44.66.050(e).

If additional information is needed, please contact this office at 465-3830.

cc: Senator Arliss Sturgulewski
Chairman
Legislative Budget and Audit Committee

ALASKANS FOR EQUAL HUNTING & FISHING

SEP 9 1981

ALASKANS FOR EQUAL FISHING AND HUNTING RIGHTS

BOX 10-1991

ANCHORAGE, ALASKA 99510

August 24, 1981

Alaska State Legislature
House of Representatives
Committee on Resources

Dear Representatives,

Thank you for your letter of July 14, 1981. First, as a point of correction, Warren Olson is the chairman of Alaskans for Equal Fishing and Hunting Rights. Sam McDowell is a director of Alaskans for Equal Fishing and Hunting Rights and also president of the Izaak Walton League of America, Anchorage Chapter.

The chairman and directors of Alaskans for Equal Fishing and Hunting Rights have reviewed your letter, and after consultation with a number of the members and sponsors, have joined in this reply to your invitation to negotiate the subsistence issue. We cannot participate in these meetings. This decision is based on the fact that we have no authority to negotiate or compromise on this issue. The members of our organization are working together to pass the initiative. We are not delegated the right to dilute or even discuss dilution of the position established by the initiative.

Our position is based on the following points:

1. The position of Alaskans for Equal Fishing and Hunting Rights is clear and precise. The initiative is the exact and total statement of our position. (Copy Included).

The clear intent of the initiative is that of "individual equality for personal consumptive users of fish and game," and to repeal existing laws relating to subsistence use of fish and game. We will not compromise this principle which we believe is one of the basic rights which constitute the essence of our country.

2. Over 1500 Alaskans are currently circulating the initiative. Our claim of support is verified by those who circulate and are signatory to the initiative, and the validity of our representation is limited to that position. These people have repeatedly stated that, if we do less than stand firm, they will feel betrayed....We will not betray them!!!! We have neither the desire, the authority, nor the belief that a compromise can be made between such equality and any priority.
3. This issue is one of full public concern and right. The initiative meets that concern by establishing this equal right. We believe that the only proper forum for this issue is a totally open public participation. We do not shrink from open dialogue on the merits of our position, and are prepared to defend our stand at any public forum. At any such meetings we will need no special invitation to participate in full view of our members and the public.
4. We will continue to support only the full individual equality of all personal consumptive users of Alaska's Fish and Game, and, as necessary, present this position to the Alaska public for their vote, through the initiative. This issue will be taken to the highest level possible.....The citizens of Alaska.

For further clarification of our position during the course

of your deliberations, we would refer you to the United States Constitution, the Alaska State Constitution, the Bill of Rights, and the Declaration of Independence.

Thank You,

Board of Directors

Sam. E. McDowell

Louis K. Brunner.

Warren E. Olson

Clyde A. James

Dale Berdavant

Theodore J. Dixon

Donald W. Gibson

Tom Scarborough

Toni Palmieri

AMSTRUP, CARL

JAY S. HAMMOND
GOVERNOR



JUL 29 1981
Telephone: 907/452-1590

JUL 29 1981

STATE OF ALASKA
OFFICE OF THE GOVERNOR
Special Projects Office
ALASKA AGRICULTURAL ACTION COUNCIL

July 27, 1981

Honorable Ken Fanning
Alaska State Legislature
House of Representatives
Pouch V
Juneau, Alaska 99811

Dear Representative Fanning:

Your letter of July 16th to Bob Pollock was forwarded to me. Bob resigned as executive director, and I took his place effective July 20.

During the next two or three weeks, I will be occupied with learning the current work of the Council in preparing for the high priority planning that must be done by the end of the calendar year. Your suggestion that we meet to discuss programs is very much appreciated. As soon as it can be arranged, I will contact Gail Nordling as you suggested.

Sincerely,

Carl

Carl R. Amstrup
Executive Director

cc: Bob Palmer

CA/nk

Anchorage Times



Alaska State Legislature

HOUSE OF REPRESENTATIVES
COMMITTEE ON RESOURCES

KEN FANNING, CO-CHAIRMAN
ERIC SUTCLIFFE, CO-CHAIRMAN
POUCH V
JUNEAU, ALASKA 99811
(907) 465-3715

July 27, 1981

Anchorage Times
P.O. Box 40
Anchorage, Alaska 99510

To whom it may concern:

I would like to subscribe to the Anchorage Times for six months effective immediately. Please send the paper to the address below:

House Resource Committee
Pouch V
Juneau, Alaska 99811

The bill should be sent to the accounting department of the Legislative Affairs Agency at Pouch Y, Juneau, Alaska 99811.

Thank you for your attention to this matter.

Sincerely,

Handwritten signature of Gail Nordling in cursive.

Gail Nordling, Secretary
House Resources Committee

AUG 13 1981

STATE OF ALASKA

JAY S. HAMMOND, GOVERNOR

DEPARTMENT OF FISH AND GAME
OFFICE OF THE COMMISSIONERSUBPORT BUILDING
JUNEAU, ALASKA 99801

August 12, 1981

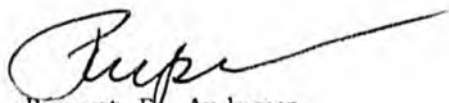
The Honorable Kenneth J. Fanning
Alaska State House
of Representatives
Pouch V, State Capitol
Juneau, Alaska 99811

Dear Ken:

Congratulations on your new assignment as co-chairman of the Resources Committee. I personally am pleased to see you accept this important assignment, because of your experience and interest in fish and wildlife.

I and several of my staff would be more than pleased to meet with you and Representative Sutcliffe. My travel plans this year call for an absence from Juneau September 14 through November 14, 1981. Any time prior or later than the above dates would be fine for a get together. As Commissioner Skoog indicated in his August 7, 1981 letter, Anchorage or Fairbanks are suitable places to meet if it fits your schedule more conveniently. Please advise if you have any areas of special concern for which briefing material would need to be prepared for your committee's use.

Sincerely,



Rupert E. Andrews
Director
Division of Sport Fish
(907) 465-4180



Alaska State Legislature

HOUSE OF REPRESENTATIVES
COMMITTEE ON RESOURCES

KEN FANNING, CO-CHAIRMAN
ERIC BUTCLIFFE, CO-CHAIRMAN
POUCH V
JUNEAU, ALASKA 99811
(907) 465-3715

July 14, 1981

Ray Arnett, Asst. Secretary
Fish, Wildlife and Parks
Department of the Interior
18th and C Streets
Washington, D.C. 20240

Dear Mr. Arnett:

The leadership of the Alaska House of Representatives cordially invites you to be an active participant in negotiations which we hope will defuse and resolve the priority subsistence issue. The timeliness of your actions and decisions is crucial if we are to avoid a permanent divisiveness which may occur if the issue is not resolved.

As a sincere and necessary step to reaching an agreeable compromise to the controversy, the House leadership is calling for a series of four summit meetings, commencing in late September, to bring together representatives of the now polarized factions in an atmosphere in which an agreement can be worked out. The monthly meetings will be held in Anchorage and, in the interest of expediency, the House Resources Committee staff will handle logistics.

We are inviting representatives of the House and Senate, the Governor's office, the ADF & G, the Alaska Federation of Natives, Alaskans for Equal Hunting and Fishing Rights, the Alaska Wildlife Federation and the federal government. We want participation by those decision-makers who are willing to discuss all parameters of this volatile issue.

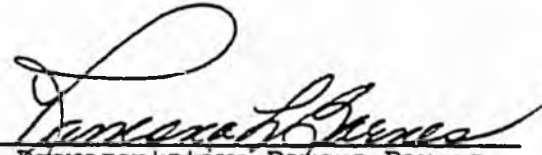
We will follow up this letter with a telephone call or personal visit to gain your input and further suggestions and to finalize with you the details of the initial meeting, tentatively scheduled for September 26.

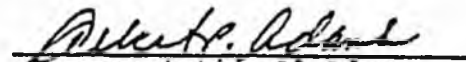
If you have not already done so, please familiarize yourself with the several reports published by members of the House Special Committee on Subsistence last May. Those reports may be obtained by contacting the Resource Committee at the above address. Additionally, if you have any materials you would like to have reviewed by other participants, please send them to the Committee staff no later than September 12.

It is extremely important that each participant lay the groundwork for the initial meeting by having on file with the Resources Committee a position paper which briefly outlines their concerns. If this information is available to the staff by September 12, they will be able to organize the initial meeting efficiently.


We sincerely ask for your active participation in seeking a resolve to the volatile subsistence issue. We are committed to working for you and look forward to the meeting in September.

Best Regards,


Representative Ramona Barnes


Representative Al Adams


Representative Eric Butcliffe


Representative Ken Fanning

~~Subsistence~~ *BARNES, Ramona*
Alaska State Legislature

REP. RAMONA L. BARNES
Chairman

REP. CHARLES L. ANDERSON
Vice-Chairman



POUCH V
JUNEAU, ALASKA 99811

INTERIM OFFICE:

P.O. Box 3382
Anchorage, Alaska 99510
(907) 274-1441/1432

HOUSE JUDICIARY COMMITTEE

9/18/81

September 1, 1981

TO: Representative Eric Sutcliff
House Resources

FROM: Rep. Barnes *[Signature]*

Re: September Subsistence Meeting

This memo is to serve as written confirmation that I support inviting only those persons included on the original list for the initial September subsistence meeting.

/bk1

BARNES, RAMONA



Alaska State Legislature

HOUSE OF REPRESENTATIVES
COMMITTEE ON RESOURCES

KEN FANNING, CO-CHAIRMAN
ERIC SUTCLIFFE, CO-CHAIRMAN
POUCH V
UNEAU, ALASKA 99811
(907) 463-3715

October 7, 1981

Representative Ramona Barnes
P.O. Box 3382
Anchorage, AK 99510

Dear Ramona:

This is just a short reminder regarding the upcoming subsistence summit meeting.

The meeting will begin at 9:00 AM, Saturday, October 24 at the Legislative Information Office in Anchorage. The morning session will be devoted to a discussion of the peripheral issues of wanton waste, predator control and habitat modification. The afternoon session will entail a thorough examination of the positive and negative aspects participants see in the current law. It is our intention to adjourn at approximately 3:00 PM.

If you have material pertaining to the agenda items that you would like to have included in the packet of information we are preparing, please submit them to the Resource Committee staff as soon as possible.

Finally, we have requested of the six non-legislative participants the names of their alternates. We expect to compile a list of all participants and alternates and distribute it prior to the meeting on the 24th.

See you there.

Best Regards,

A handwritten signature in cursive script that reads "Eric".

Eric Sutcliffe
Chairman

ES:gnt

BEIRNE, MIKE

Bills/Priorities



Alaska State Legislature

House of Representatives

JUNE-DECEMBER
Box 80929
College, AK 99708
Ph. 907-479-4234

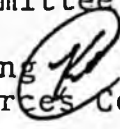
WHILE IN SESSION:
Pouch V
State Capitol
Juneau, Alaska 99811
Ph. 907-465-4833

Official Business

Representative Ken Fanning

M E M O R A N D U M

TO: Representative Mike Beirne
Chairman, House HESS Committee

FROM: Representative Ken Fanning 
Co-Chairman, House Resources Committee

DATE: January 12, 1981

On the attached list of bills in HESS, I have indicated three which are priorities as far as I am concerned. I presume that since this is the second time I have done this, My preferences will get expeditious consideration?

Seriously, I am concerned that HB 609 be addressed as soon as practicable. That bill was introduced as a response to a specific case of blatant abuse of detention powers last winter at a state institution in Anchorage. How prevalent this type of thing may be in state institutions warrants looking into. I would certainly recommend that Kathryn Aring, the young girl whose rights were violated in this case, be contacted for her testimony. Additionally, Carl Whitson of Anchorage would be interested in testifying, or submitting testimony.

As for the other two bills, I am not intimately acquainted with them, and therefore, cannot recommend any specific witnesses. I support them as appropriate legislative responses to their respective problems.

Incidentally, regarding the rest of the bills in your committee, I'm glad it's you and not me, because they are really shitty.

Thanky you for asking my input.

p.s. I'll kick your butt if you decline to show up and rant and rave "LAND, LAND, LAND" at the Resources committee's legislative forum.



Official Business

Alaska State Legislature

House of Representatives

Committee on

Health, Education & Social Services

Pouch V
State Capitol
Juneau, Alaska 99811

January 11, 1982

MEMORANDUM

TO: All Members of Majority Coalition *MB*

FROM: Representative Mike Beirne
Chairman, House H.E.S.S. Committee

Some of you have already received my earlier letter requesting your priorities for the bills in my committee. I have attached a listing of all the bills currently in committee. I would appreciate it if you would review this list and let my staff know as soon as possible which ones are a priority for you and which ones you have witnesses for.

We are attempting to schedule committee hearings on these bills and your prompt attention to this matter will be appreciated.
Thanks.

BERRIER, BILLY



Alaska State Legislature

HOUSE OF REPRESENTATIVES
COMMITTEE ON RESOURCES

KEN FANNING, CO-CHAIRMAN
ERIC SUTCLIFFE, CO-CHAIRMAN
POUCH V
JUNEAU, ALASKA 99811
(907) 485-3718

November 18, 1981

Billy Berrier, Director
Division of Legal Services
Room 601, Court Building
Pouch Y
Juneau, Alaska 99811

Dear Mr. Berrier:

I am requesting for Representative Fanning a legal opinion regarding the authority under which the proposed Delta II agricultural land disposal is to take place in February next year.

Specifically, AS 44.33.475 requires that certain legislation be recommended by the Agriculture Action Council, and then passed into law before a proposed agricultural development project can be implemented. We would like to know in what legislation this project is authorized, what are the boundaries of the project as required by AS 44.33.475(b)(1) and what are the specific tasks required by subsection (b)(2).

In our research we have not been able to obtain satisfactory answers to the above questions. This has led us to seriously question whether or not the Ag Council is, indeed, authorized to implement Delta II.

Respectfully,

A handwritten signature in cursive script that reads "John Manly".

John Manly, Administrative Aide

STATE OF ALASKA
THE LEGISLATUREPOUCH Y - STATE CAPITOL
JUNEAU, ALASKA 99811
907-465-3800

LEGISLATIVE AFFAIRS AGENCY

MEMORANDUM

November 30, 1981

SUBJECT: Delta II land disposal
(Work Order No. 12-2083)

TO: Representative Kenneth J. Fanning

FROM: Richard A. Bradley *B*
Legislative Counsel

John Manley asked that I comment briefly on the issues raised in your work order request. I have already discussed the matter with him, I believe to his satisfaction.

As I understand his question, his enquiry starts with the provisions of AS 44.33.475 which provide:

"AS 44.33.475. AGRICULTURAL DEVELOPMENT PROJECTS.
(a) Before January 15 of each year the council shall report to the governor and the legislature concerning the activities of the council during the current fiscal year. The report shall contain recommendations for the development of agriculture in the state during the next fiscal year.

"(b) An agricultural development project recommended under (a) of this section may not be implemented unless authorized by law. The report required by (a) of this section shall include recommended legislation which

"(1) sets out the type of agricultural development to be accomplished and, if state land is to be developed for agricultural production, describes the boundaries of the land to be developed;

"(2) defines specific tasks to be performed by appropriate state agencies to the extent the tasks are identifiable at that time; and

Representative Kenneth J. Fanning
Page 2
November 30, 1981

"(3) grants to the council sufficient authority to insure cooperation of all state agencies involved in the implementation of the agricultural development project."

John was of the view that legislation authorizing an agricultural action project needed to be cast in the format of the second sentence of sec. 475(b).

In my view, it seems clear that the legislature has required that a project be "authorized by law". This requirement is stated in the first sentence of (b).

The remainder of subsec. (b) establishes only the format of the report of the council to the legislature. There is no requirement in the law that legislation authorizing such a project be cast in the format of the report.

I am advised that the authorization for the Delta II project is contained within the appropriation act.

If I may assist further, please advise.

RAB:ljb

BERRIER, Billy



Alaska State Legislature

HOUSE OF REPRESENTATIVES
COMMITTEE ON RESOURCES

KEN FANNING, CO-CHAIRMAN
ERIC BUTCLIFFE, CO-CHAIRMAN
POUCH V
JUNEAU, ALASKA 99811
(907) 465-3715

December 18, 1981

Billy Berrier, Director
Legal Services
Room 601, Court Building
Juneau, Alaska

Dear Mr. Berrier:

On behalf of Rep. Fanning, I am requesting a legal opinion regarding the proposed land disposal in the Delta II project.

Specifically, our concern is that AS 44.33.475(b)(1) requires that proposed legislation describing an agricultural development project

"sets out the type of agricultural development to be accomplished and, if state land is to be developed for agricultural production, describes the boundaries of the land to be developed;"

We presume this requirement was met in the Alaska Agriculture Action Council's first annual report to the Legislature (Jan. 15, 1980). The same metes and bounds description contained in that report appeared in the ill-fated HCS CSSB 59, vetoed by the governor in June of 1980. So, both the report and the Senate bill described, as they were originally proposed, Delta II, East and West.

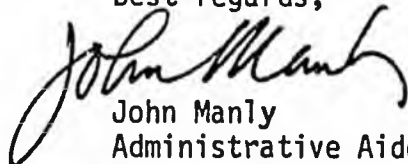
However, the AAAC, citing revised soil surveys which indicate less Class II and Class III soils in the project area than was originally anticipated, has expanded Delta II West to approximately 35,000 acres, or about three times its original size.

It seems to us that, while the law is somewhat nebulous at AS 44.33.475, the AAAC is still not authorized to implement a project on state land unless it describes the boundaries of the land it proposes to use.

Therefore, our request asks three basic questions: 1) is there another document, which we have missed, in which the AAAC has properly described the additional 20,000+ acres into which it has expanded its project; 2) if not, then, is this an unauthorized project; and 3) what actions can the Resources Committee, Rep. Fanning or the Legislature take to stop the disposal, if they determine that is necessary?

If you have any questions regarding this request, please call me at 465-3715. Thank you.

Best regards,


John Manly
Administrative Aide

Berrier, Billy



Alaska State Legislature

HOUSE OF REPRESENTATIVES
COMMITTEE ON RESOURCES

KEN FANNING, CO-CHAIRMAN
ERIC BUTCLIFFE, CO-CHAIRMAN
POUCH V
JUNEAU, ALASKA 99811
(907) 465-3718

December 4, 1981

Billy G. Berrier, Director
Division of Legal Services
Room 601, Court Building
Juneau, AK 99801

Dear Mr. Berrier:

This is a request on behalf of Rep. Fanning for draft legislation that will address the following problem:

The statute enabling the establishment of agricultural development projects, AS 44.33.475, mandates that the Alaska Agriculture Action Council (AAAC), when it wants to start a project, must, in its annual report to the legislature and the Governor, propose legislation that describes the boundaries of any state land involved in the proposed project. Yet, in the case of the Delta II project, when the 11th Legislature passed a bill establishing the project, the Governor vetoed the bill citing a separation-of-powers conflict; he claimed the executive branch has the power to classify land, and that the legislature does not (see attached.)

It has been pointed out to me that if this was a case of constitutional separation-of-powers, rather than statutory, then the Governor would have a valid argument. However, as the conflict is in the statutes, which the Legislature creates (and can therefore amend or abolish as it sees fit), the point is not well taken. Furthermore, the Legislature seems to have been remiss in not contesting that part of the veto message at the time it was delivered.

Another problem, it seems to me, is that AS 44.33.475 leaves a rather wide loophole that allows the administration to set up agricultural development projects with little legislative oversight. The statute merely says the AAAC has to propose the legislation, not that the legislation has to pass, or even be introduced in the Legislature. It does not say the AAAC has to stick by its proposal, as described in their annual report, or that authorization need be anything more than a budget line item. The restriction that a project cannot be implemented unless authorized by law doesn't seem, in reality, to carry much weight.

This seems to have fostered the current situation, wherein the AAAC briefly describes the features of a proposed project in its annual report, with the funds requested in the Governor's

Billy G. Berrier
December 4, 1981
Page 2

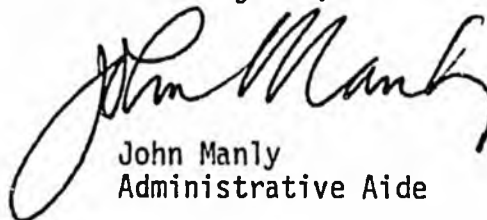
budget. Passage of those line items in the budget constitutes the authorization for the AAAC to proceed with the project. But, since no legislation describing the details of the project has passed, the head of the AAAC is bound only by the AAAC annual report in designing and implementing the project. And that report, Mr. Palmer tells me, has been determined to be binding only to a certain extent; The AAAC is free to alter the project plan if they "come up with something better."

It would be appropriate to have the language in AS 44.33.475 cleared up to affirm that the Legislature does, indeed, have the power to classify land, if it so chooses, and that the form and substance of a proposed AAAC project must be approved by the Legislature, and adhered to by the AAAC as it implements the project.

If you have any questions or comments regarding this request, or my assessment of the situation, please call me at 466-3715.

Thank you for your attention to this matter.

Best regards,



John Manly
Administrative Aide

enclosures

Bettisworth, Bob

SEP 21 1981

Alaska State Legislature



POUCH V
JUNEAU, ALASKA 99811

REPRESENTATIVE
ROBERT H. "BOB" BETTISWORTH

P.O. BOX 80288
COLLEGE, ALASKA 99708

September 18, 1981

Rep. Ken Fanning
Pouch V
Juneau, AK 99811

Dear Ken:

I was pleased to receive your letter requesting my priority of legislation in the Resources Committee. I feel that we need to work hard to pass only a few good bills next session rather than volumes of poorer legislation.

From the list you provided of the bills in your committee, I would like to see the following passed next session:

HB 2	Disposal of State Land
HB 8	Management & Control of State Land
HB 44	Grant Homesteads to Alaska Citizens
HB 231	Re/Seizure/Item/Fish & Game Violators
HJR 2	Am AK Constitution/Land Dislaimed/Act
HJR 18	Am AK Constitution/ Re: Ownership Nat. Res.
HJR 63	Navigability/AK Waters

I am opposed to HB 281-Establishing the Fairbanks State Forest-and hope that it won't be considered priority legislation for next year.

Sincerely,

A handwritten signature in cursive script that reads "Bob B".

Bob Bettisworth

BB/mjk

BRANSON, JIM



Alaska State Legislature

HOUSE OF REPRESENTATIVES
COMMITTEE ON RESOURCES

KEN FANNING, CO-CHAIRMAN
ERIC BUTCLIFFE, CO-CHAIRMAN
POUGH V
JUNEAU, ALASKA 99811
(907) 465-3715

December 10, 1981

Jim Branson
North Pacific Fisheries
Management Council
P.O. Box 3136-DT
Anchorage, Alaska 99501

Dear Mr. Branson:

The House Resources Committee is seeking information as well as the opinions of various fishery management groups concerning the Department of Public Safety's new 120' patrol vessel and its placement. The boat, tentatively named the Woldstad, is scheduled to be delivered in late spring or early summer of 1982. It is intended to replace the Vigilant, the Department's "100' aluminum skiff" currently used to patrol the Bering Sea fisheries, where, as you may be aware, aluminum skiffs are not particularly efficient. The Vigilant has not been notably effective in enforcing regulations in those fisheries.

It has now become apparent that the Department intends to continue its patrols of those fisheries from its base in Kodiak. In other words, the Woldstad will have Kodiak as its home port, alongside the Vigilant and other, smaller patrol boats.

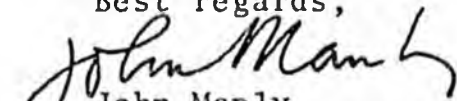
As the fishery management planners for the federal government, you are no doubt most familiar with the vulnerability of Bering Sea fisheries, and with the potential for devastation of those resources if not properly managed.

The National Marine Fisheries Service and the Coast Guard have extended their enforcement authorities to the state by a Cooperative Enforcement Agreement, and in light of that, it would seem to me that the most appropriate use of this highly sophisticated and useful enforcement tool would be of vital interest to the NPFMC.

Would you please comment on the effectiveness you would predict the vessel can have, based in Kodiak, as opposed to basing it in Unalaska?

Thank you for your attention to this matter.

Best regards,


John Manly
Administrative Aide

cc: Clem Tillion

Bray, Eileen

Alaska Farm Magazine

A Step Forward In Alaskan Agriculture

December 11, 1981

Alaska State Legislature
Attn: Gail Thibodeau, Secretary
House Resource Committee
Pouch V
Juneau, AK 99811

Dear Ms. Thibodeau

Thank you for your subscription and letter of Dec. 4, 1981. Both representative are on our complimentary subscription list and should have their December issues by now. We will be happy to accept a subscription from Resource Committee.

Enclosed please find a bill for 18.00 for a one year subscription.

Sincerely,

Eileen Bray

Eileen Bray
Ad Director

Bill taken to accounting, 12/14/81.

DEB:s
enc.

Brehmer, Gerry & Cynthia



Alaska State Legislature

HOUSE OF REPRESENTATIVES
COMMITTEE ON RESOURCES

KEN FANNING, CO-CHAIRMAN
ERIC BUTCLIFFE, CO-CHAIRMAN
POUCH V
JUNEAU, ALASKA 99811
(907) 465-3715

October 12, 1981

Gerry and Cynthia Brehmer
Mile 1403 1/2 Alaska Highway
Delta Junction, AK 99737

Dear Gerry and Cynthia,

Thanks for spending time and sharing your thoughts with me last Saturday.

While it was indeed a quick "tour", being able to speak with you one on one and looking the situation over first hand gives me a much better grasp of your concerns and the current situation, as well as some ideas for solutions to some of the problems.

I intend to make at least one more trip to the Delta area prior to session and will let you know when planning is finalized.

Eric Sutcliffe and I have every intention of addressing those concerns for which we see viable solutions in the House Resource Committee this year. Feel free to express any further thoughts you may have on the subjects we discussed or others. My staff, consisting of Gail Thibodeau and John Manly, would be pleased to correspond with you on detailed solutions and are at your disposal.

While conflicts obviously still exist, it is apparent to me that viable solutions to many of the problems also exist, and we'll try to see those solutions enacted. Although we may continue to disagree on some issues, I hope we can both cooperate to solve the bigger issues.

Sorry about Kip runnin' on the grain pile - I could have died. Thanks again for your time.

Best Regards,

Gail Thibodeau
for Ken Fanning

KF/gn

CARLSON, LYLE



Alaska State Legislature

HOUSE OF REPRESENTATIVES
COMMITTEE ON RESOURCES

KEN FANNING, CO-CHAIRMAN
ERIC BUTCLIFFE, CO-CHAIRMAN
POUCH V
JUNEAU, ALASKA 99811
(907) 465-3715

November 24, 1981

Lyle R. Carlson
NBA Building, Suite 206
P.O. Box 2741
Fairbanks, Alaska 99701

Dear Mr. Carlson:

As per our telephone conversation of this morning, I have enclosed the materials regarding contacts with Sandy Sagalkin. You might be aware that he was probably expecting to get this job, if and when it was funded. Whether or not he knows that the Sports Council went another route, I do not know. I had expected him to call me sometime after the ASC annual meeting, but I haven't heard from him.

I hope the enclosed information will be helpful to you, and I am willing to help in any way I can with this issue. If you need my assistance, please feel free to call.

Best regards,

A handwritten signature in cursive script, appearing to read "John Manly".

John Manly, Administrative Aide

enclosures

Carlson, Mike



Alaska State Legislature

HOUSE OF REPRESENTATIVES
COMMITTEE ON RESOURCES

KEN FANNING, CO-CHAIRMAN
ERIC SUTCLIFFE, CO-CHAIRMAN
POUCH V
JUNEAU, ALASKA 99811
(907) 485-3718

October 12, 1981

Mike Carlson
Box 953
Delta Junction, AK 99737

Dear Mike,

Thanks for spending time and sharing your thoughts with me last Saturday.

While it was indeed a quick "tour", being able to speak with you one on one and looking the situation over first hand gives me a much better grasp of your concerns and the current situation, as well as some ideas for solutions to some of the problems.

I intend to make at least one more trip to the Delta area prior to session and will let you know when planning is finalized.

Eric Sutcliffe and I have every intention of addressing those concerns for which we see viable solutions in the House Resource Committee this year.

Feel free to express any further thoughts you may have on the subjects we discussed or others. My staff, consisting of Gail Thibodeau and John Manly, would be pleased to correspond with you on detailed solutions and are at your disposal.

While conflicts obviously still exist, it is apparent to me that viable solutions to many of the problems also exist, and we'll try to see those solutions enacted.

Thanks again.

Best Regards,

Gail Thibodeau
for Ken Fanning

KF/gnt

Carney, Dominic

AUG 2 1981

STATE OF ALASKA

JAY S. HAMMOND, GOVERNOR

DEPARTMENT OF NATURAL RESOURCES

DIVISION OF AGRICULTURE

POUCH A
WASILLA, ALASKA 99687
PHONE: (907) 376-3276

July 30, 1981

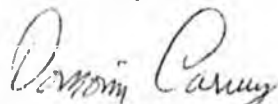
Representative Ken Fanning
Alaska State Legislature
House of Representatives
Committee on Resources
Pouch V
Juneau, AK 99811

Dear Representative Fanning:

Your expression of interest in meeting with me during the legislative interim period was most welcome. I am a firm believer that the goal of both the legislature and the administration is to serve the public as well as possible, and that to do so will require us to work as partners. Communications will remain the key to a partnership arrangement. We much prefer to develop our programs in concert with you as a representative and the committee as a group, rather than submit our ideas to you cold each spring, and have you judge their worth.

I've been in touch with Gail in Juneau, and we've tentatively agreed the most opportune time to get together would be late September, after your (and I hope my) hunting seasons. I'll see you then if not before.

Sincerely,



Dominic L. Carney
Director

cc: Representative Sutcliffe
Commissioner John W. Katz