

**HB**

**227**

<target><bill>HB 227</bill><subject>HB  
227</subject><comm>HFSH26</comm></target>



## HB 227 Bill Packet Contents

1. HB 227
2. Sponsor Substitute for HB 227  
- *FISCAL NOTES*
3. Sponsor Statement
4. Sectional Analysis
5. DNR Holitna River Area Plan
6. Correspondence in Support of the Legislation
7. Map of Proposed Reserve

# FISCAL NOTE

STATE OF ALASKA  
2010 LEGISLATIVE SESSION

Fiscal Note Number: \_\_\_\_\_  
Bill Version: HB227 (FSH)  
( ) Publish Date: \_\_\_\_\_

Identifier (file name): HB227-DNR-CPL-02-01-2010 Dept. Affected: Natural Resources  
Title HOLITNA BASIN RESERVE RDU Resource Development  
Component Claims, Permits and Leases  
Sponsor REP Herron  
Requester House FSH Component Number 2460

**Expenditures/Revenues** (Thousands of Dollars)

Note: Amounts do not include inflation unless otherwise noted below.

	Appropriation Required	Information						
		FY 2011	FY 2011	FY 2012	FY 2013	FY 2014	FY 2015	FY 2016
<b>OPERATING EXPENDITURES</b>								
Personal Services								
Travel								
Contractual								
Supplies								
Equipment								
Land & Structures								
Grants & Claims								
Miscellaneous								
<b>TOTAL OPERATING</b>	<b>0.0</b>	<b>0.0</b>	<b>0.0</b>	<b>0.0</b>	<b>0.0</b>	<b>0.0</b>	<b>0.0</b>	<b>0.0</b>

<b>CAPITAL EXPENDITURES</b>								
-----------------------------	--	--	--	--	--	--	--	--

<b>CHANGE IN REVENUES ( )</b>								
-------------------------------	--	--	--	--	--	--	--	--

**FUND SOURCE** (Thousands of Dollars)

1002 Federal Receipts								
1003 GF Match								
1004 GF								
1005 GF/Program Receipts								
1037 GF/Mental Health								
Other Interagency Receipts								
<b>TOTAL</b>	<b>0.0</b>	<b>0.0</b>	<b>0.0</b>	<b>0.0</b>	<b>0.0</b>	<b>0.0</b>	<b>0.0</b>	<b>0.0</b>

Estimate of any current year (FY2010) cost: \_\_\_\_\_

**POSITIONS**

Full-time								
Part-time								
Temporary								

**ANALYSIS:** (Attach a separate page if necessary)

The bill requires ADF&G to prepare a land use plan. DNR will review and comment on the proposed plan and will annotate the department's lands records system to display the new Reserve, however DNR anticipates no need for additional funding to accomplish these tasks.

Prepared by: Dick Mylius, Director Phone 269-8600  
Division: Mining, Land and Water Date/Time January 29, 2010  
Approved by: Tom Irwin, Commissioner Date January 29, 2010  
Natural Resources

# FISCAL NOTE

**STATE OF ALASKA**  
**2010 LEGISLATIVE SESSION**

Fiscal Note Number: SSHB227  
 Bill Version: \_\_\_\_\_  
 () Publish Date: \_\_\_\_\_

Identifier (file name): SSHB227-DFG-COM-01-22-10 Dept. Affected: ADF&G  
 Title An Act relating to the establishment of state fish and game reserves.... RDU Administration and Support  
 Component Commissioner's office  
 Sponsor Rep. Herron, Neuman  
 Requester House Fisheries Component Number 2175

**Expenditures/Revenues** (Thousands of Dollars)

Note: Amounts do not include inflation unless otherwise noted below.

	Appropriation Required	Information					
		FY 2011	FY 2012	FY 2013	FY 2014	FY 2015	FY 2016
<b>OPERATING EXPENDITURES</b>							
Personal Services	0.0	0.0	0.0	0.0	0.0	0.0	0.0
Travel	0.0	0.0	0.0	0.0	0.0	0.0	0.0
Contractual	0.0	0.0	0.0	0.0	0.0	0.0	0.0
Supplies	0.0	0.0	0.0	0.0	0.0	0.0	0.0
Equipment	0.0	0.0	0.0	0.0	0.0	0.0	0.0
Land & Structures	0.0	0.0	0.0	0.0	0.0	0.0	0.0
Grants & Claims	0.0	0.0	0.0	0.0	0.0	0.0	0.0
Miscellaneous	0.0	0.0	0.0	0.0	0.0	0.0	0.0
<b>TOTAL OPERATING</b>	<b>0.0</b>	<b>0.0</b>	<b>0.0</b>	<b>0.0</b>	<b>0.0</b>	<b>0.0</b>	<b>0.0</b>

<b>CAPITAL EXPENDITURES</b>	<b>0.0</b>	<b>0.0</b>	<b>0.0</b>	<b>0.0</b>	<b>0.0</b>	<b>0.0</b>	<b>0.0</b>
-----------------------------	------------	------------	------------	------------	------------	------------	------------

<b>CHANGE IN REVENUES ( )</b>	<b>0.0</b>	<b>0.0</b>	<b>0.0</b>	<b>0.0</b>	<b>0.0</b>	<b>0.0</b>	<b>0.0</b>
-------------------------------	------------	------------	------------	------------	------------	------------	------------

**FUND SOURCE** (Thousands of Dollars)

1002 Federal Receipts							
1003 GF Match							
1004 GF	***	***	***	***	***	***	***
1005 GF/Program Receipts							
1037 GF/Mental Health							
Other Interagency Receipts							
<b>TOTAL</b>	<b>***</b>	<b>***</b>	<b>***</b>	<b>***</b>	<b>***</b>	<b>***</b>	<b>***</b>

Estimate of any current year (FY2010) cost: \_\_\_\_\_

**POSITIONS**

Full-time	0.0	0.0	0.0	0.0	0.0	0.0	0.0
Part-time	0.0	0.0	0.0	0.0	0.0	0.0	0.0
Temporary	0.0	0.0	0.0	0.0	0.0	0.0	0.0

**ANALYSIS:** (Attach a separate page if necessary)

Indeterminate fiscal impact to Department of Fish and Game. If the planning effort for this new reserve were one similar to what we do in concert with the Alaska Board of Fisheries whereby we hold and solicit public input and craft specific regulations for this area that could be done with existing functions and resources. However, if the planning effort involved a suite of meetings and staff travel from Goodnews to McGrath and points in between then the department would incur some one time additional costs.

Prepared by: Jeff Hoover, Deputy Director  
 Division: Administrative Services  
 Approved by: Tom Lawson, Director of Administrative Services  
Alaska Department of Fish and Game

Phone 907-465-6077  
 Date/Time 1/22/10 4:30 PM  
 Date 1/22/2010

# Representative Bob Herron

Rep.Bob.Herron@legis.state.ak.us

State Capitol • Juneau, Alaska 99801-1182

Phone: (907) 465-4942 • Fax: (907) 465-4589



House District 38  
Kuskokwim & Johnson Rivers  
Kuskokwim Bay & Nelson Island

Akiachak  
Akiak  
Atmautluak  
Bethel  
Chefornak  
Eek  
Goodnews Bay  
Kasigluk  
Kipnuk  
Kongiganak  
Kwethluk  
Kwigillingok  
Lower Kalskog  
Mekoryuk  
Mertarvik  
Napakiak  
Napaskiak  
Newtok  
Nightmute  
Nunapitchuk  
Oscarville  
Platinum  
Quinhagak  
Toksook Bay  
Tuluksak  
Tununak  
Tuntutuliak  
Upper Kalskog

## Sponsor Statement

### House Bill 227: Holitna River Basin Hunting, Fishing & Trapping Reserve

This bill addresses several major areas of identified needs in protecting or furthering the management concepts embodied within the state's intensive management policies.

First, HB 227 establishes a burden of proof for legal challenges by animal welfare groups – legal challenges that may suspend or pre-empt active management programs designed to manage fish or game populations for human harvest benefit. It seeks to define legal avenues for process challenges in these designated areas by animal welfare entities that often emphasize political science over biological science within our state's management structure.

Second, although some limited active management programs have been implemented with the support of past gubernatorial administrations, this bill is intended to strengthen statutory, constitutional-related active management principles.

Third, the bill is specifically written to be compatible with other "Breadbasket" areas within the state's Intensive Management Areas which exemplify high quality habitat and productivity contributions to entire GMU sub-regions.

Finally, it intends to clearly establish the priority and primary management use of the area to protect the hunting, fishing & trapping activities for future generations. Frustration has been expressed throughout the state where it was thought these values were being protected through the creation of Refuges or Public Use Management Areas only to see these areas experience increasing restrictions, closures, or other actions such as banning of firearms.

This proposed reserve concept was initiated by the Sleetmute Traditional and Orutsararmiut Native Councils; has records of support from the Lower Kuskokwim, Central Kuskokwim, Stony/Holitna and Anchorage Fish & Game Advisory Committees, Kuskokwim Salmon Management Working Group, Association of Village Council Presidents and Calista Corporation; and has undergone legal review through the State Board of Game process, twice receiving their endorsement.

# Representative Bob Herron

Rep.Bob.Herron@legis.state.ak.us

State Capitol • Juneau, Alaska 99801-1182

Phone: (907) 465-4942 • Fax: (907) 465-4589

House District 38

Kuskokwim & Johnson Rivers

Kuskokwim Bay & Nelson Island



Akiachak

Akiak

Atmoutluak

Bethel

Chefornak

Eek

Goodnews Bay

Kasigluk

Kipnuk

Kongiganak

Kwethluk

Kwigillingok

Lower Kalskag

Mekoryuk

Mertarvik

Napakiak

Napaskiak

Newtok

Nighthute

Nunapitchuk

Oscarville

Platinum

Quinhagak

Toksook Bay

Tuluksak

Tununak

Tuntutuliak

Upper Kalskag

## Sectional Analysis Holitna River Reserve SSHB 227 – Version K

### Section 16.20.700. Purpose

States that the purpose of establishing a fish and game reserve is to promote sustainable levels of human consumption of fish and game.

### Section 16.20.710. Regulations

Gives authority to the Board of Game or Board of Fish (whichever is more appropriate) to adopt regulations designed to conserve fish and game; and to carry out the purpose as set forth in sections 16.20.700 and 16.20.720.

### Section 16.20.720 (a)

All present and future state-owned land and water within the Holitna and Hoholitna River watersheds is designated as part of the Reserve.

### Section 16.20.720 (b)

The Reserve is established to ensure:

1. Management and protection of fish and game populations and habitat to perpetuate subsistence use, commercial use, and other consumptive uses;
2. Management techniques that promote maximum use with sustained yield to maintain historical harvest levels with human consumptive use as a priority;
3. Maintenance of fish and game populations to provide for high levels of human consumptive use (within limits set by Fish and Game Boards);
4. Allowance for scientific research elucidating the effectiveness of management activities in this section in providing for current and future human harvest needs.

### Section 16.20.720 (c)

The Department of Fish and Game, the Board of Fisheries and the Board of Game shall manage fish and game resources within the Reserve to provide for high levels of human harvest and, subject to priorities among intensively managed areas for which these entities set policy, shall:

1. Control predation and adjust predator and prey population ratios thru appropriate means;
2. Conduct management actions designed to further the purposes of this section so long as the appropriate board has not found such actions to be ineffective at maintaining fish and game populations commonly harvested for food by humans;

3. Consider scientific evidence augmented by local environmental knowledge when evaluating management activities.

Section 16.20.720 (d)

The Department of Natural Resources may acquire privately owned land within the Reserve by purchase or exchange, but not thru eminent domain.

Section 16.20.720 (e)

Public access to the Reserve may be regulated by DNR, in consultation with DFG, as necessary to meet the purposes of this section and to protect access to, and development of, other resources within the Reserve.

Section 16.20.720 (f)

Access corridors established by DNR, in consultation with DFG and a private property owner, shall guarantee access to and from private property within the Reserve.

Section 16.20.720 (g)

Entry into the Reserve to explore or develop nonrenewable resources must be approved by DNR, in consultation with DFG, and such activities must be compatible with the purpose of this section.

Section 16.20.720 (h)

Except as otherwise provided in this section, DFG and DNR shall exercise their respective authority over the Reserve thru a management plan prepared by DFG in consultation with DNR.

Section 16.20.720 (i)

Reserve boundaries are defined as including all the sections (listed beneath their respective township and range designations) on the last eight pages of this bill.

## UNIT 15: HOLITNA RIVER

### Background

**Location and Land Ownership.** The Holitna River management unit encompasses the watersheds of Holitna and Hoholitna Rivers. This is the largest management unit in the planning area, and is nearly all state owned. The land along the Kuskokwim River near Sleetmute is Native owned, and there are three parcels of Native selections near Sleetmute, two of which overlap with state selections. Three small parcels of federal land complete the ownership pattern in the Sleetmute area. The remaining land -- over 90 percent of the total area -- is state owned. Sleetmute, located at the confluence of the Holitna and Kuskokwim, is the only village in the unit. However, there are approximately 165 parcels of private land in or adjacent to this unit. They are a mixture of Native allotments, and federal homesites, headquarters sites, and trade and manufacturing sites.

**Resources and Land Use.** The central and northern portions of the unit are broad lowlands; western, southern, and eastern boundaries are defined by the Chuilnuk and Kiokluk mountains, the highlands dividing the Kuskokwim basin from Bristol Bay, and the mountains surrounding Sparrevohn Air Force Station. The upper elevations of these ranges are approximately 4,000 feet. The Holitna and Hoholitna rivers, and the lower Chukowan, Kogrukuk, Shotgun, Taylor, and Titnuk waterways are lined by relatively broad bands of white spruce and hardwood forest that are one-half to two miles wide on each side of the river. Some south-facing hillslopes scattered throughout the unit also support hardwood forest that are one-half to two miles wide on each side of the river. The rest of the lowlands is dominated by black spruce woodlands, grading into shrublands on the upper slopes, and alpine tundra on the highest mountains.

The Holitna basin contains the greatest concentration of salmon spawning areas in the entire Kuskokwim drainage and the most productive moose habitat. In addition, these lands support concentrations of bear and waterfowl, and provide winter range for caribou and extensive habitat for furbearers. The fish and wildlife resources of the Holitna basin attract residents of communities from McGrath to Bethel, and sportsmen and guides from throughout Alaska and the continental U.S. The greatest concentration of subsistence activities in the planning area occurs in the Holitna basin. It is used for hunting, trapping, fishing, berry picking, houselog harvest, and firewood collection. It is also the most intensively used part of the basin for sport hunting for moose. Twelve registered hunting guides, six fishing guides, and an unknown number of outfitters use this drainage, targeting moose, caribou, salmon, and sheefish. There are two lodges in the unit, and a third is planned for construction. Salmon from the Holitna drainage provide about 20 percent of the annual salmon harvest for Kuskokwim basin subsistence and commercial fishermen. The king salmon stocks from this and other Kuskokwim drainages are fully allocated at present.

The Holitna basin is rich in other resources as well. The riparian forestlands are among the most productive in the Kuskokwim basin. These forests are highly suitable for settlement and timber harvest for personal and commercial use. The Taylor Mountains and the Kuskokwim Mountains along the western boundary of the unit have moderate to very high mineral potential, a number of existing claims, and two mines that have been active in recent years. Gravel bars in the Kuskokwim River near Sleetmute also have provided materials for local construction projects.

**Access.** The main access to the unit is by boat on the Kuskokwim, Holitna, and Hoholitna rivers and their major tributaries. Small planes can also land on sections of the Holitna River, numerous lakes, and natural landing areas in the tundra. A public airstrip is maintained at Sleetmute, and there are strips of mining claims at Forty-seven Creek and in the Taylor Mountains. A number of trails cross the unit along major rivers or overland routes into the Kuskokwim Mountains.

### **Management Intent:**

The emphasis of state land management in the Holitna management unit is protection of the fish and wildlife habitat, and support for continued subsistence, commercial, and sport use of these resources. Forestlands will continue to be available for personal and commercial timber harvest. Most of the unit will remain in public ownership, but opportunities for private use of state lands may be made available through a land disposal near Slectmute, and a land disposal and remote cabin sites along the southern perimeter of the unit and in the Door Mountains. The remote cabin sites and land disposals are located to offer sites that can support private recreation and settlement, while avoiding the main public use areas and most important habitat lands. Land disposal offerings total approximately 3,600 acres of land and there are 56 remote cabin sites.

Most state lands will remain open to mineral entry. However, to protect important salmon populations, spawning beds and rearing areas in known mineralized zones will be closed to new mineral entry. Closures include portions of Portage, Bakbuk, Mukslulik, Taylor, Kiknik, and Chuilnuk creeks, a portion of the Gemuk River, Gemuk Lake, part of an unnamed tributary to the Holitna between Bakbuk and Portage Creeks, and an unnamed tributary of the Hoholitna in the Door Mountains. Uplands along the Gemuk River, Gemuk Lake, Mukslulik Creek and unnamed tributaries of the Holitna and Hoholitna river drainages will be subject to leasehold location requirements to ensure compatibility of mining with salmon spawning and king salmon rearing areas.

In addition to state-owned uplands, the beds of the Kuskokwim, Holitna, Hoholitna, and other navigable waters are state owned and are subject to the guidelines of this plan.

#### **Subunit 15a - Holitna-Hoholitna Corridors**

Subunit 15a contains the main stems of the Holitna and Hoholitna rivers, the core of the Holitna basin. It receives more use for subsistence and sport hunting for moose than any other subunit in the planning area, and is important for salmon spawning, and harvest of salmon and resident fish. The Department of Fish and Game's only Kuskokwim weir for estimating the size of salmon runs is located at Kashegelok in the southern part of the subunit. The forests along the rivers are the most productive in the Holitna basin, and some of the best in the entire planning area. This subunit is state owned except for a number of Native allotments along the river. Three permits for trapping cabins have been issued within the subunit. Subunit 15a is accessible by boat and small plane.

The Holitna and Hoholitna Corridors will be kept in public ownership and managed to protect the fish and wildlife habitat and populations, and to support continued use of these resources. The forest lands will be managed to provide timber for personal and commercial and timber harvest. Other uses of this land are permitted when compatible with the primary intent of protecting the fish and wildlife resources. Most state lands in this subunit will remain open to new mineral entry; however, portions of Whitewater Creek, Kiknik Creek, and from unnamed tributaries to Kiknik Creek will be closed to protect salmon rearing areas.

In recognition of the outstanding habitat, forestry, and human use values of this area, it is also recommended that the legislature consider designating it as a state Public Use Area. The Public Use Area would contain subunit 15a and the adjacent portions of subunits 15b and 15c that are rated A-2 ("special value") habitat (see in Appendix A). This designation would be intended to keep these lands in permanent public ownership; protect the fish and wildlife habitat; promote forest management; and ensure that fish, wildlife, and forest resources continue to be available for personal and commercial use. Other uses will be allowed whenever compatible with the intent to protect and manage habitat and forest resources. The Public Use Area would be managed by DNR under a management plan prepared with the concurrence of the Department of Fish and Game.

# AVCP

ASSOCIATION OF VILLAGE COUNCIL PRESIDENTS  
P.O. Box 219 • BETHEL, ALASKA 99559 • PHONE 543-3521

42<sup>ND</sup> ANNUAL CONVENTION  
BETHEL, ALASKA                      OCTOBER 3-5, 2006

## RESOLUTION 06-10-04

- TITLE:**        **SUPPORT FOR THE CREATION OF A HOLITNA BASIN HUNTING, FISHING, AND TRAPPING RESERVE**
- WHEREAS**    The Association of Village Council Presidents (AVCP) is the recognized tribal organization and non-profit Alaska Native regional corporation for its fifty-six member indigenous Native villages within Western Alaska and supports the endeavors of its member villages; and
- WHEREAS**    AVCP fully supports its member villages in all aspects of their self-determination, health and well-being; and
- WHEREAS**    The Holitna basin contains the greatest concentration of salmon spawning areas in the entire Kuskokwim drainage and the most productive moose habitat that are extremely important to subsistence harvest needs of all residents throughout the Kuskokwim Drainage; and
- WHEREAS**    Recent research has shown that the Holitna Basin provides spawning and rearing habitat for up to 70% of the sockeye salmon and up to 51% Chinook salmon for the Kuskokwim Drainage, and great but at this time unknown numbers of chum and coho salmon; and
- WHEREAS**    Recent surveys show that approximately 50% of the subsistence Chinook salmon harvest for the entire State of Alaska occurs in the Kuskokwim Drainage, and the Holitna River provides a large portion of those salmon for both subsistence and commercial salmon harvests; and
- WHEREAS**    Recent studies have shown that several whitefish species use the Holitna Drainage for spawning and rearing, and that these Holitna River whitefish travel throughout the Kuskokwim Drainage and provide subsistence opportunity for all Kuskokwim River residents; and
- WHEREAS**    For generations the Holitna Basin has maintained abundant moose populations that provided a high level of annual subsistence harvest for residents throughout the Kuskokwim Drainage; and

**Resolution 06-10-04**

- WHEREAS** In the last decade, these moose populations have substantially declined primarily due to lack of active management brought about by outside administrative and political interference, that has caused extreme hardships in meeting subsistence needs in communities throughout the Kuskokwim Drainage and resulted in the state Board of Game closing the Holitna Basin to moose hunting entirely in 2006 due these depleted numbers; and
- WHEREAS** The Holitna Basin is currently included in an active predator management plan area that is threatened with being prematurely shut down due to another lawsuit recently filed by animal welfare advocates in August, 2006; and
- WHEREAS** The magnitude and fundamental support of the Holitna River system for sustained yield and harvest of fish stocks & wildlife populations throughout the entire Kuskokwim drainage, and their importance to residents of the region cannot be over emphasized; and
- WHEREAS** The Kuskokwim Area Plan adopted by DNR in 1988 stated, "The emphasis of state land management in the Holitna management unit is protection of the fish and wildlife habitat, and support for continued subsistence, commercial, and sport use of these resources.", recommending further that the Holitna & Hoholitna be especially managed area to protect these uses "In recognition of the outstanding habitat, forestry & human use values of the area"; and
- WHEREAS** In March of 2006 the Board of Game approved the creation of The Holitna Basin Hunting and Trapping Reserve with the purpose of focusing management to protect and help moose populations recover and be maintained in the future to provide for amounts necessary for subsistence and reasonable harvest opportunities; and
- WHEREAS** A proposal is before the Board of Fisheries to create a Holitna Basin Fishing Reserve to ensure long-term protection and sustainable harvest of Kuskokwim fish populations that is scheduled to be considered at their January, 2007 meeting; and
- WHEREAS** Any action of the State Board of Game or Board of Fisheries to create a Reserve is subject to approval by the State Legislature; and
- WHEREAS** The primary intent and purpose of the creation of this Reserve is specifically to emphasize and ensure the conservation, maintenance and enhancement of healthy and abundant fish and game populations important to providing established amounts necessary for subsistence,

**Resolution 06-10-04**

reasonable harvest opportunity, and other identified population goals and harvest objectives that promote or maintain these populations at the high levels they have provided for generations.


NOW THEREFORE BE IT FURTHER RESOLVED THAT AVCP urges support by all residents of the region that have utilized the resources of the Holitna Drainage in fulfilling their annual subsistence needs over the generations, the State Board of Fisheries, its State House and Senate representatives, the Alaska State Legislature, and State Administration for the creation of a Holitna Basin Hunting, Fishing & Trapping Reserve, and future implementations serving its primary purpose and intent.

BE IT FURTHER RESOLVED THAT these management actions furthering the primary intent will not be interrupted, curtailed, over-ridden or discontinued, unless it has been first fully documented scientifically, and conclusively proven that such actions are counter-productive or ineffective in promoting, maintaining or enhancing fish and game populations for maximizing sustained yield or providing for reasonable harvest opportunity.

ADOPTED by the Association of Village Council Presidents during its Annual Convention held at Bethel, Alaska, this 4th day of October 2006 with a duly constituted quorum of delegates.



Raymond J. Watson, Chairman



Myron P. Naneng, Sr., President

Sponsor: ONC and Sleetmute Traditional Council

**COPY****SLEETMUTE TRADITIONAL COUNCIL**

P.O. Box: 109, Sleetmute, AK-99668; Ph: 907-449-4205; Fax: 907-449-4203

Email: [swadmin@stabsand.net](mailto:swadmin@stabsand.net)**RESOLUTION NO. 06-16**

**A RESOLUTION OF THE NATIVE VILLAGE OF SLEETMUTE TRADITIONAL COUNCIL, THE GOVERNING BODY FOR THE NATIVE VILLAGE OF SLEETMUTE TO URGE SUPPORT FOR THE CREATION OF THE HOLITNA BASIN HUNTING, FISHING, AND TRAPPING RESERVE**

**WHEREAS:** The Native Village of Sleetmute Traditional Council is the federally recognized governing body of the Native Village of Sleetmute; and

**WHEREAS:** The Holitna basin contains the greatest concentration of salmon spawning areas in the entire Kuskokwim drainage and the most productive moose habitat that are extremely important to subsistence harvest needs for all residents throughout the Kuskokwim Drainage particularly the residents of Sleetmute and surrounding villages.

**WHEREAS:** The Upper Kuskokwim Region is one of the few regions in the State where subsistence still plays a larger role in the local economy than cash does.

**WHEREAS:** Recent research has shown that the Holitna Basin provides spawning and rearing habitat for up to 70% of the sockeye salmon and up to 51% Chinook salmon for the Kuskokwim Drainage above Kalskag, and great but at this time unknown numbers of chum and coho salmon.

**WHEREAS:** Recent surveys show that approximately 50% of the subsistence Chinook salmon harvest in the State of Alaska occurs in the Kuskokwim Drainage, and the Holitna River provides a large portion of the salmon taken by both the subsistence and commercial salmon harvest.

**WHEREAS:** The magnitude and fundamental support of the Holitna River system for sustained yield of fish stocks throughout the entire Kuskokwim drainage, and the importance of those fish stocks to residents of the Kuskokwim cannot be over emphasized.

**WHEREAS:** Recent studies have shown that highly used subsistence whitefish species humpback whitefish and least cisco, and likely as well broad whitefish use the Holitna Drainage during their fall spawning season and that these Holitna River whitefish travel throughout the Kuskokwim Drainage and provide subsistence opportunity for all Kuskokwim River residents.

**WHEREAS:** For generations the Holitna Basin has maintained abundant moose populations that provided a high level of annual subsistence harvest for residents throughout the Kuskokwim Drainage and across the State.

**WHEREAS:** In addition, these lands support concentrations of bear and waterfowl, and provide winter range for caribou and extensive habitat for furbearers.

**WHEREAS:** In the last decade, these moose populations have substantially declined primarily due to lack of active management brought about by outside administrative and political interference that has caused extreme hardships in meeting subsistence needs in communities throughout the Kuskokwim Drainage.

**WHEREAS:** The Kuskokwim Area Plan adopted in 1988 stated that, "The emphasis of state land management in the Holitna management unit is protection of the fish and wildlife habitat, and support for continued subsistence, commercial, and sport use of these resources."

**WHEREAS:** In March of 2006 the Board of Game closed the Holitna Basin to moose hunting entirely due to the depleted numbers and a lack of sustainable surplus for harvest.

**WHEREAS:** In March of 2006 the Board of Game also approved the creation of The Holitna Basin Hunting and Trapping Reserve with the purpose of focusing management to help moose populations recover and be maintained to provide for amounts necessary for subsistence and reasonable harvest opportunities.

**WHEREAS:** A proposal is before the Board of Fisheries to create The Holitna Basin Fishing Reserve to ensure long-term protection and sustainable harvest of fish populations and their habitat.

**WHEREAS:** The primary intent and purpose of the creation of this reserve is to ensure the conservation, maintenance and enhancement of healthy and abundant fish and game populations important to providing established amounts necessary for subsistence, reasonable harvest opportunity, and other identified population goals and harvest objectives that promote or provide for high levels of human consumptive use

**WHEREAS:** Prior to the Holitna Basin being designated as an "Intensive Management Area", management actions furthering the primary intent were interrupted, curtailed, pre-empted or discontinued.

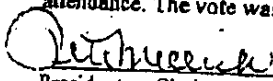
**WHEREAS:** These board actions are subject to formal creation and final approval by the State Legislature.


**NOW THEREFORE BE IT RESOLVED:** That the Sleetmute Traditional Council gives its full support to the creation of The Holitna Basin Hunting, Fishing, and Trapping Reserve and requests the support of all communities in the region that utilize the Holitna Drainage to fulfill their annual subsistence needs.

**THEREFORE BE IT FURTHER RESOLVED:** That management actions furthering the primary intent will not be interrupted, curtailed, pre-empted or discontinued, unless it has been first fully documented scientifically, and conclusively proven that such programs are counter-productive or ineffective in promoting, maintaining or enhancing fish and game populations for maximizing sustained yield or providing for reasonable harvest opportunity.

**THEREFORE BE IT FURTHER RESOLVED:** The Sleetmute Traditional Council urges support of its House and Senate representatives, the Alaska State Legislature, and State Administration for the creation of this reserve and active support of its primary purpose and intent.

This will certify the foregoing resolution was approved at a Native Village of Sleetmute Traditional Council meeting held this 21<sup>st</sup> day of SEPT. 2006, at which a quorum were in attendance. The vote was 5 For and 0 Against.

  
\_\_\_\_\_  
President or Chairman

  
\_\_\_\_\_  
Secretary or Vice President



NOV 07 2006

301 Calista Court, Suite A • Anchorage, Alaska 99518-3028 • (907) 279-5516 • Facsimile (907) 272-5060 • Website: www.calistacorp.com

November 3, 2006

Greg Roczicka  
Orutsarmiut Native Council  
P.O. Box 927  
Bethel, AK 99559

Re: Proposal for Holitna River Basin Hunting, Fishing and Trapping Reserve

Dear Mr. <sup>Guy</sup>~~Roczicka~~:

Thank you for allowing Calista Corporation to review and comment on the proposed legislation to establish the Holitna River Basin Reserve.

The proposed legislation focuses chiefly on fish and wildlife resource and habitat management. Passage of such legislation will be most successful if it is not complicated with side issues, such as development restrictions on non-wildlife resources, which could distract from the main purpose of the proposal.

The Kuskokwim Area Plan for Management Area 15 – Holitna River, states that all areas within Area 15 are open to leasable minerals and most areas are open to locatable minerals with the exception of certain named and identified streams designated as important for salmon spawning and rearing. These waters are already closed to new locatable mineral entry through the Kuskokwim Area Plan.

While Calista does not have a problem with the proposal as presently written, Calista would have concerns should the proposal affect our access to our land holdings in the Holitna River basin.

Please keep us informed of the status of the proposed legislation and particularly of any revisions to the proposed language.

Thank you for your consideration and attention.

Sincerely,

CALISTA CORPORATION

A handwritten signature in black ink, appearing to read 'Andrew J. Guy', is written over the printed name.

Andrew J. Guy  
EVP General Counsel

cc: Sleetmute Traditional Council

# STATE OF ALASKA

DEPARTMENT OF FISH AND GAME  
ALASKA BOARD OF FISHERIES

SEAN PARNELL, GOVERNOR

ADF&G  
P.O. BOX 115526  
JUNEAU, AK 99811-5526  
PHONE: (907) 465-4110  
FAX: (907) 465-6094

Representative Mike Chenault  
Speaker of the House, Alaska State Legislature  
State Capitol, Room 208  
Juneau, Alaska 99801-1182

Senator Gary Stevens  
Senate President, Alaska State Legislature  
State Capitol, Room 111  
Juneau, Alaska 99801-1182

Re: House Bill 227

January 31, 2010

Dear Representative Mike Chenault and Senator Gary Stevens,

The Alaska Board of Fisheries supports the language providing for resource protection found in House Bill 227 which would establish a fishing and hunting reserve in the Holitna River Basin. This action is consistent with the Board of Fisheries responsibilities in the conservation and development of fishery resources in the state.

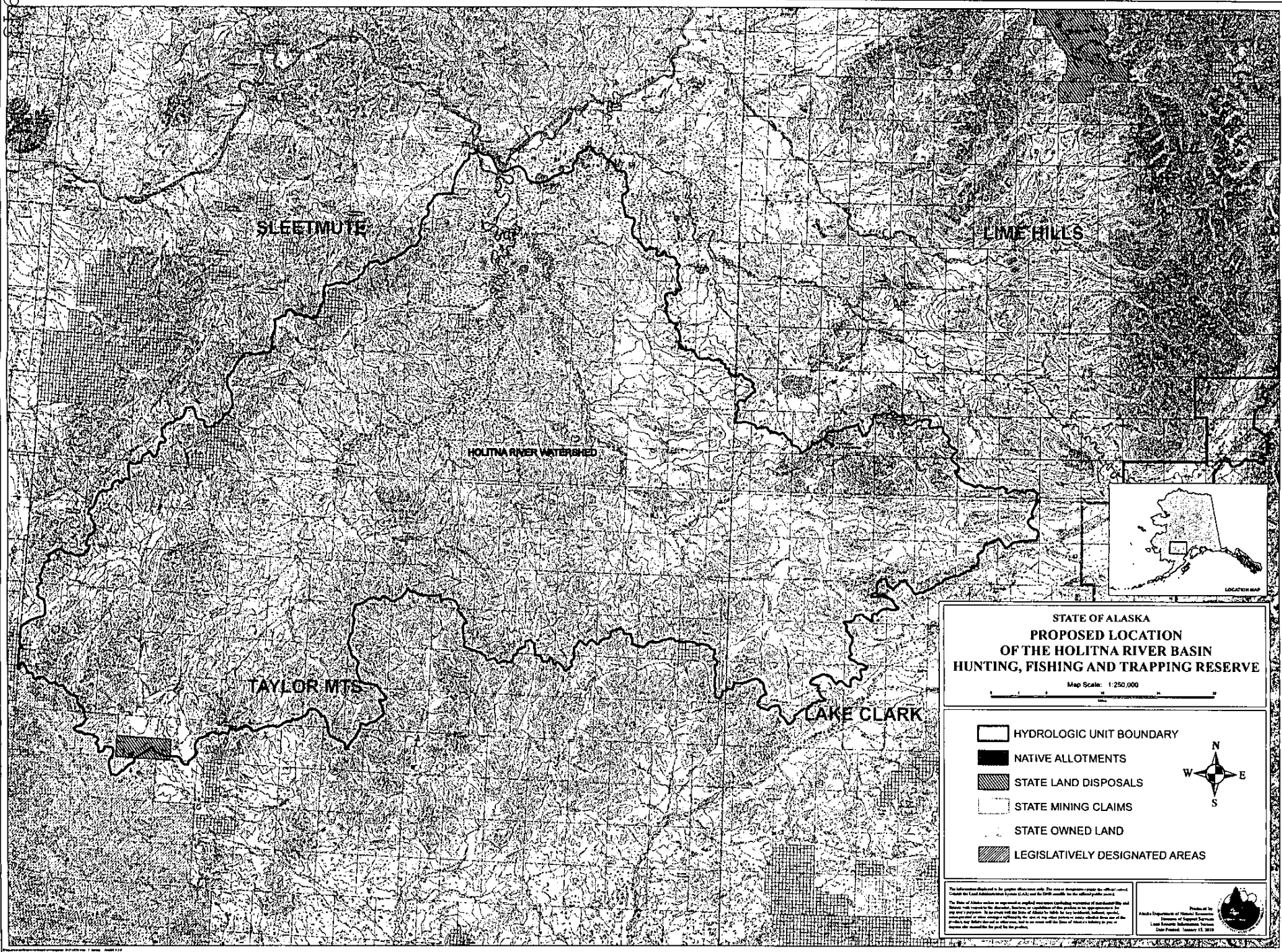
Thank you for your interest in the conservation and development of Alaska's fisheries resources.

Sincerely,



Vince Webster  
Chairman, Alaska Board of Fisheries

cc: Governor Sean Parnell  
Denby Lloyd, Commissioner, Department of Fish and Game  
Representative Herron, Sponsor  
Representative Neuman, Sponsor



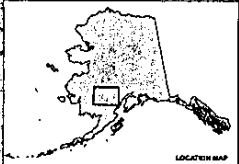
SLEETMUTE

LIME HILLS

HOLITNA RIVER WATERSHED


TAYLOR MTS

LAKE CLARK



STATE OF ALASKA  
**PROPOSED LOCATION  
 OF THE HOLITNA RIVER BASIN  
 HUNTING, FISHING AND TRAPPING RESERVE**


Map Scale: 1:250,000

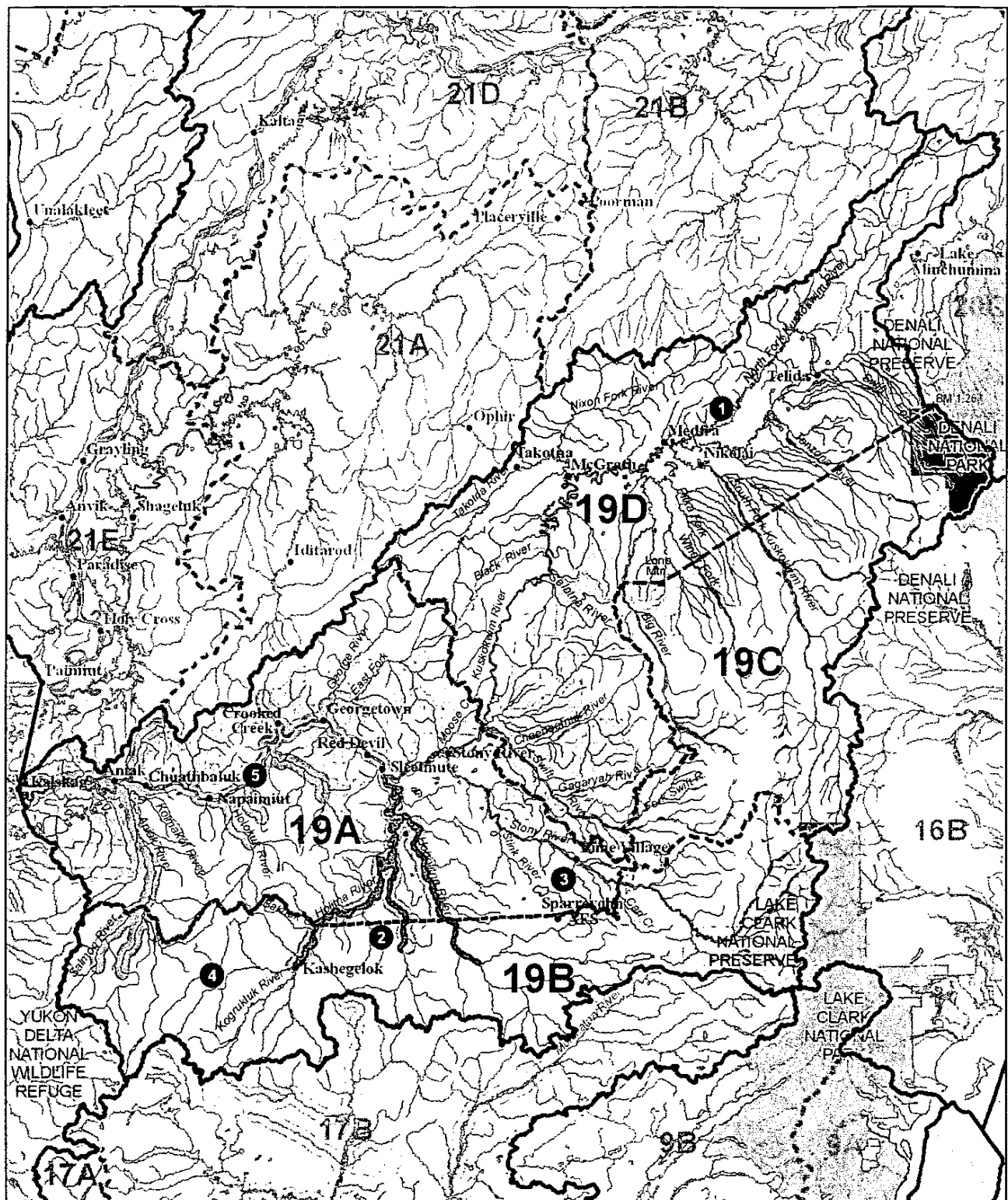
-  HYDROLOGIC UNIT BOUNDARY
-  NATIVE ALLOTMENTS
-  STATE LAND DISPOSALS
-  STATE MINING CLAIMS
-  STATE OWNED LAND
-  LEGISLATIVELY DESIGNATED AREAS



The information published in this graphic document is for general information only. For more information, contact the official record-keeper for the Land Administration System (L.A.S.) and the State records for the official public records.  
 The State of Alaska makes no representation or implied warranty (including acceptance of jurisdiction) by and without liability to the applicant, borrower, or recipient of this product or its reproduction for any use or purpose. It is intended only for the State of Alaska. For any individual, business, group, or other entity, use of this product and any other product of the State of Alaska is subject to the terms and conditions of the State of Alaska's Standard Terms and Conditions for the use of its products.

Printed at the  
 Alaska Department of Natural Resources  
 Bureau of Geologic Survey  
 Land Inventory Information System  
 Date Printed: January 11, 2019

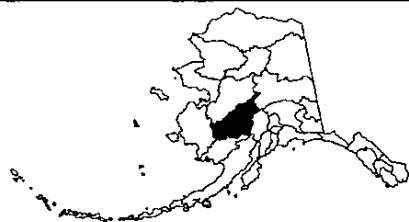




# Unit 19 McGrath

Region 3

0 10 20 40 Miles



## Game Management Units / Special Management Areas

- |                                                      |                                          |                     |
|------------------------------------------------------|------------------------------------------|---------------------|
| Closed Areas                                         | Other State Lands                        | Unit Boundaries     |
| Controlled Use Areas                                 | National Parks                           | Unit Sub-Boundaries |
| Management Areas                                     | National Preserves & Other Federal Lands | Roads               |
| State Refuges, Sanctuaries, & Critical Habitat Areas |                                          | Railroads           |

