

**ALASKA LEGISLATURE**

**2019**

**HOUSE and SENATE FINANCE COMMITTEE FILES, 1999 - 2000**

170

3. Taxes and Third Party Interests: There are no outstanding taxes or third party interests in the lands to be exchanged.
4. Authority. Each signatory to this Agreement has the authority to negotiate this exchange on behalf of its principals, subject to any necessary Board of Directors or legislative approval.
5. Conveyance. The State and AHI will exchange their respective rights, titles and interests in the lands identified in Exhibits A and B on an unequal value basis, subject to valid existing rights and other reservations as mutually agreed upon. The State will receive a warranty deed from AHI, and AHI will receive a quit claim deed for the land estate from the State. Land estate is the fee simple estate less the mineral rights reserved under AS 38,05.125(a). The right-of-way for Willow Creek Road, also known as Hatcher Pass Road is excluded as well. The mineral estate under the land estate going to AHI will be closed to mineral entry and the creation of third party interests. The warranty deed to the State, from AHI, will include language specifying that lands conveyed by AHI are to be owned and managed by the Division of Parks and Outdoor Recreation as part of Independence Mine State Historical Park.
6. Value of Land. The land to be exchanged by the parties is of unequal appraised fair market value. According to the *Appraisal of Hatcher Pass Properties for a Land Exchange, Palmer, Alaska, Valuation Date of September 21, 1999, Appraiser: Eric G Follett, MAI*, the value of the 107 acres of state land going to AHI is \$66,500 and the value of the 118 acres of AHI land going to the State is \$87,000. AHI agrees to receive land of less value, is donating to the State, and does not expect compensation from the State for the \$20,500 difference in value.
7. Mineral Closing Order. The State will, as necessary, classify or reclassify the land identified in Exhibit A and B, and concurrently complete a mineral closing order on the same lands pursuant to AS 38.05.185(a) and 11 AAC 67.230(b).
8. ACMP. The property involved in this land exchange is outside the boundaries of the Alaska Coastal Management Program.
9. Third Party Interests. There are no known third party interests in the parcels belonging to each party.
10. Binding Effect. This Agreement shall be binding on and inure to the benefit of the respective parties hereto, their successors and assigns. This agreement shall be executed by an exchange of deeds thirty days after signature, or thirty days after any appeals are resolved.
11. Construction: This Agreement shall be construed and enforced in accordance with the laws of the State of Alaska.

12. Appeals: This is a final administrative order and decision of the department for purposes of an appeal to Superior Court. A person adversely affected by this final order and decision may (1) appeal to Superior Court within 30 days in accordance with the rules of the court, and to the extent permitted by applicable law, or (2) first request reconsideration of this decision, in accordance with AS 44.62.540 and 11 AAC 02.020, to John Shively, Commissioner, Department of Natural Resources, 550 W. 7th Avenue, Suite 1400, Anchorage, Alaska 99501-3561. Please include the appeal code number provided below. Any such request for reconsideration must be received at that address, or received by being faxed to 1-907-269-8918, within 15 calendar days after the date of "delivery" of this decision, as defined by 11 AAC 02.040(c) and (d). Failure of the commissioner to act on a request for reconsideration within 30 days after delivery of this decision is a denial of reconsideration and is also a final administrative order and decision for purposes of an appeal to Superior Court. It may then be appealed to Superior Court within a further 30 days in accordance with the rules of the court, and to the extent permitted by applicable law. A copy of 11 AAC 02 may be obtained from any regional information office of the Department of Natural Resources. If no request for reconsideration is filed before the end of the period specified, this decision then goes into effect.

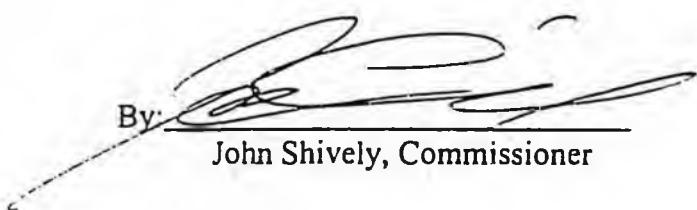
13. Legislative Approval: This final land exchange agreement is subject to approval by the Alaska Legislature under AS 38.50.140. Without legislative approval by the end of the legislative session in the year 2001, this agreement is null and void.

IN WITNESS WHEREOF, the parties have set their hands and seals as of the date first above written.

ALASKA HARDROCK, INC.

By:   
Scott Eubanks, President

STATE OF ALASKA  
DEPARTMENT OF NATURAL RESOURCES

By:   
John Shively, Commissioner

STATE OF ALASKA )

) ss:

THIRD JUDICIAL DISTRICT )

THIS IS TO CERTIFY that on the 26<sup>th</sup> day of January, 2000, before me, the undersigned, a notary public in and for the State of Alaska, duly commissioned and sworn, personally appeared Scott Eubanks, President of Alaska Hardrock, Inc., to me known and known to me to be the identical individual described in and who executed the within and foregoing document as President of Alaska Hardrock, Inc., and acknowledged to me that he signed the same in the name of and for and on behalf of Alaska Hardrock, Inc., freely and voluntarily for the uses and purposes therein mentioned.

GIVEN UNDER MY HAND and official seal the day and year last above written.



Anna M. Solorzano  
Notary Public in and for Alaska  
My Commission Expires: 11-15-03

STATE OF ALASKA )

) ss:

THIRD JUDICIAL DISTRICT )

THIS IS TO CERTIFY that on the 26<sup>th</sup> day of January, 2000, before me, the undersigned, a notary public in and for the State of Alaska, duly commissioned and sworn, personally appeared John Shively, Commissioner of the State Department of Natural Resources, to me known and known to me to be the identical individual described in and who executed the within and foregoing document as Commissioner of the Department of Natural Resources for the State of Alaska and acknowledged to me that he signed the same in the name of and for and on behalf of said Department of Natural Resources, freely and voluntarily for the uses and purposes therein mentioned.

GIVEN UNDER MY HAND and official seal the day and year last above written.



Anna M. Solorzano  
Notary Public in and for Alaska  
My Commission Expires: 11-15-03

**Exhibit A**  
**Page 1 of 5**

Final Exchange Agreement  
with Alaska Hardrock, Inc.

**Legal Description of AHI lands going to the State:**

Mineral/Subsurface Estate of the Following Eight Patented Federal Mining Claims:

T20N R1E SM

Section 28:

Independence Lode, USMS 958-A  
Granite Mountain, USMS 958-A  
Granite Mountain #1, USMS 958-A  
Granite Mountain #2, USMS 961/2046  
Granite Mountain #3, USMS 961/2046  
Lois Fraction, USMS 2041  
Snowbird, USMS 2041  
Homestake 4, USMS 980

Section 29:

Independence Lode, USMS 958-A  
Granite Mountain, USMS 958-A

Section 33:

Homestake 4, USMS 980





SEC 33 TOWNSHIP 20N RANGE 1E OF THE SEWARD MERIDIAN, ALASKA

LEGEND

GENERAL INFORMATION

- INFORMATION
- SURVEY LINE
- SURVEY LOT LINE
- TRANSMISSION CABLE
- 1/4 SECTION LINE
- HIGHWAY
- ROAD
- TRAIL
- RAILROAD
- ELECTRICAL POWER LINE
- TELEPHONE LINE
- PIPELINE
- AIRPORT LANDING STRIP
- HORIZONTAL CONTROL
- CONTROL MONUMENT

US INFORMATION

- TITLE
- BOUNDARY
- CLASSIFICATION
- DISPOSAL
- MUNICIPAL
- RESTRICTION
- FEDERAL ACTION
- MENTAL HEALTH TRUST
- LIMITS OF ACTION
- NAVIGATIONAL AID
- CABIN PERMIT
- TRAPPING CABIN PERMIT
- WILDFIRE LOCATION

SURFACE WATER RIGHTS

- APPLICATION
- PERMIT
- CERTIFICATE

UNDER SURFACE WATER RIGHTS

- APPLICATION
- PERMIT
- CERTIFICATE

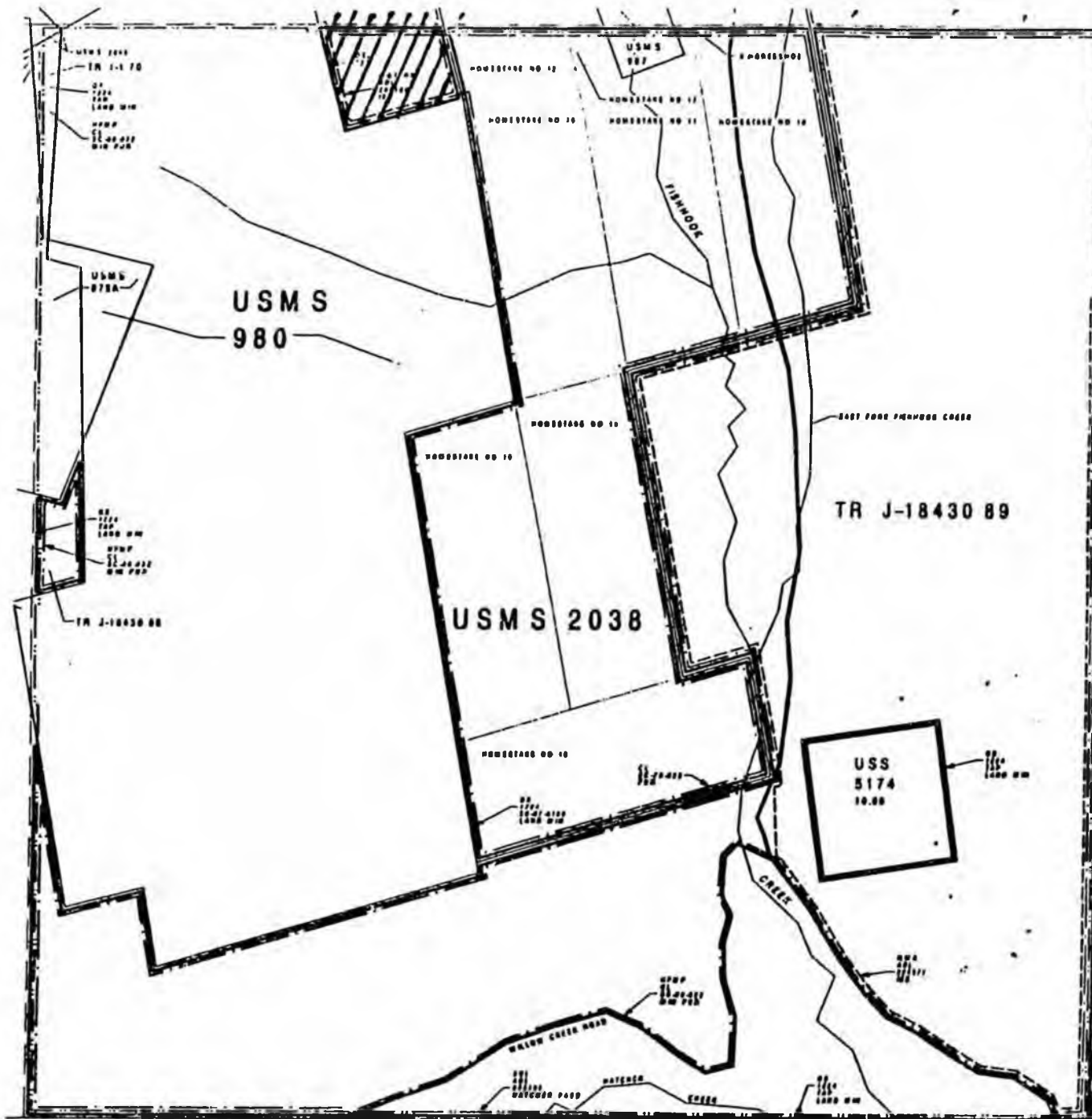
STREAM FLOW RESERVATION

- APPLICATION
- CERTIFICATE

LAND USE BARRETS

- APPLICATION
- PERMIT
- CERTIFICATE

6	5	4	3	2	1
7	8	9	0	Q	
0	7	6	5	4	3
19	20	21	22	23	24
30	29	28	27	26	25
31	32	33	34	35	36



LAND ESTATE

THIS STATE (PARTIAL) LAND SURVEY MAPS THIS ARE AVAILABLE IN-FULL AND SUBJECT TO THE LAW AND ELLIOT OF THE STATE AND ANY REVISIONS OR CORRECTIONS TO THE PLAN(S) DATED BY THE STATE.

**REVISIONS**  
 COMMENTS:  
 ALASKA STATE PLANS 2007-4  
 U (10/18/07) IN TOWNSHIP  
 R (10/18/07)  
 T (10/18/07)  
 S (10/18/07)  
 L (10/18/07)  
 (10/18/07) IN TOWNSHIP

**NOTICE**  
 THIS SURVEY MAP (PARTIAL) IS SUBJECT TO THE LAW AND ELLIOT OF THE STATE AND ANY REVISIONS OR CORRECTIONS TO THE PLAN(S) DATED BY THE STATE.

**LAND USE**  
 LAND SURVEY MAPS (PARTIAL) IS SUBJECT TO THE LAW AND ELLIOT OF THE STATE AND ANY REVISIONS OR CORRECTIONS TO THE PLAN(S) DATED BY THE STATE.

USMS 1000 APPROVED 02/10/10  
 USMS 1001 APPROVED 02/10/10  
 USMS 1002 APPROVED 02/10/10  
 USMS 1003 APPROVED 02/10/10  
 USMS 1004 APPROVED 02/10/10  
 USMS 1005 APPROVED 02/10/10  
 USMS 1006 APPROVED 02/10/10  
 USMS 1007 APPROVED 02/10/10  
 USMS 1008 APPROVED 02/10/10  
 USMS 1009 APPROVED 02/10/10  
 USMS 1010 APPROVED 02/10/10  
 USMS 1011 APPROVED 02/10/10  
 USMS 1012 APPROVED 02/10/10  
 USMS 1013 APPROVED 02/10/10  
 USMS 1014 APPROVED 02/10/10  
 USMS 1015 APPROVED 02/10/10  
 USMS 1016 APPROVED 02/10/10  
 USMS 1017 APPROVED 02/10/10  
 USMS 1018 APPROVED 02/10/10  
 USMS 1019 APPROVED 02/10/10  
 USMS 1020 APPROVED 02/10/10  
 USMS 1021 APPROVED 02/10/10  
 USMS 1022 APPROVED 02/10/10  
 USMS 1023 APPROVED 02/10/10  
 USMS 1024 APPROVED 02/10/10  
 USMS 1025 APPROVED 02/10/10  
 USMS 1026 APPROVED 02/10/10  
 USMS 1027 APPROVED 02/10/10  
 USMS 1028 APPROVED 02/10/10  
 USMS 1029 APPROVED 02/10/10  
 USMS 1030 APPROVED 02/10/10  
 USMS 1031 APPROVED 02/10/10  
 USMS 1032 APPROVED 02/10/10  
 USMS 1033 APPROVED 02/10/10  
 USMS 1034 APPROVED 02/10/10  
 USMS 1035 APPROVED 02/10/10  
 USMS 1036 APPROVED 02/10/10  
 USMS 1037 APPROVED 02/10/10  
 USMS 1038 APPROVED 02/10/10  
 USMS 1039 APPROVED 02/10/10  
 USMS 1040 APPROVED 02/10/10  
 USMS 1041 APPROVED 02/10/10  
 USMS 1042 APPROVED 02/10/10  
 USMS 1043 APPROVED 02/10/10  
 USMS 1044 APPROVED 02/10/10  
 USMS 1045 APPROVED 02/10/10  
 USMS 1046 APPROVED 02/10/10  
 USMS 1047 APPROVED 02/10/10  
 USMS 1048 APPROVED 02/10/10  
 USMS 1049 APPROVED 02/10/10  
 USMS 1050 APPROVED 02/10/10  
 USMS 1051 APPROVED 02/10/10  
 USMS 1052 APPROVED 02/10/10  
 USMS 1053 APPROVED 02/10/10  
 USMS 1054 APPROVED 02/10/10  
 USMS 1055 APPROVED 02/10/10  
 USMS 1056 APPROVED 02/10/10  
 USMS 1057 APPROVED 02/10/10  
 USMS 1058 APPROVED 02/10/10  
 USMS 1059 APPROVED 02/10/10  
 USMS 1060 APPROVED 02/10/10  
 USMS 1061 APPROVED 02/10/10  
 USMS 1062 APPROVED 02/10/10  
 USMS 1063 APPROVED 02/10/10  
 USMS 1064 APPROVED 02/10/10  
 USMS 1065 APPROVED 02/10/10  
 USMS 1066 APPROVED 02/10/10  
 USMS 1067 APPROVED 02/10/10  
 USMS 1068 APPROVED 02/10/10  
 USMS 1069 APPROVED 02/10/10  
 USMS 1070 APPROVED 02/10/10  
 USMS 1071 APPROVED 02/10/10  
 USMS 1072 APPROVED 02/10/10  
 USMS 1073 APPROVED 02/10/10  
 USMS 1074 APPROVED 02/10/10  
 USMS 1075 APPROVED 02/10/10  
 USMS 1076 APPROVED 02/10/10  
 USMS 1077 APPROVED 02/10/10  
 USMS 1078 APPROVED 02/10/10  
 USMS 1079 APPROVED 02/10/10  
 USMS 1080 APPROVED 02/10/10  
 USMS 1081 APPROVED 02/10/10  
 USMS 1082 APPROVED 02/10/10  
 USMS 1083 APPROVED 02/10/10  
 USMS 1084 APPROVED 02/10/10  
 USMS 1085 APPROVED 02/10/10  
 USMS 1086 APPROVED 02/10/10  
 USMS 1087 APPROVED 02/10/10  
 USMS 1088 APPROVED 02/10/10  
 USMS 1089 APPROVED 02/10/10  
 USMS 1090 APPROVED 02/10/10  
 USMS 1091 APPROVED 02/10/10  
 USMS 1092 APPROVED 02/10/10  
 USMS 1093 APPROVED 02/10/10  
 USMS 1094 APPROVED 02/10/10  
 USMS 1095 APPROVED 02/10/10  
 USMS 1096 APPROVED 02/10/10  
 USMS 1097 APPROVED 02/10/10  
 USMS 1098 APPROVED 02/10/10  
 USMS 1099 APPROVED 02/10/10  
 USMS 1100 APPROVED 02/10/10  
 USMS 1101 APPROVED 02/10/10  
 USMS 1102 APPROVED 02/10/10  
 USMS 1103 APPROVED 02/10/10  
 USMS 1104 APPROVED 02/10/10  
 USMS 1105 APPROVED 02/10/10  
 USMS 1106 APPROVED 02/10/10  
 USMS 1107 APPROVED 02/10/10  
 USMS 1108 APPROVED 02/10/10  
 USMS 1109 APPROVED 02/10/10  
 USMS 1110 APPROVED 02/10/10  
 USMS 1111 APPROVED 02/10/10  
 USMS 1112 APPROVED 02/10/10  
 USMS 1113 APPROVED 02/10/10  
 USMS 1114 APPROVED 02/10/10  
 USMS 1115 APPROVED 02/10/10  
 USMS 1116 APPROVED 02/10/10  
 USMS 1117 APPROVED 02/10/10  
 USMS 1118 APPROVED 02/10/10  
 USMS 1119 APPROVED 02/10/10  
 USMS 1120 APPROVED 02/10/10  
 USMS 1121 APPROVED 02/10/10  
 USMS 1122 APPROVED 02/10/10  
 USMS 1123 APPROVED 02/10/10  
 USMS 1124 APPROVED 02/10/10  
 USMS 1125 APPROVED 02/10/10  
 USMS 1126 APPROVED 02/10/10  
 USMS 1127 APPROVED 02/10/10  
 USMS 1128 APPROVED 02/10/10  
 USMS 1129 APPROVED 02/10/10  
 USMS 1130 APPROVED 02/10/10  
 USMS 1131 APPROVED 02/10/10  
 USMS 1132 APPROVED 02/10/10  
 USMS 1133 APPROVED 02/10/10  
 USMS 1134 APPROVED 02/10/10  
 USMS 1135 APPROVED 02/10/10  
 USMS 1136 APPROVED 02/10/10  
 USMS 1137 APPROVED 02/10/10  
 USMS 1138 APPROVED 02/10/10  
 USMS 1139 APPROVED 02/10/10  
 USMS 1140 APPROVED 02/10/10  
 USMS 1141 APPROVED 02/10/10  
 USMS 1142 APPROVED 02/10/10  
 USMS 1143 APPROVED 02/10/10  
 USMS 1144 APPROVED 02/10/10  
 USMS 1145 APPROVED 02/10/10  
 USMS 1146 APPROVED 02/10/10  
 USMS 1147 APPROVED 02/10/10  
 USMS 1148 APPROVED 02/10/10  
 USMS 1149 APPROVED 02/10/10  
 USMS 1150 APPROVED 02/10/10  
 USMS 1151 APPROVED 02/10/10  
 USMS 1152 APPROVED 02/10/10  
 USMS 1153 APPROVED 02/10/10  
 USMS 1154 APPROVED 02/10/10  
 USMS 1155 APPROVED 02/10/10  
 USMS 1156 APPROVED 02/10/10  
 USMS 1157 APPROVED 02/10/10  
 USMS 1158 APPROVED 02/10/10  
 USMS 1159 APPROVED 02/10/10  
 USMS 1160 APPROVED 02/10/10  
 USMS 1161 APPROVED 02/10/10  
 USMS 1162 APPROVED 02/10/10  
 USMS 1163 APPROVED 02/10/10  
 USMS 1164 APPROVED 02/10/10  
 USMS 1165 APPROVED 02/10/10  
 USMS 1166 APPROVED 02/10/10  
 USMS 1167 APPROVED 02/10/10  
 USMS 1168 APPROVED 02/10/10  
 USMS 1169 APPROVED 02/10/10  
 USMS 1170 APPROVED 02/10/10  
 USMS 1171 APPROVED 02/10/10  
 USMS 1172 APPROVED 02/10/10  
 USMS 1173 APPROVED 02/10/10  
 USMS 1174 APPROVED 02/10/10  
 USMS 1175 APPROVED 02/10/10  
 USMS 1176 APPROVED 02/10/10  
 USMS 1177 APPROVED 02/10/10  
 USMS 1178 APPROVED 02/10/10  
 USMS 1179 APPROVED 02/10/10  
 USMS 1180 APPROVED 02/10/10  
 USMS 1181 APPROVED 02/10/10  
 USMS 1182 APPROVED 02/10/10  
 USMS 1183 APPROVED 02/10/10  
 USMS 1184 APPROVED 02/10/10  
 USMS 1185 APPROVED 02/10/10  
 USMS 1186 APPROVED 02/10/10  
 USMS 1187 APPROVED 02/10/10  
 USMS 1188 APPROVED 02/10/10  
 USMS 1189 APPROVED 02/10/10  
 USMS 1190 APPROVED 02/10/10  
 USMS 1191 APPROVED 02/10/10  
 USMS 1192 APPROVED 02/10/10  
 USMS 1193 APPROVED 02/10/10  
 USMS 1194 APPROVED 02/10/10  
 USMS 1195 APPROVED 02/10/10  
 USMS 1196 APPROVED 02/10/10  
 USMS 1197 APPROVED 02/10/10  
 USMS 1198 APPROVED 02/10/10  
 USMS 1199 APPROVED 02/10/10  
 USMS 1200 APPROVED 02/10/10

OTHER ACTIONS AFFECTING RIGHTS OR USE OF STATE LANDS  
 SEE THE LRS CABLES OR ORIGINAL SOURCE DOCUMENTS FOR  
 ADDITIONAL INFORMATION.

ENTIRELY NEW PALMS ACCORDING DISTRICT  
 ENTIRELY NEW PALMS - DISTRICT BOROUGH  
 SUBJECT TO MATRONS PASS MANAGEMENT PLAN  
 OR 12A, TERRITORY APPROVAL, EXCLUDED FEDERAL APPLICATION  
 AA-1100 AA-1101 AA-1102 AA-1103 AA-1104 AA-1105 AA-1106 AA-1107  
 AA-1108 AA-1109 AA-1110 AA-1111 AA-1112 AA-1113 AA-1114 AA-1115  
 AA-1116 AA-1117 AA-1118 AA-1119 AA-1120 AA-1121 AA-1122 AA-1123  
 AA-1124 AA-1125 AA-1126 AA-1127 AA-1128 AA-1129 AA-1130 AA-1131  
 AA-1132 AA-1133 AA-1134 AA-1135 AA-1136 AA-1137 AA-1138 AA-1139  
 AA-1140 AA-1141 AA-1142 AA-1143 AA-1144 AA-1145 AA-1146 AA-1147  
 AA-1148 AA-1149 AA-1150 AA-1151 AA-1152 AA-1153 AA-1154 AA-1155  
 AA-1156 AA-1157 AA-1158 AA-1159 AA-1160 AA-1161 AA-1162 AA-1163  
 AA-1164 AA-1165 AA-1166 AA-1167 AA-1168 AA-1169 AA-1170 AA-1171  
 AA-1172 AA-1173 AA-1174 AA-1175 AA-1176 AA-1177 AA-1178 AA-1179  
 AA-1180 AA-1181 AA-1182 AA-1183 AA-1184 AA-1185 AA-1186 AA-1187  
 AA-1188 AA-1189 AA-1190 AA-1191 AA-1192 AA-1193 AA-1194 AA-1195  
 AA-1196 AA-1197 AA-1198 AA-1199 AA-1200

Exhibit A  
 page 5 of 5

GRAPHIC ILLUSTRATION ONLY.  
 SOURCE DOCUMENTS REMAIN THE OFFICIAL RECORD.  
 CONSULT LAND ADMINISTRATION SYSTEM (LAS)  
 CAREFULLY FOR ADDITIONAL INFORMATION.

SCALE

ATTENTION STATUS PLAY USERS: ON THIS PLAY, ALL STATUS  
 LINE CLASSES PLUS ACTIONS THAT EXTEND INTO ADJACENT TOWNSHIPS,  
 THIS INCLUDES STATUS LINE CLASSES SUCH AS DISPOSAL, MUNICIPAL, TITLE,  
 CLASSIFICATION, ETC. PLEASE REFER TO ADJACENT TOWNSHIP OR LAS  
 TO OBTAINING STATUS INFORMATION BEYOND THE BOUNDARY.

A PRODUCT OF THE  
 STATE OF ALASKA  
 DEPARTMENT OF NATURAL RESOURCES  
 LAND ADMINISTRATION SECTION

SEC 11

**Exhibit B**  
**Page 1 of 9**

Final Exchange Agreement  
with Alaska Hardrock, Inc.

**Legal Description of State lands going to AHI:**

**Five Parcels of Land Estate with Mineral Closure:**

Parcel One named Lucky Shot Mill Site: Tract B of ASLS 98-45, within the NE1/4, Sec. 2, T19N R1W SM, excluding R/W for Willow Creek Road, also known as Hatcher Pass Road. Approximate acreage: 29

Parcel Two named Willow Creek Decline: ASLS 98-44 and federal mining claim Brightness 2, USMS 2047, within the SE1/4, Sec 29 and NE1/4, Sec 32; T20N R1E SM. Approximate acreage for entire parcel: 41

Parcel Three named Lucky Shot Tunnel: Tract A of ASLS 98-45, within the SW1/4, Sec 35, T20N R1W SM, excluding R/W for Willow Creek Road, also known as Hatcher Pass Road. Approximate acreage: 27

Parcel Four: Tract B of US Rectangular Survey dated September 28, 1978, in section 35, T20N R1W, SM. Approximate acreage: 8

Parcel Five: Tract C of US Rectangular Survey dated September 28, 1978, in sections 34 and 35, T20N R1W, SM. Approximate acreage: 2

TOWNSHIP 19N RANGE 14W OF THE SEWARD MERIDIAN, ALASKA

EGEND

INFORMATION

- HYDROGRAPHY
- 50 FEET LINE
- 50 FEET LOT LINE
- TOWNSHIP SECTION GRID
- 1/4 SECTION LINE
- HIGHWAY
- ROAD
- TRAIL
- RAILROAD
- ELECTRICAL POWER LINE
- TELEPHONE LINE
- PIPELINE
- AIRBORNE PHOTOGRAPHY
- HORIZONTAL CONTROL
- CONTROL MEASUREMENT

S INFORMATION

- TITLE
- BOUNDARY
- CLASSIFICATION
- DISPOSAL
- MUNICIPAL
- RESTRICTION
- FEDERAL ACTION
- MENTAL HEALTH TRUST
- LIMITS OF ACTION
- NAVIGATIONAL AID
- CAMP PERMIT
- TRAPPING CAMP PERMIT
- FISHING LOCATION

WATER RIGHTS

- APPLICATION
- PERMIT
- CERTIFICATE

SURFACE WATER RIGHTS

- APPLICATION
- PERMIT
- CERTIFICATE

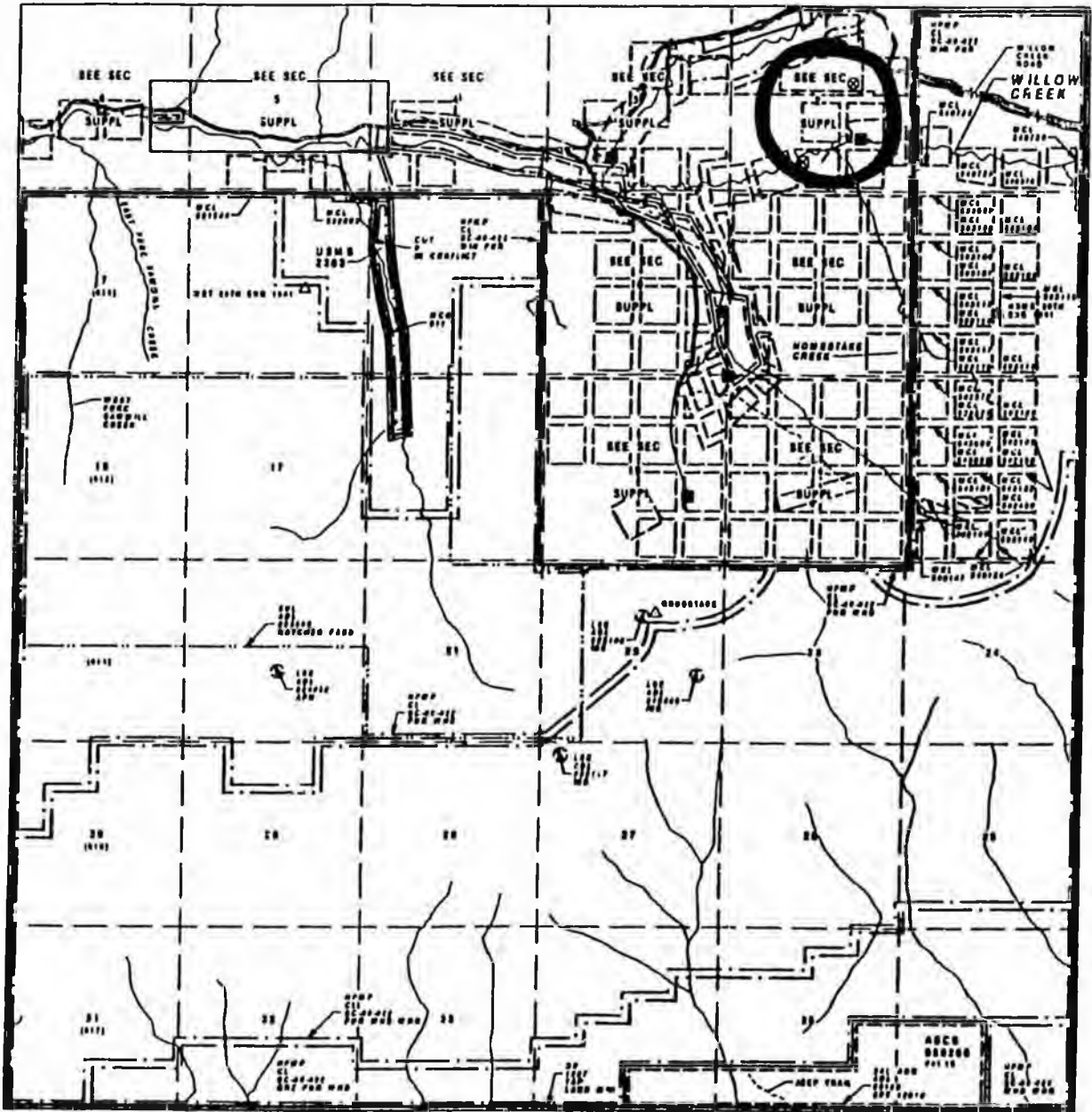
STREAM FLOW RESERVATION

- APPLICATION
- CERTIFICATE

WATER BARRIERS

- APPLICATION
- PERMIT
- CERTIFICATE

6	5	4	3	2	1
7	8	9	0	0	0
0	7	8	9	0	0
0	20	21	22	23	24
30	29	28	27	26	25
31	32	33	34	35	36



STATUS PLAT

THIS PLAT SHOWS ALL LAND CLAIMS WHICH HAVE BEEN RECEIVED BY THE STATE OF ALASKA AND WHICH ARE SUBJECT TO THE FEDERAL LAND MANAGEMENT SYSTEM (FLMRS) AND ARE SUBJECT TO THE FEDERAL LAND MANAGEMENT SYSTEM (FLMRS) AND ARE SUBJECT TO THE FEDERAL LAND MANAGEMENT SYSTEM (FLMRS).

BASED ON:  
 CONTINENTAL  
 ALASKA STATE PLANS AND  
 BE CLASSIFIED BY THE  
 B. 01244 111  
 T. 100001 120  
 LAT. 66 01 12 00 N  
 LONG. 150 01 24 00 W

HYDROGRAPHY  
 (1967-71) AND (1971) REVISED BY PLAN ENGINE ALASKA  
 HIGH ALTITUDE PHOTOGRAPHY (1964-1965)

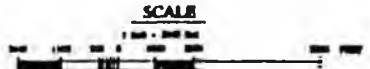
LAND USE  
 1700 PROTECTION (MAGRAM 21-17) APPROVED (10/10/97)  
 1700 TRACT A, 25 0000 ACRES, ACCEPTED (10/10/97)  
 1700 1700, ACCEPTED (10/10/97)  
 1700 1700, ACCEPTED (10/10/97)  
 1700 1700 A & B, APPROVED (10/10/97)  
 1700 1700 A & B, APPROVED (10/10/97)  
 1700 1700, APPROVED (10/10/97)  
 1700 1700, APPROVED (10/10/97)  
 1700 1700, APPROVED (10/10/97)  
 1700 1700, APPROVED (10/10/97)  
 1700 1700, APPROVED (10/10/97)

OTHER ACTIONS AFFECTING INTERESTS IN THE STATE LANDS  
 SEE THE LAS (ALASKA) OR (FEDERAL) SOURCE DOCUMENTS FOR  
 ADDITIONAL INFORMATION

INTERESTS WITH CLAIMS INCLUDING EXISTING INTERESTS  
 CONTROLLED BY NATURAL RESOURCES SURVEY DIVISION  
 SUBJECT TO WILDERNESS MANAGEMENT PLAN

Exhibit B  
 page 2 of 9

GRAPHIC ILLUSTRATION ONLY.  
 SOURCE DOCUMENTS REMAIN THE OFFICIAL RECORD.  
 COMPLY LAND ADMINISTRATION SYSTEM (CLAS)  
 CAPABLE FOR ADDITIONAL INFORMATION.



ATTENTION STATUS PLAT USERS: ON THIS PLAT, ALL STATUS  
 LINES CLOSE FOR ACTIONS THAT EXTEND INTO ADJACENT TOWNSHIPS.  
 THIS INCLUDES STATUS LINES SUCH AS DISPOSAL, MUNICIPAL, TITLE,  
 CLASSIFICATION, ETC. PLEASE REFER TO ADJACENT TOWNSHIPS OR LAS  
 TO DETERMINE IF ACTIONS EXTEND BEYOND THE TOWNSHIP BOUNDARY.

A PROJECT OF THE  
 STATE OF ALASKA  
 DEPARTMENT OF NATURAL RESOURCES  
 LAND RECORD INFORMATION SECTION

Si

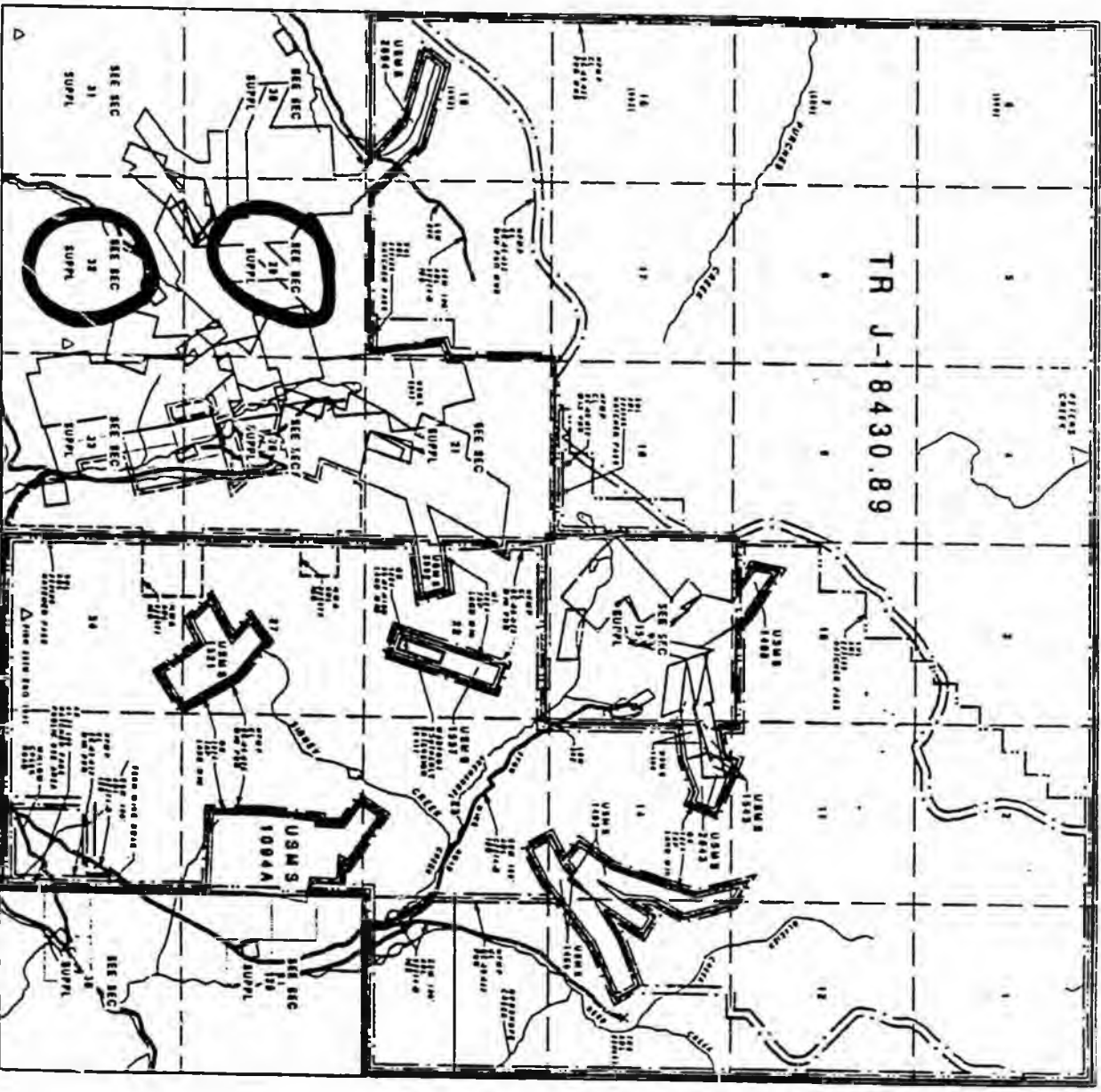
TWP



LAND ESTATE

LEGEND

- LAND INFORMATION**
- INTEREST
  - MARY'S LINE
  - MARY'S LOT LINE
  - TOWNSHIP SECTION GRID
  - SECTION LINE
  - QUAD
  - ROAD
  - TRAIL
  - BAR ROAD
  - ELECTRICAL POWER LINE
  - TELEPHONE LINE
  - POWER LINE
  - AIRPORT AND/OR STRIP
  - INDUSTRIAL CONTROL
  - CONTROL MONUMENT
- US INFORMATION**
- TITLE
  - BOUNDARY
  - CLASSIFICATION
  - ZONING
  - RESTRICTION
  - FEDERAL ACTION
  - FEDERAL HEALTH TRUST
  - (POINTS OF ACTION)
  - NAVIGATIONAL AND CABIN POINT
  - TRAPPING CASH POINT
  - TRAPPING LOCATION
- US BUREAU OF LAND MANAGEMENT**
- APPLICATION
  - MONUMENT
  - CERTIFICATE
- US BUREAU OF WATER RESOURCES**
- APPLICATION
  - MONUMENT
  - CERTIFICATE
- US DEPARTMENT OF AGRICULTURE**
- APPLICATION
  - MONUMENT
  - CERTIFICATE
- US DEPARTMENT OF COMMERCE**
- APPLICATION
  - MONUMENT
  - CERTIFICATE



1	2	3	4	5	6	7	8	9	10	11	12	13	14	15	16	17	18	19	20	21	22	23	24	25	26	27	28	29	30	31	32	33	34	35	36	37	38	39	40	41	42	43	44	45	46	47	48	49	50	51	52	53	54	55	56	57	58	59	60	61	62	63	64	65	66	67	68	69	70	71	72	73	74	75	76	77	78	79	80	81	82	83	84	85	86	87	88	89	90	91	92	93	94	95	96	97	98	99	100
---	---	---	---	---	---	---	---	---	----	----	----	----	----	----	----	----	----	----	----	----	----	----	----	----	----	----	----	----	----	----	----	----	----	----	----	----	----	----	----	----	----	----	----	----	----	----	----	----	----	----	----	----	----	----	----	----	----	----	----	----	----	----	----	----	----	----	----	----	----	----	----	----	----	----	----	----	----	----	----	----	----	----	----	----	----	----	----	----	----	----	----	----	----	----	----	----	----	----	-----

LAND INFORMATION ONLY.  
SOURCE DOCUMENTS MAINTAIN THE ORIGINAL RECORDS.  
CONSULT LAND ADMINISTRATION SYSTEM DATA  
COMPILED FOR ADDITIONAL INFORMATION.



ATTENTION STATES THAT USM'S ON THIS MAP ALL STATES  
LINES CROSS OR ADJACENT THAT LATTER AND ADJACENT TOWNSHIP.  
THIS INCLUDES STATES THAT LATTER AND ADJACENT TOWNSHIP.  
THE STATES THAT LATTER AND ADJACENT TOWNSHIP.  
TO OBTAIN THE STATES THAT LATTER AND ADJACENT TOWNSHIP.  
THE STATES THAT LATTER AND ADJACENT TOWNSHIP.  
THE STATES THAT LATTER AND ADJACENT TOWNSHIP.

**ALASKA DEPARTMENT OF NATURAL RESOURCES**  
LAND ESTATE INFORMATION SYSTEM

STATE OF ALASKA  
DEPARTMENT OF NATURAL RESOURCES  
LAND ESTATE INFORMATION SYSTEM

STATE OF ALASKA  
DEPARTMENT OF NATURAL RESOURCES  
LAND ESTATE INFORMATION SYSTEM

Exhibit B  
page 4 of 9

THIS MAP IS A REPRODUCTION OF THE ORIGINAL RECORDS.  
THE ORIGINAL RECORDS ARE MAINTAINED AT THE  
ALASKA DEPARTMENT OF NATURAL RESOURCES.  
FOR MORE INFORMATION CONTACT THE  
ALASKA DEPARTMENT OF NATURAL RESOURCES.

SECTION 18  
SECTION 19  
SECTION 20  
SECTION 21  
SECTION 22  
SECTION 23  
SECTION 24  
SECTION 25  
SECTION 26  
SECTION 27  
SECTION 28  
SECTION 29  
SECTION 30  
SECTION 31  
SECTION 32  
SECTION 33  
SECTION 34  
SECTION 35  
SECTION 36  
SECTION 37  
SECTION 38  
SECTION 39  
SECTION 40  
SECTION 41  
SECTION 42  
SECTION 43  
SECTION 44  
SECTION 45  
SECTION 46  
SECTION 47  
SECTION 48  
SECTION 49  
SECTION 50  
SECTION 51  
SECTION 52  
SECTION 53  
SECTION 54  
SECTION 55  
SECTION 56  
SECTION 57  
SECTION 58  
SECTION 59  
SECTION 60  
SECTION 61  
SECTION 62  
SECTION 63  
SECTION 64  
SECTION 65  
SECTION 66  
SECTION 67  
SECTION 68  
SECTION 69  
SECTION 70  
SECTION 71  
SECTION 72  
SECTION 73  
SECTION 74  
SECTION 75  
SECTION 76  
SECTION 77  
SECTION 78  
SECTION 79  
SECTION 80  
SECTION 81  
SECTION 82  
SECTION 83  
SECTION 84  
SECTION 85  
SECTION 86  
SECTION 87  
SECTION 88  
SECTION 89  
SECTION 90  
SECTION 91  
SECTION 92  
SECTION 93  
SECTION 94  
SECTION 95  
SECTION 96  
SECTION 97  
SECTION 98  
SECTION 99  
SECTION 100



SEC 32 TOWNSHIP 20N RANGE 1E OF THE SEWARD MERIDIAN, ALASKA

LEGEND

- INFORMATION**
- INDICATORY
  - SURVEY LINE
  - SURVEY LOT LINE
  - TOWNSHIP SECTION GRID
  - TR SECTION LINE
  - RIGHTWAY
  - ROAD
  - TRAIL
  - RAILROAD
  - ELECTRICAL POWER LINE
  - TELEPHONE LINE
  - PIPELINE
  - AIRPORT LANDING STRIP
  - HORIZONTAL CONTROL
  - CONTROL MONUMENT

- S INFORMATION**
- TITLE
  - BOUNDARY
  - CLASSIFICATION
  - DISPOSAL
  - MUNICIPAL
  - RESTRICTION
  - FEDERAL ACTION
  - MENTAL HEALTH TRUST
  - LIMITS OF ACTION
  - NAVIGATIONAL AID
  - CADON PERMIT
  - TRAPPING CABIN PERMIT
  - TRESPASS LOCATION

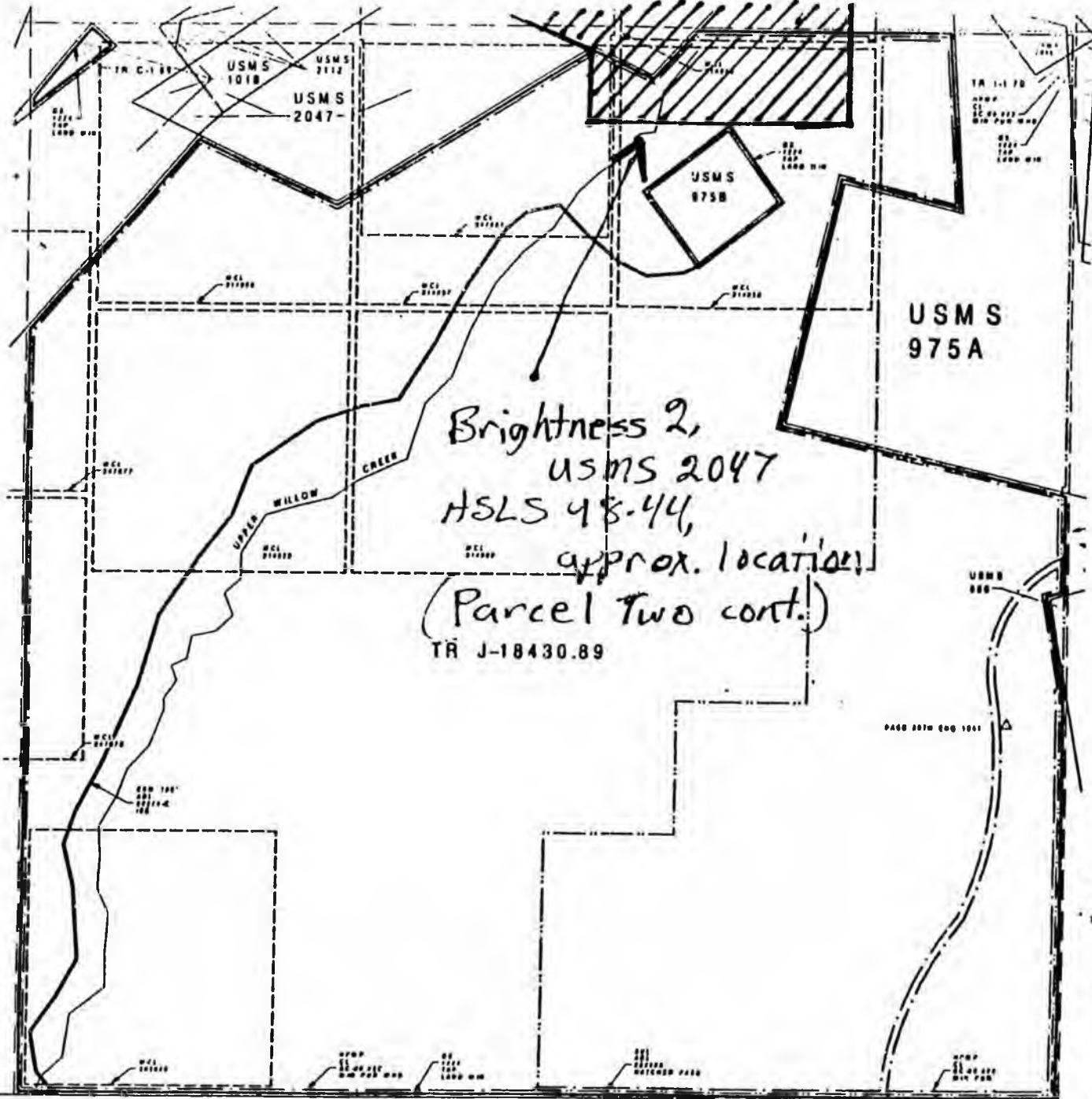
- R STATE WATER RIGHTS**
- APPLICATION
  - PERMIT
  - CERTIFICATE

- TO SURFACE WATER RIGHTS**
- APPLICATION
  - PERMIT
  - CERTIFICATE

- STREAM FLOW RESERVATION**
- APPLICATION
  - CERTIFICATE

- M. RIVER BARBAR**
- APPLICATION
  - PERMIT
  - CERTIFICATE

8	5	4	3	2	1
7	6	5	4	3	2
6	5	4	3	2	1
5	4	3	2	1	0
4	3	2	1	0	9
3	2	1	0	9	8
2	1	0	9	8	7
1	0	9	8	7	6
0	9	8	7	6	5
9	8	7	6	5	4
8	7	6	5	4	3
7	6	5	4	3	2
6	5	4	3	2	1
5	4	3	2	1	0
4	3	2	1	0	9
3	2	1	0	9	8
2	1	0	9	8	7
1	0	9	8	7	6
0	9	8	7	6	5



STATUS PLAT

THE STATE ENGINEER HAS EXAMINED THE SURVEY AND FINDS THAT THE SURVEY IS CORRECT AND ACCORDS WITH THE ORIGINAL SURVEY RECORDS ON FILE IN THE STATE ENGINEER'S OFFICE.

**COMMISSIONER**  
 ALASKA STATE PLANS UNIT 4  
 500 NORTH 10TH AVENUE  
 ANCHORAGE, ALASKA 99503  
 DATE: 10/10/1989

**NOTICE TO PROPERTY OWNERS**  
 THIS STATUS PLAT IS A PUBLIC RECORD AND IS AVAILABLE TO THE PUBLIC FOR INFORMATION.

**LAND USE**  
 ALL PROPOSED DEVELOPMENT MUST BE IN ACCORDANCE WITH THE ZONING ORDINANCE AND THE SUBDIVISION MAP ACT.

- USMS 1018 APPROVED 08/10/1989
- USMS 1019 APPROVED 08/10/1989
- USMS 1020 APPROVED 08/10/1989
- USMS 1021 APPROVED 08/10/1989
- USMS 1022 APPROVED 08/10/1989
- USMS 1023 APPROVED 08/10/1989
- USMS 1024 APPROVED 08/10/1989
- USMS 1025 APPROVED 08/10/1989
- USMS 1026 APPROVED 08/10/1989
- USMS 1027 APPROVED 08/10/1989
- USMS 1028 APPROVED 08/10/1989
- USMS 1029 APPROVED 08/10/1989
- USMS 1030 APPROVED 08/10/1989
- USMS 1031 APPROVED 08/10/1989
- USMS 1032 APPROVED 08/10/1989
- USMS 1033 APPROVED 08/10/1989
- USMS 1034 APPROVED 08/10/1989
- USMS 1035 APPROVED 08/10/1989
- USMS 1036 APPROVED 08/10/1989
- USMS 1037 APPROVED 08/10/1989
- USMS 1038 APPROVED 08/10/1989
- USMS 1039 APPROVED 08/10/1989
- USMS 1040 APPROVED 08/10/1989
- USMS 1041 APPROVED 08/10/1989
- USMS 1042 APPROVED 08/10/1989
- USMS 1043 APPROVED 08/10/1989
- USMS 1044 APPROVED 08/10/1989
- USMS 1045 APPROVED 08/10/1989
- USMS 1046 APPROVED 08/10/1989
- USMS 1047 APPROVED 08/10/1989
- USMS 1048 APPROVED 08/10/1989
- USMS 1049 APPROVED 08/10/1989
- USMS 1050 APPROVED 08/10/1989
- USMS 1051 APPROVED 08/10/1989
- USMS 1052 APPROVED 08/10/1989
- USMS 1053 APPROVED 08/10/1989
- USMS 1054 APPROVED 08/10/1989
- USMS 1055 APPROVED 08/10/1989
- USMS 1056 APPROVED 08/10/1989
- USMS 1057 APPROVED 08/10/1989
- USMS 1058 APPROVED 08/10/1989
- USMS 1059 APPROVED 08/10/1989
- USMS 1060 APPROVED 08/10/1989
- USMS 1061 APPROVED 08/10/1989
- USMS 1062 APPROVED 08/10/1989
- USMS 1063 APPROVED 08/10/1989
- USMS 1064 APPROVED 08/10/1989
- USMS 1065 APPROVED 08/10/1989
- USMS 1066 APPROVED 08/10/1989
- USMS 1067 APPROVED 08/10/1989
- USMS 1068 APPROVED 08/10/1989
- USMS 1069 APPROVED 08/10/1989
- USMS 1070 APPROVED 08/10/1989
- USMS 1071 APPROVED 08/10/1989
- USMS 1072 APPROVED 08/10/1989
- USMS 1073 APPROVED 08/10/1989
- USMS 1074 APPROVED 08/10/1989
- USMS 1075 APPROVED 08/10/1989
- USMS 1076 APPROVED 08/10/1989
- USMS 1077 APPROVED 08/10/1989
- USMS 1078 APPROVED 08/10/1989
- USMS 1079 APPROVED 08/10/1989
- USMS 1080 APPROVED 08/10/1989
- USMS 1081 APPROVED 08/10/1989
- USMS 1082 APPROVED 08/10/1989
- USMS 1083 APPROVED 08/10/1989
- USMS 1084 APPROVED 08/10/1989
- USMS 1085 APPROVED 08/10/1989
- USMS 1086 APPROVED 08/10/1989
- USMS 1087 APPROVED 08/10/1989
- USMS 1088 APPROVED 08/10/1989
- USMS 1089 APPROVED 08/10/1989
- USMS 1090 APPROVED 08/10/1989
- USMS 1091 APPROVED 08/10/1989
- USMS 1092 APPROVED 08/10/1989
- USMS 1093 APPROVED 08/10/1989
- USMS 1094 APPROVED 08/10/1989
- USMS 1095 APPROVED 08/10/1989
- USMS 1096 APPROVED 08/10/1989
- USMS 1097 APPROVED 08/10/1989
- USMS 1098 APPROVED 08/10/1989
- USMS 1099 APPROVED 08/10/1989
- USMS 1100 APPROVED 08/10/1989

OTHER ACTIONS AFFECTING DISPOSAL OR USE OF STATE LANDS SEE THE LAS CASES IN USFWS SOURCE DOCUMENTS FOR ADDITIONAL INFORMATION.

ENTRUSTED WITH PUBLIC ADMINISTRATION DISTRICTS  
 DISTRICTS WITH PUBLIC ADMINISTRATION DISTRICTS  
 SUBJECT TO NATIONAL FIRE MANAGEMENT PLAN  
 CO 124 TENTATIVE APPROVAL ENCLAVES FEDERAL APPLICATIONS  
 AA-1191 AA-1192 AA-1193 AND BARRING CLAIM  
 APPLICATIONS AA-1194 THROUGH AA-1199 AA-1200 THROUGH  
 AA-1201 THROUGH AA-1206 AA-1207 THROUGH AA-1212  
 AA-1213 THROUGH AA-1218 AA-1219 THROUGH AA-1224  
 AA-1225 THROUGH AA-1230 AA-1231 THROUGH AA-1236  
 AA-1237 THROUGH AA-1242 AA-1243 THROUGH AA-1248  
 AA-1249 THROUGH AA-1254 AA-1255 THROUGH AA-1260  
 AA-1261 THROUGH AA-1266 AA-1267 THROUGH AA-1272  
 AA-1273 THROUGH AA-1278 AA-1279 THROUGH AA-1284  
 AA-1285 THROUGH AA-1290 AA-1291 THROUGH AA-1296  
 AA-1297 THROUGH AA-1302 AA-1303 THROUGH AA-1308  
 AA-1309 THROUGH AA-1314 AA-1315 THROUGH AA-1320  
 AA-1321 THROUGH AA-1326 AA-1327 THROUGH AA-1332  
 AA-1333 THROUGH AA-1338 AA-1339 THROUGH AA-1344  
 AA-1345 THROUGH AA-1350 AA-1351 THROUGH AA-1356  
 AA-1357 THROUGH AA-1362 AA-1363 THROUGH AA-1368  
 AA-1369 THROUGH AA-1374 AA-1375 THROUGH AA-1380  
 AA-1381 THROUGH AA-1386 AA-1387 THROUGH AA-1392  
 AA-1393 THROUGH AA-1398 AA-1399 THROUGH AA-1404  
 AA-1405 THROUGH AA-1410 AA-1411 THROUGH AA-1416  
 AA-1417 THROUGH AA-1422 AA-1423 THROUGH AA-1428  
 AA-1429 THROUGH AA-1434 AA-1435 THROUGH AA-1440  
 AA-1441 THROUGH AA-1446 AA-1447 THROUGH AA-1452  
 AA-1453 THROUGH AA-1458 AA-1459 THROUGH AA-1464  
 AA-1465 THROUGH AA-1470 AA-1471 THROUGH AA-1476  
 AA-1477 THROUGH AA-1482 AA-1483 THROUGH AA-1488  
 AA-1489 THROUGH AA-1494 AA-1495 THROUGH AA-1500  
 AA-1501 THROUGH AA-1506 AA-1507 THROUGH AA-1512  
 AA-1513 THROUGH AA-1518 AA-1519 THROUGH AA-1524  
 AA-1525 THROUGH AA-1530 AA-1531 THROUGH AA-1536  
 AA-1537 THROUGH AA-1542 AA-1543 THROUGH AA-1548  
 AA-1549 THROUGH AA-1554 AA-1555 THROUGH AA-1560  
 AA-1561 THROUGH AA-1566 AA-1567 THROUGH AA-1572  
 AA-1573 THROUGH AA-1578 AA-1579 THROUGH AA-1584  
 AA-1585 THROUGH AA-1590 AA-1591 THROUGH AA-1596  
 AA-1597 THROUGH AA-1602 AA-1603 THROUGH AA-1608  
 AA-1609 THROUGH AA-1614 AA-1615 THROUGH AA-1620  
 AA-1621 THROUGH AA-1626 AA-1627 THROUGH AA-1632  
 AA-1633 THROUGH AA-1638 AA-1639 THROUGH AA-1644  
 AA-1645 THROUGH AA-1650 AA-1651 THROUGH AA-1656  
 AA-1657 THROUGH AA-1662 AA-1663 THROUGH AA-1668  
 AA-1669 THROUGH AA-1674 AA-1675 THROUGH AA-1680  
 AA-1681 THROUGH AA-1686 AA-1687 THROUGH AA-1692  
 AA-1693 THROUGH AA-1698 AA-1699 THROUGH AA-1704  
 AA-1705 THROUGH AA-1710 AA-1711 THROUGH AA-1716  
 AA-1717 THROUGH AA-1722 AA-1723 THROUGH AA-1728  
 AA-1729 THROUGH AA-1734 AA-1735 THROUGH AA-1740  
 AA-1741 THROUGH AA-1746 AA-1747 THROUGH AA-1752  
 AA-1753 THROUGH AA-1758 AA-1759 THROUGH AA-1764  
 AA-1765 THROUGH AA-1770 AA-1771 THROUGH AA-1776  
 AA-1777 THROUGH AA-1782 AA-1783 THROUGH AA-1788  
 AA-1789 THROUGH AA-1794 AA-1795 THROUGH AA-1800  
 AA-1801 THROUGH AA-1806 AA-1807 THROUGH AA-1812  
 AA-1813 THROUGH AA-1818 AA-1819 THROUGH AA-1824  
 AA-1825 THROUGH AA-1830 AA-1831 THROUGH AA-1836  
 AA-1837 THROUGH AA-1842 AA-1843 THROUGH AA-1848  
 AA-1849 THROUGH AA-1854 AA-1855 THROUGH AA-1860  
 AA-1861 THROUGH AA-1866 AA-1867 THROUGH AA-1872  
 AA-1873 THROUGH AA-1878 AA-1879 THROUGH AA-1884  
 AA-1885 THROUGH AA-1890 AA-1891 THROUGH AA-1896  
 AA-1897 THROUGH AA-1902 AA-1903 THROUGH AA-1908  
 AA-1909 THROUGH AA-1914 AA-1915 THROUGH AA-1920  
 AA-1921 THROUGH AA-1926 AA-1927 THROUGH AA-1932  
 AA-1933 THROUGH AA-1938 AA-1939 THROUGH AA-1944  
 AA-1945 THROUGH AA-1950 AA-1951 THROUGH AA-1956  
 AA-1957 THROUGH AA-1962 AA-1963 THROUGH AA-1968  
 AA-1969 THROUGH AA-1974 AA-1975 THROUGH AA-1980  
 AA-1981 THROUGH AA-1986 AA-1987 THROUGH AA-1992  
 AA-1993 THROUGH AA-1998 AA-1999 THROUGH AA-2004  
 AA-2005 THROUGH AA-2010 AA-2011 THROUGH AA-2016  
 AA-2017 THROUGH AA-2022 AA-2023 THROUGH AA-2028  
 AA-2029 THROUGH AA-2034 AA-2035 THROUGH AA-2040  
 AA-2041 THROUGH AA-2046 AA-2047 THROUGH AA-2052  
 AA-2053 THROUGH AA-2058 AA-2059 THROUGH AA-2064  
 AA-2065 THROUGH AA-2070 AA-2071 THROUGH AA-2076  
 AA-2077 THROUGH AA-2082 AA-2083 THROUGH AA-2088  
 AA-2089 THROUGH AA-2094 AA-2095 THROUGH AA-2100  
 AA-2101 THROUGH AA-2106 AA-2107 THROUGH AA-2112  
 AA-2113 THROUGH AA-2118 AA-2119 THROUGH AA-2124  
 AA-2125 THROUGH AA-2130 AA-2131 THROUGH AA-2136  
 AA-2137 THROUGH AA-2142 AA-2143 THROUGH AA-2148  
 AA-2149 THROUGH AA-2154 AA-2155 THROUGH AA-2160  
 AA-2161 THROUGH AA-2166 AA-2167 THROUGH AA-2172  
 AA-2173 THROUGH AA-2178 AA-2179 THROUGH AA-2184  
 AA-2185 THROUGH AA-2190 AA-2191 THROUGH AA-2196  
 AA-2197 THROUGH AA-2202 AA-2203 THROUGH AA-2208  
 AA-2209 THROUGH AA-2214 AA-2215 THROUGH AA-2220  
 AA-2221 THROUGH AA-2226 AA-2227 THROUGH AA-2232  
 AA-2233 THROUGH AA-2238 AA-2239 THROUGH AA-2244  
 AA-2245 THROUGH AA-2250 AA-2251 THROUGH AA-2256  
 AA-2257 THROUGH AA-2262 AA-2263 THROUGH AA-2268  
 AA-2269 THROUGH AA-2274 AA-2275 THROUGH AA-2280  
 AA-2281 THROUGH AA-2286 AA-2287 THROUGH AA-2292  
 AA-2293 THROUGH AA-2298 AA-2299 THROUGH AA-2304  
 AA-2305 THROUGH AA-2310 AA-2311 THROUGH AA-2316  
 AA-2317 THROUGH AA-2322 AA-2323 THROUGH AA-2328  
 AA-2329 THROUGH AA-2334 AA-2335 THROUGH AA-2340  
 AA-2341 THROUGH AA-2346 AA-2347 THROUGH AA-2352  
 AA-2353 THROUGH AA-2358 AA-2359 THROUGH AA-2364  
 AA-2365 THROUGH AA-2370 AA-2371 THROUGH AA-2376  
 AA-2377 THROUGH AA-2382 AA-2383 THROUGH AA-2388  
 AA-2389 THROUGH AA-2394 AA-2395 THROUGH AA-2400  
 AA-2401 THROUGH AA-2406 AA-2407 THROUGH AA-2412  
 AA-2413 THROUGH AA-2418 AA-2419 THROUGH AA-2424  
 AA-2425 THROUGH AA-2430 AA-2431 THROUGH AA-2436  
 AA-2437 THROUGH AA-2442 AA-2443 THROUGH AA-2448  
 AA-2449 THROUGH AA-2454 AA-2455 THROUGH AA-2460  
 AA-2461 THROUGH AA-2466 AA-2467 THROUGH AA-2472  
 AA-2473 THROUGH AA-2478 AA-2479 THROUGH AA-2484  
 AA-2485 THROUGH AA-2490 AA-2491 THROUGH AA-2496  
 AA-2497 THROUGH AA-2502 AA-2503 THROUGH AA-2508  
 AA-2509 THROUGH AA-2514 AA-2515 THROUGH AA-2520  
 AA-2521 THROUGH AA-2526 AA-2527 THROUGH AA-2532  
 AA-2533 THROUGH AA-2538 AA-2539 THROUGH AA-2544  
 AA-2545 THROUGH AA-2550 AA-2551 THROUGH AA-2556  
 AA-2557 THROUGH AA-2562 AA-2563 THROUGH AA-2568  
 AA-2569 THROUGH AA-2574 AA-2575 THROUGH AA-2580  
 AA-2581 THROUGH AA-2586 AA-2587 THROUGH AA-2592  
 AA-2593 THROUGH AA-2598 AA-2599 THROUGH AA-2604  
 AA-2605 THROUGH AA-2610 AA-2611 THROUGH AA-2616  
 AA-2617 THROUGH AA-2622 AA-2623 THROUGH AA-2628  
 AA-2629 THROUGH AA-2634 AA-2635 THROUGH AA-2640  
 AA-2641 THROUGH AA-2646 AA-2647 THROUGH AA-2652  
 AA-2653 THROUGH AA-2658 AA-2659 THROUGH AA-2664  
 AA-2665 THROUGH AA-2670 AA-2671 THROUGH AA-2676  
 AA-2677 THROUGH AA-2682 AA-2683 THROUGH AA-2688  
 AA-2689 THROUGH AA-2694 AA-2695 THROUGH AA-2700  
 AA-2701 THROUGH AA-2706 AA-2707 THROUGH AA-2712  
 AA-2713 THROUGH AA-2718 AA-2719 THROUGH AA-2724  
 AA-2725 THROUGH AA-2730 AA-2731 THROUGH AA-2736  
 AA-2737 THROUGH AA-2742 AA-2743 THROUGH AA-2748  
 AA-2749 THROUGH AA-2754 AA-2755 THROUGH AA-2760  
 AA-2761 THROUGH AA-2766 AA-2767 THROUGH AA-2772  
 AA-2773 THROUGH AA-2778 AA-2779 THROUGH AA-2784  
 AA-2785 THROUGH AA-2790 AA-2791 THROUGH AA-2796  
 AA-2797 THROUGH AA-2802 AA-2803 THROUGH AA-2808  
 AA-2809 THROUGH AA-2814 AA-2815 THROUGH AA-2820  
 AA-2821 THROUGH AA-2826 AA-2827 THROUGH AA-2832  
 AA-2833 THROUGH AA-2838 AA-2839 THROUGH AA-2844  
 AA-2845 THROUGH AA-2850 AA-2851 THROUGH AA-2856  
 AA-2857 THROUGH AA-2862 AA-2863 THROUGH AA-2868  
 AA-2869 THROUGH AA-2874 AA-2875 THROUGH AA-2880  
 AA-2881 THROUGH AA-2886 AA-2887 THROUGH AA-2892  
 AA-2893 THROUGH AA-2898 AA-2899 THROUGH AA-2904  
 AA-2905 THROUGH AA-2910 AA-2911 THROUGH AA-2916  
 AA-2917 THROUGH AA-2922 AA-2923 THROUGH AA-2928  
 AA-2929 THROUGH AA-2934 AA-2935 THROUGH AA-2940  
 AA-2941 THROUGH AA-2946 AA-2947 THROUGH AA-2952  
 AA-2953 THROUGH AA-2958 AA-2959 THROUGH AA-2964  
 AA-2965 THROUGH AA-2970 AA-2971 THROUGH AA-2976  
 AA-2977 THROUGH AA-2982 AA-2983 THROUGH AA-2988  
 AA-2989 THROUGH AA-2994 AA-2995 THROUGH AA-3000

Exhibit B  
 page 6 of 9

GRAPHIC ILLUSTRATION ONLY. SOURCE DOCUMENTS REMAIN THE OFFICIAL RECORD. CONTACT LAND ADMINISTRATION SYSTEM (LAS) CASEFILES FOR ADDITIONAL INFORMATION.

SCALE

ATTENTION STATUS PLAT USERS: ON THIS PLAT ALL STATUS LINES CLOSE FOR ACTIONS THAT EXTEND INTO ADJACENT TOWNSHIPS. THIS INCLUDES STATUS LINES SUCH AS DISPOSAL, MUNICIPAL, TITLE CLASSIFICATION, ETC. PLEASE REFER TO ADJACENT TOWNSHIPS OR LAS TO DETERMINE IF ACTIONS EXTEND BEYOND THE BOUNDARIES SHOWN ON THIS PLAT. REMEMBER TITLE CLASSIFICATION IS THE RESPONSIBILITY OF THE USER.

A DIVISION OF THE  
 STATE OF ALASKA  
 DEPARTMENT OF NATURAL RESOURCES  
 LAND MANAGEMENT INFORMATION SYSTEM

SEC  
 S1  
 TWP

TOWNSHIP 20N RANGE 1W OF THE SEWARD MERIDIAN, ALASKA

LEGEND

GENERAL INFORMATION

- HYDROGRAPHY
- SURVEY LINE
- SURVEY LEFT LINE
- TOWNSHIP/SECTION GRID
- 1/4 SECTION LINE
- HIGHWAY
- ROAD
- TRAIL
- RAILROAD
- ELECTRICAL POWER LINE
- TELEPHONE LINE
- PIPELINE
- AIRPORT/LANDMINE STRIP
- HORIZONTAL CONTROL
- CONTROL MONUMENT

PROPERTY INFORMATION

- TITLE
- BOUNDARY
- CLASSIFICATION
- DISPOSAL
- MUNICIPAL
- RESTRICTION
- FEDERAL ACTION
- MENTAL (HEALTH TRUST)
- LIMITS OF ACTION
- NAVIGATIONAL AID
- CANN PERMIT
- TRAPPING CANN PERMIT
- TROWAS LOCATION

WATER RIGHTS

- APPLICATION
- PERMIT
- CERTIFICATE

WATER RIGHTS

- APPLICATION
- PERMIT
- CERTIFICATE

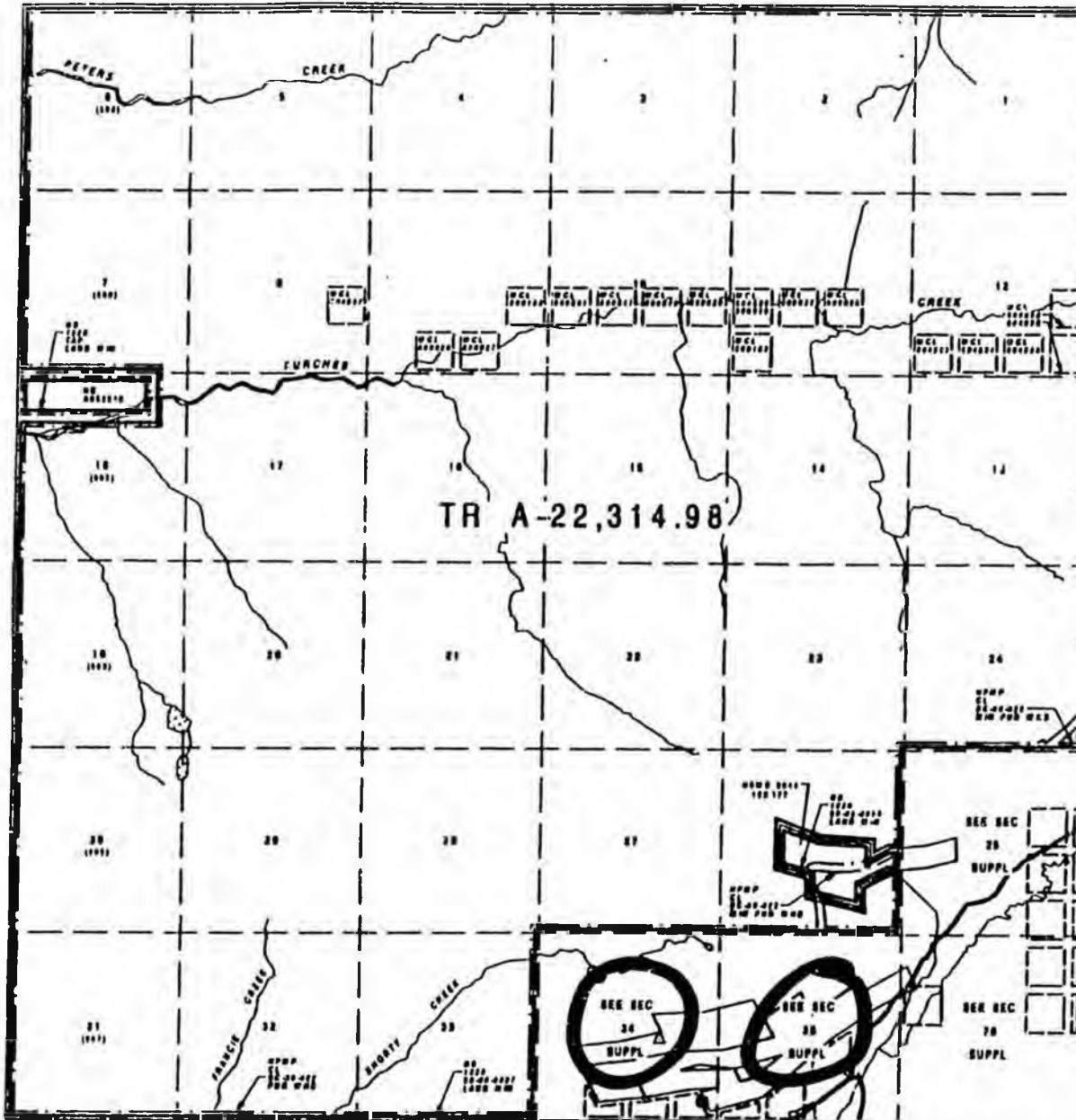
STREAM FLOW RESERVATION

- APPLICATION
- CERTIFICATE

WATER BARRED

- APPLICATION
- PERMIT
- CERTIFICATE

6	5	4	3	2	1
7	8	9	10	11	12
13	14	15	16	17	18
19	20	21	22	23	24
25	26	27	28	29	30
31	32	33	34	35	36



STATUS PLAT

THIS STATUS PLAT AND LAND USE RIGHTS SHOWN HEREON ARE BASED ON THE SURVEY AND RECORDS OF THE BUREAU OF LAND MANAGEMENT AND ARE SUBJECT TO THE FEDERAL REGISTER ACT AND THE FEDERAL REGISTER REGULATIONS.

BASED ON

ALASKA STATE PLANS 2000 4  
SE (100) IN (100) 100  
S (100) 100  
T (100) 100  
LAT 61 00 100 N  
LONG 149 11 100 W

HYDROGRAPHY  
USGS ANCHORAGE (7) 1000 BY 1000 AT 1000 M  
ALTIITUDE POLYGRAPHY 100-1000

LAND USE  
AFC PERMITTING PROGRAM 11-11 APPROVED 10/11/11  
USGS CREATING PLATS A, B & C, 11/11/11 AT 1000  
ACCEPTED 10/11/11  
USGS 1000 APPROVED 10/11/11  
USGS 1000 APPROVED 10/11/11  
USGS 1000 APPROVED 10/11/11

OTHER ACTIONS AFFECTING ORIGINAL USE OF THIS PLAT  
SEE THE BUREAU OF LAND MANAGEMENT WEBSITE FOR  
ADDITIONAL INFORMATION

PROPERTY OWNERS RECORDING TITLES  
EFFECTIVE WITH MATAMUSIA - SOUTH BUREAU  
SUBJECT TO FEDERAL LAND MANAGEMENT PLAN

Exhibit B  
page 7 of 9

SEC 34 TOWNSHIP 20N RANGE 1W OF THE SEWARD MERIDIAN, ALASKA

EGEND

INFORMATION

- HYDROGRAPHY
- SURVEY LINE
- SURVEY LOT LINE
- TOWNSHIP AND RANGE LINE
- SECTION LINE
- HIGHWAY
- ROAD
- TRAIL
- RAILROAD
- ELECTRICAL POWER LINE
- TELEPHONE LINE
- PIPELINE
- AIRPORT LANDING STRIP
- HORIZONTAL CONTROL
- CONTROL MONUMENT

S INFORMATION

- TITLE
- BOUNDARY
- CLASSIFICATION
- DISPOSAL
- MUNICIPAL
- RESTRICTION
- FEDERAL ACTION
- MENTAL HEALTH TRUST
- LIMITS OF ACTION
- NAVIGATIONAL AID
- CAMP PERMIT
- TRAPPING CAMP PERMIT
- TRAPLINE LOCATION

SURFACE WATER RIGHTS

- APPLICATION
- PERMIT
- CERTIFICATE

SUBSURFACE WATER RIGHTS

- APPLICATION
- PERMIT
- CERTIFICATE

RIVERMILE HISTORY SURVEY

- APPLICATION
- CERTIFICATE

DAM, WEIR, BARRELS

- APPLICATION
- PERMIT
- CERTIFICATE

1	2	3	4	5	6	7	8	9	10
11	12	13	14	15	16	17	18	19	20
21	22	23	24	25	26	27	28	29	30
31	32	33	34	35	36	37	38	39	40
41	42	43	44	45	46	47	48	49	50

AN INDEX OF STATUS PLAT ABBREVIATIONS IS INCLUDED WITH EACH APPLICATION CARD

SCALE

STATUS PLAT

(SCALE: 8.25 INCHES TO THE FOOT)

THE STATE (HEREINAFTER REFERRED TO AS "WE") HEREBY CERTIFIES THAT THE INFORMATION CONTAINED HEREIN IS TRUE AND CORRECT TO THE BEST OF OUR KNOWLEDGE AND BELIEF.

DATE: 1/1/00

CORRECTIONS

ALASKA STATE PLAT BOOK 4  
 IN COLUMN 14 TOWNSHIP,  
 2 RANGE  
 7 SECTION  
 14 T. 20N. R. 1W. S. 7E.

HYDROGRAPHY

USGS AND NOAA (D) DATA BY DEM FROM AERIAL PHOTO  
 AERIAL PHOTOGRAPHY (1971-1972)

LAND USE

ALL PROTRACTED (MAGNAN 11-17) APPROVED 8/1/1978  
 UPON (MAGNAN) TRACTS A, B & C 161250 ACRES  
 ACQUIRED 8/1/1978  
 (1980) APPROVED 8/1/1978  
 (1980) APPROVED 8/1/1978  
 (1980) APPROVED 8/1/1978  
 (1980) APPROVED 8/1/1978

THESE ACTIONS AFFECTING LANDS ARE THE PROPERTY OF THE STATE OF ALASKA AND ARE SUBJECT TO FEDERAL AND STATE LAWS AND REGULATIONS.

ENTIRELY FROM PUBLIC SURVEYING INSTRUMENTS  
 SUBJECT TO BATTERY PAGE MANAGEMENT PLAN

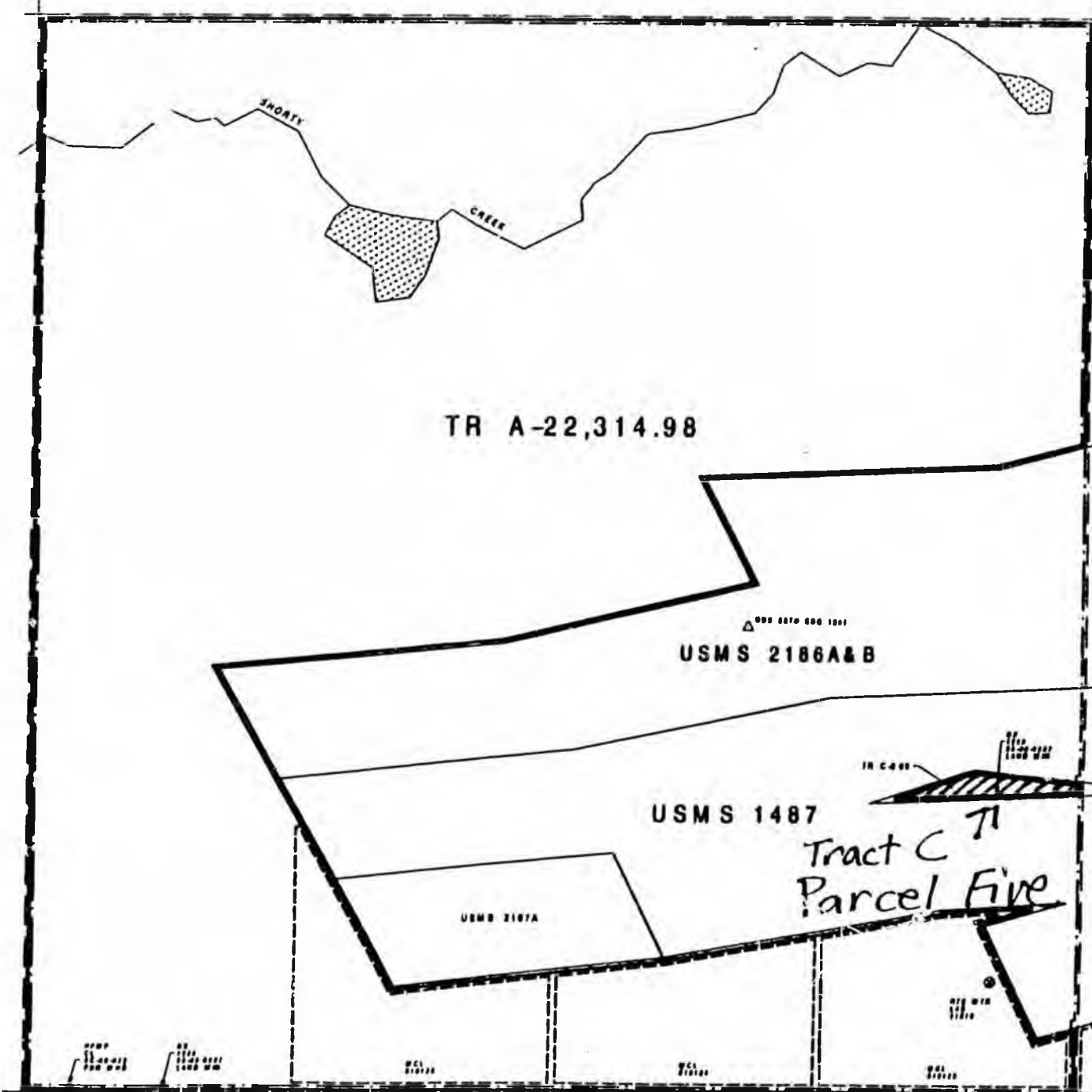


Exhibit B  
 page 8 of 9

ATTENTION STATUS PLAT USERS: IN THIS PLAT, ALL STATUS LINE CROSS FOR ACTIONS THAT EXTEND INTO ADJACENT TOWNSHIPS, THE BOUNDARY LINE SHALL BE INDICATED BY A DASHED LINE, CLASSIFICATION, ETC. PLEASE REFER TO ADJACENT PLATS OR LAWS TO DETERMINE IF ACTIONS EXTEND BEYOND THE BOUNDARY SHOWN IN THIS PLAT. BOUNDARY LINE CLASSIFICATION AND RESTRICTION LINES ALWAYS CLOSE ON ALL PLATS.

	A PRESENT OF THE	SEC 34
	STATE OF ALASKA	
DEPARTMENT OF NATURAL RESOURCES		SP
LAND ACQUISITION INFORMATION SECTION		

SEC 35 TOWNSHIP 20N RANGE 1W OF THE SEWARD MERIDIAN, ALASKA

EGEND

INFORMATION

- HYDROGRAPHY
- 4 BURY LINE
- 4 BURY LOT LINE
- DISCONTINUITY GAD
- 14 SECTION LINE
- 10000 4V
- ROAD
- TRAIL
- RAILROAD
- ELECTRICAL POWER LINE
- TELEPHONE LINE
- PIPELINE
- AIRBORNE STRIP
- HORIZONTAL CONTROL
- CONTROL MEASUREMENT

S INFORMATION

- TITLE
- BOUNDARY
- CLASSIFICATION
- DISPOSAL
- MUNICIPAL
- RESTRICTION
- FEDERAL ACTION
- MENTAL HEALTH TRUST
- LIMITS OF ACTION
- NAVIGATIONAL AID
- CASH PERMIT
- TRAPPING CASH PERMIT
- FIREWALL LOCATION

WASTE WATER RIGHT

- APPLICATION
- PERMIT
- CERTIFICATE

R- WASTE WATER RIGHT

- APPLICATION
- PERMIT
- CERTIFICATE

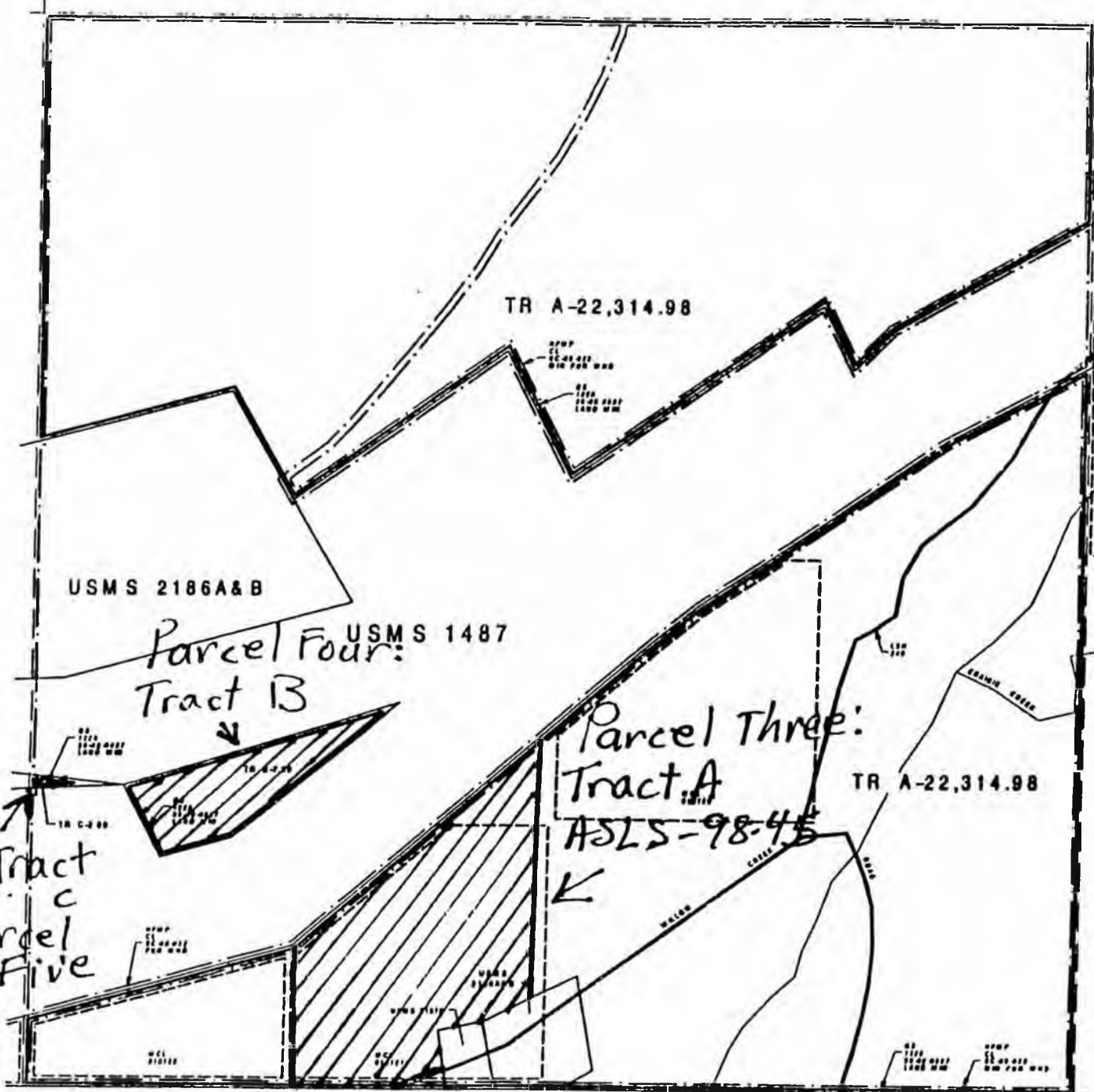
- STREAM FLOW RESERVATION

- APPLICATION
- CERTIFICATE

WATER BARBER

- APPLICATION
- PERMIT
- CERTIFICATE

6	5	4	3	2	1
7	8	9	0	11	12
13	14	15	16	17	18
19	20	21	22	23	24
25	26	27	28	29	30
31	32	33	34	35	36



THIS STATUS PLAT IS A GRAPHIC ILLUSTRATION OF THE STATUS OF THE LAND AS SHOWN ON THE ORIGINAL SURVEY RECORDS AND AS APPEARING IN THE PUBLIC RECORDS OF THE STATE.

**CLASSIFICATION**  
 ALASKA STATE PLANS 2186 A  
 22 CROWNED IN TOWNSHIP  
 B 001111 000  
 C 000111 000  
 LAT 41 00 10 00 N  
 LONG 149 31 00 00 W

**HYDROGRAPHY**  
 USGS AERIAL PHOTOGRAPHY 1974-1981  
 AERIAL PHOTOGRAPHY 1974-1981

**LAND USE**  
 AFR. PROTECTED BY FEDERAL 52-17 APPROVED 001111001  
 USMS CROWNED TRACTS A, B & C, 21 111100 ACRES  
 ACCEPTED 001111001  
 USMS INT. APPROVED 001111001  
 USMS 2186A APPROVED 001111001  
 USMS 2186B APPROVED 001111001  
 USMS 2186C APPROVED 001111001

OTHER ACTIONS AFFECTING FEDERAL AND STATE LANDS  
 SEE THE CASE FILES OR ORIGINAL SURVEY RECORDS FOR  
 ADDITIONAL INFORMATION

ENTRUST WITH PALMER RECLAMATION DISTRICT  
 SUBJECT TO MATCHER PASS MANAGEMENT PLAN

Exhibit B  
 page 9 of 9

GRAPHIC ILLUSTRATION ONLY.  
 SOURCE DOCUMENTS REMAIN THE ORIGINAL RECORD.  
 COURTESY LAND ADMINISTRATION SYSTEM (LACS)  
 CASPER FOR ADDITIONAL INFORMATION

ATTENTION STATUS PLAT USERS: ON THIS PLAT, ALL STATUS  
 LINES CLOSE FOR ACTIONS THAT EXTEND INTO ADJACENT TOWNSHIPS.  
 THIS INCLUDES STATUS LINES SUCH AS DISPOSAL, MUNICIPAL, TITLE,  
 CLASSIFICATION, ETC. PLEASE REFER TO ADJACENT TOWNSHIP STATUS PLATS

A PORTION OF THE  
 STATE OF ALASKA  
 DEPARTMENT OF NATURAL RESOURCES  
 LAND RIGHTS INFORMATION SYSTEM

SEC 35

SENATE FINANCE COMMITTEE

SIGN-IN

HB 344-HARDROCK LAND EXCHANGE/ HEALY RR LEASE

NAME: Charlene Bally Subject/Bill No: HB 344  
Co./Dept./Title: USIBELLI CORP Phone: 452 2625  
Address: 100 Cushman St, STE 210 Zip: 99701  
Do you wish to testify?  Yes  No  Respond To Questions

NAME: \_\_\_\_\_ Subject/Bill No: \_\_\_\_\_  
Co./Dept./Title: \_\_\_\_\_ Phone: \_\_\_\_\_  
Address: \_\_\_\_\_ Zip: \_\_\_\_\_  
Do you wish to testify?  Yes  No  Respond To Questions

NAME: \_\_\_\_\_ Subject/Bill No: \_\_\_\_\_  
Co./Dept./Title: \_\_\_\_\_ Phone: \_\_\_\_\_  
Address: \_\_\_\_\_ Zip: \_\_\_\_\_  
Do you wish to testify?  Yes  No  Respond To Questions

NAME: \_\_\_\_\_ Subject/Bill No: \_\_\_\_\_  
Co./Dept./Title: \_\_\_\_\_ Phone: \_\_\_\_\_  
Address: \_\_\_\_\_ Zip: \_\_\_\_\_  
Do you wish to testify?  Yes  No  Respond To Questions

**HB**

**346**

**HFIN**

**FILE**

(11)

# HOUSE COMMITTEE REPORT

Date Referred to Committee: March 6, 2000

FURTHER REFERRALS:

Date of Committee Action: 3/31/00

The FINANCE Committee considered:

HB 346

HOUSE BILL NO. 346

SERVICES FOR DISABLED PERSONS

"An Act relating to services for persons with developmental disabilities."

recommends it be replaced  
with the following committee substitute

CS HB 346 (HCS)

the same title  
 a new title

additional referral to \_\_\_\_\_ Committee  
 attached amendment(s)

ADOPTS: \_\_\_\_\_ Letter of Intent

ATTACHES NEW FISCAL NOTE(S): (Dept)

APPROVES PREVIOUS: (Dept/Date)

fiscal note(s) \_\_\_\_\_

fiscal note(s) \_\_\_\_\_

zero fiscal note(s) \_\_\_\_\_

zero fiscal note(s) \_\_\_\_\_

DHSS 3/6/00

SIGNING WITH RECOMMENDATIONS		DP	DNP	NR	AM
<i>Tom Therriault</i>	Therriault			X	
<i>Richard Mulder</i>	Mulder	X			
<i>Tom Bundt</i>	Bundt			✓	
<i>Alvin Austin</i>	Austinman	X			
<i>John Young</i>	J. Davis	X			
<i>Ben Grossman</i>	Grossman F	✓			
<i>John G. Davis</i>	G. Davis	✓			
<i>Keith Phillips</i>	Phillips	✓			
<i>[Signature]</i>	Foster	X			

CO CHAIR'S SIGNATURE

*Tom Therriault* *John Mulder*

**FISCAL NOTE**

No: 1

**STATE OF ALASKA**  
**2000 LEGISLATIVE SESSION**

Bill ~~Session~~: CSHB 346 (HES)  
(H) Publish Date: 3/6/00

Revision Date/Time (Note if correction): \_\_\_\_\_ Dept. Affected: Health and Social Services  
 Title: An Act relating to services for persons with BRU: Community Dev. Disabilities Grants  
developmental disabilities Component: Community Dev. Disabilities Grants  
 Sponsor: Representatives Joule and Brice COMPONENT SERIAL NO. 309  
 Requestor: House (HES, FIN) See also (SN#): \_\_\_\_\_

**Expenditures/Revenues:** (Thousands of Dollars)

Note: Amounts do not include inflation unless otherwise noted below.

OPERATING	FY2001	FY2002	FY2003	FY2004	FY2005	FY2006
PERSONAL SERVICES						
TRAVEL						
CONTRACTUAL	0.0	0.0	0.0	0.0	0.0	0.0
SUPPLIES						
EQUIPMENT						
LAND & STRUCTURES						
GRANTS, CLAIMS						
MISCELLANEOUS						
<b>TOTAL OPERATING</b>	<b>0.0</b>	<b>0.0</b>	<b>0.0</b>	<b>0.0</b>	<b>0.0</b>	<b>0.0</b>

<b>CAPITAL EXPENDITURES</b>						
-----------------------------	--	--	--	--	--	--

<b>CHANGES IN REVENUES ( )</b>						
--------------------------------	--	--	--	--	--	--

**FUND SOURCE** (Thousands of Dollars)

1002 Federal Receipts						
1003 GF Match						
1004 GF						
1005 GF/Program Receipts						
1037 GF/Mental Health						
1092 MHTAAR						
<b>TOTAL</b>	<b>0.0</b>	<b>0.0</b>	<b>0.0</b>	<b>0.0</b>	<b>0.0</b>	<b>0.0</b>

Estimate of any current year (FY2000) cost: \$0.0

**POSITIONS:**

FULL-TIME						
PART-TIME						
TEMPORARY						

**ANALYSIS:** (Attach a separate page if necessary)

The Alaska Developmental Disabilities Information System (ADDIS) is expected to come on line for service providers and division staff the end of FY 2000. This information management tool will greatly enhance the division's ability to provide current information on the developmental disabilities population being served. With the information ADDIS will provide, the division estimates meeting the reporting requirements proposed under HB 346 would take approximately three full days of a staff person's time, which could be absorbed into current workloads.

Prepared by: Anne Henry Phone: 465-4852  
 Division: Mental Health & Dev. Disabilities Date/Time: 2/17/00 9:46 AM  
 Approved by Commissioner: Karen Perdue, Commissioner Date: 2/22/00  
 Agency: Department of Health & Social Services

**COMMITTEE COPY**

Approved by Commissioner:

Agency:

**PREPARER TO PROVIDE ALL DISTRIBUTION COPIES TO GOVERNOR'S LEGISLATIVE OFFICE**  
 For further distribution information, call the Governor's Legislative Office

**FISCAL NOTE**

No: 1

**STATE OF ALASKA**  
**2000 LEGISLATIVE SESSION**

Bill ~~Number~~ **sion: CSHB 346 (HES)**  
**(H) Publish Date: 3/6/00**

Revision Date/Time (Note if correction): \_\_\_\_\_ Dept. Affected: Health and Social Services  
 Title: An Act relating to services for persons with BRU: Community Dev. Disabilities Grants  
developmental disabilities Component: Community Dev. Disabilities Grants  
 Sponsor: Representatives Joule and Brice COMPONENT SERIAL NO. 309  
 Requestor: House (HES, FIN) See also (SN#): \_\_\_\_\_

**Expenditures/Revenues:** (Thousands of Dollars)

Note: Amounts do not include inflation unless otherwise noted below.

OPERATING	FY2001	FY2002	FY2003	FY2004	FY2005	FY2006
PERSONAL SERVICES						
TRAVEL						
CONTRACTUAL	0.0	0.0	0.0	0.0	0.0	0.0
SUPPLIES						
EQUIPMENT						
LAND & STRUCTURES						
GRANTS, CLAIMS						
MISCELLANEOUS						
<b>TOTAL OPERATING</b>	<b>0.0</b>	<b>0.0</b>	<b>0.0</b>	<b>0.0</b>	<b>0.0</b>	<b>0.0</b>

<b>CAPITAL EXPENDITURES</b>						
-----------------------------	--	--	--	--	--	--

<b>CHANGES IN REVENUES ( )</b>						
--------------------------------	--	--	--	--	--	--

**FUND SOURCE** (Thousands of Dollars)

1002 Federal Receipts						
1003 GF Match						
1004 GF						
1005 GF/Program Receipts						
1037 GF/Mental Health						
1092 MHTAAR						
<b>TOTAL</b>	<b>0.0</b>	<b>0.0</b>	<b>0.0</b>	<b>0.0</b>	<b>0.0</b>	<b>0.0</b>

Estimate of any current year (FY2000) cost: \$0.0

**POSITIONS:**

FULL-TIME						
PART-TIME						
TEMPORARY						

**ANALYSIS:** (Attach a separate page if necessary)

The Alaska Developmental Disabilities Information System (ADDIS) is expected to come on line for service providers and division staff the end of FY 2000. This information management tool will greatly enhance the division's ability to provide current information on the developmental disabilities population being served. With the information ADDIS will provide, the division estimates meeting the reporting requirements proposed under HB 346 would take approximately three full days of a staff person's time, which could be absorbed into current workloads.

Prepared by: Anne Henry Phone: 465-4852  
 Division: Mental Health & Dev. Disabilities Date/Time: 2/17/00 9:46 AM  
 Approved by Commissioner: Karen Perdue, Commissioner Date: 2/22/00  
 Agency: Department of Health & Social Services

**COMMITTEE COPY**

Approved by Commissioner:  
 Agency:

**PREPARER TO PROVIDE ALL DISTRIBUTION COPIES TO GOVERNOR'S LEGISLATIVE OFFICE**  
 For further distribution information, call the Governor's Legislative Office

# FISCAL NOTE

No: 1

STATE OF ALASKA  
2000 LEGISLATIVE SESSION

Bill Number: CSHB 346 (HES)  
(H) Publish Date: 3/6/00

Revision Date/Time (Note if correction): \_\_\_\_\_ Dept. Affected: Health and Social Services  
 Title: An Act relating to services for persons with BRU: Community Dev. Disabilities Grants  
developmental disabilities Component: Community Dev. Disabilities Grants  
 Sponsor: Representatives Joule and Brice COMPONENT SERIAL NO. 309  
 Requestor: House (HES, FIN) See also (SN#): \_\_\_\_\_

**Expenditures/Revenues:** (Thousands of Dollars)  
 Note: Amounts do not include inflation unless otherwise noted below.

OPERATING	FY2001	FY2002	FY2003	FY2004	FY2005	FY2006
PERSONAL SERVICES						
TRAVEL						
CONTRACTUAL	0.0	0.0	0.0	0.0	0.0	0.0
SUPPLIES						
EQUIPMENT						
LAND & STRUCTURES						
GRANTS, CLAIMS						
MISCELLANEOUS						
<b>TOTAL OPERATING</b>	<b>0.0</b>	<b>0.0</b>	<b>0.0</b>	<b>0.0</b>	<b>0.0</b>	<b>0.0</b>

CAPITAL EXPENDITURES						
CHANGES IN REVENUES ( )						

**FUND SOURCE** (Thousands of Dollars)

1002 Federal Receipts						
1003 GF Match						
1004 GF						
1005 GF/Pr gram Receipts						
1037 GF/Mental Health						
1092 MHTAAP						
<b>TOTAL</b>	<b>0.0</b>	<b>0.0</b>	<b>0.0</b>	<b>0.0</b>	<b>0.0</b>	<b>0.0</b>

Estimate of any current year (FY2000) cost: \$0.0

**POSITIONS:**

FULL-TIME						
PART-TIME						
TEMPORARY						

**ANALYSIS:** (Attach a separate page if necessary)

The Alaska Developmental Disabilities Information System (ADDIS) is expected to come on line for service providers and division staff the end of FY 2000. This information management tool will greatly enhance the division's ability to provide current information on the developmental disabilities population being served. With the information ADDIS will provide, the division estimates meeting the reporting requirements proposed under HB 346 would take approximately three full days of a staff person's time, which could be absorbed into current workloads.

Prepared by: Anne Henry Phone: 465-4852  
 Division: Mental Health & Dev. Disabilities Date/Time: 2/17/00 9:46 AM  
 Approved by Commissioner: Karen Perdue, Commissioner Date: 2/22/00  
 Agency: Department of Health & Social Services

**COMMITTEE COPY**

Approved by Commissioner:  
Agency:

**PREPARER TO PROVIDE ALL DISTRIBUTION COPIES TO GOVERNOR'S LEGISLATIVE OFFICE**  
 For further distribution information, call the Governor's Legislative Office

## **CS for HB 346**

### **SPONSOR STATEMENT**

An act relating to services for persons with developmental disabilities

This bill helps address the needs of individuals with developmental disabilities and their families by requiring the Division of Mental Health and Developmental Disabilities to conduct periodic reviews of their wait list and by requiring an annual report to the legislature and governor regarding the same. For some time now there have been more individuals with developmental disabilities requesting services than there are available resources to provide those services. Thus, in 1989 the Division of Mental Health and Developmental Disabilities began a waitlist for individuals waiting for services. The waitlist is the Division's way of prioritizing individual requests and is the gateway to services. There are presently 786 people on the developmental disabilities waitlist and 333 on the Infant Learning Program waitlist.

The CS to HB 346 only makes some minor changes to the original bill. The title has been changed to more accurately represent the purpose of the bill. The second amendment changes Section 1(d)(3) by deleting language that the division is not required to collect. This section now asks for the basic demographic information across all regions about the age, sex, and racial and ethnic background of the individuals on the waiting list. The last amendment changes section 1 (d)(8) to allow the department to provide copies of the department's policies, manuals and procedures in either written or electronic form. The amendment added the option of providing the data in electronic format.

In the future, it is estimated that the need for services for individuals with developmental disabilities will continue to grow faster than available resources. In order to meet the needs of individuals with developmental disabilities and their families, planning regarding the wait list and available services must continue. Effective planning requires the collection and analysis of relevant data regarding people who are currently receiving services, the length of time it takes to obtain services, and the effectiveness of the services received, among other things. This bill will require the collection and dissemination of this data to relevant parties. There is a zero fiscal note for this bill.

In order to make the best use of available resources and to ensure fair administration of the waitlist, this bill will establish periodic reviews of the wait list along with an annual report to the legislature and governor. The periodic reviews will ensure individuals with developmental disabilities and their families that the waitlist is being fairly administered, reviewed, and updated on a regular basis. The information provided in the annual report will be useful to the individuals with developmental disabilities and their families, the administration, the legislature and a variety of service agencies. Additionally, the bill will require the Division to establish written procedures and consumer information that will be available to aid the general public. Currently, this is a fifty million-dollar industry without uniform statewide information available to the public who accesses and uses the service. This new information will greatly benefit the public.

## SECTIONAL ANALYSIS CS to HB 346

**Section 1** A.S. 47.80.130 is amended by adding a new section (d). This section establishes that the Division of Mental Health and Developmental Disabilities must establish a wait list when state funding is not adequate to meet the need of developmentally disabled people needing services. The department shall also perform an annual review of the wait list, and give an annual report to the legislature and governor. The report must contain the following information:

- (1) Provide a description of the purposes for the wait list and how people are notified regarding the same. As part of the report, submit copies of form letters and other information used to notify developmentally disabled individuals regarding their rights.
- (2) Provide an explanation of how the wait list works to select individuals equitably across the state for services ie; criteria, placement and rank determination.
- (3) Provide basic demographic information across all regions for the individuals on the wait list ie; age, sex, race, and ethnic background.
- (4) Identify level of need, supports, preferences, and estimated cost of the services the developmentally disabled individuals require.
- (5) For the last 12 months, identify why and how many developmentally disabled individuals were removed from the wait list. Identify how long individuals were waiting for services before they were received.
- (6) Identify how many developmentally disabled individuals were on the wait list for 90 days or more. Identify steps taken to review wait list status.
- (7) Provide educational data to include the number of special education students graduating, dropping out, or reaching age 22 without graduating.

(8) Provide a copy in written or electronic format of the department's written policies, manuals and procedures.

**SECTION 2** Provide first report by Nov. 15, 2000 based on wait list existing from Oct. 1, 1999 to Sept. 30, 2000.



TONY KNOWLES, GOVERNOR  
State of Alaska

GOVERNOR'S COUNCIL ON DISABILITIES AND SPECIAL EDUCATION

P.O. Box 240249 • Anchorage, Alaska 99524-0249 • Phone: 907-269-8990 • Fax: 907-269-8995

February 18, 2000

House HESS Committee  
Representative John Coghill Jr., Co-Chair  
Representative Fred Dyson, Co-Chair  
State Capitol, Room 120  
Juneau, AK 99801-1182

Dear Committee Co-Chairs:

The Governor's Council on Disabilities and Special Education writes this letter in support of HB 346, which requires that the Division of Mental Health and Developmental Disabilities (DMH/DD) conduct periodic reviews of the Waitlist. HB 346 also requires that the DMH/DD produce an annual report to the legislature that covers its findings.

The Waitlist is the DMH/DD's method of prioritizing consumer requests for services. The process of prioritization began in 1989. At that point in time there were 400 individuals waiting for services. As of December 15, 1999 the information provided by DMH/DD indicated that there were 843 eligible individuals on the Waitlist.

HB 346 directs the DMH/DD to commit their process to writing. Currently, DMH/DD does not have a formalized description of the following: the procedure for determining eligibility, assignment to the Waitlist, selection of those to be enrolled in services, a description of the available services under the Medicaid Waiver Program, and information about consumer rights.

Currently, there are more individuals who are requesting services than there are resources to meet their needs. As a result, many developmentally disabled (DD) individuals and their families are not receiving the services they require. Often individuals on the Waitlist reach a crisis situation before they are eligible to receive services.

The need for services will continue to escalate faster than the availability of services. To effectively, and efficiently meet the needs of DD individuals and their families, planning regarding the Waitlist must occur. Successful planning must include a regular examination of the relevant data pertaining to the Waitlist. HB 346 seeks to do this by requiring the collection and analysis of relevant data regarding people who receive services; the length of time it takes to obtain services; and the effectiveness of services received.

Your continued consideration of HB 346, as well as your attention to the needs of Alaskans with developmental disabilities and their families is very much appreciated.

Sincerely,

A handwritten signature in black ink, appearing to read "David Maltman".

David Maltman,  
Executive Director.

## Waiting Lists for DD and ILP Services Analysis by Legislative District

House District	Senate District	Consumers in these communities	ILP-12/1/99 Wait List	DD-12/1/99 Wait List
1	A	Ketchikan, Hyder, Annette, Metlakatla	10	16
2	A	Sitka, Petersburg, Wrangell	14	10
3,4	B	Juneau, Douglas, Funter Bay, Auk Bay	26	51
5	C	Craig, Gustavus, Yakutat	7	13
6	C	Kodiak, Port Lions, Afognak	3	10
7	D	Homer, Seldovia, Anchor Point	4	32
8	D	Seward, Soldotna, Moose Pass	14	41
9	E	Kenai, Nikiski, Salmanoff	4	25
10-23	E-L	Anchorage	83	265
24,25	L,M	Eagle River	16	33
25,26	M	Chugiak	6	10
26,28	M,N	Wasilla	1	60
27	N	Palmer	1	43
28	N	Willow, Houston		12
29-31	O,P	Fairbanks	47	62
32-34	P,Q	North Pole, Two Rivers, Salcha	9	23
35	R	Valdez, Delta, Cordova, Paxson	14	16
36	R	Aniak, Fort Yukon, Chitina	6	14
37	S	Barrow, Kotzebue, Shismaref	46	8
38	S	Nome, Unalakaleet, St. Marys	11	22
39	T	Bethel, Dillingham, Kwethluk	5	16
40	T	Adak, St. Paul, Sand Point	6	4
		<b>Total</b>	<b>333</b>	<b>786</b>



Alaska Department of Education and Early Development • Quarterly Report • Winter 2000

# Alaska's Children

## The First Three Years

Myth or Miracle?

About five years ago, some well-known organizations and individuals began to publish some pretty exciting information about child growth and development. **The information drew our attention to the first three years of a child's life and to the development of the human brain.** Among the most comprehensive

published reports were *Starting Points* by the Carnegie Corporation and *Rethinking the Brain, New Insights into Early Development* by the Family and Work Institute. A nationwide public education campaign, "I Am Your Child," extended this complicated information to the public through articles in magazines like *Time* and *Newsweek*, a one-hour television special and other media events. In 1997, the White House held a conference on Early Childhood Education and Learning: *What New Research*

*on the Brain Tells Us About Our Youngest Children.* Building on these nationwide efforts, individual states began presenting information about the importance of the first three years through conferences, publications, training and educational programs. Alaska was one of these states. In early 1997, a team of public and private organizations and businesses began planning a conference to focus on the state's youngest children. On Septem-

*Please turn to next page*

*First Three Years, continued*

ber 23-25, 1998 over six hundred Alaskans attended *The Early Years, The Critical Years – Implications of Brain Research on Early Childhood Policy and Practice in Alaska*.

It is as predictable as rain in Southeast Alaska, that soon after one group of educators or researchers releases new information about child development, an opposing view will soon arrive to challenge or discredit the information. Last summer, John Bruer a consultant on educational issues, authored several articles and a book, *The Myth of the First Three Years – A New Understanding of Early Brain Development and Lifelong Learning*. Bruer is very critical of the "brain-based research" and what he considers misinterpretations about neuroscientific information. He claims brain science is a "myth," that is too theoretical at this point to be real science and has "little to offer educational practice or policy."

**Who's Right Anyway**

Bruer's theories have sparked some important debates about child development. Debates between scholars and scientists are part of how science works. Sometimes it takes years of discussion before old ideas are replaced by new ones. Bruer's side of the debate challenges current brain-based research and aims to discredit theories about the importance of the first three years of a child's life. On the other side of the debate, there are many studies, publications and experts in the field of child development and neuroscience that support the importance of the first three years and the new findings about brain growth and development. Parents, teachers, policy makers and the public have been caught in the middle of this debate. Those who are interested in the well-being of children must decide, after studying opposing views, if they are willing to wait for absolute decisions among scientists or choose to support current research that makes the most sense.

To begin with, making sense of the wealth of information about human brain development and early childhood development is a huge job. Bruer's book has pulled together an impressive review of brain-based literature and research; even reaching as far back as three centuries to prove a point. But his work does come with a few problems:

- First, Bruer has no formal training in neuroscience or early childhood development. His interpretations of neuroscientific research are only one opinion.

- The "Myth" book is written to appeal to and be purchased by middle class Americans, rarely addressing issues of poverty, violence, poor health or other worries.
- Bruer's work does not give readers a true picture of all the research, studies and information about child growth and development. His work is limited to analysis of neuroscientific research, studies and publications. He does not include current research from other fields like early childhood education, child care, Head Start or the behavioral sciences.
- There are inconsistencies in his work. For example, he cautions the public not to rely on single studies or think that experiments on rats can be used to prove a point about children. However, when it is convenient, he uses these tools to support his own theories.
- Bruer has been promoted as the person responsible for "debunking" popular beliefs about a child's brain development. But, in some areas, Bruer's own theories are right in line with current brain development information.

There are no popular bookstore publications like the "Myth" that packages research

and studies supporting brain development and the importance of the first three years. This alone makes it difficult for parents or the public to compare opposing views. And there is a lot to study and compare. At Alaska's *Early Years, Critical Years Conference*, experts in the field of neuroscience, child development, early childhood education and public policy presented key information about current knowledge and practice. Three full days of educational workshops and training sessions, public forums, keynote speeches and work sessions were planned to help educate participants about the first three years of a child's life. Conversations among participants weeks and months after the conference illustrated the interest in, and importance of, current research about early brain development. As a result of the continued interest of participants, conference proceedings were published that summarized, to the extent possible, key findings presented at the conference. These key findings can also serve as an excellent forum to discuss Bruer's opposing views about early brain development. (note: a copy of the full Conference Proceedings is available from the Alaska Department of Education and Early Development, contact Dorothy Douglas at (907) 465-4547 or e-mail dot\_douglas@eed.state.ak.us)

**Alaska Key Findings and The Myth**

**Key Finding 1: There are new discoveries about early brain growth and development.** Aided by new scientific research tools, the field of neuroscience has gained more knowledge about early brain growth and development than ever before. Scientists have been able to observe brain structure and function in greater detail and have provided new insights about how the brain grows and develops. Despite this new wealth of knowledge, the neuroscience of early childhood is, in a sense, in its own infancy. Neuroscience alone cannot tell us how to run schools or be better parents. But we do have a great deal of knowledge about child development and learning from other sources. The social sciences, psychology - especially cognitive psychology, early childhood education, medical and developmental research are also key sources of information. Current findings about brain growth and development support and, in many cases, build on many years of early childhood knowledge and accepted practice.

Bruer agrees that neuroscience has put

forth some new discoveries about brain development. He states that "in the past fifteen years many theoretical barriers about brain growth and development have fallen." However, he still believes that brain-based science is too new to be taken seriously - that is, until many of these theories have gone through a rigorous scientific review and testing process they should not be used to influence parents, teachers or policy makers. Bruer does not discuss brain-based science in relation to other fields of study. He does not review research and current practice from other sources, or discuss important links between brain-based information and over 50 years of early childhood knowledge.

**Key Finding 2: The greatest period of brain growth and development is during the first three years of life.** At birth, the brain is remarkably unfinished - only those parts of the brain that are necessary for survival are functioning. A baby can see, hear and smell - but only dimly. During the next three years the brain

will grow and develop at an astounding rate. By age three, roughly 85% of the brain's core structures will be organized. The basic building blocks of the brain are neurons (nerve cells) – long wiry cells that carry electrical messages through the nervous system and brain. Neurons are connected by synapses, the plug that allows impulses to flow between them. During prenatal development, the brain forms about 100 billion neurons, but only about 50 trillion synapses, not nearly enough to complete all of the circuits that are required for the complex tasks the brain must do. Soon after birth, neurons begin to organize and the brain begins to form the trillions of additional connections needed to complete brain growth. By the age of three, the number of synapses in the human brain will increase from 50 to 1,000 trillion.

The synapses formed during this growth period are thin and weak at first. As the child receives repeated stimuli and experiences from the environment, synapses become stronger. In this way the connections become "hard wired" into the brain's circuitry. Those synapses that are seldom stimulated remain weak and will eventually be discarded by the brain. By the time a child reaches late adolescence, half of all synapse connections will be discarded, leaving the brain about 500 trillion synapses. In this way, the experiences, both positive and negative, that young children receive are critical for determining how the brain will be organized for all future functioning.

Both neuroscientists and Bruer agree that what happens to synapses during development, and why, are fundamental questions for modern neuroscience, and that much research remains to be done in these areas. Bruer also supports neuroscientific findings about synapse growth and elimination. "What we see from the research is that synaptic densities follow an inverted-U pattern over our lifetimes, as it does over the life span of rhesus monkeys. At birth, we have approximately the same synaptic densities in our cortex that we do as adults. Rapid synapse formation following birth leads to a plateau period. Synapse elimination beginning at puberty reduces densities to adult levels."

Bruer also is willing to speculate that experience may play a part in strengthening synapses. ". . . this also leaves open the possibility that early experience might strengthen existing synapses and that these strengthened synapses would be more likely to survive through the high-plateau period and into adulthood."

**Key Finding 3: The human brain has a remarkable capacity to change, but timing is crucial.** While learning continues throughout the life cycle, there are "prime times" for optimal development – periods during which the brain is particularly efficient at specific kinds of learning. These periods have been described as "critical periods" when the brain must receive the right experiences at the right time in order to organize and develop correctly. Each functional area of the brain organizes according to its own timetable and level of experience. During the first three years of life, the brain will develop the neurological foundations for vision; hearing and oral language; motor development, including balance; hand/eye coordination; crawling and walking; social attachment and emotional response; cognitive

functioning; memory; reasoning and sensory perceptions such as taste, smell and touch. Each of these foundations sets the stage for future learning and more complex activities.

As knowledge about brain development spreads, there has been a tendency to misinterpret some key issues, particularly the "prime times" concept that has been popularly characterized as "windows of opportunity." For example, some people have reasoned that if a two-year old is capable of learning one new word every hour, then teaching her two words must be better. However, more is not always better. Over-stimulating children can interfere with development that is occurring in other functional areas of the brain, or simply be a waste of time. Children learn at an age and stage that is appropriate for their individual development; and not all children will reach the developmental milestones at the same time.

Bruer also would agree with much of this key finding. "Although the synaptic preservation strategy does not make much neurological sense, we do know that for some brain systems, normal development does require that certain kinds of experiences occur at



certain times during development." He is also supportive of the "more is not better" concept and in particular, is critical of the "windows of opportunity" picture. Bruer and most neuroscientists agree, that the "windows" concept misleads parents into thinking that at some point the "window" will slam shut and a child's learning along with it.

Bruer rightly points out that the critical periods are complex. There are critical-period constraints for specific and limited kinds of learning and development, such as critical periods for vision and hearing. Most learning is not subject to critical-period constraints, not confined to windows of opportunity that slam shut. Learning can and does take place throughout life. What Bruer fails to discuss in any meaningful way, however, are the foundations that are built during the first three years of life. For example, a child does not simply "learn to read" in first grade.

Children begin acquiring language during the first months of life. A child will establish neural circuits for the phonetic structure of language, combine syllables into words and words into simple sentences. Around the

*Please turn to next page*

**First Three Years, continued**

age of 36 months, a child can build simple sentences into more complex sentence structure. At the same time a child is acquiring oral language skills, they are building the foundation for turning words into print. At age six months a child will pay attention when an adult reads to them. By 1 year a child will turn the pages of a book or grasp a crayon and discover it will make marks on paper. By age 36 months, a child will follow a simple plot in a story book and join in when being read to. Between the age of 3 and 5, a child will begin to recognize letters of the alphabet, tell the difference between one letter and another, reproduce letters in drawings, and learn that words have meaning. The ability to integrate oral language (sounds) with written language (print) is critical if children are to become competent readers and writers. It is one of the best predictors of success in becoming literate.

**Key Finding 4: Early care and Education has a decisive impact on how people develop, their ability to learn, and their capacity to regulate their emotions.** The experiences a child receives during the first three years of life play a critical role in healthy brain growth and development. More than anything else, children need to have nurturing, responsive, predictable care and secure attachments to their parents and caregivers. Today, parents are not the only caregivers for children. Approximately 60% of Alaska's preschool-age children have working parents and are receiving some type of care

outside the home well before they're three years old. If a child is spending a large part of his day in an environment that is not stimulating and lacking in positive experiences, precious time is being wasted.

In the final chapter of his book, "What's a Mother To Do," Bruer presents his premise about quality early care programs for children. Based on his lengthy discussion of published research, studies and other information, Bruer concludes that quality child care can only boost a child's intelligence 1 to 4 % in the long run. Although he gives the reader no actual information about the cost of care or what defines quality care, he nevertheless concludes that high quality child care is too costly for most families. "You as a parent," he cautions "would also have to know how much the 1 to 4 % improvement would cost." "Questions about reasonable trade-offs between quality and cost are fundamental to childcare policy. Given the small incremental impact of high-quality care versus good to mediocre care, what is the preferable way to invest the resources that we are likely to have..."

Of all of the theories Bruer puts forth, this is one of his most dangerous. The sole reason for choosing quality child care never has been or should be, about boosting a child's intelligence. Quality child care provides a safe, secure and stable environment; enriched with the daily experiences that support a child's overall health and development while his/her parents are working. Child care providers should be well-trained and capable of providing appropriate care according to the age and stage of the individual child's development. For example, the needs of infants and toddlers

are very different from the needs of a school-age child, as are the needs of a disabled or medically fragile child from the needs of a healthy, stable child. Parents should not have to choose between poor, mediocre and quality care. All parents should be able to access quality care and all providers

should be compensated for the important work they do. Sadly this is not the case. Nationwide, the majority of child care is rated as mediocre to poor and in some cases, unsafe.

Parents should seriously consider what mediocre and poor child care means for a child. For example, it could mean that:

- Providers have not had adequate training or education, possibly including first aid and CPR training.
- Child/staff ratios are too high so that children may be unsupervised at times.
- Children may not have access to healthy activities like outdoor play or field trips.
- Watching videos may be a primary activity instead of being read to or helping with a cooking project.
- Providers are constantly leaving their jobs because of low wages and poor working conditions. Parents are forced to find new child care arrangements and children are forced to adjust to another new situation.

Bruer is also critical of other early care and education programs like Head Start, totally disregarding current longitudinal studies about the program. Findings from a recently published Head Start Family and Child Experiences Survey (FACES) show that a typical Head Start four-year-old completing Head Start has knowledge and skills in early literacy and numeracy, improved health and social skills signifying readiness to learn in kindergarten. The FACES study also shows that families are involved in their children's education despite challenges they face such as lack of employment, poverty, inadequate housing or poor medical care.

**Key Finding 5: Early negative experiences, abuse and neglect, or the absence of appropriate stimulation can have serious and sustained effects on brain growth and development.** Research has documented that sustained early abuse and neglect, emotional deprivation or exposure to violence at an early age can interfere with normal brain development in children. If a child's early experiences are fear and stress, then the neurochemical responses to fear and stress become the stimuli that shape the developing brain. For example, early trauma elevates stress hormones, such as cortisol. High cortisol levels during the vulnerable years of zero to three increase activity in the part of the brain involved in vigilance and arousal. As a result the brain remains in a constant state of high alert. The slightest stress unleashes another surge of stress hormones



causing hyperactivity, anxiety and impulsive behavior. Children who are abused early in life or live in un-stimulating environments are much more likely to suffer impairments in cognitive learning abilities, physical development, emotional and impulsive behavior control, and the ability to form secure attachments later in life.

Bruer's book is written to appeal to middle class America. He devotes very little time or effort to issues like poor health, lack of adequate medical care, poverty, abuse, neglect, family violence or homelessness. Bruer does not address the immense and crucial social and emotional development that begins in early childhood and the effects of abuse, neglect and violence. Trauma and abuse are not the only conditions that can lead to developmental delays or impairments. Research has shown that emotional neglect, social deprivation and a chronic lack of stimulation are among major factors that jeopardize early development. Long-term research has also confirmed the link between poor attachment to parents and primary caregivers and violence. Children, whose primary caregivers were emotionally unavailable in the early years of life due to depression, substance abuse and other risk factors, exhibit more aggression and conduct problems in childhood and adolescence.

**Key Finding 6: Evidence about early brain development points to the critical need for prevention and early intervention.** During the first three years of life, the profusion of synapses in a child's brain gives the brain exceptional flexibility or malleability. At no other time will the brain be able to master new skills so readily, or rebound from setbacks so easily. If there is a way to compensate for brain injury, disabilities, or early negative experiences, the brain can be taught to find it. Study after study shows that intensive, well-designed, timely intervention can improve the prospects and the quality of life for many children who are considered to be at risk.

One of the findings that Bruer is adamant about is the brain's "plasticity." He states, "... the first three years are not the only years we have to build better brains. The brain is not "cooked" by age 3 or age 10. Our brains remain remarkably plastic and we retain the ability to learn throughout our lives." If a child does not acquire early literacy skills in preschool, they can still learn to read in first grade; and if they are still not readers by age 18, there are still adult literacy programs. What Bruer does not emphasize, however, is that the chance of a functionally illiterate adult becoming a

competent reader is very slim, or that adult literacy programs require intensive instruction and are very expensive.

Both Bruer and neuroscience would agree that children whose early emotional circuits were wired by abuse and neglect, or who experienced developmental delays due to injury or poor health are not doomed to lives of violence or school failure. As children move into the second decade of life, it appears to be more difficult to bring about change, but with timely and well-designed interventions, it is possible. Interventions, however, are costly and come with no guarantee. Bruer, however, chooses not to discuss the dollar or emotional costs associated with helping children with developmental delays. Nor does he talk about the financial benefits and need for preventing problems before they occur in the first place.

**Key Finding 7: Research on brain growth has critical implications for improving public policy and practice, education systems and business practices.** There is a wide gap between what is known and about early brain growth and development and what is being done on a local, state and national level to support a child's healthy growth and development. Nationwide we invest the least amount of our public resources in children under age five. Early education programs, public schools and policy makers can benefit from new information about brain research and long-standing information about child development.

Bruer believes that this is one of the dangers of the "first three years myth." He cautions readers that once the "Myth" is accepted by policy makers, it will mean re-



sources will be taken away from programs for older children and adults and diverted to programs for young children. Advocates for young children have never supported such a position. This position is clearly stated in the publication *Rethinking the Brain*. "Optimal development and learning for Americans of all ages must be a top national priority, so that a good start in life for our youngest children is not purchased at the expense of their older brothers and sisters."

### **"What's A Mother (or the rest of us) To Do"**

The final chapter of the "Myth" book - "What's A Mother To Do," pretty much sums up Bruer's feelings about the brain science. He concludes that educators, policy makers and, in particular, parents . . . "would all do well to abandon the Myth." "There is little that is new in the brain-based parenting advice, and the articles do not give you much specific

*Please turn to page 8*

COLLABORATION  
B·R·I·E·F·I·N·G·S

**Head Start Beats Mercedes**

For the first time, government agencies are participating in the measurement of customer satisfaction as part of the American Customer Satisfaction Index (ACSI). ACSI is the national indicator of customer evaluations of the quality of goods and services available to U.S. residents. It is the only uniform, cross industry/government measure of customer satisfaction. Since 1994, ACSI has measured satisfaction, its causes and effects, for seven economic sectors, 34 industries, over 170 private sector companies, two types of local government services, the U.S. Postal Service and the Internal Revenue Service. This year, a substantial portion of the federal government joined the ACSI. The 30 agencies participating in ACSI serve 90% of federal government customers.

The Department of Health and Human Services, Administration for Children and Families (ACF) chose Head Start as the program to measure for their agency. The ACF decided that parents are the measure of customer satisfaction in Head Start programs. They provided a listing of its entire directory of Head Start Centers totaling more than 1,600 nationwide. A geographically representative sample of former and current Head Start parents were contacted and interviewed about their satisfaction with their Head Start Program. The 1999 overall customer satisfaction index for Head Start is 87, 15 points above the current national score of 73. **Head Start received the highest score of any government agency or private company, even surpassing the ratings of Mercedes-Benz and BMW.**

**Governor Tony Knowles' 1999 State of the Child Address**

On November 9, 1999 Governor Knowles presented his Annual State of the Child Address before the Association of Alaska School Boards. The annual address grew out of a recommendation from the Alaska Children's Cabinet five years ago. This is the fourth report to the people of Alaska on the status and progress of the well being of Alaska's children. Following are excerpts from this speech.

... "one of our greatest challenges is providing safe, loving homes to hundreds of children in state custody. Thousands of Alaskans selflessly open their homes as foster parents..." "Because our new child protection law and response to reports of harm are working so well, there are a record high number of children in foster care today—more than 1,100. Yet a third of our foster homes are over-capacity. To address their needs quickly and effectively for the coming year, I will ask the Legislature for the necessary funds (for foster care). To provide for children with severe behavioral and physical needs unsuitable for traditional foster care, we must expand our system of round-the-clock residential care homes in four communities – Anchorage, Fairbanks, Juneau and Kenai.

"We have a special obligation and duty to ensure that foster and residential care is safe. So for the coming year, I will seek the necessary resources for fingerprint and background checks of all adults who work with foster children.

"Many foster children who are adopted have special challenges—medical and behavioral problems that would tax any family. I have made it a priority to help these families through our subsidized adoption program—by placing into permanent homes this past year more than 300 children who lingered for three years or longer in the foster care system. This program helps families in a modest way with the expenses of raising an adopted child with challenges. It could never repay the love, sweat and tears lavished on these needy children. I expect—I hope—this program can grow by 500 families in the next two years, and I will be asking for the necessary financial support.

"We also will seek more child protection workers and better ensure their safety by fi-

nally providing them with adequate emergency and communications equipment.

"By meeting that commitment today with the necessary resources, we save millions tomorrow in the cost of prisons, welfare and heartbreak. The special focus on foster care, adoptions, and child protection needs I've spelled out this morning may well mean additional funds approaching 10 million dollars.

"While we are still in the preliminary stages of budgeting, my direction to state departments is that we will fund children's priorities. My bottom line is: we will not balance our budget on the backs of our children's health, safety or education.

"Safe, healthy children are just part of our goal. Once we get kids to school ready to learn, we need to make sure schools are ready to deliver. To achieve that, we launched two major improvements: the quality schools initiative and sorely needed additional funds for public schools. The 26 million additional dollars for public schools last year and this, is the first increase in the foundation formula beyond enrollment growth in more than a decade. I believe the Quality Schools Initiative is the most profound opportunity for positive change in Alaska's public education system since statehood.

"The Quality Schools Initiative is based on five principles:

- First, if we raise the academic bar, children will respond;
- Second, accountability is a necessary component of education – the public is demanding it;
- Third, teachers and administrators need training to teach in standards-based schools;
- The fourth principle requires parents



## Calendar of Events

<b>February 2-4</b> Anchorage, AK	<i>Bilingual Multicultural Education Equity Conference</i>	
<b>February 24-26</b> Washington, D.C.	<i>National Association of Child Care Resource and Referral Agencies 12<sup>th</sup> Annual Symposium</i>	
<b>February 28-29</b>	<i>Alaska Head Start Association Pre-Conference Meeting</i>	Pam Gingue (907) 883-5159
<b>March 1-3</b> Captain Cook Hotel Anchorage, AK	<i>Region X Head Start Training Conference "Celebrating The Past: Creating The Future"</i>	
<b>March 6-9</b> Albuquerque, NM	<i>19<sup>th</sup> Native American Child and Family Conference</i>	(405)360-2919
<b>March 16-19</b> New Orleans, LA	<i>2000 National Child Care Association Annual Conference</i>	(800)543-7161
<b>March 25-28</b> New York City, NY	<i>Children's Defense Fund National Conference 2000 - Taking Responsibility for Our Children In the 21<sup>st</sup> Century</i>	(800)CDF-1200
<b>March 31- April 2</b> Anchorage, AK	<i>Weaving a Circle of Care, Alternative Care Conference Alaska Foster Parent Training Center</i>	1-800-478-7307
<b>April 26-29</b> Washington, D.C.	<i>Head Start Fulfilling the Promise, NHSA 27<sup>th</sup> Annual Training Conference</i>	
<b>June 28-July 1</b> Washington, D.C.	<i>Head Start's Fifth National Research Conference "Developmental and Contextual Transitions Of Children and Families: Implications for Research, Policy and Practice."</i>	(703) 821-3090 ex.233
<b>July 9-13</b> Arlington, VA	<i>National Indian Head Start Directors Association's 10<sup>th</sup> National Training Conference and 20<sup>th</sup> Year Celebration</i>	(405) 360-2919
<b>October 23-25 zxx</b> Anchorage, AK	<i>Alaska Children's Mental Health Conference Ways to Care - Connections to Make (Call for papers by February 29, 2000)</i>	

and community members, including businesses to be active partners;

- Our final principle is that schools must be safe. We don't need armed guards and metal detectors. We need to identify at-risk children and intervene meaningfully to stop youth violence at school and in our communities.

"But the Initiative has many other moving parts - higher standards for teachers and students; skills profiles for beginning students; benchmark testing in 3<sup>rd</sup>, 6<sup>th</sup> and 8<sup>th</sup> grades; and required improvements for low-performing schools. To keep our end of the bargain, we will continue our financial commitments to education in the coming year. The cost of fully meeting our obligation for pupil enrollment, quality schools and transportation could reach 15 to 20 million dollars over current-year funding. Final enrollment numbers are due at the end of this month. But whatever that cost, I will ask the Legislature to fund it for Fiscal 2000. And I repeat, we will not retreat nor balance the budget on the backs of our children's health, safety or education.

"Our commitment to education also demands smart management and efficiency. Alaskans are willing to pay more when they are convinced they're getting the best value for each dollar. I believe we can achieve efficiencies in school district expenditures through consolidated business functions. Some districts can regionalize or combine with municipality's functions such as payroll, personnel, information systems and purchasing. Applying best business practices can lead to significant savings. No amount is too small.

"So I'd like to issue this challenge. School districts statewide spend about \$60 million a year on traditional business functions. I believe that can be trimmed by 10 percent - a \$6 million savings. And I pledge that any savings will be returned to that district for use in the classroom.

"Value and efficiency also includes being smart about how we build and maintain schools. Crumbling classrooms, leaking roofs and honey buckets as plumbing are unacceptable. Despite solutions we've offered for rural school needs, the Legislature has overlooked them in recent years. Now the courts have spoken. We are working to bring all parties to the table and agree on a funding plan to put all Alaska children in schools they deserve. Our hope is to resolve this in the schoolhouse not the courthouse.

"As the Quality Schools Initiative moves forward, two important dates lie ahead. One is 2002. That's when the state will designate every public school in Alaska 'distinguished,'

'successful,' 'deficient' or 'in crisis.' We will honor top-flight schools. For those not doing the job, we will insist on improvement.

"The other key date is more imminent - March 2000. That's when the high school qualifying exam will be given. Sophomores will take it first so they'll have plenty of time to try again, if necessary. They'll be tested in reading, writing and math - based on academic standards taught in high school and

earlier grades.

"(The) handbook the School Boards Association produced - 'Helping Kids Succeed, Alaskan Style' - has a quote highlighted inside. It serves as a reminder to each of us who get up every day dedicated to improving the state of Alaska's children. It says: 'Shoot for the Moon. Even if you miss it, you will land among the stars.'"

Alaska Head Start Association

# NEWS

## Region X Head Start Association Training Conference.

The Alaska Head Start Association is very honored to host the Region X Head Start Association Training Conference. The theme of this Conference is "Celebrating Our Past; Creating Our Future." A rich selection of workshops and training sessions has been built around this theme. The Conference will begin on Monday, February 28, with preconference meetings and workshops. The Opening Session for the conference will begin on Wednesday, March 1. All events will be held at the Captain Cook Hotel in Anchorage, Alaska. Invited Guests for the Conference include: Governor Tony Knowles; Patricia Montoya, Commissioner, Administration of Children, Youth and Families, Washington, D.C.; Anne Linehan, Operations Manager, National Head Start Association, Washington, D. C.; Nancy Hutchins, Region X Head Start; and Helen Scheirbeck, Region XI American Indian Program Branch Head Start. Alaska Conference Co-chairs are Shirley Pittz, RurAL CAP, and Krishna Moore, Chugiak Children's Services. Reference the chart below for events during Head Start week in Alaska.

## Head Start Directors Complete Fellowship Program

Four Alaska Head Start Directors have completed the Johnson and Johnson Head Start Management Fellow Program. Valerie

Larson, Director of Bristol Bay Native Association Head Start; Theo McIntyre, Director of Metlakatla Indian Community Head Start; Shirley Pittz, RurAL CAP Head Start Director; and MaryEllen Fritz, Southcentral Foundation Head Start Director were selected to attend the Fellowship Program. Conducted by the Anderson Graduate School of Management, University of California (UCAL), the intensive two-week program aims to enhance management skills of Head Start Directors around the nation. Johnson & Johnson awarded the Anderson Graduate School a \$584,000 grant to administer the program, which has graduated more than 500 Head Start Directors since 1991. To compete for the management fellowship, applicants must have been directors for at least three years. A team of UCAL faculty members selects the directors who participate in the program. The selection process guarantees that the program represents Head Start Programs nationwide in terms of urban/rural mix, size and other demographic factors. Johnson & Johnson, the corporate leader supporting Head Start, has invested over \$4 million in the program since 1991. Report from the Northwest Region - Alakanuk, Chevok, Emmonak, Hooper Bay

## Report from the Northwest Region - Alakanuk, Chevok, Emmonak, Hooper Bay

by Teresa Pingayak

Recently, I went to support a family who had lost a loved one in another village. As usual, the whole village got together, and

relatives of the family came from everywhere to help the family. This has always been a wonderful part of being in a close knit community, not only in villages, but in other places as well. Having the support of relatives and friends is one of the priceless ways that one can give to another in the time of need.

I thought about each one of my children. Have I taken the time to let each one know through my actions and words that I appreciate them for who they are? Have I taken the time to spend quality time with each child, or do I pay attention only when something negative happens? I thought about how I could become a more responsive parent and all the other things I could do better in my life because I am the teacher in the life of my children. I always believed that my children are the extension of who I am and what values I teach them will reflect on them for the rest of their lives and be passed onto the next generation to come.

Today is a new day and a new beginning for me.

### First Three Years, continued

guidance on what to do, other than to follow traditional middle-class parenting practices.

Bruer is partially correct. The first three years of a child's life have been described as a time of natural learning. Parents, no matter what their socioeconomic status, educational background, marital status or cultural/ethnic background, are natural teachers. Everyday, the instinctive things that parents do support their children's learning. Holding and cuddling an infant helps to develop a child's emotional attachment. Talking, singing or naming objects in the grocery store supports a child's language development. Reading to a child, helping them learn to use a crayon or paint brush sends them on their way to becoming competent readers and writers. Healthy food, naps, outdoor play and exercise helps a child develop physically. Medical check-ups, immunizations, a home free of hazards,

Please turn to back page

### Schedule of Events — Head Start Week

Monday - 2/28	Tuesday - 2/29	Wednesday - 3/1	Thursday - 3/2	Friday - 3/3
RX Meeting	RX Board Mtg. Meeting	AHSA Breakfast 7:30-9:30	8:30-12:00 Workshops	8:30 - 10:00 Workshops
	1) Region X Disabilities Coordinators Retreat	10:00 - 1:00 Opening Session	1:00 - 4:30 Workshops	10:30 - 12:00 Closing Session
	2) Quilt	8:00 - 6:00 Vendors Open	7:30 am-6:00 pm Vendors Open	No Exhibits
	3) Culturally Based Curriculum	1:00 - 4:30 Workshops	5:30-7:30 Reception and Keynote	
		5:30 - 7:00 AHSA Reception		

## STATUS REPORT

## Alaska's Children

A national poll of Police Chiefs called for state and national policy makers to boost funding for after-school programs and child care. The poll shows that:

- 86% of the Chiefs said "Expanding after-school programs and educational child care programs like Head Start would greatly reduce youth crime and violence";
- 69% of Chiefs gave the highest priority to providing "more after-school programs and educational childcare," when asked to guide elected officials by ranking four strategies to reduce youth violence. The other strategies were: 17% prosecute more juveniles as adults, 13% hire more police officers to investigate juvenile crime; 1% install more metal detectors and surveillance cameras in schools.
- 91% of Chiefs agreed: "If America does not make greater investments in after-school and educational child care programs to help children and youth now, we will pay far more in crime, welfare and other costs."

Source: Fight Crime, Invest in Kids

A national poll conducted in August asked participants to respond to questions about children's issues and programs. Questions and results were:

As children head back to school what are you most concerned about:

- violence/crime – 47%
- Inadequate education – 18%
- The cost of education – 2%
- Any other concerns – 21%
- No concern/answer – 11%

To provide kids in your community with access to good after-school programs and early childhood development programs like Head Start, would you be willing to pay more taxes or pass up a tax cut:

- Pay more taxes – 50%
- Unwilling to pay more taxes, but willing to pass up a tax cut – 24%

Which of these priorities are more important than cutting taxes?

Providing access to after-school and early childhood development

- programs like Head Start – 67%
- Paying off national debt – 6%
- Building new highways – 32%
- Building more advanced military weapons/ spending more on military pay – 27%
- Don't know/none of these – 5%

Source: Opinion Research Poll International for Fight Crime – Invest in Kids

**Only ten percent of children eligible for federal child care assistance in 1998 received it.** Approximately 14.7 million children in low-income families were eligible to receive a subsidy under federal income limits in 1998, but funding allowed for only 1.5 million children to actually receive assistance. Parents who must wait for child care support are seven times more likely to rely on public assistance than employed parents who receive a subsidy.

Source: Access to Child Care for Low-Income Working Families, HHS

**Military child care centers pay staff about \$1.04 an hour more than civilian centers.** As a result, staff turnover in military child care centers declined to 40% annually from as much as 300% during the 1980s.

Source: Preschool Programs Biweekly Newsletter, November 24, 1999

**The Anchorage School District reported that their new Independent Reader Assessment showed that 41% of third-grade students last year – about 1,400 pupils – could not read without help.**

Source: Anchorage Daily News, 10/12/99

# Alaska's Children

Alaska Head Start State Collaboration Project  
Alaska Department of Education and Early Development  
P.O. Box 112100  
Juneau, Alaska 99811-2100

BULK RATE  
US Postage  
PAID  
Permit #89  
Juneau AK

*First Three Years, continued*  
support a child's health and safety. Children do not need to listen to an expensive Mozart CD to support their cognitive development - learning traditional Native dancing and songs will be much more enriching. Parents do not need to rush out and buy the latest toy "guaranteed to boost your baby's brain power." Some homemade play dough and a few hours of an adult's time is one the best brain boosters. Brain science certainly confirms that these kinds of natural learning supports from parents and caregivers are just what a developing brain needs.

Brain science also supports many other things that parents and care givers need to know. Parents need to be very sensitive to possible problems and quick to seek help if necessary. We need to understand that if an infant has vision problems that are not corrected early, the sensory system can be compromised for a lifetime. Chronic ear infections can affect hearing and impede language development, literacy and subsequent educational success. Parents also should be aware of developmental milestones, like learning to crawl, walk, manipulate small objects, and

know where and when to seek help if developmental problems are evident. Parents also need to know that neglect, abuse, family violence and other challenges can have a lifelong effect on children.

As for the "rest of us" - can brain science answer important questions about child development, or help us make policy and budget decisions? The answer for most of us should be - "It would be foolish to ignore it." Unfortunately, Bruer chooses to do just that by thinking that middle-class-parenting practices (whatever those are) will solve all our problems and answer all our questions.

The debate about the first three years is far from over. Neuroscience is one of the fastest growing fields of scientific study and everyday, more information is being added to the body of knowledge about brain development and young children. We can draw on this knowledge, as well as knowledge from other fields, from parents, caregivers, health care professionals and many others. All of this information can help us answer the most important question we should be asking: whether or not we can make life better for our children.

For those who are interested in this question, an important opportunity awaits you. This March, Dorothy Routh, one of the keynote speakers and workshop presenters for Alaska's *Early Years, Critical Years Conference* will return to our state. Ms. Routh will hold intensive training sessions on how the brain develops, brain research findings, and why these findings are important for parents, teachers and policy makers. The schedule of training sessions is Juneau - March 17 and 18, Anchorage - March 20 and 21, Fairbanks - March 23. Anyone interested in attending this training, or receiving additional information about the training events can contact Marilyn Webb at (907)465-4861.

Information sources: *Conference Proceedings, The Early Years, The Critical Years - Implications of Brain Research on Early Childhood Policy and Practice in Alaska. Rethinking the Brain*, Rima Shore, Families and Work Institute. *The Myth of the First Three Years*, John T. Bruer. "In Search of . . . Brain Based Education", John T. Bruer, Phi Delta Kappa International. "Educators Need to Know about the Human Brain", Ron Brandt, Phi Delta Kappa, 11/99. "Response to The Myth of the First Three Years, ZERO TO THREE." *Starting Points - Meeting the Needs of Our Youngest Children*, Carnegie Corporation of New York.



## CONFERENCE PROCEEDINGS

*The Early Years, The Critical Years*

Implications of Brain Research on Early Childhood Policy and Practice in Alaska





**CONFERENCE PROCEEDINGS**  
*The Early Years, The Critical Years*

Implications of Brain Research on Early Childhood Policy and Practice in Alaska



# Contents

**Acknowledgements** ..... page 3

**Introduction** ..... page 4

**Part I. Conference Highlights** ..... page 5

Key Findings About Current Brain Research  
Setting the Stage for Change — Alaska's Commitment to Children  
Plotting the Future for Alaska's Children

**Part II. Key Lessons, Recommendations  
and Suggested Activities** ..... page 15

Public Awareness  
Parent and Family Support  
Quality Early Care and Education  
Windows of Opportunity  
Education and Training  
Health Care  
Abuse and Neglect  
Primary Prevention  
Early Intervention  
Special Needs and Disabilities  
Programs and Services  
Community Support  
Work Place/Business Support  
Public Policy

**Appendices** ..... page 30

Steering Committee and Conference Sponsors List  
Training the Trainers List

# Acknowledgements

**T**he Early Years, The Critical Years Conference owes its success to a long and diverse list of people and organizations. Their collective energy, knowledge, and commitment helped to build these three days into a conference that will make a difference in the lives of our youngest children and their families. To all of the following individuals and groups, our grateful thanks:

- ~• Each one of the 600+ conference participants who, on a daily basis, support the healthy growth and development of young children.
- ~• The conference steering committee whose vision and dream it has been for many years to have a conference devoted to our youngest and most vulnerable children.
- ~• The workshop trainers, educators and keynote speakers who serve as mentors and guides for those who work with young children.
- ~• Governor Tony Knowles, Lt. Governor Fran Ulmer, and the Knowles-Ulmer Children's Cabinet whose personal commitment to children is demonstrated in their professional lives.
- ~• The conference sponsors who donated time, funding and support, and without whom this conference would not have been possible.
- ~• Nine Star Enterprises who made all of the bits and pieces fit together.

*Note:* a list of registered conference participants can be obtained by contacting Shari Paul, Special Assistant to the Children's Cabinet, at 465-4870, e-mail: spaul@comregaf.ak.us. A complete list of conference sponsors and steering committee members can be found in the appendices.



## Introduction

On September 23-25, 1998, over 600 Alaskans gathered in Anchorage to attend the first statewide conference about our youngest children, age birth to three focusing on early brain development. The conference was designed to:

- Educate participants about current brain research and how the experiences a child receives during the first three years of life influence brain growth and development.
- Give participants an opportunity to hear and discuss public policy with top state administrators and policy makers.
- Provide a forum for participants to develop recommendations and activities to support the healthy growth and development of young children throughout Alaska.
- Offer quality training and education workshops about early childhood development.
- Continue the momentum of the conference by publishing the conference proceedings, which include action items and activities participants can use in their personal and professional lives.

Conversations between participants weeks and months after the conference illustrate the importance of the current information about early brain development, and the implications it has for future policy and practice. This document is intended to keep the momentum of the conference rolling by summarizing the information presented at the conference, providing recommendations and activities that can be used to support the healthy growth and development of all children, and providing resources participants can use for additional training and information.

### Conference Participant Comment

*Children just need a chance for a good life—only adults can give them one.*





## Part I. Conference Highlights

The opening session of "The Early Years, The Critical Years" conference was devoted to educating participants about brain development during the first three years of a child's life and the implications of that new knowledge for families, child care providers, businesses, communities and public policy. Key information about current knowledge and practice concerning young children was presented by experts in the field of neuroscience, child development, early childhood education, and public policy and practice. The keynote presenters included:

- Dr. James L. McGaugh, Director of the Center for the Neurobiology of Learning and Memory at the University of California, Irvine;
- Nina Sazer O'Donnell, M.Ed., Senior Associate at the Families and Work Institute, New York;
- Dr. Ron Lally, Director, Center for Child and Family Studies at WestEd, California;
- Dorothy Routh, Director, Florida Starting Points Initiative and Faculty, Florida State University.

It is not possible to duplicate the collective knowledge and experience of the keynote speakers, or to restate all of the information presented in their remarks in these proceedings. The following information provides only a brief summary about early brain development and its implications.

### Key Findings About Current Brain Research

*There are new discoveries about early brain growth and development.*

During the last ten years, the field of neuroscience has gained more knowledge about early brain growth and development than ever before. These new discoveries have been aided, in part, by new research tools and technologies such as Magnetic Resonance Imaging (MRI) and Positron Emission Tomography, or PET scan. These tools have allowed scientists to observe brain structure and function in greater detail, and have provided new insights into how the brain develops and functions. These stunning new discoveries about the brain, combined with many years of early childhood knowledge and practice and a growing concern about the well-being of young children, have led to new insights about growth and development during the first three years of a child's life.

*Human development is a delicate dance between nature and nurture.*

For many years, parents, educators, neuroscientists, child development specialists, and others have debated about what controls the growth and development of the human brain. Most of our thinking about the brain has been driven by old beliefs — that our genetic code (nature) determines how our brain develops, and that in turn determines how we will interact with the world around us. Research now shows that



Keynote Presenter—James McGaugh

our genetic code only controls brain growth up to a certain point. Nature is the dominant partner during prenatal brain growth and development. But once a child is born, a child's daily experiences and environment (nurture) interact with his/her genetic endowment to stimulate brain growth and development. Nature may open the doors, but experiences allow a child to walk across the threshold.

*The greatest period of brain growth and development is during the first three years of life.*

At birth, the brain is remarkably unfinished — only those parts of the brain that are necessary for survival are functioning. Our genetic codes have directed the brain to complete those circuits that control heart rate, breathing, reflexes, and body temperature. A baby can see, hear and smell — but only dimly. During the next three years, the brain will grow and develop at an astounding rate. By age three, roughly 85% of the brain's core structures will be organized.

The basic building blocks of the brain are neurons (nerve cells). Neurons are long wiry cells that carry electrical messages through the nervous system and brain. Every neuron has an axon — an "output" fiber that sends impulses, and dendrites — short hairlike "input" fibers that receive impulses. The neurons are connected by synapses — the plug that allows impulses to flow between them. This elaborate network can be referred to as the brain's wiring or circuitry. During prenatal development, the brain forms about 100 billion neurons, but only about 50 trillion synapses — not nearly enough to complete all of the circuits that are required for the complex tasks the brain must do. Soon after birth, neurons begin to organize and the brain begins to form the trillions more connections needed to complete brain growth and development. By the age of three, the number of synapses in the human brain will increase from 50 to 1,000 trillion. In this way, a child's brain becomes super dense — it contains about twice as many synapses as an adult brain and consumes twice as much energy.

The synapses formed during this remarkable growth period are thin and weak at first. As the child receives repeated stimuli and experiences from the environment, the synapses become stronger until they reach a threshold level. In effect, these connections become hard wired into the brain's permanent circuitry. Those synapse connections that are seldom or never stimulated remain weak and will eventually be discarded by the brain. By the time a child reaches late adolescence, half of all synapse connections will be discarded, leaving about 500 trillion synapses. In this way, the experiences, both positive and negative, that young children receive during the first years of life determines which synapses will be retained, which ones will be discarded, and how the brain will be organized for all future functioning.



Keynote Presenter—Dorothy Routh

#### Conference Participant Comment . . .

*I plan to incorporate the information on brain development and developmental stages into the teen parenting classes I teach so they will understand the importance of early development.*

*The human brain has a remarkable capacity to change, but timing is crucial.*

While learning continues throughout the life cycle, there are "prime times" for optimal development — periods during which the brain is particularly efficient at specific kinds of learning. These special periods are described as "critical periods" when the brain must receive the right experiences at the right time in order to organize and develop correctly. For example, the critical period for wiring vision is during the first six months of life. At birth, connections between the eye and brain are immature and visual experience is needed to "hard wire" the visual system. If visual impairments, like cataracts, cloud a newborn's vision during the first six months, the critical circuits between the eye and the brain cannot be formed and a visual system will not develop. Even if the cataracts are removed later in life and the eye mechanisms are functional, the brain will lack the ability to see.

Each functional area of the brain organizes according to its own timetable and level of experience. During the first three years of life, the brain will develop the neurological foundations for hearing and oral language; motor development, including balance, hand/eye coordination, crawling, and walking; social attachment and emotional response; cognitive functioning, memory, and reasoning; and sensory perceptions such as taste, smell and touch. Each of these foundations sets the stage for future learning and complex activities like the ability to perform a ballet, do mathematical calculations, paint a picture, play a musical instrument, write and read, learn a second language, form strong attachments to other people, become a critical thinker, experience joy/sadness and anger/compassion, and a host of other activities and experiences.

As knowledge about brain development spreads, there has been a tendency to misinterpret some of the key issues, particularly the "prime times for learning" concept. Parents and others may believe that if a child can learn one new word every hour at age 2, then teaching them two words will be better; or using math flash cards on a three year old will speed them on their way to algebra. But more is not always better. Rather, over-stimulating children to learn language faster or walk earlier can interfere with development that is occurring in other functional areas of the brain, or simply be a waste of time. Children absorb new experiences at an age and stage that is appropriate for their individual development; and not all children will reach developmental milestones within the time frames that have been suggested as "prime times."

*Early care and education has a decisive impact on how people develop, their ability to learn, and their capacity to regulate their emotions.*

The experiences a child receives during the first three years of life play a critical role in healthy brain growth and all future functioning. More than anything else, children need to have nurturing, responsive, predictable care, and secure attachments to their caregivers. The simple act of picking up a crying infant, holding her close, touching her face and hands, speaking in a calm and comforting voice; stimulates the emotional neurological pathways to become stronger. When a parent encourages an infant to coo and gurgle, neurons in the auditory cortex are stimulated to recognize the phonemic structure of language. Helping a child reach and grasp a toy develops small and large motor skills. Parents are recognized as the primary caregivers for children, and almost all parents have a natural disposition to support their child's growth and development. By paying attention to a child's cues and clues, parents help children learn that their environment is safe, loving and secure.

*Children absorb new experiences at an age and stage that is appropriate for their individual development; and not all children will reach developmental milestones within the time frames that have been suggested as "prime times."*



Keynote Presenter — Ron Lally

*Study after study shows that intensive, well designed, timely intervention can improve the prospects and the quality of life for many children who are considered to be at risk.*

In our society, parents are not the only caregivers for children. Today, over half of all children are receiving care outside the home. Caregivers can include extended family members, child care providers, preschool staff, foster parents, health care providers, and others. Because every interaction between an adult and an infant, toddler or preschooler initiates some type of learning experience for children, all caregivers need to be aware of the impact early care has on growth and development. If a child is spending a large part of his day in an environment that is not stimulating and lacking in positive experiences, critical time is being wasted.

*Early negative experiences, abuse and neglect, or the absence of appropriate stimulation can have serious and sustained effects on brain growth and development.*

Neuroscientists have documented that sustained early abuse and neglect, emotional deprivation or exposure to violence at an early age can interfere with normal brain development in children. If a child's early experiences were fear and stress, then the neurochemical responses to fear and stress become the stimuli that shape the developing brain, eventually changing the structure of the brain. For example, early trauma elevates stress hormones, such as cortisol. High cortisol levels during the vulnerable years of zero to three increase activity in the part of the brain involved in vigilance and arousal. As a result the brain is wired to be in a constant state of high alert. The slightest stress unleashes another surge of stress hormones causing hyperactivity, anxiety and impulsive behavior. While the brain is paying attention to fear and stress, other areas of the brain can un-develop. Autopsies on the brains of young children who were abused early in life revealed regions in the cortex and the limbic system (responsible for emotions, attachments, logic and reasoning) that were 20 to 30% smaller than those in normal kids. Children who are abused early in life or live in un-stimulating environments are much more likely to suffer impairments in: cognitive learning abilities, emotional and impulsive behavior control, the ability to form secure attachments later in life, and physical development.

*Evidence about early brain development points to the critical need for prevention and early intervention.*

During the first years of life, the profusion of synapses in a child's brain gives the brain exceptional flexibility or malleability. At no other time will the brain be able to master new skills so readily, or rebound from setbacks so easily. If there is a way to compensate for brain injury, disabilities or early negative experiences, the brain can be taught to find it. Study after study shows that intensive, well designed, timely intervention can improve the prospects and the quality of life for many children who are considered to be at risk. In some cases, effective intervention can even improve conditions once thought to be virtually untreatable, such as autism or mental retardation. Prevention and early intervention programs have also proven to be the least costly and most successful way to improve the lives of children.

The necessity for timely intervention has very strong implications for child protective services and the legal practices that support children who are at risk for abuse and neglect. The need for safe, secure environments for young children must be a priority when social service systems consider placements for children who have been, or are suspected of being, abused or neglected.

*Research on brain growth has critical implications for improving public policy and practice, education systems and business practices.*

There is a wide gap between what is known about early brain growth and development and what is being done on a local, state and national level to support healthy

growth and development during these critical years. For example, research demonstrates that the human brain achieves approximately 85 to 90 percent of its adult size by age three. The highest level of plasticity and responsiveness to environmental influences occurs in the earliest ages. Yet, nationwide, we invest the least amount of our public resources in children under age five. The national average spent per child under age five was \$1,472, compared to \$6,567 (in 1992 dollars) spent per child age 6-18. Only about 8% of our public funds are invested in promoting healthy growth and development during the most critical learning years. The new knowledge about the importance of the early years shows that children need and deserve policies and investment of resources that support this critical period of growth and development.

Public spending is not the only area where resources are limited. Child care providers receive the lowest wages, are required to have the least amount of training and education and have fewer regulations governing their work than most private businesses. Analysis of other resources like health care, parent training and education, education programs, and community and employer supports for families with young children, also show a lower level of support for this critical period of human development.

Nationwide, few corporations and businesses have recognized the benefits of developing family-friendly workplaces. Helping employees balance work and family obligations by supporting on-site or near-site child care facilities, allowing flexible leave and work schedules, and providing health, child development and parenting classes for employees can have positive benefits. Documented benefits for businesses include higher job satisfaction, increased productivity, lower turnover rates, and reduced employee absences.

Early education programs and public school systems can benefit from new information about brain research and child development. Middle and high school grades are a prime time to provide new insights into human development to the next generation of parents — before they become parents. Curriculums in preschools and elementary schools can take advantage of “prime times” for learning by teaching foreign languages at a much earlier age when children are still developing language skills. Teachers and educators of any grade level can benefit from information about how children develop and how their early experiences shape their individual learning styles and behaviors.

#### Conference Participant Comment . . .

*I am appalled by the fact that 91% of infant toddler care in this country has been deemed “Inadequate,” and 40% “harmful” . . . especially in light of the overwhelming and exciting evidence that infant development is so critical in life long success. I have decided I must become more politically active. . . to do what I can to help elect candidates who are seriously committed to our youngest children.*



Keynote Presenter — Nina Sazer O'Donnell

## Setting the Stage for Change — Alaska's Commitment to Children

The success of any conference does not just depend on educating and training the people who attend. Success also hinges on positive changes that happen as a result of new information and new insights gained at a conference. For real change to happen, participants must have the support of policy makers, elected officials, program managers and others who are responsible for developing public policy and investing resources. Alaska is very fortunate to have support for, and commitment to, our youngest children from the highest levels of policy makers and elected officials. Alaska's Governor, Lt. Governor, and the Knowles-Ulmer Children's Cabinet, were active supporters and participants in this conference. The opening session of the conference featured presentations by Lt. Governor Fran Ulmer and Governor Tony Knowles.

*... There is mounting evidence about the importance of the birth to three age group — yet, the evidence is not getting as much attention as it deserves. Instead, we seem to be conducting business as usual in our nation.*

### Lieutenant Governor Fran Ulmer — A Call to Action

Lt. Governor Fran Ulmer has always been one of Alaska's most outspoken and respected advocates for children and their families. Her opening remarks at the conference served not only to reinforce the goals of the conference but to create an atmosphere charged with energy and determination that continued on through the remaining days of the conference. Following are excerpts from Lt. Governor Ulmer's speech.

... There is mounting evidence about the importance of the birth to three age group — yet, the evidence is not getting as much attention as it deserves. Instead, we seem to be conducting business as usual in our nation. One hundred years ago, 70% of the population lived in small communities and family relationships were more stable. Extended family — grandparents, aunts, cousins — usually lived within close proximity to one another. As a result, caregivers for young children were available in the home. For a long period of time, family and community structures changed very little. By 1960, more families were working in manufacturing jobs, but most individu-



als still lived in their home communities, and family support systems remained intact. Only 1% of America's children experienced divorce. The next decades, however, have seen some dramatic changes to our family structures that can no longer be ignored: over half of all children live at least 5 years in single parent households, 27% of children live with unmarried mothers, 66% of all preschoolers have working mothers, and 50% of all mothers are back in the workforce within the first year of a child's life. Other nations recognize these changes in family structure and have built policies and programs to meet the needs of their changing families. For example, some countries have one year maternity leave policies, child care holds the same professional status as higher education, training and retirement plans are part of a child care provider's employment package.

Our nation's public policies, public opinions and public laws still assume we are living in the 1950's when most children were cared for in the home and poverty and poor health was not a national concern. Today a quarter of families with children under three live in poverty, a total of 2.2 million children under the age of three have no health insurance, 25% of all two-year old children are not immunized, nine out of a thousand infants die before age one, an employee in a fast food restaurant makes more money than a child care provider, the highest rates of employee turnover can be found in the child care world, infant and toddler care for the majority of children in out of home care has been found substandard.

The alarming result of our attitudes shows up in the grimmest statistics: the level of violence in our society is higher than ever before and higher than any other industrialized nation; the U.S. has more gun related deaths of young children; school shootings, unheard of in other countries, are becoming commonplace in the U.S.; the majority of individuals in prisons in the U.S. and Alaska do not have a high school diploma, and 80% have experienced physical or sexual abuse as children; more children are spending more time in front of the television set and the level of violent programming on TV is higher and more graphic than ever before; and community violence is increasing every year.

All of these statistics prove what is being talked about in this conference — when young children experience inadequate nurturing, receive substandard care, are victims of family or community violence and cannot gain access to prevention and early intervention programs, their futures are very grim and scary.

Our greatest challenge in the next century is turning this knowledge about the early development of children into action plans that reach into every home and into every baby's life. We can no longer tolerate even one child not having the love and care he or she needs to grow into a healthy and responsible adult. Childhood, in all its wonder and magic, is the most basic human right that we must guarantee as a society, and it is the responsibility of each person at this conference to protect and provide the right to a healthy and happy childhood.

#### Conference Participant Comment . . .

*I'm glad I have the privilege of working with infants and toddlers because there is so much hope that quality care during those years will affect their lives, our lives—life.*



Lt. Governor Fran Ulmer

*Our greatest challenge in the next century is turning this knowledge about the early development of children into action plans that reach into every home and into every baby's life.*

## Governor Tony Knowles — 1998 State of the Child Address

**I**n 1995, Governor Knowles delivered his first statewide speech dedicated solely to Alaska's children. His continuing commitment to children and families since that first speech, have helped to establish a precedent for the state — an annual State of the Child Address. Each year his speeches serve to remind us that, in Alaska, planning for the future of our children is as important as planning the budget, the economy, and other affairs of the state. This year, the conference served as an appropriate forum for Governor Knowles to deliver his third official State of the Child Address. This third address cataloged and celebrated the progress the state has made on children's issues, and outlined some important new steps the administration will propose to build a better future for Alaska's children. Among the successes the Governor highlighted in his speech were:

- An active Children's Cabinet that brings the needs of Alaska's kids to the table in every top level policy discussion.
- The Alaska Children's Trust, an \$8 million trust that uses the interest generated from the account to fund community driven projects to prevent child abuse and neglect.
- The Governor's Conference on Youth and Justice that led to some important legal and policy initiatives to help prevent juvenile crime.
- A \$1 per pack state tax on cigarettes to help prevent children from using tobacco.
- The convening of this conference to focus more attention on brain research and the importance of early childhood development.
- A statewide education summit that paved the way for the Quality Schools Initiative and the biggest increase in classroom funding in a decade.
- More juvenile treatment beds to make sure young offenders get the help they need.
- A statewide domestic violence summit, a tough new law and more resources to help break the cycle of family violence.
- The Smart Start Initiative — a three-pronged approach to improve outcomes for children, including: expanded health care for pregnant women and uninsured children; investing in proven prevention programs that help break the cycle of abuse and neglect; better child protection laws and more resources to help intervene swiftly and forcefully when children are in danger.

Building on these past successes, the Governor and his administration have highlighted the following priority areas for continued improvements during the next year: improved child health outcomes through the continuation of health insurance for uninsured children and pregnant women, expanded proven prevention programs, continued emphasis on quality improvements for Alaska's schools, and zero tolerance for the abuse and neglect of children. Some specific strategies that will be used to accomplish these goals are:

- To continue to address and reduce incidents of child abuse and neglect by answering every report of harm to children and committing the necessary resources to do so.
- To expand the use of our schools by requiring every school district to have solid programs in place to help struggling students by doing whatever it takes, summer school, night school, Saturday or early morning classes.
- To increase access to health care for all uninsured children and pregnant women. By next March, 94% of Alaska's children will have access to basic health care. To make sure the

*Governor Tony Knowles*



remaining 6% have that same opportunity, ideas such as insurance pooling plans will be thoroughly explored.

- To develop aggressive plans and actions to eliminate the pain and lifelong limitations inflicted on children as a result of Fetal Alcohol Syndrome. The first steps that will be taken are to expand alcohol treatment programs for women, increase public awareness about FAS, promote the philosophy that women should not carry the burden for prenatal health alone — spouses, parents, family members, friends and communities — all have the responsibility to prevent the tragedy of FAS birth defects.
- To renew the commitment begun in the Smart Start Initiative by expanding proven prevention programs like Head Start, Healthy Families and child care.
- To promote quality early care for young children through proposing to the legislature:
  - a 5% rate increase for licensed child care providers to pay for continuing improvements using funds from welfare reform savings.
  - a 50% increase in child care grants to licensed providers, from \$22 to \$33 per month — this approximately \$900,000 will go for learning supplies, staff training, long overdue salary increases and other quality improvements.

The Governor concluded his State of the Child Address by asking all Alaskans to work together on behalf of children:

*"As we continue our journey to improve the lives of Alaska's children, I want to leave you with this simple message. Working together, we can make a difference in the lives of children — whether our specialties are providing child care, conducting research, teaching students in the classroom, enforcing the law or shaping public policy. . . Our mission together is this: We will make sure our children's earliest years are the foundation for success, not failure."*

#### Conference Participant Comment . . .

*I am so inspired to apply all the information I have received. I want to help educate parents and provide the support needed to guide people to the correct resources. I won a scholarship through the Governor's council and what I didn't know, but I do now, is that I won a chance to help make a difference in other parents and children's lives.*



Commissioner Shirley Holloway

## Plotting the Future for Alaska's Children

### *Recommendations for Tomorrow*

Under the guidance of the Knowles-Ulmer Children's Cabinet, participants moved on to accomplish the conference's third goal — to develop recommendations and activities to support the healthy growth and development of young children throughout Alaska. The Children's Cabinet is made up of a core group of policy makers from the Knowles Administration. They are:

- ~• Shirley Holloway, Commissioner - Department of Education
- ~• Ron Otte, Commissioner - Department of Public Safety
- ~• Margaret Pugh, Commissioner - Department of Corrections
- ~• Mike Irwin, Commissioner - Department of Community and Regional Affairs
- ~• Bruce Botelho - Attorney General
- ~• Karen Perdue - Commissioner - Department of Health and Social Services
- ~• Annalee McConnell - Director, Office of Management and Budget.

The Children's Cabinet represents not only the customary departments that administer state programs for children and families, but also some departments that, on the surface, do not seem to have a lot of responsibility for young children. But, both Commissioners Pugh (Corrections) and Otte (Public Safety), are the first to say that one of the most important ways to reduce prison populations and crime rates in the state through quality prevention and early intervention programs for at-risk children so they can have safe, secure and nurturing environments. Likewise, Attorney General Botelho and Budget Director McConnell understand that investing state resources in children is the key to our future wealth.

Members of the Cabinet acted as team leaders for discussion groups. These groups were asked to draft recommendations and activities for further action in homes, communities and businesses. Part II of these Conference Proceedings contains these specific recommendations.

### *New Knowledge, New Skills*

The second and third days of the Conference gave each participant the opportunity to attend specialized workshops and training sessions. Over 30 workshops were offered by some of the best trainers in the state and the nation — people who work on a daily basis to improve the lives of children. One of the sessions offered was a "Training of Trainers" Program, presented by Dorothy Routh. This workshop was designed to prepare participants to take information from this conference back to their communities and workplaces to train others. A list of participants who attended this course is included in the Appendices. Individuals or organizations who are interested in training sessions can contact anyone from this list for more information.

*...one of the most  
important ways to  
reduce prison  
populations and  
crime rates in the  
state through  
quality prevention  
and early  
intervention  
programs...*





## The Early Years, The Critical Years

Implications of Brain Research on Early Childhood Policy and Practice in Alaska

# Part II. Key Lessons, Recommendations and Suggested Activities

Participants at the conference played an active role in developing recommendations for future policy based on the information presented at the opening sessions of the conference. They were asked to join one of five discussions groups. Each group had a designated topic:

- Education, Learning and Schooling
- Prevention and Health Care
- Quality Early Development and Care
- Family, Community and Business Support
- Healthy and Safe Families.

Groups were given the task of identifying key lessons presented during the conference, considering the implications of those lessons, and developing recommendations and suggested activities to enhance planning for programs and services in Alaska. Participants were asked to consider not only what government could do to promote the healthy growth and development of young children; but how communities, schools, parents and families, business, service providers and others could contribute.

Following are the key lessons, recommendations and suggested activities that were developed by the discussion groups. Minimal editing of the recommendations has been done to preserve the intended action of the group participants. These recommendations are not meant to be the final answer, but a starting point for future action. Readers are encouraged to add their own recommendations, and to act on those relevant to their interests. Finally, during the next year, the conference steering committee would appreciate reports from you on action you have taken, or new ideas for future recommendations. Additional recommendations or activities can be sent to Shari Paul, Special Assistant to the Children's Cabinet at (e-mail) [spaul@comregaf.ak.us](mailto:spaul@comregaf.ak.us) or call (907) 465-4870.

*Participants were asked to consider not only what government could do to promote the healthy growth and development of young children; but how communities, schools, parents and families, business, service providers and others could contribute.*



## Key Lesson: Public Awareness

**There is a wide gap between scientific research about brain development and public knowledge about the current research.** It is critical that information about this research and early childhood development find its way into our homes, early childhood centers, schools and communities. Every person should have basic information about the opportunities and risks of the first three years of life.

*Recommendation: Explore non-traditional methods to increase public awareness of new research about brain development.*

- ~• Meet with village Elders in each community.
- ~• Use the faith community, church programs and newsletters to educate others.
- ~• Give new parents gifts of books about child development and brain research instead of baby clothes or toys.

*Recommendation: Develop a state-wide action plan to educate all Alaskans about brain development and the first years of life.*

- ~• Identify all state programs and services that make direct contact with children and families. Require that information about brain research be provided to families through these programs.
- ~• Identify non-state programs, businesses and services that can be used to provide information.
- ~• Break down brain information into respectful and easily understood parenting tips.
- ~• Use existing resources like TV, radio, newspapers and newsletters to promote information.
- ~• "Think outside the box" and identify other resources that can be used to educate.
- ~• Go where children and families are: fast food restaurants, shopping malls, sports programs.
- ~• Initiate a year long, state-wide mass media campaign for Alaska.

*Recommendation: Communities should develop action plans to educate residents on brain research and early childhood development.*

- ~• Use community forums, celebrations, events, to inform community members.
- ~• Define needs and goals within each community.
- ~• Identify community resources that can be used.
- ~• Develop a calendar of events in the community and target events that can be used.
- ~• Sponsor children's events.
- ~• Hold a community conference on brain development.
- ~• Identify children's programs within the community that currently support sound early practices for young children; identify other community programs that could expand their services to include children's services.

*Recommendation: Ask businesses, professional organizations, private and non-profit organizations to help.*

- ~• Ask businesses, unions, schools, other groups to include information on brain development in their communications, newsletters, etc. to staff.

### Conference Participant Comment . . .

*I learned that brain research is applicable, it's not all "rocket science." It can really change the way I interact with families and children.*



## Key Lesson: Parent and Family Support

### **Parents and families are the brain's first and most important influence.**

Even before birth, a child's environment influences the growth and development of the brain. The care, nourishment, attachment, experiences and teaching that parents and families provide during the first three years of life have profound and life-long effects on children. All parents and families need support to be their children's most important influence.

*All parents and families need support to be their children's most important influence.*

*Recommendation: Provide information on brain research and child development to everyone before they become parents.*

- Beginning in middle school and high school, require school districts to expand science curricula to include units on human brain development and the first three years of a child's life.

*Recommendation: Promote the health and well-being of all family members.*

- Extend health insurance benefits to all uninsured families.
- Strengthen the child support enforcement agency and make access to their services easier.
- Increase availability of individuals and couples counseling services.

*Recommendation: Provide education and training for parents on brain research and child development.*

- Extend childbirth classes into support groups and parenting education classes.
- Provide free child care for all parenting classes.
- Help parents arrange for transportation to parenting classes.
- Hold parenting classes at the work place during work hours or allow parents time off to attend classes.
- Provide training and education at no cost to parents.
- Require parent education classes for participation in child care assistance, welfare to work programs, or other subsidy programs.
- Identify local experts in the community and develop a team of specialists and trainers to provide education and training, child screening and assessments, and health care education. For small communities with fewer resources, develop traveling teams to provide training.
- Develop a distance delivery or correspondence study curriculum through the University on brain development and child development to accommodate isolated families or those who are unable to attend community classes.
- Develop a state newsletter and other information on brain research that is sent out with all birth registration certificates.
- Relate early childhood development to cultural practices of families and communities.

*Recommendation: Expand existing family support programs to reach every new parent.*

- Universal access to home-visit and support services.
- Make emergency or respite care available in all communities.
- Explore waivers or exemptions for services like Infant Learning, Head Start, and Healthy Families to serve families who do not meet eligibility requirements.
- Eliminate waiting lists for programs and services.

*Recommendation: Identify risks to children resulting from poverty.*

- Develop position paper on poverty and the effects on child growth and development.
- Allow parents on public assistance to waive 30 hour work week requirement in lieu of full or part-time educational programs.
- Allow exemption for a parent on ATAP to stay at home with an infant for at least the first year.

*On any given day,  
over 13 million  
children under the  
age of six spend part  
or all of their day in  
out-of-home care.*

## Key Lesson: Quality Early Care and Education

**Quality early care and education environments are essential for brain growth and development.** The experiences children receive outside the home are also important for healthy growth and development. On any given day, over 13 million children under the age of six spend part or all of their day in out-of-home care. Over half of these children are under the age of three. A quality care environment, one that is predictable, nurturing, consistent and enriched with trained, well-paid providers, is not a luxury — but essential for healthy brain development.

*Recommendation: Increase public awareness about the importance of quality child care and the crucial role child care providers have in children's lives.*

- ~• Provide information on child development and quality child care to parents in prenatal, child birth and parenting classes.
- ~• Health care professionals should provide quality child care information to parents as part of their health care package.
- ~• Businesses, employers, unions and other related groups can provide quality child care information as part of an employment package, through lunch hour mini-training sessions, and other forums.
- ~• Educate policy makers about the link between brain development and quality care.

*Recommendation: Provide high quality, on-going training to child care providers that is consistent with the latest research.*

- ~• Ensure that all training and education opportunities promote developmentally appropriate practices.
- ~• Using established programs and models such as the CDA program, NAEYC and Alaska Partners, develop education and training standards and career development programs for child care providers.
- ~• Develop minimum education requirements of at least 20 hours annually for child care directors, 15 hours for staff members as a prerequisite for licensing and continuing education requirements to retain license.
- ~• Provide incentives for child care providers to obtain training and education through state/federal funding subsidies or business supported incentives like equipment, books, etc.

*Recommendation: Promote safe, quality child care through child care licensing or monitoring standards.*

- ~• Require and speed up background/security checks for all providers.
- ~• Publish provider training and scoring of licensing in newspapers.
- ~• Develop different levels of licensing based on training, education, number of children in care.
- ~• Eliminate exemptions for child care.
- ~• Develop formal waiver plans for child care providers that include minimum standards for training, education and safety.
- ~• Revisit state child care licensing regulations and monitoring practices to ensure policies are consistent with new research.

*Recommendation: Help to reduce child care provider turn-over rates through non-wage incentives.*

- ~• Develop a program for licensed providers to participate in state health insurance and/or retirement benefit plans.
- ~• Celebrate positive practices and high quality programs through media, business/employer sponsored recognition.



- ~• Reduce staff/child ratios through state subsidies.
- ~• Promote community support of child care through safe/accessible playground and recreation facilities, free or reduced public transportation, provider training and education opportunities, and community planning for child care facilities.

*Recommendation: Promote quality child care through wage/salary benefits for providers.*

- ~• Increase public awareness of the impact of low wages on quality child care.
- ~• Increase public funding for child care grants and subsidies through state budget and legislative approval process.
- ~• Tie increased grant/subsidy funding for providers to demonstrated competency, quality, training and education standards.
- ~• Provide a living wage and benefits to child care providers.

*Recommendation: Provide support for parents to obtain and participate in quality child care.*

- ~• Provide education and training for parents on quality child care through free community, business and university sponsored classes.
- ~• Model quality child care at all gatherings.
- ~• Provide on-site child care for community events, education and training.
- ~• Ask businesses to allow flexible work/leave hours to attend to child care needs.

*Recommendation: Provide quality child care options to meet the diverse needs of children and families.*

- ~• Expand care opportunities for infants, special needs children, foster families, respite care through specialized provider training programs, state financial subsidies, and other incentives.
- ~• Address the need for child care options for families who work evening and night shifts, travel for work related reasons, or have ill (especially chronically ill) children through specialized training, employer/business subsidies, provider wage subsidies, on-site child care at the workplace, and family-leave without penalty policies.

#### Conference Participant Comment . . .

*This conference made me want to:  
Be the best parent I can be  
Start a child care business  
Be kind and supportive to and with  
everyone I meet, especially parents  
Spread this information to everyone  
I meet  
Get active in promoting policies that  
reflect this information*



*Windows of  
opportunity do not  
slam shut at a  
given point.*

## Key Lesson: Windows of Opportunity

**While learning continues throughout the life cycle, there are critical times or "windows of opportunity" when the brain's ability to learn is at its highest point.** Providing the right information and experiences at the right time (developmentally appropriate practices) promotes healthy brain development. Caution about the concept of "learning windows" must also be exercised. Windows of opportunity do not slam shut at a given point. Learning does continue throughout life, but at a slower and less effective pace. All children should be supported at all ages and stages of development. It must also be realized that more is not necessarily better. There are risks associated with pushing children to accomplish tasks when it is not appropriate.

*Recommendation: Ensure that all programs and services for young children are developmentally appropriate.*

- ~• Review all early care and education programs to ensure they are responsive to appropriate learning and development.
- ~• Use model curriculums such as Head Start to establish appropriate programs that are flexible enough to meet the diverse community and cultural needs in the state.
- ~• Require early childhood training and certification for all preschool and elementary public school teachers.
- ~• Use CDA training models as a starting place for training of early care and education providers.
- ~• Partner with the university system to offer quality early childhood education for early care providers, teachers and educators.

*Recommendation: Help parents and teachers relax and not push children to experience things they are not ready to do.*

- ~• Educate the public about developmentally appropriate early care and learning environments.
- ~• Do not emphasize "academic" programs as a measure of quality.
- ~• Provide easily understood information on developmental windows or milestones for parents.

*Recommendation: Provide positive, helpful information about windows of opportunity to parents and the general public.*

- ~• Develop media campaign to get this information to the general public.
- ~• Provide information through training, university courses, and teacher/care giver preparation.

## Key Lesson: Education and Training

**Education and training for parents, caregivers, early educators and other professionals is key to promoting healthy brain growth and development.**

Transferring brain development research and information into daily practice in homes, workplaces, child care settings, schools and communities is important. Basic education, along with appropriate specialized training, about brain development and early childhood development must be available to parents, child care providers, teachers, service providers, medical and judicial practitioners, employers and policy makers.

*Recommendation: Provide comprehensive, coordinated birth through three programs aligned with sound early childhood practices by increasing training opportunities at all levels.*

- ~• Develop statewide coordination position to pull in key players (DOE, University of Alaska, school boards, educators, government, communities, parents, care givers, professional organizations) to plan and obtain funding to make training available.



- ~• Require interagency meetings from all players to do needs assessment and define how the recommendation will be practically implemented.

*Recommendation: Make available model training/education curriculum on brain development and early childhood development.*

- ~• Research or develop a curriculum that can be used for middle school and high school science courses on brain development.
- ~• Develop a quality curriculum that can be tailored to individual communities that is developmentally appropriate and culturally relevant.
- ~• Present information in a sensitive and dignified manner.

*Recommendation: Educate policy makers.*

- ~• Develop information that show the connection between early brain development and support for quality prevention and early intervention programs.

*Recommendation: Continue education and training in brain development/early childhood development.*

- ~• Using the same Early Years, Critical Years groups, plan and conduct annual workshops that are affordable and available.
- ~• Explore grants and funding sources for train-the-trainers workshops.
- ~• Conduct in-service days at child care centers.
- ~• Explore and promote training exchanges between Head Start and child care centers.
- ~• Make CDA training and certification more available and affordable.
- ~• Have coursework on brain development and early childhood education available through the University of Alaska as part of education programs.

*Recommendation: Include information about brain development and research in education/training programs for all rural health providers.*

- ~• Share information from "The Early Years, The Critical Years" conference with village clinic staff to get them interested.
- ~• Share information with tribal councils and encourage a resolution to tribal health providers/agencies.
- ~• Develop training for doctors, physician assistants, community health aides and public health nurses.
- ~• Develop a position statement and present to all state and tribal organizations.

*Recommendation: Provide brain development information to a wider audience of people who work with young children.*

- ~• Expand training to include brain development information for police, state troopers, public safety officers, fire fighters, EMT's, social workers, child-in-need of aid lawyers and guardians, etc.
- ~• Provide adult education classes for community members, educators, university personnel, tribal native groups, community action and civic groups.

*Recommendation: Provide education and training on the effects of violence, abuse, neglect, and stress on brain development.*

- ~• Require training for all mental health providers, domestic violence advocates, child health planners (Medicaid, EPSDT, etc.), Department of Corrections programs, etc.
- ~• Present training to boards and commissions that oversee programs such as the Alaska Mental Health Board, Governor's Council on Disabilities and Special Education, etc.





*Recommendation: Develop a course on early brain development at post-secondary institutions.*

- ~• Require training for teachers, administrators and nurses.
- ~• Make training on early childhood development a requirement for teacher certification.

*Recommendation: Develop a long-term action plan for education and training.*

- ~• Identify all groups/providers that should have brain development information.
- ~• Identify events, conferences, meetings that could be used to provide information.
- ~• Recruit businesses and community organizations to be part of the plan.

*Recommendation: Make education and training on brain development part of public school programs.*

- ~• Meet with school boards, education associations, and superintendents to discuss brain development research.
- ~• Require brain development information for in-service training for all teachers at all levels.
- ~• Provide specific training to special needs school aides, counselors, and other non-teaching school personnel.
- ~• Provide information at PTA meetings or to other parent groups in the state.

## **Key Lesson: Health Care**

**Proper health care during the prenatal period and first 3 years of life is critical for brain development.** Providing preventive and primary health care education and coverage greatly reduces many health and safety risks for children.

*Recommendation: Severe brain damage resulting from injury is irreversible. Efforts must be made to reduce injury rates for young children.*

- ~• Promote public awareness about the consequences of brain injury.
- ~• Expand programs to promote the use of safety helmets and protective gear for sports activities, biking, etc.
- ~• Strengthen and enforce laws for the use of car seats and safety belts.

*Recommendation: Provide universal access to prenatal health care.*

- ~• Expand existing programs for low-income, uninsured pregnant women so no one goes without prenatal health care.
- ~• Eliminate insurance exemptions to ensure that all health insurance coverage includes pregnant women and infants.
- ~• Develop media campaign to reach and enroll all pregnant women in prenatal care.

*Recommendation: Develop incentive programs for prenatal care and education programs for pregnant women.*

- ~• Incentive programs could include a combination of health care, education and training. Participants would be required to complete all prenatal health check-ups, attend education and training classes in (at a minimum): parenting, CPR/first aid, nutrition, child development, child safety and FAS/FAE. Participants who complete health care and education components will receive vouchers for groceries, baby clothing, or other incentives.
- ~• Secure funding for incentive programs from state appropriations, business and community supports.

*Recommendation: Provide continued health care and support for new parents.*

- ~• Develop a welcome baby program through hospitals, health care providers, health aides that provides brain research information.

- Provide at least one home visit for all new parents with follow-up visits, if needed.

*Recommendation: Provide health care services or health insurance plans for all families regardless of income or work status.*

- Expand health insurance coverage to all families and all children.
- Require insurance coverage to include well baby and well child check-ups and screening.

## **Key Lesson: Abuse and Neglect**

**Rich and positive experiences promote healthy brain development. Conversely, research indicates that early exposure to prolonged negative experiences such as abuse, neglect, violence, substance abuse, and successive out-of-home placements can have serious and sustained effects even into adulthood.** When children need help, intervention must be swift and designed to provide healthy, consistent attachments during these critical years. Because prenatal and early exposure to substance abuse can have such devastating effects on brain development, efforts to prevent birth defects caused by drugs and alcohol must also be a priority.

*Recommendation: Expand substance abuse treatment center availability and services.*

- Provide on-site residential child care facilities for children whose mothers are receiving treatment.
- Provide parenting education and training on brain development and early childhood development as part of treatment programs at rehabilitation centers.
- Expand residential treatment facilities into parts of the state with no service availability.
- Streamline access to abuse treatment for pregnant women and teens.

*Recommendation: Develop statewide plan to address FAS/FAE.*

- By March, 1999, in collaboration with tribal providers, state and communities develop a realistic statewide action plan to eliminate FAS births.
- Review state policies regarding substance abusing pregnant women and their partners.
- Expand substance abuse programs for pregnant women so there is immediate response and admission to residential treatment centers.
- Develop a statewide media campaign to educate everyone about FAS.
- Require FAS education in all schools.
- Provide training programs for providers and educators on adapting teaching methods to the learning style of FAS children.

*Recommendation: Provide services for the whole family in cases of family violence.*

- Require domestic violence offenders to receive treatment services in anger management, conflict resolution, mental health, child development, including brain development information.
- Require services be provided to children who are victims of abuse and family violence.

*Recommendation: Child protective services (CPS) workers should be knowledgeable about brain development and the effects of abuse and neglect.*

- Provide training to CPS staff (state and tribal) in early childhood development.
- Require university level work in child development as a condition of hire.
- Form partnerships with early childhood programs to facilitate training, service collaboration and referrals.

*When children need help, intervention must be swift and designed to provide healthy, consistent attachments during these critical years.*

*One of the guiding  
principles to emerge  
from the brain  
research is "Do No  
Harm."*

*Recommendation: Legal system personnel should be knowledgeable about early childhood development, and the effects placement changes and failed reunification have on healthy development.*

- ~• Provide training to judges, attorneys, guardians ad litem, and social workers.
- ~• Require university level work in early childhood development as a condition of hire.
- ~• Change state laws to require out-of-home placements for infants and toddlers to meet criteria for forming healthy attachments and minimize trauma for children.
- ~• Fully fund guardian ad litem programs.
- ~• Create and fund more judicial positions for CPS.
- ~• Require state and tribal collaboration for cases which involve both to minimize total time for out-of-home placement.

*Recommendation: Ensure all policies, practices and laws consider the risks of abuse and neglect during the first three years.*

- ~• Review all policies to make sure they reflect new research about brain and early childhood development.
- ~• Any new policies affecting children should not be approved if they do not include an assessment on the effects of abuse and neglect on early brain development.

*Recommendation: Promote interagency information sharing.*

- ~• Review confidentiality requirements for each program to allow more information sharing.
- ~• Develop a statewide data system to track kids receiving services that includes input from each program they are enrolled in: (child protection, juvenile justice, Medicaid, etc.).

*Recommendation: Provide support to parents with at-risk children.*

- ~• Parenting, conflict resolution, and other related education programs should be required for any parent whose child enters the child protective system.
- ~• Provide secure housing for homeless families.

## **Key Lesson: Primary Prevention**

**Supporting programs and services that promote healthy brain development through primary prevention should be our highest priority.** One of the guiding principles to emerge from the brain research is "Do No Harm." All policies and practices should be geared toward primary prevention, that is, preventing problems from occurring in the first place.

*Recommendation: Promote the importance of prevention through more public awareness.*

- ~• Develop a cost analysis on the benefits of prevention versus treatment.
- ~• Identify model prevention programs and advertise their benefits.

*Recommendation: Require hearing tests for all babies.*

- ~• Newborn screening for hearing is now available and is required by law in 18 states. Alaska should explore a universal newborn screening program at no cost to parents.

*Recommendation: Provide child and brain development information to everyone before they become parents.*

- ~• Require classes to be completed before students graduate from high school.
- ~• Course work should include community service hours at a child care facility, health clinic or other children's service programs.



*Recommendation: Make prevention a priority when creating state and local government budgets.*

- ~• Educate elected officials, policy makers and the public about cost saving benefits and long term investments of prevention programs.
- ~• Require that budgets for prevention programs be the same size as treatment programs. Include judicial, juvenile justice and corrections programs in budget analysis.
- ~• Invest in Head Start until all eligible children are served — this can be in partnership with the federal Head Start Bureau.

## **Key Lesson: Early Intervention**

**Research demonstrates that well designed, intensive and timely intervention programs and services are even more important than previously thought.** Risk is not destiny. The brain has an amazing capacity to overcome early negative experiences and neurological impairments when children have access to quality early intervention services.

*Recommendation: Expand early diagnostic programs to allow all families access to health and developmental screening and services.*

- ~• There should be no waiting lists for services from programs like Infant Learning for any child who is at-risk for developmental delays.
- ~• Set up clinics and programs so all parents can take advantage of screening.

*Recommendation: Provide training and education on early screening and diagnostic techniques.*

- ~• Provide more training opportunities for providers on new research and tools for at-risk children.
- ~• Provide more training for parents on the importance of screening and early intervention.

*Recommendation: Require universal prenatal and neonatal screening for high risk stress indicators.*

- ~• Train providers to screen high risk families.
- ~• Provide referrals for all high risk families.

*Recommendation: All Alaskan families should have access to adequate mental health services.*

- ~• Expand community mental health services so more families can be served without having a DSM-IV diagnosis.
- ~• Expand the capacity of existing programs to provide infant mental health services statewide by providing training to professionals in infant mental health.
- ~• Enlist tribal peoples in designing and delivering tribal controlled and culturally appropriate mental health services.

### **Conference Participant Comment . . .**

*I plan to go back to my community and involve the business community in the support of Early Home Visiting support services. This means communicating the research on brain development to a more diverse audience.*



*Each year, exciting  
new interventions are  
emerging that  
specifically address a  
range of special needs.*

## Key Lesson: Special Needs and Disabilities

**The brain's plasticity means that children with special needs can be helped to overcome or lessen the effects of many impairments.** New insights into brain development have allowed researchers to develop interventions that address neurological impairments such as developmental, hearing and language delays. Each year, exciting new interventions are emerging that specifically address a range of special needs.

*Recommendation: Increase screening initiatives such as universal newborn screening, using the ages and stages questionnaire; to identify problems and enable earlier access to services.*

- ~• Support identification and tracking initiatives to help ensure children with special needs are identified and have services.

*Recommendation: Increase funding and explore ways to serve more children with mild to moderate delays, and those who are at risk for delays.*

- ~• There should be no waiting lists for services to any child at risk for developmental delays.
- ~• Respite care needs to be available to families with children who have special needs.

*Recommendation: Support parents with special needs children through training, education, and community support groups.*

- ~• Provide training opportunities for parents relative to the needs of their child.
- ~• Expand child care opportunities for children with special needs through provider training and financial subsidies.
- ~• Promote community access to all children in natural settings.

*Recommendation: Implement a philosophy of teamwork and collaboration across agencies serving birth to age three children with special needs.*

- ~• Family support providers and medical providers should work together.
- ~• Promote close collaboration between child protective services and family support providers.

## Key Lesson: Programs and Services

**Delivery of services for young children must be timely, appropriate and available during this critical period of development.** When healthy brain development is at-risk due to abuse, neglect, the effects of poverty, or neurological impairments; children need immediate access to programs and services. Because interventions later in life are more costly and less successful, services for children prenatal through age 3, must have a higher priority in planning, funding and delivery.

*Recommendation: Identify model early childhood programs in the state and promote their expansion and development in other communities.*

- ~• Identify what programs are working and how they can be used as models.
- ~• Connect groups from throughout the state to train others.



*Recommendation: Create a clearinghouse for information, services, and planning of services for young children.*

- Require coordination and collaboration for all children's services provided by the state.
- Require that all planning for new services or expansion of existing services be approved through the clearinghouse.

*Recommendation: Develop a philosophy of teamwork and collaboration.*

- Medical providers should consult with family support service providers at the first sign of problems (ILP, Head Start, Healthy Families, school counselors).
- Share training and education opportunities with all providers in the community.
- Re-evaluate referral systems within communities.
- Develop stronger collaboration with hospitals to get information about services, early care and development to parents.
- Create strong links between existing programs through required service coordination.
- Cross-train providers (law, social services, mental health, disabilities, etc).

*Recommendation: Expand early childhood programs through increased funding and support.*

- Write letters to legislators about brain development and importance of services and supports.
- Invite legislators, policy makers, and community representatives to visit preschools, child care facilities, and accompany home visitors.
- Video tape program activities and send to policy makers, tribal councils, native corporations, etc.
- Fully fund established programs before starting new ones.
- Encourage tribal governments, state agencies, voters, and legislators to identify new funding sources for underserved areas using existing program models.

*Recommendation: Expand home-visiting programs for new parents and families.*

- Have universal access to home-visiting through hospitals or other programs for new parents with follow-up support if needed.
- Eliminate waiting lists for people who qualify for existing home-visit programs like Healthy Families programs.
- Find ways to waive requirements such as developmental need, socio-economic guidelines, ethnicity for proven home-visiting services.

*Recommendation: Support parents and families that are enrolled in programs.*

- Develop a common approach to services.
- Co-locate a variety of family support programs in one facility.

#### Conference Participant Comment . . .

*I plan to inform as many people as I can on the importance of the early childhood years, and of providing the highest quality of care. Every adult of voting age must value children as a national resource and be willing to support only those elected representatives who will work on behalf of children and make a financial commitment to making quality care accessible to every family.*



*Tomorrow's  
employees are  
today's children.  
Businesses have a  
vested interest in  
promoting a stable,  
healthy, well-  
trained workforce  
for the future.*

## Key Lesson: Community Support

**Children live and grow in communities. Education, prevention, and early intervention programs for children and families that are community-based have proven to be the most enduring and most effective.**

Enabling communities to have the flexibility and resources they need to create a vision for children, implement action plans, finance their efforts, and evaluate their results deserves community, state and national support.

*Recommendation: Develop action plans in each community specific to early childhood programs, supports, and services.*

- ~• Communities should develop forums that focus on the 0-5 population.
- ~• Existing community needs assessments or action plans should be revised to include information on brain development.
- ~• All communities should develop action plans to promote early growth, development, and quality care.

*Recommendation: Educate the whole community.*

- ~• Make sure translators are available when training is given.
- ~• Include legislators and elected officials in training programs.
- ~• Make training and education programs relevant to community needs.

*Recommendation: Provide community-based services and resources for parents*

- ~• Establish a resource center for parents that may include: lending library of clothes, books, toys and other resources; play groups for children; on-going education programs; health care information and clinics.
- ~• Inventory all community resources for families and develop a hot-line for parents. Use web-sites to advertise community resources.
- ~• Involve Elders in the community to provide support to parents and volunteer time for children's programs.
- ~• Involve neighborhoods, churches, and community school programs in activities.
- ~• Designate a community liaison to connect parents with resources.
- ~• Target funding for community resource centers.
- ~• Plan for community resource centers to be a center for service referral, coordination of resources, and sharing of information on brain development.

## Key Lesson: Work Place/Business Support

**Current brain research lends new information about the importance of promoting healthy learning experiences much earlier and providing support to working parents and families.** Tomorrow's employees are today's children. Businesses have a vested interest in promoting a stable, healthy, well-trained workforce for the future. Traditionally, businesses have been active supporters of education and training for older children. Current information about early brain development lends credibility to the need to support learning at a much earlier age.

*Recommendation: Make life more sane and more liveable for working parents.*

- ~• Encourage government and private business to adopt flexible work hours, job sharing, part-time employment options, and shorter work weeks.
- ~• Promote collaboration and partnerships between state government and unions to model family-friendly practices.
- ~• Make job related family health insurance benefits mandatory.



- ~• Recognize the importance of extended maternity and family leave policies along with job security at every place of employment.
- ~• Extended family leave policies should include new fathers.
- ~• Provide incentives to employees who want to attend parenting classes.
- ~• Provide on-site or near-site child care facilities.
- ~• Allow employees time off to attend events with children and participate in child care activities.
- ~• Extend time off to nursing mothers to feed their children.
- ~• Provide meaningful job training for rural residents.
- ~• Develop options for parents, such as salary set-asides, sabbaticals/leave of absences, who want to take extended leave (1 to 3 years) off to stay at home with their children.
- ~• Have parenting classes at the worksite.

*Recommendation: Create a link between work force development and quality child care.*

- ~• Provide information to all employers on the connection between quality child care and employee/business productivity.
- ~• Ask businesses to adopt and support a child care center or home provider through donations, work-day exchanges, field trips, training fees, and subsidies, etc.
- ~• Identify business leaders for mentoring.
- ~• Encourage businesses to provide on-site child care. Require government to plan on-site child care facilities for all new construction.
- ~• Establish a "Green Star" type program to acknowledge businesses that have family-friendly policies and practices.

## **Key Lesson: Public Policy**

**Children need and deserve public policies and actions that reflect the importance of the early years.** Public policy, children's initiatives, state and national budgets, legal and judicial practices, early education and care programs all influence the early development of children, especially children who are at-risk.

*Recommendation: Make state supported programs and services more responsive and coordinated.*

- ~• Consolidate administration of all state and federally funded or administered programs and services for young children in one setting, such as an Office of Child Development.
- ~• Continue Children's Cabinet activities in all future administrations.

*Recommendation: Report to all Alaskan's annually on the status of young children in the state.*

- ~• Require all future administrations to deliver an annual State of the Child report.
- ~• Publish a Report Card to the Public on the status of children.

*Recommendation: Consider the impacts any new legislation has on young children.*

- ~• Along with fiscal note on budget implications of new legislation, require impact note on effects, positive or negative, to child growth and development.
- ~• Hold elected officials and appointed administrators accountable for their actions.



# APPENDICES



## Steering Committee Members

Alaska Department of Community and Regional Affairs

Patty Rosnel  
Marilyn Webb  
Ruth DeCamp  
Bill Mailer

Alaska Department of Health and Social Services

Michele Hansen  
Lizette Stiehr  
Claudia Shanley

Cathy Sullivan  
Lisa Simono  
Jill Holdren

Alaska Department of Education

Beth Lape  
Gretchen Guess  
Kathi Wineman

The Knowles-Ulmer Children's Cabinet

Shari Paul

Prevention Associates

Bonny Headley

## Conference Sponsors

Alaska Department of Community and Regional Affairs:

Head Start

Child Care Programs

Head Start State Collaboration Project

Alaska Department of Health and Social Services:

Early Intervention/Infant Learning Program

Healthy Families Program

Public Health Nursing

Alaska Department of Education

Education Commission of the States

Charles A. Dana Foundation

The Knowles-Ulmer Children's Cabinet

I Am Your Child Campaign - Alaska

Head Start Quality Center for Training

and Technical Assistance - Prevention Associates

BP Exploration (Alaska) Inc.

Providence Health Systems of Alaska

### Conference Participant Comment . . .

*As a previous classroom teacher, I realize how important it is to offer this kind of perspective—brain research—to classroom teachers no matter what grade level or subject they teach.*



## Training of Trainers

The following conference participants attended a Training of Trainers session at the conference presented by Dorothy Routh. These participants are available to provide training on brain research and its implications on early childhood development to others in their communities and workplaces.

Mary Whitaker, Bethel Community Services  
P.O. Box 2188 Bethel, Alaska 99559  
543-3690

Nicki Shelton, Parents as Teachers  
P.O. Box 101 Hoonah, Alaska 99829  
945-3380

Carla Kelly and Carol Barrier, P.I.C.  
4400 Business Park Blvd., Suite 34  
Anchorage, Alaska 99503  
550-3025

Donna Chaikoff, Anchorage Literacy Project  
1345 Rudakof Circle #104  
Anchorage, Alaska 99508  
337-1981

Cameron Young, REACH  
2810 Peters Lane  
Juneau, Alaska 99801  
463-5712

Barbara Jackson, Focus PWS-ILP  
P.O. Box 671750  
Chugiak, Alaska 99567  
688-0282

Melanie Reif, Center for Community  
700 Katlian, Suite B  
Sitka, Alaska 99835  
747-6960

Ronni Berg, Academy Charter  
115 W. Eagle  
Palmer, Alaska 99645  
465-8623

Alice Walter, HESS/NIU  
620 West 12th  
Juneau, Alaska 99801  
465-8623

Cheryl Howell, Healthy Families  
Jean Kincaid, MSSCA/ILP  
5050 Dunbar Street, Suite A  
Wasilla, Alaska 99654  
376-9312 or 373-1400

Marvella Webster, Chugiak Children's Services  
2100 Foundry Way  
Wasilla, Alaska 99654  
373-7795

Cheryl Keepers, FNSB Child Care Assistance  
P.O. Box 71267  
Fairbanks, Alaska 99707  
459-1474

Kari VanDelden, Norton Sound ILP  
P.O. Box 1012 Nome Alaska 99762  
443-3298

LaVonne Gullickson, CDS Fort Wainwright  
4720 Harvard Circle  
Fairbanks, Alaska 99709  
353-6266

Rebecca Paul, Homer Head Start RurAL CAP  
1266 Ocean Drive  
Homer, Alaska 99603  
235-4322

Healthier Gallatin-Baker, Child Care Connection  
401 W. International Airport Rd., Ste., 27  
Anchorage, Alaska 99507  
563-1966

Theresa Torres, FNSB Option Teen Parenting  
3750 Geist Road  
Fairbanks, Alaska 99709  
479-4452

Marlene Cushing, PHN  
P.O. Box 377  
Petersburg, Alaska 99833  
772-4611

Karin McCullough, T&H Head Start  
P.O. Box 707  
Petersburg, Alaska 99833  
772-4751

LJ Stout, NW Artic Borough  
P.O. Box 51 Kotzebue, Alaska 99752  
442-3274

Cynthia Hull, Child Care Connection  
P.O. Box 240008  
Anchorage, Alaska 99502  
563-2910

Susan Olson, State of Alaska  
145 Main Street Loop, Room #215  
Kenai, Alaska 99611  
283-3643

Loretta Harvey, Kenai Head Start  
P.O. Box 988  
Kenai, Alaska 99669  
283-0707

Julie Wild-Curry, RCPC Healthy Families  
1401 Kellum Street  
Fairbanks, Alaska 99701  
456-2866

Adelle Johnson, YMCA  
1677 Juneau Drive  
Anchorage, Alaska 99501  
696-3929

Monica Acton, State of Alaska PHN  
145 Main Street Loop, Room 215  
Kenai, Alaska 99611  
283-3543

Monica Luther, Seward Life Action ILP  
P.O. Box 1045  
Seward, Alaska 99664  
224-5257

Lois Daubney, State of Alaska PHN  
P.O. Box 810  
Seward, Alaska 99664  
224-5567

Lavonne Dryden, RurAL CAP  
1817 Simeonoff  
Kodiak, Alaska 99615  
486-6954

Angelica Morales, Rainbows End Day Care  
P.O. Box 771  
Unalaska, Alaska 99685  
581-6215

Karen Kallen-Brown, TCC  
122 First Avenue  
Fairbanks, Alaska 99701  
452-8251

Toni Jo Dalman, Juneau School District  
4933 Hummingbird Lane  
Juneau, Alaska 99801  
463-1710

Mary Messner, North Slope Borough PHN  
P.O. Box 1069  
Barrow, Alaska 99723  
852-0270

Dino Allen, Governor's Council on D&SE  
P.O. Box 240249  
Anchorage, Alaska 99524  
269-8990

Zenia Tata, Serenity Reunification CCS  
P.O. Box 20113  
Juneau, Alaska 99801  
463-6142

Mary Weston, ACS  
6224 Geronimo Circle  
Anchorage, Alaska 99504  
384-1517

Alcia Berka, Play-N-Learn  
374 Old Chena Pump Road  
Fairbanks, Alaska 99709  
479-0900



## Training of Trainers, continued

AnneMarie Matheny, FNA Early Head Start  
609 3rd Street  
Fairbanks, Alaska 99701  
451-8814

Carla Cheap, Parents as Teachers  
201 1st Avenue #200  
Fairbanks, Alaska 99701  
451-1005

Pam Christiansen, Anchorage Center for Families  
3745 Community Park Loop, Suite 102  
Anchorage, Alaska 99508  
276-4994

Carol Noddings Johnson, Program for Infants and Children  
4400 Business Park Blvd.  
Anchorage, Alaska 99503  
550-3031

Patty Meritt, UAF  
510 2nd Avenue  
Fairbanks, Alaska 99701  
474-5503

Joan Mangrum, Mangrum's Consulting Services  
1330 Atigun Drive  
North Pole, Alaska 99705  
488-0820

Bonnie Bently, Home Health Center PHN  
195 Bunnell Avenue, Suite C  
Homer, Alaska 99603  
770-8857

Darla Brown, Upper Tanana Head Start  
P.O. Box 459  
Tok, Alaska 99780  
883-5159

Valarie Larson, BBNA  
P.O. Box 310  
Dillingham, Alaska 99576  
842-4059

Nancy Smith-Earle,  
Joy Child Development Center  
10111 Eagle River Loop Road,  
Eagle River, Alaska 99577  
694-2755

Bobbi Figdor, REACH - ILP  
Box 612  
Haines, Alaska 766-2750

Laurie Hamberger, Community Connections  
P.O. Box 9586  
Ketchikan, Alaska 99901  
225-5396

Shirley Harris, Early Learning  
P.O. Box 252  
Klawock, Alaska 99925  
755-2220

Martha Taylor, AK Family Child Care Assoc.  
5565 Chilkoot Court  
Anchorage, Alaska 99504  
337-6787

Diane Dishman, USAF Family Child Care  
21344 B Orange Ave.  
Elemendorf AFB, Alaska 99506  
753-8338

John Hayden, LYSD  
50 School Street  
Emmonak, Alaska 99581  
949-1248

Nancy Cavanaugh, Sitak PH  
210 Moller Drive  
Sitka, Alaska 99835  
747-3255

Jennifer Moore and Elizabeth O'Leary, Healthy Families-Juneau  
520 Harris Street  
Juneau, Alaska 99801  
463-6137

Jacqueline Tagaban and Sue Oliphant, Tlingit and Haida Head Start  
320 W. Willoughby, Suite 300  
Juneau, Alaska 99801  
463-7152

### Conference Participant Comment . . .

*Though I came (to the conference) in a professional context, I think I will take home many ideas from a parental point of view. I have learned that I need to step back more often and let my kids be the leader. The conference hrs also really instilled a desire in me to volunteer in different ways. I don't know if my busy schedule will allow it, but I'd like to donate time at the hospital to hold at-risk infants who may not otherwise get much contact in the early months.*



**HEB**

**349**

**HFIN**

**FILE**

(11)

# HOUSE COMMITTEE REPORT

Date Referred to Committee: March 15, 2000

FURTHER REFERRALS:

Date of Committee Action: 4/5/00

The FINANCE Committee considered:

HB 349

HOUSE BILL NO. 349

FISH AND GAME/REFUGES/HABITAT & USE AREAS

"An Act relating to powers of the Board of Game, means of access for hunting, trapping, and fishing, the definition of 'means' and 'methods,' and hunting safety education and game conservation education programs; relating to the purposes of game refuges, fish and game critical habitat areas, and public use areas."

recommends it be replaced with the following committee substitute CS HB 349 (Fin)  the same title  a new title

additional referral to \_\_\_\_\_ Committee  
 attached amendment(s)

ADOPTS: \_\_\_\_\_ Letter of Intent

ATTACHES NEW FISCAL NOTE(s): (Dept) \_\_\_\_\_ APPROVES PREVIOUS: (Dept/Date) \_\_\_\_\_

fiscal note(s) \_\_\_\_\_  fiscal note(s) \_\_\_\_\_

zero fiscal note(s) \_\_\_\_\_  zero fiscal note(s) DNR 3-15-00

SIGNING WITH RECOMMENDATIONS	DP	DNP	NR	AM
<i>Gene Herrin</i>	X			
<i>Glen Hurd</i>	X			
<i>John L. Dancy</i>			X	
<i>W. B. ...</i>			X	
<i>Herb L. ...</i>			X	
<i>W. K. Williams</i>			X	
<i>Gail Phillips</i>	✓			
<i>[Signature]</i>	X			

CHAIR'S SIGNATURE *Gene Herrin* *Glen Hurd*

(H) Publish Date: 3/15/00

**STATE OF ALASKA  
 2000 LEGISLATIVE SESSION**

Revision Date/Time: \_\_\_\_\_ Dept Affected: Natural Resources  
 Title: FISH AND GAME/REFUGES/HABITAT BRU: Minerals, Land & Water Development  
           & USE AREAS Component: Claims, Permits and Leases  
 Sponsor: Rep. MASEK  
 Requestor: (H) RES Component No 2460

Expenditures/Revenues (Thousands of Dollars)  
 Note: Amounts do not include inflation unless otherwise noted below.

OPERATING EXPENDITURES	FY2001	FY2002	FY2003	FY2004	FY2005	FY2006
PERSONAL SERVICES						
TRAVEL						
CONTRACTUAL						
SUPPLIES						
EQUIPMENT						
LAND & STRUCTURES						
GRANTS & CLAIMS						
MISCELLANEOUS						
<b>TOTAL OPERATING</b>	0.0	0.0	0.0	0.0	0.0	0.0
<b>CAPITAL EXPENDITURES</b>	0.0	0.0	0.0	0.0	0.0	0.0
<b>CHANGE IN REVENUES (fund code)</b>	0.0	0.0	0.0	0.0	0.0	0.0

**FUND SOURCE** (Thousands of Dollars)

1002 Federal Receipts						
1003 GF Match						
1004 GF						
1005 GF/Program Receipts						
1037 GF/Mental Health						
Other (Specify Type)						
<b>TOTAL</b>	0.0	0.0	0.0	0.0	0.0	0.0

Estimate of any current year (FY2000) cost: \$ \_\_\_\_\_ n/a

**POSITIONS**

FULL-TIME	0	0	0	0	0	0
PART-TIME	0	0	0	0	0	0
TEMPORARY	0	0	0	0	0	0

**ANALYSIS:** (Attach a separate page if necessary)

No fiscal impacts are anticipated from this legislation as existing staff currently deals with access issues and it is not anticipated that approval of this legislation will significantly add to the present workloads.

Prepared by: Robert M. Loeffler *[Signature]* Phone: 907-269-8625  
 Division: Mining, Land and Water Date: 01-Mar-00  
 Approved by Commissioner: John Shively *[Signature]* Date: 01-Mar-00  
 Agency: Natural Resources *[Signature]*

**PREPARER TO PROVIDE ALL DISTRIBUTION COPIES TO GOVERNOR'S LEGISLATIVE OFFICE**  
**COMMITTEE COPY** For further distribution information call the Governor's Legislative Office

Delete Sec 15-19  
Amend on page 3

**CS FOR HOUSE BILL NO. 349(FIN)**

**IN THE LEGISLATURE OF THE STATE OF ALASKA**

**TWENTY-FIRST LEGISLATURE - SECOND SESSION**

**BY THE HOUSE FINANCE COMMITTEE**

Offered:  
Referred:

Sponsor(s): **REPRESENTATIVES MASEK, Dyson, Harris**

**A BILL**

**FOR AN ACT ENTITLED**

1 "An Act relating to the Board of Game, means of access for hunting, trapping,  
2 and fishing, the definition of 'means' and 'methods,' and hunting safety education  
3 and wildlife conservation education programs; and relating to the purposes of  
4 game refuges, fish and game critical habitat areas, and public use areas."

5 **BE IT ENACTED BY THE LEGISLATURE OF THE STATE OF ALASKA:**

6 \* Section 1. AS 16.05.221(b) is amended to read:

7 (b) For purposes of the conservation, [AND] development, and maintenance  
8 of the game resources of the state, there is created a Board of Game composed of  
9 seven members appointed by the governor, subject to confirmation by a majority of  
10 the members of the legislature in joint session. The governor shall appoint each  
11 member on the basis of interest in public affairs, good judgment, knowledge, and  
12 ability in the field of action of the board, and with a view to providing diversity of  
13 interest and points of view in the membership. The appointed members shall be  
14 residents of the state and shall be appointed without regard to political affiliation or

1 geographical location of residence. The commissioner is not a member of the Board  
2 of Game, but shall be ex officio secretary.

3 \* Sec. 2. AS 16.05.255(a) is amended to read:

4 (a) The Board of Game may adopt regulations it considers advisable in  
5 accordance with AS 44.62 (Administrative Procedure Act) for

6 (1) setting apart game reserve areas, refuges, and sanctuaries in the  
7 water or on the land of the state over which it has jurisdiction, subject to the approval  
8 of the legislature;

9 (2) establishing open and closed seasons and areas for the taking of  
10 game;

11 (3) establishing the means and methods employed in the pursuit,  
12 capture, taking, and transport of game, including regulations, consistent with resource  
13 conservation, [AND] development, and maintenance goals, establishing means and  
14 methods that may be employed by persons with physical disabilities;

15 (4) setting quotas, bag limits, harvest levels, and sex, age, and size  
16 limitations on the taking of game;

17 (5) classifying game as game birds, song birds, big game animals, fur  
18 bearing animals, predators, or other categories;

19 (6) methods, means, and harvest levels necessary to control predation  
20 and competition among game in the state;

21 (7) watershed and habitat improvement, and management, conservation,  
22 protection, use, disposal, propagation, and stocking of game;

23 (8) prohibiting the live capture, possession, transport, or release of  
24 native or exotic game or their eggs;

25 (9) establishing the times and dates during which the issuance of game  
26 licenses, permits, and registrations and the transfer of permits and registrations between  
27 registration areas and game management units or subunits are [IS] allowed;

28 (10) regulating sport hunting and subsistence hunting as needed for the  
29 conservation, development, maintenance, and continued utilization of game;

30 (11) taking game to ensure public safety.

31 \* Sec. 3. AS 16.05 is amended by adding a new section to article 6 to read:

1  
2  
3  
4  
5  
6  
7  
8  
9  
10  
11  
12  
13  
14  
15  
16  
17  
18  
19  
20  
21  
22  
23  
24  
25  
26  
27  
28  
29  
30  
31

**Sec. 16.05.911. Regulation of the means of access for hunting, trapping, and fishing.** Notwithstanding other provisions of law, traditional means of access for purposes of hunting, trapping, or noncommercial fishing may not be restricted except as

(1) specifically authorized by act of the legislature;

~~Delete~~ (2) specifically authorized by a regulation adopted by the Board of Fisheries or the Board of Game, provided that a local fish and game advisory committee with jurisdiction over the area where the regulation would apply has not objected in writing to the adoption of the regulation;

(3) necessary to maintain sustained yield management of a fish stock or game population or to protect or enhance habitat that is essential to the maintenance of sustained yield management of a fish stock or game population;

(4) necessary to achieve the statutory purpose of an area established by law to protect a fish stock or game population or the habitat of a fish stock or game population, such as a refuge, sanctuary, range, or critical habitat area;

(5) necessary to achieve temporary protection for a fish stock or game population or the habitat of a fish stock or game population for a period of less than one year in a specifically identified area; or

(6) provided by a law or by a regulation adopted by the Board of Fisheries or the Board of Game that is applicable to a refuge, sanctuary, range, critical habitat area, controlled-use area, or conservation area and that is in effect on the effective date of this section.

\* **Sec. 4.** AS 16.05.940 is amended by adding a new paragraph to read:

(37) "means," "means and methods," and "methods" mean the tools, implements, devices, substances, or vehicles employed to take fish or game and the use of tools, implements, devices, substances, or vehicles to take fish or game.

\* **Sec. 5.** AS 16.20.020 is repealed and reenacted to read:

**Sec. 16.20.020. Purposes.** The purposes of AS 16.20.010 - 16.20.080 are to

(1) protect, enhance, and preserve fish and game habitat and the fish and game that use the habitat;

(2) consistent with (1) of this section, protect, enhance, and preserve

1 traditional public uses of fish and game, including fishing, hunting, trapping, viewing,  
2 and photography;

3 (3) provide for additional public uses of the refuges that are consistent  
4 with this section.

5 \* Sec. 6. AS 16.20.500 is amended to read:

6 **Sec. 16.20.500. Purpose.** The purpose of AS 16.20.500 - 16.20.690 is to  
7 protect and preserve habitat areas especially crucial to the perpetuation of fish and  
8 wildlife and traditional uses of fish and wildlife [,] and to restrict all other uses not  
9 compatible with that primary purpose.

10 \* Sec. 7. AS 16.55.010 is amended to read:

11 **Sec. 16.55.010. Duties of department.** The Department of Fish and Game  
12 shall

13 (1) assist in developing and coordinating activities involving private  
14 organizations relating to shooting and firearms;

15 (2) develop [A] hunting safety education and wildlife conservation  
16 education programs and cooperate with private nonprofit organizations  
17 established for the primary purpose of preserving hunting, fishing, and trapping  
18 and with other organizations to expand these education programs [PROGRAM]  
19 for the people of the state;

20 (3) establish a program to assist in the planning, construction, and  
21 operation of public shooting ranges.

22 \* Sec. 8. AS 16.55.020 is amended to read:

23 **Sec. 16.55.020. Powers of department.** In the discharge of its duties under  
24 AS 16.55.010, the Department of Fish and Game may

25 (1) provide, through a departmental coordinator, technical assistance to  
26 municipalities, communities, and organizations;

27 (2) make grants to municipalities and organizations as provided in  
28 AS 16.55.030 to

29 (A) [TO] develop and operate public shooting ranges and  
30 facilities; [AND]

31 (B) [TO] operate programs involving education and training in

1 the safe use of firearms;

2 (C) assist private nonprofit organizations established for the  
3 primary purpose of preserving hunting, fishing, and trapping in providing  
4 hunting safety education; and

5 (D) provide wildlife conservation education programs.

6 \* Sec. 9. AS 16.55.030 is amended to read:

7 Sec. 16.55.030. Grants. Subject to legislative appropriation for the purpose,  
8 the Department of Fish and Game may make grants in accordance with  
9 AS 16.55.020(2) to (1) municipalities and private nonprofit organizations established  
10 for the primary purpose of preserving hunting, fishing, and trapping to provide  
11 hunting safety education; and (2) municipalities and private nonprofit  
12 organizations to provide wildlife conservation education [IN ACCORDANCE  
13 WITH AS 16.55.020(2)]. The department may impose reasonable restrictions on the  
14 use of funds granted under this section.

15 \* Sec. 10. AS 41.23.010 is amended to read:

16 Sec. 41.23.010. Purpose of AS 41.23.010 - 41.23.040. The purpose of  
17 AS 41.23.010 - 41.23.040 is to establish the area described in AS 41.23.040 as the  
18 Nelchina Public Use Area. The Nelchina Public Use Area is established to

19 (1) protect, develop, and maintain fish and wildlife habitat and the fish  
20 and wildlife that use the habitat [, PARTICULARLY CARIBOU CALVING  
21 AREAS, TRUMPETER SWAN NESTING AREAS, AND OTHER IMPORTANT  
22 HABITATS FOR MOOSE, DALL SHEEP, AND BROWN BEAR SO THAT  
23 TRADITIONAL PUBLIC USES OF FISH AND WILDLIFE POPULATIONS MAY  
24 CONTINUE];

25 (2) protect, [PERPETUATE AND] enhance, and preserve traditional  
26 public uses of fish and wildlife. [PUBLIC ENJOYMENT OF FISH AND WILDLIFE  
27 AND THEIR HABITAT] including fishing, hunting, trapping, viewing, and  
28 photography;

29 (3) perpetuate and enhance general public recreation in a quality  
30 environment;

31 (4) [PERPETUATE AND ENHANCE ADDITIONAL PUBLIC USES