

ALASKA LEGISLATURE

1852

HOUSE and SENATE FINANCE COMMITTEE FILES, 1999 - 2000

Division of Mental Health & Developmental Disabilities

Karl R. Brimmer
Division Director



Mission

To plan with and provide appropriate prevention, treatment, and support for families impacted by mental disorders or developmental disabilities, while maximizing self-determination.

Advocacy and Public Education

Both sections of the Division, Mental Health and Developmental Disabilities, provide grant funding for advocacy and public education agencies to support consumers and their families and to educate the public concerning mental health and developmental disabilities issues.

Community Mental Health Program

The Community Mental Health Program provides grant or contract funds to local nonprofit or government agencies to provide an array of outpatient and residential community mental health services. The services provided by these agencies include: emergency out-patient and residential crisis/respite services, outpatient and residential treatment and rehabilitation services for adults with severe mental illness and for youth who are severely emotionally disturbed, and outpatient treatment services for adults and youth with emotional disturbances.

Alaska Youth Initiative (AYI)

AYI is a joint effort of the Department of Health and Social Services Divisions of Mental Health and Developmental Disabilities and Family and Youth Services, and the Department of Education. The goals of AYI are to prevent children from being placed in facilities out-of-state and to reduce institutionalization of children with severe emotional disturbances. These youth are characterized by a history of multiple failed placements and severe mental, emotional, and behavioral disorders. Funds have been committed to

AYI by all three agencies involved. These funds are combined to fund highly individualized services that are based on each individual's unique needs.

Designated Evaluation and Treatment

Limited fee-for-service funding on behalf of indigent patients is provided to local hospitals for inpatient psychiatric evaluation and treatment services to help maintain local treatment capacity.

Mental Health Housing

The Division pursues, on behalf of nonprofit agencies, federal grants for housing for adults experiencing severe mental illnesses. The Division also provides technical assistance in helping agencies apply for, review, and renew mental health housing grants.

Alaska Psychiatric Institute

Alaska Psychiatric Institute (API) is the only state-owned and operated psychiatric hospital in Alaska. In concert with the Department's stated purpose of promoting the health and well-being of Alaskans, API's mission is to provide an accessible and appropriate array of quality, tertiary, inpatient psychiatric services 7 days a week, 24 hours a day, for the evaluation, diagnosis, care and treatment of adults and adolescents with severe and persistent psychiatric disorders or seriously maladaptive behaviors.

"Tertiary care" has been defined to mean both acute and short term care for patients whose needs are so great or complex that an appropriate level of care cannot be provided in their community, and longer term care for highly complex or high-security needs patients. A special medium security unit evaluates and treats forensic patients who need services regarding competency to stand trial or who cannot be treated successfully in a correctional setting.

Developmentally Disabled (DD) Individualized Services

Developmental Disabilities services provided under the rubric of individualized service might include one or more of the services listed below. A service may be offered that is not listed below, depending on the individual's needs. However, an individual is in no way limited to just these services and, in fact, may design his or her own services to meet their unique needs.

- ***Home & Community-Based Waivers Program (H&CBW)***: Allows people to receive services in their homes for children with medically complex conditions and adults with physical disabilities.
- ***In-Home Support***: Designed to help individuals who experience a disability to overcome or cope with functional limitations.
- ***Shared Care***: Two families share the responsibility of caring for an individual with

a disability, allowing natural families to keep family members at home at least part of the time.

- **Foster Care**: Out-of-home care with a qualified adult or family
- **Adult Assisted Living**: Provides meals, personal assistance, and assistance with activities of daily living for adults in a home-like environment.
- **Group Homes**: Out-of-home adult care in a group setting with two to four individuals living together.

Other services include vocational training, respite care, and case management.

Division Contacts

Karl Brimner, Director
P.O. Box 110620
Juneau, Alaska 99811-0620
Phone (907) 465-3370/Fax 465-2668
TDD/TTY (907) 465-2225

Northern Regional Office
751 Old Richardson Highway, Suite 123
Fairbanks, Alaska 99701
Phone (907) 451-5045/Fax 451-5046
Toll Free (800) 770-1672
TDD/TTY (907) 451-5093

Alaska Psychiatric Institute
Randall Burns, Director
2900 Providence Drive
Anchorage, Alaska 99508-4677
Phone (907) 269-7100/Fax 269-7128
TDD/TTY (907) 561-8809

Anchorage Regional Office
701 East Tudor Road, Suite 260
P.O. Box 240249
Anchorage, Alaska 99524-0249
Phone (907) 269-3600/Fax 269-3623
Toll Free (800) 770-3930
TDD/TTY (907) 269-3624

Southcentral Regional Office
851 E. Westpoint Drive, Suite 310
Wasilla, Alaska 99654
Phone (907) 352-6301/Fax 352-6330
Toll Free (800) 755-0712
TDD/TTY (907) 352-6333

Central Office

350 Main Street, Room 214
P.O. Box 110620
Juneau, Alaska 99811-0620
Phone (907) 465-3370
Toll Free (800) 465-4828
Fax (907) 465-2557 or 2668

Leonard Abel

Mental Health Services Program
Administrator
P.O. Box 110620
Juneau, Alaska 99811-0620
Phone (907) 465-3370/Fax 465-2668

Connie Anderson

Developmental Disabilities Program
Administrator
P.O. Box 110620
Juneau, Alaska 99811-0620
Phone (907) 465-3370/Fax 465-2668
TDD/TTY (907) 465-4827

Carol Taplin

Administrative Manager
P.O. Box 110620
Juneau, Alaska 99811-0620
Phone (907) 465-3370/Fax 465-5864

Division of Public Assistance

Jim Nordlund
Division Director



Mission

*We provide opportunities for Alaskans
in need to achieve an improved quality of life.*

Alaska Temporary Assistance Program (ATAP)

Temporary Assistance provides families with needy children with economic assistance and supports services needed to achieve self-sufficiency. Temporary Assistance promotes personal responsibility and assists participants to quickly find paid employment. Benefits assist very low income, low assets families with their most basic needs: shelter, clothing, transportation, and food. In partnership with the Department of Education, Labor, and Community and Regional Affairs, as well as community organizations and governments, the Department of Health and Social Services uses Temporary Assistance to reduce welfare dependency through employment. Central to this effort are Welfare-to-Work Services.

Welfare-to-Work Services

The array of services intended to help recipients into the workforce are referred to as Welfare-to-Work services, which will provide job search, job placement, and other supportive services to Temporary Assistance recipients in order to promote early paid employment and family self-sufficiency. Welfare-to-Work services include:

- Monitored work activities for all Temporary Assistance families with participation requirements. Paid employment is the goal. The primary activities to empower individuals in gaining paid employment are un-front job search, vocation and employment education, literacy, and basic life skills. In communities where paid employment opportunities are limited, community service work is one way families can meet the requirement to participate in a work activity. The Departments of Labor and Health and Social Services work

in partnership to provide services to Temporary Assistance families. Community agencies and businesses provide some services through contracts, grants, or individual agreements.

- Recognizing the importance of community ownership, the Division has increased community-based work services grants and contracts. Over 30 contracts, blending federal and state funds, are issued for post-employment, adult basic education, and various forms of case management.
- Federally funded job placement is available through the Food Stamp Employment and Training program. The Departments of Labor and Health and Social Services work in partnership to move Food Stamp recipients into paid employment through Employment and Training (E&T).

Child Care Services

Providing access to childcare is a key component in the state's efforts to move more parents into full-time jobs and more families toward self-sufficiency. The Child Care Development Fund is a federal and State funded block grant which provides childcare assistance on a sliding scale based on family size and income. This grant is available for families in welfare-to-work activities; families moving off of welfare due to increased earnings; and working families whose low income places them at risk of requiring welfare.

The Department of Health and Social Services is working in partnership with the Department of Community and Regional Affairs to coordinate these funds with the State funded Day Care Assistance Program. The program seamlessly supports working families along the path to self-sufficiency.

Food Stamp Program

The Food Stamp Program helps low-income households maintain adequate nutrition. Food Stamp benefits are used to purchase food products from more than 500 retail grocery stores throughout Alaska. The Food Stamp Program is operated by states nationwide. Benefits are 100% federally funded by the U.S. Department of Agriculture. The state and federal government equally share the administrative cost of the program. Congress recently re-authorized the current program through the year 2002.

Adult Public Assistance (APA)

Adult Public Assistance (APA) is a state funded program that provides cash assistance to needy aged, blind, and disabled persons who meet certain income and resource requirements. Adult Public Assistance is a supplement for Supplemental Security Income (SSI) recipients. Individuals may be covered under the Interim Assistance

(IA) program while the SSI or the Disability Determination Unit (DDU) reviews their medical records. If the disability is approved, an applicant's Interim Assistance closes and Adult Public Assistance opens.

Energy Assistance Program (EAP)

The Energy Assistance Program helps low-income households with home heating expenses. Both homeowners and renters may apply for this program which is funded by the federal Low-Income Home Energy Assistance Program (LIHEAP) Block Grant. Eligibility for the program is based upon a household's income, before deductions, the calendar month prior to the month a person applies. An average monthly income based on the prior 12-month period is used for self-employed and seasonal occupations.

General Relief Assistance (GRA)

Alaska's General Relief Assistance (GRA) program provides for the most basic needs of many Alaskans without the personal resources to meet an emergency need and who are not eligible for assistance through other assistance programs offered by the state. GRA is designed to meet the immediate, basic needs of Alaskans facing extreme financial crisis. Examples of basic needs include shelter and utilities. Under limited circumstances, GRA can provide assistance for clothing, food for persons not eligible to receive food stamps, limited medical care, and a limited amount of funding is available to provide burial for the indigent.

Alaska Longevity Bonus Hold Harmless (ALBHH)

This is a state program for the aged. It replaces public assistance benefits lost due to receipt of Alaska Longevity Bonus payments.

Permanent Fund Dividend Hold Harmless Program

The Permanent Fund Dividend Hold Harmless Program replaces Public Assistance benefits which have been lost due to the receipt of Permanent Fund Dividend(s).

Quality Assessment

The purpose of the Division's Quality Assessment Unit is to measure the performance of welfare programs. For the Medicaid and Food Stamps programs, the respective federal agency mandates the performance assessment and dictates how and what will be measured. For the Alaska Temporary Assistance Program, funded by the federal Temporary Assistance for Needy Families (TANF) program, the Division has responsibility to assess the performance of the new program. There are two primary goals in this assessment: assess the effectiveness of policy and procedures to support clients' efforts to achieve self-sufficiency and to verify the accuracy of the welfare payment.

Fraud Control

The Division uses a variety of methods to deter welfare fraud. Rigorous application screening and client interviews, coupled with computer matching to validate assets and work history, help ensure only eligible applicants get assistance. A 13-member Fraud Control Unit investigates cases suspected of applicant or recipient fraud. The most serious cases are referred to the Department of Law for possible criminal prosecution. When investigations confirm welfare fraud, individuals are disqualified from the program and overpayment must be repaid.

Division Contacts

Jim Nordlund, Director
350 Main Street, Room 309
P.O. Box 110640
Juneau, Alaska 99811-0640
Phone (907) 465-2680/Fax 465-5154
TDD/TTY (907) 465-3347

Chris Ashenbrenner, Chief
Policy & Program Development
350 Main Street, Room 317
P.O. Box 110640
Juneau, Alaska 99811-0640
Phone (907) 465-2339/Fax 465-5154

Ellie Fitzgarrald
Program Services Officer
350 Main Street, Room 317
P.O. Box 110640
Juneau, Alaska 99811-0640
Phone (907) 465-5847/Fax 465-5154

Debra Craig, Program Officer
Work Services
350 Main Street, Room 310
P.O. Box 110640
Juneau, Alaska 99811-0640
Phone (907) 465-5843/Fax 465-5154

Rebecca Eames, Chief
Field Operations
3601 C Street, Suite 434
P.O. Box 240249
Anchorage, Alaska 99524-0249
Phone (907) 269-7880/Fax 561-1745

Rudder Hulce, Manager
Coast Regional Office
3601 C Street, Suite 510
P.O. Box 240249
Anchorage, Alaska 99524-0249
Phone (907) 269-8980/Fax 561-0767

Ted Sponsel, Manager
Northern Regional Office
675 7th Avenue, Section E
Fairbanks, Alaska 99701
Phone (907) 451-2854/Fax 451-2923
TDD/TTY (907) 269-6530

Bill Field, Manager
Central Region B
400 Gambell Street, Suite 303
Anchorage, Alaska 99501
Phone (907) 269-6482/Fax 269-6440

Division Contacts

Jim Dalman, Chief, Program Support
Food Stamp Program
400 W. Willoughby, Suite 302
Juneau, Alaska 99801-1731
Phone (907) 465-3360/Fax 465-3651

Manager, Vacant
Southeastern Regional Office
2030 Sea Level Drive, Suite 301
Ketchikan, Alaska 99901
Phone (907) 225-2135/Fax 247-2135

Mary Riggen-Ver, Program Coordinator
Energy Assistance Program
400 W. Willoughby, Suite 302
Juneau, Alaska 99801-1731
Phone (907) 465-3066/Fax 465-3319

Ivic Hall, Program Manager
Fraud Control Unit
619 E. Ship Creek Avenue, #220
Anchorage, Alaska 99501
Phone (907) 277-3338/Fax 277-3339

Val Horner, Program Officer
Welfare-to-Work Program
400 W. Willoughby, Suite 302
P.O. Box 110640
Juneau, Alaska 99811-0640
Phone (907) 465-4952/Fax 465-3651

Division of Public Health

Peter Nakamura, MD, MPH
Division Director



Mission

To use the best available scientific knowledge to set public health policy and ensure provision of services which guarantee the health of all Alaskans, so that they can live full lives with optimum well-being.

Bureau of Vital Statistics

The Bureau records, safeguards, and certifies copies of records of vital events (births, adoptions, marriages, divorces, and deaths) for residents of and visitors to Alaska. The Bureau also compiles, analyzes, and publishes statistical data obtained from records of vital events.

Community Health and Emergency Medical Service Certification and Licensing

This Section provides certification for Emergency Medical Technicians (EMTs), EMT instructors, and air and land ambulance services. Staff directs overall planning, education, and coordination for comprehensive statewide emergency medical services and trauma care systems, rural and primary health care services, and health promotion and prevention efforts statewide. Grants and consultation for community health aide training and community based health promotion programs are provided. The Section also conducts behavioral risk factor surveys and health professional and student recruitment and placement activities.

Medicaid Services Unit

This Unit directs statewide outreach and access to services to ensure the maximum numbers of income eligible children and pregnant women are enrolled in the Medicaid program and receiving needed services. Staff serves as the liaison between the Division of Medical Assistance and program staff within the Division of Public Health providing services financed by the Medicaid Program. The Public Health

Improvement process initiative is directed from this unit, in coordination with the Director's Office.

Epidemiology

The Section of Epidemiology is responsible for surveillance, epidemic response, investigation, and control of acute and chronic diseases and injuries through defining causal factors, identifying and directing control measures, and providing a basis for policy development, program planning and evaluation. Epidemiology has long been considered the essential science of public health, and a strong assessment and surveillance system based on epidemiologic principles is a fundamental part of a technically competent public health activity.

Maternal, Child and Family Health

This Section provides leadership and support at the state and local level, working in collaboration with other government and private agencies, to develop comprehensive systems of care for all women and children in the state, with a focus on the most vulnerable populations. Priority is given to activities that assist communities in developing service capacity at the local level. Community-based grantees and contractors deliver nearly all services provided by the Section. The Women, Infants, and Children (WIC) Program, provides food and nutrition education programs for at risk, low income women and young children. The Infant Learning Program is for young children at risk of developing or already experiencing developmental disabilities and their families. Both programs serve thousands of Alaskan families every month. Healthy Families Alaska, a child abuse and neglect prevention program, Family Planning and Pregnancy Support services for low income women and teens, the Alaska Family Violence Project and Adolescent Health are other programs administered by the Section targeted to serve high risk groups. Ongoing educational efforts, such as the Back-to-Sleep campaign to prevent Sudden Infant Death Syndrome (SIDS) deaths, utilize the latest scientific knowledge to assist in ensuring that all Alaskan women and children are as safe and healthy as possible.

Public Health Nursing

Public Health Nurses are the "public health safety net" in Alaska. Their goals are to improve the health and well being of Alaskans and reduce health care costs through early detection and prevention of health problems. Direct services are provided to individuals, families, and communities through four regional offices, 20 health centers, and itinerant services to 250 communities. Services to individuals and families include: immunization; family planning; pregnancy testing; prenatal monitoring and post-partum home visits; well child exams; Medicaid outreach, screening, and referral; specialty clinics; support of Section of Maternal, Child, and Family Health Programs; tuberculosis screening, surveillance, and follow-up; STD/HIV testing and counseling. Services to communities include: community

assessment; health promotion and education; communicable disease investigation; and development of collaborative relationships with other agencies at the community, regional, and State level in matters of local public health significance. Fees for public health nursing services are charged only for adult services, based on a sliding fee scale. No one is denied service due to an inability to pay.

Medical Examiner

The State Medical Examiner's (SME) office conducts autopsies and cause of death investigations for criminal, medically unexplained, accidental, and unattended deaths. The SME also provides testimony in criminal cases, and provides training for death scene investigation to coroners, State Troopers, and local police.

State Laboratories

The State Public Health Laboratories provide tests aimed at detecting disease patterns and trends to assess a community's well-being. The laboratories also provide necessary specialized services that are otherwise not available. Public health laboratories provide essential services for disease surveillance and prevention, as well as recognition of new and re-emerging infectious disease agents that threaten the public health and welfare. Public health laboratories are a critical resource in the investigation of disease outbreaks and efforts to bring them under control.

Division Contacts

Peter M. Nakamura, MD, MPH, Director
350 Main Street, Room 503
P.O. Box 110610
Juneau, Alaska 99811-0610
Phone (907) 465-3090/Fax 586-1877

Al Zangri, Chief
Bureau of Vital Statistics
350 Main Street, Room 144
P.O. Box 110675
Juneau, Alaska 99811-0675
Phone (907) 465-3392/Fax 465-3618

Karen Pearson, Deputy Director
350 Main Street, Room 503
P.O. Box 110610
Juneau, Alaska 99811-0610
Phone (907) 465-3090/Fax 586-1877

Gregory V. Hayes, Dr. Ph.D.
Chief, Laboratories
P.O. Box 196093
Anchorage, Alaska 99509-6093
Phone (907) 269-7942/Fax 269-6290

Brad Whistler, Chief
Medicaid Services Unit
350 Main Street, Room 514
P.O. Box 110610
Juneau, Alaska 99811-0610
Phone (907) 465-2745/Fax 465-2898

Pam Muth, Chief
Maternal, Child & Family Health
1231 Gambell Street
Anchorage, Alaska 99501-4267
Phone (907) 269-3400 Fax 269-3414

Mark Johnson, Chief
Community Health & Emergency Medical
Services
P.O. Box 110616
Juneau, Alaska 99811-0616
Phone (907) 465-3027/Fax 465-4101

Dr. John Middaugh, Chief
Section of Epidemiology
3601 C Street, Suite 540
P.O. Box 240249
Anchorage, Alaska 99524-0249
Phone (907) 269-8000/Fax 561-7802

Nancy Davis, Chief
Public Health Nursing
350 Main Street, Suite 528
P.O. Box 110611
Juneau, Alaska 99811-0611
Phone (907) 465-3150/Fax 465-2898

Dr. Michael Propst
State Medical Examiner
5700 E. Tudor Road
Anchorage, Alaska 99508
Phone (907) 269-5090/Fax 269-5069

CORRECTION

THE FOLLOWING DOCUMENT(S)
HAVE BEEN REFILMED TO
ASSURE LEGIBILITY OR PAGINATION



Rev. 6/98

Central Microfilm Services
Department of Education & Early Development
State of Alaska

This publication was produced by the Department of Health and Social Services, Office of the Commissioner, at a cost of \$1.61 per copy.

CORRECTION

THE FOLLOWING DOCUMENT(S)
HAVE BEEN REFILMED TO
ASSURE LEGIBILITY OR PAGINATION



Rev. 6/98

Central Microfilm Services
Department of Education & Early Development
State of Alaska

This publication was produced by the Department of Health and Social Services, Office of the Commissioner, at a cost of \$1.61 per copy.

*The State of Alaska Department of Health & Social Services
is an Equal Opportunity Employer and is in compliance with
the Americans with Disabilities Act.*

For copies of this publication, please contact:

Office of the Commissioner
Department of Health & Social Services
350 Main Street, Room 229
P.O. Box 110601
Juneau, Alaska 99811-0601
Phone (907) 465-3030/Fax 465-3068

OR

Public Information Office
3601 C Street, Suite 578
P.O. Box 240249
Anchorage, Alaska 99524-0249
Phone (907) 269-7801/Fax 561-1308



The Department's logo was designed by Alaskan artist Jane Terzis. It depicts a polar view of the world and Alaska's circumpolar location. The image of a man, woman, and child highlight the Department's mission of services to Alaskan families and communities.

**Alaska Department of Education
House Finance Committee
FY2000 Budget Presentation**

January 27, 1999

Mr. Chairman, members of the House Finance Committee, thank you for the opportunity to be with you today to talk about the work of the State Board and the Department of Education in improving student learning in Alaska. I look forward to working with you to craft a budget that will provide the resources that are critical to this effort. For the record, I am Shirley Holloway, Commissioner of the Department of Education.

I would like to describe for you the beliefs, mission, and goals of the department, give you a status of the Quality Schools Initiative which is aligned to the performance measures in the FY2000 budget request before you along with the major budget changes, and respond to any questions you might have.

Post-it* Fax Note	7671	Date	1/27/99	# of pages	7
To	LISA	From	Karen R.		
Co./Dept.	House Finance	Co.	DOE		
Phone #	2156	Phone #	8650		
Fax #	6813	Fax #			

**Alaska Department of Education
House Finance Committee
FY2000 Budget Presentation**

January 27, 1999

I. Department Beliefs, Purpose, Goals

Beliefs

The Alaska State Board of Education's vision, mission and goals are driven by a deeply held set of beliefs about children and learning. They are:

1. All children, given adequate opportunity and support, can learn.
2. High standards, which set high expectations, produce high achievement.
3. Results matter. We can teach for results and build accountability for results.
4. Financial support for schools must be equitable.

Purpose/Mission

It is the policy of this state that the purpose of education is to help ensure that all students will succeed in their education and work, shape worthwhile and satisfying lives for themselves, exemplify the best values of society, and be effective in improving the character and quality of the world about them. (Alaska Statute 14.03.015)

Goals

There are five major goals that support the mission:

1. To have clear, rigorous, credible standards and assessments.
2. To have a credible system of academic and fiscal accountability for students, professionals, schools and districts.
3. To have highly qualified school professionals who have met rigorous and credible standards and assessments.
4. To have schools in which students, staff, families and communities are active partners in learning.
5. To have an adequate and secure source of funding for schools.

**Alaska Department of Education
House Finance Committee
FY2000 Budget Presentation**

January 27, 1999

II. Status of Quality Schools Initiatives

At the beginning of the session, I provided each legislator with a letter outlining our progress with the Quality Schools Initiatives and implementation of the High School Graduation Qualifying Examination. With that letter was a copy of a handbook that we are distributing that contains detailed information on the exit exam and some sample questions. (HOLD UP COPY). I would like to briefly summarize our progress for you here.

Area	Where We Started	Where We Are Now	What Is Next
Student Standards	Voluntary Broad Based Standards in 11 content areas	Mandatory - Specific Standards Reading, Writing, Math (correlated to Employability Standards)	Ensure that all school boards adopt performance standards Align district curriculum to reading, writing, math performance standards
Assessment	Mandated norm-referenced assessments for grades 4 - 8 - 11 Voluntary writing assessments in grades 7 & 11	Mandatory assessments measuring our standards - reading, writing, math Benchmarks in grades 3, 6, 8 HSQE (grades 10-12) - must meet standards (proficient) to qualify for high school diploma Norm-referenced (grades 4 & 7) Developmental Profile (grades K & 1)	Identify all students in jeopardy or not meeting reading, writing, math standards (K-12) Schools use data to design student/school interventions February 1999 Statewide Reading Initiative launched "Every Child a Reader" (Independent reader by 3 rd grade) Establish cut scores for standards:
Quality Professional Standards	Teacher standards were in draft form	Teacher/Administrator standards in regulation and driving evaluation licensure licensure renewal university preparation professional development	Gain experience with the effects of these major changes (supply and demand)

**Alaska Department of Education
House Finance Committee
FY2000 Budget Presentation**

January 27, 1999

Area	Where We Started	Where We Are Now	What Is Next
Family Involvement Business Partnerships Community Involvement	No formal partnerships or programs	Family Involvement partnership NEA, AKPTA, AASB, and DOE (sponsor 50+ community based workshops a year) School-To-Work 500+ partnerships Community Involvement - I.E. Compass, mental health/school district partnerships, UAA social worker/schools, etc	DOE Family Involvement Center Opens in Spring with an 800 number Continue to build inter-agency agreements with schools Form Business Advisory group
School Standards	None	School Standards based on Effective School Research with scoring guide School Standards now incorporated in School Accreditation	Student Assessment data plus school standards will be the basis for school improvement plans for designated schools, in-decline or crisis
Early Childhood	Different agencies providing services related to ECE	Based on substantial research, knowledge we need a change	Take strong leadership role. Critical to the success of a standards based school system. 0-5 must be a priority.
Technical Assistance	DOE Staff Focus: compliance with laws, regulations	DOE Staff Focus: Identify resources available to districts for student/school interventions through the Quality Team Leaders	Quality School Consultants (distinguished educators) Federal \$ QS Grants under Foundation Formula

**Alaska Department of Education
House Finance Committee
FY2000 Budget Presentation**

January 27, 1999

Area	Where We Started	Where We Are Now	What Is Next
K-12/ University	Some locale efforts to build connections primarily for college bound students	Two pilots in place Ketchikan, Kodiak 11-14 HSQE Occupational emphasis	

School Account-Ability	<ul style="list-style-type: none"> • No systematic data available about performance by students by school. • School District Report Cards published by district and DOE (local school data available at school; not published). 	<ul style="list-style-type: none"> • <u>School level</u> Report Cards will be required in 2000; definitions and forms are being developed. • Ch. 83 requires school performance designations (distinguished, successful, deficient, in crisis) based on multiple student measures, including student achievement by 2002. • Ch. 83 requires all schools designated as deficient or in crisis to develop a 	<ul style="list-style-type: none"> • Publish statewide compilation of (2000 data) School Report Card information. (January 2001) • Develop regulations that identify the multiple student measures (and their sources of data) to be used to develop the school performance designations; and identify the designation process (AS14.03.123a). • Identify additional elements (student assessment data and school standards required) to be included in an acceptable school improvement plan, including family/community and district involvement, and necessary benchmarks for student improvement (AS 14.03.123e).
------------------------	---	--	---

**Alaska Department of Education
House Finance Committee
FY2000 Budget Presentation**

January 27, 1999

School Account- ability		<p>school improvement plan in consultation with their local community and district staff.</p> <ul style="list-style-type: none"> • Title 1 requires identification of and specific assistance to schools in need of improvement. 	<ul style="list-style-type: none"> • Develop regulations that identify measures to be progressively implemented by the Commissioner to assist a school in its improvement of student performance by 2002 (AS14.03.123i). • Develop and implement a system to monitor the progress of each school improvement plan by 2002 (AS14.03.123f).
Area	Where We Started	Where We Are	What Is Next
Student Account- ability	<ul style="list-style-type: none"> • 21 credits required for diploma based upon 8100 minutes class time per credit; content determined at the local level. 	<ul style="list-style-type: none"> • 21 credits required for graduation based upon student evidence that the course standards have been mastered. • Waivers available to for establishment of systems based upon student performance, not credits. 	<ul style="list-style-type: none"> • Each student, to earn a Diploma, must successfully pass the High School Graduation Qualifying Exam plus other requirements of the school district, including 21 credits of study. • A student who does not pass the HSGQE and earns 21 credits will be given a Certificate of Attendance.

Alaska Department of Education
House Finance Committee
FY2000 Budget Presentation

January 27, 1999

III. FY2000 Budget Changes

Total Budget Request \$991,338,300

General Fund \$727,559,800

96% of the general funds support K-12 formula programs

Overall is a 2.5% increase, \$24,462,200, from the current year (FY99 Authorized)

General Fund increase is \$18,745,600, or 2.6% from the current year.

The biggest portion of the GF increase is in the Foundation Program, \$14,438,000 to fully fund the new formula enacted by passage of SB36.

Another \$1,693,000 in general funds fully funds the Pupil Transportation program in FY2000.

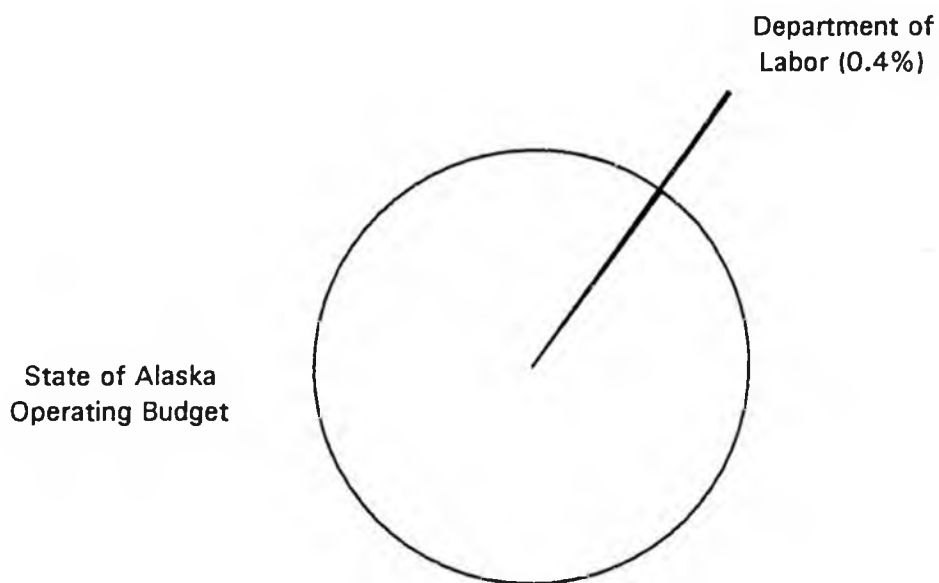
\$1,500,000 general funds are included under the Quality Schools component for the ongoing resources necessary to implement the new law. This includes ongoing development and implementation of the comprehensive student assessment program in multiple grade levels to determine how well Alaskan students are doing in meeting high academic standards. The data obtained from these assessments will be used to identify schools that are performing below a prescribed level and will be able to provide support to those schools in improving performance.

There are other changes in the budget that we will be happy to discuss in greater detail as we work with the committee in developing the FY2000 budget.

ALASKA DEPARTMENT OF LABOR

FY 2000 BUDGET OVERVIEW

FY 99 General Fund Operating Budget Comparison



DEPARTMENT OF LABOR
AGENCY CONTACTS

Ed Flanagan, Commissioner	465-2700
Vacant, Deputy Commissioner	465-2700
Dwight Perkins, Special Assistant	465-2700
Mark Torgerson, Hearing Examiner Alaska Labor Relations Agency	269-4895 (Anchorage)
Denise Liccioli, Acting Director Administrative Services Division	465-2720
Rebecca J. Gamez, Director Employment Security Division	465-2712
Al Dwyer, Director Labor Standards & Safety Division	465-4855
Paul Grossi, Director Worker's Compensation Division	465-2790

State of Alaska
 FY 99 Authorized Budget Comparison

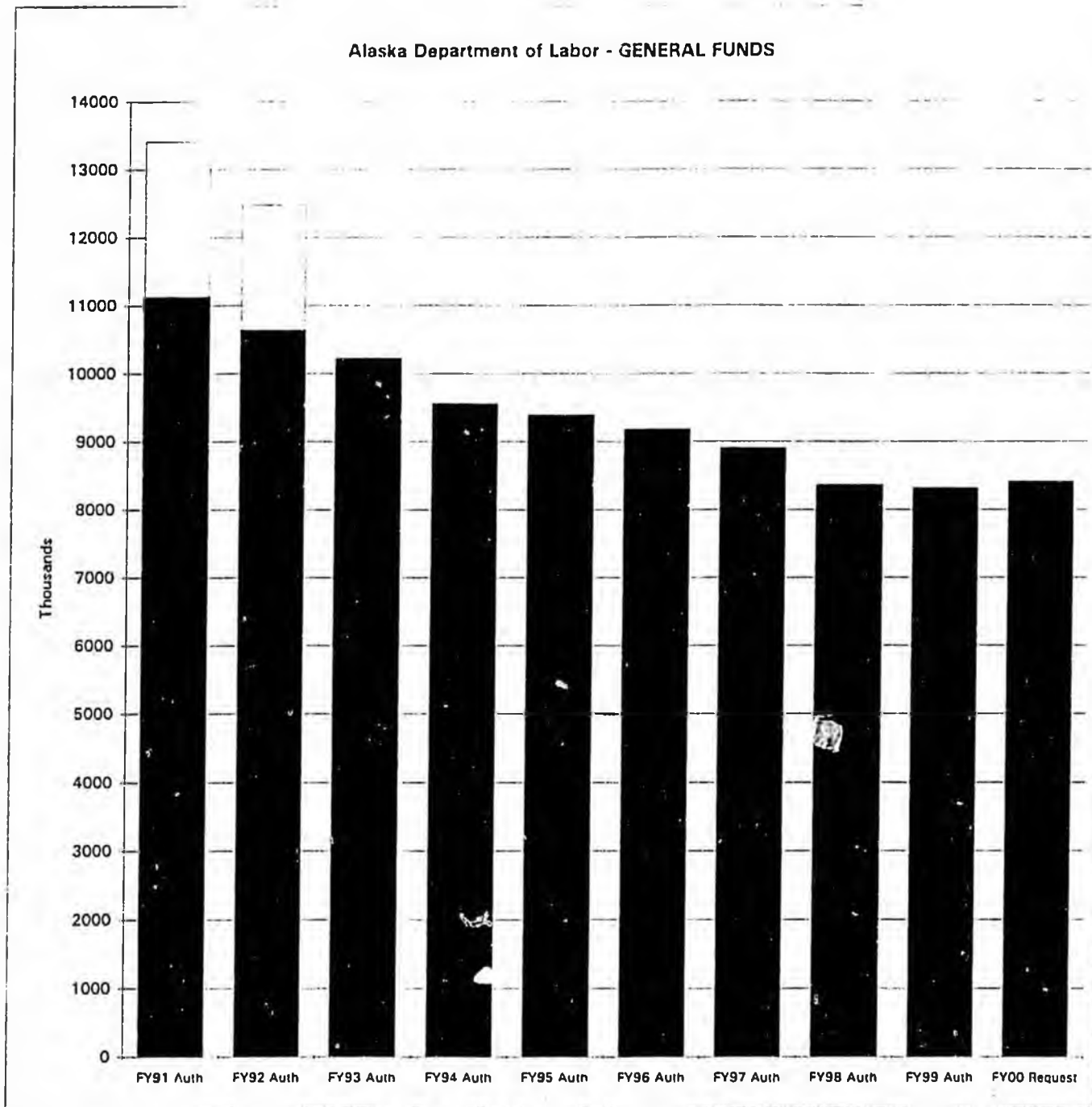
1/15/99

Source: Legislative Finance Summary dated 1/15/99

	General Funds		Total Funds	Positions			
				PFT	PPT	Non-Perm	
1. Education	708,686.1	1. Education	966,876.1	1. University of Alaska	3,387	233	0
2. Health & Social Services	320,735.4	2. Health & Social Services	938,016.3	2. Transportation	2,735	647	1
3. University of Alaska	166,132.2	3. University of Alaska	442,440.7	3. Health & Social Services	2,073	58	18
4. Administration	163,792.8	4. Transportation	335,395.8	4. Corrections	1,360	1	0
5. Corrections	136,220.0	5. Administration	256,096.4	5. Administration	1,262	114	108
6. Transportation	130,034.6	6. Community & Regional Aff.	161,581.9	6. Fish & Game	805	879	68
7. Public Safety	77,610.8	7. Corrections	152,726.0	7. Revenue	782	32	55
8. Community & Regional Aff.	69,997.6	8. Revenue	144,936.7	8. Public Safety	757	28	1
9. Alaska Court System	49,525.8	9. Fish & Game	109,130.5	9. Alaska Court System	665	50	26
10. Natural Resources	39,537.0	10. Public Safety	94,791.5	10. Labor	564	111	0
11. Fish & Game	34,316.6	11. Commerce	70,354.4	11. Natural Resources	556	247	816
12. Legislature	31,807.2	12. Natural Resources	64,468.2	12. Environmental Conservation	488	5	4
13. Law	27,442.3	13. Labor	57,508.5	13. Education	465	104	6
14. Commerce	26,413.7	14. Alaska Court System	49,717.7	14. Law	443	14	0
15. Governor	18,186.2	15. Environmental Conservation	46,915.2	15. Commerce	343	10	0
16. Environmental Conservation	12,734.8	16. Law	43,780.4	16. Legislature	218	271	0
17. Revenue	10,699.7	17. Military & Vet Affairs	36,373.7	17. Military & Vet Affairs	210	1	17
18. Labor	8,310.7	18. Legislature	32,018.6	18. Governor	187	5	37
19. Military & Vet Affairs	8,004.7	19. Governor	22,296.3	19. Community & Regional Aff.	168	3	7
Total	2,040,188.2	Total	4,025,424.9	Total	17,468	2,813	1,164

3

Alaska Department of Labor - GENERAL FUNDS



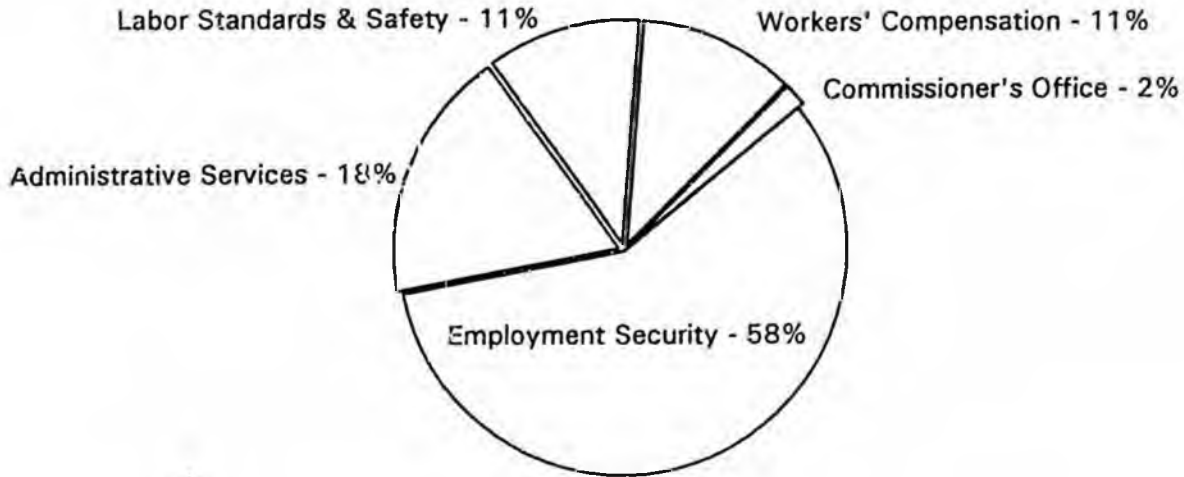
Note: During FY 91 & FY 92 the State Training & Employment Program (STEP) was classified as general funds. In FY 93 STEP classification was changed to non-general funds. Amounts for the STEP program are shown as unshaded in the appropriate years.

Major Fund Changes

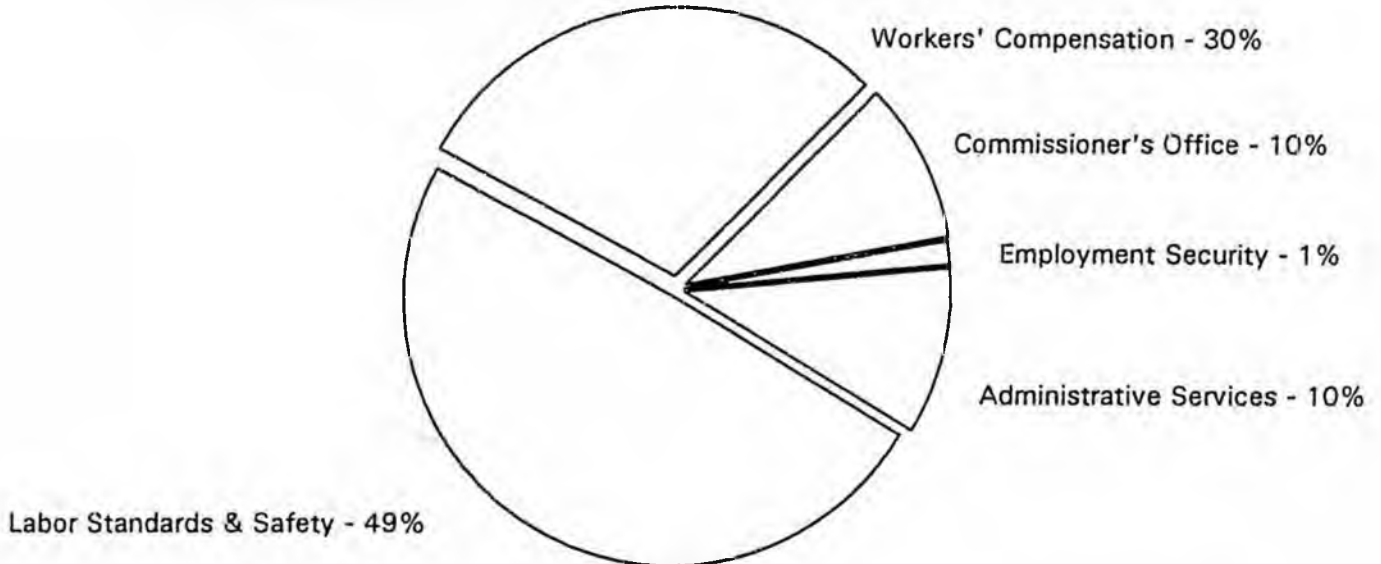
- FY 91 - FY 92 Decreases for 5%+ reductions and STEP
- FY 92 - FY 93 Increase for DP Chargeback, STEP fund source change. Unallocated & Misc cuts
- FY 93 - FY 94 Reductions to Labor Market Info, Comm Offc, Work Comp, Labor Standards & Safety
- FY 94 - FY 95 Reductions to Data Processing, Labor Market Info and Occ Safety & Health
- FY 95 - FY 96 Reduction to Occupational Safety & Health
- FY 96 - FY 97 Increase for COLA. Reductions to Wage & Hour, Mechanical Inspection and Work Comp & Misc cuts
- FY 97 - FY 98 Increase for COLA. Reduction to AK Work Programs. Management Svcs, Wage & Hour and Occ Safety & Health
- FY 98 - FY 99 Reduction for Better Business Practices. Reduction for PERS Employer rate change. Program Receipt reclassification
- FY 99 - FY 00 Transfer Gov Committee to Dept of Education. Increase for Census preparation, AK Work Program funding change to Interagency
- Program receipt increase for Mechanical Inspection position

Department of Labor

FY 99 Operating Budget Request by Division



FY 99 GENERAL FUND Operating Budget Request by Division

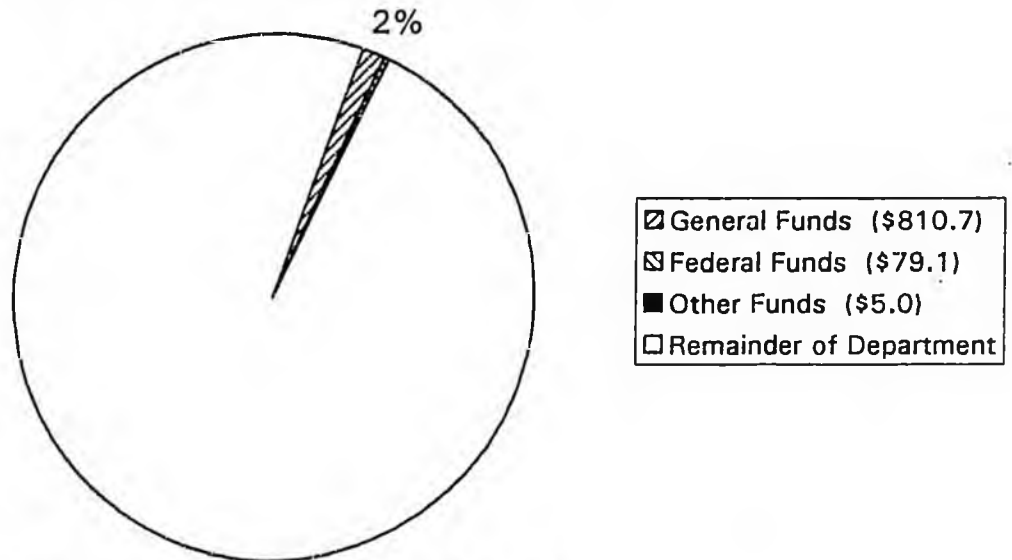


The Department is comprised of the Commissioner's Office, which includes the Alaska Labor Relations Agency, and four divisions:

- Administrative Services
- Employment Security
- Labor Standards & Safety
- Workers' Compensation

The Department of Labor's mission as set out in Title 23 is to foster and promote the welfare of the wage earners in the state, improve their working conditions and advance their opportunities for profitable employment.

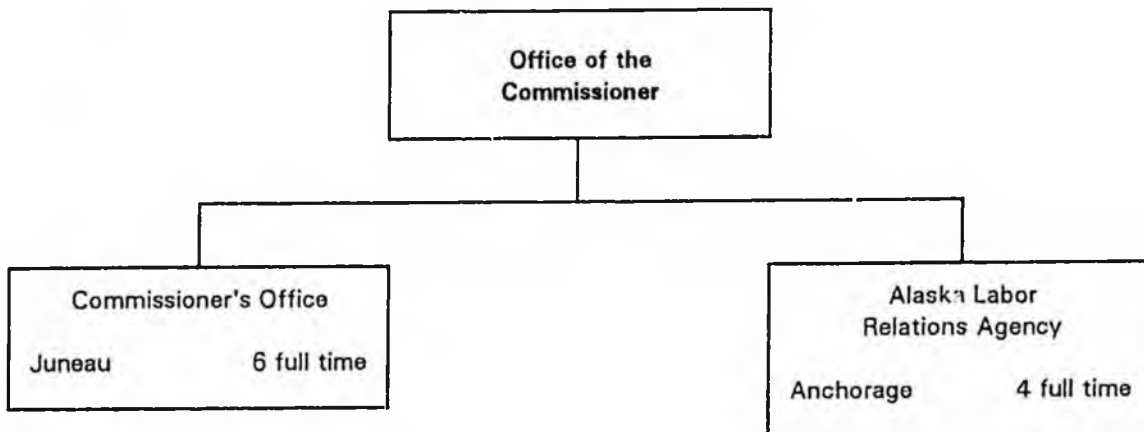
OFFICE OF THE COMMISSIONER



Department of Labor's FY 00 Budget Request

The Office is comprised of two components:

- Alaska Labor Relations Agency - (\$324.2 GF)
- Office of the Commissioner - (\$486.5 GF)



OFFICE OF THE COMMISSIONER

Commissioner's Office

The Commissioner's Office component provides direction to the department's divisions in the administration of the department's programs to fulfill the mission of providing for the health and economic welfare of Alaska's workers.

Alaska Labor Relations Agency

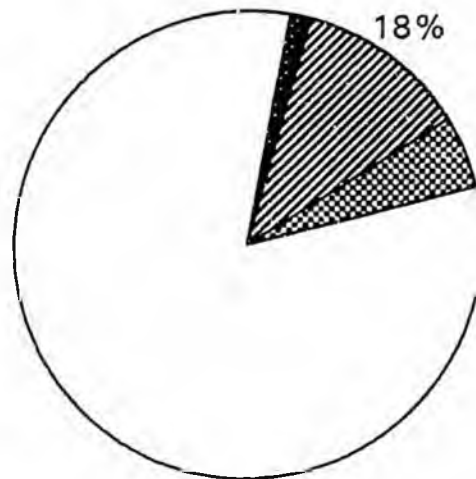
The Alaska Labor Relations Agency component facilitates the resolution of disputes between organized labor and public employers in the state. The Agency promotes cooperative relations between government and its employees and protects the public's interest in the provision of uninterrupted government services.

Issues

Accommodate an increasing demand for services within the resources available.

Most of the collective bargaining agreements with major state employee unions expire June 30, 1999. In addition, many school districts will also be renegotiating contracts during this same time frame. The Agency will be challenged with continuing to provide ongoing services while also providing a forum for the timely resolution of any disputes.

ADMINISTRATIVE SERVICES DIVISION

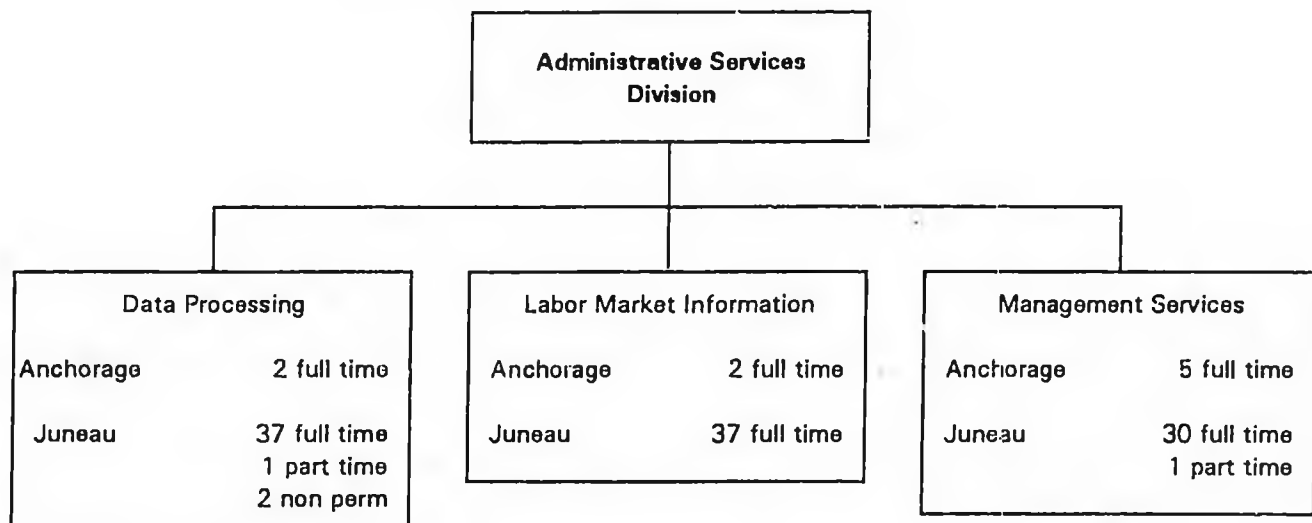


■	General Funds (\$490.7)
■	General Fund Match (\$344.4)
▨	Federal Funds (\$6,894.4)
▩	Other Funds (\$2,873.5)
□	Remainder of Department

Department of Labor's FY 00 Budget Request

The Division is comprised of three components:

- Data Processing
- Labor Market Information - (\$490.7 GF, \$71.2 GFM)
- Management Services - (\$273.2 GFM)



ADMINISTRATIVE SERVICES DIVISION

Management Services

The Management Services component provides budget planning, monitoring and reporting; federal, state and unemployment insurance trust fund accounting; publication functions; human resource management; and procurement, mail and office space management to departmental programs.

Labor Market Information

The Labor Market Information component collects, analyses and publishes information on employment, unemployment, wage rates, occupational injuries, population estimates and forecasts, and other economic and demographic information.

Data Processing

The Data Processing component provides long-range planning, project management, mainframe and distributed systems applications analysis and programming, database and security administration and network services installations and support.

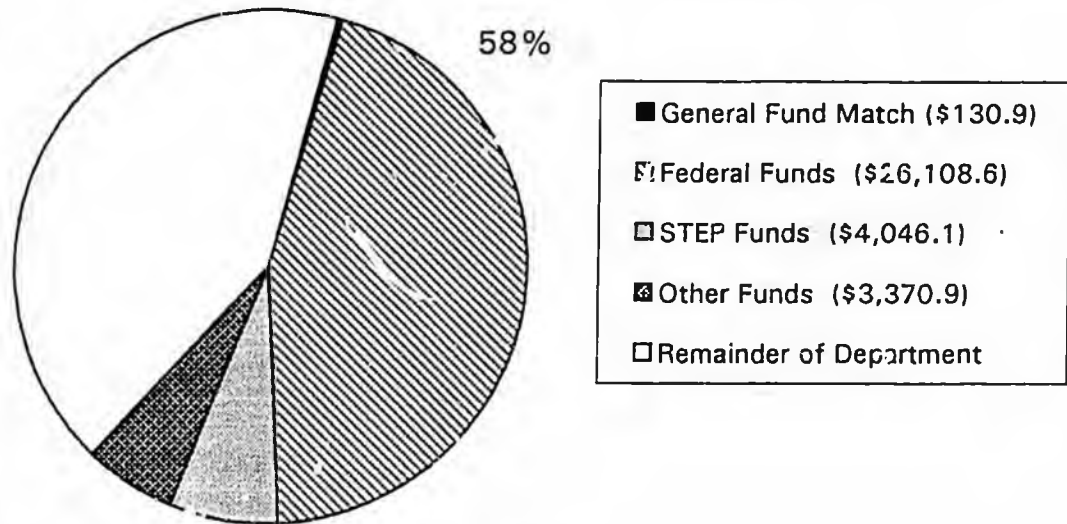
Issues

Providing support and training with the implementation of changing technologies and program service.

Participation in and support for implementation of the federal Workforce Investment Act of 1998 as the state's and individual program needs are addressed.

FY 2000 is the critical budget year for preparatory work leading to redistricting after the 2000 Census. Alaska's Constitution now requires that a redistricting plan be adopted within 30 days after the official reporting of the decennial census of the United States. If this timeline is to be met, the state must have all support systems ready for redistricting when that process begins. Based on past experience of the Labor Market Information component staff and that of other states, work on this project must begin as soon as possible to ensure a smooth and successful redistricting effort. As costs are better known, they will have to be incorporated into the FY 2000 budget.

EMPLOYMENT SECURITY DIVISION



Department of Labor's FY 00 Budget Request

The Division is comprised of four components:

- Employment Services
- State Training & Employment Program
- Unemployment Insurance
- Work Services (JOBS) - (\$130.9 GFM)

Location	Employment Security Division					
	Employment Services		Unemployment Insurance		Work Services	
	PFT	PPT	PFT	PPT	PFT	PPT
Anchorage	34	5	59	28	13	
Bethel	2	1				
Dillingham		1				
Eagle River	3					
Fairbanks	14	2	13	8	4	
Glennallen		1				
Homer	1					
Juneau	40	1	94	29	4	
Kanai	4	6	1			
Ketchikan	7	1			1	
Kodiak	4					
Nome	2	2				
Petersburg		1				
Seward	1					
Sitka	1	1				
Soldotna					1	
Tok		1				
Valdez	1	1				
Wasilla	8	2			3	

EMPLOYMENT SECURITY DIVISION

Employment Services (ES)

- Public Employment Service System maintained throughout the State.
- Vocational counseling, guidance, and career planning for adult workers.
- Aptitude, interest, and skill testing for job seekers and workers who need retraining.
- Group workshops and "Job Clubs" on job seeking, interviewing, and resumes.

Unemployment Services (UI)

- Conduct field audits to help employers pay taxes in timely, accurate way.
- Protect the UI Trust Fund against fraudulent claims; recovery of misclaimed payments.
- Process timely payment of UI benefits to eligible workers, meeting strict federal performance standards and objectives.
- Adjudicate appeals by claimants and employers through Appeals Tribunal.

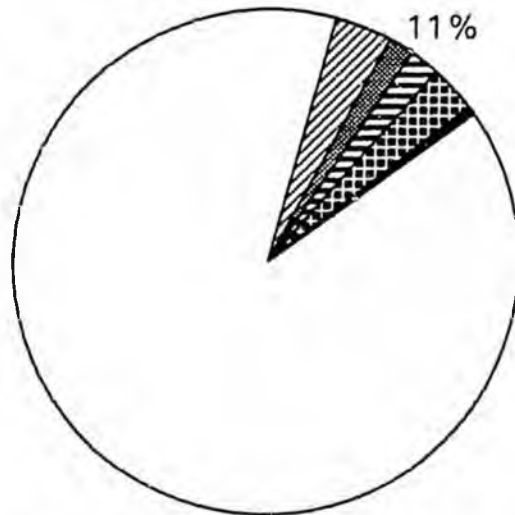
Other Services

- The Work Services program is jointly administered with the Department of Health and Social Services, provides a labor exchange for TANF and food stamp recipients.
- The Worker Profiling and Re-employment Services programs for UI recipients are intended to hasten their return to work.
- The veterans programs provide special services to veterans as mandated by federal law.
- The State Training and Employment Program (STEP), funded through the UI Trust Fund with one tenth of 1% of workers' wages subject to regular UI contributions, targets the training needs of Alaskan workers and businesses.

Issues

- The key issue for the Employment Security Division is becoming Year 2000 compliant.
- Pursuing alternative funding sources for our programs.
- Implementing new distance spanning technology to better serve both our rural and urban clients.
- Comply with the recently passed federal Workforce Investment Act of 1998 which mandates states integrate employment, training, and related public services into a one-stop service delivery system.

LABOR STANDARDS & SAFETY DIVISION

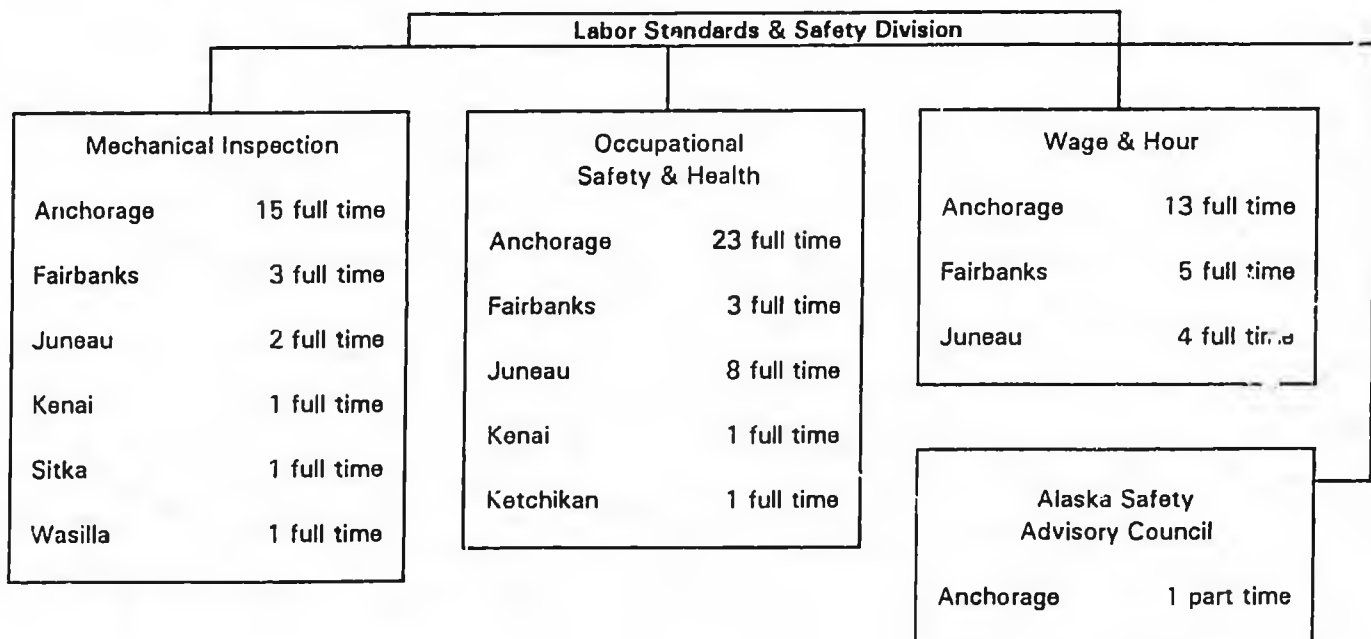


▨	General Funds (\$2,061.3)
▩	Program Receipts (\$942.4)
▧	General Fund Match (\$1,131.1)
▦	Federal Funds (\$1,777.2)
■	Other Funds (\$455.2)
□	Remainder of Department

Department of Labor's FY 00 Budget Request

The Division is comprised of four components:

- Alaska Safety Advisory Council - (\$106.7 PR)
- Mechanical Inspection - (\$673.8 GF, \$835.7 PR)
- Occupational Safety & Health - (\$1,131.1 GFM)
- Wage & Hour - (\$1,387.5 GF)



LABOR STANDARDS & SAFETY DIVISION

Wage & Hour

- Establish and enforce protective standards to safeguard minors from abuse and exploitation in the workplace.
- Ensure that in accordance with law, Alaska Workers receive minimum wages, overtime wages, and return transportation.
- Enforce prevailing wage rates and employment preference on public works projects.
- Educate employers and employees about Alaska Labor Laws.

Mechanical Inspection

- License electricians, power linemen, plumbers, boiler operators, painters, asbestos abatement workers, and explosive handlers.
- Inspect
 - Boilers & pressure vessels for safety
 - Elevators, wheel chair lifts, escalators, tramways, ski lifts and amusement rides for safety, proper maintenance and operation.
 - New construction, and alterations to existing construction, for compliance with applicable state plumbing and electrical codes.
- Work in conjunction with the Department of Commerce & Economic Development to ensure that electricians, plumbers, construction contractors and electrical and mechanical administrators have proper certificates and/or licenses.
- Work in conjunction with Department of Natural Resources, Joint Pipeline Office, in ensuring compliance of safety and electrical TAPS activities.

Occupational Safety and Health

- Enforce the state's occupational safety and health laws
 - Inspect workplaces, scheduled and unscheduled, to assess workplace safety and health.
 - Ensure prompt elimination or restraint of imminent danger situations in the workplace.
 - Investigate employee complaints, work related fatalities and catastrophes.

- Protect employees against wrongful discharge or discrimination for exercising their rights under this program.
- Focus on Alaska's high-hazard industries, e.g. construction, logging and seafood processing for compliance with health and safety laws.
- Provide consultation and training services to Alaska workers and businesses to encourage safe working conditions and practices
- Provide incentive to employers through the Voluntary Protection Program and Safety and Health Achievement Recognition Program.

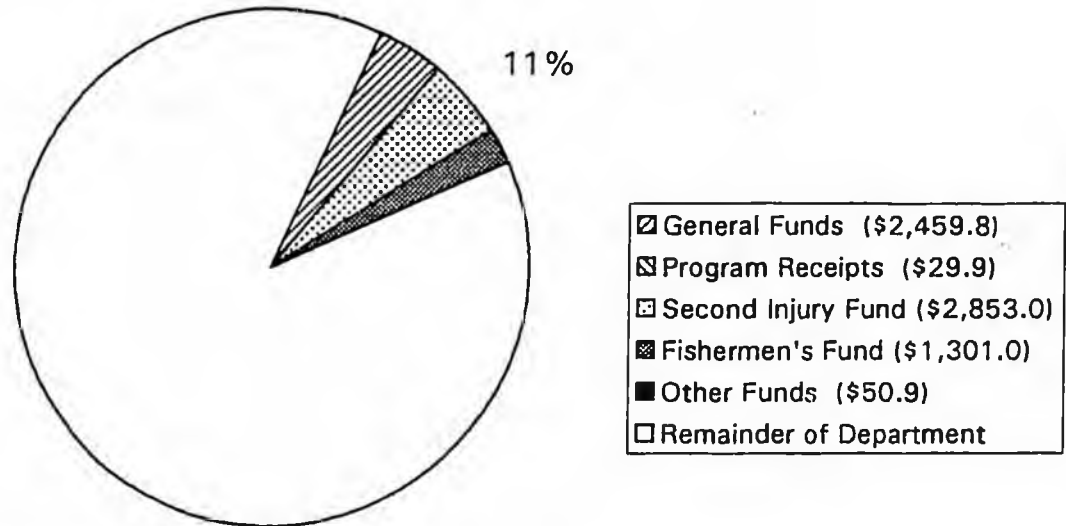
Alaska Safety Advisory Council

- Work with organizations, individuals and groups in the promotion of safety to reduce accidental death and injury.
- Organize and sponsor the Annual Governor's Safety and Health Conference.
 - Provide certification and continuing education.
 - Demonstrations and presentations on safety related products.
- Promote the Occupational Safety and Health Voluntary Protection Program and Safety and Health Achievement Recognition Program.

Issues

- Maintenance of current enforcement levels of minimum wage, overtime, and child labor and public contract laws statewide with limited available resources.
- Meeting the objectives set out in the Federal Fiscal year 1999 Annual Performance Plan and the five-year Strategic Plan approved by the Federal Occupational Safety and Health Administration.
- Increasing current boiler/pressure vessel inspection levels through increased staff, cross training and education efforts.
- Increased outreach and education through the Alaska Safety Advisory Council annual conference.

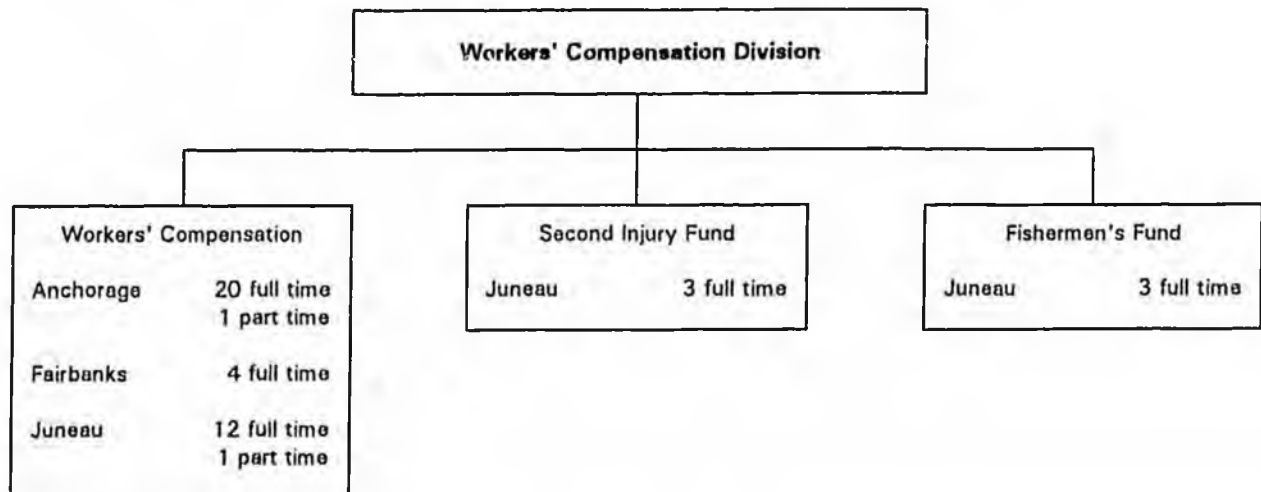
WORKERS' COMPENSATION DIVISION



Department of Labor's FY 00 Budget Request

The Division is comprised of three components:

- Fishermen's Fund
- Second Injury Fund
- Workers' Compensation - (\$2,459.8 GF, \$29.9 PR)



WORKERS' COMPENSATION DIVISION

Workers' Compensation

Serves as administrative arm to the Alaska Workers' Compensation Board to implement the state's workers' compensation law to ensure that eligible Alaska workers are provided adequate medical care and prompt payment of benefits.

- Adjudicate disputes regarding workers' compensation coverage between employees and employers, or their insurers, through mediation or administrative hearings.
- Identify and investigate uninsured employers.
- Maintain a database of all aspects of worker's compensation activity.
- Administer the voluntary reemployment benefits program that offers training to those injured workers whom, because of their workplace injuries, cannot return to their jobs.
- Administer the state's self-insurance program.

Second Injury Fund

- Administer the employer reimbursement program for workers who qualify under this program.

Fishermen's Fund

- Provide assistance with the medical costs of injuries or illnesses due to commercial fishing activities on shore or in Alaska waters.

Issues

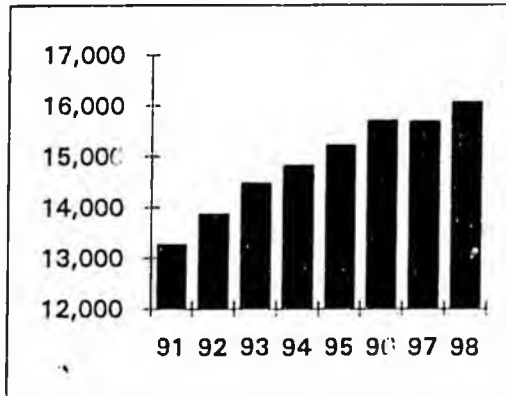
- Resolve Year 2000 computer concerns in order to maintain integrity of historical information.
- Increase investigations of potentially uninsured employers in an attempt to eliminate the number of uninsured Alaskan workers that are injured each year.

- Implementation of new electronic workers' compensation information handling system to provide better services to the public and more useful information to the state's legislators and policy makers.
- Research and pursue the possibility of electronic filing of annual reports to provide greater access to businesses and the public and to create another avenue of conducting workers' compensation business.
- Increase Alaska commercial fishermen's awareness of the Fishermen's Fund program and improve response time in the processing of claims, invoices and inquiries.
- Participate in deliberations with various constituent groups to formulate legislation that meets the needs of Alaskans, employees and employers.

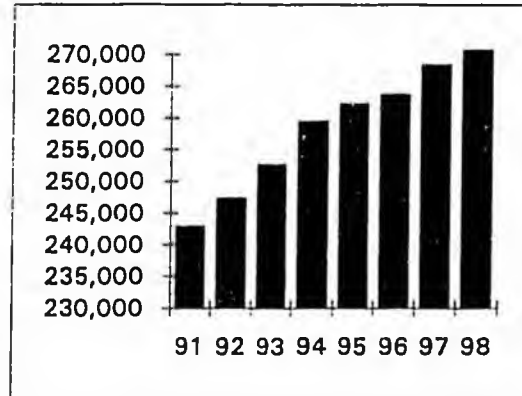
Department of Labor

General Fund Budget versus the Alaska Work Force

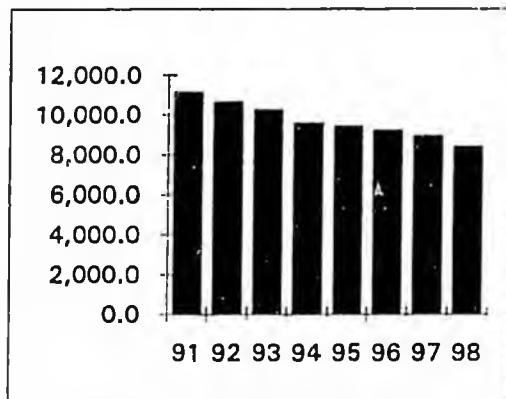
Number of Employers



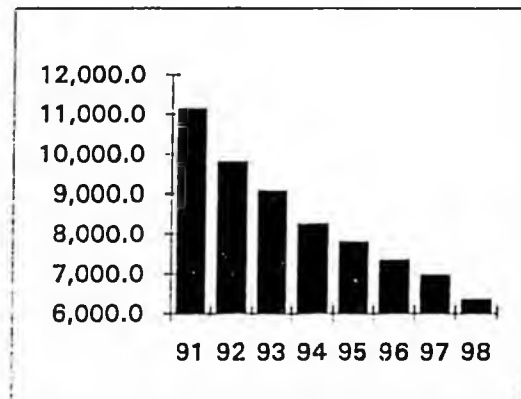
Number of Employees



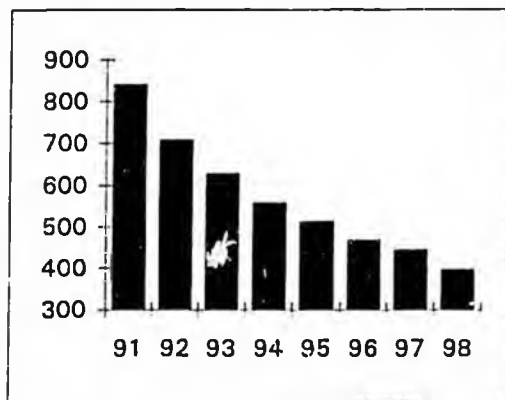
General Fund Budget



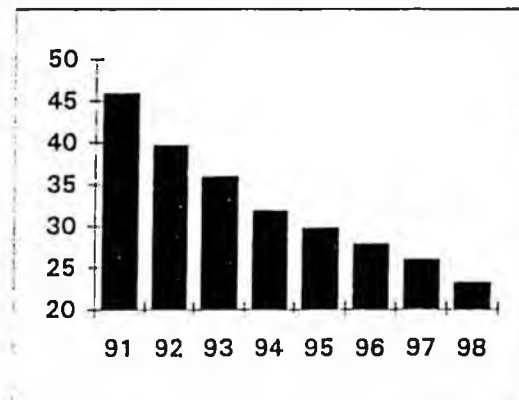
GF Budget in 1991 Dollars



1991 Dollars per Employer



1991 Dollars per Employee



THE FOLLOWING DOCUMENT HAS NOT
BEEN FILMED BUT IS AVAILABLE IN THE
ORIGINAL FILE.

State of Alaska

Department of Health and Social Services

**Overview of Programs
and Services**

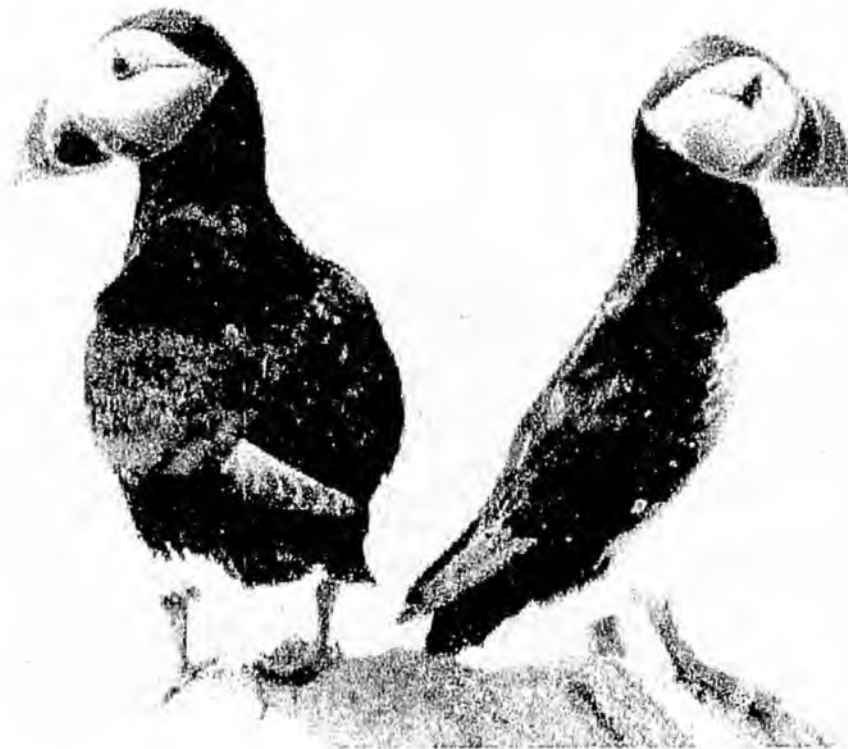
January 1999



**Tony Knowles
Governor**

**Karen Perdue
Commissioner**

**State of Alaska
Department of
Health & Social Services**



**Fiscal Year 1999
Operating Grants**



**Tony Knowles
Governor**

**Karen Perdue
Commissioner**



1/27/99

STATE OF ALASKA

TONY KNOWLES, GOVERNOR

DEPT. OF HEALTH AND SOCIAL SERVICES

OFFICE OF THE COMMISSIONER

P.O. BOX 110601
JUNEAU, ALASKA 99811-0601
PHONE: (907) 465-3030
FAX: (907) 465-3068

December 10, 1998

Dear Alaskans:

Many of the health and human services administered by the Department of Health and Social Services are provided through grants to non-profit service agencies. Approximately \$100,000,000 of the Department's annual budget is awarded in grants, confirming the Department's commitment to the delivery of responsive and efficient services provided by these community-based agencies.

This report tabulates the funds awarded to grantees by the Department. It also shows the amount of funding which has been granted to a particular community or region, and the organizations that are working to address the special needs of Alaskans throughout the state.

We welcome your suggestions regarding the Department's response to the needs of Alaskans and how we can improve our services through our grant programs.

Sincerely,



Karen Perdue
Commissioner

CONTENTS

PART I: COMPETITIVE OPERATING GRANTS AND DESIGNATED GRANTS

<u>Division of Administrative Services</u>	
Alaska Children's Trust (ACT).....	1
<u>Division of Alcoholism and Drug Abuse</u>	
Alcohol/Drug Abuse Grants	3
Alcohol Safety Action Program	9
Community Action Against Substance Abuse.....	11
Community-Based Suicide Prevention	13
Fetal Alcohol Consultation and Training Services	18
Peer Counselor, Natural Helper.....	20
Rural Human Services Project.....	22
<u>Division of Family and Youth Services</u>	
Child Care Licensing	24
Community Based Family Resource Programs	26
Family Support and Family Preservation Services.....	28
Human Services Community Matching Grants	32
Residential Child Care.....	34
Social Services BRU Grants.....	37
Governor's Conference on Youth and Justice.....	39
Juvenile Justice and Delinquency Prevention	41
<u>Division of Mental Health and Developmental Disabilities</u>	
Community Developmental Disabilities	48
Community Mental Health Services	54
Fish Disaster Grants.....	69
<u>Division of Public Assistance</u>	
Alaska Temporary Assistance Program	71
Child Care and Development Fund	73
Community Emergency Food Program.....	75
Innovative Community-Based Services for Pregnant and Parenting Teens.....	77
SSI Disability Benefits	79
<u>Division of Public Health</u>	
Alaska Office of Rural Health	81
Alaska Trauma Registry	83
Assistance to Community Health Facilities	85
Cancer	87
Community Based Health Promotion	89
Community Health Aide Training.....	92

Designated BRU Grants	94
Diabetes.....	96
Emergency Medical Services	98
Family Planning Services	101
Healthy Families Alaska.....	103
HIV/AIDS Care	105
HIV/AIDS Prevention	107
Immunizations	109
Infant Learning Programs.....	111
Parent Navigation	114
Pregnancy Prevention/Management Services.....	116
Program Monitoring	118
Public Health Nursing: Anchorage.....	120
Public Health Nursing: North Slope.....	123
Rural Health Education and Screening	125
Supplemental Food Program for Women, Infants, and Children.....	128
Tobacco Prevention and Control.....	130
Tuberculosis.....	132

PART II: OPERATING GRANTS BY ELECTION DISTRICTS

Election District:

01	134
02	136
03 - 04	139
05.....	142
06.....	144
07-09	146
10 - 25	149
26 - 28	156
29 - 34	158
35.....	162
36.....	164
37.....	168
38.....	170
39.....	172
40.....	176
99.....	178

PART III: NOTES

Election Districts and Staffing.....	181
--------------------------------------	-----

PART I

PROFILES AND LISTINGS

**DEPARTMENT OF HEALTH &
SOCIAL SERVICES**

**FY 99 COMPETITIVE OPERATING GRANTS
AND DESIGNATED BRU GRANTS**

BY DIVISION AND GRANT PROGRAM

DIVISION OF ADMINISTRATIVE SERVICES**PROGRAM: Alaska Children's Trust (ACT)**

AUTHORITY: ART III, Sec. 23 of the Alaska Constitution and in accordance with AS 37.14.200

APPROPRIATIONS:

The ACT relies on gifts, bequests, and contributions of cash or other assets from individuals, corporate entities, legislative appropriations, and federal funds. The annual funding level for ACT is based upon annual income earnings from the trust. Grant awards are contingent upon legislative appropriations of funds to the ACT.

PRIORITIES:

The ACT is dedicated to the prevention of child abuse and neglect. Programs and projects that address child abuse and neglect at the primary and secondary levels of prevention are eligible for funding.

Primary prevention programs are educational and are intended to raise awareness of and change attitudes about child abuse and neglect and its prevention (AS 37.14.270).

Secondary prevention programs are services intended to reach high-risk groups and to prevent the occurrence or recurrence of child abuse and neglect (AS 37.14.270).

TARGET GROUP:

The ACT places special emphasis on funding proposals which provide home visitation services for parents (including expectant parents) in underserved areas; parent education and support; programs engaging fathers/adult males in parenting and child abuse and neglect prevention; programs serving young children ages prenatal to 8 years; multi-media public education campaign - statewide or local; special research on issues relating to child abuse and neglect; community solutions for creatively serving children who are otherwise unserved or underserved (such as neglected children who do not receive services); and community groups seeking to improve or develop child abuse prevention and reporting networks.

RESOURCE ALLOCATIONS:

The annual funding level for the ACT is based upon annual income earnings from the trust. The amount of funds available for prevention projects for fiscal year 1999 was \$286,000. Grant awards ranged from \$9,000 to \$38,000. Grant awards are contingent upon legislative appropriation of funds to the ACT.

CRITERIA:

Grant proposals are evaluated according to a score sheet with points assigned to individual criteria such as project abstract, project background, project description, evaluation plan, budget information and required attachments.

ALASKA CHILDREN'S TRUST

BRU: CHILDREN'S TRUST PROGRAM

COMPONENT: CHILDREN'S TRUST PROGRAM

DIVISION OF ADMINISTRATIVE SERVICES

GRANTEE	LOCATION	ELECT. DIST.	NEW/ CONT.	FY98 AMT. AWARDED	SERVICE	FTE STAFF	AMT. PERS. SERVICES	FUND SOURCE	FY99 AMT. AWARDED
Big Dipper Circle	Kotzebue	37	NEW	\$0	Parenting Education	0.02	\$900	ACT	\$9,659
Boys and Girls Club of the Kenai Peninsula	Kenai	9	CONT	\$22,500	Violence Prevention Education	0.58	\$12,572	ACT	\$20,038
Covenant House	Anchorage	099	CONT	\$28,000	Parenting Education and Support	0.6	\$18,950	ACT	\$21,000
Eastern Aleutian Tribes	Sand Point	40	NEW	\$0	Parenting Education and Support	0.75	\$20,556	ACT	\$20,556
Fairbanks Resource Agency	Fairbanks	29-34	CONT	\$22,674	Supported Parenting	0	\$0	ACT	\$22,674
Gulkana Village Council	Gakona	36	NEW	\$0	Family Education and Counseling	0.5	\$5,875	ACT	\$9,000
Homer Children's Services	Homer	7	NEW	\$0	Early Childhood Family Education and Support	0.48	\$20,195	ACT	\$23,239
KYUK/ARCS	Bethel	39	CONT	\$22,311	Parenting and Adolescent Family Education	0.05	\$2,250	ACT	\$15,450
Native Village of Eklutna	Eklutna	26	NEW	\$0	Family Mentoring	0.92	\$32,032	ACT	\$37,792
Native Village of Wales	Wales	37	NEW	\$0	Cultural Continuity/Family Education	0.08	\$2,500	ACT	\$13,740
Northeast Community Center	Anchorage	10-25	NEW	\$0	Parenting and Vocational Education	0.51	\$15,000	ACT	\$15,000
Resource Center for Parents & Children (RCPC)	Fairbanks	29-34	CONT	\$25,071	Early Childhood Respite	0.49	\$19,820	ACT	\$25,071
Tundra Women's Coalition	Bethel	39	NEW	\$0	Abuse Prevention Education	0.75	\$22,500	ACT	\$22,938
Volunteers of America	Anchorage	10-25	NEW	\$0	Abuse Prevention Education and Family Respite	0.02	\$1,000	ACT	\$9,672
Wrangell Community Services	Wrangell	2	NEW	\$0	Parenting Education and Support	0.32	\$17,680	ACT	\$20,080
				\$120,556	TOTALS	6.07	\$191,830		\$285,900

DIVISION OF ALCOHOLISM AND DRUG ABUSE**PROGRAM: Alcohol/Drug Abuse Grants**

AUTHORITY: AS 47.37 (Uniform Alcoholism and Intoxication Treatment Act); AS 47.30.470-500 (Grant in Aid) under the DHSS grant regulations 7AAC 78.

APPROPRIATION:

Appropriations for Alcohol/Drug Programs are made to the Alcohol/Drug Abuse Grants component and the Corrections' ADA Services component for inmate programs. Separate allocations for the different activities are made through decision of the State Division of Alcoholism and Drug Abuse. A total of \$18,218,600 (\$7,714,600 General Fund/Mental Health funds, \$4,519,600 General funds, \$4,281,300 Federal Receipts, \$1,353,100 Mental Health Trust Authority Authorized Receipt funds, and \$350,000 of Interagency Receipts) is available in FY99. \$17,620,753 has been awarded to date.

PRIORITY SETTING:

Priorities of the three categories of services are as follows: 1) Community Program - emergency care, intermediate care, outpatient, outreach, aftercare services, and prevention; 2) Training Program - to increase knowledge, skills or competency of service providers; and, 3) Inmate Program - education and treatment services.

Statute and locally derived needs assessment mandate priorities. Input is considered from the Management Information System (MIS) data, the state plan, and on-site evaluations. Additional input for the Inmate Programs is received from the Oversight Committees (Department of Corrections and the Division of Alcoholism and Drug Abuse).

TARGET GROUP/GEOGRAPHIC AREA SERVED:

The target group for the Community Program are those whose dependency or addiction is to alcohol and/or other drugs; for Training Programs, it is the DHSS grant funded and allied health providers; and, the Inmate Program targets incarcerated persons. The geographical area covered includes all regions of the state.

RESOURCE ALLOCATION:

Criteria for allocation of Community Program and Training Program funds are: 1) the need for services; 2) quality of the grant proposal; 3) on-site evaluation, fiscal audit, MIS data; and, 4) per capita/funding. For the Inmate Program the allocation is based on the jail population.

CRITERIA:

Criteria for awarding grants are derived from statute and regulation and include component costs, budget summary and narrative, certification of matching requirements, and program narrative and goals and objectives. Determinations for grant awards are made based on evaluation of information contained in applications. Final funding decisions are made by the Commissioner of Health and Social Services.

ALCOHOL/DRUG PROGRAM

**BRU: ALCOHOL AND DRUG
ABUSE SERVICES**

COMPONENT: DRUG ABUSE GRANTS

DIVISION: ALCOHOLISM AND DRUG ABUSE

GRANTEE	LOCATION	ELECT. DIST.	NEW/ CONT.	FY98 AMT. AWARDED	SERVICE	FTE STAFF	AMT. PERS. SERVICES	FUND SOURCE	FY99 AMT. AWARDED
AK Comm. for Chemical Dependency Prof. Cert.	Statewide	099	CONT	\$19,963	Statewide Counselor Certification	0.23	\$8,900	GF	\$19,963
Akeela House	Anchorage	10-25	CONT	\$35,000	Prevention Services	1.13	\$32,155	GF	\$35,000
Akeela House	Anchorage/ Stwd	099	CONT	\$71,540	DOC Dedicated Beds	0	\$0	GF	\$71,537
Akeela House	Statewide	099	CONT	\$640,510	Treatment Services	13.62	\$553,159	FED/GF/ MH	\$640,510
Alaska Council on Prevention of ADA	Anchorage	10-25	CONT	\$819,130	Prevention Services	10.1	\$478,810	FED/GF	\$809,130
Alaska Council on Prevention of ADA	Statewide	099	CONT	\$50,000	Prevention Services	1	\$43,750	GF/MH	\$50,000
Alaska Council on Prevention of ADA	Statewide	099	CONT	\$79,700	Prevention Services	1.05	\$46,625	MHTAAR	\$79,700
Alaska Women's Resource Center	Statewide	099	CONT	\$303,647	Primary Women's Treatment Services	11.19	\$357,038	FED/GF/ MH/IA	\$383,647
Aleutian/Pribilof Islands Association	Unalaska	40	CONT	\$73,000	Treatment Services	1.31	\$49,069	GF/MH	\$73,000
Anchorage, Municipality of	Anchorage	10-25	CONT	\$423,653	Treatment Services	0	\$0	GF/MH	\$423,563
ARCA, The Arc of Anchorage	Anchorage	10-25	CONT	\$5,000	Treatment Services	0.13	\$5,000	GF/MH	\$5,000
Avenues	Wrangell	2	CONT	\$93,140	Treatment Services	1.68	\$74,970	GF/MH	\$93,140
Bristol Bay Area Health Corporation	Dillingham	39	CONT	\$515,325	Treatment Services	11.46	\$403,619	GF/MH	\$515,325
Changing Tides	Petersburg	2	CONT	\$106,649	Treatment Services	2.77	\$97,349	GF/MH	\$106,649
Chugachmiut	Chenega/ Tatitlek	35	CONT	\$40,000	Prevention Services	0.45	\$20,695	GF	\$40,000
Communities Organized for Health Options	Craig	5	CONT	\$146,565	Treatment Services	3.94	\$143,967	GF/MH	\$146,565
Cook Inlet Council on Alcohol	Homer/Kenai	7-9	CONT	\$323,013	Treatment Services	6.61	\$275,013	GF/MH	\$323,013

ALCOHOL/DRUG PROGRAM

BRU: ALCOHOL AND DRUG
ABUSE SERVICES

COMPONENT: DRUG ABUSE GRANTS

DIVISION: ALCOHOLISM AND DRUG ABUSE

GRANTEE	LOCATION	ELECT. DIST.	NEW/ CONT.	FY98 AMT. AWARDED	SERVICE	FTE STAF.	AMT. PERS. SERVICES	FUND SOURCE	FY99 AMT. AWARDED
Cook Inlet Tribal Council	Anchorage/ Stwd	099	CONT	\$35,770	DOC Dedicated Beds	0	\$0	GF	\$35,770
Cook Inlet Tribal Council - ANARC	Statewide	099	CONT	\$387,554	Treatment Services	6.12	\$282,296	GF/MH	\$387,554
Eastern Aleutian Tribes	Sand Point	40	CONT	\$14,400	Treatment Services	0	\$0	MHTAAR	\$2,600
Eastern Aleutian Tribes	Sand Point	40	CONT	\$72,500	Treatment Services	1.25	\$67,567	GF/MH	\$72,500
Fairbanks Native Association	Fairbanks	20	CONT	\$30,364	Women & Youth SA Assessmen/DFYS/Joint	1	\$39,893	MHTAAR	\$50,000
Fairbanks Native Association	Fairbanks/ Stwd	099	CONT	\$995,936	Emergency Care, Intermediate Care	0	\$0	FED	\$163,930
Fairbanks Native Association	Fairbanks	20	CONT	\$123,490	Youth Intervention & Outpatient Services	2.65	\$96,363	GF	\$123,490
Fairbanks Native Association	Fairbanks	20	NEW	\$0	Women & Youth Treatment Services	11.74	\$395,563	GF/MH	\$600,000
Fairbanks Native Association	Fairbanks	20	CONT	\$100,000	Domiciliary Care	2.8	\$78,063	MHTAAR	\$100,000
Fairbanks Native Association	Fairbanks	20	CONT	\$1,104,103	Treatment Services	19.14	\$727,352	GF/MH	\$1,104,103
Fairbanks Native Association	Fairbanks/Stwd	099	CONT	\$53,655	DOC Dedicated Beds	0	\$0	GF	\$53,655
Fairbanks Native Association	Northern Region	17-20-29	CONT	\$80,831	Substance Abuse Counselor Training	0.98	\$67,301	GF/MH	\$80,831
Fairbanks Native Association	Fairbanks/ Stwd	099	CONT	\$600,000	Resident Treatment for Pregnant & Postpartum	0	\$0	FED	\$600,000
Four Rivers Counseling Services	McGrath	36	CONT	\$94,424	Treatment Services	1.53	\$75,461	GF/MH	\$94,424
Gastineau Human Services	Juneau/Stwd	099	CONT	\$35,770	DOC Dedicated Beds	0	\$0	GF	\$35,770
Gateway Center for Human Services	Ketchikan	1	CONT	\$434,534	Treatment Services	9.72	\$434,534	GF/MH	\$434,534

ALCOHOL/DRUG PROGRAM

BRU: ALCOHOL AND DRUG
ABUSE SERVICES

COMPONENT: DRUG ABUSE GRANTS

DIVISION: ALCOHOLISM AND DRUG ABUSE

GRANTEE	LOCATION	ELECT. DIST.	NEW/ CONT.	FY98 AMT. AWARDED	SERVICE	FTE STAFF	AMT. PERS. SERVICES	FUND SOURCE	FY99 AMT. AWARDED
Gateway Center for Human Services	Ketchikan	1	CONT	\$63,300	Treatment Services	0.88	\$50,726	MHTAAR	\$63,300
Gateway Center for Human Services	Ketchikan	1	CONT	\$105,000	Youth Intervention & Outpatient Services	2.16	\$104,959	GF	\$105,000
Juneau, City & Borough	Juneau	4	NEW	\$0	Women & Youth Treatment Services	1	\$42,722	MHTAAR	\$71,552
Juneau, City & Borough	Juneau	4	CONT	\$123,163	Youth Intervention & Outpatient Services	2.02	\$101,600	GF	\$123,163
Juneau, City & Borough	Juneau	4	CONT	\$931,491	Treatment Services	17.43	\$657,100	GF/MH	\$931,491
Kuskokwim Native Association	Aniak	36	CONT	\$10,000	Treatment Services	0.16	\$7,164	GF	\$10,000
Mat-Su Recovery Center	Mat-Su	13-16-25	CONT	\$325,581	Treatment Services	10.88	\$325,581	GF/MH	\$325,581
Mat-Su Recovery Center	Talkeetna	28	CONT	\$18,187	Treatment Services	0.45	\$18,187	GF	\$18,187
Mat-Su Recovery Center	Wasilla	26	CONT	\$49,171	Women & Youth Treatment Services	2.29	\$87,526	GF/MHTAAR	\$94,171
Mat-Su Recovery Center	Wasilla	26	CONT	\$45,582	Youth Intervention & Outpatient Services	1.19	\$45,582	GF	\$45,582
Narcotic Drug Treatment Center	Anchorage	10-25	CONT	\$436,500	Treatment Services	6.8	\$355,934	FED/GF	\$436,500
National Council on Alcoholism	Southeast Region	1-5	CONT	\$76,876	Substance Abuse Counselor Training	1.15	\$53,373	GF/MH	\$76,876
National Council on Alcoholism	Southeast Region	1-5	CONT	\$78,772	Prevention Services	1.38	\$63,120	FED/GF	\$78,772
Nome Community Center	Nome	38	CONT	\$35,000	Prevention Services	0.5	\$17,880	GF	\$35,000
North Slope Borough	Barrow	37	CONT	\$400,000	Treatment Services	6.3	\$324,478	GF/MH	\$400,000
Northern Lights Recovery Center	Nome/Stwd	099	CONT	\$17,885	DOC Dedicated Beds	0	\$0	GF	\$17,885

ALCOHOL/DRUG PROGRAM

**BRU: ALCOHOL AND DRUG
ABUSE SERVICES**

COMPONENT: DRUG ABUSE GRANTS

DIVISION: ALCOHOLISM AND DRUG ABUSE

GRANTEE	LOCATION	ELECT. DIST.	NEW/ CONT.	FY98 AMT. AWARDED	SERVICE	FTE STAFF	AMT. PERS. SERVICES	FUND SOURCE	FY99 AMT. AWARDED
Nugen's Ranch	Statewide	099	CONT	\$976,451	Treatment Services	20.02	\$723,631	FED/GF/ MH/MHT	\$981,286
Providence Alaska Medical Center	Anchorage	10-25	CONT	\$56,250	Treatment Services	0.5	\$37,500	MHTAAR	\$37,500
RADACT Training	Statewide	099	CONT	\$86,918	Substance Abuse Counselor Training	1.19	\$70,373	GF/MH	\$86,918
Railbelt Mental Health	Nenana	36	CONT	\$77,353	Treatment Services	1.32	\$63,100	GF/MH	\$77,353
urALCAP	Statewide	099	CONT	\$25,000	Prevention Services	0	\$0	FED	\$25,000
Safe Harbor/KCA	Kodiak	6	CONT	\$456,062	Treatment Services	8.63	\$363,169	GF/MH	\$456,062
Safeharbor/KCA	Kodiak/Stwd	099	CONT	\$35,770	DOC Dedicated Beds	0	\$0	GF	\$35,770
Salvation Army Booth Memorial	Anchorage	10-25	CONT	\$37,700	Women & Youth Treatment Services	0.62	\$24,930	GF	\$37,700
Salvation Army Clitheroe Center	Anchorage/Stwd	099	CONT	\$295,328	DOC Dedicated Beds	0	\$0	GF	\$295,328
Salvation Army Clitheroe Center	Statewide	099	CONT	\$1,729,008	Treatment Services	76.05	\$1,566,016	FED/GF/ MH/MHT	\$1,785,291
Salvation Army Clitheroe Center	Statewide	099	CONT	\$644,703	Women's Outpatient Services	20.13	\$543,833	FED/GF/ MH	\$644,703
Seward Life Action Council	Seward	8	CONT	\$107,794	Treatment Services	2	\$98,185	GF/MH	\$107,794
Sitka Treatment & Prevention Services	Sitka	2	CONT	\$347,353	Treatment Services	7.4	\$272,453	GF/MH	\$347,353
Sitka Treatment & Prevention Services	Sitka	2	NEW	\$0	Women's Outpatient Services	0.53	\$17,500	MHTAAR	\$30,000
Sitka Treatment & Prevention Services	Sitka	2	CONT	\$58,760	Prevention Services	1.99	\$52,360	GF	\$58,760
Sound Alternatives	Cordova	35	CONT	\$72,373	Treatment Services	1.3	\$62,872	GF/MH	\$72,373

ALCOHOL/DRUG PROGRAM

BRU: ALCOHOL AND DRUG
ABUSE SERVICES

COMPONENT: DRUG ABUSE GRANTS

DIVISION: ALCOHOLISM AND DRUG ABUSE

GRANTEE	LOCATION	ELECT. DIST.	NEW/ CONT.	FY98 AMT. AWARDED	SERVICE	FTE STAFF	AMT. PERS. SERVICES	FUND SOURCE	FY99 AMT. AWARDED
SouthCentral Foundation	Statewide	099	CONT	\$251,402	Women's Treatment Services	4	\$165,880	GF/MH/ MHTAAR	\$268,902
Valdez Counseling Center	Valdez	35	CONT	\$10,000	Treatment Services	0.11	\$10,000	GF	\$10,000
Volunteers of America	Statewide	099	CONT	\$31,505	Prevention Services	0.65	\$28,591	GF	\$31,505
Volunteers of America	Anchorage	10-25	CONT	\$611,307	Treatment Services	14.03	\$512,441	GF/MH	\$611,307
Volunteers of America/ASSIST	Anchorage	10-25	CONT	\$164,000	Youth Intervention & Outpatient Services	2.99	\$120,871	GF	\$164,000
Yukon-Kuskokwim Health Corp.	Yukon-Kuskokwim	39	CONT	\$850,000	Outpatient Care, Aftercare	0	\$0	FED	\$850,000
Yukon-Kuskokwim Health Corp.	Bethel/Stwd	099	CONT	\$17,885	DOC Dedicated Beds	0	\$0	GF	\$17,885
				\$17,568,596	TOTALS	341.65	\$11,844,149		\$17,620,753

DIVISION OF ALCOHOLISM AND DRUG ABUSE**PROGRAM: Alcohol Safety Action Program**

AUTHORITY: AS 47.37 (Uniform Alcoholism and Intoxication Treatment Act) under the DHSS grant regulations 7AAC 78.

APPROPRIATION:

The appropriation is made to a separate Alcohol Safety Action Program budget component in the Alcohol/Drug Abuse Services BRU. A total of \$533,400 of General Fund/Mental Health receipts has been awarded in FY99.

PRIORITY SETTING:

Priorities of the program are alcohol screening, referral and case management of court cases. These are mandated by statute and locally derived need assessment. Monthly, quarterly, and annual reports, on-site reviews and Advisory Board recommendations are also considerations.

TARGET GROUP/GEOGRAPHICAL AREA SERVED:

The services are intended for clients involved in court related cases in the highest volume jurisdictions. Geographic areas covered are the State of Alaska.

RESOURCE ALLOCATIONS:

Criteria for allocation of funds for these services are 1) cost per case; 2) size of caseload and; 3) support of the local justice system. Geographic consideration is based on the number of cases in each court location.

CRITERIA:

Criteria for awarding grants are derived from statute and regulation and include component costs, budget summary and narrative, program narrative, and goals and objectives. Determinations are made by a proposal evaluation committee based on evaluation of the information provided in applications. Final funding decisions are made by the Commissioner of Health and Social Services.

ALCOHOL SAFETY ACTION PROGRAM

BRU: ALCOHOL AND DRUG ABUSE SERVICES

COMPONENT: ALCOHOL SAFETY ACTION PROGRAM

DIVISION: ALCOHOLISM AND DRUG ABUSE

GRANTEE	LOCATION	ELECT. DIST.	NEW/ CONT.	FY98 AMT. AWARDED	SERVICE	FTE STAFF	AMT. PERS. SERVICES	FUND SOURCE	FY99 AMT. AWARDED
Abused Women's Aid in Crisis, Inc.	Anchorage	10-25	CONT	\$50,000	Screen, Refer, Monitor Court Referrals	1.88	\$50,000	GF	\$50,000
Bristol Bay Area Health Corporation	Dillingham	39	CONT	\$25,500	Screen, Refer, Monitor Court Referrals	0.41	\$21,214	GF	\$25,000
Cook Inlet Council on Alcohol	Homer/Kenai	7-9	CONT	\$73,500	Screen, Refer, Monitor Court Referrals	1.79	\$64,910	GF	\$73,500
Fairbanks Native Association	Fairbanks	20	CONT	\$85,900	Screen, Refer, Monitor Court Referrals	1.56	\$65,831	GF	\$85,900
Gateway Center for Human Services	Ketchikan	1	CONT	\$56,000	Screen, Refer, Monitor Court Referrals	0.97	\$56,000	GF	\$56,000
Mat-Su Recovery Center	Palmer/Wasilla	27-16	CONT	\$93,000	Screen, Refer, Monitor Court Referrals	2.71	\$93,000	GF	\$93,000
National Council on Alcoholism	Juneau	4	CONT	\$85,000	Screen, Refer, Monitor Court Referrals	2	\$75,666	GF	\$85,000
Safeharbor/KCA	Kodiak	6	CONT	\$41,000	Screen, Refer, Monitor Court Referrals	0.9	\$36,223	GF	\$41,000
Seward Life Action Council	Seward	8	CONT	\$24,000	Screen, Refer, Monitor Court Referrals	0.95	\$17,984	GF	\$24,000
				\$533,900	TOTALS	13.17	\$480,828		\$533,400

DIVISION OF ALCOHOLISM AND DRUG ABUSE**PROGRAM: Community Action Against Substance Abuse**

AUTHORITY: AS 47.37.045 (Community Action Against Substance Abuse); AS 47.37 (Uniform Alcoholism and Intoxication Treatment Act) under the DHSS grant regulations 7AAC 78.

APPROPRIATION:

The appropriation is made to a separate Community Action Against Substance Abuse Program budget component in the Alcohol/Drug Abuse Services BRU. A total of \$177,300 General Funds is available and has been awarded in FY99.

PRIORITY SETTING:

Statute and locally derived needs assessment mandate priorities.

TARGET GROUP/GEOGRAPHIC AREA SERVED:

The services are intended for primary prevention aimed at youth under 18 years of age.

RESOURCE ALLOCATIONS:

Criteria for allocation of funds for these services are: 1) the need of services; 2) quality of the grant; 3) on-site evaluation, fiscal audit, MIS data; and, 4) per capita funding.

CRITERIA:

Criteria for awarding grants is derived from regulation and include component costs, budget summary and narrative, program narrative, and goals and objectives. Determinations are made by a proposal evaluation committee based on evaluation of the information provided in applications. Final funding decisions are made by the Commissioner of Health and Social Services.

COMMUNITY ACTION AGAINST SUBSTANCE ABUSE

BRU: ALCOHOL AND DRUG
ABUSE SERVICES

COMPONENT: COMMUNITY ACTION AGAINST SUBSTANCE
ABUSE

DIVISION: ALCOHOLISM AND DRUG ABUSE

GRANTEE	LOCATION	ELECT. DIST.	NEW/ CONT.	FY98 AMT. AWARDED	SERVICE	FTE STAFF	AMT. PERS. SERVICES	FUND SOURCE	FY99 AMT. AWARDED
Bristol Bay Area Health Corporation	Dillingham	39	NEW	\$18,876	Youth Prevention Services	0.12	\$3,438	GF	\$27,619
Gateway Center for Human Services	Ketchikan	1	NEW	\$40,731	Youth Prevention Services	0.75	\$39,323	GF	\$40,731
Mat-Su Recovery Center	Wasilla	26	NEW	\$38,950	Youth Prevention Services	1.11	\$38,950	GF	\$38,950
Wrangell Police in School Liason	Wrangell	2	NEW	\$40,000	Youth Prevention Services	0.89	\$40,000	GF	\$40,000
Yukon-Kuskokwim Health Corporation	Bethel/Emmonak/Mt. Village/St. Mary's	39	NEW	\$30,000	Youth Prevention Services	0	\$0	GF	\$30,000
				\$ 168,557	TOTALS	2.87	\$121,711		\$177,300

DIVISION OF ALCOHOLISM AND DRUG ABUSE**PROGRAM: Community-Based Suicide Prevention**

AUTHORITY: This program is managed under the DHSS grant regulations 7AAC 78. It is based on the recommendations contained in the March 1988 report of the Senate Special Committee on Suicide Prevention and is in compliance with the State of Alaska Comprehensive Plan for Mental Health FY 88-93 ("specialized services to Alaska Natives" Goal D, Objective 2).

APPROPRIATION:

The program is funded through a specific appropriation first authorized by the Legislature in FY89. Total funding for the program for FY99 is \$815,801 of General Fund/Mental Health receipts. A total of \$737,323 has been awarded to date.

PRIORITY SETTING:

This program offers smaller communities of Alaska the opportunity to implement local projects to reduce self-destructive behavior and promote community and individual wellness. The projects are based on local determination of the underlying causes of individual and community dysfunction and locally designed interventions. The program encourages integrated approaches and requires participation by the community as a whole in the preparation of the application. To facilitate an integrated approach, the program is managed by an Interdepartmental Team whose membership includes representatives from various DHSS divisions and from the Departments of Education, Public Safety, and Community and Regional Affairs.

TARGET GROUP/GEOGRAPHIC AREA SERVED:

The program is available to smaller communities throughout the state. In FY99, 56 grants have been awarded.

CRITERIA:

The program was evaluated on a number of criteria over a three-year period by an independent contractor. Criteria include: an increase in community awareness of suicide prevention; an increase in wellness promoting community activities; and a reduction in indicators of social stress, including suicide, violent crime, child abuse and substance abuse.

COMMUNITY-BASED SUICIDE PREVENTION

BRU: ALCOHOL AND DRUG
ABUSE SERVICES

COMPONENT: RURAL SERVICES GRANTS

DIVISION: ALCOHOLISM AND DRUG ABUSE

GRANTEE	LOCATION	ELECT. DIST.	NEW/ CONT	FY98 AMT. AWARDED	SERVICE	FTE STAFF	AMT. PER S. SERVICES	FUND SOURCE	FY99 AMT. AWARDED
Akutan Traditional Council	Akutan	40	CONT	\$13,475	Local Activities Promoting Wellness, Preventing Suicide	0.15	\$4,343	GF/IA/MH	\$13,475
Alakanuk, City of	Alakanuk	38	CONT	\$13,000	Local Activities Promoting Wellness, Preventing Suicide	0.38	\$9,880	GF/IA/MH	\$13,000
Ambler, City of	Ambler	37	CONT	\$14,000	Local Activities Promoting Wellness, Preventing Suicide	0.5	\$11,642	GF/IA/MH	\$14,000
Angoon Resource Coalition	Angoon	5	CONT	\$13,000	Local Activities Promoting Wellness, Preventing Suicide	0.47	\$9,500	GF/IA/MH	\$13,000
Brevig Mission Traditional Council	Brevig Mission	38	CONT	\$15,000	Local Activities Promoting Wellness, Preventing Suicide	0.3	\$10,584	GF/IA/MH	\$15,000
Bristol Bay Borough	Naknek	40	CONT	\$13,000	Local Activities Promoting Wellness, Preventing Suicide	0.32	\$8,910	GF/IA/MH	\$13,000
Chistochina Village Council	Chistochina	36	CONT	\$14,723	Local Activities Promoting Wellness, Preventing Suicide	0	\$0	GF/IA/MH	\$14,723
Chuathbaluk Traditional Council	Chuathbaluk	36	CONT	\$10,500	Local Activities Promoting Wellness, Preventing Suicide	0.37	\$8,602	GF/IA/MH	\$10,500
Delta Junction, City of	Delta Junction	35	CONT	\$10,000	Local Activities Promoting Wellness, Preventing Suicide	0.35	\$6,970	GF/IA/MH	\$10,000
Eek, City of	Eek	39	CONT	\$12,000	Local Activities Promoting Wellness, Preventing Suicide	0.18	\$7,028	GF/IA/MH	\$12,000
Emmonak, City of	Emmonak	38	CONT	\$19,000	Local Activities Promoting Wellness, Preventing Suicide	0.47	\$15,439	GF/IA/MH	\$19,000
False Pass, City of	False Pass	40	CONT	\$12,000	Local Activities Promoting Wellness, Preventing Suicide	0.14	\$3,580	GF/IA/MH	\$12,000
Hoonah Indian Association	Hoonah	5	CONT	\$15,000	Local Activities Promoting Wellness, Preventing Suicide	0.5	\$11,000	GF/IA/MH	\$15,000
Iditarod School District	McGrath	36	CONT	\$14,900	Local Activities Promoting Wellness, Preventing Suicide	0.47	\$12,418	GF/IA/MH	\$14,900
Igiugig Village Council	Igiugig	39	CONT	\$10,000	Local Activities Promoting Wellness, Preventing Suicide	0.29	\$5,911	GF/IA/MH	\$10,000

COMMUNITY-BASED SUICIDE PREVENTION

BRU: ALCOHOL AND DRUG
ABUSE SERVICES

COMPONENT: RURAL SERVICES GRANTS

DIVISION: ALCOHOLISM AND DRUG ABUSE

GRANTEE	LOCATION	ELECT. DIST.	NEW/ CONT	FY98 AMT. AWARDED	SERVICE	FTE STAFF	AMT. PERS. SERVICES	FUND SOURCE	FY99 AMT. AWARDED
King Cove, City of	King Cove	40	CONT	\$12,500	Local Activities Promoting Wellness, Preventing Suicide	0.32	\$7,500	GF/IA/MH	\$10,700
King Salmon Village Council	King Salmon	40	CONT	\$13,000	Local Activities Promoting Wellness, Preventing Suicide	0.29	\$9,408	GF/IA/MH	\$13,000
Kipnuk Traditional Council	Kipnuk	39	CONT	\$15,000	Local Activities Promoting Wellness, Preventing Suicide	0.5	\$11,960	GF/IA/MH	\$15,000
Kotlik City Council	Kotlik	38	CONT	\$15,816	Local Activities Promoting Wellness, Preventing Suicide	0.58	\$13,836	GF/IA/MH	\$15,816
Koyukuk, City of	Koyukuk	36	CONT	\$11,589	Local Activities Promoting Wellness, Preventing Suicide	0.38	\$10,120	GF/IA/MH	\$11,589
Levelock Village Council	Levelock	39	CONT	\$12,000	Local Activities Promoting Wellness, Preventing Suicide	0.42	\$9,680	GF/IA/MH	\$12,000
Lower Kalskag, City of	Lower Kalskag	36	CONT	\$11,000	Local Activities Promoting Wellness, Preventing Suicide	0.38	\$7,957	GF/IA/MH	\$11,000
Mentasta Tribal Council	Mentasta	36	CONT	\$14,000	Local Activities Promoting Wellness, Preventing Suicide	0.5	\$11,648	GF/IA/MH	\$14,000
Minto Village Council	Minto	36	CONT	\$12,500	Local Activities Promoting Wellness, Preventing Suicide	0.25	\$6,026	GF/IA/MH	\$12,500
Native Village of Elim	Elim	38	CONT	\$13,000	Local Activities Promoting Wellness, Preventing Suicide	0.34	\$8,670	GF/IA/MH	\$13,000
Native Village of Fort Yukon	Fort Yukon	36	CONT	\$14,000	Local Activities Promoting Wellness, Preventing Suicide	0.35	\$8,631	GF/IA/MH	\$14,000
Native Village of Gambell	Gambell	38	CONT	\$10,000	Local Activities Promoting Wellness, Preventing Suicide	0.38	\$8,862	GF/IA/MH	\$10,000
Native Village of Kluti-Kaah	Copper Center	36	CONT	\$10,000	Local Activities Promoting Wellness, Preventing Suicide	0.03	\$500	GF/IA/MH	\$10,000
Native Village of Koyuk	Koyuk	38	CONT	\$13,000	Local Activities Promoting Wellness, Preventing Suicide	0.27	\$6,703	GF/IA/MH	\$13,000

COMMUNITY-BASED SUICIDE PREVENTION

BRU: ALCOHOL AND DRUG
ABUSE SERVICES

COMPONENT: RURAL SERVICES GRANTS

DIVISION: ALCOHOLISM AND DRUG ABUSE

GRANTEE	LOCATION	ELECT. DIST.	NEW/ CONT	FY98 AMT. AWARDED	SERVICE	FTE STAFF	AMT. PERS. SERVICES	FUND SOURCE	FY99 AMT. AWARDED
Native Village of Mekoryuk	Mekoryuk	38	CONT	\$12,000	Local Activities Promoting Wellness, Preventing Suicide	0.29	\$7,080	GF/IA/MH	\$12,000
Native Village of Shishmaref	Shishmaref	37	CONT	\$15,000	Local Activities Promoting Wellness, Preventing Suicide	0.5	\$10,120	GF/IA/MH	\$15,000
Native Village of St. Michael	St. Michael	38	CONT	\$15,000	Local Activities Promoting Wellness, Preventing Suicide	0.21	\$7,279	GF/IA/MH	\$12,000
Nenana Native Council	Nenana	36	CONT	\$14,000	Local Activities Promoting Wellness, Preventing Suicide	0.5	\$11,655	GF/IA/MH	\$14,000
New Stuyahok Tribal Village Council	New Stuyahok	39	CONT	\$15,000	Local Activities Promoting Wellness, Preventing Suicide	0.38	\$9,688	GF/IA/MH	\$15,000
Newhalen Tribal Council	Newhalen	40	CONT	\$14,000	Local Activities Promoting Wellness, Preventing Suicide	0.43	\$9,900	GF/IA/MH	\$14,000
Nondalton Tribal Council	Nondalton	40	CONT	\$14,000	Local Activities Promoting Wellness, Preventing Suicide	0.3	\$7,246	GF/IA/MH	\$14,000
Noorvik, City of	Noorvik	37	CONT	\$11,500	Local Activities Promoting Wellness, Preventing Suicide	0.36	\$8,150	GF/IA/MH	\$11,500
Nulato, City of	Nulato	36	CONT	\$10,000	Local Activities Promoting Wellness, Preventing Suicide	0.33	\$7,934	GF/IA/MH	\$10,000
Old Harbor Tribal Council	Old Harbor	6	CONT	\$15,000	Local Activities Promoting Wellness, Preventing Suicide	0.38	\$11,040	GF/IA/MH	\$15,000
Organized Village of Kake	Kake	5	CONT	\$12,000	Local Activities Promoting Wellness, Preventing Suicide	0.19	\$6,663	GF/IA/MH	\$12,000
Organized Village of Kwethluk (IRA)	Kwethluk	39	CONT	\$13,000	Local Activities Promoting Wellness, Preventing Suicide	0.38	\$10,620	GF/IA/MH	\$13,000
Orutsaramiut Native Council	Bethel	39	CONT	\$15,000	Local Activities Promoting Wellness, Preventing Suicide	0.3	\$10,584	GF/IA/MH	\$15,000
Port Graham Village Council	Port Graham	7	CONT	\$12,000	Local Activities Promoting Wellness, Preventing Suicide	0.34	\$8,453	GF/IA/MH	\$12,000

COMMUNITY-BASED SUICIDE PREVENTION

**BRU: ALCOHOL AND DRUG
ABUSE SERVICES**

COMPONENT: RURAL SERVICES GRANTS

DIVISION: ALCOHOLISM AND DRUG ABUSE

GRANTEE	LOCATION	ELECT. DIST.	NEW/ CONT	FY98 AMT. AWARDED	SERVICE	FTE STAFF	AMT. PERS. SERVICES	FUND SOURCE	FY99 AMT. AWARDED
Port Lions Traditional Tribal Council	Port Lions	3	CONT	\$15,000	Local Activities Promoting Wellness, Preventing Suicide	0.4	\$10,046	GF/IA/MH	\$15,000
Qawalangin Tribe of Alaska	Unalaska	40	CONT	\$13,000	Local Activities Promoting Wellness, Preventing Suicide	0.07	\$2,742	GF/IA/MH	\$13,000
Ruby City Council	Ruby	36	CONT	\$10,000	Local Activities Promoting Wellness, Preventing Suicide	0.38	\$9,360	GF/IA/MH	\$10,000
Savoonga, City of	Savoonga	38	CONT	\$17,000	Local Activities Promoting Wellness, Preventing Suicide	0.35	\$10,128	GF/IA/MH	\$15,000
Shaktoolik IRA Council	Shaktoolik	38	CONT	\$14,037	Local Activities Promoting Wellness, Preventing Suicide	0.4	\$9,856	GF/IA/MH	\$14,037
South Naknek Village Council	South Naknek	40	CONT	\$13,155	Local Activities Promoting Wellness, Preventing Suicide	0.35	\$8,300	GF/IA/MH	\$12,787
St. Mary's, City of	St. Mary's	38	CONT	\$19,000	Local Activities Promoting Wellness, Preventing Suicide	0.5	\$15,607	GF/IA/MH	\$19,000
Togiak, City of	Togiak	39	CONT	\$15,000	Local Activities Promoting Wellness, Preventing Suicide	0.2	\$8,200	GF/IA/MH	\$15,000
Toksook Bay, City of	Toksook Bay	38	CONT	\$15,000	Local Activities Promoting Wellness, Preventing Suicide	0.46	\$11,427	GF/IA/MH	\$15,000
Upper Kalskag Traditional Council	Upper Kalskag	36	CONT	\$12,796	Local Activities Promoting Wellness, Preventing Suicide	0.38	\$9,856	GF/IA/MH	\$12,796
Wales, City of	Wales	37	CONT	\$13,000	Local Activities Promoting Wellness, Preventing Suicide	0.12	\$2,635	GF/IA/MH	\$13,000
White Mountain, City of	White Mountain	38	CONT	\$10,000	Local Activities Promoting Wellness, Preventing Suicide	0.31	\$7,918	GF/IA/MH	\$10,000
Yakutat Tlingit Tribe	Yakutat	5	CONT	\$13,000	Local Activities Promoting Wellness, Preventing Suicide	0.47	\$9,778	GF/IA/MH	\$13,000
				\$744,491	TOTALS	19.16	\$489,573		\$737,323

CORRECTION

THE FOLLOWING DOCUMENT(S)
HAVE BEEN REFILMED TO
ASSURE LEGIBILITY OR PAGINATION



Rev. 6/98

Central Microfilm Services
Department of Education & Early Development
State of Alaska

COMMUNITY-BASED SUICIDE PREVENTION

BRU: ALCOHOL AND DRUG
ABUSE SERVICES

COMPONENT: RURAL SERVICES GRANTS

DIVISION: ALCOHOLISM AND DRUG ABUSE

GRANTEE	LOCATION	ELECT. DIST.	NEW/ CONT	FY98 AMT. AWARDED	SERVICE	FTE STAFF	AMT. PERS. SERVICES	FUND SOURCE	FY99 AMT. AWARDED
Port Lions Traditional Tribal Council	Port Lions	6	CONT	\$15,000	Local Activities Promoting Wellness, Preventing Suicide	0.4	\$10,046	GF/IA/MH	\$15,000
Qawalangin Tribe of Alaska	Unalaska	40	CONT	\$13,000	Local Activities Promoting Wellness, Preventing Suicide	0.07	\$2,742	GF/IA/MH	\$13,000
Ruby City Council	Ruby	36	CONT	\$10,000	Local Activities Promoting Wellness, Preventing Suicide	0.38	\$9,360	GF/IA/MH	\$10,000
Savoonga, City of	Savoonga	38	CONT	\$17,000	Local Activities Promoting Wellness, Preventing Suicide	0.35	\$10,128	GF/IA/MH	\$15,000
Shaktoolik IRA Council	Shaktoolik	38	CONT	\$14,037	Local Activities Promoting Wellness, Preventing Suicide	0.4	\$9,856	GF/IA/MH	\$14,037
South Naknek Village Council	South Naknek	40	CONT	\$13,155	Local Activities Promoting Wellness, Preventing Suicide	0.35	\$8,300	GF/IA/MH	\$12,787
St. Mary's, City of	St. Mary's	38	CONT	\$19,000	Local Activities Promoting Wellness, Preventing Suicide	0.5	\$15,507	GF/IA/MH	\$19,000
Togiak, City of	Togiak	39	CONT	\$15,000	Local Activities Promoting Wellness, Preventing Suicide	0.2	\$8,200	GF/IA/MH	\$15,000
Toksook Bay, City of	Toksook Bay	38	CONT	\$15,000	Local Activities Promoting Wellness, Preventing Suicide	0.46	\$11,427	GF/IA/MH	\$15,000
Upper Kalskag Traditional Council	Upper Kalskag	36	CONT	\$12,796	Local Activities Promoting Wellness, Preventing Suicide	0.38	\$9,856	GF/IA/MH	\$12,796
Wales, City of	Wales	37	CONT	\$13,000	Local Activities Promoting Wellness, Preventing Suicide	0.12	\$2,635	GF/IA/MH	\$13,000
White Mountain, City of	White Mountain	38	CONT	\$10,000	Local Activities Promoting Wellness, Preventing Suicide	0.31	\$7,918	GF/IA/MH	\$10,000
Yakutat Tlingit Tribe	Yakutat	5	CONT	\$13,000	Local Activities Promoting Wellness, Preventing Suicide	0.47	\$9,778	GF/IA/MH	\$13,000
				\$744,491	TOTALS	19.16	\$489,573		\$737,323

DIVISION OF ALCOHOLISM AND DRUG ABUSE**PROGRAM: Fetal Alcohol Consultation and Training Services (FACTS)**

AUTHORITY: AS 47.37.045 (Community Action Against Substance Abuse); AS 47.37 (Uniform Alcoholism and Intoxication Treatment Act) under the DHSS grant regulations 7AAC 78.

APPROPRIATIONS:

The FACTS grant is funded by the Alaska Mental Health Trust Authority (AMHTA). The Trust allocated \$300,000 for programming to deal with the critical issue of fetal alcohol syndrome. The FACTS grant is one of five (5) projects being funded with these allocated dollars.

PRIORITIES:

The intent of the FACTS project is to impact children and adolescents affected by fetal alcohol syndrome (FAS) and other alcohol related neuro-developmental disorders (ARND) through building local capacity by training families, educators and other key stakeholders in methods and strategies for educating children with this disability.

Onsite training, consultation and support will be offered through school district special education services to four target communities [Ketchikan, Kenai, Bethel and Fairbanks]. In addition consultation, support and educational information will be available across the state upon request.

TARGET GROUP:

Special emphasis will be placed on direct services to school district personnel, parents of children with FAS/ARND and other community resources that are available to provide educational and support services to the individual and his/her family. As indicated, four targeted communities will receive more intensive services, but other services will be available upon request. Educational services for children from pre-school through high school will be targeted within the public, private and home-schooling systems.

RESOURCE ALLOCATIONS:

The AMHTA has recommended funding for FAS projects for three (3) fiscal years—FY99, FY00 and FY01. One grant award has been made in the amount of \$125,000 for eight months. Continuing years will be funded at \$139,000 for 12 months. Grant awards are contingent upon yearly budget considerations.

CRITERIA:

The FACTS project is a competitive grant, with proposals being scored and rated by a Proposal Evaluation Committee. Primary criteria are combined experience and knowledge in both special education services and fetal alcohol syndrome.

FETAL ALCOHOL CONSULTATION AND TRAINING SERVICES

BRU: ALCOHOL AND DRUG
ABUSE SERVICES

COMPONENT: DRUG ABUSE GRANTS

DIVISION: ALCOHOLISM AND DRUG ABUSE

GRANTEE	LOCATION	ELECT. DIST.	NEW/ CONT.	FY98 AMT. AWARDED	SERVICE	FTE STAFF	AMT. PERS. SERVICES	FUND SOURCE	FY99 AMT. AWARDED
Special Education Services Agency	Statewide	099	NEW	\$0	Training, consultation and support to school personnel,	1.19	\$74,247	MHTAAR	\$125,000
				\$0	TOTALS	1.19	\$74,247		\$125,000

DIVISION OF ALCOHOLISM AND DRUG ABUSE**PROGRAM: Peer Counselor/Natural Helper**

AUTHORITY: The Legislature first appropriated funds for this program in FY89 as part of the "suicide prevention package" recommended by the Senate Special Committee on Suicide Prevention. The program is governed by DHSS grant regulations, 7AAC 78.

APPROPRIATION:

Total funding for the program is \$306,600 of General Fund/Mental Health receipts. Of this total amount \$226,941 has been granted to programs, and \$79,659 has not been allocated or awarded to date.

PRIORITY SETTING:

This program recognizes that people, particularly adolescents, turn frequently to responsive peers for help and support when they are troubled. Peer counselor/natural helper programs identify those most often turned to and provide training, supervision and support to enhance their natural skills and facilitate referrals to professional helpers when appropriate.

TARGET GROUP/GEOGRAPHIC AREA SERVED:

This statewide program targets high school students. Funds are available to community mental health centers, which are required to apply in conjunction with their local school district. The program requires a close working relationship between the participating school and the mental health center. This includes formal, written memoranda of agreement regarding referrals, exchange of information, and cluster suicide containment strategies. Nine programs are currently funded.

CRITERIA:

Quarterly reports provide information on the number of students involved as natural helpers; and, as reported by the natural helpers, the number of students seeking help and for what problems; as well as the number of students referred for professional assistance, training and supervision.

PEER COUNSELOR, NATURAL HELPER

BRU: ALCOHOL AND DRUG ABUSE SERVICES

COMPONENT: RURAL SERVICES GRANTS

DIVISION: ALCOHOLISM AND DRUG ABUSE

GRANT/TEE	LOCATION	ELECT. DIST.	NEW/ CONT.	FY98 AMT. AWARDED	SERVICE	FTE STAFF	AMT. PERS. SERVICES	FUND SOURCE	FY99 AMT. AWARDED
Bristol Bay Area Health Corporation	Dillingham	39	CONT	\$45,000	School-Based Peer Counseling, Support	0.38	\$14,423	GF/MH	\$45,000
Communities Organized for Health Options	Craig	5	CONT	\$23,376	School-Based Peer Counseling, Support	0.5	\$19,186	GF/MH	\$23,376
Council of Athabascan Tribal Governments	Yukon Flats	36	CONT	\$8,000	School-Based Peer Counseling, Support	0.1	\$3,588	GF/MH	\$8,000
Fairbanks Community Mental Health Center	Delta Greely	35	CONT	\$12,100	School-Based Peer Counseling, Support	0.16	\$6,257	GF/MH	\$12,100
Fairbanks Crisis Line	Fairbanks	29-34	CONT	\$55,000	School-Based Peer Counseling, Support	0.9	\$40,169	GF/MH	\$55,000
Gateway Mental Health	Ketchikan	1	CONT	\$4,000	School-Based Peer Counseling, Support	0.05	\$2,155	GF/MH	\$4,000
Mat-Su Community Mental Health Services	Wasilla	26	CONT	\$21,465	School-Based Peer Counseling, Support	0.05	\$1,900	GF/MH	\$21,465
Sitka Teen Resource Center	Sitka	2	CONT	\$46,000	School-Based Peer Counseling, Support	1.5	\$41,210	GF/MH	\$46,000
Wrangell Community Mental Health Center	Wrangell	2	CONT	\$12,000	School-Based Peer Counseling, Support	0.2	\$7,568	GF/MH	\$12,000
				\$226,941	TOTALS	3.84	\$136,456		\$226,941

DIVISION OF ALCOHOLISM AND DRUG ABUSE**PROGRAM: Rural Human Services Project**

AUTHORITY: This program is managed under the DHSS grant regulations 7AAC 78.

APPROPRIATION:

Total funding for the program is \$1,233,035 composed of \$1,083,035 General Fund/Mental Health and \$150,000 of Mental Health Authorized Agency Receipts. Total grants awarded to date equal \$1,080,000

PRIORITY SETTING:

The Rural Human Services System Project awards grants to rural mental health and substance abuse agencies to employ, train and supervise village-based human services workers. Workers are required to participate in the Rural Human Services Certificate Program at the College of Rural Alaska, University of Fairbanks.

TARGET GROUP/GEOGRAPHIC AREA SERVED:

All rural human service agencies are eligible to apply to this program. Ten agencies received grants in FY99. They employ village-based generalist human services providers in 30 rural communities.

CRITERIA:

All people employed or trained through this program, village-based workers and supervisors are required to submit data to the Management Information System. In addition, program directors complete quarterly reports, and periodically survey key community informants. Data are compiled and analyzed annually.

RURAL HUMAN SERVICE SYSTEM

BRU: ALCOHOL AND DRUG ABUSE SERVICES

COMPONENT: RURAL SERVICES GRANTS

DIVISION: ALCOHOLISM AND DRUG ABUSE

GRANTEE	LOCATION	ELECT. DIST.	NEW/ CONT.	FY98 AMT. AWARDED	SERVICE	FTE STAFF	AMT. PERS. SERVICES	FUND SOURCE	FY99 AMT. AWARDED
Bristol Bay Area Health Corporation	Bristol Bay	39	CONT	\$305,107	Provide Human Services Locally	5	\$201,694	GF/MH	\$305,107
Copper River Native Assoc.	Copper Center	36	CONT	\$64,500	Provide Human Services Locally	0.5	\$38,922	GF/MH	\$64,500
Council of Athabascan Tribal Governments	Interior/Yukon Flats	36	CONT	\$26,500	Provide Human Services Locally	0.36	\$19,000	GF/MH	\$26,500
Eastern Aleutian Tribes	Aleutians East	40	NEW	\$0	Provide Human Services Training & Staff	3	\$67,776	GF/MH/MHT AAR	\$109,812
Kodiak Area Native Association	Kodiak Island	6	CONT	\$113,551	Provide Human Services Locally	2.3	\$82,818	GF/MH	\$113,551
Maniilaq Association	Northwest Arctic	37	NEW	\$0	Provide Human Services Training & Staff	3.32	\$86,136	GF/MH/MHT AAR	\$158,532
Norton Sound Health Center	Nome	38	NEW	\$0	Provide Human Services Training & Staff	0	\$0	GF/MH/MHT AAR	\$42,932
Southeast Alaska Regional Health Consortium	Southeast	1-4	CONT	\$47,500	Provide Human Services Locally	0	\$0	GF/MH	\$36,224
Yukon-Koyukuk Mental Health	Yukon-Koyukuk	36	CONT	\$156,500	Provide Human Services Locally	3.33	\$127,864	GF/MH	\$156,500
Yukon-Kuskokwim Health Corporation	Yukon-Kuskokwim	39	CONT	\$66,342	Provide Human Services Locally	1.33	\$34,881	GF/MH	\$66,342
				\$780,000	TOTALS	19.14	\$659,091		\$1,080,000

DIVISION OF FAMILY AND YOUTH SERVICES**GRANT PROGRAM: Child Care Licensing**

AUTHORITY: AS 47.35.010(b) provides for the delegation to home rule municipalities of its licensing powers for child care licensing. In 1989, under this authority, the state delegated authority for child care center licensing to the Municipality of Anchorage. However, from the beginning, the state has subsidized the Municipality for this function. Beginning in FY 91, the Municipality began to assist the State with family child care home licensing. However, home licensing powers have neither been requested nor delegated.

APPROPRIATIONS:

Funding for this grant comes from the Purchased Services BRU; Family Preservation Component. The grant for this function totals \$170,355 for FY 99.

PRIORITIES:

Services under this grant include licensing of child care centers, assistance in providing family child care home orientations, and reviews and assessment of home applications in Anchorage. This grant also includes funding joint state and municipal investigation of complaints regarding unlicensed home care of five or more children in the Anchorage area.

TARGET GROUP/GEOGRAPHICAL AREA SERVED:

Licensing and review of child care centers and family child care in Anchorage. A total of 789 applicants were served through this grant in FY 98. A similar number is expected for FY 99.

RESOURCE ALLOCATION:

Funding is based largely upon the cost of meeting the need and demand for such services, extrapolating from recent experience.

CRITERIA:

Funding for the license function to the Municipality of Anchorage is based upon the fact that that municipality is the only municipality in the State of Alaska which has requested and been delegated the licenser function for child care centers and to assist the Division in the reviewing and orientation of home child care.

CHILD CARE LICENSING

BRU: PURCHASED SERVICES

COMPONENT: FAMILY PRESERVATION

DIVISION: FAMILY AND YOUTH SERVICES

GRANTEE	LOCATION	ELECT. DIST.	NEW/ CONT.	FY98 AMT. AWARDED	SERVICE	FTE STAFF	AMT. PERS. SERVICES	FUND SOURCE	FY99 AMT. AWARDED
Anchorage, Municipality of	Anchorage	10-25	CONT	\$170,355	Child Care Licensing	5	\$166,164	GF	\$170,355
				\$170,355	TOTALS	5	\$166,164		\$170,355

DIVISION OF FAMILY AND YOUTH SERVICES**GRANT PROGRAM: Community Based Family Resource Programs**

AUTHORITY: AS 47.05.010 mandates the Department of Health and Social Services to: administer Adult Public Assistance programs, Aid to Families with Dependent Children, and all other assistance programs, and receive and spend funds made available to it.

AS 47.40.041 (Grants) authorizes the Department to award grants in accordance with its regulations.

APPROPRIATIONS:

Money for the Community Planning grant also comes from this source. Money for the Community Based Family Resource Programs stems from Title IV of the Human Services Amendments of 1994, Public Law 103-252, which established a new Title II of the Child Abuse Prevention and Treatment Act (CAPTA). However, the state appropriation process is still followed. Money comes from appropriations to the Purchased Services Budget Request Unit, (BRU) and components within that BRU, via the Family Preservation Component. The total amount granted for this grant category in FY 99 is \$153,403.

PRIORITIES:

Under this set of grants, family preservation services are community-based preventive services to promote the well being of children and families. As with the Family Support and Family Preservation Services grants, the individuals served by these grants are primarily "at risk" children and their families. Community based family resource programs are services to support family well being and prevent child abuse and neglect. For FY 99, it is estimated that 50 families or 121 individuals will be served under the Community Based Family Resource Program grants.

RESOURCE ALLOCATION:

Of the total of \$153,403 granted for FY 99, \$29,416 was awarded in the Northern Region, \$33,987 was awarded in the Southcentral Region and \$90,000 was awarded in the Southeast Region.

CRITERIA:

As with other grants, this too was a continuation year. The grantees were required to submit the following criteria: project abstract, project description, statement of need, goals and objectives, cost and budget considerations, and an evaluation plan.

COMMUNITY BASED FAMILY RESOURCE PROGRAMS

BRU: PURCHASED SERVICES

COMPONENT: FAMILY PRESERVATION

DIVISION: FAMILY AND YOUTH SERVICES

GRANTEE	LOCATION	ELECT. DIST.	NEW/ CONT.	FY98 AMT. AWARDED	SERVICE	FTE STAFF	AMT. PERS. SERVICES	FUND SOURCE	FY99 AMT. AWARDED
Alaska Women's Resource Center	Anchorage	10-25	CONT	\$33,987	Community Based Family Resource Programs	0.87	\$32,227	FED	\$33,987
Catholic Community Services	Juneau	3-4	CONT	\$40,000	Community Based Family Resource Programs	1.06	\$30,037	FED	\$40,000
Fairbanks Counseling & Adoption/RCPC	Fairbanks	29-34	CONT	\$29,416	Community Based Family Resource Programs	0.86	\$23,255	FED	\$29,416
Women in Safe Homes	Ketchikan	1	CONT	\$50,000	Community Based Family Resource Programs	0.86	\$31,710	FED	\$50,000
				\$153,403	TOTALS	3.65	\$117,289		\$153,403

DIVISION OF FAMILY AND YOUTH SERVICES**GRANT PROGRAM: Family Support and Family Preservation Services**

AUTHORITY: AS 47.05.010 mandates the Department of Health and Social Services to: administer Adult Public Assistance programs, Aid to Families with Dependent Children, and all other assistance programs, and receive and spend funds made available to it.

AS 47.40.041 (Grants) authorizes the Department to award grants in accordance with its regulations.

APPROPRIATIONS:

Money for the Family Support and Family Preservation Services Grants comes from appropriations to the Purchased Services Budget Request Unit, (BRU) and components within that BRU. Money for the Family Support and Family Preservation Services grants is drawn from the Family Preservation Component. This component includes federal money from Title IV-B, of the Social Security Act, Subpart 2 Omnibus Budget Reconciliation Act of 1993 (P.L. 103-66). The total amount granted for the Family Support Services and Family Preservation Services grants for FY 99 is \$2,323,089. Of this total, \$956,928 is federal money.

PRIORITIES:

The services obtained through these grants are an adjunct to the services provided directly by the Division of Family and Youth Services. The individuals served by these grants are primarily "at risk" children and their families. The goals of the services obtained through these grants include the following:

...to keep the family intact, to re-unite families, and to reduce the number of out-of-home placements.

This set of grants also has the aim of preventing further delinquency, as one of the grants is for an electronic monitoring project in Anchorage, and another, also in Anchorage provides a diversion and education program for first time juvenile offenders.

Services provided through this grant category are direct services for high-risk parents and their children. Such services, delivered in the home, have the aim of reducing out-of-home placements and easing the reunification process where there has been an out-of-home placement. This grant program also provides crisis respite services in Anchorage, parent aide services in various locations, and emergency shelter services in Fairbanks and Anchorage.

This grant program serves approximately 2,500 persons each year.

RESOURCE ALLOCATION:

Regional funding allocations for the Family Support and Family Preservation Services grants are based on population, numbers of family services clients, numbers of youth services clients, and community resources. Regional allocations are as follows:

Northern (27.2%):	\$631,430
Southcentral (57.8%):	1,345,155
Southeastern (15%):	<u>346,504</u>
Total:	\$2,323,089

CRITERIA:

FY99 was a continuation year for the Family Support / Family Preservation grants. All grantees were required to submit the following criteria: Project Abstract, Statement of Need/Target Population, Project Description, Goals and Objectives, and Cost and Budget Considerations.

FAMILY SUPPORT/FAMILY PRESERVATION SERVICES

BRU: PURCHASED SERVICES

COMPONENT: FAMILY PRESERVATION

DIVISION: FAMILY AND YOUTH SERVICES

GRANTEE	LOCATION	ELECT. DIST.	NEW/ CONT.	FY98 AMT. AWARDED	SERVICE	FTE STAFF	AMT. PERS. SERVICES	FUND SOURCE	FY99 AMT. AWARDED
Alaska Youth & Parent Foundation	Anchorage	10-25	CONT	\$89,000	Electronic Monitoring	1.45	\$49,508	GF	\$89,000
Anchorage Center for Families	Anchorage	10-25	CONT	\$151,555	Intermission	8.8	\$269,090	FED	\$324,910
Anchorage Center for Families	Anchorage	10-25	CONT	\$446,533	Family Support/Family Preservation	9.3	\$388,713	FED	\$446,533
Catholic Community Services	Juneau	3-4	CONT	\$60,500	Parent Assistance	1.3	\$43,165	GF	\$60,500
Catholic Community Services	Juneau	3-4	CONT	\$75,000	In Home Services/Supervised Visitation	1.54	\$52,961	GF	\$75,000
Copper River Native Association	Copper Center	36	CONT	\$77,599	Counseling/Home Services	1.5	\$59,430	GF	\$77,599
Cordova Family Resource Center	Cordova	35	CONT	\$42,488	Crisis Intervention	1.07	\$35,370	GF	\$42,488
Fairbanks Counseling & Adoption	Fairbanks	29-34	CONT	\$50,000	Family Counseling	0.72	\$40,372	GF	\$50,000
Fairbanks Counseling & Adoption	Fairbanks	29-34	CONT	\$24,590	Supervised Visitation	0.34	\$10,230	FED	\$24,590
Fairbanks Native Association	Fairbanks	29-34	CONT	\$205,277	Prevention/Crisis Intervention/Counseling/Emerg	4.8	\$144,082	GF	\$205,277
Juneau Youth Services	Juneau	3-4	CONT	\$20,201	Mobile Crisis Unit	1.45	\$15,875	GF	\$20,201
Juneau Youth Services	Juneau	3-4	CONT	\$26,959	Mediation Services	0.67	\$26,010	GF	\$26,959
Juneau Youth Services	Juneau	3-4	CONT	\$17,013	Assessment Center	0.25	\$12,445	GF	\$17,013
Kenai Peninsula Community Care Center	Kenai	7	CONT	\$40,000	Intensive Home Based Services	0.91	\$37,683	GF	\$40,000

FAMILY SUPPORT/FAMILY PRESERVATION SERVICES

BRU: PURCHASED SERVICES

COMPONENT: FAMILY PRESERVATION

DIVISION: FAMILY AND YOUTH SERVICES

GRANTEE	LOCATION	ELECT. DIST.	NEW/ CONT.	FY98 AMT. AWARDED	SERVICE	FTE STAFF	AMT. PERS. SERVICES	FUND SOURCE	FY99 AMT. AWARDED
Kenaitze Indian Tribe	Kenai	7	CONT	\$26,050	In Home Support and Preservation	0.57	\$22,653	GF	\$26,050
Kodiak Youth Services	Kodiak	6	CONT	\$32,200	Early Intervention	0.71	\$28,108	GF	\$32,200
Nome Community Center	Nome	38	CONT	\$55,161	Family Support Services	1	\$36,311	FED/GF	\$55,161
Orutsaramiut Native Council	Bethel	39	CONT	\$35,000	Parenting Classes/Parenting Support Groups	0.83	\$31,200	FED/GF	\$35,000
Resource Center for Parents & Children (RCPC)	Fairbanks	29-34	CONT	\$261,402	Child Sexual Abuse Coordination	0.04	\$216,717	FED/GF	\$261,402
Salvation Army Booth Memorial	Anchorage	10-25	CONT	\$26,000	Parenting Support and Education/Supervised Visits	0.79	\$20,667	GF	\$26,000
Seward Life Action Council	Seward	8	CONT	\$15,000	Intensive Home Based Services/Supervised Visitation	0.4	\$11,400	FED/GF	\$15,000
Sitka Mental Health Clinic	Sitka	2	CONT	\$46,595	Parent Assistance/Home Based Services	1	\$46,595	FED/GF	\$46,595
Southcentral Foundation	Anchorage	10-25	CONT	\$28,948	Intensive Home Based Services	0.7	\$20,845	FED	\$28,948
Valdez, City of	Valdez	35	CONT	\$17,221	Teen Parent Support	0.4	\$17,221	FED	\$17,221
Valley Women's Resource Center	Palmer	27	CONT	\$179,206	Intensive Home Based Services	4.75	\$156,181	FED	\$179,206
Women in Safe Homes	Ketchikan	1	CONT	\$75,000	Comprehensive In Home Services	1.93	\$74,956	GF	\$75,000
Wrangell Mental Health	Wrangell	2	CONT	\$25,236	In Home Based Services	0.79	\$21,435	FED/GF	\$25,236
				\$2,149,734	TOTALS	53.01	\$1,889,223		\$2,323,089

DIVISION OF FAMILY AND YOUTH SERVICES**GRANT PROGRAM: Human Services Community Matching Grants**

AUTHORITY: Authority for these grants derives both from AS 47.40.041, which authorizes the department to award grants in accordance with its regulations, and statutory provisions found at AS 29.60.600 *et. seq.*

APPROPRIATIONS:

Funding for these grants is by a separate budget component. For FY 99, the legislature appropriated the sum of \$1,751,900, the same as in FY 98. By statute, this amount is available to eligible municipalities in proportion to population.

PRIORITIES

The provisions of AS 29.60.600 *et. seq.* mandate that these grants be used for "essential human services." AS 29.60.650(1) defines "essential human services as follows:

'essential human services' and 'services' have the meaning given social services in AS 47.75.050 except that they include only services whose unavailability would subject persons needing the services to serious mental or physical hardship.

TARGET GROUP/GEOGRAPHICAL AREA SERVED:

The geographical areas served are the Municipality of Anchorage and the Fairbanks North Star Borough. Target groups are persons in need of essential human services.

RESOURCE ALLOCATIONS:

The amount appropriated by the legislature has been allocated for FY 99 as follows: Municipality of Anchorage: \$1,324,337; Fairbanks North Star Borough: \$427,562. This compares with \$1,322,984 and \$428,916 respectively in FY 98.

CRITERIA:

The Human Services Community Matching Grants are designated recipient grants, because of the definition of "municipality", only the municipalities of Anchorage and Fairbanks are eligible.

HUMAN SERVICES COMMUNITY MATCHING GRANTS

BRU: HUMAN SERVICES COMMUNITY
MATCHING GRANTS

COMPONENT: HUMAN SERVICES COMMUNITY
MATCHING GRANTS

DIVISION: FAMILY AND YOUTH SERVICES

GRANTEE	LOCATION	ELECT. DIST.	NEW/ CONT.	FY98 AMT. AWARDED	SERVICE	FTE STAFF	AMT. PERS. SERVICES	FUND SOURCE	FY99 AMT. AWARDED
Anchorage, Municipality of	Anchorage	10-25	CONT	\$1,322,984	Human Services Community Matching Grants	0	\$0	GF/IA	\$1,324,338
Fairbanks North Star Borough	Fairbanks	29-34	CONT	\$428,916	Human Services Community Matching Grants	0	\$0	GF/IA	\$427,562
				\$1,751,900	TOTALS	0	\$0		\$1,751,900