

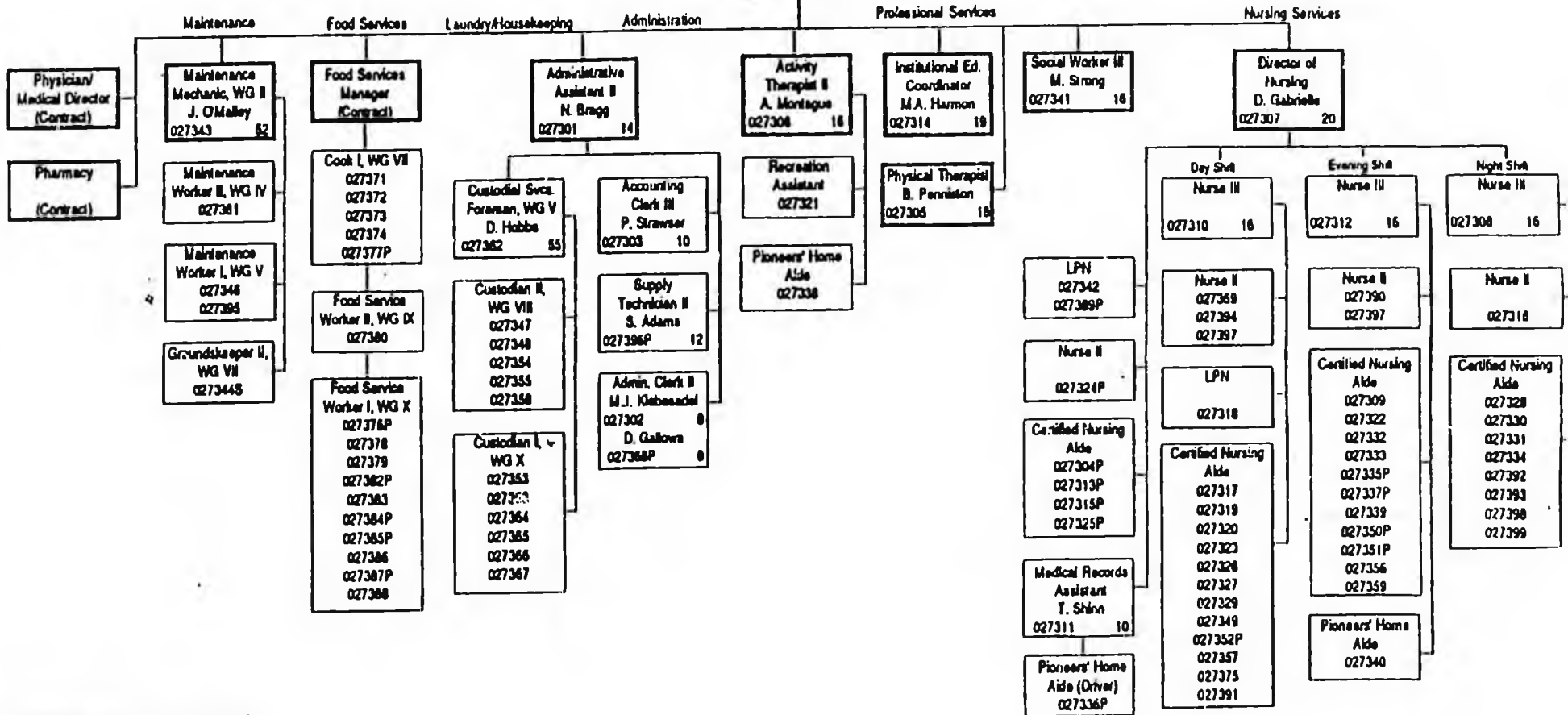
ALASKA LEGISLATURE

1265

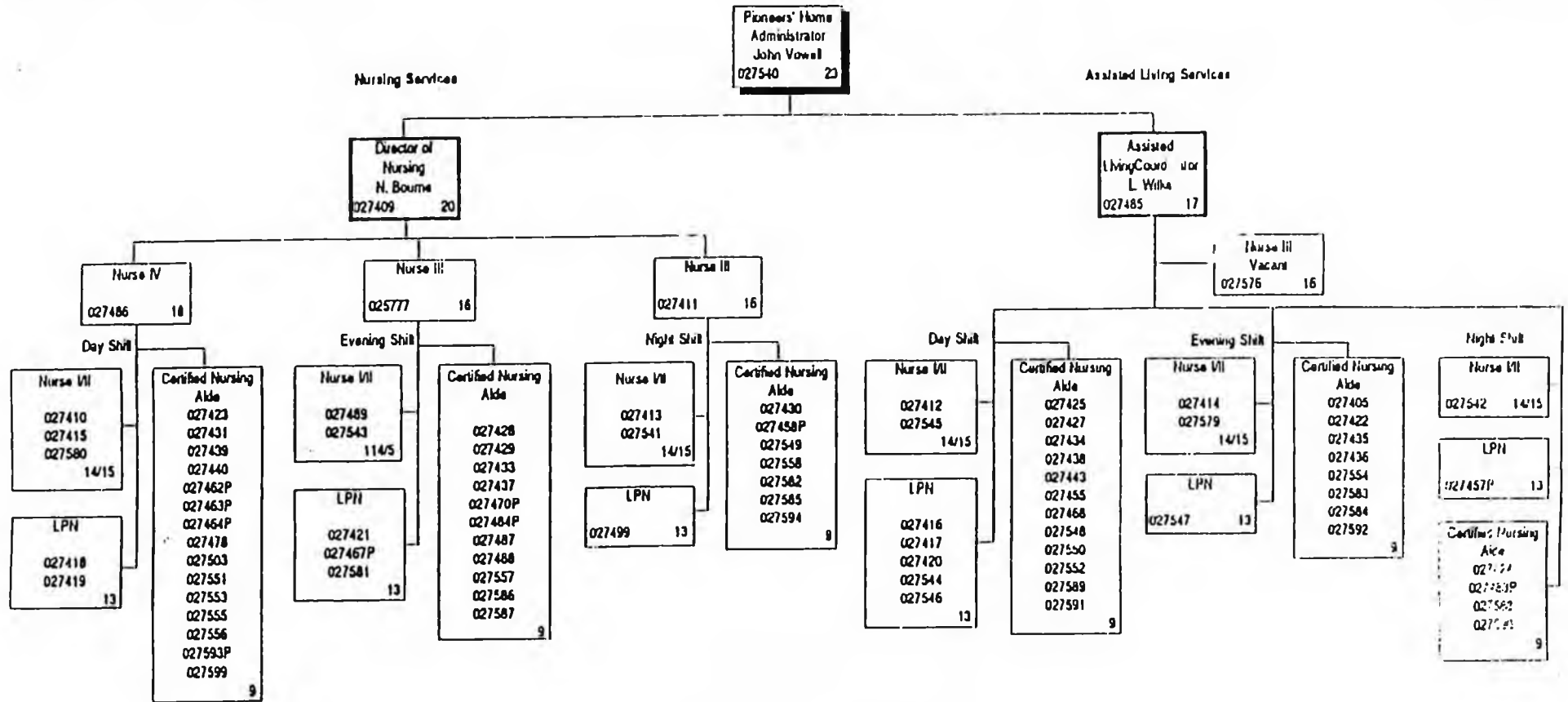
HOUSE and SENATE FINANCE COMMITTEE FILES, 1995-1996

**Department of Administration  
Division of Senior Services  
Palmer Pioneers' Home**

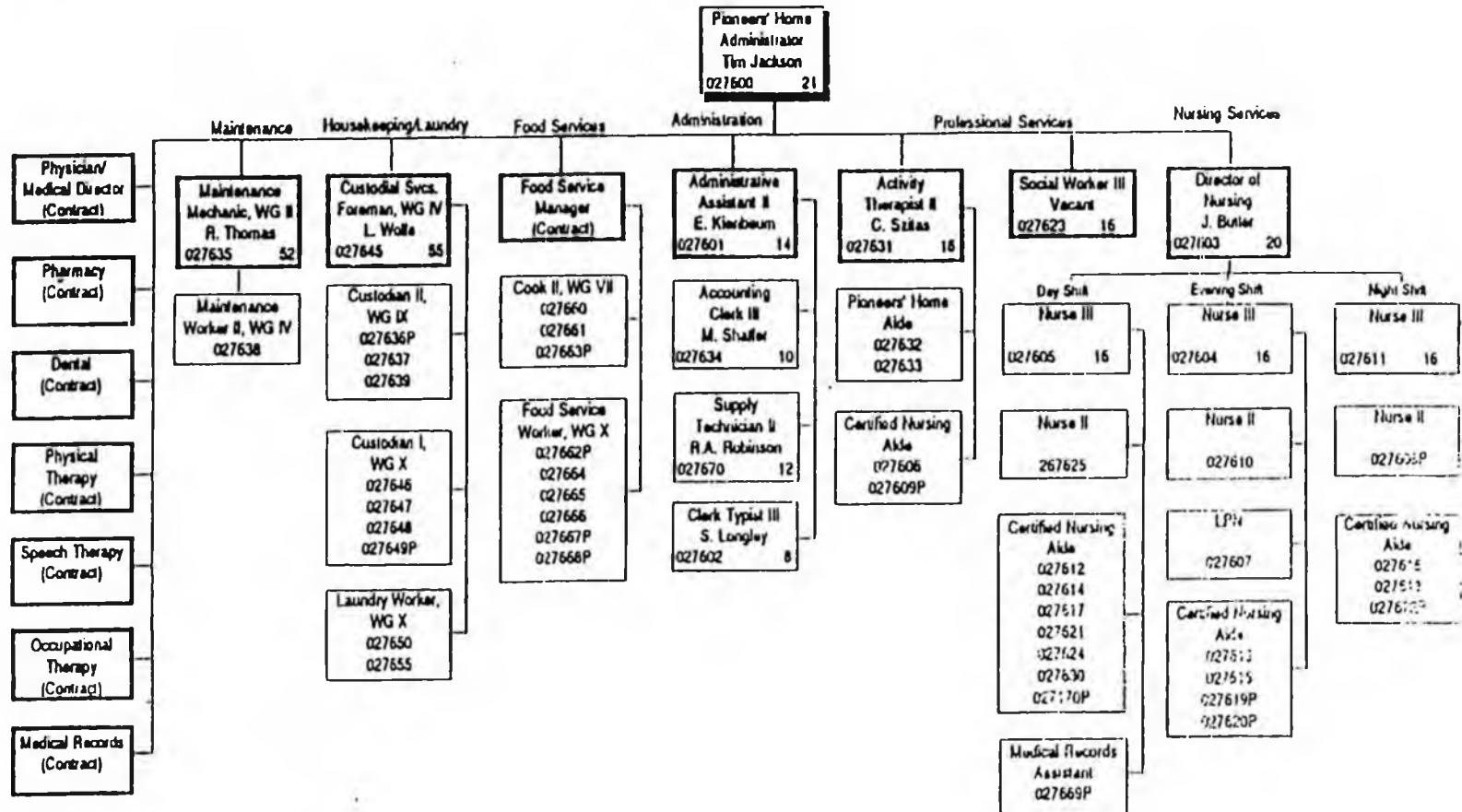
Pioneers' Home  
Administrator  
Gary Sheridan  
027300 22



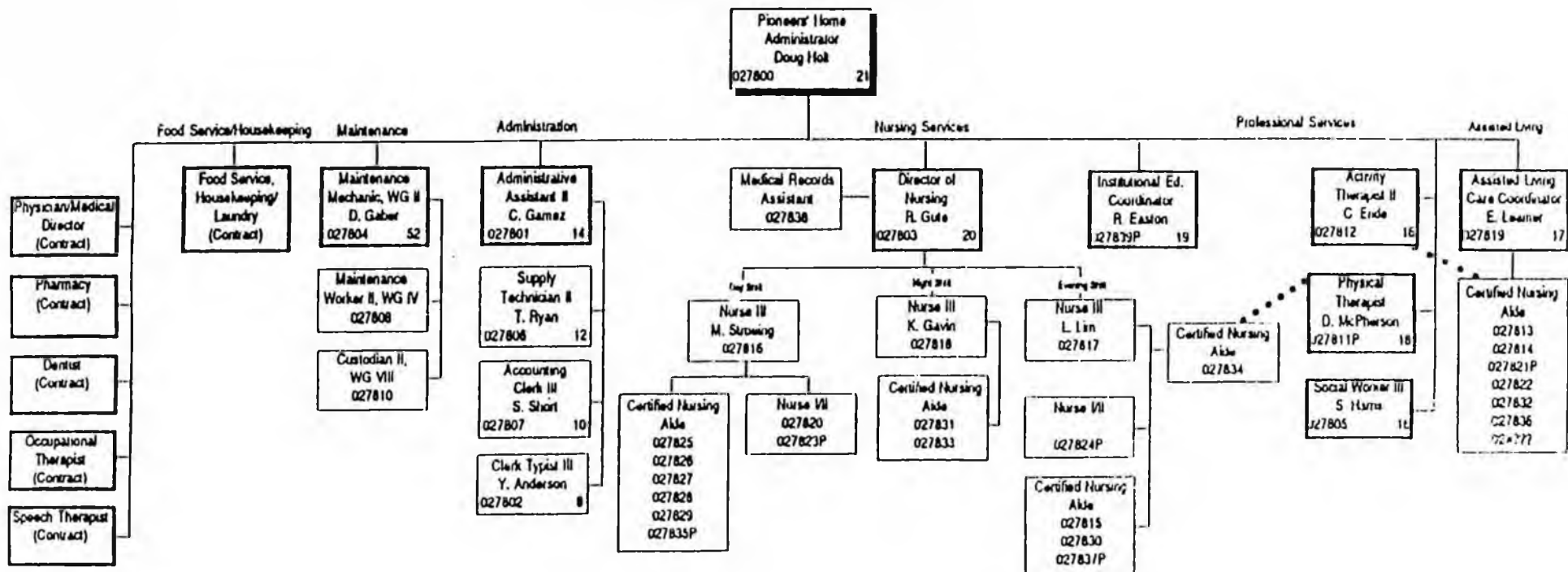




Department of Administration  
Division of Senior Services  
Ketchikan Pioneers' Home

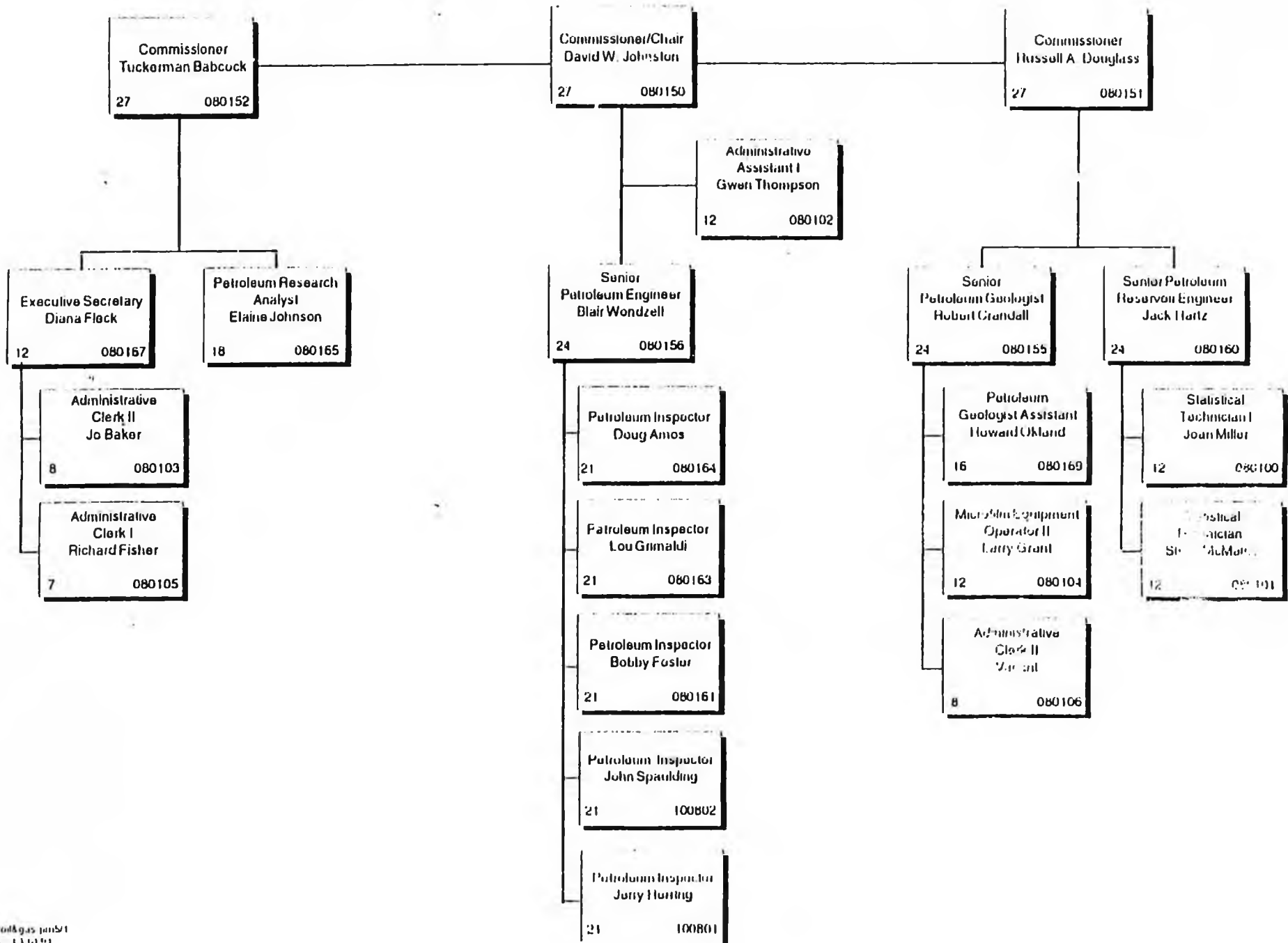


## Department of Administration Division of Senior Services Juneau Pioneers' Home

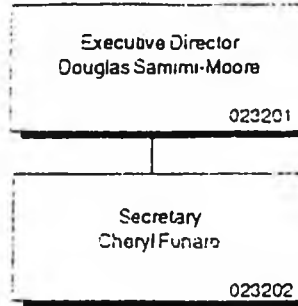


..... Position shared by both departments

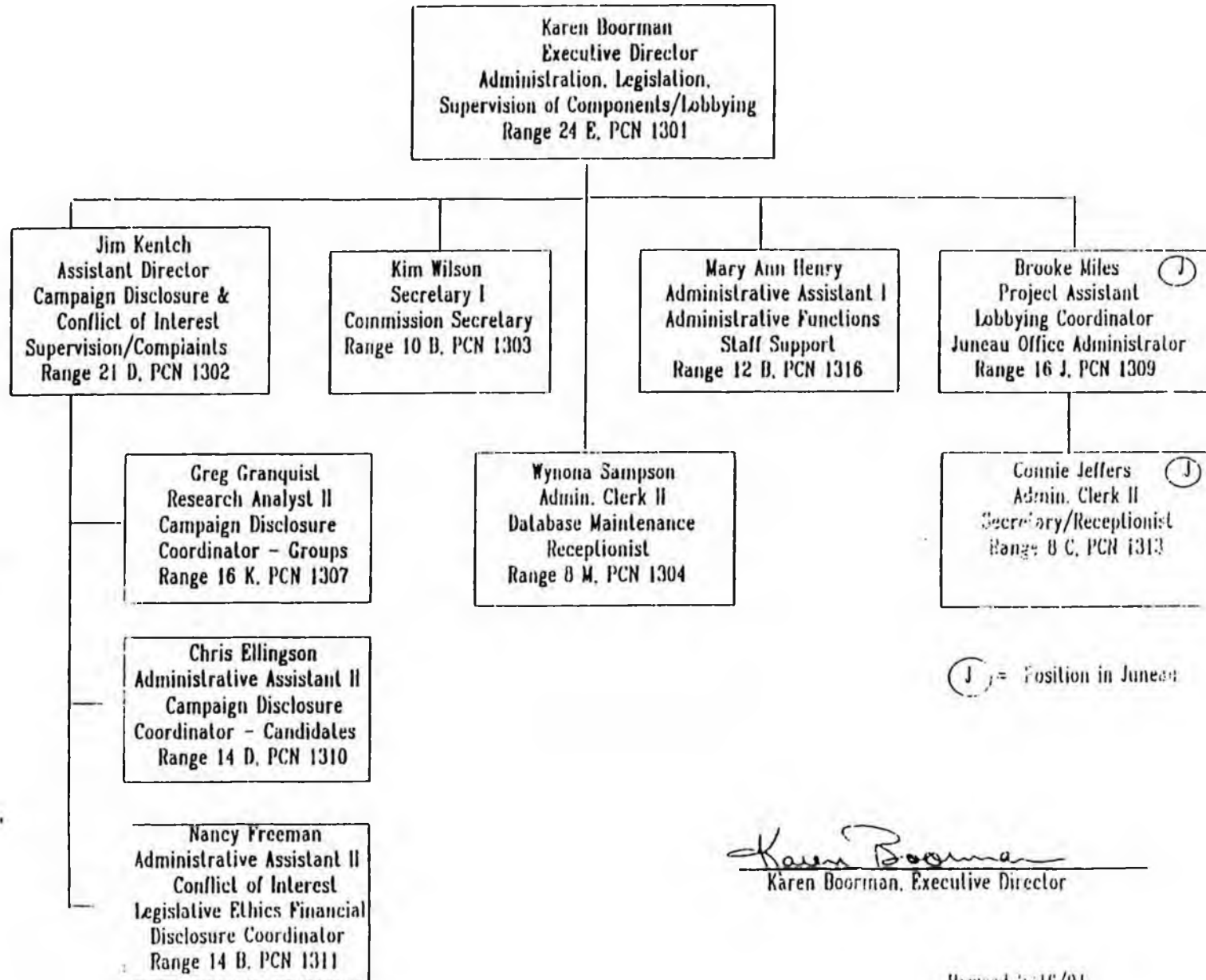
**DEPARTMENT OF ADMINISTRATION  
ALASKA OIL AND GAS CONSERVATION COMMISSION**



DEPARTMENT OF ADMINISTRATION  
ALASKA PUBLIC BROADCASTING COMMISSION

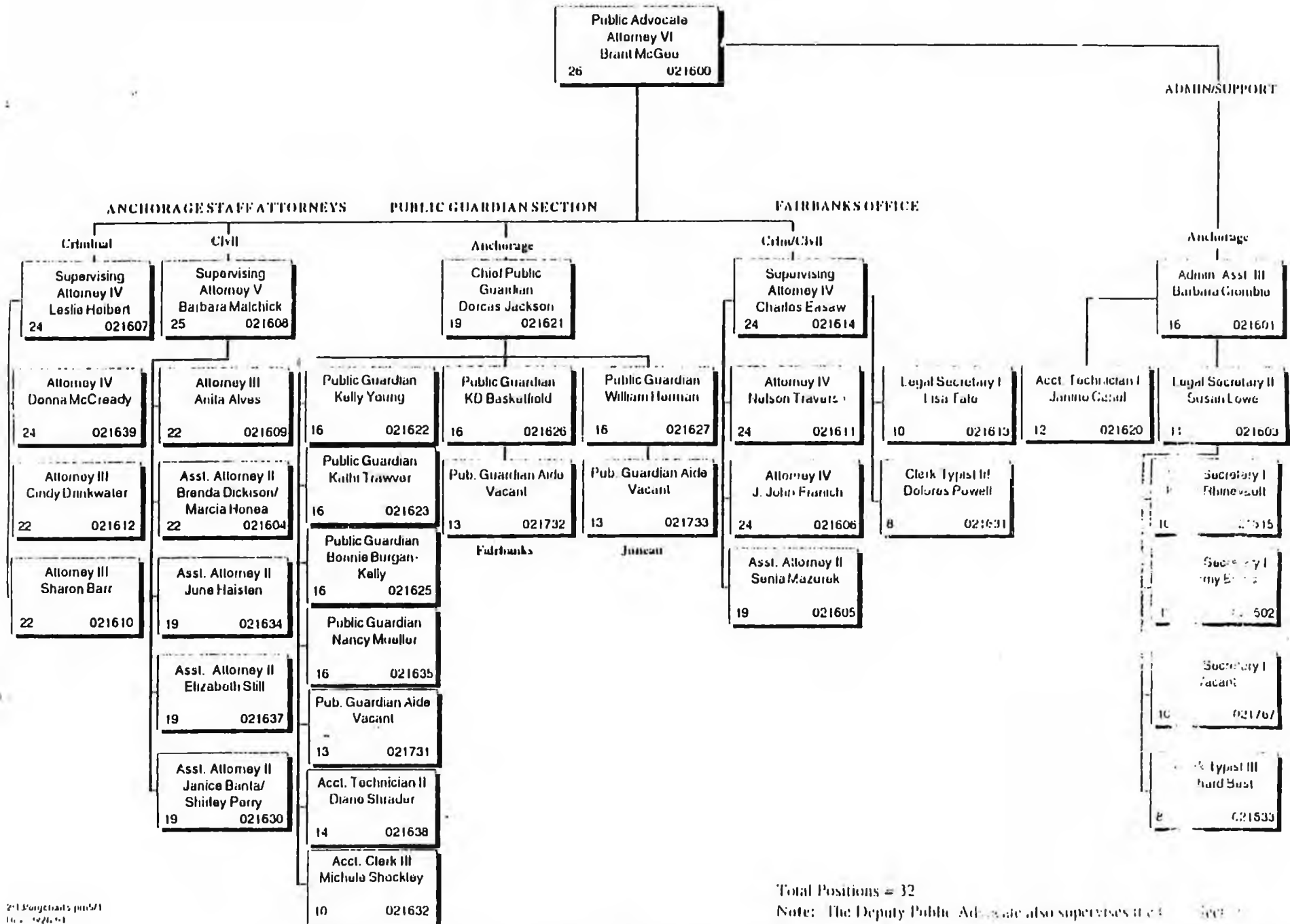


DEPARTMENT OF ADMINISTRATION  
ALASKA PUBLIC OFFICES COMMISSION



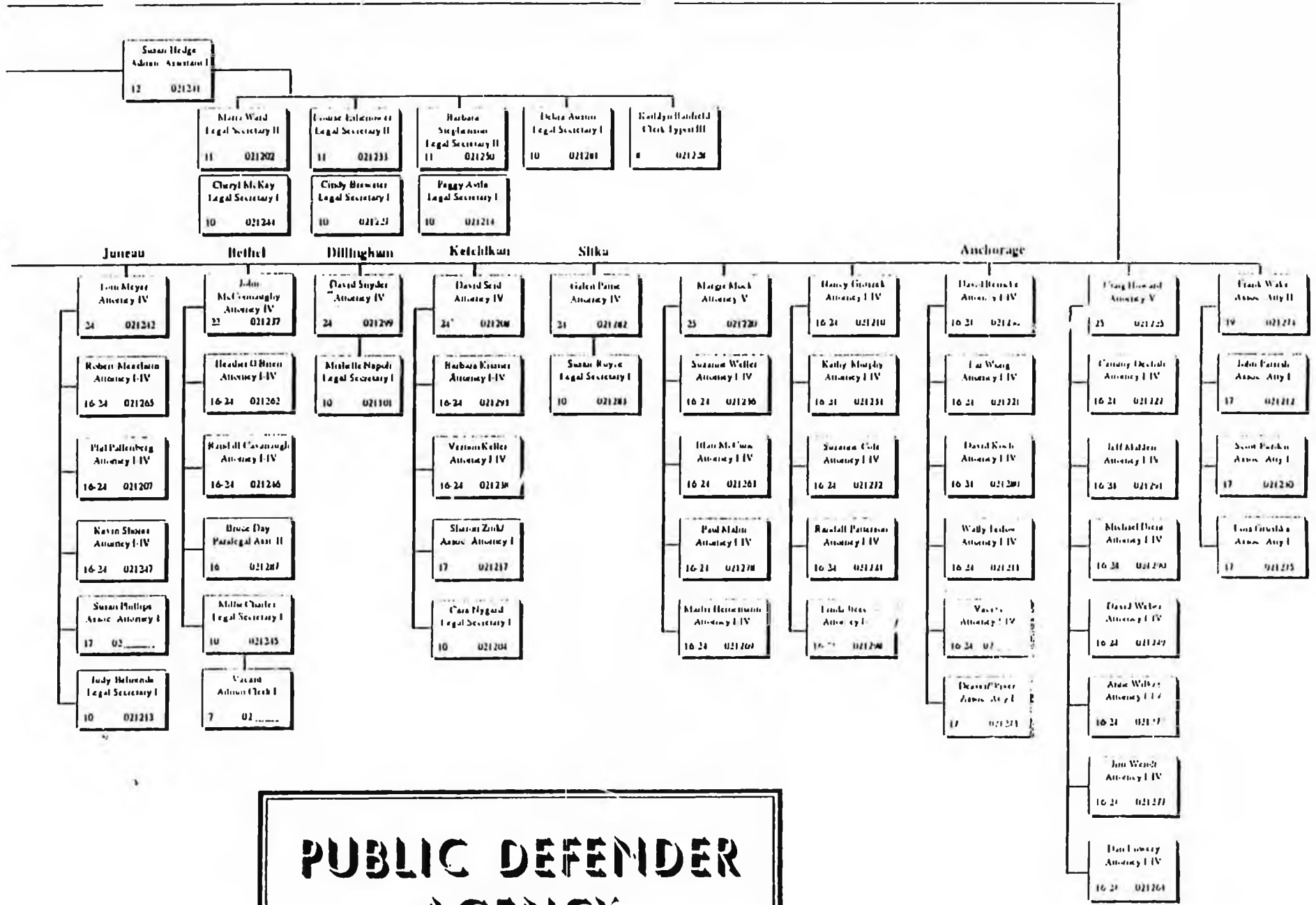
*Karen Boorman*  
Karen Boorman, Executive Director

**DEPARTMENT OF ADMINISTRATION  
OFFICE OF PUBLIC ADVOCACY**

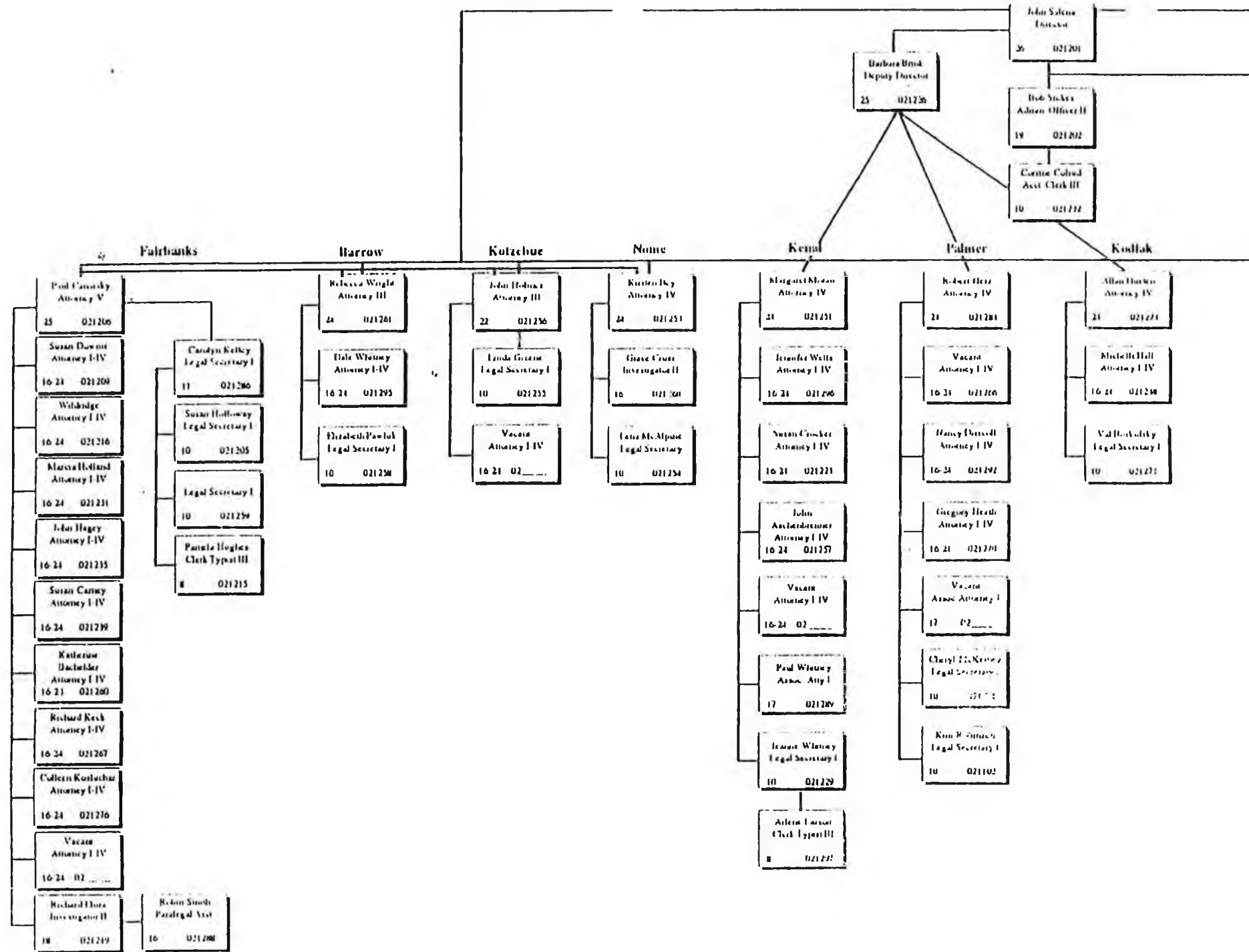


Total Positions = 32

Note: The Deputy Public Advocate also supervises the



**PUBLIC DEFENDER  
AGENCY**



**DEPARTMENT OF CORRECTIONS  
FACT SHEET  
January 22, 1995**

◆	<b>Total Offenders in system</b>	<b>6,783</b>
◆	<b>Incarcerated:</b>	
	<b>In-State Correctional Centers</b>	<b>2,704</b>
	<b>Out of State Correceptional Centers</b>	<b>159</b>
	<b>Felons</b>	<b>2,290</b>
	<b>Misdemeanants</b>	<b>494</b>
◆	<b>Probation/Parole Supervision</b>	<b>3,214</b>
◆	<b>Community Residential Placements</b>	<b>626</b>
◆	<b>Cost of Services:</b>	
	<b>In-State Correctional Centers</b>	<b>\$113 per manday, average</b>
	<b>Out of State Correctional Centers</b>	<b>\$59 per manday, average</b>
	<b>Community Residential Center</b>	<b>\$57 per manday, average</b>
	<b>Probation/Parole Suupervision</b>	<b>\$6 per manday, average</b>
◆	<b>Employees</b>	<b>1,329</b>
◆	<b>Alcohol involved offenses</b>	<b>85%-90% of total</b>
◆	<b>In-State Correctional Centers</b>	<b>12</b>
◆	<b>Probation/Parole Offices</b>	<b>14</b>
◆	<b>Budget</b>	
	<b>FY 95 Authorized</b>	<b>117,639.1</b>
	<b>FY 95 Fiscal Notes</b>	<b>2,608.5</b>
	<b>FY 95 Total</b>	<b>120,247.6</b>
◆	<b>Projected FY 95 Supplemental</b>	<b>13,000.0</b>

**Average Monthly DOC Inmate Population: Actual Counts\*, With 206 Out-of-State Placements and Current CRC\*, Wildwood Beds**

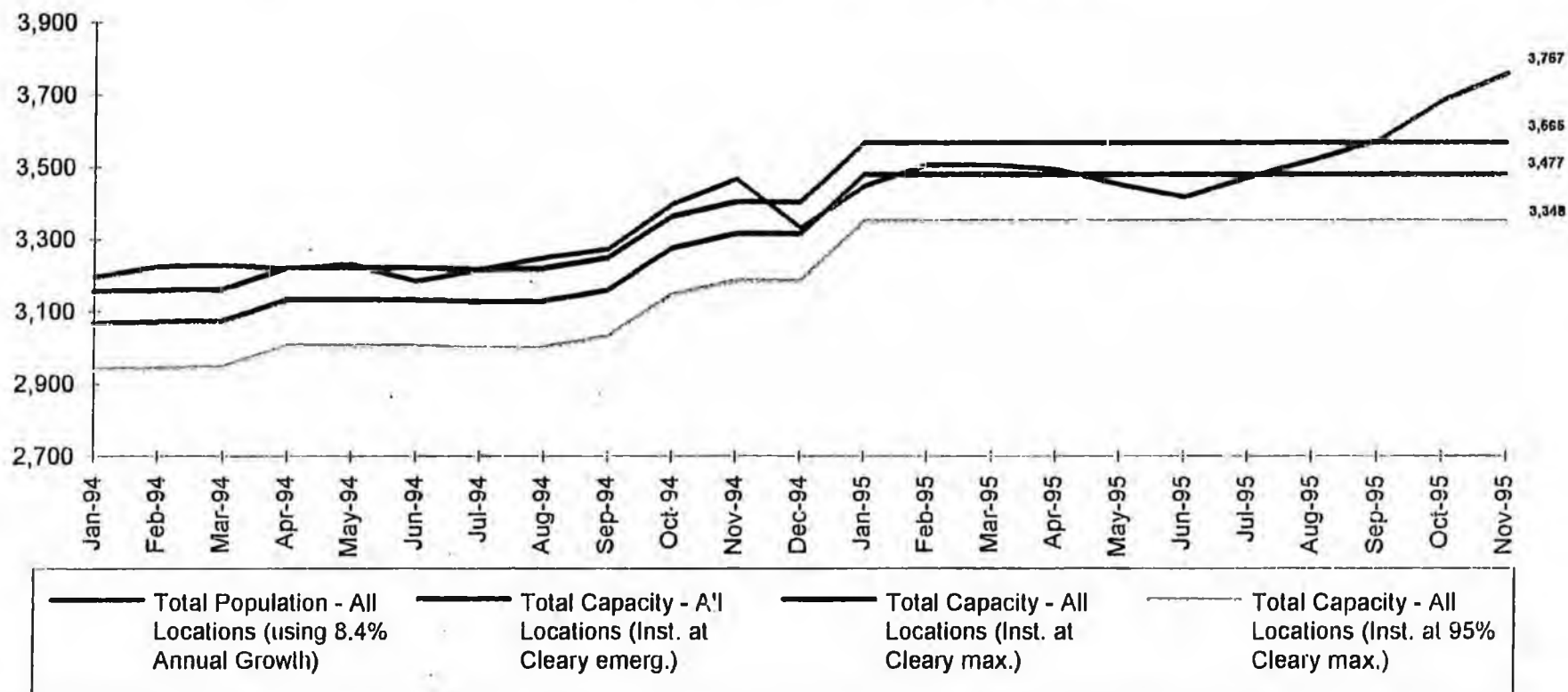


Exhibit B to Pugh Affidavit  
P. 2 of 8

\*Projected populations were computed using a 8.4% Annual Growth Rate.  
Projected populations do not consider the impact of Juvenile Wavler or Conspracy crime bills

\*41 CRC beds lapsed In January, 1095

**Average Monthly DOC Inmate Population: Actual Counts\*, Without 205 Out-of-State Placements and Current CRC\*, Wildwood Beds**

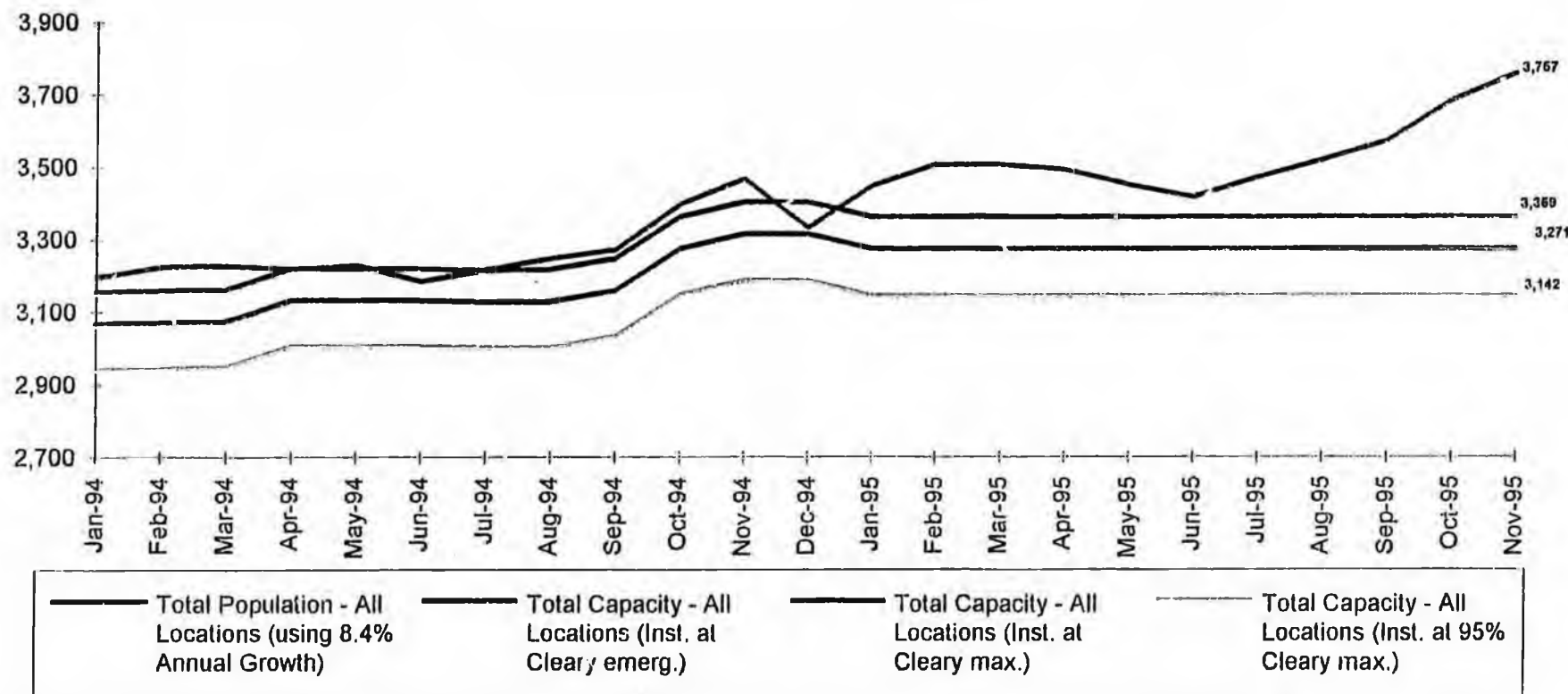


Exhibit B to Pugh Affidavit  
P. 4 of 8

\*Projected populations were computed using a 8.4% Annual Growth Rate.  
Projected populations do not consider the impact of Juvenile Wavier or Conspiracy crime bills

\*41 CRC beds lapsed in January, 1995

**Average Monthly DOC Inmate Population: Actual Counts\*, With 206 Out-of-State Placements and Current CRC\*, Wildwood Beds**

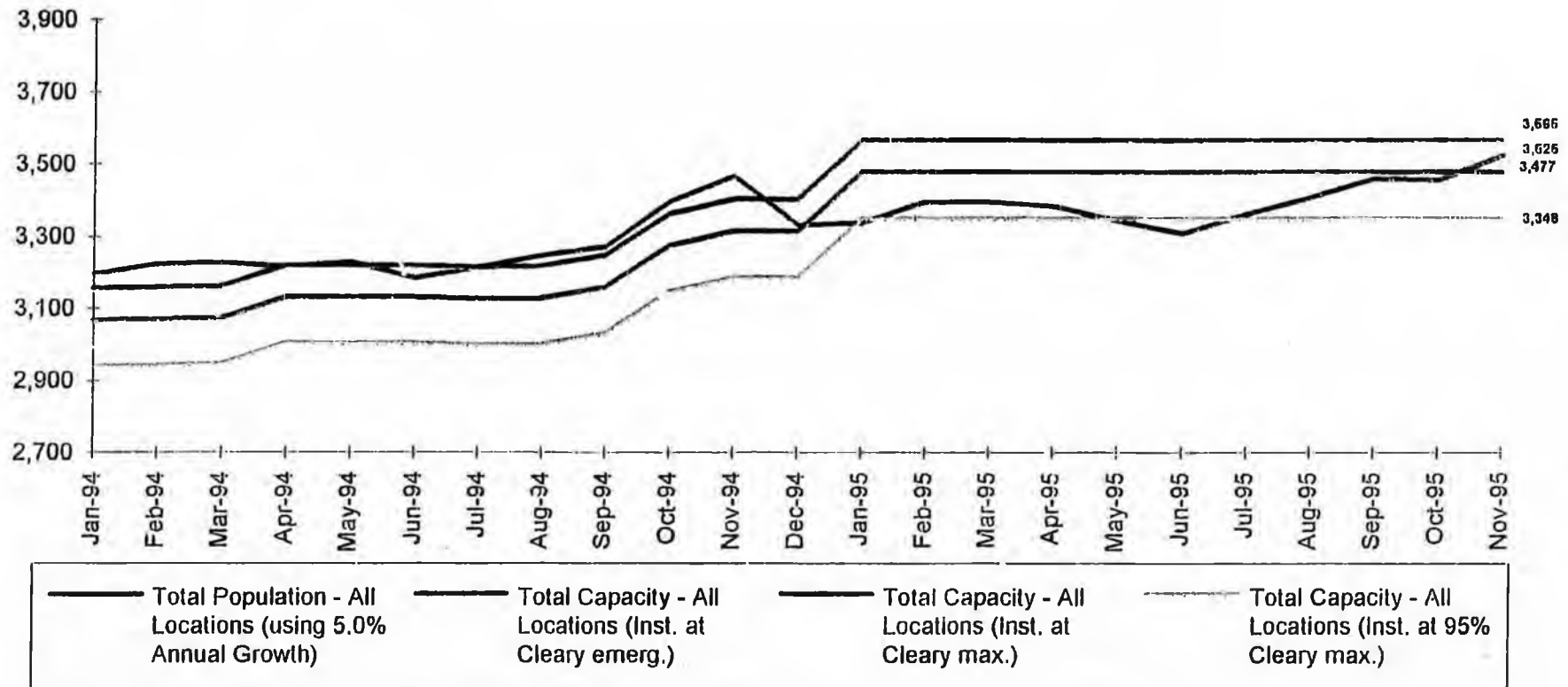


Exhibit B to Pugh Affidavit  
P. 6 of 8

\*Projected populations were computed using a 5.0% Annual Growth Rate.  
Projected populations do not consider the impact of Juvenile Wavler or Conspiracy crime bills

\*41 CRC beds lapsed in January, 1995

**Average Monthly DOC Inmate Population: Actual Counts\*, Without 206 Out-of-State Placements and Current CRC\*, Wildwood Beds**

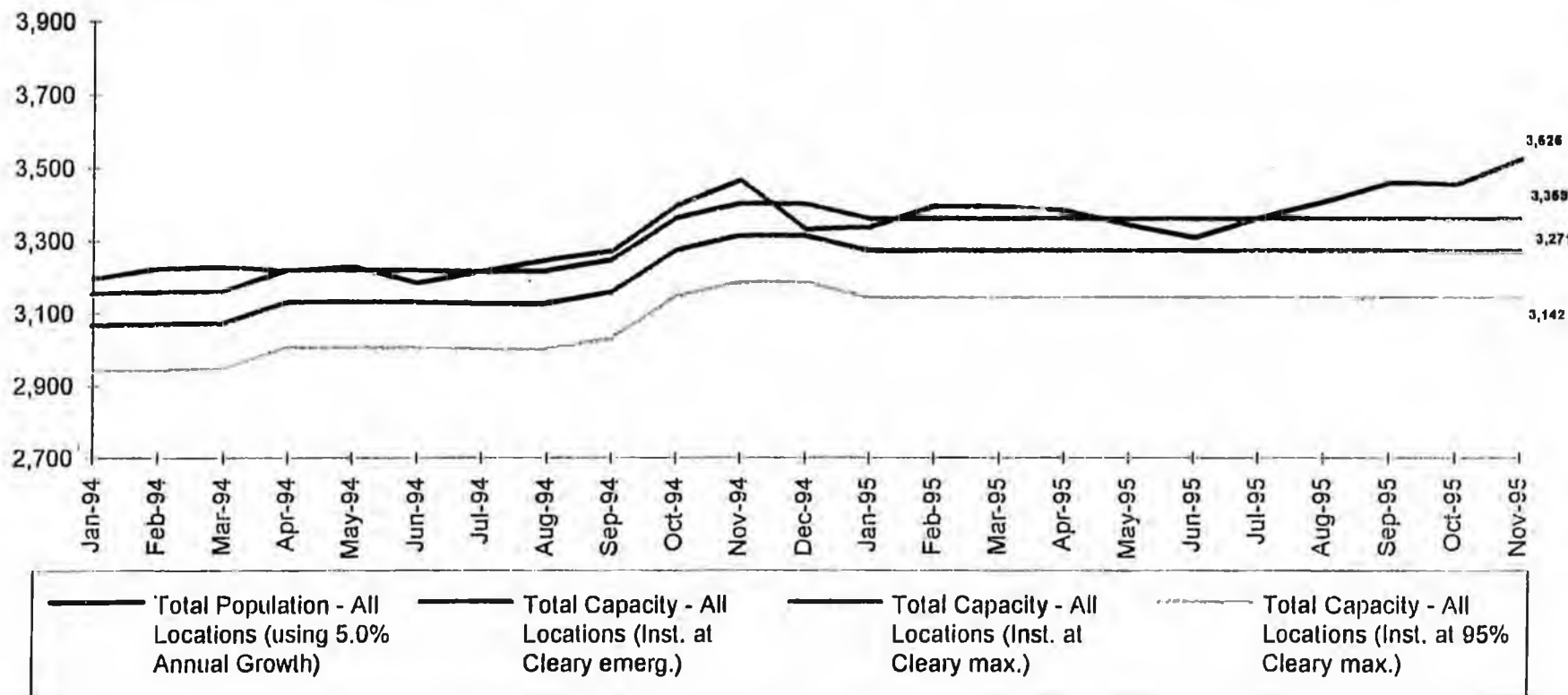
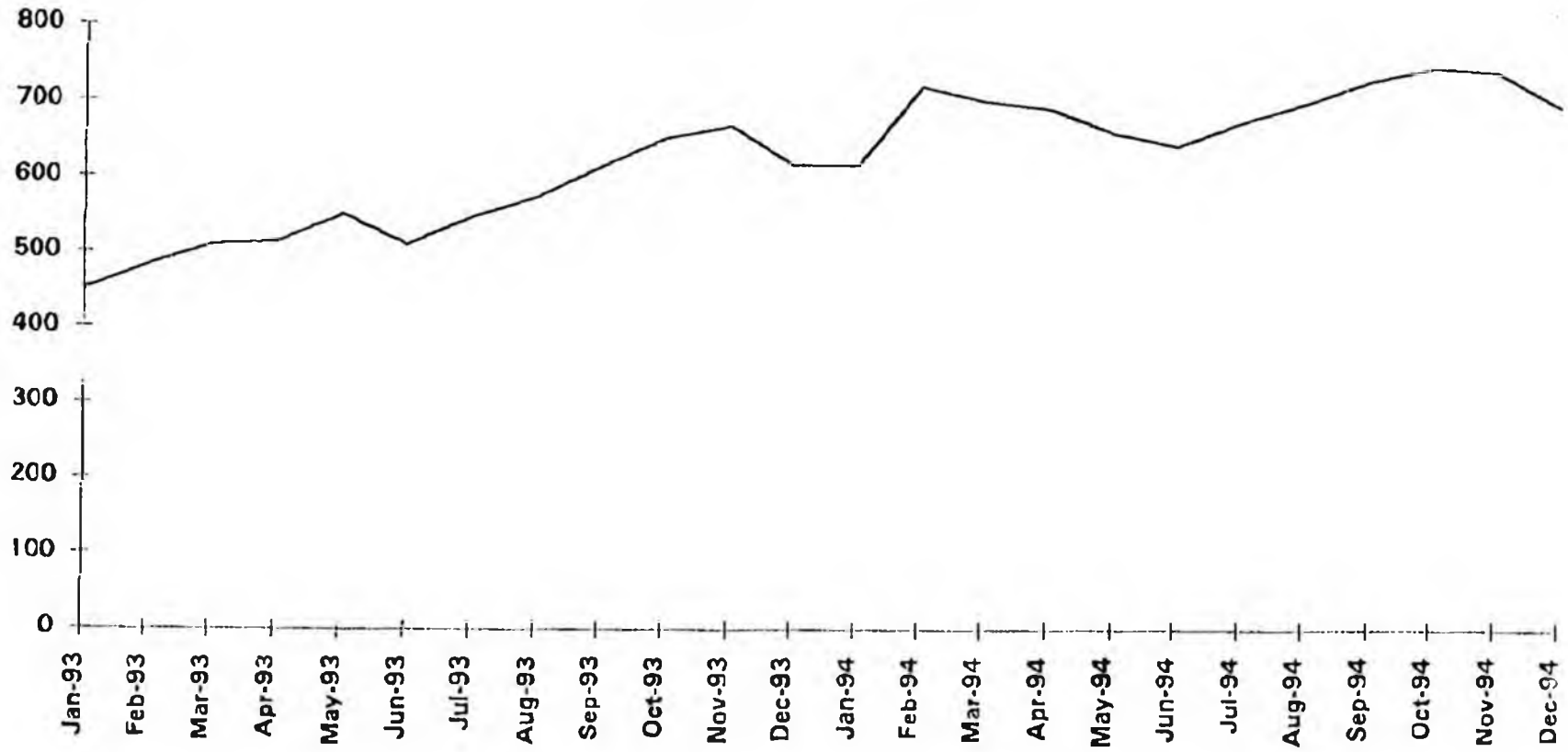


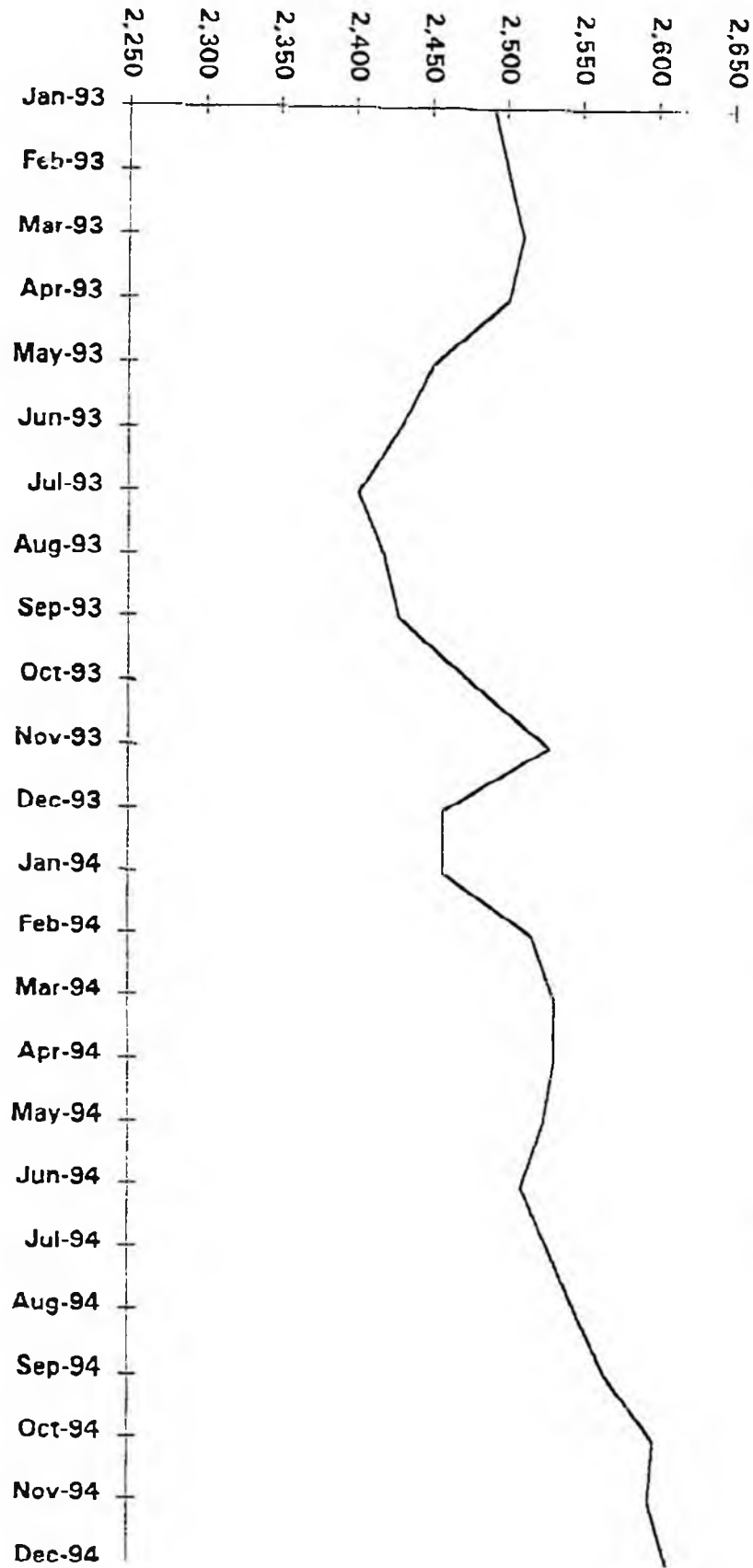
Exhibit B to Pugh Affidavit  
P. 8 of 8

\*Projected populations were computed using a 5.0% Annual Growth Rate.  
Projected populations do not consider the impact of Juvenile Wavler or Conspiracy crime bills

\*41 CRC beds lapsed in January, 1995

DOC Incarcerated Misdemeanant Population January 1993 - December 1994





DOC Incarcerated Felon Population January 1993 - December 1994

Attachment #5  
1/23/95

---

Department of Education

# House Finance Committee Overview

January 23, 1995



---

---

**Department of Education**  
**House Finance Committee Overview**  
January 23, 1995

**Table of Contents**

	<b>Page Number</b>
<b>State Board of Education</b>	<b>1</b>
<b>Mission/Functions</b>	<b>2</b>
<b>FY96 Organization Chart</b>	<b>3</b>
<b>Divisions/Programs</b>	<b>5</b>
<b>Formula Programs</b>	<b>9</b>
<b>Issues</b>	<b>13</b>
<b>Funding Summary</b>	<b>15</b>
<b>Funding History (All Funds)</b>	<b>16</b>
<b>FY95 to FY96 Comparison (All Funds)</b>	<b>17</b>
<b>Highlights FY96 General Fund Changes</b>	<b>18</b>
<b>Position Changes From FY95 Authorized     to FY96 Request By Division</b>	<b>19</b>

---

---

**State Board of Education  
Members**

Stowell Johnstone, Chair

June Nelson, First Vice-Chair

Patti Norheim, Second Vice-Chair

Judy Norton

Robert Walp

Donald Fancher

John Hotzfield

Roger Jarvis, Military Advisor

Annette Evans, Student Advisor

**Department of Education  
Commissioner**

Jerry Covey

### **Mission Statement**

To assure student success and maintain and improve the quality of the state's education system, to assist adults in assuming a productive role in the Alaska economy by providing basic education and vocational rehabilitation services, and to maintain and make available to the public current and historical information, records and heritage.

### **Functions**

Statutes governing operation of the Department of Education are included within AS 14, 23, 43 and 44.

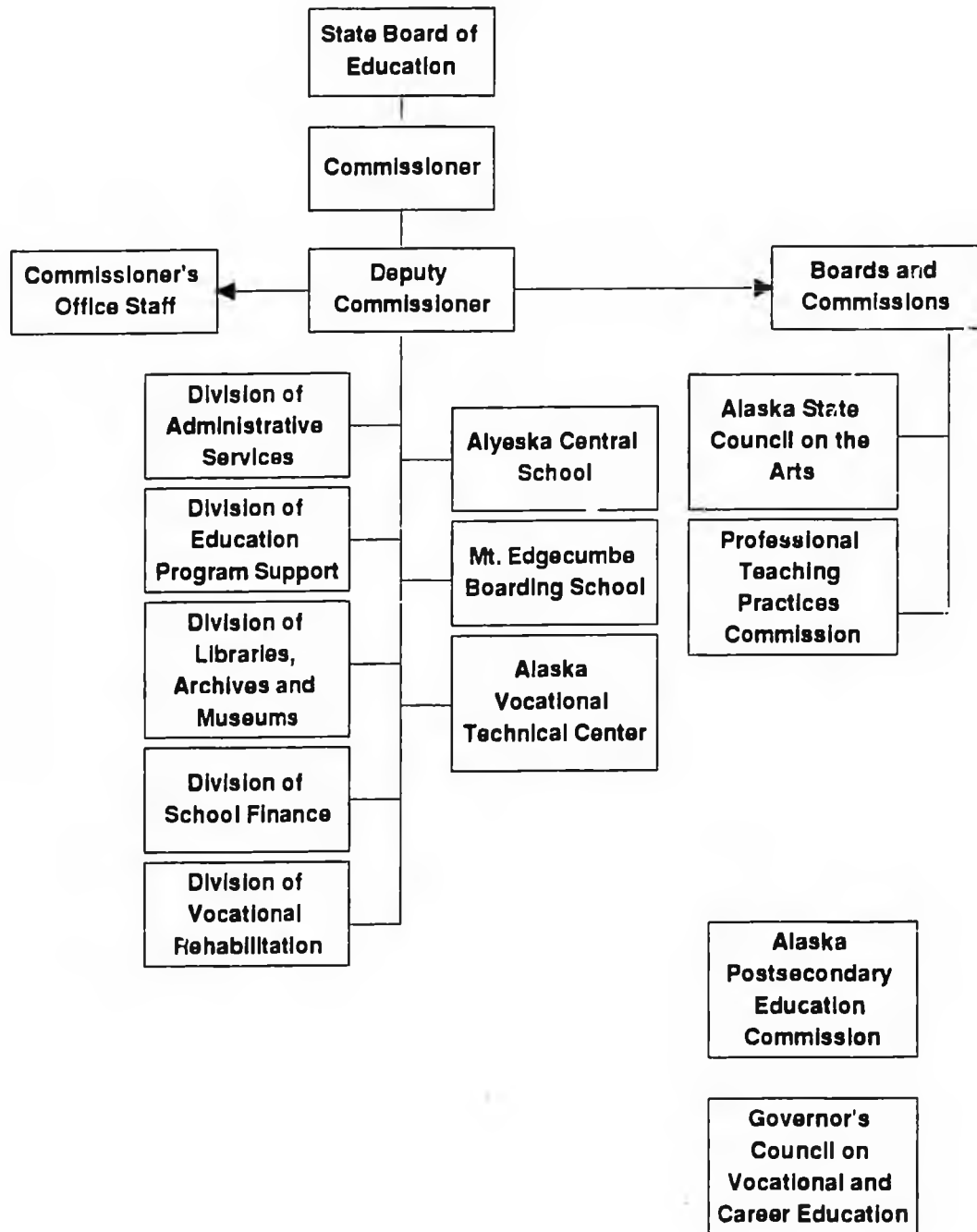
Duties of the Department - AS 14.07.020

- \* Exercise general supervision over public schools
- Study conditions/needs of schools and recommend plans for improvement
- \* Provide advisory/consultative services to public school personnel
- \* Prescribe by regulation a minimum course of study
- \* Provide services to children in detention facilities
- \* Supervise pre-elementary schools receiving state or federal funds
- \* Provide elementary and secondary correspondence study programs
- \* Provide educational opportunities in vocational education and training, and basic education for individuals over sixteen
- \* Administer grants awarded under certain programs
- \* Establish school bus driver training and bus inspection programs

### **Additional statutory responsibilities**

- \* Teacher Certification
- \* Administration of grants to school districts
  - Foundation
  - Tuition
  - Pupil Transportation
  - School Construction (Debt Retirement and Capital Account)
- \* Vocational Education
- \* Vocational Rehabilitation
- \* State Museums
- \* State Library
- \* State Archives and Records Management
- \* Mt. Edgecumbe High School
- \* Alaska Vocational Technical Center (AVTEC)
- \* Professional Teaching Practices Commission
- \* Alaska State Council on the Arts

# Alaska Department of Education FY96 Organization



*House Finance Committee Overview*

---

---

# **Divisions/Programs**

### **Divisions/Programs**

#### ***Alaska Vocational Technical Center***

The Alaska Vocational Technical Center (AVTEC), located in Seward, provides vocational training to students seeking entry level employment and for individuals seeking training to improve their job skills. The courses offered meet industry employment demands and allow graduates the opportunity to acquire employment in Alaska.

#### ***Alaska Postsecondary Education Commission***

The Alaska Postsecondary Education Commission (ACPE), comprised of 14 members, was established in 1974 to assure that Alaskans have the opportunity to pursue postsecondary education by providing student financial assistance and that quality education programs are available to students in the state.

#### ***Alaska State Council on the Arts***

The Alaska State Council on the Arts (ASCA) is an eleven member board appointed by the governor to promote access to, awareness of and participation in the arts in Alaska.

#### ***Alyeska Central School***

The Alyeska Central School (ACS), Alaska's centralized correspondence school, provides a cost effective educational program for Alaskan students who elect to complete their studies at home.

#### ***Education Program Support***

The Division of Education Program Support's (EPS) objective is to ensure that all Alaskan students will receive and succeed in a "world class" education. EPS provides leadership, advocacy, supervision and technical support to school districts to assure student success and the delivery of quality education within the framework of state and federal mandates. Programs administered by EPS include Community Schools, Special and Supplemental Services, Basic Education and Instructional Improvement, Education Special Projects, Adult Basic Education, Vocational Education and Child Nutrition Services.

#### ***Executive Administration***

Executive Administration includes the State Board of Education, Commissioner's Office, Human Resources and the Division of Administrative Services. The State Board of Education provides policy direction to the department which is carried out by the leadership and oversight of the commissioner. The Division of Administrative Services (DAS) provides management support to all divisions including finance and accounting, data processing, procurement and supply. Also included under DAS is the Teacher Certification Unit which is responsible for issuing Alaska certification to all eligible applicants and approving teacher education training programs at institutions of higher education. Human Resources provides employee relations, collective bargaining and payroll services.

#### ***Governor's Council on Vocational and Career Education***

The Governor's Council on Vocational and Career Education is a thirteen member council appointed by the governor to advise the governor, legislature, State Board of Education, the Job Training Council, the Board of Regents and the business community on issues concerning vocational education and training programs in the state.

***Kotzebue Technical Center***

The Kotzebue Technical Center provides adult vocational training programs in building industrial technology, office occupations, health occupations and employability and communication skills. The Department of Education's budget includes funding for the Kotzebue Technical Center through a grant to the Northwest Arctic Borough School District.

***Libraries, Archives and Museums***

The Division of Libraries, Archives and Museums collects, maintains and preserves papers and objects important to the state's history. The State Library serves as the information resource for and about state government to state agencies, the legislature and the general public. Archives and records management stores and preserves the public papers of the state. State museums preserve and exhibit the cultural heritage of Alaska.

***Mt. Edgecumbe Boarding School***

The Mt. Edgecumbe Boarding School in Sitka provides a rigorous academic program for students with needs that are not met through their own high school, correspondence program, or a boarding home.

***Professional Teaching Practices Commission***

The Professional Teaching Practices Commission (PTPC) is a nine-member commission appointed by the governor to establish criteria for and monitor the professional conduct of educators in Alaska.

***School Finance***

The Division of School Finance requests and distributes state and federal funds to school districts in support of public education. In addition, the division is responsible for the collection, analysis and compilation of education program and finance data. The division provides statewide oversight for educational facilities renovation and construction and evaluates and ranks bond reimbursement and capital project grant requests. The coordination of the development of the student performance standards and the administration of the statewide student assessment program is also accomplished through this division.

***State Board of Education***

The State Board of Education is the head of the department and consists of seven members appointed by the governor. The board sets the policies and goals for the Department of Education. Support for the state board is provided by the commissioner's office and all department staff.

***Vocational Rehabilitation***

The Division of Vocational Rehabilitation is a combined federal/state program under the authority of the federal Rehabilitation Act of 1973, as amended. The division's mission is to assist individuals with disabilities to overcome barriers to employment, and achieve independence and community integration. In addition, the division is responsible for administering the Small Business Enterprise Program, the federal assistive technology program, monitoring compliance with the requirements of the Americans With Disabilities Act for state agencies, determining eligibility for social security benefits through the disability determination unit, and providing support to the Independent Living Council for statewide services.



# **Formula Programs**

### **Formula Programs**

#### ***Foundation Program***

The Foundation Program provides the primary state financial support for the 54 school districts, Mt. Edgecumbe Boarding School and the state's centralized correspondence study program. In FY95, about \$629 million will be distributed to the school districts, according to "Basic Need", as determined by AS 14.17.021, less required local contributions and deductions for eligible Impact Aid. Alaska Statutes 14.17.170 requires that foundation payments are distributed to school districts for the first nine months of the fiscal year based on the total funding received during the preceding fiscal year. The last three months of payments are adjusted to provide each district with its revised entitlement based on current year student count data. The amount requested is based on student count projections, submitted by each school district. The actual funds needed for this program may vary depending upon the actual student counts, local contributions, and federal PL 81-874 receipts.

#### ***Cigarette Tax Distribution***

Alaska Statutes 43.50.140 provides that the proceeds derived from the payment of taxes, fees, penalties and license fees received by the Department of Revenue shall be paid into a state fund entitled "School Fund." Funds shall be used exclusively for rehabilitation, construction and repair of the state's school facilities, and for the cost of insurance on school facilities. The funds are distributed in direct proportion to the number of students enrolled in the participating city/borough school districts. Cigarette tax funds are offset against reimbursement for school bond debt in accordance with AS 14.11.100(b).

#### ***Tuition Students***

Tuition payments are made to individual school districts to compensate for the loss of revenue caused by children living in mission homes or other nonprofit institutions and children who custody has been placed elsewhere by decree of the court. The residence of the child is exempt from local property tax. The program provides revenue in excess of basic need comparable to excess local contributions. Administrative regulation 4 AAC 09.030 provides that the tuition rate shall be based upon the amount expended annually from local funds for current operation and capital outlay for the prior year divided by the average daily membership (ADM). Approximately 826 students are being served statewide under this program.

#### ***Boarding Home Grants***

Boarding Home grants are paid to school districts serving high school students who cannot complete a high school education where they reside. Boarding care costs and transportation to and from the boarding home are paid for by the Boarding Home grants. These funds are paid on a reimbursement basis to provider districts. In the current year, approximately 40 students are being served through this program.

#### ***Youth in Detention***

This program provides reimbursement to school districts for the additional cost of providing educational programs to incarcerated youth in facilities such as the Johnson Youth Center, McLaughlin Youth Center, Fairbanks Youth Center, Bethel Youth Facility and the Nome Youth Facility.

## **Formula Programs (continued)**

### ***Schools for the Handicapped***

This program provides funding for support services to special education students who cannot be served adequately in the mainstream classroom environment. Funding is provided to the Special Education Service Agency (SESA) in accordance with AS 14.30.600-660 for outreach services to school districts that serve low incidence severely disabled students. The Alaska Youth Initiative is a cooperative program of the Departments of Education and Health and Social Services and is designed to prevent out-of-state institutionalization of Alaska's trouble youth by providing comprehensive services in Alaska. The Providence Heights School serves students who are patients of the Alaska Psychiatric Hospital and the Alaska State School for the Deaf provides services for students who are not able to receive an adequate program in their home district.

### ***Pupil Transportation***

In accordance with AS 14.09.010, the department may provide for the transportation of students. Subject to availability of funds, the department reimburses school districts for the cost of all approved regular routes, special education routes, other conveyance routes, and in-lieu-of agreements. In addition, the department may provide transportation for children attending non-public schools, where the distances and routes traveled are comparable to those traveled by public school students and integrating non-public student transportation into existing systems where feasible.

### ***Child Nutrition Programs***

This program distributes federal funds for reimbursement of meals served to eligible children and adults in approved agencies. The federal funds earned by sponsors for reimbursable meals or milk served in participating schools, child or adult day care facilities, residential child care institutions, homeless shelters, or camps help subsidize the meal costs incurred by the sponsor.

### ***Community Schools***

Through grants to local school districts, the department provides funding to make school facilities available for community use, when they are not needed for regular school activities. In many communities, the school is the center of local activities, providing a place for both youth and adults to attend instructional classes. For many rural communities, the school is the only facility available for these activities to occur.



## **Significant Issues**

- **Equity and adequacy of funding for school districts**
- **Funding for school construction and maintenance projects**
- **Potential liability to pollution at REAA school sites**
- **Development and implementation of student performance standards and assessment to coincide with national Goals 2000 school reform initiative**
- **Non-public pupil transportation**
- **Access to education through technology**
- **Alaska Youth: School to work transition**
- **"Healthy Start" for all children entering school**



# Funding Summary

## House Finance Committee Overview

### Department of Education Funding History (All Funds)

(Does not include Alaska Postsecondary Education Commission)

	FY91 Actual	FY92 Actual	FY93 Actual	FY94 Actual
<b>Formula Programs</b>				
Foundation	526,382.6	560,353.4	612,698.6	610,598.4
Additional District Support	372.6	2,131.2	3,422.2	3,358.1
Cigarette Tax	2,600.0	2,500.0	2,700.0	2,721.0
Tuition Students	13,878.5	13,878.5	13,580.4	1,853.7
Boarding Home Grants	223.2	230.0	340.0	151.2
Youth in Detention	794.9	800.0	800.0	800.0
Schools for the Handicapped	2,772.6	2,977.5	2,977.5	2,977.5
Pupil Transportation	24,737.0	28,572.0	28,572.0	29,025.9
Child Nutrition	13,814.4	15,625.0	17,503.5	19,720.5
School Debt Reimbursement	116,688.6	127,671.8	125,407.9	99,798.2
Community Schools	579.0	595.5	588.5	599.6
<b>Subtotal Formula Programs</b>	<b>702,843.4</b>	<b>755,334.9</b>	<b>808,590.6</b>	<b>771,604.1</b>
Federal Receipts	34,438.4	35,580.2	59,677.8	36,708.1
General Fund	542,101.2	582,083.9	612,495.9	623,924.1
Other Funds	126,303.8	137,670.8	136,416.9	110,971.9
<b>Total Formula Funding</b>	<b>702,843.4</b>	<b>755,334.9</b>	<b>808,590.6</b>	<b>771,604.1</b>
<b>Agency Operations</b>				
School Finance	2,348.0	2,690.7	2,343.9	1,586.4
Education Program Support	47,879.3	46,816.2	49,235.0	51,993.8
Executive Administration	2,210.8	3,147.3	3,102.5	3,340.4
Correspondence Study State	0.0	5,328.6	3,757.1	3,904.3
Professional Teaching Practices	183.6	123.9	174.2	187.3
Alaska State Council on the Arts	1,960.2	1,819.0	1,694.2	1,694.2
Kotzebue Technical Center Grant	965.7	914.5	848.7	848.7
Alaska Vocational Technical Center	4,801.1	4,867.8	4,528.2	4,606.3
Mt. Edgecumbe Boarding School	3,489.0	3,615.2	4,172.1	4,170.2
Vocational Rehabilitation	14,067.5	14,988.4	16,680.1	15,805.1
Libraries, Archives & Museums	7,427.2	7,208.7	6,951.8	6,825.4
<b>Subtotal Agency Operations</b>	<b>85,332.4</b>	<b>91,520.3</b>	<b>93,487.8</b>	<b>94,962.1</b>
Federal Receipts	45,770.9	52,205.2	57,550.7	59,509.7
General Fund	30,258.5	28,743.4	27,007.2	26,786.8
Other Funds	9,303.0	10,571.7	8,929.9	8,665.6
<b>Total Agency Operations Funding</b>	<b>85,332.4</b>	<b>91,520.3</b>	<b>93,487.8</b>	<b>94,962.1</b>
<b>Total Education</b>	<b>788,175.8</b>	<b>846,855.2</b>	<b>902,078.4</b>	<b>866,566.2</b>
<b>DOE Positions:</b>				
Full-Time	412.0	413.0	386.0	377.0
Part-Time	99.0	99.0	106.0	103.0

**Department of Education  
FY95 to FY96 Comparison (All Funds)**

(Does not include Alaska Postsecondary Education Commission)

	FY95 Authorized	FY96 Dec. 15	FY95/96 Change	% Change
<i>Formula Programs</i>				
Foundation	629,338.0	649,913.9	20,575.9	3.3%
Additional District Support	3,639.8	0.0	-3,639.8	-100.0%
Cigarette Tax	2,668.1	2,655.0	-13.1	-0.5%
Tuition Students	1,731.2	1,731.2	0.0	0.0%
Boarding Home Grants	355.0	355.0	0.0	0.0%
Youth in Detention	800.0	800.0	0.0	0.0%
Schools for the Handicapped	3,447.6	3,471.0	23.4	0.7%
Pupil Transportation	31,564.8	32,344.4	779.6	2.5%
Non-Public Pupil Transportation	0.0	3,000.0	3,000.0	100.0%
Child Nutrition	22,000.0	22,000.0	0.0	0.0%
School Debt Reimbursement	103,345.3	80,322.4	-23,022.9	-22.3%
Community Schools	600.0	600.0	0.0	0.0%
<b>Subtotal Formula Programs</b>	<b>799,489.8</b>	<b>797,192.9</b>	<b>-2,296.9</b>	<b>-0.3%</b>
Federal Receipts	43,806.1	42,791.0	-1,015.1	-2.3%
General Fund	642,853.7	666,029.8	23,176.1	3.6%
Other Funds	112,830.0	88,372.1	-24,457.9	-21.7%
<b>Total Formula Funding</b>	<b>799,489.8</b>	<b>797,192.9</b>	<b>-2,296.9</b>	<b>-0.3%</b>
<i>Agency Operations</i>				
School Finance	1,934.2	2,222.0	287.8	14.9%
Education Program Support	54,177.7	59,628.7	5,451.0	10.1%
Executive Administration	3,402.8	3,212.3	-190.5	-5.6%
Correspondence Study State	3,532.2	3,532.2	0.0	0.0%
Professional Teaching Practices Comm	188.2	188.2	0.0	0.0%
Alaska State Council on the Arts	1,537.4	1,519.9	-17.5	-1.1%
Kotzebue Technical Center Grant	814.0	814.0	0.0	0.0%
Alaska Vocational Technical Center	4,627.4	4,627.4	0.0	0.0%
Mt. Edgecumbe Boarding School	4,066.1	4,066.1	0.0	0.0%
Vocational Rehabilitation	19,042.3	19,155.5	113.2	0.6%
Libraries, Archives & Museums	7,158.7	7,164.9	6.2	0.1%
<b>Subtotal Agency Operations</b>	<b>100,481.0</b>	<b>106,131.2</b>	<b>5,650.2</b>	<b>5.6%</b>
Federal Receipts	64,400.8	69,823.4	5,422.6	8.4%
General Fund	26,457.3	26,548.6	91.3	0.3%
Other Funds	9,622.9	9,759.2	136.3	1.4%
<b>Total Agency Operations Funding</b>	<b>100,481.0</b>	<b>106,131.2</b>	<b>5,650.2</b>	<b>5.6%</b>
<b>Total Education</b>	<b>899,970.8</b>	<b>903,324.1</b>	<b>3,353.3</b>	<b>0.4%</b>
<i>DOE Positions</i>				
Full-Time	374.0	372.0	-2.0	-0.5%
Part-Time	106.0	100.0	-6.0	-5.7%

**Highlights FY96 General Fund Changes**

	<b>FY96 Dec. 15</b>	<b>FY96 Proposed Change</b>	<b>FY96 Revised</b>
<ul style="list-style-type: none"><li>• <b>Foundation Program</b> Increase due to projected increase in Average Daily Membership (ADM) of approximately 2,300 and a decrease in PL 81-874 and Public School Fund revenues.</li></ul>	23,012.9	-6,512.0	16,500.9
<ul style="list-style-type: none"><li>• <b>Schools for the Handicapped</b> Special Education Services Agency - formula based on 2% of special education funding or \$85 per student.</li></ul>	23.4	0.0	23.4
<ul style="list-style-type: none"><li>• <b>Pupil Transportation</b> Funding to reimburse school districts for the cost of providing transportation for public school students.</li></ul>	1,107.0	497.8	1,604.8
<ul style="list-style-type: none"><li>• <b>Non-Public Pupil Transportation</b> Funding to reimburse school districts for the costs of providing transportation for non-public school students as required by statute.</li></ul>	2,672.6	0.0	2,672.6
<ul style="list-style-type: none"><li>• <b>School Debt Reimbursement</b> Funding required to reimburse municipal districts has declined based on the estimate of outstanding debt for FY96.</li></ul>	-23,022.9	0.0	-23,022.9

**Department of Education  
Position Changes From FY95 Authorized  
to FY96 Request By Division**

(Does not include Alaska Postsecondary Education Commission)

	FY95		FY96		Change	
	Authorized		Dec. 15			
	PFT	PPT	PFT	PPT	PFT	PPT
School Finance	18	1	17	2	-1	1
Education Program Support	61	2	61	0	0	-2
Executive Administration	37	5	39	1	2	-4
Correspondence Study State	23	25	21	26	-2	1
Professional Teaching Practices Comm	2	0	2	0	0	0
Alaska State Council on the Arts	3	2	4	1	1	-1
Alaska Vocational Technical Center	26	36	27	34	1	-2
Mt. Edgecumbe Boarding School	17	26	15	25	-2	-1
Vocational Rehabilitation	116	0	116	4	0	4
Libraries, Archives & Museums	71	9	70	7	-1	-2
<b>Total Positions</b>	<b>374</b>	<b>106</b>	<b>372</b>	<b>100</b>	<b>-2</b>	<b>-6</b>

1/23/95

## NON-PUBLIC PUPIL TRANSPORTATION

January 23, 1995

Following are estimated costs per district for transporting non-public students in FY96. Estimates were provided by the districts listed.

Anchorage	\$3,000,000 - \$5,000,000
Fairbanks, current annual cost	321,740
Fairbanks, potential additional	201,085
Kenai Peninsula	Not Available
Kodiak	87,386
Ketchikan	43,000
Mat-Su	<u>450,000 - 500,000</u>
Total	\$4,103,211 - \$6,153,211

These estimates include current non-public student ridership as well as potential ridership based on criteria established by the 1/25/94 court decision in Ten Eyck v. Dept. of Education. In that decision, the court upheld the constitutionality of AS 14.09.020 and ruled that non-public students are eligible to ride public school buses in districts that provide transportation to public school students. Non-public school students may be transported up to the maximum distance which the district transports a public student.

Currently, Fairbanks transports the most non-public students on 8 essentially dedicated school buses (the district has indicated that if non-public busing were to end, that only 5 buses could be eliminated). The other districts listed above transport fewer than 50 non-public students each and incorporate those riders into existing routes.

Anchorage, Mat-Su and Kenai School Districts currently transport only a handful of non-public students, but it is in these districts that the greatest potential exists for substantial increases in ridership, costs and conflicts to occur. The majority of the state's non-public school students are located within these districts' boundaries. While few non-public school students currently utilize the transportation authorized by AS 14.09.020, the potential exists for costs to increase to, and exceed, the estimates provided above by the districts. Anchorage is also concerned about the potential conflict of transporting non-public school students while denying transportation of it's alternative school students and students who elect to attend a school other than their assigned attendance center.

The Alaska Civil Liberties Union Foundation (ACLUF) has voiced concern and opposition to the concept of using public funds to provide transportation for non-public school students. The ACLUF has threatened to sue the state over this issue. Copies of correspondence submitted by the ACLUF, school districts and legislators in response to a request for public comment on regulations proposed to interpret AS 14.09.020 are available from the department.

**DEPARTMENT OF ENVIRONMENTAL CONSERVATION**

**DEPARTMENT OVERVIEW  
TO  
HOUSE FINANCE COMMITTEE**

1/24/95

Attachment #1  
1/25/95

# Alaska Department of Environmental Conservation



410 Willoughby Ave, Suite 105  
Juneau, AK 99801-1795  
(907) 465-5050

**Mission:** To protect public health from environmental threats, and to conserve, protect and improve Alaska's environment for present and future generations.

## Environmental Health Division

465-5280

① Assures wholesome fish, meat, and dairy products for consumers and enforces basic standards of sanitation in public facilities.

- seafood inspection
- pesticide program
- laboratory monitoring operations, lab certification
- meat/poultry/animal health & dairy program
- environmental sanitation

## Environmental Quality Division

465-5260

→ Ensures compliance with air, land and water pollution laws to protect public health and the environment.  
~

- public drinking water
- air quality management
- water quality management
- solid waste management
- hazardous waste management
- industrial wastewater control
- domestic wastewater control
- pollution prevention office
- environmental analysis laboratory

## Facilities Construction and Operation Division

465-5180

→ Provides financial and technical assistance to local communities for construction and operation of water, sewer, and solid waste projects.

- Village Safe Water program
- 50% matching grants for facility construction
- Alaska Clean Water Fund administration
- operator training and certification
- remote maintenance worker assistance

## Spill Prevention and Response Division

465-5250

→ Improves the state's capability to prevent, respond to, and clean up pollution from oil and hazardous substances.  
4

- government preparedness and response
- industry preparedness
- contaminated sites remediation
- underground storage tanks

## Information & Administrative Services Division

465-5010

→ Provides overall financial, employee and informational services to the public and within the department.  
36

- financial services
- personnel
- media/publications/library
- information systems and data management
- supply and procurement

**FY96 Operating Budget Structure  
Department of Environmental Conservation**

<b>BRU (Budget Request Unit)</b>
----------------------------------

<b>Component</b>
------------------

**Administration BRU**

- Commissioner's Office
- Information & Administrative Services
- Telecommunication Chargeback
- Response Fund Administration

**Statewide Programs BRU**

- Regional Management

**Environmental Quality (EQ) BRU**

- EQ Director
- Monitoring & Lab
- Drinking Water
- Wastewater & Water Treatment
- Solid & Hazardous Waste
- Air Quality
- Water Quality

**Spill Prevention & Response (SPAR) BRU**

- SPAR Director
- Contaminated Sites
- Underground Storage Tanks
- Industry Preparedness
- Government Preparedness

**Environmental Health (EH) BRU**

- EH Director
- Animal Industries
- Seafood/Sanitation Inspections
- Palmer Lab

**Facility Construction & Operations (FCO) BRU**

- Facility Construction & Operations

h:\home\dank\budget\history\fundhist.xls  
 Department of Environmental Conservation  
 Departmental Operating Budget - By Fund Source(000's)

1/24/95

Fund Source	FISCAL YEAR (FY) AUTHORIZED										* FY96 GOV REQUEST
	FY86	FY87	FY88	FY89	FY90	FY91	FY92	FY93	FY94	FY95	
Federal	3,292.1	3,326.8	3,559.9	5,353.1	5,486.3	5,842.9	6,790.5	10,264.6	8,694.9	9,937.8	11,248.2
GF Match	1,427.2	1,352.9	1,438.2	1,786.7	1,798.3	1,959.9	2,182.7	2,474.7	2,435.0	2,448.3	2,572.6
General Fund (GF)	11,153.9	9,360.2	10,653.5	13,384.2	16,486.5	25,267.9	19,818.4	15,622.5	13,465.3	12,933.1	12,820.3
GF/Program Receipts	95.0	95.0	95.0	95.0	95.0	95.0	394.1	2,573.9	3,305.2	3,093.1	4,953.1
Interagency	331.8	393.6	428.1	456.5	470.2	549.8	454.5	449.0	1,120.0	980.7	624.5
Response Fund					4,371.8	6,810.8	7,193.7	10,627.7	11,370.6	10,342.9	9,858.9
CIP	511.9	750.5	806.5	944.3	729.8	740.5	335.7	337.7	433.7	1,144.9	1,256.4
Ak Clean Water Fund						88.4	90.5	92.7	127.7	149.8	296.5
Tank Fund							6,767.8	3,892.3	5,191.5	3,991.3	3,991.3
<b>TOTAL</b>	<b>16,811.9</b>	<b>15,279.0</b>	<b>16,981.2</b>	<b>22,019.8</b>	<b>29,437.9</b>	<b>41,355.2</b>	<b>44,027.9</b>	<b>46,335.1</b>	<b>46,143.9</b>	<b>45,021.9</b>	<b>47,621.8</b>
Front of Budget Items							46,085.5	42,780.0			
Spill Reserve									34066.1		
Response Fund (other agencies)									2569.4	2698.6	2266.5
EVOS Restoration									2284.6		
<b>Grand Total</b>	<b>16,811.9</b>	<b>15,279.0</b>	<b>16,981.2</b>	<b>22,019.8</b>	<b>29,437.9</b>	<b>41,355.2</b>	<b>90,113.4</b>	<b>89,115.1</b>	<b>85,064.0</b>	<b>47,720.5</b>	<b>49,888.3</b>

\* Subject to change

Attachment #2

1/25/95

**ALASKA DEPARTMENT  
OF HEALTH AND  
SOCIAL SERVICES**

**An Overview**



---

# TABLE OF CONTENTS

<b>OFFICE OF THE COMMISSIONER .....</b>	<b>5</b>
General Information	
Alaska Mental Health Board	
Governor's Council on Disabilities and Special Education	
Medical Care Advisory Committee	
Medicaid Rate Advisory Commission	
Office of Hearings and Appeals	
Public Information Office	
<b>DIVISION PROGRAMS / SECTIONS .....</b>	<b>6</b>
<b>DIVISION OF ADMINISTRATIVE SERVICES .....</b>	<b>7</b>
General Information	
Specific Support Services	
Personnel and Payroll	
Budget Section	
Planning Section	
Facilities Section	
Finance Section	
Supply Section	
Information Systems	
<b>DIVISION OF ALCOHOLISM AND DRUG ABUSE .....</b>	<b>9</b>
General Information	
Program Summaries	
Drug Abuse Programs	
Alcohol Abuse Programs	
<b>DIVISION OF FAMILY AND YOUTH SERVICES .....</b>	<b>10</b>
General Information	
Program Summaries	
Child Protective Services	
Adoption and Guardianship	
Youth Corrections	
Youth Correctional Facilities	
Juvenile Delinquency Prevention	
Foster Care for Children, Youth, and Adults	
Alaska Youth Initiative	
Residential Care for Children, Youth, and Adults	
Adult Protective Services	
Community Care Licensing	
Child Protection Day Care	
Interstate Compact on the Placement of Children	
Interstate Compact on Juveniles	
Grants	

---

# TABLE OF CONTENTS (CONT.)

**DIVISION OF MEDICAL ASSISTANCE ..... 13**

General Information

Program Summaries

Medicaid

General Relief Medical

Certification and Licensing

Medical Care Advisory Committee

Home and Community-Based Services

**DIVISION OF MENTAL HEALTH AND  
DEVELOPMENTAL DISABILITIES ..... 15**

General Information

Program Summaries

Community Mental Health Services

Community Developmental Disabilities Services

Institutional Facilities

Alaska Psychiatric Institute

Harborview Developmental Center

**DIVISION OF PUBLIC ASSISTANCE ..... 17**

General Information

Program Summaries

Aid to Families with Dependent Children

Food Stamps

Medicaid

General Relief Assistance

General Relief Medical

Energy Assistance Program

Adult Public Assistance

Job Opportunities and Basic Skills Program

Food Stamp Employment and Training

Child Care

Permanent Fund Dividend Hold Harmless

Alaska Longevity Bonus Hold Harmless

**DIVISION OF PUBLIC HEALTH ..... 21**

General Information

Program Summaries

Public Health Nursing Services

Epidemiology

Maternal, Child, and Family Health

Medicaid Services Unit

Public Health Laboratories

Emergency Medical Service Certification and Licensing

Bureau of Vital Statistics

Community Health Services

Office of the Medical Examiner



---

# DEPARTMENT OF HEALTH AND SOCIAL SERVICES

## OFFICE OF THE COMMISSIONER

"The mission of the State of Alaska Department of Health and Social Services is to promote and protect the physical, emotional, social, and economic well-being of Alaskans so that each person can be as self-sufficient as possible."

### GENERAL INFORMATION

The Office of the Commissioner leads the Department in its efforts toward accomplishing this mission. The Office also provides executive leadership in fulfilling the Governor's goals for Alaska's health and social services programs and represents the Governor on issues relating to these areas. The Office defines the Department's policies, and focuses management direction and program coordination between the Department's seven Divisions, following these policies. In addition to the Department's seven Divisions, the Office of the Commissioner oversees the following agencies:

**Alaska Mental Health Board** - The Board is composed of 12 members appointed by the Governor and the Commissioner or the Commissioner's designee. It assists the Governor, the Department, and the Alaska State Legislature to ensure an integrated and comprehensive mental health system.

**Governor's Council on Disabilities and Special Education** - The Council is composed of 26 members appointed by the Governor who represent persons with disabilities, principal State agencies, and private providers. It serves as a forum and advocate for coordinated delivery programs for the disabled and as principal planning agency for development of appropriate services. The Council also serves as the State's special education advisory council.

**Medical Care Advisory Committee** - The Committee is composed of 11 members appointed by the Commissioner to hold public meetings and advise the Commissioner on Medicaid program policy. The Committee is required by federal law and must have at least 50% consumer representation, with the balance being provider representatives. The Committee meets three to four times a year in various locations throughout the state.

**Medicaid Rate Advisory Commission** - The Commission establishes reimbursement rates for hospitals, nursing homes, rural health clinics, home health agencies, and outpatient surgical centers on behalf of Medicaid clients. It conducts fiscal and compliance audits of the State's Medicaid providers (hospitals and nursing homes) and performs audits in compliance with the State's single audit requirements for qualifying Department grantees and contractors which do not fall under the single audit requirements.

**Office of Hearing and Appeals** - This office conducts impartial administrative hearings on appeals of actions taken by the Department.

**Public Information Office** - The Public Information Office is located in Anchorage and provides leadership and assistance in areas of media coverage and response, represents the Department at meetings and conferences pertaining to health and social services, and responds to queries regarding the programs and services provided by the Department.

---

# DIVISION PROGRAMS / SECTIONS OF THE DEPARTMENT OF HEALTH AND SOCIAL SERVICES

## **Division of Administrative Services**

Budget Section  
Facilities Section  
Finance Section  
Information Systems Section  
Personnel and Payroll  
Planning Section  
Supply Section

## **Division of Alcoholism and Drug Abuse**

Alcohol Abuse Programs  
Drug Abuse Programs  
Alcohol Safety Action Program  
Alcohol Prevention Program  
Youth Substance Abuse Programs  
Inhalant Abuse Services  
Inmate Substance Abuse Programs  
Federal Block Grant Allocation of  
Prevention and Treatment

## **Division of Family and Youth Services**

Child Protective Services  
Adoption and Guardianship  
Youth Corrections  
Youth Correctional Facilities  
Juvenile Delinquency Prevention  
Foster Care for Children, Youth,  
and Adults  
Alaska Youth Initiative  
Residential Care for Children,  
Youth, and Adults  
Adult Protective Services  
Community Care Licensing  
Child Protection Day Care  
Interstate Compact on the  
Placement of Children  
Interstate Compact on Juveniles  
Grants

## **Division of Medical Assistance**

Medicaid Payments  
General Relief Medical Payments  
Medical Care Advisory Committee  
Certification and Licensing  
Home & Community-Based Services

## **Division of Mental Health and Developmental Disabilities**

Community Mental Health Services  
Community Developmental Disabilities  
Services:

- Family Support
- Individualized Services
- Programs for Children with  
Special Health Care Needs
- Respite Services

The Alaska Psychiatric Institute  
The Harborview Developmental Center  
Alaska Youth Initiative  
Village Suicide Prevention  
Rural Human Service System Project  
Youth Peer Helper Program  
Alaska Family Resource Specialist  
Program

## **Division of Public Assistance**

Aid to Families and Dependent Children  
Food Stamps  
Medicaid  
General Relief Assistance  
General Relief Medical  
Energy Assistance  
Adult Public Assistance  
Job Opportunities & Basic Skills  
Food Stamp Employment and Training  
Child Care  
Permanent Fund Dividend Hold  
Harmless  
Alaska Longevity Bonus Hold Harmless

## **Division of Public Health**

Public Health Nursing  
Epidemiology  
Maternal, Child, and Family Health  
Public Health Laboratories  
Emergency Medical Services  
Bureau of Vital Statistics  
Community Health Services  
Office of the Medical Examiner

---

# DIVISION OF ADMINISTRATIVE SERVICES

"To provide service and support to programs within the Department of Health and Social Services and its related public."

## GENERAL INFORMATION

The Division of Administrative Services provides an array of administrative and management support functions for the Department through the division's sections which include: finance, budget, supply, planning, personnel and payroll, information systems, and facilities.

These sections primarily support the program divisions and offices in achieving their immediate and long term goals of serving needy and vulnerable Alaskans. External services are provided in a number of areas: health facility construction licensing; reviews of Certificates of Need for hospitals; grant management and technical assistance to capital grantees; health care planning activities; and assisting recruitment, examination, and certification of people interested in jobs with the Department.

Administrative functions are funded primarily with State general funds. Services are provided directly by division staff in offices located in Juneau and Anchorage. However, most services are provided primarily through the Department's central office in Juneau.

## SPECIFIC SUPPORT SERVICES

### Personnel and Payroll

The personnel and payroll section is the basic administrative unit responsible for personnel management within the Department. Procedural functions include: initiate and maintain personnel, payroll, leave, training and related records. Programmatic functions include labor relations, position classification, employee development, manpower planning and eligible list certification, and staff consultations. The office maintains records on more than 2000 positions in more than 50 geographic locations.

### Budget Section

This section provides technical budget support to the Department as well as management guidance and analysis to the Commissioner's Office. It is responsible for analyzing, monitoring, and controlling the Department's annual operating and capital budgets, budget amendments, revised programs, supplementals, and fiscal notes. It is also responsible for Departmental financial procedures, processing, and control and position authorization control.

### Planning Section

The planning section engages in health and social services planning and research, Certificates of Need (CON), preparation of Healthy Alaskans 2000 plan and Hospital Data Survey. In accomplishing these tasks, the staff works closely with other divisions in the Department, local, State and federal government agencies and other interested agencies.

### Facilities Section

The facilities section supports planning for capital improvements, capital grants, inventory of health facilities, certification of revenue sharing, and construction licensing of health facilities.

---

# DIVISION OF ADMINISTRATIVE SERVICES (CONT.)

## **Finance Section**

The finance section is responsible for assisting all Divisions within the Department in fulfilling their financial obligations by providing prompt and accurate payments to vendors for health and social service programs and commodities; maximizing \$500 million in federal claims processing, maintaining adequate cash management and meeting federal reporting requirements in a timely manner. Staff also process all professional services contracts, streamline the review and approval of all contractual documents and provide clear interpretation of respective regulations.

## **Supply Section**

This section is responsible for procurement and leasing for the Department. Supply is headquartered in Juneau and purchases for the Southeast region. They are also responsible for any leases the Department originates and maintain handling of all Departmental mail. There is a regional supply office in Anchorage which purchases for Southcentral, Western and Northern regions.

## **Information Systems**

The information systems section is responsible for Department-wide management and coordination of information and telecommunication activities including the Department's Wide Area Network.

---

# DIVISION OF ALCOHOLISM AND DRUG ABUSE

"To maintain and continue to improve a comprehensive program of prevention, intervention, and treatment for all Alaskans that may be affected by alcohol, other drug, and inhalant abuse."

## GENERAL INFORMATION

The Division of Alcoholism and Drug Abuse (ADA) was established by AS 47.37.020, and is responsible for administering:

- Alcohol Abuse Programs
- Alcohol Safety Action Program
- Alcohol Prevention Programs
- Federal block grant allocation of prevention and treatment
- Drug Abuse Programs
- Youth Substance Abuse Programs
- Inhalant Abuse Services
- AIDS Intervention Program

The Division administers services which are mandated by statute through the grant-in-aid process (AS 47.30.475 - 47.30.500). Nonprofit, municipal, and public agencies provide direct service through separate division grants which employ individuals statewide. The Division maintains grant files, provides administrative support and technical assistance, and monitors all State funded programs to ensure compliance with State rules and regulations regarding the grant-in-aid process as well as federal laws and regulations pertaining to block grant funds. Grantees are surveyed annually and fiscal audits are conducted on a biennial or annual basis.

The Division maintains three offices: one located in Juneau and two in Anchorage. The Juneau office serves as the administrative, budgetary, planning, policy analysis, program development, and fiscal control point. One of the Anchorage offices serves as the monitoring and technical assistance portion of the operation, the other is the Alcohol Safety Action Program (ASAP) office. This section coordinates Statewide court system alcohol and misdemeanor services, provides alcohol and misdemeanor screening, monitoring services for the Anchorage Court System, and provides technical assistance, training, and on-site reviews of Statewide court services.

## PROGRAM SUMMARIES

### Drug Abuse Programs

All state-funded drug prevention and treatment programs are paid for through this program. There are approximately 53 agencies funded by the Division. AIDS prevention and intervention services are coordinated with the Division of Public Health.

### Alcohol Abuse Programs

Funds are awarded to agencies around the State to provide alcohol abuse and alcoholism prevention, intervention, and treatment services. There are approximately 53 agencies including Inmate Substance Abuse programs funded by the Division. These agencies provide education, emergency care, outpatient care, outreach, intermediate care, after-care, correction services, detoxification, counseling, referral services, and community patrol services. Comprehensive grants are for services designed and requested by the communities they serve.

---

# DIVISION OF FAMILY AND YOUTH SERVICES

" To protect children and vulnerable adults at risk of abuse and neglect and to rehabilitate juvenile offenders while providing community protection. These activities can be best carried out by involving and strengthening families."

## GENERAL INFORMATION

The Division of Family & Youth Services (DFYS) provides a continuum of prevention, early intervention, and treatment services for children, youth, and adults. Services are designed to break the cycles of neglect, abuse, exploitation, delinquency, and dependency. Some services are provided directly by the Division while others are purchased through grants and contracts with private providers.

The Division provides direct services to Alaskans through two sections. The Family Services section provides protective and supportive services for children, youth, and adults who are at risk of abuse, neglect, or exploitation. There are 36 Family Services field offices. The Youth Services section provides services which promote public safety and reduce risks to citizens by preventing and treating delinquency among youth. There are 14 Youth Services field offices and five Youth Facilities. The field offices are managed by three regional offices, and the State Office in Juneau provides administrative support to the Director, the regional offices, and the field offices.

## FAMILY CENTERED SERVICES

The Division recognizes that the best way to protect Alaska's children and youth is through strengthening families and communities. Therefore DFYS has implemented a family centered approach to services. Family centered service is both a philosophical approach and a method of service delivery in which culturally appropriate, community based resources are utilized to protect and/or rehabilitate children, protect dependent adults, strengthen families, promote permanency for children, and reduce the incidence and duration of out-of-home placement. This model emphasizes personal responsibility, builds upon the strengths of families and communities, and promotes community involvement.

## PROGRAM SUMMARIES

### Child Protective Services (CPS)

The purpose of CPS is to identify, treat, and reduce child abuse and neglect and to ensure that reasonable efforts are made to protect and maintain children in their own homes. However, if a child is at risk of imminent harm and conditions cannot be remedied, removal of the child is warranted. From that point forward, casework services are directed toward permanency for the child, through family reunification where possible. If a parent is unable or unwilling to provide security, affection, and continuing care for a child, an alternative permanent plan is developed and implemented. DFYS staff provide protective services for children by accomplishing the following: investigating reports of harm, assisting families in diagnosing and resolving problems, referring families to community resources, initiating legal intervention if children are unable to remain safely in their own homes, and providing out-of-home placements and permanency planning when necessary.

---

# DIVISION OF FAMILY AND YOUTH SERVICES (CONT.)

## **Adoption and Guardianship**

When efforts to reunite children with their birth parents are unsuccessful, adoption or guardianship may be considered. Adoption provides legally permanent homes for children. Legal guardianship may be an appropriate arrangement for children living in alternate family situations where the parents are willing to provide care for the children at least until they reach age eighteen. Adoption and guardianship subsidies may be available to those families who would not be able to care for hard-to-place children without financial and/or medical assistance.

## **Youth Corrections**

The mission of Youth Corrections is to reduce or prevent juvenile delinquency by meeting the needs of juvenile offenders in a manner consistent with the protection of the public. DFYS provides a preventive and rehabilitative approach to youth offenders through the provision of the following services: juvenile delinquency prevention, referral screening, short-term detention of pre-adjudicated youth, investigation of alleged offenses, identification of youth's and family's strengths and needs, legal intervention, informal and formal probation, out-of-home placement, and long-term confinement/treatment of adjudicated offenders.

## **Youth Correctional Facilities**

DFYS operates five nationally accredited youth correctional facilities located in Anchorage, Bethel, Fairbanks, Juneau, and Nome. All five facilities provide short-term detention, and four facilities provide long-term confinement/treatment.

## **Juvenile Delinquency Prevention**

Juvenile delinquency prevention services are designed to provide a wide range of assistance at the onset of delinquent behavior with the intention of limiting or preventing the entry of young offenders and first time offenders into the juvenile correction system. These services are purchased from private providers and include sex offender treatment; individual, group, and family counseling; emergency shelter and family mediation; parenting classes; diversion services; and non-secure attendant services to juvenile offenders to eliminate jailing of youth in adult facilities.

## **Foster Care for Children, Youth, and Adults**

Foster care placement is the last option considered when reasonable efforts to protect a child, youth, or vulnerable adult in his or her own home have been exhausted. The first preference considered in all foster care placements is a relative's home.

## **Alaska Youth Initiative (AYI)**

AYI provides individualized services to severely emotionally and/or behaviorally disturbed youth at risk of being placed in highly restrictive, out-of-state treatment facilities. Services are provided through a cooperative agreement among DFYS, the Division of Mental Health and Developmental Disabilities, and the Department of Education.

## **Residential Care for Children, Youth, and Adults**

Residential care facilities for children and youth provide treatment services within a therapeutic environment which is staffed 24 hours a day. Placement may be short-term emergency shelter or long-term residential treatment.

---

# DIVISION OF FAMILY AND YOUTH SERVICES (CONT.)

Residential care is appropriate for children and youth who are unable to function in less restrictive settings and who exhibit severe emotional and/or behavioral problems. Through adult residential care, dependent adults or elderly persons can be placed in nursing homes, group homes, or other residential facilities.

## **Adult Protective Services (APS)**

APS consists of a continuum of supportive and/or protective services to adults age eighteen and older who are not able to function independently and who may be subject to abuse, neglect, or economic harm. DFYS investigates reports of harm, makes referrals to community resources, and may assist in arranging adult foster care or residential care. An adult has the right to terminate an investigation or refuse service at any time. Legal intervention may be required in order to provide protective services to an adult who is incapacitated and in immediate need of protective service.

## **Community Care Licensing**

The licensing of community care facilities is a preventive service that reduces predictable risks to the health, safety, and well-being of children and vulnerable adults in out-of-home care. Licensing requirements set forth acceptable standards of care, and the licensing and monitoring processes provide support and quality control services to the care providers. DFYS licenses child foster homes, family child care homes, family child care group homes, child care centers, residential child care facilities, adult foster homes, adult residential care facilities, and child placement agencies.

## **Child Protection Day Care**

Child protection day care services provide day care for young children who are at risk of being abused or neglected within their families. The services are designed to lessen that risk by providing child care relief, offering support to both the children and the parents, monitoring for reoccurring abuse or neglect, and providing positive role models for the parents.

## **Interstate Compact on the Placement of Children (ICPC)**

The Interstate Compact on the Placement of Children establishes procedures for the interstate placement of children and fixes the responsibilities of those involved in placing the children. The primary goals of the ICPC are to protect the children being placed, ensure that they receive the services they need, and facilitate permanent placements for those children in state custody.

## **Interstate Compact on Juveniles (ICJ)**

The Interstate Compact on Juveniles provides the procedural means to affect and regulate the movement of juvenile offenders across state lines while serving the welfare of the youth and the protection of communities.

## **Grants**

The Grants program provides a variety of support services to families through grants to local communities. These grants include Family Support and Home Based Services grants, Foster Care Demonstration grants, Non-Secure Attendant Shelter Care grants, Indian Pass Through grants, Child Care Licensing grants, Human Services Matching grants, and Kawerak and Tlingit-Haida Social Services grants.

---

# DIVISION OF MEDICAL ASSISTANCE

"To ensure access to medical care by low income Alaskans who meet regulatory eligibility and medical need requirements, provide leadership in shaping changes to Alaskan health care systems and financing programs, and to ensure that Alaskan health care facilities adhere to federal and state standards."

## GENERAL INFORMATION

The primary goal of the Division of Medical Assistance (DMA), is to enable needy Alaskans access to medical care through the same network of medical providers servicing the general population, and to conduct medical surveillance which assures that medical services provided are appropriate and of the proper duration and scope for the illness involved.

To achieve this goal, the Division's primary objective is to maintain medical payment and coverage policies that balance fiscal constraints and reasonable access, and encourage medical professionals to accept medical assistance clients. The challenge is to maintain a program that meets the health care needs of the recipients, is accepted by providers, and affordable within State resources. Developing strategies to achieve this balance between fiscal constraint and reasonable access to needed medical care is an on-going Division focus.

## PROGRAM SUMMARIES

### Medicaid

Persons are automatically eligible for Medicaid if they receive financial assistance from Aid to Families with Dependent Children (AFDC), Old Age Assistance, Aid to the Blind, Aid to the Disabled, or the Federal Supplemental Security Income Program. Other eligibles include foster children, mental health inpatients under 22 or over 65 years of age, certain nursing home residents, and all low income children under age 6 who are not eligible for AFDC because of income. Federal law permits each state to define the scope of its Medicaid program. The Alaska Legislature by statute (AS 47.07.020 and AS 47.07.030) identifies the eligible groups and medical services which the Medicaid program covers in Alaska.

### General Relief Medical (GRM)

GRM covers poor adults who do not qualify for Medicaid because they are not blind, disabled, or over the age of 65. GRM is 100 percent state-funded, and until FY 86, offered the same general scope of medical services as Medicaid. However, in FY 87 major reductions in GRM services were approved by the legislature (see AS 47.25.195). The program covers only the cost of major medical non-elective inpatient hospital care, pregnancy-related services, prescribed drugs, and limited physician visits for a small group of citizens with specific serious medical conditions.

The Medical Assistance budget purchases a wide range of medical services, primarily through Medicaid. These services include but are not limited to hospital services, physician services, nursing home services, prescribed drugs and medical supplies, dental care, eyeglasses, nurse-midwife services, medical transportation, home health services, family planning, rural health clinics, and treatment for speech, hearing and language disorders.

During FY 94 approximately 86,000 Alaskans were eligible to receive medical care under these programs. Of those eligible Alaskans approximately 70,000 actually received medical care during the year.

---

# DIVISION OF MEDICAL ASSISTANCE (CONT.)

Approximately 60 percent of all persons served by the Division through the Medicaid Program are children, most of whom are also receiving state financial assistance under AFDC. Except for those persons requiring nursing home care and GRM hospital services, medical care is provided at no cost to the recipient.

## **Certification and Licensing**

The Health Facilities Licensing and Certification section's primary function is to perform the annual inspection of over 50 health facilities. All hospitals, nursing homes (including the nursing wing of each pioneer home), home health agencies, rural health clinics, and stage renal disease centers, freestanding birth centers, mobile X-Ray, outpatient physical therapy services, speech pathology services, occupational therapist and physical therapists in independent practice, and surgery centers are reviewed to ensure these facilities comply with the health and safety requirements of state and federal law. This section licenses Alaska facilities for all medical services, not just those purchased by the Medical Assistance Division. In addition, this section is responsible for authorization of all Medicaid admissions to nursing homes and for conducting an annual inspection of care of each Medicaid-eligible individual in each nursing home.

## **Medical Care Advisory Committee**

This committee, authorized under Title 42, Section 431.12, is a seven member group appointed by the Commissioner to advise the Division of Medical Assistance concerning Medicaid policies and programs. It receives staff support from the Division of Medical Assistance.

## **Home and Community-Based Services**

In FY 94, DMA began offering home and community-based services, such as respite care and environmental modifications, to people who would otherwise need long term care in institutions. A waiver authorization unit within DMA oversees this program, which is offered through federally-approved Medicaid waivers. The program is expected to serve over 800 people per year by the third year of operation.

---

# DIVISION OF MENTAL HEALTH AND DEVELOPMENTAL DISABILITIES

"To plan for and provide appropriate prevention, treatment, and support for individuals and families impacted by mental disorders or developmental disabilities while maximizing self-determination."

## GENERAL INFORMATION

Most administrative staff of the Division of Mental Health and Developmental Disabilities (MHDD) are located in Juneau. Others work out of Division offices in Anchorage and Fairbanks. Additionally, direct care staff are located in our institutions in Anchorage and Valdez.

The community mental health and community developmental disabilities programs are funded by the state through grants to local programs. These programs employ local workers to provide mental health and developmental disabilities services in their own communities.

## PROGRAM SUMMARIES

### Community Mental Health Programs

The community mental health program provides a statewide comprehensive array of outpatient, residential, and locally provided inpatient mental health services to persons with mental illnesses or severe emotional dysfunctions. Thirty-one local non-profit providers receive grants for comprehensive community mental health centers. In addition, specialized mental health services are provided through 76 grants or contracts with single-service or limited service providers.

Psychiatric emergency services at all of the community mental health centers provide screening and referral, brief therapy for problem resolution, crisis/referral telephone lines, and emergency outreach and crisis intervention. In three locations emergency services also include crisis/respite facilities.

Specialized community support programs for adults with severe long term mental illness are available through all of the community mental health centers and 10 limited service providers. Specific services provided are: evaluation and diagnosis; treatment planning; case management; living skills training; medication management; psychiatric and nursing services; vocational skills training; a variety of residential treatment options; supportive individual and family counseling; a drop in center; psychosocial rehabilitation; and crisis intervention. Services for individuals with severe mental illness also include a consumer run advocacy and support group, a family education and support group, and legal advocacy services.

Services for youth with serious emotional disturbances are provided at 20 community mental health centers and 5 limited service providers. The specialized programs include: case management; children's day treatment; outreach and home based therapy; residential treatment options; individual and family therapy; and other support services. Services for youth with the most serious problems are provided through the Alaska Youth Initiative (AYI) program, an innovative individualized "wrap-around" service program.

General community mental health services for persons experiencing depression, suicidal ideation or behavior, or other serious individual or family psychiatric dysfunction are provided by 16 community mental health centers and 2 limited service providers. The services include: evaluation and diagnosis; brief strategic individual and family psychotherapy; psychiatric and nursing service; and case consultation. Other general mental health services are community organization, public education, and advocacy.

---

## DIVISION OF MENTAL HEALTH AND DEVELOPMENTAL DISABILITIES (CONT.)

Fifteen community mental health centers and 60 limited service providers (villages) have peer helper programs, village-based suicide prevention programs or provide services through village paraprofessional human service workers who are specially trained and supervised.

The Division funds psychiatric evaluation and treatment services at local hospitals and client and client escort travel between the client's house and the hospital. The funds are used to supplement client resources on a "payor of last resort" basis. In FY 93 eight hospitals throughout the state provided psychiatric evaluations and two provided designated psychiatric treatment services.

### **Community Developmental Disabilities Programs**

Developmental disabilities services are driven by two central goals. 1) maximize the potential of individual developmentally disabled citizens to live as normal a life as possible and 2) reduce the risk of institutionalization. Additionally, all developmental disabilities services are guided by the following service principles:

- Services are the result of on-going planning.
- Services are built around the individual's wants and needs.
- Individuals are allowed to choose the locality in which they live and work.
- Services are age appropriate.
- The person has options from which to choose.
- Services are aimed at maximizing community participation.
- Services are culturally appropriate.
- Individuals are provided supports and services necessary to succeed in their chosen environment.
- Services are designed to promote and utilize natural and informal community supports, including family, friends, and other non paid citizens.

The major categories of services provided by community developmental disabilities services are individualized programs, in-home training, shared care, foster care, group homes, independent/semi-independent living, vocational training, case management, services for children who experience special health care and developmental needs, special needs child care, respite care, and natural family support.

### **Institutions**

The Alaska Psychiatric Institute in Anchorage provides inpatient psychiatric care for a wide range of persons including adults and adolescents who are acutely psychiatrically disturbed. Longer term care with special efforts toward transition to the community is provided for patients with serious persistent mental illness. A special security unit evaluates and treats forensic patients who need services regarding competency to stand trial or who cannot be managed in a jail setting. Patients are admitted on a voluntary and involuntarily committed basis.

Harborview Developmental Center in Valdez is a licensed intermediate care facility for individuals with developmental disabilities. Its developmental model, as opposed to medical model, is progressive and has helped pave the way for discharging over 100 clients in the last 15 years. The center also provides nursing care for patients who exhibit difficult behaviors associated with mental disorders. Center staff share their expertise with other care givers from around the state. As a result of this training, more individuals with needs for both nursing care and treatment for mental disorders can receive the services in their own communities.

---

# DIVISION OF PUBLIC ASSISTANCE

"To provide cash, food, and housing assistance to low-income Alaskans who do not have enough resources to provide their own basic needs, and to promote the economic self-sufficiency of public assistance recipients."

## GENERAL INFORMATION

The Division of Public Assistance (DPA) is responsible for the administration of the following programs:

- Aid to Families with Dependent Children (AFDC)
- Food Stamps
- Medicaid
- General Relief Assistance
- General Relief Medical
- Energy Assistance
- Adult Public Assistance
- Job Opportunities and Basic Skills (JOBS)
- Food Stamp Employment and Training (E&T)
- Child Care Programs
- Permanent Fund Dividend (PFD) Hold Harmless
- Alaska Longevity Bonus (ALB) Hold Harmless

In several of these programs benefits are funded wholly or in part with federal funds: AFDC (50 percent federal), Food Stamps (100 percent federal), Medicaid (50 percent federal), and Energy Assistance (100 percent federal). Food Stamp program benefit funding is not contained in the state budget. Partial federal funding is also provided for services under the JOBS and Food Stamp Employment and Training programs. The federal government also pays 50 percent of the cost of administering AFDC, Food Stamps, and Medicaid. Along with the contribution of federal money to these programs comes a set of federal rules governing conditions of eligibility for benefits as well as rules and procedures for overall program operation. The remaining programs are funded entirely from state general funds.

The Division of Public Assistance conducts business through a mix of private vendor contracts and state staffed facilities. Most of the activities administered by state staff are prohibited by federal law from transfer to the private sector. At present, the Division has offices in the following locations:

SOUTHEAST	SOUTHCENTRAL	NORTHERN	SOUTHWEST
Juneau	Anchorage	Fairbanks	Bethel
Sitka	Homer	Kotzebue	
Ketchikan	Kodiak	Nome	
	Kenai		
	Wasilla		

The Division of Public Assistance also contracts with the North Slope Borough for assistance in taking applications. The Division has fee agents in approximately 175 additional communities around the state, bringing the total number of communities having Division representation to approximately 190.

---

# DIVISION OF PUBLIC ASSISTANCE (CONT.)

The Division will serve approximately 35,500 families each month during FY 95 (July 1994 through June 1995). Since many families are served only seasonally or for a short period of need, the above numbers may represent a duplicated count of families served over the course of a full year; a conservative estimate would place the unduplicated count of families who will receive aid at 40,000 families, consisting of approximately 85,000 persons. One out of every eight Alaskans seeks some type of cash, food, medical, or energy assistance from the Division.

## PROGRAM SUMMARIES

### **Aid to Families with Dependent Children (AFDC)**

AFDC is a nationwide state and federal financial aid program that helps needy families with children who are deprived of support and care because at least one parent is unemployed, absent, disabled, or deceased. The amount of assistance is intended to be adequate to provide the basic necessities for eligible families, thereby enabling the family to stay together. Approximately 12,500 families receive AFDC benefits each month.

### **Food Stamps**

Food stamps provide federally funded assistance to low income households to purchase food. The objective is to improve the nutrition level of low-income recipients. Eligibility for food stamps and the amount of benefits which participants receive are determined by each household's size and financial situation. The amount of benefits is also adjusted for local food costs.

### **Medicaid**

Medicaid is a state/federal medical assistance program that provides medical assistance to certain low-income, needy individuals and families. Medicaid benefits are available to any person receiving a cash benefit from Aid to Families with Dependent Children (AFDC), Adult Public Assistance (APA), or Supplemental Security Income (SSI). Medicaid benefits are also available to low-income pregnant women and children and to certain groups of persons who meet the AFDC or APA income and resource limit, but do not otherwise qualify for a cash payment.

### **General Relief Assistance (GRA)**

General Relief Assistance is a state funded program designed to meet the emergency subsistence needs of Alaskans, many of whom have no other way to meet their basic needs. Strict income requirements and a demonstrated need (such as an eviction notice) must be met. If eligible, a maximum monthly payment of \$120.00 per person is allowed to meet critical subsistence needs. Payments are made directly to landlords and vendors on behalf of clients. The great majority of GRA payments are made to cover rent for people who are homeless or face eviction. This program also provides limited funds for the burial of needy individuals.

### **General Relief Medical (GRM)**

General Relief Medical is a state-funded program designed to meet the immediate and specific medical needs of low income Alaskans who are not eligible for Medicaid benefits because they do not meet federal Medicaid eligibility requirements. Strict income and resource requirements must be met and medical need must be demonstrated.

---

# DIVISION OF PUBLIC ASSISTANCE (CONT.)

## **Energy Assistance Program (EAP)**

The Energy Assistance Program is a federally funded program providing cash assistance to help low income households pay home energy bills. The benefits are in the form of a once per year payment, usually made to home energy providers on behalf of each eligible household. Benefit amounts vary depending on household income, fuel costs, and geographic location. Payments cover oil, natural gas, electricity, propane, wood, and other heating products. Similar programs are administered directly by several Native organizations, so EAP does not provide service in every Alaskan community.

## **Adult Public Assistance (APA)**

Adult Public Assistance is a state-funded program that provides cash assistance to aged (Old Age Assistance), blind (Aid to the Blind), and disabled persons (Aid to the Disabled) who meet certain income and resource requirements. APA supplements the federal Supplemental Security Income (SSI) program for the aged, blind, and disabled, and uses basically the same rules as the SSI program to determine eligibility. The essential difference between APA and SSI is APA's higher payment standard. In FY 95 the APA program will provide an average supplemental payment of \$337 to 10,479 APA clients each month. APA clients receive Medicaid coverage.

## **Job Opportunities and Basic Skills Program (JOBS)**

JOBS is a work program designed to help AFDC recipients to attain employment and self-sufficiency. JOBS services include case management, employment counseling, adult education, work experience, life skills training, vocational training, supportive services, and child care. JOBS targets those who are or are likely to become long-term welfare dependent.

## **Food Stamp Employment and Training (E&T)**

This work program helps food stamp recipients seek rapid entry into employment through a self-directed job search or other training activity. Optional activities include adult education, employment counseling, and vocational training. Child care may be provided to participants.

## **Child Care**

Child care is available to families who are low-income and at risk of needing AFDC, or have found employment and are no longer in need of AFDC benefits. Child care is also provided to participants in the JOBS and E&T work programs. Child care consumer information is provided to AFDC recipients. Parents exercise their own choice among licensed or legally exempt child care providers, and a percentage of the cost of child care is subsidized based on family income.

## **Permanent Fund Dividend Hold Harmless**

The Permanent Fund Dividend (PFD) law provides that the Department may not consider the Permanent Fund Dividend as income or a resource in determining eligibility for public assistance programs unless required to do so by federal law or regulation. Individuals who would be found ineligible to receive public assistance solely because of receiving the dividend are eligible to receive cash assistance under the PFD Hold Harmless program for a period not to exceed four months each year.

Receipt of the PFD results in most AFDC, Food Stamp, and SSI recipients losing federal benefits for at least one month each year. The amount of hold harmless assistance issued is equal to the benefit a household would have received had it not gotten the dividend.

---

# DIVISION OF PUBLIC ASSISTANCE (CONT.)

After the four month period, the recipient must once again meet all eligibility requirements for public assistance programs, or benefits are discontinued.

## **Alaska Longevity Bonus Hold Harmless (ALB HH)**

The Alaska Longevity Bonus Hold Harmless program is a state program for the aged. Before May 1984, Alaska Longevity Bonus payments were made only to Alaska residents with more than 25 years of continuous residency. These payments were not counted as income for the Adult Public Assistance, Medicaid, and Supplemental Security Income programs.

In May 1984, a lawsuit required the state to shorten the 25 year residency requirement to one year. Congress then changed the law and required assistance programs to count Longevity Bonus payments received under the new, one year residency requirement. This change in federal law would have caused a large number of elderly Alaskans to lose millions of dollars in state and federal assistance. The Alaska Longevity Bonus Hold Harmless program replaces medical assistance benefits lost because of the receipt of countable Longevity Bonus payments.

---

# DIVISION OF PUBLIC HEALTH

"To use the best available scientific knowledge to set public health policy and ensure provision of services which guarantee the health of all Alaskans, so that they can live full lives with optimum well being."

## GENERAL INFORMATION

The Division of Public Health (DPH) is responsible for administration of the following programs:

- Public Health Nursing Services
- Epidemiology
- Maternal, Child, and Family Health
- Medicaid Unit
- Public Health Laboratories
- Emergency Medical Services
- Bureau of Vital Statistics
- Community Health Services
- Medical Examiner

The Division provides public health services through State staffed public health centers and clinics. The Division has staffed services in the following locations:

SOUTHEAST	SOUTHCENTRAL	NORTHERN	WESTERN
Craig	Anchorage	Fort Yukon	Bethel
Haines	Homer	Fairbanks	
Juneau	Kenai	Galena	
Ketchikan	Kodiak	Delta	
Petersburg	Seward	Tok	
Sitka	Dillingham		
Wrangell	Wasilla		
	Palmer		
	Glennallen		
	Valdez/Cordova		

The Division also provides grants to the following regional agencies for services in the areas of public health nursing, community health aide training and supervision, audiology, eye care, residential prenatal care, and emergency medical services, and home care, health clinic, infant learning, and injury prevention.

The Division estimates that 250,000 individuals will be screened, tested, immunized, treated, and counseled this year. A conservative, unduplicated estimate is that 190,000 individuals will be served. In addition, 460,000 laboratory tests will be performed, 120 radiations sources will be inspected, and 254 communities will be provided services through grants for clinics, health aides, health observers, and trained emergency medical technicians.

---

# DIVISION OF PUBLIC HEALTH (CONT.)

## PROGRAM SUMMARIES

### **Public Health Nursing Services**

Nursing services statewide provide a major portion of the Division's service delivery for health assessment, health promotion, and disease prevention. Public health nurses provide screening, testing, immunizations, and treatment.

### **Epidemiology**

The section of epidemiology identifies, plans and implements morbidity and mortality prevention activities in order to control outbreaks of infectious disease, chronic diseases, injuries, and exposure to hazardous materials. Epidemiological programs include AIDS and control of sexually transmitted disease, control of tuberculosis, and immunizations. The section also acts as the research core for the division, performing studies and investigations tied to federal and international programs.

### **Maternal, Child, and Family Health (MCFH)**

This section assesses the health care status and needs of families in the State, with a focus on vulnerable populations such as women, and children, and collaborates with others to assure these populations access to needed public health services. Programs and services delivered, in partnership with grantees and contractors, by the Section include: prematernal and family planning services, adolescent health, infant mortality review, genetics and metabolic screening, early intervention services for very young children with developmental delays (ILP), audiology and communication disorders, domestic violence prevention, medical and case management services for special needs children, specialty clinics, oral health, chronic disease nutrition, maternal and child health nutrition, the Supplemental Food and nutrition program for Women, Infants, and Children (WIC), and fetal alcohol syndrome project support.

### **Medicaid Services Unit**

The mission of the Healthy Baby, Healthy Kids Program is to improve the availability, accessibility, effectiveness and utilization of preventative health services, thus improving health outcomes in the State of Alaska. The Healthy Baby, Healthy Kids Program directly support public and private efforts to provide prevention, early detection and intervention services in order to enhance the health status of Medicaid-eligible persons under 21 and high risk pregnant women. This support is provided through the key public health functions of assessment, policy development and assurance.

### **Public Health Laboratories**

Public health laboratories provide and coordinate diagnosis, reference, consultation and training in microbiology, immunology, and virology statewide through three regional laboratory facilities. The Public Health laboratories establish standards for testing, provide diagnostic support for early detection and surveillance, and provide services to other departments. Radiological health provides registration and inspections of X-Ray equipment, maintains a radon monitoring and data collection program, and provides radiological expertise to State programs and to the Alaska State Legislature.

### **Emergency Medical Service Certification and Licensing**

EMS Certification and Licensing provides certification for Emergency Medical Technicians

---

# DIVISION OF PUBLIC HEALTH (CONT.)

(EMTs), EMT instructors, ambulance services, air ambulances and medevac services. The section also provides overall planning, education, and coordination for a comprehensive statewide emergency medical services system. This section works with the State Advisory Council on EMS to review EMS capital grants and operating grants. An injury prevention office has been established to promote involvement of EMS providers in injury prevention activities. The major goal of the EMS program is to reduce deaths and disabilities resulting from injuries and acute illnesses by immediately accessing and stabilizing patients, and transporting them to the best available medical facility.

Grants are awarded to regional EMS programs to maintain and develop comprehensive EMS systems and to give all types of emergency medical training. Mini-grants to volunteer ambulance services are made for maintenance and repair, equipment purchases, technician training, and general operating costs.

#### **Bureau of Vital Statistics**

The Bureau of Vital Statistics records and safeguards records of vital events for residents of and visitors to Alaska. The Bureau also compiles, analyzes, and publishes statistical information concerning these vital events (births, deaths, marriages, divorces, and adoptions). This information is used by health professionals and officials in Alaska as well as by those in other states and federal government to help identify needs and establish policies and initiatives to address those needs. Vital statistics are crucial in identifying the nature and extent of health problems, developing strategies to address those problems and measuring the effectiveness of State and the Federal prevention and intervention efforts. Records of vital events are also essential to estimating the size and distribution of population changes providing information fundamental to planning throughout government and in much of private enterprise.

#### **Community Health Services**

The section of Community Health Services provides support for community-based primary care, health promotion, and home care programs. Access to these programs is assured through assessment, policy development, and provision of financial and technical assistance. The section administers grants for community health training and supervision, rural primary care mid-level practitioner clinics, local planning for health promotion projects, project development for avoidance of tobacco use, and home care service delivery.

#### **Office of the Medical Examiner**

The Office of Medical Examiner was established by statute in FY 94. The primary focus of this office is to determine the cause of death for forensic and medical purposes. The successful operation of this service is dependent on a very close and cooperative arrangement with the Department of Law, the Court System, and Public Safety. The program is headed by a board certified forensic pathologist.

---

# KEY CONTACT LIST

## Office of the Commissioner - Juneau

P.O. Box 110601  
Juneau, Alaska 99811-0601  
(907) 465-3030

## Division of Medical Assistance

P.O. Box 110660  
Juneau, Alaska 99811-0660  
(907) 465-3355

## Regional Office of the Commissioner - Anchorage

P.O. Box 240249  
Anchorage, Alaska 99524-0249  
(907) 561-4211

## Division of Mental Health and Developmental Disabilities

P.O. Box 110620  
Juneau, Alaska 99811-0620  
(907) 465-3370

## Division of Administrative Services

P.O. Box 110650  
Juneau, Alaska 99811-0650  
(907) 465-3082

## Division of Public Assistance

P.O. Box 110640  
Juneau, Alaska 99811-0640  
(907) 465-3347

## Division of Alcoholism and Drug Abuse

P.O. Box 110607  
Juneau, Alaska 99811-0607  
(907) 465-2071

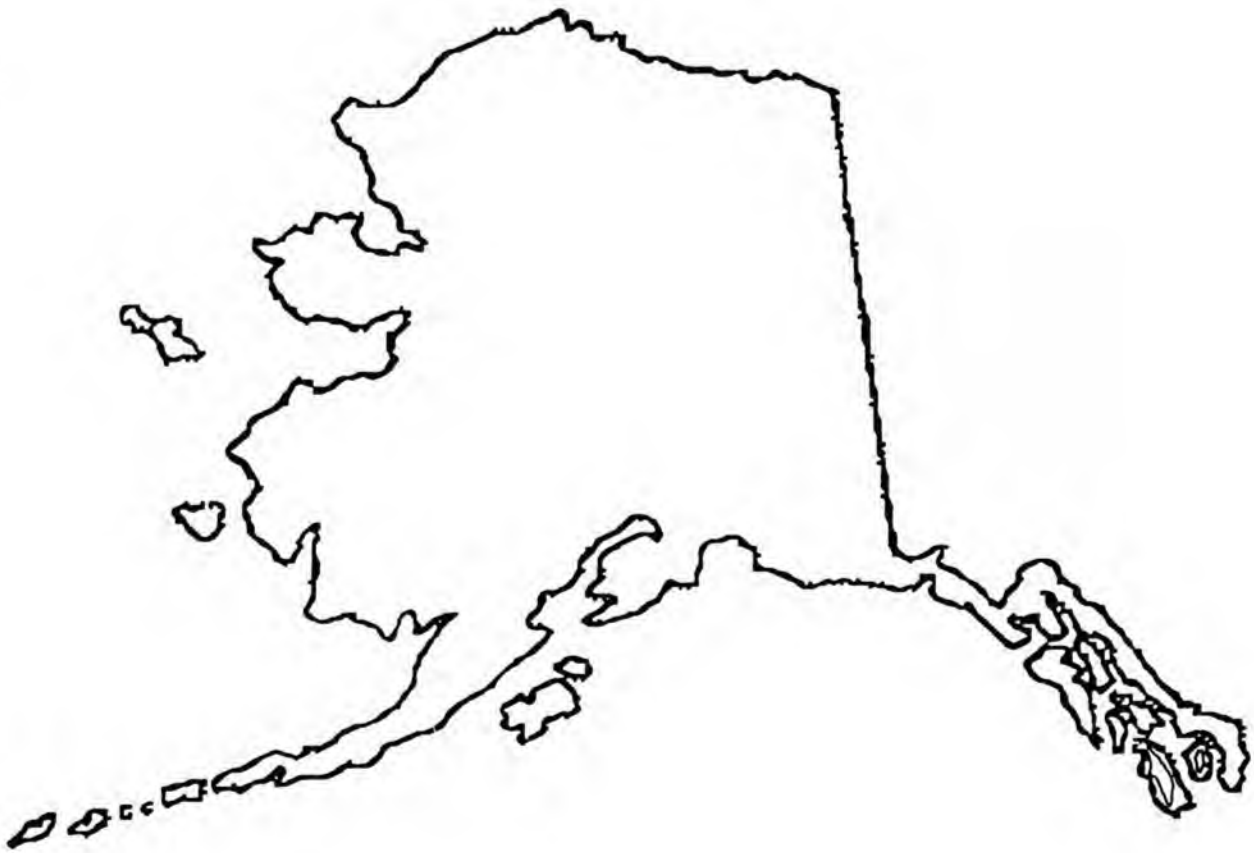
## Division of Public Health

P.O. Box 110610  
Juneau, Alaska 99811-0610  
(907) 465-3090

## Division of Family and Youth Services

P.O. Box 110630  
Juneau, Alaska 99811-0630  
(907) 465-3191

# Alaska



**Department of Labor**

**DEPARTMENT OF LABOR**

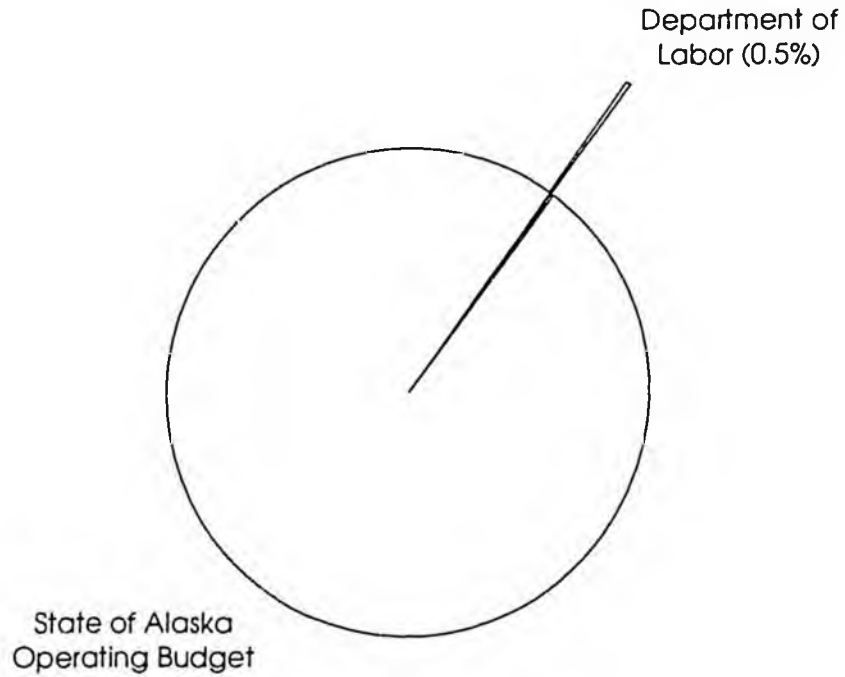
**AGENCY CONTACTS**

Tom Cashen, Commissioner	465-2700
Deputy Commissioner	465-2700
Special Assistant	465-2700
Arbe Williams, Director Administrative Services Division	465-5981
Paul Grossi, Director Worker's Compensation Division	465-6059
John Abshire, Director Labor Standards & Safety Division	465-4855
Director Employment Security Division	465-2712

# ALASKA DEPARTMENT OF LABOR

## FY 96 BUDGET OVERVIEW

### FY 95 General Fund Operating Budget Comparison



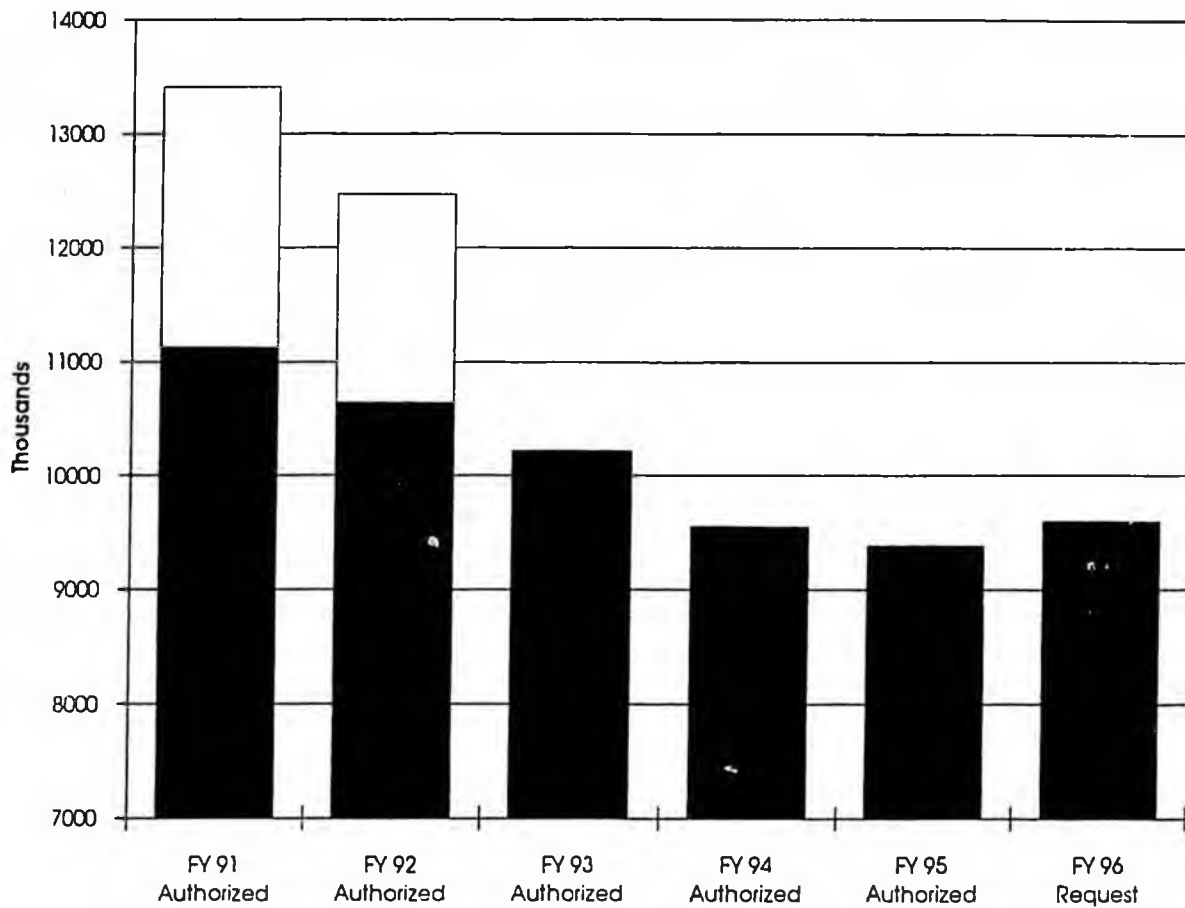
**State of Alaska  
FY 95 Authorized Budget Comparison**

12/28/94

Source: Legislative Finance Summary dated 12/28/94

	General Funds		Total Funds	Positions			
				PFT	PPT	Non- Perm	
1. Education	661,644.2	1. Education	909,098.5	1. University of Alaska	3,456	298	0
2. Health & Social Services	343,298.0	2. Health & Social Services	826,858.3	2. Transportation	2,689	777	0
3. Administration	173,595.1	3. University of Alaska	424,950.9	3. Health & Social Services	2,037	77	41
4. University of Alaska	169,208.7	4. Transportation	335,416.5	4. Corrections	1,293	5	0
5. Transportation	129,104.0	5. Administration	259,186.1	5. Administration	1,119	96	69
6. Corrections	111,479.3	6. Community & Regional Aff.	150,383.0	6. Public Safety	858	54	12
7. Community & Regional Aff.	96,515.6	7. Revenue	131,397.7	7. Fish & Game	750	791	73
8. Public Safety	89,667.1	8. Corrections	120,247.6	8. Revenue	744	53	73
9. Alaska Court System	45,463.1	9. Public Safety	99,682.2	9. Alaska Court System	655	35	22
10. Natural Resources	44,170.3	10. Environmental Conservation	97,516.8	10. <b>Labor</b>	613	130	1
11. Commerce	44,057.9	11. Fish & Game	91,590.4	11. Natural Resources	593	245	838
12. Fish & Game	41,267.0	12. Commerce	69,604.2	12. Environmental Conservation	484	22	9
13. Revenue	31,856.9	13. Natural Resources	65,796.5	13. Education	475	109	8
14. Legislature	27,578.9	14. <b>Labor</b>	59,288.6	14. Law	430	6	0
15. Law	21,091.1	15. Law	51,012.0	15. Commerce	392	16	0
16. Environmental Conservation	18,474.5	16. Alaska Court System	45,502.4	16. Legislature	242	272	0
17. Governor	16,645.1	17. Legislature	27,863.9	17. Community & Regional Aff.	190	5	1
18. <b>Labor</b>	9,383.5	18. Military & Vet Affairs	22,457.9	18. Governor	174	4	50
19. Military & Vet Affairs	6,874.2	19. Governor	19,850.4	19. Military & Vet Affairs	155	0	45
<b>Total</b>	<b>2,081,374.5</b>	<b>Total</b>	<b>3,807,703.9</b>	<b>Total</b>	<b>17,349</b>	<b>2,995</b>	<b>1,242</b>

### Alaska Department of Labor - General Funds



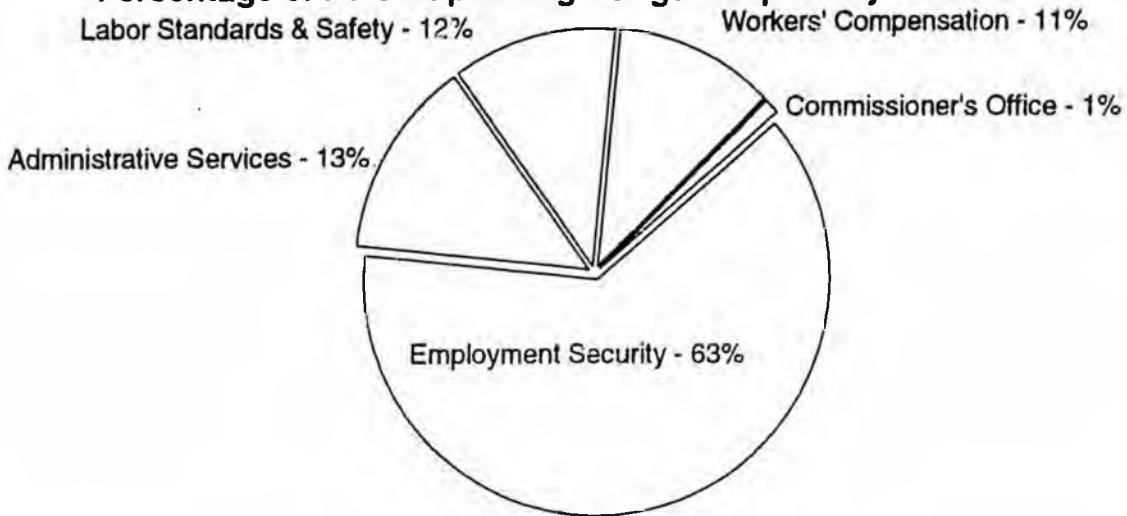
Note: During FY 91 & FY 92 the State Training & Employment Program (STEP) was classified as general funds. In FY 93 STEP classification was changed to non-general funds. Amounts for the STEP program are shown as unshaded in the appropriate years.

#### Major Fund Changes

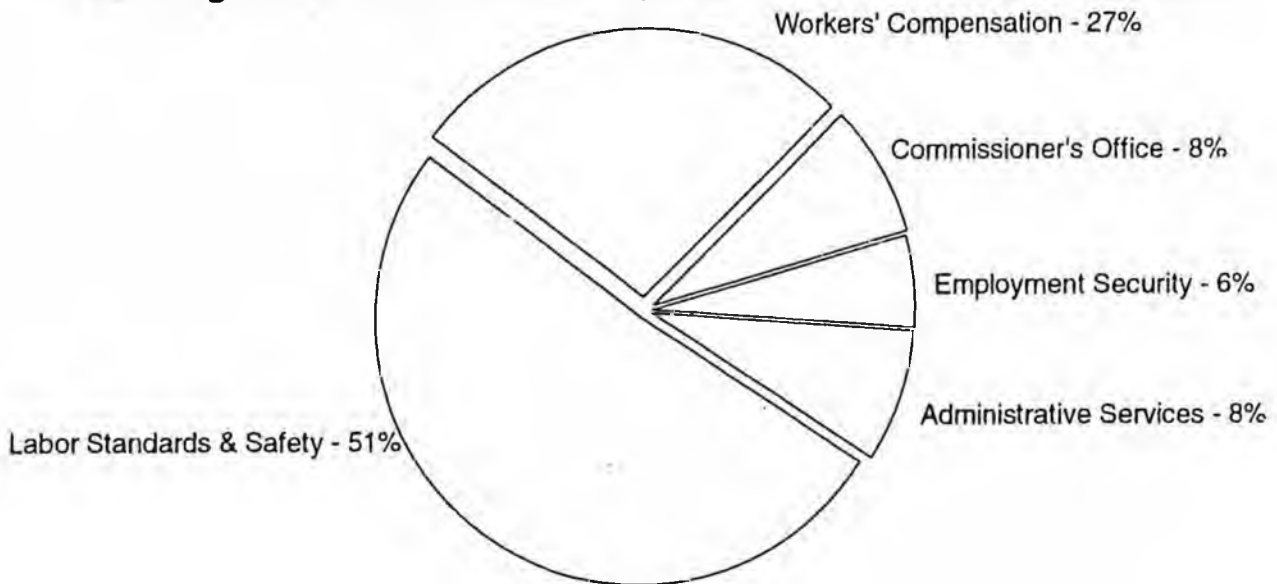
FY 91 - FY 92	Decreases for 5%+ reductions and STEP
FY 92 - FY 93	Increase for DP Chargeback, STEP fund source change, Unallocated & Misc cuts
FY 93 - FY 94	Reductions to Labor Market Info, Comm Offc, Work Comp, Labor Standards & Safety
FY 94 - FY 95	Reductions to Data Processing, Labor Market Info, Occ Safety & Health, Telecomm & Misc cuts
FY 95 - FY 96	Transfers between GF types, increase program receipts for Occ Safety & Health

# Department of Labor

## Percentage of FY 96 Operating Budget Request by Division



## Percentage of FY 96 General Fund Operating Budget Request by Division

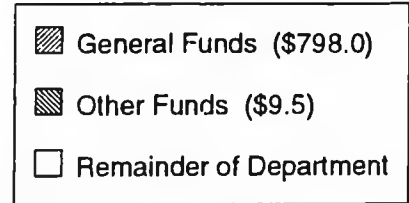
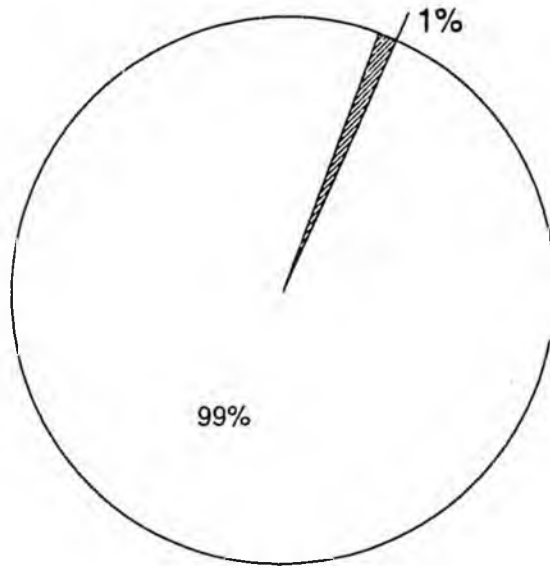


The Department is comprised of the Commissioner's Office and four divisions:

- Administrative Services Division
- Employment Security Division
- Labor Standards & Safety Division
- Workers' Compensation Division

4 The Department of Labor's mission as set out in Title 23 is to foster and promote the welfare of the wage earners in the state, improve their working conditions and advance their opportunities for profitable employment.

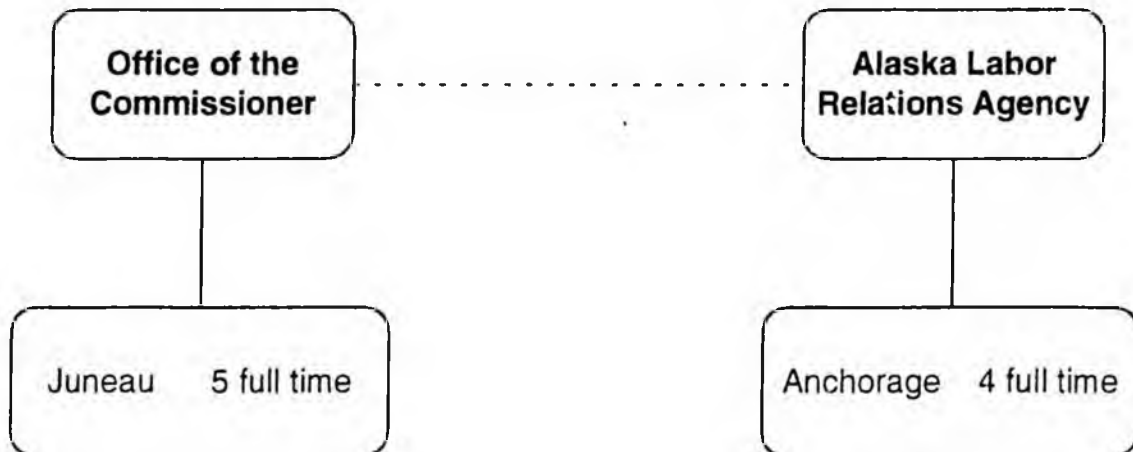
### COMMISSIONER'S OFFICE



Department of Labor's FY 96 Budget Request

The Office is comprised of two sections:

- Office of the Commissioner
- Alaska Labor Relations Agency



## **COMMISSIONER'S OFFICE**

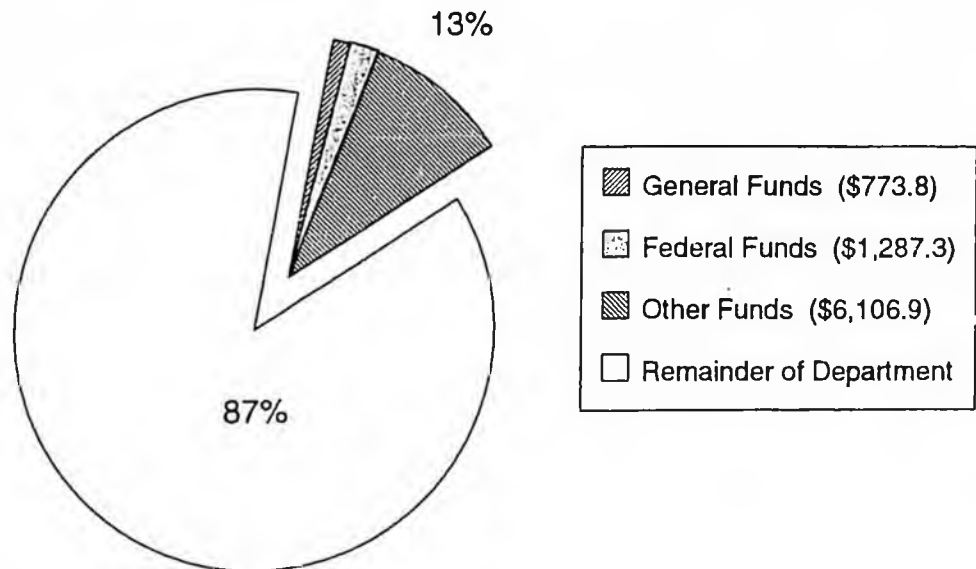
### **COMMISSIONER'S OFFICE**

The Commissioner's Office is the policy arm of the department and focuses operations on the purpose of the department which is to foster and promote the health, safety, and economic well being of Alaska's workers.

### **ALASKA LABOR RELATIONS AGENCY**

The Alaska Labor Relations Agency administers the Public Employment Relations Act and the Alaska Railroad's laws for public employers in the state. This includes the State, University, Railroad, political subdivisions, and school districts. The Agency's principal role is to referee disputes between organized labor and public employers. The Agency's methods can be informal, through conciliation, or formal, through quasijudicial administrative hearings.

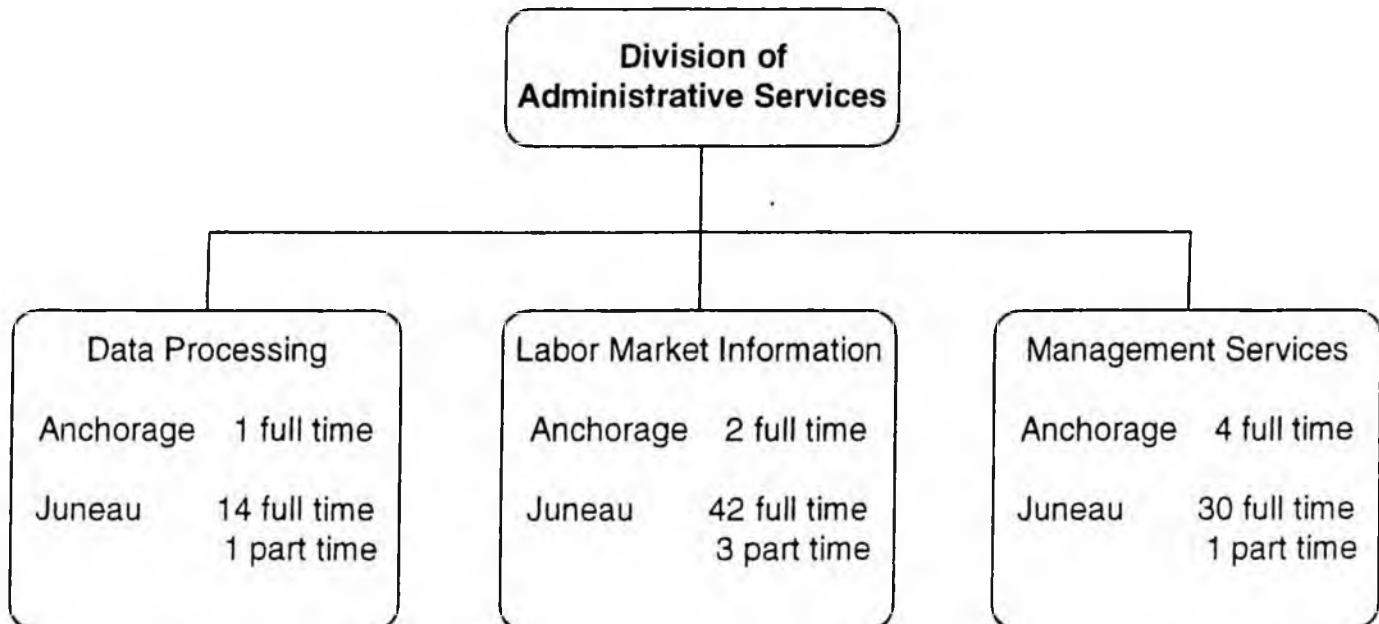
## ADMINISTRATIVE SERVICES DIVISION



Department of Labor's FY 96 Budget Request

The Division is comprised of three sections:

- Data Processing
- Labor Market Information
- Management Services



## ADMINISTRATIVE SERVICES DIVISION

### DATA PROCESSING

The Data Processing section provides the internal data processing support necessary for department programs to operate as efficiently, effectively and economically as possible. Services include: production of computer generated forms; equipment installation, maintenance and repair; data base management; and computer security.

### LABOR MARKET INFORMATION

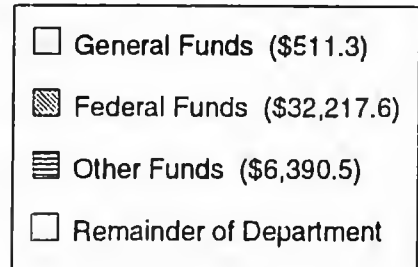
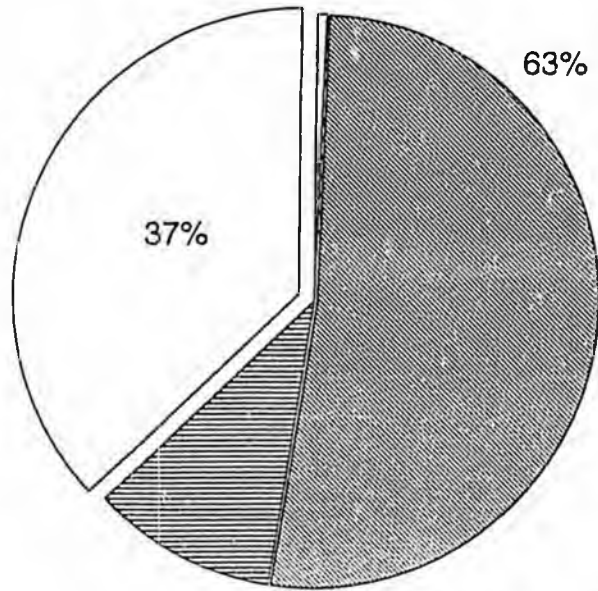
The Labor Market Information section works cooperatively with other federal and state agencies to gather, edit, estimate, project, analyze, and distribute most of Alaska's economic and demographic data. Information produced includes:

- employment by industry
- wage rates and earnings
- unemployment
- occupational injuries
- occupational employment and other career information
- pre and post training earnings
- housing: permits, costs, affordability and vacancies
- population

### MANAGEMENT SERVICES

The Management Services section provides services within the department of Labor. These services include: personnel/payroll/training functions; budget preparation and monitoring; bill paying, contract review, grants review and other fiscal functions; and centralized mail, procurement and supply activities. These services are performed with the objective to ensure that the department's internal operations are as efficient, effective and economical as possible so that each division's programs can concentrate on serving the public as well as possible.

## EMPLOYMENT SECURITY DIVISION



Department of Labor's FY 96 Budget Request

**Division of  
Employment Security**

The Division's budget is comprised of four sections:

- Alaska Work Programs (JOBS)
- Employment/Unemployment Services
- Governor's Committee on Employment of People with Disabilities
- State Training & Employment Program

Anchorage	110 full time 2 part time	Juneau	168 full time 24 part time	Seward	4 full time 1 part time
Bethel	1 full time 1 part time	Kenai	25 full time 1 part time	Sitka	6 full time
Dillingham	2 full time	Ketchikan	18 full time	Soldotna	3 full time
Eagle River	8 full time	Kodiak	7 full time 2 part time	Tok	1 full time 1 part time
Fairbanks	47 full time 1 part time	Kotzebue	2 full time 1 part time	Valdez	6 full time 1 part time
Glennallen	1 full time 1 part time	Nome	4 full time	Wasilla	23 full time
Homer	5 full time	Petersburg	2 full time		

## **EMPLOYMENT SECURITY DIVISION**

### **ALASKA WORK PROGRAMS**

The Alaska Work Programs enables Aid to Families with Dependent Children and Food Stamp recipients to attain economic self-sufficiency. Services provided include: assessment, testing, counseling, employability planning, case management, job readiness and job search activities, placement and job development assistance to the program participants.

### **EMPLOYMENT/UNEMPLOYMENT SERVICES**

The Employment/Unemployment Services program promotes employment and economic stability by responding to the needs of employers and job seekers. Services include: providing an electronically linked statewide labor exchange; paying unemployment insurance benefits to eligible claimants; vocational assessment and counseling; training in job finding, resume writing and other employability enhancement areas. Special employment assistance is offered to persons with disabilities, youth, veterans and other special target groups. The program also collects and accounts for unemployment insurance taxes paid by employers and employees.

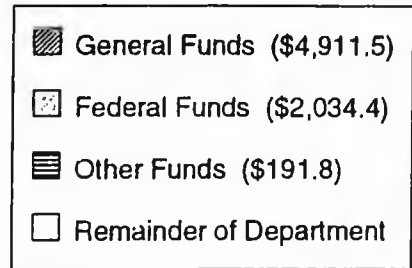
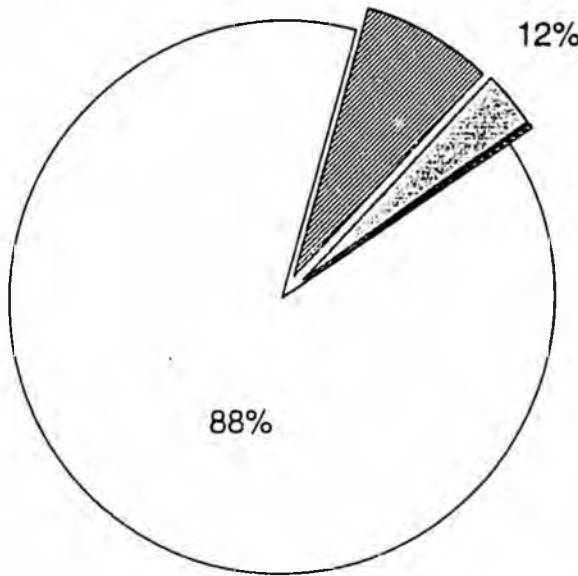
### **GOVERNOR'S COMMITTEE ON EMPLOYMENT OF PEOPLE WITH DISABILITIES**

The Committee carries on a program to promote the employment of citizens of the state who have disabilities by creating statewide interest in the rehabilitation and employment of people with disabilities. The Committee provides education and facilitates interaction with public and private groups and individuals, and empowers people with disabilities to gain, retain and advance in employment.

### **STATE TRAINING & EMPLOYMENT PROGRAM**

The State Training & Employment Program (STEP) attempts to reduce current and future claims against unemployment benefits by: providing workers with the training needed to secure employment; foster job growth in the state by making a skilled work force available to new and expanding firms and increasing training opportunities for workers who are affected by economic fluctuations and technological change. Services provided include: industry specific training; institutional and classroom training; support services; job search and counseling.

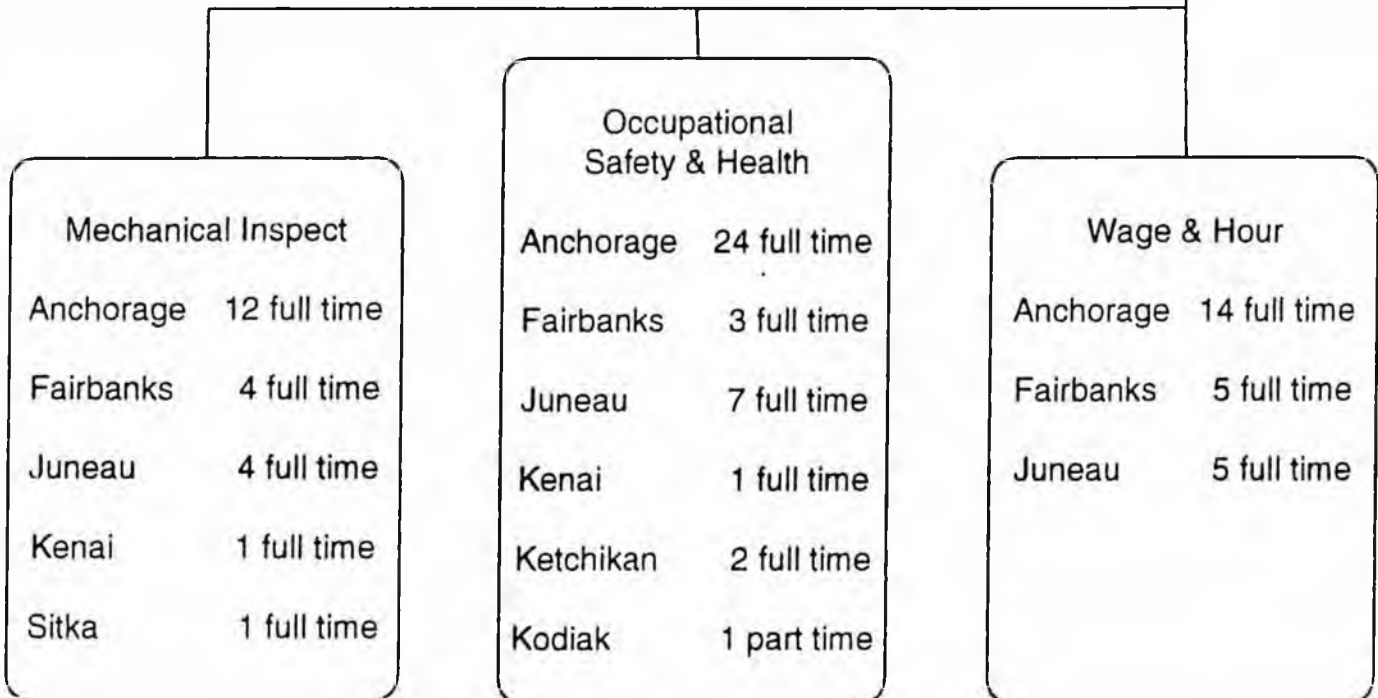
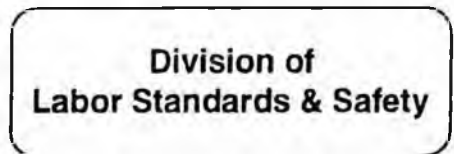
## LABOR STANDARDS & SAFETY DIVISION



Department of Labor's FY 96 Budget Request

The Division is comprised of four sections:

- Alaska Safety Advisory Council
- Mechanical Inspection
- Occupational Safety & Health
- Wage & Hour



## **LABOR STANDARDS & SAFETY DIVISION**

### **ALASKA SAFETY ADVISORY COUNCIL**

The Alaska Safety Advisory Council provides assistance to various state agencies by making recommendations on proposed legislation and regulations dealing with safety, health, and injury prevention, also the Council works to promote coordination of state and federal programs that deal with accident prevention. In addition the Council organizes, promotes and holds the annual Governor's Safety Conference to bring together Alaskans interested in safety & health matters.

### **MECHANICAL INSPECTION**

The Mechanical Inspection program provides the public with protection from the following dangers: improperly installed or improperly maintained boilers, pressure vessels, elevators, wheelchair lifts and recreational devices such as ski lifts, tramways, and amusement rides; sub-code electrical and plumbing installations and incompetent installers.

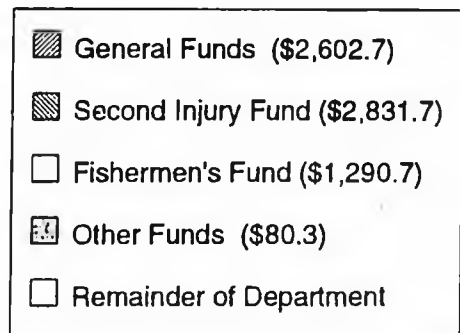
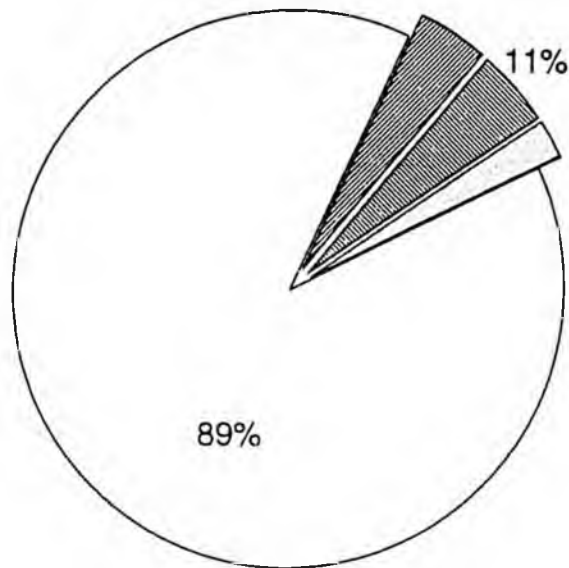
### **OCCUPATIONAL SAFETY & HEALTH**

The Occupational Safety & Health program, through regulation development and enforcement, inspections, training and the distribution of applicable information, attempts to lower the number of industrial fatalities, injuries and illnesses suffered by Alaskan workers. The program also certifies individuals to perform hazardous work including asbestos removal, hazardous painting and explosives handling.

### **WAGE & HOUR**

The Wage & Hour program promotes the welfare of the wage earner in the state by enforcing all state labor laws relative to payment of wages, minimum wage, overtime, family leave, employment preference and prevailing wage; and to protect the minor from abuse and exploitation in the workplace. The program also protects the general public from unscrupulous business operations of unlicensed construction contractors and employment agencies.

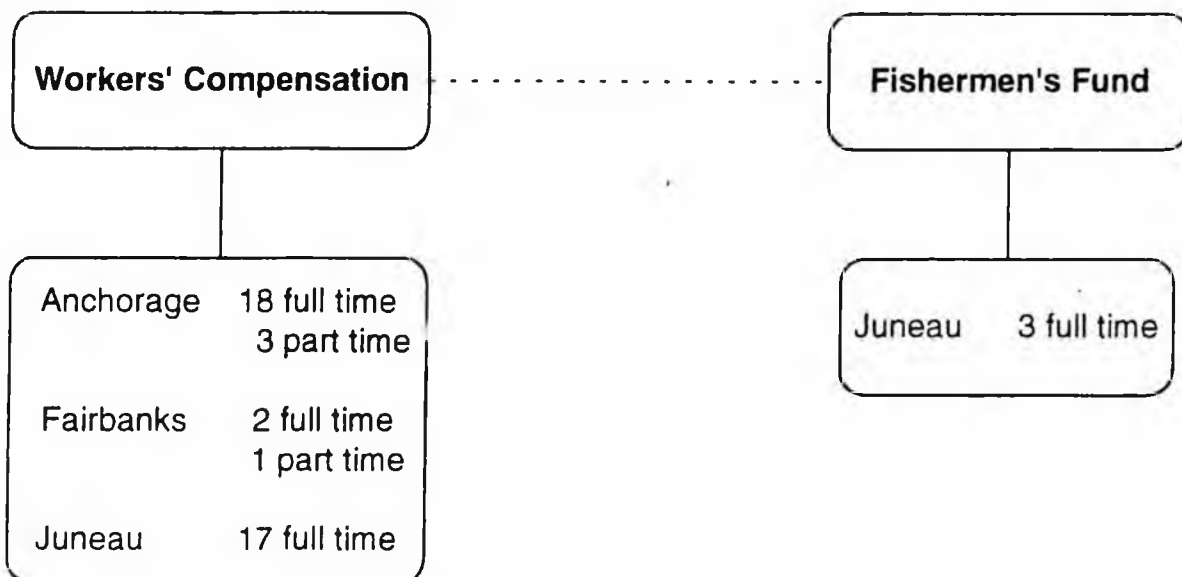
## WORKERS' COMPENSATION DIVISION



Department of Labor's FY 96 Budget Request

The Division is comprised of two sections:

- Workers' Compensation
- Fishermen's Fund



## **WORKERS' COMPENSATION DIVISION**

### **WORKERS' COMPENSATION**

The Workers Compensation program, through adjudications, the Second Injury Fund, rehabilitation benefits, administration, and monitoring of self-insurers, assures that Alaska employers provide timely and correct payment of medical costs and partial replacement of wages to employees who are injured or become ill as a result of work conditions and, if necessary, retraining for an injured worker's return to gainful employment.

### **FISHERMEN'S FUND**

The Fishermen's Fund program provides assistance with the costs for treatment and care of Alaska licensed commercial fishermen who are injured or become ill due to commercial fishing activities in Alaska.