

LEGISLATIVE FINANCE - HOUSE / SENATE FINANCE COMM. FILES 8879

SB 396 cont.

671

262

CODE	EXPENDITURE CLASSIFICATION	CURRENT YEAR FY 90 AUTHORIZED	SPENT AS OF 12/31/89	ADDITIONAL PROJECTED EXPENSES THRU 2/15/90	SUPPLEMENTAL 2/15 - 6/30/90	TOTAL FY 90 BUDGET
72240	Field Travel	25.0	4.0	1.5	2.5	8.0
72270	Administrative Travel					
72300	Conventions and Meeting Travel					
72330	Boards, Commissions and Legislators Travel					
72360	Moving or Relocation Expense					
72390	Non-Employee Travel					
72500	Per Diem	25.0	4.5	2.0	3.5	10.0
72800	Honorarium/Stipends					
72000	TOTAL TRAVEL AND MOVING	50.0	8.5	3.5	6.0	18.0
	INTER-AGENCY TRANSFER (NON-ADD)					

CODE	EXPLANATION	ADJUSTED BASE	INCREMENT/ DECREMENT
	The supplement requested is necessary to allow field staff to travel through the full fiscal year. Travel includes to the field offices for monitoring oil impacts and attendance at Winter Plan Working Group meetings. Also included is travel to Juneau to attend damage assessment meetings.		

C200 TRAVEL AND MOVING

AGENCY NATURAL RESOURCES
 BRU OIL SPILL PROJECT
 COMPONENT OIL SPILL PROJECT COORDINATION OFFICE

PAGE 4 OF 7
 REVISED DATE: Jan. 3, 1990

FY 90

CODE	CONTRACTUAL SERVICES CLASSIFICATION	CURRENT YEAR FY 90 AUTHORIZED	SPENT AS OF 12/31/89	ADDITIONAL PROJECTED EXPENSE THRU 2/15/90	SUPPLEMENTAL 2/15 - 6/30/90	TOTAL FY 90 BUDGET
73100	Professional Services		.1		2.0	2.1
73253	DP Chargeback (DOA)					
73300	Communication		6.4	2.5	6.5	15.4
73400	Transportation		.3	0.0	1.0	1.3
73420	Transportation - State Equipment Fleet Fees					
73500	Advertising, Printing and Binding		2.6	.5	2.0	5.1
73600	Public Utilities Services		.1	.5	2.0	2.6
73700	Minor Repair and Maintenance		1.5	2.6	2.5	6.6
73800	Rental for Land, Buildings and Space		25.9	7.8	27.9	61.6
73860	Rental for Machinery and Equipment					
73900	Other Expenditures and Services					
73300	TOTAL CONTRACTUAL	100.0	36.9	13.9	43.9	94.7
	INTER-AGENCY TRANSFERS (NON-ADD)					

CODE	EXPLANATION	ADJUSTED BASE	INCREMENT/ DECREMENT
	Contractual services funding is necessary to support the coordination office. Included are funds to continue to provide office space, utilities and other services. Funds provide for a continuation of current service levels.		

C300 CONTRACTUAL SERVICES

AGENCY NATURAL RESOURCES
 BRU OIL SPILL PROJECT
 COMPONENT OIL SPILL PROJECT COORDINATION OFFICE

PAGE 5 OF 7
 REVISED DATE: Jan. 3, 1990

FY 90

CODE	SUPPLIES AND MATERIALS CLASSIFICATION	CURRENT YEAR FY 90 AUTHORIZED	SPENT AS OF 12/31/89	ADDITIONAL PROJECTED EXPENSES THRU 2/15/90	SUPPLEMENTAL 2/15 - 6/30/90	TOTAL FY 90 BUDGET
74200	Office Supplies (Includes Office Furniture)		19.4	5.5	20.5	45.4
74400	Operating Supplies		6.8	1.0	20.4	28.2
74480	Household and Institutional Supplies					
74520	Professional and Scientific Supplies					
74560	Data Processing Supplies					
74600	Other Operating Supplies					
74650	Repair and Maintenance Supplies		.4	0.0	2.5	2.9
74000	TOTAL SUPPLIES AND MATERIALS	17.8	26.6	6.5	43.4	76.5
	INTER-AGENCY TRANSFER (NOW-ADD)					

CODE	EXPLANATION	ADJUSTED BASE	INCREMENT OVER AUTHORIZED FY 90
	The supplemental funds required for supplies provide for continuing services provided by the Oil Spill Coordination Office. Minimal office supplies are anticipated, for the period 2/15 - 6/30/90 as the majority of supply purchases were made early in the project.		

C400	SUPPLIES AND MATERIALS
------	------------------------

AGENCY NATURAL RESOURCES
 BRU OIL SPILL PROJECT
 COMPONENT OIL SPILL PROJECT COORDINATION OFFICE

PAGE	<u>6</u>	OF	<u>7</u>
REVISED DATE:	Jan. 3, 1990		

FY 90

CODE	SUPPLIES AND MATERIALS CLASSIFICATION	CURRENT YEAR FY 90 AUTHORIZED	SPENT AS OF 12/31/89	ADDITIONAL PROJECTED EXPENSES THRU 2/15/90	SUPPLEMENTAL 2/15 - 6/30/90	TOTAL FY 90 BUDGET
75690	Machine/Equipment Summary		26.9	0.0	8.5	35.5
75790	Communication Equipment					
75830	Data Processing Equipment					
75870	Laboratory and Scientific Equipment					
75900	Shop, Plant and Industrial Equipment					
75940	Special Equipment					
76050	Furniture and Office Equipment		.8	0.0	0.0	.8
75690	TOTAL EQUIPMENT AND MACHINERY	39.0	27.7	0.0	8.5	36.2
	INTER-AGENCY TRANSFER (NON-ADD)					

EXPLANATION

The supplemental funds requested will provide continuation of current level of service with no increase of service expected.

C500 EQUIPMENT AND
MACHINERY

AGENCY NATURAL RESOURCES
 BRU OIL SPILL PROJECT
 COMPONENT OIL SPILL PROJECT COORDINATION OFFICE

FY 90

PAGE 7 OF 7
 REVISED DATE: Jan. 3, 1990

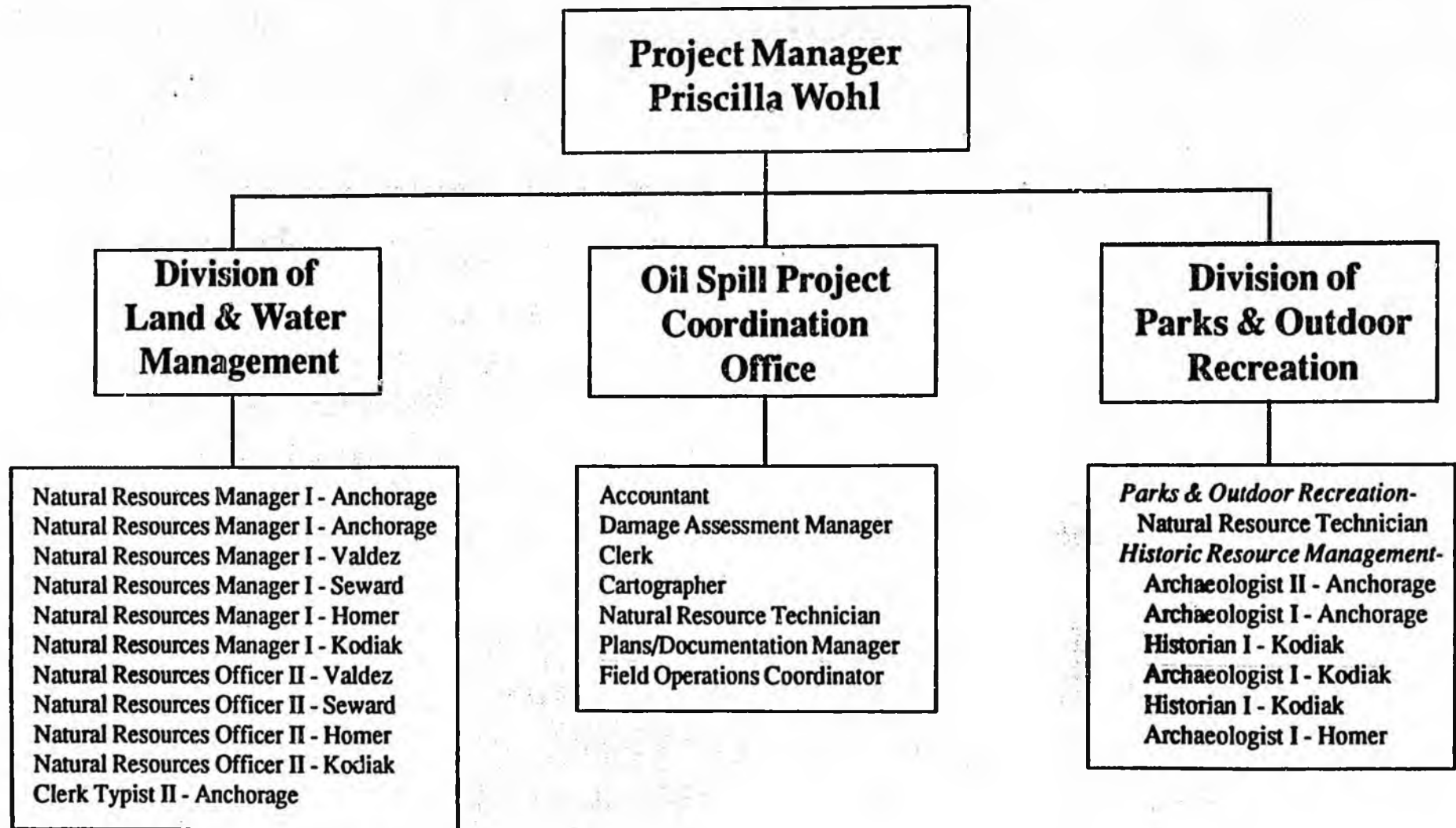
DNR FY 91 OIL SPILL BUDGET

100	PERSONAL SERVICES	DLWM	210.9
		SHPO	175.6
		PARKS	12.9
		OSPCO	<u>252.3</u>
	TOTAL		651.7
200	TRAVEL	DLWM	14.2
		SHPO	12.0
		PARKS	1.0
		OSPCO	<u>17.3</u>
	TOTAL		44.5
300	CONTRACTUAL	DLWM	31.8
		SHPO	26.8
		PARKS	2.0
		OSPCO	<u>38.7</u>
	TOTAL		99.3
400	SUPPLIES	DLWM	3.8
		SHPO	3.2
		PARKS	0.3
		OSPCO	<u>4.7</u>
	TOTAL		12.0
	TOTAL		807.5

TOTAL BY DIVISION

DLWM	260.7
SHPO	217.6
PARKS	16.2
OSPCO	<u>313.0</u>
	807.5

- FY 91-
DEPARTMENT OF NATURAL RESOURCES
OIL SPILL PROJECT



AGENCY CONTACT/PHONE NUMBER: Jerry Gallagher - 762-2165
Priscilla Wohl - 762-2295

DESCRIBE WHY THIS INCREMENT/DECREMENT IS NEEDED & WHAT IT PURCHASES:

The FY 91 budget provides for the continuation of the Department of Natural Resources oil spill related services while keeping impacts to other department functions to a minimum. The budget includes continuation of the department-wide coordination functions, provides for an active field presence to ensure effective management of state land, historic and prehistoric resources and park lands. The budget includes funding for the Oil Spill Project Coordination Office, the Division of Land and Water Management, the Division of Parks and Outdoor Recreation including the Office of History and Archaeology. Each office/division is an integral part of the department response to the oil spill.

The Oil Spill Project Coordination Office was established to ensure the effective coordination of DNR staff both in the field and in other oil spill related activities. The office is responsible for the collection and inventory of all documentation related to DNR's involvement with the oil spill. The OSPCO is the primary contact for the department on several working groups for the implementation of the State's Winter Plan and represents the Department in the damage assessment study process.

OSPCO Responsibilities:

Policy Implementation - OSPCO coordinates the development and implementation of department wide policies related to the oil spill.

Interagency Coordination - OSPCO provides a single point of contact for other State and Federal agencies when dealing with DNR on the oil spill.

Documentation - OSPCO provides a data and evidence management system for oil spill documentation for the department.

Damage Assessment - OSPCO reviews study programs for coordination with DNR policies and authorities; participates as co-chair on the Coastal Habitat Damage Assessment Study; and participates in the restoration process.

Accounting Coordination - OSPCO ensures that proper and specific guidelines for the oil spill are followed.

Public Response - OSPCO responds directly to public inquiries concerning the oil spill, while coordinating responses with the Attorney General's Office and the Office of the Governor.

The Division of Land and Water Management (DLWM) provides an active field presence in the areas impacted by the oil spill. The DLWM provides staff to four field offices - Valdez, Seward, Homer, and Kodiak. The field offices provide the following services:

- * Provide continued cleanup response for state-owned tidelands, monitor cleanup activities, inspect treated areas for re-oiling, and document status.

CODE	EXPENDITURE BY OBJECT	AGENCY REQ.	GOV'S REQ
100	PERSONAL SERVICES	651.7	
200	TRAVEL	44.5	
300	CONTRACTUAL SERVICES	99.3	
400	SUPPLIES	12.0	
500	EQUIPMENT	0.0	
600	LANDS, BLDGS, ETC		
700	GRANTS, CLAIMS, ETC		
800	MISCELLANEOUS		
TOTAL		807.5	
I-A TRANSFER (NON-ADD)			
1002	FEDERAL RECEIPTS		
1003	GENERAL FUND MATCH		
1004	GENERAL FUND		
1005	PROGRAM RECEIPTS/GF		
1007	I-A RECEIPTS	807.5	
POSITION INFORMATION		PFT	
		PPT	
		NON-PERMANENT	
		STAFF MONTHS	
<input type="checkbox"/> ENHANCE EXISTING SERVICE COMPARED TO FY 90		<input type="checkbox"/> FORMULA PROGRAM	
<input type="checkbox"/> NEW SERVICE COMPARED TO FY 90			
<input checked="" type="checkbox"/> CONTINUATION OF FY 90 SERVICE LEVEL			
IMPACT FROM CAPITAL PROJECT (NAME)			
CHAPTER	SLA	PAGE/LINE	

CS INCREMENT/DECREMENT REQUEST

AGENCY _____ PRIORITY _____ OF _____

AGENCY NATURAL RESOURCES

BRU OIL SPILL PROJECT

COMPONENT _____

FY 91

PAGE 1 OF 6

REVISED DATE: Jan. 3, 1990

- Provide assistance to applicants, and if appropriate, issue the necessary authorizations for continuing cleanup activities.
- Evaluate cleanup methodologies and assess their effects on state tidelands.
- Assist with other State response efforts.
- Provide documentation of DLWM activities to the OSFCO for inclusion in records.

Additionally the Anchorage staff within DLWM provide supervision and oversight of the field operations, manage authorized funds by implementing budgetary guidelines, and provide information to the public concerning the DLWM oil spill operations.

The Office of History and Archaeology are involved at all levels of the oil spill response effort. They continue to work with the U.S. Coast Guard, Exxon, and local communities to provide technical assistance and compliance with state and federal cultural resource laws. They will implement cultural resource objectives required in the State's Winter Plan and will evaluate and assist in the development and implementation of oil spill cultural programs in Valdez, Homer and Kodiak. The Office of History and Archaeology will provide the following:

- Expertise, coordination and oversight to the numerous agencies, local communities, and Exxon regarding the impacts of the cleanup activities on historic and archaeological sites, protection strategies, research methodologies, evaluation of site significance, and important data recovery. Additionally, the Office provides site location information on historic and archaeological sites to appropriate parties involved with the spill.

The Office of History and Archaeology provides the expertise in the decision making process to ensure the protection of resources and fulfills its responsibilities under the Alaska Historic Preservation Act and National Historic Preservation Act to protect and preserve historic sites. Additionally, they provide assistance to federal and state agencies in making decisions that impact historic resources. Hundreds of documented archaeological sites have been impacted by the oil spill. Many undocumented sites may also have been impacted or will likely be impacted through continued oil spill cleanup.

The Division of Parks and Outdoor Recreation (DPOR) is involved in the 1990 field season in a much reduced capacity than in 1989, however DPOR concerns are being addressed by the field staff provided by the DLWM. The DPOR will be providing staff for the Shuyak Island Ranger Station. This involvement will allow for the field inspection and monitoring of critical areas impacted by the spill on Shuyak Island, north of Kodiak. Additionally, as needed the DPOR will provide necessary permitting functions on State park lands and provide assistance with the radio system established for communication of oil spill personnel in remote locations.

All offices/division within DNR involved with the oil spill work as a project team. Each component of the team is necessary to fully implement the department's role in the Winter Plan and fully respond to the oil spill in the summer of 1990. Additionally, funds requested for FY 91 will enable the necessary documentation of DNR involvement in the oil spill and the level of damage to natural resources managed or protected by the department. The elimination of any or all functions performed by the various DNR divisions/offices would seriously impact the departments ability to respond to the spill and fulfill the legislated responsibilities of the department.

C5	ADDITIONAL EXPLANATION
----	---------------------------

AGENCY	NATURAL RESOURCES
BRU	OIL SPILL PROJECT
COMPONENT	

FY 91

PAGE	2	OF	6
REVISED DATE: Jan. 3, 1990			

DEPARTMENT OF NATURAL RESOURCES - OIL SPILL PROJECT PERSONAL SERVICES PROJECTIONS

POSITION		NUMBER OF MONTHS	TOTAL AGENCY BUDGET
<u>Project Coordination - Anchorage</u>			
Project Manager	4836/mo	12	
Accountant	4055/mo	6	
Damage Assessment Manager	4203/mo	6	
Clerk	2265/mo	12	
Cartographer	3399/mo	6	
Natural Resource Technician	2797/mo	8	
Plans/Documentation Manager	4504/mo	12	
Field Operations Coordinator	6900/mo	3	
<u>Land and Water Field Operations</u>			
Natural Resource Manager I	Anchorage 4156/mo	12	
Natural Resource Manager I	Anchorage 4156/mo	3	
Natural Resource Manager I	Valdez 5732/mo	3	651.7
Natural Resource Manager I	Seward 4224/mo	3	
Natural Resource Manager I	Homer 4527/mo	3	
Natural Resource Manager I	Kodiak 5365/mo	3	
Natural Resource Officer II	Valdez 4300/mo	3	
Natural Resource Officer II	Seward 3600/mo	3	
Natural Resource Officer II	Homer 3900/mo	3	
Natural Resource Officer II	Kodiak 3600/mo	3	
Clerk Typist II	Anchorage 2311/mo	3	
<u>Historic Resource Management</u>			
Archaeologist II	Anchorage 4721/mo	12	
Archaeologist I	Anchorage 4135/mo	3	
Historian I	Valdez 3890/mo	3	
Archaeologist I	Kodiak 4460/mo	3	
Historian I	Kodiak 3890/mo	3	
Archaeologist I	Homer 4135/mo	3	
<u>Parks and Outdoor Recreation</u>			
Natural Resource Technician	3300/mo	3	
(Total Includes Overtime)			

EXPLANATION

Personal Services funds represent existing oil spill staff continuing current level of service through September 15, 1990. Then staffing is reduced sharply with only minimal staff retained through the remainder of the fiscal year.

C100

AGENCY NATURAL RESOURCES

BRU OIL SPILL PROJECT

COMPONENT _____

PAGE 3 OF 6

REVISED DATE: Jan. 3, 1990

FY 91

CODE	EXPENDITURE CLASSIFICATION	PRIOR YEAR FY 89 ACTUAL	CURRENT YEAR FY 90 AUTHORIZED	BUDGET YEAR - FY 91 REVISED		
				ADJUSTED BASE	INCREMENT/ DECREMENT	AGENCY REQUEST
72240	Field Travel					20.0
72270	Administrative Travel					4.0
72300	Conventions and Meeting Travel					5.0
72330	Boards, Commissions and Legislators Travel					
72360	Moving or Relocation Expense					
72390	Non-Employee Travel					
72500	Per Diem					15.5
72800	Honorarium/Stipends					
72000	TOTAL TRAVEL AND MOVING					44.5
	INTER-AGENCY TRANSFER (NON-ADD)					

CODE	EXPLANATION	ADJUSTED BASE	INCREMENT OVER AUTHORIZED FY 90
	Travel funds requested for FY 91 provide for field staff travel between regions and travel to Juneau for administrative and damage assessment related duties. This funding level does not provide for any increase of services and assumes significant reductions in personal services on September 15, 1990.		

C200	TRAVEL AND MOVING
------	----------------------

AGENCY NATURAL RESOURCES
 BRU OIL SPILL PROJECT
 COMPONENT _____

FY 91

PAGE 4 OF 6
 REVISED DATE: Jan. 3, 1990

CODE	CONTRACTUAL SERVICES CLASSIFICATION	PRIOR YEAR FY 89 ACTUAL	CURRENT YEAR FY 90 AUTHORIZED	BUDGET YEAR - FY 90 REVISED		
				ADJUSTED BASE	INCREMENT/ DECREMENT	AGENCY REQUEST
73100	Professional Services					
75253	DP Chargeback (DOA)					
73300	Communication					
73400	Transportation					22.0
73420	Transportation - State Equipment Fleet Fees					
73500	Advertising, Printing and Binding					1.0
73600	Public Utilities Services					25.0
73700	Minor Repair and Maintenance					
73800	Rental for Land, Buildings and Space					51.3
73860	Rental for Machinery and Equipment					
73900	Other Expenditures and Services					
73300	TOTAL CONTRACTUAL					99.3
	INTER-AGENCY TRANSFERS (NON-ADD)					

CODE	EXPLANATION	ADJUSTED BASE	INCREMENT/ DECREMENT
	Contractual services represent continuation of FY 90 services levels with a significant reduction in transportation costs after September 15, 1990.		

C300 CONTRACTUAL SERVICES

AGENCY NATURAL RESOURCES
 BRU OIL SPILL PROJECT
 COMPONENT _____

FY 91

PAGE 5 OF 6
 REVISED DATE: Jan. 3, 1990

CODE	SUPPLIES AND MATERIALS CLASSIFICATION	PRIOR YEAR FY 89 ACTUAL	CURRENT YEAR FY 90 AUTHORIZED	BUDGET YEAR - FY 90 REVISED		
				ADJUSTED BASE	INCREMENT/ DECREMENT	AGENCY REQUEST
74220	Office and Library Supplies (Includes Office Furniture)					8.0
74440	Agricultural Supplies					
74480	Household and Institutional Supplies					
74520	Professional and Scientific Supplies					4.0
74560	Data Processing Supplies					
74600	Other Operating Supplies					
74650	Repair and Maintenance Supplies					
74000	TOTAL SUPPLIES AND MATERIALS					12.0
	INTER-AGENCY TRANSFER (NON-ADD)					

CODE	EXPLANATION	ADJUSTED BASE	INCREMENT OVER AUTHORIZED FY 90
	It is anticipated that only minimal supplies will be required to support the staffing levels proposed.		

C400	SUPPLIES AND MATERIALS
------	---------------------------

AGENCY NATURAL RESOURCES
 BRU OIL SPILL PROJECT
 COMPONENT _____

FY 91

PAGE 6 OF 6
 REVISED DATE: Jan. 3, 1990

MEMORANDUM

State of Alaska
Department of Fish and Game

TO: Alison M. Elgee
Director
Division of Budget Review
Office of Management
and Budget

DATE: January 9, 1990

FILE NO:

TELEPHONE NO: 465-4100

FROM: Don W. Collinsworth *DWC*
Commissioner
Department of Fish and Game

SUBJECT: Oil Spill Project
Budgets

Enclosed are our FY 90 supplemental and FY 91 requests for CERCLA damage assessment and extra management support projects. Included are position authorization and control system (PACS) reports, P-1 and P-2 budget forms (instead of C-5 per your agreement) and, Budget Preparation System descriptions. Also enclosed is a lotus spreadsheet with FY 89 through FY 91 information.

Expected project completion dates cannot be identified at this time because of the Trustee Council review and approval process. Therefore, all projects submitted at this time are to be considered tentative. We will have to come back after the Trustee Council review process and amend some projects. The CERCLA damage assessment process includes projects for the Department of Environmental Conservation, Department of Natural Resources, University of Alaska, and the Department of Fish and Game.

New Projects: In order to meet the submission deadlines for budget consideration, some new projects have been included at this time. There are approximately 12 new projects being submitted in the FY 90 supplemental and FY 91 budget request. These projects were submitted by staff in consultation with legal teams and contract experts at a meeting during the last week of November. An analysis of needs and anticipated benefits for each of these new projects cannot be provided at this time because a formal proposal has yet to be developed.

The time frames for the oil spill project budget submissions are out of sequence with the project review and approval by the Trustee Council CERCLA process. Therefore, we will need to work closely with you in the future to ensure that we have the most cost effective and legally defensible program that goes forth.

Please let us know if you need clarification or further information in regards to the oil spill projects budget.

Enclosures

ALASKA DEPARTMENT OF FISH AND GAME

FY90: FEB 15 TO JUNE 30 OIL SPILL SUPPLEMENTAL ESTIMATE (GF ONLY)

PROJECT TITLE	COLLOCATION CODE	PROJECT NUMBER	ORIGINAL ESTIMATE	ADJUSTMENT PER ASSESSMENT REVIEW MEETINGS	CURRENT ESTIMATE 1/31/90
GEO EXTENT IN WATER (2 RSA)	11852059	80205	215.9	-25.0	190.9
INJURY TO SUBTIDALS (2 RSA'S)	11852109	80210	445.1	25.0	470.1
HYDROCARBONS IN WATER	11852159	80215	176.3	-176.0	0.3
INJURY TO DEEP WATER (RSA)	11582209	80220	130.4	0.0	130.4
RECONNAISSANCE STUDY	11852258	80225	155.7	0.0	155.7
PWS IMPACT SALMON SPAWNING AREAS	11852301	80230	19.3	0.0	19.3
PWS IMPACT SALMON SPAWNING AREAS	11852302	80230	0.0	0.0	0.0
PINK/CHUM PRE-EMERGENT FRY SMP LMG	11852351	80235	85.3	0.0	85.3
PWS SALMON SWTR STUDIES-RECOVERY	11852401	80240	203.0	0.0	203.0
PWS SALMON CWTR STUDIES-TAG LAB	11852403	80240	39.8	0.0	39.8
PWS SAL CWTR STUDIES-R11 TAGGING	11852413	80240	559.2	0.0	559.2
PWS SAL CWTR STUDIES-BIOMETRICIAN	11852421	80242	48.6	0.0	48.6
EARLY MARINE SAL INJURY ASSESS	11852453	80245	155.3	0.0	155.3
ASSESSMENT / IMPACT PWS HERRING	11852501	80250	322.1	50.0	372.1
ASSESS/IMPACT HERRING OUTSIDE PWS	11852551	80255	31.2	-31.0	0.2
ASSESSMENT/IMPACT PWS CRABS	11852601	80260	7.6	0.0	7.6
ASSESS/IMPACT PWS SPOTTED SHRIMP	11852651	80265	15.1	0.0	15.1
ASSESSMENT/IMPACT PWS ROCKFISH	11852702	80270	0.0	50.0	50.0
PWS SHELLFISH/GRDFISH TRAWL ASSESS	11852751	80275	76.5	0.0	76.5
ASSESS/IMPACT LARVAL SHELL/GRD-FSH	11852809	80280	653.3	-500.0	153.3
UNDERSEA OBSERVATION, BENTHIC FISH	11852851	80285	0.0	0.0	0.0
ASSESS CRABS-OUTSIDE PWS, RII	11852901	80290	0.0	0.0	0.0
ASSESS CRABS-OUTSIDE PWS REG IV	11852911	80290	0.0	0.0	0.0
ASSESS ROCKFISH, HALIBUT, LINGCOD	11852952	80295	18.4	0.0	18.4
SHELL/GRD TRAWL OUTSIDE PWS, RII	11853001	80300	4.0	0.0	4.0
ASSESS SEA URCHINS KODIAK PJT	11853051	80305	25.8	-26.0	-0.2
INJURY TO DEER	11853105	80310	17.3	-17.0	0.3
INJURY TO BLACK BEAR	11853155	80315	0.0	0.0	0.0
INJURY TO RIVER OTTER AND MINK	11853205	80320	231.5	0.0	231.5
INJURY TO BROWN BEAR	11853255	80325	59.3	50.0	109.3
HISTOPATHOLOGY ANALYSIS	11853303	80330	67.0	0.0	67.0
MAPPING	11853359	80335	156.0	0.0	156.0
PWS DOLLY VARDEN	11853402	80340	181.4	0.0	181.4
CREEL CENSUS	11853452	80345	44.6	-44.6	0.0
PINK/CHUM SPAWN OUTSIDE PWS, RII	11853501	80350	73.7	0.0	73.7
PC EGG PRE-EMERG OUTSIDE PWS, RIV	11853561	80355	147.3	0.0	147.3
EARLY MARINE SALMON INJURY ASSESS	11853603	80360	175.1	0.0	175.1
DOLLY VARDEN CHAR/SOCKEYE	11853652	80365	203.7	-100.0	103.7
PWS CLAMS	11853701	80370	56.9	0.0	56.9
PWS OYSTERS	11853753	80375	45.5	-45.5	0.0
CLAMS OUTSIDE PWS	11853801	80380	93.7	0.0	93.7
SCALLOPS	11853853	80385	60.5	-60.5	0.0
INJURY TO AIR-DEC RSA	11853909	80390	80.0	0.0	80.0
SMALL MAMMALS	11853955	80395	0.0	0.0	0.0
MINK REPRODUCTION	11854009	80400	123.9	50.0	173.9
ADMINISTRATIVE OVERHEAD/OSIAR	11854059	80405	369.2	0.0	369.2
ADMINISTRATIVE OVERHEAD/COMM FISH	11854051	80405	99.0	0.0	99.0
ADMINISTRATIVE OVERHEAD/ADMIN.	11854050	80405	267.3	0.0	267.3
ADMINISTRATIVE OVERHEAD/SPORT FISH	11854052	80405	24.8	0.0	24.8
ADMINISTRATIVE OVERHEAD/FRED	11854053	80405	41.4	0.0	41.4
ADMINISTRATIVE OVERHEAD/WILDLIFE	11854055	80405	57.1	0.0	57.1
IMPACT ON SOCKEYE SAL REARING	99001	99001	38.1	0.0	38.1
RESTORATION PROJECTS	99011	99011	77.0	0.0	77.0
NRDA PROJECTS MODELING	99012	99012	400.0	-30.0	370.0
BLACK BEAR	99004	99004	150.0	-150.0	0.0
SMALL MAMMALS	99005	99005	125.0	-25.0	100.0
DEER HARVEST SURVEY	99006	99006	67.0	0.0	67.0
KENAI RIVER SOCKEYE OVER-EXCAP	99007	99007	56.9	0.0	56.9
KODIAK SOCKEYE OVER-ESCAPEMENT	99008	99008	127.3	0.0	127.3
KODIAK SOCKEYE HYDROACOUSTICS	99009	99009	67.0	0.0	67.0
FOX	99010	99010	80.0	0.0	80.0
TOTAL NPDA ASSESSMENT			7252.4	-1005.6	6246.8

ALASKA DEPARTMENT OF FISH AND GAME
 FY90: FEB 15 TO JUNE 30 OIL SPILL SUPPLEMENTAL ESTIMATE (GF ONLY)

PROJECT TITLE	COLLOCATION CODE	PROJECT NUMBER	ORIGINAL ESTIMATE	ADJUSTMENT PER ASSESSMENT REVIEW MEETINGS	CURRENT ESTIMATE 1/31/90
PUBLIC INFORMATION	11854400	80440	2.0	0.0	2.0
SPORT FISHERIES OIL MGMT	11854452	80445	29.8	0.0	29.8
SOUTHCENTRAL/SOUTHWEST WILDLIFE	11854505	80450	197.5	0.0	197.5
HEADQUARTERS PLANNING AND REVIEW	11854551	80455	22.8	0.0	22.8
KODIAK/CHIGNIK MGMT	11854601	80460	58.9	0.0	58.9
UCI FISHERIES MGMT	11854651	80465	122.3	0.0	122.3
LCI FISHERIES MGMT	11854661	80465	78.9	0.0	78.9
PHS SALMON FISHERIES MGMT	11854701	80470	31.4	0.0	31.4
CENTRAL REGION MANAGEMENT		99003	5.0	0.0	5.0
OIL SPILL CONTINGENCY PLAN		99002	65.9	0.0	65.9
TOTAL MANAGEMENT			614.5	0.0	614.5
SUBSISTENCE FOODS TESTING	11850557	92750	115.0	0.0	115.0
TOTAL ADF&G OIL SPILL SUPPLEMENTAL REQUEST			7981.9	-1005.6	6976.3

ALASKA DEPARTMENT OF FISH AND GAME

FY90 FEB 15 TO JUN 30 SUPPLEMENTAL REQUEST

REQUEST

PROJECT TITLE	COLLOCATION CODE	PROJECT NUMBER	71000	72000	73000	74000	75000	TOTAL	
GEO EXTENT IN WATER (2 RSA)	11852059	80205	88.4	12.3	73.2	27.0	15.0	215.9	9017
INJURY TO SUBTIDALS (2 RSA'S)	11852109	80210	199.0	2.1	209.6	27.3	7.1	445.1	9017
HYDROCARBONS IN WATER	11852159	80215	105.6	7.7	52.4	10.6	0.0	176.3	9017
INJURY TO DEEP WATER (RSA)	11582209	80220	54.3	2.3	72.8	1.0	0.0	130.4	9017
RECONNAISSANCE STUDY	11852258	80225	14.7	3.0	135.0	3.0	0.0	155.7	9017
PWS IMPACT SALMON SPAWNING AREAS	11852301	80230	6.2	0.6	2.0	3.0	7.5	19.3	9017
PWS IMPACT SALMON SPAWNING AREAS	11852302	80230	0.0	0.0	0.0	0.0	0.0	0.0	9017
PINK/CHUM PRE-EMERGENT FRY SMPNG	11852351	80235	43.4	0.7	24.5	1.5	15.2	85.3	9017
PWS SALMON SITR STUDIES-RECOVERY	11852401	80240	159.0	4.0	14.7	10.5	14.8	203.0	9017
PWS SALMON CNTR STUDIES-TAG LAB	11852403	80240	36.1	1.0	1.2	1.5	0.0	39.8	9017
PWS SAL CNTR STUDIES-R11 TAGGING	11852413	80240	397.0	6.0	95.7	50.5	10.0	559.2	9017
PWS SAL CNTR STUDIES-BIOMETRICIAN	11852421	80242	31.7	2.1	6.0	0.8	8.0	48.6	9017
EARLY MARINE SAL INJURY ASSESS	11852453	80245	72.0	2.0	70.0	6.0	5.3	155.3	9017
ASSESSMENT / IMPACT PWS HERRING	11852501	80250	66.7	3.1	246.8	1.5	4.0	322.1	9017
ASSESS/IMPACT HERRING OUTSIDE PWS	11852551	80255	19.2	0.0	10.0	2.0	0.0	31.2	9017
ASSESSMENT/IMPACT PWS CRABS	11852601	80260	5.0	1.0	0.0	0.5	1.1	7.6	9017
ASSESS/IMPACT PWS SPOTTED SHRIMP	11852651	80265	8.0	0.0	5.0	1.0	1.1	15.1	9017
ASSESSMENT/IMPACT PWS ROCKFISH	11852702	80270	0.0	0.0	0.0	0.0	0.0	0.0	9017
PWS SHELLFISH/GRDFISH TRAWL ASSESS	11852751	80275	52.1	1.0	3.0	7.0	13.4	76.5	9017
ASSESS/IMPACT LOBSTR SHELL/GRD-FSH	11852809	80280	156.2	24.7	464.2	7.2	1.0	653.3	9017
UNDERSEA OBSERVATION, BENTHIC FISH	11852851	80285	0.0	0.0	0.0	0.0	0.0	0.0	9017
ASSESS CRABS-OUTSIDE PWS, R11	11852901	80290	0.0	0.0	0.0	0.0	0.0	0.0	9017
ASSES CRABS-OUTSIDE PWS REG IV	11852911	80290	0.0	0.0	0.0	0.0	0.0	0.0	9017
ASSESS ROCKFISH, HALIBUT, LINGCOD	11852952	80295	2.0	0.7	15.0	0.7	0.0	18.4	9017
SHELL/GRD TRAWL OUTSIDE PWS, R11	11853001	80300	3.2	0.8	0.0	0.0	0.0	4.0	9017
ASSESS SEA URCHINS KODIAK PJT	11853051	80305	5.0	0.8	20.0	0.0	0.0	25.8	9017
INJURY TO DEER	11853105	80310	8.0	1.8	7.2	0.3	0.0	17.3	9017
INJURY TO BLACK BEAR	11853155	80315	0.0	0.0	0.0	0.0	0.0	0.0	9017
INJURY TO RIVER OTTER AND MINK	11853205	80320	85.2	6.6	96.9	24.6	18.2	231.5	9017
INJURY TO BROWN BEAR	11853255	80325	10.0	3.0	37.0	8.8	0.5	59.3	9017
HISTOPATHOLOGY ANALYSIS	11853303	80330	15.6	0.8	50.0	0.6	0.0	67.0	9017
MAPPING	11853359	80335	93.0	5.0	5.0	25.0	28.0	156.0	9017
PWS DOLLY VARDEN	11853402	80340	118.0	5.8	39.3	17.5	0.8	181.4	9017
CREEL CENSUS	11853452	80345	25.4	2.8	5.4	5.6	5.4	44.6	9017
PINK/CHUM SPAIN OUTSIDE PWS, R11	11853501	80350	24.7	0.8	45.0	0.0	3.2	73.7	9017
PC EGG PRE-EMERG OUTSIDE PWS, RIV	11853561	80355	59.5	1.7	85.7	0.4	0.0	147.3	9017
EARLY MARINE SALMON INJURY ASSESS	11853603	80360	76.2	1.2	69.6	7.9	20.2	175.1	9017
DOLLY VARDEN CHAR/ SOCKEYE	11853652	80365	114.7	0.8	22.2	62.2	3.8	203.7	9017
PWS CLAMS	11853701	80370	16.0	3.1	33.6	2.3	1.9	56.9	9017

PWS OYSTERS	11853753	80375	19.0	6.5	16.0	2.0	2.0	45.5	9034
CLAMS OUTSIDE PWS	11853801	80380	24.0	2.6	60.5	2.7	3.9	93.7	9035
SCALLOPS	11853853	80385	27.0	8.0	21.5	2.0	2.0	60.5	9036
INJURY TO AIR-DEC RSA	11853909	80390	3.0	2.0	74.5	0.5	0.0	80.0	9037
SMALL MAMMALS	11853955	80395	0.0	0.0	0.0	0.0	0.0	0.0	
MINI. REPRODUCTION	11854009	80400	0.0	0.0	123.9	0.0	0.0	123.9	9038
ADMINISTRATIVE OVERHEAD	11854059	80405	241.7	55.0	50.0	22.5	0.0	369.2	9039
ADMINISTRATIVE OVERHEAD	11854051	80405	65.0	3.8	0.0	3.0	27.2	99.0	9040
ADMINISTRATIVE OVERHEAD	11854050	80405	239.5	2.5	12.3	8.0	5.0	267.3	9041
ADMINISTRATIVE OVERHEAD	11854052	80405	20.2	1.6	0.0	3.0	0.0	24.8	9042
ADMINISTRATIVE OVERHEAD	11854053	80405	36.4	2.0	2.0	1.0	0.0	41.4	9043
ADMINISTRATIVE OVERHEAD	11854055	80405	47.6	1.0	3.0	1.0	4.5	57.1	9044
PEARLE'S PEREGRINE FALCONS(USFWS)	11853405	80410	25.8	3.5	63.5	2.5	0.0	95.3	9045
GLAUCOUS WINGED GULLS(USFWS)	11853455	80415	18.6	6.0	5.0	4.0	6.0	39.6	9046
SEA DUCKS(USFWS)	11853505	80420	20.0	20.0	26.5	6.5	0.0	73.0	9047
PASSERINES (USFWS)	11853555	80425	0.0	0.0	0.0	0.0	0.0	0.0	
SEA LIONS (USFWS)	11853605	80430	43.2	2.4	55.5	1.0	1.0	103.1	9048
HARBOR SEALS (NMFS)	11853655	80435	29.9	8.0	28.0	2.8	0.0	68.7	9049
IMPACT ON SOCKEYE SAL REARING	99001		12.0	0.5	25.0	0.6	0.0	38.1	9050
RESTORATION PROJECTS	99011		0.0	20.0	50.0	0.0	7.0	77.0	9051
NRDA PROJECTS MODELING	99012		0.0	0.0	400.0	0.0	0.0	400.0	9052
BLACK BEAR	99004		0.0	0.0	150.0	0.0	0.0	150.0	9053
SMALL MAMMALS	99005		0.0	0.0	125.0	0.0	0.0	125.0	9054
DEER HARVEST SURVEY	99006		15.0	3.0	49.0	0.0	0.0	67.0	9055
KENAI RIVER SOCKEYE OVER-EXCAP	99007		28.8	0.0	1.2	6.9	20.0	56.9	9056
KODIAK SOCKEYE OVER-ESCAPEMENT	99008		70.0	1.0	27.0	24.3	5.0	127.3	9057
KODIAK SOCKEYE HYDROACOUSTICS	99009		8.0	1.0	5.0	2.0	51.0	67.0	9058
FOX	99010		0.0	0.0	80.0	0.0	0.0	80.0	9059
TOTAL ASSESSMENT			3165.8	259.7	3472.4	414.1	320.1	7632.1	
PUBLIC INFORMATION	11854400	80440	0.0	2.0	0.0	0.0	0.0	2.0	9100
SPORT FISHERIES OIL MGMT	11854452	80445	23.6	4.2	1.0	1.0	0.0	29.8	9101
SOUTHCENTRAL/SOUTHWEST WILDLIFE	11854505	80450	186.5	4.0	6.0	1.0	0.0	197.5	9102
HEADQUARTERS PLANNING AND REVIEW	11854551	80455	19.4	3.0	0.4	0.0	0.0	22.8	9103
KODIAK/CHIGNIK MGMT	11854601	80460	42.0	2.4	4.5	10.0	0.0	58.9	9104
UCI FISHERIES MGMT	11854651	80465	15.0	2.0	103.8	1.5	0.0	122.3	9105
LCI FISHERIES MGMT	11854661	80465	6.5	2.5	68.0	1.9	0.0	78.9	9106
PWS SALMON FISHERIES MGMT	11854701	80470	19.3	0.8	10.8	0.5	0.0	31.4	9107
CENTRAL REGION MANAGEMENT	99003		0.0	5.0	0.0	0.0	0.0	5.0	9108
OIL SPILL CONTINGENCY PLAN	99002		51.9	2.0	4.0	1.0	7.0	65.9	9109
TOTAL MANAGEMENT			364.2	27.9	198.5	16.9	7.0	614.5	
TOTAL SUPPLEMENTAL REQUEST			3530.0	287.6	3670.9	431.0	327.1	8246.6	

ALASKA DEPARTMENT OF FISH AND GAME

FY91 REQUEST

FY91 REQUEST

PROJECT TITLE	COLLOCATION CODE	PROJECT NUMBER	71000	72000	73000	74000	75000	TOTAL	
GEO EXTENT IN WATER (2 RSA)	11852059	80205	78.6	12.3	41.9	27.2	15.0	175.0	100
INJURY TO SUBTIDALS (2 RSA'S)	11852109	80210	398.0	10.0	419.2	54.5	0.0	881.7	100
HYDROCARBONS IN WATER	11852159	80215	211.2	10.0	104.8	21.1	0.0	347.1	100
INJURY TO DEEP WATER (RSA)	11852209	80220	79.1	1.9	72.1	1.1	0.0	154.2	100
RECONNAISSANCE STUDY	11852258	80225	4.5	3.0	8.5	1.5	0.0	17.5	100
PWS IMPACT SALMON SPAWNING AREAS	11852301	80230	107.4	2.1	89.2	10.3	9.3	218.3	100
PWS IMPACT SALMON SPAWNING AREAS	11852302	80230	15.3	0.6	48.2	2.6	0.0	66.7	100
PINK/CHUM PRE-EMERGENT FRY SMPING	11852351	80235	180.5	5.1	46.2	8.4	8.2	248.4	100
PWS SALMON SWTR STUDIES-RECOVERY	11852401	80240	649.6	15.8	46.0	17.7	13.4	742.5	100
PWS SALMON CWTR STUDIES-TAG LAB	11852403	80240	111.0	2.0	7.4	11.1	14.2	145.7	100
PWS SAL CWTR STUDIES-R11 TAGGING	11852413	80240	180.5	10.0	460.7	82.5	115.0	848.7	100
PWS SAL CWTR STUDIES-BIOMETRICIAN	11852421	80242	73.8	5.4	8.0	1.5	8.0	96.7	100
EARLY MARINE SAL INJURY ASSESS	11852453	80245	181.6	11.9	185.1	17.7	9.5	405.8	100
ASSESSMENT / IMPACT PWS HERRING	11852501	80250	78.9	5.6	228.0	4.0	6.9	323.4	100
ASSESS/IMPACT HERRING OUTSIDE PWS	11852551	80255	0.0	0.0	0.0	0.0	0.0	0.0	100
ASSESSMENT/IMPACT PWS CRABS	11852601	80260	19.8	1.4	37.8	5.0	0.0	64.0	100
ASSESS/IMPACT PWS SPOTTED SHRIMP	11852651	80265	30.2	1.4	12.1	6.1	0.0	49.8	100
ASSESSMENT/IMPACT PWS ROCKFISH	11852702	80270	0.0	0.0	0.0	0.0	0.0	0.0	100
PWS SHELLFISH/GRDFISH TRAWL ASSESS	11852751	80275	114.1	4.2	205.6	7.2	0.0	331.1	100
ASSES/IMPACT LARVAL SHELL/GRD-FSH	11852809	80280	441.6	47.6	937.2	20.5	0.0	1446.9	100
UNDERSEA OBSERVATION, BENTHIC FISH	11852851	80285	0.0	0.0	0.0	0.0	0.0	0.0	100
ASSESS CRABS-OUTSIDE PWS, RII	11852901	80290	0.0	0.0	0.0	0.0	0.0	0.0	100
ASSESS CRABS-OUTSIDE PWS REG IV	11852911	80290	0.0	0.0	0.0	0.0	0.0	0.0	100
ASSESS ROCKFISH, HALIBUT, LINGCOD	11852952	80295	8.8	0.8	15.0	0.8	0.0	25.4	1015
SHELL/GRD TRAWL OUTSIDE PWS, RII	11853001	80300	13.7	5.0	138.0	4.0	10.5	171.2	1016
ASSESS SEA URCHINS KODIAK PJT	11853051	80305	0.0	0.0	0.0	0.0	0.0	0.0	100
INJURY TO DEER	11853105	80310	25.8	1.5	1.6	1.0	0.0	29.9	1017
INJURY TO BLACK BEAR	11853155	80315	0.0	0.0	0.0	0.0	0.0	0.0	100
INJURY TO RIVER OTTER AND MINK	11853205	80320	127.4	15.7	135.7	12.7	1.2	292.7	1018
INJURY TO BROWN BEAR	11853255	80325	24.2	2.4	19.0	2.3	3.5	51.4	1019
HISTOPATHOLOGY ANALYSIS	11853303	80330	16.1	1.2	96.0	2.2	0.0	115.5	1020
MAPPING	11853359	80335	242.5	8.8	47.0	60.0	84.0	442.3	1021
PWS DOLLY VARDEN	11853402	80340	215.4	8.0	38.6	20.0	0.0	282.0	1022
CREEL CENSUS	11853452	80345	133.9	8.6	17.2	10.2	0.0	169.9	1023
PINK/CHUM SPAWN O/S PWS RII, IV	11853501	80350	213.0	9.1	123.7	15.0	4.9	365.7	1024
PC EGG PRE-EMERG O/S PWS RII, IV	11853561	80355	118.8	1.9	59.1	9.3	4.7	193.8	1025
EARLY MARINE SALMON INJURY ASSESS	11853603	80360	89.4	2.4	88.2	19.2	5.0	204.2	1026
DOLLY VARDEN CHAR/SOCKEYE	11853652	80365	170.6	4.0	32.1	32.0	0.0	238.7	1027
PWS CLAMS	11853701	80370	44.5	4.7	66.4	3.2	1.5	120.3	1028
PWS OYSTERS	11853753	80375	0.0	14.0	39.1	6.9	3.1	63.1	1029
CLAMS OUTSIDE PWS	11853801	80380	61.5	8.2	109.2	3.2	2.0	184.1	1030

SCALLOPS	11853853	80385	74.2	14.0	41.2	6.8	3.1	139.3	
INJURY TO AIR-DEC RSA	11853909	80390	0.0	0.0	0.0	0.0	0.0	0.0	
SMALL MAMMALS	11853955	80395	0.0	0.0	0.0	0.0	0.0	0.0	
MINK REPRODUCTION	11854009	80400	0.0	0.0	404.0	0.0	0.0	404.0	
ADMINISTRATIVE OVERHEAD	11854059	80405	551.9	123.0	297.7	80.0	6.0	1058.6	
ADMINISTRATIVE OVERHEAD	11854051	80405	178.3	6.8	0.0	0.0	0.0	185.1	
ADMINISTRATIVE OVERHEAD	11854050	80405	622.8	12.0	42.3	25.0	0.0	702.1	1033
ADMINISTRATIVE OVERHEAD	11854052	80405	53.3	7.6	3.8	2.2	0.0	66.9	
ADMINISTRATIVE OVERHEAD	11854053	80405	92.2	4.9	3.9	1.7	1.0	103.7	
ADMINISTRATIVE OVERHEAD	11854055	80405	95.8	3.0	4.0	1.0	0.0	103.8	
PEALE'S PEREGRINE FALCONS(USFWS)	11853405	80410	55.6	8.1	99.8	2.5	0.0	166.0	1034
GLAUCOUS WINGED GULLS(USFWS)	11853455	80415	104.6	40.0	17.0	4.0	6.0	171.6	1035
SEA DUCKS(USFWS)	11853505	80420	33.2	18.0	48.2	12.9	6.0	118.3	1036
PASSERINES (USFWS)	11853555	80425	0.0	0.0	0.0	0.0	0.0	0.0	
SEA LIONS (USFWS)	11853605	80430	28.5	5.0	44.0	2.0	1.2	80.7	1037
HARBOR SEALS (NMFS)	11853655	80435	52.4	10.1	15.0	4.0	0.0	81.5	1038
IMPACT ON SOCKEYE SAL REARING	99001		22.5	2.4	82.7	0.4	0.0	108.0	1039
BLACK BEAR	99004		0.0	0.0	300.0	0.0	0.0	300.0	1040
SMALL MAMMALS	99005		0.0	0.0	300.0	0.0	0.0	300.0	1041
DEER HARVEST SURVEY	99006		0.0	0.0	30.0	0.0	0.0	30.0	1042
KENAI RIVER SOCKEYE OVER-ESCAPE	99007		41.1	2.0	1.7	8.3	5.1	58.2	1043
KODIAK SOCKEYE OVER-ESCAPEMENT	99008		153.8	1.0	7.5	14.3	1.0	177.6	1044
KODIAK SOCKEYE HYDROACOUSTICS	99009		28.6	4.1	27.9	6.0	0.0	66.6	1045
FOX	99010		0.0	0.0	300.0	0.0	0.0	300.0	1046
RESTORATION PROJECTS	99011		292.5	0.0	600.0	0.0	0.0	892.5	1047
NRDA PROJECTS MODELING	99012		0.0	0.0	975.0	0.0	0.0	975.0	1048
TOTAL ASSESSMENT			6942.6	508.6	7629.6	673.1	349.3	16103.2	
PUBLIC INFORMATION	11854400	80440	0.0	0.0	0.0	0.0	0.0	0.0	
SPORT FISHERIES OIL MGMT	11854452	80445	55.2	8.5	9.7	2.3	0.0	75.7	1100
SOUTHCENTRAL/SOUTHWEST WILDLIFE	11854505	80450	0.0	0.0	0.0	0.0	0.0	0.0	
HEADQUARTERS PLANNING AND REVIEW	11854551	80455	44.6	4.0	3.5	0.0	0.0	52.1	1101
KODIAK/CHIGNIK MGMT	11854601	80460	125.0	5.0	804.0	7.2	3.0	944.2	1102
UCI FISHERIES MGMT	11854651	80465	10.7	0.5	103.8	0.0	0.0	115.0	1103
LCI FISHERIES MGMT	11854661	80465	6.0	0.7	67.5	1.5	0.0	75.7	1104
PWS SALMON FISHERIES MGMT	11854701	80470	62.1	1.3	15.0	1.0	0.0	79.4	1105
PWS AND KENAI COAST	11870105	80010	30.7	4.0	4.0	1.5	0.0	40.2	1106
AK PENINSULA, LCI, KODIAK	11870115	80011	10.4	6.0	12.5	2.0	0.0	30.9	1107
RESPONSE PLANNING COORD & SUP	11870125	80012	85.9	2.5	1.5	1.5	0.0	91.4	1108
CENTRAL REGION MANAGEMENT	99003		0.0	6.0	0.0	0.0	0.0	6.0	1109
OIL SPILL CONTINGENCY PLAN	99002		130.5	6.0	13.0	1.0	0.0	150.5	1110
TOTAL MANAGEMENT			561.1	44.5	1034.5	18.0	3.0	1661.1	
TOTAL FY91 REQUEST			7503.7	553.1	8664.1	691.1	352.3	17764.3	

PROJECT NUMBER	PROJECT TITLE	PRIOR YEAR FY 89 ACTUAL		CURRENT YEAR FY 90 AUTHORIZED		BUDGET YEAR - FY 91					
		GENERAL FUNDS	TOTAL	GENERAL FUNDS	TOTAL	AGENCY		GOVERNOR'S BUDGET			
						ADJUSTED BASE	REQUEST	GENERAL FUNDS	TOTAL		
9 230	PWS IMPACT SALMON SPAWING		76.5		133.2		285.0		285.0		
9 240	PWS SALMON CWTR STUDIES		321.5		2145.0		1736.9		1736.9		
9 290	ASSESS CRABS OUTSIDE PWS P		0.1		5.9						
9 350	PINK/CHUM SPAWN OUTSIDE PW		0.2		346.2		365.7		365.7		
9 355	PC EGG PRE-EMERG OUTSIDE P		5.7		253.0		193.8		193.8		
9 365	DOLLY VARDEN CHAR/SOCKEYE		2.5		242.1		238.7		238.7		
9 405	ADMINISTRATIVE OVERHEAD		554.5		2071.9		2220.2		2220.2		
9 2059	GEO EXTENT IN WATER				407.4		175.0		175.0		
9 2109	INJURY TO SUBTIDAL				550.5		881.7		881.7		
9 2159	HYDROCARBONS IN WATER				388.6		347.1		347.1		
9 2209	INJURY TO DEEP WATER				171.4		154.2		154.2		
9 2258	RECONNAISSANCE STUDY		0.3		539.6		17.5		17.5		
9 2351	PINK/CHUM PRE-EMERGENT FRY		37.8		139.8		248.4		248.4		
9 2421	PWS SALMON CWTR STUDIES BI		0.4		73.7		96.7		96.7		
9 2453	EARLY MARINE SAL INJURY AS		27.9		413.0		405.8		405.8		
9 2501	ASSESSMENT/IMPACT PWS HERF		270.0		322.1		323.4		323.4		
9 2551	ASSESS/IMPACT HERRING OUTL		3.7		60.0						
9 2601	ASSESSMENT/IMPACT PWS CRAE		33.3		59.9		64.0		64.0		
9 2651	ASSESS/IMPACT PWS SPOT SHP		13.0		55.0		49.8		49.8		
9 2702	ASSESSMENT/IMPACT PWS ROCK		10.2		21.6						
9 2751	PWS SHELLFISH/GDFISH TRAWL		13.7		173.7		331.1		331.1		
9 2809	ASSESS/IMPACT LARVAL SHELL				840.2		1446.9		1446.9		
9 2851	UNDERSEA OBSERVATION/BENTH				118.1						
9 2952	ASSESS ROCKFISH, HAL, LING		24.6		69.4		25.4		25.4		
9 3001	SHELL/GRD TRAWL O/S PWS RI		0.1		61.1		171.2		171.2		
SUBTOTAL TOTAL			1391.0		9662.5		9778.5		9778.5		

P1 PROJECT LISTING

AGENCY FISH AND GAME

BRU G. L. E.

COMPONENT OIL DRILL ASSESSMENT

FY 91

Page ____ of ____

Revised Date: _____

PROJECT NUMBER	PROJECT TITLE	PRIOR YEAR		CURRENT YEAR		BUDGET YEAR - FY 91				GOVERNOR'S BUDGET	
		FY 89 ACTUAL		FY 90 AUTHORIZED		AGENCY ADJUSTED BASE		AGENCY REQUEST		GOVERNOR'S BUDGET	
		GENERAL FUNDS	TOTAL	GENERAL FUNDS	TOTAL	GENERAL FUNDS	TOTAL	GENERAL FUNDS	TOTAL	GENERAL FUNDS	TOTAL
9 3011	SHELL/GRD OUTSIDE PWS RIV		0.7		205.0						
9 3051	INJURY TO SEA URCHINS KODI				114.2						
9 3105	INJURY TO DEER		75.3		35.3		29.9		29.9		
9 3155	INJURY TO BLACK BEAR		6.0								
9 3205	INJURY TO RIVER OTTER & M		14.5		393.2		292.7		292.7		
9 3255	INJURY TO BROWN BEAR		43.2		115.1		51.4		51.4		
9 3303	HISTOPATHOLOGY ANALYSIS		1.1		124.1		115.5		115.5		
9 3359	MAPPING OF DAMAGE ASSESME		1.0		578.4		442.3		442.3		
9 3402	PWS DOLLY VARDEN		255.6		289.9		282.0		282.0		
9 3405	PEALES PEREGRIN FALCONS		1.9		122.0		166.0		166.0		
9 3452	CREEL CENSUS STUDY #6		12.2		161.7		169.9		169.9		
9 3455	GLAUCOUS WINGED GULLS		23.2		114.7		171.6		171.6		
9 3505	SEA DUCKS		0.2		172.6		118.3		118.3		
9 3603	EARLY MARINE SALMON INJURY		106.6		313.7		204.2		204.2		
9 3605	STELLER SEA LION'		23.4		233.8		81.7		81.7		
9 3655	HARBOR SEALS		5.1		169.5		81.5		81.5		
9 3701	PWS CLAMS		28.7				120.1		120.1		
9 3753	PWS OYSTERS				79.5		63.1		63.1		
9 3801	CLAMS OUTSIDE PWS		17.7		128.4		184.1		184.1		
9 3853	SCALLOPS		0.1		112.6		139.3		139.3		
9 3909	INJURY TO AIR-DEC, RSA #5				213.0						
9 3955	SMALL MAMMALS OUTSIDE PWS		0.4								
9 4009	MINK REPRODUCTION				354.5		404.0		404.0		
9 9001	IMPACT ON SOCKEYE SAL REAF				58.3		108.0		108.0		
9 9004	BLACK BEAR				150.0		300.0		300.0		
SUBTOTAL			2007.9		13976.3		13303.3		13303.3		

P1

PROJECT LISTING

AGENCY FISH AND GAME

BRU CSIAS

COMPONENT OIL SPILL ASSESSMENT

FY 91

Page _____ of _____

Revised Date: _____

PROJECT NUMBER	PROJECT TITLE	PRIOR YEAR FY 89 ACTUAL		CURRENT YEAR FY 90 AUTHORIZED		BUDGET YEAR - FY 91					
						AGENCY		GOVERNOR'S BUDGET			
		GENERAL FUNDS	TOTAL	GENERAL FUNDS	TOTAL	GENERAL FUNDS	TOTAL	GENERAL FUNDS	TOTAL		
9 9005	SMALL MAMMALS				125.0		300.0		300.0		
9 9006	DEER HARVEST SURVEY				67.0		30.0		30.0		
9 9007	KENAI RIVER SOCKEYE OVER-E				56.9		58.2		58.2		
9 9008	KODIAK SOCKEYE OVER-ESCAPE				127.3		177.6		177.6		
9 9009	KOD SOCKEYE OVER-ESC LAKE				67.0		66.6		66.6		
9 9010	FOX				80.0		300.0		300.0		
9 9011	RESTORATION PROJECTS				77.0		892.5		892.5		
9 9012	NRDA PROJECTS MODELING				400.0		975.0		975.0		
TOTAL			2007.9		14976.5		16103.2		16103.2		

P1 PROJECT LISTING

AGENCY FISH AND GAME
 BRU U.S.L.A.R.
 COMPONENT OIL SPILL ASSESSMENT

FY 91

Page ____ of ____
 Revised Date: _____

PROJECT NUMBER: 9 230	PROJECT TITLE: PWS IMPACT SALMON SPAWING AREA	STATUTORY AUTHORITY: AS 16	LOCATION: DWA CORDOVA
			PROJECT MANAGER: AM SHARR
			PHONE: 424-3212

LINE ITEM DETAIL	PRIOR YEAR FY 89 ACTUAL	CURRENT YEAR FY 90 AUTHORIZED	BUDGET YEAR - FY 91			GOVERNOR'S BUDGET
			AGENCY		AGENCY REQUEST	
			ADJUSTED BASE	INCREMENT/ DECREMENT		
71000 Personal Services	0.5	1.4	2.7		2.7	
72000 Travel						
73000 Contractual Services	56.7	37.2	137.4		137.4	
74000 Supplies and Materials	8.7	17.6	12.9		12.9	
75690 Equipment	5.1		9.3		9.3	
75025 Lands/Buildings		9.9				
77000 Grants, Claims						
78000 Miscellaneous						
TOTAL	76.5	127.7	285.0		285.0	
1002 Federal Receipts						
1004 General Fund						
1007 I-A Receipts						
1051 Other: EXXON VALDEZ OIL SPILL	76.5	127.7	285.0		285.0	
15 Full-Time	5.0	1.0	4.0		4.0	
16 Part-Time	10.0	1.0	9.0		9.0	
17 Non Permanent			6.0		6.0	
18 Staff Months	70.0	16.0	65.0		65.0	

PROJECT DESCRIPTION:
WILD STOCKS OF SALMON PROVIDE A MAJOR FISHERY IN PWS. IN 1988, THE VALUE OF THE COMMERCIAL CATCH OF SALMON (WILD AND HATCHERY STOCKS COMBINED) WAS \$76 MILLION TO THE FISHERMEN. SALMON ALSO ARE VERY IMPORTANT TO SPORT, SUBSISTENCE AND PERSONAL USE FISHERIES. FRESHWATER SURVIVAL OF PWS SALMON MAY BE ADVERSELY AFFECTED BY HIGHER THAN OPTIMAL LEVELS OF ESCAPEMENT AS A CONSEQUENCE OF THE INABILITY TO HARVEST SALMON IN TRADITIONAL FISHING AREAS BECAUSE OF OIL IN THOSE AREAS. MARINE SURVIVAL

MAY BE ADVERSELY IMPACTED BECAUSE THE OIL SPILL REACHED INTER-TIDAL SPAWNING AREAS AS WELL AS REARING AREAS. MARINE INTER-TIDAL SPAWNING AREAS AS WELL AS REARING AREAS. THEREFORE, THE OIL SPILL MAY HAVE A DELETERIOUS IMPACT ON THE FUTURE ABUNDANCE OF SALMON. THIS STUDY WILL IDENTIFY AFFECTED STREAMS AND DOCUMENT OIL IMPACTS ON SPAWNING WILD SALMON.

P2	PROJECT DETAIL
-----------	---------------------------

AGENCY _____
 BRU _____
 COMPONENT _____

FY 91

Page _____ of _____
 Revised Date: _____

OBJECTIVES:

- A. DETERMINE PRESENCE OR ABSENCE OF OIL ON INTERTIDAL HABITAT OF SPAWNER DISTRIBUTION FOR EACH STREAM SAMPLED.
- B. DOCUMENT THE PHYSICAL EXTENT OF OIL DISTRIBUTION ON INTERTIDAL SPAWNING AREAS.
- C. ESTIMATE THE NUMBERS OF SPAWNING PINK, CHUM AND SOCKEYE SALMON BY SPECIES, AND BY INTERTIDAL AND UPSTREAM AREAS FOR APPROXIMATELY 100 STREAMS IN THE SOUND.
- D. PRODUCE A CATALOG OF AERIAL PHOTOGRAPHS AND DETAILED MAPS

FISH AND GAME

FY 91

PC

**ADDITIONAL
EXPLANATION
FORM**

AGENCY U.S.T.A.R.

BRU OIL SPILL ASSESSMENT

COMPONENT _____

Page _____ of 09/01/90

Revised Date: _____

PROJECT NUMBER: 9 240	PROJECT TITLE: PWS SALMON CWTR STUDIES	STATUTORY AUTHORITY: AS16	LOCATION: DWA CORDOVA
			PROJECT MANAGER: SAM SHARR
			PHONE: 424-3214

LINE ITEM DETAIL	PRIOR YEAR FY 89 ACTUAL	CURRENT YEAR FY 90 AUTHORIZED	BUDGET YEAR - FY 91			GOVERNOR'S BUDGET
			AGENCY			
			ADJUSTED BASE	INCREMENT/ DECREMENT	AGENCY REQUEST	
71000 Personal Services	78.8	899.2	541.1		541.1	
72000 Travel	1.5	21.1	27.8		27.8	
73000 Contractual Services	44.6	662.0	514.1		514.1	
74000 Supplies and Materials	114.9	140.0	111.3		111.3	
75690 Equipment	83.7	11.3	142.6		142.6	
75025 Lands/Buildings		405.8				
77000 Grants, Claims						
78000 Miscellaneous						
TOTAL	321.5	2139.4	1736.9		1736.9	
1002 Federal Receipts						
1004 General Fund						
1007 I-A Receipts						
1008 Other: EXXON VALDEZ OIL SPILL	211.0	2145.0	1736.9		1736.9	
1009 Other: HAZARDOUS WASTE REPR.	10.5					
15 Full-Time	2.0		4.0		4.0	
16 Part-Time	1.0		8.0		8.0	
17 Non Permanent	6.0		33.0		33.0	
18 Staff Months			211.0		211.0	

PROJECT DESCRIPTION:

STUDY TITLE SALMON CODED-WIRE TAG STUDIES IN PWS. WILD STOCKS OF SALMON AND SALMON FROM 5 HATCHERIES PROVIDE A MAJOR FISHERY IN PWS. THE MARINE AND ESTUARINE SURVIVAL OF SALMON MAY BE ADVERSELY IMPACTED DUE TO EXPOSURE OF INTERTIDAL SPAWNING AREAS ALONG WITH NEARSHORE & OFFSHORE REARING AREAS, TO CRUDE OIL. BECAUSE OF THESE FACTORS, OPERATING SINGULARLY OR IN CONCERT, THE EXXON VALDEZ OIL SPILL MAY HAVE A MAJOR DELETERIOUS IMPACT ON THE FUTURE PRODUCTIVITY OF SALMON STOCKS. BEFORE A LOSS IN PRO-

DUCTION DUE TO THE OIL SPILL CAN BE MEASURED, 1) YOUNG SALMON MUST BE SHOWN TO BE EXPOSED TO CONTAMINATED WATERS; & 2) THE SUBSEQUENT RETURN (HARVEST & ESCAPEMENT) OF THESE SALMON MUST BE KNOWN. THE FORMER INFORMATION INDICATES CAUSE, WHILE THE LATTER SHOWS THE EXTENT OF THE DAMAGE. FISH #4 WILL DOCUMENT THE PRESENCE OR ABSENCE OF YOUNG SALMON FROM VARIOUS CODED-WIRE TAGGED STOCKS IN OILED WATER. SURVIVAL RATES OF SELECTED STOCKS WILL BE MEASURED IN THIS STUDY.

P2 PROJECT DETAIL

AGENCY FISH AND GAME

BRU

COMPONENT

FY 91

Page of

Revised Date:

0 240 FW SALMON (WTF STUDIES

OBJECTIVES

- A. ASSESS THE MARINE SURVIVAL RATES AND HARVEST OF PINK SALMON FROM 3 STREAMS WITH OIL-CONTAMINATED ESTUARIES & 2 STREAMS WITH UNCONTAMINATED ESTUARIES.
- B. ASSESS THE MARINE SURVIVAL RATES AND HARVESTS OF SOCKEYE SALMON FROM 2 WATERSHEDS WITH ESTUARIES CONTAMINATED WITH OIL & 1 WITH AN ESTUARY THAT IS NOT CONTAMINATED.
- C. ASSESS THE MARINE SURVIVAL RATES AND HARVEST OF PINK, CHUM, COHO, SOCKEYE & CHINOOK SALMON RELEASED FROM 2 HATCHERIES IN

THE BURNING OF THESE FACILITIES HAVE HEAVILY SOILED ESTUARIES WHICH DO NOT.

- D. ASSESS THE ABUNDANCE OF SOCKEYE SALMON SMOLTS EMIGRATING FROM THE STUDY STREAMS.
- E. ASSESS THE EXTENT OF STRAYING OF RETURNING SALMON IN OUTLYING AREAS.

P2

ADDITIONAL
EXPLANATION
FORM

AGENCY FISH AND GAME

BRU C.S.I.A.P.

COMPONENT ESTUARINE ASSESSMENT

FY 91

Page of

Revised Date: 09/01/90

PROJECT NUMBER: 9 290	PROJECT TITLE: ASSESS CRABS OUTSIDE PWS R11	STATUTORY AUTHORITY: AS16	LOCATION: CVB HOMER
			PROJECT MANAGER: L KIMKER
			PHONE: 235-8191

LINE ITEM DETAIL	PRIOR YEAR FY 89 ACTUAL	CURRENT YEAR FY 90 AUTHORIZED	BUDGET YEAR - FY 91			GOVERNOR'S BUDGET
			AGENCY			
			ADJUSTED BASE	INCREMENT/ DECREMENT	AGENCY REQUEST	
71000 Personal Services						
72000 Travel						
73000 Contractual Services						
74000 Supplies and Materials	0.1					
75690 Equipment						
75025 Lands/Buildings						
77000 Grants, Claims						
78000 Miscellaneous						
TOTAL						
1002 Federal Receipts						
1004 General Fund						
1007 I-A Receipts						
Other: EXXON VALDEZ OIL SPILL	0.1	5.0				
15 Full-Time						
16 Part-Time						
17 Non Permanent						
18 Staff Months						

PROJECT DESCRIPTION:
 STUDY TITLE INJURY TO CRABS OUTSIDE PWS. THE DIVERSE MARINE HABITATS OF KODIAK ISLAND AND COOK INLET SUPPORT A WIDE VARIETY OF COMMERCIAL, SPORT, AND SUBSISTENCE CRAB SPECIES. DUNGENESS CRAB SUPPORT COMMERCIAL FISHERIES IN COOK INLET AND NEAR KODIAK ISLAND VALUED AT \$4 MILLION ANNUALLY. THE COMMERCIAL VALUES, WHEN INCLUDED WITH THE SUBSISTENCE & SPORT HARVESTS, MAKE THIS SPECIES EXTREMELY VALUABLE. CRABS ARE KNOWN TO BE VERY SENSITIVE TO HYDROCARBON CONTAMINATION. THEY ARE KNOWN TO LOSE LEGS, SUFFER EGG LOSS, & HAVE DIFFICULTY MOLTING DUNGENESS CRAB MAY BE PARTICULARLY SUSCEPTIBLE TO OIL CONTAMINATION DUE TO THEIR SHALLOW WATER EXISTENCE. THIS IS AN RSA WITH DEC.

P2	PROJECT DETAIL
-----------	---------------------------

AGENCY FISH AND GAME

BRU

COMPONENT

FY 91

Page of

Revised Date:

9 290 ASSESS CRABS OUTSIDE PWS R:1

OBJECTIVES:

- A. DETERMINE THE LEVELS OF HYDROCARBONS IN DUNGNESS CRABS IN OILED & NON-OILED SITES IN COOK INLET & NEAR KODIAK ISLAND.
- B. DETERMINE THE INCIDENCE OF LIMB LOSS, ABNORMALITIES IN NEWLY FORMED CRAB SHELLS, & ASSESS SUCH REPRODUCTIVE FACTORS AS FECUNDITY, EGG LOSS, CONDITION, & DEVELOPMENT; & ASSESS LARVAL PRODUCTION FROM OVIGEROUS FEMALES COLLECTED IN OILED & NON-OILED AREAS.
- C. DETERMINE WHETHER THE OBSERVED EFFECTS ARE ADVERSE CHANGE.

ALSO: VIABILITY OF THE RESULTS.



ADDITIONAL
EXPLANATION
FORM

AGENCY FISH AND GAME
BRU _____
COMPONENT _____

FY 91

Page _____ of _____

Revised Date: _____

PROJECT NUMBER: 9 350	PROJECT TITLE: PINK/CHUM SPAWN OUTSIDE PWS	STATUTORY AUTHORITY: AS16	LOCATION: EBA ANCHORAGE
			PROJECT MANAGER: HENRY YUEN PHONE: 486-4791

LINE ITEM DETAIL	PRIOR YEAR FY 89 ACTUAL	CURRENT YEAR FY 90 AUTHORIZED	BUDGET YEAR - FY 91			GOVERNOR'S BUDGET
			AGENCY			
			ADJUSTED BASE	INCREMENT/ DECREMENT	AGENCY REQUEST	
71000 Personal Services		240.3	213.0		213.0	
72000 Travel		4.6	9.1		9.1	
73000 Contractual Services		49.7	123.7		123.7	
74000 Supplies and Materials	0.2	18.0	15.0		15.0	
75690 Equipment			4.9		4.9	
75025 Lands/Buildings		3.2				
77000 Grants, Claims						
78000 Miscellaneous						
TOTAL	0.2	315.8	365.7		365.7	
1002 Federal Receipts						
1004 General Fund						
1007 I-A Receipts						
1011 Other:	0.2	340.0	365.7		365.7	
15 Full-Time			5.0		5.0	
16 Part-Time			6.0		6.0	
17 Non Permanent			7.0		7.0	
18 Staff Months			58.7		58.7	

PROJECT DESCRIPTION:
 STUDY TITLE INJURY TO PINK/CHUM SALMON SPAWNING AREAS OUTSIDE PWS. WILD STOCKS OF PINK/CHUM SALMON PROVIDE MAJOR FISHERIES IN AREAS OUTSIDE PWS WHERE EXTENSIVE OILING HAS OCCURRED. IN 1988, THE VALUE OF THE COMMERCIAL CATCH OF WILD & HATCHERY STOCKS OF SALMON FROM THE OILED LCI TO THE SOUTH ALASKA PENINSULA/ALEUTIA AREA WAS MORE THAN \$210 MILLION TO FISHERMAN. SALMON ALSO ARE VERY IMPORTANT TO SPORT, SUBSISTENCE & PERSONAL USE FISHERIES. THE MARINE SURVIVAL OF WILD STOCKS MAY BE ADVERSELY IMPACTED

BECAUSE INTERTIDAL SPAWNING AREAS AS WELL AS NEARSHORE AND OFF SHORE REARING AREAS WERE AFFECTED BY THE OIL SPILL. IN ADDITION THE FRESHWATER SURVIVAL OF SALMON MAY BE AFFECTED BY LEVELS OF ESCAPEMENT AS A CONSEQUENCE OF THE INABILITY TO HARVEST SALMON IN TRADITIONAL FISHING AREAS DUE TO THE PRESENCE OF OIL IN THOSE AREAS. BECAUSE OF THESE FACTORS, OPERATING SINGLY OR IN CONCERT, THE EXXON VALDEZ OIL SPILL MAY HAVE A MAJOR DELETERIOUS IMPACT ON THE FUTURE ABUNDANCE OF PINK/CHUM SALMON

P2	PROJECT DETAIL
-----------	---------------------------

AGENCY _____

BRU _____

COMPONENT _____

FY 91

Page _____ of _____

Revised Date: _____

PROJECT NUMBER: 9 355	PROJECT TITLE: PC EGG PRE-EMERG OUTSIDE PWS	STATUTORY AUTHORITY: AS16	LOCATION: EBA ANCHORAGE
			PROJECT MANAGER: HENRY VUEN
			PHONE: 486-4791

LINE ITEM DETAIL	PRIOR YEAR FY 89 ACTUAL	CURRENT YEAR FY 90 AUTHORIZED	BUDGET YEAR - FY 91			GOVERNOR'S BUDGET
			AGENCY		AGENCY REQUEST	
			ADJUSTED BASE	INCREMENT/ DECREMENT		
71000 Personal Services	5.7	128.3	118.8		118.8	
72000 Travel		3.4	1.9		1.9	
73000 Contractual Services		112.8	59.1		59.1	
74000 Supplies and Materials		1.5	9.3		9.3	
75690 Equipment			4.7		4.7	
75025 Lands/Buildings						
77000 Grants, Claims						
78000 Miscellaneous						
TOTAL	5.7	246.0	193.8		193.8	
1002 Federal Receipts						
1004 General Fund						
1007 I-A Receipts						
Other: EXXON VALDEZ OIL SPILL	5.7	246.0	193.8		193.8	
15 Full-Time		1.0	3.0		3.0	
16 Part-Time			4.0		4.0	
17 Non Permanent			1.0		1.0	
18 Staff Months		12.0	28.5		28.5	

PROJECT DESCRIPTION:

STUDY TITLE INJURY TO PINK/CHUM SALMON SPAWNING AREAS OUTSIDE PWS. WILD STOCKS OF PINK/CHUM SALMON PROVIDE MAJOR FISHERIES IN AREAS OUTSIDE PWS WHERE EXTENSIVE OILING HAS OCCURRED. IN 1988, THE VALUE OF THE COMMERCIAL CATCH OF WILD & HATCHERY STOCKS OF SALMON FROM THE OILED LCI TO THE SOUTH ALASKA PENINSULA/ALEUTIA AREA WAS MORE THAN \$210 MILLION TO FISHERMAN. SALMON ALSO ARE VERY IMPORTANT TO SPORT, SUBSISTENCE & PERSONAL USE FISHERIES. THE MARINE SURVIVAL OF WILD STOCKS MAY BE ADVERSELY IMPACTED

BECAUSE INTERTIDAL SPAWNING AREAS AS WELL AS NEARSHORE AND OFF SHORE REARING AREAS WERE AFFECTED BY THE OIL SPILL; IN ADDITION THE FRESHWATER SURVIVAL OF SALMON MAY BE AFFECTED BY LEVELS OF ESCAPEMENT AS A CONSEQUENCE OF THE INABILITY TO HARVEST SALMON IN TRADITIONAL FISHING AREAS DUE TO THE PRESENCE OF OIL IN THOSE AREAS. BECAUSE OF THESE FACTORS, OPERATING SINGLY OR IN CONCERT, THE EXXON VALDEZ OIL SPILL MAY HAVE A MAJOR DELETERIOUS IMPACT ON THE FUTURE ABUNDANCE OF PINK/CHUM SALMON

P2	PROJECT DETAIL
-----------	---------------------------

AGENCY _____

BRU _____

COMPONENT _____

FY 91

Page ____ of ____

Revised Date: _____

EGG PRE EMERG OUTSIDE PWS

OBJECTIVES:

- A. DETERMINE ABUNDANCE OF PINK/CHUM SALMON EGGS & PRE-EMERGENT FRY.
- B. DETERMINE OVERWINTER MORTALITY OF PINK/CHUM SALMON EGGS.
- C. DETERMINE REDUCTIONS, IF ANY, IN PINK/CHUM SALMON PRE-EMERGENT FRY ABUNDANCE DUE TO OILING.

FY 91

ADDITIONAL EXPLANATION FORM

AGENCY FISH AND GAME
 BRU C.S.I.A.F.
 COMPONENT C.S.I.A.F. MEN

Page of
 Revised Date:

PROJECT NUMBER: 9 365	PROJECT TITLE: DOLLY VARDEN CHAR/SOCKEYE	STATUTORY AUTHORITY: A516	LOCATION: DOA KENAI
			PROJECT MANAGER: JELLY HEDLER
			PHONE: 267-2216

LINE ITEM DETAIL	PRIOR YEAR FY 89 ACTUAL	CURRENT YEAR FY 90 AUTHORIZED	BUDGET YEAR - FY 91			GOVERNOR'S BUDGET
			AGENCY			
			ADJUSTED BASE	INCREMENT/ DECREMENT	AGENCY REQUEST	
71000 Personal Services		144.3	170.6		170.6	
72000 Travel		0.8	4.0		4.0	
73000 Contractual Services		23.3	32.1		32.1	
74000 Supplies and Materials	2.5	69.7	32.0		32.0	
75690 Equipment						
75025 Lands/Buildings		3.8				
77000 Grants, Claims						
78000 Miscellaneous						
TOTAL	2.5	241.1	238.7		238.7	
1002 Federal Receipts						
1004 General Fund						
1007 I-A Receipts						
1051 Other: EXXON VALDEZ OIL SPILL	2.5	241.1	238.7		238.7	
15 Full-Time	1.0		1.0		1.0	
16 Part-Time	1.0		1.0		1.0	
17 Non Permanent	1.0		13.0		13.0	
18 Staff Months			78.0		78.0	

PROJECT DESCRIPTION:

STUDY TITLE INJURY TO DOLLY VARDEN CHAR & SOCKEYE SALMON IN THE LOWER KENAI PENINSULA. CRUDE OIL HAS CONTAM. NEARSHORE & ESTUARINE WATERS IMPORTANT TO BOTH DOLLY VARDEN CHAR & SOCKEYE SALMON. BIOASSAYS HAVE SHOWN THAT THE PRESENCE OF CRUDE OIL IN LOW CONCENTRATIONS CAN AFFECT THE SURVIVAL OF PREY OF THESE SPECIES. HIGH CONCENTRATIONS MAY DIRECTLY IMPAIR REPRODUCTION, GROWTH, AND SURVIVAL RATES OF DOLLY VARDEN AND SOCKEYE SALMON AS WELL. DOLLY VARDEN & SOCKEYE SALMON AS CAUGHT IN SPORT,

COMMERCIAL, & SUBSISTENCE FISHERIES IN LCI. A REDUCTION IN ABUNDANCE DUE TO THE OIL SPILL COULD THEREFORE REDUCE THE CATC ANY IMPACTS OF OIL COULD AFFECT THE SURVIVAL RATES OF FISH FREQUENTLY OILED WATERS. THERE IS CONCERN THAT THE OIL SPILL MAY HAVE SERIOUSLY JEOPARDIZED UNIQUE POPULATIONS OF THESE TWO SPECIES OUTSIDE OF PWS.

P2	PROJECT DETAIL
-----------	---------------------------

AGENCY _____
 BRU _____
 COMPONENT _____

FY 91

Page ____ of ____
 Revised Date: _____

PROJECT NUMBER: 9 2059	PROJECT TITLE: GEO EXTENT IN WATER	STATUTORY AUTHORITY: AS16	LOCATION: AWA JUNEAU PROJECT MANAGER: PHONE: MARSHALL WENDT/DRE 455-2521
----------------------------------	--	-------------------------------------	--

LINE ITEM DETAIL	PRIOR YEAR FY 89 ACTUAL	CURRENT YEAR FY 90 AUTHORIZED	BUDGET YEAR - FY 91			GOVERNOR'S BUDGET
			AGENCY			
			ADJUSTED BASE	INCREMENT/ DECREMENT	AGENCY REQUEST	
71000 Personal Services		106.4	78.6		78.6	
72000 Travel		20.5	12.3		12.3	
73000 Contractual Services		212.5	41.9		41.9	
74000 Supplies and Materials		40.0	27.2		27.2	
75690 Equipment						
75025 Lands/Buildings		28.0	15.0		15.0	
77000 Grants, Claims						
78000 Miscellaneous						
TOTAL		407.4	175.0		175.0	
1002 Federal Receipts						
1004 General Fund						
1007 I-A Receipts						
Other: EXXON VALDES OIL SPILL		407.4	175.0		175.0	
15 Full-Time						
16 Part-Time						
17 Non Permanent						
18 Staff Months						

PROJECT DESCRIPTION:
 THE PRESENTS OF FLOATING OIL VIOLATES STATE AND FEDERAL LAWS. DEMONSTRATING A VIOLATION OF WATER QUALITY CRITERIA IS DE FACTO EVIDENCE THAT USES OF THE WATER PROTECTED BY LAW HAVE BEEN JEOPARDIZED. DOCUMENTING THE TEMPORAL AND SPATIAL PATTERNS OF FLOATING OIL WILL PROVIDE INFORMATION FOR DETERMINING INJURY TO THE WATER RESOURCE AND FOR QUANTIFYING SERVICE LOST DUE TO INJURY. THE TIME SERIES OF THE GEOGRAPHIC EXTENT OF FLOATING OIL ALSO IS NEEDED FOR CALCULATING EXPOSURES OF FISH, BIRDS, AND MARINE MAMMALS. THIS IS AN RSA WITH DEC.

P2	PROJECT DETAIL
-----------	---------------------------

AGENCY FISH AND GAME

BRU _____

COMPONENT _____

FY 91

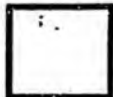
Page _____ of _____

Revised Date: _____

2059 SEC EXTENT IN WATER

OBJECTIVES

CONFIRM, AS NEEDED, THAT FLUORIDES FROM THE LEACHING
DOCUMENT TEMPORAL AND SPATIAL PATTERNS OF FLUORIDING
PROVIDE INFORMATION TO OTHER STUDY TEAMS FOR USE IN INJURY
ASSESSMENT.



**ADDITIONAL
EXPLANATION
FORM**

AGENCY FISH AND GAME

BRU BRU

COMPONENT INJURY ASSESSMENT

FY 91

Page of
Revised Date: 06/01/90

PROJECT NUMBER: 9 2109	PROJECT TITLE: INJURY TO SUBTIDAL	STATUTORY AUTHORITY: AS16	LOCATION: EAA VALDEZ
			PROJECT MANAGER: RT WEINER
			PHONE: 835-8025

LINE ITEM DETAIL	PRIOR YEAR FY 89 ACTUAL	CURRENT YEAR FY 90 AUTHORIZED	BUDGET YEAR - FY 91			GOVERNOR'S BUDGET
			AGENCY			
			ADJUSTED BASE	INCREMENT/ DECREMENT	AGENCY REQUEST	
71000 Personal Services		244.7	398.0		398.0	
72000 Travel		4.2	10.0		10.0	
73000 Contractual Services		246.1	419.2		419.2	
74000 Supplies and Materials		36.7	54.5		54.5	
75690 Equipment						
75025 Lands/Buildings		18.8				
77000 Grants, Claims						
78000 Miscellaneous						
TOTAL		550.5	881.7		881.7	
1002 Federal Receipts						
1004 General Fund						
1007 I-A Receipts						
105 Other: EAA VALDEZ OIL SPILL		550.5	881.7		881.7	
15 Full-Time						
16 Part-Time						
17 Non Permanent						
18 Staff Months						

PROJECT DESCRIPTION:
 STUDY TITLE PETROLEUM HYDROCARBON-INDUCED INJURY TO SUBTIDAL MARINE SEDIMENT RESOURCES. HYDROCARBON CONTAMINATION OF MARINE SEDIMENTS VIOLATES STATE AND FEDERAL WATER QUALITY CRITERIA WHERE CONCENTRATIONS RESULT IN DELETERIOUS EFFECTS ON AQUATIC LIFE. BENTHIC INFAUNA AND EPIFAUNA ARE FOOD FOR FISH, MARINE MAMMALS, AND BIRDS. DOCUMENTING INJURY TO SUBTIDAL SEDIMENTS IS A USEFUL STEP IN QUANTIFYING DAMAGES TO THESE RESOURCES. DETERMINING THE EXTENT OF SUBTIDAL OILING IS HELPFUL IN EVALUATING WHETHER THIS ENVIRONMENT WILL SERVE AS A LONG-TERM REPOSITORY FOR HYDROCARBONS, CONTRIBUTING TO CHRONIC TOXICITY THROUGH REMOBILIZATION OF OIL INTO THE WATER COLUMN. EVALUATING THE EXTENT OF OILING IN KEY SEDIMENTS WILL ESTABLISH POSSIBLE CONTAMINATION PATHWAYS (FOR EXAMPLE, SALMON FRY FEEDING ON BENTHIC COPEPODS). THIS IS AN RSA WITH DEC.

P2	PROJECT DETAIL
-----------	---------------------------

AGENCY FISH AND GAME

BRU _____

COMPONENT FISH AND GAME

FY 91

Page _____ of _____

Revised Date: _____

PROJECT NUMBER: 9 2159	PROJECT TITLE: HYDROCARBONS IN WATER	STATUTORY AUTHORITY: AS16	LOCATION: EAA VALDEZ	
			PROJECT MANAGER: ART WEINER	PHONE: 835-8025

LINE ITEM DETAIL	PRIOR YEAR FY 89 ACTUAL	CURRENT YEAR FY 90 AUTHORIZED	BUDGET YEAR - FY 91			GOVERNOR'S BUDGET
			AGENCY			
			ADJUSTED BASE	INCREMENT/ DECREMENT	AGENCY REQUEST	
71000 Personal Services		164.4	211.2		211.2	
72000 Travel		15.4	10.0		10.0	
73000 Contractual Services		154.1	104.8		104.8	
74000 Supplies and Materials		14.4	21.1		21.1	
75690 Equipment						
75025 Lands/Buildings						
77000 Grants, Claims						
78000 Miscellaneous						
TOTAL		348.3	347.1		347.1	
1002 Federal Receipts						
1004 General Fund						
1007 I-A Receipts						
1051 Other: EAGLE VALDEZ OIL SPILL		368.1	347.1		347.1	
15 Full-Time						
16 Part-Time						
17 Non Permanent						
18 Staff Months						

PROJECT DESCRIPTION:
 STUDY TITLE GEOGRAPHIC & TEMPORAL DISTRIBUTION OF DISSOLVED & PARTICULATE PETROLEUM HYDROCARBONS IN THE WATER COLUMN. STATE OF ALASKA WATER QUALITY CRITERIA ESTABLISH A 10 UG/LITER (PPB) LIMIT ON ALLOWABLE LEVELS OF TOTAL AROMATIC HYDROCARBONS IN THE WATER COLUMN. QUANTIFYING HYDROCARBON LEVELS IN THE WATER COLUMN IS MOST CRITICAL DURING THE FIRST FEW WEEKS FOLLOWING AN OIL SPILL. WHEN DISSOLUTION OF SOLUBLE COMPONENTS IS HIGHEST, EXCEEDING STATE WATER QUALITY CRITERIA CONSTITUTES DE FACTO EVIDENCE THAT WATER USES PROTECTED UNDER REGULATION HAVE BEEN JEOPARDIZED. THIS STUDY PROVIDES THE NECESSARY EVIDENCE OF CHEMICAL EXPOSURE TO SUPPORT DETERMINATION OF INJURY TO BIOLOGICAL AND GEOLOGICAL RESOURCES. THIS IS AN RSA WITH DEC.

P2	PROJECT DETAIL
-----------	---------------------------

AGENCY ELM 46. 64MF

BRU _____

COMPONENT _____

Page _____ of _____
Revised Date: _____

FY 91

9 2159 HYDROCARBONS III: WATER

OBJECTIVES:

- A. DOCUMENT WATER COLUMN HYDROCARBON CONCENTRATIONS AT A RANGE OF DEPTHS, LOCATIONS, AND TIMES.
- B. QUANTIFY INJURY TO WATER RESOURCES.
- C. RELATE WATER INJURY TO BIOLOGICAL INJURY.
- D. EVALUATE TRENDS IN AMBIENT WATER QUALITY THROUGH MEASUREMENTS OF HYDROCARBONS IN A BIOLOGICAL INDICATOR (MYTILUS) AS A SURROGATE FOR CHEMICAL MEASUREMENTS.
- E. IDENTIFY POTENTIAL ALTERNATIVE METHODS AND STRATEGIES FOR

RESTORATION OF LOCAL AND FEDERAL OIL AND GAS RESOURCES WHERE INJURY IS IDENTIFIED



ADDITIONAL
EXPLANATION
FORM

AGENCY FISH AND GAME
BRU _____
COMPONENT _____

FY 91

Page _____ of _____
Revised Date: _____

PROJECT NUMBER: 9 2209	PROJECT TITLE: INJURY TO DEEP WATER	STATUTORY AUTHORITY: AS16	LOCATION: STW STATEWIDE
			PROJECT MANAGER: HOWARD FEDEK
			PHONE: 474-7956

LINE ITEM DETAIL	PRIOR YEAR FY 89 ACTUAL	CURRENT YEAR FY 90 AUTHORIZED	BUDGET YEAR - FY 91			GOVERNOR'S BUDGET
			AGENCY		AGENCY REQUEST	
			ADJUSTED BASE	INCREMENT/ DECREMENT		
71000 Personal Services		84.8	79.1		79.1	
72000 Travel		2.7	1.9		1.9	
73000 Contractual Services		81.5	72.1		72.1	
74000 Supplies and Materials		2.4	1.1		1.1	
75690 Equipment						
75025 Lands/Buildings						
77000 Grants, Claims						
78000 Miscellaneous						
TOTAL			154.2		154.2	
1002 Federal Receipts						
1004 General Fund						
1007 I-A Receipts						
1008 Other: EXXON VALDEZ OIL SPILL		171.4	154.2		154.2	
15 Full-Time						
16 Part-Time						
17 Non Permanent						
18 Staff Months						

PROJECT DESCRIPTION:
 STUDY TITLE INJURY TO DEEP WATER (<20 METERS) BENTHIC INFAUNAL RESOURCES FROM PETROLEUM HYDROCARBONS. DEEPWATER BENTHIC INFAUNAL COMMUNITIES MAY BE ADVERSELY AFFECTED. THEY ALSO PROVIDE PREY FOR DEMERSAL FISH & SOME MARINE MAMMALS. SUCH COMMUNITIES ALSO HAVE BEEN DOCUMENTED TO BE USEFUL INDICATORS OF POLLUTION. IF INJURY TO THESE COMMUNITIES IS DEMONSTRATED IN CONJUNCTION WITH ELEVATED LEVELS OF PETROLEUM HYDROCARBONS IN SUBTIDAL SEDIMENTS, VIOLATION OF STATE AND FEDERAL WATER QUALITY CRITERIA IS CONCLUSIVE. BENTHIC INFAUNAL COMMUNITIES HAVE HISTORICALLY SERVED AS USEFUL INDICATORS OF SUBTIDAL HEALTH IN POLLUTED AREAS. THIS IS AN RSA WITH DEC.

P2 PROJECT DETAIL

AGENCY FISH AND GAME
 BRU _____
 COMPONENT WATER QUALITY

FY 91

Page ____ of ____
 Revised Date: _____

9 2209 INJURY TO DEEP WATER

OBJECTIVES:

1. DETERMINE INJURY TO THE BENTHIC INFAUNAL RESOURCE
2. QUANTIFY INJURY TO THE DEEP BENTHIC INFAUNAL RESOURCE
3. DETERMINE PERSISTENCE OF INJURY TO BENTHIC RESOURCES.



ADDITIONAL
EXPLANATION
FORM

AGENCY FISH AND GAME

BRU G.S.I.A.F.

COMPONENT FISH AND GAME

FY 91

Page of

Revised Date:

9 2351 PINK/CHUM FRY EMERGENT FRY SAM

OBJECTIVES:

- A. ASSESS ABUNDANCE OF PINK AND CHUM SALMON EGGS AND FRY EMERGENT FRY IN STUDY STREAMS.
- B. ASSESS OVERWINTER MORTALITY OF PINK AND CHUM SALMON EGGS.
- C. ASSESS TISSUE CONCENTRATIONS OF HYDROCARBONS IN ALEVINS COLLECTED IN APRIL 1989 FROM OILED AND NON-OILED SITES.

ADDITIONAL
EXPLANATION
FORM

AGENCY FISH AND GAME
BRU 01011A.F.
COMPONENT FISH AND GAME

FY 91

Page of

Revised Date: 09/11/89

PROJECT NUMBER: 9 2421	PROJECT TITLE: PWS SALMON CWTR STUDIES BIOMET	STATUTORY AUTHORITY: AS16	LOCATION: EBA ANCHORAGE
			PROJECT MANAGER: IRIAN BUE
			PHONE: 424-3214

LINE ITEM DETAIL	PRIOR YEAR FY 89 ACTUAL	CURRENT YEAR FY 90 AUTHORIZED	BUDGET YEAR - FY 91			GOVERNOR'S BUDGET
			AGENCY			
			ADJUSTED BASE	INCREMENT/ DECREMENT	AGENCY REQUEST	
71000 Personal Services		50.7	73.8		73.8	
72000 Travel		5.7	5.4		5.4	
73000 Contractual Services	0.3	8.3	8.0		8.0	
74000 Supplies and Materials	0.1	1.6	1.5		1.5	
75690 Equipment			8.0		8.0	
75025 Lands/Buildings		8.0				
77000 Grants, Claims						
78000 Miscellaneous						
TOTAL	0.4	73.7	96.7		96.7	
1002 Federal Receipts						
1004 General Fund						
1007 I-A Receipts						
Other: EXXON VALDEZ OIL SPILL	0.4	73.7	96.7		96.7	
15 Full-Time			2.0		2.0	
16 Part-Time						
17 Non Permanent			2.0		2.0	
18 Staff Months			18.0		18.0	

PROJECT DESCRIPTION:
STUDY TITLE SALMON CODED-WIRE TAG STUDIES IN PWS. WILD STOCKS OF SALMON AND SALMON FROM 5 HATCHERIES PROVIDE A MAJOR FISHERY IN PWS. THE MARINE AND ESTUARINE SURVIVAL OF SALMON MAY BE ADVERSELY IMPACTED DUE TO EXPOSURE OF INTERTIDAL SPawning AREAS ALONG WITH NEARSHORE & OFFSHORE REARING AREAS, TO CRUDE OIL. BECAUSE OF THESE FACTORS, OPERATING SINGULARLY OR IN CONCERT, THE EXXON VALDEZ OIL SPILL MAY HAVE A MAJOR DELETERIOUS IMPACT ON THE FUTURE PRODUCTIVITY OF SALMON STOCKS. BEFORE A LOSS IN PRO-

DUCTION DUE TO THE OIL SPILL CAN BE MEASURED, 1) YOUNG SALMON MUST BE SHOWN TO BE EXPOSED TO CONTAMINATED WATERS; & 2) THE SUBSEQUENT RETURN (HARVEST & ESCAPEMENT) OF THESE SALMON MUST BE KNOWN. THE FORMER INFORMATION INDICATES CAUSE, WHILE THE LATTER SHOWS THE EXTENT OF THE DAMAGE. FISH #4 WILL DOCUMENT THE PRESENCE OR ABSENCE OF YOUNG SALMON FROM VARIOUS CODED-WIRE TAGGED STOCKS IN OILED WATER. SURVIVAL RATES OF SELECTED STOCKS WILL BE MEASURED IN THIS STUDY.

P2	PROJECT DETAIL
-----------	---------------------------

AGENCY FISH AND GAME

BRU _____

COMPONENT EXXON VALDEZ OIL SPILL

FY 91

Page _____ of _____
Revised Date: _____

PROJECT NUMBER: 9 2453	PROJECT TITLE: EARLY MARINE SAL INJURY ASSESS	STATUTORY AUTHORITY: AS16	LOCATION: JBA FAIRBANKS
			PROJECT MANAGER: PHONE: TIM RAYMOND 479-9512

LINE ITEM DETAIL	PRIOR YEAR FY 89 ACTUAL	CURRENT YEAR FY 90 AUTHORIZED	BUDGET YEAR - FY 91			GOVERNOR'S BUDGET
			AGENCY		AGENCY REQUEST	
			ADJUSTED BASE	INCREMENT/ DECREMENT		
71000 Personal Services	12.7	101.5	181.8		181.8	
72000 Travel	0.2	5.3	11.9		11.9	
73000 Contractual Services	6.9	70.0	185.1		185.1	
74000 Supplies and Materials	3.1	22.8	17.7		17.7	
75690 Equipment			9.5		9.5	
75025 Lands/Buildings		25.6				
77000 Grants, Claims						
78000 Miscellaneous						
TOTAL	22.9	225.2	405.8		405.8	
1002 Federal Receipts						
1004 General Fund						
1007 I-A Receipts						
1051 Other: EXXON VALDEZ OIL SPILL	22.9	413.6	405.8		405.8	
15 Full-Time			1.0		1.0	
16 Part-Time			2.0		2.0	
17 Non Permanent			3.0		3.0	
18 Staff Months			20.5		20.5	

PROJECT DESCRIPTION:
 STUDY TITLE EARLY MARINE SALMON INJURY ASSESSMENT IN PWS. SOMES ESTUARINE & INTERTIDAL NURSERY AREAS FOR WILD & HATCHERY STOCKS WERE HEAVILY IMPACTED BY THE OIL SPILL. IT IS ANTICIPATED THAT THESE IMPACTS MAY HAVE DETRIMENTALLY AFFECTED THE VIABILITY OF SALMON PRODUCTION IN PWS & THE RESULTANT VIABILITY OF PRESENT FISHERIES & THE RELATED ECONOMY. BEFORE ANY LOSS IN PRODUCTION FROM THE OIL SPILL CAN BE ESTIMATED: 1) YOUNG SALMON MUST HAVE BEEN EXPOSED TO CONTAMINATED HABITAT; & 2) THE SUBSEQUENT RETURN MUST BE KNOWN. THE FORMER INFORMATION INDICATES CAUSE, WHILE THE LATTER SHOWS EXTENT OF THE DAMAGE. THIS STUDY WILL ADDRESS THE QUESTION OF EXPOSURE. ALSO, RESIDENCE TIME WITHIN THE AREA IMPACTED BY THE OIL SPILL IS OF CONCERN, AS IS THE EXTENT TO WHICH ESTUARINE & NEARSHORE REARING HABITAT HAS BEEN DEGRADED BY THE OIL SPILL.

P2	PROJECT DETAIL
-----------	---------------------------

AGENCY FISH AND GAME

BRU _____

COMPONENT _____

FY 91

Page ____ of ____

Revised Date: _____

PROJECT NUMBER: 9 2501	PROJECT TITLE: ASSESSMENT/IMPACT PWS HERRING	STATUTORY AUTHORITY: AS16	LOCATION: DWA CORDOVA
			PROJECT MANAGER: VELYN BIGGS
			PHONE: 424-3212

LINE ITEM DETAIL	PRIOR YEAR FY 89 ACTUAL	CURRENT YEAR FY 90 AUTHORIZED	BUDGET YEAR - FY 91			GOVERNOR'S BUDGET
			AGENCY			
			ADJUSTED BASE	INCREMENT/ DECREMENT	AGENCY REQUEST	
71000 Personal Services	86.3	72.7	78.9		78.9	
72000 Travel	8.4	4.9	5.6		5.6	
73000 Contractual Services	100.1	268.0	228.0		228.0	
74000 Supplies and Materials	49.0	14.8	4.0		4.0	
75690 Equipment	26.2	4.0	6.9		6.9	
75025 Lands/Buildings						
77000 Grants, Claims						
78000 Miscellaneous						
TOTAL		304.4	323.4		323.4	
1002 Federal Receipts						
1004 General Fund						
1007 I-A Receipts						
1051 Other: EXXON VALDEZ OIL SPILL	27.0	323.4	323.4		323.4	
15 Full-Time	1.0		1.0		1.0	
16 Part-Time			2.0		3.0	
17 Non Permanent			3.0		3.0	
18 Staff Months			17.0		17.0	

PROJECT DESCRIPTION:

STUDY TITLE INJURY TO PWS HERRING. THE PWS HERRING STOCK SUPPORTS COMMERCIAL FISHERIES WITH A 1988 EXVESSEL VALUE OF \$12 MILLION, AND SUBSISTENCE HARVESTS. DIRECT MORTALITY OF ADULT HERRING, EGGS, AND LARVAE DUE TO OIL CONTAMINATION OF NEARSHORE SPAWNING AND REARING AREAS MAY REDUCE THE FUTURE ABUNDANCE OF HERRING. HYDROCARBONS MAY ALSO INTERFERE WITH GROWTH AND REPRODUCTION DURING THE SPRING AND SUMMER OF 1989 AND POSSIBLY LONGER. HERRING IMPACT STUDIES ARE DESIGNED TO ASSESS LETHAL &

SUBLETHAL EFFECTS OF THE OIL SPILL ON JUVENILE AND ADULT HERRING SURVIVAL, GROWTH, AND REPRODUCTION. THERE IS CONCERN THAT THE OIL SPILL MAY HAVE SERIOUSLY JEOPARDIZED UNIQUE POPULATIONS OF HERRING, PARTICULARLY IN HEAVILY OILED AREAS.

P2	PROJECT DETAIL
-----------	---------------------------

AGENCY _____
 BRU _____
 COMPONENT _____

FY 91

Page _____ of _____
 Revised Date: _____

9 2501 ASSESSMENT/IMPACT PWS HERRING

OBJECTIVES:

- EXPAND THE NORMAL DATABASE FOR HERRING TO INCREASE THE PRECISION OF THE ESTIMATED ABUNDANCE OF HERRING USING EXPANDED SPAWN DEPOSITION SURVEYS OF THE NUMBER OF EGGS DEPOSITED, COMBINED WITH AGE, WEIGHT, SEX & FECUNDITY SAMPLING.
- B. DOCUMENT THE OCCURRENCE OF HERRING SPAWN IN OILED & NON-OILED AREAS.
- C. DETERMINE HYDROCARBON CONTAM. OF AND PHYSIOLOGICAL IMPACTS

- ON ADULT HERRING BY ANALYZING TISSUE SAMPLES FOR HYDROCARBON & HISTOPATH ANALYSES FROM HERRING IN OILED & NON-OILED AREAS.
- D. DETERMINE THE PROPORTION OF DEAD HERRING EGGS IN OILED & NON-OILED AREAS.
- E. DETERMINE THE HATCHING SUCCESS, VIABLE HATCH, & OCCURRENCE OF ABNORMAL LARVAE BY COLLECTING HERRING EGGS FROM OILED & NON-OILED AREAS & REARING THEM UNDER LABORATORY OBSERVATION.



ADDITIONAL
EXPLANATION
FORM

AGENCY FISH AND GAME
BRU 0.0.0.0.0.0
COMPONENT WILDLIFE AND FISH

FY 91

Page ____ of ____

Revised Date: _____

PROJECT NUMBER: 9 2551	PROJECT TITLE: ASSESS/IMPACT HERRING OUTSIDE	STATUTORY AUTHORITY: AS16	LOCATION: CAA KODIAK
		PROJECT MANAGER: PETE PROBASCO	PHONE: 486-4791

LINE ITEM DETAIL	PRIOR YEAR FY 89 ACTUAL	CURRENT YEAR FY 90 AUTHORIZED	BUDGET YEAR - FY 91			
			AGENCY			GOVERNOR'S BUDGET
			ADJUSTED BASE	INCREMENT/ DECREMENT	AGENCY REQUEST	
71000 Personal Services						
72000 Travel						
73000 Contractual Services	1.6	18.1				
74000 Supplies and Materials		4.1				
75690 Equipment						
75025 Lands/Buildings						
77000 Grants, Claims						
78000 Miscellaneous						
TOTAL	3.7	54.2				
1002 Federal Receipts						
1004 General Fund						
1007 I-A Receipts						
Other: OIL SPILL	3.7	60.1				
15 Full-Time						
16 Part-Time						
17 Non Permanent						
18 Staff Months						

PROJECT DESCRIPTION:
 STUDY TITLE INJURY ASSESSMENT TO KODIAK & ALASKA PENINSULA HERRING. KODIAK & ALASKA PENINSULA HERRING STOCKS SUPPORT COMMERCIAL FISHERIES WITH 1988 EXVESSEL VALUES OF \$2.5 MILLION AND \$0.5 MILLION, RESPECTIVELY, AS WELL AS SUBSISTENCE HARVESTS DIRECT MORTALITY OF ADULT HERRING, EGGS, AND LARVAE DUE TO OIL CONTAMINATION OF NEARSHORE SPAWNING AND REARING AREAS MAY REDUCE THE FUTURE ABUNDANCE OF HERRING. HYDROCARBONS MAY ALSO INTERFERE WITH GROWTH & REPRODUCTION. HERRING IMPACT STUDIES ARE DESIGNED TO ASSESS LETHAL AND SUBLETHAL EFFECTS OF THE OIL SPILL ON EGG SURVIVAL AND ADULT HERRING GROWTH AND REPRODUCTION. THERE IS CONCERN THAT THE OIL SPILL MAY HAVE SERIOUSLY JEOPARDIZED UNIQUE POPULATIONS OF HERRING, PARTICULARLY IN AREAS THAT WERE HEAVILY OILED.

P2 PROJECT DETAIL

AGENCY FISH AND GAME
 BRU _____
 COMPONENT INJURY ASSESSMENT

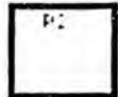
FY 91

Page _____ of _____
 Revised Date: _____

E 255: ASSESS/IMPACT HERRING OUTSIDE

OBJECTIVES:

- A. DOCUMENT THE OCCURRENCE OF HERRING SPAWN IN OILED & NON-OILED AREAS
- E. COMPARE GROWTH INCREMENTS OF ADULT HERRING DURING 1989 WITH THOSE FOR OTHER YEARS.



**ADDITIONAL
EXPLANATION
FORM**

AGENCY FISH AND GAME

BRU G.S.I.A.F.

COMPONENT OIL SPILL ASSESSMENT

FY 91

Page of

Revised Date:

PROJECT NUMBER: 9 2601	PROJECT TITLE: ASSESSMENT/IMPACT PWS CRABS	STATUTORY AUTHORITY: AS16	LOCATION: DWA CORDOVA
			PROJECT MANAGER: CHARLES TROWBRIDGE PHONE: 424-3212

LINE ITEM DETAIL	PRIOR YEAR FY 89 ACTUAL	CURRENT YEAR FY 90 AUTHORIZED	BUDGET YEAR - FY 91			GOVERNOR'S BUDGET
			AGENCY			
			ADJUSTED BASE	INCREMENT/ DECREMENT	AGENCY REQUEST	
71000 Personal Services	15.7	19.5	19.5		19.5	
72000 Travel		2.2	1.4		1.4	
73000 Contractual Services	16.0		37.8		37.8	
74000 Supplies and Materials	1.2	2.5	5.0		5.0	
75690 Equipment						
75025 Lands/Buildings		1.1				
77000 Grants, Claims						
78000 Miscellaneous						
TOTAL	33.3	25.1	64.0		64.0	
1002 Federal Receipts						
1004 General Fund						
1007 I-A Receipts						
105 Other: EXXON VALLETT OIL SPILL	33.3	59.9	64.0		64.0	
15 Full-Time						
16 Part-Time			1.0		1.0	
17 Non Permanent	2.0		2.0		2.0	
18 Staff Months			6.6		6.6	

PROJECT DESCRIPTION:
 STUDY TITLE INJURY TO PWS CRABS. THE DIVERSE MARINE HABITATS OF PWS SUPPORT A VARIETY OF CRAB SPECIES. 2 OF THESE, THE BROWN KING CRAB AND DUNGENESS CRAB, CANNOT BE ASSESSED WITH TRAWLS. BROWN KING CRABS, WHICH OCCUR IN VERY DEEP WATERS, CURRENTLY SUPPORT A COMMERCIAL FISHERY. DUNGENESS CRABS, WHICH OCCUR IN MORE SHALLOW WATER, CURRENTLY SUPPORT SUBSISTENCE & SPORT FISHERIES, & HAVE SUPPORTED A COMMERCIAL FISHERY IN THE PAST. CRABS ARE KNOWN TO BE VERY SENSITIVE TO HYDROCARBONS. CRABS ARE KNOWN TO LOSE LEGS, SUFFER EGG LOSS, AND HAVE MOLTING DIFFICULTY AS A RESULT OF HYDROCARBON EXPOSURE. IT IS SUSPECTED THE DUNGENESS CRABS MAY BE PARTICULARLY SUSCEPTIBLE DUE TO THEIR SHALLOW-WATER ECOLOGY.

P2	PROJECT DETAIL
-----------	---------------------------

AGENCY FISH AND GAME

BRU _____

COMPONENT _____

FY 91

Page _____ of _____

Revised Date: _____

9 2601 ASSESSMENT: IMPACT FWD CRABS

OBJECTIVES:

- A. ASSESS THE LEVELS OF HYDROCARBONS IN DUNGENESS CRABS AT FOUR OILED & FOUR NON-OILED SITES IN THE SOUND.
- B. ASSESS THE LEVELS OF HYDROCARBONS IN BROWN KING CRABS AT NINE SITES IN THE SOUND.
- C. FOR BOTH CRAB SPECIES, ASSESS THE INCIDENCE OF LIMB LOSS & ABNORMALITIES IN NEWLY FORMED CRAB SHELLS, AND ASSESS SUCH REPRODUCTIVE FACTORS AS FECUNDITY, EGG LOSS, CONDITION, & DEVELOPMENT; & FOR DUNGENESS CRABS, ASSESS LARVAL PRODUCTION FROM OVIGEROUS FEMALES COLLECTED IN OILED & NON OILED AREAS.
- D. DETERMINE WHETHER THESE OBSERVATIONS DEMONSTRATE ANY ADVERSE CHANGES IN VIABILITY.



ADDITIONAL
EXPLANATION
FORM

AGENCY FISH AND GAME
BRU C.S.I.A.F.
COMPONENT COASTAL MANAGEMENT

FY 91

Page _____ of _____
Revised Date: _____

PROJECT NUMBER: 9 2651	PROJECT TITLE: ASSESS/IMPACT PWS SPOT SHRIMP	STATUTORY AUTHORITY: AS16	LOCATION: DWA CORDOVA
			PROJECT MANAGER: CHARLES TROWBRIDGE
			PHONE: 424-3212

LINE ITEM DETAIL	PRIOR YEAR FY 89 ACTUAL	CURRENT YEAR FY 90 AUTHORIZED	BUDGET YEAR - FY 91			GOVERNOR'S BUDGET
			AGENCY			
			ADJUSTED BASE	INCREMENT/ DECREMENT	AGENCY REQUEST	
71000 Personal Services	1.5	32.5	30.2		30.2	
72000 Travel			1.4		1.4	
73000 Contractual Services	1.0	10.2	12.1		12.1	
74000 Supplies and Materials		9.7	6.1		6.1	
75690 Equipment	10.5					
75025 Lands/Buildings		1.1				
77000 Grants, Claims						
78000 Miscellaneous						
TOTAL		53.5	49.8		49.8	
1002 Federal Receipts						
1004 General Fund						
1007 I-A Receipts						
1051 Other: EXXON VALDEZ OIL SPILL	13.0	53.5	49.8		49.8	
15 Full-Time						
16 Part-Time			1.0		1.0	
17 Non Permanent			2.0		2.0	
18 Staff Months			11.0		11.0	

PROJECT DESCRIPTION:
STUDY TITLE INJURY TO PWS SPOT SHRIMP. IN 1988 THE COMMERCIAL HARVEST OF SPOT SHRIMP IN PWS AMOUNTED TO OVER \$500,000 WHICH WAS APPROXIMATELY ON-THIRD OF THE STATEWIDE TOTAL. SPOT SHRIMP ALSO SUPPORT SUBSISTENCE & PERSONAL USE FISHERIES IN THE SOUND. SPOT SHRIMP ARE RELATIVELY LONG-LIVED (SEVEN TO NINE YEARS) & ARE KNOWN TO BE VERY SENSITIVE TO OIL CONTAMINATION. IMPACTS TO SPOT SHRIMP POPULATIONS MAY OCCUR, SINCE SPOT SHRIMP EGGS (WHICH HATCHED IMMEDIATELY BEFORE THE OIL SPILL) AND EARLY LIFE

STAGES ARE KNOWN TO BE VERY SENSITIVE TO OIL CONTAMINATION.

P2	PROJECT DETAIL
-----------	---------------------------

AGENCY _____
BRU _____
COMPONENT _____

FY 91

Page _____ of _____
Revised Date: _____

9 2051 ASSESS/IMPACT PWS SPOT SHRIMP

OBJECTIVES:

- A. MEASURE HYDROCARBON CONCENTRATIONS IN SPOT SHRIMP FROM OILED AND NON-OILED AREAS.
- B. DETERMINE THE RELATIVE ABUNDANCE OF SPOT SHRIMP IN OILED AND CONTROL AREAS.
- C. ANALYZE EGG FECUNDITY, MORTALITY, AND SUBLETHAL EFFECTS FOR OILED AND NON-OILED AREAS, AND DETERMINE WHETHER THOSE EFFECTS RESULT IN ADVERSE CHANGES IN VIABILITY.



ADDITIONAL
EXPLANATION
FORM

AGENCY FISH AND GAME

BRU _____

COMPONENT _____

FY 91

Page _____ of _____

Revised Date: _____

PROJECT NUMBER: 9 2751	PROJECT TITLE: PWS SHELLFISH/GDFISH TRAWL AS	STATUTORY AUTHORITY: AS16	LOCATION: DWA CORDOVA
			PROJECT MANAGER: WAYNE DONALDSON
			PHONE: 424-3212

LINE ITEM DETAIL	PRIOR YEAR FY 89 ACTUAL	CURRENT YEAR FY 90 AUTHORIZED	BUDGET YEAR - FY 91			GOVERNOR'S BUDGET
			AGENCY			
			ADJUSTED BASE	INCREMENT/ DECREMENT	AGENCY REQUEST	
71000 Personal Services	4.0	89.3	114.7			
72000 Travel	5.8	7.9	4.2		4.2	
73000 Contractual Services	1.2	4.3	205.6		205.6	
74000 Supplies and Materials	2.1	46.8	7.2		7.2	
75690 Equipment						
75025 Lands/Buildings		15.4				
77000 Grants, Claims						
78000 Miscellaneous						
TOTAL	13.7	173.7	331.5		331.5	
1002 Federal Receipts						
1004 General Fund						
1007 I-A Receipts						
1051 Other: EXXON VALDEZ OIL SPILL	13.7	173.7	331.5		331.5	
15 Full-Time	1.0		2.0		2.0	
16 Part-Time						
17 Non Permanent	1.0		1.0		1.0	
18 Staff Months			27.6		27.6	

PROJECT DESCRIPTION:
 STUDY TITLE PWS TRAWL ASSESSMENT. PWS SUPPORTS BOTTOM FISHERIES WORTH SEVERAL MILLION DOLLARS ANNUALLY FOR SPECIES SUCH AS TANNER CRAB, KING CRAB, SIDESTRIPE SHRIMP, HALIBUT, POLLOCK, SABLEFISH, PACIFIC COD, AND OTHERS. A MULTISPECIES STOCK ASSESMENT SURVEY PERMITS ESTIMATION OF ABUNDANCE. A DROP IN ABUNDANCE OF THOSE STOCKS PREVIOUSLY SURVEYED (E.G., TANNER CRAB) WOULD SHOW THAT SUSTAINABLE HARVESTS HAVE DECLINED. DATA FROM THIS STUDY WILL ALLOW DETECTION OF MISSING YEAR-CLASSES CONSISTENT WITH THE TIMING OF THE OIL SPILL. DATA FROM THIS STUDY WILL PERMIT QUANTIFICATION OF ANY HARVEST FOREGONE DUE TO THE OIL SPILL.

P2 PROJECT DETAIL

AGENCY FISH AND GAME
 BRU 244
 COMPONENT FISH STOCK ASSESSMENT

FY 91

Page ____ of ____
 Revised Date: _____

9 2751 PWS SHELLFISH/GDFISH TRAWL A:

OBJECTIVES:

- A. DETERMINE ABUNDANCE OF TANNER CRAB, SIDESTRIPE SHRIMP, HALIBUT, SABLEFISH & OTHER COMMERCIALY IMPORTANT SPECIES.
- B. DETERMINE AGE COMPOSITION FOR PRIMARY SPECIES.
- C. DETERMINE THE INCIDENCE OF ABNORMALITIES IN TISSUES & ORGANS IN FISH & SHELLFISH CAPTURED IN OILED & NON-OILED AREAS & WHETHER SUCH ABNORMALITIES RESULT IN ADVERSE CHANGES IN VIABILITY FOR THE RESOURCE.
- D. DETERMINE THE INCIDENCE OF TAR BALLS IN THE DEMERSA:

ENVIRONMENT & IN-STOMACH OF GROUND FISH CAPTURED IN OILED & NON-OILED AREAS.

FC	ADDITIONAL EXPLANATION FORM
----	--

AGENCY FISH AND GAME

BRU

COMPONENT

FY 91

Page <u> </u> of <u> </u>
Revised Date: <u> </u>

PROJECT NUMBER: 9 2809	PROJECT TITLE: ASSESS/IMPACT LARVAL SHELL/GRD	STATUTORY AUTHORITY: AS16	LOCATION: JBA FAIRBANKS
			PROJECT MANAGER: IRENDA NORCROSS
			PHONE: 474-7631

LINE ITEM DETAIL	PRIOR YEAR FY 89 ACTUAL	CURRENT YEAR FY 90 AUTHORIZED	BUDGET YEAR - FY 91			
			AGENCY			GOVERNOR'S BUDGET
			ADJUSTED BASE	INCREMENT/ DECREMENT	AGENCY REQUEST	
71000 Personal Services		222.4	441.0		441.0	
72000 Travel		30.1	47.6		47.6	
73000 Contractual Services		541.0	937.2		937.2	
74000 Supplies and Materials		15.8	20.5		20.5	
75690 Equipment						
75025 Lands/Buildings		10.5				
77000 Grants, Claims						
78000 Miscellaneous						
TOTAL		819.8	1446.9		1446.9	
1002 Federal Receipts						
1004 General Fund						
1007 I-A Receipts						
107 Other: EXXON VALDEZ OIL SPILL		840.1	1446.9		1446.9	
15 Full-Time						
16 Part-Time						
17 Non Permanent						
18 Staff Months						

PROJECT DESCRIPTION:
 STUDY TITLE INJURY TO LARVAL FISH IN PWS. LARVAE OF POLLOCK, HALIBUT, PACIFIC COD, BLACK COD, HERRING, FLATHEAD SOLE, STARRY FLOUNDER, YELLOWFIN SOLE, TANNER CRAB, SPOT SHRIMP, PINK SHRIMP AND KING CRAB ARE VULNERABLE TO OIL CONTAMINATION. ALL OF THESE SPECIES ARE IMPORTANT TO COMMERCIAL, SPORT, SUBSISTENCE, AND PERSONAL USE FISHERIES. LARVAE OF THESE SPECIES MAY HAVE BEEN PRESENT IN PWS AT THE TIME OF THE SPILL AND MAY HAVE BEEN AFFECTED BY HYDROCARBONS KNOWN TO LOW CONCENTRATIONS, IN THE WATER COLUMN WILL KILL LARVAE AFTER THE PRINCIPAL SLICK HAS PASSED. THE POSITION IN THE WATER COLUMN OF MANY OF THESE SPECIES IS UNKNOWN. ALSO, ABUNDANCE OF SOME OF THESE SPECIES CAN BE ASSESSED ONLY AT THE LARVAL STAGE IN THEIR LIFE HISTORY THIS IS AN RSA WITH THE UNIVERSITY OF ALASKA.

P2	PROJECT DETAIL
-----------	---------------------------

AGENCY _____
 BRU _____
 COMPONENT _____

FY 91

Page _____ of _____
 Revised Date: _____

9 2000 ASSESS/IMPACT LARVAL SHELL/GRD

OBJECTIVES:

- A. DETERMINE THE SPATIAL & TEMPORAL PRESENCE OF LARVAL FINFISH & SHELLFISH IN THE SOUND.
- B. DETERMINE LARVAL DISTRIBUTION OF FINFISH & SHELLFISH IN RELATION TO DISTRIBUTION OF HYDROCARBONS IN THE SOUND.
- C. ESTIMATE LOSS OF LARVAL FINFISH & SHELLFISH PRODUCTION DURING 1989 AS A RESULT OF THE OIL SPILL WITH ASSISTANCE FROM LITERATURE DATA ON TOXICITY.

P2

ADDITIONAL
EXPLANATION
FORM

AGENCY FISH AND GAME
BRU G.S.I.A.F.
COMPONENT ENVIRONMENTAL ASSESSMENT

FY 91

Page _____ of _____

Revised Date: _____

285 UNDERSEA OBSERVATION/BENTHIC

OBJECTIVES:

- A. THROUGH DIRECT OBSERVATION, IDENTIFY APPROPRIATE SAMPLE AREAS FOR THE BROWN KING CRAB, SPOT SHRIMP, AND ROCKFISH/HALIBUT STUDIES.
- B. DIRECT SELECTION OF SPECIFIC SITES WITHIN OILED & CONTROL AREAS FOR PAIRWISE EVALUATION.
- C. PROVIDE DIRECT SUPPORT TO THE ROCKFISH INJURY ASSESSEMENT STUDY IN RESURRECTION BAY.



ADDITIONAL
EXPLANATION
FORM

AGENCY _____

FISH AND GAME

BRU _____

U.S.I.A.R.

COMPONENT _____

ROCKFISH ASSESSEMENT

FY 91

Page _____ of _____

Revised Date: _____

PROJECT NUMBER: 9 2952	PROJECT TITLE: ASSESS ROCKFISH, HAL, LINGCOD	STATUTORY AUTHORITY: AS16	LOCATION: EBA ANCHORAGE
			PROJECT MANAGER: KELLY HEPLER PHONE: 267-2218

LINE ITEM DETAIL	PRIOR YEAR FY 89 ACTUAL	CURRENT YEAR FY 90 AUTHORIZED	BUDGET YEAR - FY 91			GOVERNOR'S BUDGET
			AGENCY		AGENCY REQUEST	
			ADJUSTED BASE	INCREMENT/ DECREMENT		
71000 Personal Services		26.2	8.8		8.8	
72000 Travel	1.1	7.5	0.8		0.8	
73000 Contractual Services	17.2	28.4	15.0		15.0	
74000 Supplies and Materials	3.7	7.3	0.8		0.8	
75690 Equipment						
75025 Lands/Buildings	2.6					
77000 Grants, Claims						
78000 Miscellaneous						
TOTAL	24.6	69.4	25.4		25.4	
1002 Federal Receipts						
1004 General Fund						
1007 I-A Receipts						
105 Other: EXAM. VALDEZ OIL SPILL	2.6	69.4	25.4		25.4	
15 Full-Time						
16 Part-Time			1.0		1.0	
17 Non Permanent			1.0		1.0	
18 Staff Months			4.0		4.0	

PROJECT DESCRIPTION:

STUDY TITLE INJURY TO ROCKFISH, HALBUT, & LINGCOD ALONG THE LOWER KENAI PENINSULA. THE RECREATIONAL FISHERIES FOR HALIBUT BASED IN HOMER & FOR HALIBUT, ROCKFISH, & LINGCOD BASED IN SEWARD ARE THE LARGEST OF THEIR KIND IN ALASKA. THESE SPECIES ARE ALSO HARVESTED BY COMMERCIAL & SUBSISTENCE FISHERMAN. ROCK-FISH IN THESE FISHERIES ARE SEMI-PELAGIC & ASSOCIATED WITH REEFS & PINNACLES. LINGCOD ARE BENTHIC, SEDENTARY, & ASSOCIATED WITH REEFS. HALIBUT ARE BENTHIC & MIGRATORY. OIL CONTAMINATION

OF REEFS COULD KILL THESE FISH OUTRIGHT OR CONTINUE TO CHRONICALLY TAIN THEM DUE TO PERSISTENCE OF OIL IN THE SUBSTRATE OR IN THE FOOD WEB.

P2	PROJECT DETAIL
-----------	---------------------------

AGENCY FISH AND GAME

BRU _____

COMPONENT _____

FY 91

Page _____ of _____

Revised Date: _____

PROJECT NUMBER: 9 3011	PROJECT TITLE: SHELL/GRD OUTSIDE PWS RIV	STATUTORY AUTHORITY: AS16	LOCATION: CAA KODIAK
			PROJECT MANAGER: PHONE: BILL NIPPES 486-4791

LINE ITEM DETAIL	PRIOR YEAR FY 89 ACTUAL	CURRENT YEAR FY 90 AUTHORIZED	BUDGET YEAR - FY91			
			AGENCY			GOVERNOR'S BUDGET
			ADJUSTED BASE	INCREMENT/ DECREMENT	AGENCY REQUEST	
71000 Personal Services						
72000 Travel	0.7	2.9				
73000 Contractual Services						
74000 Supplies and Materials						
75690 Equipment						
75025 Lands/Buildings						
77000 Grants, Claims						
78000 Miscellaneous						
TOTAL	0.7	2.9				
1002 Federal Receipts						
1004 General Fund						
1007 I-A Receipts						
Other: EXXON VALDEZ OIL SPILL	0.7	205.0				
15 Full-Time						
16 Part-Time						
17 Non Permanent						
18 Staff Months						

PROJECT DESCRIPTION:
 STUDY TITLE SHELLFISH & GROUND FISH TRAWL ASSESSMENT OUTSIDE PWS. IN LCI, SHELKOF STRAIT, WATERS OFF KODIAK ISLAND, & AK PENINSULA BAYS, BOTH SEDIMENTS & PREY ITEMS OF GROUND FISH & CRAB FISHERIES YIELD MULTI-MILLIONS OF DOLLARS ANNUALLY FOR SPECIES SUCH AS TANNER CRAB, RED KING CRAB, SHRIMP, HALIBUT, POLLOCK, SABLE FISH, PACIFIC COD, FLATFISH, & OTHERS. A MULTI-SPECIES STOCK ASSESSMENT PERMITS ESTIMATION OF ABUNDANCE. DECREASES IN ABUNDANCE OF THOSE STOCKS PREVIOUSLY SURVEYED

WOULD SHOW THAT SUSTAINABLE HARVESTS HAVE DECLINED. DATA FROM THIS PROJECT WILL ALLOW DETECTION OF REDUCED YEAR-CLASS STRENGTH CONSISTENT WITH THE TIMING OF THE OIL SPILL. DATA FROM THIS PROJECT WILL PERMIT QUANTIFICATION OF ANY HARVEST FOREGON DUE TO THE OIL SPILL.

P2 PROJECT DETAIL

AGENCY FISH AND GAME
 BRU _____
 COMPONENT WILDLIFE ASSESSMENT

FY 91

Page _____ of _____
 Revised Date: _____

