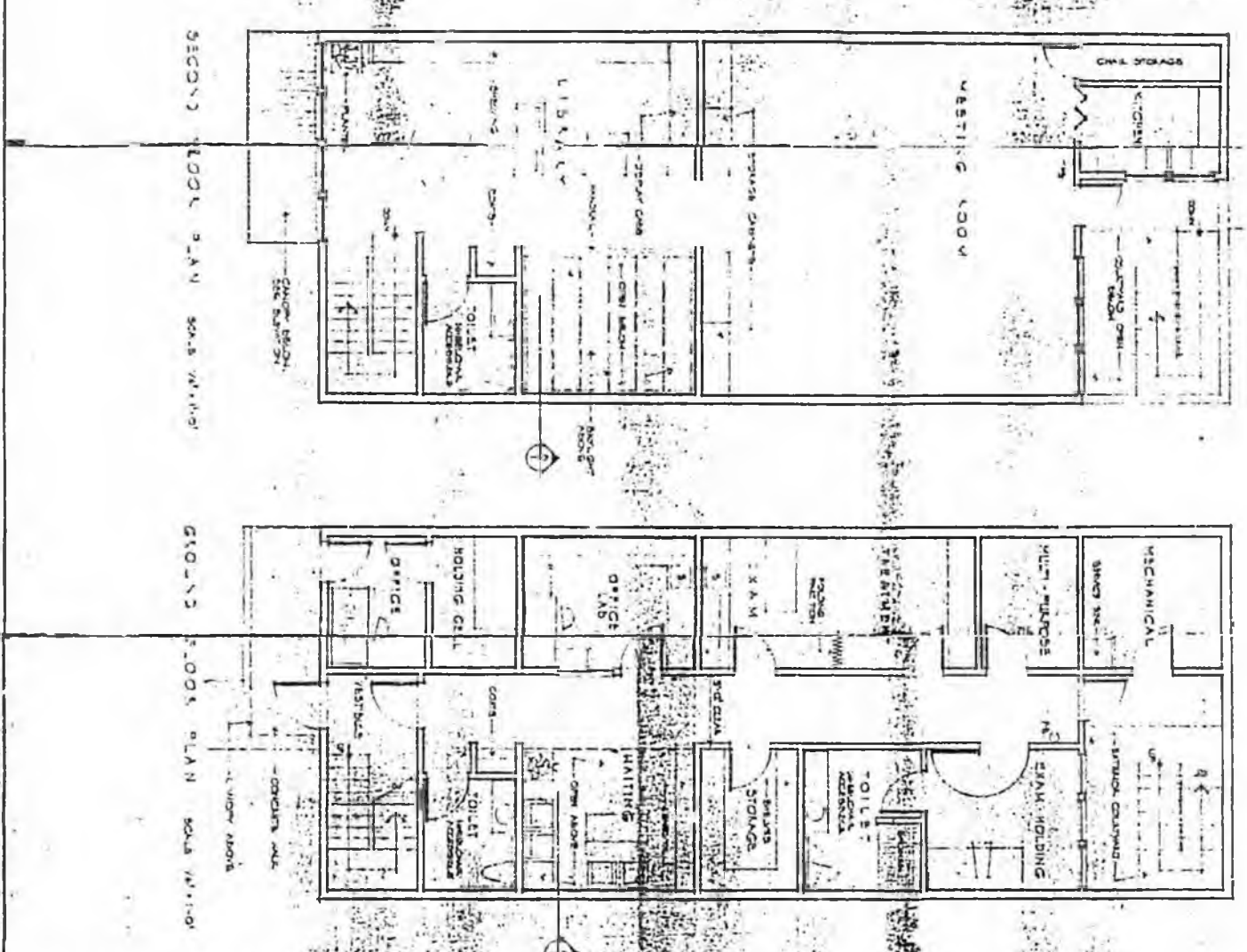
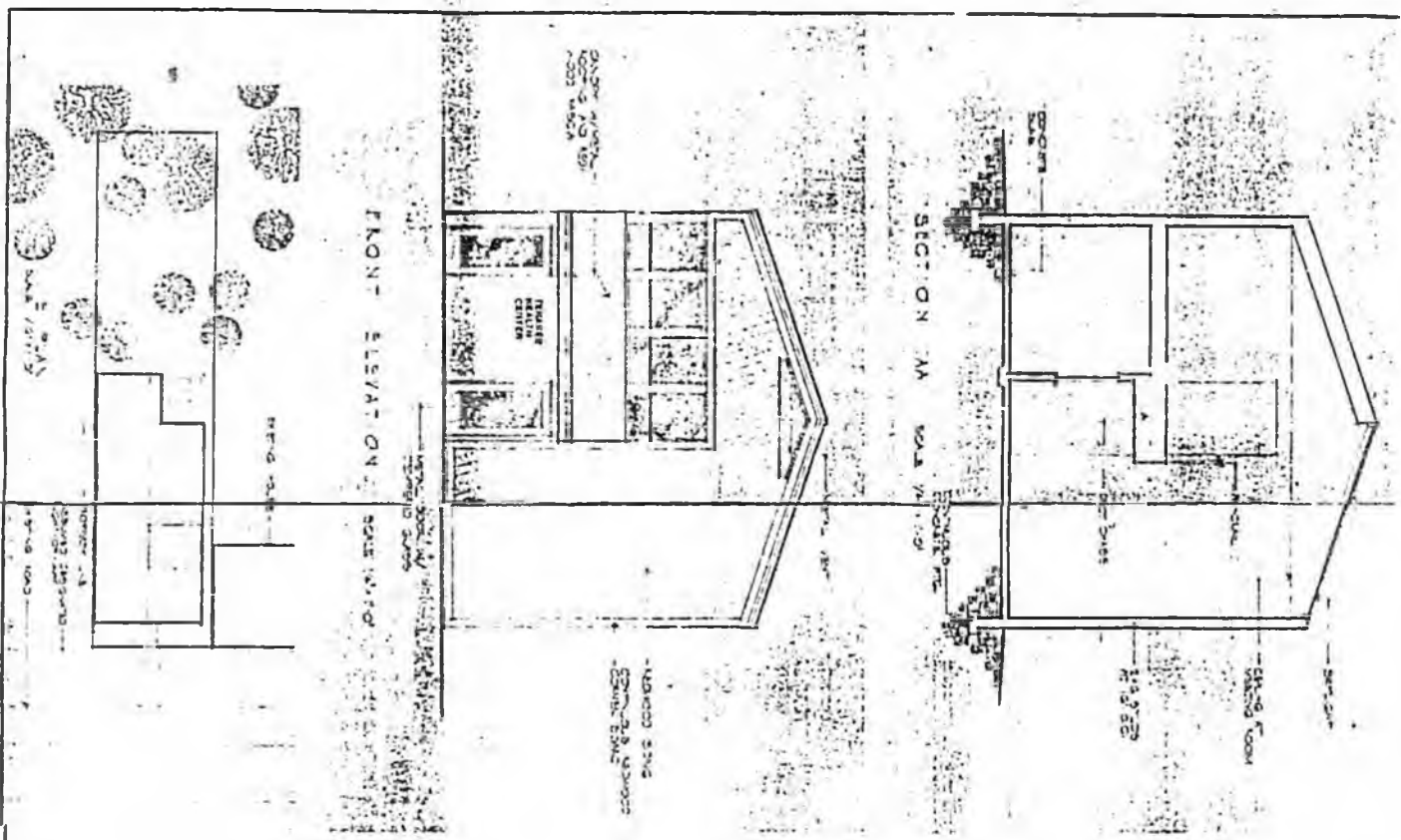
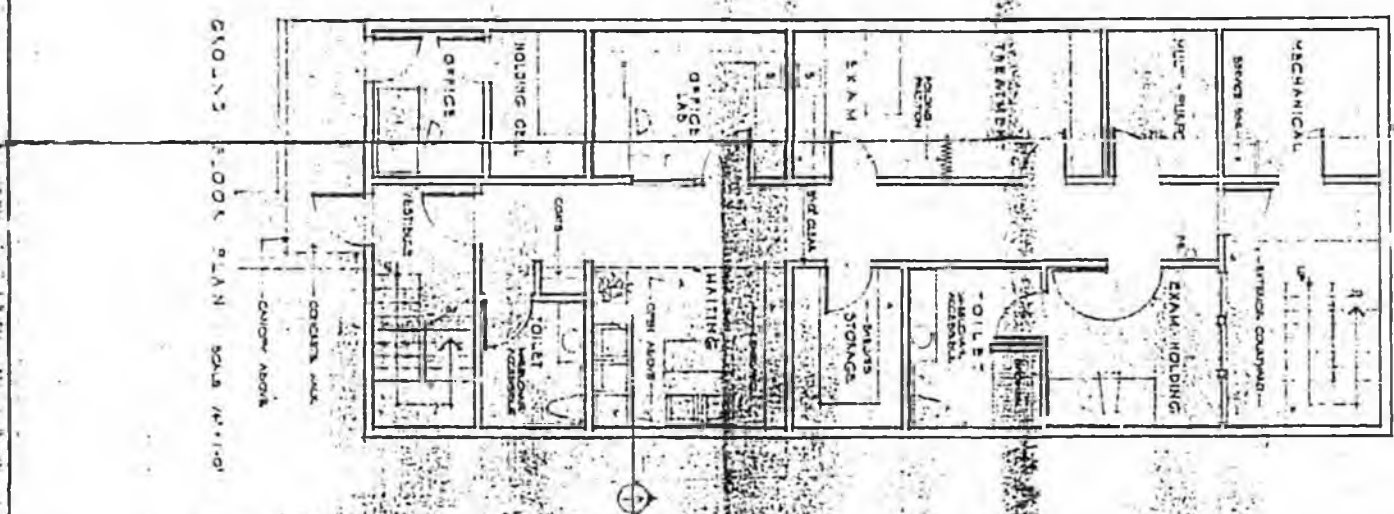
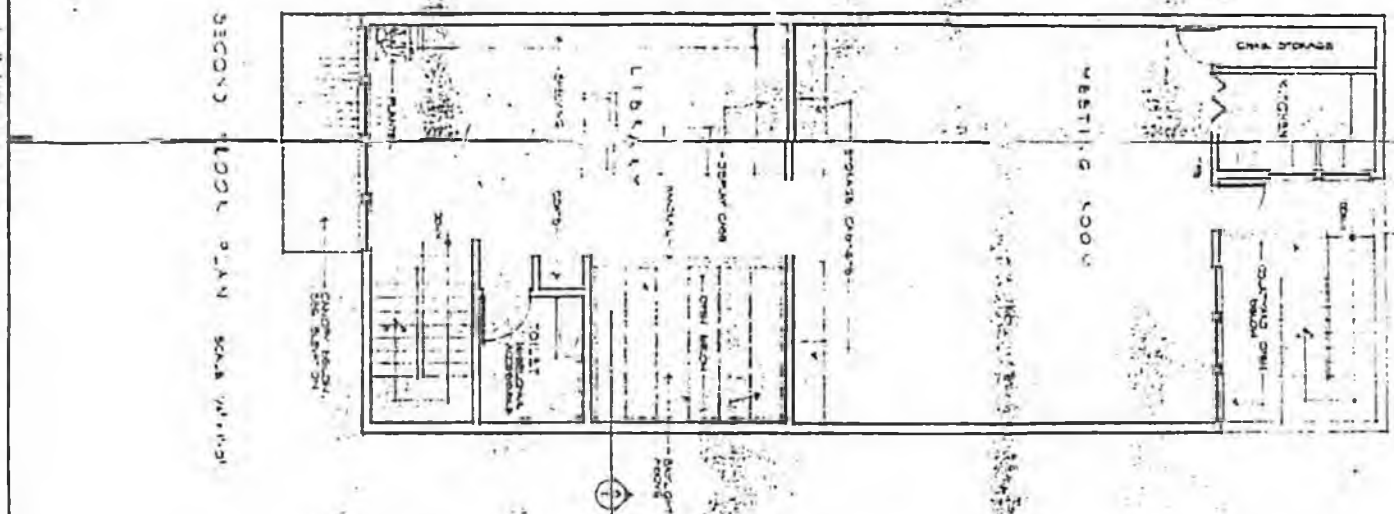
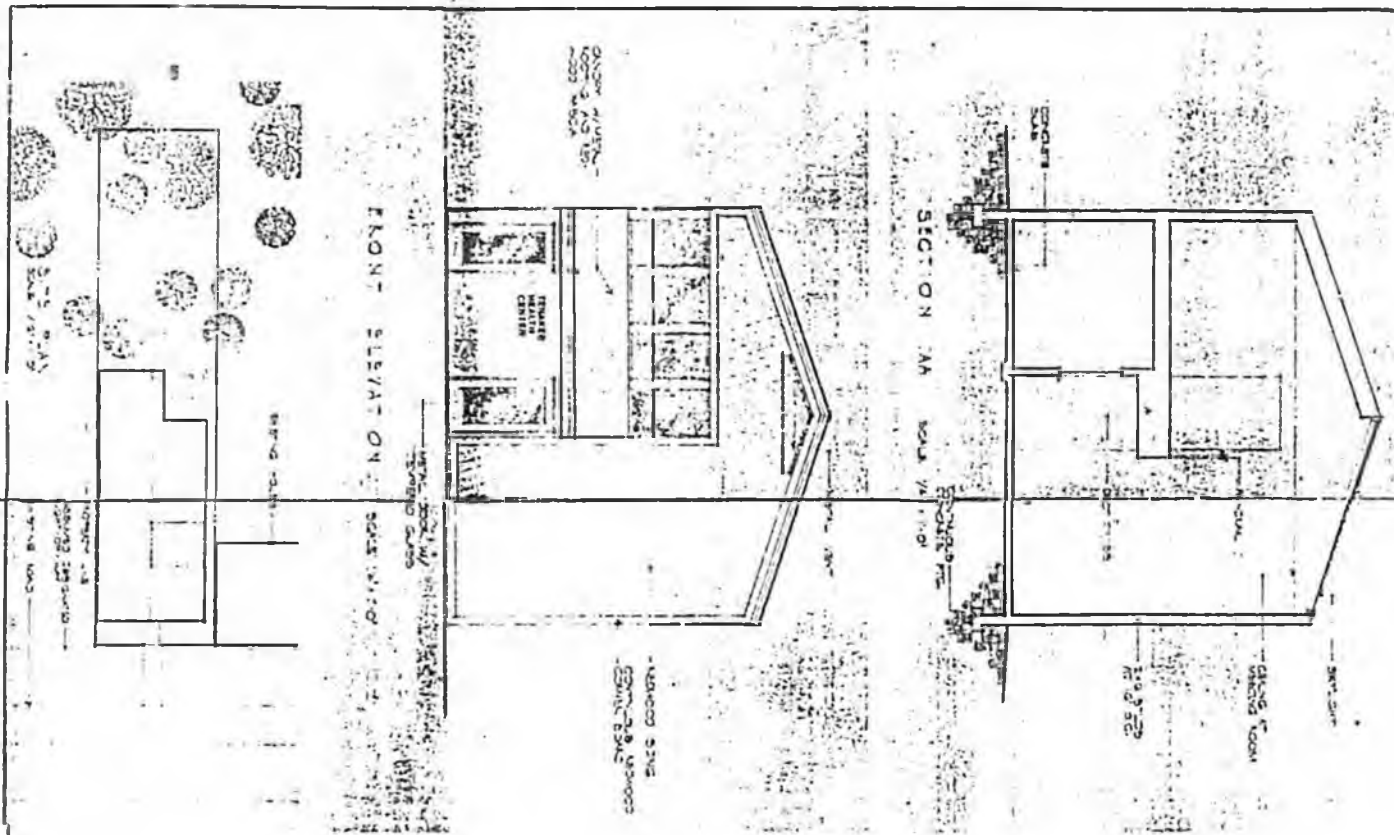


LEG. FINANCE - BILLS 1979 - 1980 1198

HB 957 cont., thru HB 959 198



Date: 1/15/00 Drawn by: FT Check by: FT	SCHEMATIC DESIGN TENAKEE HEALTH CENTER TENAKEE BRIDGE, ALASKA	LINN A. FORREST ARCHITECTS AIA 800 GLACIER AVE. SUITE A JUNEAU, ALASKA	
---	---	---	--

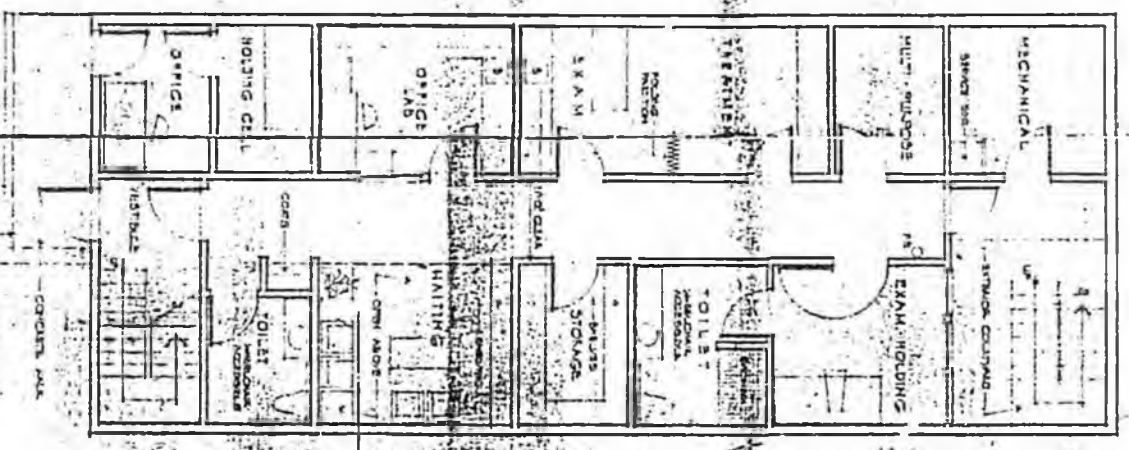
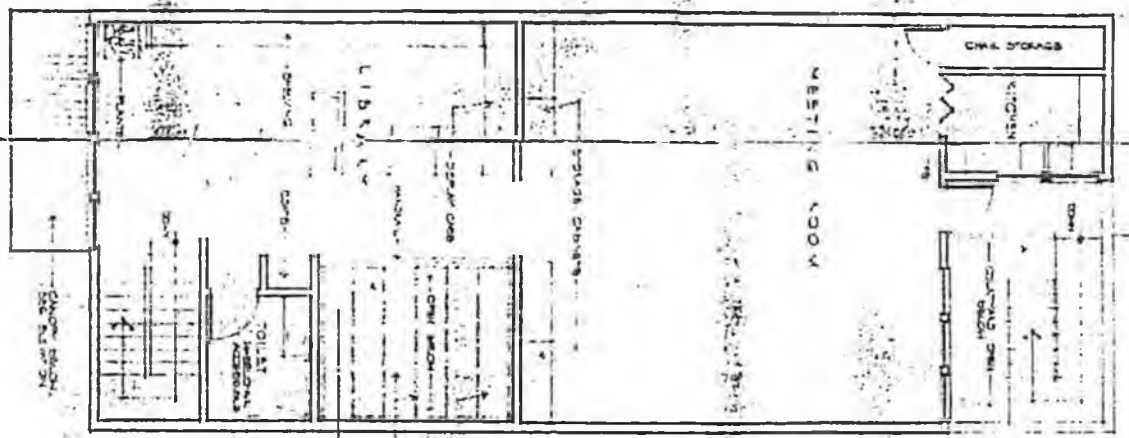
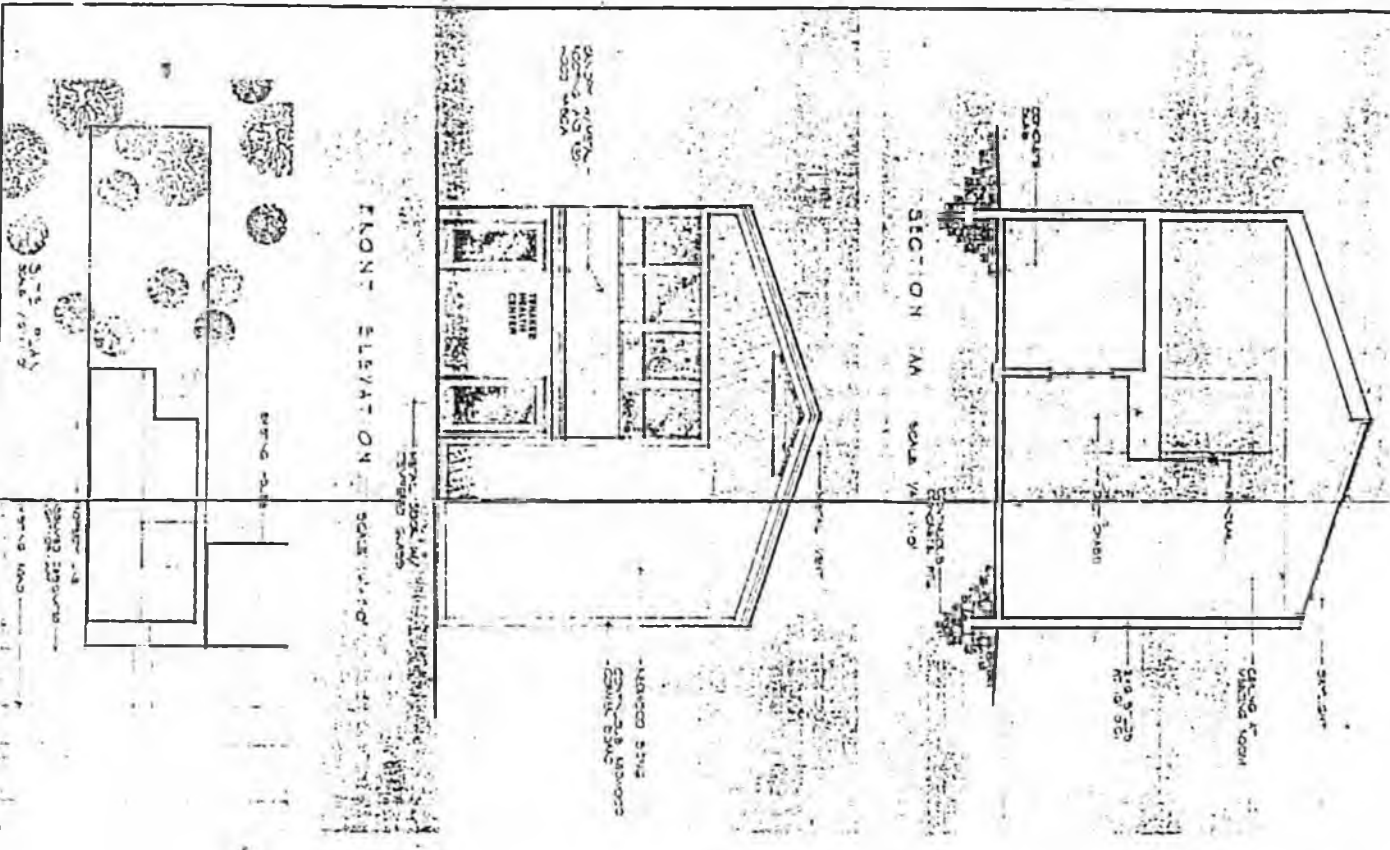


DATE: 11/15/00
 DRAWN BY: [Signature]
 CHECKED BY: [Signature]

SCHEMATIC DESIGN
TENAKES HEALTH CENTER
 TENAKES SPRING, ALASKA

LINN A. FORREST ARCHITECTS AIA
 800 GLACIER AVE. SUITE A JUNEAU, ALASKA

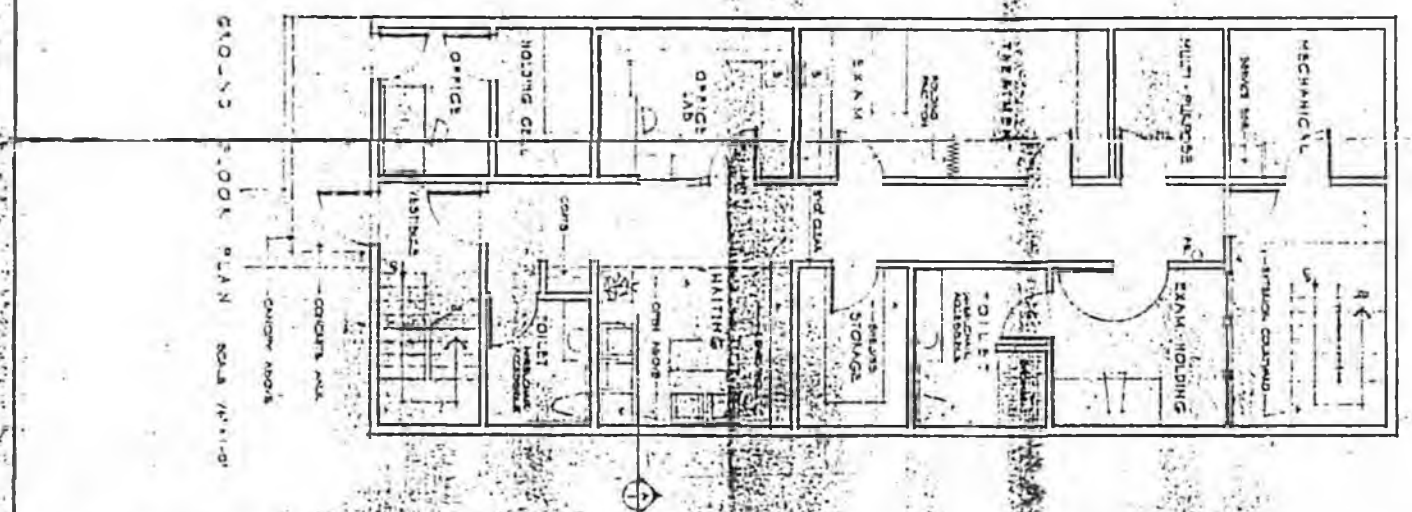
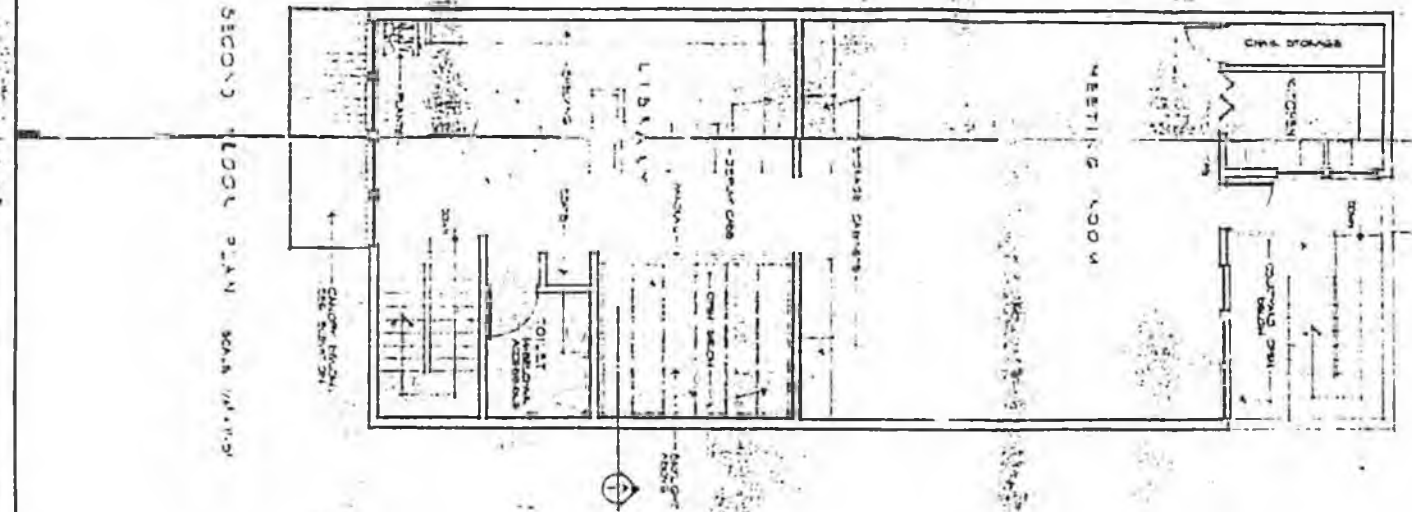
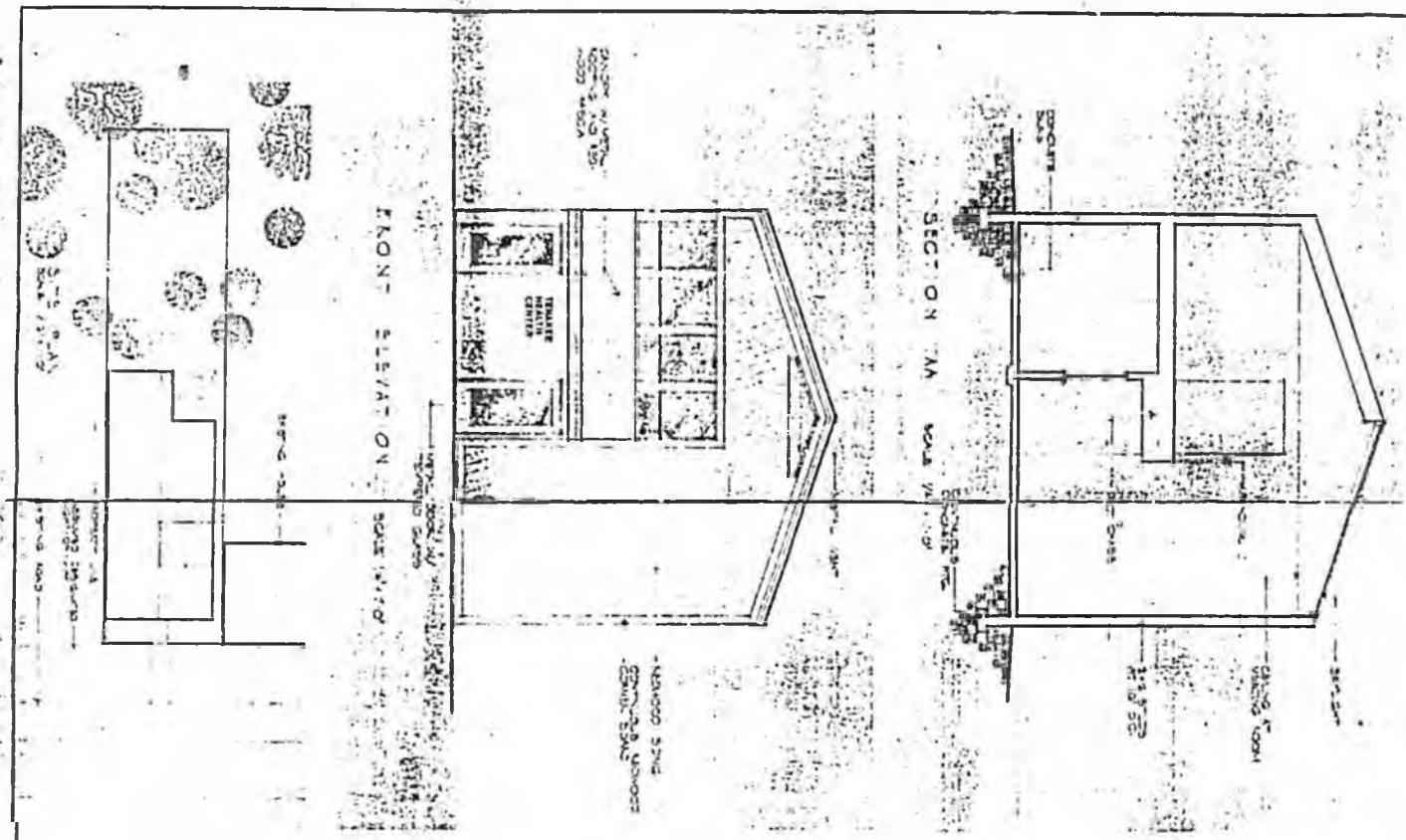




DATE: 11-8-80
 DRAWN BY: [Signature]
 CHECKED BY: [Signature]

SCHEMATIC DESIGN
 TENAKEE HEALTH CENTER
 TENAKEE DRUGO, ALASKA

LINN A. FORREST ARCHITECTS AIA.
 600 GLACIER AVE. SUITE A
 JUNEAU, ALASKA



SCHEMATIC DESIGN

TENAKEE HEALTH CENTER

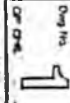
TENAKEE BRIDGE, ALASKA

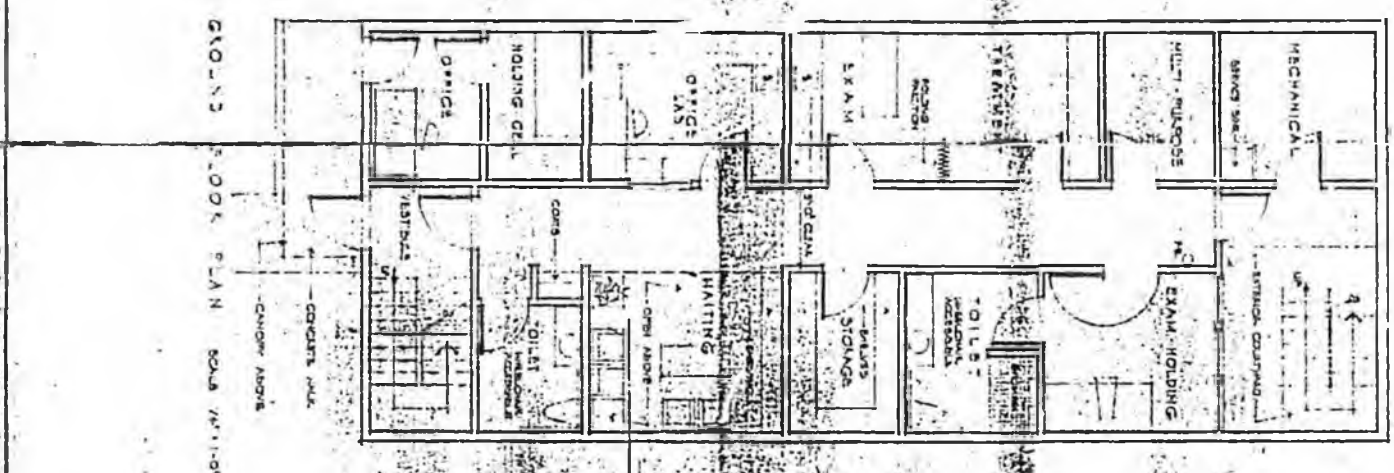
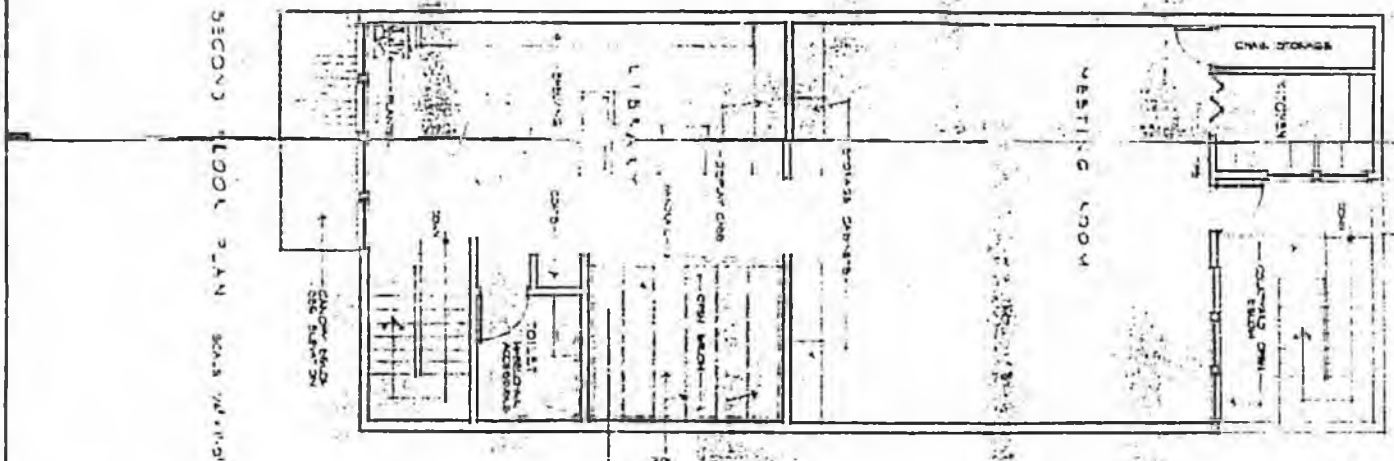
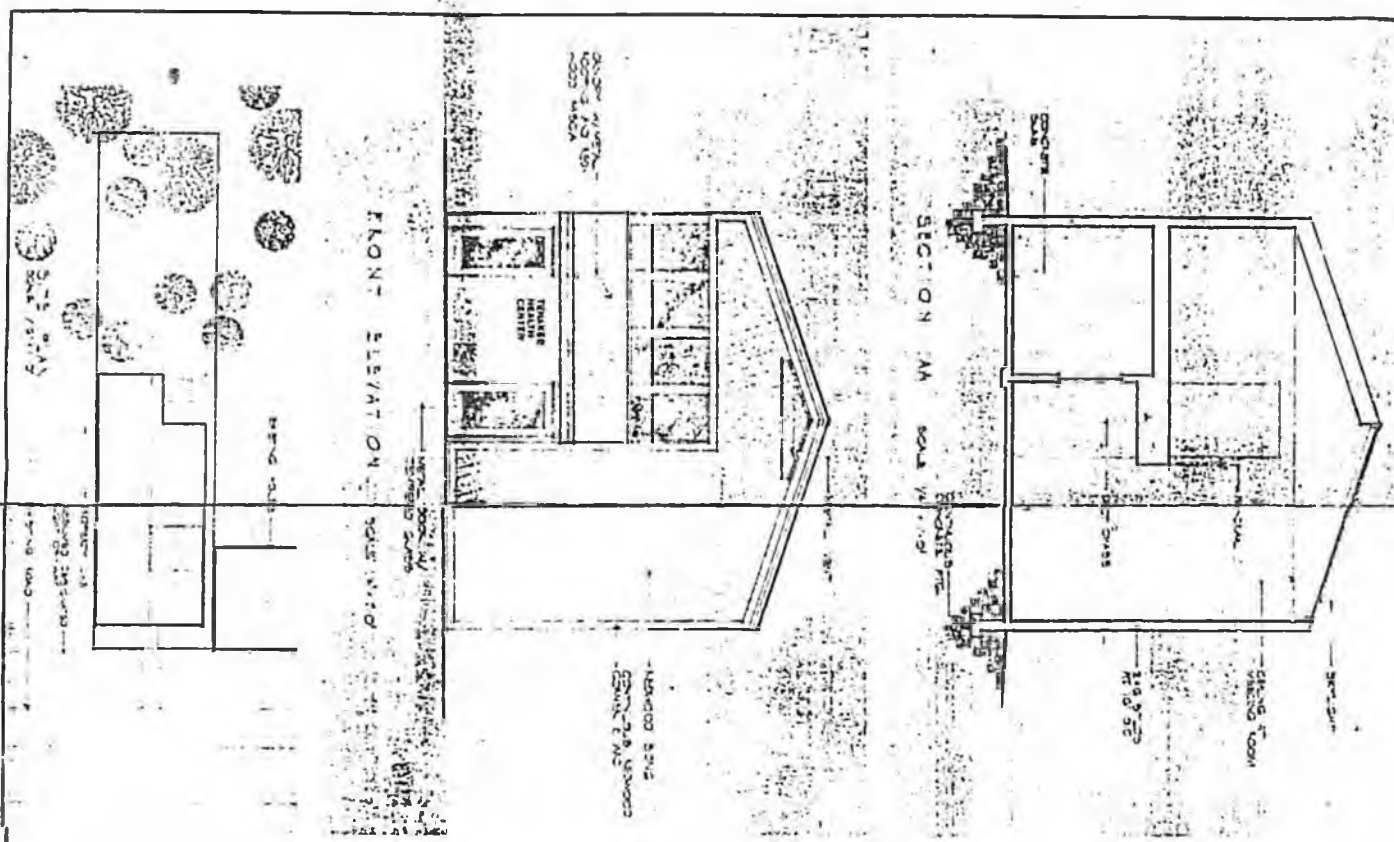
LINN A. FORREST ARCHITECTS AIA

800 GLACIER AVE. SUITE A

JUNEAU, ALASKA

DATE	1-13-70
DRW	FF
CHK	FF
APP	FF



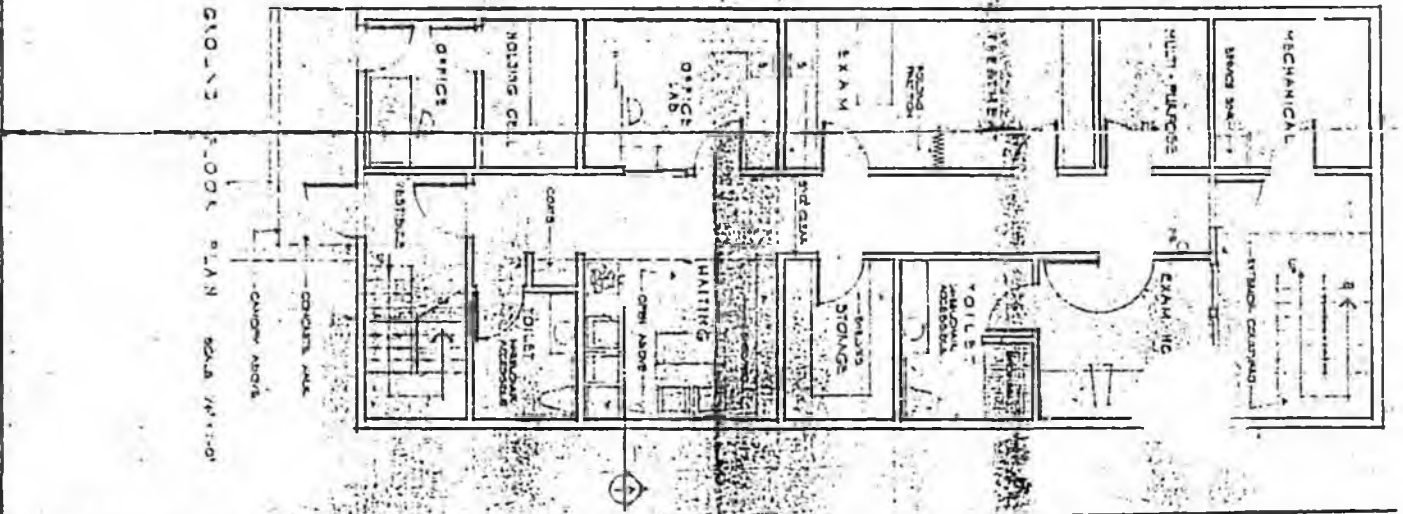
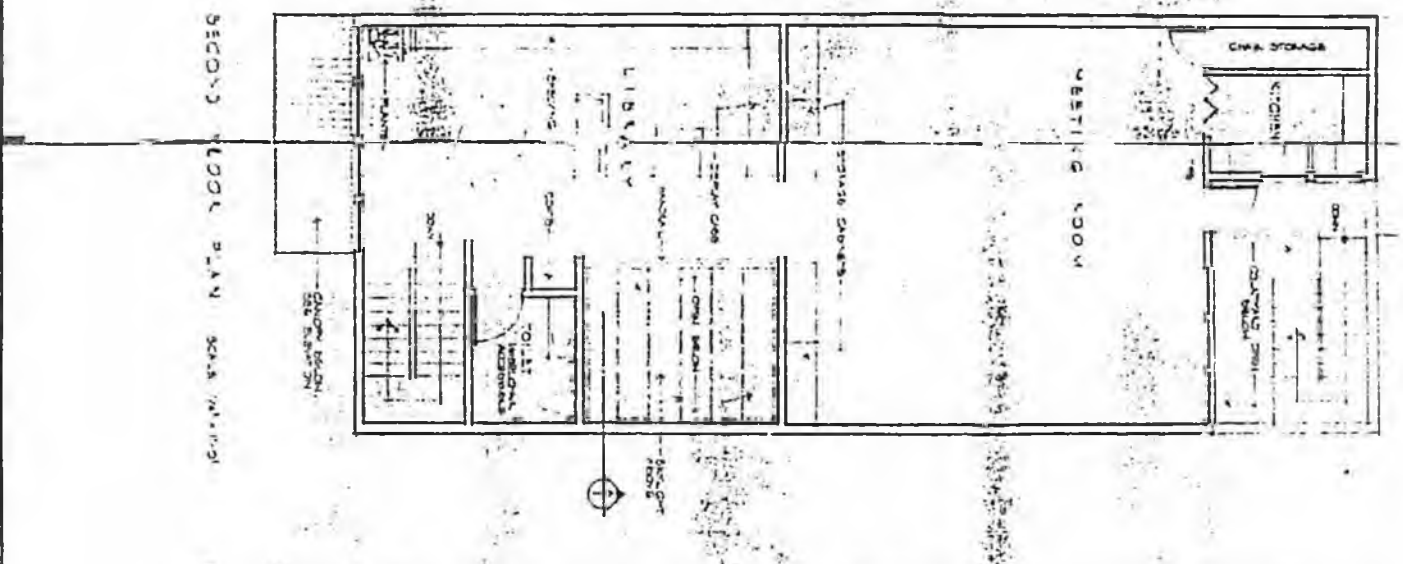
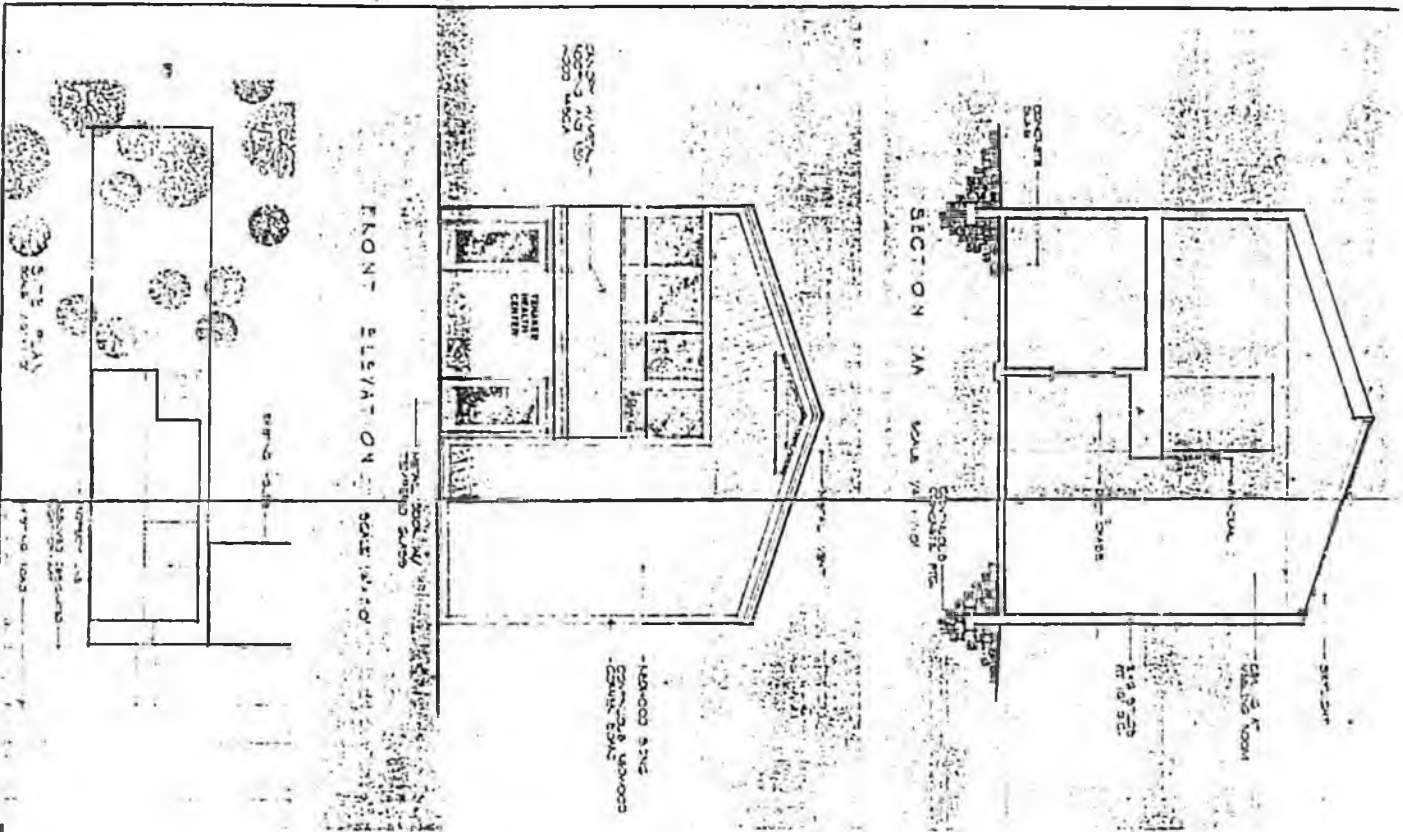


SCHEMATIC DESIGN
 TENAKEE HEALTH CENTER
 TENAKEE SPRING, ALASKA

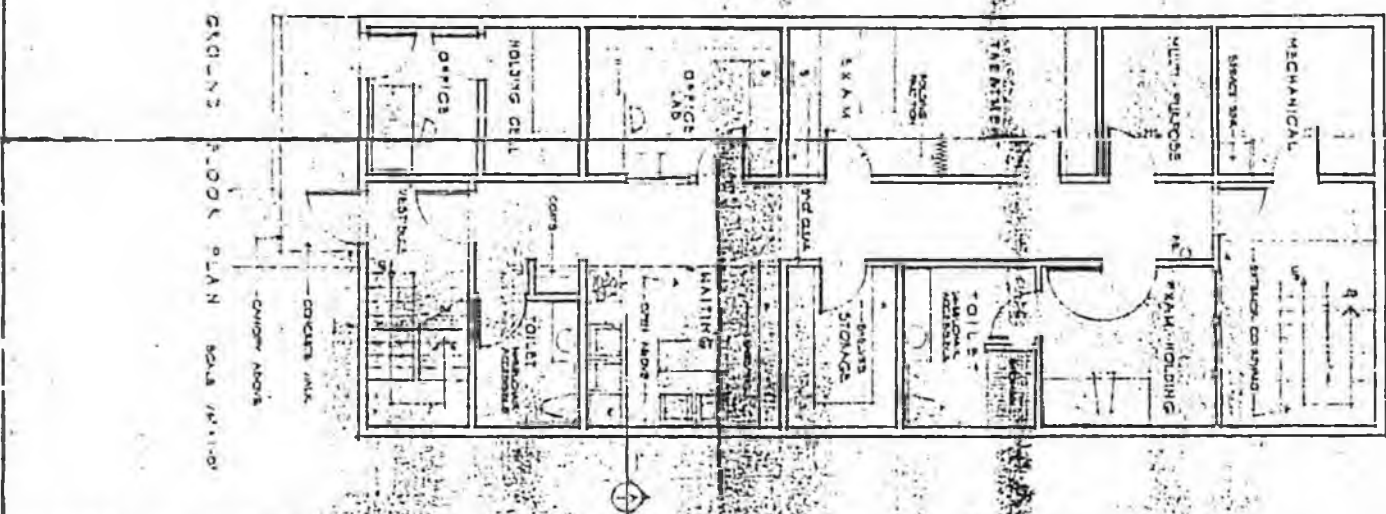
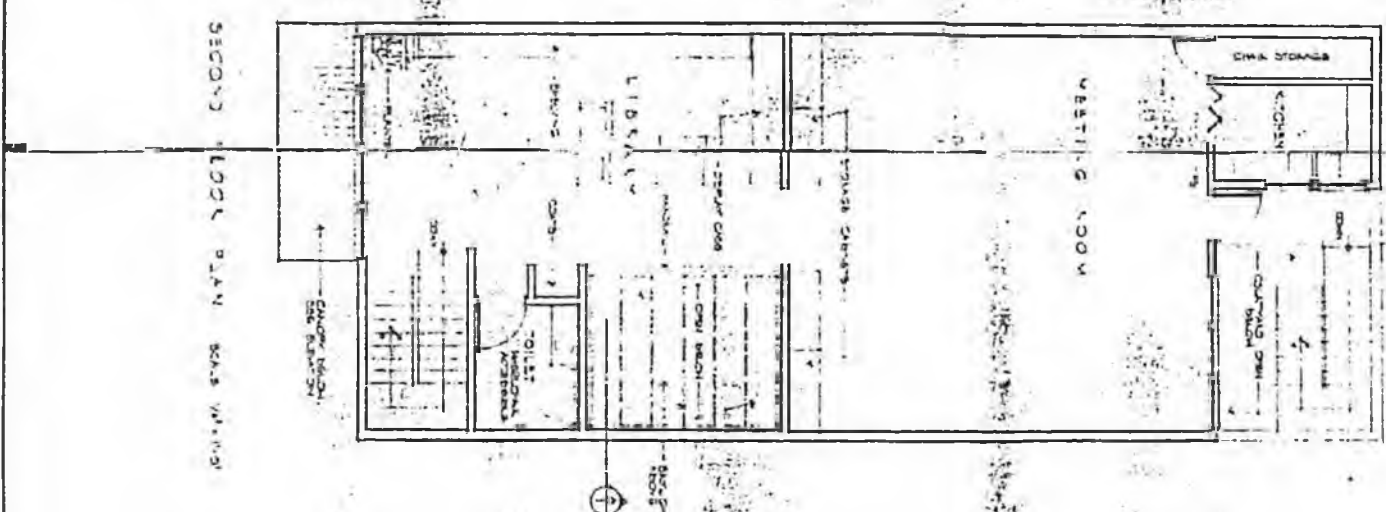
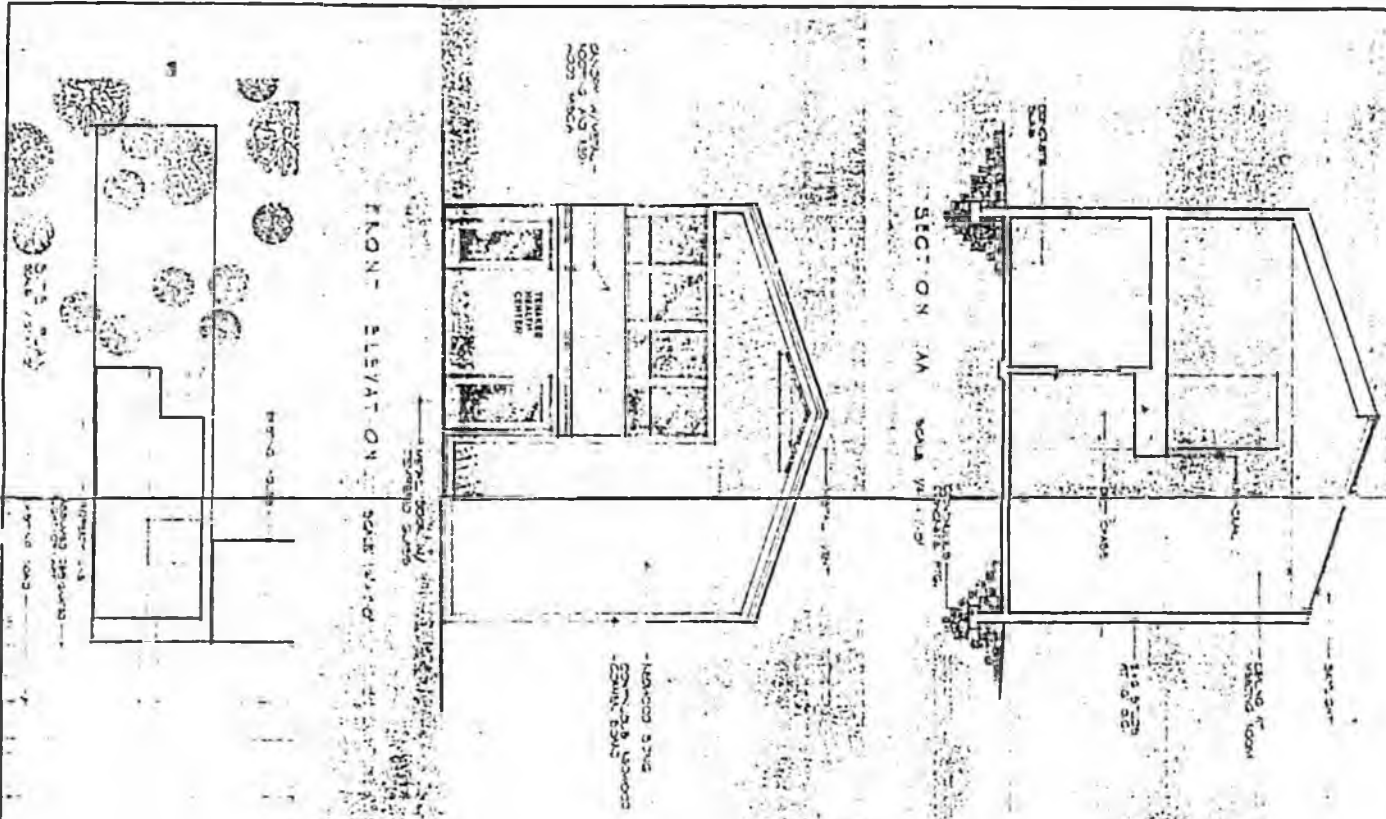
LINN A. FORREST ARCHITECTS AIA
 800 GLACIER AVE. SUITE A JUNEAU, ALASKA



DATE 1-15-80
 DRAWN BY
 CHECKED BY
 PROJECT NO.



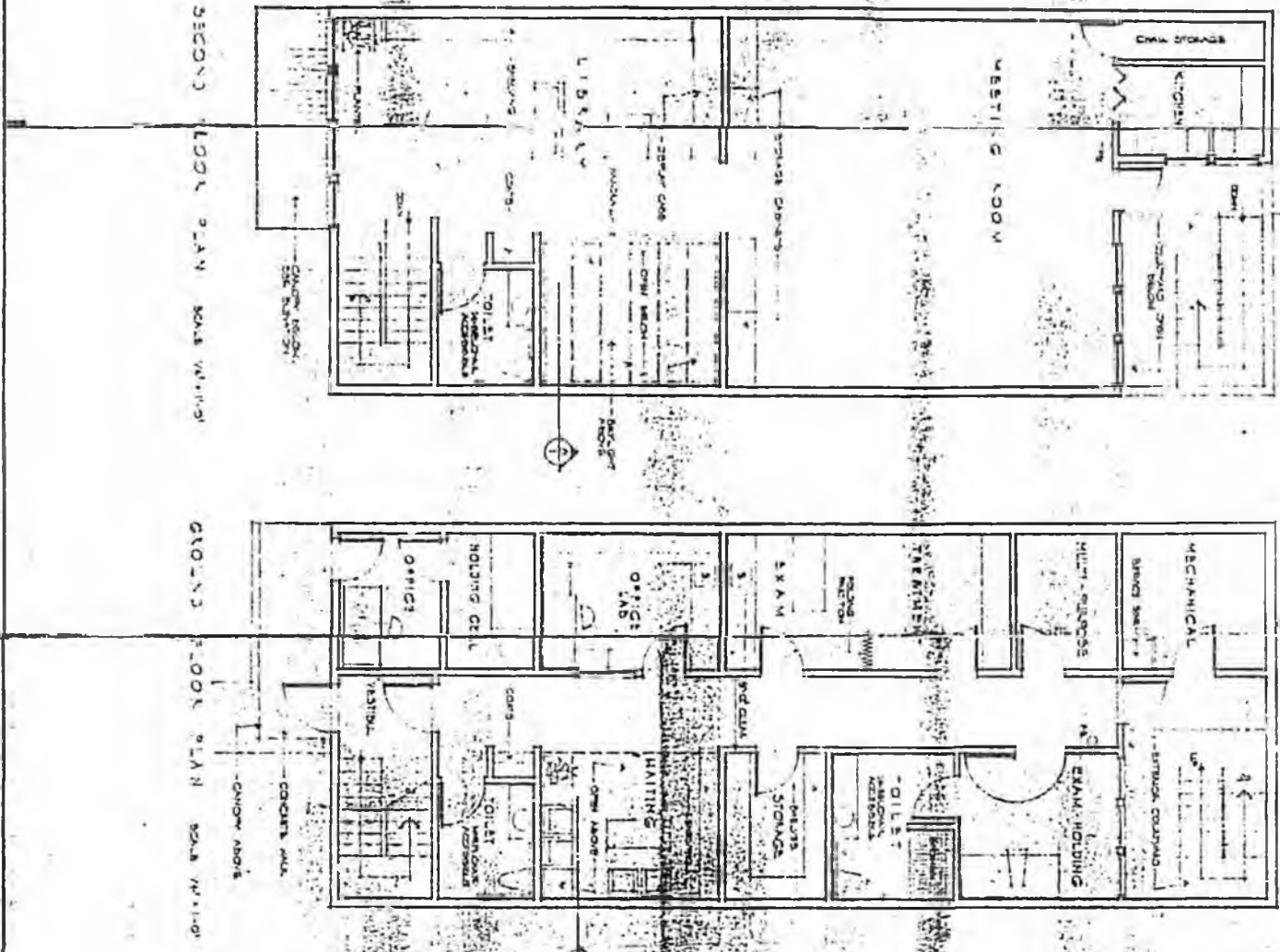
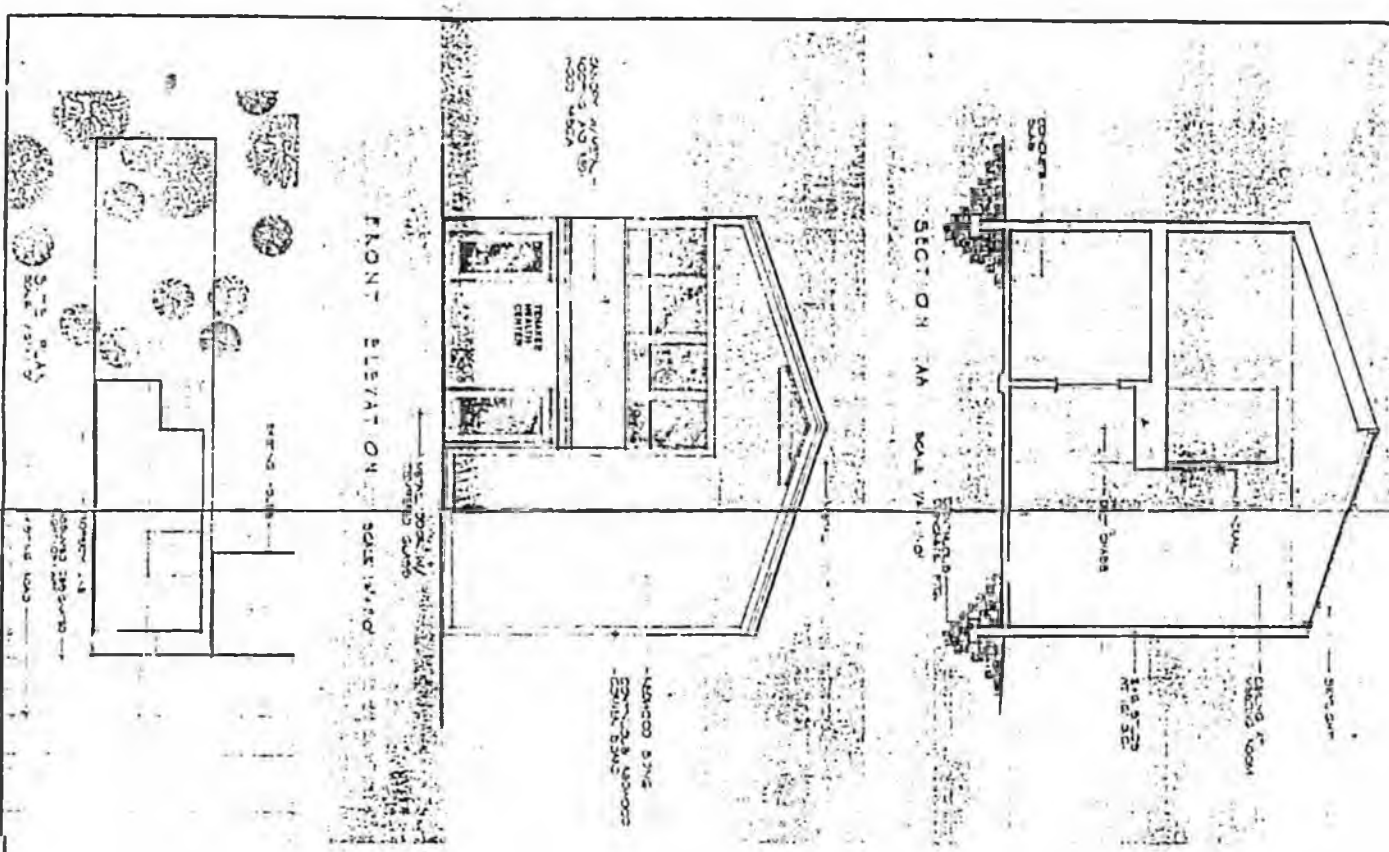
Date 1-15-00 Drawn TT Check TT Title TT Scale TT	SCHEMATIC DESIGN TENAKEE HEALTH CENTER TENAKEE SPRING, ALASKA	LINN A. FORREST ARCHITECTS AIA. 800 GLACIER AVE. SUITE A JUNEAU, ALASKA	
--	--	--	--



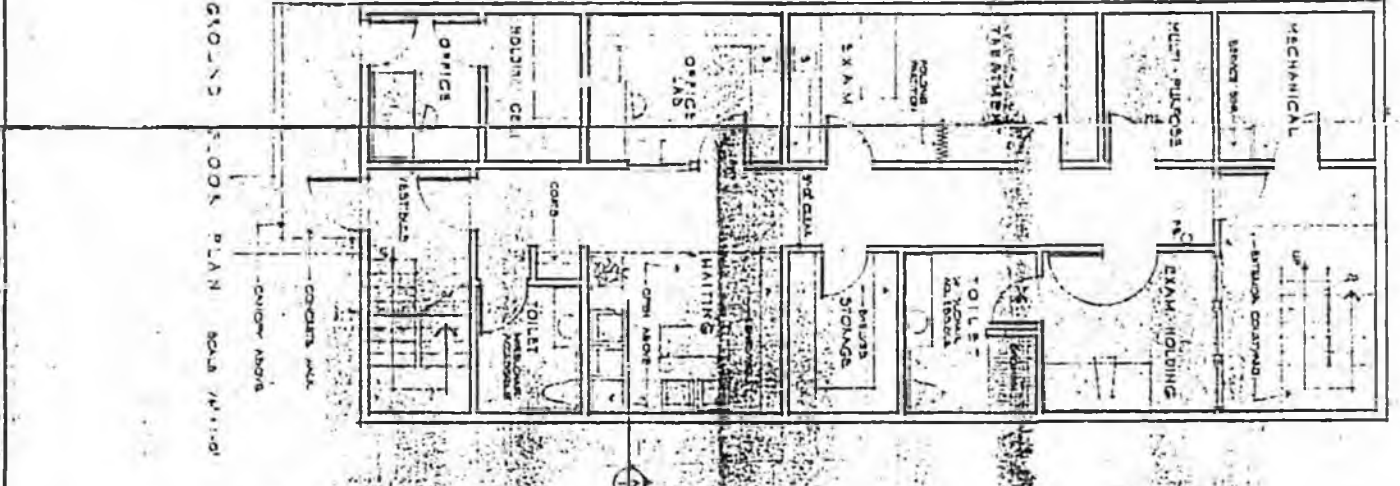
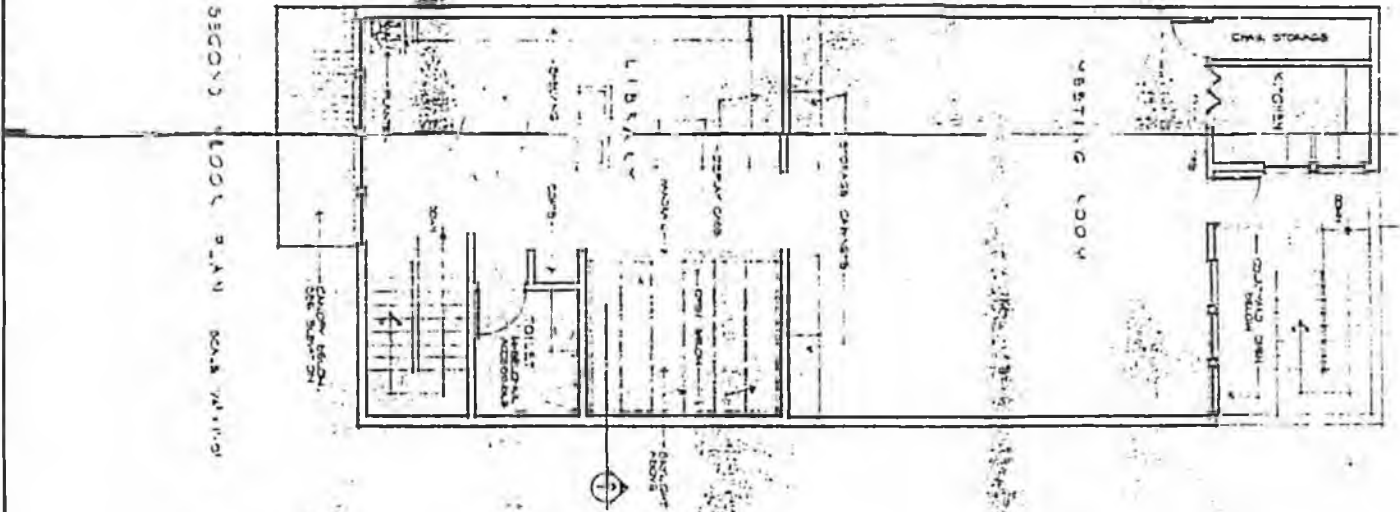
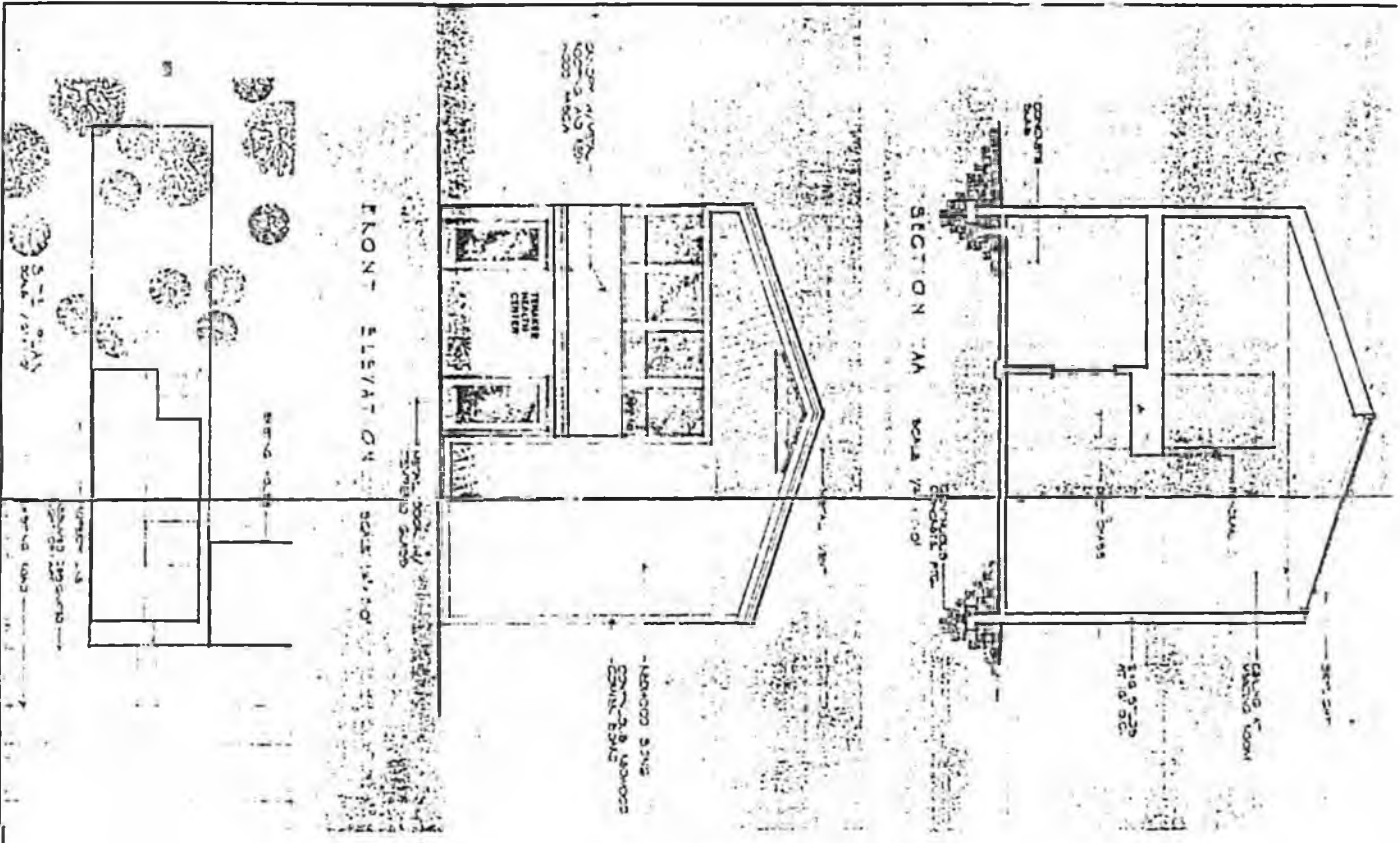
SCHEMATIC DESIGN
 TENAKEE HEALTH CENTER
 TENAKEE SPRING, ALASKA

LINN A. FORREST ARCHITECTS AIA
 800 GLACIER AVE. SUITE 4 JUNEAU, ALASKA

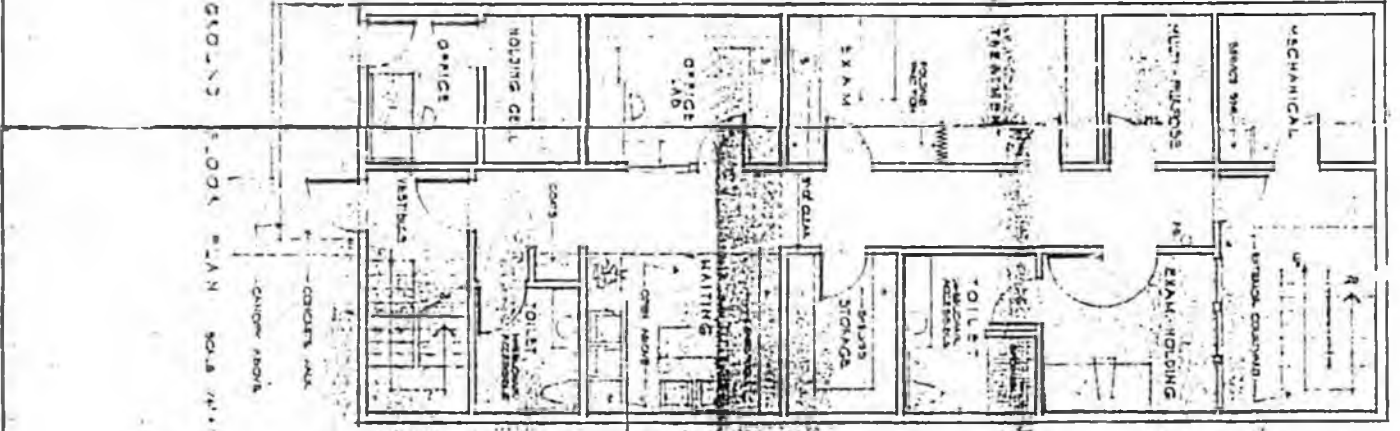
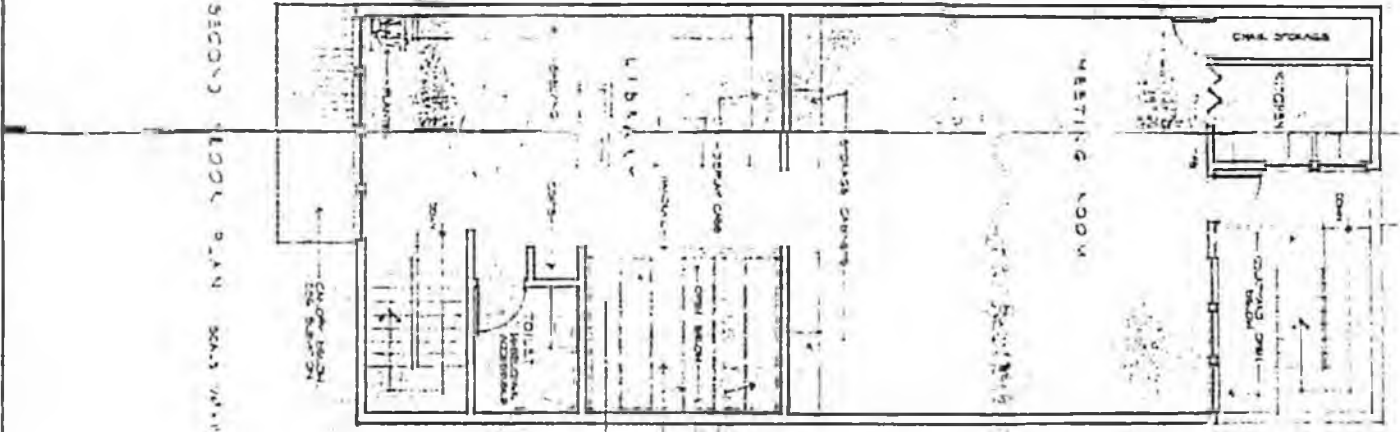
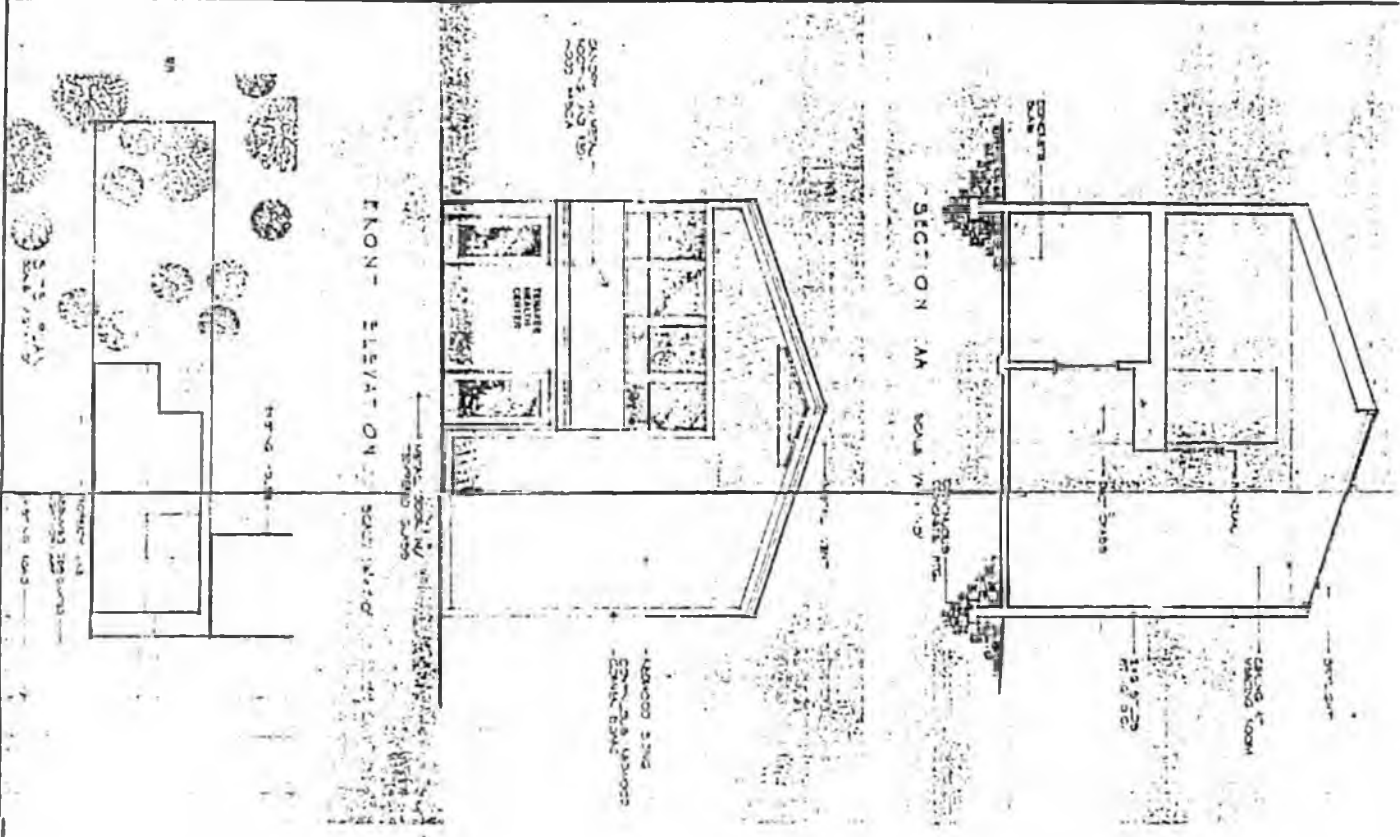
DATE	11.5.00
DRAWN	TF
CHECKED	TF
DATE	11.5.00
DRAWN	TF
CHECKED	TF



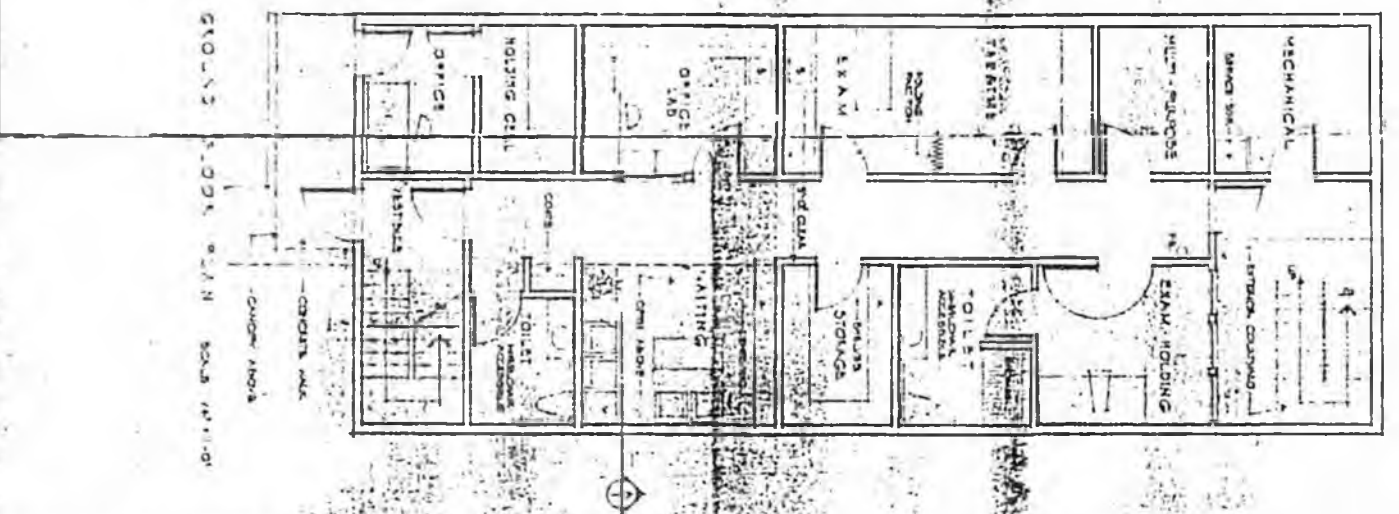
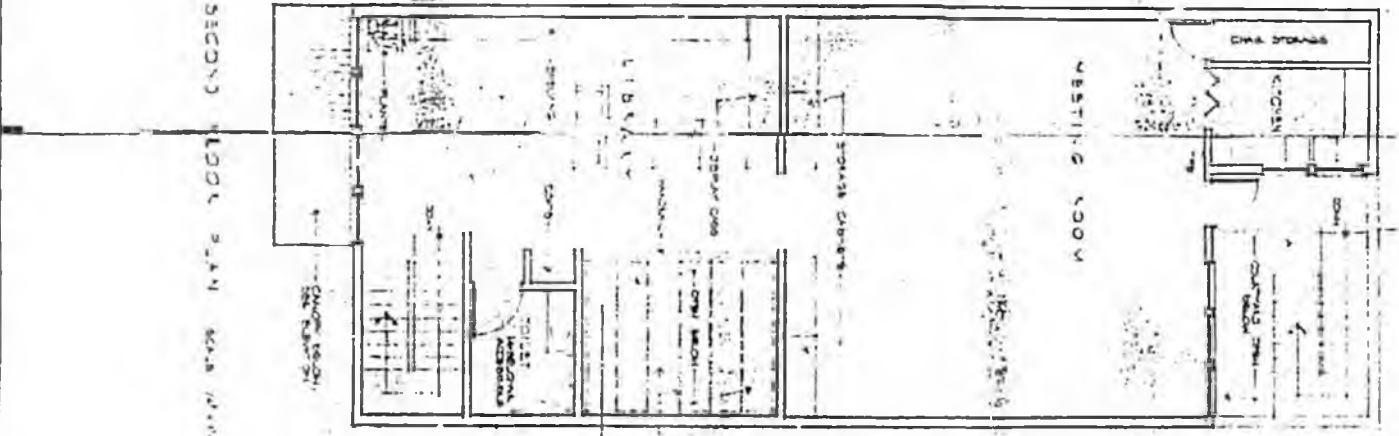
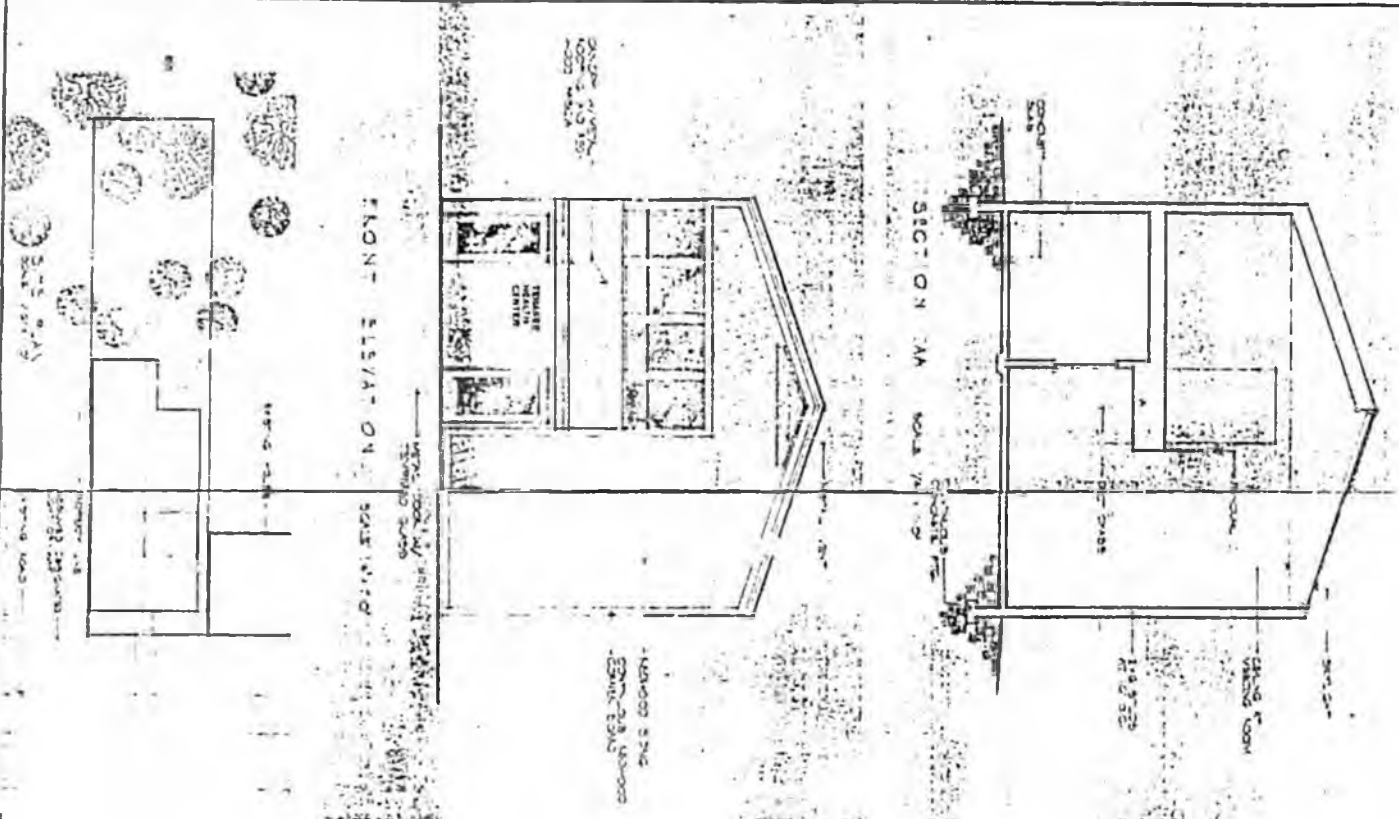
Dwg No. 1 Date 11-15-00 Drawn by JF Checked by JF Design by JF	SCHEMATIC DESIGN TENAKEE HEALTH CENTER TENAKEE DISTRICT, ALASKA	LINN A. FORREST ARCHITECTS AIA 800 GLACIER AVE. SUITE A JUNEAU, ALASKA



DATE 11-13-00 DRAWN BY [Signature] CHECKED BY [Signature] PROJECT NO. 1	SCHEMATIC DESIGN	LINN A. FORREST ARCHITECTS AIA. 800 GLACIER AVE SUITE A JUNEAU, ALASKA
	TENAKEE HEALTH CENTER TENAKEE SPRING, ALASKA	



1/8" = 1'-0" 1/4" = 3'-0" 1/2" = 6'-0" 3/4" = 9'-0" 1" = 12'-0" 1 1/4" = 15'-0" 1 1/2" = 18'-0" 1 3/4" = 21'-0" 2" = 24'-0" 2 1/4" = 27'-0" 2 1/2" = 30'-0" 2 3/4" = 33'-0" 3" = 36'-0" 3 1/4" = 39'-0" 3 1/2" = 42'-0" 3 3/4" = 45'-0" 4" = 48'-0" 4 1/4" = 51'-0" 4 1/2" = 54'-0" 4 3/4" = 57'-0" 5" = 60'-0" 5 1/4" = 63'-0" 5 1/2" = 66'-0" 5 3/4" = 69'-0" 6" = 72'-0" 6 1/4" = 75'-0" 6 1/2" = 78'-0" 6 3/4" = 81'-0" 7" = 84'-0" 7 1/4" = 87'-0" 7 1/2" = 90'-0" 7 3/4" = 93'-0" 8" = 96'-0" 8 1/4" = 99'-0" 8 1/2" = 102'-0" 8 3/4" = 105'-0" 9" = 108'-0" 9 1/4" = 111'-0" 9 1/2" = 114'-0" 9 3/4" = 117'-0" 10" = 120'-0" 10 1/4" = 123'-0" 10 1/2" = 126'-0" 10 3/4" = 129'-0" 11" = 132'-0" 11 1/4" = 135'-0" 11 1/2" = 138'-0" 11 3/4" = 141'-0" 12" = 144'-0" 12 1/4" = 147'-0" 12 1/2" = 150'-0" 12 3/4" = 153'-0" 13" = 156'-0" 13 1/4" = 159'-0" 13 1/2" = 162'-0" 13 3/4" = 165'-0" 14" = 168'-0" 14 1/4" = 171'-0" 14 1/2" = 174'-0" 14 3/4" = 177'-0" 15" = 180'-0" 15 1/4" = 183'-0" 15 1/2" = 186'-0" 15 3/4" = 189'-0" 16" = 192'-0" 16 1/4" = 195'-0" 16 1/2" = 198'-0" 16 3/4" = 201'-0" 17" = 204'-0" 17 1/4" = 207'-0" 17 1/2" = 210'-0" 17 3/4" = 213'-0" 18" = 216'-0" 18 1/4" = 219'-0" 18 1/2" = 222'-0" 18 3/4" = 225'-0" 19" = 228'-0" 19 1/4" = 231'-0" 19 1/2" = 234'-0" 19 3/4" = 237'-0" 20" = 240'-0" 20 1/4" = 243'-0" 20 1/2" = 246'-0" 20 3/4" = 249'-0" 21" = 252'-0" 21 1/4" = 255'-0" 21 1/2" = 258'-0" 21 3/4" = 261'-0" 22" = 264'-0" 22 1/4" = 267'-0" 22 1/2" = 270'-0" 22 3/4" = 273'-0" 23" = 276'-0" 23 1/4" = 279'-0" 23 1/2" = 282'-0" 23 3/4" = 285'-0" 24" = 288'-0" 24 1/4" = 291'-0" 24 1/2" = 294'-0" 24 3/4" = 297'-0" 25" = 300'-0" 25 1/4" = 303'-0" 25 1/2" = 306'-0" 25 3/4" = 309'-0" 26" = 312'-0" 26 1/4" = 315'-0" 26 1/2" = 318'-0" 26 3/4" = 321'-0" 27" = 324'-0" 27 1/4" = 327'-0" 27 1/2" = 330'-0" 27 3/4" = 333'-0" 28" = 336'-0" 28 1/4" = 339'-0" 28 1/2" = 342'-0" 28 3/4" = 345'-0" 29" = 348'-0" 29 1/4" = 351'-0" 29 1/2" = 354'-0" 29 3/4" = 357'-0" 30" = 360'-0" 30 1/4" = 363'-0" 30 1/2" = 366'-0" 30 3/4" = 369'-0" 31" = 372'-0" 31 1/4" = 375'-0" 31 1/2" = 378'-0" 31 3/4" = 381'-0" 32" = 384'-0" 32 1/4" = 387'-0" 32 1/2" = 390'-0" 32 3/4" = 393'-0" 33" = 396'-0" 33 1/4" = 399'-0" 33 1/2" = 402'-0" 33 3/4" = 405'-0" 34" = 408'-0" 34 1/4" = 411'-0" 34 1/2" = 414'-0" 34 3/4" = 417'-0" 35" = 420'-0" 35 1/4" = 423'-0" 35 1/2" = 426'-0" 35 3/4" = 429'-0" 36" = 432'-0" 36 1/4" = 435'-0" 36 1/2" = 438'-0" 36 3/4" = 441'-0" 37" = 444'-0" 37 1/4" = 447'-0" 37 1/2" = 450'-0" 37 3/4" = 453'-0" 38" = 456'-0" 38 1/4" = 459'-0" 38 1/2" = 462'-0" 38 3/4" = 465'-0" 39" = 468'-0" 39 1/4" = 471'-0" 39 1/2" = 474'-0" 39 3/4" = 477'-0" 40" = 480'-0" 40 1/4" = 483'-0" 40 1/2" = 486'-0" 40 3/4" = 489'-0" 41" = 492'-0" 41 1/4" = 495'-0" 41 1/2" = 498'-0" 41 3/4" = 501'-0" 42" = 504'-0" 42 1/4" = 507'-0" 42 1/2" = 510'-0" 42 3/4" = 513'-0" 43" = 516'-0" 43 1/4" = 519'-0" 43 1/2" = 522'-0" 43 3/4" = 525'-0" 44" = 528'-0" 44 1/4" = 531'-0" 44 1/2" = 534'-0" 44 3/4" = 537'-0" 45" = 540'-0" 45 1/4" = 543'-0" 45 1/2" = 546'-0" 45 3/4" = 549'-0" 46" = 552'-0" 46 1/4" = 555'-0" 46 1/2" = 558'-0" 46 3/4" = 561'-0" 47" = 564'-0" 47 1/4" = 567'-0" 47 1/2" = 570'-0" 47 3/4" = 573'-0" 48" = 576'-0" 48 1/4" = 579'-0" 48 1/2" = 582'-0" 48 3/4" = 585'-0" 49" = 588'-0" 49 1/4" = 591'-0" 49 1/2" = 594'-0" 49 3/4" = 597'-0" 50" = 600'-0" 50 1/4" = 603'-0" 50 1/2" = 606'-0" 50 3/4" = 609'-0" 51" = 612'-0" 51 1/4" = 615'-0" 51 1/2" = 618'-0" 51 3/4" = 621'-0" 52" = 624'-0" 52 1/4" = 627'-0" 52 1/2" = 630'-0" 52 3/4" = 633'-0" 53" = 636'-0" 53 1/4" = 639'-0" 53 1/2" = 642'-0" 53 3/4" = 645'-0" 54" = 648'-0" 54 1/4" = 651'-0" 54 1/2" = 654'-0" 54 3/4" = 657'-0" 55" = 660'-0" 55 1/4" = 663'-0" 55 1/2" = 666'-0" 55 3/4" = 669'-0" 56" = 672'-0" 56 1/4" = 675'-0" 56 1/2" = 678'-0" 56 3/4" = 681'-0" 57" = 684'-0" 57 1/4" = 687'-0" 57 1/2" = 690'-0" 57 3/4" = 693'-0" 58" = 696'-0" 58 1/4" = 699'-0" 58 1/2" = 702'-0" 58 3/4" = 705'-0" 59" = 708'-0" 59 1/4" = 711'-0" 59 1/2" = 714'-0" 59 3/4" = 717'-0" 60" = 720'-0" 60 1/4" = 723'-0" 60 1/2" = 726'-0" 60 3/4" = 729'-0" 61" = 732'-0" 61 1/4" = 735'-0" 61 1/2" = 738'-0" 61 3/4" = 741'-0" 62" = 744'-0" 62 1/4" = 747'-0" 62 1/2" = 750'-0" 62 3/4" = 753'-0" 63" = 756'-0" 63 1/4" = 759'-0" 63 1/2" = 762'-0" 63 3/4" = 765'-0" 64" = 768'-0" 64 1/4" = 771'-0" 64 1/2" = 774'-0" 64 3/4" = 777'-0" 65" = 780'-0" 65 1/4" = 783'-0" 65 1/2" = 786'-0" 65 3/4" = 789'-0" 66" = 792'-0" 66 1/4" = 795'-0" 66 1/2" = 798'-0" 66 3/4" = 801'-0" 67" = 804'-0" 67 1/4" = 807'-0" 67 1/2" = 810'-0" 67 3/4" = 813'-0" 68" = 816'-0" 68 1/4" = 819'-0" 68 1/2" = 822'-0" 68 3/4" = 825'-0" 69" = 828'-0" 69 1/4" = 831'-0" 69 1/2" = 834'-0" 69 3/4" = 837'-0" 70" = 840'-0" 70 1/4" = 843'-0" 70 1/2" = 846'-0" 70 3/4" = 849'-0" 71" = 852'-0" 71 1/4" = 855'-0" 71 1/2" = 858'-0" 71 3/4" = 861'-0" 72" = 864'-0" 72 1/4" = 867'-0" 72 1/2" = 870'-0" 72 3/4" = 873'-0" 73" = 876'-0" 73 1/4" = 879'-0" 73 1/2" = 882'-0" 73 3/4" = 885'-0" 74" = 888'-0" 74 1/4" = 891'-0" 74 1/2" = 894'-0" 74 3/4" = 897'-0" 75" = 900'-0" 75 1/4" = 903'-0" 75 1/2" = 906'-0" 75 3/4" = 909'-0" 76" = 912'-0" 76 1/4" = 915'-0" 76 1/2" = 918'-0" 76 3/4" = 921'-0" 77" = 924'-0" 77 1/4" = 927'-0" 77 1/2" = 930'-0" 77 3/4" = 933'-0" 78" = 936'-0" 78 1/4" = 939'-0" 78 1/2" = 942'-0" 78 3/4" = 945'-0" 79" = 948'-0" 79 1/4" = 951'-0" 79 1/2" = 954'-0" 79 3/4" = 957'-0" 80" = 960'-0" 80 1/4" = 963'-0" 80 1/2" = 966'-0" 80 3/4" = 969'-0" 81" = 972'-0" 81 1/4" = 975'-0" 81 1/2" = 978'-0" 81 3/4" = 981'-0" 82" = 984'-0" 82 1/4" = 987'-0" 82 1/2" = 990'-0" 82 3/4" = 993'-0" 83" = 996'-0" 83 1/4" = 999'-0" 83 1/2" = 1002'-0" 83 3/4" = 1005'-0" 84" = 1008'-0" 84 1/4" = 1011'-0" 84 1/2" = 1014'-0" 84 3/4" = 1017'-0" 85" = 1020'-0" 85 1/4" = 1023'-0" 85 1/2" = 1026'-0" 85 3/4" = 1029'-0" 86" = 1032'-0" 86 1/4" = 1035'-0" 86 1/2" = 1038'-0" 86 3/4" = 1041'-0" 87" = 1044'-0" 87 1/4" = 1047'-0" 87 1/2" = 1050'-0" 87 3/4" = 1053'-0" 88" = 1056'-0" 88 1/4" = 1059'-0" 88 1/2" = 1062'-0" 88 3/4" = 1065'-0" 89" = 1068'-0" 89 1/4" = 1071'-0" 89 1/2" = 1074'-0" 89 3/4" = 1077'-0" 90" = 1080'-0" 90 1/4" = 1083'-0" 90 1/2" = 1086'-0" 90 3/4" = 1089'-0" 91" = 1092'-0" 91 1/4" = 1095'-0" 91 1/2" = 1098'-0" 91 3/4" = 1101'-0" 92" = 1104'-0" 92 1/4" = 1107'-0" 92 1/2" = 1110'-0" 92 3/4" = 1113'-0" 93" = 1116'-0" 93 1/4" = 1119'-0" 93 1/2" = 1122'-0" 93 3/4" = 1125'-0" 94" = 1128'-0" 94 1/4" = 1131'-0" 94 1/2" = 1134'-0" 94 3/4" = 1137'-0" 95" = 1140'-0" 95 1/4" = 1143'-0" 95 1/2" = 1146'-0" 95 3/4" = 1149'-0" 96" = 1152'-0" 96 1/4" = 1155'-0" 96 1/2" = 1158'-0" 96 3/4" = 1161'-0" 97" = 1164'-0" 97 1/4" = 1167'-0" 97 1/2" = 1170'-0" 97 3/4" = 1173'-0" 98" = 1176'-0" 98 1/4" = 1179'-0" 98 1/2" = 1182'-0" 98 3/4" = 1185'-0" 99" = 1188'-0" 99 1/4" = 1191'-0" 99 1/2" = 1194'-0" 99 3/4" = 1197'-0" 100" = 1200'-0" 100 1/4" = 1203'-0" 100 1/2" = 1206'-0" 100 3/4" = 1209'-0" 101" = 1212'-0" 101 1/4" = 1215'-0" 101 1/2" = 1218'-0" 101 3/4" = 1221'-0" 102" = 1224'-0" 102 1/4" = 1227'-0" 102 1/2" = 1230'-0" 102 3/4" = 1233'-0" 103" = 1236'-0" 103 1/4" = 1239'-0" 103 1/2" = 1242'-0" 103 3/4" = 1245'-0" 104" = 1248'-0" 104 1/4" = 1251'-0" 104 1/2" = 1254'-0" 104 3/4" = 1257'-0" 105" = 1260'-0" 105 1/4" = 1263'-0" 105 1/2" = 1266'-0" 105 3/4" = 1269'-0" 106" = 1272'-0" 106 1/4" = 1275'-0" 106 1/2" = 1278'-0" 106 3/4" = 1281'-0" 107" = 1284'-0" 107 1/4" = 1287'-0" 107 1/2" = 1290'-0" 107 3/4" = 1293'-0" 108" = 1296'-0" 108 1/4" = 1299'-0" 108 1/2" = 1302'-0" 108 3/4" = 1305'-0" 109" = 1308'-0" 109 1/4" = 1311'-0" 109 1/2" = 1314'-0" 109 3/4" = 1317'-0" 110" = 1320'-0" 110 1/4" = 1323'-0" 110 1/2" = 1326'-0" 110 3/4" = 1329'-0" 111" = 1332'-0" 111 1/4" = 1335'-0" 111 1/2" = 1338'-0" 111 3/4" = 1341'-0" 112" = 1344'-0" 112 1/4" = 1347'-0" 112 1/2" = 1350'-0" 112 3/4" = 1353'-0" 113" = 1356'-0" 113 1/4" = 1359'-0" 113 1/2" = 1362'-0" 113 3/4" = 1365'-0" 114" = 1368'-0" 114 1/4" = 1371'-0" 114 1/2" = 1374'-0" 114 3/4" = 1377'-0" 115" = 1380'-0" 115 1/4" = 1383'-0" 115 1/2" = 1386'-0" 115 3/4" = 1389'-0" 116" = 1392'-0" 116 1/4" = 1395'-0" 116 1/2" = 1398'-0" 116 3/4" = 1401'-0" 117" = 1404'-0" 117 1/4" = 1407'-0" 117 1/2" = 1410'-0" 117 3/4" = 1413'-0" 118" = 1416'-0" 118 1/4" = 1419'-0" 118 1/2" = 1422'-0" 118 3/4" = 1425'-0" 119" = 1428'-0" 119 1/4" = 1431'-0" 119 1/2" = 1434'-0" 119 3/4" = 1437'-0" 120" = 1440'-0" 120 1/4" = 1443'-0" 120 1/2" = 1446'-0" 120 3/4" = 1449'-0" 121" = 1452'-0" 121 1/4" = 1455'-0" 121 1/2" = 1458'-0" 121 3/4" = 1461'-0" 122" = 1464'-0" 122 1/4" = 1467'-0" 122 1/2" = 1470'-0" 122 3/4" = 1473'-0" 123" = 1476'-0" 123 1/4" = 1479'-0" 123 1/2" = 1482'-0" 123 3/4" = 1485'-0" 124" = 1488'-0" 124 1/4" = 1491'-0" 124 1/2" = 1494'-0" 124 3/4" = 1497'-0" 125" = 1500'-0" 125 1/4" = 1503'-0" 125 1/2" = 1506'-0" 125 3/4" = 1509'-0" 126" = 1512'-0" 126 1/4" = 1515'-0" 126 1/2" = 1518'-0" 126 3/4" = 1521'-0" 127" = 1524'-0" 127 1/4" = 1527'-0" 127 1/2" = 1530'-0" 127 3/4" = 1533'-0" 128" = 1536'-0" 128 1/4" = 1539'-0" 128 1/2" = 1542'-0" 128 3/4" = 1545'-0" 129" = 1548'-0" 129 1/4" = 1551'-0" 129 1/2" = 1554'-0" 129 3/4" = 1557'-0" 130" = 1560'-0" 130 1/4" = 1563'-0" 130 1/2" = 1566'-0" 130 3/4" = 1569'-0" 131" = 1572'-0" 131 1/4" = 1575'-0" 131 1/2" = 1578'-0" 131 3/4" = 1581'-0" 132" = 1584'-0" 132 1/4" = 1587'-0" 132 1/2" = 1590'-0" 132 3/4" = 1593'-0" 133" = 1596'-0" 133 1/4" = 1599'-0" 133 1/2" = 1602'-0" 133 3/4" = 1605'-0" 134" = 1608'-0" 134 1/4" = 1611'-0" 134 1/2" = 1614'-0" 134 3/4" = 1617'-0" 135" = 1620'-0" 135 1/4" = 1623'-0" 135 1/2" = 1626'-0" 135 3/4" = 1629'-0" 136" = 1632'-0" 136 1/4" = 1635'-0" 136 1/2" = 1638'-0" 136 3/4" = 1641'-0" 137" = 1644'-0" 137 1/4" = 1647'-0" 137 1/2" = 1650'-0" 137 3/4" = 1653'-0" 138" = 1656'-0" 138 1/4" = 1659'-0" 138 1/2" = 1662'-0" 138 3/4" = 1665'-0" 139" = 1668'-0" 139 1/4" = 1671'-0" 139 1/2" = 1674'-0" 139 3/4" = 1677'-0" 140" = 1680'-0" 140 1/4" = 1683'-0" 140 1/2" = 1686'-0" 140 3/4" = 1689'-0" 141" = 1692'-0" 141 1/4" = 1695'-0" 141 1/2" = 1698'-0" 141 3/4" = 1701'-0" 142" = 1704'-0" 142 1/4" = 1707'-0" 142 1/2" = 1710'-0" 142 3/4" = 1713'-0" 143" = 1716'-0" 143 1/4" = 1719'-0" 143 1/2" = 1722'-0" 143 3/4" = 1725'-0" 144" = 1728'-0" 144 1/4" = 1731'-0" 144 1/2" = 1734'-0" 144 3/4" = 1737'-0" 145" = 1740'-0" 145 1/4" = 1743'-0" 145 1/2" = 1746'-0" 145 3/4" = 1749'-0" 146" = 1752'-0" 146 1/4" = 1755'-0" 146 1/2" = 1758'-0" 146 3/4" = 1761'-0" 147" = 1764'-0" 147 1/4" = 1767'-0" 147 1/2" = 1770'-0" 147 3/4" = 1773'-0" 148" = 1776'-0" 148 1/4" = 1779'-0" 148 1/2" = 1782'-0" 148 3/4" = 1785'-0" 149" = 1788'-0" 149 1/4" = 1791'-0" 149 1/2" = 1794'-0" 149 3/4" = 1797'-0" 150" = 1800'-0" 150 1/4" = 1803'-0" 150 1/2" = 1806'-0" 150 3/4" = 1809'-0" 151" = 1812'-0" 151 1/4" = 1815'-0" 151 1/2" = 1818'-0" 151 3/4" = 1821'-0" 152" = 1824'-0" 152 1/4" = 1827'-0" 152 1/2" = 1
--

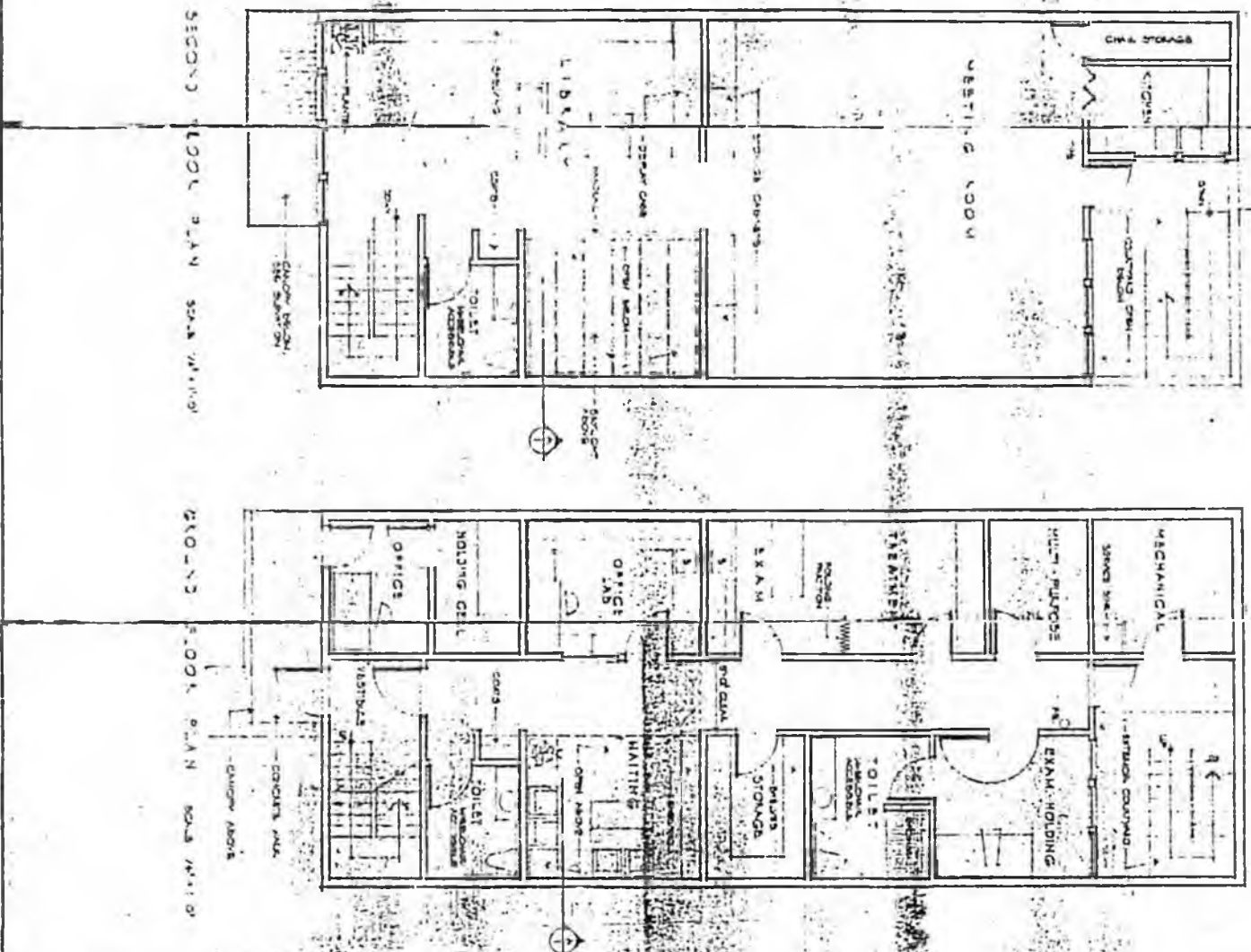
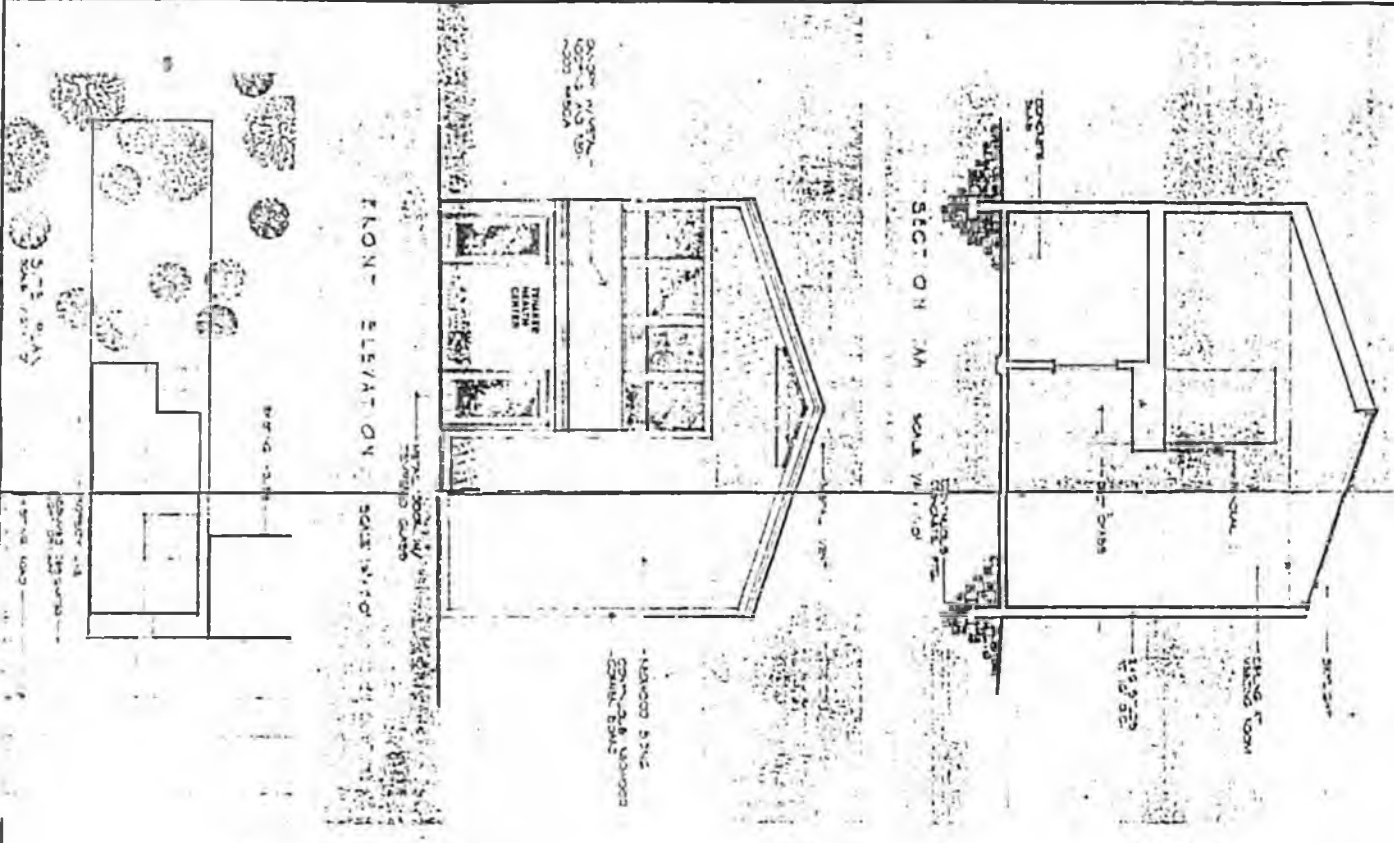


DATE: 11/13/02
 DRAWN BY: [Signature]
 CHECKED BY: [Signature]

SCHEMATIC DESIGN
 TENAKEE HEALTH CENTER
 TENAKEE BRIDGE, ALASKA

LINN A. FORREST ARCHITECTS A.I.A.
 800 GLACIER AVE. SUITE A
 JUNEAU, ALASKA



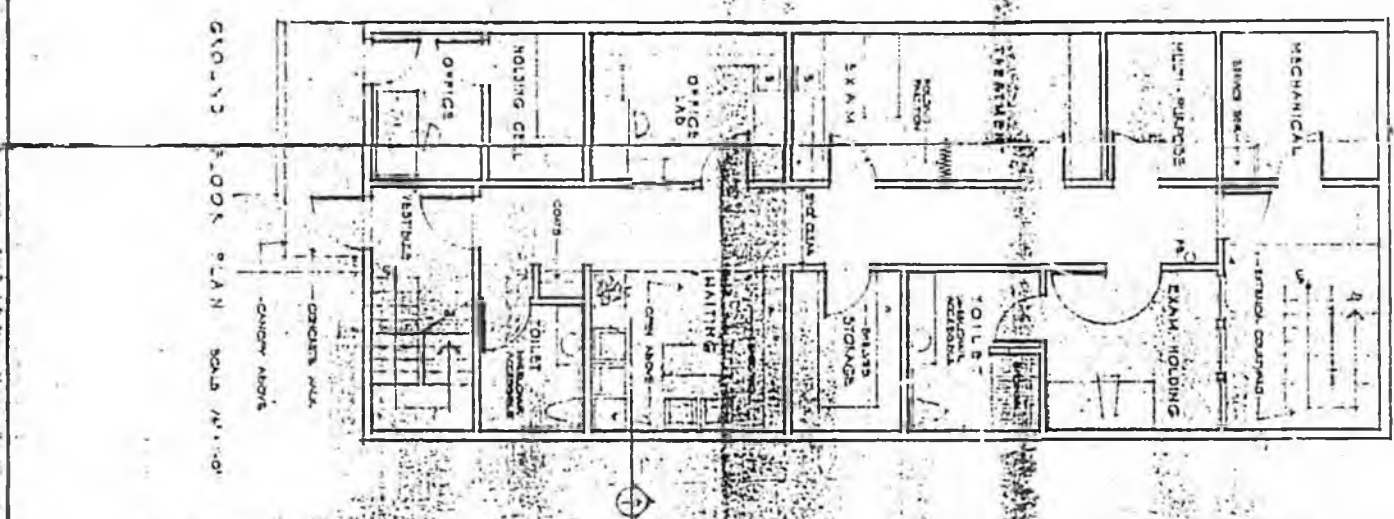
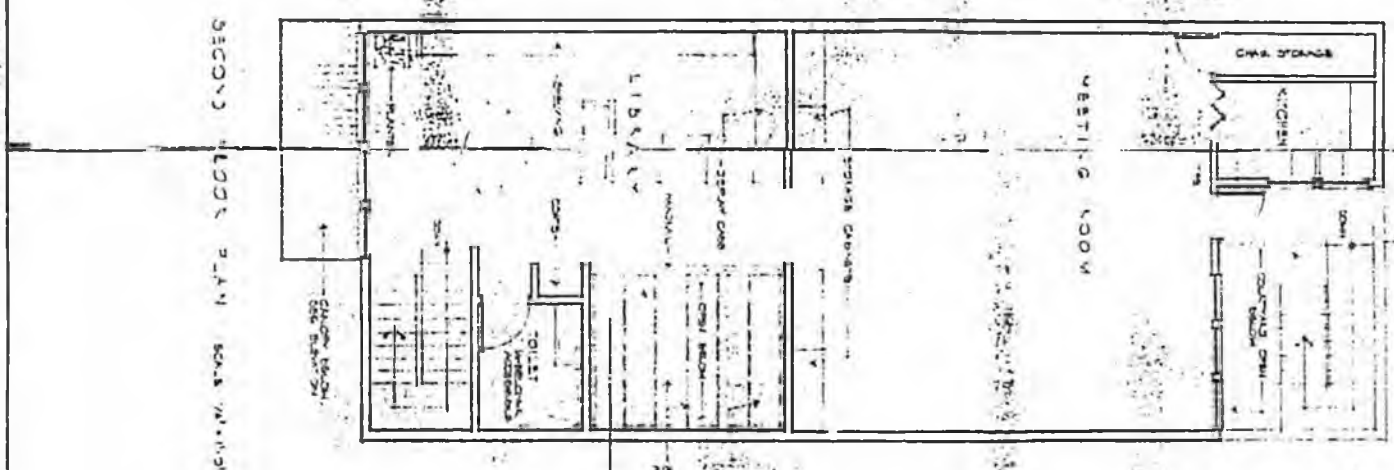
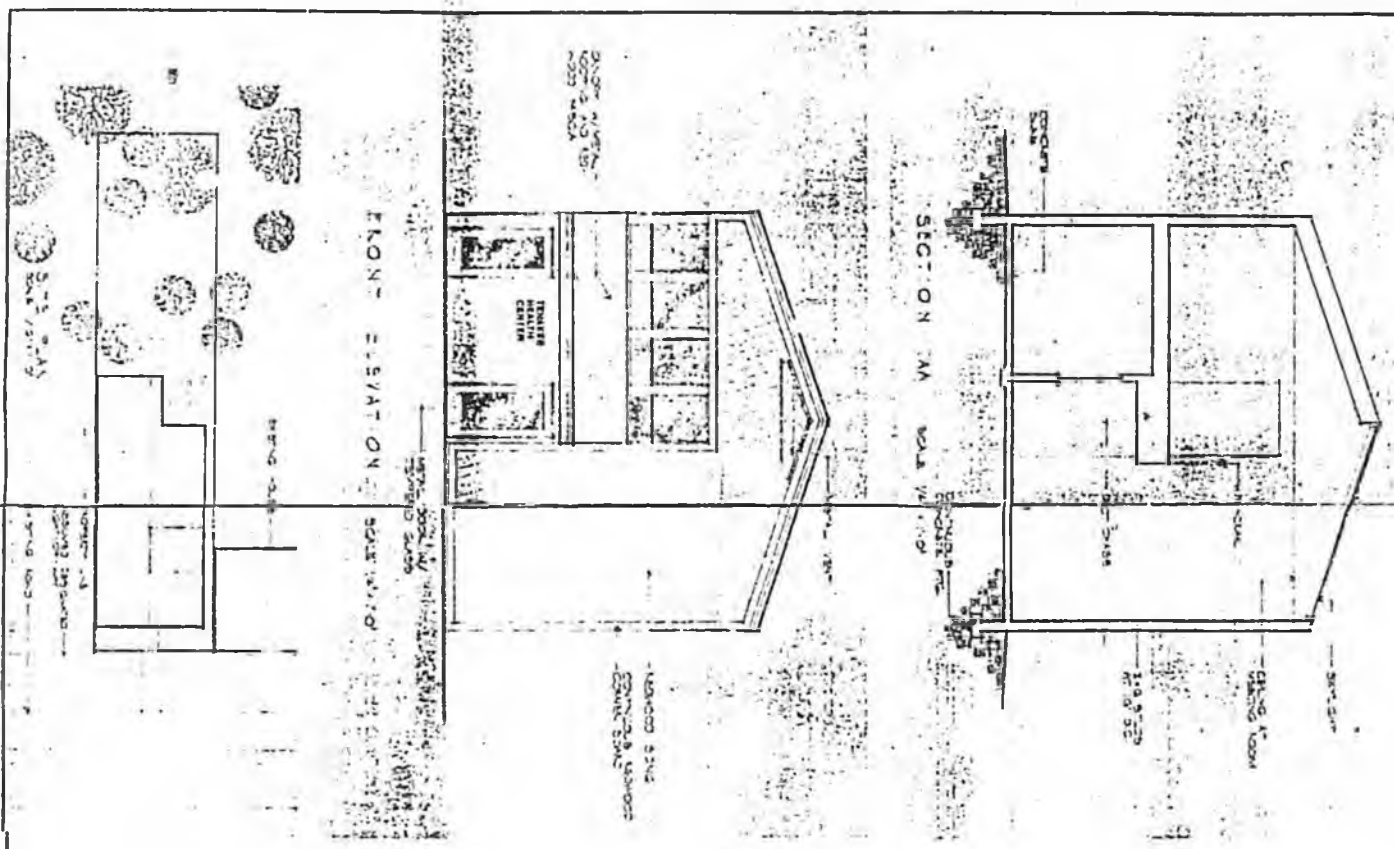


SCHEMATIC DESIGN

TENAKEE HEALTH CENTER
 TENAKEE SPRING, ALASKA

LINN A. FORREST ARCHITECTS AIA
 300 GLACIER AVE. SUITE A
 JUNEAU, ALASKA

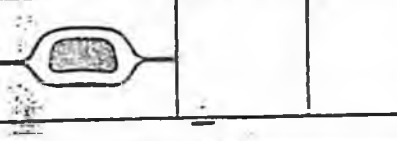
DATE: 11-18-80
 DRAWN BY: JF
 CHECKED BY: JF
 DESIGNED BY: JF

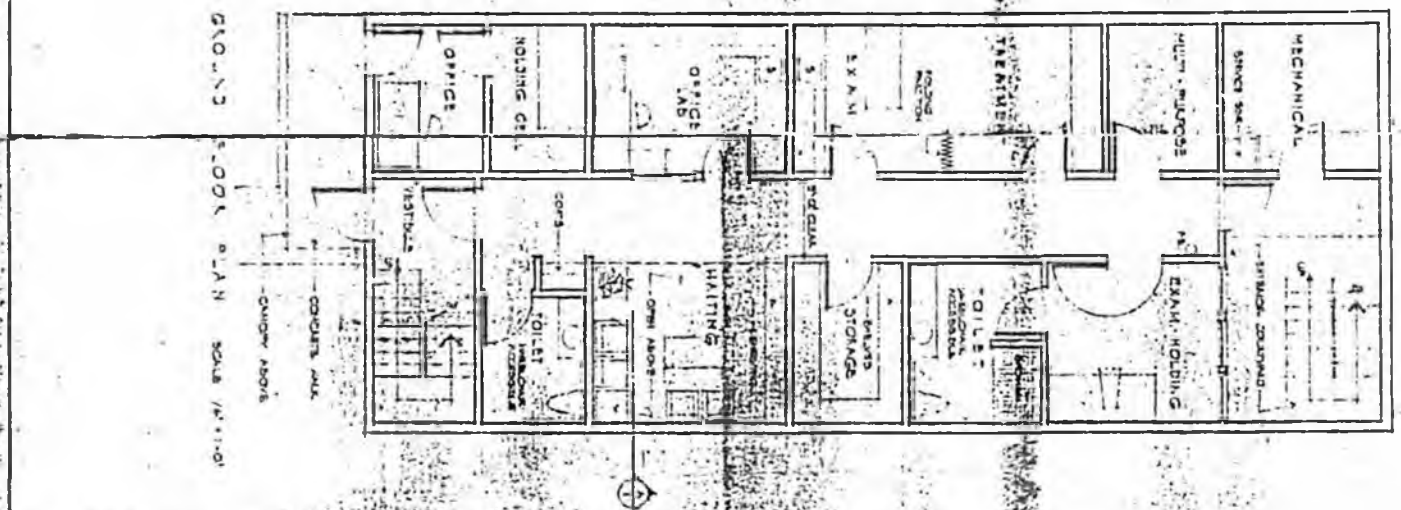
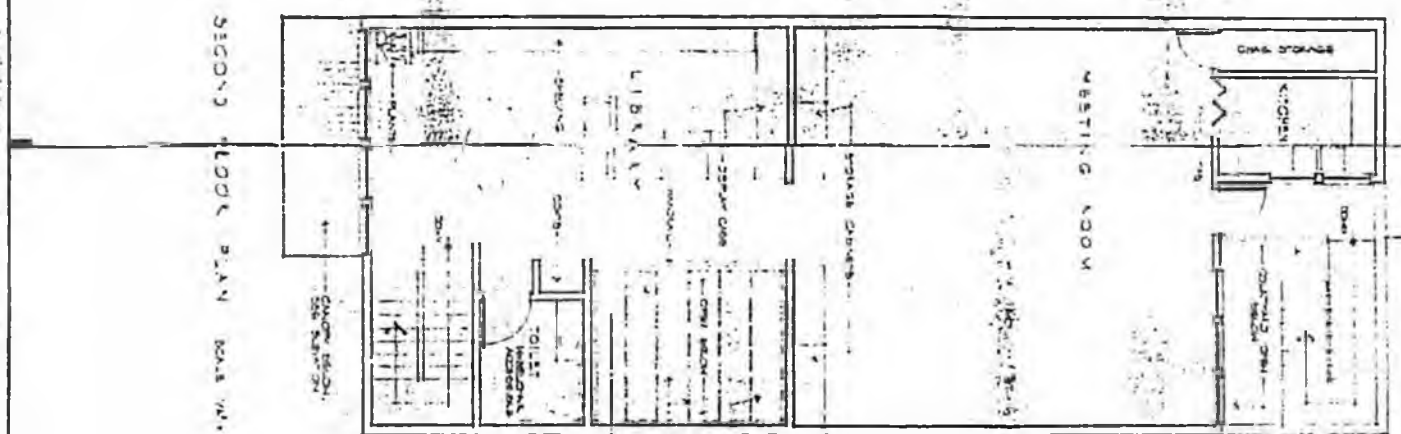
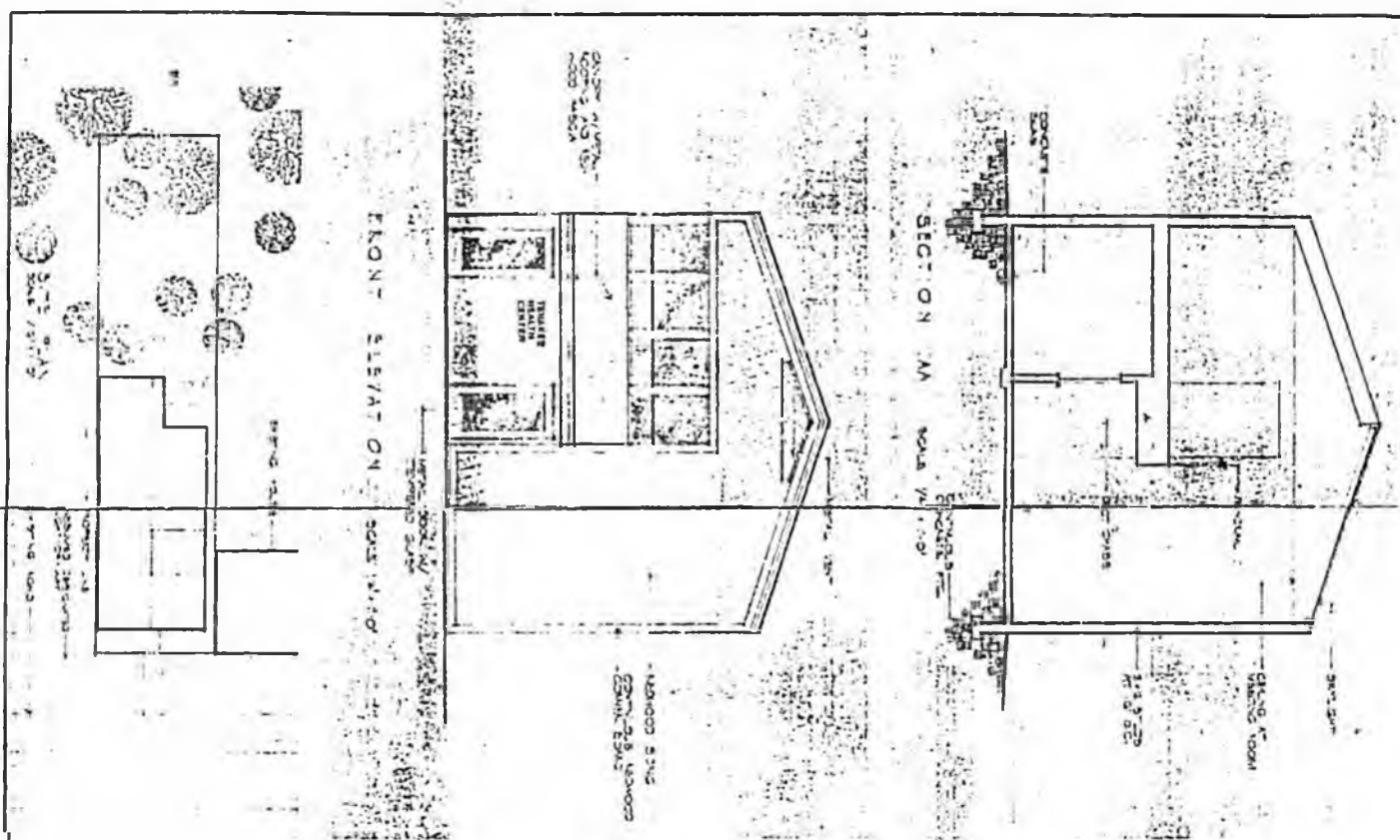


DATE: 11-13-00
 DRAWN BY: [Signature]
 CHECKED BY: [Signature]

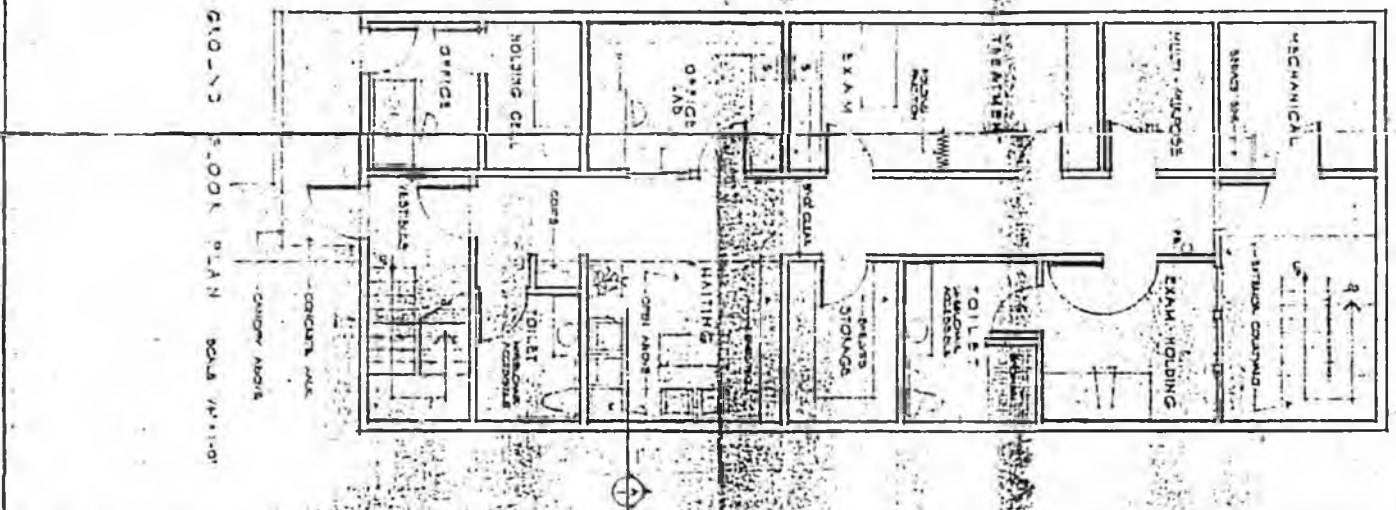
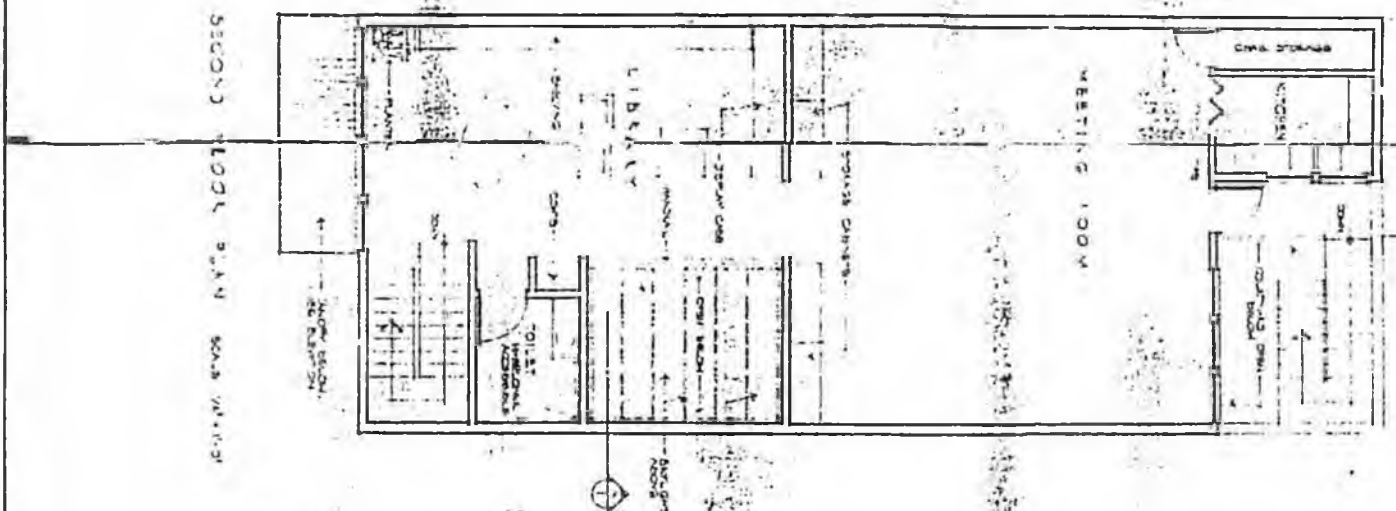
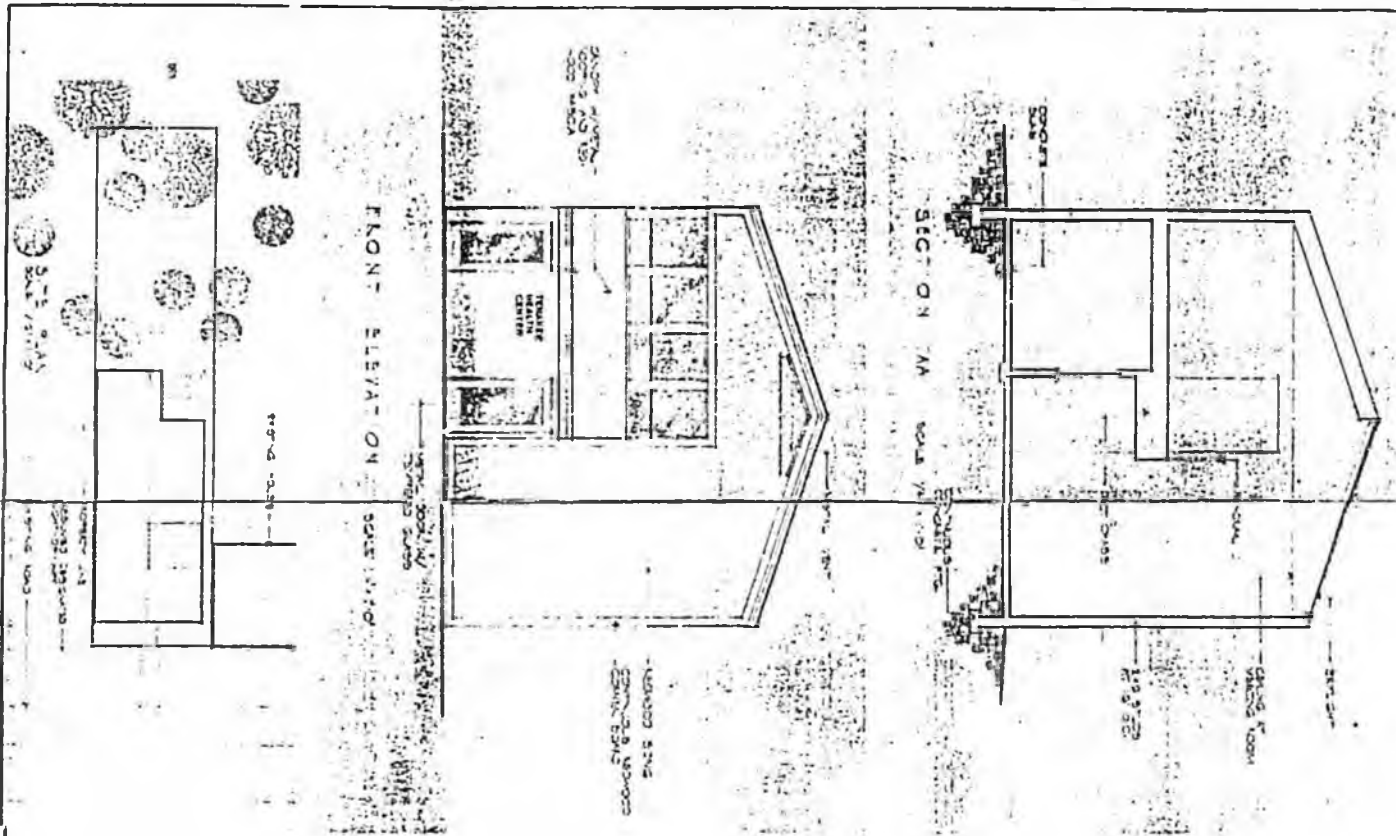
SCHEMATIC DESIGN
 TENAKEE HEALTH CENTER
 TENAKEE DRUGO, ALASKA

LINN A. FORREST ARCHITECTS A.I.A.
 800 GLACIER AVE. SUITE 4
 JUNEAU, ALASKA





DATE 11/18/00 DRAWN F.F. CHECKED M.F. DESIGNED J.F.	SCHEMATIC DESIGN	LINN A. FORREST ARCHITECTS AIA. 800 GLACIER AVE. SUITE A JUNEAU, ALASKA
	TENAKEE HEALTH CENTER TENAKEE SPRING, ALASKA	

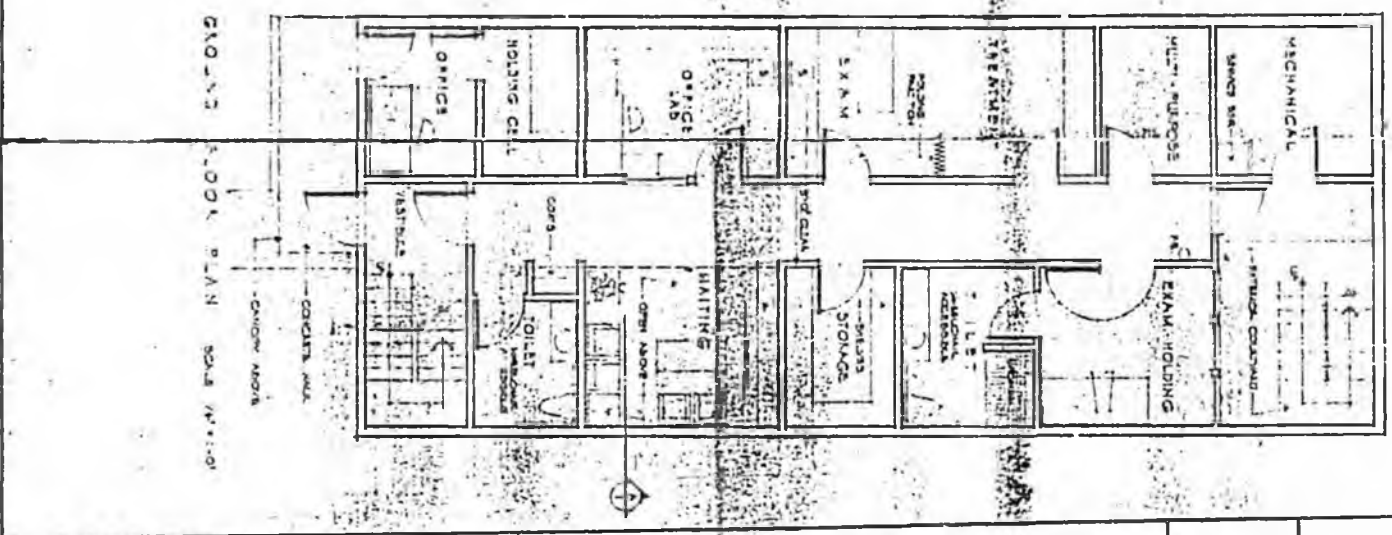
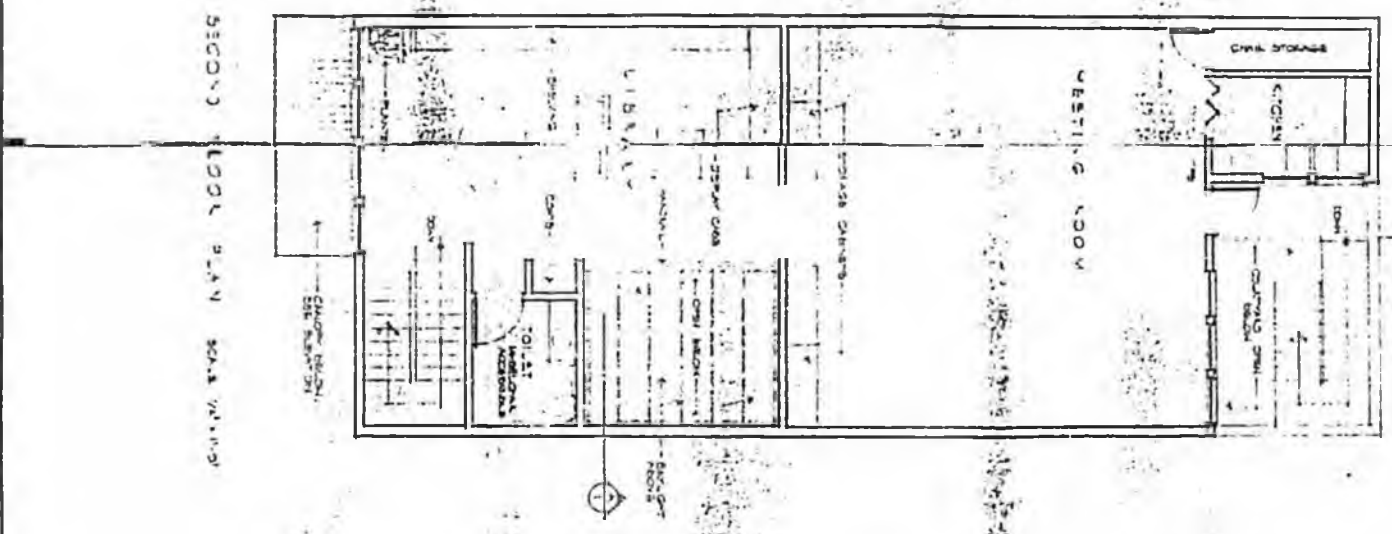
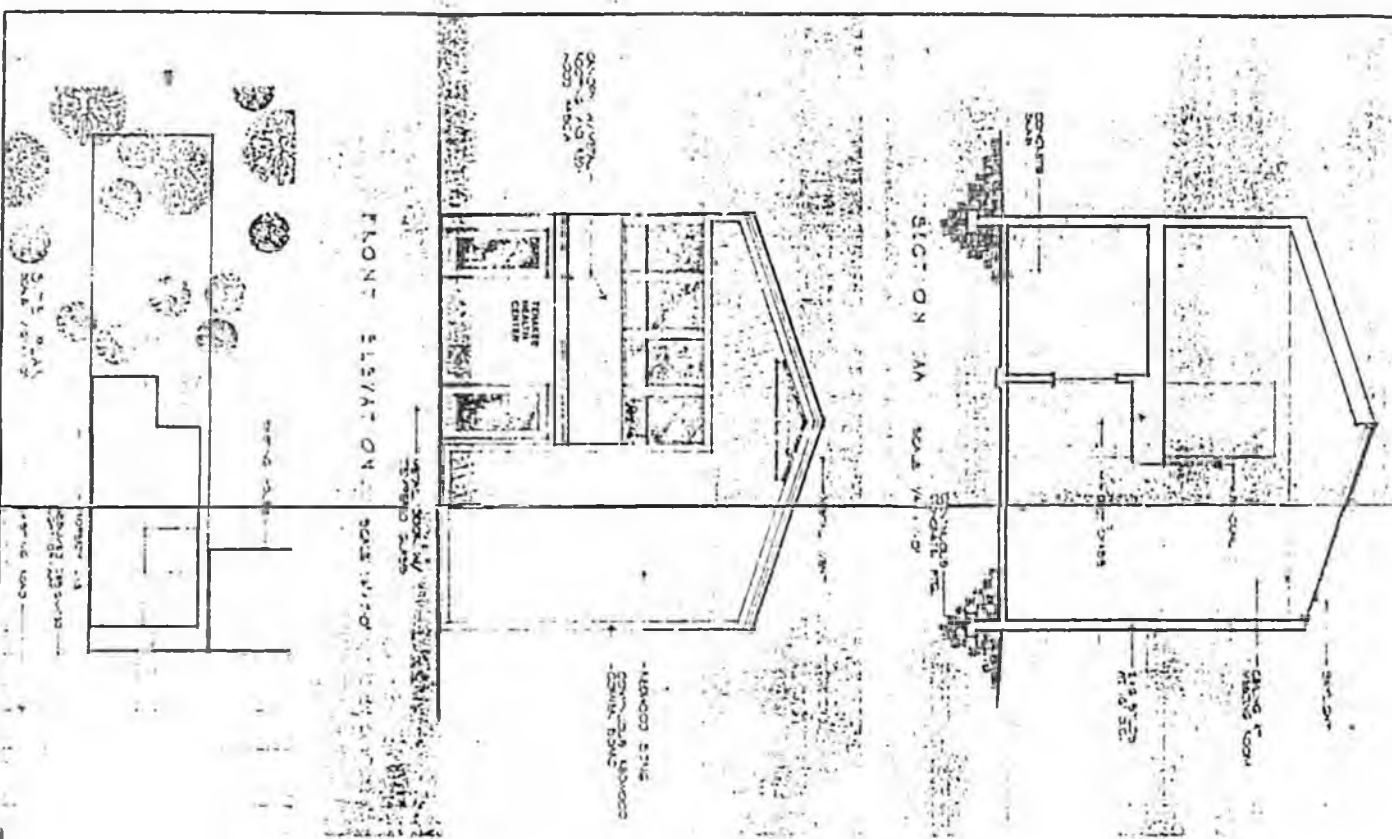


DATE: 11-13-00
 DRAWN BY: [Signature]
 CHECKED BY: [Signature]
 PROJECT NO: 07-004

SCHEMATIC DESIGN
 TENAKEE HEALTH CENTER
 TENAKEE BRIDGE, ALASKA

LINN A. FORREST ARCHITECTS AIA
 800 GLACIER AVE. SUITE A
 JUNEAU, ALASKA



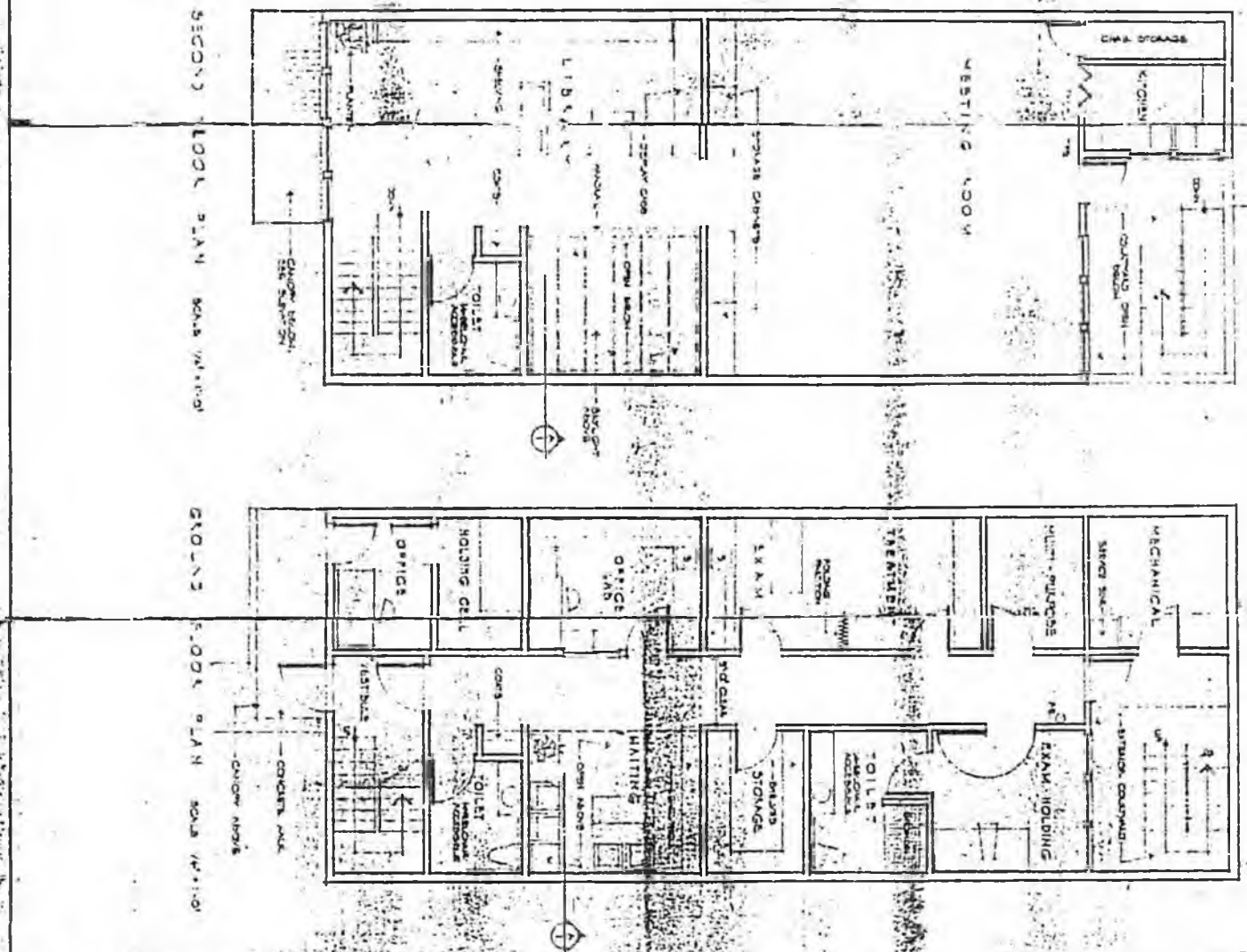
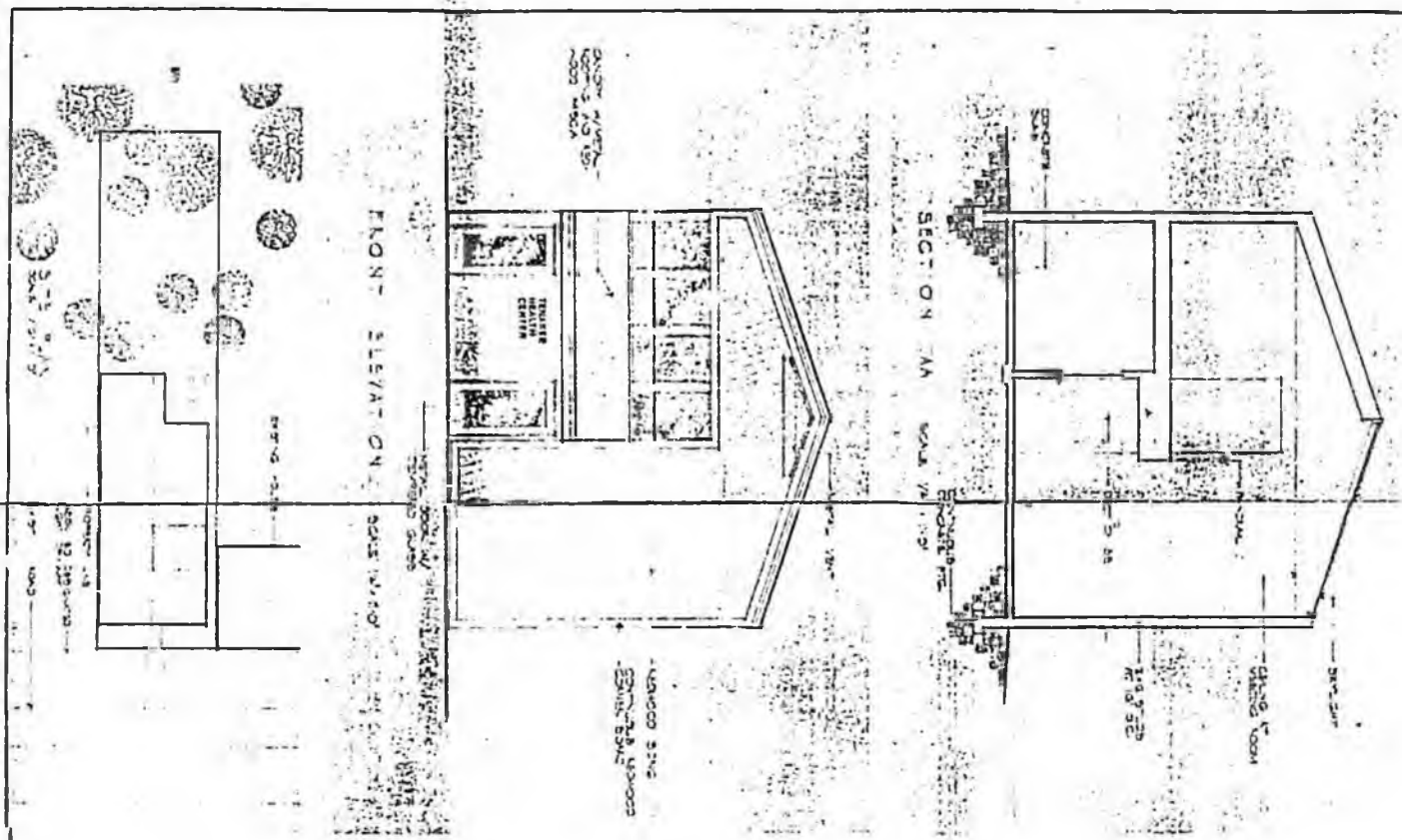


DATE	1-15-80
BY	LF
CHECKED	LF
SCALE	1/4" = 1'-0"
PROJECT	1

SCHEMATIC DESIGN
TENAKEE HEALTH CENTER
 TENAKEE BRIDGE, ALASKA

LINN A. FORREST ARCHITECTS AIA
 800 GLACIER AVE. SUITE A
 JUNEAU, ALASKA





DATE	1-13-00
DESIGNER	DA
CHECKER	DA
DATE	1-13-00
DESIGNER	DA
CHECKER	DA
DATE	1-13-00
DESIGNER	DA
CHECKER	DA

SCHEMATIC DESIGN

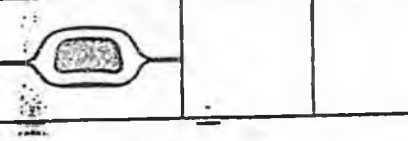
TENAKEE HEALTH CENTER

TENAKEE DISTRICT, ALASKA

LINN A. FORREST ARCHITECTS AIA.

800 GLACIER AVE. SUITE A

JUNEAU, ALASKA





RECORDS



CERTIFICATION

I, the undersigned, an employee of the State of Alaska, do hereby certify that the microfilm images on this microform are accurate reproductions of the original records of the State of Alaska as accumulated during the regular course of business, and that it is the established policy and practice of this State to microfilm its records and to dispose of the original records after microfilm reproductions have been made.

James O. Smith
Signature of Camera Operator

3/20/90
Date

COMMITTEE REPORT

SENATE

FURTHER: None

5/9/80

Date: 5-21-80

Mr. President:

The Committee on FINANCE has had HB 957

capital improvement program and budget recommendations under the Executive Budget Act

under consideration and (a majority of the committee) (the committee) reports it back with the following recommendations:

- do pass do not pass
- do pass with attached amendments(s) same title
- replace with CS for _____ new title
- and recommends _____
- AND attaches a "Letter of Intent" New Fiscal Note
- reports it back without recommendation
- referred to the _____ Committee

MEMBERS SIGNING
DO PASS

[Signature]

[Signature]

MEMBERS HAVING
OTHER RECOMMENDATIONS:

[Signature]

[Signature]

CHAIRMAN

THE LEGISLATURE

BUDGET AND AUDIT COMMITTEE

FINANCE DIVISION
POUGH WF-STATE CAPITOL
JUNEAU, ALASKA 99811
PHONE: (907) 465-3795

M E M O R A N D U M

DATE: April 24, 1980

FROM: J. H. ~~Hogan~~, Director
Legislative Finance Division

SUBJECT: HB 957

The cost of HB 957 is difficult to estimate because it would vary directly with the types and numbers of projects planned for inclusion by the Governor in next year's capital budget. It is my opinion, however, that sufficient funding will be budgeted to allow for better documentation of those projects that are recommended for appropriation by the Governor. An example of this type of funding is attached (capital budget request for Department of Transportation and Public Facilities).

JHH:vsw

Attachment

PROJECT TITLE Facilities Planning		LOCATION(S) Statewide	AREA SERVED Statewide	ELECTION DISTRICT(S) All
OLD NO(S) 1,2,3,4,5	OPERATING BUDGET BRU(S) NAME(S)	BUDGET COMPONENT NUMBERS		START DATE July, 1980
PROJECT NARRATIVE FACILITIES ANNUAL WORK PROGRAM: FY 81 The facilities component of the Planning and Research Unit operates within a planning process that is compatible with that of the transportation component. That process is accomplished at three levels (Statewide, Regional and Unit Support) in four phases described as follows. Phase 1 Public Input, is the collection of perceptions, attitudes and needs from any party that may make use of benefit from or be impacted by future public facilities. Phase 2 Policies and Procedures is the formulation of mechanisms which satisfy legislative mandates and accommodate public input obtained in Phase 1. Phase 3 Facility performance and evaluation, is a process of testing both existing facility adequacy, and alternative programs for satisfying future facility needs which have been identified in Phases 1 and 2. Phase 4 Facility development is a part of the overall process which brings together the specific facility alternatives derived in Phase 3 into a statewide Capital Improvement Program (state public facilities plan), as required by AS 44.42.055 and concludes with the implementation of built facilities. STATEWIDE: Statewide activities pertaining to Phase 1 (Public Input) include the following:		PROJECT TYPE <input type="checkbox"/> Building Construction (C) <input type="checkbox"/> Other Improvement (I) <input type="checkbox"/> Equipment (E) <input type="checkbox"/> Land (L) <input checked="" type="checkbox"/> Professional Services (P) <input checked="" type="checkbox"/> Other (O)	APPROPRIATION REQUEST 1002 FED. RCPTS 1003 G/F MATCH 8,822.8 1004 GEN. FUND 1005 I/A RCPTS. G.O. BONDS TOTAL 8,822.8	COMPLETION DATE June, 1982
		PROJECT CHARACTERISTICS <input type="checkbox"/> Totally New Facility <input type="checkbox"/> Addition to Existing Facility <input type="checkbox"/> Renovation of Existing Facility <input type="checkbox"/> Major Maintenance or Repair <input type="checkbox"/> Supplement Previously Authorized Funds to Enable Completion <input type="checkbox"/> One of Several Phases <input type="checkbox"/> Major External Funding Source <input checked="" type="checkbox"/> Other	GOVERNOR'S RECOMMENDATION APPROVED DEFERRED DISAPPROVED <input checked="" type="checkbox"/> <input type="checkbox"/> <input type="checkbox"/> 1002 FED. RCPTS 1003 G/F MATCH 1004 GEN. FUND 4,3100.0 1005 I/A RCPTS. G.O. BONDS TOTAL 4,3100.0	
		NO YES SITE FEATURES <input type="checkbox"/> <input type="checkbox"/> Site Currently Owned? <input type="checkbox"/> <input type="checkbox"/> All Utilities Available? <input type="checkbox"/> <input type="checkbox"/> Access Already Available?	01-1035a (1/7/79)	
		OPERATIONAL COST & NO. PERSONNEL INCREASE (DECREASE)	FIRST OPERATING YEAR	ULTIMATE ANNUAL YEAR
		FUNDING SOURCE FED. RCPTS. GEN. FUND		
		TOTAL ANNUAL OPERATIONAL COST		
		POSITION (FTE)		
				PREVIOUS YR-PRIORITY
				AGENCY PRIORITY
				GOVERNOR'S PRIORITY

CATEGORY General Government

AGENCY _____

DOT/PE _____

PROGRAM Facilities Planning

01-1035a (7/79)

350

PROPOSED CAPITAL PROJECT

REVISED DATE

000118

Introduced: 3/17/80
Referred: Finance

1 IN THE HOUSE

BY THE FINANCE COMMITTEE
BY REQUEST

2 HOUSE BILL NO. 957

3 IN THE LEGISLATURE OF THE STATE OF ALASKA

4 ELEVENTH LEGISLATURE - SECOND SESSION

5 A BILL

6 For an Act entitled: "An Act relating to the capital improvement program and
7 budget recommendations under the Executive Budget Act."

8 BE IT ENACTED BY THE LEGISLATURE OF THE STATE OF ALASKA:

9 * Section 1. AS 37.07.060(b)(3)(A) is amended to read:

10 (A) a description of each project, its estimated cost
11 for the year construction is to start and the estimated cost of the
12 project adjusted for inflation over the estimated period of con-
13 struction, and the source of financing for the project; the pro-
14 ject description for a new building or a new facility or for a
15 major addition to a building or facility should include a site
16 plan, preliminary drawings, and architect's or engineer's total
17 cost estimate for the project;

STATE OF ALASKA

JAY S. HAMMOND, GOVERNOR

DEPARTMENT OF TRANSPORTATION AND PUBLIC FACILITIES

OFFICE OF THE COMMISSIONER

POUCH Z
JUNEAU, ALASKA 99811
(TELEX 45-328)

SAMPLE OF WHAT WE WOULD EXPECT FOR
GOVERNOR'S PROJECTS IF THIS BILL
WERE TO BECOME LAW.

February 1, 1980

000H-

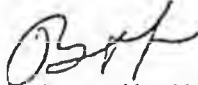
RE: Legislative Intent -
Tenakee Health Center
Facility

J. H. Hogan, Director
Legislative Finance Division
Legislative Affairs Agency
Pouch WF
Juneau, Alaska 99811

Dear Mr. Hogan:

The first session of the 11th Legislature requested that this Department develop and submit to the second session a schematic plan and cost estimate for a Health Center at Tenakee. The attached plan and cost estimate covers a basic Health center plus two options for a public safety facility and a community center. This proposal has been developed in cooperation with the officials of the City of Tenakee.

Sincerely,


Robert W. Ward
Commissioner

LINN A. FORREST ARCHITECTS A.I.A.

A PROFESSIONAL CORPORATION

800 GLACIER AVE. - SUITE A JUNEAU, ALASKA 99801

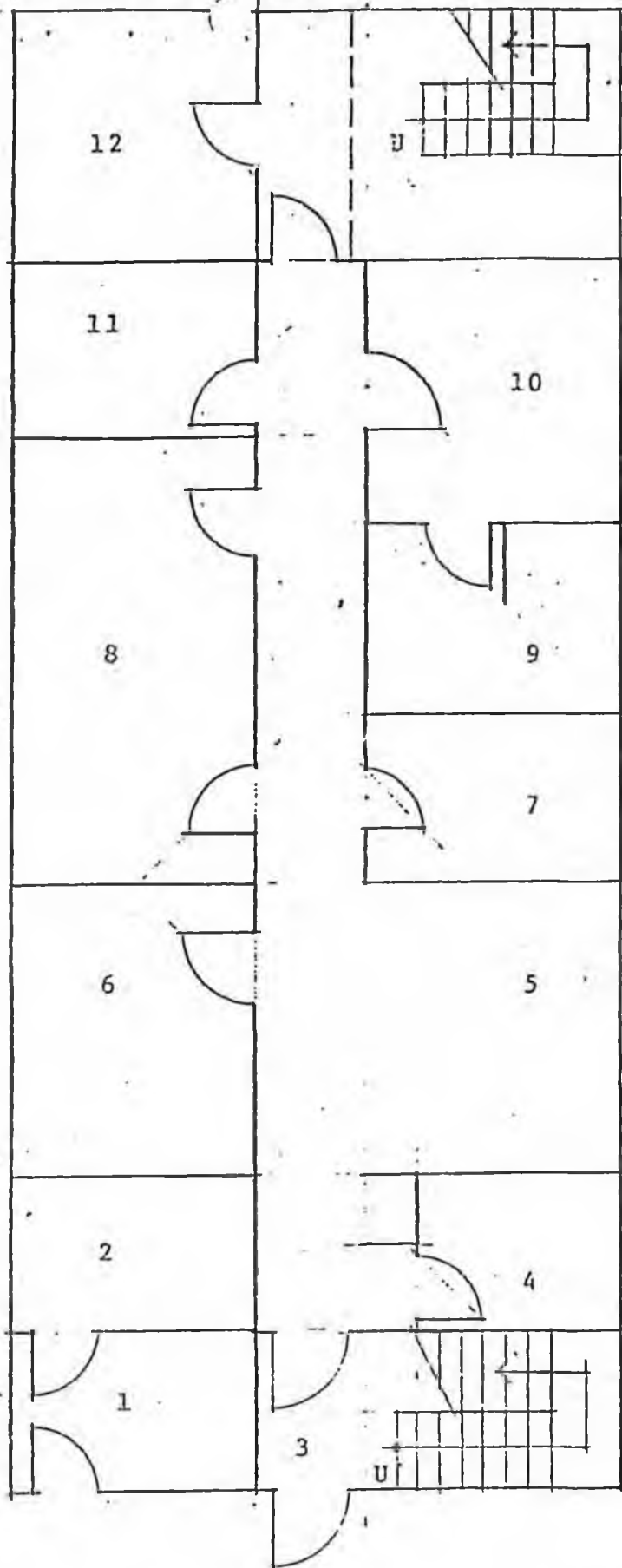
TELEPHONES (907) 586-1371 586-1375

TENAKEE HEALTH CENTER TENAKEE SPRINGS, ALASKA

Cost Estimate Schematic Design Phase

1. Site Preparation	LS		<u>\$10,000.00</u>
2. Base Bid			
Ground floor, not including holding cell and office			
		165 \$/sf x 1815 sf =	299,475.00
		+ 10% contingency =	<u>329,422.50</u>
3. Alternate No. 1	LS		<u>8,000.00</u>
Holding cell and office, including all required special equipment.			
4. Alternate No. 2		125 \$/sf x 1678 sf =	209,750.00
second floor		+ 10% contingency =	<u>230,725.00</u>
		TOTAL COST	<u>\$578,147.50</u>

The above costs are construction costs only, and do not include non built-in equipment, Architect/Engineer fees, inspections, etc. The above total cost should be increased by approximately 28% to give total project costs.

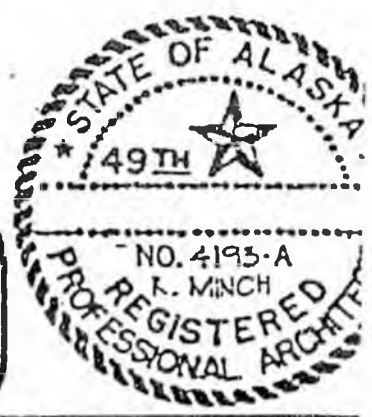


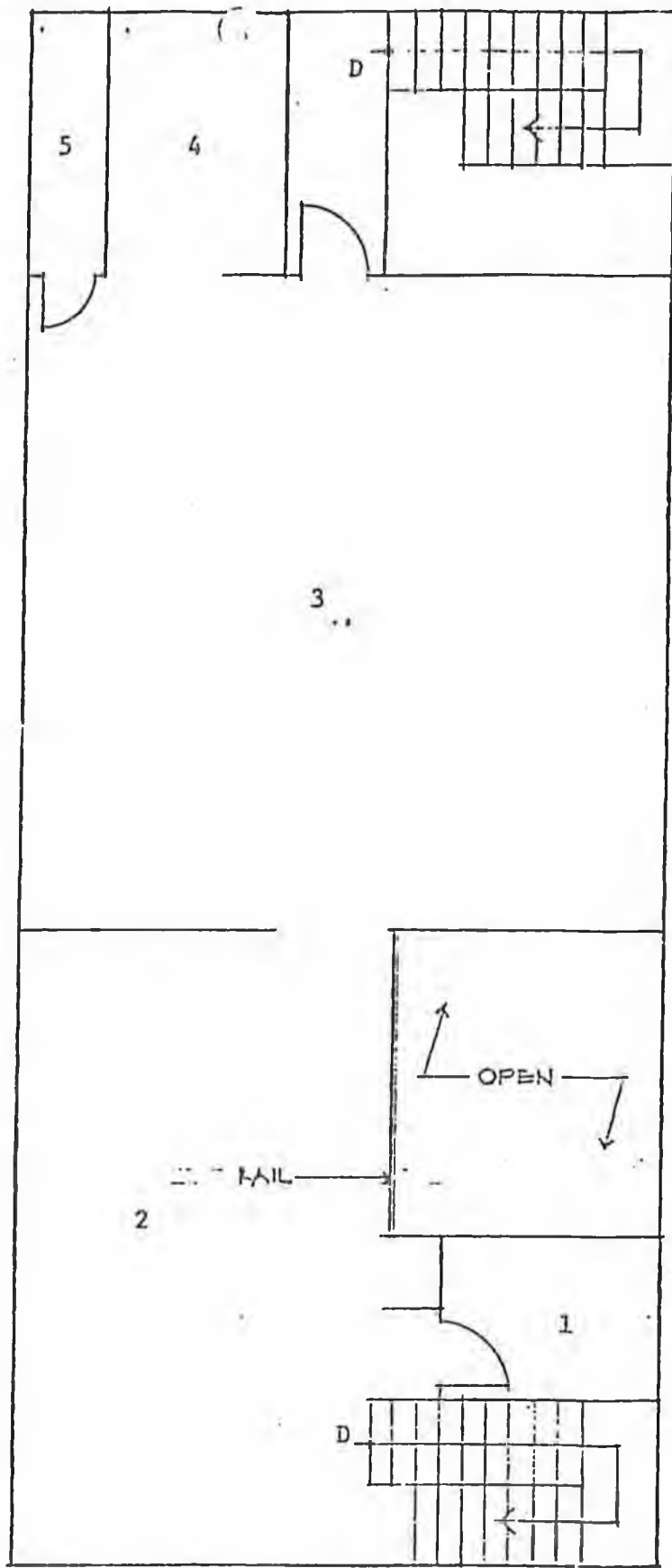
LEGEND

- 1 Office -
- 2 Holding Cell
- 3 Entry Vestibule
- 4 Toilet
- 5 Waiting Room
- 6 Office/Lab
- 7 Storage
- 8 Exam/Treatment
- 9 Toilet/Shower
- 10 Exam/Holding
- 11 Multi-purpose
- 12 Mechanical
- U Stairs UP
- D Stairs DOWN

GROUND FLOOR PLAN - Scale 1/8"=1'-0"

Drawn **TF** Project **TENAKEE HEALTH CENTER LINN . A. FORREST**
 Date **1-13-80** **TENAKEE SPRINGS, ALASKA ARCHITECTS A.I.A.**
 Sheet **1 OF 2** Title **- SCHEMATIC FLOOR PLAN Juneau alaska**





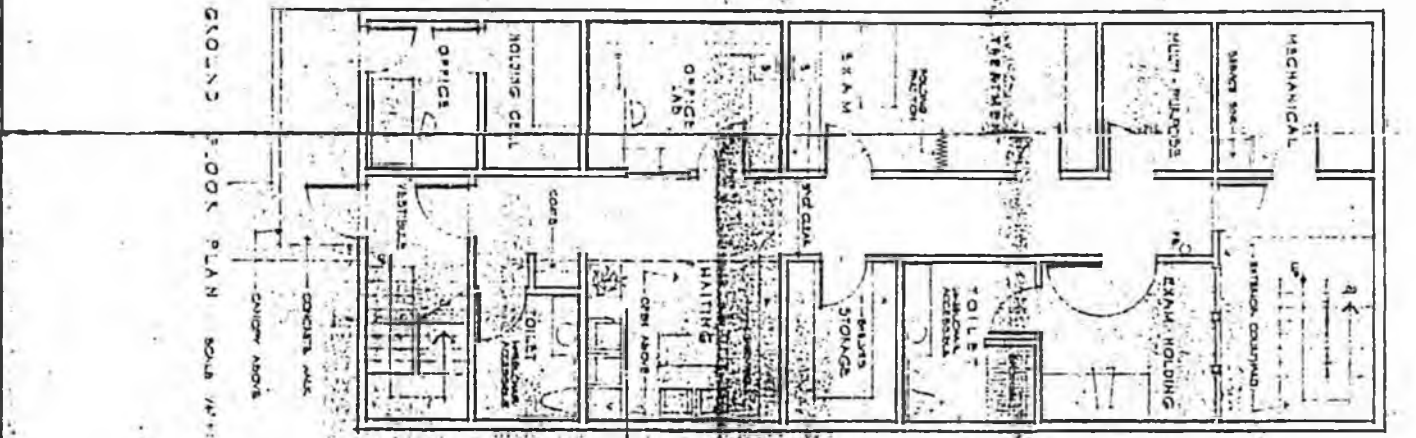
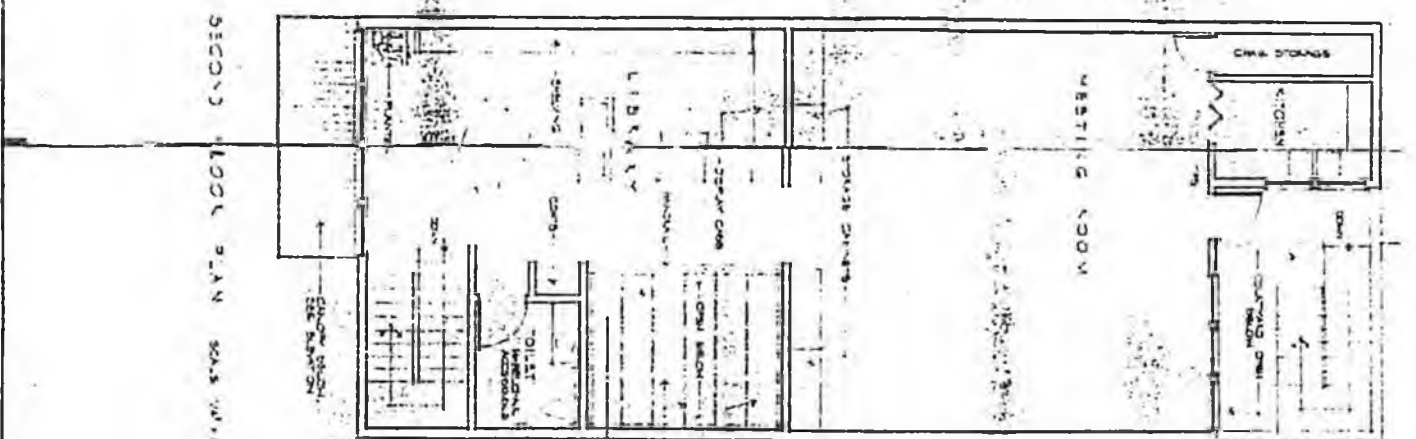
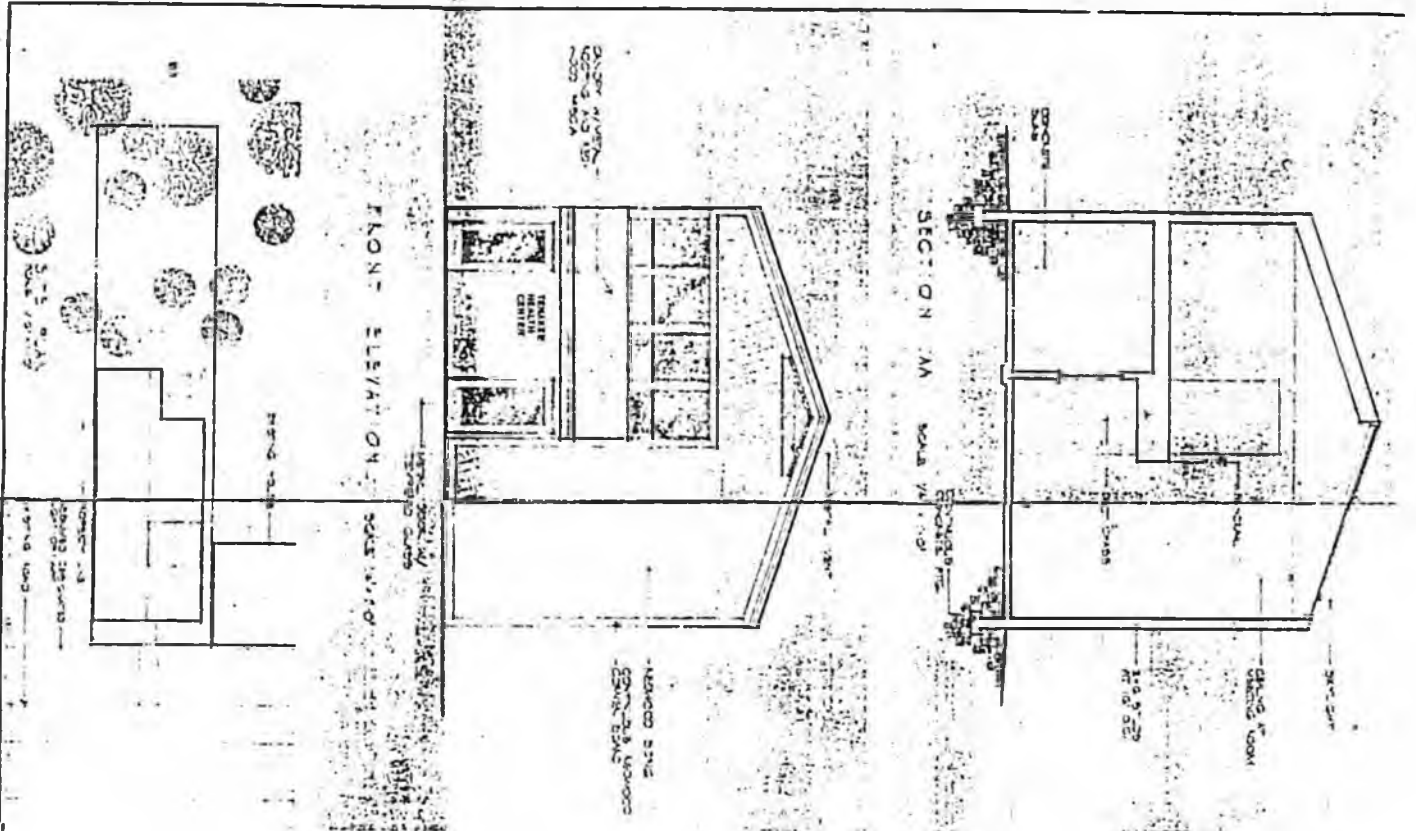
LEGEND

- 1 Toilet
- 2 Library
- 3 Meeting Room
- 4 Kitchen
- 5 Chair Storage

SECOND FLOOR PLAN-scale 1/8"=1'-0"



Drawn BY Project TENAKEE HEALTH CENTER LINN A. FORREST
 Date 1-15-80 TENAKEE SPRINGS, ALASKA ARCHITECTS A.I.A.
 Sheet 2 OF 2 Title SCHEMATIC FLOOR PLAN Inupiat Alaska



DATE	NO.
08/11/80	01
08/11/80	02
08/11/80	03
08/11/80	04
08/11/80	05
08/11/80	06
08/11/80	07
08/11/80	08
08/11/80	09
08/11/80	10

SCHEMATIC DESIGN

TENAKSE HEALTH CENTER

TENAKSE, JUNEAU, ALASKA

LINN A. FORREST ARCHITECTS AIA

800 GLACIER AVE. SUITE A

JUNEAU, ALASKA





RECORDS CERTIFICATION



I, the undersigned, an employee of the State of Alaska, do hereby certify that the microfilm images on this microform are accurate reproductions of the original records of the State of Alaska as accumulated during the regular course of business, and that it is the established policy and practice of this State to microfilm its records and to dispose of the original records after microfilm reproductions have been made.

James O Smith
Signature of Camera Operator

3/20/90
Date

Funding Information:
General Fund: \$208,500
Other Funds: -0-
\$208,500

Introduced: 3/17/80
Referred: Finance

1 IN THE HOUSE

BY THE RULES COMMITTEE BY
REQUEST OF THE GOVERNOR

2 HOUSE BILL NO. 958

3 IN THE LEGISLATURE OF THE STATE OF ALASKA

4 ELEVENTH LEGISLATURE - SECOND SESSION

5 A BILL

6 For an Act entitled: "An Act making a supplemental appropriation to the
7 Office of the Governor for the confidential bargaining
8 unit; and providing for an effective date."

9 BE IT ENACTED BY THE LEGISLATURE OF THE STATE OF ALASKA:

10 * Section 1. The sum of \$208,500 is appropriated from the general fund
11 to the Office of the Governor, to pay the costs of a negotiated salary
12 increase for the confidential bargaining unit.

13 * Sec. 2. This Act takes effect immediately in accordance with AS 01.-
14 10.070(c).

15

16

17

18

19

20

21

22

23

24

25

26

27

28

29

JAY S. HAMMOND
GOVERNOR



STATE OF ALASKA
OFFICE OF THE GOVERNOR
JUNEAU

HB 958

March 17, 1980

The Honorable Terry Gardiner
Speaker of the House
Alaska State Legislature
Pouch V
Juneau, Alaska 99811

Dear Mr. Speaker:

Under the authority of art. III, sec. 18, of the Alaska Constitution, I am transmitting a bill making a supplemental appropriation to the Office of the Governor, to pay the costs of a negotiated salary increase with the confidential bargaining unit. The contract negotiations were recently concluded to become effective March 16, 1980.

Sincerely,

Jay S. Hammond
Governor

A handwritten signature in dark ink, appearing to be "T. Miller", written over the printed name of Terry Miller.

By: Terry Miller
Lieutenant Governor

Salary Increase -- Confidential Unit

Contract effective 3/16/80 provides for paying confidential unit employees on same salary schedule as general government unit employees. A sampling of the entire unit by Ken Cates determined costs of this increase for 150 members in the unit to be \$107,550 (without benefits). Other terms: a) \$385 bonus payment to each member; b) increased health insurance to provide same level of coverage as supervisors unit (6,100); c) increased travel accident insurance coverage (750). Total FY80 costs are as follows:

1. Bonus payment plus benefits at 22% (150 x 385 x 1.22)	70,455
2. Salary increase plus benefits (107 x 550 x 1.22)	131,211
3. Health insurance (6.77 x 150 x 6 months)	6,100
4. Travel accident insurance	750

TOTAL 208,516

208,500 per Jeff Morrison

Benefits as follows, assumes 1/3 of unit is a maximum on SBS:

SB S.0613 x 2/3 =	.0408
PERS =	.1267
VI =	.0090
Term Lv =	.0100
Risk Mgt. =	.0310
	<u>.2175</u>

use 22% rounded

letter + memo

Funding Information:
General Fund: \$208,500
Other Funds: -0-
\$208,500

Introduced: 3/17/80
Referred: Finance

1 IN THE HOUSE

BY THE RULES COMMITTEE BY
REQUEST OF THE GOVERNOR

2 HOUSE BILL NO. 958

3 IN THE LEGISLATURE OF THE STATE OF ALASKA

4 ELEVENTH LEGISLATURE - SECOND SESSION

5 A BILL

6 For an Act entitled: "An Act making a supplemental appropriation to the
7 Office of the Governor for the confidential bargaining
8 unit; and providing for an effective date."

9 BE IT ENACTED BY THE LEGISLATURE OF THE STATE OF ALASKA:

10 * Section 1. The sum of \$208,500 is appropriated from the general fund
11 to the Office of the Governor, to pay the costs of a negotiated salary
12 increase for the confidential bargaining unit.

13 * Sec. 2. This Act takes effect immediately in accordance with AS 01.-
14 10.070(c).

29 COMMITTEE COPY

JAY S. HAMMOND
GOVERNOR



STATE OF ALASKA
OFFICE OF THE GOVERNOR
JUNEAU

HB 958

March 17, 1980

The Honorable Terry Gardiner
Speaker of the House
Alaska State Legislature
Pouch V
Juneau, Alaska 99811

Dear Mr. Speaker:

Under the authority of art. III, sec. 18, of the Alaska Constitution, I am transmitting a bill making a supplemental appropriation to the Office of the Governor, to pay the costs of a negotiated salary increase with the confidential bargaining unit. The contract negotiations were recently concluded to become effective March 16, 1980.

Sincerely,

Jay S. Hammond
Governor

A handwritten signature in dark ink, appearing to read "T. Miller", written over the printed name of Terry Miller.

By: Terry Miller
Lieutenant Governor

Salary Increase -- Confidential Unit

Contract effective 3/16/80 provides for paying confidential unit employees on same salary schedule as general government unit employees. A sampling of the entire unit by Ken Cates determined costs of this increase for 150 members in the unit to be \$107,550 (without benefits). Other terms: a) \$385 bonus payment to each member; b) increased health insurance to provide same level of coverage as supervisors unit (6,100); c) increased travel accident insurance coverage (750). Total FY80 costs are as follows:

1. Bonus payment plus benefits at 22%	70,455
(150 x 385 x 1.22)	
2. Salary increase plus benefits	131,211
(107 x 550 x 1.22)	
3. Health insurance	6,100
(6.77 x 150 x 6 months)	
4. Travel accident insurance	750

TOTAL 208,516

208,500 per Jeff Morrison

Benefits as follows, assumes 1/3 of unit is a maximum on SBS:

SB S.0613 x 2/3 =	.0408
PERS =	.1267
VI =	.0090
Term Lv =	.0100
Risk Mgt. =	.0310
	<u>.2175</u>

use 22% rounded

ALASKA STATE LEGISLATURE

ELEVENTH Legislature SECOND Session

HOUSE BILL NO. 958

By THE RULES COMMITTEE BY REQUEST OF THE GOVERNOR

"An Act making a supplemental appropriation to the Office of the Governor for the confidential bargaining unit; and providing for an effective date."

Supp appro, confidential bargaining unit

Introduced in the House 3/17/80, 1980

HISTORY IN THE HOUSE

19 80	Read first time and referred to Committee on Finance																												
Mar 17	Reported back with recommendation that																												
	Read second time and																												
	Read third time and																												
	<table border="0"> <tr> <td>PASS</td> <td>Effective Date</td> </tr> <tr> <td>Yeas</td> <td>Yeas</td> </tr> <tr> <td>Nays</td> <td>Nays</td> </tr> <tr> <td>Absent</td> <td>Absent</td> </tr> <tr> <td>Excused</td> <td>Excused</td> </tr> <tr> <td colspan="2">Reconsideration</td> </tr> <tr> <td>PASS</td> <td>Effective Date</td> </tr> <tr> <td>Yeas</td> <td>Yeas</td> </tr> <tr> <td>Nays</td> <td>Nays</td> </tr> <tr> <td>Absent</td> <td>Absent</td> </tr> <tr> <td>Excused</td> <td>Excused</td> </tr> <tr> <td colspan="2">Reported correctly engrossed</td> </tr> <tr> <td colspan="2">Signed by Speaker</td> </tr> <tr> <td colspan="2">Sent to Senate</td> </tr> </table>	PASS	Effective Date	Yeas	Yeas	Nays	Nays	Absent	Absent	Excused	Excused	Reconsideration		PASS	Effective Date	Yeas	Yeas	Nays	Nays	Absent	Absent	Excused	Excused	Reported correctly engrossed		Signed by Speaker		Sent to Senate	
PASS	Effective Date																												
Yeas	Yeas																												
Nays	Nays																												
Absent	Absent																												
Excused	Excused																												
Reconsideration																													
PASS	Effective Date																												
Yeas	Yeas																												
Nays	Nays																												
Absent	Absent																												
Excused	Excused																												
Reported correctly engrossed																													
Signed by Speaker																													
Sent to Senate																													
CHIEF CLERK OF THE HOUSE																													

HISTORY IN THE SENATE

19	Read first time and referred to Committee on																												
	Reported back with recommendation that																												
	Read second time and																												
	Read third time and																												
	<table border="0"> <tr> <td>PASS</td> <td>Effective Date</td> </tr> <tr> <td>Yeas</td> <td>Yeas</td> </tr> <tr> <td>Nays</td> <td>Nays</td> </tr> <tr> <td>Absent</td> <td>Absent</td> </tr> <tr> <td>Excused</td> <td>Excused</td> </tr> <tr> <td colspan="2">Reconsideration</td> </tr> <tr> <td>PASS</td> <td>Effective Date</td> </tr> <tr> <td>Yeas</td> <td>Yeas</td> </tr> <tr> <td>Nays</td> <td>Nays</td> </tr> <tr> <td>Absent</td> <td>Absent</td> </tr> <tr> <td>Excused</td> <td>Excused</td> </tr> <tr> <td colspan="2">Reported correctly engrossed</td> </tr> <tr> <td colspan="2">Signed by President</td> </tr> <tr> <td colspan="2">Returned to House</td> </tr> </table>	PASS	Effective Date	Yeas	Yeas	Nays	Nays	Absent	Absent	Excused	Excused	Reconsideration		PASS	Effective Date	Yeas	Yeas	Nays	Nays	Absent	Absent	Excused	Excused	Reported correctly engrossed		Signed by President		Returned to House	
PASS	Effective Date																												
Yeas	Yeas																												
Nays	Nays																												
Absent	Absent																												
Excused	Excused																												
Reconsideration																													
PASS	Effective Date																												
Yeas	Yeas																												
Nays	Nays																												
Absent	Absent																												
Excused	Excused																												
Reported correctly engrossed																													
Signed by President																													
Returned to House																													
SECRETARY OF THE SENATE																													

HISTORY IN THE HOUSE

19	Received from Senate
	Concurred in Senate amendment thus adopting: VOTE
	Failed to concur in Senate amendment; asked Senate to recede VOTE
	Senate receded from amendment VOTE
	Senate failed to recede from amendment VOTE
	CC appointed by House
	CC appointed by Senate
	CC adopted by House VOTE
	CC adopted by Senate VOTE
	To enrolling
	Reported correctly enrolled
	Sent to Governor
 by Governor
	Filed with Lt. Governor
	Chapter No.



RECORDS



CERTIFICATION

I, the undersigned, an employee of the State of Alaska, do hereby certify that the microfilm images on this microform are accurate reproductions of the original records of the State of Alaska as accumulated during the regular course of business, and that it is the established policy and practice of this State to microfilm its records and to dispose of the original records after microfilm reproductions have been made.

James A. Smith
Signature of Camera Operator

3/20/90
Date



STATE OF ALASKA
OFFICE OF THE GOVERNOR
JUNEAU

March 17, 1980

14B 959

The Honorable Terry Gardiner
Speaker of the House
Alaska State Legislature
Pouch V
Juneau, Alaska 99811

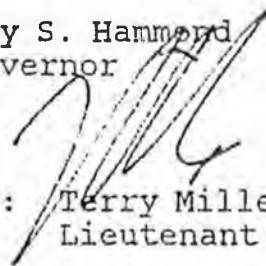
Dear Mr. Speaker:

Under the authority of article III, section 18, of the Alaska Constitution, I am transmitting a bill making supplemental appropriations to the Alaska Housing Finance Corporation for the purpose of (1) the special mortgage purchase program; (2) deposit in the mortgage interest reduction fund; and (3) deposit in the housing insurance fund.

This measure is the appropriation bill referred to in my transmittal letters for SB 384 and HB 671 (identical bills relating to the Alaska Housing Finance Corporation), introduced February 4, 1980. See Senate Journal, pp. 161-163 and House Journal, pp. 215-217.

Sincerely,

Jay S. Hammond
Governor

By:  Terry Miller
Lieutenant Governor

Funding Information:

General Fund: \$271,354,000
Other Funds: -0-
\$271,354,000

Introduced: 3/17/80
Referred: Finance

1 IN THE HOUSE

BY THE RULES COMMITTEE BY
REQUEST OF THE GOVERNOR

2 HOUSE BILL NO. 959

3 IN THE LEGISLATURE OF THE STATE OF ALASKA

4 ELEVENTH LEGISLATURE - SECOND SESSION

5 A BILL

6 For an Act entitled: "An Act making supplemental appropriations to the
7 Alaska Housing Finance Corporation; and providing for
8 an effective date."

9 BE IT ENACTED BY THE LEGISLATURE OF THE STATE OF ALASKA:

10 * Section 1. The sum of \$200,000,000 is appropriated from the general
11 fund to the Alaska Housing Finance Corporation for the purpose of the
12 special mortgage purchase program of the corporation.

13 * Sec. 2. The sum of \$67,354,000 is appropriated from the general fund
14 to the Alaska Housing Finance Corporation for deposit in the mortgage
15 interest reduction fund of the corporation.

16 * Sec. 3. The sum of \$4,000,000 is appropriated from the general fund
17 to the Alaska Housing Finance Corporation for deposit in the housing insur-
18 ance fund of the corporation.

19 * Sec. 4. This Act takes effect July 1, 1980.
20
21
22
23
24
25
26
27
28
29

ELEVENTH LEGISLATURE

FISCAL NOTE

I. REQUEST

Bill/Resolution No. HOUSE BILL NO. 959
 Title An Act to establish a Special Mortgage Purchase Program, a Mortgage Interest Reduction Fund and a Housing Mortgage Insurance Fund; and providing Date February 1, 1980
 for an effective date.
 Requested by: Governor

II. FISCAL DETAIL

Agency Affected Department of Revenue
 Program Category Affected Revenue Collection & Management
 BRU, Program, or Subprogram(s) Affected Treasury Management
 (Note: If more than one budget component is affected, separate line-item amounts and funding for each component in the analysis section.)

EXPENDITURES (Thousands of Dollars)

	FY 80	FY 81	FY 82	FY 83	FY 84	FY 85
100 PERSONAL SERVICES						
200 TRAVEL						
300 CONTRACTUAL						
400 COMMODITIES						
500 EQUIPMENT						
600 LAND & STRUCTURES						
700 GRANTS, CLAIMS, ETC.		200,000.0				
700 GRANTS (Rate Subsidy)		67,354.0	67,354.0	67,354.0	67,354.0	67,354.0
TOTAL		267,354.0	67,354.0	67,354.0	67,354.0	67,354.0

FUNDING (Thousands of Dollars)

GENERAL FUND	267,354.0	67,354.0	67,354.0	67,354.0	67,354.0
FEDERAL FUNDS					
OTHER (Specify Fund Source)					

POSITIONS

FULL TIME					
PART TIME					
TEMPORARY					

III. ANALYSIS (See Fiscal Note Preparation Instructions, Section III)

The initial \$200,000,000 appropriated would be used to make mortgages at the specified rates. In order to regain capital invested, GNMA type pool certificates would be issued. In effect, the market would require a \$67,354,000 discount so that investors could earn the market rate of interest. A subsidy in the amount of the discount would be necessary to replenish funds to the original \$200,000,000 level so that new loans could be made.

See attached Assumptions.

Angela C. Spack

IV. DATE February 1, 1980 PREPARED BY Angela C. Spack, Treasury Controller
 AGENCY Department of Revenue, Treasury Division
 PHONE 465-2351
 Original: Legislative Finance
 cc: Budget and Management
 Prime Sponsor (First Legislator Named)

003241

FISCAL NOTE

Bill/Resolution No.:

Title: An Act to establish a Special Mortgage Purchase Program, a Mortgage Interest Reduction Fund and a Housing Mortgage Insurance Fund; and providing for an effective date.

Requested by: Governor

Assumptions:

Rate: 9-1/2% regular rate to borrower, 9-1/4% to Veterans.

Costs: 3/8% service fee, 1/8% other costs; net yield therefor
9% regular, 8-3/4% Veterans.

Term: 25 years.

Composition: 90% regular mortgages, 10% Veterans.

Market: 13-1/2% required to sell in GNMA type pool.

Effective Date: July 1, 1980.

Mortgage Level: \$200,000,000 per year.

Prepared by: Anselm C. Staack, Treasury Comptroller

Agency: Department of Revenue, Treasury Division

Phone: 465-2351

Date: February 1, 1980

CORRECTION

**THIS DOCUMENT
HAS BEEN REPHOTOGRAPHED
TO ASSURE LEGIBILITY**

FISCAL NOTE

I. REQUEST

Bill/Resolution No. HOUSE BILL NO. 959

Title An Act to establish a Special Mortgage Purchase Program, a Mortgage Interest Reduction Fund and a Housing Mortgage Insurance Fund; and providing Date February 1, 1980 for an effective date.

Requested by: Governor

II. FISCAL DETAIL

Agency Affected Department of Revenue

Program Category Affected Revenue Collection & Management

BRU, Program, or Subprogram(s) Affected Treasury Management

(Note: If more than one budget component is affected, separate line-item amounts and funding for each component in the analysis section.)

EXPENDITURES (Thousands of Dollars)

	FY 80	FY 81	FY 82	FY 83	FY 84	FY 85
100 PERSONAL SERVICES						
200 TRAVEL						
300 CONTRACTUAL						
400 COMMODITIES						
500 EQUIPMENT						
600 LAND & STRUCTURES						
700 GRANTS, CLAIMS, ETC.		200,000.0				
700 GRANTS (Rate Subsidy)		67,354.0	67,354.0	67,354.0	67,354.0	67,354.0
TOTAL		267,354.0	67,354.0	67,354.0	67,354.0	67,354.0

FUNDING (Thousands of Dollars)

	FY 80	FY 81	FY 82	FY 83	FY 84	FY 85
GENERAL FUND		267,354.0	67,354.0	67,354.0	67,354.0	67,354.0
FEDERAL FUNDS						
OTHER (Specify Fund Source)						

POSITIONS

	FY 80	FY 81	FY 82	FY 83	FY 84	FY 85
FULL TIME						
PART TIME						
TEMPORARY						

III. ANALYSIS (See Fiscal Note Preparation Instructions, Section III)

The initial \$200,000,000 appropriated would be used to make mortgages at the specified rates. In order to regain capital invested, GNMA type pool certificates would be issued. In effect, the market would require a \$67,354,000 discount so that investors could earn the market rate of interest. A subsidy in the amount of the discount would be necessary to replenish funds to the original \$200,000,000 level so that new loans could be made.

See attached Assumptions.

Anselm C. Stack

IV. DATE February 1, 1980 PREPARED BY Anselm C. Stack, Treasury Comptroller

AGENCY Department of Revenue, Treasury Division

PHONE 465-2351

Original: Legislative Finance

cc: Budget and Management

Prime Sponsor (First Legislator Named)

CATEGORY: GENERAL GOVERNMENT
PROGRAM: REVENUE COLLECTION AND MANAGEMENT

AGENCY: REVENUE
BRU (s): AUDIT; PETROLEUM REVENUE; ENFORCEMENT; TREASURY MANAGEMENT; ADMINISTRATION AND SUPPORT

All Department of Revenue BRU's in the Revenue Collection and Management cover program are included herein. A major emphasis on identifying the "invisible taxpayer" is planned in the FY 81 budget, primarily in the BRUs of Audit, Enforcement, and Administration and Support.

The goals of the Audit BRU are to achieve effective compliance by taxpayers with the tax laws of Alaska, and to raise revenues through an effective audit program. The Revenue Audit staff concentrates on corporate and individual income tax, estate taxes, excise taxes, business license tax, fisheries tax, mining license tax, and the issuance of permits for games or skill or chance.

The goals of the Petroleum Revenue BRU are to administer state taxes on oil and gas production, which includes the State oil and gas property tax, oil and gas production tax and the oil and gas corporate income tax, and also to coordinate with local governments also taxing that property. The Division of Petroleum Revenue also generates revenue estimates for the State of projected oil and gas related revenues.

The goal of the Enforcement BRU is to enforce the collection of taxes from all taxpayers in a fair and equitable manner. The Division is responsible for billing and collecting all delinquent tax accounts.

The goals of the Treasury Management BRU are to manage available funds for a maximum return consistent with statutory limitations; to place general bonded debt as needed for capital projects at minimum cost to the State; and to report the management of funds in accordance with current reporting standards. The Treasury Management Division works closely with the State Bond Committee in performing these functions. Fund management is centralized for the Public Employees Retirement Fund, the Teachers Retirement Fund, and the General Fund, as well as other special funds.

The Administration and Support BRU includes the Office of the Commissioner, Administrative Services, and Fish and Game Licensing. The Commissioner's Office oversees all functions of the Department of Revenue. The Research Section, under the Office of the Commissioner, performs special studies in analyzing and developing revenue sources, as well as projecting State cash flow through revenue estimating models and information provided by State agencies. The Administrative Services component provides centralized general services for the Department of Revenue, including personnel, budget, payroll, purchasing, mail, etc. This section also provides certain technical services such as administering business licenses, processing tax and license remittances, and initial processing of tax returns. The Fish and Game Licensing component is being transferred to this BRU from the Natural Resources category for FY 81. This component processes revenues received from the sales of Fish and Game licenses statewide. Most of the licenses are sold by contract vendors such as sporting goods stores.

COMPONENT DESCRIPTION	79 AUTH	79 FINAL	79 ACT	80 AUTH	80 SUPL	80 RP	GOVERNOR
AUDIT	2461.5	2530.6	2513.1	2691.6			3223.6
PETROLEUM REVENUE	1279.6	1240.1	1187.3	1435.0			1447.2
ENFORCEMENT	1196.5	1335.4	1324.7	1217.0			1346.3
TREASURY MANAGEMENT	1232.3	1227.9	1120.3	1357.1			1436.9
OFFICE OF THE COMMISSIONER	877.3	1077.4	1054.4	757.6			964.5
ADMINISTRATIVE SERVICES	1630.0	1783.7	1746.5	1773.6			2361.4
FISH AND GAME LICENSING	572.1	580.6	531.6	259.0			298.0
MM TOTAL	9249.3	9775.7	9477.9	9490.9			11097.9
MM CHANGE VERSUS 80 AUTH							16.9%
OBJECT DESCRIPTION							
PERS. SERV.	6294.0	6685.5	6654.2	6784.4			7519.5
TRAVEL	336.8	333.8	316.3	315.7			419.6
CONTRACTUAL	2218.2	2320.1	2075.1	2031.5			2728.1
COMMODITIES	68.5	69.3	59.0	58.2			80.9
EQUIPMENT	23.5	58.7	65.3				37.0
LANDS/BLDGS	308.3	308.3	308.0	301.1			312.8
FUNDING SOURCE							
GENERAL FUND	8446.3	9040.7	8835.4	8956.9			10520.7
PGM RECEIPTS	308.0	240.0	217.5				
OTHER FUNDS	495.0	495.0	425.0	534.0			577.2
MM GENERAL FUND CHANGE VS. 80 AUTH							17.4%
POSITIONS							
FULL-TIME	220.0	220.0	220.0	224.0			237.0
PART-TIME	8.0	8.0	8.0	8.0			21.0
TEMPORARY	14.0	14.0	14.0	13.0			
STAFF MONTHS	2715.1	2715.1	2715.1	2784.0			2944.2

FISCAL NOTE

Bill/Resolution No.:

Title: An Act to establish a Special Mortgage Purchase Program, a Mortgage Interest Reduction Fund and a Housing Mortgage Insurance Fund; and providing for an effective date.

Requested by: Governor

Assumptions:

Rate: 9-1/2% regular rate to borrower, 9-1/4% to Veterans.

Costs: 3/8% service fee, 1/8% other costs; net yield therefor
9% regular, 8-3/4% Veterans.

Term: 25 years.

Composition: 90% regular mortgages, 10% Veterans.

Market: 13-1/2% required to sell in GNMA type pool.

Effective Date: July 1, 1980.

Mortgage Level: \$200,000,000 per year.

Prepared by: Anselm C. Staack, Treasury Comptroller

Agency: Department of Revenue, Treasury Division

Phone: 465-2351

Date: February 1, 1980

151

HB 959

THE LEGISLATURE OF THE STATE OF ALASKA
ELEVENTH LEGISLATURE

FISCAL NOTE

I. REQUEST

Bill/Resolution No. HB 959
 Title An Act to establish a Special Mortgage Purchase Program, a Mortgage Interest Redu-
tion Fund and a Housing Mortgage Insurance Fund; and providing Date February 1, 1980
 for an effective date.
 Requested by: Governor

II. FISCAL DETAIL

Agency Affected Department of Revenue
 Program Category Affected Revenue Collection & Management
 BRU, Program, or Subprogram(s) Affected Treasury Management
 (Note: If more than one budget component is affected, separate line-item amounts and funding for each
 component in the analysis section.)

EXPENDITURES (Thousands of Dollars)

	FY 80	FY 81	FY 82	FY 83	FY 84	FY 85
100 PERSONAL SERVICES						
200 TRAVEL						
300 CONTRACTUAL						
400 COMMODITIES						
500 EQUIPMENT						
600 LAND & STRUCTURES						
700 GRANTS, CLAIMS, ETC.		200,000.0				
700 GRANTS (Rate Subsidy)		67,354.0	67,354.0	67,354.0	67,354.0	67,354.0
TOTAL		267,354.0	67,354.0	67,354.0	67,354.0	67,354.0

FUNDING (Thousands of Dollars)

GENERAL FUND		267,354.0	67,354.0	67,354.0	67,354.0	67,354.0
FEDERAL FUNDS						
OTHER (Specify Fund Source)						

POSITIONS

FULL TIME						
PART TIME						
TEMPORARY						

III. ANALYSIS (See Fiscal Note Preparation Instructions, Section III)

The initial \$200,000,000 appropriated would be used to make mortgages at the specified rates. In order to regain capital invested, GNMA type pool certificates would be issued. In effect, the market would require a \$67,354,000 discount so that investors could earn the market rate of interest. A subsidy in the amount of the discount would be necessary to replenish funds to the original \$200,000,000 level so that new loans could be made.

See attached Assumptions.

Anselm C. Staack

IV. DATE February 1, 1980 PREPARED BY Anselm C. Staack, Treasury Comptroller
 AGENCY Department of Revenue, Treasury Division
 PHONE 465-2351

Original: Legislative Finance
 cc: Budget and Management
 Prime Sponsor (First Legislator Named)

FISCAL NOTE

Bill/Resolution No.:

Title: An Act to establish a Special Mortgage Purchase Program, a Mortgage Interest Reduction Fund and a Housing Mortgage Insurance Fund; and providing for an effective date.

Requested by: Governor

Assumptions:

Rate: 9-1/2% regular rate to borrower, 9-1/4% to Veterans.

Costs: 3/8% service fee, 1/8% other costs; net yield therefor
9% regular, 8-3/4% Veterans.

Term: 25 years.

Composition: 90% regular mortgages, 10% Veterans.

Market: 13-1/2% required to sell in GNMA type pool.

Effective Date: July 1, 1980.

Mortgage Level: \$200,000,000 per year.

Prepared by: Anselm C. Staack, Treasury Comptroller

Agency: Department of Revenue, Treasury Division

Phone: 465-2351

Date: February 1, 1980

(11)

COMMITTEE REPORT

HOUSE

3/17/80

FURTHER:

Date: _____

Mr. Speaker:

The Committee on FINANCE has had HB 959

"An Act making supplemental appropriations to the Alaska Housing Finance Corporation; and providing for an effective date."

under consideration and (a majority of the committee) (the committee) reports it back with the following recommendations:

- do pass do not pass
- do pass with attached amendments(s)
- replace with CS for _____ same title
- and recommends _____ new title
- AND attaches a "Letter of Intent" New Fiscal Note
- reports it back without recommendation
- referred to the _____ Committee

MEMBERS SIGNING
DO PASS

MEMBERS HAVING
OTHER RECOMMENDATIONS:

CHAIRMAN

Letter + Vote

Funding Information:
General Fund: \$271,354,000
Other Funds: -0-
\$271,354,000

Introduced: 3/17/80
Referred: Finance

BY THE RULES COMMITTEE BY
REQUEST OF THE GOVERNOR

1 IN THE HOUSE

2 HOUSE BILL NO. 959

3 IN THE LEGISLATURE OF THE STATE OF ALASKA

4 ELEVENTH LEGISLATURE - SECOND SESSION

5 A BILL

6 For an Act entitled: "An Act making supplemental appropriations to the
7 Alaska Housing Finance Corporation; and providing for
8 an effective date."

9 BE IT ENACTED BY THE LEGISLATURE OF THE STATE OF ALASKA:

10 * Section 1. The sum of \$200,000,000 is appropriated from the general
11 fund to the Alaska Housing Finance Corporation for the purpose of the
12 special mortgage purchase program of the corporation.

13 * Sec. 2. The sum of \$67,354,000 is appropriated from the general fund
14 to the Alaska Housing Finance Corporation for deposit in the mortgage
15 interest reduction fund of the corporation.

16 * Sec. 3. The sum of \$4,000,000 is appropriated from the general fund
17 to the Alaska Housing Finance Corporation for deposit in the housing insur-
18 ance fund of the corporation.

19 * Sec. 4. This Act takes effect July 1, 1980.
20
21
22
23
24
25
26
27
28
29

JAY S. HAMMOND
GOVERNOR



STATE OF ALASKA
OFFICE OF THE GOVERNOR
JUNEAU

March 17, 1980

14B 959

The Honorable Terry Gardiner
Speaker of the House
Alaska State Legislature
Pouch V
Juneau, Alaska 99811

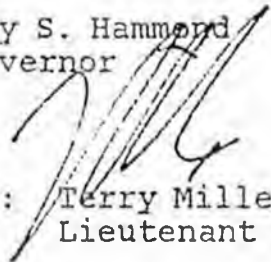
Dear Mr. Speaker:

Under the authority of article III, section 18, of the Alaska Constitution, I am transmitting a bill making supplemental appropriations to the Alaska Housing Finance Corporation for the purpose of (1) the special mortgage purchase program; (2) deposit in the mortgage interest reduction fund; and (3) deposit in the housing insurance fund.

This measure is the appropriation bill referred to in my transmittal letters for SB 384 and HB 671 (identical bills relating to the Alaska Housing Finance Corporation), introduced February 4, 1980. See Senate Journal, pp. 161-163 and House Journal, pp. 215-217.

Sincerely,

Jay S. Hammond
Governor


By: Terry Miller
Lieutenant Governor

THE LEGISLATURE OF THE STATE OF ALASKA
ELEVENTH LEGISLATURE

FISCAL NOTE

I. REQUEST

Bill/Resolution No. HOUSE BILL NO. 959

Title An Act to establish a Special Mortgage Purchase Program, a Mortgage Interest Reduction Fund and a Housing Mortgage Insurance Fund; and providing Date February 1, 1980
for an effective date.

Requested by: Governor

II. FISCAL DETAIL

Agency Affected Department of Revenue

Program Category Affected Revenue Collection & Management

BRU, Program, or Subprogram(s) Affected Treasury Management

(Note: If more than one budget component is affected, separate line-item amounts and funding for each component in the analysis section.)

EXPENDITURES (Thousands of Dollars)

	FY 80	FY 81	FY 82	FY 83	FY 84	FY 85
100 PERSONAL SERVICES						
200 TRAVEL						
300 CONTRACTUAL						
400 COMMODITIES						
500 EQUIPMENT						
600 LAND & STRUCTURES						
700 GRANTS, CLAIMS, ETC.		200,000.0				
700 GRANTS (Rate Subsidy)		67,354.0	67,354.0	67,354.0	67,354.0	67,354.0
TOTAL		267,354.0	67,354.0	67,354.0	67,354.0	67,354.0

FUNDING (Thousands of Dollars)

GENERAL FUND		267,354.0	67,354.0	67,354.0	67,354.0	67,354.0
FEDERAL FUNDS						
OTHER (Specify Fund Source)						

POSITIONS

FULL TIME						
PART TIME						
TEMPORARY						

III. ANALYSIS (See Fiscal Note Preparation Instructions, Section III)

The initial \$200,000,000 appropriated would be used to make mortgages at the specified rates. In order to regain capital invested, GNMA type pool certificates would be issued. In effect, the market would require a \$67,354,000 discount so that investors could earn the market rate of interest. A subsidy in the amount of the discount would be necessary to replenish funds to the original \$200,000,000 level so that new loans could be made.

See attached Assumptions.

Anselm C. Staack

IV. DATE February 1, 1980 PREPARED BY Anselm C. Staack, Treasury Comptroller
AGENCY Department of Revenue, Treasury Division
PHONE 465-2351

Original: Legislative Finance
cc: Budget and Management
Prime Sponsor (First Legislator Named)

FISCAL NOTE

Bill/Resolution No.:

Title: An Act to establish a Special Mortgage Purchase Program, a Mortgage Interest Reduction Fund and a Housing Mortgage Insurance Fund; and providing for an effective date.

Requested by: Governor

Assumptions:

Rate: 9-1/2% regular rate to borrower, 9-1/4% to Veterans.

Costs: 3/8% service fee, 1/8% other costs; net yield therefor
9% regular, 8-3/4% Veterans.

Term: 25 years.

Composition: 90% regular mortgages, 10% Veterans.

Market: 13-1/2% required to sell in GNMA type pool.

Effective Date: July 1, 1980.

Mortgage Level: \$200,000,000 per year.

Prepared by: Anselm C. Staack, Treasury Comptroller

Agency: Department of Revenue, Treasury Division

Phone: 465-2351

Date: February 1, 1980

ALASKA STATE LEGISLATURE

ELEVENTH Legislature SECOND Session

HOUSE BILL NO. 959

By THE RULES COMMITTEE BY REQUEST OF THE GOVERNOR

"An Act making supplemental appropriations to the Alaska Housing Finance Corporation; and providing for an effective date."

Supp appro, Alaska Housing Finance Corporation

Introduced in the House 3/17, 1980

HISTORY IN THE HOUSE

19 80	Read first time and referred to Committee on Finance												
Mar 17	Reported back with recommendation that												
	Read second time and												
	Read third time and												
	<table border="0"> <tr> <td>PASS</td> <td>Effective Date</td> </tr> <tr> <td>Yeas</td> <td>Yeas</td> </tr> <tr> <td>Nays</td> <td>Nays</td> </tr> <tr> <td>Absent</td> <td>Absent</td> </tr> <tr> <td>Excused</td> <td>Excused</td> </tr> </table>	PASS	Effective Date	Yeas	Yeas	Nays	Nays	Absent	Absent	Excused	Excused		
PASS	Effective Date												
Yeas	Yeas												
Nays	Nays												
Absent	Absent												
Excused	Excused												
	<table border="0"> <tr> <td colspan="2">Reconsideration</td> </tr> <tr> <td>PASS</td> <td>Effective Date</td> </tr> <tr> <td>Yeas</td> <td>Yeas</td> </tr> <tr> <td>Nays</td> <td>Nays</td> </tr> <tr> <td>Absent</td> <td>Absent</td> </tr> <tr> <td>Excused</td> <td>Excused</td> </tr> </table>	Reconsideration		PASS	Effective Date	Yeas	Yeas	Nays	Nays	Absent	Absent	Excused	Excused
Reconsideration													
PASS	Effective Date												
Yeas	Yeas												
Nays	Nays												
Absent	Absent												
Excused	Excused												
	Reported correctly engrossed												
	Signed by Speaker												
	Sent to Senate												
CHIEF CLERK OF THE HOUSE													

HISTORY IN THE SENATE

19	Read first time and referred to Committee on												
	Reported back with recommendation that												
	Read second time and												
	Read third time and												
	<table border="0"> <tr> <td>PASS</td> <td>Effective Date</td> </tr> <tr> <td>Yeas</td> <td>Yeas</td> </tr> <tr> <td>Nays</td> <td>Nays</td> </tr> <tr> <td>Absent</td> <td>Absent</td> </tr> <tr> <td>Excused</td> <td>Excused</td> </tr> </table>	PASS	Effective Date	Yeas	Yeas	Nays	Nays	Absent	Absent	Excused	Excused		
PASS	Effective Date												
Yeas	Yeas												
Nays	Nays												
Absent	Absent												
Excused	Excused												
	<table border="0"> <tr> <td colspan="2">Reconsideration</td> </tr> <tr> <td>PASS</td> <td>Effective Date</td> </tr> <tr> <td>Yeas</td> <td>Yeas</td> </tr> <tr> <td>Nays</td> <td>Nays</td> </tr> <tr> <td>Absent</td> <td>Absent</td> </tr> <tr> <td>Excused</td> <td>Excused</td> </tr> </table>	Reconsideration		PASS	Effective Date	Yeas	Yeas	Nays	Nays	Absent	Absent	Excused	Excused
Reconsideration													
PASS	Effective Date												
Yeas	Yeas												
Nays	Nays												
Absent	Absent												
Excused	Excused												
	Reported correctly engrossed												
	Signed by President												
	Returned to House												
SECRETARY OF THE SENATE													

HISTORY IN THE HOUSE

19	Received from Senate
	Concurred in Senate amendment thus adopting: VOTE
	Failed to concur in Senate amendment; asked Senate to recede VOTE
	Senate receded from amendment VOTE
	Senate failed to recede from amendment VOTE
	CC appointed by House
	CC appointed by Senate
	CC adopted by House VOTE
	CC adopted by Senate VOTE
	To enrolling
	Reported correctly enrolled
	Sent to Governor
 by Governor
	Filed with Lt. Governor
	Chapter No.