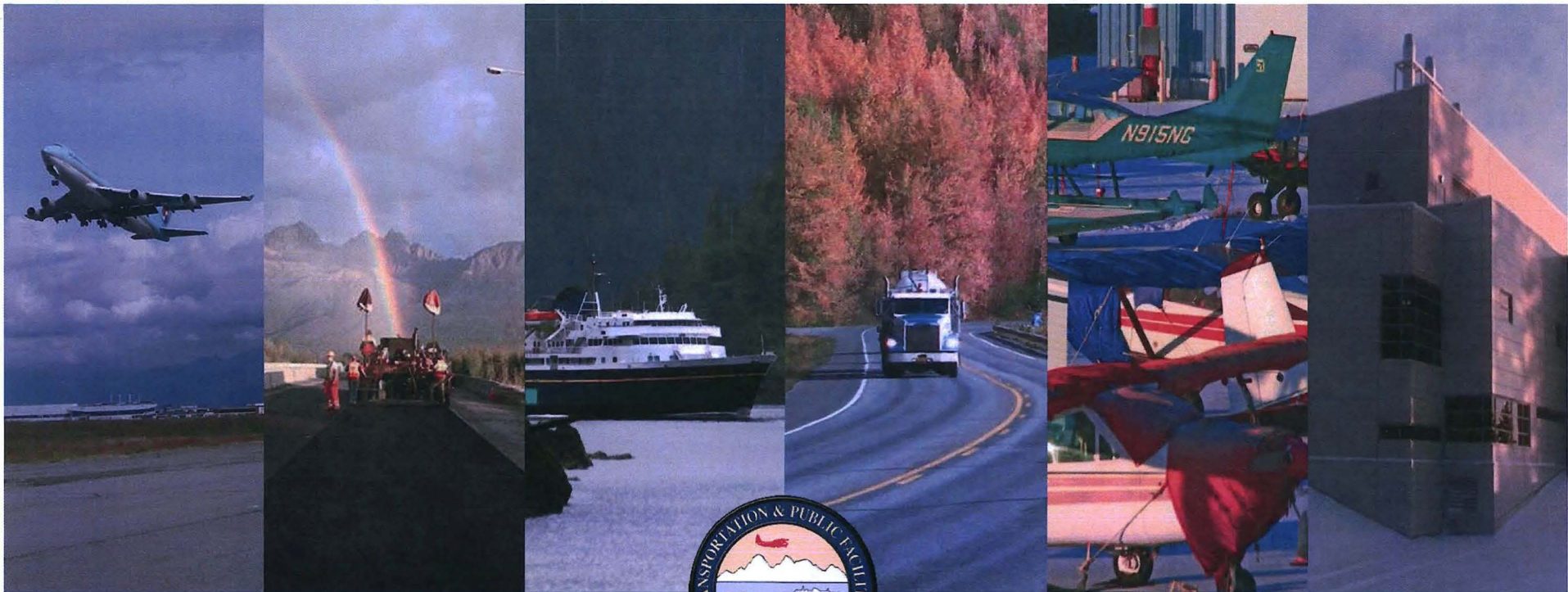


# Central 2018

<TARGET><BILL></BILL><SUBJECT>Central  
2018</SUBJECT><COMM></COMM></TARGET>



# Alaska Department of Transportation & Public Facilities

Central Region  
Dave Kemp, P.E., PMP

*Keep Alaska Moving* through service and infrastructure

# Meet the people of DOT&PF



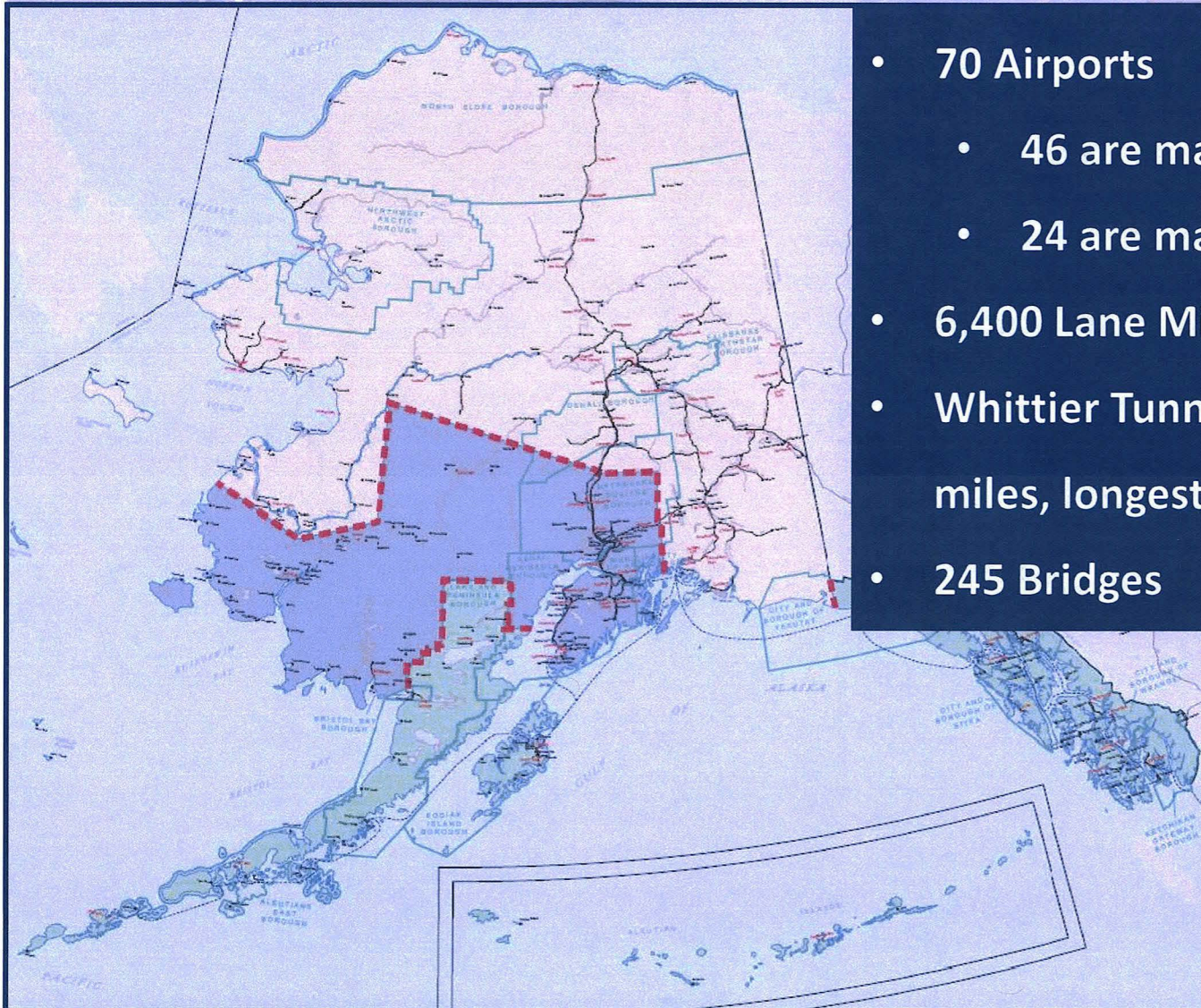
## Soldotna Station 2018 Team Award

From left: Matthew Blaine, Marian Morse, Brekke Hewitt, (supervisor Carl High) Brian Gabriel, Sean Montgomery, and Salty Bock.

Recognized for exceptional productivity and innovative thinking.

1. Kenai District started the salt brine program, lowering costs and lowering the temperatures in which it can be used. This initiative saved money and increased the safety of the highway surfaces for the traveling public.
2. Kenai District developed Federal Preventative Maintenance Program funding for dust palliative and ditch cleaning. This allowed the department to better utilize GF funding.

# Snapshot of Central Region



- 70 Airports
  - 46 are maintained by contractors
  - 24 are maintained by DOT&PF
- 6,400 Lane Miles of Roads
- Whittier Tunnel Component (2.5 miles, longest in North America).
- 245 Bridges



# Statewide Overview

	Northern Region	Central Region	Southcoast Region
Highway Lane Miles	8,920	6,400	1,528
Maintenance Stations	37	20	19
Airports	101	70	69

# Results Based Alignment (RBA)

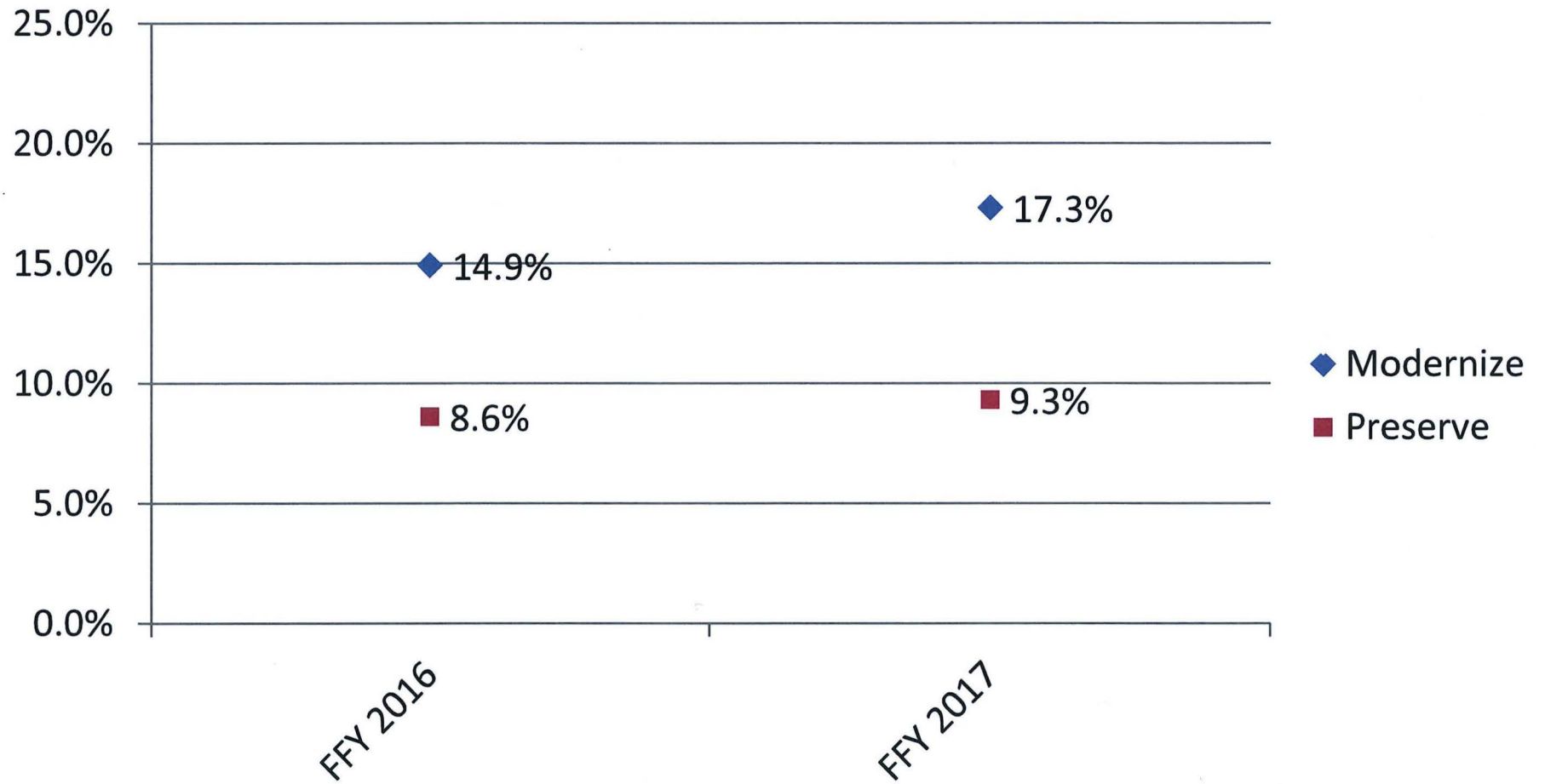


## Results Based Alignment (RBA)

A service delivery framework from which we will validate (measure) the contribution (efficiency and effectiveness) of the services we deliver in support of our mission.

# RBA

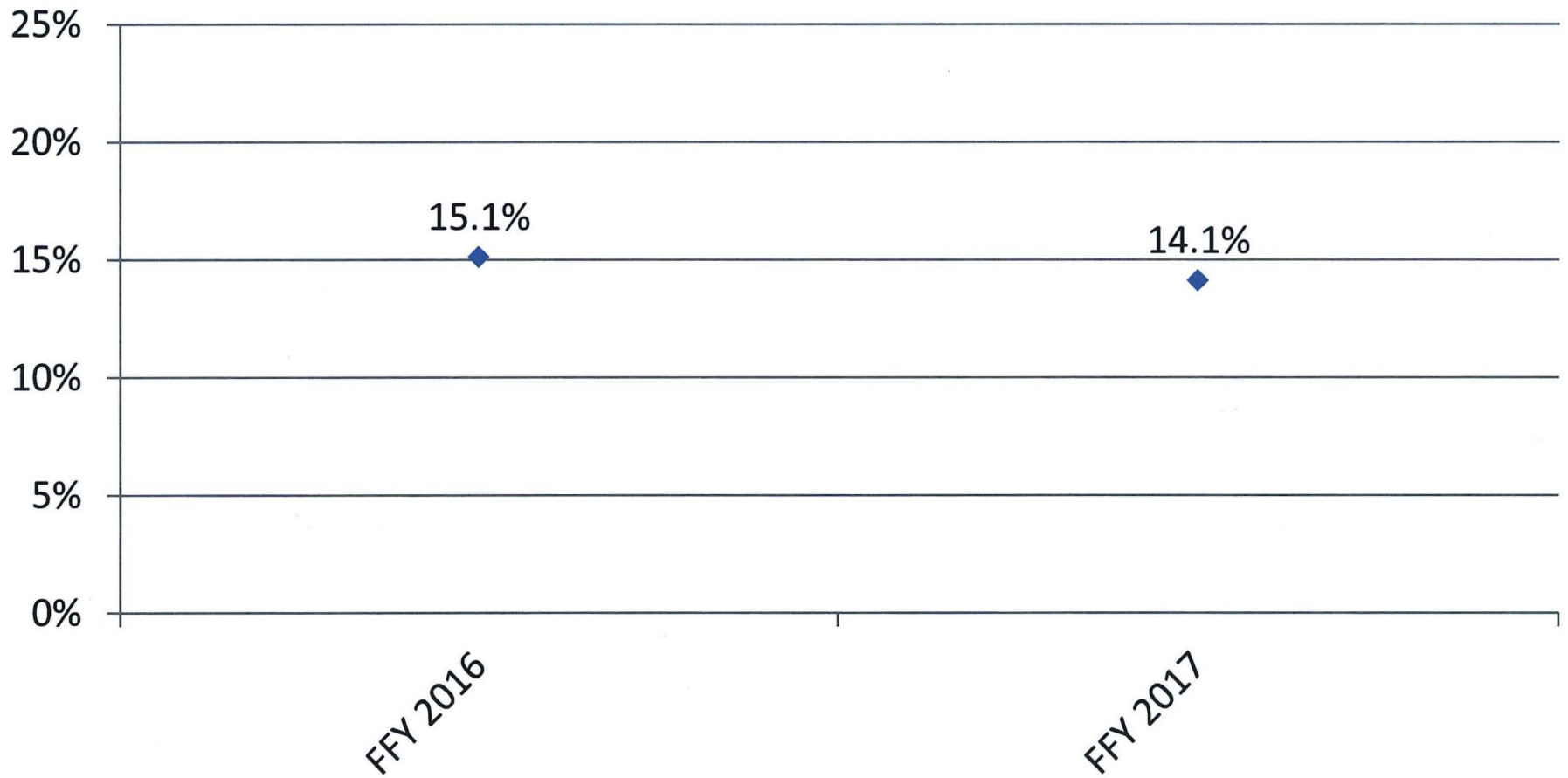
## Design Costs over Construction Costs at Award





# RBA

## Construction Engineering Cost versus Contractor Payments



## Time to Restore Roads to Target Conditions

Priority	Target Response Time	Average Response Time
1	24:00	7:35
2	36:00	7:49
3	48:00	11:04
4	96:00	16:08

Report from 9/1/17- 12/31/17



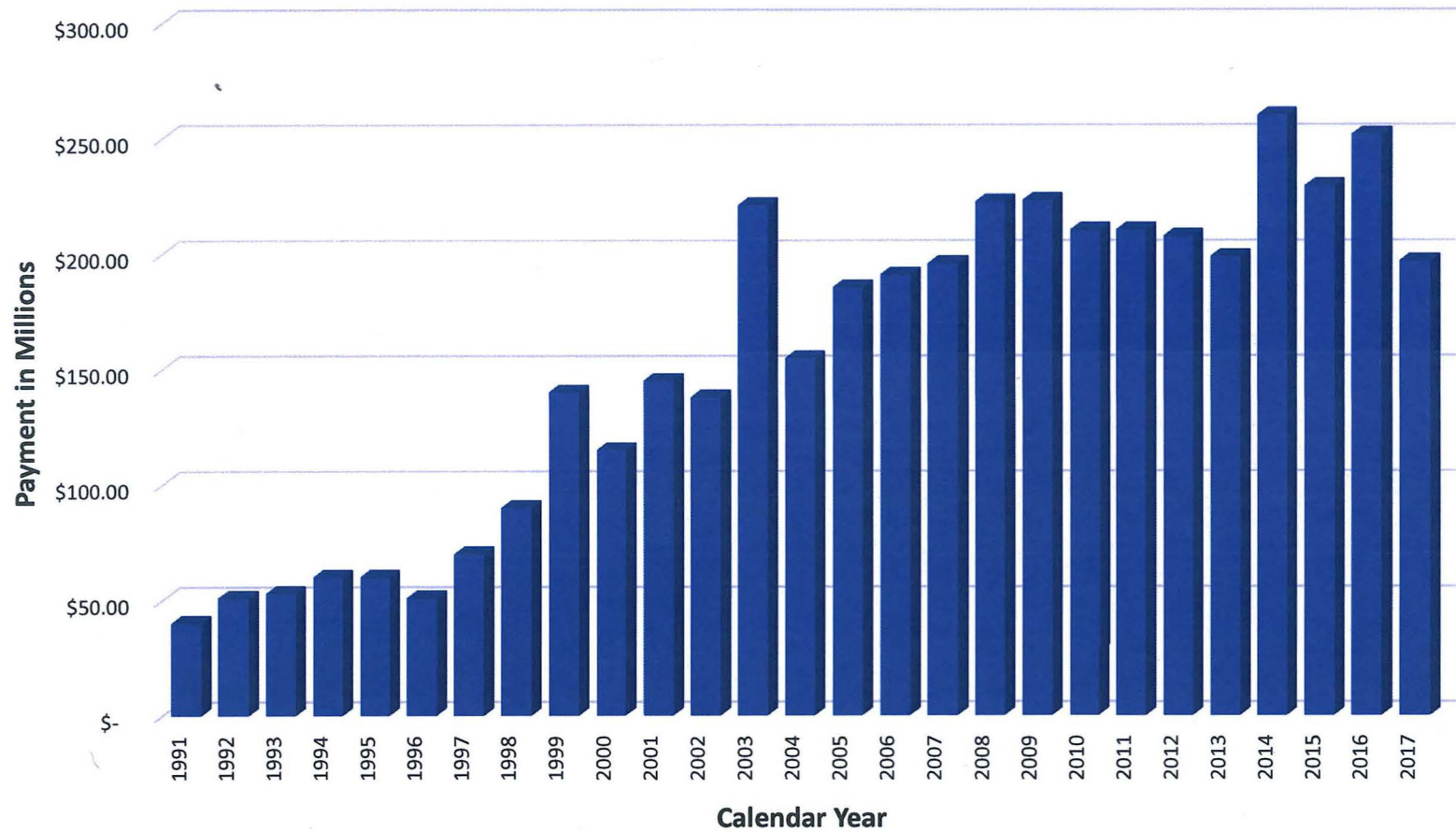
# RBA

## Percent of Pavement Miles Rated Overall “Fair” or Better 2016

Road Miles of Roadway that are Fair or Better Condition	Total Roadway Miles	Actual	Goal
3526	3922	<b>89.9%</b>	≥ 90

# Construction in Central Region

## Total Contractor Payment - Central Region



# Active Construction Projects

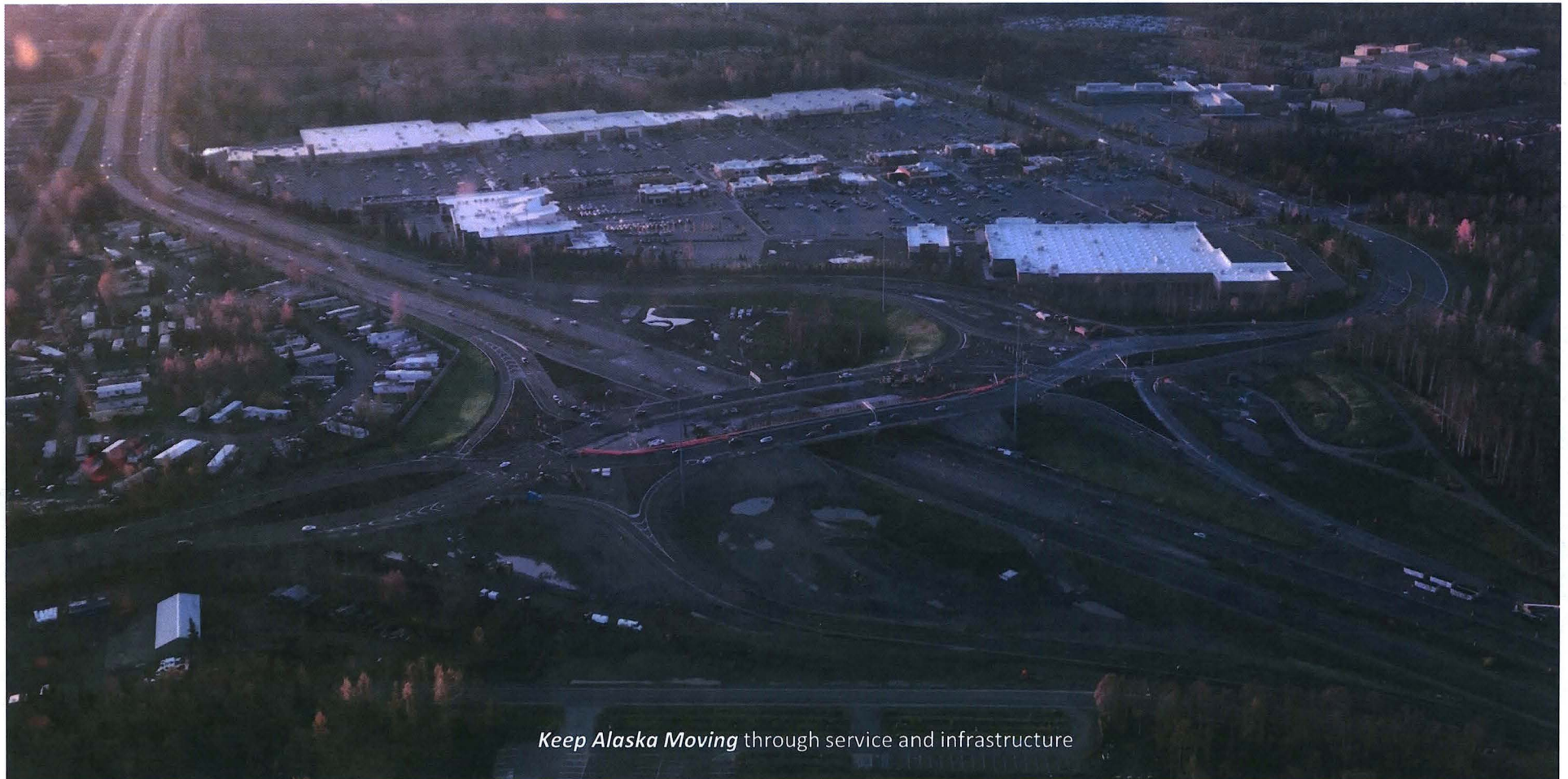
## PARKS HIGHWAY AT VINE ROAD

Area	Number of Projects	Estimated Cost (Millions)
Kenai Peninsula	3	\$58
Mat-Su	2	\$51
Anchorage and Vicinity	4	\$128
Anchorage International Airport	1	\$3
Remote	2	\$13.5
	<b>12</b>	<b>\$253.5</b>

*Keep Alaska Moving* through service and infrastructure

# Glenn/Muldoon Interchange

- Replaced old, under capacity interchange with Diverging Diamond while keeping old structure in use and in place.
- New structure is in use and remaining items will be complete in 2018.
- Project cost is \$41 million.



*Keep Alaska Moving* through service and infrastructure

# Seward Highway: Dimond to Dowling

- Reconstruct the Seward Highway from Dimond to Dowling by improving the corridor from 4 lanes to 6 lanes, constructing a new overpass at 76<sup>th</sup> Avenue to provide a new east-west connection with double roundabouts, and constructing 2 box culverts for the north and south channels of Campbell Creek.
- Project includes upgrading the frontage roads which requires continuous work with 60 businesses on Homer and 50 on Brayton to mitigate construction impacts.
- Aggressive schedule—half way through a three-year project in one season
- Project cost is \$59.5 million and will be completed in October 2018.



*Keep Alaska Moving* through service and infrastructure

# O'Malley Rd Reconstruction: Ph. 1

- Reconstruct O'Malley Road from the Seward Highway to Livingston Street
- Four-lane divided roadway with continuous illumination and pathway
- Construction is expected to be complete by QAP mid-August 2018 at a cost of \$26.1 million



*Keep Alaska Moving* through service and infrastructure

# Parks Highway: Church to Pittman

- Extension of four-lane divided highway with center median for Parks Highway through Wasilla
- Project includes constructing a second bridge over the Alaska Railroad (clear span of 225) to allow for future expansion as well as the installation of continuous lighting.
- Project began spring 2017 and will be complete in fall 2018 for a cost of \$42.5 million.



*Keep Alaska Moving* through service and infrastructure

# Sterling Highway MP 58-79

- Award-winning, 21 miles of rehabilitated highway
- Developed in cooperative partnership with US Fish & Wildlife Service
- Six wildlife enhancements—undercrossings, jump outs and moose fencing
- Three sets of passing lanes, wider shoulders, improved drainage features, new pavement.
- Construction began summer 2017 and is expected to be complete fall 2019 for \$54 million.

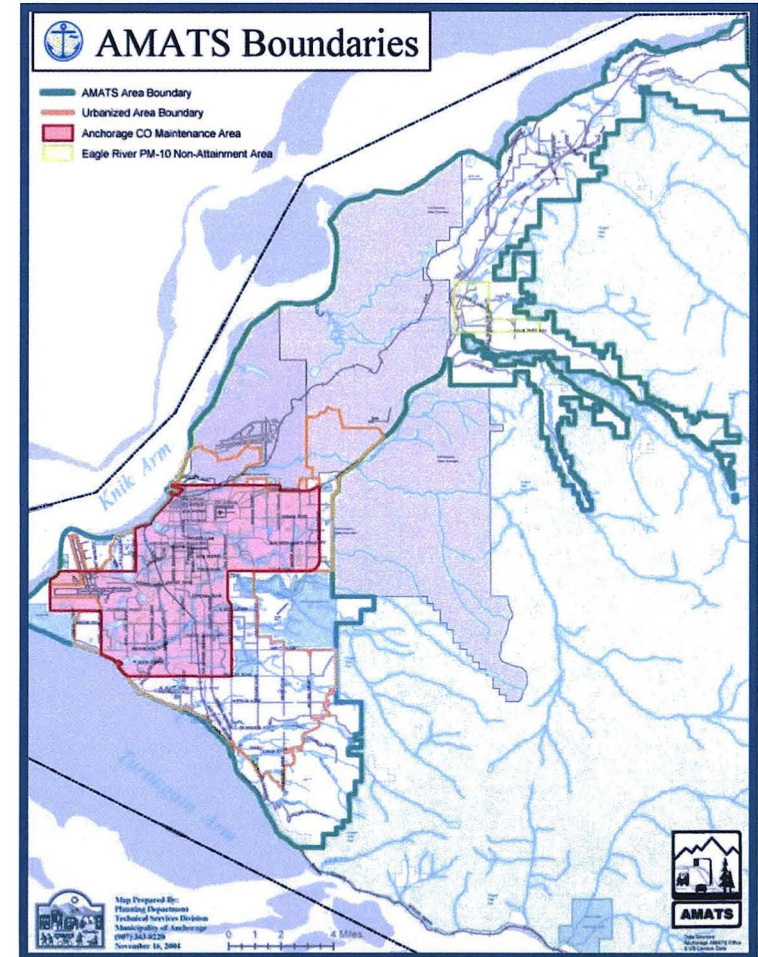
U.S. Fish and Wildlife Service Alaska Region presented its Regional Director Award to recognize outstanding employees and partners.



*Keep Alaska Moving* through service and infrastructure

# AMATS

- Determines needs and priorities
- Develops the Transportation Improvement Program (TIP)-4 year and the Metropolitan Transportation Plan (MTP)-20 year
- Federal funding passed through DOT to AMATS; projects selected by AMATS
- Air quality a factor in Anchorage as a maintenance area for carbon monoxide



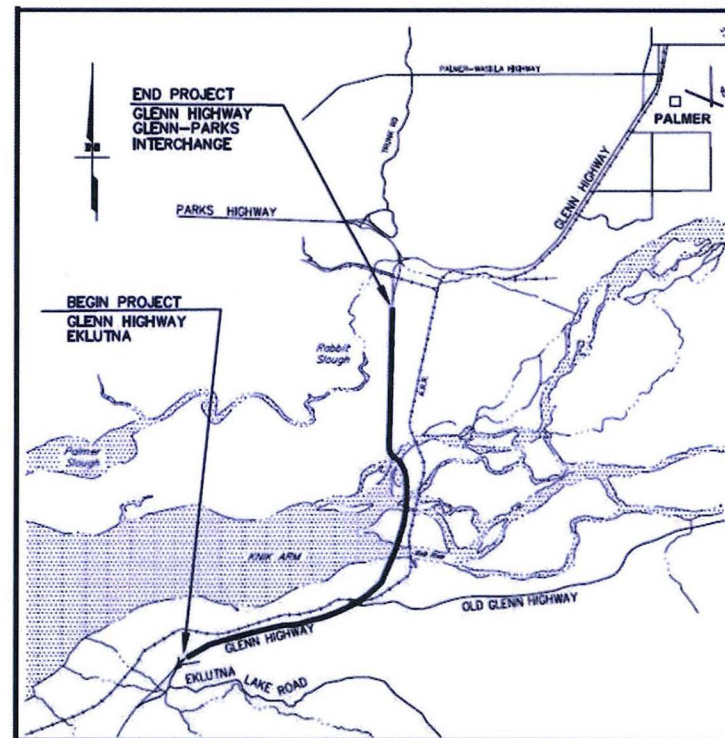
# Projects Nearing Construction

Area	Number of Projects*	Estimated Cost (Millions)
Kenai Peninsula	9	\$81.5
Mat-Su	5	\$89.5
Anchorage and Vicinity	7	\$58
South of Anchorage	2	\$63
Anchorage International Airport	3	\$82.5
Remote	6	\$64.5
*Proposed 2018 construction	<b>32</b>	<b>\$439</b>

*Keep Alaska Moving* through service and infrastructure

# Glenn: Eklutna to Parks Repave

- Resurface 7.8 miles of the Glenn Highway from Eklutna to the Parks Highway interchange
- Includes application of sand seal to interchange ramps
- Project construction will begin spring 2018 and be complete fall 2018 for a cost of \$6.6 million. Pruhs Construction Company LLC will be the contractor.





# Parks Highway: Passing Lanes

The following projects will construct a total of 8 passing lanes while widening 9 miles of shoulders and resurfacing a segment of the roadway; improving safety on the Parks Highway and extending the service life of these segments:

**MP 83-99 HSIP-** project was awarded to QAP with the Parks Highway MP 90-99 Rehabilitation and Talkeetna Spur Road Pedestrian Improvements projects for \$19 million. Construction will begin spring 2018 and be complete fall 2019.

**MP 99-123.5 HSIP** - project is in final design and will be advertised with the Parks Highway MP 99-123.5 Pavement Preservation project for an estimated \$13.4 million. Construction is anticipated to begin spring 2018 and be complete fall 2019.

# K-Beach MP 16-22.2

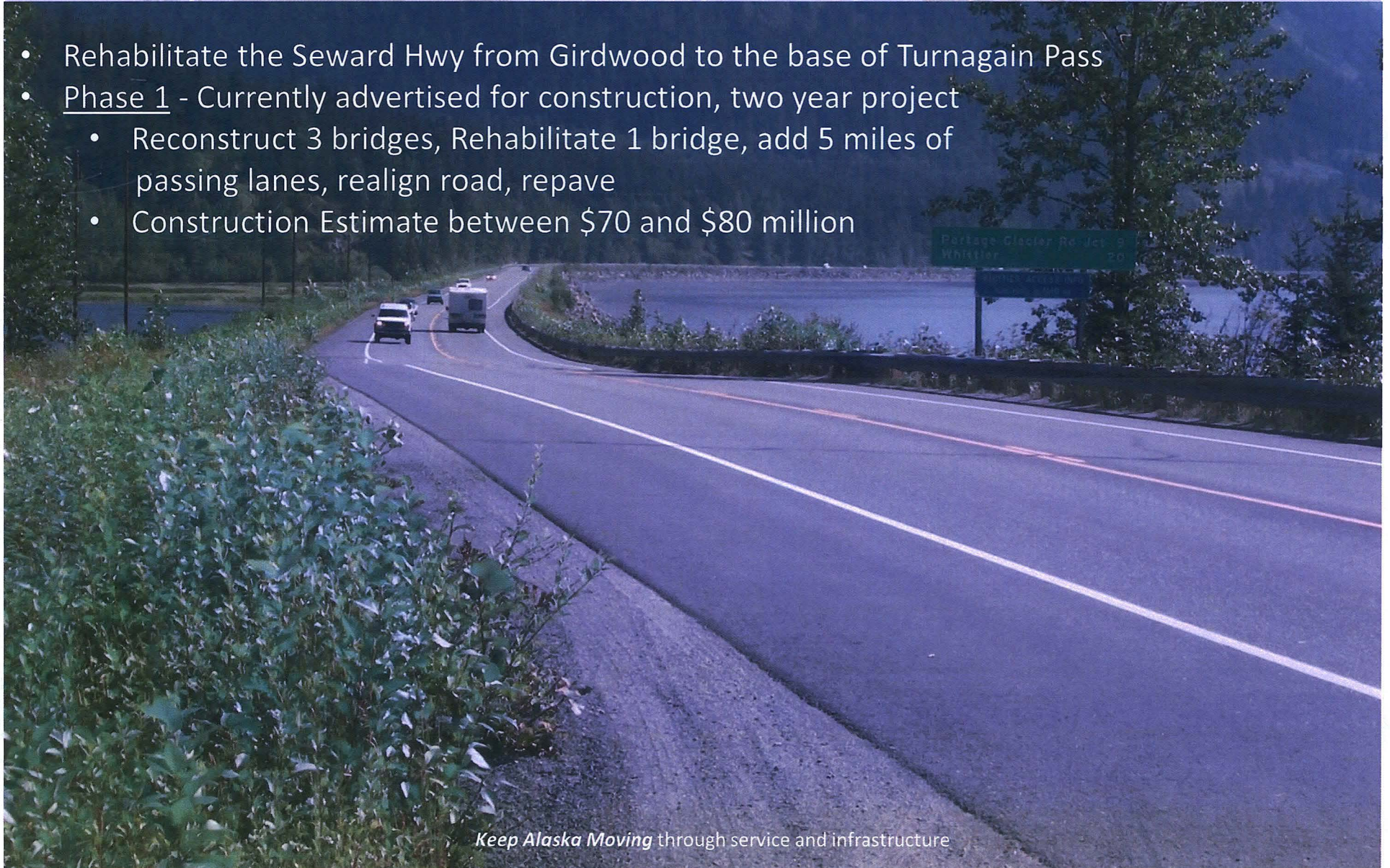
- Resurface Kalifornsky Beach Road from Bridge Access Road to Sterling Highway
- Improvements will be made to the existing traffic signals at Bridge Access Road and Poppy Lane and new signals will be installed at Ciechanski Road and Gas Well Road
- Construction will begin spring 2018 and be complete fall 2018 for a cost of \$10.4 million. Knik Construction Company will be the contractor.



*Keep Alaska Moving* through service and infrastructure

# Seward Highway: MP 75-90

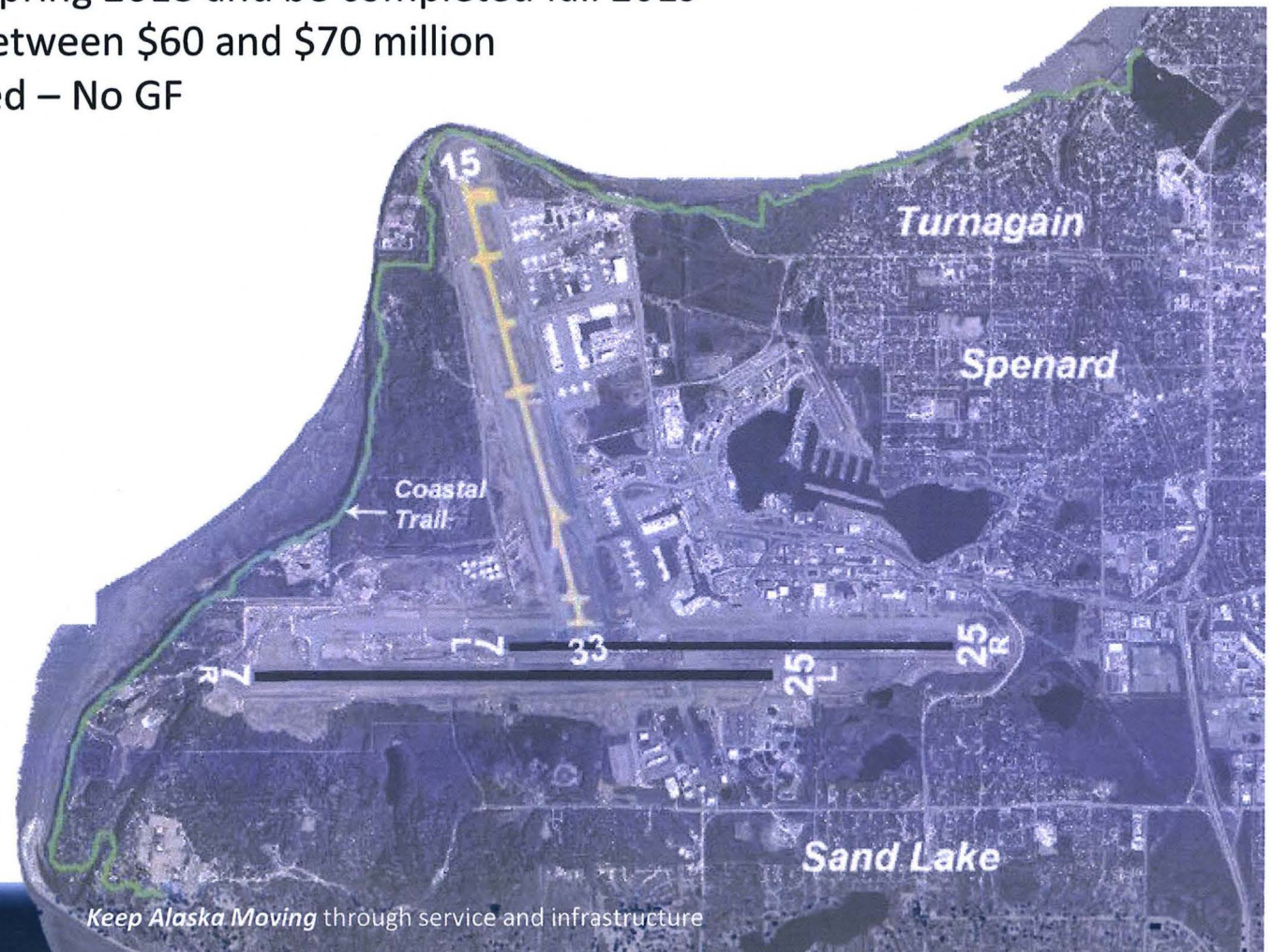
- Rehabilitate the Seward Hwy from Girdwood to the base of Turnagain Pass
- Phase 1 - Currently advertised for construction, two year project
  - Reconstruct 3 bridges, Rehabilitate 1 bridge, add 5 miles of passing lanes, realign road, repave
  - Construction Estimate between \$70 and \$80 million



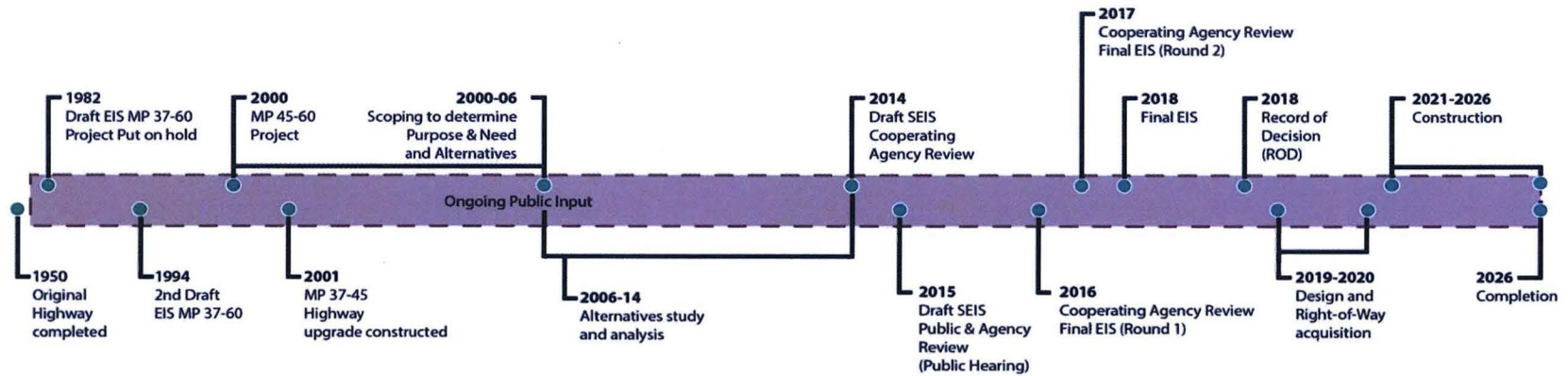
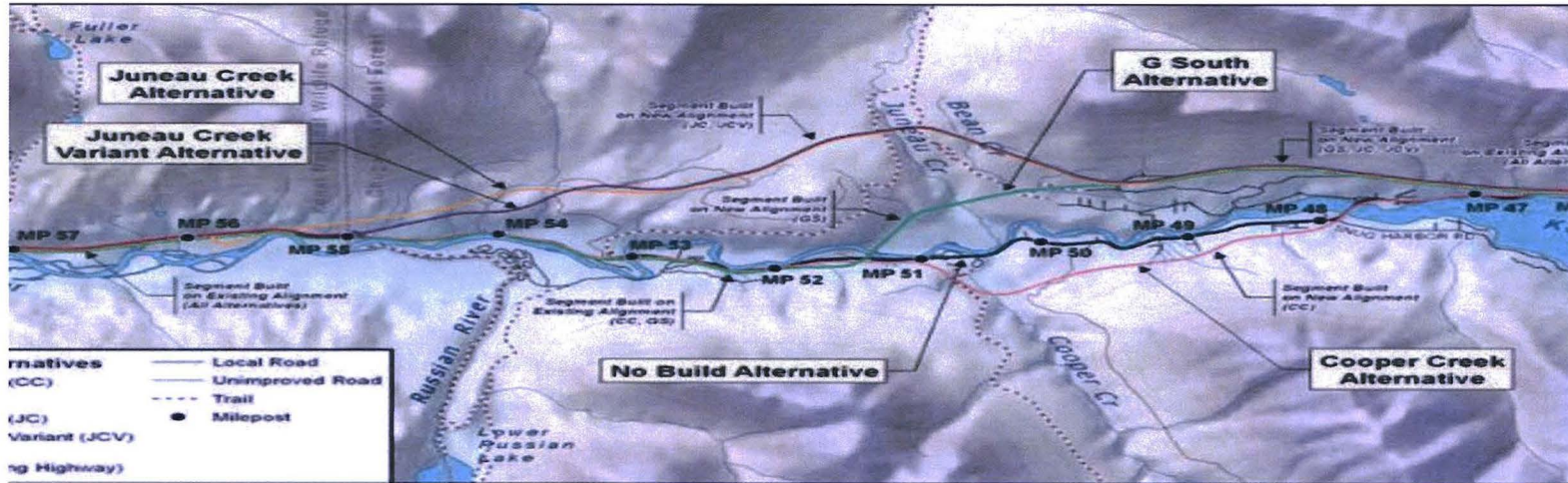
*Keep Alaska Moving* through service and infrastructure

# AIA Runway 15/33 Rehabilitation

- Rehabilitate and widen the Runway 15/33 at Anchorage International Airport
- Expected to be advertised for construction in February
- Construction will begin spring 2018 and be completed fall 2019
- Construction Estimate between \$60 and \$70 million
  - FAA and ANC Funded – No GF



# Cooper Landing Bypass

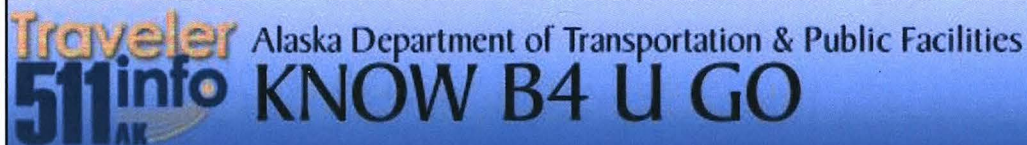


# Where to Find Construction Info

- **AlaskaNavigator.org**
- **511.Alaska.gov or Call 511**
- **Social Media**
  - Facebook, Twitter, YouTube, Vimeo



State of Alaska Department of Transportation & Public Facilities



 **Alaska Department of Transportation & Public Facilities** added 4 new photos. ...  
October 5, 2017 at 12:54pm · 🌐

UPDATE 10/11: The ramp is now closed and intersection work is underway. The ramp will reopen early Friday morning, Oct. 13. Thank you for your patience.


Original Post: #GlennHighway #Muldoon Ramp Closure: ... More



 29      20 Comments    43 Shares 

*Keep Alaska Moving* through service and infrastructure

# Recently Completed Projects



Area	Number of Projects	Estimated Cost (Millions)
Kenai Peninsula	8	\$40
Mat-Su	13	\$87
Anchorage and Vicinity	6	\$89
South of Anchorage	3	\$14
Anchorage International Airport	5	\$91
Remote	3	\$32
<b>Total</b>	<b>38</b>	<b>\$353</b>

Beluga Lake Float Plane Project

# Glenn Highway Pavement Preservation: Airport Heights to Hiland & Hiland to Eklutna

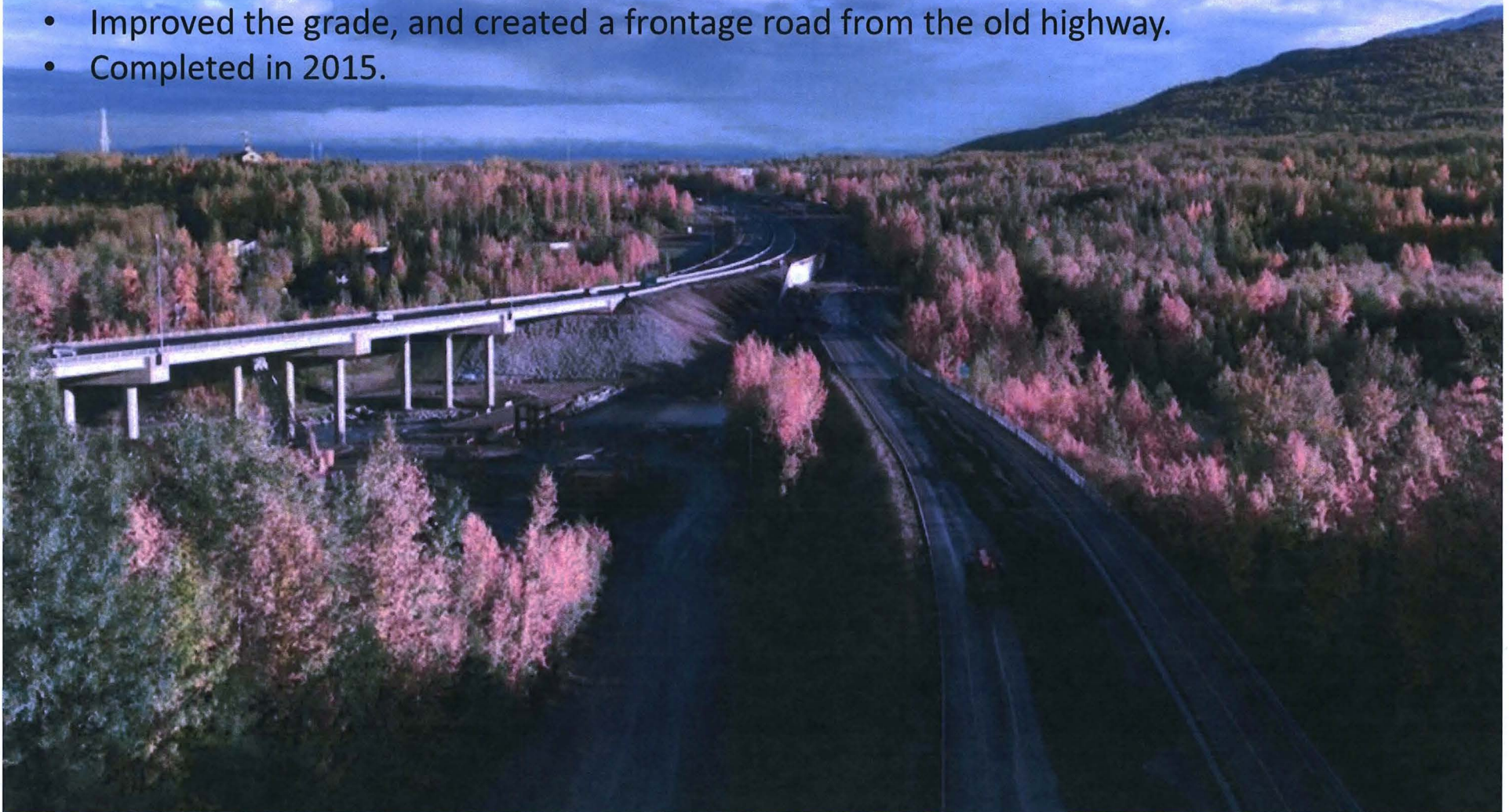
- Resurface approximately 25 miles of Glenn (Airport Heights to Eklutna), delineation and median crossovers in two contracts.
- Completed fall 2017.



*Keep Alaska Moving* through service and infrastructure

# Glenn Highway Capacity Improvement

- Added new lanes onto northbound Glenn and a new bridge over Eagle River
- Improved the grade, and created a frontage road from the old highway.
- Completed in 2015.



*Keep Alaska Moving* through service and infrastructure

# West Dowling Extension

- Constructed a four-lane facility with on-street bike lanes, a separated multi-use path, and improvements on connecting streets.
- Included a new bridge over Arctic Boulevard, new signalized intersections, and an extensive stormwater management system for Tina Lake.
- Completed in 2016.

*Keep Alaska Moving* through service and infrastructure

# Innovations-Microsurfacing



*Keep Alaska Moving through service and infrastructure*

# Innovations-Snow plows on F250s



*Keep Alaska Moving* through service and infrastructure

# Innovations-Snow Lion Ice Breaker



*Keep Alaska Moving* through service and infrastructure

# Innovations-Snow Lion Ice Breaker



*Keep Alaska Moving* through service and infrastructure

# Innovations-High Friction Surface



- High friction Surface Treatment is a thin layer of very hard, very rough aggregate that is adhered to the road with an epoxy.
- Think sand paper--it's tougher to lose your grip on a rough surface.
- Over 28 sites treated--The department expects a 20-30% reduction in all crashes and a 50% reduction of weather related crashes.

# Innovations-Lighting Curfew

- Pilot Project launched July 2017 to conserve electrical costs.
- 0.6 miles of road-Minnesota between International & Old Seward
- Midnight to 5 a.m.
- Initial results show annual savings of \$18,000 annually
- M&O is considering other locations

*Keep Alaska Moving* through service and infrastructure

# Innovations-Transportation Fairs



*Keep Alaska Moving through service and infrastructure*

# Innovations-Use of Drones



SEWARD HIGHWAY MP 105

# Innovation SWAT Team

First meeting 2/8/2018

- Develop emails for region wide distribution and posters for stations not normally using email
- Develop an Innovative Idea Tracking System
- Solicit ideas from ADOT Staff
- Develop an Incentive Program to encourage input
- Develop methods to identify effective ideas and prioritize
- Develop reporting process to disseminate information



# Average Daily Traffic

Glenn Highway-Airport Heights to Eklutna  
65,000 vehicles a day (AADT)

Seward Highway-Diamond-Dowling  
56,000 vehicles a day (AADT)

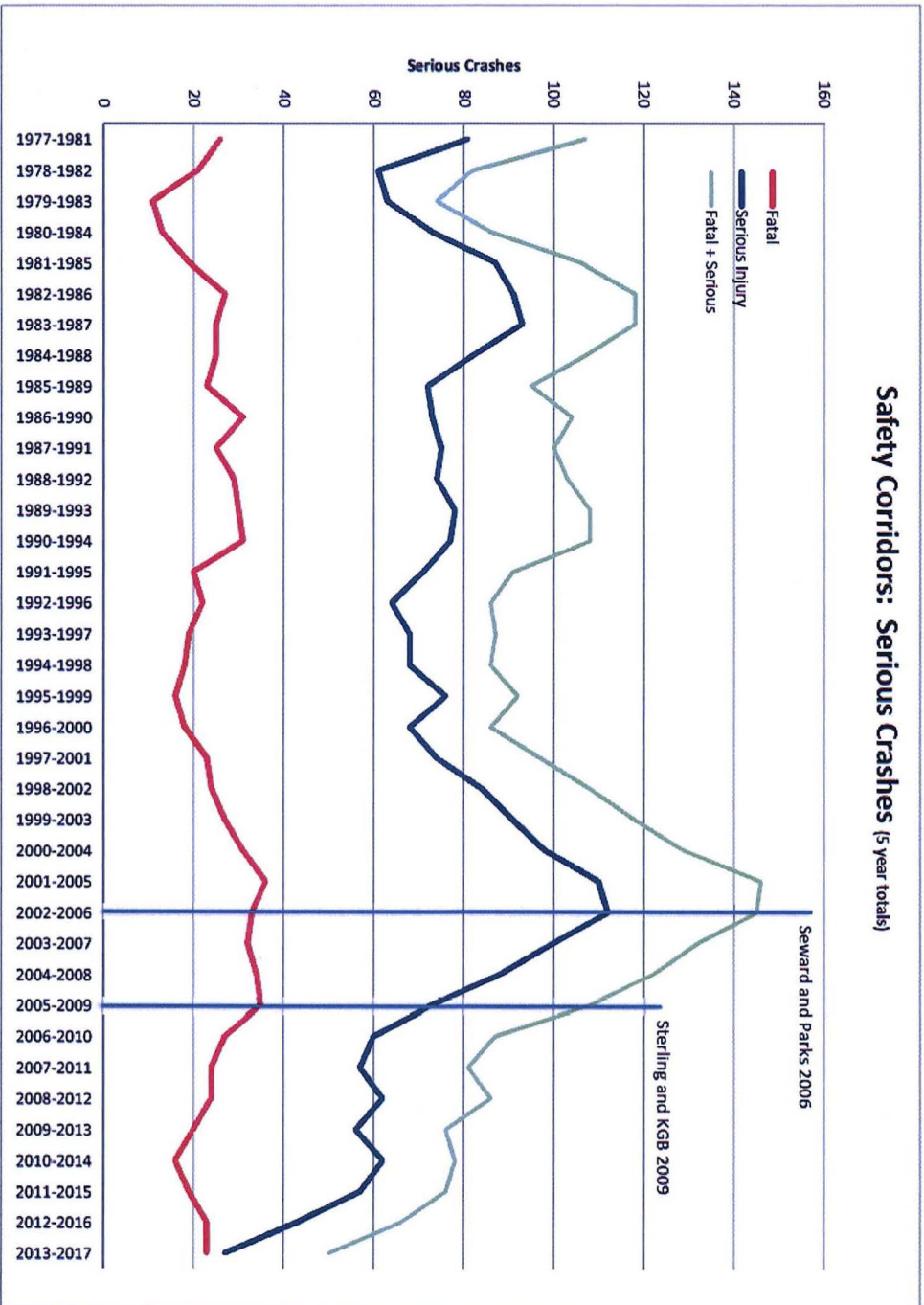
Minnesota-International to Raspberry  
49,000 vehicles a day (AADT)

# Central Region Safety Corridors

Established on highest risk corridors to reduce fatal and serious injury crashes:

1. Seward Highway MP 87-117, Anchorage to south of Girdwood (30 miles). Established May 2006.
2. Parks Highway MP 44-52, Wasilla to Big Lake (8 miles). Established in 2006.
3. Sterling Highway, Moose river to Kenai Spur Highway (10 miles). Established July 2009.
4. Knik-Goose Bay Road, Parks Highway to Point MacKenzie Road (17 miles). Established July 2009.

# Safety Corridors 1991-2017



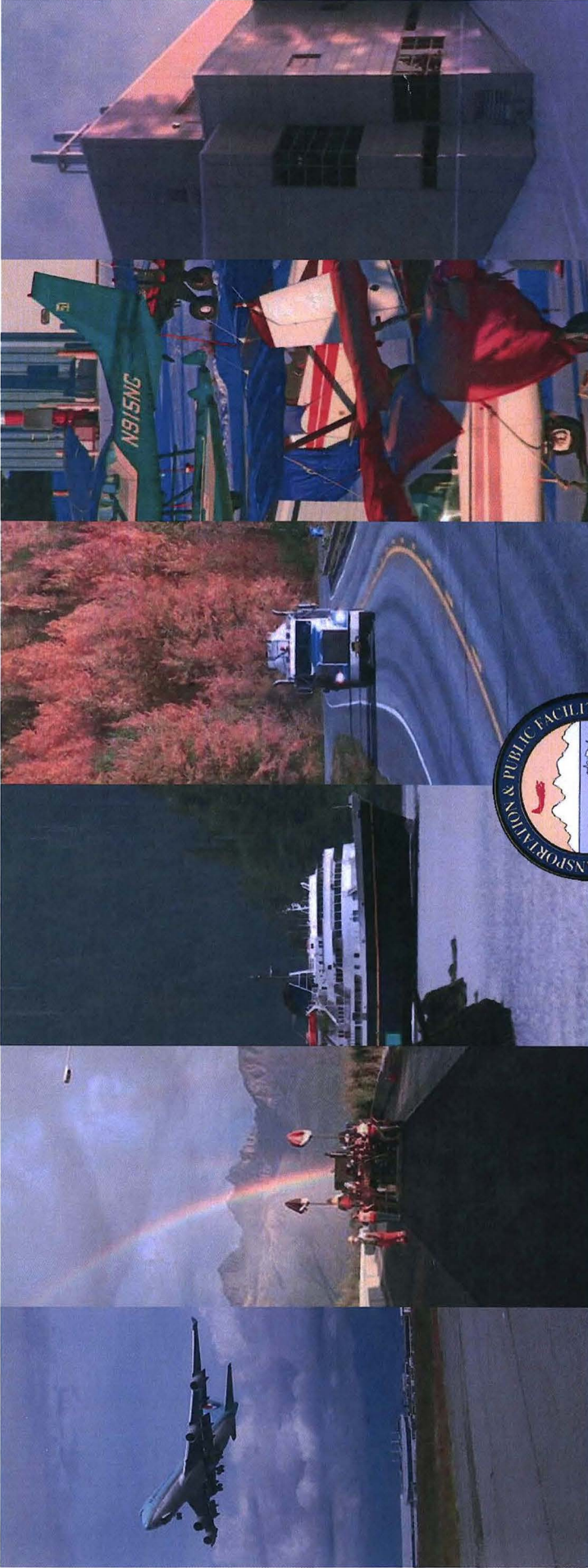
Keep Alaska Moving through service and infrastructure

# Central Region Safety Corridors



DOT&PF's Scott Thomas, P.E. accepts the prestigious National Roadway Safety Award from FHWA and Roadway Safety Foundation.

In the decade since established fatal and serious injury crashes along the Safety Corridors have dropped by 46 percent—82 lives.



# Questions?

<http://dot.alaska.gov/creg/>

*Keep Alaska Moving* through service and infrastructure