

HB

231

<TARGET><BILL>HB 231</BILL><SUBJECT>HB
231</SUBJECT><COMM>HFSH30</COMM></TARGET>



THE STATE
of **ALASKA**
GOVERNOR BILL WALKER

Department of Administration

SHELDON FISHER, COMMISSIONER

10th Fl. State Office Building
PO Box 110200
Juneau, AK 99811-0200
Main: 907.465.2200
Fax: 907.465.2135
www.doa.alaska.gov

April 19, 2017

The Honorable Louise Stutes, Chair
House Fisheries Committee
State Capitol Building, Room 406
Juneau, AK 99801

Dear Representative Stutes:

On behalf of Governor Walker, the Department of Administration (DOA) respectfully requests that HB 231, "CFEC: BD. Salary; Staff Classified Service" be considered for a scheduled hearing in the House Fisheries Committee.

This bill proposes to better align the Commercial Fisheries Entry Commission with comparable commissions by adjusting the salary levels of commissioners, and removing the requirement for commission staff to be exempt employees.

We greatly appreciate your consideration of this important piece of legislation. If you need additional information, please contact Leslie Ridle, Deputy Commissioner for the Department of Administration at (907) 465-2200.

Sincerely,

A handwritten signature in black ink, appearing to read "S. Fisher".

Sheldon Fisher, Commissioner

CC: Darwin Peterson, Legislative Director, Office of the Governor

STATE CAPITOL
P.O. Box 110001
Juneau, AK 99811-0001
907-465-3500
fax: 907-465-3532



550 West Seventh Avenue, Suite 1700
Anchorage, AK 99501
907-269-7450
fax 907-269-7461
www.Gov.Alaska.Gov
Governor@Alaska.Gov

Governor Bill Walker
STATE OF ALASKA

April 14, 2017

The Honorable Bryce Edgmon
Speaker of the House
Alaska State Legislature
State Capitol Room 208
Juneau, AK 99801-1182

Dear Speaker Edgmon:

Under the authority of Article III, Section 18, of the Alaska Constitution, I am transmitting this bill relating to the Alaska Commercial Fisheries Entry Commission (Commission).

The Commission is a regulatory and quasi-judicial agency tasked to promote the conservation and sustained yield management of Alaska's commercial fishery resource by regulating and controlling entry of participants and vessels into the commercial fisheries in the public interest and without unjust discrimination. This bill proposes amendments to address the changing environment of the Commission without affecting the Commission's mission.

Therefore, the bill proposes to adjust the salary range for Commissioners of the Commission from range 27 to range 24 to better align them with other comparable positions. Further, the bill would amend AS 16.43.080 to remove a requirement that employees of the Commission be in the exempt service. To accommodate this change, Commission employees would be transferred to the classified service, but would still be employed by the Commission.

I urge your prompt and favorable action on this measure.

Sincerely,

A handwritten signature in black ink that reads "Bill Walker".

Bill Walker
Governor



HB 231 Sectional Analysis

Section 1: AS 16.43.060 – Amended

- (a) – Adjusts salary range from 27 to 24 for commissioners

Section 2: AS 16.43.080– Amends subsection (a)

- (a) – Removes language placing employees of the Commission in the exempt service

Section 3: AS 39.25.110(11)(D) – Repealed (highlighted below):

Sec. 39.25.110. Exempt service. Unless otherwise provided by law, the following positions in the constitute the exempt service and are exempt from the provisions of this chapter and the rules adopted under it:

- (11) the officers and employees of the following boards, commissions, and authorities:

- (A) *[Repealed, Sec. 13 ch 43 SLA 1994].*
- (B) Alaska Permanent Fund Corporation;
- (C) Alaska Industrial Development and Export Authority;
- (D) Alaska Commercial Fisheries Entry Commission;
- (E) Alaska Commission on Postsecondary Education;
- (F) Alaska Aerospace Corporation;
- (G) *[Repealed, Sec. 23 ch 11 SLA 2013].*

Section 4: Adds transition language to uncodified law

Transition language stipulates Commission staff members will be appointed to classified services upon the bill's effective date; if the classified position has a lower rate of pay, a staff member's salary will be held at the rate received in exempt service until such time as the classified rate meets it.

Section 5: Sets effective date as immediate

Fiscal Note

State of Alaska
2017 Legislative Session

Bill Version:	HB 231
Fiscal Note Number:	1
(H) Publish Date:	4/15/2017

Identifier: DFG-CFEC-04-10-17
 Title: CFEC: BD. SALARY;STAFF CLASSIFIED SERVICE
 Sponsor: RLS BY REQUEST OF THE GOVERNOR
 Requester: Governor

Department: Department of Fish and Game
 Appropriation: Commercial Fisheries
 Allocation: Commercial Fisheries Entry Commission
 OMB Component Number: 471

Expenditures/Revenues

Note: Amounts do not include inflation unless otherwise noted below. (Thousands of Dollars)

	FY2018 Appropriation Requested	Included in Governor's FY2018 Request	Out-Year Cost Estimates				
			FY 2019	FY 2020	FY 2021	FY 2022	FY 2023
OPERATING EXPENDITURES	FY 2018	FY 2018	FY 2019	FY 2020	FY 2021	FY 2022	FY 2023
Personal Services	(78.7)		(78.7)	(78.7)	(78.7)	(78.7)	(78.7)
Travel							
Services							
Commodities							
Capital Outlay							
Grants & Benefits							
Miscellaneous							
Total Operating	(78.7)	0.0	(78.7)	(78.7)	(78.7)	(78.7)	(78.7)

Fund Source (Operating Only)

1005 GF/Prgm (DGF)	(78.7)		(78.7)	(78.7)	(78.7)	(78.7)	(78.7)
Total	(78.7)	0.0	(78.7)	(78.7)	(78.7)	(78.7)	(78.7)

Positions

Full-time							
Part-time							
Temporary							

Change in Revenues

None							
Total	0.0	0.0	0.0	0.0	0.0	0.0	0.0

Estimated SUPPLEMENTAL (FY2017) cost: 0.0 (separate supplemental appropriation required)
 (discuss reasons and fund source(s) in analysis section)

Estimated CAPITAL (FY2018) cost: 0.0 (separate capital appropriation required)
 (discuss reasons and fund source(s) in analysis section)

ASSOCIATED REGULATIONS

Does the bill direct, or will the bill result in, regulation changes adopted by your agency? No
 If yes, by what date are the regulations to be adopted, amended or repealed?

Why this fiscal note differs from previous version:

Not applicable, initial version.

Prepared By:	Sylvan Robb, Policy Analyst	Phone:	(907)465-4676
Division:	Office of Management and Budget	Date:	04/10/2017 05:00 PM
Approved By:	Pat Pitney, Director	Date:	04/10/17
Agency:	Office of Management and Budget		

FISCAL NOTE ANALYSIS

STATE OF ALASKA
2017 LEGISLATIVE SESSION

Analysis

This bill lowers the salary range for commission members from range 27 to range 24. It also moves commission employees from the exempt service to the classisified service.

Immediate cost savings from commission members salary reduction:

<u>PCN</u>	<u>Range 27</u>	<u>Range 24</u>	<u>Savings</u>
11-3008	\$212,682	\$184,993	-\$27,689
11-3034	\$186,998	\$162,404	-\$24,594
11-3035	\$199,467	\$173,017	-\$26,450
		Total Savings	-\$78,733

Additional cost savings from commission employees moving into the classified service will result if positions are classified at a lower range when staff turnover occurs.

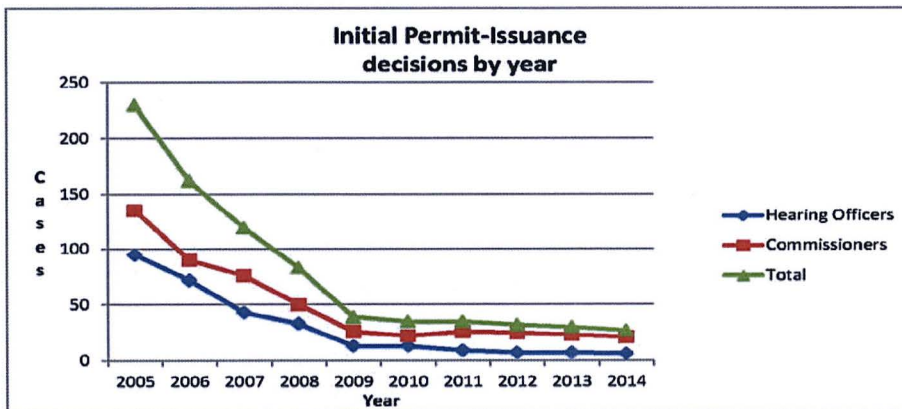


THE STATE
of **ALASKA**
GOVERNOR BILL WALKER

Commercial Fisheries Entry Commission

8800 Glacier Highway, Suite 109
PO Box 110302
Juneau, Alaska 99811-0302
Main: 907.789.6160
Licensing: 907.789.6150
Fax: 907.789.6170

Year	Hearing Officers	Commissioners	Total
2005	95	135	230
2006	72	90	162
2007	43	76	119
2008	33	50	83
2009	13	26	39
2010	13	22	35
2011	9	26	35
2012	7	25	32
2013	7	23	30
2014	6	21	27



N.B.: Initial permit-issuance decisions are the smallest category of determinations made by the Commercial Fisheries Entry Commission (CFEC). These figures do not include permanent transfer, emergency transfer, demerit assessment, fee refund or any other miscellaneous decisions or determinations made by CFEC.

CFEC Commissioner Adjudications

Year	Permit Applications		Permit Transfer and Miscellaneous Reviews and Appeals			Commissioners
	Completed Permit Applications	Pending Applications Case Load	Permit Transfers	Enforcement	Misc	
1996	51	609	43		16	BT (c), DA, MJ
1997	64	597	44		11	BT (c), MJ, MM
1998	105	590	42	1	10	BT (c), MJ, MM
1999	80	540	41		6	BT (c), MJ, MM
2000	70	468	25	3	5	BT (c), MJ, MM
2001	71	422	27	1	9	BT (c), MJ, MM
2002	75	362	16	10	3	BT (c), MJ, MM
2003	43	314	18	16	4	BT (c), MM, FH
2004	58	280	9	include w/ misc	23	BT (c), MM, FH
2005	72	230	11	include w/ misc	3	FH (c), BT, PF
2006	88	162	20	include w/ misc	10	FH (c), BT, PF
2007	51	119	27		2	FH (c), BT, PF
2008	39	83	12		1	FH (c), BT, PF
2009	33	52	27	6	2	FH (c), BT, PF
2010	14	39	31		1	BT (c), PF, FH (Sept)
2011	5	35	24		1	BT (c), PF, BB
2012	3	32	9		9	BT (c), PF, BB
2013	3	*	14		0	BT (c), BB
2014	2	28	75		14	BT (c), BB

Source: CFEC Annual Reports.

The adjudications case load at the end of 2013 was not reported in the 2013 / 2014 CFEC Annual Report.

Figures include adjudication decisions for both administrative reviews and administrative appeals.

The Commission normally strives to complete administrative reviews of emergency and permanent transfers in the same calendar year when the transfers take place. Recently, the Commission allowed a backlog of reviews to accumulate, and did not complete their final review of cases from 2012 and 2013 until late in calendar year 2014. This accounts for the abnormally large number of permit transfer administrative reviews in 2014.

Commissioners: BB = Ben Brown; BT = Bruce Twomley; DA = Dale Anderson; FH = Frank Homan; PF = Peter Froehlich; MJ = Marlene Johnson; MM = Mary McDowell; (c) indicates Chairman

HB 231 Alaska Commercial Fisheries Entry Commission



Presented by
Deputy Commissioner Leslie Ridle
Deputy Director Division of Personnel and Labor Relations
Nancy Sutch

Commercial Fisheries Entry Commission

- The Commercial Fisheries Entry Commission (CFEC) is a regulatory and quasi-judicial agency that is tasked to:
 - Limit entry of participants and vessels into the commercial fisheries
 - Issue and transfer annual commercial fishing permits and vessel licenses
 - Adjudicate appeals of actions including denials of applications and transfers
 - Study, analyze, and report on the economics and stability of commercial fisheries
 - Ensure reliable and timely access to fishery data; and
 - Promote the conservation and sustained yield management of Alaska's commercial fishery resource
 - Assess demerit points against or suspend fishing privileges of permit holders for convictions for violations of commercial fishing laws

What HB 231 Does

- Changes compensation for three commissioners of the CFEC
 - Pay is reduced from a Range 27 (\$8789/month) to a Range 24 (\$7225/month)
 - Commissioner pay is not frozen if HB 231 passes—example: a commissioner at a 27J level could continue to receive pay increments on the new merit anniversary date
- Removes the CFEC staff from exempt service and assigns them to classified service
 - Division of Personnel/Labor Relations will perform a classification study and place positions on appropriate classified pay scale
 - Current CFEC staff will not receive a reduction in pay—their pay will be “frozen” until the pay scale catches up to the newly classified position
 - New CFEC staff will start at the new Range/Step A
 - Staff will be represented by appropriate unions—Supervisors Union (SU) and General Government Unit (GGU) or Confidential Employees Association (CEA)

Savings

Commissioners: \$78,733/year

Staff: Savings come when staff turnover occurs and positions are rehired at the appropriate step/range

Why is HB 231 Needed

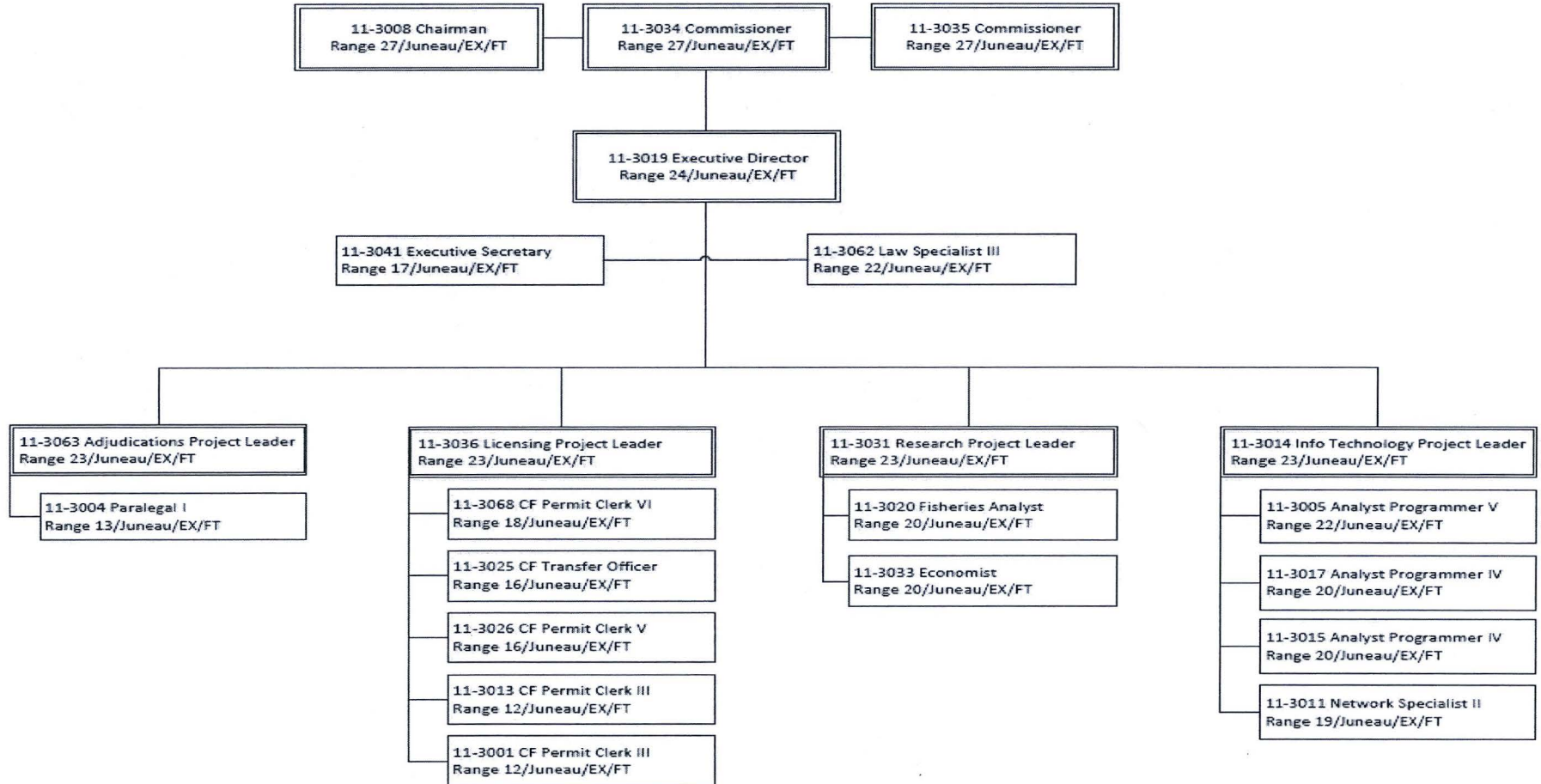
- Caseload is lighter
 - Decisions from the CFEC have dropped from a high of 105 cases in 1998 to 3 cases in 2015 and 0 cases in 2016
- Save money
 - Align commissioners to similar ranges of similar positions (OAH, Hearing Officers)
 - Align staff with similar positions in classified service

CFEC Budget

	FY 16 Management Plan	FY 17 Management Plan	FY 18 Governor
Personnel Services	3,562.1	2,945.9	2,998.9
Travel	35.0	35.0	20.0
Services	609.0	609.0	538.3
Commodities	94.1	94.1	75.4
Capital Outlay	10.0	10.0	0.0
Grants, Benefits	0.0	0.0	0.0
Miscellaneous	0.0	0.0	0.0
Totals	4,310.2	3,694.0	3,632.6
FUNDING SOURCES			
Fed Rcpts (Fed)	114.4	114.4	0.0
CFEC Rcpts (DGF)	4,195.8	3,579.6	3,632.6
FUNDING TOTALS			
UGF	0.0	0.0	0.0
DGF	4,195.8	3,579.6	3,632.6
Other	0.0	0.0	0.0
Federal	114.4	114.4	0.0
POSITIONS			
Permanent Full Time	26	22	22
Permanent Part Time	2	0	0
Non-Permanent	0	0	0

471 - Commercial Fisheries Entry Commission

(Administratively attached to the Department of Fish and Game)



UNITED SOUTHEAST ALASKA GILLNETTERS

Box 2196, Petersburg AK 99833 * (253) 237-3099 * usag.alaska@gmail.com * akgillnet.org

May 1, 2017

Representative Louise Stutes
Chair, House Fisheries Committee
State Capitol Room 416
Juneau, AK 99801-1182
sent via email

Dear Representative Stutes and Committee members:

RE: SUPPORT for HB 231 "*An Act relating to the Alaska Commercial Fisheries Entry Commission (CFEC); and providing for an effective date.*"

This legislation is a culmination of efforts between fishing groups, including United Southeast Alaska Gillnetters, the Governor and his staff, and CFEC Commissioners to improve this critical program. We support the bill as written and encourage you to move it forward.

The mission of the CFEC is "to control entry into Alaska's commercial fisheries to promote conservation of Alaska's fishery resources and economic health of commercial fishing". CFEC is in existence for and paid by commercial fishermen.

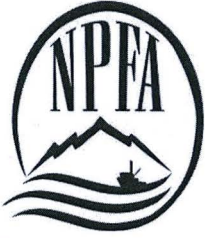
The mission of United Southeast Alaska Gillnetters is to protect, serve and enhance the gillnet fleet of southeast Alaska. We represent the interests of 473 salmon gillnet permit holders and their families.

Thank you,



Cynthia Wallesz
Executive Director

Cc: Barbara Blake
John Hozey



North Pacific Fisheries Association
P.O. Box 796 · Homer, AK · 99603

May 1, 2017

Representative Louise Stutes, Chair
House Fisheries Committee

Representative.Louise.Stutes@akleg.gov

Re: Support for HB231

"An Act relating to the Alaska Commercial Fisheries Entry Commission; and providing for an effective date."

Dear Chairman Stutes and House Fishery Committee Members,

The North Pacific Fisheries Association is a multi gear, multi species, commercial fishing organization based in Homer, Alaska since 1955. We have over 55 members who participate in a variety of fisheries throughout the State of Alaska.

NPFA's Board of Directors is writing you today in support of HB 231. Almost all of our members hold at least one limited entry permit and we have worked with the Commercial Fisheries Entry Commission since its inception. We appreciate the introduction of this bill to help achieve efficiencies within CFEC. Our group strongly supports the fact that this bill preserves the autonomy of the commission.

We request that you move this bill forward as we believe it is in the best interest of the State of Alaska.

Respectfully,

G Malcolm Milne
President, North Pacific Fisheries Association



CS HB 231 Explanation of Changes

Section 1-3: New sections. These sections relate to reducing the number of commissioners on the Commercial Fisheries Entry Commission (CFEC) from three to two and allowing one commissioner to perform the duties of the commission when both commissioners are unavailable. This assures that business can continue during vacancies.

Section 4: Modified from original bill. This section maintains the current statutory salary at Range 27 for the commissioner serving as chair, as the chair is expected to perform additional duties and functions. The original bill reduced the chair's salary to a Range 24. The salary range for the second commissioner continues to be reduced from Range 27 to 24, as in the original bill.

Section 5: No change (previously Section 2). Section removes commissioner employees from exempt service.

Section 6-7: New sections. These sections relate to section 1, which reduced commissioners to two. These new sections deal with tie votes and hearings.

Section 8: No change (previously Section 3). This section matches Section 5 related to removing employees from exempt service.

Section 9: No change (previously Section 4). Protects employees from having their pay lowered when moving from exempt to classified services, while holding pay at that rate until the employee earns the next classified rate of pay.

Section 10: New section. Because a commissioner's salary cannot be reduced during the term of their appointment, this section clarifies that commissioners serving before this bill goes into effect will not be impacted during that term. Commissioners appointed or reappointed after the bill's effective date will be compensated as outlined in this bill.

Section 11: No change (previously Section 5). Sets effective date as immediate.



CS HB 231 Sectional Analysis

Section 1: AS 16.43.020 – Amended

(a) Reduces the number of commissioners appointed to the Commercial Fisheries Entry Commission (CFEC) from three to two.

Section 2: AS 16.43.030 – Amended

(c) Allows a single commissioner to exercise the powers and duties of the commission, when there is a vacancy on the commission.

Section 3: AS 16.43.040 – Amended

Allows for a quorum of one commissioner.

Section 4: AS 16.43.060 – Amended

Provides that the member serving as chair will be paid a step in Range 27; adjusts the salary range from 27 to 24 for the other commissioner.

Section 5: AS 16.43.080 – Amended

(a) – Removes language placing employees of the commission in the exempt service.

Section 6: AS 16.43.110 – Adds new subsection

(f) Provides that tie votes between commissioners will be settled by the hearing officer.

Section 7: AS 16.43.960 – Amended

(d) Allows for cause hearings to be conducted before one commissioner and a hearing officer.

Section 8: AS 39.25.110(11)(D) – Repealed (highlighted below)

Sec. 39.25.110. Exempt service. Unless otherwise provided by law, the following positions constitute the exempt service and are exempt from the provisions of this chapter and the rules adopted under it:

(11) the officers and employees of the following boards, commissions, and authorities:

(A) *[Repealed, Sec. 13 ch 43 SLA 1994]*.

(B) Alaska Permanent Fund Corporation;

- (C) Alaska Industrial Development and Export Authority;
- (D) Alaska Commercial Fisheries Entry Commission;
- (E) Alaska Commission on Postsecondary Education;
- (F) Alaska Aerospace Corporation;
- (G) *[Repealed, Sec. 23 ch 11 SLA 2013]*.

Section 9: Adds transition language to uncodified law

Transition language stipulates commission staff members will be appointed to classified services upon the bill's effective date; if the classified position has a lower rate of pay, a staff member's salary will be held at the rate received in exempt service until such time as the classified rate meets it.

Section 10: Adds an applicability clause to uncodified law

Establishes that salary changes outlined in Section 4 of this bill will apply to commissioners appointed after the bill's effective date.

Section 11: Sets effective date as immediate

30-GH1053\D
Bullard
2/14/18

CS FOR HOUSE BILL NO. 231(FSH)

IN THE LEGISLATURE OF THE STATE OF ALASKA

THIRTIETH LEGISLATURE - SECOND SESSION

BY THE HOUSE SPECIAL COMMITTEE ON FISHERIES

Offered:

Referred:

Sponsor(s): HOUSE RULES COMMITTEE BY REQUEST OF THE GOVERNOR

A BILL

FOR AN ACT ENTITLED

1 **"An Act reducing the membership of the Alaska Commercial Fisheries Entry**
2 **Commission to two individuals; providing that a single member of the commission may**
3 **exercise all powers and duties of the commission; providing for commissioner**
4 **compensation; relating to tie votes of the commission; assigning employees of the**
5 **commission to the classified service; and providing for an effective date."**

6 **BE IT ENACTED BY THE LEGISLATURE OF THE STATE OF ALASKA:**

7 *** Section 1.** AS 16.43.020(a) is amended to read:

8 (a) There is established the Alaska Commercial Fisheries Entry Commission
9 as a regulatory and quasi-judicial agency of the state. The commission consists of two
10 [THREE] members appointed by the governor and confirmed by the legislature in
11 joint session.

12 *** Sec. 2.** AS 16.43.030(c) is amended to read:

13 (c) A vacancy on the commission does not impair the authority of a single
14 commissioner [QUORUM OF COMMISSIONERS] to exercise all the powers and

1 perform all the duties of the commission.

2 * **Sec. 3.** AS 16.43.040 is amended to read:

3 **Sec. 16.43.040. Quorum.** A single member [TWO MEMBERS] of the
4 commission constitutes [CONSTITUTE] a quorum for the transaction of business, for
5 the performance of a duty, or for the exercise of a power of the commission.

6 * **Sec. 4.** AS 16.43.060 is amended to read:

7 **Sec. 16.43.060. Compensation.** Members of the commission are in the exempt
8 service and are entitled to a monthly salary. The member serving as chair is paid a
9 salary equal to a step in Range 27, and the other commissioner is paid a salary
10 equal to a step in Range 24, of the salary schedule in AS 39.27.011.

11 * **Sec. 5.** AS 16.43.080(a) is amended to read:

12 (a) The commission may employ those persons necessary to carry out the
13 purposes of this chapter. [EMPLOYEES OF THE COMMISSION ARE IN THE
14 EXEMPT SERVICE UNDER AS 39.25.110.]

15 * **Sec. 6.** AS 16.43.110 is amended by adding a new subsection to read:

16 (f) In case of a tie vote between commissioners in an adjudicatory proceeding,
17 the decision of the hearing officer is the final administrative decision of the
18 commission subject to review by a superior court under AS 44.62 (Administrative
19 Procedure Act).

20 * **Sec. 7.** AS 16.43.960(d) is amended to read:

21 (d) The show cause hearing shall be conducted before at least one
22 commissioner [A QUORUM OF COMMISSIONERS] and shall be presided over by
23 a hearing officer appointed by the commission [WHO SHALL RULE ON THE
24 PRESENTATION OF EVIDENCE AND OTHER PROCEDURAL MATTERS].
25 Hearings shall be conducted in accordance with regulations adopted under
26 AS 16.43.110(b).

27 * **Sec. 8.** AS 39.25.110(11)(D) is repealed.

28 * **Sec. 9.** The uncodified law of the State of Alaska is amended by adding new sections to
29 read:

30 TRANSITION: ASSIGNMENT OF EXISTING STAFF MEMBERS OF THE
31 ALASKA COMMERCIAL FISHERIES ENTRY COMMISSION. Employees employed as

1 staff members of the Alaska Commercial Fisheries Entry Commission on or before the
2 effective date of this Act are assigned to the classified service in accordance with
3 AS 16.43.080(a), as amended by sec. 5 of this Act. Notwithstanding any other provision of
4 law, staff members of the Alaska Commercial Fisheries Entry Commission employed on or
5 before the effective date of this Act

6 (1) shall immediately be appointed to the classified service;

7 (2) may not have a reduction in pay

8 (A) solely because of the assignment described in this section; or

9 (B) if the employee is assigned to a position in the classified service
10 that is classified at a lower rate of pay than the rate of pay that was received when the
11 position was assigned to the exempt service.

12 * **Sec. 10.** The uncodified law of the State of Alaska is amended by adding a new section to
13 read:

14 **APPLICABILITY.** AS 16.43.060, as amended by sec. 4 of this Act, applies to the
15 compensation of commissioners of the Alaska Commercial Fisheries Entry Commission
16 appointed after the effective date of this Act.

17 * **Sec. 11.** This Act takes effect immediately under AS 01.10.070(c).

AMENDMENT

Adopted

OFFERED IN THE HOUSE

BY REPRESENTATIVE STUTES

TO: CSHB 231(FSH), Draft Version "D"

1 Page 1, line 2:

2 Delete "**member of the commission**"

3 Insert "**commissioner**"

4

5 Page 1, line 3, following "**commission**":

6 Insert "**if there is a vacancy on the commission**"

7

8 Page 1, line 13:

9 Delete "A"

10 Insert "**If there is a** [A]"

11 Delete "does not impair the authority of"

12 Insert "**,** [DOES NOT IMPAIR THE AUTHORITY OF]"

13

14 Page 1, line 14:

15 Delete "[QUORUM OF COMMISSIONERS] to"

16 Insert "**may** [QUORUM OF COMMISSIONERS TO]"

17

18 Page 2, lines 3 - 4:

19 Delete "**A single member** [TWO MEMBERS] of the commission **constitutes**

20 [CONSTITUTE]"

21 Insert "**Unless there is a vacancy on the commission, two** [TWO] members of the

22 commission constitute"



Southeast Alaska Fishermen's Alliance

9369 North Douglas Highway

Juneau, AK 99801

Phone: 907-586-6652

Email: seafa@gci.net

Fax: 907-523-1168

Website: <http://www.seafa.org>

March 5, 2018

House Fisheries Committee
Representative Louise Stutes, Chair
State Capitol, Room 416
Juneau, AK 99801-1182

RE: **HB 231: Support** for *"An Act relating to the Alaska Commercial Fisheries Entry Commission (CFEC); and providing for an effective date."*

Dear Representative Stutes and House Fisheries Committee Members,

Southeast Alaska Fishermen's Alliance (SEAFA) supports HB 231 that is an act to the Alaska Commercial Fisheries Entry Commission (CFEC) reducing the number of Commissioners and moving staff from exempt service to classified service. We strongly appreciate this legislation that was a workable compromise between industry and the Administration for the operation and management of CFEC but preserves the necessary autonomy of CFEC that is so important to the commercial fishing industry.

We believe that maintaining two commissioners is important moving forward but appreciate the legislation deals with the situation when there may only be one appointed Commissioner at time. The two commissioner allows for an exchange back and forth to look at an issue/decision from multiple view-points and allows for a more informed decision making process. With two commissioners you can have one Commissioner with a heavier emphasis on a legal perspective and one Commissioner with a more practical knowledge of the industry.

Southeast Alaska Fishermen's Alliance is a membership-based association representing our 330+ members involved in the salmon, crab, shrimp and longline fisheries primarily in Southeast Alaska.

Sincerely,

A handwritten signature in black ink, appearing to read "Kathy Hansen", followed by a long horizontal line extending to the right.

Kathy Hansen,
Executive Director



UNITED FISHERMEN OF ALASKA

Mailing Address: PO Box 20229, Juneau AK 99802-0229

Physical Address: 410 Calhoun Ave Ste 101, Juneau AK 99801

Phone: (907) 586-2820 **Fax:** (907) 463-2545

Email: ufa@ufafish.org **Website:** www.ufafish.org

March 4, 2018

Representative Louise Stutes
Chair, House Fisheries Committee
State Capitol Room 406
Juneau, Alaska 99801

Re: UFA Support for HB 231

Dear Representative Stutes,

United Fishermen of Alaska (UFA) is the statewide commercial fishing trade association, representing 35 commercial fishing organizations participating in fisheries throughout the state, and the federal fisheries off Alaska's coast. UFA's mission is to promote and protect the common interest of Alaska's commercial fishing industry.

UFA respectfully submits the following letter in support of HB 231 – "An Act relating to the Alaska Commercial Fisheries Entry Commission; and providing for an effective date."

UFA worked closely with our members, CFEC Commissioners, and the Governor and his staff to ensure strengthening and improvement of the CFEC. We are committed to making the CFEC the best and most efficient agency possible, which we feel this bill accomplishes as written.

The CFEC is an integral part to Alaska's fishing industry and UFA believes the changes and updates this bill reflects will strengthen the success of CFEC, thus strengthening the success of our fisheries.

We ask that this bill be moved forward as it is within the best interest of the commercial fisheries of Alaska.


Jerry McCune
President


Frances H. Leach
Executive Director

MEMBER ORGANIZATIONS

Alaska Bering Sea Crabbers • Alaska Independent Tendermen's Association • Alaska Longline Fishermen's Association • Alaska Scallop Association
Alaska Trollers Association • Alaska Whitefish Trawlers Association • Armstrong Keta • At-sea Processors Association • Bristol Bay Fishermen's Association
Bristol Bay Reserve • Cape Barnabas, Inc. • Concerned Area "M" Fishermen • Cook Inlet Aquaculture Association • Cordova District Fishermen United
Douglas Island Pink and Chum • Freezer Longline Coalition • Golden King Crab Coalition • Groundfish Forum • Kenai Peninsula Fishermen's Association
Kodiak Regional Aquaculture Association • Kodiak Seiners Association • North Pacific Fisheries Association • Northern Southeast Regional Aquaculture Association
Petersburg Vessel Owners Association • Prince William Sound Aquaculture Corporation • Purse Seine Vessel Owner Association
Seafood Producers Cooperative • Southeast Alaska Herring Conservation Alliance • Southeast Alaska Fisherman's Alliance
Southeast Alaska Regional Dive Fisheries Association • Southeast Alaska Seiners • Southern Southeast Regional Aquaculture Association
United Cook Inlet Drift Association • United Southeast Alaska Gillnetters • Valdez Fisheries Development Association