

SCR

2

<TARGET><BILL>SCR 2</BILL><SUBJECT>SCR
2</SUBJECT><COMM>HSTA30</COMM></TARGET>

ALASKA STATE LEGISLATURE

Interim:
1500 West Benson Blvd.
Anchorage, Alaska 99503
Phone: (907) 269-0199
Fax (907) 269-0197
Senator.Kevin.Meyer@akleg.gov



Session:
Alaska State Capitol
Juneau, Alaska 99801-1182
Phone: (907) 465-4945
Fax: (907) 465-3476
Toll Free: (866) 465-4945

SENATOR KEVIN MEYER
SENATE DISTRICT M

SPONSOR STATEMENT FOR SCR 2

"Proclaiming April 2017 as Sexual Assault Awareness Month"

All Alaskans deserve a life free from violence. In our homes, in relationships, or in our communities, every individual should live a life without fear and with security and safety. This resolution encourages Alaskans to acknowledge and speak out against sexual assault as we join in unity to dispel the fear, self-blame, depression and anxiety that can be exhibited both emotionally and physically by those who have endured this terrible experience. This resolution emboldens Alaskans to declare that sexual assault of any kind will not be accepted.

SCR 2 also recognizes the dedicated work in Alaska of the volunteers, staff and agencies, who dedicate their lives to ensure victims have someone to talk to, a place to go, as well as many other services to help. These individuals and groups deserve our respect and support and we join them in removing the veil of secrecy and silence, and declare intolerance towards the crime of sexual assault in Alaska.

SCR 2 proclaims the month of April 2017 as Sexual Assault Awareness Month in Alaska.

ALASKA STATE LEGISLATURE


Interim:
1500 West Benson Blvd.
Anchorage, Alaska 99503
Phone: (907) 269-0199
Fax (907) 269-0197
Senator.Kevin.Meyer@akleg.gov



Session:
Alaska State Capitol
Juneau, Alaska 99801-1182
Phone: (907) 465-4945
Fax: (907) 465-3476
Toll Free: (866) 465-4945

SENATOR KEVIN MEYER SENATE DISTRICT M

TO: Rep. Jonathan Kreiss-Tomkins, Chair
House State Affairs Committee

FROM: Senator Kevin Meyer 

DATE: March 9, 2017

RE: Request for Hearing SCR 2
Proclaiming April 2017 as Sexual Assault Awareness Month

This is a request to the House State Affairs Committee to schedule a bill hearing for SCR2 which would proclaim April 2017 as Sexual Assault Awareness Month.

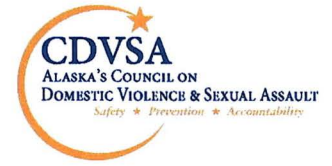
The following documents are attached and will be sent electronically:

- Latest version of the bill: 30-LS0320\A
- Sponsor Statement
- Supporting Documents
 - Intimate Partner Violence and Sexual Violence in the State of Alaska: Key Results from the 2015 Alaska Victimization Survey
 - National Intimate Partner and Sexual Violence Survey: Highlights of 2010 Findings
- Letter of Support:
 - Alaska Network on Domestic Violence and Sexual Assault
- Fiscal Note: 0 from LAA
- Witness/Testimony:
 - Jayne Andreen, Interim Executive Director for the Council on Domestic Violence and Sexual Assault
 - Aliza Kazmi, Policy Specialist with the Alaska Network on Domestic Violence and Sexual Assault
- Staff member assigned to the bill:
 - Christine R. Marasigan, christine.marasigan@akleg.gov, 465-6876

This resolution would proclaim April 2017 as Sexual Assault Awareness Month.



Intimate Partner Violence and Sexual Violence in the State of Alaska: Key Results from the 2015 Alaska Victimization Survey



Out of every 100 adult women who reside in the State of Alaska:

40 experienced intimate partner violence (IPV):



33 experienced sexual violence:



50 experienced intimate partner violence, sexual violence, or both:



These lifetime estimates come from a 2015 survey of adult women in the State of Alaska.
Source: UAA Justice Center, Alaska Victimization Survey, <http://justice.uaa.alaska.edu/avs>.

Purpose of the Survey

Every human being has the right to be safe and free from violence in their own homes, in their relationships, and in their community. Intimate partner violence and sexual violence are endemic problems. The Alaska Victimization Survey provides comprehensive statewide and regional data to guide planning and policy development and to evaluate the impact of prevention and intervention services. The 2015 survey was designed to provide estimates that could be compared to previous estimates from 2010. Results can be used to support prevention and intervention efforts that reduce violence against women.

Methodology

A total of 3,027 adult women in Alaska participated in the 2015 survey. Respondents were randomly selected by phone (using both land lines and cell phones) from May to August 2015. Respondents were asked behaviorally specific questions about intimate partner violence (both threats and physical violence). Intimate partners included romantic and sexual partners. Respondents were also asked about sexual violence (both alcohol- or drug-involved sexual assault and forcible sexual assault). These questions were not limited to intimate partners. Procedures were designed to maximize the safety and confidentiality of all respondents. The survey was approved by multiple institutional review boards and was supported by the Alaska Council on Domestic Violence and Sexual Assault.

Acknowledgments

We sincerely thank the 3,027 adult women in Alaska who invested time and effort to participate in this victimization survey. They re-lived horrendous experiences, experiences that no one should be subjected to, to help the rest of us understand the extent of intimate partner and sexual violence in Alaska. Funding for this project was provided by the Alaska Council on Domestic Violence and Sexual Assault. The survey was administered by RTI International. Data were analyzed by the UAA Justice Center.

Important Limitations

The survey excluded non-English speaking women, women without phone access, and women not living in a residence. Estimates may be higher among women excluded from the survey. Estimates may also be conservative because of the continuing stigma of reporting victimization. This survey measured the number of *victims*, not the number of *victimizations*. In addition, not all forms of intimate partner violence or sexual violence were measured.

Intimate Partner Violence and Sexual Violence in the State of Alaska: Key Results from the 2015 Alaska Victimization Survey

Key Estimates

The following table shows the percentage of adult women in the State of Alaska who experienced each form of violence. Results from the 2015 survey are compared to results from 2010. All estimates were weighted to control for selection, non-response, and coverage. The 2015 estimates show that 50.3% of adult women in Alaska experienced sexual violence, intimate partner violence, or both, in their lifetime (versus 58.6% in 2010); and 8.1% experienced these forms of violence in the past year (versus 11.8% in 2010).

Measures of Violence	Lifetime		Past Year	
	2010	2015	2010	2015
Intimate partner violence (composite)	47.6%	40.4%	9.4%	6.4%
Threats of physical violence	31.0%	25.6%	5.8%	3.0%
Physical violence	44.8%	39.6%	8.6%	5.9%
Sexual violence (composite)	37.1%	33.1%	4.3%	2.9%
Alcohol- or drug-involved sexual assault	26.8%	22.6%	3.6%	2.0%
Forcible sexual assault	25.6%	23.5%	2.5%	1.6%
Any Violence (composite)	58.6%	50.3%	11.8%	8.1%

Intimate Partner Violence Estimates:

The intimate partner violence composite includes both threats of physical violence and physical violence.

- 40.4% of adult women experienced intimate partner violence in their lifetime (versus 47.6% in 2010).
 - 25.6% experienced threats of physical violence (versus 31.0% in 2010).
 - 39.6% experienced physical violence (versus 44.8% in 2010).
- 6.4% of adult women experienced intimate partner violence in the past year (versus 9.4% in 2010).
 - 3.0% experienced threats of physical violence (versus 5.8% in 2010).
 - 5.9% experienced physical violence (versus 8.6% in 2010).

Sexual Violence Estimates:

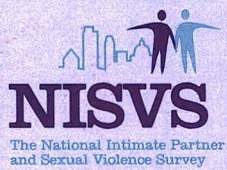
The sexual violence composite includes both alcohol- or drug-involved sexual assault and forcible sexual assault.

- 33.1% of adult women experienced sexual violence in their lifetime (versus 37.1% in 2010).
 - 22.6% experienced at least one alcohol- or drug-involved sexual assault (versus 26.8% in 2010).
 - 23.5% experienced at least one forcible sexual assault (versus 25.6% in 2010).
- 2.9% of adult women experienced sexual violence in the past year (versus 4.3% in 2010).
 - 2.0% experienced at least one alcohol- or drug-involved sexual assault (versus 3.6% in 2010).
 - 1.6% experienced at least one forcible sexual assault (versus 2.5% in 2010).

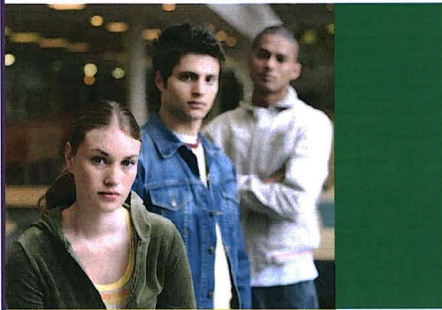
Conclusion

Half of adult women in Alaska have experienced violence in their lifetime, and 1 in 12 have experienced violence in the past year. Four in 10 have experienced intimate partner violence in their lifetime, and 1 in 16 have experienced intimate partner violence in the past year. Three in 10 have experienced sexual violence in their lifetime, and 1 in 34 have experienced sexual violence in the past year. Some women experienced violence more than once.

While the rates of violence against women in the State of Alaska are trending in the right direction, they remain unacceptably high.



National Intimate Partner and Sexual Violence Survey



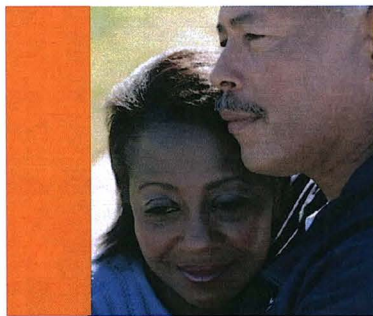
CDC's National Intimate Partner and Sexual Violence Survey (NISVS) is an ongoing, nationally-representative telephone survey that collects detailed information on sexual violence, stalking, and intimate partner violence victimization of adult women and men in the United States. The survey collects data on past-year experiences of violence as well as lifetime experiences of violence. The 2010 survey is the first year of the survey and provides baseline data that will be used to track trends in sexual violence, stalking and intimate partner violence. CDC developed NISVS to better describe and monitor the magnitude of these forms of violence in the United States.

Highlights of 2010 Findings

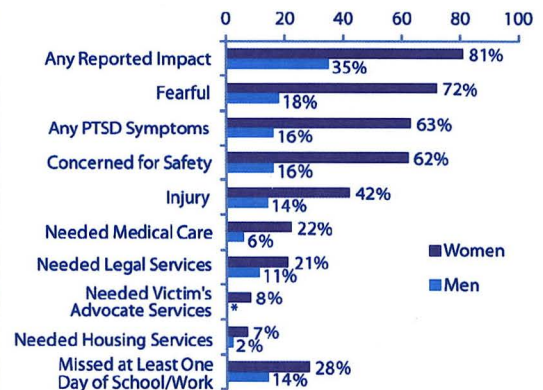
Sexual violence, stalking, and intimate partner violence are widespread in the United States. The findings in this report underscore the heavy toll of this violence, the immediate impacts of victimization, and the lifelong health consequences.

Women are disproportionately affected by sexual violence, intimate partner violence and stalking.

- 1.3 million women were raped during the year preceding the survey.
- Nearly 1 in 5 women have been raped in their lifetime while 1 in 71 men have been raped in their lifetime.
- 1 in 6 women have been stalked during their lifetime. 1 in 19 men have experienced stalking in their lifetime.
- 1 in 4 women have been the victim of severe physical violence by an intimate partner while 1 in 7 men experienced severe physical violence by an intimate partner.
- 81% of women who experienced rape, stalking or physical violence by an intimate partner reported significant short or long term impacts related to the violence experienced in this relationship such as Post-Traumatic Stress Disorder (PTSD) symptoms and injury while 35% of men report such impacts of their experiences.
- Women who had experienced rape or stalking by any



IPV-Related Impacts Among Victims of Rape, Physical Violence, and/ or Stalking by an Intimate Partner



National Intimate Partner and Sexual Violence Survey

perpetrator or physical violence by an intimate partner in their lifetime were more likely than women who did not experience these forms of violence to report having asthma, diabetes, and irritable bowel syndrome.

- Men and women who experienced these forms of violence were more likely to report frequent headaches, chronic pain, difficulty with sleeping, activity limitations, poor physical health and poor mental health than men and women who did not experience these forms of violence.

Female victims of intimate partner violence experienced different patterns of violence than male victims.

- Female victims experienced multiple forms of these types of violence; male victims most often experienced physical violence.

The majority of this victimization starts early in life.

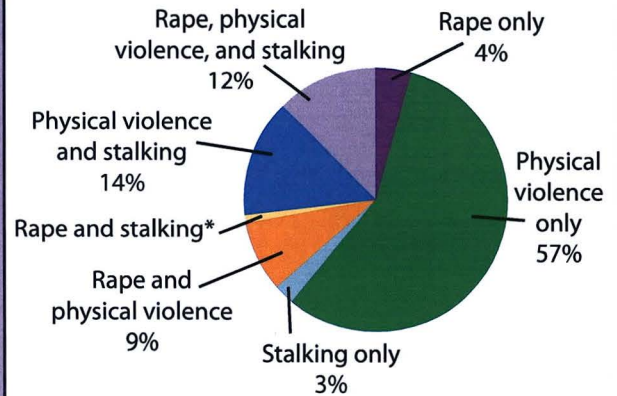
- Approximately 80% of female victims experienced their first rape before the age of 25 and almost half experienced the first rape before age 18 (30% between 11-17 years old and 12% at or before the age of 10).
- About 35% of women who were raped as minors were also raped as adults compared to 14% of women without an early rape history.
- 28% of male victims of rape were first raped when they were 10 years old or younger.

Summary

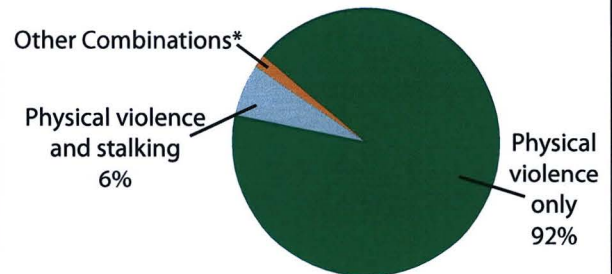
Overall, lifetime and one year estimates for sexual violence, stalking and intimate partner violence were alarmingly high for adult Americans; with IPV alone affecting more than 12 million people each year. Women are disproportionately impacted. They experienced high rates of severe intimate partner violence, rape and stalking, and long-term chronic disease and other health impacts such as PTSD symptoms. NISVS also shows that most rape and IPV is first experienced before age 24, highlighting the importance of preventing this violence before it occurs to ensure that all people can live life to their fullest potential.

Overlap of Lifetime Intimate Partner Rape, Stalking, and Physical Victimization

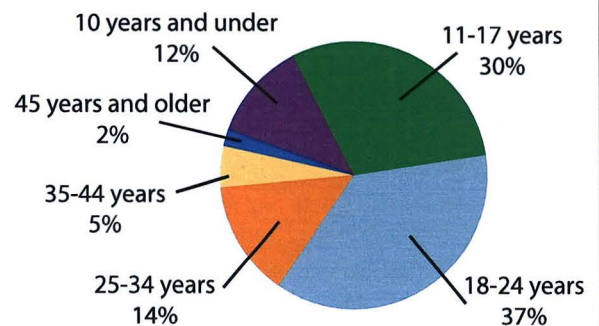
Female Victims



Male Victims



Age at Time of First Completed Rape Victimization in Lifetime Among Female Victims





ANDVSA

Alaska Network on Domestic Violence
& Sexual Assault

Main Office

130 Seward St. #214
Juneau, Alaska 99801
Phone: (907) 586-3650
Fax: (907) 463-4493

Sitka Office

PO Box 6631
Sitka, Alaska 99835
Phone: (907) 747-7545
Fax: (907) 747-7547

Anchorage Office

431 W. 7th Ave. #205
Anchorage, AK 99501
Phone: (907) 297-2860
Fax: (907) 279-2451

2 March 2017
Alaska State Legislators
Juneau, AK

Dear Legislators:

I write to you as the Executive Director of the Alaska Network on Domestic Violence and Sexual Assault (ANDVSA). We offer our full support of SCR 2 designating April 2017 as Sexual Assault Awareness Month. ANDVSA is grateful to Senator Meyer and his staff for putting sexual assault response, intervention, and prevention at the forefront through Sexual Assault Awareness Month.

Our member agencies and affiliates – 24 victims' services providers from around the state – prioritize intervention in experiences of sexual assault, as well as upstream violence prevention efforts. However, Alaskans continue to experience unacceptably high levels of sexual assault. The 2015 Alaska Victimization Survey showed that out of every 100 adult women who reside in Alaska, 33 women experienced sexual violence and 50 women experienced intimate partner violence, sexual violence, or both. In particular, Alaska Native women and children are disproportionately impacted, and these numbers do not include victimization rates among men and boys.

Every day, emergency service provision through our member agencies engages advocates, medical professionals, and law enforcement to establish immediate safety and longer-term support for victims of sexual assault. Services include legal advocacy during prosecution as well as increasing access to basic life-saving social services. Our member agencies continuously strive to conduct broad and effective outreach and work in conjunction with community partners. As a result, more victims are aware of, have confidence in, and seek out services. In spite of strained resources, our member agencies do everything in their power to serve victims.

Prevention of sexual assault is rooted in educational advocacy and policy changes. Evidence-based, evidence-generating, and culturally-ground community-based work engages multiple stakeholders to build knowledge and tools, which in turn enables Alaskans to build community partnerships around the response to and prevention of sexual assault. This level of engagement is critical in dismantling the cultural normativity of sexual assault, as well as the culture of victim-blaming.

Ending sexual assault is a priority not only for individuals but also within and among communities throughout our state. Victim services providers always benefit from greater and enhanced community awareness and collaboration around this issue. Each and every Alaskan must be informed and empowered to work together to end sexual assault through a rigorous, comprehensive, and ongoing process of community-based interventions prevention efforts, and resounding efforts to listen to victims and survivors and to believe victims and survivors.

Member Programs

Anchorage AWAIC, STAR Bethel TWC Cordova CFRC Dillingham SAFE Fairbanks IAC Homer SPHH Juneau AWARE
Kenai LeeShore Center Ketchikan WISH Kodiak KWRCC Kotzebue MFCC Nome BSWG
Seward SeaView Community Services Sitka SAFV Unalaska USAFV Utqiagvik AWIC Valdez AVV



ANDVSA

Alaska Network on Domestic Violence
& Sexual Assault

Main Office

130 Seward St. #214
Juneau, Alaska 99801
Phone: (907) 586-3650
Fax: (907) 463-4493

Sitka Office

PO Box 6631
Sitka, Alaska 99835
Phone: (907) 747-7545
Fax: (907) 747-7547

Anchorage Office

431 W. 7th Ave. #205
Anchorage, AK 99501
Phone: (907) 297-2860
Fax: (907) 279-2451

We urge you to support SCR 2 and help continue expanding awareness and resources in order to end sexual assault in Alaska. If you have any questions or need additional information, please contact me at (907) 586-6560 or clowry@andvsa.org.

Thank you very much for your time and consideration, and thank you for your service to the people of Alaska. It is our power to work together that will end violence.

Carmen Lowry
Executive Director
Alaska Network on Domestic Violence and Sexual Assault

Member Programs

Anchorage AWAIC, STAR Bethel TWC Cordova CFRC Dillingham SAFE Fairbanks IAC Homer SPHH Juneau AWARE
Kenai LeeShore Center Ketchikan WISH Kodiak KWRCC Kotzebue MFCC Nome BSWG
Seward SeaView Community Services Sitka SAFV Unalaska USAFV Utqiagvik AWIC Valdez AVV

Fiscal Note

State of Alaska
2017 Legislative Session

Bill Version:	SCR 2
Fiscal Note Number:	1
(S) Publish Date:	3/3/2017

Identifier: SCR2-LEG-SESS-2-27-17
 Title: SEXUAL ASSAULT AWARENESS MONTH:APRIL
 2017
 Sponsor: MEYER
 Requester: SENATE HSS

Department:
 Appropriation:
 Allocation:
 OMB Component Number: 0

Expenditures/Revenues

Note: Amounts do not include inflation unless otherwise noted below. (Thousands of Dollars)

	FY2018 Appropriation Requested	Included in Governor's FY2018 Request	Out-Year Cost Estimates					
			FY 2018	FY 2018	FY 2019	FY 2020	FY 2021	FY 2022
OPERATING EXPENDITURES								
Personal Services								
Travel								
Services								
Commodities								
Capital Outlay								
Grants & Benefits								
Miscellaneous								
Total Operating	0.0	0.0	0.0	0.0	0.0	0.0	0.0	0.0

Fund Source (Operating Only)

None							
Total	0.0	0.0	0.0	0.0	0.0	0.0	0.0

Positions

Full-time							
Part-time							
Temporary							

Change in Revenues

None							
Total	0.0	0.0	0.0	0.0	0.0	0.0	0.0

Estimated SUPPLEMENTAL (FY2017) cost: 0.0 *(separate supplemental appropriation required)*
(discuss reasons and fund source(s) in analysis section)

Estimated CAPITAL (FY2018) cost: 0.0 *(separate capital appropriation required)*
(discuss reasons and fund source(s) in analysis section)

ASSOCIATED REGULATIONS

Does the bill direct, or will the bill result in, regulation changes adopted by your agency?
 If yes, by what date are the regulations to be adopted, amended or repealed?

Why this fiscal note differs from previous version:

INITIAL VERSION. ONE PAGE. ZERO NOTE.

Prepared By: <u>JESSICA GEARY, FINANCE MANAGER</u>	Phone: (907)465-6626
Division: <u>LEGISLATIVE AFFAIRS AGENCY</u>	Date: 02/27/2017 08:20 AM
Approved By: <u>PAM VARNI, EXECUTIVE DIRECTOR</u>	Date: 02/27/2017
Agency: <u>LEGISLATIVE AFFAIRS AGENCY</u>	