

**03/14/16**

**OVERVIEW:**

**OIL AND GAS**

**CONSERVATION**

**COMMISSION**

**(AOGCC)**

<TARGET><BILL></BILL><SUBJECT>03-14-16 OVERVIEW OIL  
AND GAS CONSERVATION COMMISSION  
(AOGCC)</SUBJECT><COMM>SRES29</COMM></TARGET>

# Alaska Oil and Gas Conservation Commission (AOGCC)

## Contact Information

Phone: (907) 793-1223

Fax: (907) 276-7542

[www.aogcc.alaska.gov](http://www.aogcc.alaska.gov)

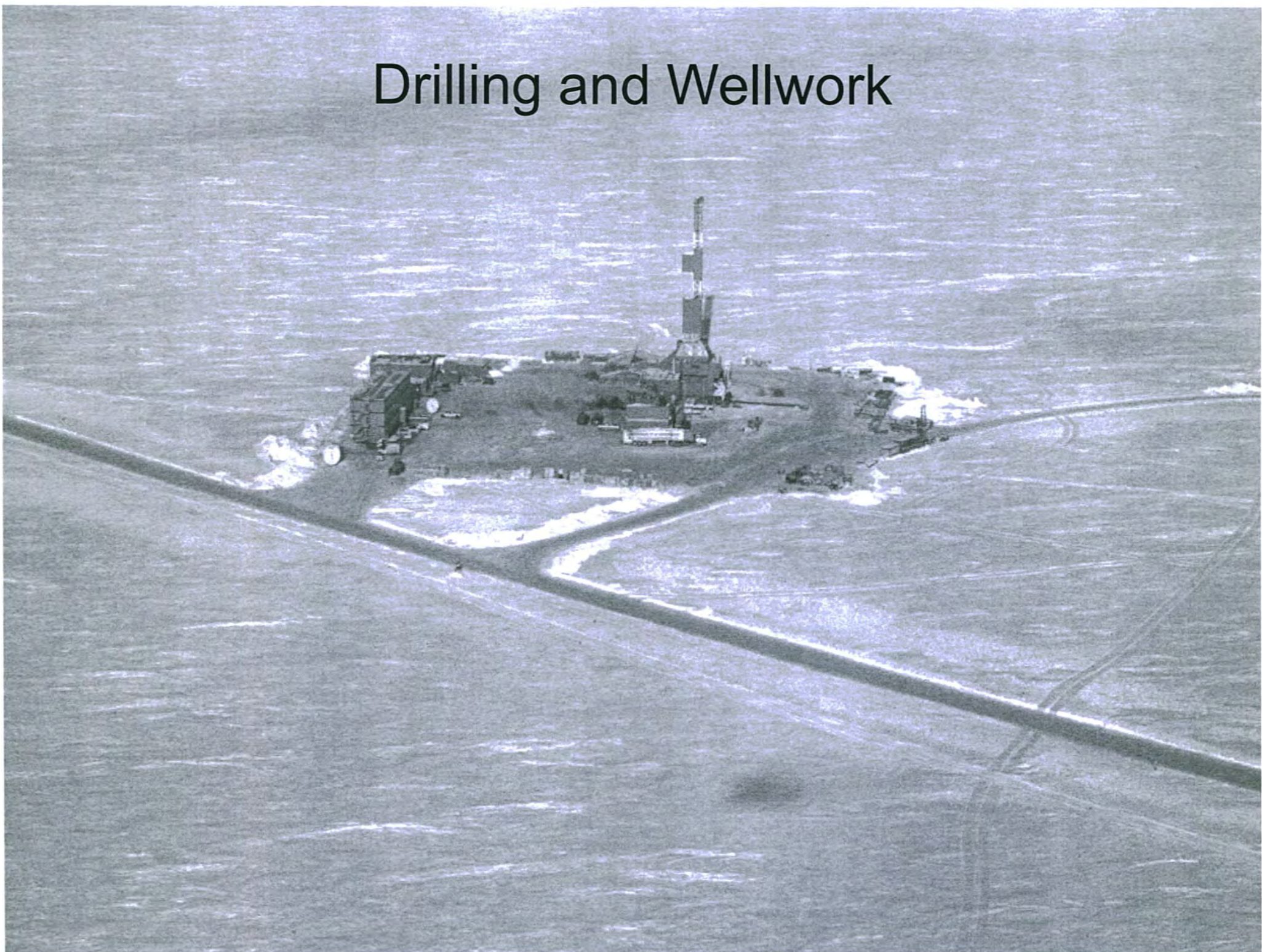
# What We Do

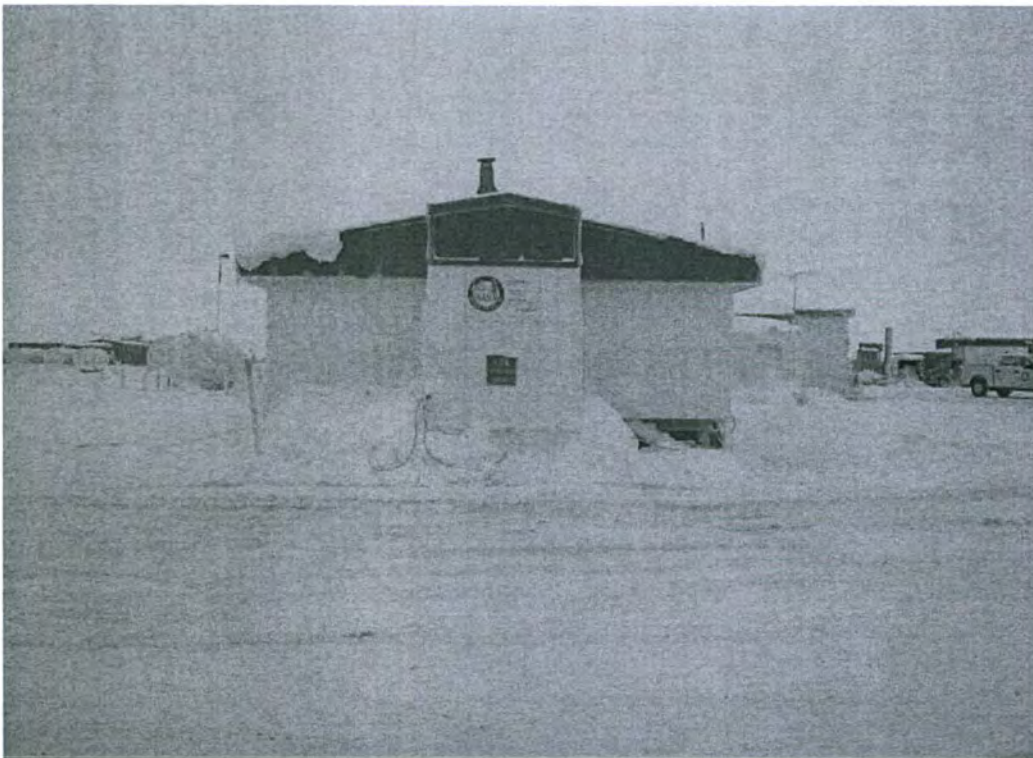


# 2015 Major Activities and Issues



# Drilling and Wellwork





# AOGCC Staffing Needs

- Public Commissioner
- Field Inspector



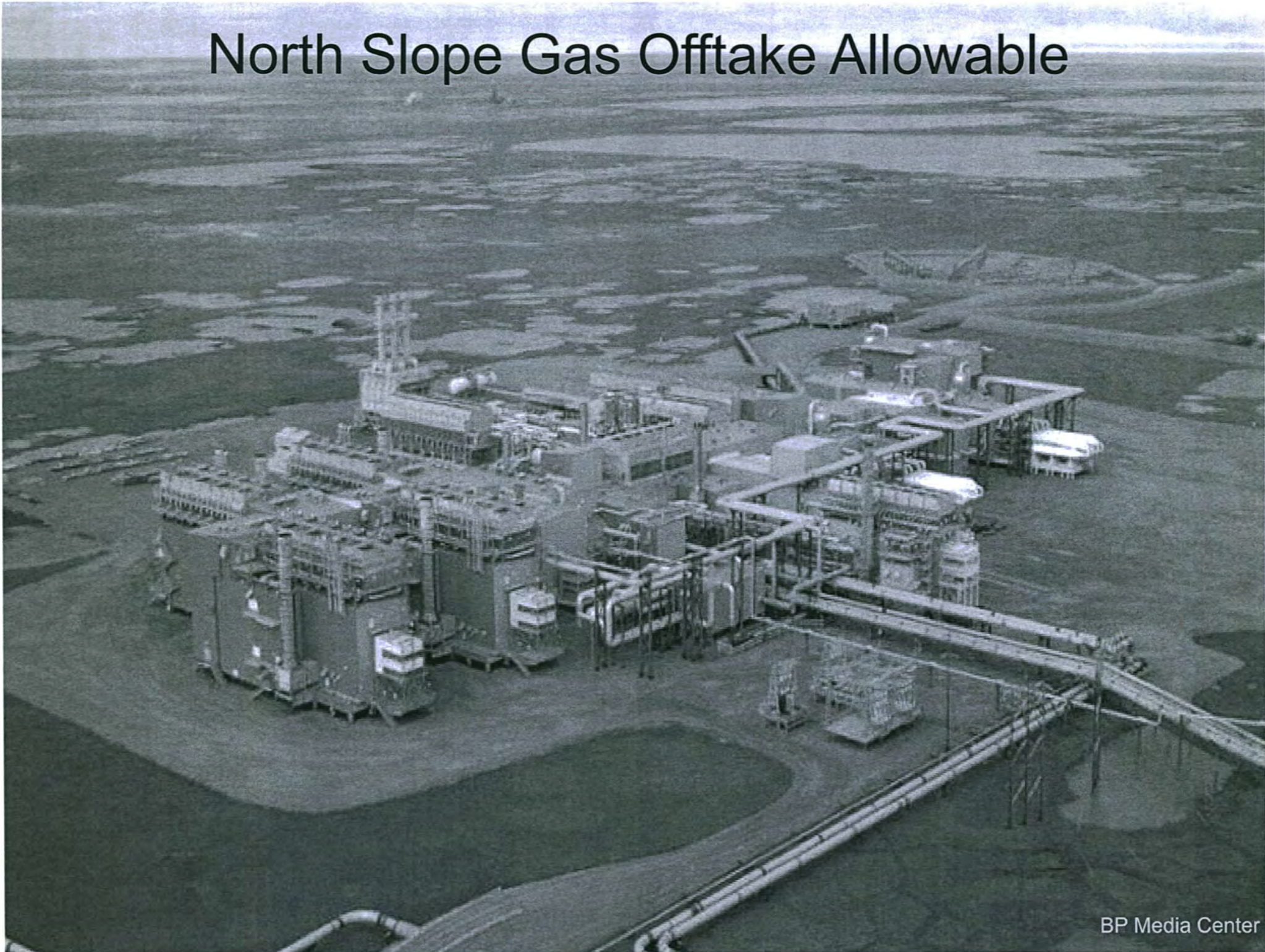
An aerial photograph of an offshore oil rig under construction in the ocean. The rig's central structure is a tall, dark, cylindrical tower with a lattice of steel beams. A large crane is positioned on the rig's deck, extending its arm over the water. The rig is surrounded by a complex network of steel beams and scaffolding. In the foreground, a large, dark, rectangular structure, possibly a storage tank or a part of the rig's infrastructure, is visible. The ocean is dark and choppy, with white-capped waves breaking against the rig's structure. The sky is overcast and grey. The overall scene depicts a large-scale industrial project in a remote, maritime environment.

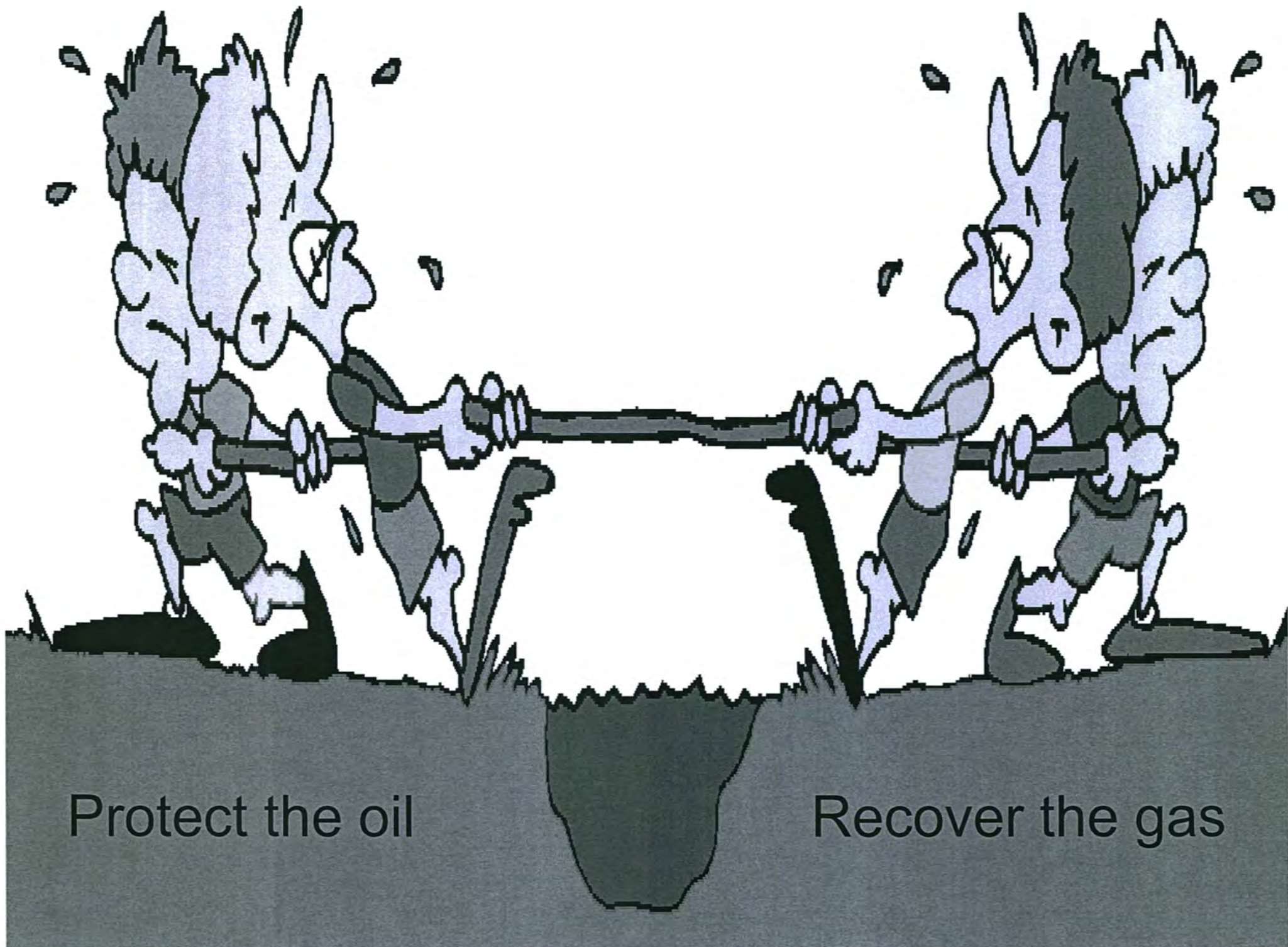
# Hydraulic Fracturing Regulations

# BLM Legacy Well Clean-up



# North Slope Gas Offtake Allowable





Protect the oil

Recover the gas

# Summary of the Rulings

- Prudhoe Bay
  - Offtake allowable increased to 3.6 BCF/day on an annual average
  - In 5 years BP must provide report of oil recovery acceleration activities and results
  - CO<sub>2</sub> injection for EOR authorized, based on positive study results
  - CO<sub>2</sub> disposal authorization outside AOGCC jurisdiction
- Pt Thomson
  - Offtake of 1.1 BCF/day allowed
  - Prior to MGS, Exxon must demonstrate that cycling isn't feasible

# Point Thomson Cycling Start-up



# Importance of AOGCC Staffing

- Small, highly technical staff
  - Geologic and engineering decisions daily
- Three, highly diverse commissioners
  - Oil and gas geology, engineering, legal understanding all essential
  - No decisions can be made without a quorum of at least two Commissioners