

**01/27/15  
OVERVIEWS:  
STATEWIDE  
FACILITIES &  
ENERGY SAVINGS  
EFFORTS; DOT&PF  
HIGHWAY PROGRAM**

<TARGET><BILL></BILL><SUBJECT>01-27-15 OVERVIEWS  
STATEWIDE FACILITIES and ENERGY SAVINGS EFFORTS; DOTandPF  
HIGHWAY PROGRAM</SUBJECT><COMM>HTRA29</COMM></TARGET>



# Alaska Department of Transportation & Public Facilities

## Statewide Public Facilities Overview

Dave Kemp, PE, PMP, Chief, Statewide Public Facilities  
Christopher Hodgin, PE, CEM, Energy Office Program Manager

January 27, 2015



# Authority

- AS 35.05.010 & AS 36.30
- Statewide Public Facilities is responsible for the planning, design and construction of the majority of new public facilities as well as renovation of existing facilities within the State of Alaska.



# Statewide Public Facilities

- Provides full service project management for facility construction and renovation.
- Management of Architectural/Engineering professional service agreements.
- Management and oversight of construction projects including program planning, site selection, cost estimating, management of design services, construction management services, art selection, commissioning services and warranty work.



# Statewide Public Facilities

- Provide Project Management services for most executive branch departments as well as local communities and tribal organizations on an as needed basis.
- Our projects range from smaller projects such as the Sitka Pioneer Home Reroof project to larger and more complex projects such as the State Library Archives and Museum in Juneau.



# Statewide Public Facilities Projects

- We currently manage 155 projects-including projects in various stages of completion from initial scoping to final close out.
- Total of \$658M of projects currently being managed.



# Statewide Public Facilities

Staff includes

- Licensed Architects, Civil, Mechanical and Electrical Engineers
- Certified Energy Managers
- Leadership In Energy & Environmental Design Accredited Professionals
- Paraprofessional Staff



# Alaska Veterans' and Pioneer's Home Siding and Painting

- Cost - \$677,550
- Client Agency – Department of Health and Social Services



Before



After



# Statewide Library Archive and Museum

- Cost - \$138,665,000
- Client Agency – Department of Education and Early Development





# Energy Program

- AS 44.42.067
- Our statutory requirement is to perform energy efficiency improvements in at least 25% of State public buildings 10,000 square feet or larger, excluding Legislative and Court Buildings by January 1, 2020.
- With the completion of the Mt. Edgecumbe High School Campus Wide Energy Upgrade project, we accomplished this requirement in 2014.



## Services Provided

- Assessment and comprehensive energy audits
- Project development, life cycle cost analysis and facilitating project financing options
- Project execution and management
- Monitoring of completed projects to ensure that they have met their energy efficiency goals



## ENERGY EFFICIENCY RESULTS

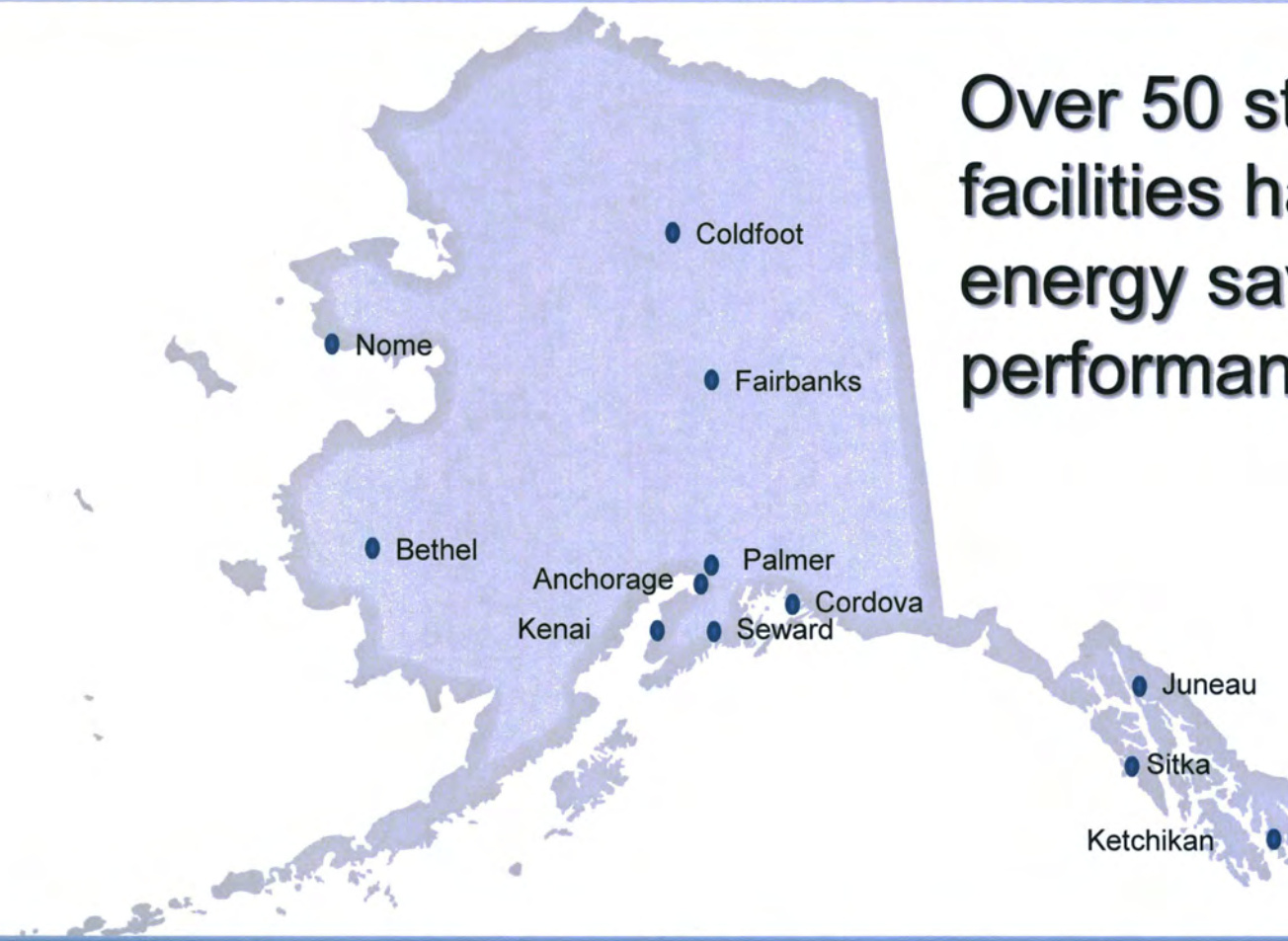
Through energy savings performance contracting— the state has achieved combined energy cost savings greater than **\$2.4M per year.**

ANNUAL ENERGY SAVINGS ACHIEVED		
Electricity	> 7,700,000	kWh
Natural Gas	> 162,000	CCF
Heating Oil	> 237,000	Gallons
CO2 Reduction	> 9,500	Tons



# PROJECTS ACCOMPLISHED

Over 50 state public facilities have received energy savings performance projects.

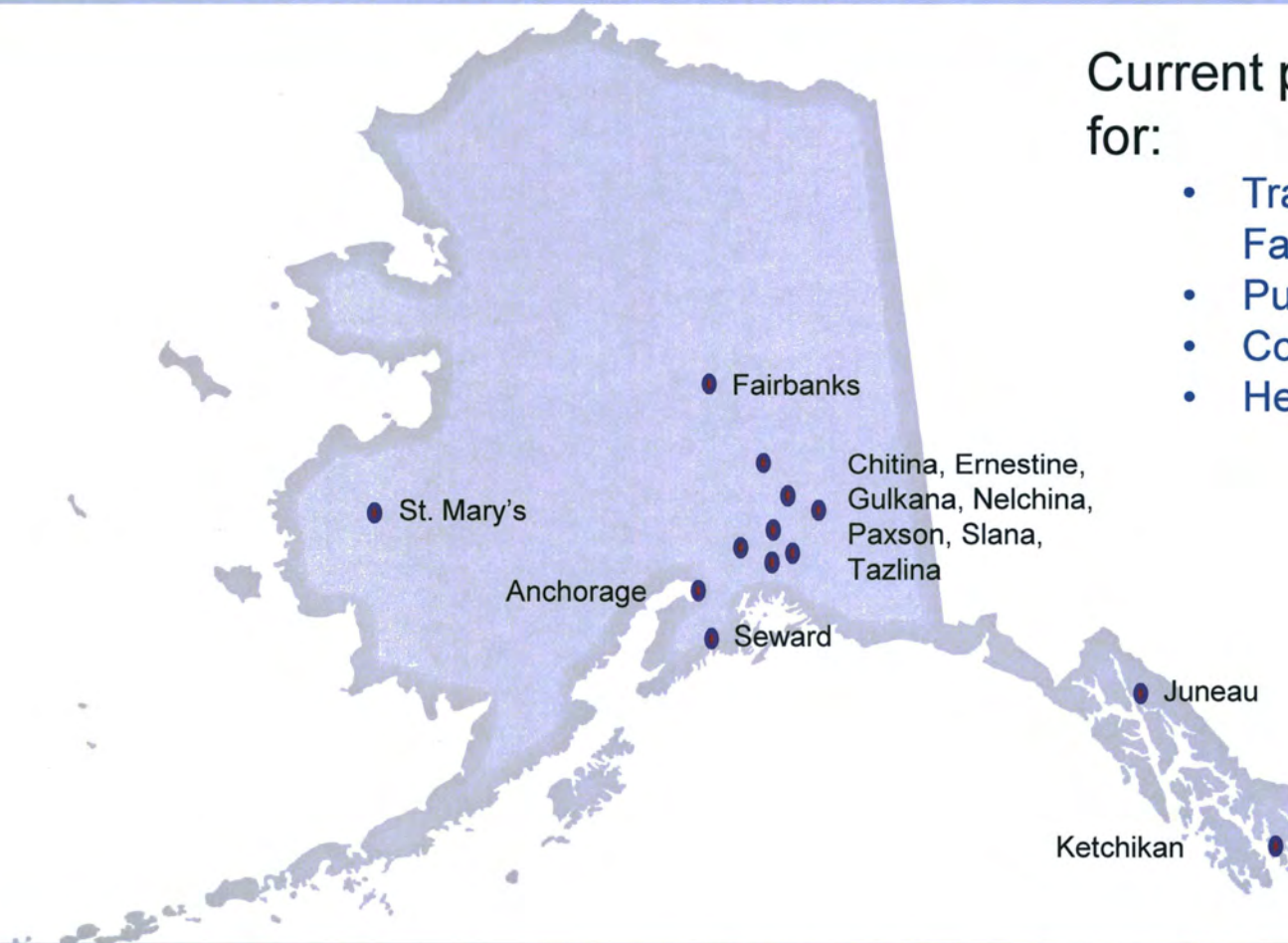




# PROJECTS IN-PROGRESS

Current projects in development for:

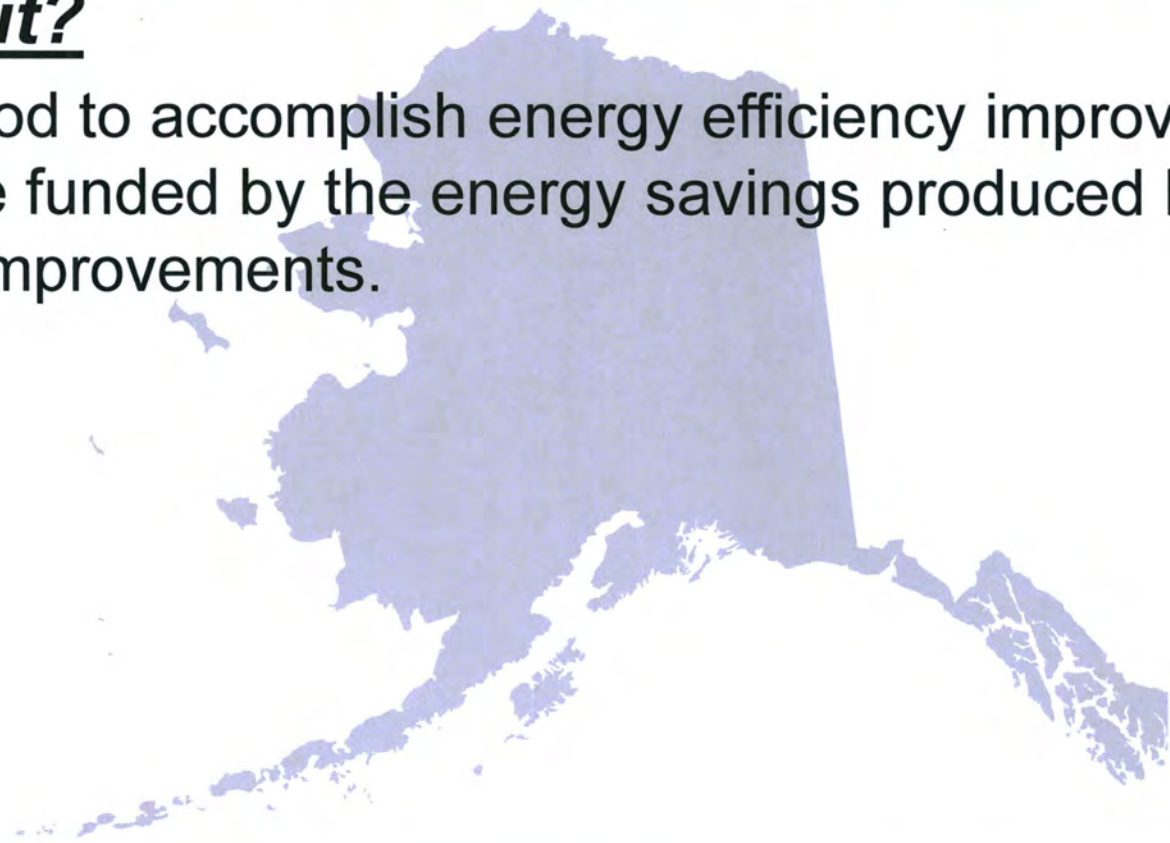
- Transportation & Public Facilities
- Public Safety
- Corrections
- Health & Social Services





# ENERGY SAVINGS PERFORMANCE CONTRACTING

- **What is it?**
  - A method to accomplish energy efficiency improvements that are funded by the energy savings produced by those same improvements.





# ENERGY EFFICIENCY

Examples of technologies implemented or analyzed include

- *New lighting technologies – fluorescent and LED*
- *High efficiency heating systems (fuel oil, natural gas), cogeneration*
- *Heat pump systems, air, ground-source, or seawater heat pump systems*
- *Renewables - photovoltaic systems, wind, biomass heating*





## ENERGY EFFICIENCY EXAMPLES

- **Energy Efficiency Improvement Examples: Lighting Upgrades**

Before



After



*At Mt. Edgecumbe High School (Sitka) – new high efficiency fluorescent lights were installed in the Gymnasium-both reducing energy use and dramatically improving the gym environment.*



## Mt. Edgecumbe High School Campus Wide Energy Upgrades

- Cost - \$4,788,878
- Client Agency – Department of Education and Early Development
- Campus wide energy upgrades

- ◆ Total Annual Fuel Oil Savings:

- » > 66,000 Gal

- ◆ Total Annual Energy Savings:

- » > \$304,000





## FOR FURTHER INFORMATION

David Kemp, P.E., PMP

Dept. of Transportation & Public Facilities  
Chief, Statewide Public Facilities

[David.Kemp@alaska.gov](mailto:David.Kemp@alaska.gov)

(907) 269-0811

Christopher Hodgin, P.E., C.E.M.

Dept. of Transportation & Public Facilities  
Program Manager, Energy Office

[Christopher.Hodgin@alaska.gov](mailto:Christopher.Hodgin@alaska.gov)

(907) 269-7484

***Thank you  
for your  
attention  
and this  
opportunity.***



# Alaska Department of Transportation & Public Facilities

## SURFACE TRANSPORTATION & MAP-21 OVERVIEW

Deputy Commissioner K. Kim Rice, P.E.

January 27, 2015



# Outline

- DOT & PF
  - Purpose - Statutes
  - Agency's Mission
- DOT&PF's Organization
  - 1 - Headquarters – Programs, Policy
  - 2 - Systems – AMHS, Internationals
  - 3 - Regions – Capital Program Delivery; M&O
- Budget – Operating & Capital
- Moving Ahead for Progress in the 21<sup>st</sup> Century (MAP-21)
- Strengths / Challenges / Initiatives
- Web Information



# Alaska Statute

- **Alaska Statutes: AS 19.05.125 Purpose.**

The purpose of AS 19.05 - AS 19.25 is to establish a highway department capable of carrying out a highway planning, construction, and maintenance program that will provide a common defense to the United States and Alaska, a network of highways linking together cities and communities throughout the state (thereby contributing to the development of commerce and industry in the state, and aiding the extraction and utilization of its resources), and otherwise improve the economic and general welfare of the people of the state.



# Mission

*“Keep Alaska moving through service and infrastructure.”*

To do this we:

- Provide for the safe and efficient movement of people and goods
- Provide access to state services
- Open opportunities for exploration and development of Alaska’s resources



# Core Values

*“Keep Alaska moving through service and infrastructure.”*

To do this we Encourage/Embrace the Core Values

- **Integrity:** Ensure honesty, dependability, loyalty, and a high ethical standard
- **Excellence:** Personal and department commitment to continually improve individual, team, and organizational knowledge, performance, and methods to provide superior service and products
- **Respect:** Positive regard for colleagues and customers



# Strengths

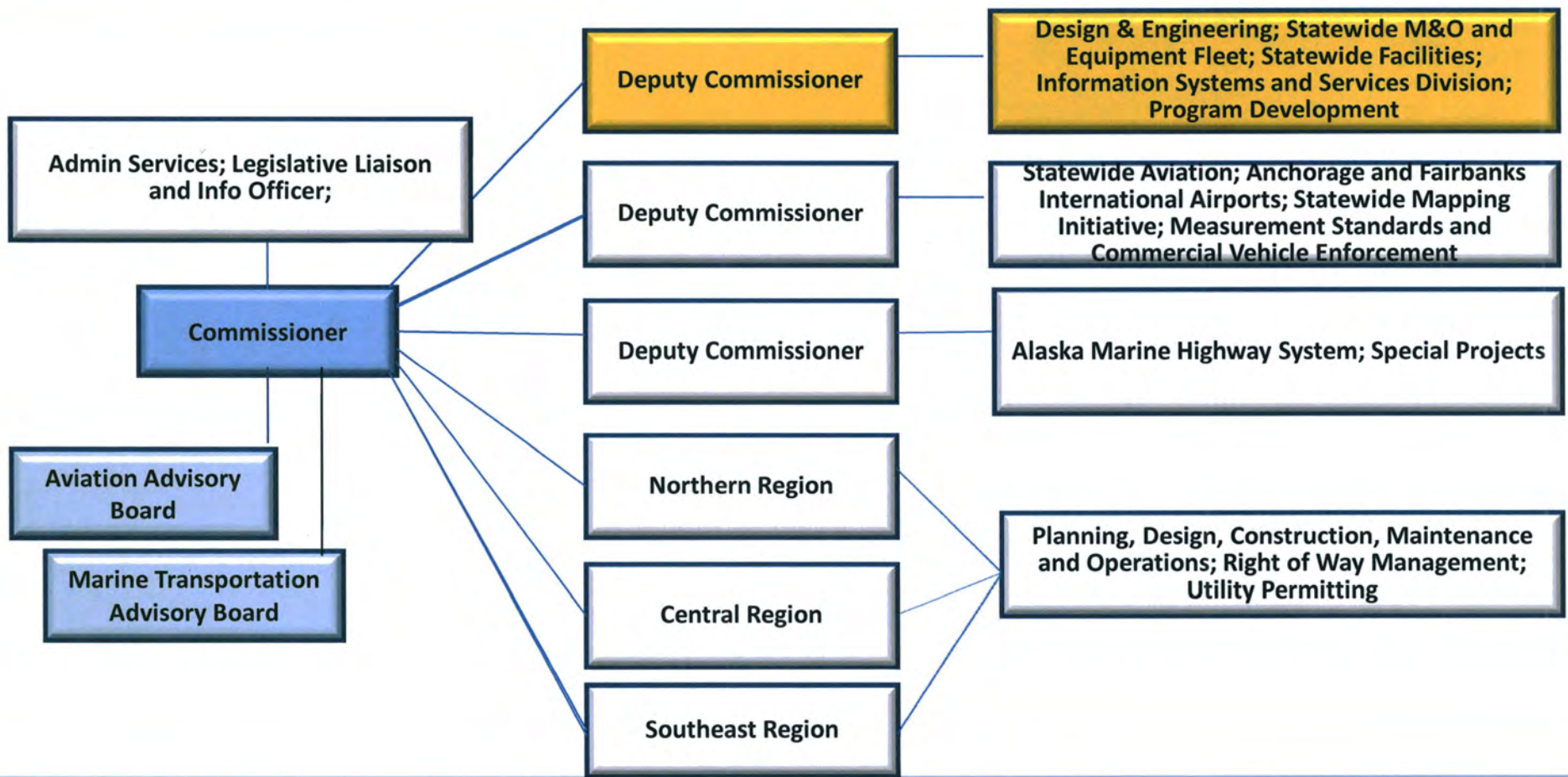
- **History of success**
  - Tough mission, in a tough environment
  - Permafrost, mountains, oceans, extreme climate, vast distances
- **Not just about highways / Most diverse state DOT among 50 states / Multi-model**
- **Workforce –Great People!**
  - Competence - experience, expertise, knowledge
  - Dedicated
  - Pride in accomplishments
  - Strong work ethic
  - Innovative
  - Problem solvers
- **Quantity and quality of assets**
- **Diverse & interesting challenges**
  - Opportunity for growth
  - Opportunity to serve



2014 Richardson Highway Avalanche

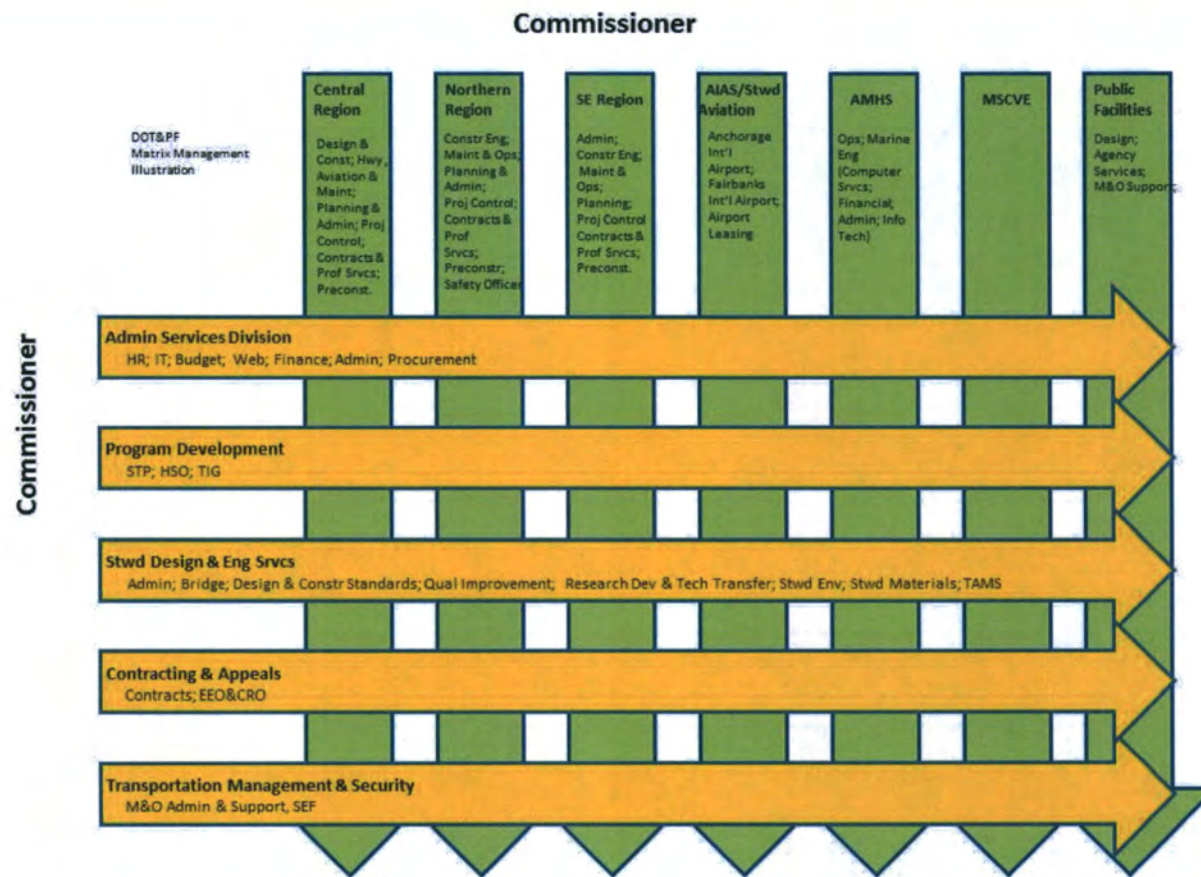


# Organization





# Fabric of DOT&PF



CREDIT:  
Shelly Saviers &  
Amanda Holland



# Statewide Functions

- Statewide Engineering
  - Standards, Bridge Design, Harbors
  - Geotechnical/Materials, Right of Way, Environmental
- Statewide Maintenance & State Equipment Fleet
- Planning/Program Development
  - STIP, long range plan, data warehouse, highway safety office
- Facilities
- Information Systems and Services
- Statewide Aviation, AMHS, Administrative, MSCVE

<http://dot.state.ak.us/>



# Regional Functions

- Three Geographic Regions
  - Highway design and construction
  - M&O to both highways and rural aviation systems
  - Planning, ROW, environmental
  - Aviation design and construction
  - Marine Facilities for AMHS
- Locations
  - Central Region – Anchorage
  - Northern Region – Fairbanks
  - Southcoast Region - Juneau



Southcoast Maintenance Shooting down avalanches on Thane Road.

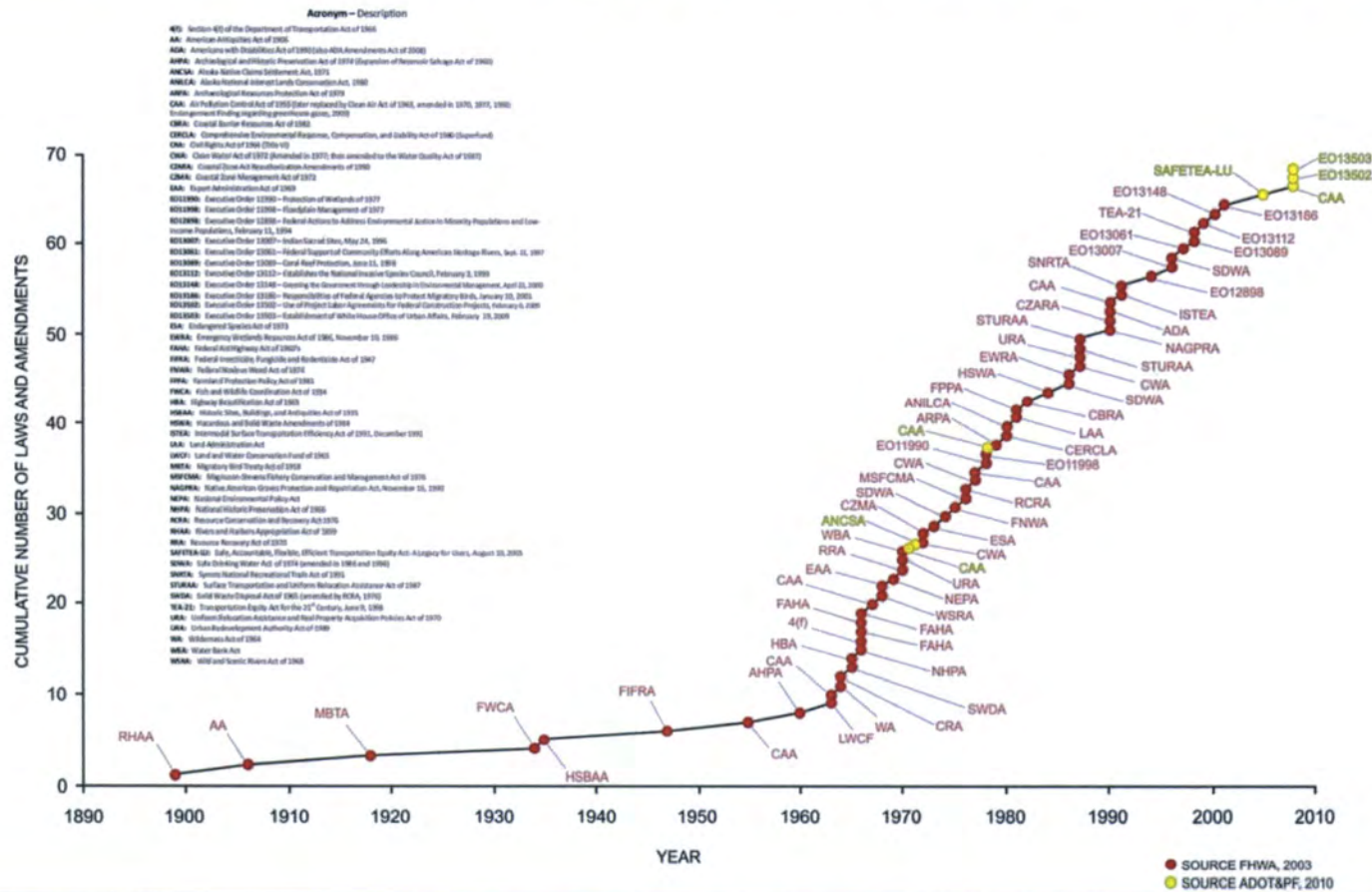


# Challenges

- M&O \$ – Balancing budget against needs, changing conditions and expectations
- Capital \$ – very dependent upon federal funds, dollars not indexed to need or construction cost
  - Rural essential needs
  - Population growth demands, more lanes
  - Safety issues
- Staffing – Aging workforce / Recruitment & Retention
- Environmental/land issues – continue to expand, new issues being raised, longer process timelines



# Federal Environmental Requirements Affecting Transportation

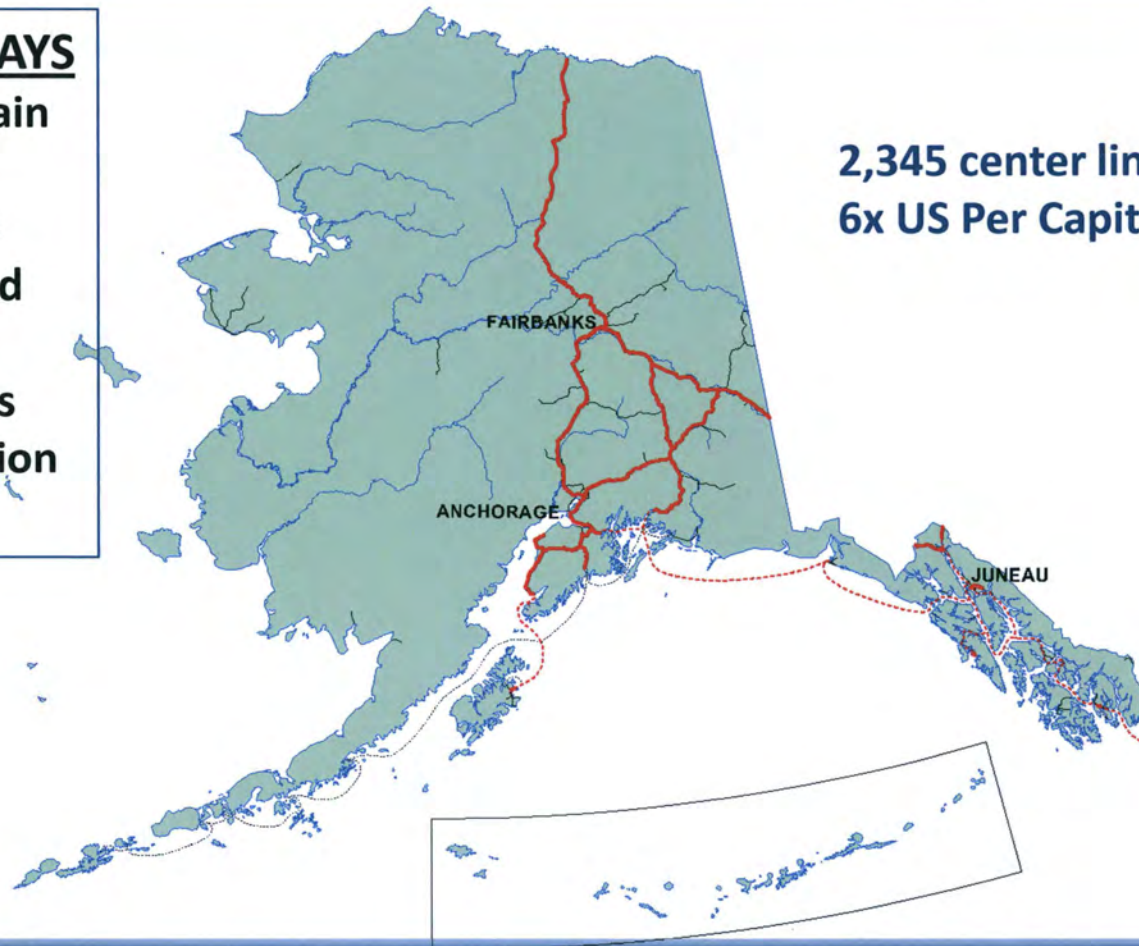




# National Highway System

## DOT&PF HIGHWAYS

- Own and maintain 5,589 miles of roads/highways
- 810 State Owned Bridges
- 7 Weigh Stations
- 9 Weigh-in-Motion Stations

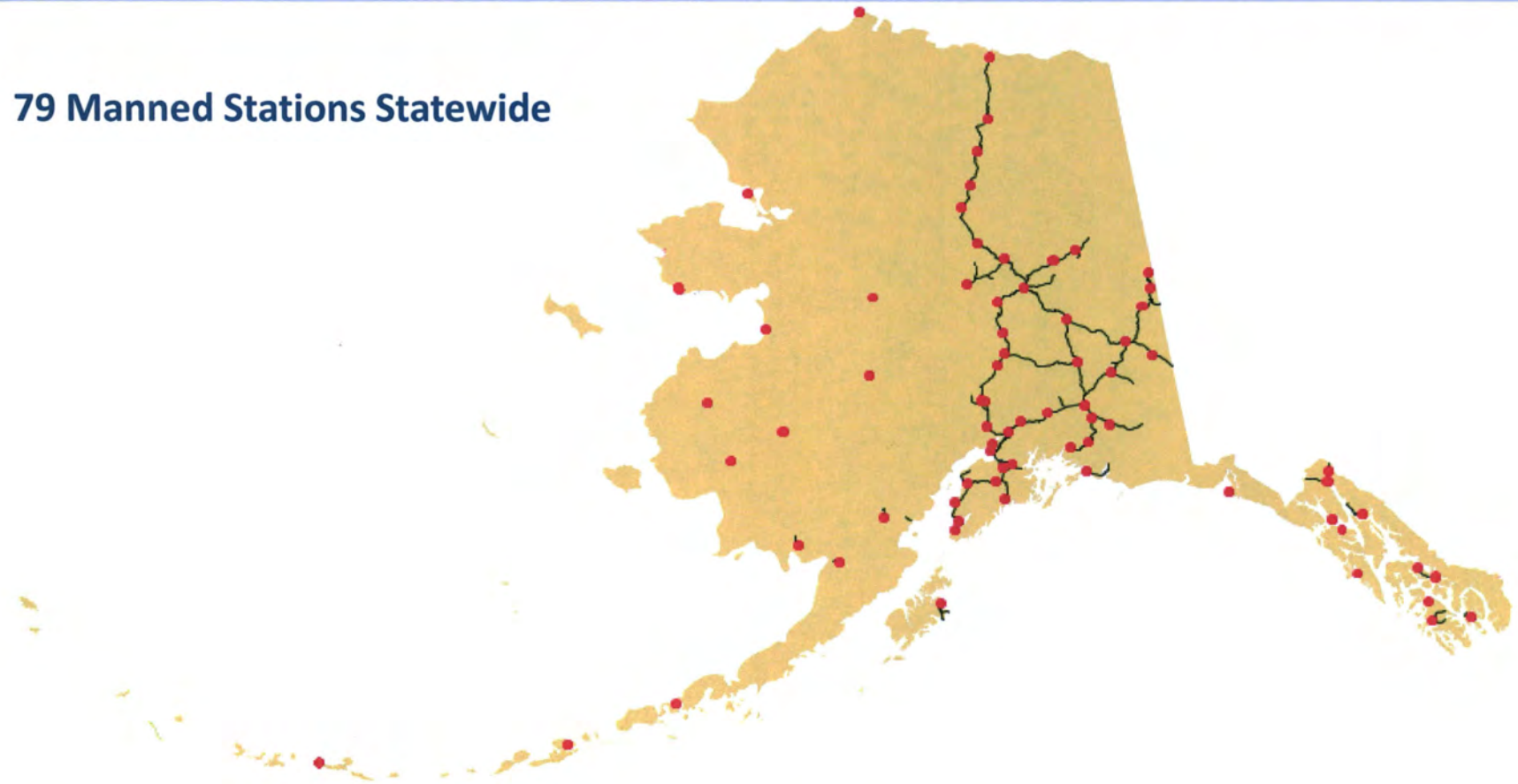


2,345 center line miles  
6x US Per Capita avg.



# DOT&PF Maintenance Stations

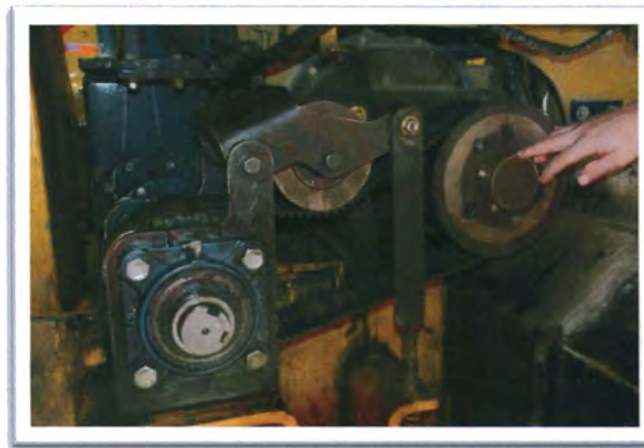
79 Manned Stations Statewide





# Changes/Efficiencies

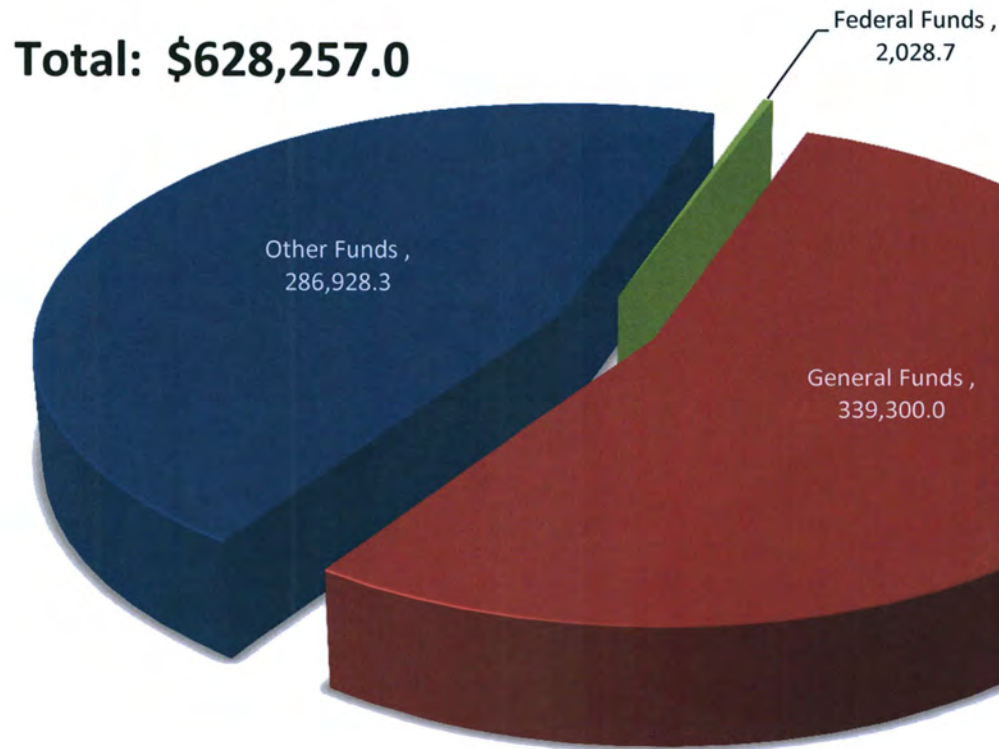
- Information Systems and Services Division
- Workforce Development
- Innovations/Efficiency Implementations



Kodiak Snow-blower Modification at Chandalar Station



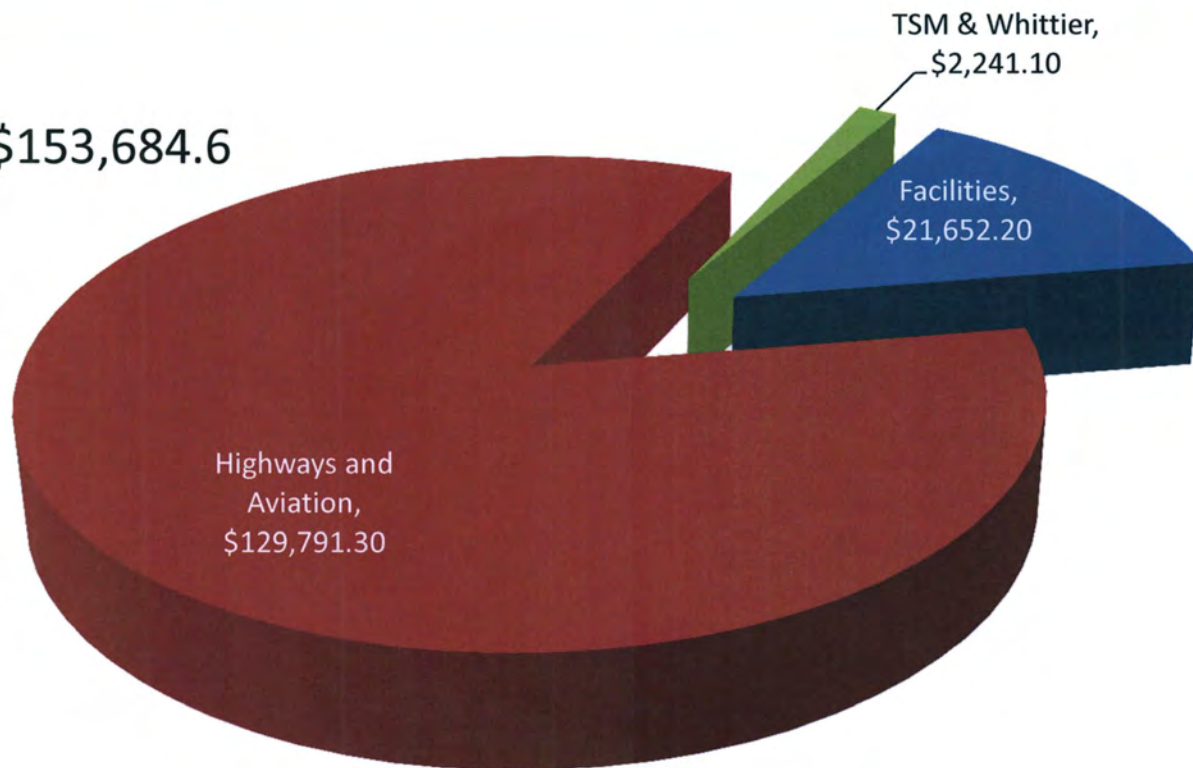
# FY16 Operating Budget





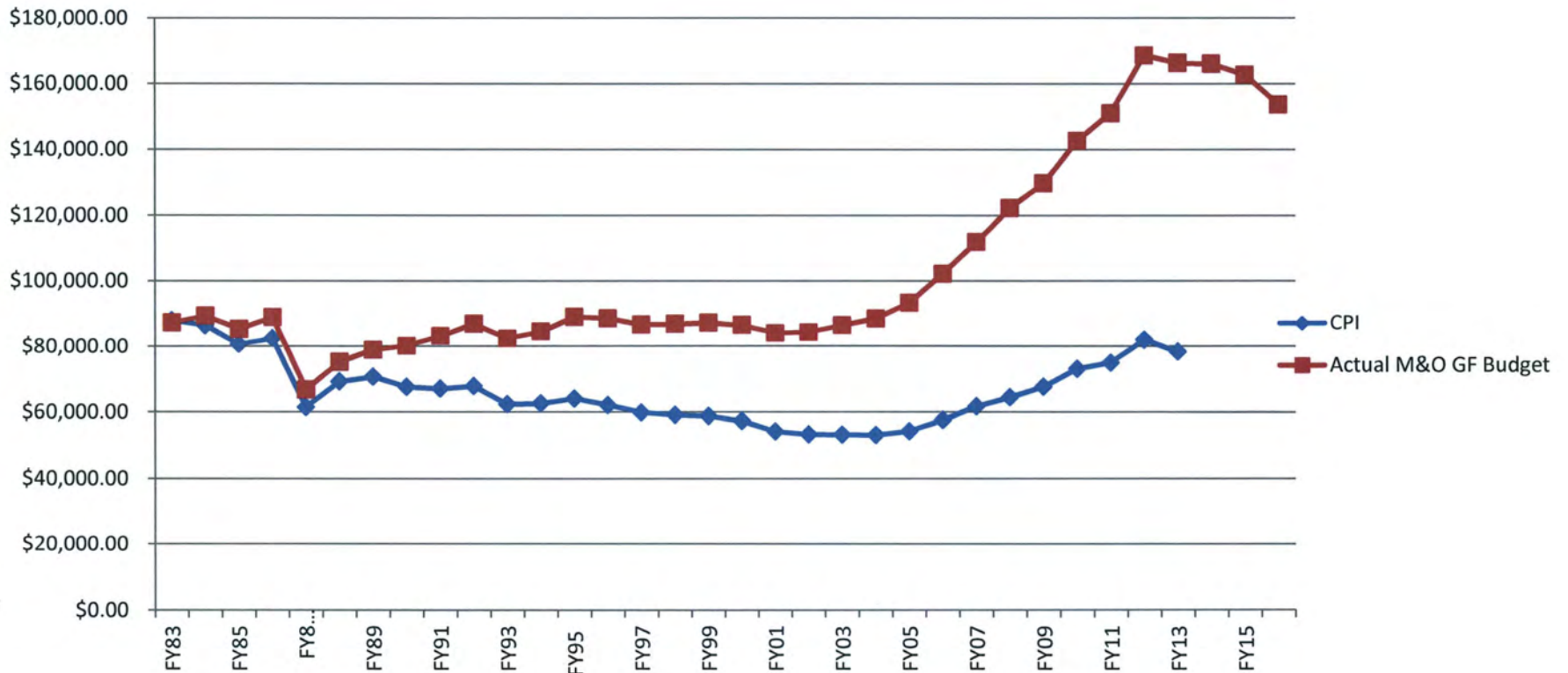
# FY16 M&O GF Authorization

Total: \$153,684.6





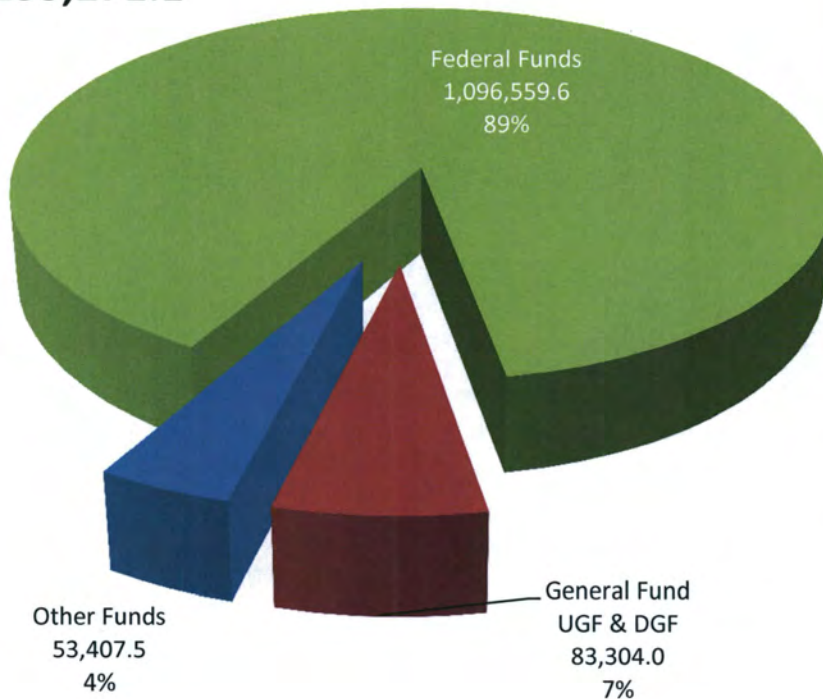
# Historical Funding for M&O





# FY16 Capital Budget

**Total: \$ 1,233,271.1**

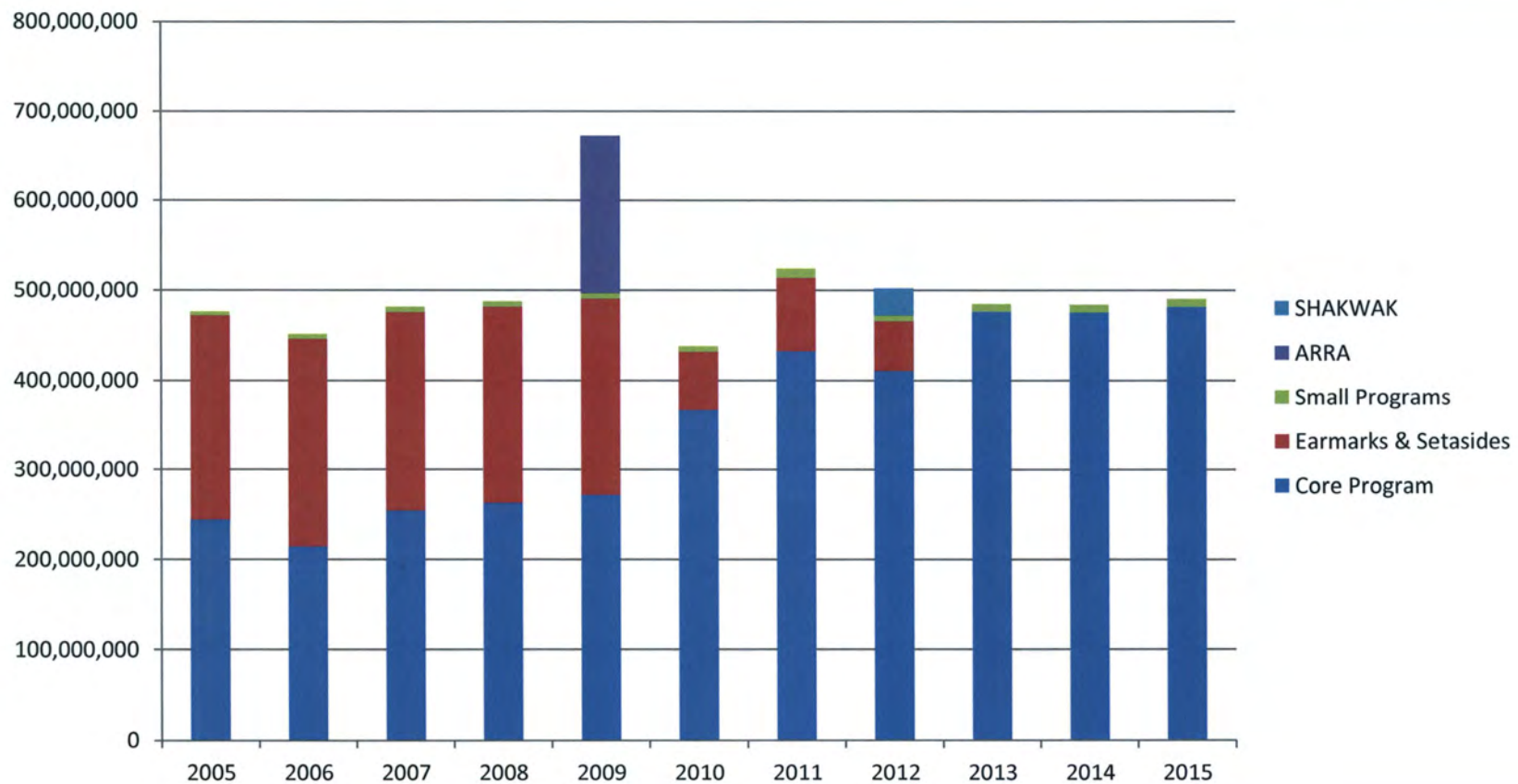


Federal Programs	Amounts
Aviation Program	\$125,939.6
<b>Highway Program</b>	<b>\$891,120.0</b>
Statewide Federal Programs	\$79,500.0

- **Federal Highway Program (FHWA)**
- Federal Aviation Program (FAA)
- Federal Transit Administration (FTA)
- National Highway Traffic Safety Administration (NHTSA)
- Federal Motor Carrier Safety Administration (FMCSA)

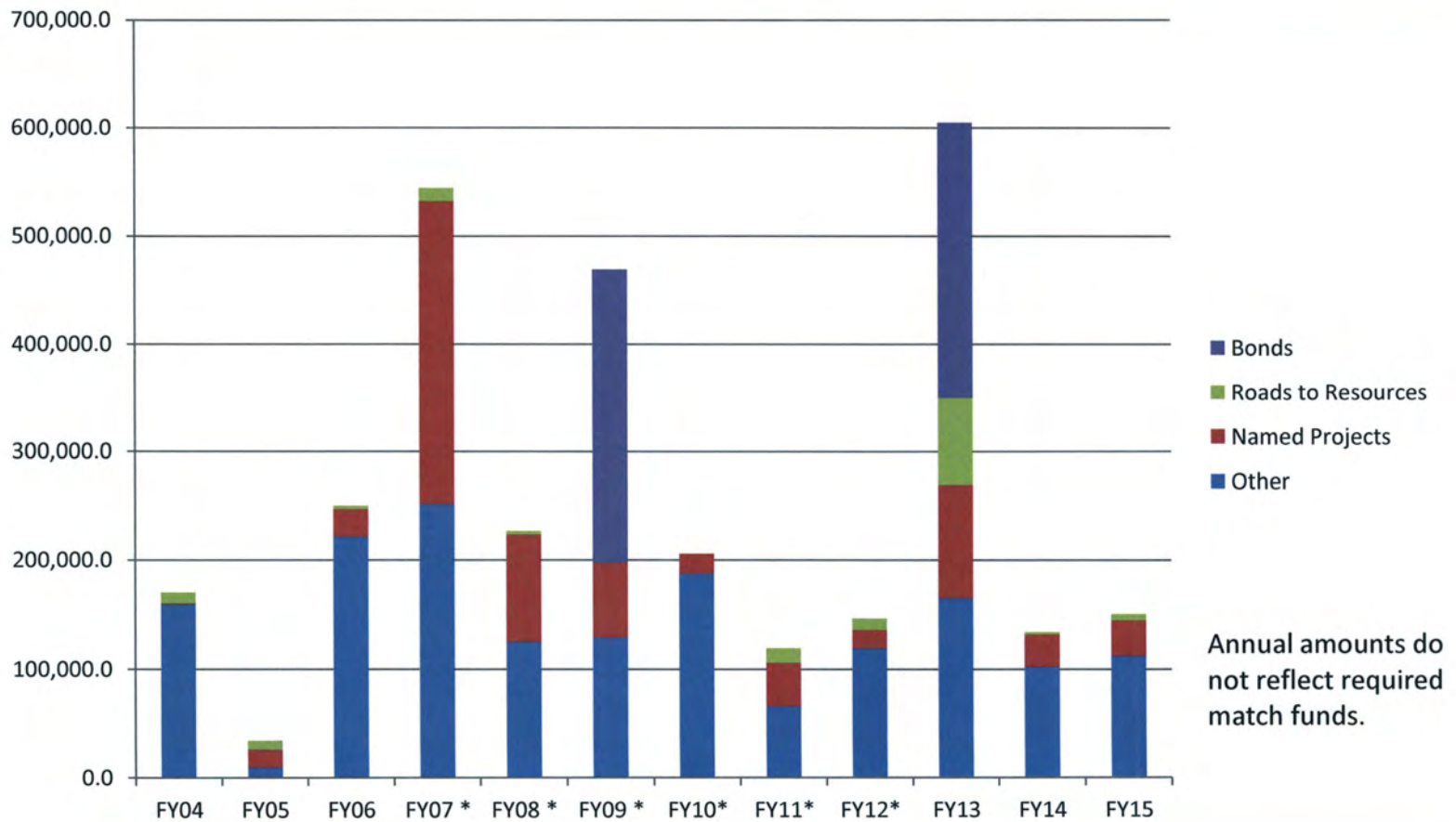


# Federal Capital Program





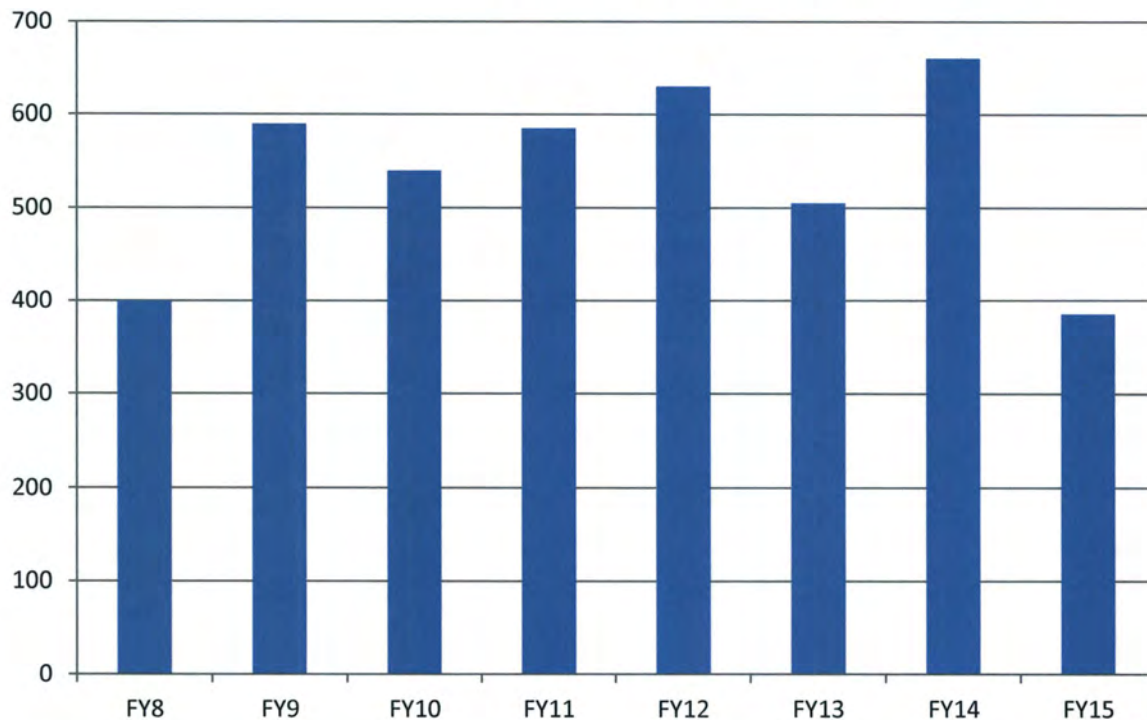
# State Capital Program





# DOT&PF Capital Construction Projects

Millions of Contract Awards



**NOTE:**

a. All construction awards (aviation, marine highways, highways, facilities)

b. All fund sources – State, GF, Federal

c. 2015 is estimated. - will likely be larger.

■ Millions of Contract Awards

<http://www.dot.state.ak.us/procurement/index.shtml>



## HTF – Highway Trust Fund

- Source of highway and transit (including ferry) funding state receives
- Historically a 100% user-fee program:
  - Fuel taxes, excise taxes
  - Rates charged unchanged in 22 years
- Changes in driving and fuel usage have reduced funding stream; now about 20% deficit and increasing annually



# MAP-21 Funding

## Moving Ahead for Progress in the 21st Century Act (MAP-21):

- 2-year authorization originally (2013 & 2014)
- Historically, program has always been continued and financed near prior levels
- Continued into 2015; only 8 months funding. Congress must extend in 2015
  - However, the Highway Trust Fund revenue continues to decline



# MAP-21 Funding

- Highway funding down from \$520 M to \$485 M
  - Similar reduction felt in all other states
- Transit funding at \$45 M, plus new ferry funding of about \$17 million
- Significant streamlining of funding categories
- Federal priorities based on funding allocations:
  - National Highway System (expanded)
  - Highway Safety
  - Meeting performance standards on NHS
  - Urban areas > 200,000 population



# MAP-21 Redefines Federal Interest

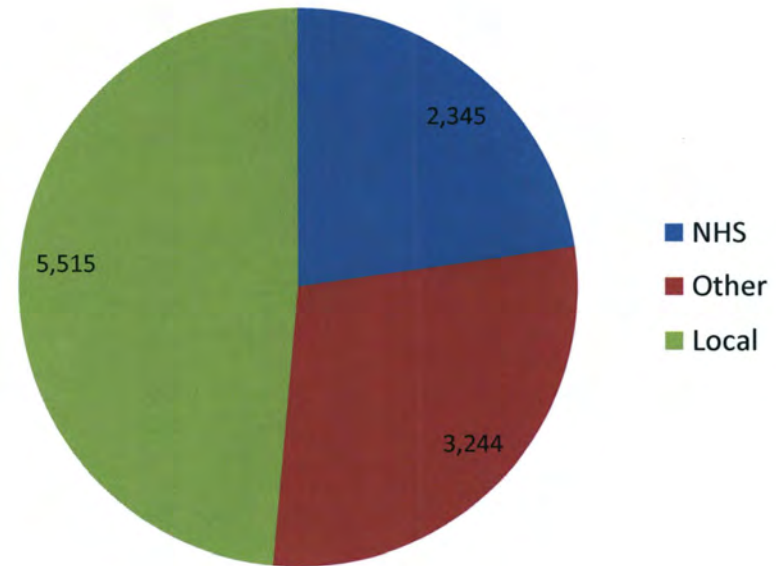
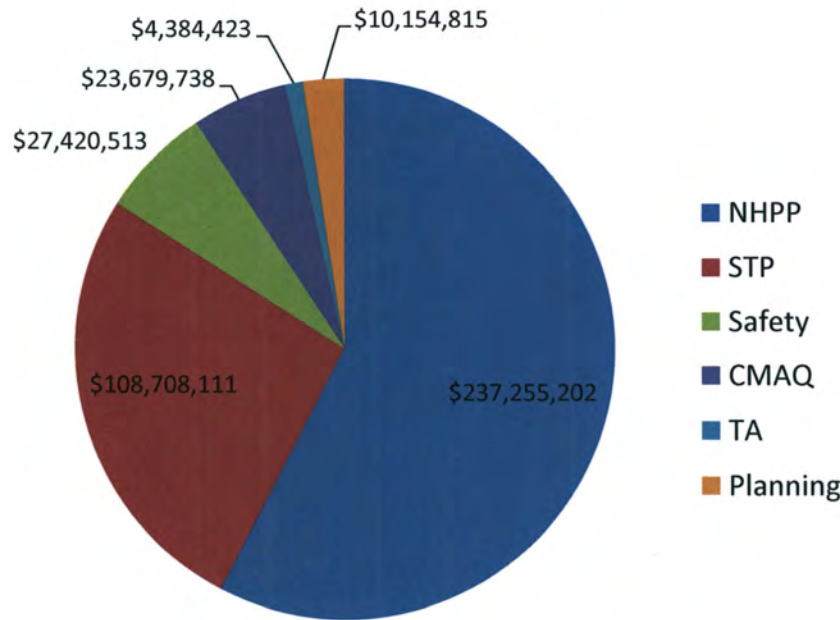
- Federal-Aid System narrowed to just the Interstate and Nat'l Highway routes.
  - NHS broadened to include all Principal Arterials.
  - Added 90 miles (~4%) to Alaska NHS
- 57% of funding focused on the NHS
- 27% of funding focused on lower-tier roads
- 7% of funding directed to safety (+5% sanctions)
- 9% to several other minor categories



# MAP-21 Emphasis is to National Highway System (NHS)

Federal-aid Funds\*

Miles of Road



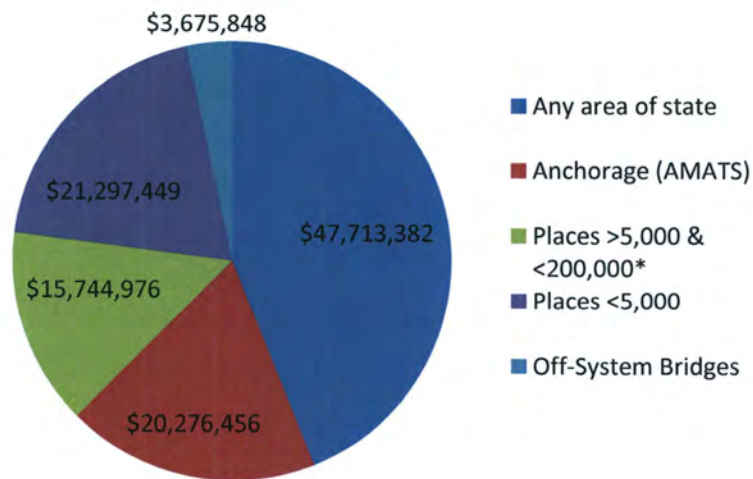
**18% of Road Miles Garner 57% of Federal-aid Funding**

(\*Note: Dollar amounts based on current FY15 )



# MAP-21 Allocation to STP

## MAP-21 STP Funds\*



\*Fairbanks, Juneau, Kenai, Ketchikan, Kodiak, Sitka, Palmer & Wasilla

- All non-NHS roads and other needs will compete for smaller share of funding.
- Dollars available per mile:
  - NHS = \$92,000/mile
  - Other, except local = \$32,100/mile
- Many required work items must be funded from STP also.

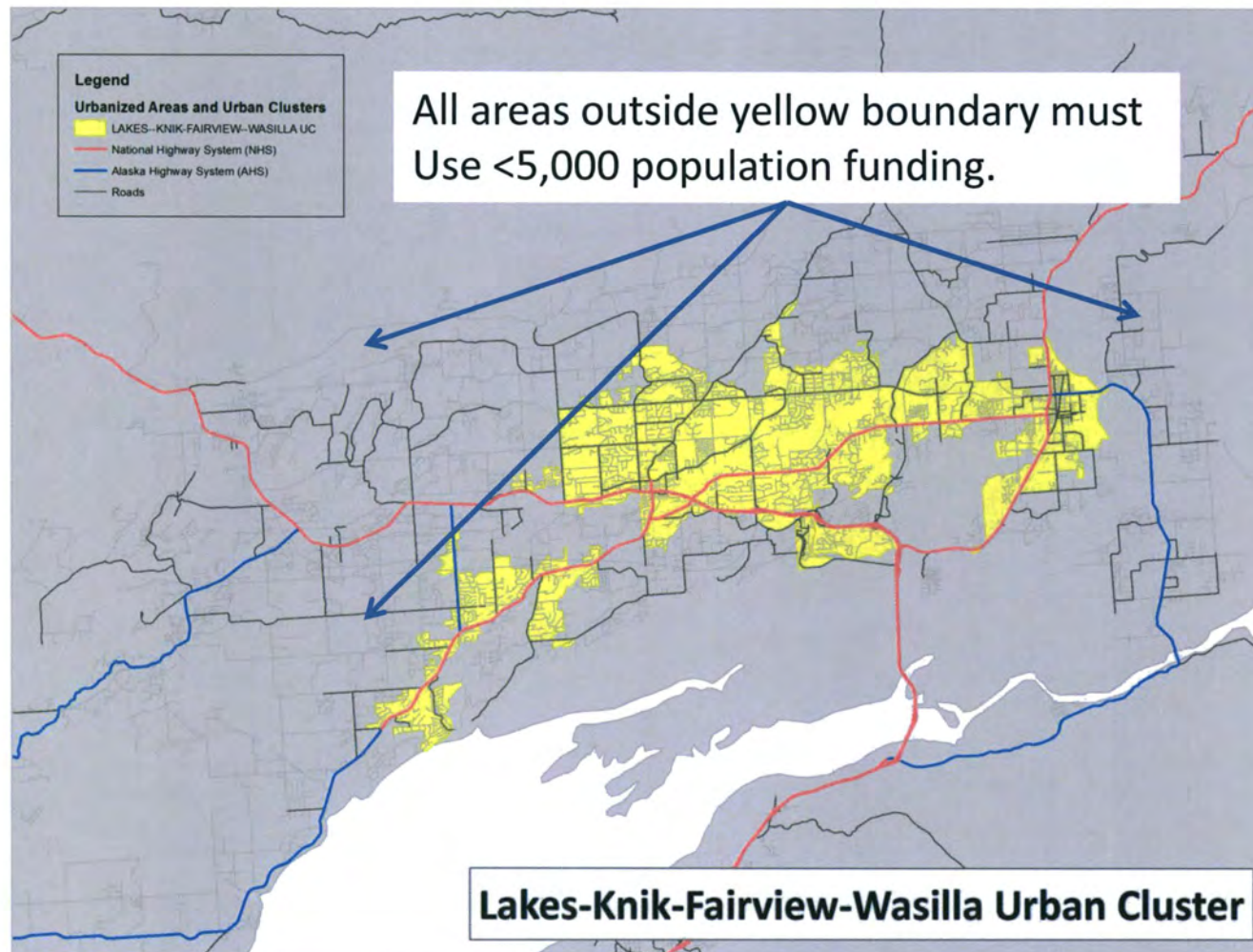
(\*Note: Dollar amounts based on current FY15 Program)



## Understanding the Population Rules

- MAP-21 removed exemption for Alaska regarding population set-asides of STP funding.
- Except for Anchorage, all funding must be sourced-based on urban boundaries (aka *urban clusters*).
- Urban clusters are not based on municipal boundaries.

# Mat-Su Urban Cluster





# MAP-21 Eliminations

- Shakwak funding ends
  - \$30 M annually to Canada for Haines & Alaska Highways
  - Periodic method of funding AMHS needs
- Forest Highway program ends
  - \$9 M annually to build highways on Nat'l Forests
  - Replaced by \$7 M program on all federal lands (FLAP = Federal Lands Access Program)



# Performance Mandate

- FHWA to set NHS Performance Measures for:
  - Pavements and Bridges
  - Safety
  - Freight Mobility
  - Congestion
- If NHS system conditions fall behind:
  - Must divert funding to better performance
  - Later, penalized with higher match requirement



# DOT&PF Information Sources

- DOT Website <http://dot.state.ak.us/>
- 511 – Traveler Information (Road Conditions, RWIS...) <http://511.alaska.gov/alaska511/mappingcomponent>
- Navigator Construction Status - <http://alaskanavigator.org/>
- Active Project Status - <http://dot.alaska.gov/projects-status/>
- Links to Project Websites [http://dot.alaska.gov/project\\_info/index.shtml](http://dot.alaska.gov/project_info/index.shtml)
- State Transportation Improvement Program <http://www.dot.state.ak.us/stwdplng/cip/stip/index.shtml>



## Contact Info

- [kkim.rice@alaska.gov](mailto:kkim.rice@alaska.gov)

### Public Information Officers

- Juneau – [jeremy.woodrow@alaska.gov](mailto:jeremy.woodrow@alaska.gov)
- Anchorage - [jill.reese@alaska.gov](mailto:jill.reese@alaska.gov)
- Fairbanks - [meadow.bailey@alaska.gov](mailto:meadow.bailey@alaska.gov)

### Legislative Liaison

[Connie.mckenzie@alaska.gov](mailto:Connie.mckenzie@alaska.gov)



**For Immediate Release:** January 27, 2015

**Contact:** Jeremy Woodrow, 907-465-8994, [Jeremy.Woodrow@alaska.gov](mailto:Jeremy.Woodrow@alaska.gov)

## **ADOT&PF to Close Bars on State Ferries**

**(JUNEAU, Alaska)** – The Alaska Department of Transportation and Public Facilities (ADOT&PF) today announced that the Alaska Marine Highway System (AMHS) will begin the process of closing bars on state ferries this winter.

Operation of AMHS bars results in a net loss for the State of Alaska. The closure will save the state more than \$750,000 annually.

“Closing bars on state ferries creates immediate savings for the state and allows the department to limit reductions in ferry service to communities,” said ADOT&PF Acting Commissioner John Binder.

Six AMHS ferries currently have bar service. The exact closure date will vary upon each vessel’s return to service following its 2015 annual overhaul this spring. The vessels affected by the closure are:

- M/V Kennicott
- M/V Matanuska
- M/V Columbia
- M/V Tustumena
- M/V Malaspina
- M/V Taku

Beer and wine will continue to be sold on AMHS ferries. Concurrent with each bar closure, consumption and sales of alcoholic beverages will be limited to the vessel’s cafeteria as single serving sizes during meal hours.

The department is working with the Inlandboatmen’s Union to ensure that current AMHS employees are not displaced by the operational change.

The Alaska Department of Transportation and Public Facilities oversees 254 airports, 11 ferries serving 35 communities, 5,619 miles of highway and 720 public facilities throughout the state of Alaska. The mission of the department is to **Keep Alaska Moving** through service and infrastructure.

###

# ALASKA MARINE HIGHWAY FUND



## Annual Financial Report

For the fiscal year ended June 30, 2014

2014



Alaska Marine Highway System Fund

# **ANNUAL FINANCIAL REPORT**

---

For the fiscal year ended June 30, 2014

Prepared by: Alaska Marine Highway System,  
Department of Transportation and Public Facilities

---

# TABLE OF CONTENTS

---

**Alaska Marine Highway System**  
**Annual Financial Report**  
For the Fiscal Year Ended June 30, 2014

	page
<b><u>INTRODUCTORY SECTION</u></b>	1
Letter of Transmittal	2
Marine Transportation Advisory Board	3
Ports of Call	4
Profile of the Fleet	5
Vessel Information	6
FY 2014 Operating Plan	7
Operating Revenue Chart	8
Operating Expenditures Chart	9
<b><u>FINANCIAL SECTION</u></b>	11
Statement of Revenues, Expenditures, and Changes in Fund Balance	12
Statement of Actual and Estimated Revenues from Operations	13
Notes to the Financial Statement	14
<b><u>STATISTICAL SECTION</u></b>	15
Operating Revenues by Vessel FY 2003 - FY 2014	16
Operating Expenditures by Vessel FY 2003 - FY 2014	17

---

# I

# LETTER OF TRANSMITTAL



THE STATE  
of **ALASKA**  
GOVERNOR BILL WALKER

## Department of Transportation and Public Facilities

OFFICE OF THE COMMISSIONER  
Patrick J. Kemp, P.E., Commissioner

3132 Channel Drive  
P.O. Box 112500  
Juneau, Alaska 99811-2500  
Main: 907.465.3900  
Fax: 907.586.8365  
dot.state.ak.us

December 16, 2014

Dear Alaska State Legislator:

Enclosed is the Alaska Marine Highway System (AMHS) Annual Financial Report for Fiscal Year 2014 (ended June 30, 2014) as required by AS 19.65.070.

During FY2014, AMHS recorded \$50.9 million in operating revenues which was down from the two previous years. A portion of the reduced revenue was expected because less service was provided to accommodate the \$4.2 million reduction in the FY2014 operating budget. Also, late deliveries of the M/V Tustumena and M/V Columbia from refurbishment projects contributed to reduced service and lower revenue.

The department implemented a number of cost saving measures such as reducing commissions paid to travel agents and eliminating certain discounted fares. The planned and unplanned reductions in service combined with cost saving measures and reduced fuel use resulted in a total operating expenditure of \$166 million, \$6.5 million less than FY2013.

AMHS operated with an on-time departure rate of 92 percent. Service weeks provided by AMHS decreased to 376.6, down from the prior year's 403.8, and port calls decreased from 7,005 to 6,490. Ridership decreased three percent for passenger and four percent for vehicles. As with revenues, these decreases were primarily due to the budget reduction and late availability of the M/V Tustumena and M/V Columbia.

AMHS is striving to meet the challenge of providing safe, efficient, reliable, and cost effective transportation for the traveling public while addressing the need to reduce cost to the state. The system's customer satisfaction rating remains strong at 97 percent.

I look forward to the opportunity to share more AMHS successes with you in the coming year.

Sincerely,

Handwritten signature of Patrick J. Kemp in blue ink.

Patrick J. Kemp, P.E.  
Commissioner

*"Keep Alaska Moving through service and infrastructure."*

# MARINE TRANSPORTATION ADVISORY BOARD

---

## Alaska Marine Highway System Marine Transportation Advisory Board

On March 28, 2007, Governor Sarah Palin signed Administrative Order No. 233 establishing the Alaska Marine Transportation Advisory Board (MTAB). On June 4, 2008, Governor Palin signed House Bill 294. This bill established the Alaska Marine Transportation Advisory Board and set out its powers and duties; made conforming amendments; and provided an effective date of June 5, 2008. The following are the MTAB Board Members as of June 30th, 2014:

### **CHAIRMAN**

Robert Venables

Northern Southeast (Haines, Juneau, Skagway)

### **DOT&PF STAFF SUPPORT**

Reuben Yost

Deputy Commissioner

Nicole Gorle

Administrative Assistant

### **MEMBERS**

Patricia Branson

Southwest (Kodiak)

Ron Bressette

Labor Unions of the employees of the AMHS

Gerald Hope

Central Southeast (Petersburg, Sitka, Wrangell)

Joshua Howes

Member At-Large, resident of an area not directly served by AMHS

Timothy Joyce

Prince William Sound / Kenai Peninsula (Cordova, Valdez, Whittier, Yakutat, Chenega Bay, Tatitlek)

Daniel Kelly

Business owner with experience interacting with AMHS and resident of the Ketchikan Gateway Borough

Richard Knapp

Northern Southeast Alaska

Shirley Marquardt

Southwest / Aleutian Chain / Alaska Peninsula (Akutan, Chignik, Cold Bay, False Pass, Homer, King Cove, Kodiak, Port Lions, Sand Point, Seldovia, Unalaska / Dutch Harbor)

Cathie Roemmich

Member At-Large

Maxine Thompson

Southeast Alaska (Angoon, Hoonah, Kake, Pelican, Tenakee)

# PORTS OF CALL

---

## Alaska Marine Highway System Ports of Call

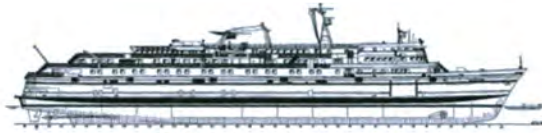
### SOUTHEAST ALASKA

Angoon  
Bellingham, WA  
Gustavus  
Haines and Borough  
Hoonah  
Juneau and Borough (Auke Bay)  
Kake  
Ketchikan and Borough  
Metlakatla and Annette Island  
Pelican  
Petersburg (serving Kuperanof Island)  
Prince Rupert, BC  
Sitka and Borough  
Skagway  
Tenakee Springs  
Wrangell and Borough  
Yakutat and Borough

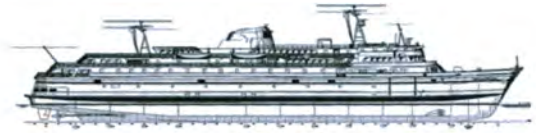
### SOUTHWEST ALASKA

Akutan  
Chenega Bay  
Chignik  
Cold Bay  
Cordova  
False Pass  
Homer  
King Cove  
Kodiak and Borough  
Old Harbor  
Ouzinkie  
Port Lions  
Sand Point  
Seldovia  
Tatitlek  
Unalaska / Dutch Harbor  
Valdez  
Whittier

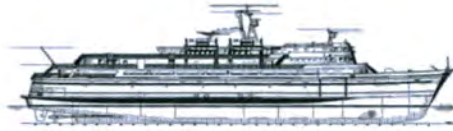
## Alaska Marine Highway System Profile of the Fleet



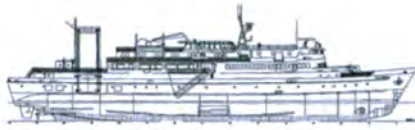
**M/V Matanuska**  
408 feet  
Built 1963



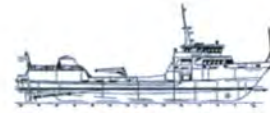
**M/V Malaspina**  
408 feet  
Built 1963



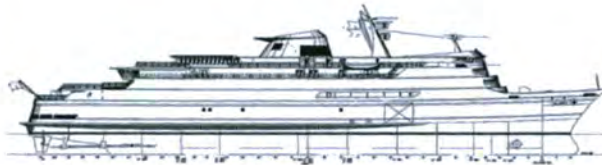
**M/V Taku**  
352 feet  
Built 1963



**M/V Tustumena**  
296 feet  
Built 1964



**M/V Lituya**  
193 feet  
Built 2004



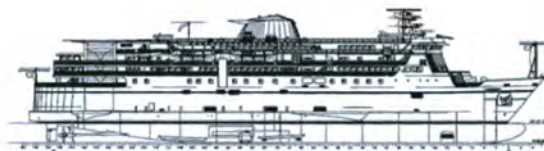
**M/V Columbia**  
418 feet  
Built 1974



**M/V LeConte**  
235 feet  
Built 1974



**M/V Aurora**  
235 feet  
Built 1977



**M/V Kennicott**  
382 feet  
Built 1998



**FVF Fairweather**  
240 feet  
Built 2004

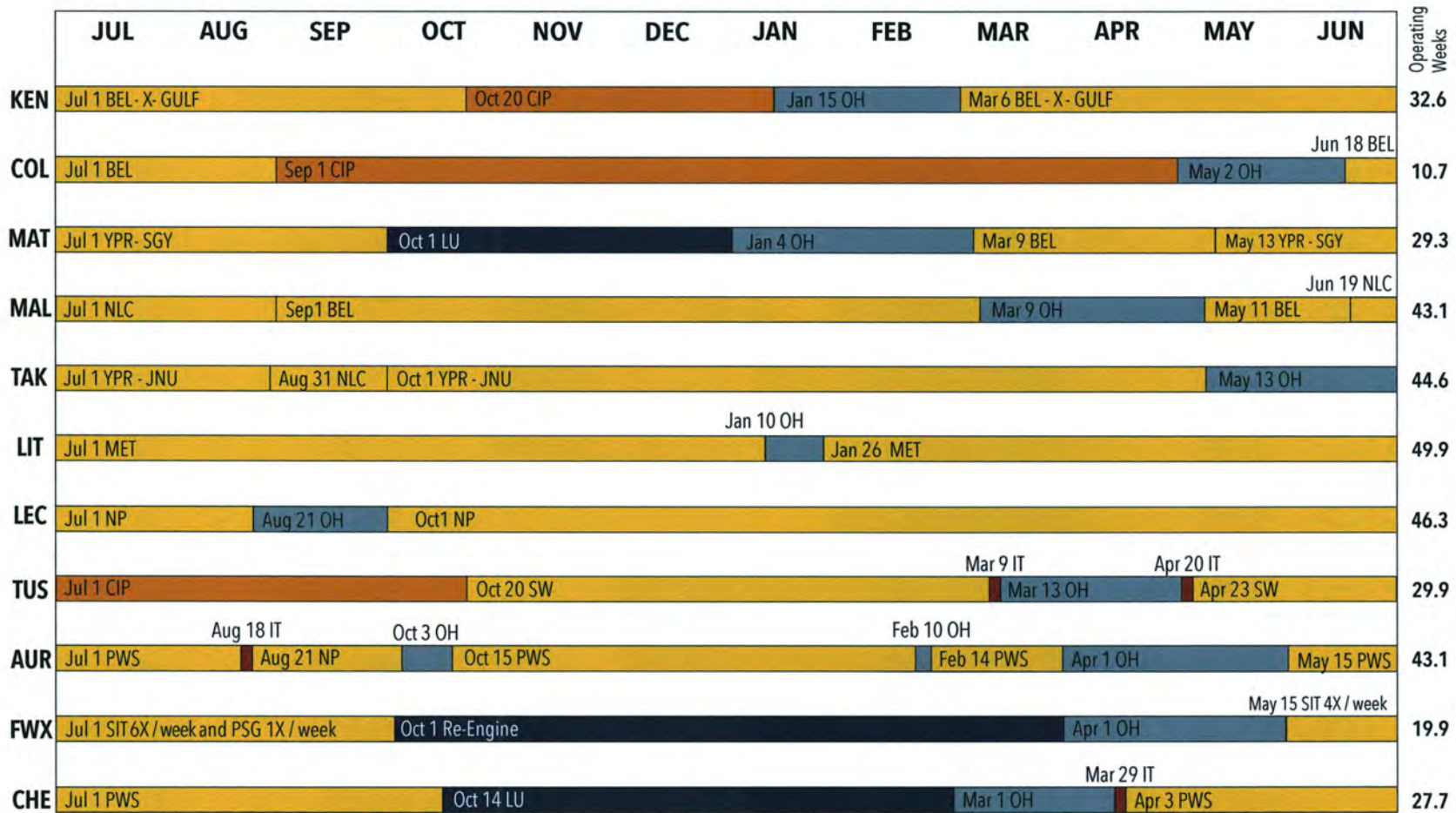






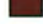
**FVF Chenega**  
240 feet  
Built 2005

### Alaska Marine Highway System Vessel Information Table

	Matanuska	Malaspina	Taku	Tustumena	Columbia	LeConte	Aurora	Kennicott	Lituya	Fairweather	Chenega
Date Built	1963	1963	1963	1964	1974	1974	1977	1998	2004	2004	2005
Length (feet)	408	408	352	296	418	235	235	382	193	240	240
Beam (feet)	74	74	74	59	85	57	57	85	50	60	60
Displacement (long tons)	5,569	5,552	4,283	3,067	7,683	2,132	2,132	7,503	647	787	787
Loaded Draft (feet-inches)	16'-11 5/8"	16'-11 3/8"	16'-11"	14'-4 1/2"	17'-6 1/8"	13'-10 7/8"	13'-10 7/8"	17'-6"	10'-6"	8'-6"	8'-6"
International Tonnage: Gross	9214	9121	7302	4529	13009	3124	3124	12635	n/a	3442	3420
(cubic capacity) Net	3824	3667	2496	1451	4932	987	987	3790	n/a	1032	1026
Domestic Tonnage: Gross	3,029	2,928	2,624	2,174	3,946	1,328	1,280	9,978	99	1,280	1,333
(cubic capacity) Net	1,235	1,253	1,494	898	2,683	566	453	7,354	66	870	827
Horsepower @ Service Speed	7,400	8,000	8,122	5,100	12,350	4300	4300	13,380	2000	15,360	15,360
Service Speed (knots)	17	17	17	14	17	14.5	14.5	17	11.5	32	32
Fuel Use (Gallons/hour)	234	270	253	151	397	188	190	354	55	600	600
Crew Capacity COI	57	59	43	37	86	24	24	52	5	10	10
Passenger Capacity COI	499	499	370	174	600	247	300	499	149	250	250
Passenger Book Capacity	450	450	350	160	499	225	250	450	125	210	210
Staterooms - 4 berth	6.0	45.0	6.0	6.0	44.0	0.0	0.0	46.0	0.0	0.0	0.0
Staterooms - 3 berth	20	0	0	0	0	0	0	0	0	0	0
Staterooms - 2 berth	79	26	32	17	56	0	0	56	0	0	0
ADA Staterooms (4 b)	0	0	0	0	0	0	0	3	0	0	0
ADA Staterooms (2 b)	1	1	2	1	3	0	0	2	0	0	0
Total Staterooms	106	72	40	24	103	0	0	109	0	0	0
Total Berths	247	238	106	68	294	0	0	320	0	0	0
Vehicle Capacity (lane-ft.)	1760	1760	1380	720	2680	680	680	1600	360	720	720
(Qty of 20 foot vehicles)	88	88	69	36	134	34	34	80	18	36	36
Vehicle Book Capacity	1675	1675	1360	680	2660	660	660	1560	300	620	620
Van Booking Capacity	10	20	4	6	21	8	8	17	2	2	3

## Alaska Marine Highway System FY 2014 Operating Plan



 <b>On Line</b>	BEL: Bellingham to Skagway	PWS: Prince William Sound	NP: Northern Panhandle Dayboat	<b>Mainline Vessels</b>	160.3
 <b>Overhaul (OH)</b>	BEL - X - Gulf: Bellingham Cross Gulf Southwest	MET: Metlakatla Service	NLC: North Lynn Canal Dayboat	<b>Feeder Vessels</b>	116.1
 <b>Layup (LU)</b>				<b>Southwest Vessels</b>	100.7
 <b>CIP</b>	SIT or PSG : Sitka or Petersburg Service	SW: Southwest	YPR-JNU: Prince Rupert to Juneau		
 <b>In Transit (IT)</b>	Note: Dates represent the first day of the period. Overhaul and refurbishment periods include vessel travel time.		YPR-SGY: Prince Rupert to Skagway	<b>Total Operating Weeks</b>	377.1

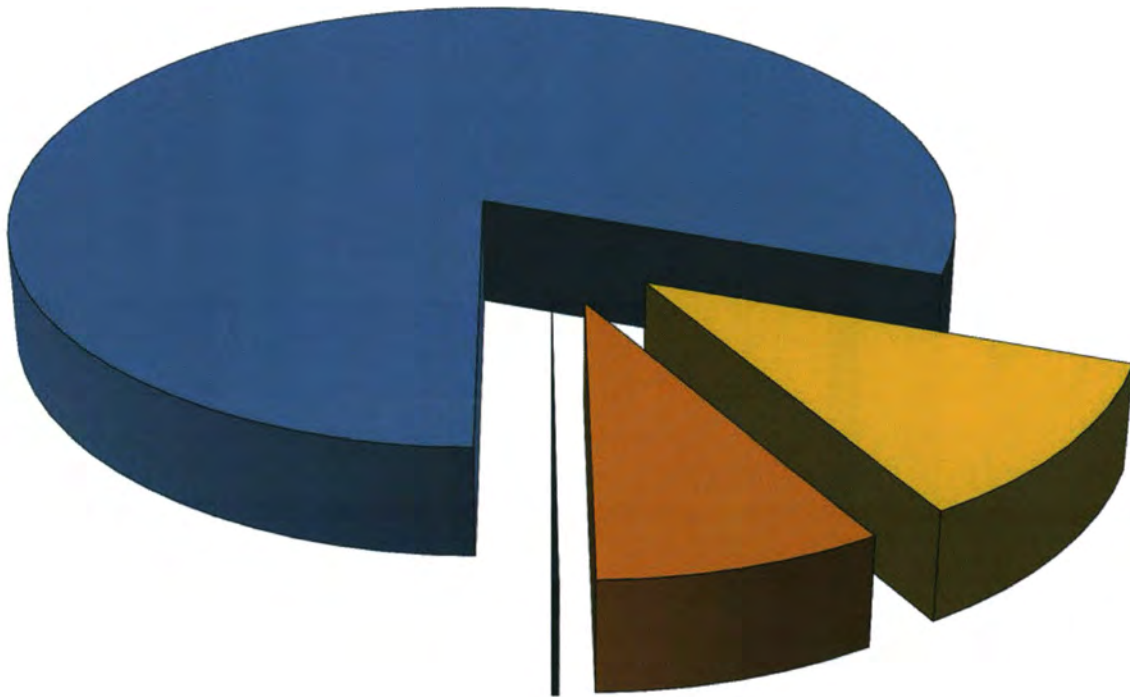
# OPERATING REVENUES

---

Alaska Marine Highway System Fund  
**UNRESTRICTED OPERATING REVENUES**

For the fiscal year ended June 30, 2014

**\$50.9 MILLION**

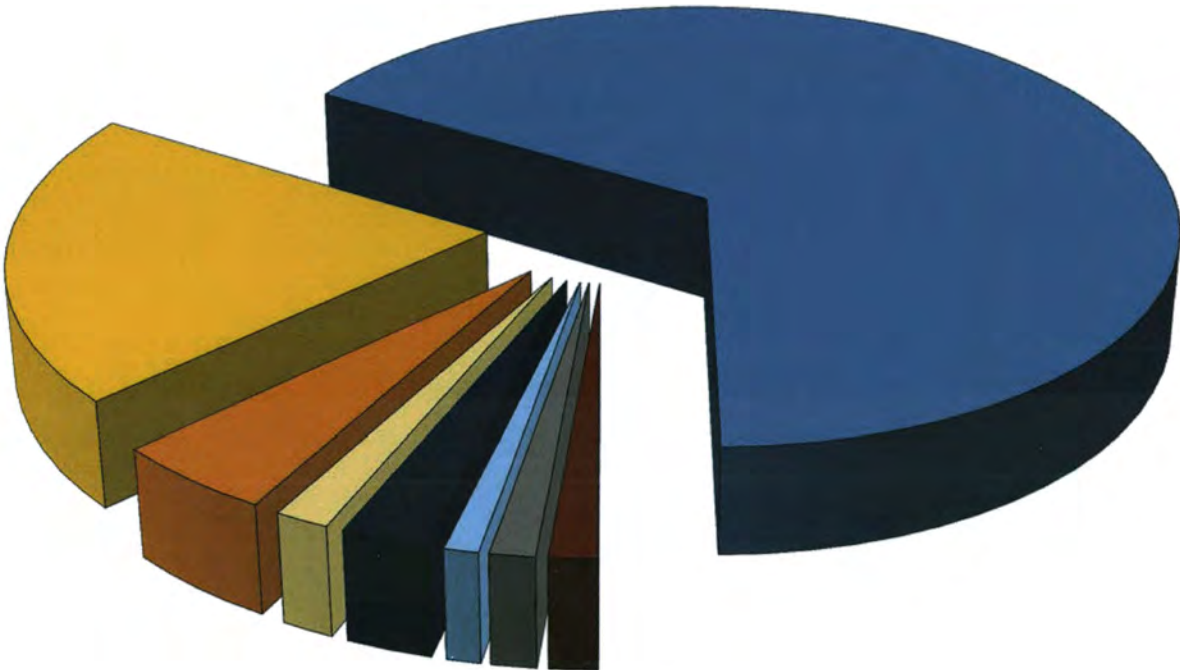










	Ticket Sales	80.7%
	Stateroom Sales	10.4%
	Passenger Services Sales	8.5%
	Other Unrestricted Revenue	0.4%

**Alaska Marine Highway System Fund**  
**OPERATING EXPENDITURES**

For the fiscal year ended June 30, 2014

**\$166.0 MILLION**



	Marine Vessel Operations	<b>67.2%</b>		Operations Management	<b>3.0%</b>
	Marine Fuel	<b>19.3%</b>		Overhaul	<b>1.0%</b>
	Shore Operations	<b>5.0%</b>		Marine Engineering	<b>1.6%</b>
	Reservations and Marketing	<b>1.5%</b>		Support Services	<b>1.5%</b>



F

# STATEMENT OF REVENUES, EXPENDITURES, AND CHANGES IN FUND BALANCE

**Alaska Marine Highway System Fund**  
**Statement of Revenues, Expenditures and Changes in Fund Balance**  
For the Fiscal Year Ended June 30, 2014 (In Thousands)

<b>Revenues:</b>	<u>Capitalization</u>	<u>AMHS</u>	<u>Total</u>
Unrestricted Revenues:			
Ticket Sales	\$ -	\$ 41,074	\$ 41,074
Stateroom Sales	-	5,268	5,268
Passenger Services Sales	-	4,327	4,327
Facility Rental	-	2	2
Concession Fees	-	7	7
Investment Interest	-	172	172
Other Unrestricted Revenue	-	27	27
Total Unrestricted Revenues	-	<u>50,877</u>	<u>50,877</u>
Restricted Revenues	-	388	388
Indirect Cost Recovery	-	504	504
<b>Total Revenues</b>	-	<u>51,769</u>	<u>51,769</u>
<b>Expenditures:</b>			
Current Operating:			
Support Services		2,434	2,434
Marine Engineering	-	2,632	2,632
Overhaul	-	1,606	1,606
Operations Management	-	5,057	5,057
Reservations & Marketing	-	2,432	2,432
Shore Operations	-	8,305	8,305
Marine Fuel	-	31,966	31,966
Marine Vessel Operations	-	111,202	111,202
AMHS RSA	-	388	388
<b>Total Expenditures</b>	-	<u>166,022</u>	<u>166,022</u>
Excess (Deficiency) of Revenues and Other Financing Sources			-
Financing Uses from Operating	-	(114,253)	(114,253)
Fund Balance , Beginning of Year	16,644	4,568	21,212
Reserves and Year End Adjustments	(14,000)	-	(14,000)
Fund Transfer - General Fund	-	116,830	116,830
<b>Fund Balance, End of Year; Undesignated</b>	<u>\$ 2,644</u>	<u>\$ 7,145</u>	<u>\$ 9,789</u>

The notes to the financial statement are an integral part of this statement.

# STATEMENT OF ACTUAL AND ESTIMATED REVENUES

## Alaska Marine Highway System Fund Statement of Actual and Estimated Revenues Budgetary Basis (In Thousands)

	Fiscal Year Ended June 30, 2014			Fiscal Year Ending June 30, 2015		Fiscal Year Ending June 30, 2016
	Estimated Revenues	Actual Revenues	Actual Over (Under) Estimated	Total Estimated Revenues	Estimated Revenues 12/31/2014	Estimated Revenues
<b>Restricted:</b>						
Restricted Revenues	\$ 586	\$ 388	\$ (198)	\$ 575	\$ 200	\$ 575
Indirect Cost Recovery (ICAP)	581	504	(77)	590	588	1,222
<b>Total Restricted</b>	<u>1,167</u>	<u>892</u>	<u>(275)</u>	<u>1,165</u>	<u>788</u>	<u>1,797</u>
<b>Unrestricted AMHS Fund</b>						
Ticket Sales	42,346	41,074	(1,272)	42,662	22,920	44,531
Stateroom Sales	5,892	5,268	(624)	5,471	2,939	5,711
Passenger Services Sales	4,785	4,327	(458)	4,495	2,415	4,692
Facility Rental	10	2	(8)	10	3	10
Concession Fees	30	7	(23)	30	0	30
Other Unrestricted Revenue	150	199	49	150	28	150
<b>Total Unrestricted</b>	<u>53,213</u>	<u>50,877</u>	<u>(2,336)</u>	<u>52,818</u>	<u>28,305</u>	<u>55,124</u>
<b>Total Revenues</b>	<u>\$ 54,380</u>	<u>\$ 51,769</u>	<u>(2,611)</u>	<u>\$ 53,983</u>	<u>\$ 29,093</u>	<u>\$ 56,921</u>

The notes to the financial statement are an integral part of this statement  
Budgetary Presentation shows all budgeted and actual revenues including budgeted intergovernmental activity.

# NOTES TO THE FINANCIAL STATEMENT

---

**Alaska Marine Highway System Fund**  
**Notes to the Financial Statement**  
For the Fiscal Year Ended June 30, 2014

**NOTE 1 - Alaska Marine Highway System Fund**

The Alaska Marine Highway System Fund was established July 1, 1990. All gross revenues generated from the operation of the Alaska Marine Highway System are accounted for and remitted in accordance with AS 19.65.070 which mandates that the money shall be deposited in the Alaska Marine Highway System Fund.

**Marine Highway Capitalization Account**

The Marine Highway Capitalization account was established within the Alaska Marine Highway System Fund June 30, 2009. An estimated \$9 million in general funds was reappropriated to the new Capitalization Account. Access to this new funding will be restricted and will only occur with approval by the Legislative Budget and Audit Committee.

An unexpended and unobligated balance of funds for the off-set of higher fuel costs, estimated at \$1.25 million, were reallocated in Chapter 13, SLA 10, Sec 11(c) to the Marine Highway Capitalization Account.

In FY2012 and FY2013, a total of \$6.55 million of unexpended and unobligated balance of funds for the off-set of higher fuel costs were reallocated to the Marine Highway Capitalization Account.

In FY2014, \$11.0 million of funds were transferred to the AMHS FY15 Capital Fund for vessel overhaul projects and \$3.0 million in funds were transferred to the AMHS Deferred Maintenance capital fund.

**NOTE 2 - CIP Program Component**

The Alaska Marine Highway System budget includes a component which authorizes positions directly related to capital projects. Beginning in FY2001, the salary cost of time charged directly to capital projects is not recorded in the Alaska Marine Highway Fund. The cost of time charged to administration or overhead, is recorded in the Alaska Marine Highway Fund.

**NOTE 3 - Interest Earned on the Fund**

In FY13, the Alaska Marine Highway Fund began receiving the interest earned on its fund. This interest is recorded as unrestricted revenue and is reflected on the Combining Statement of Revenues, Expenditures and Changes in Fund Balance Statement.

**NOTE 4 - Operating Overhaul**

Overhaul expenditures that are included in the Operating Budget are limited to small maintenance items that arise while the vessels are operating and do not include capital overhaul expenditures. Required annual and biennial vessel overhauls (including dry docking for hull and shaft inspections) and deferred maintenance items are included in the Capital Budget. In FY2014, the Vessel Overhaul and Deferred Maintenance Capital Budgets totalled \$12.8 million.

S

**Alaska Marine Highway System  
Revenue by Vessel\***  
Fiscal Years 2003 - 2014 (In Thousands)

Vessel	FY03	FY04	FY05	FY06	FY07	FY08	FY09	FY10	FY11	FY12	FY13	FY14
Aurora	931	3,749	2,333	2,327	2,003	1,347	2,191	3,115	2,522	1,898	2,679	2,421
Bartlett	2,271	1,387	-	-	-	-	-	-	-	-	-	-
Chenegat	-	-	-	1,128	1,963	3,093	3,380	1,392	3,428	2,889	2,221	2,358
Columbia	8,227	7,763	7,917	15,530	12,439	6,463	9,713	7,924	8,939	13,014	16,635	6,682
Fairweather	-	401	3,003	2,257	2,913	2,605	1,015	1,945	1,805	1,659	1,537	1,415
Kennicott	6,519	5,276	5,662	6,209	5,831	3,414	5,182	3,125	7,154	8,151	9,195	8,425
Leconte	1,527	880	1,396	1,638	916	1,514	1,808	1,757	794	2,537	2,006	2,499
Lituya	-	78	593	593	593	721	639	620	724	822	774	769
Malaspina	2,829	12,550	11,975	7,832	7,552	11,659	10,980	11,446	10,520	5,765	3,133	12,051
Matanuska	11,555	3,798	8,762	7,418	8,146	8,841	3,094	6,211	6,100	9,003	9,217	7,154
Taku	4,787	5,039	761	3,292	2,833	4,480	5,156	4,755	2,265	4,001	3,839	4,789
Tustumena	2,453	3,366	3,196	2,849	3,060	3,376	2,992	3,525	3,318	3,755	1,875	2,106
Contract Vessels	-	3	-	76	127	-	2	54	39	12	2	-
Non Vessel Revenue	63	399	64	53	32	135	46	46	89	180	121	207
<b>TOTAL</b>	<b>41,162</b>	<b>44,689</b>	<b>45,662</b>	<b>51,202</b>	<b>48,407</b>	<b>47,647</b>	<b>46,200</b>	<b>45,914</b>	<b>47,697</b>	<b>53,684</b>	<b>53,234</b>	<b>50,877</b>

\* \*These figures are close approximations based on reservations and ticketing information. They may be used to show relative magnitude of different vessel operations. They are not accounting figures. Therefore, attempts to reconcile the figures with accounting documents may yield small discrepancies.

**Alaska Marine Highway System**  
**Operating Expenditures by Vessel\***  
 Fiscal Years 2003 - 2014 (In Thousands)

Vessel	FY03	FY04	FY05	FY06	FY07	FY08	FY09	FY10	FY11	FY12	FY13	FY14
Aurora	4,379	5,565	3,533	6,434	6,264	3,649	7,649	7,720	8,065	5,380	8,104	7,013
Bartlett	4,274	1,032	-	-	-	-	-	-	-	-	-	-
Chenega	-	-	314	7,778	6,360	8,845	9,474	4,643	10,146	8,513	8,098	7,971
Columbia	7,917	7,787	7,336	17,205	16,735	8,892	11,231	9,587	11,861	17,292	20,380	9,706
Fairweather	-	692	5,635	5,887	7,762	8,154	4,949	7,356	7,824	9,539	7,774	6,586
Kennicott	12,483	9,744	9,535	15,624	16,300	11,853	15,091	10,557	18,022	17,341	21,170	16,468
LeConte	6,490	4,037	5,869	8,129	5,485	7,141	6,912	7,070	4,858	9,807	9,533	9,915
Lituya	-	177	629	961	1,008	1,170	1,189	1,114	1,415	1,381	1,367	1,195
Malaspina	4,432	10,131	11,492	9,219	9,089	14,664	14,065	14,558	16,147	11,843	8,573	16,929
Matanuska	10,920	5,018	11,202	11,456	14,814	14,160	7,260	12,611	16,246	17,390	17,669	14,644
Taku	9,492	8,709	4,107	9,436	9,452	13,745	13,583	13,458	8,853	15,880	16,020	17,810
Tustumena	5,433	5,483	6,269	6,378	8,744	9,612	6,642	9,114	10,068	10,978	6,527	9,966
Vessel Leave	-	9,824	9,204	11,571	14,576	15,164	14,268	14,375	15,949	16,605	16,695	17,234
All Vessels	8,184	9,077	13,904	10,123	11,024	9,709	12,231	10,240	10,379	9,591	10,178	9,725
<b>TOTAL</b>	<b>74,005</b>	<b>77,275</b>	<b>89,028</b>	<b>120,201</b>	<b>127,613</b>	<b>126,757</b>	<b>124,542</b>	<b>122,404</b>	<b>139,834</b>	<b>151,540</b>	<b>152,087</b>	<b>145,162</b>

\* Expenditures by vessel include the following operating components: Marine Vessel Operations, Overhaul, Fuel and unbudgeted AMHS Reimbursable Service Agreements (RSA). Not included are the budget components for Marine Engineering, Operations Management, Reservations and Marketing, and Shore Operations.



**Alaska Marine Highway System Fund**  
**FY 2014 ANNUAL FINANCIAL REPORT**

---

State of Alaska, Department of Transportation and Public Facilities

Compiled November 25th, 2014

