

02/26/15

**PRESENTATION:
DEPARTMENT OF
HEALTH AND
SOCIAL
SERVICES
DIVISION OF
PUBLIC
ASSISTANCE**

<TARGET><BILL></BILL><SUBJECT>02-26-15 PRESENTATION
DEPARTMENT OF HEALTH AND SOCIAL SERVICES DIVISION OF
PUBLIC ASSISTANCE</SUBJECT><COMM>HHSS29</COMM></TARGET>



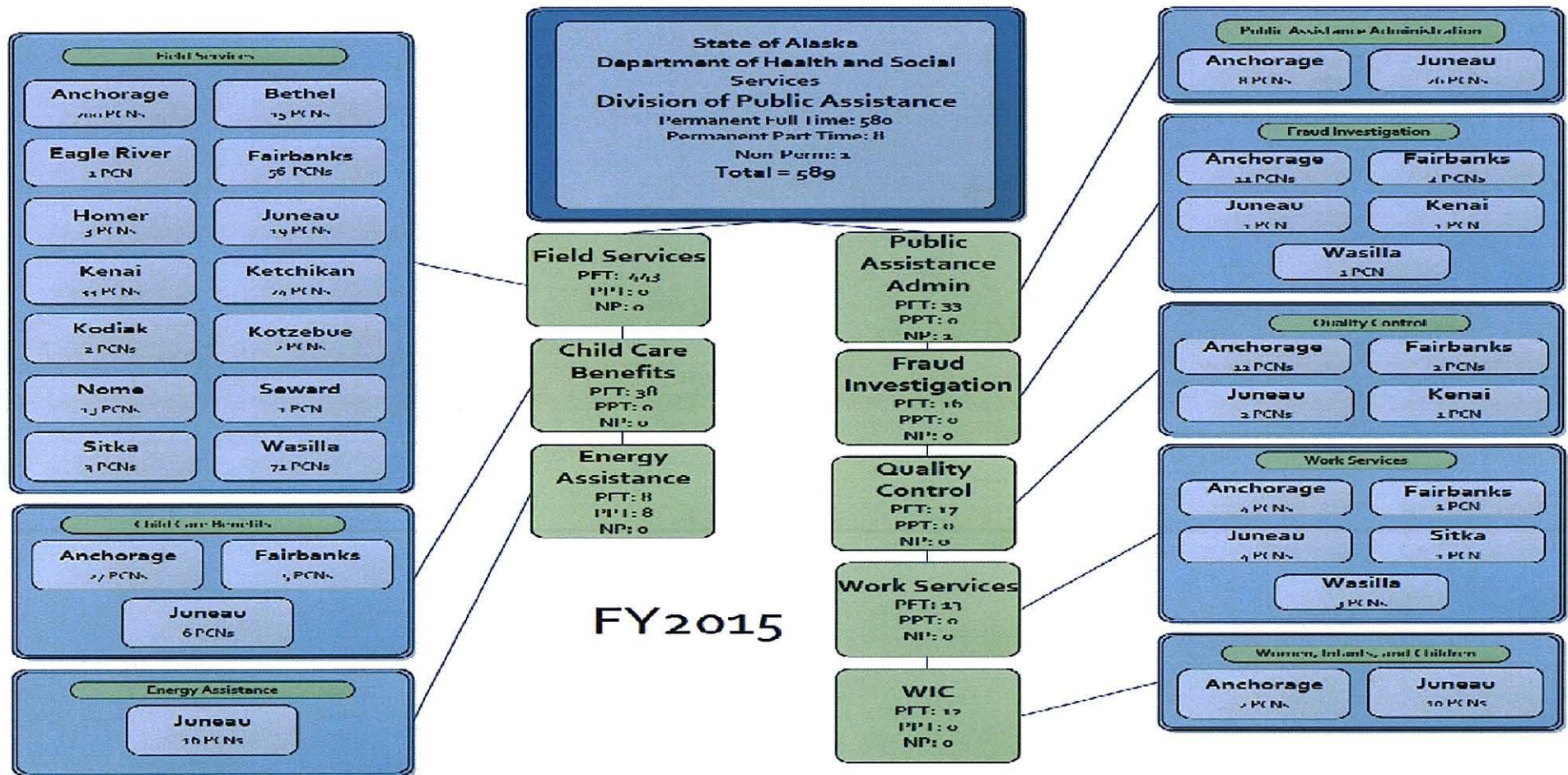
VISION
ALASKA INDIVIDUALS, FAMILIES AND COMMUNITIES ARE SAFE AND HEALTHY
MISSION
TO PROMOTE AND PROTECT THE HEALTH AND WELL-BEING OF ALASKANS

House Health and Social Services Committee - FY2016 Division Overview

Ron Kreher | Interim Director
Division of Public Assistance

February 26, 2015

Division Organization Chart



FY2015



MISSION TO PROMOTE AND PROTECT THE HEALTH AND WELL-BEING OF ALASKANS

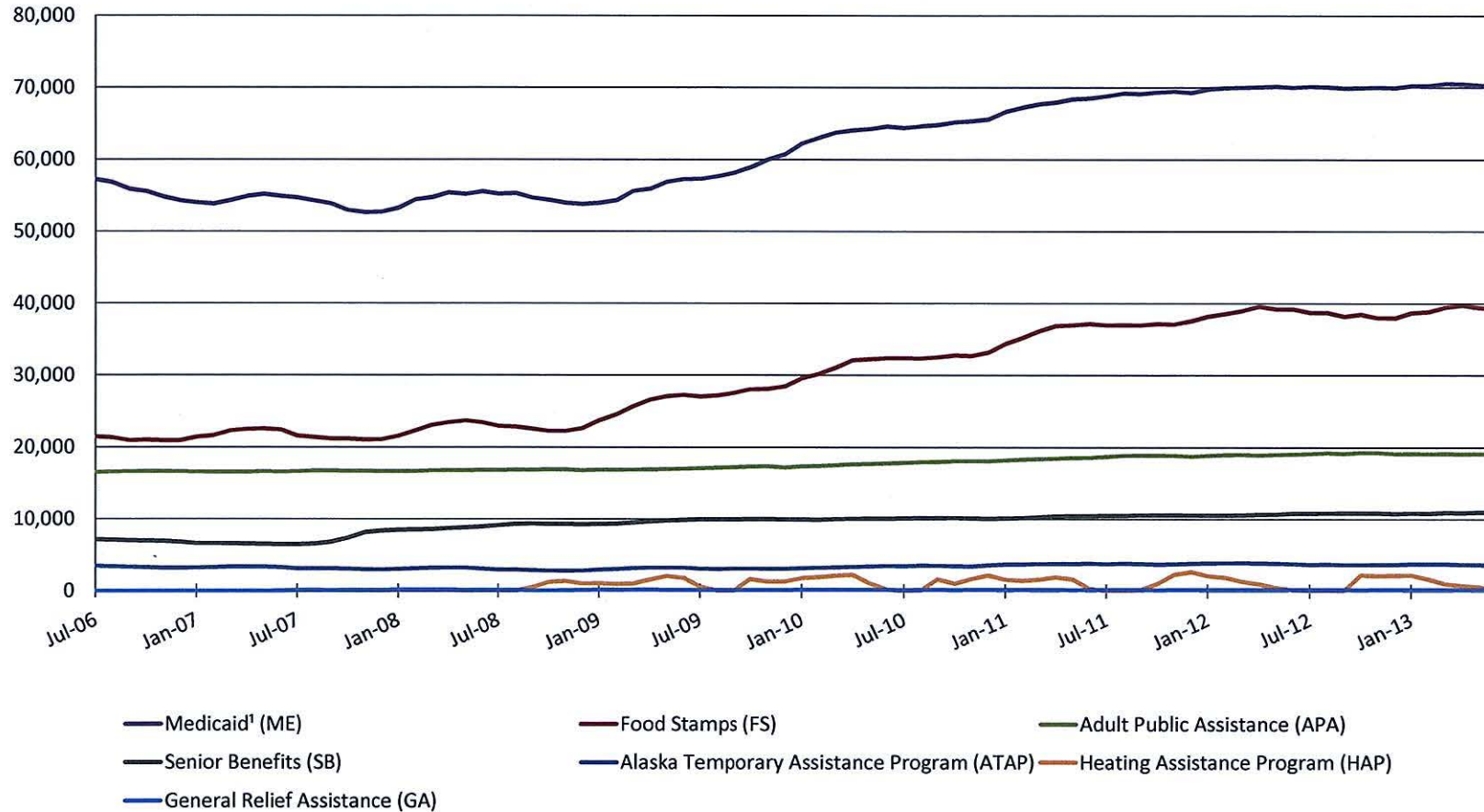
Division Overview

- Mission: To Promote self-sufficiency and provide for basic living expenses to Alaskans in need.
- **589** FT/PT Positions
 - 76% of Work Force supports benefit determination and issuance
- **155,120** - Total service population Nov. 2014
 - 20.7 Avg. % of Alaska's population receiving welfare
 - 18.6 Avg. % U.S population receiving welfare (2009 Census Data)



MISSION TO PROMOTE AND PROTECT THE HEALTH AND WELL-BEING OF ALASKANS

DPA Caseload History FY2007-2014

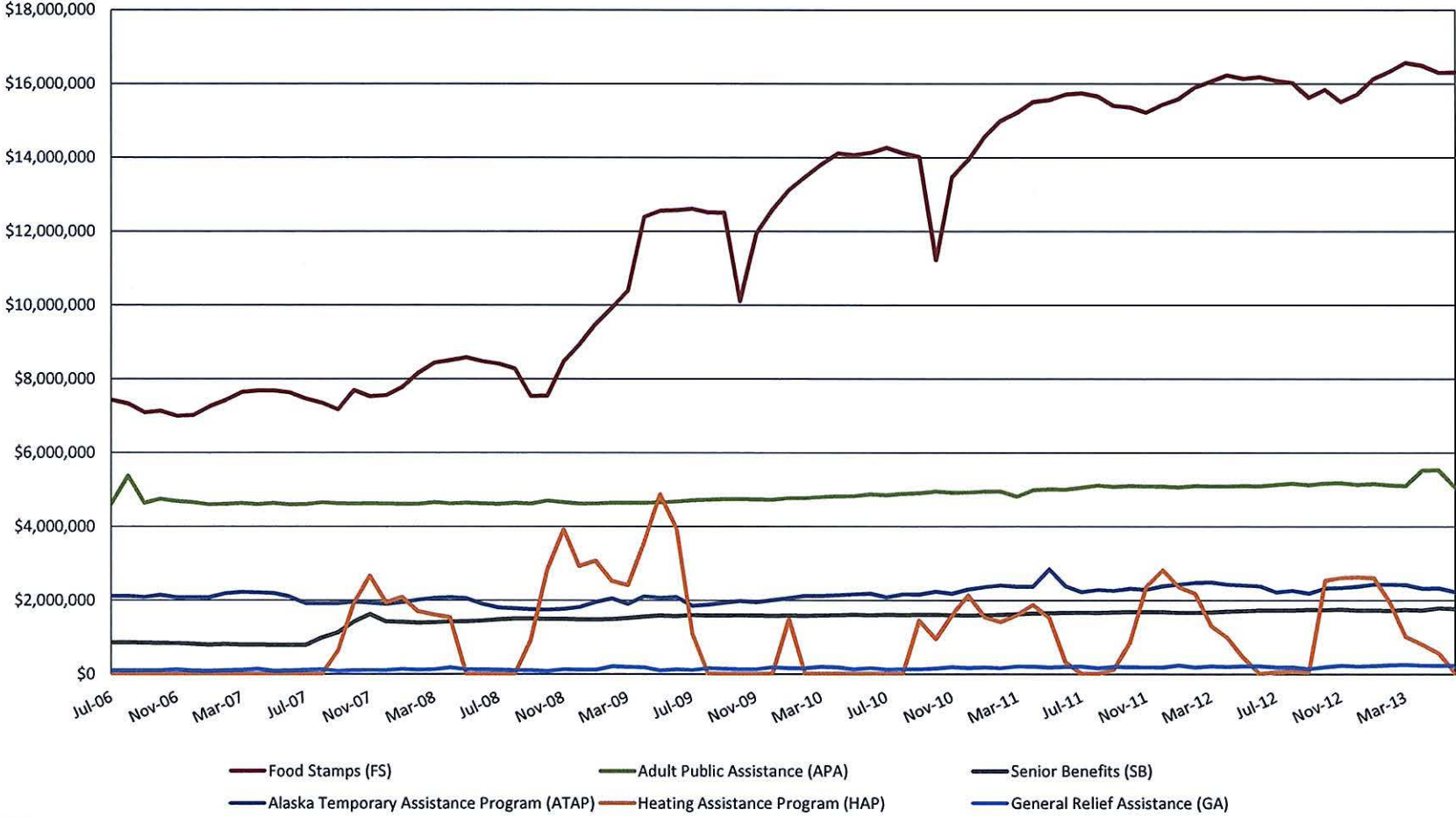


¹ Medicaid data are estimates and may vary from data reported by Health Care Services.



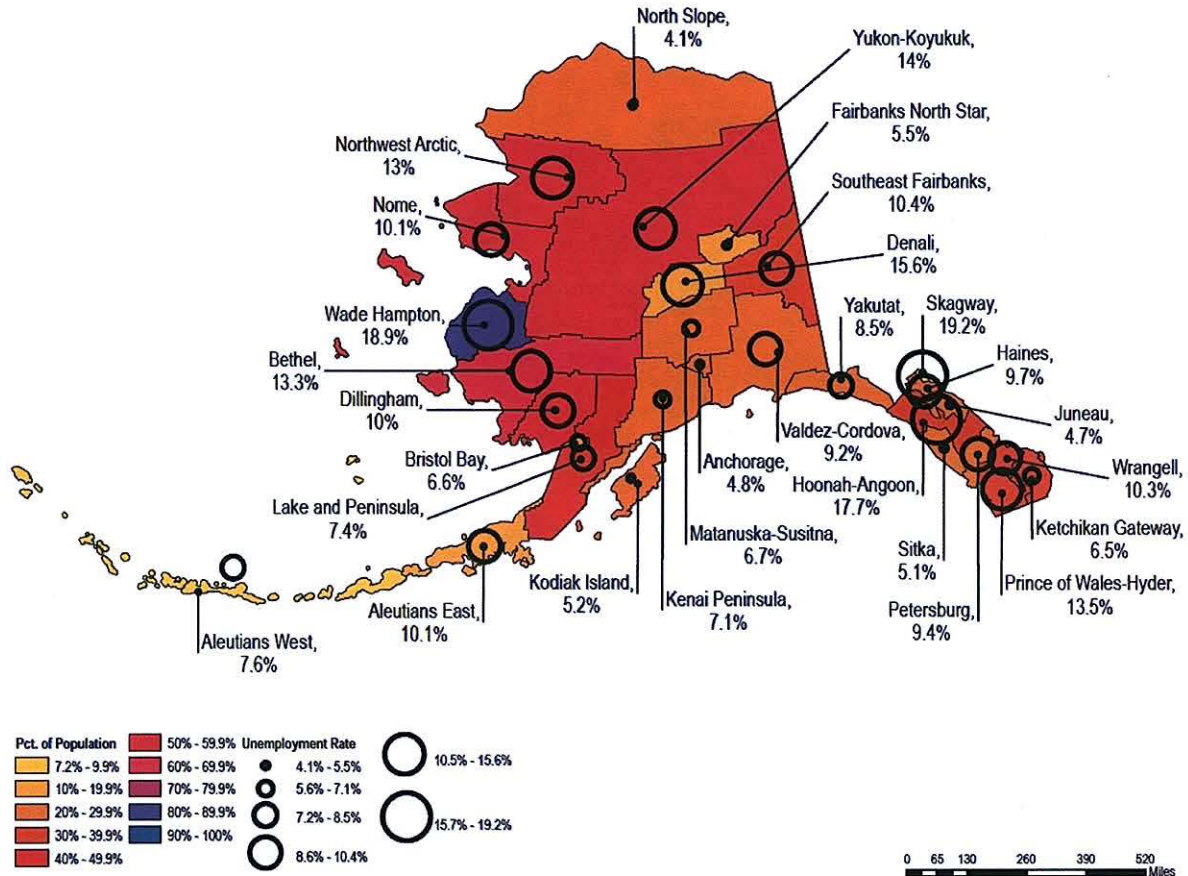
MISSION TO PROMOTE AND PROTECT THE HEALTH AND WELL-BEING OF ALASKANS

DPA Benefit History FY2007-2014



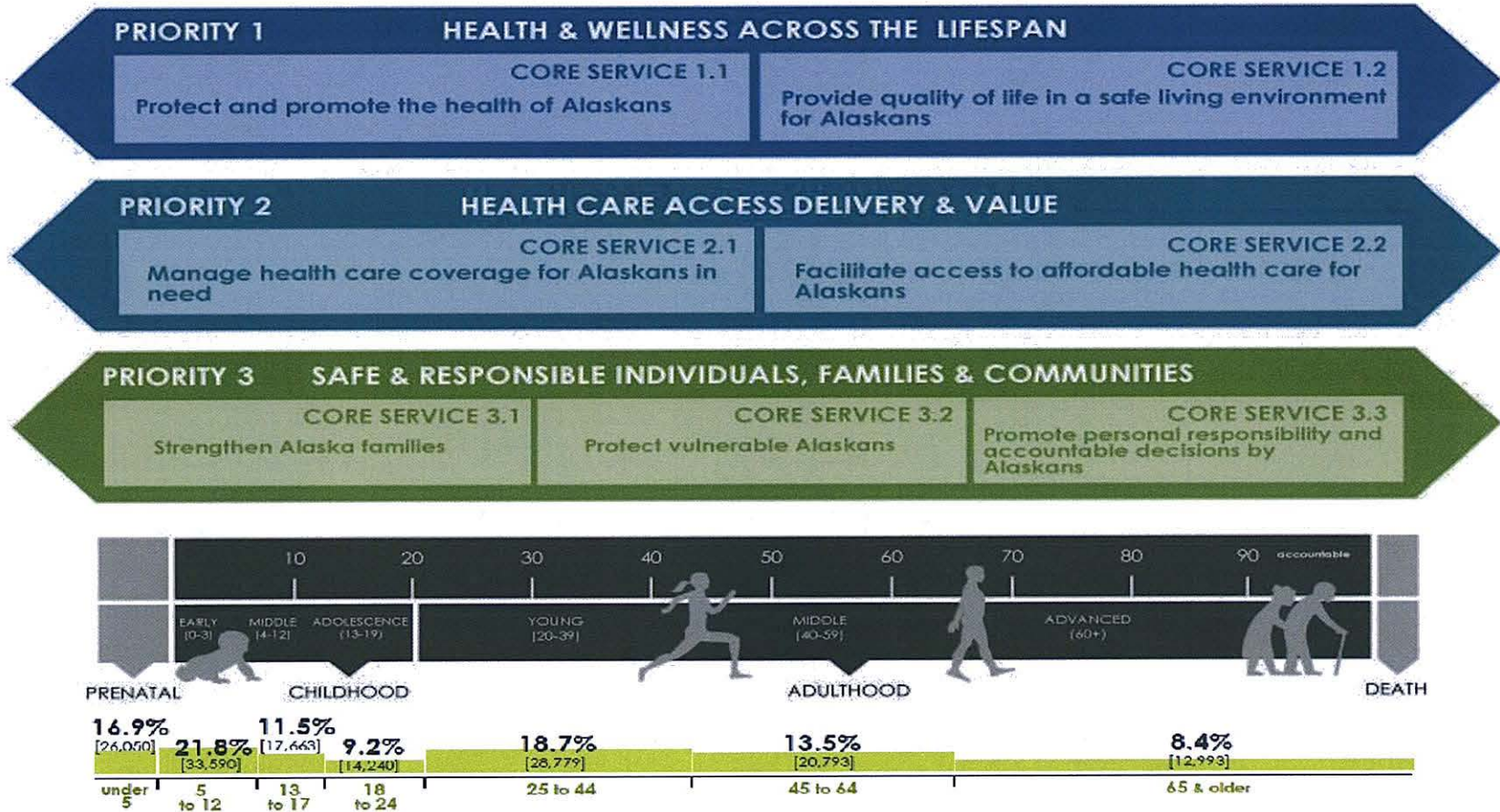
MISSION TO PROMOTE AND PROTECT THE HEALTH AND WELL-BEING OF ALASKANS

DPA Recipients as a Percentage of Census Area Population & Unemployment Rate, SFY 2014



MISSION TO PROMOTE AND PROTECT THE HEALTH AND WELL-BEING OF ALASKANS

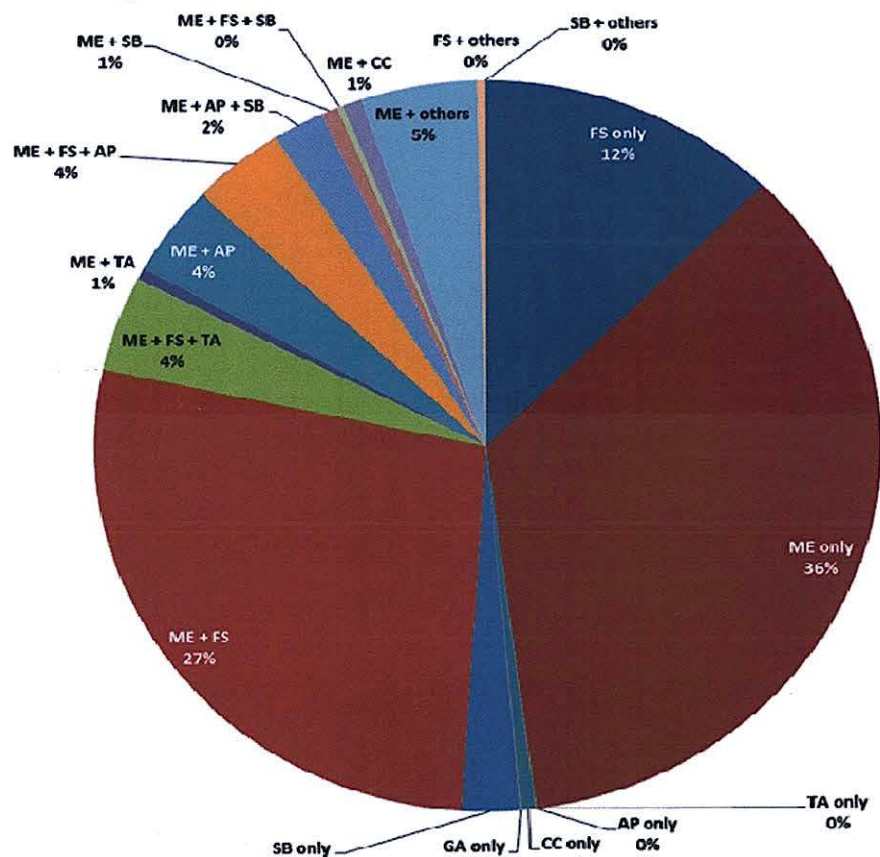
DPA Service Population



MISSION TO PROMOTE AND PROTECT THE HEALTH AND WELL-BEING OF ALASKANS

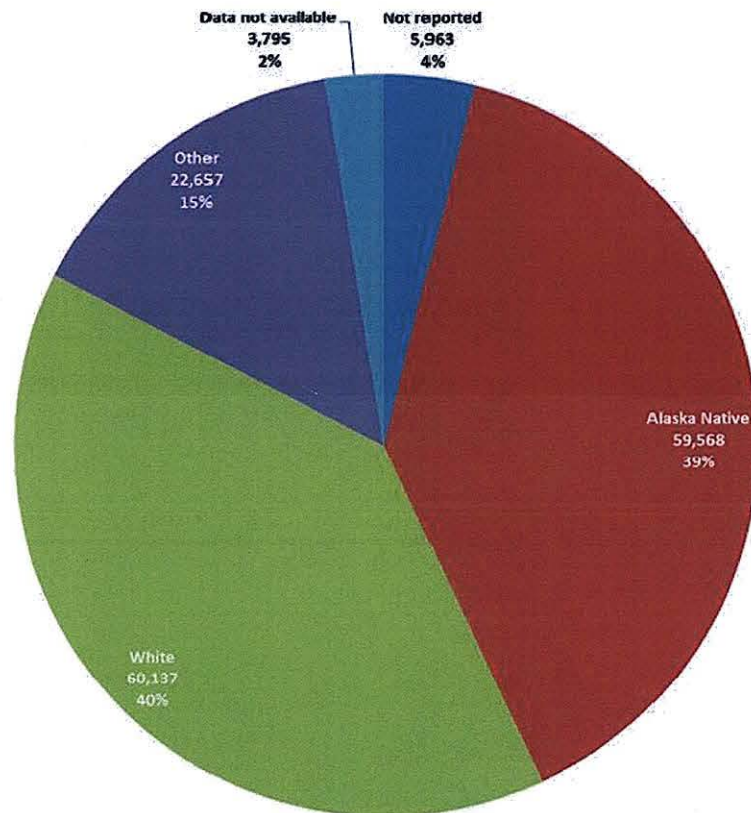
Individual Recipients – November 2014

Combination	Recipients	Percent
FS only	19,246	12%
ME only	55,194	36%
TA only	74	0%
AP only	2	0%
CC only	783	1%
GA only	37	0%
SB only	3,723	2%
ME + FS	42,540	27%
ME + FS + TA	6,513	4%
ME + TA	803	1%
ME + AP	6,258	4%
ME + FS + AP	6,063	4%
ME + AP + SB	3,241	2%
ME + SB	1,108	1%
ME + FS + SB	346	0%
ME + CC	1,261	1%
ME + others	7,391	5%
FS + others	530	0%
SB + others	7	0%
Total	155,120	100%
FS	Food Stamps	
ME	Medicaid	
AP	Adult Public Assistance	
CC	Child Care	
GA	General Relief Assistance	
SB	Senior Benefits	
TA	Alaska Temporary Assistance Program	



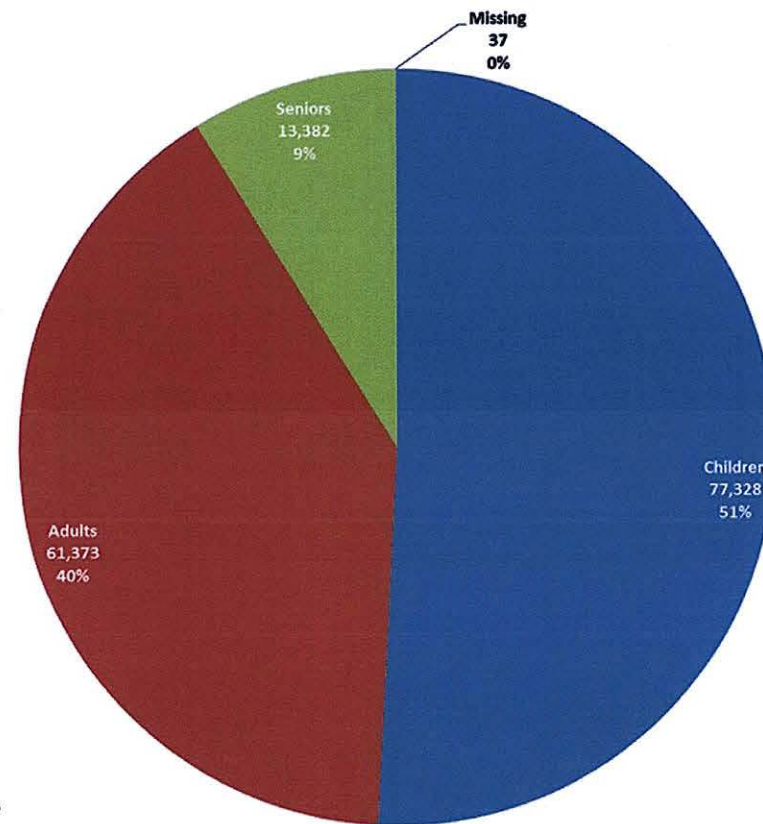
MISSION TO PROMOTE AND PROTECT THE HEALTH AND WELL-BEING OF ALASKANS

Race, All Programs – November 2014



MISSION TO PROMOTE AND PROTECT THE HEALTH AND WELL-BEING OF ALASKANS

Age, All Programs – November 2014



Children: 0 – 18 years
Adults: 19 – 64 years
Seniors: 65+ years

Age data is not available for recipients of only General Relief Assistance



MISSION TO PROMOTE AND PROTECT THE HEALTH AND WELL-BEING OF ALASKANS

Public Assistance Core Services

Determine Eligibility		
		SFY2014 Average Monthly Recipients
	Medicaid	115,591
	Supplemental Nutrition Assistance Program (SNAP)	90,833
	Adult Public Assistance	18,853
	Woman, Infant and Children	20,735
	Alaska Temporary Assistance	9,523
	Heating Assistance	12,323 (Annual)
	Senior Benefits	11,086
	Farmers Market Nutrition Program	5,965 (Annual)
	Child Care Assistance	4,706
	Senior Farmers Market Nutrition Program	2,350 (Annual)
	Commodity Supplemental Food Program	2,100 (Annual)
	General Relief	172
	Chronic and Acute Medical Assistance	492



MISSION TO PROMOTE AND PROTECT THE HEALTH AND WELL-BEING OF ALASKANS

Public Assistance Core Services

Issue Benefits		
		SFY2014 Annual Expenditures
	Supplemental Nutrition Assistance Program (SNAP)	\$181,551,444
	Adult Public Assistance	\$59,493,505
	Woman, Infant and Children	\$16,842,502
	Alaska Temporary Assistance	\$28,179,521
	Heating Assistance	
	<ul style="list-style-type: none"> Alaska Heating Assistance Program 	\$4,109,516
	<ul style="list-style-type: none"> Low Income Heating Assistance Program 	\$9,254,202
	Senior Benefits	\$21,656,528
	Farmers Market Nutrition Program	\$179,000
	Child Care Assistance	\$1,739,326 (Monthly)
	Senior Farmers Market Nutrition Program	\$87,700
	Commodity Supplemental Food	\$153,000
	General Relief	\$2,835,437



MISSION TO PROMOTE AND PROTECT THE HEALTH AND WELL-BEING OF ALASKANS

Public Assistance Core Services

Monitor Beneficiary and Provider Compliance

Child Care Community Outreach Efforts

Child Care Licensing

Benefit Recovery

Quality Assurance

Vendor Compliance Review and Monitoring

Fraud Investigation

- Referral and Investigate
- Data Mining
- Fraud Detection

Home and Site Visits

Research and Analysis



MISSION TO PROMOTE AND PROTECT THE HEALTH AND WELL-BEING OF ALASKANS

Public Assistance Core Services

Individual and Family Support Services

Work Services

- Job Search and Work Activities
- Employment and Self Sufficiency Planning
- Supportive Services
- Skills Development
- Job Training
- Families First and Self-Sufficiency Activities

Policy and Program Review and Development



MISSION TO PROMOTE AND PROTECT THE HEALTH AND WELL-BEING OF ALASKANS

Public Assistance Core Services

Individual and Family Support Services

Women, Infants and Children

- Breastfeeding Promotion and Support
- Health and Nutrition Education
- Access to Healthy Foods
- Nutrition Assessment
- Referral other Health and Social Services
- Immunization Referrals and Motor Voter Registration Assistance
- Access to Locally-Grown Fresh Fruits and Vegetables



MISSION TO PROMOTE AND PROTECT THE HEALTH AND WELL-BEING OF ALASKANS

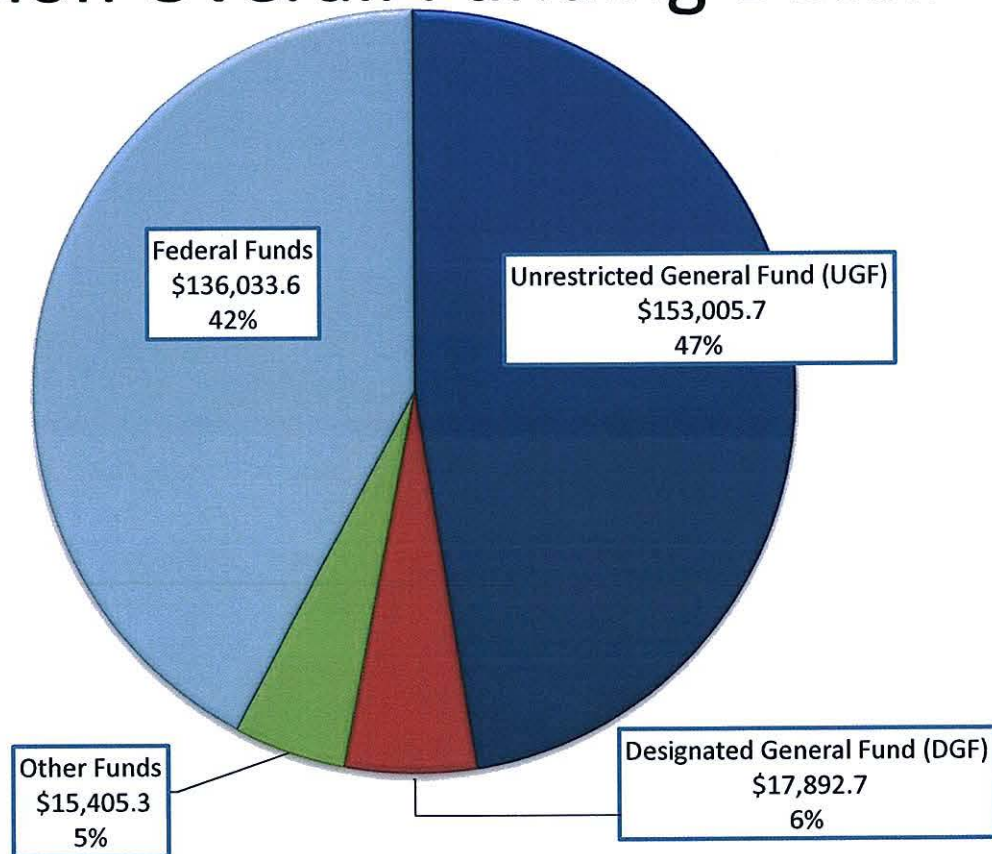
DPA Budget Overview

- **\$322,337.3** - SFY16 Operating Budget Request
- **11.9%** - % of DHSS SFY16 Operating Budget Request
- **76%** - Issued to clients or vendors
- **24%** - Administrative Costs



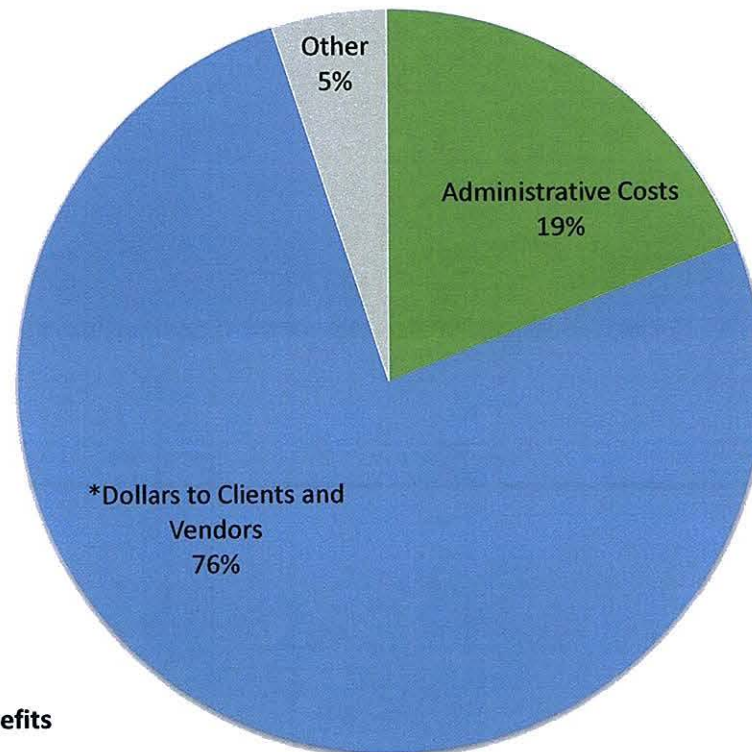
MISSION TO PROMOTE AND PROTECT THE HEALTH AND WELL-BEING OF ALASKANS

Division Overall Funding Detail



MISSION TO PROMOTE AND PROTECT THE HEALTH AND WELL-BEING OF ALASKANS

FY2014 Public Assistance Expenditures

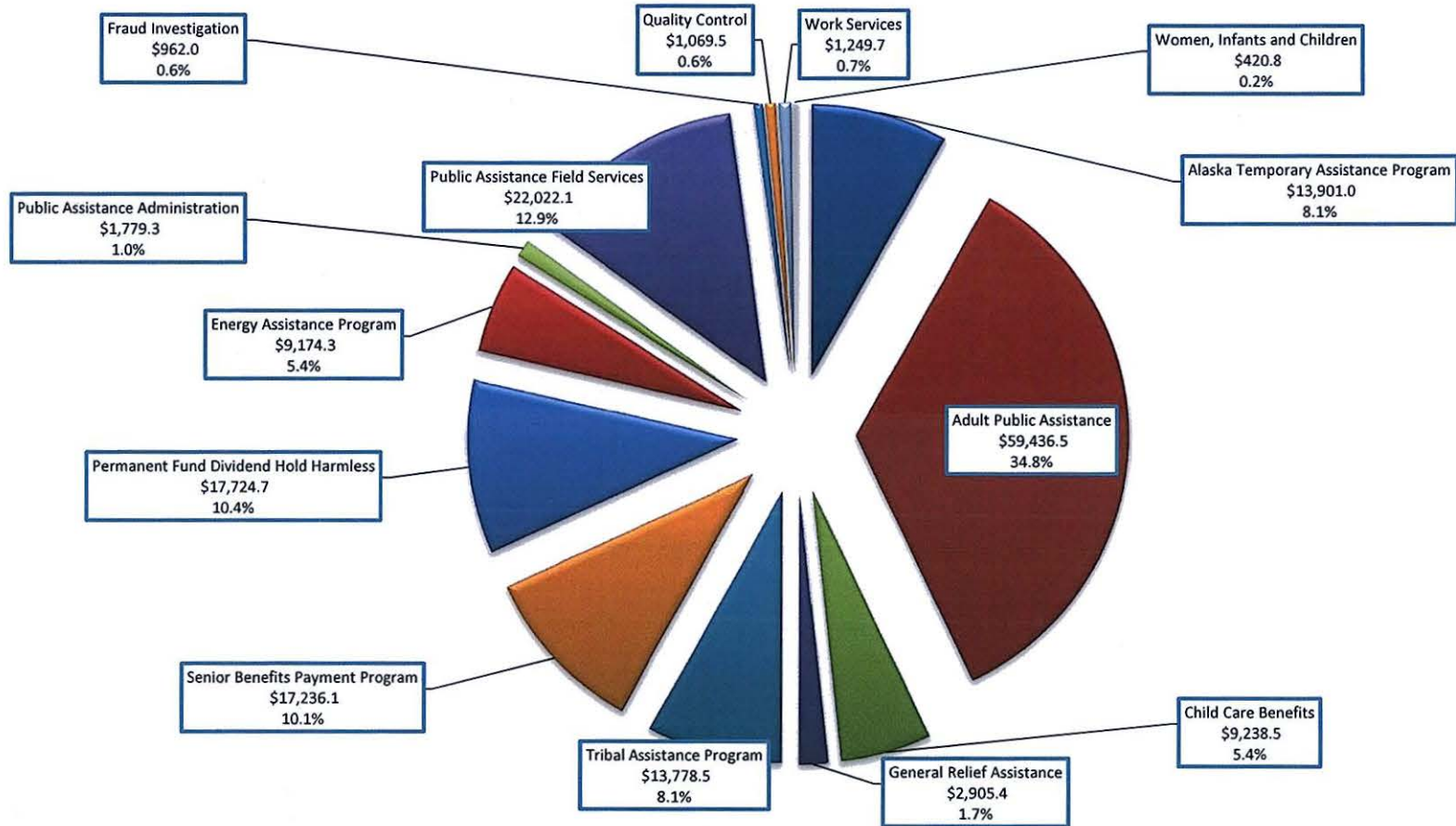


*Excludes federal SNAP (aka Food Stamps) benefits



MISSION TO PROMOTE AND PROTECT THE HEALTH AND WELL-BEING OF ALASKANS

Breakdown of General Funds



MISSION TO PROMOTE AND PROTECT THE HEALTH AND WELL-BEING OF ALASKANS

Public Assistance

FY2016 Governor's Operating Budget Transactions

Alaska Temporary Assistance Program	(1,072.6) DGF	Reduce projected lapse balance.
Adult Public Assistance	(2,372.4) UGF	Reduce projected lapse balance.
Tribal Assistance Program	(681.8) UGF	Reduce projected lapse balance.
Senior Benefits Program	(5,091.6) UGF	20% reduction to the two lower payment levels of the program.
Energy Assistance Program	(3,500.0) UGF	Reduce projected lapse balance.
Field Services	1,385.6 (Fed) 1,385.7 (MHTAAR)	Increment for Medicaid expansion.



MISSION TO PROMOTE AND PROTECT THE HEALTH AND WELL-BEING OF ALASKANS

Recent Successes

- \$907,161 in bonus awards for outstanding performance administering the Food Stamp Program in FFY 2013
- Major steps in development of a Quality Recognition & Improvement System with *thread*, Alaska's statewide Child Care Resource and Referral Network and other early childhood partners



MISSION TO PROMOTE AND PROTECT THE HEALTH AND WELL-BEING OF ALASKANS

Recent Successes

- \$7.78 million - the SFY14 combined amount of cost avoidance, fraud claims and direct savings imposed for program disqualifications
- Successful implementation of the SPIRIT system for the Women, Infants and Children's program.
- Pilot of Hospital Presumptive Eligibility



MISSION TO PROMOTE AND PROTECT THE HEALTH AND WELL-BEING OF ALASKANS

Current Challenges

Public Assistance Applications Out of Timeframes

Program	12/1/2014	2/16/15	2/23/15
Medicaid	6,325	7,242	7,441
All Other Programs	3,662	3,413	3,243
Total	9,987	10,655	10,684

- Most urgent challenge the division is addressing serious workload issues in advance of Medicaid Expansion.
- Leveraging technology effectively to reduce operational costs
- Business Process Improvements
- Implementing changes mandated by reauthorization of the Child Care and Development Block Grant in Nov. 2014



MISSION TO PROMOTE AND PROTECT THE HEALTH AND WELL-BEING OF ALASKANS

Moving Forward

- Risk of potential increase to caseloads due to economic changes associated with the state revenue streams are anticipated.
- The division is looking at long range programmatic impacts of minimum wage increases.
- Pursuing Partnerships
 - Office of Children’s Services
 - Public Health Section of Women’s, Children’s & Family Health
 - Department of Labor – Workforce Innovation and Opportunity Act
 - Tribal Organizations – Health Care, Tribal TANF, & Tribal Child Care



MISSION TO PROMOTE AND PROTECT THE HEALTH AND WELL-BEING OF ALASKANS

QUESTIONS?

Thank You

Division of Public Assistance: <http://dhss.alaska.gov/dpa/Pages/default.aspx>

Child Care Program: <http://dhss.alaska.gov/dpa/Pages/ccare/default.aspx>

WIC Nutrition Education: <http://dhss.alaska.gov/dpa/Pages/nutri/wic/wiceducation.aspx>



MISSION TO PROMOTE AND PROTECT THE HEALTH AND WELL-BEING OF ALASKANS

Senior BENEFITS PROGRAM



Fact Sheet February 17, 2015

The Alaska Senior Benefits Payment Program was established on August 1, 2007 and is currently set to end on June 30, 2015. It pays cash benefits to Alaskans who are age 65 or older and have low to moderate income. Cash payments are \$125, \$175, or \$250 each month depending on income.

Recipients

- There were 11,222 Senior Benefits recipients as of December 2014.
 - ✓ Number and percent of seniors at each payment level in December 2014.
 - ✓ \$250 – 1,442 (12.9%)
 - ✓ \$175 – 4,668 (41.6%)
 - ✓ \$125 – 5,108 (45.5%)
- Average age of recipients is 75. The maximum age is 104.

Program Expenditures

- | | FY 2010 | FY 2011 | FY 2012 | FY 2013 | FY 2014 | FY 2015 | FY 2016 |
|--|------------|------------|------------|------------|------------|------------|------------|
| | \$19,147.9 | \$20,609.5 | \$20,893.7 | \$21,128.6 | \$21,656.5 | \$23,897.0 | \$23,964.6 |
- Projected program expenditures for FY 2015 are \$23,897.0. Projected expenditures for FY 2016 are \$23,964.6.

Eligibility and Payment

- Eligibility and payment amount is based on gross annual income (before any deductions are taken for taxes, Medicare premiums, etc.).

Senior Household Size	Senior Benefits Program Gross Annual Income Limit (Effective 3/1/2015)		
	\$250 monthly payment	\$175 monthly payment	\$125 monthly payment
Individual	\$11,040 (\$920 per month)	\$14,720 (\$1,2127 per month)	\$25,760 (\$2,146 per month)
Married Couple	\$14,940 (\$1,245 per month)	\$19,920 (\$1,660 per month)	\$34,860 (\$2,905 per month)

- Income limits may change yearly along with Alaska's federal poverty level. The \$250, \$175, and \$125 monthly payments correspond to 75 percent, 100 percent, and 175 percent of the federal poverty level for Alaska, respectively.
- Assets, such as savings, are not counted for eligibility.

- Payments are not available to seniors living in the following institutions:
 - ✓ Prison or jail,
 - ✓ Nursing home,
 - ✓ Alaska Pioneers' Home or Alaska Veterans' Home, or
 - ✓ Public or private institution for mental disease

Geographic Distribution by Census Area, December 2014

Census Area	Number of Recipients	Census Area	Number of Recipients
ALEUTIANS EAST	24	MAT-SU	1,480
ALEUTIANS WEST	37	NOME	252
ANCHORAGE	4,114	NORTH SLOPE	35
BETHEL	538	NW ARCTIC	174
BRISTOL BAY	11	PETERSBURG	85
DENALI	15	PRINCE OF WALES	210
DILLINGHAM	134	SE FAIRBANKS	203
FAIRBANKS N STAR	821	SITKA	117
HAINES	84	SKAGWAY	9
HOONAH-ANGOON	90	VALDEZ/CORDOVA	167
JUNEAU	342	WADE HAMPTON	238
KENAI	1,129	WRANGELL	99
KETCHIKAN GATEWAY	273	YAKUTAT	17
KODIAK	224	YUKON KOYUKUK	259
LAKE AND PENINSULA	40	Grand Total	11,222

Evolution of the Senior Benefits Program	
1972 - 2003	Alaska Longevity Bonus Program. The Alaska Longevity Bonus Program was established in 1972. Alaska residents became eligible upon reaching the age of 65. \$250/month was issued to seniors who applied before 1994, \$200 to those applying in 1994, \$150 to those applying in 1995, and \$100 to those applying in 1996. Payments were not available to seniors who applied after 1996. The program was subsequently defunded in 2003, and final benefits were issued for the month of August 2003.
2003 - 2004	Senior Assistance Program. Beginning September 2003, the Governor's office used its executive authority to establish the needs-based Senior Assistance program in response to the needs of low-income Alaskans aged 65 and older who were financially impacted by the elimination of the Alaska Longevity Bonus. Payments were limited to \$120/month. The program ended March 2004.
2004 - 2007	SeniorCare Program. Beginning April 2004, the SeniorCare Program was established to replace the former Senior Assistance Program. The new program was expanded to include a prescription drug benefit. Low-income seniors that passed the program's income and resource limits could choose to receive either a \$120/month payment or a prescription drug benefit. The program ended July 2007.
2007 - Present	Senior Benefits Program. Beginning August 2007, the Senior Benefits Program was established to replace the SeniorCare Program. The program provides three payment levels that are based on the senior's gross annual income. Income limits are tied to the Federal Poverty Guidelines for Alaska and change each year as the poverty level changes. There is no asset test. The program is currently set to expire on June 30, 2015.



Temporary Assistance for Needy Families

Alaska Temporary Assistance Work Services

Native Family Assistance Programs

The Temporary Assistance for Needy Families (TANF) block grant funds

- The Alaska Temporary Assistance Program (ATAP) which provides cash assistance and Work Services to low-income families with children to help them with basic needs while they work toward becoming self-sufficient.
- Native Family Assistance Programs (NFAP) administered by eligible tribal organizations which provide comparable cash assistance benefits and services designed to support Alaska Native families with basic needs while supporting self-sufficiency and wellness.

ATAP Work Services

Work is required and services are provided to all ATAP families with a parent included in the home.

- Adults are required to go to work, maintain employment, plan for self-sufficiency and exiting the program, and engage in activities that will help them become independent from ATAP. Failure to go to work and participate without good cause results in a reduction in cash assistance, up to and including a "full family sanction" and case closure for the entire family. Twenty-five percent of cases are "child only" with no parent in the home.
- There are two service tracks for two group of families
- Work First – services for families with parents who are able to pursue work and do not have multiple or profound challenges to employment.
 - Activities focus on immediate engagement in job search, maintaining employment, advancing on the job and supportive services to help with transportation, work tools and other items needed to ensure success at work.
 - In September 2014, 1,311 families, 56.7% of the cases with a parent included, Work had received less than 24 months of assistance in their lifetime.
- Families First – services for families with multiple or profound challenges to employment. These families often have involvement with multiple Department of Health and Social Services agencies (such as an open child welfare or juvenile justice case) or have health or behavioral health challenges that prevent them from working full time.
 - Activities focus on coordination with partner agencies, health and wellness activities to increase employability, skills building, specialized employability assessment and job placement, and in some cases pursuit of Social Security benefits for disability.
 - In September 2014, 655 families, 28.3% of cases with a parent included, had received more than 24 months of assistance.

Native Family Assistance Programs

The Department of Health and Social Services provides a supplementary grant to tribal organizations who administer a Tribal TANF Native Family Assistance Program.

- Seven (7) NFAPs serve a specific group of families with dependent children in their service area.
 - Four (4) tribal organizations serve needy Alaska Native families in their service area.
 - Three (3) tribal organizations are “regional” providers serving all needy families in their service area.

- Six (6) eligible tribal organizations have not yet implemented an NFAP, including Aleutian and Pribilof Islands Association, Arctic Slope Native Association, Chugachmiut, Copper River Native Association, Kawerak, Inc., and Metlakatla Indian Community. Of these, Kawerak would have the largest caseload if they implemented, with 158 families in their service area currently receiving ATAP benefits and Work Services (September 2014).

- NFAP Native Employment Work Services have increased flexibility (as compared to the State of Alaska ATAP) in defining work and activities that are recognized by the federal TANF program as allowable and “countable.”
 - Lower program targets for work participation rates in rural areas of high unemployment or due to other challenges.
 - Traditional, subsistence and cultural activities are recognized as “countable” and directly contributing to self-sufficiency for tribal NFAPs. Some NFAPs include activities supporting child welfare and education (such as parent-teacher conferences and parent volunteering) as program activities.

NFAP Caseload and Benefit Issuance		
MONTH of September 2014		
Tribal Organization	Cases	Expenditures
Association of Village Council Presidents*	503	\$342,084
Bristol Bay Native Association*	84	\$60,291
Cook Inlet Tribal Council	553	\$348,784
Kodiak Area Native Association	21	\$11,772
Maniilaq Association*	135	\$75,467
Tanana Chiefs Conference	90	\$54,084
Tlingit and Haida Central Council	210	\$171,877
TOTAL	1,596	\$1,064,359

*Regional Provider



Tribal Temporary Assistance for Needy Families

Fact Sheet

- The State of Alaska currently has grants with seven Tribal organizations to operate Native Family Assistance Programs (NFAP).
- The state grant is a supplement to the Tribal Temporary Assistance for Needy Families (TANF) Program block grant each organization receives from the federal Department of Health and Human Services.
- Tribal TANF programs are comparable to the Alaska's TANF funded Alaska Temporary Assistance Program (ATAP) and are funded by the state in accordance with AS 47.27.200.
- These seven Tribal TANF programs are funded with State of Alaska General funds which are eligible for satisfying TANF maintenance-of-effort, which supports Alaska in securing federal TANF funding. Federal TANF funding is used for ATAP and other associated programs which help needy families with dependent children to prevent dependence on welfare. Grant funds received by NFAPs are used exclusively for TANF family benefits and supportive services.
- NFAP's report directly to the federal Department of Health and Human Services, because of this the Division of Public Assistance does not receive extensive data on Tribal TANF households.
- The Division of Public Assistance has partnered with the University of Alaska Anchorage, Institute for Circumpolar Health Studies to assess the characteristics of clients participating in Tribal TANF programs.

Fiscal Year	Average Monthly Caseload	Total State Program Expenditures
SFY08	1,546	\$12,466,755
SFY09	1,423	\$12,035,646
SFY10	1,646	\$12,542,052
SFY11	1,761	\$13,772,457
SFY12	1,644	\$13,626,599
SFY13	1,570	\$13,635,893
SFY14	1,598	\$13,762,647

Tribal TANF Maximum Benefit Levels

Household Type	Maximum Benefit*
Pregnant Woman	\$541
Adult Included (1-parent or 2-parent families)	\$821
Each additional child	\$102
Child Only	\$452
Each additional child	\$102

**Tribal TANF benefit levels cannot exceed the ATAP benefit levels established in statute at AS 47.27.025(b) and regulations at 7 AAC 45.523*

<i>Evolution of the Tribal Temporary Assistance for Needy Family (TANF) Programs</i>	
August, 1996	The Personal Responsibility and Work Opportunity Reconciliation Act (PRWORA) was signed into law, which authorized the Tribal Family Assistance Grant for Tribal TANF Programs.
July, 1997	The State of Alaska enacted its Alaska Temporary Assistance Program (ATAP). Approximately one year after the passing of PRWORA, Alaska established the ATAP, which established a framework for Tribal TANF programs.
October, 1998	The State of Alaska partnered with the Tanana Chiefs Conference (TCC) to pilot the first Tribal TANF program and operate the first Native Family Assistance Program (NFAP). TCC has a current TANF caseload of approximately 90 families and serves the Doyon/Fairbanks region of interior Alaska.
Legislative Session of 2000	The 21st Alaska Legislature passed The Native Family Assistance Program (AS 47.27.200 et al) as a pilot program through 6/30/2005.
July, 2000	Central Council of the Tlingit and Haida Indian Tribes of Alaska (CCTHITA) enacted their Tribal TANF program. CCTHITA has a current caseload of approximately 210 families and serves the Sealaska/Southeast region of Alaska.
October, 2000	Association of Village Council Presidents (AVCP) enacted their Tribal TANF program. AVCP has a current caseload of approximately 503 families and serves both Native and non-Native households in the Calista/Western region of Alaska.
Legislative Session of 2005	The 24th Alaska Legislature reauthorized The Native Family Assistance Program (AS 47.27.200 et al) and made it permanent.
July, 2005	Cook Inlet Tribal Council (CITC) Inc. enacted their Tribal TANF program. CITC has a current caseload of approximately 553 families and serves the Cook Inlet Region Inc./Anchorage and Matsu Valley regions of Southcentral Alaska.
October, 2006	Bristol Bay Native Association (BBNA) enacted their Tribal TANF program. BBNA has a current caseload of approximately 84 families and serves both Native and non-Native households in the Bristol Bay region of Southwestern Alaska.
January, 2009	Kodiak Area Native Association (KANA) enacted their Tribal TANF program. KANA has a current caseload of approximately 21 families and serves the Koniag /Kodiak Island Archipelago region of Alaska.
July, 2009	Maniilaq Area Native Association enacted their Tribal TANF program. Maniilaq has a current caseload of approximately 135 families and serves both Native and non-Native households in the NANA/Northwestern region of Alaska.
Current Works	In June of 2014 University of Alaska Anchorage, Institute for Circumpolar Health Studies published a study on Tribal TANF recipients in Alaska. The Division of Public Assistance is currently in negotiations with the Metlakatla Indian Community of Annette Islands Reserve to develop a Tribal TANF program for their service area.

Notes: Caseload data reported is from September of 2014 and is available on DPAAweb under Statewide Monthly Caseload & Benefit Summary. A copy of the Institute for Circumpolar Health's research can be made upon request.

Alaska Temporary Assistance Program Fact Sheet



- The Alaska Temporary Assistance Program (ATAP) provides cash assistance and services to low-income families with children to help them with basic needs while they work toward becoming self-sufficient.
- ATAP is funded with a combination of general funds and federal funds under the Temporary Assistance for Needy Families (TANF) block grant. The TANF block grant requires the state to meet a maintenance of effort for the funding received. The expenditures in this program area are qualifying to satisfy this requirement when general funds are used.
- Benefits for families with an adult included are limited to 60-months in a lifetime.
- Adults are required to go to work, maintain employment, plan for self-sufficiency and exiting the program, and engage in activities that will help them become independent from ATAP. Failure to go to work and participate without good cause results in a reduction in case assistance, up to and including a "full family sanction" and case closure for the entire family.
- ATAP also provides cash assistance to support the needs of parentless children who are being cared for by relatives rather than the foster care system. There is no benefit time limit for parentless children and approximately 25% of the ATAP caseload is comprised of these parentless children.

State Program Expenditures	
Fiscal Year	Expenditures
SFY08	\$24,371,088
SFY09	\$24,121,327
SFY10	\$25,519,436
SFY11	\$27,799,199
SFY12	\$28,515,716
SFY13	\$27,916,125
SFY14	\$28,179,521

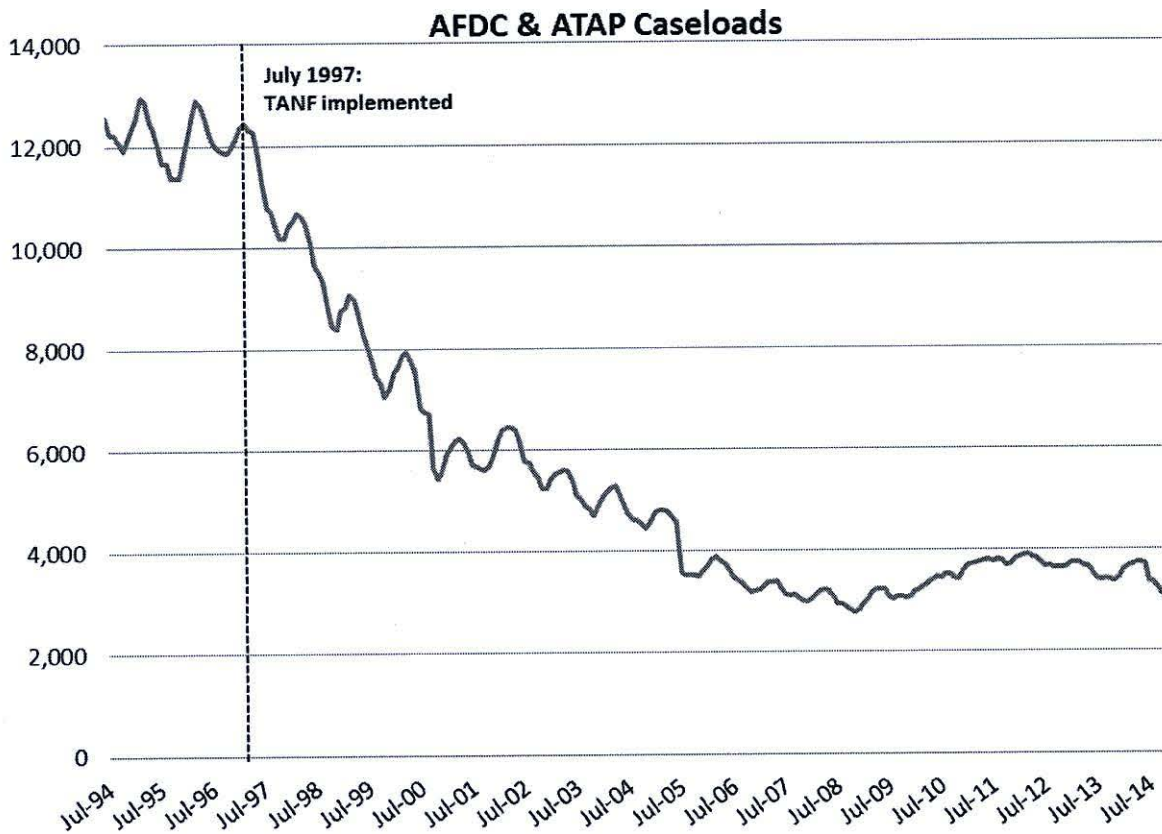
Maximum Benefit Levels	
Household Type	Maximum Benefit
Pregnant Woman	\$541
Adult Included	\$821
<i>Each additional child</i>	\$102
Child Only	\$452
<i>Each additional child</i>	\$102

Average Monthly Caseload Demographics		
Demographics	SFY14	SFY15 YTD (through 12/14)
Caseload	3,551	3,203
Household Size	2.7	2.7
Benefit per Household	\$641.67	\$602.83
Recipients	9,523	8,606
Number of Adults	3,108	2,767
Number of Children	6,415	5,839
Earnings for Cases With Earnings	\$1,058.74	\$1,128.72

ATAP Case Distribution by Census Area (December 2014)

Census Area	Caseload	Census Area	Caseload
Anchorage	1,440	NW Arctic	0
Mat-Su	580	SE Fairbanks	16
Aleutians East	2	Yukon/Koyukuk	4
Aleutians West	2	Haines	1
Bethel	0	Hoonah/Angoon	5
Bristol Bay	0	Juneau	90
Dillingham	0	Ketchikan Gateway	87
Kenai	259	Petersburg	7
Kodiak	28	Prince of Wales	82
Lake and Peninsula	0	Sitka	22
Wade Hampton	0	Skagway	3
Denali	1	Valdez/Cordova	53
Fairbanks N Star	220	Wrangell	2
Nome	144	Yakutat	1
North Slope	17	Statewide Total	3,066

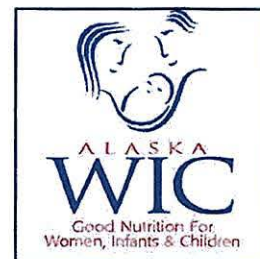
Alaska Temporary Assistance Program Fact Sheet





Alaska Family Nutrition Programs

Division of Public Assistance
Department of Health and Social Services



Our Mission:

To support Alaskan families in making nutrition decisions for life-long health and wellbeing.

Our Programs: (see page 2 for more information)

- Women, Infants and Children
- Commodity Supplemental Food Program
- Farmers' Market Nutrition Program
- Senior Farmers' Market Nutrition Program
- Supplemental Nutrition Program and Nutrition Education
- Breastfeeding Peer Counseling Program



Women, Infants and Children Supplemental Nutrition Program (WIC)

Accomplishments:

- 40 years providing healthy foods and nutrition information to Alaska's pregnant, breastfeeding, post-partum women and their children up to age 5.
- One Call Now- computerized automated client calling system implemented
- Roll out SPIRIT MIS System

Challenges:

- Caseload decreased 22% since 2009
- Low redemption of fruits and vegetable benefits in WIC (73.7 %), FMNP (44%)
- WIC food available in all WIC approved stores statewide
- Reduce state costs and vendor penalties for rejected WIC checks that exceed allowable costs

FY 2014 Program Facts:

- Federal funds: \$24 million
- State Funds: \$317,090
- Caseload:
 - FY 12 25,369
 - FY 13 23,836
 - FY 14 20,735
- Potential Caseload: 24,937
- WIC food dollars spent/month -- \$1million
- 13 WIC clinics/21 sites

Positive Health Outcomes:

- Improves birth outcomes and saves on health care costs
- Improves infant/child intellectual development and eating behaviors
- Improves rates of childhood immunization

Most Frequently Assigned Nutrition Risk Factors:

- Anemia
- Overweight women
- Overweight or at risk of overweight children
- High maternal weight gain
- Sugar containing fluids

Alaska WIC Data:

- Breastfeeding initiation 85%
- Infants and Children Overweight 7.2%
- Infants and Children at Risk for Overweight 5.7%
- 2-5 Year Old Children Obese 23%

Program Changes

- Addition of low-fat dairy, yogurt, and white potatoes



Alaska Family Nutrition Programs

Division of Public Assistance
Department of Health and Social Services



Additional Alaska FNS Programs and Projects:



Commodity Supplemental Food Program (CSFP) (\$153,000) offers food boxes to income-eligible seniors. Programs located in Anchorage/ Mat-Su and Fairbanks, Kenai Peninsula, Wrangell, Copper, Center, and bush Alaska Sites. Average monthly participation is 2,100.



WIC Farmers' Market Nutrition Program (FMNP) (\$179,000) provides vouchers for WIC participants to purchase locally grown fruits and vegetables at Farmers' Markets. In FFY 14, the program served 5,965 participants in Anchorage, Mat-Su, Kenai Peninsula, Dillingham, Bethel, Sitka, Petersburg, Fairbanks & surrounding areas. Challenges include 61% of issued vouchers were used in FSY 14, clients needing transportation to markets, and need for outreach to clients about markets.

Senior Farmers Market Nutrition Program (SFMNP) (\$87,000) provides coupons to low income-eligible seniors to purchase locally grown fruits and vegetables at Farmers' Markets. Program is offered in Anchorage/Mat-Su, Fairbanks, Kenai Peninsula, Dillingham, Copper Center and Bethel regions. In FFY 14, 2,350 seniors participated with a 72% redemption rate.



Supplemental Nutrition Program and Nutrition Education and Obesity Prevention (SNAP-ED) (approx. \$509,795) provides funding for nutrition education and obesity prevention activities for SNAP (Food Stamps) eligible infants to adults. Strategies include multi-level, community, and public health partnerships that work on USDA supported messages of healthy foods and active lifestyles. In FFY 14, a needs assessment identified program goals, target populations, and service areas for use in the FY 16 competitive grant process.



Breastfeeding Peer Counseling Program (BFPC) (\$308,801) grants to eight WIC grantees to provide breastfeeding support to WIC clients outside WIC hours including cell phone, text and Facebook page opportunities. In SFY 14, there were 9980 BFPC contacts.

How you can help:

- Support and encourage breastfeeding mothers and their families.
- Support and encourage breastfeeding in your organizations and communities.
- Use the FNP website to find program updates, location of services, and nutrition information and resources.

Questions: Kathleen Wayne MS, RD, LD/ FNP Manager/ Kathleen.Wayne@alaska.gov/ 907-465-8636

Visit our Website! <http://dhss.alaska.gov/dpa/Pages/nutri/wic/default.aspx>



Heating Assistance Program

Fact Sheet

Alaska's Heating Assistance Program provides a one-time (per program year) benefit to help defray home heating costs for eligible Alaska residents with incomes up to 225% of Alaska's federal poverty income guidelines. The program is funded through the federal Low Income Home Energy Assistance Program (LIHEAP) and state's Alaska Affordable Heating Program (AKAHP).

The programs are administered by the Division of Public Assistance and 13 Tribal organizations.

- Association of Village Council Presidents
- Bristol Bay Native Association
- Cook Inlet Tribal Council
- Kodiak Area Native Association
- Orutsaramiut Native Association
- Tanana Chief Conference
- Yakutat Tlingit Tribe
- Aleutian Pribilof Island Association, Inc.
- Chuathbaluk Traditional Council
- Kenaitze Indian Tribe
- Kuskokwim Native Association
- Seldovia Village Tribe
- Tlingit-Haida Regional Housing Authority

Recipients

In 2014 a total of \$24,893,735 in heating assistance benefits were distributed between 21,407 households across Alaska. Benefits were paid out of LIHEAP and AKAHP funds.

2014 LIHEAP Households Served – State and Tribes				
Program	# of Households Served by State DPA	# of Households Served by Tribal Organizations	Total Households Served	Average Benefit
LIHEAP	10,425	8,271	18,696	\$1,238
AKAHP	1,995	716	2,711	\$ 643
Total	12,420	8,987	21,407	

Clients Served By Priority Groups and Income Levels - State Data Only: (Tribal data not available)										
Program	HH's With Vulnerable Member			Households Served At Each Federal Poverty Level						
	Elderly	Disabled	Children under 6	LIHEAP Income Levels				AKAHP Income Levels		
				0-75%	76-100%	101-125%	126-150%	151-175%	176-200%	201-225%
LIHEAP	3,213	2,968	2,712	4,376	3,053	1,700	1,296	0	0	0
AKAHP	842	446	547	0	0	0	0	1,017	615	363
Total	4,055	3,515	3,259	4,376	3,053	1,700	1,296	1,017	615	363

Program Funding and Expenditures

- LIHEAP funding is supplemented with state funds for LIHEAP eligible households in order to meet the benefit amount defined in state statute (AS47.25.623).
- As of February 1, 2015, the state received \$10,142,441 in LIHEAP funding for FY 2015. To date Tribal programs received \$7,315,133 in LIHEAP fund for a total of \$17,457,574 federal funding for FY 2015.
- AKAHP funding serves the higher income households and augments LIHEAP funding shortfalls. FY 2015 AKAHP funding is at \$12.6 million. AKAHP funding and expenditures includes tribal grants.

State/DHSS LIHEAP Funding and Expenditures As Reported to the Administration for Families and Children (Does not include tribal grants)					
Year	Leveraging Incentive Awards	Emergency Funds	Block Grant Funds	Total Funds Received	Total Program Expenditures*
2008	\$ 0	\$ 4,177,248	\$ 7,503,659	\$ 11,680,907	\$ 11,174,843
2009	\$ 359,009	\$ 5,100,014	\$ 16,332,944	\$ 21,791,967	\$ 20,644,506
2010	\$ 1,144,721	\$ 1,830,172	\$ 15,513,764	\$ 18,488,657	\$ 16,486,189
2011	\$ 0	\$ 646,161	\$ 14,327,158	\$ 14,973,319	\$ 14,852,401
2012	\$ 664,795	\$ 0	\$ 10,641,269	\$ 11,306,064	\$ 14,348,388
2013	\$ 0	\$ 0	\$ 10,149,914	\$ 10,149,914	\$ 15,933,445
2014	\$ 0	\$ 0	\$ 11,172,660	\$ 11,172,660	\$ 10,088,833

Source: LIHEAP Performance Measurement Web Site (<https://liheapdev.ncat.org>)
*Includes Administration, heating and crisis benefits, and weatherization services.

AKAHP Funding and Expenditures (Includes Tribes)							
Year	2008	2009	2010	2011	2012	2013	2014
Funding	\$0	\$19,000,000	\$5,000,000	\$5,000,000	\$13,500,000	\$20,864,700	\$13,600,000
Program Expenditures	\$0	\$18,219,244	\$2,024,865	\$5,007,211	\$13,472,599	\$9,972,083	\$10,142,166

Eligibility and Payments

As of February 1, 2015, the state has received 10,030 applications and issued benefits to 5,784 LIHEAP households and 1,035 AKAHP households to date with, as of 2/1/2015, an average LIHEAP benefit of \$1,353 and an average AKAHP benefit of \$625.00.

History

The state has participated in LIHEAP since the 1980's. AKAHP was created in July of 2008 and implemented in SFY 2009. Both programs use the same application, have the same requirements, and use the same eligibility and benefit determination formula. The "program year" runs from October 1, to September 30, however the last day to apply for assistance is April 30.

Assistance Programs

<i>Food and Nutrition Assistance</i>				
Program & People	Benefit	Eligibility Requirements	Authority	Budget/Funding
<p>Food Stamps</p> <p>37,836 average monthly recipients</p>	<p>Average household allotment in FY 2014 was \$415</p>	<ul style="list-style-type: none"> • Alaska resident • Net income of not more than \$1,215 for an individual or \$1,639 for a couple; levels increase based on household size • Not more than \$2,250 in assets per household, \$3,250 for a household who has at least one member who is disabled or over age 60 	<p>Federal/State Program</p> <p>PL 110-246 (2008) 7 CFR. 271 – 274</p> <p>AS 47.25.975 – 990 7 AAC 46.010 – 990</p>	<p>\$181.5 million spent on SNAP benefits in FFY2014</p> <p>Benefits are 100% federally funded and are not included as part of the operating budget.</p>
<p>Food Stamp Nutrition Education Program (SNAP ED)</p>	<p>Provide nutrition education information to Food Stamp eligible populations</p>	<ul style="list-style-type: none"> • Alaska resident • Net income of not more than \$1,215 for an individual or \$1,639 for a couple; levels increase based on household size • Not more than \$2,250 in assets per household, \$3,250 for a household who has at least one member who is disabled or over age 60 	<p>Federal/State Program</p> <p>PL 110-246 (2008) 7 CFR. 271 – 274</p> <p>AS 47.25.975 – 990 7 AAC 46.010 – 990</p>	<p>\$503.5 awarded in FFY2014</p> <p>100% Federal Funds</p>
<p>WIC</p> <p>20,735 households annually in SFY14</p>	<p>Provides nutrition education, referrals, breastfeeding support and checks to purchase supplemental foods designed to address nutrient inadequacies and nutrition education</p>	<ul style="list-style-type: none"> • Alaska resident • Must have a nutrition risk • Pregnant, breastfeeding, and postpartum women, infants and children up to five years of age • Must meet income criteria or must be within 185% of poverty • Yearly income of \$26,548 for a 1 person household, \$35,853 for a 2 person household (2013). USDA updates income guidelines annually (April). 	<p>Federal/State Program</p> <p>PL 111-296 (2010) 7 CFR 246</p>	<p>FFY2014 funds awarded to date are \$22,749.1</p> <p>100% federally funded.</p>



Assistance Programs

Program & People	Benefit	Eligibility Requirements	Authority	Budget/Funding
Breastfeeding Peer Counseling Program	Provides breastfeeding support through a peer-to-peer counseling structure to WIC pregnant and breastfeeding women	<ul style="list-style-type: none"> Alaska resident Must have a nutrition risk Pregnant, breastfeeding, and postpartum women, infants and children up to five years of age Must meet income criteria or must be within 185% of poverty Yearly income of \$26,548 for a 1 person household, \$35,853 for a 2 person household (2013). USDA updates income guidelines annually (April). 	Federal/State Program PL 111-296 (2010) 7 CFR 246	FFY2014 funds \$214.7 100% Federally Funded
Commodity Supplemental Food Program 2,100 households annually in SFY2014	Provides supplemental foods designed to address nutrient inadequacies. Includes nutrition education. Cannot have concurrent participation in WIC	<ul style="list-style-type: none"> Alaska resident Pregnant, breastfeeding, and postpartum women, infants and children up to six years of age or age 60 or older Yearly income for woman, infants, and children for family of two- \$35,853 or one person household of \$18,655 for senior citizens (2013) Only available in Anchorage, Mat-Su, Kenai, and Fairbanks and limited outlying areas. 	Federal/State Program PL 111-296 (2010) 7 CFR 247	FFY2014 funds \$154.9 100% Federally Funded
WIC Farmers Market Nutrition Program 5,965 annual participants in SFY2014	Provide checks for purchase of fruits and/or vegetables. Provide nutrition education materials	<ul style="list-style-type: none"> Alaska Resident Current WIC participants Only available in Anchorage, Eagle River, Mat – Su area, Delta Junction, Kenai Peninsula, Dillingham, Fairbanks area, Valdez, Copper Center, Bethel and Sitka Yearly income of \$25,845 for a 1 person household, \$35,002 for a 2 person household (FY 2013). USDA updates income guidelines annually (April). 	Federal/State Program PL 11-296 (2010) 7 CFR 248	FFY2014 funds \$185.3 100% Federally Funded

Assistance Programs

Program & People	Benefit	Eligibility Requirements	Authority	Budget/Funding
<p>Senior Farmers Market Nutrition</p> <p>Estimated 2,350 participants in SFY2014</p>	<p>Provides checks for purchase of fresh fruits and/or vegetables from local farmer's markets. Provides nutrition education materials</p>	<ul style="list-style-type: none"> • Alaska resident • Age 60 or older • Participation in CSFP, TEFAP, Public Assistance, NEOP, or household participation in WIC, CSFP, or Free or Reduced School Meals OR • Yearly income \$26,548 for one person household, \$35,853 for two person household (2013) • Available in Anchorage, Mat-Su, Kenai, Fairbanks, and limited outlying areas. 	<p>Federal/State Program</p> <p>PL 111-296 (2010) 7 CFR 249</p>	<p>FFY14 funds \$85.7</p> <p>100% Federally Funded</p>
<i>Medical Assistance</i>				
<p>Medicaid</p> <p>115,591 FY2014 average monthly unduplicated recipients</p>	<p>Provides medical assistance to needy individuals and families. Basically, it is intended to provide medical coverage for needy families with children, pregnant women, and aged, blind and disabled persons</p>	<ul style="list-style-type: none"> • To be eligible, recipients must meet certain income and/or resource criteria. These criteria vary depending on the particular Medicaid category for which the recipient is eligible for • Eligibility criteria for aged, blind, and disabled persons are based on eligibility criteria used for the Adult Public Assistance program • Eligibility criteria for parents and other caretaker relatives, pregnant women, children under age 19, under 21 Medicaid, and former foster children up to age 26 are based on the eligibility criteria created by the Affordable Care Act 	<p>Federal/State Program</p> <p>PL 112-238 (2012) 42 USC 1396</p> <p>AS 47.07 7 AAC 100.001 - 990</p>	<p>Benefits are paid from another appropriation. Eligibility is determined in DPA.</p>



Assistance Programs

Program & People	Benefit	Eligibility Criteria	Authority	Budget/Funding
Chronic and Acute Medical Assistance	Provides emergency medical coverage for persons who do not qualify for Medicaid	<ul style="list-style-type: none"> • Age 18 or older • Lack of other medical resources • Covered medical needs only include: <ul style="list-style-type: none"> ➢ A terminal illness ➢ Cancer requiring chemotherapy ➢ Diabetes and diabetes insipidus ➢ Seizure disorders ➢ Chronic mental illness ➢ Hypertension • Countable income of not more than \$300 for an individual or \$400 for a couple • Assets that do not exceed \$500 	State Program AS 47.08.150 7 AAC 48.500 - 900	Benefits are paid from another appropriation. Eligibility is determined in DPA.
<i>Assistance for Seniors & Disabled</i>				
Adult Public Assistance (including Interim Assistance and Old Age Assistance) 18,853 average monthly recipients	Maximum \$362/month; combined with SSI max is \$1,072/month	The Adult Public Assistance program is designed as a State supplement to the Federal Supplemental Security Income Program (SSI). As such, it confers Medicaid eligibility to its recipients. <ul style="list-style-type: none"> • Age 65 or older, blind or disabled • Alaska resident • Less than \$2,000 (single) \$3,000 (couple) in assets excluding house, one vehicle, burial fund • Monthly income below \$1,362 for an individual, \$2,017 for a couple, both eligible 	State Program AS 47.25.430 - 615 7 AAC 40.020 - 900	\$66,177.3 FY2016 Appropriation

Assistance Programs

Program & People	Benefit	Eligibility Criteria	Authority	Budget/Funding
Senior Benefits Program (100% State Funded) 11,068 average monthly recipients	Monthly payment of \$125, \$175 or \$250 depending on income	<ul style="list-style-type: none"> • Age 65 or older • Alaska resident • Effective March 1, 2015 – February 28, 2016 – Yearly income of below \$25,760 for an individual or \$34,860 for a couple • Effective March 1, 2014 – February 28, 2015 – Yearly income of below \$25,515 for an individual or \$34,405 for a couple 	State Program AS 47.45.300 – 309 7 AAC 47.545 - 599	\$17,236.1 appropriated for benefits. 100% General Funds
<i>Heating Assistance</i>				
Heating Assistance Program (LIHEAP –federally-funded) 10,425 households in SFY2014	Provides help paying for home heating costs \$1,238/year average per household in FY2014	<ul style="list-style-type: none"> • Annual home heating costs must exceed \$200 • Gross income at or below \$1,792 for an individual, \$2,422 for a couple (150% of federal poverty level) • Household with a person age 60 or older, disabled, or under the age of 6, is considered a priority population. Households receive one additional heating point toward their benefit calculation 	Federal/State Program PL 97-35 (1981) 45 CFR 96.80 - 89 AS 47.25.621 – 626 7 AAC 44.010 – 900	\$14,183.6 appropriated 100% Federal Funds
Alaska Affordable Heating Program (100% state-funded) 1,995 households in SFY2014	Provides help paying for home heating costs \$643/year average per household in FY2014	<ul style="list-style-type: none"> • Annual home heating costs must exceed \$200 • Gross income between 151% to 225% of federal poverty level or \$2,688 for an individual, \$3,633 for a couple • Household with a person age 60 or older, disabled, or under the age of 6, is considered a priority population. Households receive one additional heating point toward their benefit calculation 	State Program AS 47.05.010 AS 47.25.621 - 626 7 AAC 44.200 - 900	\$9,174.3 appropriated 100% General Funds General funds are also used to supplement awards to LIHEAP eligible households



Assistance Programs

Assistance for Families with Dependent Children				
Program & People	Benefit	Eligibility Criteria	Authority	Budget/Funding
Alaska Temporary Assistance Program 9,523 average monthly recipients	Maximum cash benefit of \$821 for a family with 1 child, \$923 for a family with 2 children	<ul style="list-style-type: none"> • Alaska resident • Families with dependent children under age 18 • Child support cooperation • 60-month time limit • • Not more than \$2,000 in assets per household, \$3,000 for a household who has at least one member who is over 60 • Net income of not more than \$1,412 for a family with 1 child, \$1,590 for a family with 2 children • Benefit amount based on income (lower if more income or less need) • 25% are "Child Only" Cases (non-needy caregiver) • 75% include a parent and are subject to work and time limits <ul style="list-style-type: none"> > 59% have used less than 2 years > 17% have used between 2 and 3 years > 11% have used between 3 and 4 years > 7% have used between 4 and 5 years > 6% have used more than 5 years (on extension) 	Federal/State Program 42 USC 602 – 608 45 CFR 200 – 499 AS 47.27.005 – 990 7 AAC 45.150 – 990	\$33,032.8 appropriated for benefits. *UGF in this component is Match for TANF MOE.



Alaska Department of Health and Social Services
 Division of Public Assistance

Assistance Programs

<p>Child Care Assistance</p> <p>4,706 families per month</p>	<p>Provides monthly subsidy to help low income families pay for child care. Benefit is paid to the child care provider based on geographic location, type of care and age of children</p>	<ul style="list-style-type: none"> To be eligible, the parent(s) in the family must be participating in work, seeking work, in school or training activities, and meet income criteria. Countable income is dependent on the household size. Child(ren) must be under the age of 13 or under the age of 19 if developmentally disabled Income limits are set at 75% of 2008 median income for Alaska: \$4,524 for household of 3, \$4,614 for a household of 4, etc. 	<p>Federal/State Program</p> <p>PL 112-74 (2011) 42 USC 9858 45 CFR 98 – 99</p> <p>AS 47.25.001 – 095 7 AAC 41.010 – 990</p>	<p>\$40,528.8 appropriated for benefits.</p>
<p><i>Other Assistance</i></p>				
<p>General Relief Assistance</p>	<p>Provides for emergent basic needs for shelter, utilities, food, clothing or burial</p>	<ul style="list-style-type: none"> Alaska resident Have an emergent need for shelter, food, clothing, or burial Assets that do not exceed \$500 Countable income of not more than \$300 for an individual or \$400 for a couple 	<p>State Program</p> <p>AS 47.05.010 AS 47.25.170 7 AAC 47.050 - 290</p>	<p>\$2,905.4 appropriated for benefits. 100% general funds.</p>



Assistance Programs

ACRONYM KEY

AAC	Alaska Administrative Code
APA	Adult Public Assistance
AS	Alaska Statute
ATAP	Alaska Temporary Assistance Program
CFR	Code of Federal Regulations
CSFP	Commodity Supplemental Food Program
DKC	Denali Kid Care
LIHEAP	Low Income Heating Energy Assistance Program
NEOP	Nutrition Education & Obesity Prevention - Supplemental Nutrition Assistance Program
PL	Public Law
POMS SI	Social Security Administration Program Operations Manual System - Supplemental Security Income
SSI	Supplemental Security Income
TEFAP	The Emergency Food Assistance Program
USC	United States Code
USDA	U.S. Department of Agriculture
WIC	Women, Infants, and Children



Alaska Family Nutrition Programs

Division of Public Assistance
Department of Health and Social Services



Our Mission:

To support Alaskan families in making nutrition decisions for life-long health and wellbeing.

Our Programs: (see page 2 for more information)

- Women, Infants and Children
- Commodity Supplemental Food Program
- Farmers' Market Nutrition Program
- Senior Farmers' Market Nutrition Program
- Supplemental Nutrition Program and Nutrition Education
- Breastfeeding Peer Counseling Program



Women, Infants and Children Supplemental Nutrition Program (WIC)

Accomplishments:

- **40** years providing healthy foods and nutrition information to Alaska's pregnant, breastfeeding, post-partum women and their children up to age 5.
- One Call Now- computerized automated client calling system implemented
- Roll out SPIRIT MIS System

Challenges:

- Caseload decreased 22% since 2009
- Low redemption of fruits and vegetable benefits in WIC (xx %) and FMNP (44%)
- WIC food available in all WIC approved stores statewide
- Reduce state costs and vendor penalties for rejected WIC checks that exceed allowable costs

FY 2014 Program Facts:

- Federal funds \$24 million
- State Funds \$317,090
- Caseload
 - FY 12 25,369
 - FY 13 23,836
 - FY 14 20,735
- Potential Caseload **24,937**
- WIC food dollars spent/month -- \$1million
- 13 WIC clinics/21 sites

Positive Health Outcomes:

- Improves birth outcomes and saves on health care costs
- Improves infant/child intellectual development and eating behaviors
- Improves rates of childhood immunization

Most Frequently Assigned Nutrition Risk Factors:

- Anemia
- Overweight women
- Overweight or at risk of overweight children
- High maternal weight gain
- Sugar containing fluids

Alaska WIC Data:

- Breastfeeding initiation 85%
- Infants and Children Overweight 7.2%
- Infants and Children at Risk for Overweight 5.7%
- 2-5 Year Old Children Obese 23%

Program Changes and Challenges

- Addition of low-fat dairy, yogurt, and white potatoes



Alaska Family Nutrition Programs

Division of Public Assistance
Department of Health and Social Services



Additional Alaska FNS Programs and Projects:



Commodity Supplemental Food Program (CSFP) (\$153,000) offers food boxes to income-eligible seniors. Programs located in Anchorage/ Mat-Su and Fairbanks, Kenai Peninsula, Wrangell, Copper, Center, and bush Alaska Sites. Average monthly participation is 2,100.



WIC Farmers' Market Nutrition Program (FMNP) (\$179,000) provides vouchers for WIC participants to purchase locally grown fruits and vegetables at Farmers' Markets. In FFY 14, the program served 5,965 participants in Anchorage, Mat-Su, Kenai Peninsula, Dillingham, Bethel, Sitka, Petersburg, Fairbanks & surrounding areas. Challenges include 61% of issued vouchers were used in FSY 14, clients needing transportation to markets, and need for outreach to clients about markets.

Senior Farmers Market Nutrition Program (SFMNP) (\$87,000) provides coupons to low income-eligible seniors to purchase locally grown fruits and vegetables at Farmers' Markets. Program is offered in Anchorage/Mat-Su and Fairbanks, Kenai Peninsula, Dillingham, Copper Center and Bethel regions with 2,350 participating seniors.



Supplemental Nutrition Program and Nutrition Education and Obesity Prevention (SNAP-ED) (approx. \$509,795) provides funding for nutrition education and obesity prevention activities for SNAP (Food Stamps) eligible infants to adults. Strategies include multi-level, community, and public health partnerships that work on USDA supported messages of healthy foods and active lifestyles. In FFY 14, a needs assessment identified program goals, target populations, and service areas for use in the FY 16 competitive grant process.



Breastfeeding Peer Counseling Program (BFPC) (\$308,801) grants to eight WIC grantees to provide breastfeeding support to WIC clients outside WIC hours including cell phone, text and Facebook page opportunities. In SFY 14, there were 9980 BFPC contacts.

How you can help:

- Support and encourage breastfeeding mothers and their families.
- Support and encourage breastfeeding in your organizations and communities.
- Use the FNP website for program updates, local service providers, and nutrition information and resources.

Questions: Kathleen Wayne MS, RD, LD/ FNP Manager/ Kathleen.Wayne@alaska.gov/ 907-465-8636

Visit our Website! <http://dhss.alaska.gov/dpa/Pages/nutri/wic/default.aspx>

Family meals are fun!

Breastfeeding is the best first family meal.

- Feed your baby only breastmilk the first 6 months.
- Breastfeed as long as you and baby want.

Start little ones at the table early.

- Children as young as 6 months can sit in a highchair during meal time.
- Young children and infants over six months can eat small bites of soft foods from the family table.

Cook meals quickly and eat slowly.

- Parents decide what foods to serve and children decide how much to eat.
- Older children can help prepare meals.
- Children are more likely to eat if they help cook.

Have family meals with your children.

- Children of all ages eat better when adults eat with them.
- Mom & Dad and other adults are role models for healthy eating.

Talk to each other at the table.

- Share the best part of the day, what is going on or family stories.
- Save serious talk for another time.
- Turn off the TV during meals.



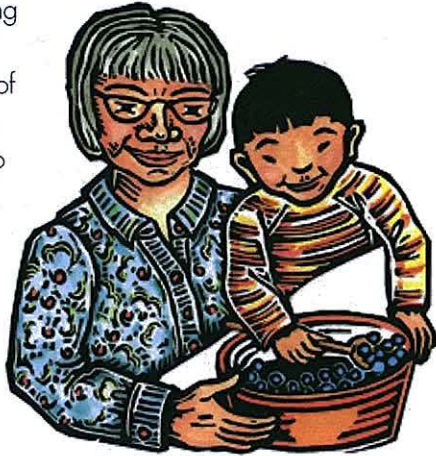
Enjoying Family Meals

Family meals are important and teach your child healthy eating. Lifelong memories are made around the family table. When you try new foods, your child may be more adventurous with food. Be a good role model!

Goal: _____

Families eat better together!

Family meals are a time for strengthening family ties and keeping track of your children's lives. They also can lead to better health for the entire family!



Support for Alaska families in making nutrition decisions for lifelong health and well-being.



For more information:

www.fns.usda.gov/wic/Breastfeeding/breastfeedingmainpage.htm

www.eatSMART.org

www.casafamilyday.org

Alaska Department of Health and Social Services
Division of Public Assistance • Family Nutrition Services

P.O. Box 110612
Juneau, AK 99811
Phone: (907) 465-3100
Fax: (907) 465-3416

www.familynutrition.alaska.gov
E-mail: wic@alaska.gov

Supported by the following Alaska WIC Grantees:

- ASYMCA Military
- Alaska Family Services—Kenai Peninsula
- Alaska Family Services—Matanuska Valley
- Aleutian / Probilof Islands Association
- Bristol Bay Area Health Corporation
- Cook Inlet Tribal Council
- Kodiak Area Native Association
- Maniilaq Association
- Metlakatla Indian Community
- Municipality of Anchorage
- Native Village of Eyak
- North Slope Borough
- Norton Sound Regional Health Corporation
- Providence Hospital
- Resource Center for Parents and Children
- SouthEast Regional Health Consortium
- Tanana Chiefs Conference
- Yukon Kuskokwim Health Corporation



USDA is an equal opportunity provider

EVON ZERBETZ

Family Meals & Breastfeeding ...

so good for me!

Water, Water ... so good for me!

- Drink water between meals and at bedtime.
- Drink milk and 100% juice in a cup with meals and snacks:
 - 2 cups (16 oz) milk a day
 - Whole milk for children 1-2 years
 - 2% or less fat milk for children age 2 and older
 - ½-¾ cup (4-6 oz) juice or less a day
- Limit soda, Kool-aid, Tang, fruit drinks and sport drinks.
- Drink water with fluoride to prevent tooth decay.
- Ask your dentist or healthcare provider about flouride.
- Drink water to prevent fatigue.
- Thirst is often mistaken for hunger.



Water is good to drink for strong bodies & healthy teeth!

Goal: _____

Water, Water ... so good for me!

Water in a bottle,
Water in the glass,
Water in the training cup,
Healthy teeth fast.

Water in the morning,
Water AT PLAY,
Water at nighttime,

**GETTING
HEALTHY
TODAY!**



Supported by the following Alaska WIC Grantees:

ASYMCA Military
Alaska Family Services—Kenai Peninsula
Alaska Family Services—Matanuska Valley
Aleutian / Pribilof Islands Association
Bristol Bay Area Health Corporation
Cook Inlet Tribal Council
Kodiak Area Native Association
Manilaq Association
Metlakatla Indian Community
Municipality of Anchorage
Native Village of Eyak
North Slope Borough
Norton Sound Regional Health Corporation
Providence Hospital
Resource Center for Parents and Children
SouthEast Regional Health Consortium
Tanana Chiefs Conference
Yukon Kuskokwim Health Corporation



Support for Alaska families
in making nutrition decisions for
lifelong health and well-being.



For more information:

www.fitness.gov
www.gameskidsplay.net
www.cdc.gov
www.smallsteps.gov

Alaska Department of Health and Social Services
Division of Public Assistance
Family Nutrition Services

P.O. Box 110612
Juneau, AK 99811
Phone: (907) 465-3100
Fax: (907) 465-3416

www.familynutrition.alaska.gov
E-mail: wic@alaska.gov

USDA is an equal opportunity provider

Water, Water ... so good for me



For healthy teeth
and strong bodies!

Child Development Education and Training

Child Care Grant funds may be used to access professional development opportunities including college courses and distance learning, training workshops, and conferences.

Alaska's Statewide Child Care Resource & Referral Network, **thread**, provides a wide range of training, on-site assistance and support for early care and education professionals to improve their skills and the quality of their programs. For statewide information visit www.threadalaska.org.

Contact information for regional **thread** offices:

South Central Alaska

Phone: (907) 265-3100
Toll free: 1-800-278-3723
Email: info@threadalaska.org

Southeast Alaska

Phone: (907) 789-1235
Toll free: 1-888-785-1235
Email: info@aeyc-sea.org

Interior/ Northern Alaska

Resource phone: (907)-479-2214
Referral phone: (907)-479-2204
Toll free: 1-866-878-2273
Email: thread@thrivalaska.com

To participate in the Child Care Assistance Program contact the regional office nearest you:

Alaska Family Services: Municipality of Anchorage

(Anchorage, Bird Creek, Chugiak, Eagle River, Girdwood, Joint Base Elmendorf-Richardson)
Phone: (907) 644-5000

Alaska Family Services: Central

(Cordova, Glennallen, Mat-Su Valley, Palmer, Valdez, Wasilla)
Phone: (907) 373-4450
Toll free: 1-866-746-4080

The LeeShore Center: Coastal

(Aleutian Chain, Bristol Bay, Kenai Peninsula, Kodiak, Kotzebue, Nome)
Phone: (907) 283-4707
Toll free: 1-877-855-2227

thread: Northern

(Barrow, Fairbanks North Star Borough, Salcha, Tok, Yukon Kuskokwim Delta)
Phone: (907) 479-2212
Toll free: 1-855-479-2212

Catholic Community Service: Southeast

(Haines, Juneau, Ketchikan, Metlakatla, Petersburg, Prince of Wales, Skagway, Sitka, Wrangell)
Phone: (907) 463-6184
Toll free: 1-800-505-6124

Child Care Program Office:

Statewide: Eligibility for Child Care Assistance PASS I and Approved Providers

Municipality of Anchorage: Eligibility for ALL Providers (Approved, Approved Relative, In-home, Licensed)

Phone: (907) 269-4500
Toll free: 1-888-268-4632



Child Care Grant Program

Monthly Reimbursements Supporting Licensed Child Care Providers



Sean Parnell, Governor
William J. Streur, Commissioner
Department of Health and Social Services

Child Care Program Office

3601 C Street, Suite 140
Anchorage, Alaska 99503

Phone: (907) 269-4500
Toll free: 1-888-268-4632
Fax: (907) 269-1064

Toll free fax: 1-888-224-4536

Email: CCPO@alaska.gov

Website: <http://dhss.alaska.gov/dpa/Pages/ccare>



Eligibility

To apply for the Child Care Grant Program, please contact the Child Care Program Office or visit our website for an application:

<http://dhss.alaska.gov/dpa/Pages/ccare/>

To participate in the Child Care Grant Program a child care provider must:

- Be licensed by the State of Alaska as a Child Care Home, Group Home or Center; or
- Be licensed by the Municipality of Anchorage as a Child Care Home or Center; and
- Participate in the State of Alaska Child Care Assistance Program (CCAP).

For continued participation, within 6 months of approval a child care provider/facility must, provide child care for 1 child or 5% of the children in care, whichever is greater, who have been issued an authorization through the CCAP which includes the Office of Children's Services.



Promotes Quality Child Care

The Child Care Grant Program promotes quality child care by supporting and encouraging professional development, the retention of early care and education professionals, and safe and healthy environments for children in care.

Key indicators to quality child care include the following:

- Licensed by the State of Alaska as a Child Care Home, Group Home or Center
- Licensed by the Municipality of Anchorage as a Child Care Home or Center
- Low child to caregiver ratio
- Dedicated caregivers who have education and training in child development
- Safe, welcoming and nurturing child care setting
- Culturally rich environment
- Activities that promote intellectual, social, emotional, language and communication, and physical development
- Nutritious meals and snacks
- Inclusion of children with special needs
- Encouraging involvement of parents and families

What the Child Care Grant May Reimburse

Child Care Grant funds assist licensed providers with operational costs associated with their facilities.

Monthly reimbursement amounts are based on children's attendance and the Child Care Grant Rate Schedule. Categories of expenditures allowable for reimbursement related to facility operation include the following:

- Staff salaries and benefits
- Costs of providing substitute care
- Health and safety costs
- Costs of supplies, equipment, and activities for children in care
- Child development education and training



Child Care Resource & Referral Network

The Child Care Program Office provides funding to Alaska's Statewide Child Care Resource and Referral Network, **thread**, which offers referral services to parents. **thread** also provides consumer education and training to families, child care providers, and the public regarding quality early care and education. **thread** determines eligibility for the Alaska Inclusive Child Care Program (Alaska IN!). For statewide information visit www.threadalaska.org.

Contact information for regional **thread** offices:

South Central Alaska

Phone: (907) 265-3100

Toll free: 1-800-278-3723

Email: info@threadalaska.org

Southeast Alaska

Phone: (907) 789-1235

Toll free: 1-888-785-1235

Email: info@aeyc-sea.org

Interior/ Northern Alaska

Resource phone: (907) 479-2214

Referral phone: (907) 479-2204

Toll free: 1-866-878-2273

Email: thread@thrivalaska.com

Alaska IN!

Alaska IN! is a statewide, collaborative effort focused on increasing the quality and availability of inclusive child care programs for children with special needs who are participating in the Child Care Assistance Program. Alaska's Statewide Child Care Resource & Referral Network, **thread**, offers enhanced referrals, education and outreach to families of children seeking child care and provides additional funding for providers caring for children with special needs. Please contact **thread** at the above office nearest you to speak to an Alaska IN! Case Manager.

To participate in the Child Care Assistance Program contact the regional office nearest you:

Alaska Family Services: Municipality of Anchorage

(Anchorage, Bird Creek, Chugiak, Eagle River, Girdwood, Joint Base Elmendorf-Richardson)

Phone: 644-5000

Alaska Family Services: Central

(Cordova, Glennallen, Mat-Su Valley, Palmer, Valdez, Wasilla)

Phone: (907) 373-4450

Toll free: 1-866-746-4080

The LeeShore Center: Coastal

(Aleutian Chain, Bristol Bay, Kenai Peninsula, Kodiak, Kotzebue, Nome)

Phone: (907) 283-4707

Toll free: 1-877-855-2227

thread: Northern

(Barrow, Fairbanks North Star Borough, Salcha, Tok, Yukon Kuskokwim Delta)

Phone: (907) 479-2212

Toll free: 1-855-479-2212

Catholic Community Service: Southeast

(Haines, Juneau, Ketchikan, Metlakatla, Petersburg, Prince of Wales, Skagway, Sitka, Wrangell)

Phone: (907) 463-6184

Toll free: 1-800-505-6124

Child Care Program Office:

Statewide: Eligibility for Child Care Assistance PASS I and Approved Providers

Municipality of Anchorage: Eligibility for ALL Providers (Approved, Approved Relative, In-home, Licensed)

Phone: (907) 269-4500

Toll free: 1-888-268-4632



Child Care Program Office



Sean Parnell, Governor
William J. Streur, Commissioner
Department of Health and Social Services
Division of Public Assistance

Child Care Program Office

3601 C Street, Suite 140

Anchorage, Alaska 99503

Phone: (907) 269-4500

Toll free: 1-888-268-4632

Fax: (907) 269-1064

Toll free fax: 1-888-224-4536

Email: CCPO@alaska.gov

Website: <http://dhss.alaska.gov/dpa/Pages/ccare>



Child Care Program Office

The Child Care Program Office (CCPO) is the lead agency for the federal Child Care and Development Fund functions in the State of Alaska and includes the following programs: Child Care Assistance; Child Care Licensing; Child Care Grant; Alaska Inclusive Child Care; and Child Care Resource and Referral.

The CCPO monitors, regulates, and licenses child care facilities and promotes quality child care through a grant to Alaska's Statewide Child Care Resource and Referral Network, **thread**.

The CCPO promotes access to child care with a priority for children of families with low to moderate income and children with special needs.

Mission: *We support Families in Accessing Quality Child Care.*

Vision: *Safe, healthy child care is available and affordable for all families in Alaska.*

Child Care Grant

The Child Care Grant Program promotes quality child care by supporting and encouraging professional development, the retention of early care and education professionals, and safe and healthy environments for children in care.

Child Care Grant funds assist licensed providers with operational costs associated with their facilities.

Child Care Assistance

The Child Care Assistance Program (CCAP) provides assistance with child care expenses based on a sliding fee scale for eligible families. CCAP also approves providers to participate in the program.

CCAP in Alaska is known as "Parents Achieving Self Sufficiency" (PASS). The Division of Public Assistance (DPA), CCPO, manages the PASS Program. PASS categories are:

PASS I – provides child care assistance to families receiving benefits under the Alaska Temporary Assistance Program (TA).

PASS II – provides child care assistance for up to a twelve-month period to families leaving TA who continue to need child care while working, seeking work, in training or attending school.

PASS III – provides child care assistance to families who are not eligible for PASS I or PASS II and are working, seeking work, in training or attending school.

PASS I Child Care Assistance (CCA) is administered by the CCPO in collaboration with DPA Field Services and Work Service Providers (WSP) statewide. If you are receiving TA, please see your WSP.

PASS II and PASS III CCA is administered by grantees statewide. For regional contact information see reverse side of brochure.



Child Care Licensing

CCPO Child Care Licensing (CCL) recruits providers and licenses, monitors and regulates Child Care Homes, Group Homes and Centers statewide, except for the Municipality of Anchorage (MOA). The CCPO delegates authority for licensing services to the MOA.

CCL collaborates statewide with providers and early childhood partners/stakeholders to improve licensing regulations, health and safety standards and to make on-going improvements in the consistent application of licensing standards.

Visit the CCPO website for CCL Regulations: <http://dhss.alaska.gov/dpa/Pages/ccare/regs.aspx>

For more CCL information contact the office nearest you:

CCPO toll free: 1-888-268-4632

South Central: (907) 269-4500
3601 C Street, Suite 140
Anchorage, AK 99503

Northern: (907) 451-3198
542 4th Avenue, Suite 212
Fairbanks, AK 99701

Southeast: (907) 465-4756
150 3rd Street, Suite 107
Juneau, AK 99811

Municipality of Anchorage: (907) 343-4758
825 L Street, 3rd Floor
Anchorage, AK, 99501
Email: HHSCCL@muni.org

Child Care Program Office

The Division of Public Assistance, Child Care Program Office (CCPO) recruits child care providers and licenses, monitors and regulates child care facilities across the state (except for the Municipality of Anchorage).

The CCPO collaborates statewide with providers and early childhood partners/stakeholders to improve licensing regulations, health and safety standards and to make on-going improvements in the consistent application of licensing standards.

The CCPO licenses Child Care Homes, Group Homes and Centers statewide, except for the Municipality of Anchorage (MOA): the State delegates authority for licensing services to the MOA.

Mission: *We support Families in Accessing Quality Child Care.*

Vision: *Safe, healthy child care is available and affordable for all families in Alaska.*



For information regarding **Child Care Licensing**, please contact the regional office nearest you.

State of Alaska Child Care Program Office

Toll free phone: 1-888-268-4632
Toll free fax: 1-888-224-4536
Email: CCPO@alaska.gov

South Central

Physical Address:
3601 C Street, Suite 140
Anchorage, AK 99503
Mailing Address:
P.O. Box 241809
Anchorage, AK 99524
Phone: (907) 269-4500

Northern

Physical and Mailing Address:
542 4th Avenue, Suite 212
Fairbanks, AK 99701
Phone: (907) 451-3198

Southeast

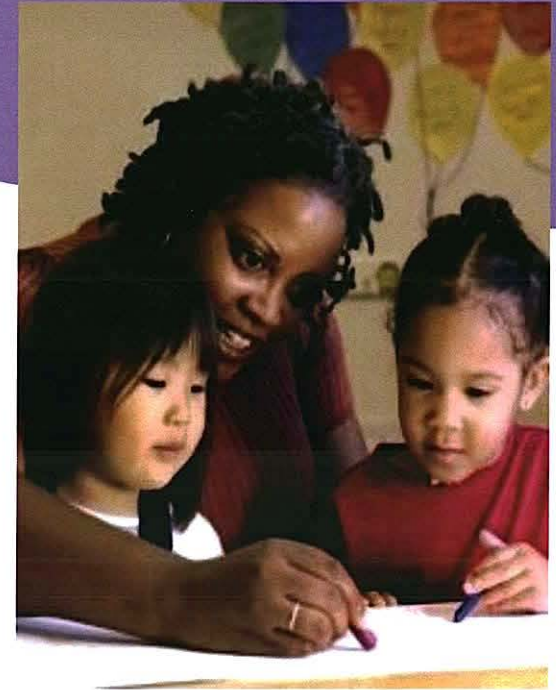
Physical Address:
150 3rd Street, Suite 107
Juneau, AK 99801
Mailing Address:
P.O. Box 110640
Juneau, AK 99811
Phone: (907) 465-4756

Municipality of Anchorage

Physical Address:
825 L Street, 3rd Floor
Anchorage, AK 99501
Mailing Address:
P.O. Box 196650,
Anchorage, AK 99519
Phone: (907) 343-4758
Email: HHSCCL@muni.org



Child Care Licensing



Sean Parnell, Governor
William J. Streur, Commissioner
Department of Health and Social Services
Division of Public Assistance

Child Care Program Office

3601 C Street, Suite 140
Anchorage, Alaska 99503
Phone: (907) 269-4500
Toll free: 1-888-268-4632
Fax: (907) 269-1064
Toll free fax: 1-888-224-4536
Email: CCPO@alaska.gov

Website: <http://dhss.alaska.gov/dpa/Pages/ccare>



Child Care Licensing

The CCPO provides information and technical assistance to individuals interested in becoming licensed and to licensed child care providers of Homes, Group Homes, and Centers.

Licensing Specialists and Supervisors are here to help you through the application process and provide on-going support regarding regulations, statutes, policies and child and family issues. Once licensed, you will receive announced and unannounced inspections during your operating hours.

CCPO Licensing Specialists complete health and safety inspections of child care facilities as well as for pre-elementary schools approved by the Department of Education and Early Development. They also investigate reports of concern and complaints about licensed child care facilities, Approved Providers (In-home, Approved and Approved Relative), and facilities operating without a license.

License Facility Types

- **Child Care Home:** Care is provided for up to 8 children
- **Child Care Group Home:** Care is provided for 9 to 12 children
- **Child Care Center:** Care is provided for 13 or more children

Who Needs a License?

- Anyone providing care to more than a total of 4 children unrelated to the caregiver, outside of the child's own home that does not meet exempt status.
- Approved (non-relative) providers who wish to continue providing child care services after the end of their 12 month approval period (for children whose families receive Child Care Assistance).

Why Become Licensed?

- Be viewed as an early childhood professional.
- Families seek safe and secure child care through licensed providers.
- With a license you may care for more children.
- Licensed providers may participate in the Child Care Grant Program to receive monthly reimbursements for training and operating costs. Contact the CCPO for more information.
- Licensed providers receive increased reimbursement amounts for families receiving Child Care Assistance and may receive access to additional resources and programs.



Application Process

If you are located within the Municipality of Anchorage (MOA), contact the MOA for specific application requirements. If located outside the MOA, contact the regional CCPO office nearest you for an application. See reverse for all office contact information.

A Licensing Specialist is available to assist you in completing the application process and will explain facility types and licensing regulations. They will also conduct an orientation and an on-site health and safety inspection of your facility. This includes a thorough check of all indoor and outdoor premises of your facility. While on-site, your Licensing Specialist will also observe your interactions with children.

It may take up to 90 days from the receipt of a complete application to process and make a decision to license a facility.

Prior to becoming licensed, a fingerprint based background check through the State of Alaska Background Check Program must be passed for all individuals associated with your facility who are 16 years of age or older, except for applicants within the MOA.

Visit the CCPO website for **Child Care Licensing Regulations:**
hss.state.ak.us/dpa/programs/ccare/regs.htm

If you have a concern regarding a child care facility, please call the CCPO toll free: 1-888-268-4632.

Child Care Resource and Referral Network

The Child Care Program Office provides funding to Alaska's Statewide Child Care Resource and Referral Network, **thread**, which offers referral services to parents. **thread** also provides consumer education and training to families, child care providers, and the public regarding quality early care and education. **thread** determines eligibility for the Alaska Inclusive Child Care Program (Alaska IN!). For statewide information visit www.threadalaska.org.

Contact information for regional **thread** offices:

South Central Alaska

Phone: (907) 265-3100

Toll free: 1-800-278-3723

Email: info@threadalaska.org

Southeast Alaska

Phone: (907) 789-1235

Toll free: 1-888-785-1235

Email: info@aeyc-sea.org

Interior/ Northern Alaska

Resource phone: (907) 479-2214

Referral phone: (907) 479-2204

Toll free: 1-866-878-2273

Email: thread@thrivalaska.com



To participate in the Child Care Assistance Program contact the regional office nearest you:

Alaska Family Services: Municipality of Anchorage

(Anchorage, Bird Creek, Chugiak, Eagle River, Girdwood, Joint Base Elmendorf-Richardson)

Phone: 644-5000

Alaska Family Services: Central

(Cordova, Glennallen, Mat-Su Valley, Palmer, Valdez, Wasilla)

Phone: (907) 373-4450

Toll free: 1-866-746-4080

The LeeShore Center: Coastal

(Aleutian Chain, Bristol Bay, Kenai Peninsula, Kodiak, Kotzebue, Nome)

Phone: (907) 283-4707

Toll free: 1-877-855-2227

thread: Northern

(Barrow, Fairbanks North Star Borough, Salcha, Tok, Yukon Kuskokwim Delta)

Phone: (907) 479-2212

Toll free: 1-855-479-2212

Catholic Community Service: Southeast

(Haines, Juneau, Ketchikan, Metlakatla, Petersburg, Prince of Wales, Skagway, Sitka, Wrangell)

Phone: (907) 463-6184

Toll free: 1-800-505-6124

Child Care Program Office:

Statewide: Eligibility for Child Care Assistance PASS I and Approved Providers

Municipality of Anchorage: Eligibility for ALL Providers (Approved, Approved Relative, In-home, Licensed)

Phone: (907) 269-4500

Toll free: 1-888-268-4632



Alaska Inclusive Child Care Program (Alaska IN!)



Sean Parnell, Governor
William J. Streur, Commissioner
Department of Health and Social Services
Division of Public Assistance

Child Care Program Office

3601 C Street, Suite 140

Anchorage, Alaska 99503

Phone: (907) 269-4500

Toll free: 1-888-268-4632

Fax: (907) 269-1064

Toll free fax: 1-888-224-4536

Email: CCPO@alaska.gov

Website: <http://dhss.alaska.gov/dpa/Pages/ccare>

ALASKA IN!: An Inclusive Child Care Program

Eligibility



The Alaska IN! Child Care Program is a statewide, collaborative effort focused on increasing the quality and availability of inclusive child care programs for children with special needs who are participating in the Child Care Assistance Program (CCAP). To be eligible a child must:

- Be age birth through age 12
- Have a diagnosed disability
- Participate in the CCAP
- Receive child care from a provider participating in the CCAP

Services



The Alaska IN! Child Care Program:

- Provides child care referrals, outreach and education to parents of children with special needs
- Provides referrals for training opportunities to providers caring for children with special needs
- Provides additional funding to providers based on each child's individual needs
- Works to expand the availability of quality child care by promoting inclusive practices

To Begin



Contact **thread** and speak to an Alaska IN! Case Manager. The case manager acts as a liaison between parents, the child care provider, and other resources to:

- Assist in finding quality child care
- Determine needed accommodations
- Develop a Provider Training Plan
- Access supplemental funding



Selecting a Child Care Provider

Only child care providers participating in the Child Care Assistance Program may be selected:

A Licensed Child Care Provider has a child care license issued by one of the following: State of Alaska Department of Health & Social Services (DHSS), Municipality of Anchorage, or the Department of Defense/ Coast Guard.

An Approved Provider is approved to participate in the CCAP by the CCPO or by a tribal organization (that meets or exceeds DHSS standards).

An In-home Provider provides care in the family's home for only the CCAP eligible children who live in the home. Other laws and regulations affect this option. Please contact your local Child Care Assistance office for more information.

Alaska's Statewide Child Care Resource and Referral Network, **thread**, offers referral services to parents. **thread** also provides consumer education and training to families, child care providers, and the public regarding quality early care and education. For statewide information visit www.threadalaska.org.

Contact information for regional **thread** offices:

South Central Alaska

Phone: (907) 265-3100

Toll free: 1-800-278-3723

Email: info@threadalaska.org

Southeast Alaska

Phone: (907) 789-1235

Toll free: 1-888-785-1235

Email: info@aeyc-sea.org

Interior/ Northern Alaska

Resource phone: (907) 479-2214

Referral phone: (907) 479-2204

Toll free: 1-866-878-2273

Email: thread@thrivalaska.com

To apply for the Alaska Temporary Assistance Program call the regional Division of Public Assistance office nearest you:

Anchorage District Office:

Eagle River Job Center:
694-7006 or 269-0001

Gambell Job Center:
269-6599 or toll free: 1-888-876-2477

Muldoon Office:
269-0001

Bethel District Office:

543-2686 or toll free: 1-800-478-2686

Coastal Field Office:

269-8950

Toll free: 1-800-478-4364 or 1-800-478-4372

Fairbanks District Office:

451-2850 or toll free: 1-800-478-2850

Juneau District Office:

465-3537 or toll free: 1-800-478-3537

Kenai Peninsula Job Center:

283-2900 or toll free: 1-800-478-0032

Ketchikan District Office:

225-2135 or toll free: 1-800-478-2135

Kodiak Office:

486-3783 or toll free: 1-888-480-3783

Kotzebue District Office:

442-3451 or toll free: 1-800-478-3451

Mat-Su District Office:

376-3903 or toll free: 1-800-478-7778

Nome District Office:

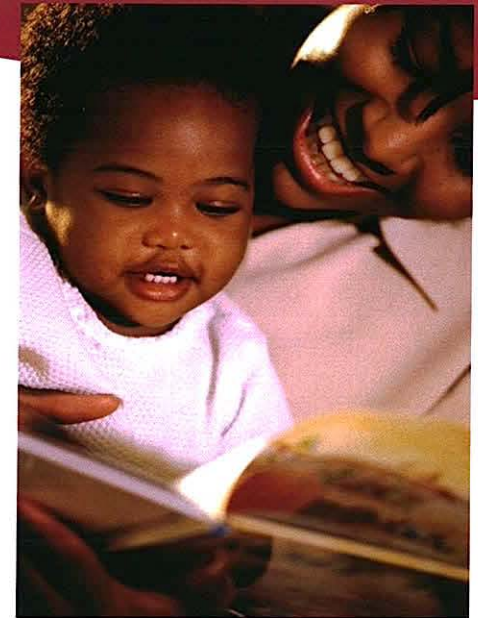
443-2237 or toll free: 1-800-478-2236

Sitka District Office:

747-8234 or toll free: 1-800-478-8234



Child Care Assistance Program PASS I



Sean Parnell, Governor
William J. Streur, Commissioner
Department of Health and Social Services
Division of Public Assistance

Child Care Program Office

3601 C Street, Suite 140

Anchorage, Alaska 99503

Phone: (907) 269-4500

Toll free: 1-888-268-4632

Fax: (907) 269-1064

Toll free fax: 1-888-224-4536

Email: CCPO@alaska.gov

Website: <http://dhss.alaska.gov/dpa/Pages/ccare>



Child Care Assistance

The Child Care Assistance Program (CCAP) provides help with child care expenses based on a sliding fee scale for eligible families. The CCAP in Alaska is known as “Parents Achieving Self Sufficiency” (PASS). The Division of Public Assistance, Child Care Program Office (CCPO) manages the PASS Program. PASS categories are:

PASS I – provides child care assistance to families receiving benefits under the Alaska Temporary Assistance Program (TA).

PASS II – provides child care assistance for up to a twelve-month period to families leaving TA who continue to need child care while working, seeking work, in training or attending school.

PASS III – provides child care assistance to families who are not eligible for PASS I or PASS II and are working, seeking work, in training or attending school.

PASS I Child Care Assistance (CCA) is administered by the CCPO in collaboration with DPA Field Services, and Work Service Providers (WSP) statewide. If you are receiving TA, please see your WSP.

PASS II and PASS III CCA is administered by child care assistance grantees statewide. Visit the CCPO website for regional CCA contact information:

<http://dhss.alaska.gov/dpa/Pages/ccare>

PASS I Eligibility

Families applying for or receiving TA benefits through DPA may need help in covering child care costs. Parent(s) are referred by DPA to the appropriate WSP providing case management, job coaching, structured work search, job referrals and employment services in their community. Families are assisted in obtaining needed child care and issued PASS I CCA if they meet program requirements.

PASS I CCA is a supportive service issued to parent(s) while they are engaged in an approved activity on their Family Self-Sufficiency Plan such as: work, work search/readiness, or family-support activities. PASS I CCA may also be available if work or an approved activity will begin within a month, and without immediate child care coverage a space would be unavailable with their eligible child care provider.

Children must be under the age of 13, or up to the age of 19, if they have a diagnosed developmental disability or required court supervision stating the child must be in care of an adult. Children may receive PASS I CCA if they are:

- A dependent child included in the TA case;
- A child for whom the parent(s) is acting 'in loco parentis' (in place of a parent); or
- A dependent child not included in the TA case because the parent(s) receive Social Security Income benefits

Child Care Coverage

If eligible for PASS I CCA, a Child Care Authorization is issued covering the timeframe the family is eligible for and is based on: a comparison of the parents' expected participation in approved activities; the need for sleep time; the need for travel time to each of the parent(s) approved activities and child care; and the selected child care provider's hours of operation.

Child care providers must become eligible to participate in the CCAP. For more information see **Selecting a Child Care Provider**.

Provider Payment

Families are responsible, on a monthly basis, for paying any costs charged to their child care provider which are over the authorized amount or for care used outside of authorized timeframes. There are no contribution costs (co-pay) for families receiving PASS I CCA.

The CCPO will, on a monthly basis, pay the authorized child care amount directly to the child care provider, if billed.



Selecting a Child Care Provider

Only child care providers participating in the Child Care Assistance Program may be selected:

A Licensed Child Care Provider has a child care license issued by one of the following: State of Alaska Department of Health & Social Services (DHSS), Municipality of Anchorage, or the Department of Defense/ Coast Guard.

An Approved Provider is approved to participate in the CCAP by the CCPO or by a tribal organization (that meets or exceeds the standards of the DHSS).

An In-home Provider provides care in the family's home for only the CCAP eligible children who live in the home. Other laws and regulations affect this option. Please contact your local Child Care Assistance office for more information.

Alaska's Statewide Child Care Resource and Referral Network, **thread**, offers referral services to parents. **thread** also provides consumer education and training to families, child care providers, and the public regarding quality early care and education. For statewide information visit www.threadalaska.org.

Contact information for regional **thread** offices:

South Central Alaska

Phone: (907) 265-3100
Toll free: 1-800-278-3723
Email: info@threadalaska.org

Southeast Alaska

Phone: (907) 789-1235
Toll free: 1-888-785-1235
Email: info@aeyc-sea.org

Interior/ Northern Alaska

Resource phone: (907) 479-2214
Referral phone: (907) 479-2204
Toll free: 1-866-878-2273
Email: thread@thrivalaska.com

To apply for PASS II or PASS III Child Care Assistance contact the regional office nearest you:

Alaska Family Services: Municipality of Anchorage

(Anchorage, Bird Creek, Chugiak, Eagle River, Girdwood, Joint Base Elmendorf-Richardson)
Phone: 644-5000

Alaska Family Services: Central

(Cordova, Glennallen, Mat-Su Valley, Palmer, Valdez, Wasilla)
Phone: (907) 373-4450
Toll free: 1-866-746-4080

The LeeShore Center: Coastal

(Aleutian Chain, Bristol Bay, Kenai Peninsula, Kodiak, Kotzebue, Nome)
Phone: (907) 283-4707
Toll free: 1-877-855-2227

thread: Northern

(Barrow, Fairbanks North Star Borough, Salcha, Tok, Yukon Kuskokwim Delta)
Phone: (907) 479-2212
Toll free: 1-855-479-2212

Catholic Community Service: Southeast

(Haines, Juneau, Ketchikan, Metlakatla, Petersburg, Prince of Wales, Skagway, Sitka, Wrangell)
Phone: (907) 463-6184
Toll free: 1-800-505-6124

Child Care Program Office:

Statewide: Eligibility for Child Care Assistance PASS I and Approved Providers

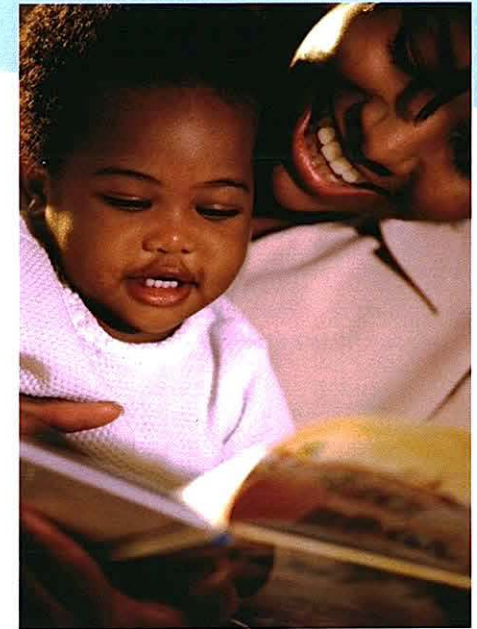
Municipality of Anchorage: Eligibility for ALL Providers (Approved, Approved Relative, In-home, Licensed)

Phone: (907) 269-4500
Toll free: 1-888-268-4632



Child Care Assistance Program

PASS II and PASS III



Sean Parnell, Governor
William J. Streur, Commissioner
Department of Health and Social Services
Division of Public Assistance

Child Care Program Office

3601 C Street, Suite 140
Anchorage, Alaska 99503
Phone: (907) 269-4500
Toll free: 1-888-268-4632
Fax: (907) 269-1064
Toll free fax: 1-888-224-4536
Email: CCPO@alaska.gov
Website: <http://dhss.alaska.gov/dpa/Pages/ccare>



Child Care Assistance

The Child Care Assistance Program (CCAP) provides help with child care expenses based on a sliding fee scale for eligible families. The CCAP in Alaska is known as “Parents Achieving Self Sufficiency” (PASS). The Division of Public Assistance, Child Care Program Office (CCPO) manages the PASS Program. PASS categories are:

PASS I – provides child care assistance to families receiving benefits under the Alaska Temporary Assistance Program (TA).

PASS II – provides child care assistance for up to a twelve-month period to families leaving TA who continue to need child care while working, seeking work, in training or attending school.

PASS III – provides child care assistance to families who are not eligible for PASS I or PASS II and are working, seeking work, in training or attending school.

PASS I Child Care Assistance (CCA) is administered by the CCPO in collaboration with DPA Field Services and Work Service Providers (WSP) statewide. If you are receiving TA, please see your WSP.

PASS II and PASS III CCA is administered by child care assistance grantees statewide. For regional CCA contact information see reverse side of brochure.

Eligibility

You may be eligible for PASS II or PASS III Child Care Assistance to help pay child care costs if you work, go to school, are in job training, or are looking for work. If eligible, you may receive child care assistance for children who are under the age of 13, or up to the age of 19, if your child has a diagnosed developmental disability.

Eligibility is also based on your family size and your gross income (before taxes).

You will need to select a child care provider eligible to participate in the CCAP. For more information, see **Selecting a Child Care Provider**.

Contribution

Depending upon your family’s size and monthly income, you will be responsible to contribute toward your child care costs. The contribution (co-pay) is the amount you are required to pay toward your total cost of child care each month regardless of how many children are in care or the number of hours they are in care.

Visit the CCPO website’s online child care contribution calculator to get an idea of your family’s monthly child care contribution:

<http://dhss.alaska.gov/dpa/Pages/ccare>

Child Care Coverage

If eligible, a Child Care Authorization is issued covering the timeframe for which your family is eligible and is based on: a comparison of the parent(s) expected participation in eligible activities such as work, training or an educational program; the need for sleep time; the need for travel time to each of the parent(s) eligible activities and child care; and the selected child care provider’s hours of operation.

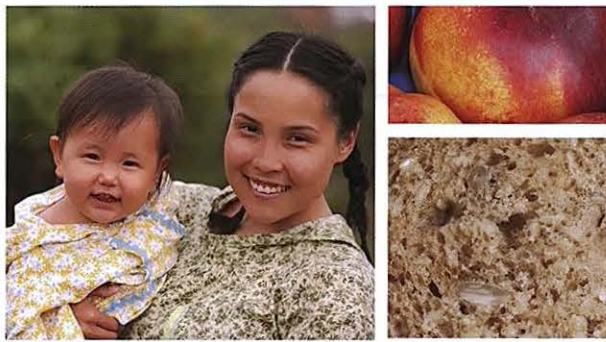
Provider Payment

You will be responsible, on a monthly basis, for paying your contribution and any costs charged by your child care provider which are over the state rate or for care used outside of authorized timeframes.

The CCPO will, on a monthly basis, pay your authorized child care amount minus your contribution directly to your child care provider, if billed.

The Alaska Inclusive Child Care Program (Alaska IN!) also offers assistance to child care providers who care for children with diagnosed developmental disabilities. Please contact your regional **thread** office for more information.





Women in Alaska's Women, Infants and Children WIC program receive free healthy foods like fruits, vegetables, whole grains, milk and eggs, along with breastfeeding support and much more. Healthier diets mean healthier babies who grow and develop better than those whose mothers are at nutritional risk.

In accordance with federal law and Department of Agriculture (USDA) policy, this institution is prohibited from discriminating on the basis of race, color, national origin, sex, age, or disability.

To file a complaint of discrimination, write USDA, Director, Office of Adjudication, 1400 Independence Avenue, SW, Washington, D.C. 20250-9410 or call toll free 866-632-9992 (Voice). Individuals who are hearing impaired or have speech disabilities may contact USDA through the Federal Relay Service at 800-877-8339; or 800-845-6136 (Spanish). USDA is an equal opportunity provider and employer.



Contact Information

ANCHORAGE & MAT-SU

Anchorage area	907-343-4668
Palmer	907-746-4080
Wasilla	907-376-4080

GULF COAST

Homer	907-235-5495
Kenai/Seward	907-283-4172 1-800-687-4172
Kodiak	907-486-1372
Valdez/Copper River Basin/Cordova	844-373-4467

INTERIOR ALASKA

Fairbanks-Resource Center for Parents & Children	907-456-9000
Interior/Fairbanks-Tanana Chiefs Conference	907-451-6682, EXT 3778 1-800-478-6682, EXT 3778

NORTHERN ALASKA

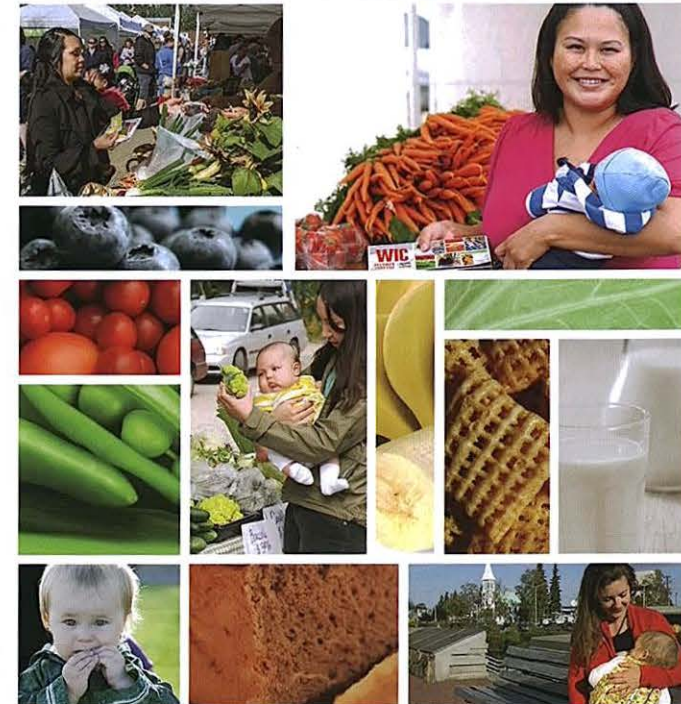
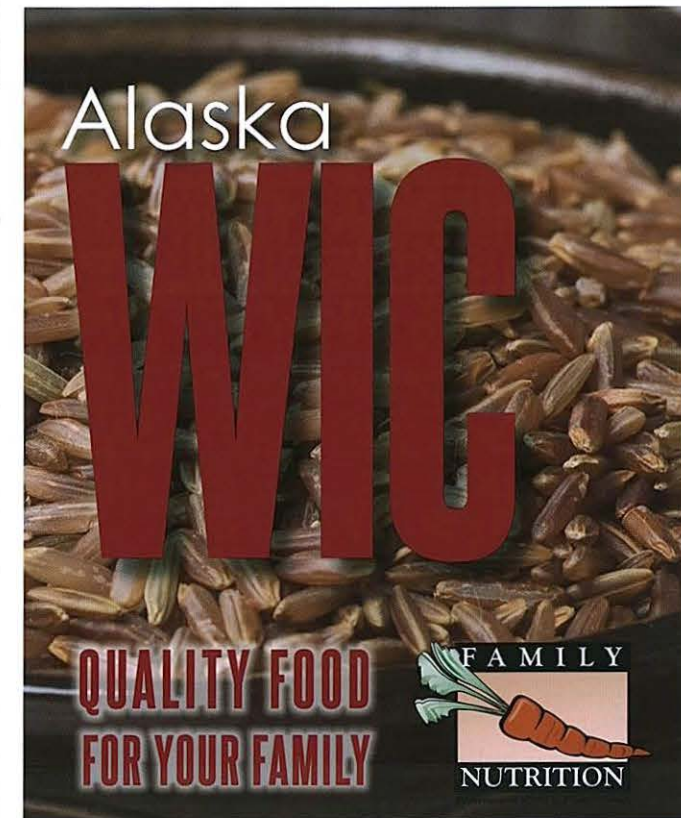
Barrow	907-852-0410
Nome	907-443-3299
Kotzebue	907-442-7181 1-800-478-3312, EXT 7181

SOUTHWEST ALASKA

Aleutians	907-269-3459
Bethel	907-543-6459 1-800-764-6459
Bristol Bay	907-842-2036 1-888-842-2037

SOUTHEAST ALASKA

Juneau	907-463-4099
Ketchikan	907-225-3392
Sitka	907-966-8352
Metlakatla	907-886-5872





Do I qualify?

You qualify for WIC if you:

- ▶ are pregnant, recently gave birth or are breastfeeding, and/or have an infant or child under the age of 5;
- ▶ have a nutritional need; and
- ▶ have a household income that is less than or equal to the income guidelines listed on: <http://alaska.gov/go/ZQM9>.

You are already qualified if you:

- ▶ Receive Medicaid, ATAP, food stamps, free & reduced price school lunches, Denali KidCare, or are a foster parent of a child under 5.

How does it work?

Make an appointment by calling the WIC clinic nearest you or visit our website at FamilyNutrition.alaska.gov.

You can receive **monthly food vouchers**, which can be used at local grocery stores. These nutritious foods keep women, infants and children on track for healthy development during times of growth.

You will also receive **information on nutrition**, shopping for food, healthy meal planning, breastfeeding support and more.

You will receive **health referrals** for immunizations and other needed services for your family.

Approved foods

In addition to milk, cereal, cheese, eggs, juice, peanut butter and beans you will also receive:

More variety!

- ▶ Fresh, canned and frozen fruits and vegetables each month
- ▶ Whole grains like whole wheat bread, brown rice, soft corn tortillas, whole wheat tortillas, whole wheat pasta and oatmeal
- ▶ Canned salmon, tuna, mackerel and sardines for fully breastfeeding moms
- ▶ Soy beverage in place of milk
- ▶ Some tofu in place of milk
- ▶ Yogurt

Changes to support a healthy lifestyle!

- ▶ Less milk and only lower fat milk for everyone over 2 years old
- ▶ Less cheese, eggs and juice

Healthy choices for babies

- ▶ Baby fruits and vegetables for babies over six months
- ▶ Baby food meats for fully breastfed babies over six months



Find playtime places within your community

- Public schools
- Community recreation centers
- Pools
- Park facilities
- Family play groups
- Child care centers



Support for Alaska families
in making nutrition decisions for
lifelong health and well-being.



For more information:

www.fitness.gov
www.gameskidsplay.net
www.cdc.gov
www.smallsteps.gov

Alaska Department of Health and Social Services
Division of Public Assistance
Family Nutrition Services

P.O. Box 110612
Juneau, AK 99811
Phone: (907) 465-3100
Fax: (907) 465-3416

www.familynutrition.alaska.gov
E-mail: wic@alaska.gov

USDA is an equal opportunity provider

Playtime ... so good for me!



Play more ...

- Dance and move to music.
- Play indoors and outdoors: hopscotch, hide-n-seek or make a marching band.
- Take a walk together.
- Let your baby crawl and explore safely.
- Encourage your children to be active
 - let them play and have fun
 - jump rope, hula hoop, somersault
- Teach your children new skills
 - throw and kick a ball, shoot and dribble a basketball, swim



Sit Less ...

- Turn off the TV one night a week.
- Add a 10-minute activity break for every hour you sit.
- Limit computer use and video games.

Play with your children!

Keeping young children active is important for their health especially as obesity is increasing even among preschool-age children. Plan unstructured play to promote their growth and development.

Goal: _____

