

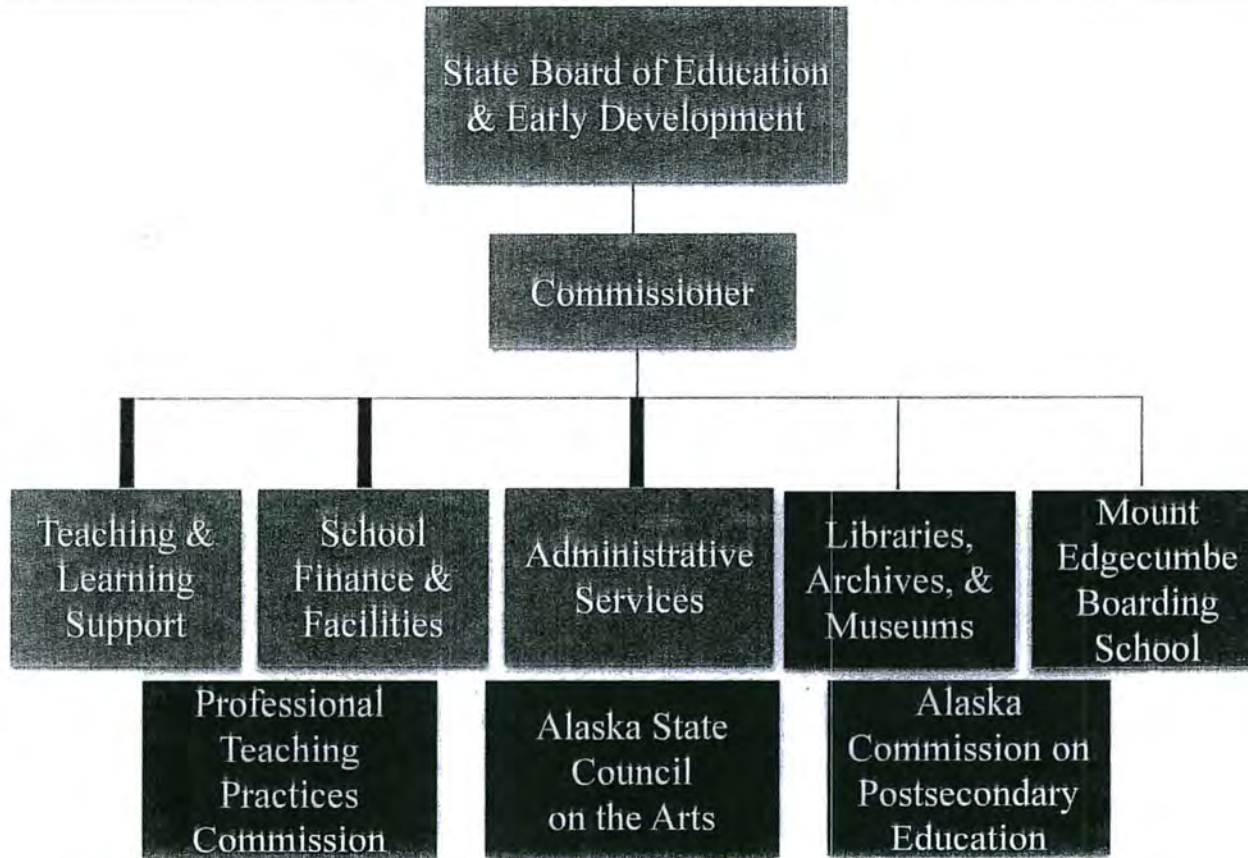
02/02/15
PRESENTATION:
ROLE OF THE
STATE BOARD OF
EDUCATION &
DEED FEDERAL
GRANT PROGRAMS

<TARGET><BILL></BILL><SUBJECT>02-02-15 PRESENTATION
ROLE OF THE STATE BOARD OF EDUCATION and DEED FEDERAL
GRANT PROGRAMS</SUBJECT><COMM>HEDC29</COMM></TARGET>

House Education Committee

Role of the State Board of Education &
Department of Education & Early Development
Federal Grant Programs and Corresponding Mandates

Structure



State Board of Education & Early
Development

Duties as described in 14.07.145-14.07.170

Appoints a commissioner

Promulgates regulations for the implementation of statutes.

Approves charter schools and state boarding schools.

Reports annually to the legislature

Sets graduation requirements.

May adopt bylaws for the management of the department.



Duties as Described in 14.07.145

Appointed by and serves at the pleasure of the State Board of Education

Employs and removes all exempt, partially exempt, and classified personnel

Responsibility and authority for the preparation and execution of budget and other fiscal affairs of the department

Operates under the guidance of the State Board

Represents the governor as a member of his Cabinet

Works with legislature to promote governor's priorities and assist with legislative priorities

Sets the vision and direction for the department

Federal Funds

- Elementary & Secondary Education Act (ESEA) funds
- Individuals with Disabilities Act (IDEA) funds
- Carl Perkins Vocational Education Funds

Elementary and Secondary Education Act

- Passed in 1965 as part of President Lyndon B. Johnson's "War on Poverty"
- Provides supplementary funding for elementary and secondary education emphasizing providing each child with fair and equal opportunities for academic achievement
- Most recent reauthorization was in 2001 as the No Child Left Behind Act
- Federal programs include:
 - Title I - Improving the Academic Achievement of the Disadvantaged
 - Title IIA - Teacher & Principal Training & Recruiting
 - Title III - Language Instruction for Limited English Proficient and Immigrant Students
 - Title IV B - 21st Century Community Learning Centers
 - Title VI - Flexibility & Accountability
 - Title VIII - Impact Aide
 - Title X C - Homeless Education (McKinney-Vento Education for Homeless Children & Youth Program)

Title I – Improving the Academic Achievement of the Disadvantaged

- Purpose
 - to ensure that all children have a fair, equal, and significant opportunity to obtain a high-quality education and reach, at a minimum, proficiency on challenging state academic achievement standards and state academic assessments
- Title IA – Improving Basic Programs
- Title IA – School Improvement Grants 1003g (SIG)
- Title IC – Education of Migratory Children
- Title ID – Prevention and Intervention Program for Neglected, Delinquent, or At-Risk Youth

Title IA – Improving Basic Programs

- Purpose
 - Provides financial assistance to local educational agencies and schools with high numbers or high percentages of children from low-income families to help ensure that all children meet challenging state academic standards
- Eligibility
 - All State Education Agency (SEA) and Local Education Agency (LEA) are eligible for formula-driven funds based on census data and free & reduced lunch data
- Requirements
 - A plan that identifies strategies to address the needs of low-achieving students (tutoring, instructional materials, small-group instruction, parent involvement, professional development for staff)
- Funding - \$38,150.0

Title IA School Improvement Grants (SIG)

- Purpose
 - Enables states to provide grants to LEAs for assistance with school improvement for the lowest performing schools
- Eligibility
 - SEAs are eligible for formula funds based on funding under Title I (census data) and LEAs are eligible to submit applications for competitive grants for schools identified as lowest performing (priority and focus)
- Requirement
 - Schools must implement one of required intervention models (turnaround, transformation, restart as charter, closure, and 3 new models for next school year: state-defined, early learning, evidence-based whole school reform)
- Funds - \$1,500.0

Title IC Education of Migratory Children

- Purpose
 - To help migrant students overcome challenges of mobility, frequent absences, late enrollment, social isolation, and other difficulties associated with a migratory life, in order that they might succeed in school
- Eligibility
 - SEAs and LEAs are eligible for formula-driven funds based on the number of students who are identified as migratory children
- Requirement
 - Programs and strategies that address the identified needs of migratory children that result from their migratory lifestyle and permit these children to participate effectively in school (tutoring, summer school, book distributions, credit recovery, educational supplies, health & safety education)
- Funds - \$6,875.0

Title ID Prevention and Intervention Programs for Children and Youth who are Neglected, Delinquent, or At-Risk

- Purpose
 - To help provide education continuity for students in correctional institutions so that these youths can make successful transitions to school or employment once they are released
- Eligibility
 - LEAs are eligible based on the number of students served by an institutional facility within their district
- Requirements
 - Provide supplementary education services and transition services to students in correctional institutions (counseling support, tutoring, instructional materials)
- Funds – \$250.0

Title IIA Teacher and Principal Training and Recruiting

- Purpose
 - To increase student academic achievement through strategies such as improving teacher and principal quality and increasing the number of highly qualified teachers in the classroom and highly qualified principals in schools
- Eligibility
 - SEAs and LEAs are eligible for formula-driven funds based on census data
- Requirements
 - Programs and strategies aimed at recruiting, retaining, and training highly qualified teachers and principals (professional development, literacy or math coaches, Alaska School Leadership Institute, RTI conference, recruitment bonuses)
- Funds - \$10,870.0

Title IIB Mathematics and Science Partnerships

- Purpose
 - To improve the academic achievement of students in the areas of mathematics and science
- Eligibility
 - SEAs are eligible for formula funds based on funding under Title I (census data) and LEAs are eligible to submit application for competitive grant.
- Requirements
 - Partnership between an institution of higher education, a high-need district for the purpose creating opportunities for enhanced and ongoing professional development of mathematics and science teachers (summer workshops, professional development, teacher stipends)
- Funds - \$750.0

Title III – Language Instruction for Limited English Proficient and Immigrant Students

- Purpose
 - To increase English proficiency and academic achievement of limited English proficient children in the core academic subjects
- Eligibility
 - SEAs are eligible for formula-driven funds. LEAs must have a minimum number of Limited English Proficient (LEP) students to qualify for funding.
- Requirements
 - Provide language instruction educational programs and professional development to teachers, principals, or other staff who work with LEP students
- Funds - \$1,200.0

Title IVB – 21st Century Community Learning Centers

- Purpose
 - Establish or expand activities in community learning centers that provide academic enrichment opportunities during non-school hours for children, particularly students who attend high-poverty and low-performing schools
- Eligibility
 - LEAs and non-profit organizations are eligible through a competitive grant process
- Requirements
 - Before-school, after-school, or summer activities to enhance academic performance and positive youth development (adult mentoring, tutoring)
- Funds - \$5,630.0

Title VI – Flexibility and Accountability

- Purpose
 - To allow SEAs and LEAs flexibility to target federal funds to federal programs that most effectively address the unique needs of states and localities
- Title VI A – Improving Academic Achievement
- Title VI B(1) – Small, Rural School Achievement Program (SRSA)
- Title VI B(2) – Rural and Low-Income Schools Program (RLIS)

Title VI A – Improving Academic Achievement

- Purpose
 - To pay the costs of the development and implementation of state assessments and standards that are required by ESEA
- Eligibility
 - All SEAs are eligible for \$3 million of funding with additional funding prorated based on the census data that drives Title I
- Requirement
 - Plans to development, implement, disseminate information about state assessments and standards
- Funds - \$3,500.0

Title VI B(1) – Small, Rural School Achievement Program (SRSA)

- Purpose
 - To address the unique needs of rural school districts that frequently lack the personnel and resources needed to compete effectively for Federal competitive grants and receive formula grant allocations in amounts too small to be effective in meeting their intended purposes
- Eligibility
 - LEA is eligible if it meets definition of rural based on student count and population density. Funding is provided directly by US ED to LEAs
- Requirement
 - Use of funds as authorized under any of the following provisions: Title IA; Title II; Title III; Title IV; Title V. May combine/pool funds provided for these provisions.
- Funds - \$20.0
 - Funds allocated to EED are passed through from US ED to Mt. Edgecumbe Boarding School

Title VI B(2) – Rural and Low-Income School Program (RLIS)

- Purpose
 - Address the unique needs of rural school districts that frequently lack the personnel and resources needed to compete effectively for federal competitive grants and receive formula grant allocations in amounts too small to be effective in meeting their intended purposes
- Eligibility
 - SEAs are eligible to apply on behalf of LEAs with 20% or more children ages 5-17 from families with incomes below the poverty line.
- Requirement
 - Funds may be used for teacher recruitment and retention, professional development, educational technology, parental involvement activities, Title IA authorized activities, Title III authorized activities.
- Funds - \$88.0

Title X- Homeless Education (McKinney-Vento Homeless Education Assistance Act of 2001)

- Purpose
 - To ensure that each child of a homeless individual and each homeless youth has equal access to the same free, appropriate public education as provided to other children and youths
- Eligibility
 - SEAs are eligible based on the number of students identified as homeless children and youth. LEAs are eligible through competitive grant process.
- Requirements
 - Activities for, and service to homeless children that enable such children to enroll in, attend, and succeed in school (assistance with transportation, clothing, laundry, eyeglasses, tutoring, professional development for school staff)
- Funding - \$170.0

Individuals with Disabilities Act Title VI

- Purpose
 - To ensure that all children with disabilities have available to them a free appropriate public education that emphasizes special education and related services designed to meet their unique needs and prepare them for further education, employment, and independent living
- Eligibility
 - All SEAs eligible for funding based on average daily membership of LEAs; LEAs are eligible based on average daily membership and number of students living in poverty.
- Requirements
 - Districts are required to provide service for the identification and support of students with disabilities or for students age birth – 2 years with development delays (staff, programs, equipment, instructional supplies)
- Funds - \$36,130.0 general; \$1,175.0 preschool

Carl D. Perkins Vocation and Applied Technology Education Act

- Purpose
 - To develop the academic, vocational, and technical skills of secondary students and post-secondary students who elect to enroll in vocational and technical education programs
- Eligibility
 - SEA funding is based on the state's population in certain age groups and per-capita income. LEAs must have a sufficient number of students to generate a minimum allocation of \$15,000.
- Requirements
 - Develop plans to strengthen the academic and career/technical skills of CTE students
- Funds - \$4,215.0

Herman, Marcy J (EED)

From: Herman, Marcy J (EED)
Sent: Tuesday, February 03, 2015 5:03 PM
To: 'Janet Ogan'
Cc: Peterson, Darwin R (GOV); Wilcox, Lacy (GOV sponsored)
Subject: (H) EDC Follow up Responses from 2.2.15 Hearing
Attachments: ACPE Component Detail FY11 MP to FY16 Gov Amend.pdf; 2014SchoolEnrollment.pdf; Minimum Expenditure Calculation.pdf

Dear Janet,

Included within the body of this email and corresponding attachments are the responses to questions from Monday's hearing on federal programs and mandates at EED.

1. Rep. Colver would like to see the growth of the ACPE over the years.

DEED response: Please see the attached document titled: "ACPE Component Detail FY11 MP to FY16 Gov. Amended.pdf". This document shows both funding and staffing levels from FY2011 Management Plan through the FY2016 Governor Amended budget.

2. Rep. Vazquez would like an explanation of the National School Lunch Program.

DEED response: The National School Lunch Program (NSLP) is a federally funding program whose main purpose is to provide reimbursement to school districts for meals in compliance with U.S. Department of Agriculture (USDA) regulations. It provides approximately 50,000 meals to Alaska children daily; 50% of the students are eligible for free or reduced-price meals. The amount of federal funding provided for the National School Lunch Program is \$41 million, 100% of which goes to districts to operate their meal programs.

Another question on the NSLP related to a school or district providing a free lunch to students whose families may not meet the income eligibility requirements. This is permitted through a Universal Feeding Program whereby all students in a school may receive a free lunch if the school has a very high percentage of its students who qualify for a free or reduced lunch. This is permitted by the USDA in order to lessen annual paperwork requirements and to increase meal participation at low-income schools. Providing a Universal Feeding Program has nothing to do with the Title I funding received by a school, nor does it increase a school's Title I funding.

3. Rep. Reinbold would like to know if there is a food recycling program on school lunches to homeless shelters or similar food-supplying programs.

DEED response: Share tables are encouraged and supported by our office and USDA - see USDA policy memo <http://www.fns.usda.gov/guidance-food-donation-program-child-nutrition-programs> . This information has been disseminated to all districts. Children may share the food or it may be donated to food charities.

4. Rep. Reinbold asked whether or not children whose families receive welfare or other support are also eligible for free meals.

DEED response: This practice is required by USDA. For example, children whose families qualify for Supplemental Nutrition Assistance Program (food stamps) or children who are in foster care automatically qualify for free lunch.

5. Rep. Vazquez would like a listing of districts and schools.

DEED response: Please see attached document "2014 School Enrollment.pdf".

6. Rep. Vazquez would like the department to put forward budget cutting proposals in addition to the cuts being put forward by Governor's budget.

DEED response: The Governor's FY2016 Budget detail will be made public soon and the department can share that with the H EDC when that detail is public.

7. Rep. Reinbold would like to know the number of EED employees in FY15 vs. FY16 proposed.

DEED response:

	FY2015 Management Plan	FY2016 Governor Amended
Full-time	331	329
Part-time	15	15
Non-perm	18	15
Total Positions	364	359

8. Rep. Vazquez would like to know what of the \$1.7 billion department budget is GF and what is federal funds in dollar amounts.

DEED response:

	FY2016 Governor Amended
Undesignated General Funds (UGF)	56,445.6
Designated General Funds (DGF)	1,418,101.6
Federal	232,003.7
Other	26,322.2
Total	1,732,873.1

* Total includes school debt reimbursement of \$128,423.0 (UGF & DGF).

* Total general funds (UGF + DGF) = \$1,474,547.2

9. Rep. Vazquez would like to know how the term instruction is defined related to the 70/30 minimum expenditure on instruction.

DEED response: The definition of instruction is provided by statute at AS 14.17.520 Minimum expenditure for instruction. Please see attached document "Minimum Expenditure Calculation.pdf" for the required categories under the 70/30 minimum expenditures for instruction.

10. A question unattributed to a committee member was asked on how many Title I Schools there are in Alaska.

DEED response: There are 291 Title I schools out of 509 total schools in operation during the 2014-2015 school year.

Please let me know if you have difficulty opening these attachments. I will make copies and bring them to committee in the morning as we have discussed.

Thank you Janet,

Marcy

Marcy Herman

Special Assistant to the Commissioner

Alaska Department of Education & Early Development

P.O. Box 110500

Juneau, AK 99811

(907)465-2803

Component Detail (1077)
Department of Education and Early Development

DRAFT

Component: Program Administration & Operations (AR 18005) (2738)

RDU: Alaska Postsecondary Education Commission (68)

	FY2011 Management Plan (8230)	FY2012 Management Plan (9056)	FY2013 Management Plan (9920)	FY2014 Management Plan (10697)	FY2015 Management Plan (11493)	DEED FY2016 Governor's Amended (12192)
71000 Personal Services	9,052.9	9,551.6	10,298.1	10,705.8	11,015.4	11,412.7
72000 Travel	117.7	117.7	117.7	117.7	117.7	117.7
73000 Services	4,289.3	5,137.3	4,542.7	5,638.7	5,612.6	5,421.6
74000 Commodities	108.2	108.2	108.2	108.2	108.2	108.2
75000 Capital Outlay	0.0	0.0	0.0	0.0	0.0	0.0
77000 Grants, Benefits	540.0	3,140.0	4,000.0	4,000.0	5,500.0	5,750.0
78000 Miscellaneous	0.0	0.0	0.0	0.0	0.0	0.0
Totals	14,108.1	18,054.8	19,066.7	20,570.4	22,353.9	22,810.2
<u>Funding Sources:</u>						
1002Fed Rcpts (Fed)	802.5	1,917.0	1,926.8	1,984.1	1,987.1	2,009.4
1004Gen Fund (UGF)	650.0	3,000.0	3,000.0	0.0	0.0	0.0
1007I/A Rcpts (Other)	0.0	158.0	160.1	1,167.6	1,409.5	1,066.0
1106P-Sec Rcpt (Other)	12,555.6	12,879.8	12,879.8	13,318.7	13,274.5	13,802.0
1108Stat Desig (Other)	100.0	100.0	100.0	100.0	100.0	100.0
1226High Ed (DGF)	0.0	0.0	1,000.0	4,000.0	5,582.8	5,832.8
<u>Funding Totals:</u>						
Unrestricted General (UGF)	650.0	3,000.0	3,000.0	0.0	0.0	0.0
Designated General (DGF)	0.0	0.0	1,000.0	4,000.0	5,582.8	5,832.8
Other	12,655.6	13,137.8	13,139.9	14,586.3	14,784.0	14,968.0
Federal	802.5	1,917.0	1,926.8	1,984.1	1,987.1	2,009.4
<u>Positions:</u>						
Permanent Full Time	98	97	95	95	95	95
Permanent Part Time	0	0	0	0	0	0
Non Permanent	4	4	11	11	11	11

Component Detail (1077)
Department of Education and Early Development

DRAFT

Component: WWAMI Medical Education (AR 18022) (953)

RDU: Alaska Postsecondary Education Commission (68)

	FY2011 Management Plan (8230)	FY2012 Management Plan (9056)	FY2013 Management Plan (9920)	FY2014 Management Plan (10697)	FY2015 Management Plan (11493)	DEED FY2016 Governor's Amended (12192)
71000 Personal Services	0.0	0.0	0.0	0.0	0.0	0.0
72000 Travel	0.0	0.0	0.0	0.0	0.0	0.0
73000 Services	2,964.8	2,964.8	2,964.8	2,964.8	2,964.8	2,964.8
74000 Commodities	0.0	0.0	0.0	0.0	0.0	0.0
75000 Capital Outlay	0.0	0.0	0.0	0.0	0.0	0.0
77000 Grants, Benefits	0.0	0.0	0.0	0.0	0.0	0.0
78000 Miscellaneous	0.0	0.0	0.0	0.0	0.0	0.0
Totals	2,964.8	2,964.8	2,964.8	2,964.8	2,964.8	2,964.8
<u>Funding Sources:</u>						
1004Gen Fund (UGF)	2,964.8	2,964.8	2,964.8	2,964.8	2,964.8	2,964.8
<u>Funding Totals:</u>						
Unrestricted General (UGF)	2,964.8	2,964.8	2,964.8	2,964.8	2,964.8	2,964.8
Designated General (DGF)	0.0	0.0	0.0	0.0	0.0	0.0
Other	0.0	0.0	0.0	0.0	0.0	0.0
Federal	0.0	0.0	0.0	0.0	0.0	0.0
<u>Positions:</u>						
Permanent Full Time	0	0	0	0	0	0
Permanent Part Time	0	0	0	0	0	0
Non Permanent	0	0	0	0	0	0

Attachment for Question #5

Alaska Department of Education & Early Development
Assessment, Accountability, and Student Information
School Enrollment by Grade as of October 1, 2013
FY 2014

District	School	PK	KG	1	2	3	4	5	6	7	8	9	10	11	12	Total KG-12	Total PK-12
Alaska Gateway School District																	
	Alaska REACH Academy	0	7	4	7	3	7	8	5	8	4	17	12	7	11	100	100
	Dot Lake School	0	1	0	0	0	1	0	0	1	1	1	1	4	0	10	10
	Eagle Community School	0	2	3	1	3	2	3	2	3	2	1	1	1	2	26	26
	Mentasta Lake School	1	4	3	5	3	2	2	3	5	1	4	3	0	0	35	36
	Tanacross School	0	2	3	2	2	2	3	2	2	1	0	0	0	0	19	19
	Tetlin School	0	6	4	5	1	5	4	1	1	3	4	0	0	0	34	34
	Tok School	1	19	15	14	12	11	10	16	12	10	10	11	6	6	152	153
	Walter Northway School	1	6	5	3	6	3	5	4	1	4	7	1	1	0	46	47
	Alaska Gateway Schools Total	3	47	37	37	30	33	35	33	33	26	44	29	19	19	422	425
Aleutian Region School District																	
	Adak School	0	2	3	2	5	2	1	2	1	0	1	1	0	1	21	21
	Yakov E. Netsvetov School	0	4	0	0	1	1	1	0	2	2	0	1	1	1	14	14
	Aleutian Region School District Total	0	6	3	2	6	3	2	2	3	2	1	2	1	2	35	35
Aleutians East Borough School District																	
	Akutan School	5	0	2	3	0	0	1	1	0	0	3	0	2	1	13	18
	Cold Bay School	1	0	1	0	0	2	2	2	1	2	0	0	0	1	11	12
	False Pass School	2	0	1	0	1	1	1	0	1	1	0	0	0	0	6	8
	King Cove School	12	7	7	8	7	3	9	7	8	9	5	7	6	5	88	100
	Sand Point School	16	3	12	7	8	8	6	9	3	9	8	7	4	11	95	111
	Aleutians East Borough SD Total	36	10	23	18	16	14	19	19	13	21	16	14	12	18	213	249
Anchorage School District																	
	Abbott Loop Elementary	0	42	61	57	56	57	59	45	0	0	0	0	0	0	377	377
	Airport Heights Elementary	0	54	48	35	42	47	48	37	0	0	0	0	0	0	311	311
	Alaska Native Cultural Charter School	16	44	42	41	32	37	25	28	19	19	0	0	0	0	287	303
	Alaska State School Deaf & Hard of Hearing	1	4	1	3	1	6	2	2	1	3	4	0	4	4	35	36
	Alpenglow Elementary	2	74	75	92	86	72	83	72	0	0	0	0	0	0	554	556
	Aquarian Charter School	0	61	60	60	56	52	47	41	0	0	0	0	0	0	377	377
	Aurora Elementary	2	49	67	48	56	55	39	42	0	0	0	0	0	0	356	358
	Avail School	0	0	0	0	0	0	0	0	0	0	0	6	23	32	61	61
	Bartlett High School	0	0	0	0	0	0	0	0	0	0	456	411	372	373	1,612	1,612

District	School	PK	KG	1	2	3	4	5	6	7	8	9	10	11	12	Total KG-12	Total PK-12
	Baxter Elementary	0	61	58	52	61	49	48	58	0	0	0	0	0	0	387	387
	Bayshore Elementary	1	57	66	65	71	60	72	86	0	0	0	0	0	0	477	478
	Bear Valley Elementary	0	55	40	50	65	55	56	68	0	0	0	0	0	0	389	389
	Benson Secondary/S.E.A.R.C.H.	0	0	0	0	0	0	0	0	0	10	16	26	54	149	255	255
	Birchwood ABC Elementary	0	49	63	62	47	53	40	11	0	0	0	0	0	0	325	325
	Bowman Elementary	23	72	71	64	66	71	65	55	0	0	0	0	0	0	464	487
	Campbell Elementary	25	51	58	45	47	53	52	47	0	0	0	0	0	0	353	378
	Central Middle School of Science	0	0	0	0	0	0	0	0	257	234	0	0	0	0	491	491
	Chester Valley Elementary	0	45	44	35	37	37	42	1	0	0	0	0	0	0	241	241
	Chinook Elementary	0	83	66	82	69	53	53	60	0	0	0	0	0	0	466	466
	Chugach Optional Elementary	0	36	36	36	39	36	41	31	0	0	0	0	0	0	255	255
	Chugiak Elementary	0	86	92	77	58	73	81	0	0	0	0	0	0	0	467	467
	Chugiak High School	0	0	0	0	0	0	0	0	0	0	304	265	264	273	1,106	1,106
	Clark Middle School	0	0	0	0	0	0	0	365	380	381	0	0	0	0	1,126	1,126
	College Gate Elementary	0	63	50	49	50	46	43	55	0	0	0	0	0	0	356	356
	Creekside Park Elementary	37	82	81	74	58	77	67	0	0	0	0	0	0	0	439	476
	Crossroads School	0	0	0	0	0	0	0	0	0	0	1	1	8	20	30	30
	Denali Montessori Elementary	16	63	54	57	61	50	56	48	0	0	0	0	0	0	389	405
	Dimond High School	0	0	0	0	0	0	0	0	0	0	427	433	408	381	1,649	1,649
	Eagle Academy Charter School	0	25	25	26	26	26	26	22	0	0	0	0	0	0	176	176
	Eagle River Elementary	17	74	66	62	54	46	53	29	0	0	0	0	0	0	384	401
	Eagle River High School	0	0	0	0	0	0	0	0	0	0	237	212	200	178	827	827
	East High School	0	0	0	0	0	0	0	0	0	0	593	567	492	487	2,139	2,139
	Fairview Elementary	24	66	66	46	62	58	53	46	0	0	0	0	0	0	397	421
	Family Partnership Charter School	0	31	28	31	25	30	41	32	40	31	44	51	79	97	560	560
	Fire Lake Elementary	4	44	60	61	64	47	64	0	0	0	0	0	0	0	340	344
	Frontier Charter School	0	10	8	10	5	15	17	10	22	30	31	39	43	73	313	313
	Girdwood School	0	29	20	28	24	24	18	16	11	16	0	0	0	0	186	186
	Gladys Wood Elementary	17	54	60	45	58	58	47	61	0	0	0	0	0	0	383	400
	Goldenview Middle School	0	0	0	0	0	0	0	0	362	340	0	0	0	0	702	702
	Government Hill Elementary	0	74	65	66	70	65	61	54	0	0	0	0	0	0	455	455
	Gruening Middle School	0	0	0	0	0	0	0	0	300	308	0	0	0	0	608	608
	Hanshaw Middle School	0	0	0	0	0	0	0	0	399	392	0	0	0	0	791	791
	Highland Tech High Charter School	0	0	0	0	0	0	0	22	28	34	37	26	28	37	212	212
	Homestead Elementary	2	38	48	43	54	49	48	39	0	0	0	0	0	0	319	321
	Huffman Elementary	0	46	48	43	65	51	60	53	0	0	0	0	0	0	366	366
	Inlet View Elementary	0	37	39	32	33	29	39	26	0	0	0	0	0	0	235	235
	Kasuun Elementary	22	60	57	59	52	59	77	64	0	0	0	0	0	0	428	450
	Kincaid Elementary	2	84	75	62	70	76	78	71	0	0	0	0	0	0	516	518

District	School	PK	KG	1	2	3	4	5	6	7	8	9	10	11	12	Total KG-12	Total PK-12
	Klatt Elementary	0	66	57	57	50	60	55	61	0	0	0	0	0	0	406	406
	Lake Hood Elementary	19	50	46	43	42	51	50	62	0	0	0	0	0	0	344	363
	Lake Otis Elementary	1	63	73	57	56	51	60	59	0	0	0	0	0	0	419	420
	McLaughlin Secondary School	0	0	0	0	0	0	0	0	2	2	11	20	33	27	95	95
	Mears Middle School	0	0	0	0	0	0	0	0	387	430	0	0	0	0	817	817
	Mirror Lake Middle School	0	0	0	0	0	0	0	184	250	222	0	0	0	0	656	656
	Mountain View Elementary	19	60	60	54	49	54	50	0	0	0	0	0	0	0	327	346
	Mt. Spurr Elementary	1	56	64	38	40	38	19	29	0	0	0	0	0	0	284	285
	Muldoon Elementary	0	65	69	63	64	68	63	0	0	0	0	0	0	0	392	392
	Nicholas J. Begich Middle School	0	0	0	0	0	0	0	345	340	318	0	0	0	0	1,003	1,003
	North Star Elementary	20	66	54	59	43	65	63	54	0	0	0	0	0	0	404	424
	Northern Lights ABC K-8 School	0	66	66	71	74	73	71	76	58	50	0	0	0	0	605	605
	Northwood ABC	44	48	41	46	43	46	44	38	0	0	0	0	0	0	306	350
	Nunaka Valley Elementary	28	42	42	32	41	30	35	0	0	0	0	0	0	0	222	250
	Ocean View Elementary	19	64	63	53	45	62	46	48	0	0	0	0	0	0	381	400
	O'Malley Elementary	2	46	45	45	47	47	59	40	0	0	0	0	0	0	329	331
	Orion Elementary School	2	84	88	64	53	54	54	36	0	0	0	0	0	0	433	435
	Polaris K-12 School	0	34	33	35	36	40	38	44	46	41	37	39	36	25	484	484
	Ptarmigan Elementary	1	61	64	48	77	74	66	0	0	0	0	0	0	0	390	391
	Rabbit Creek Elementary	0	60	66	60	56	65	55	61	0	0	0	0	0	0	423	423
	Ravenwood Elementary	28	49	44	59	59	67	52	57	0	0	0	0	0	0	387	415
	Rilke Schule Charter School	0	89	94	66	65	50	17	25	13	6	0	0	0	0	425	425
	Rogers Park Elementary	0	89	75	94	76	64	69	65	0	0	0	0	0	0	532	532
	Romig Middle School	0	0	0	0	0	0	0	0	413	387	0	0	0	0	800	800
	Russian Jack Elementary	24	64	60	47	67	49	47	0	0	0	0	0	0	0	334	358
	S.A.V.E. High School	0	0	0	0	0	0	0	0	0	0	0	3	31	187	221	221
	Sand Lake Elementary	0	101	89	96	86	96	99	93	0	0	0	0	0	0	660	660
	Scenic Park Elementary	0	75	65	56	74	65	66	0	0	0	0	0	0	0	401	401
	Service High School	0	0	0	0	0	0	0	0	0	0	474	436	428	410	1,748	1,748
	South Anchorage High School	0	0	0	0	0	0	0	0	0	0	387	368	372	322	1,449	1,449
	Spring Hill Elementary	3	58	57	56	51	48	50	61	0	0	0	0	0	0	381	384
	Steller Secondary School	0	0	0	0	0	0	0	0	50	50	48	44	47	37	276	276
	Susitna Elementary	0	77	76	72	72	56	61	0	0	0	0	0	0	0	414	414
	Taku Elementary	27	79	48	63	54	41	51	45	0	0	0	0	0	0	381	408
	The New Path High School	0	0	0	0	0	0	0	0	0	0	0	0	2	15	17	17
	Trailside Elementary	1	70	66	67	51	54	63	69	0	0	0	0	0	0	440	441
	Tudor Elementary	0	55	57	53	53	35	52	51	0	0	0	0	0	0	356	356
	Turnagain Elementary	2	84	77	67	61	56	45	59	0	0	0	0	0	0	449	451
	Ursa Major Elementary	35	70	70	67	62	57	46	45	0	0	0	0	0	0	417	452

District	School	PK	KG	1	2	3	4	5	6	7	8	9	10	11	12	Total KG-12	Total PK-12
	Ursa Minor Elementary	0	69	63	64	53	42	43	41	0	0	0	0	0	0	375	375
	Wendler Middle School	0	0	0	0	0	0	0	2	250	235	0	0	0	0	487	487
	West High School	0	0	0	0	0	0	0	0	0	0	542	475	443	384	1,844	1,844
	Whaley School	42	3	3	8	14	19	11	24	21	29	40	38	26	143	379	421
	William Tyson Elementary	16	79	81	75	61	59	57	0	0	0	0	0	0	0	412	428
	Williwaw Elementary	33	73	61	65	59	63	63	1	0	0	0	0	0	0	385	418
	Willow Crest Elementary	14	60	61	49	47	41	45	57	0	0	0	0	0	0	360	374
	Winterberry School	0	22	28	28	28	30	28	31	18	20	0	0	0	0	233	233
	Wonder Park Elementary	38	50	48	63	58	54	55	0	0	0	0	0	0	0	328	366
	Anchorage School District Total	630	4,050	3,952	3,738	3,687	3,596	3,549	3,560	3,667	3,588	3,689	3,460	3,393	3,654	47,583	48,213

Annette Island School District

	Charles R. Leask Sr. Middle School	0	0	0	0	0	0	0	27	23	28	0	0	0	0	78	78
	Metlakatla High School	0	0	0	0	0	0	0	0	0	0	14	20	19	20	73	73
	Richard Johnson Elementary	3	30	29	20	25	18	16	0	0	0	0	0	0	0	138	141
	Annette Island School District Total	3	30	29	20	25	18	16	27	23	28	14	20	19	20	289	292

Bering Strait School District

	Aniguiin School	18	10	9	9	9	5	9	4	8	7	4	5	5	2	86	104
	Anthony A. Andrews School	26	13	18	10	18	14	15	7	18	11	8	12	6	6	156	182
	Brevig Mission School	20	14	8	11	8	10	6	8	11	5	10	9	4	11	115	135
	Diomedea School	0	1	2	0	3	4	0	2	2	2	1	1	1	2	21	21
	Gambell School	18	13	14	14	23	16	8	19	18	13	9	8	15	14	184	202
	Hogarth Kingeekuk Sr. Memorial School	20	18	20	16	11	11	20	19	18	18	16	10	13	14	204	224
	James C. Isabell School	11	2	3	9	6	2	5	5	5	3	5	7	7	3	62	73
	Koyuk-Malimiut School	19	12	8	4	10	9	9	11	9	7	3	8	6	3	99	118
	Martin L. Olson School	7	4	3	8	2	4	4	1	3	4	3	4	3	3	46	53
	Shaktoolik School	17	3	8	9	6	5	5	7	6	4	4	2	4	7	70	87
	Shishmaref School	32	17	13	21	17	21	12	19	16	15	13	12	12	9	197	229
	Tukurngailnguq School	21	23	14	20	16	17	14	9	14	12	9	12	10	15	185	206
	Unalakleet School	23	13	20	14	10	16	9	12	9	9	17	8	6	15	158	181
	Wales School	6	2	3	3	4	5	4	0	3	0	1	2	1	4	32	38
	White Mountain School	9	5	5	2	2	2	4	5	5	4	1	5	0	5	45	54
	Bering Strait School District Total	247	150	148	150	145	141	124	128	145	114	104	105	93	113	1,660	1,907

District School	PK	KG	1	2	3	4	5	6	7	8	9	10	11	12	Total KG-12	Total PK-12
Bristol Bay Borough School District																
Bristol Bay Middle/High School	0	0	0	0	0	0	0	0	9	16	11	9	8	16	69	69
Naknek Elementary	14	6	9	13	13	12	10	7	0	0	0	0	0	0	70	84
Bristol Bay Borough SD Total	14	6	9	13	13	12	10	7	9	16	11	9	8	16	139	153
Chatham School District																
Angoon School	3	9	7	7	7	3	3	3	7	7	5	6	6	2	72	75
Chatham Correspondence	0	0	0	0	0	0	0	0	0	1	0	1	0	0	2	2
Gustavus School	0	8	6	6	5	7	6	5	2	5	1	5	3	2	61	61
Klukwan School	0	0	0	1	0	1	0	2	2	2	1	2	1	1	13	13
Chatham School District Total	3	17	13	14	12	11	9	10	11	15	7	14	10	5	148	151
Chugach School District																
Chenega Bay School	0	0	1	0	0	1	0	2	2	1	1	0	0	3	11	11
FOCUS Homeschool	20	30	18	21	16	19	17	18	18	13	23	17	14	9	233	253
Tatitlek Community School	1	1	1	0	1	0	2	0	1	0	2	0	2	0	10	11
Whittier Community School	6	3	4	4	0	2	4	2	3	2	3	2	1	1	31	37
Chugach School District Total	27	34	24	25	17	22	23	22	24	16	29	19	17	13	285	312
Copper River School District																
Glennallen Elementary	1	27	22	19	22	22	25	27	0	0	0	0	0	0	164	165
Glennallen Jr/Sr High School	0	0	0	0	0	0	0	0	25	20	25	20	21	26	137	137
Kenny Lake School	1	7	7	7	5	6	7	6	10	11	9	3	7	5	90	91
Slana School	2	1	1	1	2	0	1	1	0	2	0	0	1	0	10	12
Upstream Learning Correspondence	0	1	5	4	6	2	7	6	3	3	3	0	3	3	46	46
Copper River School District Total	4	36	35	31	35	30	40	40	38	36	37	23	32	34	447	451
Cordova City School District																
Cordova Jr/Sr High School	0	0	0	0	0	0	0	0	25	19	20	36	24	21	145	145
Cordova School District Innovative Learning	0	0	0	1	1	0	0	0	0	2	0	0	1	1	6	6
Mt. Eccles Elementary	14	23	27	20	21	22	20	31	0	0	0	0	0	0	164	178
Cordova City School District Total	14	23	27	21	22	22	20	31	25	21	20	36	25	22	315	329

District School	PK	KG	1	2	3	4	5	6	7	8	9	10	11	12	Total KG-12	Total PK-12
Craig City School District																
Craig Alternative High School	0	0	0	0	0	0	0	0	0	0	0	0	2	4	6	6
Craig Elementary	1	23	21	33	23	15	24	0	0	0	0	0	0	0	139	140
Craig High School	0	0	0	0	0	0	0	0	0	0	21	17	29	17	84	84
Craig Middle School	0	0	0	0	0	0	0	24	17	21	0	0	0	0	62	62
PACE Correspondence	0	24	32	37	23	33	37	25	24	19	13	11	10	7	295	295
Craig City School District Total	1	47	53	70	46	48	61	49	41	40	34	28	41	28	586	587
Delta-Greely School District																
Delta Junction Elementary	18	63	59	53	53	0	0	0	0	0	0	0	0	0	228	246
Delta Junction Sr. High School	0	0	0	0	0	0	0	0	0	0	58	45	35	42	180	180
Delta/Greely Homeschool	0	12	3	5	5	8	10	5	11	5	7	10	10	8	99	99
Fort Greely School	0	0	0	0	0	59	50	65	64	55	0	0	0	0	293	293
Gerstle River School	0	1	3	1	4	0	5	1	4	2	0	0	0	0	21	21
New Horizons High School	0	0	0	0	0	0	0	0	0	0	1	1	5	5	12	12
Delta-Greely School District Total	18	76	65	59	62	67	65	71	79	62	66	56	50	55	833	851
Denali Borough School District																
Anderson School	0	0	1	1	0	1	4	1	1	2	2	1	2	0	16	16
Cantwell School	0	1	0	0	1	3	3	2	4	1	0	2	1	1	19	19
Denali PEAK	0	47	66	61	55	66	52	50	63	46	46	36	38	36	662	662
Tri-Valley School	1	19	11	14	16	9	16	10	16	12	10	14	17	13	177	178
Denali Borough School District Total	1	67	78	76	72	79	75	63	84	61	58	53	58	50	874	875
Dillingham City School District																
Dillingham Correspondence School	0	2	0	0	1	0	1	0	2	0	0	1	0	2	9	9
Dillingham Elementary	38	45	33	31	39	31	39	0	0	0	0	0	0	0	218	256
Dillingham Middle/High School	0	0	0	0	0	0	0	20	47	32	43	36	38	55	271	271
Dillingham City School District Total	38	47	33	31	40	31	40	20	49	32	43	37	38	57	498	536
Fairbanks North Star Borough School District																
Alternative Learning Systems	2	1	0	3	1	4	3	4	4	13	18	16	26	36	129	131
Anderson Elementary	12	75	94	77	0	0	0	0	0	0	0	0	0	0	246	258
Anne Wien Elementary	18	62	65	63	54	60	51	47	0	0	0	0	0	0	402	420
Arctic Light Elementary	17	95	93	83	85	58	54	53	0	0	0	0	0	0	521	538
Badger Road Elementary	7	94	80	70	76	79	91	0	0	0	0	0	0	0	490	497
Barnette Magnet School	1	40	45	46	47	48	53	49	45	47	0	0	0	0	420	421
Ben Eielson Jr/Sr High School	0	0	0	0	0	0	0	0	71	73	79	69	55	51	398	398
Chinook Montessori Charter School	0	16	16	15	17	16	16	16	20	17	0	0	0	0	149	149

District	School	PK	KG	1	2	3	4	5	6	7	8	9	10	11	12	Total KG-12	Total PK-12
	Crawford Elementary	0	0	0	0	86	73	79	60	0	0	0	0	0	0	298	298
	Denali Elementary	1	64	53	60	51	56	59	57	0	0	0	0	0	0	400	401
	Effie Kokrine Charter School	0	0	0	0	0	0	0	0	24	37	31	22	41	14	169	169
	Fairbanks B.E.S.T.	0	9	16	13	16	14	17	14	14	12	15	44	44	40	268	268
	Fairbanks Youth Facility	0	0	0	0	0	0	0	0	0	0	0	2	5	2	9	9
	Hunter Elementary	14	67	52	50	41	54	41	39	0	0	0	0	0	0	344	358
	Hutchison High School	0	0	0	0	0	0	0	0	0	0	98	102	82	81	363	363
	Joy Elementary	26	65	60	71	58	65	70	52	0	0	0	0	0	0	441	467
	Ladd Elementary	26	88	88	75	71	58	68	78	0	0	0	0	0	0	526	552
	Lathrop High School	0	0	0	0	0	0	0	0	0	0	287	281	301	210	1,079	1,079
	Nordale Elementary	12	46	49	45	50	31	45	44	0	0	0	0	0	0	310	322
	North Pole Elementary	15	86	78	76	68	68	70	0	0	0	0	0	0	0	446	461
	North Pole High School	0	0	0	0	0	0	0	0	0	0	206	192	188	165	751	751
	North Pole Middle School	0	0	0	0	0	0	0	224	204	229	0	0	0	0	657	657
	Pearl Creek Elementary	11	64	57	74	65	71	79	60	0	0	0	0	0	0	470	481
	Randy Smith Middle School	0	0	0	0	0	0	0	0	181	157	0	0	0	0	338	338
	Ryan Middle School	0	0	0	0	0	0	0	0	179	204	0	0	0	0	383	383
	Salcha Elementary	0	8	7	10	14	18	9	9	0	0	0	0	0	0	75	75
	Star of the North Secondary School	0	0	0	0	0	0	0	0	7	23	18	17	59	64	188	188
	Tanana Middle School	0	0	0	0	0	0	0	0	238	236	0	0	0	0	474	474
	Ticasuk Brown Elementary	12	94	97	79	83	78	77	0	0	0	0	0	0	0	508	520
	Two Rivers School	2	14	10	14	11	8	14	14	6	7	0	0	0	0	98	100
	University Park Elementary	5	85	83	69	74	66	67	59	0	0	0	0	0	0	503	508
	Watershed Charter School	0	22	22	23	23	22	23	22	23	22	0	0	0	0	202	202
	Weller Elementary	8	70	64	60	62	77	81	57	0	0	0	0	0	0	471	479
	West Valley High School	0	0	0	0	0	0	0	0	0	0	287	235	248	201	971	971
	Woodriver Elementary	4	52	78	60	56	69	63	58	0	0	0	0	0	0	436	440
	Fairbanks North Star Borough SD Total	193	1,217	1,207	1,136	1,109	1,093	1,130	1,016	1,016	1,077	1,039	980	1,049	864	13,933	14,126
Galena City School District																	
	Galena Interior Learning Academy	0	0	0	0	0	0	0	0	0	0	56	62	62	35	215	215
	Interior Distance Education of Alaska	147	317	307	342	320	290	294	299	282	272	232	230	221	258	3,664	3,811
	Sidney C. Huntington Elementary	13	4	2	5	0	6	7	4	0	0	0	0	0	0	28	41
	Sidney C. Huntington Jr/Sr High School	0	0	0	0	0	0	0	0	6	6	8	11	6	9	46	46
	Galena City School District Total	160	321	309	347	320	296	301	303	288	278	296	303	289	302	3,953	4,113
Haines Borough School District																	
	Haines Elementary	2	17	20	18	14	15	22	22	18	22	0	0	0	0	168	170
	Haines High School	0	0	0	0	0	0	0	0	0	0	18	23	20	26	87	87

District	School	PK	KG	1	2	3	4	5	6	7	8	9	10	11	12	Total KG-12	Total PK-12
	Haines Home School	0	0	1	0	2	1	0	3	6	0	0	1	0	1	15	15
	Mosquito Lake Elementary	0	1	2	1	2	3	0	0	0	0	0	0	0	0	9	9
	Haines Borough School District Total	2	18	23	19	18	19	22	25	24	22	18	24	20	27	279	281
Hoonah City School District																	
	Hoonah Elementary	4	6	10	7	14	5	9	8	0	0	0	0	0	0	59	63
	Hoonah Jr/Sr High School	0	0	0	0	0	0	0	0	7	12	7	8	6	9	49	49
	Hoonah City School District Total	4	6	10	7	14	5	9	8	7	12	7	8	6	9	108	112
Hydaburg City School District																	
	Hydaburg School	1	8	11	5	4	2	4	3	7	7	2	6	1	5	65	66
	Hydaburg City School District Total	1	8	11	5	4	2	4	3	7	7	2	6	1	5	65	66
Iditarod Area School District																	
	Blackwell School	0	2	1	1	2	1	1	4	3	3	0	0	0	0	18	18
	David Louis Memorial School	0	4	7	3	2	5	5	0	4	2	2	0	0	0	34	34
	Distance Learning/Corresp. Ctr.	0	10	9	10	6	4	7	6	9	6	7	4	7	3	88	88
	Holy Cross School	0	1	2	9	1	2	3	3	3	7	5	3	1	0	40	40
	Innoko River School	0	4	3	1	3	0	0	0	2	0	0	0	0	1	14	14
	McGrath School	0	7	3	5	6	5	5	4	6	5	5	2	4	4	61	61
	Takotna Community School	0	2	1	1	0	1	0	1	0	1	2	1	1	0	11	11
	Top of the Kuskokwim School	0	1	0	0	0	0	1	1	1	1	3	1	0	2	11	11
	Iditarod Area School District Total	0	31	26	30	20	18	22	19	28	25	24	11	13	10	277	277
Juneau Borough School District																	
	Auke Bay Elementary	0	52	63	62	49	53	54	0	0	0	0	0	0	0	333	333
	Dzantik'i Heeni Middle School	0	0	0	0	0	0	0	162	167	140	0	0	0	0	469	469
	Floyd Dryden Middle School	0	0	0	0	0	0	0	155	190	192	0	0	0	0	537	537
	Gastineau Elementary	18	53	42	48	52	49	37	0	0	0	0	0	0	0	281	299
	Glacier Valley Elementary	0	75	65	60	66	54	56	0	0	0	0	0	0	0	376	376
	Harborview Elementary	10	70	86	84	64	92	65	16	0	0	0	0	0	0	477	487
	HomeBRIDGE	0	5	0	0	3	1	1	2	4	1	1	9	20	14	61	61
	Johnson Youth Center	0	0	0	0	0	0	0	0	0	0	2	2	4	3	11	11
	Juneau Community Charter School	0	13	10	10	9	11	11	15	16	15	0	0	0	0	110	110
	Juneau-Douglas High School	0	0	0	0	0	0	0	0	0	0	172	170	217	111	670	670
	Mendenhall River Community School	32	53	61	55	52	73	63	0	0	0	0	0	0	0	357	389
	Riverbend Elementary	26	43	43	42	34	48	52	0	0	0	0	0	0	0	262	288
	Thunder Mountain High School	0	0	0	0	0	0	0	0	0	0	203	171	212	106	692	692

District	School	PK	KG	1	2	3	4	5	6	7	8	9	10	11	12	Total KG-12	Total PK-12
	Yaakoosge Daakahidi Alt. H.S.	0	0	0	0	0	0	0	0	0	0	8	20	97	16	141	141
	Juneau Borough School District Total	86	364	370	361	329	381	339	350	377	348	386	372	550	250	4,777	4,863
Kake City School District																	
	Kake Elementary & High School	3	15	9	9	10	9	5	7	8	4	5	9	4	7	101	104
	Kake City School District Total	3	15	9	9	10	9	5	7	8	4	5	9	4	7	101	104
Kashunamiut School District																	
	Chevak School	3	30	28	28	32	23	22	24	22	17	28	17	13	34	318	321
	Kashunamiut School District Total	3	30	28	28	32	23	22	24	22	17	28	17	13	34	318	321
Kenai Peninsula Borough School District																	
	Aurora Borealis Charter School	0	24	23	22	24	24	24	21	18	14	0	0	0	0	194	194
	Chapman School	17	21	16	13	12	9	13	6	14	7	0	0	0	0	111	128
	Connections	0	43	54	43	49	51	45	52	62	52	55	76	93	99	774	774
	Cooper Landing School	0	1	1	2	5	0	2	2	1	1	1	0	1	0	17	17
	Fireweed Academy	0	23	12	25	12	11	13	13	0	0	0	0	0	0	109	109
	Homer Flex School	0	0	0	0	0	0	0	0	0	0	0	5	18	14	37	37
	Homer High School	0	0	0	0	0	0	0	0	0	0	105	109	104	93	411	411
	Homer Middle School	0	0	0	0	0	0	0	0	95	99	0	0	0	0	194	194
	Hope School	1	1	3	2	1	2	1	1	1	0	1	1	1	2	17	18
	Kachemak Selo School	0	4	2	4	6	6	8	4	7	6	4	3	6	3	63	63
	Kaleidoscope School of Arts & Sciences	0	36	36	37	36	37	38	33	0	0	0	0	0	0	253	253
	Kalifornsky Beach Elementary	4	59	49	62	53	63	48	50	0	0	0	0	0	0	384	388
	Kenai Alternative High School	10	0	0	0	0	0	0	0	0	0	0	2	8	53	63	73
	Kenai Central High School	0	0	0	0	0	0	0	0	0	0	150	138	139	119	546	546
	Kenai Middle School	0	0	0	0	0	0	0	95	140	117	0	0	0	0	352	352
	Marathon School	0	0	0	0	0	0	0	0	0	0	0	2	0	1	3	3
	McNeil Canyon Elementary	0	13	18	21	14	26	25	14	0	0	0	0	0	0	131	131
	Moose Pass School	0	2	2	3	3	1	2	3	0	0	0	0	0	0	16	16
	Mt. View Elementary	28	85	77	58	75	60	74	0	0	0	0	0	0	0	429	457
	Nanwalek School	1	5	5	11	11	11	5	7	3	5	4	3	3	7	80	81
	Nikiski Middle/Senior High School	0	0	0	0	0	0	0	54	65	54	67	61	64	42	407	407
	Nikiski North Star Elementary	21	56	61	57	56	53	60	0	0	0	0	0	0	0	343	364
	Nikolaevsk School	0	4	4	4	5	10	7	8	2	9	3	9	4	3	72	72
	Ninilchik School	1	12	9	8	13	16	9	9	10	12	14	16	10	5	143	144
	Paul Banks Elementary	28	55	50	56	0	0	0	0	0	0	0	0	0	0	161	189
	Port Graham School	0	4	3	1	3	1	1	1	1	1	2	1	0	1	20	20
	Razdolna School	0	3	15	4	9	10	8	5	9	1	4	5	4	0	77	77

District	School	PK	KG	1	2	3	4	5	6	7	8	9	10	11	12	Total KG-12	Total PK-12
	Redoubt Elementary	19	57	38	50	60	52	65	53	0	0	0	0	0	0	375	394
	River City Academy	0	0	0	0	0	0	0	0	15	11	16	11	10	9	72	72
	Seward High School	0	0	0	0	0	0	0	0	0	0	37	47	54	39	177	177
	Seward Middle School	0	0	0	0	0	0	0	0	38	46	0	0	0	0	84	84
	Skyview High School	0	0	0	0	0	0	0	0	0	0	56	68	82	75	281	281
	Soldotna Elementary	35	41	34	42	33	40	31	34	0	0	0	0	0	0	255	290
	Soldotna High School	0	0	0	0	0	0	0	0	0	0	174	128	141	114	557	557
	Soldotna Middle School	0	0	0	0	0	0	0	0	187	193	0	0	0	0	380	380
	Soldotna Montessori Charter School	0	23	24	23	23	25	27	22	0	0	0	0	0	0	167	167
	Sterling Elementary	12	25	40	27	24	25	29	27	0	0	0	0	0	0	197	209
	Susan B English School	0	4	1	2	2	2	3	5	1	5	4	11	4	4	48	48
	Tebughna School	0	5	5	1	4	2	3	7	2	2	4	1	1	1	38	38
	Tustumena Elementary	11	25	28	24	22	23	24	21	0	0	0	0	0	0	167	178
	Voznesenka School	6	11	3	8	5	7	5	5	11	13	8	11	10	7	104	110
	West Homer Elementary	0	0	0	0	57	56	57	65	0	0	0	0	0	0	235	235
	William H. Seward Elementary School	26	52	56	52	29	42	46	36	0	0	0	0	0	0	313	339
	Kenai Peninsula Borough SD Total	220	694	669	662	646	665	673	653	682	648	709	708	757	691	8,857	9,077
Ketchikan Gateway Borough School District																	
	Fast Track	0	9	3	4	5	6	8	3	7	4	8	8	10	9	84	84
	Fawn Mountain Elementary	44	39	41	32	38	38	36	37	0	0	0	0	0	0	261	305
	Houghtaling Elementary	22	45	53	42	42	46	34	41	0	0	0	0	0	0	303	325
	Ketchikan Charter School	0	13	12	22	16	18	25	22	15	19	0	0	0	0	162	162
	Ketchikan High School	0	0	0	0	0	0	0	0	0	0	182	148	161	128	619	619
	Ketchikan Regional Youth Facility	0	0	0	0	0	0	0	0	0	0	0	1	0	0	1	1
	Point Higgins School	23	23	38	24	36	34	33	28	0	0	0	0	0	0	216	239
	Revilla Jr/Sr High School	0	0	0	0	0	0	0	0	6	12	21	31	44	51	165	165
	Schoenbar Middle School	0	0	0	0	0	0	0	0	137	149	0	0	0	0	286	286
	Tongass School of Arts and Sciences Charter	21	31	21	22	25	26	28	16	0	0	0	0	0	0	169	190
	Ketchikan Gateway Borough SD Total	110	160	168	146	162	168	164	147	165	184	211	188	215	188	2,266	2,376
Klawock City School District																	
	Klawock City School	4	11	10	11	6	8	8	16	7	11	11	10	15	13	137	141
	Klawock City School District Total	4	11	10	11	6	8	8	16	7	11	11	10	15	13	137	141
Kodiak Island Borough School District																	
	Akhiok School	0	2	1	1	2	1	3	1	2	1	4	2	0	2	22	22
	Chiniak School	0	2	2	2	0	0	0	2	0	2	1	1	0	0	12	12
	East Elementary	0	52	49	45	47	41	48	0	0	0	0	0	0	0	282	282

District	School	PK	KG	1	2	3	4	5	6	7	8	9	10	11	12	Total KG-12	Total PK-12
	Karluk School	0	0	0	0	2	1	1	2	0	2	1	0	2	0	11	11
	Kodiak High School	0	0	0	0	0	0	0	0	0	0	194	180	186	201	761	761
	Kodiak Island Correspondence	0	9	8	11	10	11	10	5	9	6	6	4	2	12	103	103
	Kodiak Middle School	0	0	0	0	0	0	0	160	163	171	0	0	0	0	494	494
	Larsen Bay School	0	3	0	1	1	0	0	1	3	0	2	0	1	2	14	14
	Main Elementary	0	29	44	41	40	42	36	0	0	0	0	0	0	0	232	232
	North Star Elementary	0	34	49	41	38	33	29	0	0	0	0	0	0	0	224	224
	Old Harbor School	1	2	2	2	3	0	3	1	2	1	1	2	6	6	31	32
	Ouzinkie School	0	3	4	3	1	3	3	5	3	0	1	2	3	2	33	33
	Peterson Elementary	55	55	49	39	40	23	23	0	0	0	0	0	0	0	229	284
	Port Lions School	0	1	0	4	1	2	3	2	0	1	3	0	1	2	20	20
	Kodiak Island Borough SD Total	56	192	208	190	185	157	159	179	182	184	213	191	201	227	2,468	2,524
Kuspuk School District																	
	Aniak Jr/Sr High School	0	0	0	0	0	0	0	0	7	10	9	12	10	8	56	56
	Auntie Mary Nicoli Elementary	27	12	13	6	14	7	4	10	0	0	0	0	0	0	66	93
	Crow Village Sam School	7	5	2	4	5	2	2	1	1	2	1	0	1	2	28	35
	George Morgan Sr. H.S.	0	0	0	0	0	0	0	0	13	11	7	10	7	15	63	63
	Gusty Michael School	0	0	0	0	0	0	0	2	0	2	0	1	0	0	5	5
	Jack Egnaty Sr. School	1	2	2	0	1	2	0	2	2	0	1	1	0	1	14	15
	Johnnie John Sr. School	4	2	1	3	1	0	2	2	0	5	0	0	1	2	19	23
	Joseph S. & Olinga Gregory Elementary	1	16	15	7	8	0	0	0	0	0	0	0	0	0	46	47
	Zackar Levi Elementary	0	0	0	0	0	13	10	11	0	0	0	0	0	0	34	34
	Kuspuk School District Total	40	37	33	20	29	24	18	28	23	30	18	24	19	28	331	371
Lake and Peninsula Borough School District																	
	Chignik Lagoon School	2	0	3	1	0	2	1	0	0	2	0	0	1	1	11	13
	Chignik Lake School	5	0	1	1	1	2	1	1	0	1	1	2	4	3	18	23
	Egegik School	1	1	0	1	1	0	0	1	1	1	0	3	1	1	11	12
	Igiugig School	5	1	0	3	2	2	1	0	1	1	1	0	0	2	14	19
	Kokhanok School	13	3	2	2	4	2	3	2	2	3	0	0	2	0	25	38
	Lakeview Home School	0	1	1	0	0	1	0	1	1	1	0	1	0	1	8	8
	Levelock School	2	3	1	3	1	2	1	0	1	1	0	1	1	2	17	19
	Meshik School	5	4	2	3	2	1	0	2	1	0	0	1	2	2	20	25
	Newhalen School	14	6	3	5	6	1	3	1	3	2	5	6	5	9	55	69
	Nondalton School	4	0	6	2	4	3	1	4	3	1	0	3	1	2	30	34
	Perryville School	2	3	2	3	0	3	5	1	0	3	0	2	4	2	28	30
	Pilot Point School	2	0	1	3	2	0	1	0	0	1	0	1	0	1	10	12

District	School	PK	KG	1	2	3	4	5	6	7	8	9	10	11	12	Total KG-12	Total PK-12
	Tanalian School	4	4	3	0	6	3	6	9	4	5	5	5	5	2	57	61
	Lake and Peninsula Borough SD Total	59	26	25	27	29	22	23	22	17	22	12	25	26	28	304	363
Lower Kuskokwim School District																	
	Akiuk Memorial School	10	8	10	7	7	6	6	7	6	5	6	6	2	3	79	89
	Akula Elitnaurvik School	0	10	13	8	12	12	9	10	9	8	11	5	3	7	117	117
	Anna Tobeluk Memorial School	1	9	19	17	14	28	13	8	19	19	18	6	5	6	181	182
	Arviq School	0	3	2	3	2	3	0	3	2	1	2	1	0	0	22	22
	Ayagina'ar Elitnaurvik	13	15	12	17	10	19	16	18	5	6	20	8	14	4	164	177
	Ayaprun Elitnaurvik	0	39	31	24	22	25	18	13	0	0	0	0	0	0	172	172
	Ayaprun School	14	10	10	13	7	19	13	9	16	7	11	11	6	9	141	155
	Bethel Regional High School	0	0	0	0	0	0	0	0	121	105	88	84	54	71	523	523
	Bethel Youth Facility	0	0	0	0	0	0	0	0	0	2	4	2	2	10	10	
	Chaputnguak School	1	11	10	23	11	6	12	11	8	7	23	16	6	13	157	158
	Chief Paul Memorial School	1	12	23	20	24	12	17	16	19	18	17	12	11	14	215	216
	Eek School	10	9	9	10	11	6	9	10	6	5	12	9	5	1	102	112
	Gladys Jung Elementary	0	0	0	0	82	80	86	76	0	0	0	0	0	0	324	324
	Joann A. Alexie Memorial School	12	11	8	10	4	10	6	11	15	10	9	4	4	6	108	120
	Ket'acik/Aapalluk Memorial School	0	21	27	24	21	22	26	17	22	20	30	9	7	12	258	258
	Kuinerrarmiut Elitnaurviat	0	17	16	20	20	23	23	15	16	14	16	8	5	9	202	202
	Kuskokwim Learning Academy	0	0	0	0	0	0	0	0	0	0	16	23	17	23	79	79
	Kwigillingok School	2	6	7	11	8	12	8	14	12	6	12	5	12	1	114	116
	Lewis Angapak Memorial School	1	12	13	13	9	9	11	9	13	13	12	12	9	10	145	146
	Mikelnguut Elitnaurviat	97	78	81	98	0	0	0	0	0	0	0	0	0	0	257	354
	Negtemiut Elitnaurviat School	12	5	6	5	10	7	7	8	7	8	10	4	2	2	81	93
	Nelson Island Area School	1	18	9	11	12	18	19	16	17	19	21	17	9	11	197	198
	Nuniwarmiut School	12	4	3	6	1	4	0	5	0	2	8	1	1	1	36	48
	Paul T. Albert Memorial School	12	6	5	6	11	15	5	7	11	10	13	4	4	4	101	113
	Qugcuun Memorial School	0	1	0	1	2	0	1	2	6	1	1	4	0	2	21	21
	Rocky Mountain School	1	6	6	8	8	1	3	1	3	8	1	3	3	3	54	55
	William Miller Memorial School	0	11	9	4	6	6	5	15	5	14	8	1	0	0	84	84
	Z. John Williams Memorial School	1	11	11	15	10	18	17	16	12	12	14	6	5	4	151	152
	Lower Kuskokwim SD Total	201	333	340	374	324	361	330	317	350	318	381	263	186	218	4,095	4,296
Lower Yukon School District																	
	Alakanuk School	4	27	32	15	19	20	18	18	21	21	17	13	10	12	243	247
	Emmonak School	0	19	21	14	17	18	16	15	20	16	13	10	15	13	207	207
	Hooper Bay School	0	44	36	52	36	35	30	22	40	34	30	21	18	23	421	421
	Ignatius Beans School	0	15	23	24	26	19	16	15	17	17	15	10	16	15	228	228

District	School	PK	KG	1	2	3	4	5	6	7	8	9	10	11	12	Total KG-12	Total PK-12
	Kotlik School	0	20	24	16	13	12	10	13	12	11	9	15	18	25	198	198
	Marshall School	1	10	11	8	7	7	18	10	11	10	12	10	6	7	127	128
	Pilot Station School	1	15	10	22	14	17	18	16	10	18	8	8	7	8	171	172
	Russian Mission School	0	10	9	10	8	13	7	10	9	8	8	6	4	6	108	108
	Scammon Bay School	0	17	18	12	13	15	12	11	22	27	15	18	11	19	210	210
	Sheldon Point School	0	2	5	1	6	4	5	5	4	4	5	6	1	4	52	52
	Lower Yukon School District Total	6	179	189	174	159	160	150	135	166	166	132	117	106	132	1,965	1,971

Mat-Su Borough School District

	Academy Charter School	0	24	24	25	25	26	26	30	28	27	0	0	0	0	235	235
	Alaska Middle College School	0	0	0	0	0	0	0	0	0	0	0	0	46	37	83	83
	American Charter Academy	0	9	8	13	12	14	14	15	25	28	21	11	7	14	191	191
	Beryozova School	0	0	0	2	0	3	1	0	5	0	0	4	0	2	17	17
	Big Lake Elementary	14	87	66	85	75	57	55	0	0	0	0	0	0	0	425	439
	Birchtree Charter School	0	46	41	44	49	44	44	23	23	19	0	0	0	0	333	333
	Burchell High School	0	0	0	0	0	0	0	0	0	0	17	41	60	147	265	265
	Butte Elementary	36	52	46	43	53	44	42	0	0	0	0	0	0	0	280	316
	Colony High School	0	0	0	0	0	0	0	0	0	0	287	278	286	253	1,104	1,104
	Colony Middle School	0	0	0	0	0	0	0	198	213	244	0	0	0	0	655	655
	Cottonwood Creek Elementary	12	75	69	78	70	78	69	0	0	0	0	0	0	0	439	451
	Finger Lake Elementary	22	42	52	50	40	44	57	0	0	0	0	0	0	0	285	307
	Fred and Sara Machetanz Elementary	14	54	69	82	65	57	71	0	0	0	0	0	0	0	398	412
	Fronteras Charter School	0	45	44	43	26	24	26	13	7	5	0	0	0	0	233	233
	Glacier View School	0	4	5	5	2	3	5	2	1	1	3	3	3	2	39	39
	Goose Bay Elementary	72	138	162	163	0	0	0	0	0	0	0	0	0	0	463	535
	Houston High School	0	0	0	0	0	0	0	0	0	0	114	106	73	88	381	381
	Houston Middle School	0	0	0	0	0	0	0	109	131	148	0	0	0	0	388	388
	Iditarod Elementary	26	57	54	68	50	50	47	0	0	0	0	0	0	0	326	352
	John Shaw Elementary	58	65	69	53	71	70	56	0	0	0	0	0	0	0	384	442
	Knik Elementary School	0	0	0	0	150	144	145	0	0	0	0	0	0	0	439	439
	Larson Elementary	14	58	68	68	71	52	63	0	0	0	0	0	0	0	380	394
	Mat-Su Career & Tech Ed High School	0	0	0	0	0	0	0	0	0	0	143	112	92	85	432	432
	Mat-Su Central School	0	84	94	106	107	116	102	115	116	112	94	118	144	201	1,509	1,509
	Mat-Su Day School	0	0	0	0	0	0	1	6	6	10	7	9	9	27	75	75
	Mat-Su Youth Facility	0	0	0	0	0	0	0	0	0	1	3	5	1	3	13	13
	Meadow Lakes Elementary	28	66	79	75	73	64	49	0	0	0	0	0	0	0	406	434
	Midnight Sun Family Learning Center	0	12	19	27	27	26	19	18	8	7	0	0	0	0	163	163
	Palmer High School	0	0	0	0	0	0	0	0	0	0	207	217	175	205	804	804
	Palmer Middle School	0	0	0	0	0	0	0	219	193	229	0	0	0	0	641	641

District	School	PK	KG	1	2	3	4	5	6	7	8	9	10	11	12	Total KG-12	Total PK-12
	Pioneer Peak Elementary	8	69	72	54	63	76	65	0	0	0	0	0	0	0	399	407
	Sherrod Elementary	0	0	0	0	144	160	132	0	0	0	0	0	0	0	436	436
	Snowshoe Elementary	9	62	63	67	70	65	57	0	0	0	0	0	0	0	384	393
	Susitna Valley High	0	0	0	0	0	0	0	0	27	27	31	30	27	25	167	167
	Sutton Elementary	0	10	4	8	8	4	4	0	0	0	0	0	0	0	38	38
	Swanson Elementary	41	135	145	128	0	0	0	0	0	0	0	0	0	0	408	449
	Talkeetna Elementary	20	12	13	16	13	8	11	18	0	0	0	0	0	0	91	111
	Tanaina Elementary	15	68	72	80	66	74	57	0	0	0	0	0	0	0	417	432
	Teeland Middle School	0	0	0	0	0	0	0	234	234	234	0	0	0	0	702	702
	Trapper Creek Elementary	6	7	7	5	1	4	3	4	0	0	0	0	0	0	31	37
	Twindly Bridge Charter School	0	26	22	19	30	30	25	21	20	15	15	16	15	5	259	259
	Valley Pathways	0	0	0	0	0	0	0	0	0	0	14	30	47	77	168	168
	Wasilla High School	0	0	0	0	0	0	0	0	0	0	349	311	303	269	1,232	1,232
	Wasilla Middle School	0	0	0	0	0	0	0	265	263	272	0	0	0	0	800	800
	Willow Elementary	16	18	18	21	14	17	15	11	0	0	0	0	0	0	114	130
	Mat-Su Borough School District Total	411	1,325	1,385	1,428	1,375	1,354	1,261	1,301	1,300	1,379	1,305	1,291	1,288	1,440	17,432	17,843
	Mount Edgecumbe High School																
	Mt. Edgecumbe High School	0	0	0	0	0	0	0	0	0	0	96	111	108	90	405	405
	Mount Edgecumbe High School Total	0	0	0	0	0	0	0	0	0	0	96	111	108	90	405	405
	Nenana City School District																
	CyberLynx Correspondence Program	30	40	36	39	32	35	31	37	32	29	32	49	208	136	736	766
	Nenana City School	0	7	12	7	8	7	7	11	7	10	25	26	49	32	208	208
	Nenana City School District Total	30	47	48	46	40	42	38	48	39	39	57	75	257	168	944	974
	Nome Public Schools																
	Anvil City Science Academy	0	0	0	0	0	0	11	12	11	11	0	0	0	0	45	45
	Extensions Correspondence	0	1	1	2	0	1	1	2	1	0	0	0	0	1	10	10
	Nome Elementary	9	66	65	55	55	49	49	33	0	0	0	0	0	0	372	381
	Nome Youth Facility	0	0	0	0	0	0	0	0	0	0	6	0	2	0	8	8
	Nome-Beltz Jr/Sr High	0	0	0	0	0	0	0	0	44	40	55	36	43	39	257	257
	Nome Public Schools Total	9	67	66	57	55	50	61	47	56	51	61	36	45	40	692	701
	North Slope Borough School District																
	Alak School	17	12	16	10	14	10	13	11	6	13	7	10	6	8	136	153
	Barrow High School	0	0	0	0	0	0	0	0	0	0	68	58	44	37	207	207
	Eben Hopson Middle School	0	0	0	0	0	0	0	84	67	96	0	0	0	0	247	247
	Fred Ipalook Elementary	170	100	88	77	93	83	70	0	0	0	0	0	0	0	511	681

District	School	PK	KG	1	2	3	4	5	6	7	8	9	10	11	12	Total KG-12	Total PK-12
	Harold Kaveolook School	8	8	2	3	5	7	2	2	3	7	2	4	4	3	52	60
	Kali School	12	5	6	10	3	11	7	6	7	7	1	2	5	6	76	88
	Kiita Learning Community	0	0	0	0	0	0	0	0	0	0	0	6	14	24	44	44
	Meade River School	14	4	6	6	4	4	4	5	8	5	5	8	1	4	64	78
	Nuiqsut Trapper School	23	9	7	13	10	4	10	10	6	3	3	5	2	9	91	114
	Nunamiut School	15	11	4	9	8	4	5	6	8	7	5	5	6	9	87	102
	Tikigaq School	35	19	17	23	22	18	19	16	12	13	14	8	7	11	199	234
	North Slope Borough SD Total	294	168	146	151	159	141	130	140	117	151	105	106	89	111	1,714	2,008
Northwest Arctic Borough School District																	
	Ambler School	7	5	4	6	7	9	6	6	4	5	7	6	5	1	71	78
	Aqqaluk High/Noorvik Elementary	22	12	15	12	21	12	9	19	12	14	23	12	6	2	169	191
	Buckland School	13	11	19	12	13	9	8	9	13	12	14	13	13	8	154	167
	Davis-Ramoth School	23	29	27	20	19	17	23	25	20	18	30	20	12	6	266	289
	Deering School	6	3	7	3	4	3	1	4	3	0	1	4	6	1	40	46
	June Nelson Elementary	49	60	53	55	60	54	56	0	0	0	0	0	0	0	338	387
	Kiana School	18	5	13	3	9	8	10	6	14	8	10	8	10	8	112	130
	Kobuk School	8	4	4	3	5	1	6	3	4	4	1	3	3	4	45	53
	Kotzebue Middle/High School	0	0	0	0	0	0	0	47	54	44	52	41	26	33	297	297
	McQueen School	15	18	16	13	9	11	11	8	6	9	12	6	6	6	131	146
	Napaaqtugmiut School	18	13	22	16	16	9	10	11	9	14	25	12	9	8	174	192
	NWABSD Home School	0	0	0	0	0	0	0	0	1	0	0	0	0	0	1	1
	Shungnak School	8	8	12	9	7	8	4	5	3	7	13	3	2	3	84	92
	Northwest Arctic Borough SD Total	187	168	192	152	170	141	144	143	143	135	188	128	98	80	1,882	2,069
Pelican City School District																	
	Pelican School	0	0	1	1	0	2	0	1	2	0	2	1	1	2	13	13
	Pelican City School District Total	0	0	1	1	0	2	0	1	2	0	2	1	1	2	13	13
Petersburg City School District																	
	Mitkof Middle School	0	0	0	0	0	0	0	40	31	41	0	0	0	0	112	112
	Petersburg High School	0	0	0	0	0	0	0	0	0	0	34	30	35	45	144	144
	Rae C. Stedman Elementary	5	28	42	27	24	28	30	0	0	0	0	0	0	0	179	184
	Petersburg City School District Total	5	28	42	27	24	28	30	40	31	41	34	30	35	45	435	440
Pribilof School District																	
	St. George School	0	3	1	2	1	0	1	2	0	1	0	0	0	0	11	11

District	School	PK	KG	1	2	3	4	5	6	7	8	9	10	11	12	Total KG-12	Total PK-12
	St. Paul School	10	8	11	5	5	3	2	11	4	4	5	5	7	2	72	82
	Pribilof School District Total	10	11	12	7	6	3	3	13	4	5	5	5	7	2	83	93
Saint Mary's School District																	
	Saint Mary's School	13	17	20	17	19	16	15	15	9	18	15	11	11	15	198	211
	Saint Mary's School District Total	13	17	20	17	19	16	15	15	9	18	15	11	11	15	198	211
Sitka School District																	
	Baranof Elementary	31	126	117	0	0	0	0	0	0	0	0	0	0	0	243	274
	Blatchley Middle School	0	0	0	0	0	0	0	88	105	113	0	0	0	0	306	306
	Keet Gooshi Heen Elementary	0	0	0	107	95	96	100	0	0	0	0	0	0	0	398	398
	Pacific High School	0	0	0	0	0	0	0	0	0	0	10	4	4	7	25	25
	Sitka Correspondence	0	4	5	5	5	1	3	8	7	8	8	6	16	10	86	86
	Sitka High School	0	0	0	0	0	0	0	0	0	0	92	79	73	93	337	337
	Sitka School District Total	31	130	122	112	100	97	103	96	112	121	110	89	93	110	1,395	1,426
Skagway City School District																	
	Skagway School	22	13	10	9	8	4	5	4	6	6	8	4	4	4	85	107
	Skagway City School District Total	22	13	10	9	8	4	5	4	6	6	8	4	4	4	85	107
Southeast Island School District																	
	Barry Craig Stewart Kasaan School	2	1	1	1	1	1	1	2	1	1	0	0	0	0	10	12
	Edna Bay School	0	0	1	0	1	2	0	1	1	1	1	0	1	1	10	10
	Hollis School	1	2	0	4	1	2	1	0	0	1	2	0	0	0	13	14
	Howard Valentine Coffman Cove School	3	2	1	3	1	3	1	3	1	3	3	0	4	0	25	28
	Naukati School	1	2	2	3	3	2	1	3	1	1	1	2	0	2	23	24
	Port Alexander School	0	2	3	1	0	2	0	1	0	0	0	2	0	0	11	11
	Port Protection School	0	2	0	1	0	2	0	0	1	0	1	2	0	2	11	11
	Thorne Bay School	3	7	1	7	6	10	6	3	6	10	3	11	10	7	87	90
	Whale Pass School	0	1	1	0	3	1	2	0	1	1	0	0	1	0	11	11
	Southeast Island School District Total	10	19	10	20	16	25	12	13	12	18	11	17	16	12	201	211
Southwest Region School District																	
	Aleknagik School	0	1	1	1	5	2	3	6	3	2	0	0	0	0	24	24
	Chief Ivan Blunka School	1	16	10	8	10	11	8	8	10	17	13	1	14	7	133	134
	Koliganek School	0	7	5	5	7	4	6	5	4	3	2	1	5	5	59	59
	Manokotak School	6	14	11	11	7	10	9	10	7	9	15	8	11	11	133	139
	Togiak School	3	14	21	18	20	13	16	16	16	15	26	13	13	12	213	216
	Twin Hills School	2	1	4	2	1	3	0	2	3	0	0	0	0	0	16	18

District	School	PK	KG	1	2	3	4	5	6	7	8	9	10	11	12	Total KG-12	Total PK-12
	William "Sonny" Nelson School	0	0	1	4	2	0	0	2	0	2	0	0	0	0	11	11
	Southwest Region School District Total	12	53	53	49	52	43	42	49	43	48	56	23	43	35	589	601
Tanana City School District																	
	Maudrey J. Sommer School	0	2	2	2	4	5	3	2	0	5	6	1	5	3	40	40
	Tanana City School District Total	0	2	2	2	4	5	3	2	0	5	6	1	5	3	40	40
Unalaska City School District																	
	Eagle's View Elementary School	2	32	33	30	36	24	21	39	0	0	0	0	0	0	215	217
	Unalaska Jr/Sr High School	0	0	0	0	0	0	0	0	37	22	33	30	33	37	192	192
	Unalaska City School District Total	2	32	33	30	36	24	21	39	37	22	33	30	33	37	407	409
Valdez City School District																	
	George H. Gilson Middle School	0	0	0	0	0	0	0	52	54	39	0	0	0	0	145	145
	Hermon Hutchens Elementary	10	48	52	42	48	40	45	0	0	0	0	0	0	0	275	285
	Valdez High School	0	0	0	0	0	0	0	0	0	0	44	41	49	50	184	184
	Valdez City School District Total	10	48	52	42	48	40	45	52	54	39	44	41	49	50	604	614
Wrangell Public School District																	
	Alaska Virtual Academy	0	8	4	7	5	5	9	12	12	14	0	0	0	0	76	76
	Evergreen Elementary	1	25	20	20	16	20	19	0	0	0	0	0	0	0	120	121
	Stikine Middle School	0	0	0	0	0	0	0	25	20	20	0	0	0	0	65	65
	Wrangell High School	0	0	0	0	0	0	0	0	0	0	22	23	23	16	84	84
	Wrangell Public School District Total	1	33	24	27	21	25	28	37	32	34	22	23	23	16	345	346
Yakutat School District																	
	Yakutat Home School	0	1	1	2	0	1	0	1	0	0	0	1	0	0	7	7
	Yakutat School	1	9	5	7	8	6	3	7	12	5	9	5	8	8	92	93
	Yakutat School District Total	1	10	6	9	8	7	3	8	12	5	9	6	8	8	99	100
Yukon Flats School District																	
	Arctic Village School	2	4	3	0	1	2	5	1	1	2	3	1	3	1	27	29
	Circle School	0	0	0	1	2	1	2	3	1	3	2	3	1	0	19	19
	Cruikshank School	0	3	0	2	0	1	0	1	1	2	0	0	0	1	11	11
	Fort Yukon School	1	9	12	9	9	9	10	10	9	13	9	9	9	7	124	125
	John Fredson School	0	5	3	6	5	2	4	5	5	4	3	7	1	1	51	51
	Stevens Village School	0	0	0	0	0	0	1	1	0	0	0	0	0	0	2	2

District	School	PK	KG	1	2	3	4	5	6	7	8	9	10	11	12	Total KG-12	Total PK-12
	Tsuk Taih School	0	2	4	1	1	0	1	2	0	3	0	2	0	0	16	16
	Yukon Flats School District Total	3	23	22	19	18	15	23	23	17	27	17	22	14	10	250	253
Yukon-Koyukuk School District																	
	Allakaket School	0	6	3	5	0	3	1	3	2	2	1	4	1	5	36	36
	Andrew K. Demoski School	1	7	3	7	2	1	0	2	2	8	4	3	2	2	43	44
	Ella B. Verneti School	1	4	1	1	1	2	0	2	2	1	0	0	0	0	14	15
	Gladys Dart School	0	0	1	1	0	1	1	0	1	3	2	2	1	0	13	13
	Jimmy Huntington School	0	9	7	6	3	7	3	5	7	8	7	10	7	5	84	84
	Johnny Oldman School	0	1	2	1	0	0	0	0	0	1	3	0	2	2	12	12
	Kaltag School	1	0	2	5	2	2	1	3	2	3	0	1	0	2	23	24
	Merrelaine A Kangas School	0	7	3	4	4	4	3	4	3	2	0	1	1	1	37	37
	Minto School	0	5	2	3	4	3	4	5	1	5	4	1	4	2	43	43
	Raven Correspondence School	0	94	80	117	92	78	80	87	73	82	71	108	99	157	1,218	1,218
	Yukon-Koyukuk School District Total	3	133	104	150	108	101	93	111	93	115	92	130	117	176	1,523	1,526
Yupit School District																	
	Akiachak School	8	17	14	9	14	17	14	13	18	16	12	14	17	7	182	190
	Akiak School	0	9	6	8	10	11	12	12	14	8	1	6	7	3	107	107
	Tuluksak School	1	13	15	9	19	16	12	8	12	9	5	7	14	2	141	142
	Yupit School District Total	9	39	35	26	43	44	38	33	44	33	18	27	38	12	430	439
Grand Total		3,250	10,654	10,549	10,232	9,934	9,745	9,565	9,549	9,776	9,723	9,959	9,368	9,668	9,605	128,327	131,577

**Department of Education & Early Development
Minimum Expenditure for Instruction Calculation Overview**

School Operating Fund Only

Calculation for FY 1999 and FY 2000	Calculation for FY 2001	Calculation for FY 2002/Beyond
FY99 Minimum Expenditure for Instruction is 60%	FY01 Minimum Expenditure for Instruction is 70%	FY02 Minimum Expenditure for Instruction is 70%
FY00 Minimum Expenditure for Instruction is 65%		
100 Instruction _____	100 Instruction _____	100 Instruction _____
200 Special Education _____	200 Special Education _____	200 Special Education _____
220 Special Education-Support Svc. _____	220 Special Education-Support Svc. _____	220 Special Education-Support Svc. _____
300 Support Services – Students _____	300 Support Services – Students _____	300 Support Services – Students _____
350 Support Services – Instruction _____	350 Support Services – Instruction _____	350 Support Services – Instruction _____
	400 School Administration _____	400 School Administration _____
Total Instructional Expenditures 100-350(a) _____	Total Instructional Expenditures 100-400(a) _____	Total Instructional Expenditures 100-400(a) _____
400 School Administration _____	510 District Administration _____	450 School Administration Support _____
510 District Administration _____	550 District Administration-Support _____	510 District Administration _____
550 District Administration-Support _____	600 Operation & Maintenance _____	550 District Administration-Support _____
600 Operation & Maintenance _____	700 Student Activities _____	600 Operation & Maintenance _____
700 Student Activities _____	780 Community Service _____	700 Student Activities _____
780 Community Service _____		780 Community Service _____
Total Expenditures 100-780(b) _____	Total Expenditures 100-780(b) _____	Total Expenditures 100-780(b) _____
Total Instructional (a) divided by total expenditures (b) _____ %	Total Instructional (a) divided by total expenditures (b) _____ %	Total Instructional (a) divided by total expenditures (b) _____ %

**Department of Education & Early Development
Minimum Expenditure for Instruction Calculation Overview**

School Operating Fund Only

Calculation for FY 1999 and FY 2000	Calculation for FY 2001	Calculation for FY 2002/Beyond
FY99 Minimum Expenditure for Instruction is 60%	FY01 Minimum Expenditure for Instruction is 70%	FY02 Minimum Expenditure for Instruction is 70%
FY00 Minimum Expenditure for Instruction is 65%		
100 Instruction _____	100 Instruction _____	100 Instruction _____
200 Special Education _____	200 Special Education _____	200 Special Education _____
220 Special Education-Support Svc. _____	220 Special Education-Support Svc. _____	220 Special Education-Support Svc. _____
300 Support Services – Students _____	300 Support Services – Students _____	300 Support Services – Students _____
350 Support Services – Instruction _____	350 Support Services – Instruction _____	350 Support Services – Instruction _____
	400 School Administration _____	400 School Administration _____
Total Instructional Expenditures 100-350(a)	Total Instructional Expenditures 100-400(a)	Total Instructional Expenditures 100-400(a)
400 School Administration _____	510 District Administration _____	450 School Administration Support _____
510 District Administration _____	550 District Administration-Support _____	510 District Administration _____
550 District Administration-Support _____	600 Operation & Maintenance _____	550 District Administration-Support _____
600 Operation & Maintenance _____	700 Student Activities _____	600 Operation & Maintenance _____
700 Student Activities _____	780 Community Service _____	700 Student Activities _____
780 Community Service _____		780 Community Service _____
Total Expenditures 100-780(b)	Total Expenditures 100-780(b)	Total Expenditures 100-780(b)
Total Instructional (a) divided by total expenditures (b) _____%	Total Instructional (a) divided by total expenditures (b) _____%	Total Instructional (a) divided by total expenditures (b) _____%