

01/23/13
WHO'S
KEEPING
THE LIGHTS
ON?
(PART 3)

<TARGET><BILL></BILL><SUBJECT>01-23-13 WHO'S KEEPING
THE LIGHTS ON- (PART
3)</SUBJECT><COMM>SRES28</COMM></TARGET>

ALASKA STATE LEGISLATURE

Sen. Cathy Giessel, Chair
Sen. Fred Dyson, Vice Chair
Sen. Lesil McGuire
Sen. Anna Fairclough
Sen. Click Bishop
Sen. Peter Micciche
Sen. Hollis French



State Capitol, Room 427
Juneau AK 99801-1182
907-465-4843
Fax: 907-465-3871
800-465-4843

Senate Resources Committee

Butrovich Room 205

Wednesday, January 23, 2013

3:30-6:00 p.m.

AGENDA

➤ "Who's Keeping the Lights & Heat On. Problems & Solutions"

Railbelt Utilities

Gas Supply Study Group

Moira Smith, VP & Gen. Counsel Enstar

James Posey, Gen. Manager., Municipal Light & Power

Brad Evans, CEO, Chugach Electric

Joe Griffith, Gen. Manager, Matanuska Electric Assn.

Brad Janorschke, Gen. Manager, Homer Electric Assn.

Golden Valley Electric

Cory Borgeson, President/CEO

Testimony: By Invitation

➤ SB 29 CRUISE SHIP WASTEWATER DISCHARGE PERMITS

Larry Hartig, Commissioner Dept. of Environmental Conservation

Lynn Kent, Deputy Commissioner Dept. of Environmental Conservation

Michelle Bonnet Hale, Director, Division of Water

Ruth Hamilton Hesse, Asst. Attorney General, Dept. of Law (on line)

Testimony: By Invitation

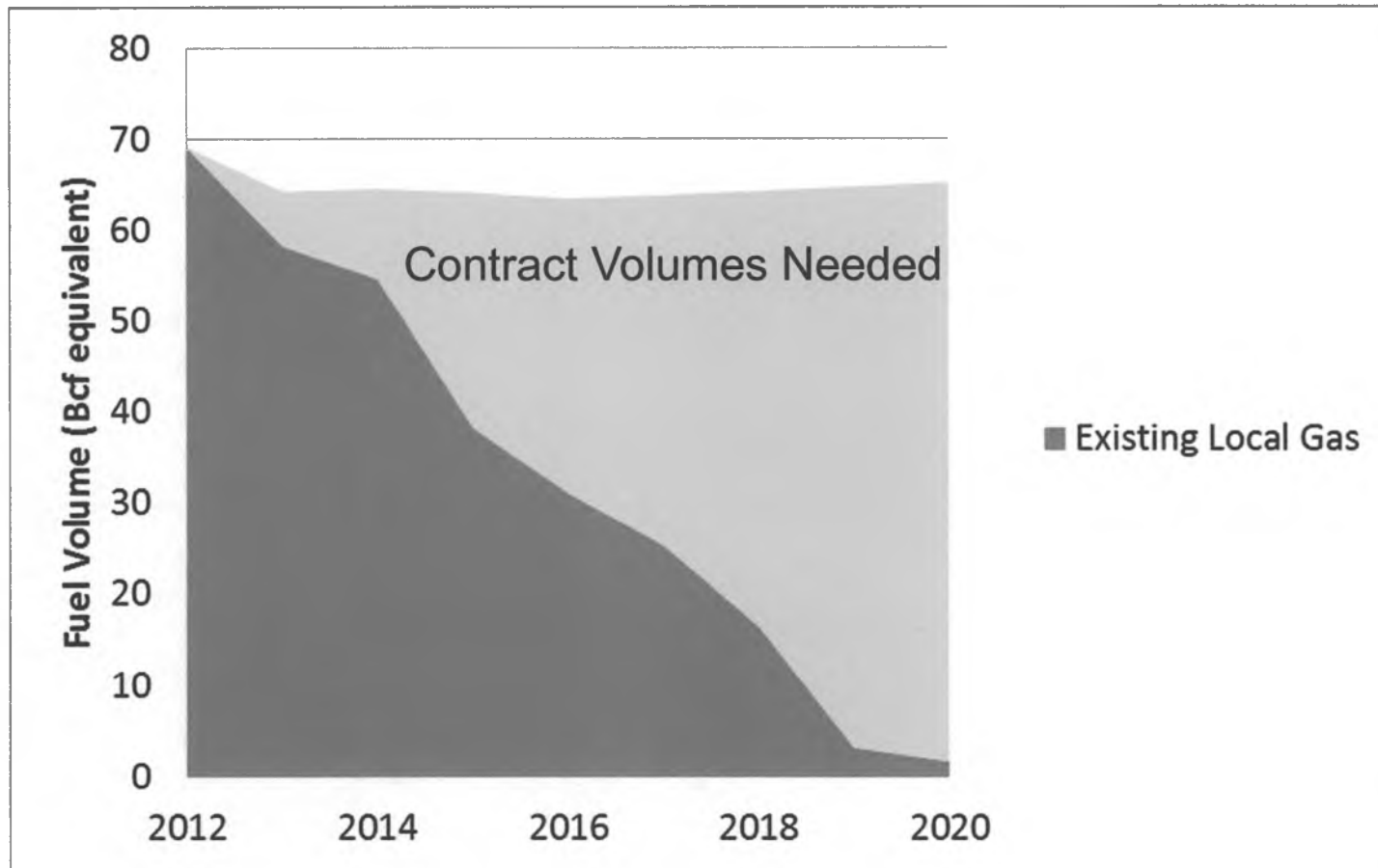
Teleconference



Long-term Gas Supply Work Group

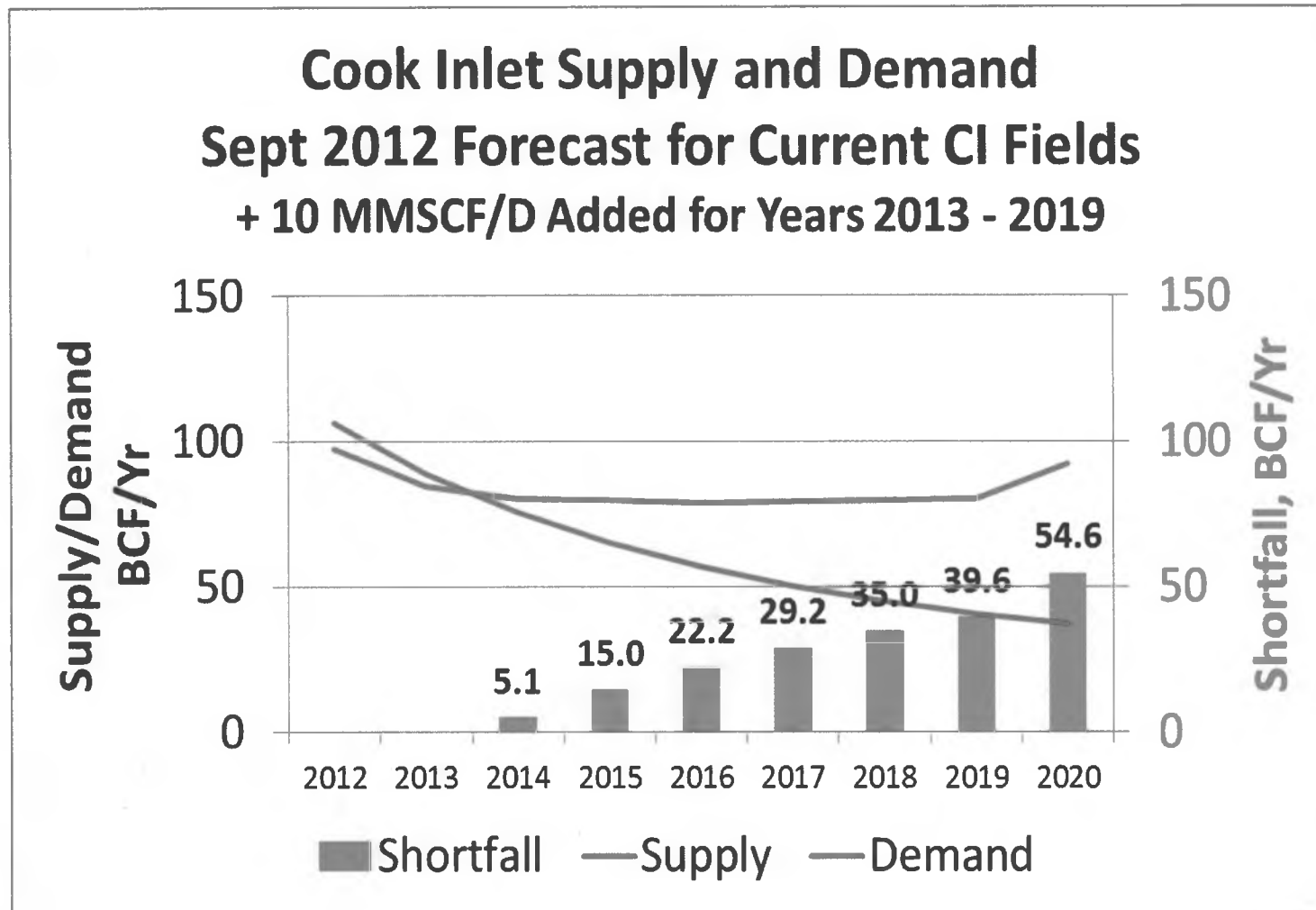
January 23, 2013

Need vs. Time

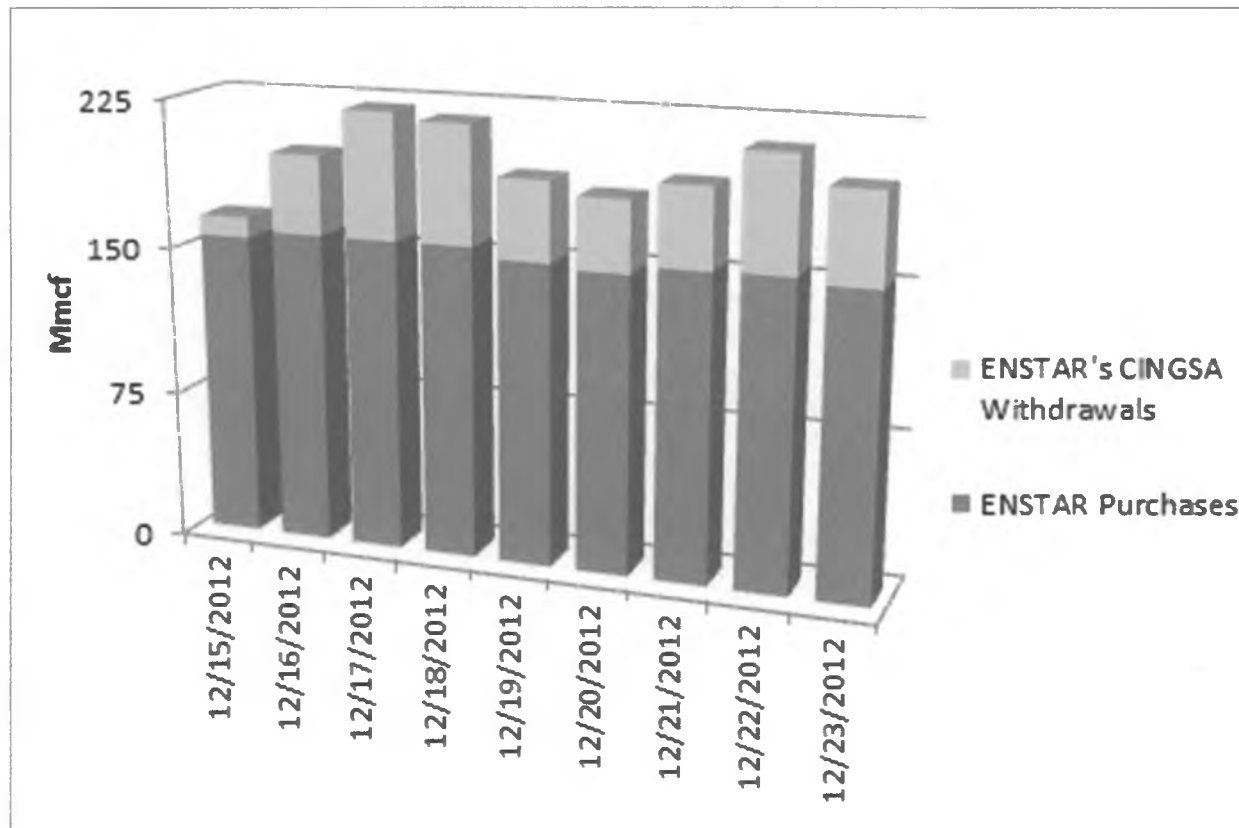


*

PRA Update



Case Study: A Cold Day in December 2012



Impacts of Incentives



Hilcorp Alaska



Aurora

Anchor Point Energy



Furie Operating Alaska LLC



Cook Inlet Energy

Working Together - Plans Become Reality



**Cook Inlet Natural Gas Storage Alaska
CINGSA on-line for Southcentral utilities
11 BCF Storage**



**Fire Island turbines now producing
wind power for Southcentral Alaska
Offsets .4 Bcf of gas/year**



**SPP Spins First Turbine—Alaska Day
Oct 18, 2012
Offsets 3 Bcf of gas/year**

“Bottom Line”: Supplementing Cook Inlet Gas

The ideal solution would:

- Avoid discouraging new Cook Inlet production
- Be scalable to market needs
- Create price signals to producers to encourage local supply
- Be flexible to allow for portfolio of future options

“Bottom Line”: Interest Expressed in Response to LTGS Request for Information

- 3 Marine CNG Providers
- 5 Marine LNG Providers
- LNG Trucking from ANS

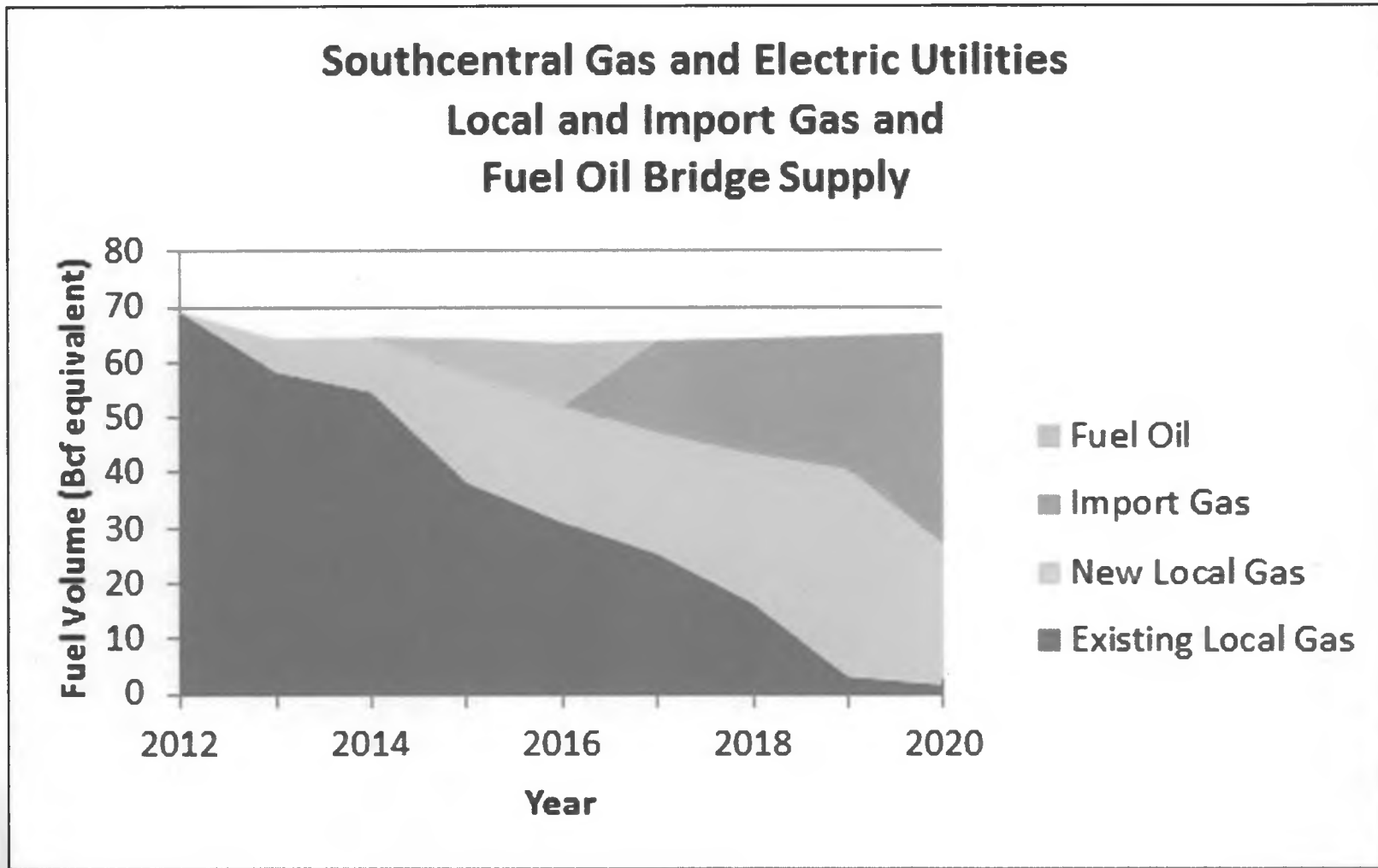
Plan Forward - Group Project Components

- Group Efforts
 - Actively engaged in years past
 - Renewed efforts
- Timeframe
 - Short term
 - Long term
- Regulatory Hurdles
- Next Steps

Timeframe

- Short Term
 - Possible Gas Supply Need - 2014
 - Weather Drives Need
 - Diesel Alternative
 - Short term/Spot LNG Imports
- Long Term
 - 10-15 years
 - CNG/LNG/Trucking
 - Australia, Canada, North Slope, U.S.

Future Supply Scenario



Next Steps

- Study Completion
- Consultants' Recommendations
- Decision on Path Forward
- Regulatory Filings
 - State
 - Federal

SENATE RESOURCES COMMITTEE

INDEPENDENT
bridge to the future LIGHT

Generation Plan Update



PRESENTED BY:

BRADLEY P. JANORSCHKE

Homer Electric Association, Inc. General Manager

January 23, 2013

SENATE RESOURCES COMMITTEE

INDEPENDENT
bridge to the future LIGHT

Generation Plan Update



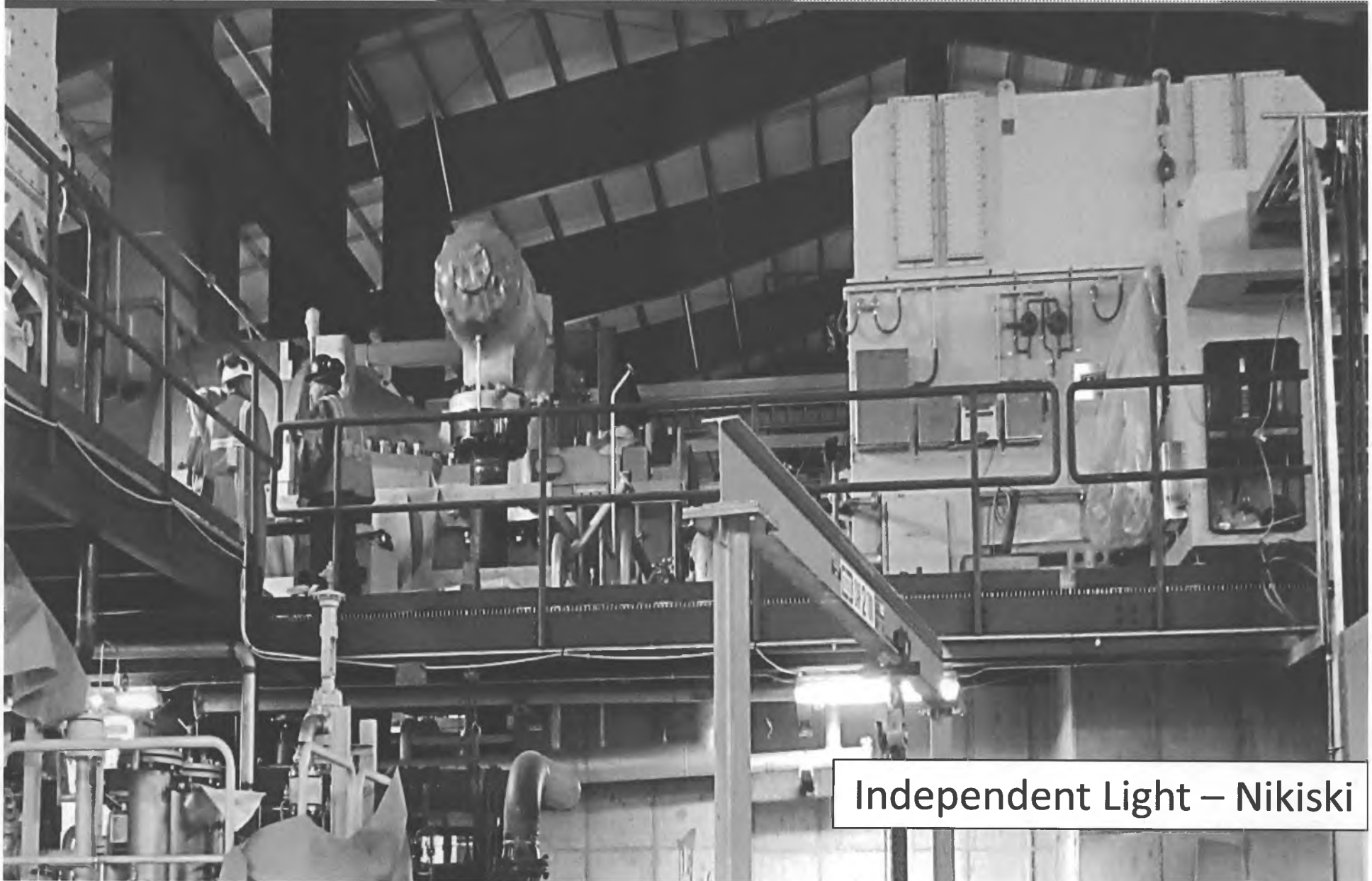
Independent Light – Nikiski

INDEPENDENT

bridge to the future

LIGHT

Generation Plan Update



Independent Light – Nikiski

Generation Plan Update



Independent Light – Soldotna

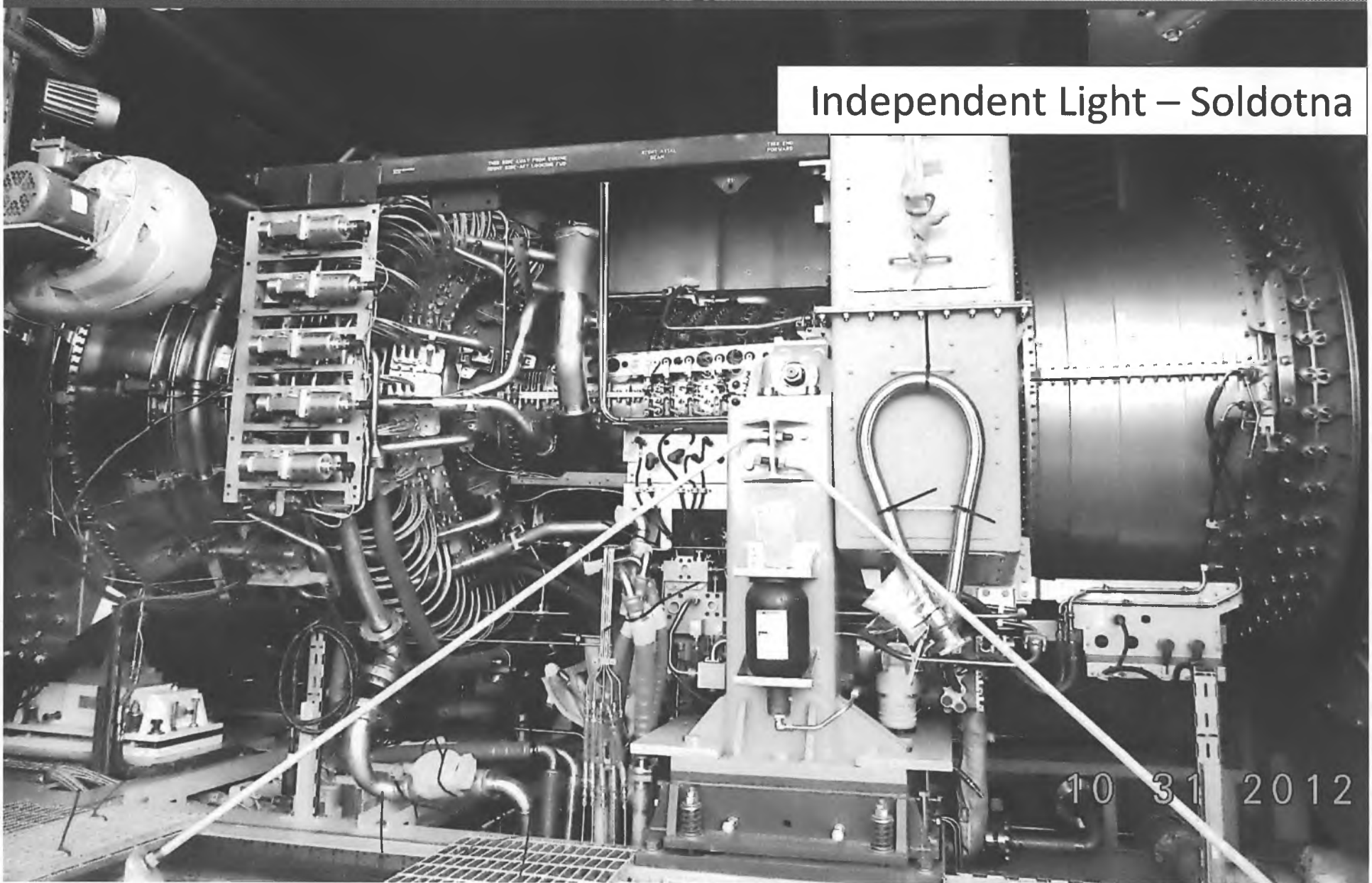


01 22 2013

Generation Plan Update



Independent Light – Soldotna



10 31 2012

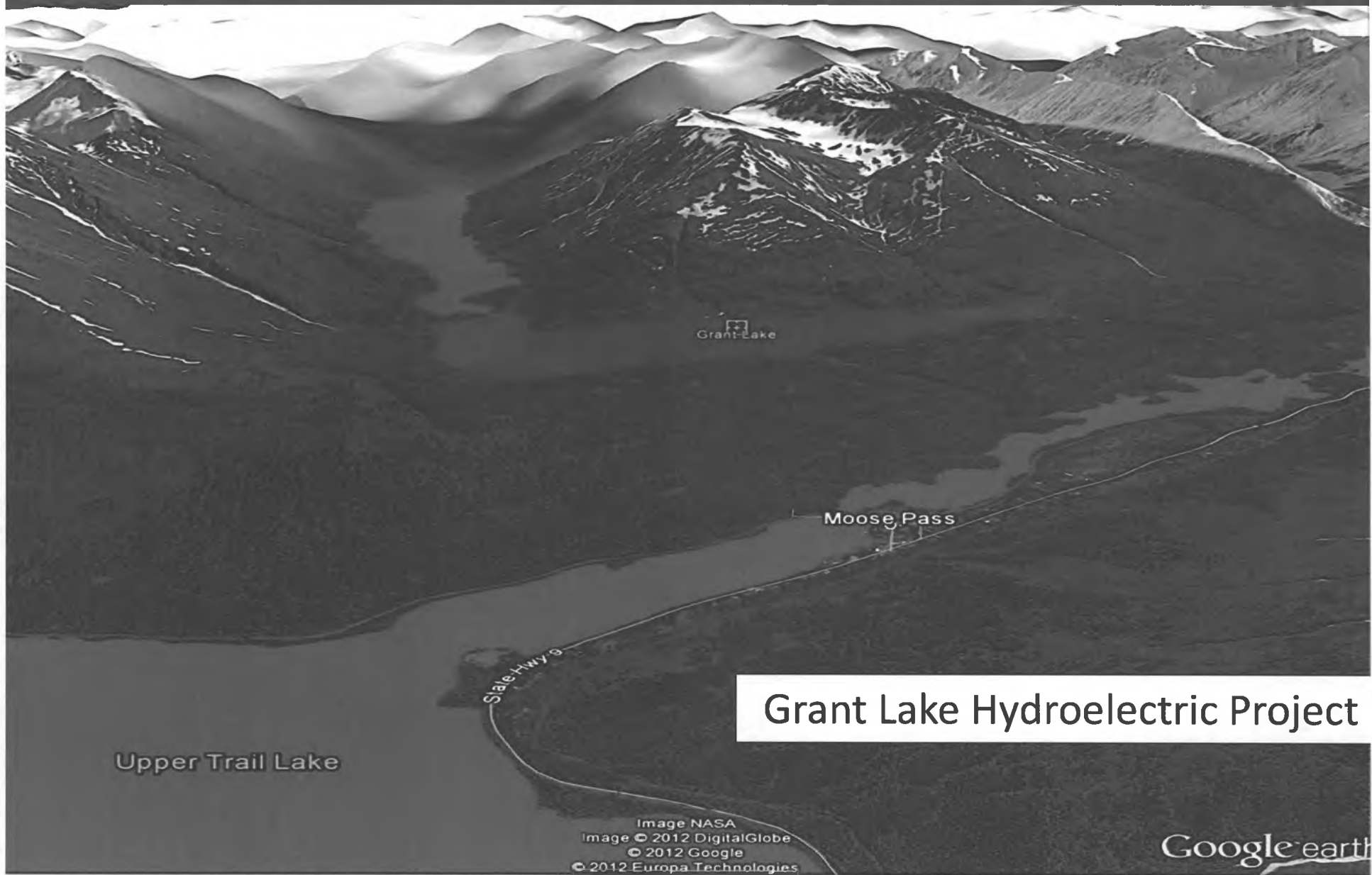
Generation Plan Update



Independent Light – Bernice Lake



Generation Plan Update



Grant Lake Hydroelectric Project

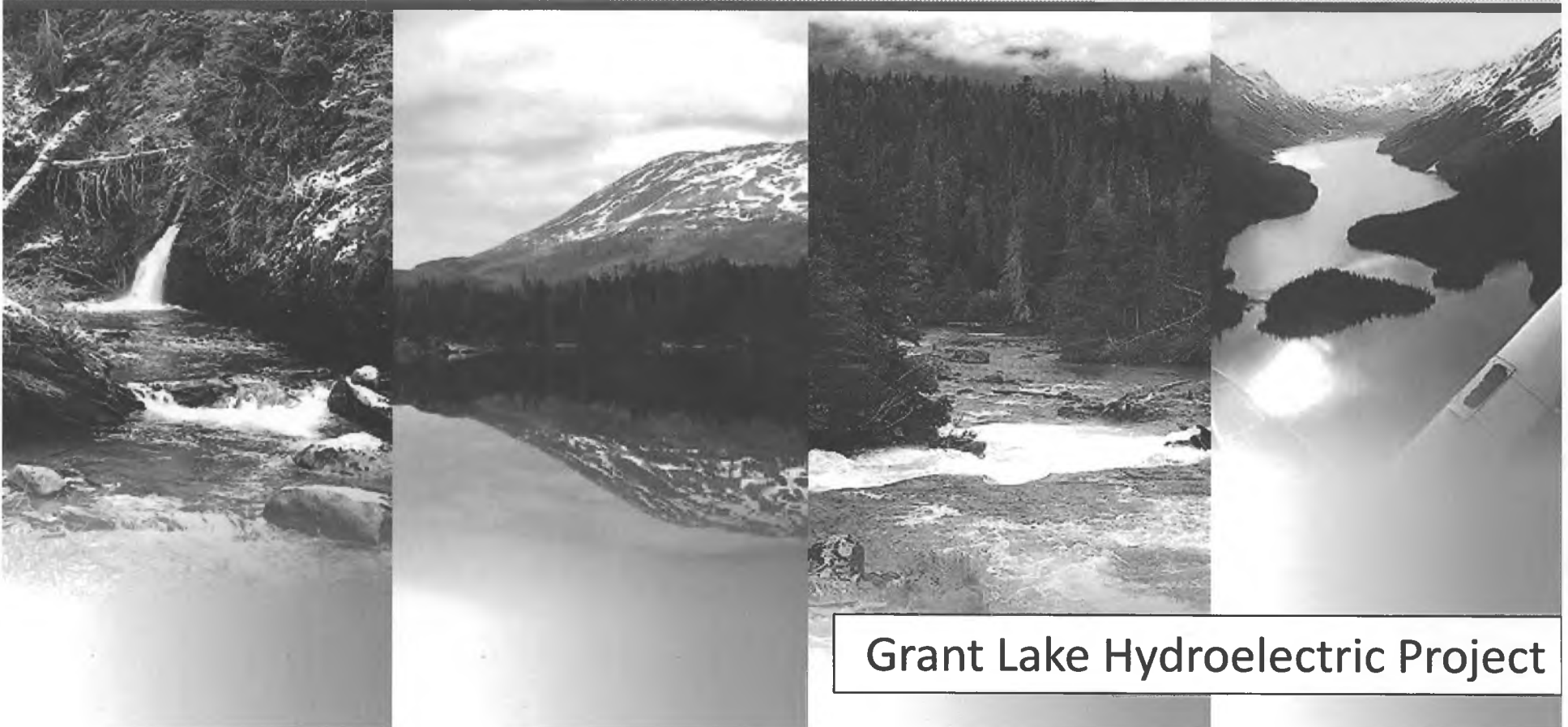
Image NASA
Image © 2012 DigitalGlobe
© 2012 Google
© 2012 Europa Technologies

Google earth

Generation Plan Update



- Aquatic Resources
- Water Resources
- Terrestrial Resources
- Recreational/Visual Resources
- Cultural Resources



Grant Lake Hydroelectric Project

SENATE RESOURCES COMMITTEE

INDEPENDENT
bridge to the future LIGHT

Generation Plan Update

A black and white photograph of a landscape. In the foreground, there are silhouettes of trees and a road. In the middle ground, there is a large body of water. In the background, there are mountains under a cloudy sky. The word 'QUESTIONS?' is overlaid in large, white, outlined letters across the middle of the image.

QUESTIONS?

PRESENTED BY:

BRADLEY P. JANORSCHKE

Homer Electric Association, Inc. General Manager

January 23, 2013