

**SB**

**159**

<TARGET><BILL>SB 159</BILL><SUBJECT>SB  
159</SUBJECT><COMM>SRES27</COMM></TARGET>

# Senator Linda Menard

## Session

State Capitol, Room 9  
Juneau, Alaska 99801  
Phone: (907) 465-6600  
Fax: (907) 465-3805



## Interim

600 E. Railroad Ave.  
Wasilla, Alaska 99654  
Phone: (907) 376-3370  
Fax: (907) 376-3157

## Alaska State Legislature

### Sponsor Statement Senate Bill 159

Senate Bill 159 will establish a new Susitna State Forest from state lands presently used for timber harvest. The Division of Forestry will be able to manage the state forest for a long-term supply of timber to local processors, and retain the land in state ownership for multiple uses. The Susitna State Forest would be the fourth state forest established in Alaska, joining the Haines State Forest, the Tanana Valley State Forest and the Southeast State Forest.

The proposed Susitna State Forest includes **33 parcels totaling approximately 763,200 acres**. The parcels are Forestry classified lands located in 14 large management blocks listed below. The Division of Forestry worked with the Division of Mining, Land, and Water Management to identify and exclude lands that are priorities for the state land disposal program.

In the region where the State Forest is proposed, timber sales and personal use sales for fuelwood are growing steadily. Local mills depend on state timber for their raw material supply, and there is a growing interest in the use of wood in the form of roundwood, chips or wood pellets for both commercial and residential space heating.

The state is committed to long-term management solutions by:

- maximizing the sustainable supply of timber from the state timber base;
- developing access and encouraging a broad range of multiple uses on state forest lands including motorized uses;
- providing economic opportunities to the communities, businesses and residents of the region.

Legislatively designating a State Forest would ensure that some land will remain available for long-term forest management and the region will retain large open spaces of public lands for the range of benefits residents of the region currently enjoy. It will also allow for mining on state forest land.

The Susitna State Forest would be managed as part of the State Forest System under AS 41.17.200-.230. Lands in the State Forest would continue to be open for multiple uses, including wildlife habitat and harvest and recreational activities.

# LEGAL SERVICES

DIVISION OF LEGAL AND RESEARCH SERVICES  
LEGISLATIVE AFFAIRS AGENCY  
STATE OF ALASKA

(907) 465-3867 or 465-2450  
FAX (907) 465-2029  
Mail Stop 3101

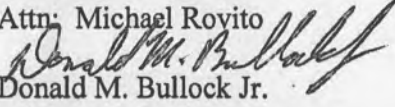
State Capitol  
Juneau, Alaska 99801-1182  
Deliveries to: 129 6th St., Rm. 329

## MEMORANDUM

January 17, 2012

**SUBJECT:** Sectional summary for SB 159 (Work Order No. 27-LS1179M)

**TO:** Senator Linda Menard  
Attn: Michael Royito

**FROM:**   
Donald M. Bullock Jr.  
Legislative Counsel

You have requested a sectional summary of the above-described bill.

As a preliminary matter, note that a sectional summary of a bill should not be considered an authoritative interpretation of the bill and the bill itself is the best statement of its contents. If you would like an interpretation of the bill as it may apply to a particular set of circumstances, please advise.

**Section 1.** Designates state-owned or acquired land and water lying within the listed parcels as the Susitna State Forest. Requires the commissioner of natural resources to prepare a management plan for the forest, and authorizes the commissioner to establish transportation corridors within the forest.

**Section 2.** Provides a July 1, 2012 effective date for the Act.

DMB:ljw  
12-019.ljw

# FISCAL NOTE

**STATE OF ALASKA**  
**2012 LEGISLATIVE SESSION**

Bill Version SB159  
 Fiscal Note Number \_\_\_\_\_  
 ( ) Publish Date \_\_\_\_\_

Identifier (file name) SB159-DNR-FMD-3-9-12 Dept. Affected Natural Resources  
 Title An Act establishing the Susitna State Forest; and Appropriation Resource Development  
providing for an effective date. Allocation Forest Management & Development  
 Sponsor Senator Menard  
 Requester Senate Resources OMB Component Number 435

**Expenditures/Revenues** (Thousands of Dollars)

Note: Amounts do not include inflation unless otherwise noted below.

	FY13 Appropriation Requested	Included in Governor's FY13 Request	Out-Year Cost Estimates					
			FY13	FY14	FY15	FY16	FY17	FY18
<b>OPERATING EXPENDITURES</b>								
Personal Services								
Travel								
Services								
Commodities								
Capital Outlay								
Grants, Benefits								
Miscellaneous								
<b>TOTAL OPERATING</b>	<b>0.0</b>	<b>0.0</b>	<b>0.0</b>	<b>0.0</b>	<b>0.0</b>	<b>0.0</b>	<b>0.0</b>	<b>0.0</b>

<b>FUND SOURCE</b>		(Thousands of Dollars)						
1002	Federal Receipts							
1003	GF Match							
1004	GF							
1005	GF/Prgm (DGF)							
1037	GF/MH (UGF)							
1178	temp code (UGF)							
<b>TOTAL</b>		<b>0.0</b>	<b>0.0</b>	<b>0.0</b>	<b>0.0</b>	<b>0.0</b>	<b>0.0</b>	<b>0.0</b>

<b>POSITIONS</b>								
Full-time								
Part-time								
Temporary								

<b>CHANGE IN REVENUES</b>	<b>0.0</b>	<b>0.0</b>	<b>0.0</b>	<b>0.0</b>	<b>***</b>	<b>***</b>	<b>***</b>
---------------------------	------------	------------	------------	------------	------------	------------	------------

Estimated SUPPLEMENTAL (FY12) operating costs 0.0 (separate supplemental appropriation required)  
 (discuss reasons and fund source(s) in analysis section)

Estimated CAPITAL (FY13) costs 0.0 (separate capital appropriation required)  
 (discuss reasons and fund source(s) in analysis section)

**Why this fiscal note differs from previous version (if initial version, please note as such)**

Not applicable, initial version.

Prepared by John "Chris" Maisch, Division Director Phone 451-2666  
 Division Forest Management & Development Date/Time 3/9/12 3:00 PM  
 Approved by Daniel S. Sullivan, Commissioner Date 3/9/2012  
Department of Natural Resources

FISCAL NOTE

STATE OF ALASKA  
2012 LEGISLATIVE SESSION

BILL NO. SB159

**Analysis**

This bill would establish a new Susitna State Forest in the Matanuska and Susitna Valleys from state lands presently classified for forestry management by the two Area Plans for the region. These lands are currently managed by the Division of Forestry for timber harvest and other multiple uses. Designation of these lands as a state forest will ensure the long-term availability of a timber supply to local commercial and personal use customers, support economic opportunities for the region's communities, improve access to the parcels and retain the land in state ownership for multiple uses. The state forest will also directly support a growing interest in wood energy space heating projects by local communities. These projects require a long-term, sustainable supply of wood.

The proposed State Forest includes 33 parcels totaling approximately 763,200 acres and are located in 14 large management blocks. The Susitna State Forest would become part of the State Forest System under AS 41.17.010-.230 and will continue to be managed under the provisions of the State Forest Resources and Practices Act (FRPA) which is designed to protect fish habitat and water quality. The forest management plan for the region would be updated via a public process per AS 41.17.230.

Implementation of this bill will not require new positions or funding.

The bill will have no short-term impact to the revenue stream, but will provide for long-term increases in forest productivity and subsequent increased timber revenues.

**SB 159**  
**Susitna State Forest**

The proposed Susitna State Forest includes 14 management blocks totaling approximately 760,000 acres. The blocks have previously been classified Forestry in the Susitna Matanuska and the Southeast Susitna Area Plans. The Division of Forestry worked with the Division of Mining, Land, and Water Management to identify and exclude lands that are priorities for the state land disposal program.

The effect of legislatively designating these lands as State Forest is as follows:

<b>Current Condition</b>	<b>Proposed State Forest</b>
Lands may be designated for disposal through agency action.	This would provide for long term forest management planning. Lands would need to be withdrawn from the State Forest system through legislative action.
Revised area plans may further subdivide the existing forest.	Existing private inholdings would remain. All state land designated for settlement in the current Area Plans would remain available for purchase by the public. Any changes in land classification or use would be addressed in the Susitna State Forest Management Plan.
Reluctance by forest managers to invest public funds if the lands are subject to disposal.	Forest Managers would have the opportunity to invest in long term land management projects without having the lands converted to other uses. For example, the DOF would have the opportunity to collaborate with the Department of Fish and Game on long term wildlife enhancement projects, silvicultural treatments for stand improvement, and other activities that show benefits over time.
Lands are managed for multiple use.	No Change.
Existing mineral entry rights.	The lands would be managed for multiple use and would be open for mineral development as it currently exists.
The Susitna Forestry Guidelines, adopted over 20	The Alaska Forest Resources and Practices Act and

years ago and prior to the final revision of the Alaska Forest Resources and Practices Act (AS 41.17), are used for planning timber harvests in the Susitna Valley.	other guidelines will be incorporated into the Susitna State Forest Management Plan and after adoption will be the basis for timber harvests in the State Forest.
Forests are managed on a sustained yield.	AS 41.17.220 requires the management of State Forests occur on the sustained yield principle.
Access for recreation is limited.	A forest management plan would include a transportation plan that addresses recreational opportunities as roads are developed.
Multiple Area Plans are used for the current management of State land.	A Forest Management Plan as required under AS. 41.17.230 must be adopted within 3 years of the establishment of a state forest. The plan requires a forest inventory and must consider other uses such as mineral extraction, recreation, fish and wildlife, and other traditional uses.

# Public Briefing: SB-159

## Susitna State Forest

DEPARTMENT OF NATURAL RESOURCES



Alaska Department of  
**NATURAL  
RESOURCES**

January, 2012

DIVISION OF FORESTRY

**Background.** The state Department of Natural Resources manages over 9.5 million acres of forest land in the Matanuska and Susitna Valleys. Of this land, timber management is allowed on approximately 2.1 million acres. The state actively manages this timber base to supply wood to local processors. Remaining land is designated primarily for other uses including land sales, recreation, water resources, and fish and wildlife habitat, including over 3.1 million acres of legislatively designated state parks, refuges, and public use areas.

In the region, demand for state timber sales is steady and growing and personal use sales for fuelwood have also increased. Local mills depend heavily on state timber for their raw material supply and there is a growing interest in the use of wood in the form of roundwood, chips or wood pellets for both commercial and residential space heating.

There is also a need to more actively manage lands and vegetation to promote a variety of forest ages to provide for diverse and healthy habitats for wildlife. At the same time, active management will also help reduce wildland fire risk by breaking up large fuel types and encouraging initial regeneration by hardwood species.

The state is committed to long-term management solutions by:

- maximizing the sustainable supply of timber from the state timber base;
- developing access and encouraging a broad range of multiple uses on state forest lands including motorized uses;
- providing economic opportunities to the communities, businesses and residents of the region.

Legislatively designating a State Forest would ensure that some land will remain available for long-term forest management and the region will retain large open spaces of public lands for the range of benefits residents of the region currently enjoy.

**Purpose.** This bill would establish a new Susitna State Forest from state lands presently used for timber harvest. The Division of Forestry will be able to manage the State Forest for a long-term supply of timber to local processors, and retain the land in state ownership for multiple uses.

**Proposed State Forest Land.** The proposed Susitna State Forest includes 33 parcels totaling approximately 763,200 acres (see chart). The parcels are Forestry classified lands located in 14 large management blocks listed below. The Division of Forestry worked with the Division of Mining, Land, and Water (DML&W) management to identify and exclude lands that are priorities for the state land disposal program.

**State Forest Management.** The Susitna State Forest would be managed as part of the State Forest System under AS 41.17.200-.230. Lands in the State Forest would continue to be open for multiple uses, including wildlife habitat and harvest and recreational activities. State Forest lands would be managed consistent with the management intent under the current Susitna Matanuska and the Southeast Susitna Area Plans. Changes to management intent would require public and interagency review through adoption of a State Forest Management Plan under AS 41.17.230. The States Forest Resources Practices Act (FRPA) would apply to management activities on the forest and is designed to protect both fish habitat and water quality. (AS 41.17.010 - .955.) A forestry inventory was completed in 2010 for approximately 75% of the acreage and work is ongoing to complete the project. An interim forest inventory report is available.

January 18, 2012

<b>PROPOSED SUSITNA STATE FOREST</b>			
<b>Parcel</b>	<b>Acreage</b>	<b>General Location</b>	<b>Block</b>
<b>Susitna-Matanuska Area Plan</b>			
P-13a	18,100	Kroto Creek East	East Petersville
P-13b	49,600	Kroto Creek West	West Petersville
P-13c	3,300	Amber Lake	West Petersville
U-26a	35,400	Yentna River West	Yentna
R-03a	6,500	Nakoshna River	Yentna
R-03b	33,600	Skwentna River North	West Skwentna
U-26b	15,500	Skwentna River North	West Skwentna
R-03c	5,100	Hayes River	West Skwentna
M-07a	24,200	Canyon Creek	South Skwentna
M-07b	187,000	Mount Susitna	Mount Susitna
M-07c	2,500	Theodore River	Mount Susitna
M-07d	5,800	Alexander Creek West	Alexander Creek
U-24a	10,300	Alexander Creek East	Alexander Creek
U-04a	500	Kroto Slough	Susitna
U-04b	155,800	Kahiltna River	Susitna
U-07e	104,100	Skwentna Village	East Skwentna
B-10	15,200	Yenlo Creek	East Skwentna
S-35	12,800	South Fork Montana Creek	Talkeetna
<b>Southeast Susitna Area Plan</b>			
U-01a	1,200	Sheep Creek North	Talkeetna
U-01b	6,500	Sheep Creek South	Kashwitna
U-01c	5,800	Kashwitna River	Kashwitna
U-01d	13,900	Little Willow Creek North	Willer-Kash
U-01e	18,600	Willow Creek North	Willer-Kash
U-01f	10,500	Deception Creek	Houston
W-01g	600	Houston	Houston
H-06a	800	Houston	Houston
H-32	500	Houston	Houston
H-06b	3,000	Houston	Houston
P-03	600	Little Susitna North	Houston
P-02	1,600	Little Susitna North	Houston
S-03a	300	Deshka Landing	Red Shirt Lake
S-03b	13,300	Deshka Landing South	Red Shirt Lake
S-03c	700	Susitna Village	Red Shirt Lake
<b>TOTAL</b>	<b>763,200</b>		

January 18, 2012

## Expanded Bullets on area plan public processes related to the new Susitna State Forest [1/30/12]

- 1985 Susitna Area Plan identified Forestry designated lands for consideration as legislatively designated areas (LDAs).
- State lands under consideration for a Susitna State Forest are addressed by two area plans: the Susitna Matanuska Area Plan (2011), and the Southeast Susitna Area Plan (2008). These two plans supersede the 1985 Susitna Area Plan.
- The Commissioner of DNR adopted the Southeast Susitna Area Plan (SSAP) on April 28, 2008, following a year-long planning process that included two rounds of public meetings. This plan applies to about 255,000 acres of state land formerly managed by the 1982 Willow Sub-Basin Area Plan and the original 1985 Susitna Area Plan. The SSAP designates 74,855 acres of state land for Forestry. The Division of Forestry actively manages these lands in the Houston and Kashwitna areas for timber production.

A recurring theme during the following processes was the idea of a Susitna State Forest.

- In 2009, DOF engaged in a revision process for the 1991 Susitna Forestry Guidelines (SFG). A citizens' advisory committee and an inter-agency planning team were established and several meetings held. In addition, the SFG process held joint public scoping meetings with the DMLW-led SMAP planning process.
- In 2009, DOF's planner mentioned the Susitna State Forest during his presentation to the Mat-Su Salmon Science and Conservation Symposium in Wasilla.
- During annual (2008-2011) Winter Trails User's meetings between timber operators and Willow area dog mushers, the concept of a state forest in the Susitna was discussed, with broad support for the idea expressed by those attending. Dog mushers enjoy the use of state lands and the associated improved access from logging activities.
- Following a two year planning process, the Commissioner of the Department of Natural Resources (DNR) adopted the Susitna Matanuska Area Plan (SMAP) on August 11, 2011, with a date of issuance of August 17<sup>th</sup>. The SMAP applies to nine million acres of state land formerly managed under the Susitna Area Plan. About 700,000 acres of these state lands are classified Forestry. This area plan recommends establishment of a legislatively designated State Forest for those lands designated or co-designated Forestry in the SMAP and the 2008 Southeast Susitna Area Plan. Public input received at a series of community meetings held throughout the planning area and during a three and a half month public review (February – May 2011) of the draft SMAP supported the concept of a Susitna State Forest.
- DOF coordinated the public scoping efforts for the SFG with DMLW's area plan scoping and the Matanuska-Susitna Borough's land use planning. During April of 2009, six joint open houses were held in communities in the Mat-Su area, and one in Anchorage. An

open house planned for Skwentna in late March was cancelled due to an ash fall in the area from the volcanic eruption of Mt. Redoubt. Approximately 80 people attended the public meetings, and DOF received 22 written scoping comments through the end of July. Many of the written comments supported maintaining or strengthening the Susitna Forestry Guidelines as they are presently written, and keeping its original purpose statement intact. The public comments were generally supportive of forestry. The issues most frequently mentioned were regeneration, timber road access after harvesting, harvest design, riparian standards, and herbicides. Other public outreach efforts that occurred during this period included briefings with the Alaska Outdoor Council, Friends of the Mat-Su, and WACO Trail's Committee.

- The Mat-Su Area Forester reported on the interest in the Susitna State Forest to the Board of Forestry during their August 30-31, 2011 meeting.

\*Provided by Division of Forestry.

***Alaska Trappers Association  
PO Box 82177  
Fairbanks, AK 99708***

**Linda Menard  
Alaska State Senator  
State Capitol, Room 9  
Juneau, AK 99801**

**February 2, 2012**

**Re: SB 159 – Susitna State Forest**

**Dear Senator Menard:**

**The Alaska Trappers Association is a statewide organization with nearly one thousand members. We are active in Alaska wildlife issues and other resource conservation efforts. We support a very active trapper education program.**

**ATA supports the CONCEPT of a fourth state forest, but we have serious concerns about how this might affect other consumptive resource use, particularly trapping. Our concern stems primarily from experience with the way that the planning process for the Tanana Valley State Forest (TVSF) in Interior Alaska was politically manipulated by Governor Knowles.**

**Title 41 (specifically AS 41.17.200) makes it quite clear that the primary purpose of any state forest is to provide a timber base and the opportunity for active forest management and timber harvest. We support and applaud this goal. However, the TVSF Citizens Advisory Committee (a quasi-public agency) was stacked with non-consumptive users and allowed to corrupt and control the planning process to minimize logging, hunting, trapping and motorized access. That serious and systemic problem was exactly what happened when the TVSF Management Plan was rewritten. Environmental groups (enabled, supported and encouraged by the Governor's Office) tied up the planning process for years and manipulated the process. The Governor's Office, rather than the State Forester's**

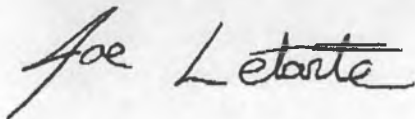
**Office, controlled which specific individuals were appointed to the Citizens' Advisory Committee.**

**Thus, before we can wholeheartedly support your bill, we would prefer to see included some language to prevent or at least minimize this type of political manipulation of the planning process and attempts to preclude the very consumptive uses the State Forest was established to protect. This might entail a slight change to AS 41.17.200. Or perhaps it could be handled with a very clear statement of legislative intent. At a minimum, public discussion during the legislative process regarding this bill should thoroughly air and review the process that took place during the rewriting of the TVSF Management Plan.**

**Once this concern is addressed, we will be glad to comment on specific acreages and areas proposed for inclusion. However, until we can be sure that trapping (and timber harvest, for that matter) are really protected, we support only the CONCEPT of establishing the Susitna State Forest.**

**Thank you for the opportunity to comment on your proposal to establish a Susitna State Forest in South-Central Alaska.**

**Sincerely,**

A handwritten signature in cursive script that reads "Joe Letarte". The signature is written in black ink and is positioned below the word "Sincerely,".

**Joe Letarte, President  
Alaska Trappers Association**



## **MATANUSKA-SUSITNA BOROUGH**

### **Office of the Borough Manager**

350 East Dahlia Avenue • Palmer, AK 99645

Phone (907) 745-9689 • Fax (907) 745-9669

John.Moosey@matsugov.us

January 18, 2012

The Honorable Senator Linda Menard  
Alaska State Capitol  
Room 9  
Juneau, Alaska 99801

Dear Senator Menard,

I am very pleased to send a letter of support for Senate Bill 159 which will establish the Susitna State Forest. This bill will establish a new State Forest from state lands presently used for timber harvest. The Division of Forestry will be able to manage the State Forest for a long-term supply of timber to local processors, and retain the land in state ownership for multiple uses.

The Mat-Su Borough and its residents will benefit from a state forest in the form of an economic boost from a sustainable supply of timber from the state timber base. The Susitna State Forest would be managed as part of the State Forest System and would be open for multiple uses, including wildlife habitat, harvest, and recreational activities.

Demand for state timber sales is steady and growing, and personal use sales for fuel wood have also increased. Local mills depend heavily on state timber for their raw material supply and there is a growing interest in the use of wood in the form of round wood, chips or wood pellets for both commercial and residential space heating. At the same time, active management will also help reduce wild land fire risk by breaking up large fuel types and encouraging initial regeneration by hardwood species.

Thank you for the opportunity to endorse this project. Should you have any questions, please do not hesitate to contact my office.

Sincerely,

John M. Moosey  
Borough Manager

JM/al



# RESOURCE DEVELOPMENT COUNCIL

Growing Alaska Through Responsible Resource Development

Founded 1975  
Executive Director

Rick Rogers

2011-2012 Executive Committee

Tom Maloney, President

Phil Cochrane, Sr. Vice President

L.F. "Len" Horst, Vice President

Eric Fjelstad, Treasurer

Ralph Samuels, Secretary

Wendy Lindskoog, Past President

Bob Berto

Patty Bielawski

Pat Carter

Steve Denton

Jeff Foley

Stan Foo

Paul Glavinovich

Scott Jepsen

Lance Miller

Kara Moriarty

Lisa Parker

Dale Pittman

Ethan Schutt

Lorna Shaw

John Shively

Jeanine St. John

Scott Thorson

Cam Toohey

Directors

Todd Abbott

Greg Baker

Dave Benton

Allen Bingham

Dave Chaput

Steve Connelly

Bob Cox

Dave Cruz

Allan Dolynny

Paula Easley

Ella Ede

Brad Evans

Corri Feige

Carol Fraser

Tim Gallagher

Ricky Gease

Dan Graham

Chuck Greene

Scott Habberstad

Karl Hanneman

Rick Harris

Paul Henry

Steve Hites

Larry Houle

Teresa Imm

Bill Jeffress

Mike Jungreis

Frank Kelty

Thomas Krzewinski

Jim Laiti

John Lau

Tom Lovas

Andy Mack

Thomas Mack

John MacKinnon

Stephanie Madsen

Sam Mazzeo

Ron McPheters

James Mery

Denise Michels

Hans Neidig

Judy Patrick

Charlie Powers

Mike Sattre

Mary Sattler

Keith Silver

Lorali Simon

John Sturgeon

Dan Sullivan

Peter Taylor

Michael Terminel

Jan Trigg

Ex-Officio Members

Senator Mark Begich

Senator Lisa Murkowski

Congressman Don Young

Governor Sean Parnell

January 19, 2012

Senators Joe Paskvan and Tom Wagoner  
Co-Chairs, Senate Resources Committee  
Alaska State Legislature  
Juneau, AK 99801

RE: Senate Bill 159, Susitna State Forest

Dear Senators Paskvan and Wagoner:

The Resource Development Council (RDC) is writing to support Senate Bill 159, which would create the Susitna State Forest over 763,200 acres of state land west of the Parks Highway.

RDC is a statewide, non-profit, membership-funded organization founded in 1975. The RDC membership is comprised of individuals and companies from Alaska's oil and gas, mining, timber, tourism, and fisheries industries, as well as Alaska Native corporations, local communities, organized labor, and industry support firms. RDC's purpose is to link these diverse interests together to encourage a strong, diversified private sector in Alaska and expand the state's economic base through the responsible development of our natural resources.

The Alaska Department of Natural Resources currently manages 9.5 million acres of forest land in the Matanuska and Susitna Valleys. Of this land, timber management is allowed on approximately 2.1 million acres. Remaining land is designated for other uses, including land sales, recreation, water resources, and fish and wildlife habitat. Over 3.1 million acres is protected in legislatively-designated state parks, refuges, and public use areas.

The establishment of the Susitna State Forest would ensure that some land would remain available for long-term forest management. It would allow the Division of Forestry to more actively manage lands and vegetation to promote a variety of forest ages, which in turn would maximize the sustainable supply of timber from the state timber base and provide for more diverse and healthy habitats for wildlife. In addition, active management would also help reduce wildfire risk.

The Division of Forestry would manage the state forest for a long-term supply of timber to local processors and retain land in state ownership for other multiple uses. An enhanced long-term timber supply would help support the forest products industry, provide fuel for sustainable biomass energy projects, and create new jobs. It would also benefit the recreational sector as the state intends to develop access to the new state forest and encourage a broad range of multiple uses. These multiple uses, including annual timber harvests, would provide important economic opportunities to local communities, businesses, and residents.

It is important to keep in mind that SB 159 would establish a new state forest from state lands presently designated for forest management. The Susitna State Forest would be managed consistent with the management intent under the current Susitna Matanuska and the Southeast Susitna Area Plans. Alaska's Forest Resources Practices Act would apply to management activities on the forest and is designed to protect both fish habitat and water quality.

established, the Susitna State Forest would be the fourth state forest in Alaska. RDC supports SB 159 and believes the proposed state forest will be of much benefit to the local economy – creating and sustaining much needed jobs in the forest products industry while providing many other opportunities. We urge the committee to pass SB 159.

Sincerely,



Carl Portman  
Deputy Director

Cc: Senator Linda Menard  
Chris Maisch, State Forester



DEDICATED TO IMPROVING THE ENVIRONMENT  
FOR RUFFED GROUSE, WOODCOCK,  
AND OTHER FOREST WILDLIFE  
South Central Alaska Chapter  
7650 Delridge Circle, Anchorage, Alaska 99507

February 9, 2012

The Honorable Linda Menard  
State Capitol Room 9  
Juneau, Alaska 99801

Dear Senator Menard,

The South Central Alaska Chapter of The Ruffed Grouse Society would like to thank you for submitting Senate Bill 159, creating a State Forest west of the Susitna River. We support creation of this Forest for a multitude of reasons not the least of which is the ability to manage our forest resources for wildlife.

The area west of the Susitna is one of the last remaining large blocks of state land in Southcentral Alaska. Establishing a state forest will ensure that the ever increasing population of this area has access to the outdoor recreation for which our state is famous and that our timber, land and wildlife resources can be managed for the benefit of all Alaskans. A state forest will also help establish and solidify a timber industry for this area. Managed timber harvests benefit wildlife that needs an age diversified forest to thrive and would help reduce the potential for devastating fires such as the Miller Reach catastrophe.

Designation as a State Forest is, we believe, one of the least restrictive land categories possible. It allows for most uses, but would require planning and thought before implementing changes such as roads, mining, campgrounds, etc. The one restriction we know of is transfer of land into private ownership. In the past, the State has been able to meet the recreational needs of the Southcentral population through land transfers to individuals. However, the population is growing and most land with easy access, such as that bordering lakes and rivers, has already been transferred. The net effect is to block access to the remaining area. We realize there are access corridors reserved, but these are not particularly effective when it means parking your plane in front of someone's cabin to walk the right of way to a stream. Land owners tend to view such as an intrusion and clashes ensue. Additionally, owners of private land tend to want to manage all lands within view of their property. This leads to conflict when trying to manage resources on state land. In the Matanuska Valley it has hobbled the ability of Forestry to conduct timber sales and ADF&G to implement habitat improvement projects.

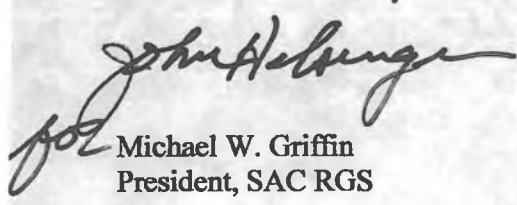
As currently described in SB 159, the State Forest is a convoluted collection of detached parcels taking 16 pages to describe the boundaries. A person out for recreation will have a difficult time trying to determine if they are in or out of the forest. Future disposal of land surrounding these parcels could complicate road development and access to proposed timber sales. Private ownership bounding the forest could result in the NIMBY problems we are already dealing with in other parts of Southcentral.

451 McCORMICK ROAD • CORAOPOLIS, PENNSYLVANIA 15108-9377  
(412) 262-4044 FAX (412) 262-9207 (888) 564-6747 TOLL FREE  
Email: [rgs@ruffedgrousesociety.org](mailto:rgs@ruffedgrousesociety.org) [www.ruffedgrousesociety.org](http://www.ruffedgrousesociety.org)

We would encourage you to expand the proposed boundaries to incorporate all unencumbered state land west of the Susitna River, south of the Denali Park Boundaries, North of Beluga Lake/Beluga River draining into Cook Inlet. As a minimum, the forest boundaries need to be simplified and expanded to create a buffer against treats to proper forest management by private ownership and to ensure reasonable access to the forest is available. This would preserve public access, ensure multiple use of our land, and enhance our wildlife resources for all Alaskans, now and in the future, while encouraging development of a comprehensive timber industry.

This forest will complement the three other state forests that have been successfully established. We urge the legislature to expand and pass SB 159 this session.

Sincerely,



for Michael W. Griffin  
President, SAC RGS

Alaska Chapter SCI  
PO Box 770511  
Eagle River, AK 99577  
(907) 980-9018



February 9, 2012

The Honorable Linda Menard  
Alaska State Senate  
120 4<sup>th</sup> St. Rm 9  
Juneau, AK 99801

Dear Senator Menard:

The Alaska Chapter of SCI is in support of SB 159 and commends you for your foresight in introducing this necessary piece of legislation.

As you may or may not know, SCI Alaska Chapter is not only the leading hunter-conservationist organization in Alaska, but is also SCI's leading chapter throughout the SCI network which includes over 105 countries and 260 chapters. Our mission is to protect the freedom to hunt through political advocacy and action, support for sound, science based conservation and wildlife management, and through humanitarian services.

In reviewing SB 159 and the applicable statutory guidelines in Title 41, we may wish to suggest amendments as this bill works its way through the process. We have some concerns as to whether the simple set aside of lands into a state forest will bring about desired results.

Our first concern is that suitable habitat is maintained for wildlife upon which rests one of the primary impetuses for recreation in Alaska. This concern leads us to believe that the bill does not go far enough in sequestering the necessary habitat to sustain wildlife populations through the establishment of contiguous parcels of land.

Our other major concern involves management practices. Although some lands may not be suitable for the growth of marketable timber, we maintain that those lands are nonetheless important for this state forest designation. Most of Alaska's wildlife depends heavily upon successional plant life. 'Climax forests do not provide the same level of benefit as does new forest lands. Since we do not encourage the proliferation of fire any longer in this area due to a variety of concerns, it is important that harvest of climax forests be allowed to produce suitable habitat for wildlife.

We look forward to working with you on this legislation and thank you again for introducing it.

Sincerely,

A handwritten signature in black ink, appearing to read 'Eddie Grasser', written in a cursive style.

Eddie Grasser  
Director of Government Affairs

**SCI's Top Gun Chapter**

## POPPERT MILLING INC

---

PO Box 870051  
Wasilla, Alaska 99587  
(907) 376-8774  
(907) 373-2907 FAX  
pmilling@mtaonline.net

RECEIVED

MAR 13 2012

March 7, 2012

Senate Resources Committee  
RE: SB-159, Susitna State Forest

Dear Senator Paskvan and Senator Wagoner,

My name is Dave Poppert and I own and operate Poppert Milling Inc. along with my wife Cathy and son Michael. Poppert Milling has been doing business in the Mat-Su Valley for almost 50 years.

I am writing in support of Senate Bill 159, which would create a state forest in the Susitna Valley, and also to express concerns of access to the area.

As a timber user it is in our best interest to do what we can to ensure a viable long-term timber supply. My Grandfather started our company in downtown Wasilla and my son is already trying to give me the "boot", but I am hesitant to let him take the reins with an unknown future for a timber supply. A state forest in the Susitna Valley could ensure a supply. But, it does no good to have a sustainable timber supply if it is not economically feasible to access it. Most of the 763,000 acres that would be included is west of the Big Susitna River, which currently can only be accessed via Petersville Road. It would be approximately 200 miles round trip for 1 load of logs to get to our facility at mp. 48.5 on the Parks Hwy. The value of the timber would be less than the cost to get it to market. Year round, closer to the user access would certainly do a lot for the timber industry in our area.

We currently do a very high value added to our timer from 3-sided "D"-logs to kiln dried architectural mouldings to tongue and groove flooring and wall paneling. With a sustainable timber supply our company would be able to expand it's operation which in turn means more jobs.

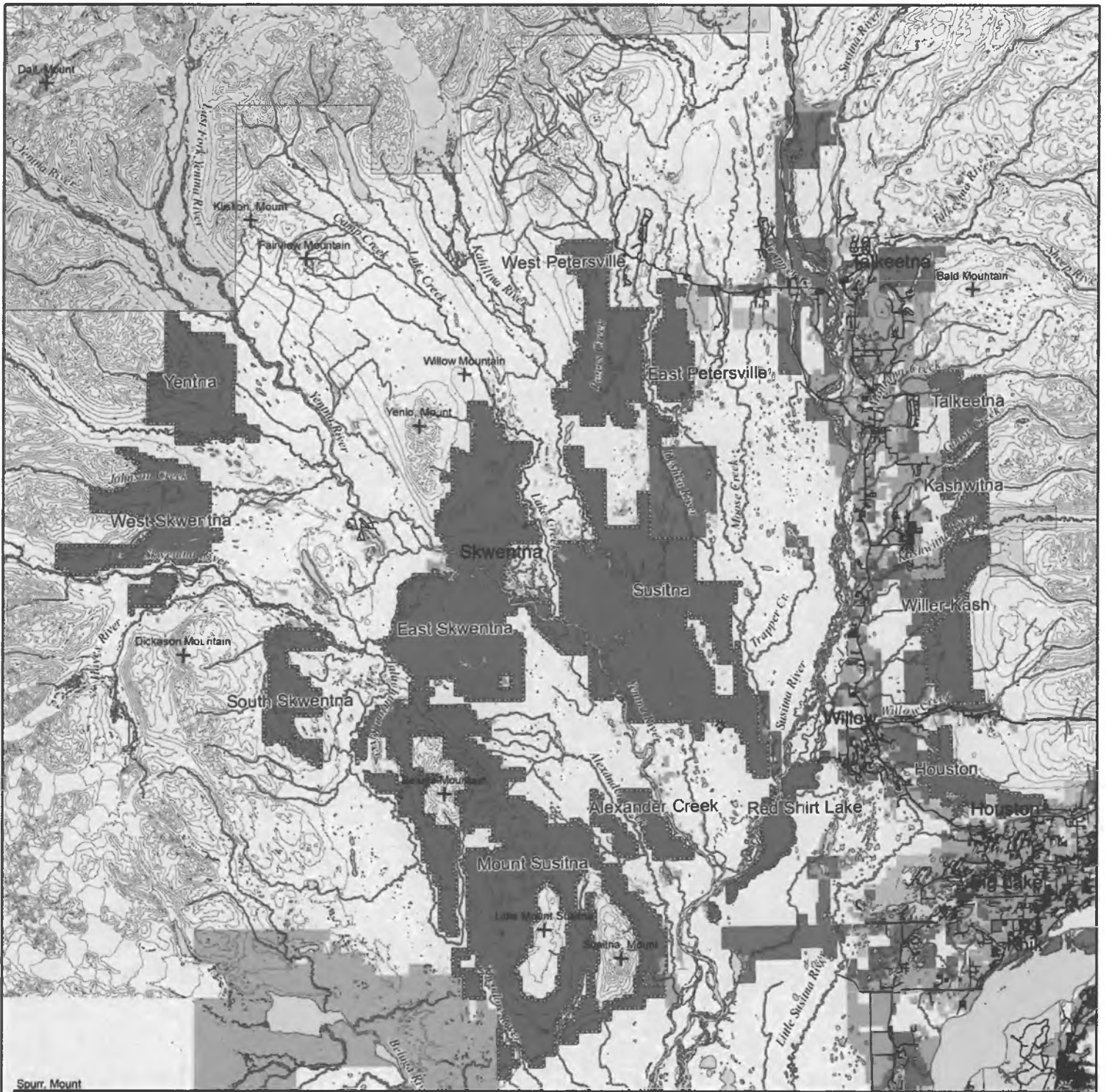
We urge the Legislature to pass Senate Bill 159 and hope that some provision can be made with regards to reasonable access so that possibly someday my grandchildren may know they can continue our business without worry of the resource

Sincerely

A handwritten signature in black ink, appearing to read 'D Poppert', with a long horizontal flourish extending to the left.

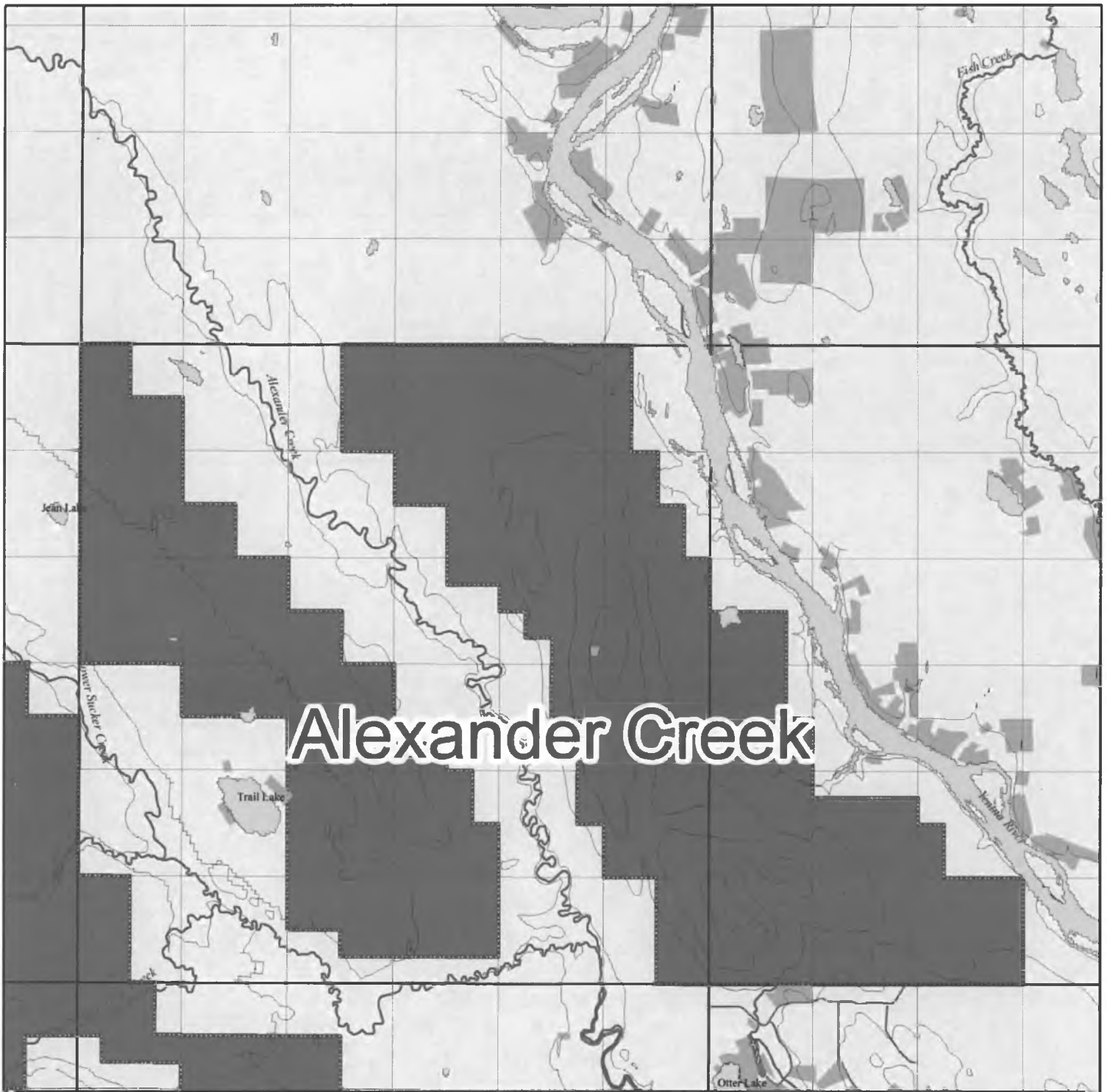
Dave Poppert  
Poppert Milling Inc.

# Susitna Valley State Forest Blocks



<b>Land Ownership</b>		<b>Proposed Susitna Valley State Forest Blocks</b>
Private Lands	0	5
ANCSA Native Corporation	10	20
Matanuska Susitna Borough	30	
University of Alaska, Alaska Mental Health Land Trust		
Federal Government	<b>Miles</b>	
State of Alaska	scale = 1:750,000	
Land Ownership information provided by the Matanuska Susitna Borough Information Technology Department, January 2012.		  
Alaska Dept of Natural Resources <b>Division of Forestry</b> Forest Resources Program 550 West 7th Avenue, Suite 1450 Anchorage, Alaska 99501		

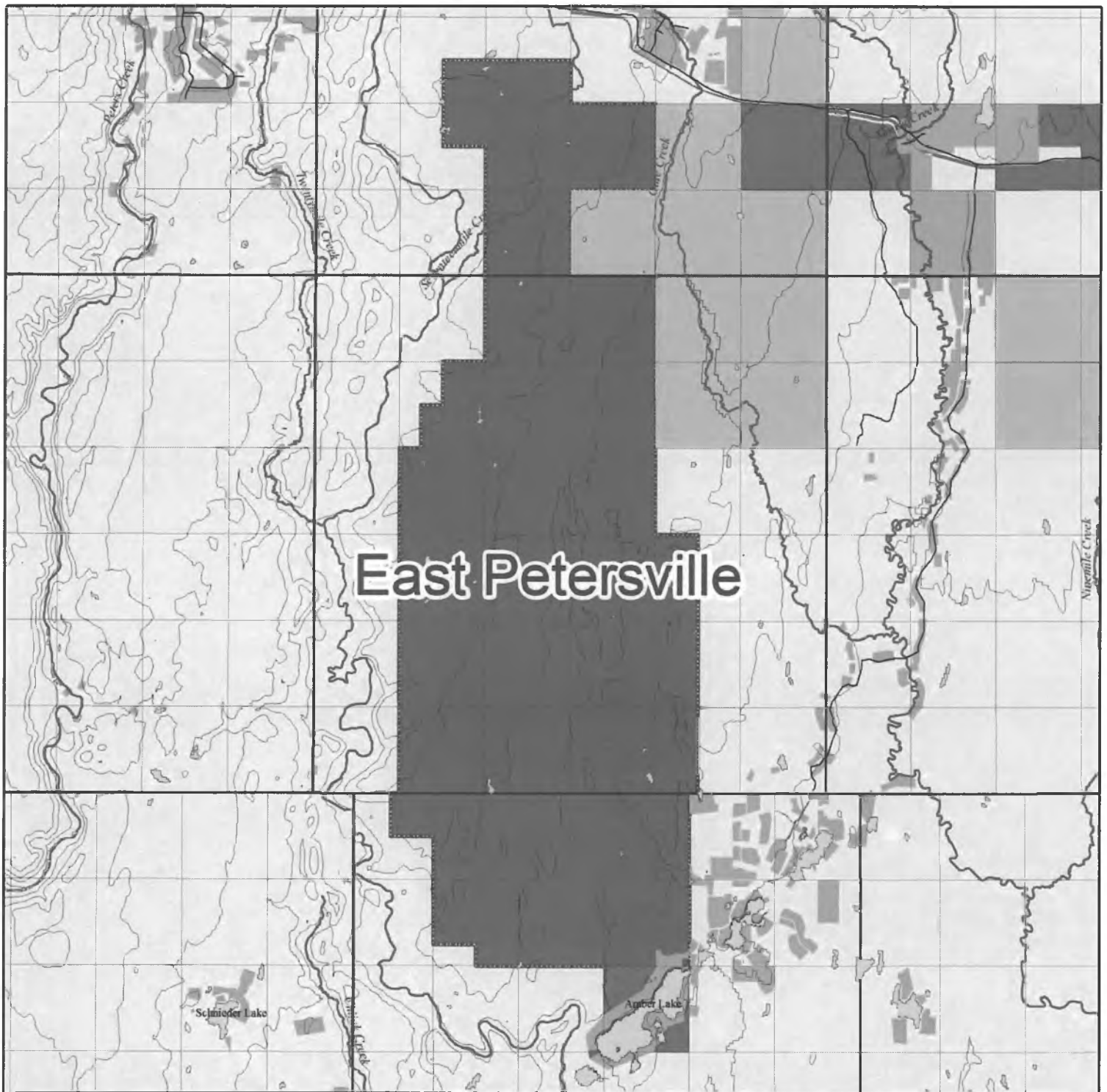
# Susitna Valley State Forest, Alexander Creek Block



Alexander Creek

<b>Land Ownership</b>	<b>Proposed Susitna Valley State Forest, Alexander Creek Block</b>
Private Lands	0 0.5 1 2 3 4
ANCSA Native Corporation	
Matanuska Susitna Borough	<b>Miles</b>
University of Alaska, Alaska Mental Health Land Trust	scale = 1:80,000
Federal Government	Land Ownership information provided by the Matanuska Susitna Borough Information Technology Department, January 2012.
State of Alaska	
	Alaska Dept of Natural Resources <b>Division of Forestry</b> Forest Resources Program 550 West 7th Avenue, Suite 1450 Anchorage, Alaska 99501

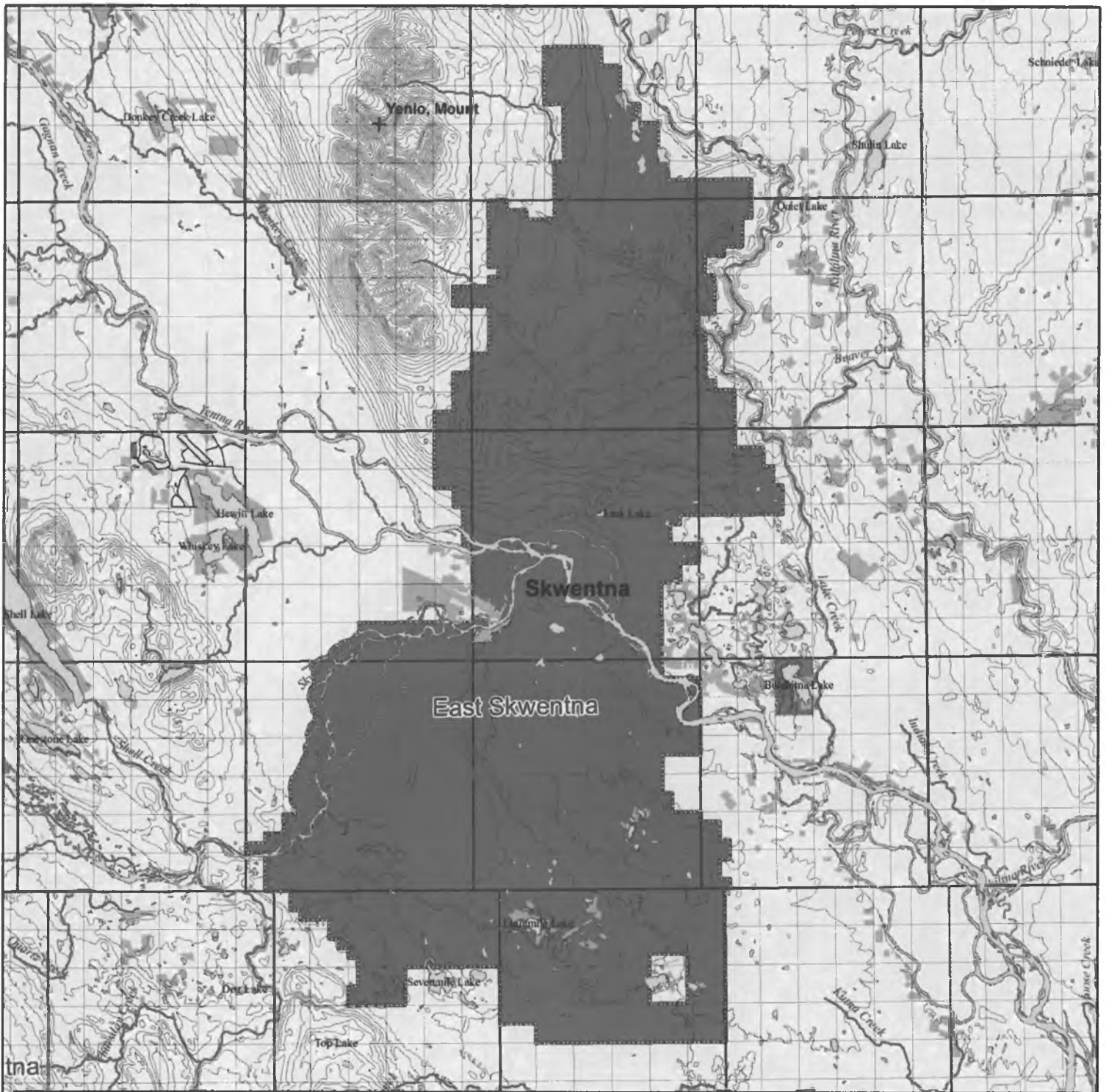
# Susitna Valley State Forest, East Petersville Block



East Petersville

<b>Land Ownership</b>		<b>Proposed Susitna Valley State Forest, East Petersville Block</b>
	0 0.5 1 2 3 4	
Private Lands		
	<b>Miles</b>	Alaska Dept of Natural Resources
ANCSA Native Corporation	scale = 1:100,000	<b>Division of Forestry</b>
	Land Ownership information provided by the Matanuska Susitna Borough Information Technology Department, January 2012.	Forest Resources Program
Matanuska Susitna Borough		550 West 7th Avenue, Suite 1450
		Anchorage, Alaska 99501
University of Alaska, Alaska Mental Health Land Trust		
Federal Government		
State of Alaska		

# Susitna Valley State Forest, East Skwentna Block



**Land Ownership**

-  Private Lands
-  ANCSA Native Corporation
-  Matanuska Susitna Borough
-  University of Alaska, Alaska Mental Health Land Trust
-  Federal Government
-  State of Alaska

**Proposed Susitna Valley State Forest, East Skwentna Block**

0 1.5 3 6 9

Miles

scale = 1:225,000



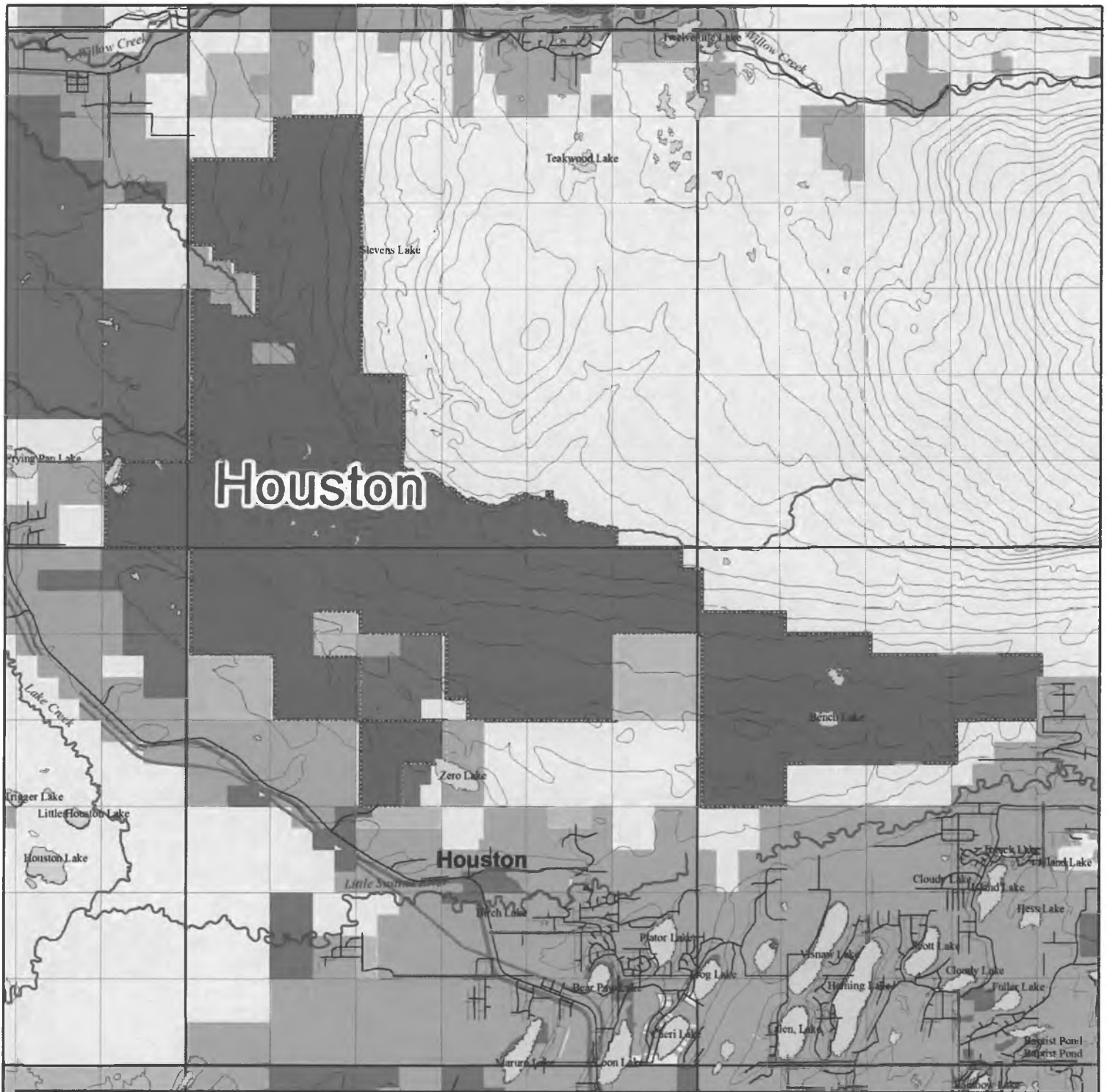
Alaska Dept of Natural Resources

**Division of Forestry**

Forest Resources Program  
550 West 7th Avenue, Suite 1450  
Anchorage, Alaska 99501

Land Ownership information provided by the  
Matanuska Susitna Borough Information  
Technology Department, January 2012.

# Susitna Valley State Forest, Houston Block

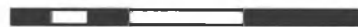


## Land Ownership

-  Private Lands
-  ANCSA Native Corporation
-  Matanuska Susitna Borough
-  University of Alaska, Alaska Mental Health Land Trust
-  Federal Government
-  State of Alaska

## Proposed Susitna Valley State Forest, Houston Block

0 0.5 1 2 3



Miles

scale = 1:100,000

Land Ownership information provided by the  
Matanuska Susitna Borough Information  
Technology Department, January 2012.

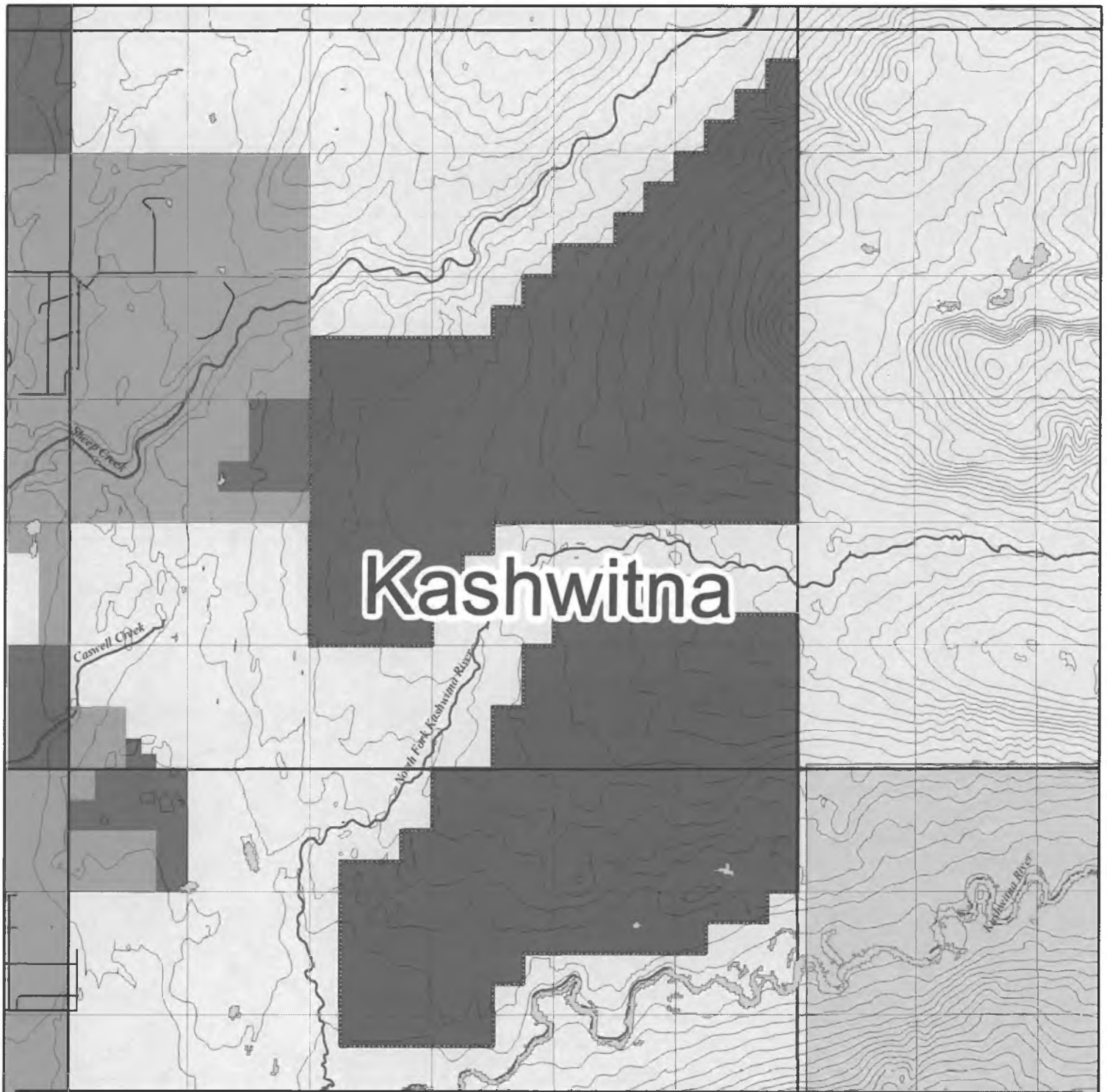


Alaska Dept of Natural Resources

**Division of Forestry**

Forest Resources Program  
550 West 7th Avenue, Suite 1450  
Anchorage, Alaska 99501

# Susitna Valley State Forest, Kashwitna Block



## Land Ownership

-  Private Lands
-  ANCSA Native Corporation
-  Matanuska Susitna Borough
-  University of Alaska, Alaska Mental Health Land Trust
-  Federal Government
-  State of Alaska



## Proposed Susitna Valley State Forest, Kashwitna Block

0 0.5 1 2 3



Miles

scale = 1:70,000



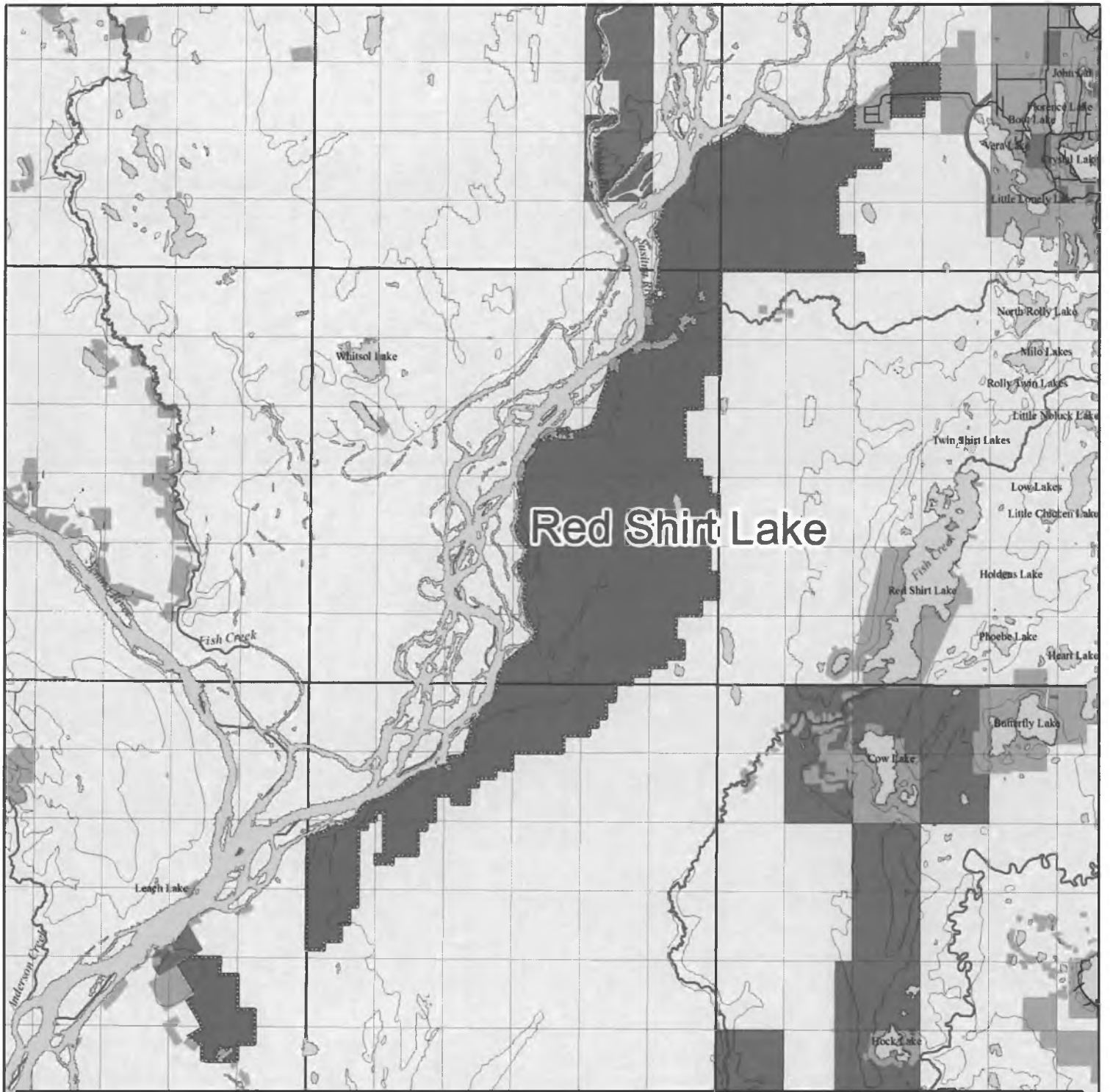
Alaska Dept of Natural Resources

**Division of Forestry**

Forest Resources Program  
550 West 7th Avenue, Suite 1450  
Anchorage, Alaska 99501

Land Ownership information provided by the  
Matanuska Susitna Borough Information  
Technology Department, January 2012.

# Susitna Valley State Forest, Red Shirt Lake Block



Red Shirt Lake

## Land Ownership

-  Private Lands
-  ANCSA Native Corporation
-  Matanuska Susitna Borough
-  University of Alaska, Alaska Mental Health Land Trust
-  Federal Government
-  State of Alaska



## Proposed Susitna Valley State Forest, Red Shirt Lake Block

0 0.5 1 2 3 4



Miles

scale = 1:125,000

Land Ownership information provided by the  
Matanuska Susitna Borough Information  
Technology Department, January 2012.

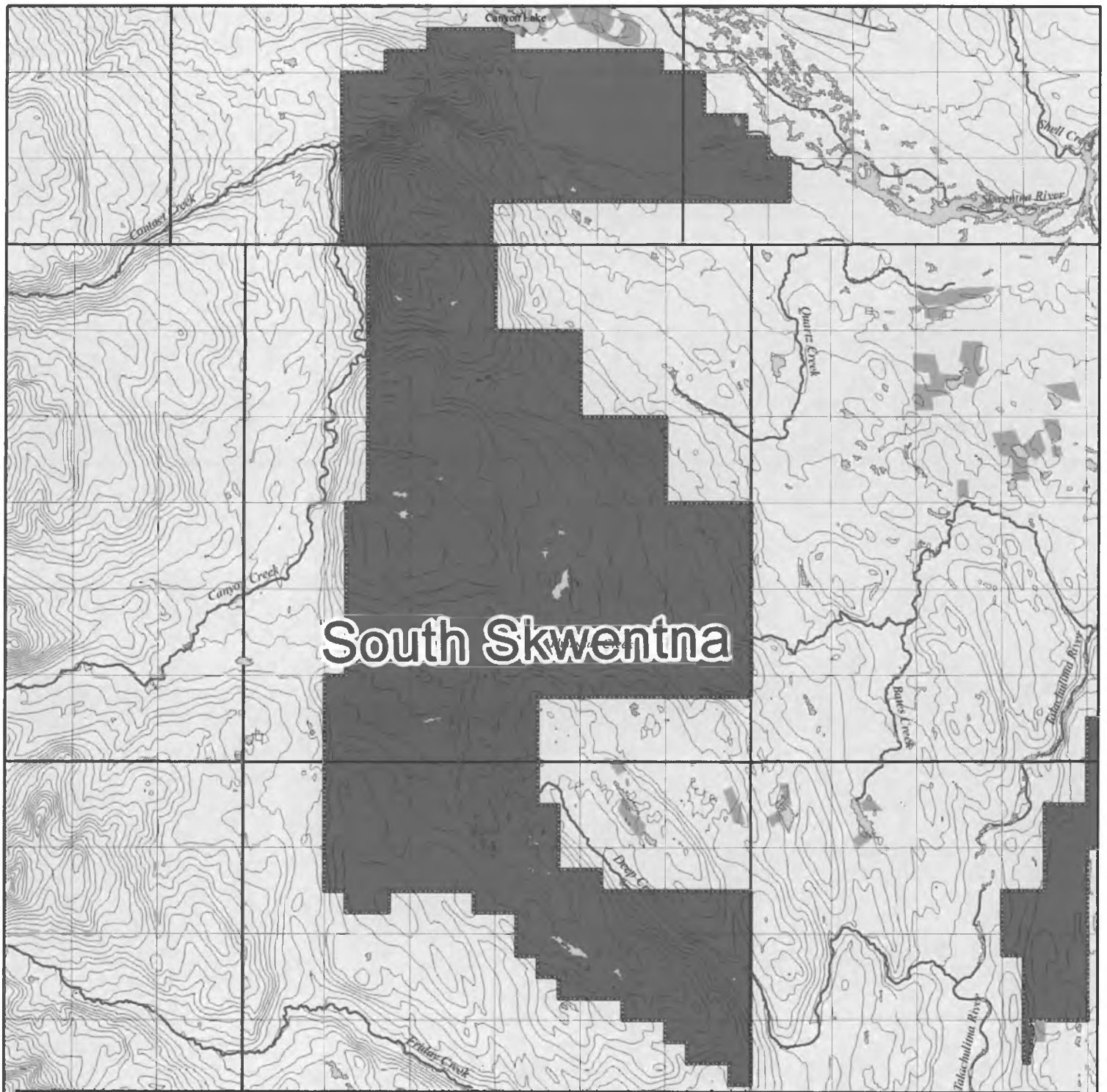


Alaska Dept of Natural Resources

**Division of Forestry**

Forest Resources Program  
550 West 7th Avenue, Suite 1450  
Anchorage, Alaska 99501

# Susitna Valley State Forest, South Skwentna Block



## Land Ownership

-  Private Lands
-  ANCSA Native Corporation
-  Matanuska Susitna Borough
-  University of Alaska, Alaska Mental Health Land Trust
-  Federal Government
-  State of Alaska



## Proposed Susitna Valley State Forest, South Skwentna Block

0 0.5 1 2 3



Miles

scale = 1:100,000

Land Ownership information provided by the  
Matanuska Susitna Borough Information  
Technology Department, January 2012.



Alaska Dept of Natural Resources

**Division of Forestry**

Forest Resources Program  
550 West 7th Avenue, Suite 1450  
Anchorage, Alaska 99501



# Susitna Valley State Forest, Talkeetna Block



Talkeetna

## Land Ownership

-  Private Lands
-  ANCSA Native Corporation
-  Matanuska Susitna Borough
-  University of Alaska, Alaska Mental Health Land Trust
-  Federal Government
-  State of Alaska



## Proposed Susitna Valley State Forest, Talkeetna Block

0 0.5 1 2 3



Miles

scale = 1:70,000

Land Ownership information provided by the  
Matanuska Susitna Borough Information  
Technology Department, January 2012.

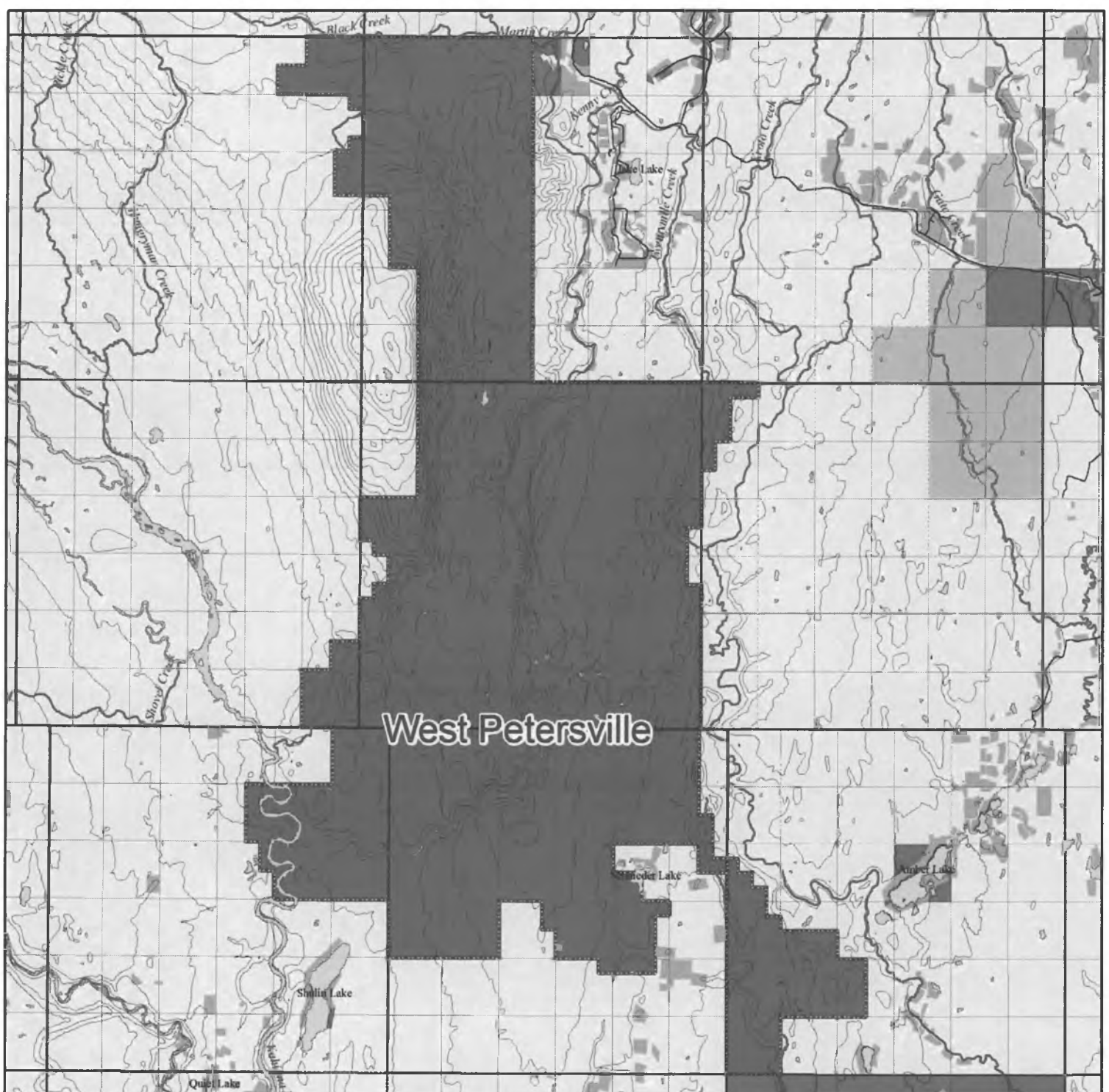


Alaska Dept of Natural Resources









**Division of Forestry**

Forest Resources Program  
550 West 7th Avenue, Suite 1450  
Anchorage, Alaska 99501

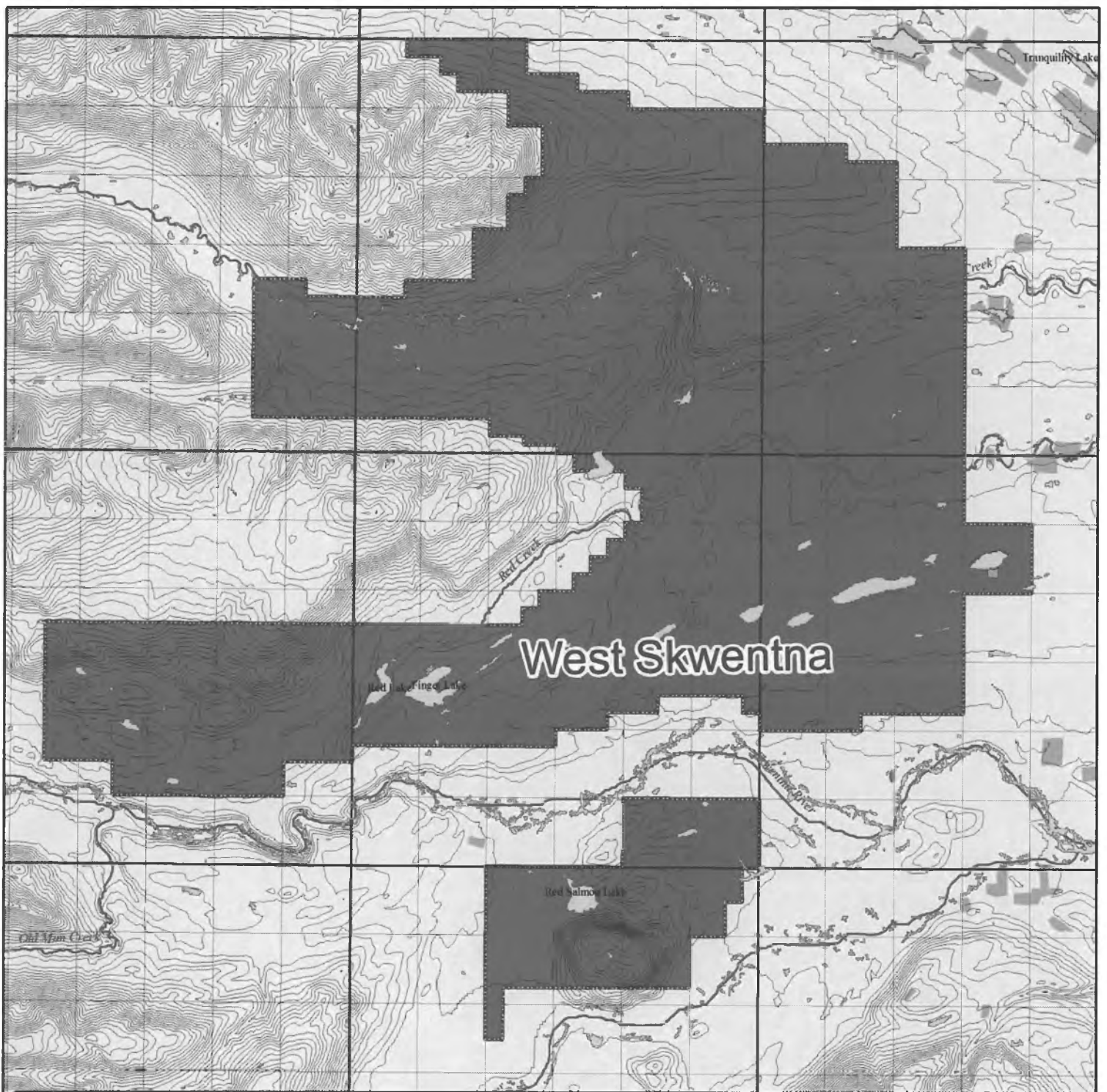
# Susitna Valley State Forest, West Petersville Block



West Petersville

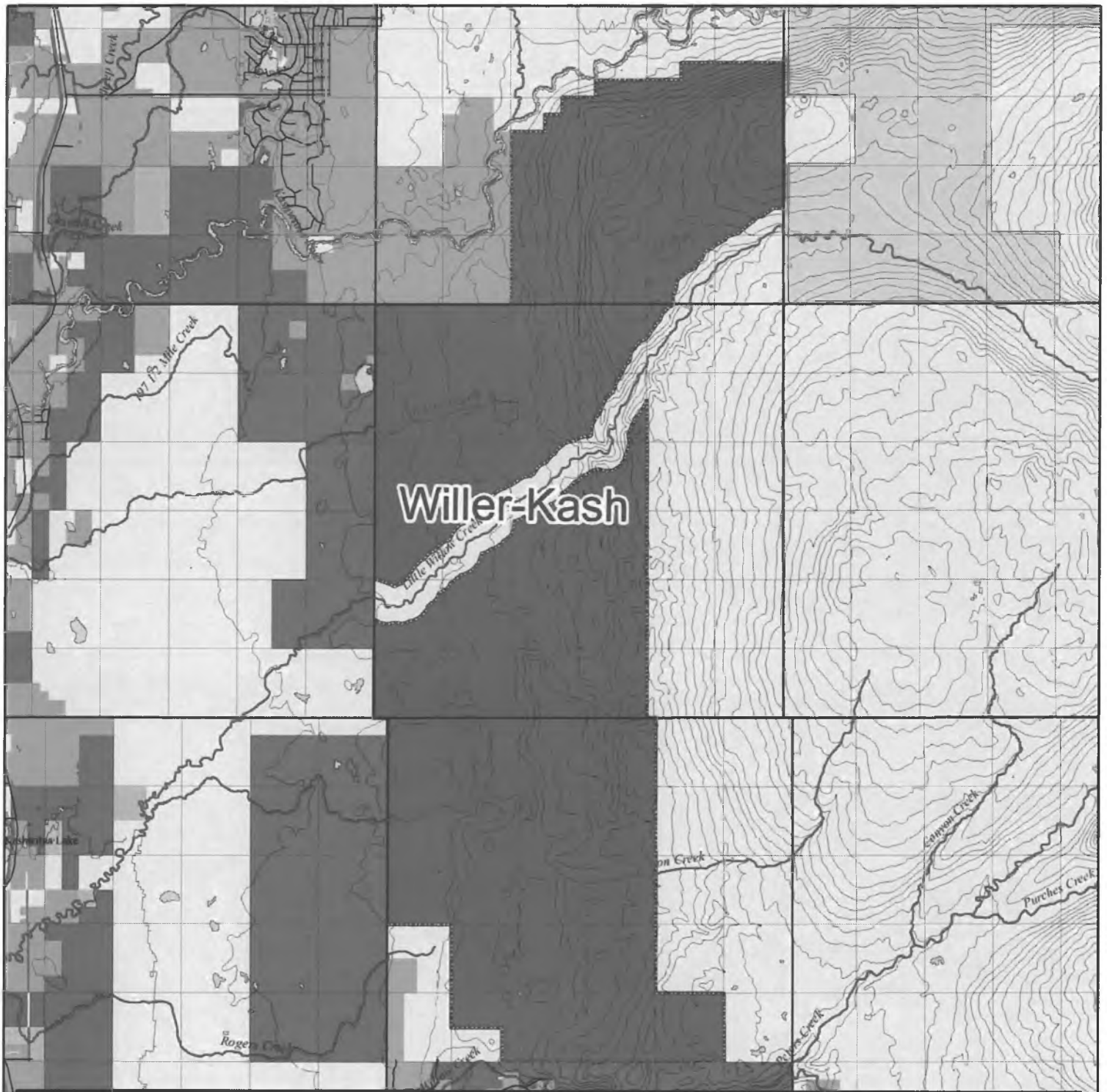
<p><b>Land Ownership</b></p> <ul style="list-style-type: none"> <li> Private Lands</li> <li> ANCSA Native Corporation</li> <li> Matanuska Susitna Borough</li> <li> University of Alaska, Alaska Mental Health Land Trust</li> <li> Federal Government</li> <li> State of Alaska</li> </ul>		<p><b>Proposed Susitna Valley State Forest, West Petersville Block</b></p>	<p>0 1 2 4 6</p>		<p>Alaska Dept of Natural Resources  <b>Division of Forestry</b>                  Forest Resources Program                  550 West 7th Avenue, Suite 1450                  Anchorage, Alaska 99501</p>
<p>Miles</p>		<p>scale = 1:150,000</p>	<p>Land Ownership information provided by the                  Matanuska Susitna Borough Information                  Technology Department, January 2012.</p>		

# Susitna Valley State Forest, West Skwentna Block



<b>Land Ownership</b>		<b>Proposed Susitna Valley State Forest, West Skwentna Block</b>	0 0.5 1 2 3 4	N	Alaska Dept of Natural Resources
Private Lands					<b>Division of Forestry</b>
ANCSA Native Corporation			<b>Miles</b>		Forest Resources Program
Matanuska Susitna Borough			scale = 1:125,000		550 West 7th Avenue, Suite 1450
University of Alaska, Alaska Mental Health Land Trust					Anchorage, Alaska 99501
Federal Government					
State of Alaska					
		Land Ownership information provided by the Matanuska Susitna Borough Information Technology Department, January 2012.			

# Susitna Valley State Forest, Willer-Kash Block



## Land Ownership

-  Private Lands
-  ANCSA Native Corporation
-  Matanuska Susitna Borough
-  University of Alaska, Alaska Mental Health Land Trust
-  Federal Government
-  State of Alaska

## Proposed Susitna Valley State Forest, Willer-Kash Block

0 0.5 1 2 3 4



Miles

scale = 1:125,000

Land Ownership information provided by the  
Matanuska Susitna Borough Information  
Technology Department, January 2012.

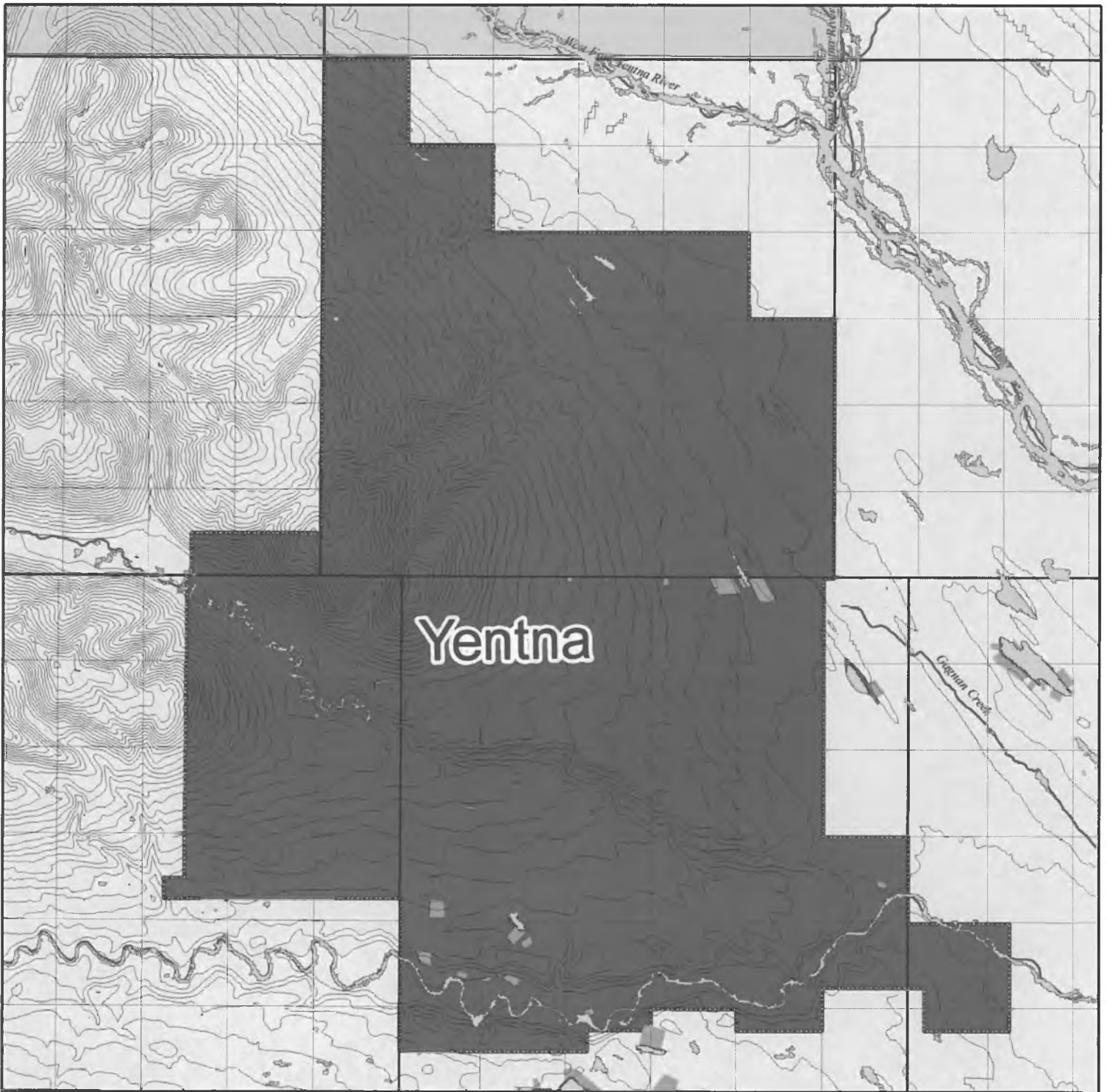


Alaska Dept of Natural Resources

**Division of Forestry**

Forest Resources Program  
550 West 7th Avenue, Suite 1450  
Anchorage, Alaska 99501

# Susitna Valley State Forest, Yentna Block



## Land Ownership

-  Private Lands
-  ANCSA Native Corporation
-  Matanuska Susitna Borough
-  University of Alaska, Alaska Mental Health Land Trust
-  Federal Government
-  State of Alaska



Proposed Susitna Valley State Forest, Yentna Block

0 0.5 1 2 3 4



Miles

scale = 1:100,000



Alaska Dept of Natural Resources

**Division of Forestry**

Forest Resources Program  
550 West 7th Avenue, Suite 1450  
Anchorage, Alaska 99501

Land Ownership information provided by the  
Matanuska Susitna Borough Information  
Technology Department, January 2012.

27-LS1179D  
Bullock  
3/19/12

**CS FOR SENATE BILL NO. 159( )**  
**IN THE LEGISLATURE OF THE STATE OF ALASKA**  
**TWENTY-SEVENTH LEGISLATURE - SECOND SESSION**

**BY**

**Offered:**  
**Referred:**

**Sponsor(s): SENATORS MENARD, Thomas**

**A BILL**  
**FOR AN ACT ENTITLED**

1 **"An Act establishing the Susitna State Forest; urging the Governor to acquire forest**  
2 **land that is currently in the Tongass National Forest; and providing for an effective**  
3 **date."**

4 **BE IT ENACTED BY THE LEGISLATURE OF THE STATE OF ALASKA:**

5 **\* Section 1.** AS 41.17 is amended by adding a new section to read:

6 **Sec. 41.17.600. Susitna State Forest.** (a) Subject to valid existing rights, the  
7 state-owned or acquired land and water lying within the parcels described in (d) of this  
8 section is designated as the Susitna State Forest.

9 (b) The commissioner shall prepare a management plan for the Susitna State  
10 Forest under AS 41.17.230.

11 (c) The commissioner may establish transportation corridors within the  
12 Susitna State Forest.

13 (d) The Susitna State Forest includes the state-owned or acquired land within  
14 the following described parcels:

1  
2  
3  
4  
5  
6  
7  
8  
9  
10  
11  
12  
13  
14  
15  
16  
17  
18  
19  
20  
21  
22  
23  
24  
25  
26  
27  
28  
29  
30  
31

- (1) Township 14 North, Range 10 West, Seward Meridian
  - Section 3;
- (2) Township 15 North, Range 8 West, Seward Meridian
  - Section 3
  - Section 4: E1/2, E1/2NW1/4, SW1/4SW1/4, SW1/4
  - Section 5: S1/2NE1/4, S1/2
  - Section 6: SE1/4
  - Section 7: E1/2, S1/2NW1/4, SW1/4;
- (3) Township 16 North, Range 8 West, Seward Meridian
  - Section 1: excluding ASLS 75-36 (Tracts A - D), ASLS 75-38, ASLS 78-83 (Tracts A and B)
  - Section 2
  - Section 3: E1/2, E1/2NW1/4
  - Section 10: E1/2NE1/4, E1/2SE1/4
  - Section 11
  - Section 12: excluding ASLS 75-39, ASLS 81-2, ASLS 82-110 (Tracts A - C)
  - Section 13: excluding ASLS 74-190 (Tracts A - V), ASLS 78-16 (Tracts A and B), ASLS 80-92 (Tracts A and B), ASLS 82-11, ASLS 83-113
  - Section 14
  - Section 15: E1/2NE1/4, E1/2SE1/4
  - Section 22: E1/2NE1/4, SE1/4
  - Section 23
  - Section 24: excluding ASLS 74-196 (Tracts A - L), ASLS 74-198 (Tracts A - W), ASLS 75-67 (Tracts A - F), ASLS 76-196 (Tracts A - D), ASLS 78-17 (Tracts A - D), ASLS 79-240, ASLS 82-98, ASLS 83-101, ASLS 83-118
  - Section 27: E1/2, SE1/4NW1/4, E1/2SW1/4
  - Section 34: E1/2, E1/2NW1/4, E1/2SW1/4
  - Section 35

1  
2  
3  
4  
5  
6  
7  
8  
9  
10  
11  
12  
13  
14  
15  
16  
17  
18  
19  
20  
21  
22  
23  
24  
25  
26  
27  
28  
29  
30  
31

Section 36: excluding ASLS 74-191 (Tracts A - D);

(4) Township 16 North, Range 9 West, Seward Meridian

Section 1: W1/2NW1/4, W1/2SW1/4, SE1/4SW1/4

Section 2: excluding ASLS 78-130

Section 3: E1/2, E1/2NW1/4, E1/2SW1/4

Section 9: SE1/4SE1/4

Section 10: E1/2, E1/2NW1/4, E1/2SW1/4, SW1/4SW1/4

Section 11

Section 12: W1/2, W1/2SE1/4

Sections 13 - 15

Section 16: E1/2NE1/4, SE1/4

Section 21: E1/2

Section 22

Section 23: N1/2, SW1/4

Section 24: W1/2NE1/4, W1/2, NW1/4SE1/4

Section 25: W1/2

Section 26: NW1/4, W1/2SW1/4

Section 27

Section 28: E1/2, SE1/4NW1/4, NE1/4SW1/4

Section 32: S1/2SE1/4

Section 33: E1/2, SE1/4NW1/4, SW1/4

Section 34

Section 35: W1/2NW1/4

Section 36: W1/2;

(5) Township 16 North, Range 10 West, Seward Meridian

Sections 1 - 5

Section 6: E1/2

Section 7: E1/2, S1/2SW1/4

Sections 8 - 11

Section 12: N1/2, SW1/4

Section 13: NW1/4, NW1/4SW1/4

- 1 Sections 14 - 16
- 2 Section 17: E1/2, E1/2NW1/4, E1/2SW1/4
- 3 Section 18: NW1/4
- 4 Section 19: S1/2
- 5 Section 20: NE1/4, NE1/4NW1/4, NE1/4SE1/4
- 6 Section 21: N1/2, N1/2SW1/4, SE1/4SW1/4, SE1/4
- 7 Section 22
- 8 Section 23: NW1/4NE1/4, W1/2, SW1/4SE1/4
- 9 Section 26: W1/2NE1/4, SE1/4NE1/4, W1/2, SE1/4
- 10 Section 27
- 11 Section 28: E1/2, E1/2NW1/4, NE1/4SW1/4
- 12 Section 29: W1/2
- 13 Sections 30 - 31
- 14 Section 32: W1/2, W1/2SE1/4
- 15 Section 33: N1/2NE1/4, SE1/4NE1/4, E1/2SE1/4
- 16 Sections 34 - 35
- 17 Section 36: SW1/4SW1/4;
- 18 (6) Township 16 North, Range 11 West, Seward Meridian
- 19 Section 1: NW1/4
- 20 Section 2: NE1/4
- 21 Section 12: S1/2SW1/4, S1/2SE1/4
- 22 Section 13: N1/2, SW1/4
- 23 Section 24: W1/2, SE1/4;
- 24 (7) Township 17 North, Range 6 West, Seward Meridian
- 25 Section 2: N1/2NW1/4, SW1/4NW1/4, W1/2SE1/4NW1/4,
- 26 N1/2NW1/4SW1/4, SW1/4NW1/4SW1/4
- 27 Section 3: N1/2, SW1/4, N1/2SE1/4, SW1/4SE1/4
- 28 Section 4: that portion Easterly of the Susitna River
- 29 Section 7: that portion Southeasterly of the Susitna River
- 30 Section 8: N1/2, N1/2SW1/4, N1/2SW1/4SW1/4,
- 31 SE1/4SW1/4SW1/4, SE1/4SW1/4, N1/2NE1/4SE1/4,

- 1 SW1/4NE1/4SE1/4, W1/2SE1/4, W1/2SE1/4SE1/4, and  
 2 Southeasterly of the Susitna River
- 3 Section 9: N1/2NE1/4, N1/2SW1/4NE1/4, NW1/4,  
 4 W1/2NE1/4SW1/4, N1/2NW1/4SW1/4, SE1/4NW1/4SW1/4,  
 5 and Southeasterly of the Susitna River
- 6 Section 17: N1/2NW1/4NE1/4, SW1/4NW1/4NE1/4,  
 7 W1/2SW1/4NE1/4, E1/2NW1/4, E1/2NW1/4NW1/4,  
 8 E1/2SW1/4NW1/4, N1/2NW1/4SW1/4
- 9 Section 18: NW1/4NE1/4NE1/4, W1/2NE1/4, W1/2,  
 10 W1/2SE1/4, and Southerly of the Susitna River
- 11 Section 19: NW1/4NE1/4, W1/2SW1/4NE1/4, NW1/4,  
 12 N1/2SW1/4, N1/2SW1/4SW1/4, excluding ASLS 76-37;
- 13 (8) Township 17 North, Range 7 West, Seward Meridian
- 14 Section 25: SW1/4SW1/4
- 15 Section 26: W1/2NE1/4, SE1/4NE1/4, W1/2, SE1/4
- 16 Section 35: NE1/4, NE1/4NW1/4
- 17 Section 36: NW1/4NW1/4
- 18 Excluding portions of ASLS 74-79 (Tract D); ASLS 77-181  
 19 (portions of Tracts A, B, C, D, E, F) portions of ASLS 83-1;  
 20 portions of ASLS 85-336;
- 21 (9) Township 17 North, Range 9 West, Seward Meridian
- 22 Section 1: N1/2, SW1/4
- 23 Sections 2 - 7
- 24 Section 8: N1/2, SW1/4, N1/2SE1/4, SW1/4SE1/4
- 25 Section 9: N1/2, N1/2SW1/4, SE1/4SW1/4, SE1/4
- 26 Section 10
- 27 Section 11: N1/2, SW1/4, W1/2SE1/4
- 28 Section 14: W1/2
- 29 Section 15
- 30 Section 16: NE1/4, NE1/4NW1/4, NE1/4SE1/4
- 31 Section 17: NW1/4NE1/4, NW1/4, NW1/4SW1/4

- 1 Sections 18 - 19
- 2 Section 22: E1/2, E1/2NW1/4, E1/2SW1/4
- 3 Section 23: W1/2
- 4 Section 24: E1/2
- 5 Section 25: E1/2, SW1/4
- 6 Section 26: W1/2, SE1/4
- 7 Section 27: NE1/4, NE1/4NW1/4, NE1/4SE1/4
- 8 Section 29: SW1/4NW1/4, W1/2SW1/4
- 9 Section 30
- 10 Section 31: N1/2NE1/4, SW1/4NE1/4, W1/2
- 11 Section 32: NW1/4NW1/4
- 12 Section 34: SE1/4SE1/4
- 13 Sections 35 - 36;
- 14 (10) Township 17 North, Range 10 West, Seward Meridian
- 15 Sections 1 - 5
- 16 Section 6: NE1/4, E1/2SE1/4
- 17 Sections 8 - 17
- 18 Sections 20 - 29
- 19 Sections 32 - 36;
- 20 (11) Township 17 North, Range 11 West, Seward Meridian
- 21 Section 1: W1/2NE1/4, W1/2, W1/2SE1/4
- 22 Section 2
- 23 Section 3: E1/2
- 24 Sections 11 - 13
- 25 Section 14: E1/2
- 26 Section 23: E1/2
- 27 Section 24
- 28 Section 25: W1/2NE1/4, W1/2, W1/2SE1/4
- 29 Section 26: E1/2
- 30 Section 35: E1/2
- 31 Section 36;

- 1 (12) Township 18 North, Range 2 West, Seward Meridian  
2 Section 6: S1/2SW1/4, S1/2SE1/4  
3 Sections 7 - 8  
4 Section 9: S1/2NE1/4, S1/2NW1/4, S1/2  
5 Section 10: S1/2NE1/4, S1/2NW1/4, S1/2  
6 Section 16: N1/2  
7 Section 17: N1/2  
8 Section 18;
- 9 (13) Township 18 North, Range 3 West, Seward Meridian  
10 Section 1: Government Lots 2, 3, and 4, S1/2NE1/4,  
11 S1/2NW1/4, S1/2  
12 Sections 2 - 4  
13 Section 5: Government Lots 1, 2, 3, and 4, S1/2NE1/4,  
14 S1/2NW1/4, SW1/4, N1/2SE1/4  
15 Section 6  
16 Section 7: Government Lot 1, N1/2NE1/4, NE1/4NW1/4  
17 Section 8: S1/2NE1/4, W1/2, SE1/4  
18 Section 10: N1/2, N1/2SW1/4, SE1/4SW1/4, SE1/4  
19 Section 11  
20 Section 16: N1/2, SW1/4;
- 21 (14) Township 18 North, Range 6 West, Seward Meridian  
22 Section 1: Easterly of Susitna River  
23 Section 2: Easterly of Susitna River  
24 Section 11: Easterly of Susitna River  
25 Section 12: N1/2, SW1/4, W1/2SE1/4  
26 Section 13: W1/2 and SW1/4SE1/4  
27 Section 14: Southeasterly of Susitna River  
28 Section 15: Southeasterly of Susitna River  
29 Section 22: Easterly of Susitna River  
30 Section 23  
31 Section 24: W1/2NE1/4NE1/4, W1/2NE1/4, SE1/4NE1/4,

1  
2  
3  
4  
5  
6  
7  
8  
9  
10  
11  
12  
13  
14  
15  
16  
17  
18  
19  
20  
21  
22  
23  
24  
25  
26  
27  
28  
29  
30  
31

W1/2, SE1/4

Section 25: N1/2, SW1/4, N1/2SE1/4, SW1/4SE1/4

Section 26

Section 27: Easterly of Susitna River

Section 33: Easterly of Susitna River

Section 34: Easterly of Susitna River

Section 35: N1/2, SW1/4, N1/2SE1/4, SW1/4SE1/4,  
N1/2SE1/4SE1/4

Section 36: W1/2NE1/4NW1/4, W1/2NW1/4,  
W1/2SE1/4NW1/4, SE1/4SE1/4NW1/4, N1/2NE1/4SW1/4,  
NW1/4SW1/4, excluding ASLS 72-2 (Tracts A, B, and C);  
ASLS 74-187; ASLS 76-30 (Tracts A, B, C, and D); ASLS  
76-31 (Tracts A, B, C, and D); ASLS 76-163 (Tracts A, A-1  
and B - J); ASLS 78-149 (Tracts A - G); ASLS 78-150; ASLS  
80-16; ASLS 82-188 (Tracts A and B); ASLS 82-211; and  
ASLS 83-26 (Tracts A and B);

(15) Township 18 North, Range 7 West, Seward Meridian

Section 18: SW1/4, W1/2SE1/4

Section 19: W1/2NE1/4, W1/2, SE1/4

Section 28: W1/2SW1/4

Section 29: S1/2NE1/4, S1/2NW1/4, S1/2

Sections 30 - 33;

(16) Township 18 North, Range 8 West, Seward Meridian

Section 1: W1/2NW1/4, W1/2SW1/4

Sections 2 - 3

Section 4: E1/2

Section 6: W1/2, SE1/4

Section 7

Section 8: SW1/4

Section 10: N1/2, SE1/4

Section 11

- 1 Section 12: W1/2, W1/2SE1/4  
 2 Section 13  
 3 Section 14: N1/2, NE1/4SW1/4, SE1/4, excluding ASLS 82-  
 4 146  
 5 Section 15: N1/2NE1/4  
 6 Section 16: SW1/4  
 7 Sections 17 - 18  
 8 Section 20: N1/2  
 9 Section 21  
 10 Section 22: S1/2SW1/4  
 11 Section 23: NE1/4, E1/2SE1/4  
 12 Sections 24 - 25  
 13 Section 26: E1/2NE1/4  
 14 Section 27: W1/2NE1/4, W1/2, SE1/4  
 15 Section 28: excluding portions of Tracts D and E, ASLS 77-149  
 16 Section 31: W1/2  
 17 Section 33: N1/2, N1/2SE1/4  
 18 Section 34: N1/2, N1/2SW1/4, N1/2SE1/4  
 19 Section 36: E1/2;  
 20 (17) Township 18 North, Range 9 West, Seward Meridian  
 21 Section 7: W1/2NE1/4, SE1/4NE1/4, W1/2, SE1/4  
 22 Section 8: SW1/4, SW1/4SE1/4  
 23 Section 14: E1/2SW1/4, W1/2SE1/4, SE1/4SE1/4  
 24 Sections 17 - 23  
 25 Section 24: W1/2, SE1/4  
 26 Sections 25 - 36  
 27 Sucker Lake: portion within Sections 10 and 15;  
 28 (18) Township 18 North, Range 10 West, Seward Meridian  
 29 Section 1: S1/2  
 30 Section 2: W1/2, SE1/4  
 31 Sections 3 - 6

- 1 Section 7: E1/2
- 2 Sections 8 - 17
- 3 Section 18: E1/2
- 4 Section 19: N1/2NE1/4, W1/2SW1/4
- 5 Section 20: NW1/4
- 6 Section 22: E1/2, E1/2NW1/4, E1/2SW1/4
- 7 Sections 23 - 25
- 8 Section 26: E1/2, N1/2NW1/4, SE1/4NW1/4, E1/2SW1/4
- 9 Section 27: N1/2NE1/4, N1/2NW1/4
- 10 Section 30: W1/2NW1/4, W1/2SW1/4
- 11 Section 31: NW1/4NW1/4, E1/2SE1/4
- 12 Section 32
- 13 Section 33: W1/2NE1/4, SE1/4NE1/4, W1/2, SE1/4
- 14 Section 34: E1/2, S1/2NW1/4, SW1/4
- 15 Sections 35 - 36;
- 16 (19) Township 18 North, Range 11 West, Seward Meridian
- 17 Sections 4 - 5
- 18 Section 6: E1/2NE1/4
- 19 Sections 8 - 9
- 20 Section 15
- 21 Section 16: N1/2, SE1/4
- 22 Section 21: E1/2
- 23 Sections 22 - 23
- 24 Section 24: W1/2NE1/4, W1/2, SE1/4
- 25 Sections 25 - 27
- 26 Sections 34 - 35
- 27 Section 36: N1/2, SW1/4, N1/2SE1/4, SW1/4SE1/4,
- 28 N1/2SE1/4SE1/4, SW1/4SE1/4SE1/4,
- 29 W1/2SE1/4SE1/4SE1/4;
- 30 (20) Township 19 North, Range 3 West, Seward Meridian
- 31 Section 7: S1/2

1 Section 8  
 2 Sections 17 - 20  
 3 Section 28: W1/2  
 4 Sections 29 - 32  
 5 Section 33: Southerly of Deception Creek  
 6 Section 34: Southerly of Deception Creek  
 7 Section 35: Southerly of Deception Creek  
 8 U.S. Survey No. 4716: Lot 4 in Sections 19 and 20;  
 9 (21) Township 19 North, Range 4 West, Seward Meridian  
 10 Section 36: Government Lots 1, 2, 3, and 4, E1/2, SW1/4;  
 11 (22) Township 19 North, Range 5 West, Seward Meridian  
 12 Section 19: Southerly of Susitna River  
 13 Section 20: Southerly of Susitna River  
 14 Section 22: W1/2NW1/4  
 15 Section 21: NE1/4, W1/2SW1/4, N1/2SE1/4, and Southeasterly  
 16 of Susitna River  
 17 Section 28: W1/2NW1/4, SE1/4NW1/4  
 18 Section 29: N1/2, SW1/4, N1/2SE1/4, SW1/4SE1/4, and  
 19 Southeasterly of Susitna River  
 20 Section 30: Southerly of Susitna River  
 21 Section 31  
 22 Section 32: W1/2NE1/4, W1/2, SE1/4  
 23 Section 33: SW1/4;  
 24 (23) Township 19 North, Range 6 West, Seward Meridian  
 25 Sections 4 - 5  
 26 Section 6: N1/2  
 27 Section 8: E1/2  
 28 Section 9  
 29 Section 15: W1/2NE1/4, W1/2, and W1/2SE1/4  
 30 Section 16  
 31 Section 21

- 1 Section 22: W1/2NE1/4, W1/2, W1/2SE1/4
- 2 Section 24: Easterly of Susitna River
- 3 Section 25: Easterly of Susitna River, excluding U.S. Survey
- 4 No. 3932
- 5 Section 27: W1/2NE1/4, W1/2, W1/2SE1/4
- 6 Section 28: N1/2, SE1/4
- 7 Section 36: Easterly of Susitna River;
- 8 (24) Township 19 North, Range 7 West, Seward Meridian
- 9 Section 3
- 10 Section 4: NW1/4NW1/4
- 11 Section 10: NE1/4;
- 12 (25) Township 19 North, Range 10 West, Seward Meridian
- 13 Section 4
- 14 Section 5: excluding ASLS 80-70
- 15 Sections 6 - 7
- 16 Section 8: SW1/4, W1/2SE1/4
- 17 Section 9: NE1/4
- 18 Section 16: W1/2, SE1/4
- 19 Sections 17 - 21
- 20 Section 22: excluding a portion of Tract B, ASLS 90-313
- 21 Sections 25 - 29
- 22 Sections 32 - 34
- 23 Section 35: W1/2;
- 24 (26) Township 19 North, Range 11 West, Seward Meridian
- 25 Sections 1 - 8
- 26 Sections 12 - 13
- 27 Sections 17 - 18
- 28 Section 19: NE1/4NE1/4
- 29 Section 20: N1/2, E1/2SW1/4, SE1/4
- 30 Section 26: SW1/4
- 31 Section 27: S1/2

1  
2  
3  
4  
5  
6  
7  
8  
9  
10  
11  
12  
13  
14  
15  
16  
17  
18  
19  
20  
21  
22  
23  
24  
25  
26  
27  
28  
29  
30  
31

Section 28

Section 29: E1/2, E1/2NW1/4

Section 30: SW1/4NW1/4, SW1/4, W1/2SE1/4

Section 31: W1/2NE1/4, SE1/4NE1/4, W1/2, SE1/4

Section 32: E1/2, S1/2NW1/4, SW1/4

Section 33

Section 34: NW1/4, W1/2SW1/4;

(27) Township 19 North, Range 12 West, Seward Meridian

Sections 1 - 2

Section 3: SE1/4

Section 10: E1/2, SW1/4

Section 15: E1/2, N1/2NW1/4, SE1/4NW1/4, E1/2SW1/4

Section 22: that portion in E1/2NW1/4 West of an unnamed stream and unnamed lake

Section 25: S1/2

Section 26: SW1/4NW1/4, S1/2

Section 35: NE1/4

Section 36;

(28) Township 19 North, Range 13 West, Seward Meridian

Section 3: W1/2, W1/2SE1/4

Sections 4 - 5

Section 8: N1/2, NE1/4SW1/4, NW1/4SE1/4

Section 9: N1/2, NE1/4SE1/4

Section 10: W1/2NE1/4, SE1/4NE1/4, NW1/4, N1/2SW1/4, SE1/4SW1/4, SE1/4

Section 11: SW1/4NW1/4, S1/2

Section 12: S1/2

Section 13

Section 14: N1/2, N1/2SW1/4, SE1/4

Section 15: NE1/4, NE1/4NW1/4, NE1/4SE1/4

Section 24: NE1/4, N1/2NW1/4, SE1/4NW1/4, NE1/4SE1/4;

- 1 (29) Township 20 North, Range 3 West, Seward Meridian  
2 Sections 3 - 10  
3 Sections 15 - 18  
4 Sections 20 - 22  
5 Sections 26 - 28  
6 Section 29: N1/2, E1/2SE1/4;
- 7 (30) Township 20 North, Range 6 West, Seward Meridian  
8 Section 5: W1/2  
9 Section 6  
10 Section 8: W1/2, W1/2SE1/4  
11 Section 17  
12 Section 20  
13 Section 21: SW1/4NW1/4, SW1/4  
14 Sections 28 - 33;
- 15 (31) Township 20 North, Range 7 West, Seward Meridian  
16 Section 1: E1/2  
17 Section 2: W1/2SW1/4  
18 Sections 3 - 10  
19 Section 11: W1/2, SE1/4  
20 Sections 14 - 23  
21 Sections 25 - 36;
- 22 (32) Township 20 North, Range 8 West, Seward Meridian  
23 Sections 1 - 18  
24 Section 19: excluding Tract B of ASLS 94-53  
25 Section 20  
26 Section 21: excluding portion Southwesterly of Yentna River  
27 Section 22: excluding ASLS 81-52  
28 Sections 23 - 26  
29 Section 27: excluding portion Westerly of Yentna River in  
30 SW1/4NW1/4 and NW1/4SW1/4  
31 Section 34: excluding portions of Tracts A, B, C, and D of

1  
2  
3  
4  
5  
6  
7  
8  
9  
10  
11  
12  
13  
14  
15  
16  
17  
18  
19  
20  
21  
22  
23  
24  
25  
26  
27  
28  
29  
30  
31

ASLS 85-307 and portion Southwesterly of ASLS 85-307  
 Sections 35 - 36;  
 (33) Township 20 North, Range 10 West, Seward Meridian  
 Sections 1 - 10  
 Section 11: N1/2, N1/2SW1/4, N1/2SE1/4  
 Sections 12 - 13  
 Sections 15 - 18  
 Section 19: N1/2  
 Sections 20 - 24  
 Section 29: W1/2SW1/4  
 Section 30: S1/2  
 Section 31  
 Section 32: W1/2NE1/4, W1/2, W1/2SE1/4  
 Excluding ASLS 76-164, ASLS 77-93 (Tracts A - J), ASLS 84-81, ASLS 85-163, ASLS 85-179, ASLS 87-387 (Tracts A - C), ASLS 88-32 (Tracts A and B), ASLS 88-77, ASLS 88-98, ASLS 88-156, ASLS 89-128 (Tracts A and B), ASLS 89-187, ASLS 90-158, ASLS 90-248, ASLS 91-117 (Tracts A and B), ASLS 91-238 (Tracts A and B), ASLS 92-58, ASLS 92-130 (Tract A), ASLS 92-130a (Tract B-1), ASLS 92-180, ASLS 92-187 (Tracts A - D), ASLS 92-193, ASLS 93-84, ASLS 93-85, ASLS 93-122, ASLS 93-154, ASLS 94-83, and ASLS 95-70;  
 (34) Township 20 North, Range 11 West, Seward Meridian  
 Sections 1 - 4  
 Section 5: N1/2, N1/2SW1/4, SE1/4  
 Section 6: NE1/4, NE1/4SE1/4  
 Section 8: N1/2NE1/4, SE1/4NE1/4  
 Section 9: N1/2, N1/2SW1/4, SE1/4SW1/4, SE1/4  
 Sections 10 - 12  
 Section 15: W1/2

- 1 Section 16: E1/2, E1/2NW1/4, SW1/4
- 2 Section 21
- 3 Section 22: N1/2, SW1/4
- 4 Section 25: S1/2
- 5 Section 26: S1/2
- 6 Section 27: W1/2, SE1/4
- 7 Section 28
- 8 Section 29: W1/2NW1/4, S1/2
- 9 Excluding ASLS 74-66 (Tracts A - E)
- 10 Sections 30 - 36;
- 11 (35) Township 20 North, Range 12 West, Seward Meridian
- 12 Section 25: S1/2
- 13 Section 35: E1/2, SW1/4
- 14 Section 36;
- 15 (36) Township 20 North, Range 13 West, Seward Meridian
- 16 Section 4
- 17 Section 5: E1/2
- 18 Section 8: E1/2
- 19 Sections 9 - 10
- 20 Sections 14 - 16
- 21 Section 17: E1/2
- 22 Section 20: E1/2, E1/2NW1/4, E1/2SW1/4
- 23 Sections 21 - 28
- 24 Section 29: E1/2, E1/2NW1/4, E1/2SW1/4
- 25 Sections 32 - 33
- 26 Section 34: N1/2NE1/4, W1/2
- 27 Section 35: N1/2NE1/4, N1/2NW1/4
- 28 Section 36: N1/2NE1/4, N1/2NW1/4;
- 29 (37) Township 21 North, Range 3 West, Seward Meridian
- 30 Section 3: N1/2, SW1/4, NW1/4SE1/4
- 31 Sections 4 - 8

1  
2  
3  
4  
5  
6  
7  
8  
9  
10  
11  
12  
13  
14  
15  
16  
17  
18  
19  
20  
21  
22  
23  
24  
25  
26  
27  
28  
29  
30  
31

Section 9: N1/2, SW1/4, N1/2SE1/4, SW1/4SE1/4  
Section 10: N1/2NW1/4, SW1/4NW1/4, SE1/4SE1/4  
Section 15: E1/2NE1/4, E1/2SW1/4; SW1/4SW1/4, SE1/4  
Section 16: N1/2NW1/4, SW1/4NW1/4  
Section 17: N1/2, SW1/4, NW1/4SE1/4  
Section 18  
Section 19: N1/2, N1/2SW1/4, NW1/4SE1/4  
Section 20: NW1/4NW1/4, SE1/4SE1/4  
Section 21: E1/2, SE1/4NW1/4, SW1/4  
Section 22  
Sections 27 - 28  
Section 29: E1/2, E1/2NW1/4, SW1/4NW1/4, SW1/4  
Section 30: S1/2SW1/4, E1/2SE1/4, SW1/4SE1/4  
Sections 31 - 34;

(38) Township 21 North, Range 6 West, Seward Meridian

Section 5: N1/2NE1/4, W1/2  
Sections 6 - 7  
Section 8: NW1/4, N1/2SW1/4  
Sections 18 - 19  
Sections 30 - 31  
Section 32: SW1/4NE1/4, W1/2SE1/4;

(39) Township 21 North, Range 7 West, Seward Meridian

Sections 1 - 14  
Section 15: N1/2, SE1/4  
Sections 16 - 21  
Section 23: NE1/4  
Section 24  
Section 25: excluding a portion of Lot 34, Block 8, ASLS 80-175  
Section 27: W1/2NE1/4, W1/2, W1/2SE1/4  
Sections 28 - 33

1  
2  
3  
4  
5  
6  
7  
8  
9  
10  
11  
12  
13  
14  
15  
16  
17  
18  
19  
20  
21  
22  
23  
24  
25  
26  
27  
28  
29  
30  
31

Section 34: W1/2NE1/4, SE1/4NE1/4, W1/2, SE1/4

Section 36: E1/2;

(40) Township 21 North, Range 8 West, Seward Meridian

Section 1

Sections 3 - 36

Excluding ASLS 81-182, ASLS 82-47, ASLS 82-175 (Tracts A and B), ASLS 85-278, ASLS 86-24 (Tracts A and B), ASLS 86-79 (Tracts A, B, and C), ASLS 87-52, ASLS 89-129 (Tracts A and B), ASLS 89-176, ASLS 89-199 (Tracts A and B), ASLS 90-2, ASLS 91-203, ASLS 92-83, ASLS 92-124, ASLS 94-80, ASLS 94-111, and ASLS 95-55;

(41) Township 21 North, Range 9 West, Seward Meridian

Sections 1 - 2

Section 7: N1/2, N1/2SW1/4, N1/2SE1/4

Section 8

Section 9: S1/2

Sections 11 - 14

Section 16

Section 17: E1/2, E1/2NW1/4

Section 20: NE1/4 NE1/4SE1/4

Sections 21 - 27

Section 28: NE1/4, NE1/4NW1/4, NE1/4SE1/4

Section 30: S1/2NW1/4, SW1/4, SW1/4SE1/4

Section 31: NW1/4NE1/4, W1/2, SW1/4SE1/4

Section 34: NE1/4, NE1/4NW1/4, NE1/4SE1/4

Sections 35 - 36

Excluding ASLS 70-5 (Tracts A, B, C, D, and E); ASLS 71-13 (Tracts A, A-1, B, B-1, C, and D); ASLS 73-73; ASLS 73-147 (Tracts A, B, F, G, H, and I, and portions of Tracts C, D, and E); ASLS 74-193 (Tracts A and B); ASLS 74-200; ASLS 75-85 (Tracts A, B, and C); ASLS 76-65; ASLS 76-148 (Tracts

1  
2  
3  
4  
5  
6  
7  
8  
9  
10  
11  
12  
13  
14  
15  
16  
17  
18  
19  
20  
21  
22  
23  
24  
25  
26  
27  
28  
29  
30  
31

A, B, C, D, E, F, G, H, I, and J); ASLS 76-214 (Tracts A and B); ASLS 78-20 (Tracts A and B); ASLS 80-43; ASLS 80-162 (Tracts A, B, and C); ASLS 80-167; ASLS 84-171 (Tracts A, B, C, and D); ASLS 86-103 (Tracts A, B, and C); ASLS 86-106 (a portion of Tract A); ASLS 88-107; ASLS 89-60 (Tracts A, B, C, and D); ASLS 90-160; ASLS 90-201; ASLS 92-157; and ASLS 92-182;

(42) Township 21 North, Range 10 West, Seward Meridian

Section 1: S1/2  
Sections 2 - 12  
Section 13: N1/2  
Sections 14 - 23  
Section 24: W1/2SW1/4  
Sections 25 - 36  
Excluding ASLS 73-75 and ASLS 85-162 (Tracts A - M);

(43) Township 21 North, Range 11 West, Seward Meridian

Sections 1 - 4  
Section 5: excluding portion Westerly of Skwentna River  
Section 8: excluding portion Westerly of Skwentna River  
Sections 9 - 16  
Section 17: excluding portion Westerly of Skwentna River  
Section 20: excluding portion Westerly of Skwentna River  
Sections 21 - 29  
Section 30: S1/2SW1/4, SE1/4  
Section 31: E1/2  
Sections 32 - 36;

(44) Township 21 North, Range 12 West, Seward Meridian

Section 30: W1/2NW1/4, SW1/4, W1/2SE1/4, SE1/4SE1/4, excluding a portion of ASLS 77-2  
Section 31: N1/2  
Section 32: W1/2NW1/4;

1  
2  
3  
4  
5  
6  
7  
8  
9  
10  
11  
12  
13  
14  
15  
16  
17  
18  
19  
20  
21  
22  
23  
24  
25  
26  
27  
28  
29  
30  
31

- (45) Township 21 North, Range 13 West, Seward Meridian
  - Section 21: S1/2SE1/4
  - Section 22: S1/2
  - Section 24: SW1/4SE1/4
  - Sections 25 - 28
  - Section 33
  - Section 34: N1/2, SW1/4, W1/2SE1/4
  - Section 35: N1/2
  - Section 36: N1/2
  - Excluding a portion of ASLS 77-142 (Tract A)
  - Alaska State Land Survey No. 80-139:
    - Tract F: portion in S1/2SW1/4 of Section 24
    - Tract J: portion in S1/2SW1/4 and S1/2SE1/4 of Section 23;
- (46) Township 21 North, Range 15 West, Seward Meridian
  - Section 1: W1/2NE1/4, W1/2
  - Sections 2 - 4
  - Section 9: N1/2, N1/2SW1/4, SW1/4SW1/4, N1/2SE1/4
  - Section 10: N1/2, N1/2SW1/4, N1/2SE1/4
  - Section 11: N1/2, N1/2SW1/4, N1/2SE1/4
  - Section 16: W1/2NW1/4;
- (47) Township 22 North, Range 3 West, Seward Meridian
  - Sections 1 - 3
  - Section 4: SE1/4SW1/4, E1/2SE1/4, SW1/4SE1/4
  - Section 9: E1/2, E1/2NW1/4, E1/2SW1/4
  - Section 10: N1/2, SW1/4, NW1/4SE1/4
  - Section 11: N1/2
  - Section 12: NW1/4NE1/4, N1/2NW1/4, SW1/4NW1/4
  - Section 13: S1/2
  - Section 14: S1/2SW1/4, SE1/4
  - Section 15: N1/2NW1/4, SE1/4SW1/4, S1/2SE1/4
  - Section 16: N1/2NE1/4, NE1/4NW1/4

1 Section 21: NE1/2NE1/4, SW1/4NE1/4, S1/2  
 2 Sections 22 - 24  
 3 Section 25: N1/2, N1/2SW1/4  
 4 Sections 26 - 28  
 5 Sections 33 - 34  
 6 Section 35: NW1/4NE1/4, NW1/4, W1/2SW1/4;  
 7 (48) Township 22 North, Range 7 West, Seward Meridian  
 8 Sections 15 - 22  
 9 Sections 27 - 34;  
 10 (49) Township 22 North, Range 8 West, Seward Meridian  
 11 Section 1  
 12 Section 5  
 13 Section 6: E1/2NE1/4, NE1/4SE1/4  
 14 Section 8: N1/2, E1/2SW1/4, SE1/4  
 15 Sections 9 - 16  
 16 Section 17: E1/2, S1/2NW1/4, SW1/4  
 17 Section 18: E1/2SW1/4NE1/4, SW1/4SW1/4NE1/4,  
 18 SE1/4NE1/4, S1/2S1/2NW1/4, S1/2  
 19 Sections 19 - 36  
 20 Excluding ASLS 81-136 (Tracts A and B); ASLS 82-17 (Tracts  
 21 A and B); ASLS 84-40; ASLS 84-165 (Tracts A and B);  
 22 ASLS 85-57 (Tracts A - F); ASLS 85-331 (Tracts A - F);  
 23 ASLS 90-81 (Tracts A - F); ASLS 95-7; and a portion of  
 24 ASLS 2002-10 (Tract B);  
 25 (50) Township 22 North, Range 9 West, Seward Meridian  
 26 Section 5: SW1/4, W1/2SE1/4  
 27 Sections 6 - 8  
 28 Section 9: W1/2SW1/4  
 29 Section 13: S1/2NE1/4, S1/2NW1/4, S1/2  
 30 Section 14: S1/2NE1/4, S1/2NW1/4, S1/2  
 31 Section 15: S1/2NE1/4, SE1/4

1  
2  
3  
4  
5  
6  
7  
8  
9  
10  
11  
12  
13  
14  
15  
16  
17  
18  
19  
20  
21  
22  
23  
24  
25  
26  
27  
28  
29  
30  
31

Section 16: NW1/4NW1/4  
Section 17: N1/2NE1/4, N1/2NW1/2  
Section 18: N1/2NE1/4, N1/2NW1/2  
Section 22: E1/2  
Sections 23 - 26  
Section 27: NE1/4, E1/2SE1/4  
Sections 35 - 36  
Excluding cadastral survey control plat for T22N, R9W S.M.  
(Tract A); ASLS 84-167; ASLS 87-114; ASLS 87-227 (Tracts  
A and B); ASLS 87-304 (Tracts A - G); and a portion of  
ASLS 88-22;

(51) Township 22 North, Range 10 West, Seward Meridian

Sections 1 - 12  
Section 13: N1/2NE1/4, NW1/4, W1/2SW1/4  
Sections 14 - 23  
Section 24: N1/2, SW1/4  
Sections 26 - 35  
Excluding ASLS 72-49 (Tracts A and B); ASLS 74-64 (Tracts  
A, A-1, B - H, and portions of Tract I); portions of ASLS 74-  
70 (Tract E); ASLS 75-73 (Tracts A - J); ASLS 76-40 (Tracts  
A and B); ASLS 76-142 (Tracts A and B, portions of Tracts C  
and D); ASLS 76-211; ASLS 77-120 (Tracts A and B);  
portions of ASLS 77-160 (Tract B); ASLS 78-12 (Tracts A, B,  
and C); ASLS 78-25 (Tracts A, B, and C); ASLS 78-122;  
ASLS 79-67; ASLS 79-236; ASLS 82-20; and ASLS 85-293;

(52) Township 22 North, Range 11 West, Seward Meridian

Section 1  
Section 12: N1/2, SE1/4  
Section 13: E1/2NE1/4, E1/2SE1/4  
Section 33: excluding Northerly of the Skwentna River  
Sections 34 - 35

- 1 Section 36: excluding ASLS 76-142 (Tracts C and D)  
 2 Yentna River: Section 13, E1/2NE1/4, E1/2SE1/4  
 3 Skwentna River: within Sections 32, 33, 34, 35, 36;  
 4 Eightmile Creek: within Section 36;  
 5 (53) Township 22 North, Range 14 West, Seward Meridian  
 6 Sections 4 - 9  
 7 Section 10: excluding ASLS 93-133  
 8 Sections 16 - 19  
 9 Section 20: N1/2, SW1/4, N1/2SE1/4  
 10 Section 21: N1/2, N1/2SW1/4, N1/2SE1/4;  
 11 (54) Township 22 North, Range 15 West, Seward Meridian  
 12 Section 1  
 13 Section 2: N1/2, E1/2SW1/4, SE1/4  
 14 Section 3: N1/2NE1/4, NE1/4NW1/4  
 15 Section 10: SE1/4NE1/4, SE1/4SW1/4, SE1/4  
 16 Sections 11 - 15  
 17 Section 16: E1/2NE1/4, SW1/4NE1/4, S1/2  
 18 Section 17: S1/2  
 19 Section 18: S1/2  
 20 Sections 19 - 21  
 21 Section 22: N1/2, SW1/4, N1/2SE1/4, SW1/4SE1/4  
 22 Section 23: N1/2, N1/2SW1/4  
 23 Section 24: N1/2, NE1/4SE1/4  
 24 Section 28: N1/2NE1/4, N1/2NW1/4  
 25 Section 29: N1/2NE1/4, N1/2NW1/4  
 26 Section 30: N1/2NE1/4, N1/2NW1/4  
 27 Sections 35 - 36;  
 28 (55) Township 22 North, Range 16 West, Seward Meridian  
 29 Section 13: S1/2  
 30 Section 14: S1/2  
 31 Section 15: S1/2

- 1 Section 16: S1/2
- 2 Section 17: SE1/4
- 3 Section 20: E1/2
- 4 Sections 21 - 24
- 5 Section 25: N1/2
- 6 Sections 26 - 27
- 7 Section 28: N1/2, SE1/4
- 8 Section 29: NE1/4;
- 9 (56) Township 23 North, Range 3 West, Seward Meridian
- 10 Section 1: SE1/4NE1/4, SE1/4SW1/4, SE1/4
- 11 Section 2: N1/2NW1/4, SW1/4NW1/4
- 12 Section 3: N1/2, SW1/4, N1/2SE1/4, SW1/4SE1/4
- 13 Section 9: N1/2, NW1/4SW1/4
- 14 Section 10: N1/2NW1/4, SW1/4NW1/4
- 15 Section 11: SE1/4NE1/4, S1/2SW1/4, SE1/4
- 16 Sections 12 - 14
- 17 Section 15: E1/2NE1/4, SW1/4NE1/4, S1/2
- 18 Section 16: S1/2
- 19 Sections 21 - 24
- 20 Section 25: S1/2SW1/4, S1/2SE1/4
- 21 Section 26: S1/2
- 22 Section 27: N1/2NW1/4, SW1/4NW1/4
- 23 Section 28
- 24 Section 34: E1/2NE1/4, SE1/4
- 25 Sections 35 - 36;
- 26 (57) Township 23 North, Range 8 West, Seward Meridian
- 27 Sections 17 - 20
- 28 Section 25
- 29 Section 29
- 30 Section 30: N1/2, E1/2SW1/4, SE1/4
- 31 Section 31: E1/2

1  
2  
3  
4  
5  
6  
7  
8  
9  
10  
11  
12  
13  
14  
15  
16  
17  
18  
19  
20  
21  
22  
23  
24  
25  
26  
27  
28  
29  
30  
31

Section 32

Section 36;

(58) Township 23 North, Range 9 West, Seward Meridian

Section 1

Section 2: E1/2

Section 5: NW1/4, W1/2SW1/4

Section 6

Section 7: N1/2NE1/4, SW1/4NE1/4, NW1/4, W1/2SW1/4

Section 8: NW1/4NW1/4

Section 11: NE1/4, E1/2SE1/4

Section 12

Section 13: N1/2, E1/2SW1/4, SE1/4

Section 18: W1/2

Section 19: W1/2SW1/4

Section 24: NE1/4, E1/2SE1/4

Section 30: W1/2NW1/4, W1/2SW1/4, SE1/4SW1/4

Section 31;

(59) Township 23 North, Range 10 West, Seward Meridian

Sections 1 - 3

Section 4: E1/2, E1/2NW1/4, SW1/4

Section 5: S1/2NW1/4, S1/2

Section 6: E1/2

Section 7: NE1/4, N1/2SE1/4, SE1/4SE1/4

Sections 8 - 17

Section 18: E1/2, S1/2NW1/4, N1/2SW1/4

Section 19: E1/2

Sections 20 - 36;

(60) Township 23 North, Range 11 West, Seward Meridian

Section 13: S1/2NE1/4, N1/2SE1/4

Section 25: SE1/4

Section 36: E1/2, SW1/4;

1  
2  
3  
4  
5  
6  
7  
8  
9  
10  
11  
12  
13  
14  
15  
16  
17  
18  
19  
20  
21  
22  
23  
24  
25  
26  
27  
28  
29  
30  
31

- (61) Township 23 North, Range 14 West, Seward Meridian
  - Section 7: S1/2
  - Section 8: W1/2SW1/4, SE1/4SW1/4, S1/2SE1/4
  - Sections 17 - 21
  - Sections 28 - 33;
- (62) Township 23 North, Range 15 West, Seward Meridian
  - Section 3: W1/2SW1/4, SE1/4SW1/4, S1/2SE1/4
  - Section 4: NW1/4, N1/2SW1/4, SE1/4SW1/4, SE1/4
  - Section 5: NE1/4, N1/2NW1/4, SE1/4NW1/4, N1/2SE1/4
  - Section 6: NE1/4NE1/4
  - Section 9: N1/2NE1/4, SE1/4NE1/4, NE1/4NW1/4, E1/2SE1/4
  - Sections 10 - 15
  - Section 16: E1/2, SE1/4NW1/4, E1/2SW1/4, SW1/4SW1/4
  - Section 17: SE1/4SE1/4
  - Section 19: S1/2SW1/4, E1/2SE1/4, SW1/4SE1/4
  - Section 20: E1/2NE1/4, S1/2
  - Sections 21 - 30
  - Section 31: N1/2
  - Section 32: N1/2
  - Section 33: N1/2, N1/2SW1/4, N1/2SE1/4, N1/2S1/2SE1/4
  - Sections 34 - 36;
- (63) Township 23 North, Range 16 West, Seward Meridian
  - Section 23: SE1/4
  - Section 24: W1/2SW1/4, SE1/4SW1/4, S1/2SE1/4
  - Section 25
  - Section 26: E1/2
  - Section 35: NE1/4
  - Section 36: N1/2;
- (64) Township 24 North, Range 3 West, Seward Meridian
  - Section 1: S1/2
  - Section 2: S1/2SE1/4

1 Section 3: N1/2, SW1/4, W1/2SE1/4  
 2 Section 4  
 3 Section 5: E1/2, N1/2SE1/4NW1/4, S1/2N1/2SW1/4,  
 4 S1/2SW1/4  
 5 Section 8: N1/2  
 6 Sections 9 - 15  
 7 Section 16: N1/2NE1/4, N1/2NW1/4  
 8 Sections 22 - 27  
 9 Sections 34 - 36;  
 10 (65) Township 24 North, Range 7 West, Seward Meridian  
 11 Sections 3 - 5  
 12 Section 6: NE1/4  
 13 Section 8: N1/2, N1/2SW1/4, SE1/4  
 14 Sections 9 - 10  
 15 Section 18: SW1/4NW1/4, SW1/4, SW1/4SE1/4  
 16 Section 19: W1/2NE1/4, SE1/4NE1/4, W1/2, SE1/4  
 17 Section 20: S1/2  
 18 Section 28: W1/2  
 19 Sections 29 - 31  
 20 Excluding from Section 10: ASLS 73-144 (Tracts C-1, C-2, and  
 21 D; portions of Tracts A and B; and the portion of the Oil Well  
 22 Road ROW); ASLS 74-51 (Tracts B and C); and the remnant  
 23 parcel bounded by Oil Well Road ROW, Tract 52 of ASLS  
 24 71-18, Tract B of ASLS 73-144, and Tract B of ASLS 74-51;  
 25 (66) Township 24 North, Range 8 West, Seward Meridian  
 26 Section 1: W1/2  
 27 Sections 2 - 11  
 28 Section 12: W1/2, W1/2SE1/4  
 29 Section 13: W1/2NE1/4, SE1/4NE1/4  
 30 Section 14: SW1/4  
 31 Sections 15 - 20

1  
2  
3  
4  
5  
6  
7  
8  
9  
10  
11  
12  
13  
14  
15  
16  
17  
18  
19  
20  
21  
22  
23  
24  
25  
26  
27  
28  
29  
30  
31

Section 21: E1/2NE1/4

Section 22

Section 23: N1/2NE1/4, SW1/4NE1/4, W1/2, W1/2SE1/4

Section 26: NW1/4NE1/4, N1/2NW1/4

Section 27: NE1/4NE1/4

Excluding ASLS 85-44 (portions of Tract A); portions of ASLS 85-60; ASLS 88-125 (portions of Tract E); ASLS 91-184; and ASLS 95-3;

(67) Township 24 North, Range 9 West, Seward Meridian

Section 1

Section 10: E1/2

Sections 11 - 14

Section 15: E1/2NE1/4

Section 31: S1/2

Section 32: SW1/4;

(68) Township 24 North, Range 10 West, Seward Meridian

Section 15: W1/2, SE1/4

Section 16

Section 21: N1/2, SE1/4

Section 22

Section 23: SW1/4

Sections 26 - 27

Section 28: E1/2

Section 33: E1/2, E1/2NW1/4, E1/2SW1/4

Sections 34 - 35

Section 36: W1/2NW1/4, S1/2;

Excluding ASLS 76-41 (Tract E and portions of Tract D); portions of ASLS 76-207; ASLS 76-210 (portions of Tracts A - F); and ASLS 87-27;

(69) Township 24 North, Range 13 West, Seward Meridian

Section 29: W1/2NW1/4, W1/2SW1/4

- 1 Section 30: N1/2, N1/2SW1/4, SE1/4SW1/4, SE1/4  
 2 Section 31: N1/2NE1/4, NE1/4NW1/4  
 3 Section 32: NW1/4NW1/4;  
 4 (70) Township 24 North, Range 14 West, Seward Meridian  
 5 Sections 2 - 11  
 6 Sections 14 - 24  
 7 Section 25: N1/2, N1/2SW1/4, N1/2SE1/4  
 8 Sections 26 - 30  
 9 Section 31: N1/2  
 10 Section 32: N1/2  
 11 Section 33: N1/2NE1/4, N1/2NW1/4, SW1/4NW1/4  
 12 Section 35: N1/2NE1/4, N1/2NW1/4  
 13 Excluding ASLS 74-144 (Tracts A and B); ASLS 76-120;  
 14 ASLS 76-121; ASLS 83-138 (Tracts A, B, C, and D); ASLS  
 15 85-138 (Tracts A and B); portions of ASLS 85-297 (Tract A);  
 16 ASLS 88-1; ASLS 90-141 (Tracts A, B, and C); ASLS 90-156  
 17 (Tracts A, B, C, and D); and a portion of ASLS 91-96;  
 18 (71) Township 24 North, Range 15 West, Seward Meridian  
 19 Sections 1 - 2  
 20 Section 3: E1/2  
 21 Section 10: E1/2  
 22 Sections 11 - 14  
 23 Section 15: E1/2  
 24 Section 22: NE1/4, NE1/4SW1/4, N1/2SE1/4  
 25 Section 23: N1/2, N1/2SW1/4, N1/2SE1/4  
 26 Section 24: N1/2, N1/2SW1/4, N1/2SE1/4;  
 27 (72) Township 25 North, Range 7 West, Seward Meridian  
 28 Sections 3 - 4  
 29 Section 6: N1/2NE1/4, W1/2  
 30 Section 7: W1/2NW1/4  
 31 Section 8: E1/2, E1/2SW1/4

- 1 Sections 9 - 10
- 2 Sections 15 - 17
- 3 Sections 20 - 22
- 4 Section 23: W1/2
- 5 Section 26: W1/2
- 6 Sections 27 - 29
- 7 Sections 32 - 34
- 8 Section 35: W1/2;
- 9 (73) Township 25 North, Range 8 West, Seward Meridian
- 10 Sections 1 - 5
- 11 Sections 8 - 12
- 12 Section 13: N1/2, SW1/4, W1/2SE1/4
- 13 Sections 14 - 17
- 14 Section 18: N1/2, N1/2SW1/4, SE1/4SW1/4, SE1/4
- 15 Section 19: E1/2, E1/2SW1/4, SW1/4SW1/4
- 16 Sections 20 - 23
- 17 Section 24: W1/2NE1/4, W1/2, SE1/4
- 18 Sections 25 - 26
- 19 Section 27: excluding Tracts A and B, ASLS 77-41
- 20 Sections 28 - 33
- 21 Section 34: excluding ASLS 77-40
- 22 Sections 35 - 36;
- 23 (74) Township 25 North, Range 9 West, Seward Meridian
- 24 Section 25: SE1/4
- 25 Section 36;
- 26 (75) Township 25 North, Range 14 West, Seward Meridian
- 27 Sections 6 - 8
- 28 Sections 14 - 36;
- 29 (76) Township 25 North, Range 15 West, Seward Meridian
- 30 Section 35: SE1/4
- 31 Section 36: S1/2;

1  
2  
3  
4  
5  
6  
7  
8  
9  
10  
11  
12  
13  
14  
15  
16  
17  
18  
19  
20  
21  
22  
23  
24  
25  
26  
27  
28  
29  
30  
31

- (77) Township 26 North, Range 7 West, Seward Meridian
  - Section 20: SE1/4
  - Section 21: S1/2
  - Sections 27 - 28
  - Section 29: NE1/4
  - Section 33;
- (78) Township 26 North, Range 8 West, Seward Meridian
  - Sections 4 - 9
  - Sections 16 - 17
  - Section 18: N1/2, N1/2SW1/4, SE1/4
  - Section 19: E1/2
  - Sections 20 - 21
  - Sections 28 - 29
  - Sections 32 - 33;
- (79) Township 26 North, Range 9 West, Seward Meridian
  - Section 1
  - Section 2: SE1/4
  - Section 12: NE1/4NE1/4, SE1/4SE1/4
  - Section 13: NE1/4, N1/2SE1/4.

\* **Sec. 2.** The uncodified law of the State of Alaska is amended by adding a new section to read:

**ACQUISITION OF FOREST LAND IN THE TONGASS NATIONAL FOREST.** (a) The legislature urges the governor to negotiate or renegotiate state land entitlements under sec. 6 of the Alaska Statehood Act (P.L. 85-508, 72 Stat. 339) or work to amend the Alaska Statehood Act for the purpose of acquiring on behalf of the state forest land currently in the Tongass National Forest.

(b) If the state fails to acquire forest land under (a) of this section, the legislature urges the governor to negotiate the purchase from the federal government of forest land currently in the Tongass National Forest.

(c) In this section, "forest land" has the meaning given in AS 41.17.950.

\* **Sec. 3.** This Act takes effect July 1, 2012.

# Senator Linda Menard

## Session

State Capitol, Room 9  
Juneau, Alaska 99801  
Phone: (907) 465-6600  
Fax: (907) 465-3805



## Interim

600 E. Railroad Ave.  
Wasilla, Alaska 99654  
Phone: (907) 376-3370  
Fax: (907) 376-3157

## Alaska State Legislature

To: Senator Tom Wagoner  
Senator Joe Paskvan  
Co-Chairs, Senate Finance Committee

From: Senator Linda Menard  
Alaska State Senate

Date: February 10, 2012

Re: Request for hearing for Senate Bill 159

---

Honorable Senators Joe Paskvan and Tom Wagoner

I respectfully request a hearing of the Senate Resources Committee for Senate Bill 159.

Senate Bill 159 is an establishing the Susitna State Forest.

Thank you for your consideration.

A handwritten signature in cursive script that reads "Linda Menard".

Sen. Linda Menard

## Expanded Bullets on area plan public processes related to the new Susitna State Forest [1/30/12]

- 1985 Susitna Area Plan identified Forestry designated lands for consideration as legislatively designated areas (LDAs).
- State lands under consideration for a Susitna State Forest are addressed by two area plans: the Susitna Matanuska Area Plan (2011), and the Southeast Susitna Area Plan (2008). These two plans supersede the 1985 Susitna Area Plan.
- The Commissioner of DNR adopted the Southeast Susitna Area Plan (SSAP) on April 28, 2008, following a year-long planning process that included two rounds of public meetings. This plan applies to about 255,000 acres of state land formerly managed by the 1982 Willow Sub-Basin Area Plan and the original 1985 Susitna Area Plan. The SSAP designates 74,855 acres of state land for Forestry. The Division of Forestry actively manages these lands in the Houston and Kashwitna areas for timber production.

A recurring theme during the following processes was the idea of a Susitna State Forest.

- In 2009, DOF engaged in a revision process for the 1991 Susitna Forestry Guidelines (SFG). A citizens' advisory committee and an inter-agency planning team were established and several meetings held. In addition, the SFG process held joint public scoping meetings with the DMLW-led SMAP planning process.
- In 2009, DOF's planner mentioned the Susitna State Forest during his presentation to the Mat-Su Salmon Science and Conservation Symposium in Wasilla.
- During annual (2008-2011) Winter Trails User's meetings between timber operators and Willow area dog mushers, the concept of a state forest in the Susitna was discussed, with broad support for the idea expressed by those attending. Dog mushers enjoy the use of state lands and the associated improved access from logging activities.
- Following a two year planning process, the Commissioner of the Department of Natural Resources (DNR) adopted the Susitna Matanuska Area Plan (SMAP) on August 11, 2011, with a date of issuance of August 17<sup>th</sup>. The SMAP applies to nine million acres of state land formerly managed under the Susitna Area Plan. About 700,000 acres of these state lands are classified Forestry. This area plan recommends establishment of a legislatively designated State Forest for those lands designated or co-designated Forestry in the SMAP and the 2008 Southeast Susitna Area Plan. Public input received at a series of community meetings held throughout the planning area and during a three and a half month public review (February – May 2011) of the draft SMAP supported the concept of a Susitna State Forest.
- DOF coordinated the public scoping efforts for the SFG with DMLW's area plan scoping and the Matanuska-Susitna Borough's land use planning. During April of 2009, six joint open houses were held in communities in the Mat-Su area, and one in Anchorage. An

open house planned for Skwentna in late March was cancelled due to an ash fall in the area from the volcanic eruption of Mt. Redoubt. Approximately 80 people attended the public meetings, and DOF received 22 written scoping comments through the end of July. Many of the written comments supported maintaining or strengthening the Susitna Forestry Guidelines as they are presently written, and keeping its original purpose statement intact. The public comments were generally supportive of forestry. The issues most frequently mentioned were regeneration, timber road access after harvesting, harvest design, riparian standards, and herbicides. Other public outreach efforts that occurred during this period included briefings with the Alaska Outdoor Council, Friends of the Mat-Su, and WACO Trail's Committee.

- The Mat-Su Area Forester reported on the interest in the Susitna State Forest to the Board of Forestry during their August 30-31, 2011 meeting.

\*Provided by Division of Forestry.