

3/05/12
OVERVIEW:
GOVERNOR'S
COUNCIL ON
DISABILITIES
& SPECIAL
EDUCATION

<TARGET><BILL></BILL><SUBJECT>3-05-12 OVERVIEW
GOVERNOR'S COUNCIL ON DISABILITIES and SPECIAL
EDUCATION</SUBJECT><COMM>SHSS27</COMM></TARGET>

Overview

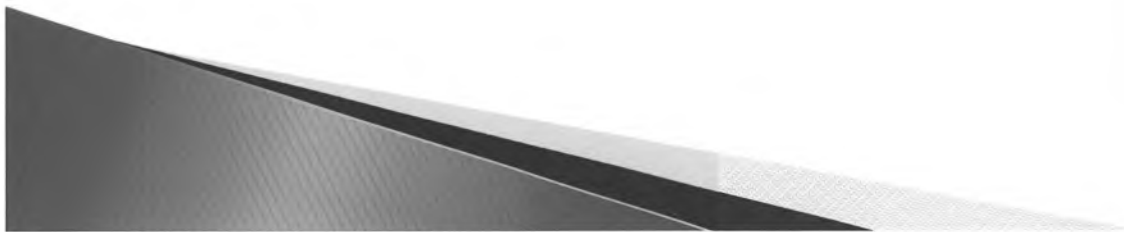
Governor's Council on Disabilities & Special Education

**Senate HSS Standing Committee
March 5, 2012**




Council Mission

- ▶ Create change that improves the lives of people with disabilities
 - Capacity building
 - Systems change
 - Advocacy

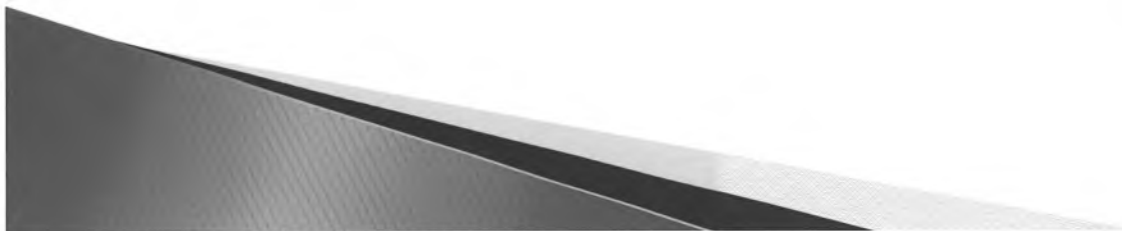


Council Members

- ▶ 27 members appointed by the Governor
 - ▶ Primary consumers or self-advocates
 - Individuals with disabilities
 - ▶ Secondary consumers
 - Parents or family members of people with disabilities
 - ▶ State agency representatives
 - ▶ Other representatives designated in federal law
 - Center for Human Development
 - Disability Law Center
 - Non-profit agencies
 - Public education systems
 - Higher education
- 

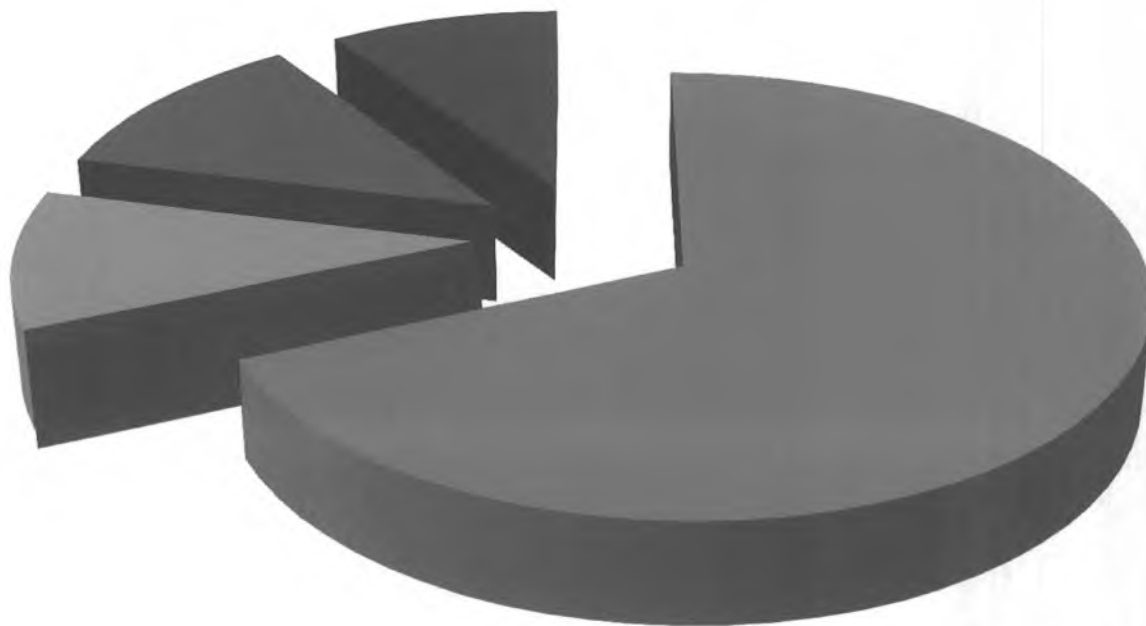
The Council – A Unique “Beast”

- ▶ Located within State of Alaska government
 - Boards and Commissions
 - Designated State Agency: DHSS
- ▶ Different from most boards and commissions
 - “Freedom to Act”
- ▶ Different from other states
 - Roles and responsibilities
 - No granting authority
 - “Working” board



FY12 Funding Sources

\$2,536.8 Total



- Federal Receipts \$1,739.2
- General Fund Receipts \$0
- Inter-Agency Receipts \$261.9
- GF/MH \$297.0
- MHTAAR \$238.7

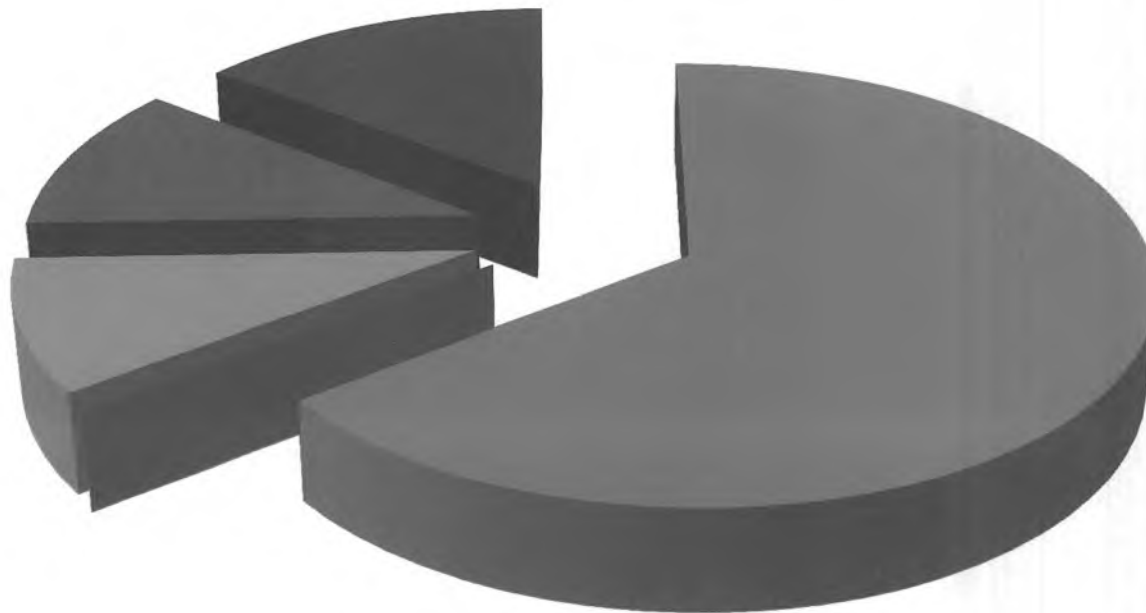
Mental Health

Children's Service



FY13 Funding Sources

\$2,709.9 Total

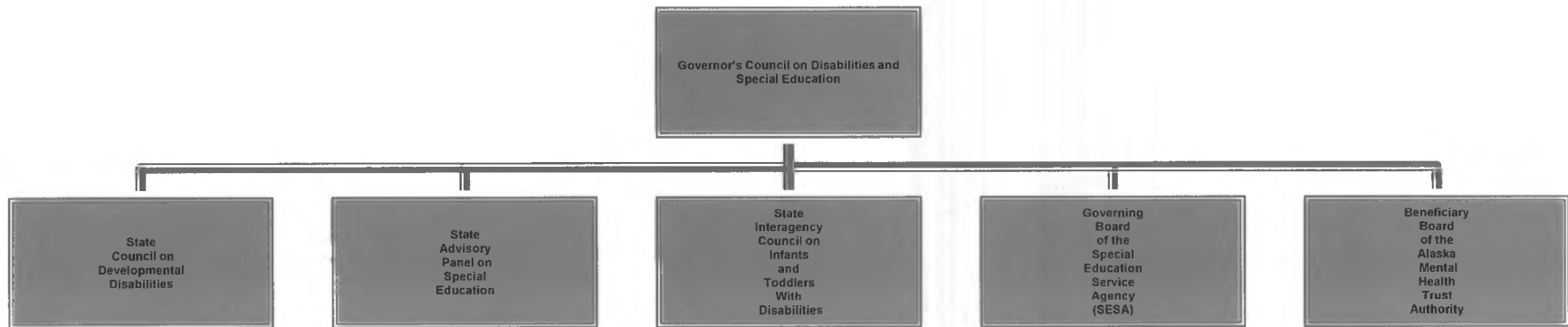


- Federal Receipts
\$1,753.8
- General Fund
Receipts \$0
- Inter-Agency
Receipts \$266.3
- GF/MH \$297.0
- MHTAAR \$392.8



Council Responsibilities

Governor's Council



KEY FACTS ABOUT DEVELOPMENTAL DISABILITIES

- ❑ Severe, chronic disabilities that occur at birth or before age 22 and are likely to continue indefinitely
- ❑ Result in substantial function limitations in 3 or more areas of major life activity
 - ❑ Self-care
 - ❑ Receptive and expressive language
 - ❑ Learning
 - ❑ Mobility
 - ❑ Self-direction
 - ❑ Capacity for independent living
 - ❑ Economic self-sufficiency

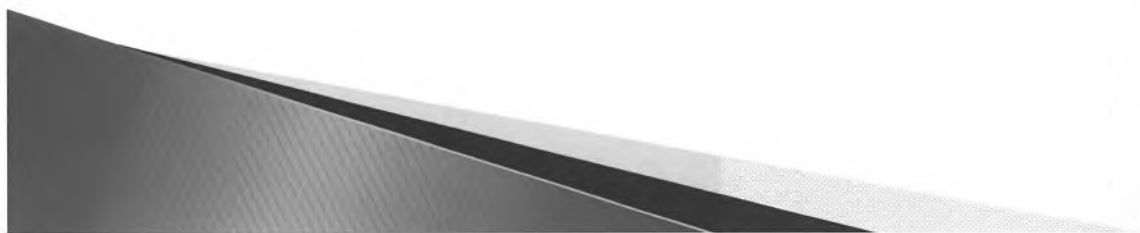


KEY FACTS ABOUT DEVELOPMENTAL DISABILITIES

13,000

- ❑ Reflect individual's need for a combination and sequence of special, interdisciplinary or generic assistance, supports or other services that are of lifelong or extended duration and are individually planned and coordinated
- ❑ Examples of developmental disabilities
 - Intellectual disabilities
 - Cerebral palsy
 - Seizure disorders
 - Autism
 - **Note:** mental illness and FAS or FASD may be developmental disabilities IF all criteria in the definition are met
- ❑ Approximately 12,784 Alaskans have a developmental disability

must be institutional



Ongoing Challenges

- ▶ Developing actions and policies that will improve the lives of thousands of Alaskans with disabilities in the future
- ▶ Properly equipping Alaskans with disabilities with tools, skills and opportunities they need to successfully live the same everyday lives as Alaskans without disabilities



5-Year State Plan Goal Areas

- Advocacy and Leadership
 - Foundation of all Council work
- Community Inclusion and Supports
 - Home and community-based services
 - Housing
 - Transportation
- Employment
- Early Intervention
- Education
- Healthy Living



Tools Used to Achieve Mission

- ▶ Gathering community and stakeholder input
- ▶ Conducting research and data gathering
- ▶ Preparing policy papers and issue reports
- ▶ Providing legislative testimony
- ▶ Providing policy recommendations and advice
- ▶ Helping people connect with the political process
- ▶ Educating and providing information to the public



Example of Council in Action

- ▶ Heard considerable public testimony about barriers to employment
 - Lack of policy that promotes work as an expectation
 - Fear of losing health benefits
 - Financial disincentives
 - Lack of knowledge of existing work incentives
 - Lack of access to needed resources/fragmented services
 - Lack of holistic vocational services
 - Work incentives counseling, 1-stop job center resources, assistive technology, asset building, transportation and housing
 - Limited employment opportunities
 - Limited access to employment and training programs
 - Self-employment often viewed as “option of last resort”



Overall Strategies

- ▶ Secured Trust and federal funding
- ▶ Worked within existing systems, initiatives and partnerships
- ▶ Gathered variety of information to prioritize activities
- ▶ Identified and leveraged resources to strategically address areas of need
- ▶ Took comprehensive approach
 - Strategic planning (“Summits R Us”)
 - Capacity building (training, technical assistance and outreach)
 - Policy assessment
- ▶ Built on what’s learned




Some Outcomes to Date

- ❑ Division of Vocational Rehabilitation policy changes
 - ❑ Work Incentives Counseling reimbursement
 - ❑ *Discovery* as a reimbursable service
 - ❑ Self-employment policy more friendly to would-be entrepreneurs
- ❑ Establishment of microenterprise and virtual business coaching program
- ❑ Slow but steady increase in number of participants in Working Disabled Medicaid Buy-in Program



Some Outcomes to Date

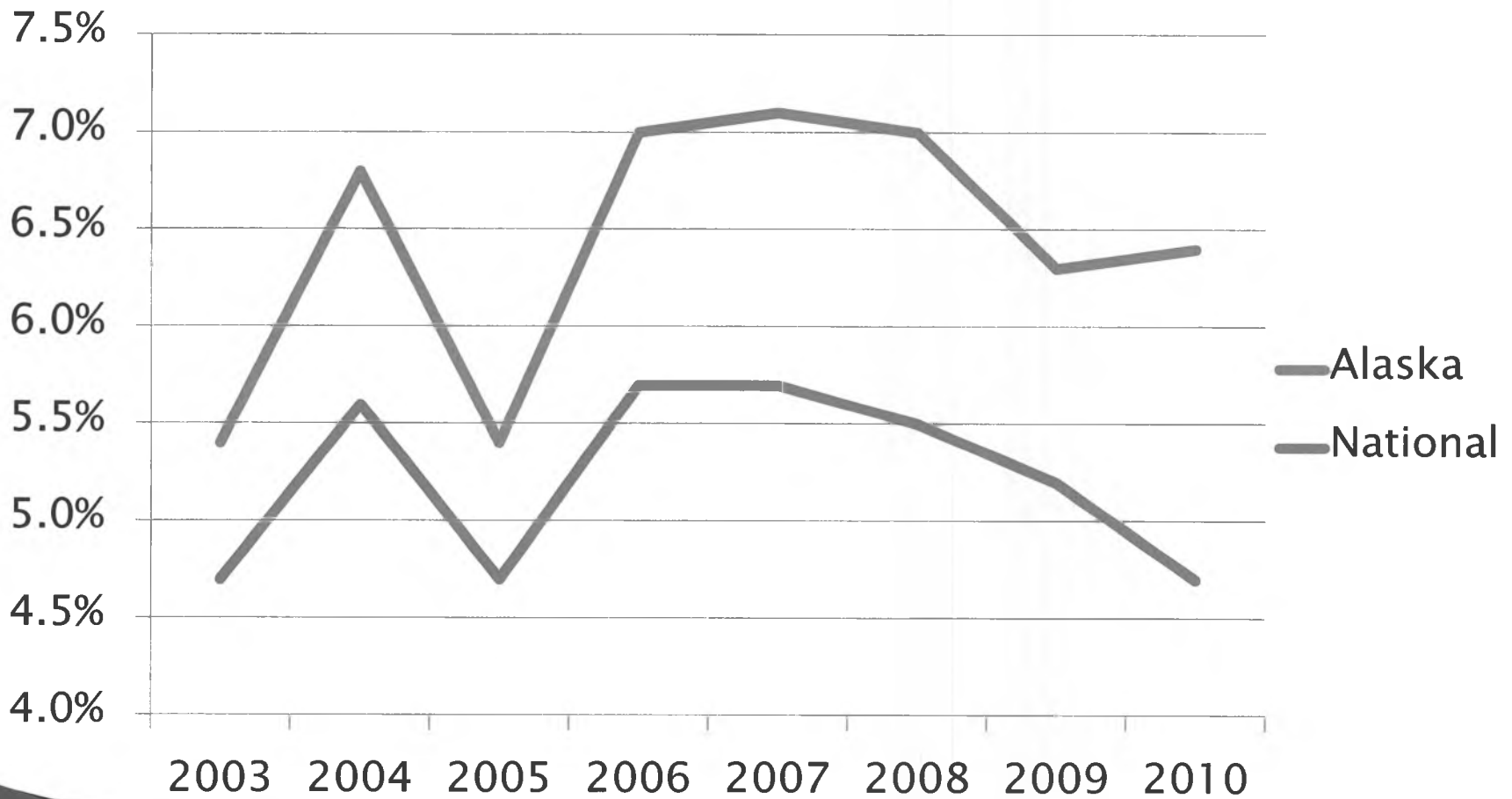
- ❑ Annual *Full Lives Conference* includes employment track
 - ❑ Establishment of 3 Project SEARCH sites
 - ❑ Providence Hospital – Anchorage
 - ❑ Mat–Su Regional Medical Center
 - ❑ Fairbanks Memorial Hospital
 - ❑ One–stop job center policy changes
 - ❑ Disability Resource Coordinators located within job centers
 - ❑ Development of curriculum on customized self–employment
- 

Some Outcomes to Date

- ❑ Division of Vocational Rehabilitation policy changes
 - ❑ Work Incentives Counseling reimbursement
 - ❑ *Discovery* as a reimbursable service
 - ❑ Self-employment policy more friendly to would-be entrepreneurs
- ❑ Establishment of microenterprise and virtual business coaching program
- ❑ Annual *Full Lives Conference* includes employment track
- ❑ Establishment of 3 Project SEARCH sites
- ❑ One-stop job center policy changes
 - ❑ Disability Resource Coordinators located within job centers



Percent on SSI Who Work

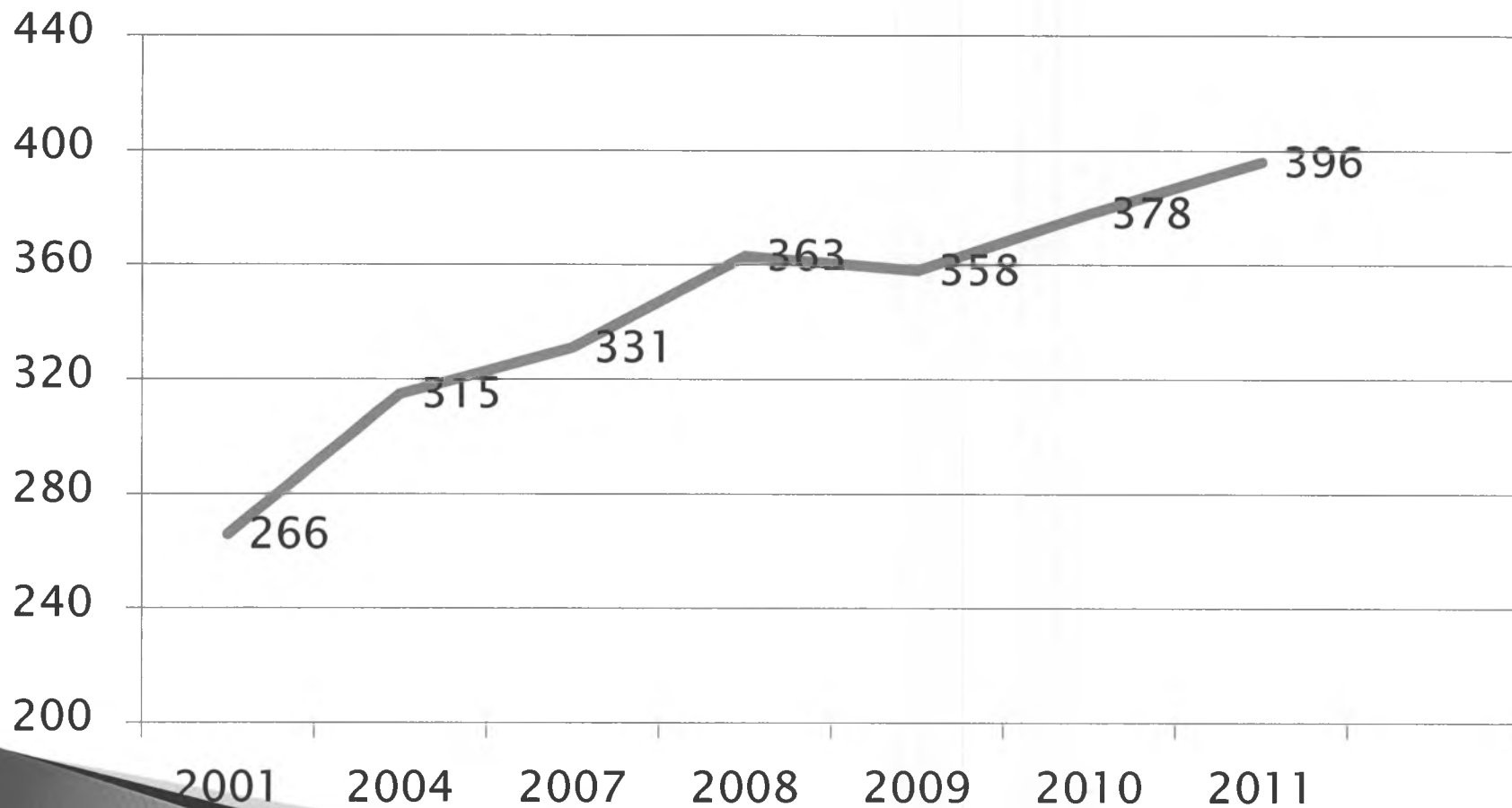


*recorded annually in
December

Source: www.SocialSecurity.gov

Number in Integrated Employment

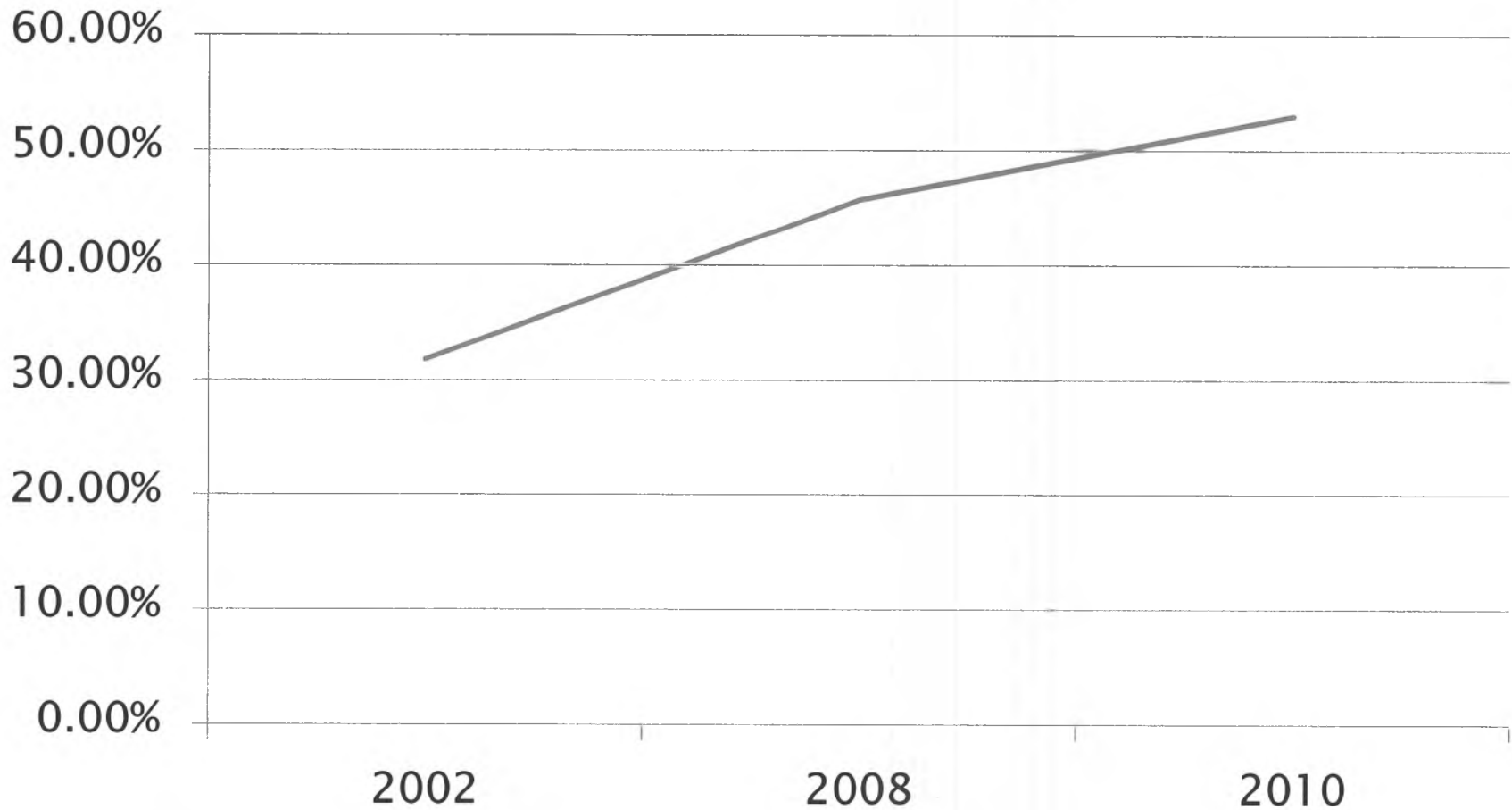
(Includes: Competitive Employment, Individual Supported Employment and Group Supported Employment)



Source: *Institute for Community Inclusion*

Ability to Hold Down a Job

Source: Alaska Mental Health Trust Authority

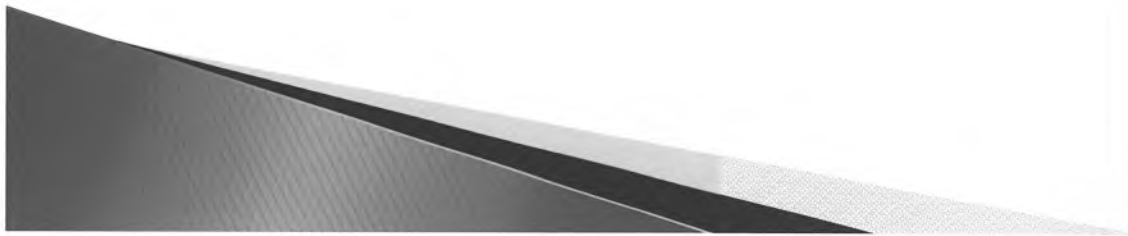


Good trend



Thank You!

Questions?





Governor's Council on Disabilities & Special Education

1 ROLE

1. Role of the Council

- State Council on Developmental Disabilities
- Special Education Advisory Panel
- Interagency Coordinating Council for Infants and Toddlers with Disabilities
- Governing Board of the Special Education Service Agency
- Beneficiary Board for the Alaska Mental Health Trust Authority

2 MISSION

2. Mission

Creating change that improves the lives of Alaskans with disabilities

THE COUNCIL IN ACTION

3. Making Sustainable Change — An Example of the Council in Action

The Council manages the Alaska Works Initiative, a strategic effort funded by the Centers for Medicare & Medicaid Services to improve Medicaid programs and employment infrastructures. The Council works with state agencies, business & industry, service providers and the university to improve employment outcomes for Alaskans with severe disabilities. The Council also receives funding from the Alaska Mental Health Trust Authority to manage the microenterprise grant program, which helps Trust beneficiaries start their own businesses. In addition, the Council received funding from the Department of Education & Early Development to start a Project SEARCH program, which provides internship opportunities to youth with intellectual or developmental disabilities in their last year of school at a host business.

MOVING TOWARDS EMPLOYMENT

- From 2009 to 2010, there was a **5.6% increase** in the number of Alaskans on social security who worked (Note: nationally, there was an average **4.8% decrease** in the number of people on Social Security who worked).

5 OUTCOMES

6 PRIORITIES

3. Continued ... Sustainable Change

- In fiscal year 11, the number of people with developmental disabilities who were employed increased by 10.6% (358 to 396).
- In fiscal year 11, 13 Trust beneficiaries started their own businesses.
- Three Project SEARCH sites were established at Mat-Su Regional Medical Center, Providence Hospital and Fairbanks Memorial Hospital; other partners include the Division of Vocational Rehabilitation, local school districts and disability service providers.

4. Moving toward Employment: Stories of people who have benefited from the work of the Council

- Katie, age 21, was the first student to be hired by one of the host hospitals participating in Project SEARCH. Katie was in the program at Mat-su Regional Medical Center (MRMC) only five months before she was hired to work as a technician in Environmental Services. She works 20-25 hours per week, is a union member and makes over \$13 an hour. One of the goals of Project SEARCH is to change the culture of a workplace into one that accepts disability in the workplace. At MRMC, Katie and the other Project SEARCH students have certainly accomplished this.
- Becca is starting Becca's Alpacas in the Mat-Su valley, thanks to start-up funding from the microenterprise grant program. Her business will primarily raise, breed, and sell alpacas. She may also collect and sell alpaca waste as fertilizer for local gardeners, and shear alpaca fleece and have it made into yarn to sell locally and/or online.

5. Other Outcomes for Alaskans with Intellectual or Developmental Disabilities in Fiscal Year 2011

As a result of the Council's work with 119 entities participating in partnerships or coalitions, the following number of people benefited:

- 627 people have needed health services.
- 3,019 people received formal or informal supports.
- 3,297 people have transportation for work, medical and personal needs.
- 81 individuals got and kept employment consistent with their interests and abilities.
- 2,301 students have the education and support they need to reach their educational goals.
- 1,821 infants and young children have services and supports needed to reach developmental goals.
- 384 individuals have homes of their choice.
- 928 people have information, skills, opportunities and supports to live independently, productively and included in all aspects of community life.

6. Fiscal Year 2012-13 Priorities

- Ensuring the continuation of complex behavior collaborative consultation and training services to meet the needs of individuals with cognitive disabilities and challenging behaviors
- Implementing autism insurance reform
- Changing the funding formula for the Special Education Service Agency (SESA) and removing its sunset clause in state statute
- Increasing the employment and self-employment rate of people with disabilities
- Improving services and supports to women with disabilities who are victims of sexual or physical assault
- Increasing access to services for people residing in rural and remote areas of the state