

**1/24/12
LEGISLATIVE
FISCAL
ANALYST'S
OVERVIEW OF
GOVERNOR'S FY13
BUDGET**

<TARGET><BILL></BILL><SUBJECT>1-24-12 LEGISLATIVE
FISCAL ANALYST'S OVERVIEW OF GOVERNOR'S FY13
BUDGET</SUBJECT><COMM>SFIN27</COMM></TARGET>

Senate Finance Committee

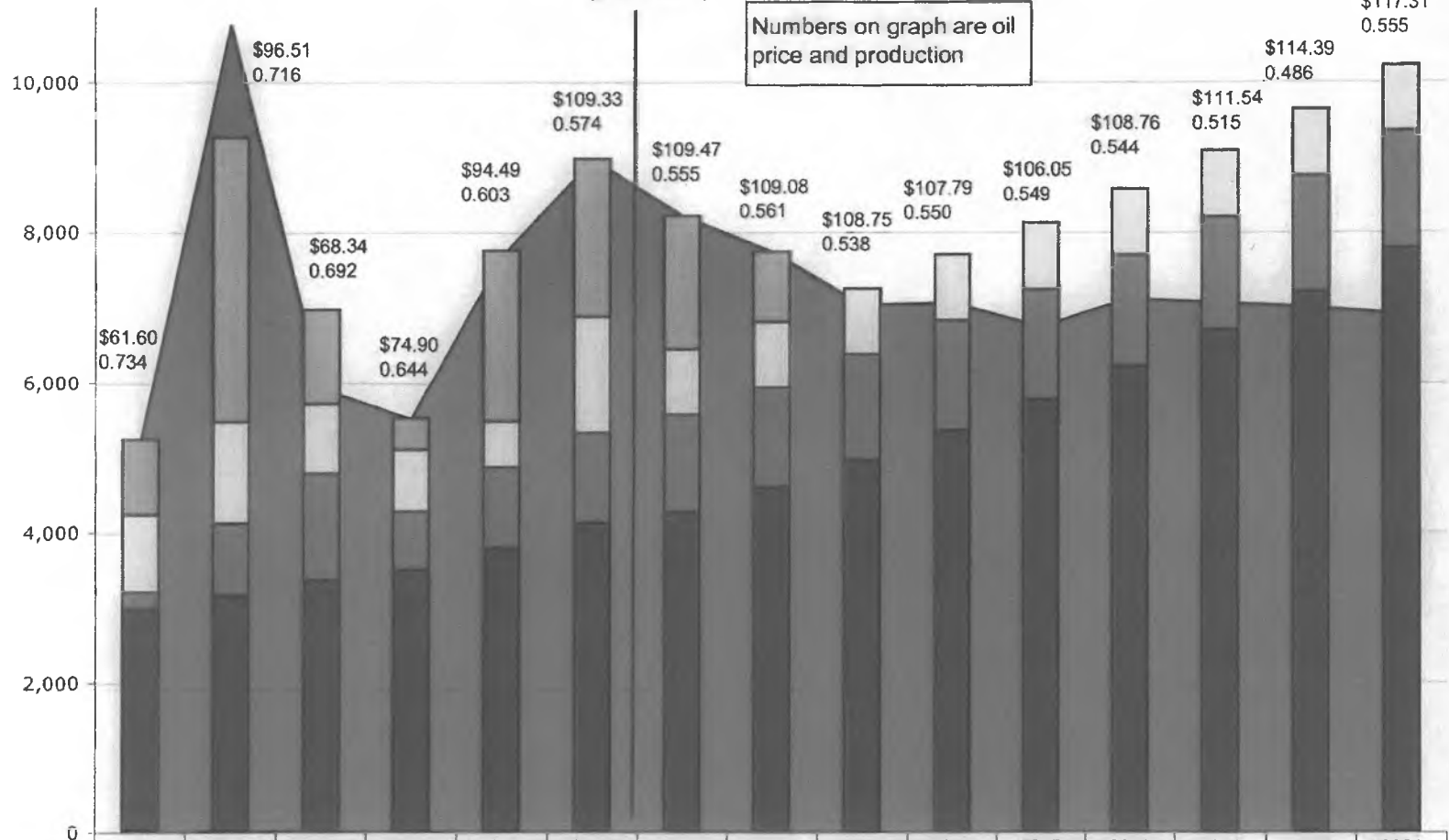
January 24, 2012

Legislative Fiscal Analyst's Overview of the Governor's FY13 Budget

David Teal
Legislative Fiscal Analyst
<http://www.iegfin.state.ak.us>

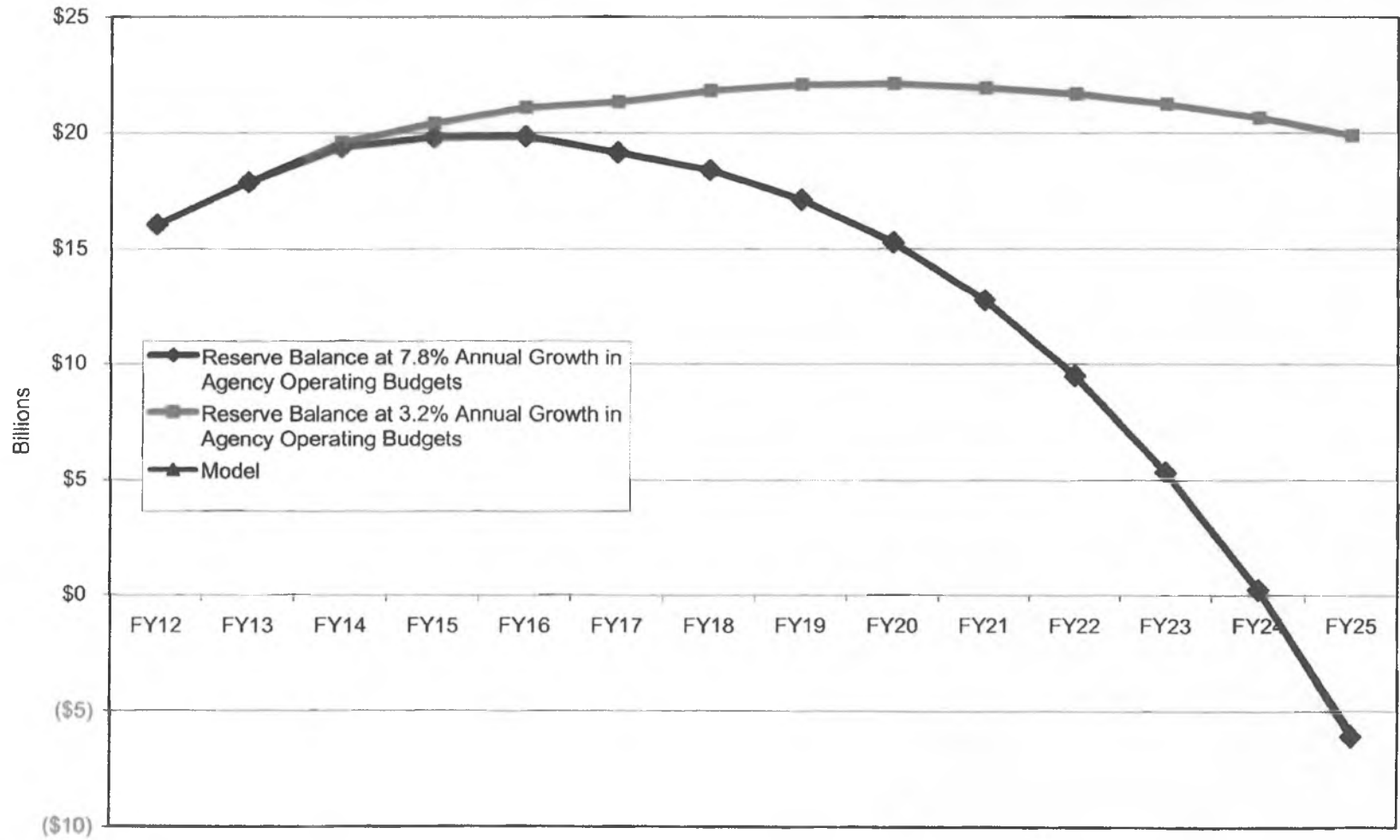
Figure 2. Unrestricted General Fund Revenue/ Budget

(\$millions)



	2007	2008	2009	2010	2011	2012	2013	2014	2015	2016	2017	2018	2019	2020	2021
■ GF Revenue (Fall 2011)	5,215.7	10,764.3	5,918.8	5,513.3	7,673.0	8,981.6	8,222.7	7,742.8	7,043.4	7,065.5	6,738.9	7,125.0	7,070.4	7,012.1	6,917.5
■ Net Fund Transfers	1,003.3	3,788.3	1,260.0	426.1	2,279.5	2,100.4	1,773.8	932.6	(216.0)	(641.2)	(1,388.3)	(1,454.3)	(2,016.0)	(2,623.4)	(3,308.8)
■ Capital Budget	1,035.1	1,351.7	924.1	826.2	614.6	1,557.1	882.0	882.0	882.0	882.0	882.0	882.0	882.0	882.0	882.0
■ Statewide Operating	220.6	963.1	1,423.4	771.0	1,072.1	1,191.9	1,294.2	1,322.2	1,412.2	1,472.2	1,475.2	1,477.2	1,499.2	1,525.2	1,552.2
■ Agency Operations	2,986.5	3,165.4	3,370.3	3,506.6	3,793.1	4,132.2	4,272.7	4,606.0	4,965.2	5,352.5	5,770.0	6,220.1	6,705.2	7,228.3	7,792.1

Figure 3. Projected Reserve Balances
 (Assumes revenue of \$7 billion annually after FY21 and a constant (\$882 million/year) capital budget)



Projected Direct State Contributions to PERS and TRS

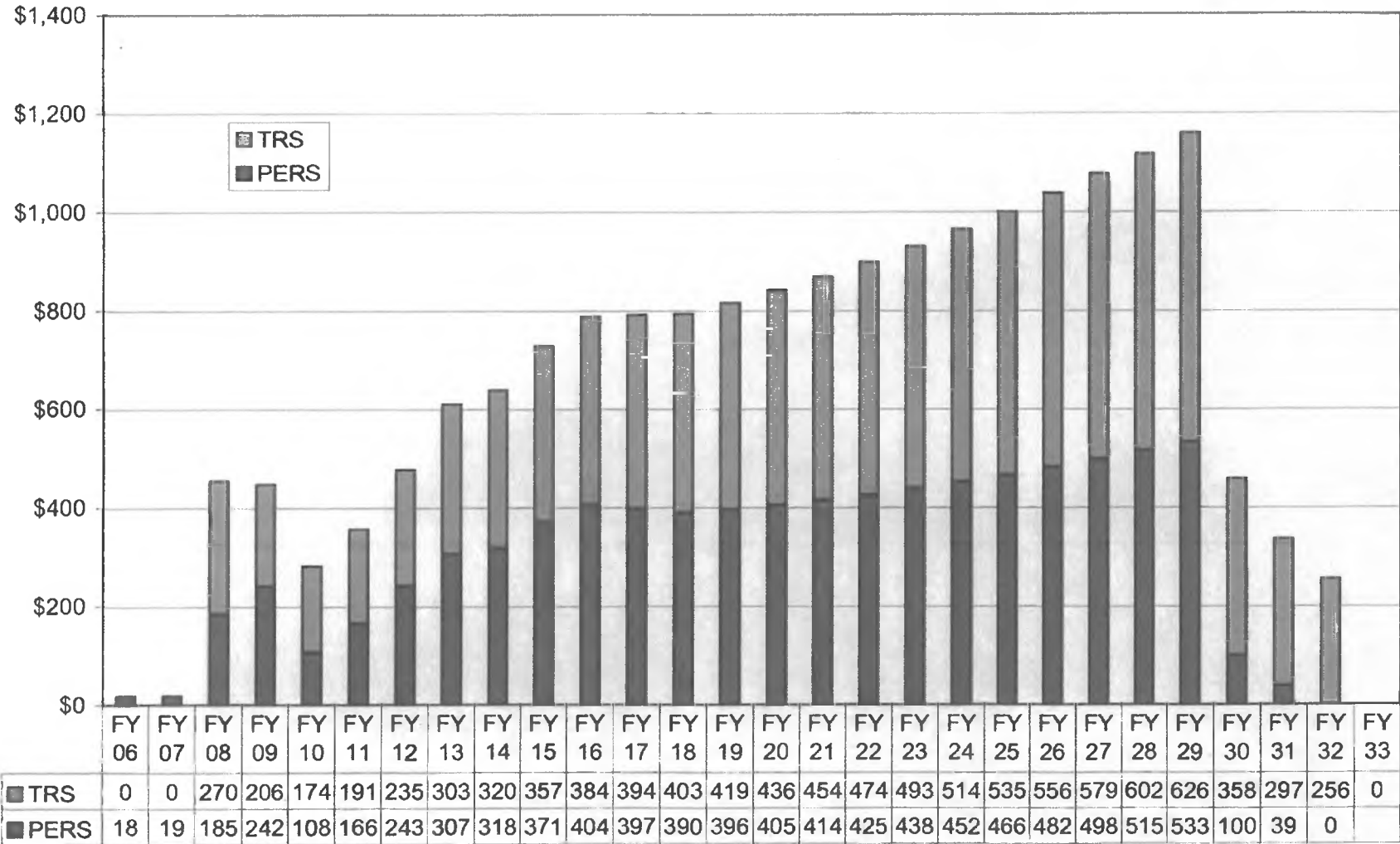
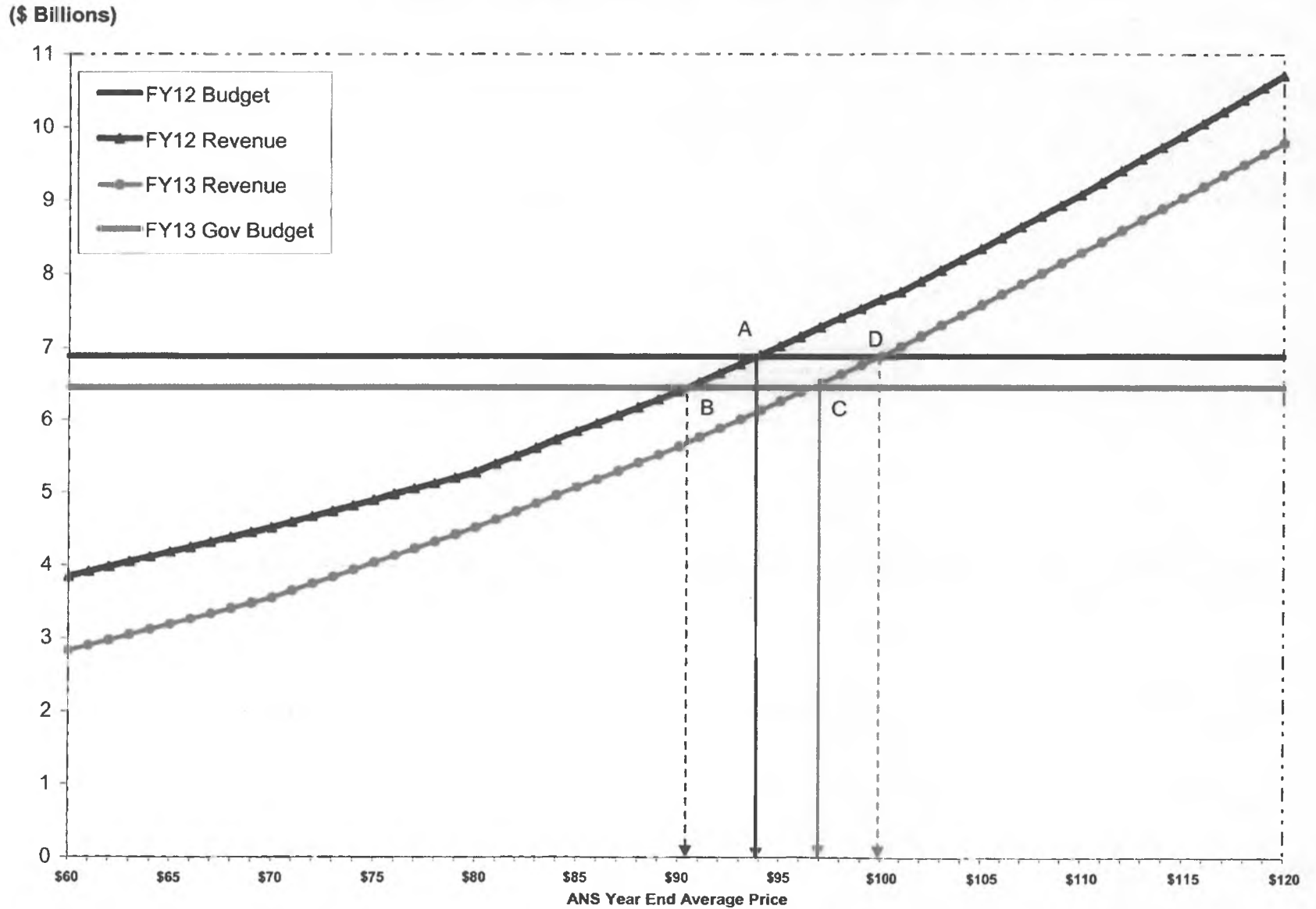


Figure 4. FY12/13 General Fund - Fiscal Sensitivity Overlay



Note: Revenue figures from DOR Fall 2011 Forecast. Figures include sources not directly affected by oil prices. Budget Authorization corresponds with "Pre-transfer" authorization on Fiscal Summary.