

SB

91

<TARGET><BILL>SB 91</BILL><SUBJECT>SB
91</SUBJECT><COMM>HF IN27</COMM></TARGET>

FISCAL NOTE

STATE OF ALASKA cost # codes
2012 LEGISLATIVE SESSION

Bill Version HCSCSSB 91 (FIN)
 Fiscal Note Number _____
 Publish Date _____

Identifier (file name) SB91HCSCS(FIN)-DFG-SFD-04-13-12 Dept. Affected Fish and Game
 Title SPORT FISHING GUIDING SERVICES Appropriation Sport Fisheries
 Allocation Sport Fisheries
 Sponsor SENATOR MCGUIRE
 Requester House Finance Committee OMB Component Number 464

Expenditures/Revenues (Thousands of Dollars)

Note: Amounts do not include inflation unless otherwise noted below.

	FY13 Appropriation Requested	Included in Governor's FY13 Request	Out-Year Cost Estimates					
			FY13	FY14	FY15	FY16	FY17	FY18
OPERATING EXPENDITURES								
Personal Services		290.0	290.0	290.0				
Travel		10.0	10.0	10.0				
Services		90.0	90.0	90.0				
Commodities		10.0	10.0	10.0				
Capital Outlay								
Grants, Benefits								
Miscellaneous								
TOTAL OPERATING	0.0	400.0	400.0	400.0	0.0	0.0	0.0	0.0

FUND SOURCE		(Thousands of Dollars)						
1002	Federal Receipts							
1003	GF Match							
1004	GF							
1005	GF/Prgm (DGF)							
1037	GF/MH (UGF)							
1024	Fish/Game (Other)		400.0	400.0	400.0			
TOTAL		0.0	400.0	400.0	400.0	0.0	0.0	0.0

POSITIONS								
Full-time								
Part-time								
Temporary								

CHANGE IN REVENUES								

Estimated SUPPLEMENTAL (FY12) operating costs _____ (separate supplemental appropriation required)
 (discuss reasons and fund source(s) in analysis section)

Estimated CAPITAL (FY13) costs _____ (separate capital appropriation required)
 (discuss reasons and fund source(s) in analysis section)

Why this fiscal note differs from previous version (if initial version, please note as such)

Reflects the change in the sunset date from Jan. 1, 2013 to Jan. 1, 2015.

Prepared by Charles O. Swanton, Director
 Division Sport Fisheries
 Approved by Kevin Brooks, Administrative Services Director
Department of Fish and Game

Phone 907-465-6184
 Date/Time 4/13/12 10:24 AM
 Date 4/13/2012

FISCAL NOTE

STATE OF ALASKA
2012 LEGISLATIVE SESSION

BILL NO. HCSCSSB 91 (FIN)

Analysis

Senate Bill 91 extends the termination date of the licensing program for sport fishing guide and sport fishing operators from January 1, 2013 to January 1, 2015. The division has budgeted \$400.0 in the FY13 Governor's budget, and the subsequent fiscal years, to administer the Sport Fish operator/guide/vessel program. The program generates average Fish and Game Fund revenues of \$250.0, with the balance of the program expenditures funded with Sport Fishing license sale revenue.

HOUSE CS FOR CS FOR SENATE BILL NO. 91(FIN)
IN THE LEGISLATURE OF THE STATE OF ALASKA
TWENTY-SEVENTH LEGISLATURE - SECOND SESSION

BY THE HOUSE FINANCE COMMITTEE

Offered:
Referred:

Sponsor(s): SENATOR MCGUIRE

A BILL

FOR AN ACT ENTITLED

1 **"An Act amending the termination date of the licensing of sport fishing operators and**
2 **sport fishing guides; and providing for an effective date."**

3 **BE IT ENACTED BY THE LEGISLATURE OF THE STATE OF ALASKA:**

4 * **Section 1.** Section 8, ch. 70, SLA 2004, as amended by sec. 3, ch. 61, SLA 2009, sec. 1,
5 ch. 48, SLA 2010, and sec. 1, ch. 13, SLA 2011, is amended to read:

6 Sec. 8. AS 16.05.340(a)(26); AS 16.40.260, 16.40.270, 16.40.280, 16.40.290,
7 16.40.299; AS 25.27.244(s)(2)(A)(xviii), and 25.27.244(s)(2)(A)(xix) are repealed
8 January 1, 2015 [2013].

9 * **Sec. 2.** This Act takes effect immediately under AS 01.10.070(c).

FISCAL NOTE

STATE OF ALASKA
2012 LEGISLATIVE SESSION

Bill Version CSSB 91(FIN)
 Fiscal Note Number 3
 (S) Publish Date 4/4/12

Identifier (file name) SB91CS(FIN)-DFG-SFD-03-30-12 Dept. Affected Fish and Game
 Title SPORT FISHING GUIDING SERVICES Appropriation Sport Fisheries
 Allocation Sport Fisheries
 Sponsor SENATOR MCGUIRE
 Requester Senate Finance Committee OMB Component Number 464

Expenditures/Revenues (Thousands of Dollars)

Note: Amounts do not include inflation unless otherwise noted below.

	FY13 Appropriation Requested	Included in Governor's FY13 Request	Out-Year Cost Estimates					
			FY13	FY14	FY15	FY16	FY17	FY18
OPERATING EXPENDITURES								
Personal Services		290.0	290.0	290.0	290.0	290.0	290.0	
Travel		10.0	10.0	10.0	10.0	10.0	10.0	
Services		90.0	90.0	90.0	90.0	90.0	90.0	
Commodities		10.0	10.0	10.0	10.0	10.0	10.0	
Capital Outlay								
Grants, Benefits								
Miscellaneous								
TOTAL OPERATING	0.0	400.0	400.0	400.0	400.0	400.0	400.0	0.0

FUND SOURCE		(Thousands of Dollars)						
1002	Federal Receipts							
1003	GF Match							
1004	GF							
1005	GF/Prgm (DGF)							
1037	GF/MH (UGF)							
1024	Fish/Game (Other)		400.0	400.0	400.0	400.0	400.0	400.0
TOTAL		0.0	400.0	400.0	400.0	400.0	400.0	0.0

POSITIONS								
Full-time								
Part-time								
Temporary								

CHANGE IN REVENUES								

Estimated SUPPLEMENTAL (FY12) operating costs _____ (separate supplemental appropriation required)
 (discuss reasons and fund source(s) in analysis section)

Estimated CAPITAL (FY13) costs _____ (separate capital appropriation required)
 (discuss reasons and fund source(s) in analysis section)

Why this fiscal note differs from previous version (if initial version, please note as such)

Reflects the change in the sunset date from Jan. 1, 2013 to Jan. 1, 2017.

Prepared by Charles O. Swanton, Director
 Division Sport Fisheries
 Approved by Kevin Brooks, Administrative Services Director
Department of Fish and Game

Phone 907-465-6184
 Date/Time 3/30/12 10:24 AM
 Date 3/30/2012

FISCAL NOTE #3

STATE OF ALASKA
2012 LEGISLATIVE SESSION

BILL NO. CSSB 91(FIN)

Analysis

Senate Bill 91 extends the termination date of the licensing program for sport fishing guide and sport fishing operators from January 1, 2013 to January 1, 2017. The division has budgeted \$400.0 in the FY13 Governor's budget, and the subsequent fiscal years, to administer the Sport Fish operator/guide/vessel program. The program generates average Fish and Game Fund revenues of \$250.0, with the balance of the program expenditures funded with Sport Fishing license sale revenue.

Adopted
4/13/12

House Finance Committee

April 13, 2012

SB 91 - Sport Fishing Guiding Services

Amendment # 1

Submitted by Rep. Bill Stoltze

On page 1 line 8

Delete "2017" Insert "2015"

ALASKA STATE LEGISLATURE

Session
State Capitol Building, Room 125
Juneau, Alaska 99801-1182
Phone (907) 465-2995
Fax (907) 465-6592



Interim
716 West Fourth Avenue, Suite 430
Anchorage, Alaska 99501
Phone (907) 269-0250
Fax (907) 269-0249

SENATOR LESIL MCGUIRE

SPONSOR STATEMENT FOR SENATE BILL 91

"An Act amending the termination date of the licensing of sport fishing operators and sport fishing guides; and providing for an effective date."

Senate Bill 91 will ensure the continuation of Alaska's sport fish guide licensing and reporting program. Legislation authorizing the program was passed in 2004 and the program has proven beneficial to both the sport fishing industry and resource managers. With more than 1.8 million clients, 88% of whom are nonresidents, taking more than 460,000 guided fishing trips in Alaska annually; guided sport fishing has become an integral part of Alaska's tourism economy. In fact, a study commissioned by the Alaska Department of Fish and Game estimated that nonresident spending on sport fishing was more than \$650 million in 2007.

Since the program's inception, an average of 1,670 sport fishing business licenses and 1,981 sport fishing guide licenses have been sold annually. 90% of license holders are Alaska residents and the professionalization of the sport fishing guide industry has benefitted both the industry and the resource. The data collected through the program provides the information state and federal managers need to sustainably manage sport fish populations. The program also allows Alaska to receive an exemption from the National Saltwater Angler Registry; a federal program that would begin levying fees for registration in 2011.

Recognizing the importance of the program, the Alaska legislature extended the program's termination date for one year in 2010; SB 91 proposes to amend the program's associated termination language in existing statutes in order to allow this valuable program to continue serving Alaskans and their valuable fishery resources.



State of Alaska
Department of Fish & Game
Division of Sport Fish

2012 Saltwater Charter Logbook and Vessel Registration

Vessel
Name: _____

Vessel AK. #
or
U.S.C.G. #: _____



Federal rules require that the Charter Halibut Permit (CHP) number(s) be recorded on the logbook before the beginning of any trip during which halibut are caught and retained.

CHP #:	CHP HOLDER:
_____	_____
_____	_____
_____	_____
_____	_____

Please follow the INSTRUCTIONS carefully as they have changed

LOGBOOK INSPECTION

This logbook must be presented for inspection, upon request, to any representative of the Department of Fish and Game, peace officer of the state, or law enforcement representative of the National Marine Fisheries Service.

Monday to Sunday Activity	Postmarked or Received
During the week of:	by ADF&G (Mondays):
January 1 – April 1	April 9
April 2 – April 8	April 16
April 9 – April 15	April 23
April 16 – April 22	April 30
April 23 – April 29	May 7
April 30 – May 6	May 14
May 7 – May 13	May 21
May 14 – May 20	May 28
May 21 – May 27	June 4
May 28 – June 3	June 11
June 4 – June 10	June 18
June 11 – June 17	June 25
June 18 – June 24	July 2
June 25 – July 1	July 9
July 2 – July 8	July 16
July 9 – July 15	July 23
July 16 – July 22	July 30
July 23 – July 29	August 6
July 30 – August 5	August 13
August 6 – August 12	August 20
August 13 – August 19	August 27
August 20 – August 26	September 3
August 27 – September 2	September 10
September 3 – September 9	September 17
September 10 – September 16	September 24
September 17 – September 23	October 1
September 24 – September 30	October 8
October 1 – October 7	October 15
October 8 – October 14	October 22
October 15 – October 21	October 29
October 22 – October 28	November 5
October 29 – November 4	November 12
November 5 – November 11	November 19
November 12 – November 18	November 26
November 19 – November 25	December 3
November 26 – December 2	December 10
December 3 – December 9	December 17
December 10 – December 16	December 24
December 17 – December 23	December 31
December 24 – December 31	January 7, 2013



INSTRUCTIONS FOR ADF&G REPRESENTATIVE:

Please forward the white copy of this form to: Sport Fish RTS, 333 Raspberry Rd., Anchorage, AK 99518-1565.

DO NOT REMOVE THE PINK COPY. THE PINK COPY MUST STAY IN THE LOGBOOK.

DO NOT ISSUE A LOGBOOK UNLESS THE APPLICANT HAS THE FOLLOWING:

⇒ 2012 ADF&G Sport Fish Business License

⇒ Current AK Vessel Number issued by DMV or Current U.S.C.G. Vessel Documentation No.

NONE OF THE ABOVE CAN BE "PENDING"

2012 ADF&G Sport Fish Business Owner and Guide License applications are available at all ADF&G offices or online at: <http://www.adfg.alaska.gov/index.cfm?adfg=prolicenses.forms>

AK Vessel Registration information is available from Alaska Div. of Motor Vehicles at (907) 269-5551 or online at: <http://www.doa.alaska.gov/dmv/reg/boat.htm>

2012 Saltwater Sport Fish Charter Logbook Sign-Out AND Vessel Registration
Must be completed

SPORT FISH BUSINESS INFORMATION:

Name of Sport Fishing Business: _____

ADF&G Sport Fish Business License Number : 2012- _____

SPORT FISHING CHARTER VESSEL REGISTRATION:

⇒ DMV issued AK No. or U.S.C.G. Vessel Documentation No.: _____
(A logbook WILL NOT be issued without a current AK or U.S.C.G. number)

⇒ Vessel Name: _____
(Vessel name and AK No. or U.S.C.G. # must appear on the cover)

⇒ Primary Alaska Saltwater port from which this vessel will operate during 2012:

DEPARTMENT USE ONLY

⇒ Did you issue a Stat. Area Map? YES NO If No, Explain:

⇒ ADF&G Representative: *(print)* _____

⇒ Area Office: _____ Date of Issue: _____

INSTRUCTIONS FOR COMPLETING THE 2012 SALTWATER TRIP LOGBOOK PAGES

WHEN TO COMPLETE A LOGBOOK

A Charter Vessel Fishing Trip is Defined as the time period between the first deployment of fishing gear into the water from a vessel with one or more paying charter vessel clients onboard and the offloading of one or more paying charter vessel clients or any harvested fish from that vessel.

A trip that consists of no paying clients, that is, all anglers are “comped”, and the guide is NOT receiving any tips or other compensation, would NOT be considered a chartered trip and a logbook data sheet should not be completed and submitted to the Alaska Dept. of Fish and Game. A licensed guide may be present during a private fishing trip but must NOT be compensated by the angler(s) or by any licensed fishing service or any other party.

Before a Trip Begins (see definition above), the Guide must Record:

- The 2012 sport fishing license number, permanent identification number (PID) or disabled veteran (DAV) license number for anyone that will fish during any part of the trip, including paying and non-paying (comped) anglers and crew.
- The first and last name of each angler in the space provided below their license number.
- The word “Youth” in the fishing license space along with the first and last name on the name line for all anglers under the age of 16. Multiple youth anglers on a trip should be recorded as Youth 1, Youth 2 etc.

Complete the logbook through the last charter trip of the season in the following manner:

Returning to a Dock:

- Complete and sign the logbook data page before offloading any fish from the vessel. If no fish were kept, complete the logbook data page before offloading any clients.

No Docking Facilities (e.g., trailered vessels):

- Complete and sign the logbook data page before the vessel or guide departs the launch/landing site AND before offloading any fish from the vessel.
- If no fish were kept, complete the logbook data page before the vessel or guide departs the launch/landing site.

No Vessel Used (aircraft, highway vehicles, walk-in, ATVs, etc.):

- Complete and sign the logbook data page before the guide leaves the fishing site. Fishing site is defined as the location where fishing activity took place.

Multiple Trips per Day:

Use a separate logbook data page for each trip if multiple trips were taken during the same day. Complete the logbook data page at the end of each trip as described above.

Multiple Day Trips:

Complete a logbook page at the end of each day on which sport fishing guide services were provided. Use a separate page for each day of the trip. Record the port or community of offloading at the end of the multiple-day trip, not the port or location where the vessel anchored or moored each night.

For example, for a five-day trip with only three days of guided fishing, three logbook pages should be submitted, all with the same port of offloading.

RETURN THE LOGBOOK DATA PAGES WEEKLY

Fishing activity that occurs prior to April 1, 2012 is due to ADF&G by April 9, 2012; all activity thereafter must be received by ADF&G **EVERY WEEK** as detailed in the schedule provided on the inside of the front cover of this book. Logbook data pages can be submitted to any regional or area ADF&G office or mailed to the address printed on the back of each logbook page.

INSTRUCTIONS FOR COMPLETING THE 2012 SALTWATER TRIP LOGBOOK PAGES

RESPONSIBILITY OF OWNER & GUIDE

It is the responsibility of the guide to ensure that daily trip activity is accurately recorded as described in these instructions.

It is the responsibility of the business owner (owner of the sport fish business license) to ensure that all data for fishing activities from January 1, 2012 through December 31, 2012 is submitted to ADF&G in the manner previously described.

VESSEL REGISTRATION

All vessels used in sport fishing guide activities must be registered with ADF&G. All vessels must have a current AK registration number issued by the Division of Motor Vehicles (DMV) or a current U.S.C.G. documentation number prior to registering with ADF&G. **If the vessel has an AK number, the AK number must be displayed during guided fishing operations.**

VESSEL DECALS/RENEWAL TAGS

One set of ADF&G decals will be issued per registered vessel. Decals must be applied and visible on both sides of the vessel. Decals do not have to be applied directly to the hull of the vessel. Decals can be adhered to wood, fiberglass or "Plexiglas", which in turn is secured to both sides of the vessel. Decals can be transferred from one vessel to another; as long as the receiving vessel has a current AK registration number from DMV or a current U.S.C.G. documentation number and has been registered with ADF&G. Annual stickers or tags will be issued as vessels are registered and must be adhered directly to the decal in the designated area. Lost decals and tags can be replaced free of charge at any ADF&G office.

TRANSFERRING A LOGBOOK

A logbook is issued to a specific business for a specific vessel. All active vessels must be registered and issued a current year logbook from a local ADF&G office.

Logbooks may not be transferred between businesses. Only the business issued a logbook may use that logbook. If a vessel belonging to a licensed guide business is borrowed by another business, the borrowing business must acquire their own logbook.

If a business substitutes a different vessel for the primary vessel the original logbook can be used on the substitute vessel for up to **seven (7) consecutive days**. A temporary vessel used for a longer period of time must be issued a new logbook. ADF&G must be notified (see contact information on page vii) with the substitute vessel registration information.

All vessels engaged in fishing with clients on board must be registered and display the vessel decals.

WHAT A GUIDE MUST HAVE IN POSSESSION WHILE GUIDING

While providing sport fishing guide services, a sport fishing guide shall have the following readily available for inspection by request of a representative of the Department, a peace officer of the state, or law enforcement representative of the National Marine Fisheries Service:

- Valid sport fishing guide license issued by ADF&G;
- Copy of the current ADF&G sport fishing business license of the guide's employer;
- Valid Alaska sport fishing license, tags, stamps or permits that are required to engage in the sport fishery for which guide services are being provided;
- Identification card issued to the sport fishing guide by a state or federal agency that bears a photo of the sport fishing guide. The identification card **MUST** match the name on the guide license.

INSTRUCTIONS FOR COMPLETING THE 2012 SALTWATER TRIP LOGBOOK PAGES

TRIP INFORMATION	
Date	Record the month and day for each trip taken. If two or more trips were taken on the same day, that date will appear on all sheets for that day.
Hour Trip Ended	Record the hour in which the trip ended with the offloading of clients and fish. Round to the nearest hour only: trips ending at or after 5:00 pm but before 5:31pm would be logged as 5 pm and trips ending from 5:31pm to 6:00 pm would be logged as 6 pm. Do not indicate minutes. Fill in the circle for AM or PM.
Guide License Number	The 2012 guide license number issued by ADF&G to the guide that led the fishing trip.
Charter Halibut Permit (CHP) Number and multiple Permits	Record the primary Charter Halibut Permit (CHP) number used for the trip on the logbook data page in the space provided. Write the entire number as it appears on the permit followed by the alpha character, i.e. 1234A. If more than one CHP is used during a trip, check the box next to the primary CHP number. Complete a separate page for each CHP used during a trip. Unique trip information for each CHP, along with individual angler and catch information must be recorded for each CHP used. Angler license numbers along with kept and released information would be recorded only ONCE per trip. Record all CHP number(s) and CHP Holder(s) names on the front cover of the logbook.
Guided Angler Fish (GAF) Permit Number (New in 2012 – see page vii for information on the Federal GAF program)	DO NOT record a GAF Permit Number until NOAA Fisheries provides notice of the effective date of federal GAF halibut regulations. GAF halibut will be authorized and available for use ONLY AFTER implementation of federal regulations. IF GAF regulations are implemented in 2012, NOAA Fisheries will provide notice to operators on when to begin reporting GAF halibut in the logbook. Until such time DO NOT record GAF halibut. When GAF regulations go into effect, record the number of GAF halibut kept for each trip on the logbook page and record the number of the GAF permit used on each logbook page.
Port or Community of Off-Loading	The port or community where clients and/or fish were off-loaded at the conclusion of the trip. On a multi-day trip, indicate the community where fish and clients will be off-loaded when the trip is finished.
Primary Stat Area Fished	Report the 6-digit stat area code where most of the fish were caught or targeted. Record the stat area for salmon and/or bottomfish, depending on whether the gear and fishing methods were effectively targeting salmon, bottomfish, or both. Report only stat areas from maps provided with the logbook for this purpose.
No. of Boat Hours Fished	The number of boat hours for which at least one rod/line was fished. Record only the number of hours spent fishing, NOT hours spent running to or from fishing areas. Round to the nearest whole hour.
INDIVIDUAL ANGLER INFORMATION	
Sport Fish License No.	Before a guided sport fishing trip begins (see definition on page iii), record the 2012 Alaska Sport Fishing License number, resident PID (permanent identification number) or DAV (disabled veteran license number) of each client, comped angler, and crew member that will be fishing. See Youth Angler instructions below .
Residency	Fill in the circle to indicate AK Resident OR Non-Resident for all anglers, including crew and “comped” anglers.
Crew and “Comped” angler status	If applicable , next to each angler license number: <ul style="list-style-type: none"> ➤ fill in the circle if the angler is a Crew member, ➤ fill in the circle if the angler is “Comped” (the guide service is not compensated for the angler). A crew member includes the licensed guide leading the fishing trip as well as any person who, for compensation or the intent to receive compensation, provides assistance to clients on board the vessel.
Angler Name	Angler’s first and last name MUST be printed below the angler’s license number .
Youth Anglers	For anglers under the age of 16, write the word “YOUTH” in the fishing license space AND record the first and last name on the name line. If more than one youth angler is on a trip, record them as Youth 1, Youth 2, etc.
Angler Signatures in 2C	Federal rules require that all anglers who harvest (keep) halibut in IPHC 2C must sign the logbook to verify that their information and number of halibut reported kept are correct. A signature is also required of youth anglers.
Continuing Trip Information	Complete the Page <input type="checkbox"/> of <input type="checkbox"/> if more than one page is required for this trip, for example, if two pages are required to list all anglers, they would be numbered Page 1 of 2 and Page 2 of 2.
Guide Signature	The licensed guide who led the trip with clients on board MUST sign at the bottom of each page.

INSTRUCTIONS FOR COMPLETING THE 2012 SALTWATER TRIP LOGBOOK PAGES

RECORDING CATCH INFORMATION	
Recording Catch Information	Indicate the number of fish Kept (retained) and Released (let go) by species or group. Leave the fields BLANK if no fish were kept or released.
EXAMPLE 1: One target Salmon	If bottomfish were caught while targeting salmon only , record the number of bottomfish in the appropriate columns in the bottomfish section. The stat area and hours fished should be recorded on the salmon target species line under Trip Information. If salmon were targeted but no salmon were caught, record the stat area and boat hours fished on the salmon target species line under Trip Information.
EXAMPLE 2: One target Bottomfish (incl. Halibut)	If salmon were caught while targeting bottomfish only , record the number of salmon in the appropriate columns in the salmon section. The stat area and hours fished should be recorded on the bottomfish target species line under Trip Information. If bottomfish were targeted but no bottomfish were caught, record the stat area and boat hours fished on the bottomfish target species line under Trip Information.
EXAMPLE 3: Two targets Salmon and Bottomfish	Record the maximum number of boat hours spent fishing simultaneously for both salmon AND bottomfish on both the salmon and bottomfish target species lines under Trip Information. For example, if mooching or jigging for 7 hours record 7 hours in the salmon effort row, and 7 hours in the bottomfish effort row.

Special Instructions and Definitions	
Charter Halibut Permit (CHP) by Trip and for the Season	Federal regulations require that if one or more anglers are catching and retaining halibut in Area 2C or Area 3A, the guide MUST have a valid charter halibut permit (CHP) for the appropriate regulatory area on board the vessel at all times. Record the primary charter halibut permit number used during a trip on each page. If more than one CHP is used during a trip, check the box next to the primary CHP number. Complete a separate page for each CHP used during a trip. Unique trip information for each CHP, along with individual angler and catch information must be recorded for each CHP used. Angler License numbers along with kept and released information would be recorded only ONCE per trip. All CHP number(s) and CHP Holder(s) used during the fishing season MUST appear on the front cover of the logbook with the primary CHP number used during a trip appearing on the individual trip sheet. A CHP number needs to appear only once on the cover, but recorded on the trip sheet each time it is used.
(GAF) Guided Angler Fish (New in 2012 – see page vii for information on the Federal GAF program)	DO NOT record the number of GAF halibut kept until NOAA Fisheries provides notice of the effective date of federal GAF halibut regulations. Record GAF halibut kept ONLY AFTER implementation of federal regulations. IF GAF regulations are implemented in 2012, NOAA Fisheries will provide notice to operators on when to begin reporting GAF halibut in the logbook. Until such time DO NOT record GAF halibut kept. When GAF regulations go into effect, record the number of GAF halibut kept for each client on each trip within the logbook. If GAF halibut were kept along with Non- GAF halibut, record the number of each within the appropriate category. NOTE: record the number of Non- GAF halibut kept AND released.
2C/3A Operators (operators who fish both 2C and 3A for Halibut)	Federal regulations prohibit retention of halibut from Area 2C and Area 3A during the same charter vessel fishing trip. Contact NOAA for additional federal halibut regulations; see page vii for contact information.
Angler Signature	Federal regulations require that every angler (including youth) who keeps halibut caught in IPHC Area 2C must sign on the angler signature line directly beneath the angler's first and last name on the front side of each page.
"Shakers"	King salmon under 28" in Southeast Alaska must be released upon capture, unless caught in designated terminal harvest areas, or allowed by emergency order.
Pelagic Rockfish	Includes black, dark and dusky rockfish (commonly called "black bass"), yellowtail, widow and blue rockfish. These species of rockfish are uniformly gray, green, brown, or black (see rockfish ID chart in your regulation booklet).
Yelloweye Rockfish	"Commonly called "red snapper." Adults primarily orange with a pale yellow line running along the lateral line, juveniles with two bold white lateral stripes. Have yellow eyes. Can grow to 36 inches in length.
Other Non-pelagic Rockfish	Includes quillback, copper, silvergray, China, tiger, and other rockfish species.
Sablefish (Black Cod)	Sablefish, commonly known as black cod, have a streamlined, elongated body, black to dark gray above fading to gray or white in the belly, with two dorsal fins and small teeth. Larger fish found in deep water, can grow to 40 inches.
Salmon Shark	This is a single species, <i>Lamna ditropis</i> . These sharks are large, firm, dark brown or black on top, with white bellies with dark blotches. Do not include spiny dogfish ("sand shark") or sleeper sharks ("mud sharks") in this category.
All Other Fish	DO NOT record any OTHER fish kept that does not fit into any currently listed category of fish.

INSTRUCTIONS FOR COMPLETING THE 2012 SALTWATER TRIP LOGBOOK PAGES

PROXY FISHING INSTRUCTIONS

If an angler is also proxy fishing for a beneficiary, that angler **MUST** have the fishing license or PID/DAV of the person for whom he/she is fishing. Write down the license number of the recipient of the fish (beneficiary), the beneficiary's first and last name, followed by the word "**Proxy**" on the signature line.

Halibut may not be taken by proxy fishing.

Use two records on the logbook data sheet, one for the angler's license number and name and the other record for the beneficiary's license number and name. Mark AK Resident in the adjacent column for both. Beneficiaries and those fishing for them **must** both be residents of Alaska.

For **permanent** licenses (residents only), write down the entire license number, including the preceding alpha character, which can be a P, D, T or Z, e.g. **Z50148**.

2012 FEDERAL GAF PROPOSAL:

On July 22, 2011, NOAA Fisheries proposed regulations to authorize guided angler fish (GAF) for the Charter halibut fisheries. GAF will be available for use **ONLY AFTER** publication and implementation of final regulation by NOAA Fisheries. NOAA will provide notice to operators as soon as possible if such regulations are implemented during 2012. Information will also be available on the NOAA Fisheries Alaska Region web site at: <http://alaskafisheries.noaa.gov/sustainablefisheries/halibut/sport.htm>

NOAA CONTACT INFORMATION:

There are numerous differences between State and Federal regulations that govern charter fishing in 2C and 3A, which all operators must be aware of, and operate under. For Additional information on federal charter logbook requirements for halibut, call NOAA Fisheries Office for Law Enforcement (907) 586-7225.

You must comply with the federal halibut regulations described at:

<http://alaskafisheries.noaa.gov/regs/summaryv.htm> and <http://www.iphc.int>

A summary of the charter halibut fishery federal regulations is available at:

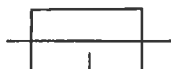
<http://alaskafisheries.noaa.gov/sustainablefisheries/halibut/sport.htm>

LOGPAGE CLARITY: 2012 logbook sheets are designed to be read by an optical scanner. Your cooperation and neatness in reporting minimizes data entry time and cost, and makes the information available sooner.

1. Use clear and legible handwriting. Print: **DO NOT** use cursive.
2. Use a black ink pen; do **NOT** use a pencil or other color pen.
3. Do **not** write in the margins.
4. Do **not** write 0's (zero) if a client **DID NOT** keep or release any fish during a trip, leave the kept and released fields blank.



NO



NO



NO

5. Contain trip information within the boxes and lines provided. Stay within the "bracketed" space allowed:



NO



NO



YES

Single digits should appear in the right hand column.

6. Keep data pages and logbook as clean as possible.

ADF&G Contact Information:

Division of Sport Fish, Guide Licensing and Logbook Program in Anchorage, Alaska at (907) 267-2369, or 267-2390 or email: dfg.dsf.guides@alaska.gov



The hour in which the trip ENDED.

TRIP INFORMATION

Both salmon and bottomfish were targeted. This was a 7 hour trip, 3 hours were spent targeting salmon, 4 hours were spent targeting bottomfish.

Complete this section on pages for trips with additional same trip.

DATE FISHED: 7 / 12 2012 6 AM PM

Bottomfish: 1 1 2 1 2 0 Hours Fished: 3
Primary Statistical Area Hours Fished

2012 GUIDE LICENSE NUMBER: (assigned to you by ADF&G)

The complete CHP number MUST be provided. This operator is using more than one CHP on this trip.

COMMUNITY OR PORT WHERE TRIP ENDED: (where fish or clients were off-loaded from vessel)

1 2 8 2 8

J. U. N. E. A. U.

CHARTER HALIBUT PERMIT (CHP) NUMBER (assigned to you by NOAA)

GUIDED ANGLER FISH (GAF) NUMBER: (assigned to you by NOAA)

1 2 3 4 A

Check box if more than one CHP is used on this trip:

SEE INSTRUCTIONS ON PAGES V-VII

INDIVIDUAL ANGLER AND CATCH INFORMATION

Complete one row below for each angler who fished this trip.

Record sport fishing license number, printed name AND Alaska residency status for all anglers.

Write "YOUTH" in license number field for anglers under 16.

	SALMON						BOTTOMFISH											
	AK Resident	Non - Resident	Comped	Crew	Kept / Released		King (28" & larger)	King (under 28")	Coho	Sockeye	Other Salmon	Halibut	GAF Halibut	Lingcod	Pelagic Rockfish	Yelloweye Rockfish	Nonpelagic Rockfish (excluding yelloweye)	Sablefish (Black Cod)

1. 2 0 4 2 8 4 5 K▶

License Number
LARRY LURE

First Name / Last Name
Larry Lure

Signature

This angler must provide a signature if halibut were kept in 2C.

2. 2 2 3 2 2 5 5 K▶

License Number
IGOT HALIBUT

First Name / Last Name
Igot Halibut

Signature

Next to EVERY fishing license number: Fill in the circle for Nonresident or Resident.

3. 2 3 5 9 9 6 7 K▶

License Number
DOUG DRIFT

First Name / Last Name
Doug Drift

Signature

Fill in the circle if the angler is "Comped" or nonpaying. Fill in "Crew" if the angler is a crew member. Doug Drift: is a "comped" resident angler.

4. YOUTH K▶

License Number
BRYAN BAITER

First Name / Last Name
Bryan Baiter

Signature

Youth angler kept a halibut and must sign on the signature line.

5. 2 9 5 5 0 0 2 K▶

License Number
FRANK FISHER

First Name / Last Name
Proxy

Signature

This license holder had another angler proxy fish for him. Record the beneficiary's license number, first and last name, and write "PROXY" on the signature line.

6. _____
License Number

First Name / Last Name

Signature

The guide must sign the bottom of every logsheet for each trip he/she was in charge of.

Form 11-540 (01-2012)



TRIP INFORMATION

Complete this section for every trip. Continue on additional pages for trips with more than six anglers in the same trip.

DATE FISHED: _____ / _____ 2012 AM PM
Month Day Hour Trip Ended

2012 GUIDE LICENSE NUMBER: _____
(assigned to you by ADF&G)

CHARTER HALIBUT PERMIT (CHP) NUMBER: _____
(assigned to you by NOAA)

Check box if more than one CHP is used on this trip:

FOR OFFICE USE ONLY
Total Anglers _____

TARGETED SPECIES / LOCATION FISHED:
(where most fish species were caught)

Salmon: _____
Primary Statistical Area Hours Fished

Bottomfish: _____
Primary Statistical Area Hours Fished

COMMUNITY OR PORT WHERE TRIP ENDED:
(where fish or clients were off-loaded from vessel)

GUIDED ANGLER FISH (GAF) NUMBER:
(assigned to you by NOAA)

INDIVIDUAL ANGLER AND CATCH INFORMATION

Complete one row below for each angler who fished this trip.

Record sport fishing license number, printed name AND Alaska residency status for all anglers.

Write "YOUTH" in license number field for anglers under 16.

	AK Resident	Non - Resident	Comped Crew	Kept / Released	SALMON					BOTTOMFISH							
					King (28" & larger)	King (under 28")	Coho	Sockeye	Other Salmon	Halibut	GAF Halibut	Lingcod	Pelagic Rockfish	Yelloweye Rockfish	Nonpelagic Rockfish (excluding Yelloweye)	Sablefish (Black Cod)	Salmon Shark
1. _____ License Number	<input type="radio"/>	<input type="radio"/>	<input type="radio"/>	K ▶	<input type="text"/>	<input type="text"/>	<input type="text"/>	<input type="text"/>	<input type="text"/>	<input type="text"/>	<input type="text"/>	<input type="text"/>	<input type="text"/>	<input type="text"/>	<input type="text"/>	<input type="text"/>	<input type="text"/>
_____ R ▶ First Name / Last Name					<input type="text"/>	<input type="text"/>				<input type="text"/>	<input type="text"/>	<input type="text"/>	<input type="text"/>	<input type="text"/>	<input type="text"/>	<input type="text"/>	<input type="text"/>
_____ Signature																	
2. _____ License Number	<input type="radio"/>	<input type="radio"/>	<input type="radio"/>	K ▶	<input type="text"/>	<input type="text"/>	<input type="text"/>	<input type="text"/>	<input type="text"/>	<input type="text"/>	<input type="text"/>	<input type="text"/>	<input type="text"/>	<input type="text"/>	<input type="text"/>	<input type="text"/>	<input type="text"/>
_____ R ▶ First Name / Last Name					<input type="text"/>	<input type="text"/>				<input type="text"/>	<input type="text"/>	<input type="text"/>	<input type="text"/>	<input type="text"/>	<input type="text"/>	<input type="text"/>	<input type="text"/>
_____ Signature																	
3. _____ License Number	<input type="radio"/>	<input type="radio"/>	<input type="radio"/>	K ▶	<input type="text"/>	<input type="text"/>	<input type="text"/>	<input type="text"/>	<input type="text"/>	<input type="text"/>	<input type="text"/>	<input type="text"/>	<input type="text"/>	<input type="text"/>	<input type="text"/>	<input type="text"/>	<input type="text"/>
_____ R ▶ First Name / Last Name					<input type="text"/>	<input type="text"/>				<input type="text"/>	<input type="text"/>	<input type="text"/>	<input type="text"/>	<input type="text"/>	<input type="text"/>	<input type="text"/>	<input type="text"/>
_____ Signature																	
4. _____ License Number	<input type="radio"/>	<input type="radio"/>	<input type="radio"/>	K ▶	<input type="text"/>	<input type="text"/>	<input type="text"/>	<input type="text"/>	<input type="text"/>	<input type="text"/>	<input type="text"/>	<input type="text"/>	<input type="text"/>	<input type="text"/>	<input type="text"/>	<input type="text"/>	<input type="text"/>
_____ R ▶ First Name / Last Name					<input type="text"/>	<input type="text"/>				<input type="text"/>	<input type="text"/>	<input type="text"/>	<input type="text"/>	<input type="text"/>	<input type="text"/>	<input type="text"/>	<input type="text"/>
_____ Signature																	
5. _____ License Number	<input type="radio"/>	<input type="radio"/>	<input type="radio"/>	K ▶	<input type="text"/>	<input type="text"/>	<input type="text"/>	<input type="text"/>	<input type="text"/>	<input type="text"/>	<input type="text"/>	<input type="text"/>	<input type="text"/>	<input type="text"/>	<input type="text"/>	<input type="text"/>	<input type="text"/>
_____ R ▶ First Name / Last Name					<input type="text"/>	<input type="text"/>				<input type="text"/>	<input type="text"/>	<input type="text"/>	<input type="text"/>	<input type="text"/>	<input type="text"/>	<input type="text"/>	<input type="text"/>
_____ Signature																	
6. _____ License Number	<input type="radio"/>	<input type="radio"/>	<input type="radio"/>	K ▶	<input type="text"/>	<input type="text"/>	<input type="text"/>	<input type="text"/>	<input type="text"/>	<input type="text"/>	<input type="text"/>	<input type="text"/>	<input type="text"/>	<input type="text"/>	<input type="text"/>	<input type="text"/>	<input type="text"/>
_____ R ▶ First Name / Last Name					<input type="text"/>	<input type="text"/>				<input type="text"/>	<input type="text"/>	<input type="text"/>	<input type="text"/>	<input type="text"/>	<input type="text"/>	<input type="text"/>	<input type="text"/>
_____ Signature																	

Form 11-540 (01-2012)

CERTIFICATION: I certify that the information provided herein is accurate and true. Falsification or omission of information on this form is punishable under AS 11.56.210(a) and 5 AAC 75.076.

X GUIDE SIGNATURE PAGE OF

(Fold here)

Fold and Insert into a Business Envelope and mail to the following address:

**Alaska Department of Fish and Game
Division of Sport Fish – RTS
Logbook Program**



**333 Raspberry Road
Anchorage, AK 99518-1599**

UP TO 4 PAGES CAN BE MAILED FOR THE COST OF ONE FIRST CLASS STAMP.

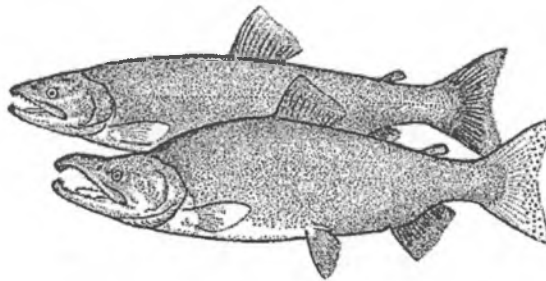
(Fold here)

2012 Freshwater Sport Fish Guide Logbook and Vessel Registration

LOGBOOK NO.

BUSINESS NAME

ADF&G BUSINESS OWNER'S LICENSE NO.



*Please follow the instructions carefully
as they have changed.*



**State of Alaska Department of Fish & Game
Division of Sport Fish**

LOGBOOK INSPECTION

*Upon request from any representative
of the Department or any peace officer of the state,
a person is required to present this Alaska Department
of Fish and Game Freshwater Sport Fishing
Guide Logbook for inspection.*

Monday to Sunday Activity During the week of:	Postmarked or Received by ADF&G (Mondays):
January 1 – April 1	April 9
April 2 – April 8	April 16
April 9 – April 15	April 23
April 16 – April 22	April 30
April 23 – April 29	May 7
April 30 – May 6	May 14
May 7 – May 13	May 21
May 14 – May 20	May 28
May 21 – May 27	June 4
May 28 – June 3	June 11
June 4 – June 10	June 18
June 11 – June 17	June 25
June 18 – June 24	July 2
June 25 – July 1	July 9
July 2 – July 8	July 16
July 9 – July 15	July 23
July 16 – July 22	July 30
July 23 – July 29	August 6
July 30 – August 5	August 13
August 6 – August 12	August 20
August 13 – August 19	August 27
August 20 – August 26	September 3
August 27 – September 2	September 10
September 3 – September 9	September 17
September 10 – September 16	September 24
September 17 – September 23	October 1
September 24 – September 30	October 8
October 1 – October 7	October 15
October 8 – October 14	October 22
October 15 – October 21	October 29
October 22 – October 28	November 5
October 29 – November 4	November 12
November 5 – November 11	November 19
November 12 – November 18	November 26
November 19 – November 25	December 3
November 26 – December 2	December 10
December 3 – December 9	December 17
December 10 – December 16	December 24
December 17 – December 23	December 31
December 24 – December 31	January 7, 2013

2012 FRESHWATER SPORT FISH
Logbook Sign-Out

SPORT FISH BUSINESS INFORMATION

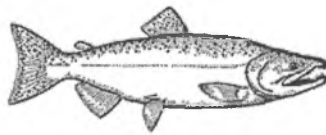
Must have a current ADF&G Business License Number

NAME OF PERSON TO WHOM THIS LOGBOOK WAS ISSUED

SPORT FISHING BUSINESS NAME

ADF&G LICENSE NUMBER OF BUSINESS (NOT A "GUIDE ONLY" LICENSE)

CONTACT PHONE NUMBER



Do you plan to use a vessel while providing sport fishing guided services in freshwater?

No Yes (If yes, list vessels on pg. iii)

INSTRUCTIONS TO ADF&G REPRESENTATIVE

Please forward the white copy of this form to:
**Sport Fish Research & Technical Services
333 Raspberry Rd., Anchorage, AK 99518**

ADF&G area offices **will** keep the pink copy on file.

Do **NOT** issue a logbook unless the applicant has the following:

- 2012 ADF&G Business License;
- Current AK Boat Number issued by DMV **OR** current U.S.C.G. Vessel Documentation number, if applicable.

None of the required information can be "pending." This form must be complete and accurate to the best of your knowledge.

Incomplete forms will be returned to you for follow-up and completion, resulting in a processing delay.

DID YOU PROVIDE A SITE CODE LIST ?

ADF&G REPRESENTATIVE (PRINT)

AREA OFFICE

DATE OF ISSUE

2012 FRESHWATER SPORT FISH GUIDE

Logbook Instructions

VESSEL REGISTRATION

The following applies to all **powered and non-powered** vessels being used to conduct sport fishing guided activities:

- Must be currently licensed with the Alaska Division of Motor Vehicles (DMV) and hold a current AK Registration number or hold a current U.S.Coast Guard (U.S.C.G.) Vessel Documentation number.
- Must be registered with the Alaska Department of Fish and Game (ADF&G) and display an ADF&G vessel decal with the current year tag.
- Vessels borrowed or purchased in-season must adhere to the above criteria and display ADF&G sport fish guide vessel decals.

Upon registration, each vessel is issued two charter vessel decals and current year tabs.

See page iii for instructions on vessels that are added midseason.

VESSEL DECALS/YEAR TABS

One set of ADF&G decals will be issued per registered vessel. Decals must be displayed and visible on each side of the vessel. Decals do not have to be applied directly to the hull of the vessel. Decals can be adhered to wood, fiberglass or plexiglas® which in turn is secured to each side of the vessel. Decals can be transferred from one vessel to another, as long as the receiving vessel has a current AK registration number from DMV or a U.S.C.G. documentation number and has been registered with ADF&G. Decals are designed to withstand several years of use. Annual tabs will be issued as vessels are registered. Annual year tabs are to be adhered directly to the decal in the designated area.

RESPONSIBILITY OF OWNER & GUIDE

It is the responsibility of the **guide** to ensure that daily trip activity is accurately recorded as described on page v - vii.

It is the responsibility of the **business owner** (owner of the sport fish owner/operators license) to ensure that all data for fishing activities from January 1, 2012 through December 31, 2012 is submitted to ADF&G according to the schedule on the inside the front cover.

WHAT A GUIDE MUST HAVE IN POSSESSION WHILE GUIDING

While engaged in providing sport fish guide services, a sport fishing **guide** shall have the following readily available for inspection upon request of a representative of the Department or a peace officer of the state:

- Valid ADF&G sport fishing guide license;
- Copy of the current ADF&G sport fishing operator's (business owner) license of the guide's employer;
- Valid Alaska sport fishing license, tags, stamps or permits that are required to engage in the sport fishery for which guide services are being provided;
- Identification card issued to the sport fishing guide by a state or federal agency that bears a photo of the sport fishing guide (e.g. driver's license);
- Other agencies may have additional requirements (e.g. U.S.C.G.).

It is the guides responsibility to determine what those requirements are.

2012 FRESHWATER SPORT FISH GUIDE

Logbook Instructions

WHEN TO COMPLETE A LOGBOOK

Client Information: The sport fish license number must be recorded for all paying clients, “comped” anglers, and crew that fished during any part of the trip. A “comped” angler is an angler who is **not paying** for this trip; it can include family, friends or other acquaintances.

The logbook must be completed at the end of each day of fishing or at the end of each trip within a day as described below through the last trip of the season.

The guide that leads the trip is required to complete this logbook per the schedule described below.

VESSEL USED

Returning to a lodge, camp, dock or mooring location:

Complete the logbook before offloading any fish from the vessel. If no fish were kept, complete the logbook before offloading any clients.

Returning to a boat ramp, launching site, or other client drop off location:

Complete the logbook before the vessel or guide departs the launching /landing site **AND** before offloading any fish from the vessel.

If no fish were kept, complete the logbook before the guide departs the launch/landing site.

NO VESSEL USED

Aircraft, highway vehicles, walk-in, ATVs, etc.

Complete the logbook before the guide leaves the fishing site. Fishing site is defined as the location where the fishing activity took place. Refer to the list of unique freshwater site codes provided with the logbook.

MULTIPLE TRIPS PER DAY

Each trip of multiple trips in a day should be logged on a separate logbook sheet. Complete the logbook at the end of each trip, as described above.

MULTIPLE DAY TRIPS

Complete the logbook at day’s end for each day of the trip. Use a separate logbook data sheet for each day of that trip.

MULTIPLE SITES FISHED

If multiple sites were fished on the same day, write down each site fished prior to leaving that fishing site per the instructions above. Each site would have the same date and would require a new logbook page.

RETURN THE LOGBOOK REPORTS WEEKLY

Fishing activity that occurs prior to April 1, 2012 is due to ADF&G by April 9, 2012; all activity, thereafter, must be received by ADF&G offices **EVERY WEEK** as detailed in the schedule provided on the inside of the front cover of this book.

All 2012 logbook data must be received by January 15, 2013.

PINK COPIES ARE TO REMAIN IN THE LOGBOOK.

For fishing activity that occurs in the early winter of 2013, please call the local ADF&G office for logbook instructions if the 2013 logbooks are not yet available.

Logbook Instructions

LOGBOOK ASSIGNMENTS/TRANSFERS

Logbooks are issued to individual licensed businesses. Due to the variety of ways that freshwater businesses conduct operations, the number of logbooks issued to a unique business will vary.

The business owner or their representative must determine how many logbooks that business will be required to have in order to comply with the recording requirements outlined in the instructions. For example, an operation that conducts business from a lodge with 6 guides may need more logbooks than a single owner/operator with one vessel that is trailered.

A logbook is assigned by ADF&G to the business; the business owner can distribute individual logbooks to a vessel or to a guide. It is up to the discretion of the business owner to distribute logbooks to employed guides in any manner that facilitates the timely recording of trip information as described previously in the instructions.

Remember: it is the responsibility of the **guide** to complete daily trip activity in the logbook. It is the responsibility of the **business owner** to ensure that all data is submitted to ADF&G in a timely manner.

2012 FRESHWATER SPORT FISH GUIDE

How to Fill Out the Logbook

ADF&G Sport Fish Guide License Number - The current guide license number issued by ADF&G to the guide for a specific year. Only one guide license number should appear on each logsheet page.

Date Fished- The date for each trip taken. If multiple trips to multiple different fishing sites were taken on the same day, that date and unique trip information would appear on as many data sheets as there were unique trips. Although the date would be the same, client information and trip specifics may differ. If there were more than six clients, continue on a separate logsheet with the trip information and individual angler license information carried over to the next page.

River/Stream/Lake (Specify) - The name of the site where fishing activity occurred.

Site Code - Refer to the site code list provided with the logbook for the site code associated with the river, stream or lake where fishing activity occurred. Write the site code down as it appears on this list. If no site code exists for your fishing site, use the code for Other Streams or Other Lakes.

Page Number - On each logsheet, record the page no. if multiple pages were necessary to fit in all the client information. Note the total no. of pages used for that trip.

Other Species Write-In - On the line denoted with an *, write in the name of the "other" species kept or released. Use the last blank column on the right to record this "other" species of fish as long as it does not already have an existing column. If more than one "other" species is kept or released, use an existing column, cross out the existing species of fish not present at this fishing site and write in the name of that second species.

Once a species has been written in, that column becomes dedicated to that species for the remainder of that logsheet.

Examples of Other Species: pink (or humpy) salmon, chum (or dog) salmon, burbot, and whitefish.

How to Fill Out the Logbook (cont'd)

Residency - In the columns to the left of each sport fish license number, **circle**:

- **R** for **Resident** or **N** for **Nonresident**.

Sport Fish License Number - Record the current Alaska Sport Fishing License number, resident PID (permanent license number) or DAV (disabled AK veteran license number) of **each client, comped angler, and crew that fished**. A “comped” angler is an angler who is **not paying** for this charter; it can include family, friends or other acquaintances.

Record anglers under 16 years of age as “**Youth angler 1 (YA1)**, **Youth angler 2 (YA2)**” etc., uniquely identifying them as 1, 2 or 3 for as many as fished on each trip.

Record the license numbers of those clients that **actively** fished during any part of the trip regardless of whether they caught anything. Use one line per angler, recording the license number and all activity on that line.

Crew Status and “Comped” Anglers should be noted to the right of each angler sport fish license number, if applicable, **circle**:

- **X** if angler is “**Comped**” (nonpaying) or
- **C** if angler is **Crew member**

RECORDING SALMON AND OTHER SPECIES

Fish Kept & Released - Record the total number of fish kept (**K**) in the white row and released (**R**) in the gray row by each angler during that trip. Each angler’s license number has a dedicated line assigned on each logbook sheet. If the same angler goes on more than one trip on the same day, that angler’s license number will appear on as many logsheets as were used.

PROXY FISHING INSTRUCTIONS

If a paying client is also proxy fishing for a beneficiary, that client **must** have the fishing license of the person for whom he/she is fishing. Write down the license number of the recipient of the fish (beneficiary), followed by a (**P**) to indicate proxy, e.g. **10123456-P**.

Use two lines on the logbook data sheet, one for the angler’s license number and one for the beneficiary’s license number. Indicate (**R**) for Resident in the adjacent column; beneficiaries and those fishing for them **must** be residents of Alaska.

For permanent licenses (residents only), write down the entire license number, including the preceding alpha character, which can be a **P, D, T** or **Z**, i.e. **Z50148-P**.

CONTACT INFORMATION

For questions or to register a vessel, please contact:

- Division of Sport Fish, Guide Licensing and Logbook Program in Anchorage, Alaska at (907) 267-2369 or (907) 267-2390.



Alaska Department of Fish & Game

2012 Freshwater Sport Fish Trip Logbook

RETURN TO: 333 RASPBERRY ROAD, ANCHORAGE, AK 99518-1565 • QUESTIONS: (907) 267-2369

LOGBOOK NO. _____

TRIP INFORMATION	Angler Residency		Sport Fish License Number of each Client, Nonpaying angler, and Crew <u>THAT FISHED</u> AND Record all those anglers under 16 as "Youth Angler" (YA1, YA2etc.)	Circle One if applicable		SALMON			TROUT				OTHER						
	Resident	NonResident		Comped Crew	KEPT	RELEASED	KING	COHO	SOCKEYE	CUTTHROAT	RAINBOW	STEELHEAD	LAKE TROUT	DOLLY VARDEN/ARCTIC CHARR	ARCTIC GRAYLING	NORTHERN PIKE	SHEEFISH	*	
	R	N		X	C	K	R												
2012 ADF&G GUIDE LICENSE #: _____	R	N	X	C	K				KEPT										
DATE FISHED: _____, 2012 (Month) (Day)	R	N	X	C	R				RELEASED										
RIVER / STREAM / LAKE (SPECIFY)	R	N	X	C	K				KEPT										
	R	N	X	C	R				RELEASED										
SITE CODE (REFER TO SITE CODE LIST)	R	N	X	C	K				KEPT										
	R	N	X	C	R				RELEASED										
PAGE NO. _____ OF _____	R	N	X	C	K				KEPT										
TOTAL NO. OF PAGES FOR THIS TRIP ↑	R	N	X	C	R				RELEASED										
	R	N	X	C	K				KEPT										
* WRITE IN OTHER SPECIES HERE	R	N	X	C	R				RELEASED										

CERTIFICATION: I certify that the information provided herein is accurate and true. Falsification or omission of information on this form is punishable under AS 11.56.210(a) and 5 AAC 75.076.

X

GUIDE SIGNATURE

CONTINUE ON NEXT PAGE IF MORE THAN 6 ANGLERS.
CHECK IF TRIP INFORMATION IS CONTINUED ON NEXT PAGE:

Fishery Data Series No. 11-31

**Participation, Effort, and Harvest in the Sport
Fish Business/Guide Licensing and Logbook
Programs, 2010**

by

Dora Sigurdsson

and

Bob Powers

July 2011

Alaska Department of Fish and Game

Divisions of Sport Fish and Commercial Fisheries



Symbols and Abbreviations

The following symbols and abbreviations, and others approved for the Système International d'Unités (SI), are used without definition in the following reports by the Divisions of Sport Fish and of Commercial Fisheries: Fishery Manuscripts, Fishery Data Series Reports, Fishery Management Reports, and Special Publications. All others, including deviations from definitions listed below, are noted in the text at first mention, as well as in the titles or footnotes of tables, and in figure or figure captions.

Weights and measures (metric)		General	Mathematics, statistics
centimeter	cm	Alaska Administrative Code	<i>all standard mathematical signs, symbols and abbreviations</i>
deciliter	dL		
gram	g	all commonly accepted abbreviations	alternate hypothesis H_A
hectare	ha		base of natural logarithm e
kilogram	kg	all commonly accepted professional titles	catch per unit effort CPUE
kilometer	km		coefficient of variation CV
liter	L		common test statistics (F, t, χ^2 , etc.)
meter	m	at	confidence interval CI
milliliter	mL	compass directions:	correlation coefficient (multiple) R
millimeter	mm	east E	correlation coefficient (simple) r
		north N	covariance cov
Weights and measures (English)		south S	degree (angular) °
cubic feet per second	ft ³ /s	west W	degrees of freedom df
foot	ft	copyright ©	expected value E
gallon	gal	corporate suffixes:	greater than >
inch	in	Company Co.	greater than or equal to \geq
mile	mi	Corporation Corp.	harvest per unit effort HPUE
nautical mile	nmi	Incorporated Inc.	less than <
ounce	oz	Limited Ltd.	less than or equal to \leq
pound	lb	District of Columbia D.C.	logarithm (natural) ln
quart	qt	et alii (and others) et al.	logarithm (base 10) log
yard	yd	et cetera (and so forth) et c.	logarithm (specify base) log ₂ , etc.
		exempli gratia (for example) e.g.	minute (angular) ' "
Time and temperature		Federal Information Code FIC	not significant NS
day	d	id est (that is) i.e.	null hypothesis H_0
degrees Celsius	°C	latitude or longitude lat. or long.	percent %
degrees Fahrenheit	°F	monetary symbols (U.S.) \$, ¢	probability P
degrees kelvin	K	months (tables and figures): first three letters Jan., ..., Dec	probability of a type I error (rejection of the null hypothesis when true) α
hour	h	registered trademark ®	probability of a type II error (acceptance of the null hypothesis when false) β
minute	min	trademark ™	second (angular) "
second	s	United States (adjective) U.S.	standard deviation SD
		United States of America (noun) USA	standard error SE
Physics and chemistry		U.S.C. United States Code	variance
all atomic symbols		U.S. state U.S. state	population Var
alternating current	AC		sample var
ampere	A		
calorie	cal		
direct current	DC		
hertz	Hz		
horsepower	hp		
hydrogen ion activity (negative log of)	pH		
parts per million	ppm		
parts per thousand	ppt, ‰		
volts	V		
watts	W		

FISHERY DATA SERIES NO. 11-31

**PARTICIPATION, EFFORT, AND HARVEST IN THE SPORT FISH
BUSINESS/GUIDE LICENSING AND LOGBOOK PROGRAMS, 2010**

by

Dora Sigurdsson

and

Bob Powers

Division of Sport Fish Research and Technical Services, Anchorage

Alaska Department of Fish and Game
Division of Sport Fish, Research and Technical Services
333 Raspberry Road, Anchorage, Alaska, 99518-1599

July 2011

ADF&G Fishery Data Series was established in 1987 for the publication of Division of Sport Fish technically oriented results for a single project or group of closely related projects, and in 2004 became a joint divisional series with the Division of Commercial Fisheries. Fishery Data Series reports are intended for fishery and other technical professionals and are available through the Alaska State Library and on the Internet: <http://www.adfg.alaska.gov/sf/publications/>. This publication has undergone editorial and peer review.

*Dora Sigurdsson and Bob Powers
Alaska Department of Fish and Game, Division of Sport Fish, Research and Technical Services
333 Raspberry Road, Anchorage, AK 99518-1599, USA*

This document should be cited as:

Sigurdsson, D. and B. Powers. 2011. Participation, effort, and harvest in the sport fish business/guide licensing and logbook programs, 2010. Alaska Department of Fish and Game, Fishery Data Series No. 11-31 Anchorage.

The Alaska Department of Fish and Game (ADF&G) administers all programs and activities free from discrimination based on race, color, national origin, age, sex, religion, marital status, pregnancy, parenthood, or disability. The department administers all programs and activities in compliance with Title VI of the Civil Rights Act of 1964, Section 504 of the Rehabilitation Act of 1973, Title II of the Americans with Disabilities Act (ADA) of 1990, the Age Discrimination Act of 1975, and Title IX of the Education Amendments of 1972.

If you believe you have been discriminated against in any program, activity, or facility please write:

ADF&G ADA Coordinator, P.O. Box 115526, Juneau, AK 99811-5526
U.S. Fish and Wildlife Service, 4401 N. Fairfax Drive, MS 2042, Arlington, VA 22203
Office of Equal Opportunity, U.S. Department of the Interior, 1849 C Street NW MS 5230, Washington DC 20240

The department's ADA Coordinator can be reached via phone at the following numbers:

(VOICE) 907-465-6077, (Statewide Telecommunication Device for the Deaf) 1-800-478-3648,
(Juneau TDD) 907-465-3646, or (FAX) 907-465-6078

For information on alternative formats and questions on this publication, please contact:

ADF&G Division of Sport Fish, Research and Technical Services, 333 Raspberry Road, Anchorage AK 99518 (907) 267-2375.

TABLE OF CONTENTS

	Page
LIST OF TABLES.....	II
LIST OF FIGURES.....	II
LIST OF APPENDICES.....	III
ABSTRACT.....	1
BACKGROUND.....	1
Guide and Business Registration and Licensing.....	1
Logbooks.....	2
Vessel Registration.....	5
METHODS.....	5
Guide and Business Licensing.....	5
Logbook Data Collection.....	6
Saltwater Logbook Forms.....	6
Freshwater Logbook Forms.....	7
Vessel Registration.....	8
Logbook Outreach, validation and Verification.....	8
Outreach.....	8
Validation.....	9
Verification.....	11
RESULTS.....	11
Guide and Business Licensing.....	11
Vessels.....	13
Saltwater.....	13
Freshwater.....	14
Trips.....	15
Saltwater.....	15
Freshwater.....	16
Logbook Trip Effort and Harvest.....	16
Saltwater.....	16
Freshwater.....	17
DISCUSSION.....	20
Guide and Business Licensing.....	20
Logbooks.....	20
ACKNOWLEDGEMENTS.....	21
REFERENCES CITED.....	22
APPENDIX A SPORT FISH BUSINESS OWNER/GUIDE LICENSE APPLICATION.....	23
APPENDIX B SALTWATER LOGBOOK FORM.....	27
APPENDIX D VESSEL REGISTRATION FORMS, DECALS AND TAGS.....	35
APPENDIX E SALTWATER EDITING RESULTS.....	39
APPENDIX F FRESHWATER EDITING RESULTS.....	41
APPENDIX G FRESHWATER LOGBOOK SUMMARIES BY AREA AND PORT OF OFFLOADING.....	43
APPENDIX H SALTWATER LOGBOOK SUMMARIES BY AREA.....	65

LIST OF TABLES

Table		Page
1.	Division of Sport Fish regions and management areas.	3
2.	Number of licensed businesses and guides by region, 2006–2010.....	12
3.	Number of active saltwater businesses and guides by region, 2006–2010.....	13
4.	Number of active freshwater businesses and guides by region, 2006–2010.....	13
5.	Number of registered and active saltwater vessels by region, 2006–2010.....	14
6.	Number of active saltwater vessels that made at least one trip in each target category, by region, 2006–2010.....	14
7.	Number of registered freshwater vessels by year and region ^a , 2006–2010.....	15
8.	Number of saltwater trips by targeted species by region, 2006–2010.....	15
9.	Number of freshwater trips by region, 2006–2010.....	16
10.	Saltwater and freshwater trips and angler days by region, 2006–2010.....	17
11.	Saltwater salmon effort and harvest by region and angler type, 2010.....	18
12.	Saltwater bottomfish effort and harvest by region and angler type, 2010.....	18
13.	Freshwater effort and harvest by species, region and angler type, 2010.....	19

LIST OF FIGURES

Figure		Page
1.	Map of Alaska and Division of Sport Fish regions and management areas.	4
2.	International Pacific Halibut Commission (IPHC) regulatory areas.	5

LIST OF APPENDICES

Appendix	Page
A1. Sport fish business owner/guide license application, 2010.	24
B1. Saltwater charter logbook form, 2010.	28
C1. Freshwater guide logbook form, 2010.	32
D1. Saltwater sport fish charter logbook sign-out and vessel registration form, 2010.	36
D2. Freshwater sport fish guide vessel registration form, 2010.	37
D3. Vessel decal, 2010.	38
D4. Vessel tab, 2010.	38
E1. Saltwater editing results, 2010.	40
F1. Freshwater editing results, 2010.	42
G1. Freshwater logbook participation by area and site, Southeast Alaska, 2010.	44
G2. Freshwater logbook participation by area and site, Southcentral Alaska, 2010.	45
G3. Freshwater logbook participation by area and site, AYK Alaska, 2010.	49
G4. Freshwater logbook participation by region, statewide, 2010.	50
G5. Freshwater logbook angler days and species kept by area and site, Southeast Alaska, 2010.	51
G6. Freshwater logbook angler days and species kept by area and site, Southcentral Alaska, 2010.	52
G7. Freshwater logbook angler days and species kept by area and site, AYK Alaska, 2010.	56
G8. Freshwater logbook angler days and species kept by region, Statewide, 2010.	57
G9. Freshwater logbook angler days and species released by area and site, Southeast Alaska, 2010.	58
G10. Freshwater logbook angler days and species released by area and site, Southcentral Alaska, 2010.	59
G11. Freshwater logbook angler days and species released by area and site, AYK Alaska, 2010.	63
G12. Freshwater logbook angler days and species released by region, Statewide, 2010.	64
H1. Saltwater logbook salmon participation, effort, kept and released by area and port of offloading, Southeast Alaska, 2010.	66
H2. Saltwater logbook salmon participation, effort, kept, and released by area and port of offloading, Southcentral Alaska, 2010.	67
H3. Saltwater logbook salmon participation, effort, kept and released by region, statewide, 2010.	68
H4. Saltwater logbook bottomfish participation, effort, kept and released by area and port of offloading, Southeast Alaska, 2010.	69
H5. Saltwater logbook bottomfish participation, effort, kept, and released by area and port of offloading, Southcentral Alaska, 2010.	70
H6. Saltwater logbook bottomfish participation, effort, kept, and released by region, statewide, 2010.	71

ABSTRACT

In 2010, 1,452 sport fishing businesses and 3,034 guides licensed under the Alaska Department of Fish and Game guide and business licensing program, signifying intent to provide sport fishing services in Alaska. Of the 1,452 sport fishing businesses registered in 2010, 1,323 were combination owner/guide licenses. Based on the 2010 physical addresses of both the businesses and guides, 88% of the businesses were residents of Alaska, and 12% were from other residency strata (defined as nonresidents), 72% of the guides were residents and 28% were nonresidents.

Of the 2,257 saltwater logbooks issued in 2010, 1,848 were activated, and of the 2,299 freshwater logbooks issued in 2010, 1,476 were activated. Of those businesses that submitted logbook information in 2010, 59% offered saltwater services, and 41% offered freshwater guided services. In 2010, logbook records show that 1,172 saltwater vessels were active. Of those active saltwater vessels, 55% were active in Southeast Alaska and 45% were active in Southcentral Alaska.

A total of 48,742 saltwater charter trips and 246,054 saltwater angler days of fishing occurred in 2010. Of the statewide saltwater trips, 81% of the saltwater angler days were nonresidents, 15% were residents and 4% were crew, comped fishing (nonpaying anglers) or unknown residency. In freshwater, 37,791 trips and 113,239 angler days occurred in 2010. Of the statewide freshwater trips, 88% of the angler days were nonresidents, 10% were residents, and 2% were crew, comped fishing or unknown residency.

2010 saltwater salmon harvests show that coho and king salmon made up 65% and 14% of the total salmon harvest respectively statewide. Saltwater bottomfish harvests in 2010 show that Pacific halibut were the predominant species with 58% of the total saltwater bottomfish harvest statewide. In freshwater, coho salmon were the predominant harvested species, followed by sockeye and then king salmon.

Key words: Sport fishing, guide and business registration, freshwater logbook, saltwater logbook, participation, effort, harvest, sport fishing vessel, Pacific halibut, salmon, bottomfish, Southeast Alaska, Southcentral Alaska

BACKGROUND

The Alaska Department of Fish and Game (ADF&G) Division of Sport Fish (DSF) has operated a program since 1998 to register and license both sport fishing guides and sport fishing guide businesses. Saltwater information on sport fishing participation, effort, and harvest has been collected since 1998. Freshwater information on fishing participation, effort and harvest has been collected since 2005. This report briefly summarizes the approach, history, and results of this program for 2010.

GUIDE AND BUSINESS REGISTRATION AND LICENSING

The activities of the guided sport fishing industry in Alaska have significantly increased in recent years with implications to fish allocation and management decisions. Resolution of related issues was hampered by a lack of information regarding the industry and its impact on fishery resources in many parts of Alaska. The sport fishing guide and business registration and licensing programs were designed to provide a comprehensive system to better define this diverse industry throughout Alaska. A brief history of the statewide registration and licensing process follows.

Beginning in May 1995 the owner(s) of any business that engaged in sport fish guiding of anglers anywhere in Alaska were required to register their business information, employees acting as sport fishing guides for the business, and list all vessels used for guiding. In 1997, sport fishing guides were required to register and provide information about the employing business (Dean 2001; Dean and Howe 1999).

In 1998, the Alaska Board of Fisheries (BOF) adopted new statewide sport fishing guide registration regulations and definitions during their February Statewide Finfish meeting in

Girdwood, Alaska (5 AAC 75.075: *Sport Fishing Services and Sport Fishing Guide Services; License Requirements; Regulations of Activities*). It should be stressed that this was a registration process, not a licensing process. No fees were required and businesses and guides were allowed to provide services in any area of the state, assuming other regulatory requirements were met. In 1998, ADF&G continued to register guide businesses and guides, but stopped registering charter vessels, because the Commercial Fisheries Entry Commission (CFEC) implemented a licensing program for all vessels to be used for guided sport fishing. From 1998 through 2004, ADF&G continued to register sport fishing businesses and sport fishing guides.

On May 11, 2004, the Alaska Legislature adopted House Bill 452 (HB 452), that established licensing requirements for sport fishing guide business owners and sport fishing guides on a statewide basis. This bill was created to establish minimum professional standards required of both freshwater and saltwater sport fish guides and business owners before a license could be obtained. The standards were established to protect consumers and to promote the viability and legitimacy of a professional sport fish guide industry. Businesses providing sport fish guided services were now required to obtain a State of Alaska Occupational Business License and hold liability insurance with a minimum of \$300,000 coverage for all incidents in a year (AS 16.40.260). Licensed sport fishing guides were required (1) to be citizens of the United States, Canada, or Mexico, (2) hold a current first aid card, (3) have a current year Alaska sport fishing license and (4) have a valid U.S. Coast Guard operator's license if they were to operate a motorized vessel in navigable waters. License application forms and the information collected have remained consistent in design since 2006 (Sigurdsson and Powers 2009).

LOGBOOKS

In February, 1998 the BOF adopted regulations (5 AAC 75.076) requiring logbooks for saltwater charter vessels statewide. Information on the amounts and locations of charter activity and actual participation and harvest by individual vessels and businesses was needed by the BOF for allocation and management of Chinook salmon *Oncorhynchus tshawytscha*, rockfish *Sebastes* spp., and lingcod *Ophiodon elongatus*, and by the North Pacific Fisheries Management Council (NPFMC) for allocation of Pacific halibut *Hippoglossus stenolepis*. To meet these information needs ADF&G implemented a saltwater sport fishing charter vessel logbook program for DSF Region I, Southeast Alaska (Southeast), and Region II, Southcentral Alaska (Southcentral; Table 1; Figure 1).

In 1999, the NPFMC was considering proposals to limit the guided sport halibut harvest. Their concerns were: (1) that growth in this fishery was reallocating resources away from the individual fishing quota (IFQ) commercial longline fishery, and (2) that in some areas there was overcapitalization and localized depletion of the halibut resource. NPFMC endorsed a two-prong approach to resolve the perceived impact of increased guided charter halibut fishing. The first was establishment of guideline harvest limits (GHL) for International Pacific Halibut Commission (IPHC) Areas 2C and 3A (Figure 2), and the second was a process to establish local area management plans for halibut fisheries in coastal communities.

Since 1998, the logbook design has undergone annual revisions, driven primarily by changes or improvements in the collection of halibut, lingcod and rockfish data through the logbook program, Statewide Harvest Survey (SWHS), and expanded port sampling programs. House Bill 452, adopted in 2004, not only established new licensing requirements, but also established a logbook reporting requirement for all freshwater businesses in addition to the existing saltwater

reporting requirements. For various reasons, both technical and policy-based, information on halibut harvests was not collected from 2002 through 2005. The collection of halibut data was resumed in 2006. In addition, the 2006 logbook was redesigned to require reporting of angler license numbers and the harvest and release numbers by angler in an effort to improve reporting and facilitate evaluation of the quality of logbook data.

The data from logbooks are compiled to show where fishing effort occurs, the extent of participation, and the species and numbers of fish kept and released by individual clients. This information is used for regulation and the development and management of fisheries, for project evaluation, and for formulation of department policies and priorities that reflect angler needs, concerns, and preferences. It also provides ADF&G with a tool to promote management of Alaska's resources for sustained yield.

Table 1.—Division of Sport Fish regions and management areas.

Regions	
SE	Southeast Alaska
SC	Southcentral Alaska
AYK	Arctic-Yukon-Kuskokwim
Areas	
Southeast Alaska	
A	Ketchikan
B	Prince of Wales Island
C	Kake, Petersburg, Wrangell, Stikine
D	Sitka
E	Juneau
F	Haines-Skagway
G	Glacier Bay
H	Yakutat
Southcentral Alaska	
J	North Gulf Coast/Prince William Sound
K	Knik Arm Drainage
L	Anchorage
M	Susitna River Drainage
N	West Side Cook Inlet
P	Kenai Peninsula
Q	Kodiak
R	Naknek River Drainage/Alaska Peninsula Area
S	Kvichak River Drainage
T	Nushagak, Wood River and Togiak
Arctic-Yukon-Kuskokwim	
I	Upper Copper River Drainage
U	Tanana River Drainage
V	Kuskokwim River/Kuskokwim Bay Drainages
W	Norton Sound/Seward Peninsula
X	Northwest Alaska
Y	Yukon River Drainage
Z	North Slope/Brooks Range

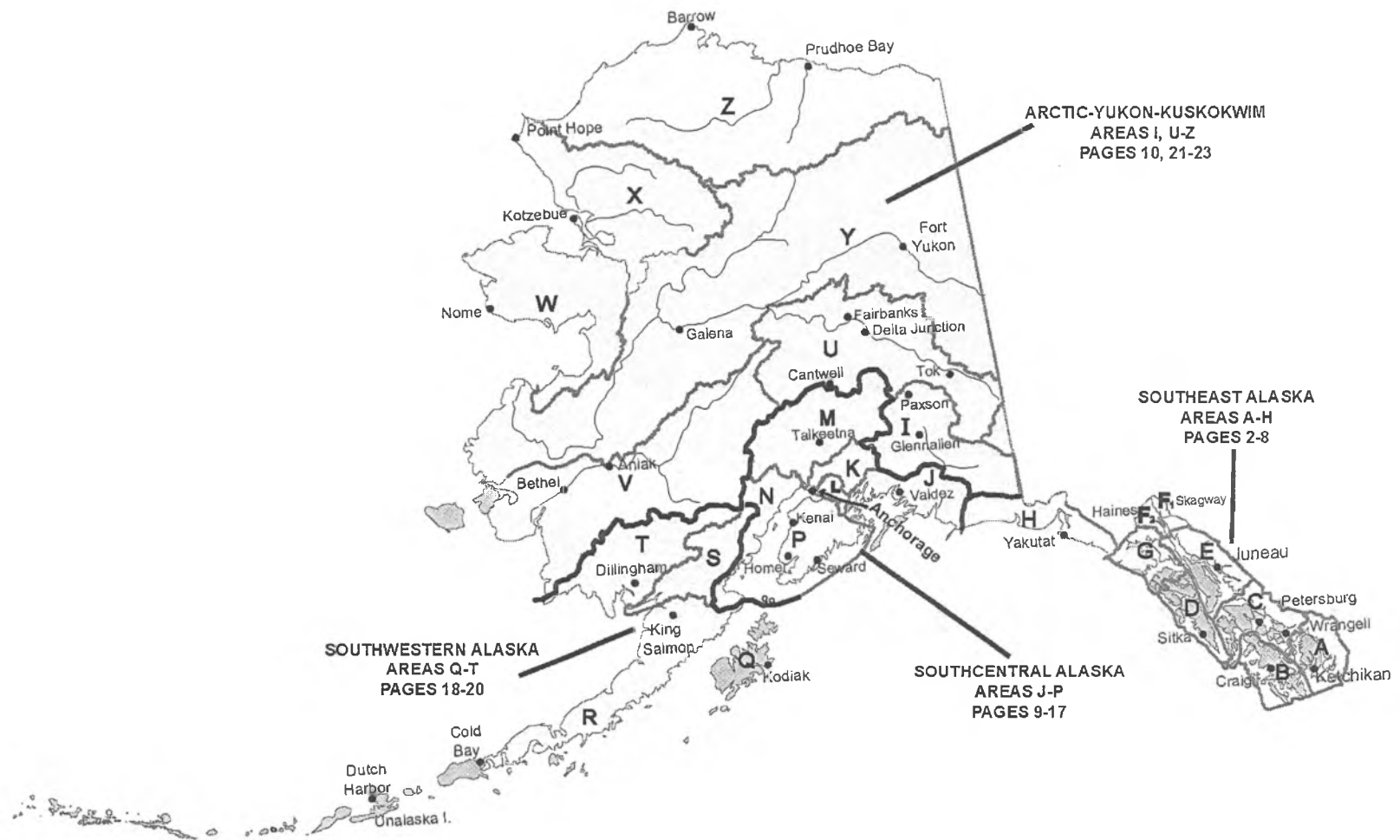


Figure 1.—Map of Alaska and Division of Sport Fish regions and management areas.

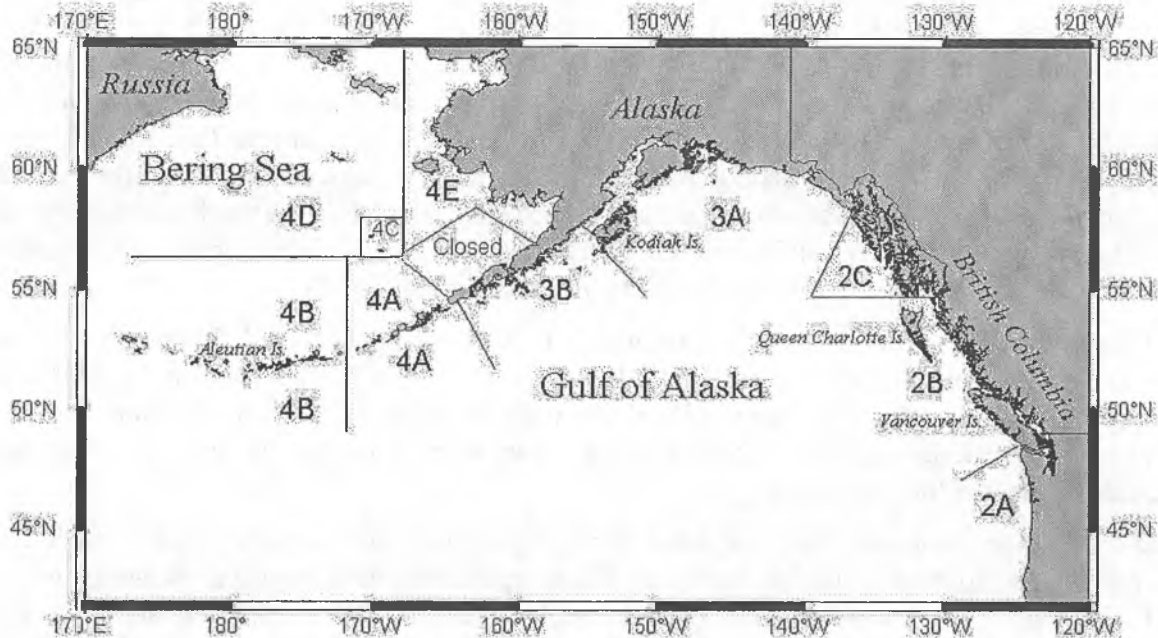


Figure 2.—International Pacific Halibut Commission (IPHC) regulatory areas.

Currently, a logbook record is required for every chartered or guided trip taken with clients, defined as an outing with one group of clients that ends when the clients and their fish (if fish were kept) are offloaded. Each trip is associated with an individual licensed business and guide.

VESSEL REGISTRATION

In addition to establishing a licensing program and statewide freshwater logbook requirement, HB 452 included establishment of a vessel registration program to be conducted by ADF&G as part of the logbook program to monitor the number of vessels used in the guided marine and freshwater fisheries. All boats used in marine or freshwater are referred to as “charter or guide boats” regardless of their size or the manner in which they are used. All vessels used in the charter guide industry were required to be registered with ADF&G.

METHODS

GUIDE AND BUSINESS LICENSING

Businesses and guides can be licensed to provide sport fishing guided services if they meet the minimum qualifications specified in regulation (AS 16.40.260 and AS 16.40.270).

Beginning in 2006, each January the Division of Sport Fish mailed renewal license applications to each sport fishing guide and sport fishing business that was licensed in the previous year. In addition, guides and businesses could obtain a license in person at local ADF&G offices or through the Internet.

The license application could be used in three ways (Appendix A):

- To license a business only,
- To license a guide only,
- To license a combination business and guide (an owner/operator where the owner also conducted the guiding).

The license application collected business owner or guide name, permanent mailing information, permanent and inseason phone number if applicable. Additionally, the name of the business, name of the business owner, occupational business license number, insurance company information and insurance binder or policy number and effective dates were required. A guide is required to be a citizen of the United States, Canada, or Mexico, hold a current first aid card and have a current year Alaska sport fishing license along with any tags or permits required for specific fisheries. If a guide planned to operate a motorized vessel on navigable waters with clients on board, the guide was required to have a current U.S. Coast Guard Operator's License and provide that number and expiration date on the license application.

Unique license numbers were assigned according to how licensing occurred. License numbers did not remain the same in subsequent years. If an operator or guide licensed at an ADF&G office, a pre-numbered application was used and that number became the license number for that year. Renewal or internet license applications are numbered sequentially by the computer database that processed the information

Once the license applications were reviewed for completeness and accuracy, DSF mailed a wallet-sized license to each guide or business. Those applicants who licensed by going to an ADF&G office received a copy of their license, which allowed them to operate immediately. Those who applied on the Internet or with the renewal application, were required to wait until they received their license in the mail prior to operating or providing guiding services.

LOGBOOK DATA COLLECTION

Logbook reporting is a mandatory process governed by regulation (AS 16.40.280). As such, the reporting process was considered to be a census of all charter/guided trips. Logbooks were available and issued from ADF&G area offices located statewide, in addition to a vendor located in Seward.

The statewide logbook has remained consistent in design since 2006, with few annual changes occurring in logbook layout. In 2006, both the freshwater and saltwater logbooks were redesigned to require reporting of angler license numbers and the harvest and release numbers by angler in an effort to improve reporting and facilitate evaluation of the quality of logbook data. Some of the annual design changes in the saltwater logbook were driven primarily by changes or improvements in the collection of halibut and rockfish data, and by requests from the NPFMC for information needed for allocation of halibut. Some changes were made to improve or simplify the use of the forms based on operator input, and to improve the capture of client and crew harvest information. Other than a few minor design changes, both the saltwater and freshwater logbooks collected the same information during all five years.

Saltwater Logbook Forms

A saltwater logbook consisted of the cover page, schedule of reporting deadlines, one logbook check out sheet to show the business to which the logbook was issued and to register the saltwater vessel, a set of instructions for filling out the information on the logbook sheets, and 50 data sheets to record trip information (Appendix B). Data collected on each of the 50 pages consisted of:

- Date that fishing took place;
- Time that trip started;

- ADF&G guide license number for the guide leading the trip;
- Port or community where fishing began;
- Port or community where trip ended,
- Primary statistical area fished while targeting salmon or bottomfish;
- Crew, client, and “comped” angler’s current ADF&G sport fishing license or PID (permanent fishing license) number, the word “YOUTH” for anglers under 16;
- First and last name of each client and youth angler;
- Client residency(Alaska resident/nonresident of Alaska);
- Indication if crew fished or if angler was “comped”;
- Signature of angler who kept halibut while fishing in 2C only (southeast);
- A breakdown by fish species kept and released by each individual angler.

During a saltwater charter trip, the operator must decide if his/her gear or fishing methods are effectively targeting bottomfish, salmon or both. A 6-digit statistical code where most of the fish were caught or targeted is logged for each trip. Statistical maps were provided to the operator upon logbook issuance.

Saltwater species information collected included kept and released information for “large” Chinook (king salmon) 28” and longer and for “small” Chinook (king salmon) less than 28”. Also recorded were coho *O. kisutch*, sockeye *O. nerka*, halibut, lingcod, pelagic rockfish, yelloweye, and other nonpelagic rockfish, salmon shark *Lamna ditropis*, sablefish and a category for the number of all other species not already listed (Appendix B).

To determine the number of businesses and guides that were “active” in the industry, a cross reference of business and guide licenses is made to the logbooks to determine if actual guided trips were provided. If ADF&G received at least one logbook data page that reported targeted effort, the charter operation turning in the form was considered an “active” bottomfish or salmon charter operator with an “active” vessel.

Freshwater Logbook Forms

A freshwater logbook consisted of the cover page, schedule of reporting deadlines, one logbook check out sheet to show the business to which the logbook was issued, a freshwater vessel registration page that collects the unique AK # assigned by the Department of Motor Vehicles (DMV) or a United States Coast Guard (USCG) documentation number and primary drainage, a set of instructions for filling out the information on the logbook sheets, and 50 data sheets to record trip information (Appendix C). Data collected on each of the 50 pages consisted of:

- ADF&G guide license number,
- Date that fishing took place,
- Specific name of river, stream or lake fished,
- Site code of site fished as referenced within a list provided with each logbook,
- Number of logbook pages used for a specific trip,
- Name of any other species kept,
- Crew, client, and “comped” angler’s current ADF&G sport fishing license number, and a youth angler designation for anglers under 16 years of age.

- Client residency,
- A breakdown by fish species kept and released by each individual angler.

Upon acquiring a freshwater logbook, the operator registers all vessels that may be used during the course of the fishing season. Freshwater vessel registration requires that the vessel already have a unique AK # assigned by DMV or a USCG documentation number. Freshwater vessels primarily have AK #'s. The operator must provide the AK # and indicate the primary freshwater drainage where the vessel will operate.

The freshwater logbook does not collect targeted species information like the saltwater logbook, it collects information on species kept and released regardless of what was targeted or sought after. A trip is counted if a logbook data page is submitted with effort information regardless of catch. Freshwater trips are assigned a region of the state based on the name of the site fished, each freshwater site is assigned a unique regional alpha code followed by a numeric code within the region in which it is located (Table 1).

Freshwater information collected were: kept and released numbers for king, coho, and sockeye salmon, cutthroat *O. clarkii*, rainbow and steelhead trout *O. mykiss*, lake trout *Salvelinus namaycush*, Dolly Varden *S. malma*, Arctic grayling *Thymallus arcticus*, northern pike *Esox lucius*, sheefish *Stenodus leucichthys* and a category for the number of all other fish not already listed.

Business operators are allowed to and even encouraged to pick up as many logbooks as they anticipated needing during the course of the season. The ability to acquire as many logbooks as are needed prevents them from having to make multiple trips to an ADF&G office. As a result, numerous businesses ended up getting more logbooks than were eventually used. Because of this, ADF&G differentiates between the number of logbooks issued versus the number that are actually used or activated.

Vessel Registration

Vessel registration information was collected when a saltwater or freshwater logbook was issued to a business (Appendix D1 and D2). Registration information included the Department of Motor Vehicles (DMV) number or the U.S. Coast Guard vessel documentation number. Upon completion of vessel registration with ADF&G, each vessel was provided with two decals and year tags to indicate that the vessel is to be used in the guide industry (Appendix D3 and D4). Decals must be applied and visible on both sides of the vessel.

LOGBOOK OUTREACH, VALIDATION AND VERIFICATION

In December 2005, the Commissioner of the ADF&G issued a statement that mandated and detailed strategies for assuring the accuracy of the reporting of Pacific halibut harvest for the saltwater charter logbook through outreach and validation.

Outreach

An outreach program was initiated to reach as many operators as possible to field questions and to ensure compliance with the reporting requirements. The outreach program was conducted on-site (in the field) by ADF&G employees and off-site from the Anchorage ADF&G office.

On-site Logbook Inspections

Logbook outreach occurred in parts of the Southeast and Southcentral regions in conjunction with existing creel survey and port sampling programs. "Courtesy logbook inspections" were

conducted as time allowed by ADF&G creel and port sampling technicians during their regular dockside checks of the primary fisheries from May through September. In addition, management staff continued with periodic checks of charter logbooks while in the field. Logbooks were inspected to make sure that they were filled out correctly, and staff answered any questions about how they should be filled out. These checks were not intended for enforcement or for evaluating the accuracy of data but rather as another opportunity to encourage compliance and completeness and as an indicator of how important logbook data are to ADF&G.

Off-site Logbook Review

The goal of the outreach program was to ensure compliance with all reporting requirements, by emphasizing education early in the season. Off-site outreach was conducted by the Division of Sport Fish, Research and Technical Services (RTS) staff in the Anchorage office. All logbook trip data was subject to a reporting deadline. Logbook data pages were required to be completed and returned to ADF&G on a weekly basis as specified in the instructions of both the saltwater and freshwater logbooks. Timely submission was a requirement to facilitate recall and to allow ADF&G staff to review each data page for completeness and legibility. All logbook data sheets were received by RTS in Anchorage where ADF&G data entry staff date-stamped each data page with the date received, reviewed each page for incomplete, illegible or erroneous information, and conducted phone calls to business owners and guides for follow up and clarification. Calls early in the season were intended to alleviate repeat errors in reporting which were thought to result in fewer calls being necessary later in the fishing season.

As logbook data sheets were received, RTS staff conducted reviews by monitoring all data for completion and legibility prior to data entry. In the event that some of the logbook data sheets required verification from the operator or guide, staff would place phone calls.

Phone calls to the business owners and guides significantly improved the quality of the data, minimized reoccurring mistakes by the guide, increased compliance, and contributed to the outreach portion of this program. Logbook data entry staff contacted charter operators to resolve logbook reporting issues and to improve future reporting. These calls were intended to improve data quality and reinforce the message to the guide industry that logbook data are important and are consistently being reviewed.

Number of follow-up calls to Operators by year.				
2006	2007	2008	2009	2010
3,011	1,415	2,160	780	830

Follow up phone calls have become a valuable outreach tool and will continue to be a standard procedure in the future.

Validation

In-season Saltwater Logbook Editing

Computer routines have been written to check and validate the following saltwater data fields during the fishing season as logbook data pages are returned.

- Validate the guide license is filled in and valid.
- Validate the date is filled in and in 2010.

- Validate the port of landing is entered and is in the valid port site table.
- If hours are listed verify a statistical area is listed for the appropriate effort.
- Verify the statistical area listed is a valid statistical area.
- If there is harvest verify the appropriate statistical area is filled in.
- If a statistical area is filled out verify the appropriate hours field is filled in.
- Verify a statistical area is filled in (both can't be blank).
- Verify hours are filled in (both can't be blank).
- Validate possible incorrect stat areas that appear to be valid;
 - If data entry mistakenly enters the hours info in the statistical area the first statistical area that starts with the same number will be auto populated and accepted as valid.
- Check to see which log pages were turned in more than 7 days after the due date.
- Verify logbooks are checked out to a business and not a guide.
- Check all records with more than 12 hours listed.
- Check for duplicate logbook pages.
- Check trips that don't have paying angler records.
- Verify the date fished is not greater than the date the log page is received by ADF&G.

Post-season Saltwater Logbook Editing

At the end of the fishing season, computer routines check and validate the above listed items in addition to the following saltwater data fields in preparation for developing summaries (Appendix E).

- All of the in-season edits are re-run.
- Check to make sure fish kept are within the limits for the area fished.
- Validate and review excessively large numbers of released fish based on frequency distribution analysis.

In-season Freshwater Logbook Editing

Computer routines have been written to check and validate the following freshwater data fields during the fishing season as logbook data pages are returned.

- Validate the guide license number is filled in and valid.
- Validate the date is filled in and in 2010.
- Validate the site code is entered and is in the valid site code table.
- Check to make sure there are paying clients (not comped or crew) on the trip.
- Check to see which log pages were turned in more than 7 days after the due date.
- Check for duplicate logbook pages.
- Verify the date fished is not greater than the date the log page is received by ADF&G.
- Verify logbooks are checked out to a business and not a guide.
- Verify Kenai River trips weren't taken on Sunday or Monday in May – July.
- Check trip records that don't have angler records.

Post-season Freshwater Logbook Editing

At the end of the fishing season, computer routines check and validate the above listed items in addition to the following freshwater data fields in preparation for developing summaries (Appendix F).

- All of the in-season edits are re-run.
- Check to make sure fish kept are within the limits for the site fished.
- Check to make sure the fish caught are valid species for the site fished.
- Validate excessively large numbers of released fish based on frequency distribution analysis.
- Recode 'Other' site codes to correct values if they exist in the site code table.
- Recode sites with 'System' in the description to a more specific site code if available.
- Check records with 6 clients to verify the next page isn't part of the same trip.

Verification

Logbook data were compared to actual counts of harvested fish (verified) and to reported harvest data (unverified) from onsite interviews. These comparisons are ongoing and are part of a more comprehensive evaluation of logbook data quality (Meyer and Powers *Unpublished*).

Two unique methods will be used to conduct post-season verification of logbook data:

1. A freshwater and saltwater comparison will be made between logbook data and guided trip information collected from the Alaska Statewide Harvest Survey (SWHS; Jennings et al. 2010).
2. The data collected from the logbooks was compared to the data collected in the saltwater creel programs administered through ADF&G. Saltwater creel programs include the *Assessment of Recreational Halibut and Groundfish Harvest in Southcentral Alaska* program in Homer, *Haines Marine Sport Fishery Harvest in Southeast Alaska* (Chapell 2010), and *Harvest estimates for selected marine sport fisheries in Southeast Alaska* (Wendt and Jaenicke *In prep*).

RESULTS

GUIDE AND BUSINESS LICENSING

In 2010, 1,452 sport fishing businesses and 3,034 sport fishing guides were licensed with ADF&G to provide sport fishing services in Alaska. The total number of businesses and guides includes all saltwater and freshwater operators. Of the 1,452 sport fishing businesses licensed in 2010, 1,323 were combination owner/guide licenses. Physical addresses of both the businesses and guides in 2010 indicated that 88% of the businesses reported Alaska residency, and 12% were from other residency strata (defined as nonresidents), 72% of the guides were residents and 28% were nonresidents.

The licensed businesses and guides were subtotaled by region for Southeast, Southcentral, and Other Alaska, including the Arctic-Yukon-Kuskokwim area and nonresident license applicants. In 2010 26% of the licensed businesses had physical addresses in Southeast, 57% in Southcentral, 5% had permanent addresses in other parts of Alaska, and 12% had nonresident addresses based on their license applications. In 2010, 16% of those that licensed as guides only

had permanent addresses in Southeast, 38% in Southcentral, 5% in other parts of Alaska and 41% had nonresident addresses based on their license applications (Table 2).

Based on the submission of logbook data pages with trip information in 2006, 777 businesses provided saltwater services, 503 provided freshwater services and 140 businesses provided both freshwater and saltwater services. In 2007, 786 businesses provided saltwater services, 513 provided freshwater services and 132 businesses provided both freshwater and saltwater services. In 2008, 766 businesses provided saltwater services, 508 provided freshwater services and 122 businesses provided both freshwater and saltwater services (Sigurdsson and Powers 2010). In 2009, 690 businesses provided saltwater services, 474 provided freshwater services and 112 businesses provided both freshwater and saltwater services. In 2010, 660 businesses provided saltwater services, 430 provided freshwater services and 116 businesses provided both freshwater and saltwater services (Table 3 and Table 4).

Table 2.—Number of licensed businesses and guides by region, 2006–2010.

Licensed Businesses ^a					
Region ^b	2006	2007	2008	2009	2010
SE	38	39	43	34	32
SC	62	70	66	65	68
Other Alaska	5	2	2	2	4
Resident Total	105	111	111	101	104
Other U.S.	25	18	23	21	25
Foreign	0	0	0	0	0
Nonresident Total	25	18	23	21	25
Total	130	129	134	122	129
Combination Licenses ^c					
SE	432	422	414	371	351
SC	891	909	887	812	764
Other Alaska	71	74	75	68	62
Resident Total	1,394	1,405	1,376	1,251	1,177
Other U.S.	153	160	149	155	146
Foreign	0	0	0	0	0
Nonresident Total	153	160	149	155	146
Total	1,547	1,565	1,525	1,406	1,323
Licensed Guides ^d					
SE	346	334	319	272	269
SC	732	777	765	678	662
Other Alaska	66	75	80	87	78
Resident Total	1,144	1,186	1,164	1,037	1,009
Other U.S.	761	780	831	705	702
Foreign	2	0	2	1	0
Nonresident Total	763	780	833	706	702
Total	1,907	1,966	1,997	1,743	1,711

Note: Data are current as of 05/24/2011.

^a Business only licenses do not include the owner as a guide.

^b Region assigned based on physical address indicated at time of licensing.

^c Combination licenses that include the business and the business owner as the guide.

^d Guide license only, no business license.

Table 3.—Number of active saltwater businesses and guides by region, 2006–2010.

Region ^c	Active Businesses ^a					Active Guides ^b				
	2006	2007	2008	2009	2010	2006	2007	2008	2009	2010
SE	439	430	429	387	373	881	872	860	738	730
SC	479	488	459	416	403	772	765	739	661	633
Total^d	917	918	888	802	776	1,603	1,600	1,561	1,355	1,325

Note: Data are current as of 05/24/2011.

^a Active Business counts are based on the business number listed on the signout sheet of a logbook (this can be a business only or a combined business/guide license) and the submission of at least one log page from the logbook.

^b Active Guide counts are based on the guide number written on each log page (this can be a guide only or a combined business/guide license) and the submission of at least one log page showing that guide license number.

^c Region is based on the port of offloading, salmon and bottomfish statistical area.

^d Total is not additive because a business or guide could operate in both regions. Includes businesses and guides that offered both saltwater and freshwater services.

Table 4.—Number of active freshwater businesses and guides by region, 2006–2010.

Region ^c	Active Businesses ^a					Active Guides ^b				
	2006	2007	2008	2009	2010	2006	2007	2008	2009	2010
SE	69	72	70	63	69	173	176	178	143	151
SC	526	528	512	476	433	1,220	1,270	1,302	1,090	1,051
AYK	71	68	69	67	62	194	224	222	203	200
Total^d	643	645	630	586	546	1,518	1,579	1,633	1,375	1,348

Note: Data are current as of 05/24/2011.

^a Active Business counts are based on the business number listed on the signout sheet of a logbook (this can be a business only or a combined business/guide license) and the submission of at least one log page from the logbook.

^b Active Guide counts are based on the guide number written on each log page (this can be a guide only or a combined business/guide license) and the submission of at least one log page showing that guide license number.

^c Region is based on the site code provided for the site fished on each logbook page.

^d Total is not additive because a business or guide could operate in multiple regions. Includes businesses and guides that offered both freshwater and saltwater services.

VESSELS

Saltwater

The number of vessels registered to provide saltwater sport fishing charter services was 1,671 in 2006, 1,666 in 2007, 1,601 in 2008, a 1,444 in 2009, and 1,389 in 2010 (Table 5). A vessel, though registered, is not considered “active” unless that vessel was used on one or more guided trip(s) as indicated by the submission of a logbook data page. Of the 1,671 saltwater vessels registered in 2006, 1,368 were active, of the 1,666 vessels registered in 2007, 1,409 were active, in 2007, of the 1,601 registered vessels, 1,353 were active, in 2009, 1,444 saltwater vessels that were registered, 1216 were active, and in 2010, of the 1,389 registered saltwater vessels, 1,172 were actually active. Based on the primary port of operation indicated at registration and port of offloading, 644 saltwater vessels operated in Southeast and 528 operated in Southcentral in 2010, the lowest number recorded in the last five years (Table 5).

Table 5.—Number of registered and active saltwater vessels by region, 2006–2010.

Region	Registered Vessels ^a					Active Vessels ^b				
	2006	2007	2008	2009	2010	2006	2007	2008	2009	2010
SE	926	918	905	807	778	747	768	757	670	644
SC	745	748	697	637	611	622	641	596	547	528
Total ^c	1,671	1,666	1,601	1,444	1,389	1,368	1,409	1,353	1,216	1,172

Note: Data are current as of 05/24/11.

^a Region is based on primary port of operation listed on the sign-out sheet

^b Region is based on primary port of off loading, salmon and bottomfish statistical area.

^c Total is not additive because vessels can operate in both regions.

Logbook data indicate that vessels will target all possible species; bottomfish, salmon and both during the course of a fishing season (Table 6).

Table 6.—Number of active saltwater vessels that made at least one trip in each target category, by region, 2006–2010.

Year	Region ^b	Target ^a			No Statistical Area Reported
		Salmon	Bottomfish	Both	
2006	SE	631	495	637	5
	SC	383	551	486	6
	Total	1,014	1,046	1,123	11
2007	SE	637	494	676	49
	SC	377	576	495	32
	Total	1,014	1,070	1,171	81
2008	SE	622	534	648	55
	SC	325	546	441	22
	Total	947	1,080	1,089	77
2009	SE	538	417	586	27
	SC	269	497	402	17
	Total	807	914	988	44
2010	SE	514	401	567	63
	SC	245	476	385	43
	Total	759	877	952	106

Note: Data are current as of 05/24/2011.

^a Target is based on salmon and bottomfish statistical areas.

^b Region is based on primary port of off loading, salmon and bottomfish statistical area.

Freshwater

Based on the primary drainage and sites fished, many more freshwater vessels operate in Southcentral than in other regions between 2006 and 2010 (Table 7).

Table 7.—Number of registered freshwater vessels by year and region^a, 2006–2010.

Year	SE	SC	AYK	Unknown ^b	Total ^c
2006	148	1,717	221	2	2,086
2007	131	1,668	240	2	2,040
2008	122	1,743	262	2	2,128
2009	97	1,642	236	2	1,976
2010	96	1,607	206	4	1,912

Note: Data are current as of 05/24/2011.

^a Region is based on primary drainage listed on the vessel registration sheet. If region could not be determined based on primary drainage, then the area fished was used.

^b Insufficient information available during registration and on fishing activity.

^c Total not additive because a vessel could be registered and operate in more than one region.

TRIPS

Saltwater

Logbook data indicate that 65,671 saltwater charter trips were conducted statewide in 2006, 67,152 trips were conducted in 2007, 62,005 trips were conducted in 2008, 48,506 saltwater trips were conducted in 2009, and 48,742 in 2010. During all five years, a majority of the trips that targeted salmon only, occurred in Southeast Alaska, whereas, the majority of trips that targeted bottomfish only, occurred in Southcentral Alaska. During the same five years, operators in Southeast conducted significantly more trips in which both salmon and bottomfish were targeted on the same trip. If a statistical area fished was not provided or indicated, no targeted species was assigned (Table 8).

Table 8.—Number of saltwater trips by targeted species by region, 2006–2010.

Year	Region ^b	Species Targeted ^a			No Statistical Area Reported	Total
		Salmon	Bottomfish	Both		
2006	SE	14,309	6,146	18,628	5	39,088
	SC	3,481	15,555	7,537	10	26,583
	Total	17,790	21,701	26,165	15	65,671
2007	SE	12,759	6,144	20,633	63	39,599
	SC	2,876	16,489	8,145	43	27,553
	Total	15,635	22,633	28,778	106	67,152
2008	SE	11,338	7,368	18,634	108	37,448
	SC	2,135	15,733	6,617	72	24,557
	Total	13,473	23,101	25,251	180	62,005
2009	SE	8,789	4,842	14,498	45	28,174
	SC	2,008	12,604	5,699	21	20,332
	Total	10,797	17,446	20,197	66	48,506
2010	SE	7,613	5,368	14,740	99	27,820
	SC	2,024	13,219	5,591	88	20,922
	Total	9,637	18,587	20,331	187	48,742

Note: Data are current as of 05/24/2011.

^a Species targeted is based on the provision of salmon and/or bottomfish statistical areas.

^b Region is based on the port of offloading, salmon and bottomfish statistical area.

Freshwater

In 2006, 46,781 freshwater guided fishing trips were taken, 48,697 were taken in 2007, and 48,501 were taken in 2008, and 37,554 freshwater trips occurred in 2009. In 2010, 37,791 freshwater trips were conducted statewide, 83% of those trips took place in Southcentral, 11% in the Arctic-Yukon-Kuskokwim (AYK) area, and 6% in Southeast (Table 9).

Table 9.—Number of freshwater trips by region, 2006–2010.

Year	SE	SC	AYK	Total
2006	3,040	39,479	4,262	46,781
2007	3,241	40,557	4,899	48,697
2008	3,113	40,587	4,801	48,501
2009	2,400	31,305	3,849	37,554
2010	2,459	31,267	4,065	37,791

Note: Data are current as of 05/24/2011.

^a Region is based on the area code of the site code listed on each logbook page.

LOGBOOK TRIP EFFORT AND HARVEST

Statewide saltwater charter trips decreased significantly in 2009 after an increase between 2006 and 2007, and a slight decrease in 2008 (Table 10). Saltwater angler days have steadily decreased from 2006 to 2009 with a very slight increase in 2010 (Table 10). For freshwater guided fishing statewide, the number of trips and angler days fished appeared to remain steady from 2006 to 2008 until 2009 and 2010 when a notable decrease in freshwater trips and angler days occurred (Table 10).

SALTWATER

In 2010, 82% of the saltwater logbooks that were issued were activated (effort or catch reported). From 2006 through 2010, the saltwater logbook collected information on client residency. Records show that in 2010, 87% of the angler days of effort in the saltwater charter salmon fishery were conducted by nonresident anglers, compared with 10% by residents and 3% by crew, comped anglers or those of unknown residency. Records also indicate that for 2010, 79% of the angler days of effort in the saltwater charter bottomfish fishery were conducted by nonresident anglers, 16% by residents and 5% by crew fishing, comped anglers or those of unknown residency (Tables 11-12).

In 2010 coho and king salmon made up 65% and 14% respectively of the harvest statewide, with the remaining 21% consisting of a combination of other salmon (Table 11).

Based on the number of angler days fished in 2010, 65% of the salmon participation took place in Southeast, and 35% in Southcentral. Within that same period, 40% of the bottomfish participation took place in Southeast, and 60% occurred in Southcentral (Table 12).

Of the bottomfish harvested in 2010, halibut were the most harvested species at 264,467 fish, consisting of 58% of the total bottomfish harvest statewide. Statewide, 19% of the halibut harvest occurred in Southeast and 81% occurred in Southcentral (Table 12). It should be noted that in Southeast, IPHC area 2C, anglers fishing from a charter vessel were limited to one halibut per day, whereas in Southcentral, IPHC area 3A, guided anglers were allowed two halibut per day in 2010.

FRESHWATER

In 2010, 64% of the freshwater logbooks that were issued were activated. In 2010, 8% of the freshwater participation occurred in Southeast, 84% occurred in Southcentral, and 8% took place in the Alaska-Yukon-Kuskokwim (AYK) or interior Alaska (Table 13).

Angler days of effort in 2010 indicate that 88% of the anglers in the freshwater guided fishery were nonresident anglers, 10% were residents and 2% were crew fishing, comped anglers or those of unknown residency. In Southeast, 94% of the guided/chartered fishing was conducted by nonresident anglers, 88% were nonresidents in Southcentral, and 90% of the anglers in AYK were nonresidents.

In 2010, coho, sockeye and king salmon were the predominant salmon species, making up 50%, 33% and 13% respectively of the harvest statewide, with the remaining 4% consisting of a combination of other fish (Table 13).

Table 10.—Saltwater and freshwater trips and angler days by region, 2006–2010.

Year	Region	Saltwater ^a		Freshwater ^b	
		Trips	Angler Days	Trips	Angler Days
2006	SE	39,088	154,549	3,040	11,470
2006	SC	26,583	175,695	39,479	124,931
	AYK	0	0	4,262	11,006
	Total	65,671	330,244	46,781	147,407
2007	SE	39,599	158,551	3,241	11,610
2007	SC	27,553	163,964	40,557	126,444
	AYK	0	0	4,899	12,266
	Total	67,152	322,515	48,697	150,320
2008	SE	37,448	150,789	3,113	10,730
2008	SC	24,557	146,717	40,587	126,596
	AYK	0	0	4,801	11,833
	Total	62,005	297,506	48,501	149,159
2009	SE	28,174	110,285	2,400	8,066
2009	SC	20,332	119,611	31,305	94,387
	AYK	0	0	3,849	8,909
	Total	48,506	229,896	37,554	111,362
2010	SE	27,820	110,911	2,459	8,913
2010	SC	20,922	135,143	31,267	94,910
	AYK	0	0	4,065	9,416
	Total	48,742	246,054	37,791	113,239

Note: Data are current as of 05/24/2011.

^a Saltwater region is based on the port of offloading, salmon and bottomfish statistical area.

^b Freshwater region is based on the area code of the site code listed on each logbook page.

Table 11.—Saltwater salmon effort and harvest by region and angler type, 2010.

Region ^a	Type of Angler	Angler Days ^b	King salmon		Coho	Sockeye	Other Salmon
			Large	Small			
SE	Resident	1,937	936	18	1,544	5	411
	Nonresident	87,025	25,579	767	94,346	729	42,705
	Comped	444	160	6	396	1	164
	Crew	571	39	1	235	0	94
	Unknown	316	44	3	335	2	144
	Total	90,293	26,758	795	96,856	737	43,518
SC	Resident	11,781	911	232	14,145	177	905
	Nonresident	34,035	3,407	833	46,311	968	4,507
	Comped	541	45	12	521	54	22
	Crew	3,028	151	34	1,656	27	98
	Unknown	258	11	6	350	10	22
	Total	49,643	4,525	1,117	62,983	1,236	5,554
Total	Resident	13,718	1,847	250	15,689	182	1,316
	Nonresident	121,060	28,986	1,600	140,657	1,697	47,212
	Comped	985	205	18	917	55	186
	Crew	3,599	190	35	1,891	27	192
	Unknown	574	55	9	685	12	166
	Total	139,936	31,283	1,912	159,839	1,973	49,072

Note: Data are current as of 05/24/2011.

^a Region is based on the port of offloading, salmon and bottomfish statistical area.

^b Angler days totals all anglers who fished on a day when a salmon statistical area was entered, plus angler days where an angler harvested a salmon when a bottomfish statistical area was provided.

Table 12.—Saltwater bottomfish effort and harvest by region and angler type, 2010.

Region ^a	Type of Angler	Angler Days ^b	Rockfish						
			Halibut	LingCod	Pelagic	Yelloweye	Non-Pelagic	Sablefish	Shark
SE	Resident	1,900	1,185	276	1,090	308	447	12	0
	Nonresident	81,971	49,396	4,342	57,852	14,473	20,101	3,894	8
	Comped	513	286	53	265	101	117	10	0
	Crew	591	86	8	231	28	36	8	0
	Unknown	244	127	8	102	27	57	3	0
	Total	85,219	51,080	4,687	59,540	14,937	20,758	3,927	8
SC	Resident	31,473	54,170	3,639	11,949	2,829	2,155	21	8
	Nonresident	85,528	143,959	9,902	37,418	6,729	7,025	123	10
	Comped	1,373	2,171	184	703	134	118	5	1
	Crew	8,429	12,361	526	2,005	410	361	4	0
	Unknown	458	726	83	235	53	50	0	0
	Total	127,261	213,387	14,334	52,310	10,155	9,709	153	19
Total	Resident	33,373	55,355	3,915	13,039	3,137	2,602	33	8
	Nonresident	167,499	193,355	14,244	95,270	21,202	27,126	4,017	18
	Comped	1,886	2,457	237	968	235	235	15	1
	Crew	9,020	12,447	534	2,236	438	397	12	0
	Unknown	702	853	91	337	80	107	3	0
	Total	212,480	264,467	19,021	111,850	25,092	30,467	4,080	27

Note: Data are current as of 05/24/2011.

^a Region is based on the port of offloading, bottomfish and salmon statistical area.

^b Angler days totals all anglers who fished on a day when a bottomfish statistical area was entered, plus angler days where an angler harvested a bottomfish when a salmon statistical area was provided.

Table 13.—Freshwater effort and harvest by species, region and angler type, 2010.

Region ^a	Type of Angler	Angler Days	King	Coho	Sockeye	Cutthroat	Rainbow	Steelhead	Lake Trout	Grayling	Dolly Varden	Pike	Sheefish
SE	Resident	316	0	323	28	0	1	3	0	0	12	0	0
	Nonresident	8,358	35	6,710	1,143	13	5	1	0	0	211	0	0
	Comped	41	1	84	3	0	0	0	0	0	0	0	0
	Crew	126	7	70	69	0	0	0	0	0	2	0	0
	Unknown	72	0	51	7	0	0	0	0	0	0	0	0
	Total	8,913	43	7,238	1,250	13	6	4	0	0	225	0	0
SC	Resident	9,628	1,437	3,286	1,847	0	35	0	3	15	82	1	0
	Nonresident	83,332	8,950	34,223	26,746	1	316	7	86	193	1218	264	0
	Comped	359	48	110	65	0	0	0	1	0	7	0	0
	Crew	777	24	293	221	0	2	2	3	4	16	0	0
	Unknown	814	97	173	267	0	6	0	0	19	19	0	0
	Total	94,910	10,556	38,085	29,146	1	359	9	93	231	1,342	265	0
AYK	Resident	785	308	72	118	0	1	0	0	40	85	75	7
	Nonresident	8,464	974	2,043	523	0	17	0	1	185	628	100	55
	Comped	14	2	5	0	0	0	0	0	0	1	0	0
	Crew	83	0	2	11	0	0	0	0	0	10	1	3
	Unknown	70	11	30	16	0	0	0	0	1	0	0	0
	Total	9,416	1,295	2,152	668	0	18	0	1	226	724	176	65
Total	Resident	10,729	1,745	3,681	1,993	0	37	3	3	55	179	76	7
	Nonresident	100,154	9,959	42,976	28,412	14	338	8	87	378	2,057	364	55
	Comped	414	51	199	68	0	0	0	1	0	8	0	0
	Crew	986	31	365	301	0	2	2	3	4	28	1	3
	Unknown	956	108	254	290	0	6	0	0	20	19	0	0
	Total	113,239	11,894	47,475	31,064	14	383	13	94	457	2,291	441	65

Note: Data are current as of 05/24/11.

^a Region is based on the area code of the site code listed on each logbook page.

DISCUSSION

GUIDE AND BUSINESS LICENSING

The 2006 through 2010 ADF&G guide and business licensing process differed from the registration process prior to 2005 in terms of the approach used, fees, and the information collected on license applications. The current licensing approach reflects changes made in 2005 to initiate the new minimum requirements established by HB 452. Guides and businesses offering guided fishing services are now held to a higher standard of compliance than previous to 2005. Violations of the guide licensing statutes or regulations adopted under HB 452 are either violations or misdemeanors, and courts are authorized to revoke the license of the guide or business under certain conditions, such as repeated convictions within a three-year period.

ADF&G no longer collects the information collected in earlier years on the type (saltwater vs. freshwater) and location (regions/subareas) of services. The 2006-2010 licensing processes have been similar and provide a basis for establishing a long-term database of licensed businesses and guides. Charter/guide business and guide licensing still reflects the intent to operate, while actual activity is confirmed by the submission of logbook trip data.

LOGBOOKS

ADF&G initiated a mandatory saltwater charter logbook program in 1998. The BOF adopted regulations requiring annual registration of sport fishing guides and businesses, and logbook reporting. The logbook and registration/licensing program was intended to provide information on actual participation and harvest by individual vessels and businesses.

Recent emphasis from ADF&G management staff and NPFMC on more timely saltwater data spurred discussions on how to hasten logbook data availability. Up until 2010, logbook data entry involved collecting logbook sheets from the guide, entering the logbook data into a logbook database, and editing the data. This process could take RTS from six to eight weeks. Discussions included the possibility of an electronic submission option that would provide data to ADF&G and NPFMC staff in a more timely manner. Any option for a logbook change would have to include a design that is appealing and easy for the guide industry to use, such that they would perceive it as beneficial to a process that they already consider "burdensome." Electronic reporting options were, at first, appealing to fulfill both management needs and halibut management needs for more timely information. Further discussions concluded that electronic reporting would still necessitate the use of a paper version of the logbook due to enforcement and trip recording requirements. Data would still need to be verified for errors, be entered accurately into a database, and be available for onsite inspection. There are currently no options for going "paperless", and no perceived benefit to managers or the industry that would result from the process. The "paperless" approach would require a change in regulation for reporting requirements along with extensive research into the cost of electronic reporting. The discussion for going "paperless" will continue however.

Upon further discussion and research, an alternative approach was considered. In 2009, ADF&G programmers researched the option of developing a system that would electronically scan the image of a redesigned logbook data page. Scanned images would minimize data entry time but allow for data entry personnel to fix images flagged as unrecognizable, thus maintaining data accuracy and quality. This option is not any more "burdensome" to the industry and would

likely make the weekly reporting requirement more palatable knowing that the data would be more immediately available.

In 2010, the saltwater logbook data page design change incorporated the ability to use the new scanning software. Due to first year design “glitches” and software troubleshooting, the 2010 saltwater data was not available in as timely a manner as originally hoped. A program review with office assistants and discussions with the project analyst programmer resulted in adjustments to the design format and software to be implemented for 2011.

For 2011, ADF&G and National Marine Fisheries Service (NMFS) will be working collaboratively to modify the logbook requirements associated with the federal Charter Halibut Program (CHP), a program that establishes limited access to the guided halibut fishery.

Preliminary results from verification studies comparing the accuracy of logbook harvest data with the statewide harvest survey estimates, and onsite creel programs are favorable. Logbook data will continue to be compared to counts from those two programs. Comparisons are ongoing and are part of a more comprehensive evaluation of logbook data quality. Logbook halibut data has been used extensively. Saltwater and freshwater logbook data have also been used for a variety of regulatory analyses for state managed species.

ACKNOWLEDGEMENTS

Southeast and Southcentral regional and area staff, especially numerous front counter personnel, have been critical to the success of the ADF&G sport fishing guide and business licensing and logbook program. The above staff along with Bob Chadwick and Mike Jaenicke from Southeast, Scott Meyer, Matt Miller and Tom Vania from Southcentral, and Tom Taube from Fairbanks have also provided valuable comments during the process of licensing and logbook form design.

Doug Vincent-Lang continued to provide valuable insight on the history of the program and facilitated numerous discussions with NOAA and IPHC. Bob Clark’s thoughtful insight and direction has been very much appreciated. We also acknowledge the expertise and infinite patience exhibited by Joanne MacClellan in preparing this report. Her knowledge and willingness to assist is invaluable.

Kirk Brogdon of the division's Research and Technical Services section deserves considerable credit for designing and implementing efficient information management systems for data capture, cleaning, storage, and reporting.

Kathy Kush should be acknowledged for her incredible skills in streamlining the licensing process and making sure that all license applications are processed in a timely manner that has allowed the guides and businesses to start operation without delay.

Margaret Nussbaum, Diane Novinska, Raili Kedzior, and Andrea Hamby deserve credit for receiving, editing, scanning, entering, and filing the licensing and logbooks forms. With their perseverance, we met reporting deadlines that seemed nearly impossible with available staffing and workloads.

We also acknowledge the cooperation of the thousands of sport fishing guides and sport fishing businesses that licensed and completed their logbooks in a timely and compliant manner.

REFERENCES CITED

- Chapell, R. S. 2010. Production, escapement, and juvenile tagging of Chilkat River Chinook salmon in 2007. Alaska Department of Fish and Game, Fishery Data Series No. 10-86, Anchorage. <http://www.sf.adfg.state.ak.us/FedAidpdfs/FDS10-86.pdf>
- Dean, M. R. 2001. Alaska Department of Fish and Game sportfishing guide and business registration and saltwater sportfishing charter vessel logbook program, 1999. Alaska Department of Fish and Game, Special Publication No. 01-1, Anchorage. <http://www.sf.adfg.state.ak.us/FedAidPDFs/sp01-01.pdf>
- Dean, M. R., and A. L. Howe. 1999. Alaska Department of Fish and Game sportfishing guide and business registration and saltwater sportfishing charter vessel logbook program, 1998. Alaska Department of Fish and game, Special Publication No. 99-1, Anchorage. <http://www.sf.adfg.state.ak.us/FedAidPDFs/sp99-01.pdf>
- Jennings, G. B., K. Sundet, and A. E. Bingham. 2010. Estimates of participation, catch, and harvest in Alaska sport fisheries during 2008. Alaska Department of Fish and Game, Fishery Data Series No. 10-22, Anchorage. <http://www.sf.adfg.state.ak.us/FedAidpdfs/FDS10-22.pdf>
- Meyer, S., and B. Powers. *Unpublished*. Evaluation of Alaska Charter Logbook data for 2006-2008, a report to the North Pacific Fishery Management Council, October 2010. Alaska Department of Fish and Game, Division of Sport Fish, Anchorage. http://www.fakr.noaa.gov/npfmc/current_issues/halibut_issues/logbookeval909.pdf
- Sigurdsson, D., and B. Powers. 2010. Participation, effort, and harvest in the sport fish business/guide licensing and logbook reporting programs, 2006-2009. Alaska Department of Fish and Game, Fishery Data Series No. 10-65, Anchorage. <http://www.sf.adfg.state.ak.us/FedAidPDFs/FDS10-65.pdf>
- Sigurdsson, D., and B. Powers. 2009. Participation, effort, and harvest in the sport fish business/guide licensing and logbook reporting programs, 2006-2008. Alaska Department of Fish and Game, Special Publication No. 09-11, Anchorage. <http://www.sf.adfg.state.ak.us/FedAidPDFs/SP09-11.pdf>
- Wendt, K. L., and M. J. Jaenicke. *In prep*. Harvest estimates for selected marine sport fisheries in Southeast Alaska during 2010. Alaska Department of Fish and Game, Fishery Data Series, Anchorage.

**APPENDIX A
SPORT FISH BUSINESS OWNER/GUIDE LICENSE
APPLICATION**



2010 SPORT FISH BUSINESS OWNER/ GUIDE LICENSE APPLICATION

Alaska Department of Fish and Game/ Division of Sport Fish - RTS
333 Raspberry Road, Anchorage, Alaska 99518-1565
Telephone: (907) 267-2369 or (907) 267-2390
<http://www.sf.adfg.state.ak.us/statewide/Guides/guide.cfm>

License #

This **TEMPORARY LICENSE** is good for 21 business days from date signed by Dept. Representative

<p>FEES CHECK ONE: <u>All fees are nonrefundable</u></p> <p><input type="checkbox"/> \$50.00 Guide Only License</p> <p><input type="checkbox"/> \$100.00 Business Only License</p> <p><input type="checkbox"/> \$100.00 Combined Business/Guide License* <i>*An agent for this business cannot apply as a guide on a combination license</i></p> <p><input type="checkbox"/> \$50.00 Guide Only Upgrade to Combination Business/Guide License</p>	<p>METHOD OF PAYMENT:</p> <p><input type="checkbox"/> Check #: _____ Make checks payable to "State of Alaska"</p> <p><input type="checkbox"/> Money Order #: _____</p> <p><input type="checkbox"/> Cash (Anchorage, Juneau, Fairbanks offices ONLY)</p> <p><input type="checkbox"/> Credit Card (Anchorage, Juneau, Fairbanks offices ONLY)</p>	<p>APPLICATION MUST BE STAMPED BY ADF&G TO BE VALID</p>
--	--	--

INSTRUCTIONS TO COMPLETE FORM ON REVERSE

SECTION A. ALL APPLICANTS COMPLETE THIS SECTION

Name of Business Owner or Guide: _____
Last First Mi

Permanent Mailing Address: _____
PO Box or Street Address City State Zip

Telephone Number: () _____ In season Telephone Number: () _____

Mail License Here (if different than above): _____
PO Box or Street Address City State Zip

SECTION B. TO BE FILLED OUT BY THE BUSINESS OWNER OR THEIR AGENT

BUSINESS INFORMATION:
Name of Business: _____
Name of Business Owner: _____
Alaska Div. of Occupational Business License Number: _____ Expiration Date: Mo/Date/Yr

INSURANCE: See detailed insurance requirements on back.
Name of Insurance Company: _____
Policy/Binder #: _____ Effective Dates: From: _____ To: _____
Remember to get a logbook for your business at the nearest ADF&G office prior to commencement of guiding activities.

SECTION C. TO BE FILLED OUT BY GUIDE OR THEIR AGENT

Are you a citizen of the United States, Canada, Mexico or resident alien? Yes No

Basic First Aid Information: Certifying agency: _____ Exp. Date: Mo/Yr

2010 Alaska Sport Fishing License # (not your Guide License #): _____ Date of Birth: Mo/Date/Yr

U.S. COAST GUARD OPERATOR'S LICENSE: (See explanation on back)
Do you plan to operate a motorized vessel in Navigable Waters? Yes No **If yes, complete the next line.**
U.S.C.G. License # or Merchant Mariner Credential Doc #: _____ Exp. Date: Mo/Date/Yr

SIGNATURE OF BUSINESS OWNER/AGENT or GUIDE:
I hereby certify that all information is true and correct and that I understand this information is subject to public disclosure. (NOTE: Making a false statement or omitting a material fact, is subject to a maximum penalty of \$10,000 or 1 year imprisonment, or both, per AS 11.56.210.)

_____ **Circle one: Applicant or Agent** Date: _____

This temporary license must be signed and stamped by an ADF&G employee and in your possession before guiding activities begin.

Name of ADF&G Representative (print): _____ Place of Issue: _____
Signature: _____ Date: _____

COPY TO APPLICANT



INSTRUCTIONS FOR THE 2010 SPORT FISH BUSINESS OWNER/ GUIDE LICENSE APPLICATION

Attention: *The following will apply without exception:*

1. All applicable sections of the license application must be complete and legible prior to ADF&G validation. No "pending", "unknowns," or blanks will be accepted.
2. Incomplete license applications will be returned resulting in a processing delay.
3. A signature is required.
4. This is a license application only. A permanent license will be mailed within 21 business days.
5. There may be requirements by other state and federal agencies to operate as a guide in Alaska.

INSTRUCTIONS:

SECTION A: ALL applicants must complete this section.

SECTION B: BUSINESS OWNER OR THEIR AGENT: Complete this section if you are the owner/agent of the sport fishing business. This section should be filled out even if the owner does not intend to personally guide clients. An agent for this business **CANNOT** apply as a guide on the same application. A separate license application must be submitted.

LIABILITY INSURANCE REQUIREMENT: General liability or marine protection that covers at least \$100,000 for each incident and \$300,000 for all incidents in a year. Insurance must cover **ALL** periods of time when the owner or owner's employees are providing sport fishing services to clients. Insurance must be current, **NOT** pending.

IMPORTANT NOTICE TO BUSINESS OWNERS

State regulation (5 AAC 75.075) requires that all operators providing sport fishing guide services in Alaska must apply annually for a license with the Department of Fish and Game before guiding services begin. Business owners are required to register all charter vessels with ADF&G and acquire a logbook prior to commencement of guiding activities. *Guides hired by an operator must keep a copy of the ADF&G business license in their possession while guiding.*

SECTION C: GUIDES: Complete this section if you intend to guide for a sport fish operation owned by someone other than you or if you are the business owner who also intends to guide (owner/operator).

U.S. COAST GUARD OPERATOR'S LICENSE: A licensed sport fish guide must have, at minimum, a Limited OUPV for Western Waters in Alaska or 6-pak U.S.C.G. operator's license in their possession while operating a motorized vessel with clients or transporting clients in a motorized vessel on navigable waters. Navigable waters are determined by the U.S. Coast Guard (907) 271-6736.

Note: Effective April 20, 2009 the U.S.C.G. began issuing the Merchant Mariner Credentials (MMC). Applicants must provide the U.S.C.G. license number, expiration date and date of birth (DOB).

IMPORTANT NOTICE TO GUIDES

State regulation (5 AAC 75.075) requires that all licensed guides providing sport fishing guide services in Alaska must apply annually for a license with the Department of Fish and Game before guiding activities begin.

WHAT A GUIDE MUST HAVE IN POSSESSION WHILE GUIDING

A sport fish business owner or guide should be able to present all documents required for licensing upon request by a representative of the department of fish and game, or any peace officer of the state. While engaged in providing sport fishing guide services, a sport fishing guide shall have the following readily available for inspection:

- A current sport fishing guide license;
- A copy of the current ADF&G sport fishing business license of the guide's employer;
- A current Alaska sport fishing license, tags, stamps or permits that are required to engage in the sport fishery for which the guide services are providing;
- An identification card issued to the sport fishing guide by a state or federal agency that bears a photo of the sport fishing guide.

**APPENDIX B
SALTWATER LOGBOOK FORM**



State of Alaska
Department of Fish & Game
Division of Sport Fish

2010 Saltwater Charter Logbook and Vessel Registration

Vessel

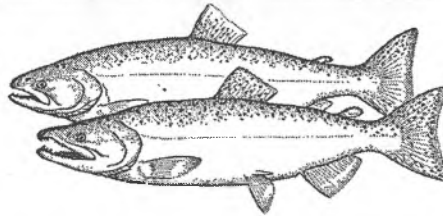
Name: _____

Vessel AK. #

or

U.S.C.G. # : _____

THIS LOGBOOK MUST REMAIN WITH THIS VESSEL



Please follow the INSTRUCTIONS carefully as they have changed

LOGBOOK INSPECTION

Upon request from any representative of the Department or any peace officer of the state, a person is required to present this *Alaska Department of Fish and Game Saltwater Sportfishing Charter Vessel Logbook* for inspection.

Appendix B1.--Saltwater charter logbook form, 2010.

-continued-

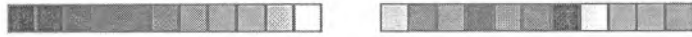


TRIP INFORMATION											
<p>⇒ Complete this section for every trip. Continue on additional pages for trips with more than six anglers in the same trip.</p>											
<p>⇒ DATE FISHED: _____ / _____ / 2010 _____ AM <input type="radio"/> PM <input type="radio"/></p> <p>Month Day Hour Started</p>	<table border="1"> <thead> <tr> <th>Targeted Species</th> <th>Primary Stat. Area Where most fish were caught</th> <th>Boat Hours Fished</th> </tr> </thead> <tbody> <tr> <td>Salmon:</td> <td>_____</td> <td>_____</td> </tr> <tr> <td>Bottomfish:</td> <td>_____</td> <td>_____</td> </tr> </tbody> </table>	Targeted Species	Primary Stat. Area Where most fish were caught	Boat Hours Fished	Salmon:	_____	_____	Bottomfish:	_____	_____	
Targeted Species	Primary Stat. Area Where most fish were caught	Boat Hours Fished									
Salmon:	_____	_____									
Bottomfish:	_____	_____									
<p>⇒ 2010 GUIDE LICENSE #: _____ (assigned to you by ADF&G)</p>	<p>⇒ COMMUNITY OR PORT WHERE TRIP BEGAN: _____ (where clients boarded the vessel)</p>										
		<p>⇒ COMMUNITY OR PORT WHERE TRIP ENDED: _____ (where fish or clients were off-loaded from vessel)</p>									

INDIVIDUAL ANGLER AND CATCH INFORMATION																
Complete one row below for each angler who fished this trip. Record sport fishing license number, printed name AND Alaska residency status for all anglers. Write "YOUTH" in license number field for anglers under 16.			SALMON						BOTTOMFISH							
AK - Resident	Non - Resident	Compd Crew	Kept / Released	King (2+ & larger)	King (under 2+)	Coho	Sockeye	Other Salmon	Hellbait	Lingcod	Plasale Rockfish	Yelloweye Rockfish	Non parasitic Rockfish	Sablefish (black cod)	Salmon Shark	All Other Fish
1. _____	<input type="radio"/>	<input type="radio"/>	K▶	<input type="text"/>	<input type="text"/>	<input type="text"/>	<input type="text"/>	<input type="text"/>	<input type="text"/>	<input type="text"/>	<input type="text"/>	<input type="text"/>	<input type="text"/>	<input type="text"/>	<input type="text"/>	<input type="text"/>
License Number			R▶	<input type="text"/>	<input type="text"/>	<input type="text"/>	<input type="text"/>	<input type="text"/>	<input type="text"/>	<input type="text"/>	<input type="text"/>	<input type="text"/>	<input type="text"/>	<input type="text"/>	<input type="text"/>	<input type="text"/>
First / Last Name				<input type="text"/>	<input type="text"/>	<input type="text"/>	<input type="text"/>	<input type="text"/>	<input type="text"/>	<input type="text"/>	<input type="text"/>	<input type="text"/>	<input type="text"/>	<input type="text"/>	<input type="text"/>	<input type="text"/>
Signature				<input type="text"/>	<input type="text"/>	<input type="text"/>	<input type="text"/>	<input type="text"/>	<input type="text"/>	<input type="text"/>	<input type="text"/>	<input type="text"/>	<input type="text"/>	<input type="text"/>	<input type="text"/>	<input type="text"/>
2. _____	<input type="radio"/>	<input type="radio"/>	K▶	<input type="text"/>	<input type="text"/>	<input type="text"/>	<input type="text"/>	<input type="text"/>	<input type="text"/>	<input type="text"/>	<input type="text"/>	<input type="text"/>	<input type="text"/>	<input type="text"/>	<input type="text"/>	<input type="text"/>
License Number			R▶	<input type="text"/>	<input type="text"/>	<input type="text"/>	<input type="text"/>	<input type="text"/>	<input type="text"/>	<input type="text"/>	<input type="text"/>	<input type="text"/>	<input type="text"/>	<input type="text"/>	<input type="text"/>	<input type="text"/>
First / Last Name				<input type="text"/>	<input type="text"/>	<input type="text"/>	<input type="text"/>	<input type="text"/>	<input type="text"/>	<input type="text"/>	<input type="text"/>	<input type="text"/>	<input type="text"/>	<input type="text"/>	<input type="text"/>	<input type="text"/>
Signature				<input type="text"/>	<input type="text"/>	<input type="text"/>	<input type="text"/>	<input type="text"/>	<input type="text"/>	<input type="text"/>	<input type="text"/>	<input type="text"/>	<input type="text"/>	<input type="text"/>	<input type="text"/>	<input type="text"/>
3. _____	<input type="radio"/>	<input type="radio"/>	K▶	<input type="text"/>	<input type="text"/>	<input type="text"/>	<input type="text"/>	<input type="text"/>	<input type="text"/>	<input type="text"/>	<input type="text"/>	<input type="text"/>	<input type="text"/>	<input type="text"/>	<input type="text"/>	<input type="text"/>
License Number			R▶	<input type="text"/>	<input type="text"/>	<input type="text"/>	<input type="text"/>	<input type="text"/>	<input type="text"/>	<input type="text"/>	<input type="text"/>	<input type="text"/>	<input type="text"/>	<input type="text"/>	<input type="text"/>	<input type="text"/>
First / Last Name				<input type="text"/>	<input type="text"/>	<input type="text"/>	<input type="text"/>	<input type="text"/>	<input type="text"/>	<input type="text"/>	<input type="text"/>	<input type="text"/>	<input type="text"/>	<input type="text"/>	<input type="text"/>	<input type="text"/>
Signature				<input type="text"/>	<input type="text"/>	<input type="text"/>	<input type="text"/>	<input type="text"/>	<input type="text"/>	<input type="text"/>	<input type="text"/>	<input type="text"/>	<input type="text"/>	<input type="text"/>	<input type="text"/>	<input type="text"/>
4. _____	<input type="radio"/>	<input type="radio"/>	K▶	<input type="text"/>	<input type="text"/>	<input type="text"/>	<input type="text"/>	<input type="text"/>	<input type="text"/>	<input type="text"/>	<input type="text"/>	<input type="text"/>	<input type="text"/>	<input type="text"/>	<input type="text"/>	<input type="text"/>
License Number			R▶	<input type="text"/>	<input type="text"/>	<input type="text"/>	<input type="text"/>	<input type="text"/>	<input type="text"/>	<input type="text"/>	<input type="text"/>	<input type="text"/>	<input type="text"/>	<input type="text"/>	<input type="text"/>	<input type="text"/>
First / Last Name				<input type="text"/>	<input type="text"/>	<input type="text"/>	<input type="text"/>	<input type="text"/>	<input type="text"/>	<input type="text"/>	<input type="text"/>	<input type="text"/>	<input type="text"/>	<input type="text"/>	<input type="text"/>	<input type="text"/>
Signature				<input type="text"/>	<input type="text"/>	<input type="text"/>	<input type="text"/>	<input type="text"/>	<input type="text"/>	<input type="text"/>	<input type="text"/>	<input type="text"/>	<input type="text"/>	<input type="text"/>	<input type="text"/>	<input type="text"/>
5. _____	<input type="radio"/>	<input type="radio"/>	K▶	<input type="text"/>	<input type="text"/>	<input type="text"/>	<input type="text"/>	<input type="text"/>	<input type="text"/>	<input type="text"/>	<input type="text"/>	<input type="text"/>	<input type="text"/>	<input type="text"/>	<input type="text"/>	<input type="text"/>
License Number			R▶	<input type="text"/>	<input type="text"/>	<input type="text"/>	<input type="text"/>	<input type="text"/>	<input type="text"/>	<input type="text"/>	<input type="text"/>	<input type="text"/>	<input type="text"/>	<input type="text"/>	<input type="text"/>	<input type="text"/>
First / Last Name				<input type="text"/>	<input type="text"/>	<input type="text"/>	<input type="text"/>	<input type="text"/>	<input type="text"/>	<input type="text"/>	<input type="text"/>	<input type="text"/>	<input type="text"/>	<input type="text"/>	<input type="text"/>	<input type="text"/>
Signature				<input type="text"/>	<input type="text"/>	<input type="text"/>	<input type="text"/>	<input type="text"/>	<input type="text"/>	<input type="text"/>	<input type="text"/>	<input type="text"/>	<input type="text"/>	<input type="text"/>	<input type="text"/>	<input type="text"/>
6. _____	<input type="radio"/>	<input type="radio"/>	K▶	<input type="text"/>	<input type="text"/>	<input type="text"/>	<input type="text"/>	<input type="text"/>	<input type="text"/>	<input type="text"/>	<input type="text"/>	<input type="text"/>	<input type="text"/>	<input type="text"/>	<input type="text"/>	<input type="text"/>
License Number			R▶	<input type="text"/>	<input type="text"/>	<input type="text"/>	<input type="text"/>	<input type="text"/>	<input type="text"/>	<input type="text"/>	<input type="text"/>	<input type="text"/>	<input type="text"/>	<input type="text"/>	<input type="text"/>	<input type="text"/>
First / Last Name				<input type="text"/>	<input type="text"/>	<input type="text"/>	<input type="text"/>	<input type="text"/>	<input type="text"/>	<input type="text"/>	<input type="text"/>	<input type="text"/>	<input type="text"/>	<input type="text"/>	<input type="text"/>	<input type="text"/>
Signature				<input type="text"/>	<input type="text"/>	<input type="text"/>	<input type="text"/>	<input type="text"/>	<input type="text"/>	<input type="text"/>	<input type="text"/>	<input type="text"/>	<input type="text"/>	<input type="text"/>	<input type="text"/>	<input type="text"/>
<p>■ Certification: I certify that the information provided herein is accurate and true. Falsification or omission of information on this form is punishable under AS 11.66.210(a) and 5 AAC 75.076</p>			X	GUIDE SIGNATURE						PAGE	<input type="text"/>	OF	<input type="text"/>	■		

Form 11-540 (01-2010)

**APPENDIX C
FRESHWATER LOGBOOK FORMS**

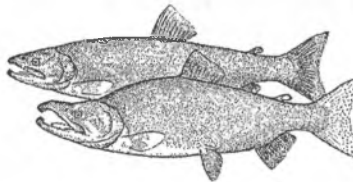


**2010 Freshwater Sport Fish
Guide Logbook
and
Vessel Registration**

LOGBOOK NO.

BUSINESS NAME

ADF&G BUSINESS OWNER'S LICENSE NO.



*Please follow the instructions carefully
as they have changed.*



**State of Alaska Department of Fish & Game
Division of Sport Fish**

LOGBOOK INSPECTION

*Upon request from any representative
of the Department or any peace officer of the state,
a person is required to present this Alaska Department
of Fish and Game Freshwater Sport Fishing
Guide Logbook for inspection.*



FW_Cover_Instr10.pmd

1

11/12/2009, 7:19 AM

Appendix C1.-Freshwater guide logbook from, 2010.

-continued-



Alaska Department of Fish & Game

2010 Freshwater Sport Fish Trip Logbook

RETURN TO: 333 RASPBERRY ROAD, ANCHORAGE, AK 99518-1565 • QUESTIONS: (907) 267-2369

LOGBOOK NO. _____

TRIP INFORMATION	Angler Residency <small>Circle One</small>		Sport Fish License Number of each Client, Nonpaying angler, and Crew <u>THAT FISHED</u> AND Record all those anglers under 16 as "Youth Angler" (YA1, YA2etc.)	Crew <small>Circle One if applicable</small>		SALMON				TROUT				HER				
	Resident	Non-Resident		Competed	Crew	KEPT	RELEASED	KING	COHO	SOCKEYE	CUTTHROAT	RAINBOW	STEELHEAD	LAKE TROUT	DOLLY WARDEN	ARCTIC GRAPLING	NORTHERN PIKE	SHEEPSHANK *
2010 ADF&G GUIDE LICENSE #: _____	<input type="checkbox"/>	<input type="checkbox"/>		<input type="checkbox"/>	<input type="checkbox"/>	<input type="checkbox"/>												
DATE FISHED: _____ 2010 <small>(Month) (Day)</small>	<input type="checkbox"/>	<input type="checkbox"/>		<input type="checkbox"/>	<input type="checkbox"/>	<input type="checkbox"/>												
RIVER / STREAM / LAKE (SPECIFY) _____	<input type="checkbox"/>	<input type="checkbox"/>		<input type="checkbox"/>	<input type="checkbox"/>	<input type="checkbox"/>												
SITE CODE <small>(REFER TO SITE CODE LIST)</small> _____	<input type="checkbox"/>	<input type="checkbox"/>		<input type="checkbox"/>	<input type="checkbox"/>	<input type="checkbox"/>												
PAGE NO. _____ OF _____	<input type="checkbox"/>	<input type="checkbox"/>		<input type="checkbox"/>	<input type="checkbox"/>	<input type="checkbox"/>												
TOTAL NO. OF PAGES FOR THIS TRIP ↑	<input type="checkbox"/>	<input type="checkbox"/>		<input type="checkbox"/>	<input type="checkbox"/>	<input type="checkbox"/>												
* WRITE IN OTHER SPECIES HERE _____	<input type="checkbox"/>	<input type="checkbox"/>		<input type="checkbox"/>	<input type="checkbox"/>	<input type="checkbox"/>												

CERTIFICATION: I certify that the information provided herein is accurate and true. Falsification or omission of information on this form is punishable under AS 11.56.210(a) and 5 AAC 75.076.

X

GUIDE SIGNATURE

CONTINUE ON NEXT PAGE IF MORE THAN 6 ANGLERS.
CHECK IF TRIP INFORMATION IS CONTINUED ON NEXT PAGE:

APPENDIX D
VESSEL REGISTRATION FORMS, DECALS AND TAGS



INSTRUCTIONS FOR ADF&G REPRESENTATIVE:

Please forward the white copy of this form to: Sport Fish RTS, 333 Raspberry Rd., Anchorage, AK 99518-1565.

DO NOT REMOVE THE PINK COPY. THE PINK COPY MUST STAY IN THE LOGBOOK.

DO NOT ISSUE A LOGBOOK UNLESS THE APPLICANT HAS THE FOLLOWING:

- ⇒ 2010 ADF&G Sport Fish Business License
- ⇒ Current AK Vessel Number issued by DMV or Current U.S.C.G. Vessel Documentation No.

NONE OF THE ABOVE CAN BE "PENDING"

2010 ADF&G Sport Fish Business Owner and Guide License applications are available at all ADF&G offices or online at: <http://www.admin.adfg.state.ak.us/license/>

AK Vessel Registration information is available from Alaska Div. of Motor Vehicles at (907) 269-5551 or online at: <http://www.doa.alaska.gov/dmv/reg/boat.htm>

2010 Saltwater Sport Fish Charter Logbook Sign-Out AND Vessel Registration
Must be completed

SPORT FISH BUSINESS INFORMATION:

Name of Sport Fishing Business: _____

Sport Fish Business Owner License Number (ADF&G #): 2010- _____

SPORT FISHING CHARTER VESSEL REGISTRATION:

⇒ DMV issued AK No. or Vessel U.S.C.G. Documentation No.:
No. : _____ *(A logbook WILL NOT be issued without a current AK or U.S.C.G. number)*

⇒ Vessel Name: _____
(Vessel name and AK No. or U.S.C.G. # must appear on the cover)

⇒ Primary Alaska Saltwater port from which this vessel will operate during 2010:

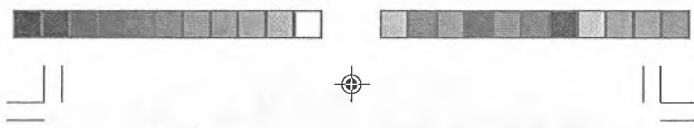
⇒ Will you be fishing both 2C and 3A? (See map on pg. vii) YES NO
If YES, you must complete a logbook page for each IPHC area fished during a trip. See instructions on page vi.

DEPARTMENT USE ONLY

⇒ Did you issue a Stat. Area Map? YES NO If No, Explain: _____

⇒ ADF&G Representative: *(print)* _____

⇒ Area Office: _____ Date of Issue: _____



LOGBOOK NO. _____

**2010 FRESHWATER SPORT FISH
Logbook Sign-Out
SPORT FISH BUSINESS INFORMATION**

Must have a current ADF&G Business License Number

NAME OF PERSON TO WHOM THIS LOGBOOK WAS ISSUED _____

SPORT FISHING BUSINESS NAME _____

ADF&G LICENSE NUMBER OF BUSINESS (NOT A "GUIDE ONLY" LICENSE) _____

CONTACT PHONE NUMBER _____



Do you plan to fish from a vessel while providing sport fishing guided services in freshwater?
No Yes (If yes, list vessels on pg. iii)

INSTRUCTIONS TO ADF&G REPRESENTATIVE

Please forward the white copy of this form to:
**Sport Fish Research & Technical Services
333 Raspberry Rd., Anchorage, AK 99518**

ADF&G area offices will keep the pink copy on file.

Do NOT issue a logbook unless the applicant has the following:

- 2010 ADF&G Business License;
- Current AK Boat Number issued by DMV **OR** current U.S.C.G. Vessel Documentation number, if applicable.

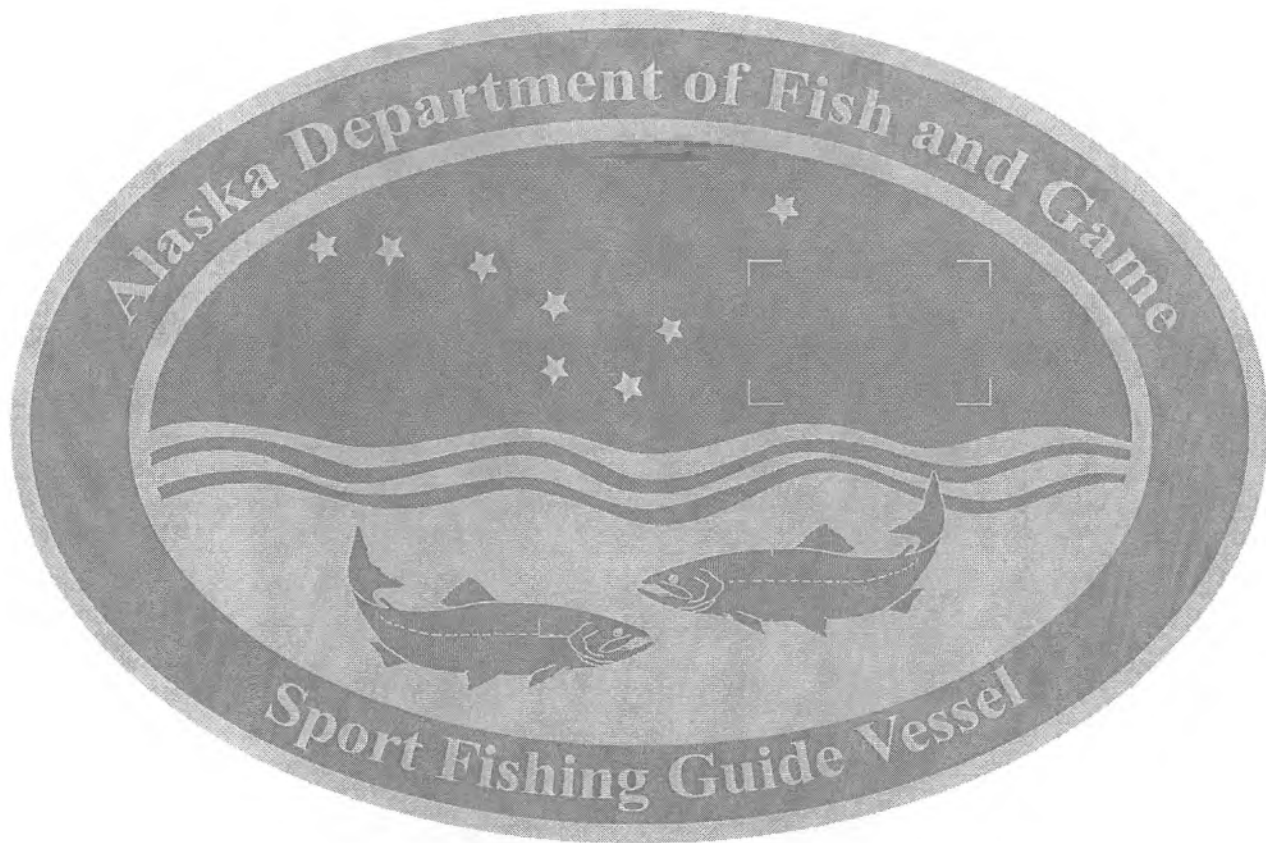
None of the required information can be "pending." This form must be complete and accurate to the best of your knowledge. Incomplete forms will be returned to you for follow-up and completion, resulting in a processing delay.

REMEMBER TO PROVIDE A SITE CODE LIST

ADF&G REPRESENTATIVE (PRINT) _____

AREA OFFICE _____ DATE OF ISSUE _____





Appendix D3.—Vessel decal, 2010.



Appendix D4.—Vessel tab, 2010.

APPENDIX E
SALTWATER EDITING RESULTS

Appendix E1.—Saltwater editing results, 2010.

Edit	Number Occurrences
No guide license number	0
Invalid guide license number	1
Missing date	0
Invalid date (not in correct year)	0
Invalid port of offloading	0
Invalid port of origin	1
Missing salmon statistical area	42
Missing bottomfish statistical area	78
Invalid salmon statistical area	5
Invalid bottomfish statistical area	5
Salmon harvest no salmon statistical area	1,152
Bottomfish harvest no bottomfish statistical area	2,010
Salmon statistical area listed, no hours listed	354
Bottomfish statistical area listed, no hours listed	446
No statistical area listed	201
No hours listed	128
Possible invalid salmon statistical area	0
Possible invalid bottomfish statistical area	0
Log pages turned in late ^a	3,364
Log book wasn't checked out to a business	0
Salmon or bottomfish hours are greater than 12	40
Duplicate log pages	0
Trip records without angler records	0
Date fished greater than date received by ADF&G	4
Trips	48,742

^a Allows a 7 day grace period

APPENDIX F
FRESHWATER EDITING RESULTS

Appendix F1.–Freshwater editing results, 2010.

Edit	Number Occurrences
No guide license number	3
Invalid guide license number	22
Missing date	0
Invalid date (not in correct year)	0
Missing site code	6
Invalid site code	0
No paying clients	0
Log pages turned in late ^a	7,648
Duplicate log pages	0
Date fished greater than date received by ADF&G	46
Log book wasn't checked out to a business	0
Kenai River trips on Sunday or Monday	134
Trip records without angler records	0
Trips	37,791

^a Allows a 7 day grace period

APPENDIX G
FRESHWATER LOGBOOK SUMMARIES BY AREA AND
PORT OF OFFLOADING

Appendix G2.—Freshwater logbook participation by area and site, Southeast Alaska, 2010.

Area	Site	Trips	Businesses ^a	Guides ^a	Angler Days					Total
					Resident	Non-Res	Comped	Unknown	Crew	
A	Lakes	19	4	5	0	63	0	0	0	63
A	Streams	169	7	13	1	563	0	4	0	568
B	Other Lakes	14	4	4	0	30	0	0	0	30
B	Other Streams	64	8	11	2	136	0	0	1	139
B	Thorne River and Lake	15	5	7	1	41	0	0	0	42
C	Streams	53	7	8	3	196	0	0	2	201
D	Baranof Island Lakes and Streams	214	10	28	13	742	0	6	1	762
D	Chichagof Island Lakes and Streams	43	7	13	8	148	1	2	0	159
D	Nakwasina Sound Streams (Baranof Island)	25	6	9	2	84	0	0	0	86
D	Other Lakes and Streams	22	9	13	3	78	1	0	1	83
D	Politofski Creek (Baranof Island)	8	4	4	0	21	1	0	1	23
D	Salmon Creek (Baranof Island)	9	4	6	0	23	0	0	0	23
D	Sitkoh Creek and Lake (Chichagof Island)	12	5	8	3	39	0	0	0	42
E	Admiralty Island Streams (Admiralty Island)	139	6	27	6	560	3	11	3	583
E	Other Streams	208	5	12	5	914	1	6	0	926
G	Mud Bay Creek (Chichagof Island)	12	5	5	1	49	0	2	2	54
G	Other Streams	65	6	11	13	311	0	9	3	336
G	Trail River (Chichagof Island)	17	6	6	0	91	0	0	17	108
H	East Alsek River	95	4	7	2	401	0	0	6	409
H	Other Lakes and Streams	326	10	20	61	1,090	29	5	33	1,218
H	Situk River (above weir)	373	6	14	98	812	1	4	31	946
H	Situk River (below weir)	55	7	12	11	108	0	2	19	140
H	Tsiu River	427	5	20	81	1,538	4	17	6	1,646
	Other Lakes and Streams in Southeast	75	4	6	2	320	0	4	0	326
	Total Southeast	2,459	69	151	316	8,358	41	72	126	8,913

Note: Responses with less than 4 businesses are not reported separately, to protect confidentiality of respondents. Data are current as of 05/26/2011.

^a Regional and statewide business and guide totals aren't additive because a business and/or guide can operate in multiple sites and areas.

Appendix G3.—Freshwater logbook participation by area and site, Southcentral Alaska, 2010.

Area	Site	Trips	Businesses ^a	Guides ^a	Angler Days					Total
					Resident	Non-Res	Comped	Unknown	Crew	
J	Delight Lake	11	5	5	1	51	0	0	0	52
J	Eyak River	50	4	6	15	161	0	5	11	192
J	Other Lakes and Streams	36	7	9	15	147	0	0	0	162
K	Lakes and Streams	359	11	17	467	823	16	6	54	1,366
M	Alexander Lake	11	5	5	2	26	0	0	0	28
M	Chulitna River	39	4	7	0	102	0	0	0	102
M	Chunilna Creek (Clear Creek)	58	5	8	12	236	1	0	0	249
M	Deshka River (Kroto Creek)	298	10	12	408	706	11	5	19	1,149
M	Fish Lake Creek and Fish Lakes (Yentna Drainage)	33	6	12	2	98	0	0	0	100
M	Indian Creek (into Yentna near Fish Lakes)	136	6	20	9	416	3	0	6	434
M	Lake Creek	1,374	18	52	271	3,545	19	0	28	3,863
M	Little Willow Creek	27	6	7	22	69	0	0	6	97
M	Montana Creek	10	4	4	7	12	0	0	0	19
M	Other Lakes - Chulitna/East Susitna Drainage	13	4	4	9	32	0	0	0	41
M	Other Streams - Chulitna / East Susitna Drainage	58	10	12	76	157	4	0	0	237
M	Other Lakes and Streams - West Susitna Drainage	69	8	14	52	196	0	7	1	256
M	Talachulitna Creek	44	5	8	2	100	0	1	0	103
M	Talachulitna River	501	10	29	60	1,368	0	5	43	1,476
M	Talkeetna River	153	7	11	93	513	0	33	5	644
M	Willow Creek	47	6	6	28	70	0	0	0	98
M	Yentna River	86	6	15	30	182	5	0	2	219
M	Yentna River Drainage (Remainder)	957	18	48	46	2,735	0	1	35	2,817
N	Big River	74	8	8	17	263	0	0	0	280
N	Big River Lakes	674	28	35	122	2,463	4	11	16	2,616
N	Chuitna River	31	7	10	2	122	0	1	0	125
N	Coal Creek (into Beluga Lake)	15	6	8	0	51	0	0	1	52
N	Crescent Lake	110	11	18	24	342	0	6	0	372
N	Kamishak River	72	6	17	6	212	0	0	5	223
N	Kustatan River	215	24	32	96	815	0	0	3	914
N	Other Sites (South of North Forelands)	102	12	19	7	392	1	0	0	400
N	Other Sites between North Forelands and Susitna Drainage	5	4	4	0	20	0	0	0	20
N	Wolverine Creek mouth (by Big River Lakes)	526	21	30	118	1,824	0	10	1	1,953

-continued-

Area	Site	Trips	Businesses ^a	Guides ^a	Angler Days					Total
					Resident	Non-Res	Comped	Unknown	Crew	
P	Anchor River	56	8	11	7	106	0	4	3	120
P	Deep Creek	44	4	5	13	162	2	0	2	179
P	Kasilof River reach not specified	19	10	11	4	59	0	0	0	63
P	Kasilof River above Highway	54	11	14	20	126	1	7	0	154
P	Kasilof River below Highway	1,784	85	134	904	4,831	39	50	12	5,836
P	Kenai River - Cook Inlet to Soldotna Bridge	5,886	173	260	3,340	16,836	100	149	45	20,470
P	Kenai River - reach not specified	117	31	34	40	332	0	1	0	373
P	Kenai River - Moose River to Skilak outlet	1,231	82	118	682	3,134	14	48	4	3,882
P	Kenai River - Skilak Inlet to Kenai Lake	2,258	41	87	960	5,773	29	118	52	6,932
P	Kenai River - Soldotna Bridge to Moose River	865	67	90	288	2,578	16	26	4	2,912
P	Ninilchik River	39	4	5	11	135	0	1	2	149
P	Other Lakes	30	9	10	10	85	0	1	6	102
P	Other Streams	64	15	19	22	244	0	1	0	267
P	Quartz Creek	41	8	13	1	71	0	4	0	76
P	Russian River	83	10	17	10	167	0	4	1	182
Q	Afognak River (Litnik Stream)	31	5	6	3	102	0	0	7	112
Q	American River	24	4	4	1	54	0	0	0	55
Q	Ayakulik River (sometimes called Red River)	125	4	10	7	352	0	0	0	359
Q	Dog Salmon Creek (Frazer River)	114	8	15	12	414	4	4	1	435
Q	Karluk Lagoon and River below Weir (to .5 m above lagoon)	36	4	10	2	159	0	0	0	161
Q	Karluk Lake and River above Weir	31	6	9	1	167	0	0	7	175
Q	Olds River	25	8	8	3	53	0	0	2	58
Q	Other Remote Streams	226	17	25	36	729	7	4	9	785
Q	Roadside Lakes	35	4	6	0	121	0	1	0	122
Q	Roadside Streams	77	7	8	13	223	0	4	1	241
Q	Saltery River	407	8	18	61	1,213	2	13	73	1,362
Q	Uganik River	78	4	7	12	230	0	0	28	270
Q	Zachar Bay Streams	18	4	5	5	56	0	1	0	62
R	American Creek	460	21	52	38	1,168	22	5	40	1,273
R	Becharof System	61	10	22	7	151	0	0	7	165
R	Brooks Lake	14	7	10	0	35	0	0	0	35

--continued--

Appendix G2.-Page 3 of 4.

Area	Site	Trips	Businesses ^a	Guides ^a	Angler Days				Total	
					Resident	Non-Res	Comped	Unknown		Crew
R	Brooks River	282	21	74	20	726	1	4	0	751
R	Contact Creek	48	11	22	9	109	4	1	0	123
R	Egegik River (Becharof System)	113	6	23	1	421	0	2	3	427
R	Naknek River (dwnstream frm Rapids Camp incl trib)	183	8	20	29	412	0	5	2	448
R	Naknek River (Rapids Camp upstream to Naknek Lk,incl trib)	542	12	42	93	1,250	0	4	3	1,350
R	Naknek River and Tributaries	486	21	64	99	1,245	4	6	8	1,362
R	Other Lakes	62	11	21	11	186	0	0	0	197
R	Other Streams	1,001	24	61	42	2,445	0	6	0	2,493
R	Swikshak River	18	4	8	0	65	0	0	0	65
R	Ugashik System	109	13	34	4	284	0	1	13	302
S	Alagnak (Branch) River	1,337	19	84	44	2,778	6	18	22	2,868
S	Alexey Lake	6	4	4	3	16	0	0	0	19
S	Battle River	76	10	21	10	227	0	0	40	277
S	Copper River (Lake Iliamna Area)	366	10	34	38	928	1	3	5	975
S	Funnel Creek	39	9	21	2	103	0	0	0	105
S	Gibraltar River	71	6	15	3	165	0	0	0	168
S	Kijik Lake	9	6	8	2	30	3	0	0	35
S	Kukaklek River (Big Ku) (into Alagnak)	98	8	22	3	223	0	0	0	226
S	Kulik River	406	13	43	65	1,016	1	2	0	1,084
S	Kvichak River	1,081	23	88	87	2,546	8	14	3	2,658
S	Lake Clark	49	8	14	10	135	7	2	1	155
S	Lake Iliamna	133	6	15	18	307	0	14	0	339
S	Little Kulik (into Nanuktuk Creek)	18	7	11	0	47	0	0	0	47
S	Lower Talarik Creek	46	7	19	2	127	0	0	0	129
S	Moraine Creek	370	19	65	22	860	0	0	2	884
S	Nanuktuk Creek	59	10	22	2	135	1	1	0	139
S	Newhalen River	62	6	16	1	230	0	0	0	231
S	Nonvianuk Lake	20	4	8	5	39	0	0	0	44
S	Nonvianuk River (into Alagnak)	63	7	15	6	136	0	1	4	147
S	Other Lakes and Streams	19	5	7	0	46	0	4	0	50
S	Tazimina Lakes	13	5	7	1	30	0	0	1	32

-continued-

Area	Site	Trips	Businesses ^a	Guides ^a	Angler Days					Total
					Resident	Non-Res	Comped	Unknown	Crew	
S	Tazimina River	78	4	13	4	182	2	0	0	188
T	Agulowak River	442	8	33	77	749	0	32	0	858
T	Agulukpak River	210	7	33	5	395	0	11	0	411
T	Aleknagik Lake	43	4	9	1	80	0	7	0	88
T	Mulchatna River	40	6	7	19	79	0	0	6	104
T	Nushagak River - Black Point upstream to Sonar Site	578	22	66	97	1,610	6	19	85	1,817
T	Nushagak River - sonar site to outlet of Mulchatna	662	26	84	190	1,869	10	15	19	2,103
T	Nushagak River - upstream from mouth of Mulchatna River	342	7	24	6	623	0	1	0	630
T	Nushagak River System (incl. Harris Creek, King Salmon R.)	73	11	16	0	186	0	0	6	192
T	Nuyakuk River (Tikchik-Nuyakuk Lake System)	140	5	17	1	268	4	2	10	285
T	Other Lakes and Streams	311	5	26	7	596	0	3	1	607
T	Togiak River System	397	7	45	28	768	1	75	1	873
T	Wood River	62	4	12	4	113	0	18	0	135
T	Wood River Lakes System	137	7	24	6	309	0	6	0	321
	Other Lakes and Streams in Southcentral	40	4	4	19	123	0	0	0	142
	Total Southcentral	31,267	433	1,051	9,628	83,332	359	814	777	94,910

Note: Responses with less than 4 businesses are not reported separately, to protect confidentiality of respondents. Data are current as of 05/26/2011.

^a Regional and statewide business and guide totals aren't additive because a business and/or guide can operate in multiple sites and areas.

Appendix G4.—Freshwater logbook participation by area and site, AYK Alaska, 2010.

Area	Site	Trips	Businesses ^a	Guides ^a	Angler Days					Total
					Resident	Non-Res	Comped	Unknown	Crew	
I	Copper River	29	5	6	77	28	0	2	1	108
I	Gulkana River (Highway to Copper River)	44	5	6	23	122	0	1	5	151
I	Gulkana River (West Fork to Highway)	81	7	12	62	189	0	5	1	257
I	Klutina River	407	13	25	360	890	7	18	11	1,286
I	Other Streams	21	6	8	16	52	0	0	0	68
U	Other Lakes	25	4	5	31	39	0	0	0	70
U	Other Streams	369	7	16	69	932	2	9	19	1,031
V	Aniak River	348	6	22	2	615	2	11	0	630
V	Goodnews River	446	6	18	24	817	1	19	1	862
V	Holitna River	179	4	23	5	393	0	0	2	400
V	Kanektok River (Quinhagak, Chosen)	952	6	44	16	1,808	1	4	1	1,830
V	Kuskokwim River drainages below Aniak R; incl. Aniak R. drainages	213	10	23	26	611	0	0	8	645
V	Other Lakes and Streams	63	7	16	2	127	0	1	4	134
V	Other streams - Kuskokwim drainages above Aniak	22	6	9	1	49	0	0	7	57
W	Streams	273	6	14	20	525	1	0	3	549
Y	Lakes and Streams	567	5	19	40	1,060	0	0	19	1,119
	Other Lakes and Streams in AYK	26	4	4	11	207	0	0	1	219
	Total AYK	4,065	62	200	785	8,464	14	70	83	9,416

Note: Responses with less than 4 businesses are not reported separately, to protect confidentiality of respondents. Data are current as of 05/26/2011.

^a Regional and statewide business and guide totals aren't additive because a business and/or guide can operate in multiple sites and areas.

Appendix G5.—Freshwater logbook participation by region, statewide, 2010.

Region	Trips	Businesses ^a	Guides ^a	Angler Days					Total
				Resident	Non-Res	Comped	Unknown	Crew	
Southeast	2,459	69	151	316	8,358	41	72	126	8,913
Southcentral	31,267	433	1,051	9,628	83,332	359	814	777	94,910
Arctic-Yukon-Kuskokwim	4,065	62	200	785	8,464	14	70	83	9,416
Total	37,791	546	1,348	10,729	100,154	414	956	986	113,239

Note: Data are current as of 05/26/2011.

^a Regional and statewide business and guide totals aren't additive because a business and/or guide can operate in multiple sites and areas.

Appendix G6.—Freshwater logbook angler days and species kept by area and site, Southeast Alaska, 2010.

Area	Site	Angler Days	Salmon			Trout				Dolly Varden	Grayling	Northern	
			King	Coho	Sockeye	Cutthroat	Rainbow	Steelhead	Lake			Pike	Sheefish
A	Lakes	63	0	0	0	0	0	0	0	0	0	0	0
A	Streams	568	0	86	0	0	0	0	0	11	0	0	0
B	Other Lakes	30	0	54	0	0	0	0	0	0	0	0	0
B	Other Streams	139	0	37	8	0	0	0	0	15	0	0	0
B	Thorne River and Lake	42	0	13	0	0	0	0	0	10	0	0	0
C	Streams	201	0	13	2	0	0	0	0	1	0	0	0
D	Baranof Island Lakes and Streams	762	0	57	4	2	5	0	0	13	0	0	0
D	Chichagof Island Lakes and Streams	159	0	0	0	0	0	0	0	0	0	0	0
D	Nakwasina Sound Streams (Baranof Island)	86	0	0	0	0	0	0	0	0	0	0	0
D	Other Lakes and Streams	83	0	19	0	0	0	0	0	0	0	0	0
D	Politofski Creek (Baranof Island)	23	0	0	0	0	0	1	0	0	0	0	0
D	Salmon Creek (Baranof Island)	23	0	0	0	0	0	0	0	0	0	0	0
D	Sitkoh Creek and Lake (Chichagof Island)	42	0	0	0	0	0	0	0	0	0	0	0
E	Admiralty Island Streams (Admiralty Island)	583	0	0	0	0	0	0	0	6	0	0	0
E	Other Streams	926	0	26	0	0	0	0	0	57	0	0	0
G	Mud Bay Creek (Chichagof Island)	54	0	0	0	0	0	0	0	30	0	0	0
G	Other Streams	336	0	6	0	0	0	0	0	12	0	0	0
G	Trail River (Chichagof Island)	108	0	0	0	0	0	0	0	0	0	0	0
H	East Alsek River	409	0	557	202	0	0	0	0	0	0	0	0
H	Other Lakes and Streams	1,218	34	1,930	21	10	1	0	0	28	0	0	0
H	Situk River (above weir)	946	9	449	847	0	0	3	0	35	0	0	0
H	Situk River (below weir)	140	0	45	164	1	0	0	0	3	0	0	0
H	Tsiu River	1,646	0	3,931	0	0	0	0	0	0	0	0	0
	Other Lakes and Streams in Southeast	326	0	15	2	0	0	0	0	4	0	0	0
	Total Southeast	8,913	43	7,238	1,250	13	6	4	0	225	0	0	0

Note: Responses with less than 4 businesses are not reported separately, to protect confidentiality of respondents. Data are current as of 05/26/2011.

Appendix G7.—Freshwater logbook angler days and species kept by area and site, Southcentral Alaska, 2010.

Area	Site	Angler	Salmon			Trout				Dolly	Northern		
		Days	King	Coho	Sockeye	Cutthroat	Rainbow	Steelhead	Lake	Varden	Grayling	Pike	Sheefish
J	Delight Lake	52	0	134	0	0	0	0	0	2	0	0	0
J	Eyak River	192	0	345	72	0	0	0	0	1	0	0	0
J	Other Lakes and Streams	162	0	211	0	1	0	0	0	5	0	0	0
K	Lakes and Streams	1,366	146	1,143	5	0	8	0	0	0	0	0	0
M	Alexander Lake	28	0	0	0	0	0	0	0	0	0	60	0
M	Chulitna River	102	3	0	0	0	0	0	0	0	0	0	0
M	Chunilna Creek (Clear Creek)	249	7	65	2	0	1	0	0	0	0	0	0
M	Deshka River (Kroto Creek)	1,149	450	608	0	0	15	0	0	0	0	7	0
M	Fish Lake Creek and Fish Lakes (Yentna Drainage)	100	5	40	16	0	0	0	0	0	0	145	0
M	Indian Creek (into Yentna near Fish Lakes)	434	17	808	12	0	1	0	0	0	0	13	0
M	Lake Creek	3,863	524	1,930	174	0	27	0	0	0	1	4	0
M	Little Willow Creek	97	0	85	0	0	6	0	0	0	0	0	0
M	Montana Creek	19	0	1	0	0	0	0	0	0	0	0	0
M	Other Lakes - Chulitna/East Susitna Drainage	41	0	3	20	0	0	0	1	0	18	0	0
M	Other Streams - Chulitna / East Susitna Drainage	237	92	38	0	0	6	0	0	0	0	0	0
M	Other Lakes and Streams - West Susitna Drainage	256	33	188	2	0	1	0	0	0	0	0	0
M	Talachulitna Creek	103	4	24	61	0	0	0	0	2	0	0	0
M	Talachulitna River	1,476	227	541	190	0	0	0	0	14	3	0	0
M	Talkeetna River	644	121	141	376	0	0	0	0	0	0	0	0
M	Willow Creek	98	0	0	0	0	0	0	0	0	0	0	0
M	Yentna River	219	43	121	1	0	0	0	0	0	0	0	0
M	Yentna River Drainage (Remainder)	2,817	160	1,389	199	0	4	0	2	1	9	10	0
N	Big River	280	0	462	284	0	0	0	0	0	0	0	0
N	Big River Lakes	2,616	0	4,726	2,112	0	0	0	0	10	0	0	0
N	Chuitna River	125	2	165	1	0	0	0	0	1	0	0	0
N	Coal Creek (into Beluga Lake)	52	9	45	20	0	0	0	0	5	0	0	0
N	Crescent Lake	372	0	120	564	0	0	0	2	55	59	0	0
N	Kamishak River	223	0	333	0	0	0	0	0	12	0	0	0
N	Kustatan River	914	6	2,421	57	0	0	0	0	13	0	0	0
N	Other Sites (South of N Forelands)	400	0	565	16	0	0	0	0	44	0	0	0
N	Other Sites between N Forelands and Susitna Drainage	20	0	6	0	0	0	0	0	0	0	7	0

-continued-

Appendix G6.--Page 2 of 4.

Area	Site	Angler	Salmon			Trout				Dolly	Northern		
		Days	King	Coho	Sockeye	Cutthroat	Rainbow	Steelhead	Lake	Varden	Grayling	Pike	Sheefish
N	Wolverine Creek mouth (by Big River Lakes)	1,953	0	887	3,481	0	0	0	0	2	0	0	0
P	Anchor River	120	3	7	0	0	0	0	0	4	0	0	0
P	Deep Creek	179	1	81	0	0	0	0	0	59	0	0	0
P	Kasilof River reach not specified	63	18	3	0	0	0	0	0	1	0	0	0
P	Kasilof River above Highway	154	12	67	20	0	1	0	0	3	0	0	0
P	Kasilof River below Highway	5,836	1,920	763	119	0	35	0	0	65	0	0	0
P	Kenai River - Cook Inlet to Soldotna Bridge	20,470	2,697	7,273	1,210	0	34	0	0	68	0	0	0
P	Kenai River - reach not specified	373	34	65	100	0	5	0	0	6	0	0	0
P	Kenai River - Moose River to Skilak outlet	3,882	133	1,793	2,842	0	39	0	1	47	0	0	0
P	Kenai River - Skilak Inlet to Kenai Lake	6,932	0	228	2,784	0	42	0	0	56	0	0	0
P	Kenai River - Soldotna Bridge to Moose River	2,912	675	480	985	0	16	0	0	10	0	0	0
P	Ninilchik River	149	17	30	0	0	0	0	0	0	0	0	0
P	Other Lakes	102	0	0	0	0	2	0	3	0	8	0	0
P	Other Streams	267	2	152	9	0	0	0	0	2	1	0	0
P	Quartz Creek	76	0	0	0	0	0	0	0	1	0	0	0
P	Russian River	182	0	4	133	0	0	0	0	0	0	0	0
Q	Afognak River (Litnik Stream)	112	0	210	80	0	0	0	0	0	0	0	0
Q	American River	55	4	3	0	0	0	0	0	12	0	0	0
Q	Ayakulik River (sometimes called Red River)	359	0	199	44	0	0	0	0	25	0	0	0
Q	Dog Salmon Creek (Frazer River)	435	0	306	782	0	1	0	0	64	0	0	0
Q	Karluk Lagoon and River below weir ^a	161	0	96	57	0	0	0	0	75	0	0	0
Q	Karluk Lake and River above weir	175	0	4	7	0	0	2	0	31	0	0	0
Q	Olds River	58	1	12	0	0	0	0	0	5	0	0	0
Q	Other remote Streams	785	2	659	552	0	0	7	0	66	0	0	0
Q	Roadside lakes	122	0	15	0	0	0	0	0	29	0	0	0
Q	Roadside streams	241	0	50	4	0	0	0	0	26	0	0	0
Q	Saltery River	1,362	0	227	1,305	0	0	0	0	168	2	0	0
Q	Uganik River	270	0	31	7	0	1	0	0	2	0	0	0
Q	Zachar Bay streams	62	0	82	0	0	0	0	0	7	0	0	0
R	American Creek	1,273	0	0	0	0	1	0	1	48	0	0	0
R	Becharof System	165	2	27	10	0	0	0	0	9	1	0	0

-continued-

Appendix G6.--Page 3 of 4.

Area	Site	Angler Days	Salmon			Trout				Dolly		Northern	
			King	Coho	Sockeye	Cutthroat	Rainbow	Steelhead	Lake	Varden	Grayling	Pike	Sheefish
R	Brooks Lake	35	0	0	0	0	0	0	0	0	0	0	0
R	Brooks River	751	1	0	8	0	5	0	0	0	0	0	0
R	Contact Creek	123	0	0	0	0	1	0	0	36	7	0	0
R	Egegik River (Becharof System)	427	0	1,071	120	0	0	0	1	8	0	0	0
R	Naknek River ^b	448	155	213	120	0	0	0	0	0	0	0	0
R	Naknek River ^c	1,350	46	358	1,603	0	9	0	0	2	1	0	0
R	Naknek River and Tributaries	1,362	234	389	400	0	6	0	0	26	0	0	0
R	Other Lakes	197	15	137	164	0	0	0	29	27	0	0	0
R	Other Streams	2,493	443	1,357	772	0	0	0	0	42	0	0	0
R	Swikshak River	65	0	169	0	0	0	0	0	0	0	0	0
R	Ugashik System	302	4	58	3	0	0	0	0	14	0	0	0
S	Alagnak (Branch) River	2,868	246	609	2,522	0	14	0	31	7	24	0	0
S	Alexey Lake	19	0	0	0	0	0	0	0	0	0	1	0
S	Battle River	277	0	0	0	0	0	0	0	0	0	0	0
S	Copper River (Lake Iliamna Area)	975	0	9	79	0	0	0	0	0	0	0	0
S	Funnel Creek	105	0	0	0	0	0	0	0	0	0	0	0
S	Gibraltar River	168	0	0	10	0	0	0	0	0	0	0	0
S	Kijik Lake	35	0	0	0	0	0	0	1	0	0	0	0
S	Kukaklek River (Big Ku) (into Alagnak)	226	0	0	44	0	0	0	0	0	0	0	0
S	Kulik River	1,084	0	0	0	0	2	0	4	0	0	0	0
S	Kvichak River	2,658	3	599	2,363	0	39	0	0	11	13	0	0
S	Lake Clark	155	0	0	25	0	0	0	0	0	14	6	0
S	Lake Iliamna	339	0	9	163	0	0	0	0	0	0	0	0
S	Little Kulik (into Nanuktuk Creek)	47	0	0	16	0	0	0	0	0	0	0	0
S	Lower Talarik Creek	129	0	32	6	0	0	0	0	0	0	0	0
S	Moraine Creek	884	0	0	0	0	9	0	0	0	0	0	0
S	Nanuktuk Creek	139	0	0	0	0	0	0	0	0	0	0	0
S	Newhalen River	231	0	10	533	0	0	0	5	0	2	0	0
S	Nonvianuk Lake	44	0	0	0	0	0	0	1	0	0	0	0
S	Nonvianuk River (into Alagnak)	147	0	0	6	0	2	0	4	0	0	0	0
S	Other Lakes and Streams	50	0	0	1	0	0	0	0	0	0	0	0

-continued-

Appendix G6.—Page 4 of 4.

Area	Site	Angler	Salmon			Trout			Dolly	Northern		
		Days	King	Coho	Sockeye	Cutthroat	Rainbow	Steelhead	Lake	Varden	Grayling	Pike
S	Tazimina Lakes	32	0	0	0	0	0	0	0	0	0	0
S	Tazimina River	188	0	0	14	0	0	0	3	0	5	0
T	Agulowak River	858	0	5	1,127	0	5	0	0	3	10	2
T	Agulukpak River	411	0	0	3	0	0	0	0	0	0	2
T	Aleknagik Lake	88	0	2	54	0	0	0	0	4	0	0
T	Mulchatna River	104	0	55	1	0	5	0	0	2	8	0
T	Nushagak River - Black Point upstream to sonar site	1,817	605	243	18	0	8	0	0	3	0	0
T	Nushagak River - sonar site to outlet of Mulchatna	2,103	883	1,226	11	0	2	0	0	13	3	3
T	Nushagak River - upstream from mouth of Mulchatna R.	630	19	166	0	0	2	0	0	31	13	0
T	Nushagak River System ^d	192	15	0	20	0	2	0	0	17	2	0
T	Nuyakuk River (Tikchik-Nuyakuk Lake System)	285	0	33	23	0	0	0	1	1	12	3
T	Other Lakes and Streams	607	38	183	31	0	0	0	3	2	0	0
T	Togiak River System	873	477	597	2	0	1	0	0	16	0	0
T	Wood River	135	0	34	154	0	1	0	0	6	0	0
T	Wood River Lakes System	321	0	12	10	0	0	0	0	0	15	2
	Other Lakes and Streams in Southcentral	142	2	97	5	0	0	0	0	15	0	0
	Total Southcentral	94,910	10,556	38,085	29,146	1	359	9	93	1,342	231	265

Note: Responses with less than 4 businesses are not reported separately, to protect confidentiality of respondents. Data are current as of 05/26/2011.

- ^a Karluk Lagoon and River below weir (to .5 mile above lagoon).
- ^b Naknek River (downstream from Rapids Camp, including tributaries).
- ^c Naknek River (Rapids Camp upstream to Naknek Lake, including tributaries).
- ^d Nushagak River System (including Harris Creek and King Salmon River).

Appendix G8.—Freshwater logbook angler days and species kept by area and site, AYK Alaska, 2010.

Area	Site	Angler Days	Salmon			Trout				Dolly Varden	Northern		
			King	Coho	Sockeye	Cutthroat	Rainbow	Steelhead	Lake		Grayling	Pike	Sheefish
I	Copper River	108	82	1	21	0	0	0	0	0	0	0	0
I	Gulkana River (Highway to Copper River)	151	60	0	7	0	0	0	0	0	0	0	0
I	Gulkana River (West Fork to Highway)	257	125	0	7	0	0	0	0	0	0	0	0
I	Klutina River	1,286	563	0	356	0	1	0	0	184	6	0	0
I	Other Streams	68	18	0	0	0	0	0	0	0	0	0	0
U	Other Lakes	70	0	0	0	0	10	0	0	1	41	124	0
U	Other Streams	1,031	6	95	0	0	0	0	0	0	2	0	0
V	Aniak River	630	10	47	3	0	0	0	0	24	4	12	5
V	Goodnews River	862	76	552	63	0	6	0	0	39	0	0	0
V	Holitna River	400	76	33	0	0	0	0	0	50	2	14	19
V	Kanektok River (Quinhagak, Chosen)	1,830	163	598	210	0	1	0	0	42	11	0	0
V	Kuskokwim River drainages below Aniak R ^a	645	6	14	0	0	0	0	0	10	21	0	0
V	Other Lakes and Streams	134	0	1	1	0	0	0	0	1	0	0	0
V	Other Streams - Kuskokwim drainages above Aniak R.	57	0	14	0	0	0	0	1	0	0	2	0
W	Streams	549	36	559	0	0	0	0	0	151	6	0	0
Y	Lakes and Streams	1,119	74	238	0	0	0	0	0	20	133	24	7
	Other Lakes and Streams in AYK	219	0	0	0	0	0	0	0	202	0	0	34
	Total AYK	9,416	1,295	2,152	668	0	18	0	1	724	226	176	65

Note: Responses with less than 4 businesses are not reported separately, to protect confidentiality of respondents. Data are current as of 05/26/2011.

^a Kuskokwim River drainages below Aniak River; includes drainages of the Aniak River.

Appendix G9.—Freshwater logbook angler days and species kept by region, Statewide, 2010.

Region	Angler	Salmon			Trout				Dolly	Northern		
	Days	King	Coho	Sockeye	Cutthroat	Rainbow	Steelhead	Lake	Varden	Grayling	Pike	Sheefish
Southeast	8,913	43	7,238	1,250	13	6	4	0	225	0	0	0
Southcentral	94,910	10,556	38,085	29,146	1	359	9	93	1,342	231	265	0
Arctic-Yukon-Kuskokwim	9,416	1,295	2,152	668	0	18	0	1	724	226	176	65
Total	113,239	11,894	47,475	31,064	14	383	13	94	2,291	457	441	65

Note: Data are current as of 05/26/2011.

Appendix G10.—Freshwater logbook angler days and species released by area and site, Southeast Alaska, 2010.

Area	Site	Angler Days	Salmon			Trout				Dolly Varden	Northern		
			King	Coho	Sockeye	Cutthroat	Rainbow	Steelhead	Lake		Grayling	Pike	Sheefish
A	Lakes	63	0	0	0	550	1	0	0	0	0	0	0
A	Streams	568	0	58	1	102	297	4	0	120	0	0	0
B	Other Lakes	30	0	26	38	5	1	0	0	60	0	0	0
B	Other Streams	139	2	11	37	10	4	2	0	306	0	0	0
B	Thorne River and Lake	42	0	1	0	13	4	1	0	49	0	0	0
C	Streams	201	39	103	33	94	14	59	0	171	0	0	0
D	Baranof Island Lakes and Streams	762	0	11	1	263	130	7	0	2,011	0	0	0
D	Chichagof Island Lakes and Streams	159	0	15	0	41	0	12	0	944	0	0	0
D	Nakwasina Sound Streams (Baranof Island)	86	0	0	0	0	0	0	0	312	0	0	0
D	Other Lakes and Streams	83	0	10	0	5	121	11	0	205	0	0	0
D	Politofski Creek (Baranof Island)	23	0	0	0	0	9	11	0	4	0	0	0
D	Salmon Creek (Baranof Island)	23	0	0	0	19	64	4	0	63	0	0	0
D	Sitkoh Creek and Lake (Chichagof Island)	42	0	0	0	246	127	0	0	79	0	0	0
E	Admiralty Island Streams (Admiralty Island)	583	0	4	0	11	0	1	0	2,832	0	0	0
E	Other Streams	926	1	49	0	20	0	11	0	3,714	0	0	0
G	Mud Bay Creek (Chichagof Island)	54	0	2	0	1	0	0	0	674	0	0	0
G	Other Streams	336	0	34	3	98	0	0	0	1,476	0	0	0
G	Trail River (Chichagof Island)	108	0	39	0	1	0	0	0	93	0	0	0
H	East Alsek River	409	0	2,890	220	0	0	0	0	0	0	0	0
H	Other Lakes and Streams	1,218	5	5,957	8	88	0	251	0	131	0	0	0
H	Situk River (above weir)	946	0	481	832	0	2	1,378	0	71	0	0	0
H	Situk River (below weir)	140	0	28	59	0	0	46	0	19	0	0	0
H	Tsiu River	1,646	0	26,626	0	0	0	1	0	14	0	0	0
	Other Lakes and Streams in SE	326	0	0	80	0	0	0	0	158	0	0	0
	SE Total	8,913	47	36,345	1,312	1,567	774	1,799	0	13,506	0	0	0

Note: Responses with less than 4 businesses are not reported separately, to protect confidentiality of respondents. Data are current as of 05/26/2011.

Appendix G11.—Freshwater logbook angler days and species released by area and site, Southcentral Alaska, 2010.

Area	Site	Angler Days	Salmon			Trout				Dolly		Northern	
			King	Coho	Sockeye	Cutthroat	Rainbow	Steelhead	Lake	Varden	Grayling	Pike	Sheefish
J	Delight Lake	52	0	4	0	0	0	0	0	2	0	0	0
J	Eyak River	192	0	269	18	2	0	0	0	326	0	0	0
J	Other Lakes and Streams	162	0	185	0	64	0	0	0	38	0	0	0
K	Lakes and Streams	1,366	14	43	3	0	63	0	0	3	1	0	0
M	Alexander Lake	28	0	0	0	0	0	0	0	0	0	557	0
M	Chulitna River	102	0	0	21	0	371	0	0	0	40	0	0
M	Chunilna Creek (Clear Creek)	249	13	192	5	0	24	0	0	17	36	0	0
M	Deshka River (Kroto Creek)	1,149	83	87	0	0	62	0	0	0	1	28	0
M	Fish Lake Creek and Fish Lakes (Yentna Drainage)	100	1	11	8	0	0	0	0	1	0	32	0
M	Indian Creek (into Yentna near Fish Lakes)	434	49	79	0	0	7	0	0	0	0	4	0
M	Lake Creek	3,863	748	1,215	232	0	4,321	0	0	8	1,129	10	0
M	Little Willow Creek	97	0	7	0	0	35	0	0	1	1	0	0
M	Montana Creek	19	0	1	0	0	30	0	0	0	2	0	0
M	Other Lakes - Chulitna/East Susitna Drainage	41	0	0	11	0	11	0	3	3	63	0	0
M	Other Streams - Chulitna / East Susitna Drainage	237	39	117	0	0	46	0	0	1	326	0	0
M	Other Lakes and Streams - West Susitna Drainage	256	61	356	2	0	36	0	0	19	48	0	0
M	Talachulitna Creek	103	10	126	163	0	99	0	0	50	47	1	0
M	Talachulitna River	1,476	567	710	96	0	767	0	0	365	353	4	0
M	Talkeetna River	644	88	132	254	0	37	0	0	22	28	0	0
M	Willow Creek	98	0	1	0	0	1,019	0	0	4	70	0	0
M	Yentna River	219	35	75	1	0	8	0	0	1	0	12	0
M	Yentna River Drainage (Remainder)	2,817	598	2,444	279	0	3,429	0	16	1,113	834	33	0
N	Big River	280	0	56	433	0	0	0	0	2	0	0	0
N	Big River Lakes	2,616	0	936	2,690	0	1	0	0	41	0	0	0
N	Chuitna River	125	16	189	0	0	115	0	0	11	0	0	0
N	Coal Creek (into Beluga Lake)	52	2	34	6	0	8	0	0	16	10	0	0
N	Crescent Lake	372	7	18	151	0	10	0	25	834	347	0	0
N	Kamishak River	223	0	473	14	0	2	4	0	780	14	0	0
N	Kustatan River	914	0	506	81	0	0	0	0	209	0	0	0
N	Other Sites (South of North Forelands)	400	1	729	6	0	0	0	16	664	0	0	0
N	Other Sites between N. Forelands and Susitna Drainage	20	0	0	0	0	19	0	5	30	1	126	0

-continued-

Appendix G10.--Page 2 of 4.

Area	Site	Angler	Salmon			Trout				Dolly		Northern	
		Days	King	Coho	Sockeye	Cutthroat	Rainbow	Steelhead	Lake	Varden	Grayling	Pike	Sheefish
N	Wolverine Creek mouth (by Big River Lakes)	1,953	0	252	2,862	0	0	0	0	0	0	0	0
P	Anchor River	120	11	14	0	0	2	36	0	332	0	0	0
P	Deep Creek	179	21	7	0	0	3	22	0	165	0	0	0
P	Kasilof River reach not specified	63	11	0	0	0	0	4	0	7	0	0	0
P	Kasilof River above Highway	154	7	5	0	0	10	1	0	68	0	0	0
P	Kasilof River below Highway	5,836	1,143	40	8	0	48	116	1	717	0	0	0
P	Kenai River - Cook Inlet to Soldotna Bridge	20,470	1,008	323	231	0	4,392	0	0	3,035	0	0	0
P	Kenai River - reach not specified	373	5	0	30	0	613	0	0	466	0	0	0
P	Kenai River - Moose River to Skilak outlet	3,882	62	267	1,181	0	15,638	0	0	10,674	31	8	0
P	Kenai River - Skilak Inlet to Kenai Lake	6,932	6	151	2,367	0	22,673	0	58	21,218	10	0	0
P	Kenai River - Soldotna Bridge to Moose River	2,912	309	40	156	0	3,089	0	0	654	0	0	0
P	Ninilchik River	149	144	2	0	0	1	2	0	32	0	0	0
P	Other Lakes	102	0	0	0	0	354	0	0	6	92	0	0
P	Other Streams	267	0	819	0	0	254	5	0	313	18	0	0
P	Quartz Creek	76	0	0	10	0	64	0	0	791	7	0	0
P	Russian River	182	0	1	105	0	325	0	0	87	0	0	0
Q	Afognak River (Litnik Stream)	112	0	26	9	0	9	2	0	6	0	0	0
Q	American River	55	5	0	0	0	0	0	0	89	0	0	0
Q	Ayakulik River (sometimes called Red River)	359	161	1,401	351	0	0	62	0	687	0	0	0
Q	Dog Salmon Creek (Frazer River)	435	1	149	701	0	11	2	0	248	0	0	0
Q	Karluk Lagoon and River ^a	161	12	51	62	0	0	4	0	291	0	0	0
Q	Karluk Lake and River above Weir	175	0	145	65	0	0	661	0	1,803	0	0	0
Q	Olds River	58	4	13	0	0	0	0	0	16	0	0	0
Q	Other Remote Streams	785	27	562	820	0	63	51	0	438	0	0	0
Q	Roadside Lakes	122	0	26	7	0	2	0	0	485	0	0	0
Q	Roadside Streams	241	0	64	12	0	1	0	0	139	0	37	0
Q	Saltery River	1,362	1	82	919	6	25	0	0	4,470	2	0	0
Q	Uganik River	270	1	197	3	0	172	4	0	2,483	0	0	0
Q	Zachar Bay Streams	62	0	26	0	0	0	0	0	76	0	0	0
R	American Creek	1,273	0	0	76	0	5,154	0	3	15,610	255	1	0
R	Becharof System	165	5	34	85	0	150	0	0	1,508	300	4	0

-continued-

Appendix G10.—Page 3 of 4.

Area	Site	Angler	Salmon			Trout				Dolly	Northern		
		Days	King	Coho	Sockeye	Cutthroat	Rainbow	Steelhead	Lake	Varden	Grayling	Pike	Sheefish
R	Brooks Lake	35	0	0	1	0	185	0	12	0	0	4	0
R	Brooks River	751	0	5	929	0	4,071	11	2	47	5	1	0
R	Contact Creek	123	29	1	6	0	128	0	0	886	537	0	0
R	Egegik River (Becharof System)	427	1	1,384	80	0	1	0	0	21	0	0	0
R	Naknek River ^b	448	220	197	74	0	144	0	0	33	2	0	0
R	Naknek River ^c	1,350	303	365	1,557	0	4,592	0	1	913	178	36	30
R	Naknek River and Tributaries	1,362	270	173	223	0	2,539	0	752	3,503	719	70	0
R	Other Lakes	197	0	159	110	0	213	0	7	188	0	20	0
R	Other Streams	2,493	1,655	6,033	1,168	0	514	26	0	3,671	43	0	0
R	Swikshak River	65	0	248	0	0	0	0	0	0	0	0	0
R	Ugashik System	302	74	339	137	0	0	0	10	2,215	183	0	0
S	Alagnak (Branch) River	2,868	1,424	1,065	2,841	0	2,461	0	242	199	858	11	0
S	Alexey Lake	19	0	0	0	0	9	0	0	0	52	43	0
S	Battle River	277	0	0	253	0	1,102	0	2	4	81	0	0
S	Copper River (Lake Iliamna Area)	975	0	2	576	0	6,904	0	0	19	7	75	0
S	Funnel Creek	105	0	0	31	0	827	0	1	22	3	0	0
S	Gibraltar River	168	1	0	72	0	1,040	0	0	5	10	0	0
S	Kijik Lake	35	0	0	0	0	0	0	35	36	119	0	0
S	Kukaklek River (Big Ku) (into Alagnak)	226	0	0	21	0	1,346	0	13	5	23	4	0
S	Kulik River	1,084	0	0	253	0	11,932	0	423	10	18	0	0
S	Kvichak River	2,658	22	636	5,437	0	6,342	0	0	134	2,221	366	0
S	Lake Clark	155	0	0	14	0	4	0	88	67	583	307	0
S	Lake Iliamna	339	0	20	401	0	1,266	0	0	2,018	4	0	0
S	Little Kulik (into Nanuktuk Creek)	47	0	0	27	0	272	0	0	44	0	0	0
S	Lower Talarik Creek	129	0	32	85	0	665	0	0	0	13	0	0
S	Moraine Creek	884	0	0	403	0	7,449	0	8	21	312	0	0
S	Nanuktuk Creek	139	0	0	76	0	1,372	0	0	234	36	0	0
S	Newhalen River	231	0	2	265	0	203	0	89	8	290	0	0
S	Nonvianuk Lake	44	0	0	1	0	111	0	206	0	0	0	0
S	Nonvianuk River (into Alagnak)	147	8	0	33	1	980	0	252	2	1	0	0
S	Other Lakes and Streams	50	0	0	13	0	470	0	0	93	70	50	0

-continued-

Appendix G10.—Page 4 of 4.

Area	Site	Angler	Salmon			Trout				Dolly		Northern	
		Days	King	Coho	Sockeye	Cutthroat	Rainbow	Steelhead	Lake	Varden	Grayling	Pike	Sheefish
S	Tazimina Lakes	32	0	0	0	0	77	0	0	5	72	0	0
S	Tazimina River	188	0	1	37	0	705	0	2	48	864	0	0
T	Agulowak River	858	0	32	1,079	0	2,505	0	0	902	1,580	193	1
T	Agulukpak River	411	0	0	54	0	1,479	0	0	56	548	580	0
T	Aleknagik Lake	88	0	5	8	0	7	0	0	212	0	120	0
T	Mulchatna River	104	12	630	7	0	147	0	1	186	209	2	0
T	Nushagak River - Black Point upstream to Sonar Site	1,817	3,139	423	22	0	63	0	0	0	1	2	0
T	Nushagak River - sonar site to outlet of Mulchatna	2,103	2,322	2,291	3	0	12	0	0	8	79	6	0
T	Nushagak River - upstream from mouth of Mulchatna R.	630	42	178	11	0	2,344	0	0	2,391	1,782	0	0
T	Nushagak River System ^d	192	10	0	59	0	398	0	0	727	1,722	1	0
T	Nuyakuk River (Tikchik-Nuyakuk Lake System)	285	8	356	94	0	384	0	18	110	3,182	9	0
T	Other Lakes and Streams	607	323	1,233	125	0	339	0	669	176	610	103	0
T	Togiak River System	873	2,028	1,408	31	0	441	0	8	562	41	28	0
T	Wood River	135	0	8	65	0	17	0	0	190	10	1	0
T	Wood River Lakes System	321	0	1	326	0	313	0	0	319	346	751	0
	Other Lakes and Streams in SC	142	1	17	1	0	14	0	0	99	0	0	0
	SC Total	94,910	17,168	30,936	31,543	73	129,960	1,013	2,968	91,864	21,480	3,640	31

Note: Responses with less than 4 businesses are not reported separately, to protect confidentiality of respondents. Data are current as of 05/26/2011.

- ^a Karluk Lagoon and River below weir (to .5 mile above lagoon).
- ^b Naknek River (downstream from Rapids Camp, including tributaries).
- ^c Naknek River (Rapids Camp upstream to Naknek Lake, including tributaries).
- ^d Nushagak River System (including Harris Creek and King Salmon River).

Appendix G12.—Freshwater logbook angler days and species released by area and site, AYK Alaska, 2010.

Area	Site	Angler	Salmon			Trout				Dolly	Northern		
		Days	King	Coho	Sockeye	Cutthroat	Rainbow	Steelhead	Lake	Varden	Grayling	Pike	Sheefish
I	Copper River	108	247	0	5	0	0	0	0	0	0	0	0
I	Gulkana River (Highway to Copper River)	151	66	0	34	0	15	0	0	0	171	0	0
I	Gulkana River (West Fork to Highway)	257	139	0	14	0	35	0	0	0	38	0	0
I	Klutina River	1,286	924	0	117	0	25	0	0	91	28	0	0
I	Other Streams	68	30	0	0	0	57	0	0	1	129	0	0
U	Other Lakes	70	0	0	0	0	12	0	3	0	142	267	0
U	Other Streams	1,031	31	54	0	0	0	0	0	0	5,930	51	0
V	Aniak River	630	443	492	30	0	2,388	0	0	4,947	1,444	269	45
V	Goodnews River	862	339	3,937	93	0	649	0	2	3,017	259	0	0
V	Holitna River	400	173	32	66	0	0	0	0	622	690	1,365	175
V	Kanektok River (Quinhagak, Chosen)	1,830	612	1,600	767	0	2,606	0	1	5,282	769	11	0
V	Kuskokwim R. drainages below Aniak River ^a	645	35	295	14	0	2,309	0	0	2,722	2,045	4	3
V	Other Lakes and Streams	134	4	217	13	0	528	0	30	223	80	0	0
V	Other streams - Kuskokwim drainages above Aniak River	57	46	39	11	0	8	0	44	51	183	65	0
W	Streams	549	185	1,515	0	0	0	0	0	1,472	1,102	19	0
Y	Lakes and Streams	1,119	287	1,888	121	0	0	0	0	961	7,579	4,513	145
	Other Lakes and Streams in AYK	219	0	0	0	0	0	0	0	158	41	8	462
	AYK Total	9,416	3,561	10,069	1,285	0	8,632	0	80	19,547	20,630	6,572	830

Note: Responses with less than 4 businesses are not reported separately, to protect confidentiality of respondents. Data are current as of 05/26/2011.

^a Kuskokwim River drainages below Aniak River; includes drainages of the Aniak River.

Appendix G13.—Freshwater logbook angler days and species released by region, Statewide, 2010.

Region	Angler	Salmon			Trout				Dolly	Northern		
	Days	King	Coho	Sockeye	Cutthroat	Rainbow	Steelhead	Lake	Varden	Grayling	Pike	Sheefish
Southeast	8,913	47	36,345	1,312	1,567	774	1,799	0	13,506	0	0	0
Southcentral	94,910	17,168	30,936	31,543	73	129,960	1,013	2,968	91,864	21,480	3,640	31
Arctic-Yukon-Kuskokwim	9,416	3,561	10,069	1,285	0	8,632	0	80	19,547	20,630	6,572	830
Total	113,239	20,776	77,350	34,140	1,640	139,366	2,812	3,048	124,917	42,110	10,212	861

Note: Data are current as of 05/26/2011.

APPENDIX H
SALTWATER LOGBOOK SUMMARIES BY AREA

Appendix H1.—Saltwater logbook salmon participation, effort, kept and released by area and port of offloading, Southeast Alaska, 2010.

Area	Port of Offloading	Businesses ^a	Vessels ^a	Trips	Angler Days	King				Coho Kept	Sockeye Kept	Other Salmon Kept
						Large		Small				
						Kept	Released	Kept	Released			
A	Clover Pass	5	6	116	481	65	1	0	21	1,132	14	919
A	Ketchikan	71	91	4,143	16,444	1,533	154	325	1,703	8,578	44	15,744
A	Knudson Cove	18	19	865	3,731	219	34	24	556	1,589	22	3,561
A	Salmon Falls	5	13	205	663	130	54	2	120	1,132	1	970
A	Other	11	23	664	1,464	213	31	34	301	1,650	9	1,367
B	Coffman Cove	6	7	156	645	30	5	4	37	656	0	26
B	Craig	30	56	1,330	4,457	1,655	199	58	74	7,660	10	538
B	Klawock	9	18	435	1,352	349	23	21	47	2,193	12	309
B	Thorne Bay	8	11	293	1,039	52	17	2	111	1,044	2	882
B	Whale Pass	4	6	37	141	0	0	0	0	21	0	6
B	Other	24	67	3,081	12,528	3,426	342	52	776	15,218	38	4,496
C	Kake	4	4	27	128	0	0	0	0	22	0	0
C	Petersburg	29	36	686	2,503	172	17	9	23	598	0	100
C	Wrangell	11	11	189	748	88	8	2	41	143	0	11
D	Port Alexander	7	8	133	462	90	25	3	4	250	150	55
D	Sitka	95	156	7,296	29,721	16,044	3,757	147	1,157	35,862	196	4,434
D	Other	9	20	411	1,311	235	44	2	98	1,753	0	364
E	Angoon	5	11	245	935	119	11	3	28	1,768	0	358
E	Auke Bay	30	39	1,844	7,849	337	39	46	188	2,469	21	2,183
E	Juneau	21	34	389	1,333	41	6	3	34	373	3	156
E	Other	10	22	766	3,108	104	21	13	75	1,473	8	1,301
F1	Skagway	5	5	359	1,325	157	60	5	822	1	0	5
G	Bartlett Cove	9	12	67	266	14	6	0	1	31	3	39
G	Elfin Cove	16	29	1,122	4,306	823	148	6	89	3,695	5	925
G	Gustavus	15	27	1,326	5,372	322	61	7	74	1,914	158	975
G	Hoonah	17	19	346	1,612	11	8	8	7	115	0	91
G	Pelican	5	9	210	716	231	47	12	27	686	2	21
G	Other	7	8	180	2,708	134	49	3	45	2,260	35	3,613
H	Yakutat	7	11	646	2,643	111	14	4	6	2,361	4	28
	Other Southeast	5	8	253	920	53	8	0	248	209	0	41
	Total Southeast	373	644	27,820	110,911	26,758	5,189	795	6,713	96,856	737	43,518

Note: Participation (number of businesses, vessels, trips and angler days) was determined by number of trips, not targeted species. Responses with less than 4 businesses are not reported separately, to protect confidentiality of respondents. Data are current as of 05/25/2011.

^a Business and vessel regional and total counts are not additive as they can offload at multiple ports.

Appendix H2.—Saltwater logbook salmon participation, effort, kept, and released by area and port of offloading, Southcentral Alaska, 2010.

Area	Port of Offloading	Businesses ^a	Vessels ^a	Trips	Angler Days	King				Coho Kept	Sockeye Kept	Other Salmon Kept
						Large		Small				
						Kept	Released	Kept	Released			
J	Chenega Bay	5	5	46	224	1	0	1	0	155	0	28
J	Cordova	5	5	84	363	2	0	1	0	66	0	44
J	Port Ashton	5	5	17	101	4	0	2	0	142	0	3
J	Valdez	38	42	1,232	6,618	30	10	13	3	8,139	96	192
J	Whittier	25	27	684	3,819	0	0	4	1	1,428	100	276
N	Other	4	5	46	185	0	0	0	0	0	0	0
P	Anchor Point	38	41	1,502	8,443	132	11	27	10	171	5	93
P	Deep Creek	69	93	3,197	18,663	200	11	25	11	53	1	15
P	Homer	118	134	5,637	43,252	1,855	75	442	46	2,927	284	1,342
P	Ninilchik	20	24	443	2,369	49	1	11	13	9	0	3
P	Seldovia	7	7	110	489	13	1	4	1	20	1	39
P	Other	11	23	372	1,230	112	3	3	1	231	5	3
P	Seward	73	110	4,423	36,167	601	51	140	48	40,323	302	2,194
Q	Anton Larsen Bay	4	4	8	30	9	0	0	0	8	0	6
Q	Kodiak	34	36	1,041	5,185	859	18	158	7	1,759	83	421
Q	Larsen Bay	8	15	461	1,725	155	85	76	32	2,747	6	27
Q	Port Lions	9	12	213	855	146	3	23	0	742	21	145
Q	Raspberry Island	5	5	79	307	69	4	37	4	142	0	11
Q	Ugak Bay	4	5	69	287	3	0	5	0	148	0	3
Q	Other	29	43	867	3,092	282	16	142	149	3,011	188	178
R	Other	11	15	178	604	2	0	0	0	97	7	5
	Other Southcentral	4	8	213	1,135	1	0	3	0	665	137	526
	Total Southcentral	403	528	20,922	135,143	4,525	289	1,117	326	62,983	1,236	5,554

Note: Participation (number of businesses, vessels, trips and angler days) was determined by number of trips, not targeted species. Responses with less than 4 businesses are not reported separately, to protect confidentiality of respondents. Data are current as of 05/25/2011.

^a Business and vessel regional and total counts are not additive as they can offload at multiple ports.

Appendix H3.—Saltwater logbook salmon participation, effort, kept and released by region, statewide, 2010.

Region	Businesses ^a	Vessels ^a	Trips	Angler Days	King				Coho Kept	Sockeye Kept	Other Salmon Kept
					Large		Small				
					Kept	Released	Kept	Released			
SE	373	644	27,820	110,911	26,758	5,189	795	6,713	96,856	737	43,518
SC	403	528	20,922	135,143	4,525	289	1,117	326	62,983	1,236	5,554
Total	776	1,172	48,742	246,054	31,283	5,478	1,912	7,039	159,839	1,973	49,072

Note: Participation (number of businesses, vessels, trips and angler days) was determined by number of trips, not targeted species. Responses with less than 4 businesses are not reported separately, to protect confidentiality of respondents. Data are current as of 05/25/2011.

^a Business and vessel regional and total counts are not additive as they can offload at multiple ports.

Appendix H4.—Saltwater logbook bottomfish participation, effort, kept and released by area and port of offloading, Southeast Alaska, 2010.

Area	Port of Offloading	Businesses ^a	Vessels ^a	Trips	Angler Days	Rockfish											
						Halibut		Lingcod		Pelagic		Yelloweye		Non-Pelagic		Sablefish	Shark
						Kept	Released	Kept	Released	Kept	Released	Kept	Released	Kept	Released	Kept	Kept
A	Clover Pass	5	6	116	481	399	59	11	3	184	2	56	0	41	0	0	0
A	Ketchikan	71	91	4,143	16,444	3,001	1,269	100	259	1,046	284	1,163	92	3,271	321	28	0
A	Knudson Cove	18	19	865	3,731	210	35	4	9	23	36	20	1	41	0	1	0
A	Salmon Falls	5	13	205	663	336	89	8	20	50	1	50	2	148	16	7	0
A	Other	11	23	664	1,464	374	49	19	9	233	11	114	1	303	20	7	0
B	Coffman Cove	6	7	156	645	523	305	11	7	21	0	48	0	147	2	4	0
B	Craig	30	56	1,330	4,457	2,905	1,094	490	411	3,545	218	1,287	27	1,433	245	28	3
B	Klawock	9	18	435	1,352	1,110	580	188	288	1,816	125	212	37	872	403	0	0
B	Thorne Bay	8	11	293	1,039	435	202	65	71	273	11	150	7	461	3	6	0
B	Whale Pass	4	6	37	141	91	81	0	0	6	0	1	0	14	0	0	0
B	Other	24	67	3,081	12,528	7,360	1,446	1,117	1,181	9,207	986	2,452	154	3,728	1,266	44	0
C	Kake	4	4	27	128	96	3	3	3	110	1	31	0	0	1	0	0
C	Petersburg	29	36	686	2,503	1,563	3,362	6	44	397	61	68	13	144	35	19	1
C	Wrangell	11	11	189	748	232	82	5	5	19	0	13	0	22	1	1	0
D	Port Alexander	7	8	133	462	219	142	26	79	195	33	88	2	38	4	26	0
D	Sitka	95	156	7,296	29,721	13,143	5,176	1,230	6,051	31,437	1,555	7,281	685	6,114	318	246	3
D	Other	9	20	411	1,311	650	459	7	54	236	441	116	11	231	9	0	0
E	Angoon	5	11	245	935	582	232	3	5	240	16	64	0	332	9	29	0
E	Auke Bay	30	39	1,844	7,849	2,069	1,678	7	18	648	8	58	5	745	20	1,675	0
E	Juneau	21	34	389	1,333	276	334	2	8	146	44	31	6	119	40	4	0
E	Other	10	22	766	3,108	1,997	940	57	112	2,887	21	366	17	609	29	1,756	0
F1	Skagway	5	5	359	1,325	5	1	0	0	1	0	0	0	0	16	0	0
G	Bartlett Cove	9	12	67	266	142	328	3	19	23	13	1	1	7	2	0	0
G	Elfin Cove	16	29	1,122	4,306	2,240	2,513	181	1,592	3,620	570	719	119	1,047	138	41	0
G	Gustavus	15	27	1,326	5,372	3,849	6,193	153	373	699	81	253	12	281	42	0	0
G	Hoonah	17	19	346	1,612	634	2,297	1	3	14	9	11	2	15	7	0	0
G	Pelican	5	9	210	716	314	223	18	22	191	22	113	7	43	4	0	0
G	Other	7	8	180	2,708	2,581	3,390	37	47	60	56	17	19	41	63	5	1
H	Yakutat	7	11	646	2,643	3,359	885	922	366	1,895	94	97	0	349	11	0	0
	Other Southeast	5	8	253	920	385	375	13	54	318	46	57	11	162	4	0	0
	Total Southeast	373	644	27,820	110,911	51,080	33,822	4,687	11,113	59,540	4,745	14,937	1,231	20,758	3,029	3,927	8

Note: Participation (number of businesses, vessels, trips and angler days) was determined by number of trips, not targeted species. Responses with less than 4 businesses are not reported separately, to protect confidentiality of respondents. Data are current as of 05/25/2011.

^a Business and vessel regional and total counts are not additive as they can offload at multiple ports.

Appendix H5.—Saltwater logbook bottomfish participation, effort, kept, and released by area and port of offloading, Southcentral Alaska, 2010.

Area	Port of Offloading	Businesses ^a	Vessels ^a	Trips	Angler Days	Rockfish											
						Halibut		Lingcod		Pelagic		Yelloweye		Non-Pelagic		Sablefish	Shark
						Kept	Released	Kept	Released	Kept	Released	Kept	Released	Kept	Released	Kept	Kept
J	Chenega Bay	5	5	46	224	367	0	23	4	407	14	15	0	20	4	0	0
J	Cordova	5	5	84	363	304	86	47	19	255	166	93	1	62	6	0	0
J	Port Ashton	5	5	17	101	144	73	31	9	104	0	12	0	4	2	0	0
J	Valdez	38	42	1,232	6,618	6,920	5,448	1,999	1,347	2,339	139	1,763	229	460	30	20	10
J	Whittier	25	27	684	3,819	4,497	3,269	571	307	689	191	568	13	482	17	16	1
N	Other	4	5	46	185	321	119	1	4	0	0	0	0	0	1	0	0
P	Anchor Point	38	41	1,502	8,443	16,035	18,442	316	209	218	15	111	3	69	13	0	0
P	Deep Creek	69	93	3,197	18,663	35,551	44,491	33	48	75	2	26	5	23	8	8	1
P	Homer	118	134	5,637	43,252	79,070	106,842	3,355	1,549	9,907	910	1,228	43	1,809	119	33	1
P	Ninilchik	20	24	443	2,369	4,389	5,475	61	35	14	8	37	2	21	1	0	0
P	Seldovia	7	7	110	489	877	1,073	34	8	11	9	33	2	1	0	0	0
P	Other	11	23	372	1,230	1,945	4,671	1	8	12	0	3	1	0	0	0	0
P	Seward	73	110	4,423	36,167	47,274	22,000	5,489	2,216	25,644	1,523	4,722	83	3,642	287	74	3
Q	Anton Larsen Bay	4	4	8	30	49	19	2	0	40	19	0	0	0	0	0	0
Q	Kodiak	34	36	1,041	5,185	7,133	3,902	1,423	160	8,518	952	435	7	2,435	134	0	0
Q	Larsen Bay	8	15	461	1,725	2,391	6,102	57	90	695	145	268	18	118	28	0	0
Q	Port Lions	9	12	213	855	989	272	43	12	357	36	11	0	13	0	1	0
Q	Raspberry Island	5	5	79	307	392	410	10	3	88	47	2	0	0	0	0	0
Q	Ugak Bay	4	5	69	287	165	85	6	6	321	786	3	0	16	76	0	0
Q	Other	29	43	867	3,092	2,760	3,220	714	433	1,332	1,666	279	14	389	347	0	3
R	Other	11	15	178	604	849	831	26	1	101	61	8	1	58	17	1	0
	Other Southcentral	4	8	213	1,135	965	257	92	43	1,183	19	538	38	87	13	0	0
	Total Southcentral	403	528	20,922	135,143	213,387	227,087	14,334	6,511	52,310	6,708	10,155	460	9,709	1,103	153	19

Note: Participation (number of businesses, vessels, trips and angler days) was determined by number of trips, not targeted species. Responses with less than 4 businesses are not reported separately, to protect confidentiality of respondents. Data are current as of 05/25/2011.

^a Business and vessel regional and total counts are not additive as they can offload at multiple ports.

Appendix H6.—Saltwater logbook bottomfish participation, effort, kept, and released by region, statewide, 2010.

Region	Businesses ^a	Vessels ^a	Trips	Angler Days	Rockfish											
					Halibut		Lingcod		Pelagic		Yelloweye		Non-Pelagic		Sablefish	Shark
					Kept	Released	Kept	Released	Kept	Released	Kept	Released	Kept	Released	Kept	Kept
SE	373	644	27,820	110,911	51,080	33,822	4,687	11,113	59,540	4,745	14,937	1,231	20,758	3,029	3,927	8
SC	403	528	20,922	135,143	213,387	227,087	14,334	6,511	52,310	6,708	10,155	460	9,709	1,103	153	19
Total	776	1,172	48,742	246,054	264,467	260,909	19,021	17,624	111,850	11,453	25,092	1,691	30,467	4,132	4,080	27

Note: Participation (number of businesses, vessels, trips and angler days) was determined by number of trips, not targeted species. Responses with less than 4 businesses are not reported separately, to protect confidentiality of respondents. Data are current as of 05/25/2011.

^a Business and vessel regional and total counts are not additive as they can offload at multiple ports.