

**3/26/12
EDUCATION
OVERVIEW:
ACCOUNTABILITY
AND
RESPONSIBIL-
ITIES**

<TARGET><BILL></BILL><SUBJECT>3-26-12 EDUCATION OVERVIEW
ACCOUNTABILITY AND
RESPONSIBILITIES</SUBJECT><COMM>HFIN27</COMM></TARGET>

Alaska State Legislature
HOUSE FINANCE COMMITTEE

Agenda
1:30PM

Monday, March 26, 2012

Education Overview:

Accountability & Responsibilities

Standards, Testing, Graduation Rates

Moore Case Settlement Update

*Commissioner Michael Hanley, Department of Education & Early
Development*

Karen Rehfeld, Director of the Office of Management and Budget

*Ms. ~~Attlesman~~
noodleman*

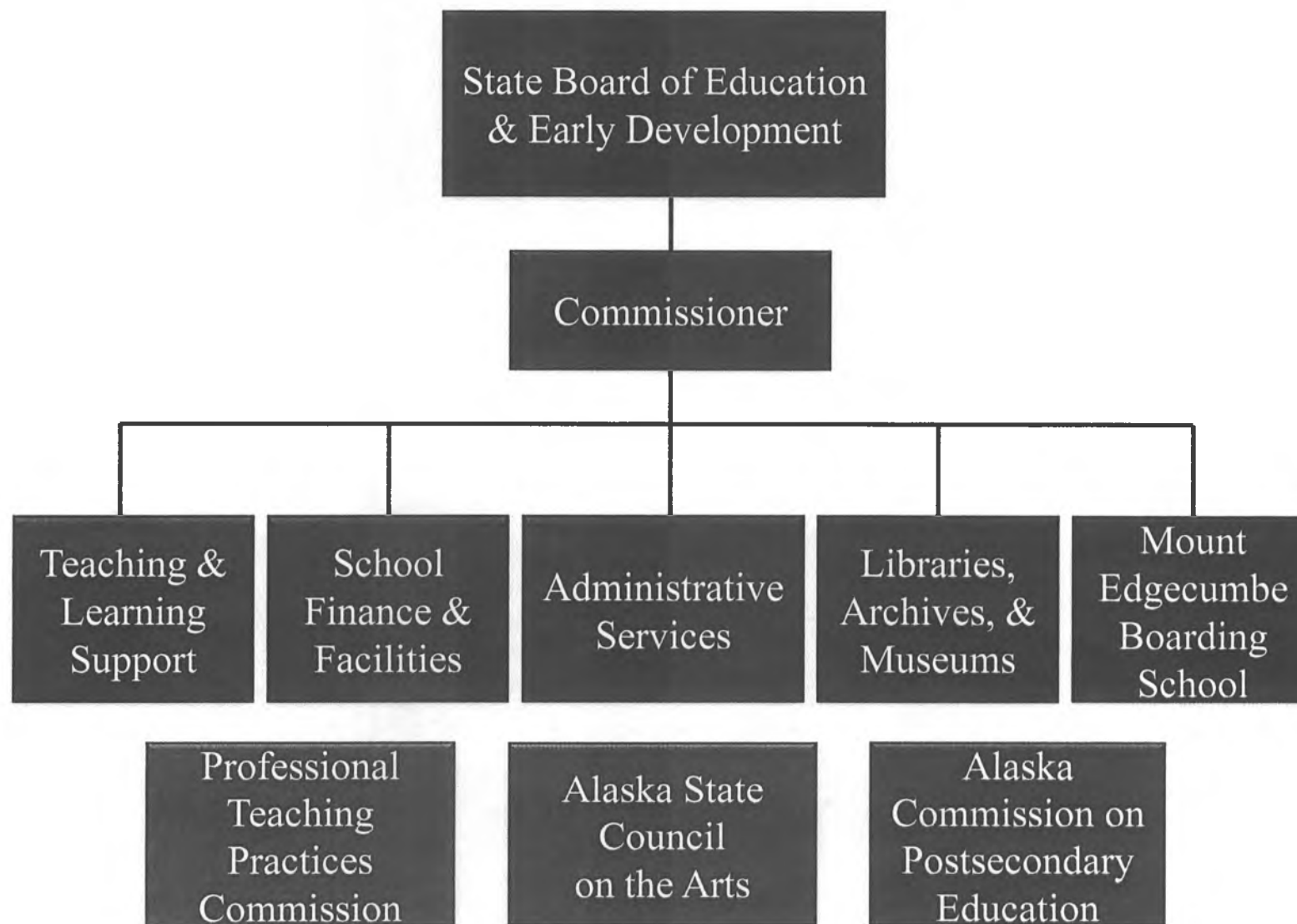
Alaska Department of Education & Early Development

House Finance Committee

*Education Overview: Accountability &
Responsibilities – March 26, 2012*



Structure



Department of Education and Early Development Constitution, continued

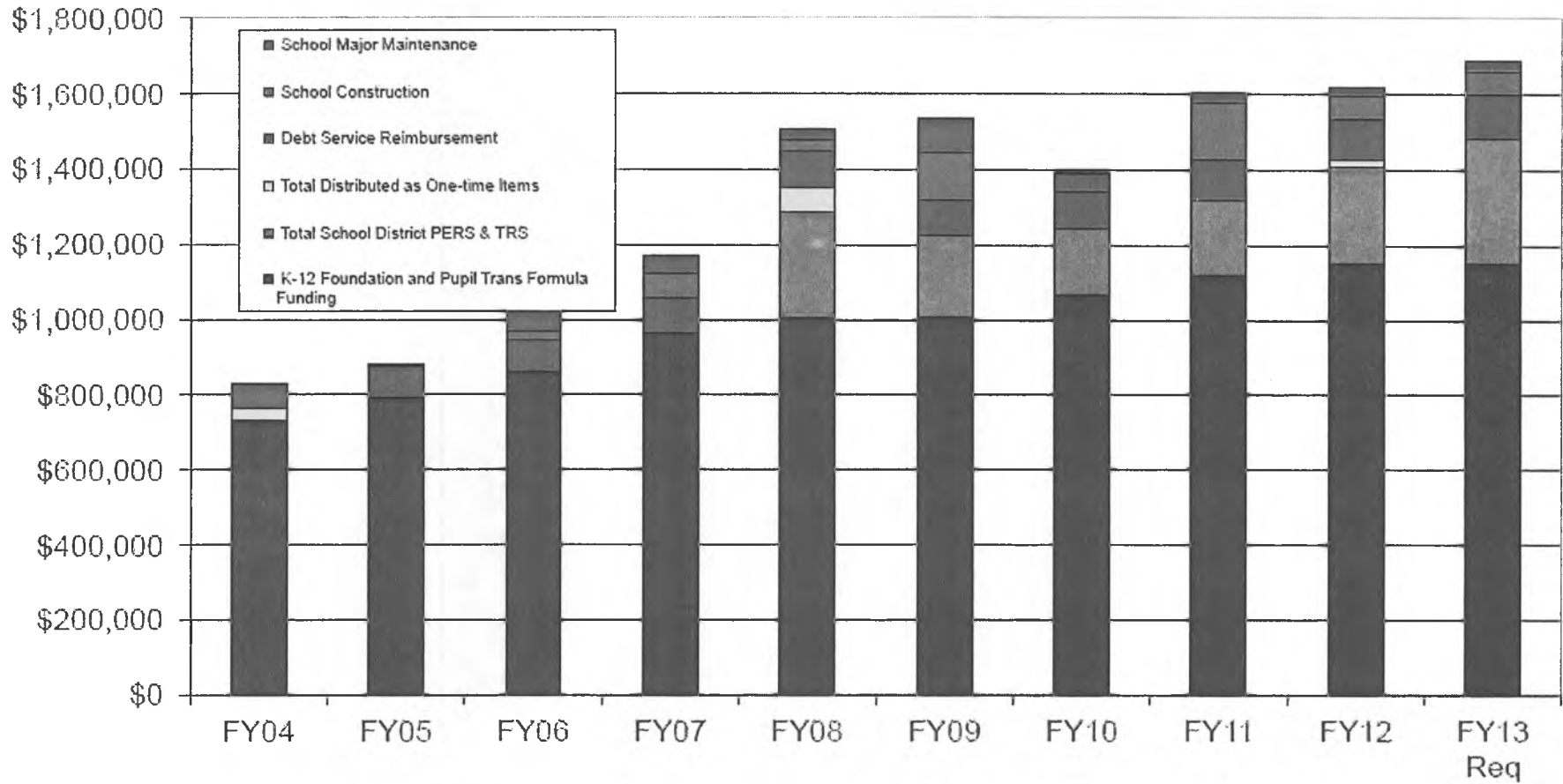
Alaska Superior Court defined, in 2007, the State's responsibilities under the Education clauses:

1. Appropriate Educational Standards
2. Adequate Assessments
3. Oversight & Accountability

(A fourth is funding, which is a statutory decision)



General Fund Appropriations for K-12 Education (\$ Thousands)



	FY04	FY05	FY06	FY07	FY08	FY09	FY10	FY11	FY12	FY13 Req
K-12 Foundation and Pupil Trans Formula Funding	734,912	791,299	861,165	967,351	1,003,643	1,000,425	1,068,622	1,121,905	1,154,851	1,152,730
Total School District PERS & TRS	-	-	-	-	282,279	216,400	175,720	200,635	253,437	329,569
Total Distributed as One-time Items	29,202	2,083	1,454	-	69,101	-	-	-	20,000	-
Debt Service Reimbursement	66,024	81,870	86,464	93,935	94,997	97,021	100,045	106,250	108,146	120,386
School Construction	-	-	20,978	64,218	31,314	125,110	-	148,500	61,911	60,974
School Major Maintenance	819	5,840	51,322	46,712	26,761	85,579	45,144	27,159	20,660	25,604
Total	830,757	881,073	1,021,382	1,172,216	1,508,094	1,533,535	1,389,531	1,604,458	1,619,005	1,689,262
Student Head Count)	131,623	130,928	131,263	130,164	128,975	128,381	129,229	129,047	128,886	129,021
Expenditures per ADM	6,312	6,729	7,781	9,008	11,693	11,945	10,752	12,433	12,562	13,093

Originated by Legislative Finance and modified by the Department of Education & Early Development
 Major Maintenance funding based on ABB and includes MEHS projects.

1) The FY08 BSA was not reduced when \$80 million in retirement costs were shifted to the state.

64

Department of Education & Early Development K12 Funding

FY2013 K-12 Public School and Pupil
Transportation Funding Fixed Cost Increases

Provided as a spreadsheet within presentation

Prepared by The Department of Education & Early Development
 FY2013 K-12 Public School and Pupil Transportation Funding
 Fixed Cost Increases
 3/26/2012

School District	State Aid	Pupil	Fixed Cost		
	Foundation	Transportation	Increase		
	Allocations by	Allocations by	Total Dec 15	Allocation Based	Total
	District Dec 15	District Dec 15		on AADM	
Alaska Gateway	\$ 7,518,561	\$ 568,694	\$ 8,087,255	\$ 169,101	\$ 8,256,356
Aleutian Region	1,372,112	-	1,372,112	30,705	1,402,817
Aleutians East Borough	5,037,573	63,840	5,101,413	131,333	5,232,746
Anchorage	309,039,060	19,406,574	328,445,634	9,135,724	337,581,358
Annette Island	2,226,281	16,406	2,242,687	83,284	2,325,971
Bering Strait	28,548,578	77,760	28,626,338	813,999	29,440,337
Bristol Bay Borough	1,632,549	335,675	1,968,224	58,497	2,026,721
Chatham	3,266,821	12,012	3,278,833	74,856	3,353,689
Chugach	2,386,618	-	2,386,618	50,881	2,437,499
Copper River	6,948,692	632,341	7,581,033	156,361	7,737,394
Cordova	3,451,424	94,962	3,546,386	94,364	3,640,750
Craig	4,970,005	91,606	5,061,611	123,869	5,185,480
Delta/Greely	10,213,634	1,183,336	11,396,970	228,633	11,625,603
Denali Borough	5,523,504	406,800	5,930,304	135,914	6,066,218
Dillingham	5,921,476	486,000	6,407,476	147,501	6,554,977
Fairbanks N. Star Borough	114,311,573	9,920,064	124,231,637	3,262,698	127,494,335
Galena	19,393,725	77,520	19,471,245	423,073	19,894,318
Haines Borough	3,131,795	177,158	3,308,953	90,439	3,399,392
Hoonah	1,990,884	33,972	2,024,856	48,292	2,073,148
Hydaburg	1,040,803	-	1,040,803	24,615	1,065,418
Iditarod Area	5,743,823	38,164	5,781,987	130,123	5,912,110
Juneau Borough	37,802,832	2,728,848	40,531,680	1,123,754	41,655,434
Kake	1,454,646	19,706	1,474,352	34,458	1,508,810
Kashunamiut	3,739,418	1,578	3,740,996	117,513	3,858,509
Kenai Peninsula Borough	73,036,420	5,462,775	78,499,195	2,122,885	80,622,080
Ketchikan Gateway Borough	17,727,852	1,485,261	19,213,113	501,022	19,714,135
Klawock	1,824,675	28,098	1,852,773	48,990	1,901,763
Kodiak Island Borough	23,834,773	1,423,793	25,258,566	634,524	25,893,090
Kuspuk	6,466,247	221,706	6,687,953	166,486	6,854,439
Lake & Peninsula Borough	8,801,092	118,205	8,919,297	211,874	9,131,171
Lower Kuskokwim	57,866,164	830,148	58,696,312	1,576,635	60,272,947
Lower Yukon	29,465,260	2,022	29,467,282	879,834	30,347,116
Mat-Su Borough	137,199,356	11,952,384	149,151,740	3,500,388	152,652,128
Nenana	6,207,471	112,761	6,320,232	136,723	6,456,955
Nome	8,409,216	278,850	8,688,066	205,486	8,893,552
North Slope Borough	14,245,494	1,494,996	15,740,490	605,165	16,345,655
Northwest Arctic Borough	33,831,731	42,262	33,873,993	809,486	34,683,479
Pelican	436,559	792	437,351	8,764	446,115
Petersburg	5,633,620	120,060	5,753,680	148,036	5,901,716
Pribilof	1,250,493	-	1,250,493	39,374	1,289,867
Saint Mary's	3,167,806	13,125	3,180,931	69,503	3,250,434
Sitka Borough	12,034,653	547,840	12,582,493	339,042	12,921,535
Skagway	504,598	2,268	506,866	20,483	527,349
Southeast Island	4,728,563	180,399	4,908,962	102,674	5,011,636
Southwest Region	9,593,193	379,461	9,972,654	283,184	10,255,838
Tanana	928,100	16,730	944,830	22,232	967,062
Unalaska	4,050,521	272,160	4,322,681	128,584	4,451,265
Valdez	4,504,451	442,890	4,947,341	172,238	5,119,579
Wrangell	4,034,094	185,952	4,220,046	102,351	4,322,397
Yakutat	1,416,435	67,962	1,484,397	36,831	1,521,228
Yukon Flats	7,208,546	66,013	7,274,559	172,617	7,447,176
Yukon/Koyukuk	10,965,128	79,833	11,044,961	257,352	11,302,313
Yupit	6,504,293	904	6,505,197	197,969	6,703,166
MEHS	2,983,812	-	2,983,812	84,437	3,068,249
	\$ 1,085,527,003	\$ 62,202,666	\$ 1,147,729,669	\$ 30,275,156	\$ 1,178,004,825

ALASKA DEPARTMENT OF EDUCATION
 FY2012 FOUNDATION PROGRAM AS 14.17.410
 LOCAL EFFORT

	Required Education Mil Rate	Required Full Assessment Mil Rate	Education full Value Determination	Required Local Effort	Allowable Additional Local	Total Allowable Local	AS 17.17.410 FY2012 Contributed	Contributions Below Cap
ALEUTIANS EAST =	4.0	2.8	\$167,635,650	\$670,543	\$1,390,258	\$2,060,801	\$1,379,725	\$681,076
ANCHORAGE =	4.0	2.9	25,480,261,280	101,921,045	96,328,802	198,249,847	196,307,312	1,942,535
BRISTOL BAY =	4.0	3.6	222,705,150	890,821	656,283	1,547,104	1,298,276	248,828
CORDOVA =	4.0	3.2	215,966,335	863,865	944,841	1,808,706	1,799,862	8,844
CRAIG =	4.0	3.6	113,358,050	453,432	1,279,501	1,732,933	672,575	1,060,358
DENALI =	4.0	3.0	176,534,850	706,139	1,369,604	2,075,743	2,069,720	6,023
DILLINGHAM =	4.0	3.7	152,546,600	610,186	1,557,346	2,167,532	1,200,000	967,532
FAIRBANKS =	4.0	3.0	7,200,654,550	28,802,618	33,907,207	62,709,825	47,359,300	15,350,525
GALENA =	4.0	3.2	23,798,850	95,195	4,484,244	4,579,439	2,058,928	2,520,511
HAINES =	4.0	3.2	263,503,200	1,054,013	951,869	2,005,882	1,744,865	261,017
HOONAH =	4.0	2.7	48,030,600	192,122	483,486	675,608	515,167	160,441
HYDABURG =	4.0	3.1	11,129,400	44,518	266,166	310,684	188,065	122,619
JUNEAU =	4.0	3.1	3,440,158,100	13,760,632	12,300,527	26,061,159	25,451,000	610,159
KAKE =	4.0	3.3	22,817,200	91,269	336,006	427,275	110,000	317,275
KENAI =	4.0	3.0	6,018,961,460	24,075,846	22,290,842	45,872,444	43,251,135	2,621,309
KETCHIKAN =	4.0	3.4	1,320,322,100	5,281,288	5,157,955	10,439,243	8,650,000	1,789,243
KLAWOCK =	4.0	3.2	42,939,100	171,756	524,363	696,119	348,730	347,389
KODIAK =	4.0	3.4	1,123,355,550	4,493,422	6,753,239	11,246,661	10,250,350	996,311
LAKE AND PENINSULI =	4.0	3.0	71,281,100	285,124	2,168,611	2,453,735	1,028,792	1,424,943
MAT-SU =	4.0	2.7	6,041,800,755	24,167,203	37,007,699	61,174,902	48,347,365	12,827,537
NENANA =	4.0	3.3	23,969,600	95,878	1,629,943	1,725,821	95,878	1,629,943
NOME =	4.0	3.2	247,436,850	989,747	2,077,189	3,066,936	1,763,747	1,303,189
NORTH SLOPE /2 =	0.9		13,725,039,365	12,047,630	33,036,551	45,084,181	33,375,626	11,708,555
NORTHWEST ARCTI =	4.0	3.1	530,115,950	2,120,464	7,697,975	9,818,439	4,000,000	5,818,439
PELICAN =	4.0	3.7	12,960,200	51,841	91,291	143,132	51,841	91,291
PETERSBURG =	4.0	3.4	293,943,500	1,175,774	1,537,019	2,712,793	1,818,000	894,793
SAINT MARYS =	4.0	2.7	8,708,550	34,834	727,743	762,577	34,900	727,677
SITKA =	4.0	3.1	879,285,800	3,517,143	3,500,198	7,017,341	5,026,975	1,990,366
SKAGWAY /2 =	2.1		245,414,950	527,482	684,106	1,211,588	1,211,588	-
TANANA =	4.0	3.3	7,768,850	31,075	228,071	259,146	31,075	228,071
UNALASKA =	4.0	3.4	444,317,800	1,777,271	1,292,186	3,069,457	3,054,589	14,868
VALDEZ /2 =	2.0		1,715,291,175	3,413,436	4,963,878	8,377,314	8,168,329	208,985
WRANGELL =	4.0	3.5	169,449,750	677,799	1,035,479	1,713,278	1,545,287	167,991
YAKUTAT =	4.0	3.3	56,979,450	227,918	395,068	622,986	441,000	181,986
TOTALS		Average contribution in mills >>	\$70,518,441,670	\$235,319,329	\$289,055,546	\$523,880,631	\$454,650,002	\$69,230,629

/1 Can not exceed the total allowable local.
 /2 Required local effort is limited to 45% of Basic Need of the preceding year. Allowable excess is 2 mills.

5 to 7

STATE COST

District	FY02	FY03	FY04	FY05	FY06	FY07	FY08	FY09	FY10	FY11	Preliminary FY12	Projected FY13	CUMULATIVE STATE AID
	Increased State Aid	Increased State Aid	Increased State Aid	Increased State Aid	Increased State Aid	Increased State Aid	Increased State Aid	Increased State Aid	Increased State Aid	Increased State Aid	Increased State Aid	Increased State Aid	
Alaska Gateway	-	-	-	-	-	-	-	-	-	-	-	-	-
Aleutian Region	-	-	-	-	-	-	-	-	-	-	-	-	-
Aleutians East Borough	489	-	-	-	-	-	8,839	38,623	62,434	118,469	282,848	274,284	785,986
Anchorage	1,827,538	5,201,483	7,085,229	11,107,435	13,980,346	18,833,077	26,345,651	34,838,625	38,501,977	38,935,812	39,277,215	39,945,987	275,880,375
Annette Island	-	-	-	-	-	-	-	-	-	-	-	-	-
Bering Strait	-	-	-	-	-	-	-	-	-	-	-	-	-
Bristol Bay Borough	-	-	-	-	-	-	-	-	-	56,164	50,637	113,339	220,140
Chatham	-	-	-	-	-	-	-	-	-	-	-	-	-
Chugach	-	-	-	-	-	-	-	-	-	-	-	-	-
Copper River	-	-	-	-	-	-	-	-	-	-	-	-	-
Cordova	16,964	34,234	23,774	36,420	48,108	23,725	754	63,592	94,609	118,606	202,605	228,153	891,544
Craig	-	405	-	-	-	-	-	3,655	-	4,667	40,417	47,197	96,341
Delta/Greely	-	-	-	-	-	-	-	-	-	-	-	-	-
Denali Borough	-	60,663	60,156	73,214	73,214	73,214	149,562	212,649	211,954	215,179	215,159	245,066	1,590,030
Dillingham	3,763	26,086	780	-	15,811	-	85,618	48,030	46,718	61,472	25,112	44,171	357,560
Fairbanks North Star B	252,784	612,396	944,033	1,409,216	2,386,892	3,489,580	5,105,813	7,005,004	8,274,493	9,109,331	9,945,933	9,881,145	58,416,620
Galena	121	20	427	1,210	1,210	1,210	4,982	8,374	23,684	24,828	23,263	23,982	113,312
Haines Borough	11,922	37,397	37,144	42,500	45,171	94,243	149,855	207,498	289,472	258,865	261,766	243,095	1,678,928
Hoonah	-	24,328	23,014	21,546	21,546	21,546	22,965	36,378	37,754	90,953	90,835	94,459	485,323
Hydaburg	-	493	88	-	-	-	942	1,136	1,503	11,626	11,625	13,575	40,988
Iditarod Area	-	-	-	-	-	-	-	-	-	-	-	-	-
Juneau Borough	276,478	703,573	780,055	881,946	1,211,564	2,056,725	3,510,783	3,723,469	3,841,730	3,682,973	3,785,447	4,000,844	28,455,587
Kake	-	-	280	2,476	2,476	2,476	3,230	3,840	5,349	19,055	19,011	20,067	78,261
Kashunamiut	-	-	-	-	-	-	-	-	-	-	-	-	-
Kenai Peninsula Borou	396,460	955,598	1,639,406	2,584,199	2,921,957	3,431,335	4,244,039	5,596,202	6,988,799	8,165,514	7,872,194	8,575,458	53,371,161
Ketchikan Gateway Bor	61,700	170,635	144,661	47,551	62,446	184,837	338,196	659,278	915,009	1,041,551	936,992	1,013,285	5,576,142
Klawock	-	-	-	-	-	-	4,515	4,906	8,707	42,668	42,662	39,250	142,708
Kodiak Island Borough	82,466	82,088	133,940	116,664	190,535	317,507	394,848	510,004	606,712	703,258	746,482	883,044	4,767,548
Kuspuk	-	-	-	-	-	-	-	-	-	-	-	-	-
Lake & Peninsula Boroi	-	2,012	-	-	-	-	-	-	2,845	8,166	8,161	151,880	173,064
Lower Kuskokwim	-	-	-	-	-	-	-	-	-	-	-	-	-
Lower Yukon	-	-	-	-	-	-	-	-	-	-	-	-	-
Mat-Su Borough	554,203	978,270	1,485,659	2,270,976	3,731,858	6,139,250	9,056,429	11,202,265	11,436,170	11,898,626	12,248,068	12,167,793	83,169,567
Nenana	-	-	-	877	356	7,668	9,285	19,738	23,601	16,009	23,573	19,943	121,050
Nome	38,395	32,004	30,436	40,749	28,726	58,717	121,599	120,446	187,995	245,658	222,043	270,027	1,396,794
North Slope Borough	-	-	-	-	-	-	-	-	-	-	-	-	-
Northwest Arctic Borou	-	-	2,024	1,906	1,906	1,906	8,903	570,611	580,813	601,128	595,720	609,729	2,974,647
Pelican	663	-	-	2,961	3,660	2,695	-	29	-	2,754	2,680	3,997	19,439
Petersburg	20,751	29,850	-	11,096	60,678	116,348	73,391	113,165	172,270	237,056	200,378	212,002	1,246,985
Pribilof	-	-	-	-	-	-	-	-	-	-	-	-	-
Saint Marys	71	443	-	786	786	786	1,157	1,014	16,562	16,865	16,832	16,653	71,955
Sitka Borough	45,060	85,149	134,767	194,084	269,304	338,359	619,866	860,734	1,061,249	1,085,266	974,071	1,033,389	6,701,298
Skagway	-	-	-	-	-	-	-	-	-	-	-	-	-
Southeast Island	-	-	-	-	-	-	-	-	-	-	-	-	-
Southwest Region	-	-	-	-	-	-	-	-	-	-	-	-	-
Tanana	-	-	-	-	-	-	266	281	4,582	6,227	7,739	6,890	25,985
Unalaska	-	-	-	-	5,742	57,658	146,325	175,794	171,587	245,178	273,900	360,308	1,436,492
Valdez	-	-	-	-	-	-	-	-	-	-	-	-	-
Wrangell	4,884	37,019	1,871	-	550	744	-	-	32,874	76,034	85,682	89,239	328,897
Yakutat	530	5,586	24,739	17,118	19,774	15,539	17,648	51,355	54,806	45,267	50,733	50,420	353,515
Yukon Flats	-	-	-	-	-	-	-	-	-	-	-	-	-
Yukon/Koyukuk	-	-	-	-	-	-	-	-	-	-	-	-	-
Yupit	-	-	-	-	-	-	-	-	-	-	-	-	-
Mt. Edgcombe HS	-	-	-	-	-	-	-	-	-	-	-	-	-
TOTAL	\$3,595,242	\$9,079,732	\$12,552,486	\$18,864,929	\$25,084,616	\$35,269,145	\$50,425,461	\$66,076,695	\$73,656,258	\$77,145,225	\$78,539,783	\$80,678,671	\$530,968,243

8

Alaska Pre-K Program

Dial 3* Child Outcome Data

Year 1

Collaboration Approach		
	Entry (Fall) N=57	Exit(Spring) N=57
Top Quartile	2	8
Second Quartile	9	10
Third Quartile	5	16
Bottom Quartile	33	15
Infused Approach		
	Entry (Fall) N=49	Exit(Spring) N=49
Top Quartile	2	8
Second Quartile	9	10
Third Quartile	5	16
Bottom Quartile	33	15
District Approach		
	Entry (Fall) N=39	Exit(Spring) N=39
Top Quartile	5	12
Second Quartile	8	9
Third Quartile	9	8
Bottom Quartile	17	10

Year 2

Collaboration Approach		
	Entry (Fall) N=58	Exit(Spring) N=58
Top Quartile	4	19
Second Quartile	13	13
Third Quartile	17	14
Bottom Quartile	24	12
Infused Approach		
	Entry (Fall) N=77	Exit(Spring) N=77
Top Quartile	9	38
Second Quartile	10	12
Third Quartile	17	12
Bottom Quartile	41	15
District Approach		
	Entry (Fall) N=27	Exit(Spring) N=27
Top Quartile	6	11
Second Quartile	3	6
Third Quartile	6	4
Bottom Quartile	12	6

*The Developmental Indicators for the Assessment of Learning Third Edition (DIAL-3) is a screening tool for children who are of ages 3 years, 0 months, to 6 years 11 months. It is given in three parts: the *Motor* skills subtest measures skills that are relevant for learning to write, the *Concepts* subtest measures skills that are relevant for learning arithmetic, the *Language* subtest measures skills that are relevant for learning to read. This assessment allows a focus on prerequisite skills needed for later successful academic achievement. The total score based on the scores in all three areas was used for this chart.

79

Alaska Pre-K Program

Alaska Pre-K Program Approaches and Funding

Collaborative Approach Systems worked together to meet both district and Head Start requirements.				
Anchorage School District				
Funding Source			State Contribution per Child	Total Cost per Child
State	Head Start	Other Funds		
167,684	180,000	10,000	4,936	9,936
Juneau School District				
Funding Source			State Contribution per Child	Total Cost per Child
State	Head Start	Other Funds		
201,073	242,000	109,909	5,027	13,824
Infused Approach District infused existing Head Starts with certified teachers, specialized curriculum and training.				
Bering Strait School District				
Funding Source			State Contribution per Child	Total Cost per Child
State	Head Start	Other Funds		
362,828	448,486	27,270	7,405	17,113
Nome City Schools				
Funding Source			State Contribution per Child	Total Cost per Child
State	Head Start	Other Funds		
219,539	314,343		5,488	13,347
District Approach Provided teachers, classroom space, and curriculum.				
Lower Kuskokwim School District				
Funding Source			State Contribution per Child	Total Cost per Child
State	Head Start	Other Funds		
337,732		14,107	11,646	12,132
Yukon-Koyukuk School District				
Funding Source			State Contribution per Child	Total Cost per Child
State	Head Start	Other Funds		
325,445		37,000	6,026	6,711
Legislative Intent to provide Intervention Districts with funding.				
Lower Yukon School District used funding to integrate and coordinate district programs with existing early childhood programs and to provide outreach to communities.				150,000
Yupit School District used funding to integrate and coordinate district programs with existing early childhood programs and to provide outreach to communities.				150,000

Other funds include federal grant funds, and in-kind donations including Alaska Native Education grants, Title 1, heating & and electricity, staff time, food, supplies, transportation, staff training and professional development.

Proposed Alaska Standards

ALASKA MATHEMATICS STANDARDS

Pending approval by the State Board of Education in June 2012

Department of Education
& Early Development

ALASKA ENGLISH LANGUAGE ARTS STANDARDS

Pending approval by the State Board of Education in June 2012

Department of Education
& Early Development

ALASKA STATEWIDE ASSESSMENTS
UPDATED FEBRUARY 2012

	Purpose	Assessment Dates	Grade Level	Content Area	Statute and Regulation	Number of Students Assessed Per Year	Costs FY12
Developmental Profile	Measure students school preparedness.	First four weeks of the school year	When first enrolled in kindergarten or 1 st grade.	School Readiness	AS 14.07.020 4 AAC 06.712	FY12 = 9881	Current assessment staff provide effort to design, data collection and reporting.
Standards Based Assessments	Measure student achievement relative to the state adopted standards; determine school and district performance for accountability.	First Monday through the third Monday of April	3 rd through 10 th Science 4 th , 8 th and 10 th	Reading Writing Mathematics Science	Title I ESEA Sec. 101 AS 14.07.020 AS 14.03.123 AS 14.03.120 4 AAC 06.737	76,624 X 3 (reading, writing, math) 28,423 X 1 (science)	\$ 5,290,643
High School Graduation Qualifying Examination (HSGQE)	Measure student achievement of essential skills; required to graduate.	3 consecutive days: The fall Retest administration normally takes place the first Tues, Wed, Thurs of October; the spring Grade 10 HSGQE and Retest the first Tues, Wed, and Thurs of April	Spring 10 th Grade year, and after until passage.	Reading Writing Mathematics	AS 14.03.075 AS 14.07.020 4 AAC 06.710 4 AAC 06.755	Fall '11 & Spring '11 Re- take Reading = 3816 Writing = 6008 Math = 1710 *10 th grade count of 10,210 included in SBA	\$ 2,527,646
Alternative Assessment: Modified and Nonstandardized HSGQE	Measure student achievement of essential skills with modifications or portfolio format to meet the needs of students in special education	Same as HSGQE	Grades 11-12, repeating 10 th graders and grade 10 with a waiver	Reading Writing Mathematics	IDEA 1997 AS 14.03.075 AS 14.07.020 4 AAC 06.710 4 AAC 06.775	<i>This is not a separate assessment, these are students who due to their disability take the HSGQE in a modified format.</i>	Current assessment staff provide effort to design forms, data collection, approvals and reporting.
Norm-referenced Assessment	Measure student achievement relative to the group of students who took the test when the test was normed.	February - 20 day window	5 th and 7 th	Reading Language Arts Mathematics	AS 14.07.020 AS 14.03.120 4 AAC 06.730	19,850 Eligible in FY12	\$ 253,636

**Alaska Statewide Assessments
Updated February 2012**

English Language Proficiency Assessment	Measure English language proficiency of students who are limited English proficient.	February 1 – March 31 annually	Identified Students with Limited English Proficiency, K-12.	English Language Acquisition (listening, speaking, reading, writing)	Title I ESEA Title III ESEA 4 AAC 34.055	14,768 Students in FY11	\$ 488,000
National Assessment of Educational Progress (NAEP)	Measure state achievement relative to NAEP standards, and compare state to state and state to national performance.	Every other year (odd numbered years), six-week window beginning at the end of January	Selected students, grade 4 th and 8 th Bi-annually	Reading Mathematics	Title I ESEA Pending AS 14.03.123	In 2011 5500 4 th grade and 4800 8 th grade students took the matrix-sampled NAEP	Costs are directly covered by Federal Government
WorkKeys	Job skills' assessment measuring students' career preparedness.	Electronic August 1 – December 30 annually or Paper/Pencil two-week testing period in November annually	Grade 11 required – optional to grade 12	Reading for Information Applied Mathematics Locating for Information	4 AAC 06.717	10,725 Eligible in FY11	FY12=227,000 FY12 & 13 KeyTrain Curriculum = \$120,000

Elementary and Secondary Education Act (ESEA) as amended by No child Left Behind (NCLB) 2001
Individuals with Disabilities Act (IDEA) 1997

Graduation Rate

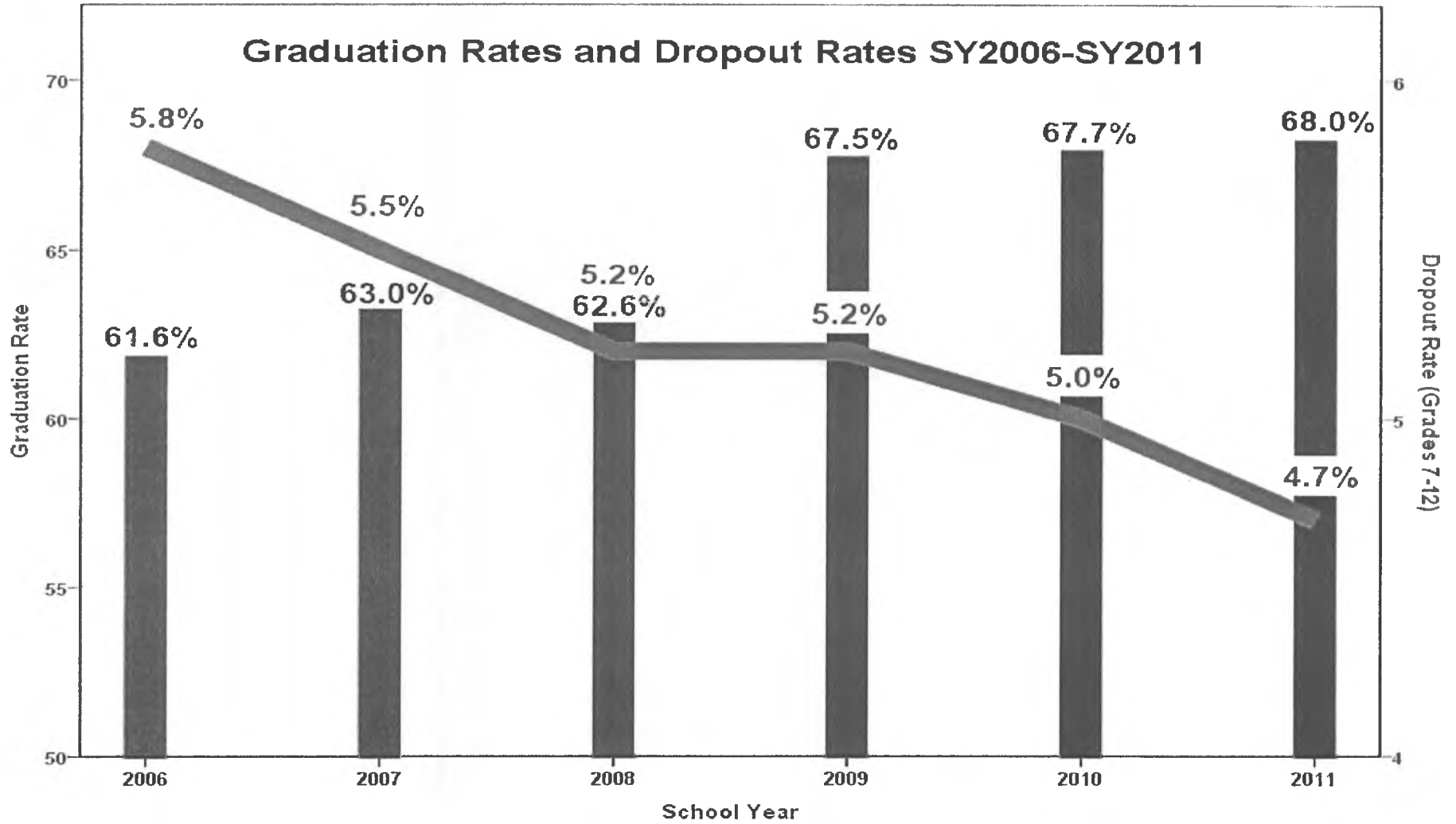
1. The Adjusted Cohort Graduation Rate is reported as a fraction.
 - A. The numerator is the sum of the number of graduates within the cohort who receive a regular diploma on or before June 30.
 - B. The denominator is the sum of all students assigned to the cohort from the 9th grade class three years prior.

$$\frac{\text{\# of graduates in cohort}}{\text{\# in 9th grade cohort*}} = \text{graduation rate}$$

* Takes into account the transfers in and out.

12
14

Graduation & Dropout Rate



13
15

SCHOOL DISTRICT *estimated* State of Alaska additional payments for unfunded liability in FY13

PERS estimated unfunded liability paid by state in FY13		TRS estimated unfunded liability paid by state in FY13		Total State Assistance Pers/TRS unfunded liability FY13
ALASKA GATEWAY SD	\$229,901	AK GATEWAY SD	\$989,153	\$1,219,054
ALEUTIAN REGION SD	\$20,319	ALEUTIAN REGION SD	\$159,134	\$179,454
ALEUTIANS EAST BOR SD	\$169,265	ALEUTIANS EAST BOR SD	\$696,611	\$865,876
ANCHORAGE SD	\$16,405,582	ANCHORAGE SD	\$107,560,147	\$123,965,728
ANNETTE ISLAND SD	\$98,597	ANNETTE ISLAND SD	\$681,224	\$779,821
BERING STRAIT SD	\$1,467,173	BERING STRAIT SD	\$5,623,809	\$7,090,983
BRISTOL BAY BOROUGH SD	\$73,492	BRISTOL BAY BOR SD	\$301,119	\$374,611
CHATHAM SD	\$103,545	CHATHAM SD	\$453,545	\$557,091
CHUGACH SD	\$83,084	CHUGACH SD	\$691,754	\$774,838
COPPER RIVER SD	\$212,369	COPPER RIVER SD	\$1,033,137	\$1,245,506
CORDOVA CITY SD	\$117,054	CORDOVA CITY SD	\$1,026,613	\$1,143,667
CRAIG CITY SD	\$172,219	CRAIG CITY SD	\$762,604	\$934,823
DELTA/GREELY SD	\$292,995	DELTA/GREELY SD	\$1,489,556	\$1,782,552
DENALI BOROUGH SD	\$163,633	DENALI BOROUGH SD	\$654,726	\$818,359
DILLINGHAM CITY SD	\$247,071	DILLINGHAM CITY SD	\$1,151,724	\$1,398,795
FAIRBANKS NORTH STAR BOR	\$5,410,069	FAIRBANKS NORTH STAR BOR	\$29,637,277	\$35,047,347
GALENA CITY SD	\$520,939	GALENA CITY SD	\$1,961,761	\$2,482,700
HAINES BOROUGH SD	\$159,309	HAINES BOR SD	\$695,262	\$854,571
HOONAH CITY SD	\$96,420	HOONAH CITY SD	\$198,324	\$294,744
HYDABURG CITY SD	\$19,134	HYDABURG CITY SD	\$165,243	\$184,378
IDITAROD AREA SD	\$196,282	IDITAROD AREA SD	\$461,049	\$657,331
JUNEAU BOROUGH SD	\$1,953,720	JUNEAU BOR SD	\$11,618,602	\$13,572,323
KAKE CITY SD	\$65,109	KAKE CITY SD	\$334,946	\$400,055
KASHUNAMIUT SD	\$252,392	KASHUNAMIUT SD	\$713,480	\$965,871
KENAI PENINSULA BOR SD	\$2,832,521	KENAI PENINSULA BOR SD	\$19,258,762	\$22,091,284
KETCHIKAN GATEWAY BOR SD	\$735,417	KETCHIKAN GATEWAY BOR SD	\$5,427,001	\$6,162,418
KLAWOCK CITY SD	\$99,668	KLAWOCK CITY SD	\$410,978	\$510,646
KODIAK ISLAND BOROUGH SD	\$959,303	KODIAK ISLAND BOR SD	\$6,399,968	\$7,359,271
KUSPUK SD	\$303,466	KUSPUK SD	\$1,041,799	\$1,345,265
LAKE AND PENINSULA BOR SD	\$381,515	LAKE & PENINSULA BOR SD	\$1,185,632	\$1,567,146
LOWER KUSKOKWIM SD	\$3,136,748	LOWER KUSKOKWIM SD	\$10,597,530	\$13,734,278
LOWER YUKON SD	\$1,036,372	LOWER YUKON SD	\$4,623,751	\$5,660,123
MATANUSKA-SUSITNA BOR SD	\$4,390,562	MATANUSKA-SUSITNA BOR SD	\$34,210,836	\$38,601,398
NENANA CITY SD	\$166,514	NENANA CITY SD	\$777,056	\$943,570
NOME CITY SD	\$247,787	NOME CITY SD	\$1,344,343	\$1,592,130
NORTH SLOPE BOROUGH SD	\$1,792,457	NORTH SLOPE BOR SD	\$5,736,101	\$7,528,558
NORTHWEST ARCTIC BOR SD	\$1,242,204	NORTHWEST ARCTIC BOR SD	\$4,793,305	\$6,035,509
PELICAN CITY SD	\$12,627	PELICAN CITY SD	\$54,124	\$66,751
PETERSBURG CITY SD	\$148,257	PETERSBURG CITY SD	\$1,342,854	\$1,491,111
PRIBILOF SD	\$81,400	PRIBILOF SD	\$350,000	\$431,399
SAINT MARY'S SD	\$59,456	SAINT MARY'S SD	\$429,900	\$489,356
SITKA BOROUGH SD	\$401,476	SITKA BOR SD	\$3,416,775	\$3,818,250
SKAGWAY CITY SD	\$50,709	SKAGWAY CITY SD	\$295,398	\$346,107
SOUTHEAST ISLAND SD	\$115,572	SOUTHEAST ISLAND SD	\$618,870	\$734,442
SOUTHWEST REGION SD	\$450,746	SOUTHWEST REGION SD	\$1,786,229	\$2,236,974
TANANA SD	\$6,423	TANANA SD	\$146,173	\$152,596
UNALASKA CITY SD	\$157,709	UNALASKA CITY SD	\$991,006	\$1,148,715
VALDEZ CITY SD	\$352,391	VALDEZ CITY SD	\$1,826,452	\$2,178,844
WRANGELL PUBLIC SD	\$121,177	WRANGELL PUBLIC SD	\$713,579	\$834,756
YAKUTAT SD	\$56,098	YAKUTAT SD	\$347,606	\$403,703
YUKON / KOYUKUK SD	\$370,093	YUKON / KOYUKUK SD	\$1,767,800	\$2,137,893
YUKON FLATS SD	\$236,149	YUKON FLATS SD	\$898,600	\$1,134,750
YUPIIT SD	\$299,252	YUPIIT SD	\$941,575	\$1,240,827
SCHOOL DISTRICT SUBTOTAL	\$48,773,745		\$280,794,803	\$329,568,548

Information Provided from DOA

Prepared by The Department of Education & Early Development
 FY2013 K-12 Public School and Pupil Transportation Funding
 Fixed Cost Increases
 3/26/2012

School District	State Aid	Pupil	Fixed Cost		
	Foundation Allocations by District Dec 15	Transportation Allocations by District Dec 15	Total Dec 15	Allocation Based on AADM	Total
Alaska Gateway	\$ 7,518,561	\$ 568,694	\$ 8,087,255	\$ 169,101	\$ 8,256,356
Aleutian Region	1,372,112	-	1,372,112	30,705	1,402,817
Aleutians East Borough	5,037,573	63,840	5,101,413	131,333	5,232,746
Anchorage	309,039,060	19,406,574	328,445,634	9,135,724	337,581,358
Annette Island	2,226,281	16,406	2,242,687	83,284	2,325,971
Bering Strait	28,548,578	77,760	28,626,338	813,999	29,440,337
Bristol Bay Borough	1,632,549	335,675	1,968,224	58,497	2,026,721
Chatham	3,266,821	12,012	3,278,833	74,856	3,353,689
Chugach	2,386,618	-	2,386,618	50,881	2,437,499
Copper River	6,948,692	632,341	7,581,033	156,361	7,737,394
Cordova	3,451,424	94,962	3,546,386	94,364	3,640,750
Craig	4,970,005	91,606	5,061,611	123,869	5,185,480
Delta/Greely	10,213,634	1,183,336	11,396,970	228,633	11,625,603
Denali Borough	5,523,504	406,800	5,930,304	135,914	6,066,218
Dillingham	5,921,476	486,000	6,407,476	147,501	6,554,977
Fairbanks N. Star Borough	114,311,573	9,920,064	124,231,637	3,262,698	127,494,335
Galena	19,393,725	77,520	19,471,245	423,073	19,894,318
Haines Borough	3,131,795	177,158	3,308,953	90,439	3,399,392
Hoonah	1,990,884	33,972	2,024,856	48,292	2,073,148
Hydaburg	1,040,803	-	1,040,803	24,615	1,065,418
Iditarod Area	5,743,823	38,164	5,781,987	130,123	5,912,110
Juneau Borough	37,802,832	2,728,848	40,531,680	1,123,754	41,655,434
Kake	1,454,646	19,706	1,474,352	34,458	1,508,810
Kashunamiut	3,739,418	1,578	3,740,996	117,513	3,858,509
Kenai Peninsula Borough	73,036,420	5,462,775	78,499,195	2,122,885	80,622,080
Ketchikan Gateway Borough	17,727,852	1,485,261	19,213,113	501,022	19,714,135
Klawock	1,824,675	28,098	1,852,773	48,990	1,901,763
Kodiak Island Borough	23,834,773	1,423,793	25,258,566	634,524	25,893,090
Kuspuk	6,466,247	221,706	6,687,953	166,486	6,854,439
Lake & Peninsula Borough	8,801,092	118,205	8,919,297	211,874	9,131,171
Lower Kuskokwim	57,866,164	830,148	58,696,312	1,576,635	60,272,947
Lower Yukon	29,465,260	2,022	29,467,282	879,834	30,347,116
Mat-Su Borough	137,199,356	11,952,384	149,151,740	3,500,388	152,652,128
Nenana	6,207,471	112,761	6,320,232	136,723	6,456,955
Nome	8,409,216	278,850	8,688,066	205,486	8,893,552
North Slope Borough	14,245,494	1,494,996	15,740,490	605,165	16,345,655
Northwest Arctic Borough	33,831,731	42,262	33,873,993	809,486	34,683,479
Pelican	436,559	792	437,351	8,764	446,115
Petersburg	5,633,620	120,060	5,753,680	148,036	5,901,716
Pribilof	1,250,493	-	1,250,493	39,374	1,289,867
Saint Mary's	3,167,806	13,125	3,180,931	69,503	3,250,434
Sitka Borough	12,034,653	547,840	12,582,493	339,042	12,921,535
Skagway	504,598	2,268	506,866	20,483	527,349
Southeast Island	4,728,563	180,399	4,908,962	102,674	5,011,636
Southwest Region	9,593,193	379,461	9,972,654	283,184	10,255,838
Tanana	928,100	16,730	944,830	22,232	967,062
Unalaska	4,050,521	272,160	4,322,681	128,584	4,451,265
Valdez	4,504,451	442,890	4,947,341	172,238	5,119,579
Wrangell	4,034,094	185,952	4,220,046	102,351	4,322,397
Yakutat	1,416,435	67,962	1,484,397	36,831	1,521,228
Yukon Flats	7,208,546	66,013	7,274,559	172,617	7,447,176
Yukon/Koyukuk	10,965,128	79,833	11,044,961	257,352	11,302,313
Yup'it	6,504,293	904	6,505,197	197,969	6,703,166
MEHS	2,983,812	-	2,983,812	84,437	3,068,249
	\$ 1,085,527,003	\$ 62,202,666	\$ 1,147,729,669	\$ 30,275,156	\$ 1,178,004,825