

**2/23/12**

**PRESENTATION:**

**DOMESTIC**

**VIOLENCE AND**

**SEXUAL ASSAULT**

**PROGRAMS UPDATE**

<TARGET><BILL></BILL><SUBJECT>2-23-12 PRESENTATION  
DOMESTIC VIOLENCE AND SEXUAL ASSAULT PROGRAMS  
UPDATE</SUBJECT><COMM>HFIN27</COMM></TARGET>

Alaska State Legislature  
HOUSE FINANCE COMMITTEE

Agenda

1:30 PM

Thursday, February 23, 2012

Presentation:

Domestic Violence & Sexual Assault Programs Update

Presenters:

**Joe Masters**, Commissioner, Department of Public Safety

**Michael Geraghty**, Attorney General, Department of Public Safety

**Lauree Morton**, Executive Director, Council on Domestic Violence & Sexual Assault

**Andre Rosay**, Director, UAA Justice Center – 2012 DVSA Dashboard

**Bill Streur**, Commissioner, Department of Health and Social Services

**Mike Hanley**, Commissioner, Department of Education and Early Development

**Joe Schmidt**, Commissioner, Department of Corrections

↪ **HB 224-SALES OF NICOTINE PRODUCTS TO MINOR**

Updated NEW Fiscal Note, previous#1(HSS) zero

Updated NEW Fiscal Note, previous#2 (LAW) zero

Testifiers:

**Carrie Nyssen** – Regional Director Alaska Lung Ass.

**Emily Nenon** -Alaska Cancer Society

**Lincoln Bean** - Chairman Alaska Native Health Board

**SB 23-FILM PRODUCTION TAX CREDIT/AUDITS**

*Bring up adoption of House L&C Committee Substitute Hold for future Hearings & Public Testimony*

Possible Testifiers:

**Johnny Ellis**, Senator

**Matthew Moser**, Staff to Johnny Ellis

**SB 30-RETURN OF SEIZED PROPERTY**

**HB 125-ALCOHOLIC BEVERAGE CONTROL BOARD**

*Public Testimony only*

S but not heard

H & H

S but not heard

H/O 1



## **House Finance Committee**

# **Domestic Violence & Sexual Assault Initiative Update**

February 23, 2012

**Be courageous: Prevent, Protect, Enforce, and Heal. [ChooseRespect.Alaska.gov](http://ChooseRespect.Alaska.gov)**

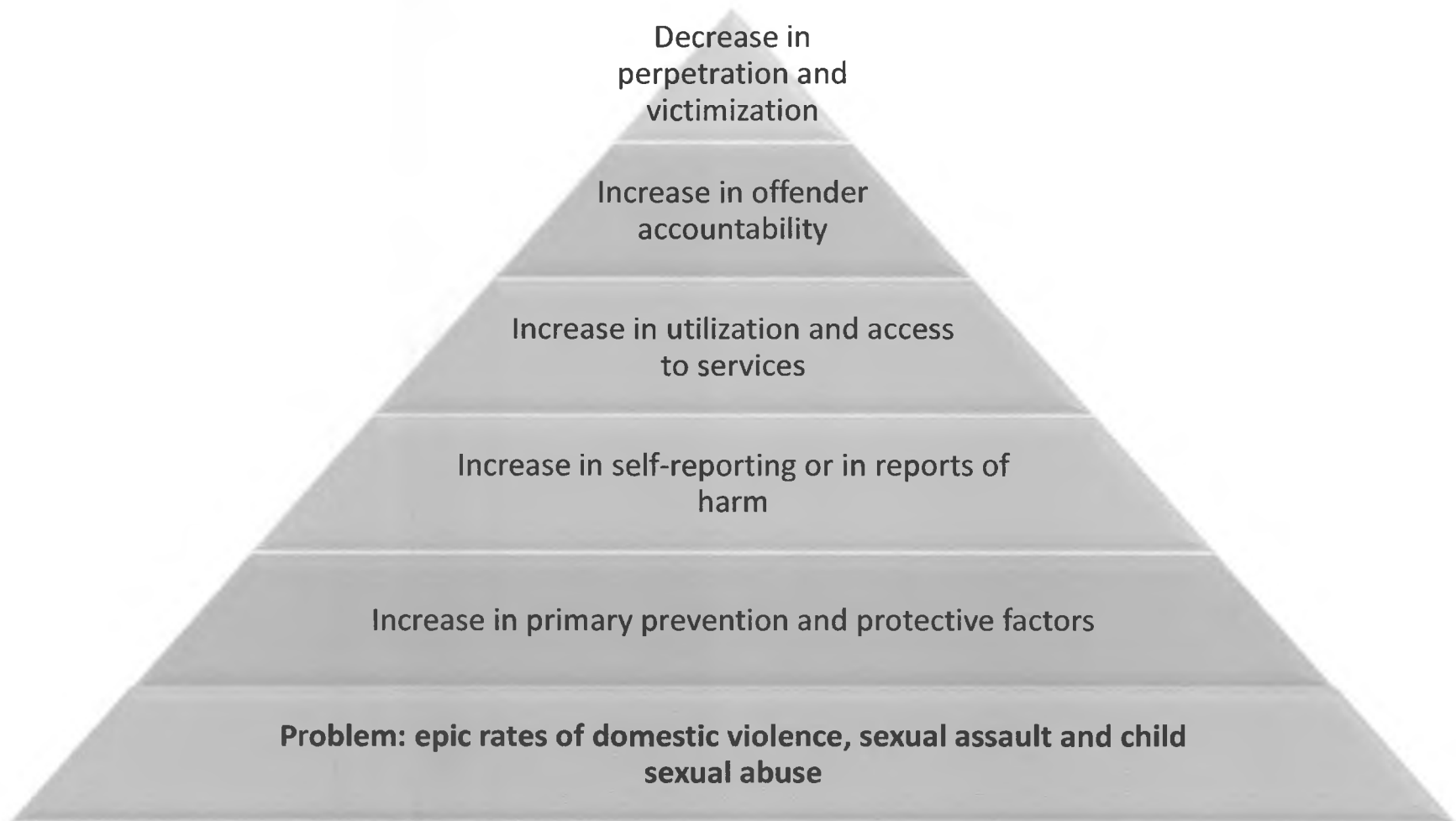
# Overview

- The mission is **to end the epidemic of domestic violence and sexual assault in ten years**
- History
  - Recognition of the magnitude of the problem
  - Issues that impact every Alaskan
  - Acceptance and ownership of the issue by the Administration and communities
- All departments working together towards a common goal
- Starting point: breaking the silence and community engagement

# March 29, 2012 Participating Communities



# Mission: End the Epidemic



# Overview

- To truly turn the curve and reduce the upward trend, we must change the social norms that promote and condone violence within our families and our communities
- As the stigma of reporting lessens and as we increase victim safety, those experiencing violence will be more likely to report and seek help
- We must continually find a balance between primary prevention and secondary and tertiary prevention. In all of our efforts, we must always consider the safety and well-being of victims
- Domestic violence and sexual violence are not solely public safety issues; they are public health issues, human rights issues, spiritual issues, and community issues



# Overview

- Guiding principals which are the foundation of the initiative:
  - A culture of responsibility
  - Community ownership over solutions
  - Partnerships
  - Culturally tailored programs
  - Youth leadership in development and executing programs
  - Support programs with proven effectiveness
  - Use metrics to measure success

# Key Priority Areas

	<b>FY 2011</b>	<b>FY 2012</b>	<b>FY 2013</b>
1. Prevention and Intervention	\$3,200.0	\$3,622.5	\$3,355.0
2. Support for Survivors	\$706.9	\$878.2	\$3,225.5
3. Law Enforcement	\$3,776.3	\$5,337.7	\$5,408.8
	<hr/>		
<b>TOTAL</b>	<b>\$7,683.2</b>	<b>\$9,838.4</b>	<b>\$11,989.3</b>



# Lifetime Estimates: Victimization Survey



Percent of adult women who experienced  
intimate partner violence

Sample	Intimate Partner Violence	Sexual Violence
Statewide (FY10)	47.6%	37.1%
Anchorage (FY11)	42.2%	29.6%
Fairbanks (FY11)	49.5%	31.4%
Juneau (FY11)	47.1%	35.3%
Bristol Bay (FY11)	44.2%	31.2%



# 2012 Alaska Dashboard



**2012 Alaska Dashboard**  
Key Issues Impacting Domestic Violence and Sexual Assault in Alaska

Some of the data below are based on self-reports to survey questions on domestic violence (DV) and sexual assault (SA). These estimates are conservative (actual rates are much higher). As the stigma of reporting violence lessens and as we increase victim safety, more experiencing violence will be more likely to report and seek help. Certain estimates may increase over time (e.g., reports of harm, utilization of services, and records to law enforcement).

Key Population Indicators for Alaska	Previous AK Data	Current AK Data	Percent Change	Progress
<b>Individual Perspectives on Domestic Violence</b>				
1. Percent of adults exposed to intimate partner violence of parent (IPV-CP)	19.1%	19.2%	+1%	●
2. Percent of mothers whose 3-year-old child saw violence or physical abuse (CUBV)	4.0%	3.2%	-20%	●
<b>Child and Youth Experiences</b>				
3. Percent of students experiencing physical/sexual violence (IPV-MS)	12.1%	12.0%	-1%	●
4. Percent of students experiencing sexual violence in schools (SV-S)	10.1%	9.2%	-9%	●
<b>Parental Abuse of Child and Family</b>				
5. Rate of reported child abuse and neglect per 10,000 US CHS	182.1	180.6	-1%	●
6. Rate of reported child sexual maltreatment per 10,000 CHS	3.8	6.1	+58%	●
<b>Adult Experiences</b>				
7. Percent of women experiencing physical intimate partner violence in past year (AVP)	N/A	3.4%	N/A	○
8. Percent of women experiencing sexual violence in past year (AVS)	N/A	4.3%	N/A	○
9. Percent of pregnant women experiencing intimate partner physical abuse (PWAPV)	3.5%	4.0%	+11%	○
<b>Reports of Abuse (Self-Reported)</b>				
10. Number of vulnerable adults reporting abuse or neglect (ARV)	176	169	-4%	○
11. Number of vulnerable elders reporting abuse or neglect (ARE)	73	75	+3%	○
<b>Domestic Violence</b>				
12. Percent of pregnant women whose health provider talked to them about DV (PRMVC)	61.0%	61.3%	+2%	○
13. Number of students contacted seeking help from 3 or more adults (VRBS)	32.0%	33.3%	+4%	○
14. Percent of schools implementing Fourth R, ready, reasoning, our youth (RERO)	9.7%	12.4%	+26%	○
<b>Sexual Assault</b>				
15. Rate of rape (as type reported to law enforcement) per 10,000 (RCA)	7.3	7.6	+3%	○
16. Number of domestic violence related homicides reported to law enforcement (DPR)	2	15	+200%	●
17. Number of elderly victims reporting DV-related sexual/physical assaults to ASY (DPR)	176	149	-15%	●
<b>Child Abuse and Neglect</b>				
18. Rate of child abuse reported to law enforcement per 10,000 (ACA)	81.0	84.8	+5%	●
19. Rate of adults utilizing services for domestic violence per 10,000 (CDVSA)	14.2	69.7	+390%	●
20. Rate of children with adults in domestic violence services per 10,000 (CDVSA)	74.0	74.4	+1%	○
21. Rate of adults utilizing services for sexual assault per 10,000 (CDVSA)	27.8	21.9	-21%	○
22. Rate of youth utilizing services for domestic violence per 10,000 (CDVSA)	32.5	17.9	-45%	○
23. Rate of youth utilizing services for sexual assault per 10,000 (CDVSA)	23.1	31.4	+36%	○
<b>Juvenile Justice</b>				
24. Percent of reported forcible rapes resulting in an arrest (DPR)	24.3%	31.5%	+30%	●
25. Rate of juveniles referred for sex offenses per 1,000 (DPR)	12.9	13.8	+7%	○
26. Rate of juveniles referred for a DV-related assault per 10,000 (DPR)	N/A	38.5	N/A	○
27. Number of sexual assault cases identified for prosecution (DPR)	111	118	+6%	○
28. Percent of accepted sexual assault cases with a conviction (DPR)	63.0%	64.1%	+2%	○
29. Number of sexual abuse of minor cases accepted for prosecution (DPR)	159	123	-23%	○
30. Percent of accepted sexual abuse of minor cases with a conviction (DPR)	64.2%	72.0%	+12%	○
31. Number of domestic violence cases accepted for prosecution (DPR)	2,817	2,997	+6%	○
32. Percent of accepted domestic violence cases with a conviction (DPR)	72.8%	72.1%	-1%	○

Progress: ● Progress satisfactory ○ Progress uncertain ■ Progress Needs Improvement  
Percent change is relative to previous data. (See definition on page 3. Percent changes may or may not be statistically significant.)  
Definitions for each population indicator and rates for current and previous data are found starting on page 3. Alaska Dashboard, January 2012. ©2012 Alaska Council on Domestic Violence and Sexual Assault. <http://cdvsa.alaska.gov/data>

- Previous Alaska Data
- Current Alaska Data
- Percent Change

– Increase or decrease in the current Alaska data, relative to the previous Alaska data

– Some changes are not statistically significant



# 2012 Alaska Dashboard



- What's behind the numbers
  - Results based accountability: population, performance and outcome measures
  - First time these numbers are presented together
  - Progress: ● Satisfactory
    - Uncertain
    - Needs improvement
  - Hope



# Sources for Additional Information



- 2012 Alaska Dashboard: <http://dps.alaska.gov/cdvsa/>
- Alaska Victimization Survey: <http://justice.uaa.alaska.edu/avs>
- André B. Rosay (Anchorage): 786-1821 [afabr@uaa.alaska.edu](mailto:afabr@uaa.alaska.edu)
- Lauree Morton (Juneau): 465-4356 [lauree.morton@alaska.gov](mailto:lauree.morton@alaska.gov)

# Council on Domestic Violence and Sexual Assault PREVENTION

- Systemic Process promoting healthy environments and behaviors reducing the likelihood/frequency of violence
- Primary Prevention – stopping violence before it occurs
- Secondary and Tertiary – keeping the violence from reoccurring



# Council on Domestic Violence and Sexual Assault

## Risk and Protective Factors

Prevention works to promote healthy relationships by reducing factors associated with violent behavior (risk factors)

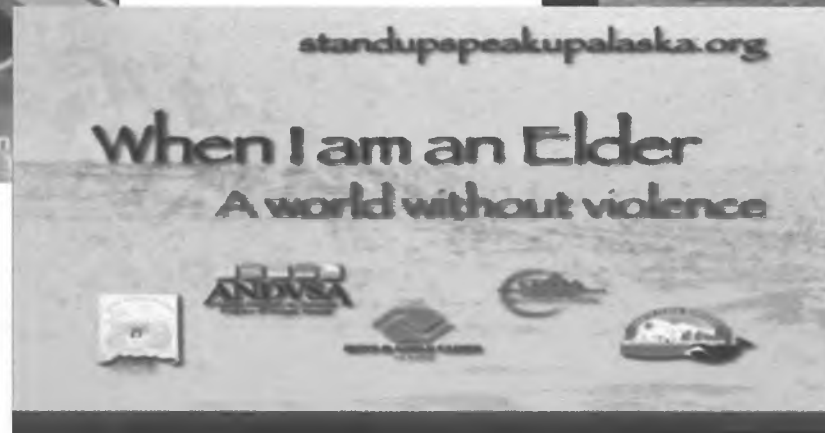
And by strengthening factors that support positive behaviors (protective factors)

# Council on Domestic Violence and Sexual Assault Primary Prevention

Works to change knowledge, norms and behaviors so violence never occurs



**Lead On!**  
FOR PEACE AND EQUALITY IN ALASKA



Ending Violence...  
One Green Dot at a Time

# Council on Domestic Violence and Sexual Assault

- Victim Services
  - Residential
  - Advocacy
  - Safety Planning
  - Information and Referral
  - Support



# Primary Prevention in Schools





# Primary Prevention in Schools

Mental health counseling  
Identification and referral  
to social services and  
trauma informed services  
Social and Emotional  
Learning (SEL)



Policies and Programs (anti-bullying etc)  
Positive Behavioral Intervention Supports (PBIS)  
Positive school climate and increasing connectedness

Health Education Standards  
K-12 Health Education  
Fourth R Curriculum  
Social and Emotional  
Learning (SEL)

Parent involvement  
Parent education  
Positive youth development  
Community engagement and  
partnerships

School nurses and  
school-based health centers



## Health and Safety Coordinator Position

- Focuses primarily on school-based programs for Domestic Violence and Sexual Assault prevention in schools
- Serves on the Governor's Initiative Work Group(s) and State Council on Domestic Violence and Sexual Assault
- Serves as health education expert for the Department
- Collaborates with partners and provides guidance for comprehensive and coordinated school health and safety programs
- Coordinates training and provides technical assistance
- Consults on EED DVSA E-learning Courses
- Collects and interprets school health data for planning and evaluation



## Healthy Relationships Curriculum

- Curriculum for students grades 7 – 9
- Developed in Canada by the Centre for Addiction and Mental Health (CAMH), Centre for Prevention Services
- Adapted for use in Alaska
- Evidence-based
- Focuses on healthy relationships, decision making, skill development through role plays and practice

### Topics Cover

- Bullying
- Personal relationships
- Peer and dating violence
- Substance abuse
- Other high risk behaviors



# Outreach – Reporting Harm

Office of Children’s Services

## Increasing Public Awareness

- Regional mass distribution of posters and business cards emphasizing the importance of reporting suspected child abuse.
- 2011 PSA entitled “*It’s my Job to Prevent Child Abuse*” – premiered in April & still runs regularly. Will hit again big in April ‘12 (Nat. Child Abuse Prev. Month)
- Increased visibility and access to mandatory reporting hotline numbers on OCS website.

# Outreach – Reporting Harm

Senior & Disabilities Services – Adult Protective Services

## Increasing Public Awareness

- Produced Mandatory Report of Harm training video & distributed to rural hubs. Next to smaller villages.
- On-going training/education by APS staff on reporting harm (statewide).
- APS receives approx. 500 reports/month.



# Rural Pilot Projects

## Division of Behavioral Health

**Four community projects** were selected through a competitive grant process to begin February 2011.

**(1) Implementation Project:**

- **Dillingham CANDU Implementation Project-\$800,000**

**(3) Capacity Building Projects:**

- **Kodiak Island Turning the Tide Building Capacity Project - \$200,000**
- **Sitka Pathways to a Safer Sitka Building Capacity Project - \$200,000**
- **Bethel Building Awareness Project -\$200,000**

# Trauma Informed Care

Division of Behavioral Health

## Training Impacts

- 714 individuals trained (*since Feb 2011*)
- Participants include- Behavioral Health, Domestic Violence, Health Care, Juvenile Justice, Child Protection and Child Advocacy
- Glowing evaluations- state Trauma Informed Care provides an answer for their most complex cases
- Expansion- Training at the Early Childhood Mental Health Conference and Annual School on Addictions & Behavioral Health

# Trauma Informed Care

Division of Behavioral Health

## Screening

- Alaska Screening Tool (AST) identifies Trauma in the elements of the instrument
  - 61% reported Trauma Symptoms in FY 2011
  - 69% reported an adverse experience
  - 18% reported intimate partner violence
- Clinical interviews utilizing the technology framed in Trauma 101 shapes effective treatment

# Community Engagement

## FWWI Model

- Funding provides communities with education & training, leadership development and technical assistance.
- Equips community leaders with skills and knowledge to assume responsibility for their community's efforts to reduce family violence and child maltreatment.

**FY2011- \$400,000 Dillingham & Bethel**

**FY2012- \$200,000 Bethel**

# Fed. Funded Prevention Programs

## Division of Public Health

### **Maternal, Infant, and Early Childhood Home Visiting -- \$ 1 million per year for each of 5 years (through 2015) from Health Resources and Services Administration**

- Utilizes the Nurse Family Partnership model program to offer direct services including screening and education for DV/SA during home visiting to program participants in the Anchorage area. A safety plan, referral and follow up are conducted when needed.
- RFP for local contractor will be out by March 1, 2012.

### **Alaska Family Violence Prevention Project -- \$50,000 in FY12 from Health Resources and Services Administration Title V Block Grant**

- Program started in 1993.
- Provides research, training curricula, technical assistance and resource library for providers and organizations.

# Fed. Funded Prevention Programs

## Division of Public Health

### **Personal Responsibility Education Program -- \$250,000 per year (through 2015) from Family and Youth Services Bureau**

- Collaborate with Department of Education & Early Development to implement the Fourth R curriculum in Alaska schools
- Evaluation of curriculum underway

### **Healthy Start -- \$400,000 per year for each of 5 years (through 2015) from HRSA**

- Direct client services will include screening and education of all Healthy Start clients for DV/SA, as well as conducting brief interventions, a safety plan, and referral and follow up, when needed.
- Group health education sessions for all community members will likely occur.
- Data will be gathered for evaluation purposes.

# Additional Prevention Activities

## Division of Public Health

### Public Health Nursing Centers

- All clients are screened for DVSA. Suspected cases of Sexual Abuse of Minors are reported to OCS.
- Education to individuals and groups including school groups – teens are educated on safe and unsafe dating practices and resisting sexual coercion.

### RSA with Division of Public Assistance Temporary Assistance for Needy Families

- Stand Up Speak Up Campaign- Teen dating violence and leadership campaign
  - Current funding: **\$20,000 in FY 12**
- Lead On for Peace and Equality in Alaska- youth leadership and violence prevention mini summit- collaboration with ANDVSA and others
  - Current funding: **\$10,000 sponsorship in FY 12**
- Youth violence prevention grants- ANDVSA administers on WCFH's behalf.
  - Current funding: **\$20,000 in FY 12**

# Screening & Behavioral Services

Alaska Mental Health Trust – Alaska Mental Health Board

## Early Childhood Screening & Brief Behavioral Services

**\$400,000 MH**

FY13 “Brief Behavioral Services” are expected to become available for young children & their families in primary care offices and community mental health centers.

- Will fund outreach, training and technical assistance to providers on administering Early & Periodic Screening, Diagnostic and Treatment (EPSDT) screening and program tools.
- Outreach & education to parents about EPSDT program and services available to their family.

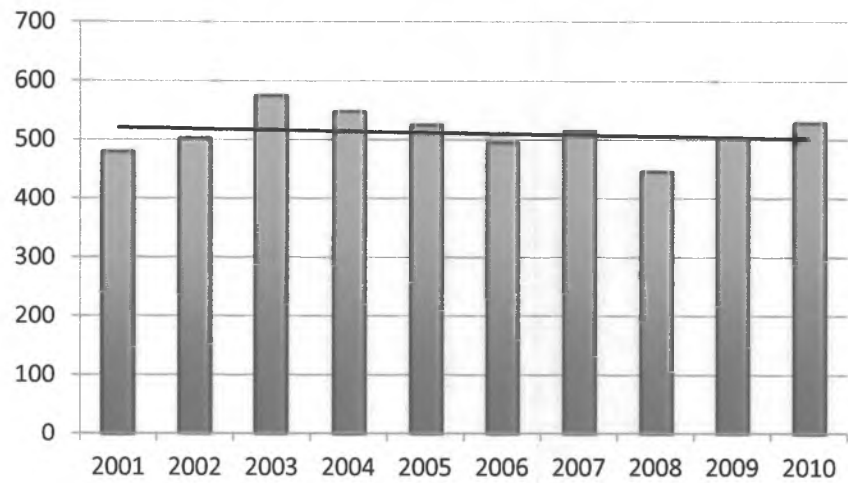
# Department of Public Safety

- Provide a law enforcement presence in every community that desires one
  - Increase the number of VPSO positions
  - Additional trooper posts
- Improve law enforcement response
  - Adding trooper & investigator positions
    - VPSO support troopers
    - Domestic violence follow-up troopers
    - Technical Crimes Unit investigators
    - Child Abuse Investigation Unit investigators
    - Major Crimes Unit investigators
  - Increased funding for forensic medical sexual assault exams
  - Development of pediatric sexual assault kits

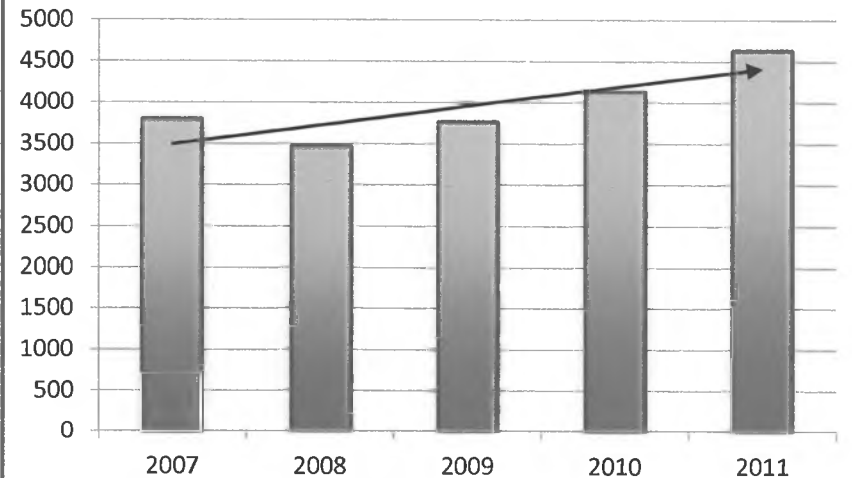
# Department of Public Safety

- Training
  - Online domestic violence training for VPSOs
  - Child forensic interview training
  - Integrated VPSO/VPO training
  - Report writing training
- Improved evidence and case handling
  - Crime lab

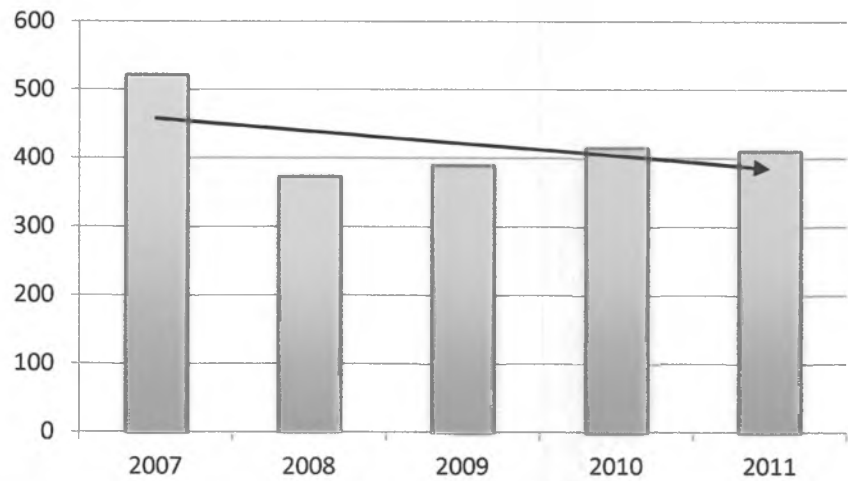
### Forcible Rape (UCR)



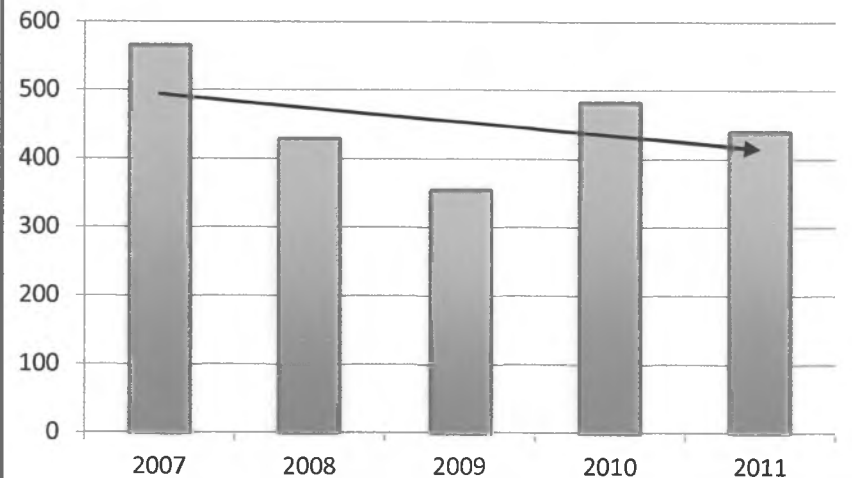
### Domestic Violence



### Sexual Assault



### Sexual Abuse of a Minor



# Department of Law

- Drafted and provided advice leading to passage of bills in 2010 and 2011 that
  - Strengthened laws on sexual exploitation of children, domestic violence, stalking, and evidence retention
  - Strengthened penalties
- Working with Governor's Office on 2012 legislation that further strengthens laws and addresses legal issues with 2012 laws

# Department of Law

- Over 3 years, replaced \$2.5 million in federal grants for prosecutors, paralegals, and staff with state funds
- Created the Cybercrimes Unit staffed by a full time prosecutor
  - 90% of investigations involve internet child exploitation
- All 100+ line prosecutors received specific training on DVSA and stalking at DA's conferences

# 2012 Legislation

- Adopts conspiracy laws for human trafficking and sex trafficking
- Amends the law prohibiting the distribution of indecent materials to minors in response to a decision by the federal district court that Alaska's statute is overbroad
- Changes the terminology for the crime of promoting prostitution to "sex trafficking;"
- Increases the penalty for being a patron of a prostitute if the prostitute is under 18 years of age
- Allows for the forfeiture of property in prostitution cases
- Allows the court to use contemporaneous two-way video conference testimony under special circumstances
- Requires every person to register as a sex offender in Alaska if the person is already required to register in another jurisdiction

# LAW's Requested FY13 Budget Increments

- A second cold case prosecutor: \$225.0
- Continuation of language access programs for victims and witnesses: \$140.0
- Fully fund three Medicaid fraud investigators approved in FY12: \$28.1
- Fully fund Kotzebue attorney approved in FY12: \$52.2
- Fully fund Palmer Child Protection attorney and paralegal approved in FY12: \$87.5

# Corrections: Fairbanks Pilot

1. To test the effectiveness of forma supervision on misdemeanor DV offenders in terms of
  - a. Improving victim safety
  - b. Holding offenders accountable for compliance with court ordered conditions of probation in a swift, certain and proportionate manner
2. To test the extent to which offender accountability and victim safety is promoted by the DV probationer's reduced use of alcohol and drugs
3. To gauge the impact of the DV probationer's consistent attendance in a Batterer Intervention Program on victim safety and on the reduction of DV recidivism

# Pilot: How it works

1. The initial placement goal is to 20 offenders, with a future goal of at least 60 offenders under formal supervision
2. Selection criteria:
  - a. Offender must have committed a misdemeanor DV assault on an intimate partner
  - b. Offender must have had at least two prior documented DV assaults
  - c. Score 7 or higher on the Ontario Domestic Assault Risk Assessment tool
3. Program outcomes to be evaluated by UAA Justice Center

# What's Different About This Approach?

- 1. Supervision:** Normally misdemeanor offenders are not supervised by a probation officer
- 2. Accountability:** Often the criminal justice system doesn't know that a misdemeanor probationer hasn't satisfied his court ordered conditions of probation
- 3. Justice not delayed:** The probationer will receive a swift, certain and proportionate sanction by the judge soon after the violation

# Expanded Bethel Sex Offender Management Program

1. Expand current sex offender management in the Bethel area to provide community-based outpatient sex offender treatment to offenders who are not receiving residential treatment (CRC) and as aftercare to CRC graduates.
2. This service is critically needed given that 48% of state sexual assault arrests come from Southwest Alaska. This leads area wide to a high number of sex offenders on probation and parole.

# Mat-Su Area Institutional Sex Offender Program

1. DOC currently incarcerates over 600 convicted sex offenders.
2. Currently, DOC has 29 beds at LCCC for the provisioning of institutional sex treatment to higher risk offenders.
3. 30 more institutional treatment beds will improve public safety outcomes with improved use of the containment model.

# CHOOSE RESPECT



Alaskans working together to end the epidemic of domestic violence and sexual assault.

OFFICE OF GOVERNOR  
SEAN PARNELL

**Mission:** To end the epidemic of domestic violence and sexual assault in Alaska.

Key Priority Areas:	FY2011	FY2012	FY2013
1. Prevention and Intervention	\$3,200.0	\$3,622.5	\$3,355.0
2. Support for Survivors	\$706.9	\$878.2	\$3,225.5
3. Law Enforcement	\$3,776.3	\$5,337.7	\$5,408.8
<b>Total</b>	<b>\$7,683.2</b>	<b>\$9,838.4</b>	<b>\$11,989.3</b>

## Measures of Success and Progress:

**Short-term:** Increased reports to law enforcement and utilization of victim services.

**Long-term:** Decreases in the percent of women who experienced intimate partner violence in the past year, the rate of childhood exposure to domestic violence, and the rate of forcible rape.

## DVSA Initiative FY 13 Governor's Proposed Budget Highlights

### Prevention and Intervention

- Prevention programming and community level prevention projects (CDVSA-\$250.0)
- Continuation of rural pilot project and capacity grants (DBH-\$1.4M)
- Continuation of Public Education and Awareness Campaign (CDVSA-\$450.0)

### Support for Survivors

- Affordable housing for victims of domestic violence (AHFC-\$1.3 M)
- Trauma informed services for victims and survivors and early childhood screening and brief behavioral services for children exposed to violence (DBH-\$800.0)
- Support for victim service provider agencies (CDVSA-\$475.5)

### Law Enforcement

- 15 VPSOs (to 116) and an additional support trooper (DPS-\$2.7M)
- Continuation of low interest loans or grants for VPSO housing (AHFC-\$1.0M)
- Felony supervision (probation) for domestic violence and sex offenders and funding for sex offender management (DOC-\$688.9)
- Cold case prosecutor and language access for limited English proficient (LEP) persons (DOL-\$365.0)

\*CDVSA - Council on Domestic Violence and Sexual Assault; DBH - Health and Social Services Division of Behavioral Health; AHFC - Alaska Housing Finance Corporation; DPS - Department of Public Safety; DOC - Department of Corrections; DOL - Department of Law.

**Be Courageous: Prevent, Protect, Enforce and Heal.**

[chooserespect.alaska.gov](http://chooserespect.alaska.gov)

# Governor Parnell's DVSA Initiative FY 2011 -12 Highlights

## Prevention and Intervention

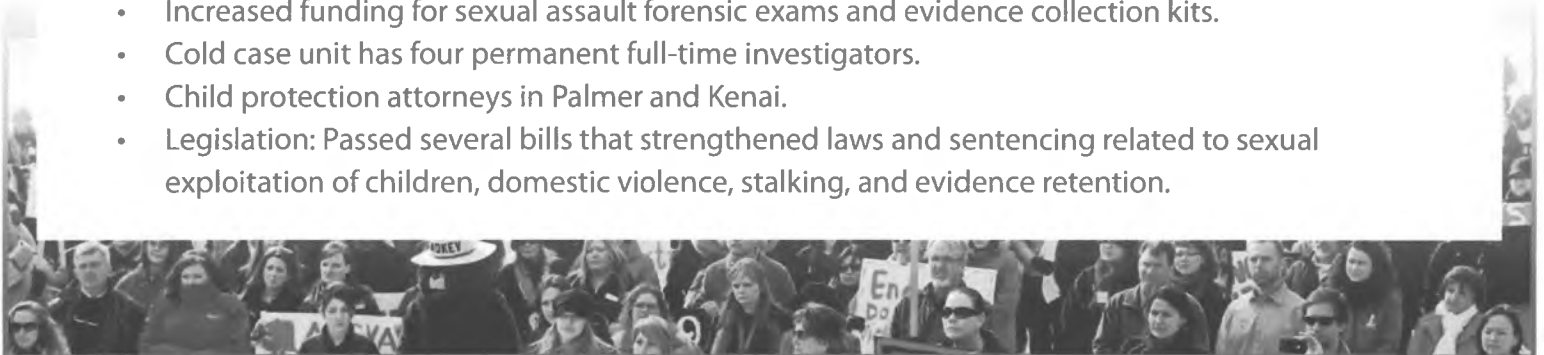
- Choose Respect Marches: 18 in 2010 and 64 in 2011 with a goal for 100 communities in 2012.
  - [chooserespect.alaska.gov](http://chooserespect.alaska.gov)
- Real Alaskans Choose Respect media campaign has over 17 radio and television ads.
  - [andvsa.org/our-commercials/](http://andvsa.org/our-commercials/)
- Other campaigns include Stand Up Speak Up and Lead on! for Peace and Justice.
  - [andvsa.org/lead-on/](http://andvsa.org/lead-on/) and [standupspeakupalaska.org](http://standupspeakupalaska.org)
- Trained 35 teachers from 17 school districts in Fourth R, a healthy relationship curriculum.
- Family Violence Prevention Project supports a train-the-trainer initiative and provides technical support on dating violence, adolescent brain development, and substance abuse.
  - [hss.state.ak.us/dph/chronic/AKFVPPP/](http://hss.state.ak.us/dph/chronic/AKFVPPP/)
- Added a Rural Pilot Project in Dillingham and Capacity Grants in Bethel, Kodiak, and Sitka.

## Support for Survivors

- Victim service program utilization increased by 34 percent, from 8,550 in FY09 to 11,478 in FY11.
- CDVSA reports that 93 percent of FY11 program participants knew more about enhancing safety and 92 percent knew more about available community resources.
- ANDVSA pro-bono attorneys donated \$826,000 worth of free legal assistance for victims.
  - [andvsa.org/pro-bono-program/](http://andvsa.org/pro-bono-program/)
- More than 700 behavioral health providers received training in trauma informed services.
- Expanded access to child advocacy centers (CAC) by supporting the new CAC in Kodiak.
  - [acmhs.com/programs-services/child-family-services/alaska-child-trauma-center](http://acmhs.com/programs-services/child-family-services/alaska-child-trauma-center)
- 160 Family Wellness Warriors participants in Bristol Bay and Yukon-Kuskokwim Regions.
  - [fwwi.org](http://fwwi.org)

## Law Enforcement

- Doubled the number of filled VPSO positions from 47 in 2008 to 96 in January of 2012.
  - [dps.alaska.gov/AST/vpso](http://dps.alaska.gov/AST/vpso)
- Increased VPSO oversight by adding three support troopers for Bethel, Fairbanks, and Kotzebue.
- Five rural communities received low interest loans for VPSO housing.
- Added three positions to the Alaska State Trooper technical crimes unit (cyber-crimes).
- Added four positions to the Alaska Bureau of Investigation (major crimes and child abuse units).
- Launched the Department of Corrections' Fairbanks Pilot Project for 20 to 60 domestic violence misdemeanor offenders. Evaluation to be conducted by UAA's Justice Center.
- Increased funding for sexual assault forensic exams and evidence collection kits.
- Cold case unit has four permanent full-time investigators.
- Child protection attorneys in Palmer and Kenai.
- Legislation: Passed several bills that strengthened laws and sentencing related to sexual exploitation of children, domestic violence, stalking, and evidence retention.



# DVSA Initiative Funding

FY2011-FY2013, All Funds

## By Department

February 23, 2012

### DVSA Capital Budget

Dept	RDU	Component	Project Title
DOR	AHFC	AHFC Operation	Designated DVSA Housing Program for Victims
DOR	AHFC	AHFC Operations	New VPSO Housing
DPS	Statewide Support	Lab Services	Crime Laboratory Equipment Replacement

**Capital Total**

FY2011	
Funding	Pos
1,000.0	
86.0	

FY2012	
Funding	Pos
1,000.0	

FY2013	
Funding	Pos
1,300.0	
1,000.0	

**\$ 1,086.0 0**

**\$ 1,000.0 0**

**\$ 2,300.0 0**

### DVSA Operating Budget

Dept	RDU	Component	Project Title
DOC	Population Management	Statewide Probation and Parole	Targeting Supervised Release of DVSA Felons (PACE) - Anchorage, Fairbanks, Bethel
DOC	Offender Habilitation	Sex Offender Management Program	Palmer Institutional Sex Offender Management Pgm
DOC	Offender Habilitation	Sex Offender Management Program	MH Clinician II for Bethel Sex Offender Management Pgm Support
DOC	Pop Management	Institution Director's Office	FN - Sexual Assault, Child Porn, Distribution of Indecent Materials (SB222)
DOC	Inmate Health Care	Behavioral Health Care	Sex Offender Treatment Program

**DOC subtotal**

FY2011	
Funding	Pos
99.9	1

FY2012	
Funding	Pos
136.9	0

FY2013	
Funding	Pos
338.9	3
200.0	
150.0	
46.0	

**\$ 99.9 1**

**\$ 136.9 0**

**\$ 734.9 3**

Dept	RDU	Component	Project Title
DEED	Teaching and Learning Support	Student and School Achievement	School Health and Safety Coordinator Base Funding

**DEED subtotal**

FY2011	
Funding	Pos
-	0

FY2012	
Funding	Pos
200.0	0

FY2013	
Funding	Pos
-	0

**\$ - 0**

**\$ 200.0 0**

**\$ - 0**

Dept	RDU	Component	Project Title
Gov	Executive Ops	DVSA	Prevention and Intervention Programs
Gov	Executive Ops	Executive Office	DVSA Coordinator

**Gov subtotal**

FY2011	
Funding	Pos
3,000.0	
200.0	1

FY2012	
Funding	Pos
3,000.0	
100.0	

FY2013	
Funding	Pos
3,000.0	

**\$ 3,200.0 1**

**\$ 3,100.0 0**

**\$ 3,000.0 0**

Dept	RDU	Component	Project Title
DHSS	Public Health	Chronic Disease Prevention/Health Promotion	Alaska Family Violence Prevention Project
DHSS	Senior and Disability Svcs	SDS Admin	Adult Protective Services and Provider Quality Assurance
DHSS	Behavioral Health	Svs/Severely Emotion Dist Yth	MH Trust: Early Childhood Screening and Brief Behavioral Services
DHSS	Behavioral Health	BH Grants	MH Trust: Trauma Informed Care
DHSS	Behavioral Health	BH Grants	Telehealth Strategic Capacity Expansion
DHSS	Children's Services	Family Preservation	Kodiak Area Child Advocacy Center Operations

**DHSS subtotal**

FY2011	
Funding	Pos
-	0

FY2012	
Funding	Pos
200.0	
450.0	0

FY2013	
Funding	Pos
550.0	
400.0	
400.0	
100.0	
250.0	

**\$ - 0**

**\$ 450.0 0**

**\$ 1,450.0 0**

Dept	RDU	Component	Project Title
Law	Criminal	Criminal Appeals/Special Litigation	Cold Case Prosecutor in Anchorage
Law	Criminal	3rd Judicial: Anchorage	Language Interpreter Program for Victims and Witnesses of DVSA Crimes
Law	Civil	Child Protection	Child Protection Attorney and Paralegal in Palmer
Law	Criminal	2nd Judicial	New Attorney in Kotzebue
Law	Civil	Child Protection	Child Protection Attorney in Kenai

**Law subtotal**

FY2011	
Funding	Pos
200.0	1

FY2012	
Funding	Pos
262.5	2
157.5	1

FY2013	
Funding	Pos
225.0	1
140.0	
87.5	
52.5	

**\$ 200.0 1**

**\$ 420.0 3**

**\$ 505.0 1**

Dept	RDU	Component	Project Title
DPS	CDVSA	CDVSA	Expand Community Level Prevention Efforts
DPS	CDVSA	CDVSA	Data Collection
DPS	CDVSA	CDVSA	Planning and Coordination - Contracted Services
DPS	CDVSA	CDVSA	Currently Funded Pgm Increases: Utilities, Health Insurance, Workers' Compensation, Meals for Victims, etc
DPS	CDVSA	CDVSA	Support Domestic Violence Shelters
DPS	CDVSA	CDVSA	DVSA Victim Services
DPS	VPSO	VPSO Contracts	Governor's Village Public Safety Officer Initiative
DPS	VPSO	VPSO Support	VPSO/VPO Regional 12-Week Training Program, 2x/Yr
DPS	AST	AST Detachments	DVSA Investigations, Training, and Exams
DPS	AST	Special Projects	Violence Against Women and Training Program
DPS	Statewide Support	Lab Services	Pediatric Sexual Assault Kits
DPS	Statewide Support	Lab Services	DNA Analyst for Unknown Suspect Sexual Assault Cases
DPS	VPSO	VPSO Contracts	VPSO Cost of Living Adjustment and Merit Increases
DPS	AK Police Strds Council	AK Police Strds Council	DVSA and Rural Law Enforcement Training
DPS	AST	Alaska Bureau of Investigations	Investigator and Criminal Justice Tech I for Internet Crimes Against Children Cases

**DPS subtotal**

FY2011	
Funding	Pos
381.9	
325.0	
1,261.5	
725.0	3
75.0	
12.3	
92.8	
223.8	
359.6	2

FY2012	
Funding	Pos
122.5	1
550.0	
3,371.2	3
50.0	
4,453.3	6

FY2013	
Funding	Pos
250.0	
50.0	
55.0	
475.5	
2,668.9	1
500.0	
3,999.4	1

**\$ 3,097.3 3**

**\$ 4,453.3 6**

**\$ 3,999.4 1**

Dept	RDU	Component	Project Title
Courts	Alaska Court System	Trial Courts	Part-time DVSA Coordinator

**Courts subtotal**

FY2011	
Funding	Pos
-	0

FY2012	
Funding	Pos
78.2	0

FY2013	
Funding	Pos
-	0

**\$ - 0**

**\$ 78.2 0**

**\$ - 0**

**Operating Total**

**\$ 6,597.2 6**

**\$ 8,838.4 9**

**\$ 9,689.3 5**

**Capital and Operating Total**

**\$ 7,683.2 6**

**\$ 9,838.4 9**

**\$ 11,989.3 5**

# DVSA Initiative Funding

FY2011-FY2013, All Funds

By Category

February 23, 2012

## Prevention and Intervention

Dept	RDU	Component	Project Title	FY2011		FY2012		FY2013	
				Funding	Pos	Funding	Pos	Funding	Pos
Gov	Executive Ops	DVSA	Prevention and Intervention Programs	3,000.0		3,000.0		3,000.0	
Gov	Executive Ops	Executive Office	DVSA Coordinator	200.0	1	100.0			
DEED	Teaching and Learning Support	Student and School Achievement	School Health and Safety Coordinator Base Funding			200.0			
DHSS	Public Health	Chronic Disease Prevention/Health Promotion	Alaska Family Violence Prevention Project			200.0			
DPS	CDVSA	CDVSA	Expand Community Level Prevention Efforts			122.5	1	250.0	
DPS	CDVSA	CDVSA	Data Collection					50.0	
DPS	CDVSA	CDVSA	Planning and Coordination - Contracted Services					55.0	
<b>Prevention and Intervention Total</b>				<b>\$ 3,200.0</b>	<b>1</b>	<b>\$ 3,622.5</b>	<b>1</b>	<b>\$ 3,355.0</b>	<b>0</b>

## Support for Survivors

Dept	RDU	Component	Project Title	FY2011		FY2012		FY2013	
				Funding	Pos	Funding	Pos	Funding	Pos
Courts	Alaska Court System	Trial Courts	Part-time DVSA Coordinator			78.2			
DHSS	Senior and Disability Svcs	SDS Admin	Adult Protective Services and Provider Quality Assurance					550.0	
DHSS	Behavioral Health	Svs/Severely Emotion Dst Yth	MH Trust: Early Childhood Screening and Brief Behavioral Services					400.0	
DHSS	Behavioral Health	BH Grants	MH Trust: Trauma Informed Care					400.0	
DHSS	Behavioral Health	BH Grants	Telehealth Strategic Capacity Expansion					100.0	
DHSS	Children's Services	Family Preservation	Kodiak Area Child Advocacy Center Operations			250.0			
DOR	AHFC	AHFC Operations	Designated DVSA Housing Program for Victims - CAPITAL					1,300.0	
DPS	CDVSA	CDVSA	Currently Funded Pgm Increases: Utilities, Health Insurance, Workers' Compensation, Meals for Victims, etc					475.5	
DPS	CDVSA	CDVSA	Support for Domestic Violence Shelters	381.9		550.0			
DPS	CDVSA	CDVSA	DVSA Victim Services	325.0					
<b>Support for Survivors Total</b>				<b>\$ 706.9</b>	<b>0</b>	<b>\$ 878.2</b>	<b>0</b>	<b>\$ 3,225.5</b>	<b>0</b>

## Law Enforcement

Dept	RDU	Component	Project Title	FY2011		FY2012		FY2013	
				Funding	Pos	Funding	Pos	Funding	Pos
DOR	AHFC	AHFC Operations	New VPSO Housing - CAPITAL	1,000.0		1,000.0		1,000.0	
DOC	Population Management	Statewide Probation and Parole	Targeting Supervised Release of DVSA Felons (PACE) - Anchorage, Fairbanks, Bethel					338.9	3
DOC	Offender Habilitation	Sex Offender Management Program	Palmer Institutional Sex Offender Management Pgm					200.0	
DOC	Offender Habilitation	Sex Offender Management Program	MH Clinician II for Bethel Sex Offender Management Pgm Support					150.0	
DOC	Pop Management	Institution Director's Office	FN - Sexual Assault, Child Porn, Distribution of Indecent Materials (SB222)			136.9		46.0	
DOC	Inmate Health Care	Behavioral Health Care	Sex Offender Treatment Program	99.9	1				
Law	Criminal	Criminal Appeals/Special Litigation	Cold Case Prosecutor in Anchorage					225.0	1
Law	Criminal	Third Judicial: Anchorage	Language Interpreter Program for Victims and Witnesses of DVSA Crimes					140.0	
Law	Civil	Child Protection	Child Protection Attorney and Paralegal in Palmer			262.5	2	87.5	
Law	Criminal	2nd Judicial	New Attorney in Kotzebue			157.5	1	52.5	
Law	Civil	Child Protection	Child Protection Attorney in Kenai	200.0	1				
DPS	Statewide Support	Lab Services	Crime Laboratory Equipment Replacement - CAPITAL	86.0					
DPS	VPSO	VPSO Contracts	Governor's Village Public Safety Officer Initiative	1,261.5		3,371.2	3	2,658.9	1
DPS	VPSO	VPSO Support	VPSO/VPO Regional 12-Week Training Program, 2x/Yr					500.0	
DPS	AST	AST Detachments	DVSA Investigations, Training, and Exams	725.0	3				
DPS	AST	Special Projects	Violence Against Women and Training Program	75.0					
DPS	Statewide Support	Lab Services	Pediatric Sexual Assault Kits	12.3					
DPS	Statewide Support	Lab Services	DNA Analyst for Unknown Suspect Sexual Assault Cases	92.8					
DPS	VPSO	VPSO Contracts	VPSO Cost of Living Adjustment and Merit Increases	223.8					
DPS	AK Police Stds Council	AK Police Stds Council	DVSA and Rural Law Enforcement Training			50.0			
DPS	AST	Alaska Bureau of Investigations	Investigator and Criminal Justice Tech I for Internet Crimes Against Children Cases			358.6	2		
<b>Law Enforcement and Public Safety Total</b>				<b>\$ 3,776.3</b>	<b>5</b>	<b>\$ 5,337.7</b>	<b>8</b>	<b>\$ 5,408.8</b>	<b>5</b>

### DVSA Initiatives Summarized

1. Prevention and Intervention
2. Support for Survivors
3. Law Enforcement

FY2011		FY2012		FY2013	
Funding	Pos	Funding	Pos	Funding	Pos
\$ 3,200.0	1	\$ 3,622.5	1	\$ 3,355.0	0
\$ 706.9	0	\$ 878.2	0	\$ 3,225.5	0
\$ 3,776.3	5	\$ 5,337.7	8	\$ 5,408.8	5
<b>\$ 7,683.2</b>	<b>6</b>	<b>\$ 9,838.4</b>	<b>9</b>	<b>\$ 11,989.3</b>	<b>5</b>

# DVSA Initiative Funding

FY2011-FY2013, All Funds

## Governor's \$3.0 Million Prevention and Intervention Detail

February 23, 2012

				FY2011		FY2012		FY2013	
Dept	RDU	Component	Project Title	Funding	Pos	Funding	Pos	Funding	Pos
<b>Gov</b>	Executive Ops	DVSA	DVSA Support and Planning, Coordinator's Office	50.0		50.0		50.0	
<b>Servicing detail, Gov's RSAs to Agencies:</b>									
<b>DOC</b>	Population Management	Statewide Probation and Parole	DV Misdemeanant PACE Pilot, Fairbanks			200.0		200.0	
<b>DEED</b>	Teaching and Learning Support	Student and School Achievement	School Health and Safety Coordinator-DEED	200.0					
<b>DHSS</b>	Behavioral Health	BH Grants/CAPI in FY13	Family Wellness Warriors Initiative	400.0		200.0		200.0	
<b>DHSS</b>	Behavioral Health	BH Grants	Trauma-Informed Training for Behavioral Health Providers	200.0		200.0		200.0	
<b>DHSS</b>	Behavioral Health	CAPI	Multi-disciplinary Rural Community Pilot Project	1,350.0		1,400.0		1,400.0	
<b>DHSS</b>	Children's Services	Family Preservation	Children's Advocacy Center Expansion	40.0					
<b>DPS</b>	CDVSA	CDVSA	Batterers' Intervention, Evaluation and Investigation of Evidence Based Practices	100.0					
<b>DPS</b>	CDVSA	CDVSA	Pro-Bono Attorney Clearinghouse	60.0		60.0		60.0	
<b>DPS</b>	CDVSA	CDVSA	Universal Public Education Marketing (prevention)	300.0		450.0		450.0	
<b>DPS</b>	CDVSA	CDVSA	Victimization Study, Evaluation and Planning Grants (research)	237.7		400.0		400.0	
<b>UAA</b>	Budget Reductions/ Additions	Systemwide Reductions/Additions	Future Provider Workforce Development/Training			40.0		40.0	
<b>UAA</b>			DVSA Research Services	62.3					
<b>Governor's RSA Total</b>				<b>\$ 3,000.0</b>	<b>0</b>	<b>\$ 3,000.0</b>	<b>0</b>	<b>\$ 3,000.0</b>	<b>0</b>



# 2012 Alaska Dashboard

#2

## Key Issues Impacting

### Domestic Violence and Sexual Assault in Alaska

Some of the data below are based on self-disclosures to survey questions on domestic violence (DV) and sexual assault (SA). These estimates are conservative (actual rates are much higher). As the stigma of reporting violence lessens and as we increase victim safety, those experiencing violence will be more likely to report and seek help. Certain estimates may increase over time (e.g., reports of harm, utilization of services, and reports to law enforcement).

Key Population Indicators for Alaska	Previous AK Data	Current AK Data	Percent Change	Progress
<b>Childhood Exposure to Domestic Violence</b>				
1. Percent of adults exposed to intimate partner violence of parent (BRFSS)	19.1%	19.2%	+1%	○
2. Percent of mothers whose 3 year old child saw violence or physical abuse (CUBS)	4.0%	7.2%	+80%	●
<b>Child and Youth Victimization</b>				
3. Percent of students experiencing physical dating violence in past year (YRBS)	13.3%	12.0%	-10%	●
4. Percent of students experiencing sexual violence in lifetime (YRBS)	10.1%	9.2%	-9%	●
<b>Reports of Harm (Child and Youth)</b>				
5. Rate of reported child abuse and neglect per 10,000 (US DHHS)	190.1	150.8	-21%	●
6. Rate of reported child sexual maltreatment per 10,000 (OCS)	5.8	6.5	+12%	●
<b>Adult and Elder Victimization</b>				
7. Percent of women experiencing physical intimate partner violence in past year (AVS)	N/A	9.4%	N/A	○
8. Percent of women experiencing sexual violence in past year (AVS)	N/A	4.3%	N/A	○
9. Percent of pregnant women experiencing intimate partner physical abuse (PRAMS)	3.6%	4.0%	+11%	●
<b>Reports of Harm (Adult and Elder)</b>				
10. Number of vulnerable adults reporting abuse or neglect (APS)	176	160	-9%	●
11. Number of vulnerable elders reporting abuse or neglect (APS)	73	76	+4%	○
<b>Primary Prevention and Protective Factors</b>				
12. Percent of pregnant women whose health provider talked to them about DV (PRAMS)	60.0%	61.3%	+2%	○
13. Percent of students comfortable seeking help from 3 or more adults (YRBS)	44.6%	43.8%	-2%	○
14. Percent of schools implementing Fourth R healthy relationship curriculum (DEED)	9.7%	12.5%	+29%	●
<b>Reports to Law Enforcement</b>				
15. Rate of forcible rape reported to law enforcement per 10,000 (UCR)	7.3	7.5	+3%	○
16. Number of domestic violence related homicides reported to law enforcement (DPS)	5	15	+200%	●
17. Number of elderly victims reporting DV-related sexual/physical assaults to AST (DPS)	176	149	-15%	●
<b>Utilization of Services</b>				
18. Rate of children evaluated by child advocacy centers per 10,000 (ACA)	81.9	94.8	+16%	●
19. Rate of adults utilizing services for domestic violence per 10,000 (CDVSA)	84.2	89.7	+7%	●
20. Rate of children with adults in domestic violence services per 10,000 (CDVSA)	74.0	74.4	+1%	○
21. Rate of adults utilizing services for sexual assault per 10,000 (CDVSA)	21.8	21.9	+0%	○
22. Rate of youth utilizing services for domestic violence per 10,000 (CDVSA)	22.5	17.9	-20%	●
23. Rate of youth utilizing services for sexual assault per 10,000 (CDVSA)	43.3	31.4	-27%	●
<b>Offender Accountability</b>				
24. Percent of reported forcible rapes resulting in an arrest (DPS)	24.3%	21.0%	-14%	●
25. Rate of juveniles referred for sex offenses per 10,000 (DJJ)	10.9	13.8	+27%	●
26. Rate of juveniles referred for a DV-related assault per 10,000 (DJJ)	N/A	38.5	N/A	○
27. Number of sexual assault cases accepted for prosecution (DOL)	111	118	+6%	●
28. Percent of accepted sexual assault cases with a conviction (DOL)	63.0%	66.1%	+5%	●
29. Number of sexual abuse of minor cases accepted for prosecution (DOL)	109	123	+13%	●
30. Percent of accepted sexual abuse of minor cases with a conviction (DOL)	84.4%	78.0%	-8%	○
31. Number of domestic violence cases accepted for prosecution (DOL)	2,617	2,977	+14%	●
32. Percent of accepted domestic violence cases with a conviction (DOL)	73.8%	73.1%	-1%	○

**Progress:** ● Progress Satisfactory ○ Progress Uncertain ● Progress Needs Improvement

Percent change is relative to previous data. See definition on page 3. Percent changes may or may not be statistically significant.

# 2012 Alaska Dashboard

## Key Issues Impacting Domestic Violence and Sexual Assault in Alaska

### National Comparisons

National data for comparison purposes are only available for a few of the population indicators on the Alaska dashboard for key issues impacting domestic violence and sexual assault in Alaska. Few of the data sources on the Alaska dashboard are available nationally or in other states. When they are available, data are rarely directly comparable. In particular, different states have different definitions for domestic violence and sexual assault. Listed below are the few indicators that are directly comparable to national data.

Key Population Indicators for Alaska	Previous AK Data	Current AK Data	U.S. Data
<b>Child and Youth Victimization</b>			
3. Percent of students experiencing physical dating violence in past year (YRBS)	13.3%	12.0%	9.8%
4. Percent of students experiencing sexual violence in lifetime (YRBS)	10.1%	9.2%	7.4%
<b>Reports of Harm (Child and Youth)</b>			
5. Rate of reported child abuse and neglect per 10,000 (US DHHS)	190.1	150.8	92.2
<b>Reports to Law Enforcement</b>			
15. Rate of forcible rape reported to law enforcement per 10,000 (UCR)	7.3	7.5	2.8

#### Percent of students experiencing physical dating violence in the past year (YRBS)

In 2009 (previous AK data), the percentage of Alaska high school students experiencing physical dating violence in the past year was 13.3%, compared to 9.8% of high school students in the U.S. The percentage of high school students experiencing physical dating violence in the past year was 1.4 times higher in Alaska than in the U.S.

#### Percent of students experiencing sexual violence in lifetime (YRBS)

In 2009 (previous AK data), the percentage of Alaska high school students experiencing sexual violence in their lifetime was 10.1%, compared to 7.4% of high school students in the U.S. The percentage of high school students experiencing sexual violence in their lifetime was 1.4 times higher in Alaska than in the U.S.

#### Rate of reported child abuse and neglect per 10,000 (US DHHS)

In 2010 (current AK data), the rate of reported and substantiated child abuse and neglect was 150.8 per 10,000 children (ages 0 to 17) in Alaska, compared to 92.2 per 10,000 children in the U.S. The Alaska rate was 1.6 times higher than the U.S. rate.

#### Rate of forcible rape reported to law enforcement per 10,000 (UCR)

In 2010 (current AK data), the rate of forcible rape reported to law enforcement was 7.5 per 10,000 in Alaska, compared to 2.8 per 10,000 in the U.S. The Alaska rate was 2.7 times higher than the U.S. rate.

### Forthcoming Indicators

<b>Reports to Law Enforcement</b>	
1.	Number of sexual assaults reported to law enforcement (DPS)
2.	Number of sexual abuses of minors reported to law enforcement (DPS)
<b>Offender Accountability</b>	
3.	Percent of juvenile sex offenders who recidivate (DJJ)
4.	Percent of adult sex offenders who recidivate (DOC)
<b>Primary Prevention and Protective Factors</b>	
5.	Percent of students who feel connected to their school (SCCS)

# 2012 Alaska Dashboard

## Key Issues Impacting Domestic Violence and Sexual Assault in Alaska

### Percent Change

Percent change is the increase or decrease in the current Alaska data relative to the previous Alaska data. It is not an absolute difference in percent. For example, indicator #2 has increased from 4.0% to 7.2%. The absolute difference in percent is 3.2, but the percent change from the previous to the current Alaska data is 80%, because 3.2 is 80% of the previous Alaska data. Percent changes may or may not be statistically significant since some change randomly occurs from year to year.

$$\text{Percent Change is } \frac{\text{Current AK data} - \text{Previous AK data}}{\text{Previous AK data}} \times 100$$

### Dashboard Indicator Definitions

#### Childhood Exposure to Domestic Violence

##### 1. Percent of adults exposed to intimate partner violence of parent

Behavioral Risk Factor Surveillance System (BRFSS). Approximately every third year, 2,500 adults in Alaska are asked "As a child, did you ever see or hear one of your parents or guardians being hit, slapped, punched, shoved, kicked or otherwise physically hurt by their spouse or partner?" Most current Alaska data are from 2009 and previous Alaska data are from 2006.

##### 2. Percent of mothers whose 3 year old child saw violence or physical abuse

Childhood Understanding Behaviors Survey (CUBS). Each year, over 1,000 mothers of three year old children are asked "Has your child ever experienced seeing violence or physical abuse in person?" Most current Alaska data are from 2010 and previous Alaska data are from 2009.

#### Child and Youth Victimization

##### 3. Percent of students experiencing physical dating violence in past year

Youth Risk Behavior Survey (YRBS). Every two years, over 1,000 students in traditional high schools are asked "During the past 12 months, did your boyfriend or girlfriend ever hit, slap, or physically hurt you on purpose?" Most current Alaska data are from 2011 and previous Alaska data are from 2009.

##### 4. Percent of students experiencing sexual violence in lifetime

Youth Risk Behavior Survey (YRBS). Every two years, over 1,000 students in traditional high schools are asked "Have you ever been physically forced to have sexual intercourse when you did not want to?" Most current Alaska data are from 2011 and previous Alaska data are from 2009.

#### Reports of Harm (Child and Youth)

##### 5. Rate of reported child abuse and neglect per 10,000

US Department of Health and Human Services (US DHHS). Rate of unique victims of reported and substantiated child abuse and neglect per 10,000 children ages 0-17. Child abuse and neglect is defined as any recent act or failure to act on the part of a parent or caretaker which results in death, serious physical or emotional harm, sexual abuse or exploitation; or an act or failure to act which presents and imminent risk of serious harm. Most current Alaska data are from 2010 and previous Alaska data are from 2009. For the purpose of the dashboard, this indicator is not used to measure rates of victimization. It is used to measure rates of reporting harm.

##### 6. Rate of reported child sexual maltreatment per 10,000

Office of Children's Services (OCS). Rate of non-duplicated children per 10,000 (ages 0-17) that are referred to the Office of Children's Services for substantiated incidents of sexual maltreatment. Sexual maltreatment includes sexual abuse (sexual assault, sexual abuse of a minor, incest, online enticement of a minor, unlawful exploitation of a minor, indecent exposure), sexual exploitation (allowing, permitting, or encouraging child prostitution), and prostitution or promoting prostitution. Most current Alaska data are from 2010 and previous Alaska data are from 2009. For the purpose of the dashboard, this indicator is not used to measure rates of victimization. It is used to measure rates of reporting harm.

### Adult and Elder Victimization

#### 7. Percent of women experiencing intimate partner violence in past year

Alaska Victimization Survey (AVS). In 2010, over 800 adult women were asked if in the past year, an intimate partner (a) "Made threats to physically harm you?" (b) "Slapped you?" (c) "Pushed or shoved you?" (d) "Hit you with a fist or something hard?" (e) "Kicked you?" (f) "Hurt you by pulling your hair?" (g) "Slammed you against something?" (h) "Tried to hurt you by choking or suffocating you?" (i) "Beaten you?" (j) "Burned you on purpose?" or (k) "Used a knife or gun on you?" Most current Alaska data are from 2010.

#### 8. Percent of women experiencing sexual violence in past year

Alaska Victimization Survey (AVS). In 2010, over 800 adult women were asked "When you were drunk, high, drugged, or passed out and unable to consent" in the past year, has anyone (a) "Had vaginal sex with you?" (b) "Made you receive anal sex?" (c) "Made you perform oral sex?" or (d) "Made you receive oral sex?" and has anyone in the past year "used physical force or threats to physically harm you to" (a) "Make you have vaginal sex?" (b) "Make you receive anal sex?" (c) "Make you perform oral sex?" (d) "Make you receive oral sex?" (e) "Put their fingers or an object in your vagina or anus?" or (f) "Try to have vaginal, oral, or anal sex with you, but sex did not happen?" Most current Alaska data are from 2010.

#### 9. Percent of pregnant women experiencing intimate partner physical abuse

Pregnancy Risk Assessment Monitoring System (PRAMS). Each year, one of every six women who delivered a live-born infant is asked "During your most recent pregnancy, did your husband or partner push, hit, slap, kick, choke, or physically hurt you in any other way?" Most current Alaska data are from 2010 and previous Alaska data are from 2009.

### Reports of Harm (Adult and Elder)

#### 10. Number of vulnerable adults reporting abuse or neglect

Adult Protective Services (APS). Number of vulnerable adults with a substantiated allegation of abuse or neglect reported to Adult Protective Services. Vulnerable adults are people 18 years of age or older who, because of physical or mental impairment, are unable to meet their own needs or to seek help without assistance. Abuse includes the willful, intentional, or reckless nonaccidental, and nontherapeutic infliction of physical pain, injury, or mental distress; or sexual assault in the first or second degree. Neglect includes the intentional failure by a caregiver to provide essential care or services necessary to maintain the physical and mental health of the vulnerable adult (self-neglect is not included). Most current Alaska data are from 2011 and previous Alaska data are from 2010. For the purpose of the dashboard, this indicator is not used to measure rates of victimization. It is used to measure rates of reporting harm.

#### 11. Number of vulnerable elders reporting abuse or neglect

Adult Protective Services (APS). Number of vulnerable elders with a substantiated allegation of abuse or neglect reported to Adult Protective Services. Vulnerable elders are people 65 years of age or older who, because of physical or mental impairment, are unable to meet their own needs or to seek help without assistance. Abuse includes the willful, intentional, or reckless nonaccidental, and nontherapeutic infliction of physical pain, injury, or mental distress; or sexual assault in the first or second degree. Neglect includes the intentional failure by a caregiver to provide essential care or services necessary to maintain the physical and mental health of the vulnerable adult (self-neglect is not included). Most current Alaska data are from 2011 and previous Alaska data are from 2010. For the purpose of the dashboard, this indicator is not used to measure rates of victimization. It is used to measure rates of reporting harm.

### Primary Prevention and Protective Factors

*Primary prevention includes approaches before violence has occurred to prevent initial perpetration or victimization*

#### 12. Percent of pregnant women whose health provider talked to them about DV

Pregnancy Risk Assessment Monitoring System (PRAMS). Each year, one of every six women who delivered a live-born infant is asked "During any of your prenatal care visits, did a doctor, nurse, or other health care worker talk with you about physical abuse to women by their husbands or partners?" Most current Alaska data are from 2010 and previous Alaska data are from 2009.

#### 13. Percent of students comfortable seeking help from 3 or more adults

Youth Risk Behavior Survey (YRBS). Every two years, over 1,000 students in traditional high schools are asked "Besides your parents, how many adults would you feel comfortable seeking help from if you had an important question affecting your life?" Most current Alaska data are from 2011 and previous Alaska data are from 2009.

#### 14. Percent of schools implementing Fourth R healthy relationship curriculum

Department of Education & Early Development (DEED). Percentage of public secondary schools that have teachers trained in the Fourth R healthy relationship curriculum. Secondary schools include public high schools, middle schools, and alternative schools. Most current Alaska data are from FY12 and previous Alaska data are from FY11.

## Reports to Law Enforcement

### 15. Rate of forcible rape reported to law enforcement per 10,000

Uniform Crime Reports (UCR). Rate of forcible rape reported to most law enforcement agencies in Alaska per 10,000 population. Forcible rape is defined as the carnal knowledge of a female forcibly and against her will. Attempted forcible rapes are included, regardless of the age of the victim. Statutory offenses (no force used – victim under age of consent) are excluded. To obtain rates per 100,000, multiply the rates per 10,000 by 10. Most current Alaska data are from 2010 and previous Alaska data are from 2009.

### 16. Number of domestic violence related homicides reported to law enforcement

Alaska Department of Public Safety (DPS). Number of homicides (willful nonnegligent killings) known to law enforcement that occurred in Alaska where the homicide was committed by a household member against another household member. Household members include adults or minors who are current or former spouses, who live together or who have lived together, who are dating or who have dated, who are engaged in or who have engaged in a sexual relationship, who are related to each other up to the fourth degree of consanguinity, who are related or formerly related by marriage, who have a child of the relationship. Household members also include children of a person in any of these relationships. In some cases, the relationship of the victim to the offender is unknown. These cases are not included in the number of domestic violence related homicides. Most current data are from 2010 and previous Alaska data are from 2009.

### 17. Number of elderly victims reporting DV-related sexual/physical assaults to AST

Alaska Department of Public Safety (DPS). Number of elderly victims (age 60 or older) who reported an assault involving domestic violence or a sexual assault involving domestic violence to Alaska State Troopers. This is the unduplicated count of victims, not the count of offenses or cases. In addition, each victim is counted only once per year. This number does not include offenses reported to local or municipal police departments. This number also does not include other domestic violence offenses (other crimes against the person, burglary, criminal trespass, arson or criminally negligent burning, criminal mischief, terrorist threatening, violating a protective order, and harassment). Crimes are domestic violence related if they occur between household members (i.e., adults or minors who are current or former spouses, who live together or who have lived together, who are dating or who have dated, who are engaged in or who have engaged in a sexual relationship, who are related to each other up to the fourth degree of consanguinity, or who are related or formerly related by marriage; persons who have a child of the relationship; and minor children of a person in any of these relationships). Most current data are from 2010 and previous Alaska data are from 2009.

## Utilization of Services

### 18. Rate of children evaluated by child advocacy centers per 10,000

Alaska Children's Alliance (ACA). Number of children evaluated at a child advocacy center (duplicated count) per 10,000 children ages 0-17. Children are evaluated at child advocacy centers for allegations of child sexual abuse or assault, child physical abuse, drug endangerment, witnessing violent events in the home where they are present, and neglect or medical failure to thrive. Most current Alaska data are from state fiscal year 2010 and previous Alaska data are from state fiscal year 2009.

### 19. Rate of adults utilizing services for domestic violence per 10,000

Council on Domestic Violence and Sexual Assault (CDVSA). Number of unduplicated adults per 10,000 adults (age 18 and older) who utilized services from a CDVSA-funded domestic violence and sexual assault service agency, and who were recorded at that agency as being a primary victim of domestic violence. Primary victims are adults who are directly harmed, either physically or emotionally, by the actions of another. Domestic violence is defined as any pattern of coercive behavior that is used by one person to gain power and control over a current or former intimate partner. Domestic violence includes dating violence, which is violence committed by a person who is or has been in a social relationship of a romantic or intimate nature with the program participant. Most current Alaska data are from state fiscal year 2011 and previous Alaska data are from state fiscal year 2010.

### 20. Rate of children with adults in domestic violence services per 10,000

Council on Domestic Violence and Sexual Assault (CDVSA). Number of unduplicated minors per 10,000 minors (ages 0-17) who utilized services from a CDVSA-funded domestic violence or sexual assault service agency, and who were recorded as being a secondary victim of domestic violence. Secondary victims are minors beyond the immediate victim who have been affected by the repercussions of an event or events. These may include child witnesses who although not the direct target of abuse, have been affected. This number does not include minors who were primary victims of domestic violence (even if they were also secondary victims). Domestic violence is defined as any pattern of coercive behavior that is used by one person to gain power and control over a current or former intimate partner. Domestic violence includes dating violence, which is violence committed by a person who is or has been in a social relationship of a romantic or intimate nature with the program participant. Most current Alaska data are from state fiscal year 2011 and previous Alaska data are from state fiscal year 2010.

**21. Rate of adults utilizing services for sexual assault per 10,000**

Council on Domestic Violence and Sexual Assault (CDVSA). Number of unduplicated adults per 10,000 adults (age 18 and older) who utilized services from a CDVSA-funded domestic violence and sexual assault service agency, and who were recorded at that agency as being primary victims of sexual assault. Primary victims are adults who are directly harmed, either physically or emotionally, by the actions of another. Sexual assault includes both assaults committed by offenders who are strangers to the program participants and assaults committed by offenders who are known to, related by blood or marriage to, or in a dating relationship with the program participant. Most current Alaska data are from state fiscal year 2011 and previous Alaska data are from state fiscal year 2010.

**22. Rate of youth utilizing services for domestic violence per 10,000**

Council on Domestic Violence and Sexual Assault (CDVSA). Number of unduplicated youth per 10,000 youth (ages 12-17) who utilized services from a CDVSA-funded domestic violence and sexual assault service agency, and who were recorded at that agency as being a primary victim of domestic violence. Primary victims are youth who are directly harmed, either physically or emotionally, by the actions of another. Domestic violence is defined as any pattern of coercive behavior that is used by one person to gain power and control over a current or former intimate partner. Domestic violence includes dating violence, which is violence committed by a person who is or has been in a social relationship of a romantic or intimate nature with the program participant. Most current Alaska data are from state fiscal year 2011 and previous Alaska data are from state fiscal year 2010.

**23. Rate of youth utilizing services for sexual assault per 10,000**

Council on Domestic Violence and Sexual Assault (CDVSA). Number of unduplicated youth per 10,000 youth (ages 12-17) who utilized services from a CDVSA-funded domestic violence and sexual assault service agency, and who were recorded at that agency as being primary victims of sexual assault. Primary victims are youth who are directly harmed, either physically or emotionally, by the actions of another. Sexual assault includes both assaults committed by offenders who are strangers to the program participants and assaults committed by offenders who are known to, related by blood or marriage to, or in a dating relationship with the program participant. Most current Alaska data are from state fiscal year 2011 and previous Alaska data are from state fiscal year 2010.

Offender Accountability
-------------------------

**24. Percent of reported forcible rapes resulting in an arrest**

Alaska Department of Public Safety (Crime Reported in Alaska). Number of offenses cleared by arrest or exceptional means per actual offenses reported or known to law enforcement. Unfounded complaints are excluded. Most current Alaska data are from 2010 and previous Alaska data are from 2009.

**25. Rate of juveniles referred for sex offenses per 10,000**

Alaska Division of Juvenile Justice (DJJ). Rate of non-duplicated juveniles per 10,000 (ages 11-17) that are referred to the Alaska Division of Juvenile Justice for sexual assault in the first to fourth degree or sexual abuse of a minor in the first to fourth degree. Most current Alaska data are from FY11 and previous Alaska data are from FY10.

**26. Rate of juveniles referred for a DV-related assault per 10,000**

Alaska Division of Juvenile Justice (DJJ). Rate of non-duplicated juveniles per 10,000 (ages 11-17) that are referred to the Alaska Division of Juvenile Justice for domestic violence related assault in the first to fourth degree. An assault is domestic violence related if it occurred between household members (i.e., minors who are current or former spouses, who live together or who have lived together, who are dating or who have dated, who are engaged in or who have engaged in a sexual relationship, who are related to each other up to the fourth degree of consanguinity, or who are related or formerly related by marriage; persons who have a child of the relationship; and minor children of a person in any of these relationships). Most current Alaska data are for FY11 (these were extrapolated from data that were available from 2/23/11 to 6/30/11). These data were not collected prior to 2/23/11.

**27. Number of sexual assault cases accepted for prosecution**

Alaska Department of Law (DOL). Number of cases referred to the Alaska Department of Law that were accepted for prosecution with a sexual assault charge in the first, second, third, or fourth degree. A case is accepted for prosecution when the district attorney's office, after reviewing the file and evidence, determines that there is sufficient credible evidence to convict a specific person of the particular crime. Most current Alaska data are from 2009 and previous Alaska data are from 2008.

**28. Percent of accepted sexual assault cases with a conviction**

Alaska Department of Law (DOL). Percent of sexual assault cases accepted for prosecution that resulted in a conviction. Percentage is based on the number of cases accepted for prosecution with a sexual assault charge in the first, second, third, or fourth degree. A conviction is an accepted charge resulting in a finding of guilt (on any charge). A finding of guilt can occur through plea bargaining or being found guilty beyond a reasonable doubt by either a judge or jury. Most current Alaska data are from 2009 and previous Alaska data are from 2008. Conviction data were retrieved on 11/10/11. Data across years are not directly comparable because recent cases are more likely to be pending prosecution at the time of the data retrieval than older cases.

**29. Number of abuse of minor cases accepted for prosecution**

Alaska Department of Law (DOL). Number of cases referred to the Alaska Department of Law that were accepted for prosecution with a sexual abuse of a minor charge in the first, second, third, or fourth degree. A case is accepted for prosecution when the district attorney's office, after reviewing the file and evidence, determines that there is sufficient credible evidence to convict a specific person of the particular crime. Most current Alaska data are from 2009 and previous Alaska data are from 2008.

**30. Percent of accepted sexual abuse of minor cases with a conviction**

Alaska Department of Law (DOL). Percent of sexual abuse of minor cases accepted for prosecution that resulted in a conviction. Percentage is based on the number of cases accepted for prosecution with a sexual abuse of a minor charge in the first, second, third, or fourth degree. A conviction is an accepted charge resulting in a finding of guilt (on any charge). A finding of guilt can occur through plea bargaining or being found guilty beyond a reasonable doubt by either a judge or jury. Most current Alaska data are from 2009 and previous Alaska data are from 2008. Conviction data were retrieved on 11/10/11. Data across years are not directly comparable because recent cases are more likely to be pending prosecution at the time of the data retrieval than older cases.

**31. Number of domestic violence cases accepted for prosecution**

Alaska Department of Law (DOL). Number of cases referred to the Alaska Department of Law that were accepted for prosecution with an assault charge in the first, second, third, or fourth degree involving domestic violence. Most current Alaska data are from 2009 and previous Alaska data are from 2008.

**32. Percent of accepted domestic violence cases with a conviction**

Alaska Department of Law (DOL). Percent of assault cases involving domestic violence accepted for prosecution that resulted in a conviction for an assault involving domestic violence. Percentage is based on the number of cases accepted for prosecution with an assault charge in the first, second, third, or fourth degree involving domestic violence. Most current Alaska data are from 2009 and previous Alaska data are from 2008. Conviction data were retrieved on 11/10/11. Data across years are not directly comparable because recent cases are more likely to be pending prosecution at the time of the data retrieval than older cases.