

2/02/12

BUDGET

OVERVIEW:

DEPARTMENT

OF PUBLIC

SAFETY

<TARGET><BILL></BILL><SUBJECT>2-02-12 BUDGET OVERVIEW
DEPARTMENT OF PUBLIC
SAFETY</SUBJECT><COMM>HFIN27</COMM></TARGET>

2/2/12

Department of Public Safety

Department Overview



presented to

House Finance Committee

February 2, 2012



Department of Public Safety

Our Mission

To ensure public safety and enforce fish and wildlife laws

Our Priority Programs

- Law Enforcement Patrol and Investigations
- Rural Law Enforcement
- Domestic Violence and Sexual Assault Programs
- Statewide Public Safety Programs
- Resource Protection
- Highway Safety



Statewide Impact

- DPS is the primary statewide law enforcement agency
- Direct support
 - Investigative assistance
 - Search and rescue
 - Training
 - Alaska Public Safety Information Network (APSIN)
 - Crime lab

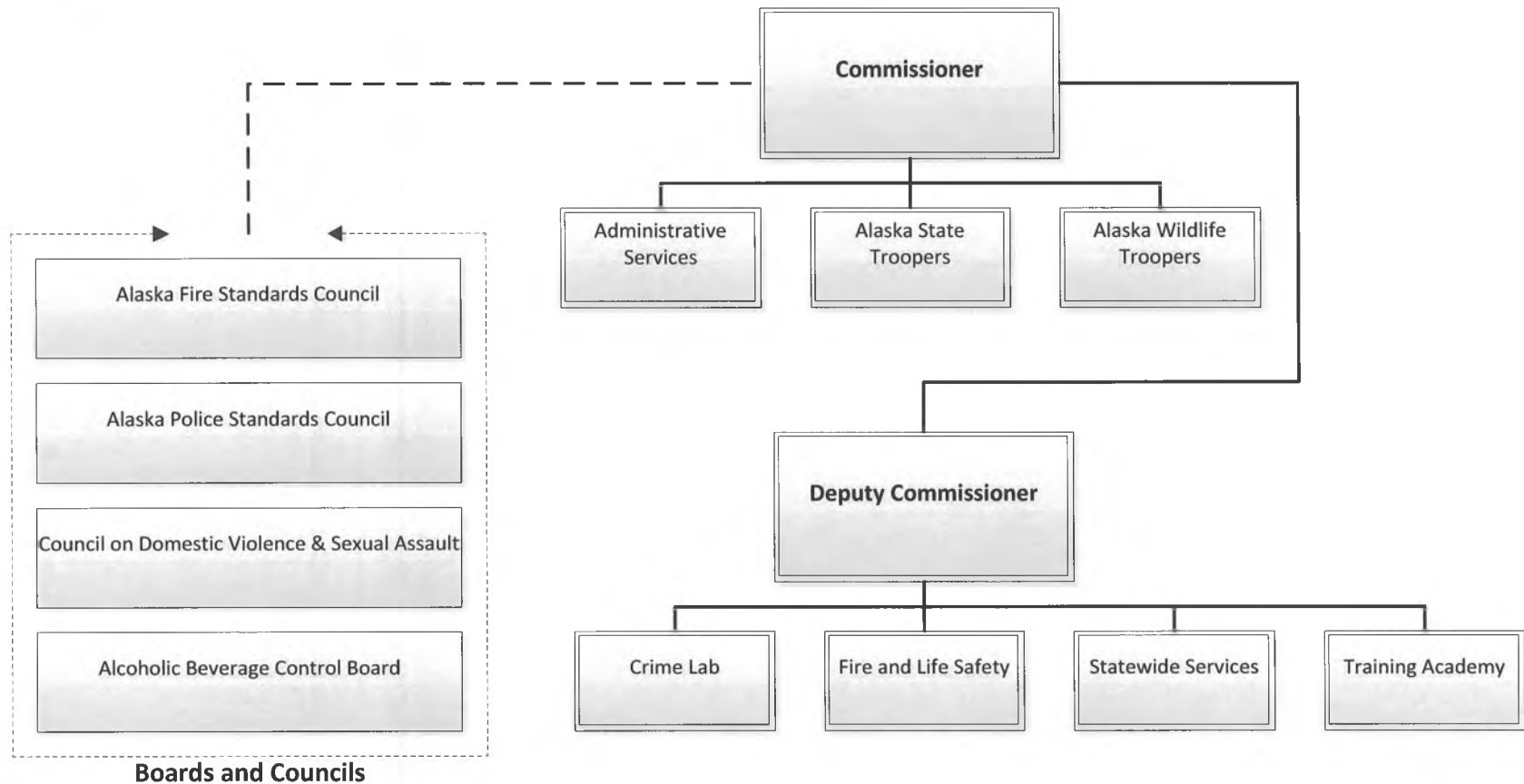


Performance Indicators

- **Law Enforcement Patrol and Investigations**
 - Homicide solve rate in AST jurisdiction and where AST assumed investigative jurisdiction was 94%
- **Rural Law Enforcement**
 - 36% of misdemeanor and felony alcohol crimes referred in FY2011 were accepted for prosecution compared to 31% in FY2010
- **Domestic Violence and Sexual Assault**
 - 44% of sexual assault/sexual abuse cases referred in FY2011 were accepted for prosecution compared to 41% in FY2010
- **Statewide Public Safety Programs**
 - 83% of requests for laboratory services had a turnaround time of less than 30 days
 - 1.5% of unworked requests for laboratory service were over 120 days old compared to 2% in FY2010
- **Resource Protection**
 - 8.3% decrease in recreational boating accidents with deaths from 12 fatalities in CY2009 to 11 fatalities in CY2010
 - Wildlife violations as a percentage of total contacts remained steady in FY2011
- **Highway Safety**
 - 14% decrease in the number of DUI fatalities compared to the previous 3-year average



Organizational Chart



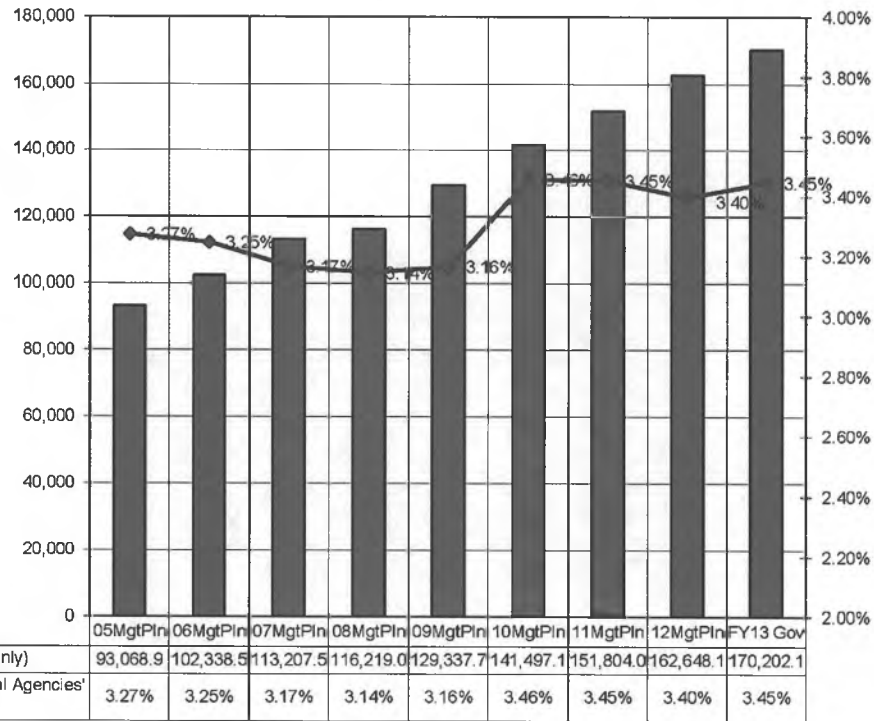


Five-Year Look Back

**Department of Public Safety's Share of Total Agency Operations
(GF Only)
(Thousands)**

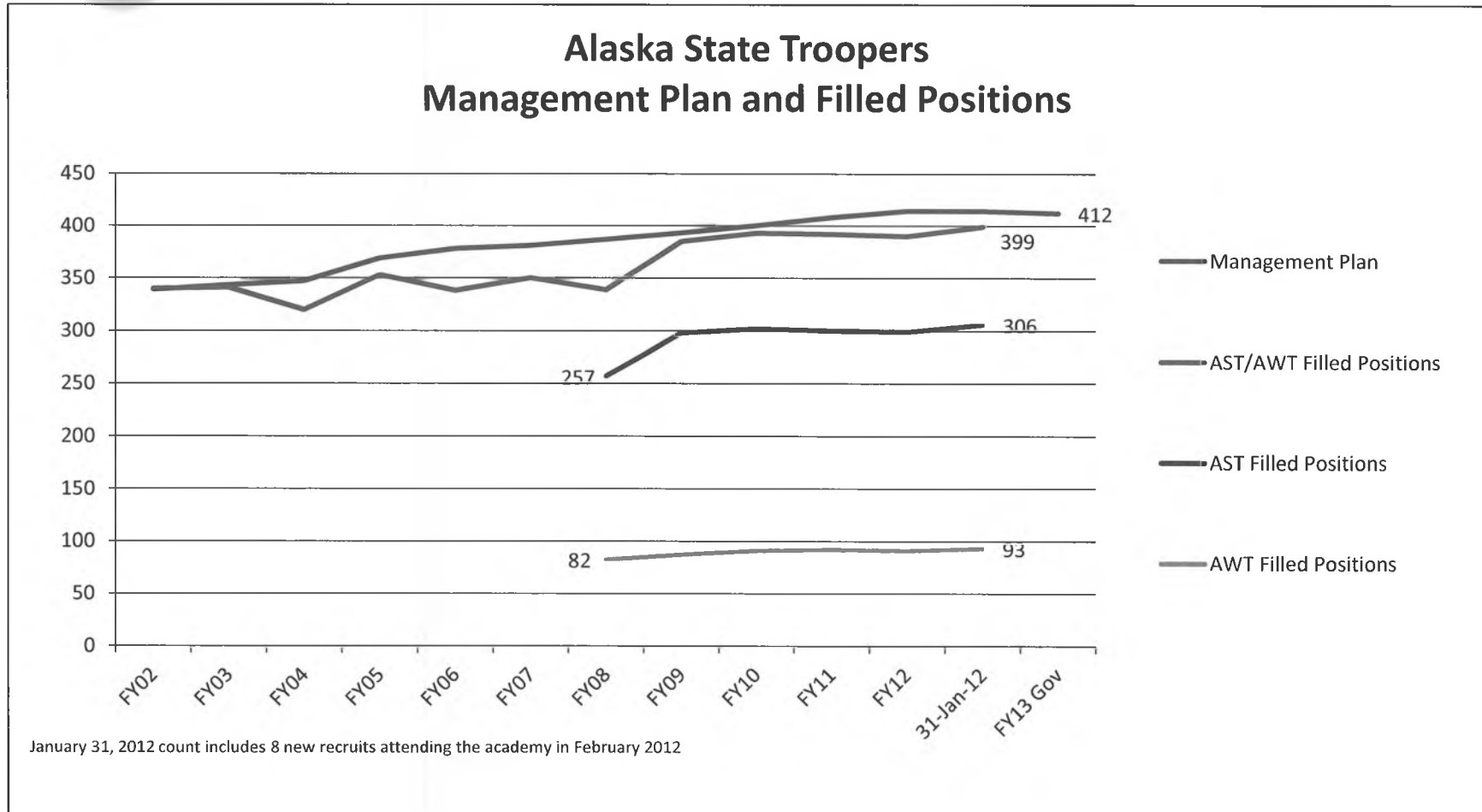
The department's average annual growth rate from FY05 to FY13 is 7.8%.

The department's total FY13 GF budget equates to \$475 per resident worker.



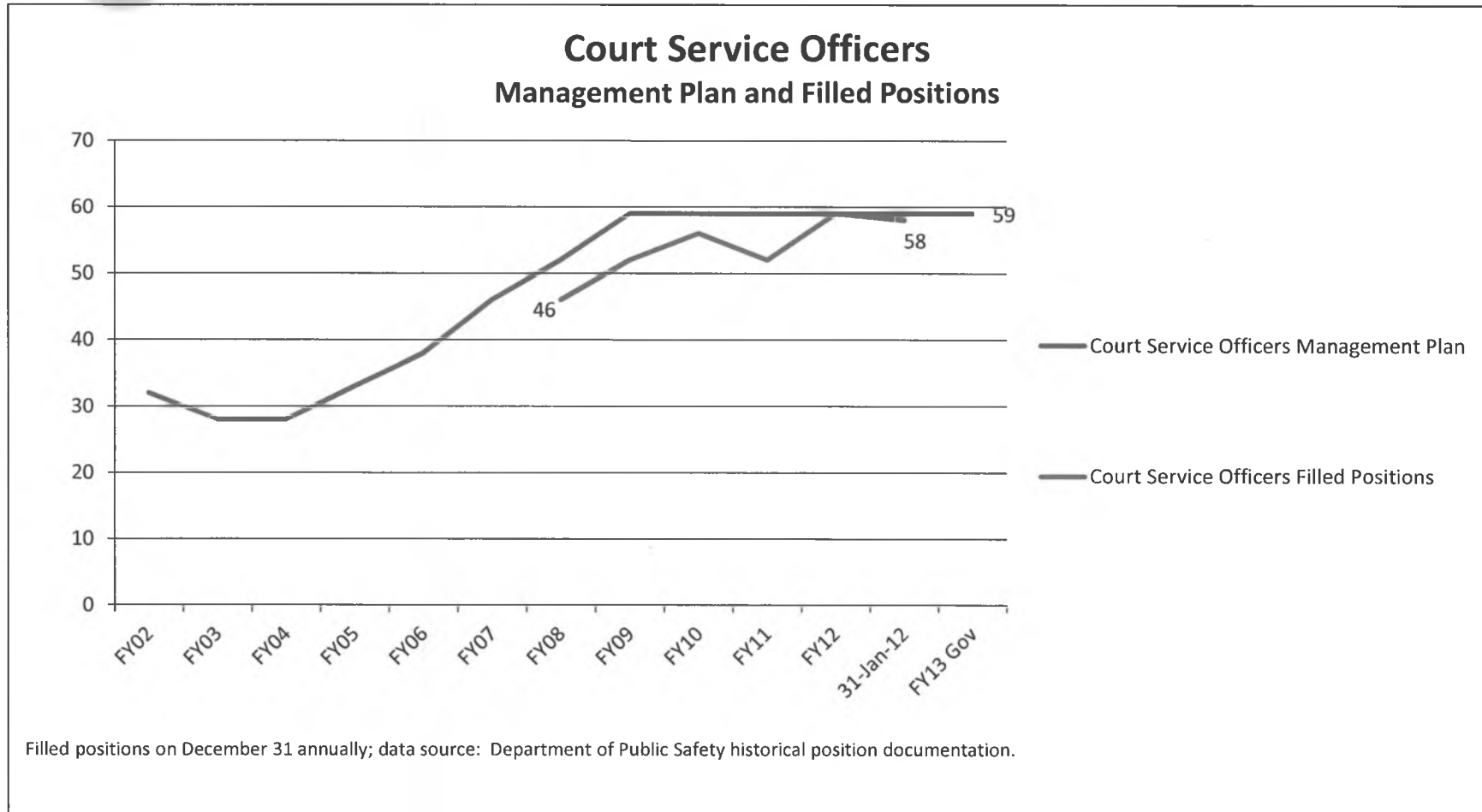


Alaska State Trooper Positions





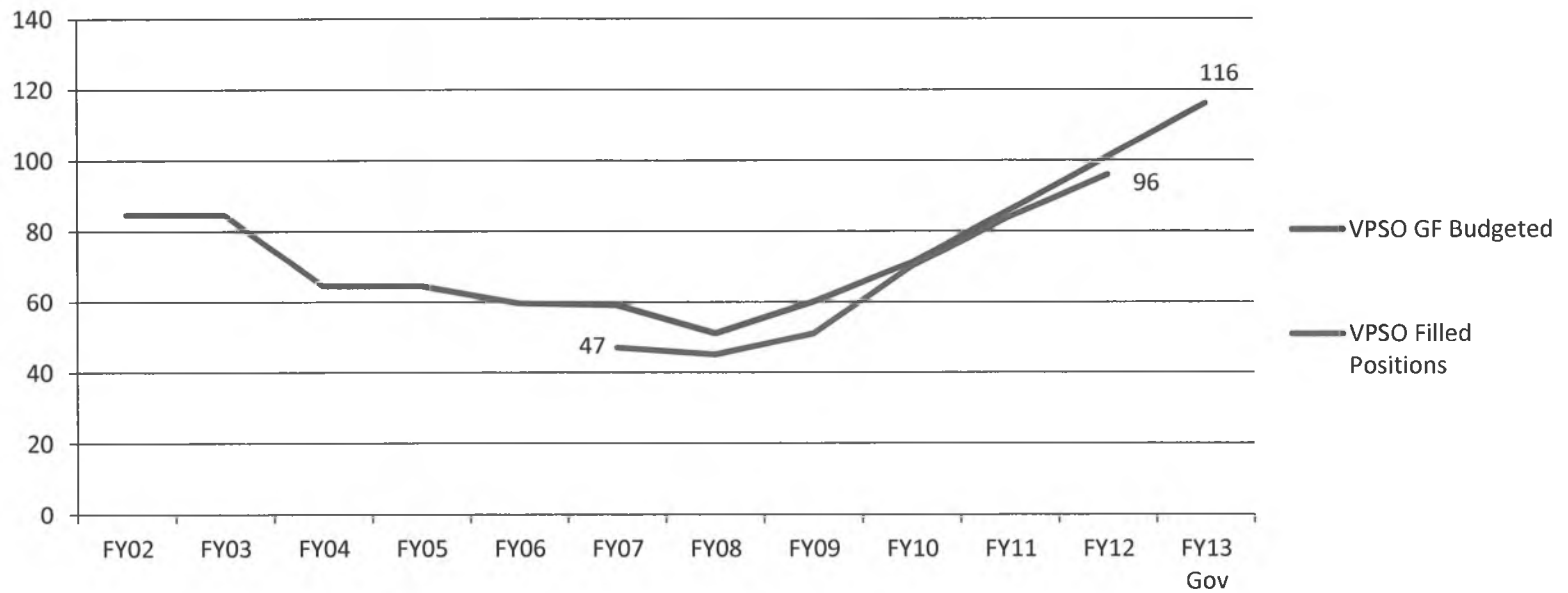
Court Service Officer Positions





VPSO Positions

Village Public Safety Officers GF Budgeted and Filled Positions



VPSO position data is derived from contractual agreements with non-profits that hire the VPSO employees. Budgeted position count is the level to which DPS could contract. Filled positions are based on data reported to DPS.



FY2012 Increments

- **Alaska State Troopers**
 - Three new troopers for VPSO support: \$1,056.2 GF, \$15.4 GFPR
 - New investigator and criminal justice technician for internet crimes against children investigations; \$359.6 GF
 - New State Trooper post established in Northwest Alaska: \$511.3 GF, \$30.8 GFPR
 - Community public safety emergency communications coordinator: \$165.0 GF
- **VPSO**
 - Contract for 15 new VPSO positions: \$2,299.5 GF
- **Alaska Police Standards Council**
 - Fund training in new developments in sexual assault investigations and prosecutions, including child abuse cases and child forensic interview training: \$50.0 GFPR



FY2012 Increments

- **Council on Domestic Violence and Sexual Assault**
 - Support shelters with increased operating funds: \$550.0 GF
 - Year 2: Universal public marketing campaign: \$450.0 IAR (RSA from Governor's Office)
 - Year 2: Victimization study, evaluation, planning: \$400.0 IAR (RSA from Governor's Office)
 - Year 2: Pro bono attorney clearinghouse: \$60.0 IAR (RSA from Governor's Office)
 - Continue legal advocacy program, replace federal earmark funds: \$697.4 GF
 - Maintain shelter services, replace permanent fund dividend appropriations in lieu of dividends to criminals: \$1,001.9 GF
 - Enhance community, regional, and statewide DVSA prevention: \$122.5 GF



FY2013 Increments

- **Alaska State Troopers**
 - One new trooper for VPSO support: \$215.0 GF
- **Alaska Wildlife Troopers**
 - Civilian pilot and operating costs for Interior helicopter: \$296.8 GF
- **VPSO**
 - Contract for 15 new VPSO positions: \$2,209.8 GF
 - Establish VPSO/VPO twelve-week training programs: \$500.0 GF
- **Laboratory Services**
 - Facilities maintenance position for new laboratory: \$92.0 GF



FY2013 Increments

- **Council on Domestic Violence and Sexual Assault**
 - Operations costs for currently funded DVSA programs: \$475.5 GF
 - Expanded DVSA prevention: \$250.0 GF
 - CDVSA batterer's intervention program data collection: \$50.0 GF
 - Planning and coordination efforts for DVSA initiative: \$55.0 GF



Status of Current Year

Accomplishments

- Completion of new crime lab
- Public Safety Academy
- Village Crime Reduction Program
- Improvement in delivery of rural services

Challenges

- Justice Assistance Grant Reductions
- Sex Offender Registration and Notification Act (SORNA) Implementation
- Bureau of Highway Patrol funding from Alaska Highway Safety Office



10-Year Plan

- **AST**
 - Additional trooper resources to maintain level of service
 - ARRA Justice Assistance Grant (JAG) funds replacement
- **VPSO**
 - Continue VPSO initiative by adding 15 VPSOs and one support trooper per year through FY2020
- **Domestic Violence and Sexual Assault**
 - CDVSA grantee salary/health insurance and travel cost increases for rural shelters and program maintenance
 - CDVSA interagency receipts built into base from FY2012 interagency receipts from Governor's Office
- **APSIN**
 - Management and maintenance for APSIN roll-out

Questions?



Thank You

**VPSO and VPO/TPO Listing
by Community as of 1/1/2012**

2/2/12

DCED Listed Alaska Communities	Population 2010	Nonprofit	Federal Recognized Tribe	Filled VPSO	VPO/TPO	Comments
Adak	326	APIA	No			C Detachment
Akhiok	71	KANA	Yes	1		C Detachment
Akiachak	627	AVCP	Yes	1	4	C Detachment
Akiak	346	AVCP	Yes		3	C Detachment
Akutan	1027	APIA	Yes	1		C Detachment
Alakanuk	677	AVCP	Yes	2	1	C Detachment
Alatna	37	TCC	Yes			D Detachment
Alcan Border	33		No			B Detachment
Aleknagik	219	BBNA	Yes	1		C Detachment
Aleneva	37		No			C Detachment
Allakaket	105	TCC	Yes			D Detachment
Alpine	0		No			D Det/Seasonal
Ambler	258	NWAB	Yes		1	C Detachment
Anaktuvuk Pass	324		Yes			D Detachment
Anchor Point	1,930		No			E Detachment
Anchorage	291,826		No			C Detachment
Anderson	246		No			D Detachment
Andreafsky	0		Yes			C Detachment
Angoon	459	CCTH	Yes	2		A Detachment
Aniak	501	AVCP	Yes			C Detachment
Anvik	85	TCC	Yes			D Detachment
Arctic Village	152	TCC	Yes		1	D Detachment
Atka	61	APIA	Yes	1		C Detachment
Atmautluak	277	AVCP	Yes		3	C Detachment
Atkasuk	233		Yes			D Detachment
Attu Station	21		No			US Coast Guard
Barrow	4,212		Yes			D Detachment
Bear Creek	1,959		No			E Detachment
Beaver	84	TCC	Yes	1		D Detachment
Belkofski	0		No			C Det/Seasonal
Beluga	20		No			E Detachment
Bethel	6,080	AVCP	Yes	3		C Detachment
Bettles	12		No			D Detachment
Big Delta	591		No			D Detachment
Big Lake	3,350		No			B Detachment
Bill Moore's Slough	0		No			Seasonal only
Birch Creek	33	TCC	Yes			D Detachment
Brevig Mission	388	KAWA	Yes	2	2	C Detachment
Buckland	416	NWAB	Yes		2	C Detachment
Buffalo Soapstone	855		No			B Detachment
Butte	3,246		No			B Detachment
Cantwell	219		Yes			D Detachment
Central	96	TCC	No			D Detachment
Chalkyitsik	69	TCC	Yes	1		D Detachment
Chase	34		No			D Detachment
Chefornak	418	AVCP	Yes	2	1	C Detachment
Chenega Bay	76	CHUG	Yes			A Detachment
Chevak	938	AVCP	Yes	3	6	C Detachment
Chickaloon	272		Yes			B Detachment
Chicken	7		No			D Detachment

**VPSO and VPO/TPO Listing
by Community as of 1/1/2012**

DCED Listed Alaska Communities	Population 2010	Nonprofit	Federal Recognized Tribe	Filled VPSO	VPO/TPO	Comments
Chignik	91	BBNA	Yes	1		C Detachment
Chignik Lagoon	78	BBNA	Yes			C Detachment
Chignik Lake	73	BBNA	Yes			C Detachment
Chiniak	47		No			C Detachment
Chisana			No			D Detachment
Chistochina	93		Yes			D Detachment
Chitina	126		Yes			B Detachment
Chuathbaluk	118	AVCP	Yes			C Detachment
Chuloonawick			No			C Det/Seasonal
Circle	104	TCC	Yes			D Detachment
Clam Gulch	176		No			E Detachment
Clark's Point	62	BBNA	Yes			C Detachment
Coffman Cove	176	CCTH	No			A Detachment
Cohoe	1,364		No			E Detachment
Cold Bay	108	APIA	No			C Detachment
Coldfoot	10		No			D Detachment
College	12,964		No			D Detachment
Cooper Landing	289		No			E Detachment
Copper Center	328	CRNA	Yes	1		B Detachment
Copperville			No			D Detachment
Cordova	2239		No			B Detachment
Council	0		No			C Det/ Seasonal
Covenant Life	86		No			A Detachment
Craig	1201		Yes			A Detachment
Crooked Creek	105	AVCP	Yes			C Detachment
Crown Point	74		No			E Detachment
Cube Cove			No			A Detachment
Deering	122	NWAB	Yes			C Detachment
Delta Junction	958		No			D Detachment
Deltana	2,251		No			D Detachment
Diamond Ridge	1,156		No			E Detachment
Dillingham	2,329		Yes			C Detachment
Diomede	115		Yes			C Detachment
Dot Lake	13		No			D Detachment
Dot Lake Village	62		Yes			D Detachment
Douglas			Yes			A Detachment
Dry Creek	94		No			D Detachment
Eagle	86	TCC	No	1		D Detachment
Eagle River - Chugiak			No			B Detachment
Eagle Village	67		Yes			D Detachment
Edna Bay	42		No			A Detachment
Eek	296	AVCP	Yes	1	3	C Detachment
Egegik	109	BBNA	Yes			C Detachment
Eklutna			Yes			B Detachment
Ekuk			Yes			C Detachment
Ekwok	115	BBNA	Yes	1		C Detachment
Elfin Cove	20		No			A Detachment
Elim	330	KAWE	Yes		1	C Detachment
Emmonak	762	AVCP	Yes		2	C Detachment
Ester	2,422		No			D Detachment

**VPSO and VPO/TPO Listing
by Community as of 1/1/2012**

DCED Listed Alaska Communities	Population 2010	Nonprofit	Federal Recognized Tribe	Filled VPSO	VPO/TPO	Comments
Evansville	15		Yes			D Detachment
Excursion Inlet	12		No			A Detachment
Eyak			Yes			E Detachment
Fairbanks	31,535		No			D Detachment
False Pass	35	APIA	Yes	1		C Detachment
Farm Loop	1,028		No			B Detachment
Ferry	33		No			D Detachment
Fishhook	4,679		No			B Detachment
Flat	0		No			C Detachment
Fort Yukon	583	TCC	Yes			D Detachment
Four Mile Road	43		No			D Detachment
Fox	417		No			D Detachment
Fox River	685		No			E Detachment
Fritz Creek	1,932		No			E Detachment
Funny River	877		No			E Detachment
Gakona	218	CRNA	Yes	1		D Detachment
Galena	470		Yes			D Detachment
Gambell	681	KAWE	Yes	1	3	C Detachment
Game Creek	18		No			A Detachment
Gateway	552		No			B Detachment
Georgetown			Yes			C Detachment
Girdwood			No			E Detachment
Glacier View	234		No			B Detachment
Glennallen	483		No			B Detachment
Golovin	156	KAWE	Yes	1		C Detachment
Goodnews Bay	243	AVCP	Yes	1		C Detachment
Grayling	194	TCC	Yes			C Detachment
Gulkana	119	CRNA	Yes	1		C Detachment
Gustavus	442		No			A Detachment
Haines	1,713		Yes			A Detachment
Halibut Cove	76		No			E Detachment
Hamilton	0		No			C Det/Seasonal
Happy Valley	593		No			E Detachment
Harding-Birch Lakes	299		No			D Detachment
Healy	1,021		No			D Detachment
Healy Lake	13		Yes			D Detachment
Hobart Bay	1		No			A Detachment
Hollis	112		No			A Detachment
Holy Cross	178	AVCP	Yes			C Detachment
Homer	5,003		No			E Detachment
Hoonah	760		Yes			A Detachment
Hooper Bay	1,093	AVCP	Yes	2	7	C Detachment
Hope	192		No			E Detachment
Houston	1,912		No			B Detachment
Hughes	77	TCC	Yes			B Detachment
Huslia	275	TCC	Yes	1		D Detachment
Hydaburg	376	CCTH	Yes	1		A Detachment
Hyder	87		No			A Detachment
Igiugig	50	BBNA	Yes	1		C Detachment
Iliamna **	109	BBNA	Yes			C Detachment

**VPSO and VPO/TPO Listing
by Community as of 1/1/2012**

DCED Listed Alaska Communities	Population 2010	Nonprofit	Federal Recognized Tribe	Filled VPSO	VPO/TPO	Comments
Ivanof Bay	7		Yes			C Detachment
Juneau	31,275		Yes			A Detachment
Kachemak	472		No			E Detachment
Kagauyak	0		No			C Det/Seasonal
Take	557	CCTH	Yes	2		A Detachment
Kaktovik	239		Yes			D Detachment
Kalifornsky	7,850		No			E Detachment
Kaltag	190	TCC	Yes			D Detachment
Kanatak	0		No			C Det/Seasonal
Karluk	37	KANA	Yes			C Detachment
Kasaan	569	CCTH	Yes			A Detachment
Kasigluk	569	AVCP	Yes	1	6	C Detachment
Kasilof	549		No			E Detachment
Kenai	7,100		Yes			E Detachment
Kenny Lake	355		No			D Detachment
Ketchikan	8,050		Yes			A Detachment
Kiana	361	NWAB	Yes	2	1	C Detachment
King Cove	938	APIA	Yes			C Detachment
King Island	0		No			C Det/Seasonal
King Salmon	374		Yes			C Detachment
Kipnuk	639	AVCP	Yes		2	C Detachment
Kivalina	374	NWAB	Yes		1	C Detachment
Klawock	755		Yes			A Detachment
Klukwan	95		Yes			A Detachment
Knik River	744		No			B Detachment
Kobuk	151	NWAB	Yes		1	C Detachment
Kodiak	6,130		Yes			C Detachment
Kokhanok	170	BBNA	Yes	1		C Detachment
Koliganek	209	BBNA	Yes	1		C Detachment
Kongiganak	439	AVCP	Yes	1	2	C Detachment
Kotlik	577	AVCP	Yes	1	3	C Detachment
Kotzebue	3,201		Yes	1		C Detachment
Koyuk	332	KAWE	Yes			C Detachment
Koyukuk	96	TCC	Yes			D Detachment
Kupreanof	27		No			A Detachment
Kwethluk	721	AVCP	Yes	1	6	C Detachment
Kwigillingok	321	AVCP	Yes	1	5	C Detachment
Lake Louise	46		No			B Detachment
Lake Minchumina	13		No			D Detachment
Lakes	8,634		No			B Detachment
Larsen Bay	87	KANA	Yes	1		C Detachment
Lazy Mountain	1,479		No			B Detachment
Leivengood	13		No			D Detachment
Levelock	69	BBNA	Yes	1		C Detachment
Lime Village	29		Yes			C Detachment
Little Diomedea		KAWE				C Detachment
Lowell Point	80		No			E Detachment
Lower Kalskag	282	AVCP	Yes		1	C Detachment
Lutak	49		No			A Detachment
Manley Hot Springs	89		Yes			D Detachment

**VPSO and VPO/TPO Listing
by Community as of 1/1/2012**

DCED Listed Alaska Communities	Population 2010	Nonprofit	Federal Recognized Tribe	Filled VPSO	VPO/TPO	Comments
Manokotak	442	BBNA	Yes	1		C Detachment
Marshall	414	AVCP	Yes			C Detachment
Mary's Igloo	0		No			C Det/Seasonal
McCarthy	28		No			D Detachment
McGrath	346	TCC	Yes			C Detachment
McKinley Park	185		No			D Detachment
Meadow Lakes	7,570		No			B Detachment
Mekoryuk	191	AVCP	Yes	2		C Detachment
Mendeltna	39		No			D Detachment
Mentasta Lake	112		Yes			D Detachment
Metlakatla	1,405		Yes			A Detachment
Meyers Chuck			No			A Detachment
Miller's Landing			No			E Detachment
Minto	210	TCC	Yes		1	D Detachment
Moose Creek	747		No			D Detachment
Moose Pass	219		No			E Detachment
Mosquito Lake	309		No			A Detachment
Mountain Village	813	AVCP	Yes			C Detachment
Mud Bay	212		No			A Detachment
Naknek	544	BBNA	Yes			C Detachment
Nanwalek	254	CHUG	Yes			E Detachment
Napaimute	0		No			C Det/Seasonal
Napakiak	354	AVCP	Yes	2	3	C Detachment
Napaskiak	405	AVCP	Yes	3		C Detachment
Naukati Bay	113		No			A Detachment
Nelchina	59		No			D Detachment
Nelson Lagoon	52	APIA	Yes	1		C Detachment
Nenana	378		Yes			D Detachment
New Allakaket	66		No			D Detachment
New Stuyahok	510	BBNA	Yes	2		C Detachment
Newhalen **	190	BBNA	Yes	1		C Detachment
Newtok	354	AVCP	Yes		3	C Detachment
Nightmute	280	AVCP	Yes		2	C Detachment
Nikiski	4,493		No			E Detachment
Nikolaevsk	318		No			E Detachment
Nikolai	94	TCC	Yes			D Detachment
Nikolski	18	APIA	Yes			C Detachment
Ninilchik	883		Yes			E Detachment
Noatak	514	NWAB	Yes	1	1	C Detachment
Nome	3,598	KAWA	Yes	1		C Detachment
Nondalton	164	BBNA	Yes			C Detachment
Noorvik	668	NWAB	Yes		2	C Detachment
North Pole	2,117		No			D Detachment
Northway	71		Yes	1		D Detachment
Northway Junction	54		No			D Detachment
Nuiqsut	402		Yes			D Detachment
Nulato	264	TCC	Yes		1	D Detachment
Nunam Iqua (Sheldon Pt)	187	AVCP	Yes			C Detachment
Nunapitchuk	496	AVCP	Yes	2	6	C Detachment
Ohogamiut	0		No			C Det/Seasonal

**VPSO and VPO/TPO Listing
by Community as of 1/1/2012**

DCED Listed Alaska Communities	Population 2010	Nonprofit	Federal Recognized Tribe	Filled VPSO	VPO/TPO	Comments
Old Harbor	218	KANA	Yes	1		C Detachment
Oscarville	70		Yes			C Detachment
Ouzinkie	161	KANA	Yes	1		C Detachment
Paimiut	0		No			C Det/Seasonal
Palmer	5,937		No			B Detachment
Pauloff Harbor	0		No			C Detachment
Paxson	40		No			B Detachment
Pedro Bay	42	BBNA	Yes			C Detachment
Pelican	88	CCTH	No	1		C Detachment
Perryville	113	BBNA	Yes			C Detachment
Petersburg	2,948		Yes			A Detachment
Petersville	4		No			B Detachment
Pilot Point	68	AVCP	Yes	1		C Detachment
Pilot Station	568	AVCP	Yes	1	1	C Detachment
Pitka's Point	109	BBNA	Yes			C Detachment
Platinum	61	AVCP	Yes	1		C Detachment
Pleasant Valley	725		No			D Detachment
Point Baker	15		No			A Detachment
Point Hope	674		Yes			D Detachment
Point Lay	189		Yes			D Detachment
Point MacKenzie	529		No			B Detachment
Pope-Vannoy Landing	6		No			C Detachment
Port Alexander	52		No			A Detachment
Port Alsworth	159		No			C Detachment
Port Clarence	24		No			C Detachment
Port Graham	177	CHUG	Yes	1		E Detachment
Port Heiden	102	BBNA	Yes			C Detachment
Port Lions	194	KANA	Yes	1		C Detachment
Port Protection	48		Yes			A Detachment
Port William	0		No			C Det/Seasonal
Portage Creek	2		No			C Detachment
Primrose	78		No			E Detachment
Prudoe Bay	2174		No			D Detachment
Quinhagak	669	AVCP	Yes	2	4	C Detachment
Rampart	24	TCC	Yes			D Detachment
Red Devil	23	AVCP	Yes			C Detachment
Red Dog Mine	309		No			C Detachment
Ridgeway	2,022		No			E Detachment
Ruby	166	TCC	Yes	1		D Detachment
Russian Mission	312	AVCP	Yes			C Detachment
Saint George	102	APIA	Yes	1		C Detachment
Saint Mary's	507	AVCP	Yes			C Detachment
Saint Michael	401	KAWA	Yes	1	3	C Detachment
Saint Paul	479		Yes			C Detachment
Salamatof	980		Yes			E Detachment
Sand Point	976		Yes			C Detachment
Savoonga	671	KAWA	Yes		3	C Detachment
Saxman	411	CCTH	Yes			A Detachment
Scammon Bay	474	AVCP	Yes	1	1	C Detachment
Selawik	829	NWAB	Yes		4	C Detachment

**VPSO and VPO/TPO Listing
by Community as of 1/1/2012**

DCED Listed Alaska Communities	Population 2010	Nonprofit	Federal Recognized Tribe	Filled VPSO	VPO/TPO	Comments
Seldovia	255		No			E Detachment
Seldovia Village	165		Yes			E Detachment
Seward	2,693		No			E Detachment
Shageluk	83	TCC	Yes			D Detachment
Shaktoolik	251	KAWA	Yes		1	C Detachment
Shishmaref	563	KAWA	Yes	2		C Detachment
Shungnak	262	NWAB	Yes	1	1	C Detachment
Silver Springs	114		No			B Detachment
Sitka	8,881		Yes			A Detachment
Skagway	968		Yes			A Detachment
Skwentna	37		No			B Detachment
Slana	147		No			B Detachment
Sleetmute	86	AVCP	Yes			C Detachment
Soldotna	4,163		No			E Detachment
Solomon			Yes			C Detachment
South Naknek	79		Yes			C Detachment
Stebbins	556	KAWA	Yes		2	C Detachment
Sterling	5,617		No			E Detachment
Stevens Village	78	TCC	Yes			D Detachment
Stony River	54	AVCP	Yes			C Detachment
Sunrise	18		No			E Detachment
Susitna	18		No			B Detachment
Sutton-Alpine	1,447		No			B Detachment
Takotna	52		Yes			C Detachment
Talkeetna	876		No			B Detachment
Tanacross	136		Yes			B Detachment
Tanaina	8,197		No			B Detachment
Tanana	246	TCC	Yes	1		D Detachment
Tatitlek	88	CHUG	Yes	1		A Detachment
Tazlina	297	CRNA	Yes	1		D Detachment
Telida			Yes			C Detachment
Teller	229	KAWA	Yes			C Detachment
Tenakee Springs	131	CCTH	No			A Detachment
Tetlin	127	TCC	No	1		D Detachment
Thom's Place			No			A Detachment
Thorne Bay	471	CCTH	No	2		C Detachment
Togiak	817	BBNA	Yes	1	2	C Detachment
Tok	1,258		No			D Detachment
Toksook Bay	590	AVCP	Yes	1	3	C Detachment
Tolsona	30		No			B Detachment
Tonsina	78		No			B Detachment
Trapper Creek	481		No			B Detachment
Tuluksak	373	AVCP	Yes		5	C Detachment
Tuntutuliak	408	AVCP	Yes	1	3	C Detachment
Tununak	327	ACVP	Yes		2	C Detachment
Twin Hills	74	BBNA	Yes			C Detachment
Two Rivers	719		No			D Detachment
Tyonek	171	CHUG	Yes			E Detachment
Ugashik	12		Yes			C Detachment
Umkumiute			No			C Det/Seasonal

VPSO and VPO/TPO Listing by Community as of 1/1/2012

DCED Listed Alaska Communities	Population 2010	Nonprofit	Federal Recognized Tribe	Filled VPSO	VPO/TPO	Comments
Unalakleet	688	KAWE	Yes	1	3	C Detachment
Unalaska/Dutch Harbor	4,376		Yes			C Detachment
Unga			No			C Det/Seasonal
Upper Kalskag	210	AVCP	Yes			C Detachment
Valdez	3,976		No			E Detachment
Venetie	166	TCC	Yes			D Detachment
Wainwright	556		Yes			D Detachment
Wales	145	KAWE	Yes			C Detachment
Wasilla	7,831		No			B Detachment
Whale Pass	31		No			A Detachment
White Mountain	190	KAWE	Yes	1		C Detachment
Whitestone Logging	17		No			A Detachment
Whittier	220		No			E Detachment
Willow	2,102		No			B Detachment
Willow Creek	191		No			B Detachment
Wiseman	14		No			D Detachment
Womens Bay	719		No			C Detachment
Woody Island			No			C Detachment
Wrangell	2,369		Yes			A Detachment
Yakutat	662		Yes			A Detachment
370	622,739		Villages	76	49	
			Filled	96	125	
			Funded	101		
			Vacant	5		

NON PROFIT ALLOCATONS

	Funded Positions	Filled Positions	Vacant	Allocation of new positions
Aleutian/Pribilof Islands Association	36	36	0	7
Association of Village Council Presidents	5	5	0	0
Bristol Bay Native Association	13	13	0	3
Central Council of Tlingit/Haida	4	4	0	1
Chugachmiut	3	2	1	0
Copper River Native Association	8	8	0	0
Kodiak Area Native Association	5	5	0	0
Kawerak	10	10	0	2
Northwest Arctic Borough	6	5	1	0
Tanana Chiefs Conference	9	8	1	0
Non-Allocated	2		2	2
	101	96	5	15

**VPSO and VPO/TPO Listing
by Community as of 1/1/2012**

2/2/12

DCED Listed Alaska Communities	Population 2010	Nonprofit	Federal Recognized Tribe	Filled VPSO	VPO/TPO	Comments
Manokotak	442	BBNA	Yes	1		C Detachment
Marshall	414	AVCP	Yes			C Detachment
Mary's Igloo	0		No			C Det/Seasonal
McCarthy	28		No			D Detachment
McGrath	346	TCC	Yes			C Detachment
McKinley Park	185		No			D Detachment
Meadow Lakes	7,570		No			B Detachment
Mekoryuk	191	AVCP	Yes	2		C Detachment
Mendeltna	39		No			D Detachment
Mentasta Lake	112		Yes			D Detachment
Metlakatla	1,405		Yes			A Detachment
Meyers Chuck			No			A Detachment
Miller's Landing			No			E Detachment
Minto	210	TCC	Yes		1	D Detachment
Moose Creek	747		No			D Detachment
Moose Pass	219		No			E Detachment
Mosquito Lake	309		No			A Detachment
Mountain Village	813	AVCP	Yes			C Detachment
Mud Bay	212		No			A Detachment
Naknek	544	BBNA	Yes			C Detachment
Nanwalek	254	CHUG	Yes			E Detachment
Napaimute	0		No			C Det/Seasonal
Napakiaik	354	AVCP	Yes	2	3	C Detachment
Napaskiak	405	AVCP	Yes	3		C Detachment
Naukati Bay	113		No			A Detachment
Nelchina	59		No			D Detachment
Nelson Lagoon	52	APIA	Yes	1		C Detachment
Nenana	378		Yes			D Detachment
New Allakaket	66		No			D Detachment
New Stuyahok	510	BBNA	Yes	2		C Detachment
Newhalen **	190	BBNA	Yes	1		C Detachment
Newtok	354	AVCP	Yes		3	C Detachment
Nightmute	280	AVCP	Yes		2	C Detachment
Nikiski	4,493		No			E Detachment
Nikolaevsk	318		No			E Detachment
Nikolai	94	TCC	Yes			D Detachment
Nikolski	18	APIA	Yes			C Detachment
Ninilchik	883		Yes			E Detachment
Noatak	514	NWAB	Yes	1	1	C Detachment
Nome	3,598	KAWA	Yes	1		C Detachment
Nondalton	164	BBNA	Yes			C Detachment
Noorvik	668	NWAB	Yes		2	C Detachment
North Pole	2,117		No			D Detachment
Northway	71		Yes	1		D Detachment
Northway Junction	54		No			D Detachment
Nuiqsut	402		Yes			D Detachment
Nulato	264	TCC	Yes		1	D Detachment
Nunam Iqua (Sheldon Pt)	187	AVCP	Yes			C Detachment
Nunapitchuk	496	AVCP	Yes	2	6	C Detachment
Ohogamiut	0		No			C Det/Seasonal