

**2/02/12**

**BUDGET**

**OVERVIEW:**

**DEPARTMENT**

**OF**

**CORRECTIONS**

<TARGET><BILL></BILL><SUBJECT>2-02-12 BUDGET OVERVIEW  
DEPARTMENT OF  
CORRECTIONS</SUBJECT><COMM>HFIN27</COMM></TARGET>

AK  
23

Alaska State Legislature  
HOUSE FINANCE COMMITTEE

Agenda  
1:30 PM

Thursday, February 2, 2012

**Department of Public Safety**  
Budget Overview

Presenters:

xjm  
**Joseph Masters**, Commissioner, Department of Public Safety

**Dan Spencer**, Director, Division of Administrative Services, Department of Public Safety

Available for Questions:

**Lauree Morton**, Executive Director, Council on Domestic Violence & Sexual Assault

Available for Questions via teleconference:

**Orin Dym**, Forensic Laboratory Manager, Department of Public Safety

**Department of Corrections**  
Budget Overview

Presenters:

xjs  
**Joe Schmidt**, Commissioner, Department of Corrections

**Carmen Gutierrez**, Deputy Commissioner, Department of Corrections

**Leslie Houston**, Administrative Services Division, Department of Corrections

**Alaska Mental Health Trust Authority**  
Presentation by the Board of Trustees

Presenters:

xwd  
**Dr. William Doolittle**, Board Member, Alaska Mental Health Trust Authority

**Jeff Jessee**, Chief Executive Officer, Alaska Mental Health Trust Authority

2/2/12

# Alaska Department of Corrections



## FY2013 Overview

February 2, 2012

Office of the Commissioner

# Mission

---

The Alaska Department of Corrections enhances the safety of our communities. We provide secure confinement, reformatory programs, and a process of supervised community reintegration.

# DOC at a Glance

---

- Alaska is one of six states in the nation that operates a unified correctional system
- In 2010, DOC booked 38,000 offenders into its facilities
- As of Jan. 31, 2012, 6,005 offenders are in prison, a CRC or on EM
- As of Jan. 31, 2012, 6,195 offenders are on probation or parole
- 1,511 department staff
- 12 facilities statewide plus one out of state facility in Hudson, Colorado
- 13 field probation offices
- 15 regional jail contracts
- 6 Community Residential Center contracts
- Electronic Monitoring Programs operated in 7 communities

# Core Services

---

## *Provide Secure Confinement -*

- 12 In-state Correctional Facilities with maximum bed capacity of 3,840 beds
- 1 out-of-state contract facility located in Hudson, Colorado housing 1,050 offenders
  - Pending opening of new Goose Creek Correctional Center located in MacKenzie Point with bed capacity for 1,536 offenders.
- 15 contracts with local Regional Jails – 159 beds

# Core Services

## (Continued)

---

*Provide Supervised Release –*

- 6 Community Residential Centers – 789 beds
- 13 Regional Adult Probation Offices
- Electronic Monitoring operated in 7 communities with capacity to support up to 385 offenders

# Core Services

## (Continued)

---

### *Provide Reformative Programs –*

- Substance Abuse Treatment Programs
- Sex Offender Management Programs
- Vocational Education Programs
- Educational Programs
- Domestic Violence Programs
- Faith-based Re-entry Programs
- Mental Health Services

# Performance Indicators

---

## **Secure Confinement:**

Maintain zero prison escapes

- The department maintained zero prisoner escapes from a secure facility during FY2011

Decrease the number of special incident reports

- The number of special incident reports decreased from 70 during calendar year 2009 to 66 during calendar year 2010

# Performance Indicators

## (Continued)

---

### Supervised Release:

Increase the percent of probationers and parolees who satisfy their court ordered conditions of release

- During FY2011, 1,820 offenders were discharged from Probation or Parole. Of those discharged 884 (48.57%) met all requirements established by the courts to qualify as a successful discharge

Reduce criminal recidivism. For this purpose recidivism is defined as any person convicted of a felony offense who is incarcerated as a result of a new sentence, parole or probation revocation within three years

- Decreased the percentage of felony offenders re-incarcerated within three years of release from 50.57% in 2007 to 49.42% in 2008

# Performance Indicators

## (Continued)

---

### Reformative Programs:

Increase the number of individuals who complete an institutional or community based substance abuse treatment program

- The number of offenders completing an institutional or community based substance abuse treatment program increased from 424 during FY2010 to 719 during FY2011

Increase the number of sex offender probationers who complete a sex offender management program and who receive polygraph testing while on probation

- The number of sex offenders that received a polygraph while on probation increased from 383 during FY2010 to 454 during FY2011

# Performance Indicators

## (Continued)

---

### Reformative Programs:

Increase the number of offenders who receive a General Education Development certificate while incarcerated

- The number of offenders receiving a General Education Development (GED) certification while incarcerated increased from 247 during FY2010 to 254 during FY2011

Increase the number of inmates who successfully complete an institutional faith-based re-habilitative program

- The number of offenders completing an institutional faith-based rehabilitative program increased from 36 during FY2010 to 44 during FY2011

# Goals

---

- Protect the public
- Reduce recidivism
- Delay the need for construction of a new prison for sentenced offenders
- Ensure that incarcerated offenders spend their time in custody productively
- Work collaboratively with outside stakeholders to achieve these goals

# Challenges and Issues

---

- Meet 24/7 operational needs while striving to remain within fiscal parameters
- Availability of community-based resources for releasing offenders
- Meeting the maintenance needs of the aging correctional facilities
- Electronic records system for all offender files

# Challenges and Issues

## (Continued)

---

- Over the past decade, medical care costs in Anchorage have increased by 46%, compared to 27% nationwide (*Alaska Economic Trends, May 2011*)
- Increases in chronic health issues and an aging inmate population has led to higher acuity and increased need for higher medical care

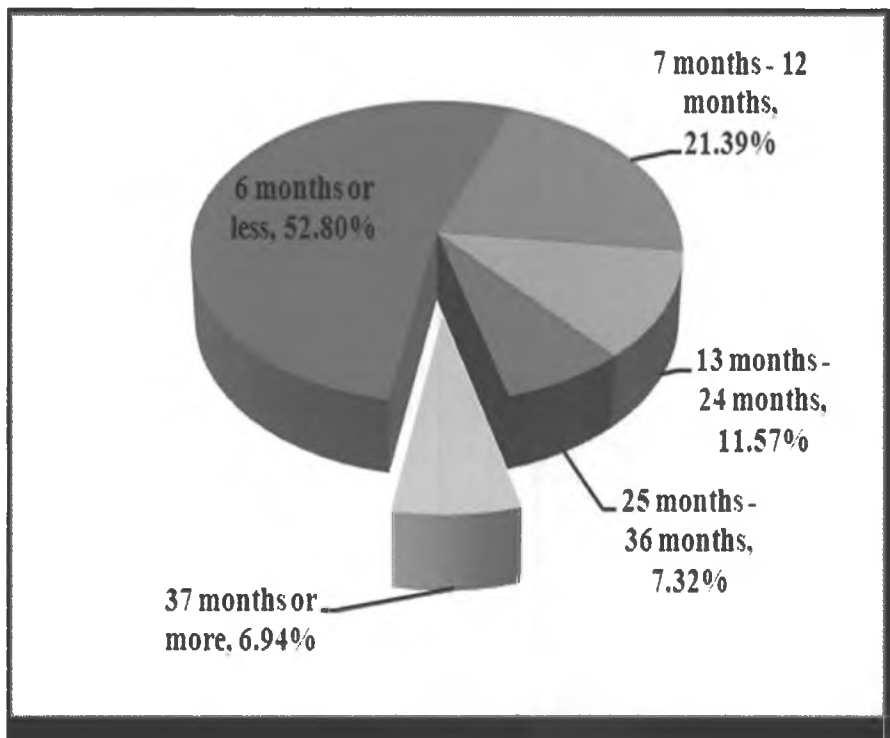
# Population Information

---

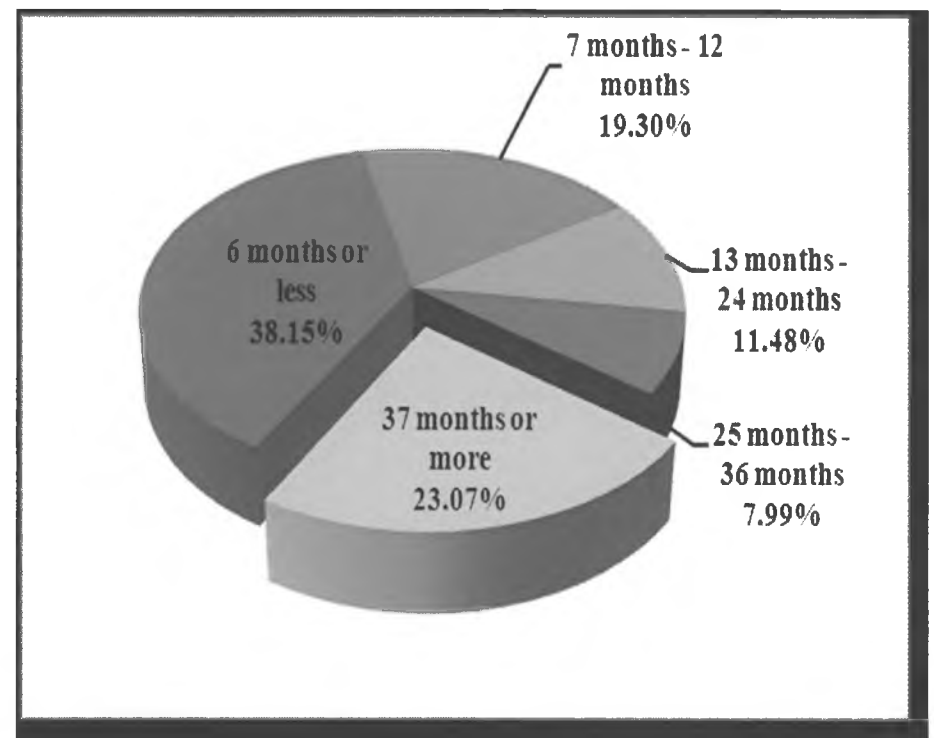
Changes to the offender population .....

# Percent of Offenders by Length of Stay from Admission

As of December 31, 2002



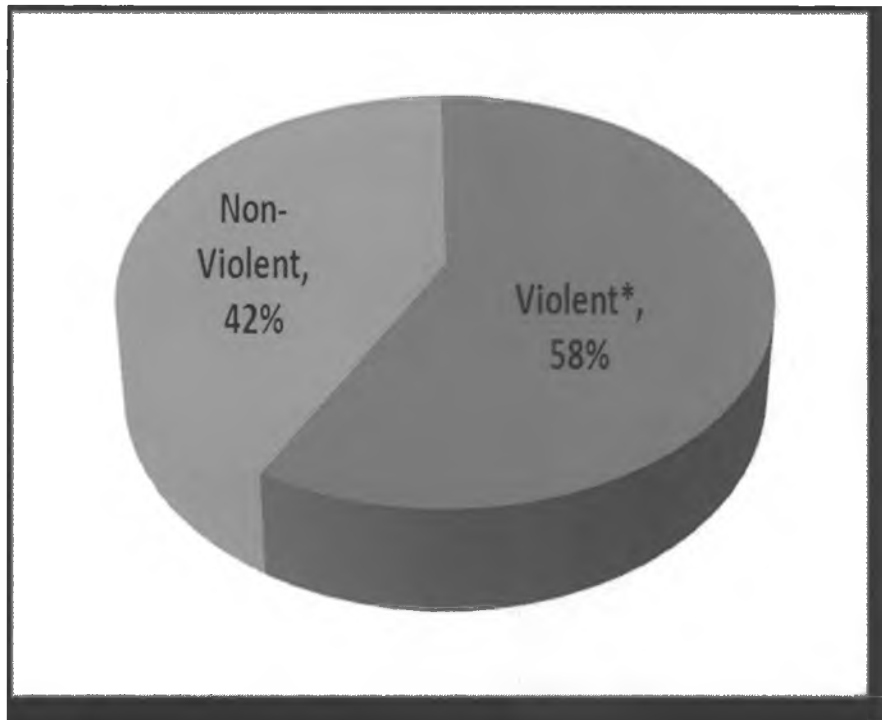
As of December 31, 2011



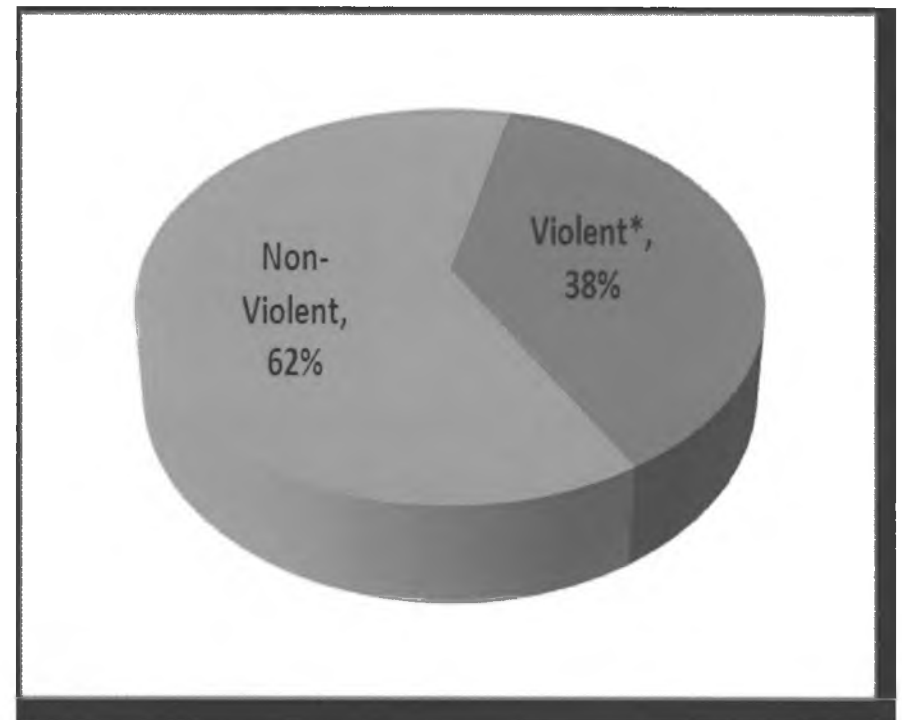
# Standing Population & Crime Type

---

As of December 31, 2002

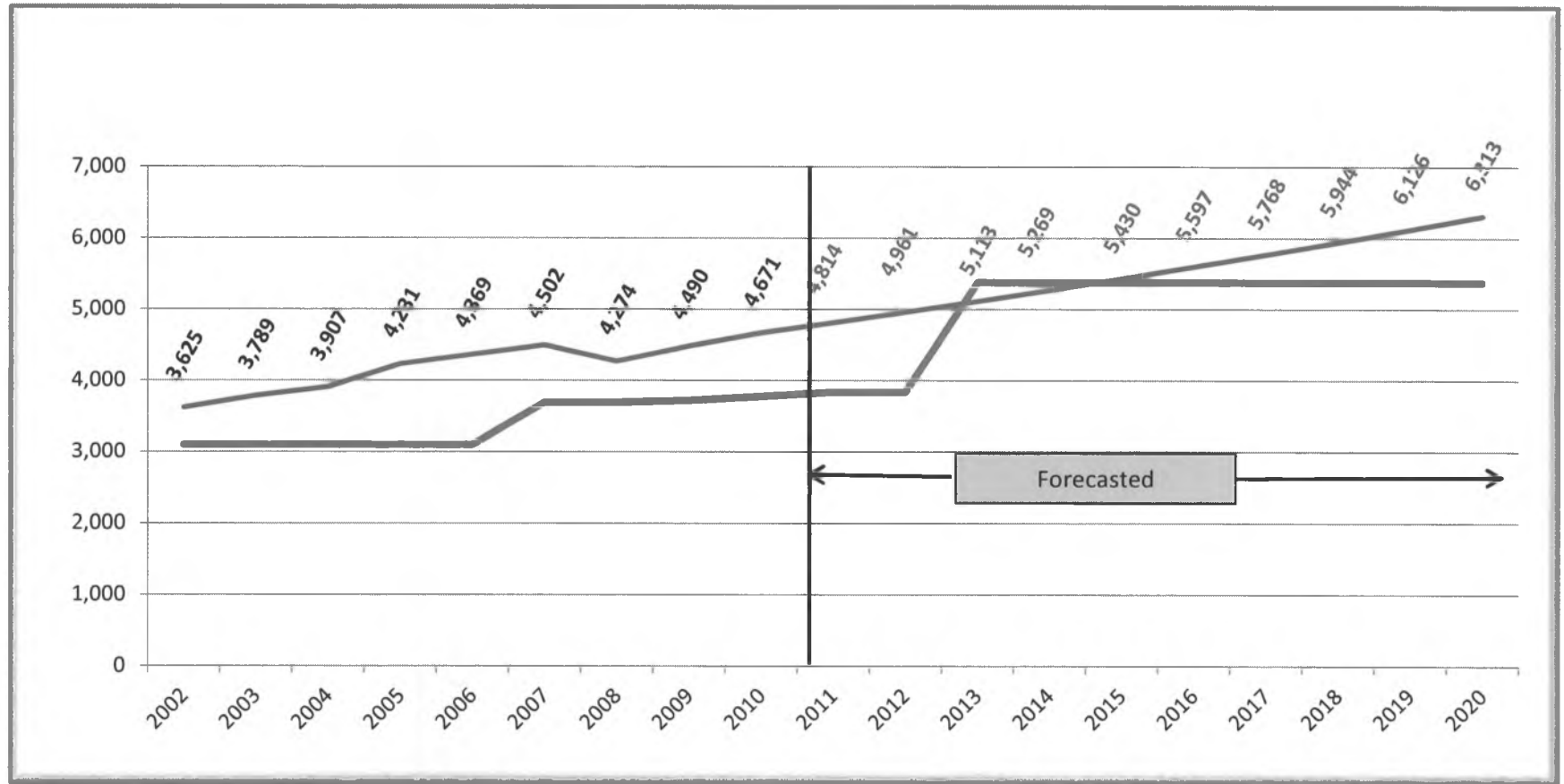


As of December 31, 2011



\* Violent Crimes include all crimes against a person and also includes registerable sex offenses.

# Institutional Inmate Population 2002 - 2020



From 2002 to 2010, the annual average inmate population grew slightly more than 3% per year. Based on that growth rate, it is estimated inmate population will reach 6,313 by 2020.

# FY13 Operating Changes

---

- Salary and Health Insurance Increases \$ 1,961.6
- Maintain Current Level of Services \$ 2,487.4
- New Initiatives \$29,182.6
- FY12 August Fuel/Utility Reversal (\$ 720.0)
- One Time Item Reversal (\$ 630.0)

# FY13 Capital Changes

---

- Maintain Current Level of Services \$6,000.0
  - Annual Facility Maintenance & Repairs
  - Deferred Maintenance Projects
  
- New Initiatives \$5,250.0
  - Goose Creek Correctional Center FFE
  - Information Technology Disaster Recovery & Novell Replacement Projects

**End**