

**2/02/11
BUDGET
OVERVIEW:
DEPARTMENT OF
TRANSPORTATION
AND PUBLIC
FACILITIES**

<TARGET><BILL></BILL><SUBJECT>2-02-11 BUDGET OVERVIEW
DEPARTMENT OF TRANSPORTATION AND PUBLIC
FACILITIES</SUBJECT><COMM>HFIN27</COMM></TARGET>



Alaska Department of Transportation & Public Facilities

Overview

Presented to the House Finance Committee

February 2, 2011

Marc Luiken, Commissioner



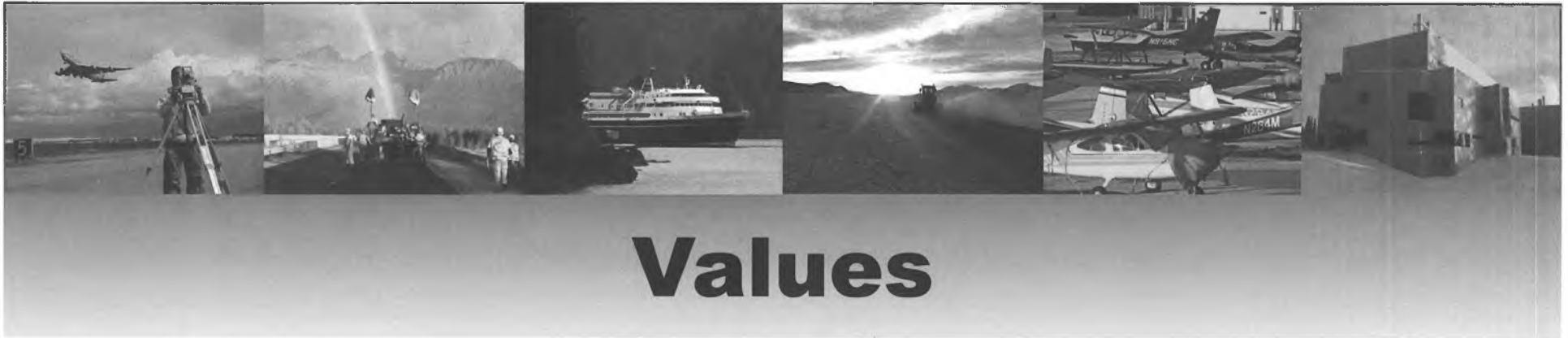
Mission

to provide for the safe and efficient movement of people and goods and the delivery of State services



Vision

- Trusted performance-driven organization
- Collaborating with internal and external partners
- Delivering an efficient multi-modal transportation system and public facilities
- Enhancing the quality of life for Alaskans
- Promoting economic resource development



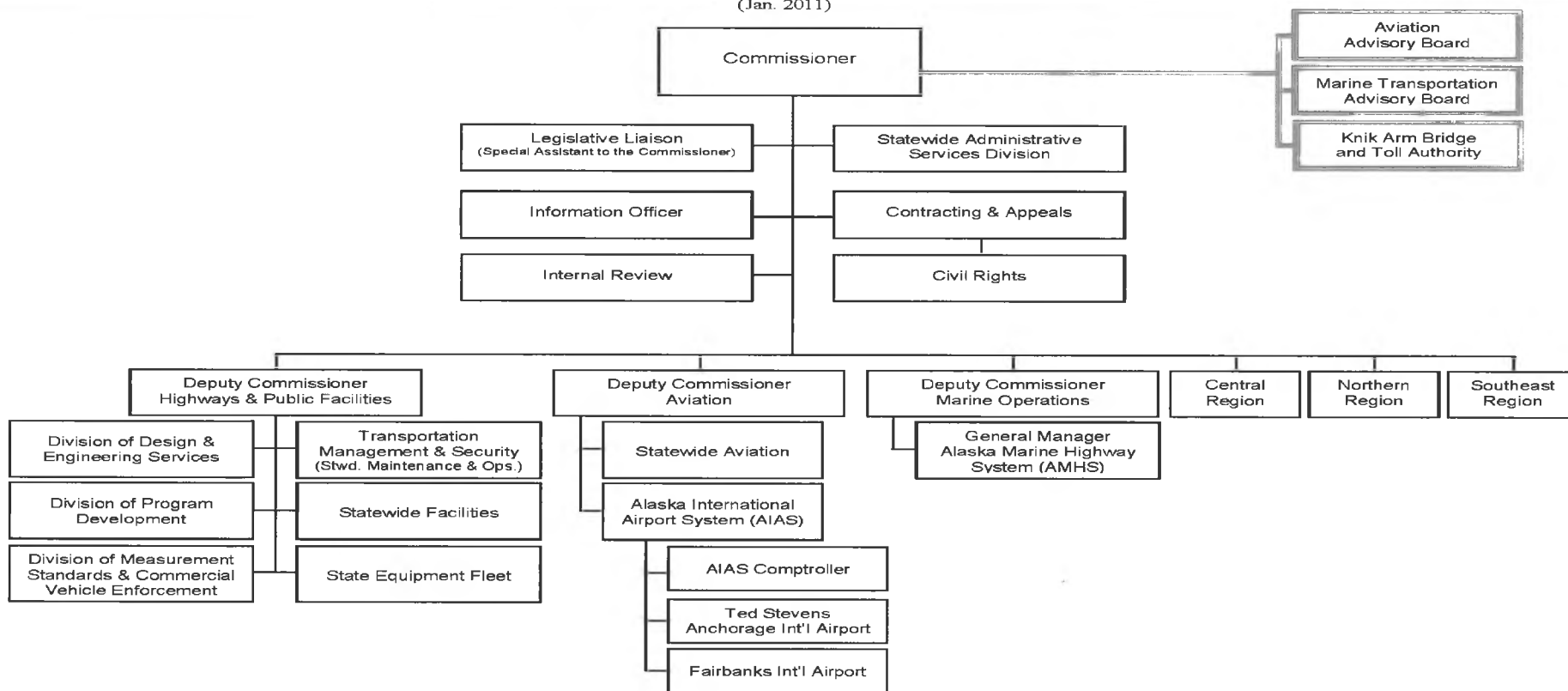
Values

- Integrity
- Transparency
- Outstanding service provided by
 - Continually developing our skills, tools, expertise
 - Developing internal/external relationships
 - Pioneering spirit: innovative ways of doing business
 - Adapting rapidly to opportunities and challenges
 - Quality work force



Organization

(Jan. 2011)

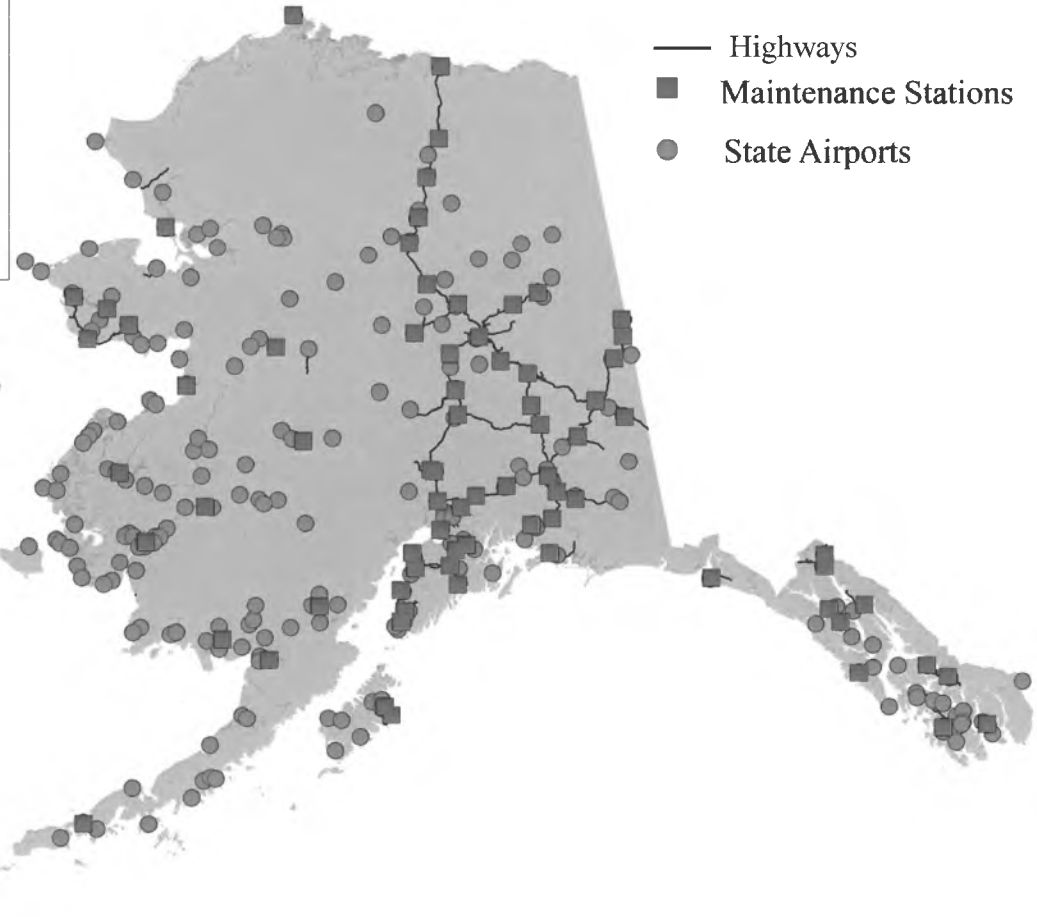




State Owned Centerline Lane Miles =
5,601 or approximately 11,202 lane miles

Maintenance Stations = 80

State Airports = 255





Governor's Priorities

- Jobs
- Safety
- Roads to resources
 - Foothills West – road to Umiat
 - Ambler mining district access
 - Western Access
- Deferred maintenance





Project Prioritization

- Safety
- Asset Management System
 - Pavement, bridges, airports, ferries, transit, maintenance
- 2030 Long Range Transportation Plan
 - Regional Transportation Plans



Project Prioritization Cont'd

- Aviation Improvement Program (AIP)
- State Transportation Improvement Program (STIP)



Successes



Highways & Aviation



Mertarvik Project



Tanana Bridge



Fairbanks International Airport



Marine Highways

- Hoonah Ferry Terminal dock facilities.



- Gustavus
- Aleutian Chain



Challenges

- Needs exceed resources
- Federal funding/process
- Recruitment/retention
- AMHS
- Natural Disasters





Current Information on Alaska's Roadways

- Weather Cameras
- Weather Watches
- Road Construction
- Future Construction
- Incidents
- Driving Conditions
- Available by Phone or on the web

Project Information Reporting Improvements on web



RWIS Camera ✕

Parks Highway @ Little Coal Creek MP 163.2



Fair Driving Conditions ✕

Elliott Highway from Steese Highway to Milepost 27

Warnings: Reduce your speed - Drive with headlights on - Be prepared for winter driving .

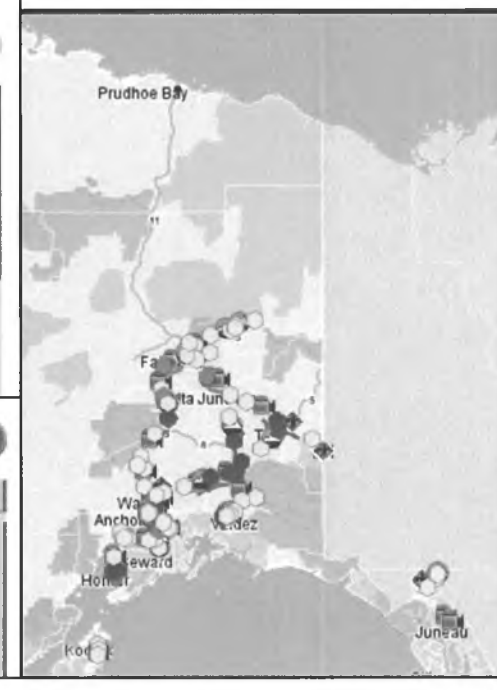
Atmospherics: - Cloudy - Fog .

Pavements: Icy patches - Rough icy patches
Road surface in poor condition .

Snow:

Wind Speed:

Last updated: Jan 5, 2011



Road construction ✕

Alaska Highway from Milepost 1222 to Milepost 1235

roadwork

Closures: Future lane closure - Short delays (5 - 15 min) .

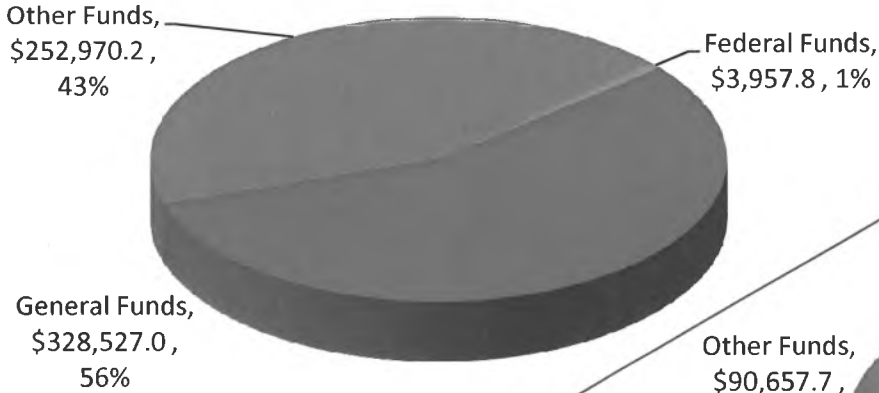
Warnings: Be prepared to stop - Heavy equipment on roadway - Heavy equipment on shoulder - Use caution when traveling through this area - Use extreme caution - Warning - Workers on roadway -

Last updated: Dec 27, 2010 12:07 PM

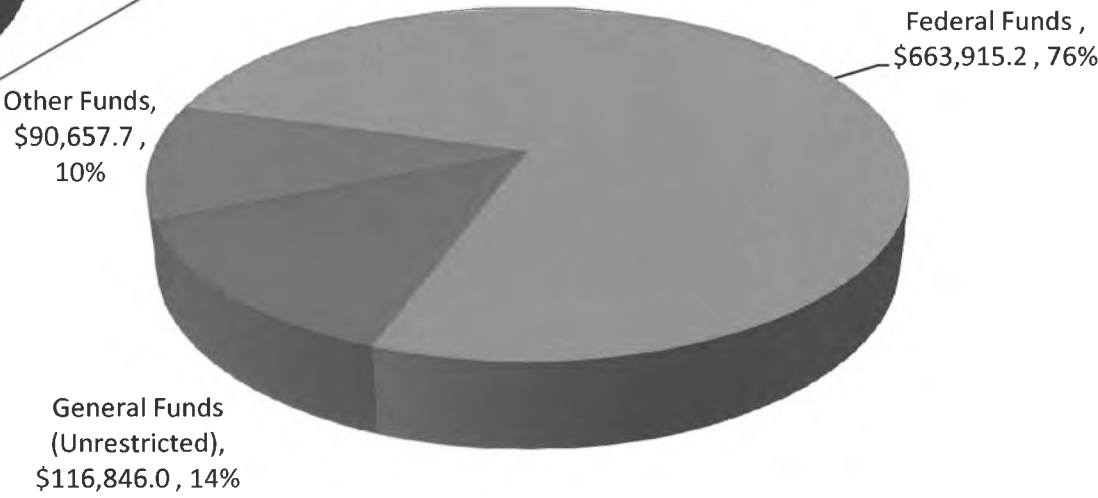


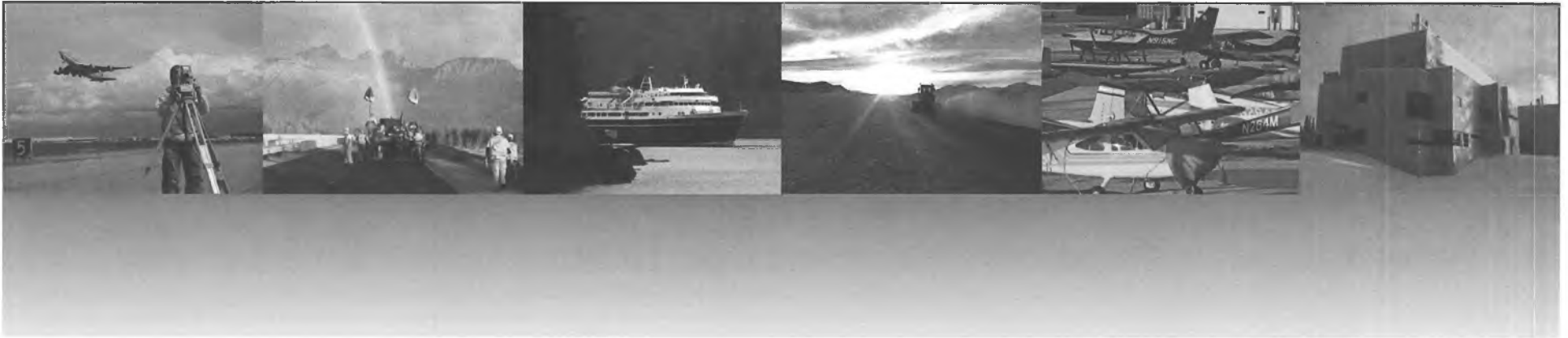
Funding

FY2012 DOT&PF Operating Budget
\$585,455.0 Total Funds



FY2012 DOT&PF Capital Budget
\$871,418.9 Total Funds





Questions?