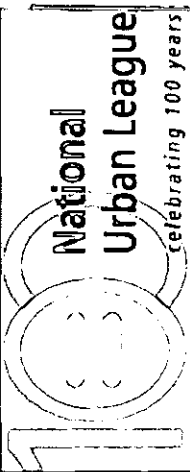


3/1/10

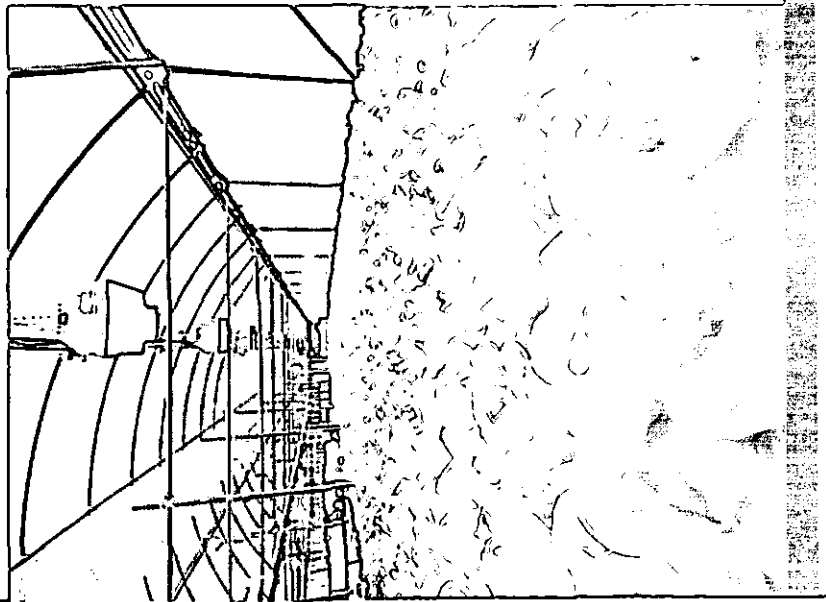
PRESENTA-  
TION:  
ANCHOR-  
AGE URBAN  
LEAGUE  
& DIV. OF...



# ANCHORAGE URBAN LEAGUE

# ALASKA SEEDS OF CHANGE

Providing Transitional  
Services for Our Youth





# ANCHORAGE URBAN LEAGUE

## Mission:

The purpose of the Anchorage Urban League is to provide direct services to African-Americans and other people of color in our community – thereby empowering us to secure economic self-reliance and parity.

The Anchorage Urban League endeavors to enrich our community by embracing our diversity and addressing real needs among our population.



# EMPOWERED

THE NATIONAL URBAN LEAGUE



# ANCHORAGE URBAN LEAGUE

## Alaska Seeds of Change - Challenges Facing Transitional Youth:

- High rates of unemployment, lower wages.
- High dropout rates.
- Involvement with criminal justice system.
- High rates of homelessness/unsafe housing.
- Development of mental health & substance abuse problems.
- Less community engagement.



# ANCHORAGE URBAN LEAGUE

## Alaska Seeds of Change - Why a Social Enterprise?

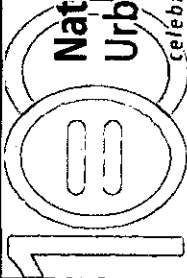
- Funding sustainability.
- Providing services in a normalized setting.
- “Real world,” challenging opportunities to acquire and apply skills.
- Youth recognized as resources and not merely as “problems.”



# ANCHORAGE URBAN LEAGUE

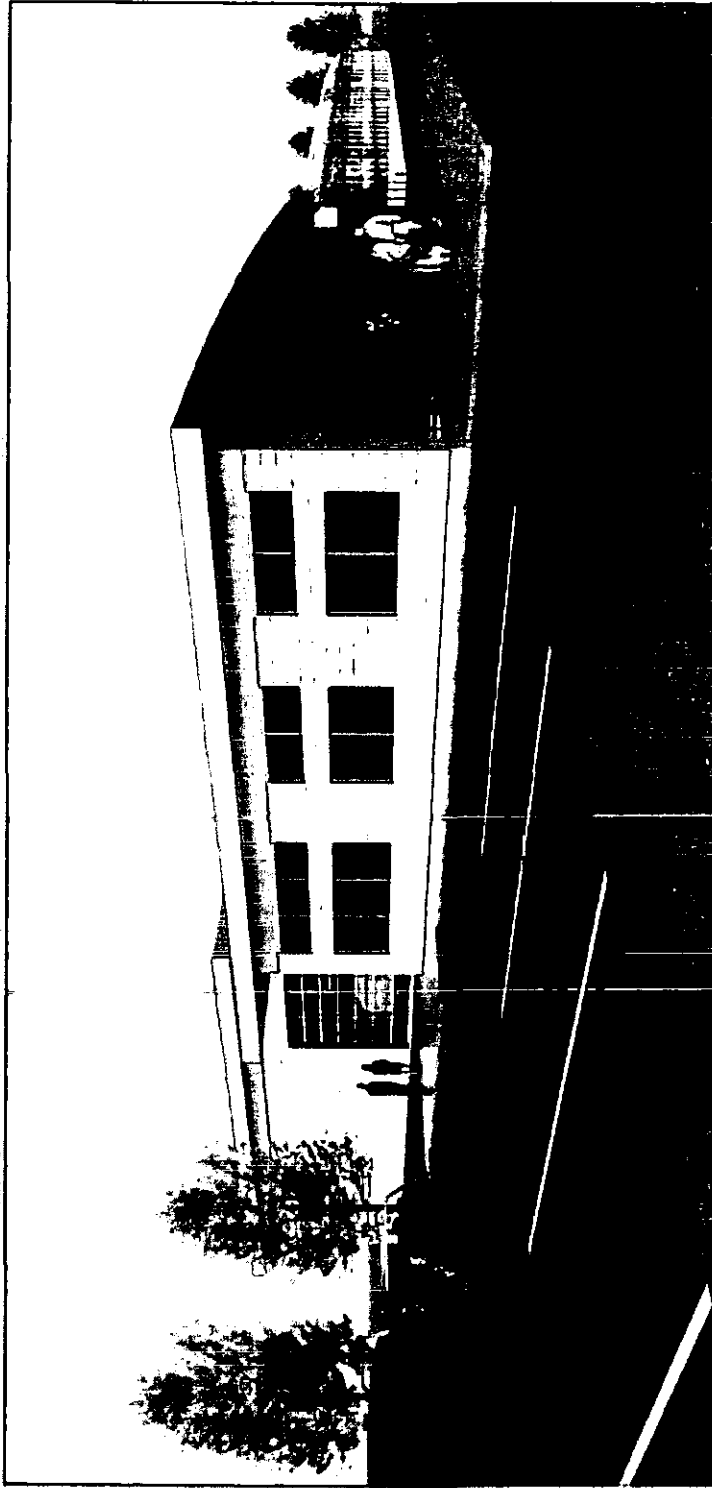
## Alaska Seeds of Change - Program Highlights:

- Comprehensive, individualized transitional services for youth with complex emotional and behavioral needs.
- Youth acquire independent living skills (including employability skills and job experience) by participating in all major aspects of running an urban greenhouse business.
- Internships for students from the University of Alaska Anchorage. SOC will promote workforce development.
- Measure functional outcomes and implement evidence-supported practices.
- Help grow the local food production system through the use of innovative energy-conservation growing practices.



National Urban League  
Celebrating 100 years

# ANCHORAGE URBAN LEAGUE



RENDERING - NORTHWEST CORNER, N12



Anchorage Urban League



ALASKA SEEDS OF CHANGE

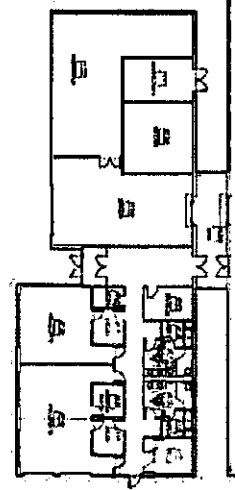


kpba architects

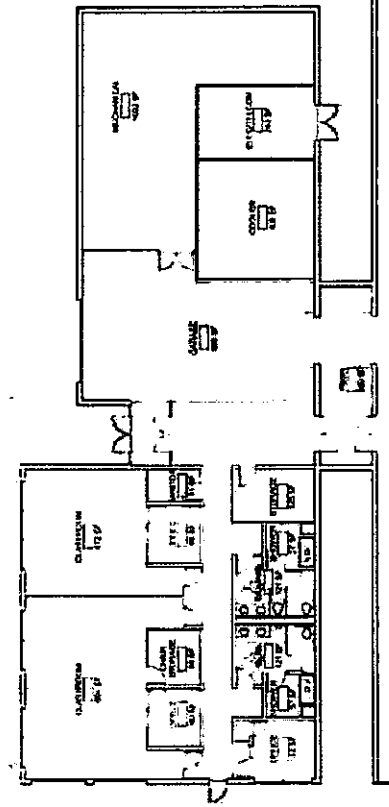


# ANCHORAGE URBAN LEAGUE

- CLASSMEETING
- ENTRY
- GREENHOUSE
- LOADING
- MECH/ELEC
- OFFICE
- STORAGE
- SUPPORT



OVERALL FLOOR PLAN N.E.O.



ENLARGED FLOOR PLAN SCALE 1/8"=1'-0"



Anchorage Urban League

Empowering Communities  
Changing Lives

ALASKA SEEDS OF CHANGE



lpb architects



# ANCHORAGE URBAN LEAGUE

## Alaska Seeds of Change - Goals and Outcomes:

- Higher rates of permanent employment and job retention.
- Increased high school graduation rates.
- Increased participation in vocational training.
- Safe and stable housing arrangements.
- Reduced reliance upon public support.
- Reduced involvement with the legal system.
- Creation of jobs that provide meaningful skills and work experience.



## ANCHORAGE URBAN LEAGUE

### Alaska Seeds of Change - Goals and Outcomes (cont.):

- Reduced impact of mental health and substance abuse problems on daily functioning.
- Less victimization of transitional age youth.
- Greater youth participation in the community.
- Improved local community due to community gardens.
- Increased dissemination of hydroponic greenhouse growing practices.



# ANCHORAGE URBAN LEAGUE

## Project Status

**AMTHA**

Predevelopment funding

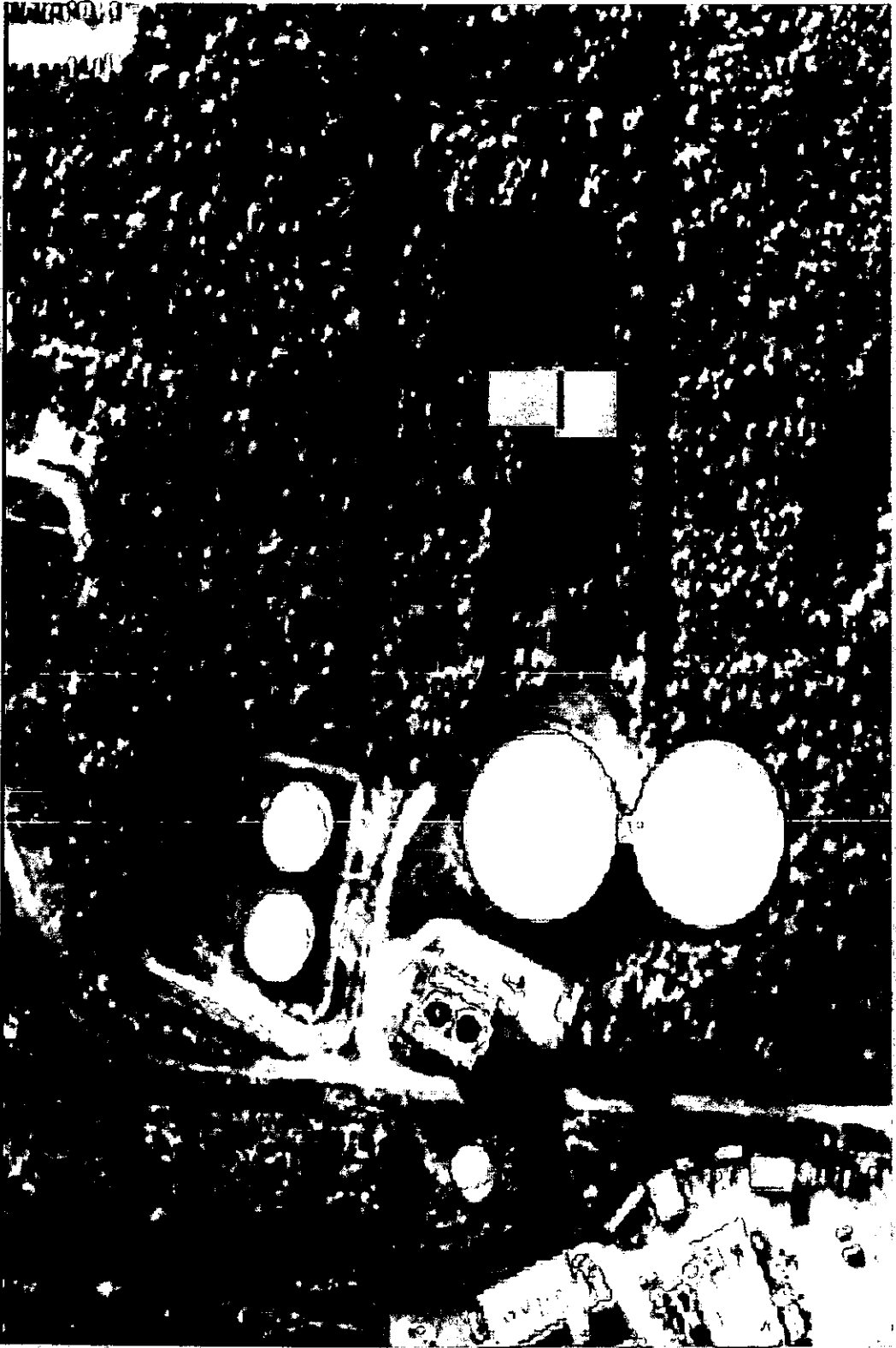
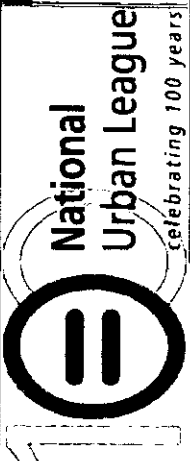
**Foraker Group**

Predevelopment services

**Municipality of Anchorage**

Site lease and energy source

# ANCHORAGE URBAN LEAGUE





# ANCHORAGE URBAN LEAGUE

## Project Fiscal Plan

Cost of Greenhouse and Program Space \$5,321,000

### Possible source of funds

DHSS /Denali BTKH Funding 2,800,000

Private Foundations 800,000

Private Corporate Grants 750,000

Legislative appropriation 1,000,000

Total \$5,350,000

### Equity

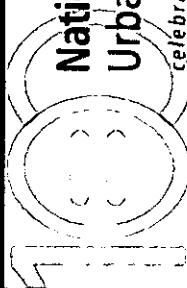
Estimated Municipal land value \$823,000



# ANCHORAGE URBAN LEAGUE

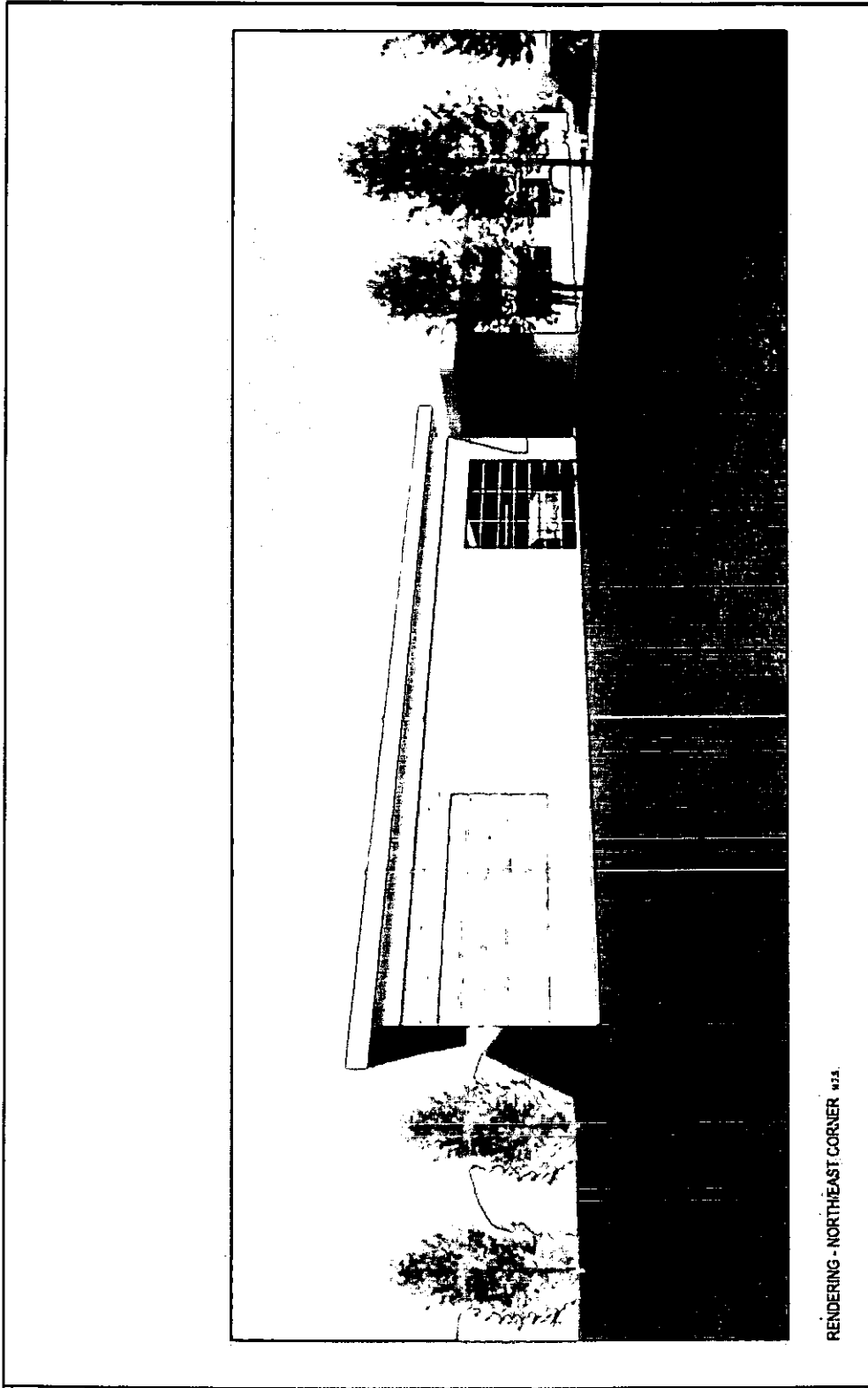
## Alaska Seeds of Change - Major Partners:

- Municipality of Anchorage
- Alaska Mental Health Trust Authority
- The Foraker Group
- State of Alaska
  - Division of Juvenile Justice
  - Division of Behavioral Health
  - Office of Children Services
- University of Alaska Anchorage, College of Health & Social Welfare
- NeighborWorks of Anchorage
- Denali Family Services
- Casey Family Foundation
- Facing Foster Care in Alaska
- University of Alaska Fairbanks, Cooperative Extension Services



National Urban League  
celebrating 100 years

# ANCHORAGE URBAN LEAGUE



RENDERING - NORTHEAST CORNER 10.14



Anchorage Urban League

Empowering Communities  
Building Hope

ALASKA SEEDS OF CHANGE



kpb architects



# **The Alaska Division of Pioneer Homes; Planning for Tomorrow**

**February 2010**

The Pioneer Homes have a long history of providing care to Alaska's elderly and are an important part of the senior services continuum of care.



The Sitka  
Pioneer  
Home built  
in 1913

Where the  
Alaska Elder  
population is  
going....



**Table 1: Alaska population projections by age group for ages 60 and up,  
2010-2030**

<b>Age</b>	<b>2010</b>	<b>2015</b>	<b>2020</b>	<b>2025</b>	<b>2030</b>
60-64	35,359	43,061	44,317	40,560	33,434
65-69	21,872	31,865	39,135	40,455	36,954
70-74	13,251	19,091	28,193	35,020	36,363
75-79	8,854	10,924	15,916	23,880	29,953
80-84	6,026	6,655	8,278	12,264	18,645
85-89	3,435	4,033	4,475	5,635	8,414
90+	1,886	2,412	2,905	3,292	4,062



## How we meet the needs of Alaska's elder's today

**Table 2: Pioneer Homes Licensed Beds, June 2009**

<b>Pioneer Homes</b>	<b>Licensed Beds</b>	<b>Year Built</b>
Sitka Pioneer Home	75	1913*
Fairbanks Pioneer Home	93	1967
Alaska Veterans & Pioneer Home in Palmer	79	1971
Ketchikan Pioneer Home	48	1981
Anchorage Pioneer Home	168	1982
Juneau Pioneer Home	45	1988
<b>Total Licensed Beds</b>	<b>508</b>	

**Table 3: Occupancy by Pioneer Home, June 2009**

	<b>Available Beds</b>	<b>Occupied Beds</b>	<b>Percent Occupied</b>
Anchorage	168	164	97.6%
Fairbanks	93	84	90.3%
Juneau	45	43	95.6%
Ketchikan	48	42	95.5%
Palmer	79	71	89.9%
Sitka	75	58	80.6%
<b>All Pioneer Homes</b>	<b>508</b>	<b>462</b>	<b>92.2%</b>

**Table 4: Residents by service level by Pioneer Home, June 2009**

Level 1 = Independent

Level 2 = Semi-Independent

Level 3 = Dependant

	<b>Level 1</b>	<b>Level 2</b>	<b>Level 3</b>	<b>Total</b>
Anchorage	38	48	78	<b>164</b>
Fairbanks	7	24	53	<b>84</b>
Juneau	1	13	29	<b>43</b>
Ketchikan	4	10	28	<b>42</b>
Palmer	5	14	52	<b>71</b>
Sitka	5	22	31	<b>58</b>
<b>All Pioneer Homes</b>	<b>60</b>	<b>131</b>	<b>271</b>	<b>462</b>

Table 5: Age of residents by Pioneer Home, June 2009

<b>Pioneer Home</b>	<b>65-69</b>	<b>70-74</b>	<b>75-79</b>	<b>80-84</b>	<b>85-89</b>	<b>90+</b>	<b>Unknown</b>
Anchorage	4	9	20	50	42	39	0
Fairbanks	1	3	5	15	30	30	0
Juneau	0	4	2	9	12	16	0
Ketchikan	1	4	4	9	4	14	4
Palmer	1	2	6	16	23	22	0
Sitka	4	10	12	17	11	4	0
<b>All Pioneer Homes</b>	<b>11</b>	<b>32</b>	<b>49</b>	<b>116</b>	<b>122</b>	<b>125</b>	<b>4</b>

**Table 6: Wait list by Pioneer Home, June 2009**

<b>Pioneer Home</b>	<b>Active Wait List</b>	<b>Inactive Wait List</b>
Anchorage	129	1,268
Fairbanks	86	1006
Juneau	62	904
Ketchikan	34	489
Palmer	122	960
Sitka	4	692
<b>All Pioneer Homes</b>	<b>437</b>	<b>5,319</b>

With an ever increasing waitlist should the Pioneer Homes system be proactive and begin planning expansion now instead of waiting until the state faces a crisis in the future?



**Table 7: Anchorage Pioneer Home service area population by age cohort, 2010-2030**

Age	Projected Population					Percent Change			
	2010	2015	2020	2025	2030	2010-15	2015-20	2020-25	2025-30
65-69	8,825	13,331	16,029	16,859	15,643	51.1%	20.2%	5.2%	-7.2%
70-74	5,187	7,698	11,828	14,385	15,087	48.4%	53.7%	21.6%	4.9%
75-79	3,628	4,353	6,521	10,143	12,352	20.0%	49.8%	55.5%	21.8%
80-84	2,426	2,760	3,347	5,079	7,937	13.8%	21.3%	51.7%	56.3%
85-89	1,416	1,646	1,876	2,302	3,493	16.2%	14.0%	22.7%	51.7%
90+	802	1,018	1,220	1,403	1,694	26.9%	19.8%	15.0%	20.7%

**Table 8: Palmer Veterans and Pioneer Home service area population by age, 2010-2030**

Age	Projected Population					Percent Change			
	2010	2015	2020	2025	2030	2010-15	2015-20	2020-25	2025-30
65-69	2,519	3,657	5,108	5,648	5,529	45.2%	39.7%	10.6%	-2.1%
70-74	1,633	2,307	3,343	4,682	5,233	41.3%	44.9%	40.1%	11.8%
75-79	1,116	1,401	1,975	2,889	4,090	25.5%	41.0%	46.3%	41.6%
80-84	736	889	1,113	1,581	2,336	20.8%	25.2%	42.0%	47.8%
85-89	391	518	626	789	1,128	32.5%	20.8%	26.0%	43.0%
90+	186	280	378	466	590	50.5%	35.0%	23.3%	26.6%

**Table 9: Fairbanks Pioneer Home service area population by age cohort,  
2010-2030**

Age	Projected Population					Percent Change			
	2010	2015	2020	2025	2030	2010-15	2015-20	2020-25	2025-30
65-69	3,129	4,616	5,650	5,636	5,214	47.5%	22.4%	-0.2%	-7.5%
70-74	1,851	2,725	4,078	5,051	5,064	47.2%	49.7%	23.9%	0.3%
75-79	1,178	1,523	2,268	3,451	4,319	29.3%	48.9%	52.2%	25.2%
80-84	809	867	1,137	1,726	2,673	7.2%	31.1%	51.8%	54.9%
85-89	429	540	582	773	1,185	25.9%	7.8%	32.8%	53.3%
90+	243	306	384	434	552	25.9%	25.5%	13.0%	27.2%

**Table 10: Juneau Pioneer Home service area population by age cohort, 2010-2030**

Age	Projected Population					Percent Change			
	2010	2015	2020	2025	2030	2010-15	2015-20	2020-25	2025-30
65-69	1411	2260	2615	2329	2062	60.2%	15.7%	-10.9%	-11.5%
70-74	879	1212	1971	2309	2086	37.9%	62.6%	17.1%	-9.7%
75-79	491	700	986	1636	1963	42.6%	40.9%	65.9%	20.0%
80-84	390	371	529	760	1284	-4.9%	42.6%	43.7%	68.9%
85-89	229	245	236	341	508	7.0%	-3.7%	44.5%	49.0%
90+	154	172	186	185	243	11.7%	8.1%	-0.5%	31.4%

**Table 11: Ketchikan Pioneer Home service area population by age cohort, 2010-2030**

Age	Projected Population					Percent Change			
	2010	2015	2020	2025	2030	2010-15	2015-20	2020-25	2025-30
65-69	810	1,000	1,191	1,095	898	23.5%	19.1%	-8.1%	18.0%
70-74	505	702	877	1,027	1,037	39.0%	24.9%	17.1%	1.0%
75-79	289	393	559	787	884	36.0%	42.2%	40.8%	12.3%
80-84	233	216	292	440	556	-7.3%	35.2%	50.7%	26.4%
85-89	133	151	140	224	284	13.5%	-7.3%	60.0%	26.8%
90+	66	81	98	105	124	22.7%	21.0%	7.1%	18.1%

**Table 12: Sitka Pioneer Home Service Area service area population by age cohort, 2010-2030**

Age	Projected Population					Percent Change			
	2010	2015	2020	2025	2030	2010-15	2015-20	2020-25	2025-30
65-69	641	809	891	946	692	26.2%	10.1%	6.2%	26.8%
70-74	472	558	708	789	849	18.2%	26.9%	11.4%	7.6%
75-79	277	382	454	589	668	37.9%	18.8%	29.7%	13.4%
80-84	227	208	285	348	460	-8.4%	37.0%	22.1%	32.2%
85-89	145	155	144	198	241	6.9%	-7.1%	37.5%	21.7%
90+	85	97	104	102	130	14.1%	7.2%	-1.9%	27.5%



How will the Alaska Pioneer Homes meet the needs of elder Alaskans in the future?

**Table 13: New beds needed to meet projected demand, 2015-2030**

\*June 2009

<b>Pioneer Home</b>	<b>Occupied Beds*</b>	<b>2015</b>	<b>2020</b>	<b>2025</b>	<b>2030</b>
Anchorage	164	35	49	82	121
Fairbanks	84	20	23	37	65
Palmer	71	25	28	37	58
Juneau	43	5	9	15	27
Ketchikan	42	6	10	14	11
Sitka	58	7	12	17	16
<b>Total</b>	<b>462</b>	<b>98</b>	<b>131</b>	<b>202</b>	<b>298</b>

**Total projected new beds needed for the period 2015 – 2030 = 729 (per Information Insights projection data).**

## Conclusion

- There is clearly a need to expand the service array for seniors in the next twenty years.
- As part of this service array, the Pioneer Homes should consider expanding bed capacity by approximately 200 beds in a phased approach.
- Emphasis should be on creating Level III beds, our most dependent level of care, because elders are entering our homes at higher acuity levels and consequently there is more demand for Level III beds.
- A study should be conducted to determine the feasibility of adding to the existing Homes in particular where we currently own land and/or determining where additional Homes could be built.