

4/6/10

PRESENTA-

TION:

ALASKA

CLASS

FERRY



## Ferry Acquisition Project

Summary and Status Report, March 2010

### Project Mission Statement



Design and construct the next generation of ferries to begin the replacement of the aging AMHS fleet. These ferries will be environmentally responsible, fuel efficient and versatile. They will enhance AMHS operations on current and future routes within inside waters and enable AMHS to continue its tradition of providing safe, reliable service

# Importance



**These new ferries will allow AMHS to continue to accomplish its mission to provide safe, reliable and efficient marine transportation.**

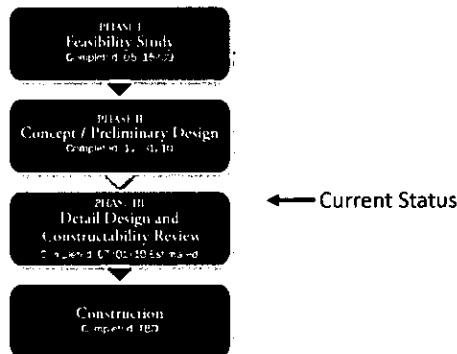
- Modern safety features will be incorporated into these vessels.
- Dependable service is essential for the sustainability and growth of commerce and the livelihood of established communities in Alaska.
- Conventional U.S. vehicle ferries typically last 40 to 60 years.
- Four AMHS vessels are 45 years old.
- Old ferries are costly to maintain and operate.
- A new ferry takes 4 to 7 years to acquire, including design.

3

# Approach



**Our approach for developing the optimal design of the new ship consists of three phases:**



4

## Design Status

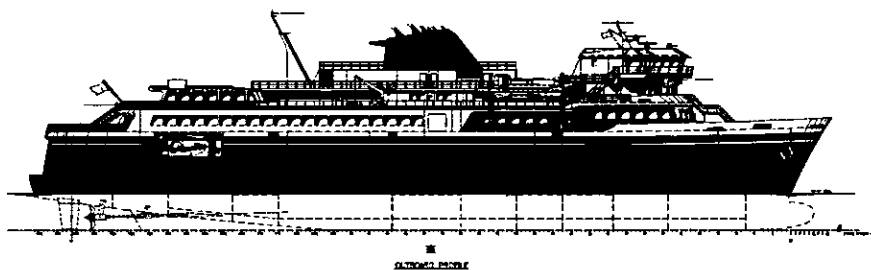


### Preliminary design documents completed include:

- Preliminary Arrangements and Details
- Mid-ship Sectional Drawings
- Propulsion Validation Study
- Preliminary Scantling Calculations
- Equipment List
- CFD (Computational Fluid Dynamics) Report
- Galley Equipment and Layout Detail Development

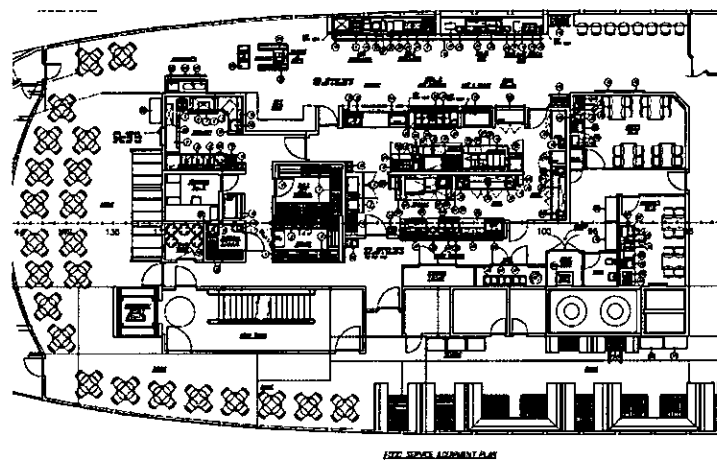
5

## Vessel Profile

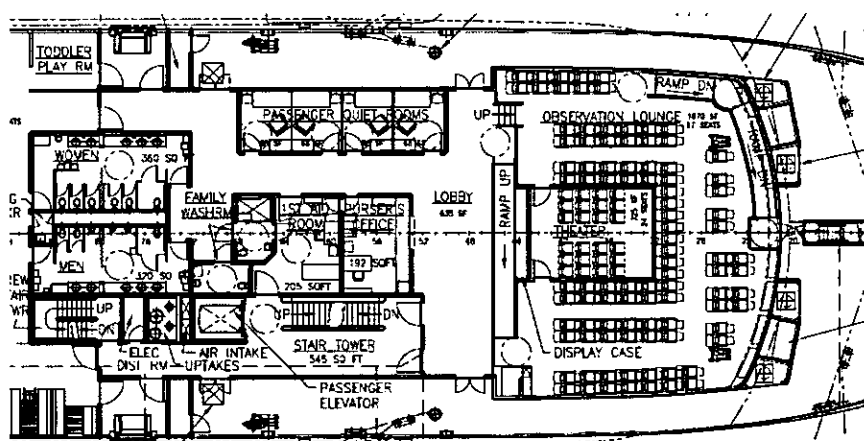


6

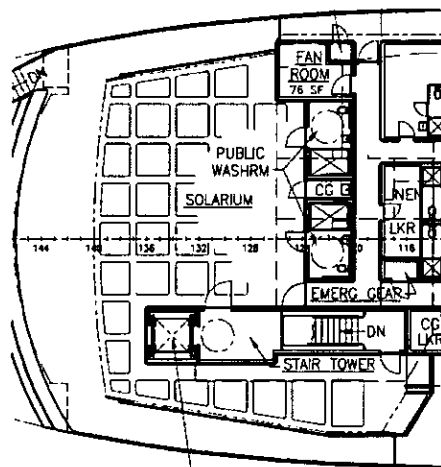
## Current Galley and Food Service Arrangement



## Current Forward Passenger Area Arrangement

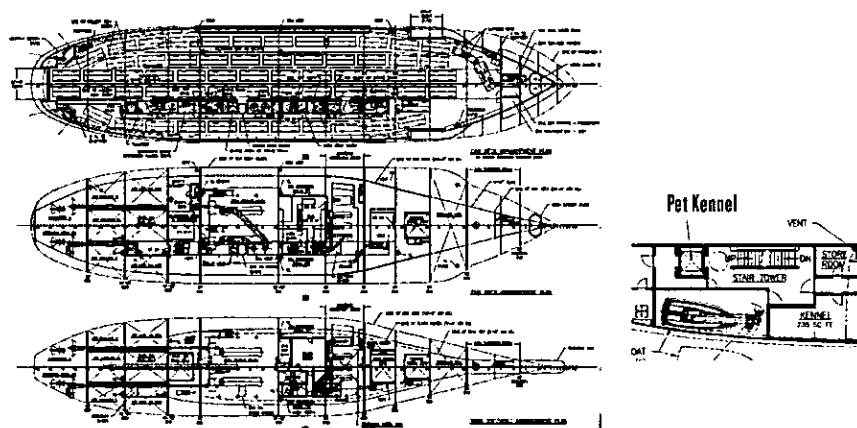


# Current Solarium Arrangement



9

# Vehicle and Lower Deck Arrangements



10

## On the Horizon



### Procurement and Design Completion

- Alaska DOT&PF is developing a strategy to implement a constructability review
- Value derived from such a review of the design can add significant benefit to the vessel construction process for the State of Alaska.
  - Risk identification and mitigation prior to funding appropriation
  - Agreed to cost prior to construction funding request to obligate
  - "Buy-in" from the Contractor to contract documentation and design
  - Incorporation of ship builders strengths and processes into the design

88


## For More Information



### Visit the Alaska Class Ferry website:

- [http://www.dot.state.ak.us/amhs/alaska\\_class](http://www.dot.state.ak.us/amhs/alaska_class)
- Can also be found under "News & Updates" at FerryAlaska.com

12



## Alaska Class Ferry Project


DOT&PF > AMHS Home >

PHASE I  
Feasibility Study  
Completed: 05/15/09

PHASE II  
Concept / Preliminary Design  
Completed: 12/31/10

PHASE III  
Detail Design and  
Constructability Review  
Completed: 07/01/10 Estimated

Construction  
Completed: TBD



The mission of the Alaska Class Ferry Project is to design and construct the next generation of ferries to begin the replacement of the aging AMHS fleet. These ferries will be environmentally-responsible, fuel-efficient and versatile. They will enhance AMHS operations on current and future routes within inside-waters and enable AMHS to continue its tradition of providing safe, reliable service.

The link below will take you to the results of our project survey. We encourage you to read the rest of the project information within this site in addition to reading through the results.

[View Survey Results](#)

Background

- [Introduction](#)
- [Importance](#)
- [Mission Background](#)
- [Participants & Roles](#)

Process


[Vessel Design](#)


Reference

State of Alaska | AMHS Web Manager | DOT&PF Employee Directory | Terms of Use | Copyright © DOT&PF Home

13

# Questions?





09