

1/27/09

OVERVIEW:
DEPT.
OF
TRANSPOR-
TATION

STIP 2009 ADVERTISED
(Not In Priority Order)

- 1 AMATS: Hwy & TE Funds
- 2 FMATS: Hwy & TE Funds
- 3 Mats: Mackenzie Pt Rd Improvements
- 4 Hyder: Trestle Replacement
- 5 Siktak: Japonski Island Road
- 6 Nome: City Streets Earmark
- 7 Stevens Village: Sinitation Road
- 8 Hulia: Landfill Road
- 9 Emmonak: Road Improvements
- 10 Emmonak: Landfill Road
- 11 Emmonak: Airport Clinic Road
- 12 Galena: Road Resurfacing
- 13 Point Hope: Evacuation Road
- 14 Barrow: North Slope Road Imprv
- 15 Barrow: Research Center Access Rd
- 16 Anchorage: Minnesota Dr. Resurficing
- 17 NIKILCHIK: Intersection Improvement
- 18 Richardson Hwy: Fbx Weigh Station
- 19 Dalton Hwy: Yukon River Bridge
- 20 Dalton Hwy: 144-175 Reconstruction
- 21 Dalton Hwy: 197-209
- 22 Dalton Hwy: 274-289 Reconstruction
- 23 Dalton Hwy: 335-382 Reconstruction
- 24 Tok Cutoff: MP 2 Galena River Bridge
- 25 Glenn Hwy: 172-189
- 26 Alaska Hwy: 1222-1235
- 27 Nome Hwy: Bridge Improvements
- 28 Argoport: Ferry Terminal
- 29 Siktak: Sawmill/Hallbut Pt Roundabout
- 30 Central Reg: Guardrail Ends
- 31 Central Reg: Pavement Rehab
- 32 Northern Reg: Surface Rehab

STIMULUS RECOMMENDED
(Not In Priority Order)

- 1 Valdez: Bike/Ped & Pavement Rehab
- 2 Denali Hwy: MP 7 Wayside
- 3 AMATS: Highway Funds
- 4 Kotzebue: Shore Avenue Reconstruction
- 5 Gustavus: Causeway Replacement
- 6 Yakutat: Area Paving
- 7 Haines Hwy: Front St. Union
- 8 Nome: City Streets
- 9 Emmonak: Community Roads Upgrade
- 10 Marshall: Bridge Repair/Replace
- 11 Hoonah: Airport to Ferry Terminal Paving
- 12 Dalton Hwy: 175-197
- 13 Dalton Hwy: 260-321 Culverts
- 14 Paris Hwy: Willow-Kashwitza Rehab
- 15 Alaska Hwy: 1412-1422
- 16 Alaska Hwy: Tok Weigh Station
- 17 Glenn Hwy: Rut Repair Hilland-Ekluna
- 18 Glenn Hwy: 34-42 Rut Repair

STIMULUS CONTINGENT
(Not In Priority Order)

- 1 Ketchikan: Water St. Sidewalk Imprv
- 2 Glenn Hwy: Eagle River-Birchwood Bike
- 3 Kipnuk: Bearwalk Improvements Ph II
- 4 Dillingham: Wood River Road
- 5 Delta Jct: City Streets Rehab
- 6 Richardson Hwy: 276-286 Resurficing
- 7 Ketchikan: M/Y Bob Ellis Airport Ferry
- 8 FMATS: Lighting/Sights/ADA (3)
- 9 Kodiak: Rezanof Dr. Rut Repairs
- 10 Delta Jct: NHS Repaving
- 11 Sterling Hwy: 96.5-110 Rut Repair
- 12 Juneau: Bridges Jordan Ck & Basin Rd
- 13 Richardson Hwy: Moose Ck RR Xing
- 14 Ketchikan: Tongas Ave Viaduct-Sig II
- 15 Mats: Seward Meridian Ph. I
- 16 Sterling Hwy: Sterling Weigh Station
- 17 Ketchikan: M/Y Bob Ellis Airport Ferry
- 18 Juneau: Glacier Hwy Merodenhall-Ferry T
- 19 Ketchikan: North Tongass Hwy Ph. II
- 20 Juneau: Glacier Hwy Amalga-Eagle R

STIMULUS TRANSIT
(Not In Priority Order)

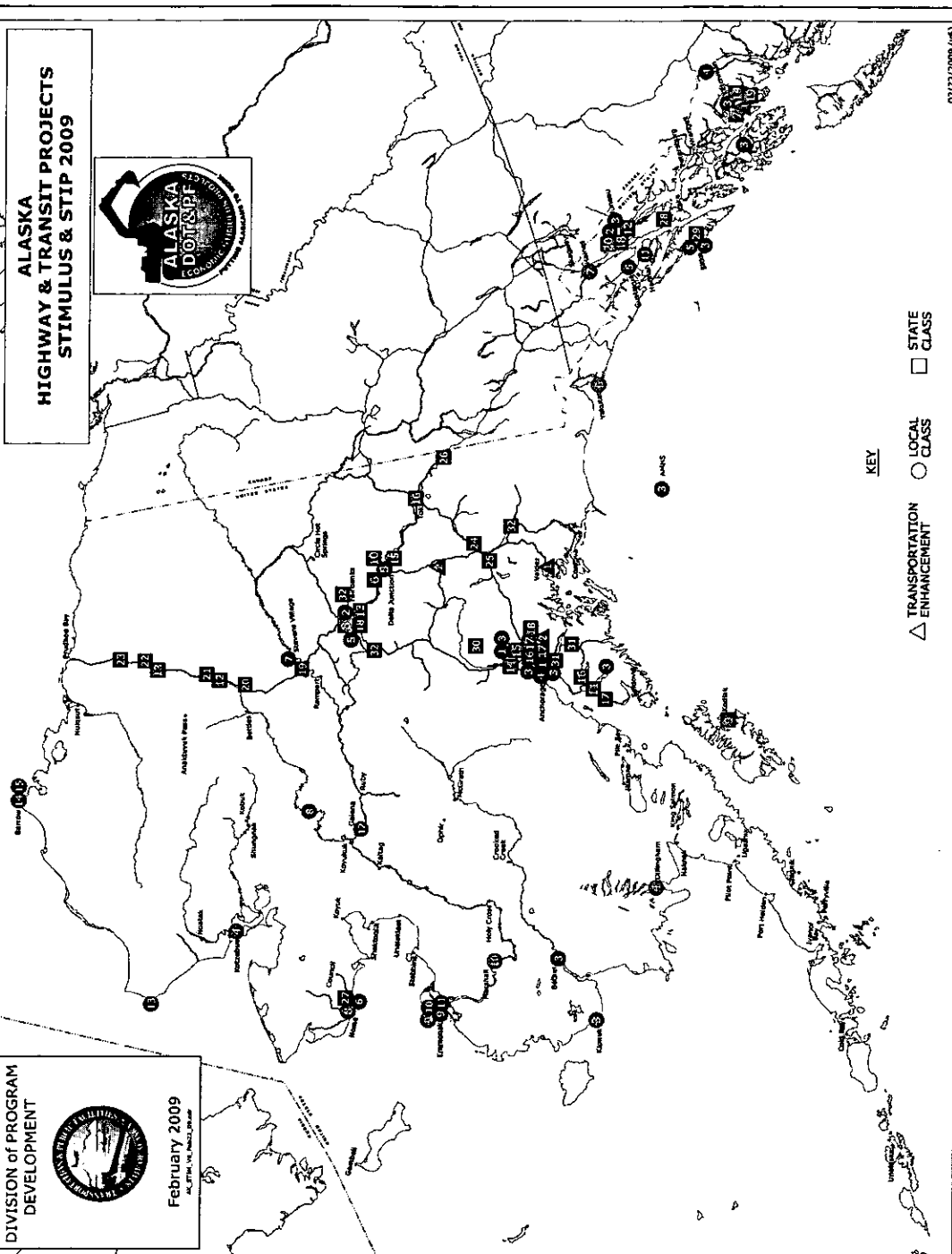
- 1 Mats: Park/Ride Parks & Seward
- 2 Juneau: Downtown Transit Center
- 3 Statewide: Grant Apps for Transit Eqp (Eligible Organizations)
- 4 AMATS/AKSR Allocation
- 5 FMATS Allocation

DIVISION of PROGRAM DEVELOPMENT



February 2009
ALDOT, 1000 West Northern Blvd, Anchorage, AK 99501

ALASKA HIGHWAY & TRANSIT PROJECTS STIMULUS & STIP 2009



KEY

- △ TRANSPORTATION ENHANCEMENT
- LOCAL CLASS
- STATE CLASS

02/22/2009 (v4)

**STIP 2009 CONSTRUCTION
(Not In Priority Order)**

- 1 Akutan: Access Road
- 2 False Pass: Airport Access
- 3 Seward Hwy: Indian to Potter
- 4 Nasaaklak: Sanitation Boardwalk
- 5 Aleknagik: Flox Plane Rd
- 6 Richardson Hwy: Fbx Weigh Station
- 7 Ninihik: Intersection Improvement
- 8 Ketchikan: AMHS Headquarters
- 9 Glenn Hwy: 28-32
- 10 Dalton Hwy: 274-289 Reconstruction
- 11 Dalton Hwy: 335-362 Reconstruction
- 12 Sitka: Japonski Island Rd
- 13 Angoon: Ferry Terminal
- 14 Emmonak: Road Improvements
- 15 Dalton Hwy: 144-175 Reconstruction
- 16 Central Reg: Guardrail Ends
- 17 Glenn Hwy: 172-189
- 18 AMATS: Hwy & TE Funds
- 19 FMATS: Hwy & TE Funds
- 20 Northern Reg: Mill & Pave (3)

**STIMULUS FAST AWARD
(Not In Priority Order)**

- 1 Glenn Hwy: Rut Repair Hilland-Ektuna
- 2 Parks Hwy: Willow-Kashwitna
- 3 Alaska Hwy: 1412-1422
- 4 Dalton Hwy: 175-197
- 5 Dalton Hwy: 260-321 Culverts
- 6 Glenn Hwy: Rut Repair 34-42
- 7 Tok CutOff: Gakona River Bridge
- 8 Richardson Hwy: 276-286 Resurface
- 9 Kotzebue: Shore Ave
- 10 Sterling Hwy: Rut Repairs 96.5-110
- 11 Haines Hwy: Front St-Union St
- 12 Gustavus: Causeway
- 13 Yakutat: Area Paving
- 14 Tok: Weigh Station Recon
- 15 Valdez: Bike/Ped & Pavement Rehab
- 16 Denali Hwy: MP 7 Wayside
- 17 AMATS: Hwy & TE Funds
- 18 FMATS: Hwy & TE Funds


**STIMULUS SLOW AWARD
(Not In Priority Order)**

- 1 Juneau: Off-System Bridges (2)
- 2 Skagway: Bridge (1)
- 3 Kodiak: Rezanol Rut Repairs
- 4 Mat-Su: Off System Bridges (2)
- 5 Glenn Hwy: Lighting Birchwood-Ekiurna
- 6 Dillingham: Wood River Rd
- 7 Kodiak: Chimik Rd MP 23.7
- 8 Richardson Hwy: Moose CkRR Xing
- 9 Delta Jct: City Street Improvements
- 10 Ketchikan: Boardwalk Improvement
- 11 Ketchikan: Tongass Viaduct Rehab
- 12 Juneau: Glacier Hwy Resurfacing
- 13 Hoonah: Airport to Ferry Terminal
- 14 Marshall: Bridge Repair
- 15 Nome: City Street Improvements
- 16 Emmonak: Road Improvements
- 17 Sitka: Sawmill Ck Rd/Halibut Pt
- 18 Sitka: Japonski Island Utilities & Rds
- 19 Sterling Hwy: Weigh Station
- 20 Mat-Su: Seward Meridian Ph 1
- 21 Ketchikan: Water St Sidewalk Impv
- 22 Glenn Hwy: Eagle River-Birchwood
- 23 AMATS: Hwy & TE Funds
- 24 FMATS: Hwy & TE Funds

**STIMULUS TRANSIT
(Not In Priority Order)**

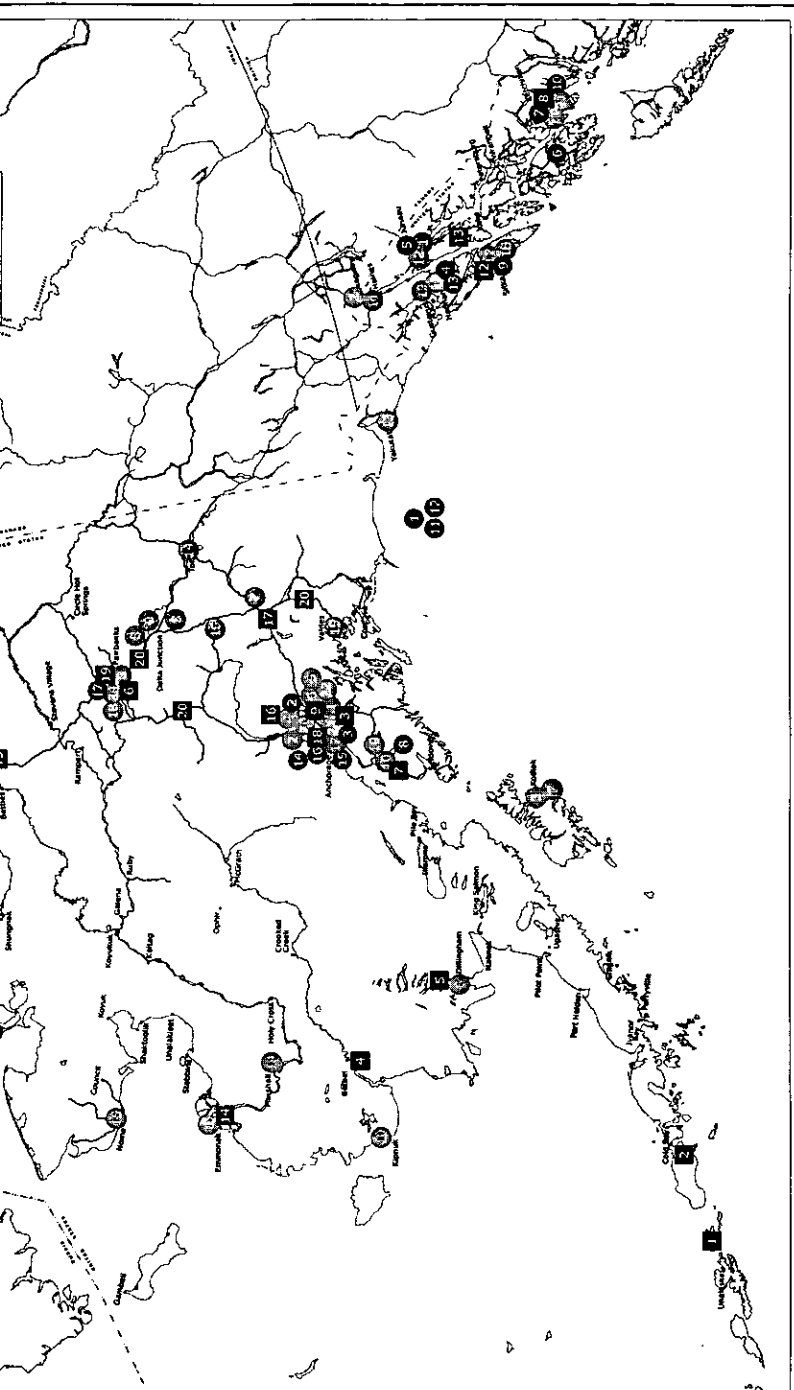
- 1 AMHS: Transit Capital Prj
- 2 Mat-Su: Transit Capital Prj
- 3 AKRR: Transit Capital Prj
- 4 Hoonah: Transit Capital Prj
- 5 Juneau: Transit Capital Prj
- 6 IFA: Transit Capital Prj
- 7 Ketchikan (KGB): Transit Capital Prj
- 8 Kenai (KPB): Transit Capital Prj
- 9 Sitka: Transit Capital Prj
- 10 Ketchikan (KGB): m/v Bob Ellis Repl
- 11 AMHS: Alaska Class Ferry (Vessel 1)
- 12 AMHS: Ferry Vessel Rehab
- 13 AMHS Hoonah: Marine Terminal Impv
- 14 AKRR: Collision Avoidance System
- 15 Mat-Su: Ferry Landings
- 16 AMATS: Transit
- 17 FMATS: Transit

DIVISION OF PROGRAM DEVELOPMENT



January 2009
Revised: September, 2008; 2009-01-09

ALASKA CONSTRUCTION & TRANSIT PROJECTS STIMULUS & STIP 2009

**REGULAR
AIRPORT IMPROVEMENT PROGRAM 2009 AWARD**
(Not In Priority Order)

- 1 Anchorage: Various Projects
- 2 Alakanuk: Airport Relocate-Stg 3
- 3 Alakanuk: Airport Relocate-Stg 4
- 4 Anagoon: Airport EIS-Stg 2
- 5 Bethel: Parallel Runway/Imprv-Stg5
- 6 Emmonak: Rehab & Apron Exp-Stg 3
- 7 Goodnews Bay: Airport Recon-Stg 2
- 8 Iliamna: SRE/Sand/Chem/Office Bldg
- 9 Kodiak: Airport EIS-Stg 3
- 10 Seldovia: SRE Bldg Construction
- 11 Kotzebue: Airport Master Plan
- 12 Platinum: Airport Relocation
- 13 Savoonga: Airport Imprv-Stg 2
- 14 Sitka: Airport Stotted Drain
- 15 Dillingham: 3 Bay Chemical Bldg
- 16 Dillingham: SPB Master Plan
- 17 Tokona: Airport Relocation
- 18 Aviation Systems Plan Update
- 19 Barrow: Rwy/Apron Paving SA Expan
- 20 Unalakleet: SRE Bldg Replacement
- 21 King Salmon: Airport Impv-Stg 3
- 22 Newtok: Airport Master Plan-Stg 4
- 23 Tutuakak: Airport Relocation-Stg 1
- 24 Galena: SRE Bldg Replacement
- 25 Kipnuk: Airport Relocation
- 26 Petersburg: Runway Safety Area-Stg 2
- 27 King Cove: Fencing
- 28 Airport Snow Removal Equipment
- 29 Various Airports Minor Surface Imprv
- 30 Akutan: Airport Construction-Stg 1 7

STIMULUS PROGRAM - EXPECTED PROJECTS
(Not In Priority Order)

- 1 Akiahaak: Airport Relocation
- 2 Fairbanks: FIA Taxiway & Apron Imprv
- 3 Fort Yukon: Airport Improvements
- 4 Hoonah: Airport Improvements
- 5 Kotzebue: Apron Expansion
- 6 Oufitkile: Airport Relocation-Stg 1

STIMULUS PROGRAM - CONTINGENCY PROJECTS
(Not In Priority Order)

- 1 Allakleet: Airport Improvements
- 2 Cordova: Apron/TWY/GA Imprv
- 3 Lake Louise: Runway Rehab-Stg 2
- 4 Kodiak: Chemical Storage Bldg
- 5 Anchorage: AIA Gate NB Apron Recon
- 6 Fairbanks: FIA Security Access Control

STIMULUS PROGRAM - MUNICIPAL AIRPORT PROJECTS
(Not In Priority Order)

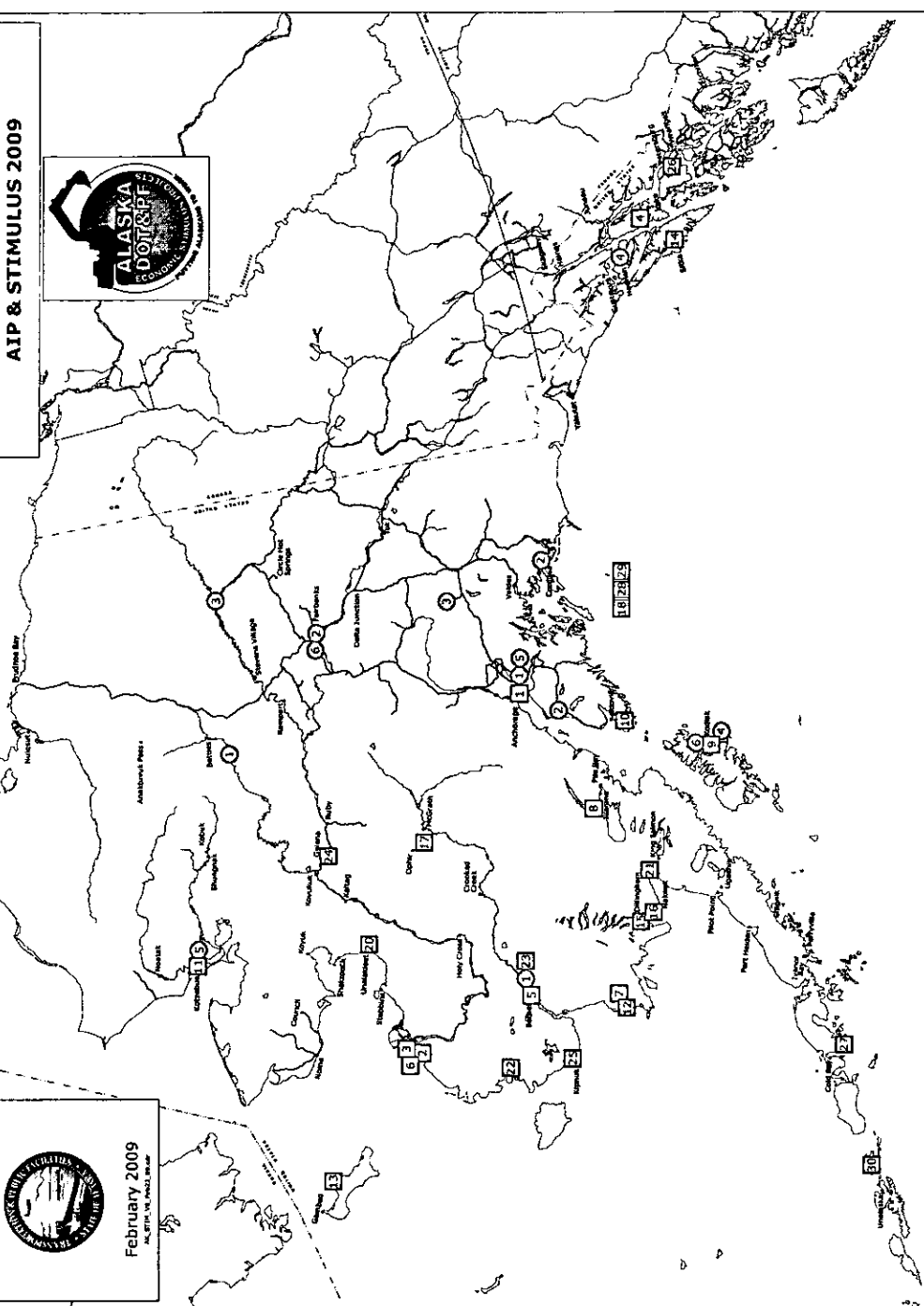
- 1 Anchorage: Merrill Field Apron Rehab
- 2 Kenai: Airport Apron Rehab

**DIVISION OF PROGRAM
DEVELOPMENT**



February 2009
L. J. PETERSON, Director

**ALASKA
AVIATION PROJECTS
AIP & STIMULUS 2009**





Alaska DOT&PF Overview House and Senate Transportation Committees

January 2009

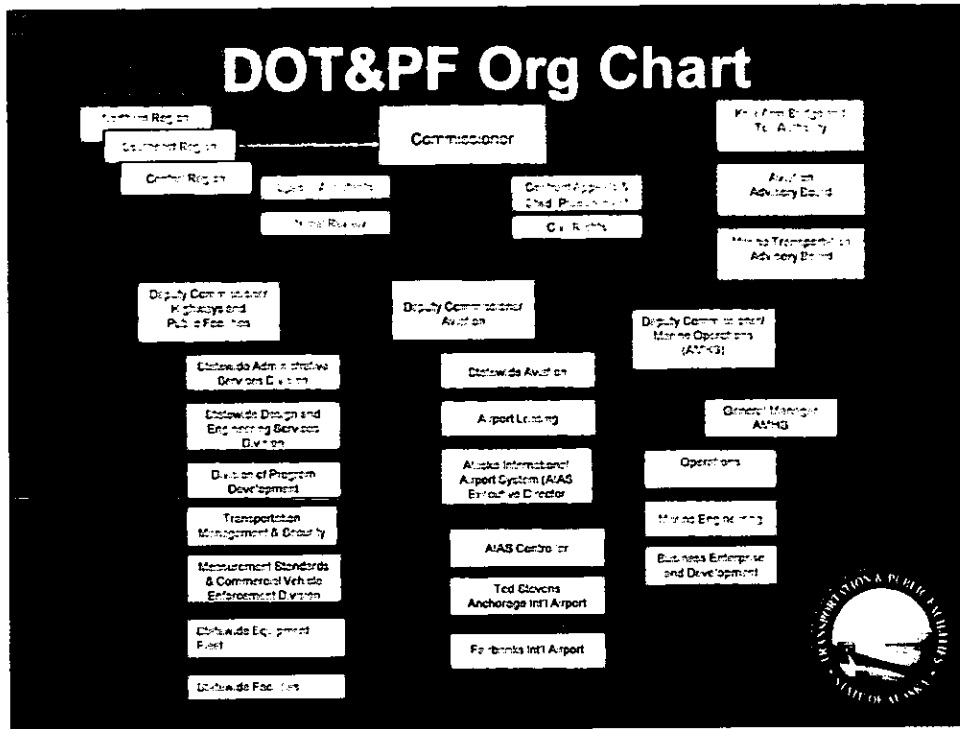
Leo von Scheben
Commissioner

DOT&PF's Mission

Provide for the safe
movement of people and
goods and the delivery of
state services.

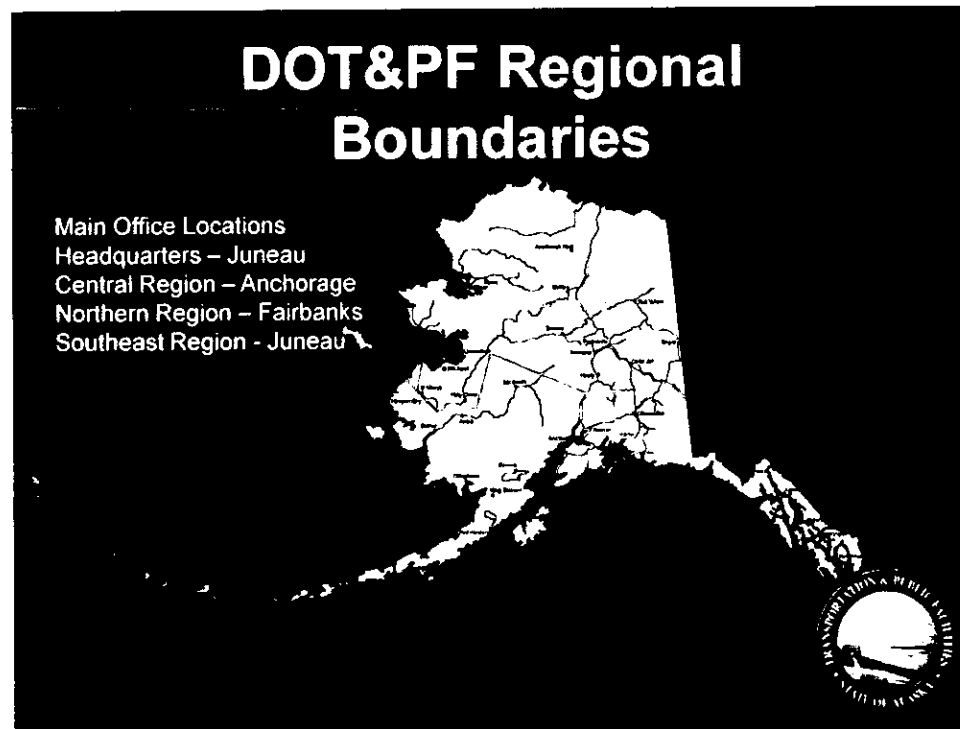


DOT&PF Org Chart



DOT&PF Regional Boundaries

- Main Office Locations
- Headquarters – Juneau
- Central Region – Anchorage
- Northern Region – Fairbanks
- Southeast Region - Juneau



National Highway System

2,113 center line miles



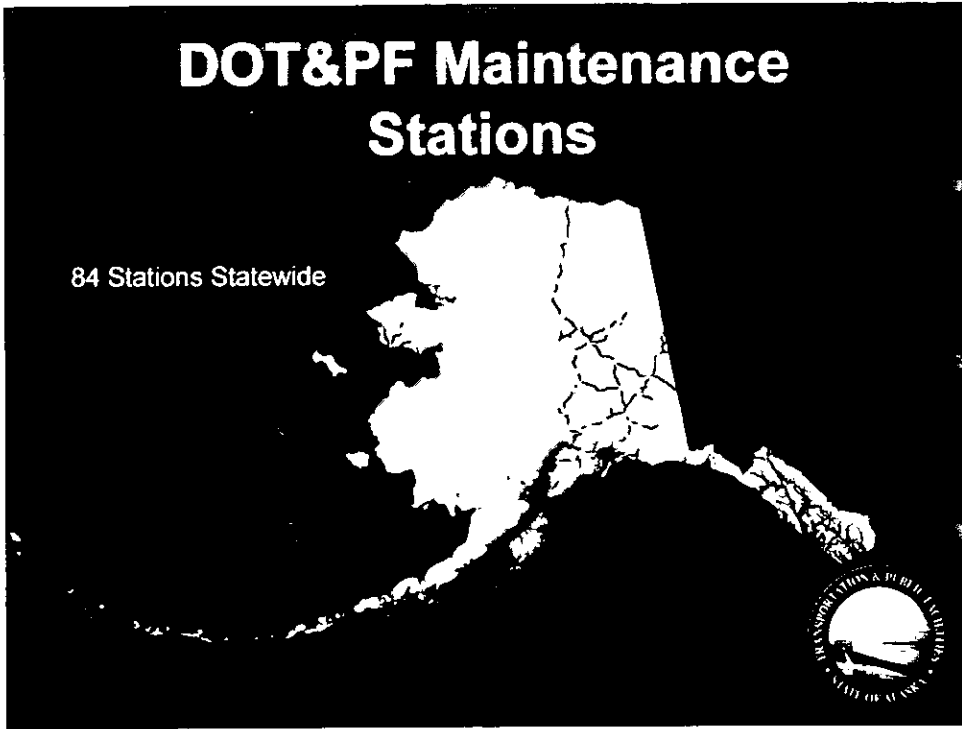
Alaska Highway System

1,508 center line miles



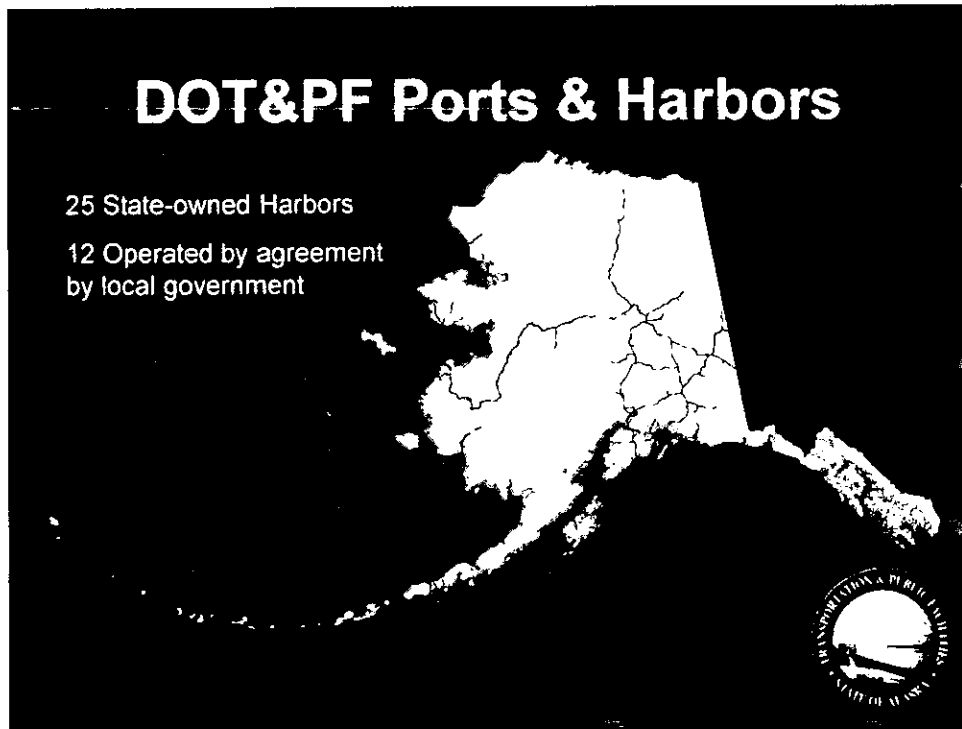
DOT&PF Maintenance Stations

84 Stations Statewide



DOT&PF Ports & Harbors

25 State-owned Harbors
12 Operated by agreement
by local government



Ports and Harbors

- Responsible for 25 of 99 public harbor facilities in AK
- 12 facilities are operated by local governments
 - Operating agreements provide no state funds for operations
 - State obligated for replacement and major repairs
- Capital Program is largely Corps of Engineers Program, except bond funds and state match
 - Corps funds breakwaters and navigation channels. State and Local fund mooring basins and inner-harbor facilities
- Transferred 71 state harbor facilities to local ownership since 1986 using deferred maintenance funding
- Administer the municipal harbor matching grant program (AS 29.60.810)



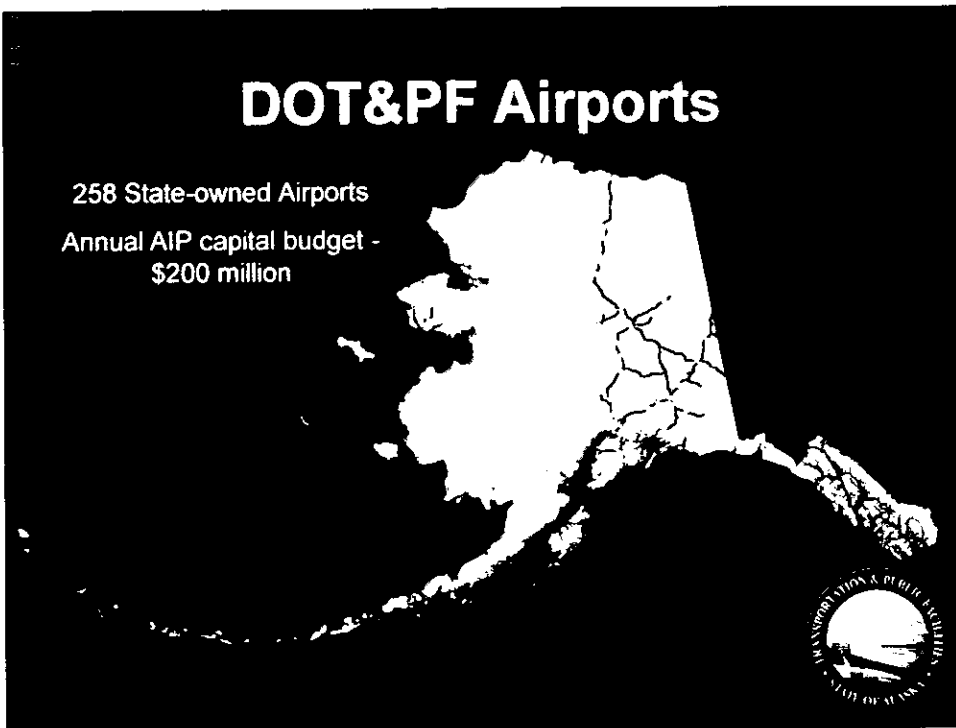
Measurement Standards and Commercial Vehicle Enforcement

- Enforces all federal and state commercial vehicle laws to ensure safe highways
- Certifies the accuracy of all weighing and measuring devices used in commerce
- Issues permits for overweight vehicles
- Has implemented a new one-stop web-based permit system
- Worked with the trucking industry and Legislature to increase the penalties for overweight vehicles for the 1st time in 30 years
- Implements and operates the Commercial Vehicle Information Systems and Network



DOT&PF Airports

258 State-owned Airports
Annual AIP capital budget -
\$200 million



DOT&PF Airports

- Largest Airport Operator in the U.S.
 - 258 State owned & operated airports
 - 2 Internationals - Anchorage & Fairbanks
 - 21 Rural Certificated
 - 235 Community
 - 134 Rural airports have maintenance contracted out for a total cost of \$3 million with an average cost of \$27,000 per airport

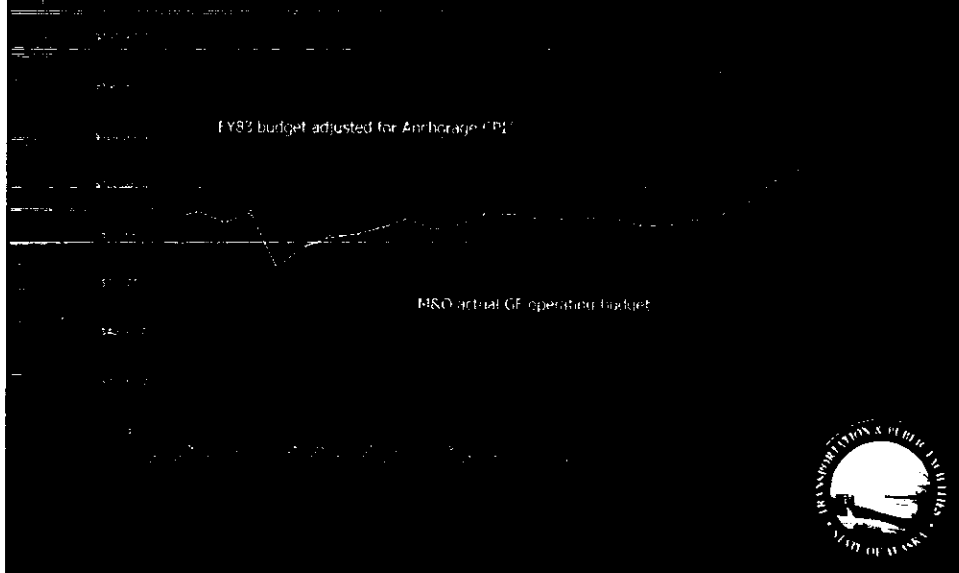


Maintenance

- FY08 State Maintenance Expenditures
 - Operating (all funds)
 - Facilities \$21.1 million
 - Highways and Airports \$122.6 million
- FFY09 Federal Maintenance Programs
 - Highways
 - Preventive Maintenance \$11.0 million
 - Pavement Refurbishment \$39.0 million
 - Aviation
 - Preventive Maintenance \$4.0 million



Maintenance and Operations General Fund Authorizations



Construction

- Regional construction offices provide oversight of all DOT&PF construction projects
- Construction consists of
 - Contract Administration
 - Field Inspection/Oversight
 - Quality Assurance

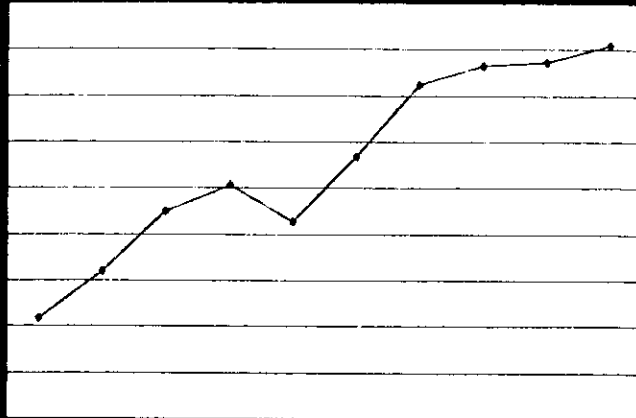


Construction Program

| Mode/System | FY09 Budget |
|-------------------------|----------------|
| Highways and Ferries | \$738.6M |
| Aviation | \$349.6M |
| Facilities | \$26.3M |
| Harbors | \$16.5M |

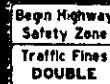


Historical Construction Expenditures AMHS, Highways and Aviation



Safety Programs

- Traffic Safety Corridors



- 511 Program

511Alaska.gov

- Road Weather Information System



- Intelligent Transportation System for Commercial Vehicles

- Size and Weight Enforcement



- Safe Routes to School



Traffic Safety Corridors

- Designated Corridors
 - Seward Highway
 - Parks Highway
- In Process
 - Knik Goose Bay Road
 - Sterling Highway
 - Palmer-Wasilla Highway
- Double Fines
- More patrol efforts
- New Highway Patrol Bureau



Accomplishments

- 17% reduction in square footage of structurally deficient bridges (2007-2008)
- 2% increase in the percentage of survey responders satisfied with the maintenance of state roads and highways (2005-2008)
- 3% increase in the voluntary use of seatbelts (2007-2008)
- 22% reduction in fatal and major injury crashes (2005-2006)



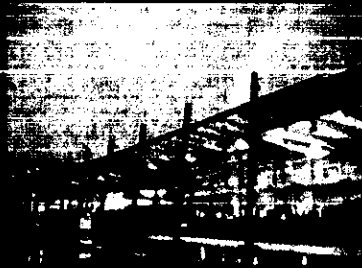
2008 Accomplishments

- M&O crews covered 1,563,794 linear feet of highways with surface crack seal treatment or re-leveling depressed roadway surfaces by “banding”
- Paved 33 lane miles of gravel roads
- Repaved 213 lane miles of roads
- Reconstructed 31 lane miles of roads
- Performed 529 bridge inspections



Efficiencies

- Using new and innovative techniques to extend life of pavement
- Elevated the importance of Public Facilities
- Ports and Harbors grants and transfers



Key Department Challenges

- Recruiting and retaining staff
- Preserving and protecting Alaska's infrastructure
- Major proposed transportation projects
- High inflation and economic downturn
- Highway and aviation federal authorization bills
- Aging fleet



Questions?

