

HB

378



REPRESENTATIVE BILL THOMAS

ALASKA STATE LEGISLATURE DISTRICT 5

e-mail: Representative.Bill.Thomas@legis.state.ak.us webpage: www.akrebublicans.org/thomas/

State Capitol

Juneau AK, 99801-1182

907-465-3732

888-461-3732

FAX 907-465-2652

Date: 4-11-06

To: Representative Ramras, Co-Chair House Resources Committee
Representative Samuels, Co-Chair House Resources Committee

From: Representative Thomas

Re: Sponsor Statement for CSHB 378 An act designating a representative of a Haines nonprofit recreational group as an ex officio member of the Alaska Chilkat Bald Eagle Preserve Advisory Council and removing the mayor of the City of Haines as an ex officio member of the council.

The Alaska Chilkat Bald Eagle Preserve was created by the State of Alaska in 1982. The preserve, located along the Haines Highway, was created to protect the world's largest concentration of Bald Eagles and their habitat. Along with the large eagle population, the preserve is home to five species of salmon that spawn in the surrounding streams and tributaries.

At the heart of the Eagle Preserve, between 18 and 24 mile of the Haines Highway, is the main viewing area for eagle watchers. This area hosts a particularly large concentration of eagles due to the availability of salmon and open water in the winter months.

In order to protect the sanctity and utility of the Eagle Preserve, the Alaska Bald Eagle Preserve Advisory Council was created. The council consists of 12 seats representing local, state, environmental, traditional, and commercial interests. One of these seats is dedicated to the Haines City Mayor. However, the City of Haines and the Haines Borough have since consolidated leaving the seat for the Haines City Mayor open. CSHB 378 designates this open seat to a person who is a member of the Haines Borough Assembly, who has been recommended by the Borough Assembly, and appointed by the governor.

I respectfully request your support of CSHB 378.

adopted

24-LS1486S
Kane
4/19/06

CS FOR HOUSE BILL NO. 378()

IN THE LEGISLATURE OF THE STATE OF ALASKA

TWENTY-FOURTH LEGISLATURE - SECOND SESSION

BY

**Offered:
Referred:**

Sponsor(s): REPRESENTATIVE THOMAS

A BILL

FOR AN ACT ENTITLED

1 **"An Act providing for selection of a member of the Haines Borough Assembly to serve**
2 **as an ex officio member of the Alaska Chilkat Bald Eagle Preserve Advisory Council**
3 **and removing the mayor of the City of Haines as an ex officio member of the council."**

4 **BE IT ENACTED BY THE LEGISLATURE OF THE STATE OF ALASKA:**

5 *** Section 1. AS 41.21.625(c) is amended to read:**

6 (c) The [MAYOR OF THE CITY OF HAINES, THE] mayor of the Haines
7 Borough, the president of Klukwan, Inc., the chair [CHAIRMAN] of the Council of
8 the Chilkat Indian Village, and the chair [CHAIRMAN] of the Chilkoot Indian
9 Association are ex officio members of the Alaska Chilkat Bald Eagle Preserve
10 Advisory Council. A member of the Haines Borough Assembly who has been
11 selected by the Haines Borough Assembly is also an ex officio member of the
12 advisory council. For this selection, preference shall be given to those members of
13 the Haines Borough Assembly who do not also sit on boards that are already
14 represented on the advisory council. The mayor of the Haines Borough may

1 recommend to the governor for appointment to the advisory council the name of a
2 resident of the Haines Borough for the representation of commercial or industrial
3 interests.

not taken up

24-LS1486L
Kane
2/16/06

CS FOR HOUSE BILL NO. 378()

IN THE LEGISLATURE OF THE STATE OF ALASKA

TWENTY-FOURTH LEGISLATURE - SECOND SESSION

BY

Offered:

Referred:

Sponsor(s): REPRESENTATIVE THOMAS

A BILL

FOR AN ACT ENTITLED

1 "An Act providing for selection of a member of the Haines Borough Assembly to serve
2 as an ex officio member of the Alaska Chilkat Bald Eagle Preserve Advisory Council
3 and removing the mayor of the City of Haines as an ex officio member of the council."

4 BE IT ENACTED BY THE LEGISLATURE OF THE STATE OF ALASKA:

5 * Section 1. AS 41.21.625(c) is amended to read:

6 (c) The [MAYOR OF THE CITY OF HAINES, THE] mayor of the Haines
7 Borough, the president of Klukwan, Inc., the chair [CHAIRMAN] of the Council of
8 the Chilkat Indian Village, and the chair [CHAIRMAN] of the Chilkoot Indian
9 Association are ex officio members of the Alaska Chilkat Bald Eagle Preserve
10 Advisory Council. A member of the Haines Borough Assembly who has been
11 recommended by the Haines Borough Assembly and appointed by the governor
12 is also an ex officio member of the advisory council. For the recommendation of
13 this position, preference shall be given to those members of the Haines Borough
14 Assembly who do not also sit on boards that are already represented on the

1 advisory council. The mayor of the Haines Borough may recommend to the governor
2 for appointment to the advisory council the name of a resident of the Haines Borough
3 for the representation of commercial or industrial interests.

FISCAL NOTE

STATE OF ALASKA
2006 LEGISLATIVE SESSION

Fiscal Note Number: _____
 Bill Version: HB378-DNR-Parks-02-06
 () Publish Date: _____

Revision Date/Time (Note if correction): _____ Dept. Affected: Natural Resources
 Title: Chilkat Bald Eagle Preserve RDU: Resource Development
Advisory Council Component: Parks Management
 Sponsor: Rep. Thomas
 Requester: (H) CRA Component No. 452

Expenditures/Revenues (Thousands of Dollars)

Note: Amounts do not include inflation unless otherwise noted below.

OPERATING EXPENDITURES	FY 2007	FY 2008	FY 2009	FY 2010	FY 2011	FY 2012
Personal Services						
Travel						
Contractual						
Supplies						
Equipment						
Land & Structures						
Grants & Claims						
Miscellaneous						
TOTAL OPERATING	0.0	0.0	0.0	0.0	0.0	0.0

CAPITAL EXPENDITURES						
-----------------------------	--	--	--	--	--	--

CHANGE IN REVENUES ()						
-------------------------------	--	--	--	--	--	--

FUND SOURCE (Thousands of Dollars)

1002 Federal Receipts						
1003 GF Match						
1004 GF						
1005 GF/Program Receipts						
1037 GF/Mental Health						
Other (Specify Type--Do not abbreviate)						
TOTAL	0.0	0.0	0.0	0.0	0.0	0.0

Estimate of any current year (FY2006) cost: 0.0

Mark this box (X) if funding for this bill is included in the Governor's FY 2007 budget proposal:

POSITIONS

Full-time						
Part-time						
Temporary						

ANALYSIS: (Attach a separate page if necessary)

There is no fiscal impact associated with implementation of this legislation.

Prepared by: Jerry Lewanski, Director Phone: 907-269-8701
 Division: Parks Date/Time: 2/6/2006
 Approved by: Michael Mange Date: 2/6/2006
 Agency: Natural Resources

State of Alaska**Office of Boards and Commissions**

BALD EAGLE PRESERVE

BOARD: Alaska Chilkat Bald Eagle Preserve Advisory Council

BOARD IDENTIFICATION NUMBER: 009

DEPARTMENT: DEPARTMENT OF NATURAL RESOURCES

AUTHORITY: AS 41.21.625; Chapter 95, SLA 1982

STATUS: Active

SUNSET DATE:

REQUIREMENTS: No Legislative Confirmation or Financial Disclosure required

PROHIBITIONS: None

TERM: 2 years

DESCRIPTION: 12 member council. Governor appoints a resident of the Haines Borough representing a conservation organization, a representative of the U.S. Fish and Wildlife Service, and a member of the Upper Lynn Canal fish and game advisory committee. The Mayor of the City of Haines, the Mayor of the Haines Borough, the President of Klukwan, Inc., the chairman of the Council of the Chilkat Indian Village, and the chairman of the Chilkoot Indian Association serve as ex officio members. The Mayor of the Haines Borough may recommend to the Governor for appointment to the council a resident of the Haines Borough for representation of commercial or industrial interests. The commissioner of Fish and Game, the director of the Division of Parks, and the director of the Division of Forestry, or their designees also serve ex officio. Members may select alternates to act as members in their absence.

FUNCTION: Assists the department in the development and monitoring of a management plan for the Alaska Chilkat Bald Eagle Preserve.

CHAIR: No provisions.

SPECIAL FACTS: Advisory.

COMPENSATION: Standard Travel and Per Diem.

MEETINGS: 7 times per year; 7 days total; September through March.

FOR FURTHER INFORMATION CONTACT:

Mr. Michael Eberhardt
Southeast Area Superintendent
Division of Parks and Outdoor Recreation
DNR, 400 Willoughby Avenue, Fifth Floor M/S 1000
Juneau, AK 99801
Phone: (907) 465-4563, FAX: (907) 455-5330

Chilkat Bald Eagle Preserve Advisory Council Members
February 2006

Kimberley Strong	Chilkat Indian Village P.O. Box 210, Haines, Ak 99827 kstrong@aptalaska.net	
Gary Hess	Upper Lynn Canal Fish and Game Advisory Committee P.O. Box 125, Haines Ak 99827 gdhess@aptalaska.net	
Fred Shields	Mayor, Haines Borough P.O. 1209, Haines Ak 99827 fshields@haines.ak.us	Co-Chair
Mike Jacobson	U.S. Department of the Interior Fish and Wildlife Service/Raptor Management 3000 Vintage Blvd #240 Juneau, Ak 99801 Mike_Jacobson@fws.gov	
Travis Reid	Business and Industry P.O. Box 267, Haines Ak 99827 travisreid@chilkatguides.com	
Lori Crupi	Conservation Organization P.O. Box 1606, Haines Ak 99827 Cassadie22@yahoo.com	
Bill Thomas	Chilkoot Indian Association P.O. Box 490 (CIA business office), Haines Ak 99827 Thomasgroup@aptalaska.net	
Roy Josephson	Division of Forestry P.O. Box 263, Haines Ak 99827 Roy_Josephson@dnr.state.ak.us	
Les Katzeek	Klukwan, Inc P.O. Box 104, Haines Ak 99827	
Randy Bachman	Department of Fish and Game P.O. Box 330, Haines Ak 99827 Randy_Bachman@fishgame.state.ak.us	
Jerry Lewanski, Director or Joel Telford	Department of Parks and Outdoor Recreation P.O. Box 430, Haines Ak 99827	
Vacant	City Mayor	

Chilkat Bald Eagle Preserve Advisory Council Members
February 2006

Kinberley Strong	Chilkat Indian Village P.O. Box 210, Haines, Ak 99827 kstrong@aptalaska.net	
Gary Hess	Upper Lynn Canal Fish and Game Advisory Committee P.O. Box 125, Haines Ak 99827 gdhess@aptalaska.net	
Fred Shields	Mayor, Haines Borough P.O. 1209, Haines Ak 99827 fshields@haines.ak.us	Co-Chair
Mike Jacobson	U.S. Department of the Interior Fish and Wildlife Service/Raptor Management 3000 Vintage Blvd #240 Juneau, Ak 99801 Mike_Jacobson@fws.gov	
Travis Reid	Business and Industry P.O. Box 267, Haines Ak 99827 travisreid@chilkatguides.com	
Lori Crupi	Conservation Organization P.O. Box 1606, Haines Ak 99827 Cassadie22@yahoo.com	
Bill Thomas	Chilkoot Indian Association P.O. Box 490 (CIA business office), Haines Ak 99827 Thomasgroup@aptalaska.net	
Roy Josephson	Division of Forestry P.O. Box 263, Haines Ak 99827 Roy_Josephson@dnr.state.ak.us	
Les Katzeek	Klukwan, Inc P.O. Box 104, Haines Ak 99827	
Randy Bachman	Department of Fish and Game P.O. Box 330, Haines Ak 99827 Randy_Bachman@fishgame.state.ak.us	
Jerry Lewanski, Director or Joel Telford	Department of Parks and Outdoor Recreation P.O. Box 430, Haines Ak 99827	
Vacant	City Mayor	

8 Feb 02

Dear Rep. Thomas,

The Chukot eagle preserve is a spectacular + very special place, with one of the largest (perhaps THE largest) aggregations of eagles ever known. Feeding on the late chum run is undoubtedly important to their winter survival + the maintenance of the great eagle concentrations in Southeast Alaska. People come from all over to see this spectacle without disturbing either the fish or the eagles. We should protect the entire preserve in order to protect an area of great ecological importance and an important tourist draw.

HB 378 - or any attempt to reduce protection for the Preserve - is a really bad idea + should not be supported.

MA Wilken
5230 Tanager Pl.
Juneau.

A
L
A
S
K
A



Photo Courtesy of K.L. Ramseyer



C
H
I
L
K
A
T



BALD EAGLE PRESERVE, Haines, Alaska

The Preserve

The Alaska Chilkat Bald Eagle Preserve was created by the State of Alaska in June of 1982. The preserve was established to protect and perpetuate the world's largest concentration of Bald Eagles and their critical habitat. It also sustains and protects the natural salmon runs and allows for traditional uses provided such uses do not adversely affect preserve resources. The Preserve consists of 48,000 acres of river bottom land of the Chilkat, Kleheni, and Tsirku Rivers. The boundaries were designated to include only areas important to eagle habitation. Virtually every portion of the preserve is used by eagles at some time during the year.

The river "flats" of the Chilkat River along the Haines Highway between miles 18 and 21 are the main viewing area for eagle watchers and considered critical habitat in the preserve. Bald eagles are attracted to the area by the availability of spawned-out salmon and open waters in late fall and winter. The natural phenomena responsible for five miles of open water on the Chilkat River during freezing months is called an "alluvial fan reservoir". The Tsirku fan, which is a fan-shaped accumulation of gravel, rock, sand, and glacial debris, at the confluence of the Tsirku, Kleheni, and Chilkat Rivers acts as a large water reservoir.

During the warmer spring, summer and early fall seasons, water from snow and melted glacial ice flows into the alluvial fan. The fan receives water



Photo Courtesy of K.L. Ramseyer

Visitor Guidelines

The following guidelines were developed to insure protection to the eagles and other critical features of the preserve. Please help us protect this area for the eagles and future visitor use.

STAY OFF THE FLATS! This is where the eagles feed. Their energy is better utilized by feeding than by flying away from intruders.

VIEW EAGLES FROM AREA BETWEEN HAINES HIGHWAY AND RIVER. Staying within this area prevents stressful conditions for the eagles. They need their space to roost and feed.

DO NOT DISTURB THE FISH IN ANY WAY. Fish are the eagles' food. Please leave all fish and fish carcasses where nature has placed them.

STOP AND PARK ONLY IN DESIGNATED TURNOUTS. The road is narrow and has many curves. Watch for traffic at all times. Never stop on the roadway. Do not set up tripods on the road.

The Bald Eagle (*Haliaeetus leucocephalus*)

The Bald Eagle is found only on the North American continent. Adult eagles generally weigh between 9 and 12 pounds and have a wing span of 7 feet. Females are slightly larger than males. Immature eagles are mottled brown and white. The distinct white head and tail of the mature bird is developed between 4 and 6 years of age.

Eagles feed mainly on fish, but water fowl, small mammals and carrion supplement their diet, especially when fish are in short supply. Eagles can fly up to 30 m.p.h. and can dive at speeds up to 100 m.p.h.. Their keen eyesight allows them to spot fish at distances up to 1 mile.

faster than it can flow out, creating a huge reservoir of water. When winter arrives, cold weather sets in and surrounding waters freeze. However, water in this large reservoir remains from 10 to 20 degrees (F) above surrounding water temperatures. This warmer water "percolates" into the Chilkat River and keeps it from freezing.

Five species of salmon spawn in these and other nearby streams and tributaries. The salmon runs begin in the summer and continue on through late fall or early winter. The salmon die shortly after spawning and it is their carcasses which provide large quantities of food for the eagles. This combination of open water and large amounts of food bring large concentrations of eagles into the Chilkat Valley beginning early October and last through February.

Bald eagles mate for life. Courting behavior begins in early April and often involves spectacular aerial displays of eagles diving and locking talons. Eagles lay from 1 to 3 eggs (commonly two) and the eggs usually hatch between late May and early June after a 34 or 35 day incubation period. The young usually leave the nest by early September.

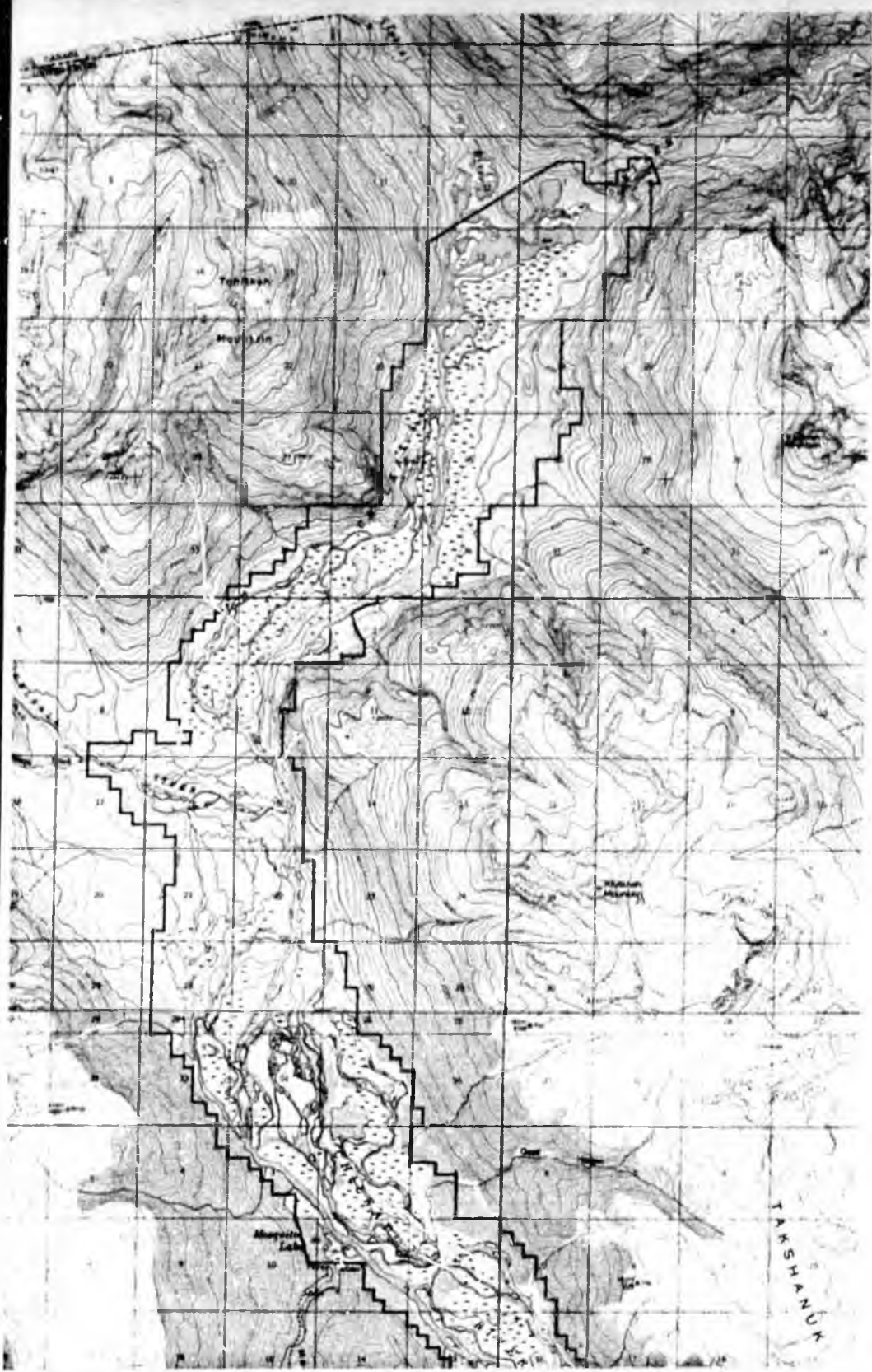
The Chilkat Valley is year-round home for between 200 and 400 eagles. Over 80 eagle nests have been observed in the Eagle Preserve. By the time of the Fall Congregation the resident eagles are through raising their young, although immature eagles may stay near their parents for a year or more. Over 3,000 bald eagles have been counted within the preserve during the Fall Congregation.



Photo Courtesy of Woody Balach



ALASKA STATE PARKS
Department of Natural Resources
Division of Parks & Outdoor Recreation
400 Willoughby, 3rd Floor
Juneau, Alaska 99801



REGULATIONS

The use and discharge of weapons for the purpose of lawful hunting or trapping is allowed in the preserve, except within one-half mile of a developed facility. Fireworks are prohibited.

The Critical Habitat Area is closed to aircraft landing.

No person may disturb, damage, deface or remove cultural, archaeological or historical materials. No person may damage or remove natural objects including rocks and minerals, except that edible plants and roots may be gathered for personal use.

Normal animal waste discarded from lawful hunting, trapping, or fishing must not be left within 100 feet of a trail, road, or a developed facility. Fish waste should be discarded in the waters from which they were taken.

The Bald Eagle Protection Act, a federal law, states that it is unlawful to possess, sell, barter or transport bald eagles (dead or alive or any part of), nests or eggs. Violations of this law can result in a fine of up to \$10,000 and up to a two-year imprisonment.

Permits are required for certain activities within the preserve. Any commercial activity including any form of guiding, transportation services, or sale of any goods or services within the boundaries of the preserve requires a Commercial Use Permit. A list of permitted operators is available at the parks office.

Special Use Permits are required for activities that may affect the environment of the preserve. A partial list of activities includes scientific research, promotional activities, construction of facilities or structures of any kind, and camping longer than 15 days.

Persons having questions concerning permits or needing assistance in determining if permits are required for certain activities should contact the Division of Parks and Outdoor Recreation at the locations listed in this brochure.

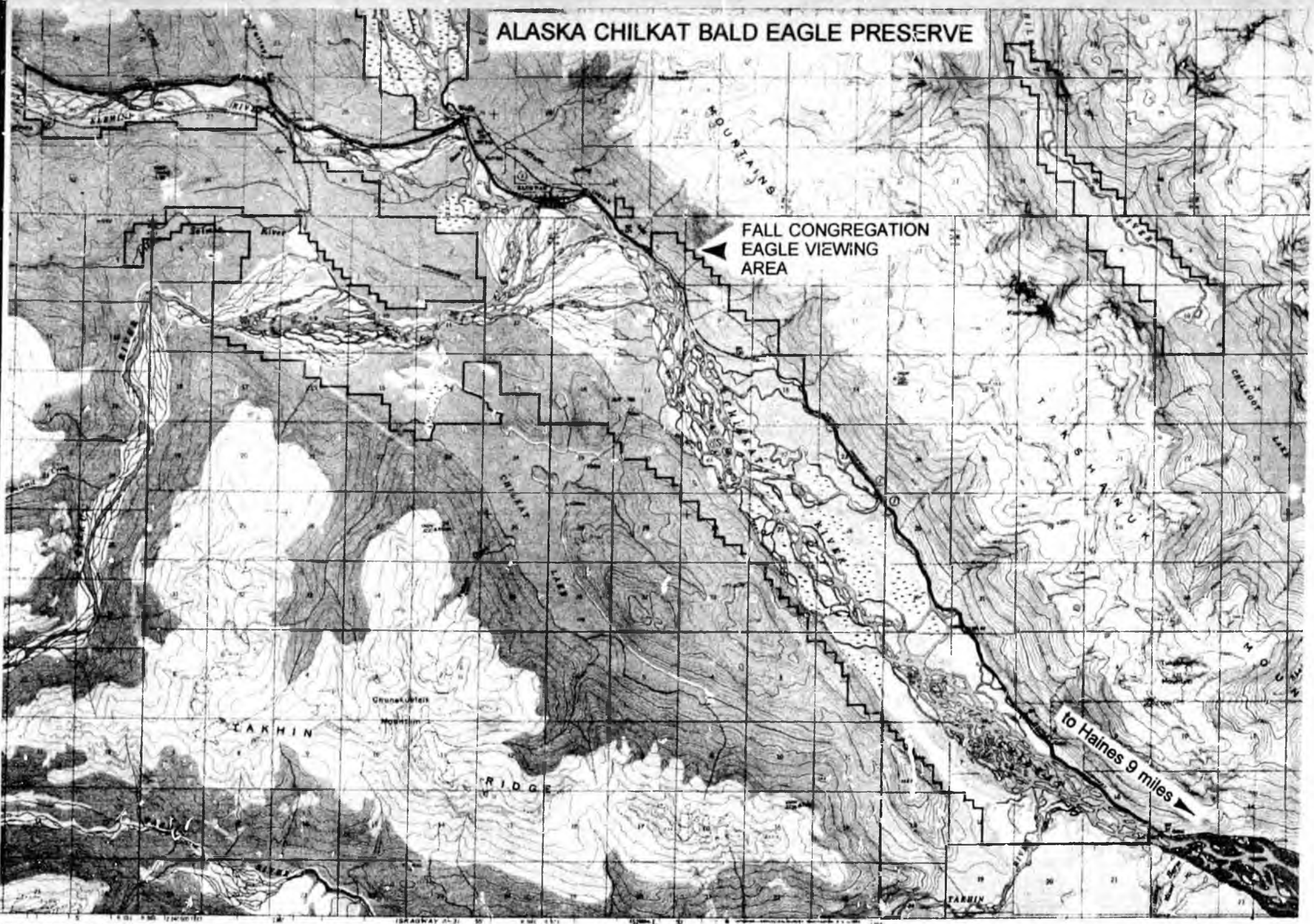
MANAGEMENT

The Alaska Chilkat Bald Eagle Preserve is managed by the State of Alaska Division of Parks and Outdoor Recreation with the assistance of the 13-member Alaska Chilkat Bald Eagle Preserve Advisory Council.

FOR MORE INFORMATION

Alaska State Parks
400 Willoughby Ave.
Juneau, AK 99801
(907) 465-4563

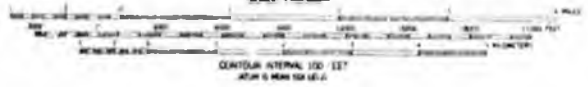
ALASKA CHILKAT BALD EAGLE PRESERVE



FALL CONGREGATION
EAGLE VIEWING
AREA

to Haines 9 miles

Edited and published by the Geological Survey
of the U.S.G.A. and Geol. Survey of Canada
by the photogrammetric methods from aerial photographs
with field correction 1958. Map not field checked.
1. Transverse Mercator projection, 1927 North American datum.
2. Grid based on Alaska's uniform system, zone 1
after Universal Transverse Mercator grid scale,
shown in title.
3. Printed in grey ink on uncoated and unprinted
paper approved by the State of Alaska, Division of Lands
and Minerals.
4. All rights reserved. No part of this map may be
reproduced or transmitted in any form or by any means
electronic, mechanical, photocopying, recording, or by any
information storage and retrieval system, without permission
in writing from the U.S. Geological Survey.



ROAD CLASSIFICATION
Major Road
Minor Road
Unimproved Road
Dirt Road

FOR SALE BY U. S. GEOLOGICAL SURVEY
FACSIMILE ALASKA 80791, DENVER, COLORADO 80225 OR RESTON, VIRGINIA 22092

SKAGWAY (B-3) ALASKA
89915 - 012545 - 1522 5

This map should not be used for survey information or land status and ownership. The State of Alaska assumes no responsibility for any graphical errors or omissions.

REGULATIONS

The use and discharge of weapons for the purpose of lawful hunting or trapping is allowed in the preserve, except within one-half mile of a developed facility. Fireworks are prohibited.

The Critical Habitat Area is closed to aircraft landing.

No person may disturb, damage, deface or remove cultural, archaeological or historical materials. No person may damage or remove natural objects including rocks and minerals, except that edible plants and roots may be gathered for personal use.

Normal animal waste discarded from lawful hunting, trapping, or fishing must not be left within 100 feet of a trail, road, or a developed facility. Fish waste should be discarded in the waters from which they were taken.

The Bald Eagle Protection Act, a federal law, states that it is unlawful to possess, sell, barter or transport bald eagles (dead or alive or any part of), nests or eggs. Violations of this law can result in a fine of up to \$10,000 and up to a two-year imprisonment.

Permits are required for certain activities within the preserve. Any commercial activity including any form of guiding, transportation services, or sale of any goods or services within the boundaries of the preserve requires a Commercial Use Permit. A list of permitted operators is available at the parks office.

Special Use Permits are required for activities that may affect the environment of the preserve. A partial list of activities includes scientific research, promotional activities, construction of facilities or structures of any kind, and camping longer than 15 days.

Persons having questions concerning permits or needing assistance in determining if permits are required for certain activities should contact the Division of Parks and Outdoor Recreation at the locations listed in this brochure.

MANAGEMENT

The Alaska Chilkat Bald Eagle Preserve is managed by the State of Alaska Division of Parks and Outdoor Recreation with the assistance of the 13-member Alaska Chilkat Bald Eagle Preserve Advisory Council.

FOR MORE INFORMATION

Alaska State Parks
400 Willoughby Ave.
Juneau, AK 99801
(907) 465-4563

ALASKA CHILKAT BALD EAGLE PRESERVE

FALL CONGREGATION
EAGLE VIEWING
AREA

to Haines 5 miles

Map printed and published by the Geological Survey, U.S. Department of the Interior, Washington, D.C. 20508. This map is available for sale by the U.S. Geological Survey, Reston, Virginia 20192. For more information, contact the U.S. Geological Survey, Reston, Virginia 20192. This map is available for sale by the U.S. Geological Survey, Reston, Virginia 20192. For more information, contact the U.S. Geological Survey, Reston, Virginia 20192.

FOR SALE BY U.S. GEOLOGICAL SURVEY
FAIRBANKS, ALASKA 99701, DENVER, COLORADO 80226, OR RESTON, VIRGINIA 20192
A FOLDER DESCRIBING TOPOGRAPHIC MAPS AND SYMBOLS IS AVAILABLE ON REQUEST

This map should not be used for survey information or land status and ownership. The State of Alaska assumes no responsibility for any graphical errors or omissions.



BALD EAGLE PRESERVE, Haines, Alaska



The Bald Eagle (*Haliaeetus leucocephalus*)

The Bald Eagle is found only on the North American continent. Adult eagles generally weigh between 9 and 12 pounds and have a wing span of 7 feet. Females are slightly larger than males. Immature eagles are mottled brown and white. The distinct white head and tail of the mature bird is developed between 4 and 6 years of age.

Eagles feed mainly on fish, but water fowl, small mammals and carrion supplement their diet, especially when fish are in short supply. Eagles can fly up to 30 m.p.h. and can dive at speeds up to 100 m.p.h.. Their keen eyesight allows them to spot fish at distances up to 1 mile.

Bald eagles mate for life. Courting behavior begins in early April and often involves spectacular aerial displays of eagles diving and locking talons. Eagles lay from 1 to 3 eggs (commonly two) and the eggs usually hatch between late May and early June after a 34 or 35 day incubation period. The young usually leave the nest by early September.

The Chilkat Valley is year-round home for between 200 and 400 eagles. Over 80 eagle nests have been observed in the Eagle Preserve. By the time of the Fall Congregation the resident eagles are through raising their young, although immature eagles may stay near their parents for a year or more. Over 3,000 bald eagles have been counted within the preserve during the Fall Congregation.

The Preserve

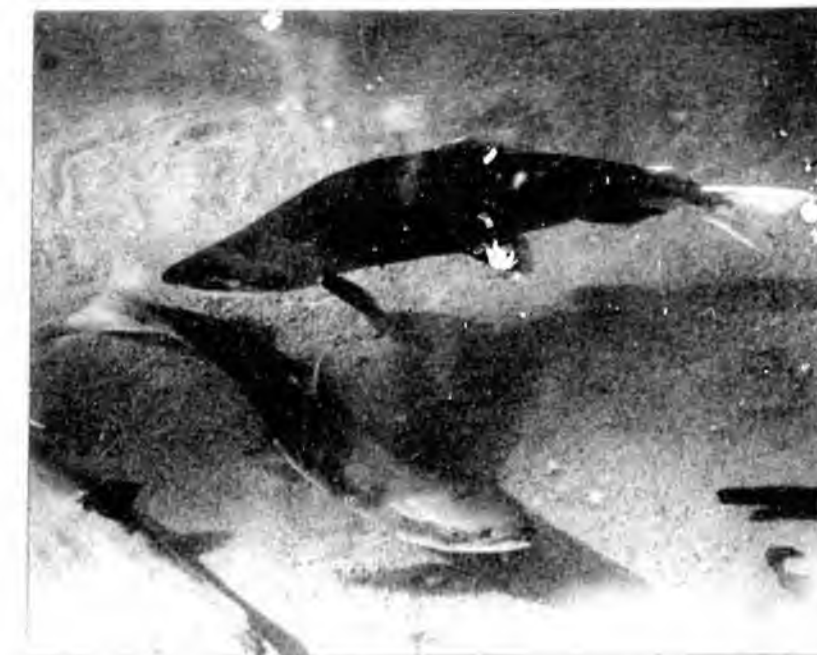
The Alaska Chilkat Bald Eagle Preserve was created by the State of Alaska in June of 1982. The preserve was established to protect and perpetuate the world's largest concentration of Bald Eagles and their critical habitat. It also sustains and protects the natural salmon runs and allows for traditional uses provided such uses do not adversely affect preserve resources. The Preserve consists of 48,000 acres of river bottom land of the Chilkat, Klehenu, and Tsirku Rivers. The boundaries were designated to include only areas important to eagle habitation. Virtually every portion of the preserve is used by eagles at some time during the year.

The river "flats" of the Chilkat River along the Haines Highway between miles 18 and 21 are the main viewing area for eagle watchers and considered critical habitat in the preserve. Bald eagles are attracted to the area by the availability of spawned-out salmon and open waters in late fall and winter. The natural phenomena responsible for five miles of open water on the Chilkat River during freezing months is called an "alluvial fan reservoir". The Tsirku fan, which is a fan-shaped accumulation of gravel, rock, sand, and glacial debris, at the confluence of the Tsirku, Klehenu, and Chilkat Rivers acts as a large water reservoir.

During the warmer spring, summer and early fall seasons, water from snow and melted glacial ice flows into the alluvial fan. The fan receives water

faster than it can flow out, creating a huge reservoir of water. When winter arrives, cold weather sets in and surrounding waters freeze. However, water in this large reservoir remains from 10 to 20 degrees (F) above surrounding water temperatures. This warmer water "percolates" into the Chilkat River and keeps it from freezing.

Five species of salmon spawn in these and other nearby streams and tributaries. The salmon runs begin in the summer and continue on through late fall or early winter. The salmon die shortly after spawning and it is their carcasses which provide large quantities of food for the eagles. This combination of open water and large amounts of food bring large concentrations of eagles into the Chilkat Valley beginning early October and last through February.



Visitor Guidelines

The following guidelines were developed to insure protection to the eagles and other critical features of the preserve. Please help us protect this area for the eagles and future visitor use.

STAY OFF THE FLATS! This is where the eagles feed. Their energy is better utilized by feeding than by flying away from intruders.

VIEW EAGLES FROM AREA BETWEEN HAINES HIGHWAY AND RIVER. Staying within this area prevents stressful conditions for the eagles. They need their space to roost and feed.

DO NOT DISTURB THE FISH IN ANY WAY. Fish are the eagles' food. Please leave all fish and fish carcasses where nature has placed them.

STOP AND PARK ONLY IN DESIGNATED TURNOUTS. The road is narrow and has many curves. Watch for traffic at all times. Never stop on the roadway. Do not set up tripods on the road.



ALASKA STATE PARKS
Department of Natural Resources
Division of Parks & Outdoor Recreation
400 Willoughby 3rd Floor
Juneau, Alaska 99801