

**HB**

**123**

**HFIN**

**FILE**



# FISCAL NOTE

STATE OF ALASKA  
2004 LEGISLATIVE SESSION

Fiscal Note Number: \_\_\_\_\_  
Bill Version: HB123-DOLWD-WIB-01-30-04  
( ) Publish Date: \_\_\_\_\_

Revision Date/Time (Note if correction): \_\_\_\_\_  
Title: Alaska Human Resource Investment Council

Department: Labor and Workforce Development  
RDU: Business Partnerships  
Component: Workforce Investment Board

Sponsor: Representative Moses  
Requester: House Finance

Component Number: 2659

**Expenditures/Revenues** (Thousands of Dollars)

Note: Amounts do not include inflation unless otherwise noted below.

OPERATING EXPENDITURES	FY 2005	FY 2006	FY 2007	FY 2008	FY 2009	FY 2010
Personal Services						
Travel						
Contractual						
Supplies						
Equipment						
Land & Structures						
Grants & Claims						
Miscellaneous						
<b>TOTAL OPERATING</b>	<b>0.0</b>	<b>0.0</b>	<b>0.0</b>	<b>0.0</b>	<b>0.0</b>	<b>0.0</b>

CAPITAL EXPENDITURES						
----------------------	--	--	--	--	--	--

CHANGE IN REVENUES ( )						
------------------------	--	--	--	--	--	--

**FUND SOURCE** (Thousands of Dollars)

1002 Federal Receipts						
1003 GF Match						
1004 GF						
1005 GF/Program Receipts						
1037 GF/Mental Health						
Other (Specify Type-Do not abbreviate)						
<b>TOTAL</b>	<b>0.0</b>	<b>0.0</b>	<b>0.0</b>	<b>0.0</b>	<b>0.0</b>	<b>0.0</b>

Estimate of any current year (FY2004) cost: None  
Mark this box (X) if funding for this bill is included in the Governor's FY 2005 budget proposal:

**POSITIONS**

Full-time						
Part-time						
Temporary						

ANALYSIS: (Attach a separate page if necessary)

There is no anticipated fiscal impact to the department as a result of this legislation.

Prepared by: Katherine Farnham, Director  
Division: Business Partnerships Division  
Approved by: Greg O'Claray, Commissioner  
Agency: Department of Labor and Workforce Development

Phone 269-7490  
Date/Time 1/30/04 2:29 PM  
Date 1/30/2004

23-LS0620VH

Kurtz  
2/3/04

*adopted 2/4/04*

**CS FOR HOUSE BILL NO. 123( )**

**IN THE LEGISLATURE OF THE STATE OF ALASKA  
TWENTY-THIRD LEGISLATURE - SECOND SESSION**

**BY**

**Offered:  
Referred:**

**Sponsor(s): REPRESENTATIVES MOSES, Kapsner**

**A BILL**

**FOR AN ACT ENTITLED**

1 **"An Act relating to the allocation of money appropriated to the Alaska Workforce**  
2 **Investment Board; and providing for an effective date."**

3 **BE IT ENACTED BY THE LEGISLATURE OF THE STATE OF ALASKA:**

4 **\* Section 1.** The uncodified law of the State of Alaska is amended by adding a new section  
5 to read:

6 **ALLOCATION OF APPROPRIATIONS FOR FISCAL YEARS ENDING JUNE 30,**  
7 **2005, AND JUNE 30, 2006.** Notwithstanding AS 23.15.840(a), for the fiscal years ending  
8 June 30, 2005, and June 30, 2006, the money collected under AS 23.15.835 or otherwise  
9 appropriated to the Alaska Workforce Investment Board (formerly known as the Alaska  
10 Human Resource Investment Council) shall be allocated directly in the following percentages  
11 to the following institutions for programs consistent with AS 23.15.820 - 23.15.850 and  
12 capital improvements:

- |    |   |            |
|----|---|------------|
| 13 | University of Alaska                                | 59 percent |
| 14 | Galena Project Education Vocational Training Center | 4 percent  |

L

- 1           Kotzebue Technical Center           11 percent
- 2           Alaska Vocational Technical Center           22 percent
- 3           Southwest Alaska Vocational and Education Center           4 percent.
- 4    \* **Sec. 2.** This Act takes effect July 1, 2004.

THE  
FOLLOWING  
DOCUMENT(S)  
ARE  
POOR  
ORIGINAL  
COPIES

# Yuut Elitnaurviat People's Learning Center

Alaska National Guard • Association of Village Council Presidents • Association of Village Council  
Presidents Regional Housing Authority • Calista Corporation • City of Bethel • Coastal Villages Region  
Fund • Lower Kuskokwim School District • Kuskokwim Campus, College of Rural Alaska- UAF •  
Yukon-Kuskokwim Health Corporation

HB 123

## FAX

To: Bill Eckman (907) 465 3793

From: Janelle Vanasse

Phone: 907-543-6982

Fax: 907-543-3152

Re: Yuut Elitnaurviat HB 123

**Message:** Bill, I apologize that you did not get this in a timely manner. I completed it at home and sent it by email Wednesday morning, but apparently had some connection problems. I know Pat from Rep. Kapsner's office was able to get it to you, but very late. Again, I apologize.

I will keep my ear to the ground on this one.

Thanks

Janelle

Number of pages including cover sheet:

## Project: Yuut Eliitaurviat- People's Learning Center (Bethel)

### Partners:

- Alaska National Guard
- Assoc. of Village Council Pres.
- AVCP-Regional Housing Auth.
- City of Bethel
- Coastal Villages Region Fund
- Calista Corporation
- Kuskokwim Campus- UAF
- Lower Kuskokwim School Dist
- Yukon Kuskokwim Health Corp.

### Project Summary & Update:

Yuut Eliitaurviat- or the People's Learning Center, is a multi-organizational approach to address the educational and workforce development needs of the Yukon Kuskokwim Delta region. Nine partners have joined to establish and operate a learning center targeting both youth and adults. The education at the learning center, will meet both academic and industry standards in the area's most in-demand industries: Health Careers, Construction Trades, Education & Early Childhood, and Aviation. Programs are being built from existing successful initiatives to avoid duplication and maximize existing resources. The center will be located in Bethel with boarding capacity that will open educational and training opportunities to the entire region.

### Highlights of Current Activity:

The unique partnership make-up has allowed Yuut Eliitaurviat to move forward with program planning and development at the same time as developing the facility that will ultimately house the Yuut programs into sustainability. Below is a highlight of some of the program activity of Yuut Eliitaurviat. Courses and programs will continue to be developed and piloted over the next two years, then these proven programs will be delivered consistently out of the new facility when it opens in August 2005.

#### Health Careers

- 21 high school students completed a dual credit (providing high school and college credit) class that catapults them into a post-secondary health career field.
- 60+ high school students are currently taking a uniquely designed class that will result in many of them earning a Personal Care Attendant industry certificate while also allowing them to explore health careers.
- 8 adults are scheduled to attend a Personal Care Attendant course that also includes workplace basics
- 16 adults are scheduled to complete a Certified Nursing Assistant course this summer
- 11 adults have completed course work for Licensed Practical Nurse and will be sitting for their state test
- 12 adults are currently enrolled in the first-ever rural Registered Nurse program in our state.

#### Construction Trades:

- 72 high school students are enrolled in a pre-apprenticeship construction trades training program with National recognition so they may bring their experience into an apprenticeship program as an adult.
- Over 60 adults in the region are registered in a Building Maintenance and Repairer apprenticeship program sponsored by Alaska Works Partnership. (Youth in the above program can directly enter this apprenticeship)
- A local apprenticeship program in Carpentry, Electrical, and Plumbing has been recently registered and will allow individuals to earn journeyman status in one of these trades while working on projects in the region.

#### Education and Early Childhood

- 21 adults are scheduled to sit for their national test for their Child Development Associate certificate.
- A dual credit class is being developed to provide high school students interested in education to earn college credit that will give them both a jump start and exposure to education and early childhood careers.

Contact Information: Janelle Vanasse 907-543-0982, janelle\_vanasse@lkcd.org

**Need for Facility:**

No single partner organization currently has the space needed to deliver the programs envisioned for Yuut Elitnaurviat. A new campus facility will allow for quality industry standard instruction, seamless collaboration, and the necessary boarding. The campus will be operated by the Yuut Elitnaurviat- People's Learning Center 501 (c)3 corporation with funds available through the various partners. Programs will be accredited through the existing educational institutions of the Lower Kuskokwim School District and the University of Alaska Fairbanks. Funds are being secured for construction of the Yuut Elitnaurviat campus. Over nine million has been secured. Design, sitework, and piling installation have already begun. The project is currently on budget.

**Long Term Sustainability:**

The multi-agency model of Yuut Elitnaurviat allows funds from a variety of sources to be tapped for operational expense. State AHRIC funds will be combined with other funding to ensure quality programming and successful operation. Following is an example of funds already available to the partners.

Partner organization	Organization Type	Available Resources
Association of Village Council Presidents	Native non-profit corporation	<ul style="list-style-type: none"> <li>Scholarships</li> <li>Native Training Funds</li> <li>Professional development funds for Head Start workers</li> </ul>
Association of Village Council Presidents- Regional Housing Authority	Native Housing Authority	<ul style="list-style-type: none"> <li>HUD funds for housing low income housing beneficiaries during education and training</li> </ul>
Calista Corporation	Native for Profit	
City of Bethel	Municipality	<ul style="list-style-type: none"> <li>In-kind road/grounds maintenance</li> </ul>
Coastal Villages Region Fund	Community Development Quota	<ul style="list-style-type: none"> <li>Scholarships for beneficiaries</li> </ul>
Lower Kuskokwim School District	Rural Education Attendance Area	<ul style="list-style-type: none"> <li>State formula funds</li> </ul>
University of Alaska- Kuskokwim Campus	University	<ul style="list-style-type: none"> <li>Access to student grant/loan programs</li> <li>Faculty</li> </ul>
Yukon Kuskokwim Health Corporation	638 private health corporation	<ul style="list-style-type: none"> <li>Scholarships</li> <li>Direct financial contribution into recruitment and training</li> </ul>
Alaska National Guard	State	<ul style="list-style-type: none"> <li>Continued education funds for Guardsmen</li> </ul>

\* All partners have unique opportunities to apply for and receive grants

Department	Funds
Department of Housing and Urban Development	Youthbuild CFDA #14.243 Alaska Native/Native Hawaiian Communities Program CFDA 14.515
Department of Labor	Workforce Investment Act (WIA) funds
Department of Education	Alaska Native Education Equity CFDA 84.356 A Tech-Prep Demonstration CFDA 84.353A Strengthening AK Native Alaskan/Hawaiian Institution Programs CFDA 84.031 A

Contact Information: Janelle Vanasse 907-543-6982, janelle\_vanasse@lksd.org

# *Alaska State Legislature*

**Representative Carl E. Moses**

*House District 37*



## **SPONSOR STATEMENT / SECTIONAL ANALYSIS**

### **HB 123 – Allocations To The A.W.I.B.**

House Bill 123 would add the Southwest Alaska Vocational & Education Center in King Salmon, and Bethel's Yuut Elitnaurviat, Inc. People's Learning Center, to the roster of entities eligible for allocated funding under the Alaska Human Resource Investment Council. These entities are not currently among the program participants afforded a regular allocation under the AHRIC. In the case of the Center at King Salmon, it is a struggling regional training center in the heart of the worst failed salmon fishery in Alaska. This bill would require the expenditure of no new money, only reallocate whatever funds are appropriated to the program.

The Center at King Salmon provides ongoing skill development and retraining services in several areas of potential reemployment for local residents, including skills in the construction trades, energy development, heavy equipment operation, computer hardware, commercial operators' licenses, refrigeration, and welding, just to name a few. The center is uniquely positioned to train the workforce likely needed to support oil and gas development now identified in this region. The Southwest Alaska Vocational & Education Center has officially been in existence since May of 2002, and between that time and January of 2003, it has served just over 900 students, many of whom have received formal credits through the Bristol Bay Campus of the University of Alaska. The average active student count is about 45 individuals per month.

The Center in Bethel is currently in development, and is expected to open its facility in August of 2005. It will serve high school and adult students in need of employable skills. Planned in three phases, the center will eventually include boarding facilities and apprenticeship schools. Once established, the Yuut

#### **SESSION**

State Capitol Building  
Juneau, AK 99801-1182  
Phone: (907) 465-4451  
Toll-Free: (800) 898-4451  
Fax: (907) 465-3445

Alaska Peninsula  
Aleutians  
Bristol Bay  
Pribilofs

#### **INTERIM**

716 West 4<sup>th</sup> Avenue  
Anchorage, AK 99501-2133  
Phone: (907) 269-0275  
Toll-Free: (800) 898-4451  
Fax: (907) 269-0274

Elitnaurviat Center will prepare local people for high-skill, high-wage local employment.

Both centers have obtained funding from the Denali Training Fund, and other federal and private sources for specific program development, but need these proposed allocations for assistance with operational expenses.

**BILL SECTION 1:** Adds the Southwest Alaska Vocational & Education Center (King Salmon) and the Yuut Elitnaurviat, inc. People's Learning Center (Bethel) to the list of entities receiving allocation percentages of appropriations to the Alaska Human Resource Investment Council. Each of these institutions would receive 4% of the allocation, and the combined 8% would be deducted from the University of Alaska share.

**BILL SECTION 2:** The effective date is July 1, 2004.

HB 123 / Rp. Carl E. Moses (staff: tim benintendi / 6591) 2-2-04

**University of Alaska  
FY03  
Workforce Development Funding**

**University of Alaska  
WFD (SB252) Distribution Summary**

MAU	Type	Campus	Program	FY03 WFD Funding	FY04 WFD Funding
UAA	H	AC	Allied Health Instruction	266,600	266,600
UAA	H	AC	Distance Delivery of Nursing Programs	137,000	137,000
UAA	H	AC	Radiography Technology A.A.S.	132,600	132,600
UAA	H	AC	Radiography Technology A.A.S.	65,000	65,000
UAA	H	AC	DE grad Social Work	50,000	-
UAA	H	AC	Allied Health	85,400	-
UAA	IT	MSC	AAS Computer Systems	120,000	120,000
UAA	IT	AC	Certificate in Information Technology - MSSP	172,000	172,000
UAA	IT	PWS	Network Administrator	70,000	70,000
UAA	TE	AC	Early Childhood / Head Start	120,000	120,000
UAA	TE	AC	Early Childhood / Head Start	60,000	60,000
UAA	TE	MSC	Early Childhood / Head Start	60,000	60,000
UAA	TE	CTC	Tech Prep Coordinator	97,000	97,000
UAA	VE	CTC	GM ASEP Auto	75,000	75,000
UAA	VE	PWS	Vocational/Industrial Training/PWSCC	50,000	50,000
UAA	VE	KPC	Well Simulator Equipment	107,000	-
UAA	VE	AC	PNE Distance Site Support	12,000	-
<b>Total UAA</b>				<b>1,679,600</b>	<b>1,425,200</b>
UAF	H	RC	Rural Human Services	100,000	100,000
UAF	H	FC	Allied Health Instruction	66,600	66,600
UAF	H	KU	Medical Technology	25,000	25,000
UAF	H	TVC	Emergency Medical Technicians	82,000	82,000
UAF	H	TVC	Radiology Technician	42,000	42,000
UAF	IT	NW	Microcomputer Support Specialist - NW	105,000	105,000
UAF	IT	TVC	MSSP / TVC	55,000	55,000
UAF	TE	RC	Early Childhood Faculty/Coordinator	120,000	120,000
UAF	VE	TVC	Law Enforcement	65,000	65,000
<b>Total UAF</b>				<b>660,600</b>	<b>660,600</b>
UAS	H	JC	Practical Nurse Education	111,200	111,200
UAS	VE	JC	Construction Technology	75,000	75,000
UAS	VE	KEC	AAS Forestry Technician	75,000	75,000
UAS	VE	KEC	Marine Technology & Operations	52,000	52,000
UAS	VE	SC	Networking/CISCO Systems	75,000	75,000
UAS	VE	KEC	AAS Business Admin Program Development	10,000	-
UAS	VE	SC	Automotive Technology	30,000	-
<b>Total UAS</b>				<b>428,200</b>	<b>388,200</b>
SW	AD	SW	Admin Fee	100,500	100,500
<b>Total</b>				<b>2,868,900</b>	<b>2,574,500</b>
<b>Total Program Commitments</b>				<b>2,868,900</b>	<b>2,574,500</b>
<b>Available for One-time Commitments</b>				<b>-</b>	<b>294,400</b>
<b>Total Available</b>				<b>2,868,900</b>	<b>2,868,900</b>

Alaska Department of Labor and Workforce Development  
Alaska Technical Vocational Education Program (TVEP) Funding

**Authorizing Legislation:**

The Technical Vocational Education Program (TVEP) program was established by the legislature on July 1, 2000. TVEP supports technical and vocational education entities in Alaska. The TVEP legislation included an oversight and a policy role for the Alaska Workforce Investment Board (AWIB or Board) (then known as the Alaska Human Resource Investment Council) to assure effective and coordinated programs across Alaska.

**Funding Source and Purpose:**

The TVEP program is funded by collecting from each employee, 1 tenth of 1 percent of employee wages, as set out in AS 23.20.175, on which the employee makes contributions to the Unemployment Insurance fund. This is similar to how the State Training and Employment Program (STEP) is funded; however these two programs differ in focus. TVEP supports vocational education institutions whereas STEP supports individuals more directly through grants and Individual Training Accounts. In both cases, the investments are to be made in accordance with the industry priorities established by the Board.

**Administration:**

By statute, the TVEP program is to be administered by the AWIB, located within the Alaska Department of Labor and Workforce Development (ADOLWD), Division of Business Partnerships. The TVEP statute directs the AWIB to establish rules, regulations and procedures as needed to award grants, perform grant administration and accounting procedures. The Division administers other programs, including STEP, the federal Workforce Investment Act programs, and the Denali Training Fund. It has significant expertise in managing \$30-40 million dollars of workforce development resources each year and has well established performance targets and accountability standards.

**Fund Allocation:**

The initial legislation included a provision for first-year operation by allocating TVEP revenue directly to three institutions to ensure no delay in investing the funds while the Board established the necessary regulations and procedures. In FY 2001, \$3,425,000 was appropriated to the University of Alaska (52%), the Alaska Vocational Technical Center (AVTEC) in Seward (32%), and the Alaska Technical Center (ATC) in Kotzebue (16%).

In 2001, SB 137 extended the allocation approach rather than implementing the original plan for the administration of the fund. This bill also modified the allocations for FY 2002 to increase the University share to 63%, reduce AVTEC and ATC to 22% and 11%

respectively, and to include 4% for the Galena Project Education Vocational Training Center.

The above allocations to the four institutions have been in place for three years and are set to expire June 30, 2006. In 2003, Representative Moses introduced HB 123 which would modify the allocations by adding two new institutions: Yuut Elitnaurviat, Inc. People's Learning Center in Bethel (4%) and Southwest Alaska Vocational and Education Center (4%). In this bill, the University would see a corresponding reduction from 63% to 55%. AVTEC and ATC would be held constant.

The chart below provides a summary of the fund since inception and the allocation of TVEP dollars to various institutions.

**Status of Regulations for Administering TVEP:**

Regulations governing the State Technical and Vocational Education Program, 8 AAC 86, including application deadline, priority for technical and vocational education grant awards, required match for technical and vocational education grants, and administrative cost standards, were signed by the Lieutenant Governor on March 19, 2002 and became effective on April 18, 2002. Revisions to the regulations will be adopted by the Board and forwarded to the Lt. Governor's Office before July 1, 2004.

**TVEP Funding Distribution (in thousands)**

State FY	Bill	Annual Approp	UA %	UA Amt	Kotz %	Kotz Amt	AVTEC %	AVTEC Amt	Galena %	Galena Amt
2001	SB 289	3,425.0	52.0%	1,781.0	16.0%	548.0	32.0%	1,096.0	0.0%	0.0
2002	SB 137	4,553.8	63.0%	2,868.9	11.0%	500.9	22.0%	1,001.8	4.0%	182.2
2003	SB 252	4,553.8	63.0%	2,868.9	11.0%	500.9	22.0%	1,001.8	4.0%	182.2
2004	SB 252	4,561.5	63.0%	2,873.7	11.0%	501.8	22.0%	1,003.5	4.0%	182.5
<b>Total</b>		<b>17,094.1</b>		<b>10,392.5</b>		<b>2,051.6</b>		<b>4,103.2</b>		<b>546.8</b>

Note: Due to the use of revenue projections to determine the annual appropriation amount, actual receipts may be higher or lower than budgeted authorization.

---

# **“ACCESS TO THE FUTURE” STATUS REPORT**

---

Draft



September 12, 2003

RECEIVED

SEP 15 2003

AK Dept. of Comm. & Econ. Dev.  
Commissioner's Office



Edgar Blatchford, Commissioner  
Department of Community and Economic Development  
P. O. Box 110800  
Juneau, Alaska 99811-0801  
Telephone: 907-465-2500

Frank H. Murkowski, Governor

# Alaska

## Department of Community and Economic Development

### Office of the Commissioner

550 W. 7th Avenue, Suite 1770, Anchorage, AK 99501-3510

Telephone: (907) 269-8100 • Fax: (907) 269-8127 • Text Telephone: (907) 465-5437

Email: [questions@dced.state.ak.us](mailto:questions@dced.state.ak.us) • Website: [www.dced.state.ak.us/](http://www.dced.state.ak.us/)

September 12, 2003

Dear Alaskan:

Enclosed with this letter is a draft copy of the **Access to the Future** status report.

**Access to the Future** is one of the Murkowski Administration's ongoing initiatives to grow and diversify our economy and strengthen our regions by creating stable, long-term jobs throughout Alaska.

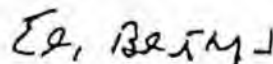
The **Access to the Future** initiative provides focused leadership from the Governor to coordinate the efforts of government departments and ensure that funding streams are used with maximum effectiveness. Building crucial infrastructure and creating a positive regulatory environment will attract private investment and encourage natural resource development and jobs for Alaskans.

This document is a conceptual framework with some concrete examples of how the initiative is being applied in different regions of Alaska. However, each region has unique needs and circumstances, and we request that you explain what local initiatives are supported in your region to further economic development. In other words, tell us how **Access to the Future** can be applied to your region to advance your goals.

We are very happy with the initiatives described in this draft report, but **Access to the Future** is a work-in-progress. We hope to receive feedback and suggestions from you and other Alaskans. Your comments will certainly be considered, and they may influence the decision-making process.

Please send your comments our department at the address listed above, attention Mark Edwards, or by email at [accesstothefuture@dced.state.ak.us](mailto:accesstothefuture@dced.state.ak.us).

Sincerely,



Edgar Blatchford  
Commissioner

### **Delta Area Development**

- **Missile Defense Facility:**
  - \$500 million construction project employing 500 workers;
  - \$24.8 million impact mitigation effort; and
  - 180 jobs to operate the facility.
- **Pogo Mine:**
  - \$78 million of private investment to date;
  - \$250 million total private investment expected;
  - 300 high quality jobs to operate the mine;
  - 11-year projected life for operations; and
  - numerous exploration projects in district.
- **Other Economic Activities in the Upper Tanana Basin:**
  - Agriculture, including more than 75 farms, a dairy processing plant, a privately-owned slaughterhouse and meat-packing plant, a farmers' co-op fertilizer plant and grain elevator, a veterinary clinic, USDA government support offices, the UAF Delta Research Site and Cooperative Extension Service office; and
  - DNR 5,400 acres timber harvest.

### **Alaska Peninsula / Bristol Bay Development**

- **Oil and Gas Exploration and Leasing:** In July 2003, a Memorandum of Understanding was signed between the Alaska Department of Natural Resources (DNR) and the Bristol Bay Native Corporation (BBNC) to facilitate on-shore oil and gas lease sales in the region. Consequently, DNR will be conducting areawide on-shore oil and gas lease sales on the Peninsula by 2006. In the long-term, development of on-shore oil and gas reserves will spawn construction of transportation systems to get products to market.
- **Transportation Improvements:** In the short-term, there are numerous federal and state transportation improvements currently underway and planned for the region, including:
  - Dillingham - \$4.1 million All-tide Dock;
  - Chignik - \$11 million Breakwater, Harbor, Dock and Small Boat Harbor;
  - Williamsport/Pile Bay Road - \$10 million;
  - Iliamna-Newhalen Road - \$5 million; and
  - Dillingham - \$5.1 million Airport Runway Rehabilitation.
- **Employment and Training:** The Southwest Alaska Vocational & Education Center (SAVEC) in King Salmon opened its doors in May 2002 to train area residents in construction, health care, computer technologies and fisheries occupations. Local hire is crucial to the economic health of the region, and SAVEC is a key partner in ensuring employment readiness. Over 400 individuals in the region have been certified as eligible to receive job training, job searching, and relocation assistance under the federal Trade Adjustment Act (TAA).

## **Employment and Training**

---

Bristol Bay's commercial drift fleet has declined by 37% since 1997. Area residents are leaving the commercial fishing industry and want training for employment in other occupations. The Southwest Alaska Vocational & Education Center (SAVEC) in King Salmon opened its doors in May 2002 to train area residents in construction, health care, computer technologies and fisheries occupations. The Center has fully equipped labs, classrooms and residential facilities, and has served over 830 students to date. Local hire is crucial to the economic health of the region, and SAVEC is a key partner in ensuring employment readiness.

Over 400 individuals in the region have been certified as eligible to receive job training, job searching, and relocation assistance under the federal Trade Adjustment Act (TAA). Statewide, over \$100 million has been secured to assist individuals with training and employment in Alaskan fishing communities.

## **Conclusion**

---

Development in the Alaska Peninsula and Bristol Bay region is consistent with Governor Murkowski's "Access to the Future" strategy. The project will likely:

- Require complete cooperation between several key State departments;
  - Provide long-lasting benefits to residents of the region;
  - Provide hundreds of short-term construction, engineering and support jobs;
  - Support hundreds of permanent employment opportunities; and
  - Provide the basis for positive changes in the region's fishing industry and the foundation for expanded private sector development.
-

**Support Letters and/or Resolutions on file for the  
Southwest Alaska Vocational Education Center**

1.	Governor	
2.	Southwest Alaska Municipal Conference	Resolution 97-01 02/01/97
3.	Bristol Bay Borough	Resolution 96-20 05/28/97
4.	Bristol Bay Area Health Corporation	Resolution 95-06 03/05/95
5.	Bristol Bay Native Association	Resolution 97-34 03/19/97
6.	Bristol Bay Native Corporation	Resolution 95-05 02/17/95
7.	Lake and Peninsula Borough	Letter of Support 06/09/97
8.	Lake and Peninsula Borough	Resolution 96-11 05/21/96
9.	Bristol Bay Borough School District	Resolution 97-04 06/02/97
10.	Alaska Peninsula Corporation	Resolution 98-05 06/07/97
11.	Bristol Bay Economic Development Corporation	Resolution 96-13 06/07/96
12.	Bristol Bay Campus Council	Letter of Support 05/12/95
13.	AVCP Housing Authority	Letter of Support 04/30/96
14.	Northwest Inupiat Housing Authority	Letter of Support 04/25/96
15.	Tagiugmiullu Nunamiullu Housing Authority	Letter of Support 09/11/96
16.	Tagiugmiullu Nunamiullu Housing Authority	Resolution 96-32 09/11/96
17.	Kodiak Island Housing Authority	Letter of Support 04/18/96
18.	Senator Lyman F. Hoffman	Letter of Support 05/11/95
19.	Paug-Vik Inc. Ltd.	Resolution 95-01 01/31/95
20.	Dillingham Native Village Council	Resolution 95-09 04/27/95
21.	Manokotak Village Council	Resolution 95-09 04/18/95
22.	City of New Stuyahok	Letter of Support 03/20/95
23.	Kokhanok Village Council	Resolution 95-05 04/11/95
24.	Koliganek Village Council	Resolution 95-08 04/21/95
25.	Kokhanok Resident Organization	Resolution 95-01 03/29/95
26.	Newhalen Resident Organization	Resolution 95-03 03/22/95
27.	New Stuyahok Resident Organization	Resolution 95-01 03/07/95
28.	Manokotak Heights Housing Resident Council	Resolution 95-01 04/04/95
29.	Perryville Resident Organization	Resolution 95-01 03/13/95
30.	Dillingham Resident Organization	Resolution 95-01 03/04/95
31.	Egegik Village Council	Resolution 95-09 03/31/95
32.	Ekwok Resident Organization	Resolution 95-01 03/15/95
33.	South Naknek Resident Organization	Resolution 95-01 03/28/95
34.	Naknek Resident Organization	Resolution 95-01 03/06/95
35.	Clark's Point Resident Organization	Resolution 95-01 04/14/95
36.	King Salmon Village Council	Resolution 97-05 04/24/97
37.	Port Heiden Resident Organization	Resolution 95-01 05/01/95

**Agencies which have made pledges for contributions in cash or support services:**

1. Bristol Bay Native Corporation
2. Bristol Bay Area Health Corporation
3. Bristol Bay Native Association
4. Bristol Bay Economic Development Corporation
5. Bristol Bay Housing Authority
6. Bristol Bay Borough
7. University of Alaska - Bristol Bay Campus
8. U.S. Dept. of Housing and Urban Development - ONAP - (Grant Awarded)
9. U.S. Dept. of Commerce - EDA - (Grant Awarded)
10. Alaska Works - Denali Commission Funding

**Partnership efforts are ongoing with additional agencies:**

1. Alaska Human Resources Investment Council
2. Alaska Department of Labor - Workforce Development
3. Alaska Department of Community and Economic Development

## Project Has Gathered Significant Support

An extensive feasibility study has confirmed the viability of the People's Learning Center, Phase One. Existing revenue streams available to the various partners have been identified to cover the projected operational costs. The wide range of partners, and the multi- needs addressed by Yuut Elitnaurviat open up several revenue streams that are already available in the region. Once built, the facility is sustainable.

Building Yuut Elitnaurviat, however, requires outside support. Support that is beginning to roll in. A development budget for a \$16 million campus including facilities has been developed. Of the \$16 million, over \$2 million is contributed by partners, others are also committed. Although not all funds are secured, sources have been targeted for the full amount. Yuut Elitnaurviat continues to appreciate support from

Source	Amount	Status
YE Partners	\$2.1 million	Secured
AK State Appropriation	\$.9 million	Secured
BIA FY02 Appropriation	\$1.0 million	Secured
Rasmuson Foundation	\$2.0 million	Secured
University of Alaska	\$.5 million	Secured
BIA FY 03	\$1.0 million	Pending*
USDA	\$2.0 million	Pending
Denali Commission	\$.5 million	App. In-progress
US Native Ed. Funds	\$1.8 million	App In-progress
Murdock Foundation	\$1.5 million	Requested
Paul G. Allen Found.	\$.5 million	Requested
Gates Foundation	\$1.5 million	Requested
Other	\$1.0 million	Varies
<b>Total</b>	<b>\$16.3 million</b>	

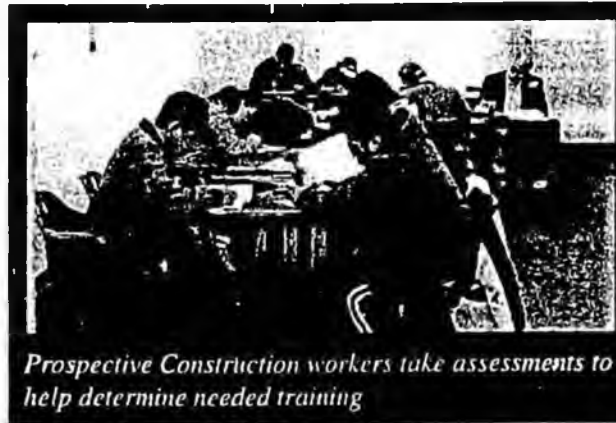
\* Has passed Senate and House

the State, federal delegation, and a generous contribution of \$2 million from the Rasmuson Foundation is opening doors to further relationships with private foundations.

## JOBS!

In addition to training local people to fill existing jobs in the region, the People's Learning Center will create jobs itself. During construction of the facility, over 40 field jobs are expected. With YE Inc's unique plan for a hybrid force account construction, about 30 of these will be filled with local workers. YE Inc. is utilizing existing training dollars to provide training to prospective local construction workers. Construction of Yuut Elitnaurviat will be a walk-the-talk demonstration.

Once built, the operation of Yuut Elitnaurviat will provide at least 26 jobs.



*Prospective Construction workers take assessments to help determine needed training*

## The People's Learning Center Moves Forward without Walls

The unique partnership of Yuut Elitnaurviat Inc. has allowed for program development prior to the

construction of the new facility. Following is just a sampling of accomplishments:

- 5 graduated Licenced Practical Nurses
- 30 enrolled construction apprentices
- 20 teacher aids slotted for training
- 5 HS students stepped up into adult program
- 16 HS studer's in dual credit health course
- 40+ Construction jobs anticipated for the construction of new facility- training will be paired with facility construction.

### Yuut Elitnaurviat Inc. People's Learning Center

Contact Information:

Janelle Vanasse  
Executive Director

(907) 543-6982 phone  
(907) 543-3152 fax  
janelle\_vanasse@ykhc.org

P.O. Box 305  
Bethel, Alaska 99559

# Bristol Bay Economic Development Corporation

P.O. Box 1464 • Dillingham, Alaska 99576 • (907) 842-4370 • Fax (907) 842-4336 • 1-800-476-4370



May 15, 2003

Representative Carl Moses  
State Capitol  
Juneau, AK 99801-1182

Dear Representative Moses:

This letter is to express support and urge the passage of House Bill 123 "An act relating to the allocation of money appropriated to the Alaska Human Resource Investment Council; and providing for an effective date."

In particular, the Bristol Bay Economic Development Corporation supports the inclusion of the Southwest Alaska Vocational & Education Center (Center) as a participant in the funds appropriated to the Alaska Human Resource Investment Council.

The Center is a critical component of the transition for Bristol Bay residents from a total reliance on a declining fishing industry to an expanded workforce with alternative employment skills.

Thank you for considering this request.

Sincerely,

A handwritten signature in cursive script that reads "Bryce Edgmon". The signature is written in black ink and is positioned below the word "Sincerely,".

Bryce Edgmon  
Chief of Operations

Cc: Steven Angasan, Chair, Southwest Alaska Vocational and Education Center

BRISTOL BAY NATIVE ASSOCIATION  
P.O. BOX 310  
DILLINGHAM, ALASKA 99576  
(907) 842-5257

Resolution 2003-30  
BY  
FULL BOARD OF DIRECTORS

Supporting State of Alaska House Bill 123 to Provide  
Funding for the Southwest Alaska Vocational and  
Educational Center in King Salmon

- WHEREAS: The series of fishing disasters in Bristol Bay has many residents looking for year round jobs; and,
- WHEREAS: There are many opportunities for local residents to capture some of the jobs that are available and presently going to outsiders; and,
- WHEREAS: Many residents need to find other employment to buy food or fuel for the winter; and,
- WHEREAS: Residents are sent to far away places such as Seward or Seattle to get the skills they need; and,
- WHEREAS: These students could be taught closer to home and in an environment that they are used to; and,
- WHEREAS: Studies have shown that people taught at home are more apt to stay and get the training they need; and,
- WHEREAS: House Bill 123 introduced by Representative Carl Moses proposes that the Southwest Alaska Vocational and Education Center (SAVEC) will receive an annual share of the grant money of the Alaska Human Resource Investment Council; and,
- WHEREAS: With continuing woes in the Western Alaska salmon fishery, this vital skills development operation is a key to retraining our citizens for opportunities beyond the fishing industry.

NOW THEREFORE BE IT RESOLVED by the Bristol Bay Native Association Board of Directors that they encourage Governor Murkowski and the Alaska State Legislature to enact the provisions of HB 123 into law in support of the Southwest Alaska Vocational and Education Center.

Signed: \_\_\_\_\_

President/CEO

CERTIFICATION:

I, the undersigned Secretary of the Bristol Bay Native Association, do hereby certify that BBNA's Full Board of Directors duly passed the foregoing resolution on this 19<sup>th</sup> day of March, 2003, and that a quorum was present.

Signed: \_\_\_\_\_

Secretary

George A. Castaneda  
Borough Manager



TELEPHONE  
(907) 246-4224  
FAX  
(907) 246-6633

## *Bristol Bay Borough*

BOX 189 • NAKNEK, ALASKA 99633

### **BRISTOL BAY BOROUGH RESOLUTION 2003-02**

#### **A RESOLUTION OF THE BRISTOL BAY BOROUGH IN SUPPORT FOR FUNDING OF THE SOUTHWEST ALASKA VOCATIONAL & EDUCATION CENTER KING SALMON ALASKA.**

**WHEREAS**, Senator Stevens requested that Alaska prioritize statewide its many vocational and adult educational facility needs and;

**WHEREAS**, the Southwest Alaska Vocational & Education Center in King Salmon, has been established to serve educational training needs of the Bristol Bay, Alaska Peninsula and Aleutian regions of Alaska and;

**WHEREAS**, the mission of the Center is to promote, coordinate and provide high quality training and education to the residents of Southwest Alaska and;

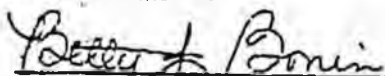
**WHEREAS**, the Center cannot fulfill the mission without adequate funding and;


**WHEREAS**, funds for four educational institutions on a percentage basis are allocated in SB 252, 22<sup>nd</sup> legislature section 48.

**NOW THEREFORE BE IT RESOLVED**, that the Bristol Bay Borough Assembly fully supports the Center's request to become the fifth educational institution to receive funding under SB 252, 22<sup>nd</sup> legislature section 48.

**PASSED AND APPROVED**, by a duly constituted quorum of the Bristol Bay Borough Assembly on this 3<sup>rd</sup> day of March 2003.

ATTEST:

  
Betty J. Hoain, Borough Clerk

  
Michael S. Swain Sr., Mayor

UAF/Bristol Bay Campus  
P.O. Box 1070  
Dillingham, AK 99576  
(907) 842-5109

**Resolution 03-01  
BY  
BRISTOL BAY CAMPUS COUNCIL**

**A resolution in support of HB 123 to provide funding the Southwest  
Alaska Vocational and Educational Center (SAVEC)**

**Whereas,** the Southwest Alaska Voc Ed Center is operating at the present time, and serves the employment training needs for residents, as our region employs the largest number of transient workers in the State of Alaska.

**Whereas,** HB 123 introduced by Representative Carl Moses proposes that the Southwest Alaska Voc Ed Center, which has seen 700+ students pass through its doors since opening on Memorial Day of 2002, receive a percentage of the Alaska Human Resource Investment tax funds, and will bring State involvement to Center, and which supports other vocational education Centers throughout the State of Alaska.

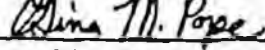
**Whereas,** the money will help with training of our local residents so that they can develop local capacity to join the labor force for jobs within the region.

**Whereas,** there is an increased demand on the Bristol Bay Campus and the Southwest Alaska Voc Ed Center to serve students due to Dillingham's economic shortages and Campus resources are scarce with vocational funds having been exhausted.

**Now, therefore be it resolved,** that the Bristol Bay Campus Council supports HB 123, which will provide the needed funding for the Southwest Alaska Voc Ed Center.

Signed:   
Chair Person

Attest: This resolution passed without objection at the meeting of the Bristol Bay Campus Council on May 9, 2003.

Signed:   
Vice Chair Person

**Bristol Bay Housing Authority**

P.O. Box 50 Dillingham, Alaska 99576 Fax: (907) 842-2784 Phone: (907) 842-5056

**RESOLUTION 03-03**

Approving Resolution of Support for Funding of Southwest  
Alaska Vocational Education and Technical Center from  
Alaska Workforce Investment Board Allocations

Whereas, the State of Alaska's Workforce Investment Board allocates funding on an annual basis through the legislature from receipts collected under AS 23.15.835, and

Whereas, the Southwest Alaska Vocational Education and Technical Center is in operation and offers Vocational Training to the most economically distressed area of the State, and

**NOW THEREFORE BE IT RESOLVED**, by the Board of Commissioners of Bristol Bay Housing Authority that they recommend to the Alaska State Legislature and the Governor that no less than eleven percent of the receipts collected under AS 23.15.835 or otherwise appropriated to the Alaska Workforce Investment Board be allocated to the Southwest Alaska Vocational Education and Technical Center located in King Salmon, for programs consistent with AS 23.15.820-23.15.850 and capital improvements.

**ADOPTED AND APPROVED** this 24th Day of January, 2003.

  
\_\_\_\_\_  
CHAIRMAN, WILLIAM TENNYSON

ATTEST:

  
\_\_\_\_\_  
SECRETARY, JOSEPH L. CLARK

SEAL

OFFICE - (907) 543-6982

CELL - (907) 351-447

**Subject:** Paragraph for YE

**Date:** Fri, 11 Apr 2003 09:24:13 -0800

**From:** "Janelle Vanasse" <Janelle\_Vanasse@fc.lksd-do.org>

**To:** Pat\_Jackson@legis.state.ak.us

Pat,

This may be a bit longer than you wanted-- Please feel free to EDIT! I wasn't quite sure what angle to take-- that we are already up and running despite no building or that we really need the building to get up and running. I tried to go middle of the road.

Janelle

Yuut Elitnaurviat has been incorporated since March 2002. The People's Learning Center is a partnership that integrates existing education and training efforts in the region so that they are comprehensive and may be expanded. Partners include school district, university, health corporation, housing authority, and Native organizations. Services are provided to both youth and adults with an emphasis on bridging the gap between high school/ GED and post-secondary training. The People's Learning Center focus is on providing local people with the education and training to fill local jobs in a region with available jobs, yet continued high poverty. Cornerstone programs that will be incorporated into the center have demonstrated significant success in raising High School test scores (30%), successfully training local nurses (12) and nurses assistants (23), and has provided construction trades training to over 60 individuals. With current operating cornerstone programs, active enrollment is 64; establishment of the People's Learning Center will extend daily attendance capacity to 140 with over 300 people receiving training each year.

**Southwest Alaska Vocational and Education Center  
P.O. Box 615  
King Salmon, Alaska 99613  
Phone: (907) 246-4600  
Fax: (907) 246-4607  
bnevj@unaf.edu**

February 3, 2004

Representative Carl Moses  
Mr. Tim Benintendi

RE: Proposed Use of Revenues Generated for SAVEC by HB123

The Center a Regional Training Center for Southwest Alaska is in need of operational funds to support training programs in the area of Construction Trades, Health Occupations, Information Technology including Office Occupations, and emerging economics such as Oil and Gas and Mining. The Center operates on a \$690,000 dollar approved budget and training grants.

The regional economy is facing hard times and many non-profits and governments are indicating their lack of ability to continue to make contributions to support the center as they once did. The proposed funding from HB123 would generate between \$180,000 to \$200,000 and would support the operations of our 25,000 square foot facility where training and housing of area residents is conducted.

Examples of expenditures where the money would be utilized include:

Facility Maintenance and Repairs	\$7,300
Facility Insurance	\$7,800
Facility Supplies	\$4,000
Facility Utilities	\$94,000
Facility Maintenance & Housekeeping Wages	\$77,000
Communications	\$10,800

TOTAL \$ 200,900.00

As you can see this money is necessary to fund our facility to support regional training activities which now exceeds 900 residents seeking new occupational skills needed because of a failing commercial fishery economy.

If I can provide additional information please call me at (907) 246-4600.

Thank you.

Erie V. Johnson, Executive Director



## Project: Yuut Elitnaurviat- People's Learning Center (Bethel)

### Partners:

- Alaska National Guard
- Assoc. of Village Council Pres.
- AVCP-Regional Housing Auth.
- City of Bethel
- Coastal Villages Region Fund
- Calista Corporation
- Kuskokwim Campus- UAF
- Lower Kuskokwim School Dist
- Yukon Kuskokwim Health Corp.

### Project Summary & Update:

Yuut Elitnaurviat- or the People's Learning Center, is a multi-organizational approach to address the educational and workforce development needs of the Yukon Kuskokwim Delta region. Nine partners have joined to establish and operate a learning center targeting both youth and adults. The education at the learning center, will meet both academic and industry standards in the area's most in-demand industries: Health Careers, Construction Trades, Education & Early Childhood, and Aviation. Programs are being built from existing successful initiatives to avoid duplication and maximize existing resources. The center will be located in Bethel with boarding capacity that will open educational and training opportunities to the entire region.

### Highlights of Current Activity:

The unique partnership make-up has allowed Yuut Elitnaurviat to move forward with program planning and development at the same time as developing the facility that will ultimately house the Yuut programs into sustainability. Below is a highlight of some of the program activity of Yuut Elitnaurviat. Courses and programs will continue to be developed and piloted over the next two years, then these proven programs will be delivered consistently out of the new facility when it opens in August 2005.

#### Health Careers

- 21 high school students completed a dual credit (providing high school and college credit) class that catapults them into a post-secondary health career field.
- 60+ high school students are currently taking a uniquely designed class that will result in many of them earning a Personal Care Attendant industry certificate while also allowing them to explore health careers.
- 8 adults are scheduled to attend a Personal Care Attendant course that also includes workplace basics
- 16 adults are scheduled to complete a Certified Nursing Assistant course this summer
- 11 adults have completed course work for Licensed Practical Nurse and will be sitting for their state test
- 12 adults are currently enrolled in the first-ever rural Registered Nurse program in our state.

#### Construction Trades:

- 72 high school students are enrolled in a pre-apprenticeship construction trades training program with National recognition so they may bring their experience into an apprenticeship program as an adult.
- Over 60 adults in the region are registered in a Building Maintenance and Repairer apprenticeship program sponsored by Alaska Works Partnership. (Youth in the above program can directly enter this apprenticeship)
- A local apprenticeship program in Carpentry, Electrical, and Plumbing has been recently registered and will allow individuals to earn journeyman status in one of these trades while working on projects in the region.

#### Education and Early Childhood

- 21 adults are scheduled to sit for their national test for their Child Development Associate certificate.
- A dual credit class is being developed to provide high school students interested in education to earn college credit that will give them both a jump start and exposure to education and early childhood careers.

#### Need for Facility:

No single partner organization currently has the space needed to deliver the programs envisioned for Yuut Elitnaurviat. A new campus facility will allow for quality industry standard instruction, seamless collaboration, and the necessary boarding. The campus will be operated by the Yuut Elitnaurviat- People's Learning Center 501 (c)3 corporation with funds available through the various partners. Programs will be accredited through the existing educational institutions of the Lower Kuskokwim School District and the University of Alaska Fairbanks. Funds are being secured for construction of the Yuut Elitnaurviat campus. Over nine million has been secured. Design, sitework, and piling installation have already begun. The project is currently on budget.

Contact Information: Janelle Vanasse 907-543-6982, [janelle\\_vanasse@lksd.org](mailto:janelle_vanasse@lksd.org)

**Long Term Sustainability:**

The multi-agency model of Yuut Elitmaurviat allows funds from a variety of sources to be tapped for operational expense. State AHRIC funds will be combined with other funding to ensure quality programming and successful operation. Following is an example of funds already available to the partners.

Partner organization	Organization Type	Available Resources
Association of Village Council Presidents	Native non-profit corporation	<ul style="list-style-type: none"> <li>Scholarships</li> <li>Native Training Funds</li> <li>Professional development funds for Head Start workers</li> </ul>
Association of Village Council Presidents- Regional Housing Authority	Native Housing Authority	<ul style="list-style-type: none"> <li>HUD funds for housing low income housing beneficiaries during education and training</li> </ul>
Calista Corporation	Native for Profit	
City of Bethel	Municipality	<ul style="list-style-type: none"> <li>In-kind road/grounds maintenance</li> </ul>
Coastal Villages Region Fund	Community Development Quota	<ul style="list-style-type: none"> <li>Scholarships for beneficiaries</li> </ul>
Lower Kuskokwim School District	Rural Education Attendance Area	<ul style="list-style-type: none"> <li>State formula funds</li> </ul>
University of Alaska-Kuskokwim Campus	University	<ul style="list-style-type: none"> <li>Access to student grant/loan programs</li> <li>Faculty</li> </ul>
Yukon Kuskokwim Health Corporation	638 private health corporation	<ul style="list-style-type: none"> <li>Scholarships</li> <li>Direct financial contribution into recruitment and training</li> </ul>
Alaska National Guard	State	<ul style="list-style-type: none"> <li>Continued education funds for Guardsmen</li> </ul>

\* All partners have unique opportunities to apply for and receive grants

Department	Funds
Department of Housing and Urban Development	Youthbuild CFDA #14.243 Alaska Native/Native Hawaiian Communities Program CFDA 14.515
Department of Labor	Workforce Investment Act (WIA) funds
Department of Education	Alaska Native Education Equity CFDA 84.356 A Tech-Prep Demonstration CFDA 84.353A Strengthening AK Native Alaskan/Hawaiian Institution Programs CFDA 84.031 A

Contact Information: Janelle Vanasse 907-543-6982, janelle\_vanasse@lksd.org



Spend an extra day or two and visit Brooks Camp and the Valley of 10,000 Smokes. Arrangements can be made to travel to these areas by air or by a 40 mile boat trip across Naknek Lake. (seasonal)

Do you like to go for big fish? SAVEC is located in the center of some of the best sport fishing in Alaska. Test your skills in the many lakes and rivers in the area. Professional guide services are readily available to make your trip to King Salmon a memorable experience. (seasonal)



We can provide nearly everything for your training needs. Just give us a call and let us know what your training needs are and when you would like it to happen.

Contact us at:

Southwest Alaska Vocational and  
Education Center

P.O. Box 615

King Salmon, Alaska 99613

**Phone: 907-246-4600**

**Fax: 907-246-4607**



Alaska Works Partnership, Inc. training session at SAVEC

## SOUTHWEST ALASKA VOCATIONAL & EDUCATION CENTER

P.O. BOX 615

KING SALMON, ALASKA 99613

907-246-4600

---

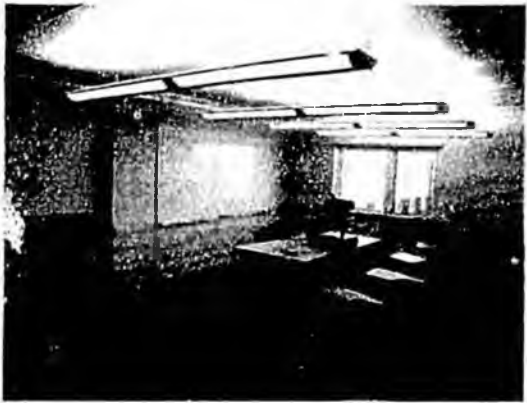
*The Premier Technical &  
Vocational Center in Southwest  
Alaska*

*MISSION STATEMENT: To promote,  
coordinate, and provide high quality training  
and education to residents of Southwest  
Alaska*





SAVEC's computer lab features 12 high speed, high quality computer stations. Each computer has a flat screen monitor, the latest software, and is connected to the internet. The instructor station is connected to a 48 inch plasma screen.



We offer 7 modern classrooms varying in size from 275 to 400 square feet. The occupancy loads range from 14 to 20 students. Double size classrooms are also available.

---

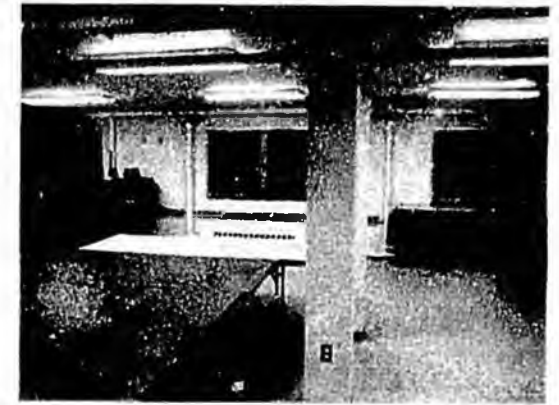
We even have a 555 square foot classroom with a sink with hot & cold running water. This classroom will seat 28 people. This lab/classroom also has counters that allow trainees to use lab instruments.



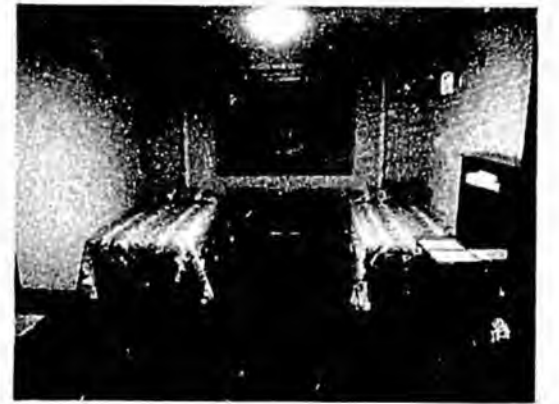
Need to train for the medical field? We have a mini-clinic available with all the latest equipment including the exam table.



Our 550 square foot conference room will seat 37 people. It features a 5 disc DVD player with projector and surround sound.



We have an area with 950 square foot of open floor space which is adjacent to our furnished wood shop. The wood shop has over 860 square feet and contains all the tools and equipment required for construction training.



We have 14 double and 2 single occupancy rooms on two floors. We can accommodate up to 32 people. Men's and Women's floors are available. Each room has desks and a telephone. There are laundry facilities on each floor.