

ALASKA

COAL

BED

METHANE

1/29/02

EVERGREEN



EVERGREEN RESOURCES, INC.

Corporate Presentation

**Alaska State House of Representatives
Resources and Oil & Gas Committees**

January 29, 2002

What Exactly is Unconventional Gas?

The definition continues to evolve as technology and reservoir understanding continues to improve.

Certainly Coal Bed Methane applies.

Certain Tight Gas Sand plays and projects qualify.

Conventional Gas: Relatively hard to find;
Relatively easy to produce.

Unconventional Gas: Relatively easy to find;
Relatively hard to produce.
Very process intensive.

Our Niche: Rockies and Unconventional Gas!

Focused on Coal Bed Methane Opportunities

Recognized CBM Technology Leader

Completely Integrated Approach to CBM Development

Operations & Services & Infrastructure

Main Drilling Project: Raton Basin CBM

Primary Unevaluated Projects: UK CBM
N. Ireland Tight Gas
Alaska CBM

Accelerated Growth Since 1994

EVERGREEN

Focused on Raton Basin Coal Bed Methane

- Sold all other producing O&G properties
- Consolidated 274,000+ quality acres in the Basin
- Drilled & Acquired 700+ Raton Basin CBM producing wells

Expanded gas transportation infrastructure

- CIG Campo and Picketwire Laterals: Better gas markets
- Gas collection and compression facilities: Internal growth

Accelerated drilling program

- 140+ wells in 2001
- 150+ wells in 2002

Community Relations/Awards

EVERGREEN

State of Colorado Oil and Gas Conservation Commission
Outstanding Oil and Gas Operations Awards in 1996, 1997, and 2001

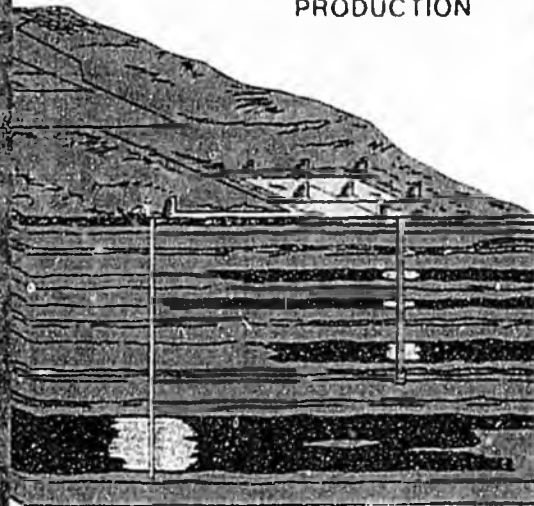
Interstate Oil and Gas
Compact Commission
2001 Chairman's Stewardship Awards
Independent/Small Company



*In our Corporate Mission Statement, we are Explicitly
Committed to Environmentally Responsible Development
and Community Enrichment.*

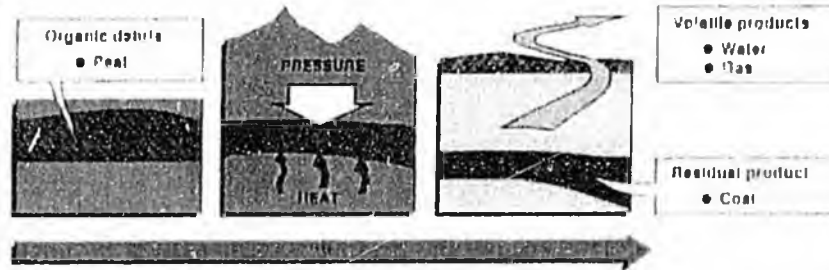
EVERGREN

COALBED METHANE PRODUCTION

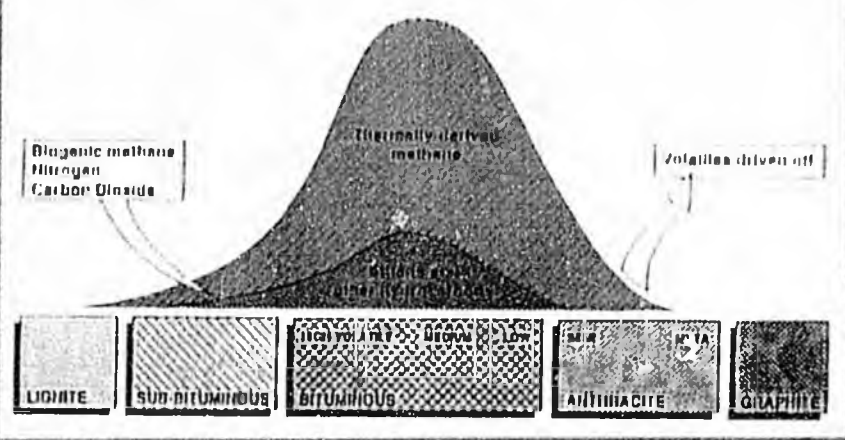


EVERGREN

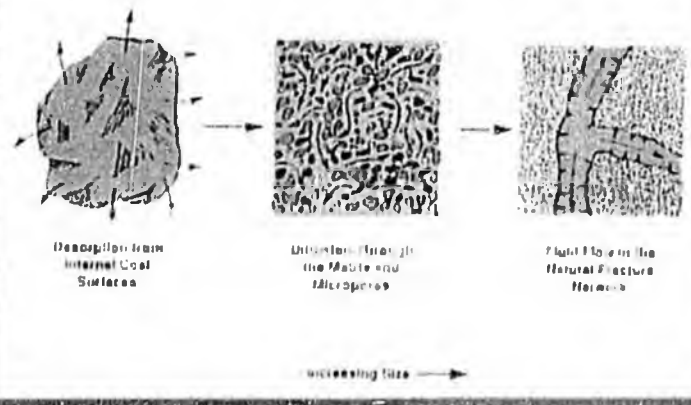
COALIFICATION



GAS GENERATION IN COAL

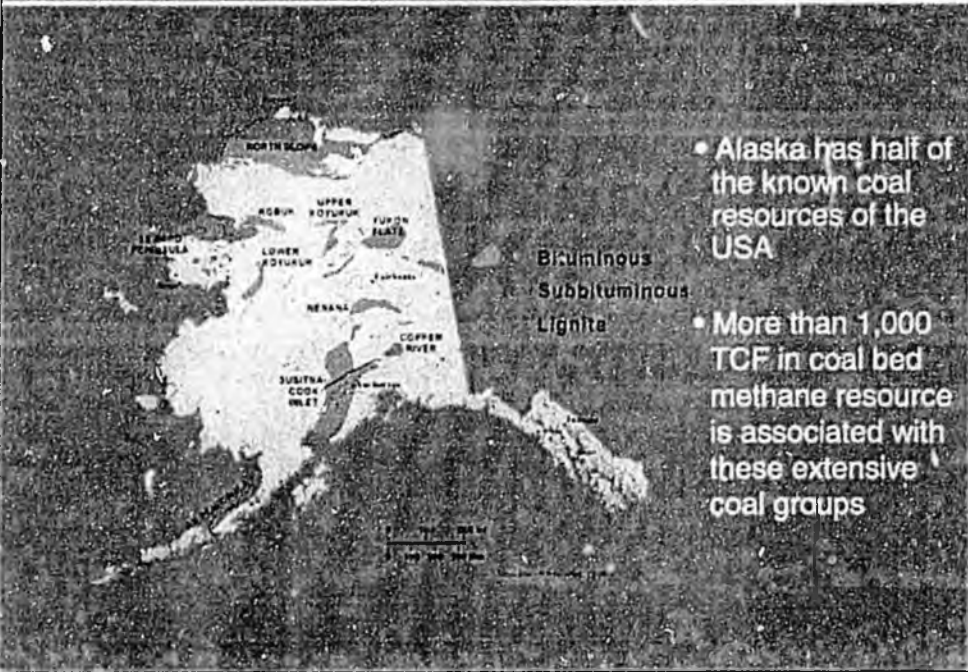


PROCESSES IN THE TRANSPORT OF COALBED METHANE GAS



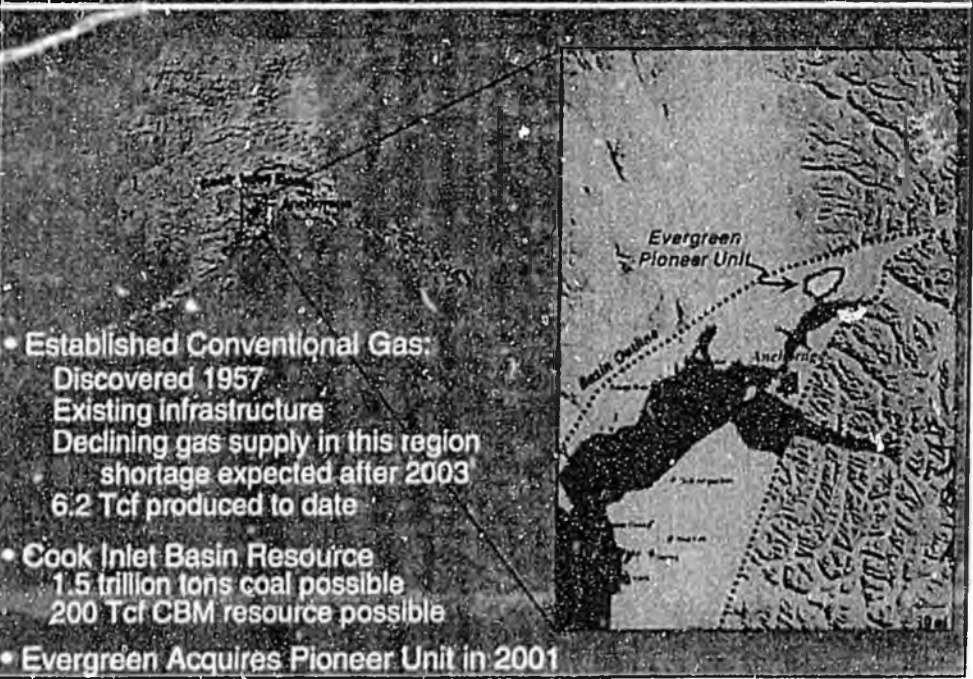
Alaska Coal

EVERGREEN



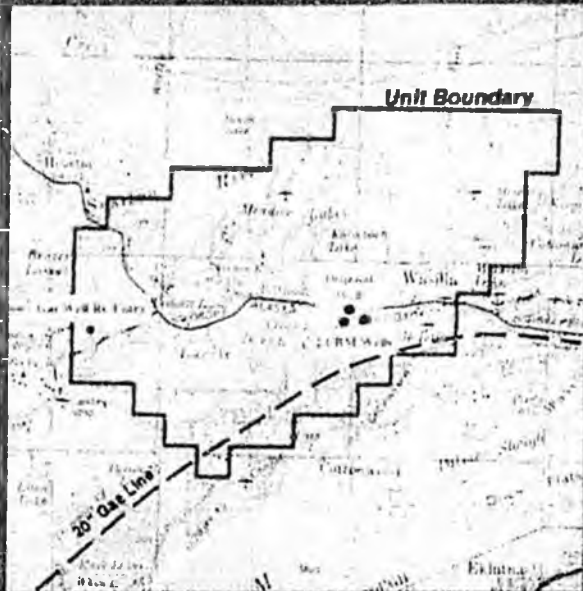
Alaska Cook Inlet Basin

EVERGREEN



Pioneer Unit

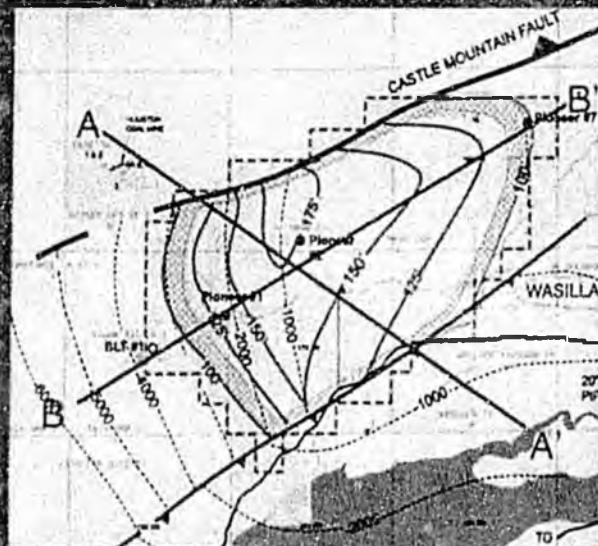
EVERGREEN



- 48,000 acres
- 100% working interest
- Infrastructure
 - Gas pipeline nearby
- Wells drilled - 2000
 - 2 CBM
 - 1 Water disposal
 - 1 Gas Well Re-entry
- Future Plans
 - Drill/Comp 6-10 wells '02
 - Complete Disposal Well

Pioneer Coals

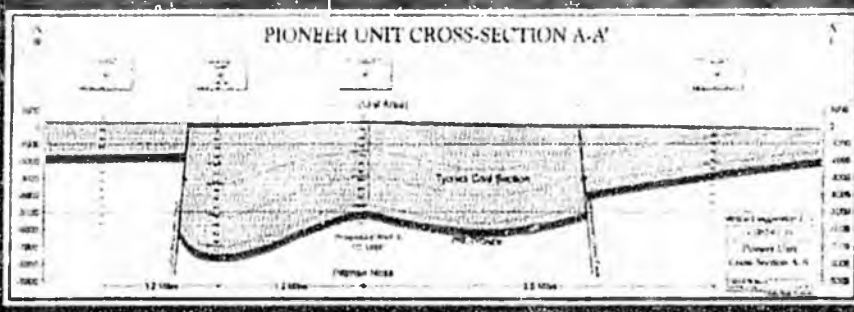
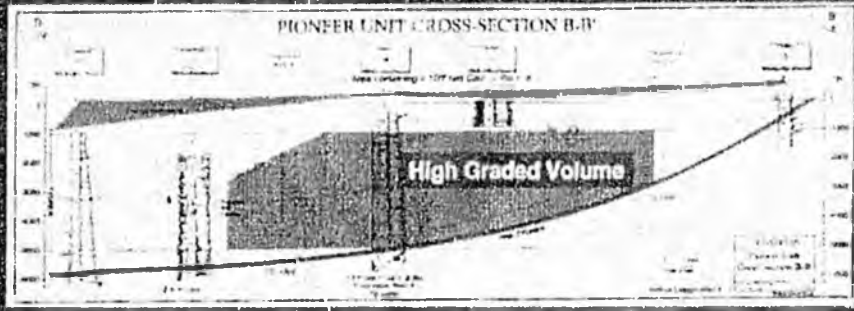
EVERGREEN



- Target
 - Tyonek Coals
 - Tyonek Sandstone
- Avg Coal Thickness
 - 138 feet
- Number of Zones
 - 15+
- Depths
 - 250 to 5,000 ft

Cross Sections

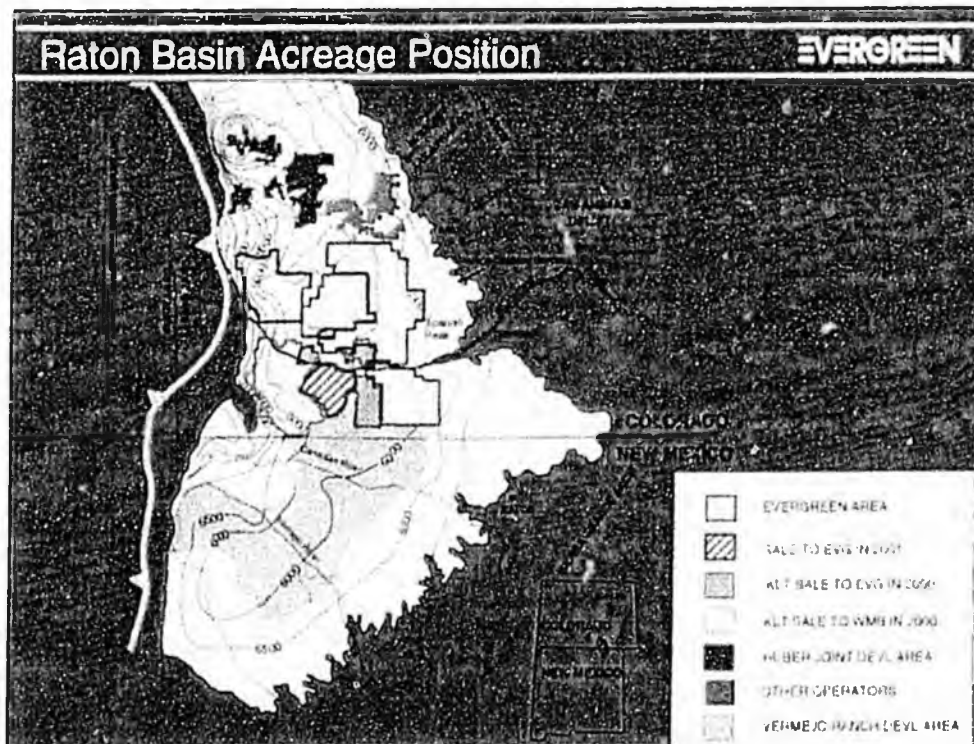
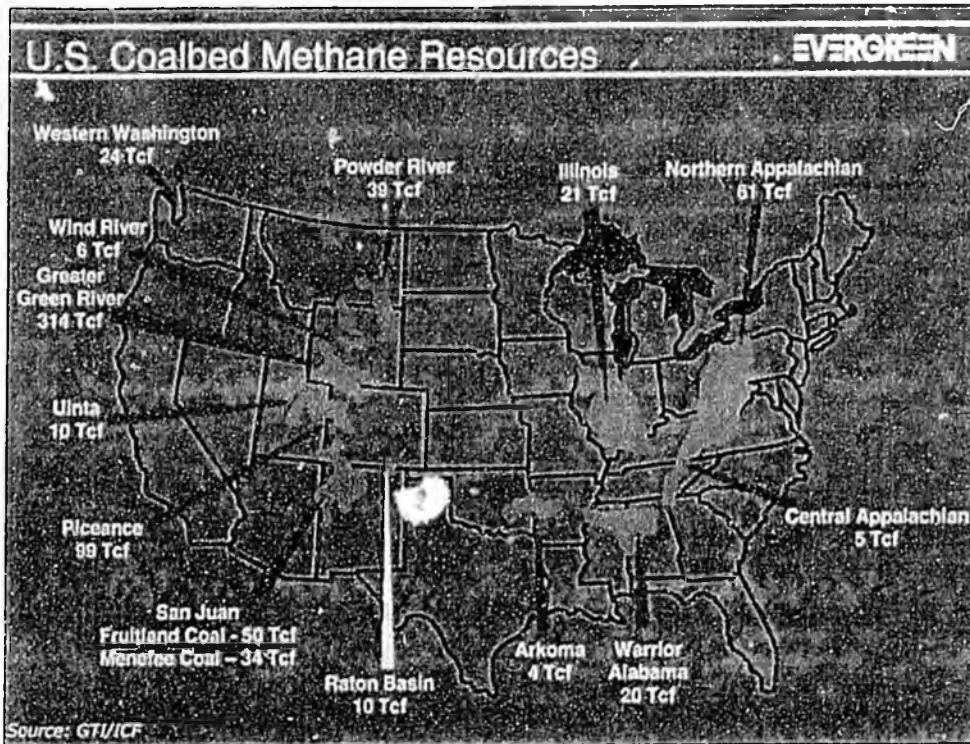
EVERGREEN

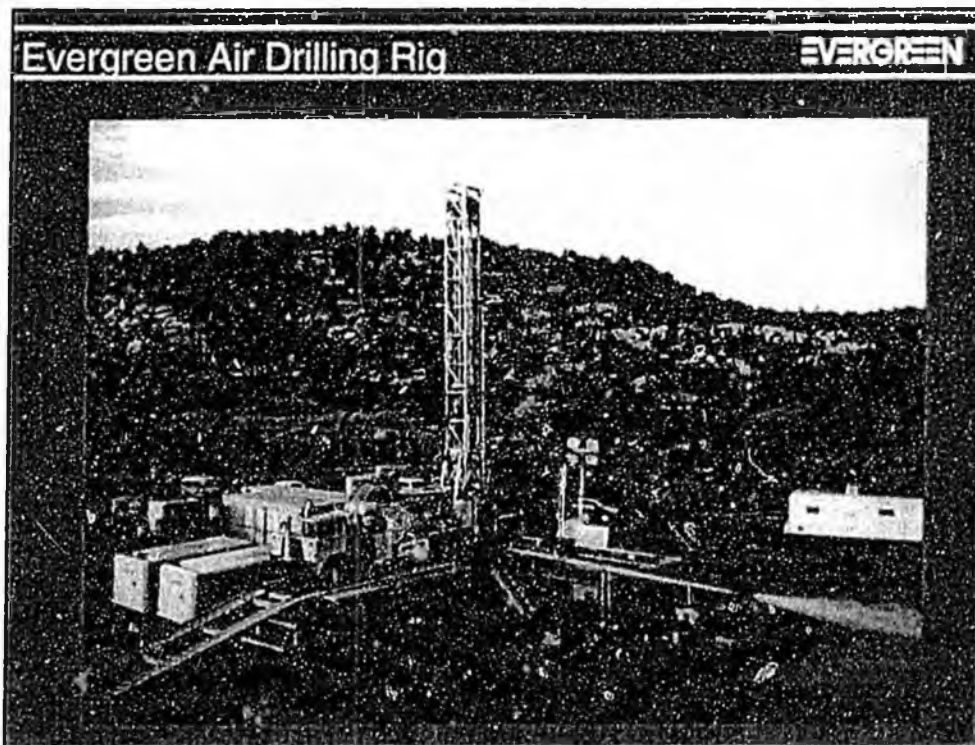
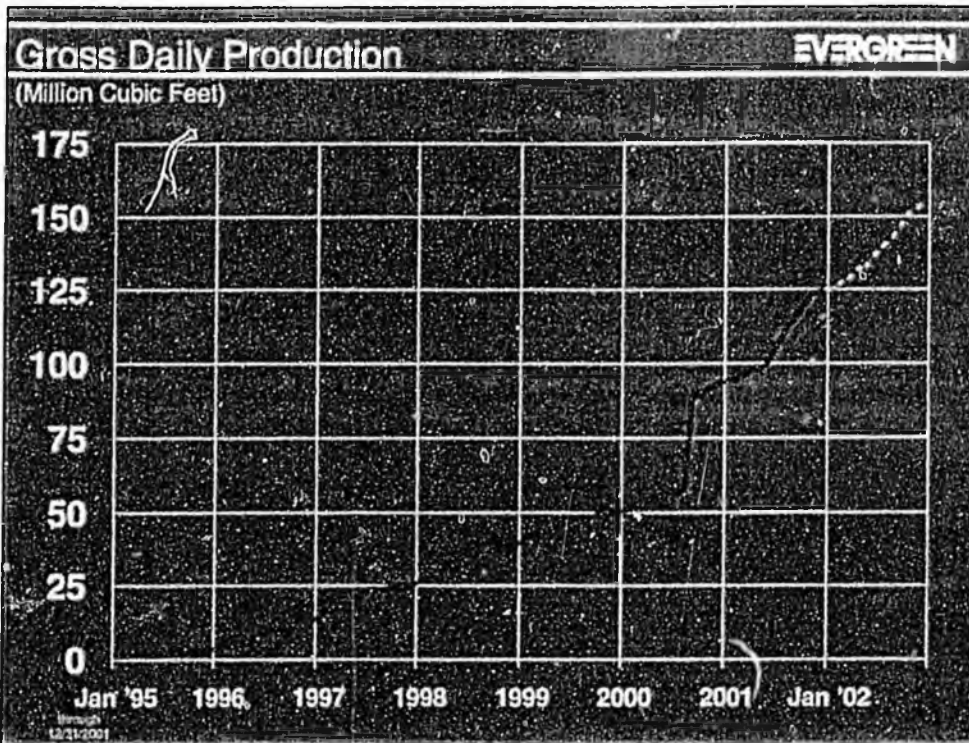


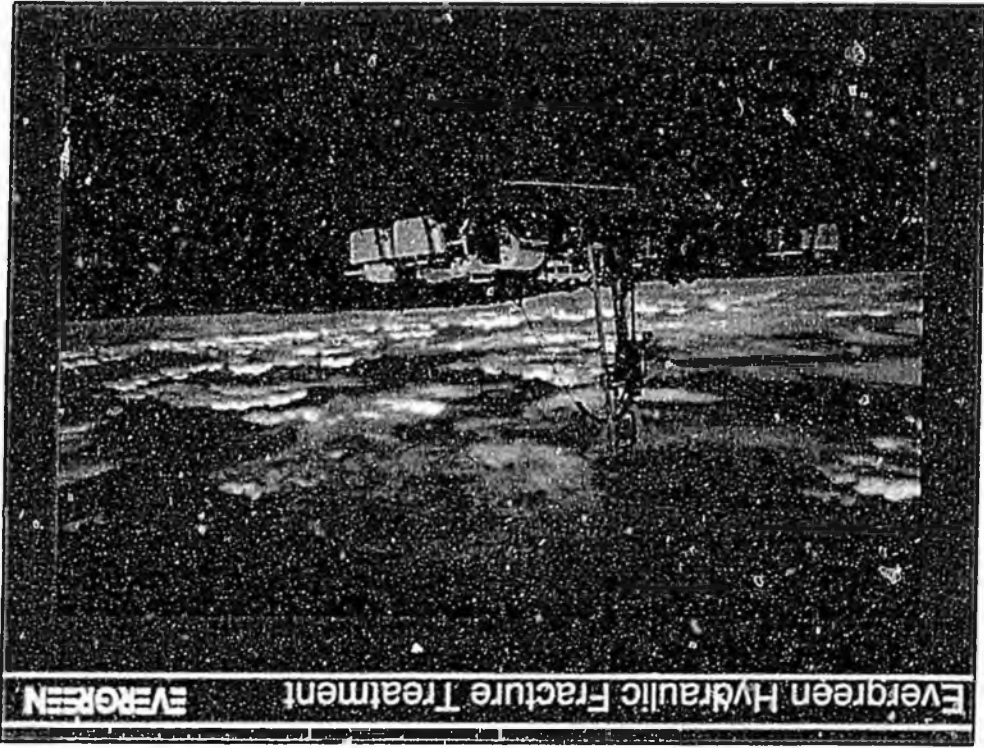
Raton Basin

EVERGREEN

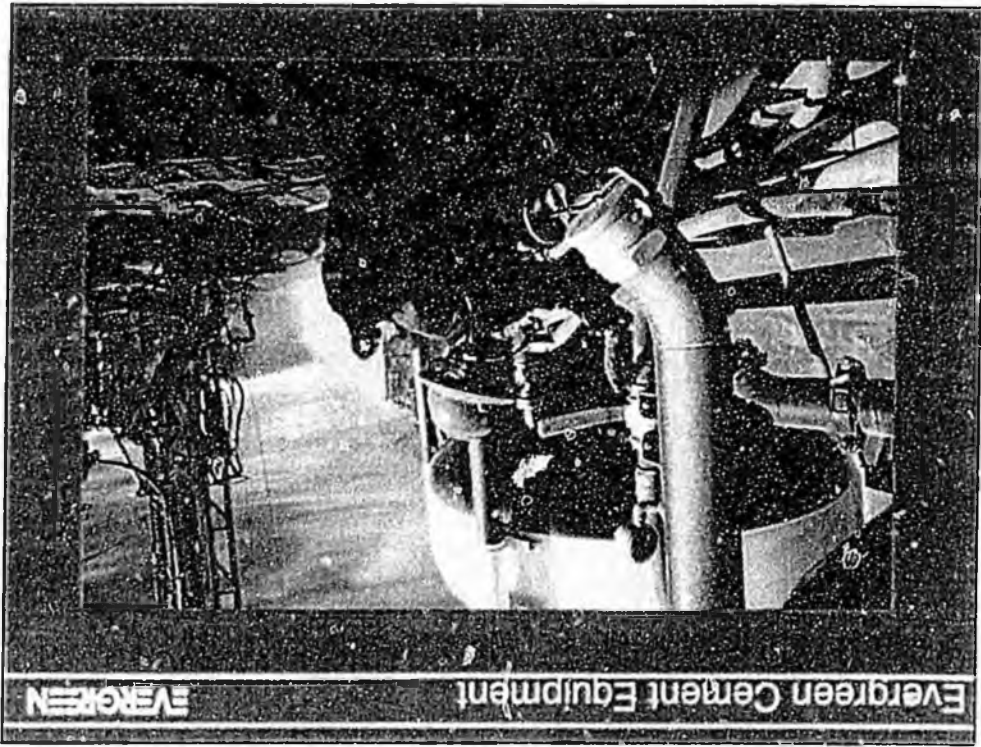








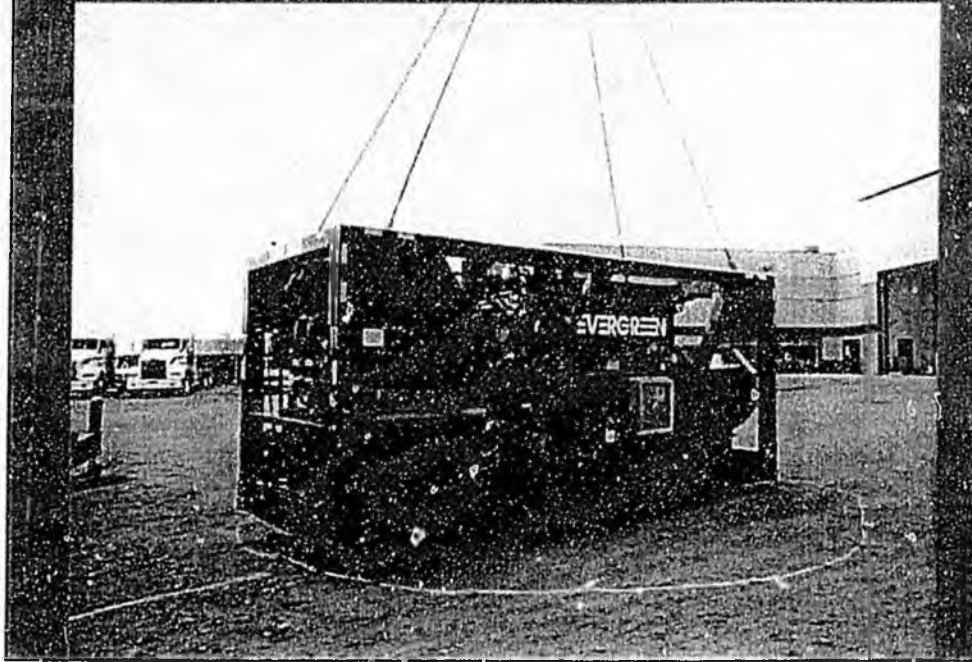
Evergreen Hydraulic Fracture Treatment



Evergreen Cement Equipment

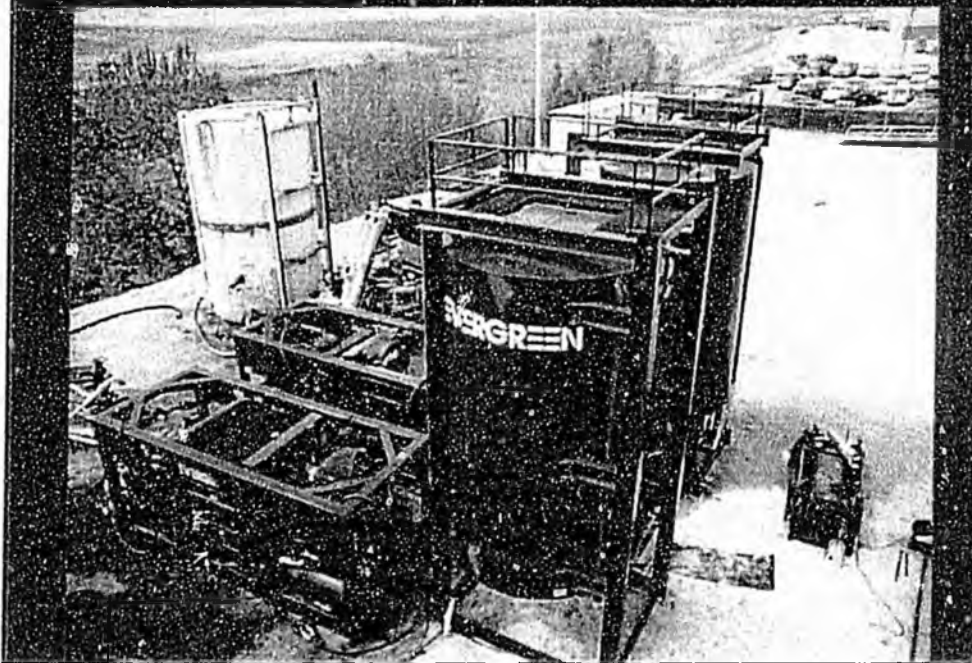
Portable Frac Equipment

EVERGREEN



Portable Frac Equipment

EVERGREEN

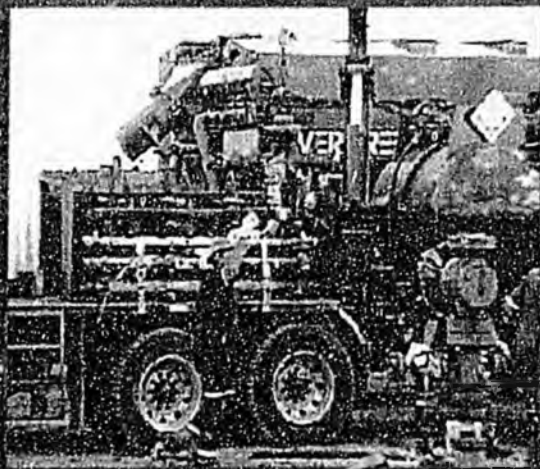


Key Operating Focus

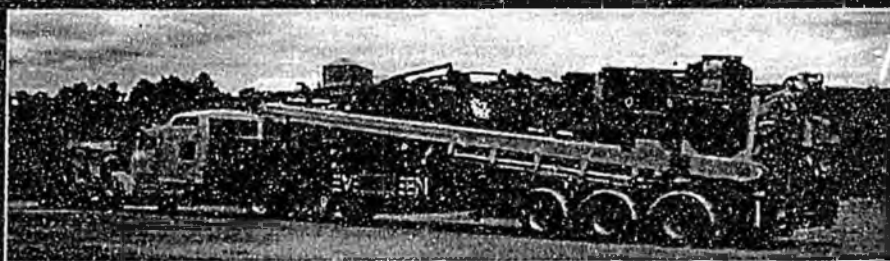
EVERETT

Constant experimentation to
improve productivity through
new technologies

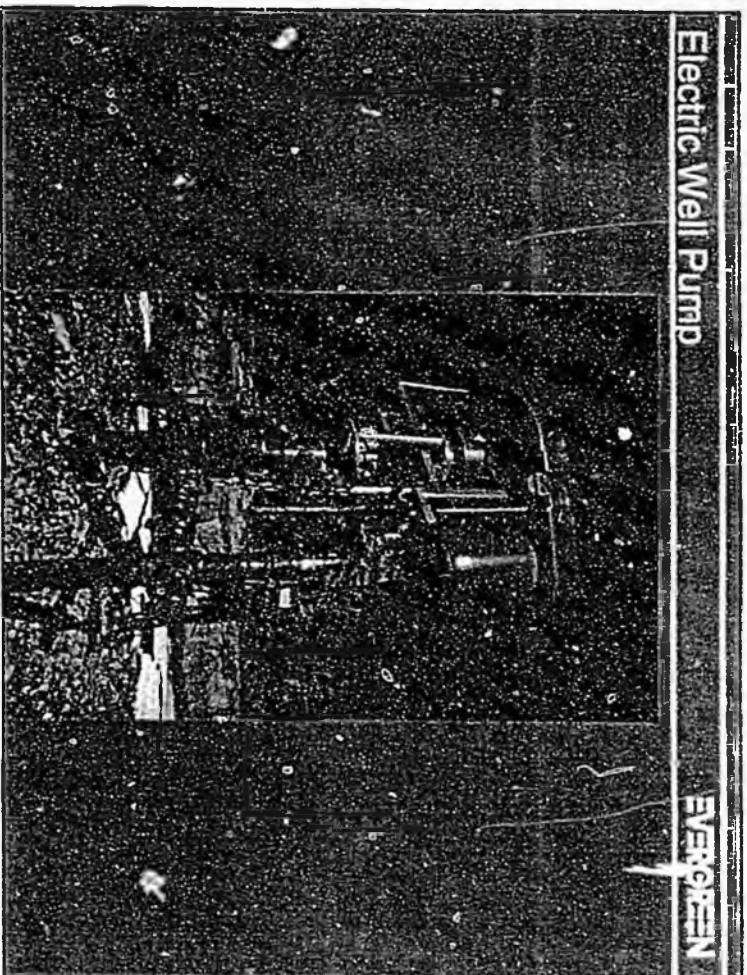
Overall drilling
success since
1993: 98%



New Completion Technology

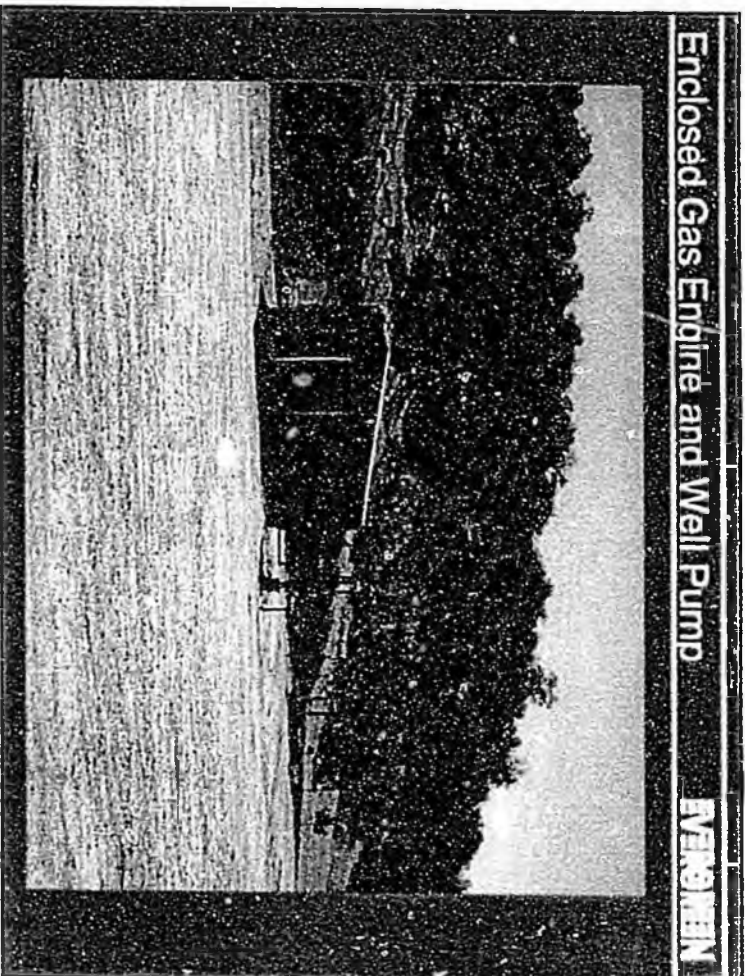


Electric Well Pump



EVERGREEN

Enclosed Gas Engine and Well Pump



EVERGREEN



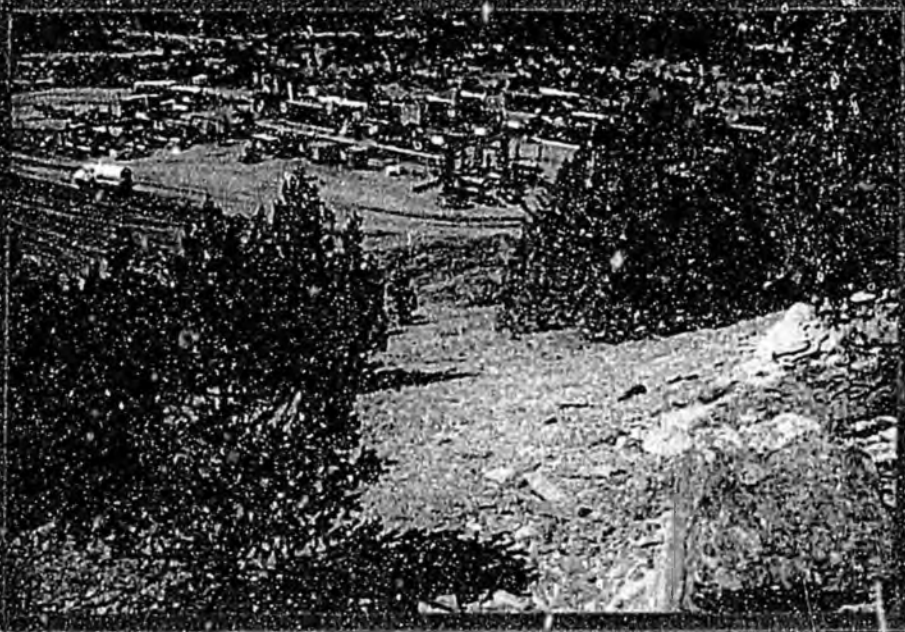
Evergreen Pipeline Construction

EVERGREEN



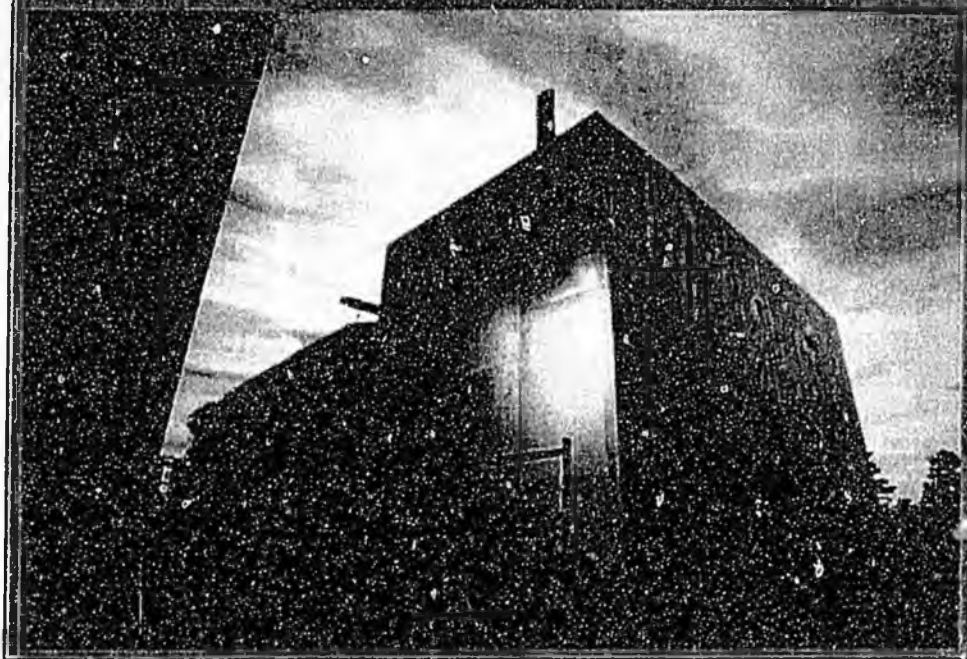
Evergreen Compressor Station

EVERGREEN



Compressor Noise Reducing Structure

EVERGREEN



Concluding Remarks

EVERGREEN

- Evergreen's and Alaska's Shared Goal:
Provide Long-Term Natural Gas Supply for Alaskans
- CBM is a long lived resource and provides us the opportunity to make a long term investment in Alaska and Alaskan jobs. Successful CBM will require several hundred million dollars in capital investments and generate hundreds of jobs.
- We support Alaska's gas pipeline efforts to the lower 48. CBM development could be the solution to solve future projected gas supply shortages in the Anchorage, Kenai, and Mat-Su Valley areas.
- The summary benefit of a successful Evergreen CBM drilling program will be environmentally responsible development, resulting in a clean, reliable, long term energy source. We have done this in the Raton Basin of Colorado, we look forward to replicating that success here in Alaska. Community enrichment is a specific part of our corporate mission statement.

