

SCR

1



ALASKA STATE LEGISLATURE

SENATOR RANDY PHILLIPS
SENATE DISTRICT L

SESSION
State Capitol
Juneau, AK 99801
(907) 465-4949
800-478-4950
Fax: 465-4979

INTERIM
P.O. Box 142
Eagle River AK 99577
(907) 894-4949
Fax: 894-4948

Memorandum

TO: Senator Lyda Green, Chair
Senate Health Education and Social Services Committee

FROM: Senator Randy Phillips *RP*

DATE: January 26, 1995

RE: Sponsor Statement for: Senate Concurrent Resolution #1
Establishing the Foundation Formula Task Force and relating
to revising the formula for providing state aid for education.

Senate Concurrent Resolution #1 would set-up a task force to recommend changes to the education foundation formula. This task force would be comprised of members of the Legislature, representatives of school districts, the state board of education and the public. The education formula was last revised by the Legislature in 1986. Total expenditures for education are more than 1/3 of the state's general fund budget. Just one part of the education budget, the education foundation program, is by far the largest single component of the state budget.

Over the past years several bills have been introduced by members of the Legislature and by the administration attempting to make changes to the education foundation formula. Each of these bills has failed to go forward due to a lack of consensus between the affected parties. It is necessary to put the affected parties together in some type of forum that can resolve differences before a bill to change the foundation formula is brought before the Legislature.

Governor Knowles has stated that revising the education foundation formula is a priority for the administration. The Knowles/Ulmer policy transition team's report on education recommends the convening of a "Blue Ribbon Commission" to develop a new funding program for education. I believe that the Legislature should take the lead in establishing the task force and working with all parties to produce a workable plan for funding education in Alaska.

A REVIEW
THE ALASKA SCHOOL FOUNDATION FUNDING
PROGRAM

JANUARY 1995

THE FOUNDATION PROGRAM is based on the "instructional unit" method of funding.

TERMS AND CONCEPTS printed on page 2, when used with the two mathematical formulas below and the numerical data on page 4, provide for understanding the foundation law.

THE FORMULA USED TO CALCULATE BASIC NEED:

$$\text{BASIC NEED} = (\text{INSTRUCTIONAL UNITS}) \times (\text{AREA COST DIFFERENTIAL}) \times (\$61,000)$$

THE FORMULA USED TO CALCULATE STATE FOUNDATION AID:

$$\text{STATE FOUNDATION AID} = (\text{BASIC NEED}) - (\text{LOCAL EFFORT}) - (90\% \text{ ELIGIBLE PL 81-874})$$



TERMS AND CONCEPTS:

ADM (AVERAGE DAILY MEMBERSHIP) - The average of the number of students enrolled in a school district or specific school program (vocational education, bilingual education, special education) over a specified fall or spring student count period. The more students a district has in Average Daily Membership, the more instructional units the district generates increasing the funding it receives through the foundation program.

AREA COST DIFFERENTIAL - A factor multiplied by a school district's instructional units to adjust for costs associated with geographic conditions, sparsity and location of various school districts. Factors vary between 1.0 and 1.46, depending usually on remoteness of the district.

BASIC NEED - An amount of money determined by multiplying the area cost differential by the number of a school district's allowable instructional units times the instructional unit value, set by the legislature. The foundation program sets the instructional unit value at \$61,000. (See page 4, column A)

INSTRUCTIONAL UNIT - A number represented by a group of students identified by grade level and the student profile dependent on whether the students are enrolled in vocational, special or bilingual education programs.

INSTRUCTIONAL UNIT VALUE - The amount under the foundation formula is \$61,000 per instructional unit and is established by law.

PL 81-874 - Federal Law PL 81-874, impact aid to education, provides federal funds to school districts for children of parents living and/or working on federal property as an "in lieu of local tax revenue." Under the foundation program 90 percent of each school district's eligible PL 81-874 receipts is subtracted from the district's basic need. (See page 4, column E)

REQUIRED LOCAL EFFORT - Under the law, city and borough school districts are required to contribute the lesser amount of:

- (1) the equivalent amount generated by a four mill tax levy based on the full and true value of the taxable real and personal property in the school district in the second preceding year (two years prior); or
- (2) 35 percent of a school district's basic need for the preceding school year.

In addition to the required local effort school districts are allowed to contribute the greater of an equivalent of 2.0 mills or \$14,030 per adjusted unit to hold disparities in funding per instructional unit among school districts to no more than 25 percent. The amount of local effort, either in the 4 mill equivalent or 35 percent basic need, is subtracted from a school district's basic need. Since Regional Education Attendance Areas do not have authority to collect taxes, there is no deduction for the local contribution portion of basic need in these districts. (See page 4, column B)

STATE FOUNDATION AID - The amount of state money school districts are entitled to receive under the Public School Foundation Program, after local and federal shares are deducted. (See page 4, column F)

OTHER ISSUES:

ALASKA'S PUBLIC SCHOOL FOUNDATION PROGRAM, AS 14.17 enables the state to meet fiscal equalization criteria outlined in the federal PL 81-874 law, commonly known as the "disparity test." Alaska must meet the guidelines in order to recognize approximately \$43 million in PL 81-874 funds within the FY95 state foundation plan as general revenues.

PL 81-874 DISPARITY TEST - The federal PL 81-874 disparity test measures the disparity in local school district revenues. The test takes into consideration designated state and local revenues. Under guidelines of the disparity test, the range of revenues may not vary more than 20 percent between the school district that raises the lowest amount of revenue per instructional unit and the school district that raises the greatest amount beginning in FY98. Since federal regulations allow states to eliminate five percent of the weighted instructional units at the top of the scale and five percent at the bottom, Alaska eliminates both of its oil rich school districts, Valdez and North Slope Borough, which contribute considerably more than 20 percent beyond the lowest amount. Since REAAs are not authorized to raise local taxes, five percent of the units at the bottom of the scale can be from any REAA. The disparity test uses \$61,000 per instructional unit as the base.

CENTRALIZED CORRESPONDENCE SCHOOL - The law provides a formula for computing funds for the state Centralized Correspondence School. Instructional units are computed under the same formula used by elementary schools with more than 200 students and multiplied by 0.65.

DECLINING ENROLLMENT - The law contains language that protects districts from losing more than 10 percent of the prior year's K-12 instructional units by phasing in the reduction over four years.

DISTRIBUTION PROCEDURES - The Department of Education will make payment of foundation aid through monthly payments to school districts. The payments for the first nine months of each fiscal year will be based on actual instructional units for the prior school year. Payments for the last three months will be adjusted by current year instructional units. Any overpayments or underpayments made during the first nine months will be adjusted in the final three payments of the fiscal year. The first counting period will be during a 20-day period ending on the fourth Friday in each October. An optional 20-day count period ending the second Friday of February may be used to calculate foundation funding, if the February counting period yields more instructional units.

FUND BALANCE LIMITATION - The law prohibits districts from accumulating an unreserved fund balance of more than 10 percent of their operating expenditures and other uses for the year. The Department of Education must deduct the amount exceeding 10 percent from a school district's succeeding year's foundation entitlement.

FULL AND TRUE VALUE - The Department of Community and Regional Affairs will determine the full value of the taxable real and personal property in each city and borough school district for the purpose of calculating a school district's required local effort.

GATHERING/REPORTING STUDENT DATA - The statute requires districts to report to the Department of Education by October 15 of each school year an estimate of its student population for the next school year. The Department of Education will use the estimates to determine the amount of state foundation aid to seek from the Legislature for the following school year.

ALASKA DEPARTMENT OF EDUCATION
PROJECTED FY96 FOUNDATION PROGRAM ENTITLEMENTS

1/23/95 File:FND96PJ.XLS

Columns >>>

	A	B	C	D	E	F	G	H
	BASIC NEED \$61,000	REQUIRED LOCAL	ELIGIBLE PL81-874	PL81-874 PERCENT	DEDUCTIBLE PL81-874 @ 90%	PROJ FY96 FOUNDATION STATE AID	100% PL-874 FLOW THRU	FOUND/ PL-874 TOTAL
ADAK	0	0	\$0	100.00%	\$0	\$0		\$0
ALASKA GATEWAY	5,278,940	0	435,487	100.00%	391,938	4,887,002	0	4,887,002
ALEUTIAN REGION	527,650	0	65,245	100.00%	58,721	468,929	0	468,929
ALEUTIANS EAST	4,218,150	358,423	583,157	36.91%	193,719	3,668,008	0	3,668,008
ANCHORAGE	237,595,000	49,183,956	9,515,470	65.91%	5,644,482	182,766,562	10,611,700	193,378,262
ANNETTE ISLANDS	2,637,640	0	1,163,121	100.00%	1,046,809	1,590,831	0	1,590,831
BERING STRAIT	19,588,320	0	3,954,145	100.00%	3,558,731	16,029,589	0	16,029,589
BRISTOL BAY	2,464,400	707,169	275,326	60.52%	149,965	1,607,266	0	1,607,266
CHATHAM	3,241,540	0	745,681	100.00%	671,113	2,570,427	0	2,570,427
CHUGACH	1,831,220	0	143,295	100.00%	128,966	1,702,254	0	1,702,254
COPPER RIVER	5,166,700	0	92,218	100.00%	82,996	5,083,704	0	5,083,704
CORDOVA	3,287,290	741,350	21,781	100.00%	19,603	2,526,337	0	2,526,337
CRAIG	2,505,270	254,661	19,100	70.88%	12,184	2,238,425	0	2,238,425
DELTA/GREELY	6,268,360	0	1,025,609	100.00%	923,048	5,345,312	0	5,345,312
DENALI	3,491,640	301,901	31,601	84.33%	23,984	3,165,755	0	3,165,755
DILLINGHAM	3,913,150	524,049	383,482	60.09%	207,391	3,181,710	0	3,181,710
FAIRBANKS	82,378,060	13,811,672	7,545,794	53.89%	3,659,786	64,906,602	8,535,241	73,441,843
GALENA	1,916,620	79,335	360,235	63.00%	204,253	1,633,032	0	1,633,032
HAINES	2,680,950	522,856	21,727	49.40%	9,660	2,148,434	0	2,148,434
HOONAH	2,170,380	96,718	273,515	16.38%	40,322	2,033,340	0	2,033,340
HYDABURG	1,005,280	23,129	19,500	25.93%	4,551	977,600	0	977,600
IDITAROD	5,981,660	0	664,578	100.00%	598,120	5,383,540	0	5,383,540
JUNEAU	28,694,400	7,063,936	19,402	54.93%	9,592	21,620,872	0	21,620,872
KAKE	1,381,650	69,261	322,640	26.78%	77,763	1,234,626	0	1,234,626
KASHUNAMIUT	2,272,250	0	310,795	100.00%	279,716	1,992,534	0	1,992,534
KENAI	59,780,000	14,162,513	95,077	53.10%	45,437	45,572,050	0	45,572,050
KETCHIKAN	13,486,490	3,942,168	10,283	59.26%	5,484	9,538,838	0	9,538,838
KLAWOCK	1,673,230	59,329	314,293	26.80%	75,807	1,538,094	0	1,538,094
KODIAK	17,080,000	3,435,410	1,237,707	93.13%	1,037,409	12,607,181	1,373,786	13,980,967
KUSPUK	5,225,460	0	635,951	100.00%	572,356	5,153,104	0	5,153,104
LAKE AND PENINSULA	7,230,940	276,911	1,176,907	30.60%	324,120	6,629,909	0	6,629,909
LOWER KUSKOKWIM	39,335,850	0	5,264,043	100.00%	4,737,639	34,598,211	0	34,598,211
LOWER YUKON	17,285,570	0	3,750,674	100.00%	3,375,607	13,909,963	0	13,909,963
MAT-SU	68,306,580	8,602,703	16,753	55.37%	8,349	59,695,528	0	59,695,528
NENANA	1,647,000	65,098	3,348	94.64%	2,852	1,579,050	0	1,579,050
NOME	4,986,750	531,875	43,695	42.04%	18,803	4,436,072	0	4,436,072
NORTH SLOPE	16,070,450	5,398,988	3,031,150	19.34%	527,602	10,143,860	0	10,143,860
NORTHWEST ARCTIC	18,837,410	1,168,962	2,564,419	53.62%	1,237,537	16,430,911	0	16,430,911
PELICAN	609,390	55,876	0	83.80%	0	553,514	0	553,514
PETERSBURG	4,022,950	808,223	18,152	55.80%	9,116	3,205,611	0	3,205,611
PRIBILOF	2,166,720	0	426,205	100.00%	383,585	1,783,135	0	1,783,135
SITKA	9,029,220	2,113,115	181,711	55.78%	91,223	6,824,882	0	6,824,882
SKAGWAY	1,067,500	360,794	0	72.95%	0	706,706	0	706,706
SOUTHEAST	4,499,970	0	527,526	100.00%	474,773	4,025,197	0	4,025,197
SOUTHWEST	7,679,290	0	1,231,902	100.00%	1,108,712	6,570,578	0	6,570,578
ST. MARY'S	1,133,990	18,134	140,224	79.70%	100,583	1,015,273	0	1,015,273
TANANA	1,231,590	44,931	203,952	41.22%	75,662	1,110,997	0	1,110,997
UNALASKA	2,765,130	1,015,620	415	70.44%	263	1,749,247	0	1,749,247
VALDEZ	5,203,910	1,795,535	50,110	44.06%	19,871	3,388,504	0	3,388,504
WRANGELL	3,209,820	592,522	2,074	52.20%	974	2,616,324	0	2,616,324
YAKUTAT	1,374,940	111,204	44,730	59.16%	23,816	1,239,920	0	1,239,920
YUKON FLATS	6,299,470	0	723,254	100.00%	650,929	5,648,541	0	5,648,541
YUKON KOYUKUK	8,017,840	0	1,144,433	100.00%	1,029,990	6,987,850	0	6,987,850
YUPIIT	4,969,670	0	989,912	100.00%	890,921	4,078,749	0	4,078,749
STATE CCS	3,808,383	0	0	100.00%	0	3,808,383	0	3,808,383
M. EDGE CUMBE	1,586,000	0	0	100.00%	0	1,586,000	0	1,586,000

TOTALS \$770,618,033 \$118,296,327 \$51,827,804 \$34,826,833 \$617,494,873 \$20,520,727 \$638,015,600

CONTRACTUAL 218,800

ON BASE SCHOOLS ADJUSTMENT 3,667,460

ESTIMATED PRIOR YEAR ADJUSTMENTS 1,500,000

EST FY96 FOUNDATION ENTITLEMENT \$643,401,860

TABLE OF INSTRUCTIONAL UNITS

COMBINED, ELEMENTARY & SECONDARY INSTRUCTIONAL UNITS

Instructional units for funding communities with fewer than 200 students in grades K-6 or fewer than 200 students in grades 7-12 are determined by the formula:

Elementary instructional units for funding communities with more than 200 students in grades K-6 are determined by the formula:

$$\text{UNITS} = 15 + \frac{(\text{ADM} - 200)}{17}$$

17

Secondary instructional units for funding communities with more than 200 students in grades 7-12 are determined by the formula:

$$\text{UNITS} = 18 + \frac{(\text{ADM} - 200)}{13}$$

13

Kindergarten students who attend less than four hours a day are counted as 0.5 ADM.

District correspondence or other students who do not regularly attend school on a daily basis are counted in the appropriate grade level of the funding community with the highest ADM in the district.

ADM	UNITS
1-10	2
11-20	$2 + \frac{(\text{ADM} - 10)}{5}$
21-60	$4 + \frac{(\text{ADM} - 20)}{8}$
61-120	$9 + \frac{(\text{ADM} - 60)}{12}$
121-525	$14 + \frac{(\text{ADM} - 120)}{15}$

VOCATIONAL EDUCATION

FTE * X WEIGHTING FACTOR * .05 = VOCATIONAL EDUCATION UNIT - 280 students in 7 period day or 240 students in 6 period day = 1 Unit

MINIMUM FUNDING: Any funding community in which a vocational education course, approved by the Dept. of Education, is operated receives a minimum of .10 instructional units for vocational education, or each school district in which such a course is operated receives a minimum of 1.00 units whichever is greater.

FACTOR PROGRAM

.5 CATEGORY 1 contains 16 programs: health, consumer and homemaking, horticulture, commercial art, clothing and textiles, general marketing, food production, renewable and natural resources, forestry, agriculture services and supplies, transportation and travel, wildlife management, business management, child care management and surveying.

.5 CATEGORY 2 contains 7 programs: aircraft mechanics, communication technologies, commercial photography, agriculture mechanics, accounting and related, small engine mechanic and automotive body repair.

FACTOR PROGRAM

.5 CATEGORY 3 contains 9 programs: agricultural production, welding, industrial education, woodworking, automobile mechanics, electrical technician, drafting, fisheries and diesel engine mechanics.

.5 CATEGORY 4 contains 3 programs: graphics, secretarial and word processing, and construction trades.

* Full Time Equivalent

SPECIAL EDUCATION

NUMBER OF STUDENTS X WEIGHTING FACTOR = SPECIAL EDUCATION UNITS

MINIMUM FUNDING: Any funding community in which a special education program, approved by the Department of Education, is operated receives a minimum of 0.25 instructional units for special education, or any school district in which such a program is operated receives a minimum of 1.00 such units, whichever is greater.

FACTOR PROGRAM

.025 GIFTED AND TALENTED - 40 Students = 1 Unit

.056 RESOURCES - 18 Students = 1 Unit

FACTOR PROGRAM

0.1 SELF-CONTAINED - 10 Students = 1 Unit

.333 INTENSIVE/HOSPITAL HOMEBOUND - 3 Students = 1 Unit

BILINGUAL EDUCATION

WEIGHTING FACTOR * X STUDENT COUNT X .042 = BILINGUAL EDUCATION UNITS

MINIMUM FUNDING: Any funding community in which a bilingual program, approved by the Dept. of Education, is operated receives a minimum of 0.10 instructional units for bilingual education, or each school district in which such a program is operated receives a minimum of 1.00 such units, whichever is greater.

FACTOR PROGRAM

1 CATEGORY A: Students who speak a language other than English exclusively. 24 Students = 1 Unit

1 CATEGORY B: Students who speak mostly a language other than English, but also speak some English. 24 Students = 1 Unit

.2 CATEGORY C: Students who speak a language other than English and English with equal ease. 119 Students = 1 Unit

FACTOR PROGRAM

.2 CATEGORY D: Students who speak mostly English but also speak a language other than English. 119 Students = 1 Unit

.1 CATEGORY E: Students who speak English exclusively but whose manner of speaking reflects the grammatical structure of another language. 238 Students = 1 Unit

* Language dominance category weighting factor.

ALASKA DEPARTMENT OF EDUCATION
PROJECTED FY96 FOUNDATION PROGRAM ENTITLEMENTS

1/10/95 File:FND96PJ.XLS

The Department of Education has not verified the unit computations submitted by the local school districts.

	PROJ. FY96 ADM	K-12 UNITS	BIL./ BIC.	SPEC. ED.	VOC. ED.	FY96 PROJ. INSTR. UNITS	AREA DIFF.	ADJUSTED FY96 INSTR. UNITS
ADAK	0 00	0 00	0 00	0 00	0 00	0 00	1 27	0 00
ALASKA GATEWAY	535 00	62 16	1 00	8 56	1 00	72 72	1 19	86 54
ALEUTIAN REGION	18 00	3 60	1 00	1 00	1 00	6 60	1 31	8 65
ALEUTIANS EAST	371 00	46 86	0 00	4 93	1 00	52 79	1 31	69 15
ANCHORAGE	46 843 00	3,140 02	88 56	629 98	36 41	3,895 00	1 00	3,895 00
ANNETTE ISLANDS	420 00	34 00	1 00	5 98	1 00	41 98	1 03	43 24
BERING STRAIT	1,694 00	195 23	13 98	19 53	2 28	231 02	1 39	321 12
BRISTOL BAY	279 00	26 33	1 00	3 48	1 00	31 81	1 27	40 40
CHATHAM	328 00	44 61	1 00	4 98	1 00	51 59	1 03	53 14
CHUGACH	135 00	22 87	1 00	1 46	1 00	26 33	1 14	30 02
COPPER RIVER	614 00	67 88	0 00	5 42	1 00	74 30	1 14	84 70
CORDOVA	525 00	40 63	1 00	5 92	1 00	48 55	1 11	53 89
CRAIG	385 00	31 67	1 00	6 20	1 00	39 87	1 03	41 07
DELTA/GREELY	971 00	72 46	1 00	14 13	1 00	88 59	1 16	102 76
DENALI	405 00	42 20	0 00	3 34	1 00	46 54	1 23	57 24
DILLINGHAM	503 80	39 06	1 19	9 26	1 00	50 51	1 27	64 15
FAIRBANKS	15 893 50	1,088 15	6 09	190 78	13 50	1,298 52	1 04	1,350 46
GALENA	194 00	18 93	1 00	3 24	1 00	24 17	1 30	31 42
HAINES	422 00	35 91	1 00	3 95	1 00	41 86	1 05	43 95
HOONAH	275 00	24 33	1 00	6 61	1 00	32 94	1 08	35 58
HYDABURG	108 00	13 00	1 00	1 00	1 00	16 00	1 03	16 48
IDITAROD	440 00	63 74	1 24	7 75	1 00	73 73	1 33	98 06
JUNEAU	5 394 00	264 76	3 84	98 71	3 09	470 40	1 00	470 40
KAKE	178 00	17 86	1 00	2 13	1 00	21 99	1 03	22 65
KASHUNAMIUT	242 00	22 13	1 83	3 05	1 00	28 01	1 33	37 25
KENAI	10 459 00	828 39	19 60	120 72	11 29	980 00	1 00	980 00
KETCHIKAN	2,731 50	190 04	1 54	25 15	4 36	221 09	1 00	221 09
KLAWOCK	220 00	20 67	1 00	3 96	1 00	26 63	1 03	27 43
KODIAK	2,737 86	217 44	5 63	30 84	2 97	256 88	1 09	280 00
KUSPUK	467 00	62 52	1 00	6 05	1 00	70 57	1 33	93 86
LAKE AND PENN.	498 00	81 71	1 00	6 78	1 00	90 49	1 31	118 54
LOWER KUSKOKWIM	3 250 00	335 00	83 47	32 05	3 60	454 12	1 42	644 85
LOWER YUKON	1 605 60	179 76	9 57	18 78	1 79	209 90	1 35	283 37
MAT-SU	12 720 00	944 67	10 57	153 11	11 43	1,119 78	1 00	1,119 78
NENANA	180 00	18 00	1 00	2 50	1 00	22 50	1 20	27 00
NOME	694 00	50 62	1 04	8 33	1 02	61 01	1 34	81 75
NORTH SLOPE	1,768 00	158 84	9 15	11 91	1 79	181 69	1 45	263 45
NORTHWEST ARCTIC	1,891 00	184 78	4 14	21 65	2 39	212 97	1 45	308 81
PELICAN	46 00	7 25	0 00	1 00	1 00	9 25	1 08	9 99
PETERSBURG	768 00	56 82	1 00	7 13	1 00	65 95	1 00	65 95
PRIBILOF	190 00	22 85	1 00	2 47	1 00	27 32	1 30	35 52
SITKA	1 820 00	131 05	1 00	14 03	1 94	148 02	1 00	148 02
SKAGWAY	130 00	14 67	0 00	1 00	1 10	16 67	1 05	17 50
SOUTHEAST	381 00	63 86	1 00	4 97	1 10	70 93	1 04	73 77
SOUTHWEST	633 00	77 08	11 12	6 90	1 00	96 10	1 31	125 89
ST. MARY'S	85 00	11 08	1 00	1 22	1 00	14 30	1 30	18 59
TANANA	101 00	12 42	1 00	1 11	1 00	15 53	1 30	20 19
UNALASKA	370 00	30 67	1 00	3 02	1 00	35 69	1 27	45 33
VALDEZ	925 00	67 50	0 00	8 36	1 00	76 86	1 11	85 31
WRANGELL	567 00	43 62	1 00	7 00	1 00	52 62	1 00	52 62
YAKUTAT	161 00	16 73	1 00	2 14	1 00	20 87	1 08	22 54
YUKON FLATS	413 00	62 91	2 07	4 65	1 10	70 73	1 46	103 27
YUKON KOYUKUK	613 00	82 52	2 62	10 89	2 06	98 09	1 34	131 44
YUPIIT	371 00	42 47	7 82	6 49	1 00	57 78	1 41	81 47
STATE CCS	1 577 93	96 05	0 00	0 00	0 00	96 05	1 00	96 05
MI. EDGE CUMDE	270 00	23 00	1 00	1 00	1 00	26 00	1 00	26 00
TOTALS	125 817 10	9 653 39	313 07	1 566 60	139 15	11 672 21		12 666 70

FY95 FOUNDATION FUNDING COMMUNITY				
FIRST STUDENT COUNT PERIOD				
SCHOOL DISTRICT	FUNDING COMMUNITY	ADM BY COMMUNITY	ADM BY DISTRICT	
REAA	ADAK	ADAK	0 00	0 00
REAA	ALASKA GATEWAY	ALCAN BORDER	7 00	538 16
		DOT LAKE	24 00	
		EAGLE	23 90	
		MENTASTA	25 36	
		NORTHWAY	83 30	
		TANACROSS	16 25	
		TETLIN	30 95	
		TOK	325 40	
REAA	ALEUTIAN REGION	ATKA	18 00	18 00
CB	ALEUTIAN EAST	AKUTAN	24 00	365 00
		COLD BAY	22 00	
		FALSE PASS	27 00	
		KING COVE	154 00	
		NELSON LAGOON	10 00	
		SAND POINT	128 00	
CB	ANCHORAGE	ANCHORAGE	39 465 23	45 895 60
		EAGLE RIVER	6 250 87	
		GIRDWOOD	169 50	
REAA	ANNETTE ISLAND	ANNETTE	420 00	420 00
REAA	BERING STRAIT	BREVIK MISSION	85 55	1,600 70
		DIOMEDE	55 55	
		ELIM	93 10	
		GAMBELL	179 15	
		GOLOVIN	51 00	
		KOYUK	79 80	
		SAYOONGA	143 30	
		SHAKTOOLIK	69 80	
		SHISHMARF	174 90	
		ST MICHAEL	116 20	
		STEBBENS	140 60	
		TELLER	83 40	
		UNALAKLEET	216 00	
		WALES	51 75	
		WHITE MOUNTAIN	60 00	
CB	BRISTOL BAY	BRISTOL BAY	254 25	269 25
		SOUTHNAKNEK	15 00	
REAA	CHATHAM	ANGDON	156 00	325 85
		CUBE COVE	29 00	
		ELFIN COVE	0 00	
		GUSTAVUS	78 70	
		KOBAHT BAY	12 25	
		KLUKWAN	27 90	
		TENAKLE SPRINGS	13 00	

FY95 FOUNDATION FUNDING COMMUNITY				
FIRST STUDENT COUNT PERIOD				
SCHOOL DISTRICT	FUNDING COMMUNITY	ADM BY COMMUNITY	ADM BY DISTRICT	
REAA	CHUGACH	CHENEGA BAY	13 00	133 00
		ICY BAY	13 00	
		TATILEK	32 00	
		TWO MOON BAY	10 00	
		WHITTIER	65 00	
STATE	CCS	CCS	1,477 16	1,477 16
REAA	COPPER RIVER	CHRISTOCHINA	13 30	623 25
		COPPER CENTER	69 80	
		GAKONA	21 76	
		GLENNALLEN	364 80	
		KENNY LAKE	107 80	
		LOTTIE SPARKS	17 00	
		SIANA	28 80	
CB	CORDOVA	CORDOVA	528 15	528 15
CB	CRAIG	CRAIG	398 00	398 00
REAA	DELTA/GREELY	DELTA JUNCTION	954 60	974 00
		HEALY LAKE	10 00	
CB	DENALI	ANDERSON	125 30	384 55
		CANTWELL	27 00	
		HEALY	232 25	
CB	DILLINGHAM	DILLINGHAM	496 20	496 20
CB	FAIRBANKS	FAIRBANKS	10,451 00	15,406 50
		NORTH POLE	3,189 00	
		SALCHA	66 50	
		TWO RIVERS	118 50	
		FIELSON	1,581 50	
CB	GALLA	GALENA	142 00	142 00
CB	HAINES	HAINES	403 15	413 15
		MOSQUITO LAKE	10 00	
CB	HOONAH	HOONAH	259 40	259 40
CB	HYDABURG	HYDABURG	107 50	107 50
REAA	IDITAROD	ANVIK	21 45	417 85
		GRAYLING	60 95	
		HOLY CROSS	69 35	
		LAKE MINCHUMINA	10 00	
		LIWE VILLAGE	12 00	
		MCGRATH	148 00	
		NIKOLAI	22 00	
		SHAGELUK	43 05	
		TAKOTNA	27 05	
		TELIDA	4 00	

FY95 FOUNDATION FUNDING COMMUNITY				
FIRST STUDENT COUNT PERIOD				
SCHOOL DISTRICT	FUNDING COMMUNITY	ADM BY COMMUNITY	ADM BY DISTRICT	
C/B	JUNEAU	JUNEAU	6,399.75	6,399.75
C/B	KAKE	KAKE	185.00	185.00
REAA	KASHUNAMIUT	CHEVAK	229.90	229.90
C/B	KENAI PENINSULA	ANCHOR POINT	249.35	10,144.00
		BELUGA	6.00	
		COOPER LANDING	41.35	
		HOMER	1,314.20	
		HOPE	44.65	
		KACHEMAK SELO	55.70	
		KASILOF	272.50	
		KENAI	1,731.10	
		MCCOY CANYON	203.80	
		MOOSE PASS	35.00	
		NANWALEK	45.40	
		NIKISKI	1,121.80	
		NIKOLAEVSK	159.25	
		NINILCHIK	201.75	
		PORT GRAHAM	36.00	
		RAZDOLNA	40.00	
		SELDOVIA	84.95	
		SEWARD	880.50	
		SOLDOTNA	3,086.10	
		STERLING	386.35	
		TYONEK	39.60	
		VOZNESENKA	108.65	
C/B	KETCHIKAN	KETCHIKAN	2,728.93	2,728.93
C/B	KLAWOCK	KLAWOCK	206.95	206.95
C/D	KODIAK ISLAND	AKHIOK	20.60	2,711.45
		BIG SANDY LAKE	14.90	
		CHIVIAK	32.80	
		DANGER BAY	13.40	
		KARLUK	7.90	
		KODIAK	2,392.05	
		LARSEN BAY	26.40	
		OLD HARBOR	91.40	
		OZZINKIE	44.50	
		PORT LIONS	67.60	
REAA	KUSPIK	ANIAX	176.20	444.30
		CHUATHNALUK	35.25	
		CHOOKED CREEK	37.25	
		RED DEVIL	15.05	
		SLEETMUTE	21.25	
		STONY RIVER	11.15	
		UPPER KALSKAG	95.00	
		LOWER KALSKAG	63.15	

FY95 FOUNDATION FUNDING COMMUNITY				
FIRST STUDENT COUNT PERIOD				
SCHOOL DISTRICT	FUNDING COMMUNITY	ADM BY COMMUNITY	ADM BY DISTRICT	
C/D	LAKE & PENINSULA	CHIGNIK BAY	21.30	607.63
		CHIGNIK LAGOON	27.75	
		CHIGNIK LAKE	53.00	
		EGEGIK	28.00	
		IGIUGIG	13.00	
		IVANOF BAY	14.00	
		KOKHANOK	48.20	
		LEVELOK	28.13	
		NEWHALEN	89.80	
		NONDALTON	66.55	
		PEDRO BAY	9.00	
		PERRYVILLE	35.00	
		PILOT POINT	25.95	
		PORT ALSWORTH	24.40	
		PORT HEIDEN	26.55	
REAA	LOWER KUSKOKWIM	AKIUK	70.50	3,051.05
		AKULA	72.65	
		ATMAUTLAUK	76.50	
		BETHIEL	1,124.10	
		CHEFORNAK	110.50	
		ECK	59.05	
		GOODNEWS BAY	66.70	
		KIPNUK	163.90	
		KONGIGANAK	91.45	
		KWETHLUK	181.20	
		KWIGILLINGOK	91.00	
		MEKORYUK	42.05	
		NAPAKIAK	88.70	
		NAPASKIAK	98.25	
		NEWTOK	85.75	
		NIGHTMUTE	46.35	
		NUNAPITCHUK	122.00	
		OSCARVILLE	13.75	
		PLATINUM	8.00	
		QUINHAGAK	127.40	
		TOKSOOK BAY	138.70	
		TUNTUTULIAK	70.60	
		TUNUNAK	92.95	
REAA	LOWER YUKON	ALAKANAK	154.40	1,820.65
		EMMONAK	203.00	
		HOOVER BAY	329.15	
		KOTLIK	168.40	
		MARSHALL	67.80	
		MOUNTAIN VILLAGE	222.70	
		PILOT STATION	156.05	
		PITKAS POINT	35.00	
		RUSSIAN MISSION	94.50	
		SCAMMON BAY	119.35	
		SHELDON POINT	46.20	

FY95 FOUNDATION FUNDING COMMUNITY FIRST STUDENT COUNT PERIOD				
	SCHOOL DISTRICT	FUNDING COMMUNITY	ADM BY COMMUNITY	ADM BY DISTRICT
STATE	MT EDGE CUMBE	MT EDGE CUMBE	282 30	282 30
CB	MAT-SU	BERYOZAYA	13 00	11,894 00
		BIG LAKE	622 80	
		BUTTE	388 90	
		COLONY	4 025 30	
		GLACIER VIEW	54 20	
		HOUSTON	567 70	
		MAT-SU VALLEY	193 10	
		PALMER	2 238 00	
		PT MCKENZIE	457 60	
		SKWENTNA	18 00	
		SUTTON	91 10	
		TALKEETNA	131 70	
		TRAPPER CREEK	57 70	
		WASILLA	2 837 10	
		WILLOW	197 80	
CB	NENANA	NENANA	162 91	162 91
CB	NOME	NOME	701 75	701 75
CB	NORTH SLOPE	ANAKTIUVUK PASS	84 50	1,707 10
		ATQASUK	46 95	
		BARROW	979 15	
		KAKTOVIK	48 00	
		NUQSUT	112 76	
		POINT HOPE	217 50	
		POINT LAY	62 00	
		WAINWRIGHT	161 25	
CB	NORTHWEST ARCTIC	AMBLER	101 00	1 672 80
		BUCKLAND	118 00	
		DEERING	44 90	
		KIANA	131 55	
		KIVALINA	104 35	
		KOBIUK	21 00	
		KOTZEBUE	773 65	
		NOATAK	118 70	
		NOORVIK	209 76	
		SELAWIK	224 90	
		SHINGNAK	75 00	
CB	PELICAN	PELICAN	44 85	44 85
CB	PETERSBURG	PETERSBURG	758 75	758 75
REAA	PRIBLOF	ST GEORGE	42 00	168 65
		ST PAUL	126 65	
CB	SITKA	CORNER BAY	13 60	1 838 60
		FALSE PASS	10 70	
		SITKA	1 814 30	

FY95 FOUNDATION FUNDING COMMUNITY FIRST STUDENT COUNT PERIOD				
	SCHOOL DISTRICT	FUNDING COMMUNITY	ADM BY COMMUNITY	ADM BY DISTRICT
CB	SKAGWAY	SKAGWAY	127 20	127 20
REAA	SOUTHEAST ISLAND	CRAIK	15 10	381 95
		EDNA BAY	18 70	
		HOLLIS	22 65	
		HOWARD VALENTINE	44 30	
		JH GILDERSLEEVE	15 00	
		MEYER CHUCK	5 00	
		NAUKATI	41 30	
		POLK INLET	11 30	
		PORT ALEXANDER	27 60	
		PORT PROTECTION	17 40	
		THORNE BAY	150 60	
		WHALE PASS	13 00	
REAA	SOUTHWEST REGION	ALEKNAGIK NORTH	25 45	568 30
		CLARKS POINT	15 00	
		EKWOK	28 00	
		KOLIGANEK	58 00	
		MANOKOTAK	123 65	
		NEW STUYAHOK	115 55	
		TOGIAK	185 65	
		TWIN HILLS	17 00	
CB	ST MARYS	ST MARYS	108 60	108 60
CB	TANANA	TANANA	102 25	102 25
CB	UNALASKA	UNALASKA	358 10	358 10
CB	VALDEZ	VALDEZ	902 75	902 75
CB	WRANGELL	WRANGELL	566 85	566 85
CB	YAKUTAI	YAKUTAI	167 00	167 00
REAA	YUKON FLATS	ARCTIC VILLAGE	38 50	475 15
		BEAVER	18 00	
		BIRCH CREEK	10 25	
		CENTRAL	15 00	
		CHARVITSIK	21 00	
		CIRCLE	28 00	
		FORT YUKON	138 70	
		NORTHERN LIGHTS	25 00	
		RAMPART	18 80	
		STEVENS VILLAGE	27 00	
		VENETIE	64 90	

FY95 FOUNDATION FUNDING COMMUNITY FIRST STUDENT COUNT PERIOD				
SCHOOL DISTRICT	FUNDING COMMUNITY	ADM BY COMMUNITY	ADM BY DISTRICT	
REAA	YLIKON/KOYUKUK	ALLAKAKET	35 80	590 10
		BETTLES	15 15	
		HUGHES	12 00	
		MUSLIA	81 25	
		KALTAG	87 00	
		KOYUKUK	38 60	
		MANLEY HOT SPRINGS	24 00	
		MINTO	88 45	
		NULATO	160 85	
		RUBY	89 00	
REAA	YUPIIT	AKIACHAK	140 00	387 00
		AKIAK	123 00	
		TULUKSAK	104 00	
TOTAL:			122,488.80	

ALASKA DEPARTMENT OF EDUCATION
 PROJECTED FY06 FOUNDATION PROGRAM ENTITLEMENTS

1/10/95 File:FND96PJ.XLS

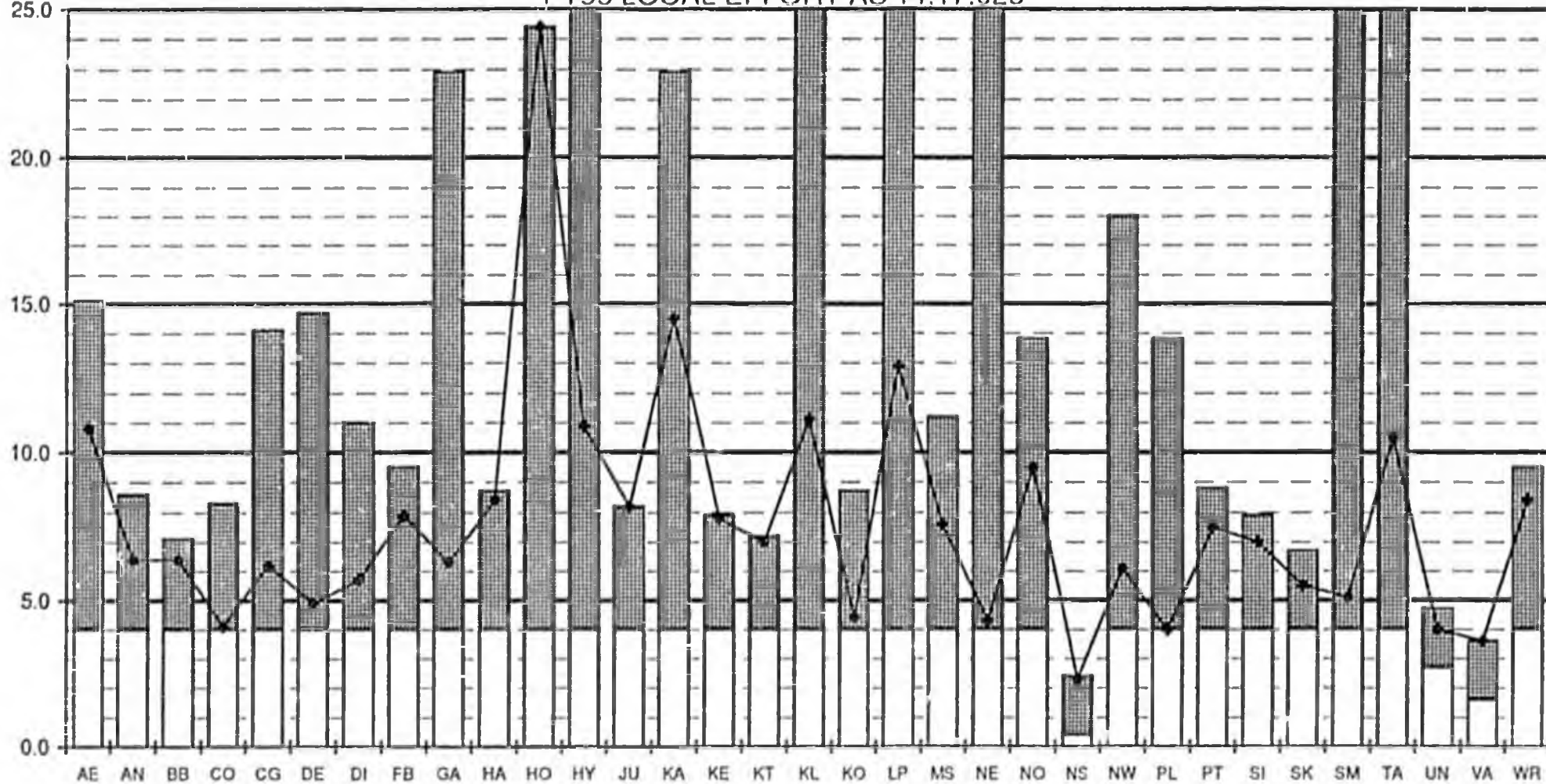
	BUDGETED FY95 LOCAL REVENUE	1994 FULL VALUE DETERMINATION
ADAK	\$0	
ALASKA GATEWAY	0	
ALEUTIAN REGION	0	
ALEUTIANS EAST	965,670	89,105,700
ANCHORAGE	74,623,835	12,295,989,030
ANNETTE ISLANDS	0	
BERING STRAIT	0	
BRISTOL BAY	1,168,421	176,792,300
CHATHAM	0	
CHUGACH	0	
COPPER RIVER	0	
CORDOVA	718,370	185,337,580
CRAIG	359,286	63,665,300
DELTA/GREELY	0	
DENALI	358,011	75,475,300
DILLINGHAM	872,054	131,012,300
FAIRBANKS	25,630,000	3,452,917,970
GALENA	125,925	19,833,700
HAINES	1,058,311	130,714,100
HOONAH	590,348	24,179,400
HYDABURG	89,211	5,782,300
IDITAROD	0	
JUNEAU	12,859,032	1,765,984,100
KAKE	258,585	17,315,300
KASHUNAMIUT	0	
KENAI	26,671,637	3,540,628,280
KETCHIKAN	6,652,147	985,541,900
KLAWOCK	221,352	14,832,300
KODIAK	3,688,900	858,852,600
KUSPUK	0	
LAKE AND PENINSULA	905,000	69,227,800
LOWER KUSKOKWIM	0	
LOWER YUKON	0	
MAT-SU	15,538,065	2,150,675,790
NENANA	68,786	16,274,400
NOME	1,265,196	132,968,700
NORTH SLOPE	27,913,000	12,293,043,490
NORTHWEST ARCTIC	2,179,920	292,240,600
PELICAN	66,679	13,968,900
PETERSBURG	1,448,406	202,055,700
PRIBILOF	0	
SITKA	3,788,524	528,278,800
SKAGWAY	494,574	90,198,400
SOUTHEAST	0	
SOUTHWEST	0	
ST. MARY'S	22,753	4,533,500
TANANA	109,000	11,232,800
UNALASKA	1,441,736	358,385,300
VALDEZ	4,074,970	1,052,513,810
WRANGELL	1,135,168	148,130,400
YAKUTAT	187,982	27,801,100
YUKON FLATS	0	
YUKON/KOYUKUK	0	
YUPIIT	0	
STATE CCS	0	
MI. EDGE CUMBE	0	
TOTALS	\$217,506,674	\$41,225,488,950

MILL EQUIVALENT OF TAX EFFORT

1/18/95 FILE: LOCAL.XLC

MILL EQUIVALENT
25.0

FY95 LOCAL EFFORT AS 14.17.025



MINIMUM - required local effort
 ALLOWABLE EXCESS - 23% of Basic Need
 LOCAL CONTRIBUTION - FY95 Budgeted Revenue, AS 14.17.250(7)

THIS CHART HAS BEEN LIMITED TO 25 MILLS.

ALASKA DEPARTMENT OF EDUCATION
 FY95 FOUNDATION PROGRAM AS 14.17.025

1/20/95 FILE: LOCAL95.XLS

/1

Abbreviations for chart on page 1.			(1993 Value)	ALLOWABLE	AS 14.17.250(7)	1993 FULL VALUE	FY95	TOTAL	AS 14.17.250(7)	
			REQUIRED	EXCESS	BUDGETED	DETERMINATION	REQUIRED	ALLOWABLE	ALLOWABLE	
			MILL EQUIV.	MILL EQUIV.	MILL EQUIV.	BY C&RA	LOCAL	EXCESS	LOCAL	
									BUDGETED	
									LOCAL	
ALEUTIANS EAST	=	AE	4.0	11.1	10.8	\$88,639,100	\$354,556	\$981,399	\$1,335,955	\$958,670
ANCHORAGE	=	AN	4.0	4.6	6.4	11,684,138,340	46,736,553	53,589,690	100,326,243	74,484,835
BRISTOL BAY	=	BB	4.0	3.1	6.4	181,347,300	725,389	562,182	1,287,571	1,153,421
CORDOVA	=	CO	4.0	4.3	4.1	174,882,450	699,530	760,286	1,459,816	709,870
CRAIG	=	CG	4.0	10.1	6.2	57,618,300	230,473	581,824	723,549	356,891
DENALI	=	DE	4.0	10.7	4.9	72,572,400	290,290	775,999	1,066,289	358,011
DILLINGHAM	=	DI	4.0	7.0	5.7	127,166,600	508,666	891,607	1,400,273	725,054
FAIRBANKS	=	FB	4.0	5.5	7.9	3,377,031,860	13,508,127	18,423,495	31,931,622	26,629,500
GALENA	=	GA	4.0	18.9	6.3	19,383,700	77,535	365,482	443,017	122,925
HAINES	=	HA	4.0	4.7	8.4	124,255,200	497,021	589,400	1,086,421	1,047,311
HOONAH	=	HO	4.0	20.4	24.4	23,127,700	92,511	471,268	563,779	563,779
HYDABURG	=	HY	4.0	40.6	10.9	5,686,500	22,746	230,653	253,399	61,711
JUNEAU	=	JU	4.0	4.2	8.2	1,574,439,800	6,297,759	6,620,617	12,918,376	12,886,000
KAKE	=	KA	4.0	18.9	14.5	17,231,200	68,925	326,057	394,982	250,000
KENAI	=	KE	4.0	3.9	7.8	3,428,536,760	13,714,147	13,319,240	27,033,387	26,869,437
KETCHIKAN	=	KT	4.0	3.2	7.0	954,350,400	3,817,402	3,092,493	6,909,895	6,681,993
KLAWOCK	=	KL	4.0	25.1	11.1	14,808,300	59,233	372,216	431,449	164,900
KODIAK	=	KO	4.0	4.7	4.4	843,618,100	3,374,472	3,938,361	7,312,833	3,699,287
LAKE AND PENINSULA	=	LP	4.0	24.5	12.9	68,357,600	273,430	1,675,603	1,949,033	885,000
MAT-SU	=	MS	4.0	7.2	7.6	2,037,791,320	8,151,165	14,619,260	22,770,425	15,462,862
NENANA	=	NE	4.0	24.5	4.3	14,628,600	58,514	358,326	416,840	63,514
NOME	=	NO	4.0	9.8	9.5	122,757,400	491,030	1,207,001	1,698,031	1,161,551
NORTH SLOPE /2	=	NS	0.4	2.0	2.3	12,174,025,630	5,042,443	24,348,051	29,390,494	27,863,000
NORTHWEST ARCTIC	=	NW	4.0	14.0	6.1	307,484,000	1,229,936	4,298,652	5,528,588	1,879,920
PELICAN	=	PL	4.0	9.8	4.0	14,044,800	56,179	138,055	194,234	56,179
PETERSBURG	=	PT	4.0	4.8	7.5	191,832,400	767,330	914,756	1,682,086	1,446,224
SITKA	=	SI	4.0	3.9	7.0	540,479,000	2,161,916	2,111,936	4,273,852	3,806,524
SKAGWAY	=	SK	4.0	2.7	5.5	89,643,500	358,574	242,719	601,293	494,574
ST. MARY'S	=	SM	4.0	68.2	5.1	4,438,300	17,753	302,627	320,380	22,753
TANANA	=	TA	4.0	25.4	10.5	11,221,100	44,884	285,090	329,974	117,368
UNALASKA /2	=	UN	2.7	2.0	4.0	351,078,720	945,805	702,157	1,647,962	1,405,800
VALDEZ /2	=	VA	1.6	2.0	3.6	1,117,648,910	1,798,311	2,235,298	4,033,609	4,026,990
WRANGELL	=	WR	4.0	5.5	8.4	133,060,900	532,244	729,700	1,261,944	1,120,168
YAKUTAT	=	YA	4.0	13.2	7.2	24,915,200	99,661	328,723	428,384	178,620
TOTALS				Average contribution in mills >	7.7	\$39,972,241,390	\$113,104,510	\$160,390,223	\$273,405,985	\$217,714,642

/1 Can not exceed the total allowable local.

/2 Required local effort is limited to 35% of Basic Need of the preceding year. Allowable excess is 2 mills.

FY95 FOUNDATION FUNDING COMMUNITY 1/95 FILE: G:\dist\sup\95found\95ADMFC.XLS
 FIRST STUDENT COUNT PERIOD

	SCHOOL DISTRICT	FUNDING COMMUNITY	ADM BY COMMUNITY	DISTRICT ADM	
REAA	ADAK	ADAK	0.00	0.00	1
REAA	IDITAROD	TELIDA	4.00	417.85	2
REAA	SOUTHEAST ISLAND	MEYER CHUCK	5.00	381.95	3
C/B	KENAI PENINSULA	BELUGA	6.00	10,144.00	4
REAA	ALASKA GATEWAY	ALCAN BORDER	7.00	536.15	5
C/B	KODIAK ISLAND	KARLUK	7.90	2,711.45	6
REAA	CHATHAM	ELFIN COVE	8.00	325.85	7
REAA	LOWER KUSKOKWIM	PLATINUM	8.00	3,051.05	8
C/B	LAKE & PENINSULA	PEDRO BAY	9.00	507.63	9
REAA	CHUGACH	TWO MOON BAY	10.00	133.00	10
REAA	DELTA/GREELY	HEALY LAKE	10.00	974.00	11
REAA	IDITAROD	LAKE MINCHUMINA	10.00	417.85	12
C/B	ALEUTIAN EAST	NELSON LAGOON	10.00	365.00	13
C/B	HAINES	MOSQUITO LAKE	10.00	413.15	14
REAA	YUKON FLATS	BIRCH CREEK	10.25	405.15	15
C/B	SITKA	FALSE PASS	10.70	1,838.68	16
REAA	KUSPUK	STONY RIVER	11.15	444.30	17
REAA	SOUTHEAST ISLAND	POLK INLET	11.30	381.95	18
REAA	YUKON/KOYUKUK	HUGHES	12.00	590.10	19
REAA	IDITAROD	LIME VILLAGE	12.00	417.85	20
REAA	CHATHAM	HOBART BAY	12.25	325.85	21
REAA	CHATHAM	TENAKEE SPRINGS	13.00	325.85	22
REAA	CHUGACH	CHENEGA BAY	13.00	133.00	23
REAA	CHUGACH	ICY BAY	13.00	133.00	24
REAA	SOUTHEAST ISLAND	WHALE PASS	13.00	381.95	25
C/B	MAT-SU	BERYOZAVA	13.00	11,894.00	26
C/B	LAKE & PENINSULA	IGIUGIG	13.00	507.63	27
REAA	COPPER RIVER	CHISTOCHINA	13.30	1,587.25	28
C/B	KODIAK ISLAND	DANGER BAY	13.40	2,711.45	29
C/B	SITKA	CORNER BAY	13.60	1,838.68	30
REAA	LOWER KUSKOKWIM	OSCARVILLE	13.75	3,051.05	31
C/B	LAKE & PENINSULA	IVANOF BAY	14.00	507.63	32
C/B	KODIAK ISLAND	BIG SANDY LAKE	14.00	2,711.45	33
REAA	SOUTHEAST ISLAND	JR GILDERSLEEVE	15.00	381.95	34
REAA	SOUTHWEST REGION	CLARKS POINT	15.00	568.30	35
REAA	YUKON FLATS	CENTRAL	15.00	405.15	36
C/B	BRISTOL BAY	SOUTH NAKNEK	15.00	269.25	37

FY95 FOUNDATION FUNDING COMMUNITY 1/95 FILE: G:\dist\sup\95found\95ADMFC.XLS
 FIRST STUDENT COUNT PERIOD

SCHOOL DISTRICT	FUNDING COMMUNITY	ADM BY COMMUNITY	DISTRICT ADM	
REAA KUSPUK	RED DEVIL	15 05	444 30	38
REAA SOUTHEAST ISLAND	CRAIK	15 10	381 95	39
REAA YUKON/KOYUKUK	BETTLES	15 15	590 10	40
REAA ALASKA GATEWAY	TANACROSS	16 25	536 15	41
REAA COPPER RIVER	LOTTIE SPARKS	17 00	1,587 25	42
REAA SOUTHWEST REGION	TWIN HILLS	17 00	568 30	43
REAA SOUTHEAST ISLAND	PORT PROTECTION	17 40	381 95	44
REAA ALEUTIAN REGION	ATKA	18 00	18 00	45
REAA YUKON FLATS	BEAVER	18 00	405 15	46
C/B MAT-SU	SKWENTNA	18 00	11,894 00	47
REAA SOUTHEAST ISLAND	EDNA BAY	18 70	381 95	48
REAA YUKON FLATS	RAMPART	18 80	405 15	49
C/B KODIAK ISLAND	AKHIOK	20 50	2,711 45	50
REAA YUKON FLATS	CHALKYITSIK	21 00	405 15	51
C/B NORTHWEST ARCTIC	KOBUK	21 00	1,877 80	52
REAA KUSPUK	SLEETNUTE	21 25	444 30	53
C/B LAKE & PENINSULA	CHIGNIK BAY	21 30	507 63	54
REAA IDITAROD	ANVIK	21 45	417 85	55
REAA COPPER RIVER	DAKONA	21 75	1,587 25	56
REAA IDITAROD	NIKOLAI	22 00	417 85	57
C/B ALEUTIAN EAST	COLD BAY	22 00	365 00	58
REAA SOUTHEAST ISLAND	HOLLIS	22 65	381 95	59
REAA ALASKA GATEWAY	EAGLE	23 20	536 15	60
REAA ALASKA GATEWAY	DOT LAKE	24 00	536 15	61
REAA YUKON/KOYUKUK	MANLEY HOT SPRINGS	24 00	590 10	62
C/B ALEUTIAN EAST	AKUTAN	24 00	365 00	63
C/B LAKE & PENINSULA	PORT ALSWORTH	24 40	507 63	64
REAA YUKON FLATS	NORTHERN LIGHTS	25 00	405 15	65
REAA ALASKA GATEWAY	MENTASTA	25 25	536 15	66
REAA SOUTHWEST REGION	ALEKNAGIK NORTH	25 45	568 30	67
C/B LAKE & PENINSULA	PILOT POINT	25 95	507 63	68
C/B LAKE & PENINSULA	EGEEK	26 00	507 63	69
C/B KODIAK ISLAND	LARSEN BAY	26 40	2,711 45	70
C/B LAKE & PENINSULA	PORT HEIDEN	26 55	507 63	71
REAA YUKON FLATS	STEVENS VILLAGE	27 00	405 15	72
C/B ALEUTIAN EAST	FALSE PASS	27 00	365 00	73
C/B DENALI	CANTWELL	27 00	364 55	74

FY95 FOUNDATION FUNDING COMMUNITY 1/95 FILE: G:\distup\95found\95ADMFC.XLS
 FIRST STUDENT COUNT PERIOD

SCHOOL DISTRICT	FUNDING COMMUNITY	ADM BY COMMUNITY	DISTRICT ADM	
REAA	IDITAROD	TAKOTNA	27 05	417 85 75
REAA	SOUTHEAST ISLAND	PORT ALEXANDER	27 60	381 95 76
CB	LAKE & PENINSULA	CHIGNIK LAGOON	27 75	507 63 77
REAA	CHATHAM	KLUKWAN	27 90	325 85 78
REAA	SOUTH WEST REGION	EKWOK	28 00	538 30 79
REAA	YUKON FLATS	CIRCLE	28 00	405 15 80
CB	LAKE & PENINSULA	LEVELOK	28 13	507 63 81
REAA	COPPER RIVER	SLANA	28 80	1,587 25 82
REAA	CHATHAM	CUBE COVE	29 00	325 85 83
REAA	ALASKA GATEWAY	TETLIN	30 95	536 15 84
REAA	CHUGACH	TATITLEK	32 00	133 00 85
CB	KODIAK ISLAND	CHINIAK	32 80	2,711 45 86
REAA	LOWER YUKON	PITKAS POINT	35 00	1,620 65 87
CB	KENAI PENINSULA	MOOSE PASS	35 00	10,144 00 88
CB	LAKE & PENINSULA	PEFTYVILLE	35 00	507 63 89
REAA	KUSPUK	CHUATHBALUK	35 25	444 30 90
REAA	YUKON KOYUKUK	ALLAKAKET	35 80	590 10 91
CB	KENAI PENINSULA	PORT GRAHAM	36 00	10,144 00 92
REAA	YUKON KOYUKUK	KOYUKUK	36 60	590 10 93
REAA	KUSPUK	CROOKED CREEK	37 25	444 30 94
REAA	YUKON FLATS	ARCTIC VILLAGE	38 50	405 15 95
CB	KENAI PENINSULA	TYONEK	39 60	10,144 00 96
CB	KENAI PENINSULA	RAZDOLNA	40 00	10,144 00 97
REAA	SOUTHEAST ISLAND	NAUKATI	41 30	381 95 98
CB	KENAI PENINSULA	COOPER LANDING	41 35	10,144 00 99
REAA	PRIEBLOF	ST GEORGE	42 00	168 65 100
REAA	LOWER KUSKOKWIM	MEKORYUK	42 05	3,051 05 101
REAA	IDITAROD	SHAGELUK	43 05	417 85 102
REAA	SOUTHEAST ISLAND	HOWARD VALENTINE	44 30	381 95 103
CB	KODIAK ISLAND	OUZINKIE	44 50	2,711 45 104
CB	KENAI PENINSULA	HOPE	44 65	10,144 00 105
CB	PELICAN	PELICAN	44 85	44 85 106
REAA	LOWER YUKON	SHELDON POINT	45 20	1,620 65 107
CB	KENAI PENINSULA	NANWALEK	45 40	10,144 00 108
REAA	LOWER KUSKOKWIM	NIGHTMUTE	46 35	3,051 05 109
CB	NORTH SLOPE	ATQASUK	46 95	1,702 10 110
CB	NORTH SLOPE	KAKTOVIK	48 00	1,702 10 111

FY95 FOUNDATION FUNDING COMMUNITY 1/95 FILE: G:\distup\95found\95ADMFC XLS
 FIRST STUDENT COUNT PERIOD

SCHOOL DISTRICT	FUNDING COMMUNITY	ADM BY COMMUNITY	DISTRICT ADM	
C/B LAKE & PENINSULA	KOKHANOK	48.20	507.63	112
C/B NORTHWEST ARCTIC	DEERING	49.90	1,877.80	113
REAA BERING STRAIT	GOLOVIN	51.00	1,600.70	114
REAA BERING STRAIT	WALES	51.75	1,600.70	115
C/B NORTH SLOPE	POINT LAY	52.00	1,702.10	116
C/B LAKE & PENINSULA	CHIGNIK LAKE	53.00	507.63	117
REAA KUSPUK	LOWER KALSKAG	53.15	444.30	118
C/B MAT-SU	GLACIER VIEW	54.20	11,894.00	119
REAA BERING STRAIT	DIOMEDE	55.55	1,600.70	120
C/B KENAI PENINSULA	KACHEMAK SELO	55.70	10,144.00	121
C/B MAT-SU	TRAPPER CREEK	57.70	11,894.00	122
REAA SOUTHWEST REGION	KOLIGANEK	58.00	568.30	123
REAA LOWER KUSKOKWIM	EEK	59.05	3,051.05	124
REAA BERING STRAIT	WHITE MOUNTAIN	60.00	1,600.70	125
REAA IDITAROD	GRAYLING	60.25	4,178.5	126
REAA YUKON FLATS	VENETIE	64.90	405.15	127
REAA CHUGACH	WHITTIER	65.00	133.00	128
C/B LAKE & PENINSULA	NORDALTON	65.55	507.63	129
C/B FAIRBANKS	SALCPA	66.50	15,406.50	130
REAA LOWER KUSKOKWIM	GOODNEWS BAY	66.70	3,051.05	131
REAA YUKON/KOYUKUK	KALTAG	67.00	590.10	132
C/B KODIAK ISLAND	PORT LIONS	67.60	2,711.45	133
REAA YUKON/KOYUKUK	RUBY	69.00	590.10	134
REAA IDITAROD	HOLY CROSS	69.35	417.85	135
REAA BERING STRAIT	SHAKTOOLIK	69.80	1,600.70	136
REAA COPPER RIVER	COPPER CENTER	69.80	1,587.25	137
REAA LOWER KUSKOKWIM	AKIUK	70.50	3,051.05	138
REAA LOWER KUSKOKWIM	AKULA	72.65	3,051.05	139
C/B NORTHWEST ARCTIC	SHUNGHIK	75.00	1,877.80	140
REAA LOWER KUSKOKWIM	ATMAUTLAK	76.50	3,051.05	141
REAA LOWER KUSKOKWIM	TUNTUTULIAK	79.60	3,051.05	142
REAA CHATHAM	GUSTAVUS	79.70	325.85	143
REAA BERING STRAIT	KOYUK	79.80	1,600.70	144
REAA YUKON/KOYUKUK	MUSLIA	81.25	590.10	145
REAA ALASKA GATEWAY	NORTHWAY	83.30	536.15	146
REAA BERING STRAIT	TELLER	83.40	1,600.70	147
C/B NORTH SLOPE	ANAKTUVUK PASS	84.50	1,702.10	148

FY95 FOUNDATION FUNDING COMMUNITY 1/95 FILE: G distup\95found\95ADMFC.XLS
 FIRST STUDENT COUNT PERIOD

SCHOOL DISTRICT	FUNDING COMMUNITY	ADM BY COMMUNITY	DISTRICT ADM		
C/B	KENAI PENINSULA	SELDOVIA	84.05	10,144.00	149
REAA	BERING STRAIT	BREVIQ MISSION	85.55	1,600.70	150
REAA	LOWER KUSKOKWIM	NEWTOK	85.75	3,051.05	151
REAA	YUKON/KOYUKUK	MINTO	88.45	590.10	152
REAA	LOWER KUSKOKWIM	NAPAKIAK	88.70	3,051.05	153
C/B	LAKE & PENINSULA	NEWHALEN	89.80	507.63	154
REAA	LOWER KUSKOKWIM	KWIGILLINGOK	91.00	3,051.05	155
C/B	MAT-SU	SUTTON	91.10	11,894.00	156
C/B	KODIAK ISLAND	OLD HARBOR	91.40	2,711.45	157
REAA	LOWER KUSKOKWIM	KONGIGANAK	91.45	3,051.05	158
REAA	LOWER YUKON	MARSHALL	92.90	1,620.65	159
REAA	LOWER KUSKOKWIM	TUNUNAK	92.95	3,051.05	160
REAA	BERING STRAIT	ELIM	93.10	1,600.70	161
REAA	LOWER YUKON	RUSSIAN MISSION	94.50	1,620.65	162
REAA	KUSPUK	UPPER KALSAG	95.30	444.30	163
REAA	LOWER KUSKOKWIM	NAPASKIAK	98.25	3,051.05	164
C/B	NORTHWEST ARCTIC	AMBLER	101.0	1,877.80	165
C/B	TANANA	TANANA	102.25	102.25	166
REAA	YUPIIT	TULUKSAK	104.00	367.00	167
C/B	NORTHWEST ARCTIC	KIVALINA	104.35	1,877.80	168
C/B	HYDABURG	HYDABURG	107.50	107.50	169
REAA	COPPER RIVER	KENNY LAKE	107.80	1,587.25	170
C/B	ST MARYS	ST MARYS	108.50	108.50	171
C/B	KENAI PENINSULA	VOZNESENKA	108.65	10,144.00	172
REAA	LOWER KUSKOKWIM	CHEFORNAK	110.50	3,051.05	173
C/B	NORTH SLOPE	NUIQSUT	112.75	1,702.10	174
REAA	SOUTHWEST REGION	NEW STUYAMOK	115.55	568.30	175
REAA	BERING STRAIT	ST MICHAEL	116.20	1,600.70	176
C/B	NORTHWEST ARCTIC	BUCKLAND	118.00	1,877.80	177
C/B	FAIRBANKS	TWO RIVERS	118.50	15,405.50	178
C/B	NORTHWEST ARCTIC	NOATAK	118.70	1,877.80	179
REAA	LOWER YUKON	SCAMMON BAY	119.35	1,620.65	180
REAA	LOWER KUSKOKWIM	NUIKAPITCHUK	122.50	3,051.05	181
REAA	YUPIIT	AKIAK	123.00	367.00	182
REAA	SOUTHWEST REGION	MANOKOTAK	123.65	568.30	183
C/B	DENALI	ANDERSON	125.30	364.55	184
REAA	PRIBILOF	ST PAUL	126.65	168.65	185

FIRST STUDENT COUNT PERIOD

SCHOOL DISTRICT	FUNDING COMMUNITY	ADM BY COMMUNITY	DISTRICT ADM	
C/B	SKAGWAY	SKAGWAY	127.20	186
REAA	LOWER KUSKOKWIM	QUINHAGAK	127.40	187
C/B	ALEUTIAN EAST	SAND POINT	128.00	188
C/B	NORTHWEST ARCTIC	KIANA	131.55	189
C/B	MAT-SU	TALKEETNA	131.70	190
REAA	LOWER KUSKOKWIM	TOKSOOK BAY	138.70	191
REAA	YUKON FLATS	FOPT YUKON	138.70	192
REAA	YUPIIT	AKIACHAK	140.00	193
REAA	BERING STRAIT	STEBBINS	140.60	194
C/B	GALENA	GALENA	142.00	195
REAA	BERING STRAIT	SAVOONGA	143.30	196
REAA	IDITAROD	MCGRATH	148.00	197
REAA	SOUTHEAST ISLAND	THORNE BAY	150.60	198
C/B	ALEUTIAN EAST	KING COVE	154.00	199
REAA	LOWER YUKON	ALAKANAK	154.40	200
REAA	CHATANGA	ANGOON	156.00	201
REAA	LOWER YUKON	PILOT STATION	156.05	202
C/B	KENAI PENINSULA	NIKOLAEVSK	159.25	203
REAA	YUKON/KOYUKUK	NULATO	160.85	204
C/B	NORTH SLOPE	WAINWRIGHT	161.25	205
C/B	NENANA	NENANA	162.91	206
REAA	LOWER KUSKOKWIM	KIPNUK	163.90	207
C/B	YAKUTAT	YAKUTAT	167.00	208
REAA	LOWER YUKON	KOTLIK	168.40	209
C/B	ANCHORAGE	GIRDWOOD	169.50	210
REAA	BERING STRAIT	SHISHMAREF	174.90	211
REAA	KUSPUK	ANJAK	176.20	212
REAA	BERING STRAIT	GAMBELL	179.15	213
REAA	LOWER KUSKOKWIM	KWETHLUK	181.20	214
C/B	KAKE	KAKE	185.00	215
REAA	SOUTHWEST REGION	TOGIAK	185.65	216
C/B	MAT-SU	MAT-SU VALLEY	193.10	217
C/B	MAT-SU	WILLOW	197.80	218
C/B	KENAI PENINSULA	NINILCHIK	201.75	219
REAA	LOWER YUKON	EMMONAK	203.00	220
C/B	KENAI PENINSULA	MONEIL CANYON	203.80	221
C/B	KLAWOCK	KLAWOCK	206.95	222

FY95 FOUNDATION FUNDING COMMUNITY 1/95 FILE: G distsup\95found\95ADMFC.XLS
 FIRSI STUDENT COUNT PERIOD

SCHOOL DISTRICT	FUNDING COMMUNITY	ADM BY COMMUNITY	DISTRICT ADM	
C/B NORTHWEST ARCTIC	NOORVIK	209.75	1,877.80	223
REAA BERING STRAIT	UNALAKLEET	216.60	1,600.70	224
C/B NORTH SLOPE	POINT HOPE	217.50	1,702.10	225
REAA LOWER YUKON	MOUNTAIN VILLAGE	222.70	1,620.65	226
C/B NORTHWEST ARCTIC	SELAVIK	224.90	1,877.80	227
REAA KASHUNAMIUT	CHEVAK	229.90	229.90	228
C/B DENALI	HEALY	232.25	384.55	229
C/B KENAI PENINSULA	ANCHOR POINT	249.35	10,144.00	230
C/B BRISTOL BAY	BRISTOL BAY	254.25	269.25	231
C/B HOONAH	HOONAH	259.40	259.40	232
C/B KENAI PENINSULA	KASILOF	272.50	10,144.00	233
STATE MT EDGE CUMBE	MT EDGE CUMBE	282.30	282.30	234
REAA ALASKA GATEWAY	TOK	325.40	536.15	235
REAA LOWER YUKON	HOOPER BAY	329.15	1,620.65	236
C/B UNALASKA	UNALASKA	356.10	356.10	237
REAA COPPER RIVER	GLENNALLEN	364.80	1,587.25	238
C/B KENAI PENINSULA	STERLING	386.35	10,144.00	239
C/B MAT-SU	BUTTE	388.90	11,894.00	240
C/B CRAIG	CRAIG	396.00	396.00	241
C/B HAINES	HAINES	403.15	413.15	242
REAA ANNETTE ISLAND	ANNETTE	420.00	420.00	243
C/B MAT-SU	PT MCKENZIE	457.60	11,894.00	244
C/B DILLINGHAM	DILLINGHAM	496.20	496.20	245
C/B CORDOVA	CORDOVA	528.15	528.15	246
C/B WRANGELL	WRANGELL	566.85	566.85	247
C/B MAT-SU	HOUSTON	567.70	11,894.00	248
C/B MAT-SU	BIG LAKE	622.80	11,894.00	249
C/B NOME	NOME	701.75	701.75	250
C/B NORTHWEST ARCTIC	KOTZEBUE	723.65	1,877.80	251
C/B PETERSBURG	PETERSBURG	758.75	758.75	252
C/B KENAI PENINSULA	SEWARD	890.50	10,144.00	253
C/B VALDEZ	VALDEZ	902.75	902.75	254
REAA DELTA GREELY	DELTA JUNCTION	964.00	974.00	255
C/B NORTH SLOPE	BARROW	979.15	1,702.10	256
C/B KENAI PENINSULA	NIKISKI	1,121.80	10,144.00	257
REAA LOWER KUSKOKWIM	BETHEL	1,124.10	3,051.05	258
C/B KENAI PENINSULA	HOMER	1,314.20	10,144.00	259

FY95 FOUNDATION FUNDING COMMUNITY 1/95 FILE: G:\dist\up95\found95ADMFC.XLS
 FIRST STUDENT COUNT PERIOD

	SCHOOL DISTRICT	FUNDING COMMUNITY	ADM BY COMMUNITY	DISTRICT ADM	
STATE	CCS	CCS	1,477.15	1,477.15	260
C/B	FAIRBANKS	EIELSON	1,581.50	15,406.50	261
C/B	KENAI PENINSULA	KENAI	1,731.10	10,144.00	262
C/B	SITKA	SITKA	1,814.33	1,838.68	263
C/B	MAT-SU	PALMER	2,238.00	11,894.00	264
C/B	KODIAK ISLAND	KODIAK	2,392.05	2,711.45	265
C/B	KETCHIKAN	KETCHIKAN	2,728.93	2,728.93	266
C/B	MAT-SU	WASILLA	2,837.10	11,894.00	267
C/B	KENAI PENINSULA	SOLDOTNA	3,086.10	10,144.00	268
C/B	FAIRBANKS	NORTH POLE	3,189.00	15,406.50	269
C/B	MAT-SU	COLONY	4,025.30	11,894.00	270
C/B	JUNEAU	JUNEAU	5,399.75	5,399.75	271
C/B	ANCHORAGE	EAGLE RIVER	6,260.87	45,895.60	272
C/B	FAIRBANKS	FAIRBANKS	10,451.00	15,406.50	273
C/B	ANCHORAGE	ANCHORAGE	59,465.23	45,895.60	274

ALASKA DEPARTMENT OF EDUCATION
 FY96 PROJECTED FOUNDATION ENTITLEMENTS IF UNIT VALUE IS ADJUSTED
 and PL01-874 FLOW THROUGH.

12/20/94 File:FND96PJ.XLS

This spreadsheet reflects the total FY96 foundation entitlements if the unit value of \$61,000 is increased by increments of \$100.

ADJUSTED UNIT VALUE >	\$100	\$200	\$300	\$400	\$500
	\$61,100	\$61,200	\$61,300	\$61,400	\$61,500
ADAK	\$0	\$0	\$0	\$0	\$0
ALASKA GATEWAY	4,895,656	4,904,310	4,912,964	4,921,618	4,930,272
ALEUTIAN REGION	469,794	470,659	471,524	472,389	473,254
ALEUTIANS EAST	3,674,923	3,681,838	3,688,753	3,695,668	3,702,583
ANCHORAGE	193,767,782	194,157,262	194,546,742	194,936,222	195,325,702
ANNETTE ISLANDS	1,595,155	1,599,479	1,603,803	1,608,127	1,612,451
BERING STRAIT	16,061,701	16,093,813	16,125,925	16,158,037	16,190,149
BRISTOL BAY	1,611,306	1,615,346	1,619,386	1,623,426	1,627,466
CHATHAM	2,575,741	2,581,055	2,586,369	2,591,683	2,596,997
CHUGACH	1,705,256	1,708,258	1,711,260	1,714,262	1,717,264
COPPER RIVER	5,092,174	5,100,644	5,109,114	5,117,584	5,126,054
CORDOVA	2,531,726	2,537,115	2,542,504	2,547,893	2,553,282
CRAIG	2,242,532	2,246,639	2,250,746	2,254,853	2,258,960
DELTA/GREELY	5,355,588	5,365,864	5,376,140	5,386,416	5,396,692
DENALI	3,171,479	3,177,203	3,182,927	3,188,651	3,194,375
DILLINGHAM	3,188,125	3,194,540	3,200,955	3,207,370	3,213,785
FAIRBANKS	73,576,889	73,711,935	73,846,981	73,982,027	74,117,073
GALENA	1,636,174	1,639,316	1,642,458	1,645,600	1,648,742
HAINES	2,152,829	2,157,224	2,161,619	2,166,014	2,170,409
HOONAH	2,036,898	2,040,455	2,044,014	2,047,572	2,051,130
HYDABURG	979,248	980,896	982,544	984,192	985,840
IDITAROD	5,393,346	5,403,152	5,412,958	5,422,764	5,432,570
JUNEAU	21,667,912	21,714,952	21,761,992	21,809,032	21,856,072
KAKE	1,236,891	1,239,156	1,241,421	1,243,686	1,245,951
KASHUNAMIUT	1,995,259	1,999,984	2,003,709	2,007,434	2,011,159
KENAI	45,670,050	45,768,050	45,866,050	45,964,050	46,062,050
KETCHIKAN	9,560,947	9,583,056	9,605,165	9,627,274	9,649,383
KLAWOCK	1,540,837	1,543,580	1,546,323	1,549,066	1,551,809
KODIAK	14,008,967	14,036,967	14,064,967	14,092,967	14,120,967
KUSPUK	5,162,490	5,171,876	5,181,262	5,190,648	5,200,034
LAKE AND PENINSULA	6,641,763	6,653,617	6,665,471	6,677,325	6,689,179
LOWER KUSKOKWIM	34,662,696	34,727,181	34,791,666	34,856,151	34,920,636
LOWER YUKON	13,938,300	13,966,637	13,994,974	14,023,311	14,051,648
MAT-SU	59,807,506	59,919,484	60,031,462	60,143,440	60,255,418
NENANA	1,581,750	1,584,450	1,587,150	1,589,850	1,592,550
NOME	4,444,247	4,452,422	4,460,597	4,468,772	4,476,947
NORTH SLOPE	10,170,205	10,196,550	10,222,895	10,249,240	10,275,585
NORTHWEST ARCTIC	16,461,792	16,492,673	16,523,554	16,554,435	16,585,316
PELICAN	554,513	555,512	556,511	557,510	558,509
PETERSBURG	3,212,206	3,218,801	3,225,396	3,231,991	3,238,586
PRIBILOF	1,786,687	1,790,239	1,793,791	1,797,343	1,800,895
SITKA	6,839,684	6,854,486	6,869,288	6,884,090	6,898,892
SKAGWAY	708,456	710,206	711,956	713,706	715,456
SOUTHEAST	4,032,574	4,039,951	4,047,328	4,054,705	4,062,082
SOUTHWEST	6,583,167	6,595,756	6,608,345	6,620,934	6,633,523
ST MARY'S	1,017,132	1,018,991	1,020,850	1,022,709	1,024,568
TANANA	1,113,016	1,115,036	1,117,054	1,119,073	1,121,092
UNALASKA	1,753,780	1,758,313	1,762,846	1,767,379	1,771,912
VALDEZ	3,397,035	3,405,566	3,414,097	3,422,628	3,431,159
WRANGELL	2,621,586	2,626,848	2,632,110	2,637,372	2,642,634
YAKUTAT	1,242,174	1,244,428	1,246,682	1,248,936	1,251,190
YUKON FLATS	5,658,868	5,669,195	5,679,522	5,689,849	5,700,176
YUKON KOYUKUK	7,000,994	7,014,138	7,027,282	7,040,426	7,053,570
YUPIIT	4,086,896	4,095,043	4,103,190	4,111,337	4,119,484
STATE CCS	3,814,626	3,820,869	3,827,112	3,833,356	3,839,599
MI EDGE CUMBE	1,588,600	1,591,200	1,593,800	1,596,400	1,599,000
SUB-TOTALS	\$639,278,908	\$640,542,216	\$641,805,524	\$643,068,833	\$644,332,141
CONTRACTUAL	3,886,260	3,886,260	3,886,260	3,886,260	3,886,260
EST PRIOR YEAR ADJ	1,500,000	1,500,000	1,500,000	1,500,000	1,500,000
FY96 EST INCREASES	\$644,665,168	\$645,928,476	\$647,191,784	\$648,455,093	\$649,718,401

FY96 PROJECTED FOUNDATION ENTITLEMENTS IF UNIT VALUE IS ADJUSTED
and PL81-874 FLOW THROUGH

This spreadsheet reflects the total FY96 foundation entitlements if the unit value of \$61,000 is increased by increments of \$100.

ADJUSTED UNIT VALUE >	\$600	\$700	\$800	\$900	\$1,000
	\$61,600	\$61,700	\$61,800	\$61,900	\$62,000
ADAK	\$0	\$0	\$0	\$0	\$0
ALASKA GATEWAY	4,938,926	4,947,580	4,956,234	4,964,888	4,973,542
ALEUTIAN REGION	474,119	474,984	475,849	476,714	477,579
ALEUTIANS EAST	3,709,498	3,716,413	3,723,328	3,730,243	3,737,158
ANCHORAGE	195,715,262	196,104,762	196,494,262	196,883,762	197,273,262
ANNETTE ISLANDS	1,616,775	1,621,099	1,625,423	1,629,747	1,634,071
BERING STRAIT	16,222,261	16,254,373	16,286,485	16,318,597	16,350,709
BRISTOL BAY	1,631,506	1,635,546	1,639,586	1,643,626	1,647,666
CHATHAM	2,602,311	2,607,625	2,612,939	2,618,253	2,623,567
CHUGACH	1,720,266	1,723,268	1,726,270	1,729,272	1,732,274
COPPER RIVER	5,134,524	5,142,994	5,151,464	5,159,934	5,168,404
CORDOVA	2,558,671	2,564,060	2,569,449	2,574,838	2,580,227
CRAIG	2,263,067	2,267,174	2,271,281	2,275,388	2,279,495
DELTA/GREELY	5,406,968	5,417,244	5,427,520	5,437,796	5,448,072
DENALI	3,200,099	3,205,823	3,211,547	3,217,271	3,222,995
DILLINGHAM	3,220,200	3,226,615	3,233,030	3,239,445	3,245,860
FAIRBANKS	74,252,119	74,387,165	74,522,211	74,657,257	74,792,303
GALENA	1,651,884	1,655,026	1,658,168	1,661,310	1,664,452
HAINES	2,174,804	2,179,199	2,183,594	2,187,989	2,192,384
HOONAH	205,688	205,246	204,804	204,362	203,920
HYDABURG	987,488	989,136	990,784	992,432	994,080
IDITAROD	5,442,376	5,452,182	5,461,988	5,471,794	5,481,600
JUNEAU	21,903,112	21,950,152	21,997,192	22,044,232	22,091,272
KAKE	1,248,216	1,250,481	1,252,746	1,255,011	1,257,276
KASHUNAMIUT	2,014,884	2,018,609	2,022,334	2,026,059	2,029,784
KENAI	46,160,050	46,258,050	46,356,050	46,454,050	46,552,050
KETCHIKAN	9,671,492	9,693,601	9,715,710	9,737,819	9,759,928
KLAWOCK	1,554,552	1,557,295	1,560,038	1,562,781	1,565,524
KODIAK	14,148,967	14,176,967	14,204,967	14,232,967	14,260,967
KUSPUK	5,209,420	5,218,805	5,228,192	5,237,578	5,246,964
LAKE AND PENINSULA	6,701,033	6,712,887	6,724,741	6,736,595	6,748,449
LOWER KUSKOKWIM	34,985,121	35,049,606	35,114,091	35,178,576	35,243,061
LOWER YUKON	14,079,985	14,108,322	14,136,659	14,164,996	14,193,333
MAT-SU	60,367,396	60,479,374	60,591,352	60,703,330	60,815,308
NENANA	1,595,250	1,597,950	1,600,650	1,603,350	1,606,050
NOME	4,485,122	4,493,297	4,501,472	4,509,647	4,517,822
NORTH SLOPE	10,301,930	10,328,275	10,354,620	10,380,965	10,407,310
NORTHWEST ARCTIC	16,616,197	16,647,078	16,677,959	16,708,840	16,739,721
PELICAN	559,508	560,507	561,506	562,505	563,504
PETERSBURG	3,245,181	3,251,776	3,258,371	3,264,966	3,271,561
PRIIBILOF	1,804,447	1,807,999	1,811,551	1,815,103	1,818,655
SITKA	6,913,694	6,928,496	6,943,298	6,958,100	6,972,902
SKAGWAY	717,206	718,956	720,706	722,456	724,206
SOUTHEAST	4,069,459	4,076,836	4,084,213	4,091,590	4,098,967
SOUTHWEST	6,646,112	6,658,701	6,671,290	6,683,879	6,696,468
ST MARY'S	1,026,427	1,028,286	1,030,145	1,032,004	1,033,863
TANANA	1,123,111	1,125,130	1,127,149	1,129,168	1,131,187
UNALASKA	1,776,445	1,780,978	1,785,511	1,790,044	1,794,577
VALDEZ	3,439,690	3,448,221	3,456,752	3,465,283	3,473,814
WRANGELL	2,647,890	2,653,158	2,658,426	2,663,694	2,668,962
YAKUTAT	1,253,444	1,255,698	1,257,952	1,260,206	1,262,460
YUKON FLATS	5,710,503	5,720,830	5,731,157	5,741,484	5,751,811
YUKON KOYUKUK	7,065,714	7,079,858	7,093,002	7,106,146	7,119,290
YUPIIT	4,127,631	4,135,778	4,143,925	4,152,072	4,160,219
STAT CCS	3,945,842	3,952,085	3,958,329	3,964,572	3,970,815
Mt EDGE CUMBE	1,601,600	1,604,200	1,606,800	1,609,400	1,612,000
SUB-TOTALS	\$645,595,449	\$646,858,757	\$648,122,066	\$649,385,374	\$650,648,682
CONTRACTUAL	3,886,260	3,886,260	3,886,260	3,886,260	3,886,260
EST PRIOR YEAR ADJ	1,500,000	1,500,000	1,500,000	1,500,000	1,500,000
FY96 EST INCREASES	\$650,981,709	\$652,245,017	\$653,508,326	\$654,771,634	\$656,034,942

ALASKA DEPARTMENT OF EDUCATION
 FY96 PROJECTED FOUNDATION INCREASED ENTITLEMENTS IF UNIT VALUE IS ADJUSTED

12/20/94 File:FND96PJ.XLS

This spreadsheet reflects the increased FY96 foundation entitlements if the unit value of \$61,000 is increased by increments of \$100.

UNIT VALUE INCREASES BY >	\$100	\$200	\$300	\$400	\$500
ADAK	\$0	\$0	\$0	\$0	\$0
ALASKA GATEWAY	8,654	17,308	25,962	34,616	43,270
ALEUTIAN REGION	865	1,730	2,595	3,460	4,325
ALEUTIANS EAST	6,915	13,830	20,745	27,660	34,575
ANCHORAGE	389,500	779,000	1,168,500	1,558,000	1,947,500
ANNETTE ISLANDS	4,324	8,648	12,972	17,296	21,620
BERING STRAIT	32,112	64,224	96,336	128,448	160,560
BRISTOL BAY	4,040	8,080	12,120	16,160	20,200
CHATHAM	5,314	10,628	15,942	21,256	26,570
CHUGACH	3,002	6,004	9,006	12,008	15,010
COPPER RIVER	8,470	16,940	25,410	33,880	42,350
CORDOVA	5,389	10,778	16,167	21,556	26,945
CRAIG	4,107	8,214	12,321	16,428	20,535
DELTA/GREELY	10,276	20,552	30,828	41,104	51,380
DENALI	5,724	11,448	17,172	22,896	28,620
DILLINGHAM	6,415	12,830	19,245	25,660	32,075
FAIRBANKS	135,046	270,092	405,138	540,184	675,230
GALENA	3,142	6,284	9,426	12,568	15,710
HAINES	4,395	8,790	13,185	17,580	21,975
HOONAH	3,558	7,116	10,674	14,232	17,790
HYDABURG	1,648	3,296	4,944	6,592	8,240
IDITAROD	9,806	19,612	29,418	39,224	49,030
JUNEAU	47,040	94,080	141,120	188,160	235,200
KAKE	2,265	4,530	6,795	9,060	11,325
KASHUNAMIUT	3,725	7,450	11,175	14,900	18,625
KENAI	98,000	196,000	294,000	392,000	490,000
KETCHIKAN	22,109	44,218	66,327	88,436	110,545
KLAWOCK	2,743	5,486	8,229	10,972	13,715
KODIAK	28,000	56,000	84,000	112,000	140,000
KUSPUK	9,386	18,772	28,158	37,544	46,930
LAKE AND PENINSULA	1,854	3,708	5,562	7,416	9,270
LOWER KUSKOKWIM	64,485	128,970	193,455	257,940	322,425
LOWER YUKON	28,337	56,674	85,011	113,348	141,685
MAT-SU	111,978	223,956	335,934	447,912	559,890
NENANA	2,700	5,400	8,100	10,800	13,500
NOME	8,175	16,350	24,525	32,700	40,875
NORTH SLOPE	26,345	52,690	79,035	105,380	131,725
NORTHWEST ARCTIC	30,881	61,762	92,643	123,524	154,405
PELICAN	999	1,998	2,997	3,996	4,995
PETERSBURG	6,595	13,190	19,785	26,380	32,975
PRIIBILOF	3,552	7,104	10,656	14,208	17,760
SITKA	14,802	29,604	44,406	59,208	74,010
SKAGWAY	1,750	3,500	5,250	7,000	8,750
SOUTHEAST	7,377	14,754	22,131	29,508	36,885
SOUTHWEST	12,589	25,178	37,767	50,356	62,945
ST MARY'S	1,859	3,718	5,577	7,436	9,295
TANANA	2,019	4,038	6,057	8,076	10,095
UNALASKA	4,533	9,066	13,599	18,132	22,665
VALDEZ	8,531	17,062	25,593	34,124	42,655
WRANGELL	5,262	10,524	15,786	21,048	26,310
YAKUTAT	2,254	4,508	6,762	9,016	11,270
YUKON FLATS	10,327	20,654	30,981	41,308	51,635
YUKON KOYUKUK	13,144	26,288	39,432	52,576	65,720
YUPIIT	8,147	16,294	24,441	32,588	40,735
STATE CCS	6,243	12,487	18,730	24,973	31,216
Mt EDGECUMBE	2,600	5,200	7,800	10,400	13,000
SUB - TOTALS	\$1,263,308	\$2,526,617	\$3,789,925	\$5,053,233	\$6,316,541
CONTRACTUAL	0	0	0	0	0
EST PRIOR YEAR ADJ	0	0	0	0	0
FY96 EST INCREASES	\$1,263,308	\$2,526,617	\$3,789,925	\$5,053,233	\$6,316,541

ALASKA DEPARTMENT OF EDUCATION
 FY96 PROJECTED FOUNDATION INCREASED ENTITLEMENTS IF UNIT VALUE IS ADJUSTED.

12/20/94 File:FND96PJ.XLS

This spreadsheet reflects the increased FY96 foundation entitlements if the unit value of \$61,000 is increased by increments of \$100.

UNIT VALUE INCREASES BY >	\$600	\$700	\$800	\$900	\$1,000
ADAK	\$0	\$0	\$0	\$0	\$0
ALASKA GATEWAY	51,924	60,578	69,232	77,886	86,540
ALEUTIAN REGION	5,190	6,055	6,920	7,785	8,650
ALEUTIANS EAST	41,490	48,405	55,320	62,235	69,150
ANCHORAGE	2,337,000	2,726,500	3,116,000	3,505,500	3,895,000
ANNETTE ISLANDS	25,944	30,268	34,592	38,916	43,240
BERING STRAIT	192,672	224,784	256,896	289,008	321,120
BRISTOL BAY	24,240	28,280	32,320	36,360	40,400
CHATHAM	31,804	37,198	42,512	47,826	53,140
CHUGACH	18,012	21,014	24,016	27,018	30,020
COPPER RIVER	50,820	59,290	67,760	76,230	84,700
CORDOVA	32,334	37,723	43,112	48,501	53,890
CRAIG	24,642	28,749	32,856	36,963	41,070
DELTA/GREELY	61,656	71,932	82,208	92,484	102,760
DENALI	34,344	40,068	45,792	51,516	57,240
DILLINGHAM	38,490	44,905	51,320	57,735	64,150
FAIRBANKS	810,276	945,322	1,080,368	1,215,414	1,350,460
GALENA	18,852	21,994	25,136	28,278	31,420
HAINES	26,370	30,765	35,160	39,555	43,950
HOONAH	21,348	24,906	28,464	32,022	35,580
HYDABURG	9,888	11,536	13,184	14,832	16,480
IDITAROD	58,836	68,642	78,448	88,254	98,060
JUNEAU	282,240	329,280	376,320	423,360	470,400
KAKE	13,590	15,855	18,120	20,385	22,650
K/ HUNAMIUT	22,350	26,075	29,800	33,525	37,250
KENAI	588,000	686,000	784,000	882,000	980,000
KETCHIKAN	132,654	154,763	176,872	198,981	221,090
KLAWOCK	16,458	19,201	21,944	24,687	27,430
KODIAK	168,000	196,000	224,000	252,000	280,000
KUSPUK	56,316	65,702	75,088	84,474	93,860
LAKE AND PENINSULA	71,124	82,978	94,832	106,686	118,540
LOWER KUSKOKWIM	386,910	451,395	515,880	580,365	644,850
LOWER YUKON	170,022	198,359	226,696	255,033	283,370
MAT-SU	671,868	783,846	895,824	1,007,802	1,119,780
NENANA	16,200	18,900	21,600	24,300	27,000
NOME	49,050	57,225	65,400	73,575	81,750
NORTH SLOPE	158,070	184,415	210,760	237,105	263,450
NORTHWEST ARCTIC	185,286	216,167	247,048	277,929	308,810
PELICAN	5,994	6,993	7,992	8,991	9,990
PETERSBURG	39,570	46,165	52,760	59,355	65,950
PRIBILOF	21,312	24,864	28,416	31,968	35,520
SITKA	88,812	103,614	118,416	133,218	148,020
SKAGWAY	10,500	12,250	14,000	15,750	17,500
SOUTHEAST	44,262	51,639	59,016	66,393	73,770
SOUTHWEST	75,534	88,123	100,712	113,301	125,890
ST MARYS	11,154	13,013	14,872	16,731	18,590
TANANA	12,114	14,133	16,152	18,171	20,190
UNALASKA	27,198	31,731	36,264	40,797	45,330
VALDEZ	51,186	59,717	68,248	76,779	85,310
WRANGELL	31,572	36,834	42,096	47,358	52,620
YAKUTAT	13,524	15,778	18,032	20,286	22,540
YUKON FLATS	61,962	72,289	82,616	92,943	103,270
YUKON-KOYUKUK	78,864	92,038	105,152	118,296	131,440
YUPIIT	48,882	57,029	65,176	73,323	81,470
STATE CCS	37,460	43,703	49,946	56,189	62,433
MI EDGE CUMBE	15,600	18,200	20,800	23,400	26,000
SUB-TOTALS	\$7,579,850	\$8,843,158	\$10,106,466	\$11,369,774	\$12,633,083
CONTRACTUAL	0	0	0	0	0
EST PRIOR YEAR ADJ	0	0	0	0	0
FY96 EST INCREASES	\$7,579,850	\$8,843,158	\$10,106,466	\$11,369,774	\$12,633,083

ALASKA DEPARTMENT OF EDUCATION
 FY96 PROJECTED FOUNDATION ENTITLEMENTS IF UNIT VALUE IS ADJUSTED
 and P/LB1-874 FLOW THROUGH.

12/20/94 File FND96PJ.XLS

This spreadsheet reflects the total FY96 foundation entitlements if the unit value of \$61,000 is increased by increments of \$1,000.

ADJUSTED UNIT VALUE >	\$62,000	\$63,000	\$64,000	\$65,000	\$66,000	\$67,000
ADAK	\$0	\$0	\$0	\$0	\$0	\$0
ALASKA GATEWAY	4,973,542	5,060,082	5,146,622	5,233,162	5,319,702	5,406,242
ALEUTIAN REGION	477,579	486,229	494,879	503,529	512,179	520,829
ALEUTIANS EAST	3,737,158	3,906,308	3,875,458	3,944,608	4,013,758	4,082,908
ANCHORAGE	197,273,262	201,168,262	205,063,262	208,958,262	212,853,262	216,748,262
ANNETTE ISLANDS	1,634,071	1,677,311	1,720,551	1,763,791	1,807,031	1,850,271
BERING STRAIT	16,350,739	16,671,829	16,992,919	17,314,009	17,635,109	17,956,209
BRISTOL BAY	1,647,666	1,688,066	1,728,466	1,768,866	1,809,266	1,849,666
CHATHAM	2,623,567	2,676,707	2,729,847	2,782,987	2,836,127	2,889,267
CHUGACH	1,732,274	1,762,294	1,792,314	1,822,334	1,852,354	1,882,374
COPPER RIVER	5,168,404	5,253,104	5,337,804	5,422,504	5,507,204	5,591,904
CORDOVA	2,580,227	2,634,117	2,688,007	2,741,897	2,795,787	2,849,677
CRAIG	2,279,495	2,320,565	2,361,635	2,402,705	2,443,775	2,484,845
DELTA/GREELY	5,448,072	5,550,832	5,653,592	5,756,352	5,859,112	5,961,872
DENALI	3,222,995	3,280,235	3,337,475	3,394,715	3,451,955	3,509,195
DILLINGHAM	3,245,860	3,310,010	3,374,160	3,438,310	3,502,460	3,566,610
FAIRBANKS	74,792,303	76,142,763	77,493,223	78,843,683	80,194,143	81,544,603
GALENA	1,664,452	1,695,872	1,727,292	1,758,712	1,790,132	1,821,552
HAINES	2,192,384	2,236,334	2,280,284	2,324,234	2,368,184	2,412,134
HOONAH	2,068,920	2,104,500	2,140,080	2,175,660	2,211,240	2,246,820
HYDABURG	994,080	1,010,560	1,027,040	1,043,520	1,060,000	1,076,480
IDITAROD	5,481,600	5,579,660	5,677,720	5,775,780	5,873,840	5,971,900
JUNEAU	22,091,272	22,561,672	23,032,072	23,502,472	23,972,872	24,443,272
KAKE	1,257,276	1,279,826	1,302,376	1,324,926	1,347,476	1,370,026
KASHUNAMIUT	2,029,784	2,067,034	2,104,284	2,141,534	2,178,784	2,216,034
KENAI	46,552,050	47,532,050	48,512,050	49,492,050	50,472,050	51,452,050
KETCHIKAN	9,759,928	9,981,018	10,202,108	10,423,198	10,644,288	10,865,378
KLAWOCK	1,565,524	1,592,954	1,620,384	1,647,814	1,675,244	1,702,674
KODIAK	14,260,967	14,540,967	14,820,967	15,100,967	15,380,967	15,660,967
KUSPUK	5,246,964	5,340,824	5,434,684	5,528,544	5,622,404	5,716,264
LAKE AND PENINSULA	6,748,449	6,865,989	6,983,529	7,101,069	7,222,609	7,341,149
LOWER KUSKOKWIM	35,243,061	35,887,911	36,532,761	37,177,611	37,822,461	38,467,311
LOWER YUKON	14,193,333	14,476,703	14,760,073	15,043,443	15,326,813	15,610,183
MAT-SU	60,815,308	61,935,088	63,054,868	64,174,648	65,294,428	66,414,208
NIENANA	1,606,050	1,633,050	1,660,050	1,687,050	1,714,050	1,741,050
NOME	4,517,822	4,599,572	4,681,322	4,763,072	4,844,822	4,926,572
NORTH SLOPE	10,407,310	10,670,760	10,934,210	11,197,660	11,461,110	11,724,560
NORTHWEST ARCTIC	16,739,721	17,048,531	17,357,341	17,666,151	17,974,961	18,283,771
PELICAN	563,504	573,494	583,484	593,474	603,464	613,454
PETERSBURG	3,271,561	3,337,511	3,403,461	3,469,411	3,535,361	3,601,311
PRIBILOF	1,818,655	1,854,175	1,889,695	1,925,215	1,960,735	1,996,255
SITKA	6,972,902	7,120,922	7,268,942	7,416,962	7,564,982	7,713,002
SKAGWAY	724,206	741,706	759,206	776,706	794,206	811,706
SOUTHEAST	4,098,967	4,172,737	4,246,507	4,320,277	4,394,047	4,467,817
SOUTHWEST	6,696,468	6,822,358	6,948,248	7,074,138	7,200,028	7,325,918
ST MARYS	1,033,863	1,052,453	1,071,043	1,089,633	1,108,223	1,126,813
TANANA	1,131,187	1,151,377	1,171,567	1,191,757	1,211,947	1,232,137
TINALASKA	1,794,577	1,839,907	1,885,237	1,930,567	1,975,897	2,021,227
VALDEZ	3,473,814	3,559,124	3,644,434	3,729,744	3,815,054	3,900,364
WRANGELL	2,668,914	2,721,554	2,774,194	2,826,834	2,879,474	2,932,114
YAKUTAT	1,262,460	1,285,000	1,307,540	1,330,080	1,352,620	1,375,160
YUKON FLATS	5,751,811	5,855,081	5,958,351	6,061,621	6,164,891	6,268,161
YUKON KOYUKUK	7,119,290	7,250,730	7,382,170	7,513,610	7,645,050	7,776,490
YUPIIT	4,160,219	4,241,689	4,323,159	4,404,629	4,486,099	4,567,569
STATE CCS	3,870,815	3,933,248	3,995,680	4,058,113	4,120,545	4,182,978
Mt EDGE CUMBE	1,612,000	1,638,000	1,664,000	1,690,000	1,716,000	1,742,000
SUB TOTALS	\$650,648,682	\$663,281,765	\$675,914,847	\$688,547,930	\$701,181,012	\$713,814,095
CONTRACTUAL	3,886,260	3,886,260	3,886,260	3,886,260	3,886,260	3,886,260
EST PRIOR YEAR ADJ	1,500,000	1,500,000	1,500,000	1,500,000	1,500,000	1,500,000
FY96 FST INCREASES	\$656,034,942	\$668,668,025	\$681,301,107	\$693,934,190	\$706,567,272	\$719,200,355

This spreadsheet reflects the increased FY96 foundation entitlements if the unit value of \$51,000 is increased by increments of \$1,000.

UNIT VALUE INCREASES BY >	\$1,000	\$2,000	\$3,000	\$4,000	\$5,000	\$6,000
ADAK	\$0	\$0	\$0	\$0	\$0	\$0
ALASKA GATEWAY	86,540	173,080	259,620	346,160	432,700	519,240
ALEUTIAN REGION	8,650	17,300	25,950	34,600	43,250	51,900
ALEUTIANS EAST	69,150	138,300	207,450	276,600	345,750	414,900
ANCHORAGE	3,895,000	7,790,000	11,685,000	15,580,000	19,475,000	23,370,000
ANNETTE ISLANDS	43,240	86,480	129,720	172,960	216,200	259,440
BERING STRAIT	321,120	642,240	963,360	1,284,480	1,605,600	1,926,720
BRISTOL BAY	40,400	80,800	121,200	161,600	202,000	242,400
CHATHAM	53,140	106,280	159,420	212,560	265,700	318,840
CHUGACH	30,020	60,040	90,060	120,080	150,100	180,120
COPPER RIVER	84,700	169,400	254,100	338,800	423,500	508,200
CORDOVA	53,890	107,780	161,670	215,560	269,450	323,340
CRAIG	41,070	82,140	123,210	164,280	205,350	246,420
DELTA/GREELY	102,760	205,520	308,280	411,040	513,800	616,560
DENALI	57,240	114,480	171,720	228,960	286,200	343,440
DILLINGHAM	64,150	128,300	192,450	256,600	320,750	384,900
FAIRBANKS	1,350,460	2,700,920	4,051,380	5,401,840	6,752,300	8,102,760
GALENA	31,420	62,840	94,260	125,680	157,100	188,520
HAINES	43,950	87,900	131,850	175,800	219,750	263,700
HOONAH	35,580	71,160	106,740	142,320	177,900	213,480
HYDABURG	16,480	32,960	49,440	65,920	82,400	98,880
IDITAROD	98,060	196,120	294,180	392,240	490,300	588,360
JUNEAU	470,400	940,800	1,411,200	1,881,600	2,352,000	2,822,400
KAKE	22,650	45,300	67,950	90,600	113,250	135,900
KASHUNAMIUT	37,250	74,500	111,750	149,000	186,250	223,500
KENA	980,000	1,960,000	2,940,000	3,920,000	4,900,000	5,880,000
KETCHIKAN	221,090	442,180	663,270	884,360	1,105,450	1,326,540
KLAWOCK	27,430	54,860	82,290	109,720	137,150	164,580
KODIAK	280,000	560,000	840,000	1,120,000	1,400,000	1,680,000
KUSPUK	93,860	187,720	281,580	375,440	469,300	563,160
LAKE AND PENINSULA	118,540	237,080	355,620	474,160	592,700	711,240
LOWER KUSKOKWIM	644,850	1,289,700	1,934,550	2,579,400	3,224,250	3,869,100
LOWER YUKON	283,370	566,740	850,110	1,133,480	1,416,850	1,700,220
MAT SU	1,119,780	2,239,560	3,359,340	4,479,120	5,598,900	6,718,680
NENANA	27,000	54,000	81,000	108,000	135,000	162,000
NOME	81,750	163,500	245,250	327,000	408,750	490,500
NORTH SLOPE	263,450	526,900	790,350	1,053,800	1,317,250	1,580,700
NORTHWEST ARCTIC	308,810	617,620	926,430	1,235,240	1,544,050	1,852,860
PELICAN	9,990	19,980	29,970	39,960	49,950	59,940
PETERSBURG	65,950	131,900	197,850	263,800	329,750	395,700
PRIBILOF	35,520	71,040	106,560	142,080	177,600	213,120
SITKA	148,020	296,040	444,060	592,080	740,100	888,120
SKAGWAY	17,500	35,000	52,500	70,000	87,500	105,000
SOUTHEAST	73,770	147,540	221,310	295,080	368,850	442,620
SOUTHWEST	125,890	251,780	377,670	503,560	629,450	755,340
ST MARYS	10,590	21,180	31,770	42,360	52,950	63,540
TANANA	20,190	40,380	60,570	80,760	100,950	121,140
UNALASKA	45,330	90,660	135,990	181,320	226,650	271,980
VALDEZ	85,310	170,620	255,930	341,240	426,550	511,860
WRANGELL	52,620	105,240	157,860	210,480	263,100	315,720
YAKUTAT	22,540	45,080	67,620	90,160	112,700	135,240
YUKON FLATS	103,270	206,540	309,810	413,080	516,350	619,620
YUKON/KOYUKUK	131,440	262,880	394,320	525,760	657,200	788,640
YUPIIT	81,470	162,940	244,410	325,880	407,350	488,820
STATE CCS	62,433	124,865	187,298	249,730	312,163	374,595
Mt EDGE CUMBE	26,000	52,000	78,000	104,000	130,000	156,000
SUB-TOTALS	\$12,633,083	\$25,266,165	\$37,899,248	\$50,532,330	\$63,165,413	\$75,798,495
CONTRACTUAL	0	0	0	0	0	0
EST. PRIOR YEAR ADJ	0	0	0	0	0	0
FY96 EST INCREASES	\$12,633,083	\$25,266,165	\$37,899,248	\$50,532,330	\$63,165,413	\$75,798,495

ALASKA DEPARTMENT OF EDUCATION
 FY96 PROJECTED FOUNDATION ENTITLEMENTS IF UNIT VALUE IS ADJUSTED
 and PL81-874 FLOW THROUGH

12/20/94 File:FND96PJ.XLS

This spreadsheet reflects the total FY96 foundation entitlements if the unit value of \$61,000 is increased by increments of \$500.

ADJUSTED UNIT VALUE >	\$62,000	\$62,500	\$63,000	\$63,500	\$64,000
ADAK	\$0	\$0	\$0	\$0	\$0
ALASKA GATEWAY	4,973,542	5,016,812	5,060,082	5,103,352	5,146,622
ALEUTIAN REGION	477,579	481,904	486,229	490,554	494,879
ALEUTIANS EAST	3,737,158	3,771,733	3,806,308	3,840,883	3,875,458
ANCHORAGE	197,273,262	199,220,762	201,168,262	203,115,762	205,063,262
ANNETTE ISLANDS	1,634,071	1,655,691	1,677,311	1,698,931	1,720,551
BERING STRAIT	16,350,709	16,511,269	16,671,829	16,832,389	16,992,949
BRISTOL BAY	1,647,666	1,667,866	1,688,066	1,708,266	1,728,466
CHATHAM	2,623,567	2,650,137	2,676,707	2,703,277	2,729,847
CHUGACH	1,732,274	1,747,284	1,762,294	1,777,304	1,792,314
COPPER RIVER	5,168,404	5,210,754	5,253,104	5,295,454	5,337,804
CCRDOW \	2,580,227	2,607,172	2,634,117	2,661,062	2,688,007
CRAIG	2,278,495	2,300,030	2,320,565	2,341,100	2,361,635
DELTA/GREELY	5,448,072	5,499,452	5,550,832	5,602,212	5,653,592
DENALI	3,222,995	3,251,615	3,280,235	3,308,855	3,337,475
DILLINGHAM	3,158,860	3,277,935	3,310,010	3,342,085	3,374,160
FAIRBANKS	74,792,303	75,467,533	76,142,763	76,817,993	77,493,223
GALENA	1,664,452	1,680,162	1,695,872	1,711,582	1,727,292
HAINES	2,192,384	2,214,359	2,236,334	2,258,309	2,280,284
HOONAH	2,068,920	2,086,710	2,104,500	2,122,290	2,140,080
HYDABURG	994,080	1,002,320	1,010,560	1,018,800	1,027,040
IDITAROD	5,481,600	5,530,630	5,579,660	5,628,690	5,677,720
JUNEAU	22,091,272	22,326,472	22,561,672	22,796,872	23,032,072
KAKE	1,257,276	1,268,601	1,279,926	1,291,251	1,302,576
KASHUNAMIUT	2,029,784	2,048,409	2,067,034	2,085,659	2,104,284
KENAI	46,552,050	47,042,050	47,532,050	48,022,050	48,512,050
KETCHIKAN	9,759,328	9,870,473	9,981,618	10,092,763	10,203,908
KLAWOCK	1,565,524	1,579,239	1,592,954	1,606,669	1,620,384
KODIAK	14,260,967	14,400,967	14,540,967	14,680,967	14,820,967
KUSPUK	5,246,964	5,293,894	5,340,824	5,387,754	5,434,684
LAKE AND PENINSULA	6,748,449	6,807,719	6,866,989	6,926,259	6,985,529
LOWER KUSKOKWIM	35,243,061	35,565,486	35,887,911	36,210,336	36,532,761
LOWER YUKON	14,193,333	14,335,018	14,476,703	14,618,388	14,760,073
MAT-SU	60,815,308	61,375,198	61,935,088	62,494,978	63,054,868
NENANA	1,606,050	1,619,550	1,633,050	1,646,550	1,660,050
NOME	4,517,822	4,558,697	4,599,572	4,640,447	4,681,322
NORTH SLOPE	10,407,310	10,539,035	10,670,760	10,802,485	10,934,210
NORTHWEST ARCTIC	16,739,721	16,894,126	17,048,531	17,202,936	17,357,341
PELICAN	563,504	561,199	573,494	578,489	583,484
PETERSBURG	3,271,561	3,304,536	3,337,511	3,370,486	3,403,461
PRIBILOF	1,818,655	1,836,415	1,854,175	1,871,935	1,889,695
SITKA	6,972,902	7,046,912	7,120,922	7,194,932	7,268,942
SKAGWAY	724,206	732,956	741,706	750,456	759,206
SOUTHEAST	4,098,967	4,135,852	4,172,737	4,209,622	4,246,507
SOUTHWEST	6,695,468	6,759,413	6,823,358	6,887,303	6,951,248
ST MARY'S	1,033,863	1,043,158	1,052,453	1,061,748	1,071,043
TANANA	1,131,187	1,141,282	1,151,377	1,161,472	1,171,567
UNALASKA	1,794,577	1,817,242	1,839,907	1,862,572	1,885,237
VALDEZ	3,473,814	3,516,469	3,559,124	3,601,779	3,644,434
WRANGELL	2,668,944	2,695,254	2,721,564	2,747,874	2,774,184
YAKUTAT	1,262,460	1,273,730	1,285,000	1,296,270	1,307,540
YUKON FLATS	5,751,811	5,803,446	5,855,081	5,906,716	5,958,351
YUKON-KOYUKUK	7,119,290	7,185,010	7,250,730	7,316,450	7,382,170
YUPIIT	4,160,219	4,200,954	4,241,689	4,282,424	4,323,159
STATE CCS	3,870,815	3,902,031	3,933,248	3,964,464	3,995,680
M. EDGE CUMBE	1,612,000	1,625,000	1,638,000	1,651,000	1,664,000
SUB-TOTALS	\$650,648,682	\$656,965,223	\$663,281,765	\$669,598,306	\$675,914,847
CONTRACTUAL	3,886,260	3,886,260	3,886,260	3,886,260	3,886,260
EST PRIOR YEAR ADJ	1,500,000	1,500,000	1,500,000	1,500,000	1,500,000
FY96 EST INCREASES	\$656,034,942	\$662,351,483	\$668,668,025	\$674,984,566	\$681,301,107

This spreadsheet reflects the increased FY96 foundation entitlements if the unit value of \$61,000 is increased by increments of \$500.

UNIT VALUE INCREASES BY >	\$1,000	\$1,500	\$2,000	\$2,500	\$3,000
ADAK	\$0	\$0	\$0	\$0	\$0
ALASKA GATEWAY	86,540	129,810	173,080	216,350	259,620
ALEUTIAN REGION	8,650	12,975	7,300	21,625	25,050
ALEUTIANS EAST	69,150	103,725	138,300	172,875	207,450
ANCHORAGE	3,895,000	5,842,500	7,790,000	9,737,500	11,685,000
ANNETTE ISLANDS	43,240	64,860	86,480	108,100	129,720
BERING STRAIT	321,120	481,680	642,240	802,800	963,360
BRISTOL BAY	40,400	60,600	80,800	101,000	121,200
CHATHAM	53,140	79,710	106,280	132,850	159,420
CHUGACH	30,020	45,030	60,040	75,050	90,060
COPPER RIVER	84,700	127,050	169,400	211,750	254,100
CORDOVA	53,890	80,835	107,780	134,725	161,670
CRAIG	41,070	61,605	82,140	102,675	123,210
DELTA/GREELY	102,760	154,140	205,520	256,900	308,280
DENALI	57,240	85,860	114,480	143,100	171,720
DILLINGHAM	64,150	96,225	128,300	160,375	192,450
FAIRBANKS	1,350,460	2,025,690	2,700,920	3,376,150	4,051,380
GALENA	31,420	47,130	62,840	78,550	94,260
HAINES	43,950	65,925	87,900	109,875	131,850
HOONAH	35,580	53,370	71,160	88,950	106,740
HYDABURG	16,480	24,720	32,960	41,200	49,440
IDITAROD	98,060	147,090	196,120	245,150	294,180
JUNEAU	470,400	705,600	940,800	1,176,000	1,411,200
KAKE	22,650	33,975	45,300	56,625	67,950
KASHUNAMIUT	37,250	55,875	74,500	93,125	111,750
KENAI	980,000	1,470,000	1,960,000	2,450,000	2,940,000
KETCHIKAN	221,090	331,635	442,180	552,725	663,270
KLAWOCK	27,430	41,145	54,860	68,575	82,290
KODIAK	280,000	420,000	560,000	700,000	840,000
KUSPUK	93,860	140,790	187,720	234,650	281,580
LAKE AND PENINSULA	118,540	177,810	237,080	296,350	355,620
LOWER KUSKOKWIM	644,850	967,275	1,289,700	1,612,125	1,934,550
LOWER YUKON	283,370	425,055	566,740	708,425	850,110
MAT-SU	1,119,780	1,679,670	2,239,560	2,799,450	3,359,340
NENANA	27,000	40,500	54,000	67,500	81,000
NOME	81,750	122,625	163,500	204,375	245,250
NORTH SLOPE	263,450	395,175	526,900	658,625	790,350
NORTHWEST ARCTIC	308,810	463,215	617,620	772,025	926,430
PELICAN	9,990	14,985	19,980	24,975	29,970
PETERSBURG	65,950	98,925	131,900	164,875	197,850
PRIBILOF	35,520	53,280	71,040	88,800	106,560
SITKA	148,020	222,030	296,040	370,050	444,060
SKAGWAY	17,500	26,250	35,000	43,750	52,500
SOUTHEAST	73,770	110,655	147,540	184,425	221,310
SOUTHWEST	125,890	188,835	251,780	314,725	377,670
ST MARY'S	18,590	27,885	37,180	46,475	55,770
TANANA	20,160	30,285	40,380	50,475	60,570
UNALASKA	45,330	67,995	90,660	113,325	135,990
VALDEZ	85,310	127,965	170,620	213,275	255,930
WRANGELL	52,620	78,930	105,240	131,550	157,860
YAKUTAT	22,540	33,810	45,080	56,350	67,620
YUKON FLATS	103,770	154,905	206,040	257,175	308,310
YUKON KOYUKUK	131,440	197,160	262,880	328,600	394,320
YUPIIT	81,470	122,205	162,940	203,675	244,410
STATE CCS	62,433	93,649	124,865	156,081	187,298
METEGECUMBE	26,000	39,000	52,000	65,000	78,000
SUB-TOTALS	\$12,633,083	\$18,949,624	\$25,266,165	\$31,582,706	\$37,899,248
CONTRACTUAL	0	0	0	0	0
EST PRIOR YEAR ADJ	0	0	0	0	0
FY96 EST INCREASES	\$12,633,083	\$18,949,624	\$25,266,165	\$31,582,706	\$37,899,248

FISCAL NOTE

STATE OF ALASKA
1995 LEGISLATIVE SESSION

NO. _____
BILL VERSION: SCR 1
PUBLISH DATE: _____

Revision Date: _____
Title: "Establishing the Foundation Formula
Task Force and relating to revising..."
Sponsor: Senator Phillips
Requestor: Senator Green

Department Affected: Legislative Affairs Agency
BRU: Council & Subcommittees
Component: Council & Subcommittees

COMPONENT SERIAL NO:

Expenditures/Revenues: (Thousands of Dollars)

OPERATING	FY 96	FY 97	FY 98	FY 99	FY 00	FY 01
PERSONAL SERVICES	40.3	0	0	0	0	0
TRAVEL	19.7	0	0	0	0	0
CONTRACTUAL	9.0	0	0	0	0	0
SUPPLIES		0	0	0	0	0
EQUIPMENT	6.0	0	0	0	0	0
LAND & STRUCTURES						
GRANTS, CLAIMS						
MISCELLANEOUS						
TOTAL OPERATING	75.0	0	0	0	0	0

CAPITAL	0	0	0	0	0	0
---------	---	---	---	---	---	---

REVENUE FUND SOURCE	0	0	0	0	0	0
---------------------	---	---	---	---	---	---

FUNDING: (Thousands of Dollars)

GENERAL FUND	75.0	0	0	0	0	0
FEDERAL FUNDS						
OTHER FUND SOURCE						
TOTAL	75.0	0	0	0	0	0

POSITIONS:

FULL-TIME	0	0	0	0	0	0
PART-TIME	1	0	0	0	0	0
TEMPORARY	0	0	0	0	0	0

Estimate of current year impact: _____

ANALYSIS: (Attach a separate page if necessary)

SCR 1 establishes a 7 member Foundation Formula Task Force. The Task Force will examine the existing formula for distributing state aid to education and recommend revisions to the existing formula. It is anticipated that the task force will hold 4 meetings.

Prepared By: Karla Schofield, Deputy Director *Karla Schofield* Phone: 485-3852
Division: Administrative Services Date: 1/30/95

Approved By: Pamela A. Vami, Executive Director *Pamela Vami*
Agency: Legislative Affairs Agency Date: 1/30/95

Distribution (by preparer): Leg. Finance, Legislative Sponsor, Requestor, OMB, Gov., & Impacted Agency(ies).

JAN 30 1995

Personal Services (Salary & Benefits)

Part Time Range 21A	40.30	
	40.30	40.3

Travel**4 Meetings****Travel for Public Members**

For purposes of estimating travel costs, 2 meetings are assumed to be in Anchorage, 2 are assumed to be in Juneau.

Anchorage

Airfare for 5 members x 2	4,868	
Per Diem - 5 members x 4 days x 211/day =	<u>4,220</u>	
	9,088	9,088.00

Juneau

Airfare for 6 members x 2	7,252	
Per Diem - 6 members x 4 days x 166/day	<u>3,394</u>	
	10,646	10,646.00

	19,734.00	19.7
--	-----------	------

Phones	3.0	
Postage	2.0	
Advertising	4.0	

	9.0	9.0
--	-----	-----

Supplies, printing, and office space will be provided within existing budgets.		0.0
--	--	-----

Computer & Printer		6.0
--------------------	--	-----

		75.0
--	--	------

FISCAL NOTE

STATE OF ALASKA
1995 LEGISLATIVE SESSION

BILL NO. SCR 1

Revision Date: _____

Department Affected: Education

Title: Establishing the Foundation Formula Task Force

BRU: K-12 Support

Component: Foundation Program

Sponsor: Senator Phillips

Requestor: Senator Phillips

COMPONENT SERIAL NO. 141

Expenditures/Revenues:

(Thousands of Dollars)

OPERATING	FY 96	FY 97	FY 98	FY 99	FY 00	FY 01
PERSONAL SERVICES						
TRAVEL						
CONTRACTUAL						
SUPPLIES						
EQUIPMENT						
LAND & STRUCTURES						
GRANTS, CLAIMS						
MISCELLANEOUS						
TOTAL OPERATING	0	0	0	0	0	0

CAPITAL						
---------	--	--	--	--	--	--

REVENUE FUND SOURCE:						
----------------------	--	--	--	--	--	--

FUNDING:

(Thousands of Dollars)

1002 Federal Receipts						
1003 GF Match						
1004 GF						
1005 GF/Program Receipts						
1006 GF/MHTIA						
Other						
TOTAL	0	0	0	0	0	0

POSITIONS:

FULL-TIME						
PART-TIME						
TEMPORARY						

Estimate of current year (FY95) impact: \$ _____

ANALYSIS: (Attach a separate page if necessary.)

This zero fiscal note assumes any travel costs related to the Chair of the State Board of Education would be paid from an appropriation to the task force.

Prepared by: Duane Guilliv

Phone: 465-2891

Division: School Finance

Date: January 27, 1995

Approved by Commissioner: _____

Jerry Covey

Agency: Education

Date: January 27, 1995

PREPARER TO PROVIDE ALL DISTRIBUTION COPIES TO GOVERNOR'S LEGISLATIVE OFFICE

For further distribution information call the Governor's Legislative Office

FISCAL NOTE

Revision Date: January 27, 1995 Dept. Affected: Community & Regional Affairs
 Title: Resolution establishing the Foundation BRU: none
Formula Task Force and relating ... Component none
 Sponsor: Senator Phillips, et. al.
 Requestor: Senate HESS Committee COMPONENT SERIAL NO. _____

Expenditures/Revenues: (Thousands of Dollars)

OPERATING	FY 96	FY 97	FY 98	FY 99	FY 00	FY 01
PERSONAL SERVICES						
TRAVEL						
CONTRACTUAL						
SUPPLIES						
EQUIPMENT						
LAND & STRUCTURES						
GRANTS, CLAIMS						
MISCELLANEOUS						
TOTAL OPERATING	0.0	0.0	0.0	0.0	0.0	0.0
CAPITAL	0.0	0.0	0.0	0.0	0.0	0.0

REVENUE FUND SOURCE: _____

FUNDING: (Thousands of Dollars)

1002 Federal Receipts						
1003 GF Match						
1004 GF						
1005 GF/Program Receipts						
1006 GF/MHTIA						
Other						
TOTAL	0.0	0.0	0.0	0.0	0.0	0.0

POSITIONS:

FULL-TIME	0	0	0	0	0	0
PART-TIME						
TEMPORARY						

Estimate of current (FY94) impact \$ none

ANALYSIS: (Attach a separate page if necessary)

There is no envisioned fiscal impact on OCRA from this bill.

Prepared by: Remond Henderson, Director *Remond Henderson* Phone: 485-4708
 Division: Division of Administrative Services Date: 1/27/95
 Approved by Commissioner: *Mike Drury* Date: 1/27/95
 Agency: Community & Regional Affairs

PREPARER TO PROVIDE ALL DISTRIBUTION COPIES TO GOVERNOR'S LEGISLATIVE OFFICE
 For further distribution information call the Governor's Legislative Office
 Page 1 of 1

JH