

SB

70

ESTABLISHED 1901

MARILYN LEAHY
SCHOOL BOARD MEMBER



VALDEZ CITY SCHOOLS
PO BOX 398
VALDEZ, AK 99686 (907) 835-4357

HOME (907) 835-2801

FAX (907) 835-4364



Art by Melissa Goose-Goble
Association of Alaska School Boards
© 1995 Juneau, Alaska

March 1, 1995

Dear Mr Arnoldt -

I truly enjoyed our conversation Tuesday morning. I hope we can work together to make the changes that need to be made in Alaska's education. Please give us the tools we need to make responsible choices for our children and our state.

Sincerely

Marilyn Leaby
Valdez City Schools

Lou Ann Nunn, President
Dillingham City School Board
Box 75
Dillingham, Ak 99576

April 18, 1995

The Honorable Lyda Green
Room 423
Alaska State Legislature
State Capitol
Juneau, AK 99801 1162

Dear Senator Green,

I know this is a long letter but it seems so many questions need to be answered. Please give it your attention.

We are a single site district in a rural setting. We serve 500 K-12 grade students. Under the current funding of \$61,000 we are offering education on a shoestring budget. This the years as the level of funding has remained the same we have been deleting sound program offerings to our students. Such as: higher level math and science classes that we as students took for granted. Further we will jeopardize existing programs and will continue to offer progressive educational reform needed to insure our youth graduate with certain knowledge, skills and attitudes to be a productive citizen and go on to further learning. We do not have the resources to implement our new and much needed school improvement plan.

We have cut funding for school activities. While they are important our focus needs to be on academic offerings and achievement. There is not so much left to cut any more.

We have been seeking and implementing ways to save more. Such as combining maintenance operations and business office functions with the city. We have a 501(c)(3) savings. By sharing some services with a local area we have saved money. We have successfully negotiated with our teachers a contract that does not increase their base salary wage. We have had a number of teacher retire and have replaced at a lower entry level. Our current market salary is 20% below the market. They are not happy.

Many of our students arrive here on the from fishing. Our population is approximately 1,000. We have an active organization within the community support through formation and activities. Making the transition to a slow process but it is moving along. We realize we need to expand our tax base. We have had a number of non-taxable land. Generating local revenue is a problem. The city does have some the impact on the local economy.

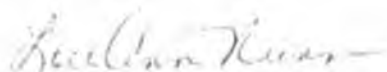
APR 24 1995

The single site issue is debated every year. Every year we never know if we are going to receive it. It is not some special treatment given. It is a recognition that the foundation formula does not provide equity for us. My understanding is that single site supplemental appropriation came about when the foundation formula was first initiated and the inequity was noted. It was felt that was the easiest way to deal with it. If I am wrong please advise.

The State Constitution does not say how much funding is to be expended on education, but the fact that it is there does it not speak to the fact of the important role education plays in the future of Alaska. As leaders of our State the priority you place on education affects everyone who resides in Alaska. I urge you to consider carefully the erosion that is occurring in education today. We are heading towards a two rate education system. "He who chooses the beginning of the road chooses the place to which it leads."

Nobody likes to hear the tax word, but I urge you to consider even a school tax before such more damage is done to our school systems across the state.

Sincerely,



William K. Steyer

APR 24 1965

Department of Education Foundation Program			
SCHOOL DISTRICT	Funding Community	Projected FY96 ADM	
ADAK	ADAK	-	
KENAI PENINSULA	BELUGA	-	
ALASKA GATEWAY	ALCAN BORDER	10.0	97,600
ALEUTIAN EAST	NELSON LAGOON	12.0	127,490
BRISTOL BAY	SOUTH NAKNEK	13.0	134,200
CHATHAM	ELFIN COVE	6.0	
CHATHAM	HOBART BAY	32 12.0	317,810
CHATHAM	TENAKEE SPRINGS	14.0	
CHUGACH	ICY BAY	10.0	
CHUGACH	TWO MOON BAY	22 12.0	178,730
COPPER RIVER	CHISTOCHINA	14.0	129,320
DELTA/GREELY	HEALY LAKE	8.0	107,970
HAINES	MOSQUITO LAKE	10.0	90,280
IDITAROD	TELIDA	6.0	
IDITAROD	LAKE MINCHUMINA	12.0	
IDITAROD	LIME VILLAGE	31 13.0	400,160
KODIAK ISLAND	KARLUK	10.9	
KODIAK ISLAND	DANGER BAY	13.8	
KODIAK ISLAND	BIG SANDY LAKE	29 14.3	297,680
KUSPUK	STONY RIVER	15.0	162,260
LAKE & PENINSULA	PEDRO BAY	10.0	
LAKE & PENINSULA	IGIUGIG	13.0	
LAKE & PENINSULA	IVANOF BAY	37 14.0	378,920
LOWER KUSKOKWIM	PLATINUM	10.0	
LOWER KUSKOKWIM	OSCARVILLE	24.5 14.5	300,120
MAT-SU	BERYOZAVA	11.0	44,550
SITKA	FALSE PASS	12.0	
SITKA	CORNER BAY	25 13.0	215,930
SOUTHEAST ISLAND	MEYER CHUCK	5.0	
SOUTHEAST ISLAND	POLK INLET	11.0	
SOUTHEAST ISLAND	WHALE PASS	13.0	
SOUTHEAST ISLAND	CRAIK	15.0	
SOUTHEAST ISLAND	JR GILDERSLEEVE	59 15.0	562,420
YUKON FLATS	BIRCH CREEK	14.0	
YUKON FLATS	CENTRAL	29 15.0	343,450
YUKON/KOYUKUK	BETTLES	10.0	
YUKON/KOYUKUK	HUGHES	24 14.0	261,690

SENATE BILL NO. 70
IN THE LEGISLATURE OF THE STATE OF ALASKA
NINETEENTH LEGISLATURE - FIRST SESSION

BY SENATOR PHILLIPS

Introduced: 2/6/95
Referred: H.S. FIN

A BILL
FOR AN ACT ENTITLED

1 "An Act relating to the public school foundation program; and providing for an
2 effective date."

3 BE IT ENACTED BY THE LEGISLATURE OF THE STATE OF ALASKA:

4 * Section 1. AS 14.17.021(b) is amended to read:

5 (b) The basic need of a school district is determined by multiplying the school
6 price index for [AREA COST DIFFERENTIAL OF] the district under AS 14.17.049
7 [AS 14.17.051] by the number of instructional units in the district under AS 14.17.031
8 and then multiplying that product by the instructional unit value in AS 14.17.056.

9 * Sec. 2. AS 14.17.024(a) is amended to read:

10 (a) Money for the instructional services provided in a fiscal year by the state
11 boarding school established under AS 14.16.010 includes an allocation from the public
12 school foundation account in an amount calculated by

13 (1) multiplying the instructional unit value in AS 14.17.056 by the total
14 number of instructional units under AS 14.17.031 for that fiscal year, as determined

1 (3) the number of units for special education determined under
2 AS 14.17.045; and

3 (4) the number of units for bilingual education determined under
4 AS 14.17.047.

5 * Sec. 5. AS 14.17.031(b) is amended to read:

6 (b) If the total elementary and secondary instructional units that a school district
7 is eligible to receive under (a) of this section decrease by five [10] percent or more from
8 one fiscal year to the next, the school district may use the last fiscal year before the
9 reduction as a base fiscal year and offset its reduction according to the following
10 schedule: (1) for the first fiscal year after the base fiscal year, the school district is
11 eligible to receive the total elementary and secondary instructional units determined
12 under (a)(1) of this section plus 75 percent of the difference in total elementary and
13 secondary instructional units between the base fiscal year and the first fiscal year after the
14 base fiscal year; (2) for the second fiscal year after the base fiscal year, the school district
15 is eligible to receive the total elementary and secondary instructional units determined
16 under (a)(1) of this section plus 50 percent of the difference in total elementary and
17 secondary instructional units between the base fiscal year and the second fiscal year after
18 the base fiscal year; (3) for the third fiscal year after the base fiscal year, the school
19 district is eligible to receive the total elementary and secondary instructional units
20 determined under (a)(1) of this section plus 25 percent of the difference in total
21 elementary and secondary instructional units between the base fiscal year and the third
22 fiscal year after the base fiscal year. The schedule established in this subsection is
23 available to a school district for the three fiscal years following the base fiscal year only
24 if the total elementary and secondary instructional units received by the school district
25 under (a)(1) of this section for each fiscal year are less than the total elementary and
26 secondary instructional units received by the school district in the base fiscal year. This
27 subsection does not apply to a decrease in total elementary and secondary instructional
28 units resulting from a loss of enrollment that occurs as a result of a boundary change
29 under AS 29.

30 • Sec. 6. AS 14.17.041(b) is amended to read:

31 (b) For funding communities that are not included under (a) of this section,

Savings +
11,000,000

1
2
3
4
5
6
7
8
9
10
11
12
13
14
15
16
17
18
19
20
21
22
23
24
25
26
27
28
29
30
31

(1) instructional units for elementary students are determined by the formula: units = $15 + ((ADM-200)/16)$ [15 + ((ADM-200)/17)], where ADM is the number of students in average daily membership in grades kindergarten through 6;

(2) instructional units for secondary students are determined by the formula: units = $18 + ((ADM-200)/13)$, where ADM is the number of students in average daily membership in grades 7 through 12.

* Sec. 7. AS 14.17.041 is amended by adding a new subsection to read:

(e) A district with an ADM of 900 or less that consists of one funding community shall increase the elementary and secondary instructional units received under (a) or (b) of this section by multiplying the instructional units by a percentage determined under the following table:

21 school
distts.
37% of
distts.

District ADM	Percentage
1 - 250	1.12
251 - 525	1.08
526 - 900	1.06.

526-900

* Sec. 8. AS 14.17 is amended by adding a new section to read:

Sec. 14.17.049. SCHOOL PRICE INDEX. (a) The department shall determine the school price index for a district based on an average of costs for educational goods and services utilized by the school districts receiving aid under this chapter. The department, by regulation, shall assign weights for the following categories of costs:

- (1) salaries and benefits of certificated employees;
- (2) salaries and benefits of noncertificated employees;
- (3) other expenses for nonpersonnel educational goods and services;
- (4) other factors intended to take into account the extent to which an

educational program reflects the additional cost of providing free public education in particular types of school districts, including a district that is geographically isolated or to a particular type of student, including a student with a disability.

(b) The department shall adjust the school price index for a district or districts in fiscal year 1999 and every third fiscal year thereafter, based on a national elementary and secondary school price index as designated in regulations adopted by the department. The department shall notify school districts annually of the school price index for each

1 district.

2 (c) The department may require school districts to submit uniform cost reports
3 as designated in regulations adopted by the department.

4 (d) The department shall assign a school price index to a new district based on
5 the school price index for districts that the department determines have similar
6 characteristics, including remoteness, population density, and geographic location.

7 * Sec. 9. AS 14.17.080 is amended to read:

8 Sec. 14.17.080. STUDENT COUNT ESTIMATES. Each district shall prepare
9 and submit to the department, by November 20 [OCTOBER 15] of each fiscal year, in
10 the manner and on forms prescribed by the department, an estimate of its average daily
11 membership and other student count data for the succeeding fiscal year, upon which
12 computations can be made of the amount of estimated state foundation aid for which the
13 district will be eligible under AS 14.17.021 in that fiscal year. In making this estimate for
14 the succeeding fiscal year, the district shall consider its average daily membership in the
15 current fiscal year, other student count data, the pattern of growth or decline in
16 preceding years, and other pertinent information available to the district. The preliminary
17 reports required by this section are the basis for estimating the need for state foundation
18 aid for the next fiscal year.

19 * Sec. 10. AS 14.17.160(b) is amended to read:

20 (b) Upon written request and for good cause shown, the commissioner may
21 permit a district to use a 20-school-day counting period from the same school year other
22 than the periods set out in (a) of this section. However, the counting period must be 20
23 consecutive school days.

24 * Sec. 11. AS 14.17.160 is amended by adding new subsections to read:

25 (c) Upon written request, and for good cause shown, the commissioner may
26 permit a district to use, for purposes of reporting its average daily membership, the
27 October or February counting period report described in (a) of this section, or the report
28 for another period authorized under (b) of this section, from the immediately preceding
29 school year. The report must accompany a request under this subsection, and is in
30 addition to the October report for the current school year required by (a) of this section.

31 (d) For purposes of this section, "good cause" includes reduction in student

1 enrollment.

2 * Sec. 12. AS 44.47.305(c) is amended to read:

3 (c) A grant under (a) of this section may not exceed \$50 per month for each child
4 the child care facility cares for, or for each full-time equivalent, as determined by the
5 department. The grant shall be adjusted on a geographic basis by the same percentages
6 as instructional unit allotments are adjusted under AS 14.17.049 [AS 14.17.051].

7 * Sec. 13. AS 14.17.051 is repealed.

8 * Sec. 14. TRANSITION: REGULATIONS. The Department of Education may immediately
9 proceed to adopt regulations necessary to implement this Act. The regulations take effect under
10 the Administrative Procedure Act, but not before July 1, 1995.

11 * Sec. 15. Sections 1, 2, 12, and 13 of this Act take effect July 1, 1996.

12 * Sec. 16. Section 14 of this Act takes effect immediately under AS 01.10.070(c).

13 * Sec. 17. Sections 3 - 11 of this Act take effect July 1, 1995.



ALASKA STATE LEGISLATURE

SENATOR RANDY PHILLIPS
SENATE DISTRICT L

SESSION
State Capitol
Juneau, AK 99801
(907) 465-4949
800-478-4950
Fax: 465-4979

INTERIM
P.O. Box 142
Eagle River AK 99577
(907) 694-4949
Fax: 694-4948

CHAIR
Administrative Regulation
Review Committee

VICE-CHAIR
Community & Regional Affairs
State Affairs

MEMBER
Alaska Commission on
Postsecondary Education

SB 70 Sponsor Statement

I introduced Senate Bill 70, "An Act relating to the public school foundation program." to make a number of changes to the public school foundation system. The funding system for education in Alaska has not been changed since 1987.

By far the largest single portion of the state general fund operating budget is the school foundation program that provides the basic state support for K-12 education. For FY 96 the projected state general fund contribution to the foundation program is approximately \$617 million, with total state spending on education at over \$800 million. Even at this level of expenditure, averaging over \$7,900 in foundation funding per student, plus local expenditures, class sizes in many of our schools are far beyond acceptable levels. Under the current formula, actual foundation funding ranges from \$3,492 per student in Ketchikan to \$26,052 per student in the Aleutian Region School District.

Senate Bill 70 makes several changes to the current foundation formula; SB70 changes the instructional unit calculation for large elementary schools to help fund reduced class sizes. It requires more local effort from certain school districts that currently have low millage rates for school support, thus increasing taxpayer equity throughout the state. SB70 changes funding levels for very small schools, those with less than 16 students, to encourage consolidation or alternate service delivery (there are currently 39 schools in Alaska

with between 4 and 16 students). SB70 allows for the Department of Education to update the area cost differentials to more accurately reflect the actual costs of doing business in various regions of the state. SB70 also makes some minor changes to the laws to improve the administration of the foundation formula.



ALASKA STATE LEGISLATURE

SENATOR RANDY PHILLIPS

SENATE DISTRICT L

SESSION
State Capitol
Juneau, AK 99801
(907) 465-4949
800-478-4950
Fax: 465-4979

INTERIM
P.O. Box 142
Eagle River AK 99577
(907) 694-4949
Fax: 694-4948

CHAIR
Administrative Regulation
Review Committee

VICE-CHAIR
Community & Regional Affairs
State Affairs

MEMBER
Alaska Commission on
Postsecondary Education

Sectional Analysis

SB 70

Sections 1&2.

Replaces the area cost differential in the school foundation formula, which is defined in statute, with the school price index which will be defined in regulation.

Section 3.

Increases the required local match from the lesser of 4 mills or 35% to the lesser of 4 mills or 50%.

Section 4.

Defines requires the Department of Education to define funding communities to include no less than 16 students in average daily membership (ADM).

Section 5.

Provides that a school district which experiences a decrease in instructional units of 5% or more in one year may use the previous year's count. Current law provides a 10% reduction.

Section 6.

Changes from seventeen (17) to sixteen (16), the divisor in the elementary school formula for schools with more than 525 ADM.

Section 7.

Provides additional funding for single site schools with an ADM of 900 or less.

Section 8.

Defines the School Price Index that is to be developed by the Department of Education.

Section 9.

Postpones the districts submittal of the student count estimate from October 15 to November 20th. It is the expectation that districts will then be able to use current data to make estimations for the succeeding fiscal year.

Section 10.

Allows the commissioner, upon written request, to permit a district to use a 20 day counting period from the same year.

Section 11.

Adds a new subsection to allow the commissioner, upon written request, for good cause to allow some flexibility in the district student counting period.

Section 12.

Provides that geographical differences for child care facility grants are to be based on the school price index instead of the area cost differential.

Section 13.

Repeals the area cost differential.

Section 14.

Allows for the Department to adopt regulations to implement the act.

Section 15.

Provides that all the sections (1,2,12 and 13) referring to the school price index or the area cost differential take effect July 1, 1996.

Section 16.

Immediate effective date for section 14.

Section 10.

Effective date of July 1, 1995 for the remainder of the act.

FISCAL NOTE

STATE OF ALASKA
1995 LEGISLATIVE SESSION

BILL NO. SB 70

Revision Date: _____

Department Affected: Education

Title: An Act relating to the public school foundation program; and providing for an effective date.

BRU: K-12

Sponsor: Senator Phillips

Component: Foundation Program

Requester: Senator Phillips

COMPONENT SERIAL NO. 141

Expenditures/Revenues:

(Thousands of Dollars)

OPERATING	FY 96	FY 97	FY 98	FY 99	FY 00	FY 01
PERSONAL SERVICES						
TRAVEL						
CONTRACTUAL						
SUPPLIES						
EQUIPMENT						
LAND & STRUCTURES						
GRANTS, CLAIMS	9,261.8	9,493.3	9,730.6	9,973.9	10,223.2	10,478.8
MISCELLANEOUS						
TOTAL OPERATING	9,261.8	9,493.3	9,730.6	9,973.9	10,223.2	10,478.8

CAPITAL						
---------	--	--	--	--	--	--

REVENUE FUND SOURCE:						
----------------------	--	--	--	--	--	--

FUNDING:

(Thousands of Dollars)

1002 Federal Receipts						
1003 GF Match						
1004 GF	9,261.8	9,493.3	9,730.6	9,973.9	10,223.2	10,478.8
1005 GF/Program Receipts						
1006 GF/MHTIA						
Other						
TOTAL	9,261.8	9,493.3	9,730.6	9,973.9	10,223.2	10,478.8

POSITIONS:

FULL-TIME						
PART-TIME						
TEMPORARY						

Estimate of current year (FY95) impact: \$.0

ANALYSIS: (Attach a separate page if necessary.) Section 1 replaces the existing area cost differentials with the school price index. The effective date of sections 1, 2, 12 and 13 is July 1, 1996. All of these sections refer to the school price index. Since the school price index has not been developed, as of this date, the department has not addressed the fiscal impact on individual school districts. The Department of Education has not projected the fiscal impact of Section 12. This fiscal note reflects the increased general fund requirements to implement sections 3, 4, 5, 6 and 7. The department projects a 5% annual increase for fiscal years 1997 through 2001.

Prepared by: Eddy Jeans Phone: 465-8685
 Division: School Finance Date: February 17, 1995
 Approved by Commissioner: [Signature] Mike Maher
 Agency: Education Date: February 17, 1995

PREPARER TO PROVIDE ALL DISTRIBUTION COPIES TO GOVERNOR'S LEGISLATIVE OFFICE

For further distribution information call the Governor's Legislative Office

ALASKA DEPARTMENT OF EDUCATION
 PROJECTED FY96 FOUNDATION PROGRAM
 Fiscal Analysis for SB70

	Section 3	Section 4	Section 5	Section 6	Section 7	Total
ADAK	-	-	-	-	-	-
ALASKA GATEWAY	-	(97,600)	-	-	-	(97,600)
ALEUTIAN REGION	-	-	77,470	-	34,160	111,630
ALEUTIANS EAST	-	(127,490)	-	-	-	(127,490)
ANCHORAGE	-	-	-	5,848,070	-	5,848,070
ANNETTE ISLANDS	-	-	-	-	170,800	170,800
BERING STRAIT	-	-	-	-	-	-
BRISTOL BAY	-	(134,200)	78,080	-	152,500	96,380
CHATHAM	-	(317,810)	220,210	-	-	(97,600)
CHUGACH	-	(178,730)	94,550	-	-	(84,180)
COPPER RIVER	-	(129,320)	-	-	-	(129,320)
CORDOVA	-	-	-	27,450	165,310	192,760
CRAIG	-	-	-	-	159,210	159,210
DELTA/GREELY	-	(107,970)	-	86,010	-	(21,960)
DENALI	-	-	-	-	-	-
DILLINGHAM	-	-	-	29,280	241,560	270,840
FAIRBANKS	-	-	-	1,936,140	-	1,936,140
GALENA	-	-	-	-	179,950	179,950
HAINES	-	(90,280)	-	2,440	176,900	89,060
HOONAH	-	-	-	-	128,710	128,710
HYDABURG	-	-	-	-	98,210	98,210
IDITAROD	-	(400,160)	-	-	-	(400,160)
JUNEAU	-	-	-	649,650	-	649,650
KAKE	-	-	-	-	134,200	134,200
KASHUNAMIUT	-	-	-	-	215,940	215,940
KENAI	-	-	-	692,960	-	692,960
KETCHIKAN	-	-	-	276,330	-	276,330
KLAWOCK	-	-	-	-	155,550	155,550
KODIAK	-	(297,680)	-	278,770	-	(18,910)
KUSPUK	-	(162,260)	-	-	-	(162,260)
LAKE AND PENINSULA	-	(348,920)	332,450	-	-	(16,470)
LOWER KUSKOKWIM	-	(300,120)	-	176,290	-	(123,830)

ALASKA DEPARTMENT OF EDUCATION
 PROJECTED FY96 FOUNDATION PROGRAM
 Fiscal Analysis for SB70

	Section 3	Section 4	Section 5	Section 6	Section 7	Total
LOWER YUKON	-	-	-	-	-	-
MAT-SU	-	(94,550)	-	893,040	-	798,490
NENANA	-	-	-	-	157,990	157,990
NOME	-	-	-	61,610	254,370	315,980
NORTH SLOPE	(2,313,852)	-	-	151,890	-	(2,161,962)
NORTHWEST ARCTIC	-	-	-	84,790	-	84,790
PELICAN	-	-	-	-	57,340	57,340
PETERSBURG	-	-	-	55,510	208,010	263,520
PRIBILOF	-	-	-	-	-	-
SITKA	-	(215,330)	-	182,390	-	(32,940)
SKAGWAY	-	-	-	-	112,850	112,850
SOUTHEAST	-	(562,420)	779,580	-	-	217,160
SOUTHWEST	-	-	-	-	-	-
ST. MARY'S	-	-	116,510	-	105,530	222,040
TANANA	-	-	-	-	118,340	118,340
UNALASKA	(435,266)	-	-	-	189,710	(245,556)
VALDEZ	(769,515)	-	-	81,130	-	(688,385)
WRANGELL	-	-	-	27,450	159,820	187,270
YAKUTAT	-	-	-	-	132,370	132,370
YUKON FLATS	-	(343,430)	-	-	-	(343,430)
YUKON/KOYUKUK	-	(261,690)	-	-	-	(261,690)
YUPIIT	-	-	-	-	-	-
STATE CCS	-	-	-	201,026	-	201,026
Mt. EDGE CUMBE	-	-	-	-	-	-
TOTALS	(3,518,633)	(4,169,960)	1,698,850	11,742,226	3,509,330	9,261,813

Site

- Section 3 - Amends AS 14.17.025(a)(2), changes required local effort from 35% to 50% of basic need.
- Section 4 - Amends AS 14.17.031(a), sets the minimum size of a funding community at 16 ADM.
- Section 5 - Amends AS 14.17.031(b), changes the hold harmless provision from a decrease of 10% to 5% of K-12 units.
- Section 6 - Amends AS 14.17.041(b), changes the divisor for the elementary table from 17 to 16.
- Section 7 - Amends AS 14.17.041, adds a new table for single site school district units.

ALASKA DEPARTMENT OF EDUCATION
PROJECTED FY96 FOUNDATION PROGRAM ENTITLEMENTS

1/23/95 File:FND96PJ.XLS

Columns >>>

	A	B	C	D	E	F	G	H
	BASIC NEED \$61,000	REQUIRED LOCAL	ELIGIBLE PL81-874	PL81-874 PERCENT	DEDUCTIBLE PL81-874 @ 90%	PROJ FY96 FOUNDATION STATE AID	100% PL-874 FLOW THRU	FOUND./ PL-874 TOTAL

ADAK	0	0	\$0	100.00%	\$0	\$0		\$0
ALASKA GATEWAY	5 278 940	0	435 487	100.00%	391 938	4 887 002	0	4 887 002
ALEUTIAN REGION	527 650	0	65 245	100.00%	58 721	468 929	0	468 929
ALEUTIANS EAST	4 218 150	356 423	583 157	38.91%	193 719	3 668 008	0	3 668 008
ANCHORAGE	237 595 000	49 183 956	9 515 470	65.91%	5 644 482	182 768 562	10 611 700	193 378 262
ANNETTE ISLANDS	2 637 640	0	1 163 121	100.00%	1 046 809	1 590 831	0	1 590 831
BERING STRAIT	19 588 320	0	3 954 145	100.00%	3 558 731	16 029 589	0	16 029 589
BRISTOL BAY	2 464 400	707 169	275 326	60.52%	149 965	1 607 266	0	1 607 266
CHATHAM	3 241 540	0	745 681	100.00%	671 113	2 570 427	0	2 570 427
CHUGACH	1 831 220	0	143 295	100.00%	128 966	1 702 254	0	1 702 254
COPPER RIVER	5 166 700	0	92 218	100.00%	82 936	5 083 704	0	5 083 704
CORDOVA	3 287 290	741 350	21 781	100.00%	19 603	2 526 337	0	2 526 337
CRAIG	2 505 270	254 661	19 100	70.88%	12 184	2 238 425	0	2 238 425
DELTA GREELY	6 268 360	0	1 025 609	100.00%	923 048	5 345 312	0	5 345 312
DENALI	3 491 640	301 901	31 601	84.14%	23 914	3 165 755	0	3 165 755
DILLINGHAM	3 913 150	524 049	383 482	60.09%	207 391	3 181 710	0	3 181 710
FAIRBANKS	82 378 060	13 811 672	7 545 794	53.89%	3 659 786	64 908 602	8 535 241	73 441 843
GALENA	1 916 620	79 335	360 235	63.00%	204 253	1 633 032	0	1 633 032
HAINES	2 680 950	522 856	21 727	49.40%	9 660	2 148 434	0	2 148 434
HOONAH	2 170 380	96 718	273 515	16.38%	40 322	2 033 340	0	2 033 340
HYDABURG	1 005 280	23 129	19 500	25.93%	4 551	977 600	0	977 600
IDITAROD	5 981 660	0	664 578	100.00%	598 120	5 383 540	0	5 383 540
JUNEAU	28 694 403	7 063 936	19 402	54.93%	9 592	21 620 872	0	21 620 872
KAKE	1 381 650	69 261	322 640	26.78%	77 763	1 234 626	0	1 234 626
KASHUNAMIUT	2 272 250	0	310 795	100.00%	279 716	1 992 534	0	1 992 534
KENAI	59 780 000	14 162 513	95 077	53.10%	45 437	45 572 050	0	45 572 050
KETCHIKAN	13 486 490	3 942 168	10 283	59.26%	5 484	9 538 838	0	9 538 838
KLAWOCK	1 673 230	59 329	314 293	26.80%	75 807	1 538 094	0	1 538 094
KODIAK	17 080 000	3 435 410	1 237 707	93.13%	1 037 403	12 607 181	1 373 786	13 980 967
KUSPUK	5 725 460	0	535 951	100.00%	572 356	5 153 104	0	5 153 104
LAKE AND PENINSULA	7 230 940	276 911	1 176 907	30.60%	324 120	6 629 909	0	6 629 909
LOWER KUSKOKWIM	39 335 850	0	5 204 043	100.00%	4 737 639	34 598 211	0	34 598 211
LOWER YUKON	17 285 570	0	3 750 674	100.00%	3 375 607	13 909 963	0	13 909 963
MAT-SU	68 308 580	8 602 703	16 753	55.37%	8 349	59 595 528	0	59 595 528
NENANA	1 647 000	65 098	3 348	94.64%	2 852	1 579 050	0	1 579 050
NOME	4 986 750	531 875	45 895	42.04%	18 003	4 436 072	0	4 436 072
NORTH SLOPE	16 070 450	5 398 988	3 031 150	19.34%	527 602	10 143 860	0	10 143 860
NORTHWEST ARCTIC	18 837 410	1 168 962	2 564 419	53.62%	1 237 537	16 430 911	0	16 430 911
PELICAN	609 390	55 876	0	83.80%	0	553 514	0	553 514
PETERSBURG	4 022 950	808 223	18 152	55.80%	9 116	3 205 611	0	3 205 611
PRIBILOF	2 168 720	0	426 265	100.00%	383 585	1 783 135	0	1 783 135
SITKA	9 029 220	2 113 115	181 711	55.78%	91 223	6 824 882	0	6 824 882
SKAGWAY	1 067 500	360 794	0	72.95%	0	706 706	0	706 706
SOUTHEAST	4 499 970	0	527 526	100.00%	474 773	4 025 197	0	4 025 197
SOUTHWEST	7 679 290	0	1 231 902	100.00%	1 108 712	6 570 578	0	6 570 578
ST. MARY'S	1 133 990	18 134	140 224	79.70%	100 583	1 015 273	0	1 015 273
TANANA	1 231 590	44 931	203 952	41.22%	75 662	1 110 997	0	1 110 997
UNALASKA	2 785 130	1 015 620	415	70.44%	263	1 749 247	0	1 749 247
VALDEZ	5 203 910	1 795 535	50 110	44.06%	19 871	3 388 504	0	3 388 504
WRANGELL	3 209 820	592 522	2 074	52.20%	974	2 616 324	0	2 616 324
YAKUTAT	1 374 940	111 204	44 730	59.16%	73 816	1 239 920	0	1 239 920
YUKON FLATS	6 292 470	0	723 254	100.00%	650 929	5 648 541	0	5 648 541
YUKON KOYUKUK	8 017 840	0	1 144 433	100.00%	1 029 990	6 987 850	0	6 987 850
YUPIK	4 969 670	0	989 912	100.00%	890 921	4 078 749	0	4 078 749
STATE CCS	3 808 383	0	0	100.00%	0	3 808 383	0	3 808 383
MT. EDGECUMBE	1 586 000	0	0	100.00%	0	1 586 000	0	1 586 000

TOTALS	\$770 618 033	\$118 206 327	\$51 827 904		\$34 826 833	\$417 494 873	\$20 520 727	\$438 015 600
						CONTRACTUAL		218 800
						ON BASE SCHOOLS ADJUSTMENT		3 667 460
						ESTIMATED PRIOR YEAR ADJUSTMENTS		1 900 000
						EST. FY96 FOUNDATION ENTITLEMENT		\$443 401 860

TABLE OF INSTRUCTIONAL UNITS

COMBINED, ELEMENTARY & SECONDARY INSTRUCTIONAL UNITS

Instructional units for funding communities with fewer than 200 students in grades K-6 or fewer than 200 students in grades 7-12 are determined by the formula:

Elementary instructional units for funding communities with more than 200 students in grades K-6 are determined by the formula:

$$\text{UNITS} = 15 + \frac{(\text{ADM} - 200)}{17}$$

ADM	UNITS
1-10	2
11-20	$2 + \frac{(\text{ADM} - 10)}{5}$
21-40	$4 + \frac{(\text{ADM} - 20)}{8}$
61-120	$9 + \frac{(\text{ADM} - 60)}{12}$
121-525	$14 + \frac{(\text{ADM} - 120)}{15}$

Secondary instructional units for funding communities with more than 200 students in grades 7-12 are determined by the formula:

$$\text{UNITS} = 18 + \frac{(\text{ADM} - 200)}{13}$$

Kindergarten students who attend less than four hours a day are counted as 0.5 ADM.

District correspondence or other students who do not regularly attend school on a daily basis are counted in the appropriate grade level of the funding community with the highest ADM in the district.

VOCATIONAL EDUCATION

FTE * X WEIGHTING FACTOR X .05 = VOCATIONAL EDUCATION UNIT - 240 students in 7 period day or 240 students in 6 period day = 1 Unit

MINIMUM FUNDING: Any funding community in which a vocational education course, approved by the Dept. of Education, is operated receives a minimum of .10 instructional units for vocational education, or each school district in which such a course is operated receives a minimum of 1.00 units whichever is greater.

FACTOR PROGRAM

.5 CATEGORY 1 contains 16 programs: health, consumer and homemaking, horticulture, commercial art, clothing and textiles, general marketing, food production, renewable and natural resources, forestry, agriculture services and supplies, transportation and travel, wildlife management, business management, child care management and surveying.

.5 CATEGORY 2 contains 7 programs: aircraft mechanics, communication technologies, commercial photography, agriculture mechanics, accounting and related, small engine mechanic and automotive body repair.

FACTOR PROGRAM

.5 CATEGORY 3 contains 9 programs: agricultural production, welding, industrial education, woodworking, automobile mechanics, electrical technician, drafting, fisheries and diesel engine mechanics.

.5 CATEGORY 4 contains 3 programs: graphics, secretarial and word processing, and construction trades.

* Full Time Equivalent

SPECIAL EDUCATION

NUMBER OF STUDENTS X WEIGHTING FACTOR = SPECIAL EDUCATION UNITS

MINIMUM FUNDING: Any funding community in which a special education program, approved by the Department of Education, is operated receives a minimum of 0.25 instructional units for special education, or any school district in which such a program is operated receives a minimum of 1.00 such units, whichever is greater.

FACTOR PROGRAM

.025 GIFTED AND TALENTED - 40 Students = 1 Unit
.050 RESOURCES - 18 Students = 1 Unit

FACTOR PROGRAM

0.1 SELF-CONTAINED - 10 Students = 1 Unit
.333 INTENSIVE/HOSPITAL/HOMEBOUND - 3 Students = 1 Unit

BILINGUAL EDUCATION

WEIGHTING FACTOR * X STUDENT COUNT X .042 = BILINGUAL EDUCATION UNITS

MINIMUM FUNDING: Any funding community in which a bilingual program, approved by the Dept. of Education, is operated receives a minimum of 0.10 instructional units for bilingual education, or each school district in which such a program is operated receives a minimum of 1.00 such units, whichever is greater.

FACTOR PROGRAM

1 CATEGORY A: Students who speak a language other than English exclusively. 24 Students = 1 Unit
1 CATEGORY B: Students who speak mostly a language other than English, but also speak some English. 24 Students = 1 Unit
2 CATEGORY C: Students who speak a language other than English and English with equal fluency. 110 Students = 1 Unit

FACTOR PROGRAM

.2 CATEGORY D: Students who speak mostly English but also speak a language other than English. 110 Students = 1 Unit
.1 CATEGORY E: Students who speak English exclusively but whose manner of speaking reflects the grammatical structure of another language. 220 Students = 1 Unit

* Language dominance category weighting factor.

ALASKA DEPARTMENT OF EDUCATION
PROJECTED FY96 FOUNDATION PROGRAM ENTITLEMENTS

1/10/95 File FND96PJ XLS

The Department of Education has not verified the unit computations submitted by the local school districts.

	PROJ. FY96 ADM	K-12 UNITS	BIL/ BIC.	SPEC. ED.	VOC. ED.	FY96 PROJ. INSTR. UNITS	AREA DIFF.	ADJUSTED FY96 INSTR. UNITS
ADAK	0 00	0 00	0 00	0 00	0 00	0 00	1 27	0 00
ALASKA GATEWAY	535 00	62 16	1 00	8 56	1 00	72 72	1 19	86 54
ALEUTIAN REGION	18 00	3 60	1 00	1 00	1 00	6 60	1 31	8 65
ALEUTIANS EAST	371 00	46 86	0 00	4 93	1 00	52 79	1 31	69 15
ANCHORAGE	46 843 00	3 140 02	88 56	629 98	36 44	3 895 00	1 00	3 895 00
ANNETTE ISLANDS	420 00	34 00	1 00	5 98	1 00	41 98	1 03	43 24
BERING STRAIT	1 694 00	195 23	13 98	19 53	2 28	231 02	1 39	321 12
BRISTOL BAY	279 00	26 33	1 00	3 48	1 00	31 81	1 27	40 40
CHATHAM	328 00	44 61	1 00	4 98	1 00	51 59	1 03	53 14
CHUGACH	135 00	22 87	1 00	1 46	1 00	26 33	1 14	30 02
COPPER RIVER	614 00	67 88	0 00	5 42	1 00	74 30	1 14	84 70
CORDOVA	525 00	40 63	1 00	5 92	1 00	48 55	1 11	53 89
CRAIG	385 00	31 67	1 00	6 20	1 00	39 87	1 03	41 07
DELTA/GREELY	971 00	72 46	1 00	14 13	1 00	88 59	1 16	102 76
DENALI	405 00	42 20	0 00	3 34	1 00	46 54	1 23	57 24
DILLINGHAM	503 80	39 06	1 19	9 26	1 00	50 51	1 27	64 15
FAIRBANKS	15 893 50	1 088 15	6 09	190 78	13 50	1 298 52	1 04	1 350 46
GALENA	191 00	18 93	1 00	3 24	1 00	24 17	1 30	31 42
HAINES	422 00	35 91	1 00	3 95	1 00	41 86	1 05	43 95
HOONAH	275 00	24 33	1 00	6 61	1 00	32 94	1 08	35 58
HYDABURG	108 00	13 00	1 00	1 00	1 00	16 00	1 03	16 48
IDITAROD	440 00	63 74	1 24	7 75	1 00	73 73	1 33	98 06
JUNEAU	5 394 00	364 76	3 84	98 71	3 09	470 40	1 00	470 40
KAKE	178 00	17 86	1 00	2 13	1 00	21 99	1 03	22 65
KASHUNAMIUT	242 00	22 13	1 83	3 05	1 00	28 01	1 33	37 25
KENAI	10 459 00	828 39	19 60	120 72	11 29	980 00	1 00	980 00
KETCHIKAN	2 731 50	190 04	1 54	25 15	4 36	221 09	1 00	221 09
KLAWOCK	220 00	20 67	1 00	3 96	1 00	26 63	1 03	27 43
KODIAK	2 737 86	217 44	5 63	30 84	2 97	256 88	1 09	280 00
KUSPUK	467 00	62 52	1 00	6 05	1 00	70 57	1 33	93 86
LAKE AND PENN.	498 00	81 71	1 00	6 78	1 00	90 49	1 31	118 54
LOWER KUSKOKWIM	3 250 00	335 00	83 47	32 05	3 60	454 12	1 42	644 85
LOWER YUKON	1 605 60	179 76	9 57	18 78	1 79	209 90	1 35	283 37
MAT-SU	12 720 00	944 67	10 57	153 11	11 43	1 119 78	1 00	1 119 78
NENANA	180 00	18 00	1 00	2 50	1 00	22 50	1 20	27 00
NOME	694 00	50 62	1 04	8 33	1 02	61 01	1 34	81 75
NORTH SLOPE	1 768 00	158 84	9 15	11 91	1 79	181 69	1 45	263 45
NORTHWEST ARCTIC	1 891 00	184 79	4 14	21 65	2 39	212 97	1 45	308 81
PELICAN	46 00	7 25	0 00	1 00	1 00	9 25	1 09	9 99
PETERSBURG	768 00	58 82	1 00	7 13	1 00	65 95	1 00	65 95
PRIBILOF	190 00	22 85	1 00	2 47	1 00	27 32	1 30	35 52
SITKA	1 820 00	131 05	1 00	14 03	1 94	148 02	1 00	148 02
SKAGWAY	130 00	14 67	0 00	1 00	1 00	16 67	1 05	17 50
SOUTHEAST	381 00	63 86	1 00	4 97	1 10	70 93	1 04	73 77
SOUTHWEST	633 00	77 08	11 12	6 90	1 00	98 10	1 31	125 89
ST. MARY'S	85 00	11 08	1 00	1 22	1 00	14 30	1 30	18 59
TANANA	101 00	12 42	1 00	1 11	1 00	15 53	1 30	20 19
UNALASKA	370 00	30 67	1 00	3 02	1 00	35 69	1 27	45 33
VALDEZ	925 00	67 50	0 00	8 36	1 00	76 86	1 11	85 31
WRANGELL	567 00	43 62	1 00	7 00	1 00	52 62	1 00	52 62
YAKUTAT	161 00	16 73	1 00	2 14	1 00	20 87	1 08	22 54
YUKON FLATS	413 00	62 91	2 07	4 65	1 10	70 73	1 46	103 27
YUKON KOYUKUK	613 00	82 52	2 62	10 89	2 06	98 09	1 34	131 44
YUPIIT	371 00	42 47	7 82	6 49	1 00	57 78	1 41	81 47
STATE CCS	1 577 93	96 05	0 00	0 03	0 00	96 05	1 00	96 05
MR. EDGE CUMBE	270 00	23 00	1 00	1 00	1 00	26 00	1 00	26 00
TOTALS	125 817 19	9 653 39	313 07	1 566 60	139 15	11 672 21		12 666 70

FY95 FOUNDATION FUNDING COMMUNITY				
FIRST STUDENT COUNT PERIOD				
SCHOOL DISTRICT	FUNDING COMMUNITY	ADM BY COMMUNITY	ADM BY DISTRICT	
REAA	ADAK	ADAK	0 00	0 00
REAA	ALASKA GATEWAY	ALCAN BORDER	7 00	536 15
		DOT LAKE	24 00	
		EAGLE	23 90	
		MENTASTA	25 35	
		NORTHWAY	63 30	
		TANACROSS	18 25	
		TETLIN	30 95	
		TOK	325 40	
REAA	ALEUTIAN REGION	ATKA	18 00	18 00
CB	ALEUTIAN EAST	AKUTAN	24 00	365 00
		COLD BAY	22 00	
		FALSE PASS	27 00	
		KING COVE	154 00	
		NELSON LAGOON	10 00	
		SAND POINT	128 00	
CB	ANCHORAGE	ANCHORAGE	39 465 23	45 895 60
		EAGLE RIVER	6 260 87	
		GIRDWOOD	169 50	
REAA	ANNETTE ISLAND	ANNETTE	420 00	420 00
REAA	BERING STRAIT	BREVIG MISSION	85 55	1 600 70
		DIOMEDE	65 66	
		ELM	93 10	
		GAMBELL	179 15	
		GOLOVN	51 00	
		KOYUK	79 80	
		SAVOONGA	143 30	
		SHAKTOOLIK	89 83	
		SHISHMAREF	174 90	
		ST MICHAEL	116 70	
		STEBBINS	140 60	
		TELLER	83 40	
		UNALASKA LEEET	218 80	
		WALES	51 75	
		WHITE MOUNTAIN	80 00	
CB	BRISTOL BAY	BRISTOL BAY	254 25	269 29
		SOUTH PARKER	16 00	
REAA	CHATHAM	ANGOOK	156 00	325 85
		CUNE COVE	29 00	
		ELM COVE	8 00	
		GUSTAVUS	79 70	
		HOBART BAY	12 25	
		KLUKWAN	27 80	
		TENAKEE SPRINGS	13 00	

FY95 FOUNDATION FUNDING COMMUNITY				
FIRST STUDENT COUNT PERIOD				
SCHOOL DISTRICT	FUNDING COMMUNITY	ADM BY COMMUNITY	ADM BY DISTRICT	
REAA	CHUGACH	CHENEGA BAY	13 00	133 00
		ICY BAY	13 00	
		TATITLEK	32 00	
		TWO MOON BAY	10 00	
		WHITTIER	65 00	
STATE	CCS	CCS	1 477 15	1 477 15
REAA	COPPER RIVER	CHISTOCHINA	13 30	623 25
		COPPER CENTER	69 80	
		GAKONA	21 75	
		GLENNALLEN	364 80	
		KENNY LAKE	107 80	
		LOTTIE SPARKS	17 00	
		SLANA	28 80	
CB	CORDOVA	CORDOVA	528 15	528 15
CB	CRAIG	CRAIG	396 00	396 00
REAA	DELTA GREELY	DELTA JUNCTION	964 00	974 00
		HEALY LAKE	10 00	
CB	DENALI	ANDERSON	125 30	384 55
		CANTWELL	27 00	
		HEALY	232 25	
CB	DILLINGHAM	DILLINGHAM	496 20	496 20
CB	FAIRBANKS	FAIRBANKS	10 411 00	15 408 50
		NORTH POLE	3 179 00	
		SALCHA	148 50	
		TWO RIVERS	118 50	
		EIELSON	1 581 50	
CB	GALENA	GALENA	142 00	142 00
CB	HANES	HANES	403 15	413 15
		MOSQUITO LAKE	13 00	
CB	HOONAH	HOONAH	259 40	259 40
CB	HYDABURG	HYDABURG	107 50	107 50
REAA	HOYAROD	ANVIK	21 45	417 85
		GRAYLING	80 95	
		HOLY CROSS	89 36	
		LAKE MICHIGAMA	10 00	
		LIME VILLAGE	12 00	
		MCCRATH	148 00	
		NIKOLAI	22 00	
		SHAGELLUK	43 00	
		TAROTNA	27 00	
		TELIDA	4 00	

FY95 FOUNDATION FUNDING COMMUNITY				
FIRST STUDENT COUNT PERIOD				
SCHOOL DISTRICT	FUNDING COMMUNITY	ADM BY COMMUNITY	ADM BY DISTRICT	
CB	JUNEAU	JUNEAU	5,399.75	5,399.75
CB	KAKE	KAKE	185.00	185.00
REAA	KASHUNAMIUT	CHEVAK	229.90	229.90
CB	KENAI PENINSULA	ANCHOR POINT	249.35	10,144.00
		BELUGA	6.00	
		COOPER LANDING	41.35	
		HOMER	1,314.20	
		HOPE	44.65	
		KACHEMAK SELO	55.70	
		KASLOF	272.50	
		KENAI	1,731.10	
		MCNEIL CANYON	203.60	
		MOOSE PASS	35.00	
		NANWALEK	45.40	
		NIKISKI	1,121.80	
		NIKOLAEVSK	159.25	
		NINILCHIK	201.75	
		PORT GRAHAM	36.00	
		RAZDOOLNA	40.00	
		SELDOVIA	84.95	
		SEWARD	860.50	
		SOLDOTNA	3,046.10	
		STERLING	386.35	
		TYONEK	39.60	
		VOZNESENKA	108.65	
CB		KETCHIKAN	KETCHIKAN	
CB	KLAWOCK	KLAWOCK	206.85	206.85
CB	KODIAK ISLAND	AKHIOK	20.50	2,711.46
		BIG SANDY LAKE	14.90	
		CHINITK	32.80	
		DANGER BAY	13.40	
		KARLUK	7.90	
		KODIAK	2,392.05	
		LARSEN BAY	28.40	
		OLD HARBOR	61.40	
		OUZONKIE	44.50	
		PORT LOCKS	67.60	
REAA	KUSPUK	ANIAK	176.25	884.30
		CHUATHDALUK	35.25	
		CROOKED CREEK	37.25	
		RED DEVIL	15.05	
		BLEETMUTE	21.25	
		STONY RIVER	11.15	
		UPPER KALSKAG	95.00	
		LOWER KALSKAG	57.15	

FY95 FOUNDATION FUNDING COMMUNITY						
FIRST STUDENT COUNT PERIOD						
SCHOOL DISTRICT	FUNDING COMMUNITY	ADM BY COMMUNITY	ADM BY DISTRICT			
CB	LAKE & PENINSULA	CHIGNIK BAY	21.30	607.63		
		CHIGNIK LAGOON	27.75			
		CHIGNIK LAKE	53.00			
		EGEGIK	28.00			
		IGIUGIG	13.00			
		IVANOF BAY	14.00			
		KOKHANGK	48.20			
		LEVELOK	28.13			
		NEWHALEN	89.60			
		NONDALTON	65.55			
		PEDRO BAY	9.00			
		PERRYVILLE	35.00			
		PILOT POINT	25.95			
		PORT ALSVORTH	24.40			
		PORT HEIDEN	26.55			
REAA		LOWER KUSKOKWIM	AXIUK		70.50	3,051.05
			AKULA		72.65	
	ATMAUTLAUK		76.50			
	BETHEL		1,124.10			
	CHEFORNAK		110.50			
	EEK		59.05			
	GOODNEWS BAY		66.70			
	KIPNUK		163.90			
	KONGIGANAK		91.45			
	KWETHLUK		181.20			
	KWIGILLINGOK		21.00			
	MEKORYUK		42.05			
	NAPAKIAK		88.70			
	NAPASKIAK		98.25			
	NEWTOK		85.75			
	NIGHTMUTE		46.35			
	NUNAPITCHLUK		122.00			
	OSCARVILLE		13.75			
	PLATINUM		6.00			
	QUINHAGAK		127.40			
	TOKSOOK BAY	138.70				
	TUNTUTULIAK	79.60				
	TUNUNAK	92.85				
REAA	LOWER YUKON	ALAKANAK	154.40	1,629.65		
		EMBAKIAK	703.00			
		HOOPER BAY	329.15			
		KOTLUK	168.60			
		MARSHALL	92.80			
		MOUNTAIN VILLAGE	227.70			
		PLOT STATION	168.05			
		PITKAS POINT	35.00			
		RUSSIAN MISSION	94.95			
		SCAMMON BAY	118.35			
	SHELDON POINT	45.25				

FY95 FOUNDATION FUNDING COMMUNITY FIRST STUDENT COUNT PERIOD				
	SCHOOL DISTRICT	FUNDING COMMUNITY	ADM BY COMMUNITY	ADM BY DISTRICT
STATE	MT EDGE CUMBE	MT EDGE CUMBE	282 30	282 30
CB	MAT-SU	BERYOZAVA	13 00	11,894 00
		BIG LAKE	622 80	
		BUTTE	388 90	
		COLONY	4,025 30	
		GLACIER VIEW	54 20	
		HOUSTON	567 70	
		MAT-SU VALLEY	193 10	
		PALMER	2,238 00	
		PT MCKENZIE	457 60	
		SKWENTNA	18 00	
		SUTTON	91 10	
		TALKEETNA	131 70	
		TRAPPER CREEK	57 70	
		WASILLA	2,837 10	
		WILLOW	197 80	
CB	NENANA	NENANA	162 91	162 91
CB	NOME	NOME	701 75	701 75
CB	NORTH SLOPE	ANAKTUVUK PASS	84 50	1,702 10
		ATQASUK	46 95	
		BARROW	879 15	
		KAKTOVIK	48 00	
		NUIGSUT	112 75	
		POINT HOPE	217 50	
		POINT LAY	52 00	
		WAINWRIGHT	181 25	
CB	NORTHWEST ARCTIC	AMBLER	101 00	1,872 80
		BUCKLAND	118 00	
		DEERING	44 90	
		KIANA	131 55	
		IVALPA	104 35	
		KOBUK	21 00	
		KOTZEBUE	723 85	
		NOATAK	11 73	
		NOORVIK	200 75	
		SELAWIK	224 90	
		SHURIGNAR	75 00	
CB	PELICAN	PELICAN	44 85	44 85
CB	PETERSBURG	PETERSBURG	758 75	758 75
REAA	PRIBLOF	ST GEORGE	42 00	168 85
		ST PAUL	126 85	
CB	SITKA	CORNER BAY	13 80	1,838 84
		FALSE PASS	10 70	
		SITKA	1,814 34	

FY95 FOUNDATION FUNDING COMMUNITY FIRST STUDENT COUNT PERIOD				
	SCHOOL DISTRICT	FUNDING COMMUNITY	ADM BY COMMUNITY	ADM BY DISTRICT
CB	SKAGWAY	SKAGWAY	127 20	127 20
REAA	SOUTHEAST ISLAND	CRAIK	15 10	381 95
		EDNA BAY	18 70	
		HOLLIS	22 85	
		HOWARD VALENTINE	44 30	
		JR GILDERSLEEVE	15 00	
		MEYER CHUCK	5 00	
		NAUKATI	41 30	
		POLK INLET	11 30	
		PORT ALEXANDER	27 60	
		PORT PROTECTION	17 40	
		THORNE BAY	150 80	
		WHALE PASS	13 00	
REAA	SOUTHWEST REGION	ALEXNAGK NORTH	25 45	568 30
		CLARKS POINT	15 00	
		EKWOK	28 00	
		KOLIGANEK	58 00	
		MANCKOTAK	123 65	
		NEW STUYAHOK	115 55	
		TOGIAK	185 65	
		TWIN HILLS	17 00	
CB	ST MARYS	ST MARYS	108 50	108 50
CB	TANANA	TANANA	102 25	102 25
CB	UNALASKA	UNALASKA	356 10	356 10
CB	VALDEZ	VALDEZ	902 75	902 75
CB	WRANGELL	WRANGELL	566 85	566 85
CB	YAKUTAT	YAKUTAT	187 00	187 00
REAA	YUKON FLATS	ARCTIC VILLAGE	38 50	405 15
		BEAVER	18 00	
		BIRCH CREEK	10 25	
		CENTRAL	15 00	
		CHALKYITSIK	21 00	
		CIRCLE	29 00	
		FORT YUKON	138 70	
		NORTHERN LIGHTS	25 00	
		RAMPART	18 80	
		STEVENS VILLAGE	27 00	
		VENETIE	64 90	

Y95 FOUNDATION FUNDING COMMUNITY FIRST STUDENT COUNT PERIOD				
SCHOOL DISTRICT	FUNDING COMMUNITY	ADM BY COMMUNITY	ADM BY DISTRICT	
REAA	YUKON/KOYUKUK	ALLAKAKET	35 80	590 10
		BETTLES	15 15	
		HUGHES	12 00	
		HUSLIA	81 25	
		KALTAG	87 00	
		KOYUKUK	38 80	
		MANLEY HOT SPRINGS	24 00	
		MINTO	88 45	
		NULATO	180 85	
		RUBY	69 00	
REAA	YUPIIT	AKIACHAK	140 00	367 00
		AKIAK	123 00	
		TULUKSAK	104 00	
TOTAL:			122,488.80	

ALASKA DEPARTMENT OF EDUCATION
 PROJECTED FY96 FOUNDATION PROGRAM ENTITLEMENTS

1/10/95 File FND96PJ XLS

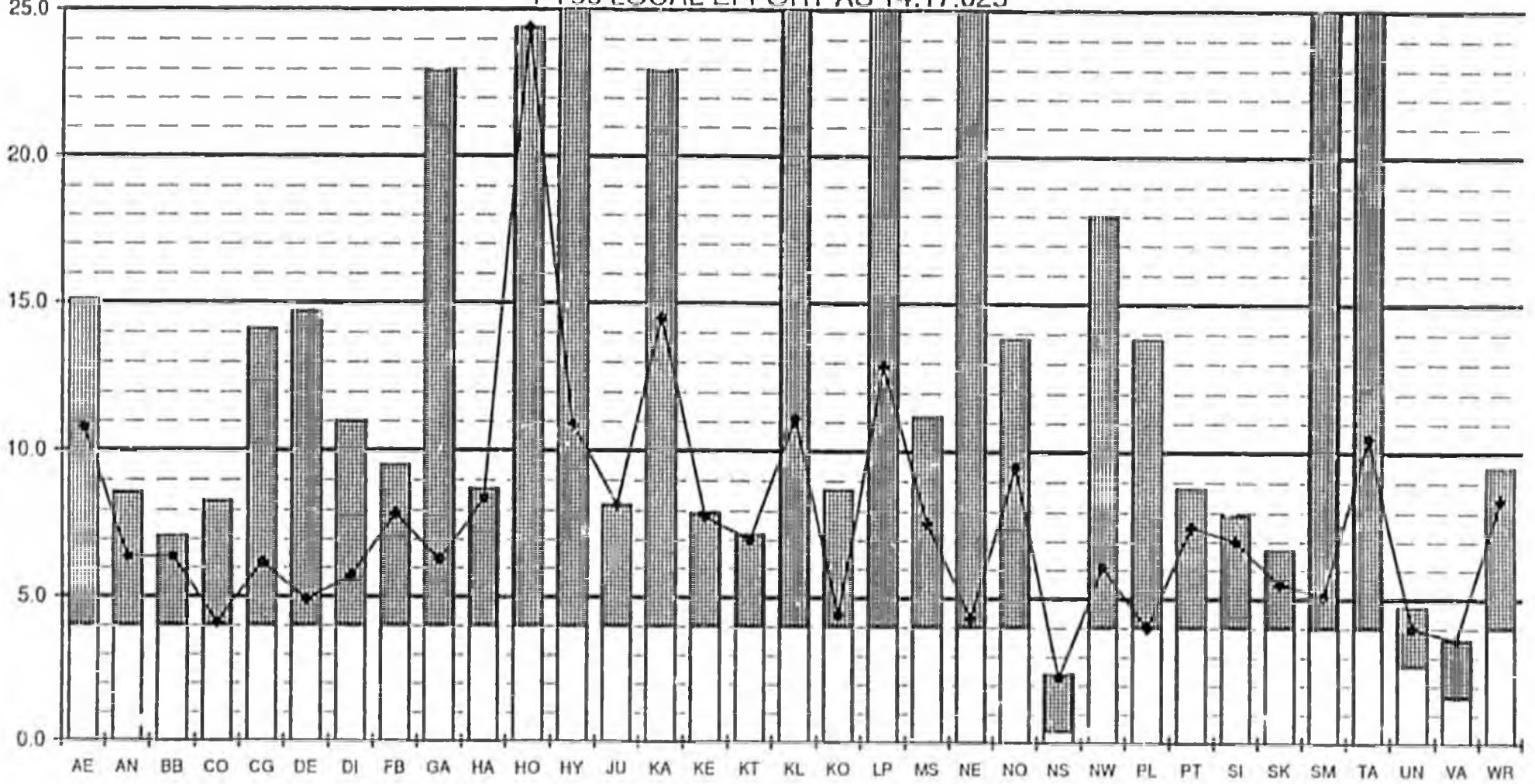
	BUDGETED FY95 LOCAL REVENUE	1994 FULL VALUE DETERMINATION
ADAK	\$0	
ALASKA GATEWAY	0	
ALEUTIAN REGION	0	
ALEUTIANS EAST	965,670	89,105,700
ANCHORAGE	74,623,835	12,295,989,030
ANNETTE ISLANDS	0	
BERING STRAIT	0	
BRISTOL BAY	1,168,421	176,792,300
CHATHAM	0	
CHUGACH	0	
COPPER RIVER	0	
CORDOVA	718,370	185,337,580
CRAIG	359,286	63,665,300
DELTA/GREELY	0	
DENALI	358,011	75,475,300
DILLINGHAM	872,054	131,012,300
FAIRBANKS	25,630,000	3,452,917,970
GALENA	125,925	19,833,700
HAINES	1,058,311	130,714,100
HOONAH	590,348	24,179,400
HYDABURG	89,211	5,782,300
IDITAROD	0	
JUNEAU	12,859,032	1,765,984,100
KAKE	258,585	17,315,300
KASHUNAMIJT	0	
KENAI	26,671,637	3,540,628,280
KETCHIKAN	6,652,147	985,541,900
KLAWOCK	221,352	14,832,300
KODIAK	3,688,900	858,852,600
KUSPUK	0	
LAKE AND PENINSULA	905,000	69,227,800
LOWER KUSKOKWIM	0	
LOWER YUKON	0	
MAT-SU	15,538,065	2,150,675,790
NENANA	68,786	16,274,400
NOME	1,265,196	132,968,700
NORTH SLOPE	27,913,000	12,293,043,490
NORTHWEST ARCTIC	2,179,920	292,240,600
PELICAN	66,679	13,968,900
PETERSBURG	1,448,406	202,055,700
PRIBILOF	0	
SITKA	3,788,524	528,278,800
SKAGWAY	494,574	90,198,400
SOUTHEAST	0	
SOUTHWEST	0	
ST. MARY'S	22,753	4,533,500
TANANA	109,000	11,232,800
UNALASKA	1,441,736	358,385,300
VALDEZ	4,074,990	1,052,513,810
WRANGELL	1,135,168	148,130,400
YAKUTAT	187,982	27,801,100
YUKON FLATS	0	
YUKON/KOYUKUK	0	
YUPIIT	0	
STATE CCS	0	
MI. EDGE CUMBE	0	
TOTALS	\$217,550,874	\$41,225,488,650

MILL EQUIVALENT OF TAX EFFORT

FY95 LOCAL EFFORT AS 14.17.025

1/18/95 FILE: LOCAL.XLC

MILL EQUIVALENT



MINIMUM - required local effort
 ALLOWABLE EXCESS - 23% of Basic Need
 LOCAL CONTRIBUTION - FY95 Budgeted Revenue, AS 14.17.250(7)

THIS CHART HAS BEEN LIMITED TO 25 MILLS.

ALASKA DEPARTMENT OF EDUCATION
 FY95 FOUNDATION PROGRAM AS 14.17.025

1/20/95 FILE: LOCAL95.XLS

/1

Abbreviations for chart on page 1.

		(1993 Value) REQUIRED MILL EQUIV.	ALLOWABLE EXCESS MILL EQUIV.	AS 14.17.250(7) BUDGETED MILL EQUIV.	1993 FULL VALUE DETERMINATION BY C&RA	FY95 REQUIRED LOCAL	ALLOWABLE EXCESS	TOTAL ALLOWABLE LOCAL	AS 14.17.250(7) BUDGETED LOCAL
ALEUTIANS EAST	= AE	4.0	11.1	10.8	\$63,639,100	\$354,556	\$981,399	\$1,335,955	\$958,670
ANCHORAGE	= AN	4.0	4.6	6.4	11,684,138,340	46,736,553	53,589,690	100,326,243	74,484,835
BRISTOL BAY	= BB	4.0	3.1	6.4	181,347,300	725,389	562,182	1,287,571	1,153,421
CORDOVA	= CO	4.0	4.3	4.1	174,882,450	699,530	760,286	1,459,816	709,870
CRAIG	= CG	4.0	10.1	6.2	57,618,300	230,473	581,824	723,549	356,891
DENALI	= DE	4.0	10.7	4.9	72,572,400	290,290	775,999	1,066,289	358,011
DILLINGHAM	= DI	4.0	7.0	5.7	127,166,600	508,666	891,607	1,400,273	725,054
FAIRBANKS	= FB	4.0	5.5	7.9	3,377,031,860	13,508,127	18,423,495	31,931,622	26,629,500
GALENA	= GA	4.0	18.9	6.3	19,383,700	77,535	365,482	443,017	122,925
HAINES	= HA	4.0	4.7	8.4	124,255,200	497,021	589,400	1,086,421	1,047,311
HOONAH	= HO	4.0	20.4	24.4	23,127,700	92,511	471,268	563,779	563,779
HYDABURG	= HY	4.0	40.6	10.9	5,686,500	22,746	230,653	253,399	61,711
JUNEAU	= JU	4.0	4.2	8.2	1,574,439,800	6,297,759	6,620,617	12,918,376	12,886,000
KAKE	= KA	4.0	18.9	14.5	17,231,200	68,925	326,057	394,982	250,000
KENAI	= KE	4.0	3.9	7.8	3,428,536,760	13,714,147	13,319,240	27,033,387	26,869,437
KETCHIKAN	= KT	4.0	3.2	7.0	954,350,400	3,817,402	3,092,493	6,909,895	6,681,993
KLAWOCK	= KL	4.0	25.1	11.1	14,808,300	59,233	372,216	431,449	164,900
KODIAK	= KO	4.0	4.7	4.4	843,618,100	3,374,472	3,938,361	7,312,833	3,699,287
LAKE AND PENINSULA	= LP	4.0	24.5	12.9	68,357,600	273,430	1,675,603	1,949,033	885,000
MAT-SU	= MS	4.0	7.2	7.6	2,037,791,320	8,151,165	14,619,260	22,770,425	15,462,862
NENANA	= NE	4.0	24.5	4.3	14,628,600	58,514	358,326	416,840	63,514
NOME	= NO	4.0	9.8	9.5	122,757,400	491,030	1,207,001	1,698,031	1,161,551
NORTH SLOPE /2	= NS	0.4	2.0	2.3	12,174,025,630	5,042,443	24,348,051	29,390,494	27,863,000
NORTHWEST ARCTIC	= NW	4.0	14.0	6.1	307,484,000	1,229,936	4,298,652	5,528,588	1,879,920
PELICAN	= PL	4.0	9.8	4.0	14,044,800	56,179	138,055	194,234	56,179
PETERSBURG	= PT	4.0	4.8	7.5	191,832,400	767,330	914,756	1,682,086	1,446,224
SITKA	= SI	4.0	3.9	7.0	540,479,000	2,161,916	2,111,936	4,273,852	3,806,524
SKAGWAY	= SK	4.0	2.7	5.5	89,643,500	358,574	242,719	601,293	494,574
ST. MARY'S	= SM	4.0	68.2	5.1	4,438,300	17,753	302,627	320,380	22,753
TANANA	= TA	4.0	25.4	10.5	11,221,100	44,884	285,090	329,974	117,368
UNALASKA /2	= UN	2.7	2.0	4.0	351,078,720	945,805	702,157	1,647,962	1,405,800
VALDEZ /2	= VA	1.6	2.0	3.6	1,117,648,910	1,798,311	2,235,298	4,033,609	4,026,990
WRANGELL	= WR	4.0	5.5	8.4	133,060,900	532,244	729,700	1,261,944	1,120,168
YAKUTAT	= YA	4.0	13.2	7.2	24,915,200	99,661	328,723	428,384	178,620
TOTALS			Average contribution in mills >:	7.7	\$39,972,241,390	\$113,104,510	\$160,390,223	\$273,405,985	\$217,714,642

/1 Can not exceed the total allowable local.

/2 Required local effort is limited to 35% of Basic Need of the preceding year. Allowable excess is 2 mills.

FIRST STUDENT COUNT PERIOD

SCHOOL DISTRICT	FUNDING COMMUNITY	ADM BY COMMUNITY	DISTRICT ADM		
REAA	ADAK	ADAK	0.00	0.00	1
REAA	IDITAROD	TELIDA	4.00	417.85	2
REAA	SOUTHEAST ISLAND	MEYER CHUCK	5.00	381.95	3
C/B	KENAI PENINSULA	BELUGA	6.00	10,144.00	4
REAA	ALASKA GATEWAY	ALCAN BORDER	7.00	536.15	5
C/B	KODIAK ISLAND	KARLUK	7.90	2,711.45	6
REAA	CHATHAM	ELFIN COVE	8.00	325.85	7
REAA	LOWER KUSKOKWIM	PLATINUM	8.00	3,051.05	8
C/B	LAKE & PENINSULA	PEDRO BAY	9.00	507.63	9
REAA	CHUGACH	TWO MOON BAY	10.00	133.00	10
REAA	DELTA/GREELY	HEALY LAKE	10.00	974.00	11
REAA	IDITAROD	LAKE MINCHUMINA	10.00	417.85	12
C/B	ALEUTIAN EAST	NELSON LAGOON	10.00	355.00	13
C/B	HAINES	MOSQUITO LAKE	10.00	413.15	14
REAA	YUKON FLATS	BIRCH CREEK	10.25	405.15	15
C/B	SITKA	FALSE PASS	10.70	1,838.68	16
REAA	KUSPUK	STONY RIVER	11.15	444.30	17
REAA	SOUTHEAST ISLAND	POLK INLET	11.30	381.95	18
REAA	YUKON/KOYUKUK	HUGHES	12.00	590.10	19
REAA	IDITAROD	LIME VILLAGE	12.00	417.85	20
REAA	CHATHAM	HOBART BAY	12.25	325.85	21
REAA	CHATHAM	TENAKEE SPRINGS	13.00	325.85	22
REAA	CHUGACH	CHENEGA BAY	13.00	133.00	23
REAA	CHUGACH	ICY BAY	13.00	133.00	24
REAA	SOUTHEAST ISLAND	WHALE PASS	13.00	381.95	25
C/B	MAT-SU	BERYOZAYA	13.00	11,894.00	26
C/B	LAKE & PENINSULA	IGIUGIG	13.00	507.63	27
REAA	COPPER RIVER	CHISTOCHINA	13.30	1,587.25	28
C/B	KODIAK ISLAND	DANGER BAY	13.40	2,711.45	29
C/B	SITKA	CORNER BAY	13.60	1,838.68	30
REAA	LOWER KUSKOKWIM	OSCARVILLE	13.75	3,051.05	31
C/B	LAKE & PENINSULA	IVANOF BAY	14.00	507.63	32
C/B	KODIAK ISLAND	BIG SANDY LAKE	14.90	2,711.45	33
REAA	SOUTHEAST ISLAND	JR GILDERSLEEVE	15.00	381.95	34
REAA	SOUTHWEST REGION	CLARKS POINT	15.00	568.30	35
REAA	YUKON FLATS	CENTRAL	15.00	405.15	36
C/B	BRISTOL BAY	SOUTH NAKNEK	15.00	269.25	37

FY95 FOUNDATION FUNDING COMMUNITY 1/95 FILE: G:\dist\sup\95\found\95ADMFC.XLS
 FIRST STUDENT COUNT PERIOD

SCHOOL DISTRICT	FUNDING COMMUNITY	ADM BY COMMUNITY	DISTRICT ADM	
REAA KUSPUK	RED DEVIL	15.05	444.30	38
REAA SOUTHEAST ISLAND	CRAIK	15.10	381.95	39
REAA YUKON/KOYUKUK	BETTLES	15.15	590.10	40
REAA ALASKA GATEWAY	TANACROSS	16.25	536.15	41
REAA COPPER RIVER	LOTTIE SPARKS	17.00	1,587.25	42
REAA SOUTHWEST REGION	TWIN HILLS	17.00	568.30	43
REAA SOUTHEAST ISLAND	PORT PROTECTION	17.40	381.95	44
REAA ALEUTIAN REGION	ATKA	18.00	18.00	45
REAA YUKON FLATS	BEAVER	18.00	405.15	46
C/B MAT-SU	SKWENTNA	18.00	11,894.00	47
REAA SOUTHEAST ISLAND	EDNA BAY	18.70	381.95	48
REAA YUKON FLATS	RAMPART	18.80	405.15	49
C/B KODIAK ISLAND	AKHIOK	20.50	2,711.45	50
REAA YUKON FLATS	CHALKYITSIK	21.00	405.15	51
C/B NORTHWEST ARCTIC	KOBUK	21.00	1,877.80	52
REAA KUSPUK	SLEETMUTE	21.25	444.30	53
C/B LAKE & PENINSULA	CHIGNIK BAY	21.30	507.63	54
REAA IDITAROD	ANVIK	21.45	417.85	55
REAA COPPER RIVER	GAKONA	21.75	1,587.25	56
REAA IDITAROD	NIKOLAI	22.00	417.85	57
C/B ALEUTIAN EAST	COLD BAY	22.00	365.00	58
REAA SOUTHEAST ISLAND	HOLLIS	22.65	381.95	59
REAA ALASKA GATEWAY	EAGLE	23.90	536.15	60
REAA ALASKA GATEWAY	DOT LAKE	24.00	536.15	61
REAA YUKON/KOYUKUK	MANLEY HOT SPRINGS	24.00	590.10	62
C/B ALEUTIAN EAST	AKUTAN	24.00	365.00	63
C/B LAKE & PENINSULA	FORT ALSWORTH	24.40	507.63	64
REAA YUKON FLATS	NORTHERN LIGHTS	25.00	405.15	65
REAA ALASKA GATEWAY	MENTASTA	25.35	536.15	66
REAA SOUTHWEST REGION	ALEKNAGIK NORTH	25.45	568.30	67
C/B LAKE & PENINSULA	PILOT POINT	25.95	507.63	68
C/B LAKE & PENINSULA	EGEGIK	26.00	507.63	69
C/B KODIAK ISLAND	LARSEN BAY	26.40	2,711.45	70
C/B LAKE & PENINSULA	PORT HEIDEN	26.55	507.63	71
REAA YUKON FLATS	STEVENS VILLAGE	27.00	405.15	72
C/B ALEUTIAN EAST	FALSE PASS	27.00	365.00	73
C/B DENALI	CANTWELL	27.00	364.55	74

FIRST STUDENT COUNT PERIOD

SCHOOL DISTRICT	FUNDING COMMUNITY	ADM BY COMMUNITY	DISTRICT ADM	
REAA	IDITAROD	TAKOTNA	27.05	417.85 75
REAA	SOUTHEAST ISLAND	PORT ALEXANDER	27.60	381.95 76
C/B	LAKE & PENINSULA	CHIGNIK LAGOON	27.75	507.63 77
REAA	CHATHAM	KLUKWAN	27.90	325.85 78
REAA	SOUTHWEST REGION	EKWOK	28.00	568.30 79
REAA	YUKON FLATS	CIRCLE	28.00	405.15 80
C/B	LAKE & PENINSULA	LEVELOK	28.13	507.63 81
REAA	COPPER RIVER	SLANA	28.80	1,587.25 82
REAA	CHATHAM	CUBE COVE	29.00	325.85 83
REAA	ALASKA GATEWAY	TETLIN	30.95	536.15 84
REAA	CHUGACH	TATILEK	32.00	133.00 85
C/B	KODIAK ISLAND	CHINIAK	32.80	2,711.45 86
REAA	LOWER YUKON	PITKAS POINT	35.00	1,620.65 87
C/B	KENAI PENINSULA	MOOSE PASS	35.00	10,144.00 88
C/B	LAKE & PENINSULA	PEPPOVILLE	35.00	507.63 89
REAA	KUSPUK	CHUATHBALUK	35.25	444.30 90
REAA	YUKON/KOYUKUK	ALLAKAKET	35.80	590.10 91
C/B	KENAI PENINSULA	PORT CRAHAM	36.00	10,144.00 92
REAA	YUKON/KOYUKUK	KOYUKUK	36.60	590.10 93
REAA	KUSPUK	CROOKED CREEK	37.25	444.30 94
REAA	YUKON FLATS	ARCTIC VILLAGE	38.50	405.15 95
C/B	KENAI PENINSULA	TYONEK	39.60	10,144.00 96
C/B	KENAI PENINSULA	RAZDOLNA	40.00	10,144.00 97
REAA	SOUTHEAST ISLAND	NAUKATI	41.30	381.95 98
C/B	KENAI PENINSULA	COOPER LANDING	41.35	10,144.00 99
REAA	PRIBILOF	ST. GEORGE	42.00	168.65 100
REAA	LOWER KUSKOKWIM	MEKORYLK	42.05	3,051.05 101
REAA	IDITAROD	SHAGELUK	43.05	417.85 102
REAA	SOUTHEAST ISLAND	HOWARD VALENTINE	44.30	381.95 103
C/B	KODIAK ISLAND	OUZINKIE	44.50	2,711.45 104
C/B	KENAI PENINSULA	HOPE	44.65	10,144.00 105
C/B	PELICAN	PELICAN	44.85	44.85 106
REAA	LOWER YUKON	SHELDON POINT	45.20	1,620.65 107
C/B	KENAI PENINSULA	NANWALEK	45.40	10,144.00 108
REAA	LOWER KUSKOKWIM	NIGHTMUTE	46.35	3,051.05 109
C/B	NORTH SLOPE	ATOASUK	46.95	1,702.10 110
C/B	NORTH SLOPE	KAKTOVIK	48.00	1,702.10 111

FY95 FOUNDATION FUNDING COMMUNITY 1/95 FILE: G:\distsup\95found\95ADMFC.XLS
 FIRST STUDENT COUNT PERIOD

SCHOOL DISTRICT	FUNDING COMMUNITY	ADM BY COMMUNITY	DISTRICT ADM	
C/B LAKE & PENINSULA	KOKHANOK	48.20	507.63	112
C/B NORTHWEST ARCTIC	DEERING	49.90	1,877.80	113
REAA BERING STRAIT	GOLOVIN	51.00	1,600.70	114
REAA BERING STRAIT	WALES	51.75	1,600.70	115
C/B NORTH SLOPE	POINT LAY	52.00	1,702.10	116
C/B LAKE & PENINSULA	CHIGNIK LAKE	53.00	507.63	117
REAA KUSPUK	LOWER KALSKAG	53.15	444.30	118
C/B MAT-SU	GLACIER VIEW	54.20	11,894.00	119
REAA BERING STRAIT	DIOMEDE	55.55	1,600.70	120
C/B KENAI PENINSULA	KACHEMAK SELO	55.70	10,144.00	121
C/B MAT-SU	TRAPPER CREEK	57.70	11,894.00	122
REAA SOUTHWEST REGION	KOLIGANEK	58.00	568.30	123
REAA LOWER KUSKOKWIM	EEK	59.05	3,051.05	124
REAA BERING STRAIT	WHITE MOUNTAIN	60.00	1,600.70	125
REAA IDITAROD	GRAYLING	60.95	4,178.5	126
REAA YUKON FLATS	VENETIE	64.90	405.15	127
REAA CHUGACH	WHITTIER	65.00	133.00	128
C/B LAKE & PENINSULA	NONDALTON	65.55	507.53	129
C/B FAIRBANKS	SALCHA	66.50	15,406.50	130
REAA LOWER KUSKOKWIM	GOODNEWS BAY	66.70	3,051.05	131
REAA YUKON/KOYUKUK	KALTAG	67.00	590.10	132
C/B KOJIAK ISLAND	PORT LIONS	67.60	2,711.45	133
REAA YUKON/KOYUKUK	RUBY	69.00	590.10	134
REAA IDITAROD	HOLY CROSS	69.35	417.85	135
REAA BERING STRAIT	SHAKTOOLIK	69.80	1,600.70	136
REAA COPPER RIVER	COPPER CENTER	69.80	1,587.25	137
REAA LOWER KUSKOKWIM	AKIUK	70.50	3,051.05	138
REAA LOWER KUSKOKWIM	AKULA	72.65	3,051.05	139
C/B NORTHWEST ARCTIC	SHUNGNAK	75.00	1,877.80	140
REAA LOWER KUSKOKWIM	ATMAUTLAUK	76.50	3,051.05	141
REAA LOWER KUSKOKWIM	TUNTUTULIAK	79.60	3,051.05	142
REAA CHATHAM	GUSTAVUS	79.70	325.85	143
REAA BERING STRAIT	KOYUK	79.80	1,600.70	144
REAA YUKON/KOYUKUK	HUSLIA	81.25	590.10	145
REAA ALASKA GATEWAY	NORTHWAY	83.30	536.15	146
REAA BERING STRAIT	TELLER	83.40	1,600.70	147
C/B NORTH SLOPE	ANAKTUVUK PASS	84.50	1,702.10	148

FY95 FOUNDATION FUNDING COMMUNITY 1/95 FILE G distsup\95found\95ADMFC.XLS
 FIRST STUDENT COUNT PERIOD

SCHOOL DISTRICT	FUNDING COMMUNITY	ADM BY COMMUNITY	DISTRICT ADM	
C/B KENAI PENINSULA	SELDOVIA	84.95	10,144.00	149
REAA BERING STRAIT	BREVIK MISSION	85.55	1,600.70	150
REAA LOWER KUSKOKWIM	NEWTOK	85.75	3,051.05	151
REAA YUKON/KOYUKUK	MINTO	88.45	590.10	152
REAA LOWER KUSKOKWIM	NAPAKIAK	88.45	3,051.05	153
C/B LAKE & PENINSULA	NEWHALEN	89.80	507.63	154
REAA LOWER KUSKOKWIM	KWIGILLINGOK	91.00	3,051.05	155
C/B MAT-SU	SUTTON	91.10	11,894.00	156
C/B KODIAK ISLAND	OLD HARBOR	91.40	2,711.45	157
REAA LOWER KUSKOKWIM	KONGIGANAK	91.45	3,051.05	158
REAA LOWER YUKON	MARSHALL	92.90	1,620.65	159
REAA LOWER KUSKOKWIM	TUNUNAK	92.95	3,051.05	160
REAA BERING STRAIT	ELIM	93.10	1,600.70	161
REAA LOWER YUKON	RUSSIAN MISSION	94.50	1,620.65	162
REAA KUSPUK	UPPER KALSKAG	95.00	444.30	163
REAA LOWER KUSKOKWIM	NAPASKIAK	98.25	3,051.05	164
C/B NORTHWEST ARCTIC	AMBLER	101.00	1,877.80	165
C/B TANANA	TANANA	102.25	102.25	166
REAA YUPIIT	TULUKSAK	104.00	367.00	167
C/B NORTHWEST ARCTIC	KIVALINA	104.35	1,877.80	168
C/B HYDABURG	HYDABURG	107.50	107.50	169
REAA COPPER RIVER	KENNY LAKE	107.80	1,587.25	170
C/B ST. MARY'S	ST. MARY'S	108.50	108.50	171
C/B KENAI PENINSULA	VOZNESENKA	108.65	10,144.00	172
REAA LOWER KUSKOKWIM	CHEFORNAK	110.50	3,051.05	173
C/B NORTH SLOPE	NUQSUT	112.75	1,702.10	174
REAA SOUTHWEST REGION	NEW STUYAHOK	115.55	568.30	175
REAA BERING STRAIT	ST. MICHAEL	116.20	1,600.70	176
C/B NORTHWEST ARCTIC	BUCKLAND	118.00	1,877.80	177
C/B FAIRBANKS	TWO RIVERS	118.50	15,406.50	178
C/B NORTHWEST ARCTIC	NOATAK	118.70	1,877.80	179
REAA LOWER YUKON	SCAMMON BAY	119.35	1,620.65	180
REAA LOWER KUSKOKWIM	NUKAPITCHUK	122.00	3,051.05	181
REAA YUPIIT	AKIAK	123.00	367.00	182
REAA SOUTHWEST REGION	MANOKOTAK	123.65	568.30	183
C/B DENALI	ANDERSON	125.30	364.55	184
REAA PRIBILOF	ST. PAUL	126.65	168.65	185

FY95 FOUNDATION FUNDING COMMUNITY 1/95 FILE Q dr:sup95found95ADMFC XLS
 FIRST STUDENT COUNT PERIOD

SCHOOL DISTRICT	FUNDING COMMUNITY	ADM BY COMMUNITY	DISTRICT ADM	
C/B	SKAGWAY	SKAGWAY	127 20	166
REAA	LOWER KUSKOKWIM	QUINHAGAK	127 40	167
C/B	ALEUTIAN EAST	SAND POINT	128 00	169
C/B	NORTHWEST ARCTIC	KIANA	131 53	180
C/B	MAT-SU	TALKEETHA	131 70	190
REAA	LOWER KUSKOKWIM	TOKSOOK BAY	138 70	191
REAA	YUKON FLATS	FORT YUKON	138 70	192
REAA	YUPIIT	AKIACHAK	140 00	193
REAA	BERING STRAIT	STEBBINS	140 60	194
C/B	GALENA	GALENA	142 00	195
REAA	BERING STRAIT	SAVOONGA	143 30	195
REAA	IDITAROD	MCGRATH	148 00	197
REAA	SOUTHEAST ISLAND	THORNE BAY	150 60	198
C/B	ALEUTIAN EAST	KING COVE	154 00	199
REAA	LOWER YUKON	ALAKANAP	154 40	200
REAA	CHATHAM	ANGOON	155 00	201
REAA	LOWER YUKON	PILOT STATION	156 05	202
C/B	KENAI PENINSULA	NIKOLAE /SK	159 25	203
REAA	YUKON/KOYUKUK	NUZATO	160 85	204
C/B	NORTH SLOPE	WAINWRIGHT	161 25	205
C/B	NENANA	NENANA	162 91	206
REAA	LOWER KUSKOKWIM	KIPNUK	163 90	207
C/B	YAKUTAT	YAKUTAT	167 00	208
REAA	LOWER YUKON	KOTLIK	168 40	209
C/B	ANCHORAGE	CHARDWOOD	169 50	210
REAA	BERING STRAIT	SHISHMAROFF	174 90	211
REAA	KUSPUK	ALIAK	176 20	212
REAA	BERING STRAIT	CAMBELL	179 15	213
REAA	LOWER KUSKOKWIM	KWETHILUK	181 20	214
C/B	KAKE	KAKE	185 00	215
REAA	SOUTHWEST REGION	TOOLIK	185 65	216
C/B	MAT-SU	MAT-SU VALLEY	183 10	217
C/B	MAT-SU	WILLOW	187 80	218
C/B	KENAI PENINSULA	MINILCHIK	201 75	219
REAA	LOWER YUKON	EMADNAK	203 00	220
C/B	KENAI PENINSULA	MCHENIL CANYON	203 90	221
C/B	FLAWOCK	FLAWOCK	206 95	222

FIRST STUDENT COUNT PERIOD

SCHOOL DISTRICT	FUNDING COMMUNITY	ADM BY COMMUNITY	DISTR CT ADM	
CB NORTHWEST ARCTIC	NOORVIK	209.75	1,877.80	223
REAA BERING STRAIT	UNALAKLEET	216.60	1,600.70	224
CB NORTH SLOPE	POINT HOPE	217.50	1,702.10	225
REAA LOWER YUKON	MOUNTAIN VILLAGE	222.70	1,620.55	226
CB NORTHWEST ARCTIC	SELAVIK	224.90	1,877.80	227
REAA KASHUNAMIUT	CHEVAK	229.90	229.90	228
CB DENALI	HEALY	232.25	384.55	229
CB KENAI PENINSULA	ANCHOR POINT	249.35	10,144.00	230
CB BRISTOL BAY	BRISTOL BAY	254.25	259.25	231
CB HOONAH	HOONAH	259.40	259.40	232
CB KENAI PENINSULA	KASILOF	272.50	10,144.00	233
STATE MT EDGE CUMBE	MT EDGE CUMBE	282.30	282.30	234
REAA ALASKA GATEWAY	TOK	325.40	536.15	235
REAA LOWER YUKON	HOOPER BAY	329.15	1,620.65	236
CB UNALASKA	UNALASKA	356.10	356.10	237
REAA COPPER RIVER	GLENNALLEN	364.80	1,587.25	238
CB KENAI PENINSULA	STERLING	386.35	10,144.00	239
CB MATSU	BUTTE	388.30	11,894.00	240
CB CRAIG	CRAIG	396.00	396.00	241
CB MAINES	MAINES	403.15	413.15	242
REAA ANNETTE ISLAND	ANNETTE	420.00	420.00	243
CB MATSU	PT MCKENZIE	457.60	11,894.00	244
CB DILLINGHAM	DILLINGHAM	496.20	496.20	245
CB CORDOVA	CORDOVA	528.15	528.15	246
CB WRANGELL	WRANGELL	566.85	566.85	247
CB MATSU	HOUSTON	567.70	11,894.00	248
CB MATSU	BIG LAKE	622.80	11,894.00	249
CB NOME	NOME	701.75	701.75	250
CB NORTHWEST ARCTIC	KOTZEBUE	723.65	1,877.80	251
CB PETERSBURG	PETERSBURG	758.75	758.75	252
CB KENAI PENINSULA	SEWARD	840.50	10,144.00	253
CB VALDEZ	VALDEZ	902.75	902.75	254
REAA DELTA-GREELY	DELTA JUNCTION	964.00	974.00	255
CB NORTH SLOPE	BARROW	979.15	1,702.10	256
CB KENAI PENINSULA	NIKISHI	1,121.80	10,144.00	257
REAA LOWER KUSKOKWIM	BETHEL	1,124.10	3,051.05	258
CB KENAI PENINSULA	HOOPER	1,314.20	10,144.00	259

FY95 FOUNDATION FUNDING COMMUNITY 1/95 FILE G distsup95found95ADMFC XLS
 FIRST STUDENT COUNT PERIOD

	SCHOOL DISTRICT	FUNDING COMMUNITY	ADM BY COMMUNITY	DISTRICT ADM	
STATE	CCS	CCS	1,477.15	1,477.15	260
C/B	FAIRBANKS	EIELSON	1,581.50	15,406.50	261
C/B	KENAI PENINSULA	KENAI	1,731.10	10,144.00	262
C/B	SITKA	SITKA	1,814.33	1,838.68	263
C/D	MAT-SU	PALMER	2,238.00	11,894.00	264
C/B	KODIAK ISLAND	KODIAK	2,392.05	2,711.45	265
C/B	KETCHIKAN	KETCHIKAN	2,728.93	2,728.93	266
C/B	MAT-SU	WASILLA	2,837.10	11,894.00	267
C/B	KENAI PENINSULA	SOLDOTNA	3,086.10	10,144.00	268
C/B	FAIRBANKS	NORTH POLE	3,189.00	15,406.50	269
C/B	MAT-SU	COLONY	4,025.30	11,894.00	270
C/B	JUNEAU	JUNEAU	5,399.75	5,399.75	271
C/B	ANCHORAGE	EAGLE RIVER	6,260.87	45,895.60	272
C/B	FAIRBANKS	FAIRBANKS	10,451.00	15,406.50	273
C/B	ANCHORAGE	ANCHORAGE	39,465.23	45,895.60	274

ALASKA DEPARTMENT OF EDUCATION
 FY96 PROJECTED FOUNDATION ENTITLEMENTS IF UNIT VALUE IS ADJUSTED
 and PL81-874 FLOW THROUGH

12/20/94 File FND96PJ XLS

This spreadsheet reflects the total FY96 foundation entitlements if the unit value of \$61,000 is increased by increments of \$100.

ADJUSTED UNIT VALUE >	\$100	\$200	\$300	\$400	\$500
	\$61,100	\$61,200	\$61,300	\$61,400	\$61,500
ADAK	\$0	\$0	\$0	\$0	\$0
ALASKA GATEWAY	4,095,656	4,904,310	4,912,964	4,921,618	4,930,272
ALEUTIAN REGION	469,794	470,659	471,524	472,389	473,254
ALEUTIANS EAST	3,674,923	3,681,838	3,688,753	3,695,668	3,702,583
ANCHORAGE	193,767,762	194,157,262	194,546,762	194,936,262	195,325,762
ANNETTE ISLANDS	1,595,155	1,599,479	1,603,803	1,608,127	1,612,451
BERING STRAIT	16,061,701	16,093,813	16,125,925	16,158,037	16,190,149
BRISTOL BAY	1,811,306	1,615,346	1,619,386	1,623,426	1,627,466
CHATHAM	2,575,741	2,581,055	2,586,369	2,591,683	2,596,997
CHUGACH	1,705,256	1,708,258	1,711,260	1,714,262	1,717,264
COPPER RIVER	5,092,174	5,100,644	5,109,114	5,117,584	5,126,054
CORDOVA	2,531,726	2,537,115	2,542,504	2,547,893	2,553,282
CRAIG	2,242,532	2,246,639	2,250,746	2,254,853	2,258,960
DELTA/GREELY	5,355,588	5,365,864	5,376,140	5,386,416	5,396,692
DENALI	3,171,479	3,177,203	3,182,927	3,188,651	3,194,375
DILLINGHAM	3,188,125	3,194,540	3,200,955	3,207,370	3,213,785
FAIRBANKS	73,576,889	73,711,235	73,846,581	73,982,027	74,117,073
GALENA	1,636,174	1,639,316	1,642,458	1,645,600	1,648,742
HAINES	2,152,829	2,157,224	2,161,619	2,166,014	2,170,409
HOONAH	2,036,898	2,040,456	2,044,014	2,047,572	2,051,130
HYDABURG	979,248	980,896	982,544	984,192	985,840
IDITAROD	5,393,346	5,403,152	5,412,958	5,422,764	5,432,570
JUNEAU	21,667,912	21,714,952	21,761,992	21,809,032	21,856,072
KAKE	1,239,891	1,239,156	1,241,421	1,243,686	1,245,951
KASHUNAMIUT	1,996,259	1,999,984	2,003,709	2,007,434	2,011,159
KENAI	45,670,050	45,768,050	45,866,050	45,964,050	46,062,050
KETCHIKAN	9,560,947	9,583,056	9,605,165	9,627,274	9,649,383
KLAWOCK	1,540,937	1,543,580	1,546,223	1,549,066	1,551,809
KODIAK	14,008,967	14,036,967	14,064,967	14,092,967	14,120,967
KUSPUK	5,162,490	5,171,876	5,181,262	5,190,648	5,200,034
LAKE AND PENINSULA	6,641,763	6,653,617	6,665,471	6,677,325	6,689,179
LOWER KUSKOKWIM	34,682,696	34,727,181	34,771,666	34,816,151	34,860,636
LOWER YUKON	13,938,300	13,966,637	13,994,974	14,023,311	14,051,648
MAT-SU	59,807,506	59,919,484	60,031,462	60,143,440	60,255,418
NENANA	1,581,750	1,584,450	1,587,150	1,589,850	1,592,550
NOME	4,444,247	4,452,422	4,460,597	4,468,772	4,476,947
NORTH SLOPE	10,170,205	10,196,550	10,222,895	10,249,240	10,275,585
NORTHWEST ARCTIC	16,461,792	16,492,673	16,523,554	16,554,435	16,585,316
PELICAN	554,513	555,512	556,511	557,510	558,509
PETERSBURG	3,212,206	3,218,801	3,225,396	3,231,991	3,238,586
PRIIBILOF	1,786,687	1,790,239	1,793,791	1,797,343	1,800,895
SITKA	6,839,684	6,854,486	6,869,288	6,884,090	6,898,892
SKAGWAY	708,456	712,206	715,956	719,706	723,456
SOUTHEAST	4,032,574	4,039,951	4,047,328	4,054,705	4,062,082
SOUTHWEST	6,583,167	6,595,756	6,608,345	6,620,934	6,633,523
ST MARYS	1,017,132	1,018,991	1,020,850	1,022,709	1,024,568
TANANA	1,113,016	1,115,035	1,117,054	1,119,073	1,121,092
UNALASKA	1,753,780	1,758,313	1,762,846	1,767,379	1,771,912
VALDEZ	3,397,035	3,405,566	3,414,097	3,422,628	3,431,159
WRANGELL	2,621,586	2,626,848	2,632,110	2,637,372	2,642,634
YAKUTAT	1,242,174	1,244,428	1,246,682	1,248,936	1,251,190
YUKON FLATS	5,658,888	5,669,195	5,679,502	5,689,809	5,700,116
YUKON KOYUKUK	7,000,994	7,014,138	7,027,282	7,040,426	7,053,570
YUPIIT	4,088,896	4,095,043	4,101,190	4,111,337	4,119,484
STATE CCS	3,814,626	3,820,969	3,827,312	3,833,656	3,839,999
MI EDGE CUMBE	1,588,600	1,591,200	1,593,800	1,596,400	1,599,000
SUB-TOTALS	\$639,278,908	\$640,542,216	\$641,805,524	\$643,068,833	\$644,332,141
CONTRACTUAL	3,886,260	3,886,260	3,886,260	3,886,260	3,886,260
EST PRIOR YEAR ADJ	1,500,000	1,500,000	1,500,000	1,500,000	1,500,000
FY96 EST INCREASES	\$644,665,148	\$645,928,476	\$647,191,784	\$648,455,093	\$649,718,401

ALASKA DEPARTMENT OF EDUCATION
 FY96 PROJECTED FOUNDATION ENTITLEMENTS IF UNIT VALUE IS ADJUSTED
 and PL81-874 FLOW THROUGH

12/20/94 File:FND96PJ.XLS

This spreadsheet reflects the total FY96 foundation entitlements if the unit value of \$61,000 is increased by increments of \$100.

ADJUSTED UNIT VALUE >	\$600	\$700	\$800	\$900	\$1,000
	\$51,600	\$61,700	\$61,800	\$61,900	\$62,000
ADAK	\$0	\$0	\$0	\$0	\$0
ALASKA GATEWAY	4,938,926	4,947,580	4,956,234	4,964,888	4,973,542
ALEUTIAN REGION	474,119	474,984	475,849	476,714	477,579
ALEUTIANS EAST	3,709,498	3,716,413	3,723,328	3,730,243	3,737,158
ANCHORAGE	195,715,262	196,104,762	196,494,262	196,883,762	197,273,262
ANNETTE ISLANDS	1,616,775	1,621,099	1,625,423	1,629,747	1,634,071
BERING STRAIT	16,222,261	16,254,373	16,286,485	16,318,597	16,350,709
BRISTOL BAY	1,631,506	1,635,546	1,639,586	1,643,626	1,647,666
CHATHAM	2,602,311	2,607,625	2,612,939	2,618,253	2,623,567
CHUGACH	1,720,256	1,723,268	1,726,270	1,729,272	1,732,274
COPPER RIVER	5,134,524	5,142,994	5,151,464	5,159,934	5,168,404
CORDOVA	2,558,671	2,564,060	2,569,449	2,574,838	2,580,227
CRAIG	2,263,067	2,267,174	2,271,281	2,275,388	2,279,495
DELTA/GREELY	5,406,968	5,417,244	5,427,520	5,437,796	5,448,072
DENALI	3,200,099	3,205,823	3,211,547	3,217,271	3,222,995
DILLINGHAM	3,220,200	3,226,615	3,233,030	3,239,445	3,245,860
FAIRBANKS	74,252,119	74,387,165	74,522,211	74,657,257	74,792,303
GALENA	1,651,884	1,655,026	1,658,168	1,661,310	1,664,452
HAINES	2,174,804	2,179,199	2,183,594	2,187,989	2,192,384
HOONAH	2,054,688	2,058,246	2,061,804	2,065,362	2,068,920
HYDABURG	987,488	989,136	990,784	992,432	994,080
IDITAROD	5,442,376	5,452,182	5,461,988	5,471,794	5,481,600
JUNEAU	21,903,112	21,950,152	21,997,192	22,044,232	22,091,272
KAKE	1,248,216	1,250,481	1,252,746	1,255,011	1,257,276
KASHUNAMIUT	2,014,884	2,018,609	2,022,334	2,026,059	2,029,784
KENAI	46,160,050	46,258,050	46,356,050	46,454,050	46,552,050
KETCHIKAN	9,671,492	9,693,601	9,715,710	9,737,819	9,759,928
KLAWOCK	1,554,552	1,557,295	1,560,038	1,562,781	1,565,524
KODIAK	14,148,967	14,176,967	14,204,967	14,232,967	14,260,967
KUSPUK	5,209,420	5,218,806	5,228,192	5,237,578	5,246,964
LAKE AND PENINSULA	6,701,033	6,712,887	6,724,741	6,736,595	6,748,449
LOWER KUSKOKWIM	34,985,121	35,049,606	35,114,091	35,178,576	35,243,061
LOWER YUKON	14,079,985	14,108,322	14,136,659	14,164,996	14,193,333
MAT-SU	60,367,396	60,479,374	60,591,352	60,703,330	60,815,308
NENANA	1,595,250	1,597,950	1,600,650	1,603,350	1,606,050
NOME	4,485,122	4,493,297	4,501,472	4,509,647	4,517,822
NORTH SLOPE	10,301,930	10,328,275	10,354,620	10,380,965	10,407,310
NORTHWEST ARCTIC	16,616,197	16,647,078	16,677,959	16,708,840	16,739,721
PELICAN	559,508	560,507	561,506	562,505	563,504
PETERSBURG	3,245,181	3,251,776	3,258,371	3,264,966	3,271,561
PRIZILOF	1,804,447	1,807,999	1,811,551	1,815,103	1,818,655
SITKA	6,913,694	6,928,496	6,943,298	6,958,100	6,972,902
SKAGWAY	717,206	718,954	720,706	722,456	724,206
SOUTHEAST	4,069,459	4,075,836	4,084,213	4,091,590	4,098,967
SOUTHWEST	6,645,112	6,658,701	6,671,290	6,683,879	6,696,468
ST MARYS	1,026,427	1,028,286	1,030,145	1,032,004	1,033,863
TANANA	1,123,111	1,125,130	1,127,149	1,129,168	1,131,187
UNALASKA	1,776,445	1,780,978	1,785,511	1,790,044	1,794,577
VALDEZ	3,439,690	3,448,221	3,456,752	3,465,283	3,473,814
WRANGELL	2,647,826	2,653,158	2,658,420	2,663,682	2,668,944
YAKUTAT	1,253,444	1,255,698	1,257,952	1,260,206	1,262,460
YUKON FLATS	5,710,503	5,720,830	5,731,157	5,741,484	5,751,811
YUKON KOYUKUK	7,068,714	7,079,858	7,091,002	7,106,146	7,119,290
YUPIIT	4,127,631	4,135,778	4,143,925	4,152,072	4,160,219
STATE CCS	3,845,842	3,852,085	3,858,329	3,864,572	3,870,815
MR EDGECUMBE	1,601,600	1,604,290	1,606,800	1,609,400	1,612,000
SUB-TOTALS	\$645,595,449	\$646,858,757	\$648,122,066	\$649,385,374	\$650,648,682
CONTRACTUAL	3,886,260	3,886,260	3,886,260	3,886,260	3,886,260
EST PRIOR YEAR ADJ	1,500,000	1,500,000	1,500,000	1,500,000	1,500,000
FY96 EST INCREASES	\$650,981,709	\$652,245,017	\$653,508,326	\$654,771,634	\$656,034,942

ALASKA DEPARTMENT OF EDUCATION
 FY96 PROJECTED FOUNDATION INCREASED ENTITLEMENTS IF UNIT VALUE IS ADJUSTED

12/20/94 File:FND96PJ.XLS

This spreadsheet reflects the increased FY96 foundation entitlements if the unit value of \$61,000 is increased by increments of \$100.

UNIT VALUE INCREASES BY >	\$100	\$200	\$300	\$400	\$500
ADAK	\$0	\$0	\$0	\$0	\$0
ALASKA GATEWAY	8,654	17,308	25,962	34,615	43,270
ALEUTIAN REGION	865	1,730	2,595	3,460	4,325
ALEUTIANS EAST	6,915	13,830	20,745	27,660	34,575
ANCHORAGE	389,500	779,000	1,168,500	1,558,000	1,947,500
ANNETTE ISLANDS	4,324	8,648	12,972	17,296	21,620
BERING STRAIT	32,112	64,224	96,336	128,448	160,560
BRISTOL BAY	4,040	8,080	12,120	16,160	20,200
CHATHAM	5,314	10,628	15,942	21,256	26,570
CHUGACH	3,002	6,004	9,006	12,008	15,010
COPPER RIVER	8,470	16,940	25,410	33,880	42,350
CORDOVA	5,389	10,778	16,167	21,556	26,945
CRAIG	4,107	8,214	12,321	16,428	20,535
DELTA/GREELY	10,276	20,552	30,828	41,104	51,380
DENALI	5,724	11,448	17,172	22,896	28,620
DILLINGHAM	6,415	12,830	19,245	25,660	32,075
FAIRBANKS	135,046	270,092	405,138	540,184	675,230
GALENA	3,142	6,284	9,426	12,568	15,710
HAINES	4,395	8,790	13,185	17,580	21,975
HOONAH	3,558	7,116	10,674	14,232	17,790
HYDABURG	1,648	3,296	4,944	6,592	8,240
IDITAROD	9,806	19,612	29,418	39,224	49,030
JUNEAU	47,040	94,080	141,120	188,160	235,200
KAKE	2,265	4,530	6,795	9,060	11,325
KASHUNAMIUT	3,725	7,450	11,175	14,900	18,625
KENAI	98,000	196,000	294,000	392,000	490,000
KETCHIKAN	22,109	44,218	66,327	88,436	110,545
KLAWOCK	2,743	5,486	8,229	10,972	13,715
KODIAK	28,000	56,000	84,000	112,000	140,000
KUSPUK	9,386	18,772	28,158	37,544	46,930
LAKE AND PENINSULA	11,854	23,708	35,562	47,416	59,270
LOWER KUSKOKWIM	64,485	128,970	193,455	257,940	322,425
LOWER YUKON	28,337	56,674	85,011	113,348	141,685
MAT-SU	111,978	223,956	335,934	447,912	559,890
NENANA	2,700	5,400	8,100	10,800	13,500
NOME	8,175	16,350	24,525	32,700	40,875
NORTH SLOPE	26,345	52,690	79,035	105,380	131,725
NORTHWEST ARCTIC	30,861	61,722	92,583	123,444	154,305
PELICAN	999	1,998	2,997	3,996	4,995
PETERSBURG	6,595	13,190	19,785	26,380	32,975
PRIBILOF	3,552	7,104	10,656	14,208	17,760
SITKA	14,802	29,604	44,406	59,208	74,010
SKAGWAY	1,750	3,500	5,250	7,000	8,750
SOUTHEAST	7,377	14,754	22,131	29,508	36,885
SOUTHWEST	12,589	25,178	37,767	50,356	62,945
ST MARYS	1,859	3,718	5,577	7,436	9,295
TANANA	2,019	4,038	6,057	8,076	10,095
UPPER ALASKA	4,533	9,066	13,599	18,132	22,665
VALDEZ	8,531	17,062	25,593	34,124	42,655
WRANGELL	5,262	10,524	15,786	21,048	26,310
YAKUTAT	2,254	4,508	6,762	9,016	11,270
YUKON FLATS	10,327	20,654	30,981	41,308	51,635
YUKON-KOYUKUK	13,144	26,288	39,432	52,576	65,720
YUPIIT	8,147	16,294	24,441	32,588	40,735
STATE CCS	6,243	12,487	18,730	24,973	31,216
MI EDGE CUMBE	2,600	5,200	7,800	10,400	13,000
SUB-TOTALS	\$1,263,308	\$2,526,617	\$3,789,925	\$5,053,233	\$6,316,541
CONTRACTUAL	0	0	0	0	0
EST PRIOR YEAR ADJ	0	0	0	0	0
FY96 EST INCREASES	\$1,263,308	\$2,526,617	\$3,789,925	\$5,053,233	\$6,316,541

ALASKA DEPARTMENT OF EDUCATION
 FY96 PROJECTED FOUNDATION INCREASED ENTITLEMENTS IF UNIT VALUE IS ADJUSTED.

12/20/94 File FND96PJ.XLS

This spreadsheet reflects the increased FY96 foundation entitlements if the unit value of \$61,000 is increased by increments of \$100

UNIT VALUE INCREASES BY >	\$600	\$700	\$800	\$900	\$1,000
ADAK	\$0	\$0	\$0	\$0	\$0
ALASKA GATEWAY	51,924	60,578	69,232	77,886	86,540
ALEUTIAN REGION	5,190	6,055	6,920	7,785	8,650
ALEUTIANS EAST	41,490	48,405	55,320	62,235	69,150
ANCHORAGE	2,337,000	2,726,500	3,116,000	3,505,500	3,895,000
ANNET ISLANDS	25,944	30,268	34,592	38,916	43,240
BERING STRAIT	192,672	224,784	256,896	289,008	321,120
BRISTOL BAY	24,240	28,280	32,320	36,360	40,400
CHATHAM	31,884	37,198	42,512	47,826	53,140
CHUGACH	18,012	21,014	24,016	27,018	30,020
COPPER RIVER	50,820	59,290	67,760	76,230	84,700
CORDOVA	32,334	37,723	43,112	48,501	53,890
CRAIG	24,642	28,749	32,856	36,963	41,070
DELTA/GREELY	61,656	71,932	82,208	92,484	102,760
DENALI	34,344	40,068	45,792	51,516	57,240
DILLINGHAM	38,490	44,905	51,320	57,735	64,150
FAIRBANKS	810,276	945,322	1,080,368	1,215,414	1,350,460
GALENA	18,852	21,994	25,136	28,278	31,420
HAINES	26,370	30,765	35,160	39,555	43,950
HOONAH	21,348	24,906	28,464	32,022	35,580
HYDABURG	9,888	11,536	13,184	14,832	16,480
IDITAROD	58,836	68,642	78,448	88,254	98,060
JUNEAU	282,240	329,280	376,320	423,360	470,400
KAKE	13,590	15,855	18,120	20,385	22,650
KIUNAMIUT	22,350	26,075	29,800	33,525	37,250
KENAI	588,000	686,000	784,000	882,000	980,000
KETCHIKAN	132,654	154,763	176,872	198,981	221,090
KLAWOCK	16,458	19,201	21,944	24,687	27,430
KODIAK	168,000	196,000	224,000	252,000	280,000
KUSPUK	56,316	65,702	75,088	84,474	93,860
LAKE AND PENINSULA	71,124	82,978	94,832	106,686	118,540
LOWER KUSKOKWIM	386,910	451,395	515,880	580,365	644,850
LOWER YUKON	170,022	198,359	226,696	255,033	283,370
MAT-SU	671,868	783,846	895,824	1,007,802	1,119,780
NENANA	16,200	18,900	21,600	24,300	27,000
NOME	49,050	57,225	65,400	73,575	81,750
NORTH SLOPE	158,070	184,415	210,760	237,105	263,450
NORTHWEST ARCTIC	185,286	216,167	247,048	277,929	308,810
PELICAN	5,994	6,993	7,992	8,991	9,990
PETERSBURG	39,570	46,165	52,760	59,355	65,950
PRIBILOF	21,312	24,864	28,416	31,968	35,520
SITKA	88,812	103,614	118,416	133,218	148,020
SKAGWAY	10,500	12,250	14,000	15,750	17,500
SOUTHEAST	44,262	51,639	59,016	66,393	73,770
SOUTHWEST	75,534	88,123	100,712	113,301	125,890
ST MARYS	11,154	13,013	14,872	16,731	18,590
TANANA	12,114	14,133	16,152	18,171	20,190
TINALASKA	27,198	31,731	36,264	40,797	45,330
VALDEZ	51,186	59,717	68,248	76,779	85,310
WRANGELL	31,572	36,834	42,096	47,358	52,620
YAKUTAT	13,524	15,778	18,032	20,286	22,540
YUKON FLATS	61,062	72,289	82,516	92,743	103,270
YUKON-KOYUKUK	78,864	92,008	105,152	118,296	131,440
YUPIIT	48,882	57,029	65,176	73,323	81,470
STATE CCS	37,460	43,703	49,946	56,189	62,433
MT EDGECUMBE	15,600	18,200	20,800	23,400	26,000
SUB TOTALS	\$7,579,850	\$8,843,158	\$10,106,466	\$11,369,774	\$12,633,083
CONTRACTUAL	0	0	0	0	0
EST PRIOR YEAR ADJ	0	0	0	0	0
FY96 EST INCREASES	\$7,579,850	\$8,843,158	\$10,106,466	\$11,369,774	\$12,633,083

ALASKA DEPARTMENT OF EDUCATION
 FY96 PROJECTED FOUNDATION ENTITLEMENTS IF UNIT VALUE IS ADJUSTED
 and PL81-874 FLOW THROUGH.

12/20/94 File FND96PJ.XLS

This spreadsheet reflects the total FY96 foundation entitlements if the unit value of \$61,000 is increased by increments of \$1,000

ADJUSTED UNIT VALUE >	\$62,000	\$63,000	\$64,000	\$65,000	\$66,000	\$67,000
	\$0	\$0	\$0	\$0	\$0	\$0
ADAK						
ALASKA GATEWAY	4,973,542	5,060,082	5,146,622	5,233,162	5,319,702	5,406,242
ALEUTIAN REGION	477,579	486,229	494,879	503,529	512,179	520,829
ALEUTIANS EAST	3,737,158	3,806,308	3,875,458	3,944,608	4,013,758	4,082,908
ANCHORAGE	197,273,262	201,168,262	205,063,262	208,958,262	212,853,262	216,748,262
ANNETTE ISLANDS	1,634,071	1,677,311	1,720,551	1,763,791	1,807,031	1,850,271
BERING STRAIT	16,350,709	16,671,829	16,992,949	17,314,069	17,635,189	17,956,309
BRISTOL BAY	1,647,666	1,688,066	1,728,466	1,768,866	1,809,266	1,849,666
CHATHAM	2,623,567	2,576,707	2,729,847	2,762,987	2,836,127	2,889,267
CHUGACH	1,732,274	1,762,294	1,792,314	1,822,334	1,852,354	1,882,374
COPPER RIVER	5,168,404	5,253,104	5,337,804	5,422,504	5,507,204	5,591,904
CORDOVA	2,580,227	2,634,117	2,688,007	2,741,897	2,795,787	2,849,677
CRAIG	2,279,495	2,329,565	2,361,635	2,402,705	2,443,775	2,484,845
DELTA/GREELY	5,448,072	5,550,832	5,653,592	5,756,352	5,859,112	5,961,872
DENALI	3,222,935	3,280,235	3,337,475	3,394,715	3,451,955	3,509,195
DILLINGHAM	3,245,860	3,310,010	3,374,160	3,438,310	3,502,460	3,566,610
FAIRBANKS	74,792,303	76,142,763	77,493,223	78,843,683	80,194,143	81,544,603
GALENA	1,664,452	1,695,872	1,727,292	1,758,712	1,790,132	1,821,552
HAINES	2,192,384	2,236,334	2,280,284	2,324,234	2,368,184	2,412,134
HOONAH	2,068,920	2,104,500	2,140,080	2,175,660	2,211,240	2,246,820
HYDABURG	994,080	1,010,560	1,027,040	1,043,520	1,060,000	1,076,480
IDITAROD	5,481,600	5,579,660	5,677,720	5,775,780	5,873,840	5,971,900
JUNEAU	22,091,272	22,561,672	23,032,072	23,502,472	23,972,872	24,443,272
KAKE	1,257,276	1,279,926	1,302,576	1,325,226	1,347,876	1,370,526
KASHUNAMIUT	2,029,784	2,067,034	2,104,284	2,141,534	2,178,784	2,216,034
KENAI	46,552,050	47,532,050	48,512,050	49,492,050	50,472,050	51,452,050
KETCHIKAN	9,759,928	9,981,018	10,202,108	10,423,198	10,644,288	10,865,378
KLAWOCK	1,565,524	1,592,954	1,620,384	1,647,814	1,675,244	1,702,674
KODIAK	14,260,967	14,540,967	14,820,967	15,100,967	15,380,967	15,660,967
KUSPUK	5,246,964	5,340,824	5,434,684	5,528,544	5,622,404	5,716,264
LAKE AND PENINSULA	6,748,449	6,866,989	6,985,529	7,104,069	7,222,609	7,341,149
LOWER KUSKOKWIM	35,243,061	35,887,911	36,532,761	37,177,611	37,822,461	38,467,311
LOWER YUKON	14,193,333	14,476,703	14,760,073	15,043,443	15,326,813	15,610,183
MAT-SU	60,815,308	61,935,088	63,054,868	64,174,648	65,294,428	66,414,208
NENANA	1,606,050	1,633,050	1,660,050	1,687,050	1,714,050	1,741,050
NOME	4,517,822	4,599,572	4,681,322	4,763,072	4,844,822	4,926,572
NORTH SLOPE	10,407,310	10,670,760	10,934,210	11,197,660	11,461,110	11,724,560
NORTHWEST ARCTIC	16,739,721	17,048,531	17,357,341	17,666,151	17,974,961	18,283,771
PELICAN	563,504	573,494	583,484	593,474	603,464	613,454
PETERSBURG	3,271,561	3,333,511	3,403,461	3,469,411	3,535,361	3,601,311
PRIBILOF	1,818,655	1,854,175	1,889,695	1,925,215	1,960,735	1,996,255
SITKA	6,972,902	7,120,922	7,268,942	7,416,962	7,564,982	7,713,002
SKAGWAY	724,206	741,706	759,206	776,706	794,206	811,706
SOUTHEAST	4,098,967	4,172,737	4,246,507	4,320,277	4,394,047	4,467,817
SOUTHWEST	6,696,468	6,822,358	6,948,248	7,074,138	7,200,028	7,325,918
ST MARYS	1,033,863	1,052,453	1,071,043	1,089,633	1,108,223	1,126,813
TANANA	1,131,187	1,151,377	1,171,567	1,191,757	1,211,947	1,232,137
UNALASKA	1,794,577	1,830,907	1,885,237	1,930,567	1,975,897	2,021,227
VALDEZ	3,473,814	3,559,124	3,644,434	3,729,744	3,815,054	3,900,364
WRANGELL	2,668,944	2,721,564	2,774,184	2,826,804	2,879,424	2,932,044
YAKUTAT	1,262,460	1,295,000	1,307,540	1,330,080	1,352,620	1,375,160
YUKON FLATS	5,751,811	5,855,081	5,958,351	6,061,621	6,164,891	6,268,161
YUKON/KOYUKUK	7,119,290	7,250,730	7,382,170	7,513,610	7,645,050	7,776,490
YUPIIT	4,160,219	4,241,689	4,323,159	4,404,629	4,486,099	4,567,569
STATE CCS	3,870,815	3,933,248	3,995,680	4,058,113	4,120,545	4,182,978
MI EDGECLUMBE	1,612,000	1,638,000	1,664,000	1,690,000	1,716,000	1,742,000
SUB-TOTALS	\$650,648,682	\$663,281,765	\$675,914,847	\$688,547,930	\$701,181,012	\$713,814,095
CONTRACTUAL	3,886,263	3,886,260	3,886,260	3,886,260	3,886,260	3,886,260
EST PRIOR YEAR ADJ	1,500,000	1,500,000	1,500,000	1,500,000	1,500,000	1,500,000
FY96 EST INCREASES	\$655,034,942	\$668,668,025	\$681,301,107	\$693,934,190	\$706,567,272	\$719,200,355

FY96 PROJECTED FOUNDATION INCREASED ENTITLEMENTS IF UNIT VALUE IS ADJUSTED

This spreadsheet reflects the increased FY96 foundation entitlements if the unit value of \$61,000 is increased by increments of \$1,000

UNIT VALUE INCREASES BY >	\$1,000	\$2,000	\$3,000	\$4,000	\$5,000	\$6,000
ADAK	\$0	\$0	\$0	\$0	0	\$0
ALASKA GATEWAY	86,540	173,080	259,620	346,160	432,700	519,240
ALEUTIAN REGION	8,650	17,300	25,950	34,600	43,250	51,900
ALEUTIANS EAST	69,150	138,300	207,450	276,600	345,750	414,900
ANCHORAGE	3,895,000	7,790,000	11,685,000	15,580,000	19,475,000	23,370,000
ANNETTE ISLANDS	43,240	86,480	129,720	172,960	216,200	259,440
BERING STRAIT	321,120	642,240	963,360	1,284,480	1,605,600	1,926,720
BRISTOL BAY	40,400	80,800	121,200	161,600	202,000	242,400
CHATHAM	53,140	106,280	159,420	212,560	265,700	318,840
CHUGACH	30,020	60,040	90,060	120,080	150,100	180,120
COPPER RIVER	84,700	169,400	254,100	338,800	423,500	508,200
CORDOVA	53,890	107,780	161,670	215,560	269,450	323,340
CRAIG	41,070	82,140	123,210	164,280	205,350	246,420
DELTA/GREELY	102,760	205,520	308,280	411,040	513,800	616,560
DENALI	57,240	114,480	171,720	228,960	286,200	343,440
DILLINGHAM	64,150	128,300	192,450	256,600	320,750	384,900
FAIRBANKS	1,350,460	2,700,920	4,051,380	5,401,840	6,752,300	8,102,760
GALENA	31,420	62,840	94,260	125,680	157,100	188,520
HAINES	43,950	87,900	131,850	175,800	219,750	263,700
HOONAH	35,580	71,160	106,740	142,320	177,900	213,480
HYDABURG	16,480	32,960	49,440	65,920	82,400	98,880
IDITAROD	98,060	196,120	294,180	392,240	490,300	588,360
JUNEAU	470,400	940,800	1,411,200	1,881,600	2,352,000	2,822,400
KAKE	22,650	45,300	67,950	90,600	113,250	135,900
KASHUNAMIUT	37,250	74,500	111,750	149,000	186,250	223,500
KENAI	980,000	1,960,000	2,940,000	3,920,000	4,900,000	5,880,000
KETCHIKAN	221,090	442,180	663,270	884,360	1,105,450	1,326,540
KLAWOCK	27,430	54,860	82,290	109,720	137,150	164,580
KODIAK	280,000	560,000	840,000	1,120,000	1,400,000	1,680,000
KUSPUK	93,860	187,720	281,580	375,440	469,300	563,160
LAKE AND PENINSULA	118,540	237,080	355,620	474,160	592,700	711,240
LOWER KUSKOKWIM	644,850	1,289,700	1,934,550	2,579,400	3,224,250	3,869,100
LOWER YUKON	283,370	566,740	850,110	1,133,480	1,416,850	1,700,220
MAT-SU	1,119,780	2,239,560	3,359,340	4,479,120	5,598,900	6,718,680
NENANA	27,000	54,000	81,000	108,000	135,000	162,000
NOME	81,750	163,500	245,250	327,000	408,750	490,500
NORTH SLOPE	263,450	526,900	790,350	1,053,800	1,317,250	1,580,700
NORTHWEST ARCTIC	308,810	617,620	926,430	1,235,240	1,544,050	1,852,860
PELICAN	9,990	19,980	29,970	39,960	49,950	59,940
PETERSBURG	65,950	131,900	197,850	263,800	329,750	395,700
PRIIBLOF	35,520	71,040	106,560	142,080	177,600	213,120
SITKA	148,020	296,040	444,060	592,080	740,100	888,120
SKAGWAY	17,500	35,000	52,500	70,000	87,500	105,000
SOUTHEAST	73,770	147,540	221,310	295,080	368,850	442,620
SOUTHWEST	125,890	251,780	377,670	503,560	629,450	755,340
ST MARY'S	18,590	37,180	55,770	74,360	92,950	111,540
TANANA	20,190	40,380	60,570	80,760	100,950	121,140
UNALASKA	45,330	90,660	135,990	181,320	226,650	271,980
VALDEZ	85,310	170,620	255,930	341,240	426,550	511,860
WRANGELL	52,620	105,240	157,860	210,480	263,100	315,720
YAKUTAT	22,540	45,080	67,620	90,160	112,700	135,240
YUKON FLATS	103,270	206,540	309,810	413,080	516,350	619,620
YUKON-KOYUKUK	131,440	262,880	394,320	525,760	657,200	788,640
YUPIIT	81,470	162,940	244,410	325,880	407,350	488,820
STATE CCS	62,433	124,865	187,298	249,730	312,163	374,595
Mt EDGECUMBE	26,000	52,000	78,000	104,000	130,000	156,000
SUB-TOTALS	\$12,633,083	\$25,266,165	\$37,899,248	\$50,532,330	\$63,165,413	\$75,798,495
CONTRACTUAL	0	0	0	0	0	0
EST PRIOR YEAR ADJ	0	0	0	0	0	0
FY96 EST INCREASES	\$12,633,083	\$25,266,165	\$37,899,248	\$50,532,330	\$63,165,413	\$75,798,495

ALASKA DEPARTMENT OF EDUCATION
 FY96 PROJECTED FOUNDATION ENTITLEMENTS IF UNIT VALUE IS ADJUSTED,
 and PLB1-874 FLOW THROUGH

12/20/94 File FND96PJ.XLS

This spreadsheet reflects the total FY96 foundation entitlements if the unit value of \$61,000 is increased by increments of \$500.

ADJUSTED UNIT VALUE >	\$62,000	\$62,500	\$63,000	\$63,500	\$64,000
ADAK	\$0	\$0	\$0	\$0	\$0
ALASKA GATEWAY	4,973,542	5,016,812	5,060,082	5,103,352	5,146,622
ALEUTIAN REGION	477,579	481,904	486,229	490,554	494,879
ALEUTIANS EAST	3,737,158	3,771,733	3,806,308	3,840,883	3,875,458
ANCHORAGE	197,273,262	199,220,762	201,168,262	203,115,762	205,063,262
ANNETTE ISLANDS	1,140,071	1,655,691	1,677,311	1,698,931	1,720,551
BERING STRAIT	16,507,099	16,511,269	16,671,829	16,832,389	16,992,949
BRISTOL BAY	1,647,666	1,667,866	1,688,066	1,708,266	1,728,466
CHATHAM	2,623,567	2,650,137	2,676,707	2,703,277	2,729,847
CHUGACH	1,732,271	1,747,284	1,762,294	1,777,304	1,792,314
COPPER RIVER	5,168,404	5,210,754	5,253,104	5,295,454	5,337,804
CORDOVA	2,580,227	2,607,172	2,634,117	2,661,062	2,688,007
CRAIG	2,279,495	2,300,030	2,320,565	2,341,100	2,361,635
DELTA/GREELY	5,448,072	5,499,452	5,550,832	5,602,212	5,653,592
DENALI	3,222,995	3,251,615	3,280,235	3,308,855	3,337,475
DILLINGHAM	3,245,860	3,277,935	3,310,010	3,342,085	3,374,160
FAIRBANKS	74,792,303	75,467,533	76,142,763	76,817,993	77,493,223
GALENA	1,654,452	1,680,162	1,695,672	1,711,582	1,727,292
HAINES	2,192,384	2,214,359	2,236,334	2,258,309	2,280,284
HOONAH	2,068,920	2,086,710	2,104,500	2,122,290	2,140,080
HYDABURG	994,080	1,002,320	1,010,560	1,018,800	1,027,040
IDITAROD	5,481,600	5,530,630	5,579,660	5,628,690	5,677,720
JUNEAU	22,091,272	22,326,472	22,561,672	22,796,872	23,032,072
KAKE	1,257,276	1,268,601	1,279,926	1,291,251	1,302,576
KASHUNAMIUT	2,029,784	2,048,409	2,067,034	2,085,659	2,104,284
KENAI	46,552,050	47,042,050	47,532,050	48,022,050	48,512,050
KETCHIKAN	9,759,928	9,870,473	9,981,018	10,091,563	10,202,108
KLAWOCK	1,565,524	1,579,239	1,592,954	1,606,669	1,620,384
KODIAK	14,260,967	14,400,967	14,540,967	14,680,967	14,820,967
KUSPUK	5,246,964	5,293,894	5,340,824	5,387,754	5,434,684
LAKE AND PENINSULA	6,748,449	6,807,719	6,866,989	6,926,259	6,985,529
LOWER KUSKOKWIM	35,243,061	35,565,486	35,887,911	36,210,336	36,532,761
LOWER YUKON	14,193,333	14,335,018	14,476,703	14,618,388	14,760,073
MAT-SU	60,815,308	61,375,198	61,935,088	62,494,978	63,054,868
NENANA	1,606,050	1,619,550	1,633,050	1,646,550	1,660,050
NOME	4,517,822	4,558,697	4,599,572	4,640,447	4,681,322
NORTH SLOPE	10,407,310	10,539,035	10,670,760	10,802,485	10,934,210
NORTHWEST ARCTIC	16,739,721	16,894,126	17,048,531	17,202,936	17,357,341
PELICAN	563,504	568,499	573,494	578,489	583,484
PETERSBURG	3,271,561	3,304,536	3,337,511	3,370,486	3,403,461
PRIIBILOF	1,818,655	1,836,415	1,854,175	1,871,935	1,889,695
SITKA	6,972,902	7,046,912	7,120,922	7,194,932	7,268,942
SKAGWAY	724,206	732,956	741,706	750,456	759,206
SOUTHEAST	4,098,967	4,135,852	4,172,737	4,209,622	4,246,507
SOUTHWEST	6,696,468	6,759,413	6,822,358	6,885,303	6,948,248
ST MARYS	1,033,863	1,043,158	1,052,453	1,061,748	1,071,043
TANANA	1,131,187	1,141,202	1,151,377	1,161,472	1,171,567
UNALASKA	1,794,577	1,817,242	1,839,907	1,862,572	1,885,237
VALCEZ	3,473,814	3,516,469	3,559,124	3,601,779	3,644,434
WRANGELL	2,668,944	2,695,254	2,721,564	2,747,874	2,774,184
YAKUTAT	1,262,460	1,273,730	1,285,000	1,296,270	1,307,540
YUKON FLATS	5,751,811	5,803,446	5,855,081	5,906,716	5,958,351
YUKON/KOYUKUK	7,119,290	7,185,010	7,250,730	7,316,450	7,382,170
YUPIIT	4,160,219	4,200,954	4,241,689	4,282,424	4,323,159
STATE CCS	3,870,815	3,902,031	3,933,248	3,964,464	3,995,680
MI EDGECUMBE	1,612,000	1,625,000	1,638,000	1,651,000	1,664,000
SUB TOTALS	\$650,648,682	\$655,965,223	\$663,281,765	\$669,598,306	\$675,914,847
CONTRACTUAL	3,886,260	3,886,260	3,886,260	3,886,260	3,886,260
EST PRIOR YEAR ADJ	1,500,000	1,500,000	1,500,000	1,500,000	1,500,000
FY96 EST INCREASES	\$656,034,942	\$652,351,483	\$668,668,025	\$674,984,566	\$681,301,107

ALASKA DEPARTMENT OF EDUCATION
 FY96 PROJECTED FOUNDATION INCREASED ENTITLEMENTS IF UNIT VALUE IS ADJUSTED

12/20/94 File FND96PJ.XLS

This spreadsheet reflects the increased FY96 foundation entitlements if the unit value of \$61,000 is increased by increments of \$500.

UNIT VALUE INCREASES BY >	\$1,000	\$1,500	\$2,000	\$2,500	\$3,000
ADAK	\$0	\$0	\$0	\$0	\$0
ALASKA GATEWAY	86,540	129,810	173,080	216,350	259,620
ALEUTIAN REGION	8,650	12,975	17,300	21,625	25,950
ALEUTIANS EAST	69,150	103,725	138,300	172,875	207,450
ANCHORAGE	3,895,000	5,842,500	7,790,000	9,737,500	11,685,000
ANNETTE ISLANDS	43,240	64,860	86,480	108,100	129,720
BERING STRAIT	321,120	481,680	642,240	802,800	963,360
BRISTOL BAY	40,400	60,600	80,800	101,000	121,200
CHATHAM	53,140	79,710	106,280	132,850	159,420
CHUGACH	30,020	45,030	60,040	75,050	90,060
COPPER RIVER	84,700	127,050	169,400	211,750	254,100
CORDOVA	53,890	80,835	107,780	134,725	161,670
CRAIG	41,070	61,605	82,140	102,675	123,210
DELTA/GREELY	102,760	154,140	205,520	256,900	308,280
DENALI	57,240	85,860	114,480	143,100	171,720
DILLINGHAM	64,150	96,225	128,300	160,375	192,450
FAIRBANKS	1,350,460	2,025,690	2,700,920	3,376,150	4,051,380
GALENA	31,420	47,130	62,840	78,550	94,260
HAINES	43,950	65,925	87,900	109,875	131,850
HOONAH	35,580	53,370	71,160	88,950	106,740
HYDABURG	16,480	24,720	32,960	41,200	49,440
IDITAROD	98,060	147,090	196,120	245,150	294,180
JUNEAU	470,400	705,600	940,800	1,176,000	1,411,200
KAKE	22,650	33,975	45,300	56,625	67,950
KASHUNAMIUT	37,250	55,875	74,500	93,125	111,750
KENAI	980,000	1,470,000	1,960,000	2,450,000	2,940,000
KETCHIKAN	221,090	331,635	442,180	552,725	663,270
KLAWOCK	27,430	41,145	54,860	68,575	82,290
KODIAK	280,000	420,000	560,000	700,000	840,000
KUSPUK	93,860	140,790	187,720	234,650	281,580
LAKE AND PENINSULA	118,540	177,810	237,080	296,350	355,620
LOWER KUSKOKWIM	644,850	967,275	1,289,700	1,612,125	1,934,550
LOWER YUKON	283,370	425,055	566,740	708,425	850,110
MAT-SU	1,119,780	1,679,670	2,239,560	2,799,450	3,359,340
NENANA	27,000	40,500	54,000	67,500	81,000
NOME	81,750	122,625	163,500	204,375	245,250
NORTH SLOPE	263,450	395,175	526,900	658,625	790,350
NORTHWEST ARCTIC	308,810	463,215	617,620	772,025	926,430
PELICAN	9,990	14,985	19,980	24,975	29,970
PETERSBURG	65,950	98,925	131,900	164,875	197,850
PRIBILOF	35,520	53,280	71,040	88,800	106,560
SITKA	148,020	222,030	296,040	370,050	444,060
SKAGWAY	17,500	26,250	35,000	43,750	52,500
SOUTHEAST	73,770	110,655	147,540	184,425	221,310
SOUTHWEST	125,890	188,835	251,780	314,725	377,670
ST MARYS	18,590	27,885	37,180	46,475	55,770
TANANA	20,190	30,285	40,380	50,475	60,570
UNALASKA	45,330	67,995	90,660	113,325	135,990
VALDEZ	85,310	127,965	170,620	213,275	255,930
WRANGELL	52,620	78,930	105,240	131,550	157,860
YAKUTAT	22,540	33,810	45,080	56,350	67,620
YUKON FLATS	103,270	154,905	206,540	258,175	309,810
YUKON-KOYUKUK	131,440	197,160	262,880	328,600	394,320
YUPIIT	81,470	122,205	162,940	203,675	244,410
STATE CCS	62,433	93,649	124,865	156,081	187,298
MI EDGECUMBE	26,000	39,000	52,000	65,000	78,000
SUB-TOTALS	\$12,633,083	\$18,949,624	\$25,266,165	\$31,582,706	\$37,899,248
CONTRACTUAL	0	0	0	0	0
EST PRIOR YEAR ADJ	0	0	0	0	0
FY96 EST INCREASES	\$12,633,083	\$18,949,624	\$25,266,165	\$31,582,706	\$37,899,248

02/18/95

LEGISLATIVE TELECONFERENCE NETWORK SYSTEM

LTN1150

13:16:29

PARTICIPANT LIST (ALL PARTICIPANTS)

BY:KTN

TCN:50215 SCHEDULED FOR:02/18/95 13:00 TO 15:00

FOR:KTN

PUBLIC HEARING

SENATE HEALTH, EDUCATION & SOCIAL SERVIC

LOCATION: KETCHIKAN

SB 70	MR. ✓ DAVID	DOSSETT	SISD	TESTIFY ✓ <i>Supt. REAA</i>
SB 70	MR. ✓ BRUCE	STANTON	KEA	TESTIFY ✓
SB 70	MR. ✓ MIKE	HARPOLD	KGSB	TESTIFY ✓
SB 70	MRS. ✓ CHRIS	CAMPBELL	PTA	TESTIFY ✓ <i>Valley Park Elem</i>
SB 70	MR. ✓ <i>rich</i> NICHOLAS	FITZGERALD	<i>Teacher/parent</i>	TESTIFY ✓

02/18/95

LEGISLATIVE TELECONFERENCE NETWORK SYSTEM

LTN1150

12:59:01

PARTICIPANT LIST (TESTIFIERS ONLY)

BY:MAT

TCN:50215

SCHEDULED FOR:02/18/95 13:00 TO 15:00

FOR:MAT

PUBLIC HEARING

SENATE HEALTH, EDUCATION & SOCIAL SERVIC

LOCATION:MATSU

SB 70

MS

MELINDA

BROOKS

- Parent

TESTIFY ✓

SB 70

MR

SCOTT

STERLING

TESTIFY ✓

02/18/95

LEGISLATIVE TELECONFERENCE NETWORK SYSTEM

LTN1150

13:03:45

PARTICIPANT LIST (ALL PARTICIPANTS)

BY:KOD

TCN:50215

SCHEDULED FOR:02/18/95 13:00 TO 15:00

FOR:KOD

PUBLIC HEARING

SENATE HEALTH, EDUCATION & SOCIAL SERVIC

LOCATION:KODIAK

ALL ITEMS

DR.

BRAD

BRINGGOLD

TESTIFY ✓

02/18/95

LEGISLATIVE TELECONFERENCE NETWORK SYSTEM

LTN1150

12:58:22

PARTICIPANT LIST (ALL PARTICIPANTS)

BY:NOM

TCN:50215

SCHEDULED FOR:02/18/95 13:00 TO 15:00

FOR:NOM

PUBLIC HEARING

SENATE HEALTH, EDUCATION & SOCIAL SERVIC

LOCATION:NOME

SB 70

MR.

MIKE

MURPHY

NOME SCHOOL BD. TESTIFY ✓

02/18/95

LEGISLATIVE TELECONFERENCE NETWORK SYSTEM

LTN1150

13:28:24

PARTICIPANT LIST (ALL PARTICIPANTS)

BY:VAL.

TCN:50215 SCHEDULED FOR:02/18/95 13:00 TO 15:00

FOR:VAL.

PUBLIC HEARING

SENATE HEALTH, EDUCATION & SOCIAL SERVIC

LOCATION:VALDEZ

SB 70

MS.

MARILYN

LEAHY

SCHOOL BOARD

TESTIFY *rw*

SB 70

MR.

HARRY

ROGERS

School Supt.

TESTIFY *✓*

02/18/95

LEGISLATIVE TELECONFERENCE NETWORK SYSTEM

LTN1150

13:25:30

PARTICIPANT LIST (ALL PARTICIPANTS)

BY:GLN

TCN:50215

SCHEDULED FOR:02/18/95 13:00 TO 15:00

FOR:GLN

PUBLIC HEARING

SENATE HEALTH, EDUCATION & SOCIAL. SERVIC

LOCATION:GLENNALLEN

SB 70

MR.

GEORGE

MAYKOWSKY, J ✓

TESTIFY ✓

SB 70

MS.

REYNE

BROCKMAN - PTA Pres.

TESTIFY ✓

Res.

*45 mins. out of increase
Glennallen (6 & 19)*

02/18/95

LEGISLATIVE TELECONFERENCE NETWORK SYSTEM

L/TN1150

13:31:03

PARTICIPANT LIST (ALL PARTICIPANTS)

BY:BAR

TCN:50215 SCHEDULED FOR:02/18/95 13:00 TO 15:00

FOR:BAR

PUBLIC HEARING

SENATE HEALTH, EDUCATION & SOCIAL SERVIC

LOCATION:BARROW

SB 70

MR. BOB

HARTY

*Ant
Seydel*

NORTH SLOPE BSD TESTIFY



02/18/95

LEGISLATIVE TELECONFERENCE NETWORK SYSTEM

LTN1150

11:28:53

PARTICIPANT LIST (TESTIFIERS ONLY)

BY:COR

TCN:50215

SCHEDULED FOR:02/18/95 13:00 TO 15:00

FOR:COR

PUBLIC HEARING

SENATE HEALTH, EDUCATION & SOCIAL SERVICE

LOCATION:CORDOVA

SH 70

MS.

PATTY

GRAVES

CORDVA :CL BOARDTESTIFY





Official Business

COMMITTEE:

SENATE HEALTH, EDUCATION & SOCIAL SERVICES

DATE: February 17, 1995

Subject of meeting:

SB 70 PUBLIC SCHOOL FOUNDATION PROGRAM

SIGN-IN

PLEASE PRINT!

NAME

ADDRESS (MAILING) & (ZIP)

PHONE

REPRESENTING

DO YOU WANT TO TESTIFY?

✓ Jerry Burnett	State Capitol	4949	Sen R. Phillips	Y
✱ Wanda Cooksey				X
✓ John Anton	SEARC 210 Ferry Way Juneau, AK 99801	586.6806	SEARC Rep. Dir.	Y

* Time Constraint

02/18/95 14:00:52
MESSAGE FROM: LIOCEMI

LEGISLATIVE TELECONFERENCE NETWORK SYSTEM
IN GLENNALLEN

LIN1120
JNU

RE TCN: 50215 SCHEDULED FOR: 02/18/95 13:00 TO 15:00
SPONSOR: SENATE HEALTH, EDUCATION & SOCIAL SERVPURPOSE: PUBLIC HEARING

MESSAGE TEXT: MR. RAYKOWSKYJ WOULD LIKE TO ADD TO TEST

POEVA

→ He has a few more comments.

**SENATE
CITATION CO-SPONSOR**

Please add my name as a co-sponsor to the following citation(s):

unfortunately you, me
and John T - are
hurt the most by
this inaction. I'm
sorry for being so abrupt
thankyou for being
understanding.

Adrian

NAME

DATE

Jyda!

Thank you for taking the time to explain to me the words I should have heard yesterday.

I was upset that 7 of us had voted to bring the Educ. Bill to the floor, and it was being killed!