

ADF & G

OVER-

VIEW

1/30/95

STATE OF ALASKA

COMMERCIAL FISHERIES ENTRY COMMISSION

TONY KNOWLES, GOVERNOR

8800 GLACIER HWY, #109
JUNEAU, AK 99801
(907) 789-6150 Licensing Calls
(907) 789-6160 Other Business
(907) 769-6170 FAX

CFEC OVERVIEW
FOR
HOUSE RESOURCES COMMITTEE

JANUARY 30, 1995

OVERVIEW OF THE COMMISSION

Limited entry was established in Alaska in response to public demand to protect the diminishing fishery resources and to stabilize the economic health of the commercial fishing industry. After years of disastrous salmon seasons in the 1960's, the industry was in serious decline and Alaskan fishers in a financial crisis. Fearing the loss of their fisheries, Alaskans voted in 1972 to amend the constitution and created a system of fishery limitation (Art VIII, Sec 15). Governor Egan assembled a study team and the Legislature approved the current Limited Entry Act in the 1973 session. Interim-use permits were first issued by the Commission in 1974 and the first permanent limited entry permits were issued in 1975. In 1976 the public again voted almost two to one to keep the limited entry system and in 1984 the U.S. Supreme Court let stand a decision of the Alaska Supreme Court upholding the constitutionality of the program. The 1973 Act created the Commercial Fisheries Entry Commission as an exempt, independent and quasi-judicial agency to regulate and control entry into the commercial fisheries of Alaska in the public interest.

Absent limited entry, many of the State's high-valued fisheries would experience increased effort by new entrants (many from other states). Such increases in effort would raise management costs and threaten the resource stocks and livelihood of many Alaskans in coastal communities where commercial fishing is the cornerstone of the economy. Unchecked growth in commercial demands would also threaten subsistence and other public uses of the resource. In extreme cases, unlimited access would require fishery managers to close some fisheries thereby losing the means of earning a living for many Alaskan families and their communities.

Through the Commercial Fisheries Entry Commission more than 10,000 limited entry permits are held by Alaskans who are granted permanent access to the State's fishery resource. Significantly, 78% of all permanent entry permits are held by Alaskans. Of these permits more than half (56%) are held by Rural Alaskans where other sources of cash are fairly limited. These percentages have remained fairly constant since the beginning of the program. It remains essentially a reflection of the distribution of participants when the limited entry program was instituted. To date, CFEC has protected Alaskan's access to their valuable fishery resources by limiting entry into 50 unique fisheries. At this time, the Commission is in various stages of considering petitions to limit 19 additional fisheries. (Appendix A & H).

The Commercial Fisheries Entry Commission (CFEC) has become an essential component of Alaska's billion dollar fishing industry. CFEC's statutory duty is to promote the conservation and sustained yield management of Alaska's fisheries resources and the economic health and stability of the industry by regulating entry into commercial fisheries in the public interest.

After twenty years of operation, CFEC remains a small agency with a limited budget. (Appendix B). In fact, the CFEC FY95 budget approximates the budget of 12 years ago in FY83, however responsibility to protect access has grown substantially. The Commission now issues 50,000 permits and vessel licenses each year, manages permit allocations in all limited fisheries throughout the state, supervises 1,800 permit transfers each year and annually contributes over \$5 million in revenues to the general fund. (Appendix C).

The Commission is a quasi-judicial agency comprised of three commissioners who hold hearings, conduct judicial review and issue final decisions in disputed cases. (Appendices D and E). In addition, the Commission is organized into four major sections: adjudications, licensing, data processing and research. (Appendix F). There are 32 persons currently employed at CFEC. (Appendix G).

APPENDICES

Appendix A	CFEC Limited Fisheries
Appendix B	CFEC Budget 1991-1996
Appendix C	CFEC Revenue
Appendix D	CFEC Adjudication Decisions Completed
Appendix E	CFEC Adjudication Cases Pending
Appendix F	CFEC Organization Chart
Appendix G	CFEC Position Count
Appendix H	CFEC Requests for Fishery Limitations

LIMITED FISHERIES (WITH QUALIFICATION DATE)

The following 50 fisheries are under a program of entry limitation:

Salmon

Southeastern purse seine (1/1/73)
Southeastern drift gill net (1/1/73)
Statewide hand troll (1/1/80)
Statewide power troll (1/1/73)
Yakutat set gill net (1/1/73)
Prince William Sound purse seine (1/1/73)
Prince William Sound drift gill net (1/1/73)
Prince William Sound set gill net (1/1/73)
Cook Inlet purse seine (incl. beach seine) (1/1/73)
Cook Inlet drift gill net (1/1/73)
Cook Inlet set gill net (1/1/73)
Kodiak purse seine (1/1/73)
Kodiak beach seine (1/1/73)
Kodiak set gill net (1/1/73)
Chignik purse seine (1/1/73)
Peninsula-Aleutian Islands purse seine (incl. beach seine) (1/1/73)
Peninsula-Aleutian Islands drift gill net (1/1/73)
Peninsula-Aleutian Islands set gill net (1/1/73)
Bristol Bay drift gill net (1/1/73)
Bristol Bay set gill net (1/1/73)
Upper Yukon gill net (1/1/76)
Upper Yukon fishwheel (1/1/76)
Kuskokwim gill net (1/1/76)
Kotzebue gill net (1/1/76)
Lower Yukon gill net (1/1/76)
Norton Sound gill net (1/1/76)

Herring

Southeastern purse seine (1/1/77)
Prince William Sound purse seine (1/1/77)
Prince William Sound gill net (1/1/79)
Kodiak purse seine (1/1/81)
Kodiak gill net (1/1/81)
Southeastern gill net (1/1/78)
Cook Inlet purse seine (1/1/77)
Nelson Island gill net (1/1/87)
Nunivak Island gill net (1/1/88)
Cape Romanzof gill net (1/1/87)
Norton Sound beach seine (1/1/87)
Norton Sound gill net (1/1/87)

Herring Spawn on Kelp Pound

Prince William Sound (1/1/87)

Northern Southeast (Hoonah Sound) (1/1/95)

Southern Southeast (Craig/Klawock) (1/1/95)

Herring Spawn on Kelp

Togiak (1/1/89)

Crab

Southeastern red and blue king crab pot (1/1/84)

Southeastern brown king crab pot (1/1/84)

Southeastern Tanner crab pot (1/1/84)

Cook Inlet Dungeness crab pot (1/1/93)

Cook Inlet Dungeness crab ring net (1/1/93)

Sablefish

Northern Southeast Inside longline (1/1/85)

Southern Southeast Inside longline (1/1/85)

Southern Southeast Inside pot (1/1/85)

Moratorium

Southeastern Dungeness crab pot and ring net (1992-1996)

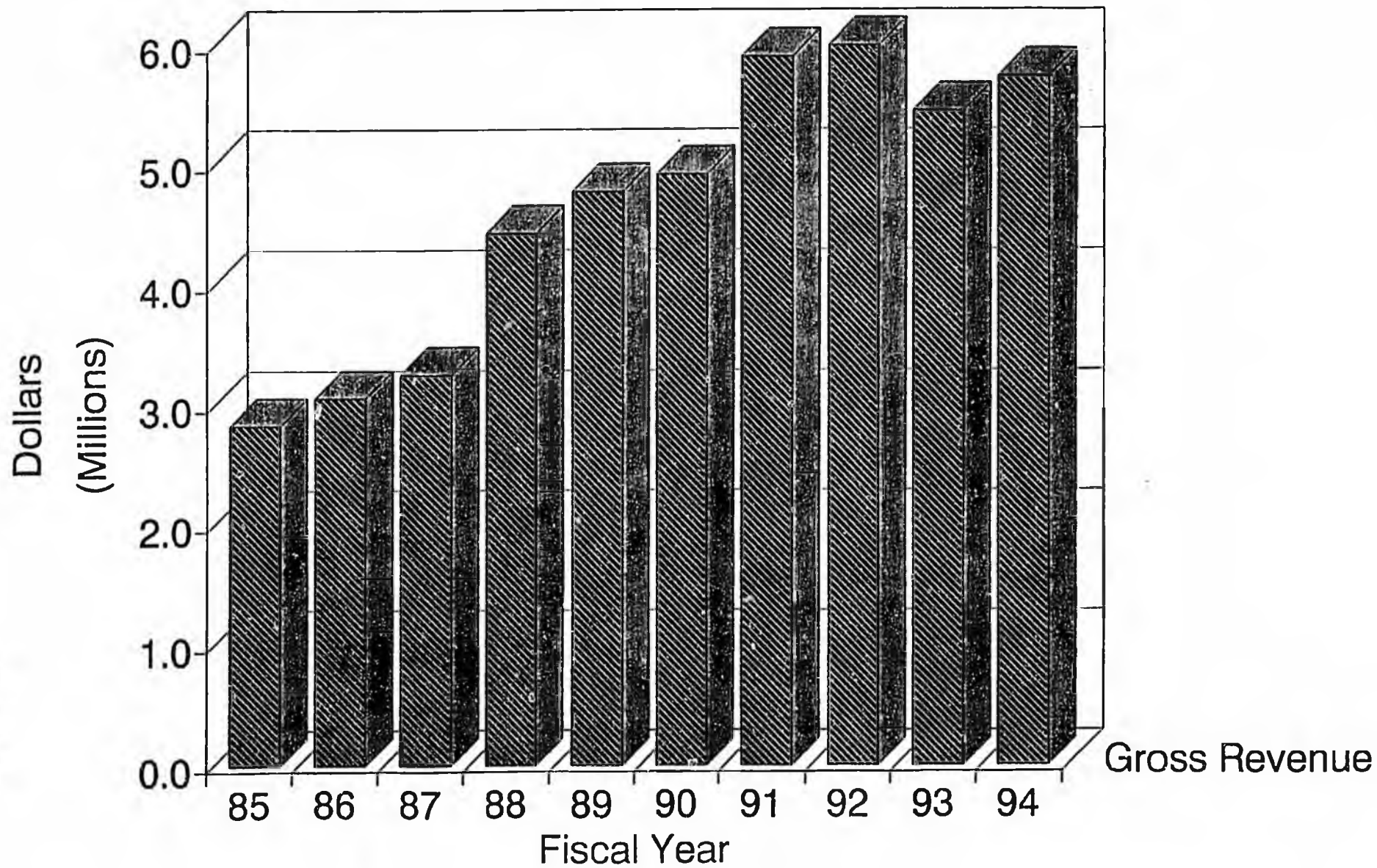
Commercial Fisheries Entry Commission

Authorized Budget

	91	92	93	94	95	96 *
Authorized	2648.1	2643.0	2747.2	2747.2	2715.6	2715.6
General Fund	2541.2	2534.6	2638.9	2638.9	2606.9	2606.9
Federal Receipts	106.9	108.4	108.3	108.3	108.7	108.7
Full-Time	38	35	33	32	32	32
Part-Time	3	4	4	5	5	5
Temporary	2	2	2	2	2	2
Staff Months	485.50	468.50	437.00	432.00	431.50	431.50

Net Revenue - All Sources

Fisherman's Fund Transfer Included

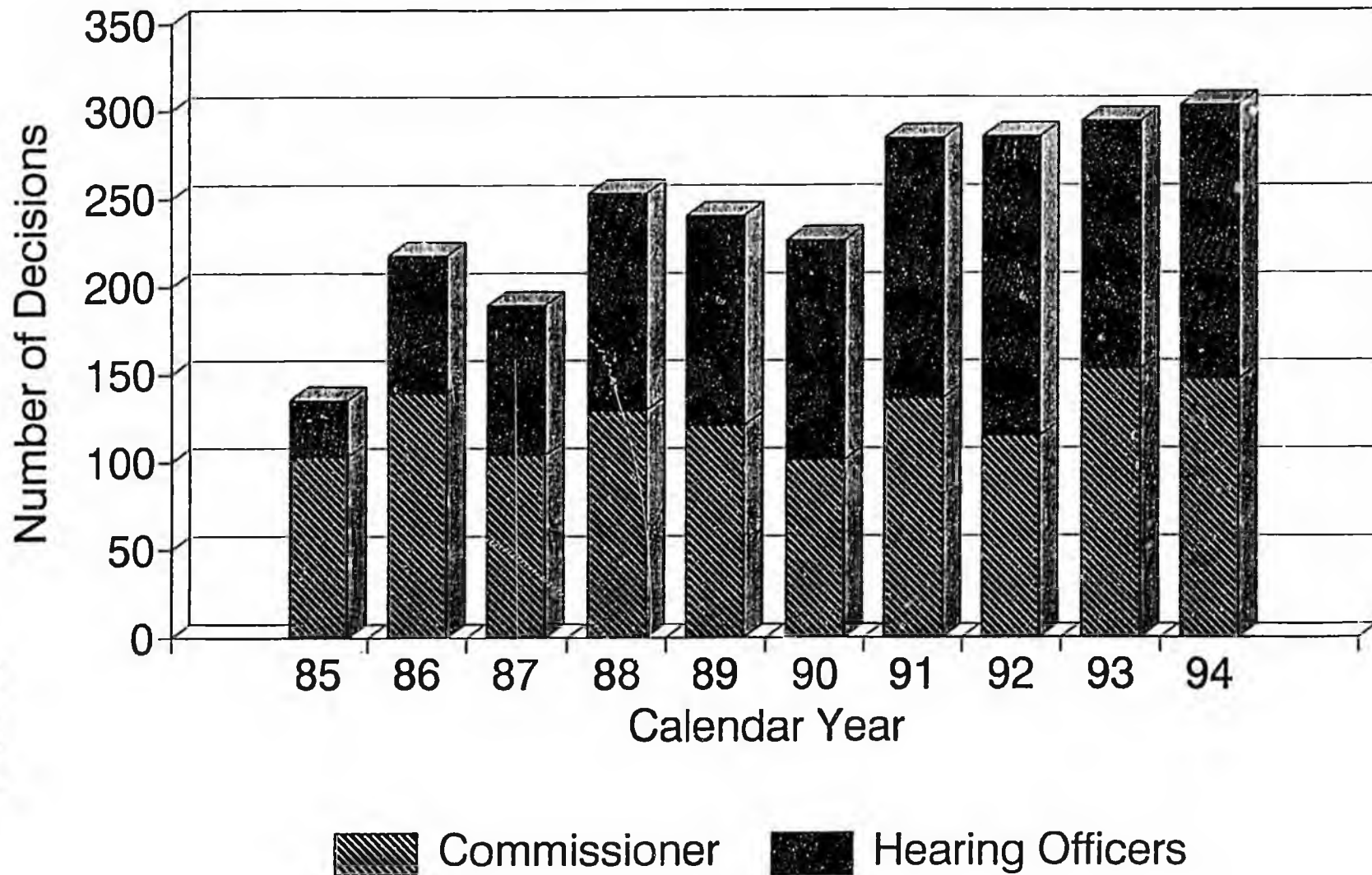


Appendix C

Gross Revenue

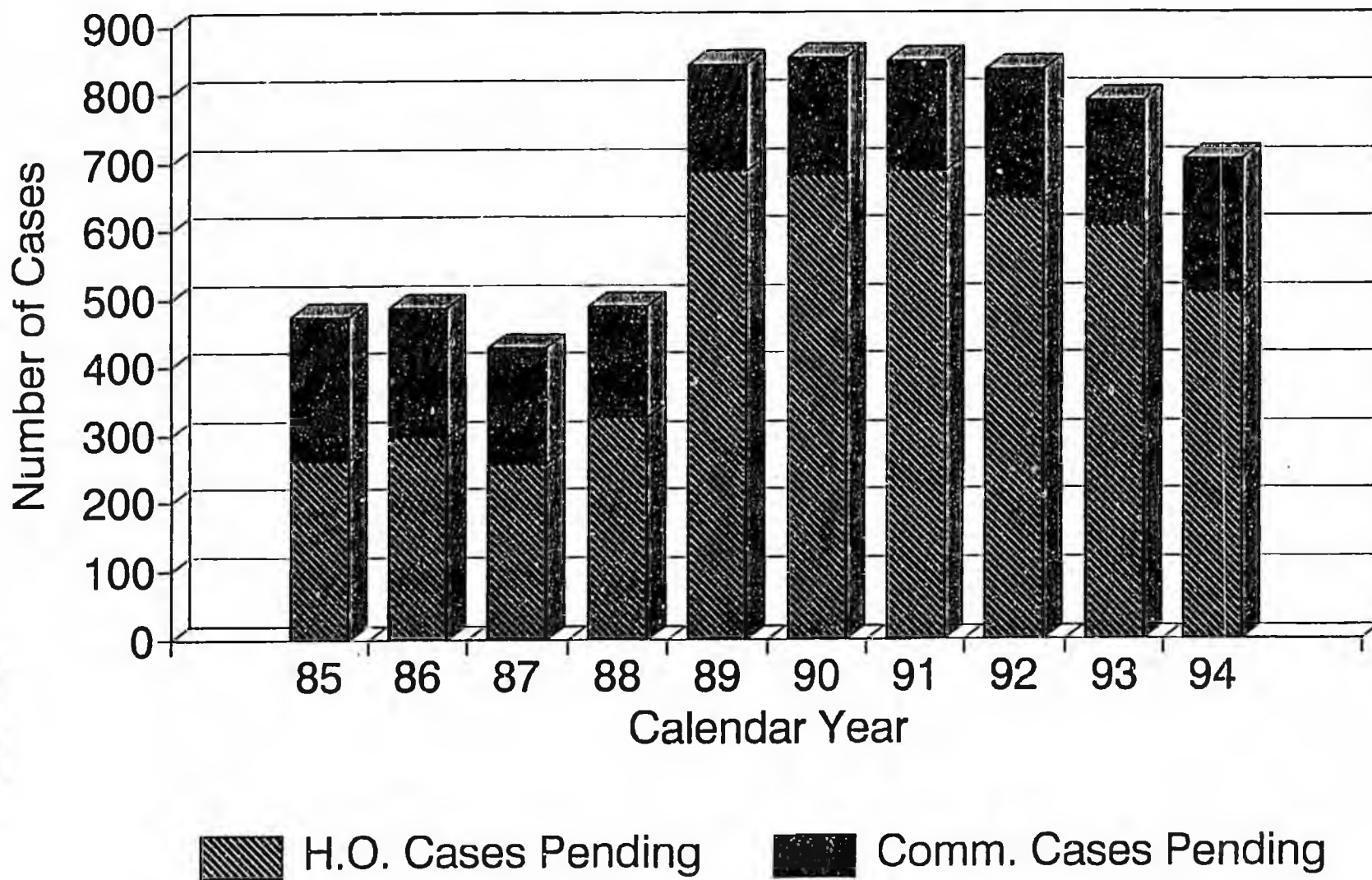
Decisions Completed

Commercial Fisheries Entry Commission



Cases Pending

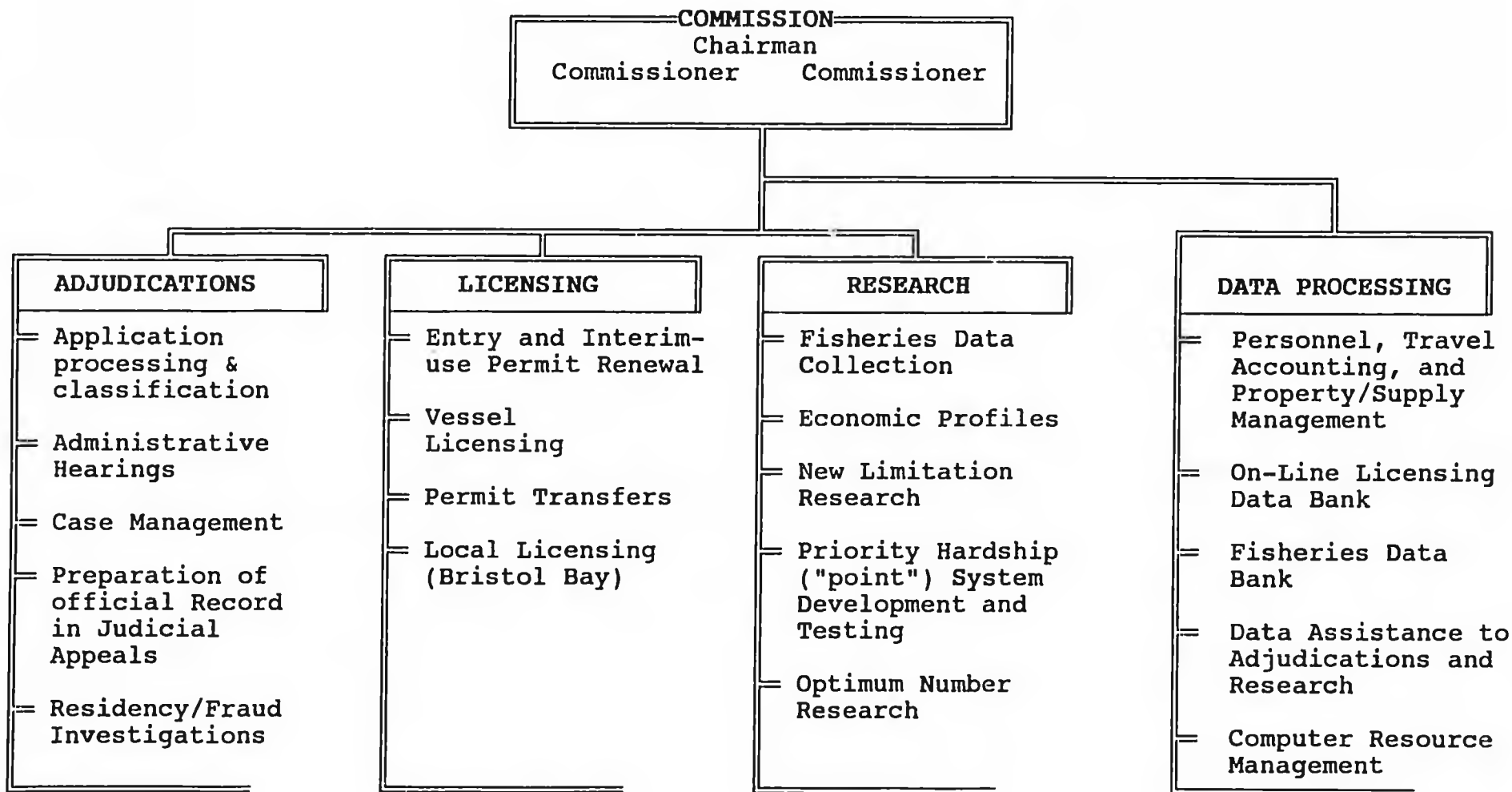
Commercial Fisheries Entry Commission



Appendix E

COMMERCIAL FISHERIES ENTRY COMMISSION

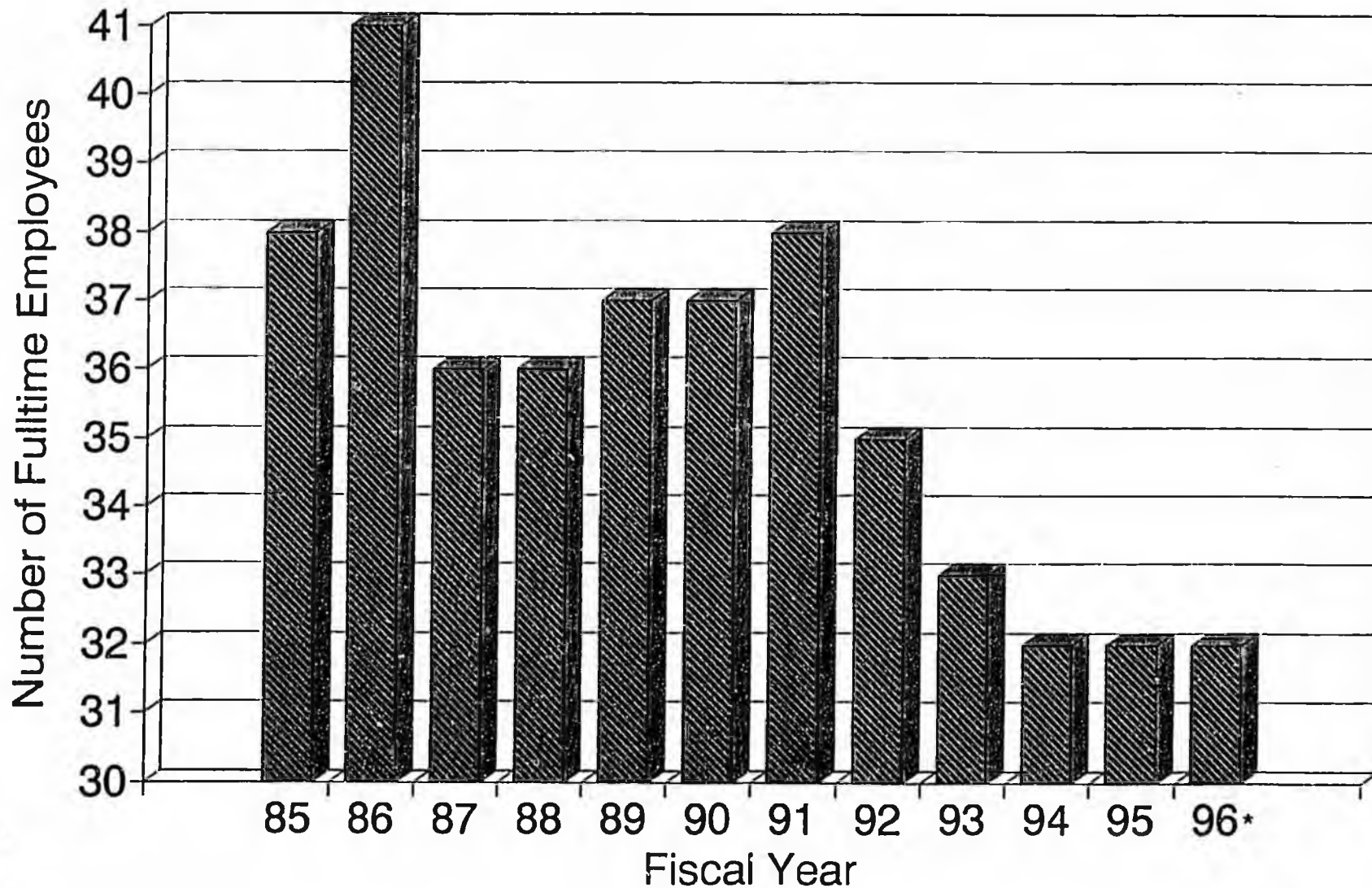
Organization by Agency Function*



*NOTE: The above Organizational Chart presents a general view of the Commission's primary functions. It by no means lists all activities undertaken to meet the Commission's statutory responsibilities as set forth in AS 16.43.010 - 990.

Position Count

Commercial Fisheries Entry Commission



COMMERCIAL FISHERIES ENTRY COMMISSION

Requests for Limited Entry in Additional Fisheries

The Commission has received petitions for the limitation of some nineteen (19) additional fisheries:

1. Security Cove/Goodnews Bay Herring gill net (10/87 & 1/93)
2. Togiak Herring purse seine (3/83, 4/88, 5/88, and 10/88)
3. Togiak Herring gill net (3/88, 4/88, 5/88, and 10/88)
4. Aleutian Herring (bait) purse seine (12/87)
5. Cook Inlet Tanner crab pot (10/84, 5/88, 7/88, 8/94 & 1/95)
6. Cook Inlet King crab pot (10/84, 5/88, 7/88, 8/94 & 1/95)
7. Cook Inlet Shrimp pot & trawl (10/84 & 1/95 (trawl only))
8. Prince William Sound Shrimp pot (11/84 & 4/87)
9. Prince William Sound Sablefish longline (7/85, 8/94, 10/94 & 11/94)
10. Prince William Sound Dungeness crab pot (8/82 & 11/91)
11. Prince William Sound Herring Spawn on Kelp diving (8/88 & 7/91)
12. Southeast King and Tanner crab ring net (7/85 & 1/89)
13. Southeast Abalone diving (12/87, 12/89, 6/90, & 7/93)
14. Southeast Sea Cucumber diving (5/90, 9/90, 1/91, & 7/93)
15. Southeast Geoduck & Sea Urchin diving (7/93)
16. Southeast Herring (bait/food) purse seine (2/92)
17. Kodiak Dungeness crab pot (1/94 & 2/94)
18. Scallop Moratoria in state waters (4/94)
19. Dutch Harbor Herring (bait/food) purse seine (10/94)

STATE OF ALASKA

COMMERCIAL FISHERIES ENTRY COMMISSION

TONY KNOWLES, GOVERNOR

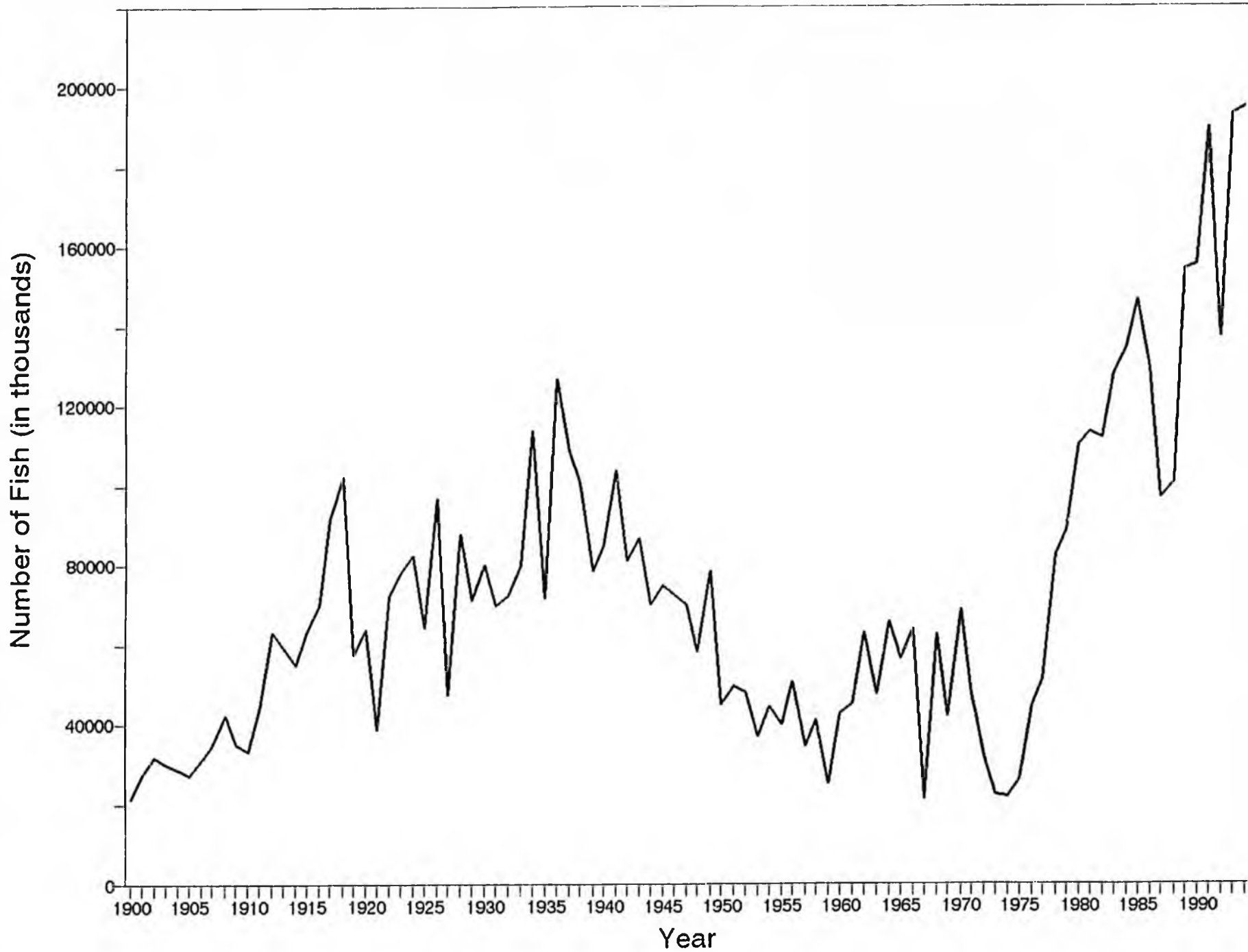
8800 GLACIER HWY, #109
JUNEAU, AK 99801
(907) 789-6150 Licensing Calls
(907) 789-6160 Other Business
(907) 789-6170 FAX

HISTORICAL SALMON

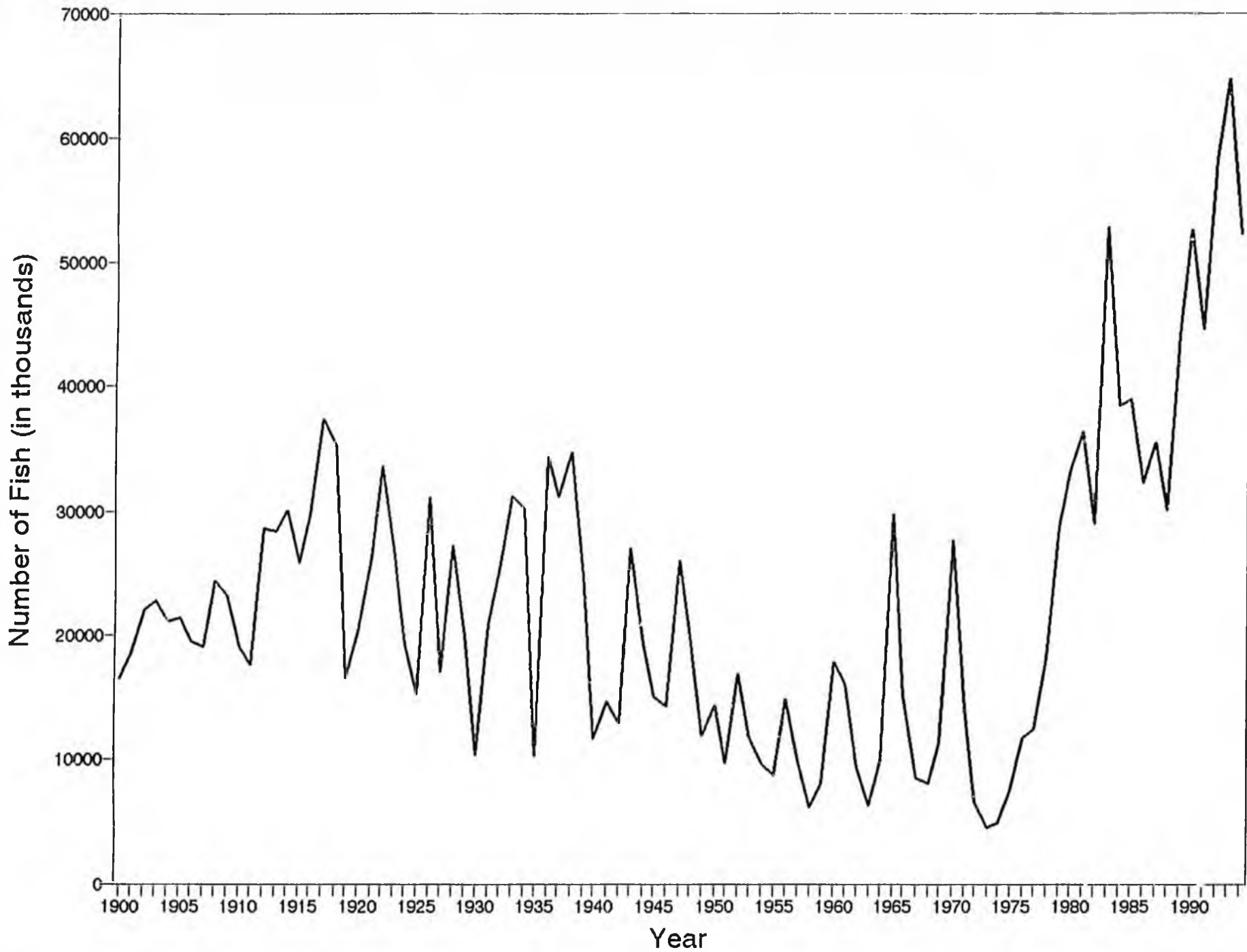
HARVESTS IN ALASKA

1900 - 1994

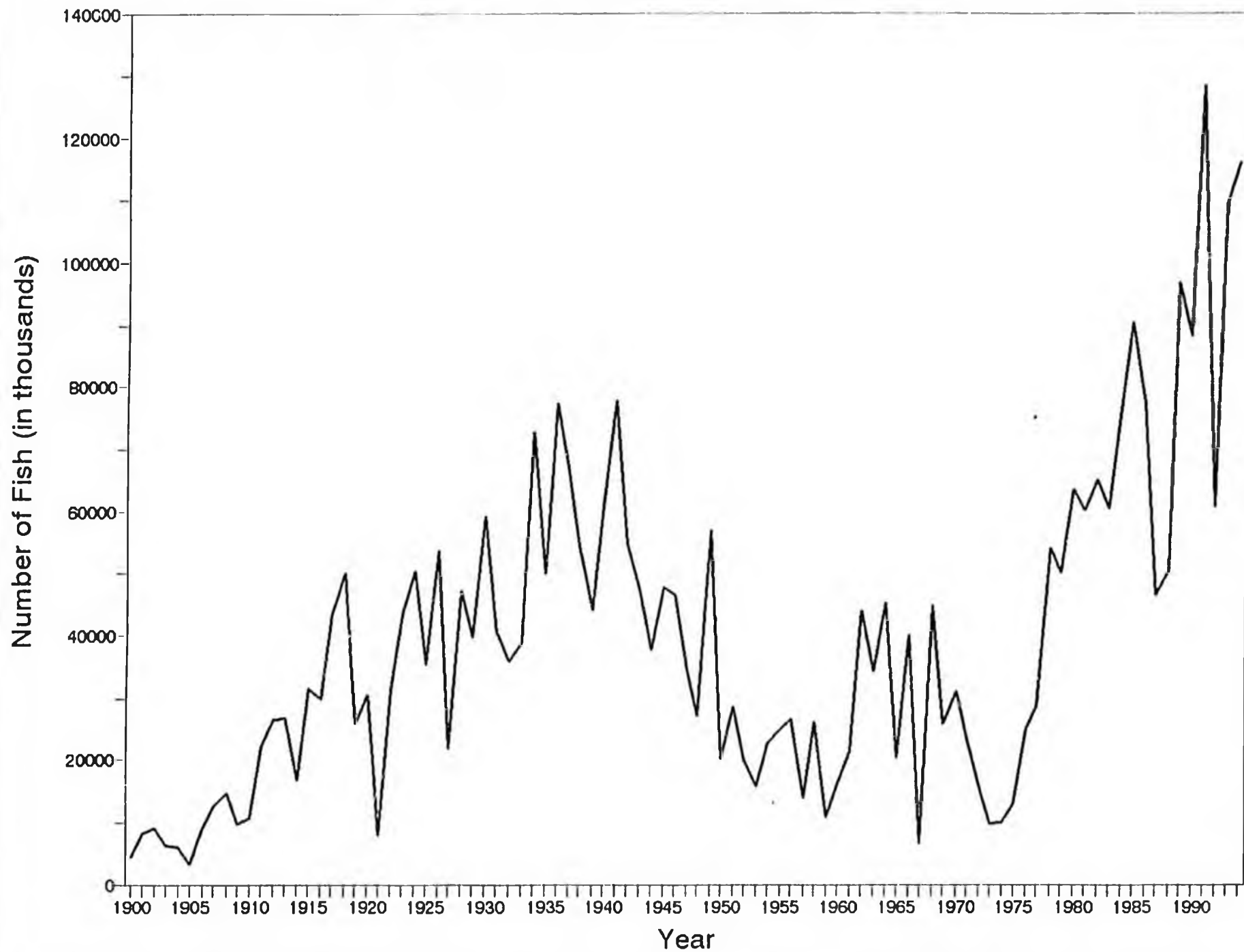
Statewide Commercial Salmon Harvests



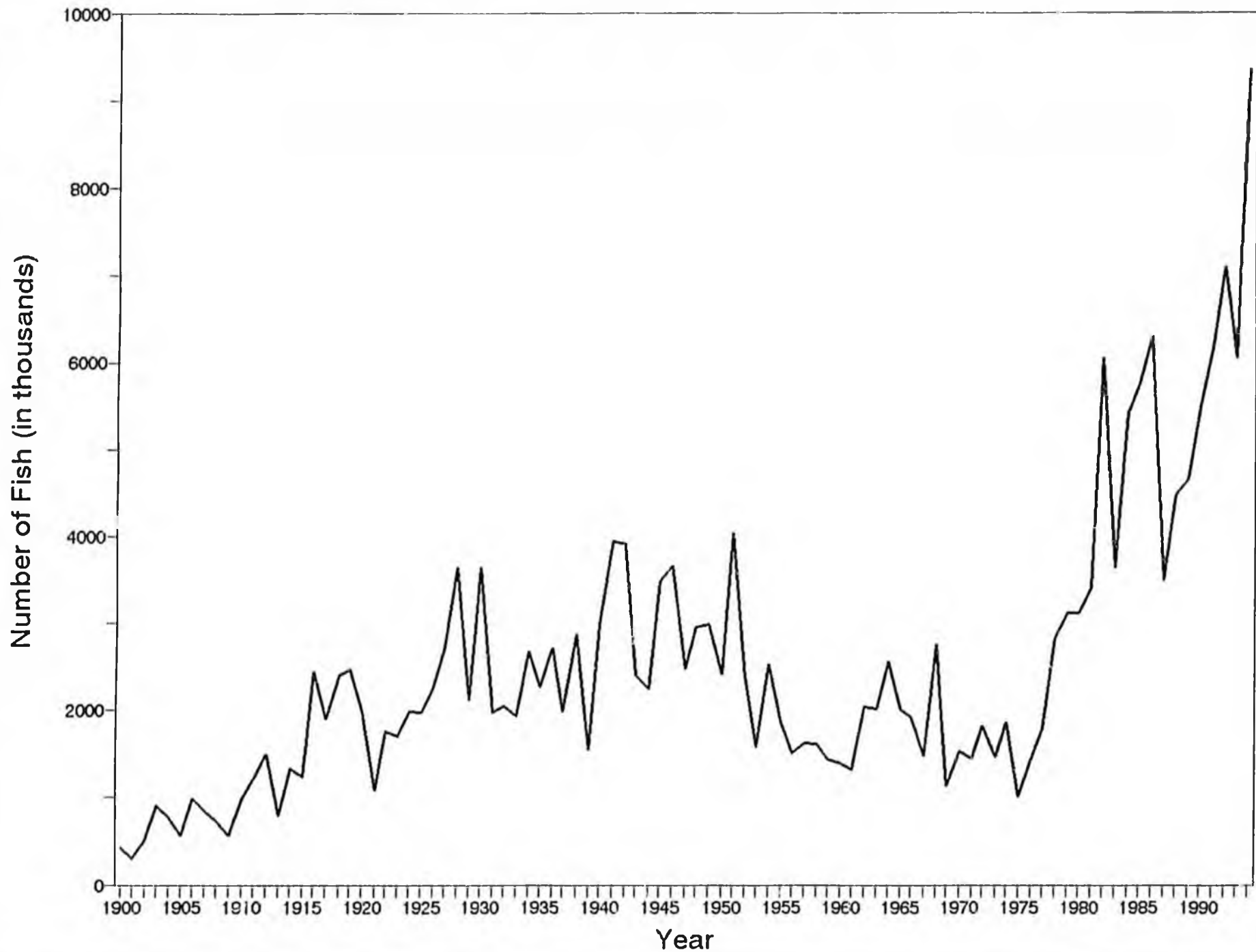
Statewide Commercial Sockeye Harvests



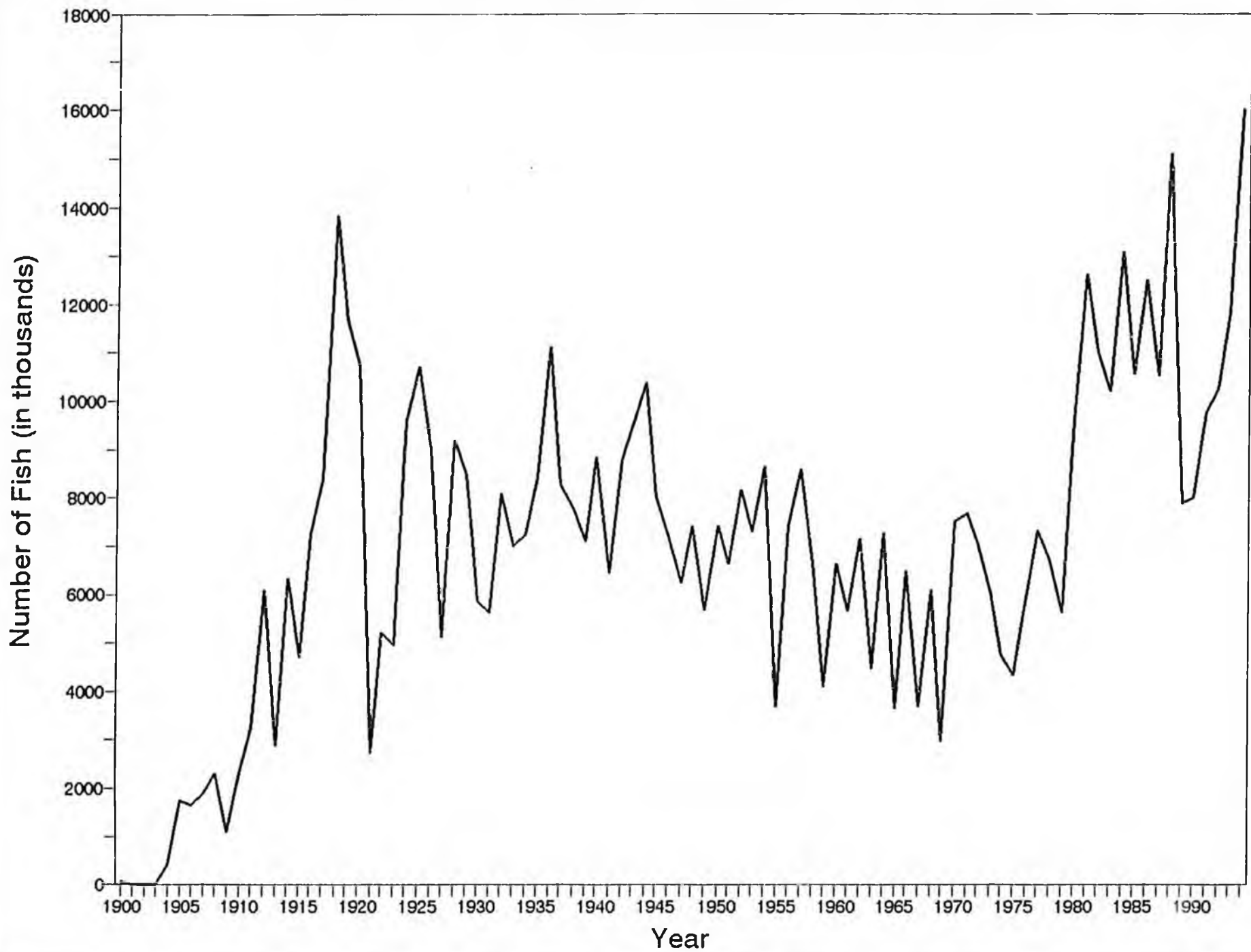
Statewide Commercial Pink Harvests



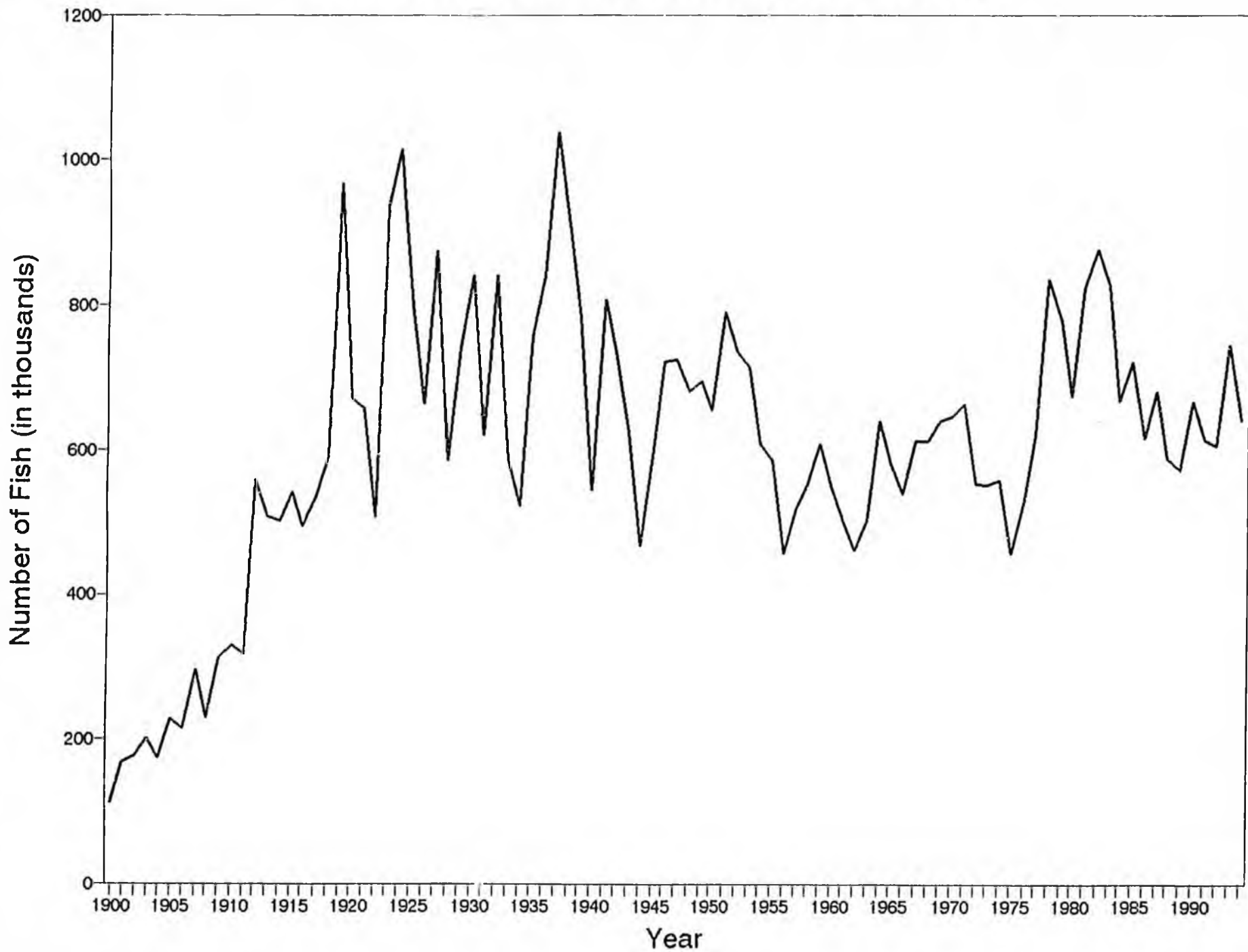
Statewide Commercial Coho Harvests



Statewide Commercial Chum Harvests



Statewide Commercial Chinook Harvests



HISTORICAL ALASKA COMMERCIAL HARVESTS (in thousands of fish)

Year	Chinook	Sockeye	Coho	Pink	Chum	Total
1900	110	16,534	440	4,432	34	21,550
1901	168	18,582	301	8,118	0	27,169
1902	175	22,046	519	9,058	0	31,798
1903	201	22,735	901	6,263	0	30,100
1904	174	21,108	774	6,183	396	28,636
1905	226	21,400	564	3,351	1,720	27,261
1906	215	19,489	984	9,002	1,628	31,318
1907	296	19,058	851	12,578	1,864	34,648
1908	229	24,388	730	14,671	2,285	42,301
1909	312	23,236	560	9,756	1,079	34,944
1910	329	19,027	984	10,725	2,308	33,373
1911	318	17,535	1,216	22,006	3,238	44,312
1912	559	28,619	1,499	26,398	6,069	63,145
1913	508	28,373	796	26,778	2,859	59,314
1914	501	30,091	1,334	16,731	6,326	54,983
1915	542	25,787	1,240	31,399	4,694	63,662
1916	493	29,744	2,440	29,831	7,243	69,751
1917	535	37,440	1,901	43,326	8,371	91,573
1918	591	35,210	2,390	50,028	13,829	102,048
1919	967	16,505	2,460	25,767	11,675	57,375
1920	671	20,358	1,993	30,312	10,740	64,074
1921	657	26,210	1,088	7,899	2,722	38,577
1922	505	33,581	1,765	31,233	5,198	72,281
1923	935	26,972	1,717	43,448	4,924	77,995
1924	1,014	19,265	1,984	50,336	9,589	82,188
1925	798	15,225	1,972	35,446	10,710	64,151
1926	662	31,136	2,250	53,747	8,987	96,791
1927	875	17,009	2,720	21,814	5,106	47,524
1928	585	27,154	3,634	47,182	9,186	87,741
1929	741	19,948	2,127	39,814	8,482	71,112
1930	842	10,394	3,645	59,345	5,856	80,083
1931	619	20,861	1,967	40,583	5,605	69,635
1932	841	25,401	2,059	35,823	8,079	72,202
1933	584	31,182	1,933	38,940	6,993	79,632
1934	521	30,194	2,683	72,801	7,239	113,438
1935	757	10,249	2,266	49,836	8,398	71,506
1936	839	34,358	2,705	77,424	11,121	126,446
1937	1,038	31,117	1,981	66,283	8,276	108,695
1938	902	34,703	2,871	54,475	7,766	100,718
1939	783	24,805	1,549	44,139	7,071	78,348
1940	543	11,683	2,993	60,766	8,821	84,806
1941	809	14,588	3,937	77,840	6,442	103,616
1942	730	12,859	3,900	54,610	8,751	80,849
1943	624	26,991	2,391	47,249	9,469	86,723
1944	467	19,291	2,252	37,741	10,381	70,133
1945	600	15,010	3,486	47,783	7,993	74,872
1946	722	14,233	3,657	46,644	7,207	72,463
1947	724	25,989	2,481	34,450	6,222	69,866
1948	681	19,879	2,957	27,250	7,399	58,167
1949	694	11,837	2,979	57,006	5,660	78,177
1950	655	14,374	2,416	19,974	7,402	44,822
1951	790	9,653	4,031	28,426	6,611	49,511
1952	735	16,929	2,376	19,862	8,138	48,040
1953	713	11,793	1,580	15,671	7,292	37,049
1954	608	9,639	2,533	22,890	8,634	44,305
1955	585	8,711	1,855	24,825	3,654	39,629
1956	456	14,783	1,513	26,421	7,423	50,596
1957	518	9,891	1,630	13,754	8,582	34,375

1958	552	6,104	1,607	26,099	6,645	41,007
1959	607	8,077	1,433	10,930	4,086	25,133
1960	547	17,834	1,404	16,079	6,625	42,490
1961	504	16,081	1,314	21,536	5,631	45,035
1962	461	9,297	2,039	43,864	7,149	62,809
1963	501	6,215	2,022	34,276	4,464	47,479
1964	639	9,966	2,558	45,291	7,271	65,725
1965	581	29,770	1,998	20,347	3,644	56,341
1966	540	15,073	1,921	40,051	6,456	64,041
1967	611	8,576	1,489	6,559	3,654	20,890
1968	611	8,130	2,751	44,727	6,082	62,300
1969	639	11,417	1,133	25,767	2,953	41,910
1970	646	27,634	1,527	31,147	7,500	68,454
1971	662	14,180	1,448	23,528	7,679	47,497
1972	553	6,590	1,831	15,920	7,065	31,959
1973	551	4,490	1,457	9,801	6,015	22,313
1974	557	4,878	1,859	9,859	4,729	21,881
1975	455	7,453	1,014	12,984	4,323	26,229
1976	531	11,780	1,432	24,755	5,924	44,422
1977	620	12,465	1,789	28,647	7,326	50,847
1978	836	18,140	2,821	53,852	6,677	82,326
1979	779	28,696	3,122	50,137	5,608	88,343
1980	675	33,295	3,115	63,304	9,603	110,043
1981	823	36,348	3,416	60,089	12,613	113,296
1982	877	28,954	6,040	64,859	10,994	111,727
1983	828	52,874	3,636	60,359	10,222	127,921
1984	667	38,450	5,405	76,343	13,096	133,961
1985	721	38,983	5,749	90,335	10,570	146,363
1986	616	32,208	6,293	77,304	12,510	128,949
1987	680	35,431	3,493	46,493	10,527	96,626
1988	589	30,038	4,473	50,357	15,102	100,563
1989	572	44,139	4,650	96,869	7,895	154,130
1990	666	52,692	5,477	88,252	8,005	155,242
1991	613	44,646	6,153	128,336	9,769	189,702
1992	606	58,283	7,095	60,597	10,223	136,937
1993	746	64,684	6,050	109,631	11,842	192,990
1994	642	52,329	9,344	116,160	16,006	194,481

Source: Compiled from ADFG RIR No. 5J91-16 and preliminary 1994 ADFG fish ticket data.