

DNR

Briefing

1-31-91

Facts and Figures:

Alaska's Land and Natural Resources



Alaska Department of
**NATURAL
RESOURCES**

Agriculture

- Agriculture contributes more than \$30 million to Alaska's economy each year.
- Alaskan farmers produced more than 20 million pounds of potatoes in 1988.
- Sales of Alaska-grown products in Alaska, the lower 48 states, and Canada increased 35 percent this year.
- Large and abundant vegetables grow in Alaska's long summer days. In 1990, a 98-pound cabbage was grown in the Matanuska Valley, near Anchorage, setting an unofficial Alaskan record.
- Alaska is the number-one U.S. producer of reindeer meat and by-products, with over \$1.7 million in sales.
- There are 600 farms in Alaska; they average more than 1,680 acres.

Forest Lands

- Sixteen percent of all the United States' forested lands are in Alaska.
- Of the forest lands in Alaska, 16 percent are owned and managed by the state.
- There are two state forests in Alaska: the Haines and the Tanana Valley State Forests, which hold a total of 1,078,000 acres of commercial forest land.
- The Division of Forestry produces more than 800,000 tree seedlings each year for private and government tree planters.
- State foresters and fire fighters responded to 469 fires in 1989, which burned 54,437 acres of state-protected land.
- Southeast Alaska's 16.7 million-acre Tongass National Forest is the largest national forest in the U.S.
- In 1989, the timber industry generated \$613 million in exports — up 29 percent over 1988.
- The total timber harvest in 1989 exceeded one billion board feet for the first time.

Fisheries

- Alaska ranks first in U.S. seafood production — not including offshore and joint-venture harvests.
- Alaska's commercial fishery accounts for nearly half the U.S. annual production and is the fifth largest in the world.
- Of the top ten U.S. fishing ports in 1989, six are Alaskan ports.
- Alaska's 1989 seafood harvest exceeded 5.2 billion; the biggest harvest on record.

Land and Water

- The State of Alaska manages nearly all the tidelands and shorelines in the state; about 65 million acres of tidelands along 47,300 miles of shoreline.
- Since 1960, more than 500,000 acres of state land have been transferred to private ownership.
- Ninety percent of all the National Wildlife Refuges are in Alaska — a total of 76 million acres. This is an area equal in size to Montana, the fourth largest state in the nation.
- Alaska has 57 million acres of land designated as wilderness — an area that nearly equals the state of Utah, the 11th largest state in the U.S. Most of Alaska's wilderness is in national parks, forests and wildlife refuges.
- The state manages more than 17,000 land sale contracts and land and resource leases, as well as 135,000 land record case files.
- Since statehood, the State of Alaska has received title to approximately 85.2 million acres of land from the federal government as part of its land entitlement under the Statehood Act.

continued on back

Minerals

- Of the 30 minerals imported by the U.S., Alaska has 22, several in world-class quantities.
- Alaska's coal resources are equal to the total coal reserves of all other states in the U.S.
- In 1988, 1.55 million tons of coal were produced at an estimated production value of \$44 million.
- The Red Dog Mine, in northwestern Alaska, is the largest zinc mine in the U.S., and the second largest in the world.
- Green's Creek Mine, on Admiralty Island in Southeast Alaska, is the largest silver mine in the U.S.

- The state manages 37,480 mining claims.
- In 1988, the Alaskan mining industry employed 4,900 workers; a 50 percent increase over the 1987 workforce.
- Sand and gravel production in fiscal year '89 was 17.2 million tons, for an estimated value of \$4 million.
- The State of Alaska earned more than \$900,000 from sand and gravel sales in fiscal year '89.
- More than \$1 million in coal royalties were paid to the state in fiscal year '89.
- Minerals extracted in 1988 were valued at \$232.2 million. This included 265,500 ounces of gold and 1.5 million tons of coal.
- In 1988, gold production increased 16 percent in value and eight percent by quantity, for a total value of \$112.8 million.
- The Valdez Creek Mining Company, east of Cantwell, was the state's largest gold producer in 1988, with total production of 52,961 ounces.
- Production of building stone in 1988 was valued at \$24.6 million; more than double the 1987 value.

Oil and Gas

- Alaska produces 25 percent of the U.S. oil output and frequently alternates with Texas as the number-one oil-producing state in the union.
- At least 25 percent of all petroleum royalties paid to the state are placed in the Alaska Permanent Fund, which was established in 1976. As of mid-1990, the total assets of the Permanent Fund were \$10,499,000,000.

- More than 80 percent of the State of Alaska's general fund monies are from oil and gas revenues. In fiscal year '89, oil and gas tax and royalty revenue contributed approximately \$2.3 billion to the state budget.
- The state manages 1,189 oil and gas leases: 656 of the leases are on the North Slope; 330 are in Cook Inlet, and 230 are in other areas of the state.
- Since 1980, the state has received more than \$28 billion in taxes and royalties from oil revenues.

Parks and Tourism

- Alaska's state parks system, with more than 3.2 million acres, is the most extensive in the U.S.
- Alaska State Parks host 5.9 million visits yearly.
- State Parks directly contribute \$74 million to Alaska's economy. With indirect contributions, the total is \$111 million.
- Volunteers donated more than 100,000 hours of labor to Alaska State Parks in 1990, more than the number of paid hours.
- In 1989, 820,000 visitors came to Alaska, spending \$433 million, and directly creating 19,000 jobs.
- Nearly two-thirds of all America's national parks are in Alaska.
- Alaska has the largest federal park, refuge and wilderness system in the United States.

For more information

For information on Alaska's natural resources, except fish and game, contact:

Alaska Department of Natural Resources
Public Affairs Office
P.O. Box 107005
Anchorage, Alaska 99510-7005
(907) 762-2451

For information on Alaska's fish and game, contact:

Alaska Department of Fish & Game
Public Communications
P.O. Box 3-2000
Juneau, Alaska 99802-2000
(907) 465-4112

DNR

DIRECTORY

**A Guide to the Alaska
Department of Natural Resources**

**Public Affair Office
January, 19**



Alaska Department of
**NATURAL
RESOURCES**

DNR

DIRECTORY

**A Guide to the Alaska
Department of Natural Resources**

The Department of Natural Resources' goal is to contribute to Alaska's economic health and quality of life by protecting, maintaining, and encouraging wise development of the state's resources, and making them available for public use.

The department is responsible for the inventory and management of all the state's surface and subsurface resources except fish and game. This includes approximately 85 million acres of uplands and 65 million acres of tidelands, shorelands and submerged lands.

For Information

The following Division of Land & Water Information Offices have information on land programs, land use permits, leases, land status and maps:

Northern Region Office

3700 Airport Way
Fairbanks, Alaska 99709
451-2700 - switchboard

Southcentral Region Office

3601 C Street, Suite 1080
P.O. Box 107005
Anchorage, Alaska 99510
762-2202 - recorded information
762-2492

Southeast Region Office

400 Willoughby Ave., 4th Floor
Juneau, Alaska 99801
465-3400

For information that you can not find in this directory, please contact one of the following:

Juneau - Commissioner's Office

400 Willoughby Avenue, 5th Floor
Juneau, Alaska 99801
465-2400

Anchorage - Public Affairs Office

3601 C Street, Suite 1210
P.O. Box 107005
Anchorage, Alaska 99510-7005
762-2451

Fairbanks - Northern Region Office

3700 Airport Way
Fairbanks, Alaska 99709
451-2700

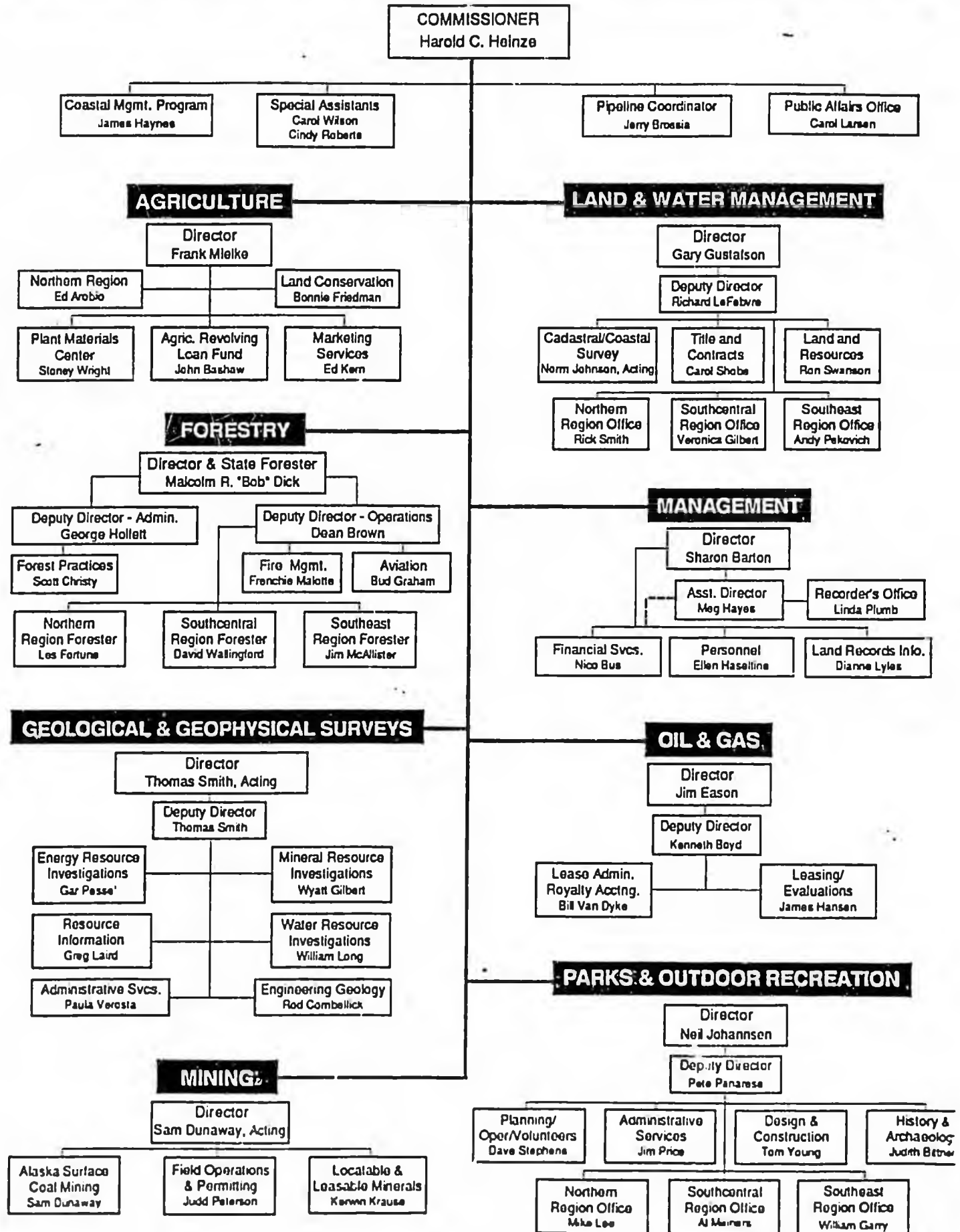
Contents of Directory

DNR history	3
DNR organization chart	4
Office of the Commissioner	5
Division of Agriculture	6
Division of Forestry	7
Division of Geological/Geophysical Surveys	8
Division of Land & Water	9
Division of Management	10
Division of Mining	11
Division of Oil & Gas	12
Division of Parks & Outdoor Recreation	13

History of DNR

- 1959** Alaska Statehood Act granted 105 million acres to the State
Bul Egan sworn in as first Governor
Department of Natural Resources created with three divisions: Mines & Minerals; Lands; Agriculture
- 1960** Phil Holdsworth appointed first DNR Commissioner
- 1962** Governor Egan re-elected
- 1968** Walter Hickel elected Governor
- 1967** Tom Kelly appointed DNR Commissioner
- 1969** Governor Hickel resigns to become Secretary of the Interior; Keith Miller succeeds him as Governor
- 1970** Bill Egan again elected Governor
Division of Parks established
- 1971** Chuck Herbert appointed DNR Commissioner
- 1973** Division of Geological & Geophysical Surveys established
- 1974** Jay Hammond elected Governor
- 1975** Guy Martin appointed DNR Commissioner
- 1976** Division of Lands and Division of Mines & Minerals abolished; Division of Minerals & Energy Management and Division of Land & Water Management created
- 1977** Robert LeResche appointed DNR Commissioner
Division of Land & Water Management replaced by Division of Forest, Land & Water Management
- 1978** Governor Hammond re-elected
- 1979** Three new divisions established: Administration & Management; Technical Services; Research & Development
- 1981** John Katz appointed DNR Commissioner
Forest, Land & Water Management divided into two divisions: Land & Water Management; Forestry
- 1982** Bill Sheffield elected Governor
Division of Oil and Gas established; Research & Development duties reassigned
- 1983** Esther Wunnicke appointed DNR Commissioner
Division of Mining established
- 1986** Steve Cowper elected Governor
Division of Technical Services functions assigned to other divisions
- 1987** Judith Brady appointed DNR Commissioner
- 1989** Lennie Gorsuch appointed DNR Commissioner
- 1990** Rod Swope appointed DNR Commissioner
Walter Hickel elected Governor
- 1991** Harold Heinze appointed DNR Commissioner

DNR Organization Chart



Office of the Commissioner



**Commissioner
Harold C. Heinze**

The Commissioner's Office provides policy and management advice to the eight DNF divisions, resource policy advice to the governor and cabinet, and resource information to the legislature, business and industry, and the public. Staff oversees development and implementation of legislation for the department, coordinates division policy and operations, considers appeals of divisions' decisions, and coordinates the department's coastal management reviews and actions.

Juneau Office

400 Willoughby, 5th Floor
Juneau, Alaska 99801
465-2400 fax: 586-2754
Harold C. Heinze
Commissioner
Michele Watts,
Secretary to Commissioner

Special Assistants

Carol Wilson
Cindy Roberts

Coastal Management Program

Jim Haynes
Natural Resource Manager

Anchorage Office

3601 C Street, Suite 1210
P.O. Box 107005
Anchorage, AK 99510-7005
762-2483 fax: 762-2536
Shirley Howes, Secretary

Public Affairs Office

Carol Larsen
Information Officer
762-2452
Patricia Joyner
Information Officer
762-2451

Pipeline Coordinator's Office

411 W. 4th Ave. Suite #2C
Anchorage, Alaska 99501
278-8594 fax: 272-0690
Jerry Brossia
State Pipeline Coordinator

Boards and Commissions

Citizen's Advisory Commission on Federal Areas
250 Cushman St., Suite
Fairbanks, Alaska 99701
456-2012

Stan Leaphart
Executive Director

The commission is located within the department administratively, but makes independent recommendations on federal land management to the governor, and state and federal agencies.

Agriculture



Director
Frank Mielke

The Division of Agriculture promotes and supports the agricultural industry in Alaska. The division plans agricultural sales and leases; provides financing for farmers and processors; educates and assists farmers in conservation methods and inspects and certifies farm products to control disease and ensure that products are of high quality.

The division's Alaska Grown Program promotes the sale of Alaska grown products, provides marketing assistance to producers and distributors of Alaskan farm products and informs the public of the availability, quality and freshness of local products.

The Plant Materials Center develops and tests plants for Alaska's climate, to improve crop yields and for use in erosion control, land reclamation and habitat improvement.

Facts and Figures

- The agricultural industry contributes \$30 million to Alaska's economy each year.
- The Division of Agriculture conducted 2,250 inspections to grade and certify agricultural products and fertilizers in 1987.
- Alaskan farmers produced more than 20 million pounds of potatoes in 1988. Sales in Alaska, Canada and the Lower 48 increased 35%.

Director's Office

1800 Glenn Highway, Ste. 12
P.O. Box 949
Palmer, Alaska 99645-0949
745-7200 fax: 745-7112
Frank Mielke, Director
Karen Harvey, Secretary

Marketing Services

Ed Kern, Section Chief

Agricultural Revolving Loan Fund

John Bashaw, Loan Manager

Land Conservation

Bonnie Friedman
Section Chief
745-7922

Plant Materials Center

Bodenburg Loop Road
HC 02, Box 7440
Palmer, Alaska 99645
745-4469
Stoney Wright, Manager

Northern Region Office

3700 Airport Way
Fairbanks, Alaska 99709
451-2780
Ed Aroblo, Manager

Boards and Commissions

Agricultural Revolving Loan
Fund Board
Plant Materials Center
Advisory Board
Soil and Water Conserva-
tion Board

Forestry



Director
Malcolm R. "Bob" Dick

The Division of Forestry manages state forest lands for multiple use and sustained yield. It encourages development of the timber industry and forest products markets; conducts personal-use and commercial firewood and timber sales; gives technical assistance to forest landowners; operates the State Forest Nursery; and administers the Forest Practices Act. The division cooperates with other state and federal agencies to provide fire protection for 134 million acres of private, state and municipal lands, commensurate with the value of the resources at risk. Training is provided to organized village fire crews, enabling them to work on fires in Alaska and around the nation.

Facts and Figures

- In 1989 the division held 60 commercial timber sales, which earned \$570,424 for the state and had an end product value of more than \$9 million.
- The State Forest Nursery produces about 800,000 tree seedlings each year for private and government tree planters.
- During 1989 the division responded to 469 fires which burned 57,676 acres of state-protected land.
- The Division of Forestry received 195 notices of timber harvests on 66,223 acres.
- The Division manages the Haines and Tanana Valley State Forests, consisting of over two million acres.

Director's Office

3601 C Street, Suite 1058
P.O. Box 107005
Anchorage, AK 99510-7005
762-2501 fax: 561-2507
Malcolm R. "Bob" Dick
Director & State Forester
George Hollett
Deputy Director, Admin.
Dean Brown
Deputy Director, Operations
Ruth Tadda, Secretary

Fire Management

Frenchie Malotte
Section Chief
762-2508

Aviation

Bud Graham, Section Chief
762-2509

Forest Practices

Scott Christy, Section Chief
762-2501

Alaska State Forest Nursery

Hiland Road
P.O. Box 650
Eagle River, Alaska 99577
694-5880
Joe Stehlik, Nursery Manager

Northern Region Office

3700 Airport Way
Fairbanks, Alaska 99709
451-2660 fax: 451-2690
Les Fortune
Regional Forester

Delta Area Office

P.O. Box 1149
Delta Junction, AK 99737
895-4225 fax: 895-4934
Al Edgren, Area Forester

Fairbanks Area Office

3742 Airport Way
Fairbanks, Alaska 99709
451-2700 fax: 451-2633
Pete Beanau, Area Forester

Tok Area Office

Box 10
Tok, Alaska 99780
883-5134 fax: 883-5135
Dick Malchow, Area Forester

Southcentral Region Office

3601 C Street, Suite 1008
P.O. Box 107005
Anchorage, AK 99510-7005
762 2511 fax: 561-2507
David Wallingford
Regional Forester

Kenai-Kodiak Area Office

HC 1, Box 107
Soldotna, Alaska 99669
262-4124 fax: 262-6390
Jim Peterson, Area Forester

Mat-Su Area Office

Mile 8.2 Big Lake Road
P.O. Box 520455
Big Lake, Alaska 99652
892-6027 fax: 892-7958
Jim Eleazer, Area Forester

Southwest Area Office

Box 130
McGrath, Alaska 99627
524-3010 fax: 524-3932
Bill Beebe, Area Forester

Valdez/Copper River Area Office

P.O. Box 185
Glennallen, Alaska 99588
822-5534 fax: 822-5539
Martin Maricle
Area Forester

Southeast Region Office

400 Willoughby, 5th Floor
Juneau, Alaska 99801
465-2491 fax: 586-2754
Jim McAllister
Regional Forester

Haines Area Office

P.O. Box 263
Haines, Alaska 99827
766-2120
Roy Josephson
Area Forester

Icy Bay/Juneau Area Office

400 Willoughby, 5th Floor
Juneau, Alaska 99801
465-2491
Mike Peacock
Icy Bay Area Forester
Larry Fry
Juneau Area Forester

Icy Bay Field Office

P.O. Box 460
Cordova, Alaska 99574
424-3933
Chris Foley, Forester

Ketchikan Area Office

2230 Sea Level Dr., Ste. 217
Ketchikan, Alaska 99901
225-3070
Chris Westwood
Area Forester

Boards and Commissions

Board of Forestry

Geological & Geophysical Surveys

The Division of Geological & Geophysical Surveys maps and inventories mineral resources on state land, including oil, gas, coal, metallic and industrial minerals, water, sand and gravel. This information is used by state and federal resource-management and policy-making agencies. The public and private sectors use this information in the exploration, development and economic assessment of mineral resources. This division also assesses and monitors the quality and quantity of surface and ground water and conducts a geologic hazards program that promotes public safety through slope-stability studies, engineering analysis of foundations materials, radon investigations and volcano and earthquake hazard studies.



Acting Director
Thomas Smith

Facts and Figures

- DGGS publishes about 75 technical reports and geologic maps each year.
- The division analyzed over 3,000 surface and ground water quality samples, conducted 33 studies on water resource quantity and quality throughout Alaska, and produced 25 reports on water quality and availability in Fiscal Year 1989.
- DGGS distributes more than 11,000 copies of publications each year and responds to many requests from the public for geologic and water-resource information.

Director's Office

3700 Airport Way
Fairbanks, AK 99709-4699
451-2760 fax 451-2703
Thomas Smith
Acting Director
Deputy Director
Dee Dee Chavez, Secretary

Energy Resource Investigations

Gar Pessel, Section Chief
474-7147

Engineering Geology

Rod Combellick, Section Chief
474-7147

Resource Information

Greg Laird, Section Chief
474-7147

Administrative Services

Paula Verosta, Section Chief
451-276

Anchorage Office

3601 C Street, Suite 1236
P.O. Box 107005
Anchorage, AK 99510-7005
762-2356

Mineral Resource Investigations

Wyatt Gilbert, Section Chief

Eagle River Office

Fish Hatchery Road
P.O. Box 772116
Eagle River, AK 99577-2116
696-0070 fax 696-0078

Water Resource Investigations

William Long, Section Chief

Geologic Materials Center

John Reeder, Curator
696-0079

Juneau Office

400 Willoughby, 3rd Floor
Juneau, Alaska 99811
465-2520
Roman Motyka, Geologist

Boards and Commissions

Geologic Materials Center
Advisory Board

Land & Water



Director
Gary Gustafson

The Division of Land and Water Management manages the state's 104 million acres of uplands and 65 million acres of tidelands, shorelands and waters, excluding state park lands. Most uses of state land must be authorized in advance by this division. Responsibilities include land selections to fulfill the state's entitlement from the federal government; classifying land and preparing land use plans; land and gravel sales; leasing state land for recreation, commercial and industrial use; leasing shorelands for setnet sites, mariculture, ports, logging and mining activities; administering a dam safety program and issuing water rights. The division also conducts land exchanges, defends public access and navigability claims, manages trust lands and acts as a statewide survey authority.

Facts and Figures

- Annual land sale income and fees collected for leases and permits on state land generate about \$8.9 million in revenue for the state each year.
- The division has transferred 532,117 acres to private ownership since 1960 and maintains sale contracts on 5,000 parcels of land purchased by Alaskans.
- Construction materials such as sand and gravel brought over \$900,000 in state revenues in Fiscal Year 1989.
- The division has accepted title to approximately 84.7 million acres of land from the federal government as part of its land entitlement under the Statehood Act.
- Land and Water manages six units with over 2.5 million acres in the Public Use and Recreational River Systems.

Director's Office

3601 C Street, Suite 814
P.O. Box 107005
Anchorage, AK 99510-7005
762-2692 fax: 762-2529
Gary Gustafson, Director
Richard LeFebvre,
Deputy Director
Sue Doggett, Adm'n. Officer
Pat Peterson, Secretary
Janet Burleson,
Legislative Liaison (Juneau)

Cadastral/Coastal Survey

Suite 1116
P.O. Box 107028
Anchorage, AK 99510-7028
762-2425
Norm Johnson
Acting Section Chief

Land & Resources

Suite 800
762-2680
Ron Swanson, Section Chief

Title & Contracts

Suite 960
762-2326
Carol Shobe, Section Chief

Northern Region Office

3700 Airport Way
Fairbanks, Alaska 99709
451-2757 fax: 451-2751
Rick Smith, Regional Mgr.
Information Office
451-2705

Prudhoe Bay Area Office

(June - September)
Contact Regional Information
Office for telephone number
and address.

Southcentral Region Office

3601 C Street, Suite 1080
P.O. Box 107005
Anchorage, AK 99510-7005
762-2253 fax: 561-0221
Veronica Gilbert
Regional Manager

Information Office

Suite 1034
762-2202 recorded info.
762-2492

Oil Spill Office

Suite 222
762-2515
Jim Frechione, Project Mgr.

Mat-Su/Copper Basin Area Office

Cottonwood Creek Center
1830 E. Parks Highway
Suite A-116
Wasilla, AK 99687-9906
376-4595 fax: 376-1612
Al Samet, Area Manager

Dillingham Area Office

(June - September)
Contact Regional Information
Office for telephone number
and address.

Homer Area Office

(June - September)
Contact Regional Information
Office for telephone number
and address.

Southeast Region Office

100 Willoughby, 4th Floor
Juneau, Alaska 99801
465-3400
Andy Pckovich
Regional Manager

Information Office

465-3400

Boards and Commissions

Water Resources Board
Interim Mental Health Trust
Commission

Management



Director
Sharon Barton

The Division of Management provides financial, personnel, computer-support, and administrative services to the department. The division prepares and monitors the annual capital and operating budgets; maintains all personnel records; provides classification, recruitment and payroll services for DNR employees; collects and processes revenue from the sale, lease and use of the state's natural resources; operates the State Recorder's and Uniform Commercial Code Offices; maintains an automated record of the state's land-ownership information; conducts geographically based resource analysis; and maintains DNR data-processing functions.

Facts and Figures

- The division accounts for more than \$1 billion annually from 42,000 contracts for sales, leases and claims related to state land and state-owned natural resources.
- Fourteen statewide recording offices annually receive and record over 250,000 documents related to real property.
- The division maintains 175,000 computerized land record case files and 19,500 associated state land status maps.

Director's Office

400 Willoughby, 3rd Floor
Juneau, Alaska 99801
465-2406 fax: 465-2492
Sharon Barton, Director
Monique Carran, Secretary
Meg Hayes
Asst. Director (Anchorage)

Financial Services

465-2424
Nico Bus, Section Chief
Finance Officer
Gary Kostenko, Budget Off.
Chris Rutz, Procurement Off.

Personnel

465-2409
Ellen Haseltine, Pers. Officer

Anchorage Office

3601 C Street, Suite 984
P.O. Box 107005
Anchorage, AK 99510-7005
Meg Hayes, Asst. Director
762-2291
Susan Bailey, Secretary
762-2304
Marion Lundvall, Admin. Asst.
762-2296

Financial Services

Suite 1234
762-2224 fax: 762-2225
Jim Stouffer, Finance Officer

Personnel - S.C.R., N.R.

Suite 1222
762-2462
Gwen Grant Asst. Persl. Off.

Land Records Info.

Suite 916
762-2384
Dianne Lyles, Section Chief

DNR Computer Info. Ctr.

Suite 984
762-2673
Greg Doggett, Manager

Business Applications

Suite 900
762-2367
John Cacy, Manager

GIS Project

Suite 934
762-2377
Rich McMahon, Manager

Status Graphics

Suite 916
762-2390
Wendy Woolf, Manager

Uniform Commercial Code Office

Suite 1132
762-2104
Helida Manrique, Supervisor

State Recorder's Office

Suite 1134
762-2437
Linda Plumb, State Recorder

Recorder's Offices

Anchorage
3601 C Street, Suite 1134
Anchorage, Alaska 99503
762-2443
Loretta Braden, Recorder

Bethel

Box 426
Bethel, Alaska 99559
543-3391
Grace Lieb, Recorder

Fairbanks

250 Cushman, Suite 3A
Fairbanks, Alaska 99701
452-3521 / 452-2298
Joan Blevins, Recorder

Glennallen

Alaska Court System
P.O. Box 86
Glennallen, Alaska 99588
822-3405
Magistrate, Recorder

Homer

3858 Lake Street, Suite 7B
Homer, Alaska 99603
235-8136
Elizabeth McBride, Recorder

Juneau

400 Willoughby Avenue
Juneau, Alaska 99801
465-3449
Kelly Farmer, Recorder

Kenai

120 Trading Bay Rd., Ste. 230
Kenai, Alaska 99611
283-3118
Catherine Morrison, Recorder

Ketchikan

415 Main Street, #320
Ketchikan, Alaska 99901
225-3142
Barbara Kimball, Recorder

Kodiak

202 Marine Way, #15
Kodiak, Alaska 99615
486-9432
Sandra Tucker, Recorder

Nome

Box 431
Nome, Alaska 99762
443-5178
Sandra Straub, Recorder

Palmer

836 South Colony Way
Palmer, Alaska 99645
745-3080 / 745-2028
Marta Hensel, Recorder

Seward

Alaska Court System
P.O. Box 1929
Seward, Alaska 99664
224-3075
Magistrate, Recorder

Sitka

210-C Lake Street
Sitka, Alaska 99835
747-3275
Leslie Vallie, Recorder

Valdez

Alaska Court System
P.O. Box 127
Valdez, Alaska 99686
835-2266
Magistrate, Recorder

Mining



**Acting Director
Sam Dunaway**

The Division of Mining oversees state mineral exploration, development and leasing programs (excluding oil, gas and geothermal energy) on state land and maintains records of locatable minerals. It administers the state's Surface Coal Mining Control and Reclamation Program, provides mineral information to the public and technical assistance to the mining industry.

Facts and Figures

- In 1988 the mining industry provided 4,353 jobs and spent \$320 million in Alaska. Minerals extracted were valued at \$232.2 million, including 265,500 ounces of gold and 1.5 million tons of coal.
- The Division of Mining administers 44,000 mining claims.
- Coal royalties of more than \$1 million were paid to the State in Fiscal Year 1989.
- Division of Mining staff visited 431 active mines and exploration projects to provide technical assistance in Fiscal Year 1989.

Director's Office

3601 C Street, Suite 880
P.O. Box 107016
Anchorage, AK 99510-7016
762-2165 fax: 563-1853
Sam Dunaway
Acting Director
Linda Books, Secretary

Alaska Surface Coal Mining

Suite 858
762-2171
Sam Dunaway, Section Chief

Locatable and Leasable Minerals

Suite 880
762-2162 1 (800) 478-2154
Kerwin Krause, Section Chief

Field Operations/Permitting

Suite 880
762-2160
Judd Peterson, Section Chief

Anchorage Mining Information Office

3601 C Street, Suite 884
P.O. Box 107016
Anchorage, AK 99510-7016
762-2518
Bob Stuvek
Natural Resource Officer

Fairbanks Mining Information Office

3700 Airport Way
Fairbanks, Alaska 9709
451-2790
John Wood, Manager

Oil & Gas



Director
James Eason

The Division of Oil and Gas develops and manages the state's five-year oil and gas leasing program. It identifies prospective lease areas; performs geologic, economic, environmental and social analyses; and coordinates public review of proposed sales. The division conducts competitive oil, gas and geothermal lease sales and monitors collection of all lease and sale payments. It performs technical reviews of federal lease and land actions, state land trades and land classifications. The division also issues and monitors oil and gas plans of operations.

Facts and Figures

- The State received approximately \$2.3 billion in revenue from oil and gas development in Fiscal Year 1989—more than 80% of the state's general fund.
- The Division of Oil and Gas manages 915 oil and gas leases on the North Slope and Beaufort Sea, 27 on the Alaska Peninsula, and 296 in Cook Inlet—in addition to two geothermal leases on Mt. Spurr.

Director's Office

3601 C Street, Suite 1380
P.O. Box 107034
Anchorage, AK 99510-7034
762-2549 fax: 562-3852

James Eason, Director
Kenneth Boyd
Deputy Director
Roberta Keith, Secretary

Lease Administration Royalty Accounting

Suite 1380
762-2551 fax: 562-5269
Bill Van Dyke
Petroleum Manager

Leasing/Evaluations

Suite 858
762-2184
James Hansen
Chief Geophysicist

Boards and Commissions

Royalty Oil and Gas
Development Advisory Board

Parks & Outdoor Recreation



Director
Neil Johannsen

The Division of Parks and Outdoor Recreation plans, develops and manages the Alaska State Park System, which includes state campgrounds, trails, visitor centers, recreation areas, historic sites and a wildlife preserve. It provides information and educational programs for park visitors; administers federal and state grant programs for outdoor recreation and historic preservation; manages the Volunteers in Parks and youth employment programs; and coordinates search and rescue efforts. The division also includes the Alaska Office of History and Archaeology.

Facts and Figures

- Alaska has the largest state park system in the United States—3.2 million acres—with 125 park units.
- Alaska State Parks host 5.5 million visitors each year.
- There are 71 campgrounds with more than 2,000 campsites in Alaska State Parks.
- Volunteers in Parks contributed 81,758 hours of work in Fiscal Year 1989-- the equivalent of 10,900 work days.
- Fifteen state park cabins around the state are available for rent by the public.
- The division hires more than 40 young people annually through the Alaska Conservation Corps and student intern programs.

Director's Office

3601 C Street, Suite 1200
P.O. Box 107001
Anchorage, AK 99510-7001
762-2602 fax: 762-2535
Neil Johannsen, Director
Pete Panarese
Deputy Director
Leah Wedmore
Statewide Services
Barbara Champion, Secretary

Administrative Services

Suite 1200
762-2609
Jim Price, Section Chief

Design & Construction

Suite 1258
762-2645
Tom Young, Section Chief

Planning/Operations/ Volunteers

Suite 1200
762-2653
Dave Stephens, Section Chief

History & Archaeology

Suite 1278
762-2626
Judith Bittner, Section Chief,
Historic Preservation Officer
Robert Shaw
State Archaeologist
762-2630

Northern Region Office

3700 Airport Way
Fairbanks, AK 99709-4613
451-2695 fax: 451-2754
Mike Lee, Regional Manager

Delta/Tok District Ranger Station *

P.O. Box 318
Delta Junction, AK 99737
895-4226 fax: 895-4934
vacant, District Ranger

Harding Lake Ranger Station *

Harding Lake
State Recreation Area
Mile 321.4 Richardson Hwy.
488-1218
Carol Acuna, Park Ranger

Tok Ranger Station *

P.O. Box 391
Tok, Alaska 99780
883-3333 fax: 883-5135
Wayne Blessel, Park Ranger

Southcentral Region Office

3601 C Street, Suite 1280
P.O. Box 107001
Anchorage, AK 99510-7001
762-2617 fax: 762-2535
Al Meiners
Regional Manager

Chugach/Southwest Area Office

Potter Section House
Mile 115 Seward Highway
HC 52, Box 8999
Indian, Alaska 99540
345-5014 fax: 345-6982
Ron Crenshaw
Superintendent

Eagle River Visitor Ctr.

Chugach State Park
P.O. Box 774495
Eagle River, Alaska 99577
694-2108
Jill Johnson, Park Ranger

Eklutna Lake Ranger Station *

HC 52, Box 8999
Indian, Alaska 99540
688-0908
Ed Barrett, Park Ranger

Wood-Tlikchik Ranger Station *

General Delivery
Dillingham, Alaska 99576
842-2375 fax: 842-2438
Dan Hourthan, Park Ranger

Kenai Area Office

Morgan's Landing
State Recreation Area
Mile 85 Sterling Highway
P.O. Box 1247
Soldotna, Alaska 99669
262-5581 fax: 262-3717
Chris Titus, Superintendent

Homer Ranger Station *

Mile 168.5, Sterling Highway
P.O. Box 321
Homer, Alaska 99603
235-7024 fax: 235-4207
Roger MacCampbell, Ranger

Ninilchik Ranger Station *

Ninilchik State
Recreation Area
Mile 135, Sterling Highway
567-3367
Sharie Menthven-Toney
Ranger

Seward Ranger Station *

Mile 0, Seward Highway
P.O. Box 3111
Seward, Alaska 99664
224-3434 fax: 224-7025
Dave Caylor, Ranger

* Offices open seasonally

Parks & Outdoor Recreation, continued

Kodiak District Office

Fort Abercrombie
SR Box 3800
Kodiak, Alaska 99615
486-6339 fax: 486-3320
Claire Holland
District Ranger

Mat-Su/Copper Basin Area Office

Finger Lake State
Recreation Area
Mile .7 Bogard Rd.
HC 32 Box 6706
Wasilla, Alaska 99687
745-3975 fax: 745-0938
Dale Bingham
Superintendent

Denali State Park Maintenance Facility *

Eyers Creek
Mile 147, Parks Highway
733-2675
David Porter, Ranger

Independence Mine Visitor Center *

Independence Mine State
Historical Park
Fishhook Road
Wasilla, Alaska
745-2827
Pat Murphy, Ranger

Susitna District Ranger Station

Nancy Lake State
Recreation Area
Mile 66.5, Parks Highway
495-6273
Dennis Helkes
District Ranger

Valdez/Copper Basin Ranger Station *

P.O. Box 286
Glennallen, Alaska 99588
822-5536
Lynn Grams, District Ranger

Southeast Region Office

400 Willoughby, 3rd Floor
Juneau, Alaska 99801
465-4563 fax: 465-2492
William Garry
Regional Manager

Haines Ranger Station *

Main Street
P.O. Box 430
Haines, Alaska 99827
766-2292
Bill Zack, Ranger

Ketchikan Ranger Station

Totem Bight State
Historical Park
Route 1, Box 719
Ketchikan, Alaska 99901
247-8574
Mary Kowalczyk, Ranger

Sitka District Office *

Halibut Point Road
P.O. Box 142
Sitka, Alaska 99835
747-6249
Lynne McGowan, Ranger

Boards and Commissions

Statewide

Alaska Historical Commission
Governor's Outdoor
Recreation Advisory Board
Historic Sites Advisory Board

Local

Big Delta State Historical
Park Advisory Board
Chugach State Park Citizens
Advisory Board
Chilkat Bald Eagle Preserve
Advisory Council
Susitna Valley State Parks
Citizens Advisory Board
Fairbanks Area State Parks
Advisory Board
Independence Mine State
Historical Park Adv. Board
Juneau Area State Parks
Advisory Board
Kachemak Bay State Park
Citizens Advisory Board
Kenai River Special Mgmt.
Area Advisory Board
Ketchikan Area State Parks
Advisory Board
Kodiak Area State Parks
Advisory Board
Sitka Area State Parks
Advisory Board
Wood-Tikchik State Park
Management Council

* Offices open seasonally