

Confirmation

Dept. of Health

&

Social Services

T. Mala



Alaska State Legislature
House of Representatives
COMMITTEE ON HEALTH, EDUCATION
AND SOCIAL SERVICES

OFFICIAL BUSINESS

POUCH V
JUNEAU, AK 99811
465-3759

M E M O R A N D U M

TO: REP. GEORGIANNA LINCOLN, CO-CHAIR
REP. PATRICK CARNEY, CO-CHAIR
REP. BETTYE DAVIS, VICE-CHAIR
REP. CHERI DAVIS
REP. JOHN GONZALES
REP. MARK HANLEY
REP. MARY MILLER
PAT JACKSON
CAROLINE LOMBARD
HOUSE HEALTH, EDUCATION AND SOCIAL SERVICES COMMITTEE

FR: PATTI, HESS COMMITTEE SECRETARY, EXT. 4923 *Patti*

DT: APRIL 5, 1991

RE: CONFIRMATION HEARING--COMMISSIONER TED MALA--4/8/91

ATTACHED ARE DOCUMENTS FOR YOUR CONSIDERATION BEFORE THE CONFIRMATION HEARING FOR COMMISSIONER TED MALA SCHEDULED ON MONDAY, APRIL 8TH, AT 8:00 A.M.

INCLUDES: 1. CURRENT RESUME
 2. DHSS ORGANIZATIONAL INFORMATION

SEE YOU ON MONDAY MORNING!

unanimous do pass

file copy

THEODORE A. MALA

Post Office Box 20029
Juneau, Alaska 99802
W: (907) 465-3030 H: 463-4951

EDUCATION:

1979-1980 HARVARD SCHOOL OF PUBLIC HEALTH Boston, Ma.

Master of Public Health degree conferred June, 1980. Core curriculum with electives in public health planning and administration. Elected Class Marshal at graduation.

1972-1977 SCHOOL OF MEDICINE, AUTONOMOUS UNIVERSITY Guadalajara, Mx.

Received Diploma of Physician and Surgeon, December, 1976
Internship requirements completed in 1977.
National Boards, Social Service and Licensing requirements completed in Mexico, 1981.

1969-1972 DE PAUL UNIVERSITY Chicago, Il.

Bachelor of Arts Degree conferred in 1972.
Major in Philosophy and Minor in Foreign Language.

PROFESSIONAL LICENSES

Physician and Surgeon, Mexico, 1985
Professions Registry No. XX-106
UNAM Degree Registry 1985-270

PROFESSIONAL EXPERIENCE:

1990-Present

Commissioner Designee, Alaska Department of Health and Social Services
Appointed by Governor Hickel to this cabinet level position subject to legislative confirmation.

1986-1990

Secretary General, International Union for Circumpolar Health.
Re-elected to three year term in Umea, Sweden in 1987.

1982-1990

UNIVERSITY OF ALASKA Anchorage, Alaska

Associate Professor of Health Sciences.
Institute Director: Institute for Circumpolar Health Studies.

Founder and Director, International Institute for Circumpolar Health Studies.

The Institute for Circumpolar Health Studies was incorporated into Alaska State Law in June of 1988 under authority of the Legislature and signed into law by the Governor (Chapter 136) and appropriated \$550,000. to start up (Chapter 137).

Founder and Director, Siberian Medical Research Program. 1982.

Author of the University of Alaska-Siberian Branch of the Academy of Medical Sciences of the USSR Medical Research Agreement. The Agreement has worldwide recognition as to its uniqueness in being the first agreement Siberia has ever made in medicine with any western institution or country.

Founder and Director, Magadan (Soviet Far East) Medical Research Program. October, 1989.

This historic agreement signed before Governor V. Kobets of Magadan Region, by the Director of the Institute for Biological Problems of the North and the Minister of Health of the Magadan Region, The Commissioner of Health and Social Services of Alaska and myself for the Institute for Circumpolar Health Studies of the University of Alaska, Anchorage, represents the first Agreement that region has entered into with the West. The signing was featured on the front page of Magadanskaya Pravda, October 13, 1989 and has resulted in the first exchanges of health professionals between Alaska and the USSR.

Courses taught:

Human Anatomy and Physiology (2 levels)
Introduction to Health Sciences
Personal Health in Alaska
Multiple seminars on Siberia and Circumpolar Health

Research:

Principal US Medical Scientific Coordinator. "Bering Bridge Expedition" (National Geographic and DuPont Company) February, 1989. Involved coordinating and following dog sled expedition from Soviet Magadan Territory to Kotzebue, Alaska.

"Drug Use and Abuse in Alaska." I was the Field Coordinator for two years on this baseline statewide study. University of Alaska Anchorage, 1982.

Chaired committee on "Minorities in Higher Education: The Changing North" for The College Board, published 1988.

1978-1979 ALASKA STATE DIVISION OF CORRECTIONS Anchorage, Alaska

Chief of Health Services. I wrote and set up the medical care system for Corrections in Alaska. This included supervising health services and medical personnel as well as writing standards and federal grants to support those services.

1977-1978 ALASKA FEDERATION OF NATIVES Anchorage, Alaska

Special Assistant for Health Affairs. I was responsible for addressing the special needs of Alaska Natives through drafting public policies, organizing a statewide health needs assessment conference, and liaised with state and federal officials as well as the public.

HONOR ACTIVITIES

Co-chairman and founder, Bering Emergency Medical Services Committee, 1990-present.
Outstanding Services Award, Alaska Commissioner of Health, 1979.
Member, American Public Health Association, 1980
Member, Alaska Public Health Association, 1983
Member, Association of American Indian Physicians, 1981
Elected Council Member: Harvard School of Public Health Alumni Council 1981-1984
Trustee, United Way of Anchorage, 1978-1979.
Member, American Society for Circumpolar Health, 1981.
Elected to Board: Alaska Native Education Association, 1984. Re-elected, 1986.
Member, American Orthopsychiatric Association, 1984.
Elected to Board: Native American Science Education Association (NASEA), Washington, DC. 1984-1987.
Chairman, 1987 NASEA Alaska Conference
Advisor, World Health Organization, Nordic Council Meeting in Greenland, 1985.
Appointed Member, Research and Publications Committee, Alaska Area US Public Health Service, 1985-present. (I represent the Alaska Native Health Board)
Appointed (by Secretary of Health and Human Services) to the National Advisory Board, National Institutes of Health, Fogarty International Center 1985 to 1987.
Elected: Secretary General, International Union for Circumpolar Health (in Sweden, March, 1986) Re-elected Permanent Secretary General, International Union for Circumpolar Health for term 1987-1990 at Umea, Sweden General Union Assembly
Elected Member: New York Academy of Sciences, 1986.
Member, American Association of University Professors, 1987.
Elected Member: Harvard Club of Boston, 1988.
Directed first USSR (Magadan) to US (Alaska-Texas) Medevac, September, 1990.

HONORS:

1990. Commendation from State of Alaska for coordinating first medical evacuation from Soviet Far East to Alaska in September, 1990. Special recognition by State of Alaska Emergency Medical Services Council.
1990. Commendation from Office of Alaska Governor Cowper for participation in the Third Northern Regions Conference in Anchorage in May, 1990.
1990. Federal Aviation Administration: Citation for coordinating first Medivac Flight from Alaska to USSR in September of 1990.
1990. Alaska State Legislature Citation for contributions to being the first in recent times to initiate relations between Alaska and the Russian Arctic Scientific Community.
1990. State of Alaska Commendation Award signed by Governor and Lt. Governor for contributions for opening the doors between Alaska and the Soviet Far East.
1990. Named to "Who's Who in the Nation's Emerging Leaders". Marquis Publications. 1990 Edition.
1990. Named to "Who's Who in the World". Marquis Publications. 1990 edition.
1989. Named to "Who's Who in the West". Marquis Publications. 1989-1990 edition.
1989. Elected to and participated in Joint Civilian Orientation Conference, Class of 1954, Department of Defense, the Pentagon, Washington, DC.
1989. Alaska State Legislature Joint Senate and House Commendation recognizing contributions resulting in the awarding of the Honor Kempton Humanitarian Award.
1989. Named 7th recipient of the "Honor Kempton Service to Humanity Award" to be conferred April 8, 1989 by the National Spiritual Assembly of the Baha'i Faith of Alaska.
1988. College Board, Western Region, Special Recognition Award for outstanding contributions to education.
1988. Governor's Award for "Program of the Year" (UAA-Siberian Medical Research Program)
1986. National Institutes of Health, John E. Fogarty International Center Recognition and Appreciation Certificate

Theodore A. Mala, MD, MPH
Page Five. April 4, 1991

LANGUAGES:

Spanish (fluent); Russian (comprehension)

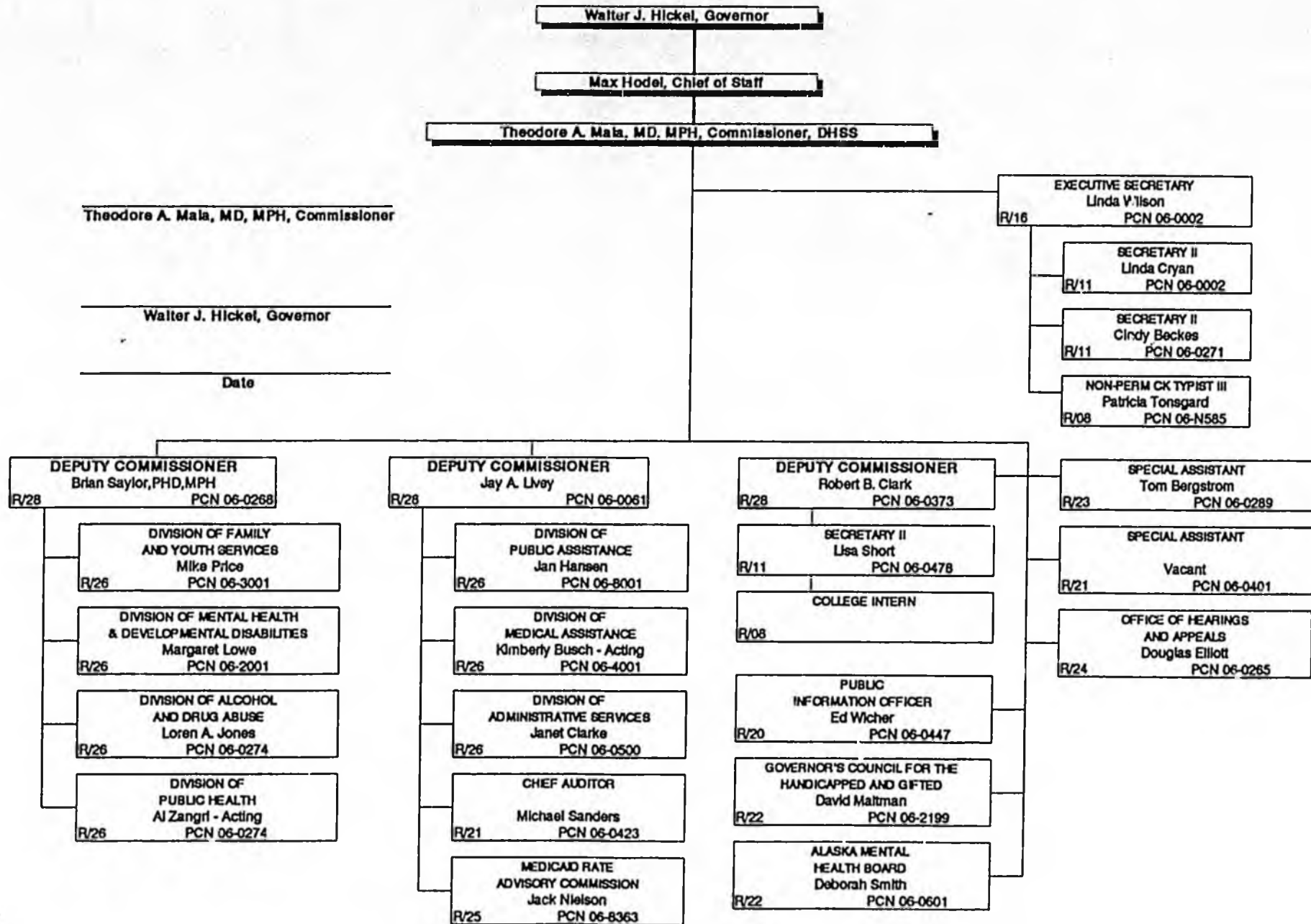
PERSONAL:

Married to Nancy Marie Edtl. Two children. Excellent health. Have traveled extensively lecturing and residing throughout US cities, Canada, Europe, Mexico, Guatemala, Soviet Russia especially Siberia and the Soviet Far East.

Special emphasis on circumpolar countries: Canada, USSR (Siberia and Soviet Far East), Greenland, Finland, Sweden, Denmark and Alaska where I have traveled and worked for years on common Northern circumpolar health problems.

REFERENCES AND PUBLICATIONS: Available on request.

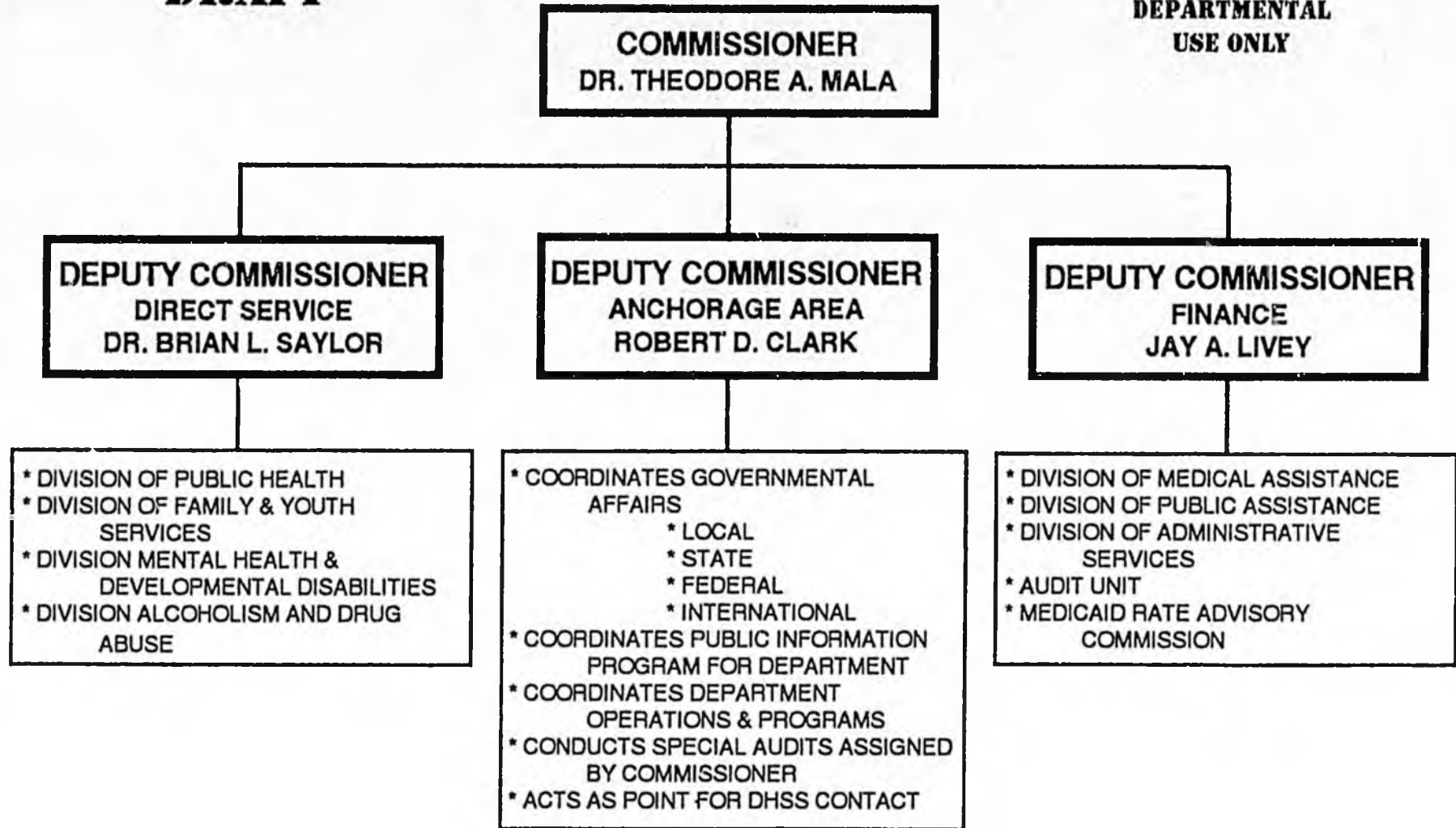
ORGANIZATION CHART
STATE OF ALASKA
DEPARTMENT OF HEALTH AND SOCIAL SERVICES
OFFICE OF THE COMMISSIONER



STATE OF ALASKA
DEPARTMENT OF HEALTH AND SOCIAL SERVICES

DRAFT

**FOR INTERNAL
DEPARTMENTAL
USE ONLY**



2-7-91 v.6

* PLEASE REFER TO ATTACHED DOCUMENT FOR "EXPLANATORY NOTES TO DRAFT ORGANIZATIONAL CHART"

EXPLANATORY NOTES TO DRAFT ORGANIZATIONAL CHART

Purpose: The purpose of these explanatory notes is to provide information and guidance to Departmental personnel as to administrative relationships and responsibilities of the Commissioner, two Juneau based Deputies (Direct Service and Finance) and Deputy Commissioner for the Anchorage area.

Notes:

1. Each of the three Deputy Commissioners report directly to the Commissioner.
2. The two Juneau based Deputy Commissioners are responsible to the Commissioner for administration of programs listed under Direct Services and Finance on the Chart.

These two Deputy Commissioners, from time to time may request assistance from the Anchorage based Deputy regarding any of the programs under their administrative structures on the chart.

The Deputy Commissioner in Anchorage may bring to the attention of the Juneau Deputy Commissioners or, in their absence, to the Commissioner's attention, any emergency or other unusual matter related to any DHSS program.

3. Private organizations and state institutions normally will contact the respective program Deputy Commissioner in Juneau for routine contractual or administrative issues. Such groups, in an urgent or emergency situation, may request assistance of the Anchorage Deputy in facilitating departmental responses for those matters.
4. Departmental Regional Managers in Anchorage will continue to report to the respective Division. Supervisors who report to Regional Managers will continue to report through those Regional Managers. The Regional Managers will continue to receive performance evaluations by those respective Division Supervisors.

5. The Deputy Commissioner for Anchorage area will have basic responsibilities as set forth on the organizational chart.

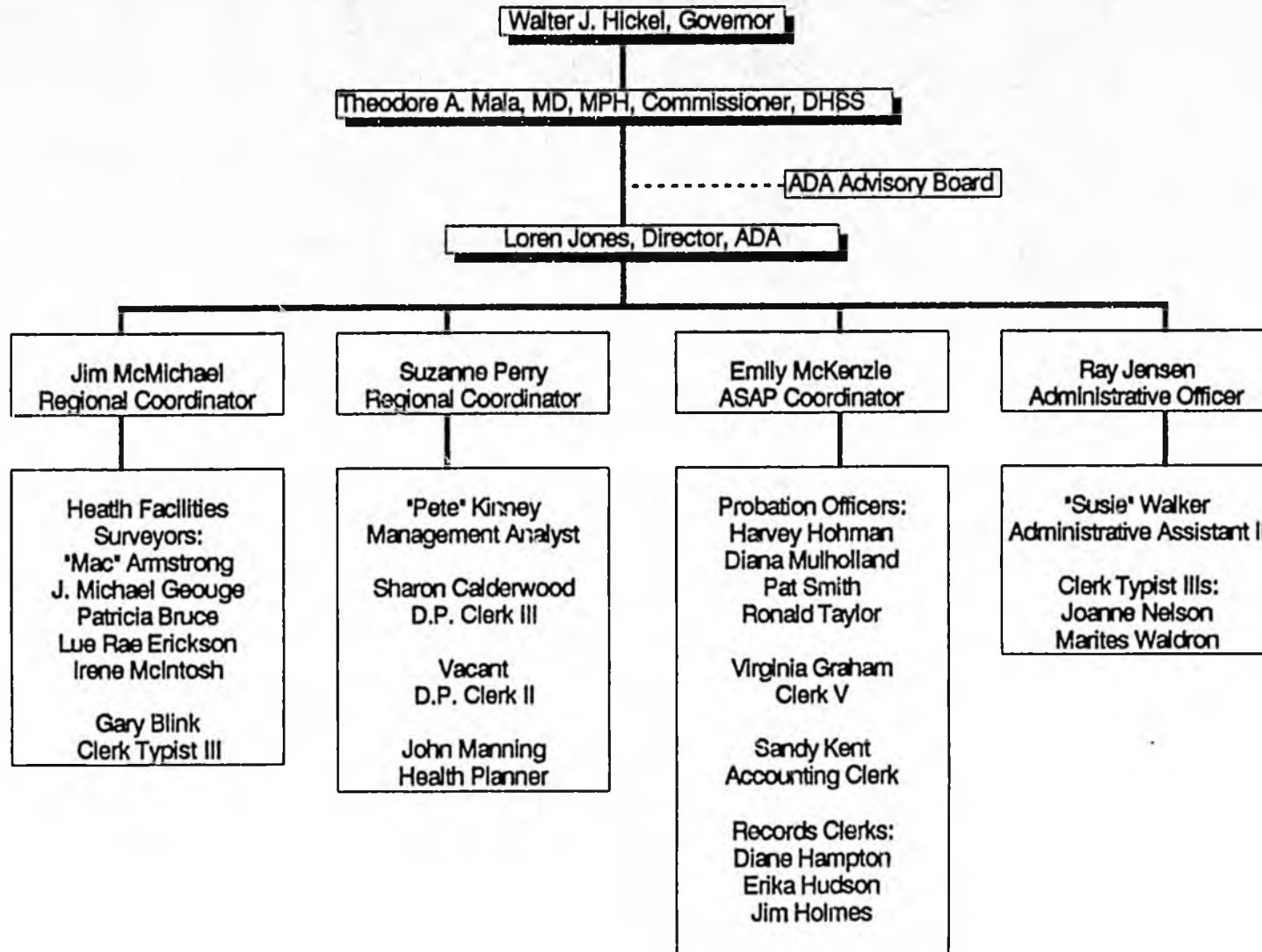
Each of the five functions are related to those program areas as implemented in and for "the Anchorage geographic area" as defined from time to time by the Commissioner.

Since the five functions listed are inter-related to the same types of activities and functions for the balance of the state, frequent formal and informal consultations between the Anchorage area Deputy and either the Deputy for Direct Service or Deputy for Finance will be needed. This will be especially important for the first three to six months of operations.

These consultations will assure consistent administration of the programs across the state.

ORGANIZATIONAL CHART

STATE OF ALASKA
DEPARTMENT OF HEALTH AND SOCIAL SERVICES
DIVISION OF ALCOHOLISM AND DRUG ABUSE



Approved _____

DEPARTMENT OF HEALTH & SOCIAL SERVICES
 Division of Administrative Services
 Organizational Chart

Approved: *J. Clarke 2/8/91*
 Janet Clarke, Director

OFFICE OF THE DIRECTOR
 0500 Director R/26 AWA
 0044 Sec. I R/10 AWA

WORD PROCESSING POOL
 0052 Admn. Asst. II R/14 AWA
 0422 Clerk Typist III R/08 AWA
 0118 Clerk Typist III R/08 AWA
 0081 Clerk Typist III R/08 AWA

INFORMATION SYSTEMS
 0355 DP Manager I R/21 AWA
 0327 Anlst/Prog IV R/19 AWA
 0454 Anlst/Prog IV R/19 EBA
 0343 DP Tech III R/16 AWA
 0439 Data Com Spec I R/18 AWA
DATA ENTRY
 0328 DP Clerk III R/11 AWA
 0354 DP Clerk II R/09 AWA
 0411 DP Clerk II R/09 AWA

FACILITIES SECTION
 0502 H&SS Plnr III R/21 AWA
 0314 Pblc Fac Plnr I R/20 AWA
 0385 Pblc Fac Plnr I R/20 EBA
 0384 Acct Tech I R/12 AWA
 0053 Archltecl R/21 AWA

PLANNING SECTION
 0114 Health Plnr III R/21 AWA
 0070 Health Plnr II R/19 AWA
 0320 Rsich Anlst III R/18 AWA

SUPPLY SECTION - JUNEAU
 0023 Supply Officer IV R/19 AWA
 0025 Supply Tech II R/12 AWA
 0455 Clerk IV R/09 AWA
 0090 DP Clerk II R/09 AWA
 0029 Mail Clerk Cr III R/09 AWA
SUPPLY SECTION - ANCHORAGE
 0066 Supply Officer III R/18 EBA
 0059 Supply Tech II R/12 EBA
 0063 Mail Clerk Cr III R/09 EBA
 0092 Clerk Typist II R/07 EBA

BUDGET SECTION
 0093 Budget Analyst IV R/21 AWA
 0011 Budget Anlyst III R/19 AWA
 0085 Budget Anlyst III R/19 AWA
 0117 Budget Anlyst III R/19 AWA
 0341 Rsich Anlyst II R/16 AWA
 0444 Acct Clerk III R/10 AWA

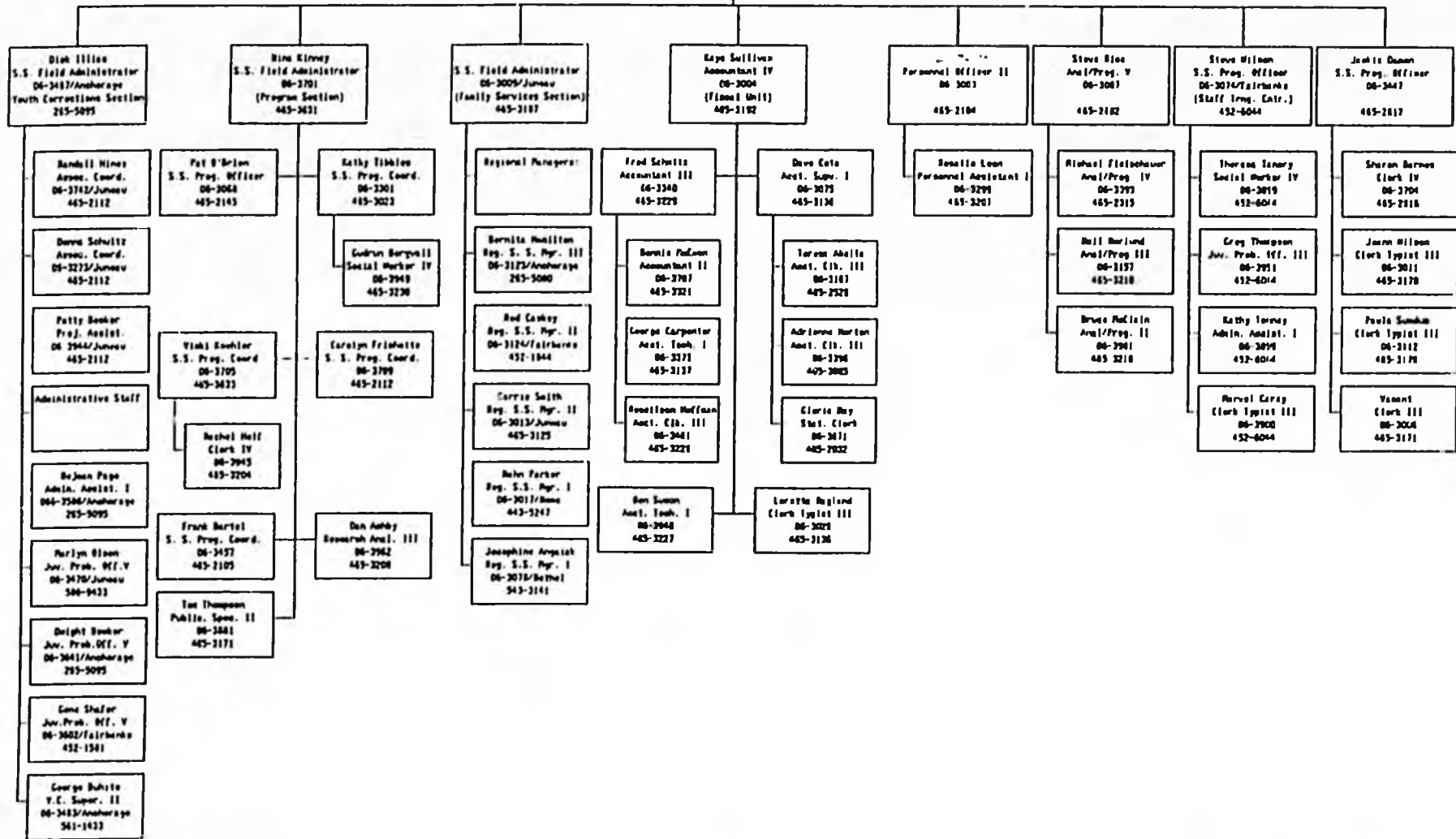
FINANCE SECTION
 0057 Acct Supervisor V R/22 AWA
 0013 Admn Asst III R/16 AWA
 0260 Admn Asst I R/12 AWA
JUNEAU FISCAL
 0012 Acct Supervisor II R/18 AWA
 0453 Acct Tech II R/14 AWA
 0104 Acct Tech I R/12 AWA
 0106 Acct Tech I R/12 AWA
 0014 Acct Clerk III R/10 AWA
 0068 Acct Clerk III R/10 AWA
 0105 Acct Clerk III R/10 AWA
 0021 Acct Clerk II R/09 AWA
 0017 Acct Clerk II R/09 AWA
 0018 Acct Clerk II R/09 AWA
 0048 Clerk I R/06 AWA
ANCHORAGE FISCAL
 0221 Acct Supervisor I R/16 EBA
 0094 Acct Clerk II R/09 EBA
 0270 Clerk Typist III R/08 EBA
JUNEAU REVENUE UNIT
 0028 Accountant IV R/20 AWA
 0245 Accountant III R/18 AWA
 0098 Acct Tech III R/16 AWA
 0096 Acct Tech II R/14 AWA

PERSONNEL & PAYROLL
 0007 Personnel Officer III R/22 AWA
CLASS/SPEC PROJECT
 0041 Personnel Spec II R/18 AWA
SOUTHEAST REGIONAL OFFICE
 0087 Personnel Officer I R/18 AWA
 0107 Personnel Asst II R/14 AWA
 0015 Personnel Asst I R/12 AWA
 0451 Acct Clerk III R/10 AWA
 0082 Acct Clerk II R/09 AWA
 0009 Clerk Typist III R/08 AWA
 0003 Clerk Typist II R/07 AWA
SOUTHCENTRAL REGIONAL OFFICE
 0064 Personnel Officer II R/20 EBA
 0008 Personnel Asst II R/14 EBA
 0072 Personnel Asst I R/12 EBA
 0065 Personnel Asst I R/12 EBA
 0452 Acct Clerk III R/10 EBA
 0046 Acct Clerk II R/09 EBA
 0050 Clerk Typist III R/08 EBA
 0108 Clerk II R/07 EBA

Department of Health & Social Services
 Division of Family & Youth Services
 Control Office

MICHAEL J. PRICE
 Division Director
 06-3001
 485-2191

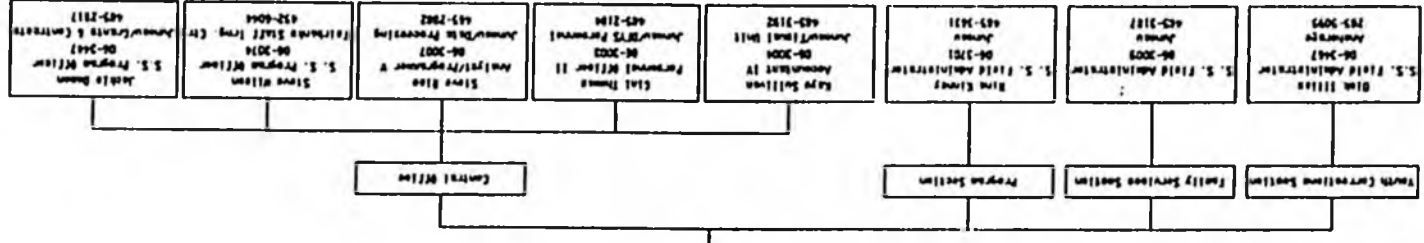
Phyllis Norman
 Secretary
 06-3782
 485-2191



Effective 12/15/80

Division of Family and Youth Services
 Bureau
 Effective 12/15/90

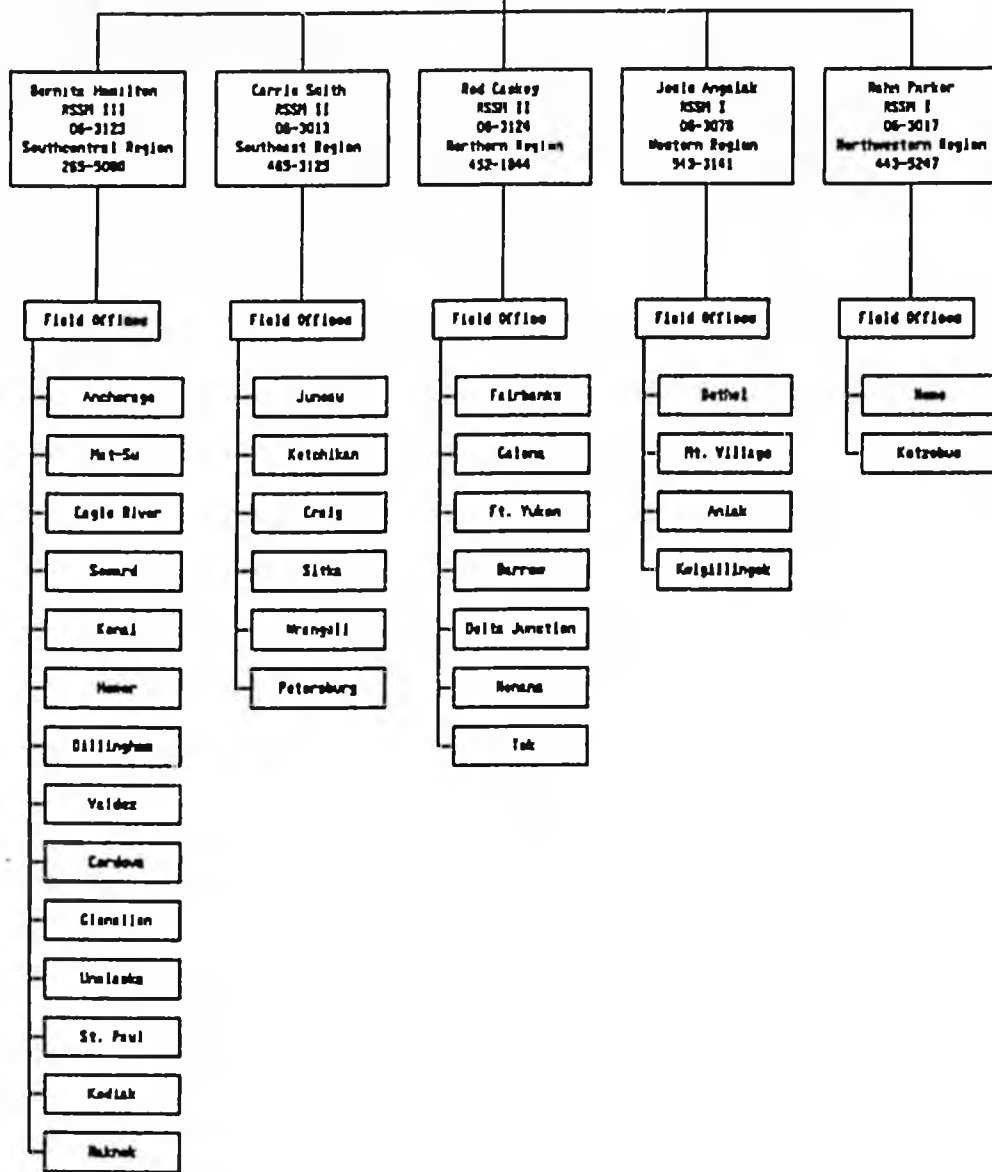
MICHAEL L. PRICE
 (Acting) Division Director
 06-2001
 James Central Office
 485-2181



Division of Family & Youth Services
 Family Services
 Field Office Locations

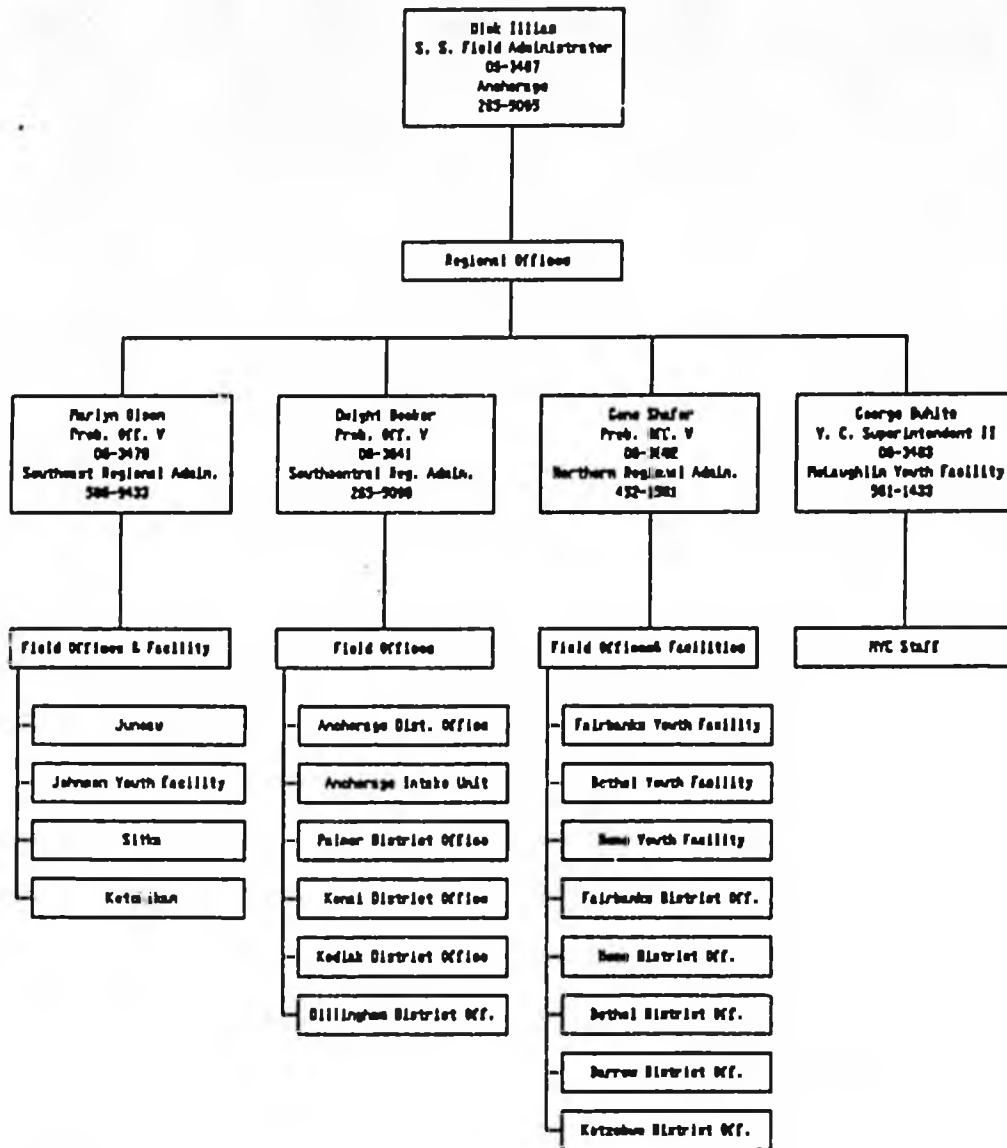
MICHAEL L. KIRK
 S. S. Field Admin.
 06-3008
 465-1187

Regional Offices

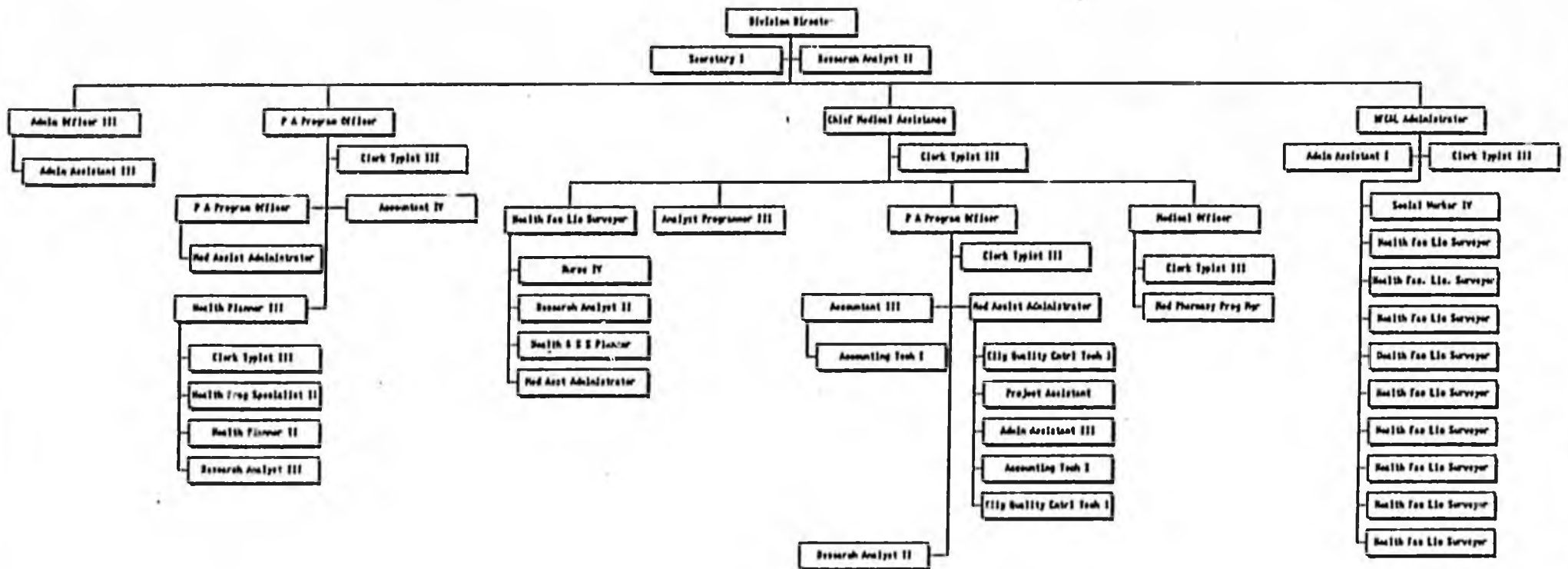


Effective 12/15/98

Division of Family and Youth Services
 Youth Corrections
 Field Office Locations

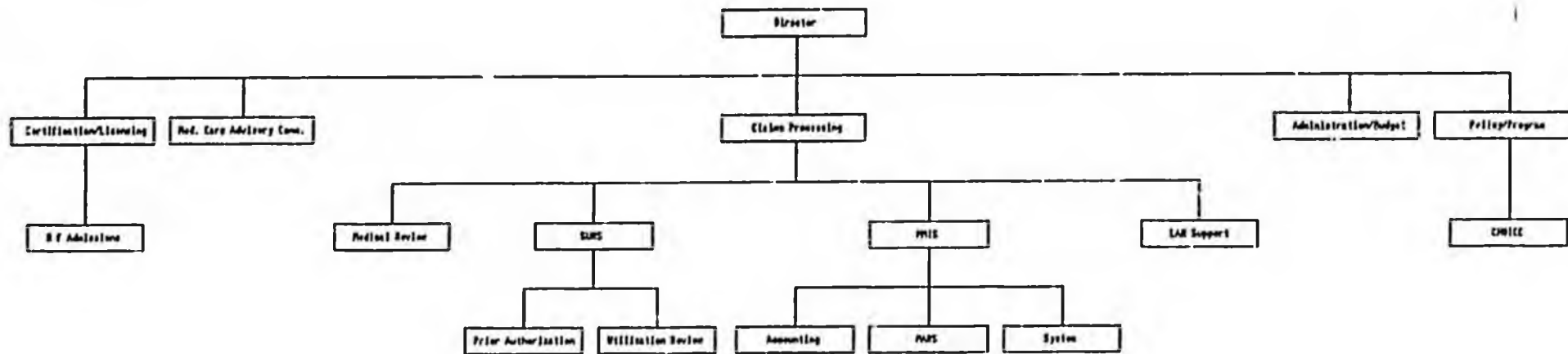


Effective 12/15/90



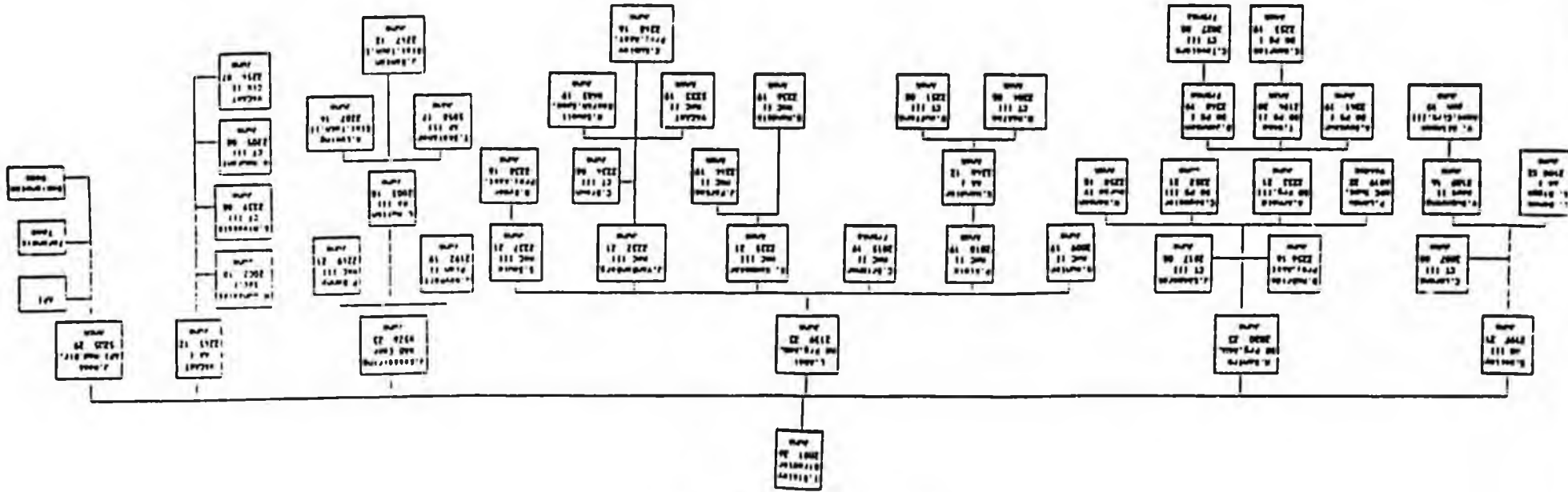
Director Kimball B. Busch

Date 11-28-90



Director Kimberly B. Busch

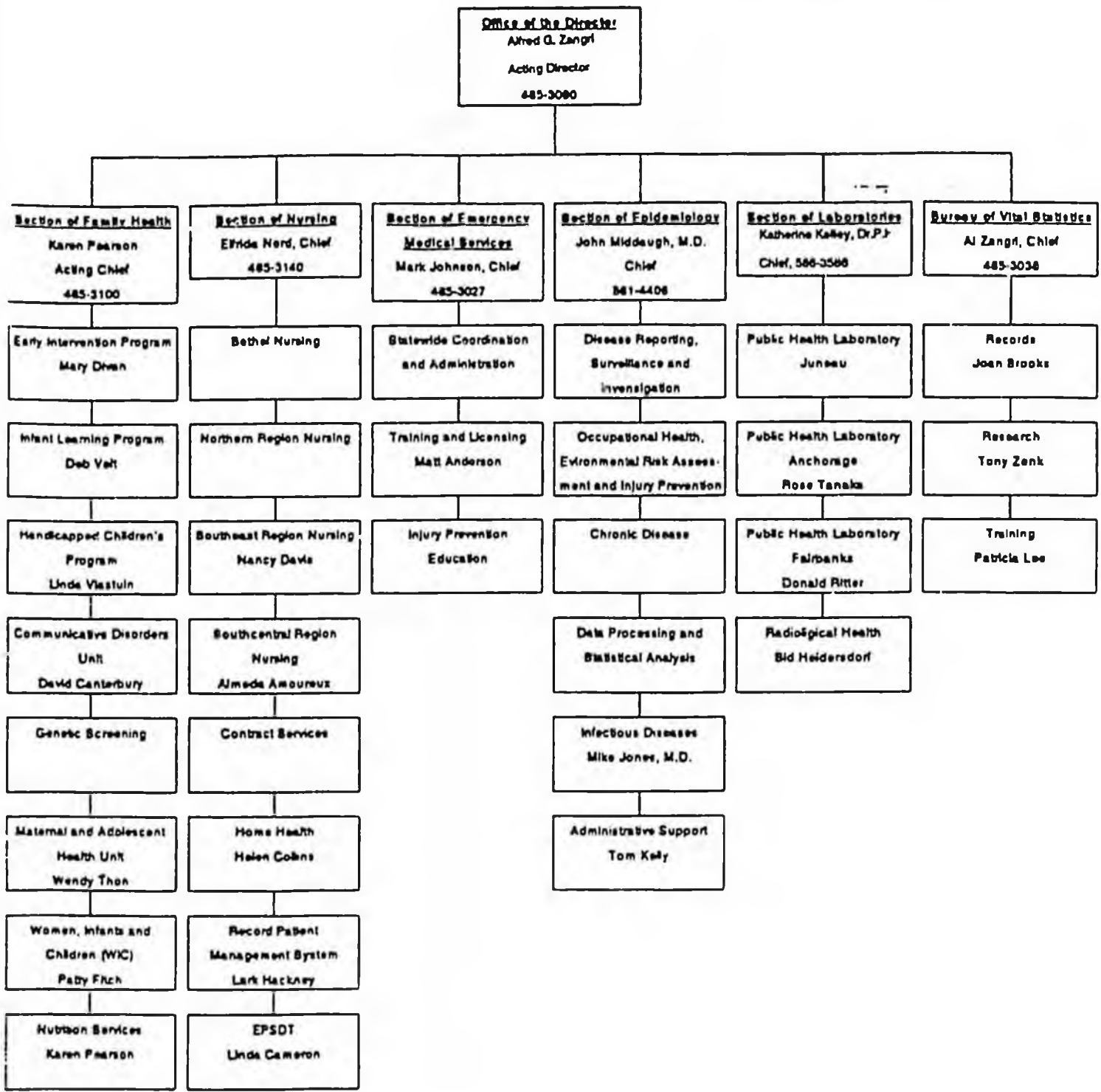
Date 11-28-90

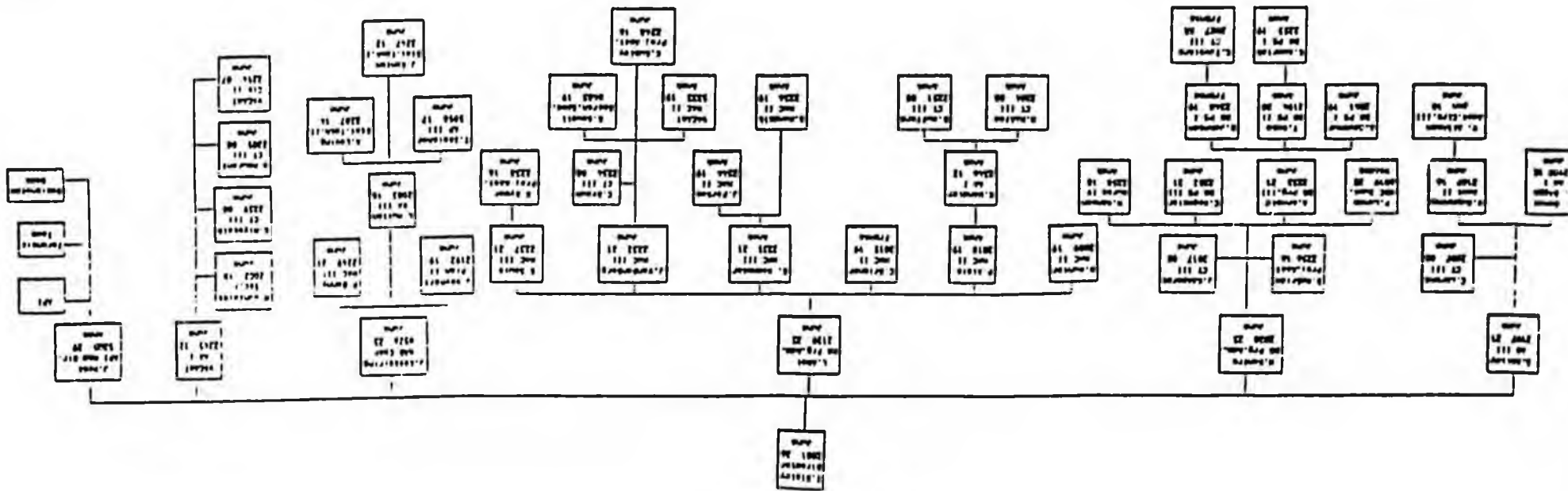


ARMY ORGANIZATION

**Division of Public Health
Organization Chart**

rev. 10-88

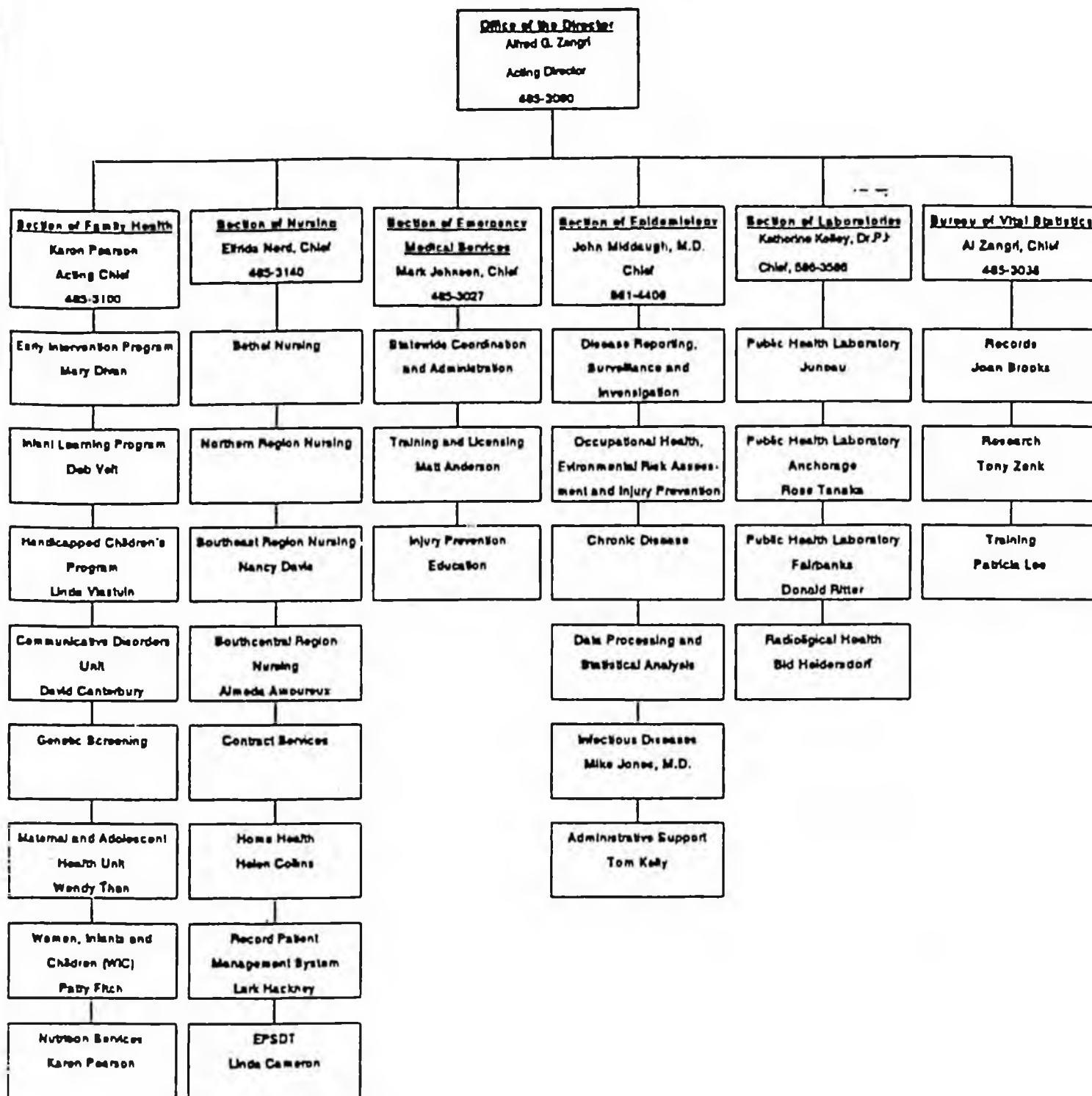




ANNALS 'ARTICLE 2000

Division of Public Health
Organization Chart

1988



FIELD OPERATIONS

Location Codes EDACHIEF OF FIELD OPERATIONS 563-0394

Eames, Rebecca	Chief	8121
Hutch, Sharie	CT III	8272

Corrective Action Unit 563-0394

Maxwell, Gregory	PAA II	8314
Ruuttila, Shana	PAA I	8064
Holan, Michelle	PAA I	8329

Early Fraud Detection Unit 277-3338

Price, Anita	EQCT II	8397
Luddington, Calvin	INY II	8398
Rogovin, Michelle	EQCT I	8400
Vacant	EQCT I	8401
Wakefield, Jackie	ET II	8402

Fair Hearing 562-0631

Patterson, Garth	PAPD	8344
McEdward, Judy	CT III	8345

Training 272-9342

Leonard, James	PATS	8165
Faglia, Patricia	PAA I	8422
Snola, Thomas	PAA I	8308
Taft, Gerald	PAA I	8048
Schmidkofer, Mary	PAA I	8309
Waggoner, Rosemary	CT III	8108

Anchorage Region

Reed, Ron PAPH 8081

Northern Region

Thomson, Judith PAPH 8042

SouthCentral/NorthWest

Eames, Rebecca PAPH 8068

Southeast Region

Harg, Hargo PAPH 8095

Southwest Region

Flood, Jack PAPH 8157

MICROTAGE REGION

Location Code: EBA

Anchorage Regional Office 274-6324

Reed, Ronald D. PAPH I 8081
 Monaghan-Price, Eileen ET III/PI 8062
 Lidbergh-Jasper, Arlene C IV 8113
 Miller, Laura CT III 8024

<u>Corrective Action/Intern Unit</u>			<u>Intake Unit #1</u>			<u>Intake Unit #2</u>			<u>Intake Clerical Unit</u>			<u>VACANT POSITIONS</u>	
Kalelnikoff, Ronda	ET IV	8043	Hoyt, Stephanie	ET IV	8431	Venhaut, Robert	ET IV	8172	Gize, Dawn	C IV	8265		
Ervin, Char	ET III	8000	Jones-Birch, Jamie	ET III	8181	Dehler, Kim	ET III	8173	Schunk, Vickie	C III	8273	ET I/II	8423
Pull, Brad	ET II/IV-E	8405	Abram, Marlek	ET II	8409	Byrd, Jema	ET II	8348	Fiegler, Bruce	C III	8271	ET I/II	8435
Giovannelli, Mike	ET II/IV-C	8419	Hitchell, Robin	ET II	8434	Franches, Mary Lou	ET II	8312	Mason, Billy	C III	8270	ET I/II	8083
Holtanbach, Patty	ET I	8437	Thomas, Judith	ET II	8245	Foster, Lois	ET I	8116	Salth, Mary K	C III	8283	ET I/II	8174
Langerman, Linda	ET I	8439	Kelso, David	ET II	8033	Alexander, Cynthia	ET I	8140	Tollfeldt, Carolyn	C III	8264	ET I/II HP	5300
Huot, Rachel	ET I	8410	Heschmer, James	ET I	8170	Marshall, Katherine	ET I	8141	Simpson, Sandra	C III	8429	C II	8219
Doughty, Robert	ET I HP	5301	Rivers, Oswell	ET I	8438	Harding, Gene	ET I HP	5343				C III	8107
Dehler, Joanna	ET I HP	5356	Dredle, Margaret	ET I	8177	Horris, Jane	C IV	HP 8118				C II	8248
			Clifford, Linda	ET I HP	5354							ET I/II HP	8149
			Stano, Susan	ET I HP	5299								

<u>Adult Public Assistance Unit</u>			<u>Maintenance Unit I</u>			<u>Maintenance Unit II</u>			<u>Maintenance Unit III</u>			<u>Maintenance Clerical Unit</u>		
Conrad, Dave	ET IV	8071	Matthews, Joan	ET IV	8041	Melaker, Lisa	ET IV	8169	Laurin, Russ	ET IV	8298	Linboe, Patricia	C IV	8117
Leck, Suzanne	ET III	8106	Rupert, John	ET III	8084	Skoog-Moera, Cecily	ET III	8073	Shookstrik, Lydie	ET III	8433	Murray, Craig	C III	8368
Hilop, Marlon	ET II	8176	Featherly, Suzanne	ET II	8311	Kahana, Mary Alice	ET II	8301	Bergel, Bruce	ET III	8432	Welch, Theresa	C III	8066
Jackson, Joe	ET II	8061	James, Charles	ET II	8310	Farbail, Art	ET II	8333	Streeter, Gil	ET II	8244	Tessal, Donald	C III	8263
Holsten, Robert	ET II	8242	Stemol, Angela	ET II	8200	Black, Anthony	ET II	8328	Jacobs, Rita	ET II	8102	Hemacher, Craig	C II	8246
Lindis, Barbara	ET II	8259	Hornath, Dennis	ET II	8180	Ross, Becky	ET II	8299	Wells, David	ET II	8104	Reed, Linda	C II	8347
Woodard, Lennier	ET II	8302	Humphries, George	ET II	8425	Hagby, Gwen	ET II	8326	O'Mear, Donna	ET II	8160			
Davis, Mary	ET I	8436	Risch, Kelli	ET II	8417	Roeding, Kirk	ET II	8418	Bruce, Thomas	ET I	8257			
Priest, Stolly	ET I	8424	Lom (Gibson), Debra	ET II	8103	Jones, Lexlie	ET I	8231	Ramos, Ingrid	ET I	8173			
Morris, Michael	ET I	8175	Fleahng, Anita	C III	8336	Ropars, Judy	C III HP	5344	Ward, Larry	ET I HP	5315			
Hoff, Donald	C III	8342	Monson, Larry (IV)	ET III/IV	8305	Ramos, Frank (III)	ET III/IV	8307	Harp, Jolynn	C III	8430			
Alston, W. Craig	C III	8109												
Pusch, Vickie	C III	8107												

NORTHERN REGION

Location Code: JDA

Northern Regional Office 451-2054

Thomson, Judith RAPH 8042
 Vacant CT III 8275

Ft. Yukon 662-2327

Kalkins, Linda ET II 8058
 Potter, Mae CT II 8160

Intake Unit 451-2850

Compton, Diane ET IV 8315
 Jorissen, Mary Lou ET III 8118
 Hondrie, Greg ET II 8055
 Nicholson, Tim C III 8277
 Northley, Annette C III 8067
 Holcomb, Becky C III 8335
 Hutchinson, Dwyto C III 8279

Maintenance Unit 451-2050

Karnes, Sylvia ET IV 8040
 Wilson, Andrea ET III 8057
 Harrington, Marie Celine ET II 8075
 Dutton, Frank ET I 8182
 McGee, Barbara ET I 8202
 Andrews, David ET I 8420

Field Unit 451-2050

Wagner, Mary ET IV 8065
 Denson, Sandy ET III 8316
 Roddon, Estrellita ET II 8078
 Kelle, Bonnie ET I 8089

Clerical Unit 451-2050

Smith, Jesse C IV 8208
 Norclor, Rosa C III 8278
 Davis, Rosalie C III 8281
 Day, Lelan C III 8276
 Watts, Thorn C III 8025
 Stoll, Bruce C III 8447
 Ednisson, Myra C II 8237
 Doggett, Diana CT III 8274

Training Unit

Holyfield, Nilda ET IV 8442
 Carter, Jaime ET III 8179
 Wasser, Sharron ET I 8444
 Morrison, George ET I PPT 8406
 Vatter, Robert (IV-E) ET I PPT 8150
 Dahl, Carol ET I 8408
 Stuhr, Jacqueline ET I 8261
 Reed, Patricia ET I 8310
 Easaw, Gloria ET I 8203
 Hall, Sholla ET I NP 8346
 Wright, Debra ET I NP 8347
 Dykas, Theresa ET I NP 8348
 Vacant ET I 8446

Specialty Unit sup'd by S. Karnes

Smith, Sandy ET III 8443
 Koo, Sandi ET II 8260
 Skinner, Sue ET II 8045
 Albin, Joy ET II 8236
 Holder, Susan ET II 8162

Review/Home Visits

Kitchinmaster, Carol ET III 8235
 Oseth, Linda ET III 8000

Energy Assistance

Millimson, Glen C IV 8219

Quality Control

Flenaugh, Mary
 Wheat, Mary

SOUTHCENTRAL NORTHWESTERN REGION

Location Code: EDA

SC/NW Regional Office 561-4370

Vacant	PAPH I	8068
McBratney, Charleen	ET III/FH	8117
Goldsmith, Carol	ET III IV	8319
Flowers, Brenda	C IV	8128
Bryan, Shirley	CT III	8159

FIELD UNIT I 561-4373 (EDA)

Biggs, Yarnetto	ET IV	8269
Gillette, Elmo	ET III	8099
Alles, Joan	ET II	0091
Bowman, Rhonda	ET II	8239
Pierre-Muriddin, Marquita	ET I	8460
Driscoll, Diantha	ET I	8141
Salazar, Terri	ET I	8258
Early, Johnie	C III	8110
Harris, Maureen	C III	K353
Vacant	ET I/IIIP	S302

Field Unit II 561-4364 (EDA)

Holce, Rudder	ET IV
Fitch, Judith	ET III
Payton, Georgia	ET II
Sheldon, Joanne	ET II
Britton, Jack	ET II
Liljokvist, Ken	ET II
Field, William	ET II
Bjorgon, Randy	ET I IV-E
Bandy, Katherine	ET I IP
Huller, Ruth	C III

DILLINGHAM 842-5961

Webb, Torry	ET I PPT	8145
-------------	----------	------

Kotzebue 442-3451

Thompson, Loretta	ET I
Vacant	C III

KODIAK 486-3783

Cornish, Helonaa	ET I	8063
McCormick, Owen	C III	8403

Home District Office 443-2237 (HHA)

Downey, Carol	ET IV	8044
Johnson, Frank	ET II	8391
Korenak, Rebecca	ET II	8448
Bronner, Susan (scas)	ET II	8230
Prather, Patricia	ET I	8051
Lyons, Michelle	ET I	8449
Horbert, Diane	CT III	8280
Hartso, June	C III PPT	8341
Vacant	ET I/II	8034

Masilla Dist Ofc 376-3903 (ECE)

Howard, Barbara	EOM	8201
Wolfe, Kathie	ET III IV	8097
Thisby, Joan	EAP C IV PPT	8216

UNIT I

Frisson, Laurel	ET III	8378
Wood, Teryl	ET II	8251
Sparks, Sheila	ET II	8228
Travis, Michael	ET II	8377
Horgan, Robert	ET II	8457
Hiller, Walter	ET I	8322
Dale, Linda	ET I	8375
Hicks, Theresa	ET I PPT	8139
Bernstein, Stacy	ET I IP	K349
Sandvik, Eldon	ET I NP	K352

UNIT II

Campbell, Lee	ET IV	8098
Matura, Leslie	ET III	8171
Stegner, Sharon	ET II	8284
Stratton, Gloria	ET II	8253
Levan, Meeno	ET II	8458

Clerical Unit

Prahl, Nancy	C IV	8143
Johnson, Sharon	C III	8376
Hasson, Jane	C III	8366
Willis, Nancy	C III	8282
Pollard, Shannon	C III	8459
Hilliard, Teri	CT III	8238

Kenai Dist Ofc 262-9032 (DOA)

Feldman, Herlin	EOM I	8050
Krogh, Marilyn	EAP C IV PPT	8215

Intake Unit

Brooks, Katherine	ET III	8181
Rowley, Mary	ET II	8286
Richmond, Mary	ET II	8321
Segura, Esthor	ET II	8285

Maintenance Unit

Hull, Sussonne	ET IV	8306
Skinner, Jeonette	ET II	8227
Gage, Deborah	ET II	8054
Grothe, Debbie	ET I PPT	8287
Brown, Barbara	ET I IP	S303
Floyd, Patricia	ET I IP	K350

Clerical Unit

Gerhard, Sharon	C IV	8331
Vacant	CT III	8207
Evanoff, Kari	C III	8289
Kopecky, Jillana	C III	8288
Snell, Judith	CT III	8467

Honor 235-6132 (superv'd by Feldman)

Johnson, Ilona	ET I	8320
Knapton, Anna E	C III	8334

SOUTHEAST REGION

Location Code: AMASoutheastern Regional Office 465-3537

Nash, Hargo		PAPM I	8095
Jennings, Evelyn		CT III	8330
Knight, David	QA/IV	ET III	8085
Pickett, Charlene		ET III	8324
Stanbury, Charlotte	IV-E	ET II	8404
Lenis, Leo		ET II	8030
Ashe, Donald		ET I	8455
Vacant (pos to be reclas'd to CT III)		ET I	8049

Location Code: ACALocation Code: ARALocation Code: AKAKotchikan District Office 225-2135

Dawson, Linda	ET IV	8037
Woodard, Rae Ann	ET III	0114
Thompson, William	ET II	8326
Peters, Janet	ET II	8347
McDowell, Petra	ET II	8325
Hollywood, Barbara	ET I	8168
Krobel, Katharine	ET I	8087
Ripley, Kathleen	CT III	8337
Scott, Hada	CT III	8032

Sitka District Office 747-8234

Monard, Cheryl	ET III	8206
Hefner, Kathleen	ET I	8115
Peel, Elizabeth	C III	8082
	(Lolly)	

Juneau District Office 465-3551

O'Connell, Joni	ET IV	8039
Hamby, Rick	ET III	7119
Hoskito, Lolita	ET II	8046
Heinson, Rick	ET II	8243
Burt, C. Rocky	ET I	8140
Paul, Rhonda	ET I	8183
Andersen, Brenda	ET I	8456
Edge, Claudollen (Scooter)	C IV	8332
Hansen, Darlene	C III	8086
Bowers, Izabelle	CT III	8338

Krangall 874-3935

Anderson, Jo	ET I PPT	8252
--------------	----------	------

Petersburg 772-3393

Hinderman, Terry (shared clerk w/dyfs)		
--	--	--

SOUTHWESTERN REGION

Location Code: DKA

Southwestern Regional Office 543-2686

Flood, Jack PAPH I 8157

<u>UNIT I</u>		<u>UNIT II</u>		<u>UNIT III</u>		<u>CLERICAL UNIT</u>					
Lester, Michele	ET IV	8069	Christiansen, Jeanette	ET IV	8303	Parsons, Michele	ET IV	8360	Tynes, Robin	C IV	8161
Mossile, Annie	ET III	8059	Stiegemeier, Franz	ET III	8120	Gholson, Carolyn	ET III	8317	Hillson, Ruth	C III	8369
Freeman, Joyce	ET II	8070	Angellan, Senka	ET II	8071	Coleman, Kathleen	ET II	8453	Evans, Matilda	G III	8035
Hanes, Michael	ET I	8452	Stiegemeier, Martha	ET II PPT	8323	Getty, Patricia	ET II	8367	Francisco, Marsha	C III	8454
Collins-Miller, Marie	ET I	8451	Raskin, Kristie	ET I	8450	Rovet, Bud	ET II	8038	LePore, Corino	C III	8355
Tschannen, Anellisa	ET I	8421	Sallifeo, Sino	ET I	8074	Angalak, William	ET II	8349	Romer, Horton	C II	8250
Rapoza, Cocolla	ET I PPT	8090	White, Faith	ET I PPT	8094	Choney, Lucy	ET II	8327	Velch, Yvos	C II	8056
Elliott, Evelyn	ET I RP	5342	Vacant	ET I/II	8079	Yager, Frances/Joanna	ET I	8031			

SYSTEMS OPERATIONS 562-3725

Location Code: EBA

Aaltonen, Karen PM/O
Spees, Robert C III
Hayo, Laura Act C III
Vacant PM Jno

O'Brien, Jack PM II
Stuart, Tom PM I
Vacant PM I
Spees, Jeff PM I
Wallace, Evelyn PM I
Boquist, Connie ET III
Kim, Seong DataProcessing Ass't
Hunloy, Rob DataProcessing Ass't

Vacant A/P V
Green, Mark A/P IV
Langston, Harv A/P IV
O'Keefe, Monica A/P III
Tooley, Doug A/P III
Eustice, Allen A/P II
Greene, Brady A/P I
Winn, Diane A/P I
Lentfer, Susan A/P I
Vacant A/P I
Vacant A/P I

FIELD OPERATIONS

Location Codes EUACHIEF OF FIELD OPERATIONS 563-0394

Emmes, Rebecca	Chief	8121
Hutch, Sharie	CT III	8272

Corrective Action Unit 563-0394

Maxwell, Gregory	PAA II	8314
Ruottila, Shana	PAA I	8064
Nolan, Michelle	PAA I	8329

Early Fraud Detection Unit 277-3330

Price, Anita	EQCT II	8397
Luddington, Calvin	INV II	8398
Rogovin, Michelle	EQCT I	8400
Vacant	EQCT I	8401
Wakefield, Jackie	ET II	8402

Fair Hearing 562-0631

Patterson, Garth	PAPD	8344
McEdward, Judy	CT III	8345

Training 272-9342

Leonard, James	PAIS	8165
Foglia, Patricia	PAA I	8422
Snola, Thomas	PAA I	8308
Taft, Gerald	PAA I	8048
Schmidkofer, Mary	PAA I	8309
Waggoner, Rosemary	CT III	8108

Anchorage Region
Read, Ron PAPH 8081

Northern Region
Thomson, Judith PAPH 8042

SouthCentral/NorthWest
Emmes, Rebecca PAPH 8068

Southeast Region
Hosh, Margo PAPH 8095

Southwest Region
Flood, Jack PAPH 8157

MICROGRACE REGION

Location Code: EBA

Anchorage Regional Office 274-6524

Reed, Ronald D. PAFM I 0081
 Monaghan-Price, Eileen ET III/FH 0062
 Lidbergh-Jasper, Arlene C IV 8113
 Miller, Laura CT III 8024

Corrective Action/Intern Unit

Intake Unit #1

Intake Unit #2

Intake Clerical Unit

VACANT POSITIONS

Kateinkoff, Ronda	ET IV	8081	Koyt, Stephanie	ET IV	8431	Vorhaus, Robert	ET IV	8172	Gize, Dawn	C IV	8165		
Ervin, Char	ET III	8060	Jones-Birch, Jamie	ET III	8183	Dehler, Kim	ET III	8173	Schunk, Vickie	C III	8273	Et I/II	8423
Puff, Brad	ET II/IV-E	8405	Abram, Warwick	ET II	8409	Byrd, James	ET II	8348	Flegler, Bruce	C III	8271	ET I/II	8415
Clovenelli, Mike	ET II/IV-E	8119	Hitchell, Robin	ET II	8434	Frankos, Mary Lou	ET II	8312	Keen, Billy	C III	8270	ET I/II	8083
Hollenbach, Patty	ET I	8437	Thomas, Judith	ET II	8245	Foster, Lois	ET I	8116	Salth, Mary K	C III	8283	ET I/II	8174
Lengerman, Linda	ET I	8439	Masuo, David	ET II	8033	Alexander, Cynthia	ET I	8240	Tellfeldt, Carolyn	C III	8264	ET I/II HP	5300
Huels, Rachel	ET I	8410	Reemper, James	ET I	8170	Marshall, Katherine	ET I	8441	Simpson, Sandra	C III	8429	C II	8249
Doughty, Robert	ET I HP	5301	Rivers, Oswald	ET I	8438	Harding, Gene	ET I	HP 5343				C III	8107
Dehler, Joanne	ET I HP	5356	Brodie, Margaret	ET I	8177	Herris, June	C IV	ENP 8218				C II	8248
			Clifford, Linda	ET I HP	5354							ET I/II TPI	8149
			Stone, Susan	ET I HP	5299								

Adult Public Assistance Unit

Maintenance Unit I

Maintenance Unit II

Maintenance Unit III

Maintenance Clerical Unit

Conrad, Dave	ET IV	8073	Matthews, Joan	ET IV	8041	Melaker, Lisa	ET IV	8169	Laurin, Russ	ET IV	8298	Lin-Boe, Patricia	C IV	8112
Lack, Suzanne	ET III	8106	Rupert, John	ET III	8044	Shoog-Moore, Cally	ET III	8073	Shoog-Moore, Lydie	ET III	8133	Murray, Craig	C III	8268
Hiclop, Marlon	ET II	8176	Featherly, Suzanne	ET II	8311	Kahana, Mary Alice	ET II	8301	Emgat, Bruce	ET III	8132	Welch, Theresa	C III	8066
Jackson, Joe	ET II	8061	James, Charles	ET II	8310	Iarball, Art	ET II	8333	Streeter, Gil	ET II	8244	Yessal, Donald	C III	8263
Nielsen, Robert	ET II	8213	Stemel, Angela	ET II	8100	Black, Anthony	ET II	8128	Jacobs, Rita	ET II	8102	Konacher, Craig	C II	8246
Lindie, Barbara	ET II	8259	Horvath, Dennis	ET II	8180	Ross, Decky	ET II	8299	Wolfe, David	ET II	8104	Road, Linda	C II	8247
Roodard, Lennier	ET II	8302	Humphries, George	ET II	8425	Mogby, Dawn	ET II	8226	O'Neal, Donna	ET II	8160			
Davis, Mary	ET I	8436	Risch, Kelli	ET II	8117	Roesling, Kisk	ET II	8418	Druce, Thomas	ET I	8257			
Priest, Sholly	ET I	8424	Low(Gibson), Debra	ET II	8103	James, Leslie	ET I	8231	Ramos, Ingrid	ET I	8173			
Morris, Michael	ET I	8175	Fleming, Anita	C III	8316	Ravera, Judy	C III HP	5344	Ward, Larry	ET I HP	5345			
Hoff, Donald	C III	8382	Monson, Larry (HW)	ET III/IV	8305	Ramos, Frank (HW)	ET III/IV	8307	Harp, Jolynn	C III	8150			
Alston, W. Craig	C III	8107												
Fusich, Vickie	C III	8107												

NORTHERN REGION

Location Code: JUA

Northern Regional Office 451-2854

Thomson, Judith RAPH 8042
 Vacant CT III 8275

Ft. Yukon 662-2327

Katkins, Linda ET II 8058
 Potter, Mae CT II 8160

Intake Unit 451-2850

Compton, Diane ET IV 8315
 Jorissen, Mary Lou ET III 8118
 Hondric, Greg ET II 8055
 Nicholson, Tim C III 8277
 Northey, Annetta C III 8057
 Halcomb, Becky C III 8335
 Hutchinson, Dwyta C III 8279

Maintenance Unit 451-2850

Karnes, Sylvia ET IV 8040
 Wilson, Andrea ET III 8057
 Harrington, Marie Colina ET II 8075
 Dutton, Frank ET I 8182
 HoGeo, Barbara ET I 8202
 Andrews, David ET I 8420

Field Unit 451-2850

Wagner, Mary ET IV 8065
 Benson, Sandy ET III 8316
 Redden, Estrellita ET II 8078
 Wells, Bonnie ET I 8089

Clerical Unit 451-2850

Smith, Jesse C IV 8208
 Horcier, Rosa C III 8278
 Davis, Rosalie C III 8281
 Day, Lelon C III 8276
 Matts, Thora C III 8025
 Stoll, Bruce C III 8447
 Edmisson, Myra C II 8237
 Daggott, Diana CT III 8274

Training Unit

Holyfield, Nilda ET IV 8442
 Carter, Jalma ET III 8179
 Wasser, Sharron ET I 8444
 Morrison, George ET I PPT 8406
 Vatter, Robert (IV-E) ET I PPT 8150
 Dahl, Carol ET I 8408
 Stuhr, Jacqueline ET I 8261
 Reed, Patricia ET I 8318
 Easaw, Gloria ET I 8203
 Hall, Sholla ET I MP 8346
 Wright, Dobra ET I MP 8347
 Dykes, Mercedes ET I MP 8348
 Vacant ET I 8446

Speciality Unit sup'd by S. Karnes

Smith, Sandy ET III 8443
 Koo, Sandi ET II 8260
 Skinner, Sue ET II 8045
 Albin, Joy ET II 8236
 Holder, Susan ET II 8102

Review/Home Visits

Kitchenmaster, Carol ET III 8235
 Oseth, Linda ET III 8008

Energy Assistance

Williamson, Grien C IV 8219

Quality Control

Flenough, Mary
 Wheat, Mary

SOUTHCENTRAL NORTHWESTERN REGION

Location Code: EBA

SC/NW Regional Office 561-4370

Vacant	PAPH I	8068
McBratney, Charleen	ET III/PII	8117
Goldsmith, Carol	ET III IV	8319
Flowers, Brenda	C IV	8128
Bryan, Shirley	CT III	8159

<u>FIELD UNIT I 561-4373 (EOA)</u>		<u>Field Unit II 561-4364 (EOA)</u>		<u>Wasilla Dist Ofc 376-3903 (ECE)</u>		<u>Kenai Dist Ofc 262-9032 (DQA)</u>					
Bliggs, Vernetto	ET IV	8269	Holce, Rudder	ET IV	8304	Howard, Barbara	EOH	8201	Feldman, Herlo	EOH I	8050
Gillette, Elma	ET III	8099	Fitch, Judith	ET III	8111	Wolf, Kathie	ET III IV	8097	Krogh, Marilyn	EAP C IV PPT	8215
Alles, Joan	ET II	8091	Payton, Georgia	ET II	8300	Thisby, Joan	EAP C IV PPT	8216			
Bowman, Rhonda	ET II	8239	Sheldon, Joanne	ET II	8229						
Pierre-Muriddin, Marquita	ET I	8460	Britton, Jack	ET II	8225	<u>UNIT I</u>			<u>Intake Unit</u>		
Driscoll, Blanche	ET I	8141	Liljokvist, Ken	ET II	8461	Frisson, Laurel	ET III	0378	Drooks, Katherine	ET III	8181
Salazar, Terri	ET I	8258	Field, William	ET II	8101	Wood, Teryl	ET II	8251	Rowley, Mary	ET II	8286
Early, Johnie	C III	8110	Bjorgon, Randy	ET I IV-E	8416	Sparks, Shella	ET II	8228	Richmond, Mary	ET II	8321
Harris, Maurcen	C III	K353	Bandy, Katharine	ET I NP	K351	Travis, Michael	ET II	0377	Segura, Esther	ET II	8285
Vacant	ET I/II/III	S302	Huller, Ruth	C III	8266	Horgan, Robert	ET II	0457			
						Miller, Walter	ET I	8322			
						Dale, Linda	ET I	8375	<u>Maintenance Unit</u>		
<u>DILLINGHAM 842-5961</u>			<u>Kotzebue 442-3451</u>			Hicks, Theresa	ET I PPT	8139	Hull, Susanne	ET IV	8306
Webb, Torry	ET I PPT	8145	Thompson, Loretta	ET I	0205	Bernstein, Stacy	ET I NP	K349	Skinner, Jeanette	ET II	0227
			Vacant	C III	8052	Sandvik, Eldon	ET I NP	K352	Gage, Deborah	ET II	8054
									Grothe, Debbie	ET I PPT	8287
<u>KODIAK 486-3783</u>						<u>UNIT II</u>			Brown, Barbara	ET I NP	S303
Cornish, Holman	ET I	8063				Campbell, Lee	ET IV	8098	Floyd, Patricia	ET I NP	K350
McCormick, Gwen	C III	8403				Matura, Leslie	ET III	8171			
						Stegner, Sharon	ET II	8284			
<u>Hume District Office 443-2237 (IITA)</u>						Stratton, Gloria	ET II	8253	<u>Clerical Unit</u>		
Downey, Carol	ET IV	8044				Levon, Heeno	ET II	0458	Gerliard, Sharon	C IV	8331
Johnson, Frank	ET II	8391							Vacant	CT III	8207
Korenok, Rebecca	ET II	8448				<u>Clerical Unit</u>			Evanoff, Kari	C III	8209
Brenner, Susan (seas)	ET II	0230				Prahl, Nancy	C IV	8143	Kopecky, Jilliana	C III	8208
Prather, Patricia	ET I	0051				Johnson, Sharon	C III	8376	Snell, Judith	CT III	8467
Lyons, Michelle	ET I	0449				Hanson, Jane	C III	8366			
Herbert, Diane	CT III	8280				Millis, Nancy	C III	8282	<u>Homer 235-6132 (superv'd by Feldman)</u>		
Martin, June	C III PPT	0341				Pollard, Shannon	C III	8459	Johnson, Ilona	ET I	8320
Vacant	ET I/II	0034				Millard, Teri	CT III	0238	Knapton, Anne E	C III	8334

SOUTHEAST REGION

Location Code: AYASoutheastern Regional Office 465-3537

Hashi, Margo		PAPM I	8095
Jennings, Evelyn		CT III	8330
Knight, David	QA/IV	ET III	8085
Pickett, Charlene		ET III	8324
Stanbory, Charlotte	IV-E	ET II	8404
Lewis, Lea		ET II	8030
Ashe, Donald		ET I	8455
Vacant (pos to be reclass'd to CT III)		ET I	8049

Location Code: ACAKetchikan District Office 225-2135

Dawson, Linda	ET IV	8037
Woodard, Roe Ann	ET III	8114
Thompson, William	ET II	8326
Peters, Janet	ET II	8347
McDowell, Petra	ET II	8325
Hollywood, Barbara	ET I	8168
Krobel, Katharine	ET I	8087
Ripley, Kathleen	CT III	8337
Scott, Hada	CT III	8032

Krangel 874-3935

Anderson, Jo ET I PPT 8252

Location Code: ARASitka District Office 747-8234

Howard, Cheryl	ET III	8206
Hefner, Kathleen	ET I	8115
Peel, Elizabeth	C III	8082
(Lolly)		

Petersburg 772-3393

Hinderman, Terry (shared clerk n/dyfs)

Location Code: AXAJuneau District Office 465-3551

O'Connell, Joni	ET IV	8039
Hamby, Rick	ET III	8119
Hoskito, Lolita	ET II	8046
Hainzon, Rick	ET II	8243
Burt, C. Rocky	ET I	8140
Paul, Rhonda	ET I	8183
Andersen, Brenda	ET I	8456
Edge, Claudellen (Scooter)	C IV	8332
Hansen, Darlene	C III	8086
Bowers, Izabella	CT III	8338

SOUTHWESTERN REGION

Location Code: DKASouthwestern Regional Office 543-2686

Flood, Jack PAPH I 8157

UNIT I

Lestar, Michele	ET IV	8069
Wassilje, Annie	ET III	8059
Freeman, Joyce	ET II	8070
Hanos, Michael	ET I	8452
Calli-Miller, Marie	ET I	8451
Tschannen, Anellise	ET I	8421
Repoza, Cecelia	ET I PPT	8090
Elliott, Evelyn	ET I HP	5342

UNIT II

Christiansen, Jeanette
Stiegemeier, Franz
Angellian, Senka
Stiegemeier, Martha
Raskin, Kristie
Sallifao, Sino
White, Faith
Vacant

UNIT III

ET IV	8303	Parsons, Michele
ET III	8120	Cholson, Carolyn
ET II	8071	Coleman, Kathleen
ET II PPT	8323	Cetty, Patricia
ET I	8450	Revet, Bud
ET I	8074	Angalak, William
ET I PPT	8094	Chaney, Lucy
ET I/II	8079	Yager, Frances/Joanne

CLERICAL UNIT

ET IV	8368	Tynes, Robin	C IV	8161
ET III	8317	Hillson, Ruth	C III	8369
ET II	8453	Evans, Matilda	C III	8035
ET II	8367	Francisco, Harsha	C III	8454
ET II	8038	LePore, Corina	C III HP	5355
ET II	8349	Romer, Harlon	C II	8250
ET II	8327	Welch, Yves	C II	8056
ET I	8031			

SYSTEMS OPERATIONS 562-3725

Location Code: EBA

Aaltonen, Karen
Speas, Robert
Hayo, Laura
Vacant

PAFO
C III
Act C III
PAA I Jno

O'Brien, Jack PAA II
Stuart, Tom PAA I
Vacant PAA I
Speas, Jeff PAA I
Wallace, Evelyn PAA I
Boquist, Connie ET III
Kim, Seong DataProcessing Ass't
Hunloy, Rob DataProcessing Ass't

Vacant A/P V
Green, Hark A/P IV
Langston, Harv A/P IV
O'Keefe, Monica A/P III
Tooley, Doug A/P III
Eustice, Allen A/P II
Greene, Brady A/P I
Winn, Diane A/P I
Lentfer, Susan A/P I
Vacant A/P I
Vacant A/P I

MEDICAID RATE ADVISORY COMMISSION

3601 C Street, Suite 250
Anchorage

Phone: 562-1996

JACK NIELSON
EXECUTIVE DIRECTOR

MARY ANDERSON
PROG. BUDGET ANAL. III

MONA SHIPMAN
INTERNAL AUDITOR I

LAURA YOUNG
INTERNAL AUDITOR II

TERRY KLEMENSON
ACCOUNTING TECH I

KENT HARTZBERG
INTERNAL AUDITOR III

RANDALL SCHLAPIA
INTERNAL AUDITOR IV

SUE BROWN
SECRETARY I

**DEPARTMENT OF HEALTH AND
SOCIAL SERVICES**

IN BRIEF

DRAFT



**THEODORE A. MALA, MD, MPH
COMMISSIONER**

January 28, 1991

January 11, 1989

Dear Legislator:

The attached document provides an introduction to the programs offered to the residents of Alaska by the Department of Health and Social Services. As you can see, the department is engaged in a variety of critical services to needy Alaskans.

In addition to this document, the department also publishes a briefing book which contains a summary of the department's budget, as well as a booklet which identifies all grants awarded by the department. These publications should be available in the near future.

If you have questions regarding any activities of the Department of Health and Social Services or if I can be of help to you, please do not hesitate to contact me or my staff.

Sincerely,

Theodore A. Mala, MD MPH
Commissioner

DIVISION OF PUBLIC ASSISTANCE

GENERAL INFORMATION

The Division of Public Assistance (DPA) is responsible for the administration of 11 programs:

1. Aid to Families with Dependent Children (AFDC)
2. Old Age Assistance (OAA)
3. Aid to the Disabled (APD)
4. Aid to the Blind (ABL)
5. Food Stamps
6. General Relief
7. General Relief Medical (Determines client eligibility)
8. Medicaid (Determines client eligibility)
9. Energy Assistance
10. PFD and ALB Hold Harmless
11. Post Mortem Examination

Several of these programs are funded wholly or in part with federal funds. These programs include AFDC (50 percent federal), Food Stamps (100 percent federal), Medicaid (50 percent federal), and Energy Assistance (100 percent federal). Food Stamp program benefit funding is not contained in the state budget. The remaining programs are funded entirely from state general funds. Along with the presence of federal money in these four programs, comes a complete set of federal rules and procedures governing conditions of eligibility for benefits as well as rules for overall program operation.

The division conducts business through a mix of private vendor contracts and state staffed facilities. Most of the activities administered by state staff are prohibited by federal law from transfer to the private sector. At present, the division has state staffed client service offices in 16 locations:

<u>SOUTHEAST</u>	<u>SOUTHCENTRAL</u>	<u>NORTHERN</u>	<u>SOUTHWEST</u>
Juneau	Anchorage	Fairbanks	Bethel
Sitka	Dillingham	Ft. Yukon	
Ketchikan	Kodiak	Kotzebue	
Wrangell	Kenai	Nome	
Petersburg	Wasilla		
	Homer		

The division also contracts for application-taking assistance in Barrow with the North Slope Borough and in Kotzebue through a similar arrangement with the Maniilaq Association. In addition to

these state and contractor operated client service offices, the division has paid agents in approximately 165 additional communities around the state, bringing the total number of communities having division representation to approximately 185.

The division will service approximately 25,500 families monthly during FY 91. Since many families are served only seasonally or for a short period of crisis, the above numbers do not represent an unduplicated count of families to be served over the course of a full year. A conservative estimate would place the unduplicated count of families who will receive aid during FY 91 at 34,000 families, consisting of approximately 70,000 persons, or roughly 13 percent of the state's population. One out of every eight Alaskans will seek some type of cash, food, medical, or energy assistance from the division in FY 91.

PROGRAM SUMMARIES

Aid to Families with Dependent Children (AFDC) - AFDC is a nationwide state/federal financial aid program that helps needy children who are deprived because at least one parent is absent, disabled, or deceased. Effective October 1990, the AFDC was expanded to provide assistance to two-parent families with an unemployed parent by federal mandate. The amount of assistance is intended to be adequate to provide the basic necessities for the children, thereby enabling them to remain within the family unit. In FY 91, approximately 8,481 families will receive benefits each month.

General Relief (GRA) - General Relief is a state funded program designed to meet the emergency subsistence needs of employable Alaskans. Strict income requirements and a demonstrated need (such as an eviction notice) must be met. If eligible, a maximum monthly payment of \$120.00 per person is allowed by state statute. On behalf of clients, payments are made directly to landlords and vendors to ensure only critical subsistence needs are met.

Adult Public Assistance (APA) - Adult Public Assistance provides a state legislated level of supplemental cash assistance to aged, blind, and disabled persons who meet certain income and resource requirements and are categorically eligible to receive

federal Supplemental Security Income (SSI). APA component funding is dependent on the number of eligible cases and the cash assistance amount issued monthly. The program currently provides a \$274.00 average supplemental payment to 6,820 APA clients each month.

Old Age Assistance - Alaska Longevity Bonus Hold Harmless -

A change in federal rules made by Congress in 1984 would have cost a large number of elderly Alaskans millions of dollars in state and federal assistance from programs based on need, were it not for this program. Federal law now requires the state to count the Alaska Longevity Bonus received by recipients when determining eligibility and payment level for Old Age Assistance. This program replaces the federal funds that this costs our seniors with an equal amount of state funds.

Energy Assistance Program (EAP) -

The Energy Assistance Program is a 100 percent federally funded program to provide cash assistance in the form of payments to home energy suppliers of low-income households. The benefits are in the form of a once-per-year payment, which varies annually. The EAP serves approximately 10,500 households depending on the household's income, fuel costs, and geographic location. It is not a monthly maintenance program. Payments cover oil, natural gas, electricity, propane, wood, and other products related to home energy needs.

Permanent Fund Dividend Hold Harmless -

The Permanent Fund Dividend (PFD) legislation provides that the department may not consider the dividend as income or a resource in determining eligibility for public assistance programs unless required to do so by federal law or regulation. Individuals found ineligible or getting reduced public assistance solely because of receiving the dividend are eligible to receive cash assistance under the PFD Hold Harmless program for a period not to exceed four months.

The PFD Hold Harmless component request assumes a PFD distribution of \$900.00 per person, resulting in most all AFDC, Food Stamp, and SSI recipients losing federal benefits for at least one month. The amount of hold harmless assistance issued is equal to the benefit a household would have received had it not gotten the dividend. After the four-month period, the recipient must once again meet all eligibility requirements for public assistance programs, or benefits are discontinued.

Food Stamps - Food Stamps provide 100 percent federally-funded assistance to low-income households to purchase food. The objective is to improve nutrition of low-income recipients. Eligibility for food stamps and the benefits which participants receive are determined by each household's size and financial situation. The amount of benefits is also adjusted for local food costs in Alaska.

Alaska Work Programs - The component provides an array of employment-related case management and support services for adult applicants and recipients of Aid to Families with Dependent Children and Food Stamps. Case workers arrange for, or provide job training, child care, transportation, counseling, and other social services as necessary, to assist clients to achieve self-support through employment. The major program in this component is the Job Opportunity and Basic Skills Training Program (JOBS); a primary aspect of welfare reform initiatives passed by Congress with the Family Support Act.

JAN HANSEN, DIRECTOR
DIVISION OF PUBLIC ASSISTANCE
464-3347

DIVISION OF MEDICAL ASSISTANCE

GENERAL INFORMATION

The division's primary goal is to enable needy Alaskans to access medical care through the same network of medical providers servicing the general population, and to conduct medical surveillance to assure that the medical services provided are appropriate and of the proper duration for the illness involved.

To achieve this goal, the division's primary objective is to maintain medical payment policies and timeframes that encourage medical professionals to accept medical assistance clients, yet result in a program scope that is affordable within state budget limits. This balance between fiscal constraint and reasonable access to needed medical care is an on-going division focus.

PROGRAM SUMMARIES

Medicaid - Persons are automatically eligible for Medicaid if they receive financial assistance from Aid to Families with Dependent Children (AFDC), Old Age Assistance, Aid to the Blind, Aid to the Disabled, or the Federal Supplemental Security Income Program. Other eligibles include foster children, mental health inpatients under 22 or over 65 years of age, certain nursing home residents, and all low income children under age 6 who are not eligible for AFDC because of income. Federal law permits each state to define the scope of its Medicaid program. The Alaska Legislature by statute (AS 47.07.020 and AS 47.07.030) identifies the eligible groups and medical services which the Medicaid program covers in Alaska.

General Relief Medical (GRM) - GRM covers poor adults who do not qualify for Medicaid because they are not blind, disabled, or over the age of 65. GRM is 100 percent state funded and until FY 86 offered the same general scope of medical services as Medicaid. However, in FY 87 major reductions in GRM services were approved by the legislature. The program was to cover only the costs of major medical non-elective inpatient hospital care, pregnancy related services, and prescribed drugs and limited physician visits for a small group of citizens with specific serious medical

conditions.

The FY 91 Medical Assistance budget purchases a wide range of medical services. These services include but are not limited to hospital services, physician services, nursing home services, prescribed drugs and medicals supplies, dental care, eyeglasses, nurse-midwife services, medical transportation, home health services, family planning, rural health clinics, and treatment for speech, hearing, and language disorders.

In any given month during FY 91, nearly 33,000 Alaskans are eligible to receive medical care under these programs. From 11,000 to 12,000 of these Alaskans will actually receive medical care each month. Approximately 60 percent of all persons served by the division are children, most of whom are also receiving state financial assistance under AFDC. Except for those persons requiring nursing home care and GRM hospital services, medical care is provided at no cost to the recipient.

Certification and Licensing - The certification and Licensing section's primary function is to perform the annual inspection of over 50 health facilities including all hospitals, nursing homes including the nursing wing of each pioneer home, home health agencies, rural health clinics, ESRD centers, Freestanding Birth Centers, mobile X-Ray, outpatient physical therapy services, speech pathology services, occupational therapists and physical therapists in independent practice, and surgery centers to insure these facilities comply with the health and safety requirements of state and federal law. This component licenses Alaska facilities for all medical services provided, not just those purchased by the Medical Assistance Division. In addition, this section is responsible for prior authorization of all Medicaid nursing home admissions and for conducting an annual inspection of care of each Medicaid-eligible individual in each nursing home.

**KIM BUSCH, ACTING DIRECTOR
DIVISION OF MEDICAL ASSISTANCE
465-3355**

DIVISION OF PUBLIC HEALTH

GENERAL INFORMATION

The Division of Public Health is responsible for administration of the following programs:

1. Public Health Nursing Services
2. Epidemiology
3. Maternal, Child, and Family Health
4. Public Health Laboratory
5. Emergency Medical Services
6. Vital Statistics
7. Health Grants

The division provides public health services through state-staffed public health centers and clinics. The division has staffed-services in the following locations:

<u>SOUTHEAST</u>	<u>SOUTHCENTRAL</u>	<u>NORTHERN</u>	<u>WESTERN</u>
Craig	Anchorage	Fort Yukon	Bethel
Haines	Homer	Fairbanks	
Juneau	Kenai	Galena	
Ketchikan	Kodiak	Delta	
Petersburg	Seward	Tok	
Sitka	Dillingham	Glennallen	
Wrangell	Wasilla	Valdez/Cordova	
	Palmer	McGrath	

The division also provides grants to the following regional agencies for services listed:

Maniilaq Association - public health nursing, community health aide training and supervision, audiology, eye care, residential prenatal care, and emergency medical services;

Norton Sound Health Corporation - public health nursing, community health aide training and supervision, audiology, eye care, emergency medical services, health clinic, infant learning, and WIC;

Tanana Chiefs Conference - Community health aide training and supervision;

Yukon Kuskokwim Health Corporation- community health aide training Corporation and supervision, emergency medical services, and WIC;

Southeast Alaska Regional Health Corporation - community health aide training Health Corporation and supervision, and WIC;

Municipality of Anchorage - public health nursing; and

North Slope Borough - public health nursing.

During FY 91, the division estimates 250,000 individuals will be screened, tested, immunized, treated, and counseled. Though this is not an unduplicated count, a conservative, unduplicated estimate is that 190,000 individuals will be served. In addition, 460,000 laboratory tests will be performed, 120 radiation sources will be inspected, and 254 communities will be provided services through grants for clinics, health aides, health observers, and trained emergency medical technicians.

PROGRAM SUMMARIES

Public Health Nursing Services - Nursing services statewide provide a major portion of the division's service delivery for health assessment, health promotion, and disease prevention. Public health nurses provide screening, testing, immunizations, and treatment. Nursing also provides home health aide and skilled home health nursing services to individuals. The Municipality of Anchorage community services grant and the North Slope Borough public health nursing grant are funded from the nursing component.

Epidemiology - The Section of Epidemiology identifies, plans, and implements appropriate morbidity and mortality prevention activities in order to control infectious disease outbreaks, chronic diseases, injuries, and exposure to hazardous materials. This section is responsible for surveillance of infectious diseases and for controlling disease outbreaks. Epidemiological programs include AIDS and sexually transmitted disease control, tuberculosis

control, and immunizations. The section also acts as the research core for the division, performing studies and investigations tied to federal and international programs.

Maternal, Child, and Family Health - The programs administered by this component include Maternal and Adolescent Health, Child Development Services, Handicapped Children's Program, Communicative Disorders, Nutrition, Education, WIC, and Genetics Counseling. These programs are aimed primarily at preventing illness and the long-term effects of handicapping conditions, and providing rehabilitative measures for children. Staff are working with the Governor's Council for the Handicapped and Gifted to develop an early intervention service plan that is required by a grant from the federal Department of Education based on the Education of the Handicapped Act, 1986 amendment.

Public Health Laboratory - Provides and coordinates diagnosis, reference, consultation and training in microbiology, immunology, and virology statewide through three regional laboratory facilities. The Public Health Laboratories establish standards for testing, provide diagnostic support for early detection and surveillance, and provide services to other departments. Radiological Health provides registration and inspections of x-ray equipment statewide, maintains a statewide radon monitoring and data collection program and provides radiological expertise to State programs and to the Legislature.

Emergency Medical Service Certification and Licensing - EMS Certification and Licensing provides certification for Emergency Medical Technicians (EMTs), EMT instructors, ambulance services, air ambulances, and medevac services. The section also provides overall planning, education, and coordination for a comprehensive statewide emergency medical services system. This section works with the State Advisory Council on EMS to review EMS capital grants and operating grants. An injury prevention office has been established to promote involvement of EMS providers in injury prevention activities. The major goal of the EMS program is to reduce deaths and disabilities resulting from injuries and acute illnesses by immediately accessing and stabilizing patients, and transporting them to the best available medical facility.

Bureau of Vital Statistics - The Bureau of Vital Statistics has two primary functions. The Bureau records, safeguards and

certifies copies of records of vital events (births, deaths, marriages, divorces and adoptions) for residents of and visitors to Alaska. The Bureau also compiles, analyzes and publishes statistical data obtained from records of vital events. This information is used by health professionals and officials in Alaska as well as other states and the federal government to help identify needs and establish policy direction for public health initiatives. Critically important, and but a small section of the scope of the many issues involved, are issues like infant mortality and suicide. Among many other uses, vital statistics are crucial in identifying the nature and extent of alcohol- and drug-related death; quantifying the nature and causes of death by injury, Alaska's number one killer; designing and tracking the efficacy and efficiency of state and federal health and prevention programs; and estimating the size and distribution of population changes.

HEALTH GRANTS - The following are health grants administered by the Division of Public Health:

Infant Learning Grants - The Infant Learning Program provides grants to nonprofit organizations that offer home-based early intervention specialized education services to infants 0 to 3 years of age who have moderate to severe mental or physical handicapping conditions. The program is a medically oriented learning program for children not yet old enough for special education offered through the school districts. There are currently 24 programs statewide that provide services with approximately 1,000 children served.

Community Health Grants - This component provides grant assistance for operational support of community-based health care service programs. This support consists of 15 grants for the Assistance to Community Health Facilities Program, which subsidize fee-for-service clinics staffed by physician assistants and nurse practitioners; and 9 grants to regional health corporations for the Community Health Aide Training and Supervision Program.

Regional Emergency Medical Services (EMS) Support - Grants are awarded to regional EMS programs to maintain and develop comprehensive EMS systems and to give all types of emergency medical training. Mini-grants to volunteer ambulance services are made for maintenance and repair, equipment purchases,

technician training, and general operating costs.

Health Promotion - This component provides grants to local health agencies and community organizations for project development in the areas of health education that emphasize accident prevention, cancer risk awareness and detection, avoidance of tobacco use, and community health education. Funding for this program is supported by the federal Preventive Health and Health Services Block Grant. Currently there are 8 projects providing services statewide.

**AL ZANGRI, ACTING DIRECTOR
DIVISION OF PUBLIC HEALTH
465-3090**

DIVISION OF MENTAL HEALTH AND DEVELOPMENTAL DISABILITIES

GENERAL INFORMATION

The Division of Mental Health and Developmental Disabilities provides services through the following programs:

1. Community Mental Health Grants
2. Community Developmental Disabilities Grants
3. Acute Inpatient Psychiatric Services
4. Intermediate Care for the Mentally Retarded at Harborview
5. Administration and Support

At present there are two institutional facilities operated by the division: Harborview Developmental Center, an Intermediate Care Facility for the Mentally Retarded, located in Valdez; and Alaska Psychiatric Institute, an acute-care psychiatric hospital located in Anchorage.

There are Mental Health Administrative Offices located in Anchorage, Fairbanks, and Juneau. Persons involved in Client Program Management for Developmental Disabilities Service also are located in these offices. The Central Office is located in the Alaska Office Building in Juneau.

The Division of Mental Health and Developmental Disabilities offers individualized services through 36 grants with private agencies within the state. These agencies provide services which enhance the quality of life and improve the functional level of developmentally disabled persons.

During FY 91, the Division of Mental Health and Developmental Disabilities is funding, through grants, 30 community mental health centers throughout Alaska. These are locally controlled and operated programs, some of which are combined with alcohol and drug abuse services. The division also is funding seven specialty programs providing youth day treatment, crisis/respite services, vocational services to severely mentally ill adults, and a crisis line. In addition, the Division provides funding for three education, advocacy, and support programs

The Community Mental Health Centers provide primarily outpatient treatment with inpatient services available on a short-term, emergency basis at local hospitals. Programs vary in size and sophistication from one-staff clinics to comprehensive centers providing specialized programs for Natives, children, the elderly, and the severely mentally ill. These grants to CMH Centers provide services designed to prevent institutionalization of the mentally ill through treatment and support in an out-patient setting.

In addition to these programs, the division is providing funding for 68 other community mental health programs: 46 village-based suicide prevention programs, 10 peer counselor programs, one prevention program, three village research and demonstration programs, and eight mental health housing programs for severely mentally ill adults. Another two housing programs will be funded later in FY 91. Nineteen of these programs are funded through Community Mental Health Centers, and 49 are funded through other agencies.

PROGRAM SUMMARIES

Community Mental Health Centers - During FY 91 the Division of Mental Health and Developmental Disabilities is providing funds by grants and contracts to 34 community mental health centers throughout Alaska. These are locally controlled and operated programs. Programs vary in size and sophistication from one-staff-person clinics to comprehensive centers.

Svcs/Chronically Mentally Ill - This program provides a comprehensive array of case management, day treatment, medication management, counseling and support, vocational, recreational, outreach, and housing programs for severely mentally ill adults. This program also provides Adult Residential Services. It funds board and care facilities and adult foster care for severely mentally ill adults.

Community Developmental Disabilities Program - This fiscal year, the Division of Mental Health and Developmental Disabilities is funding 36 grants with agencies throughout the state to provide services designed to provide support, foster independence, enhance the quality of life, and improve the functional level of developmentally disabled persons. These services and others are

determined by the individual needs of the person requesting services.

Alaska Psychiatric Institute - The Alaska Psychiatric Institute continues to be the only publicly owned and operated psychiatric hospital in Alaska. It is licensed for 160 beds; however, the daily census has remained below this level due to active discharge planning. The facility remains a multi-purpose institution that serves (1) the acutely disturbed patient, (2) the chronic patient requiring long-term care, (3) children and adolescents, (4) the criminally committed patient, (5) those found incompetent to stand trial, (6) those found guilty by reason of insanity, (7) mentally ill prisoners transferred from correctional centers, (8) and persons found guilty but mentally ill.

Harborview Developmental Center - Harborview Developmental Center in Valdez is a licensed intermediate care facility for the mentally retarded and has a capacity of 64. It is considered to be one of the best state owned facilities in the nation. Its developmental model (as opposed to medical model) is progressive and has helped pave the way for discharging over 100 clients in the last 15 years. Harborview also is unique in that the local public school along with harborview staff offer a comprehensive school program to all Harborview clients.

In FY 87, a 16 bed intermediate care facility was opened on one of the wings left vacant by deinstitutionalization. This wing (named Sourdough Place) serves older mentally ill persons who qualify medically for nursing home placement. People are admitted to Sourdough Place only from API.

Alaska Youth Initiative - This program, newly created in FY 88, is designed to safely return youth who are now placed out-of-state for treatment purposes and to serve in-state youth who are as dysfunctional as those who are now in out-of-state placements. This program is managed by the Division of Family and Youth Services, the Division of Mental Health and Developmental Disabilities, and the Department of Education to ensure that severely mentally ill, abused, delinquent, and behavior disordered youth will receive required, coordinated services in their own communities. This program serves as a successful, cost effective "institution without walls" for the 75 most difficult mentally ill adolescents and children in Alaska. Highly individualized service

plans are developed for each youth and child-specific flexible funding is based on the plan.

Advocacy and Public Education - This program provides funding for advocacy and public education agencies to assist them in providing support and education to the public. The program provides funds for the Alaska Mental Health Association, the Alaska Alliance for the Mentally Ill, and the Mental Health Consumers of Alaska.

Peer Counselors - This program provides funding for 10 peer counseling programs. These programs provide training and support to high school students, who in turn provide limited counseling to troubled fellow students and referral for professional help as needed. This program was new in FY 89.

Village Suicide Prevention Programs - This program provides funding to 46 rural villages to prevent suicide. The funding provides a wide variety of services determined by local need and appropriate to the local culture. This program was new in FY 89.

Mental Health Housing Project - This program provides funding for housing programs for severely mentally ill adults. The program is jointly administered by the division and the Alaska State Building Authority (ASBA). The division approves the program, and ASBA purchases repossessed housing for the program and maintains the real estate. There are eight programs currently funded, and another two programs will be funded in FY 91. This program was new in FY 89.

Village Research and Demonstration Projects - This program provides funding for three village-based projects intended to determine the best way to deliver services to rural native villages. The first research has been completed, and the programs are now providing direct service as demonstration programs. These programs will be folded into the regular Community Mental Health Center program.

MIKE RENFRO, ACTING DIRECTOR
DIVISION OF MENTAL HEALTH AND DEVELOPMENTAL DISABILITIES
465-3370

DIVISION OF FAMILY AND YOUTH SERVICES

GENERAL INFORMATION

The Division of Family and Youth Services (DFYS) administers programs which fall into two general categories:

1. Family Services - protective and support services for children, youth, and adults who are at risk of abuse, neglect, and exploitation.
2. Youth Corrections - services which promote public safety and reduce risks to citizens by preventing and correcting delinquency among youth.

The Division of Family and Youth Services programs are funded with state general funds except: Preventive Youth Services (32 percent federal), which is funded in part with both Title IV-B Child Welfare and Juvenile Justice and Delinquency Prevention funds. The division also claims Social Services Block Grant (SSBG) and Title IV-E of the Social Security Act funds for eligible social services programs that are budgeted with state general funds. SSBG funds are claimed to fund in full or partially the following discrete services: child protection homemaker support, child protection day care, child protective services, and staff development. Title IV-E funds appropriated under Public Law 96-272, the Adoption Assistance and Child Welfare Act, offset less than 1 percent of all foster care expenditures, however, because of efforts of the division in the past year to claim more IV-E funds, that percent is gradually increasing.

The division provides directly or arranges through private providers a continuum of prevention, early intervention, and treatment services for children, youth, and adults. Services are designed to break the cycles of neglect, abuse, exploitation, delinquency, and dependency. Some services (social work, licensing, probation, and institutional staff) are provided by the division while other services are purchased through grants with private providers (Norton Sound, Kawerak, and Maniilaq) and municipalities (Anchorage and Fairbanks).

The division provides services statewide through 49 offices

and five youth facilities. The total number of division staff requested in the Governor's FY 91 budget is 597 full-time and 14 part-time.

PROGRAM SUMMARIES

Purchased Services - This represents a range of preventive services which are purchased from community-based agencies and organizations. Services are designed to address personal and family problems which, if unattended, may result in child abuse, neglect, or delinquent behavior, and may require direct intervention by the state. Services are designed to improve family competency prior to a breakdown, intervene at an early point in stressful crisis situation, and/or achieve changes in maladaptive behavior which could result in a recurrence of abuse, neglect, or delinquency.

Adult Services - Included are: adult protection services, including investigation of alleged abuse, adult foster care and adult residential care. Out-of-home services are purchased from private providers to enable adults who are not capable of independent living and are in danger of abuse, neglect, and exploitation to function in the least restrictive setting.

Early Intervention Services - This program includes Child Protection Homemaker, and Day Care. Child Protection Homemaker Services are purchased from the private sector to assist at-risk parents in improving the level of care to children, thereby preventing an incidence of abuse or neglect. Child Protection Day Care is purchased from private providers to assist at-risk parents in improving the level of care to children, thereby preventing an incidence of abuse or neglect.

Early Intervention Services are vital adjuncts to the overall social services continuum of care. All services are administered and allocated on a regional basis.

Foster Care - This component funds the purchase of foster care for children who must reside away from their own homes in order to be protected from neglect and abuse, and for delinquent youth requiring out-of-home care outside of a youth correction facility. Funds are also included to purchase statewide foster parent support

and training, adoption exchange services, subsidized adoptions, and to support a number of innovative foster care demonstration grants.

Residential Child Care - This program includes protective and rehabilitative residential child care services. Included are short-term emergency shelter and residential treatment for children and youth who must reside away from their homes in order to be protected from neglect or abuse or to be provided rehabilitative treatment necessary to prevent recurrent delinquency. Also included is day treatment which is an intensive daytime program of structured, supervised, rehabilitative activities for adolescents with behavioral and emotional problems who, with coordinated services to them and their families, can be maintained within their own homes or in foster care. Services are purchased from private providers through the state via a competitive grant process. When certain types of specialized treatment services are not available within the state, services are purchased from out of state providers. This program is administered and allocated on a regional basis.

Family Services - The Family Services section of the agency includes protective services that are provided by division social work and licensing staff in five regional and 36 field offices. Services include: neglect, abuse, and runaway investigation; problem identification and client assessment; crisis intervention; counseling; petitioning the court for protection of the client; arranging substitute care; adoption services; and licensing community care facilities used by dependent children and adults.

Social Services Block Grant - In January 1975, Title XX of the Social Security Act was authorized to provide financial assistance to states for social services programs. Public Law 97-35, the Omnibus Budget Reconciliation Act of 1981, amended Title XX to allow for a block grant concept and for increased state flexibility in using grant funds. The name of the Act was retitled "Title XX - Block Grants to State for Social Services" in order to reflect these changes. Because it is not possible to predetermine the level of federal block grant funds which will be authorized, the eligible social service programs are budgeted with state general funds. The Division of Family and Youth Services has identified the following discrete services for which expenditures will be claimed toward the block grant in FY 90: Child Protection Homemaker Support; Adult Protection Services; Child Protective Day

Care and Day Treatment; Child Protective Services; and Staff Development.

Youth Corrections - Services in this section of the agency are statutorily mandated services required to protect the public and to care for, supervise, and treat delinquent youth. Included are community delinquency prevention services, intake and referral from police and other agencies, court screening and intake diversion, diversion and informal and formal probation services. Also included are detention and long-term institutional services provided at the McLaughlin, Fairbanks, Nome, Bethel, and Johnson Youth Facility programs.

**RUSS WEBB, ACTING DIRECTOR
DIVISION OF FAMILY AND YOUTH SERVICES
465-3170**

DIVISION OF ALCOHOLISM AND DRUG ABUSE

GENERAL INFORMATION

The Division of Alcoholism and Drug Abuse (ADA) was established by AS 47.37.020, and is responsible for administering:

1. Alcohol Abuse Programs
2. Inmate Substance Abuse Programs
3. Alcohol Safety Action Program
4. Alcohol Prevention Programs
5. Federal block grant allocation of prevention and treatment
6. Drug Abuse Programs
7. Youth Substance Abuse Programs
8. Inhalant Abuse Services
9. AIDS Intervention Program

The Division conducts statutorily mandated services through the grant-in-aid process (AS 47.30.475 -- 47.30.500). Sixty-eight nonprofit, municipal, and public agencies provide direct service through 104 separate ADA grants which employ 693 individuals statewide. The Division maintains grant files, provides administrative support, and technical assistance as well as program monitoring of all state funded programs to insure compliance with all state rules and regulations regarding the grant-in-aid process as well as federal laws and regulations pertaining to block grant funds. Grantees are field surveyed annually with fiscal audits conducted on a biennial or annual basis. The ADA maintains three offices, one located in Juneau with 10 employees, and two in Anchorage with 20 employees. The Juneau office serves as the administrative, budgetary, planning, policy analysis, program development, and fiscal control point. One of the Anchorage offices serves as the monitoring and technical assistance portion of the operation, while the other is the Alcohol Safety Action Program (ASAP) office. This section coordinates statewide court system alcohol and misdemeanor services, provides alcohol and misdemeanor screening, monitoring services for the Anchorage Court System, and provides technical assistance, training, and on-site reviews of statewide court services. This office was formerly with the Alaska Court System and was transferred via revised program to the ADA during FY 87.

PROGRAM SUMMARIES

Drug Abuse Grants - All state funded drug programs are funded out of this component. This component funds 20 agencies for drug prevention and treatment. These programs provide information, education, recreational activities, out-patient detoxification, methadone maintenance, drug-free counseling, intermediate care, residential drug-free therapeutic community information, intervention, and outreach services to clients. AIDS prevention and intervention services are coordinated with the Division of Public Health.

Alcohol Abuse Grants - Funds are awarded to agencies around the state to provide alcohol abuse and alcoholism prevention, intervention, and treatment services. There are approximately 53 alcohol funded agencies including Inmate Substance Abuse programs. These agencies provide education, emergency care, outpatient care, outreach, intermediate care, after-care, corrections services, detoxification, counseling, referral services, and community patrol services as well. These comprehensive grants are for services designed and requested by the communities they serve.

**LOREN A. JONES, DIRECTOR
DIVISION OF ALCOHOLISM AND DRUG ABUSE**

DIVISION OF ADMINISTRATIVE SERVICES

GENERAL INFORMATION

The Department of Health and Social Services provides an array of administrative and management support functions: the Medicaid Rate Commission, the Commissioner's Office, Audit Unit, Office of Personnel and Payroll, Governor's Council on the Handicapped and Gifted, Division of Administrative Services, Administrative Services Data and Word Processing, Planning, and Facilities.

In FY 89 the Alaska Mental Health Board was established within the DHSS Administrative Services Budget Request Unit.

Administrative functions are funded primarily with state general funds. Services are provided directly by department staff in offices located in Juneau, Anchorage, and Fairbanks. However, most services are provided primarily through the department's central office in Juneau. The Commissioner's Office, the Division of Administrative Services, the Office of Personnel and Payroll, and the Planning Unit have regional offices in Anchorage. The entire staff of the Medicaid Rate Commission is located in Anchorage, while the staff of the Governor's Council on Handicapped and Gifted is in Fairbanks.

These activities primarily support the program divisions and offices in achieving their immediate and long term goals of serving needy and vulnerable Alaskans. External services are provided in a number of areas: health facility construction licensing, Certificate of Need review, grant management, and technical assistance to capital grantees, planning for services for the handicapped, and recruitment, examination, and certification of people interested in jobs with the department (over 3,000 applications processed during FY 87).

SPECIFIC SUPPORT SERVICES

Medicaid Rate Commission - A five member body appointed by the Governor to set hospital, nursing home, and outpatient clinic rates in Alaska facilities for Medicaid and General Relief Medical recipients. The commission is composed of a physician, a hospital

administrator, a certified public accountant, a consumer, and a member of the state administration.

Governor's Council for the Handicapped and Gifted - Composed of 20 members who are appointed by the Governor and who represent persons with handicaps, principal state agencies, and private providers. The federally mandated council serves as a forum and an advocate for coordinated delivery programs for the handicapped and as principal planning agency for development of appropriate services. In FY 88, the council was given the added responsibility of serving as the Interagency Coordinating Council (ICC) under Public Law 99-457 and the governing board of the Special Education Services Board under AS 14.30.

Alaska Mental Health Board - Composed of 12 members appointed by the Governor. This board was established in FY 88 with passage of CSHB 92 for the purpose of assisting the department to ensure an integrated and comprehensive mental health system throughout the state.

Commissioner's Office - The Office of the Commissioner represents the Governor on health and social services issues and provides executive leadership in fulfilling the Governor's goals. It defines and clarifies policy, has final review authority for programs, provides a unified focus for management direction and program coordination, and represents the department in dealing with private providers, federal delegations, the legislature, and advisory boards.

Audit - The Audit Unit conducts fiscal and compliance audits of the state's Medicaid providers (hospitals and nursing homes); performs audits in compliance with the state's single audit requirement for qualifying DHSS grantees and contractors who are unable to pay for single audits without reducing direct services to clients; and conducts fiscal and compliance audits of DHSS grantees and contractors who do not fall under the single audit requirement. Audit provides technical assistance to the administration and to grantees. In FY 88, the unit began tracking and reconciling single audits performed by outside CPA firms for DHSS providers.

Personnel and Payroll - The Office of Personnel and Payroll is the basic administrative unit responsible for personnel

management within the department. Procedural functions include initiate and maintain personnel, payroll, leave, training, and related records. Programmatic functions include labor relations, position classification, employee development, manpower planning, recruitment, examination, and eligible list certification, and staff consultations. The office maintains records on more than 1800 positions in more than 50 geographic locations.

Budget and Finance - The Division of Administrative Services provides a full range of administrative, supply, budget, data processing, and financial services to the department. It provides technical budget support to the department as well as management guidance and analysis to the Commissioner's Office. It is responsible for analyzing, monitoring, and controlling the department's annual operating and capital budgets, budget amendments, revised programs, supplementals, and fiscal notes. It is also responsible for departmental financial procedures, processing, and control; position authorization control; claiming and reporting in excess of \$100 million in federal and other funds annually; procurement, property inventory, and leasing and facility acquisition; and contract policies and procedures and processing.

Planning and Development - This component engages in health and social services planning and research, Certificate of Need (CON) administration, health facilities construction licensing and health facility revenue sharing certification. In accomplishing these tasks, the staff works closely with other divisions in the department, local, state, and federal government agencies and other interested agencies.

In FY 88, the Division of Planning was dismantled. Both the planning and capital project management functions were consolidated within the Division of Administrative Services, while the responsibility for administering the Vital Statistics registry and reporting functions was transferred to the Division of Public Health.

The Facilities component provides capital improvement planning, capital grant administration for the department, inventory of health facilities, revenue sharing certification for health facilities and the regulatory function of construction licensing of health facilities.

JANET CLARKE, DIRECTOR
DIVISION OF ADMINISTRATIVE SERVICES
465-3082

TABLE OF CONTENTS

	PAGE
DIVISION OF PUBLIC ASSISTANCE.....	1
General Information.....	1
Program Summaries.....	2
Aid to Families with Dependent Children.....	2
General Relief.....	2
Adult Public Assistance.....	2
Old Age Assistance - Alaska Longevity Bonus Hold Harmless.....	3
Energy Assistance Program.....	3
Permanent Fund Dividend Hold Harmless.....	3
Food Stamps.....	4
Alaska Work Programs.....	4
Jan Hansen, Director.....	4
DIVISION OF MEDICAL ASSISTANCE.....	5
General Information.....	5
Program Summaries.....	5
Medicaid.....	5
General Relief Medical.....	5
Certification and Licensing.....	6
Kim Busch, Acting Director.....	6
DIVISION OF PUBLIC HEALTH.....	7
General Information.....	7
Program Summaries.....	8
Public Health Nursing Services.....	8
Epidemiology.....	8
Maternal, Child, and Family Health.....	9
Public Health Laboratory.....	9
Emergency Medical Service Certification and Licensing.....	9
Bureau of Vital Statistics.....	9
Health Grants.....	10
Infant Learning Grants.....	10
Community Health Grants.....	10
Regional Emergency Medical Services (EMS) Support.....	10
Health Promotion.....	11
Al Zangri, Acting Director.....	11

DIVISION OF MENTAL HEALTH AND DEVELOPMENTAL DISABILITIES..	12
General Information.....	12
Program Summaries.....	13
Community Mental Health Centers.....	13
Svcs/Cronically Mentally Ill.....	13
Community Developmental Disabilities Program....	13
Alaska Psychiatric Institute.....	14
Harborview Developmental Center.....	14
Alaska Youth Initiative.....	14
Advocacy and Public Education.....	15
Peer Counselors.....	15
Village Suicide Prevention Programs.....	15
Mental Health Housing Project.....	15
Village Research and Demonstration Projects....	15
Mike Renfro, Acting Director.....	15
DIVISION OF FAMILY AND YOUTH SERVICES.....	16
General Information.....	16
Program Summaries.....	17
Purchased Services.....	17
Adult Services.....	17
Early Intervention Services.....	17
Foster Care.....	17
Residential Child Care.....	18
Family Services.....	18
Social Services Block Grant.....	18
Youth Corrections.....	19
Russ Webb, Acting Director.....	19
DIVISION OF ALCOHOLISM AND DRUG ABUSE.....	20
General Information.....	20
Program Summaries.....	21
Drug Abuse Grants.....	21
Alcohol Abuse Grants.....	21
Loren A. Jones, Director.....	21

DIVISION OF ADMINISTRATIVE SERVICES.....	22
General Information.....	22
Specific Support Services.....	22
Medicaid Rate Advisory Commission.....	22
Governor's Council for the Handicapped and Gifted.....	23
Alaska Mental Health Board.....	23
Commissioner's Office.....	23
Audit.....	23
Personnel and Payroll.....	23
Budget and Finance.....	24
Planning and Development.....	24
Janet Clarke, Director.....	25