

**H J R**

**64**

SENATE STATE AFFAIRS COMMITTEE

BILL NUMBER <sup>CS</sup> HJR 64

SPONSOR ULMER

BILL TITLE

DATE REFERRED 1-30-90

HEARING SCHEDULED 2-5-90

FISCAL NOTE PREPARED

SPONSOR CONTACTED Katy ✓

INTERESTED PARTIES CONTACTED

OTHER

DATE: January 30, 1990

FURTHER:

DATE TURNED INTO OFFICE: \_\_\_\_\_

State Affairs \_\_\_\_\_ Committee considered CSHJR 64 (State Aff) am

Relating to the placement of a geographically correct Alaska on national maps.

and recommended:

- replace with C CS CS HJR 64  same title
- or adopt \_\_\_\_\_ CS \_\_\_\_\_  new title
- attached amendment(s)  technical title change (HB only)
- \_\_\_\_\_ letter of intent adopted

do pass

do not pass

no recommendation

individual recommendations

further referral to \_\_\_\_\_

ATTACHES NEW FISCAL NOTE(S):  
Dept/Date:

fiscal note(s) \_\_\_\_\_  
\_\_\_\_\_

zero fiscal note(s) \_\_\_\_\_  
\_\_\_\_\_

appropriation-no fiscal note

APPROVES PREVIOUS:  
Dept/Date:

fiscal note(s) \_\_\_\_\_  
\_\_\_\_\_

zero fiscal note(s) \_\_\_\_\_  
\_\_\_\_\_

Governor's bill w/fiscal note

SIGNING DO PASS:

Tom Kell  
\_\_\_\_\_  
Max Kirk  
\_\_\_\_\_  
Alie Adams  
\_\_\_\_\_  
\_\_\_\_\_  
\_\_\_\_\_

OTHER RECOMMENDATIONS:

\_\_\_\_\_  
\_\_\_\_\_  
\_\_\_\_\_  
\_\_\_\_\_

Fred Touchette do Pass  
\_\_\_\_\_  
Chair: Signature and Recommendation

DRAFT #2

PAT HAS OK'D —

Amend by adding:

(Following line 11, Page 1 add:) WHEREAS Alaska encompasses an area of 365 million acres, one-fifth of the total land area of the continental United States and is the largest state in the United States; and

NEW

Amend by adding: 20

(Following line ~~18~~, Page 1 add;) WHEREAS geographic illiteracy has become a serious concern for the American people and has been identified as a priority in educational program development; and

Amend by changing:

(Line 29, Page 1) size, (and) proportion, or accompanied with a scale reflecting proportion, and location.

SB

Terri  
Barnister:  
Legal

JEANNE —

We need a DRAFT CS reflecting these changes as written. I have a message w for Terri Barnister to call but with STATE AFFAIRS all afternoon I know I'll miss her call — so I left my name and your name. Could you read the changes to her over the phone if I'm not here. We need ASAP. THANKS,

## FISCAL NOTE

**REQUEST:**

Revision Date: 2/5/90  
 Title: Location of Alaska on Maps  
 Sponsor: Ulmer  
 Requestor: \_\_\_\_\_

Agency Affected: \_\_\_\_\_  
 BRU: \_\_\_\_\_  
 Components: \_\_\_\_\_

**EXPENDITURES/REVENUES:** (Thousands of Dollars)

OPERATING	FY 91	FY 92	FY 93	FY 94	FY 95	FY 96
PERSONAL SERVICES						
TRAVEL						
CONTRACTUAL						
SUPPLIES						
EQUIPMENT						
LAND & STRUCTURES						
GRANTS, CLAIMS						
MISCELLANEOUS						
TOTAL OPERATING	-0-	-0-	-0-	-0-	-0-	-0-

CAPITAL	-0-	-0-	-0-	-0-	-0-	-0-
---------	-----	-----	-----	-----	-----	-----

REVENUE	-0-	-0-	-0-	-0-	-0-	-0-
---------	-----	-----	-----	-----	-----	-----

**FUNDING:** (Thousands of Dollars)

GENERAL FUND	-0-	-0-	-0-	-0-	-0-	-0-
FEDERAL FUNDS						
OTHER						
TOTAL	-0-	-0-	-0-	-0-	-0-	-0-

**POSITIONS:**

FULL-TIME						
PART-TIME						
TEMPORARY						

**ANALYSIS :** (Attach a separate page if necessary)

No fiscal impact

Prepared by: Senate State Affairs  
 Division: \_\_\_\_\_

Phone: 465-3879  
 Date: 2/5/90

Approved by Commissioner: Senator Pat Pourchot  
 Agency: \_\_\_\_\_

Date: 2/5/90

**Distribution (by preparer):**

Legislative Finance  
 Legislative Sponsor  
 Requestor  
 Office of Management and Budget  
 Impacted Agency(ies)

## FISCAL NOTE

**REQUEST:**

Revision Date: \_\_\_\_\_  
 Title: Location of Alaska on Maps  
 Sponsor: Ulmer  
 Requestor: \_\_\_\_\_

Agency Affected: \_\_\_\_\_  
 BRU: \_\_\_\_\_  
 Components: \_\_\_\_\_

**EXPENDITURES/REVENUES:** (Thousands of Dollars)

OPERATING	FY 91	FY 92	FY 93	FY 94	FY 95	FY 96
PERSONAL SERVICES						
TRAVEL						
CONTRACTUAL						
SUPPLIES						
EQUIPMENT						
LAND & STRUCTURES						
GRANTS, CLAIMS						
MISCELLANEOUS						
<b>TOTAL OPERATING</b>	-0-	-0-	-0-	-0-	-0-	-0-
<b>CAPITAL</b>	-0-	-0-	-0-	-0-	-0-	-0-
<b>REVENUE</b>	-0-	-0-	-0-	-0-	-0-	-0-

**FUNDING:** (Thousands of Dollars)

GENERAL FUND	-0-	-0-	-0-	-0-	-0-	-0-
FEDERAL FUNDS						
OTHER						
<b>TOTAL</b>	-0-	-0-	-0-	-0-	-0-	-0-

**POSITIONS:**

FULL-TIME						
PART-TIME						
TEMPORARY						

**ANALYSIS :** (Attach a separate page if necessary)

No fiscal impact.

Prepared by: House State Affairs Phone: 465-4963  
 Division: \_\_\_\_\_ Date: Jan 19, 1990  
 Approved by Commissioner: W. A. "Red" Bauer Chair Date: Jan 19, 1990  
 Agency: \_\_\_\_\_

Distribution (by preparer) :  
 Legislative Finance  
 Legislative Sponsor  
 Requestor  
 Office of Management and Budget  
 Impacted Agency(ies)

A very bad map, as we know Alaska has its share of earthquakes.

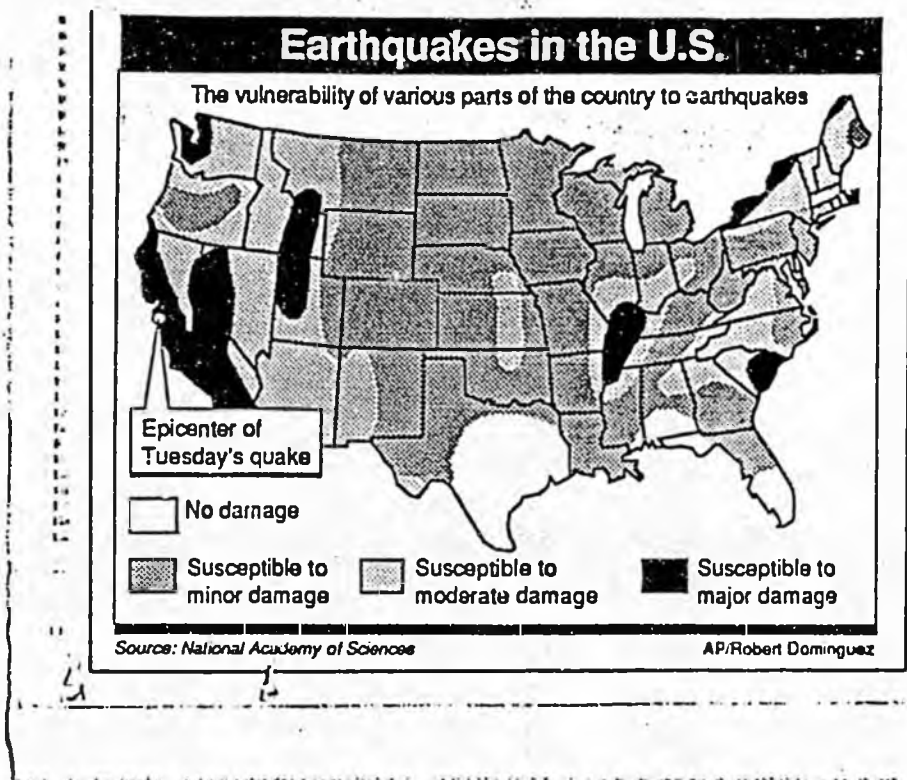
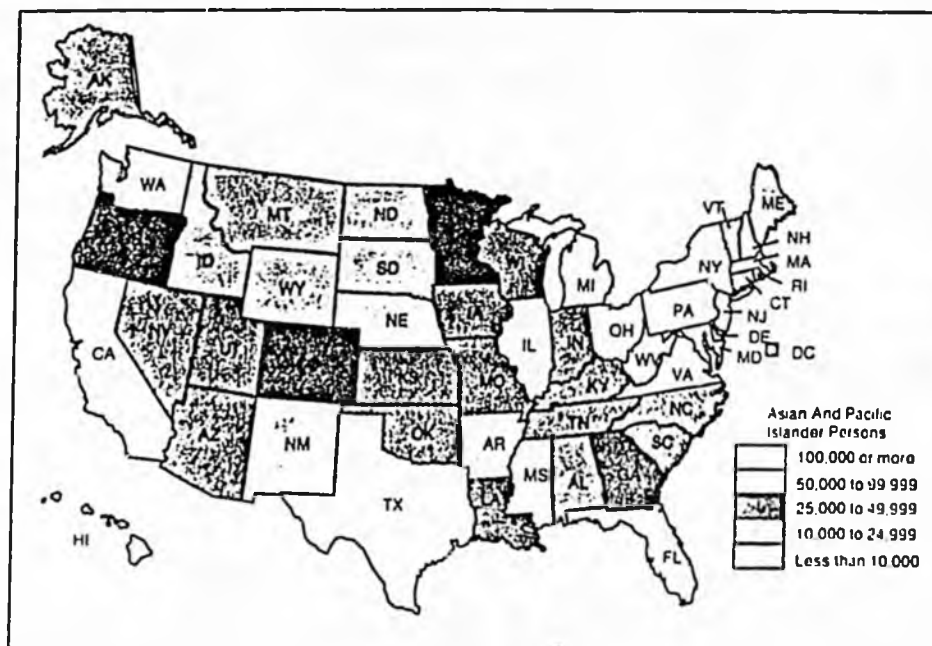


Figure 4. Number of Asian and Pacific Islander Persons by State: 1990



Finally, a very good and correct map. (It can be done.)

THE REAL SIZE OF ALASKA



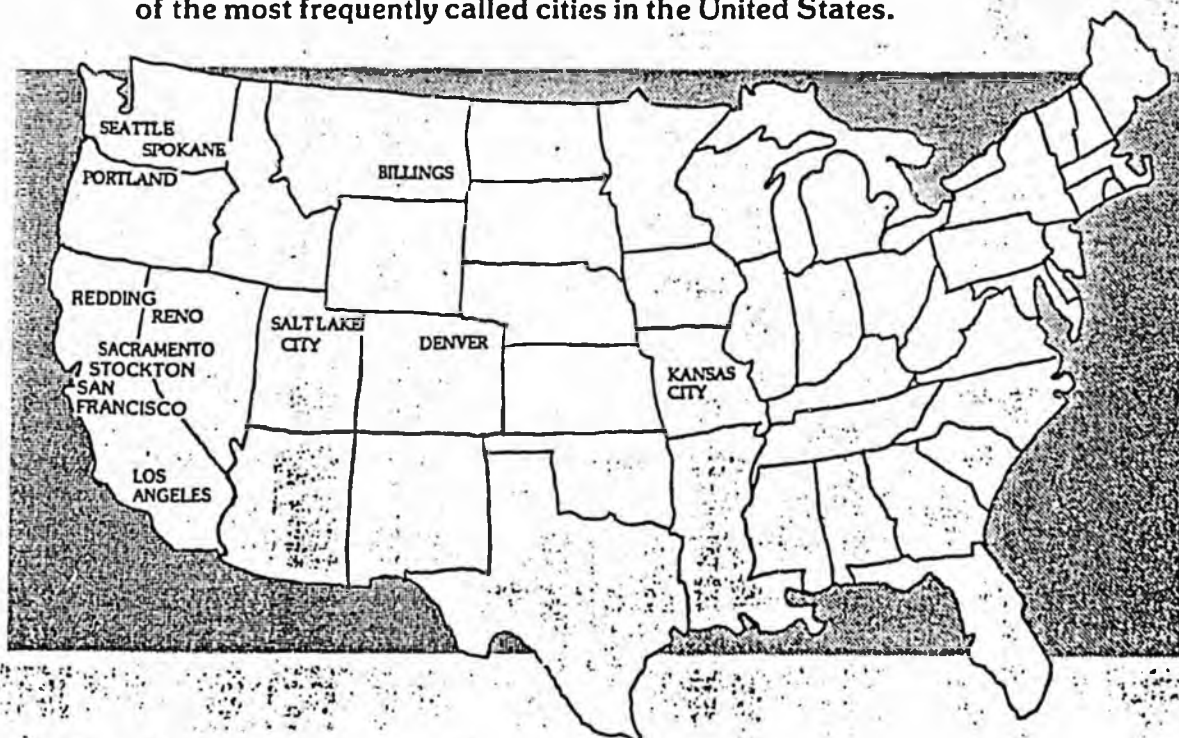
**Alaska: America's largest state**

Isn't Alaska still in the Northwest?

*Do you frequently call any of these cities?*

**EXECULINES OF THE NORTHWEST, INC. PROVIDES UP TO 40%  
SAVINGS ON CALLS MADE TO 13 CITIES**

Execulines of the Northwest, Inc., is proud to offer our exclusive "On-Net" Program to local businesses. As the only local company with its own digital network, Execulines is pleased to pass on tremendous savings on all long distance, and particularly on calls made to some of the most frequently called cities in the United States.



*PROVIDING INNOVATIVE SOLUTIONS TO OUR CUSTOMERS' LONG DISTANCE NEEDS.*



**Execulines of the Northwest, Inc.**

1333 Lincoln Suite 2 Bellingham, WA 98226 (206)676-1100 or 1-800-343-5364

Don't New Yorkers know where Alaska is?

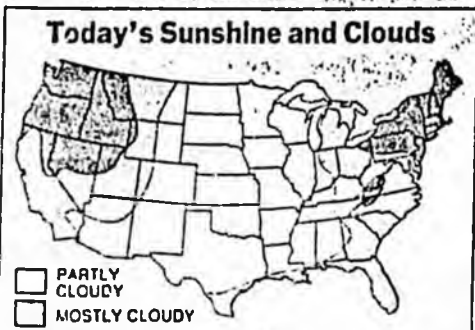
# New York Times

SUNDAY, SEPTEMBER 17, 1989

## Weather Report

Meteorology: Pennsylvania State University

### Today's High Temperatures and Precipitation



### Weather Highlight

Powerful Hurricane Hugo will threaten the Virgin Islands and Puerto Rico today and tonight. Conditions will improve slowly in the Leeward Islands.

**Hurricane Hugo: Next 36 Hours**  
 MODERATE RISK  
 HIGH RISK  
 OVER-NIGHT  
 EARLY TODAY  
 DOMINICA  
 MARTINIQUE  
 ST. LUCIA  
 ST. VINCENT

ern Pacific. San Francisco reported thunder and rain, an uncommon event in September.

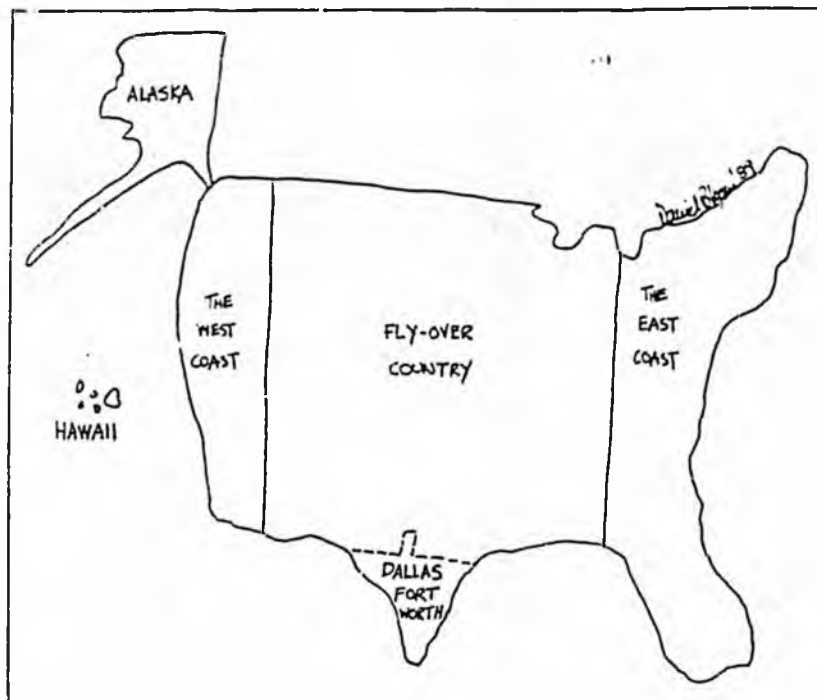
Only once in five years do thunder-

storms occur along the northern coast of California. This month is usually one of the warmest and driest for the region. More showers are expected for today

along the coast with the first snow of the season likely to fall in the northern Sierras tomorrow as very cold air aloft pushes itself inland.



## INSIDE THE BELTWAY



### Geography lesson

Dan Bloom is a Juneau journalist who was a cartoonist for The Washington Star and ex-editor of an Alaska weekly newspaper. But mostly he is a man with a cause. He wants to put his state on the map at least roughly where it ought to be: northwest of Washington state.

"A lot of maps in newspapers tend to leave Alaska off entirely or put it in a box south of California," he complained by phone the other day. Obliging, he sent a hand-drawn map (above) to show the way he thinks the media's maps should look. Sort of.

Dan is not an unreasonable man. He recognizes the space problems that newspaper makeup men face. "You could probably take a little out of South Dakota and Iowa if you needed to make room," he said. "That's all flyover country anyhow. Or maybe a chunk of Texas."

And since Alaska is one-fifth the size of the Lower 48, he doesn't expect it to be in scale.

What worries Dan is kids like the 10-year-old girl in Michigan who heard about his campaign and put Alaska northwest of Washington on a geography test. The teacher marked it wrong and told her, "Alaska belongs in a box off California."

A resolution asking mapmakers and editors to stop "mismapping Alaska" will be introduced in the state legislature next month. Attempts to canvass members of Alaska's congressional delegation yesterday were unavailing. They were either traveling or back home, and who can blame them? With the weather we've been having, wouldn't you rather be sunning yourself in Baja California — even in a box?

# Reporters from Outside become accidental tourists

1/16/90

By DUSTY RHODES  
Daily News reporter

Anchorage, Alaska

**U**sed to be, the only time Alaska got mentioned on the national morning news was when the weatherman was desperate to fill his segment. He might mention the snowfall in Anchorage by gesturing to a framed, miniature outline of our state, leading sleepy Americans to believe that Alaska is an island about one third the size of Texas, kept in a box off the coast of California.

But during the past year and a half, the national media have been forced to give Alaska more attention than rare, random reports on snowfall. Between the trapped whales and the cold wave and the oil spill and Mount Redoubt, Alaska has probably got more media attention in the past 15 months than in the previous 15 years.

Granted, most of this recent Alaska news has been patently *bad* news. Even the whale rescue has been denounced as a silly, high-priced circus.

But there was a bright side to this sudden focus on Alaska. Roving reporters from Outside became accidental Alaska tourists, and some fell in love with Alaska and Alaskans. They went back to their hometowns sounding better than cruise ship brochures, talking about our apparently unique "spirit."

(Of course, since many of them hailed from smoggy, crowded, crime-riddled cities like Los Angeles, New York or Washington,

## STORY COUNT

Number of times Alaska stories appeared in major media

**THE NEW YORK TIMES**  
1988 90 (13 trapped whales)  
1989 193 (141 oil spill)

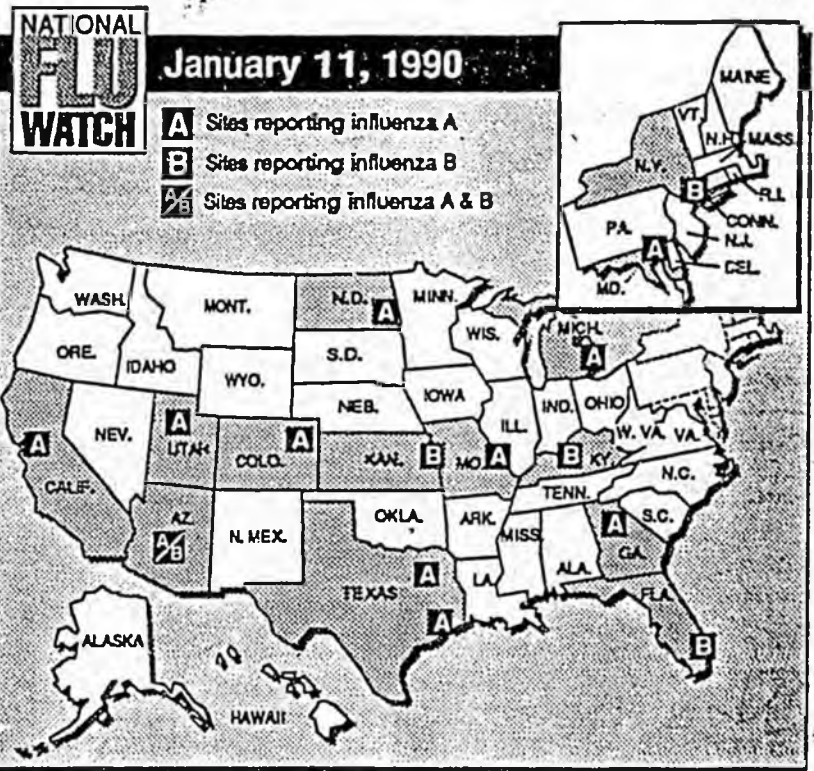
**MAJOR MAGAZINES**  
1988 60 (9 trapped whales)  
1989 120 (71 oil spill)

**NATIONAL PUBLIC RADIO**  
1987 25  
1988 37 (5 trapped whales)  
1989 125 (102 oil spill)

Sources: New York Times Index, Readers Guide to Periodical Literature, and National Public Radio.

U

Friday-Saturday, January 12-13, 1990



# Influenza hits Texas, spreads across U.S.

MR BLOOM -  
I SAW AN ARTICLE IN THE  
DETROIT FREE PRESS (10-9-86) AND 1986  
WOULD LIKE TO ADD MY SUPPORT TO  
YOUR NATIONAL CAMPAIGN TO PUT  
ALASKA ON THE MAP - WHERE IT SHOULD  
BE!  
GREETINGS FROM THE SCOGY  
METROPOLIS OF DETROIT!

Melanie A Hessens  
15333 EVANSTON  
DETROIT, MICH.  
49234

DETROIT, MICHIGAN

# Dan Bloom's mad and he's gotten USA Today to listen

By IMRE NEMETH

**W**hen Willard Scott gives the weather forecast every morning on NBC's Today Show (and in between grimaces at Bryant Gumbal), illuminated behind his athletic body is a map of the United States. All the appropriate high pressure systems, low pressure systems, warm fronts, cold fronts and storms are illustrated in graphic — although somewhat cartoony — detail.

After he points out all the hot spots and cold spots and wishes happy birthday to a few centenarians who should've died years earlier, he may lean to the left of the screen far enough so that viewers can see the last two ignored states. Usually, he pays absolutely no attention to Alaska and Hawaii and focuses on the Lower 48.

If he were to realize it, both the hot and cold spots for the nation would probably be in the 49th and 50th states.

The problem (and the point to this story) is: neither of the aforementioned states is represented geographically intact. They appear in exaggerated size and in little boxes in the lower left somewhere near Baja California. This fact is repeated on most maps purchased in this country.

Juneau resident Dan Bloom finds this altogether irritating. It's not impossible, he says, to depict the state of Alaska in its rightful position as a part of the North American continent.

Three years ago while editor of Juneau's Capital City Weekly, he took the fight to free the state from the box to the public.

The author and part-time teacher wrote an editorial calling for Juneau residents to write a letter to the national newspaper *USA Today* to convince its editorial staff of the importance of Alaska's true location. For some reason the response was strong enough to bring the editors over to Bloom's way of thinking. The current national weather maps in that publication represent Alaska as a real place -- without a box border.

"We ran a headline when they changed their policy that read, 'When Juneau talks, USA Today listens,'" Bloom said.

Subsequent campaigns to other publications weren't as successful. Bloom himself either wrote or called all sorts of major magazines and newspapers — including the New York Times, L.A. Times, Newsweek and a host of others — to enlist aid in the venture. Mostly, he met with opposition. Many were interested in the concept, even if their graphics department said it was an impossibility. His correspondence with columnists paid off. At least 25 wrote stories on the idea and many included Bloom's address as he had requested to measure the response later.

He received more than 2,000 postcards and letters from all over the country.

"One sixth grade girl wrote and said, 'I was marked wrong for putting Alaska in the Northwest. The teacher said it belonged in a box in the lower lefthand corner,'" Bloom recalled.

It's image and it suffers from being in a box, he adds.

"Since we've been a state for 30 years, you think we'd be considered part of the country," he said. "Most maps in elementary schools have Alaska in a little map south of California."

Basically, the response then, as now, from mapmakers and the news-media is that the problem is one of logistics.

The president of Rand McNally wrote Bloom and agreed in principle with his complaint but defended his industry's position saying that it was a space problem and nothing more.

"If USA Today can change its map policy then there's no problem," the Juneau resident said. "Basically, a map is a symbolic representation of a country."

Bloom hasn't been too active in his map campaigning but figures to start up again, looking to the legislature for assistance this time around

USA does it right--other publications could do it too.

14A • FRIDAY, JANUARY 12, 1990 • USA TODAY

# WEATHER ACROSS THE USA

Weather data: Weather Services Corp.

## HOW TO USE THIS PAGE

The color key shows today's high temperatures. The numbers below cities are today's forecast high and tomorrow morning's low. Temperatures are Fahrenheit.

## LEGEND

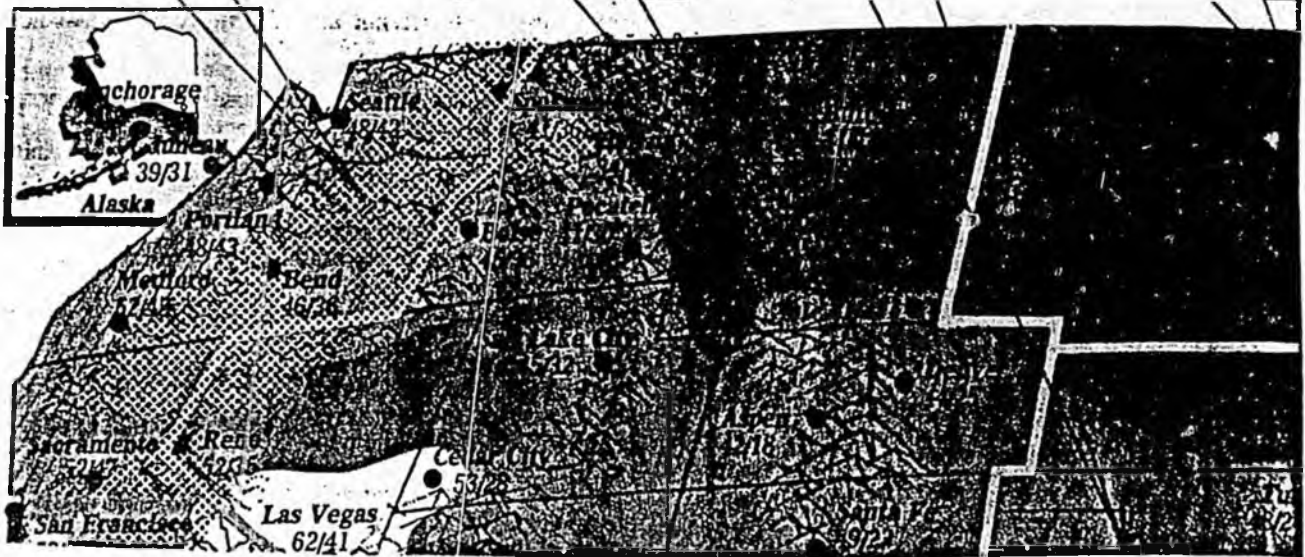
Showers  Rain 

**Pacific Coast:** Steady rain likely all day central Calif. coast into western Ore. and Wash. Showers spreading inland.

**Rockies:** Afternoon rain showers in northern Idaho, western Mont. A little wet snow in Mont. Chilly morning east of Rockies.

**South Central:** A cold morning across region except Texas, La. coasts. Sunny, pleasant day everywhere. Clear, cold tonight.

**North Central:** Sunny region. Windy morning in northern Dakotas, Minn. Windy tonight in west.



My wife and I certainly know where Juneau is. It was our pleasure along with 100 other Shriners and their ladies to visit Juneau on the first voyage this spring of the Noordam. We spent much enjoyable time on the glacier, at a salmon bake, the Red Dog Saloon, and a pleasant walk in your fine city. This was my wife's 1st visit to Alaska and my 2nd. We are looking forward to another to a great state and a great city. Did enjoy column about your problem in Fort Lauderdale News. Thought egret might be change from puffins.

Joseph Hage!in  
7527 Overlook Dr.  
Lake Worth, FL  
33463

Gulfstream Card Co. Inc. • 7801 N.W. 57 St. Miami, 33156

Yes! I support your campaign to put Alaska on the map. Last year I cut it out of my wall map and put it in its proper place. Its hard to explain to kids why its so cold in Alaska when its floating somewhere near Mexico.

Alaska sounds a beautiful place, it deserves to be on the map where it belongs. I live in Fairfax but I vacation at Harbor Beach every year. I want a postcard from there. I want one postcard from Alaska. Thank you,

lick Kilos  
5767 S. 175th St. 51253  
Riverview, FL 33411

Gulfstream Card Co. Inc. • 7801 N.W. 57 St. Miami, 33156

DEAR GOVERNOR ALASKA,  
IN JAPAN, WE  
THINK ALASKA SHOULD  
BE ON THE U.S. MAP,  
NORTH OF SEATTLE.  
OTHERWISE, WE MIGHT  
NOT BE ABLE TO FIND  
ALASKA. GEOGRAPHY IS  
IMPORTANT IN JAPAN,  
ALSO. Your friend

Makoto SATOH  
891-7 Yitukaido  
Yotsukaido CHIBA-CHEU  
JAPAN

I READ YOUR NAME IN RON HUDSFETH'S COLUMN IN THE ATLANTA CONSTITUTION. I KEEP A WALL MAP OF THE U.S.A. HUNG IN MY OFFICE. SURE ENOUGH, ALASKA IS SOUTHEAST OF CALIFORNIA. I WILL ACCEPT A POSTCARD SIZE MAP OF YOUR BEAUTIFUL STATE BUT WOULD REALLY LIKE TO HAVE SOMETHING LARGER.

THANK,  
RUSSELL ROSS  
3139 OAKCLIFF RD, 3P.  
DORAVILLE, GA. 30340

# Alaska State Legislature

## HOUSE OF REPRESENTATIVES



### REPRESENTATIVE FRAN ULMER

#### MEMORANDUM

TO: Senator Pourchot, Chairman  
Members  
Senate State Affairs Committee

FROM: Rep. Fran Ulmer

DATE: February 5, 1990

RE: HJR 64

-----

Three years ago a local Juneau editor, Dan Bloom, began a nationwide campaign to ask publications to put Alaska where it belongs on maps of the U.S., in the Northwest corner, not off the coast of California. At that time, concerned Alaskans wrote to the national newspaper *USA Today*, and convinced their editorial staff of the importance of the correct placement of Alaska on their national maps.

Subsequent campaigns to sway other publications have not been as successful, but columnists throughout the U.S. have been writing stories on this idea and have asked people to write to Dan Bloom with their comments. Already, thousands of letters of support for this idea have come to Juneau.

Last year, in a national study of high school students, an astounding number of students were found to be geographically illiterate. Considering the publications they view daily, its not surprising that they are unable to place a state 1/5 size of the country anywhere near its correct position on national maps. In a small way, HJR 64 will help America's students by asking major publications to place Alaska correctly on U.S. maps.

THE FOLLOWING DOCUMENT HAS  
NOT BEEN FILMED BUT IS  
AVAILABLE IN THE ORIGINAL  
FILE



# UPDATE

◆  
"The  
imperatives  
are clear:  
It is time  
to learn  
languages.  
It is time  
to learn  
geography."  
◆

*Virginia Governor  
Gerald L. Baliles,  
Chairman,  
National Governors'  
Association*

*Layers of life abound  
in the fragile ecosystem  
of a South American  
tropical rain forest.  
(See "Tropical Rain  
Forests: An Endangered  
Resource?" on page 10.)*

*Photograph by Loren McIntyre*



Geography Frontiers

## Alaska Alliance Holds First Summer Institute

The June skies over Anchorage, Alaska, were clear and bright as the Alaska Geographic Alliance convened its first summer geography institute. For two weeks, 31 elementary and secondary teachers from throughout the state attended classes at the University of Alaska, Anchorage. Directed by Alliance Coordinators Marjorie Gorsuch and Roger Pearson, the institute focused on the geography of Alaska and the state's relationship with the Pacific and Arctic Rims.



"I believe teachers and students should go out and experience geography firsthand, through the soles of their feet, and with all of their senses," says Pearson. Putting his ideas into practice, he led the teachers on a walk through downtown Anchorage, examining

Pacific cultural influences. They also walked to Earthquake Park to examine the impact of the 1964 quake. One class was conducted on the top floor of the tallest building in Anchorage, where the teachers used aerial and historic photographs and old maps to study changes in the urban landscape of Anchorage.

A field trip to Prudhoe Bay, sponsored by BP Exploration, highlighted the institute. Institute participants flew north past Mount McKinley to the North Slope to visit the Endicott oil-producing facilities. They stopped at the beginning of the trans-Alaska pipeline at Alyeska Pump Station #1 for a group photo. The participants observed caribou, snowy owls, and other wildlife of the tundra. A few dipped their toes in the Arctic Ocean.

Co-director Pearson declares the institute a great success—one that offered a unique experience for the participants. "How many other summer institutes are there where moose graze by the dormitories, the governor stops by for a barbecue, and the participants can have a summer solstice volleyball game in natural light at midnight?"

The institute was one of 28 alliance summer geography institutes sponsored in 1989 by the Geography Education Program and state geographic alliances. Funded by state and local contributions and by the National Geographic Society Education Foundation, these institutes focus on geography content, teaching strategies, and in-service workshop preparation. ♦

—Geoffrey Underwood

*Alaska Governor Steve Cowper, an avid supporter of geography education, visits the alliance's first summer institute.*

Photograph courtesy Alaska Geographic Alliance

## Recognition Program Focuses On Geography

Since 1982, the U. S. Department of Education has sponsored the Secondary School recognition Program, which honors exceptional public and private schools. Elementary and secondary schools are honored in alternate years. Last year, 218 of the nation's secondary schools were cited for overall excellence. For the first time, geography was emphasized last year in the nationwide competition in order to stress the need for geography to play a more prominent role in the curriculum.

"Designating geography as a special emphasis sends a signal to all schools that we need to pay more attention to geography," says Jean Narayanan, staff director of the School Recognition Program.

During the 1989–1990 school year, geography will once again be emphasized. ♦

♦  
"I believe teachers and students should go out and experience geography firsthand, through the soles of their feet, and with all of their senses."  
♦



# The Alliance Reporter

## NGS INSTITUTE REFLECTIONS

**Peg Stout**—I will never see the world through the same eyes again; I will never feel the same about being a teacher again - I attended the National Geographic Summer Institute in Washington, D.C. this summer!

My teaching career started in the autumn of 1950 in Virginia, and I've been teaching most of the time since then. The only thing that rivals my experience this summer is the two years I spent teaching in an Ethiopian boys' school.

This summer I learned that geography is more than naming and locating places on maps and globes. I learned that the dynamics of geography are alive and with us everywhere; they influence everything we do.

Geography is motion-action of people, animals, machines, water, air, and ideas. Geography is humans interacting with their environment, and we need to be aware of what is going on all over the world because everywhere is our back yard today. No longer can we afford to ignore what is happening in other parts of the world because it "doesn't concern us." We must be aware of what is happening in the world and relate it to our students in such a way that they, too, will be able to see how the mosaics of the world fit together in an exciting way that involves them.

As exciting as the information we gained was, it was nothing compared to the sense of pride and dignity that was instilled in us during that month. I came away with the feeling that teachers really are important, that



Alaska team group photo at French Embassy in Washington, D.C. during NGS Summer Geography Institute. Top: M. Keene (L) and J. Marcello; Seated, L to R: P. Stout, D. Roope, B. Lowden and L. Fry.

we can make a difference, that we must make a difference. This feeling developed because we were treated with dignity; we were professionals who were treated as professionals worthy of first-class treatment at all times. I feel that it was truly an honor and a privilege to have the opportunity to attend this institute! It is my hope that I will be able to share the information, the excitement of teaching geography and the sense of pride in being a geography teacher with many other teachers in the future.

**Bobbi Lowden**—An intense four week session of geography education was promised, and it was that and so much more!

Sequestering 70 educators from across the country with a common interest in geography can't fail to produce a kaleidoscope of ideas. For me, this was one of the most valuable features of the Summer Geography Institute in Washington, D.C. The sharing of ideas and common concerns, and the memory of the bountiful humor and energy generated by this group will not soon be forgotten.

I've brought back ideas from Hawaii, Connecticut, Oklahoma, California, Massachusetts, and the other states represented; but I also have the fond memories of the people with whom I ate, walked, talked, and shopped geography during those four weeks.

Thanks to the SGI, I've returned to Juneau with a renewed interest in teaching geography and "spreading the word," and with a different eye for viewing the world.

*(I would be remiss if I failed to mention the caliber of the other members of the Alaska contingency. I was proud to be among the talent displayed by Peg, Dan, Jody, Marlene, and Lyn.)*

## The Other Census: National Geography Society Set To Count 1990 Geography Bee

### Winners

by Jody Marcello

On Friday, May 19, 1989, and three top finishers were recognized, National Geographic Society President Gil Grosvenor called all 55 state winners to the stage to be recognized as winners, too. He acknowledged that they had won a classroom competition, won a school competition, scored high enough on a qualifying examination to win a place in the state competition, and then won the state competition.

If we use that logic as we prepare for the 1990 Geography Bee, we calculate, as NGS will, that there will be 55 state winners, 5500 state qualifying winners, 25,000 school winners, and approximately 250,000 classroom winners. Now, let's stop to think about all the geography questions answered right that this translates into: I'm willing to go for 25,000,000.

The important point is that the National Geography Bee recognizes winners: kids who are doing something right. It recognizes that for each of those 250,000 plus kids, there are parents or supporting adults and at least one dedicated. If we start to add in all of the sisters and brothers, friends, principals, teachers, neighbors, etc. so on who offer support to these winning youngsters, the numbers multiply quickly.

The National Geography Bee may be the most important census of 1990. It gives us a chance to count winners and to recognize what is working in the schools and the homes in support of geography education.

The most important date for this winning census is November 1, 1989, as that is the deadline for schools to register for participation in the 1990 National Geography Bee. The competition is set up for students in grades 4-8. Schools that participated in last year's Bee are automatically registered for the 1990 Bee. Schools that did not participate must register no later than November 1, 1989. School principals should have received a mailing last spring detailing the registration process. If this mailing has not appeared, send a letter to Mary Lee Elden, Manager, National Geography Bee, National Geographic Society, 17th and M Streets NW, Washington, DC, 20036.

Details for the state competition are being finalized by a newly established Geography Bee Subcommittee

of the Alaska Geographic Alliance. Geography Bee coordinators Jody Smothers Marcello of Sitka and Daniel Roope of Wrangell are seeking three additional members for this committee. Participants from the Alaska Geographic Alliance Institute held in Anchorage in June who are interested in serving on this committee should contact Jody (801 Lincoln St., Sitka, AK 99835, 747-3623 Home, 747-8672 Work) or Dan (Box 2176 Wrangell, AK 99929, 874-3212 Home, 874-3395 Work) no later than October 1, 1989.

Don't miss the chance to have your students stand up and be counted as WINNERS in the 1990 National Geography Bee!!!

This month in  
**The Alliance Reporter**

AGA Summer Institute Photo Album ...pg 3  
National Award Recipient in Homer! ...pg 4

## The Alliance Reporter

The Alaska Geographic Alliance (AGA) logo was designed to convey a sense of the five geographic themes. The circular image represents the earth; the primary role of geographic education is to present information and facts about the world. The intersecting lines represent *location*, position on the earth's surface, as well as identification of a specific *place* with its physical and human characteristics. The intersecting lines form specific *regions*, areas of unity which are the subject of geographic study. The Alaska Geographic Alliance initials, AGA, are placed in the globe to represent members of the Alliance working together in Alaska to build *relationships within places*. The lines that flow from the globe convey a sense of *movement*, movement between and among places. The fact that the logo was designed with computer graphics expresses the commitment of the Alaska Geographic Alliance to employ the newest technologies to communicate and develop geographic literacy.

The Alliance Reporter is published five times a year by the Alaska Department of Education. The purpose of *The Reporter* is to keep Alaskans informed about the activities of the Alaska Geographic Alliance and issues which impact geographic education. Please send news items, comments, and stories to Karen L. Cantillon, Editor, *The Alliance Reporter*, P.O. Box P, Juneau, AK 99811, or to RMEPS on the University of Alaska Computer Network. Alliance coordinators are Marjorie Gorsuch, Department of Education, P.O. Box P, Juneau, AK 99811 (907) 465-2881, and Roger Pearson, University of Alaska Fairbanks, Fairbanks, AK 99 (907) 474-7494.

This publication is made possible through funding by the Alaska State Legislature and matching funds from the National Geographic Society.

## Ideas? Ideas???

The Alaska Geographic Alliance Steering Committee is developing a 3-year plan for Alliance activities including teacher training and curriculum materials development. The plan will be submitted to the National Geographic Society on December 15, 1989 and will be the basis for our funding from NGS for the next three years. Your suggestions for directions you think the Alliance should take are invited. Please contact any Steering Committee member with your ideas.

### Steering Committee 1989-90

Roger Pearson, Coordinator (474-7494) Fbks.  
 Marjorie Gorsuch, Coordinator (465-2888) Juneau  
 Pat Fitzgerald (789-4406) Juneau  
 Tom Gallagher (563-2560) Anchorage  
 Ron Gibbs (454-2633) Port Lions  
 Steve Haycox (786-1776) Anchorage  
 Joyce Honeychurch (786-1373) Anchorage  
 Bob Henning (206-774-4111) Edmonds, Washington  
 Jody Marcello (747-8672) Sitka  
 Rep. Terry Martin (333-6990) Anchorage  
 Doug Phillips (269-2210) Anchorage  
 Monica Thomas (474-6520) Fbks.

## National Historical Pictorial Map Contest Dates Set

The Commission on the Bicentennial of the U.S. Constitution has announced dates for the second annual National Historical Pictorial Map Contest. The contest is designed to encourage the study of geography within the context of early American history. Students are asked to use graphic or artistic representations to map historical and geographical events significant to the development of early American history. Students in grades 4-12 are eligible to participate. Cash awards are given to school winners at both state and national levels of the competition.

Last year's first place winners were Harvester Christian Academy, Anchorage (Elementary and Middle) and student Roderick Gray, Harvester Christian Academy (Secondary). Second place winners were Cantwell Elementary School, St. Elizabeth Ann Seton, Anchorage (Middle), and student Chris Halvorsen, Hollis School (Secondary).

Registration deadline is November 17; state judging will take place in March, and national judging is May 15. To register, contact the National Bicentennial Competition on the Constitution and Bill of Rights, Center for Civic Education, 5146 Douglas Fir Road, Calabasas, California 91302 (818-340-9320). All schools in the state should receive information on the contest from the center during September.

## ACKNOWLEDGEMENTS

The Alaska Geographic Alliance gratefully acknowledges the generous contributions of these organizations/businesses which helped to make the AGA Summer Geography Institute possible.

National Geographic Society  
 BP Exploration  
 Chevron  
 University Of Alaska Anchorage  
 The George F. Cnm Company, Inc.  
 Nystrom  
 Alaska Geographic Society  
 National Audubon Society  
 Hilton Hotel  
 Japanese Consulate  
 Pictures and the Computer Store  
 Ken Wray Print Shop  
 John Wiley and Sons  
 American Geographical Society

## TEACHER RESOURCES

### Alaska Maps...And More

Information on maps and services available from the Department of Interior can be obtained by contacting the National Cartographic Center at 1-800-USA-MAPS. An index of all available maps is available from the department and may be obtained by calling the U.S. Geological Survey's Distribution Center in Anchorage at 561-5555 or 271-4307. Maps of Alaska are available for \$2.50 each by calling the same number.

### Global Survival Peace Project

John Bruce, a Haines, has created an interdisciplinary curriculum project focused on global peace and is currently teaching it as a course at Haines High School. *The Global Survival Handbook*, developed by John, contains 23 self-teaching units and more than 130 hands-on projects. Typical projects include making a 20-year time capsule, developing a plan for personal management, and developing a set of social principles based on natural laws. Write to John Bruce, P.O. Box 632, Haines AK 99827 (766-2469), for additional information on purchasing the project.

### Geophysical Institute Quarterly

An excellent newsletter is published quarterly as a public service by the Geophysical

Publications Office, Geophysical Institute, UAF, Fairbanks, AK 99775-0800. (474-7863).

### TC Recommends Book

Peggy Hutchins, an AGA Teacher Consultant trained at the AGA Summer Institute, recommends the publication *Geography Education*. This volume, published as part of Phi Delta Kappa's *Exemplary Practice* series, is designed to help teachers incorporate lively, engaging, geography lessons into current curriculum. The volume is available for \$20.00 from Phi Delta Kappa, P.O. Box 789, Bloomington, IN 47402-0789 (812) 339-1156.

### U.S. Census Teacher Materials

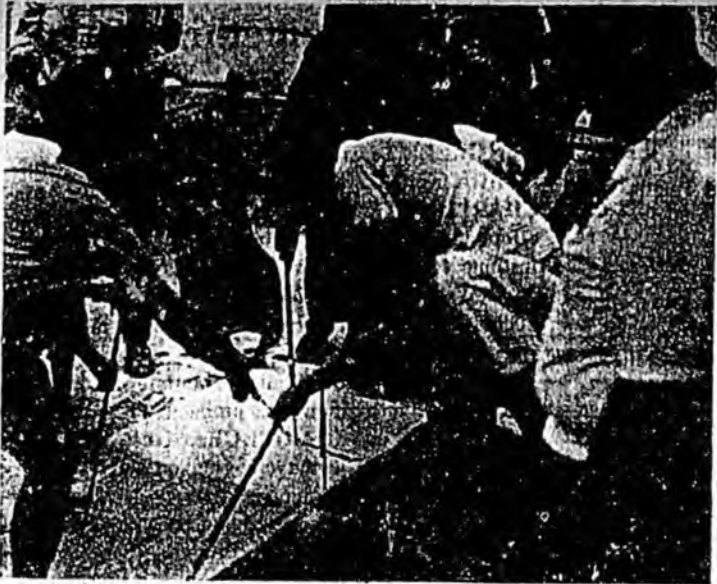
The U.S. Census Bureau has published a *1990 Census Education Project Teaching Kit*. This material will be sent to all school principals this spring. Contact the Customer Services Order Desk, Bureau of the Census, Washington, D.C. 20233. These K-12 materials are designed primarily for use during the 1990 census, but are reusable. A *Teacher Resource Guide* is also available free. Alaska data to supplement the national information is available from Kathryn Lizik, Alaska Department of Labor, P.O. Box 25504, Juneau, AK 99802-5504 (907) 465-4500.

### Culturgrams

Pamphlets on specific nations are available at nominal cost from Brigham Young University, Box 61Y FOB, Pueblo, Utah 84602. These pamphlets are comprehensive, readable, practical, and yet succinct.

### Moon Kit

A new kit of slides and information about the moon has been released by the Astronomical Society of the Pacific. The 18 slides include close-ups of craters, lava tubes and mountains as well as photos from the Apollo 11 landing. A 24-page book, which accompanies the kit, has comprehensive background information useful for the classroom. Send \$24.45 to the ASP, Moon Kit Dept. NPK, 390 Ashton Ave., San Francisco, CA 94112.



No. 1



No. 2



No. 3



No. 4



No. 5

#1—Participatory lessons were a feature of the Institute. Here a group of teachers assist Tim Peterson (center) in some "floor work."

#2—Graduation ceremonies marked the end of the two-week Institute with the faculty presenting certificates of achievement to the 31 teacher participants. Institute faculty and staff, from R to L, are: Marjorie Gorsuch and Roger Pearson, Alliance Coordinators, Geoffrey Underwood, NGS Liaison, Louie Yannotti, Rob Moore, Mary Bristol, Franklin Greenough, Harvey Brandt, and Pat Fitzgerald.

#3—Institute attendees gather at the starting point of

the Alaska pipeline during a one-day trip to Prudhoe Bay sponsored by BP Exploration.

#4—Robert A. Henning (L) being congratulated by Harvey Brandt on receiving the Alaska Geographic Alliance's first annual Recognition Award. Henning was given the award at the Institute Banquet in recognition of his pioneering efforts in Alaska geographic education and his significant contribution to our understanding and enjoyment of The Great Land. Henning, who has worked as a journalist and geography teacher, has served as publisher of The Alaska Sportsman (later renamed Alaska magazine), Milepost, Alaska Journal,

Earthlines/Tidelines, and Northwest Living. In 1968 he created the Alaska Geographic Society and has published the Alaska Geographic series of monographs since 1972 "to teach many more to know and use our natural resources." Henning has served on the Steering Committee of the Alaska Geographic Alliance since its inception.

#5—Governor Steve Cowper receives an AGA T-shirt and atlas along with thanks for his support of the Alliance's geography efforts from Marjorie Gorsuch during an informal barbeque. Dan Greer, AGA teacher participant, looks on.

## Brann Selected As Distinguished Teacher By NCGE

David Brann, a social studies teacher at Homer Junior High School, has been selected by the National Council for Geographic Education as the recipient of a 1989 Distinguished Teaching Award. David is one of only twenty K-12 teachers selected from throughout the United States for this honor. He will receive the award while attending the NCGE annual meeting in Hershey, Pennsylvania, next month.

David includes geography in all of his instruction. In addition to combining history and geography as a regular part of his eighth grade social studies class, David does extensive outdoor education involving map and compass work and even includes geography in his woodshop classes.

David concentrates on interdisciplinary approaches to his teaching and team taught with an art teacher creating maps which incorporated "good geography and good art." He has worked with the school librarian in a unit on historical fiction in which students researched their family trees and then wrote daily journals from the perspective of seventeenth century settlers. The genealogical research reaped unexpected results when David and two students discovered that they all had ancestors on the Mayflower and that, indeed, the three of them were related!

David has involved his students in the Geography Olympiad and the 1988 Geography Bee. He has been teaching for twenty years and is a member of the Alaska Council For The Social Studies and the Alaska Geographic Alliance.

## AGA Calendar

September 14—AGA Steering Committee Audio Conference

September 20 to 23—Association of Pacific Coast Geographers, Association of American Geographers, Annual Meeting, Fairbanks

September 25 to 27—Anchorage Private Schools Geography Inservice & Anchorage Area Council for the Social Studies meeting with Janet Crane, Sr. Geographer, Public & Educational Media, NGS

October 11 to 14—National Council for Geographic Education Meeting, Hershey, PA

November 10 to 13—National Council for the Social Studies Annual Conference, St. Louis, Missouri

November 12 to 18—Geography Awareness Week

November 16—Talkback on RATNET, *Geography and Our Environment*

April 19 to 21—Joint Conference "Education Partnership: Connections for the 90's"

June 10 to 23—AGA Summer Geography Institute, UAF

## Here's Something to Cheer About!

DANGREER, Seward for his careful listening skills at the AGA Institute.

CHARLIE MATTIOLI, North Pole for his creative efforts in thanking people who created summer AGA Institute.

NANCY MCCALED, 2nd grade teacher, Peterson School, Kodiak — incorporates geography into art, storytelling and celebrations.

RON GIBBS, Ouzinkie, Kodiak for forming a student-run corporation to export local products.

JULIE FROST and CHARLIE CRANGLE, 5th grade teachers, Seward, did a marvelous unit on geography of Seward involving the fishing industry.

ERNIE MANEWAL, Sitka, has done a Geoportrait Lesson on Alaska.

BARBARA SCHMIDTMAN, Central JHS, Anchorage, has a super word search about oil and oil-related vocabulary.

SYLVIA HUGHES, Anderson, Tri-Valley, wrote a fantastic theme poem on the oil spill during the AGA Institute.

DAVE HANSON, Mountain Village, plays a 20 Questions Game with his high school students using a map of Alaska.

SATORENE JACKSON, K-Beach Elementary Kenai, integrates geotaphy, English and reading in 4th grade classes.

KATHLEEN BRANDT, Baranof Elementary, Sitka, did a presentation at the AGA Institute, on mapping a town from the children's perspective.

NANCY MOTTETT, Nikiski Elementary, Kenai, integrates reading and geography through inspired teaching.

KASS FRIEND, Ravenwood Elementary, Anchorage, brings celebrations from around the world alive for her kindergarten students.

# Where is MALAWI?

"Where in the world is Malawi?" a student may ask.



A geography teacher may ask, "Where in Alaska may I go to order maps of the world, continents, nations, Alaska, etc? And how about maps of time and space (astronomy) for geo science? Or anatomy charts - maps of the body - for biology?"

There is now a place in Anchorage, Alaska which specializes in maps and globes, atlases and map games of all sorts. They take special order and purchase orders from teachers and school districts. They accept MC, Visa, American Express.

Where is this geo place? It's Maps Maps Maps: The Maps Place at 700 E. Benson Blvd. in the Country Village Mall, Anchorage, AK 99503  
Phone 907-274-MAPS

If you need some visual aids to help you teach map and geography skills so our Alaskan students improve on the Iowa Basics, you might just like to check out the Maps Place, a one stop map specialty shop.

By the way, where in the world is Malawi?

PS Do you know where to find the Iowa Basics, Chicago, Honolulu and Houston in the 43th state??? Be sure to ask about the new line of Alaskan educational maps.

A one stop map shop  
in the Country Village Mall  
700 E. Benson Blvd.  
274-MAPS

## The Maps Place

NYSTROM

# World Atlas

A RESOURCE FOR STUDENTS



Your NYSTROM Representative is prepared to help you

NYSTROM

DIVISION OF HEFF JONES, INC.

Lucille Frey  
1741 Westbury Circle  
Anchorage, AK 99504  
(907) 337-3543

## Geo-Themes

A world atlas activity program organized by five fundamental geographic themes: Location, Place, Relationships, Movement, and Regions

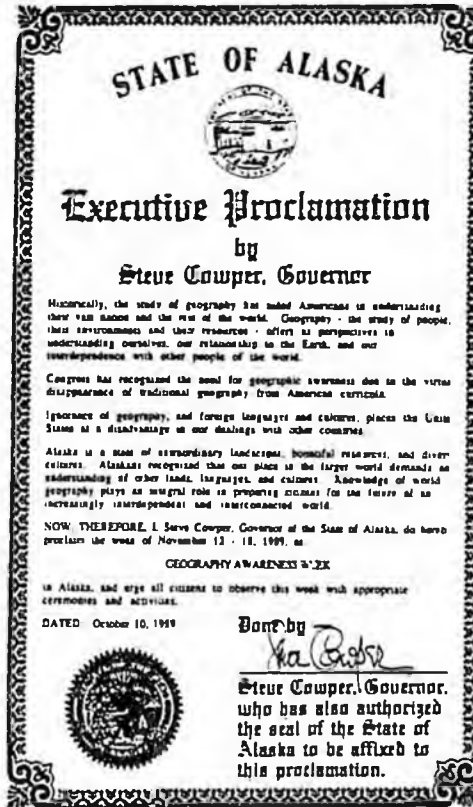


# The Alliance Reporter

## Geography Awareness Week Celebrated Statewide

Alaska's two highest elected officials will be among those taking an active role in celebrating Geography Awareness Week November 12th through 18th. Governor Steve Cowper has issued a proclamation making Alaska one of the many states joining Congress in supporting public awareness of the need for geography education.

Louie Yannotti, Chairperson of the AGA Geography Awareness Week Committee, has invited Cowper to share his interest in and knowledge of geography with students at Floyd Dryden Middle School, Juneau. Cowper will talk about his trip from Providenya to Vladivostok. He will discuss the Soviet environment, how it compares to Alaska, and how govern-



ment officials deal with common environmental problems such as pollution, rape of the land, open-cast (strip) mining, and preserving endangered species. One example of Soviet concern for endangered species is the attempt to save a giant sturgeon which inhabits the Amur River. This fish moves downstream to China where residents freely catch and eat so many that the species is endangered.

Lieutenant Governor Steve McAlpine will also take to the classroom to teach about the environment, the theme of Geography Awareness Week (GAW). He will meet with

(Continued on Pg. 6)

## Geography Bee Plans Progress

Jody Marcello reports that plans for this year's geography bee are moving right along! More than 200 of the 30,000 schools registered nationally are Alaska schools. National Geographic Society packets should be available early in January.

Of the 200 schools participating, the 100 top qualifiers will reach the state competition in March.

Additional details will be passed on as soon as they are available. Meanwhile, if you need more information, contact: Jody Marcello at 747-8672 (w), 747-3623 (h), or Dan Roope at 874-3395 (w), 874-3212 (h).

This month in  
*The Alliance Reporter*

- Lesson Plan:  
*Alaska—On the Edge?.....p. 3*
- AGA Teacher Consultants...p. 4



Alaska Geographic Alliance Vol. 2, #1 May 1988

### The Alliance Reporter

The *Alliance Reporter* is published five times a year by the Alaska Department of Education. The purpose of the *Reporter* is to keep Alaskans informed about the activities of the Alaska Geographic Alliance and issues which impact geographic education. Please send news items, comments and stories to Karen Cantillon, Editor, *Alliance Reporter*, P.O. Box F, Juneau, AK 99811, or to RMEPS on the University of Alaska Computer Network. *Alliance* coordinators are Marjorie Gorsuch, Department of Education, P.O. Box F, Juneau, AK 99811 (907) 465-2841, and Roger Pearson, Department of Geography, University of Alaska Fairbanks, Fairbanks, AK (907) 474-7494. This publication is made possible by a grant from the National Geographic Society.

## Teaching Resources Available

Educators who subscribe to *Newsweek's* Social Studies or Economics programs for their class are eligible to receive a *Geography Skills Resource Kit* free. The kit includes a world map, world map directory, detailed city and state road maps, and instructional programs and linemasters to reinforce basic map skills and understanding of key geography themes. For more information on this offer, write to *Newsweek*, Education Division, P.O. Box 414, Livingston, New York 07039-9939.

*GeoLearning* has developed a set of lesson plans to use in conjunction with their line of geography games and puzzles. *Geofile* consists of 20 hands-on learning activities which teach basic geographic concepts. More information can be obtained by writing to GeoLearning Corporation, P.O. Box 2042, Sheridan, WY 82801 (307)764-6436.

*Geography: A Resource Book for Secondary Schools*, by A. David Hill and Regina McCormick (\$35).

This book highlights disciplinary fundamentals as set forth in the widely

adopted *Guidelines for Geographic Education* of the Association of American Geographers and National Council for Geographic Education. Written in a non-technical style and from a geographer's perspective, the book features 215 figures, eight tables, maps, charts, author/title/subject index, and a glossary of geographic terms. Contact Gretchen Marks, ABC-CLIO, P.O. Box 4397, Santa Barbara, CA 93140-4397.

Cram has *Topic maps* available. These poster maps are available on a subscription basis, or you may order previous issues. They are published 10 times a year. Each month, a current issues map is made available. A subscription is available for \$85 per year. Contact the George Cram Company, 301 South LaSalle Street, P.O. Box 426, Indianapolis, Indiana 46206.

*Global Graphics and Resources* provides high quality graphic images (books/maps/posters/printers/greeting cards), objects, and prose that will increase appreciation of the planet and its peoples. Some products include Hugg-a-Planet Earth; The Changing City/Countryside; and The Earth from Space. They also do copy, layout, and design for printed communications such as newsletters, brochures, catalogs, and curriculum. Contact Global Graphics and Resources, 2108 Hillside Dr., Burlingame, CA 94010.

*Free information* is available on most Central and South American countries through the Organization of American States, General Secretariat, Washington, D.C.

For a *free map and brief information on U.S. Indian groups*, contact: Indian Rights Association, 1505 Race St., Philadelphia, PA 19102.

The *National Park Service* offers a primer on last year's fires at Yellowstone. The primer puts the fires into an historical context. The report also examines the role of fire in Yellowstone's wilderness ecosystem, and discusses why the fires burned so extensively, as well as what was done to fight them. Teachers may obtain copies of *The Yellowstone Fires: A Primer on the 1988 Fire Season*, free of charge.

Contact: *Yellowstone Fire Primer*, Division of Interpretation, National Park Service, P.O. Box 168, Yellowstone National Park, WY 82190.

*The Earth Awareness Classroom* is a resource for challenging student views of the world by presenting them with an extraordinary map. It is a 20-foot-high forced-air balloon that is painted with an accurately scaled map of the planet and features a zipper in the Pacific Ocean so that students can see the world from the inside. *The Earth Awareness Classroom* can be rented from Criteria Architects, Inc., P.O. Box 19607, St. Paul, MN 55119 (619)436-6066.

National Council for Geographic Education Membership \$25. Members receive the *Journal of Geography* and the *Perspective Newsletter* bimonthly. Contact: NCGE, Indiana University of Pennsylvania, Indiana, PA 15705, (412)357-6290.

*Population Growth Rate and Life Expectancy at Birth*. Two poster kits with accompanying teaching guides and wall maps are available from The World Bank. For a catalog of World Bank publications, or to order, send \$5.95 each to: World Bank Publications, Dept. 0552, Washington, D.C. 20073-0552.

*Themes, Key Ideas and Learning Activities*. This volume presents a framework for developing courses of study for middle and secondary school social studies programs. Also presented are several sample course formats illustrating how the framework may be implemented. The fundamental themes in geographic education provide the basis for the framework. The suggested learning opportunities are designed to incorporate various levels of thinking. These opportunities direct attention to the knowledge, skills, and attitudes that result in a total geography course. Individual copies are available at only \$6.00 each. Bulk prices are available on orders of 10 or more. Order additional copies for your teacher colleagues and curriculum personnel. Write to: National Council for Geographic Education, 16A Leonard Hall, Indiana University of Pennsylvania, Indiana, PA 15705.

# Alaska—On the Edge or Near the Center?

## Lesson Plan

By Charlie Mattioli, North Poie High School

### Introduction

Most world map projections show Alaska on the fringe or edge of the world, failing to reveal its geographic centrality in the air age. In this lesson, students will discover the notion of "great circle routes" and Alaska's strategic location in the jet age.

### Objectives

1. Students will understand that only a polar map projection or a globe accurately shows Alaska's strategic geographic location in the jet age.
2. Students will know that the shortest route between any two points on the earth is a great circle route or arc.
3. Students will be able to cite evidence supporting the idea that Alaska has a strategic location in the jet age.

**Time:** 2 - 3 class periods

### Materials:

World Map (Mercator type projection)  
Globes and/or polar projection map  
String or yarn

### Procedure:

1. Using some string or yarn and a Mercator type wall map of the world, have students find the distance and general route (countries traveled over) between each of the following pairs of cities:

Washington D.C., U.S.A. to Tokyo, Japan  
New York City, U.S.A. to Taipei, Taiwan

London, England to Seoul, South Korea  
Rio de Janeiro, Brazil to Tokyo, Japan  
Copenhagen, Denmark to Peking, Peoples' Republic of China

Students should take two important factors into account: 1) no route should pass over any part of the Soviet Union or China

(except for Peking route), and 2) students should plan a refueling stop in a major city about halfway along the route.

2. Based on the results of their findings from #1, students should be asked to accept or reject the following statements (take a tally of results):

- a. The shortest distance between two places on the earth is a straight line.
- b. In the jet age, Alaska is not strategically located on major air routes between Europe, Brazil, the eastern United States, and the Far East.

3. Using a globe and some string, have students repeat Activity #1.

4. Compare the results. Were there any important differences? Can you explain why? This is a good time for you as the teacher to introduce the students to what a great circle route is. "A great circle route is a line between any two points on the earth that if continued would circle the earth and divide it into two equal halves. It is the shortest distance between any two points on the earth."

5. Ask students to reassess this statement: "The shortest distance between any two places on the earth is a straight line." (The statement would be true if the earth were flat. It isn't of course, but most maps project it as such, so we run into the differences in results from Activities #1 and #2.)

6. Is there any evidence based on the comparison in Exercise #4 that Alaska may have a more strategic role along international routes than previously thought?

7. Based on what students have already learned in this lesson, have them explain:

- a. Why Emperor Hirohito of Japan stopped in Anchorage on his way to Washington, D.C. in the course of his first trip out of Japan.
- b. Why the Pope and the president met in Fairbanks in May, 1984.

The Pope was on his way to Korea; the president was returning from Korea.

- c. Why presidents Nixon, Ford, and Carter stopped in Alaska on trips to the Far East.
- d. Why Eielson Air Force Base, Fairbanks, is a support base with KC 135 tankers used to refuel B-52's in midair.
- e. Why Elmendorf Air Force Base near Anchorage has squadrons of F-15 interceptor fighters.
- f. Why a long string of Distant Early Warning radar stations is located in northern Alaska and Canada to detect ICBM's.
- g. Ask the students to reconsider this statement: "In the jet age, Alaska is not strategically located on major air routes between Europe, Brazil, the eastern United States, and the Far East."

### Debriefing

1. Why do most maps fail to show Alaska's strategic geographic location?
2. What is a great circle route? Why is it important?
3. What evidence can you cite indicating that Alaska is strategically located in the modern jet age?

### Follow-up:

1. Have students research an answer to this question: Why is it that Alaska is not as strategically located as an international port for ships in need of refueling, etc.?
2. General Billy Mitchell, who foresaw the importance of air power in the 1920's (long before others had) once said of Alaska's location, "In the air age, whoever controls Alaska can control the world." How would you evaluate that statement more than 60 years after it was spoken?



## Introducing....

Jody Marcello

Dan Roope

...**Jody Marcello**—Jody Marcello is a social studies teacher at Blatchley Middle School in the Sitka School District. She earned a Master of Education degree from Texas A&M University and taught in Texas. A four year resident of Alaska, Jody has devoted time and energy to her professional and community life since coming to the state. She is an active member of the Alaska Council For The Social Studies and served as co-chair of the ACSS 1989 Conference Program Committee. She is a member of the Alaska Geographic Alliance and chaired the first Geography Bee in the state. Community service includes involvement in Sitkans Against Family Violence, the Sitka Council on Alcoholism and other Drug Abuse, the Sitka Historical Society and other community organizations.

Below is an excerpt from the interest statement she wrote as part of her application for the NGS Summer Geography Institute.

As a social studies educator, it is my responsibility to motivate students to explore beyond boundaries that they do not even know exist when they walk into my classroom. I cannot simply be a pilot that carries them to a boundary line and then leaves them to go on beyond it alone. It is imperative that I teach them to navigate themselves not only to the boundary line to look beyond, but also out into the unknown and back "home" again.

...**Dan Roope**—Dan Roope, currently in his fifth year of teaching in Southeastern villages, is a social studies teacher at Wrangell Middle School. Dan is a graduate of Eastern Washington University and attended Idaho State University. He has travelled extensively, participated in archaeological digs, and has sailing experience, including advanced map skills, chart, and navigational expertise. He has mastered bilingual word processing (Tlingit) and uses the computer extensively in the classroom.

Excerpts of Dan's NGS Summer Institute Application essay follow:

The educational goals that I have for my students are well addressed by the teaching of geography. These goals are: to equip my students with skills and knowledge not directly learned from the natural environment; to develop character and personality; to realize and use individual talents; to achieve social harmony on a national and international level; and to increase awareness of group culture and heritage.... As America continues to strive for social harmony—national or international—our failings in the social studies curriculum are apparent. Americans continue to be intolerant of cultural diversity, and often our approach is ethnocentric rather than culturally tolerant. If we are to address our failings in cultural literacy, then we must work hard to improve our geography curriculum.

## *Sputniks Calling Water Cats!*

### Computer Links Juneau and Moscow Students Through WORLD 2000

October 11, 1989. The principal's office—now telecommunications central of Moscow School #1201—was packed with excited teachers, students, and administrators. The mood was exuberant and expectant. Twenty-five, fourteen-year-old Soviet students, the Moscow half of the *WORLD 2000* project, were about to send their first telecommunication message to their counterparts at Juneau-Douglas High School. The first student group hovered intently around the glowing computer screen as their typist entered their transmission:

Hello, Alaska! The name of our group is the Water Cats. We are

Alexey, Vanya, Olga, Lena, and Lena. We are very excited about this project. We shall do our best to manage this idea. We shall be friends! We are interested in problems of ocean. Our dreams are friendship, peace all over the world, and clean planet! Bye Bye!!!

To reach this moment, an instructional team of Juneau educators, Kathy Olegaard, Nancy Seamount, and Jason Ohler, worked intensely with Soviet students and staff for a week in Moscow. The team provided workshops, inservice training, and classroom instruction to develop cooperative learning groups, a first for

their Soviet counterparts.

*WORLD 2000* is a student-centered international curriculum development program which harnesses the power of cooperative learning and the immediacy of telecommunications to give today's children a voice in shaping their own future world. Environmental issues such as global warming, deforestation, nuclear threat, air and water pollution, and species extinction are topic areas. Students are responding with vigor and hope, viewing themselves as world citizens, comrades who together can shape their world.

### Geography Awareness Activities Presented (Continued from Pg. 1)

AGA Teacher Consultant Bobbie Lowden's students at Marie Drake Middle School, Juneau. Ms. Lowden's students have been preparing for the event by using the GAW packets developed by the National Geographic Society. They have researched global issues such as oil spills, earthquakes, and tropical rain forest depletion.

A special Talkback program, "Watching Your Waste—Garbage and the Great Land," will feature the relationship between Alaska's geography and solid waste disposal. AGA Teacher Consultant Mary Bristol will be one of three panelists answering student questions during the live, one-hour, interactive television program airing statewide on RATNET on November 16th.

Additional school and community awareness activities have been planned by members of the AGA Geography Awareness Week Committee.

### Geography Awareness Week Committee

Chairperson. Louie Yannotti,  
Juneau

Audrey Copeland, Fairbanks  
Steve Ex, Eagle River

Marlene Keene, Nikiski  
Bobbie Lowden, Juneau

Teresa Matetich, Wasilla  
Susanne Niebuhr, North Pole

Tim Peterson, Kenai

Barbara Schmidtman, Anchorage

Donna Victors, Big Lake

## Geography Reform Undertaken in the United Kingdom

The education minister in Margaret Thatcher's government recently announced the appointment of a ten-member commission charged with determining the nature of the geography component that all children will study under the national curriculum. The commission is in part a response to the poor showing on a recent survey which dem-



onstrated that too many British youngsters have limited place location skills. Sir Leslie Fielding of Sussex University and a former diplomat has been named to head the group. He pledges to return rigor to the teaching of geography. "There's got to be more mental discipline," he said, "facts, argument, evidence, rather than philosophy or opinion."

## American Express Announces Geography Competition

American Express is sponsoring two separate geography competitions to address the critical need for improved geography education in America. With one competition for teachers and another for students, more than \$125,000 in travel prizes will be awarded.

The student competition is open to all students in grades 7-12. Individuals or groups may enter projects based on one of the fol-

lowing three themes: 1) The Connected World; 2) The Geography of Earning a Living; 3) Human Impact on Planet Earth. The teacher's competition is open to individual teachers of geography or related disciplines and involves submissions of up to three innovative geographic teaching ideas. The deadline for postmarked registration forms is November 30, 1989. The project submission deadline is March 31, 1990, and winners will be selected

for both competitions in all three theme categories on May 4, 1990.

The American Express Geography Competition acknowledges the collaboration and support of the Association of American Geographers and the Geographic Education National Implementation Project (GENIP). For more information, contact American Express at (800) 782-8528 from 8:30 a.m. to 5:30 p.m. Pacific Time.

THURS. Feb. 1, 1990 Anch Times

## Alaska map stirs up media flap

By DAVE PATRICK

Times Juneau Bureau

JUNEAU — Alaska is back on the national media map following the introduction of a resolution by a state lawmaker that calls for the placement of a geographically correct Alaska on national maps.

"This (national attention) all started yesterday when USA Today called in the morning and said they wanted to do a story and so we did an interview," said Rep. Fran Ulmer, D-Juneau, sponsor of the House joint resolution. A call followed shortly thereafter from a radio news service, which touched off a wave of interview requests from other radio stations.

The resolution calls on magazines, newspapers, textbook publishers and map publishers to place Alaska in the northwest corner of all maps used of the United States. The idea came from the former editor of a weekly Juneau newspaper.

"I got a letter from a little school girl in Michigan two years ago, whose test was marked wrong because she placed Alaska in the northwest corner," explained Dan Blumie, former editor of the Capital City weekly. The teacher marked the student's geography test wrong, saying Alaska belonged in a box set off from the southwest corner of California, he said.



# Alaska Geographic Alliance

Coordinators: Marjorie Gorsuch Department of Education P.O. Box F Juneau, Alaska 99811 (907) 465-2841  
Roger Pearson Department of Geography University of Alaska Fairbanks Fairbanks, Alaska 99775 (907) 479-7494

January 23, 1990

The Honorable Fran Ulmer  
House of Representatives  
P.O. Box V  
Juneau, Alaska 99811

Dear Fran:

I am writing to you on behalf of the Alaska Geographic Alliance, a group of more than 350 Alaskan educators dedicated to the improvement of geographic literacy in the state. The Alaska Geographic Alliance, coordinated by the Alaska Department of Education and the University of Alaska Fairbanks, has been working with the National Geographic Society for the past two years to conduct teacher training activities and develop curriculum materials for geography education. The enclosed newsletters will provide you with some history of the Alliance's activities in the state.

It is a great pleasure to express support for the concept contained in HJR64 dealing with the placement of Alaska on national maps. The resolution reiterates a resolution developed by the Alaska Council For The Social Studies (ACSS), the professional social studies educators association in Alaska. In October 1987 ACSS sponsored a similar resolution which was adopted by the National Council For The Social Studies, a group representing 25,000 educators nationwide. The Alaska Geographic Alliance supports ACSS, NCSS, and the Alaska legislature in its quest for accurate geographic depiction of all 50 states in educational media. The T-shirt which we provided for you via Rep. Terry Martin pleads our case in a playful way.

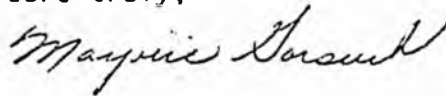
In reviewing HJR64 we feel it is necessary to object to the references to Rand McNally as a chief offender of geographic accuracy. Rand McNally is only one of many map publishers which places Alaska in a box near Baja

Page 2  
Representative Fran Ulmer

California and should not be singled out for repudiation in a resolution. The same fact is also true of the newspapers cited -- perhaps a generic reference to newspapers would suffice. The resolution could still be mailed to the offending publications and seemingly would convey the same message. Of course, we still must develop a response for those who contend that Alaskans would really like to be basking in the sun near California!

Thank you for adding the Alliance to the list of those who believe in geographic accuracy.

Yours truly,



Marjorie Gorsuch  
Coordinator

Enclosures  
10086 OIIE

# Alaska State Legislature

Sen. Pat Pourchot, Chairman

Sen. Jan Faika, Vice Chairman  
Sen. Al Adams  
Sen. Tim Kelly  
Sen. Rick Uehling



P.O. Box V  
State Capitol  
Juneau, Alaska 99811

907-465-3712

## Senate State Affairs Committee

### MEMORANDUM

TO: Senate State Affairs Committee Members  
FROM: Senator Pat Pourchot *Pat*  
RE: Monday, February 5 Committee Hearing  
DATE: February 2, 1990  
TELECONFERENCE: Whittier, Anchorage

On Monday, February 5 at 1:30 p.m. in the Beltz Room the Senate State Affairs Committee will hear the following bills:

\*CS HJ 64, Relating to the placement of a geographically correct Alaska on national maps.

This resolution, sponsored by Representative Ulmer, urges all major U.S. magazines, newspapers, textbook publishers and map publishers to place Alaska in its correct geographical position on maps of the United States and that all geographical attributes of Alaska be correct in size and location.

\*CS HB 311, An Act approving the issuance of revenue bonds for construction of a road from Portage to Whittier and of the Bradfield River resource road; and providing for an effective date.

This bill provides for the issuance of up to \$27,000,000 in revenue bonds for construction of approximately 9 miles of road from Portage to Whittier and up to \$22,300,000 for construction of the 29 mile Bradfield River Resource Road. CS HB 311 provides the funding mechanism for creation of the first toll facilities in the state.

\*Indicates first Senate State Affairs hearing

CSHJR64.txt

CS HJR 64, relating to the placement of a geographically correct Alaska on national maps.

TO Testify:

Representative Fran Ulmer

Notes:

The Alaska Geographic Alliance fully supports this resolution and asked that a copy of their letter be handed out to committee members. I will do just that.

CS will be given to members at hearing.

Teleconference for CS HB 311...not set up to include  
comments on CS HJR 64.

Original sponsor(s): REP. ULMER, Koponen, Zawacki, M.Davis, Brown, Kubina;  
SEN. Kelly, Sturgulewski, Pourchot, Binkley, Fahrenkamp, Fischer, Uehling,  
Faiks

1 IN THE HOUSE

BY THE STATE AFFAIRS COMMITTEE

2 SENATE CS FOR CS FOR HOUSE JOINT RESOLUTION NO. 64 (State Affairs)

3 IN THE LEGISLATURE OF THE STATE OF ALASKA

4 SIXTEENTH LEGISLATURE - SECOND SESSION

5 Relating to the placement of a geograph-  
6 ically correct Alaska on national maps.

7 BE IT RESOLVED BY THE LEGISLATURE OF THE STATE OF ALASKA:

8 WHEREAS Alaska has been a state in the United States for the past 31  
9 years and is part of the continental United States; and

10 WHEREAS on maps of the United States, Alaska is often placed in a box  
11 south of California and is sometimes completely left off the map; and

12 WHEREAS Alaska encompasses an area of 365,000,000 acres, one-fifth of  
13 the total land area of the continental United States, and is the largest  
14 state in the United States; and

15 WHEREAS the mismapping and nonmapping of Alaska is found even today in  
16 the pages of Newsweek, Time, the New York Times, and the Los Angeles Times,  
17 as well as many other newspapers and magazines, and is even found in the  
18 art department of the graphics division of the Associated Press and in the  
19 map department of United Press International; and

20 WHEREAS most school geography textbooks, wall maps, and road maps  
21 still place Alaska in a box south of California; and

22 WHEREAS some maps of Alaska do not represent the Aleutian chain in a  
23 geographically correct manner; and

24 WHEREAS geographic illiteracy has become a serious concern of the  
25 American people and has been identified as a priority in educational pro-  
26 gram development; and

27 WHEREAS the national newspaper, USA Today, reconsidered its map policy  
28 for Alaska and now places Alaska in the northwest corner of all of its maps  
29 of the United States;

1 BE IT RESOLVED that the Alaska State Legislature respectfully requests  
2 that all major United States magazines, newspapers, textbook publishers,  
3 and map publishers, follow the lead of USA Today in placing Alaska in its  
4 correct geographical position on maps of the United States, in the north-  
5 west corner, and that all geographical attributes of Alaska be correct in  
6 size and location and either have the correct proportions or be accompanied  
7 by a scale indicating the proportions.

8 COPIES of this resolution shall be sent to the editors of all major  
9 United States magazines, newspapers, textbook publishers, and map pub-  
10 lishers.