

**BRIEFING -
NASHAGAK &
MALCHATNA
RIVERS
RECREATION
MANAGEMENT
PLAN AND
N.W. MANAGE-
MENT PLAN**

NORTHWEST ARCTIC BOROUGH

P.O. BOX 1110
KOTZEBUE, AK 99752
(907) 442-2500 / FAX 442-2530

STATEMENT OF THE HONORABLE CHUCK GREENE, MAYOR NORTHWEST ARCTIC BOROUGH, BEFORE THE SENATE & HOUSE COMMITTEES ON NATURAL RESOURCES, FEBRUARY 24, 1989

MADAM CHAIR:

On behalf of the citizens of the Northwest Arctic Borough, I appreciate this opportunity to discuss the Northwest Area Plan.

I have been advised of your continuing concern regarding these area plans and desire for both public input and legislative review. I understand the purpose of this hearing is to familiarize the legislature with the substantive aspects of the Plan and hear public comment.

The laws and procedures governing the development of these area plans are quite explicit and are an attempt to resolve some of the emotionalism involved. There is no doubt that the legislature has a role in reviewing these plans and being aware of their content.

I understand that some groups are upset with the Plan and may use this opportunity as a means to manipulate the public process. We object to such actions. The thought that over three years of work may be trashed due to political considerations, whether real or not, is seen as a threat, especially since the Plan has not been approved by the Commissioner.

Both the Department and the Legislature should take pride in the level of public participation in the development of the Plan. It not only involved people with interests of statewide concerns; IT ALSO INVOLVED LOCAL PEOPLE WITH LOCAL CONCERNS.

A procedural issue involves the plan and the municipal selection process. I understand that others are concerned that the Northwest Arctic Borough is trying ^{to} lay claim to 700,000 acres for its municipal selection.

Factually, the Borough is entitled to 133,000 acres of state land as its municipal entitlement. This is provided to all new municipalities. The borough has charged the Planning Commission to identify the 133,000 acres of entitlement. The Planning Commission has gone through two rounds of public hearings.

It is anticipated that they will go through two more rounds of hearings prior to identifying the Borough selections.

This planning process, as any such process, starts out large. If you are going to select something, it is logical that you provide for a choice. As you try to identify your needs, entitlements, and requirements - for example, the Northwest Arctic Borough does have a Coastal Zone Management Plan which the selections have to be compared against, State law requires that municipal selections meet certain eligible purposes, and provisions for access must also be met - your selections become more limited. That is the process we are now involved with. It is anticipated that our request for selections will be made in a timely and proper manner.

The Northwest Arctic Borough is now almost three years old. In that time we have been organized, developed a home rule charter, dealt with disasters, spent a year appealing an initial municipal entitlement decision, until the legislature enacted appropriate and fair legislation. We are now involved in the selection process. We are making selections that both met the eligible criteria and also fulfill the needs identified by our citizens. We are proceeding in both a public and expeditious manner. This requires time, which cannot exceed one year from the date of entitlement.

SUBSTANTIVE PROBLEMS WITH THE PLAN

DNR'S literature states that subsistence uses are protected by the Plan. That is clearly one of the objectives. It is our hope that at some point the classification system will recognize both the importance of subsistence and the multi use of such lands.

The issue of remote cabin sites has been specifically addressed. We support the fact that no remote cabin sales are allowed by the Plan, within the Northwest Arctic Borough. Essentially, there are enough problems we are confronted with than having to deal with this one too. The potential problems created far outweigh any benefits. The planning process does not require an analysis of local services available for such sites. Even though it is anticipated that such remote areas will not receive services, they still have rights to them and make claims for such services. At this point in time the Northwest Arctic Borough is unable to deal with those potential demand for services. As the borough develops and services and

resources become available, the question of remote cabin sites will receive continuing review by both the Department and the Borough.

What you have before you, the Northwest Area Plan, is the best that could be accomplished. It is the result of three years of public scrutiny & local involvement that we feel adequately met both local and statewide interests. It is our hope that the Commissioner will approve the Plan.

I am available to answer your questions.

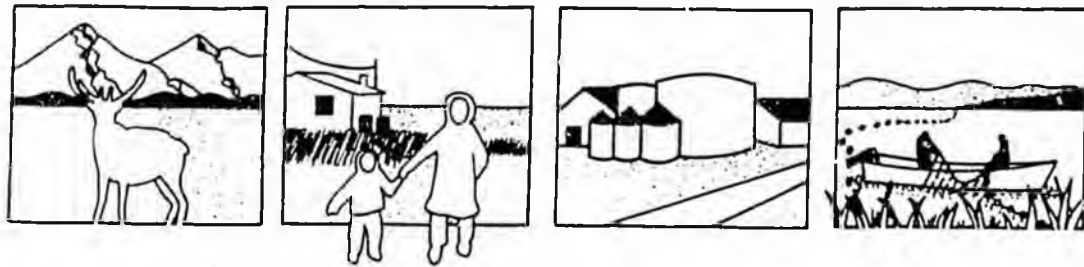
Respectfully submitted,



Chuck Greene

Mayor

NORTHWEST AREA PLAN



BRIEFING PAPER

February 1989

Purpose of the Plan

The Northwest Area Plan describes how the Department of Natural Resources (DNR) will manage state land on the Seward Peninsula and Norton Sound, the Lisburne Peninsula up to Icy Cape, and the Kobuk River Valley. The plan determines land-sale offering locations, remote cabin areas, land classifications, land selections and relinquishments, areas open to mineral entry and guidelines for leases and permits on state lands. The plan may make recommendations for interagency memoranda of agreement, cooperative agreements with other landowners, research, or recommendations to the state legislature for legislative designations or changes in legislation. The plan does not make decisions on federal, Native, or private lands.

Description of Planning Area

The Northwest Planning area includes the Lisburne Peninsula up to Icy Cape, the Kobuk River Valley, the Seward Peninsula and Norton Sound. One-fourth of the area within this region, or 10 million acres of uplands and about 4 million acres of tide and submerged lands, has been selected by or conveyed to the state. Federal lands include portions administered by the Bureau of Land Management and the following conservation units: Cape Krusenstern National Monument, Kobuk Valley National Park, Bering Land Bridge National Preserve, Selawik National Wildlife Refuge, and portions of the Noatak National Preserve, Gates of the Arctic National Park and Preserve, and Alaska National Maritime Refuge. Native regional and village corporations are major landowners who own or have selected over 4.16 million acres. In addition, about 280,000 acres or 2300 parcels have been selected or patented under federal land conveyance programs such as Native allotments, mineral patents, and homesites. There are 26 communities within the Northwest plan area with a total population of about 14,000.

Alaska Department of Natural Resources

Resource Allocation Section

3700 Airport Way
Fairbanks, Alaska 99709
(907) 451-2742

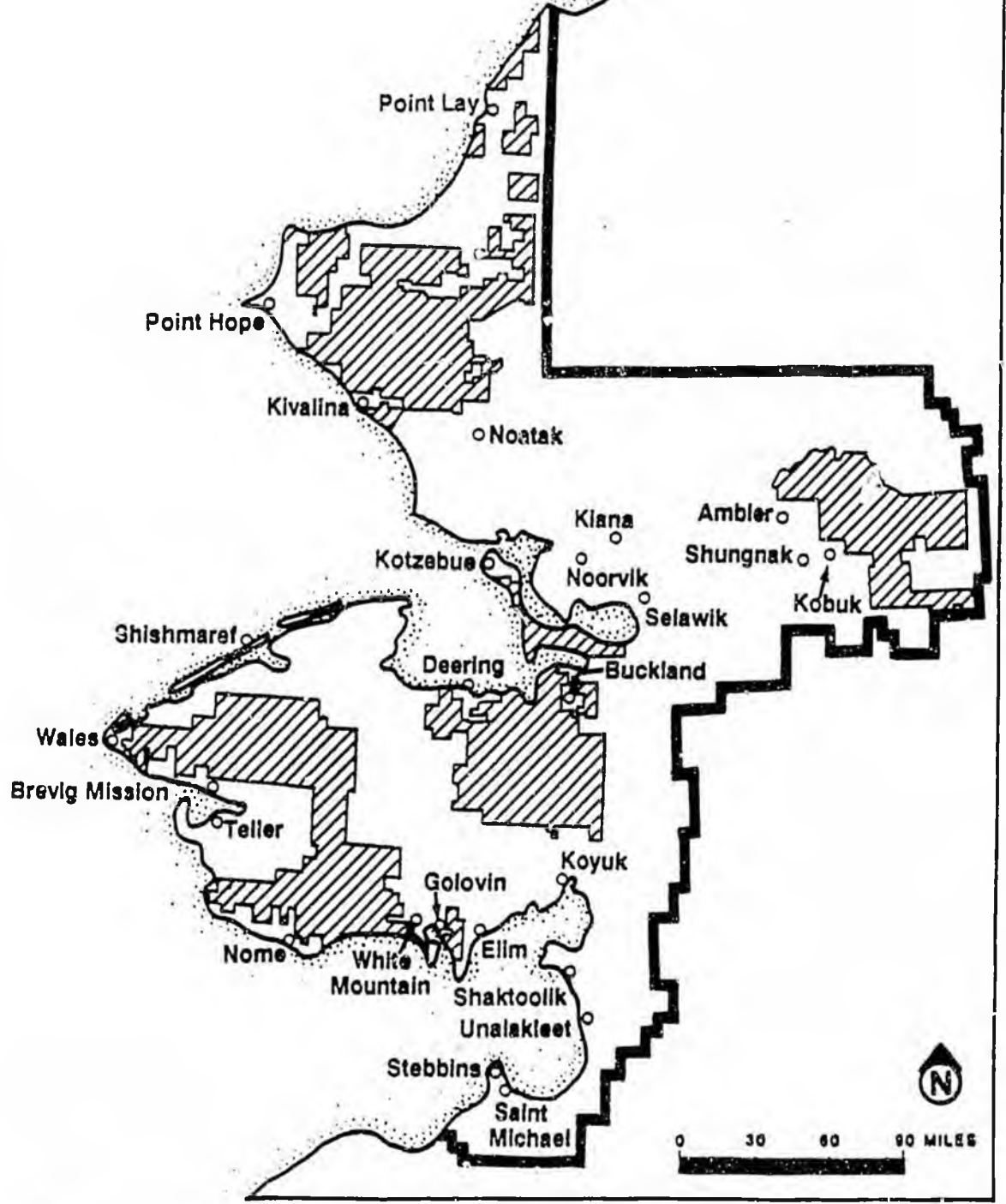


Alaska Department of
**NATURAL
RESOURCES**

NORTHWEST AREA PLAN



LOCATION OF PLANNING AREA



 STATE-OWNED AND STATE SELECTED LANDS*

 AREA PLAN BOUNDARY

* Detailed land status is not shown because of the complex land ownership pattern and the small scale of the map. Some private lands and Native-selected lands exist within the areas shown. More detailed land ownership maps are available at the DNR office.

How the Plan Was Developed

The Northwest Area Plan is the product of three-and-a half years of work by state agencies, coastal program and local government representatives, interest groups, and the general public. Over 75 public meetings and workshops have been held throughout the planning area and in Anchorage and Fairbanks to gather public comments and ideas.

The plan was developed by the Northwest Area Plan Planning Team. The planning team is made up of representatives from state agencies, coastal districts or local governments, and Native regional corporations. When consensus is not reached among planning team members, the advisory committee is consulted. The representatives on the planning team and the advisory committee are listed below.

The agency review draft, prepared in December 1987, was the first draft of the plan. Comments from 16 agencies were received in January 1988 on the agency review draft. The planning team resolved the remaining issues and revised the draft for public review.

Following the public meetings during the fall of 1988 and the end of the public comment period, the draft plan was revised. The final 30-day public notice was held in late 1988. Final issues were resolved in early 1989, and upon signature by the Commissioners of DNR and ADF&G, the Northwest Area Plan will guide state land management within the planning area.

Major Issues

Land Sales and Remote Cabins: Land sale areas and remote cabin permits have been a controversial issue in northwest Alaska. The number and density of the offerings proposed in the plan are very low, and special guidelines are developed to meet concerns of settlement impacts. For the Seward Peninsula, three land sale areas, about 900 acres, are proposed along the road system north of Nome, and two areas for about 14 remote cabin permits. For the Northwest Arctic Borough, about 300 acres are proposed for sale in two areas on tributaries of the upper Kobuk River. No remote cabin areas are proposed in the Northwest Arctic Borough. No land sales or remote cabins are proposed for the North Slope Borough (Lisburne Peninsula) area.

Mineral Entry: Nearly all state land will remain open for new mineral entry. In areas open to mineral entry, existing laws, regulations, and guidelines in the plan are used to protect surface resources and anadromous fish habitat.

Certain important habitat lands will be closed to mineral entry. Thirteen important seabird rookeries along the northwest coastline with state uplands or mineralized tideland areas are proposed for closure within a 1/4 mile radius of the rookery, about 6,500 acres total. Additionally, new mineral entry would be prohibited in seven important sheefish spawning sites and on state lands within 200 feet either side of the sites on the upper Kobuk River, about 3,000 acres total.

Municipal Entitlements: The municipal entitlement act establishes the classification categories that are available for conveyance to municipalities. Although the area plan proposes the classifications for state lands, the municipal selection process will analyze resources in greater detail, separately from the area plan. Language will be included in the plan that will emphasize keeping options open for land selection for future local governments.

The Northwest Arctic Borough and the North Slope Borough are entitled to state land selections within the planning area. In order to minimize the effect of plan classifications on municipal selections, the plan proposes to defer implementation of classifications for certain areas of borough interest. This will allow the municipal selection process to occur without requiring large scale changes to the plan. The plan will include language that recognizes the deferred classifications and borough selections.

Reindeer Grazing: Reindeer grazing is an important use of state lands on the Seward Peninsula and will continue to be allowed. Plan policies and guidelines will promote multiple use of state lands and serve to minimize conflicts among the various users. The plan recommends development of long-term grazing operations plans and a coordinated application process.

Leases and Permits: The Department of Natural Resources may issue permits for some temporary uses of state land such as trapping cabins and commercial tent camps. DNR may also issue leases for more permanent uses of state land, such as lodges or communication sites. The Northwest Area Plan will continue to allow leases and permits in most of the planning area. Leases for commercial recreation facilities will not be allowed in high value habitat areas. Trapping cabin construction permits should not be issued if the cabin conflicts with existing trapping and subsistence activities. Each request will be reviewed to see if it complies with the plan's management guidelines and policies.

Subsistence: Subsistence uses and traditional activities are one of the principal uses of state land within the planning area. Although the allocation of fish and wildlife resources among competing users is managed through the Alaska Boards of Fisheries and Game, DNR manages state lands which support subsistence resources and uses. The importance of subsistence activities and traditional uses in Northwest Alaska is recognized through plan policies and guidelines. The plan will provide opportunities for economic development that are in balance with the region's mixed cash-subsistence economy.

Other Issues: Other issues, in general, are relatively non-controversial. The plan will manage almost all lands for multiple use, open for mineral entry and available for leasing for coal, oil and gas. Plan guidelines will be consistent with coastal policies in effect for the area. There are no recommendations for legislative designations. The plan recommends further study for management of lands in the Kobuk River area by the agencies with jurisdiction along the river.

Planning Team and Advisory Committee Members

<u>Agency/Organization</u>	<u>Team Member</u>	<u>Advisory Member</u>
Department of Natural Resources Chairperson	Anna Plager (451-2700)	Tom Hawkins
Division of: Oil & Gas	Kris O'Connor (762-2548)	Jim Eason
Mining	Judd Peterson (451-2791)	Jerry Gallagher
Agriculture	Ed Arobio (451-5692)	Frank Mielke
Land & Water Management	Bill Copeland (451-2715)	Jerry Brossia
Parks & Outdoor Recreation	Mike Lee (451-2698)	Neil Johannsen
Forestry	Steve Clautice (451-2678)	Bob Dick
Dept. of Transportation & Public Facilities	Norm Piispanen (474-2423)	John Martin
Dept. of Environmental Conservation	Joyce Beelman (452-1714)	William D. (Pete) McGee
Dept. of Fish & Game	Matt Robus (451-6192)	Al Ott
Dept. of Community & Regional Affairs	Ike Waits or Bert Greist (561-8586)	Marty Rutherford

(Continued)

<u>Agency Organization</u>	<u>Team Member</u>	<u>Advisory Member</u>
North Slope Borough	Karla Kolash Dep. Dir., Planning P.O. Box 169 Barrow, AK 99723 (852-2611)	Arnold Brower, Jr.
Arctic Slope Regional Corporation	William Thomas Land Manager P.O. Box 129 Barrow, AK 99723 (852-8633)	William Thomas
Bering Straits Native Corporation	Guy Martin Director of Lands P.O. Box 1008 Nome, AK 99762 (443-5252)	Guy Martin
Bering Straits Coastal Management Program	Bryan MacLean Program Director Box 28 Unalakleet, AK 99684 (624-3062)	Johnson Eningowuk
NANA Regional Corporation	Walter Sampson Director of Lands P.O. Box 49 Kotzebue, AK 99752 (442-3301)	John Rense
Northwest Arctic Borough	Jason Jessup Planning Director P.O. Box 1110 Kotzebue, AK 99752 (442-2500)	Charles Greene
City of Nome	Tom Abrams Planning Commission Box 932 Nome, AK 99762 (443-5340)	Tom Abrams

Northwest Alaska Area Plan - Project Staff

Anna Plager, Project Manager	Ed Fogels, Natural Resource Officer
Roselynn Smith, Natural Resource Tech	Kay Zito, Clerk Typist

NUSHAGAK & MULCHATNA RIVERS

Recreation Management Plan

P.O. Box 849 • Dillingham, Alaska 99576 • (907) 842-2666



BRIEFING PAPER

February 1989

Origin of Plan

The Bristol Bay Area Plan (1983) and the Bristol Bay Coastal Management Plan (1987) each recommended that more detailed planning be done to guide recreation management in the region. The legislature appropriated \$40,000 per year in FY 88 and 89 with the intent that the Alaska Department of Natural Resources (DNR) should work with the Alaska Department of Fish and Game (ADFG) and the Bristol Bay Coastal Resource Service Area (BBCRSA) in the preparation of this plan.

Purpose of the Plan

The major points the plan will address are:

The number and location of lodges and spike camps that should be allowed.

Protection of public access sites, easements and campsites.

Other issues which the plan may address are options for managing recreational use, trespass on private land, land exchanges and legislative designations. The plan will not make regulations for fish and game management, since these are the responsibilities of the Boards of Fisheries and Game.

Summary of Plan Process

A planning team is responsible for developing the plan. The team consists of staff from DNR, ADFG, and BBCRSA. The advisory board is consulted by the team and is made up of representatives from major public interests. A project manager acts as staff to the planning team and is based at the BBCRSA office in Dillingham.

Fall 1987: Public issues and concerns identified.

Fall 1987 to Fall 1988: Resource Assessment prepared and printed.

August to December 1988: Management Alternatives prepared and distributed.

Reviewed prior to publication by planning team and advisory board. Mailed to 700 person mailing list including all commercial recreation operators known to work near the planning area, 2,200 local residents and advisory board members. 4,400 were distributed in total. Public meetings held in Anchorage, Iliamna, Dillingham, Ekwok, New Stuyuhok and Koliganek.

January to February 1989: Summary of Public Response to Management Alternatives prepared and distributed to agencies and the public.

March 1989: Draft plan prepared.

Draft is prepared based on public and agency response to alternatives.

April 1989: Agencies review draft plan.

Agencies resolve differences in opinion and the draft is modified.

May 1989: Public reviews draft plan.

Draft plan or summary of draft plan is prepared and distributed. Public meetings are held in above communities and Fairbanks.

Summer 1989: Final Plan is prepared, adopted and implemented.

Coastal consistency review will take longer.

PLANNING TEAM

Alaska Department of Fish and Game

Division of Commercial Fish

Division of Game

Habitat Division

Division of Sport Fish

Subsistence Division

Wes Bucher

Ken Taylor

Lance Trasky

Paul Krasnowski

Jim Fall

Alaska Department of Natural Resources

Division of Forestry

Division Land and Water Management

Division of Parks & Outdoor Recreation

Resource Allocation Section

Joe Stam

Helen Nienheuser

Dan Hourihan

Rob Walkinshaw

Bristol Bay Coastal Resource Service Area

Susan Flensburg

ADVISORY BOARD

Air Taxi Operator, Iliamna Air Taxi

Alaska Center for the Environment

Alaska Outdoors Council

Alaska Professional Hunters Assoc.

Alaska Professional Sportfishing Assoc.

Alaska Sportfishing Association

Bureau of Land Management

Choggiung Ltd.

Ekwok Natives Ltd.

Koliganek Natives Ltd.

National Park Service

Nushagak Fish and Game Advisory Comm.

Stuyahok Ltd.

Togiak National Wildlife Refuge

Tim La Porte

Cliff Eames

Ward Jones

James Harrower

Chris Goll

Jeff Parker

Laun Buoy

Robin Samuelson

Luki Akelkok

Jerry Liboff

Jack Mosby

Donald Sagmoen

Peter Andrew Jr.

Dave Fisher/

Pete Jerome

THE FOLLOWING DOCUMENT MAY NOT FILM
LEGIBLY BECAUSE OF THE POOR QUALITY OF THE
ORIGINAL

1952

2
D

Time

Time

Time

Time

Time

Time

Time

TELETYPE COVER SHEET

NOTE: (REV)

(C)



Alaska State Legislature

Please send me a copy of my testimony to the _____ Committee on _____

Committee on _____ bill/subject

_____ This opportunity to express _____ the issue of the _____ in perspective.

The State Board of _____ of the _____ for _____ where he will be _____

_____ the public _____ of _____ appeared _____

What is your _____

_____ public _____

A. J. ...

Testifier

Self

Address

907-455-6151

Phone No

Richard H. Bishop on the Northwest Area 01 1950 Page 2

a carefully selected and protected

to the Northwest... of the... Native... areas are... and... that... only for local... residents.

WHAT ARE THE SUBJECT RESOURCES OF THE AREA?

(1) Access -- To public lands... for... retained... such as...

(2) Hopes of public... areas... fish and game.

(3) Private... corridors to...

(4) Private... for such uses.

(5) Commercial... law.

HOW CAN THE AREA BE BETTER MANAGED?

(1) Better... have...

(2) Better... planning...

(3) Possible... to their... completely done

18) ... Bishop on the Northwest Coast ...

19) ...

20) ...

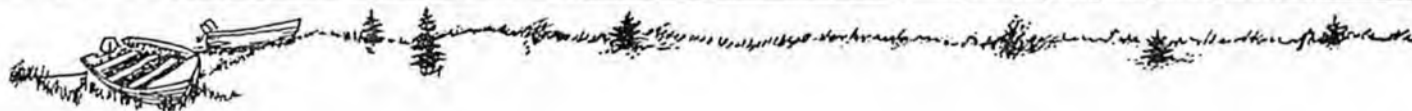
21) ...

22) ...

23) ...

NUSHAGAK & MULCHATNA RIVERS

Recreation Management Plan



How will state land near the Nushagak and Mulchatna Rivers be managed?

You can help decide.



BULK MAIL
PERMIT # 34
Dillingham, AK

11/87

HOW WILL STATE LAND NEAR THE NUSHAGAK AND MULCHATNA RIVERS BE MANAGED?

YOU CAN HELP DECIDE.

The Alaska Department of Natural Resources, Alaska Department of Fish and Game, and the Bristol Bay Coastal Resource Service Area are cooperating to prepare a management plan for state lands near the Nushagak and Mulchatna Rivers. This plan will affect the way the public uses these rivers. You are invited to help out in this process--whether you live or work in the area or use the resources of the rivers in any way.

WHY A PLAN?

This plan will build on the work done for the Bristol Bay Area Plan and address in more detail management issues for the Nushagak and Mulchatna Rivers. The Nushagak and Mulchatna Rivers are two of the most heavily used rivers in the Bristol Bay area. Over the years conflicts among people using the rivers have increased. A detailed management plan is needed to resolve these conflicts in a fair and open manner.

WHAT WILL THE PLAN DO?

The plan will describe in detail how the state intends to manage its land in the Nushagak and Mulchatna drainages. Points that the plan will address include:

- * How many lodges and commercial recreation camps will be allowed in different areas of the drainages.
- * Types of access to and wildlife resources. For example, should additional airstrips be allowed?
- * How increasing trespass will be avoided on public and private lands.
- * If and where land exchanges and legislative designations should take place.

WHAT WILL THE PLAN NOT DO?

Many decisions concerning land use have already been made in the Bristol Bay Area Plan and the Bristol Bay Coastal Management Plan. This plan will not address topics already addressed in earlier plans, including:

- * Land disposals and remote cabins.
- * Mineral management.
- * Oil and gas leasing.
- * Agriculture and grazing.



WHO WILL PREPARE THE PLAN?

The plan will be prepared by a planning team from the Department of Natural Resources, Department of Fish and Game, and Bristol Bay Coastal Resource Service Area.

An advisory board will help the planning team decide which issues the plan should address and will recommend how these issues should be resolved. The board will include representatives from Native corporations, public and commercial sport hunting and fishing interests, the local fish and game advisory committee and other people concerned with the use of the river.

THE PLANNING PROCESS

The planning process will take about a year and a half to complete and will follow these steps:

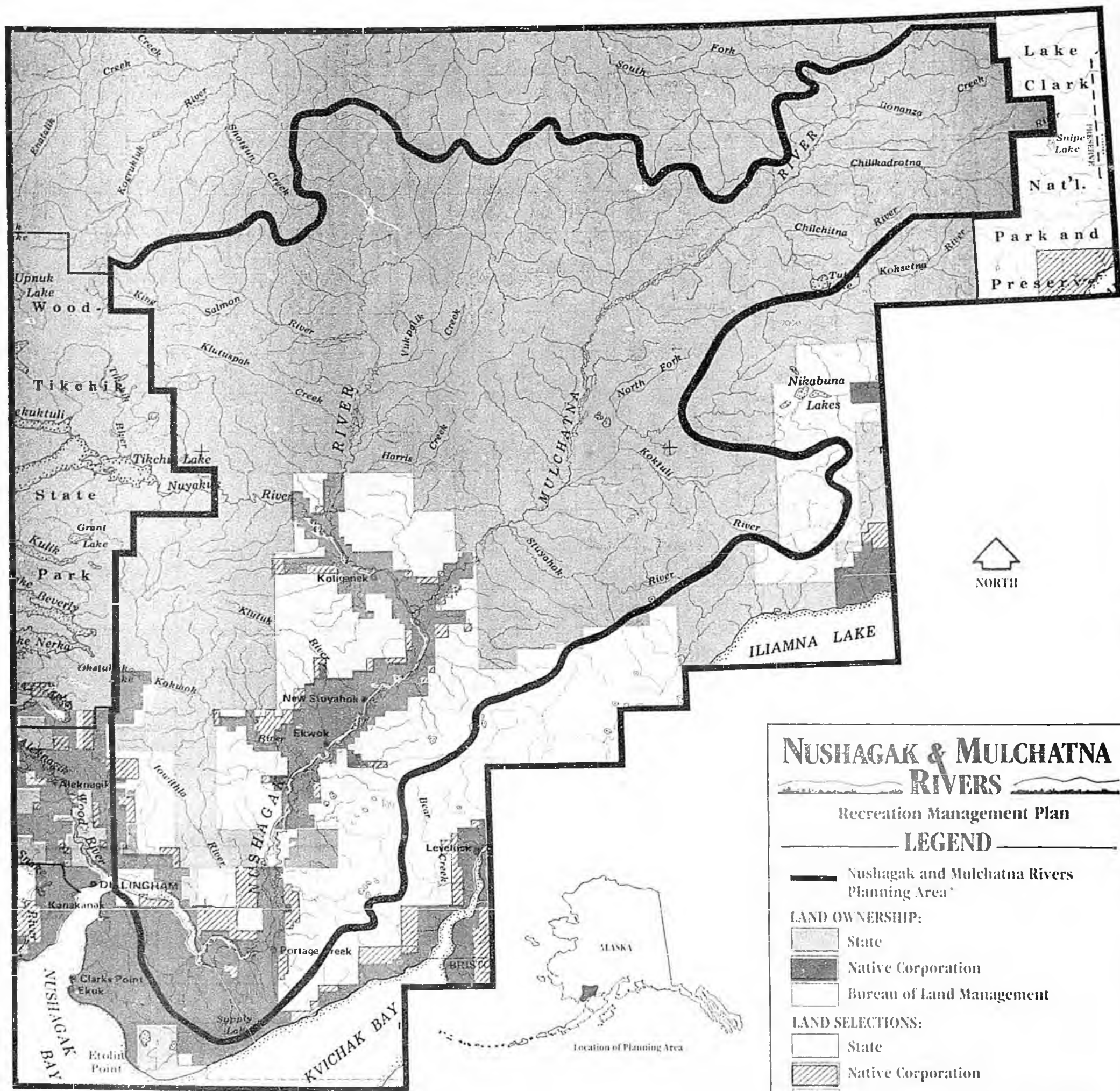
1. **Issues are Identified.** Questions that the plan can and should address are identified. (Fall 1987)
2. **Information is Collected.** Information needed to answer these questions is gathered. (Winter 1987-1988)
3. **Alternatives are Prepared.** Alternative methods for managing the land are described and their effects are weighed. (Winter 1987-1988)
4. **Alternatives are Reviewed by the Public.** Public meetings are held to review the land use alternatives and identify the choices that people prefer. (Spring 1988)
5. **Draft Plan is Prepared.** The planning team creates a draft plan using agency and public comments on the alternatives. (Summer 1988)
6. **Draft Plan is Reviewed by the Public.** Public hearings are held to review the draft plan. (Fall 1988)
7. **Final Plan is Prepared.** The planning team creates a final plan based on public comments on the draft plan. (Winter 1988-1989)
8. **Plan is Adopted and Implemented.** The Commissioners of the Department of Natural Resources and Department of Fish and Game and the Board of the Bristol Bay Coastal Resource Service Area approve the plan. The plan then guides the management of land in the area. (Winter 1988-1989)

NUSHAGAK & MULCHATNA RIVERS

Recreation Management Plan

P.O. Box 840 • Dillingham, Alaska 99576

The preparation of this document was financed in part by funds from the Alaska Coastal Management Program which is funded by the State of Alaska and the Office of Ocean and Coastal Management, National Oceanic and Atmospheric Administration, US Department of Commerce, administered by the Department of Community and Regional Affairs, Municipal and Regional Assistance Division.



NUSHAGAK & MULCHATNA RIVERS

Recreation Management Plan

LEGEND

Nushagak and Mulchatna Rivers Planning Area*

LAND OWNERSHIP:

- State
- Native Corporation
- Bureau of Land Management

LAND SELECTIONS:

- State
- Native Corporation
- Land Selection by both Native Corp. and State

Scale: 1:1,000,000

50 KILOMETERS

30 MILES

*The Planning Area

This map shows the Nushagak and Mulchatna drainages -- not necessarily the final boundaries of the planning area. The final boundaries will be determined after the planning team identifies where most of the land use conflicts are likely to take place. This will most likely be land near the rivers, which receive the most use.

Land Ownership

More than 40% of the land fronting the Nushagak and Mulchatna Rivers is owned by four Native Corporations; most of the remaining land is owned by the state. In addition, there are more than 200 Native allotments on the rivers. How the state, corporations or allottees manage their land holdings has a large effect on how the public uses all land near the rivers. The success of this plan will depend in part on cooperation between the private landowners and the state in guiding use of the land near the rivers.

HOW CAN YOU BE INVOLVED?

You can be involved in the process by sharing your knowledge and opinions directly with the planning team or by expressing your views to the plan advisory board. Steps in the planning process where your participation would be most helpful are:

- * Identifying issues and collecting information (Fall 1987). You can let the planning team or advisory council know what concerns they should consider in the plan and give them information which will help them make the right decisions.
- * Reviewing management alternatives (Winter 1987-1988). You can attend public meetings to give your views on the various ways the plan can handle these issues.
- * Reviewing the draft plan (Summer 1988). You can attend public meetings to give your opinion on the contents of the draft plan.

to make sure that it remains up-to-date. The planning team and advisory board will ask for your help again at that time.

FOR MORE INFORMATION, CONTACT:

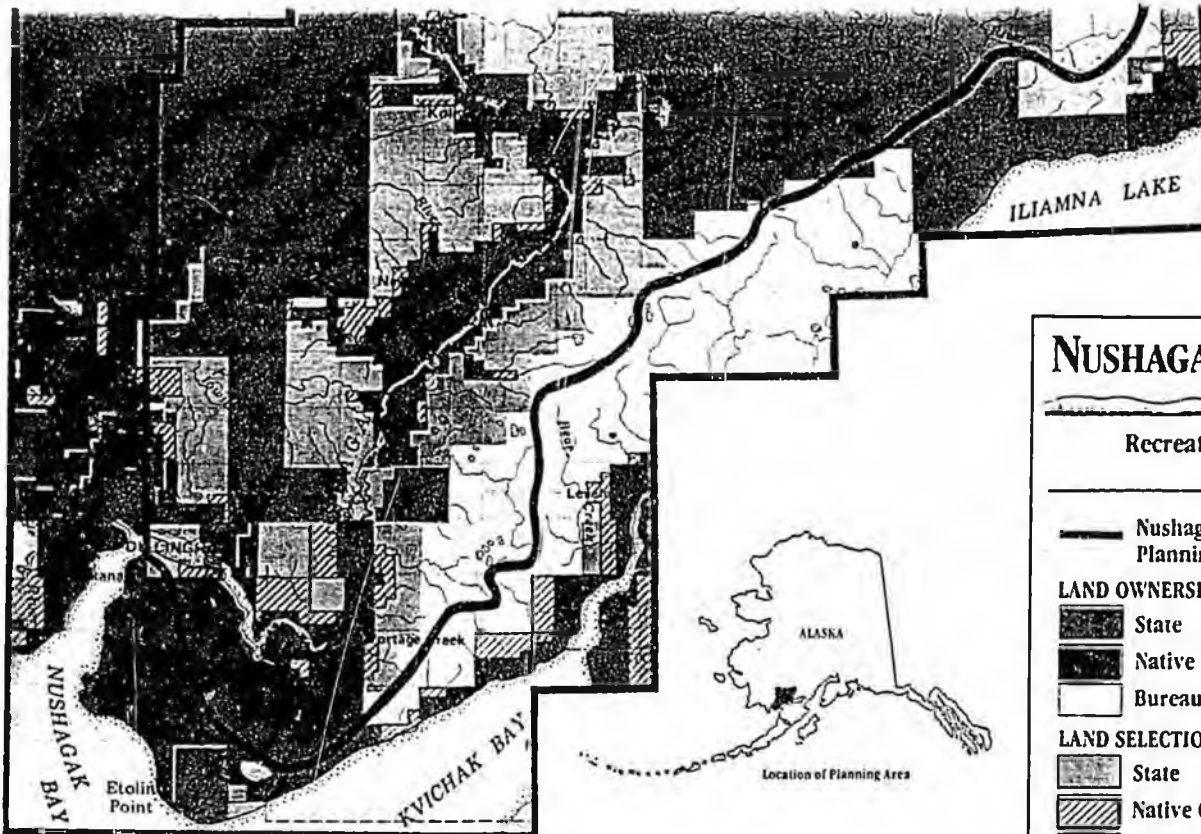
Peter Crimp, Project Manager
Nushagak and Mulchatna Rivers
Recreation Management Plan
P.O. Box 849
Dillingham, AK 99576
Phone (907)842-2666

Susan Flensburg
Bristol Bay Coastal Resource Service Area
P.O. Box 849
Dillingham, AK 99576
(907)842-2666

Rob Walkinshaw
Alaska Dept. of Natural Resources
Div. of Land & Water Management
P.O. Box 107005
Anchorage, AK 99510-7005
Phone (907)762-2660

Paul Krasnowski
Alaska Dept. of Fish and Game
Div. of Sport Fish
333 Raspberry Road
Anchorage, AK 99518-1599
Phone (907) 276-2218

The plan will be reviewed and amended in five to ten years after it is adopted



NUSHAGAK & MULCHATNA RIVERS

Recreation Management Plan

LEGEND

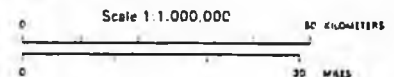
Nushagak and Mulchatna Rivers Planning Area*

LAND OWNERSHIP:

- State
- Native Corporation
- Bureau of Land Management

LAND SELECTIONS:

- State
- Native Corporation
- Land Selection by both Native Corp. and State



*The Planning Area

This map shows the Nushagak and Mulchatna drainage -- not necessarily the final boundaries of the planning area. The final boundaries will be determined after the planning team identifies where most of the land use conflicts are likely to take place. This will most likely be land near the rivers, which receive the most use.

Land Ownership

More than 40% of the land fronting the Nushagak and Mulchatna Rivers is owned by four Native Corporations; most of the remaining land is owned by the state. In addition, there are more than 200 Native allotments on the rivers. How the state, corporations or allottees manage their land holdings has a large effect on how the public uses all land near the rivers. The success of this plan will depend in part on cooperation between the private landowners and the state in guiding use of the land near the rivers.

HOW CAN YOU BE INVOLVED?

You can be involved in the process by sharing your knowledge and opinions directly with the planning team or by expressing your views to the plan advisory board. Steps in the planning process where your participation would be most helpful are:

- * Identifying issues and collecting information (Fall 1987). You can let the planning team or advisory council know what concerns they should consider in the plan and give them information which will help them make the right decisions.
- * Reviewing management alternatives (Winter 1987-1988). You can attend public meetings to give your views on the various ways the plan can handle these issues.
- * Reviewing the draft plan (Summer 1988). You can attend public meetings to give your opinion on the contents of the draft plan.

The plan will be reviewed and amended in five to ten years after it is adopted

to make sure that it remains up-to-date. The planning team and advisory board will ask for your help again at that time.

FOR MORE INFORMATION, CONTACT:

Peter Crimp, Project Manager
Nushagak and Mulchatna Rivers
Recreation Management Plan
P.O. Box 849
Dillingham, AK 99576
Phone (907)842-2666

Susan Flensburg
Bristol Bay Coastal Resource Service Area
P.O. Box 849
Dillingham, AK 99576
(907)842-2666

Rob Walkinshaw
Alaska Dept. of Natural Resources
Div. of Land & Water Management
P.O. Box 107005
Anchorage, AK 99510-7005
Phone (907)762-2660

Faul Krasnowski
Alaska Dept. of Fish and Game
Div. of Sport Fish
333 Raspberry Road
Anchorage, AK 99518-1599
Phone (907) 276-2218

NUSHAGAK & MULCHATNA RIVERS

Recreation Management Plan



How will state land near the Nushagak and Mulchatna Rivers be managed?

You can help decide.



Coastal Resource Service Area



HOW WILL STATE LAND NEAR THE NUSHAGAK AND MULCHATNA RIVERS BE MANAGED?

YOU CAN HELP DECIDE.

The Alaska Department of Natural Resources, Alaska Department of Fish and Game, and the Bristol Bay Coastal Resource Service Area are cooperating to prepare a management plan for state lands near the Nushagak and Mulchatna Rivers. This plan will affect the way the public uses these rivers. You are invited to help out in this process--whether you live or work in the area or use the resources of the rivers in any way.

WHY A PLAN?

This plan will build on the work done for the Bristol Bay Area Plan and address in more detail management issues for the Nushagak and Mulchatna Rivers. The Nushagak and Mulchatna Rivers are two of the most heavily used rivers in the Bristol Bay area. Over the years conflicts among people using the rivers have increased. A detailed management plan is needed to resolve these conflicts in a fair and open manner.

WHAT WILL THE PLAN DO?

The plan will describe in detail how the state intends to manage its land in the Nushagak and Mulchatna drainages. Points that the plan will address include:

- How many lodges and commercial recreation camps will be allowed in different areas of the drainages.
- Types of access to fish and wildlife resources. For example, should additional airstrips be allowed?
- How increasing trespass will be avoided on public and private lands.
- If and where land exchanges and legislative designations should take place.

WHO WILL PREPARE THE PLAN?

The plan will be prepared by a planning team from the Department of Natural Resources, Department of Fish and Game, and Bristol Bay Coastal Resource Service Area.

An advisory board will help the planning team decide which issues the plan should address and will recommend how these issues should be resolved. The board will include representatives from Native corporations, public and commercial sport hunting and fishing interests, the local fish and game advisory committee and other people concerned with the use of the river.

THE PLANNING PROCESS

The planning process will take about a year and a half to complete and will follow these steps:

1. Issues are Identified. Questions that the plan can and should address are identified. (Fall 1987)
2. Information is Collected. Information needed to answer these questions is gathered. (Winter 1987-1988)
3. Alternatives are Prepared. Alternative methods for managing the land are described and their effects are weighed. (Winter 1987-1988)
4. Alternatives are Reviewed by the Public. Public meetings are held to review the land use alternatives and identify the choices that people prefer. (Spring 1988)
5. Draft Plan is Prepared. The planning team creates a draft plan using agency and public comments on the alternatives. (Summer 1988)

BULK MAIL
PERMIT #34
Dillingham, AK

11/87



How will state land near the Nushagak and Mulchatna Rivers be managed?

You can help decide.



BULK MAIL
PERMIT #34
Dillingham, AK

11/87

NUSHAGAK & MULCHATNA RIVERS

Recreation Management Plan

P.O. Box 819 • Dillingham, Alaska 99576

The preparation of this document was financed in part by funds from the Alaska Coastal Management Program which is funded by the State of Alaska and the Office of Area and Coastal Management, National Oceanic and Atmospheric Administration, US Department of Commerce, administered by the Department of Community and Regional Affairs, Municipal and Regional Assistance Division.

to help out in this process--whether you live or work in the area or use the resources of the rivers in any way.

WHY A PLAN?

This plan will build on the work done for the Bristol Bay Area Plan and address in more detail management issues for the Nushagak and Mulchatna Rivers. The Nushagak and Mulchatna Rivers are two of the most heavily used rivers in the Bristol Bay area. Over the years conflicts among people using the rivers have increased. A detailed management plan is needed to resolve these conflicts in a fair and open manner.

WHAT WILL THE PLAN DO?

The plan will describe in detail how the state intends to manage its land in the Nushagak and Mulchatna drainages. Points that the plan will address include:

- How many lodges and commercial recreation camps will be allowed in different areas of the drainages.
- Types of access to fish and wildlife resources. For example, should additional airstrips be allowed?
- How increasing trespass will be avoided on public and private lands.
- If and where land exchanges and legislative designations should take place.

WHAT WILL THE PLAN NOT DO?

Many decisions concerning land use have already been made in the Bristol Bay Area Plan and the Bristol Bay Coastal Management Plan. This plan will not address topics already addressed in earlier plans, including:

- Land disposals and remote cabins.
- Mineral management.
- Oil and gas leasing.
- Agriculture and grazing.



sport hunting and fishing interests, the local fish and game advisory committee and other people concerned with the use of the river.

THE PLANNING PROCESS

The planning process will take about a year and a half to complete and will follow these steps:

1. Issues are identified. Questions that the plan can and should address are identified. (Fall 1987)
2. Information is collected. Information needed to answer these questions is gathered. (Winter 1987-1988)
3. Alternatives are prepared. Alternative methods for managing the land are described and their effects are weighed. (Winter 1987-1988)
4. Alternatives are reviewed by the public. Public meetings are held to review the land use alternatives and identify the choices that people prefer. (Spring 1988)
5. Draft Plan is Prepared. The planning team creates a draft plan using agency and public comments on the alternatives. (Summer 1988)
6. Draft Plan is Reviewed by the Public. Public hearings are held to review the draft plan. (Fall 1988)
7. Final Plan is Prepared. The planning team creates a final plan based on public comments on the draft plan. (Winter 1988-1989)
8. Plan is Adopted and Implemented. The Commissioners of the Department of Natural Resources and Department of Fish and Game and the Board of the Bristol Bay Coastal Resource Service Area approve the plan. The plan then guides the management of land in the area. (Winter 1988-1989)