

S B

4 5 3

Senate Health, Education and Social Services Committee

Legislation Checklist

Bill number: SB 453

Sponsor: Zharoff

Date referred to committee: 2/18/84

Synopsis completed:

Fiscal note:

Further referrals: fin

CONTACTS: ✓ Rick Lauber, Seafood Processors 6-6366

✓ Zharoff (Kard) 3844

✓ Kerry Ronesburg x2854

✓ ASM I (Bill Hudson) 586-2902

✓ Greg Baker, OCED (Paul Peyton) 2162
2500

COMMITTEE REPORT
SENATE

FURTHER: FINANCE

2/18/86

Date 3-6-86

Mr. President

The Committee on HESS considered SB 453

relating to memorial scholarship revolving loans, creating the A.W. (Winn) Brindle memorial scholarship loan; efd.

and (a majority of the committee) (the committee) reports it back with the following recommendations:

- do pass
- do pass with attached amendment(s)
- replace with/or adopt CS for _____
- new title
- same title and recommends _____
- and attached a "LETTER OF INTENT" [] NEW FISCAL NOTE
- reports it back without recommendation
- recommends referral to _____ Committee

MEMBERS SIGNING
DO PASS

MEMBERS HAVING
OTHER RECOMMENDATIONS

Jim P. Josephson
Carliss Jurgulinski
Edna McVies

Paul Fink No Rec

Lettye Faberkamp do pass
 Chairman

Chairman recommendation

in cases in which it is collecting child support. The current use of the term "child support" restricts the agency's ability to meet its statutory directive.

2. Section 4 clarifies that a non-supporting parent is liable for the full amount of an Aid to Families with Dependent Children (AFDC) grant, which includes the amounts paid to the child and to the custodial parent. Unless established by the court, current statute limits the obligor's payment to the amount of AFDC paid to the child even though the amount paid to the parent is for the child's care.

3. Section 12 automatically assigns an individual's rights to child and spousal support to the state upon application for AFDC. This assignment is required by federal law and is currently handled through an application form filled out by the Department of Health and Social Services and transmitted to the child support enforcement agency. Section 12 would expedite the process.

4. Sections 2 and 5 correct incorrect references. Section 3 brings our statute into compliance with federal law.

The state's child support enforcement program was established in the Department of Revenue in 1976 to help collect court-ordered support from absent parents. SB 370 is intended to enhance the Department's efforts.

SB 453 Relating to memorial scholarship revolving loans, creating the A.W. Brindle memorial scholarship loan

SB 453 would establish the Winn Brindle memorial scholarship loan program to provide loans for courses of study in fisheries, seafood processing, food technology, and related fields. Loan terms and conditions would be the same as for student loans (currently \$6,000 maximum, 5% interest, 10 year term, 1 year grace period, 50% forgiveness). Repayments of Brindle loans would be deposited into the student loan revolving loan fund.

The Senate Finance Committee is currently considering HB 58, which would allow a 50% tax credit to fish processors for certain expenditures, including contributions to the Brindle memorial fund. Per current statute, funds could be accepted from other private sources as well. Brindle, past president of the Wards Cove Packing Company, had a "distinguished career dedicated to the development of the Alaska seafood industry."

STATE OF ALASKA
THE LEGISLATURE

LEGISLATIVE AFFAIRS AGENCY

LEGISLATIVE REFERENCE LIBRARY

POUCHY - STATE CAPITOL
JUNEAU, ALASKA 99811
907-465-3800

May, 1986

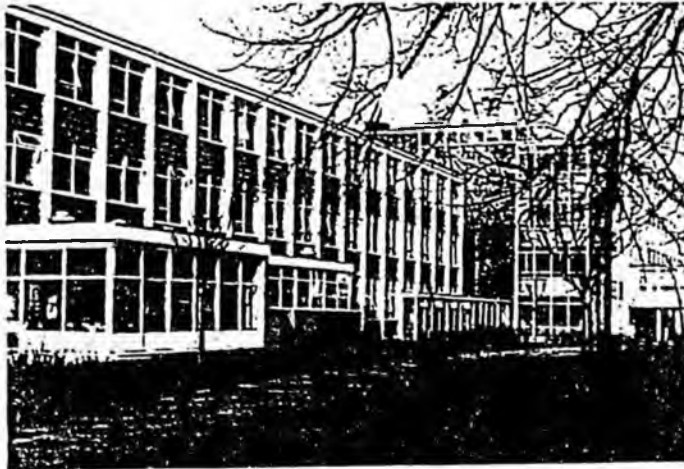
Copies of minutes listed below were originally included in this file. The minutes are available on the STAIRS date base CM 14. In order to save space copies of minutes have not been left in the files.

Jeanie Henry

Senate Health Education & Social Services Committee 3/6/86 1:34pm

file 513 vs 3

British college makes processing a priority



Part of the Grimsby site of the Humberside College of Higher Education.

School of Food Studies doubles its fish space

A BRITISH college that started teaching fish processing in a small way about ten years ago, now has an international reputation as one of the leading centres of food science and technology and attracts students from many countries.

The college concerned is the Humberside College of High Education, and its Grimsby-based School of



Dr. Steve Hanson. He directs the research activities of the School of Food Studies.

Food Studies, headed by Dr. Bryn Arthur, has become highly regarded in many countries. Not only do many Grimsby graduates now hold senior positions in the fish processing industries and institutes of their own countries, but the School of Food Studies has become widely consulted abroad as well as at home.

In 1983, the School of Food Studies and other advanced work in the Grimsby College of Technology was merged with the Hull College of High Education to form the new Humberside College of Higher Education, with main sites at Hull and Grimsby. The School of Food Studies has excellent facilities for food science and technology including specialist laboratories for fish processing, product development, microbiology, biochemistry, food science and analysis/food quality control.

To meet increasing demand for its services, the School is just completing extensive remodelling and extension work that will almost double the space available for fish processing practical work and fish microbiology.

The School provides a comprehensive range of courses at technician, technologist, degree and post-graduate levels. These include National Diploma and High National Diploma in Food Science/Technology, BSc Industrial Food Technology and Post-Graduate Diploma in Food Technology (Fish Processing). In all these courses fish science/technology is offered as a specialist option.

Short specialist courses, designed in collaboration with industry and overseas agencies/governments, are

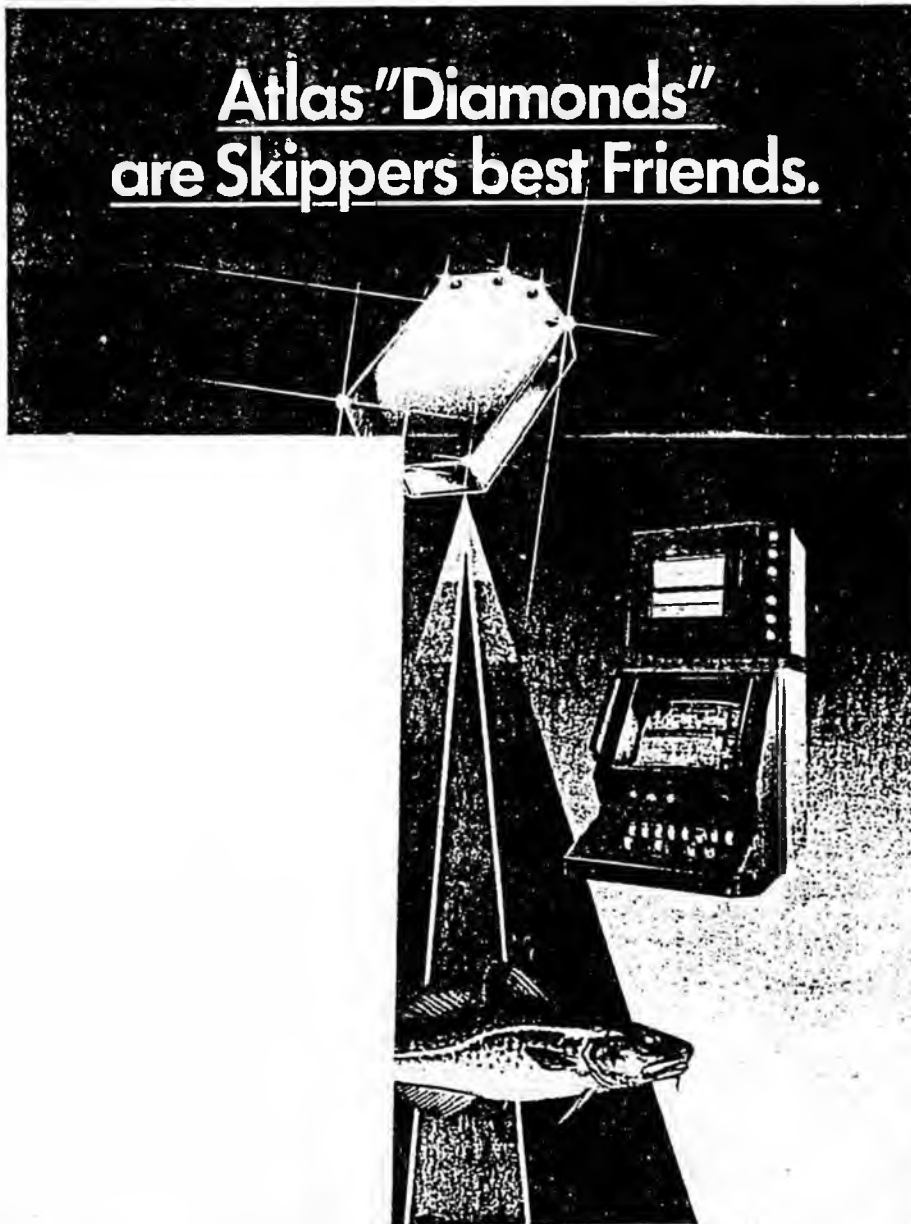
an integral part of the School's work. Recent courses have included fish quality assurance management and chill storage.

The School of Food Studies, in addition to a very active course programme of its own, has worked closely with the College's School of Fisheries Studies in developing the recently introduced three-month course in Fisheries Planning and Management, which is aimed primarily at overseas students. One week of this course is spent on fish processing at the Grimsby site.

The School makes major contributions in fish science, processing and quality control to the long-established Diploma in Fisheries Management — which about 300 students, mainly from overseas, have attended over the last ten years — and the more recent BSc in Fisheries Studies. In the latter, the fish science, processing, microbiology and quality control are taught by the School staff, and represents nearly one-third of this course.

But the course that the School of Food Studies is perhaps most proud of is its Post-Graduate Diploma in Food Technology (Fish Processing), which around 200 men and women have attended over the past ten years. Starting out as a joint Tropical Products Institute/Grimsby College of Technology course in prawn processing, this highly regarded course now attracts about 20 students a year, most of

Atlas "Diamonds" are Skippers best Friends.



ATLAS ELEKTRONIK

Sound Decision

545 • D-2800 Bremen 44 • Phone 421-457-0 • Telex 2457460 ktd
 San Carlo Hamburg Rnhway Houston, Seattle, Kobe.



Research student Rick Selter carrying out a fish



A. K. Deb, an MPhil student from Bangladesh determining protein content of shellfish.

whom are from tropical developing countries.

Students of varied backgrounds from 40 different countries have attended this post-graduate course, and the Humber College's School of Food Studies has developed a close relationship with many of their institutions, particularly in Mexico, Portugal and Indonesia.

A few years ago the School ran a special fish processing diploma course for a dozen or so Mexican students, and since then Dr. Arthur has advised the Mexican government on the design and purchase of equipment for a fish/food studies department at the Veracruz polytechnic. Bill Horner, another of the School's staff members, has also advised on staff training and curriculum development in Mexico.

Another consultancy project, for the new Politecnico De Faro in Portugal, also concerns the design and planning of fish technology facilities and the training of staff members at Grimsby. This project, headed by Dr. Arthur and commenced last year, will be ongoing for a two or three year period and may result in the establishment of a formal link between the School and the Polytechnic.

The Humber College's Post-Graduate Diploma in Food Technology (Fishes Processing) which prepares students for higher teaching, research or fish processing posts in their own countries, is designed to familiarise the participants with all aspects of handling, preservation, processing and distribution of fish. Particular emphasis is given to a study of methods to make more effective use of fish, to reduce wastage and spoilage, and to explore new products and methods.

A particularly flexible course, its programme of study is designed for each individual student and consists of units that reflect his or her requirements. As part of the programme the student usually undertakes a research project, and practical work plays an important role.

A study programme for this course consists of five units in addition to three foundation units of food preservation, food science and food microbiology, and a project unit for a unit to

meet the special needs of the student/sponsor.

A typical fish processing programme includes units on fish processing science, fish processing technology, fish microbiology and food analysis; plus food packaging, or food quality assurance management or business organisation.

Topics covered in the fish processing science unit include yield of edible flesh, composition and analysis; post-mortem changes in fish; thaw rigor, fillet shrinkage and drip loss; proteolysis; rancidity; changes in odour, flavour and texture; quality assessment methods; and chemical aspects of smoking, curing and salting.

The unit on fish processing technology also covers a wide range of topics including icing and refrigerated seawater; salting and smoking; canning; freezing; fish meal and FPC production; marinating; shellfish processing; fermented fish products; and other items such as fish sausages and fish cakes.

Fish microbiology covers taxonomy and identification of fish microflora; fish-borne food poisoning; processing hygiene; plant sanitation; growth of micro-organisms at chill temperature; high temperature preservation; causes of spoilage in canned products; and microbiological quality control.

Many students gaining the Post-Graduate Diploma at Credit or Distinction level proceed to MPhil/PhD by part-time or full-time research at the Grimsby School of Food Studies. Fourteen students over the past five years have completed research for higher degrees on fish processing topics.

Research in the School, which is directed by Dr. Steve Hanson, reader in Food Studies, is in general of an applied nature, carried out in collaboration with industry and overseas agencies/governments.

The School's expertise and reputation in areas of fish technology was an important factor in obtaining a major research contract from Britain's Overseas Development Administration (ODA) to investigate cured fish spoilage in Burma, Indonesia, Malaysia, Philippines and Thailand.

The aims of this project, which has been funded over four years with possible



A student operates a retort during a fish canning practical at the School of Food Studies.

extension for a further three years, are to assess the losses that occur, to develop means of reducing them and to investigate potentially harmful compounds in cured fish. Field work is carried out mainly in Indonesia, and involves collaboration with the national fish research centres.

MPhil/PhD students presently investigating cured fish at Grimsby include R. Ibrahim of Indonesia, who is studying ways of improving the quality of the salted-boiled fish known in her country as 'Pindang', and a student from the Seychelles, who is looking at histamine development. Other researches are examining losses due to blowfly infestation, potentially toxic compounds and water activity in relation to spoilage.

Another important research topic is concerned with the development of flesh/bone separation techniques for fish mince production — particularly from small unguiled pelagic fish — formulation of products such as fish balls, sausages, dried salted mince cakes, and assessment of their storage ability with particular emphasis on rancidity development.

Two overseas research students working on this project are Sadir Tausin of Indonesia, who is investigating shark products, and a Filipino, E.T. Banisihan, who is looking into the control of rancidity development.

A third research project is concerned with the quality changes that occur during storage and processing of fish and shellfish and involves the development and application of both chemical and bacteriological methods.

Grimsby research students working in this area include N. Rebelo of Portugal, who is examining the effects of inadequate storage temperature on the quality of frozen hake, and A.K. Deb of Bangladesh, who is interested in factors affecting the quality of frozen shellfish.

Another important research topic being investigated at Grimsby is concerned with the incidence and stability of nutritionally important fatty acids and lipid-soluble vitamins, as well as with the potential toxicity of lipid degradation products.

Two overseas students are currently engaged in research in this area. They are N.H. Ahmad of Iraq, who is looking at the effects of processing and storage on fatty acids in fish, and Sunarya of Indonesia, who is investigating nutritional aspects of shark liver oil.

Further information on courses, research or consultancy from Dr. Bryn Arthur, Head of School of Food Studies, Humber College of Higher Education, Nun's Corner, Grimsby, South Humberside DN34 5BO, England.

Tel: 98 5



ibercisa, from Comercio e Industria, S.A. founded in 1969, is dedicated to designing, fabricating and marketing of deck machinery for fishing and merchant vessels, under our own technology.

As a complement to our activities in this field, **IBERCISA** makes on board installations, vessel repairs and conversions.

The firm diversification and agility, added to its motto **QUALITY, EFFICIENCY, ECONOMY**, lets **IBERCISA** be very competitive and gives it a great capacity for penetration on the home market and abroad, where **IBERCISA** deck machinery has been installed on boats from more than thirty countries, operating to the whole satisfaction of the owners.

We Build & Supply

FISHING VESSELS

- Main fishing winches for trawls and purse seines
- Net drums
- Shrimp trawl winches
- Net hauler cable winches
- Hydraulic winches for trawls and purse seines
- Power blocks for purse seine nets
- Fish pumps
- Winches for lobster trawls, pilchard, long haul, etc.
- Hydraulic gears
- Anchor winches
- Steering gear



**get fish
cheaper**

A NEW fish distribution centre for Mexico City will greatly increase the supply of low-priced seafood to the urban area's 15 million consumers.

The government's distribution agency wants to provide cheap fish to compensate for the growing shortage of meat in Mexico. The aim is to make such fish as bonito, mackerel, mullet and tuna available for less than 60p a lb.

Consumption

As a result of a fish promotion programme, the per capita consumption of fish in Mexico is reported to have increased from about seven lb in 1982 to 22 lb in 1984.

TWENTY-ONE senior fisheries people from developing countries have recently completed the second Fisheries Planning and Management Course at the Humberside College of Higher Education in England.

Participants this year came from Bangladesh, Belize, Brunei, St. Helena, Indonesia, Maldives, Mexico, Nigeria, Seychelles, Somalia, Sri Lanka, Tanzania and PDR Yemen.

Commenting on the course, Wale Sologbade, marketing manager with the Lonrho group's John Holt company in Nigeria (Africa) said: "This was a very interesting management course in its own right, quite apart from the fisheries content, which was itself very useful as I come from a non-fisheries background."

Mr. Sologbade said he was also impressed by the way the course met his needs as someone from the private sector.

Another participant, K.

Nissanga from Sri Lanka, found the course "very sharp", while Dr. Sumpeno Putro of Indonesia said that he hoped his attendance on the course would be the beginning of an era of close co-operation between the Humberside college and fisheries institutions in his country.

This year's Fisheries Planning and Management Course built on the experience of the first one run in 1984 and reported in *FNI* in June that year. Added emphasis in 1985 was

Humberside College completes another successful course in Fisheries Planning and Management

given to areas such as investment appraisal techniques and management skills. The same process of refinement and improvement will go on into 1986 when the School of Fisheries Studies plans to extend the depth of treatment of some subjects.

Said course director Andrew Palfreman: "If I were asked to select the high spots out of a course already pitched at a consistently high level I would pick the sections on management skills, management accounts and finance, investment

appraisal techniques and the Law of the Sea.

"We continuously review, by means of discussions and questionnaires, the reaction of course participants to the quality of material presented to them, and this gives us a guide in planning of future courses and an indication of those areas which they have found the most useful.

"This is a full-cost course and one of our objectives is for participants to return home feeling that they have received value for money. Accordingly, we attach a lot of importance to the course evaluations completed by participants and use them in planning for the future."

In the section on management skills, a member of the College's staff introduces participants to the techniques which can improve their interactive skills and help them to become better managers. Therefore, over a period of three days they receive mostly new material and then have an opportunity to exercise the skills in group exercises.

This area of management education is developing rapidly and is of great assistance to men and women in all types of management, said Mr. Palfreman. It exercises and improves such areas as group performance, employee evaluation and leadership skills. It also helps the participants to

define more effectively their own roles and organisational

Mr. Palfreman points out that course participants often come from a biological or administrative background, and some have only a hazy and intuitive grasp of accounting and financial concepts. The section of the course on business management and accounts therefore gives participants an understanding of accounting principles and their application to the fish industry.

This section of the course is designed to improve understanding of the various business work. Participants leave the course with tools to undertake extension work in fish industry businesses and to give informed practical advice on the organisation and management of fisheries development projects.

One of the leading problems in development today is the improvement of the allocation of investment resources. Government and international agencies have attached a great deal of importance to the objective of increased economic efficiency through the imposition of investment decisions.

The development of techniques of investment appraisal has proceeded rapidly in recent years. Mr. Palfreman said it is essential that senior personnel in develop-

**WYNN
KENT**

Now, from a single manufacturing source, the World's most comprehensive range of marine window wipers

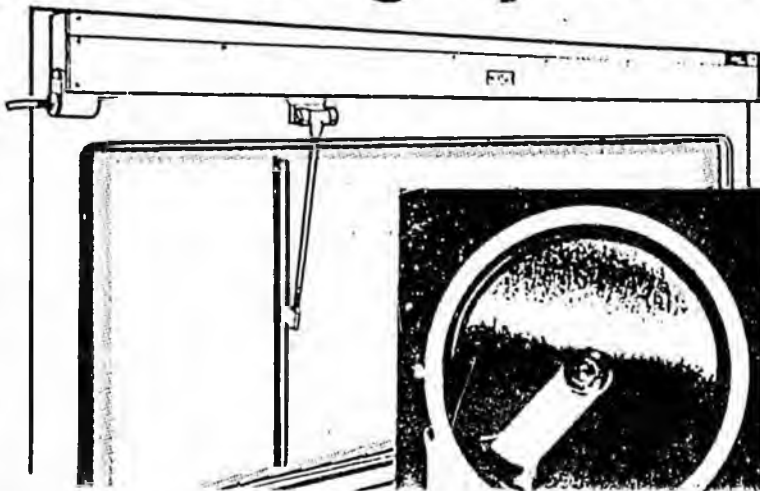
'Straight-Line' blade type wipers to provide a perfectly rectangular clearlight area up to 1.65m wide. Pendulum, Pantograph or Rotary blade types for large or small craft. Plus the renowned Kent Clear View Rotary Screen. All from Wynn.

All quality engineered throughout to full marine specification

A package deal for ocean going ships? Or a single item for small boat application? Wynn gives you the widest possible choice of types and sizes. Backed by a Worldwide service network

Most shipping lines and Navies throughout the World currently use Wynn wipers.

Bridge Window Cleaning Systems





The 1985 course participants.



College lecturer Chris Pyke teaching management skills.

countries should understand them, so that they can meet the requirements of international funding agencies and critically appraise the work of consultants employed to examine projects.

This Humberside course is designed to cover all the major issues in project appraisal related to fisheries. Project sequence, project identification and design, measures of the worth of a project, capital structures, financial appraisal, economic appraisal, shadow pricing, bidding pricing, measurement of consumer benefits, risk and uncertainty are some of the topics covered.

The section on the Law of the Sea is taught by David Freestone, an expert in marine law based at the University of Hull. Again, this part of the course presents new material to participants who have not often been faced with the intricacies of international law.

There are also sections on economics, development economics, fisheries bioeconomics and management, joint ventures, fish processing and preservation, computers,

institutions and the fish industry, co-operatives, aquaculture and monitoring, control and surveillance.

The College is able to make use of a wide range of speakers from outside the academic world. For example, economist David Insull spoke on the development of markets for tuna, consultant W.P. Appleyard gave a talk on joint ventures and development, while Mike Hatfield spoke to the course on international tendering procedures, a discussion which many participants are said to have found very useful.

Crick Carleton of Nautilus Consultants made a useful contribution on small businesses in the fish industry. Drs. Steve Lockwood and Mike Pawson of the Ministry of Agriculture, Fisheries and Food's Lowestoft Laboratory, dealt with biological aspects of fisheries management, while Tropical Development and Research Institute economist, Peter Walters, gave an interesting lecture on feasibility studies for a fisheries development project in Bolivia.

These and others brought

practical outside experience to the course and helped to maintain the lively interesting level of the content.

A significant component of the course concerns aquaculture. The supervisors of this section are Drs. Ahmad and Ratcliffe, both senior lecturers at the Humberside College. Dr. James Muir of the University of Stirling's Institute of Aquaculture also teaches a part of this module.

In 1985 the course included visits to two local fish farms rearing carp and rainbow trout.

The local farms are in a temperate zone and obviously face problems which are often very difficult from those in the participants' own countries, acknowledged Mr. Palfreman. Nevertheless, he said, it is useful to see how technology can be applied in different locations, and how fish farmers have arrived at sometimes unexpected solutions.

The aquaculture component of the Fisheries Planning and Management Course is orientated towards the business of fish farming.

It presupposes some knowledge of the technical side. Course planners want the participants to see fish farming from an economic and commercial angle.

Mr. Palfreman emphasised that the course is a full-cost one and the Humberside College has no resources to provide scholarships. In 1985 two participants were funded by their own organisations. The remaining 19 were funded by the British Council, NORAD, FAO, the Federal Republic of Germany and US Aid. In 1984 the course was also supported by UNESCO and the EEC. There are also other potential funding agencies which the prospective applicant could approach.

● The course will be repeated in 1986 between 7 April and 27 June. For further details write to Andrew Palfreman, Course Director, Fisheries Planning and Management School of Fisheries Studies, Humberside College of Higher Education, Cottingham Road, Hull HU6 7RT., United Kingdom.

for 168,000-ton marine harvest

YUGOSLAVIA's fishing industry expects its total catch of marine and freshwater fish to reach 100,000 metric tons this year. But this total is seen as still below the potential of the Adriatic and the lakes, rivers and fish farms.

The industry is introducing a series of measures intended to ensure an 11 per cent increase in the catch, which is planned to reach 168,000 tons in 1990.

Promotion of organisation and technology, modernisation of the fishing fleet and increasing the number of farms are seen as the main tasks for the next Five-year Plan period from 1986 to 1990.

To reach the planned catch of 79,000 tons of sea-fish and 11,000 tons of shell-fish, the fleet will need at least 250 modern vessels. This means - according to industry sources - that 41 vessels will have to be reconstructed and 22 new craft purchased. Substantial expansion of fish ponds will also be required.

The industry expects that another major task will be a change in the pattern of fish production to match processing capacity and market demand. About 20,000 tons of sea and freshwater fish is

exported yearly and about 10,000 tons imported, mainly to supply the processing facilities and the market with additional varieties.

Average annual per capita consumption of four kilos has increased compared with the previous decade but is still considered insufficient. However, increased Yugoslav production in the next few years should boost consumption.

South Americans study resources

PELAGIC fish within 100 miles from the coasts of Chile, Peru and Ecuador are being studied with the help of an Inter-American Development Bank grant to determine feasible future catch levels.

The project, costing 3.3 million dollars, is being shared between the bank and the three participating countries.

The results of several research expeditions are presently being evaluated by the national marine institutes of Chile, Peru and Ecuador.

As a fish meal producer you should examine these two more closely



WHY SEAFOOD STUDENTS ARE DRAWN TO SEATTLE

WITH THE development and improvement of fisheries products a high-priority for many fish-rich countries, US food science and technology graduate programmes often take on an international flavour. Half the students in the University of Washington's Institute for Food Science and Technology (IFST) are from foreign countries. And this proportion has been held down with effort.

"If we wanted to, we could easily become a training centre for foreign students," said John Liston, a professor of fisheries and director of IFST. "But since our first commitment is to US students, we try to keep the numbers balanced."

The motivation for foreign students to study in the United States may derive from a lack of educational facilities or faculty expertise in some countries. But on the other hand, a student from Iceland got his degree at UW in order to better understand US food regulations and marketing procedures so that Iceland's fish products could be competitive in America.

IFST graduates, scattered across the United States and

IN *FNI* in September, we reported that the Grimsby-based School of Food Studies in England had nearly doubled its space available for fish processing practical work and fish microbiology. We also noted that its Post-Graduate Diploma in Food Technology (Fish Processing) has

other countries, also send new students to UW.

T. A. Rachman Hanafiah, now working on an MS degree, came in part because a former employer in his

native Indonesia had a UW degree.

"I also wanted to study here because the UW food science programme is oriented towards fisheries,

been attended over the past ten years by students from 40 different countries. This international interest in food science education is also experienced by University of Washington's School of Fisheries in Seattle, as PATRICIA PEYTON describes in this article.

which are important in Indonesia," he said. "There are some fairly extensive stocks of fish, particularly in East Indonesia, that are just beginning to be harvested.

"Food scientists there are working to improve quality and consistency of traditional processing methods, such as fermentation, which is used to make fish pastes and sauces. Indonesia's hot, humid climate increases the perishability of fish, so handling and processing methods are critical. Canning and cold storage are used in some part of the country."

Adding to IFST's reputation as a place to study fisheries-food science is its history. It began as a processing technology component of the College (now School) of Fisheries founded in 1917. The field has changed; in recent years, the understanding of basic biochemical composition of fish has improved, enabling processing methods to be put on a more scientific basis.

For this reason, the UW programme emphasises fundamental science rather than the solving of specific problems.

"In some countries, food science has a rather narrow focus," said Professor Liston. "We try to provide a broad education that can be applied to most commodities."

Challenges facing food scientists in other countries may well end up on the laboratory bench at IFST. For instance, traditional processes for the preservation of fish in South-east Asia have been studied by students from the region and food science faculty for many years. Improved processes for making pindang (Indone-

sia salted, boiled fish), nam pla (Thai fish sauce) and patis (Philippine fish sauce) have resulted from these studies.

This works in both directions, since it was a student from Chile, working in Seattle on food preservation problems in his country, who first developed the enzyme digestion process used to produce fish protein hydrolysate. This began a long research effort which culminated in an industrially feasible method for the product which is used as a component for human foods such as soups and in animal weaning diets.

Professor Liston explains that the best backgrounds for students in the food sciences are basic sciences, particularly chemistry.

Tim Han, a PhD candidate from Taiwan, was well prepared. Before entering the programme he earned an MS in chemistry from UW. His goal is to teach and do research at a university in Taiwan. His thesis research concerns the enzyme system in fish muscle that is responsible for spoilage.

Developing new and better processing methods is only one specialisation at IFST. Another important area is analysing processed foods to detect toxins, contaminants, and specific ingredients. Here as in other applications of food science the needs of other countries may differ from the United States.

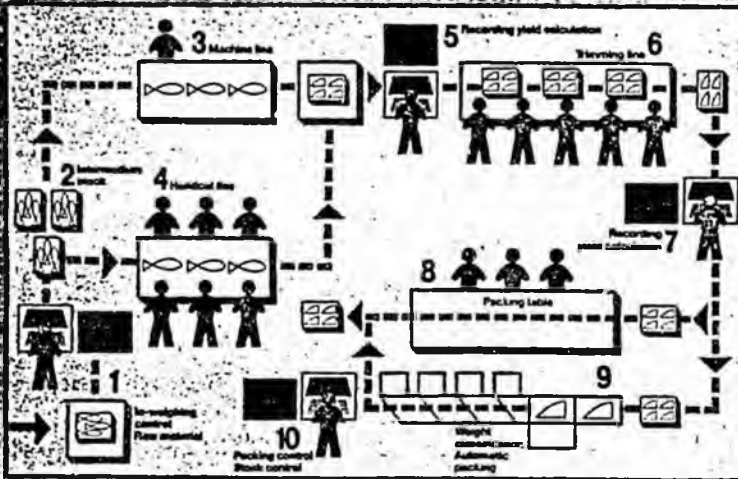
In Saudi Arabia, for example, the Islamic religion forbids the eating of pork. Detecting pork and pork derivatives such as lard in processed foods is a government obligation.

"Although the food quality control laboratories in my country are being set up with assistance from the US Food and Drug Administration, they will need to respond to different concerns than are usual in the USA," said Sahl Gazzaz, a Saudi student beginning his studies at IFST. "For example, Saudi Arabia has few food companies. For such items as spices, supermarkets buy direct from exporting countries. So we need government testing of food quality in order to protect consumers."

Weighing Systems for the Food Industry

Our long experience provides weighing system solutions which are accurate and cost-effective. Our commitment to developing and producing new weighing systems for the food industry can save you money. We have many models for food processing, from small scale to large scale. You won't regret it.

Controlled by Scanvaegt throughout the production cycle



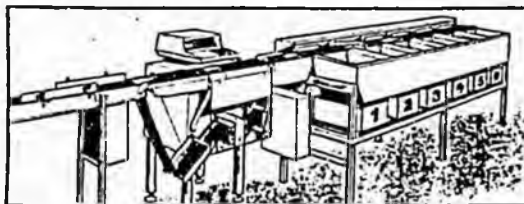
SCANVÆGT.
KNUD GRUNDTVIG A/S

Johann Gutenbergs vej 11-13
DK-8200 Århus N - Denmark
Tlf +45-6-101300 Telex 68131 kgscan dk
Telefax +45-6-10 59 66

Distribution North America

BAADER

Baader North America Corp.
777 Church Street
New Bedford, MA 02745
(617) 995-5900 Telex: 858369



Sharks join cancer fight

CHINESE scientists have established that shark serum can kill human leukemia cells, according to a report by the Institute of Aquatic Products and Shanghai Tumor Institute. Experiments indicated that the shark serum killed 43 per cent of the leukemia cells studied.

There was still a long way to go before this could be applied clinically, said U. Wei-qun, who heads a group of scientists of the laboratory of fish diseases and micro-organisms that made the discovery.

They experimented with serum from the heart of sharks caught in Fujian province in April 1984. They

Normal metabolism of the cancer cell, they found, is gradually damaged and destroyed.

They would do more studies on the immunity and anti-cancer mechanism of the shark serum, Wei-qun said. Studies of the pharmaceutical, chemical and biochemical mechanism of sharks is now of interna-

Clover Park Vocational-Technical Institute

4500 Steilacoom Boulevard S.W.
Tacoma, Washington 98499-4098
(206) 584-7611

Operated by Clover Park School District No. 400

- VOCATIONAL-TECHNICAL CAREER TRAINING
- ELECTIVE HIGH SCHOOL
- SUPPLEMENTAL/CONTINUING EDUCATION

Employment Preparation
Vocational Skill Improvement
Adult High School Completion
Adult Basic Education
Community Service
Special Vocational Projects

ALSON E. GREEN, Jr.
Administrator for Vocational Education
Director, Voc-Tech Institute

CHARLES ALEXANDER
Superintendent
Clover Park School District 400



General Advisory Committee

Dez Isaacson	Donald R. Toney
Harvey Kaufman	Chuck Gross
Dorothy Kippie	Mike McGowan
Mitch Mullan, Jr.	Marlene Scavo
C.F. (Chuck) Gorden	Dr. Edmund A. Kanar
Annolise Louer	H. Russ Peters

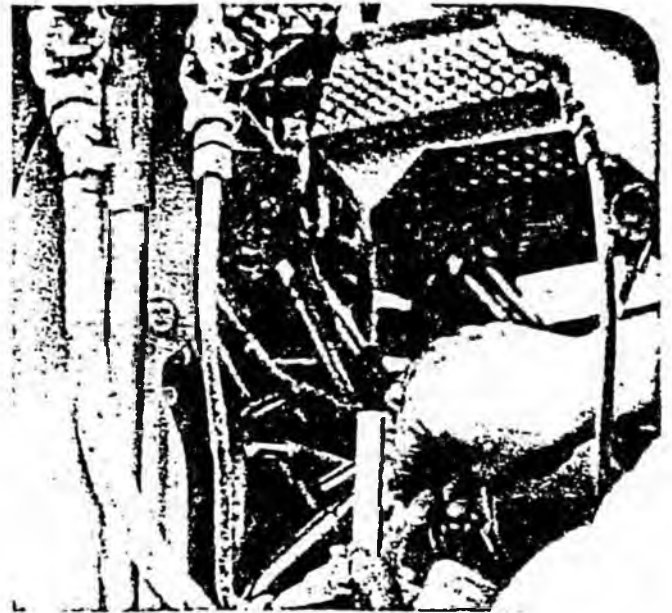
Board Of Directors

Joe M. Ghilarducci, President
Mary V. Madden, Vice President
John C. Dimmer
Donald G. Johnson
Paul C. Wulfestieg

Food Processing Machinery Maintenance and Repair Technician

Job Description

Food Processing Machinery Maintenance and Repair Technicians may perform routine maintenance on a variety of equipment found in food processing businesses such as breweries, meat packing companies, fish canneries, vegetable packers, candy companies, and dairies, for example. The technician may be assigned a specific area of responsibility which may include all the maintenance and repair, adjustment and lubrication of a certain group of machines in a large processing plant. In a smaller plant, he/she may be given total responsibility for keeping all the equipment maintained. Technicians install new equipment, move and level machinery, connect electricity and hydraulic power to the machinery and make necessary adjustments and tests to insure proper operation of new machinery.



To Qualify For Admission

Applicants must be 18 years of age by completion of the course, and be interviewed by an instructor.

Desirable Qualifications

Mechanical aptitude, basic math skills, good physical condition, and high school diploma or GED equivalency by completion of the course

Advisory Committee

Robert F. Morgan	William K. Street	Jack N. Miller
Dick Nelson	Jim Poor	Dick McEntee
Roger De Camp	Rod Sorensen	Mickey VanZile

Instructor

Lance Gilkey

Schedule of Training

84 weeks - 2520 hours
8:00 a.m. to 3:00 p.m.
Monday through Friday

How and When to Apply

Interested persons may apply anytime during the year. Enrollment in this class is continuous. Early application is recommended to avoid a long wait.

More information about this course will be available from the instructor at 3:00 p.m. on the second and fourth Wednesday of every month. Any person is welcome to attend one of these sessions without appointment.

Course Content

- Safety Indoctrination
- Hand Tools
- Basic Welding
- Basic Machine Shop
- Basic Hydraulics and Pneumatics
- Blueprint Reading
- Basic Electricity
- Power Transmission
- Bearings and Lubricants
- Machine Assembly
- Machinery Overhaul and Repair
- Packaging Closures
- Closing Machines
- Filling Machines
- Food Sterilization Equipment
- Slicers, Cutters, and Butchering Machinery
- Vacuum Pumps and Air Compressors
- Packaging Materials
- Vacuum Formers and Sealers
- Weighing Machinery and Dud-Detectors
- Transfer Systems
- Drite-Stack and Casing Equipment
- Box-Formers, Labelers and Sealers
- Refrigeration

SB 453

Effect of amendments. — The 1984 "Methodist" in paragraph (2) of subsection amendment substituted "Pacific" for (a).

Chapter 43. Scholarship, Loan, and Grant Programs for Postsecondary Students.

Article

- 4. Scholarship Loan Program (§§ 14.43.090, 14.43.095, 14.43.100, 14.43.110, 14.43.115, 14.43.120, 14.43.125, 14.43.130, 14.43.160)
- 7. Teacher Scholarship Loan Program (§§ 14.43.600 — 14.43.700)

Article 4. Scholarship Loan Program.

Section

- 90. Scholarship revolving loan fund
- 95. Financial aid committee
- 100. Applications
- 110. Undergraduate loans
- 115. Graduate loans

Section

- 120. Conditions of loans
- 125. Eligibility of students
- 130. [Repealed]
- 160. Definitions

Sec. 14.43.090. Scholarship revolving loan fund. (a) There is created a scholarship revolving loan fund. The fund shall be used to make scholarship loans to students selected under AS 14.43.090 — 14.43.160 and to pay the costs of collecting student loans that are in default if those costs are not recovered from the student. All repayments of principal and interest on scholarship loans shall be paid into the scholarship revolving loan fund. If money estimated to be available from scholarship loan repayments is inadequate to fully fund estimated scholarship loans for any fiscal year, additional funding from the general fund may be requested and appropriated for that year.

(b) *[Repealed, § 31 ch 59 SLA 1982.]*

(c) *[Repealed, § 31 ch 59 SLA 1982.]* (§ 1 ch 98 SLA 1971; am § 1 ch 156 SLA 1972; am §§ 1, 2 ch 136 SLA 1974; am § 1 ch 136 SLA 1975; am § 31 ch 59 SLA 1982; AS 14.40.751; am § 1 ch 158 SLA 1984)

Effect of amendments. — The 1984 amendment, in subsection (a), added "and to pay the costs of collecting student loans that are in default if those costs are not recovered from the student" at the end of

the first sentence and substituted "loan fund" for "fund shall be used to make new scholarship loans" in the second sentence and "money estimated to be" for "funds" and "is" for "are" in the third sentence.

There is used to 3.090 — it are in nt. All shall be ated to to fully ditional ated for

am § 1 36 SLA 58 SLA

ed "loan ake new entence "funds" entence.

Sec. 14.43.095. Financial aid committee. (a) The student financial aid committee is composed of the members of the Alaska Commission on Postsecondary Education. The commission may delegate its functions under AS 14.43.090 — 14.43.160 to a committee of its members, with augmented membership as the commission considers appropriate. The executive officer of the commission is the executive secretary of the committee. The Alaska Commission on Postsecondary Education shall administer the program established by AS 14.43.090 — 14.43.160.

(b) Members of the committee serve without compensation but are entitled to per diem and travel expenses authorized by law for boards and commissions.

(c) The committee shall make an annual report reviewing the work of the committee to the governor and the legislature.

(d) The committee shall meet at least once a year. The meetings shall be held at the call of the chairman or upon petition by two members. (§ 1 ch 98 SLA 1971; am § 2 ch 156 SLA 1972; am § 5 ch 78 SLA 1974; am § 3 ch 136 SLA 1974; AS 14.40.753; am § 57 ch 6 SLA 1984)

Effect of amendments. — The 1984 amendment substituted "and the legislature" for "the legislature and the private colleges and universities where students receiving tuition grants are enrolled" in subsection (c).

Sec. 14.43.100. Applications. (a) Applications shall be submitted to the executive secretary of the committee.

(b) A person whose loan application is not recommended or presented to the committee by the executive secretary may appeal to the committee through the chairman of the committee and the committee shall consider the application. (§ 1 ch 98 SLA 1971; am § 3 ch 156 SLA 1972; am § 4 ch 136 SLA 1974; AS 14.40.755; am § 58 ch 6 SLA 1984)

Effect of amendments. — The 1984 amendment deleted "or grant" following "loan" in subsection (b).

Sec. 14.43.110. Undergraduate loans. The committee may make a loan, not to exceed \$6,000 in any one school year, to an undergraduate student eligible under AS 14.43.125. The committee may make a loan for a summer term, even if the total loan for the school year exceeds the \$6,000 maximum, if the loan for the summer term is counted against the \$6,000 maximum for the following school year. (§ 1 ch 98 SLA 1971; am § 6 ch 136 SLA 1974; am § 1 ch 153 SLA 1978; am § 1 ch 89 SLA 1981; AS 14.40.759; am § 1 ch 34 SLA 1985)

Effect of amendments. — The 1985 amendment, effective May 24, 1985, added the second sentence of the section.

Sec. 14.43.115. Graduate loans. The committee may make a loan, not to exceed \$7,000 in any one school year, to a graduate student who is eligible under AS 14.43.125 and is pursuing an advanced degree. The committee may make a loan for a summer term, even if the total loan for the school year exceeds the \$7,000 maximum, if the loan for the summer term is counted against the \$7,000 maximum for the following school year. (§ 1 ch 98 SLA 1971; am § 7 ch 136 SLA 1974; am § 2 ch 89 SLA 1981; AS 14.40.761; am § 2 ch 34 SLA 1985)

Effect of amendments. — The 1985 amendment, effective May 24, 1985, added the second sentence.

Sec. 14.43.120. Conditions of loans. (a) Proceeds from scholarship loans may only be used for books, tuition and required fees, and for room and board.

(b) The loans may only be used to attend a career education program or a college or university approved by the commission, and, if the loans are federally insured, by the United States Commissioner of Education.

(c) To maintain a loan the student must continue to be enrolled as a full-time student in good standing in a career education program, college or university designated under (b) of this section. The commission shall adopt regulations defining "good standing" for purposes of this subsection.

(d) Scholarship loans may not be made to a student

(1) for more than five years of undergraduate study;

(2) for more than five years of graduate study;

(3) for more than a total of eight years of undergraduate and graduate study.

(e) Loans are interest bearing while a student is enrolled under (c) of this section or is receiving a deferment of payments under (k) of this section; however, a student is entitled to have a portion of the interest paid in accordance with (l) of this section.

(f) Interest on a loan given under AS 14.43.090 — 14.43.160 is at the rate of five percent a year unless the loan is in default. Interest on a loan that is in default is 10 percent a year for the period the loan is in default.

(g) Repayment of the principal and interest on the loan begins no later than one year after the borrower's studies are terminated. The loan shall provide for repayment of the total amount owed in periodic installments in not more than 10 years from the commencement of repayment, except as provided in (k) and (m) of this section. If the

commission and the borrower agree to a different repayment schedule, the borrower shall repay the loan in accordance with the agreement. A borrower may make payments earlier than required by this subsection.

(h) Security may not be required for the loans; however, provision shall be made for payment of attorney fees and costs of court if either or both are incurred in collection of the amount owed on the loan.

(i) If a loan is in default, the commission shall notify the borrower that repayment of the remaining balance is accelerated and due by sending the borrower a notice by registered or certified mail.

(j) A portion of a loan shall be paid on behalf of the borrower by the state if, upon completion of the course of study for which the loan was granted, the borrower is a resident of the state for at least two years. The portion of the loan that shall be paid by the state is the following percentages of the total loan received plus interest up to a total of 50 percent of the total loan:

- (1) two — three years residence in the state, 10 percent;
- (2) three — four years residence in the state, an additional 10 percent;
- (3) four — five years residence in the state, an additional 10 percent;
- (4) five — six years residence in the state, an additional 10 percent;
- (5) over six years residence in the state, an additional 10 percent.

(k) Periodic installments of principal shall be deferred, but interest shall accrue and be paid unless the student is eligible for interest payment benefits under (l) of this section during any of the following:

- (1) return to student status as provided in (c) of this section;
- (2) serving an initial period of up to six years on active duty as a member of the armed forces of the United States;
- (3) serving, for up to three years, as a full-time volunteer under the Peace Corps Act;
- (4) serving, for up to three years, as a full-time volunteer under the Domestic Volunteer Service Act of 1973;
- (5) for a one-time period up to 12 months in which the borrower is seeking and unable to find employment in the United States; or
- (6) if the borrower becomes 50 percent or more disabled as certified by competent medical authority.

(l) The state will pay the interest on that portion of a loan that is not federally insured during

- (1) the period before the beginning of the repayment period of the loan; and
- (2) deferments under (k) of this section.

(m) In case of hardship, the committee may extend repayment of a loan for an additional period of up to five years in increments no longer than 12 months each.

(n) [Repealed by § 11 ch 89 SLA 1981.]

(o) The provisions of (j) of this section do not apply to a loan that is in default.

(p) For purposes of this section, a person qualifies as a resident if the person is physically present in the state with the intent to remain permanently in the state or, if not physically present in the state, the person intends to return to the state and is absent due to military service.

(q) For the purposes of this section a loan is in default if a loan payment is 120 or more days past due. (§ 1 ch 98 SLA 1971; am § 4 ch 156 SLA 1972; am § 6 ch 78 SLA 1974; am § 8 ch 136 SLA 1974; am §§ 1 — 4 ch 99 SLA 1977; am §§ 3 — 8 ch 87 SLA 1979; am §§ 3 — 9, 11 ch 89 SLA 1981; am §§ 2 — 4 ch 158 SLA 1984; am § 3 ch 34 SLA 1985)

Effect of amendments. — The 1984 amendment added subsection (q) and, in subsection (f), added the second sentence and added "unless the loan is in default" at the end of the first sentence; and, in subsection (o), substituted "that is in default" for "to a borrower named in a complaint as a defendant in an action by the state or by the commission to secure

payment of the unpaid balance of a loan made under AS 14.43.110 or 14.43.115."

The 1985 amendment, effective May 24, 1985, inserted "an initial period of up to six years" in paragraph (2) of subsection (k).

Editor's notes. — This section is set out above to correct errors in the main pamphlet.

Sec. 14.43.125. Eligibility of students. (a) A person may apply for and obtain a scholarship loan if the person

(1) is

(A) enrolled as a full-time student in a career education, associate, baccalaureate, or graduate degree program; or

(B) a graduate of a high school or the equivalent, or scheduled for graduation from a high school within six months, with sufficient credits to be admitted to a career education program or to an accredited college or university;

(2) is not delinquent or in default on a previously awarded scholarship loan; and

(3) is a resident of the state at the time of application for the loan; for purposes of this section, a person qualifies as a resident of the state if at the time of application for the loan the person

(A) has been physically present in the state for at least two years immediately before the time of application for the loan;

(B) is dependent on a parent or guardian for care, the parent or guardian has been present in the state for at least two years immediately before the time of application for the loan and the person has been present in the state for at least one year of the immediately preceding five years except that the commission may by a two-thirds vote, acting upon a written appeal by the person, grant an exemption to the requirement that the person has been present in the state for one year of the immediately preceding five years;

(C) has been physically present in the state, or is a dependent of a parent or guardian who has been physically present in the state, for at least two years immediately before the applicant was absent from the state and the absence is due solely to

- (i) serving an initial period of up to six years on active duty as a member of the armed forces of the United States;
- (ii) serving, for up to three years, as a full-time volunteer under the Peace Corps Act;
- (iii) serving, for up to three years, as a full-time volunteer under the Domestic Volunteer Service Act of 1973;
- (iv) required medical care for the applicant or the applicant's immediate family;
- (v) being a person who otherwise qualifies as a resident and is accompanying a spouse who qualifies as a resident under (i) — (iv) of this paragraph; or

(D) has been physically present in the state, or is a dependent of a parent or guardian who has been physically present in the state, for at least two years immediately before the applicant or the parent or guardian was absent from the state and the absence is due solely to

- (i) participating in a foreign exchange student program recognized by the commission;
- (ii) attending a school as a full-time student;
- (iii) full-time employment by the state;
- (iv) being a member of or employed full-time by the state's congressional delegation;
- (v) being a person who otherwise qualifies as a resident and is accompanying a spouse who qualifies as a resident under (i) — (iv) of this paragraph.

(b) A person does not qualify as a resident of the state under this section if the person declares or establishes residence in another state during an absence from Alaska. (§ 1 ch 98 SLA 1971; am § 10 ch 89 SLA 1981; am § 9 ch 67 SLA 1983; am § 4 ch 34 SLA 1985)

Effect of amendments. — The 1983 amendment, in paragraph (2) of subsection (b) deleted "and" following "guardian for care" and added the language beginning "and the person has been present" at the end of the paragraph.

The 1985 amendment, effective May 24, 1985, rewrote the section.

Editor's notes. — Section 18, ch. 67, SLA 1983 provided: "If the two-year resi-

dency requirement for scholarship loans provided by AS 14.43.125 is declared unconstitutional or otherwise invalid by a court of competent jurisdiction, the Commission on Postsecondary Education shall adopt regulations to impose the most stringent residency requirement allowable under the Constitution of the State of Alaska and the United States Constitution on scholarship loan applicants."

Sec. 14.43.130. Selection criteria. [Repealed, § 19 ch 67 SLA 1983.]

Sec. 14.43.160. Definitions. In AS 14.43.090 — 14.43.160

(1) "career education" means a course or program in vocational-technical training or education approved by the commission;

(2) "commission" means the Alaska Commission on Postsecondary Education;

(3) "federally insured" means a loan covered by the provisions of the Guaranteed Student Loan Program of Title IV, Part B, of the Higher Education Act of 1965 (P.L. 89-329), as amended;

(4) "full-time student" means an undergraduate or career education student who is enrolled and is in regular attendance at classes for at least 12 semester hours of credit or the equivalent during the semester or a graduate student who is enrolled and is in regular attendance at classes for at least nine semester hours of credit or the equivalent; any combination of semester hours of credit, or the equivalent, aggregating to the requisite number of semester hours and undertaken during a semester at two or more public or private institutions of higher education constitutes full-time student status;

(5) "school year" means the period from September 1 of one year through August 31 of the following year;

(6) "summer term" means the period from June 1 — August 31. (§ 5 ch 156 SLA 1972; am § 8 ch 78 SLA 1974; am §§ 18 — 20 ch 136 SLA 1974; am § 5 ch 136 SLA 1975; am § 7 ch 246 SLA 1976; am §§ 5 — 7 ch 99 SLA 1977; am § 9 ch 87 SLA 1979; am § 11 ch 89 SLA 1981; am § 59 ch 6 SLA 1984; am § 5 ch 34 SLA 1985; am § 1 ch 52 SLA 1985)

Revisor's notes. — Reorganized in 1985 to alphabetize the defined terms.

Effect of amendments. — The 1984 amendment repealed former paragraph (3), which defined "part-time student."

The first 1985 amendment, effective May 24, 1985, added paragraph (6).

The second 1985 amendment, effective May 31, 1985 deleted "operating under a consortium" following "higher education" near the end of paragraph (4).

A.W. BRINDLE
H.A. BRINDLE

PACKERS OF
CHOICE ALASKA SALMON

Wards Cone Packing Co., Inc.

BOX C-5030, UNIVERSITY STATION
88 E. HAMLIN STREET
SEATTLE, WASHINGTON 98105-0030

PHONE (206) 323-3200

ESTABLISHED 1912

February 14, 1986

The Honorable Fred Zharoff
Box V
Juneau, Alaska 99811

Dear Senator Zharoff:

I have provided Karl Ohls with information concerning my father, A. W. "Winn" Brindle. I am also enclosing copy of some additional articles which may contain information that would be of use to you.

My mother and the other members of our family are deeply gratified that Dad would be considered for such a memorial. We greatly appreciate your efforts in this regard.

If I can be of any further assistance to you in this matter, please let me know.

Sincerely,



Alec W. Brindle

AWB/djd

Dedication

2



This year's Annual Report is dedicated to A. W. "Winn" Brindle, who passed away July 4, 1977, at Red Salmon Packing Company in Naknek. This dedication reflects our sincerest gratitude for the valuable contributions Winn made to Alaska's fishing industry and for his wise counsel and keen interest in the affairs of the bank.

Winn served the bank as a director for over 40 years. He first became a director of the Miners and Merchants Bank of Ketchikan in 1934. When that bank and five others consolidated as the National Bank of Alaska in 1960, he was elected to the original Board of Directors, a position held until his death.

Winn came to Alaska as a young child in the early 1900's and was educated in the Ketchikan school system, and attended the University of Washington. Although Winn was noted primarily for his contributions to and accomplishments in the fishing industry, he had a diversity of other business interests. Together with other business associates he developed the Northland Transportation Company, a marine transportation company, which served the major ports of Southeastern Alaska and which was eventually purchased by the Alaska Steamship Company. In the 1930's he was involved with a tugboat and mining venture on Prince of Wales Island. In 1934 he was named director of the Miners and Merchants Bank of Ketchikan. Shortly thereafter he became a major stockholder and became active in the operation of the Tongass Trading Company of Ketchikan.

Winn first became actively involved in the fishing industry when as a young man, with his brother Harold, he purchased a seine boat. In 1928 he and Harold bought the Wards Cove Cannery. From that beginning he expanded to cannery operations throughout Alaska. In 1977 Winn and his associated companies had fishing operations in Ketchikan, Excursion Inlet, Port Bailey, Alitak, Naknek, Chignik, Hoonah, Kenai, Kodiak, Ekuk, Egegik, Koggiung, Libbyville, Craig, Moser Bay, Petersburg, George Inlet, Port Otto, and Ouzinkie, comprising the largest salmon processing organization in Alaska.

In 1969 the Alaska State Chamber of Commerce named him the "Outstanding Alaskan." In further recognition of his diversity of interests the Holy Catholic Church of Ketchikan named one of their school buildings Brindle Hall.

During World War II, Winn was awarded the Legion of Merit while serving in the Aleutian campaign and attained the rank of Major in the U. S. Army.

His wisdom and experience contributed much to the development of all of his associates. The success of Alaska's fishing industry to which he dedicated his career, are monuments to his strength of character, his dedication and personal integrity. The country that he served, the fishing industry that he loved, and his associated companies share a distinguished heritage. He will be sorely missed.

STATE OF ALASKA 1986 LEGISLATIVE SESSION FISCAL NOTE

Revision Date : _____

REQUEST

Bill/Resolution No. : SB 453
 Title : RE: A.W. "Winn" Brindle
Memorial Scholarships

 Sponsor : Zharoff
 Requestor : Senate HESS
 Date of Request : March 3, 1986

FISCAL DETAIL

Agency Affected : Education
 BRU : Postsecondary Education

 Components : Memorial Scholarship
Loans

EXPENDITURES/REVENUES : (Thousands of Dollars)

OPERATING	FY 86	FY 87	FY 88	FY 89	FY 90	FY 91
PERSONAL SERVICES						
TRAVEL						
CONTRACTUAL						
SUPPLIES						
EQUIPMENT						
LAND & STRUCTURES						
GRANTS, CLAIMS						
MISCELLANEOUS						
TOTAL OPERATING	N.A.	-0-	-0-	-0-	-0-	-0-

CAPITAL						
---------	--	--	--	--	--	--

REVENUE						
---------	--	--	--	--	--	--

FUNDING : (Thousands of Dollars)

GENERAL FUND	N.A.	-0-	-0-	-0-	-0-	-0-
FEDERAL FUNDS						
OTHER						
TOTAL	N.A.	-0-	-0-	-0-	-0-	-0-

POSITIONS :

FULL-TIME	-0-	-0-	-0-	-0-	-0-	-0-
PART-TIME						
TEMPORARY						

ANALYSIS : Attach a separate page if necessary

No fiscal impact within the time of this note, since all funds are contributions, and repayments begin after schooling.

Prepared by : Kerry D. Romesburg, Executive Director Phone : 465-2854
 Division : Alaska Commission on Postsecondary Education Date : March 3, 1986

Approved by Commissioner : _____ Date : _____
 Agency : _____

Distribution (by Agency preparing fiscal note) :

- Legislative Finance
- Legislative Sponsor
- Requestor
- Office of Management and Budget
- Impacted Agency(ies)

Alaska State Legislature

Advisory Council Members
Senator Bennett, Chairman
Senator Abood
Senator Kerttula
Senator Sackett



PO. Box V
State Capitol
Juneau, Alaska 99811
Phone: (907) 465-3114

Senate Advisory Council

MEMORANDUM

TO: Senator Zharoff
Alaska State Legislature

FROM: Bill Hall *WH*
Senior Advisor

DATE: March 4, 1986

RE: Seafood Industry Training and Educational Programs

It has recently been reported that the Alaska seafood processing industry has a poor record of Alaska hire. One reason for this is the lack of Alaskans qualified to assume many of the skilled job positions required by the industry. As I know you are aware, most Alaskans work in the unskilled positions in the seafood processing plants while the skilled positions are filled by people from outside of the State. These positions include processing machinery, maintenance and repair technicians, refrigeration specialists, bookkeepers, accountants, production managers, quality control technicians, and plant superintendents. There is no reason why Alaskans cannot be trained to fill these jobs.

The future potential of Alaska's seafood industry and the opportunity to create new value for Alaskans from our fishery resources has never been greater. But for us to achieve that potential we must develop the skills of Alaskans so that they will be the ones who apply the modern technologies that are necessary for the development of the new product forms that are demanded by market place. Alaskans will not benefit from future opportunities if they are not capable of recognizing those opportunities and if they are not prepared to meet the challenge of those opportunities.

The University of Alaska has done a poor job in identifying the skills needed by the State's seafood processing industry. The lack of progress on the Kodiak based Alaska Fisheries Industrial and Technology Center is an example of their lack of interest in this area of education. We should ask the question, "Why has the State of Alaska not developed a plan for the education of Alaskans interested in working in the most labor intensive industry in the State?" A plan should have been developed years ago that included programs to meet these basic educational and economic needs of the State's residents.

Such programs would not require the University to provide all of the training and educational programs. A prudent plan to improve Alaskan's skills in this area should take advantage of resources available from other

Senator Zharoff
March 4, 1986

sources such as the University of Washington's Institute for Food Science and Technology, the Clover Park Vocational-Technical Institute in Tacoma, Washington, and the Humberstone College of Higher Education's School of Food Studies in Grimsby, England which offers educational programs aimed at students from third world countries. (In the case of the seafood processing industry, it sometimes appears that Alaska is treated as a third world country by the executives of the major seafood processing companies.)

I have included for your consideration, copies of information on the aforementioned educational institutions. If you are interested in this subject, there may be some value in directing the attention of appropriate U of A officials to the need. Please let me know if you have any interest in this subject or if I can provide you with any additional information on it.

Enclosures

AWH:er

cc: Representative Hermann

(available
from
committee
staff)

Hein ✓
3/5/86

Original sponsors: Cato, Grussendorf
Thompson and Pignalberi

1
2
3
4
5
6
7
8
9
10
11
12
13
14
15
16
17
18
19
20
21
22
23
24
25
26
27
28
29

IN THE HOUSE

SENATE CS FOR CS FOR HOUSE BILL NO. 58 ()
IN THE LEGISLATURE OF THE STATE OF ALASKA
FOURTEENTH LEGISLATURE - SECOND SESSION
A BILL

For an Act entitled: "An Act relating to the fisheries business tax; and
providing for an effective date."

BE IT ENACTED BY THE LEGISLATURE OF THE STATE OF ALASKA:

* Section 1. AS 43.75.015(a) is amended to read:

(a) A person engaged in a fisheries business is liable for and shall pay the tax levied by this section on the value of each of the following fisheries resources processed during the year at the rate set out after each:

- (1) salmon canned at a shore-based fisheries business [CANNERY] - four and one-half percent;
- (2) salmon processed by a shore-based fisheries business, except salmon for which the tax is due under (1) of this subsection, and all other fisheries resources processed by a shore-based fisheries business - three percent;
- (3) fisheries resources processed by a floating fisheries business - five percent.

* Sec. 2. AS 43.75 is amended by adding new sections to read:

Sec. 43.75.032. FISHERIES BUSINESS TAX CREDIT. (a) A fisheries business is entitled to a credit of not more than 50 percent of the business tax liability under AS 43.75.015 for capital expenditures made during the tax year that increase product diversity, increase production efficiency and capacity, improve product quality at a shore-based fisheries business facility in the state, or contribute to the development of a privately owned nonprofit cooperative seafood

1 industrial park in the state if an application for the credit is
2 approved by the department in advance of the capital expenditure. A
3 fisheries business may claim a credit under this subsection for a
4 maximum period of five consecutive years. An applicant for the credit
5 may elect to begin the five-year period with any tax year from 1987
6 through 1991.

7 (b) A fisheries business is entitled to a credit of not more
8 than 10 percent of the business tax liability under AS 47.75.015 for
9 contributions made during the tax year to the A. W. "Winn" Brindle
10 memorial scholarship account (AS 14.43.250). A fisheries business may
11 claim a credit under this subsection for the 1987 tax year and
12 subsequent tax years.

13 (c) The total tax credit that may be claimed under this section
14 for a tax year for capital expenditures and scholarship contributions
15 combined may not exceed 50 percent of the taxpayer's business tax
16 liability under AS 43.75.015 for that tax year.

17 (d) The portion of a capital expenditure that exceeds the amount
18 eligible for a credit under (a) of this section during a single tax
19 year may not be carried back to a prior tax year but may be claimed as
20 a credit under this section for a subsequent tax year within the five-
21 year period elected under (a) of this section. Tax credits may not be
22 approved for more than 100 percent of a capital expenditure.

23 (e) The department may not approve a tax credit under this
24 section if

25 (1) the property for which the capital expenditure was made
26 was the subject of a previous capital expenditure by another taxpayer
27 for whom a corresponding tax credit under this section has been ap-
28 proved;

29 (2) a fisheries business claims a tax credit under this

1 section and the payment of a fisheries business tax under AS 43.75.015
2 by the fisheries business is past due; a payment is not past due if
3 the payment of a fisheries business tax under AS 43.75.015 is in
4 administrative or judicial appeal; or

5 (3) if the property was sold or transferred between fisher-
6 ies businesses having substantial common ownership.

7 (f) The department shall prepare an application form for a
8 credit under this section.

9 (g) The department shall approve or disapprove an application
10 for a credit under this section not later than 60 days after receiving
11 the application.

12 Sec. 43.75.034. TAX CREDIT REPORT. Not later than the 15th
13 legislative day of each regular legislative session the Department of
14 Revenue, in conjunction with the Department of Commerce and Economic
15 Development, shall submit to the legislature a report on the fisheries
16 business tax credit program under AS 43.75.032. The report shall
17 describe the expenditures for which a credit was approved during the
18 previous tax year and, if possible, the increase in employment and
19 processing capacity by the fisheries businesses for which the credit
20 was approved.

21 * Sec. 3. AS 43.75.032 is repealed and reenacted to read:

22 Sec. 43.75.032. TAX CREDIT FOR SCHOLARSHIP CONTRIBUTIONS. A
23 fisheries business is entitled to a credit of not more than 10 percent
24 of the business tax liability under AS 47.75.015 for contributions
25 made during the tax year to the A. W. "Winn" Brindle memorial
26 scholarship account (AS 14.43.250).

27 * Sec. 4. AS 43.75.130 is amended by adding a new subsection to read:

28 (b) For purposes of this section, tax revenue collected under
29 AS 43.75.015 from a person entitled to a credit under AS 43.75.032

1 shall be calculated as if the person's tax had been collected without
2 applying the credit.

3 * Sec. 5. AS 43.75.140 is amended by adding new paragraphs to read:

4 (9) "capital expenditures" includes the price paid for
5 equipment and the cost of improvements made to depreciable property,
6 but does not include expenditures that are deducted entirely for
7 federal income tax purposes in the year in which they accrued or were
8 paid; in this paragraph, "equipment" and "depreciable property" have
9 the meaning given in regulations adopted by the commissioner of com-
10 merce and economic development;

11 (10) "product diversity" means the processing of nontradi-
12 tional fish or other seafood species or products;

13 (11) "product quality" means the handling of fish or other
14 seafood species or products in order to increase product sales or
15 value.

16 * Sec. 6. The first tax credit report under AS 43.75.034, enacted by
17 sec. 2 of this Act, is due February 2, 1987, and shall describe the expen-
18 ditures for which a credit was approved during 1986 for the 1987 tax year.

19 * Sec. 7. AS 43.75.140(9) - (11) are repealed January 1, 1996.

20 * Sec. 8. AS 43.75.034 is repealed February 15, 1996.

21 * Sec. 9. Sections 1, 2, and 4 - 8 of this Act take effect July 1,
22 1986.

23 * Sec. 10. Section 3 of this Act takes effect January 1, 1996.
24
25
26
27
28
29