

S

B

454

April 9, 1984

The Honorable Joe Josephson
Alaska State Legislature
Pouch V (MS3100)
Juneau, AK 99811

RECEIVED

APR 1 1984

Josephson,

Dear Senator Josephson;

From information received from our local Legislative Information Office, I understand that SB 454 concerning funding for the initial campus building of Prince William Sound Community College is now being considered by the Senate Finance Committee.

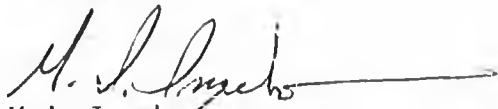
Valdez is a relatively isolated community which serves as a regional center for many of the small population groups in this part of the state. As such, I feel the need is critical for a strong community college program to enable local and area residents to upgrade their employment skills, provide cultural enrichment, and establish community cohesion by learning and working together.

With the decreasing oil revenues, Valdez seeks to strengthen and diversify its economic base to remain healthy. I feel that the Prince William Sound Community College helps to do this.

I have taken a number of classes through P.W.S.C.C. and feel their programs are very well received by community and regional residents. I am aware of their fine Developmental Disabilities Training program, Alaska Studies program, and Adult Basic Education program among others. These programs provide the community and region with many continuing learning experiences, encouraging our citizens to invest in their social and economic health.

I strongly urge you to support the passage of SB 454 because I think it is a very worthwhile investment in our residents, community and state.

Sincerely,


M.J. Ingebo

P.O. Box 572
Valdez, AK 99686

Extension Centers at:
Cordova
Copper Basin



Telephone
(907) 835-2539

PRINCE WILLIAM SOUND COMMUNITY COLLEGE

P.O. Box 97
Valdez, Alaska 99686

April 10, 1984

The Honorable Joe Josephson
Alaska State Legislature
Pouch V (MS 3100)
Juneau, AK. 99811

Dear Senator Josephson,

Thank you for the support you gave to Senate Bill 454, the special appropriation for the campus building for PWSCC, during the Senate HESS Committee hearings in March.

The students, staff, and faculty of Prince William Sound Community College certainly appreciate your efforts and will look forward to your continued support when Senate Bill 454 comes before the Senate Finance Committee.

Sincerely,

John Devens, Ph.D.
President
Prince William Sound
Community College

JD:kw

*Assigned to
Sachetti in Senate
Finance.*

RECEIVED
APR 13 1984
Josephson.

March 28

AB 454

John Devere - pres. PWS C.C.

This project before the Legislature many times.
C.O. Bond failed.

Currently in need apartment houses. Inst. Sec
Ed Com. said they should be a priority
104 full time students. Over 100 credit
students and 135 pre-college students.
Receives money from Valley.
Has a para-professional D.T. program.
#11 in Regents priority list

March 21, 1984

The Honorable Joe P. Josephson
Alaska State Legislature
Pouch V (MS 3100)
Juneau, Alaska 99811

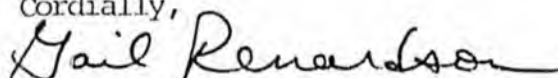
Dear Senator Josephson:

I would like to request your consideration of Senate Bill 454, which provides for a special appropriation for the construction of the Prince William Sound Community College campus building. We are proud of our college and its rapid growth, but a new facility is vital to the continued growth of our programs.

The construction of such a facility with laboratories, other specialized areas, and the additional administrative and classroom space will guarantee that the college will be able to expand its offerings and better meet the needs of its growing student body.

I sincerely hope you will support this bill. Thank you for your kind consideration.

Cordially,



Gail Renardson

cc: Rep. Bette Cato
Sen. Don Bennett

RECEIVED

MAR 26 1984

Josephson,

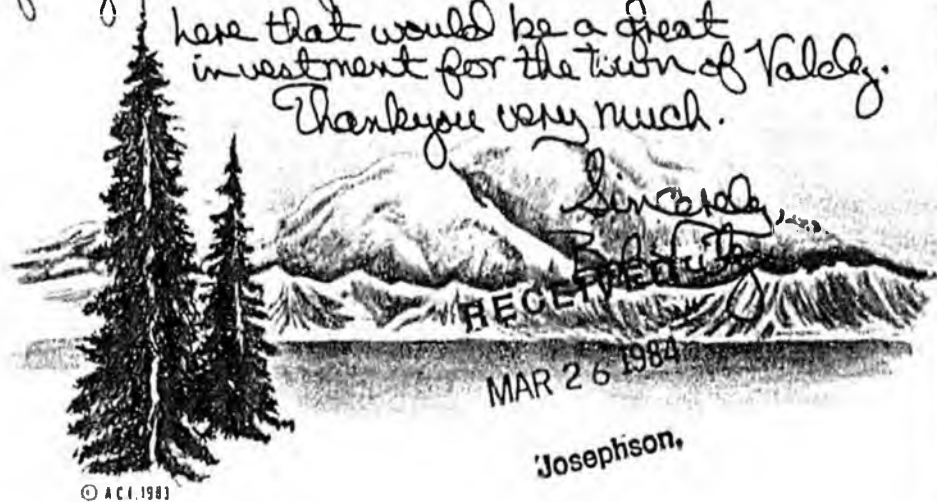
Alaska Scripts
Senate HESS Committee
Dear Joe,

21 Mar 84

I am a full time student here at Prince William Sound Community college and enjoy attending classes very much.

Valdez is an excellent place to attend school and find learning very pleasurable.

I really dream of seeing Valdez becoming a college town, a truly excellent place for higher education. Presently the school is outgrowing itself and desperately in need for larger class rooms and other things Community colleges offer. Again I plead for you to vote for a new college to be built here that would be a great investment for the town of Valdez.
Thankyou very much.



© A.C. 1983

Josephson

March 20, 1984
P.O. Box 2047
Valdez, AK 99686

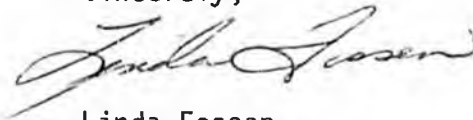
The Honorable Joe P. Josephson
Alaska State Legislature
Pouch V (MS 3100)
Juneau, Alaska 99811

Dear Mr. Josephson,

This letter is a request for your support of SB454 which provides for a special appropriation for construction of a campus building for Prince William Sound Community College. We in Valdez have been looking forward for years to having adequate campus facilities built. We are very excited about the possibility of having our dream come true this year. The construction of a new campus building would really be a giant step forward in providing top quality education to PWSCC students!

Thank you again for your support of SB454.

Sincerely,



Linda Fossen

cc: Senator Jalmar Kerttula
Representative Bette Cato
Senator Don Bennett
Senator John Sackett
Senator Frank Ferguson
Senator Jan Faiks
Senator Bob Mulcahy

Extension Centers at:
Cordova
Copper Basin



Telephone
(907) 835-2539

PRINCE WILLIAM SOUND COMMUNITY COLLEGE

P.O. Box 97
Valdez, Alaska 99686

RECEIVED

MAR 23 1984

Josephson,

March 20, 1984

The Honorable Joe Josephson
Alaska State Legislature
Pouch V (MS 3100)
Juneau, Alaska 99811

Dear Senator Josephson:

It is my understanding that SB 454 will be considered by the Senate HESS Committee on Monday, March 26, 1984. This bill would provide the funding for the initial campus building for Prince William Sound Community College.

As you may be aware, Prince William Sound Community College is currently housed in older apartment buildings that provide very inadequate classrooms and no laboratory space.

During last semester, PWSCC worked with 606 different students in credit, degree oriented courses and 533 students in pre-college level and noncredit classes. We have experienced a very steady and high growth rate since becoming a community college.

Although our school is very young and relatively small at this stage in our development, we strive to offer a high quality program that will prepare our students for employment or transfer to one of the senior colleges or universities. Some of the programs and activities that I feel makes PWSCC a very special school include:

1. PWSCC has the only program in the state and one of only a few in the country to train paraprofessionals to work with the developmentally disabled. We have 17 full-time students in this program and have received national attention with regard to these activities. Our staff have presented three papers this year at national conferences regarding the work we are doing in our developmental disabilities program.
2. PWSCC has the only Alaska Studies program of which we are aware. Within this program students can earn an Associate of Arts degree while studying the literature,

Senator Joe Josephson

March 20, 1984

Page 2

history, art, natural science, and political science of Alaska. This program won the Ester Billman Certificate of Excellence in 1982.

3. PWSCC Soundings, a literary journal, is published at the college and has received much attention and praise. We are currently publishing our fourth edition. A copy was sent to you several months ago.
4. Research by PWSCC staff has resulted in one of the world's best depositories of information on shipwrecks in the North Pacific. Currently, we have recorded more than eight hundred shipwrecks and receive many requests for copies of our materials.
5. We have more than fifty students enrolled in an open-entry/open-exit program in office occupations. PWSCC also offers review courses for the Certified Professional Secretaries examination, a nationally recognized standard of professionalism. These courses are taught by professionals throughout the state and are offered at PWSCC through teleconference.
6. Our welding program has helped many students find employment or upgrade in their current jobs.
7. We take great pride in our success with rural and Native Alaskan students. Basic skills preparation and our Adult Basic Education program provide a good beginning for students who require pre-college skill building. In our Adult Basic Education program we find that 60% of the students who were unemployed when they started the program are now employed. Five students have been helped in receiving their U.S. citizenship. Our average student scores 15 points higher than the national average on the G.E.D. examination. Last year we had 145 students in the Adult Basic Education program.
8. PWSCC has begun its third year with the National Elderhostel program. Last year we served 267 students in this program.

You can see from the above that we have a very active college that serves more than one thousand individuals each semester; but our very inadequate facilities seriously limits the services we can provide.

Senator Joe Josephson
March 20, 1984
Page 3

Any help you might give us in securing funding for our campus building will be appreciated.

Sincerely,

A handwritten signature in cursive script that reads "John Devens". The signature is written in dark ink and is positioned above the typed name.

John Devens, Ph.D.
President
Prince William Sound Community College

rs

c: Senator Paul Fischer
Senator J. Kerttula
Representative Cato

VALDEZ FISHERIES
DEVELOPMENT ASSOCIATION, INC.

P.O. BOX 125
VALDEZ, ALASKA 99686
835-4874



March 12, 1984

Senator Joe Josephson
Chairman, H.E.S.S. Committee
Pouch V
Juneau, Alaska 99811

Dear Senator:

Valdez Fisheries Development Association, Inc. would like to express its support for Senate Bill 454. Valdez Fisheries Development Association, Inc. is a nonprofit corporation dedicated to salmon enhancement for sports and commercial fishing interests in the Port Valdez and Prince William Sound area.

We have been working with the Prince William Sound Community College to institute an aquaculture training program which would train local Valdez and Cordova residents to act as fisheries technicians in our area enhancement facilities. This program would also provide local technicians for the State enhancement facilities and those of Prince William Sound Aquaculture Association. The aquaculture training program is currently scheduled for classes in the Fall of 1984.

We at the Valdez Fisheries Development Association would appreciate your support for funding for the new PWSCC facility which would not only help the specific program that we are concerned with, but would also assist other areas of the PWSCC curriculum.

Thank you for your consideration.

Sincerely,

Robert F. Kellar, President
VALDEZ FISHERIES DEVELOPMENT ASSOCIATION, INC.

JCW:pt

cc: Senator Jalmer Kertulla
Senator Paul Fisher
Senator Don Gilman

RECEIVED

MAR 23 1984

Josephson.

DEDICATED TO THE UTILIZATION, CONSERVATION,
AND REHABILITATION OF ALASKA'S FISHERY RESOURCE
WITHIN THE 200 MILE LIMIT

P. O. Box 411
Valdez, AK 99686
March 20, 1984

The Honorable Joe P. Josephson
Alaska State Legislature
Pouch V (MS 3100)
Juneau, AK 99811

Dear Senator Josephson:

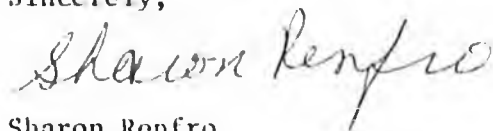
It is my understanding that Senate Bill 454 dealing with a special appropriation to Prince William Sound Community College for construction needs will soon be considered by your committee. As a new resident to Valdez and Alaska, and a new employee of Prince William Sound Community College, I would like to take this opportunity to express to you my sincere feelings about the value of the college to this community.

My initial introduction to Valdez placed the college as the hub of activity of the community. I immediately was made aware of their course offerings as well as seeing their involvement in city activities, such as their participation in the Winter Carnival.

The Community College is a "must" in meeting the educational needs of its service area!

We thank you for your past support and your consideration of this very important issue to the students and residents of our community -- Senate Bill 454.

Sincerely,



Sharon Renfro

cc: The Honorable Jalmar Kerttula
The Honorable Bette Cato
The Honorable Don Bennett
The Honorable John Sackett
The Honorable Frank Ferguson
The Honorable Jan Faiks
The Honorable Bob Mulcahy

RECEIVED

MAR 23 1984

Josephson.

March 20, 1984
P. O. Box 649
Valdez, Alaska 99686

RECEIVED

MAR 23 1984

The Honorable Joe P. Josephson
Alaska State Legislature
Pouch V (MS 3100)
Juneau, Alaska 99811

Josephson-

Dear Mr. Josephson:

I'm writing in support of SB454, which provides for a special appropriation for construction of a PWSCC campus building.

I have been employed by Prince William Sound Community College for six years; I have been the Registrar for the past four. I am also a student here, so my interest is not merely that of an employee.

PWSCC has grown rapidly since becoming a community college almost six years ago. Our headcount has doubled and our credit hours generated has increased almost three-fold. I know I'm impressed by that.

PWSCC serves more than 600 residents of this region each semester, approximately half of them citizens of Valdez. With our full-time faculty developing healthy, viable degree programs, we are also increasing our full-time student population considerably.

PWSCC in Valdez is currently housed (and that's a real appropriate word!) in three buildings which used to be apartments. These buildings just aren't suitable. Due to the structural nature of the buildings, there is a certain amount of wasted space. Although some improvements have been made--most notably, adequate lighting--too much more would have to be done to make these buildings meet our needs.

Aside from space considerations, we have had to hold classes all over town in order to be able to use the proper facilities for certain types of classes. This shouldn't be.

I respectfully request that you seriously consider SB454, and give PWSCC the opportunity for the continued growth that our communities desire.

Thank you for your time.

Sincerely,

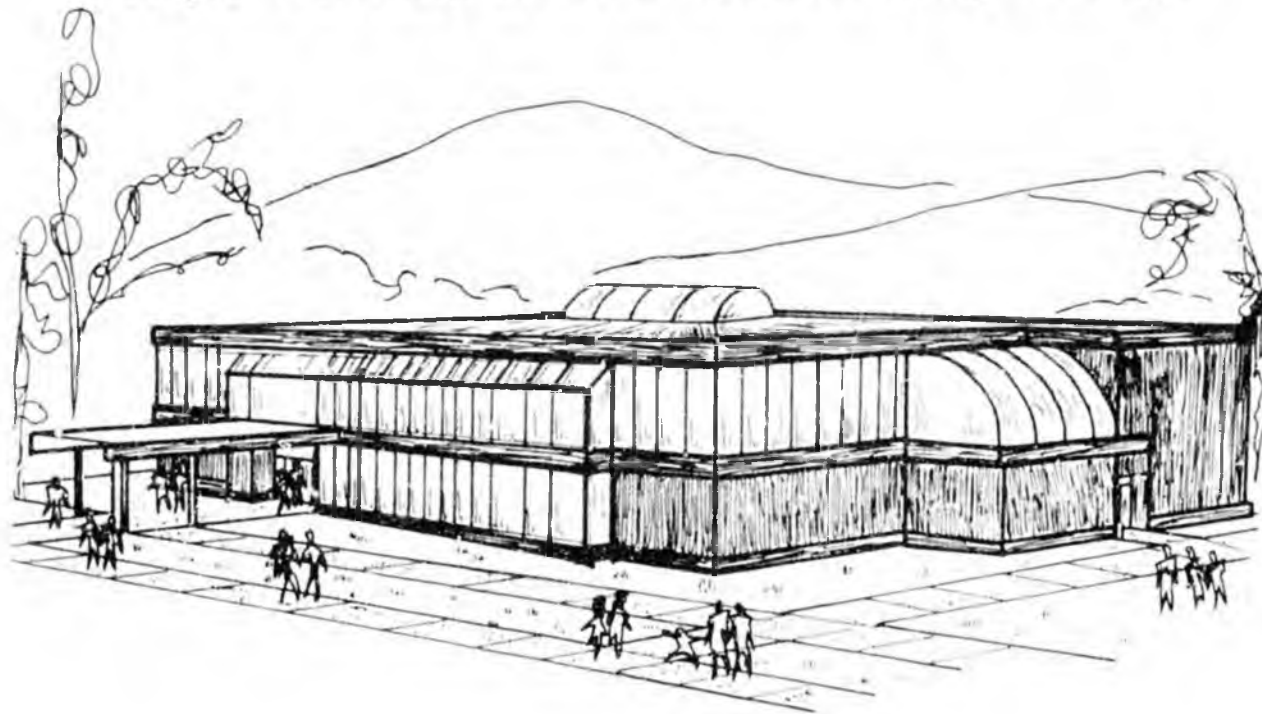


Dee Ann Williamson

cc Senator Jalmar Kerttula
Representative Bette Cato
Senator Don Bennett
Senator John Sackett
Senator Frank Ferguson
Senator Jan Faiks
Senator Bob Mulcahy

Proposal for Permanent Campus Building

Prince William Sound Community College



-PROPOSAL-

for

A Permanent Campus Building

Prince William Sound Community College

THE COMMITMENT: Academic Excellence...



Prince William Sound Community College is committed to providing academic excellence and to improving the quality of life for Alaskan citizens and their communities. The variety of programs available give students the opportunity to expand their vocational, cultural and intellectual horizons.

Prince William Sound Community College goes forward with a clear mission and well-defined goals.

PROPOSED CAMPUS BUILDING...

A three story building located at Valdez will enhance the availability of adult education services for Alaskans of this region.

The appropriate environment for learning is the inherent value of a campus building. Equipment and centralized human resources are consolidated. The managability of course offerings is more effective with centralized resources and administration. PWSCC is experiencing and will continue to experience broad involvement and leadership in response to regional expectations.

STATEMENT OF NEED...



Currently Prince William Sound Community College is based in three apartment buildings formerly utilized for low income staff housing by the State of Alaska. Former bedrooms are now utilized as offices and former living rooms are utilized as classrooms.

The limited space curtails classroom size and activities. Inappropriate design hinders normal educational functions. PWSCC is the only community college in the state that has no laboratory space.

Office Occupations classes are currently held at the high school, but this arrangement restricts the development of a daytime curriculum.

PWSCC needs a facility that will provide the science laboratory space, typing room, art rooms, home economics room, welding shop and other specialized facilities that make a comprehensive program of instruction possible.

PLANNING PROCESS: A Cooperative Effort



Planning is a vital part of responsible development. Recognizing present and future needs, Prince William Sound Community College facility planning has included needs assessments, a self-evaluation study, work sessions and campus development meetings.

Students, faculty and staff, business and service agency representatives and countless members of the community at large have generated considerable input into the planning process. Based upon information generated, architectural studies were developed.

THE RESULT: A recognized need for a community campus structure including laboratory space, shop facilities, office occupations center, student resources and centralized administrative offices.

SCOPE OF SERVICES...

•GEOGRAPHIC AREA

PWSCC is keeping pace with demands for educational delivery to a large geographic region encompassing 45,000 square miles. Administrative offices and full-time faculty are maintained at Valdez, with extension center programs based at Cordova and Copper Center. Additional communities served include Glennallen, Kenny Lake, Chitina, Mentasta, Tatitlek, Whittier, Gakona, Gulkana, Chistochina, Summitt Lake, Paxson, Sourdough, Slana, Nebesna, McCarthy, Mendeltna, Lake Louise, Nelchina, Tazlina Center, Chenega, Eyak Village and Lower Tonsina.

•ACADEMIC PROGRAMS

The Associate of Arts Program provides basic courses in the academic and applied studies for those students who may transfer to a four year college or university. This program offers a flexible and broad approach toward the first two years of a student's college requirements.

•OCCUPATIONAL EDUCATION AND ECONOMIC DEVELOPMENT

PWSCC seeks to stimulate the economic base of the region and state with the development of human resources that can satisfy the demand for qualified workers. Despite current high unemployment rates, shortages for skilled labor still exist. New technologies aggravate this problem by placing additional demands on the currently employed to constantly upgrade their skill levels. PWSCC strives to match the quality and quantity of its programs to the levels demanded by industry.

Programs



•WELDING

PWSCC's Welding Program is designed both for the beginner as well as for those desiring to upgrade their job skills.

The areas of training include manual arc welding, inert gas processes, fluxed core automatic welding, oxyacetylene burning and capillary attraction bonding techniques.

The program is currently housed in shop facilities temporarily donated by the City of Valdez.

•DEVELOPMENTAL DISABILITIES

PWSCC offers the only Associate of Applied Science and Certificate Degree Program in Alaska in Developmental Disabilities. This program prepares paraprofessionals to provide direct care and training to individuals with severe learning, behavioral and physical impairments. The program includes classroom and laboratory components providing students with marketable skills in Developmental Disabilities. Harborview Developmental Center, the State of Alaska's institution for the developmentally disabled is located at Valdez.

•OFFICE OCCUPATIONS

The Office Occupations Program offers a Certificate and an Associate of Applied Science degree. Students can take course offerings to obtain job-entry level skills or to up-date current job skills.

Modern office occupations equipment is currently being purchased. A laboratory is being developed to meet the needs of the most recent development in office administrative technology.

•FISHERIES AND MARINE TECHNOLOGY

Prince William Sound is the location of a major Alaskan fishing industry. Fishery and Marine Technology courses provide students with the basic skills needed to successfully enter the highly competitive field. Courses range from net mending to diesel mechanics; seamanship to marine ecology.

Community & Regional Services

•ALASKA STUDIES

The Center for Alaska Studies is an integral part of the PWSCC instructional program. During this past year, the program received the Ester Billman Certificate of Excellence for the Alaska Historical Society. This resulted, in part, from the establishment of a nautical archaeology program and the direction of over 14 different oral history and research projects on Prince William Sound. The Center also served to establish PWSCC's participation with the Nationwide Elderhostel-Chautaugua Program. The program, which works with senior citizens who wish to continue their education, saw 104 students over the age of 60 attend college level classes at PWSCC.

•ADULT BASIC EDUCATION

Adult basic education has long been and continues to be one of the main thrusts of community service for PWSCC. Since January of 1982, the ABE program has provided 12,636 contract hours working with 188 students and 42 students have received GED diplomas. Through the ABE program, 60 percent of the students who were unemployed when they started the program are now employed. The average student graduating from PWSCC G.E.D. program scores in the low 70's when compared to a national average of 58 on the national test.

•STUDENT SERVICES

Career and academic counseling is essential to relevant delivery of educational programs. Financial aid, career planning, testing and referral, and job placement services are available.

•"SOUNDINGS"

The regional publication "Soundings" is a literary journal which publishes writings contributed by students and community members. The journal is enjoying increasing popularity as it approaches the third annual publication. Student editors, supervised by a faculty sponsor, coordinate and produce the journal.

•MEDIA SERVICES

Telecommunications • Educational Television • Computers
A technical revolution is currently underway in the field of communication. It's impact is having a tremendous influence on Alaskan educational delivery. The Media Services Program at PWSCC is expanding educational opportunities within the Prince William Sound Region. Other innovations being developed are local video production and the creation of a telecommunication software library to be used by the college and the community.

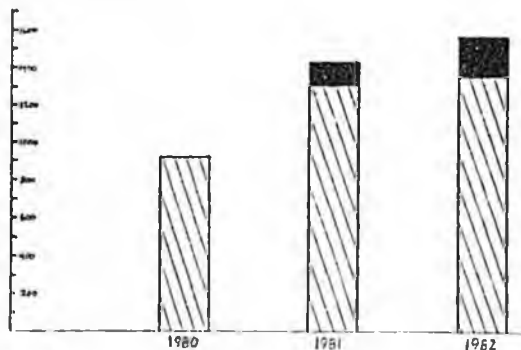
GROWTH: A Promising Future...

Prince William Sound Community College

ENROLLMENT TRENDS

Combined Credit Hours - Valdez, Copper Basin & Cordova

FALL SEMESTERS



FULL
TIME

PART
TIME

Since Fall Semester of 1980, Prince William Sound Community College has experienced a growth of 71 percent in credit hours. However, at this phase in development, limited campus facilities inhibit significant future growth for increases in full time and long term degree oriented students.

Industrial growth and adult education are necessary partners in the development of our region. Tourism, agriculture, fishing, petroleum, transportation, and mining industries place demands on instructional services. PWSCC must keep pace with economic growth and develop programs that enable local Alaskans to enter the work force, upgrade their skills, and retrain for jobs created by developing industries.

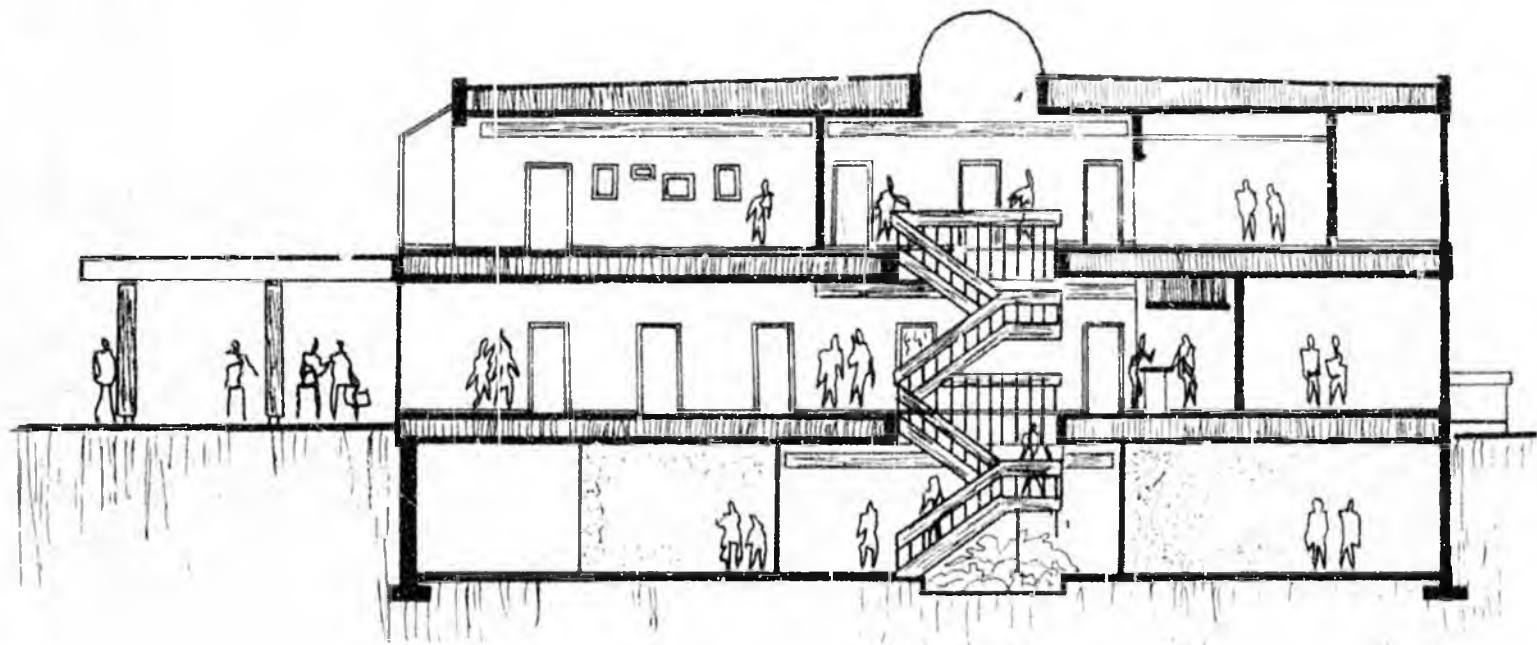
PROPOSED FACILITIES:

A three story building located at Valdez will provide adequate space for the education needs of the Prince William Sound Community College service region. The following are results of the space needs assessment.

SPACE NEEDS ASSESSMENT:

- General Classrooms
- Lecture Hall
- Vocational Education Facilities
- ABE/Learning Resource Center
- Science Laboratory
- Office Occupations Center
- Computer Room
- Counseling Center
- Audio-Visual Center
- Art Room
- Art and Music Centers
- Home Economics Center
- Photography/Darkroom
- Bookstore
- Faculty Offices
- Administrative Offices
- Conference Room
- Student Lounge

Interior Cut-away of Proposed Structure



In Summation...

- **Phyllis Irish Senior Citizen and Valdez "Old-timer"**. *"I highly approve of PWSCC and its contribution to Valdez. You are never too old to learn. The college offers our young people a chance to attend advanced education classes in their home community."*
- **Mary Jo Evans Businessperson and current Chair of Planning and Zoning Commission**. *"The college definitely adds a needed element for the enrichment of the community of Valdez."*
- **James Shepard PWSCC Student** *"The future of education in Valdez is very promising, but we need your support. Class registration is being limited due to lack of space, and furthermore, many classes requiring laboratory space cannot be offered at all. Please help us make education available to all who desire it."*
- **Valdez Chamber of Commerce** *"We urge you to support the construction for the proposed Prince William Sound Community College Campus Building at Valdez. This item has been incorporated in our proposed legislative program for FY 84"*
- **John Devens President of Prince William Sound Community College**. *"I am confident in the future of PWSCC. With the proper development of adequate facilities, we will continue to meet the rising educational needs of the people of our region."*

Alaska Scripts
SENATE HESS Committee

2/11/84

Dear Joe,

I am a full time student here at Prince William Sound Community college and enjoy attending classes very much.

Valdez is an excellent place to attend school and find learning very pleasurable.

I really dream of seeing Valdez becoming a college town, a truly excellent place for higher education. Presently the school is outgrowing itself and desperately in need for larger class rooms and other things Community colleges offer. Again I plead for you to vote for a new college to be built here that would be a great investment for the town of Valdez.

Thankyou very much.

Sincerely,
Bobby

RECEIVED

MAR 26 1984

Josephson



Extension Centers at:
Cordova
Copper Basin



*Rec'd - 84
2-2-84
JCK*

Telephone
(907) 835-2539

PRINCE WILLIAM SOUND COMMUNITY COLLEGE

P.O. Box 97
Valdez, Alaska 99686

January 31, 1984

Senator Jalmar Kerttula
State Capitol
Pouch V
Juneau, AK. 99811

Dear Senator Kerttula,

Under separate cover I am sending you a large picture of the artist's concept of our long range facilities development plans for Prince William Sound Community College. With that, you will also find sheets containing topography and site location data, as developed by Bob Eder of Valdez Engineering. Over the past several years we have done considerable planning with regard to this facility and are, of course, quite anxious to see the project begin. When you receive the tube containing the artist's concept of the facility, you will note that it is on four separate levels situated on Meals Hill adjacent to the Blueberry Hills Subdivision and facing across the bay to the Alyeska facility. We feel, and Valdez Engineering concurs, that this site is unsurpassed for natural beauty and provides us with the needed space for expansion. The \$8.5 million needed for Phase I will purchase the uppermost level and will house our classrooms, study centers, laboratories, and offices. The other buildings, as one progresses to the next lowest level, include dormitories connected to the main building by a covered walkway and then to the three buildings sitting almost at water's edge but elevated above the water. At the third level, moving from the right side of the picture to the left, we have a shop facility, then a science laboratory, which we project needing in the 1990's, and finally, a marine laboratory, which will enable us to further expand our programs in aquaculture and fisheries. The fourth and lowest level is pictured in the lower left-hand corner of the picture and that shows our boat dock and additional fresh water marine facilities.

Obviously, the long range plans that we are projecting in these pictures are truly long range and depend upon many variables including the growth of the state of Alaska, our ability to realize some of the programs which we are planning, and the growth and development in the PWSCC region. I felt you would appreciate seeing that we do have long range plans which will result in a comprehensive community college serving the specific needs of this region.

Attached to this letter, I am also including a number of items which may help in providing the support needed for this project. You will find seven black and white photographs depicting our campus as it is now, including on-campus facilities and those which we have been able to borrow from the City, the public schools and the State. We feel the pictures demonstrate the inadequacy of our classrooms and our need for modern, well-developed classrooms and laboratory facilities.

Senator Jalmar Kerttula
January 31, 1984
Page Two

I am also sending several pamphlets which were developed two years ago and describe essentially the facility we are talking about, but pictures it as a three-story building rather than a single story building as is shown in the artist's concept. With these pamphlets I'm also sending a line drawing of the classroom and laboratory areas. Essentially nothing has changed except that, as we have developed our plans on site location, we have decided to develop the building as a single story to better utilize the natural lay of the land and to fit the overall scope of the project. The square footage remains the same and the layout of the classrooms has remained essentially the same.


I have also included a site location report from Valdez Engineering. This report provides supportive data regarding our choice of the Meals Hill site.

You will also find attached this year's report from the college to the Valdez City Council indicating our progress over the past year. In the appendices of this report you will find the results of a needs assessment done by The Northern Institute. This needs assessment demonstrates the outstanding support PWSCC receives by the community at large.

Finally, I'm also including two letters that show past support for the community college building. The one letter is from the Valdez Chamber of Commerce, listing the college as a high priority for last year, and the other letter is from a former student body president who wrote in support of the college two years ago. As you are aware, there have been many other letters and telegrams written with regard to this campus building.

I have announced your support of not only the campus building but the other City projects to the Chamber of Commerce and to my fellow City Council members. Everyone is very appreciative of the support you have given us and are extremely pleased with the prospect of having you back as our senator.

Sincerely,



John Devens, Ph.D.
President
Prince William Sound
Community College

JD:kw
Attachments

VALDEZ ENGINEERING, INC.

Anchorage Office:
4410 Woronzof Drive
Anchorage, Alaska 99503
(907) 248-6686

April 7, 1983

Valdez Office:
301 Egan Drive, Suite 201
Box 907, Valdez, Alaska 99586
(907) 835-4995

PRINCE WILLIAM SOUND COMMUNITY COLLEGE PROPOSED CAMPUS SITE LOCATION REPORT

The proposed site for the new Prince William Sound Community College campus offers several quantifiable advantages over alternative sites, including the alternative of retaining the campus at its present location. The proposed site, USS 641, is situated in the Southwest corner of the Valdez Townsite, adjacent to both Port Valdez and Mineral Creek. The acreage is wooded with both spruce and cottonwood and is graced with mildly rolling terrain directly adjacent to Port Valdez. The land belongs to the University system, thus no acquisition costs will be involved in utilizing the property.

One of the foremost advantages to the proposed site is the inherent contribution toward meeting the College's Academic Mission. As suggested by its name, the College serves a wide and diverse cross-section of the population within the Prince William Sound environs. Tied closely to the sea, the people of this area have a natural need for academic programs relating to marine biology, fisheries development, boating safety skills and any number of other marine related activities. By providing direct access to the sea from the campus, this site allows propagation of marine education curricula unmatched by any other site. Students will be able to move directly from classroom to seashore for "hands-on" experience. Ongoing and continuous activities can be scheduled with direct and immediate oversight from faculty and students. The College would not impart a negative impact on existing community facilities through expansion of its marine programs and would have the required freedom to conduct its programs unhindered by external constraints.

In addition, the site allows for practically unlimited expansion over time as the needs of the community and region grow and develop. The current campus, utilizing as it does renovated, leased buildings which were formerly a low-income housing development, is particularly ill-suited to allow development of a proper Academic Master Plan designed to fulfill the college's mission. Alternative sites would not allow the flexibility, nor provide the obvious advantages that this particular site offers.

The present campus is situated on the borderline between the downtown business district and the residential area of Valdez. Within the past 3 years a large apartment building, the city's largest grocery store & mall and a new arterial road connecting to the Richardson Highway have been built adjacent to the existing campus. Already situated on one of the city's two north-south thoroughfares, the present campus is plagued

by a high-density traffic factor, and the related noise that accompanies such traffic. Such distractions would be totally eliminated by relocating the campus to the proposed site. The residential character of that part of the city the present campus borders would be strengthened, while the problems associated with being shoulder-to-shoulder with the busy business district would be eliminated. Classes would not be disrupted by constant outside noise, students could study in peace and classes requiring low-noise levels such as theater arts, music and audio-visual would be aided.

Also to be considered in any site evaluation are long-range benefits. At the current campus, no long-range benefits can be discerned. The facilities are renovated apartments with low space efficiency utilization and no expansion could be allowed without use of alternative buildings in other areas of the City as is done now. Currently, classes are held in 5 disparate buildings scattered throughout the City, cohesiveness of programs is lacking, communications is impaired and a tour of the facilities effectively means a tour of the City of Valdez.

The proposed site offers the opportunity to design a campus with an efficiently designed physical layout, where all buildings and activities would be in close proximity to one another, and expansion could be properly planned and controlled. Beginning with a core facility containing classrooms, laboratories and administrative and faculty offices, additional buildings could be designed and built to effectively and efficiently fill the needs of the College. At all stages of the college's development, growth would be controlled and guided so that the maximum benefit would be derived from the money spent on such facilities, a point which should not be lost when the state's future revenue projections are taken into account. As time passes, the wisdom of situating the campus on this site will become ever more apparent.

Access to the site is already in place. Access is provided by the Mineral Creek Access Road, a city road. Mineral Creek Access road is currently under construction to be upgraded to City Standards. Utilities presently are in place to the end of Egan Drive near Mineral Creek. Utilities along Mineral Creek Access Road to the University Property may be able to be City funded. The majority of the road system to the site would be on City property and City maintained.

From an engineering standpoint, the site offers several advantages. The proposed conceptual layout of the initial campus would occur between Elevation 120 and Elevation 140, a 20-foot vertical range. Site preparation costs will be minimized due to this narrow range of elevation gradient, and the time required for such preparation will be minimized.

Much of the cost in providing access roads, parking lots, utilities backfill and foundation material goes to meet transportation costs of such material. The main source of such backfill and foundation material in Valdez is from the Mineral Creek channel. Situated adjacent to Mineral Creek as it is, the distance required to procure such material is the absolute minimum, thus the initial infrastructure can be provided

with the least cost and time. More money will be available then for providing physical facilities. No other site offers such an advantage.

Preliminary cost estimates to provide the required infrastructure are as follows:

	<u>UNIVERSITY PROPERTY</u>	<u>CITY PROPERTY</u>
Site Preparation	\$200,000.00	
Roadways - 1500'	700,000.00	
Sewer Lines - 3600'	160,000.00	200,000.00
Water Lines - 3600'	160,000.00	200,000.00
Parking Lot	125,000.00	
Electricity	50,000.00	100,000.00
Telephone	15,000.00	35,000.00
Total Infrastructure Cost	<u>\$1,410,000.00</u>	<u>\$535,000.00</u>

As a final point in this analysis, the negative aspects of the location should be addressed. The site at this time is removed from the main developed area of Valdez. It is 1.5 miles from the proposed campus to the downtown business area, and no other development is underway in the area, with the exception of a 14 acre subdivision to the southwest of the site. Additional time and effort will be required for students, faculty and citizens to gain access to the campus. The advantages of close-at-hand businesses and support facilities currently available will be lost. However, the City of Valdez is currently building a bridge from West Egan Drive across Mineral Creek. It is the City's desire to promote residential development across Mineral Creek, and over time substantial development will undoubtedly occur in the area surrounding the proposed site. By acting now, the college will serve as an anchor for development in this section of the City and will over time undoubtedly become the centerpiece of this section of the City of Valdez. Rather than reacting to change, the college will have become an integral and important leading factor as the area develops. Rather than finding itself surrounded by development, with few alternatives for expansion, the College will be at the front in adapting itself to the changes and growth the City will experience. Sufficient land is available in this 140 acre site to provide expansion for this campus far into the future.

In summation, the proposed site offers an opportunity seldom offered, and once lost, not often regained. The college will have a facility more closely aligned to the needs of the community and region, with a location allowing it to serve fully the needs of its constituents, to grow as the region grows, in an area that reflects completely the people it is mandated to serve. Aesthetically, functionally and economically, there is no better site upon which the new Prince William Sound Community College could be built than this one.

James H. Shepard
PWSCC SGO President
Box 1828
Valdez Ak 99686
Computer ID
VSJHSHEPARD

To the members of the 1983 Alaska State Legislature;

Greetings! I am currently a full time student a Prince William Sound Community College. Having successfully completed 21 credit hours during fall semester 1982, I look forward to completing another 20 hours during spring semester 1983. This will enable me to graduate with an Associate of Arts degree this spring of which I shall be very proud. I am also president of the PWSCC Student Government Organization. It is with pleasure that I write this letter to you today.

There is a wonderful experiance in learning. Given the proper atmosphere and motovation, young and old may further their knowledge and become wise. It is the educators responsibility to provide that atmosphere conducive to learning, and it is the art of the educator to cultivate curiosity and motovation in their students. As you can see from the 1982-83 Pwscc faculty roster, there are some very gifted educators sharing their knowledge with the people of Valdez, and with the people of outlying communities who benefit from the PWSCC Extension Centers.

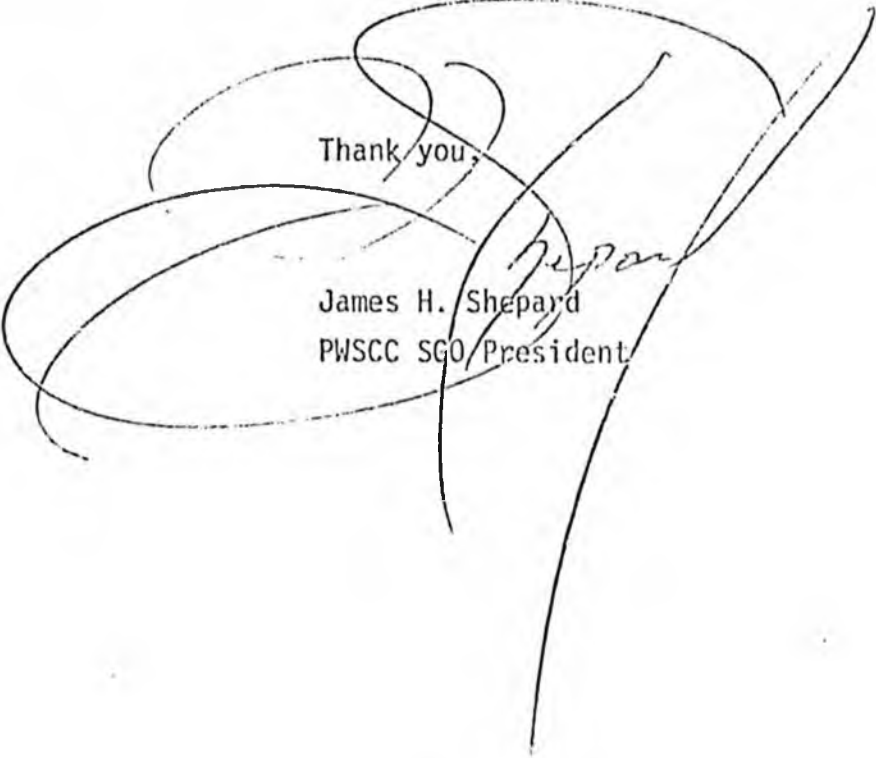
There is, however, a serious hinderance to their efforts.

Anyone who has visited our campus in Valdez recognizes our desperate need for an appropriate facility to serve the needs of our students and faculty. Many of our needs are surprisingly basic. Class registration is being limited due to lack of space, and furthermore, many classes requiring lab space cannot be offered at all. In one classroom where I was a student, we sat filling the two rows of tables and also around the walls of the room in various folding chairs. Do not be deceived. There were only twelve of us including the instructor. This is not a isolated example. The layout of the classrooms, initially designed as temporary housing units for state employies in the late sixties, are all the same.

The temporary facilities which currently house the PWSCC campus are totally inadequate to handle the needs of an increasingly numerous student body. I urge you to make available the necessary funds so that a permanent community college building may be erected in Valdez.

The future of education in Valdez is very promising, but we need your support. Please help us to make education available to all who desire it, in such a way that we may grow and benefit from the experience.

Thank you,


James H. Shepard
PWSCC SGO/President

Valdez Chamber of Commerce

P.O. Box 512 * Valdez, Alaska 99686 • Phone 835-2330

January 14, 1983

Dear Alaska State Legislators:

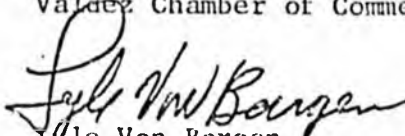
Please consider this letter as our support for the proposed capital improvement for Prince William Sound Community College. This item has been incorporated in our proposed legislative program for FY 84.

Presently, PWSCC utilizes for their facility a former Alaska State Housing complex, a private commercial office building, and has utilized a city warehouse and public school facilities after public school hours.

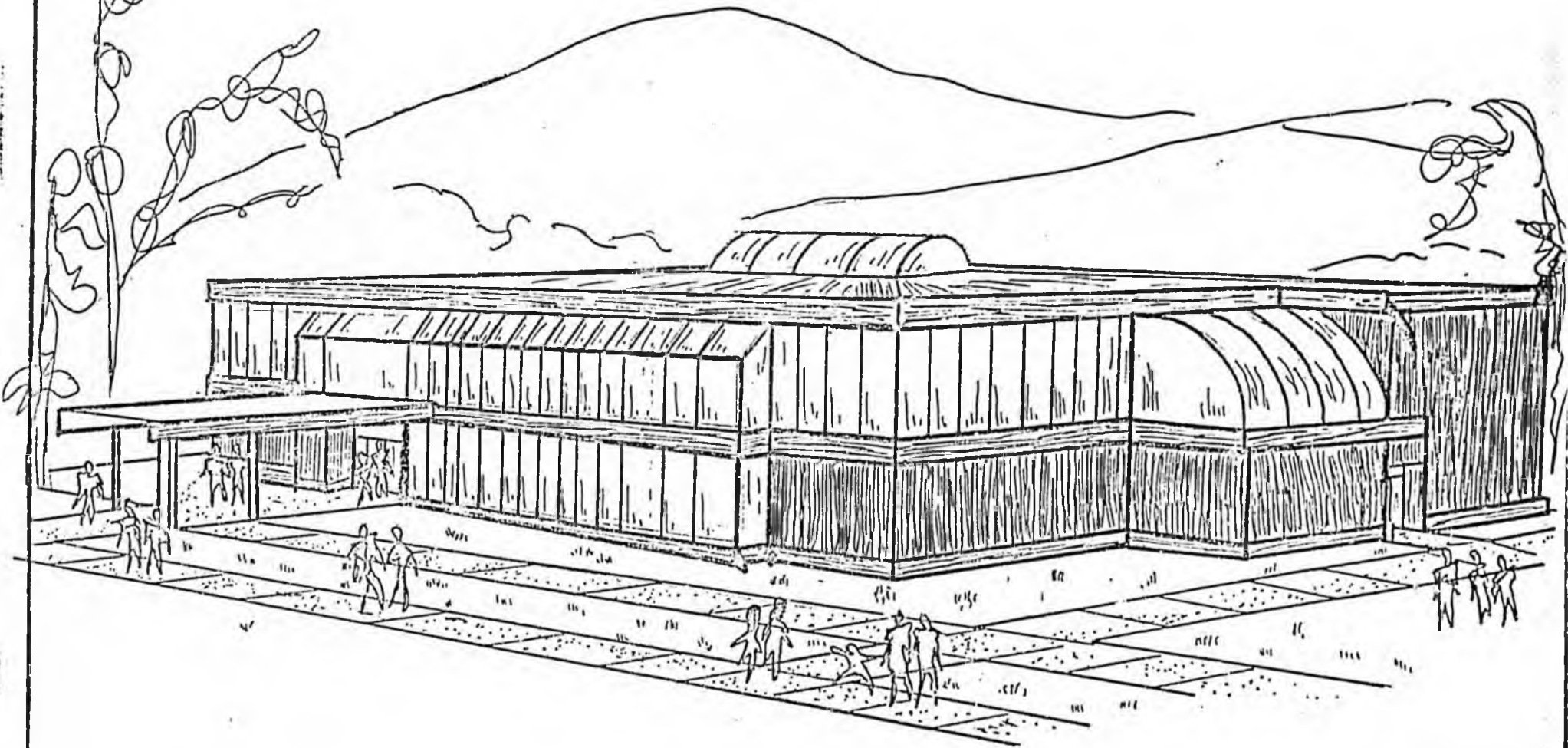
We urge you to support the construction for the proposed Prince William Sound Community College building in Valdez.

Sincerely,

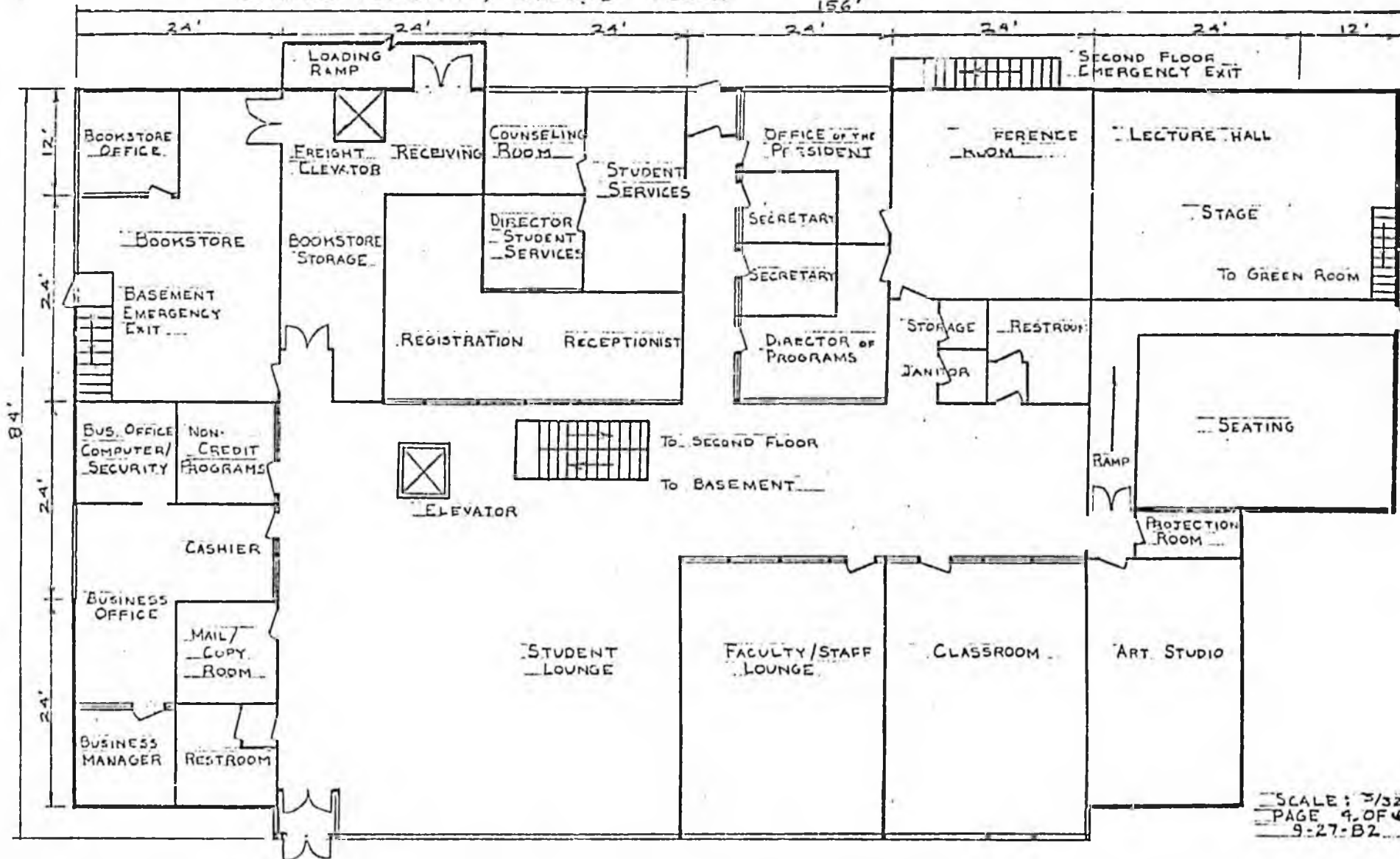
Valdez Chamber of Commerce


Jule Von Borgen,
President

PRINCE WILLIAM SOUND COMMUNITY COLLEGE
CAMPUS FACILITY ; RENDERING



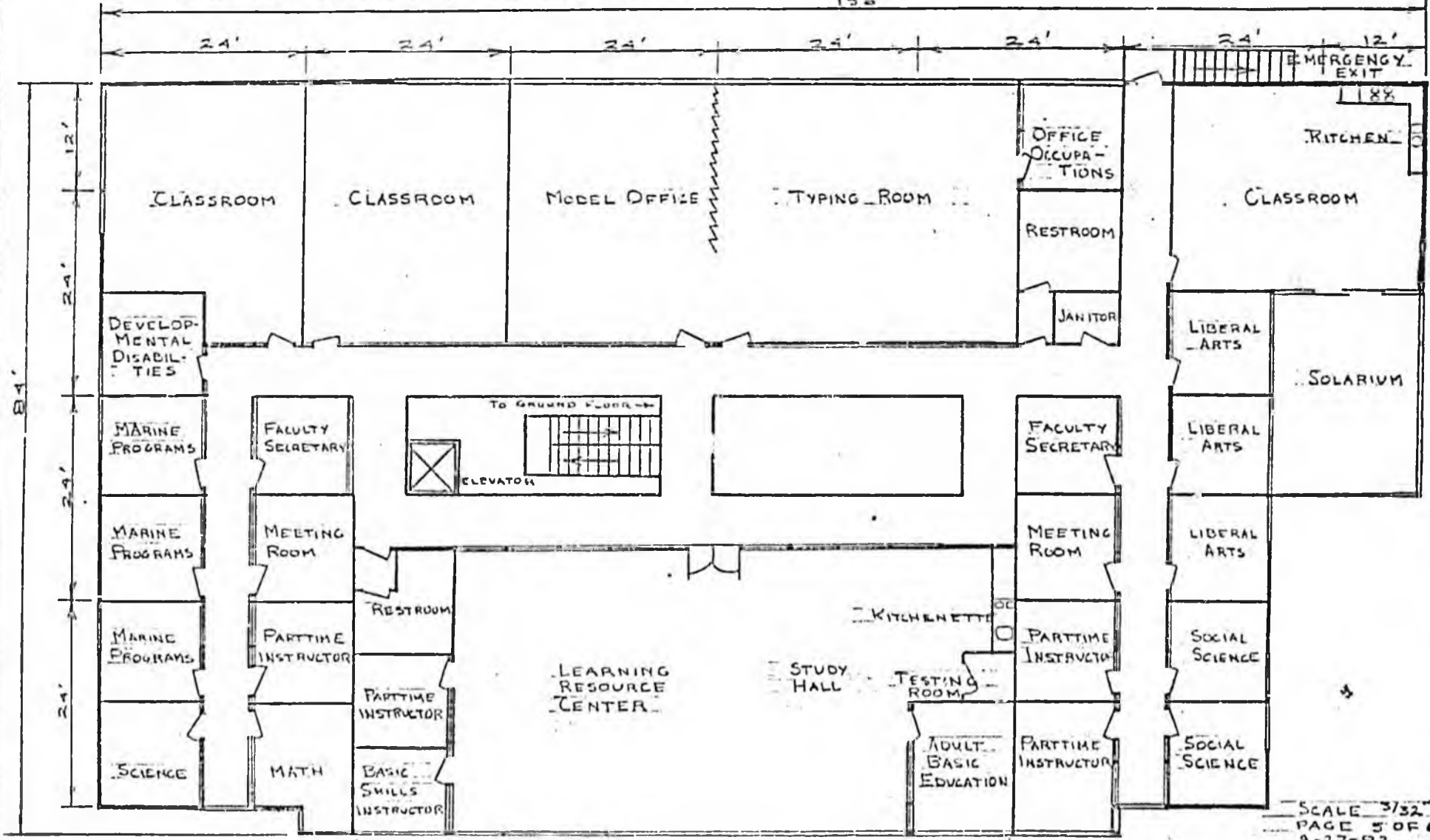
PRINCE WILLIAM SOUND COMMUNITY COLLEGE CAMPUS FACILITY 3; GROUND FLOOR



SCALE: 3/32" = 1'-0"
PAGE 4 OF 6
9-27-B2

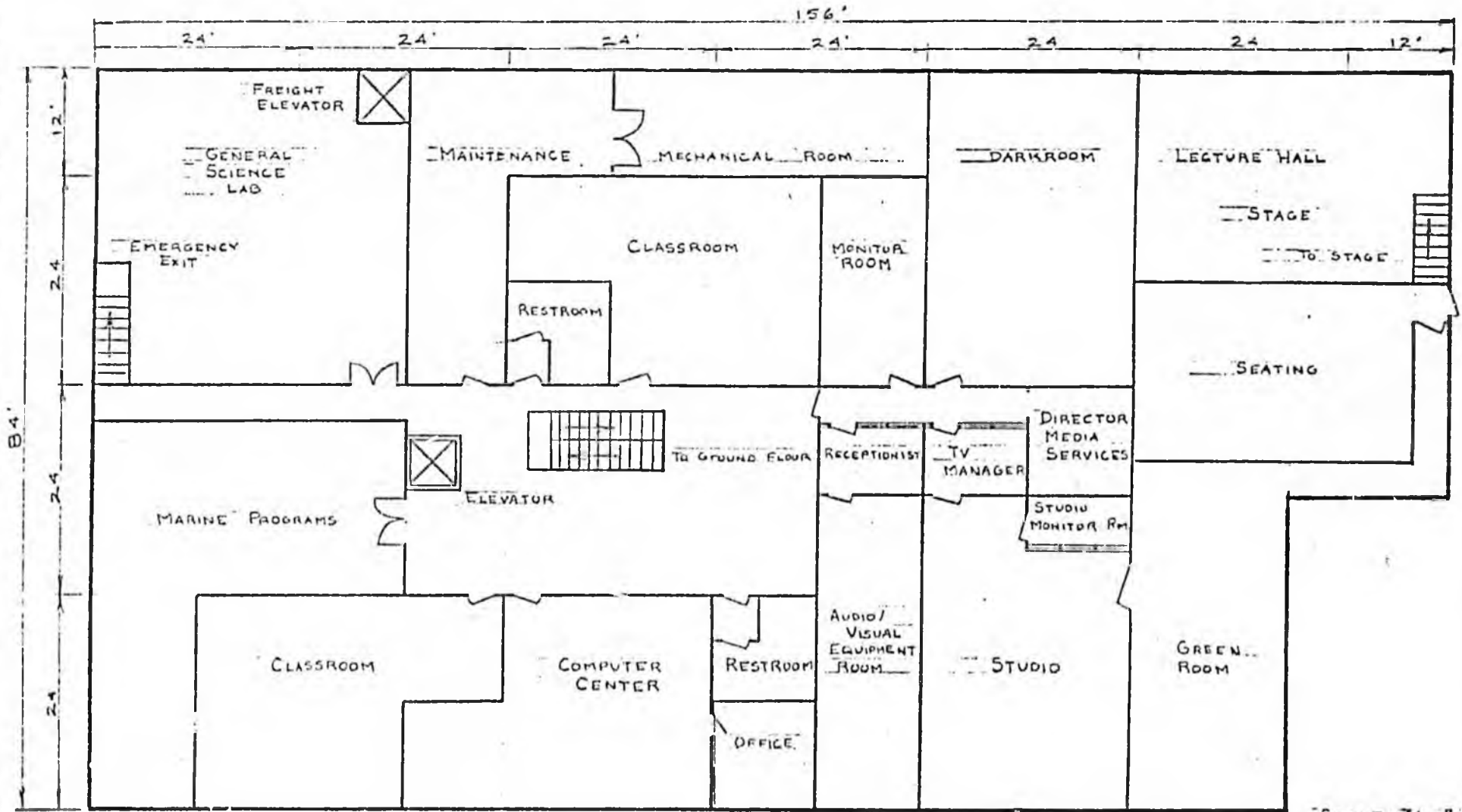
PRINCE WILLIAM SOUND COMMUNITY COLLEGE
 CAMPUS FACILITY ; SECOND FLOOR

156'



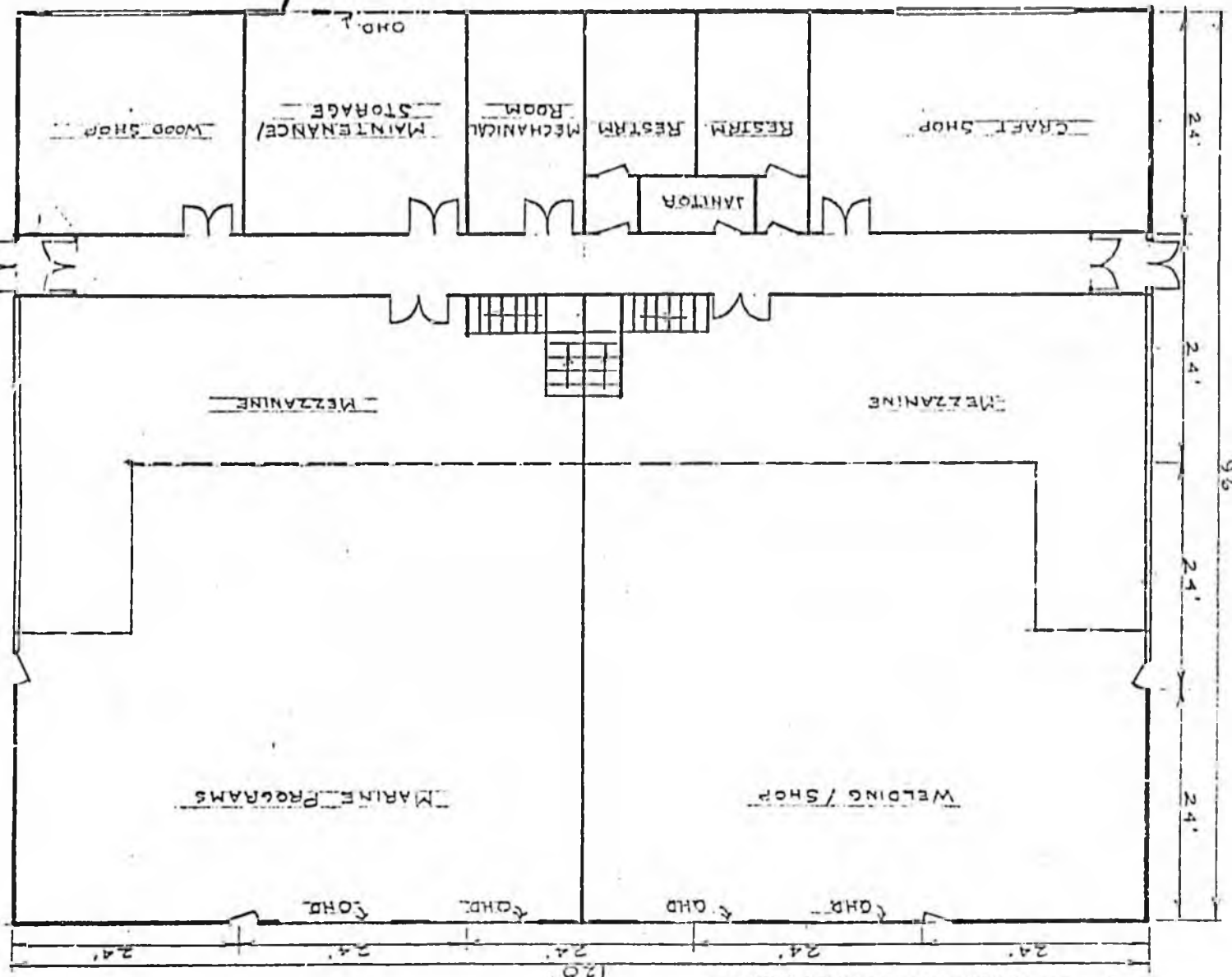
SCALE 3/32" = 1'-0"
 PAGE 5 OF 6
 9-27-82

PRINCE WILLIAM SOUND COMMUNITY COLLEGE
 CAMPUS FACILITY ; BASEMENT



SCALE: 3/32" = 1'-0"
 PAGE 3 OF 6
 9-27-82

PRINCE WILLIAM SOUND COMMUNITY COLLEGE
HEAVY SHOP BUILDING



SCALE 3/32" = 1.0"
PAGE 6 OF 6
9-27-82