

Federal
Highway
Admin.
Overview



U. S. DEPARTMENT OF TRANSPORTATION
FEDERAL HIGHWAY ADMINISTRATION
REGION TEN

FEB 4 1983

P.O. Box 1648
Juneau, Alaska 99802

February 3, 1983

IN REPLY REFER TO

HDA-AK
061

State of Alaska
House Transportation Committee
Ms. Bette Cato, Chairman
Pouch V
Juneau, Alaska 99811

Dear Ms. Cato:

Federal-aid Highway funds in the amount of \$1,285,335 have been obligated as a part of the preliminary engineering for a new ferry vessel to replace the Tustumena. Our records indicate we have obligated \$69,520,547 in the Marine Highway system since 1961.

You also asked what categories of Federal-aid funds are available in Alaska. These categories are:

- Interstate
- Interstate 4-R (Rehabilitation, Restoration, Resurfacing, Reconstruction)
- Consolidated Primary
- Primary 4-R
- Rural Secondary
- Secondary 4-R
- Urban
- Bridge Off-System (not on a Federal-aid designated system)
- Bridge On-System
- Bridge On or Off-System
- Economic Growth Center
- Forest Highway
- Hazard Elimination
- Highway Planning and Research
- Metropolitan Planning
- Public Lands
- Rail-Highway Protective Devices
- Rail-Highway-Elimination of Hazards
- Non-urban Public Transit

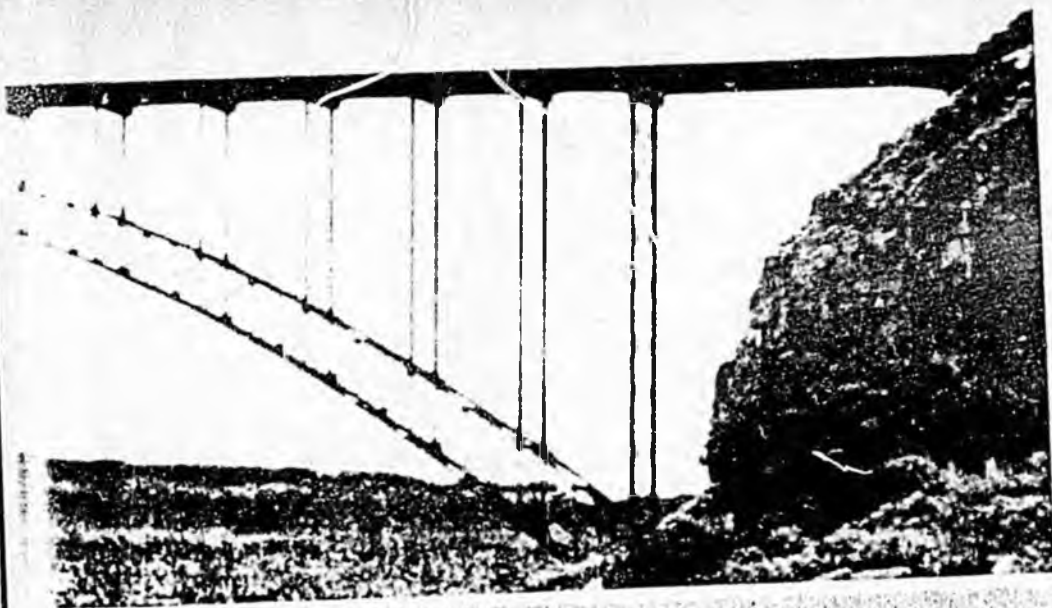
Sincerely yours,

Barry F. Morehead
Barry F. Morehead
Division Administrator

AVAILABLE AIRPORT AID

SOURCE Project	Primary Appor't'mn't	Primary Adjustm't	Non-primary Comm. Serv.	Non-Comm'l Serv.-Lrg	Non-Comm'l Serv.-Small	Area/ Popul'n	TOTALS
FY82 Carryover	\$ -0-	\$1,063,411	\$2,699,249	\$3,158,694	\$ 5,105,716	\$ -0-	\$12,027,070
FY83	3,046,727	1,153,577	3,015,117	3,158,694	5,934,516	6,040,800	22,349,431
Total Available as of 10/1/82	3,046,727	2,216,988	5,714,366	6,317,388	11,040,232	6,040,800	34,376,501
FY84	3,046,727	1,153,577	3,015,117	3,158,694	5,934,516	7,671,400	23,980,031
Total Available as of 10/1/83	6,093,454	3,370,565	8,729,483	9,476,082	16,974,748	13,712,200	58,356,532

NOTE REGARDING THE FOLLOWING FRAME(S) ON MICROFILM:
COMPLETE DOCUMENT IS AVAILABLE IN ORIGINAL FILES,
TITLE PAGE ONLY HAS BEEN FILMED.



America on the Move!

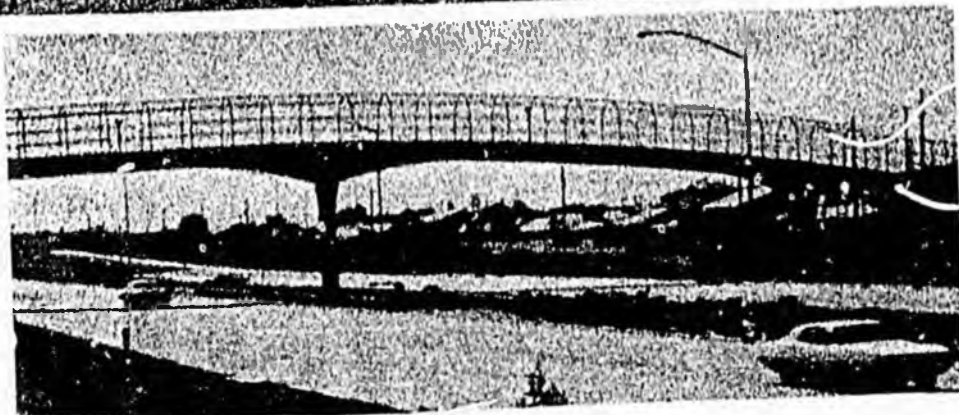
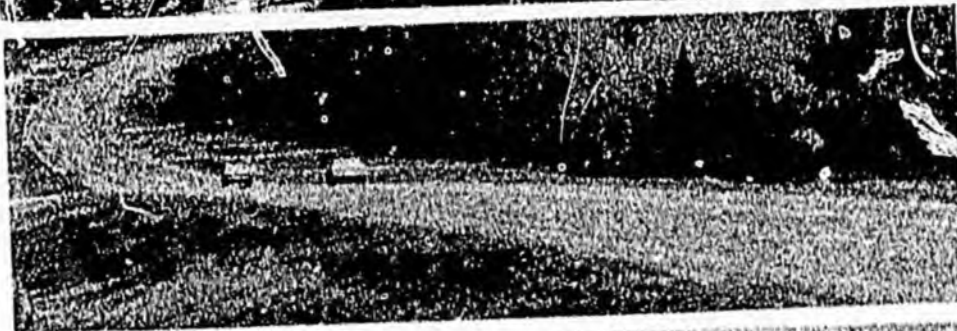
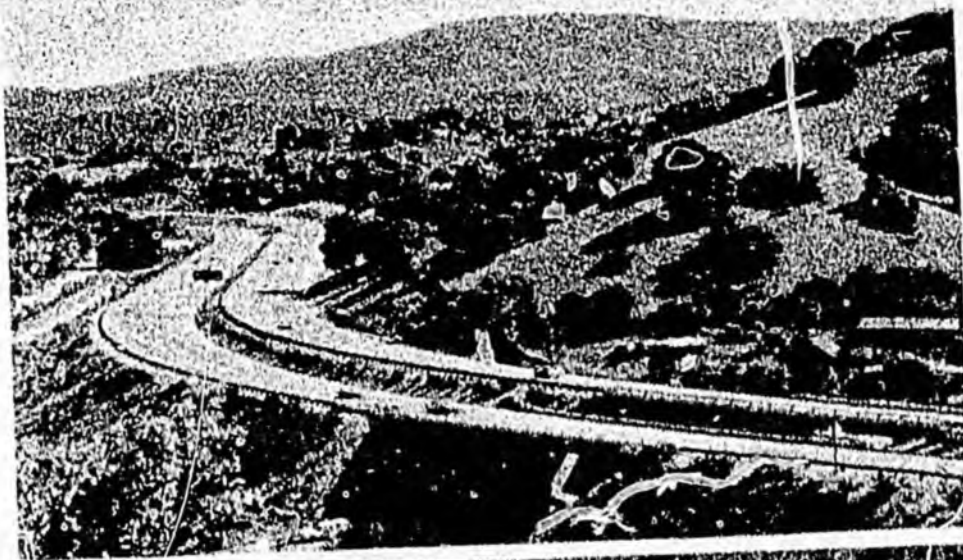
**The Story of
the Federal-Aid
Highway Program**

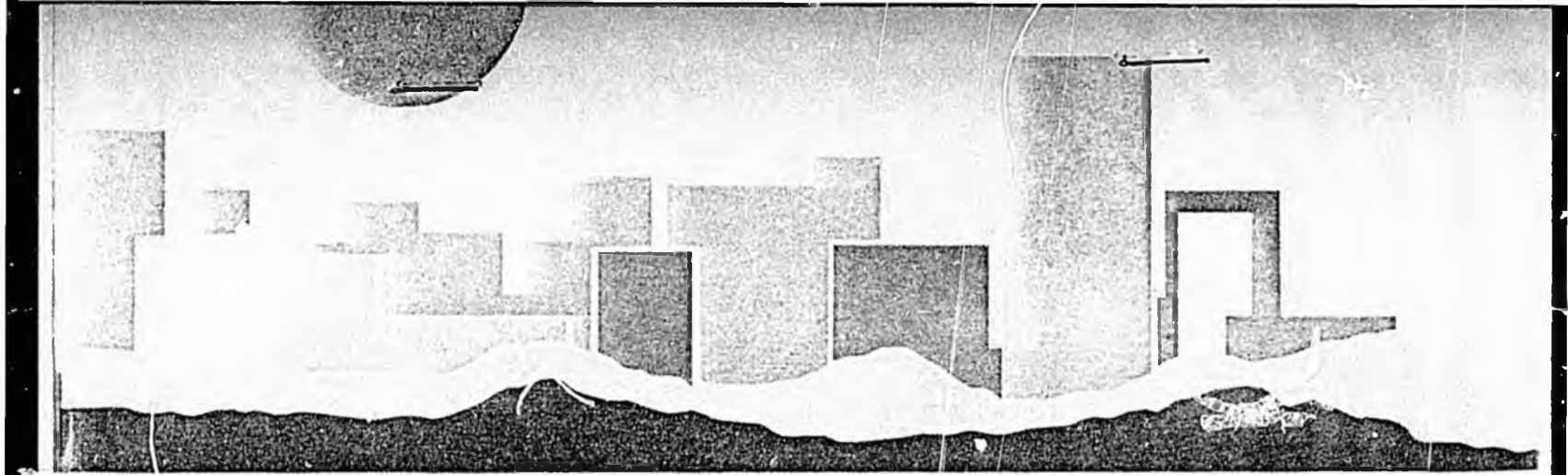
**U.S. Department
of Transportation**

**Federal Highway
Administration**

**Office of Program
and Policy Planning,
Program Coordination
Division**

**Office of
Public Affairs**





**Your Guide to
Programs of the
Federal Highway
Administration**



Region 10

U. S. DEPARTMENT OF TRANSPORTATION
Federal Highway Administration

FEDERAL-AID HIGHWAYS FINANCING

U.S. DEPARTMENT OF TRANSPORTATION
Federal Highway Administration

May 1979

U. S. DEPARTMENT OF TRANSPORTATION
Federal Highway Administration

APPORTIONMENT OF FEDERAL-AID
HIGHWAY FUNDS PROVIDED BY
THE SURFACE TRANSPORTATION ACT OF 1982

<u>STATE</u>	<u>TOTAL APPORTIONMENT</u>	<u>STATE</u>	<u>TOTAL APPORTIONMENT</u>
Alabama	217,298,389	North Carolina	249,304,385
Alaska	141,043,134	North Dakota	73,439,396
Arizona	145,082,962	Ohio	411,881,938
Arkansas	113,009,082	Oklahoma	163,314,061
California	907,229,157	Oregon	132,475,138
Colorado	164,909,513	Pennsylvania	470,283,242
Connecticut	185,382,895	Rhode Island	96,970,021
Delaware	48,723,761	South Carolina	141,564,784
Florida	405,032,427	South Dakota	75,629,908
Georgia	329,630,559	Tennessee	213,273,622
Hawaii	98,860,647	Texas	755,403,552
Idaho	72,038,238	Utah	108,475,704
Illinois	389,834,272	Vermont	52,118,742
Indiana	237,871,569	Virginia	268,229,853
Iowa	142,687,046	Washington	280,354,773
Kansas	147,676,236	West Virginia	158,774,846
Kentucky	214,524,907	Wisconsin	176,703,524
Louisiana	290,598,587	Wyoming	75,452,101
Maine	57,958,470	Dist. of Col.	63,229,575
Maryland	335,146,441	Puerto Rico	42,782,233
Massachusetts	221,341,155	Total	11,047,607,736
Michigan	339,330,875	Territories	7,456,843
Minnesota	197,623,522	Subtotal	11,055,064,579
Mississippi	128,245,651	American Samoa	910,191
Missouri	236,947,984	Guam	910,191
Montana	99,948,511	N. Mariana Islands	910,191
Nebraska	100,781,934	Virgin Islands	910,191
Nevada	66,089,407	Grand Total	11,058,705,343
New Hampshire	53,775,638		
New Jersey	267,003,353		
New Mexico	91,022,497		
New York	590,797,510		

U.S. Department
of Transportation
Federal Highway
Administration

400 Seventh St., S.W.
Washington, D.C. 20590

Official Business
Penalty for Private Use \$300



Postage and Fees Paid
Federal Highway
Administration
DOT 512



What is the difference generally and in dollars between authorized amounts and actual funding levels?

- For what purposes can the funds be used? ^{LIST} (categories) Planning?

How often and by what criteria are accounts audited in the state?

How is the relationship between Federal Highways and DOT/PE?

Do you know if funds are obligated for the
Trustee's Replacement?

(Recall we found it in DOT's R. + A. + !)

reimbursable

Funding Federal Aid
↓ State Admin - Fed appropriated

141 million in Fed income tax
dit 110 - " " Pass
Regional office in state -

Fed aid - Title 23 - U.S. Code.
Broken up in categories -
Surface Transportation act - primary.
1.82 bil - 60 mil.

- That next project -

60 million carryover from previous
year.

(talk to Casey on this as he asked for
it)

as a good
committed
people are
working

~~do you see you'll
be here Ron Lewis~~

Good committed
Mike is really
doing his homework

Why of the Federal
Hedon are reinforced and
The change from organic before
Dad's why should take longer
to get to but much faster?

Why if the federal
dollars are reimbursed and
the obligations are given before
bid, why does it take longer
to get to bid with Fed projects?

Good question
There is no
moving his movement