

H

B

2

17

Staff Report
HB 217 relating to Prison Facilities
Dave Palmer
April 18, 1983

HB 217 mandates that after July 1, 1983, all newly maximum security prisons be constructed in the vicinity of Seward.

The position paper from Department of Health and Social Services adamantly opposes the bill, and requests that the decision on correctional facility locations be based on criminal justice criteria.

The fiscal note is zero based on lack of information.

Next referral is to Judiciary Committee

POSITION PAPER

House Bill No. 217

"An Act relating to the establishment of prison facilities."

House Bill No. 217 modifies AS 33.30.020 by making that section subject to the provisions of AS 33.30.025 which is entitled Location of Facilities. AS 33.30.025 requires that after July 1, 1983, the Commissioner shall locate all newly constructed maximum security prison facilities within the vicinity of Seward.

The Department of Health and Social Services and the Division of Adult Corrections totally opposes the concept of predetermined building sites for prison facilities. It is imperative that such decisions be made by professional correctional practitioners and based on sound criminal justice criteria for site location to ensure that the prison facilities meet standards for programming, security, and safety.

Recommended by:

for Roger C. Lange

Roger V. Endell, Director
Division of Adult Corrections

Date:

3-16-83

Approved by:

Robert London Smith

Robert London Smith, Ph.D.
Commissioner

Date:

3/30/83

RECEIVED
MILGROFF, M.D.
MAR 30 5 25 PM '83

STATE OF ALASKA
FISCAL NOTE

Revision Date _____, 1983

I. REQUEST

Bill/Resolution No.: House Bill No. 217
Title: "An Act relating to estab. of pris. fac."
Sponsor: Reprs. Cato & Lindauer
Requestor: House HESS

II. FISCAL DETAIL

Agency Affected: Health & Social Services
Program Category Affected: Adm. of Just.
BRU, Program of Subprogram(s) Affected:
Adult Confinement

EXPENDITURES/REVENUES: (Thousands of Dollars)

	FY 83	FY 84	FY 85	FY 86	FY 87	FY 88
OPERATING						
100 PERSONAL SERVICES						
200 TRAVEL						
300 CONTRACTUAL						
400 COMMODITIES						
500 EQUIPMENT						
600 LAND & STRUCTURES						
700 GRANTS, CLAIMS, ETC						
TOTAL OPERATING	-0-	-0-	-0-	-0-	-0-	-0-
CAPITAL	-0-	-0-	-0-	-0-	-0-	-0-
REVENUE	-0-	-0-	-0-	-0-	-0-	-0-

FUNDING: (Thousands of Dollars)

GENERAL FUND	-0-	-0-	-0-	-0-	-0-	-0-
FEDERAL FUNDS						
OTHER (Specify Source)						

POSITIONS:

FULL-TIME	-0-	-0-	-0-	-0-	-0-	-0-
PART-TIME						
TEMPORARY						

III. SOURCE OF FUNDS TO OFFSET FISCAL IMPACT OF BILL:

Not applicable.

IV. ANALYSIS: Attach a separate page for any Analysis

Prepared By: Roger C. Lange *Roger C. Lange* Phone: 465-3376
Division: Adult Corrections Date: March 29, 1983
Approved by Commissioner: *Robert Gordon Smith, Ph.D.* Date: 3/30/83
Department: Health & Social Services

Distribution:

Original to Legislative Finance
Copy to Office of Management and Budget (for Legislature introduced bills)
Copy to Department (for Governor introduced bills)
Copy to Sponsor
Copy to Requestor (if different from Sponsor)

3/8/83

IV. ANALYSIS

No specific additional costs can be identified related to the requirement to locate all newly constructed maximum security prison facilities within the vicinity of Seward.

POSITION PAPER

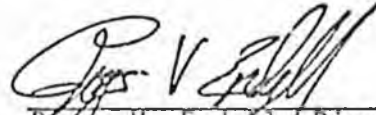
House Bill No. 275

"An Act relating to the establishment of prison facilities."

House Bill No. 275 modifies AS 33.30.020 by making that section subject to the provisions of AS 33.30.025 which is entitled Location of Facilities. AS 33.30.025 requires that after July 1, 1983, the Commissioner shall locate all newly constructed maximum security prison facilities within the vicinity of Palmer, Wasilla, and Sutton.

The Department of Health and Social Services and the Division of Adult Corrections totally opposes the concept of predetermined building sites for prison facilities. It is imperative that such decisions be made by professional correctional practitioners and based on sound criminal justice criteria for site location to ensure that the prison facilities meet standards for programming, security, and safety.

Recommended by:

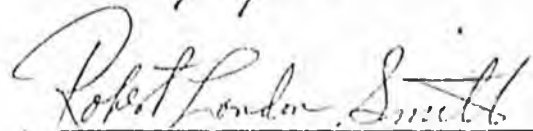


Roger V. Endell, Director
Division of Adult Corrections

Date:

3/25/83

Approved by:



Robert London Smith, Ph.D.
Commissioner

Date:

3/30/83

I. REQUEST

Bill/Resolution No.: House Bill No. 275
 Title: "An Act relating to estab. of prison fac."
 Sponsor: Reps. Larson & Lacher
 Requestor: House HESS

II. FISCAL DETAIL

Agency Affected: Health & Social Services
 Program Category Affected: Admin. of Justice
 BRU, Program of Subprogram(s) Affected: Adult Confinement

EXPENDITURES/REVENUES: (Thousands of Dollars)

	FY 83	FY 84	FY 85	FY 86	FY 87	FY 88
OPERATING						
100 PERSONAL SERVICES						
200 TRAVEL						
300 CONTRACTUAL						
400 COMMODITIES						
500 EQUIPMENT						
600 LAND & STRUCTURES						
700 GRANTS, CLAIMS, ETC						
TOTAL OPERATING	-0-	-0-	-0-	-0-	-0-	-0-
CAPITAL	-0-	-0-	-0-	-0-	-0-	-0-
REVENUE	-0-	-0-	-0-	-0-	-0-	-0-

FUNDING: (Thousands of Dollars)

	FY 83	FY 84	FY 85	FY 86	FY 87	FY 88
GENERAL FUND	-0-	-0-	-0-	-0-	-0-	-0-
FEDERAL FUNDS						
OTHER (Specify Source)						

POSITIONS:

	FY 83	FY 84	FY 85	FY 86	FY 87	FY 88
FULL-TIME	-0-	-0-	-0-	-0-	-0-	-0-
PART-TIME						
TEMPORARY						

III. SOURCE OF FUNDS TO OFFSET FISCAL IMPACT OF BILL:

Not applicable.

IV. ANALYSIS: Attach a separate page for any Analysis

Prepared By: Roger C. Lange *Roger C. Lange*
 Division: Adult Corrections

Phone: 465-3376
 Date: March 23, 1983

Approved by Commissioner: Robert L. Smith, Jr., D
 Department: Health & Social Services

Date: 3/30/83

Distribution:

- Original to Legislative Finance
- Copy to Office of Management and Budget (for Legislature introduced bills)
- Copy to Department (for Governor introduced bills)
- Copy to Sponsor
- Copy to Requestor (if different from Sponsor)

IV. ANALYSIS

No specific additional costs can be identified related to the requirement to locate all newly constructed maximum security prison facilities within the vicinity of Palmer, Wasilla, and Sutton.

POSITION PAPER

CS for House Bill No. 217 (HESS)

"An Act relating to the establishment of prison facilities."

House Bill No. 217 modifies AS 33.30.020 by making that section subject to the provisions of AS 33.30.025 which is entitled Location of Facilities. AS 33.30.025 requires that after July 1, 1983, the Commissioner shall locate the next maximum security prison facility within the vicinity of Seward.

The Department of Health and Social Services ~~and the Division of Adult Corrections~~ ^{and the Division of CPA} totally opposes the concept of predetermined building sites for prison facilities. It is imperative that such decisions be made by professional correctional practitioners and based on sound criminal justice criteria for site location to ensure that the prison facilities meet standards for programming, security, and safety.

Recommended by: *Roger C. Leung*
for Roger V. Endell, Director
Division of Adult Corrections

Date: *May 11, 1983*

Approved by: *Robert London Smith 5/14/83*
Robert London Smith, Ph.D.
Commissioner

STATE OF ALASKA
FISCAL NOTE

Revision Date _____, 1983

I. REQUEST

Bill/Resolution No.: CS for HB 217 (HESS)
Title: "An Act relating to estab. of pris. fac."
Sponsor: Reprs. Cato & Lindauer
Requestor: House HESS

II. FISCAL DETAIL

Agency Affected: Health & Social Services
Program Category Affected: Adm. of Just.
BRU, Program of Subprogram(s) Affected:
Adult Confinement

EXPENDITURES/REVENUES: (Thousands of Dollars)

	FY 83	FY 84	FY 85	FY 86	FY 87	FY 88
OPERATING						
100 PERSONAL SERVICES						
200 TRAVEL						
300 CONTRACTUAL						
400 COMMODITIES						
500 EQUIPMENT						
600 LAND & STRUCTURES						
700 GRANTS, CLAIMS, ETC						
TOTAL OPERATING	-0-	-0-	-0-	-0-	-0-	-0-
CAPITAL	-0-	-0-	-0-	-0-	-0-	-0-
REVENUE	-0-	-0-	-0-	-0-	-0-	-0-

FUNDING: (Thousands of Dollars)

GENERAL FUND	-0-	-0-	-0-	-0-	-0-	-0-
FEDERAL FUNDS						
OTHER (Specify Source)						

POSITIONS:

FULL-TIME	-0-	-0-	-0-	-0-	-0-	-0-
PART-TIME						
TEMPORARY						

III. SOURCE OF FUNDS TO OFFSET FISCAL IMPACT OF BILL:

Not applicable.

IV. ANALYSIS: Attach a separate page for any Analysis

Prepared By: Roger C. Lange *Roger C. Lange* Phone: 465-3376
Division: Adult Corrections Date: May 11, 1983

Approved by Commissioner: *Robert Gordon Smith, PhD* Date: 5/14/83
Department: Health & Social Services

Distribution:

Original to Legislative Finance
Copy to Office of Management and Budget (for Legislature introduced bills)
Copy to Department (for Governor introduced bills)
Copy to Sponsor
Copy to Requestor (if different from Sponsor)

3/8/83

IV. ANALYSIS

No specific additional costs can be identified related to the requirement to locate the next constructed maximum security prison facility within the vicinity of Seward.

POSITION PAPER

CS for House Bill No. 217 (HESS)

"An Act relating to the establishment of prison facilities."

House Bill No. 217 modifies AS 33.30.020 by making that section subject to the provisions of AS 33.30.025 which is entitled Location of Facilities. AS 33.30.025 requires that after July 1, 1983, the Commissioner shall locate the next maximum security prison facility within the vicinity of Seward.

The Department of Health and Social Services ~~and the Division of Adult Corrections~~ ^{CP} totally opposes the concept of predetermined building sites for prison facilities. It is imperative that such decisions be made by professional correctional practitioners and based on sound criminal justice criteria for site location to ensure that the prison facilities meet standards for programming, security, and safety.

Recommended by: *Roger V. Endell*
for *Roger C. Lange*
Roger V. Endell, Director
Division of Adult Corrections

Date: *May 11, 1983*

Approved by: *Robert London Smith 5/14/83*
Robert London Smith, Ph.D.
Commissioner

STATE OF ALASKA
FISCAL NOTE

Revision Date _____, 1983

I. REQUEST

Bill/Resolution No.: CS for HB 217(HESS)
Title: "An Act relating to estab. of pris. fac."
Sponsor: Reprs. Cato & Lindauer
Requestor: House HESS

II. FISCAL DETAIL

Agency Affected: Health & Social Services
Program Category Affected: Adm. of Just.
BRU, Program of Subprogram(s) Affected: Adult Confinement

EXPENDITURES/REVENUES: (Thousands of Dollars)

	FY 83	FY 84	FY 85	FY 86	FY 87	FY 88
OPERATING						
100 PERSONAL SERVICES						
200 TRAVEL						
300 CONTRACTUAL						
400 COMMODITIES						
500 EQUIPMENT						
600 LAND & STRUCTURES						
700 GRANTS, CLAIMS, ETC						
TOTAL OPERATING	-0-	-0-	-0-	-0-	-0-	-0-
CAPITAL	-0-	-0-	-0-	-0-	-0-	-0-
REVENUE	-0-	-0-	-0-	-0-	-0-	-0-

FUNDING: (Thousands of Dollars)

GENERAL FUND	-0-	-0-	-0-	-0-	-0-	-0-
FEDERAL FUNDS						
OTHER (Specify Source)						

POSITIONS:

FULL-TIME	-0-	-0-	-0-	-0-	-0-	-0-
PART-TIME						
TEMPORARY						

III. SOURCE OF FUNDS TO OFFSET FISCAL IMPACT OF BILL:

Not applicable.

IV. ANALYSIS: Attach a separate page for any Analysis

Prepared By: Roger C. Lange *Roger C. Lange* Phone: 465-3376
Division: Adult Corrections Date: May 11, 1983

Approved by Commissioner: *Robert Gordon Smith, PhD* Date: 5/14/83
Department: Health & Social Services

Distribution:

- Original to Legislative Finance
- Copy to Office of Management and Budget (for Legislature introduced bills)
- Copy to Department (for Governor introduced bills)
- Copy to Sponsor
- Copy to Requestor (if different from Sponsor)

3/8/83

FISCAL NOTE
CS for House Bill No. 217 (HESS)
Page 2

IV. ANALYSIS

No specific additional costs can be identified related to the requirement to locate the next constructed maximum security prison facility within the vicinity of Seward.

POSITION PAPER

CS for House Bill No. 217 (HESS)

"An Act relating to the establishment of prison facilities."

House Bill No. 217 modifies AS 33.30.020 by making that section subject to the provisions of AS 33.30.025 which is entitled Location of Facilities. AS 33.30.025 requires that after July 1, 1983, the Commissioner shall locate the next maximum security prison facility within the vicinity of Seward.

The Department of Health and Social Services ~~and the Division of Adult Corrections~~ ^{SA} totally opposes the concept of predetermined building sites for prison facilities. It is imperative that such decisions be made by professional correctional practitioners and based on sound criminal justice criteria for site location to ensure that the prison facilities meet standards for programming, security, and safety.

Recommended by: *Roger C. Leung*
for Roger V. Endell, Director
Division of Adult Corrections

Date: *May 11, 1983*

Approved by: *Robert London Smith 5/14/83*
Robert London Smith, Ph.D.
Commissioner

STATE OF ALASKA
FISCAL NOTE

Revision: Date _____, 1983

I. REQUEST

Bill/Resolution No.: CS for HB 217 (HESS)
Title: "An Act relating to estab. of pris. fac."
Sponsor: Reprs. Cato & Lindauer
Requestor: House HESS

II. FISCAL DETAIL

Agency Affected: Health & Social Services
Program Category Affected: Adm. of Just.
BRU, Program of Subprogram(s) Affected: Adult Confinement

EXPENDITURES/REVENUES: (Thousands of Dollars)

	FY 83	FY 84	FY 85	FY 86	FY 87	FY 88
OPERATING						
100 PERSONAL SERVICES						
200 TRAVEL						
300 CONTRACTUAL						
400 COMMODITIES						
500 EQUIPMENT						
600 LAND & STRUCTURES						
700 GRANTS, CLAIMS, ETC						
TOTAL OPERATING	-0-	-0-	-0-	-0-	-0-	-0-
CAPITAL	-0-	-0-	-0-	-0-	-0-	-0-
REVENUE	-0-	-0-	-0-	-0-	-0-	-0-

FUNDING: (Thousands of Dollars)

GENERAL FUND	-0-	-0-	-0-	-0-	-0-	-0-
FEDERAL FUNDS						
OTHER (Specify Source)						

POSITIONS:

FULL-TIME	-0-	-0-	-0-	-0-	-0-	-0-
PART-TIME						
TEMPORARY						

III. SOURCE OF FUNDS TO OFFSET FISCAL IMPACT OF BILL:

Not applicable.

IV. ANALYSIS: Attach a separate page for any Analysis

Prepared By: Roger C. Lange *Roger C. Lange* Phone: 465-3376
Division: Adult Corrections Date: May 11, 1983

Approved by Commissioner: *Robert Gordon Smith, PhD* Date: 5/14/83
Department: Health & Social Services

Distribution:

- Original to Legislative Finance
- Copy to Office of Management and Budget (for Legislature introduced bills)
- Copy to Department (for Governor introduced bills)
- Copy to Sponsor
- Copy to Requestor (if different from Sponsor)

3/8/83

IV. ANALYSIS

No specific additional costs can be identified related to the requirement to locate the next constructed maximum security prison facility within the vicinity of Seward.

POSITION PAPER

CS for House Bill No. 217 (HESS)

"An Act relating to the establishment of prison facilities."

House Bill No. 217 modifies AS 33.30.020 by making that section subject to the provisions of AS 33.30.025 which is entitled Location of Facilities. AS 33.30.025 requires that after July 1, 1983, the Commissioner shall locate the next maximum security prison facility within the vicinity of Seward.

The Department of Health and Social Services ~~and the Division of Adult Corrections~~ ^{RA} totally opposes the concept of predetermined building sites for prison facilities. It is imperative that such decisions be made by professional correctional practitioners and based on sound criminal justice criteria for site location to ensure that the prison facilities meet standards for programming, security, and safety.

Recommended by: for Roger C. Lenge
Roger V. Endell, Director
Division of Adult Corrections

Date: May 11, 1983

Approved by: Robert London Smith 5/14/83
Robert London Smith, Ph.D.
Commissioner

STATE OF ALASKA
FISCAL NOTE

Revision Date _____, 1983

I. REQUEST

Bill/Resolution No.: CS for HB 217 (HESS)
Title: "An Act relating to estab. or pris. fac."
Sponsor: Reprs. Cato & Lindauer
Requestor: House HESS

II. FISCAL DETAIL

Agency Affected: Health & Social Services
Program Category Affected: Adm. of Just.
BRU, Program of Subprogram(s) Affected:
Adult Confinement

EXPENDITURES/REVENUES: (Thousands of Dollars)

	FY 83	FY 84	FY 85	FY 86	FY 87	FY 88
OPERATING						
100 PERSONAL SERVICES						
200 TRAVEL						
300 CONTRACTUAL						
400 COMMODITIES						
500 EQUIPMENT						
600 LAND & STRUCTURES						
700 GRANTS, CLAIMS, ETC						
TOTAL OPERATING	-0-	-0-	-0-	-0-	-0-	-0-
CAPITAL	-0-	-0-	-0-	-0-	-0-	-0-
REVENUE	-0-	-0-	-0-	-0-	-0-	-0-

FUNDING: (Thousands of Dollars)

GENERAL FUND	-0-	-0-	-0-	-0-	-0-	-0-
FEDERAL FUNDS						
OTHER (Specify Source)						

POSITIONS:

FULL-TIME	-0-	-0-	-0-	-0-	-0-	-0-
PART-TIME						
TEMPORARY						

III. SOURCE OF FUNDS TO OFFSET FISCAL IMPACT OF BILL:

Not applicable.

IV. ANALYSIS: Attach a separate page for any Analysis

Prepared By: Roger C. Lange *Roger C. Lange* Phone: 465-3376
Division: Adult Corrections Date: May 11, 1983
Approved by Commissioner: *Robert Gordon Smith, PhD* Date: 5/14/83
Department: Health & Social Services

Distribution:

- Original to Legislative Finance
- Copy to Office of Management and Budget (for Legislature introduced bills)
- Copy to Department (for Governor introduced bills)
- Copy to Sponsor
- Copy to Requestor (if different from Sponsor)

3/8/83

FISCAL NOTE
CS for House Bill No. 217 (HESS)
Page 2

IV. ANALYSIS

No specific additional costs can be identified related to the requirement to locate the next constructed maximum security prison facility within the vicinity of Seward

POSITION PAPER

CS for House Bill No. 217 (HESS)

"An Act relating to the establishment of prison facilities."

House Bill No. 217 modifies AS 33.30.020 by making that section subject to the provisions of AS 33.30.025 which is entitled Location of Facilities. AS 33.30.025 requires that after July 1, 1983, the Commissioner shall locate the next maximum security prison facility within the vicinity of Seward.

The Department of Health and Social Services ~~and the Division of Adult Corrections~~ ^{RA} totally opposes the concept of predetermined building sites for prison facilities. It is imperative that such decisions be made by professional correctional practitioners and based on sound criminal justice criteria for site location to ensure that the prison facilities meet standards for programming, security, and safety.

Recommended by: *for Roger C. Lange*
Roger V. Endell, Director
Division of Adult Corrections

Date: *May 11, 1983*

Approved by: *Robert London Smith 5/14/83*
Robert London Smith, Ph.D.
Commissioner

STATE OF ALASKA
FISCAL NOTE

Revision Date _____, 1983

I. REQUEST
Bill/Resolution No.: CS for HB 217 (HESS)
Title: "An Act relating to estab. of pris. fac. Program Category Affected: Adm. of Just."
Sponsor: Reps. Cato & Lindauer
Requestor: House HESS

II. FISCAL DETAIL
Agency Affected: Health & Social Services
BRU, Program of Subprogram(s) Affected: Adult Confinement

EXPENDITURES/REVENUES: (Thousands of Dollars)

	FY 83	FY 84	FY 85	FY 86	FY 87	FY 88
OPERATING						
100 PERSONAL SERVICES						
200 TRAVEL						
300 CONTRACTUAL						
400 COMMODITIES						
500 EQUIPMENT						
600 LAND & STRUCTURES						
700 GRANTS, CLAIMS, ETC						
TOTAL OPERATING	-0-	-0-	-0-	-0-	-0-	-0-
CAPITAL	-0-	-0-	-0-	-0-	-0-	-0-
REVENUE	-0-	-0-	-0-	-0-	-0-	-0-

FUNDING: (Thousands of Dollars)

GENERAL FUND	-0-	-0-	-0-	-0-	-0-	-0-
FEDERAL FUNDS						
OTHER (Specify Source)						

POSITIONS:

FULL-TIME	-0-	-0-	-0-	-0-	-0-	-0-
PART-TIME						
TEMPORARY						

III. SOURCE OF FUNDS TO OFFSET FISCAL IMPACT OF BILL:

Not applicable.

IV. ANALYSIS: Attach a separate page for any Analysis

Prepared By: Roger C. Lange *Roger C. Lange* Phone: 465-3376
 Division: Adult Corrections Date: May 11, 1983
 Approved by Commissioner: Robert Gordon Smith, PhD Date: 5/14/83
 Department: Health & Social Services

Distribution:

Original to Legislative Finance
 Copy to Office of Management and Budget (for Legislature introduced bills)
 Copy to Department (for Governor introduced bills)
 Copy to Sponsor
 Copy to Requestor (if different from Sponsor)

3/8/83

FISCAL NOTE
CS for House Bill No. 217 (HESS)
Page 2

IV. ANALYSIS

No specific additional costs can be identified related to the requirement to locate the next constructed maximum security prison facility within the vicinity of Seward.

Alaska State Legislature

REPRESENTATIVE
BETTE CATO
DISTRICT 6
BOX 775
VALDEZ, ALASKA 99686
(907) 835-4568
WHILE IN JUNEAU
POUCH V
JUNEAU, ALASKA 99811
(907) 465-4858
(907) 586-2660

House of Representatives

COMMITTEES
CHAIRMAN
HOUSE TRANSPORTATION
MEMBER
COALITION POLICY COMMITTEE
HOUSE HEALTH EDUCATION
AND
SOCIAL SERVICES

M E M O R A N D U M

TO: Representative Milo Fritz, Co-Chairman
HOUSE HEALTH AND SOCIAL SERVICES COMMITTEE

FM: Representative Bette Cato

RE: HB 217

DT: April 5, 1983

Dear Milo,

Attached is a copy of the fiscal note for HB 217, a bill which I have sponsored and is presently with House HESS.

Thank you.

Best,


Bette Cato

attachment (1)

MAR 30 1983
MILO FRITZ, M.D.
RECEIVED

POSITION PAPER

House Bill No. 217

"An Act relating to the establishment of prison facilities."

House Bill No. 217 modifies AS 33.30.020 by making that section subject to the provisions of AS 33.30.025 which is entitled Location of Facilities. AS 33.30.025 requires that after July 1, 1983, the Commissioner shall locate all newly constructed maximum security prison facilities within the vicinity of Seward.

The Department of Health and Social Services and the Division of Adult Corrections totally opposes the concept of predetermined building sites for prison facilities. It is imperative that such decisions be made by professional correctional practitioners and based on sound criminal justice criteria for site location to ensure that the prison facilities meet standards for programming, security, and safety.

Recommended by:

for Roger C. Lange

Roger V. Endell, Director
Division of Adult Corrections

Date:

3-16-83

Approved by:

Robert London Smith

Robert London Smith, Ph.D.
Commissioner

Date:

3/30/83

STATE OF ALASKA
FISCAL NOTE

Revision Date: _____, 1983

I. REQUEST

Bill/Resolution No.: House Bill No. 217

Title: "An Act relating to estab. of pris. fac."

Sponsor: Reps. Cato & Lindauer

Requestor: House HESS

II. FISCAL DETAIL

Agency Affected: Health & Social Services

Program Category Affected: Adm. of Just.

BRU, Program of Subprogram(s) Affected:

Adult Confinement

EXPENDITURES/REVENUES: (Thousands of Dollars)

	FY 83	FY 84	FY 85	FY 86	FY 87	FY 88
OPERATING						
100 PERSONAL SERVICES						
200 TRAVEL						
300 CONTRACTUAL						
400 COMMODITIES						
500 EQUIPMENT						
600 LAND & STRUCTURES						
700 GRANTS, CLAIMS, ETC						
TOTAL OPERATING	-0-	-0-	-0-	-0-	-0-	-0-
CAPITAL	-0-	-0-	-0-	-0-	-0-	-0-
REVENUE	-0-	-0-	-0-	-0-	-0-	-0-

FUNDING: (Thousands of Dollars)

GENERAL FUND	-0-	-0-	-0-	-0-	-0-	-0-
FEDERAL FUNDS --						
OTHER (Specify Source)						

POSITIONS:

FULL-TIME	-0-	-0-	-0-	-0-	-0-	-0-
PART-TIME						
TEMPORARY						

III. SOURCE OF FUNDS TO OFFSET FISCAL IMPACT OF BILL:

Not applicable.

IV. ANALYSIS: Attach a separate page for any Analysis

Prepared By: Roger C. Lange

Division: Adult Corrections

Phone: 465-3376

Date: March 29, 1983

Approved by Commissioner: Robert Gordon Smith, Ph.D.

Department: Health & Social Services

Date: 3/30/83

Distribution:

Original to Legislative Finance

Copy to Office of Management and Budget (for Legislature introduced bills)

Copy to Department (for Governor introduced bills)

Copy to Sponsor

Copy to Requestor (if different from Sponsor)

3/8/83

SCAL NOTE
use Bill No. 217
ge 2

ANALYSIS

No specific additional costs can be identified related to the requirement to locate all newly constructed maximum security prison facilities within the vicinity of Seward.

HESS

REPRESENTATIVE
BETTE CATO
DISTRICT 6
BOX 775
VALDEZ, ALASKA 99686
(907) 835-4568
WHILE IN JUNEAU
FOUCH V
JUNEAU, ALASKA 99811
(907) 465-4858
(907) 586-2660

COMMITTEES
CHAIRMAN
HOUSE TRANSPORTATION
MEMBER
COALITION POLICY COMMITTEE
HOUSE HEALTH EDUCATION
AND
SOCIAL SERVICES

House of Representatives

M E M O R A N D U M

TO: Representative Mae Tischer, Co-Chairman
HOUSE HEALTH AND SOCIAL SERVICES COMMITTEE
FM: Representative Bette Cato
RE: HB 217
DT: April 5, 1983

Dear Mae,

Attached is a copy of the fiscal note for HB 217, a bill which I have sponsored and is presently with House HESS.

Thank you.

Best,

Bette
Bette Cato

attachment (1)

POSITION PAPER

House Bill No. 217

"An Act relating to the establishment of prison facilities."

House Bill No. 217 modifies AS 33.30.020 by making that section subject to the provisions of AS 33.30.025 which is entitled Location of Facilities. AS 33.30.025 requires that after July 1, 1983, the Commissioner shall locate all newly constructed maximum security prison facilities within the vicinity of Seward.

The Department of Health and Social Services and the Division of Adult Corrections totally opposes the concept of predetermined building sites for prison facilities. It is imperative that such decisions be made by professional correctional practitioners and based on sound criminal justice criteria for site location to ensure that the prison facilities meet standards for programming, security, and safety.

Recommended by:

for Roger C. Lange

Roger V. Endell, Director
Division of Adult Corrections

Date:

3-16-83

Approved by:

Robert London Smith

Robert London Smith, Ph.D.
Commissioner

Date:

3/30/83

STATE OF ALASKA
FISCAL NOTE

Revision Date. , 1983

I. REQUEST

Bill/Resolution No.: House Bill No. 217
Title: "An Act relating to estab. of pris. fac.
Sponsor: Reps. Cato & Lindauer
Requestor: House HESS

II. FISCAL DETAIL

Agency Affected: Health & Social Services
Program Category Affected: Adm. of Just.
BRU, Program of Subprogram(s) Affected:
Adult Confinement

EXPENDITURES/REVENUES: (Thousands of Dollars)

	FY 83	FY 84	FY 85	FY 86	FY 87	FY 88
OPERATING						
100 PERSONAL SERVICES						
200 TRAVEL						
300 CONTRACTUAL						
400 COMMODITIES						
500 EQUIPMENT						
600 LAND & STRUCTURES						
700 GRANTS, CLAIMS, ETC						
TOTAL OPERATING	-0-	-0-	-0-	-0-	-0-	-0-
CAPITAL	-0-	-0-	-0-	-0-	-0-	-0-
REVENUE	-0-	-0-	-0-	-0-	-0-	-0-

FUNDING: (Thousands of Dollars)

GENERAL FUND	-0-	-0-	-0-	-0-	-0-	-0-
FEDERAL FUNDS						
OTHER (Specify Source)						

POSITIONS:

FULL-TIME	-0-	-0-	-0-	-0-	-0-	-0-
PART-TIME						
TEMPORARY						

III. SOURCE OF FUNDS TO OFFSET FISCAL IMPACT OF BILL:

Not applicable.

IV. ANALYSIS: Attach a separate page for any Analysis

Prepared By: Roger C. Lange *Roger C. Lange* Phone: 465-3376
Division: Adult Corrections Date: March 29, 1983
Approved by Commissioner: *Robert London Smith, Ph.D.* Date: 3/30/83
Department: Health & Social Services

Distribution:

Original to Legislative Finance
Copy to Office of Management and Budget (for Legislature introduced bills)
Copy to Department (for Governor introduced bills)
Copy to Sponsor
Copy to Requestor (if different from Sponsor)

3/8/83

SCAL NOTE
use Bill No. 217
ge 2

. ANALYSIS

No specific additional costs can be identified related to the requirement to locate all newly constructed maximum security prison facilities within the vicinity of Seward.

Alaska State Legislature



House of Representatives

REPRESENTATIVE
BETTE CATO
DISTRICT 6
BOX 775
VALDEZ ALASKA 99686
(907)835-4568
WHILE IN JUNEAU
POUCH V
JUNEAU, ALASKA 99811
(907)465-4858
(907)586-2660

COMMITTEES
—
CHAIRMAN
HOUSE TRANSPORTATION
—
MEMBER
COALITION POLICY COMMITTEE
HOUSE HEALTH EDUCATION
AND
SOCIAL SERVICES

M E M O R A N D U M

TO: Representative Mae Tischer, Co-Chairman
HOUSE HEALTH & SOCIAL SERVICES COMMITTEE

FM: Representative Bette Cato

RE: HB 217

DT: March 28, 1983

HESS
HT

Dear Mae,

HB 217 establishes a maximum security facility in Seward and is presently sitting with House HESS. This bill, of which I am the original sponsor, is one of my top priorities for the session.

Mae, I respectfully request the committee's consideration of HB 217 at the earliest possible date. Naturally, my office will be most cooperative in providing you with back-up material.

Thank you.

Best regards,

Bette

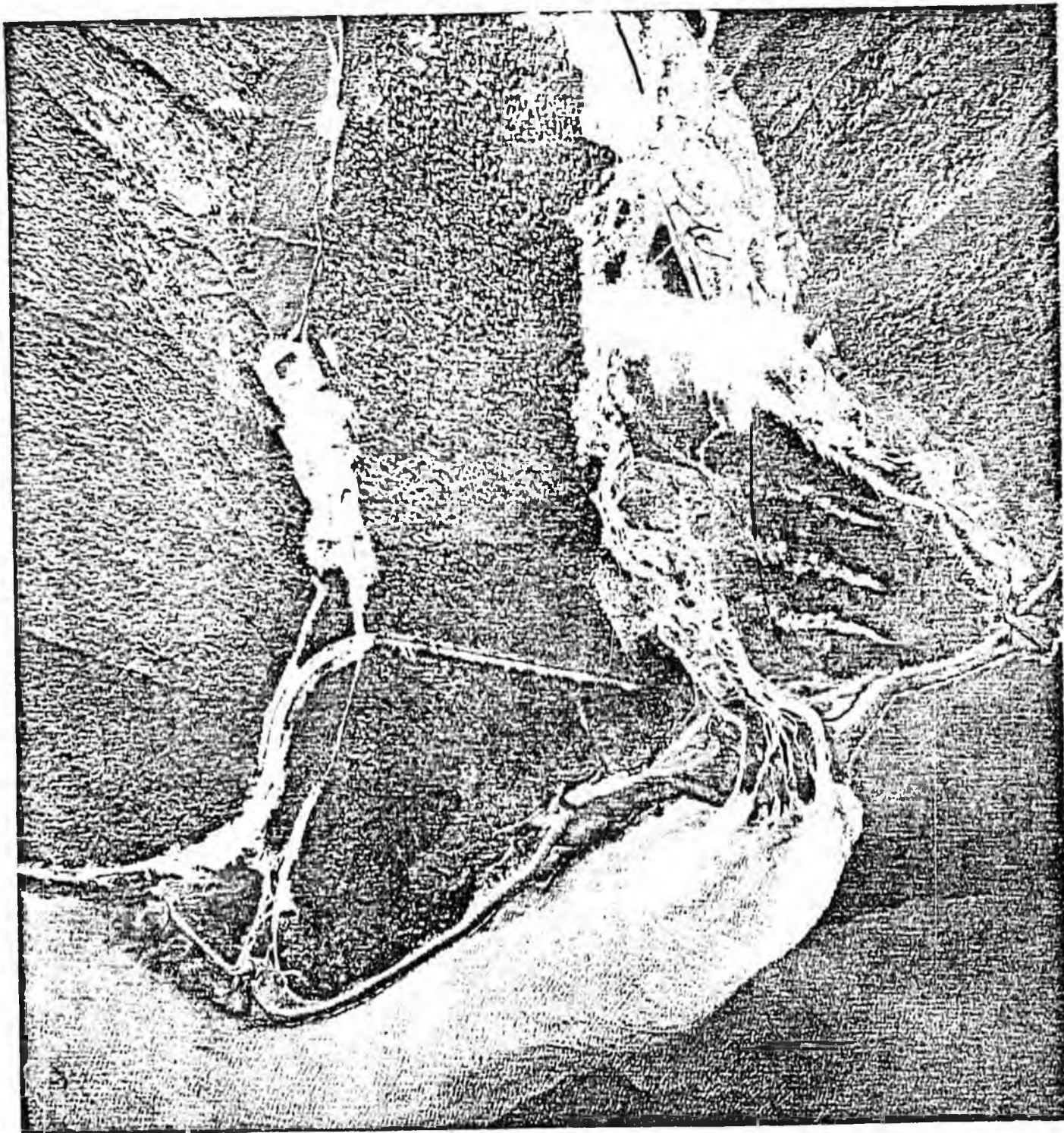
Bette Cato

JK
HT

Week of Apr 18

SEWARD, ALASKA CORRECTIONAL

FACILITY SITE ASSESSMENT



PREPARED BY

FEBRUARY 1983



WILLIAMS • KUEBELBECK & Associates, Inc.

Real Estate Economic, Financial and Management Consultants

181 1st Avenue, Seward, Alaska 99501 (907) 271-6628

CITY OF SEWARD



ADMINISTRATIVE OFFICES
P.O. BOX 167
SEWARD, ALASKA 99664

Main Office	907-224-3331
Harbor	224-3341
Police	224-3338 or 3339
Public Works	224-5449
Fire Dept	224-3445
Telecopier	224-3248

February 16, 1983

Roger Endell
Director Division of Corrections
Alaska Department of Health & Social Services
2200 East 42nd Avenue
Anchorage, Alaska 99508

Dear Mr. Endell:

As you know the City of Seward has invited the State of Alaska to seriously consider placing a Long Term Correctional Facility on its Spring Creek area property. The purpose of this report is to present the assets of Seward and the Spring Creek Site for such a facility. If you concur with this assessment the City of Seward will hold a public hearing to verify local support for the placement of this facility in Seward.

At this time and after examining the project impacts from all sides I feel Seward has a positive attitude towards this facility and will accept it and welcome the associated employees and their families.

While Seward is offering free land for this facility we also recognize that there are several options available to use in construction. One method we feel would benefit the state is for Seward to build the facility, with state appropriated funds, and then lease it back to the state for \$1.00 a year. Seward has management capability for a project this size. We feel we could bring it "on line" sooner and cheaper to the state than by using the existing state process.

Seward is a full service community with good multi-modal transportation access that is offering a compatible safe and secure Long Term Correctional Facility site. We urge you to give serious consideration to our offer and this assessment report.

Should you have any questions or need additional information please let me know.

Sincerely,

Ron Garzini
Seward City Manager

RG:bk

SEWARD, ALASKA
CORRECTIONAL FACILITY
SITE ASSESSMENT

FEBRUARY 1983
PREPARED FOR THE CITY OF SEWARD
BY
WILLIAMS-KUEBELBECK & ASSOCIATES, INC.
750 WEST SECOND AVENUE, SUITE 101
ANCHORAGE, ALASKA 99501

TABLE OF CONTENTS

	<u>PAGE</u>
<u>INTRODUCTION</u>	
PURPOSE OF REPORT	1
ORGANIZATION OF REPORT	2
<u>FINDINGS AND SUMMARY OF ASSESSMENT</u>	3
<u>SITE REQUIREMENTS</u>	
SITE CHARACTERISTICS	6
SITE/LOCATION REQUIREMENTS	6
SITE SUITABILITY	8
<u>COMMUNITY ASSETS</u>	
GENERAL SETTING	10
PUBLIC SAFETY AND HEALTH	11
EDUCATION	15
TRANSPORTATION	18
UTILITIES	20
LIVING QUARTERS	23
<u>ACKNOWLEDGEMENTS</u>	25

PURPOSE OF REPORT

The State of Alaska is seeking a site for a long term correctional facility.

The City of Seward has proposed a site within its boundaries. The 100 acres is located across Resurrection Bay approximately eight miles from the center of Seward. The site is publicly owned and would be provided to the State at no cost.

The purpose of this report is to assess the suitability of the site and the community as a location for a correctional facility of this type. Often times a large public facility project such as this long term correctional facility only includes the immediate facility funding as part of the project. This often necessitates a second level of funding to complete the support services necessary for it to function as it was intended. This assessment attempts to address the availability and suitability of those support facilities and services.

It lists all the major community facilities and support services found in the service area. This information was obtained by an on site examination and through interviews with the facility/service managers or directors.

Location of a long term correctional facility in Seward will create certain impacts. These will be both positive and negative depending on a particular point of view. For example, the local labor force will change - employment in construction and support services will increase. About 300 jobs will be created. This may also bring pressure for higher wages.

School enrollment will increase, while downtown parking space will be harder to find. Additional medical facilities may become available as will retail stores. More traffic will appear on the streets and delivery of some service may decrease as costs increase.

During the collection of data for this report it was recognized that the placement of any correctional facility should consider the impact

of that facility and all its support requirements on that area in which it is to be located. This means that not only the States concern for inmate security and other requirements must be met, but those of the employees, their families, inmate families and community acceptance must also be considered.

One factor that cannot be assessed in a report of this nature is community attitude. That will occur at a later date through public comment period and action by the City Council.

ORGANIZATION OF REPORT

The report is organized in two major sections to recognize the direct requirements for facility construction as well as the requirement for the supporting facilities and services.

- . Site Assessment - address site requirements and characteristics.
- . Community Assessment - address the facilities and services in the community necessary to support the correction facility.

These two sections are preceded by a summary and followed by a list of acknowledgements.

FINDINGS
AND
SUMMARY
OF
ASSESSMENT

The City of Seward has selected a site for consideration by the State of Alaska for the placement of a long term correctional facility. The site is within the Seward City limits and there are over 100 acres of available public and vacant land at the site.

The following are summary statements relative to the Seward area and the Spring Creek area suggested for placement of the State Long Term Correctional facility:

Site Assets

- . Well drained - level - partially cleared having good construction and foundation material.
- . Remote yet accessible and within a City offering a full range of community services.
- . Meets all state locational requirements for SIZE - ACCESSABILITY - NO ENCUMBRANCES - SERVICE AVAILABILITY.
- . Land available at no cost.
- . Required acreage for facility, expansion, buffers and support services.
- . Compatible use with assurance of continued compatibility and non outside encroachments.
- . Only minimum changes in land use plans and zoning would be needed.
- . Site assessment/feasibility work completed with adjacent Industrial Park assessment.
- . Utilities readily available to the site.
- . Utility costs could be shared with existing industrial uses.

Community Assets

- . Within a fully serviced community.
- . No additional community capital expense for correctional impact.
- . City has expansion capability with minimum or no impact in:
 - Fire and Police Protection
 - Sewer and Water Service
 - Schools
 - Electrical Service
 - Transportation
 - Employment
 - Recreation
 - Communication
 - Land Availability
- . Available services reduce need for inmate transport to other areas.
- . Visitor, legal support housing capabilities exist.
- . Secure location with ease of security enforcement.
- . Choice of rural or urban living environment for employees and families.
- . Existing in place emergency and backup support provided by Seward services.
- . Retail and speciality services in place and available for use by the correctional facility employees and their families.
- . Long distance employee commuting will not be necessary. Will add to security.

- . In place Vocational Technical Center for inmate and employee use/education:
Will be asset to prison industries.
- . Counseling service; Seward Life Action Council (SLAC).
- . Hospital and medical and emergency services in place and available
for inmates and employees.
- . Court system - easily expanded to Superior Court level.
- . Support security via United States Coast Guard and Alaska Fish
and Game patrol vessel.
- . Regional library.
- . Reduced total costs as site has access and is ready for construction
thus saving time and reducing loss to inflation.
- . Use of port will provide long term savings in operation costs.
Direct shipment of operational supplies and heating fuel in bulk
quantity.
- . Use of port will provide savings in costs for Prison Industries
materials.

SITE REQUIREMENTS
AND SUITABILITY

SITE CHARACTERISTICS

The suggested location for this Alaska Long Term Correctional Facility is at the Spring Creek area adjacent to the Fourth of July Creek and the Seward Marine Industrial Center. It is approximately eight miles by paved road from Seward's town center to the site, but only three miles across Resurrection Bay.

The size of the site is approximately 100 acres. It is rectangular in shape and all areas would be adequate for location of a large facility. The land is in public ownership and is surrounded by other land owned by the U.S. Forrest Service. Some private land borders the site nearest the Seward Marine Industrial Center. This area is well buffered by trees and does not create any land use conflicts.

The site is level and well drained. On one side, however, there is a small hill that, if included within the 40 plus acre selection, would make an ideal observation area. Surrounding land uses are vacant/forest. The only development in the area is the Seward Marine Industrial Center.

SITE/LOCATION REQUIREMENTS

The following is a discussion of the assumed site/location requirements desired by the State of Alaska in placement of Long Term Correctional Facility.

Regional Location: To meet American Correctional Association Standard 4147 for Adult Correctional Institutions, the South Central Regional Long Term Facility should be located within 50 miles of a civilian population center of at least 10,000 people, to accommodate access to the courts, a hospital and public transportation.

If this requirement were to be met in Alaska, all prisons would be in the Anchorage, Fairbanks and Juneau areas. Obviously, the population requirement does not strictly apply, to Alaska. However, other criteria should be met. This criteria is access to courts, hospitals, public transportation, etc. All of these criteria are now met or will soon be available, as incidental services to the proposed correctional site in Seward.

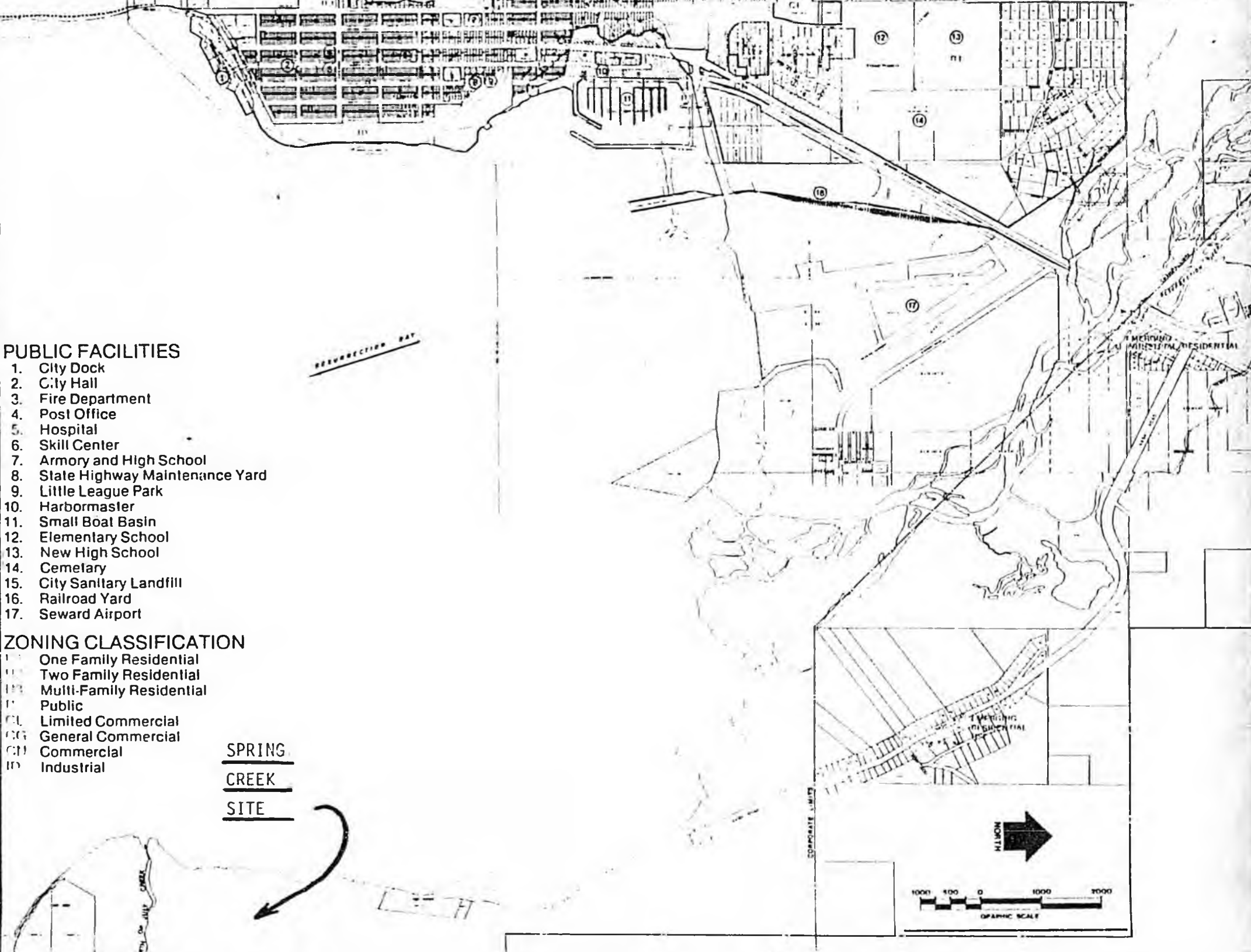
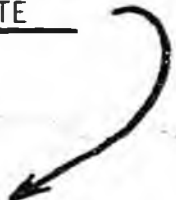
PUBLIC FACILITIES

1. City Dock
2. City Hall
3. Fire Department
4. Post Office
5. Hospital
6. Skill Center
7. Armory and High School
8. State Highway Maintenance Yard
9. Little League Park
10. Harbormaster
11. Small Boat Basin
12. Elementary School
13. New High School
14. Cemetary
15. City Sanitary Landfill
16. Railroad Yard
17. Seward Airport

ZONING CLASSIFICATION

- 1F One Family Residential
- 2F Two Family Residential
- MF Multi-Family Residential
- P Public
- CL Limited Commercial
- CG General Commercial
- CM Commercial
- IO Industrial

SPRING
CREEK
SITE



Site Availability: The site should be owned by the State of Alaska or available without cost and should not be committed to an incompatible land use. Designated public parks, recreational areas, wildlife preserves and other uses that are not fully compatible should be avoided if possible.

The suggested Seward site has over 100 acres of public owned land. The area is within an identified industrial development park. Land uses are compatible. There is no other development in the area.

A full range of support services are available to the site. It is secluded yet accessible and, because of surrounding land use and ownership patterns, will not become an incompatible use in the future.

Site Size: A site of from 30 to 75 acres, unencumbered by leases, easements or rights-of-way is desirable in order to allow flexibility in site planning and an additional buffer.

The suggested site has over 100 acres of level easily developable land. Buffers exist in the form of natural features and land ownership patterns. Sufficient acreage exists to allow for facility support and expansion purposes. There are no easements, rights-of-way or other encumbrances on this site.

Physical Site Characteristics: The development site should have a topographic slope of less than 20 per cent; it should not be within a designated 100 year or 500 year flood plain, or other area seasonally flooded by lake, pond or stream; and it should have well drained soils that are generally suitable for construction and on-site development of sewage disposal facilities.

The suggested site is level, well drained and partially cleared, thus facilitating easy development. Activity associated with the Seward Marine Industrial Center altered the natural flow of the Fourth of July Creek, thus removing this area from the 100 and 500 year flood plains. The soils are well drained and are considered to be excellent for construction and foundation purposes. Disposal of wastewater and general soils conditions are discussed elsewhere in this report.

Site Accessibility: The site must be accessible by an existing public road or be within two miles of a public road with reasonable assurance that access to the site can be obtained.

An existing paved road now provides access to within one mile of the site. The final mile of road accessing the site is a gravel road suitable for construction needs.

Utilities are available or could be easily developed.

SITE SUITABILITY

The suggested Seward Spring Creek Correctional Facility location is in an ideal place for such a facility. The site itself also has many attributes as a building site. These features can be listed as:

- . Within a fully serviced community.
- . Not generally visible or having a high public profile.
- . Ample land for buffers, support services and expansion
- . Level, good soils, partially cleared and ready for construction.
- . Access, utilities, and service available to the site.
- . Multi-modal access.
- . No, or few, community support facility expenses.
- . Proximity to Port facilities reduce construction and supply costs.
- . Remote, for security purposes, location with easily implemented security measures.

COMMUNITY ASSETS

- . Proximity to all support service thus reducing need to transport inmates.
- . Community service capability to meet impact with minimum disruption.

These and other benefits mean not only short term immediate saving to the state, but long term savings in operational costs and social disruption.

GENERAL SETTING

Seward, located on Resurrection Bay, is Alaska's only natural ice-free, deep-water port with year round rail, highway and road service. It is approximately 120 miles by highway from Anchorage, 114 by rail and 35 minutes by air. It has well maintained docks, complete marine services, dockside rail facilities and community support services.

Founded in 1903, Seward has more of a planned townsite and appears more "orderly" than most of the small towns in Alaska. Most streets are paved and have sidewalks. Most of the businesses are located in a downtown area. These include grocery, hardware, drug store, men and family clothing department stores, fabric and gift shops, beauty salons, barber shop, restaurants, hotels, offices, etc. The post office, library, hospital and ferry terminal are all within easy walking distance of the town center.

The population of Seward is approximately 1850 with another 1600 persons living within the area of trade influence. Employment for this population is concentrated in the following sectors or employers:

- . Alaska Railroad
- . Port of Seward
- . Fishing
- . Logging
- . Government and Service

At present, 18% of the workforce is unemployed.

Two new schools were constructed in the 1970's. They serve all students in grades K through 12 in Seward and high school students from Moose Pass and Cooper Landing. The new high school includes a gymnasium and swimming pool, widely used by the community schools program and local swimmers.

Many clubs and recreational opportunities are available for any interest from bird watching to sailing to baseball, skiing, bowling and basketball.

Seward is a home rule city with an elected Mayor and Council and a hired City Manager. Seward provides electricity, sewer, water, garbage pickup and several T.V. stations via satellite for a nominal rate.

There is a 1% City sales tax and a 2% borough sales tax. The City property tax rate is 5 mills. The borough assesses 2.5 mills. The City's bonded indebtedness is only 4.62% of assessed valuation.

For the past several years the City has concentrated in the development and construction of an industrial center combining harbor, ship lift and marine industrial development.

The University of Alaska has a facility in Seward in the Institute of Marine Science research. These facilities add to the cultural and educational opportunities to a degree unusual in such a small city.

Two traditional summer events drawing hundreds of visitors to Seward are the 4th of July Mt. Marathon race and the 10 day Silver Salmon derby in August. Boating and sailing enthusiasts whose boats are moored in Seward small boat harbor converge on Seward every weekend during the summer. The Seward small boat harbor has 550 slips and plans call for an additional 1000 slips in the near future.

Thus, Seward is a complete community with a full range of community facilities and services.

These facilities and services are discussed in detail below.

PUBLIC SAFETY / HEALTH

Police

The Seward Police Department consists of nine full time employees with three auxiliary members.

Four State Troopers also serve the area from Seward to Hope. This lineal positioning would be a benefit for road security/blockade purposes in the event of inmate escape. The Seward jail can house 14 prisoners in 6 cells, 5 in a dormitory type cell and 8 in maximum security cells equipped with electric doors. There are two separate

cells for women and juveniles. The City of Seward employs six jailers, all trained at Federal and State competency levels. This facility is equipped with T.V. monitors, freezers, micro wave oven, and feeds prisoners with food prepared at the Seward General Hospital.

A full range of emergency and communication equipment is in place. This includes radio communication, compatability with the Alaska Railroad, State Troopers and U.S. Coast Guard. There is a fully equipped police boat and the Alaska Department of Fish and Game also has a new boat that could, if needed, also provide security patrol assistance in Resurrection Bay.

Fire Protection

The City of Seward has a Fire Class rating of 5. Service is provided by 31 volunteers and a full time chief. Presently, two pumper trucks are the major equipment items. Funding requests for a new bay and ladder truck have been submitted to the legislature.

Another fire service district area is located at Bear Creek just outside Seward. An existing agreement between the City and Bear Creek station calls for back up service in case of extreme emergencies.

In relation to the proposed long term correctional facility it is approximately 8 miles to both the Bear Creek and Seward fire stations. The response time from both of these stations to the site is 13 minutes.

The suggested site is also less than one mile from the existing Seward Marine Industrial Center. This center will have its own (additional to that of the City and Bear Creek) fire protection facility consisting of a building and support trucks and equipment. It is scheduled for completion in 1985. It will be manned on a volunteer basis by the Marine Center employees and the other Seward volunteers.

By utilizing this facility and proper planning, the correctional facility fire protection service costs can be reduced greatly. With the City's current fire rating and in place wells, ins and

water system it will be able to accept the growth of correctional employees, their families and secondary growth without a reduction in their Class 5 rating or additional capital facilities expenses.

Seward Life Action Council

The Seward Life Action Council (SLAC) is a non-profit corporation formed to provide quality community based mental health, alcoholism, drug abuse and general counseling services to residents of Seward and the surrounding area. SLAC is governed by a Board of Directors comprised of people from the community.

Funding for SLAC is provided through grants from the State Office of Alcoholism and Drug Abuse and Division of Mental Health and Development Disabilities and by support from the City of Seward and other local contributions.

SLAC personnel consists of qualified professionals in the fields of mental health and substance abuse. A full-time licensed Ph.D. Psychologist and certified masters level Chemical Dependency Therapist offer a comprehensive approach in a variety of treatment modalities. A community outreach worker conducts prevention and education programs and coordinates special community projects. These qualifications make their services eligible for insurance coverage by some firms.

SLAC maintain regular office hours Monday through Friday, except authorized holidays. An on-call counselor is available 24 hours a day seven days per week.

Fee for services are assessed on a sliding scale based on the ability to pay. Services are never denied due to inability to pay. In addition to providing service for state correctional employee families, it is anticipated that this service could also contract with the state to provide inmate counseling.

SLAC owns its facility and could accomodate additional staff with only minimum modifications. In fact, the current organizational structure and SLAC administration is set up to expand its staff with no interruption of service.

Seward Hospital

The Seward General Hospital is a general acute care hospital providing all general services; general surgery, internal medicine, cardiology, orthopedic surgery, radiology and pathology through the addition of visiting specialist physicians. Current occupancy is about 14%. The following, in part, was taken from the state DOT/PF Inventory and Conditions Survey reports.

Seward General Hospital is a 31-bed acute care center constructed in 1955. Currently it serves a population of about 3,500 in Seward and the surrounding area, but the community is now experiencing substantial population growth. The hospital is centrally located in Seward, adjacent to a nursing home and a doctors' clinic.

With only minor modifications for room security purposes, the Seward Hospital could be used to provide major medical service to the correctional inmates.

Court System

Seward is now served by a Magistrate who is also fully qualified and has on occasion served as District Court Judge.

The present court room has space for approximately 50 spectators and prospective jurors. It has a jury room, washroom facilities, attorneys work rooms and judges chambers. This facility is located in the existing City Hall where the City Police and jail are also located.

While these facilities are adequate for today's needs, continued growth in Seward and the Kenai Peninsula, coupled with a continued heavy court case load in Anchorage and elsewhere in southcentral Alaska, indicate that some upgrading will be needed.

It is anticipated that this will occur with or without a long term correctional facility being located in Seward. It is also anticipated that any court facility upgrading would be designed to accommodate correctional court needs thus enabling a sharing of facility uses and saving of capital and operating expense to the state.

Assuming upgrade work would occur within the existing facility, only the jury and security functions would need immediate alterations.

EDUCATION

Schools

The City of Seward elementary and high schools are part of the Kenai Peninsula Borough School District.

The high school, serving grades 9 - 12, was completed in the late 1970's and has a designed capacity of 300 students. It now serves approximately 160 students, leaving an expansion capacity of 140 students. These additional students could be absorbed with no change in the facility and only minor changes to service and office accommodations.

The elementary school serves grades K - 8 and has a designed capacity for 450 students. Approximately 300 students are now enrolled, leaving an expansion capacity of 150.

Based on an average size of three persons per household, approximately 300 additional families and their children could be absorbed into the existing school facilities now located in Seward.

Some of the facilities and services existing in these adjacent buildings include:

- Theater
- Swimming Pool
- Gymnasium
- Full Service Lunch Room
- Exercise Room
- Racquet Ball Court
- Outside Track, Soccer and Play area

An extensive Community Schools program is provided with an average of 12 courses being offered by the Kenai Peninsula Community College.

Day care facilities also exist in the community and it is assumed that additional services would be provided by the private sector as demand dictated.

Vocational Technical Center

The following is taken directly from the Alaska Vocational Technical Center catalog of 1983:

The Alaska Vocational Center is an adult post-secondary educational institution dedicated to offering quality vocational/technical education to residents throughout the State of Alaska.

Educational programs at AVTEC provide the student with sufficient occupational skills to both benefit from and contribute to the economic growth of Alaska. This may include the development of basic occupational skills and/or upgrading of present skills.

At AVTEC the comprehensive instruction, counseling, residential student services and job placement contribute to the students' development of acceptable attitudes, work habits and technical knowledge to enter the job market.

Programs are offered to Alaskans whose knowledge and skills are appropriate to the programs selected and who can benefit from them, regardless of educational, cultural, or economic background. The Alaska Vocational Technical Center offers students training and instruction to help them meet minimal competencies established for skill areas based upon an analysis of occupations for which they are being prepared. This effort is supported by extensive vocational counseling, testing, supporting learning resources and open-exit scheduling. The Center maintains flexible curricula and programs that may truly reflect and respond to the needs and demands of the Alaskan job market, and the people seeking a place in that market.

The current Vocational Departments and Center Services are:

VOCATIONAL DEPARTMENTS

Food Service
Office Occupations
Building Maintenance
Mechanics
 Heavy Equipment
 Power Plant
 Diesel Mechanics
 Welding
 Auto
Oil Technology
Forestry
Emergency Medical Services
Marine Navigation

STUDENT SERVICES

Counseling
Job Development

CENTER SERVICES

Student Housing
Family Housing
Food Service Facility
Library
Medical
Recreation

The vocational departments could be expanded to serve the long-term correctional facility without need of capital expenditures, except for specified tools or equipment associated with particular classes. The services would also be available for employees and their families.

The Port and Railroad also provide good access to raw materials needed to support a prison industries program, which in turn could be assisted by the Vocational Education Center.

Library

Seward has a large "regional center" library unique for a city this size. A private endowment has enhanced the facilities and services of the library. The library space was recently remodeled to accommodate the increased demands on its use. This library with its close proximity to the suggested correctional facility could provide service to that facility. It would also benefit its employees and their families.

TRANSPORTATION

Seward is the only community in the state with a deep year round ice-free port having road, railroad and air service transportation available to it. As such there are many options available that would make both the construction of a correctional facility and its operation very efficient.

The proximity of the correctional facility to the port would mean cheaper construction and operations in that:

- . on site material storage is available,
- . a reduction in handling and transfer of material would be realized,
- . the short distance between area where material is received and construction site means less transportation costs,
- . there would be less material handling as supplies - food, prison industries materials and heating oil could be purchased in bulk quantities with direct delivery.

The railroad offers yet another access alternative. The Alaska Railroad is now providing mixed use (freight and passenger) service, which could be used by the correctional facility. The establishment of daily coal trains to Seward and mixed use service will provide economical and secure transportation, when needed, between Seward, Anchorage and Fairbanks.

The surrounding terrain and only one road access add additional security means to deter escapes and facilitate capture in the event an escape should occur.

The following is a general presentation of the various transportation modes now serving Seward:

Highway

Seward is connected to Anchorage and Kenai via the Seward Highway. Anchorage is approximately 125 miles away and Soldotna, 95 miles. The Seward Highway is part of the Federal Aid Primary Road System with an estimated capacity of 14,000 vehicles per day. The annual daily traffic now averages 800 to 3,000 vehicles per day. The State of Alaska Six Year Capital Improvement Program lists numerous reconstruction projects for upgrading the Seward Highway to a 40-foot wide section consisting of two 12-foot traffic lanes and two 8-foot paved shoulders.

Bus transportation is available on a year round basis, with two lines operating in the summer. Bus service is provided by 15 and 45 passenger buses. All of the above haul freight into and out of Seward.

Railroad

Seward is the southern terminus of the federally owned Alaska Railroad. The railroad operates a break-bulk port which handles equipment, palletized material and other large items. The railroad reserve, 100 acres, can for the most part be considered an industrial area with shipping support facilities and storage areas. This could serve as a material staging area during construction as well as a shipping center for the prison industry products.

At present the railroad has only chartered passenger service to Seward, but the advent of coal shipments scheduled for the fall of 1984 could permit a regular passenger service in conjunction with coal and regular freight trains.

Ports

Seward has several major docks: the Alaska Railroad dock (2-600 foot berths, 1-200 foot berth, 35 feet deep), the City dock (berth for 100 foot vessels, 13 feet deep) and the Fourth Avenue dock (berth for 400 foot vessels, 80 feet deep). The Alaska Railroad east berth has two cranes with capacity of 45 short tons and 105 foot radius reach.

The state ferry serves Homer, Seldovia and Kodiak on a regular basis and Valdez and Cordova on weekends in the summer. This could facilitate transfer of inmates and family visits from these communities.

Airport

Seward is served by a general aviation airport constructed and maintained by the Alaska Department of Transportation, Division of Aviation. There are two asphalt runways, the primary one is 4750 feet long and 100 feet wide while the secondary is 2300 feet long and 75 feet wide. A small asphalt apron exists just west of the secondary strip. No navigation or approach aids exist so

the airport is closed when conditions fall below those required by Visual Flight Rules operation. The addition of a microwave landing system, which is feasible, would permit instrument approach.

Charter air service is available with four aircraft of varying sizes which are available for medical evacuation, or other special transportation requirements.

UTILITIES & SERVICES

Electrical

Seward's electrical power is purchased from Chugach Electric via a transmission line which generally parallels the Seward Highway. Seward owns three diesel generators with 5,500 KW capacity for emergency and peak load. The present mainline transformer has a capacity of 5,000 kW.

The capacity of the present system is adequate to meet current demands. A major upgrading of the power delivery system within the city was completed in the fall of 1979. These improvements included a new transformer and new feeder voltage regulators to increase capacity to 7500 KVA.

The City is currently negotiating a new ten year contract with Chugach Electric. In addition approximately 14 miles of transmission line outside of Seward have been identified to be upgraded for increased local (Seward) consumption. This upgraded line is needed by Seward, with or without the correctional facility.

At present a 69 KV line is available to the suggested prison site. This is more than enough power needed to serve both the prison and the Seward Marine Industrial Center. A substation is planned as part of the Industrial Center Complex. Thus, power would also be available at minimal cost to the correctional facility.

Ample power is presently available to the site to meet construction needs. Additional power sources will be available with the completion of the Bradley Lake Dam Hydroelectric project and delivery grid.

Water

Seward has an excellent water system with high volume capacity drawing from a combination of wells and surface supplies. Two high elevation storage tanks provide 600,000 gallons of water storage. The existing system has been expanded and improved under the guidance of a comprehensive water system plan developed in 1975. Additional mains into industrial areas and more storage capacity were included. The system as upgraded can accommodate a population of 10,000.

Adequate water supplies have been identified, wells drilled and water available to the Seward Marine Industrial Center. There is more than adequate water volume to extend service to the adjacent Spring Creek site.

Wastewater

Seward is served by a gravity sewer system throughout the community. The City adopted a Comprehensive Wastewater Facility Plan to meet current Federal Regulations requiring secondary treatment. An aerated lagoon system is located at Lowell Point, south of the City. The interceptor system is designed for a saturation population of 20,500 while the treatment lagoon was initially constructed to meet the requirements of 5,000 with future expansion to accommodate a population of 10,000.

The previously referenced feasibility study for the Fourth of July Creek Industrial Development prepared by Arctic Environmental Engineers found the following:

The Fourth of July Creek is well suited to conventional wastewater collection, treatment and disposal techniques. No unusual conditions exist that would require specialized or extremely advanced practices. Resurrection Bay can be used as the receiving water for wastewater effluent and is located adjacent to the site. The types of sewage

treatment that can be utilized at Fourth of July Creek are limited by current technology and agency regulations and not by site limitations.

Essentially three basic sources of sewage need to be considered. These are domestic, industrial and fisheries wastes. Domestic wastes can be further broken down into low density industrial complexes or residential development on one hand and the same type of waste but in large quantities on the other.

A large development, such as a prison, would require a central sewage treatment facility. A collection system would be required to bring the wastes to the facility. One of the many package treatment plants on the market today would handle a fair sized development easily. Another method of treating this type waste is an aerated lagoon similar to the type the City has selected for Lowell Point. Lagoons are simple to construct and operate and are relatively inexpensive. It is anticipated that the correctional facility and the Seward Marine Industrial Center would share a common facility. This could produce a savings in both construction and operation.

Fuel

Presently two bulk fuel plants serve the Seward area: Chevron and Texaco. Each handles gasoline, diesel and related products. Natural gas is not available in the area.

A 22,000 gallon per hour pipeline is available for fueling large vessels at the end of the Alaska Railroad dock. The fishing fleet is supplied by tank trucks at the small boat harbor.

The Chevron distributor receives his fuel from Nikiski (Kenai), while Texaco is supplied from Anchorage via rail car.

With the installation of the Seward Marine Industrial Center direct bulk heating oil shipments could be made to within a mile of the proposed correctional facility. This direct delivery added to a bulk heat oil storage facility would provide substantial cost savings during the life of the facility.

Telephone

The General Telephone Company of Alaska serves Seward and currently operates about 1,500 stations for 900 customers. Long distance communication facilities consist of trunk lines tied to the Anchorage exchange. During normal business hours they are used at near capacity. The utility indicates it is capable of expanding the system to meet the type of demand that would be associated with a correctional facility, with a lead time of only six to nine months.

LIVING QUARTERS

Housing

At present Seward has a very low housing vacancy rate. However, amply serviced and developable land exists within the City as well as the area immediately outside Seward.

One such area is the Gateway Subdivision. The City is now developing this 135 acre lot subdivision adjacent to the High School. It has plotted single family and multi-family lots. These lots will be fully developed with all utilities and roads in place. This will help insure that land is available for new housing construction that will be needed for the correctional facility employees and support personnel. The City has authorized a five million dollar bond to develop the Gateway subdivision, so its availability is assured. This, plus the existing developable lots provide an ample choice of housing accommodations.

Visitor Accommodations

Seward has served as a recreational center for many years. As such, it has developed a visitor/transient support industry with motels, camper parks and restaurants.

These facilities are now in place and available to serve correctional facility visitors as well as visiting lawyers, parole board members or other providers of service. The multi-modal access to Seward also provides visitor accessibility.

ACKNOWLEDGEMENTS

Acknowledgements

The information contained in this report was provided by many individuals in Seward. In some cases this was in the form of a written program or facility report and was retyped for use in this report.

Other reports prepared for Seward projects were also used to gain background information. The individuals consulted and the reports used are listed below.

Ron Garzini - City Manager, City of Seward

Dennis Dooley - City of Seward, City Engineer and
Utilities Manager

Darryl Schafermeyer - Assistant City Manager, City
of Seward

Louis Bencardino - Police Chief, City of Seward

John Gage - Fire Chief, Seward Fire Department

Keith Campbell - Seward General Hospital

Robert Booher - Alaska Vocational Technical Center

Willard Dunham - Alaska Department of Labor

Dennis M. School, Ph.D. - Staff Psychologist, S.L.A.C.

Ronald Reding - Executive Director, S.L.A.C.

Greg Moo - Principal, Seward High School

Elizabeth Richardson - Principal, Seward Elementary
School

Feasibility Study - Fourth of July Creek Industrial
Development - Seward, Alaska; prepared by Arctic Environ-
mental Engineers, March 1979

Introduced: 2/21/83
Referred: Health, Education &
Social Services and Judiciary

1 IN THE HOUSE

BY CATO AND LINDAUER

2

HOUSE BILL NO. 217

3

IN THE LEGISLATURE OF THE STATE OF ALASKA

4

THIRTEENTH LEGISLATURE - FIRST SESSION

5

A BILL

6 For an Act entitled: "An Act relating to the establishment of prison
7 facilities."

8 BE IT ENACTED BY THE LEGISLATURE OF THE STATE OF ALASKA:

9 * Section 1. AS 33.30.020 is amended to read:

10 Sec. 33.30.020. COMMISSIONER TO ESTABLISH AND ADMINISTER PRISON
11 FACILITIES. Subject to the provisions of AS 33.30.025, the [THE]
12 commissioner shall establish prison facilities and classify the pris-
13 oners in prison facilities. The commissioner shall provide for the
14 safety, subsistence, proper government, and discipline of prisoners.
15 The commissioner shall establish programs for the treatment, care,
16 rehabilitation and reformation of prisoners.

17 * Sec. 2. AS 33.30 is amended by adding a new section to read:

18 Sec. 33.30.025. LOCATION OF FACILITIES. After July 1, 1983, the
19 commissioner shall locate ^a~~all~~ newly constructed maximum security
20 prison facilities within the vicinity of Seward.

*Willard D. ... - Co-Chair Task Force
Louis Bernard ... - Chief of Police Seward
Roger ... - Permanent*

COMMITTEE REPORT

HOUSE

JUDICIARY

FURTHER:

2/21/83

Date: _____

Mr. Speaker:

The Committee on H.E.S.S. has had HB 217

An Act relating to the establishment of prison facilities.

under consideration and reports it back as follows:

- do pass do not pass
- do pass with attached amendments(s)
- replace with CS for HB 217 same title
 new title
- and recommends passed with the following amendments
- AND attaches a "Letter of Intent" New Fiscal Note
- reports it back without recommendation Zero Fiscal Note Attached
- referred to the _____ Committee

MEMBERS SIGNING
DO PASS

MEMBERS HAVING
OTHER RECOMMENDATIONS:

[Signature]

[Signature]

[Signature]

M.W. Miller No Rec

[Signature]

[Signature]

[Signature]
CHAIRMAN