

S

B

8

3

7

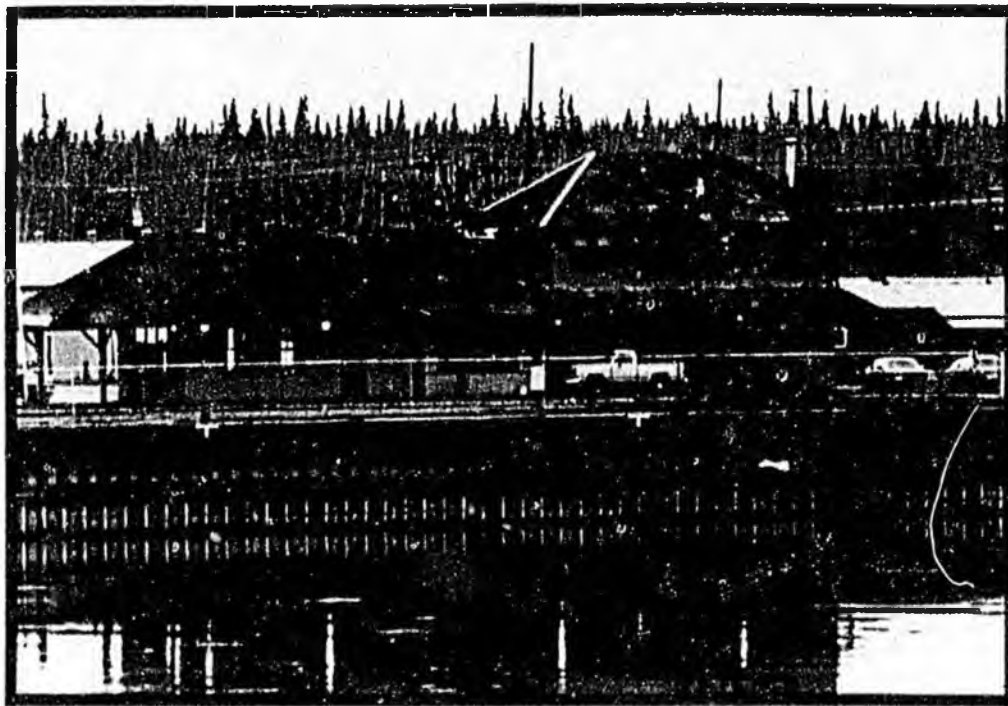
LETTER OF INTENT

Senate Bill 837 is being forwarded to the next committee of referral, which is the Senate Finance Committee, due to its financial implications. The committee recommends that this be placed as a bonding proposition to be considered by the voters in the next general election rather than making a direct appropriation.

A handwritten signature in cursive script that reads "Bill Ray".

Senator Bill Ray, Chairman
Committee on Transportation

PLEASE NOTE: THE FOLLOWING PAGES WERE TREATED
AS A UNIT IN THE ORIGINAL DOCUMENT



PORT OF NENANA ALASKA

BULKHEAD EXPANSION STUDY

1981



Peratrovich & Nottingham, Inc.
Engineering Consultants



Peratrovich & Nottingham, Inc.

Engineering Consultants

1506 W. 36th Ave • Suite 101 • Anchorage, Alaska 99503 • 907-272-8491

January 6, 1982

P&N 81080

Mr. Steve Bainbridge, City Engineer
City of Nenana
P.O. Box 177
Nenana, Alaska 99760

Re: Port of Nenana Bulkhead Expansion

Dear Mr. Bainbridge:

In accordance with your authorization, we have completed a preliminary study for the above-referenced project. Included in this report are our initial findings and a projected budget that contains certain cost assumptions, as will be discussed.

Parts of this study included a site visit to Nenana, contact with the USGS in Fairbanks regarding river parameters, inspection of Alaska Railroad-owned salvaged sheetpile material in Anchorage, and research of Alaska Railroad files and documents.

From this effort, we have concluded the following:

1. A 1,000-foot bulkhead extension, as shown on the attached drawing appears possible.
2. This extension, properly placed, would create a longer usable dock and avoid riverbed deposition.
3. Sufficient suitable salvaged sheetpile material exists in Alaska to accomplish the project.
4. About 2.5 acres of additional improved marine use uplands would be created, and at least 800 linear feet of usable dock frontage would result.
5. Flood elevations are not expected to be significantly impacted, although this needs to be accurately established through more engineering work.
6. Suitable fill and riprap is available near Nenana.
7. Riverbed materials are suitable for the type of construction envisioned.

January 6, 1982
P&N 81080
Mr. Steve Bainbridge
Page -2-

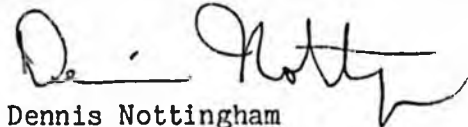
Immediate additional work required, which may impact fall 1982 completion, is permit preparation. Due to an apparent constriction and the potential to raise flood levels, the Corps of Engineers will probably require an accurate analysis to show that flood levels will not increase significantly, usually less than one foot.

The attached cost estimate has been prepared by using some cost assumptions connected with used sheetpiles. However, we feel that it will be an accurate starting point upon which future decisions can be made.

We hope this report addresses your needs; and should you have any questions, please contact us at any time.

Sincerely,

PERATROVICH & NOTTINGHAM, INC.



Dennis Nottingham
President

DN/gh/L2-h



PORT OF NENANA
PROPOSED BULKHEAD EXPANSION
Estimate and Recommended Budget

Sheetpiles Supply

2,275,000# @ 0.10 = \$ 227,500
(mainly shipping and handling)

Sheetpile Fabrication

45 "Y" connections @ 2,100#
= 143,850# @ 0.60 = 86,310
47 "T" connections @ 1,050#

Sheetpile Erection

2,635 LF @ \$230 = 606,050

Bull Rail Supply

1,100 ft. @ 85# = 94,000# @ \$0.10 = 9,400

Bull Rail Erection

94,000# @ \$0.50 = 47,000

Fill

60,000 CY @ \$6 = 360,000

Riprap

500 CY @ \$30 = 15,000

Mobilization and Demobilization =

100,000
\$1,451,260

10% Contingency 145,126

Surveys, soils and permit preparation 20,000

5% Administration and construction engineering 72,563

6% Design engineering 87,076

Total Estimated 1982 Project Cost \$1,776,025

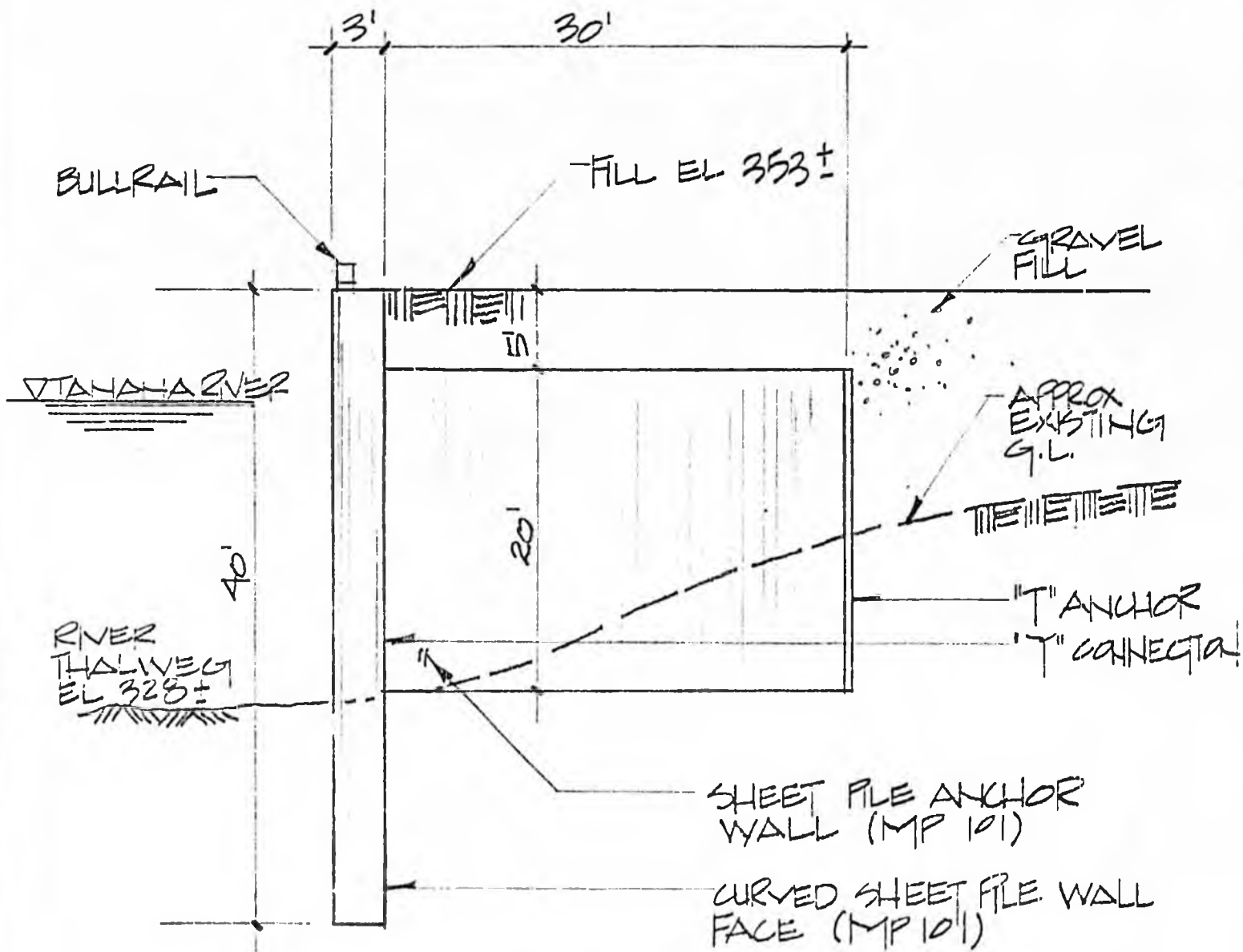
Recommended Project Budget = \$1.8 Million





OLD TIMBER BULKHEAD —
STEEL SHEETPILE BULKHEAD —

**TYPICAL EXISTING BULKHEAD
PORT OF NENANA**



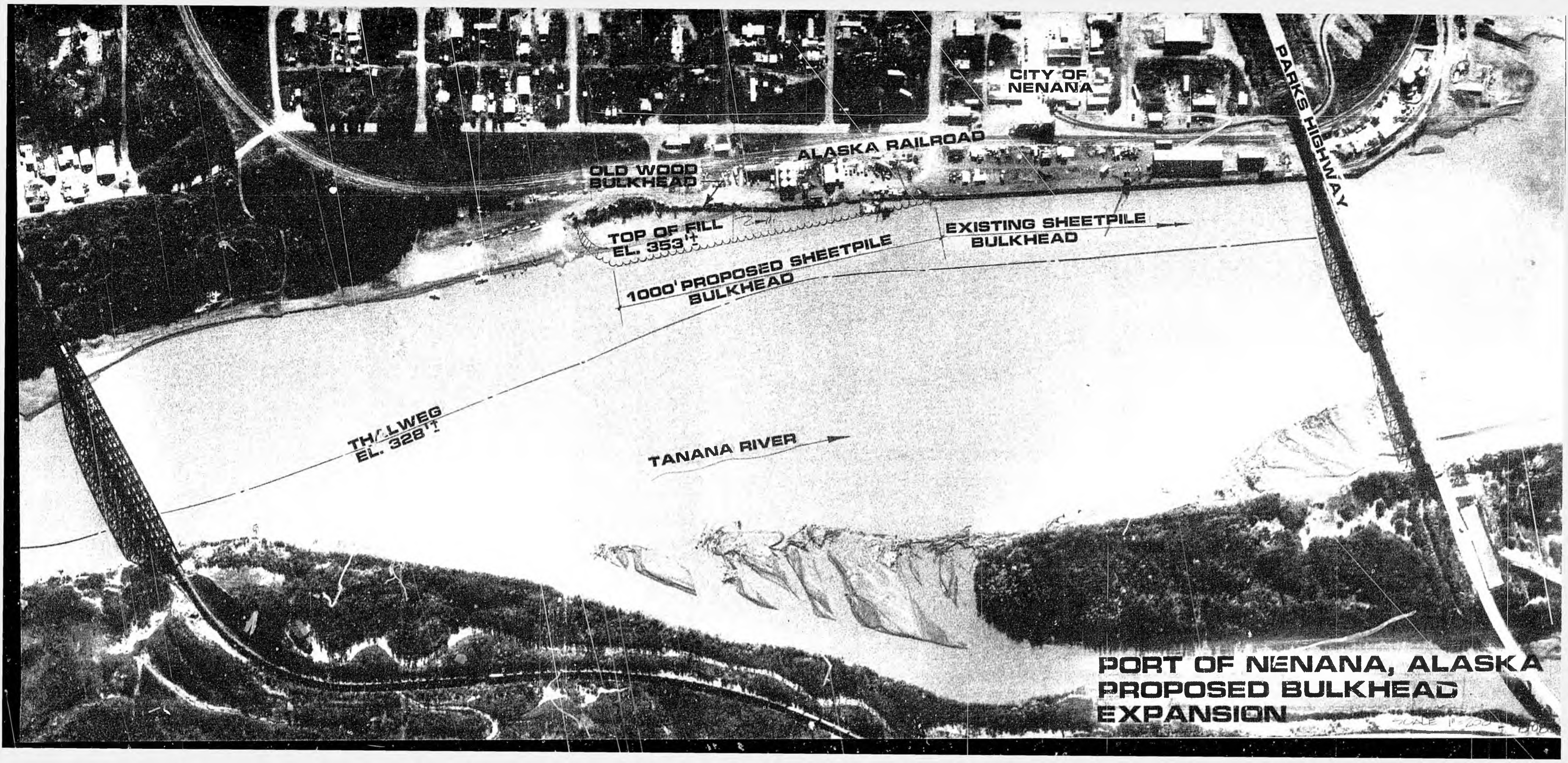
TYPICAL BULKHEAD SECTION

**PORT OF NENANA,
ALASKA**

**PROPOSED BULKHEAD
EXPANSION**

****PLEASE NOTE****

THE ORIGINAL FILE CONTAINS AN OVERSIZED DOCUMENT THAT IS UNSUITABLE FOR FILMING. PLEASE REFER TO THE ALASKA STATE ARCHIVES TO VIEW THE ORIGINAL.



CITY OF NENANA

PARKS HIGHWAY

ALASKA RAILROAD

OLD WOOD BULKHEAD

TOP OF FILL
EL. 353

1000' PROPOSED SHEETPILE
BULKHEAD

EXISTING SHEETPILE
BULKHEAD

TH/LWEG
EL. 328

TANANA RIVER

PORT OF NENANA, ALASKA
PROPOSED BULKHEAD
EXPANSION

SCALE 1" = 200'

**PLEASE NOTE: THE PRECEDING PAGES WERE TREATED
AS A UNIT IN THE ORIGINAL DOCUMENT.**